

This is Florida State



This is Florida State

Florida State University, a coed-educational institution and a senior member of the nine universities in the state system, is in Tallahassee, Florida, the state's capital.

Located just a few blocks from the Capitol, the Florida State campus is considered to be one of the most beautiful in the Southeast. The 347-acre campus is covered with hardwoods, pines and palms as well as springtime greenery that combines the blossoms of camellias, azaleas and dogwoods.

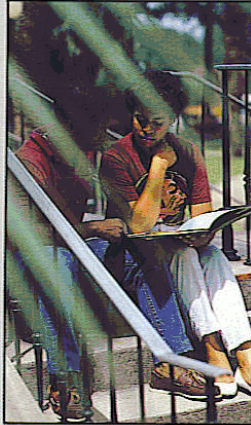
The 23,500 students currently enrolled at Florida State learn from a faculty of 1,527 which includes four members of the National Academy of Sciences. The University has 450 administrative and professional staff and 2,359 career service positions. Nearly 5,000 part-time employees, most of them students, are on the payroll each year.

FSU was established in 1857, when the governor of Florida, James E. Broome, signed a bill establishing the Seminary West of the Suwannee River in Tallahassee. The school consisted of one building located on 10 acres of land.

By 1860, the school, not yet a college, had an enrollment of 250. The president of the seminary organized the school into a four year liberal arts college in 1887. At its first commencement in June 1891, degrees were conferred on two women and five men. Ten years later, the institution was renamed Florida State College. In 1905, it became Florida Female College, and in 1909 the name was changed to Florida State College for Women (FSCW). Dr. Edward Conradi was named president, a post he held until 1941.

In 1945, FSCW took on the additional title, Tallahassee Branch of the University of Florida (TBUF), due to the fact that GIs stationed nearby were attending classes at the women's school, but, as men, couldn't really enroll.

Gov. Millard Caldwell signed a bill in 1947 making both the University of Florida and FSCW coeducational. FSCW became Florida State University.



Located just a few blocks from the Capitol, the Florida State campus is considered to be one of the most beautiful in the Southeast.



As a university, Florida State has had six chief executives: Doak Campbell (1941-57), Robert M. Strozier (1957-60), Gordon W. Blackwell (1960-65), John Champion (1965-69), J. Stanley Marshall (1969-76) and Bernard F. Sliger, who has been president since 1976.

Florida State now offers students the opportunity to choose from more than 100 career options in arts and sciences, business, communication, criminology, education, engineering, home economics, law, library and information studies, music, nursing, social sciences, social work, theater and visual arts. Honors programs are available for top students.

The University has been recognized by the Board of Regents for its continuing leadership at the graduate levels of education.

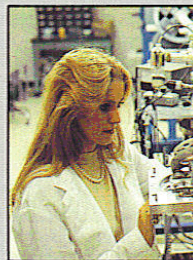
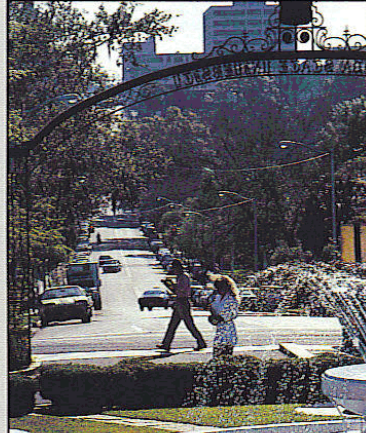
Overseas study programs in fields ranging from law to hotel and restaurant administration are offered in Florence, Italy; Oxford and London, England; Switzerland, Yugoslavia, Costa Rica and the Panama Canal Zone.

The University's location in the state capital affords excellent study, research and internship opportunities in the areas of government, social sciences, law and policy sciences.

Members of the University community, as well as local residents, take advantage of continuing education opportunities offered

such as the Supercomputer Computations Research Institute (SCRI), a substantial number of budding scientists and engineers can now realistically expect a chance to get supercomputer experience before they graduate from Florida State.

In 1982, Florida State received the Panama City campus, originally a part of the University of West Florida, through administrative transfer from the Board of Regents and the state legislature. Today approximately 85 percent of the courses offered in Panama City are taught by full-time Tallahassee faculty.



by the Center for Professional Development and Public Service, headquartered in the Florida State Conference Center.

Florida State is setting the pace as higher education in Florida prepares to enter the 21st century. One of the few institutions of learning in the United States with its own super computer, FSU is attracting researchers from around the globe. A Control Data CYBER 205 supercomputer, installed during March 1985, is the forerunner for the world's fastest computer, the ETA-10, by ETA Systems, which will be operational at FSU in 1986. With programs

The Bay County Commission purchased 21 acres, 16 of which make up Phase I of the new campus. The remaining acreage will be available for expansion into technical degree programs such as engineering and science. Designed for a student enrollment of 3,000, Phase I consists of five buildings overlooking St. Andrews Bay.

Social life for many students in Tallahassee centers around 24 fraternities and 20 sororities. Wind surfing, swimming and sunning are among the activities to be enjoyed at FSU's lakeside "Reservation" or along the sandy beaches of nearby coasts. In the fall, the campus goes wild for football, supporting the Seminoles both at home and away.

When it comes to intercollegiate athletics, Florida State has established a winning tradition. Both the men's and women's athletic programs are among the nation's best.

A unique extracurricular activity is the Flying High Circus, the nation's only all collegiate circus. Students from every academic major can become stars on the flying trapeze or highwire, or in clown acts.

Florida State is growing. Construction has begun on the Florida A&M University/FSU College of Engineering Building, located adjacent to Innovation Park, two miles southwest of the FSU campus.

Construction began last fall on the new student union complex. The project has a budget of approximately \$7.1 million and includes the addition of a new, elevated core facility which will connect the five existing buildings.

Construction is expected to be completed in December 1986 on the Science Center Library. This facility will fill a critical need for library space and provide faculty and students in the Science Center complex with quick access to library materials during research experiments.

FSU President Bernard F. Sliger takes pride not only in the programs, but also in the people—students, faculty, administrators and staff—who make Florida State a successful monument to learning.

Florida State is setting the pace as higher education in Florida prepares to enter the 21st century.

Dr. Bernard F. Sliger

Dr. Bernard F. Sliger has served as the 10th president of Florida State University since February 7, 1977, following a six month stint as the University's interim president.

After he joined the administration in 1972 as executive vice president, he assumed the additional duties of chief academic officer, and further served as director of the University's London Study Center during the fall quarter, 1975.

Sliger, a native of Trout Creek, Mich., was born Sept. 30, 1924. He holds three degrees: the B.A. ('49), M.A. ('50) and Ph.D. ('55), from Michigan State University, all in economics. He also has done postdoctoral study in mathematical economics at the University of Minnesota. Sliger has taught at Florida State, Michigan State, Louisiana State and at Southern University in Baton Rouge, La.

Sliger began his educational career as an instructor in Michigan's Interior Township Schools in 1947. Prior to joining Florida State, he worked for 19 years as a professor and administrator at Louisiana State University. During that time, he served LSU as head of the economics department, member and chairman of the graduate council, dean of academic affairs and vice chancellor. In 1969, he organized the Louisiana Coordinating Council for Higher Education, which is similar to the Florida Board of Regents, and became its executive director.

Sliger holds memberships in a number of professional, scholastic and honor societies, including Omicron Delta Kappa, Phi Kappa Phi and Alpha Kappa Psi. Since 1983, he has been a member of the board of directors of the Federal Reserve Bank of Atlanta and presently serves as chairman of the Board of Trustees of the American College Testing Corporation in Iowa City, Iowa. He also is a member of the Council of Presidents for the Southeastern Universities Research Association, based in Newport News, Va.

Sliger and his wife, Greta, have two sons and two daughters.

Cecil Ingram

Cecil Ingram, known to his friends and associates as "Hootie," has headed Florida State's athletic department for the past six years. He came to FSU in January of 1981 after

eight years with the Southeastern Conference.

Upon arriving in Tallahassee, Ingram initiated a \$10 million dollar building program for athletic facilities. Moore Athletic Center, which houses administrative, coaching and ticket personnel, was planned, built and completed under Ingram's leadership.

Seminole Baseball Stadium was completed during Ingram's second year at FSU, while Doak Campbell Stadium, the Bim Stults Aquatic Center and Mike Long Track were all renovated.

For the past year, Ingram has served on the prestigious NCAA Council. In addition, he is a member of the College Football Association (CFA) Television Committee, chairman of the NCAA Nominating Committee and chairman of the Major Independents.

A native of Tuscaloosa, Ala., Ingram played football for the hometown Crimson Tide from 1951 to 1954. He was named all-SEC as a sophomore when he led the nation in pass interceptions. He was a member of both the 1953 Orange and 1954 Cotton bowl squads, and also for the Alabama baseball team as an infielder.

After graduation and an Army stint, Ingram began his coaching career in 1956 as an assistant football coach at Bradenton (Fla.) Manatee High School. The next year, he became head coach at Tuscaloosa Brookwood High School for three years.

Ingram moved into the college coaching arena in 1960 as an assistant at Wake Forest. He also made coaching stops at Virginia Tech, Georgia and Arkansas before accepting the head coach's job at Clemson in 1970, the only collegiate head coaching job he held. Three years after taking the position, Ingram left Clemson to join the SEC as assistant commissioner.

During his eight-year tenure with the conference, his duties included supervision of football and basketball officials, rules interpretations and eligibility. After five years as assistant commissioner, he was named associate commissioner in 1978.

Ingram and his wife, Toni, have a son and two daughters.

Charles W. Ehrhardt

Faculty Athletic Committee Chairman

A professor of Law at Florida State University since 1967, Charles W. Ehrhardt is beginning his third year as Chairman of the FSU Athletic Committee.

Ehrhardt served on the committee from 1969-71, and was reappointed to the board in 1983. He succeeded Dr. James Jones as chairman in 1984, and became Florida State's representative to the NCAA with the appointment.

A native of Elkader, Iowa, Ehrhardt received a bachelor's degree from Iowa State University in 1962. Two years later he earned his law degree from the University of Iowa and went on to become an Assistant United States Attorney in that state before coming to Tallahassee.

A widely-respected expert in the field of Evidence, Ehrhardt holds the Florida State position as the Ladd Professor of Evidence. He wrote the Florida Evidence Code, passed by the state legislature in 1976, which deals with admissibility of evidence in court trials. Ehrhardt is also the author of a book on evidence, first published in 1977 and scheduled for a second edition soon.

In the spring of 1984, he was voted President of the Metro Conference, a position which makes him chief representative of the league in dealings with the NCAA.

Ehrhardt and his wife, the former Judy Sutton, have three children.

Bob Goin

Bob Goin has been the associate athletic director at Florida State since July of 1981. All sports programs report to Goin, and he also assists athletic director Hootie Ingram with day-to-day operations of the athletic department. Goin is also responsible for a large portion of game day operations for the football, basketball and baseball teams.

Goin came to Florida State with experience as both an administrator and a coach. He arrived at FSU after two years as athletic director of California (Pa.) State College, where he was credited with expanding the athletic department. He formed the Cal State Athletic Scholarship Fund and Athletic Booster Club and established the Cal State radio network.

Prior to taking the California post, Goin was assistant athletic director at West Virginia from 1976 to 1979. At WVU, he was involved in several expansion projects including construction of a new stadium and athletic facility.

Between 1960 and 1976, he held a variety of positions at Bethany (W. Va.) College, including coaching assignments in football, basketball and baseball. Goin was associate



Dr. Bernard F. Sliger



Cecil Ingram



Charles W. Ehrhardt



Bob Goin



Claude Thippen

professor and chairman of physical education and athletics at the school from 1972 to 1976, and coached Bethany football teams from 1963 to 1972.

While coaching at Bethany, two of Goin's football and baseball teams won President's Athletic Conference championships. He also won numerous individual awards, including Tri-State small college Coach of the Year, Pittsburgh and Ohio Dapper Dan awards and the Morgantown Touchdown Club award.

Goin received a bachelor's degree from Bethany in 1959 and his master's from West Virginia in 1962.

He and his wife, Nancy, have four children.

Claude Thigpen

Claude Thigpen has been a member of the Florida State athletic staff for the past 31 years and has held his present position as assistant athletic director since 1978. No one has been with the department longer than Thigpen.

Over the years he has held a variety of positions, including business manager, accountant and ticket manager.

Thigpen has supervised ticket operations for all sports and helps coordinate season ticket drives for football, basketball and baseball. He also handles certain aspects of game day operations for football and oversees the athletic department courtesy car program.

During football season, the Greenville, Fla., native takes on added duties as he makes travel arrangements for the Florida State football team and its official party.

Thigpen is married to the former Carleen Lindley.

Larry Pendleton

Assistant Athletic Director Larry Pendleton is in his 12th year as a member of the Florida State athletic department staff. From 1975 to 1980, Pendleton was academic advisor for FSU male athletes, before assuming the position of assistant athletic director in July of 1980.

Pendleton's current post touches many areas of the department. He is responsible for maintaining and scheduling all athletic facilities.

Additional duties include scheduling and making travel arrangements for the Seminole basketball team, and managing the athletic department insurance programs.

Pendleton coordinated the department's building of the Moore Athletic Center in 1983 as well as improvements to Doak Campbell Stadium, Seminole Stadium, Bim Stults Aquatic Center and Mike Long Track. He also

supervised the building of FSU's softball complex.

A 1969 graduate of Florida State, Pendleton returned to his alma mater in 1973 as a graduate assistant football coach. In 1974, he became a full-time member of the Tribe family when he was hired as an assistant football coach. The next year, he moved to the academic advising position.

A native of Winter Garden, Fla., Pendleton played linebacker and offensive guard for the Seminoles in the late 1960's.

Joe Labat

As athletic business manager, Joe Labat controls the financial aspects of the entire athletic department. He oversees a four-person staff whose responsibilities include overall supervision of accounting, budgeting, financial reporting, internal control, payroll, purchasing and travel. Labat is also the athletic department representative for these areas in University and external organizations.

Labat joined the athletic staff in 1978, moving from across campus where he served in the accounts payable section of the Florida State Comptroller's office.

An avid golfer and jogger, he also volunteers his time to officiate Florida State track meets.

Labat graduated from Florida State in 1967, then taught and coached football and track at Rickards High School in Tallahassee for two years before moving to the Florida State jobs.

A native of Tallahassee, Labat is a member of the National Business Manager's Association.

John Sheffield

In his fourth season at Florida State, John Sheffield serves as FSU's ticket coordinator. Sheffield directs the FSU season ticket campaigns for football, basketball and baseball and also organizes special event programs for the athletic department. He is currently computerizing FSU's ticket operation and oversees a staff of six ticket personnel.

Prior to his arrival in Tallahassee, Sheffield was director of ticket operations for the Tampa Bay Buccaneers from 1977 to 1982.

A 1975 graduate of Florida State, Sheffield worked in the FSU athletic department for a few months following graduation. He then moved on to the Atlanta Braves organization and later moved to Miami where he was assistant ticket director for the Miami Dolphins. Before gaining the ticket director post in Tampa, Sheffield served as business manager for the North American Soccer League's Ft. Lauderdale Strikers.

Sheffield still retains ties with the NFL as he has coordinated ticket distribution for the last seven Super Bowls.

He and his wife, Peggy, have one son.

Wayne Hogan

Tallahassee native Wayne Hogan is in his fifth year as Florida State sports information director.

Hogan is responsible for all publicity and public relations matters concerning the FSU athletic department. The SID office handles all information on 16 intercollegiate sports, encompassing both men and women's athletics.

A 1979 Florida State graduate, Hogan returned to his alma mater in 1982 after serving as assistant sports information director at New Mexico for two years. Prior to that move, he worked as director of public relations and broadcasting for two minor league baseball teams, the Charles Charlies and the Albuquerque Dukes.

Hogan began his career in the public relations and broadcasting fields while a student at Florida State. From 1975-79, he performed a variety of duties for the Seminole athletic program, including working in the sports information office, engineering the Seminole Sports Network for football and basketball broadcasts and play-by-play announcing for baseball.

In addition to his duties as sports information director, Hogan handled color commentary for the Florida State basketball radio network from 1982 to '84 and again resumed those duties last season.

Hogan and his wife, Elaine, have two daughters.

Lisa Franson

Lisa Franson has been a member of the FSU athletic staff for the past seven years, first as an assistant sports information director and then as the department's associate director. In 1986-87, she will have the added title of publications director.

Franson is responsible for all athletic department publications, including FSU's football and basketball game programs and the school's award winning football media guide. In addition to publications, she handles all other department printing.

As associate SID, she works mainly with the football, basketball and track and field teams.

A native of Pittsburgh, Pa., she earned a bachelor's degree in sports management from West Virginia University in 1980. She served as a student assistant in the SID office as well as



Larry Pendleton



Joe Labat



John Sheffield



Wayne Hogan



Lisa Franson

being a member of the women's basketball team for three years. While at WVU she worked with the Eastern Eight Basketball League (now the Atlantic 10), producing the league's media guide in 1978.

She has won numerous awards for her publications, including six national awards in 1982.

She is married to Paul Franson.

Dan Pearson

Dan Pearson, a 1979 West Virginia University graduate, begins his fifth year on the Seminole athletic staff as assistant sports information director. Pearson handles several areas of publicity and media relations for the FSU football team as well as handling all the public relations for FSU's nationally-ranked baseball program.

He also oversees the non-revenue sports, handling assignments for student assistants in those areas. Beginning this season, he will work closely with the Seminole Basketball team.

Pearson came to FSU in 1981 as a part-time assistant before being named assistant SID in October of 1982. Previously, he worked three years in West Virginia's sports information office as a student assistant and then graduate assistant. He earned his degree from WVU in journalism in 1979.

Pearson was chosen as the public relations director for the 1986 United State Baseball Federation's junior national team that traveled to Candaa during the summer.

The Emporium, Pa., native is married to the former Kathryn Smith.

Gene Deckerhoff

Gene Deckerhoff is in his third year as a full-time staff member at Florida State as its radio and television coordinator. Deckerhoff joined the Seminole athletic family in November of 1983 after five years at WCTV Channel 6 in Tallahassee where he served as sports director and sports anchor.

Deckerhoff has also been the Seminoles' play-by-play announcer for basketball for 10 years and football announcer for nine years.

Since joining the FSU staff, Deckerhoff's responsibilities have grown to include executive producer of the Bobby Bowden Show as well as coordinator of all radio and television activity at FSU. Deckerhoff also co-hosts the Bobby Bowden Show.

Gene has worked at two television stations and four radio stations since entering the broadcasting field. He has received the Florida Sportscaster of the Year Award six times: in 1979, 1980, 1983, 1984 and 1986.

Deckerhoff and his wife, Ann, have three sons.

Terry Hume

Marketing Director

A former Florida State athlete, Terry Hume has been a member of the athletic staff for the past eight years. She is in her first year as the marketing director of the entire FSU athletic department.

Hume graduated from FSU in 1977 with an English and Business degree, capping a four-year volleyball career that saw her named team captain and MVP as a senior. She went to work for her alma mater in October of 1978, assisting former women's athletics director Barbara Palmer with a variety of administrative duties. She continued in that position until early in 1986 when the athletic department underwent a reorganization.

Hume's duties now include overseeing the department's advertising efforts as well as handling all promotional activities associated with FSU's 16 sports.

The Tacoma Park, Md native is a 1974 graduate of Coral Gables High School in Miami.



Dan Pearson



Gene Deckerhoff



Terry Hume

This is Florida State Basketball and Yes, We are the Leader of Basketball in the State of Florida

	Florida State	Florida	Jacksonville	Miami	South Florida
Largest Crowd	13,188	11,914	10,117	6,524	10,259
Head Coach's Wins Per Year (Career)	20.7	16.9	13.8	17.5	19.1
Conference Titles	0	0	2	0	0
Conference Runnersups	4	0	0	0	2
NCAA Appearances	4	0	5	1	0
NCAA Final Fours	1	0	1	0	0
NCAA Championship Game	1	0	1	0	0
Alums Who Made NBA (A Full Year Minimum)	4	0	5	1	0
Alums Who Played in NBA Finals	2	0	0	1	0

The Record Speaks for Itself



FLORIDA GATORS



MIAMI



There's a New Theme For Florida State Basketball . . .

Teaching Values and Sharing Dreams!

Teaching Values

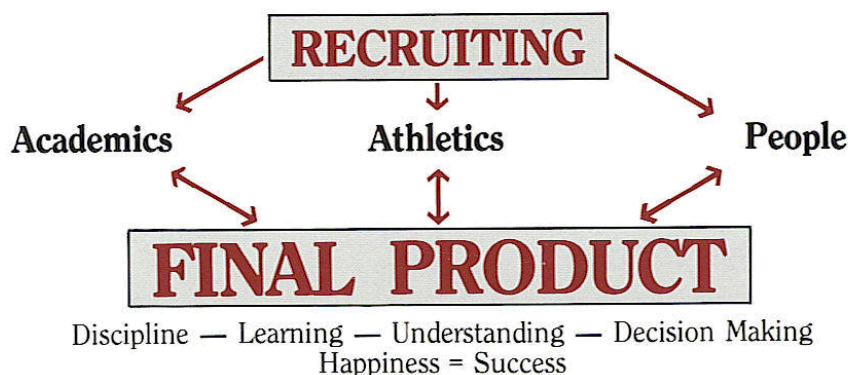
1. Discipline
2. Learning
3. Understanding
4. Decision Making

Sharing Dreams

1. 100% Graduation Rate
2. Sell Out Civic Center
3. Metro Conference Championship
4. Return to Final Four
5. National Championship

The Final Product

The "Final Product" is a polished, classy All-American type student-athlete who brings pride and recognition to his university, his family and himself. The "Final Product" is a young man going out into the world who is sound academically with his degree, is strong athletically with the competitive edge and productive socially as a contributor to society.



PERSONAL GOALS

NATIONAL CHAMPIONSHIP

Formula

- National Name Recognition
- Conference Affiliation of the Highest Level
- Facilities
 - Academic
 - Athletic
- Commitment
 - Philosophy
 - Monetary

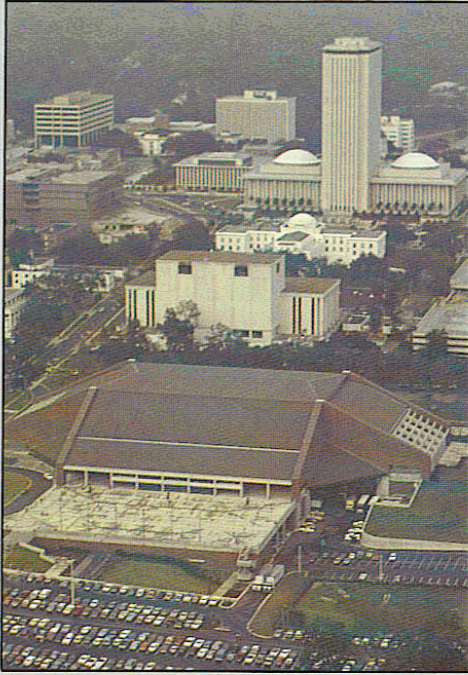
ME

- Energy-Enthusiasm
- Intelligence-Confidence
- Faith-Patience
- Work Ethic-Persistence
- Discipline-Ambition
- Family

Systems

- Development of Recruiting
- Development of Student Athlete
 - Academically
 - Athletically
 - Socially
 - Career Planning
- Development of Staff and Support Groups

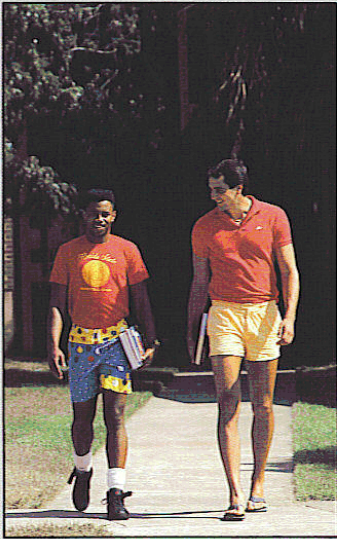
This is FSU Basketball



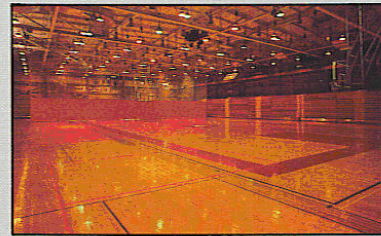
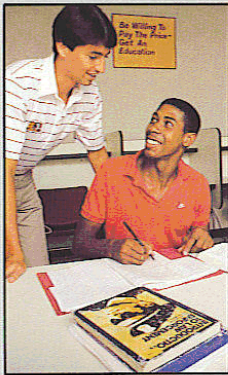
With new head Coach Pat Kennedy at the helm of the program, Florida State basketball is expecting to grow by leaps and bounds. While Kennedy's goal is to lead the FSU program into the Top Twenty on the court, he found top notch facilities waiting at Florida State when he arrived.

The 12,500 seat Leon County Civic Center is one of the most glamorous arenas in all of college basketball; two other private practice facilities are also available to Seminole Basketball players. The basketball offices are located in Moore Athletic Center, which houses one of the practice facilities as well as a multi-equipped strength complex. The Center also has an academic area where students can secure tutorial help as well as career counseling.



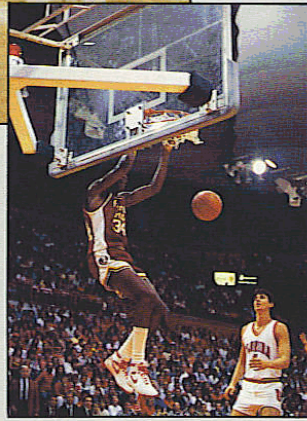


Players live in Cash Hall, a private student dormitory on the outskirts of the bustling FSU campus. Pairs of players share suites in Cash Hall and soon find it to be a comfortable home away from home. Hearty appetites are met by three square meals a day which include an endless salad and ice cream bar. The Hall also has its own entertainment center as well as a swimming pool.

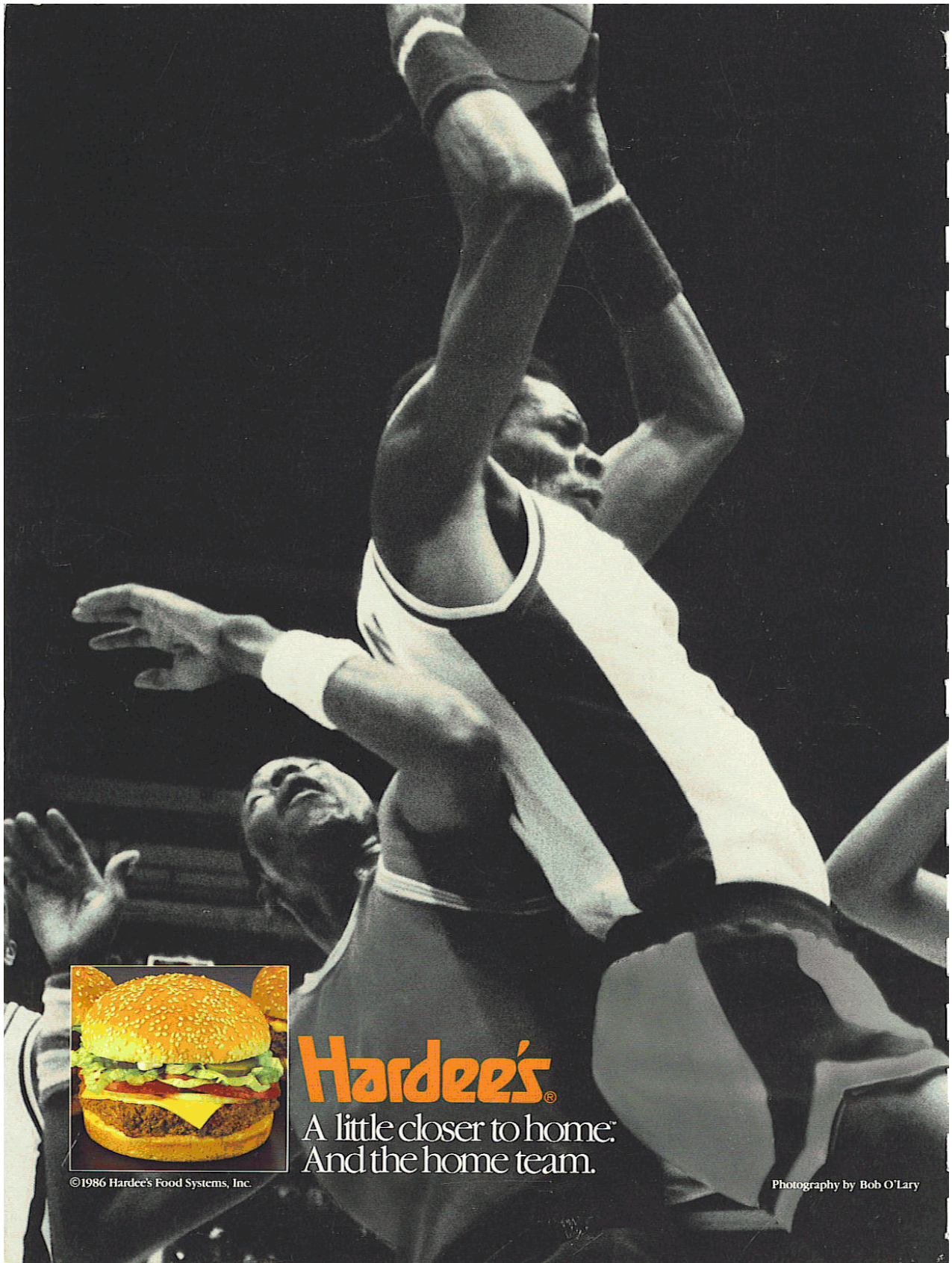




There's always an up-beat atmosphere at Florida State basketball games. With a student enrollment close to 23,000, there's plenty of support among the student body for exciting basketball. Alumni and city natives are also to be counted among the most loyal fans. In 1986, a special group of fans will join the basketball crowds at the Civic Center. They are 'The Animals,' a troupe who has received national attention because of their support of the nationally ranked FSU baseball program. With the arrival of Kennedy, the group pitched its support to move indoors and spread its enthusiasm to the basketball crowds. Florida State Basketball — it's a brand new ball game!







Hardee's[®]
A little closer to home.
And the home team.

©1986 Hardee's Food Systems, Inc.

Photography by Bob O'Lary