



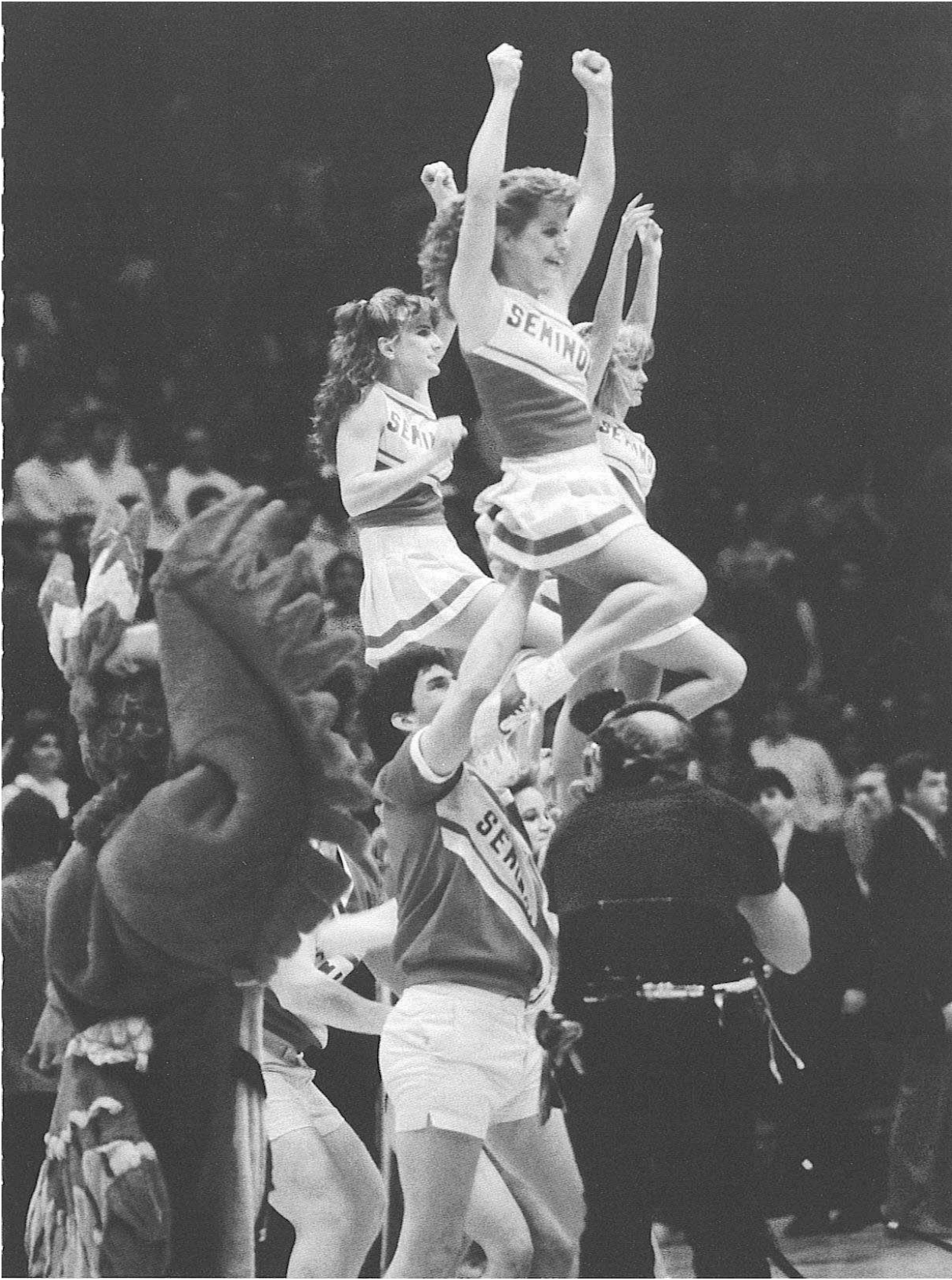
UNIVERSITY

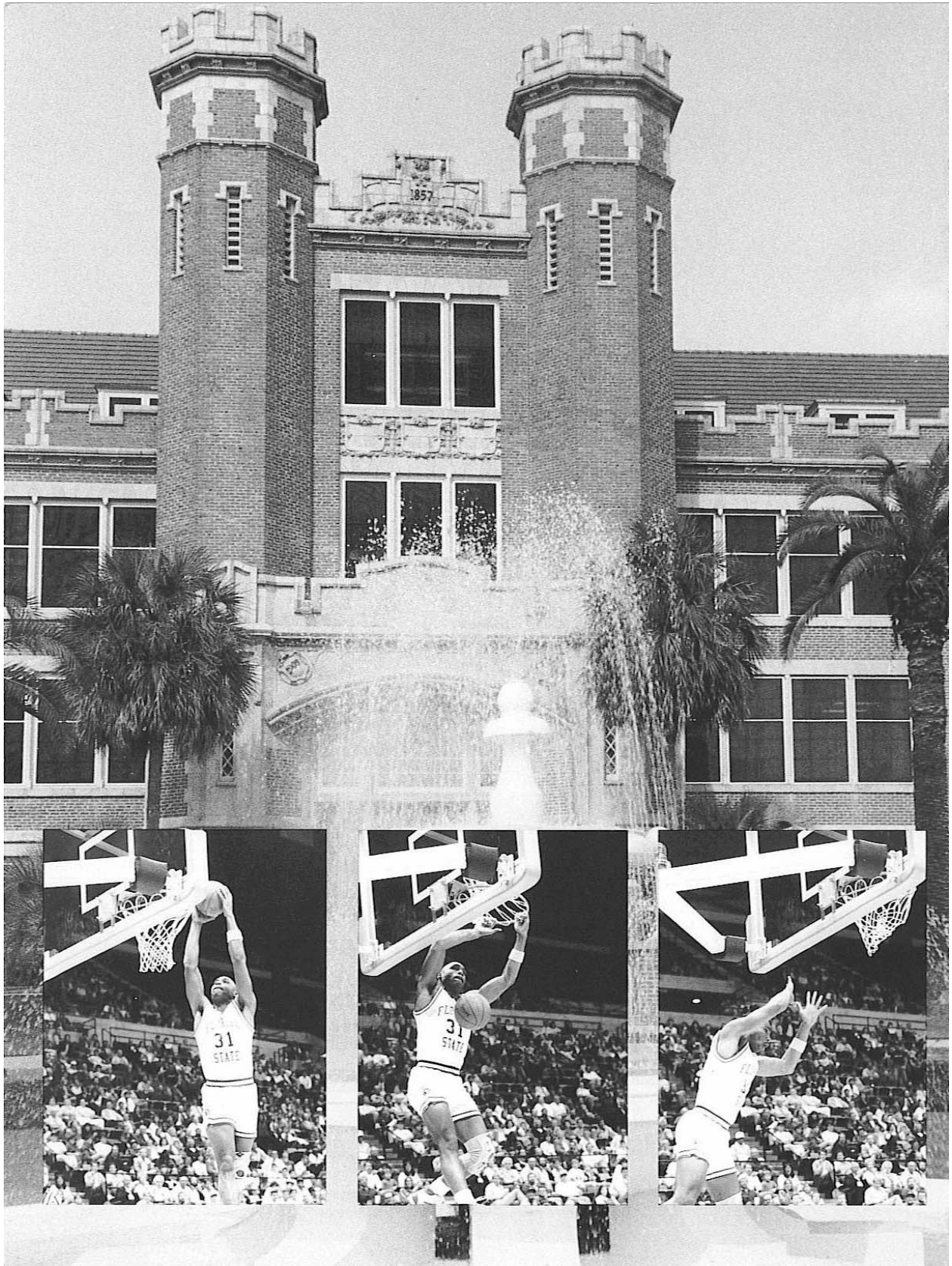
BASKETBALL AT FLORIDA STATE

IN THIS SECTION

<i>This Is Seminole Basketball</i> . . .	68
<i>High Tech or Halls of Ivy:</i> . . .	74
<i>Athletic Staff</i>	77
<i>Seminole Radio Network</i> . . .	82
<i>Television Appearances</i> . . .	83
<i>The Theme for</i>	
<i>FSU Basketball</i>	84

Photo: Unprecedented crowds have filled the Tallahassee Civic Center to cheer the Seminole basketball team. Florida State has brought an exciting brand of basketball to Tallahassee and FSU fans have responded by setting new attendance marks. The team has also responded losing just four home games over the past two seasons.





THIS IS...

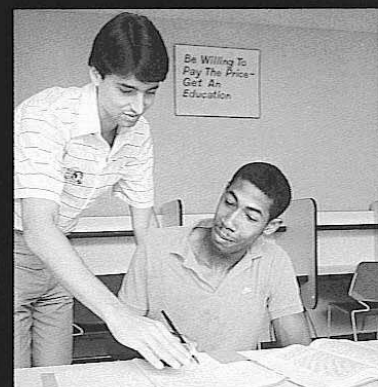
With head coach Pat Kennedy at the helm of the program, Florida State basketball is growing by leaps and bounds. While Kennedy's goal is to lead the FSU program into the Top Twenty on the court, he found top notch facilities waiting at Florida State when he arrived.

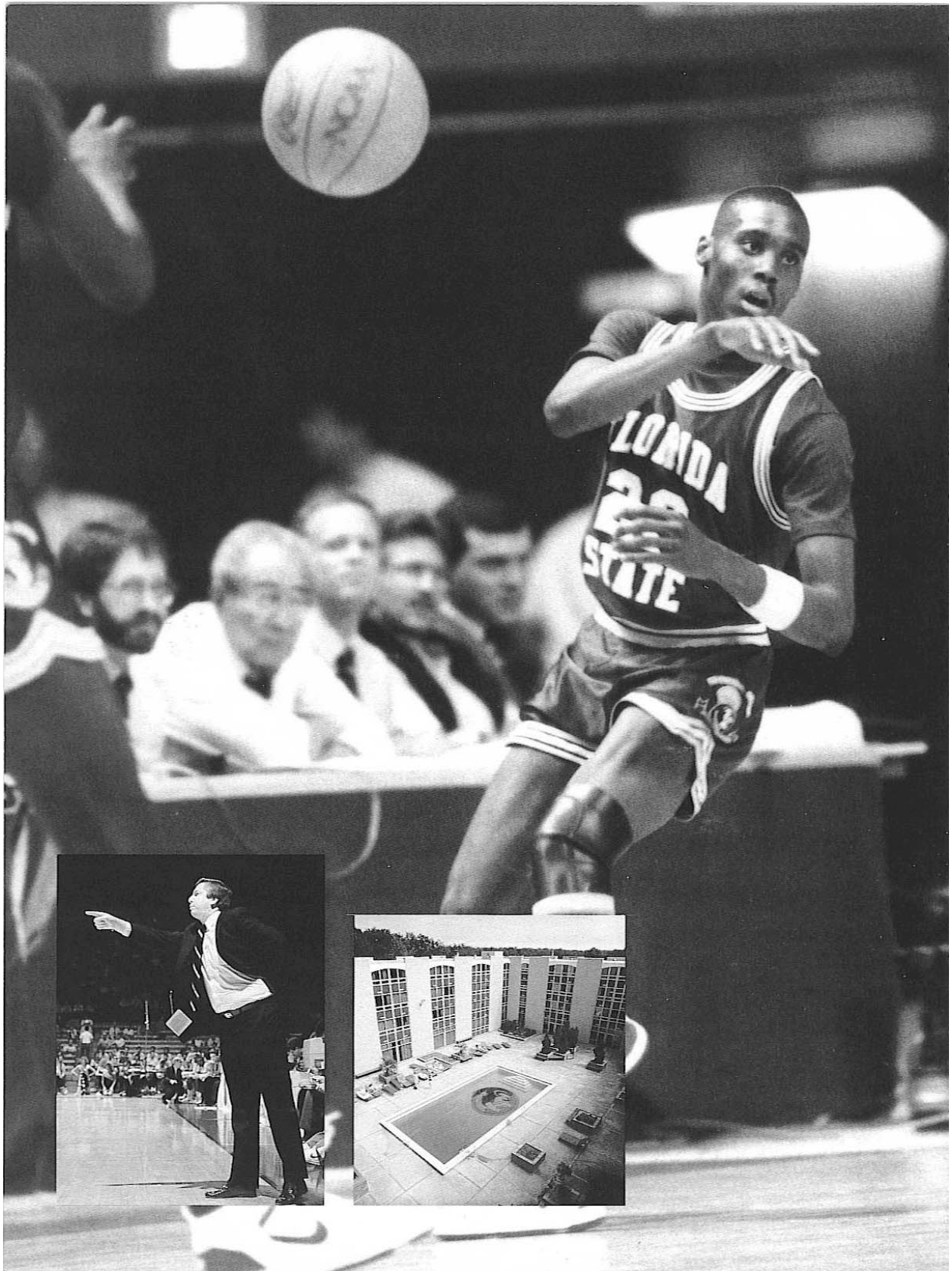
The 12,500 seat Leon County Civic Center is one of the most glamorous arenas in all of college basketball; two other private practice facilities are also available to Seminole Basketball players. The basketball offices are located in Moore Athletic Center, which houses one of the practice facilities as well as a multi-equipped strength complex. The Center also has an academic area where students can secure tutorial help as well as career counseling.

Opposite Page: While the Westcott building is the "post card" structure of Florida State University, dunks like this one by David White (opposite page, bottom) nearly brought the house down last season.

FSU basketball is more popular than ever drawing record crowds in both of Pat Kennedy's seasons. Optimism is high in Tallahassee and young players like White ensure that the feeling will be around for a while.

Kennedy brought a renewed commitment to classroom performance when he took over. Jerome Fitchett (below), the lone senior on last year's team, was in academic trouble prior to Kennedy's arrival. And after three semesters, he was recognized as one of FSU's outstanding student-athletes.





SEMINOLE...

Players live in Cash Hall, a private student dorm on the outskirts of the FSU campus. Pairs of players share suites and find it to be a comfortable home away from home. Hearty appetites are met by three square meals a day which include an endless salad and ice cream bar. The Hall has an entertainment center and a swimming pool.

There's always an upbeat atmosphere at Florida State basketball games. With a student enrollment close to 23,000, there's plenty of support among the student body for exciting basketball. Alumni and city natives are also to be counted among the most loyal fans. In fact, during Coach Kennedy's initial season, Florida State set a new home attendance record that included a defeat of the University of Florida in front of a standing-room-only crowd in the Civic Center. The crowd of over 13,300 represented the largest to ever witness a college basketball game in the state of Florida.

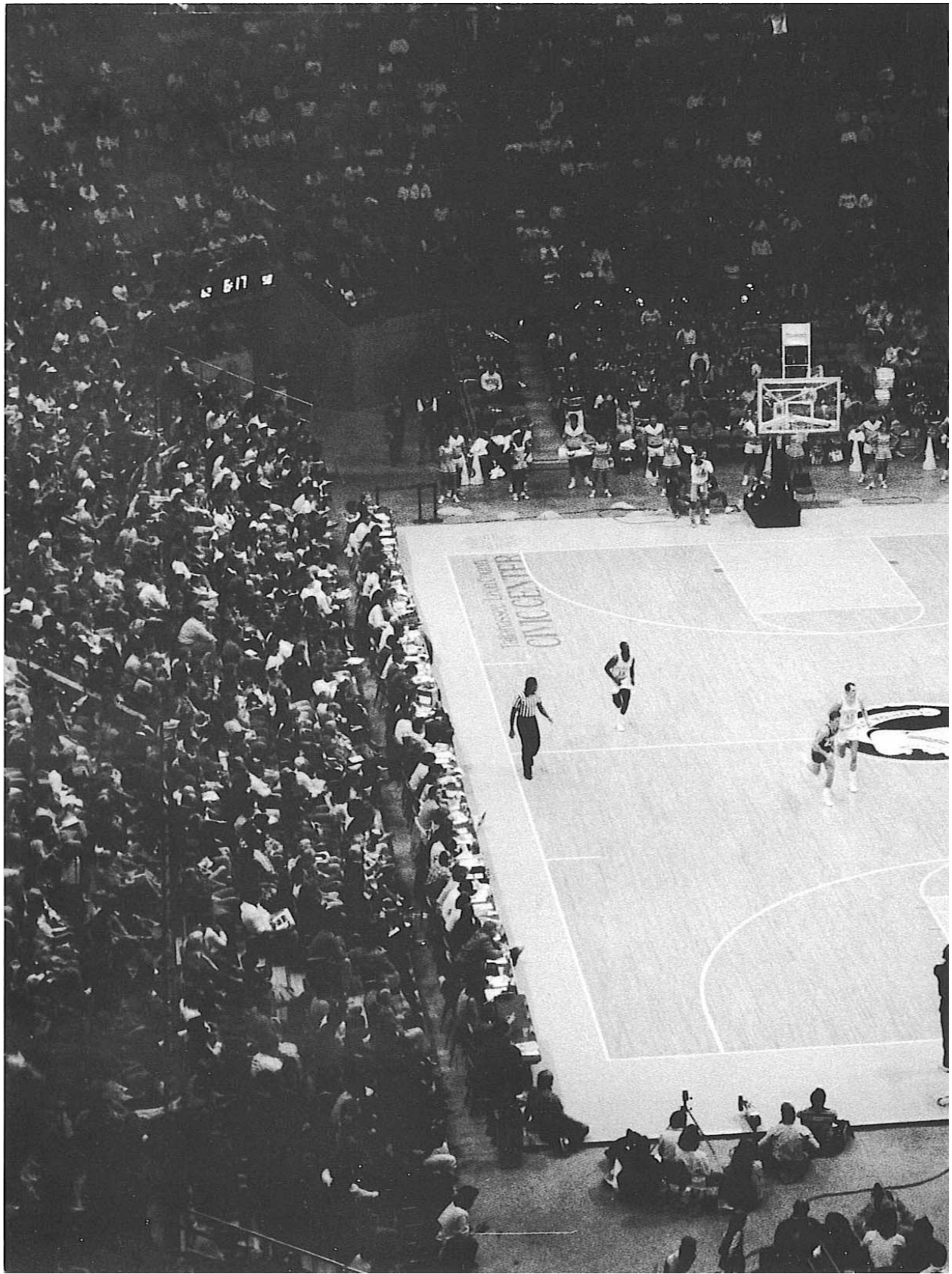
Opposite Page: Basketball means excitement at Florida State. Tharon Mayes (opposite page) flashes one of his patented "look-away" passes sure to bring the enthusiastic home crowd to its feet.

Coach Kennedy (opposite page, far right) is a floor show on his own as his animated reactions help get his point across.

When Seminole athletes are not in class, at practice or studying, they can often be found relaxing around the Osceola Hall swimming pool (opposite page, near right).

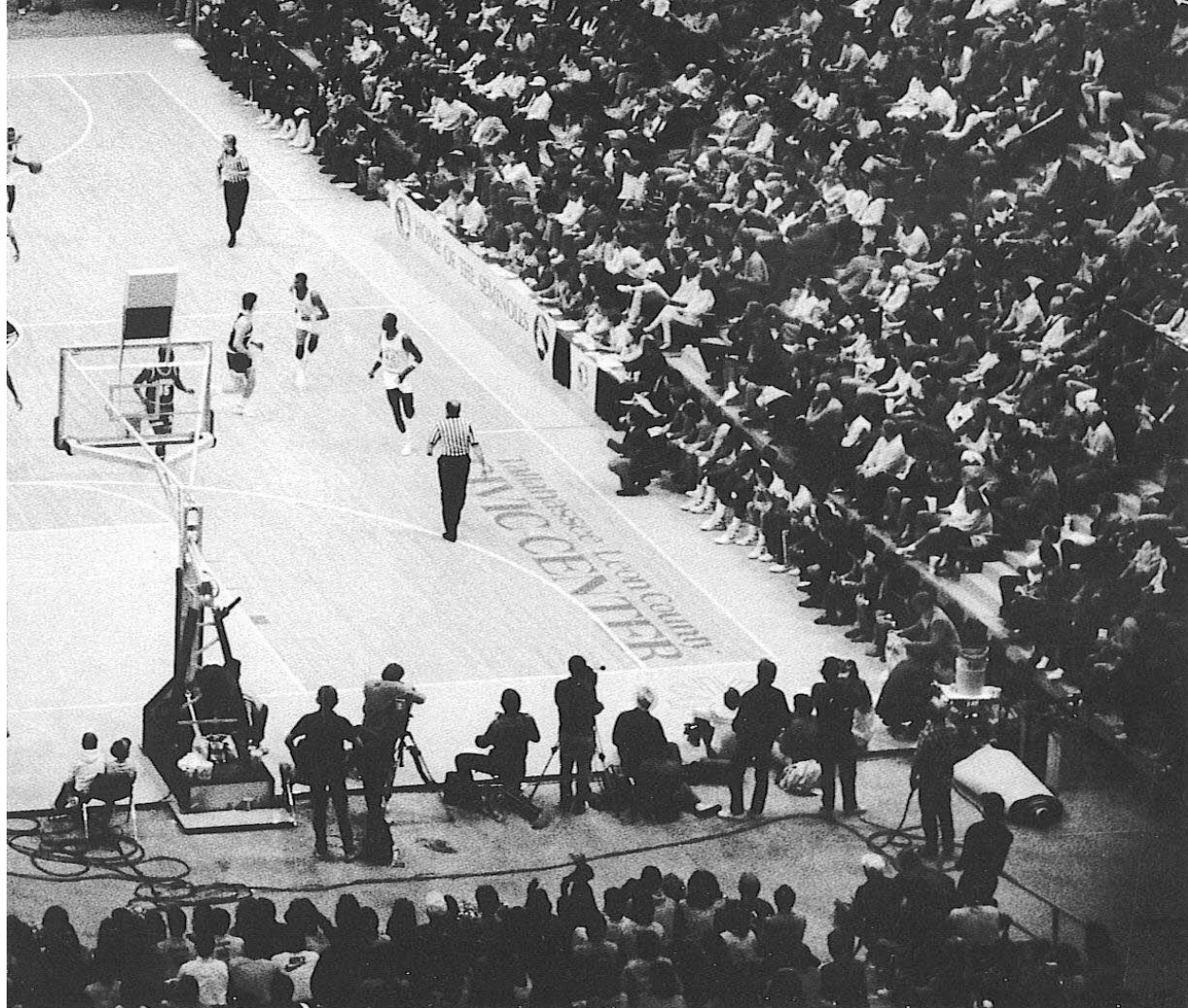
The Tallahassee Civic Center (below) is among the south's finest facilities. Seating over 12,500 fans, the Civic Center is a multi-purpose facility that is among the largest of its kind in the state. The Seminoles have lost just four games at home since Pat Kennedy took over two seasons ago.





BASKETBALL!

Simply The Best.



Take Your
Choice...
This Florida
University
Has It All.

HIGH TECH OR HALLS OF IVY



The Florida State University campus combines traditional gothic architecture with ultra-modern structures in a surrounding rich in trees and flowering plants. Large shade trees are unique to the Tallahassee area and make it one of the south's most beautiful cities.

Opposite Page: Bob Braswell, director of the FSU Computing Center, with the University's E74-10 supercomputer, currently the fastest supercomputer in the world.

H

ome of the world's fastest supercomputer, Florida State University is setting the pace as higher education in the state prepares to enter the 21st century. The FSU Supercomputer Computations Research Institute attracts international attention with scientists from many nations using the University's two powerful supercomputers in their research.

The Department of Physics' Tandem Van de Graaff Superconducting Accelerator Laboratory, ranked in the top four in the nation by the National Science Foundation, houses two powerful atom smashers which also provide unique research opportunities.

Located in Tallahassee, the capital of Florida, FSU is a public, coeducational university and a senior member of the State University System. More than 26,000 students are enrolled, representing all 50 states and 100 foreign countries. The University offers more than 250 graduate and undergraduate degrees in its 15 schools and colleges. Outstanding programs in the colleges of arts and sciences, business, communication, education, engineering, home economics, law and social sciences combine with the schools of criminology, library and information studies, music, nursing, social work, theater and visual arts to make Florida State a nationally acclaimed university.

The Florida State campus, located just blocks away from the state capitol, is beautiful in all seasons. Its 347 acres mirror the picturesque features

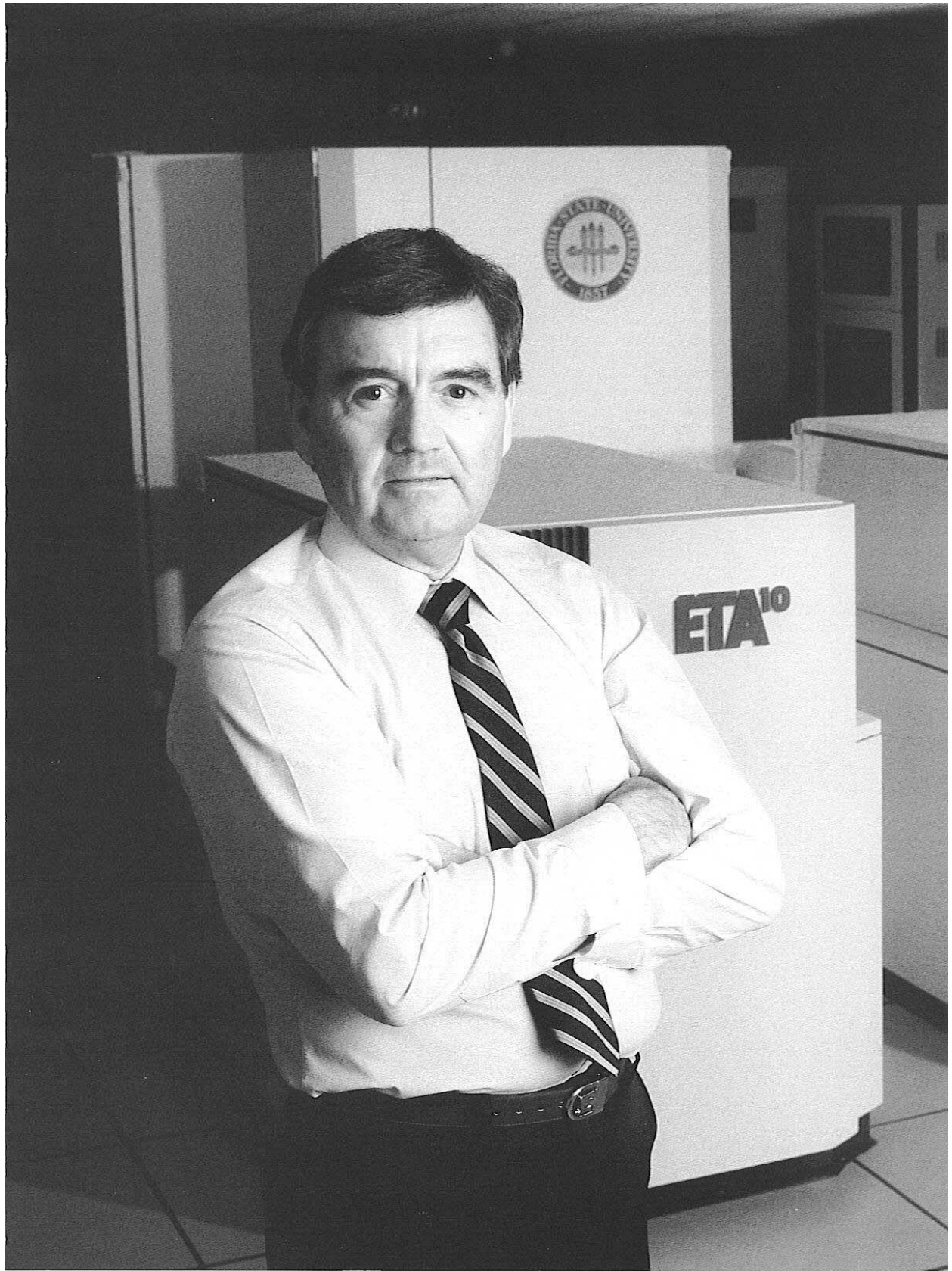
of the surrounding North Florida region. The buildings are nestled among evergreen live oaks, pines and palms, as well as hardwoods that provide fall color, and dogwoods and azaleas that are covered with a profusion of springtime blossoms.

As an institution, FSU began as coeducational Seminary West of the Suwannee River, approved by the Florida Legislature in 1851 and assigned to Tallahassee in 1857. Name changes over the years included Florida State College in 1901; then in 1905, Florida Female College and, in 1909, Florida State College for Women. Gov. Millard Caldwell signed a bill in 1947 which again made the institution coeducational and changed the name to Florida State University.

The first building to house the institution was completed in 1855. Westcott, the present administrative building, replaced the original building, making this location the state's oldest active university site.

Today, Florida State faculty and administrators generate more than \$50 million annually in external funding to supplement state sponsorship of





research. In addition, \$14.5 million in private gifts was raised through the FSU Foundation during the past fiscal year. These contributions from alumni, friends, corporations, the University community and charitable foundations benefit Florida State's academic programs.

The University's location affords excellent research and internship opportunities in government, law and the social sciences. The reputation of Florida State's research programs and the expertise of its more than 1,500 faculty members — including four members of the National Academy of Sciences and four members of the American Academy of Arts and Sciences — represent major strengths of the University. FSU prides itself on pursuing academic quality while maintaining a friendly, welcoming atmosphere.

Programs in music, dance and theater at Florida State have earned well-deserved national recognition. The visual and performing arts exhibited and produced on campus offer students and the community a wealth of enrichment opportunities.

Student activities at FSU create an important balance between the classroom experience and the



Florida State has been called a school large enough to be called a university, but small enough to care. The FSU faculty (above) stress a close relationship with their students and the excellent faculty/student ratio at FSU provides for small group teaching. Among the south's most beautiful campuses, Florida State students find studying outside (far right) in the warm Florida sunshine irresistible. And to keep the heat down, huge oaks (near right) dot the landscape.



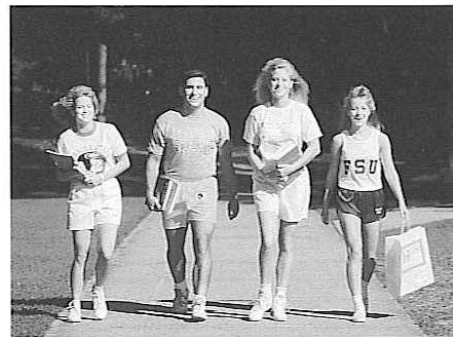
personal life of the individual scholar. Honors programs, student government, intramural sports and more than 200 organizations are available for student involvement. Furthermore, the Flying High Circus, the world's only all-collegiate circus, makes its home here.

The physical growth of the University during the 11-year administration of President Bernard Sliger represents new construction expenditures of more than \$100 million.

Florida State academic programs extend well beyond Tallahassee. The FSU Marine Laboratory is located on the Gulf of Mexico, 45 miles away. Students participate in professional training programs at the Asolo State Theater in Sarasota and the Burt Reynolds Institute for Theatre Training in Jupiter. The Panama City Campus of Florida State offers upper-level courses which lead to bachelor's and master's degrees. The Center for Professional Development and Public Service, housed in the Florida State Conference Center on the edge of the main campus, manages educational outreach activities from Pensacola to Miami.

The physical growth of the University during the 11-year administration of President Bernard Sliger represents new construction expenditures of more than \$100 million. It includes such additions as the University Union expansion project, the new Paul A.M. Dirac Science Library Building, the Jeffersonian-style Village Green project at the College of Law, the new wing of the Rovetta Business Building, and the new FAMU/FSU College of Engineering at Innovation Park.

It is not only the academic programs and facilities of Florida State, but also its people — students, faculty, alumni, administrators and staff — who make this University such a proud monument to learning.



Athletic Staff

Dr. Bernard F. Sliger, President

Dr. Bernard F. Sliger was named the 10th president of Florida State University February 7, 1977, following six months of service as the University's interim president.

After joining the administration May 15, 1972, as executive vice president, he assumed the additional duties of chief academic officer, and further served as director of the University's London Study Center during the fall quarter, 1975.

Formerly executive director of the Louisiana Coordinating Council for Higher Education, Dr. Sliger's background as an educator includes 19 years as a faculty member and administrator at Louisiana State University. During that time, he served LSU as head of the economics department, member and chairman of the graduate council, dean of academic affairs and vice chancellor. Taking leave of absence from LSU in 1969, he organized the Louisiana Coordinating Council for Higher Education, which is similar to the Florida Board of Regents, and became its executive director, a position equivalent to the chancellorship of the State University System of Florida.

An economist and scholar in the special fields of economic theory and public finance, he frequently has served as a consultant to private and public commissions and organizations. Dr. Sliger served as chairman of Gov. Reubin Askew's Economic Advisory Council. He was a member and chief consultant of the governor of Louisiana's tax study committee in 1968, and chaired a special committee appointed by the Legislature to study the Louisiana Department of Revenue. Dr. Sliger also served a year as Louisiana Commissioner of Administration and Chief Budget Officer. He presently serves as the economist for the Tallahassee Chamber of Commerce and the State Chamber of Commerce on a volunteer basis.

Dr. Sliger's administrative and consulting experience extends beyond the states of Florida and Louisiana. In 1987, he was appointed to a four-year term on the NCAA President's Commission. Since 1983, he has been a member of the board of directors of the Federal Bank of Atlanta, Ga. and is also a member of the Council of Presidents for the Southeastern Universities Research Association in Newport News, Va. Since 1984, Sliger has served on the Executive Committee of the University Research Association, Washington, D.C., and in 1988, was asked to serve on the Board of Trustees.

Born September 30, 1924, the native of Trout Creek, Mich., holds three degrees — the B.A. ('49), M.A. ('50) and Ph.D. ('55) — from Michigan State University, all in economics; he has done postdoctoral study in mathematical economics at the University of Minnesota on a sabbatical leave. He has taught at Florida State, Michigan State, Louisiana State and at Southern University at Baton Rouge, La. He holds memberships in 10 professional, scholastic and honor societies includ-



ing Omicron Delta Kappa, Phi Kappa Phi, Omicron Delta Epsilon and Alpha Kappa Psi. He is a member of the Tallahassee Kiwanis Club.

Dr. Sliger and his wife, Greta, have four children, Nan, Paul, Greta and Sten.

Charles W. Ehrhardt, Faculty Athletic Committee Chairman

A professor of Law at Florida State University since 1967, Charles W. Ehrhardt is beginning his fifth year as Chairman of the FSU Athletic Committee.

Ehrhardt served on the committee from 1969-71, and was reappointed to the board in 1983. He succeeded Dr. James Jones as chairman in 1984, and became Florida State's representative to the NCAA with the appointment.

A native of Elkader, Iowa, Ehrhardt received a bachelor's degree from Iowa State University in 1962. Two years later he earned his law degree from the University of Iowa and went on to become an Assistant United States Attorney in that state before coming to Tallahassee.

A widely-respected expert in the field of Evidence, Ehrhardt holds the Florida State position as the Ladd Professor of Evidence. He wrote the Florida Evidence Code, passed by the state legislature in 1976, which deals with the admissibility of evidence in court trials. Ehrhardt is also the author of a book on evidence, first published in 1977 with a second edition published in 1984.

Ehrhardt is frequently called on for lectures and speaking engagements. He is also asked to do private consultations with lawyers and judges nationwide on evidence matters.

From 1984-86, he was president of the Metro Conference which made him the league's chief

The Claude Pepper library (above), named in honor of the longtime Florida Congressman, is just an example of the beautiful learning centers that have made FSU one of the most popular universities in the south.



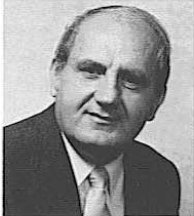
Dr. Bernard F. Sliger



Charles W. Ehrhardt



C.W. "Hootie" Ingram



Bob Goin

representative to the NCAA. He is still active in conference administration, serving on the editorial budget committee.

Ehrhardt and his wife, the former Judy Sutton, have three children.

C.W. "Hootie" Ingram, Athletic Director

Cecil Ingram, known to his friends and associates as "Hootie," has headed Florida State's athletic department for the past eight years. He came to FSU in January of 1981 after eight years with the Southeastern Conference.

Upon arriving in Tallahassee, Ingram initiated a \$10-million-dollar building program for athletic facilities. Moore Athletic Center, which houses administrative, coaching and ticket personnel, was planned, built and completed under Ingram's leadership.

Dick Howser Stadium, second to none in the South, was completed during Ingram's second year at FSU, while Doak Campbell Stadium, the Bim Stults Aquatic Center and Mike Long Track were all renovated.

Ingram is in his third year of a four-year term on the prestigious NCAA Council. As an elected member of that body, he is one of 22 representatives from Division I schools. Ingram is also a member of the College Football Association (CFA) television committee, chairman of the NCAA nominating committee and chairman of the major independents.

A native of Tuscaloosa, Ala., Ingram played football for the hometown Crimson Tide from 1951 to 1954. He was named All-SEC as a sophomore when he led the nation in pass interceptions. He was a member of both the 1953 Orange and 1954 Cotton Bowl squads, and also lettered for the Alabama baseball team as an infielder.

After graduation and an Army stint, Ingram began his coaching career in 1956 as an assistant football coach at Bradenton (Fla.) Manatee High School. The next year, he became head coach at Tuscaloosa Brookwood High School for three years.

Ingram moved into the college coaching arena in 1960 as an assistant at Wake Forest. He also made coaching stops at Virginia Tech, Georgia and Arkansas before accepting the head coaching job at Clemson in 1970, the only collegiate head coaching job he held. Three years after taking the position, Ingram left Clemson to join the SEC as assistant commissioner.

During his eight-year tenure with the conference, his duties included supervision of football and basketball officials, rules interpretations and eligibility. After five years as assistant commissioner, he was named associate commissioner in 1978.

Ingram and his wife, Toni, have a son and two daughters.

Bob Goin, Associate Athletic Director

Bob Goin is in his seventh year as associate athletic director at Florida State. Several sports programs report to Goin, and he also assists athletic director Hootie Ingram with day-to-day operations of the athletic department. Goin is also responsible for organizing and implementing game day operations for the football, basketball and baseball teams.

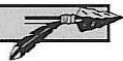
Goin has served as tournament director for the NCAA South, Atlantic and East Baseball Regionals, which have been held in Tallahassee every year since 1983.

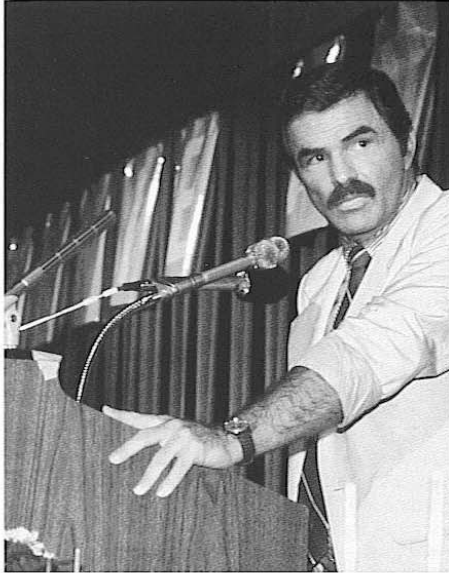
Goin came to Florida State in July of 1981 with experience as both an administrator and a coach. He arrived after two years as athletic director of California (Pa.) State College, where he was credited with expanding the athletic department. He formed the Cal State Athletic Scholarship Fund and Athletic Booster Club and established the Cal State radio network.

Prior to taking the California post, Goin was assistant athletic director at West Virginia from 1976 to 1979. At WVU, he was involved in several expansion projects, including construction of a new stadium and athletic facility.

Sprawling over 367-acres of rolling hills, the FSU campus is home to over 26,000 students. Westcott, the oldest original structure still in use, remains the focal point as it stands just inside the main entrance to the campus (right). It houses the office of the president and other chief administrators as well as numerous business offices and one of several auditoriums at Florida State.

Life outside of the classroom environment is also important to FSU students. Numerous clubs and organizations are available in addition to fine recreational facilities. Greek life is popular and the sororities always have their houses decked out for the Christmas season (below).





Between 1960 and 1976, he held a variety of positions at Bethany (W. Va.) College, including coaching assignments in football, basketball and baseball. Goin was associate professor and chairman of physical education and athletics at the school from 1972 to 1976, and coached Bethany football teams from 1963 to 1972.

While coaching at Bethany, two of Goin's football and baseball teams won President's Athletic Conference championships. He also won numerous individual awards, including Tri-State Small College Coach of the Year, Pittsburgh and Ohio Dapper Dan awards and the Morgantown Touchdown Club award.

Goin received a bachelor's degree from Bethany in 1959 and his master's from West Virginia in 1962.

He and his wife, Nancy, have four children.

Dr. Janice Stocker, Assistant Athletic Director

Dr. Janice Stocker is in her third year with the Florida State athletic administration. A veteran of 23 years of collegiate athletic experience, she serves as the primary women's administrator as well as handling several sports programs. They include volleyball, women's basketball, softball, men's and women's swimming and men's and women's tennis.

A native of Muncie, Ind., Stocker has worked in almost every area of athletics, including coaching, teaching and administration.

Stocker has been a part of the athletic administration team of four universities as well as one conference. She was associate director of women's athletics at the University of Minnesota for the 1984-85 school year and prior to that appointment, was commissioner of the Wisconsin Women's Intercollegiate Athletic Conference that included 12 institutions.

She also worked as the assistant athletic director at West Virginia University from 1977-79, teaching and working with the entire program; at Ball State University where she was women's athletic director for six years; and at Slippery Rock where she taught and coached for four years.

Stocker received her bachelor's degree from Earlham College in Richmond, Va. in 1954 and holds a 1962 master's from Ball State. She completed her doctoral studies at Temple in 1972.

Claude Thigpen, Assistant Athletic Director

Claude Thigpen has been a member of the Florida State athletic staff for the past 33 years and has held his present position as assistant athletic director since 1978. He has been with the athletic department longer than any other employee.

Over the years, he has held a variety of positions, including business manager, accountant and ticket manager.

He also handles certain aspects of game-day operations for football and oversees the athletic department courtesy car program.

During football season, the Greenville, Fla., native takes on added duties as he makes travel arrangements for the Florida State football team and its official party. This includes making airplane and hotel reservations for the entire Seminole group of up to 145 people.

Thigpen is married to the former Carleen Lindley.

Charles Hurst, Assistant Athletic Director

Charles Hurst joined the Florida State athletic staff in July of 1987. He oversees FSU's entire business and ticket operations.

Hurst, 48, came to the newly created position of assistant athletic director for business from the University of Florida, where he had served as the Director of Internal Management Auditing since 1983. At Florida, Hurst directed a staff of 15 in developing all internal audit programs within the university. Hurst had previously served as Manager of Internal Auditing at the University of South Alabama from 1981 to 1983.

The Talladega, Ala. native received his bachelor's degree from Jacksonville State (Ala.) University with a major in accounting and a minor in economics. He earned CPA status in 1975 while employed with the private accounting firm of Brooke and Freeman in Anniston, Ala.

Hurst is also affiliated with several organizations related to his field, including the American Institute of Certified Public Accountants and the Florida and Alabama Societies of Certified Public Accountants.

He and his wife, Juanita, are the parents of a daughter.

Larry Pendleton, Assistant Athletic Director

Assistant athletic director Larry Pendleton is in his 15th year as a member of the Florida State athletic department staff. From 1975 to 1980, Pendleton was academic advisor for FSU male athletes, before assuming the position of assistant athletic director in July of 1980.

Left: Florida State's list of distinguished alumni reach into almost every realm of professional and academic life. Actor Burt Reynolds, who played tailback on the Seminole football teams of the late 1950s, has retained a close relationship with Florida State. Among the most popular alumni, Reynolds has given a great deal to his beloved FSU and has several structures named after him including Burt Reynolds Hall, which houses the Seminole football team.



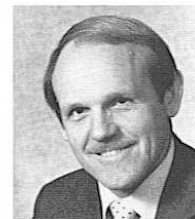
Dr. Janice Stocker



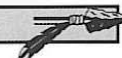
Claude Thigpen

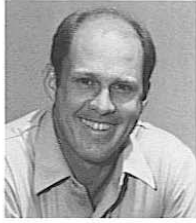


Charles Hurst



Larry Pendleton





John Sheffield



Terry Hume



Joe Labat



Gene Deckerhoff

Pendleton's current post touches many areas of the department. He is responsible for maintaining and scheduling of all athletic facilities.

Additional duties include scheduling and making travel arrangements for the Seminole basketball team, and managing the athletic department insurance programs.

Pendleton coordinated the department's building of the Moore Athletic Center in 1983 as well as improvements to Doak Campbell Stadium, Dick Howser Stadium, Bim Stults Aquatic Center and Mike Long Track. He also supervised the building of FSU's softball complex. Last year, Pendleton coordinated the addition of a new matrix scoreboard and sound system for Dick Howser Stadium as well as planting of prescription turf in Doak Campbell Stadium.

A 1969 graduate of Florida State, Pendleton returned to his alma mater in 1973 as a graduate assistant football coach. In 1974, he became a full-time member of the Tribe family when he was hired as an assistant football coach. The next year, he moved to the academic advising position.

A native of Winter Garden, Fla., Pendleton played linebacker and offensive guard for the Seminoles in the late 1960s. FSU offensive coordinator Wayne McDuffie and Pendleton were the two starting guards on the Seminoles' 1967 Gator Bowl squad. Larry was twice selected to the Florida all-star team while starting 33 consecutive games and participating in three bowl games.

John Sheffield, Assistant to the Athletic Director

Entering his sixth season at Florida State, John Sheffield serves as FSU's ticket coordinator. Sheffield directs the FSU season ticket campaigns for football, basketball and baseball and also organizes special event programs for the athletic department. He was responsible for computerizing FSU's ticket operation and oversees a staff of six who handle all FSU tickets.

Prior to his arrival in Tallahassee, Sheffield was director of ticket operations for the Tampa Bay Buccaneers from 1977 to 1982.

A 1975 graduate of Florida State, Sheffield worked in the FSU athletic department for a year following graduation. He then moved on to the Atlanta Braves organization and later moved to Miami, where he was assistant ticket director for the Miami Dolphins. Before gaining the ticket director post at Tampa, Sheffield served as business manager for the North American Soccer League's Ft. Lauderdale Strikers.

Sheffield still retains ties with the NFL as he has assisted in ticket matters for the last nine Super Bowls.

He and his wife, Peggy, have a son.

Terry Hume, Marketing Coordinator

A former Florida State athlete, Terry Hume has been a member of the athletic staff for the past 10 years. She is in her third year as the marketing and promotions coordinator of the entire FSU athletic department.

Hume graduated from FSU in 1977 with an

english and business degree, capping a four-year volleyball career that saw her named team captain and MVP as a senior.

She went to work for her alma mater in October of 1978, assisting former women's athletic director Barbara Palmer with a variety of administrative duties. She continued in that position until early in 1986 when the athletic department underwent a reorganization.

Hume's duties now include overseeing the department's advertising efforts as well as handling all promotional activities associated with FSU's 16 sports. She is also the department's advisor for its spirit groups.

The Tacoma Park, Md. native is a 1974 graduate of Coral Gables High School in Miami.

Hume has a daughter, Amy Lauren.

Joe Labat, Athletic Business Manager

Joe Labat is in his 10th year on the FSU athletic staff. As athletic business manager, Labat works with the day-to-day fiscal operations of the athletic department. He assists the assistant athletic director of financial planning in overseeing a staff whose responsibilities include overall budgeting, financial reporting, payroll, purchasing and travel.

Labat joined the athletic staff in 1978, moving from across campus where he served in the accounts payable section of the Florida State Controller's office.

An avid golfer and jogger, he also volunteers his time to officiate Florida State track meets.

Labat graduated from Florida State in 1967, then taught and coached football and track at Rickards High School in Tallahassee for two years before moving to the Florida State job.

A native of Tallahassee, Labat is a member of the National Business Manager's Association.

He is married to the former Marcia Allen.

Gene Deckerhoff, Electronic Media Coordinator

Gene Deckerhoff is in his fifth year on the full-time staff at Florida State as its radio and television coordinator. He has been a member of FSU's basketball broadcast team for the past 12 years.

Deckerhoff joined the Seminole athletic family in November of 1983 after five years at WCTV Channel 6 in Tallahassee where he served as sports director and sports anchor. As the voice of the Seminoles, Gene first teamed with former FSU coach Bill Peterson for five years. He has spent the last six years working with color analyst Vic Prinzi. Deckerhoff has also been the Seminoles' play-by-play announcer for football for the last 11 years.

Since joining the FSU staff, Deckerhoff's responsibilities have grown to include producing the Bobby Bowden Show as well as coordinating all radio and television activity at FSU. Deckerhoff also co-hosts the Bobby Bowden Show.

He also served as the play-by-play announcer for the Tampa Bay Bandits of the USFL and currently is an announcer on the HSE-Sunshine network for baseball games.

Gene has worked at two television stations and four radio stations since entering the broadcasting field. He has received the Florida Sportscaster of the Year Award six times: in 1979, 1980, 1983, 1984, 1985, 1986 and 1987.

Deckerhoff and his wife, Ann, have three sons.

Wayne Hogan, Sports Information Director

Tallahassee native Wayne Hogan is in his seventh basketball season as Florida State sports information director.

Hogan is responsible for all publicity and public relations matters concerning the FSU athletic department. The SID office handles all information on 16 intercollegiate sports, encompassing both men and women's athletics.

A 1979 Florida State graduate, Hogan returned to his alma mater in 1982 after serving as assistant sports information director at New Mexico for two years. Prior to that move, he worked as director of public relations and broadcasting for two minor league baseball teams — the Charleston Charlies and the Albuquerque Dukes.

Hogan began his career in the public relations and broadcasting fields while a student at Florida State. From 1975-79, he performed a variety of duties for the Seminole athletic program, including working in the sports information office, engineering the Seminole Sports Network for football and basketball broadcasts and play-by-play announcing for baseball.

In addition to his duties as sports information director, Hogan handled color commentary for the Florida State basketball radio network from 1982-84 and again resumed those duties in the fall of 1985. He does play-by-play for Florida State's baseball telecasts on the HSE/Sunshine Network.

Wayne's father, Patrick Hogan, is a former FSU sports information director and now has the title of Vice President for Public Affairs at Florida State.

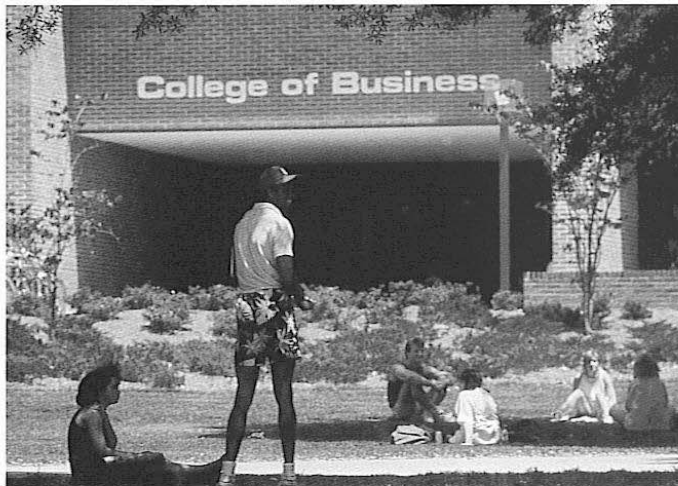
Hogan and his wife, Elaine, have two daughters — Lindsay, 6 and Kelly, 4.

Rob Wilson, Assistant Sports Information Director

Rob Wilson begins his second year with the Florida State athletic family. The 27 year-old native of San Diego, CA, returned to his alma mater in July of 1987 as assistant sports information director. A resident of Valparaiso, FL, since 1971, he serves as the primary media contact for the men's basketball program as well as duties with Seminole football.

Wilson spent three years in a similar position at East Carolina University. In addition to his duties as assistant SID, where he worked with the Pirate football and men's and women's basketball teams, Wilson was the color analyst on the Pirate Sports Network for basketball and football.

A 1983 Florida State graduate, Wilson received a bachelor of arts degree in communication with a minor in chemistry. Following graduation, he spent the 1983-84 school year as a graduate assistant in the FSU sports information office.



Wilson originally attended Ole Miss for the 1979-80 school year where he played wide receiver for the Rebels under Steve Sloan. He later transferred to Okaloosa-Walton Junior College earning an associate of arts degree in 1981.

A bachelor, Wilson also serves as a host and producer for Seminole Uprising which is a production of the Florida State department of communications.

Donna Turner, Assistant Sports Information Director

Donna Turner, a 1985 graduate of Florida State, returned to her alma mater in June as an assistant sports information director. She arrived from Iowa State University, where she worked the past two years in a similar capacity.

Turner is no stranger to the FSU Sports Information Department. She spent four years — from 1981-85 — working as a student assistant while obtaining her degree in communication.

After graduation from FSU, Turner was accepted into the master's degree program in sports administration at Ohio University. She completed the degree requirements in December of 1986, which included internships in the Ohio University Baseball Office and the East Carolina University Marketing Office. In January of 1986, she went to work for the North Carolina Athletic Ticket Office for several months before joining the Iowa State athletic program.

At Iowa State, Turner helped coordinate publicity for the Cyclones' 21-sport athletic program, and was the primary contact for ISU's women's basketball, volleyball and baseball programs. Additionally, she served as the editor of the *Cyclone Watch*, a booster club publication, and co-edited the football game program.

At Florida State, Turner will serve as editor of *Tribe Magazine*, FSU's football game program, as well as serving as a media contact for football and several other sports.

A native of Gainesville, Turner is single.

The College of Business (above) is listed among the top programs in the south. It is one of several colleges within Florida State University considered to be among the best that higher-education has to offer.



Wayne Hogan



Rob Wilson



Donna Turner

SEMINOLE RADIO AND TELEVISION NETWORK

Below: Gene Deckerhoff, a six-time recipient of the Florida Sportscaster of the Year award, will return as the voice of Seminole basketball. Deckerhoff joins sports information director Wayne Hogan (bottom) to call the excitement that is Florida State basketball.

Seminole Radio Network

Florida State basketball fans who don't have the opportunity to attend games in person can still follow the fortunes of the Seminoles by tuning in to the Bud Sports Seminole Radio Network.

The Seminole Radio Network is produced by Bud Sports, a division of Anheuser-Busch, Inc. under rights granted by Florida State University.

Gene Deckerhoff returns this season to handle the play-by-play for Seminole basketball. Deckerhoff will be joined in the broadcast booth by Wayne Hogan, sports information director at Florida State, who will handle the color commentary.

In addition to producing and syndicating Seminole basketball action, Bud Sports will produce and syndicate more than 800 sporting events in 1988, including the National League Champion St. Louis Cardinals, the Pro Bowlers Tour on NBC-TV, "Sunday Night Sports," a nationally syndicated radio program hosted by Roy Firestone, many programs seen on ESPN, and numerous others.



Seminole Television Network

Florida State University has signed a three-year contract for exclusive distribution of its athletic events with Home Sports Entertainment, the managing partner of Florida's new Sunshine Network.

The network currently represents 2.0 million Florida cable subscribers and has potential of adding another 500,000 cable homes.

The Sunshine Network will televise approximately 15 live basketball games, a substantial number of live baseball games and no fewer than five other events involving FSU's men's and women's sports teams per year. The Sunshine Network will also telecast a variety of special programs oriented toward FSU athletics.

"We are delighted to have reached an agreement with HSE/Sunshine Network," said FSU Athletic Director C.W. "Hootie" Ingram. "We have looked very carefully at several proposals over the last few months and feel this package offers the maximum guaranteed exposure for our program within the State of Florida."

The Sunshine Network is offered as a basic service via cable outlets in every major Florida



market. It has become one of the largest regional sports outlets in the country.

"FSU's commitment to the Sunshine Network brings a major ingredient to the network program line-up." HSE's Executive Vice President Dick Barron said, "We feel very fortunate to be able to represent this outstanding university."

According to Barron, Florida State's exposure stretches across the state line as well.

"FSU's athletic program reaches viewers and alumni in HSE's five-state areas of Texas, New Mexico, Oklahoma, Arkansas and Louisiana," Barron said. "We also offer these outstanding events to each of the regional sports networks across the country."

The agreement between Florida State University and the Sunshine Network officially began March 1, 1988. However, various FSU sports events were available on most Florida cable systems in December, January and February.



Network Affiliates

Radio Network Affiliates (tentative)

Location	Station	Frequency
Bartow	WWBF	1130 AM
Boca Raton	WSBR	740 AM
Camilla	WCLB	1400 AM
Chipley	WBGC	1240 AM
Crestview	WAAZ	104.9 AM
Daytona Beach	WROD	1340 AM
DeLand	WXVQ	1490 AM
Eustis	WEUS	1240 AM
Jacksonville	WQIK	99.1 FM
Lake City	WDSR	1340 AM
Leesburg	WHOF	1320 AM
Live Oak	WQHL	98.1 FM
Madison	WIMV	104.9 FM
Marianna	WTYS	1340 AM
Miami	WKAT	1360 AM
Milton	WCKC	1490 AM
Ocala	WTMC	1290 AM
Orlando	WKIS	740 AM
Palatka	WIYD	1260 AM
Perry	WGKR	1320 AM
Port St. Joe	WJST	94.5 FM
Roswell	WQRZ	1400 AM
Sarasota	WQSA	220 AM
Sebring	WJCM	950 AM
Starke	WPXE	106.3 FM
Tallahassee	WTNT	94.9 FM
Tampa	WFLA	970 AM
Thomasville	WLOR	730 AM
Valdosta	WVLD	1450 AM
Valparaiso	WFSH	1340 AM
Vero Beach	WTTB	1490 AM
Winter Haven	WSIR	1490 AM

Sunshine Cable Network Affiliates (tentative)

System	Channel	Location
American Cablevision	Ch. 19	Pompano Beach, FL
of Florida ATC	Ch. 17	Orlando, FL
Cable of Central Florida	Ch. 14	Melbourne, FL
Cable TV of Coral Springs	Ch. 11	Coral Springs, FL
Cablevision		Daytona Beach, FL
Centel	Ch. 5/6	Riviera Beach, FL
Centel	Ch. 8	Winter Haven, FL
Comcast	Ch. 5	W. Palm Beach, FL
Comcast	Ch. 23	Tallahassee, FL
Continental Cablevision	Ch. 25	Jacksonville, FL
Cox Cable	Ch. 8	Gainesville, FL
Gulfstream Cable	Ch. 9	Dunedin, FL
Halifax-TCI		Daytona Beach, FL
Jones Intercable	Ch. 47	Tampa, FL
Palmer Cable	Ch. 9	Naples, FL
Paragon	Ch. 25	Bradenton, FL
Paragon	Ch. 8	Lakeland, FL
Home Sports Entertainment		Houston, TX
Channel 53	Ch. 53	Falls Church, VA
TV-69	Ch. 69	Perry, FL
Paragon	Ch. 9	Largo, FL
Selkirk Communications	Ch. 25	Ft. Lauderdale, FL
Storer	Ch. 29	Miami, FL
Storer-South Dade		Miami, FL
Storer		Sarasota, FL
Vision Cable	Ch. 9	Clearwater, FL
Vision Cable	Ch. 9	Pineallas, FL
Dimension Cable	Ch. 18	Phoenix, AZ
Jones Cable		Tampa, FL



The excitement of Seminole basketball can be seen live across the state as the Sunshine Network will telecast over ten FSU home games via the HSE cable network.

The Sunshine Network is the home for Seminole athletics. The network broadcasts football games on a tape-delayed basis as well as showing baseball, volleyball, softball and various other Seminole sports events.

The Network is also home for Seminole Uprising, A weekly highlight show that is produced and directed by the Florida State University's acclaimed department of communication.

The Theme For Florida State Basketball

Teaching Values and Sharing Dreams!

PROGRAM GOALS

Teaching Values

1. Discipline
2. Learning
3. Understanding
4. Decision Making

Sharing Dreams

1. 100% Graduation Rate
2. Sell Out Civic Center
3. Metro Conference Championship
4. Return to Final Four
5. National Championship

The Final Product

The "Final Product" is a polished, classy All-American type student-athlete who brings pride and recognition to his university, his family and himself. The "Final Product" is a young man going out into the world who is sound academically with his degree, is strong athletically with the competitive edge and productive socially as a contributor to society.



FSU BASKETBALL – SIMPLY THE BEST!