

Kennedy's Fourth Season

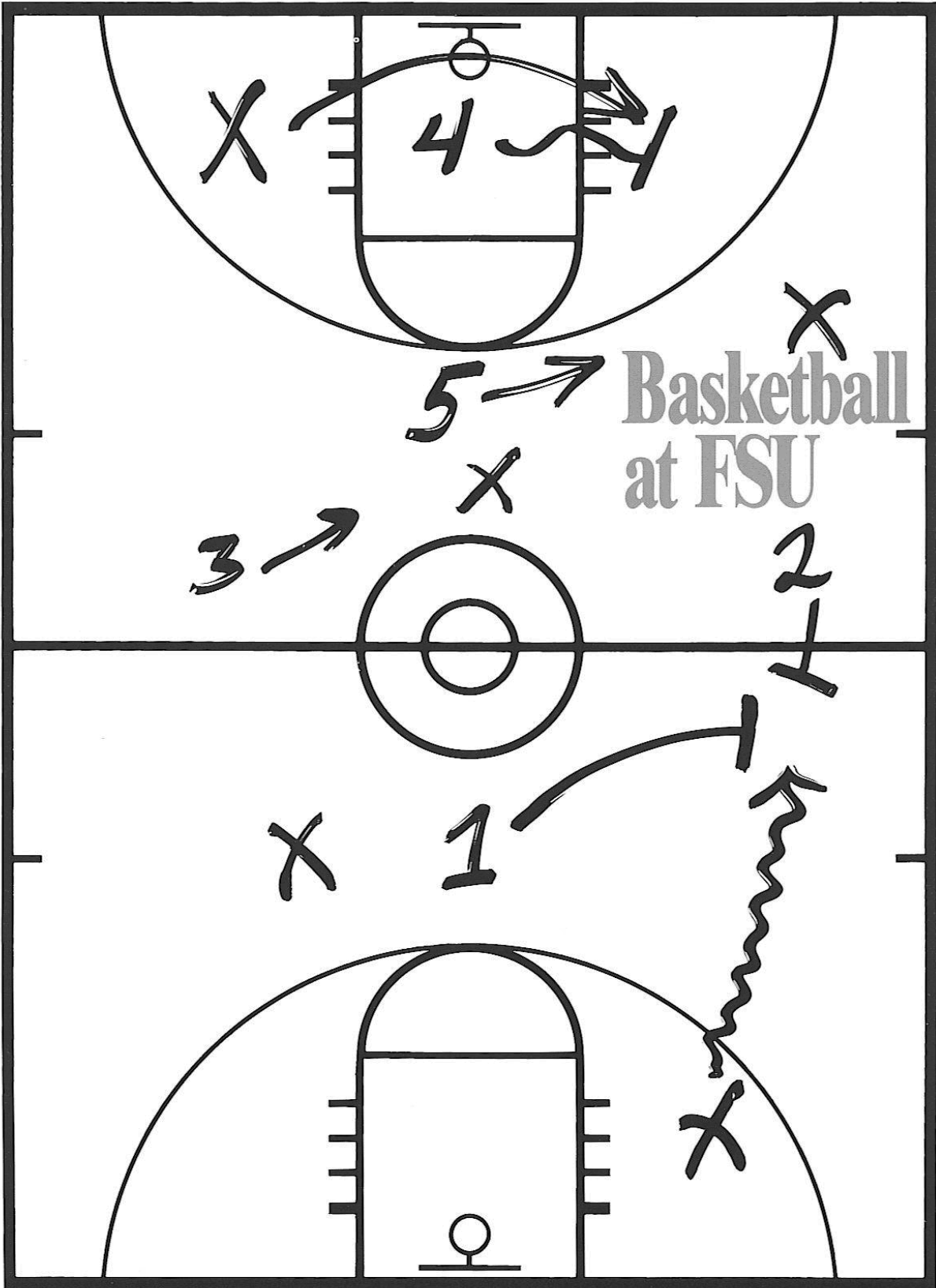
Three Years of Changes

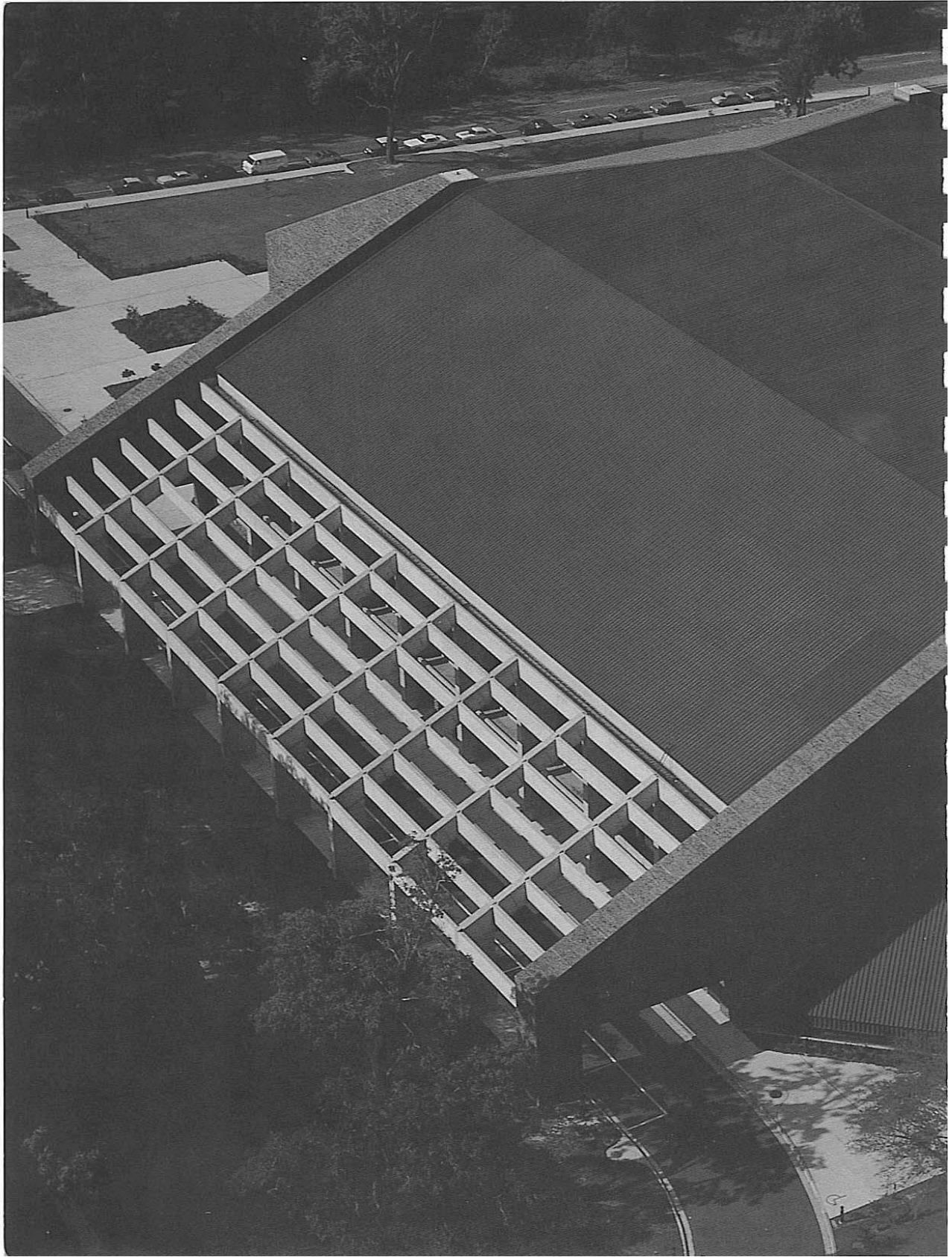
"The quality of the defense has changed radically."

"Absolutely. The key to what we have brought to the basketball program at Florida State is the 1-3-1 half-court trap. Most of our defense, and subsequently our transition offense, has come from that defensive play. It's been our trademark."

**Kennedy's
1-3-1 half-court
trap defense is
designed to make
a team pay for
everything it gets.**

**"We will hound
the ball up
the court, on
the pass, and
contest every
shot. We want the
other team to
think about
every move."**







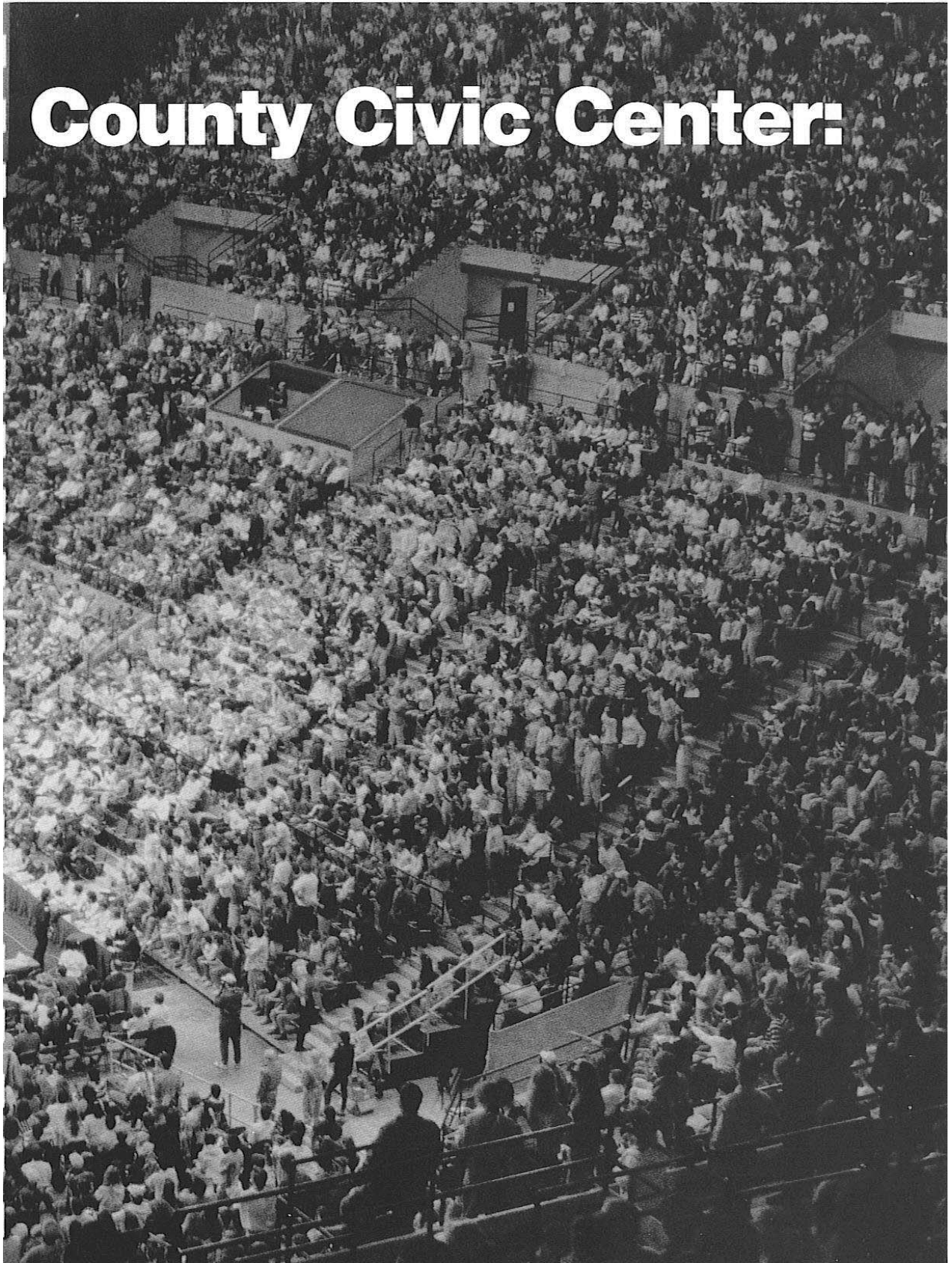
BASKETBALL AT FSU

**12,500 Seats For The
Best Show In Town!**

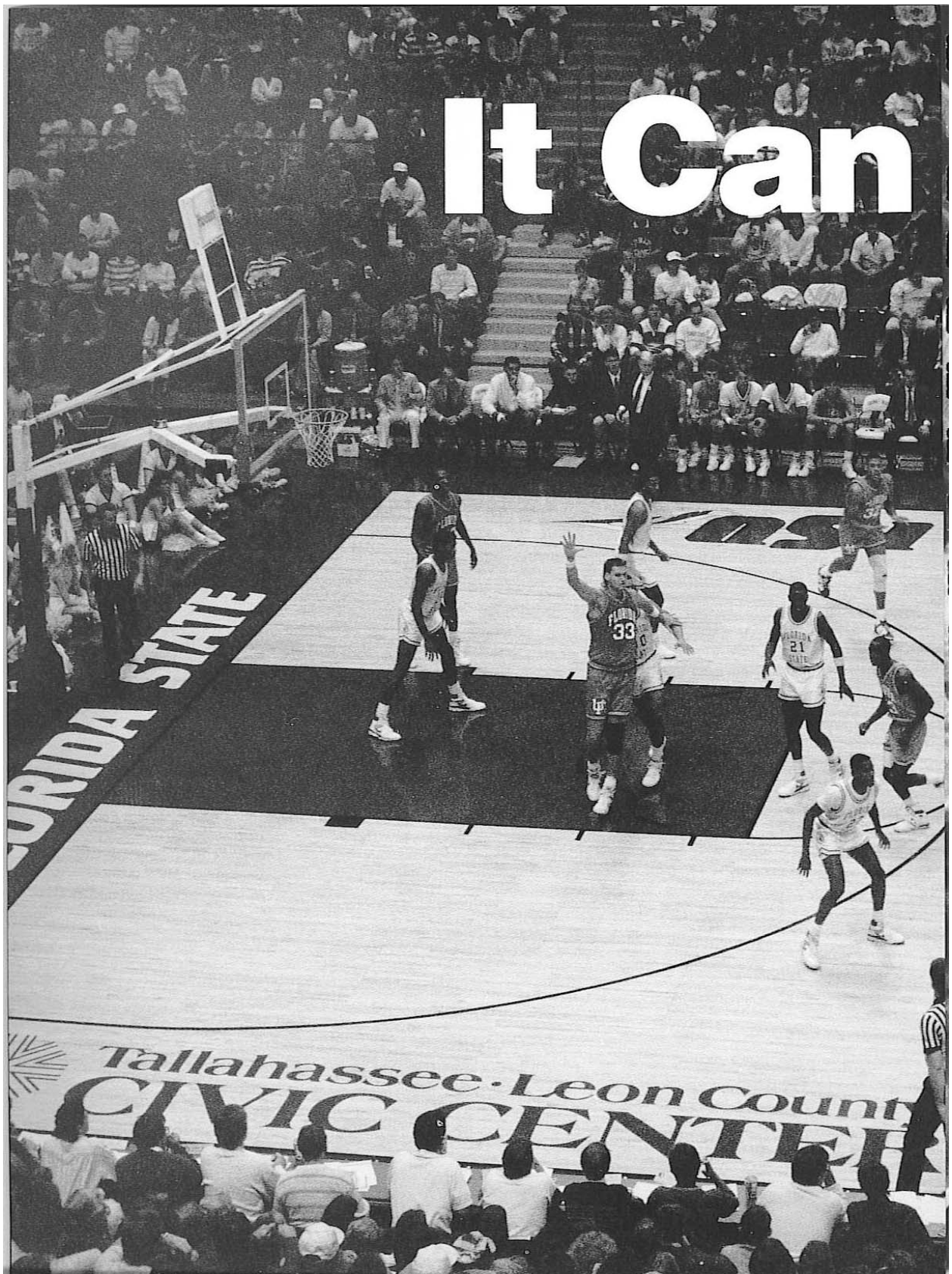
The Tallahassee-Leon



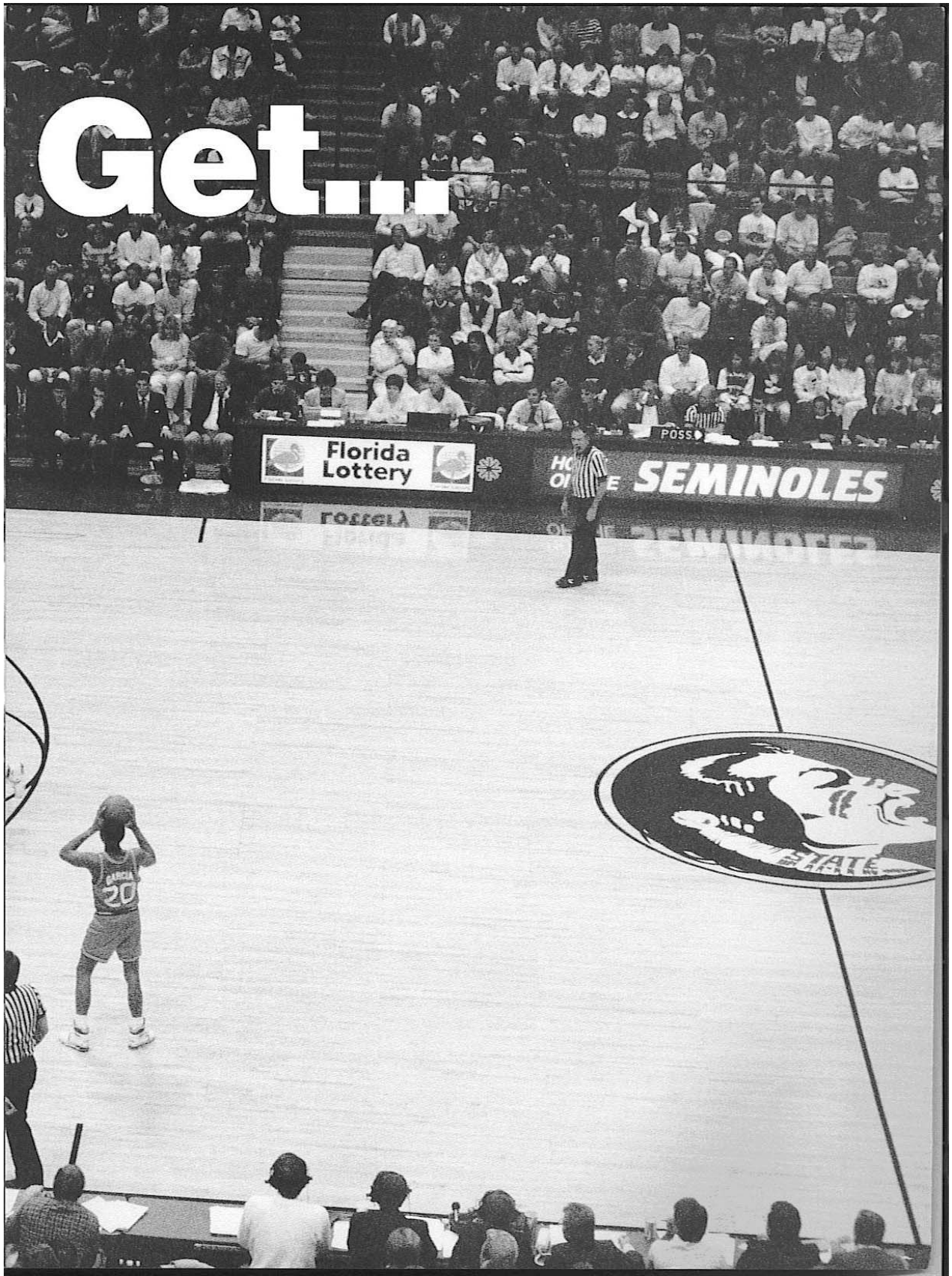
County Civic Center:



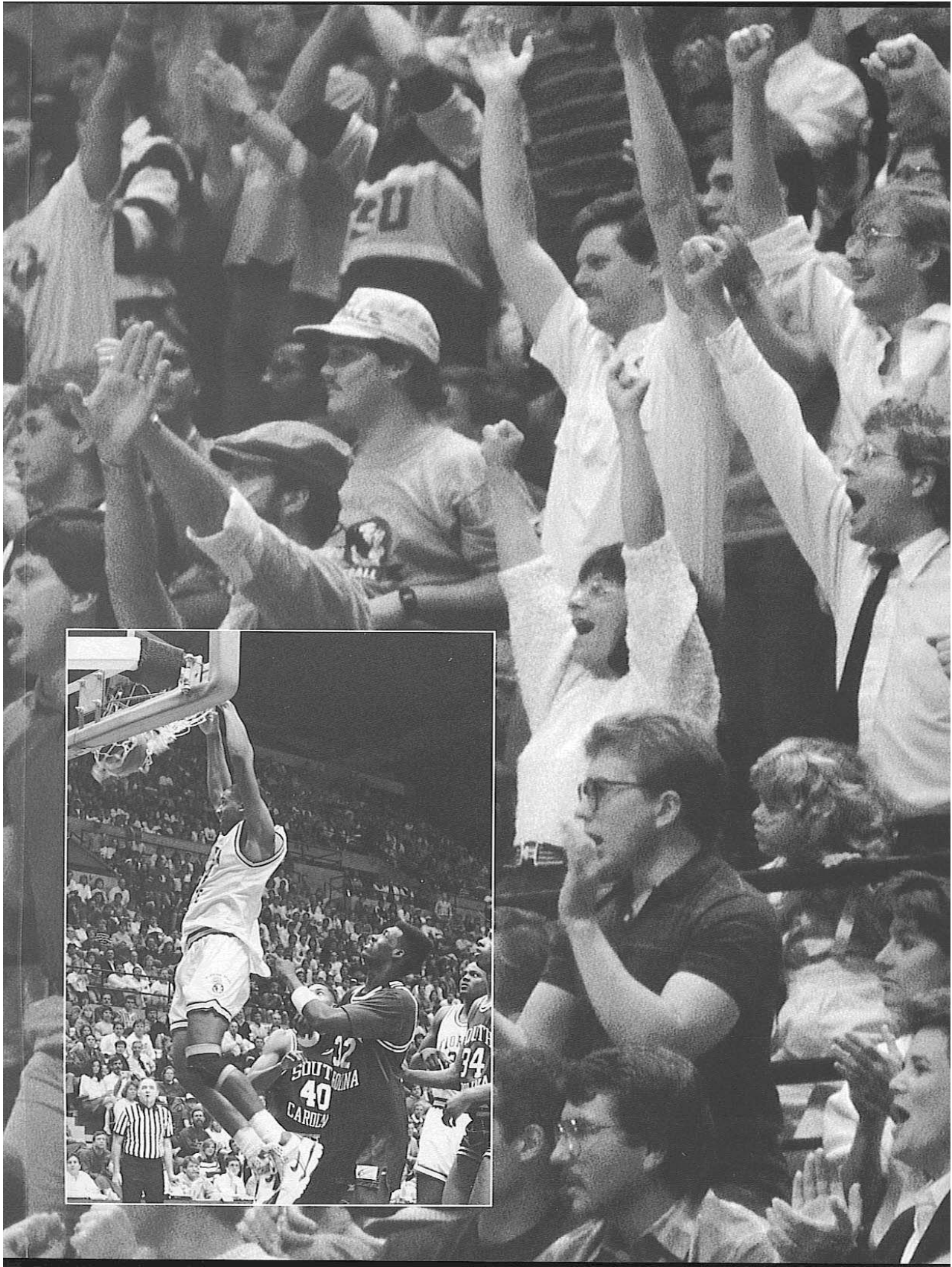
It Can

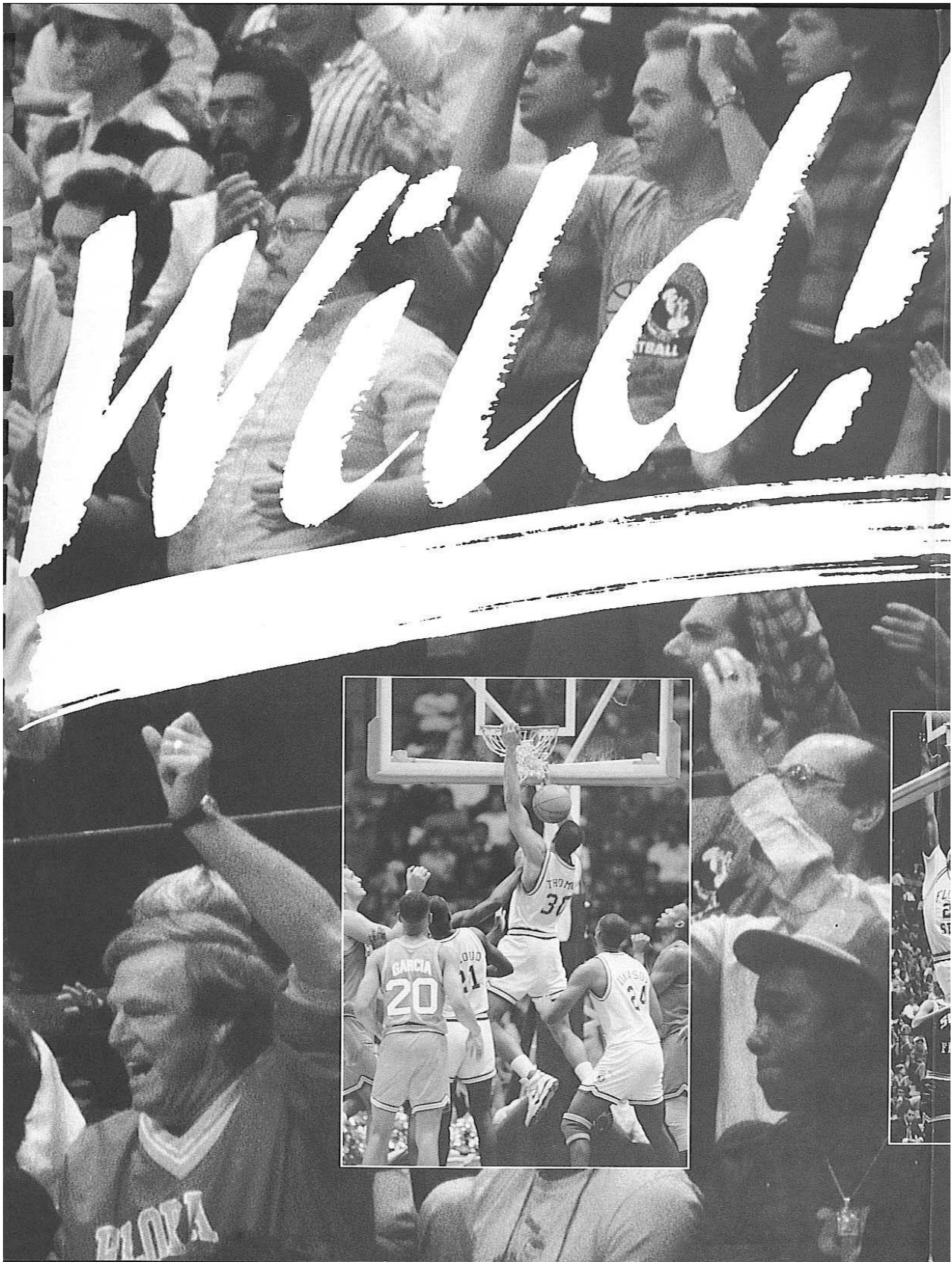


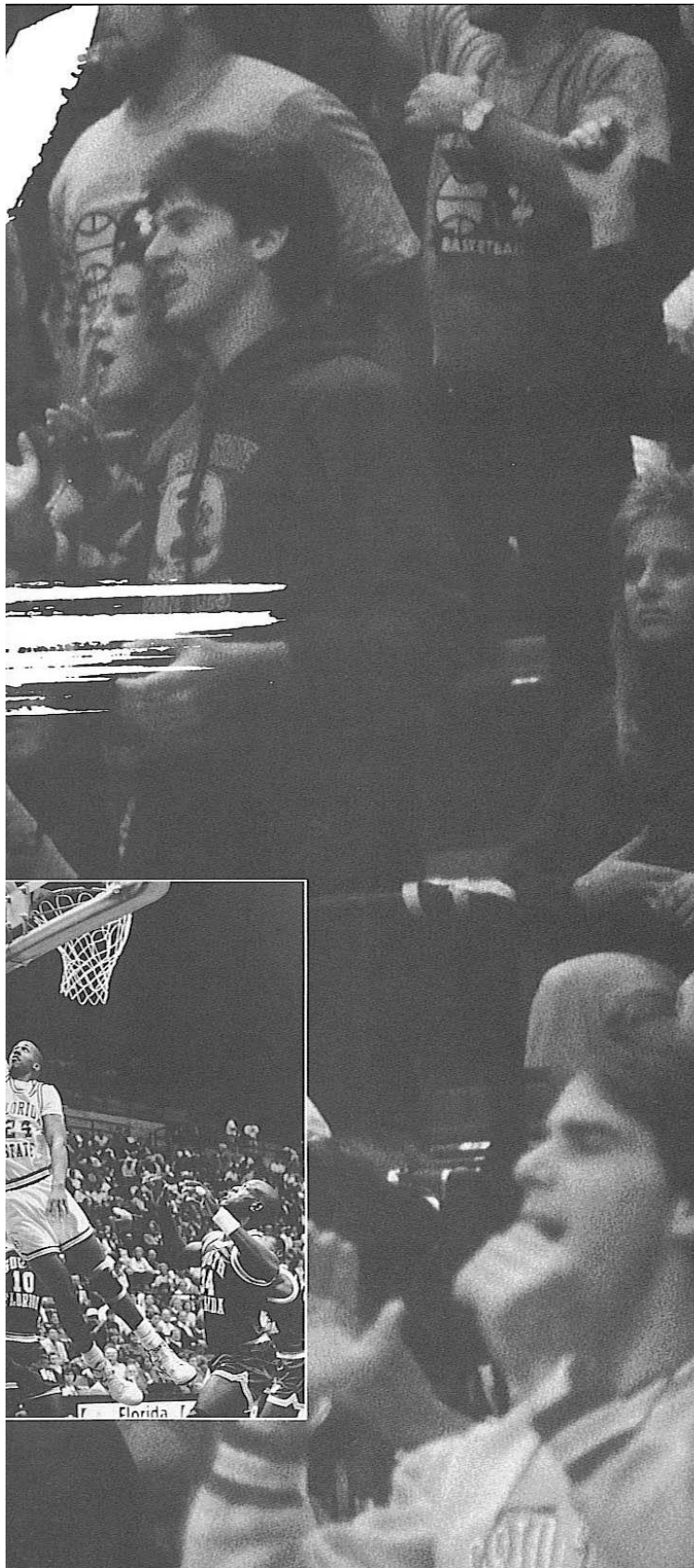
Get...











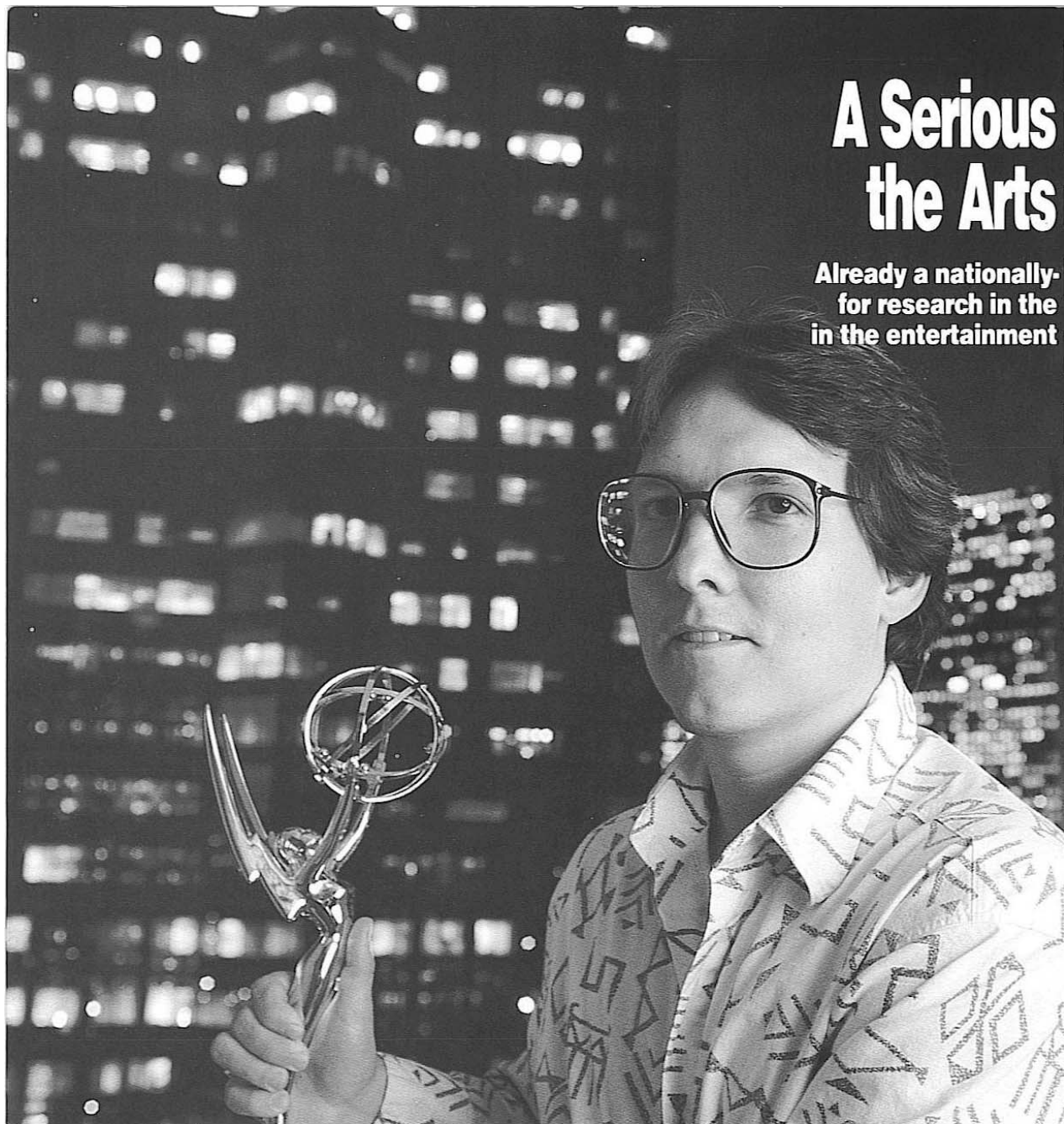
The constant beat of the flashy, pep band fills the Civic Center with the familiar sound of the Florida State fight song. 13,000 garnet and gold clad fans, some with war paint smudged on excited faces, slash the air with imaginary tomahawks.

The building nearly shakes with the excitement as the glistening wooden floor seems to invite the Tribe from the tunnel.

Soon, the war chant begins to reach a deafening crescendo, the crowd rises with cheers and the Seminoles pour from the dark tunnel into the lights and cheers of one of college basketball's most enthusiastic crowds.

A Serious the Arts

Already a nationally-
for research in the
in the entertainment



Basketball at FSU



Commitment to and Sciences

recognized center
sciences, FSU's reputation
arts is growing fast.



Above: Recent FSU graduate Keith Bilderbeck displays his Emmy award for sound editing of *Star Trek - The Next Generation*. In the background is Hollywood's Century City and 20th Century Fox Plaza.

Florida State's best known graduate in show business is probably actor Burt Reynolds (far left), but the university's new School of Motion Picture, Television and Recording Arts will eventually produce about 150 graduates a year to work in the production end of the industry.

Left: The university has already established itself as a leading research institution in the pure sciences.

THIS IS FLORIDA STATE UNIVERSITY

F

lorida State University, expanding on its long-standing reputation in the performing arts, will soon be the professional training ground for one of the state's fastest growing industries – the motion picture and television industry.

Keeping pace with professional film studios opening this year in Florida, FSU is embarking on a new project that will eventually train 150 graduate and undergraduate students each year – putting jobs in Florida in films in the hands of Florida residents. Admitting its first students this fall, the new School of Motion Picture, Television and Recording Arts will offer a bachelor of fine arts degree program in film production and management at the Tallahassee campus and a master of fine arts degree program at the FSU Motion Picture, Television and Recording Arts Conservatory at the Asolo Performing Arts Center in Sarasota.

Florida State's entry into film education complements both its commitment to nationally respected programs in music, dance and theatre, led by highly credited faculty and well-known professional artists-in-residence, and to its high standing as a research institution.

Florida State is a public, coeducational university with more than 26,000 students enrolled. A senior member of the State University System, FSU was founded in 1851 by a legislative act that provided for two institutions of higher learning, one east and one west of the Suwannee River, and began operating in Tallahassee with its first students in 1857.

Today, the main campus is spread over 347 acres in Tallahassee; the University owns a total of 1,167 acres in Leon, Bay and Franklin counties.

Florida State's operating budget is \$323 million. Faculty and administrators generate more than \$50 million annually in external funding to supplement state-sponsored research, and the private, non-profit FSU Foundation raised \$15 million in private gifts during the past fiscal year to support academics.

The University's academic programs are divided among eight colleges – Arts and Sciences, Business, Communication, Education, Engineering, Human Services (formerly Home Economics), Law and Social Sciences – and seven schools – Criminology, Library and Informational Studies, Music, Nursing, Social Work, Theatre, and Visual Arts and Dance. FSU offers more than 275 graduate and undergraduate degree programs.

With 1,450 members, the FSU faculty boasts renowned scholars, and has included four Nobel laureates. It currently includes four members of the National Academy of Sciences and four members of the American Academy of Arts and Sciences. The faculty is backed by 2,750 administrative, professional and support staff.

Florida State's entry into film education complements the university's commitment to nationally respected programs in music, dance and theatre, and its high standing as a research institution.

The Tandem Van de Graaff Superconducting Accelerator in the Department of Physics houses two powerful atom smashers and is ranked among the top four such laboratories in the nation.

Library holdings at Florida State include 1.7 million book titles, 18,000 serials, and 3.1 million microforms. The main library facility, the Robert M. Strozier Library, is linked via a computerized information system to other campus libraries and other state university research centers, as well as to the nation's outstanding research centers. Opened in fall 1988, the Paul A. M. Dirac Science Center Library places scientific library resources close by the university's main science research complex.

On the top floor of the Dirac Library is the Supercomputer Computations Research Institute, a multidisciplinary program that brings together some 50 scientists, engineers and technicians to develop computational techniques using high-performance computers. Electronically linked to an off-campus research complex, SCRI is home to two of the world's fastest and most powerful supercomputers, including the ETA10, which is capable of performing 10 billion calculations per second. Faculty members and graduate students in a variety of disciplines, as well as visitors from other universities around the world, are attracted to the research possibilities of these computing dynamos. Examples of supercomputing applications are

West Indies. Within the state, it spreads 45 miles south to its marine laboratory on the Gulf of Mexico, west to its 20-acre campus in Panama City, and south to its professional programs at the Asolo State Theatre in Sarasota and the Burt Reynolds Institute for Theatre Training in Jupiter.

The Center for Professional Development and Public Service, housed in the Florida State Conference Center located on the edge of the main campus, last year extended the University's services in credit and non-credit continuing education activities to 78,000 participants from Pensacola to Miami.

Recent growth during Dr. Bernard F. Sliger's 12-year presidency at FSU includes the student union complex expansion, the building for the joint Florida A&M University/Florida State University College of Engineering, the Village Green project at the College of Law and the new FSU Panama City Campus, which offers students in Florida's Panhandle the opportunity to pursue bachelor's and master's degrees. Recent renovation projects include the Westcott Building, Ruby Diamond Auditorium, and Dodd and Bryan Halls. Currently under construction is a new student recreation center.

The needs and interests of all its students rate high on the priority list at Florida State. Recognized as one of the nation's top universities in minority retention, FSU is among the 22 percent of colleges and universities that account for nearly 80 percent of all bachelor's degrees awarded to minority students. Indeed, Florida State's performance in retaining black students has been such that the University was selected by the U.S. Department of Education for a study of successful minority-retention policies and practices.

The one-of-a-kind, all-collegiate Flying High Circus, where students in every major may become stars on the high wire or trapeze, is but one of many extracurricular activities available to students at Florida State. The Honors and Scholars program, student government and intramural sports are among more than 200 organizations in which students can participate. Additionally, programs such as the FSU Artist Series and Distinguished Lecture Series, which bring top-caliber performers and well-known personalities to the campus, serve to broaden the horizons of Florida State students.

Florida State bonds the educational and social aspects of campus life, just as it blends Gothic and

modern styles of architecture with the oaks, pines, palms, azaleas and dogwood of North Florida and with the thriving capital city, Florida's hub of state government.

Florida State remains a growing institution — from its roots as the Seminary West of the Suwannee, through the early 20th century as the academically respected Florida State College for Women, to its coeducational status as a university in 1947, and its modern development as an acclaimed research institution, a top-ranked competitor in athletics and as a standard-setter in the performing arts. In all areas of teaching, research and service, Florida State University continues to build on its national stature.



The University's location, virtually up the street from the Capitol Center of Florida, presents students with limitless opportunities to observe state government in action, as well as numerous internship opportunities.

underground pollution studies, weather forecasting, the motion of DNA molecules, and probabilities in the state lottery.

Also providing unique research opportunities is the Tandem Van de Graaff Superconducting Accelerator Laboratory in the department of physics. It houses two powerful atom smashers and is ranked among the top four such laboratories in the nation by the National Science Foundation.

FSU extends its reach far outside of Florida by means of international study programs in England, Italy, Switzerland, Yugoslavia, France, Panama, Costa Rica and the

Basketball at FSU

ATHLETIC STAFF

Dr. Bernard F. Sliger, President

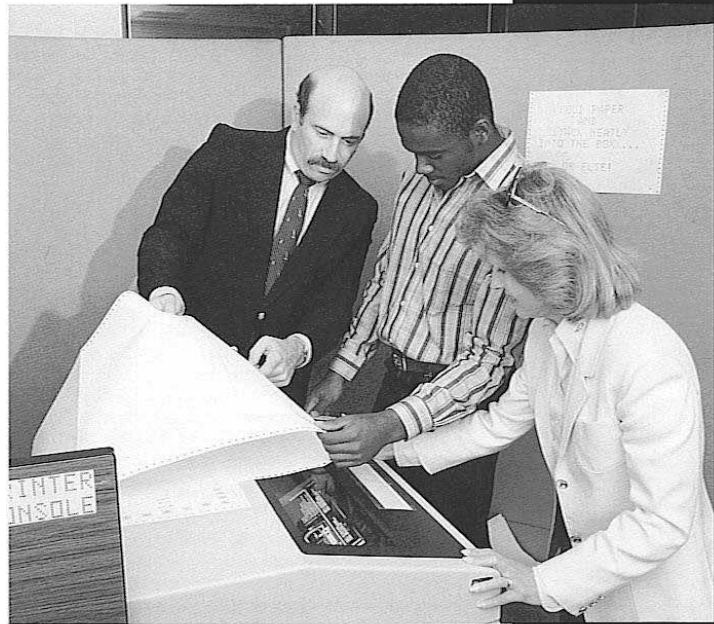
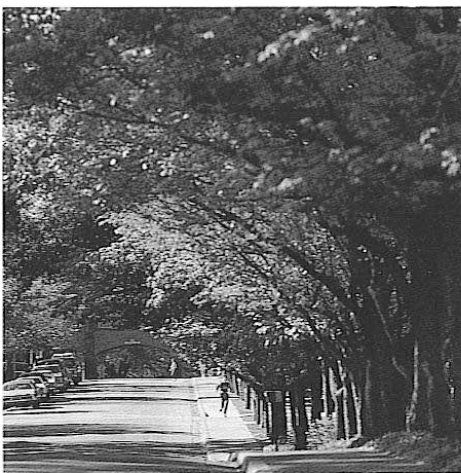
Dr. Bernard F. Sliger was named the 10th president of Florida State University February 7, 1977, following six months of service as the University's interim president.

After joining the administration May 15, 1972, as executive vice president, he assumed the additional duties of chief academic officer, and further served as director of the University's London Study Center during the fall quarter, 1975.

Formerly executive director of the Louisiana Coordinating Council for Higher Education, Dr. Sliger's background as an educator includes 19 years as a faculty member and administrator at Louisiana State University. During that time, he served LSU as head of the economics department, member and chairman of the graduate council, dean of academic affairs and vice chancellor. Taking a leave of absence from LSU in 1969, he organized the Louisiana Coordinating Council for Higher Education, which is similar to the Florida Board of Regents, and became its executive director, a position equivalent to the chancellorship of the State University System of Florida.

An economist and scholar in the special fields of economic theory and public finance, he frequently has served as consultant to private and public commissions and organizations. Sliger served as chairman of Gov. Reubin Askew's Economic Advisory Council. He was a member and chief consultant of the governor of Louisiana's tax study committee in 1968, and chaired a special committee appointed by the Legislature to study the Louisiana Department of Revenue. Sliger also served a year as Louisiana commissioner of administration and chief budget officer. He presently serves as the economist for the Tallahassee Chamber of Commerce and the state Chamber of Commerce on a volunteer basis.

Sliger's administrative and consulting experience extends beyond the states of Florida and Louisiana. Since 1983, he has been a member of the board of directors of the Federal Bank of Atlanta. He was a member of the board of trustees of the American College Testing Association, Iowa City, Iowa, from 1981 to 1987 and served as chairman, 1985-87. He is a member of the Council of Presidents for Southeastern Universities Research Association, Newport News, VA. Since 1984, Sliger has served on the executive committee of the University Research



Association, Washington, D.C., and in 1988, was asked to serve on the board of trustees. He is a member of two committees of the National Association of State Universities and Land Grant Colleges: Fisheries Education (1984) and International Affairs (1985). He has been a member of the American Council on Education Committee for Yugoslavia since 1980. In 1986-87, Sliger was a member of the ACE/AFL-CIO Labor-Higher Education Council. He was appointed a member of the Academic Task Force for Review of the Insurance and Tort System in 1986. He has been a member of the board of trustees of the Florida Chapter of The Nature Conservancy since 1985 and serves as an ex officio member of the Florida Council of 100.

In 1987, Sliger was appointed to a four-year term on the NCAA President's Commission. He chaired the commission's ad hoc committee on the national forum in 1988, charged with planning and implementing a series of NCAA national meetings on the student athlete. In 1989, he was named chair of Division 1-A of the NCAA, chair of the Presidential Nominating Committee of the President's Commission and a member of the NCAA Special Committee on Cost Reduction.

In 1987, friends of the university created the Bernard F. Sliger Eminent Scholar Chair in Economic Education at Florida State. Donations of \$600,000 were matched by \$400,000 from the state to create the \$1 million endowed faculty position. That same year, the Bernard F. Sliger Building was dedicated at Innovation Park, Florida's first university-related research park.

In 1989, Sliger was grand marshal of the 21st Annual Springtime parade.

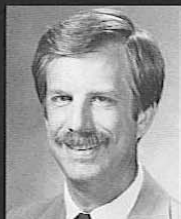
Born September 30, 1924, the native of Trout Creek, Mich., holds three degrees — the B.A., M.A. and Ph.D. — from Michigan State University, all in economics; he has done postdoctoral study in mathematical economics at the University of Minnesota on a sabbatical leave. He has taught at Florida State, Michigan State, Louisiana State and at Southern University at Baton Rouge, LA. He began his educational career as an instructor in Michigan's Interior Township Schools in 1947.

Students at FSU choose from majors ranging from the most exotic research science to the liberal arts. Though it's become a major research university, Florida State's primary mission is still the education of its undergraduate students.

FSU's tree-lined "halls-of-ivy" campus makes the walk to class a pleasant experience. The campus has been frequently used as a set for television commercials filmed in winter months that call for a college-type setting.



DR. BERNARD F. SLIGER



CHARLES W. EHRHARDT



BOB GOIN



DR. JANICE STOCKER

The Claude Pepper Library, named for Florida's famous longtime congressman, is just one example of the beautiful surroundings for learning provided by the university.

Sliger served in the U.S. Army Corps of Engineers from 1943 to 1946. Active in civic organizations in Baton Rouge, he was a member of the Mental Health Association, Boy Scout Board, Rotary Club, YMCA Board, the Budget Committee on United Givers, the Baton Rouge Goals Committee and the American Legion. He holds memberships in 10 professional, scholastic and honor societies including Omicron Delta Kappa, Phi Kappa Phi, Omicron Delta Epsilon and Alpha Kappa Psi. He is a member of the Tallahassee Kiwanis Club.

A prolific writer in his fields of study, Sliger is the author of "Public Finance," a text issued in 1964, revised in 1970, and presently used in a number of colleges and universities. He also wrote a chapter in the 1975 edition of "Municipal Finance Administration," which serves as a guide for finance directors, budget officers, tax collectors, city treasurers and other finance administrators in cities, counties and local governments throughout the United States and Canada. This chapter has since been revised.

He and Mrs. Sliger (Greta) have four children: Nan, Paul, Greta and Sten. They attend the Lutheran church and reside at 1030 W. Tennessee Street in Tallahassee.

Charles W. Ehrhardt, Faculty Athletic Committee Chairman

As he begins his sixth year as Chairman of the FSU Athletic Committee, Charles Ehrhardt continues to be an important voice for Florida State on both the conference and national levels. Since the beginning of 1989, he has been elected to a pair of posts which gives him an even larger voice in the Metro Conference and the NCAA.

Ehrhardt was elected chairman of the Faculty Athletics Representatives Association of the NCAA in January 1989 at the NCAA convention and was chosen President-Elect of the Metro Conference in May. He has already served as president of the Metro Conference (1984-86), acting as the league's chief representative to the NCAA during that time. In the interim, he was active on the editorial budget committee of the Metro.

This is also Ehrhardt's second stint on FSU's Athletic Committee. A professor of Law at Florida State since 1967, he first worked on the committee from 1969-71 and was reappointed to the board in 1983. He succeeded Dr. James Jones as chairman in 1984, and became Florida State's representative to the NCAA with the appointment.

Ehrhardt is a widely-respected expert in the field of Evidence who is the Ladd Professor of Evidence in the Florida State College of Law. He wrote the Florida Evidence Code, passed by the state legislature in 1976, which

deals with the admissibility of evidence in court trials. Ehrhardt has also written a book on evidence, published in 1977 with a second edition added in 1984.

Ehrhardt is in demand as a lecturer and speaker. He works with lawyers and judges nationwide as a private consultant on evidence matters.

A native of Elkader, Iowa, Ehrhardt received a bachelor's degree from Iowa State University in 1962. He went on to the University of Iowa and earned his law degree two years later. He eventually went on to become an Assistant United States Attorney in Iowa before coming to Tallahassee.

Ehrhardt and his wife, the former Judy Sutton, have three children.

Bob Goin, Acting Athletic Director

Dr. Bernard F. Sliger wasted no time in naming Bob Goin to the position of Acting Athletic Director when Hootie Ingram left in October. Goin, who has spent the last eight years as the associate athletic director, has earned an outstanding national reputation spearheading the day-to-day operation of the FSU program. A top-notch administrator, Goin's experience is impressive.

Goin has served as tournament director for the NCAA South, Atlantic and East Baseball Regionals, which have been held in Tallahassee every year since 1983.

Goin came to Florida State in July of 1981 with experience as both an administrator and a coach. He arrived after two years as athletic director of California (Pa.) State College, where he was credited with expanding the athletic department. He formed the Cal State Athletic Scholarship Fund and Athletic Booster Club and established the Cal State radio network.

Prior to taking the California post, Goin was assistant athletic director at West Virginia from 1976 to 1979. At WVU, he was involved in several expansion projects, including construction of a new stadium and athletic facility.

Between 1960 and 1976, he held a variety of positions at Bethany (W. Va.) College, including coaching assignments in football, basketball and baseball. Goin was associate professor and chairman of physical education and athletics at the school from 1972 to 1976, and coached Bethany football teams from 1963 to 1972.

While coaching at Bethany, two of Goin's football and baseball teams won President's Athletic Conference championships. He also won numerous individual awards, including Tri-State Small College Coach of the Year, Pittsburgh and Ohio Dapper Dan awards and the Morgantown Touchdown Club award.

Goin received a bachelor's degree from Bethany in 1959 and his master's from West Virginia in 1962.

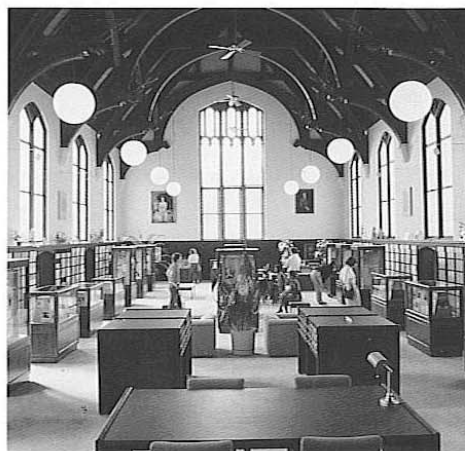
He and his wife, Nancy, have four children and two grandchildren.

Dr. Janice Stocker, Assistant Athletic Director

Dr. Janice Stocker is in her fourth year with the Florida State athletic administration. A veteran of 24 years of collegiate athletic experience, she serves as the primary women's administrator as well as handling several sports programs. They include volleyball, women's basketball, softball, men's and women's swimming and men's and women's tennis.

A native of Muncie, Ind., Stocker has worked in almost every area of athletics, including coaching, teaching and administration.

Stocker has been a part of the athletic administration team of four universities as well as one conference. She was associate director of women's athletics at the University of Minnesota for the 1984-85 school year and prior to that appointment, was commissioner of the Wisconsin Women's Intercollegiate Athletic Conference that included 12 institutions.



Basketball at FSU



Most of Florida State's athletes live in the Cash Hall complex, which features full dining facilities, study halls, a swimming pool and game room. Located just off the FSU campus, the facility combines the privacy of apartment life with the convenience of a dormitory.

She also worked as the assistant athletic director at West Virginia University from 1977-79, teaching and working with the entire program; at Ball State University where she was women's athletic director for six years; and at Slippery Rock where she taught and coached for four years.

Stocker received her bachelor's degree from Earlham College in Richmond, Va. in 1954 and holds a 1962 master's from Ball State. She completed her doctoral studies at Temple in 1972.

Claude Thigpen, Assistant Athletic Director

Claude Thigpen has been a member of the Florida State athletic staff for the past 34 years and has held his present position as assistant athletic director since 1978. He has been with the athletic department longer than any other employee.

Over the years, he has held a variety of positions, including business manager, accountant and ticket manager.

He also handles certain aspects of game-day operations for football and oversees the athletic department courtesy car program.

During football season, the Greenville, Fla., native takes on added duties as he makes travel arrangements for the Florida State football team and its official party. This includes making airplane and hotel reservations for the entire Seminole group of up to 145 people.

Thigpen is married to the former Carleen Lindley.

Charles Hurst, Assistant Athletic Director

Charles Hurst joined the Florida State athletic staff in July of 1987. He oversees FSU's entire business and ticket operations.

Hurst, 48, came to the newly created position of assistant athletic director for business from the University of Florida, where he had served as the Director of Internal Management Auditing since 1983. At Florida, Hurst directed a staff of 15 in developing all internal audit programs within the university. Hurst had previously served as Manager of Internal Auditing at the University of South Alabama from 1981 to 1983.

The Talladega, Ala. native received his bachelor's degree from Jacksonville State (Ala.) University with a

major in accounting and a minor in economics. He earned CPA status in 1975 while employed with the private accounting firm of Brooke and Freeman in Anniston, Ala.

Hurst is also affiliated with several organizations related to his field, including the American Institute of Certified Public Accountants and the Florida and Alabama Societies of Certified Public Accountants.

He and his wife, Juanita, have a daughter.

Larry Pendleton, Assistant Athletic Director

Assistant athletic director Larry Pendleton is in his 17th year as a member of the Florida State athletic department staff. From 1975 to 1980, Pendleton was academic advisor for FSU male athletes, before assuming the position of assistant athletic director in July of 1980.

Pendleton's current post touches many areas of the department. He is responsible for maintaining and scheduling of all athletic facilities.

Additional duties include scheduling and making travel arrangements for the Seminole basketball team, and managing the athletic department insurance programs.

Pendleton coordinated the department's building of the Moore Athletic Center in 1983 as well as improvements to Doak Campbell Stadium, Dick Howser Stadium, Bim Stults Aquatic Center and Mike Long Track. He also supervised the building of FSU's softball complex. Last year, Pendleton coordinated the addition of a new matrix scoreboard and sound system for Dick Howser Stadium as well as planting of prescription turf in Doak Campbell Stadium.

A 1969 graduate of Florida State, Pendleton returned to his alma mater in 1973 as a graduate assistant football coach. In 1974, he became a full-time member of the Tribe family when he was hired as an assistant football coach. The next year, he moved to the academic advising position.

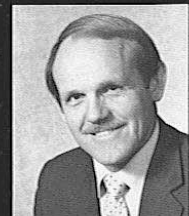
A native of Winter Garden, Fla., Pendleton played linebacker and offensive guard for the Seminoles in the late 1960s. FSU offensive coordinator Wayne McDuffie and Pendleton were the two starting guards on the Seminoles' 1967 Gator Bowl squad. Larry was twice selected to the Florida all-star team while starting 33 consecutive games and participating in three bowl games.



CLAUDE THIGPEN



CHARLES HURST



LARRY PENDLETON



JOHN SHEFFIELD

John Sheffield, Assistant to the Athletic Director

Entering his seventh season at Florida State, John Sheffield serves as FSU's ticket coordinator. Sheffield directs the FSU season ticket campaigns for football, basketball and baseball and also organizes special event programs for the athletic department. He was responsible for computerizing FSU's ticket operation and oversees a staff of six who handle all FSU tickets.

Prior to his arrival in Tallahassee, Sheffield was director of ticket operations for the Tampa Bay Buccaneers from 1977 to 1982.

A 1975 graduate of Florida State, Sheffield worked in the FSU athletic department for a year following graduation. He then moved on to the Atlanta Braves organization and later moved to Miami, where he was assistant ticket director for the Miami Dolphins. Before gaining the ticket director post at Tampa, Sheffield served as business manager for the North American Soccer League's Ft. Lauderdale Strikers.

Sheffield still retains ties with the NFL as he has assisted in ticket matters for the last nine Super Bowls.

He and his wife, Peggy, have a son.

Terry Hume, Marketing Coordinator

A former Florida State athlete, Terry Hume has been a member of the athletic staff for the past 11 years. She is in her third year as the marketing and promotions coordinator of the entire FSU athletic department.

Hume graduated from FSU in 1977 with an english and business degree, capping a four-year volleyball career that saw her named team captain and MVP as a senior.

She went to work for her alma mater in October of 1978, assisting former women's athletic director Barbara Palmer with a variety of administrative duties. She continued in that position until early in 1986 when the athletic department underwent a reorganization.

Hume's duties now include overseeing the department's advertising efforts as well as handling all promotional activities associated with FSU's 16 sports. She is also the department's advisor for its spirit groups.

The Tacoma Park, Md. native is a 1974 graduate of Coral Gables High School in Miami.

Hume has a daughter, Amy Lauren.

Joe Labat, Athletic Business Manager

Joe Labat is in his 11th year on the FSU athletic staff. As athletic business manager, Labat works with the day-to-day fiscal operations of the athletic department. He assists the assistant athletic director of financial planning in overseeing a staff whose responsibilities include overall budgeting, financial reporting, payroll, purchasing and travel.

Labat joined the athletic staff in 1978, moving from across campus where he served in the accounts payable section of the Florida State Controller's office.

An avid golfer and jogger, he also volunteers his time to officiate Florida State track meets.

Labat graduated from Florida State in 1967, then taught and coached football and track at Rickards High School in Tallahassee for two years before moving to the Florida State job.

A native of Tallahassee, Labat is a member of the National Business Manager's Association.

He is married to the former Marcia Allen.

Gene Deckerhoff, Electronic Media Coordinator

Gene Deckerhoff is in his sixth year on the full-time staff at Florida State as its radio and television coordinator. He has been a member of FSU's basketball broadcast team for the past 12 years.

Deckerhoff joined the Seminole athletic family in

November of 1983 after five years at WCTV Channel 6 in Tallahassee where he served as sports director and sports anchor. As the voice of the Seminoles, Gene first teamed with former FSU coach Bill Peterson for five years. He has spent the last six years working with color analyst Vic Prinzi. Deckerhoff has also been the Seminoles' play-by-play announcer for football for the last 11 years.

Since joining the FSU staff, Deckerhoff's responsibilities have grown to include producing the Bobby Bowden Show as well as coordinating all radio and television activity at FSU. Deckerhoff also co-hosts the Bobby Bowden Show.

Deckerhoff's latest venture sees him as the play-by-play voice of the Tampa Bay Buccaneers. He also served as the play-by-play announcer for the Tampa Bay Bandits of the USFL and currently is an announcer on the HSE-Sunshine network for baseball games.

Gene has worked at two television stations and four radio stations since entering the broadcasting field. He has received the Florida SportsCaster of the Year Award six times: in 1979, 1980, 1983, 1984, 1985, 1986 and 1987.

Deckerhoff and his wife, Ann, have three sons.

Wayne Hogan, Sports Information Director

Tallahassee native Wayne Hogan is in his eighth basketball season as Florida State sports information director.

Hogan is responsible for all publicity and public relations matters concerning the FSU athletic department. The SID office handles all information on 16 intercollegiate sports, encompassing both men and women's athletics.

A 1979 Florida State graduate, Hogan returned to his alma mater in 1982 after serving as assistant sports information director at New Mexico for two years. Prior to that move, he worked as director of public relations and broadcasting for two minor league baseball teams — the Charleston Charlies and the Albuquerque Dukes.

Hogan began his career in the public relations and broadcasting fields while a student at Florida State. From 1975-79, he performed a variety of duties for the Seminole athletic program, including working in the sports information office, engineering the Seminole Sports Network for football and basketball broadcasts and play-by-play announcing for baseball.

In addition to his duties as sports information director, Hogan handled color commentary for the Florida State basketball radio network from 1982-84 and again resumed those duties in the fall of 1985. He does play-by-play for Florida State's baseball telecasts on the HSE/Sunshine Network.

Wayne's father, Patrick Hogan, is a former FSU sports information director and now has the title of Vice President for Public Affairs at Florida State.

Rob Wilson, Assistant Sports Information Director

Rob Wilson begins his third year with the Florida State athletic family. The 28 year-old native of San Diego, CA, returned to his alma mater in July of 1987 as assistant sports information director. A resident of Valparaiso, FL, since 1971, he serves as the primary media contact for the men's basketball program as well as duties with Seminole football.

Wilson spent three years in a similar position at East Carolina University. In addition to his duties as assistant SID, where he worked with the Pirate football and men's and women's basketball teams, Wilson was the color analyst on the Pirate Sports Network for basketball and football.

A 1983 Florida State graduate, Wilson received a bachelor of arts degree in communication with a minor in chemistry. Following graduation, he spent the 1983-84



TERRY HUME



JOE LABAT



GENE DECKERHOFF



WAYNE HOGAN



ROB WILSON



The ultra-modern Coyle E. Moore Athletic Center houses athletic administration, coach's offices, training facilities, locker rooms and the athletic dining hall. It's also home to the FSU Athletic Hall of Fame.

school year as a graduate assistant in the FSU sports information office.

Wilson originally attended Ole Miss for the 1979-80 school year where he played wide receiver for the Rebels under Steve Sloan. He later transferred to Okaloosa-Walton Junior College earning an associate of arts degree in 1981.

Wilson has served as a host and producer for *Seminole Uprising* which is a production of the Florida State department of communications.

Donna Turner, Assistant Sports Information Director

Donna Turner, a 1985 graduate of Florida State, returned to her alma mater last year as an assistant sports information director. She arrived from Iowa State University, where she worked the past two years in a similar capacity.

Turner is no stranger to the FSU Sports Information Department. She spent four years — from 1981-85 — working as a student assistant while obtaining her degree

in communication.

After graduation from FSU, Turner was accepted into the master's degree program in sports administration at Ohio University. She completed the degree requirements in December of 1986, which included internships in the Ohio University Baseball Office and the East Carolina University Marketing Office. In January of 1986, she went to work for the North Carolina Athletic Ticket Office for several months before joining the Iowa State athletic program.

At Iowa State, Turner helped coordinate publicity for the Cyclones' 21-sport athletic program, and was the primary contact for ISU's women's basketball, volleyball and baseball programs. Additionally, she served as the editor of the *Cyclone Watch*, a booster club publication, and co-edited the football game program.

At Florida State, Turner serves as editor of *Tribe Magazine*, FSU's football game program, as well as serving as a media contact for football and several other sports.

A native of Gainesville, Turner is single.



DONNA TURNER

SEMINOLES ON THE AIR

FLORIDA STATE AND THE SUNSHINE NETWORK



GENE DECKERHOFF



WAYNE HOGAN

Florida State University is in the second of a three-year contract for distribution of its athletic events with Sunshine Network.

Through this agreement, Florida State serves as the flagship school for Sunshine Network's collegiate broadcast schedules including football, basketball and baseball. With more than 2.5 million subscribers throughout Florida, Sunshine Network is able to appease Seminole fans from all corners of the state. But it doesn't stop there.

Sunshine Network is part of the Prime Network family, an affiliation of regional sports networks nationwide. Through this affiliation, the Florida State Seminoles have the potential to reach an audience of 11 million households in 14 states around the country each time they are shown on Sunshine Network.

Sunshine Network will televise approximately 10 live basketball games, 10 live baseball games, all football games not carried on network television and no fewer than five other events involving FSU men's and women's sports teams per year. Additionally, Sunshine Network will telecast a variety of special programs oriented toward FSU athletics including The Pat Kennedy Show, The Mike Martin Show, The Bobby Bowden Show and Seminole Uprising.

Sunshine Network, which also serves as the cable home of the NBA's Orlando Magic, is offered as a basic cable channel via outlets in every major Florida market. Its continued growth from an initial subscriber base of 1.5 million has led to its current ranking as the third largest regional sports network in the country.

SEMINOLE RADIO NETWORK

Florida State basketball fans who don't have the opportunity to attend games in person can still follow the fortunes of the Seminoles by tuning in to any of the 19 affiliate stations on the Seminole Radio Network.

The Seminole Radio Network is produced by Bud Sports, a division of Anheuser-Busch, Inc. under rights granted by Florida State University.

Gene Deckerhoff returns this season to handle the play-by-play for Seminole basketball. Deckerhoff will be joined in the broadcast booth by Wayne Hogan, sports information director at Florida State, who will handle the color commentary.

In addition to producing and syndicating Seminole basketball and football action, Bud Sports will produce more than 800 sporting events in 1990, including the St. Louis Cardinals, Orlando Magic, Sacramento Kings, St. Louis Blues Hockey and a variety of sports specials seen on ESPN.

NETWORK AFFILIATES

Sunshine Cable Network Affiliates (tentative)

System	Channel	Location
American Cablevision of Florida ATC	Ch. 19	Pompano Beach, FL
	Ch. 17	Orlando, FL
Cable of Central Florida	Ch. 14	Melbourne, FL
Cable TV of Coral Springs Cablevision	Ch. 11	Coral Springs, FL
		Daytona Beach, FL
Centel	Ch. 5/6	Riviera Beach, FL
Centel	Ch. 8	Winter Haven, FL
Comcast	Ch. 5	W. Palm Beach, FL
Comcast	Ch. 23	Tallahassee, FL
Continental Cablevision	Ch. 25	Jacksonville, FL
Cox Cable	Ch. 8	Gainesville, FL
Gulfstream Cable	Ch. 9	Dunedin, FL
Halifax-TCI		Daytona Beach, FL
Jones Intercable	Ch. 47	Tampa, FL
Palmer Cable	Ch. 9	Naples, FL
Paragon	Ch. 25	Bradenton, FL
Paragon	Ch. 8	Lakeland, FL
Homes Sports Entertainment Channel 53	Ch. 53	Falls Church, VA
TV-69	Ch. 69	Perry, FL
Paragon	Ch. 9	Largo, FL
Selkirk Communications	Ch. 25	Ft. Lauderdale, FL
Storer	Ch. 29	Miami, FL
Storer-South Dade		Miami, FL
Storer		Sarasota, FL
Vision Cable	Ch. 9	Clearwater, FL
Vision Cable	Ch. 9	Pinellas, FL
Dimension Cable	Ch. 18	Phoenix, AZ
Jones Cable		Tampa, FL

Radio Network Affiliates (tentative)

Location	Station	Frequency
Bartow	WWBF	1130 AM
Boca Raton	WSBR	740 AM
Chipley	WBGC	1240 AM
Crestview	WAAZ	104.9 AM
Daytona Beach	WROD	1340 AM
DeLand	WXVQ	1490 AM
Jacksonville	WQIK	99.1 FM
Lake City	WDSR	1340 AM
Live Oak	WQHL	98.1 FM
Marianna	WTYS	1340 AM
Ocala	WTMC	1290 AM
Orlando	WKIS	740 AM
Sarasota	WQSA	220 AM
Sebring	WJCM	950 AM
Tallahassee	WTNT	94.9 FM
Tampa	WFLA	970 AM
Thomasville	WLOR	730 AM
Valdosta	WVLD	1450 AM
Winter Haven	WSIR	1490 AM