

Kennedy's Fourth Season

Three Years of Changes

"You obviously put a lot of stress on academics. You've been preaching about it since you arrived."

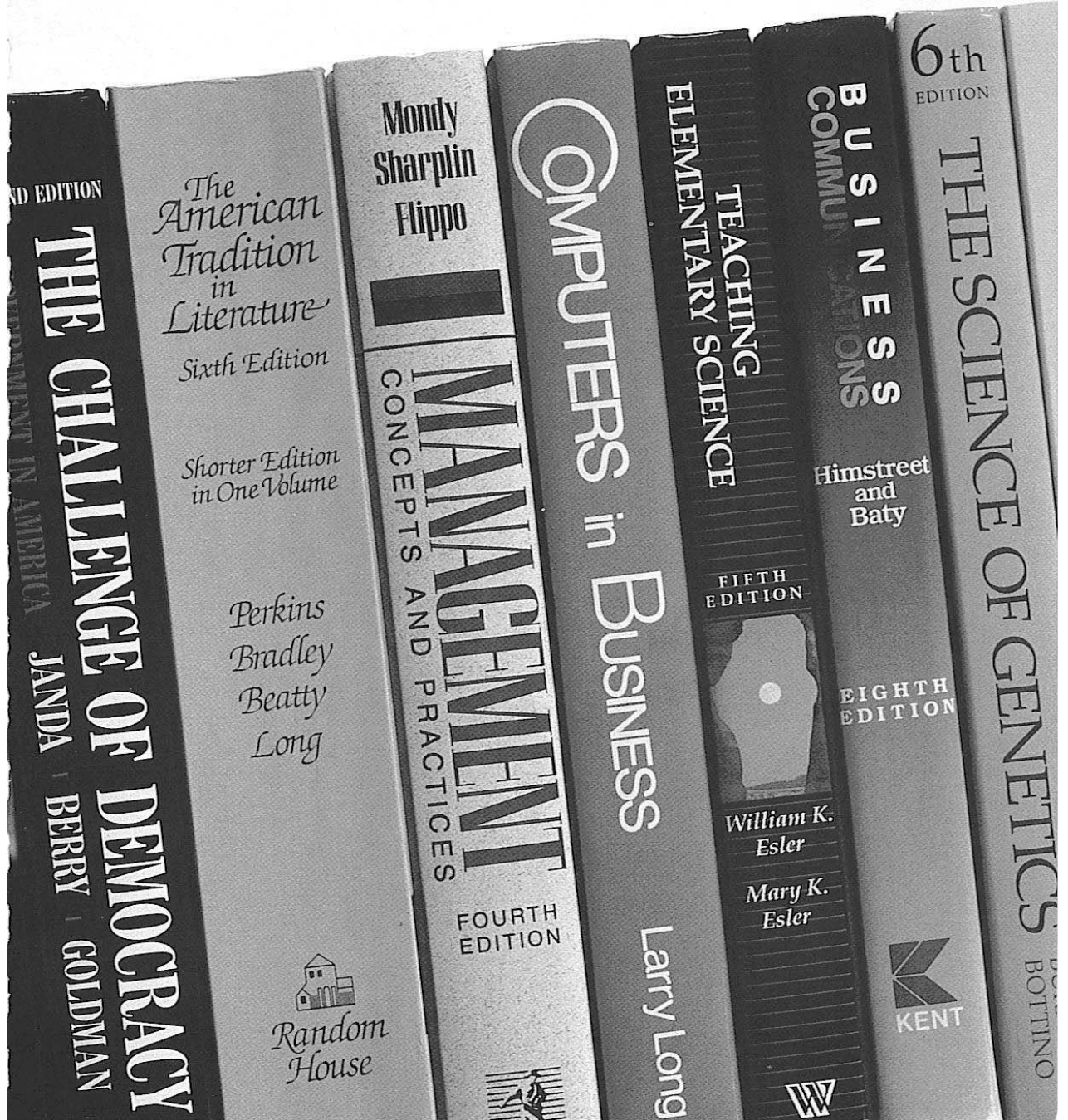
"You can't convince the nation's best players to come to a school that you don't believe in. I can go into anyone's home and say that at Florida State University you'll receive the best education possible."

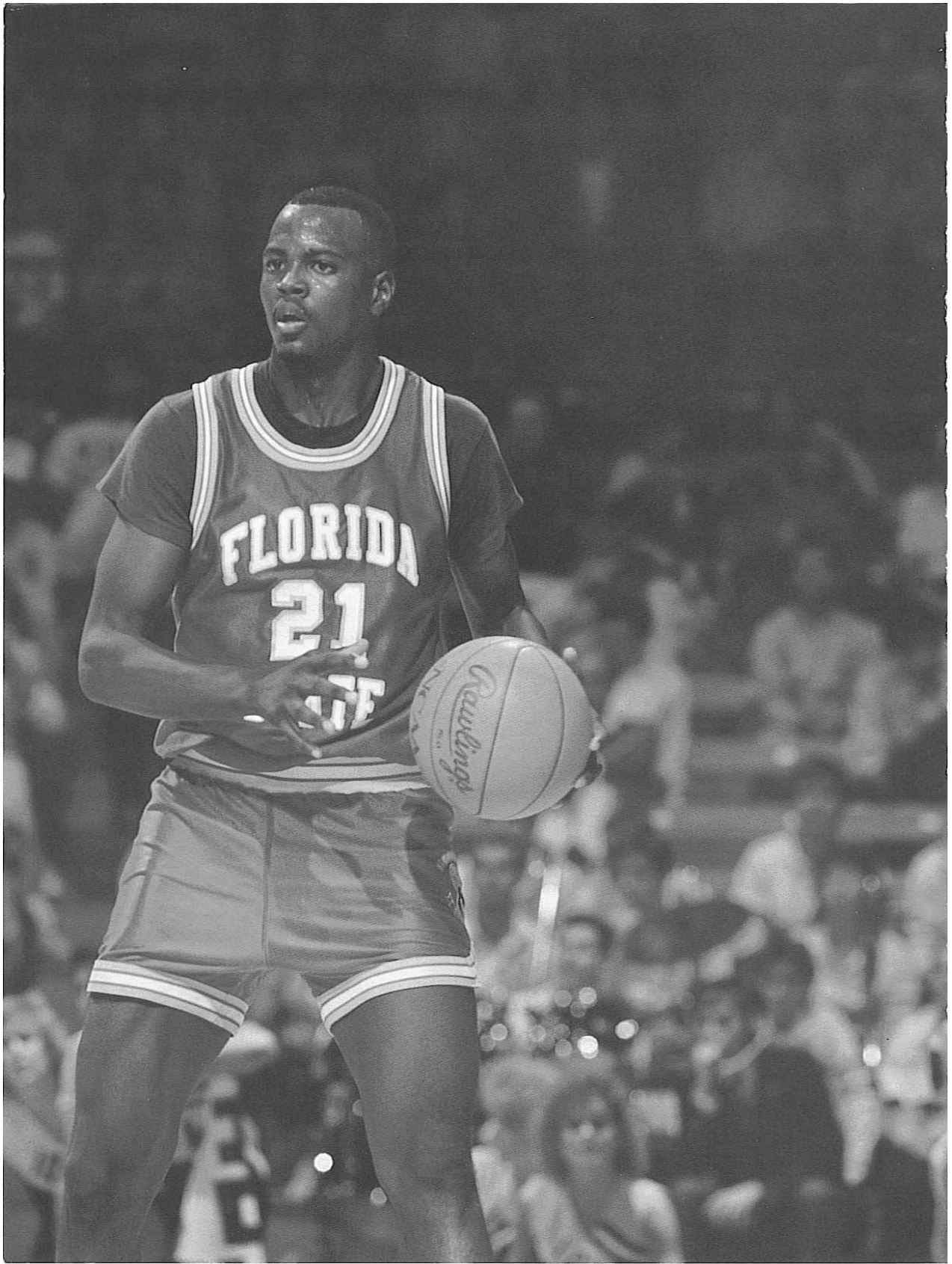
"Our goal is a 100% graduate rate. I will not sign a player who is not committed to going to class and getting his degree. There are things in life bigger than basketball and an education is just one of them."

Pat Kennedy's teams have a history of outstanding performances both in hitting the shots and the books.

Kennedy was recognized by *USA Today* for the excellent academic atmosphere around his program at Jena, and he is continuing that accomplishment at Florida State.

Statistics





INDIVIDUAL RECORDS

All-Time Records

Most Points

Game: 46, Ron King vs. Georgia Southern, 1970 - 71
 Season: 743, Jim Oler, 1955 - 56
 Career: 1820, Jim Oler, 1952 - 56

Most Field Goals

Game: 21, Ron King vs. Georgia Southern, 1970 - 71
 Season: 260, Alton Lee Gipson, 1983 - 84
 Career: 640, Mickey Dillard, 1976 - 81

Most Field Goal Attempts

Game: 37, Ham Wernke vs. Tampa, 1952 - 53
 Career: 1308, Ham Wernke, 1951 - 55

Best Field Goal Percentage

Game: 94.1 (16 - 17), Murray Brown vs. Auburn, 1978 - 79
 Season: 69.1 (237 - 343), Murray Brown, 1978 - 79
 Career: 66.8 (566 - 847), Murray Brown, 1976 - 80

Most Free Throws

Game: 22, Jim Oler vs. Rollins, 1954 - 55 and vs. Morningside, 1955 - 56
 Season: 311, Jim Oler, 1955 - 56
 Career: 762, Jim Oler, 1952 - 56

Most Free Throw Attempts

Game: 30, Jim Oler vs. Morningside, 1955 - 56
 Season: 350, Jim Oler, 1955 - 56
 Career: 975, Jim Oler, 1952 - 56

Best Free Throw Percentage

Game: 100.00 (10 - 10), Granville Arnold vs. Memphis State, 1983 - 84
 100.00 (10 - 10), Tony Dawson vs. FIU, 1987 - 88
 Season: 89.5 (51 - 57), Ken Macklin, 1969 - 70
 Career: 81.7 (161 - 197), Granville Arnold, 1982 - 85

Most Rebounds

Game: 32, Rick Benson vs. Florida Southern, 1954 - 55
 Season: 456, Dave Cowens, 1967 - 68
 Career: 1340, Dave Cowens, 1967 - 70

Most Assists

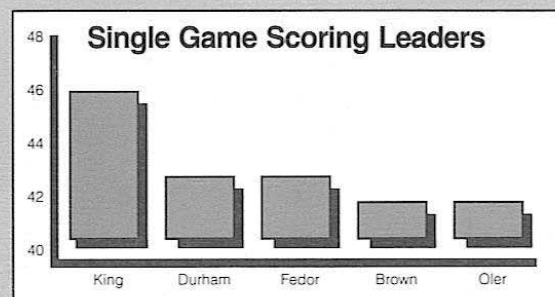
Game: 16, Otto Petty vs. South Alabama, 1971 - 72
 16, Tony William vs. Jacksonville, 1982 - 83
 Season: 227, Otto Petty, 1970 - 71
 Career: 602, Otto Petty, 1970 - 73

Best Scoring Average

Season: 29.7, Jim Oler, 1955 - 56
 Career: 23.2, Mitchell Wiggins, 1981 - 83

Best Rebound Average

Season: 17.5, Dave Cowens, 1967 - 68
 Career: 17.2, Dave Cowens, 1967 - 70



Single Game Records

Points

- 46, Ron King vs. Georgia Southern, 1970 - 71
- 43, Hugh Durham vs. Stetson, 1956 - 57
- 43, Dave Fedor vs. Miami, 1959 - 60
- 42, Murray Brown vs. Auburn, 1978 - 79
- 42, Jim Oler vs. Morningside, 1955 - 56
- 40, Pee Wee Barber vs. Miami, 1986 - 87
- 38, Ham Wernke vs. Tampa, 1952 - 53
- 38, Dave Fedor vs. Tampa, 1961 - 62
- 38, David Thompson vs. South Alabama, 1976 - 77
- 37, Dave Fedor vs. Rollins, 1959 - 60
- 37, Mitchell Wiggins vs. South Carolina, 1981 - 82
- 37, Mitchell Wiggins vs. Florida, 1981 - 82
- 37, Mitchell Wiggins vs. Memphis State, 1982 - 83
- 36, Hugh Durham vs. Georgia, 1958 - 59
- 36, Mitchell Wiggins vs. San Diego State, 1982 - 83
- 36, George McCloud vs. LaSalle, 1988 - 89
- 35, Ham Wernke vs. Montana State, 1954 - 55
- 35, Vernell Elzy vs. Biscayne, 1970 - 71
- 35, Reggie Royals vs. UC-Irvine, 1970 - 71
- 35, Benny Clyde vs. Oklahoma City, 1972 - 73
- 35, Larry Warren vs. Texas A&M, 1973 - 74
- 35, Alton Lee Gipson vs. Virginia Tech, 1983 - 84
- 35, Pee Wee Barber vs. Memphis State, 1986 - 87
- 35, George McCloud vs. Jacksonville, 1988 - 89

Field Goals Made

- 21, Ron King vs. Georgia Southern, 1970 - 71
- 17, Ron King vs. Pan Am, 1970 - 71
- 17, Ron King vs. Miami, 1970 - 71
- 17, David Thompson vs. South Alabama, 1976 - 77
- 17, Mitchell Wiggins vs. San Diego State, 1982 - 83
- 16, Dave Fedor vs. Miami, 1959 - 60
- 16, Larry Warren vs. Marshall, 1974 - 75
- 16, Murray Brown vs. Auburn, 1978 - 79
- 16, Alton Lee Gipson vs. Tampa, 1984 - 85
- 15, Dave Fedor vs. Rollins, 1959 - 60
- 15, Ray Swain vs. Tampa, 1961 - 62
- 15, Reggie Royals vs. UC-Irvine, 1970 - 71
- 15, Mitchell Wiggins vs. Florida, 1981 - 82

Field Goals Attempted

- 37, Ham Wernke vs. Tampa, 1952 - 53
- 32, Rick Benson vs. Beloit, 1954 - 55
- 32, Ron King vs. Georgia Southern, 1970 - 71
- 31, Ian Morrison vs. Tampa, 1966 - 67
- 30, Burt Deckel vs. Furman, 1957 - 58
- 30, Don Bates vs. Stetson, 1958 - 59
- 29, Don Bates vs. Auburn, 1958 - 59
- 29, Ron King vs. Miami, 1970 - 71
- 28, Rick Benson vs. Georgia Teachers, 1954 - 55
- 28, Hugh Durham vs. Auburn, 1958 - 59
- 28, David Thompson vs. Jacksonville, 1976 - 77
- 28, David Thompson vs. UNC-Charlotte, 1976 - 77

Field Goal Percentage

- 94.1 (16 - 17), Murray Brown vs. Auburn, 1978 - 79
- 92.8 (13 - 14), Tharon Mayes vs. Southern Miss, 1988 - 89
- 89.5 (17 - 19), Mitchell Wiggins vs. San Diego State, 1982 - 83
- 86.7 (13 - 15), Tony Dawson vs. Central Florida, 1988 - 89
- 80.0 (12 - 15), Tony Dawson vs. Penn State, 1988 - 89
- 80.0 (12 - 15), Tony Dawson vs. Virginia Tech, 1988 - 89
- 76.9 (10 - 13), Tat Hunter vs. South Carolina, 1988 - 89
- 72.7 (16 - 22), Larry Warren vs. Marshall, 1974 - 75
- 71.4 (15 - 21), Mitchell Wiggins vs. Florida, 1981 - 82
- 70.0 (14 - 20), Benny Clyde vs. Oklahoma City, 1972 - 73

Free Throws Made

- 22, Jim Oler vs. Rollins, 1954 – 55
- 22, Jim Oler vs. Morningside, 1955 – 56
- 16, Jim Oler vs. Montana State, 1954 – 55
- 15, Hugh Durham vs. Georgia, 1957 – 58
- 15, Hugh Durham vs. Stetson, 1956 – 57
- 14, Hugh Durham vs. Murray State, 1957 – 58
- 14, Hugh Durham vs. Kentucky, 1958 – 59
- 14, Elvis Rolle vs. Marquette, 1980 – 81
- 14, Mitchell Wiggins vs. Virginia Tech, 1982 – 83
- 14, Pee Wee Barber vs. Southern Miss., 1986 – 87

Free Throws Attempted

- 30, Jim Oler vs. Morningside, 1955 – 56
- 29, Jim Oler vs. Rollins, 1954 – 55
- 29, Gary Schull vs. Memphis State, 1977 – 78
- 20, Hugh Durham vs. Georgia, 1957 – 58
- 19, Murray Brown vs. Tulane, 1978 – 79
- 18, Jim Oler vs. Stetson, 1954 – 55
- 18, Elvis Rolle vs. Marquette, 1980 – 81
- 17, Jim Oler vs. Montana State, 1954 – 55
- 17, Jim Oler vs. Miami, 1954 – 55

Rebounds

- 32, Rick Benson vs. Florida Southern, 1954 – 55
- 31, Dave Cowens vs. LSU, 1967 – 68
- 30, Dave Cowens vs. Citadel, 1967 – 68
- 28, Dave Fedor vs. Rollins, 1959 – 60
- 27, Gary Schull vs. Jacksonville, 1965 – 66
- 27, Dave Cowens vs. Stetson, 1968 – 69
- 26, Don Boltz vs. Stetson, 1958 – 59
- 26, Dave Cowens vs. Hawaii, 1968 – 69
- 25, Dave Cowens vs. Clemson, 1969 – 70
- 23, Don Boltz vs. Miami, 1958 – 59
- 23, Dave Cowens vs. Florida Southern, 1967 – 68
- 23, Lawrence McCray vs. Connecticut, 1972 – 73

Assists

- 16, Otto Petty vs. South Alabama, 1971 – 72
- 16, Tony Williams vs. Jacksonville, 1982 – 83
- 15, Otto Petty vs. Pan Am, 1970 – 71
- 15, Otto Petty vs. Samford, 1971 – 72
- 15, Carlton Byrd vs. Stetson, 1976 – 77
- 15, Tony Jackson vs. Ala. - Birmingham, 1979 – 80
- 14, Otto Petty vs. Biscayne, 1970 – 71
- 14, Otto Petty vs. Northwestern, 1972 – 73
- 14, Wayne Smalls vs. Cal. State - Bakersfield, 1974 – 75
- 13, Otto Petty vs. Seton Hall, 1972 – 73
- 13, Otto Petty vs. Stetson, 1972 – 73
- 13, Carlton Byrd vs. South Florida, 1973 – 74
- 13, Tony William vs. Monmouth College, 1983 – 84

Single Season Records

Scoring Average

Name	Year	Avg.
1. Jim Oler	1955 – 56	29.7
2. Mitchell Wiggins	1981 – 82	23.8
3. George McCloud	1988 – 89	22.8
4. Ron King	1970 – 71	22.7
Mitchell Wiggins	1982 – 83	22.7
6. Hugh Durham	1958 – 59	21.9
7. Murray Brown	1978 – 79	21.7
8. Ham Wernke	1952 – 53	21.3
9. Jim Oler	1954 – 55	21.1
Dave Fedor	1959 – 60	21.1
11. Tony Dawson	1988 – 89	21.0
12. Mickey Dillard	1979 – 80	20.4
Dave Fedor	1961 – 62	20.4
14. Dave Cowens	1967 – 68	20.3
13. Alton Lee Gipson	1983 – 84	20.2

Top Field Goal Shooters

Name	Year	FGM - FGA	Pct.
1. Murray Brown	1978 – 79	237 - 343	.691
2. Murray Brown	1979 – 80	230 - 356	.646
3. Harry Davis	1975 – 76	143 - 224	.638
4. William Williams	1969 – 70	185 - 291	.636
5. Jan Gies	1968 – 69	80 - 291	.620
6. Kris Anderson	1976 – 77	65 - 105	.619
7. Jerome Fitchett	1985 – 86	126 - 205	.615
8. Jerome Fitchett	1984 – 85	74 - 121	.612
9. Elvis Rolle	1979 – 80	197 - 322	.611
10. Kris Anderson	1980 – 81	108 - 182	.593
11. Kris Anderson	1978 – 79	105 - 179	.587
12. Greg Grady	1974 – 75	154 - 265	.581
13. Lawrence McCray	1972 – 73	170 - 293	.580
14. Harry Davis	1977 – 78	217 - 376	.577
15. Mitchell Wiggins	1981 – 82	223 - 388	.574
Dean Shaffer	1983 – 84	132 - 230	.574

Top Free Throw Shooters

Name	Year	FT - FTA	Pct.
1. Ken Macklin	1969 – 70	51 - 57	.895
2. Brad Johnson	1987 – 88	41 - 46	.891
3. George McCloud	1988 – 89	154 - 176	.875
4. Jerry Shirley	1963 – 64	59 - 68	.868
5. Ron Harris	1969 – 70	46 - 54	.852
6. Granville Arnold	1983 – 84	85 - 101	.842
7. Ron Malmen	1964 – 65	58 - 69	.841
8. Randy Cable	1967 – 68	42 - 50	.840
9. Wayne Smalls	1976 – 77	26 - 31	.838
10. Jeff Hogan	1967 – 68	91 - 110	.827
Carlton Byrd	1976 – 77	96 - 116	.827
12. Jerome Fitchett	1986 – 87	59 - 72	.819
13. Jim Oler	1955 – 56	311 - 350	.818
14. Kris Anderson	1977 – 78	49 - 60	.816
15. Kris Anderson	1978 – 79	66 - 81	.815

Top Rebounders

Name	Year	Rebounds	Avg.
1. Dave Cowens	1967 – 68	456	17.5
2. Rick Benson	1954 – 55	451	17.3
3. Dave Cowens	1969 – 70	447	17.2
4. Dave Cowens	1968 – 69	437	17.0
5. Dave Fedor	1959 – 60	400	16.0
6. Reggie Royals	1970 – 71	390	15.0
7. Dave Fedor	1960 – 61	336	14.0
8. Gary Schull	1965 – 66	317	12.7
9. Don Boltz	1957 – 58	303	12.1
10. Reggie Royals	1971 – 72	351	11.0

Assists

Name	Year	Assists
1. Otto Petty	1970 – 71	227
2. Tony William	1983 – 84	215
3. Tony Jackson	1979 – 80	213
4. Otto Petty	1972 – 73	202
5. Otto Petty	1971 – 72	173
6. Dean Shaffer	1984 – 85	171
7. Tony Jackson	1977 – 78	166
8. Carlton Byrd	1976 – 77	159
9. Tony Jackson	1978 – 79	158
10. Tony William	1982 – 83	156
11. Skip Young	1968 – 69	155
12. Dean Shaffer	1983 – 84	146
Pee Wee Barber	1985 – 86	146
14. Pee Wee Barber	1986 – 87	144
15. Skip Young	1969 – 70	127

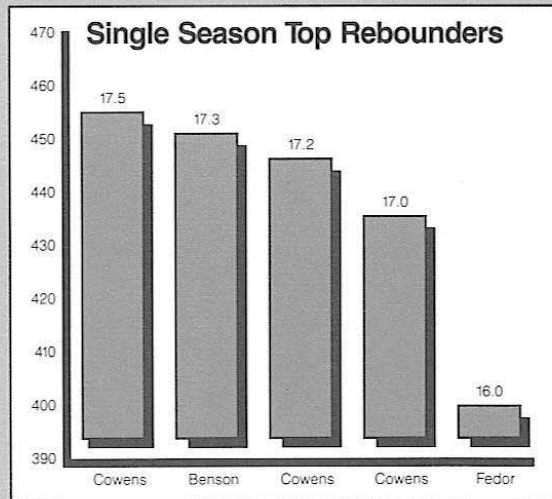
500 Point Club (one season)

Name	Year	Pts.
1. Jim Oler	1955 - 56	743
2. George McCloud	1988 - 89	683
3. Mickey Dillard	1979 - 80	635
4. Tony Dawson	1988 - 89	629
5. Murray Brown	1978 - 79	629
6. Alton Lee Gipson	1983 - 84	626
7. Ron King	1970 - 71	589
8. Murray Brown	1979 - 80	578
9. Pee Wee Barber	1986 - 87	576
10. Ron King	1971 - 72	573
11. Alton Lee Gipson	1984 - 85	568
12. Jim Oler	1954 - 55	549
13. Harry Davis	1977 - 78	546
14. George McCloud	1987 - 88	546
15. Mitchell Wiggins	1982 - 83	544
16. Tony Dawson	1987 - 88	536
17. Dave Fedor	1959 - 60	527
18. Mitchell Wiggins	1981 - 82	523
19. Mickey Dillard	1980 - 81	515
20. Ham Wernke	1954 - 55	512
21. Hugh Durham	1956 - 57	509
22. Dave Cowens	1967 - 68	508
Dave Cowens	1968 - 69	508
24. Hugh Durham	1958 - 59	504
25. David Thompson	1976 - 77	500

Career Records

Scoring Averages

Name	Years	Games/Points	Avg.
1. Mitchell Wiggins	1981 - 83	46 - 1067	23.2
2. Dave Fedor	1959 - 62	72 - 1453	20.2
3. Jim Oler	1952 - 56	91 - 1820	20.0
4. Alton Lee Gipson	1983 - 85	61 - 1194	19.6
Ron King	1970 - 73	64 - 1252	19.6
6. Tony Dawson	1987 - 89	60 - 1165	19.4
7. Ham Wernke	1951 - 55	73 - 1409	19.3
8. Dave Cowens	1967 - 70	78 - 1479	19.0
9. Hugh Durham	1956 - 59	73 - 1381	18.9
10. Pee Wee Barber	1986 - 87	58 - 1039	17.9
11. Reggie Royals	1970 - 73	84 - 1402	16.7
12. Larry Warren	1972 - 75	51 - 840	16.5
13. Elvis Rolle	1979 - 81	59 - 923	15.6
14. David Thompson	1975 - 78	83 - 1289	15.5
15. Mickey Dillard	1976 - 81	115 - 1734	15.1



Field Goals Made

Name	Years	Field Goals
1. Mickey Dillard	1976 - 81	640
Harry Davis	1974 - 78	640
3. Dave Fedor	1959 - 62	585
Randy Allen	1984 - 87	585
5. Dave Cowens	1967 - 70	582
6. Reggie Royals	1970 - 73	580
7. David Thompson	1975 - 78	571
8. Murray Brown	1976 - 80	566
9. Ron King	1970 - 73	542
10. George McCloud	1985 - 89	529
11. Jim Oler	1952 - 56	529
12. Ham Wernke	1951 - 55	508
13. Alton Lee Gipson	1983 - 85	496
14. Lawrence McCray	1971 - 74	492
15. Larry Warren	1973 - 76	473

Field Goals Attempted

Name	Years	Attempts
1. Ham Wernke	1951 - 55	1308
2. Jim Oler	1952 - 56	1303
3. Mickey Dillard	1976 - 81	1248
4. Hugh Durham	1956 - 59	1230
5. David Thompson	1975 - 78	1213
6. Randy Allen	1984 - 87	1196
7. Reggie Royals	1970 - 73	1181
8. Dave Fedor	1959 - 62	1174
9. Ron King	1970 - 73	1170
10. George McCloud	1985 - 89	1149
11. Dave Cowens	1967 - 70	1122
12. Rick Benson	1951 - 55	1104
13. Harry Davis	1974 - 78	1095
14. Larry Warren	1973 - 76	1069
15. Dave Arntmeier	1952 - 56	1050

Field Goal Percentages

Name	Years	FGM - FGA	Pct.
1. Murray Brown	1976 - 80	566 - 847	.668
2. Elvis Rolle	1979 - 81	365 - 619	.589
3. Kris Anderson	1976 - 81	371 - 633	.586
4. Harry Davis	1974 - 78	640 - 1095	.585
5. Jerome Fitchett	1984 - 88	388 - 677	.573
6. Jan Gies	1967 - 70	245 - 428	.572
7. Greg Grady	1972 - 75	300 - 532	.564
8. Willie Williams	1968 - 70	268 - 482	.556
9. Tat Honter	1985 - 88	273 - 493	.554
10. Mitchell Wiggins	1981 - 83	439 - 798	.550
11. Lawrence McCray	1971 - 74	492 - 896	.549
12. Vince Martello	1982 - 84	302 - 566	.534
13. Tony Dawson	1987 - 89	455 - 853	.533
14. Dave Cowens	1967 - 70	581 - 1122	.519
15. LaRae Davis	1985 - 87	274 - 535	.512

Free Throw Percentages

Name	Years	FTM - FTA	Pct.
1. Granville Arnold	1982 - 85	161 - 197	.817
2. Jerry Shirley	1962 - 65	161 - 198	.813
3. Pee Wee Barber	1985 - 87	197 - 250	.788
4. Jim Oler	1952 - 56	762 - 975	.782
5. Dave Fedor	1959 - 62	283 - 363	.780
6. LaRae Davis	1985 - 87	96 - 123	.780
7. George McCloud	1985 - 89	315 - 405	.779
8. Hugh Durham	1956 - 59	441 - 569	.777
9. Vince Martello	1982 - 84	130 - 168	.774
10. Mickey Dillard	1976 - 81	448 - 583	.768
11. Randy Cable	1967 - 70	106 - 139	.763
12. Larry Warren	1973 - 76	162 - 212	.762
13. Mitchell Wiggins	1981 - 83	189 - 249	.759
14. Kris Anderson	1976 - 81	205 - 271	.756
Jim Liteky	1957 - 59	135 - 181	.751

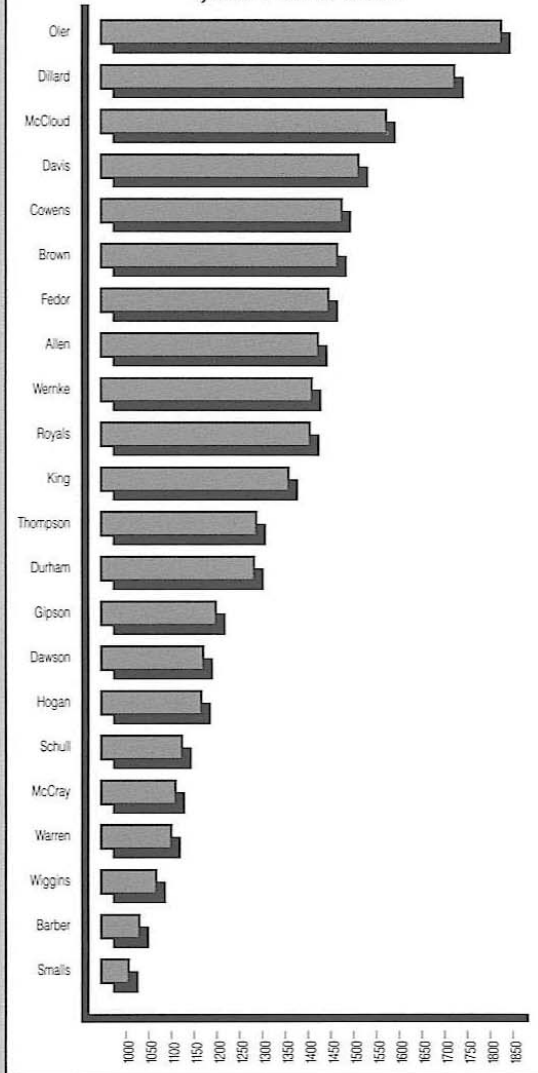
Games Played

Name	Years	Games
1. Jerome Fitchett	1984 – 88	118
2. George McCloud	1985 – 89	117
3. Tat Hunter	1985 – 89	117
4. Maurice Myrick	1981 – 85	116
5. Randy Allen	1984 – 87	115
6. Mickey Dillard	1976 – 80	115
7. Harry Davis	1974 – 78	108
8. Tony Jackson	1976 – 80	108
9. Eugene Harris	1973 – 78	107
10. Kris Anderson	1976 – 81	107
11. Murray Brown	1976 – 80	106
12. Carlton Byrd	1973 – 77	105
13. Wayne Smalls	1973 – 77	104
14. Greg Grady	1972 – 76	100
15. Bobby Parks	1977 – 81	97

Assists

Name	Years	Assists
1. Otto Petty	1970 – 73	602
2. Tony Jackson	1976 – 80	550
3. Tony William	1981 – 84	482
4. Carlton Byrd	1973 – 77	401
5. Skip Young	1968 – 71	320
6. Dean Shaffer	1983 – 85	318
7. Mickey Dillard	1976 – 81	313
8. George McCloud	1985 – 89	299
9. Pee Wee Barber	1985 – 87	290
10. Bobby Parks	1977 – 81	272
11. Wayne Smalls	1973 – 77	270
12. Eugene Harris	1973 – 77	251
13. Otis Cole	1971 – 74	214
14. Reggie Royals	1970 – 71	202
15. Larry Warren	1973 – 75	180

1,000 Point Club



500 Board Club

Name	Years	Games	Avg.	Rebounds
1. Dave Cowens	1967 – 70	78	17.2	1340
2. Reggie Royals	1970 – 73	84	11.9	1006
3. Dave Fedor	1959 – 62	72	13.5	969
4. Greg Grady	1972 – 76	100	7.9	793
5. Gary Schull	1963 – 66	76	10.1	769
6. Tat Hunter	1985 – 89	117	6.5	759
7. Lawrence McCray	1971 – 74	84	9.0	759
8. Harry Davis	1974 – 78	108	6.8	734
9. Randy Allen	1984 – 87	115	6.3	725
10. Kris Anderson	1976 – 81	107	6.7	714
11. Murray Brown	1976 – 80	106	6.0	638
12. David Thompson	1975 – 78	83	7.5	619
13. Don Boltz	1957 – 59	48	11.8	567
14. Willie Williams	1968 – 70	52	10.3	534
15. Ray Swain	1959 – 60	72	11.6	534
16. Rowland Garrett	1969 – 72	76	6.9	525

1,000 Point Club

Name	Years	Games	FG	FT	Pts.	Avg.
1. Jim Oler	1952 – 56	91	529	762	1820	20.0
2. Mickey Dillard	1976 – 81	115	640	448	1734	15.1
3. George McCloud	1985 – 89	117	529	315	1574	13.4
4. Harry Davis	1974 – 78	108	640	234	1514	14.0
5. Dave Cowens	1966 – 70	78	582	315	1479	19.0
6. Murray Brown	1976 – 80	106	566	338	1470	13.9
7. Dave Fedor	1959 – 62	72	585	283	1453	20.2
8. Randy Allen	1984 – 87	115	585	252	1428	12.4
9. Ham Wernke	1951 – 55	73	508	393	1409	19.3
10. Reggie Royals	1970 – 73	84	580	242	1402	16.7
11. Ron King	1970 – 73	64	542	168	1352	19.6
12. David Thompson	1975 – 78	83	571	147	1289	15.5
13. Hugh Durham	1956 – 59	73	470	441	1281	18.9
14. Alton Lee Gipson	1983 – 85	61	496	202	1194	19.6
15. Tony Dawson	1987 – 89	60	455	229	1165	19.4
16. Jeff Hogan	1966 – 69	79	466	232	1164	14.8
17. Gary Schull	1963 – 66	76	403	316	1122	14.3
18. Lawrence McCray	1972 – 74	84	492	127	1111	13.2
19. Larry Warren	1973 – 76	78	473	162	1108	14.2
20. Mitchell Wiggins	1981 – 83	46	439	189	1067	23.2
21. Pee Wee Barber	1985 – 87	58	387	197	1039	17.9
22. Wayne Smalls	1973 – 77	104	457	101	1015	9.8

TEAM RECORDS

Single Game Records

Most Points — Home

- 139, Baptist 72, 1976 — 77
- 134, Valdosta 65, 1971 — 72
- 133, Central Florida 79, 1988 — 89
- 125, South Dakota 65, 1970 — 71
- 122, Samford 79, 1970 — 71
- 122, Clemson 80, 1969 — 70
- 122, Miami 93, 1967 — 68

Most Points — Away

- 123, Tampa 92, 1961 — 62
- 121, Pepperdine 83, 1969 — 70
- 116, Tampa 95, 1960 — 61
- 112, Miami 96, 1969 — 70
- 111, Miami 84, 1968 — 69

Most Points — Neutral

- 130, LSU 100, 1967 — 68
- 117, Southern Mississippi 84, 1970 — 71
- 112, Arkansas 105, 1988 — 89
- 108, Furman 96, 1956 — 57
- 108, Tulane 97, 1969 — 70
- 107, W. Kentucky 87, 1973 — 74
- 101, Tulane 92, 1978 — 79

Most Points — Both Teams

- 230 — FSU 130, FSU 100, 1968 — 69
- 222 — FSU 108, Jacksonville 114, 1970 — 71
- 220 — FSU 114, Miami 106, 1970 — 71
- 219 — FSU 117, USM 102, 1986 — 87

Winning Margin

- 69 — FSU 134, Valdosta 65, 1971 — 72
- 67 — FSU 139, Baptist 72, 1977 — 78
- 64 — FSU 121, Tampa 57, 1965 — 66
- 60 — FSU 125, South Dakota 64, 1970 — 71
- 58 — FSU 108, Georgia Tech 50, 1971 — 72
- 57 — FSU 110, Rollins 53, 1961 — 62
- 57 — FSU 109, PB Atlantic 52, 1975 — 76

Fewest Points Allowed

- 21 vs. Mississippi College, 1948 — 49
- 24 vs. Mississippi College, 1949 — 50
- 27 vs. Troy State, 1949 — 50
- 34 vs. Samford, 1972 — 73
- 34 vs. Memphis State, 1978 — 79
- 36 vs. Spring Hill, 1947 — 48
- 36 vs. Stetson, 1948 — 49
- 37 vs. Troy State, 1947 — 48
- 37 vs. Charleston, 1949 — 50

Rebounds

- 84 vs. LSU, 1967 — 68
- 82 vs. Valdosta, 1970 — 71
- 72 vs. Valdosta, 1968 — 69

- 76 vs. Georgetown, 1969 — 70
- 76 vs. Wisconsin-Milwaukee, 1970 — 71
- 75 vs. Clemson, 1969 — 70
- 75 vs. Miami, 1969 — 70
- 75 vs. South Dakota, 1970 — 71
- 75 vs. Valdosta, 1971 — 72

Most Fouls

- 35 vs. Florida, 1964 — 65
- 34 vs. Memphis State, 1959 — 60
- 33 vs. Vanderbilt, 1986 — 87
- 32 vs. Alabama, 1964 — 65
- 32 vs. Florida, 1967 — 68
- 32 vs. Missouri, 1976 — 77
- 32 vs. San Diego State, 1982 — 83
- 32 vs. Iowa, 1987 — 88

Fewest Fouls

- 7 vs. Connecticut, 1972 — 73
- 9 vs. Stetson, 1971 — 72
- 9 vs. Louisville, 1984 — 85
- 10 vs. Auburn, 1961 — 62
- 10 vs. Georgia, 1964 — 65
- 10 vs. Florida, 1964 — 65
- 10 vs. Dayton, 1968 — 69
- 10 vs. UC-Irvine, 1970 — 71
- 10 vs. Samford, 1972 — 73
- 10 vs. Bucknell, 1987 — 88

Field Goals Attempted

- 115 vs. LSU, 1965 — 66
- 111 vs. Valdosta, 1968 — 69
- 110 vs. Valdosta, 1971 — 72
- 109 vs. Valdosta, 1970 — 71

Field Goals Made

- 56 vs. Baptist, 1976 — 77
- 55 vs. Valdosta, 1971 — 72
- 54 vs. South Dakota, 1970 — 71
- 54 vs. Samford, 1970 — 71
- 53 vs. Valdosta, 1968 — 69
- 53 vs. Central Florida, 1988 — 89

Free Throws Attempted

- 53 vs. Stetson, 1957 — 58
- 52 vs. Arkansas, 1988 — 89
- 52 vs. Cincinnati, 1988 — 89
- 48 vs. Georgia, 1957 — 58
- 48 vs. FIU, 1987 — 88
- 47 vs. Florida, 1980 — 81
- 46 vs. Memphis State, 1965 — 66
- 46 vs. Missouri Western, 1976 — 77
- 45 vs. Marquette, 1980 — 81

Free Throws Made

- 42 vs. Cincinnati, 1988 — 89
- 38 vs. Stetson, 1956 — 57
- 37 vs. Marquette, 1980 — 81
- 36 vs. Georgia, 1957 — 58
- 34 vs. Florida, 1980 — 81
- 34 vs. Arkansas, 1988 — 89
- 33 vs. Memphis State, 1964 — 65
- 33 vs. FIU, 1987 — 88
- 32 vs. Hofstra, 1967 — 68
- 32 vs. Georgia Tech, 1971 — 72
- 32 vs. Miami, 1953 — 54
- 32 vs. Virginia Tech, 1988 — 89

Season Records

Field Goals Attempted

- 2372 — 1971 — 72 (32 games)
- 2164 — 1954 — 55 (26 games)
- 2082 — 1970 — 71 (26 games)
- 2055 — 1973 — 74 (26 games)
- 1980 — 1988 — 89 (30 games)
- 1969 — 1983 — 84 (31 games)
- 1965 — 1968 — 69 (26 games)
- 1960 — 1967 — 68 (27 games)
- 1957 — 1977 — 78 (29 games)
- 1957 — 1969 — 70 (26 games)

Field Goals Made

- 1110 — 1971 — 72 (32 games)
- 999 — 1988 — 89 (30 games)
- 990 — 1970 — 71 (26 games)
- 986 — 1977 — 78 (29 games)
- 971 — 1973 — 74 (26 games)
- 964 — 1979 — 80 (31 games)
- 956 — 1975 — 76 (27 games)
- 956 — 1967 — 68 (27 games)
- 945 — 1976 — 77 (27 games)
- 945 — 1985 — 86 (29 games)

Free Throws Attempted

- 982 — 1954 — 55 (26 games)
- 800 — 1971 — 72 (32 games)
- 799 — 1956 — 57 (26 games)
- 772 — 1979 — 80 (31 games)
- 770 — 1988 — 89 (30 games)
- 766 — 1980 — 81 (28 games)
- 722 — 1967 — 68 (27 games)
- 720 — 1965 — 66 (25 games)
- 715 — 1987 — 88 (30 games)
- 713 — 1959 — 60 (25 games)

Free Throws Made

- 707 — 1954 — 55 (26 games)
- 561 — 1971 — 72 (32 games)
- 560 — 1988 — 89 (30 games)
- 543 — 1956 — 57 (26 games)
- 529 — 1979 — 80 (31 games)
- 526 — 1967 — 68 (27 games)
- 525 — 1980 — 81 (28 games)
- 507 — 1969 — 70 (26 games)

Rebounds

- 1608 — 1971 — 72 (32 games)
- 1451 — 1969 — 70 (26 games)
- 1422 — 1954 — 55 (26 games)
- 1388 — 1967 — 68 (27 games)
- 1388 — 1970 — 71 (26 games)

Rebounds Per Game

- 55.4 — 1969 — 70 (26 games)
- 54.6 — 1954 — 55 (26 games)
- 53.4 — 1970 — 71 (26 games)
- 52.2 — 1959 — 60 (25 games)
- 52.0 — 1958 — 59 (23 games)

Fewest Points Allowed

- 1427 — 1949 — 50 (25 games)
- 1567 — 1961 — 62 (23 games)
- 1595 — 1951 — 52 (23 games)
- 1678 — 1952 — 53 (22 games)
- 1680 — 1962 — 63 (25 games)

Fewest Points Per Game Allowed

- 57.1 — 1949 — 50 (25 games)
- 63.6 — 1950 — 51 (27 games)
- 67.2 — 1962 — 63 (25 games)
- 67.8 — 1964 — 65 (26 games)
- 68.1 — 1961 — 62 (23 games)

Most Points Scored

- 2781 — 1971 — 72 (32 games)
- 2739 — 1988 — 89 (30 games)
- 2528 — 1987 — 88 (30 games)
- 2510 — 1986 — 87 (30 games)
- 2461 — 1969 — 70 (31 games)
- 2438 — 1967 — 68 (27 games)
- 2416 — 1977 — 78 (29 games)
- 2385 — 1969 — 70 (26 games)
- 2380 — 1970 — 71 (26 games)
- 2304 — 1985 — 86 (29 games)

Most Points Per Game

- 91.7 — 1969 — 70 (26 games)
- 91.5 — 1970 — 71 (26 games)
- 91.3 — 1988 — 89 (30 games)
- 90.3 — 1967 — 68 (27 games)
- 88.3 — 1954 — 55 (26 games)
- 88.0 — 1973 — 74 (26 games)
- 86.9 — 1968 — 69 (27 games)
- 86.9 — 1971 — 72 (32 games)

Highest Point Margin

- 16.5 — 1969 — 70 (26 games)
- 15.5 — 1971 — 72 (32 games)
- 15.0 — 1975 — 76 (27 games)
- 11.9 — 1967 — 68 (27 games)
- 11.4 — 1974 — 75 (26 games)
- 11.3 — 1970 — 71 (26 games)
- 11.3 — 1972 — 73 (29 games)
- 10.1 — 1972 — 73 (26 games)

Highest Field Goal Pct.

- 532 — 1979 — 80 (31 games)
- 529 — 1983 — 84 (31 games)
- 512 — 1961 — 62 (23 games)
- 510 — 1978 — 79 (29 games)
- 509 — 1985 — 86 (29 games)
- 508 — 1987 — 88 (30 games)
- 505 — 1988 — 89 (30 games)
- 503 — 1977 — 78 (29 games)
- 502 — 1974 — 75 (26 games)
- 500 — 1976 — 77 (27 games)

Highest Free Throw Pct.

- 729 — 1967 — 68 (27 games)
- 727 — 1963 — 64 (28 games)
- 727 — 1988 — 89 (30 games)
- 719 — 1957 — 58 (25 games)
- 719 — 1982 — 83 (28 games)
- 718 — 1969 — 70 (26 games)
- 716 — 1964 — 65 (26 games)

Miscellaneous Team Records

Single Game

Largest Winning Margin on the Road — 41 vs. Jacksonville (106 - 65) 1967 - 68
Largest Winning Margin at Home — 54 vs. Florida International (97 - 43), 12/3/84 and vs. Central Florida (133 - 79), 11/25/89
Most Points Scored in First Half — 70 vs. Pepperdine (121 - 83), 1969 - 70
Most Points Scored in Second Half — 78 vs. LSU (130 - 100) 1969 - 70
Fewest Points Allowed at Home — 21 vs. Mississippi College (53 - 21) 1948 - 49
Fewest Points Allowed on the Road — 34 vs. Samford (47 - 34) 1972 - 73
Fewest Points Allowed at a Neutral Site — 46 vs. Mercer (52 - 46) 1948 - 49
Most Points Allowed at Home — 106 vs. Miami (114 - 106) 1970 - 71
Most Points Allowed on the Road — 115 vs. North Carolina (115 - 80) 1965 - 66
Most Points Allowed at a Neutral Site — 110 vs. Beloit (110 - 88) 1954 - 55
Worst Defeat at Home — 21 vs. Florida (84 - 63) 1982 - 83
Worst Defeat on the Road — 52 vs. West Virginia (103 - 51) 1957 - 58
Worst Defeat at a Neutral Site — 31 vs. Millikin (91 - 60) 1950 - 51
Fewest Points Scored at Home — 35 vs. Sewanee (43 - 35) 1948 - 49
Fewest Points Scored on the Road — 30 vs. Florida (50 - 30) 1966 - 67
Fewest Points Scored at a Neutral Site — 43 vs. Tennessee (65 - 43) 1964 - 65
Highest Field Goal Percentage — .727 vs. Minnesota (48 - 66) 1979 - 80
Highest Field Goal Percentage in a Half — .792 vs. Georgia Southern (19 of 24) 1974 - 75

Season

Most Games Played — 33, 1971 - 72
Fewest Games Played — 18, 1957 - 58
Most Victories — 27, 1971 - 72
Longest Winning Streak — 11, 1969 - 70
Longest Winning Streak at Home — 29, 1974 - 75
Longest Winning Streak on the Road — 7, 1949 - 51, 1954 - 55
Fewest Defeats — 3, 1969 - 70
Highest Winning Percentage — .885 (23 - 3) 1969 - 70
Most 100 Point Games — 11, 1988 - 89
Fewest Victories — 5, 1947 - 48 and 1951 - 52
Most Points Allowed Per Game — 81.9 (23 games), 1959 - 60
Longest Losing Streak — 13, 1947 - 48
Longest Losing Streak at Home — 4, 1956 - 67
Longest Losing Streak on the Road — 25, 1956 - 59
Fewest Points — 850, (18 games), 1947 - 48
Fewest Points Per Game — 47.2 (18 games), 1947 - 48
Most Points Allowed — 2422 (30 games), 1988 - 89
Lowest Winning Percentage — .200 (5 - 20), 1951 - 52
Highest Field Goal Percentage — .532 (964 - 1811), 1979 - 80
Highest Free Throw Percentage — .729 (526 of 722), 1967 - 68
Lowest Field Goal Percentage — .203, 1951 - 52
Lowest Free Throw Percentage — .586 (406 of 693), 1950 - 51
Fewest Personal Fouls — 383 (23 games), 1961 - 62
Most Personal Fouls — 637 (29 games), 1978 - 79

CIVIC CENTER RECORDS

Individual

Points — 40, Pee Wee Barber vs. Miami, 2/26/87
Points (Half) — 25, Randy Allen vs. St. Josephs (Me.) 1/7/85
Points By Opponent — 38, Terry Dozier (South Carolina), 1/21/87
Field Goals — 16, Al Gipson vs. Tampa, 11/26/84
Field Goals By Opponent — 16, Dell Curry, (Virginia Tech), 2/24/86
Free Throws Attempted — 15, Pee Wee Barber vs. So. Miss., 2/28/87
Free Throws Attempted By Opponent — 16, Elliot Perry (Memphis State), 2/1/89
Free Throws Made — 14, Pee Wee Barber vs. So. Miss., 2/26/87
Free Throws Made By Opponent — 15, Elliot Perry (Memphis State), 2/1/89
Free Throw Percentage — 100% (8 - 8), Michael Johnson vs. Louisville, 1/30/82
Free Throw Percentage By Opponent — 100% (9 - 9), Ronnie Williams (Florida), 1/11/82
Rebounds — 21, Tat Hunter, Virginia Tech, 3/1/89
Rebounds By Opponent — 20, Mike Hackett (Jacksonville), 12/09/81
Assists — 16, Tony William vs. Jacksonville, 2/12/83
Assists By Opponent — 14, Kenny Siler (So. Miss.), 1/18/86

Team

Points — 133 vs. Central Florida, 11/25/88
Points By Opponent — 102, So. Miss., 2/28/87
Points (Half) — 68 vs. Louisville, 2/7/87
Fewest Points — 52 vs. Tulane, 2/20/84
Fewest Points By Opponent — 43, Florida International, 12/3/84
Fewest Points (Half) — 19 vs. South Florida, 1/9/85
Fewest Points By Opponent (Half) — 17, Florida International, 12/3/84
Two-Team Score — 219, Florida State 117, Southern Miss., 102, 2/28/87
Personal Fouls — 27 vs. South Carolina, 2/16/87
Personal Fouls By Opponents — 32, Jacksonville, 2/12/83
Two-Team Personal Fouls — 27 vs. Virginia Tech, 1/25/82
Lowest Two-Team Personal Fouls — 27 vs. Virginia Tech, 1/25/82

Fewest Personal Fouls — 9 vs. Louisville, 1/12/85
Fewest Personal Fouls By Opponent — 9 vs. Tulane, 2/20/84
Field Goal Percentage — 70.9 vs. St. Josephs (Me.) 1/7/84
Field Goal Percentage By An Opponent — 64.0 vs. Southern Miss., 1/18/86
Field Goals — 53 vs. Central Florida, 11/25/88
Field Goals By Opponent — 43, Southern Miss., 1/18/86
Free Throws Attempted — 52 vs. Cincinnati, 1/21/89
Free Throws Attempted By Opponent — 35, South Carolina, 3/2/85
Fewest Free Throws Attempted — 4 vs. Auburn, 12/05/83
Fewest Free Throws Attempted By Opponent — 6, Tulane, 2/20/84
Free Throws — 42 vs. Cincinnati, 1/21/89
Free Throws By Opponent — 27, South Carolina, 3/2/85
Fewest Free Throws — 4 vs. South Carolina, 3/1/86
Fewest Free Throws By Opponent — 5 vs. Southern Miss., 2/11/85; vs. Valdosta State, 12/20/87; vs. Florida International, 11/29/88
Free Throws Missed — 17 vs. St. Leo, 1/25/82
Free Throws Missed By Opponent — 13 vs. Jacksonville, 12/09/81; Louisville, 1/7/87
Fewest Free Throws Missed — 0 (6 - 6) vs. Alabama, 12/6/86
Fewest Free Throws Missed By Opponent — 1 (14 - 15), Memphis State, 2/26/83; Central Florida, 1/26/87
Rebounds — 56 vs. Florida International, 12/3/84
Rebounds By Opponents — 47 vs. Louisville, 2/16/89
Home Attendance — 119,054 (15 games), 1988 - 89
Home Average Attendance — 7,936 (15 games), 1988 - 89
Largest Crowd — 13,339 vs. Louisville, 2/16/89
Winning Streak — 11, 1986 - 87, 1987 - 88

TOURNAMENT HISTORY

	App.	Games	Won	Lost	Pct.	Championships	Second	Third
All Tournaments	79	164	88	76	.536	14	23	15
In-Season Tournaments	49	108	56	48	.538	11	14	14
Post Season Tournaments	30	56	32	28	.533	3	9	2

Championships

NAIB District 25 — 1950 – 51
 NAIB District 25 — 1954 – 55
 Savannah Invitational — 1962 – 63
 Civitan Classic — 1968 – 69
 Gator Bowl — 1969 – 70
 Civitan Classic — 1971 – 72
 Far West Classic — 1971 – 72
 Senior Bowl — 1971 – 72
 NCAA Mideast — 1971 – 72
 Big Sun — 1973 – 74
 Big Sun — 1977 – 78
 Birmingham Classic — 1977 – 78
 Cotton States Classic — 1980 – 81
 Red Lobster Classic — 1986 – 87

Appearances

1948 – 49 Dixie Conference (1 - 2, Fourth)
 1949 – 50 Dixie Conference (1 - 1, Third)
 1950 – 51 Dixie Conference (1 - 1, Second)
 1950 – 51 NAIB District 25 (2 - 0) Champ.)
 1950 – 51 NAIB Nationals (2 - 1, Quarterfinals)
 1951 – 52 Gator Bowl (0 - 3, Round Robin)
 1951 – 52 NAIB District 25 (1 - 1, Second)
 1952 – 53 NAIB District 25 (1 - 1, Second)
 1954 – 55 Gator Bowl (1 - 1, Third)
 1954 – 55 NAIB District 25 (2 - 0, Champ.)
 1954 – 55 NAIB Nationals (1 - 1, Second Round)
 1955 – 56 Carousel Tournament (1 - 2, Sixth)
 1955 – 56 Orange Bowl (1 - 2, Seventh)

1956 – 57 Senior Bowl (1 - 1, Third)
 1957 – 58 Senior Bowl (1 - 1, Third)
 1958 – 59 Citadel Invitational (0 - 2, Fourth)
 1959 – 60 Gator Bowl (1 - 1, Second)
 1960 – 61 Gator Bowl (0 - 1)
 1962 – 63 Savannah Invitational (3 - 0, Champ.)
 1963 – 64 Gator Bowl (1 - 1, Third)
 1964 – 65 Vanderbilt Invitational (1 - 1, Third)
 1964 – 65 All College Tournament (1 - 2, Seventh)
 1965 – 66 Tampa Invitational (1 - 1, Second)
 1967 – 68 Milwaukee Classic (1 - 1, Third)
 1967 – 68 Evansville Tournament (1 - 1, Second)
 1967 – 68 **NCAA Mideast (0 - 1)**
 1968 – 69 Civitan Classic (2 - 0, Champ.)
 1969 – 70 Gator Bowl (2 - 0, Champ.)
 1970 – 71 Civitan Classic (1 - 1, Second)
 1970 – 71 Sun Bowl (0 - 2)
 1971 – 72 Civitan Classic (2 - 0, Champ.)
 1971 – 72 Far West Classic (3 - 0, Champ.)
 1971 – 72 Senior Bowl (2 - 0, Champ.)
 1971 – 72 **NCAA Mideast (3 - 0, Champ.)**
 1971 – 72 **NCAA Championship (1 - 1, Second)**
 1972 – 73 Marshall Memorial Classic (1 - 1, Third)
 1972 – 73 Dayton Invitational (1 - 1, Third)
 1972 – 73 All College (2 - 1, Third)
 1973 – 74 Steel Bowl (1 - 1, Second)
 1973 – 74 Mercer Bear Classic (1 - 1, Third)
 1973 – 74 Bluebonnet Classic (1 - 1, Second)
 1973 – 74 Big Sun (2 - 0, First)
 1974 – 75 Louisville Holiday (1 - 1, Second)
 1975 – 76 Big Sun (1 - 1, Second)

1975 – 76 Far West Classic (1 - 2, Seventh)
 1976 – 77 IPTAY Tournament (1 - 1, Second)
 1976 – 77 Cable Car Classic (1 - 1, Second)
 1976 – 77 Vermont Classic (1 - 1, Third)
 1976 – 77 Metro Tournament (0 - 1)
 1977 – 78 Big Sun (2 - 0, First)
 1977 – 78 Birmingham Classic (2 - 0, First)
 1977 – 78 Pillsbury Classic (1 - 1, Second)
 1977 – 78 Metro Tournament (1 - 1, Second)
 1977 – 78 **NCAA Mideast (0 - 1)**
 1978 – 79 Metro Tournament (2 - 1, Second)
 1978 – 79 Dayton Tournament (1 - 1, Second)
 1978 – 79 Old Dominion Classic (1 - 1, Second)
 1979 – 80 Metro Tournament (2 - 1, Second)
 1979 – 80 **NCAA Tournament (1 - 1)**
 1980 – 81 Cotton States Classic (2 - 0, First)
 1980 – 81 Metro Tournament (1 - 1, Fourth)
 1981 – 82 Florida Four (1 - 1, Second)
 1981 – 82 Dayton Tournament (1 - 1, Second)
 1981 – 82 Metro Tournament (1 - 1, Third)
 1982 – 83 Florida Four (1 - 1, Third)
 1982 – 83 Cabrillo Classic (1 - 1, Third)
 1982 – 83 Metro Tournament (0 - 1)
 1983 – 84 Metro Tournament (1 - 1)
 1983 – 84 **National Invitation Tournament (1 - 1)**
 1984 – 85 Metro Tournament (2 - 1, Second)
 1985 – 86 Metro Tournament (1 - 1)
 1986 – 87 Red Lobster Classic (2 - 0)
 1986 – 87 Metro Tournament (0 - 1)
 1986 – 87 **National Invitation Tournament (1 - 1)**
 1987 – 88 Red Lobster Classic (1 - 1)
 1987 – 88 Metro Tournament (1 - 1)
 1987 – 88 **NCAA Tournament (0 - 1)**
 1988 – 89 Red Lobster Classic (1 - 1)
 1988 – 89 Metro Tournament (1 - 1)
 1988 – 89 **NCAA Tournament (0 - 1)**

YEAR-BY-YEAR RECORD

Year	Coach	W	L	Pct.	Year	Coach	W	L	Pct.
1947 – 48	Don Loucks	5	13	.277	1969 – 70	Hugh Durham	23	3	.885
1948 – 49	J. K. "Bud" Kennedy	12	12	.500	1970 – 71	Hugh Durham	17	9	.654
1949 – 50	J. K. "Bud" Kennedy	15	10	.600	1971 – 72	Hugh Durham	27	6	.818
1950 – 51	J. K. "Bud" Kennedy	18	9	.667	1972 – 73	Hugh Durham	18	8	.692
1951 – 52	J. K. "Bud" Kennedy	5	20	.200	1973 – 74	Hugh Durham	18	8	.692
1952 – 53	J. K. "Bud" Kennedy	11	11	.500	1974 – 75	Hugh Durham	18	8	.692
1953 – 54	J. K. "Bud" Kennedy	13	7	.619	1975 – 76	Hugh Durham	22	6	.786
1954 – 55	J. K. "Bud" Kennedy	22	4	.846	1976 – 77	Hugh Durham	16	11	.593
1955 – 56	J. K. "Bud" Kennedy	16	9	.640	1977 – 78	Hugh Durham	23	6	.793
1956 – 57	J. K. "Bud" Kennedy	9	17	.346	1978 – 79	Joe Williams	19	10	.655
1957 – 58	J. K. "Bud" Kennedy	9	16	.360	1979 – 80	Joe Williams	22	9	.709
1958 – 59	J. K. "Bud" Kennedy	8	15	.347	1980 – 81	Joe Williams	17	11	.607
1959 – 60	J. K. "Bud" Kennedy	10	15	.400	1981 – 82	Joe Williams	11	17	.392
1960 – 61	J. K. "Bud" Kennedy	14	10	.583	1982 – 83	Joe Williams	14	14	.500
1961 – 62	J. K. "Bud" Kennedy	15	8	.651	1983 – 84	Joe Williams	20	11	.645
1962 – 63	J. K. "Bud" Kennedy	15	10	.600	1984 – 85	Joe Williams	14	16	.467
1963 – 64	J. K. "Bud" Kennedy	11	14	.444	1985 – 86	Joe Williams	12	17	.414
1964 – 65	J. K. "Bud" Kennedy	16	10	.620	1986 – 87	Pat Kennedy	19	11	.633
1965 – 66	J. K. "Bud" Kennedy	15	11	.577	1987 – 88	Pat Kennedy	19	11	.633
1966 – 67	Hugh Durham	11	15	.428	1988 – 89	Pat Kennedy	22	8	.733
1967 – 68	Hugh Durham	19	8	.704					
1968 – 69	Hugh Durham	18	8	.692					
					42 Years		658	452	.593

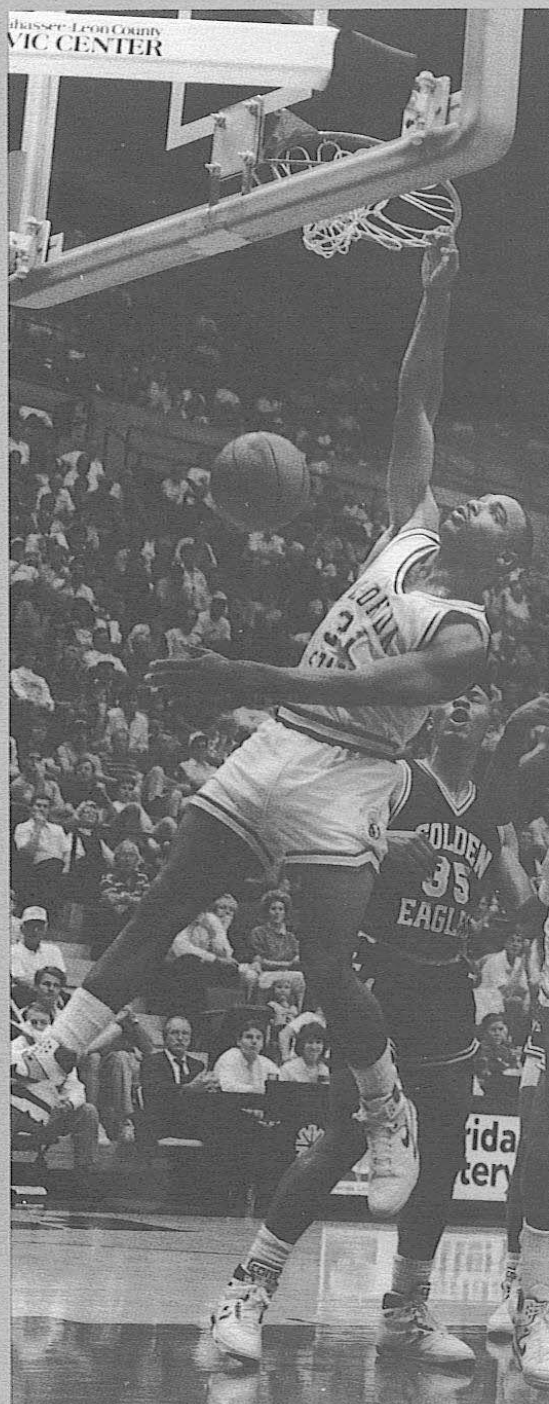
SERIES RECORDS

Team	First Meeting		Last Meeting	Site	Score	Team	First Meeting		Last Meeting	Site	Score		
	W	L					W	L					
Air Force	0	1	1963	12-26-63	N	53-78	Illinois State	3	1	1974	2-12-76	H	109-81
Alabama	7	8	1959	12-16-86	H	72-71	Indiana	0	1	1975	12-08-75	A	59-83
Alabama-Birmingham	2	0	1978	2-20-80	H	89-87	Indiana State	0	1	1973	12-27-73	N	92-93
Alabama State	1	0	1988	2-24-88	H	108-90	Iowa	0	1	1988	3-18-83	N	98-102
Alcorn State	1	0	1986	12-30-86	N	84-62	Jacksonville	31	18	1959	1-11-89	A	85-70
Arizona	2	0	1970	12-31-70	H	95-85	Jacksonville (Ala.) State	2	0	1953	12-04-54	H	103-76
Arkansas	1	0	1989	1-18-89	N	112-105	Kansas	0	1	1966	12-08-66	A	48-62
Arkansas State	1	1	1953	2-20-54	H	78-68	Kansas State	0	1	1966	12-10-66	A	58-81
Army	1	2	1958	12-29-76	N	71-72	Kent State	1	1	1969	2-05-70	A	80-79
Auburn	5	18	1958	12-05-83	H	69-76	Kentucky	2	5	1948	3-09-80	N	78-97
Austin Peay	1	0	1976	12-04-76	H	97-86	Lambuth	0	2	1948	2-28-49	N	49-65
Baptist College	4	0	1976	1-18-84	H	92-75	Lamar Tech	1	0	1965	12-01-65	H	73-68
Baylor	2	0	1964	12-16-72	N	85-67	LaSalle	0	1	1989	2-23-89	A	100-101
Beloit	0	1	1955	3-09-55	N	88-110	Louisiana State	2	2	1957	12-16-67	N	130-100
Birmingham Southern	0	2	1949	1-21-50	A	45-55	Louisville	7	27	1968	3-12-89	N	80-87
Biscayne	6	0	1970	1-20-75	A	95-85	Loyola of New Orleans	8	13	1951	3-05-66	A	62-63
Boston University	1	0	1955	12-20-55	N	86-52	Madison	2	0	1976	1-12-77	H	69-66
Bradley	0	1	1956	12-08-56	A	66-90	Manhattan	2	0	1963	1-11-71	H	96-68
Brigham Young	0	1	1972	12-29-72	N	77-80	Marquette	1	2	1967	3-01-81	N	81-78
Bucknell	1	0	1988	11-28-87	H	87-58	Marshall	1	3	1958	12-07-74	H	90-63
California-Irvine	1	0	1971	1-30-71	H	82-69	Memphis State*	20	29	1953	2-18-89	A	78-89
California (Pa.)	1	0	1986	1-09-86	H	113-75	Mercer	12	8	1948	1-31-77	A	66-65
California-Santa Barbara	1	0	1965	12-18-65	H	62-61	Miami (Ohio)	0	1	1970	12-19-70	N	64-67
California State-Bakersfield	1	0	1974	2-18-74	H	96-66	Miami	24	24	1952	2-26-87	H	108-84
Canisius	1	1	1974	1-25-75	A	74-81	Middle Tennessee	0	1	1989	3-16-89	N	83-97
Centenary	2	3	1957	2-08-64	A	72-79	Milkin	0	1	1951	3-15-51	N	60-91
Central (Mo.)	0	2	1949	12-15-52	H	59-62	Millsaps	2	0	1949	1-26-50	N	62-45
Central Florida	8	0	1980	12-28-88	N	97-64	Minnesota	2	2	1972	12-02-80	A	79-66
Charleston	2	0	1949	12-09-50	A	74-54	Mississippi	1	1	1951	2-14-51	A	75-79
Chattanooga	2	0	1963	2-01-75	H	111-70	Mississippi College	5	1	1948	2-15-51	A	77-54
Cincinnati	20	11	1972	2-04-89	A	66-65	Mississippi State	3	3	1951	12-21-56	N	71-79
Citadel	4	4	1958	2-07-68	A	93-50	Missouri	2	1	1976	12-19-80	N	68-64
Clemson	5	6	1951	11-27-76	A	92-108	Missouri Western	1	0	1976	11-30-76	H	109-80
Cleveland State	1	0	1980	2-18-80	H	86-83	Monmouth College	2	0	1984	2-02-88	H	82-68
Colorado State	1	0	1975	12-30-75	N	84-54	Montana State	1	0	1955	3-07-55	N	93-84
Connecticut	1	0	1972	1-06-73	H	91-55	Morehead State	1	1	1957	1-30-60	H	78-75
Connecticut St. Teachers	1	0	1950	12-14-50	H	76-68	Morningside	1	0	1955	12-16-55	H	104-93
Creighton	0	1	1964	12-29-64	N	77-85	Murray State	1	1	1957	2-09-59	A	71-96
Culver-Stockton	0	1	1951	12-08-51	H	56-59	Navy	1	0	1977	12-17-77	N	82-55
Dayton	3	3	1969	12-30-81	A	79-93	New Hampshire	1	0	1968	12-31-68	H	104-52
David Lipscomb	1	1	1950	1-05-51	A	73-88	New Mexico	3	1	1974	2-22-83	H	79-77
Denver	1	0	1972	1-03-72	N	88-70	New Orleans	1	2	1986	2-21-89	A	77-83
DePaul	0	1	1964	12-28-64	N	44-52	New York University	1	0	1955	12-30-55	N	85-83
Drury	0	1	1949	12-20-49	A	52-59	North Carolina	1	11	1955	1-09-64	A	64-109
Duke	0	1	1954	1-03-54	A	75-97	North Carolina State	2	2	1957	12-04-85	H	76-67
Duquesne	1	1	1956	2-04-65	N	62-58	North Carolina-Charlotte	1	2	1977	12-29-82	N	76-73
East Carolina	1	0	1968	2-03-68	H	110-100	Northwestern	1	0	1972	12-23-68	N	91-73
East Tennessee State	1	3	1955	1-08-72	H	106-63	Oglethorpe	2	1	1949	12-01-71	H	112-69
Eastern Kentucky	6	1	1966	12-06-75	A	65-59	Ohio State	0	3	1961	12-28-68	H	86-93
Eckerd	1	0	1978	11-27-78	H	116-71	Ohio University	1	1	1958	12-21-74	H	67-60
Erskine	1	1	1948	2-28-48	H	49-48	Oklahoma	0	2	1986	12-10-87	H	87-89
Evansville	0	1	1967	12-30-67	A	67-76	Oklahoma City	4	2	1958	12-30-72	A	94-80
Fairleigh Dickinson	2	0	1974	1-11-78	H	85-43	Oklahoma State	0	1	1964	12-18-64	N	56-60
Florida	13	25	1951	12-03-88	H	104-86	Old Dominion	0	1	1979	1-06-79	A	76-80
Florida A&M	4	0	1979	12-06-82	H	81-79	Oral Roberts	2	0	1977	2-27-78	A	80-76
Florida Institute Technology	1	0	1985	12-14-85	H	122-83	Oregon	1	0	1969	12-04-69	H	100-84
Florida International	4	0	1984	11-29-88	H	100-75	Oregon State*	2	1	1969	12-29-75	N	75-78
Florida Presbyterian	1	0	1967	12-02-67	A	90-66	Palm Beach Atlantic	1	0	1975	12-13-75	H	109-52
Florida Southern	21	9	1948	2-11-80	A	85-78	Panama Nationals	1	0	1966	1-28-66	H	96-73
Furman	7	2	1957	12-29-84	A	97-75	Pan American	2	0	1970	1-31-72	H	109-83
Georgetown	2	0	1969	1-08-72	H	101-70	Parris Island Marines	0	2	1951	1-26-52	H	62-64
George Washington	2	0	1967	1-25-79	A	71-68	Penn State	3	1	1972	12-17-88	A	87-81
Georgia	19	12	1947	12-01-81	H	67-70	Pepperdine	3	0	1951	1-02-71	H	101-82
Georgia Southern (Ga. Tch.)	13	4	1947	1-05-79	N	93-83	Pittsburgh	1	6	1973	12-28-87	N	72-72
Georgia State	3	0	1975	2-21-76	H	92-70	Princeton	0	1	1972	12-15-72	N	59-61
Georgia Tech	15	9	1963	2-10-79	A	72-75	Purdue	1	0	1974	12-26-75	N	69-66
Hardin-Simmons	1	0	1987	12-21-87	H	93-79	Rhode Island	1	0	1986	3-13-87	H	107-92
Hawaii	1	2	1969	12-22-71	A	76-81	Rice	3	2	1961	1-20-69	A	80-83
Hofstra	3	0	1968	1-18-75	H	107-81	Richmond	1	3	1962	12-20-62	A	114-91
Houston	2	3	1962	1-05-74	A	74-79	Rider	1	0	1988	1-04-89	H	113-67

SERIES RECORDS

Team	W	L	First Meeting	Last Meeting	Site	Score
Rollins	20	2	1951	11-28-67	H	83-59
Rutgers	1	0	1967	12-22-67	H	87-77
St. Josephs (Me.)	1	0	1985	1-07-85	H	88-72
St. Leo	3	0	1977	11-29-82	H	92-54
St. Louis	11	1	1972	1-23-82	H	89-73
Samford (Howard)	9	0	1950	1-25-73	A	47-34
San Diego State	0	1	1982	12-29-82	A	85-89
San Francisco	0	1	1976	12-18-76	A	87-93
Santa Clara	1	1	1955	12-17-76	N	94-80
Seton Hall	2	0	1972	12-10-77	N	94-63
Sewanee	3	3	1949	12-17-52	A	58-69
South Alabama	7	2	1972	12-14-88	H	87-82
South Carolina*	12	12	1960	3-11-89	N	80-63
South Carolina-Aiken	1	0	1980	1-14-80	H	82-69
South Carolina-Spartanburg	1	0	1986	12-04-86	H	97-69
South Dakota	1	0	1970	12-05-70	H	125-65
South Dakota State	1	0	1951	3-31-51	N	85-70
South Florida	14	6	1973	12-20-88	H	113-81
Southern California	1	2	1968	12-18-70	N	85-94
Southern Illinois	1	1	1973	1-21-74	A	73-77
Southern Mississippi	12	6	1951	3-04-89	A	81-78
Southwestern (Memphis)	0	1	1948	12-30-48	A	47-54
Southwestern Louisiana	2	0	1976	3-04-76	A	68-65
SW Missouri State	0	1	1949	12-21-49	A	52-79
Spring Hill	3	3	1947	1-18-55	A	81-72
Stetson	30	11	1947	12-09-88	H	91-74
Steubenville	0	1	1956	12-03-56	A	64-79
Tampa	31	8	1959	11-23-85	H	86-62
Tennessee	3	5	1957	1-15-89	H	101-90
Tennessee-Martin	1	0	1984	12-18-84	H	90-73
Tennessee Tech	1	0	1957	12-02-57	H	74-71
Texas	2	0	1969	12-01-70	N	80-78
Texas A&M	2	1	1956	12-16-77	N	100-77
Texas Christian	0	1	1963	12-12-63	A	60-66
Toledo	2	0	1976	3-07-80	N	94-91
Troy State	8	1	1947	12-01-77	H	110-82
Tulane	18	10	1967	2-06-85	H	61-64
Tulsa	3	0	1963	12-30-82	N	96-80
UCLA	0	1	1972	2-25-72	A	76-81
Union (Tenn.)	0	1	1948	12-29-48	A	52-56
Valdosta State	15	0	1961	12-20-86	H	85-75
Vanderbilt	0	2	1960	3-16-87	A	92-109
Vermont	1	0	1976	12-30-76	A	76-67
Villanova	0	1	1988	12-29-88	N	67-68
Virginia Military	2	1	1964	12-20-65	N	65-64
Virginia Tech	13	14	1968	3-01-89	H	117-97
Washington	1	1	1971	12-26-75	N	54-69
Washington State	1	0	1971	12-30-71	N	85-61
Wake Forest	1	1	1958	12-22-73	N	66-48
Western Carolina	2	0	1985	12-11-86	H	101-76
West Virginia	0	3	1955	1-30-58	A	51-103
Western Kentucky	5	0	1973	12-29-79	A	67-65
Wisconsin-Milwaukee	3	0	1971	1-07-75	H	104-82
Wofford	0	2	1948	2-06-48	A	38-77
Xavier (Ohio)	0	1	1958	2-04-58	A	60-76

* Forfeit Included



ALL-TIME FSU SCORES

1947 - 48 — Won 5, Lost 13 (.277)

39	Spring Hill (H)	36
43	Troy State (H)	37
45	Wofford (A)	48
56	Stetson (A)	65
56	Georgia Teachers (H)	60
46	Georgia (A)	65
48	Mercer (H)	61
54	Spring Hill (A)	76
43	Troy State (A)	49
41	Stetson (H)	38
45	Erskine (A)	47
38	Wofford (A)	77
42	Georgia (H)	44
41	Florida Southern (A)	47
47	Georgia Teachers (A)	65
55	Florida Southern (H)	62
41	Stetson (H)	62
49	Erskine (H)	48

1948 - 49 — Won 12, Lost 12 (.500)

53	Mississippi College (H)	21
46	Florida Southern	38
53	Florida Southern	45
68	Troy State (A)	64
50	Lambuth (A)	56
52	Union (A)	56
47	Southwestern (A)	54
49	Stetson (A)	40
40	Stetson (A)	36
56	Tampa (A)	58
63	Troy State (H)	45
52	Oglethorpe (A)	64
59	Mercer (A)	62
60	Tampa (A)	58
46	Mississippi College (A)	57
49	Missaps (A)	46
47	Oglethorpe (H)	46
35	Sewanee (H)	43
47	Sewanee	39
44	Birmingham Southern (H)	50
52	Mercer (N)	46
47	Tampa (N)	56
49	Lambuth (N)	65

1949 - 50 — Won 15, Lost 10 (.600)

43	Mississippi College (H)	24
51	Mississippi College (H)	45
61	Troy State (H)	27
72	Charleston (H)	37
50	Central (Mo.) (A)	62
52	Drury (A)	59
52	S. W. Missouri State (A)	79
60	Tampa (A)	80
65	Florida Southern (A)	71
48	Florida Southern (A)	59
63	Mercer (H)	45
59	Howard (A)	58
45	Birmingham Southern (A)	55
62	Missaps (H)	45
61	Stetson (H)	70
61	Mercer (A)	69
50	Howard (H)	39
57	David Lipscomb (H)	53
58	Tampa (H)	56
79	Troy State (A)	71
60	Sewanee (A)	59
85	Sewanee (A)	65
74	Stetson (A)	68
56	Florida Southern (N)	68
74	Mississippi College (N)	63

1950 - 51 — Won 18, Lost 9 (.667)

74	Charleston (A)	54
55	Mercer (A)	52
76	Conn. St. Teachers (H)	68
60	Howard (H)	44
66	Florida Southern (A)	55
61	Miami (A)	80
73	David Lipscomb (A)	86
63	Mississippi (H)	58
66	Stetson (H)	67
44	Florida Southern (H)	41
80	Tampa (H)	69
58	Howard (A)	51
66	Tampa (A)	76
53	Stetson (A)	71
60	Rollins (A)	57
65	Loyola of N.O. (H)	75
75	Mississippi (A)	79
77	Mississippi College (A)	54
69	Mercer (H)	64
62	Rollins (H)	45
64	Howard (N)	54
65	Mercer (A)	69
65	Stetson (N)	58
69	Georgia Teachers (N)	67
85	S. Dakota State (N)	70
61	Pepperdine (N)	59
60	Milikin (N)	91

1951 - 52 — Won 5, Lost 20 (.200)

46	Parris Is. Marines (A)	78
56	Culver-Stockton (H)	59
47	Mississippi State (A)	75
43	Southern Mississippi (A)	84
70	Southern Mississippi (H)	78
54	Springhill (A)	64
48	Sewanee (N)	58
50	Georgia (N)	79
56	Clemson (N)	62
51	Florida (N)	61
52	Loyola of N.O. (A)	74
56	Miami (A)	93
72	Tampa (A)	66
51	Florida Southern (A)	54
75	Georgia Teachers (H)	93
72	Florida Southern (H)	53
62	Parris Is. Marines (H)	64
74	Rollins (H)	71
48	Stetson (A)	58
55	Rollins (A)	69
63	Miami (H)	76
79	Tampa (H)	60
64	Stetson (H)	66
73	Miami (N)	70
57	Tampa (N)	78

1952 - 53 — Won 11, Lost 11 (.500)

62	Mercer (A)	78
68	Georgia Teachers (A)	63
90	Rollins (H)	83
77	Mercer (H)	76
59	Central Missouri (H)	62
58	Sewanee (A)	69
82	Mississippi State (H)	52
66	Loyola of N.O. (H)	72
65	Miami (A)	93
73	Tampa (A)	77
71	Florida Southern (A)	89
79	Rollins (A)	82
73	Memphis State (A)	67
77	Arkansas State (A)	88
76	Stetson (H)	66
79	Florida Southern (A)	77
83	Tampa (H)	74
77	Loyola of N.O. (A)	85
81	Miami (H)	75
83	Stetson (A)	79
87	Mercer (N)	77
81	Stetson (A)	94

1953 - 54 — Won 13, Lost 7 (.619)

75	Mississippi State (A)	87
72	Mercer (H)	70
66	Georgia Teachers (H)	58
72	Jacksonville St. (Ala.) (H)	61
74	Tampa (H)	56
76	Loyola of N.O. (H)	80
61	Miami (A)	78
82	Rollins (A)	72
73	Tampa (A)	63
96	Florida Southern (A)	80
60	Stetson (A)	82
85	Rollins (H)	66
99	Florida Southern (H)	71
63	Mercer (A)	70
76	Miami (H)	69
72	Loyola of N.O. (A)	88
89	Georgia Teachers (A)	85
78	Arkansas State (H)	68

1954 - 55 — Won 22, Lost 4 (.846)

103	Jacksonville State (H)	76
75	Georgia Teachers (H)	67
90	Tampa (H)	62
94	Stetson (H)	79
71	Miami (H)	62
79	Florida (N)	82
97	Georgia (N)	87
75	Duke (A)	97
73	Florida Southern (A)	69
96	Tampa (A)	61
90	Georgia (H)	81
81	Spring Hill (A)	72
91	Mississippi State (A)	76
84	Stetson (A)	73
86	Rollins (H)	74
84	Florida Southern (H)	63
88	Georgia (A)	79
110	Rollins (A)	82
95	Loyola (A)	101
102	Mississippi State (H)	86
87	Loyola (H)	84
86	Miami (A)	80
86	Stetson (H)	77
91	Georgia Teachers (H)	83
93	Montana State (N)	84
88	Beloit (N)	110

1955 - 56 — Won 16, Lost 9 (.640)

63	North Carolina (A)	88
54	E. Tennessee St. (A)	80
101	Rollins (H)	67
91	Stetson (H)	78
89	Tampa (A)	67
104	Morningside (H)	83
76	Clemson (N)	94
86	Boston University (N)	52
71	Mississippi State (N)	79
69	West Virginia (N)	78
59	Santa Clara (N)	61
85	New York Univ. (N)	83
78	Miami (H)	76
71	Rollins (A)	70
79	Georgia (A)	76
81	Georgia Teachers (A)	90
85	Loyola of N.O. (H)	75
90	Troy State (H)	65
48	Stetson (H)	73
92	Florida Southern (H)	73
85	Florida Southern (A)	81
89	Stetson (A)	83
85	Miami (A)	93
82	Loyola of N.O. (A)	75
80	Georgia (H)	75

1956 - 57 — Won 9, Lost 17 (.346)

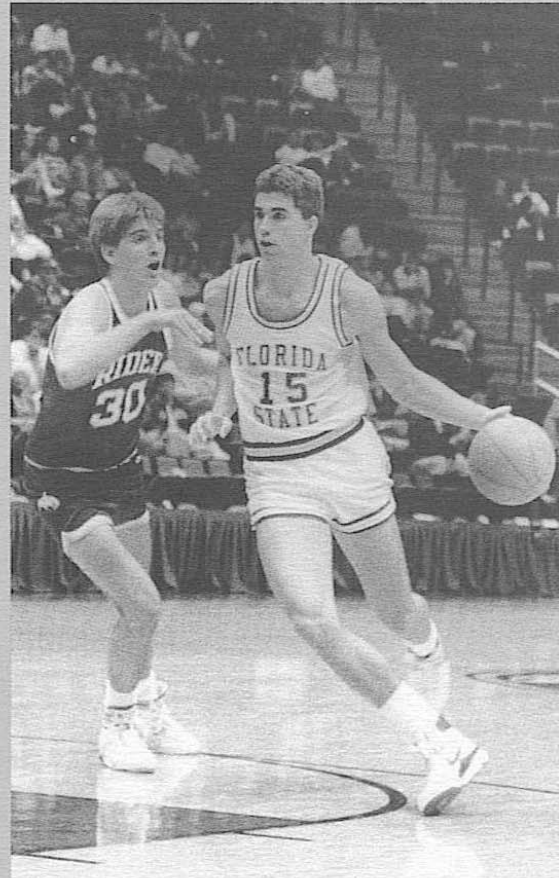
55	Duquesne (A)	70
64	Steubenville (A)	79
54	West Virginia (A)	88
66	Bradley (A)	90
65	Florida (A)	67
74	Texas A&M (H)	83
59	East Tennessee State (H)	65

1956 - 57 (cont.)

68	Georgia (H)	72
75	Morehead State (N)	97
108	Furman (N)	96
59	North Carolina State (A)	64
77	Miami (H)	65
70	Stetson (A)	97
104	Stetson (H)	86
86	Georgia (A)	63
82	Tampa (A)	67
97	Rollins (H)	94
63	Florida Southern (A)	78
67	Florida Southern (H)	73
96	Rollins (H)	79
81	Southern Mississippi (H)	72
79	Loyola of N.O. (H)	72
68	Miami (A)	96
88	Tampa (H)	57
74	Centenary (A)	92
56	Loyola of N.O. (A)	82

1957 - 58 — Won 9, Lost 16 (.360)

74	Tennessee Tech (H)	71
84	Murray State (H)	60
57	Tennessee (A)	74
70	Florida (A)	71
89	Furman (A)	95
56	Loyola of N.O. (A)	62
65	Louisiana State (A)	87
57	Citadel (N)	59
92	Georgia (N)	80
67	Loyola of N.O. (H)	79
72	Tampa (H)	53
56	Memphis State (A)	56
77	Stetson (H)	60



ALL-TIME FSU SCORES

1957 - 58 (cont.)

71 Miami (H)	70
51 West Virginia (A)	103
68 Marshall (A)	109
66 Ohio University (A)	86
60 Xavier of Ohio (A)	76
62 Army (H)	71
57 Oklahoma City (H)	52
80 Rollins (H)	61
51 Memphis State (H)	68
66 Miami (A)	86
56 Tampa (A)	79
85 Georgia (H)	77

1958 - 59 — Won 8, Lost 15 (.347)

68 Kentucky (A)	91
73 Furman (H)	72
100 Spring Hill (H)	70
64 Wake Forest (A)	73
82 Florida (H)	60
74 Auburn (A)	95
83 Miami (N)	85
72 Georgia (N)	83
82 Louisiana State (H)	67
62 Auburn (H)	69
65 Southern Mississippi (H)	62
72 Memphis State (H)	75
93 Miami (H)	69
91 Georgia (A)	94
75 Oklahoma City (A)	103
63 Centenary (A)	87
61 Loyola of N.O. (H)	60
71 Murray State (A)	96
69 Memphis State (A)	70
84 Oklahoma City (H)	98
91 Stetson (A)	98
94 Rollins (A)	83
85 Miami (A)	92

1959 - 60 — Won 10, Lost 15 (.400)

78 Louisiana State (A)	89
64 Loyola of N.O. (A)	71
71 Florida (A)	81
58 Auburn (A)	62
86 Alabama (A)	74
64 Clemson (A)	68
63 Auburn (H)	76
86 Jacksonville (A)	69
66 Georgia (N)	65
93 South Carolina (H)	75
74 Citadel (H)	78
81 Centenary (H)	71
78 Southern Mississippi (A)	87
71 Memphis State (A)	86
72 Tampa (H)	67
91 Miami (H)93	
78 Morehead State (H)	75
68 Tampa (A)	83
67 Memphis State (H)	83
101 Rollins (H)	58
105 Furman (A)	98
60 Citadel (A)	100
69 Loyola of N.O. (H)	50
89 Miami (A)	107
95 Georgia (H)	82

1960 - 61 — Won 14, Lost 10 (.583)

88 Tampa (H)	60
63 Kentucky (A)	58
55 Vanderbilt (A)	75
57 Auburn (A)	74
74 Clemson (H)	57
67 Florida (H)	74
72 South Carolina (A)	82
65 Clemson (A)	64
56 Georgia (N)	62
68 Tennessee (A) (OT)	70
73 Loyola of N.O. (H)	55
89 Miami (H)	78
67 Auburn (H)	74
78 Rollins (A)	70
68 Alabama (H)	57
83 Citadel (H)	77
86 Valdosta State (H)	66
77 Georgia (A)	68
66 Citadel	79
99 Furman (H)	57
74 Florida (A)	75
116 Tampa (A)	95
73 Miami (A)	75
72 Loyola of N.O. (A)	68

1961 - 62 — Won 15, Lost 8 (.651)

57 Ohio State (A)	72
63 Wisconsin (A)	64
76 Rice (H)	66
85 Florida (A)	71
56 Auburn (A)	52
77 Clemson (H)	82
69 Tennessee (A)	62
57 Auburn (H)	67
99 Oklahoma City (H)	74
84 Furman (A)	67
69 Clemson (A)	75
110 Rollins (H)	53
65 Miami (H)	60
57 Alabama (A)	72
81 Oklahoma City (A)	79
76 Houston (A)	42
72 Valdosta State (H)	42
91 Tampa (H)	71
71 Georgia (A)	62
79 Florida (H)	56
83 Miami (A)	79
123 Tampa (H)	92
101 Georgia (H)	69

1962 - 63 — Won 15, Lost 10 (.600)

92 Tampa (H)	60
65 Valdosta State (H)	42
59 Florida (H)	80
47 Auburn (A)	65
72 Alabama (H)	63
54 Kentucky (A)	83
70 Auburn (H)	77
55 Richmond (H)	62
77 Georgia (N)	69
49 Alabama (N)	48
79 Georgia Southern (N)	60
65 Tennessee (A)	66
72 Chattanooga (A)	55
77 Miami (H)	74
88 Georgia (H)	67
76 Georgia (A)	90
55 Georgia Tech (A)	70
86 Florida (A)	84
96 Houston (H)	99
63 Alabama (A)	61
61 Valdosta State (A)	56
73 Stetson (H)	87
82 Centenary (H)	68
73 Phillips 66 Oilers (H)	52
70 Miami (A)	99
80 Tampa (A)	58

1963 - 64 — Won 11, Lost 14 (.444)

56 Florida (A)	78
69 Auburn (H)	67
53 Alabama (A)	62
81 Rice (A)	102
60 Texas Christian (A)	66
107 Tampa (H)	61
91 Tulsa (H)	76
53 Air Force (N)	78
85 Manhattan (N)	81
65 Richmond (A)	59
72 Virginia Military (A)	83
80 Miami (H)	78
91 Memphis State (H)	90
64 Georgia (H)	63
50 Florida (H)	62
59 Auburn (A)	53
95 Alabama (H)	77
57 Furman (H)	48
72 Centenary (A)	79
72 Memphis State (A)	84
73 Georgia Tech (A)	77
101 Jacksonville (H)	77
80 Stetson (A)	60
80 Miami (A)	82
70 Georgia (A)	65

1964 - 65 — Won 16, Lost 10 (.620)

81 Valdosta State (H)	57
76 Virginia Military (H)	72
86 Auburn (A)	66
73 Alabama (A)	76
51 Florida (H)	50
56 Oklahoma State (N)	60
82 Baylor (N)	64
43 Tennessee (N)	65
74 Tulsa (A)	72
44 DePaul (N)	52
77 Creighton (N)	85
81 Rice (N)	56
64 Georgia (A) (OT)	65
67 Miami (H)	66
74 Memphis State (H)	61
72 Georgia Tech (H)	65
58 Auburn (H)	55
66 Alabama (H)	75
62 Duquesne (H)	58

1964 - 65 (cont.)

81 Memphis State (A)	70
97 Jacksonville (H)	74
76 Georgia Tech (A)	77
71 Tampa (A)	64
65 Auburn (A)	77
75 Miami (A)	82
85 Georgia (H)	83

1965 - 66 — Won 15, Lost 11 (.577)

73 Lamar Tech (H)	68
69 Valdosta (H)	68
121 Tampa (H)	57
62 Florida (A)	57
80 North Carolina (A)	115
62 Calif.-Santa Barbara (H)	61
65 V.M.I. (A)	64
58 Auburn (A)	59
64 Auburn (A)	80
67 Georgia (A)	63
78 Miami (H)	62
73 Loyola of N.O. (H)	53
67 Memphis (H)	62
65 Florida (H)	74
86 Jacksonville (A)	90
95 Panama Nationals (H)	73
71 Georgia Tech (H)	66
66 Memphis (A)	81
62 Loyola of N.O. (A)	63
78 Jacksonville (A)	49
88 Georgia Tech (A)	35
77 Samford (H)	66
99 Florida Southern (H)	54
69 Tampa (A)	70
90 Miami (A)	112
87 Georgia (H)	69

1966 - 67 — Won 11, Lost 15 (.423)

62 Valdosta State (H)	58
76 Rice (H)	72
30 Florida (A)	50
46 Kansas (A)	62
58 Kansas State (A)	81
76 Richmond (A)	80
59 Eastern Kentucky (A)	81
83 Citadel (A)	67
54 North Carolina (A)	81
79 Alabama (A)	80
59 Auburn (A)	67
81 Miami (H)	60
85 Tulane (A)	67
42 Memphis State (A)	46
81 Jacksonville (H)	70
71 Marshall (H)	77
68 Georgia Tech (H)	75
109 Tampa (H)	72
55 Memphis State (H)	51
68 Jacksonville (A)	67
100 Tulane (H)	81
84 Florida Southern (A)	76
75 Florida (H)	90
84 Georgia Tech (A)	102
87 Tampa (A)	84
90 Miami (A)	110

1967 - 68 — Won 19, Lost 8 (.704)

90 Fla. Presbyterian (A)	66
69 Ohio State (A)	76
87 Florida (H)	95
104 Samford (H)	89
58 Marquette (A)	78
130 Louisiana State (N)	100
114 Richmond (H)	91
67 Rutgers (H)	67
94 Geo. Washington (A)	69
67 Evansville (A)	75
96 Citadel (A)	76
111 Stetson (H)	81
122 Miami (H)	93
Jacksonville (H)	79
73 Georgia Tech (A)	57
109 Hofstra (H)	71
81 Valdosta State (H)	71
80 North Carolina (A)	86
110 East Carolina (H)	100
93 Citadel (H)	50
104 Florida Southern (H)	82
106 Jacksonville (A)	65
64 Florida (A)	89
72 Georgia Tech (H)	67
72 Stetson (A)	60
84 Miami (A)	96
69 East Tenn. State (A)	79
*NCAA Mid East Regionals	

1968 - 69 — Won 18, Lost 8 (.692)

120 Valdosta State (H)	75
111 Miami (A)	84
93 Jacksonville (A)	88
74 Virginia Tech (A)	77
78 Louisville (A)	79
70 Southern California (H)	68
86 Ohio State (H)	93
104 New Hampshire (H)	52
65 Jacksonville (A)	76
97 Tulane (A)	94
86 Miami (H)	81
67 Kent State (H)	76
99 Tulane (H)	90
80 Rice (A)	83
92 Hawaii (H)	60
87 South Carolina (H)	76
93 Jacksonville (H)	89
84 Valdosta State (A)	81
70 Clemson (A)	67
82 North Carolina (A)	100
95 Stetson (H)	67
79 Dayton (H)	71
76 Georgia Tech (H)	84
86 Georgia Tech (A)	80
64 Florida Southern (A)	79
89 Miami (A)	86

1969 - 70 — Won 23, Lost 3 (.885)

69 Oregon State (H)	68
100 Oregon (H)	84
107 Rollins (A)	86
75 North Carolina (A)	89
98 Georgetown (H)	65
79 Louisville (H)	69
82 Texas (H)	61
86 Army (N)	51
88 Florida (N)	63
121 Pepperdine (A)	83
66 So. California (A)	71
87 Arizona (A)	78
104 Miami (H)	63
82 Tulane (A)	77
122 Clemson (H)	80
89 Georgia Tech (A)	83
89 Jacksonville (H)	83
83 Virginia Tech (H)	73
80 Kent State (A)	79
82 Dayton (A)	76
98 Florida Southern (H)	74
112 Tulane (H)	77
81 Jacksonville (A)	85
97 Georgia Tech (H)	80
94 Stetson (A)	64
112 Miami (A)	96

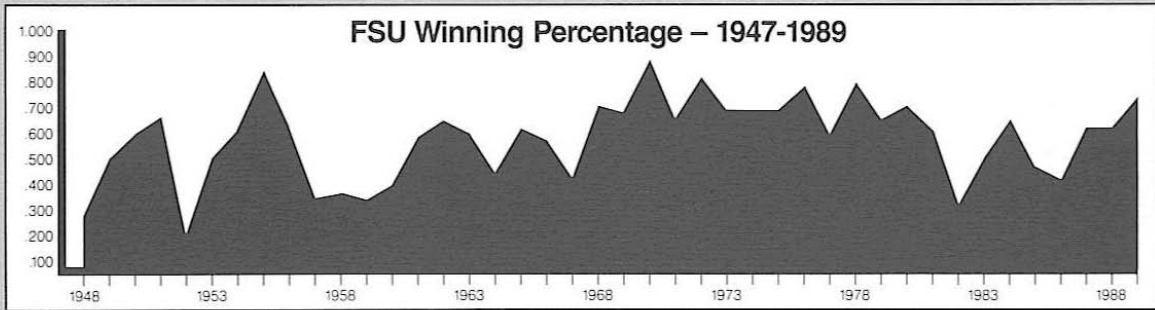
1970 - 71 — Won 17, Lost 9 (.654)

80 Texas (A)	78
106 Biscayne (H)	70
125 South Dakota (H)	65
117 Southern Mississippi (N)	84
108 Jacksonville (A)	114
111 Valdosta State (H)	63
85 So. California (N)	94
64 Miami (Ohio) (N)	67
95 Pan American (A)	90
95 Arizona (H)	85
101 Pepperdine (H)	82
114 Miami (H)	106
96 Manhattan (H)	68
69 Tulane (A)	58
122 Samford (H)	79
78 Stetson (H)	71
67 Georgia Tech (H)	85
65 Jacksonville (A)	83
82 California-Irvine (H)	69
98 Wisconsin-Milw. (H)	61
81 Georgia Tech (A)	76
113 Georgia Southern (A)	81
79 Jacksonville (H)	90
61 North Carolina (A)	70
74 Florida Southern (A)	66
94 Miami (A)	100

1971 - 72 — Won 27, Lost 6 (.818)

112 Oglethorpe (H)	69
96 Eastern Kentucky (H)	83
90 Stetson (N)	54
90 Jacksonville (A)	83
134 Valdosta State (H)	65
(10) Hawaii (A) (Forfeit)	(30)
76 Hawaii (A)	81
85 Washington (N)	77
73 Oregon State (N)	72
85 Washington State (N)	61
88 Denver (N)	60
63 St. Louis (N)	62
106 E. Tennessee State (H)	63
96 Mercer (H)	78
86 Houston (H)	79

ALL-TIME FSU SCORES



1971 - 72 (cont.)

105	South Alabama (H)	72
71	Georgia Tech (A)	69
82	Jacksonville (H)	84
84	Florida Southern (H)	63
109	Pan American (H)	83
86	Houston (A)	94
104	South Alabama (A)	61
94	Tulane (H)	84
108	Georgia Tech (H)	50
70	Jacksonville (A)	61
49	Stetson (A)	47
94	Biscayne (A)	66
64	Cincinnati (A)	88
NCAA Tournament		
83	Eastern Kentucky (N)	81
70	Minnesota (A)	56
73	Kentucky (N)	54
79	North Carolina (N)	75
76	UCLA (A)	81

1972 - 73 — Won 18, Lost 8 (.692)

109	Georgia Southern (H)	97
87	Eastern Kentucky (N)	70
97	Biscayne (H)	62
59	Princeton (N)	61
85	Baylor (N)	67
68	Alabama (N)	74
91	Northwestern (N)	73
70	Penn State (N)	60
77	Bingham Young (N)	80
94	Oklahoma City (A)	63
91	Connecticut (H)	55
101	Georgetown (H)	70
78	Cincinnati (H)	74
84	Stetson (H)	67
66	Jacksonville (A)	70
47	Samford (A)	34
78	Southern Ill. (H)	73
84	South Florida (H)	63
82	Virginia Tech (A)	91
80	Seton Hall (N)	61
62	Cincinnati (A)	89
83	Jacksonville (H)	74
79	North Carolina (N)	91
86	South Alabama (A)	69
59	Marshall (H)	71
112	Mercer (H)	94

1973 - 74 — Won 18, Lost 8 (.692)

92	Hofstra (H)	63
109	Biscayne (H)	71
65	Clemson (N)	58
60	Pittsburgh (N)	82
93	Eastern Kentucky (A)	60
78	Louisville (A)	90
88	Memphis State (H)	80
107	W. Kentucky (N)	87
66	Wake Forest (N)	48
92	Indiana State (N)	93
84	Wisc.-Milw. (N)	82
99	Texas A&M (N)	79
74	Houston (A)	79
85	Virginia Tech (N)	80
92	Georgia Southern (N)	89
94	South Florida (A) (OT)	95
73	South Illinois (A)	77
78	Jacksonville (H)	74
90	New Mexico (H)	71
91	Canisius (H)	74
118	South Florida (H)	84
89	Jacksonville (A)	113
85	North Carolina (N)	104
105	South Alabama (H)	83
86	Fairleigh Dickinson (H)	58
96	South Alabama (A)	91

1974 - 75 — Won 18, Lost 8 (.692)

81	Valdosta State (H)	74
72	Illinois State (H)	70
90	Marshall (H)	63
69	Memphis State (A)	70
75	Louisville (H)	84
96	Oa. State-Bakersfield	66
67	Ohio University (H)	60
69	Purdue (N)	66
61	Louisville (A)	79
107	Eastern Kentucky (H)	75
104	Wisconsin-Milw. (H)	82
88	Biscayne (A)	59
71	South Florida (A)	77
107	Hofstra (H)	71
95	Biscayne (A)	85
75	Canisius (A)	81
78	New Mexico (A) (OT)	84
111	UT-Chattanooga (H)	84
63	Jacksonville (H)	55
101	Georgia Southern (N)	77
81	Georgia State (H)	72
71	Jacksonville (A)	76
104	Georgia Southern (H)	71
91	Mercer (H)	68
77	South Florida (H)	64
54	Stetson (A)	63

1975 - 76 — Won 21, Lost 6 (.778)

90	Rollins (H)	47
65	Eastern Kentucky (A)	58
59	Indiana (A)	53
81	Stetson (H)	71
109	Palm Beach Atlantic (H)	52
78	South Florida (N)	71
72	Alabama (N)	76
54	Washington (N)	69
75	Oregon State (N)	78
84	Colorado State (N)	54
85	Western Kentucky (H)	80
77	Jacksonville (A)	57
107	Baptist College (H)	54
100	Memphis State (H)	79
76	South Florida (A)	72
110	Southwestern La. (H)	70
66	Georgia State (A)	58
80	Illinois State (A)	58
80	Illinois State (A) (OT)	82
88	South Florida (H)	62
109	Illinois State (H)	81
85	Madison (A)	65
74	Jacksonville (H)	65
92	Georgia State (H)	70
105	Valdosta State (H)	61
90	Mercer (H)	76
68	Southwestern La. (A)	65
81	Dayton (A)	95

1976 - 77 — Won 16, Lost 11 (.592)

70	Toledo (N)	66
92	Clemson (A)	108
109	Missouri Western (H)	80
97	Austin Peay (H)	86
63	Missouri (A)	65
94	Santa Clara (N)	80
87	San Francisco (A)	93
71	Army (N)	72
76	Vermont (A)	67
75	Louisville (A)	78
93	Western Kentucky (A)	73
83	Troy State (H)	69
69	Madison (H)	66
75	Memphis State (A)	81
97	South Florida (A)	84
115	South Alabama (H)	86
70	Jacksonville (A)	77

1976 - 77 (cont.)

65	N.C.-Charlotte (H)	76
66	Mercer (A)	65
139	Baptist (H)	72
57	Kentucky (A)	97
87	Stetson (A)	80
76	Dayton (A)	71
64	Jacksonville (H)	70
103	South Florida (H)	72
91	Oral Roberts (H)	87
72	Georgia Tech (N) *	67
* Metro Tournament		

1977 - 78 — Won 23, Lost 6 (.793)

83	Rollins (H)	59
110	Troy State (H)	82
93	St. Leo (H)	49
76	South Florida (A)	49
94	Seton Hall (A)	67
100	Texas A&M (A)	77
82	Navy (A)	55
97	Missouri (H)	64
75	Cincinnati (A)	77
71	Tulane (A)	56
74	Minnesota (A)	88
87	Tulane (A)	85
85	Fairleigh Dickinson (H)	43
103	Tulane (H)	85
76	Cincinnati (H)	66
70	Louisville (A)	66
88	St. Louis (A)	75
56	South Alabama (H)	49
72	St. Louis (A)	58
95	Memphis State (A)	89
89	Memphis State (H)	82
79	UNC-Charlotte (A)	88
81	Louisville (H)	70
78	Georgia Tech (H)	72
65	Georgia Tech (A)	82
80	Oral Roberts (A)	76
71	Georgia Tech (A)	69
93	Louisville (A)	94
76	Kentucky (A) (NCAA)	85

1978 - 79 — Won 18, Lost 10 (.642)

116	Eckerd (H)	71
70	Western Kentucky (H)	59
71	Auburn (A)	70
68	Florida (H)	61
106	Florida Southern (H)	75
80	Dayton (A)	97
57	Penn State (N)	64
85	Alabama-Birmingham (A)	66
68	Jacksonville (A)	61
96	Georgia Southern (N)	73
75	Old Dominion (A)	80
60	Tulane (A)	54
61	St. Louis (A)	79
93	Memphis State (A)	86
65	Louisville (H)	67
79	Georgia Tech (H)	73
79	George Washington (A)	68
80	Cincinnati (A)	77
89	Tulane (H)	77
71	Louisville (A)	84
84	Jacksonville (H)	81
61	South Alabama (A)	78
73	Georgia Tech (A)	75
84	St. Louis (H)	79
76	Cincinnati (H)	71
90	Memphis State (H)	87
101	Tulane (A)	92
35	Memphis State (A)	64
60	Virginia Tech (A)	38

1979 - 80 — Won 22, Lost 9 (.709)

101	Florida A&M (H)	63
76	Jacksonville (H)	77
89	South Florida (A)	71
87	Florida (N)	70
80	Memphis State (A)	78
81	Marquette (N)	76
112	Minnesota (H)	91
67	Western Kentucky (A)	65
108	Tulane (N)	97
75	St. Louis (A)	73
84	South Florida (H)	69
74	Memphis State (A)	69
79	Tulane (A)	80
82	South Carolina-Aiken (H)	69
64	Marquette (A)	74
77	Virginia Tech (H)	79
73	Louisville (A)	79
67	Cincinnati (A)	52
73	Auburn (H)	79
55	Memphis State (H) *	54
77	Cincinnati (H)	74
85	Florida Southern (A)	75
71	St. Louis (A)	69
64	Jacksonville (A)	55
66	Cleveland State (H)	83
89	Alabama-Birmingham (H)	87
76	Virginia Tech (A)	78
75	Louisville (H)	83
65	Tulane (A)	73
79	Cincinnati (A)	69
72	Louisville (A)	81
94	Toledo (NCAA) (A)	91
78	Kentucky (NCAA) (A)	97
* Forfeit		

1980 - 81 — Won 17, Lost 11 (.607)

57	Central Florida (H)	41
66	Minnesota (A)	79
59	Jacksonville (H)	57
74	Florida (N)	81
74	Auburn (A)	78
68	Missouri (N)	64
64	Georgia (N)	62
78	South Carolina (N)	80
84	Memphis State (H)	66
79	Cincinnati (A)	77
67	Baptist College (H)	60
70	Virginia Tech (A)	80
78	Louisville (A)	98
59	Jacksonville (A)	50
79	Tulane (H)	61
62	Florida (A)	71
74	Tulane (A)	68
71	St. Louis (A)	72
73	Louisville (H)	82
70	St. Louis (H)	57
79	Cincinnati (H)	80
80	Virginia Tech (H)	76
70	South Carolina (A)	83
73	Florida A&M (H)	79
84	St. Louis (N)	77
57	Cincinnati (N)	58

1981 - 82 — Won 11, Lost 17 (.393)

81	Florida A&M (H)	67
67	Georgia (H)	70
94	Jacksonville (N)	93
67	South Florida (N)	82
80	Jacksonville (H)	83
65	Florida (N)	81
76	Auburn (H)	77
82	South Carolina (A)	77
76	UNC-Charlotte (N)	73
79	Dayton (A)	93
57	Louisville (A)	79

ALL-TIME FSU SCORES

1981 - 82 (cont.)

63	Memphis State (A)	90
62	Florida (H)	67
75	St. Louis (A)	74
69	Virginia Tech (A)	65
89	St. Louis (H)	73
101	St. Leo (H)	74
79	Jacksonville (A) (OT)	80
71	Louisville (H)	65
53	Tulane (A)	66
61	Tulane (H)	62
60	Memphis State (H)	62
83	Cincinnati (A)	84
84	South Carolina (H)	87
76	Virginia Tech (H)	77
71	Cincinnati (H)	73
54	Tulane (N)	49
73	Louisville (N)	97

1982 - 83 — Won 14, Lost 14 (.500)

92	St. Leo (H)	54
68	Auburn (A)	78
81	Florida A&M (H)	79
77	South Florida (N)	90
81	Jacksonville (N)	66
63	Florida (H)	84
74	Pittsburgh (H)	75
85	San Diego State (A)	89
96	Tulsa (N)	80
74	New Mexico (A)	71
61	Jacksonville (A)	60
69	Louisville (H)	96
94	Southern Mississippi (H)	82
69	Virginia Tech (A)	70
66	Cincinnati (H)	78

1982 - 83 (cont.)

71	Southern Mississippi (A)	85
90	South Carolina (A) (OT)	85
48	Cincinnati (A)	63
63	Louisville (A)	89
83	Jacksonville (H)	74
79	Tulane (H) (2 OT)	80
82	Virginia Tech (H)	78
79	New Mexico (H)	72
74	Memphis State (H)	72
76	South Carolina (H)	79
67	Memphis State (A)	94
66	Tulane (A)	71
74	Memphis State (N)	84

1983 - 84 — Won 20, Lost 11 (.645)

95	Central Florida (H)	56
83	Tampa (H)	70
67	Florida (A)	60
69	Auburn (H)	76
76	Jacksonville (H)	63
94	Florida International (H)	75
89	Pittsburgh (A)	102
87	Florida (H)	64
93	Furman (H) (OT)	91
68	South Carolina (H)	76
83	Southern Mississippi (A)	64
43	Tulane (A)	50
71	Cincinnati (H)	57
92	Baptist College (H)	75
71	Louisville (A)	95
87	South Carolina (A)	82
78	Southern Mississippi (H)	74
75	Louisville (H)	60
69	Memphis State (H)	73

1983 - 84 (cont.)

47	Jacksonville (A)	56
67	Memphis State (A)	75
52	Tulsa (H)	61
51	South Florida (A)	53
58	Virginia Tech (H)	57
85	Cincinnati (A)	64
93	Virginia Tech (A)	79
62	Monmouth College (H)	55
72	South Carolina (N)	65
63	Memphis State (N)	65
74	North Carolina State (N) (OT)	71
63	Pittsburgh (N)	66

1984 - 85 — Won 14, Lost 16 (.466)

89	Tampa (H)	52
65	Florida (H)	68
97	Florida International (H)	43
61	Jacksonville (A)	60
90	Tennessee-Martin (H)	73
83	Pittsburgh (N)	76
97	Furman (A)	75
62	Cincinnati (A)	63
69	North Carolina (N)	78
88	Josephs (H)	72
54	South Florida (H)	56
62	Louisville (H)	63
71	Virginia Tech (A)	85
66	North Carolina State (A)	72
69	Memphis State (H)	74
63	Southern Miss (A)	77
61	Tulane (A)	64
77	South Carolina (A)	77
79	Florida (A)	86
74	Tulane (H)	51
91	Southern Miss (H)	58
88	Jacksonville (H)	72
68	Memphis State (A)	70
72	Louisville (A)	83
75	Virginia Tech (H)	87
85	Cincinnati (H)	60
87	South Carolina (H)	75
97	Virginia Tech (N)	93
75	Cincinnati (N)	65
86	Memphis State (N) (OT)	90

1985 - 86 — Won 12, Lost 17 (.414)

86	Tampa (H)	62
66	Florida (A)	85
76	North Carolina State (H)	67
91	Western Carolina (H)	83
122	Florida Tech	83
89	Alabama (A)	100
75	Pitt (A)	88
64	North Carolina (A)	109
62	Jacksonville (H)	69
76	Central Florida (H)	58
113	California Univ.-Pa. (H)	75
76	Cincinnati (H)	73
64	Louisville (H)	85
92	Southern Mississippi (H)	94
75	Miami (A)	83
55	New Orleans (A)	76
73	Virginia Tech (A)	86
73	South Carolina (A)	81
90	Miami (H)	72
96	Southern Miss (A)	102
73	Memphis State (A)	99
96	New Orleans (H)	77
72	Cincinnati (A)	76
67	Louisville (A)	89
82	Memphis State (H)	80
84	Virginia Tech (H)	92
68	South Carolina (H)	62
77	Virginia Tech (N)	76
71	Memphis State (N)	73

1986 - 87 — Won 19, Lost 11 (.633)

80	Florida (H)	76
97	South Carolina-Spartanburg (H)	69
72	Alabama (H)	71
92	Oklahoma (A)	109
101	Western Carolina (A)	76
85	Valdosta State (H)	75
84	Alcorn State (N)*	82
91	Tennessee (N) (OT)*	90
78	Jacksonville (A)	90
57	Wisconsin-Green Bay (H)	49
64	Louisville (H) Metro	73
83	Stetson (H)	75
67	Cincinnati (A) Metro	69
68	Memphis State (A) Metro	76
60	South Carolina (H) Metro	63
94	Southern Miss (A) Metro	74
76	Central Florida (H)	57
79	Virginia Tech (A) (OT) Metro	82
77	Cincinnati (H) Metro	75
57	Miami (A)	63
96	Memphis State (H) Metro	89

1986 - 87 (cont.)

80	South Carolina (A) Metro	72
83	South Florida (H)	78
71	Louisville (A) Metro	87
107	Virginia Tech (H) Metro	76
108	Miami (H)	84
117	Southern Miss (H) Metro	102
85	South Carolina (N) Metro	86
107	Rhode Island (H) NIT	92
92	Vanderbilt (A) NIT	109
* Red Lobster Classic (1st Place)		

1987 - 88 — Won 19, Lost 11 (.633)

87	Bucknell (H)	58
121	Florida International (H)	75
63	Penn State (H)	60
87	Oklahoma (H)	89
48	Florida (A)	71
80	Stetson (N)	67
78	Tennessee (A) (OT)	81
93	Hardin-Simmons (H)	79
71	Pittsburgh (A)*	72
101	Central Florida (A)*	67
87	Jacksonville (H)	63
83	Louisville (H) Metro	76
92	Memphis State (H) Metro	85
86	South Florida (A)	70
74	Cincinnati (A) Metro	71
72	South Carolina (H) Metro	80
93	Central Florida (H)	69
87	Virginia Tech (A) Metro	86
82	Monmouth (H)	68
101	Cincinnati (H) Metro	65
83	Southern Miss (H) Metro	78
62	Louisville (A) Metro	82
76	Memphis State (A) Metro	81
108	Alabama State (H)	90
78	South Carolina (A) Metro	81
92	Virginia Tech (H) Metro	79
87	Southern Miss (A) Metro	83
84	Cincinnati (A) NIT	74
74	Memphis State (A) NIT	81
98	Iowa (A) NCAA West Region	102

1988 - 89 — Won 22, Lost 8 (.733)

133	Central Florida (H)	79
100	Florida International (H)	75
104	Florida (H)	86
91	Stetson (H)	74
87	South Alabama (H)	82
78	Penn State (A)	71
113	South Florida	81
97	Central Florida (N)	64
67	Villanova (N)	68
113	Rider College (H)	67
104	Southern Miss (H)	79
95	Jacksonville (A)	70
101	Tennessee (H)	90
112	Arkansas (A) (OT)	105
95	Cincinnati (H)	80
69	South Carolina (A)	67
100	Virginia Tech (A)	97
82	Memphis State (H)	99
66	Cincinnati (A)	65
81	Louisville (A)	78
88	South Carolina (H)	72
77	Louisville (H) (OT)	76
78	Memphis State (A)	89
77	New Orleans (A)	83
100	La Salle (A)	101
117	Virginia Tech (H)	97
81	Southern Miss (A)	78
80	South Carolina (H)	63
80	Louisville (N)	87
83	Middle Tennessee State (N)	97



BASKETBALL LETTERMEN CLUB

A

Abraham, Ansley	1974
Adams, Arthur	1949
Aldridge, Archie	1974
Allen, Herbert	1976
Allen, Randy	1964, 65, 66, 67
Anderson, Kris	1977, 78, 79, 81
Arnold, Granville	1983, 84
Arnold, Rodney	1980, 81
Artemier, Richard	1954, 55
Ashworth, Rufus	1961

B

Barrow, Tim	1968
Barber, Pee Wee	1966, 67
Benjamin, Lee	1949
Benson, Rick	1952, 53
Biggs, Donald	1966
Bloodworth, John	1966
Boltz, Daniel	1957, 58, 59
Boyd, Aubry	1988
Bozeman, James	1978, 79, 81
Brennan, John	1975
Brodie, Mark	1975
Brown, Murray	1977, 78, 79, 80
Browyard, Dave	1973, 74
Burke, Dennis	1973, 74
Burst, Thomas	1953
Burt, John	1969, 70
Bush, Ken	1969
Byrd, Carlton	1974, 75, 76, 77

C

Cable, Randy	1968, 69, 70
Calkin, Jim	1972
Campbell, Rick	1967
Carter, Tony	1965, 66, 67
Casteel, Robert	1967, 68, 69, 70
Chasse, Richard	1974, 75
Chastman, Ed	1979
Choice, Raleigh	1966, 67
Clyde, Benny	1973
Cole, Otis	1972, 73, 74
Collinsworth, Greg	1979, 80, 81
Coogler, Faurest	1961
Cotton, Bill	1961
Cowens, Dave	1968, 69, 70
Cox, Jerry	1978, 79, 80
Cundy, Tom	1952, 53, 54, 55

D

Danford, Richard	1966, 67, 68
Davis, Harry	1975, 76, 77, 78
Davis, Jack	1961
Davis, LaRae	1985, 87
Dawson, Tony	1988, 89
DePatry, Bob	1968
Dillard, Mickey	1977, 78, 80, 81
Doyle, Kenneth	1967, 68
Durham, Hugh	1957, 58, 59

E

Eason, Michael	1966
Edney, Tim	1961
Ek, Bob	1962, 63
Elizy, Vernell	1970, 71

F

Fairchild, Charles	1965
Farrar, Joe	1984, 85
Fedor, Dave	1959, 60, 61, 62
Fischer, Louis	1950, 51, 52
Fitchett, Jerome	1985, 86, 87, 88
Forkay, Russell	1966
Fryer, Artie	1972

G

Garcia, Thomas	1957
Garrett, Rowland	1970, 71, 72
Gay, Larry	1971, 72, 73
Gies, Jan	1968, 69, 70
Gimre, Oren	1981, 81
Gipson, Alton Lee	1984, 85
Giswood, Bill	1963
Gienn, Bill	1966, 67
Glover, Roy	1970
Gonzalez, Pete	1963, 65
Gordon, Duane	1952, 53

Grady, Greg	1973, 74, 75, 76
Gregory, Stu	1957
Guckenberger, Buzz	1955, 59

H

Harris, Eugene	1974, 75, 76, 77
Harris, Ron	1970, 71, 72
Harrison, John	1974, 75
Hartman, Bob	1951
Hilaman, Sheldon	1948
Hogan, Jeff	1967, 68, 69
Huge, Cal	1963
Hunter, Tat	1966, 67, 68, 69

J

Jackson, Tony	1977, 78, 79, 80
Jacoby, Leroy	1956, 57, 58
Johnson, Brad	1988
Johnson, Michael	1982, 83, 84
Johnson, Otis	1973

K

Karasek, Tony	1966, 67
Kimrey, Linnie	1969
King, Ron	1971, 72, 73
Klay, Dale	1969, 70
Kuhl, Donnie	1977, 78, 79, 81
Kundick, Michael	1976

L

Langan, Robert	1947
Leskey, Ken	1964, 65
Leitch, Colin	1966
Long, Charlie	1961, 62, 63
Loucks, Donald	1948
Lovell, Bobby	1963, 64, 65

M

Mabry, Thomas	1965, 66
Mackin, Kenneth	1968, 70
McCloud, George	1966, 67, 68, 69
McComber, Darryl	1969, 70
McCrary, Benjamin	1947
McCrary, Lawrence	1972, 73, 74
Maimon, Ronald	1965, 66
Mann, Hank	1975, 78, 79
Marsee, Bud	1950, 51
Martello, Vince	1983, 84
Martin, Terry	1985
Matchett, Scott	1961
Mateer, Craig	1986, 87
Mayes, Sharon	1966
Menasco, Nick	1959
Miles, Bobby	1962, 63, 64
Mitchell, Derrick	1968, 69
Moore, Larry	1967, 68
Morrison, Bruce	1965, 66
Morrison, Ian	1967
Murphy, Brian	1965
Myrick, Maurice	1962, 63, 64, 65

N

Nemergut, Ron	1971
Nettles, Ronald	1949

O

Oler, James	1953
-------------	------

P

Parker, William	1948
Parks, Bobby	1976, 79, 80, 81
Patton, Wayne	1965
Pavy, James	1948
Peacock, William	1964, 65
Penice, Robert	1950, 51, 52, 53
Perkins, Zach	1973, 74, 75, 76
Petty, Otto	1971, 72, 73
Phillip, Raphael	1982, 83
Phillips, William	1966
Polite, Michael	1988

R

Reeves, Dale	1963
Reynolds, Carl	1968, 69
Richardson, Jimtom	1952
Ricketts, Dale	1963
Rogers, Peter	1963, 64

Rolle, Elvis	1980, 81
Ross, David	1967, 68
Royals, Reggie	1971, 72, 73

S

Samuel, Greg	1971, 72
Schull, Gary	1964, 65
Shaffer, David	1986
Shaffer, Dean	1984, 85
Shirley, Jerry	1963, 64, 65
Simmons, James	1974, 75
Smalls, Wayne	1974, 75, 76, 77
Smith, James	1976, 77, 78
Smith, Jerry	1960, 61
Spaight, David	1962, 63, 64, 65
Stewart, Darryle	1966, 67, 68
Stitt, Cyril	1973, 74, 75
Stolsen, Galen	1966
Strom, Larry	1957
Swain, Ray	1961, 62

T

Thompson, David	1976, 77, 78
Tookes, Pernell	1979, 80, 81
Towley, Jim	1974, 75, 76, 77
Trammell, Jeffrey	1976
Twomey, Fred	1957

V

Vetica, Dave	1977
--------------	------

W

Waits, Robert	1957
Wallace, Jim	1964
Ward, Bob	1957
Warren, Larry	1974, 75, 76
Watson, Ronald	1962, 63, 64
Wernke, Paul	1953
Westhafer, Jerry	1952, 53
Westhafer, Joe	1957
White, David	1968
Wiggins, Mitchell	1982, 83
Wilkes, Scott	1962, 63
William, Tony	1962, 63, 64
Williams, Bob	1957
Williams, Joseph	1957
Williams, Willie	1969, 70
Wold, Gary	1953
Woodard, Wayne	1975
Wright, William	1972
Wyman, Jr., Orlando	1948, 49, 50

Y

Young, Ed	1980, 81
Young, Skip	1969, 70, 71

FLORIDA STATE'S PROFESSIONAL DRAFT PICKS SINCE 1970

Year	Player	Team	Round
1970	Dave Cowens Ken Macklin	Boston Celtics New York Nets	First
1971	Vernell Elizy Skip Young	Phoenix Suns Boston Celtics	
1972	Rowland Garrett	Chicago Bulls	
1973	Ron King	Kentucky Colonels	
1978	Harry Davis David Thompson	Cleveland Cavaliers Buffalo	Second Fifth
1980	Murray Brown	Cleveland Cavaliers	Fourth
1981	Kris Anderson Elvis Rolle	Milwaukee Bucks Los Angeles Lakers	Fourth Second
1983	Mitchell Wiggins	Indiana Pacers	First
1984	Vince Martello Tony William	Atlanta Hawks Milwaukee Bucks	Seventh Seventh
1985	Alton Lee Gipson Dean Shaffer	Sacramento Kings Washington Bullets	Seventh Fifth
1986	David Shaffer	Portland Trailblazers	Fourth
1987	Pee Wee Baber	Portland Trailblazers	Fourth
1989	George McCloud	Indiana Pacers	First

THE METRO CONFERENCE: A NATIONAL LEADER

Effective leadership and aggressive promotion have become the trademarks of the Metro Conference administration, while the accomplishments of its athletic teams are now recognized in all sports. Fourteen league championships are decided in the men's sports of baseball, basketball, cross country, golf, swimming and diving, tennis and track and field, and in the women's sports of basketball, cross country, golf, swimming and diving, track and field, tennis and volleyball.

The Metro Conference, originally called the Metro Six, was formed on June 13, 1975. Charter members included the University of Cincinnati, Georgia Tech, Louisville, Memphis State, St. Louis and Tulane University.

Recognition came quickly, due largely to the excellent basketball tradition at each school. In unprecedented fashion, the Metro was awarded automatic qualification for the NCAA Basketball Tournament on September 22, 1975. No other conference had become an immediate qualifier for the postseason event in its first year of existence. Since then, Georgia Tech and St. Louis have withdrawn their membership. Tulane, which withdrew from the Metro in 1985, re-enters the league as of September 1, 1989 and joins present members Florida State, South Carolina, Southern Mississippi and Virginia Tech.

On August 5, 1987, Ralph McFillen was named commissioner of the Metro Conference, succeeding Steven J. Hatchell. Hatchell had served since 1983 when he replaced Larry Albus, the league's first commissioner.

Under McFillen's leadership, the Metro Conference has continued to stress a commitment to aggressive promotion. The conference newspaper, the Metro News, is distributed 15 times each year. In addition, the Metro Conference Sports Writers and Broadcasters Association (MCSWBA), formed in July, 1984, assists in publicizing the league's accomplishments.

In 1989, a record 512 student-athletes were named to the Commissioner's List, indicative of above-average grade point averages (3.0 or higher on a 4.0 scale) achieved during the academic year. The list was inception in 1983.

The Metro mystique came to fruition in 1979-80. Led by player of the year Darrell Griffith, Louisville won the NCAA Basketball Championship with a 59-54 victory over UCLA. With that win, the Metro became the first conference to capture a national title after only five years in existence.

The 1985-86 season was highlighted by Louisville's second

national title in six years. With the victory, Denny Crum became the only coach to have won the title twice in the 1980s, until Indiana's Bobby Knight matched the feat at the conclusion of the 1986-87 season. Southern Mississippi contributed to the Metro Annals in 1987 when the Golden Eagles captured the National Invitation Tournament title.

THE METRO CONFERENCE
A TRADITION OF
EXCITEMENT!

Only twice in the last 14 years has the Metro not advanced at least two teams into the NCAA Tournament. The league has been represented in the Final Four five times in the last nine years. Overall, the Metro Conference has produced two national championships and five regional winners, while earning a 38-28 (.578) record in NCAA Tournament play.

The quality of play in the conference has been consistently highlighted at the national level. In 1989, the Metro placed a record four teams (Florida State, Louisville, Memphis State and South Carolina) in the NCAA Tournament. The conference boasted back-to-back Basketball Weekly "Rookie Coaches of the Year," in 1987 and 1988, when Memphis State's Larry Finch garnered national honors followed by Virginia Tech's Frankie Allen. Players in the conference have also added to the nation's spotlight. In addition to Griffith being named College Player of the Year in 1980, his Louisville teammate Rodney McCray was selected to represent the United States on the 1980 Olympic basketball squad. Virginia Tech's Bimbo Coles was the first Metro player to actually play in the Olympic Games (the 1980 games were boycotted by the U.S.) when he traveled to Seoul, South Korea in the summer of 1988.

The Metro continued to highlight the national basketball scene in the summer of 1989, when three conference players were selected in the first round of the National Basketball Association draft. Former Louisville All-America, Pervis Ellison, emerged as 'King' of the draft when Sacramento made him the first pick of the event. Florida State's George McCloud was taken seventh by the Indiana Pacers and Louisville's Kenny Payne was picked 19th by the Philadelphia 76ers.

The Metro Conference has served as host for NCAA Tournament action throughout its 14-year history. In 1984, the league served as host for the Midwest Regional in St. Louis. The following year and again in 1987 and 1989, the conference hosted the first and second rounds of the East (1985) and Southeast (1987, 1989) regionals. The 1986 Southeast regional also came under the direction of the Metro, which also will serve as host of the 1991 Southeast subregion.

YEAR-BY-YEAR NCAA RESULTS

(Since the Metro was formed)

- 1976** Notre Dame 79, Cincinnati 78 (Midwest Regional 1st round)
Pepperdine 87, Memphis State 77 (Midwest Regional 1st round)
WON 0, LOST 2
- 1977** UCLA 87, Louisville 79 (West Regional 1st round)
Marquette 66, Cincinnati 51 (Midwest Regional 1st round)
WON 0, LOST 2
- 1978** Kentucky 85, Florida State 76 (Midwest Regional 1st round)
Louisville 76, St. John's 68 (Midwest Regional 1st round)
DePaul 90, Louisville 89, 2 OT (Midwest Regional 1st round)
WON 1, LOST 2
- 1979** Virginia Tech 70, Jacksonville 53 (Midwest Regional 1st round)
Louisville 69, South Alabama 60 (Midwest Regional 2nd round)
Indiana State 86, Virginia Tech 69 (Midwest Regional 2nd round)
Arkansas 73, Louisville 67 (Midwest Regional semifinals)
WON 2, LOST 2
- 1980** Florida State 94, Toledo 91 (Midwest Regional 1st round)
Virginia Tech 89, Western Kentucky 85, OT (Midwest Regional 1st round)
Kentucky 97, Florida State 78 (Midwest Regional 2nd round)
Indiana 68, Virginia Tech 59 (Midwest Regional 2nd round)
Louisville 71, Kansas State 69, OT (Midwest Regional 2nd round)
Louisville 66, Texas A&M 55, OT (Midwest Regional semifinals)
Louisville 86, LSU 66 (Midwest Regional championship)
Louisville 80, Iowa 72 (Final Four semifinals)
Louisville 59, UCLA 54 (Final Four championship)
WON 7, LOST 2
- 1981** Arkansas 74, Louisville 73 (Midwest Regional 2nd round)
WON 0, LOST 1
- 1982** Memphis State 56, Wake Forest 55 (East Regional 2nd round)
Villanova 70, Memphis State 66, OT (East Regional semifinals)
Louisville 81, Middle Tennessee State 56 (Midwest Regional 2nd round)
Louisville 67, Minnesota 61 (Midwest Regional semifinals)
Louisville 75, Alabama-Birmingham 68 (Midwest Regional championship)
Georgetown 50, Louisville 46 (NCAA semifinals)
WON 4, LOST 2
- 1983** Memphis State 66, Georgetown 57 (Midwest Regional 1st round)
Houston 70, Memphis State 63 (Midwest Regional semifinals)
Louisville 70, Tennessee 57 (Midwest Regional 2nd round)
Louisville 65, Arkansas 63 (Midwest Regional semifinals)
Louisville 80, Kentucky 68 (Midwest Regional championship)
Houston 94, Louisville 81 (NCAA semifinals)
WON 4, LOST 2
- 1984** Louisville 72, Morehead State 69 (Midwest Regional 1st round)
Louisville 69, Tulsa 67 (Midwest Regional 2nd round)
Kentucky 72, Louisville 67 (Midwest Regional semifinals)
Memphis State 92, Oral Roberts 83 (Midwest Regional 1st round)
Memphis State 66, Purdue 48 (Midwest Regional 2nd round)
Houston 78, Memphis State 71 (Midwest Regional semifinals)
WON 4, LOST 2
- 1985** Temple 60, Virginia Tech 57 (East Regional 1st round)
Memphis State 67, Penn 55 (Midwest Regional 1st round)
Memphis State 67, Alabama Birmingham 66, OT (Midwest Regional 2nd round)
Memphis State 59, Boston College 57 (Midwest Regional semifinals)
Memphis State 63, Oklahoma 61 (Midwest Regional championship)
Villanova 52, Memphis State 45 (NCAA semifinals)
WON 4, LOST 2
- 1986** Louisville 93, Drexel 73 (West Regional 1st round)
Memphis State 95, Ball State 63 (Southeast Regional 1st round)
Villanova 71, Virginia Tech 62 (Southeast Regional 1st round)
Louisville 82, Bradley 68 (West Regional 2nd round)
LSU 83, Memphis State 81 (Southeast Regional 2nd round)
Louisville 94, North Carolina 79 (West Regional semifinals)
Louisville 84, Auburn 76 (West Regional championship)
Louisville 88, LSU 77 (NCAA semifinals)
Louisville 72, Duke 69 (NCAA championship)
WON 7, LOST 2
- 1988** Louisville 70, Oregon State 61 (Southeast Regional 1st round)
Memphis State 75, Baylor 60 (Midwest Regional 1st round)
Iowa 102, Florida State 98 (West Regional 1st round)
Louisville 97, Brigham Young 76 (Southeast Regional 2nd round)
Purdue 100, Memphis State 73 (Midwest Regional 2nd round)
Oklahoma 108, Louisville 98 (Southeast Regional semifinals)
WON 3, LOST 3
- 1989** Louisville 76, Arkansas-Little Rock 71 (Midwest Regional 1st round)
Middle Tennessee 97, Florida State 84 (Southeast Regional 1st round)
DePaul 66, Memphis State 63 (West Regional 1st round)
North Carolina State 81, South Carolina 66 (East Regional 1st round)
Louisville 93, Arkansas 84 (Midwest Regional 2nd round)
Illinois 83, Louisville 69 (Midwest Regional semifinals)
WON 2, LOST 4
- NCAA TOURNAMENT RECORD OVERALL:**
WON 38, LOST 28 (Since 1976)

FLORIDA STATE'S ALL-METRO HONORS

First Team

Harry Davis	1977 - 78
Murray Brown	1978 - 79
Murray Brown	1979 - 80
Mickey Dillard	1979 - 80
Mitchell Wiggins	1981 - 82
Mitchell Wiggins	1982 - 83
Alton Lee Gipson	1983 - 84
Pee Wee Barber	1986 - 87
George McCloud	1987 - 88
George McCloud	1988 - 89

Second Team

David Thompson	1976 - 77
Mickey Dillard	1977 - 78
Tony Jackson	1978 - 79
Mickey Dillard	1980 - 81
Elvis Rolle	1980 - 81
Alton Lee Gipson	1984 - 85
Randy Allen	1984 - 85
Randy Allen	1985 - 86

Freshman Team

David Speights	1981 - 82
Randy Allen	1983 - 84
Michael Polite	1987 - 88

Newcomer of the Year

Alton Lee Gipson	1983 - 84
------------------	-----------

Coach of the Year

Hugh Durham	1977 - 78
-------------	-----------

All-Tournament

Eugene Harris	1977 - 78
Murray Brown	1978 - 79
Elvis Rolle	1979 - 80
Alton Lee Gipson	1983 - 84
Alton Lee Gipson	1984 - 85
Dean Shaffer	1984 - 85
Pee Wee Barber	1985 - 86
George McCloud	1987 - 88
George McCloud	1988 - 89

John Gunn Award

(Outstanding Player of Metro Tournament)	
Dean Shaffer	1984 - 85

Scoring Champion

Mitchell Wiggins	1981 - 82
Mitchell Wiggins	1982 - 83
Alton Lee Gipson	1984 - 85

Player of the Year

George McCloud	1988 - 89
----------------	-----------



FSU BASKETBALL: SIMPLY THE BEST!

Since Pat Kennedy took over as head coach of the Seminoles in 1986, the program has regained its national reputation for basketball excellence. While Kennedy's teams have earned back-to-back trips to the NCAA tournament and a Metro Championship, the student-life in Tallahassee makes attending Florida State even more enjoyable.

The 12,500 seat Tallahassee-Leon County Civic Center is one of the most glamorous arenas in all of college basketball. The Moore Athletic Center houses the basketball office as well as full practice facilities, training rooms, locker rooms and the cafeteria. The Center also has an academic area where tutoring sessions and study halls are held.

Players live in Cash Hall in suites that make a comfortable home away from home. Cash Hall is a private student dorm that sits just behind the President's home.

With a student enrollment of over 26,000, there is always an exciting atmosphere at Florida State games. Along with strong student body support, alumni and fans have poured into the Civic Center in record numbers since Coach Kennedy arrived. In each of the last four years, the basketball program has set a new attendance record. Last year, the Tribe set a record for a single game with 13,339 fans attending the nationally televised thriller with Louisville.

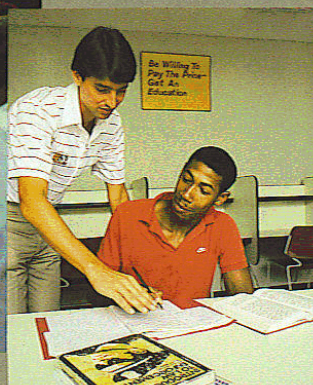


Above: The rolling, tree-covered campus of Florida State is recognized as one of the most beautiful in America, mixing traditional gothic structures with striking contemporary architecture.

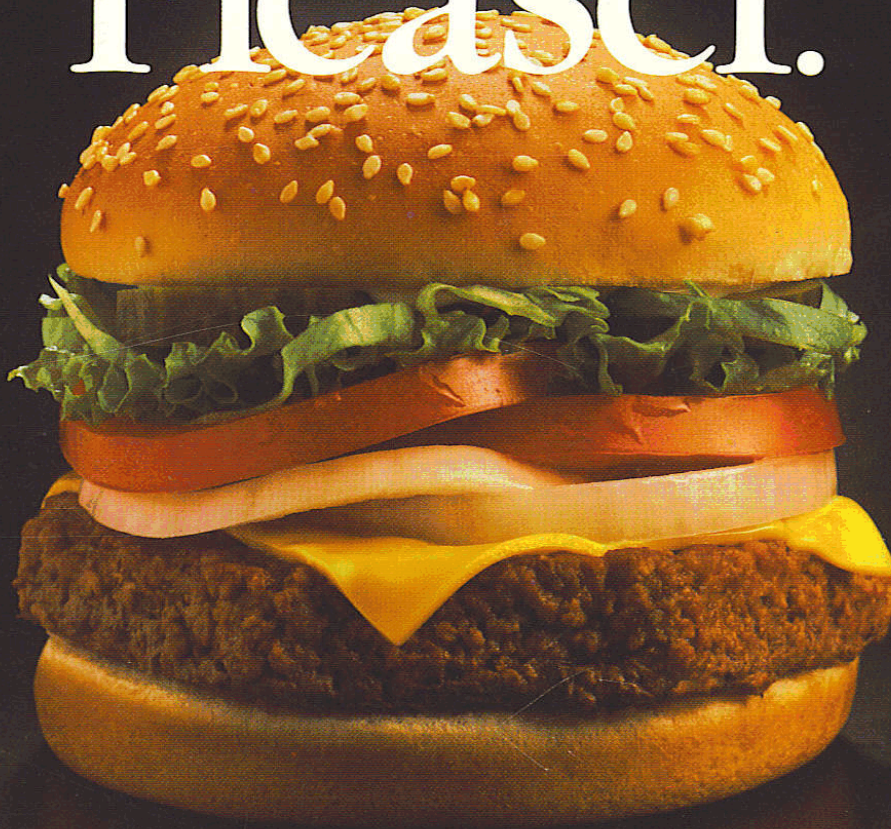
Left: Moore Athletic Center is the hub of the FSU athletic program. It houses coaches' offices and athletic administration as well as dining facilities, the hall of fame, training room, locker rooms and a fully equipped gymnasium.

Lower Left: Excitement is the name of the game when the Seminoles play in the ultra-modern Leon County Civic Center. Seating over 12,500, the area is among the most impressive in the south.

Below: At FSU, academics gets special emphasis. Tutoring and other academic support services are provided to make sure every athlete receives a superior quality education.



Crowd Pleaser.



At every Hardee's®, you'll find plenty of crowd-pleasing combinations. Like a sizzling ¼ lb.* Big Deluxe™ burger with an icy-cold soft drink. Or a scrumptious Rise and Shine™ biscuit with a piping hot cup of coffee. No matter which combination you choose, you're sure to come out a winner.

Hardee's
We're out to win you over.™

©1988 Hardee's Food Systems, Inc.
*pre-cooked weight

A3