



**Florida State
University
Seminole
Basketball
Media Guide
1991-92**

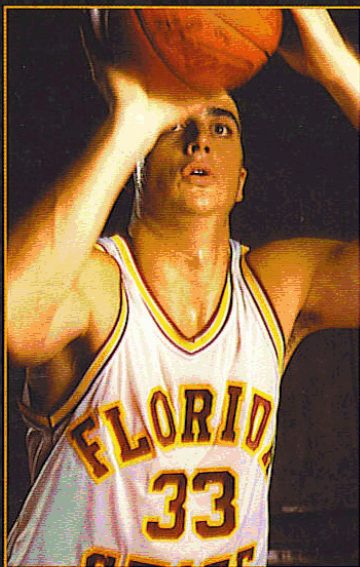
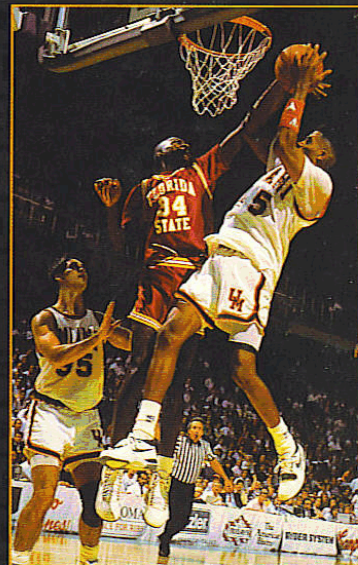
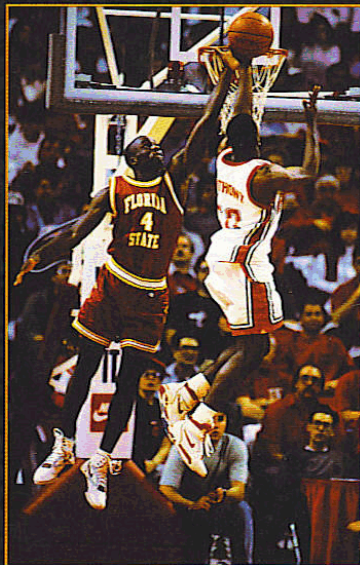


**Seminole in the
Atlantic Coast
Conference
Year One**

1991-92 Florida State Basketball Schedule

DATE	OPPONENT	LOCATION	TIME
NOVEMBER			
10	ILLAWARRA HAWKS (Australia)	Tallahassee, FL	7:00
13	ATHLETES IN ACTION	Tallahassee, FL	7:00
26	JACKSONVILLE	Tallahassee, FL	7:00
DECEMBER			
3	ACC/Big East Challenge vs. Syracuse	Atlanta, GA	7:00
6	CAPITAL CITY CLASSIC vs. Southern University	Tallahassee, FL	8:00
7	vs. Florida A&M		8:00
15	* North Carolina	Chapel Hill, NC	2:00
20	South Florida	Tampa, FL	7:30
23	ROBERT MORRIS	Tallahassee, FL	7:00
29	DUQUESNE	Tallahassee, FL	7:00
JANUARY			
2	UNC-ASHEVILLE	Tallahassee, FL	7:00
4	* VIRGINIA	Tallahassee, FL	7:00
6	†† Duke	Durham, NC	9:00
11	† Wake Forest	Winston-Salem, NC	4:00
18	* Maryland	College Park, MD	1:00
20	MERCER	Tallahassee, FL	7:00
23	† Georgia Tech	Atlanta, GA	9:00
25	* N.C. State	Tallahassee, FL	4:00
27	Florida	Gainesville, FL	7:30
30	§ DUKE	Tallahassee, FL	7:30
FEBRUARY			
1	†† WAKE FOREST	Tallahassee, FL	4:00
5	* MARYLAND	Tallahassee, FL	7:00
8	†† CLEMSON	Tallahassee, FL	4:00
10	* N.C. State	Raleigh, NC	7:30
13	§ Virginia	Charlottesville, VA	7:30
15	†† GEORGIA TECH	Tallahassee, FL	3:00
18	† Clemson	Clemson, SC	8:00
23	■ DePaul	St. Petersburg, FL	1:30
27	§ NORTH CAROLINA	Tallahassee, FL	7:30
MARCH			
12-14	ACC TOURNAMENT	Charlotte, NC	TBA

All Game Times Are Eastern
 * Atlantic Coast Conference
 † Raycom Television
 †† Raycom-Jefferson Pilot television package
 § ESPN
 ■ ABC



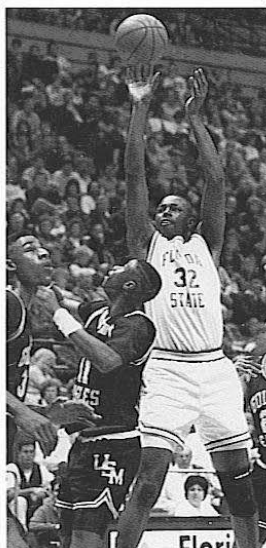
1991-92 Florida State Seminole Basketball Media Guide

Contents

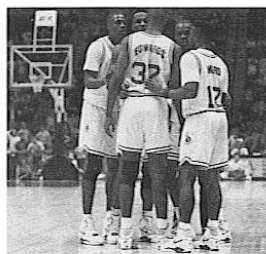
5

'91-92 Outlook

The New Kid Gets Ready to Take on the Block



Now the stakes are even higher as Florida State University embarks on its first season in the tradition-rich Atlantic Coast Conference.



13 Coaching Staff



Head Coach Pat Kennedy

He's The Coach who has propelled FSU back among the elite of college hoops.

Kennedy leads the Seminole program with championship flair.

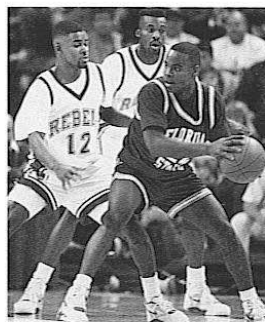
25 The 1991-92 Seminoles

Led by a legitimate All-America Candidate, the Seminoles are ready to take on the ACC.

FSU features a group of young players who must prove their ability to play as a unit early in the season.

47

1991-92 Opponents

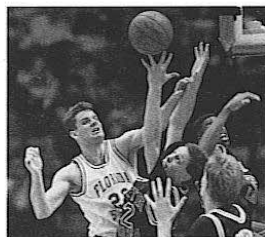


Florida State takes on the nation's finest basketball programs.

FSU's conference schedule alone would send most programs packing, but the Tribe has scheduled non-conference dates with Syracuse, DePaul and Florida in addition to the ACC schools.

77

Basketball At FSU



In athletics and academics, Florida State University exemplifies the very best. A highly-regarded academic institution, FSU is also one of the most popular schools in the country.

Media Information	2
Road Headquarters	3
Outlook	5
<i>The New Kid Gets Ready To Take On The Whole Block</i>	6
Coaching Staff	13
Head Coach Pat Kennedy: <i>He's The Coach ...</i>	14
Assistant Coaches	19
Support Staff	22
The 1991-92 Seminoles	25
Lorenzo Hands	26
Ron Miller	28
Doug Edwards	30
Sam Cassell	32
Rodney Dobard	33
Ray Donald	34
Chuck Graham	35
Stephen Gruhl	36
Andre Reid	37
Bob Sura	38
Charlie Ward	39
Byron Wells	40
Seminoles in the Pros	41
A Closer Look At The Seminoles	42
1991-92 Rosters	44
Basketball Theme	45
1991-92 Opponents	47
Opponent Profiles	48
ACC: <i>A Winner By Any Measure</i>	58
1990-91 ACC Basketball in Review	59
1990-91 Review	63
<i>A Season Of Beating The Odds</i>	64
1990-91 Statistics	66
1990-91 Box Scores	71
Basketball at FSU	77
<i>Basketball at Florida State</i>	79
Administration	92
Seminoles On The Air	99
Statistics: The Record Book	101
Individual Records	103
Team Records	107
Civic Center Records	108
Tournament History	109
Year-By-Year Record	109
Series Records	110
All-Time FSU Scores	115
Basketball Lettermen Club	119
1991-92 ACC Composite Schedule	120



**The 1991-92
FLORIDA STATE
BASKETBALL GUIDE**

Editor:

Rob Wilson

Research:

Joey Ferolito

Steve Roogow

Meredith Heins

Photography:

Ross Obley

Ryals Lee

FSU Photo Lab

Sam Lewis

Richard Lewis

Brian Tirpak

Brian Spurlock

Bucky Parrish

Randall Prophet

Phil Sears

Design:

J.S. Goodson

& Partners Advertising

Tallahassee, Florida

Printing:

Rapid Rater

Tallahassee, Florida

Press

Florida State University's 1991-92 Basketball Guide has been designed for use by the news media and Seminole fans. Any questions not covered in this brochure can be directed to the Florida State Sports Information Office.

All requests for working press, radio, television, photographers or scouting credentials should be made to Assistant Sports Information Director Rob Wilson at least one week prior to the playing day.

Working media: Working media will be admitted to the Tallahassee Leon County Civic Center and will be permitted to take their seats at courtside. Press credentials may be picked up prior to the game, or held at the Will Call window.

Requests will be evaluated and credentials issued according to the following criteria.

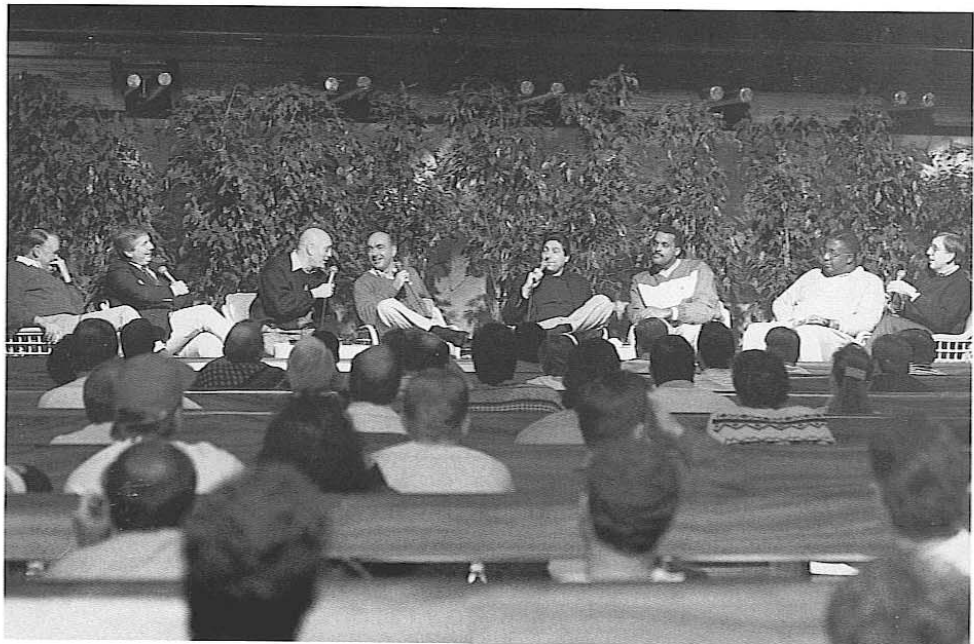
- Local metropolitan press; wire services, national publications; opposing metropolitan press; student newspaper
- Other daily newspapers
- Radio and television personnel not actually broadcasting
- Non-daily newspapers
- Scouts

Parking: To the east of the Center and surrounding areas. Press parking will be issued on a first-come first-served basis.

Photographers: Accredited photographers, upon presenting a photo pass, will be allowed to shoot in designated areas on the arena floor.

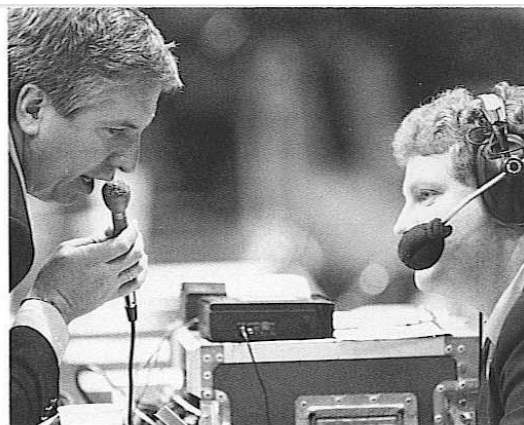
Television: Facilities are available for both local and network broadcasts. Please have requests prepared several weeks prior to the expected broadcast.

The pregame press conference before the "Dual in the Desert" included some of college basketball's legendary figures. Joining Kennedy on the panel were: (left to right) Keith Jackson, Pat Kennedy, Jerry Tarkanian, Dick Vitale, Jim Valvano, Randy Ayers, John Thompson and Brent Musburger.



The media should contact Rob Wilson of FSU Sports Information with any question regarding the basketball program. Wilson's office number is (904) 644-7292 and his home number is (904) 877-8738.

Credential requests should be sent, or faxed (904) 644-3820, to Wilson's attention no later than a week before the game.



Kennedy conducts his post-game radio interview with Wayne Hogan from courtside ten minutes after the final horn sounds.

Radio: Sections are reserved for both Florida State and opposing radio on press row. FSU grants broadcast rights to the official radio outlet of the visiting team on a reciprocal basis.

Phones: Telephone service should be secured directly through Centel Telephone Company of Tallahassee. Call 904/681-6600. Have them contact the Sports Information Office for location.

Telecopiers/FAX: A FAX machine is available in the press room.

Services: Half-time stats plus a running play-by-play will be provided to the media. Final stats and a final running will also be available following the conclusion of the game.

Interview policies: Florida State players may be reached through the Sports Information Office. A media card will be filled out and given to the player who will return the call collect. Following completion of the game, Florida State players will be available to the media after a cooling-off period. Head Coach Pat Kennedy will be taken to the press room where he will conduct a question and answer session with the media.

Press Meals: A light buffet is available in the Seminole Spirit Room to all members of the media. See Assistant Sports Information Director Rob Wilson at the game for buffet tickets.

Road Headquarters

- December 3 – Syracuse**
Atlanta Marriott Marquis – (404) 521-0500
- December 15 – North Carolina**
Marriott at Research Triangle – (919) 941-6200
- December 20 – South Florida**
Tampa Marriott Westshore – (813) 287-0561
- January 6 – Duke**
Omni Durham Hotel – (919) 683-OMNI
- January 11 – Wake Forest**
Stouffer Winston Plaza – (919) 725-3500
- January 18 – Maryland**
Greenbelt Marriott – (301) 441-3700
- January 23 – Georgia Tech**
Atlanta Airport Marriott – (404) 766-7900
- January 27 – Florida**
University Centre Hotel – (904) 371-3333
- February 10 – N.C. State**
Raleigh Marriott Crabtree Valley – (919) 781-7000
- February 13 – Virginia**
Holiday Inn University Area – (804) 293-9111
- February 18 – Clemson**
Holiday Inn of Clemson – (803) 654-4450
- February 23 – De Paul**
Tampa Marriott Westshore – (813) 287-2555

ACC Service Bureau

The ACC Service Bureau offers up-to-date statistics on a daily basis and a weekly coaches' teleconference during the course of the season. Individual and team statistics will be available by computer every afternoon by 3:00 p.m. The coaches' teleconference will take place Tuesday mornings beginning at 11:00 a.m.

Teleconference Schedule:

Cliff Ellis, Clemson	11:00
Mike Krzyzewski, Duke	11:10
Pat Kennedy, Florida State	11:20
Bobby Cremins, Georgia Tech	11:30
Gary Williams, Maryland	11:40
Dean Smith, North Carolina	11:50
Les Robinson, N.C. State	12:00
Jeff Jones, Virginia	12:10
Dave Odom, Wake Forest	12:20

Phone Numbers:

Statistics	919/855-6568
Teleconference	703/276-4310

FSU Quick Facts

President	Dr. Dale W. Lick
Location	Tallahassee, Florida
Enrollment	29,000
Founded	1857
Nickname	Seminoles
Colors	Garnet & Gold
Conference	Atlantic Coast
Arena	Tallahassee-Leon County Civic Center
Athletic Director	Bob Goin
Faculty Athletic Representative	Charles Ehrhardt
Director of Communications	Wayne Hogan
Head Basketball Coach	Pat Kennedy (Kings College '75)
Overall Record	221-116 (11 Years)



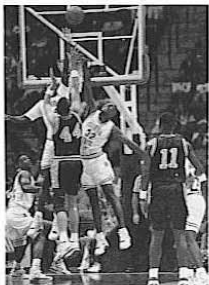


**1991-92
Outlook**



The
anticipation
is over. It's
time to
play ball.

The New Kid Gets Ready To Take On The Block



Doug Edwards led the Seminoles to their third NCAA Tournament in the last four years with outstanding play at both ends of the floor.

Opposite Page – Chuck Graham's 41-inch vertical leap allows him to get his jump shot off despite tight defense. Graham is one of only two returning Seminoles whose scoring average was in double figures last year.

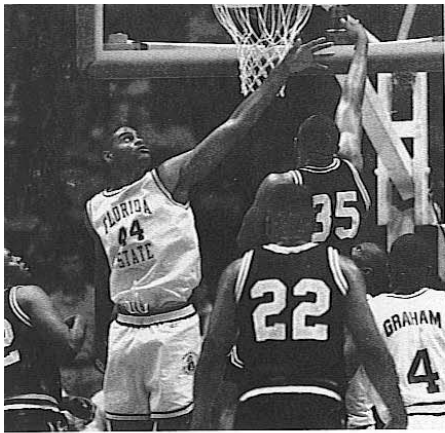
Basketball is back at Florida State.

Pat Kennedy's efforts over the last five years have resulted in three NCAA tournament trips in the last four years, both Metro Conference regular season and tournament championships, and nationally acclaimed recruiting classes. All goals which Kennedy hoped to realize when he took over the program.

Now the stakes are even higher as Florida State University embarks on its first season in the tradition-rich Atlantic Coast Conference. Kennedy's hopes for the season, however, remain the same; compete for the conference championship and earn a berth in the NCAA tournament field.

"Naturally, we are very excited about joining the ACC," said Kennedy. "But we are moving into the finest conference in the country and it will be a great challenge. We are very proud of our accomplishments over the last five years at Florida State, and welcome the new challenge that the ACC will bring."





Above — It helps when you stand 7'0" but Andre Reid combines great size with excellent skills. He averaged 4.5 blocks every 40 minutes in his rookie year.

Opposite Page — Doug Edwards always seems in control. His ability to shoot off-balance shots gives him a lot of free throw opportunities.

Much of the excitement surrounding the ACC's newest member stems from the abundant talent on FSU's young 1991-92 squad. All-America candidate Doug Edwards will headline the FSU lineup after proving lofty preseason accolades accurate last year. Considered the finest high school player in state history, Edwards (6-9, junior) led the Tribe in scoring and was second in rebounding during his rookie season. His overall game raised the level of the entire team and carried the Seminoles to their third NCAA Tournament berth in four years.

"Edwards is the real thing," said Southern California head coach George Raveling following Edwards' 24 point, nine rebound effort against the Trojans in the first round of the NCAA Tournament. "You come across great scorers, great rebounders, great passers, but rarely do you come across a guy that puts a complete game together like Edwards can. He's very tough to control because he is not selfish and he's so smart on the floor."

Joining Edwards in the front court of a projected starting five will be a pair of inside players that present an imposing defensive wall. Junior Rodney Dobard (6-9) moves from center, where he started last season, to forward and brings tremendous shot blocking ability to the position.

A left-hander, Dobard's inside offensive moves came a long way during his sophomore year. Dobard gained even more experience over the summer as he toured Europe with a group of Atlantic Coast All-Stars coached by Wake Forest's Dave Odom. Dobard averaged 8.0 points per game and gained valuable international seasoning.

"We have the potential to have one of the best front lines in college basketball next year. If Reid progresses like he has, Dobard improves offensively, and we get the same great play out of Edwards, then I think we will be awfully tough around the basket."

Andre Reid (7-0, sophomore) lacks only experience to become one of the league's top big men. He possesses the fine footwork and rebounding skills to make him a premier post player. Coaches like his ability to get off the floor and block shots without committing a foul. He blocked 34 shots last season, just two short of Dobard's freshman record set two years ago. The key for Reid will be handling opponent's attempts to get him in foul trouble.

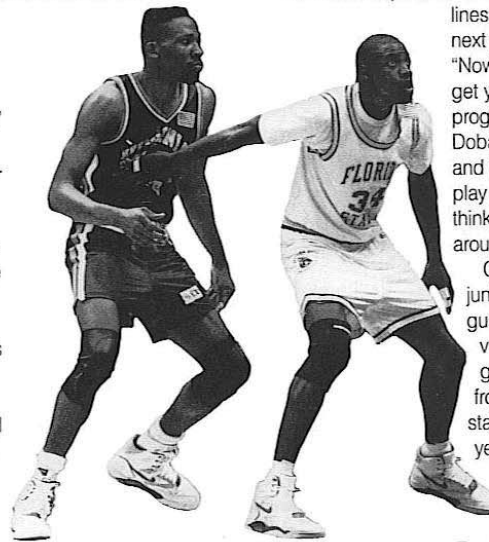
"We have the potential to have one of the best front

lines in college basketball next year," said Kennedy. "Now the word potential can get you in trouble. If Reid progresses like he has, Dobard improves offensively, and we get the same great play out of Edwards, then I think we will be awfully tough around the basket."

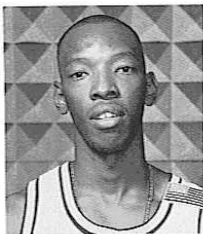
Chuck Graham (6-3, junior) returns at shooting guard where his 39-inch vertical leap allows him to get off his rainbow jumpers from anywhere. Although he started just six games last year, Graham averaged 10.9 points and drained a team-high 34.6 percent of his three-pointers.

For the Seminoles to be successful, Graham must prove to be a consistent outside scorer.

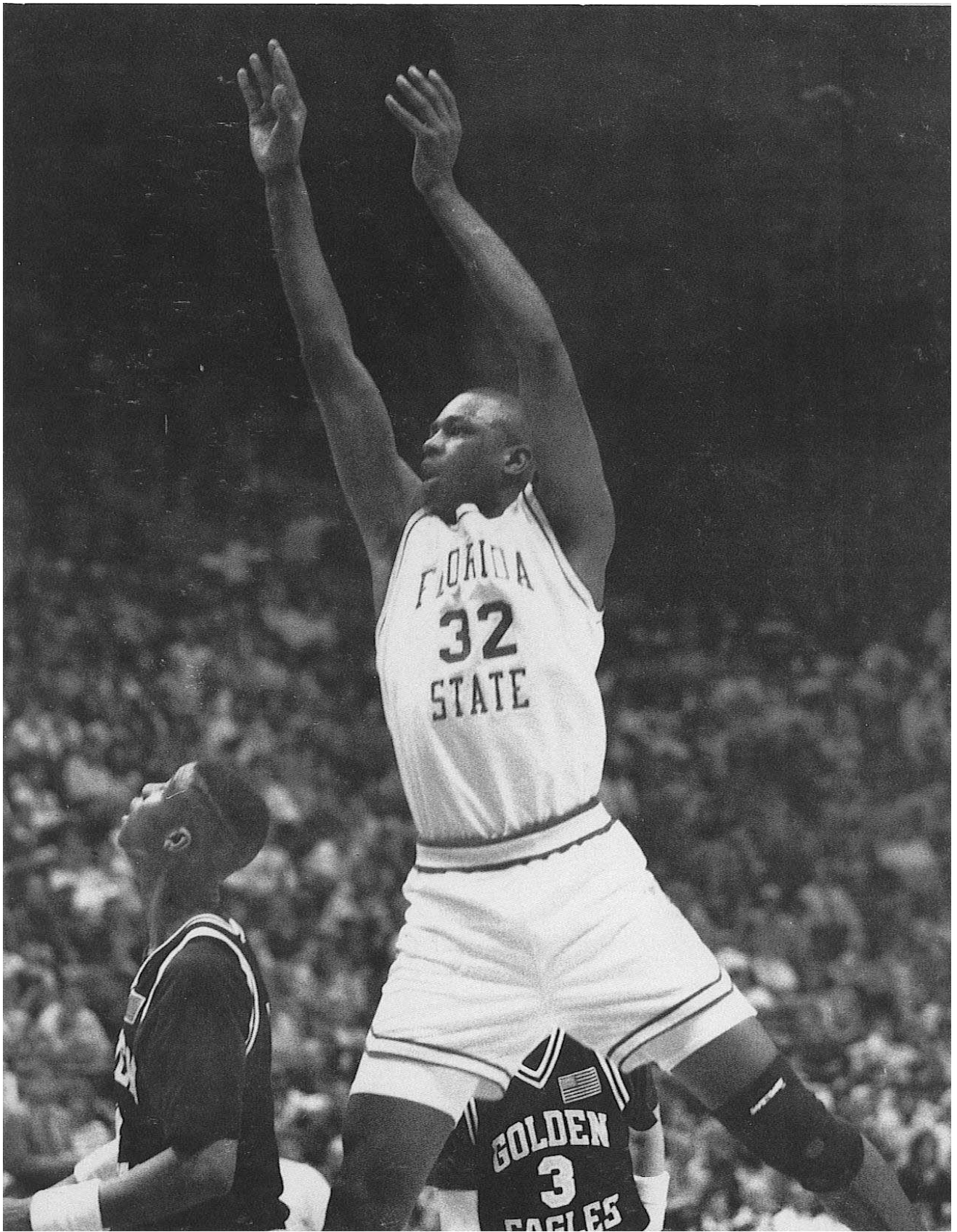
Point guard may be the position that proves most pivotal for the Tribe. Sam Cassell (6-3, junior) begins his FSU career with glittering JUCO accolades. Widely considered the top player in the country at San Jacinto (TX) last year, Cassell brings a dazzling array of passing and scoring skills that had recruiting experts swooning over FSU's class. He should get the starting nod, at least until last year's hero, Charlie Ward (6-1, sophomore), decides whether he will come out after his duties as an FSU quarterback are complete.

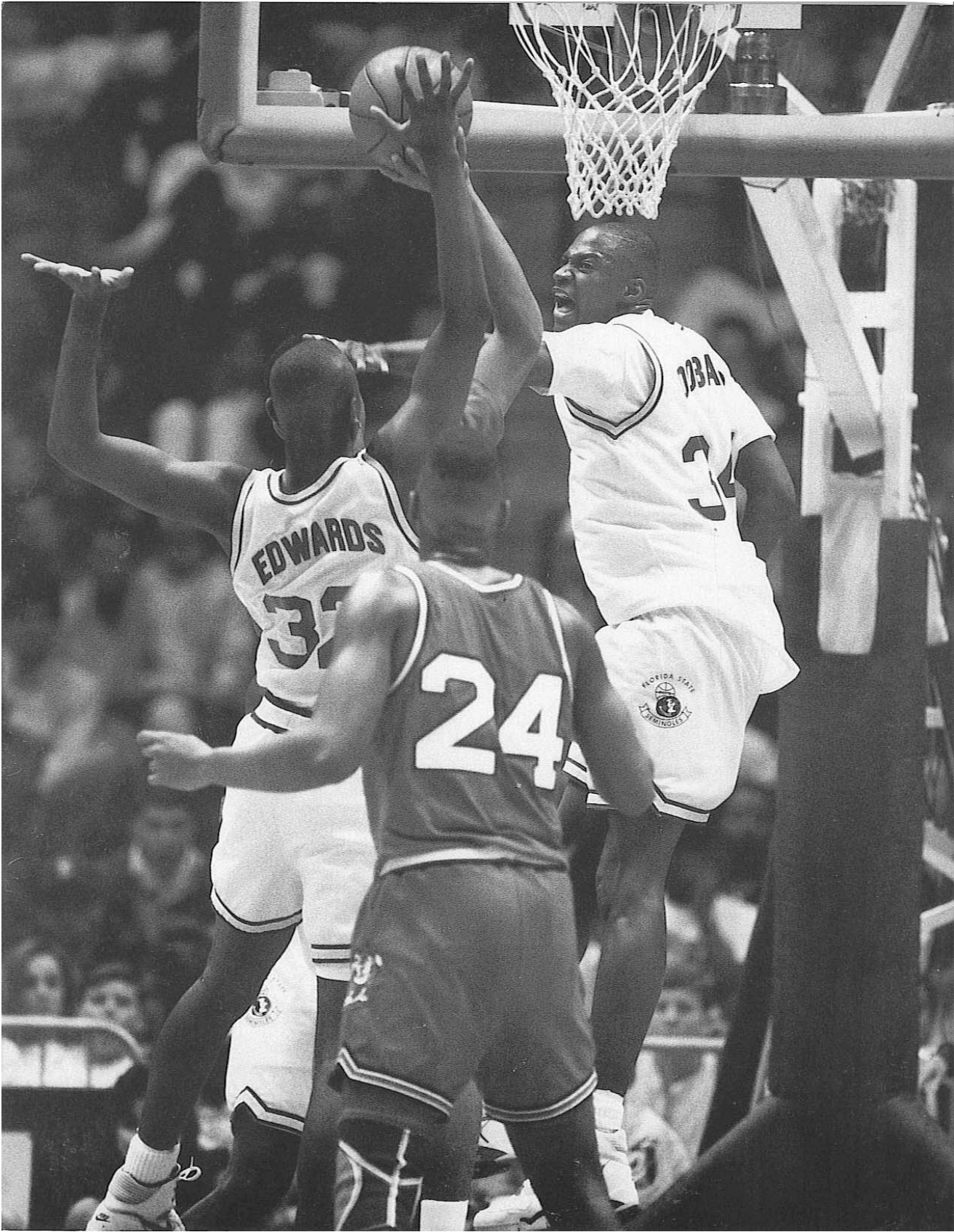


Court awareness makes Rodney Dobard the Seminoles' most dangerous defensive player.

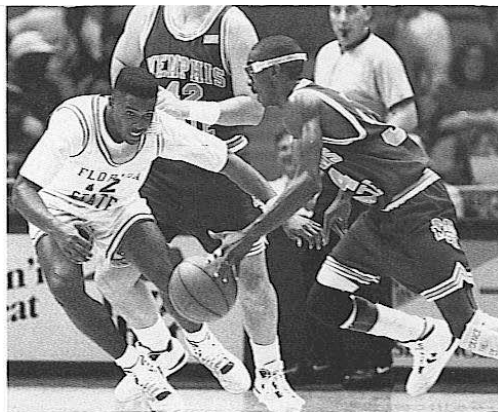


Junior College transfer Sam Cassell is expected to make an immediate impact as the Seminoles' starting point guard.





The schedule is formidable again this year with the Atlantic Coast Conference heavyweights joining a list of tough non-conference foes. Syracuse, DePaul and intra-state rival Florida headline the non-ACC games, along with Jacksonville and South Florida.



Above – Charlie Ward led the Tribe to a 15-6 record as the starter at point guard. Like any great player, he concentrated as hard on his defense as his offense.

Below – Long distance shooting is Ron Miller's specialty and he will be the first man off the bench if defenses pack it in around the Tribe's front line.

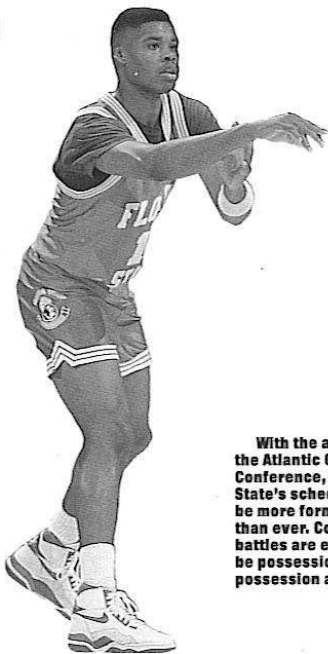
Opposite Page – Rodney Dobard's talent for blocking shots makes the Seminole defense even more intimidating.

Ward turned into a folk hero of sorts in Tallahassee as he took over at point guard at a time when Seminole hopes seemed to be gone. The team stood at 0-2 in the Metro and 5-5 on the season. After averaging better than four assists per game as the starter, Ward breathed life into the ailing FSU club and led them to the conference championship. As a fitting end to the Cinderella story, Ward slipped on the glass slipper when he nailed a 30-foot three-point shot with just seconds left to ice the win over Louisville in the Metro tournament.

"We have been blessed with great scoring guards since I came here," said Kennedy. "We've had Pee Wee Barber, George McCloud, and Tharon Mayes, now we've got to adapt a little more of an inside game. But you can look at our guards and say that they may indeed tell us how far we can go this year."

Depth will be Florida State's biggest enemy in its rookie season in the ACC. Lorenzo Hands (6-3, senior) is a defensive specialist who can play either backcourt position. He may be the stopper off the bench if opponents get hot. Ron Miller (6-3, senior) returns to his same role as the Tribe's zone breaker, but may see more action with his silky-smooth outside jumper.

Inside help will be both inexperienced and thin as the season begins. Byron Wells (6-8, junior) can do a lot offensively, but is coming off a redshirt season and still has not proven himself at the college level. Newcomer Ray Donald, a 6-8 freshman swingman out



of Pensacola, FL, must provide immediate depth at the small forward and shooting guard positions.

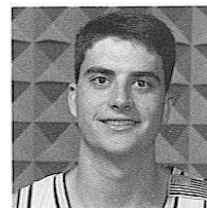
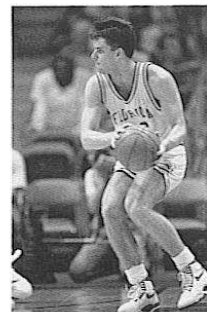
Bob Sura (6-5, freshman) may be the answer to some of the Tribe's depth problems as he has the potential to play three different positions. The player of the year in Pennsylvania last year, Sura is a hard-nosed player with great intensity. His addition as a late signee was a key element in a successful recruiting season.

"I think that our starting lineup is going to be very effective," said Kennedy. "We've got all the elements to have a fine team, but we are going to be playing against programs we haven't faced before, in cities we haven't visited. We are just going to have to adjust to the new league and our new players. We've got to have some players who can come off the bench and contribute."

The schedule is formidable again this year with the Atlantic Coast Conference heavyweights joining a list of tough non-conference foes. Syracuse, DePaul and intra-state rival Florida headline the non-ACC games, along with Jacksonville and South Florida. FSU's scheduling was made especially difficult this year after a technicality prevented them from playing in the preseason NIT as planned.

"We've got to be realistic this year in our ACC schedule," said Kennedy. "I guess if you were with the press you would have to say a .500 season for us in our first year would be successful. But it's our job to get our program ahead of expectations, and we've managed to do that since I came to Florida State. We will not be backing down from anybody this year."

With the addition of the Atlantic Coast Conference, Florida State's schedule will be more formidable than ever. Conference battles are expected to be possession-by-possession affairs.



Byron Wells has all the offensive tools to be the answer to a glaring depth problem on this year's team.