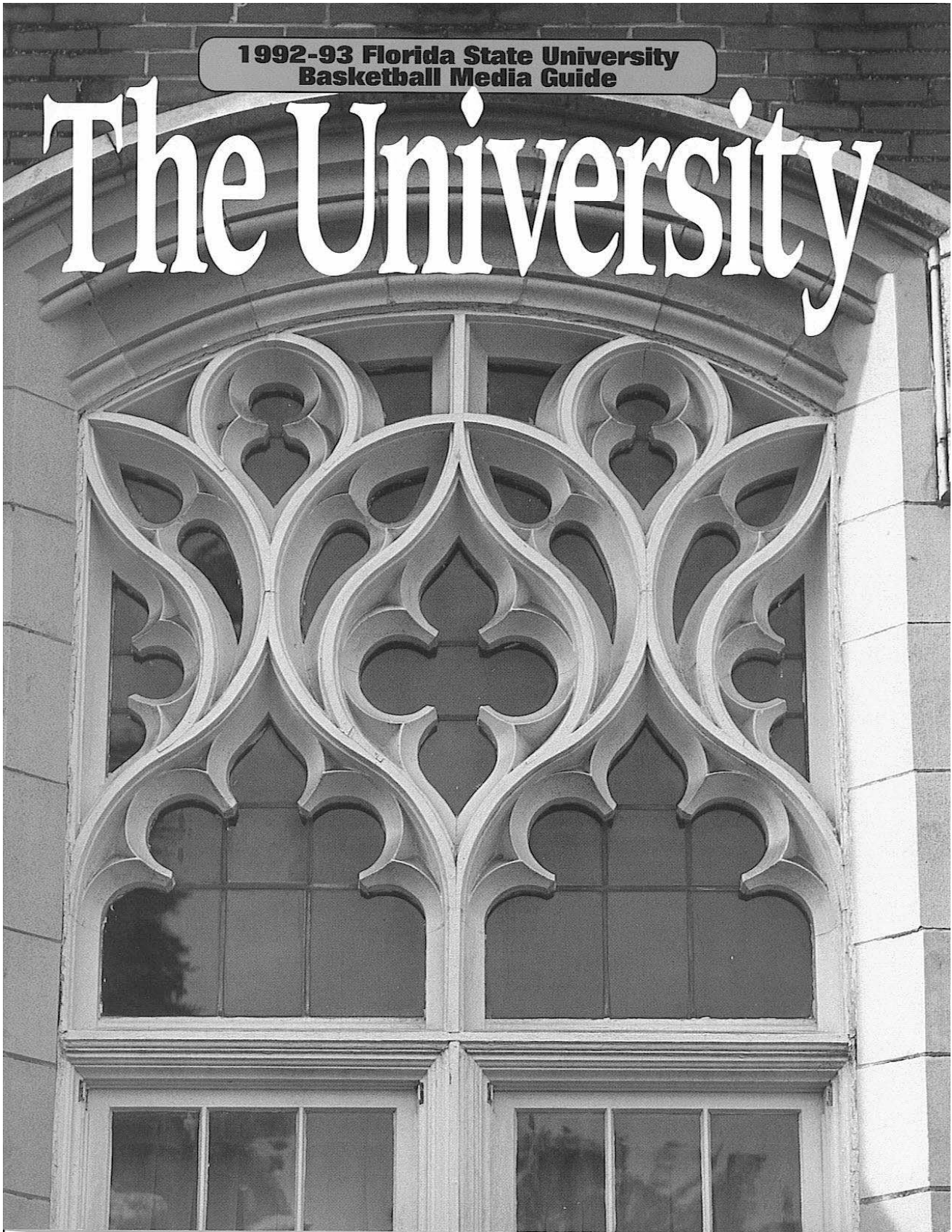
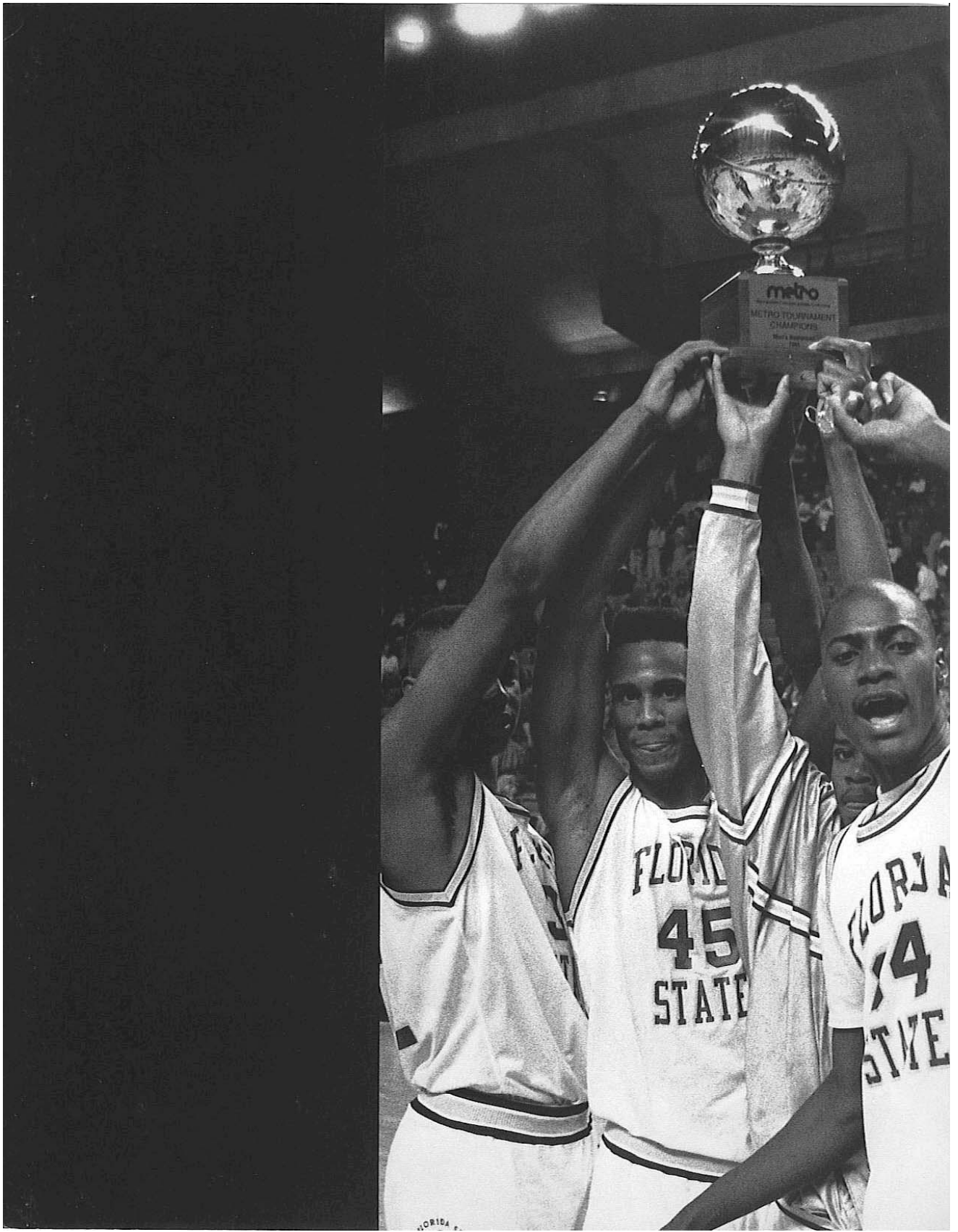


**1992-93 Florida State University  
Basketball Media Guide**

# The University





# A Winning Tradition...

**W**hile more and more teams celebrate their 100th year of college basketball in the 1990s, Florida

State remains a virtual baby when it comes to years of tradition. But not when it comes to years of excellence.

In just 45 seasons of basketball, the Seminoles have matched and surpassed some of their older brethren — in victories, in 20-win seasons, in NCAA Tournament games and wins, and in the individual honors and awards picked up by Florida State alumni.

Florida State's most successful season to date remains the 1971-72 season which saw the Seminoles play John Wooden's UCLA squad for the national championship. After going into the half with a lead, UCLA and all-everything center Bill Walton managed to top the Tribe, leaving FSU fans to celebrate a second-place finish.

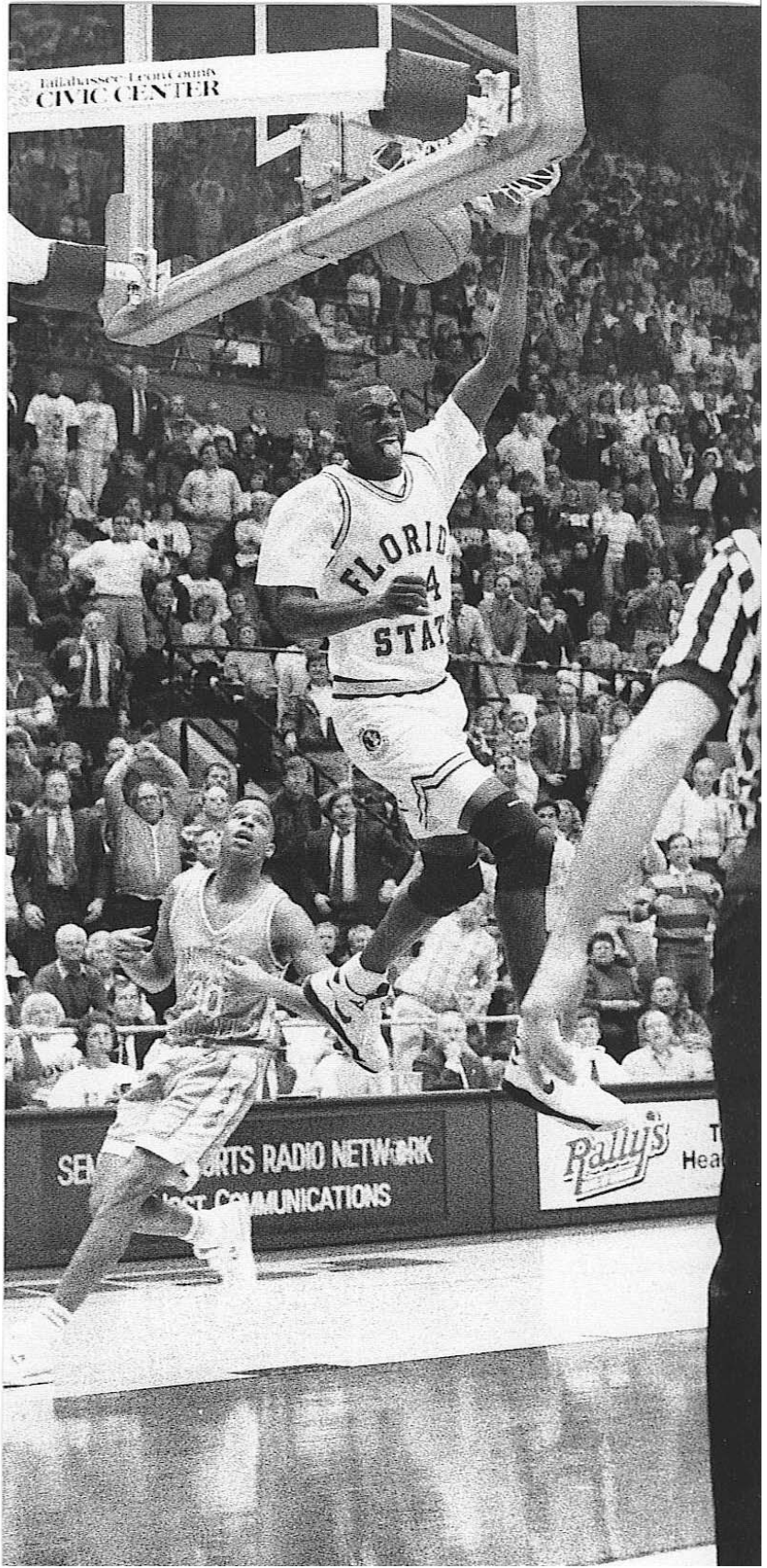
FSU basketball history is dotted with fine seasons. Nine FSU teams have won 20 or more games and eight of those have gone on to play in the NCAA Tournament.

However, recent history is the most impressive for Florida State. The Seminoles have made themselves regular visitors to the NCAA Tournament with four trips in Pat Kennedy's six years at the helm. Last season, Florida State had its second most successful season ever with a trip to the lofty Sweet 16.

And this year, the Tribe will begin the season ranked in the Top 10 of virtually every poll.

Florida State University may have one of the shortest traditions in college basketball when it comes to years. But when it comes to quality, success and excellence, the Seminoles are second to none.

**The Setting**  
**The Academics**  
**The Arena**  
**The Exposure**  
**The Excitement**  
**The Tradition**



# Electrifying Excitement...

The constant beat of the flashy pep band fills the Civic Center with the familiar sound of the Florida State fight song. 12,500 garnet and gold clad fans, some with war paint smudged on excited faces, slash the air with imaginary tomahawks.

The building nearly shakes with excitement as the glistening wooden floor seems to invite the Seminoles from the tunnel.

Soon, the War Chant begins to reach a deafening crescendo. The crowd rises with anticipation and the Seminoles pour from the dark tunnel into the lights and cheers of one of college basketball's most enthusiastic crowds.

Basketball is hot at Florida State. It will be even hotter in the ultra-modern Civic Center as this season marks the debut of the new Video Projection Screens. The huge screens will make every seat in the house as close as the press table and will bring a flair to one of

college basketball's most exciting arenas. The screens will feature game action, live animation, highlight tapes and replays of great FSU moments. FSU will be one of only three schools in the country that play their home games in arenas with big-screen capability.

The Seminole Warrior leads Florida State onto the floor amid a dazzling array of floodlights, while the award winning Florida State cheerleaders raise garnet and gold colored pom-poms. The Golden Girls, one of the nation's most heralded dance teams, gets the crowd fired up while dancing to the pre-game music.

Once the ball is tipped off, the FSU fans take over to make the Civic Center one of the toughest home courts in the country. The Seminoles have won 71 of their 86 games in Tallahassee under coach Pat Kennedy, which means the Tribe wins 82.1 percent of the time at home.



**The Setting**  
**The Academics**  
**The Arena**  
**The Exposure**  
**The Excitement**

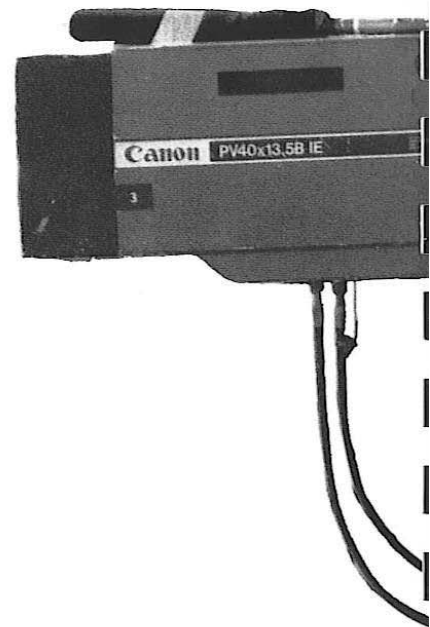
**A**long with aligning itself with some of the nation's finest academic institutions, Florida State's entrance into the Atlantic Coast Conference also brings unprecedented media exposure for the basketball program.

Already one of the nation's most popular athletic programs, the Seminoles find themselves one of college basketball's most publicized teams. Within the state of Florida alone, FSU enjoys one of the country's largest media contingents. Writers from over 15 daily newspapers regularly cover the Tribe. From the local Tallahassee Democrat to one of the nation's largest papers the Miami Herald, Florida State athletics is covered like few others. In addition to the in-state coverage, large regional media outlets make regular stops in Tallahassee. The Atlanta Constitution and Charlotte Observer join most of the South's major papers in covering the Seminoles. They combine with USA Today and the Sporting News to keep the entire country informed on FSU sports.

Television coverage is also unprecedented in Tallahassee. The Seminoles open the 1992-93 season with ten national television dates already announced, including the Georgia Tech game on ABC which will lead into the Super Bowl coverage. ABC will also air the Duke game to a national television audience on the previous Sunday. CBS has tabbed the Tribe's match-up with Big East power Connecticut on February 6th its game-of-the-week. ESPN will televise an unprecedented seven Florida State games and has already announced plans to air each of the ACC Tournament games.

In addition to the interest from the national networks, Florida State fans will see an additional six games on the extensive Raycom/Jefferson-Pilot Television Network. The host to ACC basketball since 1982, the Raycom/Jefferson-Pilot network is the nation's top independent sports programmer. This season the network will broadcast 40 Atlantic Coast Conference games along with the ACC Tournament. FSU fans will see the Seminoles on the Raycom/Jefferson-Pilot network beginning with the Florida game on January 2nd.

The increased attention for FSU basketball came with the territory when the affiliation with the ACC began. The 1992-93 ACC television schedule boasts 155 appearances by its nine member institutions, including 42 on ESPN and 20 national appearances – on ABC (14), CBS (5) and NBC (1). Fifty-nine of the league's 72 regular season conference games and the league's four-day, eight-game ACC Tournament will be televised. An additional 20 non-conference games are also on tap with ESPN airing 12, CBS three, ABC and Raycom two each and NBC one.



# Unsurpassed Exposure...

## The Seminoles On Television 1992-93 Televised Games

### DECEMBER

2 Massachusetts 7:30 ESPN

### JANUARY

2 Florida 4:00 Raycom-Jefferson Pilot

6 Virginia 9:00 ESPN

16 N.C. State 4:00 Raycom-Jefferson Pilot

24 Duke 3:45 ABC

27 North Carolina 9:00 ESPN

31 Georgia Tech 4:00 ABC

### FEBRUARY

6 Connecticut 2:00 CBS

8 Virginia 9:00 Raycom-Jefferson Pilot

10 Wake Forest 9:00 ESPN

13 Maryland 1:30 Raycom-Jefferson Pilot

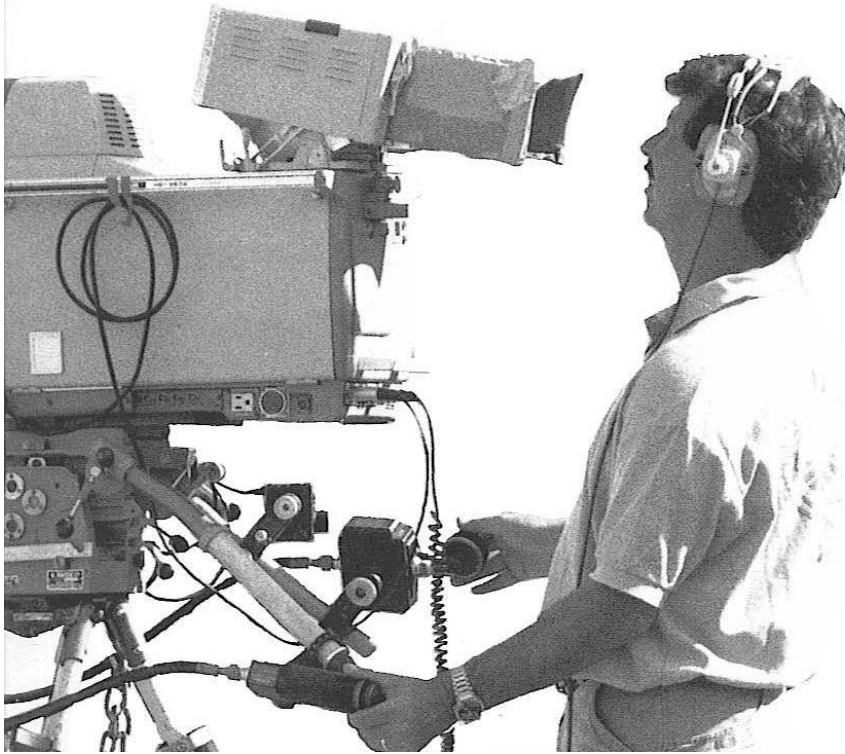
20 Clemson 4:00 Raycom-Jefferson Pilot

24 Duke 9:00 ESPN

27 North Carolina 4:00 Raycom-Jefferson Pilot

### MARCH

4 Georgia Tech 7:30 ESPN

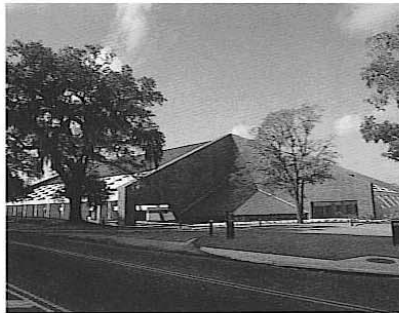


The  
Setting  
The  
Academics  
The  
Arena  
The  
Exposure

**A** Florida State basketball game is as exciting as it gets. FSU fans are spoiled by more than just a great basketball team and the nation's finest conference, they also get to watch the game in surroundings as modern as any in the country.

The Tallahassee-Leon County Civic Center is the home for Seminole basketball and the multi-purpose facility comes alive on game day.

12,500 seats are available for fans of FSU basketball who are treated to one of the most spectacular shows in college hoops. Two new big screen video systems are mounted in the corners of the arena opposite the state-of-the-art scoreboards. Fans can enjoy game action during play on the big screens. During time outs, the big screens come alive with highlight tapes, animated games and other crowd pleasing bits. The screens place Florida State among only three teams in the country that play their home games in a facility with big-screen capability.



The facility covers over 22 acres in the heart of Tallahassee's thriving downtown district. The Civic Center is only two blocks from the Capitol building and is just across the street from FSU's Center for Professional Development and nationally acclaimed Law School. The complex covers over 18,000 square feet with 119 foot ceilings. The elegant facility is neatly trimmed with 13,800 upholstered seats.

**Civic Center Records Found On Page 108**





# An Awesome Arena...



**The  
Setting  
The  
Academics  
The  
Arena**



# Rigorous Academics...

**F**lorida State basketball players work hard on the practice court. They endure hours of practice time, sit through meetings and even hit the weight room. They know that through hard work and dedication during the week, victory can be achieved on game days.

That same kind of hard work and dedication is required when it comes to the players' academic careers. The goal for every Florida State student-athlete — a degree.

Florida State's academic support system for all its student-athletes is recognized as one of the strongest programs in the country. Soon, a state-of-the-art academic center, the primary component of the new Daisy Parker Flory Wing of the Moore Athletic Center will be complete. The academic center is visible evidence of the importance the university attaches to the "student side" of the student-athlete.

Florida State student-athletes begin their academic indoctrination the minute they set foot on campus. All first-year student-athletes, whether freshmen or juniors, go through an orientation program which teaches time management and academic discipline.

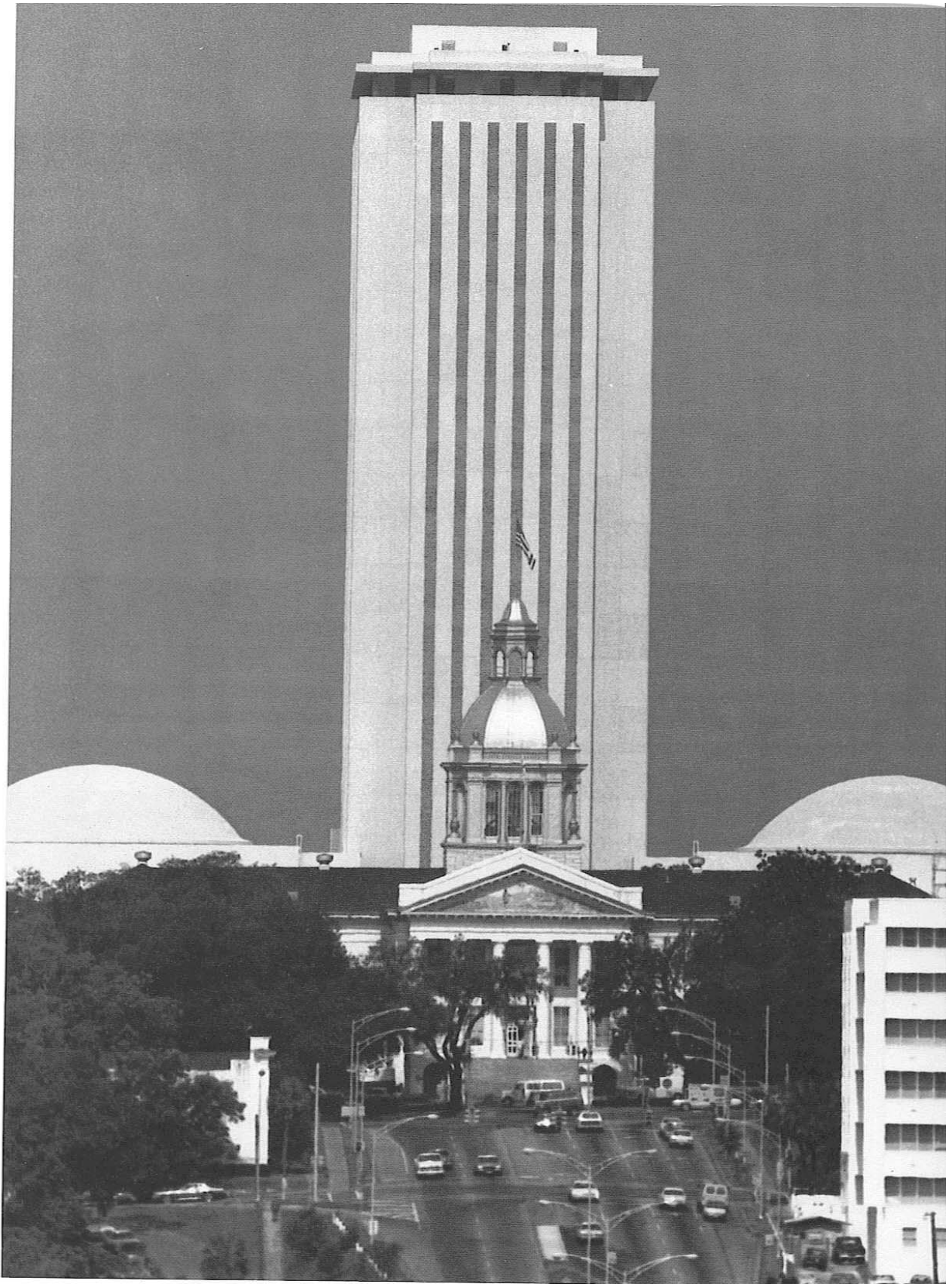
Dr. Beverly Yerg, a member of the FSU faculty since 1977, leads the academic support staff at Florida State. A full-time staff of four works with student-athletes year-round in a variety of areas. In addition, FSU assistant coaches and academic coordinator Ron Miller work with Yerg's staff to monitor the class attendance and academic progress of each team member.

Throughout the school year, nightly study halls and tutoring sessions help the student-athletes stay on course in their classes.

While awaiting completion of the new academic center, Florida State student-athletes enjoy the use of the 2,200 square foot study hall area in the Moore Athletic Center. In addition to a study hall, the room has been made into a resource center, where study carols, computers and basic reference materials are available. It is a quiet work area, completely devoted to the "student" part of the student-athlete, where students can meet with tutors or study on their own.

For everyone in the Florida State athletic department — from the coaches and academic support people to student services staff and administration — giving each and every student-athlete the opportunity to earn a degree is the primary goal.

**The Setting  
The Academics**



# In a Spectacular Setting.

## Tallahassee - Florida With A Southern Accent

**W**ith its deep-rooted history, rolling hills, canopy roads of moss-draped oaks and proximity to the Gulf's beaches, Tallahassee truly is Florida - With A Southern Accent.

Best known as Florida's capital, Tallahassee is a thriving city with natural treasures. The beautiful setting makes the city one of the state's most popular locations for both television commercials and major motion pictures.

Tallahassee's historic past is evidenced by the recently unearthed 1539 winter encampment of Spanish explorer Hernando de Soto, site of the first Christmas celebration in America.

A rich cultural interest in the community is fueled by both Florida State University and Florida A&M. Art, in all its forms, is present throughout the area.

Outdoor enthusiasts enjoy numerous adventures including boating and fishing on area lakes and the Gulf of Mexico — just 30 minutes away. Dense forests offer an abundance of prize-winning game for those who hunt with a gun or camera.

The center of government within the state, Tallahassee regularly hosts leaders from around the world.

But it remains the charm of the people and the respect for the history of the city that keeps Tallahassee so special.

## The State Of Florida

**T**he Sunshine State has become one of the nation's most diversified regions. One of the most popular attractions for tourists around the world, Florida's 8,426 miles of coastline virtually surround a state that is one of the world leaders in agriculture, industry and finance.

Fabulous Walt Disney World and surrounding theme parks are nestled in the middle of the state with the Kennedy Space Center not far away. The region is the top tourist attraction in the entire country.

The famous Florida Keys stretch almost to Cuba and add spice to the fast-paced lifestyle that can be found in the southernmost portion of the state.

Historic North Florida features legendary cities on both coasts. St. Augustine on the east coast is the nation's oldest city and Pensacola has seen five nation's rule her on the west coast.

The state's sports scene is second to none. With Florida State leading the way among great college action, the NBA (Orlando Magic, Miami Heat), NFL (Miami Dolphins, Tampa Bay Buccaneers), NHL (Tampa Bay Lightning) and soon Major League Baseball (Florida Marlins) all vie for fans' attention.

From its crystal white beaches to the majestic southern oaks, from quaint tourist towns to the big city splash — Florida has it all.

“It's almost  
*unfair* for Florida State...  
They've got all that and  
they live in Florida, too!”

– CBS Play-By-Play Announcer Sean McDonough

**One of the nation's most famous teaching and research universities, located in the breathtakingly beautiful capital of America's playground. This is Florida State!**

It would be hard to find a more beautiful campus than Florida State anywhere in the world. The campus covers 396 acres of wooded rolling hills in North Florida. In the spring, the university grounds explode in a riot of color from blooming azaleas, dogwoods and magnolias.

**F**lorida State University, nearing its golden anniversary as a coeducational graduate research institution, is poised on the brink of joining the nation's academic elite.

Located on the oldest continuous site of higher education in Florida and building rapidly on the framework of a highly regarded liberal arts college for women, the university has emerged over the past 45 years as an institution of national and international esteem. Its stature is evidenced by a number of exciting additions to a record of excellence since the decade of the 1990s began:

- In 1990, the National Science Foundation established the \$100 million National High Magnetic Field Laboratory at Florida State, which is partnered in research with the Los Alamos National Laboratory and University of Florida. A Nobel laureate in

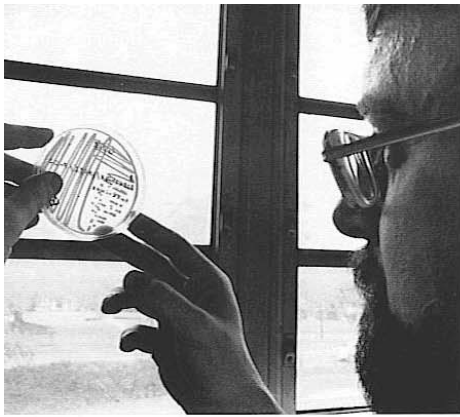
physics and a top Russian physicist are among the first scholars drawn to the FSU faculty by the magnet lab.

- At the forefront of supercomputing since obtaining its first high-speed computer in 1985, FSU took yet another step in ultrafast and parallel computing in 1990 when it acquired two supercomputers, the Thinking Machine Corp. Connection Machine and the Cray Y-MP.

- In 1990, Florida State ranked second in popularity nationwide among high school seniors, based on the number of students who request that their Scholastic Aptitude Test (SAT) scores be sent to an institution. FSU was the only institution listed among the top 10 choices of both black and white college-bound students.

- FSU's high-tech program in structural biology in 1991 received the university's largest single foundation grant, \$4 million, to position it among the leaders in the field worldwide.





**Florida State University is a leader in the sciences, attracting some of the world's top scientists. FSU's nationally-acclaimed research atmosphere fosters some of the country's most important work.**



- The Appleton Museum of Art in Ocala, its vast and varied art collection and an eminent scholar chair were donated to FSU and Central Florida Community College in 1990. Valued at \$42 million, the gift is the largest ever received at Florida State.

- Now the professional training ground for one of Florida's fastest growing industries, film production, FSU graduated the first class of graduate film students from its School of Motion Picture, Television and Recording Arts in 1991. The school offers a bachelor's degree program in Tallahassee and a master of fine arts program in Sarasota. Its students have already succeeded in producing award-winning films at national and international levels.

- To instill an awareness and understanding of the world's cultural diversity, FSU undergraduate students, beginning with the 1991 freshman class, are required to complete at least two courses that focus on diverse traditions beyond Western civilization. The multicultural study requirement complements a long-established liberal studies program for undergraduates at Florida State.

- Florida's Office of Campus Volunteers, which matches college students with agencies in need of community service volunteers, is located at Florida State. It opened in 1990.

- The Dr. Bobby E. Leach Center, a state-of-the-art student recreation facility including an indoor pool, saunas, basketball and racquet-sport courts, was completed in 1991.

- Construction of the \$82 million University Center is under way adjacent to Doak Campbell Stadium. When completed, the University Center will provide 550,000 square feet of classroom and office space and a centralized location for student services. The three-phase project will include two eight-story buildings and three four-story buildings on the east and west sides of the stadium, enclosure of the south end zone and expansion of Moore Athletic Center.

- Capping more than a decade of national prominence in intercollegiate athletics, Florida State's athletic teams, nicknamed "Seminoles,"

joined the Atlantic Coast Conference as its ninth member in 1990.

- FSU ranked 20th in the nation for 1990-91 in the number of black Ph.D. students it graduated. Over the five years from 1986 to 1990 FSU ranked eighth nationally by granting doctorates to 70 African-Americans.

- In 1992, FSU College of Law graduates led the state with a 97.5 percent passing rate among law graduates taking the state bar exam for the first time.

As this list attests, Florida State has begun the 1990s with exceptional strength, energy and vision for the future. Under the leadership of the university's 11th president, Dr. Dale W. Lick, who took office in August 1991, FSU will continue to build on the foundation of its long history of excellence in scholarship, research and service.

A public institution and a senior member of the nine-member State University System, FSU was founded as an institution of higher learning in 1851 by legislative act and began operating in Tallahassee with its first students in 1857.

Today, Florida State's operating budget is \$412 million. Faculty and administrators generate more than \$100 million annually in external funding to supplement state-sponsored research. Three direct-support organizations serve to bolster the university: the private, non-profit FSU Foundation, which raises millions in private gifts to support academics, the Seminole Boosters and the FSU Alumni Association.

The main campus is spread over 396 acres in Tallahassee; FSU, which has the smallest campus in the SUS, acquired about 49 acres in 1991-92 after many years of being landlocked at 347 acres. The university owns a total of 1,172 acres in Leon, Bay and Franklin counties.

Within the state, FSU maintains facilities at its 25-acre campus in Panama City, its Marine Laboratory on the Gulf of Mexico and the Appleton Museum in Ocala. The university's theater and film professional-training programs, the FSU/Asolo Conservatory of Professional Actor Training and



FSU/Asolo Conservatory of Motion Picture, Television and Recording Arts, both located in the Asolo Performing Arts Center in Sarasota, opened in 1990. The Center for Professional Development and Public Service, housed in the Florida State Conference Center on the edge of the main campus, provides extensive credit and non-credit continuing education programs statewide.

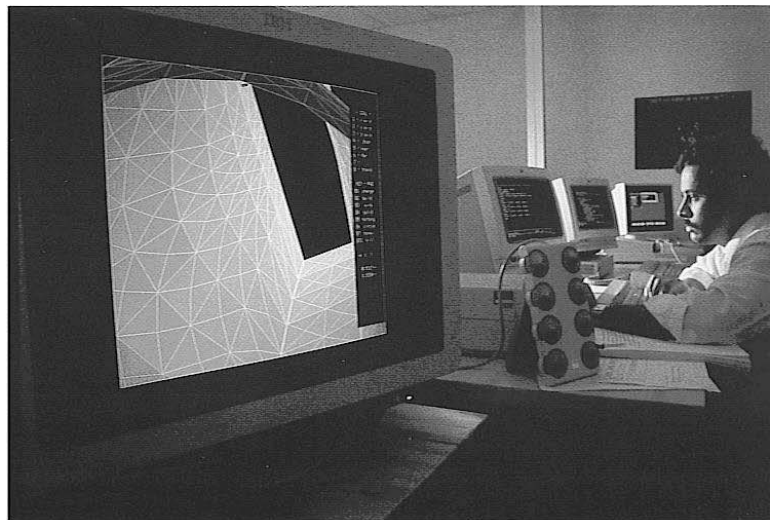
For years FSU has reached far beyond Florida through international programs in Switzerland, Yugoslavia, France, Panama, Costa Rica and the Caribbean. FSU's study centers in Florence, Italy, and London, England, are considered by many to be the nation's best in Europe.

Florida State offers 274 graduate and undergraduate degree programs through its eight colleges — Arts and Sciences; Business; Communication; Education; Engineering (operated jointly with Florida A&M University, an historically black institution); Human Sciences; Law; and Social Sciences (which also incorporates the School of Public Administration and Policy) — and eight schools — Criminology and Criminal Justice; Library and Information Studies; Motion Picture, Television and Recording Arts; Music; Nursing; Social Work; Theatre; and Visual Arts and Dance.

With 1,577 members, the FSU faculty currently includes five members of the National Academy of Sciences and four of the American Academy of Arts and Sciences, and has included five Nobel laureates. It is backed by 2,914 administrative, professional and support staff.

Library holdings at Florida State include 1.94 million book titles, 18,751 serials and 4.4 million microforms. The main library facility, the Robert M. Strozier Library, is linked via a computerized information system to other state university and national research libraries.

On the top floor of the Dirac Library is the headquarters of the Supercomputer Computations Research Institute, a multidisciplinary, multinational program established in 1984 that brings together some 50 scientists, engineers and technicians. SCRI is electronically linked to an off-campus



research complex at Innovation Park and the university's two powerful supercomputers.

Also providing unique research opportunities is the physics department's tandem Van de Graaff Superconducting Accelerator Laboratory, which houses two powerful atom smashers and is ranked among the top four nuclear research centers in the nation by the National Science Foundation.

Graduate students, who number more than 5,500, pursue advanced degrees in fields as diverse as business administration and theoretical particle physics. A majority of research done at FSU is the direct result of student effort, culminating in numerous books, monographs and journal articles relating to the whole spectrum of intellectual interests and the practical needs of society.

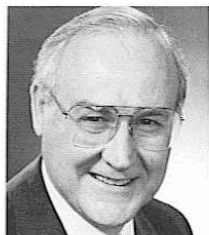
FSU, a residential campus, places a high priority on its 28,600 students and their needs and interests. The Honors and Scholars program, the Distinguished Lecture Series, Student Government, the all-collegiate Flying High Circus and intramural sports are among more than 200 organizations and activities in which students can participate.

Situated in the heart of the state's thriving capital city, Florida State's main campus blends Gothic and modern styles of architecture with the oaks, pines, dogwoods, palms and azaleas of North Florida.

Florida State continues to progress and grow — from its pre-Civil War foundation as the Seminary West of the Suwannee, through the early 20th century as the academically respected Florida State College for Women, returning to coeducational status as a university in 1947, to its modern development as an acclaimed research institution, a top-ranked competitor in intercollegiate athletics and as a standard-setter in the basic sciences and the performing arts.

In all areas of its mission of excellence in teaching, research and public service, Florida State University is advancing boldly into the 21st century.

**The university has been at the forefront of the booming computer technology and just two years ago landed the National High Magnetic Field Laboratory. The acquisition of the lab has already drawn a Nobel laureate in physics along with a top Russian scientist.**

**Dr. Dale W. Lick****Bob Goin**

## **Dr. Dale W. Lick** **President** **Michigan State '58**

Dr. Dale W. Lick is the 11th president of Florida State University, a senior member of the nine public universities in Florida's State University System. The president heads a coeducational, research institution with an enrollment of 28,600 students, an operating budget of \$412 million and \$100 million in contracts and grants.

Lick, who took office at FSU in August 1991, previously served as president of two institutions of higher education, the University of Maine and Georgia Southern College (now Georgia Southern University).

A mathematician by academic discipline, Lick also has held administrative positions at Old Dominion University, Russell Sage College and Drexel University.

A native of Michigan, born Jan. 7, 1938, in Marlette, Lick is an alumnus of Michigan State University, where he received a bachelor of science degree in 1958, graduating in three years with honors, and a master of science degree in 1959, both in mathematics. He earned a Ph.D. in mathematics from the University of California at Riverside in 1965.

After completing his doctorate, Lick joined the faculty at the University of Tennessee-Knoxville as an assistant professor of mathematics. Two years later, while on leave, he was a visiting research mathematician at Brookhaven National Laboratory in New York. He returned to UT-Knoxville as a tenured associate professor of mathematics.

In 1969, Lick became head of the department of mathematics at Drexel University in Philadelphia, Pa., while at the same time serving as an adjunct associate professor in biomathematics at Temple University Medical School. Also, from 1966 to 1971, he was a consultant to the Computing Technology Center of Union Carbide Corp. for Oak Ridge National Laboratory.

Lick moved to Troy, N.Y., in 1972 to serve as vice president for academic affairs at the private Russell Sage College. Two years later, he was named dean of the School of Sciences and Health Professions and professor of mathematics and computing sciences at Old Dominion University.

From July 1978 to September 1986, Lick was president of Georgia Southern and a professor of mathematics and computer science, and helped to lead the Statesboro institution from a teachers' college to university status.

In September 1986, Lick became president and professor of mathematics at the University of Maine, the

land-grant university and Sea Grant College of Maine and the largest of the seven institutions in the University of Maine System.

Florida State's 11th president has been married since 1956 to Marilyn K. Foster. The Licks have three grown children, Kitty, Diana and Ronald.

## **Bob Goin** **Athletic Director** **Bethany College '59**

In his three years at the helm of the Florida State athletic department, Bob Goin has been one of the leading forces in moving Seminole athletics into the future. Presently, Goin is overseeing the expansion of Doak Campbell Stadium, the addition of the new state-of-the-art Academic Center, and the construction of the Daisy Parker Flory Wing of the Moore Athletic Center which will bring all FSU coaches and athletic department staff under one roof.

Goin and former FSU President Bernard Sliger led the charge for Florida State's move into the prestigious Atlantic Coast Conference and this football season, FSU's first as a conference member, marks the completion of the integration process. By implementing one of the nation's top compliance programs, spearheading the development of athletic facilities and committing himself to continuing FSU's unprecedented successes both on and off the athletic field, Goin has proven himself an excellent leader.

Among his many national responsibilities, Goin was recently named to the prestigious NCAA Interpretations Committee and to the Executive Committee of the Division I-A Athletics Directors' Association. Goin also begins his second year as a member of the Atlantic Coast Conference Television Committee in 1992.

An assistant and then associate athletic director at Florida State from 1982-90 before becoming the acting athletic director and then athletic director, Goin was responsible for many aspects of the day-to-day operation of the Athletic Department. He was in charge of running all game-day operations for the Seminole football, basketball and baseball teams, in addition to many other duties. Goin worked as tournament director for seven NCAA baseball regionals, including the South, Atlantic and East tournaments.

Goin came to Tallahassee in July of 1981 after two years as athletic director at California (PA) State College, where he was credited with expanding the athletic department. During his time there, he formed the Cal State Athletic Scholarship Fund and Athletic Booster Club.

Prior to taking the California post, Goin served as assistant athletic director at West Virginia University. From 1976-79, Goin was involved in several expansion projects at WVU, including construction of a new stadium and athletic facility.

From 1960-76, Goin worked at Bethany College, where he held a variety of positions, including associate professor and chairman of physical education and athletics. He also coached the football, basketball and baseball teams at Bethany.

A recipient of a number of coaching honors, Goin currently serves on many university-wide committees. As Chairman of the Compliance Committee, Goin has developed and implemented a program which protects the integrity of the University by making sure each and every regulation governing intercollegiate athletics is followed. He is a member of the Campus Alcohol and Drug Information Center Committee.

Goin and his wife, Nancy, have three sons — Doug, Brian and Bruce — a daughter, Janice, and two grandchildren — Nikki, 12, and Robbie, 8.

## **Charles W. Ehrhardt** Faculty Athletic Committee Chairman Iowa State '62

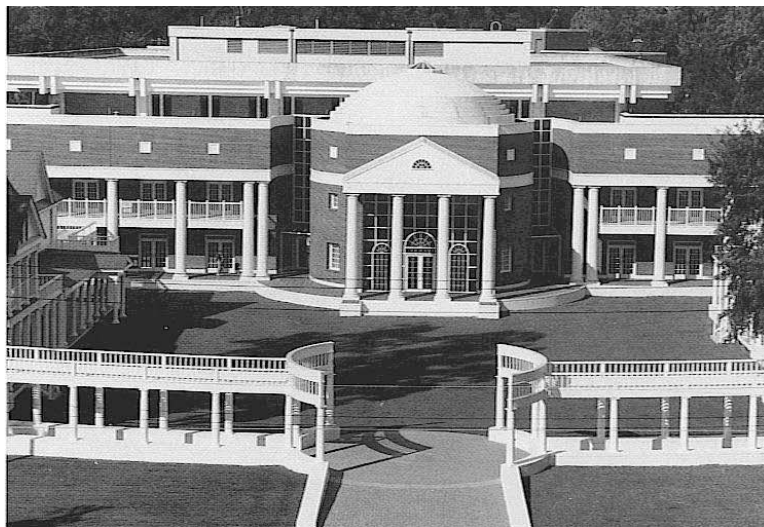
In his ninth year as Chairman of the FSU Athletic Committee, Professor of Law Charles Ehrhardt continues to be an important voice for Florida State on the national level.

Ehrhardt is a member of the National Collegiate Athletic Association's Special Committee which was appointed by NCAA Executive Director Dick Schultz to review the NCAA Enforcement and Infractions process.

Twice elected president of the Metro Conference, Ehrhardt was chair of the Faculty Athletics Representatives Association. He has been a member of the College Football Association's Monitoring Committee since 1989.

This is Ehrhardt's second stint on FSU's Athletic Committee. A professor of Law at Florida State since 1967, he first served as a member of the committee from 1969-71. He was reappointed to the board in 1983 and succeeded Dr. James Jones as chairman in 1984, thus becoming Florida State's representative to the NCAA.

A highly-respected expert in the field of Evidence, Ehrhardt is the Ladd Professor of Evidence in the Florida State College of Law. He wrote the Florida Evidence Code, passed by the state legislature in 1976, which deals with the admissibility of evidence in court trials.



Ehrhardt has written a book on evidence, which is now in its third edition.

Ehrhardt is in demand as a lecturer and speaker. He works with lawyers and judges nationwide as a private consultant on evidence matters. He currently teaches in the areas of torts, evidence, trial advocacy and sports law. He has been honored four times as the outstanding professor in FSU's College of Law and was the recipient of a University Teaching Award in 1989.

A native of Elkader, Iowa, Ehrhardt received a bachelor's degree from Iowa State University in 1962. He went on to the University of Iowa where he earned his law degree two years later. He eventually became an Assistant United States Attorney in Iowa before coming to Tallahassee.

Ehrhardt and his wife, the former Judy Sutton, have three children.

## **Charles Hurst** Associate Athletic Director Jacksonville State '72

The man responsible for all financial and business affairs at Florida State, Charles Hurst is beginning his sixth year with the athletic department but his first since moving from assistant to associate athletic director. His duties include supervision of the annual budget, business and ticket office operations, facilities management, personnel records administration and coordination of legal and administrative matters with university officials.

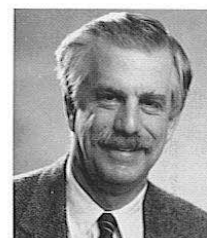
He came to Tallahassee after a stint at the University of Florida, where he was Director of Internal Management Auditing from 1983-1987. While there, he guided a staff of nine in developing all internal auditing programs within the university. Hurst also served as Manager of Internal Auditing at the University of South Alabama from 1981-1983.

A native of Talladega, Ala., Hurst received his bachelor's degree from Jacksonville State (AL) University with a major in accounting and a minor in economics. He earned CPA status in 1975 while employed by the private firm of Brook and Freeman in Anniston, Ala.

Hurst is affiliated with several organizations related to his field, including the American Institute of Certified Public Accountants and the Florida and Alabama societies of Certified Public Accountants.

He and his wife, Juanita, have one daughter.

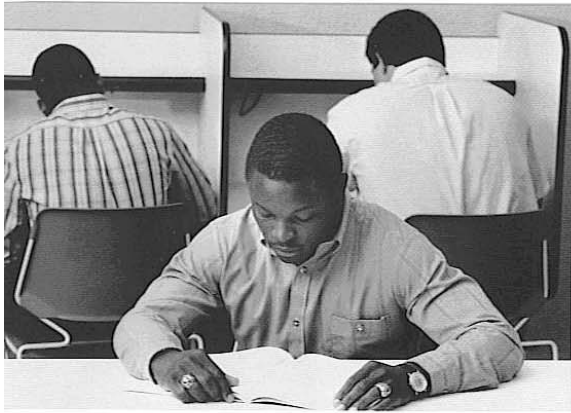
**Florida State's school of law is among the most competitive and respected in the country. The newly renovated Law Green is located just across Pensacola Street from the Civic Center.**



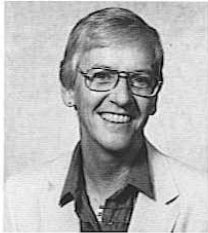
**Charles W. Ehrhardt**



**Charles Hurst**



With all the attention that the media and fans place on FSU's athletic success, the coaches and administrators remain focused on helping the athlete achieve the most important goal — a degree.



**Dr. Janice Stocker**



**Wayne Hogan**



**Brian Mand**

## **Dr. Janice Stocker** Associate Athletic Director Earlham College '54

Now in her seventh year with the Florida State athletic program, Dr. Janice Stocker was promoted to associate athletic director in 1992 after working as assistant athletic director in her first six years at FSU. She continues to oversee the operation of the entire non-revenue sports program at FSU, as well as serving as the department's senior women's administrator.

The Muncie, Ind., native has worked in nearly every area of athletics, including coaching, teaching, and administration, in her 28 years as a collegiate athletic administrator.

Stocker has been a member of athletic administrations at four universities and one conference. She was commissioner of the Wisconsin Women's Intercollegiate Athletic Conference, which included 12 institutions, before serving as associate director of women's athletics at the University of Minnesota just prior to her arrival in Tallahassee in 1987.

Her earlier work included a stint as assistant athletic director at West Virginia University from 1976-79, where Bob Goin was also an assistant AD. There, she was involved in the planning of the athletic facility. Prior to that, Stocker was women's athletic director at Ball State University for six years, and an instructor and coach at Slippery Rock for four years.

Stocker received her bachelor's degree from Earlham College in Richmond, Ind. and earned her master's degree from Ball State University in Muncie, Ind. She completed her doctoral studies at Temple University in 1972.

## **Wayne Hogan** Assistant Athletic Director Florida State '79

Now in his 11th basketball season with the Florida State athletic department, Tallahassee native Wayne Hogan begins his first year as Assistant Athletic Director after serving as Sports Information Director for the previous 10 years. Hogan is responsible for all areas of marketing, promotions and electronic media, as well as directing the operations of the sports information office.

In addition to those duties, Hogan's role within the department will expand to include commitments within the University and the community. He will work as a liaison between the athletic department and Seminole

Boosters as well as spearheading numerous different internal projects.

Hogan began his career in the public relations and broadcasting fields in the athletic department while a student at Florida State. From 1975-79, he worked in the sports information office, engineered the Seminole Sports Network broadcasts for football and basketball and was the play-by-play announcer for the Seminole baseball team.

After graduating from FSU in 1979, he worked for two minor league baseball teams — the Charleston (W. Va.) Charlies and the Albuquerque (N.M.) Dukes — before taking over as an assistant sports information director at New Mexico, where he worked for two years before returning to Tallahassee in 1982.

In addition to his job as assistant athletic director, Hogan is the play-by-play announcer for the Seminole baseball telecasts on the Sunshine Network. For the past three semesters, Hogan has taught a class in sports information in FSU's College of Communication.

Wayne's father, Patrick Hogan, is a former sports information director and Vice President for Public Affairs at Florida State. He was inducted into the Florida State Athletic Hall of Fame in 1990.

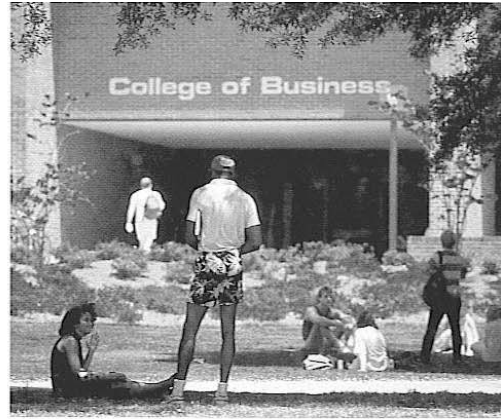
Hogan has two daughters, Lindsay and Kelly. He is married to the former Dawn Dewberry and the couple recently celebrated the first birthday of their son, Justis Patrick.

## **Brian Mand** Assistant Athletic Director Wake Forest '72

In 1992, Brian Mand begins his 13th year on the athletic staff at Florida State but his first as an assistant athletic director. Mand has served as an assistant to the athletic director for the past four years. His duties include coordinating and overseeing NCAA, Atlantic Coast Conference and institutional compliance, implementing and directing FSU's rules education programs and serving as the liaison to the NCAA and conference for legislative interpretations.

Prior to taking over as assistant to the director, Mand served as academic advisor to FSU athletes from 1980-89. Before coming to Tallahassee, Mand held academic advising positions at East Carolina and Rutgers.

Mand earned a bachelor's degree in business administration from Wake Forest University in 1972. He earned his master's degree in athletic administration from Ohio State in 1977 and has completed coursework on a doctorate in athletic administration at Florida State.



He was recently inducted into the Phi Kappa Phi National Honor Society.

Mand is a member of the American Alliance for Health, Physical Education, Recreation and Dance, the North American Society of Sports Management and the National Association of Athletics Compliance Coordinators. In addition, Mand is a past president of the National Academic Athletic Advisor's Association.

Mand and his wife, Roberta, have a son, Brandon, and a daughter, Krystina.

## **Andy Urbanic** Assistant Athletic Director Bethany College '55

Andy Urbanic begins his third year with the Florida State athletic staff as assistant athletic director in charge of football operations. Urbanic's primary responsibility is to oversee all aspects of the football program, including team travel and home game operations, practice, class attendance, and dining hall and dormitory operations. He also assists the athletic director in the day-to-day operations of the department.

Urbanic came to Tallahassee with more than 20 years of experience in collegiate athletics, mostly as a football coach. Prior to taking the administrative post at Florida State, he was at the University of Akron (Ohio), as offensive backfield coach and recruiting coordinator from 1986-87 and as assistant head football coach and offensive coordinator from 1987-88.

From 1980-86, Urbanic was the offensive backfield coach at the University of Pittsburgh, where he also directed the Pitt Panther and Foge Fazio football clinics.

Several Pennsylvania high school football programs benefitted from Urbanic's coaching abilities. He coached six undefeated seasons and earned eight state high school championships while coaching high school football. From 1976-78, his Pittsburgh Penn Hills Senior High School team posted a 32-game winning streak.

Urbanic is a past president and member of the board of directors of the Pennsylvania State High School Coaches Association and remains active in the American Football Coaches Association.

He and his wife, Dorothy, have two daughters.

## **Dr. John Eason** Assistant to the Athletic Director Florida A&M '67

An 11-year veteran of the Seminole football coaching staff, John Eason begins his third year with

dual duties within the Florida State athletic program in 1992.

Eason's role on the field is coaching FSU's highly successful wide receivers. As an administrator, he works with Florida State athletes in all sports, in the area of student affairs and academics. He monitors the academic progress of the Seminole football team, working closely with the department's academic support crew. His involvement touches all FSU student-athletes.

A native of Ocala, Fla., Eason joined Florida State from Tallahassee's Lincoln High School, where he was assistant principal of student affairs for two years. He also coached high school football locally, serving as offensive coordinator at Leon High from 1973-79.

A receiver and punter for Florida A & M University from 1963-67, Eason earned All-America honors his junior and senior years. He was named Most Valuable Player of the Rattler squad his final two seasons and was invited to play in the Blue-Gray All-Star Game following his senior year.

Eason played two years of professional football with the Oakland Raiders after his collegiate playing days ended. He began his coaching career at Vanguard High School in Ocala, where he coached until 1971. He returned to pro football in 1972 to play for the Montreal Alouettes of the Canadian Football League.

Eason holds a doctorate in Educational Administration from Florida State and received both his bachelor's and master's degrees from Florida A & M.

He and his wife, Dorothy, have a daughter, Amanda.

## **Joe Labat** Assistant to the Athletic Director Florida State '67

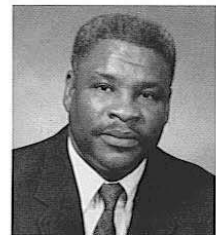
A native of Tallahassee, Joe Labat begins his 14th year on the athletic staff in 1992. He is in his third year as assistant to the athletic director, where his primary duty is to coordinate scholarships and financial aid assistance for Florida State's student-athletes in all 18 sports. Labat is also involved in a variety of other activities as assigned by the athletic director. Recently, he served as tournament director for the 1992 NCAA South II Baseball Regional held at Dick Howser Stadium in Tallahassee.

Labat joined the athletic staff in 1978 after working in the accounts payable section of the Florida State Controller's office across campus. He spent the next nine years handling the day-to-day fiscal operations of the athletic department as the athletic business manager prior to moving into his current position.

**FSU is a place where students learn in both the classroom and in the many aspects of college life available outside their course work.**



**Andy Urbanic**



**Dr. John Eason**



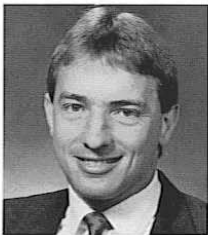
**Joe Labat**



The campus combines traditional gothic architecture with the natural beauty of the Tallahassee area.



**John Sheffield**



**Greg Phillips**



**Bernie Waxman**

Upon graduation from Florida State in 1967, Labat began teaching and coaching football and track at Tallahassee's Rickards High School. After five years at Rickards, he moved into athletic administration at Florida State.

Labat is a member of the Collegiate Business Administrators Association and the Florida Institute of Certified Public Accountants.

He and his wife, Marcia, have a daughter, Sarah.

## **John Sheffield**

### **Assistant to the Athletic Director Florida State '75**

In 1992, Georgia native John Sheffield celebrates his 10th basketball season at Florida State. His responsibilities lie in the areas of tickets and special events.

As ticket coordinator, Sheffield directs the FSU season ticket campaigns for football, basketball and baseball, and oversees the Florida State ticket office operation. He works closely with the FSU Sports Information and Sports Marketing offices to increase ticket sales and awareness. He brought the first computers into the Seminole Ticket Office. His six-person staff handles FSU ticket sales at all athletic events. Under his direction, Florida State's football season ticket sales have increased almost every season.

A 1975 graduate of Florida State, Sheffield served as director of ticket operations for the Tampa Bay Buccaneers from 1977 to 1982 before returning to his alma mater as ticket manager in 1983.

Following graduation from FSU, Sheffield worked for the FSU athletic department and the Atlanta Braves before joining the Miami Dolphins as assistant director of tickets. He was the business manager for the Ft. Lauderdale Strikers of the North American Soccer League before taking the post with the expansion Buccaneers in Tampa.

Sheffield retains his ties with the National Football League and has worked the last 13 Super Bowls.

He and his wife, Peggy, have two sons — John Jr. and Sam.

## **Greg Phillips**

### **Athletic Business Manager Florida State '84**

Greg Phillips starts his third year as the Athletic Business Manager for the FSU athletic department in 1992, and has logged a total of six years with the

Seminole business office since 1986.

Phillips handles the day-to-day fiscal operations of the department and helps the assistant athletic director of financial planning in budgeting, financial reporting, payroll, purchasing and travel. Phillips is also responsible for all departmental computer operations, a larger and more important job each year.

Phillips completed his master's degree in accounting at Florida State in 1986 and joined the athletic staff in the fall of that year as an assistant to the Athletic Business Manager. Working up through the ranks, he took over his current position in the fall of 1989.

A member of the College Athletic Business Management Association, Phillips completed a master's degree in Sport Management at the United States Sports Academy.

Phillips, a native of Bartow, Fla., is married to the former Deanna Porter.

## **Bernie Waxman**

### **Facilities Coordinator Florida State '71**

Bernie Waxman begins his second year as facilities coordinator for the FSU athletic department in 1992. Presently, Waxman is heading up the planning and development of the new Scott Speicher Tennis Center at Don Loucks Courts, and the addition to the Coyle E. Moore Athletic Center.

Waxman oversees all scheduling and maintenance of FSU's many athletic facilities, including Mike Long Track, Dick Howser Stadium (baseball), Doak Campbell Stadium (football), the Moore Athletic Center, the football practice fields and Lady Seminole Field (softball). He directs the upkeep of these buildings and is involved in all additions and construction work on the facilities.

One way or another, Waxman has been involved with FSU athletics for nearly 25 years. A 1971 graduate of Florida State, he earned three letters as a member of the FSU track and field team and captained the team in 1972. He also earned his master's degree from FSU that year.

Waxman worked for the Tallahassee Parks and Recreation Department for two years before returning to FSU as assistant intramurals director in 1974. He later became director of intramurals, a post he held for more than 10 years prior to moving over to the athletic department last year.

During his time at the intramural office, Waxman served as a master official for track and field and as the head statistician for all Florida State men's and women's basketball and football games. In that capacity, he



directed the crew which compiled the statistics for all Seminole home games.

Waxman has completed coursework for a doctorate in Athletic Administration and is currently writing his dissertation. He is married to the former Lisa Kinch, also a former FSU track and field athlete. The couple has a three-year-old daughter, Gabrielle.

**Dr. Beverly Yerg**  
**Director of Academic Support**  
**Services**  
**Temple '60**

Dr. Beverly Yerg is in her seventh year directing Florida State's academic programs for the athletic department. A member of the Florida State University faculty since 1977, Yerg has helped all Florida State student-athletes, especially freshmen, adjust to the pressures of college life by implementing a plan to guide student-athletes through their years of college.

Her duties include evaluating recruits for academic potential and teaching academic enhancement classes. These mandatory, non-credit classes are designed to teach basic survival skills of college life to incoming transfers and freshmen. The class includes library orientation, time management, recognizing and managing stress, FSU values and standards, and career planning.

Yerg also oversees the professional staff who deliver advising and tutorial services to men and women in all varsity sports.

She began working with the athletic department in 1983 on a subcommittee of the athletic board that studied some of the problems of student-athletes and recommended solutions in the form of the Student Academic Enhancement Plan. In 1986, she became the first director of academic support services.

A native of Warren, Pa., Yerg received her bachelor's and master's degrees in education from Temple University. She received her Ph. D. from the University of Pittsburgh in 1977.

Yerg served as an assistant and associate professor in Florida State's Department of Movement Science and Physical Education from 1977 to 1982, when she was named department head. She continues to hold the title of associate professor and teach classes in the department.

A former national president of Delta Psi Kappa, the professional fraternity for Health, Physical Education and Recreation, Yerg belongs to several other professional organizations and has authored many articles and

abstracts related to teacher effectiveness and teacher education.

She and her husband, Robert, have one son, David, a 1988 graduate of FSU.

**Terry Hume**  
**Director of Sports Marketing and**  
**Promotions**  
**Florida State '77**

Terry Hume, a former Florida State athlete, begins her seventh year as the Director of Sports Marketing and Promotions for the FSU athletic department. This year marks her 14th as a member of the athletic staff.

A 1977 graduate of Florida State, Hume began working at her alma mater in October of 1978 as an assistant to former women's athletic director Barbara Palmer. In that capacity, she handled a variety of administrative duties, including promotion of Florida State's non-revenue sports. She ascended to her current position in 1986.

Hume now oversees all the department advertising efforts and directs all promotional activities associated with FSU's 16 sports. She is responsible for the department's spirit groups and directs a staff of five.

Hume was a four-year letterwinner on the Lady Seminole volleyball team while earning degrees in English and business. She was named team captain and grabbed Most Valuable Player honors her senior year.

A native of Tacoma Park, Md., Hume graduated from Coral Gables High School in Miami. She has a daughter, Amy Lauren.

**Donna Turner**  
**Associate Sports Information**  
**Director**  
**Florida State '85**

Donna Turner enters her fourth year as a member of the Florida State athletic staff in 1992. Her main responsibilities lie with the highly successful Seminole football team as its primary media contact. In that role, Turner edits the award-winning Seminole Football Media Guide.

Over her first three years at FSU, Turner edited TRIBE Magazine, the FSU football program. Her other duties include organizing all photography matters related to the sports information operation. She has been media coordinator for two NCAA baseball regionals held in Tallahassee.

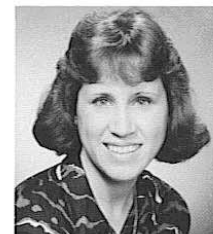
The campus at Florida State is constantly expanding. The Sliger Building at the new research park houses the university's Cray Y-MP supercomputer.



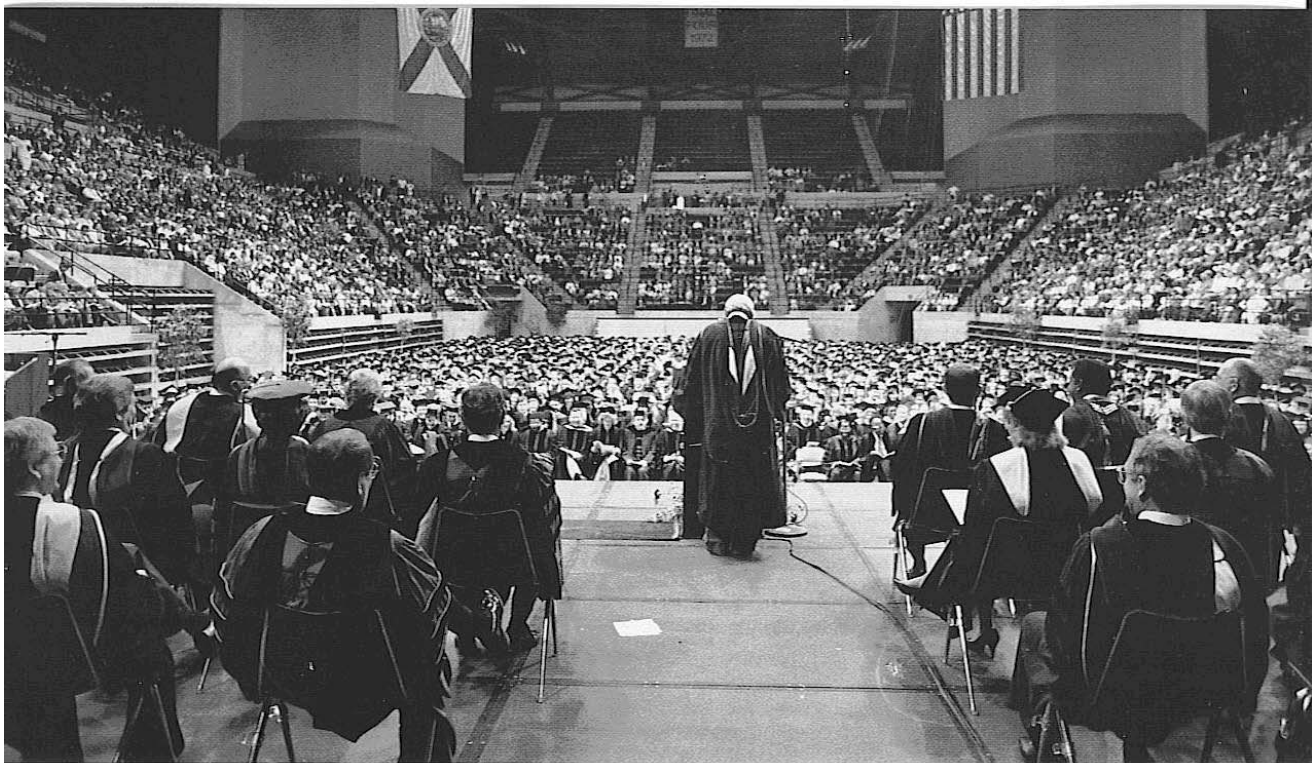
**Beverly Yerg**



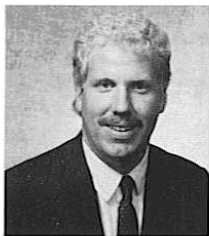
**Terry Hume**



**Donna Turner**



**The Tallahassee-Leon County Civic Center, home court to Seminole basketball, is also the site for the university's graduation ceremonies.**



**Rob Wilson**

A 1985 graduate of Florida State, Turner returned to her alma mater in June of 1988 as an assistant sports information director. Previously, she held a similar position at Iowa State University in Ames, Iowa for two years.

Turner logged four years of experience in the FSU Sports Information Office from 1981-85 as a student assistant. After obtaining her degree in communication, she went to Ohio University, where she earned a master's degree in sports administration. She completed stints in the Ohio University baseball office, the East Carolina University marketing office and the University of North Carolina ticket office before going to Iowa State.

There, Turner helped coordinate publicity for the Cyclones' 21-sport athletic program. She served as primary contact for ISU's baseball, women's basketball, and volleyball programs. Additionally, she served as editor of the Cyclone Watch, a monthly booster club publication, and co-edited the football game program.

A member of the College Sports Information Directors of America, the ACC Sportswriter's Association and the National Collegiate Baseball Writer's Association, Turner's publications have earned several awards. Most recently, her 1991 football media guide was judged "Best in the Nation" by CoSIDA. The 1989 Florida State Football Media Guide and the 1990 FSU Baseball Guide received the same honor.

Turner is a native of Gainesville, Fla.

**Rob Wilson**  
**Associate Sports Information**  
**Director**  
**Florida State '83**

Rob Wilson enters his sixth year with the Florida State athletic staff in 1992 and he serves as the primary

media contact for the FSU basketball team. In addition to many other duties with Florida State, Wilson serves as the sports information office manager and is the editor of TRIBE Magazine, FSU's football game program this past season. A 1983 Florida State graduate, the San Diego, Calif., native returned to his alma mater in July of 1987 as assistant sports information director.

Wilson came back to FSU from East Carolina University, where he was assistant sports information director from 1984-87. While there, he worked with the Pirate football and men's and women's basketball teams, and served as the color analyst on the Pirate Sports Network for basketball and football. He also edited the ECU booster organizations monthly magazine - The Purple Report.

Wilson received a bachelor's degree in communication from FSU with a minor in chemistry. He spent the 1983-84 school year as a graduate assistant in the FSU Sports Information Office.

Wilson attended Ole Miss in 1979 and played wide receiver for the Rebels under Steve Sloan. One year later, he transferred to Okaloosa-Walton Junior College where he earned an associate of arts degree in 1981.

A member of the College Sports Information Directors of America and the National Basketball Writer's Association, Wilson has won numerous awards for his publications, including a "Best in the Nation" honor for his 1988-89 Seminole Basketball Media Guide.

Wilson married the former Sherrill Sturgis of Ocala, Fla., on August 1, 1992.