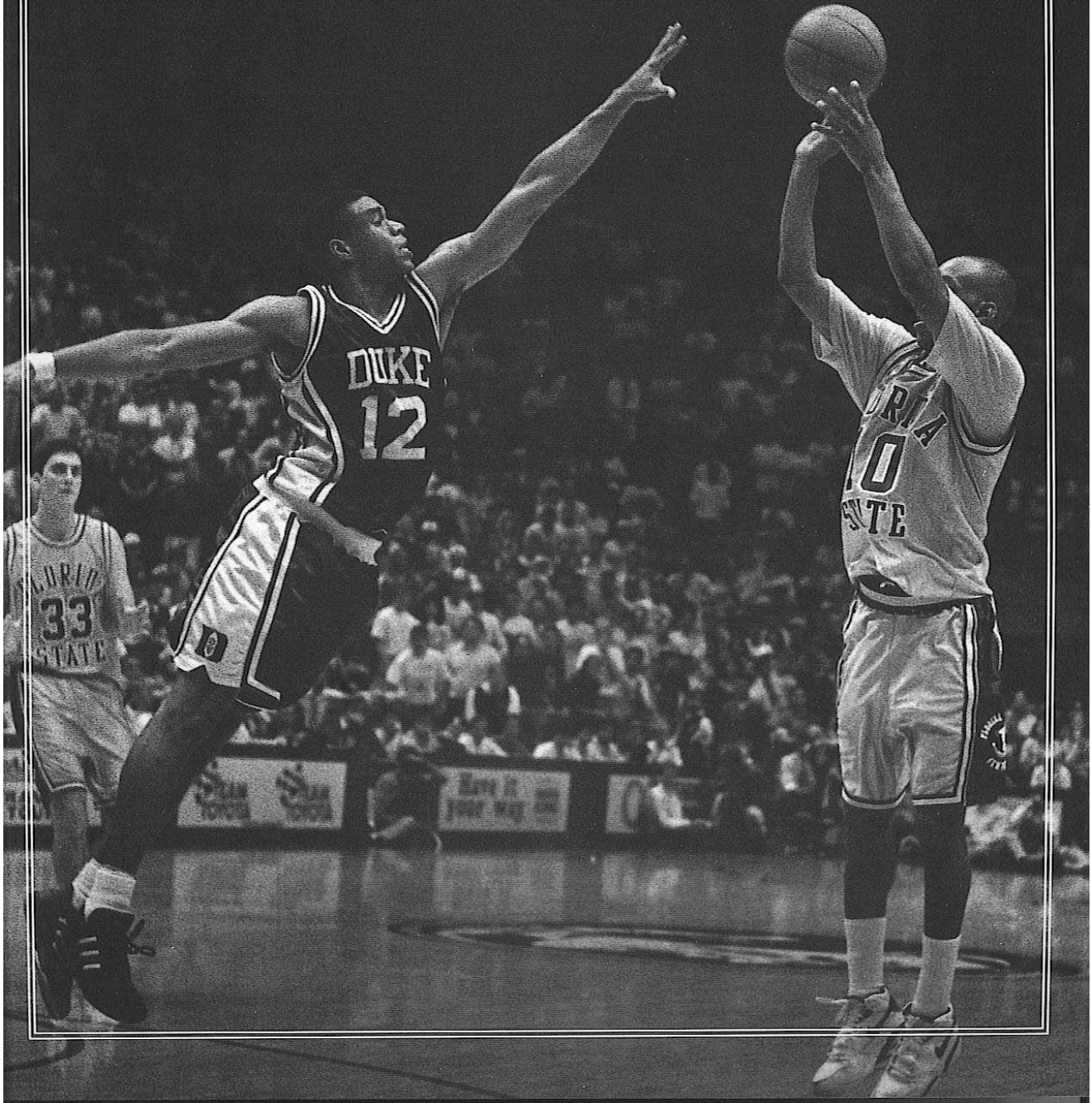


FLORIDA STATE BASKETBALL 1993-94

1992-93 Review



Florida State comes just one game shy of making a trip of the Final Four in the second most successful season in school history.

All The Way To The Final Eight

1992-93 REVIEW

The Seminoles began the 1992-93 basketball season with their highest preseason ranking since coming off a Final Four trip in 1972, and they finished the year just 40 minutes away from earning a trip to the Final Four.

Along the way, Florida State played perhaps the best basketball in school history en route to the second most successful season ever with a 25-10 record, second place ranking in the ACC, and a finish among the final eight teams in the nation.



Pat Kennedy led Sam Cassell and the Seminoles to a 25-10 record, and a second consecutive second place finish in the ACC.

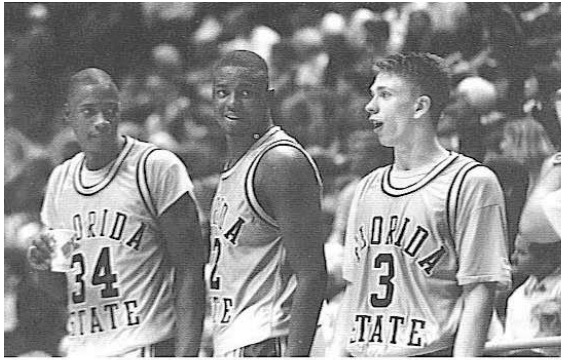
Pat Kennedy, who has made a habit of one-upping himself over his first seven seasons as the head coach of the Tribe, repeated the effort last year while guiding his fifth team into the rarified air of the NCAA Tournament. He nearly guided this one home as the Seminoles' loss to Kentucky in the Southeast Regional Final meant the 'Cats would visit the national championship round instead of FSU.



SEMINOLES

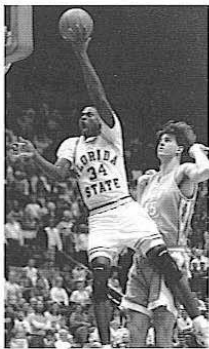






Teammates Rodney Dobard, Doug Edwards and Bob Sura (above) enjoy some rare time off the court during last year's spectacular 25-10 season.

A big reason for FSU's third consecutive trip to the NCAA Tournament was the play of forward Rodney Dobard (below) at both ends of the court. The Seminoles' all-time leading shot-blocker, Dobard also led the Tribe in field goal shooting percentage for the last three seasons.



After a second place finish in their first year in the ACC in 1992, the Seminoles repeated the feat, losing out on the top spot to the eventual national champion for the second year.

SEMINOLE BASKETBALL 1993-94 • '92 - '93 REVIEW

The tradition-rich Atlantic Coast Conference also realized it may have to make a permanent place among the upper echelon of the league for its newest member. After a second place finish in their first year in the conference in 1992, the Seminoles repeated the feat, losing out on the top spot to the eventual national champion for the second year.

The Tribe finished the tough ACC schedule with a 12-4 record, and used an ambitious non-conference lineup to prepare for a push in the NCAA Tournament that excited the entire country.

The key to Florida State's remarkable season was consistent play throughout the year and the ability to win the close games. In fact, the Tribe was involved in more close games than any other ACC member, posting a 7-3 record in games decided by three or fewer points. For the third consecutive year, FSU never lost more than two games in a row.

The season got off to a slow start with a 4-3 record over the first seven games, but the Seminoles won 18-of-21 in January and February to rise to a season-high ranking of sixth in Week 14.

FSU's success caught few by surprise, however.

With five returning starters and a 22-10 record the previous year, Pat Kennedy started last year's team off with a tough early schedule that featured the Preseason NIT along with highly-regarded non-conference foes.

While the 89-90 season-opening win over Siena in the first round of the NIT in Tallahassee was impressive, it cost the Seminoles starting guard Chuck Graham. He would undergo reconstructive knee surgery after suffering an injury just three minutes into the game. Unfortunately, it would be a scene all too familiar to FSU fans. A total of six Seminoles, including five starters (two for the season), would miss three or more games during the year with injuries.

FSU did not skip a beat two nights later while it played host to 19th-ranked Iowa State in Tallahassee.

With a trip to New York and the finals of the NIT at stake, the Tribe pounded the Cyclones 109-86 in what may have been the finest hoops an FSU squad has played in 20 years. Bob Sura, who led the Tribe in scoring in five of the first 10 games, and in fact, the rest of the season, scored a career high 34 points in the win.

Madison Square Garden was the scene for game three and, while the surroundings may have been strange, the opponent was familiar. In each of the last two NCAA Tournaments, the Indiana Hoosiers had sent

FSU packing. Despite double-figure rebounding efforts from Sura, Doug Edwards and Byron Wells, IU threw FSU into a consolation round game with an 81-78 overtime win.

The match-up with UCLA had national appeal, and FSU battled back from a 10-point halftime deficit for a shot at the win. But the Bruins took an 86-83 victory and handed the Tribe its first set of only three back-to-back losses all season.

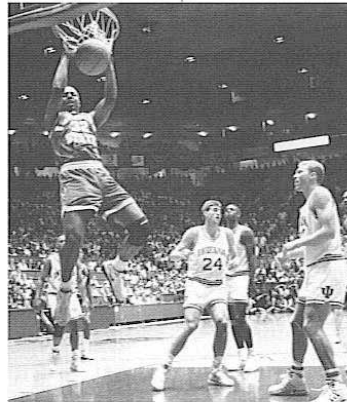
Doug Edwards got the 2-2 Seminoles back on track at home with 19 points and 12 rebounds to lead the Tribe to a workman-like 67-64 win over Top 20 member Massachusetts.

The first real road trip of the season was next for FSU, and the December 15th game at

Duquesne in Pittsburgh would be a wake up call. In front of a hostile crowd, FSU raced to a 24-point lead in the second half that had the opposition talking to itself. In a desperation move, Duquesne reached down the bench for Efferem Whitehead, who proceeded to hit 5-of-7 bombs from 3-point range to start a landslide that FSU never slowed in a surprising 91-84 loss.

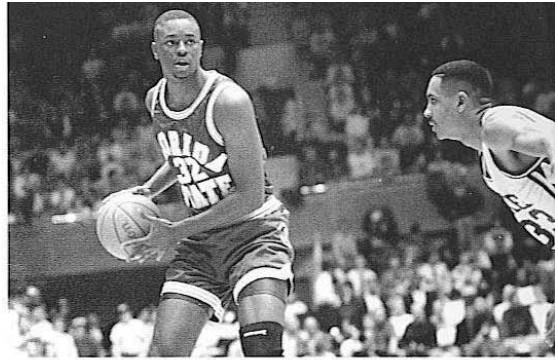
At 3-3, the Seminoles faced a crossroads. It would be six more games until point guard Charlie Ward entered the lineup, Graham was already out for the season and center Andre Reid, who coaches counted on to stop the powerful centers in the ACC, was lost for the season with a broken hand.

To attack the problem, FSU turned the offense up a notch, and the defense up several, and reeled-off wins in



Florida State and Indiana met for the third consecutive season at the semifinals of the preseason NIT in New York.

The Tribe was involved in more close games than any other ACC member, posting a 7-3 record in games decided by three or fewer points. For the third consecutive year, FSU never lost more than two games in a row.



'92 - '93 REVIEW • SEMINOLE BASKETBALL 1993 - 94

18 of its next 21 games to vault back into the national championship picture.

The Seminoles would face UNC Charlotte next in Orlando, desperately needing a win. They got double-figure scoring efforts by Sura, Edwards and Cassell, as well as an outstanding defensive effort, to win 63-59 and push their record to 4-3. The victory put FSU on the winning side.

Sura's 20-point, 14-rebound effort in a 91-80 overtime win over Temple the next night would be overshadowed by the play of freshman Derrick Carroll, who came off the bench to ignite the FSU offense with 20 points and rally the Tribe by hitting 8-of-10 free throws in overtime to give FSU the win.

Florida State pounded Arkansas-Little Rock (95-64) and Maryland-Baltimore Co. (109-80) at home in December to stretch its record to 7-3 and the winning streak to four games.

A pair of in-state rivals stood between FSU and its ACC opener at Virginia on January 6th. First, Cassell posted one of his five 30-point efforts in a 94-73 win over South Florida that saw him score 34. However, a very disappointing 89-86 loss to Florida dampened the spirits and put a halt to a six-game win streak.

Charlie Ward, still sore from the pounding Nebraska's defense put on him during his MVP performance in the Orange Bowl win on January 1st, donned his basketball uniform for the first time all year at Virginia. However, he was not able to top Cory Alexander and his teammates as the Cavalier guard scored 23 points in a hard-fought 80-76 win.

The loss seemed to focus the veteran squad and the Tribe began a run that would see them lose just once over the next 14 games.

FSU leaned on Cassell for a game-winning shot in overtime to take a 74-72 overtime win at Wake Forest that began the Seminole hot streak.

Home wins over Maryland (105-85) and N.C. State

(70-54), and a lop-sided win over Clemson on the road (89-71), set the stage for a nationally televised match-up with then sixth-ranked Duke in Tallahassee on January 24th.

The game would not disappoint the ABC television audience as the Blue Devils' Cherokee Parks knotted the game at 80 with a pair of free throws at the end of regulation. The drama continued in the extra stanza with reserve forward Byron Wells putting the finishing touch on the game with a buzzer-beating three-pointer that gave the Tribe a delirious 89-88 win over Duke. All five starters scored in double figures with Doug Edwards leading the pack with 21 points and 12 rebounds.

The schedule did not allow for long celebration, however, since FSU would travel to Chapel Hill just three days later for a showdown between the ACC's top two teams.

For most of the game, it looked as though the Seminoles were going to embarrass the homestanding Tar Heels. Edwards' lay-up with 11:48 left gave FSU a 21-point lead at 65-44. But North Carolina would mount a furious comeback. Using a trapping press, UNC overwhelmed the Seminoles, taking the lead with 1:41 left and eventually winning the game 82-77.

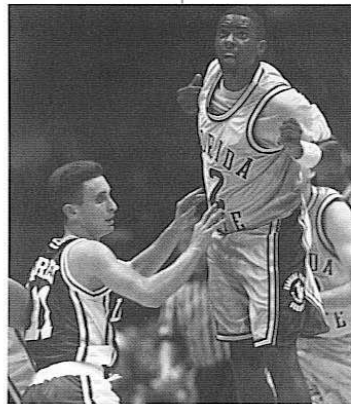
Once again, a defeat only seemed to strengthen the resolve of the Seminoles, who would put together their longest winning streak of the year after the curious loss.

Consecutive blow-outs of Georgia Tech (96-77) and Jacksonville (92-77) started the run, but cost the Tribe dearly. Charlie Ward suffered an injury to his left shoulder in the Tech win that forced him to miss six of the next nine games.

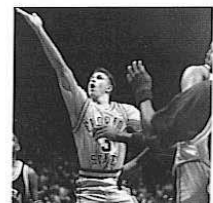
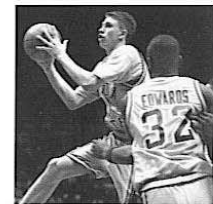
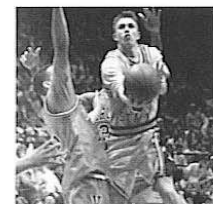
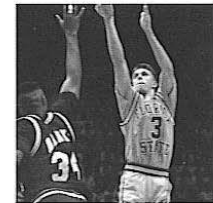
Next, FSU stepped out of conference for a road contest against Big East heavyweight Connecticut, and, even without Ward in the lineup, prevailed by an 86-74 score.

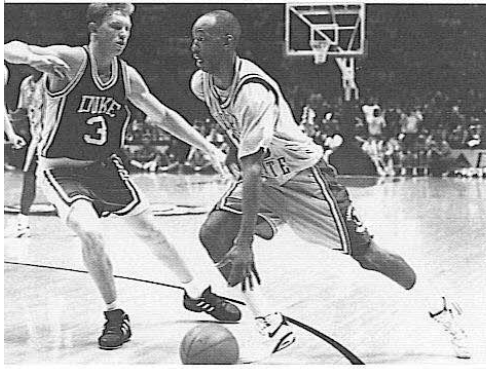
Revenge against Virginia came on February 8th by a 99-84 score, and a rout of Wake Forest (111-94) sent the

FSU All-America candidate Bob Sura (below) is the ACC's leading returning scorer after averaging 19.9 points per game last year. Sura has every offensive move in the book as illustrated in the sequence but he was far from the only scoring weapon last season. Sam Cassell, Doug Edwards (above) and Rodney Dobard all averaged in double figures last year.



FSU's thrilling 89-88 overtime win over Duke gave the tribe at least one win over every ACC team.

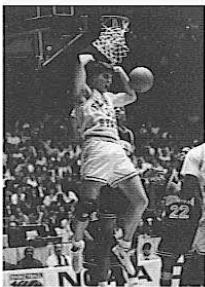




Few defenders could contain FSU guard Sam Cassell (above) or his teammates last season. The Seminoles posted a 12-4 record in their second year in the ACC and moved further in the NCAA Tournament (Final Eight) than all but one other FSU squad.

Byron Wells' (below) contribution off the bench was a big reason that FSU remained remarkably consistent despite injuries that eliminated two starters for the season and cost four more at least three games. His baseline jumper with just seconds left gave FSU a thrilling overtime win that also meant FSU had defeated every team in the ACC at least once over their two years in the league.

While FSU's fast break offense (opposite page) gained a lot of national attention, the Seminoles' ability to play stingy defense and create turnovers may have been the real reason the Tribe was so successful. Sam Cassell led the league in steals in 1992-93 while Rodney Dobard and Bob Sura were also proficient at the defensive end.



FSU's regular season run resulted in the selection of three Seminoles among the ACC's Top 10 players. Sura, Edwards and Cassell all earned second team All-ACC honors.

SEMINOLE BASKETBALL 1993-94 • '92 - '93 REVIEW

Tribe on the road to Maryland, where Bob Sura scored 34 points to push FSU to an 87-84 win and 19-6 record (9-2 in the ACC).

Ward returned for a contest at N.C. State that would be crucial for FSU since leading scorer Bob Sura and top rebounder Doug Edwards were suspended for a game for academic reasons. Rodney Dobard and Sam Cassell scored 18 each, and Maurice Robinson had a career high 16, to lead FSU to a heart-stopping 72-71 win over the Wolfpack.

A win over Clemson set the Seminoles up for a crucial back-to-back match-up with Duke and North Carolina. It would be only the third time all season that FSU would lose consecutive games. Duke ran FSU out of Cameron Indoor Stadium (98-75) and three days later, North Carolina would win in Tallahassee 86-76.

A win over Georgia Tech at home on March 4th completed Florida State's regular season at 22-8 and a 12-4 league record assured the Seminoles of second place in the ACC for the second consecutive year.

FSU's regular season run resulted in the selection of three Seminoles among the ACC's Top 10 players. Sura, Edwards and Cassell all earned second team All-ACC honors. The trio also made Florida State the only team in the country to have three players average better than 18 points each.

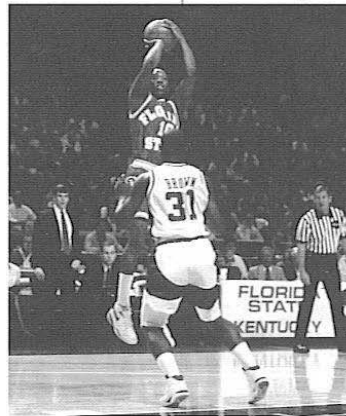
Red-hot Clemson surprised the Tribe in the first round of the ACC Tournament by an 87-75 score, but the upset did not appear to bother the NCAA selection committee, which installed the Seminoles as the third seed in the Southeast Regional.

At near full strength for really the first time all season, FSU headed to the familiar surroundings of the Orlando Arena and the equally familiar trappings of its third consecutive NCAA Tournament.

A determined Evansville squad found themselves severely undermanned against the Seminoles in an 82-

70 opening round loss that set the stage for a game with a familiar foe.

Much of the Tulane roster was still recognizable from those not so distant Metro Conference days when Pat Kennedy and staff prepared for the second round match-up. The Green Wave had been a difficult opponent for FSU over the last few years, but this game would prove different. Sam Cassell set an NCAA record when he canned all seven of his three pointers in leading FSU to a remarkably easy 94-63 victory, and the school's second straight Sweet 16 appearance.



The Seminoles advanced to within a game of the Final Four in 1992-93 making it the second most successful season in FSU history.

In Charlotte, Western Kentucky would prove worthy of its deep penetration in the NCAA dance in a game that was close throughout, and tied, 40-40 at halftime. Rodney Dobard's 16 points and 13 rebounds proved to be the difference in propelling FSU to an 81-78 win and a place among the final eight teams in the Tournament.

There, just 40 minutes away from a date to the Final Four, Florida State's season would end at the hands of a Kentucky team that was playing, at that particular time, perhaps the best basketball in the land.

The Wildcats' combination of great long range shooting and powerful inside play had Florida State off balance for most of the first half. But the Tribe rallied and

cut the UK lead to eight at the half. The surge took too much out of FSU, however, as Jamal Mashburn and company cruised in the second half to a 106-86 win for the coveted Final Four spot.

It had been a most remarkable season. Florida State had almost gone coast-to-coast in the Associated Press Top 20, finishing the regular season ranked 11th. For the second year in a row, the Seminoles finished second in the Atlantic Coast Conference and advanced to the Sweet 16 of the NCAA Tournament. The season fell just short of the school's second ever Final Four appearance, but few could argue that Florida State had lived up to the motto of "Simply The Best."



1992-93 STATISTICS

Individual Statistics — All Games

(Overall Record: 25-10; Home 13-2; Away 7-4; Neutral 5-4; Atlantic Coast Conference 12-4)

Player	GP-GS	Min.-Avg.	Field Goals		3-Point		Free Throws		Rebounds		
			FGM-FGA	FG Pct.	FGM-FGA	FG Pct.	FTM-FTA	FT Pct.	OFF	DEF	TOT-AVG
Bob Sura	34-34	1213-35.7	241-533	.452	73-220	.332	120-188	.638	81	128	209-6.1
Doug Edwards	31-31	1085-35.0	224-424	.528	6-25	.240	114-158	.722	130	160	290-9.4
Sam Cassell	35-35	1298-37.1	234-466	.502	50-131	.382	123-162	.759	47	105	152-4.3
Rodney Dobard	35-35	1105-31.6	170-297	.572	0-1	.000	64-98	.653	76	138	214-6.1
Charlie Ward	17-14	557-32.8	49-106	.462	16-50	.320	18-27	.667	9	36	45-2.6
Derrick Carroll	30-4	459-15.3	57-143	.399	26-79	.329	23-33	.697	25	52	77-2.6
Byron Wells	34-10	548-16.1	66-131	.504	7-28	.250	18-34	.529	42	81	123-3.6
Maurice Robinson	33-1	307-9.3	47-82	.573	0-0	.000	20-35	.571	27	38	65-2.0
Andre Reid	5-5	101-20.2	7-14	.500	0-0	.000	3-6	.500	10	11	21-4.2
Lorenzo Hands	29-6	304-10.5	37-81	.457	8-23	.348	14-29	.483	7	19	26-0.9
Stephen Gruhl	5-0	7-1.4	4-6	.667	0-0	.000	1-3	.333	0	1	1-0.2
Scott Shepherd	23-0	105-4.6	6-24	.250	1-7	.143	22-30	.733	3	4	7-0.3
Jonathan Kerner	10-0	31-3.1	3-5	.600	0-0	.000	3-4	.750	3	9	12-1.2
Chuck Graham	1-1	3-3.0	0-1	.000	0-0	.000	0-0	.000	0	1	1-1.0
Scott Porter	2-0	2-1.0	0-2	.000	0-0	.000	0-0	.000	0	1	1-0.5
FSU	35	7125	1145-2315	.495	187-564	.332	543-807	.673	460	784	1376-39.3
Opponents	35	7125	1170-2392	.450	220-587	.375	414-631	.656	551	790	1341-38.3

Team Rebounds: All Games (FSU 136, Opponents 138) Dead Ball Rebounds: All Games (FSU 138, Opponents 111)

Individual Statistics — ACC Games Only

(Overall Record: 12-4; Home 7-1; Away 5-3; Neutral 0-1)

Player	GP/GS	Min./Avg.	Field Goals		3-Point		Free Throws		Rebounds		
			FGM-FGA	FG Pct.	FGM-FGA	FG Pct.	FTM-FTA	FT Pct.	OFF	DEF	TOT-AVG
Sura	15/15	547/36.5	108-240	.450	32-96	.333	59-91	.648	41	53	94-6.3
Edwards	15/15	532/35.5	111-210	.529	1-8	.125	50-68	.735	69	81	150-10.0
Cassell	16/16	594/37.1	103-203	.507	21-63	.333	58-71	.817	24	41	65-4.1
Dobard	16/16	477/29.8	81-146	.555	0-1	.000	25-40	.625	34	63	97-6.1
Ward	12/9	369/30.8	33-68	.485	11-31	.355	11-14	.786	5	23	28-2.3
Robinson	16/0	172/10.8	29-53	.547	0-0	.000	16-27	.593	18	22	40-2.5
Hands	12/5	148/12.3	21-43	.488	6-12	.500	4-15	.267	2	7	9-0.8
Wells	16/2	219/13.7	28-56	.500	5-16	.313	4-8	.500	15	31	46-2.9
Carroll	11/3	149/13.5	15-51	.294	6-29	.207	4-7	.571	9	22	31-2.8
Gruhl	2/0	2/1.0	1-3	.333	0-0	.000	0-0	.000	0	0	0-0.0
Shepherd	8/0	27/3.4	0-6	.000	0-2	.000	6-8	.750	1	0	1-0.1
Kerner	5/0	12/2.4	1-1	1.000	0-0	.000	0-0	.000	0	2	2-0.4
Porter	2/0	2/1.0	0-2	.000	0-0	.000	0-0	.000	0	1	1-0.5
FSU	16	3250	531-1082	.491	82-258	.318	237-349	.679	218	346	615-38.4
Opponents	16	3250	504-1067	.472	86-235	.366	206-303	.680	222	376	598-37.4

Team Rebounds: Atlantic Coast Games (FSU 54, Opponents 46) Dead Ball Rebounds: Atlantic Coast Games (FSU 59, Opponents 51)

Single Game Highs

	Florida State	Opponents
Field Goals Made	14 - Sura vs. Iowa State	12 - Cheaney, Indiana
Field Goal Attempts	24 - Sura vs. Indiana	22 - Cheaney, Indiana
Free Throws Made	5 - Sura vs. Indiana	9 - Cheaney, Indiana
Free Throws Attempted	8 - Sura vs. Indiana	10 - Cheaney, Indiana
Points	34 - Sura vs. Iowa State	34 - Cheaney, Indiana
Rebounds	12 - Edwards vs. Indiana	14 - Roe, UMASS
Assists	9 - Cassell vs. Siena	13 - Edney, UCLA
Turnovers	6 - Sura vs. UMASS	7 - Roe, UMASS
Blocked Shots	6 - Dobard vs. UCLA	3 - Henderson, Indiana
Steals	5 - Cassell vs. Iowa State	5 - Williams, UMASS

1992-93 STATISTICS

AST	STL	BLK	TO	PF-DQ	PT-AVG
92	54	7	129	87-2	675-19.9
91	43	44	84	102-5	568-18.3
170	97	10	98	110-7	641-18.3
47	37	111	72	101-3	404-11.5
93	48	5	36	32-0	132-7.8
30	10	6	26	12-0	163-5.4
22	12	21	45	70-1	157-4.6
4	1	3	18	38-0	114-3.5
2	2	2	4	18-1	17-3.4
20	15	1	22	22-0	96-3.3
0	0	0	1	2-0	9-1.8
12	2	0	17	10-0	35-1.5
1	1	0	2	2-0	9-0.9
0	0	0	0	0-0	0-0.0
0	0	0	0	0-0	0-0.0
584	322	210	554	606	3020-86.3
563	257	102	581	669	2788-79.7

AST	STL	BLK	TO	PF-DQ	PT-AVG
44	23	4	57	31-0	307-20.5
56	26	20	30	48-2	273-18.2
76	36	3	38	53-2	285-17.8
14	13	54	28	57-3	187-11.7
68	33	3	28	23-0	88-7.3
2	1	2	8	22-0	74-4.6
8	4	0	12	10-0	52-4.3
5	6	5	22	33-1	65-4.1
8	1	1	9	2-0	40-3.6
0	0	0	0	0-0	2-1.0
4	0	0	4	4-0	6-0.8
0	0	0	0	1-0	2-0.4
0	0	0	0	0-0	0-0.0
285	143	92	236	284	1381-86.3
268	109	52	253	296	1300-81.3



Bob Sura led Florida State with an average of 19.9 points per game, however, he was far from the Seminole's only offensive weapon. Sam Cassell and Doug Edwards each averaged 18.3 points per game during their senior seasons which meant FSU was the only Division I team in the nation with three players who averaged 18 or more points.

1992-93 STATISTICS



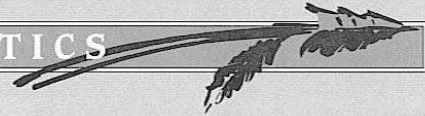
Game-By-Game

Date	Opponent	Score	Attendance	FSU High Points	FSU High Rebounds	FSU High Assists
11/18	SIENA	89-80	7,113	Sura 24	Reid 8	Cassell 9
11/20	IOWA STATE	109-86	7,919	Sura 34	Sura 10	Cassell 6
11/25	N Indiana	78-81	12,641	Cassell 18	Edwards 12	Sura 4
11/27	N UCLA	83-86	14,338	Sura 27	Edwards 8	Cassell 8
12/2	MASSACHUSETTS	67-64	7,111	Edwards 19	Edwards 12	Cassell 7
12/15	@ Duquesne	84-91	5,115	Sura 34	Edwards 10	Sura 5
12/19	N UNC-Charlotte	63-59	6,873	Edwards 22	Sura 8	Sura 4
12/20	N Temple	91-80	6,937	Sura 24	Sura 14	Cassell 6
12/22	ARKANSAS-LITTLE ROCK	95-64	7,313	Edwards 16	Edwards 5	Carrol 4
12/28	MD-BALTIMORE CO.	109-80	5,238	Cassell 31	Well 12	Cassell 8
12/30	SOUTH FLORIDA	94-73	6,013	Cassell 34	Dobard 9	Cassell 5
1/2	FLORIDA	86-89	9,099	Cassell 30	Cassell 7	Cassell 7
1/6	@ Virginia	76-80	8,864	Sura 20	Edwards 12	Cassell 9
1/9	@ Wake Forest	74-72	14,366	Cassell 21	Edwards 8	Ward 5
1/13	MARYLAND	105-85	9,018	Edwards 26	Edwards 11	Sura 7
1/16	N.C. STATE	70-54	10,910	Sura 23	Edwards 6	Ward 10
1/20	@ Clemson	89-71	8,000	Cassell 30	Edwards 10	Ward 8
1/24	DUKE	89-88	13,333	Edwards 21	Edwards 12	Cassell 6
1/27	@ North Carolina	77-82	21,572	Dobard 17	Edwards 12	Ward 5
1/31	GEORGIA TECH	96-77	10,216	Sura 22	Edwards 12	Ward 9
2/2	@ Jacksonville	92-77	8,603	Edwards 23	Dobard 10	Cassell 6
2/6	@ Connecticut	86-74	8,241	Dobard 26	Edwards 9	Sura 3
2/8	VIRGINIA	99-84	8,711	Edwards 25	Edwards 11	Sura 7
2/10	WAKE FOREST	111-94	11,341	Cassell 25	Edwards 9	Cassell 6
2/13	@ Maryland	87-84	14,500	Sura 34	Edwards 11	Ward 6
2/17	@ N.C. State	72-71	10,800	Cassell 18	Robinson 10	Ward 6
2/20	CLEMSON	102-92	11,277	Cassell 25	Edwards 11	Cassell 6
2/24	@ Duke	75-98	9,314	Sura 29	Sura 9	Cassell 5
2/27	NORTH CAROLINA	76-86	13,251	Edwards 23	Edwards 10	Sura 5
3/4	@ Georgia Tech	83-82	10,026	Sura 22	Edwards 9	Cassell 5
3/12	N Clemson	75-87	23,532	Edwards 22	Edwards 15	Edwards 5
3/17	N Evansville	82-70	14,410	Cassell 18	Edwards 12	Cassell 6
3/20	N Tulane	94-63	14,410	Cassell 31	Edwards 12	Ward 6
3/25	N Western Kentucky	81-78	22,876	Edwards 19	Dobard 13	Sura 4
3/27	N Kentucky	81-106	22,876	Sura 17	Edwards 7	Ward 7
Total Attendance:		396,157	Average: 11,319	Away Attendance: 119,401	Average: 10,855	
Home Attendance:		137,863	Average: 9,191	Neutral Attendance: 138,893	Average: 15,433	

Team and Opponent Highs and Lows

	FSU High	FSU Low	Opponent High	Opponent Low
Field Goals Made	44 vs. Iowa State	30 vs. Indiana/UMASS	37 vs. UCLA	23 vs. UMASS
Field Goal Attempts	84 vs. Indiana	58 vs. Siena	85 vs. Iowa State	59 vs. UMASS
Field Goal Percentage	60.3 vs. Iowa State	35.7 vs. Indiana	57.8 vs. UCLA	39.0 vs. UMASS
Free Throws Made	15 vs. Siena	4 vs. UMASS	20 vs. Indiana	6 vs. Siena
Free Throw Percentage	71.0 vs. Iowa State	50.0 vs. UMASS	86.7 vs. Iowa State/UMASS	43.0 vs. Siena
3-Point Field Goals Made	8 vs. Iowa State	3 vs. UMASS	10 vs. Siena	3 vs. Indiana
3-Point Field Goal Percentage	50.0 vs. Siena/UCLA	20.0 vs. Indiana	55.6 vs. UCLA	11.1 vs. Robert Morris
Rebounds	56 vs. Indiana	34 vs. UCLA/UMASS	43 vs. Indiana	31 vs. Siena
Personal Fouls	25 vs. Indiana	13 vs. UMASS	20 vs. Siena	14 vs. UMASS
Points	109 vs. Iowa State	67 vs. UMASS	86 vs. UCLA	64 vs. UMASS
Assists	24 vs. UCLA	10 vs. Siena	26 vs. UCLA	9 vs. Siena/UMASS
Turnovers	24 vs. Iowa State	14 vs. UCLA	24 vs. Iowa State	10 vs. Siena
Blocked Shots	9 vs. UCLA		7 vs. UMASS	
Steals	16 vs. Iowa State		13 vs. UMASS	

1992-93 STATISTICS



Game-By-Game Team Statistics

	FG-FGA	PCT.	FT-FTA	PCT.	REB	PF-DQ	PTS.	AST	TO	BLK	STL
FSU	35-58	.600	15-21	.710	40	15-0	89	10	15	2	8
Siena	32-70	.460	6-14	.430	31	20-0	80	9	10	2	6
FSU	44-73	.603	13-20	.650	48	18-2	109	17	24	8	16
Iowa State	34-85	.400	13-15	.867	37	15-0	86	11	19	2	12
FSU	30-84	.357	14-23	.609	56	25-2	78	11	17	3	7
Indiana	29-66	.439	20-30	.667	43	16-0	81	17	15	5	8
FSU	33-67	.493	11-17	.647	34	19-0	83	24	14	9	7
UCLA	37-64	.578	7-19	.368	39	15-0	86	26	13	2	9
FSU	30-59	.508	4-8	.500	34	13-0	67	13	19	6	8
Massachusetts	23-59	.390	13-15	.867	34	14-0	64	9	19	7	13
FSU	30-65	.462	18-28	.643	39	22-1	84	19	27	6	6
Duquesne	31-65	.477	19-29	.655	37	24-0	91	24	25	4	15
FSU	26-57	.456	10-16	.625	35	16-0	63	12	15	2	5
UNC-Charlotte	24-63	.381	5-10	.500	41	16-0	59	15	19	2	5
FSU	30-67	.448	22-30	.733	45	17-0	91	20	14	5	9
Temple	29-76	.382	10-17	.588	45	20-0	80	10	17	3	7
FSU	37-64	.576	16-24	.667	34	11-0	95	20	18	5	15
Arkansas-Little Rock	11-30	.421	6-8	.750	31	21-0	64	11	24	0	6
FSU	40-74	.541	24-32	.750	48	19-0	109	18	20	10	13
MD-Baltimore Co.	28-74	.378	17-23	.739	34	23-1	80	14	20	1	7
FSU	37-67	.552	13-20	.650	51	15-0	94	14	10	9	7
South Florida	28-78	.359	10-14	.714	40	18-1	73	16	8	0	3
FSU	32-62	.516	15-21	.762	26	16-1	86	9	18	7	11
Florida	35-60	.583	9-14	.643	36	18-0	89	17	23	1	5
FSU	31-74	.419	11-18	.611	50	20-2	76	18	16	7	4
Virginia	28-73	.384	15-25	.600	43	17-1	80	14	10	1	4
FSU	27-61	.443	16-21	.762	31	17-0	74	16	13	7	13
Wake Forest	29-72	.403	12-17	.706	53	18-0	72	17	20	1	7
FSU	37-67	.552	23-34	.676	46	16-1	105	23	20	10	11
Maryland	34-73	.479	12-17	.706	32	27-0	85	15	20	1	9
FSU	28-52	.539	8-11	.727	23	16-0	70	19	9	5	6
N.C. State	21-47	.447	9-15	.600	28	13-0	54	13	17	1	4
FSU	35-66	.530	7-10	.700	40	13-0	89	22	18	4	8
Clemson	29-61	.475	6-9	.667	26	15-0	71	19	15	3	8
FSU	36-76	.474	13-21	.520	42	21-1	89	16	14	5	10
Duke	35-68	.515	15-23	.652	42	20-1	88	14	13	6	9
FSU	31-71	.437	9-13	.692	45	16-0	77	17	23	7	12
North Carolina	31-75	.413	15-21	.714	40	13-0	82	15	14	6	13
FSU	41-85	.482	9-15	.600	49	16-0	96	20	16	5	10
Georgia Tech	33-72	.458	7-11	.636	40	16-0	77	19	20	3	5
FSU	27-53	.509	31-46	.674	43	15-0	92	16	25	12	13
Jacksonville	30-77	.390	9-14	.643	40	28-3	77	16	19	1	17
FSU	31-62	.500	18-24	.750	35	17-1	86	12	18	3	12
Connecticut	30-77	.390	10-13	.769	48	20-0	74	17	20	5	6
FSU (2)	35-69	.507	25-32	.781	38	15-0	99	20	10	2	6
Virginia (2)	35-71	.493	10-16	.625	38	25-1	84	14	15	4	3
FSU (2)	44-76	.579	16-23	.727	34	22-1	111	24	4	2	7
Wake Forest (2)	37-64	.578	15-22	.682	31	15-0	94	10	12	1	2
FSU (2)	31-59	.525	20-33	.606	37	19-0	87	11	28	9	12
Maryland (2)	32-70	.457	18-23	.783	38	22-1	84	18	23	4	13
FSU	27-56	.482	16-28	.643	39	19-1	72	14	13	6	8
N.C. State	27-61	.443	6-15	.400	37	23-0	71	20	17	3	2
FSU (2)	37-73	.507	21-28	.750	38	16-1	102	21	11	5	11
Clemson (2)	33-69	.478	15-21	.714	36	22-2	92	19	18	4	8
FSU (2)	26-65	.400	20-27	.741	35	24-1	75	10	11	6	3
Duke (2)	34-59	.576	26-35	.743	38	21-0	98	22	9	5	6
FSU (2)	30-62	.484	13-19	.684	31	19-1	76	15	18	6	9
North Carolina (2)	32-55	.492	18-24	.750	40	17-0	86	17	15	4	11
FSU (2)	35-70	.500	10-16	.625	37	14-0	83	19	12	6	13
Georgia Tech (2)	34-67	.507	7-9	.778	36	12-0	82	22	15	5	5
FSU (3)	32-77	.416	8-12	.667	39	17-1	75	18	12	6	12
Clemson (3)	35-62	.565	9-20	.450	41	13-0	87	23	17	7	6
FSU	29-54	.537	17-24	.708	39	15-0	82	16	15	6	7
Evansville	27-65	.415	8-14	.571	33	21-0	70	15	13	0	7
FSU	36-68	.529	13-19	.684	42	12-0	94	20	9	8	9
Tulane	26-75	.347	6-10	.600	42	19-0	63	12	12	3	5
FSU	30-61	.492	18-38	.474	48	27-2	81	16	19	9	5
W. Kentucky	30-75	.400	12-19	.632	40	16-1	78	11	15	4	9
FSU	25-61	.410	26-35	.743	25	24-2	81	14	11	2	9
Kentucky	38-70	.543	19-30	.633	51	27-1	106	22	20	1	2

1992-93 STATISTICS

Game-By-Game Individual Points - Rebounds

Date	Opponent	Score	Attend	Carroll	Cassell	Dobard	Edwards	Graham	Hands	Kerner	Reid	Robinson	Shepherd	Sura	Ward	Wells	
11/18	SIENA	89-80	7,113	3-4	24-5	5-4	22-4	0-1	10-2	0-0	6-8	0-0	2-1	24-6		15-6	
11/20	IOWA STATE	109-86	7,919	0-1	20-3	14-9	16-12		8-0		5-4	3-2	3-0	34-10		0-8	
11/25	N Indiana	78-81	12,641	0-0	18-5	10-5	18-8		4-1		2-6		2-0	17-10		9-10	
11/27	N UCLA	83-86	14,338	4-1	17-6	4-3	19-12		2-1		2-1	0-1	2-0	27-6		7-3	
12/2	MASSACHUSETTS	67-64	7,111	2-1	11-7	12-4	17-10		3-0		2-2		0-0	14-4		4-2	
12/15	@ Duquesne	84-91	5,115	4-3	14-3	7-5	22-6		4-1			7-3	2-1	34-6		2-3	
12/19	N UNC-Charlotte	63-59	6,873	0-0	10-4	9-5	17-5					0-0		18-8		4-8	
12/20	N Temple	91-80	6,937	20-4	12-5	11-8	16-5		0-0			7-3	0-0	24-14		4-8	
12/22	AR-LITTLE ROCK	95-64	7,313	5-4	11-6	12-4	19-5		4-2	2-3		8-1	9-2	15-4		0-1	
12/28	MD-BALTIMORE CO.	109-80	5,238	10-0	31-6	17-11			4-1	2-5		5-5	2-0	23-6		8-3	
12/30	SOUTH FLORIDA	94-73	6,013	2-8	34-7	8-9	14-12		3-2	3-2		8-6	2-0	23-3		13-12	
1/2	FLORIDA	86-89	9,099	12-6	30-7	10-3			0-1			0-0	2-0	10-3		11-6	
1/6	@ Virginia	76-80	8,864	11-7	10-6	8-5						2-1		20-7	3-1	4-0	
1/9	Wake Forest	74-72	14,366	2-4	21-1	12-6	16-8					2-0		11-4	4-2	6-4	
1/16	MARYLAND	105-85	9,018	10-1	18-7	6-6	26-11		0-0	0-1		7-1	2-0	20-7	9-4	5-4	
1/16	NC STATE	70-54	10,910	3-0	7-2	10-6	13-6		1-0	0-0		4-0	0-0	23-4	9-1	0-0	
1/20	@ Clemson	89-71	8,000	0-1	30-5	9-9	12-10		0-1			0-4	0-0	19-4	19-1	0-4	
1/24	DUKE	89-88	13,333	0-4	15-3	16-4	21-12					0-0		16-9	11-3	10-1	
1/27	@ North Carolina	7-82	21,572	0-1	15-2	17-10	16-12					9-5		15-6	5-6	0-1	
1/31	GEORGIA TECH	96-77	10,216	4-8	21-5	14-5	22-12		4-1			2-3	0-0	22-6	3-1	4-5	
2/2	@ Jacksonville	92-77	8,603	18-4	17-6	6-10	23-9		1-2			2-1	0-0	21-5		4-4	
2/6	@ Connecticut	86-74	8,241	9-4	18-4	26-5	14-9		0-2			0-0	2-1	15-7		2-1	
2/8	VIRGINIA	99-84	8,711	7-4	18-2	12-4	25-11		13-0			4-3	0-0	20-9		2-0	
2/10	WAKE FOREST	111-94	11,341	3-1	25-1	19-7	21-9		4-1			4-2	3-0	22-7	3-1	7-2	
2/13	@ Maryland	87-84	14,500		9-7	12-4	19-11		2-1			0-0		34-9	9-2	2-1	
2/17	@ NC State	72-71	10,800		18-2	18-8			9-1	2-1		16-10	1-0		4-5	4-7	
2/20	CLEMSON	102-92	11,277		25-6	9-8	20-11		13-2			6-2		20-3		9-3	
2/24	@ Duke	75-98	9,314		19-4	0-6	11-6		2-0	0-0		10-4	0-1	29-9		4-2	
2/27	NORTH CAROLINA	76-86	13,251		18-4	9-3	23-10		0-0			6-3		14-3		6-5	
3/4	@ Georgia Tech	83-82	10,026	0-0	16-8	16-6	14-9		4-2			2-2		22-7	9-1	0-0	
3/12	N Clemson	75-87	23,523	6-1	12-5	8-6	22-15		0-1			4-2		12-2	11-3		
3/17	N Evansville	82-70	14,410	8-0	18-2	13-4	14-12		0-1	0-0		1-0	3-0	7-7	15-3	3-5	
3/20	N Tulane	94-63	14,410	2-2	31-5	13-7	22-12		0-0			2-1	0-0	16-7	8-6	0-1	
3/25	N Western Kentucky	81-78	22,876	9-1	12-3	16-13	19-9					0-0		17-7	5-4	3-4	
3/27	N Kentucky	81-106	22,876	9-2	16-2	16-2	15-7		0-1			0-1	0-1	17-0	5-1	3-0	
Total Points:					163	641	404	568	0	96	9	17	114	35	675	132	157
Total Rebounds:					77	152	214	290	1	26	12	21	65	7	209	45	123

Season Superlatives

30-Point Games:	Cassell - 5 (31 vs. UMBC, 34 vs. USF, 30 vs. UF, 30 at Clemson, 31 vs. Tulane at NCAA) Sura - 3 (34 vs. Iowa State, 34 vs. Duquesne, 34 at Maryland)	
20-Point Games:	Sura - 15 (Last at Georgia Tech, 22 points) Edwards - 12 (Last vs Tulane at NCAA, 22 points) Cassell - 6 (24 vs. Siena, 20 vs. Iowa State, 21 at Wake Forest, 21 vs. Georgia Tech, 25 vs. Wake Forest, 25 vs. Clemson) Dobard - 1 (26 at Connecticut)	
10-Rebound Games:	Edwards - 16 Wells - 2 (10 vs. Indiana, 12 vs. UMBC) Robinson - 1 (10 at NC State)	Sura - 3 (Iowa State, Indiana, Temple) Dobard - 2 (11 vs. UMBC, 10 at Jacksonville)
Games as Leading Scorer:	Cassell - 12 (tied with Dobard at NC State) Edwards - 9	Sura - 11 (tied with Edwards vs. Georgia Tech) Dobard - 2 (at UNC, at UCONN, at NC State)
Games as Leading Rebounder:	Edwards - 23 (tied once with Sura, Dobard) Sura - 3 (tied once with Edwards) Wells - 1 (12 vs. UMBC) Robinson - 1 (10 at NC State)	Dobard - 3 (9 vs. USF, 6 vs. NC State, 10 at Jacksonville) Reid - 1 (8 vs. Siena) Cassell - 1 (7 vs. UF)

1992-93 STATISTICS



Team Highs & Lows - Season

Category	Florida State	Opponent	Category	Florida State	Opponent
Points 1st Half	High	57 vs. Wake Forest	Free Throws Attempted	High	46 vs. Jacksonville
	Low	27 vs. N.C. State		Low	8 vs. Massachusetts
Points 2nd Half	High	65 vs. Maryland	Free Throw Percentage	High	.781 vs. Virginia
	Low	29 vs. UNC-Charlotte		Low	.474 vs. W. Kentucky
Total Points	High	111 vs. Wake Forest	Offensive Rebounds	High	28 vs. Indiana
	Low	63 vs. UNC-Charlotte		Low	6 vs. Connecticut
Field Goals Made	High	44 vs. Iowa State	Defensive Rebounds	High	37 vs. South Florida
	Low	25 vs. Kentucky		Low	16 vs. Florida
Field Goals Attempted	High	85 vs. Georgia Tech	Total Rebounds	High	56 vs. Indiana
	Low	52 vs. N.C. State		Low	23 vs. N.C. State
Field Goal Percentage	High	.603 vs. Siena	Assists	High	24 vs. UCLA
	Low	.357 vs. Indiana		Low	9 vs. Florida
3-Pt. Field Goals Made	High	12 vs. Clemson	Blocked Shots	High	12 vs. Jacksonville
	Low	1 vs. UNC-Charlotte		Low	2 vs. Siena
3-Pt. Field Goals Attempted	High	30 vs. Temple	Steals	High	16 vs. Iowa State
	Low	6 vs. N.C. State		Low	3 vs. Duke
3-Pt. Field Goal Percentage	High	.538 vs. Evansville	Turnovers	High	56 vs. Indiana
	Low	.100 vs. UNC-Charlotte		Low	23 vs. N.C. State
Free Throws Made	High	31 vs. Jacksonville	Personal Fouls	High	25 vs. Indiana
	Low	4 vs. Massachusetts		Low	11 vs. Ark.-Little Rock

Individual Highs - Season & Career

Name	Season	Career
Derrick Carroll	20 points vs. Temple 8 rebounds vs. USF	Freshman
Sam Cassell	34 points vs. USF 8 rebounds vs. GA Tech 9 assists vs. Siena; at UVA	34 points at Wake Forest (91-92); vs. USF (92-93) 10 rebounds at N.C. State (91-92) 9 assists vs. Siena (92-93); at UVA (92-93)
Rodney Dobard	26 points at Connecticut 11 rebounds vs. UMBC	28 points vs. Maryland (91-92) 15 rebounds at Maryland (91-92)
Doug Edwards	26 points vs. Maryland 15 rebounds vs. Clemson at ACC 6 assists at Clemson	34 points vs. DePaul (91-92) 18 rebounds at Southern Miss (90-91) 6 assists vs. Morgan State (90-91); vs. Wake Forest (91-92); at Clemson (92-93)
Lorenzo Hands	13 points vs. Virginia; Clemson 2 rebounds vs. Siena; USF	13 points vs. Virginia (92-93) 3 rebounds vs. Stetson (89-90)
Jonathan Kerner	3 points vs. USF 5 rebounds vs. UMBC	Freshman
Maurice Robinson	18 points at N.C. State 10 rebounds at N.C. State	Freshman
Scott Shepherd	9 points vs. Ark.-Little Rock 2 rebounds vs. Ark.-Little Rock	Freshman
Bob Sura	34 points vs. Iowa State; vs. Duquesne; at Maryland 14 rebounds vs. Temple 7 assists vs. Maryland; vs. Virginia	34 points vs. Iowa State (92-93); vs. Duquesne (92-93); at Maryland (92-93) 14 rebounds vs. Temple (92-93) 7 assists vs. Maryland (92-93); vs. Virginia (92-93)
Charlie Ward	19 points at Clemson 6 rebounds at UNC; vs. Tulane 10 assists vs. N.C. State	19 points at Clemson (92-93) 7 rebounds vs. Stetson (90-91); at N.C. State; vs. N.C. State at ACC 12 assists vs. Southern Miss (90-91)
Byron Wells	15 points vs. Siena 12 rebounds vs. UMBC	15 points vs. Siena (92-93) 12 rebounds vs. UMBC (92-93)

1992-93 BOX SCORES



FSU Siena 89 80 Game 1 November 18, 1992 Tallahassee, Florida

FSU Name	Total FG	Total FGA	3-Point FG	3-Point FGA	FT	FTA	REB	TP
Shepherd	1	1	0	0	0	0	1	2
Sura	8	11	4	5	4	4	6	24
Graham	0	1	0	0	0	0	1	0
Cassell	11	15	0	2	4	4	5	24
Hands	4	5	0	0	2	2	2	10
Carroll	1	4	0	1	1	2	4	3
Wells	6	10	0	0	3	5	6	15
Dobard	1	6	0	0	3	4	4	5
Reid	3	4	0	0	0	0	8	6
Robinson	0	0	0	0	0	0	0	0
Totals	35	58	4	8	15	21	40	89

Halftime Score: FSU 41, Siena 35
 FG%: FSU 60%, Siena 46%
 3 PT FG%: FSU 50%, Siena 30%
 FT%: FSU 71%, Siena 43%

Siena Name	Total FG	Total FGA	3-Point FG	3-Point FGA	FT	FTA	REB	TP
Middleton	0	1	0	1	1	2	1	1
Bidlingmyer	0	4	0	3	0	0	2	0
White	1	3	1	3	0	0	0	3
Rydlor	0	2	0	1	0	0	0	0
Downing	2	4	2	3	0	0	1	6
Benneeman	5	14	2	9	1	2	3	13
Brown	11	21	5	13	1	4	1	28
Shorkey	0	0	0	0	0	0	0	0
Mathews	10	16	0	0	2	3	9	22
McKinney	2	3	0	0	1	3	4	5
Gras	1	2	0	0	0	0	6	2
Totals	32	70	10	33	6	14	31	80

FSU UCLA 83 86 Game 4 November 27, 1992 New York, New York

FSU Name	Total FG	Total FGA	3-Point FG	3-Point FGA	FT	FTA	REB	TP
Dobard	2	4	0	0	0	0	3	4
Edwards	7	13	0	0	4	5	8	18
Reid	1	2	0	0	0	0	1	2
Cassell	7	12	0	0	3	4	6	17
Sura	10	19	6	9	1	3	6	27
Wells	2	6	0	2	3	5	3	7
Robinson	0	1	0	0	0	0	1	0
Carroll	2	5	0	1	0	0	1	4
Hands	1	3	0	0	0	0	1	2
Shepherd	1	2	0	0	0	0	0	2
Totals	33	67	6	12	11	17	34	83

Halftime Score: FSU 37, UCLA 47
 FG%: FSU 49.3%, UCLA 57.8%
 3 PT FG%: FSU 50.0%, UCLA 55.6%
 FT%: FSU 64.7%, UCLA 36.8%

UCLA Name	Total FG	Total FGA	3-Point FG	3-Point FGA	FT	FTA	REB	TP
Butler	8	16	0	1	0	1	9	16
O'Bannon	5	11	1	1	2	4	4	13
Petruska	8	9	0	0	2	2	8	18
Edney	6	8	1	2	2	2	3	15
Traver	7	13	3	5	1	4	2	18
Zimmerman	2	3	0	0	0	0	4	4
Zidek	1	4	0	0	0	0	2	2
Totals	37	64	5	9	7	19	39	86

FSU Iowa State 109 86 Game 2 November 20, 1992 Tallahassee, Florida

FSU Name	Total FG	Total FGA	3-Point FG	3-Point FGA	FT	FTA	REB	TP
Dobard	7	9	0	0	0	0	9	14
Edwards	9	15	0	2	4	4	4	22
Reid	2	3	0	0	1	2	4	5
Cassell	8	15	4	6	0	0	3	20
Sura	14	20	4	8	2	2	10	34
Wells	0	1	0	1	0	2	8	0
Hands	3	4	0	1	2	2	0	8
Shepherd	0	2	0	1	3	7	0	3
Carroll	3	3	0	1	0	0	1	6
Robinson	1	1	0	0	1	1	2	3
Kemar	0	0	0	0	0	0	0	0
Totals	44	73	8	20	13	20	45	109

Halftime Score: FSU 55, Iowa State 35
 FG%: FSU 60.3%, Iowa State 40.0%
 3 PT FG%: FSU 40.0%, Iowa State 31.3%
 FT%: FSU 65.0%, Iowa State 65.7%

Iowa State Name	Total FG	Total FGA	3-Point FG	3-Point FGA	FT	FTA	REB	TP
Easton	6	13	0	0	2	2	6	14
Holberg	7	15	0	0	1	1	1	15
Michalik	6	11	0	1	2	2	4	14
Bayless	4	13	1	3	7	7	1	16
Thigpen	3	11	1	5	0	0	1	7
Wheat	2	6	0	1	0	0	5	4
Brown	2	5	0	1	1	2	2	5
Bivens	1	2	0	1	0	0	2	2
Bergman	0	0	0	0	0	0	4	0
Meyer	0	6	0	1	0	0	4	0
Carlson	0	0	0	0	0	0	0	0
Beehurn	3	3	3	3	0	0	0	9
Heister	0	0	0	0	0	0	0	0
Totals	34	85	5	16	13	15	37	86

FSU Massachusetts 67 64 Game 5 December 2, 1992 Tallahassee, Florida

FSU Name	Total FG	Total FGA	3-Point FG	3-Point FGA	FT	FTA	REB	TP
Shepherd	0	1	0	0	0	0	0	0
Sura	6	10	1	3	1	2	4	14
Cassell	5	18	0	3	1	2	7	11
Hands	1	1	1	1	0	0	0	3
Carroll	1	1	0	0	0	0	1	2
Edwards	9	14	1	2	2	4	12	19
Wells	2	3	0	0	0	0	2	4
Dobard	6	9	0	0	0	0	4	12
Reid	1	2	0	0	0	0	2	2
Totals	30	59	3	9	4	8	34	67

Halftime Score: FSU 37, Massachusetts 39
 FG%: FSU 50.8%, Massachusetts 59.0%
 3 PT FG%: FSU 33.3%, Massachusetts 29.4%
 FT%: FSU 50.0%, Massachusetts 66.7%

U. Mass. Name	Total FG	Total FGA	3-Point FG	3-Point FGA	FT	FTA	REB	TP
Dingle	0	0	0	0	0	0	0	0
Williams	6	16	2	8	2	2	1	16
Kellogg	0	1	0	1	2	2	2	2
Roe	7	13	0	0	5	5	14	19
Barbee	3	8	2	4	1	2	4	9
Malloy	4	10	1	4	0	0	2	9
Williams	3	11	0	0	3	4	3	9
Robinson, K	0	0	0	0	0	0	0	0
Totals	23	59	5	17	13	15	34	64



FSU's season started on a sour note as starting guard Chuck Graham had to have reconstructive surgery on his knee after injuring it just three minutes into the season. He was granted a medical hardship and will be eligible to play in December.

FSU Indiana 78 81 Game 3 November 25, 1992 New York, New York

FSU Name	Total FG	Total FGA	3-Point FG	3-Point FGA	FT	FTA	REB	TP
Dobard	4	10	0	0	2	2	5	10
Edwards	7	17	0	0	2	6	12	16
Reid	0	3	0	0	2	4	6	2
Cassell	7	20	1	7	3	3	5	18
Sura	5	24	2	11	5	8	10	17
Wells	4	5	1	1	0	0	10	9
Hands	2	4	0	1	0	0	1	4
Shepherd	1	1	0	0	0	0	0	2
Carroll	0	0	0	0	0	0	0	0
Totals	30	84	4	20	14	23	55	78

Halftime Score: FSU 37, Indiana 39
 FG%: FSU 35.7%, Indiana 43.9%
 3 PT FG%: FSU 20.0%, Indiana 27.3%
 FT%: FSU 60.9%, Indiana 65.7%

Indiana Name	Total FG	Total FGA	3-Point FG	3-Point FGA	FT	FTA	REB	TP
Cheaney	12	22	1	3	9	10	8	34
Henderson	5	11	0	0	2	5	12	12
Novak	1	3	0	0	1	2	7	3
Graham	4	14	1	3	4	4	7	12
Rayholds	1	3	0	0	0	0	2	2
Bailey	1	5	0	2	0	2	4	2
Evans	0	1	0	1	0	0	1	0
Graham	5	6	1	2	3	5	1	14
Leary	0	1	0	0	2	2	0	2
Sims	0	0	0	0	0	0	0	0
Totals	29	66	3	11	20	30	43	81

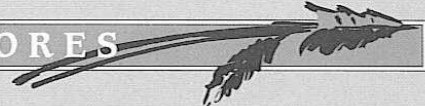
FSU UNC-Charlotte 63 59 Game 7 December 19, 1992 Orlando, Florida

FSU Name	Total FG	Total FGA	3-Point FG	3-Point FGA	FT	FTA	REB	TP
Sura	7	15	1	6	3	6	8	18
Cassell	4	11	0	3	2	4	4	10
Dobard	4	9	0	0	1	2	5	9
Edwards	9	14	0	0	4	4	6	22
Wells	2	6	0	1	0	0	8	4
Carroll	0	2	0	0	0	0	0	0
Robinson	0	0	0	0	0	0	0	0
Totals	26	57	1	10	10	16	35	63

Halftime Score: FSU 34, UNC-Charlotte 32
 FG%: FSU 45.6%, UNC-Charlotte 38.1%
 3 PT FG%: FSU 10.0%, UNC-Charlotte 33.3%
 FT%: FSU 62.5%, UNC-Charlotte 50.0%

UNC-Charlotte Name	Total FG	Total FGA	3-Point FG	3-Point FGA	FT	FTA	REB	TP
Tenell	5	16	4	12	0	0	1	14
Thompson	2	9	2	4	2	2	4	8
Odom	3	9	0	1	0	0	8	6
Lang	5	12	0	0	3	5	5	13
Wilite	4	8	0	0	0	0	3	7
Dotin	2	3	0	0	0	0	3	4
Broadhurst	1	2	0	0	0	0	3	2
Kummer	2	4	0	1	0	0	1	5
Totals	24	63	6	18	5	10	41	59

1992-93 BOX SCORES



FSU Temple 91 80

Game 8
December 20, 1992
Orlando, Florida

FSU Name	Total FG	FGA	3-Point FG	3-Point FGA	FT	FTA	REB	TP
Edwards	7	11	1	2	2	4	5	17
Wells	0	3	0	1	0	0	1	0
Dobard	4	8	0	0	3	4	8	11
Sura	9	22	4	13	2	3	14	24
Cassell	3	7	0	2	6	8	5	12
Hands	0	0	0	0	0	0	0	0
Shepherd	0	0	0	0	0	0	0	0
Carroll	4	13	4	12	8	10	4	20
Robinson	3	3	0	0	1	1	3	7
Totals	30	67	9	30	22	30	45	91

Temple Name Total FG FGA 3-Point FG FGA FT FTA REB TP
 Jones 9 17 3 6 5 9 10 26
 Batts 2 6 0 0 1 2 2 5
 Johnson 4 10 0 0 1 2 4 9
 Castarphen 3 11 3 9 0 0 3 9
 McKie 8 20 6 9 0 0 11 22
 Brunson 1 9 0 6 3 4 2 5
 King 0 0 0 0 0 0 0 0
 Ivey 2 3 0 0 0 0 7 4
Totals 29 76 12 30 10 17 45 80

Halftime Score: FSU 40, Temple 45
 FG%: FSU 44.8%, Temple 38.2%
 3 PT FG%: FSU 30.0%, Temple 40.0%
 FT%: FSU 73.3%, Temple 58.8%

FSU South Florida 94 73

Game 11
December 30, 1992
Tallahassee, Florida

FSU Name	Total FG	FGA	3-Point FG	3-Point FGA	FT	FTA	REB	TP
Sura	9	16	3	7	2	5	3	23
Cassell	13	19	3	6	5	7	7	34
Hands	1	4	1	2	0	0	2	3
McKie	8	20	6	9	0	0	11	22
Shepherd	0	3	0	1	2	2	0	2
Carroll	1	4	0	2	0	0	8	2
Gruhl	0	0	0	0	2	1	0	0
Wells	5	7	0	1	1	6	11	11
Dobard	3	5	0	2	2	9	8	8
Robinson	4	6	0	0	1	6	8	8
Kemper	1	3	0	0	1	2	2	3
Totals	37	67	7	19	13	20	51	94

S. Florida Name Total FG FGA 3-Point FG FGA FT FTA REB TP
 Coleman 8 17 2 2 0 0 9 18
 Delaney 1 6 1 5 1 2 1 4
 Greene 0 0 0 0 0 0 0 0
 Atkins 1 6 0 4 0 1 3 2
 Polk 1 4 0 1 0 0 0 2
 Sellers 2 5 0 0 4 6 6 8
 Sharp 7 12 4 7 0 0 2 15
 Hyatt 0 0 0 0 2 2 0 2
 Rush 1 5 0 0 0 0 5 2
 Jackson 0 0 0 0 2 2 1 2
 Dollar 1 1 0 0 0 0 0 2
 Allen 3 8 0 0 1 1 0 7
 Hoolester 3 11 0 0 0 0 6 6
Totals 28 78 7 19 10 14 40 73

Halftime Score: FSU 44, South Florida 38
 FG%: FSU 55.2%, South Florida 35.9%
 3 PT FG%: FSU 36.8%, South Florida 36.8%
 FT%: FSU 65.0%, South Florida 71.4%

FSU Arkansas-Little Rock 95 64

Game 9
December 22, 1992
Tallahassee, Florida

FSU Name	Total FG	FGA	3-Point FG	3-Point FGA	FT	FTA	REB	TP
Sura	6	11	3	7	0	2	4	15
Cassell	5	10	1	2	0	0	2	11
Hands	2	3	0	1	0	0	2	4
Shepherd	3	4	1	2	2	3	2	9
Carroll	1	3	0	0	3	4	4	5
Gruhl	2	2	0	0	1	1	0	5
Edwards	6	14	0	4	5	5	16	16
Wells	3	4	0	0	2	3	3	8
Dobard	5	7	0	0	2	3	4	12
Robinson	4	6	0	0	0	1	1	8
Kemper	0	0	0	0	2	2	3	2
Totals	37	64	5	12	16	24	34	95

UALR Name Total FG FGA 3-Point FG FGA FT FTA REB TP
 Martin 5 14 3 6 2 2 1 15
 Banks 0 0 0 0 0 0 1 0
 Fisher 1 5 0 1 3 3 6 5
 Griffin 0 0 0 0 0 0 0 0
 Summers 2 10 0 5 0 0 2 4
 Belleton 5 6 1 1 0 0 0 11
 Hall 3 6 0 0 1 2 2 7
 Chime 5 10 0 0 0 0 5 10
 Kalron 1 2 0 0 0 0 1 2
 Stein 2 3 0 0 0 1 6 4
 Malone 0 0 0 0 0 0 2 0
 Sarr 0 1 0 0 0 0 1 0
 Rodriguez 3 7 0 0 0 0 4 6
Totals 27 64 4 13 6 8 31 64

Halftime Score: FSU 45, Arkansas-Little Rock 26
 FG%: FSU 57.6%, Arkansas-Little Rock 42.1%
 3 PT FG%: FSU 41.5%, Arkansas-Little Rock 30.7%
 FT%: FSU 66.7%, Arkansas-Little Rock 75.0%

FSU Florida 86 89

Game 12
January 2, 1993
Tallahassee, Florida

FSU Name	Total FG	FGA	3-Point FG	3-Point FGA	FT	FTA	REB	TP
Sura	4	14	0	6	2	4	3	10
Cassell	11	17	4	5	4	4	7	30
Hands	0	1	0	1	1	2	0	1
Carroll	4	6	2	3	2	6	12	12
Edwards	8	15	1	2	3	5	19	19
Wells	1	2	0	0	2	2	0	4
Dobard	4	7	0	0	2	4	3	10
Robinson	0	0	0	0	0	0	0	0
Totals	32	62	7	16	15	21	26	86

Florida Name Total FG FGA 3-Point FG FGA FT FTA REB TP
 Thompson 0 0 0 0 0 0 0 0
 Brown 5 6 3 6 3 6 4 16
 Anderson 0 4 0 0 0 0 1 0
 Stewart 5 7 3 5 3 4 0 16
 Cross 0 0 0 0 0 0 0 0
 Kulsma 6 8 4 5 0 0 7 16
 Poole 12 24 0 0 1 2 13 25
 Grimsley 1 2 0 0 2 2 3 4
 Hill 0 0 0 0 0 0 1 0
 Carlton 2 4 0 0 0 0 0 2 4
 Dejarcoq 4 7 0 0 0 0 3 8
Totals 35 60 10 16 9 14 36 89

Halftime Score: FSU 37, Florida 45
 FG%: FSU 51.6%, Florida 58.3%
 3 PT FG%: FSU 37.5%, Florida 62.5%
 FT%: FSU 76.2%, Florida 64.3%

FSU Maryland-Baltimore Co. 109 80

Game 10
December 28, 1992
Tallahassee, Florida

FSU Name	Total FG	FGA	3-Point FG	3-Point FGA	FT	FTA	REB	TP
Sura	7	20	2	4	7	9	6	23
Cassell	12	18	0	2	7	9	6	31
Hands	1	5	0	1	2	2	1	4
Shepherd	0	0	0	0	2	2	0	2
Carroll	4	8	2	5	0	0	0	10
Gruhl	1	1	0	0	0	0	0	2
Wells	6	9	1	1	0	1	12	13
Dobard	6	10	0	0	5	7	11	17
Robinson	2	2	0	0	1	2	5	5
Kemper	1	1	0	0	0	0	5	2
Totals	40	74	5	13	24	32	48	109

UMBC Name Total FG FGA 3-Point FG FGA FT FTA REB TP
 Ferguson 2 2 1 1 1 2 1 6
 Harris 3 7 1 4 2 2 2 9
 Saunders 4 14 3 8 0 0 2 11
 Wright 1 5 1 3 1 1 2 4
 Butts 0 1 0 0 0 1 2 1 1
 Scott 3 11 0 2 0 0 2 6
 Nixon 6 14 0 0 9 10 10 21
 Walker 5 11 1 2 1 3 1 12
 Fastyle 1 5 0 0 2 2 3 4
 Watkins 2 3 0 0 0 1 6 4
 Thompson 0 0 0 0 0 0 0 0
 Tweedy 0 0 0 0 0 0 1 0
 Bellinger 1 1 0 0 0 0 0 2
Totals 28 74 7 20 17 23 34 80

Halftime Score: FSU 47, UMBC 38
 FG%: FSU 54.1%, UMBC 37.8%
 3 PT FG%: FSU 38.5%, UMBC 35.0%
 FT%: FSU 75.0%, UMBC 73.9%

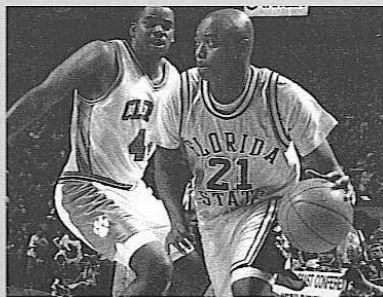
FSU Virginia 76 80

Game 13
January 6, 1993
Charlottesville, Virginia

FSU Name	Total FG	FGA	3-Point FG	3-Point FGA	FT	FTA	REB	TP
Carroll	4	9	1	6	2	2	7	11
Hands	7	16	0	0	2	12	14	14
Dobard	4	9	0	0	0	5	8	8
Sura	6	12	2	5	6	11	7	20
Cassell	4	17	0	5	2	6	10	10
Wells	4	5	0	1	0	0	5	8
Ward	1	4	0	3	1	1	3	3
Robinson	1	2	0	0	0	1	2	2
Totals	31	74	3	20	11	18	50	76

Virginia Name Total FG FGA 3-Point FG FGA FT FTA REB TP
 Burrough 3 15 0 0 5 8 9 11
 Willford 2 5 0 1 0 0 8 4
 Jeffries 7 10 0 0 4 8 5 18
 Parker 5 11 3 3 2 3 7 15
 Alexander 8 18 4 8 3 4 1 23
 Barnes 1 10 0 0 1 2 7 3
 Smith 2 4 2 3 0 0 3 6
Totals 28 73 9 15 15 25 43 80

Halftime Score: FSU 34, Virginia 38
 FG%: FSU 41.9%, Virginia 38.4%
 3 PT FG%: FSU 15.0%, Virginia 60.0%
 FT%: FSU 61.1%, Virginia 60.0%



Forced to contribute early in his rookie year due to injuries, forward Derrick Carroll responded with a solid first season that included starting four games.

FSU Wake Forest 74 72

Game 14
January 9, 1993
Winston-Salem, North Carolina

FSU Name	Total FG	FGA	3-Point FG	3-Point FGA	FT	FTA	REB	TP
Edwards	6	12	0	1	4	4	8	16
Sura	4	11	2	8	1	2	4	11
Dobard	5	9	0	1	2	4	6	12
Cassell	8	15	2	7	3	3	1	21
Ward	0	5	0	2	4	4	2	4
Wells	2	4	0	0	2	4	4	6
Robinson	1	1	0	0	0	0	2	2
Carroll	1	4	0	2	0	4	2	2
Totals	27	61	4	21	16	21	31	74

Wake Forest Name Total FG FGA 3-Point FG FGA FT FTA REB TP
 Rogers 14 23 1 2 2 5 16 31
 Banks 3 6 0 0 0 0 1 6
 Hicks 2 6 0 0 0 0 2 17 4
 Childress 5 18 1 9 6 6 0 17
 Harrison 1 6 0 3 0 0 0 2 2
 Owens 4 12 0 1 2 2 11 10
 Blucas 0 0 0 0 0 0 0 0
 Rich 0 1 0 0 2 2 2 2
Totals 29 72 2 15 12 17 53 72

Halftime Score: FSU 36, Wake Forest 31
 FG%: FSU 44.3%, Wake Forest 40.3%
 3 PT FG%: FSU 19.0%, Wake Forest 13.3%
 FT%: FSU 76.2%, Wake Forest 70.6%

1992-93 BOX SCORES



Florida State's thrilling 89-88 overtime win over Duke last year gave the Seminoles a win against every team in the ACC over the last two years. The game was one of 17 nationally televised last year.

FSU Maryland

105										85										
										Game 15										
										January 13, 1993										
										Tallahassee, Florida										
FSU Name	Total FG	FGA	3-Point FG	FGA	FT	FTA	REB	TP	Points	MD Name	Total FG	FGA	3-Point FG	FGA	FT	FTA	REB	TP	Points	
Sura	7	15	4	8	2	4	7	20		Hipp	5	11	2	0	0	0	6	11		
Cassell	6	12	0	2	6	6	7	18		Rhodes	3	12	2	4	1	2	4	9		
Ward	3	6	1	2	2	5	4	9		McLinton	11	21	1	2	5	5	4	28		
Edwards	11	15	0	2	4	5	11	26		Kerwin	5	7	0	0	1	2	7	11		
Dobard	1	6	0	0	4	4	6	6		Burns	8	13	0	0	1	2	8	17		
Hands	0	1	0	0	0	0	0	0		Thibeault	1	2	0	0	0	0	0	2		
Shepherd	0	0	0	0	2	2	0	2		Simpkins	0	1	0	1	0	0	1	0		
Pfister	0	0	0	0	0	0	0	0		Petrovic	0	0	0	0	0	0	0	0		
Carroll	3	5	2	3	2	5	1	10		Lucas	0	1	0	1	0	0	0	0		
Wells	2	2	1	1	0	0	4	5		Walsh	1	4	1	1	3	3	0	6		
Robinson	3	4	0	0	1	3	1	7		Bristol	0	0	0	0	1	3	0	1		
Kerner	0	0	0	0	0	0	1	0		Shultz	0	1	0	0	0	0	0	0		
Gruhl	1	1	0	0	0	0	0	2												
Totals	37	67	8	18	23	34	46	105		Totals	34	73	5	11	12	17	32	85		
Halftime Score: FSU 40, Maryland 23 FG%: FSU 55.2%, Maryland 47.9% 3 PT FG%: FSU 44.4%, Maryland 45.5% FT%: FSU 67.5%, Maryland 70.6%																				

FSU N.C. State

70										54										
										Game 16										
										January 16, 1993										
										Tallahassee, Florida										
FSU Name	Total FG	FGA	3-Point FG	FGA	FT	FTA	REB	TP	Points	N.C. State Name	Total FG	FGA	3-Point FG	FGA	FT	FTA	REB	TP	Points	
Sura	7	8	3	4	6	7	4	23		McCuller	3	6	0	0	0	0	1	6		
Cassell	3	5	1	3	0	0	2	7		Davis	1	8	0	2	0	0	0	2		
Ward	4	8	1	4	0	0	1	9		Marshall	3	10	1	3	0	0	2	3	7	
Edwards	6	14	0	0	1	2	6	13		Wilson	4	10	1	3	4	5	5	13		
Dobard	5	8	0	0	0	0	6	10		Thompson	6	7	0	0	4	6	12	16		
Hands	0	0	0	0	1	2	0	1		Newman	1	2	1	2	0	0	1	3		
Shepherd	0	1	0	0	0	0	0	0		Lewis	1	1	0	0	0	0	1	2		
Carroll	1	5	1	4	0	0	0	3		Fuller	2	3	0	0	1	2	2	5		
Wells	0	1	0	0	0	0	0	0												
Robinson	2	2	0	0	0	0	0	4		Totals	21	47	3	10	9	15	28	54		
Kerner	0	0	0	0	0	0	0	0												
Totals	28	52	6	15	8	11	23	70												
Halftime Score: FSU 38, N.C. State 29 FG%: FSU 53.5%, N.C. State 44.7% 3 PT FG%: FSU 40.0%, N.C. State 30.0% FT%: FSU 72.7%, N.C. State 60.0%																				

FSU Clemson

89										71										
										Game 17										
										January 20, 1993										
										Clemson, South Carolina										
FSU Name	Total FG	FGA	3-Point FG	FGA	FT	FTA	REB	TP	Points	Clemson Name	Total FG	FGA	3-Point FG	FGA	FT	FTA	REB	TP	Points	
Sura	7	15	4	8	1	2	4	19		Gray	7	14	1	3	2	4	5	17		
Edwards	5	8	0	0	2	10	12		Hines	2	4	0	0	0	0	0	1	4		
Dobard	3	10	0	0	3	4	9	9		Wright	5	6	0	0	2	2	9	12		
Cassell	12	14	6	6	0	0	5	30		Whitey	4	13	4	11	0	0	2	12		
Ward	8	12	2	6	1	1	1	19		Bovain	1	2	1	2	0	0	1	3		
Carroll	0	3	0	2	0	0	1	0		Martin	1	5	1	4	0	0	1	3		
Robinson	0	0	0	0	0	0	4	0		Kelly	4	6	0	2	0	0	0	8		
Wells	0	4	0	2	0	0	4	0		Buckingham	5	10	0	0	2	3	6	12		
Hands	0	0	0	0	0	1	1	0		Riche	0	1	0	1	0	0	0	0		
Shepherd	0	0	0	0	0	0	0	0		Tomera	0	0	0	0	0	0	0	0		
Kerner	0	0	0	0	0	0	0	0		Totals	29	61	7	23	6	9	26	71		
Totals	35	66	12	24	7	10	40	89												
Halftime Score: FSU 41, Clemson 31 FG%: FSU 53.0%, Clemson 47.5% 3 PT FG%: FSU 50.0%, Clemson 30.4% FT%: FSU 70.0%, Clemson 66.7%																				

FSU Duke

89										88										
										Game 18										
										January 24, 1993										
										Tallahassee, Florida										
FSU Name	Total FG	FGA	3-Point FG	FGA	FT	FTA	REB	TP	Points	Duke Name	Total FG	FGA	3-Point FG	FGA	FT	FTA	REB	TP	Points	
Sura	6	16	0	3	4	9	9	16		Hurley	8	13	3	7	3	4	1	22		
Cassell	6	13	0	4	3	5	3	15		Hill, T	2	11	0	2	1	2	4	5		
Ward	4	10	2	4	1	1	3	11		Leng	3	5	0	0	4	6	8	10		
Edwards	10	18	0	0	1	1	12	21		Hill, G	11	19	0	0	3	5	8	25		
Dobard	6	12	0	0	4	5	4	16		Parks	6	9	0	0	2	4	12	14		
Carroll	0	3	0	3	0	0	4	0		Clark	4	7	0	1	2	2	3	10		
Wells	4	4	2	2	0	0	1	10		Collins	0	1	0	1	0	0	0	0		
Robinson	0	0	0	0	0	0	0	0		Meek	1	2	0	0	0	0	2	2		
Totals	36	76	4	16	13	21	42	89		Totals	35	68	3	11	15	23	42	88		
Halftime Score: FSU 36, Duke 22 FG%: FSU 47.4%, Duke 51.5% 3 PT FG%: FSU 25.0%, Duke 27.3% FT%: FSU 52.0%, Duke 65.2%																				

FSU North Carolina

77										82									
										Game 19									
										January 27, 1993									
										Chapel Hill, North Carolina									
FSU Name	Total FG	FGA	3-Point FG	FGA	FT	FTA	REB	TP	Points	N. Carolina Name	Total FG	FGA	3-Point FG	FGA	FT	FTA	REB	TP	Points
Sura	6	18	1	7	2	2	6	15		Sullivan	0	3	0	0	0	0	0	0	0
Dobard	8	12	0	0	1	4	10	17		Lynch	5	14	1	1	3	4	10	14	
Edwards	6	13	1	3	3	4	12	16		McIntosh	7	10	0	0	1	2	9	15	
Cassell	5	18	3	12	2	2	2	15		Ridcl	4	9	3	6	0	0	5	11	
Ward	2	4	1	3	0	0	6	5		Cherry	0	0	0	0	0	0	2	0	
Wells	0	0	0	0	0	0	1	0		Phelps	1	8	0	4	2	2	3	4	
Carroll	0	0	0	0	0	0	1	0		Reese	2	9	0	3	1	2	1	5	
Robinson	4	6	0	0	1	1	5	9		Salvadori	3	4	0	0	0	0	2	5	6
Totals	31	71	6	25	9	13	45	77		Williams	5	12	1	6	8	8	1	19	
Halftime Score: FSU 45, North Carolina 28 FG%: FSU 43.7%, North Carolina 41.3% 3 PT FG%: FSU 24.0%, North Carolina 25.0% FT%: FSU 69.2%, North Carolina 71.4%																			

FSU Georgia Tech

96										77									
										Game 20									
										January 31, 1993									
										Tallahassee, Florida									
FSU Name	Total FG	FGA	3-Point FG	FGA	FT	FTA	REB	TP	Points	GA Tech Name	Total FG	FGA	3-Point FG	FGA	FT	FTA	REB	TP	Points
Sura	9	18	1	5	3	4	6	22		Best	7	13	3	7	0	2	3	17	
Cassell	7	13	3	7	4	6	5	21		Hill	3	9	0	1	2	2	5	8	
Ward	1	2	1	1	0	0	1	3		Moore	0	5	0	0	0	0	1	0	
Edwards	10	19	0	1	2	4	12	22		Mackey									

1992-93 BOX SCORES



FSU Connecticut **86** **74**

Game 22
February 6, 1993
Storrs, Connecticut

FSU Name	Total FG FGA	3-Point FG FGA	FT	FTA	REB	TP	Connecticut Name	Total FG FGA	3-Point FG FGA	FT	FTA	REB	TP
Carroll	3 9 2 6	1 2	4	9			Johnson	0 3 0 2	0 1	0 1	0		
Edwards	5 12 0 0	4 5	3	14			Marshall	12 20 0 2	2 3	3 9	26		
Dobard	10 14 0 0	6 7	5	26			Hayward	2 2 0 0	0 0	2 4	4		
Sura	6 13 2 6	1 2	7	15			Ollie	2 6 0 0	2 2	3 6			
Cassell	6 11 2 3	4 6	4	18			Fair	6 17 3 10	0 0	5 15			
Hands	0 0 0 0	0 0	2	0			Burrell	5 17 3 16	4 5	11 15			
Wells	1 3 0 2	0 0	1	2			Cormier	0 2 0 1	0 0	0 0			
Robinson	0 0 0 0	0 0	0	0			William	0 2 0 0	0 0	3 0			
Shepherd	0 0 0 0	2 2	1	2			Knight	1 5 0 0	1 2	5 3			
Totals	31 62	6 17	24	35	86		Marshall	2 3 0 0	1 1	4 5	7		
								Totals	30 77	4 21	10 13	48	74

Halftime Score: FSU 36, Connecticut 38
 FG%: FSU 50.0%, Connecticut 39.0%
 3 PT FG%: FSU 35.3%, Connecticut 19.0%
 FT%: FSU 75.0%, Connecticut 76.9%

FSU Virginia **99** **84**

Game 23
February 8, 1993
Tallahassee, Florida

FSU Name	Total FG FGA	3-Point FG FGA	FT	FTA	REB	TP	Virginia Name	Total FG FGA	3-Point FG FGA	FT	FTA	REB	TP
Sura	5 17 1 6	9 13	9	20			Burrough	6 11 0 0	3 7	5 15			
Cassell	6 10 0 1	6 6	2	18			Alexander	9 19 2 7	4 4	4 24			
Carroll	3 6 1 1	0 0	4	7			Parker	8 12 1 2	1 3	5 18			
Edwards	11 17 0 0	3 3	11	25			Willford	0 5 0 1	0 0	1 0			
Dobard	6 10 0 0	0 0	4	12			Jeffries	10 18 1 1	2 2	19 23			
Shepherd	0 0 0 0	0 0	0	0			Smith	0 3 0 3	0 0	0 0			
Hands	4 6 2 3	3 6	0	13			Havlicek	0 0 0 0	0 0	2 0			
Wells	0 2 0 1	0 0	2	0			Barnes	2 3 0 0	0 0	1 4			
Robinson	0 1 0 0	4 4	3 4				Totals	35 71	4 14	10 16	38	84	
Totals	35 69	4 12	25	32	38	99							

Halftime Score: FSU 42, Virginia 34
 FG%: FSU 50.7%, Virginia 49.3%
 3 PT FG%: FSU 33.3%, Virginia 28.6%
 FT%: FSU 78.1%, Virginia 62.5%

FSU Wake Forest **111** **94**

Game 24
February 10, 1993
Tallahassee, Florida

FSU Name	Total FG FGA	3-Point FG FGA	FT	FTA	REB	TP	Wake Forest Name	Total FG FGA	3-Point FG FGA	FT	FTA	REB	TP
Sura	7 13 3 5	5 6	7	22			Harrison	4 10 0 1	0 0	1 8			
Cassell	10 14 1 2	4 4	1	25			Hicks	4 7 0 0	0 0	1 6	8		
Carroll	1 6 1 4	0 0	1	3			Childress	7 9 3 4	5 7	2 22			
Edwards	9 16 0 0	3 3	9	21			Owens	4 7 0 0	1 3	4 9			
Dobard	9 11 0 0	1 2	7	19			Rogers	11 16 1 1	3 4	6 26			
Hands	2 4 0 0	0 4	1 4				Casile	2 3 0 0	2 2	0 6			
Shepherd	0 0 0 0	3 4	0 3				Larue	0 0 0 0	0 0	0 0			
Poner	0 2 0 0	0 0	1 0				Blucas	4 7 1 4	0 1	3 9			
Guhil	0 2 0 0	0 0	0 0				Banks	1 4 0 0	4 4	2 6			
Wells	3 4 1 2	0 0	2 7				Rasmussen	0 1 0 0	0 0	1 0			
Robinson	2 3 0 0	0 0	2 4				Fitzgibbons	0 0 0 0	0 0	0 0			
Ward	1 2 1 1	0 0	1 3				Totals	37 64	5 10	15 22	31	94	
Totals	44 76	7 14	16	23	34	111							

Halftime Score: FSU 57, Wake Forest 44
 FG%: FSU 57.9%, Wake Forest 57.8%
 3 PT FG%: FSU 50.0%, Wake Forest 50.0%
 FT%: FSU 72.7%, Wake Forest 68.2%

FSU Maryland **87** **84**

Game 25
February 13, 1993
College Park, Maryland

FSU Name	Total FG FGA	3-Point FG FGA	FT	FTA	REB	TP	Maryland Name	Total FG FGA	3-Point FG FGA	FT	FTA	REB	TP
Sura	13 24 4 7	4 8	9	34			Hipp	5 10 2 3	0 0	6 12			
Edwards	5 11 0 0	9 14	11	19			Lucas	1 5 0 0	0 0	2 3	2		
Dobard	4 5 0 0	4 7	4	12			Burns	11 15 0 0	2 2	8 24			
Cassell	4 10 0 1	1 2	7 9				Rhodes	5 14 0 5	0 0	8 10			
Ward	3 4 1 2	2 2	2 9				McLinton	10 20 0 1	12 15	6 32			
Hands	1 2 0 0	0 0	1 2				Kerwin	0 4 0 0	4 4	4 4			
Wells	1 3 0 0	0 0	1 2				Simpkins	0 2 0 0	0 0	0 0			
Robinson	0 0 0 0	0 0	0 0				Walsh	0 0 0 0	0 0	1 0			
Totals	31 59	5 10	20	37	87		Totals	32 70	2 9	18 23	38	84	

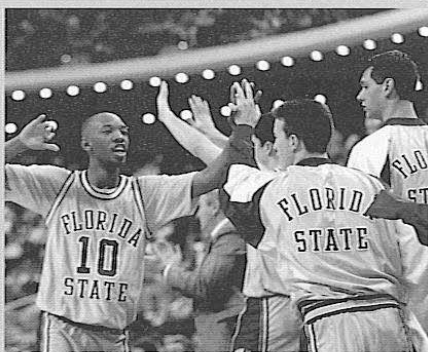
Halftime Score: FSU 35, Maryland 41
 FG%: FSU 52.5%, Maryland 45.7%
 3 PT FG%: FSU 50.0%, Maryland 22.2%
 FT%: FSU 60.6%, Maryland 78.3%

FSU N.C. State **72** **71**

Game 26
February 17, 1993
Raleigh, North Carolina

FSU Name	Total FG FGA	3-Point FG FGA	FT	FTA	REB	TP	N.C. State Name	Total FG FGA	3-Point FG FGA	FT	FTA	REB	TP
Hands	4 6 1 1	0 2	1 9				Davis	5 10 1 4	0 0	0 7	11		
Dobard	8 16 0 0	2 3	8 18				Lewis	4 8 0 0	0 0	10 10	8		
Wells	2 4 0 0	0 0	7 4				Thompson	5 9 0 0	2 7	7 9			
Cassell	6 13 1 2	5 9	2 18				McCuller	5 11 4 9	0 0	1 14			
Ward	2 5 0 2	0 0	5 4				Marshall	6 13 6 9	4 7	4 22			
Shepherd	0 1 0 1	1 2	0 1				Wilson	0 6 0 0	0 0	1 2	0		
Robinson	4 10 0 0	8 12	10 16				Fuller	1 3 0 0	0 0	1 2			
Kerner	1 1 0 0	0 0	1 2				Neuman	1 1 0 0	0 0	0 0	2		
Totals	27 56	2 6	16 28	39	72		Totals	27 61	11 22	6 15	37	71	

Halftime Score: FSU 27, N.C. State 28
 FG%: FSU 48.2%, N.C. State 44.3%
 3 PT FG%: FSU 33.3%, N.C. State 50.0%
 FT%: FSU 64.3%, N.C. State 40.0%



The Seminoles celebrated their third consecutive trip to the NCAA Tournament last year.

FSU Clemson **102** **92**

Game 27
February 20, 1993
Tallahassee, Florida

FSU Name	Total FG FGA	3-Point FG FGA	FT	FTA	REB	TP	Clemson Name	Total FG FGA	3-Point FG FGA	FT	FTA	REB	TP
Sura	8 22 2 8	2 3	3 20				Riche	0 2 0 1	0 0	0 1	0		
Cassell	7 11 1 2	10 11	6 25				Whitney	5 9 4 6	4 4	4 21			
Dobard	3 7 0 0	3 4	8 9				Brown	9 15 2 4	1 4	0 21			
Edwards	7 15 0 0	6 8	11 20				Gray	6 18 1 2	8 11	12 21			
Hands	5 8 3 6	0 0	2 13				Wright	9 13 0 0	2 2	15 20			
Robinson	3 5 0 0	0 0	2 6				Martin	4 10 4 9	0 0	1 12			
Wells	4 5 1 2	0 0	3 9				Kelly	0 1 0 1	0 0	0 0			
Totals	37 73	7 18	21 28	38	102		Morris	0 0 0 0	0 0	0 0			
								Buckingham	0 1 0 0	0 0	0 3		

Halftime Score: FSU 53, Clemson 40
 FG%: FSU 50.7%, Clemson 47.8%
 3 PT FG%: FSU 38.7%, Clemson 44.0%
 FT%: FSU 75.0%, Clemson 71.4%

Totals 33 69 11 25 15 21 36 92

FSU Duke **75** **98**

Game 28
February 24, 1993
Durham, North Carolina

FSU Name	Total FG FGA	3-Point FG FGA	FT	FTA	REB	TP	Duke Name	Total FG FGA	3-Point FG FGA	FT	FTA	REB	TP
Sura	9 17 2 6	9 11	9 29				Hill	7 10 2 2	3 4	7 19			
Edwards	4 13 0 0	3 4	6 11				Lank	6 7 0 0	0 5	7 6	17		
Dobard	0 2 0 0	0 0	6 0				Park	7 10 0 0	0 5	7 11	19		
Cassell	7 15 1 3	4 4	4 19				Hurley	5 9 2 5	4 5	1 16			
Hands	1 5 0 0	0 0	0 2				Collins	1 9 0 3	2 2	1 4			
Wells	1 4 0 2	2 2	4 4				Clark	5 9 0 1	5 6	2 15			
Robinson	4 6 0 0	2 4	4 10				Mesk	1 1 0 0	1 2	7 3			
Shepherd	0 3 0 1	0 0	1 0				Blakey	1 3 0 1	1 2	1 3			
Kerner	0 0 0 0	0 0	0 0				Brown	0 0 0 0	0 0	1 0			
Totals	26 65	3 12	20 27	35	75		Brinson	1 1 0 0	0 0	0 0	2		

Halftime Score: FSU 33, Duke 45
 FG%: FSU 40.0%, Duke 57.6%
 3 PT FG%: FSU 25.0%, Duke 33.3%
 FT%: FSU 74.1%, Duke 74.3%

1992-93 BOX SCORES

FSU **76**
North Carolina **86**
Game 29
February 27, 1993
Tallahassee, Florida

FSU Name	Total FG	FGA	3-Point FG	FGA	FT	FTA	REB	TP
Cassell	5	11	2	5	6	7	4	18
Sura	6	17	1	12	1	3	3	14
Edwards	9	13	0	1	5	6	10	23
Wells	3	8	0	3	0	0	5	6
Dobard	4	6	0	0	1	2	3	9
Hands	0	1	0	0	0	0	0	0
Robinson	3	6	0	0	0	1	3	6
Totals	30	62	3	21	13	19	31	76

Halftime Score: FSU 33, North Carolina 33
 FG%: FSU 48.4%, North Carolina 49.2%
 3 PT FG%: FSU 14.3%, North Carolina 36.4%
 FT%: FSU 68.4%, North Carolina 75.0%

N. Carolina Name	Total FG	FGA	3-Point FG	FGA	FT	FTA	REB	TP
Montross	5	10	0	0	5	5	5	15
Phelps	2	2	0	0	0	2	6	4
Williams	3	12	1	6	6	6	1	13
Reese	11	18	1	3	2	3	6	25
Lynch	7	14	0	0	2	2	10	16
Sullivan	0	2	0	0	2	2	3	2
Röhl	2	2	2	2	0	0	2	6
Calabra	1	1	0	0	1	2	3	3
Salvadori	1	4	0	0	0	0	3	2
Totals	32	55	4	11	18	24	40	86

FSU **94**
Tulane **63**
NCAA Tournament
March 20, 1993
Orlando, Florida

FSU Name	Total FG	FGA	3-Point FG	FGA	FT	FTA	REB	TP
Sura	7	15	1	7	1	3	7	16
Edwards	8	19	0	2	6	8	12	22
Dobard	5	9	0	0	3	4	7	13
Cassell	11	16	7	7	2	2	5	31
Ward	3	3	1	1	1	2	8	8
Hands	0	0	0	0	0	0	0	0
Shepard	0	1	0	0	0	0	0	0
Carroll	1	4	0	2	0	0	2	2
Wells	0	0	0	0	0	0	1	0
Robinson	1	1	0	0	0	0	1	2
Totals	38	68	9	19	13	19	42	94

Halftime Score: FSU 39, Tulane 29
 FG%: FSU 62.9%, Tulane 34.7%
 3 PT FG%: FSU 47.4%, Tulane 41.7%
 FT%: FSU 68.4%, Tulane 60.0%

Tulane Name	Total FG	FGA	3-Point FG	FGA	FT	FTA	REB	TP
Greene	6	16	0	0	4	6	9	16
Hartman	3	15	0	1	1	2	4	7
Reed	5	12	1	2	0	0	5	11
Williams	6	12	2	4	0	0	3	14
Hunter	2	7	0	2	0	0	3	4
Simmons	1	3	0	0	1	1	2	3
Jackson	0	1	0	0	0	0	1	0
Nichols	2	4	2	2	0	0	1	6
Perry	1	4	0	0	0	0	4	2
Popp	0	1	0	0	0	0	1	0
Rasche	0	0	0	0	0	0	0	0
Totals	26	75	5	12	6	10	42	63

FSU **83**
Georgia Tech **82**
Game 30
March 4, 1993
Atlanta, Georgia

FSU Name	Total FG	FGA	3-Point FG	FGA	FT	FTA	REB	TP
Sura	8	17	2	4	4	6	7	22
Edwards	5	11	0	0	4	6	9	14
Dobard	6	12	0	0	0	0	6	16
Cassell	7	12	0	1	2	4	8	16
Hands	2	7	0	1	0	0	2	4
Ward	4	6	1	1	0	0	1	9
Carroll	0	2	0	2	0	0	0	0
Robinson	1	2	0	0	0	0	2	2
Wells	0	1	0	0	0	0	0	0
Totals	35	70	3	9	10	16	37	83

Halftime Score: FSU 44, Georgia Tech 35
 FG%: FSU 50.0%, Georgia Tech 50.7%
 3 PT FG%: FSU 33.3%, Georgia Tech 43.8%
 FT%: FSU 62.5%, Georgia Tech 77.8%

GA Tech Name	Total FG	FGA	3-Point FG	FGA	FT	FTA	REB	TP
Hill	1	4	1	2	0	0	5	3
Forrest	10	22	0	0	3	3	7	23
Mackey	10	15	0	0	2	2	11	22
Best	5	10	4	7	2	2	3	16
Gaddy	1	1	0	0	0	0	0	2
Barry	1	4	0	3	0	0	1	2
Moore	5	10	2	4	0	2	2	12
Newbill	1	1	0	0	0	0	3	2
Totals	34	57	7	16	7	9	36	82

FSU **81**
Western Kentucky **78**
NCAA Tournament
March 25, 1993
Charlotte, North Carolina

FSU Name	Total FG	FGA	3-Point FG	FGA	FT	FTA	REB	TP
Sura	7	12	2	3	1	4	7	17
Edwards	8	13	0	0	3	9	9	19
Dobard	7	11	0	0	2	5	13	16
Cassell	3	14	1	5	7	3	12	12
Ward	1	3	0	1	3	6	4	5
Carroll	3	5	0	1	3	4	1	9
Wells	1	3	0	0	1	3	4	3
Robinson	0	0	0	0	0	0	0	0
Totals	30	61	3	10	18	38	48	81

Halftime Score: FSU 40, Western Kentucky 40
 FG%: FSU 49.2%, Western Kentucky 40.0%
 3 PT FG%: FSU 30.0%, Western Kentucky 31.6%
 FT%: FSU 47.4%, Western Kentucky 63.2%

W. Kentucky Name	Total FG	FGA	3-Point FG	FGA	FT	FTA	REB	TP
Mea	7	18	2	7	5	6	5	21
Brown	3	6	0	0	0	1	4	6
Hall	3	6	0	0	1	2	5	7
Ball	6	16	2	5	1	1	8	15
Horn	7	14	1	3	2	3	1	17
Fraxler	0	2	0	1	0	0	0	0
Robinson	3	5	1	2	4	3	3	9
Bunton	1	8	0	1	1	2	7	3
Totals	30	75	6	19	12	19	40	78

FSU **75**
Clemson **87**
ACC Tournament
March 12, 1993
Charlotte, North Carolina

FSU Name	Total FG	FGA	3-Point FG	FGA	FT	FTA	REB	TP
Sura	5	15	0	6	2	5	2	12
Edwards	9	18	0	1	4	5	15	22
Dobard	4	6	0	0	0	0	6	8
Cassell	5	15	0	4	2	2	5	12
Ward	5	14	1	7	0	0	3	11
Carroll	2	4	2	3	0	0	1	6
Robinson	2	4	0	0	0	0	2	4
Hands	0	1	0	1	0	0	1	0
Totals	32	77	3	22	8	12	39	75

Halftime Score: FSU 39, Clemson 45
 FG%: FSU 41.6%, Clemson 56.5%
 3 PT FG%: FSU 13.6%, Clemson 47.1%
 FT%: FSU 66.7%, Clemson 45.0%

Clemson Name	Total FG	FGA	3-Point FG	FGA	FT	FTA	REB	TP
Marin	2	9	2	7	1	2	3	7
Gray	10	14	1	1	2	5	9	23
Wright	11	17	0	0	2	6	11	24
Whitney	6	8	4	5	4	4	3	20
Bovain	5	7	1	3	0	0	7	11
Richie	0	0	0	0	0	1	0	0
Tomera	0	1	0	0	0	0	1	0
Brown	0	3	0	1	0	0	0	0
Buckingham	1	3	0	0	0	2	2	2
Totals	35	62	8	17	9	20	41	87

FSU **81**
Kentucky **106**
NCAA Tournament
March 27, 1993
Charlotte, North Carolina

FSU Name	Total FG	FGA	3-Point FG	FGA	FT	FTA	REB	TP
Sura	5	13	0	4	7	10	0	17
Edwards	4	8	2	5	5	6	7	15
Dobard	7	12	0	0	2	2	2	16
Cassell	3	11	2	3	8	10	2	16
Ward	1	7	0	6	3	5	1	5
Hands	0	2	0	1	0	0	1	0
Shepherd	0	1	0	0	0	0	1	0
Carroll	4	4	1	1	0	0	2	9
Wells	1	3	0	0	1	2	0	3
Robinson	0	0	0	0	0	0	1	0
Totals	25	61	5	20	26	35	25	81

Halftime Score: FSU 45, Kentucky 54
 FG%: FSU 41.0%, Kentucky 54.3%
 3 PT FG%: FSU 25.0%, Kentucky 47.8%
 FT%: FSU 74.3%, Kentucky 63.3%

Kentucky Name	Total FG	FGA	3-Point FG	FGA	FT	FTA	REB	TP
Mashburn	5	13	0	4	2	3	9	12
Prickett	9	12	0	0	4	6	11	22
Dent	2	5	0	0	1	3	5	5
Ford	5	9	4	7	5	6	2	19
Brown	4	10	3	7	1	2	6	12
DeK	3	5	0	0	0	1	3	6
Riddick	0	1	0	0	2	2	0	2
Rhodes	3	4	1	1	1	3	1	6
Brassow	0	0	0	0	0	0	1	0
Braddy	2	3	2	3	1	2	0	7
Timberlake	0	0	0	0	0	0	1	0
Martinez	4	6	0	0	2	2	4	10
Svoboda	1	2	1	1	0	0	0	3
Totals	38	70	11	23	19	30	51	106

FSU **82**
Evansville **70**
NCAA Tournament
March 18, 1993
Orlando, Florida

FSU Name	Total FG	FGA	3-Point FG	FGA	FT	FTA	REB	TP
Sura	2	9	0	3	3	4	7	7
Edwards	6	10	0	0	2	3	12	14
Dobard	4	6	0	0	5	6	4	13
Cassell	7	11	2	2	3	2	18	18
Ward	6	11	3	4	0	0	3	15
Hands	0	0	0	0	0	0	1	0
Shepherd	0	0	0	3	4	0	3	0
Carroll	3	4	2	3	0	0	8	8
Wells	1	3	0	1	1	2	5	3
Robinson	0	0	0	0	1	2	0	1
Keener	0	0	0	0	0	0	0	0
Totals	29	54	7	13	17	24	39	82

Halftime Score: FSU 41, Evansville 27
 FG%: FSU 53.7%, Evansville 41.5%
 3 PT FG%: FSU 53.8%, Evansville 38.1%
 FT%: FSU 70.9%, Evansville 57.1%

Evansville Name	Total FG	FGA	3-Point FG	FGA	FT	FTA	REB	TP
Elkins	3	10	1	3	4	5	6	11
Jackson	1	6	0	1	0	0	1	2
Hupmann	10	15	0	0	0	5	11	20
Cochran	2	4	2	4	0	0	1	6
Shreffler	4	12	2	6	2	2	4	12
Ball	1	3	0	1	0	0	0	2
Chandler	4	5	2	3	0	0	2	10
Hsieh	0	0	0	0	0	0	0	0
Castibier	2	10	1	3	2	2	4	7
Totals	27	65	8	21	8	14</		