

Seminoles



1999-2000
FLORIDA STATE SEMINOLE
BASKETBALL MEDIA GUIDE



Damous
Anderson



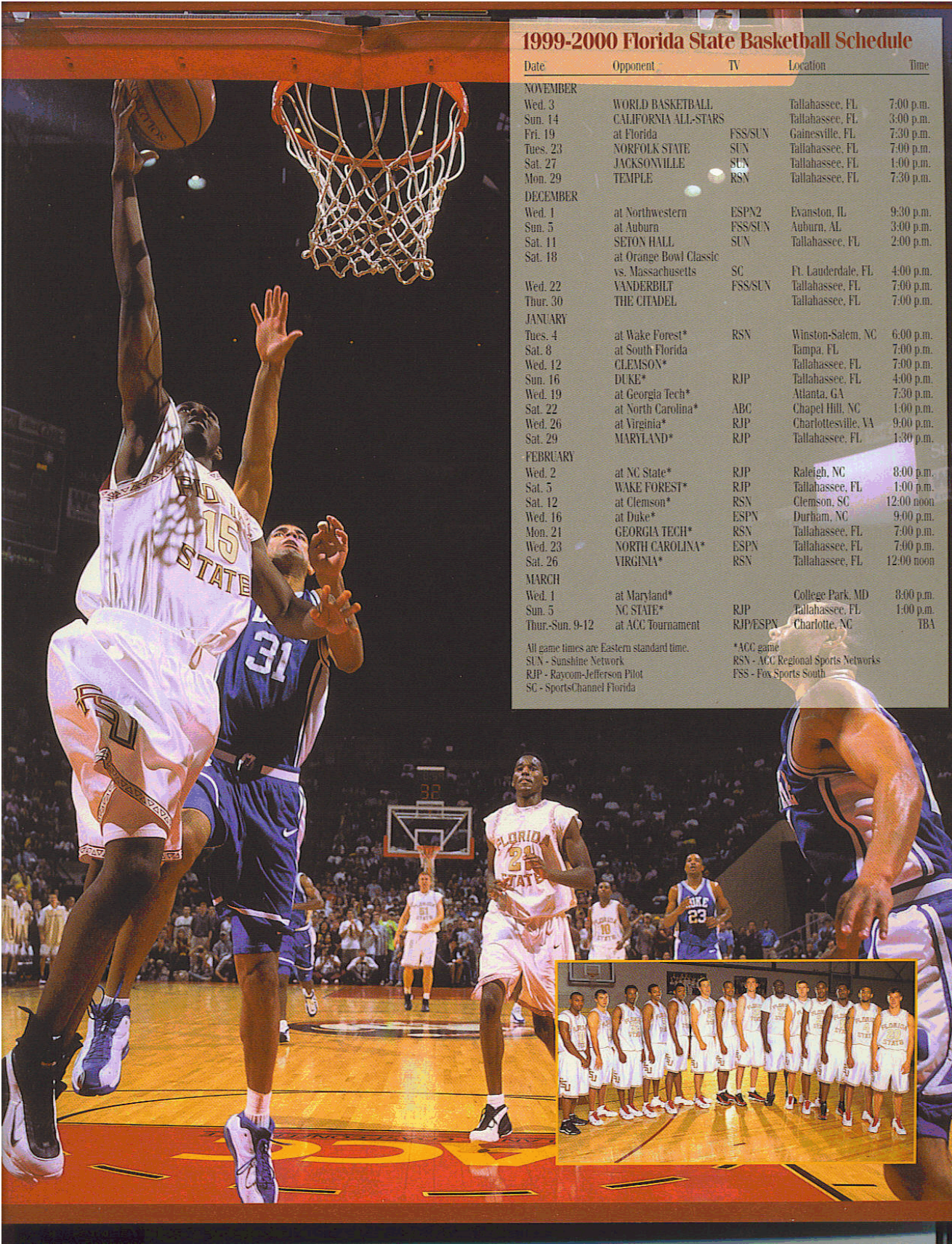
Justin
Mott



Oliver
Simmons



Ron
Hale



1999-2000 Florida State Basketball Schedule

Date	Opponent	TV	Location	Time
NOVEMBER				
Wed. 3	WORLD BASKETBALL		Tallahassee, FL	7:00 p.m.
Sun. 14	CALIFORNIA ALL-STARS		Tallahassee, FL	3:00 p.m.
Fri. 19	at Florida	FSS/SUN	Gainesville, FL	7:30 p.m.
Tues. 23	NORFOLK STATE	SUN	Tallahassee, FL	7:00 p.m.
Sat. 27	JACKSONVILLE	SCN	Tallahassee, FL	1:00 p.m.
Mon. 29	TEMPLE	RSN	Tallahassee, FL	7:30 p.m.
DECEMBER				
Wed. 1	at Northwestern	ESPN2	Evanston, IL	9:30 p.m.
Sun. 5	at Auburn	FSS/SUN	Auburn, AL	3:00 p.m.
Sat. 11	SETON HALL	SUN	Tallahassee, FL	2:00 p.m.
Sat. 18	at Orange Bowl Classic vs. Massachusetts	SC	Ft. Lauderdale, FL	4:00 p.m.
Wed. 22	VANDERBILT	FSS/SUN	Tallahassee, FL	7:00 p.m.
Thur. 30	THE CITADEL		Tallahassee, FL	7:00 p.m.
JANUARY				
Tues. 4	at Wake Forest*	RSN	Winston-Salem, NC	6:00 p.m.
Sat. 8	at South Florida		Tampa, FL	7:00 p.m.
Wed. 12	CLEMSON*		Tallahassee, FL	7:00 p.m.
Sun. 16	DUKE*	RJP	Tallahassee, FL	4:00 p.m.
Wed. 19	at Georgia Tech*		Atlanta, GA	7:30 p.m.
Sat. 22	at North Carolina*	ABC	Chapel Hill, NC	1:00 p.m.
Wed. 26	at Virginia*	RJP	Charlottesville, VA	9:00 p.m.
Sat. 29	MARYLAND*	RJP	Tallahassee, FL	1:30 p.m.
FEBRUARY				
Wed. 2	at NC State*	RJP	Raleigh, NC	8:00 p.m.
Sat. 5	WAKE FOREST*	RJP	Tallahassee, FL	1:00 p.m.
Sat. 12	at Clemson*	RSN	Clemson, SC	12:00 noon
Wed. 16	at Duke*	ESPN	Durham, NC	9:00 p.m.
Mon. 21	GEORGIA TECH*	RSN	Tallahassee, FL	7:00 p.m.
Wed. 23	NORTH CAROLINA*	ESPN	Tallahassee, FL	7:00 p.m.
Sat. 26	VIRGINIA*	RSN	Tallahassee, FL	12:00 noon
MARCH				
Wed. 1	at Maryland*		College Park, MD	8:00 p.m.
Sun. 5	NC STATE*	RJP	Tallahassee, FL	1:00 p.m.
Thur.-Sun. 9-12	at ACC Tournament	RJP/ESPN	Charlotte, NC	TBA

All game times are Eastern standard time.
 SUN - Sunshine Network
 RJP - Raycom-Jefferson Pilot
 SC - SportsChannel Florida
 *ACC game
 RSN - ACC Regional Sports Network
 FSS - Fox Sports South

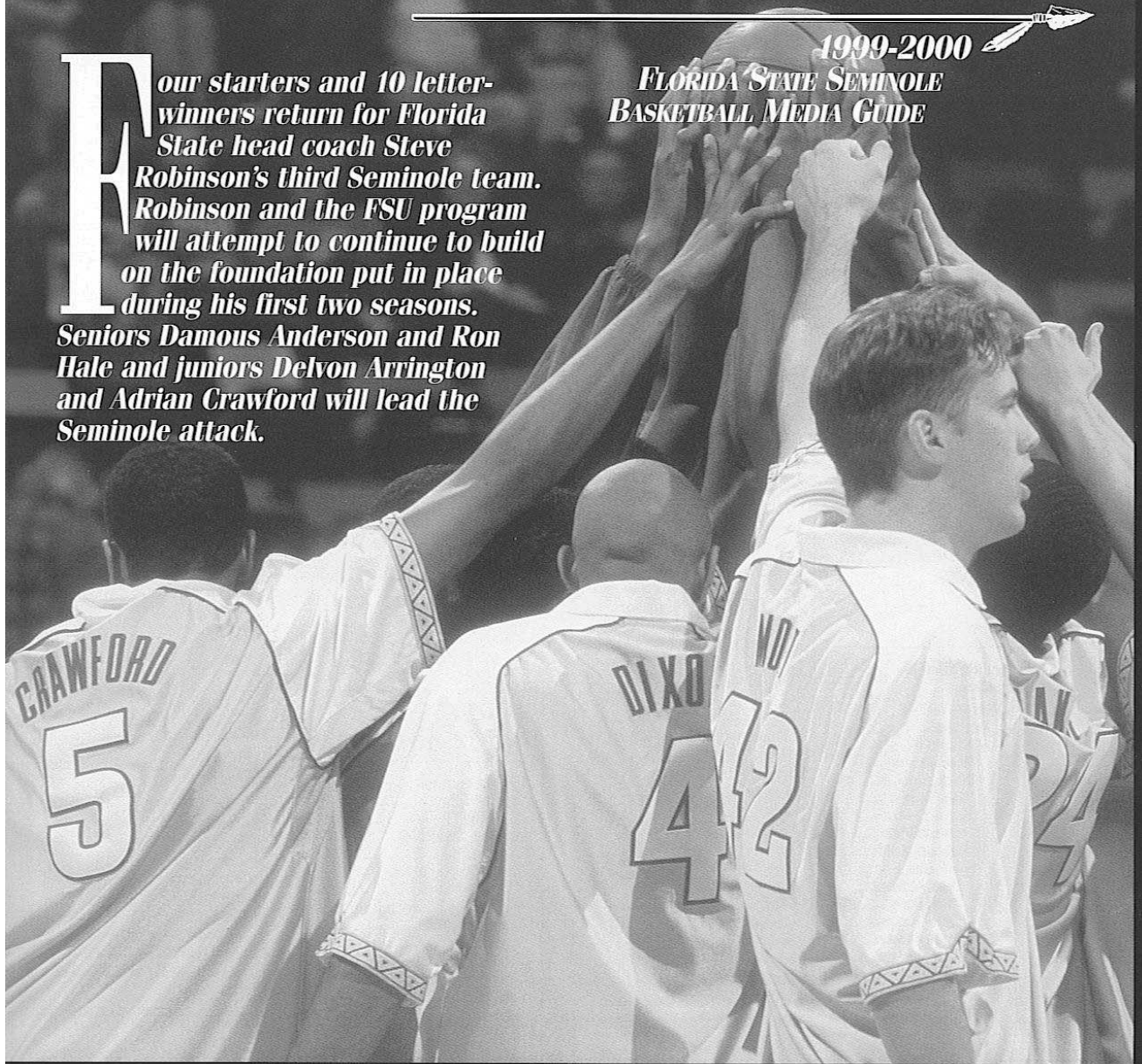
Seminoles

1999-2000 

FLORIDA STATE SEMINOLE
BASKETBALL MEDIA GUIDE

Four starters and 10 letter-winners return for Florida State head coach Steve Robinson's third Seminole team. Robinson and the FSU program will attempt to continue to build on the foundation put in place during his first two seasons.

Seniors Damous Anderson and Ron Hale and juniors Delvon Arrington and Adrian Crawford will lead the Seminole attack.

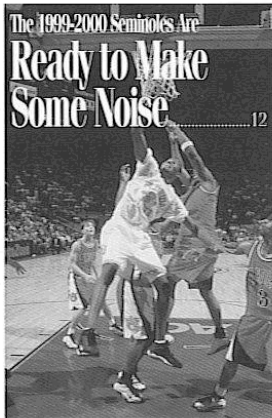


Contents

3 MEDIA INFORMATION

Press Information	4
Seminole Radio Network.....	6
Media Outlets.....	7
ACC Composite Schedule.....	8
Athletic Directory.....	9
Seminole.com.....	10

11 1999-2000 OUTLOOK

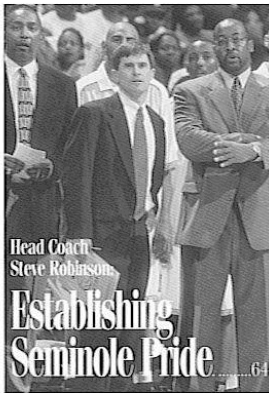


19 PLAYERS

Player Profiles & Statistics

Damous Anderson	20
Ron Hale.....	24
Justin Mott	28
Oliver Simmons.....	32
Delvon Arrington.....	36
Matt Chlebeck.....	40
Adrian Crawford.....	44
Antwuan Dixon.....	48
Emanuel Mathis.....	52
Chris Hull.....	56
David Anderson.....	57
Nigel Dixon.....	58
Mike Mathews.....	59
Rodney Tucker.....	60
Player Rosters.....	61
A Closer Look At The Seminoles ...Page 61 Foldout	
TV/Radio Speed Chart	62

63 SEMINOLE COACHING STAFF



Assistant Coaches

Coleman Crawford.....	69
Jim Platt	70
Tim Juhlin	71

Support Staff

Matt Wingate	72
Sam Lunt	73
Gene Granger.....	73
Kevin White.....	73
Ron Miller.....	74
Yulondia Wilson.....	74
Karen Strawn.....	74

75

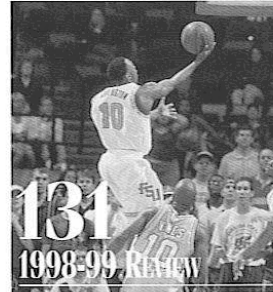
1999-2000 OPPONENTS

Schedule/Travel Itinerary.....	76
Florida.....	77
Norfolk State.....	78
Jacksonville.....	79
Temple.....	80
Northwestern.....	81
Auburn.....	82
Seton Hall.....	83
Massachusetts.....	84
Vanderbilt.....	85
The Citadel.....	86
Wake Forest.....	87
South Florida.....	88
Clemson.....	89
Duke.....	90
Georgia Tech.....	91
North Carolina.....	92
Virginia.....	93
Maryland.....	94
North Carolina State.....	95
ACC Tournament	96

97 THE UNIVERSITY

This is Florida State Basketball:

The Tradition	98
The Excitement	104
The Arena	108
The Attention	112
This is Florida State	116
Academic Support.....	120
Athletics Administration.....	124
Tallahassee.....	128
Seminole Spirit Groups.....	130



1998-99 Review Story.....	132
1998-99 Box Scores.....	137
1998-99 Statistics.....	148
The Atlantic Coast Conference.....	159
1998-99 ACC Statistics.....	160

163 RECORD BOOK

Individual Records	164
Team Records	184
Civic Center Records.....	185
Team & Individual ACC Game Records.....	186
Year-By-Year Team Statistics.....	188
Tournament History.....	190
NCAVACC Tournament History.....	192
Series Records.....	194
All-Time Scores.....	200
FSU in the AP Poll.....	205
Coaching History.....	208
FSU Basketball Letterman Club.....	210
Seminole In The Pros.....	212

Alphabetical Reference

Academics.....	120
ACC Composite Schedule.....	8
ACC Statistics.....	160
All-Time Scores.....	200
Assistant Coaches.....	69-71
Athletic Administration.....	124
Basketball Support Staff.....	72-74
Box Scores, 1998-99.....	137
Civic Center.....	108
Closer Look at the Seminoles.....	61
Coaching Records.....	208
Lettermen's Club.....	210
Media Attention.....	112
Media Information.....	4
Media Outlets.....	7
NCAA Tournament History.....	192
Opponents.....	75
Outlook.....	11
Players.....	19
Press Information.....	4
Records.....	163
Robinson Information.....	64
Rosters.....	61
Seminole Radio Network.....	6
Seminole in the Pros.....	212
Series Records.....	194
Speed Chart, TV Radio.....	62
Statistics, 1998-99.....	148
The Tradition.....	98
The University.....	116
Year In Review (1998-99).....	132

THE 1999-2000 FSU BASKETBALL GUIDE

Editor:	Chris Walker
Research:	Jason Byrne Ketsia Colimon Daniel Huffman Brian Maeder
Photography:	Ryals Lee Ross Obley, Bob Rosato Paul Chapman, Kevin O'Donnell Alan Christian, NBA Photos FSU Photo Lab
Design:	J.S. Goodson & Partners
Printing:	Rapid Press Tallahassee, Florida

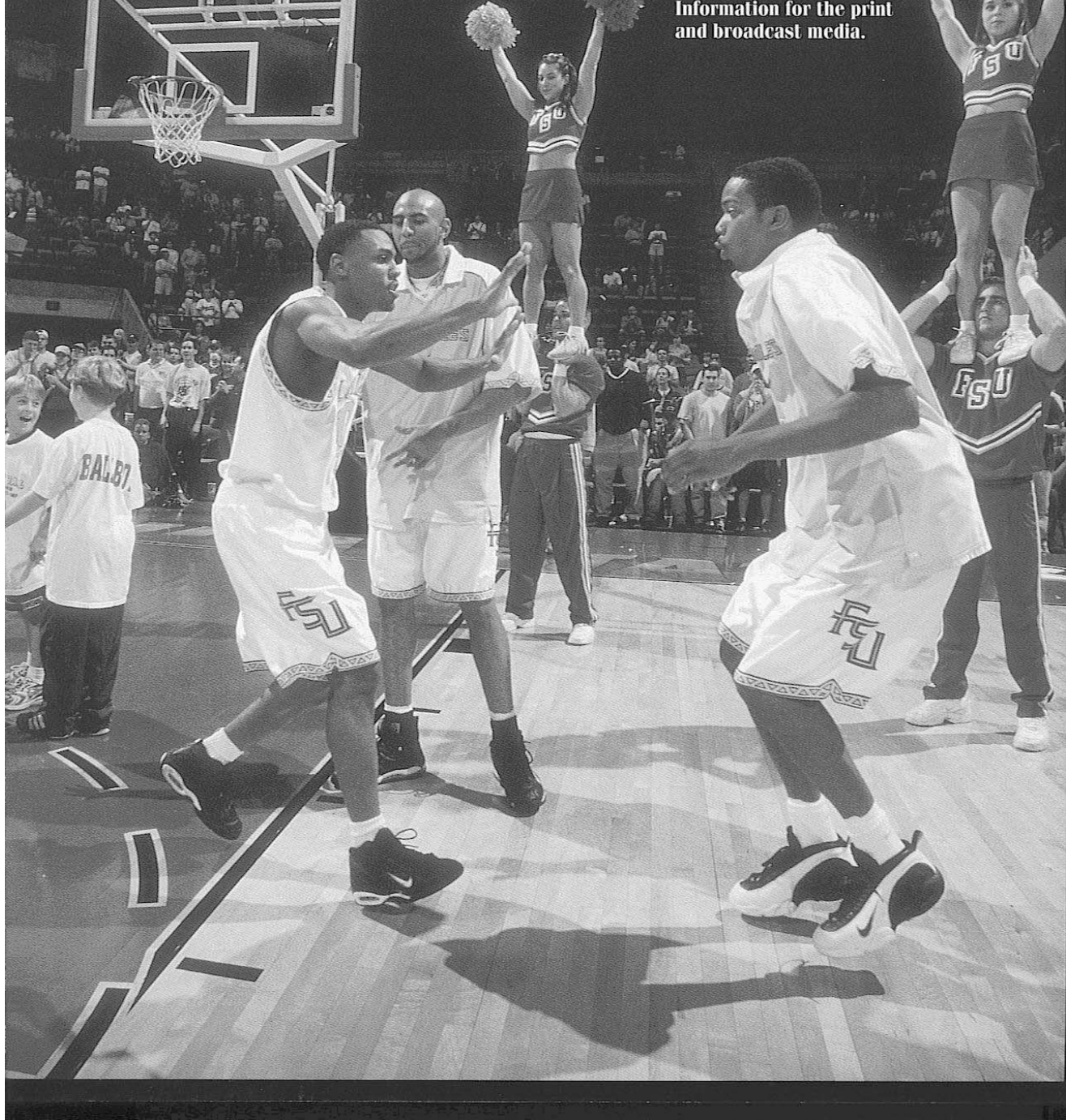
The 1999-2000 Florida State Basketball Media Guide is dedicated to the memory of Don Loucks.



The first basketball and men's tennis coach in FSU history, Loucks passed away last April at the age of 84.

Media Info

Information for the print
and broadcast media.



Covering The 1999-2000 Seminoles

The Florida State University 1999-2000 Basketball Media Guide has been designed for the use by the news media and Seminole fans. Additional information, including press releases, photography, video footage and clips, is available upon request for the media. Any questions not covered in this publication can be directed to the Florida State Sports Information Office.

Credentials

All requests for credentials — working press, radio, television, photography and scouting - must be made in writing on company letterhead to Florida State Basketball SID Chris Walker. FSU follows guidelines set forth by the NCAA and Atlantic Coast Conference in governing the issuance of credentials. Requests for season credentials should arrive no later than November 5. Requests for single game credentials should arrive no later than 48 hours prior to the day of the game. Requests will be evaluated and credentials will be issued according to the following criteria:

1. State newspapers by circulation, wire services, national publications, newspapers from opponents area and student newspapers from FSU and opponents' school.
2. Other daily newspapers with preference to those which regularly cover Florida State.
3. Radio and television personnel not broadcasting, but considered reporting (seats may be provided in the stands with locker room access granted).
4. Non-daily newspapers, with preference to those which regularly cover Florida State (if space is available).
5. Scouts.

Media Services

Weekly Interview Day — The Florida State Sports Information Office will establish a weekly interview day throughout the 1999-2000 season to assist in your coverage of Seminole basketball. The interview day, generally on Thursdays, will be held in the Moore Athletic Center and will provide the opportunity to speak with FSU head coach Steve Robinson and one or two players. Media requests for specific players to be available at the session should be made to Basketball SID Chris Walker.

ACC Coaches Teleconference — Media members covering Florida State basketball are encouraged to reach Coach Robinson on the

Atlantic Coast Conference's weekly teleconference. The nine ACC coaches will be featured each Tuesday from 11:00 a.m. to 12:30 p.m. beginning January 4th through March 14th.

ACC Coaches Teleconference

Media members covering Florida State basketball are encouraged to reach Coach Robinson on the Atlantic Coast Conference's weekly teleconference. The nine ACC coaches will be featured each Tuesday from 11:00 a.m. to 12:30 p.m. beginning January 4th through March 14th. Each coach will be on the teleconference for 10 minutes, with Robinson's segment running from 11:20 a.m. to 11:30 a.m. each week. The media telephone number for the teleconference is 913-981-5507. The weekly schedule is as follows:

Larry Shyatt, Clemson	11:00
Mike Krzyzewski, Duke	11:10
Steve Robinson, Florida State	11:20
Bobby Cremins, Georgia Tech	11:30
Gary Williams, Maryland	11:40
Bill Guthridge, North Carolina	11:50
Herb Sendek, NC State	12:00
Pete Gillen, Virginia	12:10
Dave Odom, Wake Forest	12:20

A replay of the teleconference will be available for a 24-hour period starting at 2:00 p.m. every Tuesday afternoon. Dial 402-220-4214 and ACC# as the password.

Each coach will be on the teleconference for 10 minutes, with Robinson's segment running from 11:20 a.m. to 11:30 a.m. each week. The media telephone number for the teleconference is 913-981-5507.

A replay of the teleconference will be available for a 24-hour period starting at 2:00 p.m. every Tuesday afternoon. Dial 402-220-4214 and ACC# as the password.

Coach Robinson Interviews — Coach Robinson is available on FSU's weekly interview day and on the ACC Coaches Teleconference. All other requests for Robinson interviews must be arranged through Walker.

Player Interviews — Along with the weekly interview day, Florida State players can be reached through the Sports Information Office. At least 24 hours advance notice is requested to set up an in-person interview. Please contact Walker with any requests. Interviews will be conducted either prior to or just after practice. Players are not available for interviews on game days. For out-of-town media, a call-back card

will be given to the player, who should return the call collect at a mutually agreed upon time. Please note, freshmen and transfers will not be available for interviews until the conclusion of the exhibition schedule.

Covering Practice — Generally, Florida State basketball practices are closed, however, a selected number of practices are open to the media. Please contact Walker for a schedule of open practices and to give notice that you will attend.

ACC Faxback — Florida State releases and statistics are available to members of the media through the Atlantic Coast Conference's Faxback service. It allows the league office to provide the latest information from the ACC office and the nine sports information offices of each of the league's schools, 24 hours a day. To use faxback, dial the faxback phone number from the handset of your fax machine. You will then be instructed step-by-step on how to retrieve the information. We will not release faxback's phone number except to authorized media personnel. Please contact the FSU Sports Information Office or the ACC Media Relations Office at 336-851-6062 for faxback's number.

www.seminoles.com — Media members and fans can also get a hold of the latest information concerning Florida State basketball on the internet at www.seminoles.com, the FSU athletics department's official website. Updated releases, statistics, games stories and boxscores, as well as, coach and player bios are available.

Game-Day Media Services

Parking — A limited number of spaces in the Leon County Civic Center's main parking lot have been set aside for use by the media. Vehicles should enter the main Civic Center lot off of Pensacola Street and will be directed to the proper area. All requests for parking credentials should be made along with requests for press credentials.

Entrance/Media Will Call — Media should enter the Civic Center through the elephant doors at the bottom southwest corner of the arena. Media will call is located at this entrance and is open 90 minutes prior to tipoff.

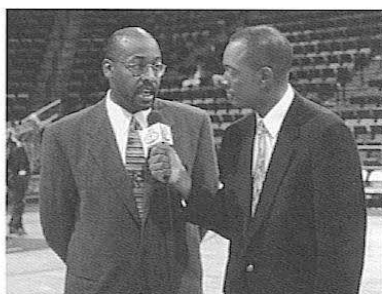
Media Room — The media room at the Civic Center is located beneath the west side of the arena in Meeting Room B. Both head coaches and at least two Florida State players will appear in the media room at the conclusion of the game.

Phones — A limited number (six) of phone lines are available in the Civic Center's media room. The phones are for credit card calls only and are available on a first-come, first-served

basis. Media may order their own phone line for the media room or at courtside through Sprint of Tallahassee. Call Sprint at 850-681-6600 to order private lines.

Photographers — Credentialed photographers will be allowed to shoot the game from courtside in the designated photo areas along each baseline. Florida State sports information officials reserve the right to remove any photographer from the photo areas for safety reasons. Photographers are not allowed to shoot from the sidelines, are prohibited from entering the team bench areas and should not shoot from anywhere on the baseline besides the photo box. No tripods are to be used when shooting as well.

Radio — Sections are reserved for both the Florida State and the opposing radio networks on press row. FSU grants broadcast rights to the



The Tallahassee Leon County Civic Center will be the site of 12 televised games in 1999-2000. FSU will appear on television 23 times this season.

official radio outlet of the visiting team on a reciprocal basis. Contact Scott Kull of Seminole Athletics Marketing at 850-644-2550 to assure the lines are available.

Press Meals — A buffet dinner is available in the Seminole Spirit Room to members of the media with a meal ticket attached to their credential. Television crews will be supplied with

FSU Quick Facts

Location: Tallahassee, FL
 Enrollment: 30,519
 Symbol: Seminole
 Colors: Garnet (187) & Gold (123)
 Conference: Atlantic Coast
 Home Court: Tallahassee-Leon County Civic Center
 Capacity: 12,200
 1998-99 Record: 13-17
 1998-99 ACC Record: 5-11 (7-7th)
 ACC Tournament: 1-1
 1998-99 Postseason: N/A
 Starters Returning/Lost: 4/1
 Lettermen Returning/Lost: 10/3

Administrative Staff

President: Talbot "Sandy" D'Alemberte
 Faculty Rep: Charles Ehrhardt
 Athletics Director: Dave Hart, Jr.
 Associate Athletics Directors:
 Charlie Carr Charles Hurst
 Kim Record Bob Minnix
 Andy Urbanic
 Assistant Athletics Directors:
 Guy Morgan Greg Phillips
 Director of Facilities: Bernie Waxman
 Director of Student Development: Pam Overton

Director of Marketing: Scott Kull
 Sports Information Director: Rob Wilson
 Ticket Manager: Patrick Martin

Basketball Staff

Head Basketball Coach: Steve Robinson
 Alma Mater (year): Radford (81)
 Overall Record (years): 77-49 (4)
 Record at FSU (years): 31-31 (2)
 Assistant Coaches: Coleman Crawford
 (North Alabama '75)
 Jim Platt (Concordia, IL, College '73)
 Tim Juhlin (Northern Iowa '90)
 Trainer: Sam Lunt
 Equipment Manager: Gene Granger
 Strength Coach: Ron Miller
 Director of Operations: Matt Wingate

Telephone Numbers

(All Area Codes 850)
 Basketball SID
 Chris Walker: Office: 644-1403
 Home: 402-0921
 SID Fax: 644-3820
 Basketball Office: 644-1461
 Athletics Director: 644-2526
 Ticket Office: 644-1830
 or 1-888-FSU-NOLE
 Mailing address: P.O. Drawer 2195
 Tallahassee, FL 32316
 Website: www.seminotes.com

five meal tickets to accommodate the talent and producers. Any catering needs for television should be addressed with Roger Englert of the Civic Center.

Faxing — Faxing of the final box score is available through the Florida State Sports Information Office. FSU will fax to outlets provided on both school's post-game fax list. If any special faxing needs occur, please contact a member of the Florida State staff.

Services/Statistics — Statistics will be distributed to the media at halftime. A game book with a boxscore and play-by-play will be made available at the end of the game. Coaches' quotes will be available approximately 30 minutes after the completion of the game. Media guides, game notes, a flip card and game programs are available prior to the game.

ACC Men's Basketball Faxback Catalog

CLEMSON

General Release 11150
 Notes Only 11151
 Stats Only 11152
 Box Score 11153
 Schedule 11154

DUKE

General Release 21150
 Notes Only 21151
 Stats Only 21152

Box Score 21153
 Schedule 21154

FLORIDA STATE

General Release 31150
 Notes Only 31151
 Stats Only 31152
 Box Score 31153
 Schedule 31154

GEORGIA TECH

General Release 41150
 Notes Only 41151
 Stats Only 41152
 Box Score 41153
 Schedule 41154

MARYLAND

General Release 51150
 Notes Only 51151
 Stats Only 51152
 Box Score 51153
 Schedule 51154

NORTH CAROLINA

General Release 61150
 Notes Only 61151
 Stats Only 61152
 Box Score 61153
 Schedule 61154

NC STATE

General Release 71150
 Notes Only 71151

Stats Only 71152
 Box Score 71153
 Schedule 71154

VIRGINIA

General Release 81150
 Notes Only 81151
 Stats Only 81152
 Box Score 81153
 Schedule 81154

WAKE FOREST

General Release 91150
 Notes Only 91151
 Stats Only 91152
 Box Score 91153
 Schedule 91154

Seminole Radio Network



Whether Florida State plays at home or on the road, fans across the Southeast follow every bounce of the ball for Steve Robinson's team on the Seminole Radio Network. The regional network brings all of the excitement of FSU basketball as well as pre-game and post-game analysis to fans, alumni and college basketball enthusiasts across the state.

The Seminole Radio Network is owned and operated by Host Communications, Inc., one of the nation's leaders in collegiate sports broadcasting. Florida State joined forces with the Lexington, Ky. based company to establish a comprehensive marketing opportunity which includes radio, television, print and corporate sponsorship components.

In addition to Florida State, Host owns the rights to the network of other outstanding schools including Texas, Virginia, Kentucky, Notre Dame, Tennessee, South Carolina, Houston and Mississippi State. Host has a long-term broadcast and printing relationship with the NCAA.

The Seminole Basketball Network will reach nearly 30 markets for the 1999-2000 season, including some of the largest in the nation with Tampa, Miami and Jacksonville slated to receive the games this year. In Tallahassee, all the Seminoles'

games can be heard on flagship station WTNT-FM (94.9).

In addition to Florida State's games, the Steve Robinson Radio Show can be heard three times daily on WTNT and WNL-AM (1270) in Tallahassee and the Steve Robinson Call-In Show, which originates from the Club Down Under on the FSU campus, can be heard in most markets each Thursday from 7:00 p.m. to 8:00 p.m. during the season.

Florida State's broadcast crew is known as one of the best in the nation as they provide insight and entertainment as well as detailed and expert play-by-play.

The broadcast team features award-winning play-by-play announcer Gene Deckerhoff, a 25-year veteran of the FSU basketball network. Deckerhoff is a nine-time winner of the Sportscaster of the Year award in Florida.

Deckerhoff is nationally known as one of the finest football and basketball announcers in the South. The "Voice of the Seminoles" for the past 20 years in football in addition to his 25 in hoops. Deckerhoff has been named the best college or pro football play-by-play announcer in the state for 16 of the last 20 years.

A native of Jacksonville, Fla., Deckerhoff also handles play-by-play announcing for the Tampa Bay Buccaneers of the NFL, making for some very busy fall weekends. Deckerhoff is also the co-host of both "The Steve Robinson Show" and "The Bobby Bowden

Show." He runs Gene Deckerhoff Productions, a firm specializing in sports broadcasting and the production of radio and television commercials.

Joining Deckerhoff for his first full year as color analyst is Florida State Assistant Athletics Director Guy Morgan. Morgan has done select games on the network the past three seasons.

A native of Virginia Beach, Va., Morgan was a four-year letter-winner on the Wake Forest basketball team from 1978-82. He averaged 10.0 points per game in his career and ranks 26th all-time at the school in scoring. Morgan still ranks among the program's all-time top 10 in field goal percentage (fourth, 56.4%), rebounds (10th, 703) and blocked shots (fourth, 182). He was the Demon Deacons' Most Valuable Player his final two seasons and co-captained the team in his senior year.

Morgan was a McDonald's High School All-American in 1978 and played for the Indiana Pacers in 1982-83. He joined the Florida State athletics staff in 1994.



Gene Deckerhoff



Guy Morgan

FSU Sports Information Office



Rob Wilson
Sports Information Director
Football



Chris Walker
Assistant Sports Information Director
Men's Basketball



Tina Thomas
Assistant Sports Information Director
Women's Basketball



Jeff Purinton
Assistant Sports Information Director
Baseball



Lynn Hobby
Administrative Secretary

Phone Number:.....850-644-1403
Fax Number:.....850-644-3820
Address:.....Sports Information,
P.O. Drawer 2195, Tallahassee, FL 32316
Overnight Address:.....Sports Information,
Moore Athletic Center,
Stadium Drive and Pensacola Street, Tallahassee, FL 32306
SID:.....Rob Wilson
Office Phone:.....850-644-1401
Basketball SID:.....Chris Walker
Office Phone:.....850-644-1403

Home Phone:.....850-402-0921
Assistant SID:.....Tina Thomas
Office Phone:.....850-644-1065
Assistant SID:.....Jeff Purinton
Office Phone:.....850-644-0615
Administrative Assistant:.....Lynn Hobby
Office Phone:.....850-644-2016
Graduate Assistant:.....Jason Byrne
Office Phone:.....850-644-4836
Graduate Assistant:.....Mandi Copeland
Office Phone:.....850-644-5656

Host Communications 1999-2000 Seminole Radio Network Affiliates

Location	Station	Frequency	Location	Station	Frequency	Location	Station	Frequency
Belle Glade	WBGF-FM	93.5	Jacksonville	WNZS-AM	930	Panama City	WYOO-FM	101.1
Bradenton	WAMR-AM	1320	Lake City	WGRO-AM	960	Pensacola	WPFL-FM	105.1
Chattahoochee	WTCL-AM	1580	Lakeland	WLKF-AM	1430	Sarasota	WSPB-AM	1450
Cordele/Vienna, GA	WWVN-AM	1550	Live Oak	WOHL-AM	1250	St. Augustine	WFOY-AM	1240
Englewood	WENG-AM	1530	Madison	WMAF-AM	1230	Stuart	WSTU-AM	1450
Fort Walton Bch/Destin	WFAV-AM	1400	Miami	WINZ-AM	940	Tallahassee	WTNT-FM	94.9
Gainesville	WWLO-AM	1430	Milton	WEBY-AM	1330	Tallahassee	WNLS-AM	1270
Graceville	WYDA-FM	101.7	Ocala	WOCA-AM	1370	Tampa/St. Pete	WDAE-AM	1250
Jacksonville	WJGR-AM	1320				West Palm Beach	WDJA-AM	850

Basketball Media Outlets

Outlet Phone Fax

Print Media

Associated Press (Local)	(850) 224-1211	224-2099
Brent Kallestad*		
336 E. College Ave., Suite 301, Tallahassee, FL 32301		
Bradenton Herald	(941) 745-7007	745-7097
Willie Hiatt		
102 Manatee Ave., West, Bradenton, FL 34205		
Daytona Beach News-Journal	(904) 252-1511	253-8433
David Markowitz		
P.O. Box 431, Daytona Beach, FL 32015		
Florida Times-Union (Local)	(850) 224-7515	681-2961
Bob Thomas*		
336 E. College Ave., Suite 304, Tallahassee, FL 32301		
Florida Times-Union	(904) 359-4246	359-4478
Jim Nascella, Gene Frenette, Mike Bianchi (C)		
One Riverside Ave., Jacksonville, FL 32202		
FL. Lauderdale Sun-Sentinel	(954) 356-1645	356-4676
Craig Barnes*, Dave Hyde (C)		
New River Center, 200 E. Las Olas Blvd., Ft. Lauderdale, FL 33301		
FL. Myers News-Press	(941) 335-0358	334-0708
Scott Korzenowski (C)		
2442 Anderson Ave., Ft. Myers, FL 33901		
FSView	(850) 561-6653	561-6578
Alex Abrams		
P.O. Box 20331, Tallahassee, FL 32316		
Gainesville Sun	(352) 378-1411	338-3128
Pai Dooley		
P.O. Drawer A, Gainesville, FL 32602		
Lakeland Ledger	(813) 687-7010	687-7016
Rick Brown*		
P.O. Box 408, Lakeland, FL 33802		
Miami Herald	(305) 376-3487	376-2295
Gary Long*, Edrain Pope (C)		
One Herald Plaza, Miami, FL 33101		
Northwest Florida Daily News	(850) 863-1111	862-5230
Arnold Feliciano		
200 Racetrack, Ft. Walton Beach, FL 32548		
Ocala Star-Banner	(352) 867-4144	867-4018
Daight Collins*, P.O. Box 490, Ocala, FL 32670		
Orlando Sentinel (Local)	(850) 222-5564	224-0979
Steve Elling*		
336 E. College Ave., Suite 303, Tallahassee, FL 32301		
Orlando Sentinel	(407) 420-5474	420-5069
Larry Guest (C), David Whitley (C)		
P.O. Box 28333, Orlando, FL 32802		
Osceola, The	(904) 222-7733	224-3627
Jerry Kutz*, Daniel Mitchell*, Jim Henry*		
402 Dunwoody St., Tallahassee, FL 32304		
Palatka Daily News	(904) 328-2721	325-0663
Kerry Dunning*		
1825 St. John's Ave., Palatka, FL 32177		

Outlet Phone Fax

Palm Beach Post	(561) 820-4440	820-4481
Dan Moffett (C), Tom D'Angelo		
2751 S. Dixie Highway, W. Palm Beach, FL 33405		
Panama City News-Herald	(850) 763-7621	763-4636
Pat McCann*		
P.O. Box 1940, Panama City, FL 32401		
Pensacola News-Journal	(850) 435-8558	435-8633
Bill Vilona*		
One News-Journal Plaza, Pensacola, FL 32501		
Sarasota Herald-Tribune	(941) 957-5171	957-5276
Tom Spousta (C), Doug Fernandez		
801 S. Trail, Sarasota, FL 34236		
St. Petersburg Times	(813) 893-8123	893-8782
Brian Landman*, Hubert Mizell (C), Gary Shelton (C)		
P.O. Box 1121, St. Petersburg, FL 33731		
Tallahassee Democrat	(850) 599-2316	599-2301
Steve Ellis*, John Nogowski (C)		
P.O. Box 990, Tallahassee, FL 32302		
Tampa Tribune (Local)	(850) 222-8382	222-4772
Doug Carlson*		
336 E. College Ave., Tallahassee, FL 32301		
Tampa Tribune	(813) 272-7655	258-8504
Tom McEwen (C), Martin Fennelly (C)		
P.O. Box 191, Tampa, FL 33601		
United Press International	(305) 445-1750	445-1789
Les Kajos		
800 Douglas Rd., Suite 565, Coral Gables, FL 33134		
Electronic Media		
Cable 47	(850) 487-3170	487-3093
Charlie Allen		
WFSU Television Center		
Capitol News Service	(850) 224-5546	224-5378
Jeff Hogan, Alia Faraj		
311 N. Adams St., Tallahassee, FL 32301		
Florida Radio Network	(407) 875-0740	661-1940
Tom Morgan, 6000 S. Rio Grande Ave., Suite 201, Orlando, FL 32809		
Seminole Radio Network	(850) 644-2550	644-0962
Scott Kull (Network Contact)		
P.O. Drawer 2195, Tallahassee, FL 32306		
Gene Deckerhoff* (Play-by-Play)	(850) 893-2576	668-0864
2704 Vasser Road, Tallahassee, FL 32308		
Sunshine Network	(407) 648-1150	648-1679
Paul Kennedy (Talent), Jeff DeMoss		
390 N. Orange Ave., Suite 275, Orlando, FL 32801		
WCTV-TV (CBS)	(850) 893-2126	668-3851
Randy Ruditz, Mark Rushing		
P. O. Box 3048, Tallahassee, FL 32315		
WEAR-TV (ABC)	(850) 455-4599	455-8972
Dan Shugart		
P.O. Box 12278, Pensacola, FL 32501		



Gene Deckerhoff is in his 26th year doing play-by-play of Florida State basketball games.

Outlet Phone Fax

WESH-TV (NBC)	(407) 539-7895	539-7948
Mark Middleton		
1021 N. Wymore Rd., Winter Park, FL 32789		
WFTV-TV (ABC)	(407) 244-8367	841-8251
Pat Clarke		
P.O. Box 999, Orlando, FL 32802		
WJHG-TV (NBC)	(850) 234-2128	233-6647
Scott Rossman		
P.O. Box 2349, Panama City, FL 32401		
WJXT-TV (CBS)	(904) 393-9845	393-9822
Sam Kouvaris		
P.O. Box 5270, Jacksonville, FL 32207		
WMBB-TV (ABC)	(850) 769-2313	372-0922
Brian Davis		
P.O. Box 1340, Panama City, FL 32401		
WNLS RADIO	(850) 386-6143	385-8789
Eric Lualien, Jeff Cameron, Rick Ballou		
325 John Knox Rd., Suite E-200, Tallahassee, FL 32303		
WTIX-TV (NBC)	(904) 633-8806	633-8899
Dan Hicken		
1070 E. Adams St., Jacksonville, FL 32202		
WTNT RADIO	(850) 385-9868	385-8789
Jim Crusty		
325 John Knox Rd., Suite E-200, Tallahassee, FL 32303		
WTWG-TV (NBC)	(850) 893-9892	893-6974
Jim Taylor, Jason Alpert		
8440 Deer Lake Rd., Tallahassee, FL 32312		
WTAL-TV (ABC)	(850) 893-1313	668-1460
Sean Woodland, Seth Grossman		
8927 Thomasville Rd., Tallahassee, FL 32312		

* Beat writer, (C) Columnist.

1999-2000 Atlantic Coast Conference Basketball Schedule

ALL TIMES EASTERN

RJ	Raycom/Jefferson-Pilot
HTS	Home Team Sports
FSS	Fox Sports South
SC	Sports Channel Florida
SUN	Sunshine
RSN	Regional Sports Network (HTS,SUN,FSS)
EKT	ESPN Regional TV

NOVEMBER

Thursday, November 11

Duke vs. Stanford	ESPN2	6:30
Madison Square Garden, New York City		

Friday, November 12

Duke in Coaches vs Cancer Classic	ESPN	TBA
Madison Square Garden, New York City		

Wednesday, November 17

San Francisco at Maryland		8:00
Preseason NIT		

Friday, November 19

E. Tennessee St. at Clemson		7:30
Florida State at Florida	FSS/SUN	7:00
Georgia at NC State	ESPN2	7:00
Mercer at Georgia Tech		7:30
Elon at Virginia		7:30
Maryland in Preseason NIT		8:00

Saturday, November 20

Army at Duke	HTS	5:00
Campbell at Wake Forest		8:00

Sunday, November 21

Wofford at Clemson		4:00
VMI at Virginia		7:30

Monday, November 22

Wake Forest at Navy	FSS/HTS	7:30
Fairleigh Dickinson at Maryland		8:00
North Carolina vs. Southern Cal	ESPN	9:00
Maua Tournament		

Tuesday, November 23

North Carolina at Florida State	SUN	7:00
Columbia at Duke		7:30
Old Dominion at NC State		7:30
North Carolina in Maui Tournament	ESPN	9:00

Wednesday, November 24

Maryland in Preseason NIT	ESPN	TBA
Georgia Tech vs. Grantling		10:00
Alaska Shootout		
North Carolina in Maui Tournament	ESPN	TBA

Thursday, November 25

Virginia vs. South Carolina	RSN	2:00
Puerto Rico Shootout		

Friday, November 26

Virginia in Puerto Rico Shootout	TBA	
Sietson at NC State		7:30
Clemson vs. Central Florida		8:30
SoCon Holiday Hoops, Greenville, SC		
Maryland in Preseason NIT	ESPN	TBA

Saturday, November 27

Virginia in Puerto Rico Shootout	TBA	
Jacksonville at Florida State	SUN	1:00
Duke vs. Southern Cal	KCAL	5:30
Wooden Classic, Anaheim, CA		
MD-Eastern Shore at Wake Forest		7:30
Clemson in SoCon Holiday Hoops	TBA	

Sunday, November 28

Big Ten Challenge		
Iowa vs. Maryland	ESPN2	7:30

Monday, November 29

Temple at Florida State	RSN	7:30
-------------------------	-----	------

Tuesday, November 30

Wisconsin at Wake Forest	ESPN	7:00
Big Ten Challenge		
Iowa vs. Maryland	ESPN2	7:30
Big Ten Challenge, Baltimore, MD		
Duke vs. Illinois	ESPN	9:00
Big Ten Challenge, Chicago, IL		
Virginia at Minnesota	ESPN2	9:30
Big Ten Challenge		

DECEMBER

Wednesday, December 1

Michigan vs. Georgia Tech	ESPN	7:00
Big Ten Challenge, Atlanta, Ga.		

NC State at Purdue

ESP/2	7:30	
Big Ten Challenge		
Michigan State at North Carolina	ESPN	9:00
Big Ten Challenge		
Florida State at Northwestern	ESPN2	9:30
Big Ten Challenge		
Clemson at Penn State	EKT	8:00
Big Ten Challenge		

Friday, December 3

Charleston vs. North Carolina	RJ	9:00
Food Lion Classic, Charlotte, NC		

Saturday, December 4

Virginia at St. John's	RSN/EKT	12:00
Madison Square Garden		
Temple at Wake Forest	ESPN	12:00
Providence at NC State	RJ	2:00
Maryland vs. Illinois	RJ	3:00

Charlotte, Southern at Clemson

4:00		
DePaul at Duke	ESPN	7:00
North Carolina in Food Lion Classic	RJ	TBA

Sunday, December 5

Florida State at Auburn	FSS/SUN	3:00
Maryland in BRAT Classic	RJ	TBA

Tuesday, December 7

North Carolina at Buffalo		7:30
Winthrop at Maryland		8:00

Wednesday, December 8

Georgia Tech at Georgia	FSS/SUN	7:30
Loyola Baltimore at Virginia		7:30
North Carolina vs. Cincinnati	ESPN	9:00
Great 8, Chicago, Ill.		

Friday, December 10

Virginia at Hampton	ESPN2	6:00
---------------------	-------	------

Saturday, December 11

Stanford vs. Georgia Tech	ESPN	12:00
Delta Airlines Classic for Kids, Atlanta, Ga.		
Seton Hall at Florida State	SUN	2:00
Wake Forest vs. Georgia	FSS/HTS	2:30
Delta Airlines Classic for Kids, Atlanta, Ga.		
SC State at Clemson		4:00
Duke at Michigan	CBS	4:00
Kentucky at Maryland	ESPN	9:00

Sunday, December 12

Tennessee Tech at North Carolina	RJ	1:30
UNC Asheville at NC State		2:00

Wednesday, December 15

UNC Greensboro at Wake Forest		8:00
-------------------------------	--	------

Thursday, December 16

South Carolina at Clemson	FSS	9:00
---------------------------	-----	------

Friday, December 17

Liberty at NC State		7:30
High Point at Wake Forest		7:30

Saturday, December 18

Winthrop at Clemson		4:00
Florida State vs. Massachusetts	SC	4:00
Orange Bowl Classic, Sunrise, Fla.		
Morehead State at Georgia Tech		7:00
North Carolina vs. Miami	ESPN	7:00
Orange Bowl Classic, Sunrise, Fla.		

Sunday, December 19

North Carolina A&T at Duke		1:00
----------------------------	--	------

Monday, December 20

Wake Forest at Arkansas	ESPN2	7:00
-------------------------	-------	------

Tuesday, December 21

Indiana vs. North Carolina	ESPN	7:00
Jimmy V Classic, Meadowlands		

Virginia at Richmond		7:30
Davidson at Duke	RJ	8:00

Wednesday, December 22

George Washington at Clemson		7:00
Vanderbilt at Florida State	FSS/SUN	7:00
Wofford at Georgia Tech		7:30
NC State at Tulane	RSN	9:00

Thursday, December 23

North Carolina at Louisville	ESPN	9:00
------------------------------	------	------

Monday, December 27

George Mason at Maryland	HTS	8:00
--------------------------	-----	------

Tuesday, December 28

Wake Forest vs. Oregon (Rainbow Tournament)	TBA	
UNC Greensboro at Georgia Tech		7:30
Yale at NC State		7:30
Belmont at Virginia		7:30

Wednesday, December 29

Wake Forest in Rainbow Tournament	TBA	
-----------------------------------	-----	--

Thursday, December 30

Furman vs. Clemson (Greenville, SC)		6:00
The Citadel at Florida State		7:00
Western Carolina at NC State		7:30
MD-Baltimore County at Maryland		8:00
Wake Forest in Rainbow Tournament	TBA	

JANUARY

Sunday, January 2

William & Mary at Duke	FSS/HTS	1:00
Coastal Carolina at Maryland		1:00
Howard at North Carolina		2:00
Dartmouth at Virginia		3:00
Lafayette at Georgia Tech	FSS/HTS	3:00

Tuesday, January 4

Florida State at Wake Forest	RSN	7:00
------------------------------	-----	------

Wednesday, January 5

Georgia Tech vs. Kentucky (Louisville)	ESPN	7:00
Duke at Virginia	ESPN	9:00

Thursday, January 6

Maryland at NC State	ESPN2	7:00
Clemson at North Carolina	RJ	8:00

Saturday, January 8

Georgia Tech at Virginia	RJ	1:30
Florida State at South Florida		7:30
NC State at North Carolina	RJ	8:00

Sunday, January 9

Wake Forest at Clemson	RJ	1 or 4
Duke at Maryland	CBS	1 or 4

Wednesday, January 12

Georgia Tech at Duke	ESPN	7:00
Clemson at Florida State		7:00
Virginia at NC State		7:30
North Carolina at Wake Forest	ESPN	9:00

Saturday, January 15

Virginia at Clemson	RSN	12:00
UCLA at North Carolina	CBS	1 or 4
Maryland at Georgia Tech	RJ	8:00

Sunday, January 16

Wake Forest at NC State	RJ	1:30
Duke at Florida State	RJ	4:00

Tuesday, January 18

North Carolina at Virginia	RJ	8:00
----------------------------	----	------

Wednesday, January 19

Appalachian State at Clemson		7:00
NC State at Duke	ESPN	7:00
Florida State at Georgia Tech		7:30
Wake Forest at Maryland	ESPN	9:00

Saturday, January 22

Duke at Wake Forest	CBS	12:00
Florida State at North Carolina	ABC	1:00
Clemson at Maryland	RJ	4:00
Georgia Tech at NC State	ESPN	9:00

Monday, January 24

Virginia vs. Virginia Tech	HTS	7:30
Richmond, Va.		

Wednesday, January 26

Maryland at North Carolina	ESPN	7:00
NC State at Clemson	RJ	9:00
Florida State at Virginia	RJ	9:00

Thursday, January 27

Wake Forest at Georgia Tech	RJ	8:00
-----------------------------	----	------

Saturday, January 29

North Carolina at Georgia Tech	ESPN	12:00
Maryland at Florida State	RJ	1:30
Clemson at Duke	RJ	4:00
Arizona State at NC State	ESPN2	5:30

Sunday, January 30

Virginia at Wake Forest	RJ	1:00
-------------------------	----	------

FEBRUARY

Wednesday, February 2

Georgia Tech at Clemson		7:00
Wake Forest at Davidson		7:00
Florida State at NC State	RJ	8:00
Virginia at Maryland	RJ	8:00

Thursday, February 3

Duke at North Carolina	RJ/ESPN2	9:00
------------------------	----------	------

Saturday, February 5

Wake Forest at Florida State	RJ	1:00
Florida A&M at Georgia Tech		1:00
Virginia at Duke	ABC	3:00

Sunday, February 6

NC State at Maryland	RJ	1:30
North Carolina at Clemson	RJ	4:00

Tuesday, February 8

Clemson at Wake Forest	RSN	7:00
------------------------	-----	------

Wednesday, February 9

North Carolina at NC State	ESPN	7:00
Virginia at Georgia Tech		7:30
Maryland at Duke	RJ	9:00

Saturday, February 12

Florida State at Clemson	RSN	12:00
Wake Forest at North Carolina	ABC	1:30
Duke at Georgia Tech	RJ	4:00
NC State at Virginia	ESPN	7:00

Sunday, February 13

Maryland at Temple	ABC	3:30
--------------------	-----	------

FSU Athletics Directory

Frequently Called Numbers

Sports Information.....	850-644-1403
Sports Information Fax.....	850-644-3820
Basketball Office.....	850-644-1461
Seminole Ticket Office.....	850-644-1830
	or 1-888-FSUNOLE
Athletics Administration.....	850-644-2526
Leon County Civic Center	
Press Row.....	850-224-4098

Mailing Address

Florida State Athletics
PO Drawer 2195
Tallahassee, FL 32316

Overnight Address

Florida State Athletics
Moore Athletic Center
Stadium Drive and Pensacola Street
Tallahassee, FL 32306

Administration.....850-644-2526

Dave Hart, Athletics Director
Charlie Carr, Senior Associate Athletics Director
Charles Hurst, Executive Associate Athletics Director
Kim Record, Associate Athletics Director
Andy Urbanic, Associate Athletics Director
Guy Morgan, Assistant Athletics Director
Judy Greve, Executive Secretary
Sharmon Parrish, Senior Secretary
Zelda Webster, Office Manager
Fax.....850-644-7293

Academics.....850-644-9201

Mark Meleney, Director of Academic Support
Kevin White, Assistant Director (Basketball)
Patti Griffith, Senior Secretary
Fax.....850-644-2188

Basketball Office.....850-644-1461

Steve Robinson, Head Coach
Coleman Crawford, Assistant Coach
Jim Platt, Assistant Coach
Tim Juhlin, Assistant Coach
Matt Wingate, Administrative Assistant
Yulondia Wilson, Executive Secretary
Karen Strawn, Senior Secretary
Fax.....850-644-6622

Business Office.....850-644-1018

Greg Phillips, Assistant Athletics Director for
Business and Support Services
Dave Marmion, Accountant
Scott McClaren, Computer Coordinator
Erica Wilcox, Accounting Coordinator
Stephanie Diaz, Accountant
Judy Wawrzyniak, Office Assistant
Fax.....850-644-3352

Compliance.....850-644-4272

Bob Minnix, Associate Athletics Director for
Compliance and Legal Services
Pennie Parker, Director of Compliance
Brian Battle, Compliance Coordinator
Fax.....850-644-7025



The Moore Athletic Center at Florida State houses the Seminole basketball office.

Equipment.....850-644-9821

Gene Granger, Basketball Equipment Manager

Facilities.....850-644-4502

Bernie Waxman, Director of Facilities
Chuck Morris, Assistant Director of Facilities
Melissa Dawson, Assistant Director of Facilities
Fax.....850-644-3352

Marketing.....850-644-2525

Scott Kull, Director of Seminole Athletics Marketing
Wade Howell, Director of Sales
Jeanne Jensen, Office Manager
Fax.....850-644-0962

Promotions.....850-644-8494

Kay Scott, Director of Promotions
Sherri Chisolm, Assistant Director of Promotions
(Basketball)
Fax.....850-644-0962

Seminole Productions Video.....850-644-0019

Mark Rodin, General Manager
Antawan Smith, Basketball Video Coordinator
Jim Garbarino, Director of The Steve Robinson Show
Fax.....850-644-9499

Student Development.....850-644-3281

Pam Overton, Director of Student Development
Bill Shirk, Assistant Director
Amy Magnuson, Nutritionist
Cathy Naracon, Secretary
Fax.....850-644-3921

Sports Information.....850-644-1403

Rob Wilson, Sports Information Director
Chris Walker, Basketball SID
Tina Thomas, Assistant Sports Information Director
Jeff Purinton, Assistant Sports Information Director
Lynn Hobby, Administrative Assistant
Fax.....850-644-3820

Ticket Office.....850-644-1830

or 1-888-FSUNOLE
Patrick Martin, Ticket Manager
Marian Lee, Ticket Office Manager
Joe Garcia, Ticket Office Program Assistant
Fax.....850-644-5688

Training Room.....850-644-6223

Randy Oravetz, Director of Sports Medicine
Sam Lunt, Associate Trainer (Basketball)
Fax.....850-644-3139

www.seminoles.com

One of America's most frequented collegiate web sites, seminoles.com is the complete source for the latest news and information about FSU athletics.

In its third year of existence, www.seminoles.com, the Florida State Department of Athletics' Official Website, is one of the most "hit" collegiate sites on the web.

Seminoles.com, already the nation's third largest collegiate athletics website, is a comprehensive site in assisting, promoting, and informing on various Florida State athletic events, student-athletes, coaches and faculty.

The site provides information regarding each of FSU's 17 varsity sports - from ticket purchasing information, daily news releases and scheduled events to program history and archives. There are also links to learn more about Florida State traditions, such as the origination of the War Chant and Seminole logo, plus illustrations and text about all athletics facilities at FSU.

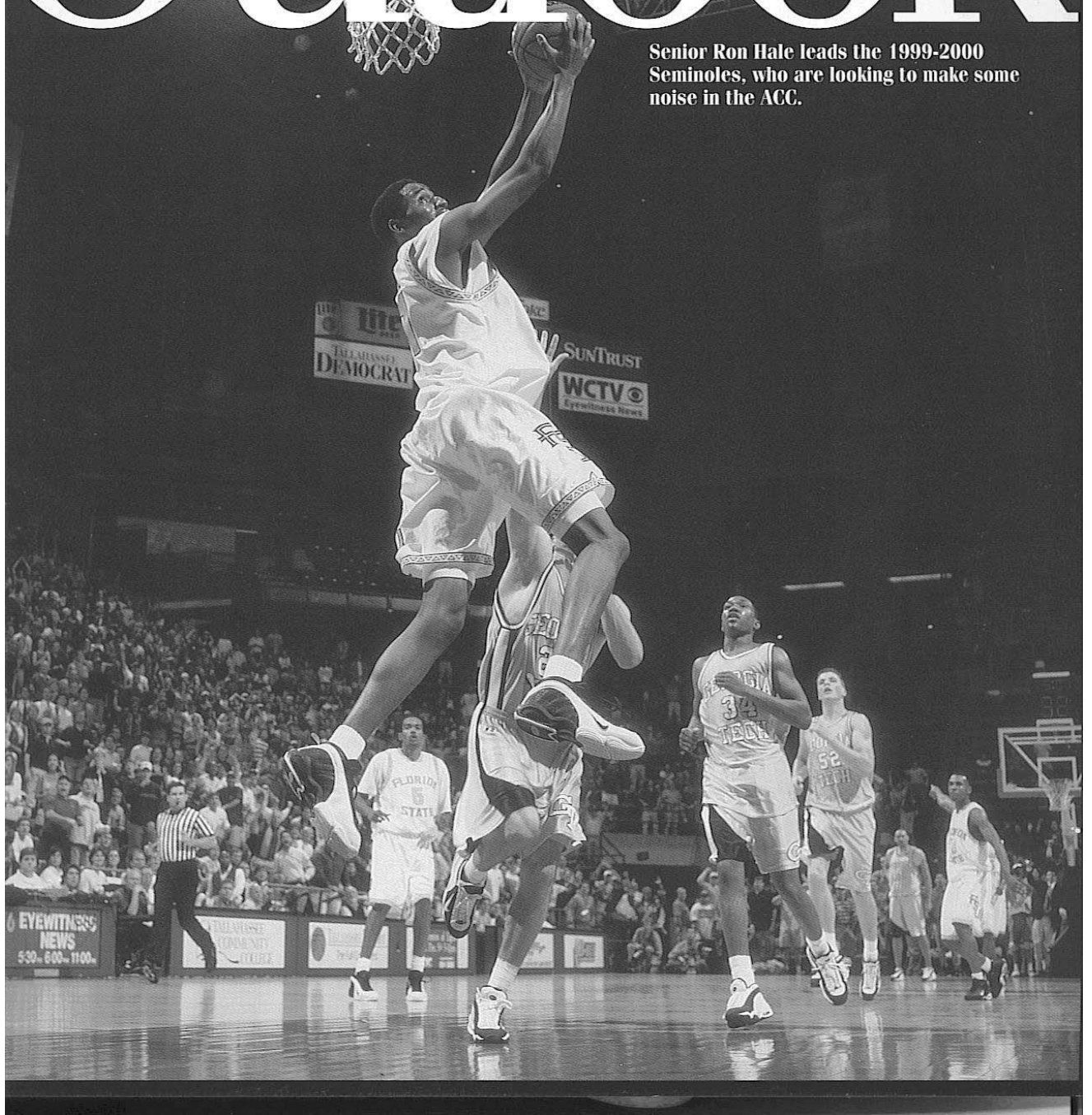
Among the most unique qualities of seminoles.com are the various sound links that can be downloaded, from live calls by long time play-by-play announcer Gene Deckerhoff to the latest musical renditions from the Marching Chiefs band. Seminoles.com is also the first place Florida State fans should go to after Seminole athletic events for game stories, results and photos.



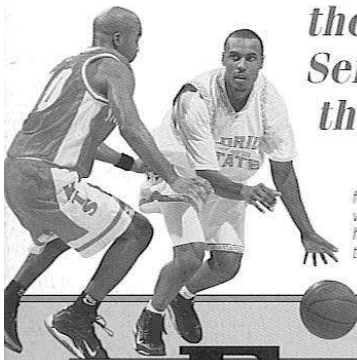
Visit www.seminoles.com for all of the latest Florida State sports information including, ticket purchasing, schedules, broadcast information and results.

Outlook

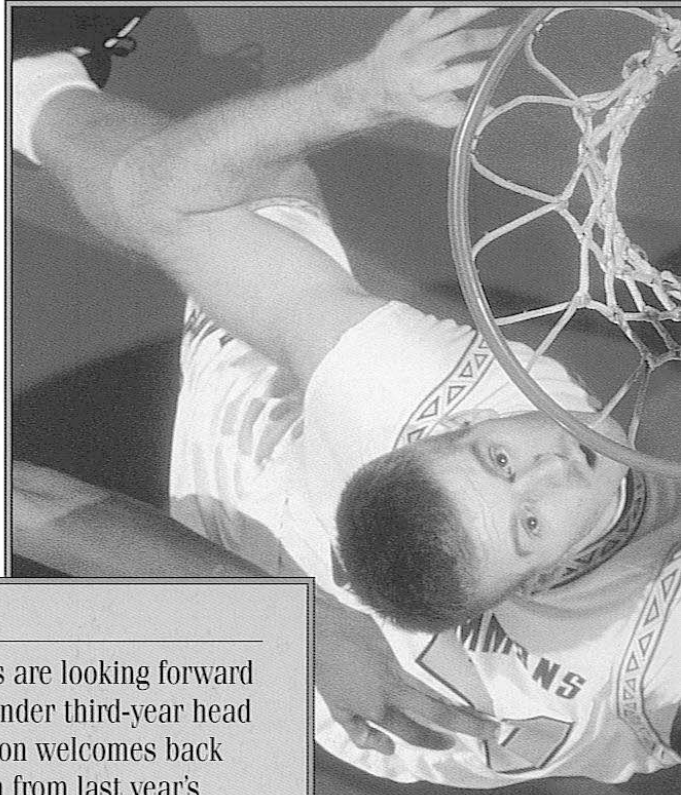
Senior Ron Hale leads the 1999-2000 Seminoles, who are looking to make some noise in the ACC.



*With 10 lettermen
back, including four
returning starters,
the 1999-2000
Seminoles like
their chances.*



Point guard Delvon Arrington returns for his second season at Florida State. He was one of the nation's top young players at his position last season after finishing third in the ACC in assists and steals.



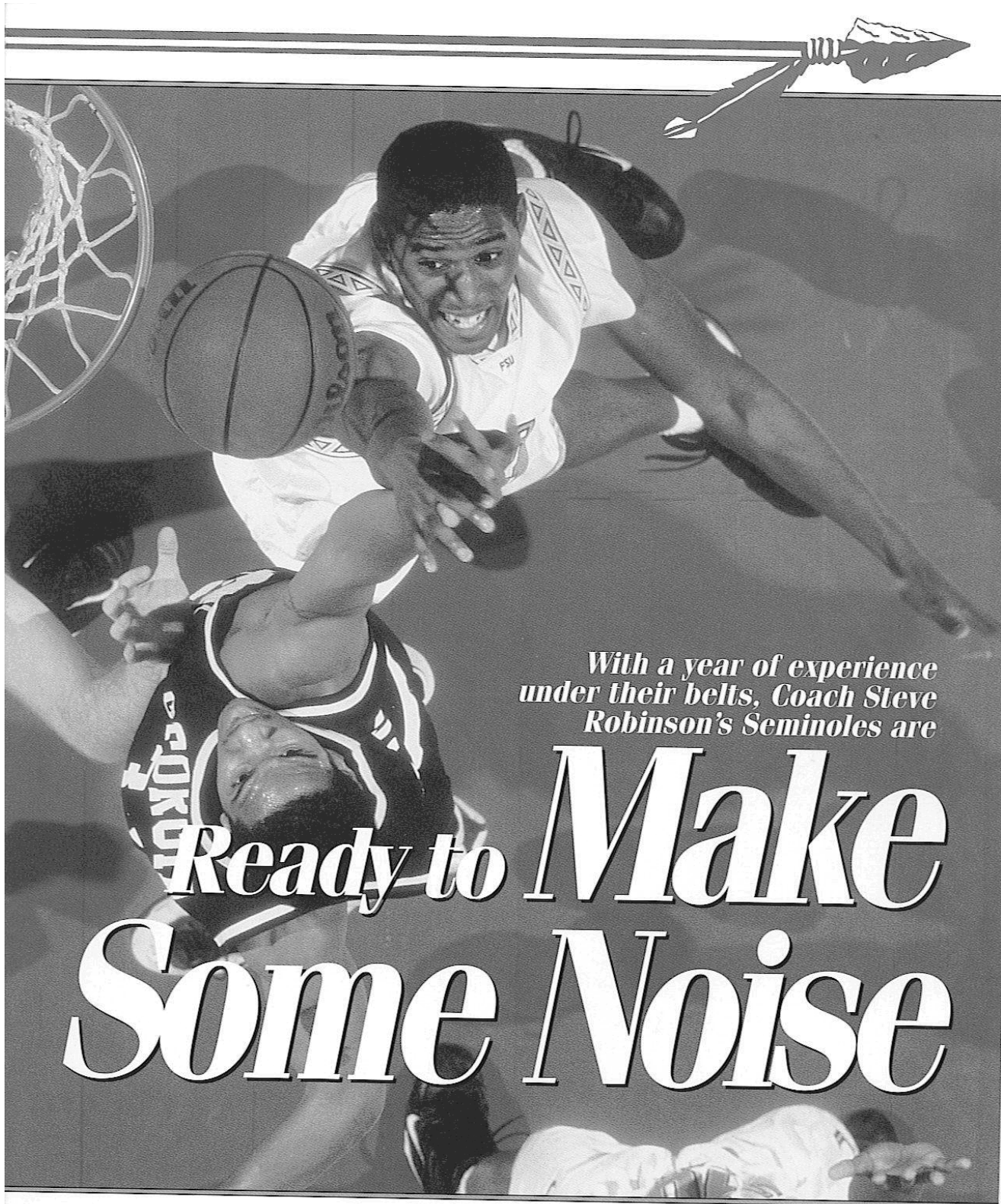
1999-2000

Outlook

Florida State basketball fans are looking forward to the 1999-2000 season under third-year head coach Steve Robinson. Robinson welcomes back four starters and 10 lettermen from last year's Seminole edition that earned the label "hardest working team in Florida State history" from their head coach.

Despite Florida State's 13-17 mark a year ago, Robinson continued his rise as one of the nation's top young coaches by keeping his young, undermanned team competitive throughout the season against the nation's second most difficult schedule according to the Ratings Percentage Index. Robinson's reputation as a strategist and bench tactician were strengthened last season when FSU opened its Atlantic Coast Conference schedule by winning five of its first seven games and staying in the first division of the league's standings with three of the country's top 10 teams – Duke, Maryland and North Carolina.

All-ACC performer Ron Hale returns for his senior season. He ranked among the league's leaders in four categories in 1998-99.



*With a year of experience
under their belts, Coach Steve
Robinson's Seminoles are*

*Ready to **Make**
Some Noise*

Ron Hale capped a breakout season a year ago by earning third-team All-ACC honors. Florida State head coach Steve Robinson expects Hale's improvement to continue in 1999-2000.



The second go around through the league was tough but the Seminoles' youngsters came away with vital experience with games on the line that will benefit the program for the upcoming season.

"We learned a lot about ourselves and our program last season," said Robinson. "We faced quite a bit of adversity on and off the court but our players stuck together and fought through it. I really feel like we are moving in the right direction."

Leading the way for Florida State on the floor this season will be 6-8 senior small forward Ron Hale. Hale emerged as one of the Atlantic Coast Conference's most improved players and as a go-to man for the Tribe last season. The Largo, Fla. native, who was FSU's sixth man his first two seasons, earned third team all-conference honors last year with an outstanding campaign. He led the Seminoles in scoring at 16.0 points per game and rebounding at a 5.6 clip, while ranking among the league's



best in four categories (scoring, field goal percentage, free throw percentage and blocked shots). He should contend for All-America honors in his final season in Tallahassee.

"Ron made a big leap in terms of performance last year," Robinson said. "I knew he had it in him and he showed that he can be a big-time player last year. But he can't rest on his laurels this season and I don't think that he will. He has all the skills you want in a player his size and I expect him to have another great season."

"We will use him in many different roles this year. He will be a marked man by our opponents but I know he can handle the attention."

Joining Hale in the frontcourt and forming a potent one-two frontline punch is senior Damous Anderson. Anderson transferred into Florida State in December last season from Atlanta Metro College and proved to be a quick learner. He appeared in 23 games after his arrival and started the final 10 games of the year. The Greenville, S.C. native was the Seminoles' third leading scorer at 11.9 points per game and ranked second on the team in rebounding at 5.1 per contest. He also finished fifth nationally in field goal percentage, hitting 60.5 percent from the floor. At 6-6, Anderson is a bit undersized to play the power forward spot and is more suited to play on the wing, but creates match-up problems out on the floor with bigger players. He may also see more time at the small forward this season.

"Damous did a tremendous job for us last year," said Robinson. "It is obvious that he has a lot of natural talent and basketball savvy. Not many people could have been thrown into our system midway through December and done as much as he did without being a natural basketball player."

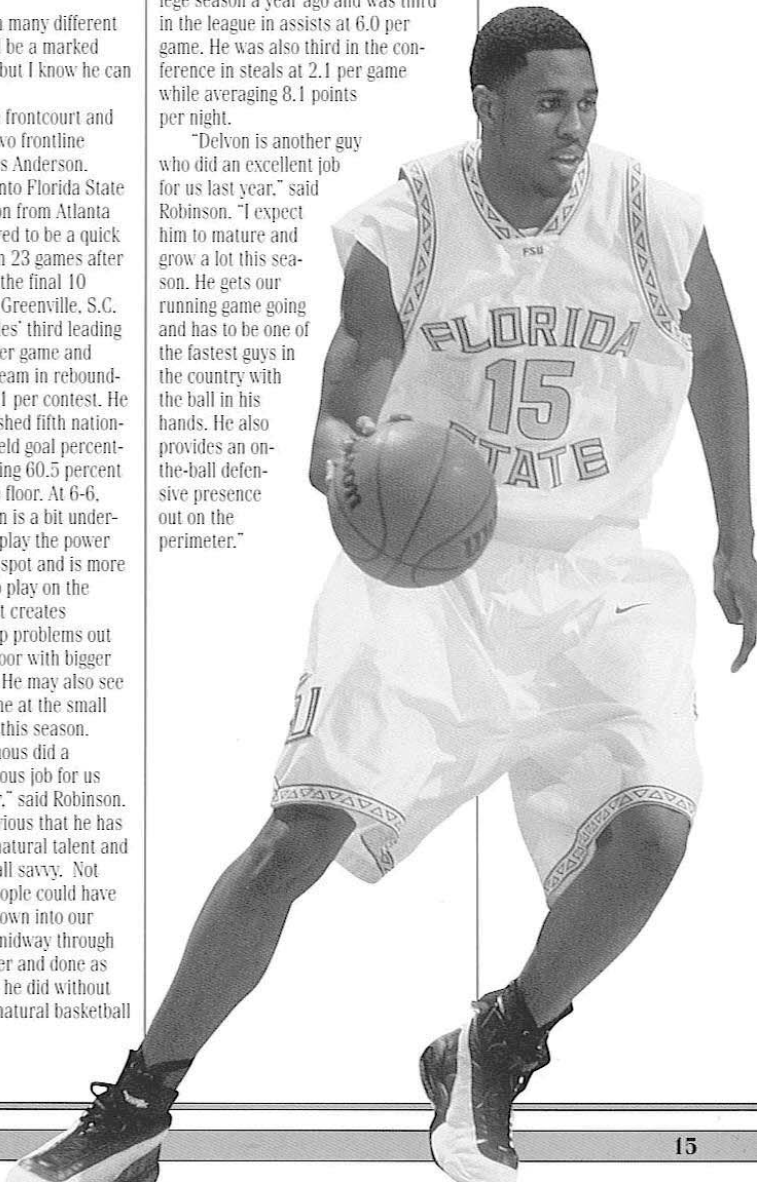
"I expect a lot more out of him this season because he has been with us for a year now. He went through our off-season program and had the opportunity to practice with us for 10 days before the Australia trip. He was probably our best player on the trip. Damous was very good last year but we haven't seen the best of Damous Anderson yet."

In the backcourt, 5-11 junior point guard Delvon Arrington returns as one of the ACC's top point guards. Arrington started 29 of 30 games in his first college season a year ago and was third in the league in assists at 6.0 per game. He was also third in the conference in steals at 2.1 per game while averaging 8.1 points per night.

"Delvon is another guy who did an excellent job for us last year," said Robinson. "I expect him to mature and grow a lot this season. He gets our running game going and has to be one of the fastest guys in the country with the ball in his hands. He also provides an on-the-ball defensive presence out on the perimeter."

Lower Left: Senior Oliver Simmons started 20 games last year at power forward and should provide some punch coming off the bench this season.

Below: All-ACC candidate Damous Anderson made an immediate impact after joining the team midway through December. With a year under his belt in the FSU program, Florida State head coach Steve Robinson expects big things from Anderson in 1999-2000.



Below: Senior Justin Mott's hard work and dedication in the weight room over the summer caught the attention of the head coach Steve Robinson.

Lower: Sophomores Emanuel Mathis and Antwan Dixon will get opportunity to see more minutes on the floor. Mathis is an excellent perimeter shooter while Dixon owns tremendous athletic ability.

Junior Adrian Crawford, who stands 6-5, was the Seminoles' sixth man last season while backing up at both the point and shooting guard spots. Crawford may move into the starting five at the shooting guard spot that was vacated by senior Terrell Baker, who averaged 14.5 points last year. Crawford started four times a year ago and averaged 10.6 points in 28.5 minutes per game. He led Florida State with 64 three-pointers and hit 39.8 percent from long range.

"Adrian has shown he is capable of having big nights on offense," Robinson said. "All he needs to do is work on his consistency. He is also nice to have because he is so versatile - a real combo guard. He also provides great on the floor leadership. That comes from having a coach as your dad."

Justin Mott, a 6-10 senior, returns after starting 23 games at center last year. He was recruited out of junior college to provide depth in the post but was thrust into the starting lineup when Karim Shabazz decided to leave the program five games into the season. Mott is not much of an offensive threat and averaged just 1.4 points a year ago but did claim 2.7 rebounds per contest and played solid post defense.

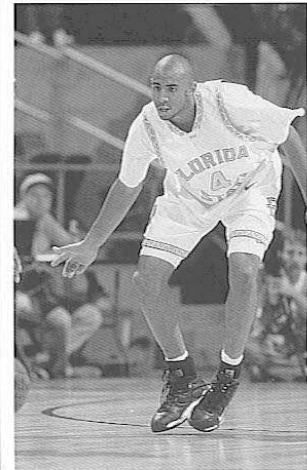
"Justin is really a hard worker," said Robinson. "He wasn't expecting to play big minutes last season but he kind of got thrown into the fire. He certainly improved last year and he can help us if he continues to do the things he can do

and not try to do more than he is capable of."

Senior forward Oliver Simmons started the first 20 games of the season last year at power forward. The 6-8 Nashville, Tenn. native lost his starting job to Anderson down the stretch but is back to provide depth along the front line. He averaged 5.9 points and 4.0 rebounds last year.

"Oliver has some talent, he just needs to stay confident," said Robinson. "I thought he got off to a good start last year but somewhere along the line he lost his confidence. He is a smart player and will fill a role for us if he just keeps on fighting."

A pair of sophomores who saw limited action last season should see bigger roles in 1999-2000. Emanuel Mathis, a 6-3 shooting guard from Atlanta, is the Tribe's best pure shooter and will get a chance to come off the bench for more minutes this year. He had 11 points in an early season game against Georgia Southern last year and hit 44.4 percent from three-point range on the season. Marietta, Ga. native Antwan Dixon, a 6-5 forward, started to get more comfortable with the college game down the stretch last season and had some big moments late in the year. He keyed FSU's ACC Tournament overtime win over Clemson with five points and five rebounds, all in the extra session. He has great athletic ability and needs only to work on his shooting to become a solid college performer.



Junior point guard **Delvon Arrington** is one of the top returning players in the ACC. Arrington is the spark that gets the Seminoles' offense going and is a tough on-the-ball defender.



“**E**manuel and Antwan are going to have the opportunity to help this team,” said Robinson. “We need them to step up. Emanuel can really shoot the ball and Antwan is as athletic as anybody we have on the team. I think they are both getting more comfortable on the floor and will just play this year instead of reacting to what is going on.”

Former walk-on Matt Chlebek, who earned a scholarship for the 1999-2000

season, also returns. Chlebek, a 6-0 junior, played extensively on Florida State's NCAA Tournament team in 1997-98. His minutes decreased last season as he appeared in 17 games. His role could increase in 1999-2000 as he competes again for the backup point guard job.

Chris Hull, a 6-3 junior who made the team last year as a walk-on, is back this season and will again serve as a backcourt back-up.

“Matt has been able to gain a lot of experience in his first two seasons,” Robinson said. “He has played in the NCAA Tournament, the ACC Tournament and the Preseason NIT Championship game. He can give us some energy when he comes into the game and will play both guards spots this year.”

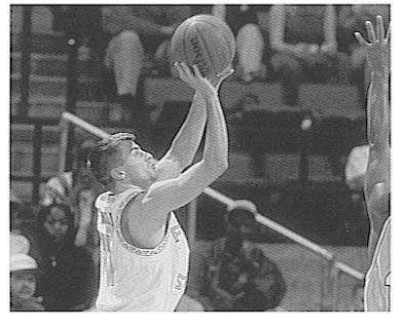
Robinson put together a four-man recruiting class – center David Anderson, center Nigel Dixon, post man Mike Mathews and forward Rodney Tucker – in his second year in Tallahassee and three of the four could have the opportunity for minutes right away.

Anderson and Dixon will try to bolster the Seminoles' post play up front. Anderson is a seven-footer who played his freshman year (1996-97) at Brigham Young before going on a two-year Mormon mission and deciding to transfer. Dixon stands 6-10 and prepped at Edgewater High School in Orlando.

“With David, it is just a matter of how long it takes him to get back into basketball-playing shape,” said Robinson. “He didn't play while he was on his mission. He gives us some size and maturity but we have to be patient with him.”

“With Nigel it is a matter of conditioning. He can provide a huge presence in the lane and has good hands and feet. We just need to help him with his conditioning.”

Tucker was an all-state performer at Stone Mountain (Ga.) High School. The 6-8 freshman should provide the FSU frontline with some athleticism.



“We don't have anyone like Rodney,” said Robinson. “He has lively legs and is an excellent athlete. He is very aggressive and will get an opportunity to get some minutes.”

Mike Mathews is the first Tallahassee product to sign with Robinson. The 6-10 post player prepped at Florida High on the FSU campus then spent last year at Fork Union Military Academy in Virginia. Mathews is a partial NCAA qualifier and will not be eligible for the 1999-2000 campaign but he will be able to practice with the Seminoles.

Florida State's returning players spent two weeks in August on a foreign tour of Australia, playing seven games.

“The Australian trip was a great opportunity for our team both on and off the basketball court,” Robinson said. “We got a head start on some things by being able to play and practice together and it gave our young guys a chance to play in some different situations. We got to see how they would respond.”

The 1999-2000 schedule should once again be one of the country's toughest. Along with the always tough ACC slate, the Seminoles will travel to Auburn, Florida, Northwestern and South Florida in non-conference games. FSU will also host Seton Hall, Temple and Vanderbilt and play Massachusetts in the Orange Bowl Classic.

“We have a very tough schedule,” said Robinson. “The ACC is always going to be the toughest conference in the country and we added a very difficult non-conference schedule to that. I want to challenge our team to play hard all the time. There was a fine line to where we finished last year and getting to the postseason. We want to cross that line this year.”

Right: Former walk-on, **Matt Chlebek** has earned a scholarship for his junior season. He has been on the floor during some big games in his first two seasons as a Seminole.

Below: Junior guard **Adrian Crawford** is one of the ACC's best three-point shooters. He also provides a leadership presence on the court.

