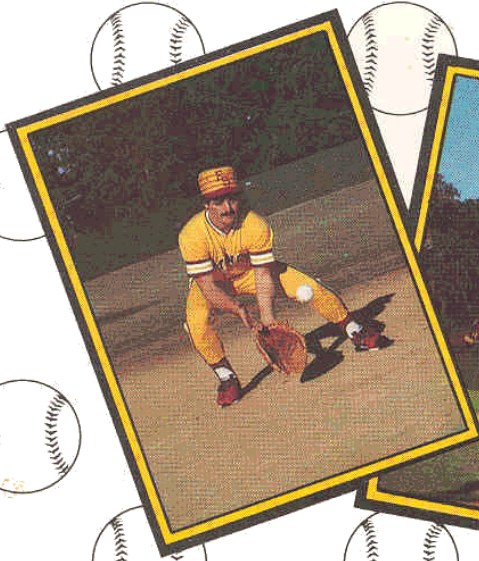


# SEMINOLE BASEBALL

1984

MEDIA GUIDE



## MEDIA INFORMATION

Florida State's 1984 media guide has been designed for use by the media and fans. Questions not covered in this brochure should be directed to the Florida State Sports Information Office, P.O. Box 2195, Tallahassee, Fla. 32316; or by calling 904/644-1060. All coach and player interviews should be arranged through the Sports Information Office.

Requests for working credentials and photo passes should be made to Wayne Hogan or Dan Pearson, one week before game day.

**WORKING MEDIA**—Working media will be admitted to Seminole Field and seated in the pressbox for all games. Additional seating will be provided in the stands when overflow conditions exist. Requests are evaluated and filled in the following priority.

- a. local and student press, radio and television stations actually broadcasting, state daily newspapers, national publications, opponent's local and student press and wire services.
- b. radio and television stations not actually broadcasting, non-daily papers
- c. scouts

**PARKING**—Easy access to Seminole stadium from Doak Campbell Parking lot, no pass required but those with heavy equipment may wish to arrive early to avoid longer walks to pressbox area.

**PHOTOGRAPHERS**—Accredited photographers only. No freelance passes will be issued.

**RADIO**—Florida State has one booth in pressbox for opponent's station. Florida State grants broadcast rights on a reciprocal basis with visiting teams.

**PHONES**—Telephone service should be directly secured through Centel Telephone of Tallahassee, (904) 222-2236. Have Centel contact FSU for placement of lines.

**SERVICES**—Scorecards, programs updated FSU statistics, refreshments and a typed play-by-play will be made available for each Seminole home game. Typewriters, telecopiers and phones are available at the FSU Sports Information Office in the Moore Athletic Center which is adjacent to Seminole Stadium. Final Box Scores will be available approximately 10 minutes after each game.



The 1984 Seminole Baseball guide is published by the Florida State Department of Intercollegiate Athletics, C.W. "Hootie" Ingram, Director, for use by the news media, perspective athletes and Seminole baseball fans. Dan Pearson, Assistant Sports Information Director, served as editor. Photos by FSU Photo Lab, Ryals Lee Jr., Bucky Parrish, Mike Ewen, and Bob O'Lary. Cover Design by Perez, Lynch and Rice Advertising. Printing by Hartley Press, Jacksonville, Fla.

## Batting Order

PAGE

### Outlook 1984

Inexperienced Squad Attacks Tough Schedule ..... 2

### Coaching Staff

Mike Martin, Head Coach ..... 6

Assistant Coaches ..... 8

### Year in Review

1983 Team Repeats as Metro Champs ..... 10

Honor Roll ..... 12

Final Polls ..... 12

Hitting Statistics ..... 13

Pitching Statistics ..... 14

Game By Game Statistics ..... 15

### Metro Conference

One of the Best ..... 18

Tournament Results ..... 19

Championship Linescores ..... 20

### Players

Veterans ..... 22

Rookies ..... 31

Rosters ..... 34

### FSU: College Baseball at Its Best

Story ..... 38

Seminoles in Championship Play ..... 40

FSU: Pipeline to the Pros ..... 41

Seminole All-Americans ..... 43

Summer League Team ..... 44

### Record Book

Coaches Record at FSU ..... 46

Year by Year Results ..... 48

Series Record vs. All Opponents ..... 49

Seasonal Leaders ..... 52

Team Records ..... 53

Individual Records ..... 54

NCAA Records ..... 59

### Florida State University

This is Florida State ..... 64

Seminole Stadium ..... 65

Administration ..... 66

### Where They Stay

Travel and Headquarter Information ..... IBC

### Competition

Schedule ..... BC



## 1984 Outlook: Talented but Inexperienced

With only two seniors on the 1984 roster, Florida State's baseball team will tackle a tough schedule this season with a young, inexperienced squad.

"I really didn't think much about it," FSU head coach Mike Martin said in assessing his squad going into January workouts. "Until coach Gailey came in and pointed out that we had 22 players out of 30 that could be classified as freshmen, sophomores or newcomers. It is without question the youngest team I've ever been associated with at Florida State in the last 19 years."

Although many questions exist concerning the youth of the squad, Martin is hardly pessimistic about the 1984 season. "There's something about the makeup of this team I like," Martin says. "It might take us some time to gel like it did last year, but I'm confident this could be a good team."

Power and defense are two reasons for Martin's optimism. "I feel that if you can hold any college team to less than five runs, you have a chance to win. We did that a lot last year and had a good season."



Transformed from a power team in 1982 to a fundamentally strong defensive team last year, the Seminoles used timely pitching, good base running and solid defense to win 55 games in 1983.

If Florida State is to make a seventh straight trip to the NCAA playoffs this year, it must continue along the same lines. "I liked last year's team a lot. But we could have used a few more home runs than we had," Martin said. "If we can get some home run production that was missing but still do some of the things we did last year in terms of pitching and defense, I think we will be competitive."

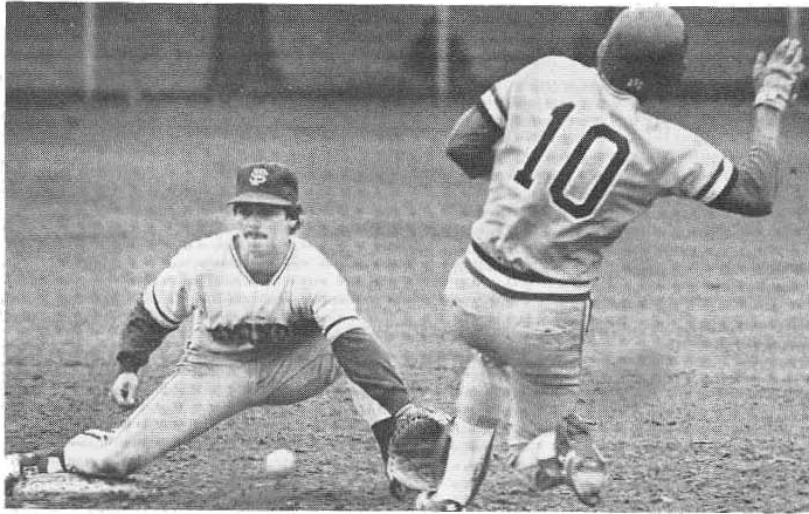
Pitching, always a key to a team's tournament success, will be a Seminole strong point in 1984. Although ace Bruce Tanner decided to forego his final two years of eligibility to play professionally, several solid performers return.

Among the returning lettermen, righthander Doug Little leads the way. The hard throwing sophomore went 12-4 last season and was named to the freshmen All-American team (first unit) by Baseball America magazine. Little has been described by former Miami great Billy Wrona as the "toughest college pitcher I have ever faced."

Senior Jeff Gray (9-3) and juniors Steve Gelmine (6-1) and Todd Morgan (5-2) will combine with Little to give the Seminoles four experienced starters coming off winning seasons.

Help from the bullpen will come from junior Doug Treadway. A middle relief specialist, Treadway went 8-1 with a 3.97





ERA in 34 relief appearances. A fifth starter and depth in the bullpen will be necessary to strengthen the Tribe's staff. Sophomore Mike Loynd and newcomers David Hanselman, Ray Revak, Joe Schlim and Paul Thomas may step in and help immediately.

"We lost some talent when Tanner (5-1, nine saves) went pro and David Smalley (5-3) graduated, but we have some solid performers back and with a little help from the newcomers we could be strong in this area," Martin added.

Behind the plate, sophomores Vince Insogna and Tommy Zoeller are battling for the number one job with Insogna considered the better defensive player and Zoeller being the stronger hitter. Should Insogna improve with the bat, look for Zoeller to see action at either designated hitter or firstbase.

At first, Jeff Ledbetter will compete for playing time with either Zoeller or Eric Deddens. Ledbetter, a converted pitcher, was an excellent high school hitter. He homered and doubled in 12 trips to the plate last season and will be given a chance to play on a regular basis.

Deddens, .245 with four home runs, will play at both first and third during the coming season; while Zoeller's bat (.277, 27 RBIs) "must be in the Florida State lineup," according to Martin.

JC transfer Dave Garrison and freshman Luis Alicea from Puerto Rico will give the Tribe two quality secondbasemen to replace two-year starter and departed senior Matt Robinson.

Despite the loss of Mark Barineau to academic problems, Florida State will be extremely strong on the left side. All-American candidate Jody Reed returns as the starting shortstop. Possessing excellent range, Reed also hit .308 with 8 home runs and 50 RBIs last season. Joining Reed on the left side is junior college All-American Greg Dennis. Originally a shortstop, Dennis has shown the ability to play third and will be backed at that position by Deddens.

Only one outfield spot as been declared filled entering the 1984 season. Frank Fazzini, who earned first-team Freshmen All-American honors, will start in left. Fazzini crashed a freshmen school record 17 home runs last year and led the team with a hefty .366 batting average.

"We would like Frank to hit a few more home runs this year," Martin said. "I think it would help the team more and if his average slips a bit it would be an acceptable trade off."

Sophomore Alan Gentry and junior college transfer Vince Calandra came out of fall practice in a virtual lock for the centerfield job. While former firstbaseman Jimmy Jones and Bart Mitchell will play right. Freshman Paul Sorrento, who led the summer league in home runs, will see action in the outfield, as well as a possible pitching assignment.

A tough regular season 75-game schedule, featuring 39 games against teams that broke into the national top 20 at one time or another last year, highlights the 1984 slate. Included in the slate are matchups with number two (final poll) Alabama, number 11 Miami, number 16 Cal State-Fullerton and number 18 Tulane.

Although the schedule may be a major stumbling block, Martin remains optimistic. "We're young and we will make some mistakes," the fifth year mentor said. "But I can't help but believe that we have some players interested in winning and willing to do what it takes to achieve that goal. I have confidence in these young men and their ability."



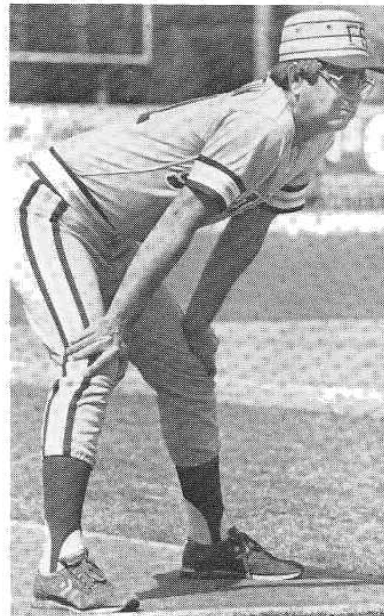
**Florida State Baseball**

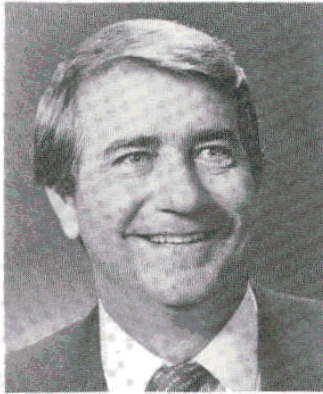
ETC: Amazing as it may seem, Florida State has never experienced a losing season. In fact the closest FSU has ever been to that point was a 9-8 season during its first campaign in 1948. FSU has finished 10 games over the .500 mark in 29 of its 36 seasons.



# Coaching Staff







## MIKE MARTIN Head Coach

Without question, Seminole head coach Mike Martin is a man of firsts. Although only head coach for a short time, Martin was the first Tribe coach to win more than 50 games in a season. He was the first FSU mentor to win more than one Metro Conference Championship. His .755 winning percentage stands first in the all-time coaching records at

Florida State. With 218 wins, he should become the winningest coach in Florida State history before the current season ends.

In just four seasons, Martin has maintained and improved Florida State's image as one of the top college baseball programs in the country.

Evidence to this can be found in the fact that since 1980, Florida State has compiled an ultra-impressive 218-70-2 record—including four consecutive 50 win seasons, three Metro Conference championships, four trips to the NCAA playoffs, a regional title and a trip to the elite College World Series.

Martin's work in the coaching field has been recognized several times. He has three conference "Coach of the Year" certificates since 1980 and was also winner of prestigious "Coach of the Year" award from the Diamond Club after his initial campaign. He also serves on the NCAA Championship Advisory Committee.

When Florida State hired Martin on November 27, 1979 as head coach, it selected a man that possessed a wealth of baseball experience. For four years prior to being named, Martin served as assistant coach at FSU under former head coaches Woody Woodward (1975-78) and Kansas City manager Dick Howser (1979).

Prior to becoming an assistant at FSU, Martin spent several years coaching two sports at both the collegiate and high school ranks. His tenure included several years as baseball and basketball coach at the junior high level, one season as head basketball coach at Tallahassee Community College, and four years as basketball coach at Godby High.

Martin was a standout baseball player at Wingate Junior College, before finishing his collegiate career at Florida State. He was a two-time All-American at Wingate, before earning all-district honors at Florida State. Martin played three years of professional ball, first with the New York Met organization and later with the Detroit Tiger system. He then returned to Tallahassee to teach and coach.

A popular speaker, Martin delivered the keynote addresses at several national and state meetings—Florida High School Coaches Association, North Carolina Coaches Clinic, Atlanta Braves Instructional Clinics, and to numerous meetings of the Seminole Booster organizations throughout the southeast.

A 1966 graduate of FSU, Martin earned his master's from Florida A&M in 1971. Mike and his wife Carol have three children, Mary Beth 14, Mike Jr. 11, and Melanie 8.

### Martin's Coaching Record

Year	Team	Record	Pct.
1980	Florida State	51-12-0	.809
1981	Florida State	56-23-0	.709
1982	Florida State	56-17-1	.764
1983	Florida State	55-18-1	.750
<b>Totals</b>		<b>218-70-2</b>	<b>.755</b>





## **RANDY GAILEY** **Assistant Coach**

Randy Gailey is in his third season as chief assistant to Mike Martin. He was named to the post on July 16, 1981—succeeding Jim Morris who resigned to become head coach at Georgia Tech.

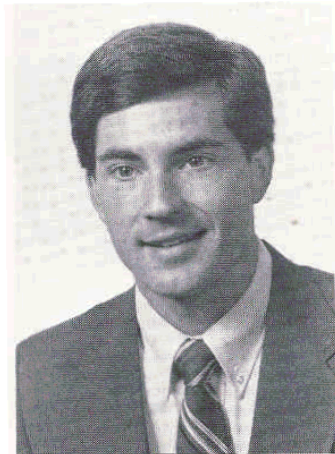
Gailey's main responsibilities include coaching the pitchers, serving as a hitting instructor and overseeing several administrative duties as assigned by Martin. In addition, Gailey is also the head coach of Jerry's Caterers baseball team—Florida State's annual entry into summer league competition.

Gailey joined the Tribe from South Georgia Junior College, where he served as head coach from 1981 to 1982. During his two year tenure, Gailey was credited with rebuilding the South Georgia JC program. During his stint as skipper, the team compiled a fine 59-27 record.

A 1973 Florida State graduate, Gailey lettered three years and was the Tribe's starting leftfielder from 1971-73. Following graduation, Gailey immediately entered the coaching profession. As head baseball and assistant football coach at Fernandina High School, he was named Coach of the Year in both 1976 and 1977.

Gailey left the prep ranks in 1977 to work on a master's degree at Georgia Southern College. He spent two years in the Eagle program as an assistant coach before leaving to take the head job at South Georgia.

Gailey and his wife Leslie have three children, Ann (7), Cliff (4) and Chris (1).



## **ROD DELMONICO** **Assistant Coach**

A former baseball and soccer standout at Liberty Baptist College, Rod Delmonico is in his first year as assistant coach at Florida State. A graduate assistant coach at Clemson for the last two years, Delmonico was named to the FSU staff in July of 1983.

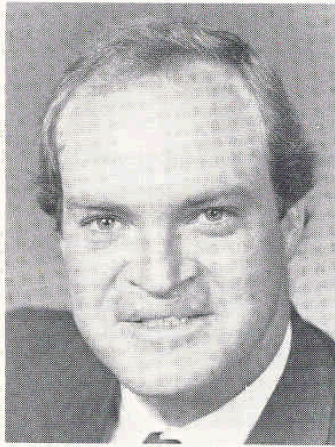
As an assistant, Delmonico will handle the outfielders, coordinate recruiting efforts, supervise an experimental year round weight training program, and handle several administrative duties dealing with the smooth operation of a major collegiate baseball program.

Delmonico lettered twice each in baseball and soccer at Liberty Baptist, before moving on to Clemson to work on a master's degree in recreation administration.

In addition to coaching, Delmonico is a noted author of several articles geared towards high school athletics. He is also a featured writer in Scholastic Coach magazine.

The 26-year-old Delmonico is married to the former Barbara Vanaman.





## **MIKE McLEOD** **Assistant Coach**

Mike McLeod starts his third year as pitching instructor at Florida State. A former Seminole pitcher in the mid 70s, McLeod brings a wealth of playing and coaching experience to his position.

During the last four summers, McLeod has worked as pitching coach for the New York Yankees farm team in Paintsville, Kentucky. An outstanding pitcher at Middle Georgia Junior College, McLeod earned All-America honors at that level before moving on to Florida State to finish his collegiate career.

Among McLeod's athletic achievements are three college no-hitters, including the last by a Florida State pitcher—a 23-0 win over Olivet in 1977.

Following graduation in 1977, McLeod played three years of minor league ball in the Yankee organization, before joining that team as a coach at Paintsville.

Mike and his wife Rose have one son, Garrett (2).



## **RICK HATCHER** **Assistant Coach**

A former professional player and an FSU athlete, Rick Hatcher is in his first season on the Seminole coaching staff. As an assistant coach, Hatcher will work closely with Mike McLeod in the development of the Seminole pitching staff.

Hatcher, 25, starred for the Seminoles from 1979-1981. The native of Marianna, Fla., played one season at George Wallace Community College before enrolling at Florida State. After an initial 2-1 season, Hatcher went on to become a solid performer and finished his career with a sparkling 20-8 record.

His pitching success earned him a contract with the Atlanta Braves and after spending just part of a season in the rookie leagues, Hatcher was promoted to the Braves' AA franchise in Savannah, Ga. Hatcher spent last year with the Durham Bulls in the Carolina League, where he went 10-5 and also threw a perfect game.

Hatcher is single.

## 1983 In Review: Metro Champions Again

Without question, 1983 will go down as one of the most successful and interesting years in Florida State baseball history. Here was a team that was made up of a few seniors and a whole bunch of inexperienced players that were given the task of carrying on a great baseball tradition.

At best, Florida State was picked to finish above .500 against a monster schedule that featured 32 games against teams that broke into the nation's top 30 during the course of the year.

A usually optimistic coach Martin had some serious reservations about his team's chances. "We were taking an inexperienced club against a tough schedule," he recalled. "We were doing that without the benefit of a great hitting club—something we have been known for in the past. Looking at our schedule I thought 35 wins could be expected, 40 would be great."

After 20 games, Martin's fears seemed to be coming true. An 11-8-1 record, not bad by some standards, but unheard of for a Florida State team. FSU found itself out of the nation's top 30 and just three games over .500 a third of the way into the season.

It was this low web that the Seminoles seemed to find themselves. Eleven consecutive wins over division one competition put the Tribe at 22-8-1 and set the stage for the rest of the season.







A sweep of defending national champion Miami, four wins over 28th ranked Georgia Southern, a sweep of Jacksonville and two wins over Memphis State gave FSU a 41-13-1 mark going into the final week of the regular season.

From there, Florida State won seven of 10 road games to finish at 50-16-1—with the 50th win coming against conference rival Tulane in New Orleans.

Seeded second for the Metro, FSU breezed into the finals by beating Southern Miss (14-7), Cincinnati (9-2) and Tulane (4-2); before meeting the Green Wave in the finals. Jeff Gray pitched FSU to a 9-2 lead and the Seminoles held on to win 9-6 before 4,116 fans.

Now owning a 54-15-1 mark, the Tribe was selected as host to the NCAA South Regional—marking the sixth straight time the Seminoles had qualified for the NCAA tournament.

After beating South Alabama in the first game, FSU fell to eventual national champion runnerup Alabama by 7-5 count and was eliminated by Miami 10-5 the following day.

Although disappointed at the regionals, the 1983 Seminole team had a lot to be proud of. A 55-18-1 final record, two players being named to Baseball America's freshman All-American team, three all-regional selections and eight all-conference tournament selections highlighted the Tribe in 1983.





## Seminole Honor Roll 1983

Mark Barineau —	All-Metro Tournament Team
Danny Dowell —	Metro Conference Tournament MVP
	All-Metro Conference Team
	All-Metro Tournament Team
Frank Fazzini —	All-Metro Conference Team
	All-Metro Tournament Team
	All-Regional Tournament Team
	Freshmen All-American (First Team)
Rick Figueredo —	All-Metro Tournament Team
	All-Regional Tournament Team
Jeff Gray —	All-Metro Tournament Team
Doug Little —	All-Metro Conference Team
	All-Regional Tournament Team
	Freshmen All-American (First Team)
Jody Reed —	Wendy's MVP Award
	All-Metro Tournament Team
	All-Metro Conference Team
David Smalley —	All-Metro Tournament Team
Mike Yastrzemski —	All-Metro Tournament Team

## FINAL 1983 BASEBALL POLLS

### BASEBALL AMERICA MAGAZINE

1. Texas	64-14
2. Alabama	46-11
3. Michigan	50-9
4. Oklahoma State	47-16
5. Stanford	41-17
6. Brigham Young	54-11
7. <b>Florida State</b>	<b>55-18-1</b>
8. San Diego State	62-15
9. Arizona State	44-24
10. Oral Roberts	55-15
11. Miami	62-21
12. Fresno State	46-18
13. Mississippi State	43-17
14. Cal St.-Santa Barbara	44-22
15. Cal State-Fullerton	50-20
16. Wichita State	54-18
17. North Carolina	42-10
18. Tulane	45-17
19. Old Dominion	41-11
20. Maine	29-16

### COLLEGIATE BASEBALL MAGAZINE

1. Texas	64-14
2. Alabama	46-11
3. Michigan	50-9
4. Arizona State	44-24
5. Stanford	41-17
6. Oklahoma State	47-16
7. Maine	29-16
8. James Madison	37-13
9. Oral Roberts	55-15
10. Miami	62-21
11. Fresno State	46-18
12. Mississippi State	43-17
13. Cal St.-Santa Barbara	44-22
14. Delaware	37-16
15. <b>Florida State</b>	<b>55-18-1</b>
16. Harvard	27-8-1
17. Brigham Young	54-11
18. San Diego State	62-15
19. Pan American	64-19-1
20. Cal State-Fullerton	50-20

# Florida State University 1983 Baseball Statistics

Won: 55 Lost: 18 Tied: 1

HOME: 41-6-1 (.864); AWAY: 14-12 (.538); NEUTRAL: 0-0 (.000); DAY: 36-13-1 (.730); NIGHT: 19-4 (.826); ONERUN GAMES: 7-3 (.700); AGAINST DIVISION I: 53-18-1 (.743); AGAINST THE METRO CONFERENCE: 10-4 (.714); AGAINST THE ACC: 4-0-1 (.900); AGAINST THE SEC: 7-5 (.583)

NAME	AVG.	G	AB	R	H	2B	3B	HR	HITTING										E	FA
									3B	HR	TB	RBI	SB	SBA	BB	SO	HBP	S-SF		
Frank Fazzini, lf	.366	69	235	65	86	13	3	17	156	63	7-12	41	40	2	1-1	66	4	.946		
Danny Dowell, c	.335	69	197	36	66	14	3	3	95	43	4-7	36	34	5	1-2	377	48	.984		
Rick Figueroa, 1b	.328	74	259	66	85	17	1	17	155	66	7-11	54	16	1	5-6	552	71	.978		
Jody Reed, ss	.308	74	276	97	85	23	1	8	134	50	31-34	68	24	6	1-3	114	224	.949		
Mark Barineau, 3b	.296	69	226	62	67	8	3	13	120	47	29-36	52	29	14	11-8	87	117	.940		
Mike Yastrzemski, cf	.285	71	256	72	73	19	2	12	132	55	14-18	52	17	2	1-3	114	6	.976		
Matt Robinson, 2b	.283	74	212	38	60	8	1	1	73	30	6-11	37	29	1	5-3	138	199	.963		
<b>LESS THAN 185 AT-BATS</b>																				
Jimmy Jones, dh	.344	57	125	27	43	8	0	1	54	36	4-5	30	18	0	0-2	78	7	.977		
Bart Mitchell, rf	.320	56	75	23	24	3	0	0	27	11	6-10	10	7	2	0-2	31	18	.907		
Billy Ashford, of	.318	45	85	16	27	6	0	1	36	17	4-4	8	21	3	0-0	13	0	.764		
Alan Gentry, cf	.282	46	78	14	22	2	0	0	24	11	5-9	13	6	1	0-1	32	0	.941		
Steve Givens, of	.280	66	132	24	37	6	0	3	52	28	7-7	34	16	1	1-2	30	1	.939		
Tom Zoeller, c	.277	49	101	19	28	7	1	2	43	27	1-3	17	20	0	0-1	16	1	1.000		
Eric Deddens, 1b	.245	36	49	15	12	2	0	4	26	17	1-1	10	15	1	0-2	62	15	.975		
Dan Griffin, 3b	.182	38	77	12	14	2	0	4	28	8	3-3	8	14	3	1-0	10	49	.797		
Jeff Ledbetter, dh	.167	12	12	2	2	1	0	1	6	1	0-0	4	3	0	0-0	0	0	.000		
Vince Insogna, c	.132	32	38	3	5	0	0	2	11	6	0-0	7	10	0	3-0	110	8	.991		
*Others	.143	74	7	2	1	0	0	0	1	2	0-0	2	1	0	0-0	60	131	.905		
<b>FSU TOTALS</b>	<b>.302</b>	<b>74</b>	<b>2440</b>	<b>593</b>	<b>737</b>	<b>139</b>	<b>15</b>	<b>89</b>	<b>1173</b>	<b>518</b>	<b>129-174</b>	<b>483</b>	<b>320</b>	<b>42</b>	<b>30-36</b>	<b>1890</b>	<b>899</b>	<b>123</b>	<b>.958</b>	
<b>OPP TOTALS</b>	<b>.243</b>	<b>74</b>	<b>2366</b>	<b>333</b>	<b>574</b>	<b>101</b>	<b>14</b>	<b>65</b>	<b>898</b>	<b>303</b>	<b>62-104</b>	<b>315</b>	<b>495</b>	<b>20</b>	<b>16-11</b>	<b>1847</b>	<b>806</b>	<b>163</b>	<b>.941</b>	

LOB: FSU 604 SLUG AVG.: FSU .481 DP: FSU 88 TP: FSU 1 PASSED BALLS: Dowell 5, Insogna 2  
 OPP 509 OPP .380 OPP 72 OPP 0 CAUGHT STEALING: Dowell 37, Insogna 4

GAME WINNING RBIs: Dowell 6, Figueroa 6, Robinson 5, Fazzini 4, Yastrzemski 4, Ashford 4, Barineau 3, Jones 3, Reed 2, Gentry 2, Deddens 2, Givens  
 Insogna 1, Zoeller 1

\*Includes pitchers' fielding and hitting

**PITCHING**

NAME	APP	GS	CG	W-L	SV	IP	R	ER	H	BB	SO	HBP	WP	SHO	ERA	HR	3B	2B	BALK
Bruce Tanner, r	41	0	0	5-1	9	66.1	18	18	47	22	54	2	4	0	2.44	6	0	9	0
Doug Little, r	18	18	7	12-4	0	111.0	54	38	94	56	71	1	3	1	3.08	7	3	21	0
Steve Gelmine, l	16	11	1	6-1	0	69.2	34	29	66	38	67	2	7	0	3.74	4	2	11	0
Doug Treadway, r	34	0	0	8-1	2	59.0	29	26	59	22	40	6	2	0	3.97	4	1	8	0
David Smalley, l	25	2	0	5-3	1	64.1	37	29	40	50	78	2	5	0	4.06	6	1	8	1
Tony Blasucci, l	16	10	0	4-3	1	51.1	32	24	49	36	59	2	2	0	4.20	6	0	9	0
Jeff Gray, r	18	17	2	9-3	0	109.1	60	53	112	25	60	3	5	0	4.36	19	3	16	1
Todd Morgan, l	17	13	1	5-2	0	68.2	44	38	76	35	44	0	3	0	4.98	9	4	15	1
<b>LESS THAN 30.0 INNINGS PITCHED</b>																			
Mark Barineau, r	1	1	0	0-0	0	1.0	0	0	0	0	0	0	0	0	0.00	0	0	0	0
Jeff Ledbetter, r	8	2	0	1-0	0	20.0	10	9	18	15	15	0	2	0	4.05	1	0	1	0
Mike Loynd, r	3	0	0	0-0	0	4.0	5	4	3	7	2	0	0	0	9.00	1	0	1	0
Buddy Shaw, r	2	0	0	0-0	0	1.0	1	1	2	1	2	0	1	0	9.00	0	0	0	0
Al Moreya, l	8	0	0	0-0	0	4.1	9	6	8	8	3	2	2	0	12.46	2	0	2	0
<b>FSU TOTALS</b>	<b>207</b>	<b>74</b>	<b>11</b>	<b>55-18</b>	<b>13</b>	<b>630.0</b>	<b>333</b>	<b>275</b>	<b>574</b>	<b>315</b>	<b>495</b>	<b>20</b>	<b>36</b>	<b>4</b>	<b>3.93</b>	<b>65</b>	<b>14</b>	<b>101</b>	<b>3</b>
<b>OPP TOTALS</b>	<b>192</b>	<b>74</b>	<b>12</b>	<b>18-55</b>	<b>8</b>	<b>615.2</b>	<b>573</b>	<b>482</b>	<b>737</b>	<b>483</b>	<b>320</b>	<b>42</b>	<b>64</b>	<b>1</b>	<b>7.05</b>	<b>89</b>	<b>15</b>	<b>139</b>	<b>11</b>

**SHUTOUTS:** Combined 3, Little 1

**SAVES:** Tanner 9, Treadway 2, Blasucci 1, Smalley 1

**NOTE:** Pitching Stats include 3-3 tie with Clemson



# Game By Game Results

NO.	GAME	WINNER	LOSER	ATTD.	RECORD
1	(H) FSU 4, Southern Miss 2	Gray (1-0)	Ortego (0-1)	DH	1-0
2	(H) FSU 8, Southern Miss 4	Treadway (1-0)	Nettles (0-1)	1500	2-0
3	(A) FSU 22, Mercer 6	Little (1-0)	Stone (0-1)	350	3-0
4	(A) FSU 14, Mercer 5	Tanner (1-0)	Wilcox (0-1)	500	4-0
5	(A) South Florida 11, FSU 10	Comellas (1-0)	Smalley (0-1)	831	4-1
6	(A) FSU 5, South Florida 2	Morgan (1-0)	Grubbs (0-1)	795	5-1
7	(A) South Florida 4, FSU 1	Walters (1-0)	Little (1-1)	1093	5-2
8	(H) FSU 12, Auburn 9	Tanner (2-0)	Long (0-1)	1100	6-2
9	(H) FSU 6, Auburn 1	Gelmine (1-0)	Tate (0-1)	DH	7-2
10	(A) Miami 9, FSU 0	Bauer (3-1)	Morgan (1-1)	6073	7-3
11	(A) Miami 4, FSU 2	Souza (2-0)	Little (1-2)	3550	7-4
12	(H) FSU 5, Clemson 4	Treadway (2-0)	Wiles (1-1)	1150	8-4
13	(H) FSU 3, Clemson 3			1200	8-4-1
14	(A) Florida 6, FSU 2	Daniel (3-0)	Little (1-3)	1896	8-5-1
15	(A) Florida 16, FSU 14	Reyes (3-1)	Morgan (1-2)	1425	8-6-1
16	(H) FSU 6, Wingate 4	Tanner (3-0)	Leach (1-2)	375	9-6-1
17	(A) FSU 7, Nevada-LV 2	Little (2-3)	Ayers (3-1)	350	10-6-1
18	(A) Nevada-LV 6, FSU 5	Pintar (1-0)	Tanner (3-1)	500	10-7-1
19	(A) FSU 14, Nevada-LV 11	Blasucci (1-0)	Kordenbrock (0-3)	500	11-7-1
20	(H) Louisville 6, FSU 4	McCormick (2-0)	Treadway (2-1)	600	11-8-1
21	(H) FSU 11, Louisville 4	Little (3-3)	Reburn (1-2)	150	12-8-1
22	(H) FSU 10, Wake Forest 2	Gray (2-0)	Mnick (0-2)	350	13-8-1
23	(H) FSU 9, Wake Forest 1	Smalley (1-1)	Featherson (1-1)	1100	14-8-1

24	(H)	FSU 7, Wake Forest 3	Little	(4-3)	Waiters	(1-1)	300	15- 8-1
25	(H)	FSU 4, Tennessee Tech 3	Treadway	(3-1)	Fontenot	(1-1)	150	16- 8-1
26	(H)	FSU 12, Tennessee Tech 2	Ledbetter	(1-0)	Behrend	(0-2)	850	17- 8-1
27	(A)	FSU 7, Auburn 5	Smalley	(2-1)	Long	(0-1)	100	18- 8-1
28	(H)	FSU 7, Pittsburgh 4	Little	(5-3)	Krause	(1-1)	1000	19- 8-1
29	(H)	FSU 12, Pittsburgh 4	Blasucci	(2-0)	Myers	(1-2)	1100	20- 8-1
30	(H)	FSU 13, Pittsburgh 0	Morgan	(2-2)	Craska	(0-1)	1300	21- 8-1
31	(H)	FSU 7, St. Xavier 4	Treadway	(4-1)	Boling	(1-2)	750	22- 8-1
32	(H)	Louisiana State 15, FSU 5	Murdock	(2-1)	Gray	(2-1)	1305	22- 9-1
33	(H)	FSU 10, Louisiana State 5	Little	(6-3)	Gihully	(0-1)	300	23- 9-1
34	(H)	FSU 4, SW Louisiana 3	Tanner	(4-1)	Johnson	(2-1)	750	24- 9-1
35	(H)	FSU 7, South Florida 6	Blasucci	(3-0)	Nickel	(1-2)	1371	25- 9-1
36	(H)	FSU 9, South Florida 4	Morgan	(3-2)	Grubbs	(2-7)	1791	26- 9-1
37	(H)	FSU 12, South Florida 2	Gray	(3-1)	Walters	(3-5)	2249	27- 9-1
38	(A)	Jacksonville 5, FSU 2	Perry	(7-2)	Little	(6-4)	1000	27-10-1
39	(A)	Jacksonville 9, FSU 7	Heise	(4-4)	Blasucci	(3-1)	1500	27-11-1
40	(H)	Florida 7, FSU 5	Fawbush	(2-0)	Smalley	(2-2)	DH	27-12-1
41	(H)	FSU 9, Florida 3	Little	(7-4)	Daniel	(5-1)	3691	28-12-1
42	(A)	FSU 12, Ga. Southern 3	Gray	(4-1)	Dale	(6-3)	753	29-12-1
43	(A)	FSU 9, Ga. Southern 6	Treadway	(5-1)	Bavosi	(3-3)	350	30-12-1
44	(H)	FSU 7, Jacksonville 1	Gelmine	(2-0)	Pate	(6-2)	1853	31-12-1
45	(H)	FSU 7, Jacksonville 2	Smalley	(3-2)	Perry	(7-4)	903	32-12-1
46	(H)	FSU 6, Miami 5	Little	(8-4)	Smith	(3-2)	3093	33-12-1
47	(H)	FSU 4, Miami 3	Tanner	(5-1)	Eichorn	(8-2)	3477	34-12-1
48	(H)	FSU 5, Miami 0	Gray	(5-1)	Meizoso	(4-2)	3415	35-12-1
49	(H)	FSU 16, Ga. Southern 4	Smalley	(4-2)	Brooks	(3-1)	910	36-12-1
50	(H)	FSU 8, Ga. Southern 1	Gelmine	(3-0)	Dale	(6-5)	775	37-12-1



51	(H)	FSU 17, Mercer 4	Smalley	(5-2)	Stone	(3-5)	886	38-12-1
52	(H)	FSU 14, Mercer 5	Gelmine	(4-0)	Perry	(2-7)	1206	39-12-1
53	(H)	FSU 17, Memphis State 0	Little	(9-4)	Cummings	(5-2)	DH	40-12-1
54	(H)	FSU 2, Memphis State 1	Blasucci	(4-1)	Litano	(4-2)	1892	41-12-1
55	(H)	Memphis State 7, FSU 6	Corder	(7-1)	Gray	(5-2)	1594	41-13-1
56	(H)	FSU 17, Georgia State 4	Gray	(6-2)	Hollins	(1-5)	1139	42-13-1
57	(H)	FSU 10, Georgia State 2	Gelmine	(5-0)	Majors	(1-5)	DH	43-13-1
58	(H)	FSU 8, Georgia State 3	Morgan	(4-2)	Sparks	(1-6)	1231	44-13-1
59	(A)	FSU 10, Georgia State 1	Little	(10-4)	Hollins	(1-6)	DH	45-13-1
60	(A)	Georgia State 7, FSU 4	Majors	(2-6)	Blasucci	(4-2)	100	45-14-1
61	(A)	FSU 9, Georgia State 7	Treadway	(6-1)	Brooks	(3-2)	75	46-14-1
62	(A)	FSU 8, Louisiana State 2	Gray	(7-2)	Murdock	(3-3)	450	47-14-1
63	(A)	FSU 6, Louisiana State 3	Treadway	(7-1)	Santerelli	(9-2)	820	48-14-1
64	(A)	FSU 3, SW Louisiana 0	Morgan	(5-2)	Credeur	(3-6)	514	49-14-1
65	(A)	Tulane 6, FSU 5	Desjardins	(12-4)	Smalley	(5-3)	DH	49-15-1
66	(A)	Tulane 8, FSU 6	Murphy	(6-0)	Blasucci	(4-3)	2106	49-16-1
67	(A)	FSU 10, Tulane 6	Gray	(8-2)	Catanese	(4-2)	2204	50-16-1
*68	(H)	FSU 14, Southern Miss 7	Treadway	(8-1)	Magee	(3-7)	2599	51-16-1
*69	(H)	FSU 9, Cincinnati 2	Gelmine	(6-0)	Query	(4-5)	1035	52-16-1
*70	(H)	FSU 4, Tulane 2	Little	(11-4)	Desjardins	(12-4)	4024	53-16-1
*71	(H)	FSU 9, Tulane 6	Gray	(9-2)	Migliore	(9-2)	4116	54-16-1
#72	(H)	FSU 8, South Alabama 2	Little	(12-4)	Oliverio	(13-4)	3778	55-16-1
#73	(H)	Alabama 7, FSU 5	Browne	(10-1)	Gray	(9-3)	5131	55-17-1
#74	(H)	Miami 10, FSU 5	Eichorn	(12-2)	Gelmine	(6-1)	3061	55-18-1

\*Metro Conference Tournament - 1st  
 NCAA South Regional - 3rd

# Metro Conference

Formed in 1975, the Metro Conference has emerged as one of the top conferences in college athletics.

Larry Albus envisioned the formation of the conference when he was athletic director at St. Louis. His dream became reality when six schools—Cincinnati, Georgia Tech, Louisville, Memphis State, St. Louis and Tulane—announced that they would become charter members of the new conference.

Under Albus, the Metro quickly became a force to be reckoned with on the college athletic scene. When Louisville won the NCAA basketball title in 1980, the Metro became the first conference to win that championship in the first five years of existence.

The conference quickly grew in prestige. Florida State joined in 1976 and when Georgia Tech resigned a year later, Virginia Tech quickly enlisted into the ranks.

A new look was added in 1982 when St. Louis resigned its membership and was replaced with strong southern independent Southern Mississippi. The conference's image received a real boost when South Carolina was admitted prior to the start of the 1983-84 school year.

Although considered a top basketball conference with top 10 teams Louisville and Memphis State; the Metro has become known as one of the most powerful baseball conferences in the nation. Florida State, Virginia Tech, Tulane and Memphis State have all received recognition as top 20 teams in the last several years and the conference will become even more powerful with the addition of NCAA playoff team South Carolina.

Recognizing this, the NCAA has awarded an automatic berth to the national championship to the winner of the Metro Tournament since 1978. A second team from the Metro is usually selected as an at-large team.

For the sixth straight year, Florida State will be the home of the Metro Conference Championship. Excellent facilities and usually warm weather, make the FSU campus an ideal spot for the championship. Fan support is high for the tournament, with close to 15,000 fans watching the three days of action. Florida State leads all conference teams with four championships (1983, 1981, 1980, 1977); while Tulane (1979, 1982) and Memphis State (1978, 1976) have each won two titles.

## Final Season Results

Team	Won-Lost-Tied	Pct.	Comment
Florida State	55-18-1	.750	Conference Champions
Memphis State	33-12-0	.733	4th tournament
Tulane	45-17-0	.723	2nd tournament NCAA qualifier
Virginia Tech	33-13-0	.717	5th tournament
Louisville	25-18-0	.581	3rd tournament
Cincinnati	17-30-0	.362	6th (tie) tournament
Southern Miss	11-33-0	.250	6th (tie) tournament



# 1983 Metro Conference Tournament

## First Round

Tulane, bye  
 Florida State 14, Southern Miss 7  
 Memphis State 13, Louisville 2  
 Cincinnati 9, Virginia Tech 7

Louisville 8, Memphis State 5  
 (10 innings)  
 Tulane 15, Louisville 1

## Second Round (Winners Bracket)

Florida State 9, Cincinnati 2  
 Tulane 4, Memphis State 2

## Third Round (Winner's Bracket)

Florida State 4, Tulane 2

## Championship Game

Florida State 9, Tulane 6

## Loser Bracket Games

Virginia Tech 11, Southern Miss 2  
 Cincinnati 9, Virginia Tech 7  
 Louisville 9, Cincinnati 1

## Championship Linescore R H E

Florida State 110 003 400 9 11 0  
 Tulane 000 000 204 6 10 5

E—Wagner, Zelenka, Murphy, Scheuermann, Fourmaux; DP—FSU 1; LOB—FSU 4, Tulane 2; 2B—Lane (T); HR—Givens (FSU), Reed (FSU), Yastrzemski (FSU), Mathews (T), Lane (T); Batteries—FSU, Gray (W 9-2), Treadway (7), Tanner (9) and Dowell; Tulane, Migliore (L 9-2), Murphy (7), Borgatti (7), Catanese (7) and Lane.

## All-Tournament Team

Catchers (2) — Danny Dowell (FSU), Bo Cleveland (Louisville)  
 Infielders (5) — Rick Figueredo (FSU), Budgie Clark (Virginia Tech), Mark Barineau (FSU), Jody Reed (FSU), Tim Dulin (Memphis State)  
 Outfielders (4) — Steve Tompkins (Louisville), Greg Barrios (Tulane), Frank Fazzini (FSU), Mike Yastrzemski (FSU)  
 Designated Hitter (1) — Tom Pfisterer (Cincinnati)  
 Pitchers (3) — Jeff Gray (FSU), Brian Shearman (Tulane), David Smalley (FSU)

Tournament MVP — Danny Dowell (FSU)

## Conference Tournament MVP's

1976—Ron McNeeley (Memphis State)  
 1977—Terry Kennedy (Florida State)  
 1978—Terry Pressgrove (Memphis State)  
 1979—Ken Francingues (Tulane)  
 1980—Mike Fuentes (Florida State)  
 1981—Mike Fuentes (Florida State)  
 1982—Eric Lane (Tulane)  
 1983—Danny Dowell (Florida State)

# Championship Linescores

## 1978 at Tallahassee, Fla.

### MEMPHIS STATE 10, FLORIDA STATE 9

Florida State .....	010	000	206	9	10	0
Memphis State .....	102	000	223	10	13	1

Riley, Fischer (7), Brooks (7), Jones (8) and McDonald; Thetford, Lea (7), Gilbert (9), Beshears and Webster. HR — Pressgrove (MS).

## 1979 at Tallahassee, Fla.

### TULANE 5, FLORIDA STATE 2

Tulane .....	002	200	100	5	7	1
Florida State .....	000	020	000	2	10	3

Francinques and Morse; Holloway, Smith (9) and Ramsey. HR — Melito (T).

## 1980 at Tallahassee, Fla.

### FIRST GAME

#### FLORIDA STATE 14, MEMPHIS STATE 11

Memphis State .....	302	100	041	11	15	2
Florida State .....	310	200	305	14	16	3

G. Williams, J. Williams (3), Schuler (6), Gilbert (9) and Webster; Smith, Hatcher (8), Smalley (9) and Ramsey. HR — Fuentes (FSU) 2, Ledbetter (FSU), P. Smith (MS), Pearson (MS).

### SECOND GAME

#### FLORIDA STATE 11, MEMPHIS STATE 7

Florida State .....	215	111	000	11	13	2
Memphis State .....	000	013	030	7	12	2

Fischer, Smalley (8) and Ramsey; Litano, Williamson (3) and Webster. HR — Fuentes (FSU), Yastrzemski (FSU), Ledbetter (FSU), Garret (MS).

## 1981 at Tallahassee, Fla.

### FIRST GAME

#### FLORIDA STATE 15, TULANE 5

Florida State .....	363	100	011	15	18	0
Tulane .....	301	010	000	5	10	1

Swindle, Smalley (2), Shoupe (6) and Ramsey; Fitch, Migliore (2) and Morse. HR — DeLoach (FSU), Lacy (FSU), Figueredo (FSU), Ramsey (FSU), Olsen (T).

### SECOND GAME

#### FLORIDA STATE 22, TULANE 4

Tulane .....	002	000	110	7	9	3
Florida State .....	250	664	10x	22	20	2

Murphy, Shearman (2), Riley (3), Wentz (5), Perret (6) and Morse, Riley (5); Fischer, Gray (8) and Ramsey, Dowell (8). HR — Vogt (T), Yastrzemski (FSU), DeLoach (FSU).

## 1982 at Tallahassee, Fla.

#### TULANE 11, FLORIDA STATE 7

Florida State .....	202	300	000	7	11	0
Tulane .....	003	031	22x	11	10	0

Swindle; Ledbetter (5), Gray (6), Smalley (7), JA Ledbetter (9) and Ashford; Fitch, Kampen (4), Murphy (4) and Lane. HR — Lane (T) 3; Yastrzemski (FSU), Zalenda (T), Barrios (T), Mathews (T).

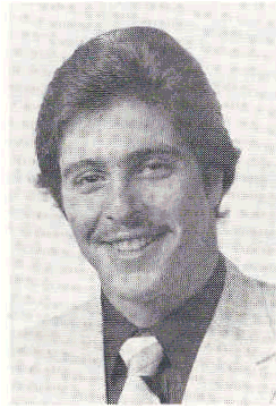


# The Players



# Returning All-American

**#6** Outfielder  
**Frank Fazzini**  
 5-9, 190, Sophomore  
 Belleville, New Jersey



**Last Season:** Earned first team selection to Baseball America's freshman All-American team...swatted a FSU freshman record 17 home runs during initial campaign...led team in hitting with a .366 average...also led team in hits (86), triples (3), and total bases (156)...credited with four game winning RBIs over the course of season...had four assists from his leftfield position last year...earned All-Metro, All-Metro Tournament and All-Regional Tournament honors last year...slapped two home runs in first game of Metro Tournament to lead FSU to win over Southern Mississippi...turned in six for 12 performance (.500) in NCAA South Regional...came on strong towards end of season, driving in 37 runs in last 22 games of season...did not hit first home run until 19th game of season...had five games with four or more RBIs.

**Career:** Played in the prestigious Cape Cod Summer Leagues in 1983, slashing nine home runs and 40 RBIs in 42 games...was a standout performer at Belleville High School, earning all-state recognition in both football and baseball...led state of New Jersey in hitting as a junior with a .560 average—despite playing with a wood bat.

**Personal:** Nicknamed "Bear"...majoring in accounting...was scholar athlete in high school, carrying solid "A" average in college prep courses...age 19...birthdate 7/27/64.

### Career Statistics

Year	Avg.	G	AB	R	H	2B	3B	HR	RB	SB-SBA	BB	SO
1983	.366	69	235	65	86	13	3	17	63	7-12	41	40

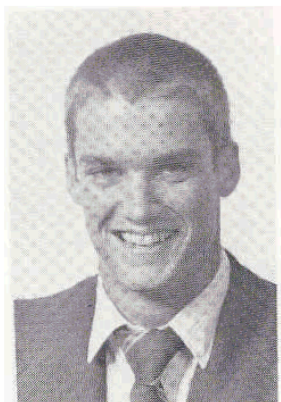
### Metro Conference Tournament

Year	Avg.	G	AB	R	H	2B	3B	HR	RB	SB-SBA	BB	SO
1983	.353	6	17	6	6	0	0	2	7	0-0	2	2



# Returning All-American

**#25** Pitcher  
**Doug Little**  
 6-1, 150, Sophomore  
 North Palm Beach,  
 Fla.



**Last Season:** Earned first team Freshman All-American award from *Baseball America* magazine by compiling 12-4 record...led team in wins (12), innings pitched (111), and starts (18)...had lowest ERA (3.08) among starting pitchers...worked number one in starting rotation for entire season...victories included 8-2 win over South Alabama in NCAA South Regional and 4-2 win over Tulane in Metro Conference Championship; which earned him all-tournament for both events...will enter season with a six game winning streak to credit...71 strikeouts was second best on squad last season behind David Smalley's 78...has potential to be one of top pitchers in school's history...also selected to the Metro Conference all-star team for regular season play...fastball clocked at close to 90 miles per hour...tied school record for starts in a season with 18.

**Career:** All-state performer at North Shore High School, posting a 12-3 record with 145 strikeouts in 96 innings...also tabbed all-conference, all-region and conference player of year under head coach John Inglis.

**Personal:** Nicknamed "Chicken"...drafted out of high school by Cleveland Indians...has been used extensively as pinch runner at FSU...majoring in general studies...age 19...birthdate 11/14/63.

### Career Statistics

Year	W-L	ERA	App	GS	CG	IP	H	R	ER	BB	SO
1983	12-4	3.08	18	18	7	111.0	94	54	38	56	71

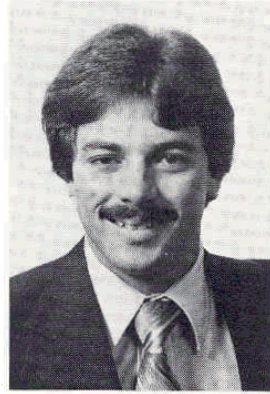
### Metro Conference Tournament

Year	W-L	ERA	App	GS	CG	IP	H	R	ER	BB	SO
1983	1-0	3.37	1	1	0	15.1	5	2	2	3	5



# All-American Candidate

**#3** Shortstop  
**Jody Reed**  
 5-8, 170, Senior  
 Brandon, Florida



**Last Season:** Had excellent campaign last year, leading Florida State both offensively and defensively...led team in at-bats (276), runs (97), doubles (23), walks (68) and stolen bases (31); while also leading infielders in assists (224) and helping team set school record with 88 double plays...excellent range at short, along with solid hitting statistics, earned Reed spot on All-South region team...selected for and made final 64 prospects for selection to the 1984 United States Olympic Team...selected team's MVP in a vote conducted by Florida State fans throughout season...voted to both All-Metro and All-Metro Tournament teams...had outstanding Metro tournament, hitting .421 with two home runs and seven RBIs in four games—including a home run and run scoring single against Tulane in championship game...combined with Matt Robinson in setting school record by turning four double plays in regular season game against Tulane.

**Career:** Played two years for Manatee Junior College before transferring to Florida State...was two-time all-division and all-state player at Manatee...MVP of 1982 junior college tournament...drafted twice in career, including in first round by San Francisco in the June 1982 draft and in the second round by the Texas Rangers in the secondary phase of the June 1983 draft...outstanding player at Brandon High School, earning all-county and all-state in baseball.

**Personal:** Nicknamed "JR" by teammates...mother works as a surgical technician...majoring in criminology...age 21...born 7-26-62.

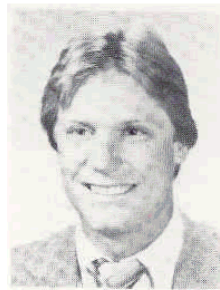
### Career Statistics

Year	Avg.	G	AB	R	H	2B	3B	HR	RB	SB	SBA	BB	SO
1983	.308	74	276	97	85	23	1	8	50	31	34	68	24

### Metro Conference Tournament

Year	Avg.	G	AB	R	H	2B	3B	HR	RB	SB	SBA	BB	SO
1983	.421	4	19	6	8	1	0	2	7	0	0	0	1

**#10 Firstbase/Thirdbase  
Eric Deddens**  
6-2, 180, Junior  
Jacksonville, Fla



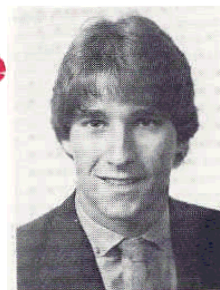
**Last Season:** Hit .245 with four home runs and 17 RBIs in a reserve role after making team as a walkon in the fall...big games included a two-homer, five RBI performance in 14-5 win over Mercer and three-run home run to help beat Southern Mississippi 8-4 in season opener... homered and singled to drive in three runs in win over Pittsburgh 3/27.

**Career:** Played and lettered in basketball and baseball at Plantation High for two seasons...did not participate in sport during freshmen year of college...had excellent fall practice before breaking hand in car accident... should challenge for starting position at third in 1984.

**Personal:** Majoring in management...21-years-old...born 10/15/62.

Career Statistics											
Year	Avg.	G	AB	R	H	2B	3B	HR	RBI	SB-SBA	BB SO
1983	.245	36	49	15	12	2	0	4	17	1-1	10 15
Metro Conference Tournament											
Year	Avg.	G	AB	R	H	2B	3B	HR	RBI	SB-SBA	BB SO
1983	.000	1	1	0	0	0	0	0	0	0-0	0 0

**#45 Pitcher  
Steve Gelmine**  
6-0, 175, Junior  
New Providence,  
New Jersey



**Last Season:** Surprise of 1983 staff, compiling a 6-1 record with 3.74 ERA as fifth starter...started 11 games as sophomore, striking out 67 and walking just 38 in 69.2 innings of work...top game was a nine inning, 15-strikeout performance against Jacksonville in 7-1 win on 4/14...struckout eight in 9-2 win over Cincinnati in Metro Conference Tournament...went on hot streak towards end of season, going 5-0 from 4/14 through 5/13.

**Career:** Drafted by Cleveland Indians in 13th round of 1981 draft...played in highly competitive Cape Cod summer league in 1983...tentatively listed as fourth starter going into 1984 campaign...was standout athlete at New Providence High, earning all-county, all-metro and all-state in baseball, as well as serving as captain of basketball and football teams.

**Personal:** Nicknamed "Germ"...father works as pharmacist...majoring in public relations...age 20, will turn 21 in April...birthdate 4/25/63.

Career Statistics											
Year	W-L	ERA	App	GS	CG	IP	H	R	ER	BB	SO
1982	0-0	13.50	4	0	0	4.0	7	10	6	8	5
1983	6-1	3.74	16	11	1	69.2	66	34	29	38	67
<b>Totals</b>	<b>6-1</b>	<b>4.28</b>	<b>20</b>	<b>11</b>	<b>1</b>	<b>73.2</b>	<b>73</b>	<b>44</b>	<b>35</b>	<b>46</b>	<b>72</b>
Metro Conference Tournament											
Year	W-L	ERA	App	GS	CG	IP	H	R	ER	BB	SO
1983	1-0	2.57	1	1	0	7.0	6	2	2	3	8

**#7** **Outfielder**  
**Alan Gentry**  
 5-9, 165, Sophomore  
 Layton, Utah



**Last Season:** Stepped in as freshman and played as spot starter for part of season...hit .282 in 46 games and was credited with two game winning RBIs...excellent speed, beating out several infield hits and stealing five bases...good knowledge of strike zone, fanning just six times last season; while drawing 13 walks in 94 plate appearances.

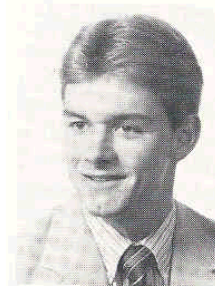
**Career:** Expected to challenge for starting centerfielder's job in 1984...standout player at Layton High School, selected to both all-state team and all-star game...all-conference and all-region football selection.

**Personal:** Father officer in air force...member of Sigma Chi fraternity...majoring in general studies...age 20...born 11/4/63.

Career Statistics												
Year	Avg.	G	AB	R	H	2B	3B	HR	RBISB-SBA	BB	SO	
1983	.282	46	78	14	22	2	0	0	11	5-9	13	6

Metro Conference Tournament												
Year	Avg.	G	AB	R	H	2B	3B	HR	RBISB-SBA	BB	SO	
1983	.333	2	3	0	1	0	0	0	0	0-0	0	0

**#27** **Pitcher**  
**Jeff Gray**  
 6-1, 175, Senior  
 Miami, Florida



**Last Season:** Worked as number two pitcher in starting rotation, compiling 9-3 record with 4.36 ERA...second on team in wins (9), starts (17), innings pitched (109.1) and complete games (2)...winning pitcher in 5-0 blanking of defending national champion Miami on 4/17...picked up victory in championship game against Tulane in Metro Conference Championship—giving up just four hits in 6.2 innings of work...selected to All-Metro Tournament team for his work in that championship game.

**Career:** One of most consistent pitchers in FSU history, going 20-6 through first three years at Florida State...pitches well in big games...excellent control, giving up just 63 walks in over 233 innings of work...could place high in several career categories before season is through...was all-state and All-American baseball player at Southridge High.

**Personal:** Majoring in business management at FSU...21-years-old, will turn 22 when FSU plays Mercer on April 10...birthdate 4/10/62.

Career Statistics											
Year	W-L	ERA	App	GS	CG	IP	H	R	ER	BB	SO
1981	3-1	4.00	10	4	0	36.0	40	25	16	10	21
1982	8-2	3.06	18	14	5	88.1	86	42	30	28	58
1983	9-3	4.36	18	17	2	109.1	112	60	53	25	60
<b>Totals</b>	<b>20-6</b>	<b>3.81</b>	<b>46</b>	<b>35</b>	<b>7</b>	<b>233.2</b>	<b>238</b>	<b>127</b>	<b>99</b>	<b>63</b>	<b>139</b>

Metro Conference Tournament											
Year	W-L	ERA	App	GS	CG	IP	H	R	ER	BB	SO
1982	0-1	5.14	2	1	0	7.0	8	5	4	1	4
1983	1-0	2.70	1	1	0	6.2	4	2	2	1	1
<b>Totals</b>	<b>1-1</b>	<b>3.95</b>	<b>3</b>	<b>2</b>	<b>0</b>	<b>13.2</b>	<b>12</b>	<b>7</b>	<b>6</b>	<b>2</b>	<b>5</b>



**#43** Catcher  
**Vince Insogna**  
 5-10, 180, Sophomore  
 Ft. Pierce, Florida



**Last Season:** Appeared in 32 games as a backup to starter Danny Dowell...hit .132 with six RBIs...offensive totals included two home runs, one against Miami (2/26) and a three run shot against Tennessee Tech (3/22)...excellent defensive catcher, throwing out four base runners and making only one error in 120 chances...credited with one game winning RBI.

**Career:** Enters 1984 season locked in battle with Tommy Zoeller and Jose Marzan for starting job...will become regular if offensive production improves...lettered four seasons at Ft. Pierce High School under Rick Dixon.

**Personal:** Majoring in business management...19-years-old...born 6/30/64.

Career Statistics												
Year	Avg.	G	AB	R	H	2B	3B	HR	RBISB-SBA	BB	SO	
1983	.132	32	38	3	5	0	0	2	6	0-0	7	10
Metro Conference Tournament												
Year	Avg.	G	AB	R	H	2B	3B	HR	RBISB-SBA	BB	SO	
1983	.000	1	0	0	0	0	0	0	0	0-0	0	0

**#14** Outfielder/  
 Designated Hitter  
**Jimmy Jones**  
 6-0, 180, Junior  
 Langley, Virginia



**Last Season:** Hit .344 as spot starter at first base last season...also used as designated hitter against right handed pitching...had three game winning RBIs last year...had big series against Georgia Southern in Statesboro, going four for seven with a home run and eight RBIs...good base runner, stealing four bases in five attempts...batting average was second best on team overall and tops among all non-starters.

**Career:** Will have chance to earn starting position in rightfield, after being moved from first during fall season...has displayed good power in past, slamming five home runs during freshman campaign in limited role...all-district and all-state in baseball at Kecoughtan High, as well as all-district in football...hit .575 with six home runs in summer ball at Virginia before knee problems shortened season.

**Personal:** Nicknamed JJ...majoring in communications...father serves as Major General in US Air Force...enrolled in ROTC, aspires to be pilot...age 20...birthdate 9/4/62.

Career Statistics												
Year	Avg.	G	AB	R	H	2B	3B	HR	RBISB-SBA	BB	SO	
1982	.289	55	83	20	24	4	1	5	26	1-1	41	40
1983	.344	57	125	27	43	8	0	1	36	4-5	30	18
<b>Totals</b>	<b>.322</b>	<b>112</b>	<b>208</b>	<b>47</b>	<b>67</b>	<b>12</b>	<b>1</b>	<b>6</b>	<b>62</b>	<b>5-6</b>	<b>71</b>	<b>58</b>
Metro Conference Tournament												
Year	Avg.	G	AB	R	H	2B	3B	HR	RBISB-SBA	BB	SO	
1982	.200	5	10	3	2	0	0	0	0	0-0	3	1
1983	.125	3	8	0	1	0	0	0	0	0-0	0	2
<b>Totals</b>	<b>.167</b>	<b>8</b>	<b>18</b>	<b>3</b>	<b>3</b>	<b>0</b>	<b>0</b>	<b>0</b>	<b>0</b>	<b>0-0</b>	<b>3</b>	<b>3</b>

**#2 Firstbase/  
Designated Hitter  
Jeff Ledbetter**  
6-4, 210, Junior  
Clearwater, Florida



**Last Season:** Spent most of year as relief pitcher, compiling 4.05 ERA in eight appearances...picked up pitching win in 12-2 win over Tennessee Tech (3/22)...lively fastball was hurt by control problems as Ledbetter recorded 15 walks and 15 strikeouts in 20 innings of work...also used a pinch hitter, hitting .167 with home run and double in 12 trips to the plate.

**Career:** Switched from pitcher to infielder during fall practice of 1983...expected to challenge for starting job at first or designated hitter...had excellent summer for Jerry's Caterers, hitting a team-leading seven home runs...pitched in eight games as a freshman.

**Personal:** Originally came to Florida State on a football scholarship, before devoting full time to baseball...majoring in psychology...age 21...born 9/12/62.

Year	Avg.	G	AB	Career Statistics							BB	SO
				R	H	2B	3B	HR	RBIS	SBA		
1982	.000	0	0	0	0	0	0	0	0	0-0	0	0
1983	.167	12	12	2	2	1	0	1	1	0-0	4	3
<b>Totals</b>	<b>.167</b>	<b>12</b>	<b>12</b>	<b>2</b>	<b>2</b>	<b>1</b>	<b>0</b>	<b>1</b>	<b>1</b>	<b>0-0</b>	<b>4</b>	<b>3</b>

**#44 Pitcher  
Mike Loynd**  
6-2, 170, Sophomore  
Short Hill, New Jersey



**Last Season:** Appeared in three games, giving up four runs in four innings pitched...had two good outings during last third of season, going three and a third innings against Georgia Southern and Mercer without giving up run.

**Career:** Rapidly developing into a good college pitcher and may be ready to contribute at FSU...played in the prestigious Atlantic Coast Summer League in 1983, going 6-1 with a 2.14 ERA...earned all-conference and all-state honors at Millburn High under head coach Bob Pearson.

**Personal:** Majoring in business management...father Richard serves as chairman of Board for Converse, an athletic shoe company...age 19...will turn 20 on March 26...born 3/26/64.

Year	W-L	ERA	App	Career Statistics							BB	SO
				GS	CG	IP	H	R	ER			
1983	0-0	9.00	3	0	0	4.0	3	5	4	7	2	

**#4 Outfielder  
Bart Mitchell**  
5-5, 125, Junior  
Tallahassee, Florida



**Last Year:** One of most popular players on team, Mitchell hit .320 as a spot starter in right field...collected three doubles and 11 RBIs to go with 24 hits and 23 runs scored...top performances included three hits and three runs scored in 9-7 loss to Jacksonville (4/5) and two hits in 4-2 win over Tulane in Metro Conference Tournament.

**Career:** Has been used as both infielder and outfielder during career, as well as pinch runner...led FSU's summer league team in hitting in each of last two seasons—batting .426 in 1982 and .389 last year...will challenge for starting assignment in right...four-time letterwinner at Lincoln High under Joe Durant.

**Personal:** Majoring in public relations...honor student, holding down 3.5 grade point average...member of Sigma Chi fraternity...age 20...born 10/9/63.

Career Statistics												
Year	Avg.	G	AB	R	H	2B	3B	HR	RBIS	SB-SBA	BB	SO
1982	.286	26	14	5	4	0	0	0	0	0-0	3	2
1983	.320	56	75	23	24	3	0	0	11	6-10	10	7
<b>Totals</b>	<b>.315</b>	<b>82</b>	<b>89</b>	<b>28</b>	<b>28</b>	<b>3</b>	<b>0</b>	<b>0</b>	<b>11</b>	<b>6-10</b>	<b>13</b>	<b>9</b>

Metro Conference Tournament												
Year	Avg.	G	AB	R	H	2B	3B	HR	RBIS	SB-SBA	BB	SO
1983	.500	3	6	0	3	0	0	0	0	0-0	1	0

**#13 Pitcher  
Todd Morgan**  
6-1, 190, Junior  
Church Road, Virginia



**Last Year:** Worked as fourth starter, compiling 5-2 record with 4.98 ERA...shoulder problems hampered performance for much of season...came on strong towards end of season, winning four of last five decisions—including 3-0 shutout win over Southwest Louisiana (5/6)...had a season high six strikeouts against South Florida in 9-4 win (4/2)...13 starts was third highest on squad.

**Career:** Used exclusively as reliever in first season at FSU, going 2-2 with a team leading seven saves...outstanding pitcher at Dinwiddle High School, striking out 123 batters in 72 innings senior campaign...drafted in 10th round by Milwaukee Brewers in June 1981 draft.

**Personal:** Majoring in Criminology...only married player on Seminole squad...age 20...born 9/8/63.

Career Statistics											
Year	W-L	ERA	App	GS	CG	IP	H	R	ER	BB	SO
1982	2-2	5.50	25	0	0	37.2	30	26	23	17	44
1983	5-2	4.98	17	13	1	68.2	76	44	38	35	44
<b>Totals</b>	<b>7-4</b>	<b>5.16</b>	<b>42</b>	<b>13</b>	<b>1</b>	<b>106.1</b>	<b>106</b>	<b>70</b>	<b>61</b>	<b>52</b>	<b>88</b>

Metro Conference Tournament											
Year	W-L	ERA	App	GS	CG	IP	H	R	ER	BB	SO
1982	0-0	9.00	2	0	0	2.0	0	3	2	4	2
1983	0-0	15.43	1	1	0	2.1	7	4	4	0	2
<b>Totals</b>	<b>0-0</b>	<b>12.46</b>	<b>3</b>	<b>1</b>	<b>0</b>	<b>4.1</b>	<b>7</b>	<b>7</b>	<b>6</b>	<b>4</b>	<b>4</b>



**#34 Pitcher**  
**Doug Treadway**  
 6-1, 180, Junior  
 Tallahassee, Florida



**Last Year:** Posted 8-1 record with two saves as long relief man out of Florida State bullpen...3.97 ERA was fourth best on team...winning pitcher in several key games, including Southern Miss in Metro Tournament and LSU during regular season...34 relief appearances ranks second on FSU all-time list behind Bruce Tanner's 41 last season...excellent control pitcher, walking only 22 and striking out 40 in 59 innings of work.

**Career:** Played one season at Jackson State before transferring to FSU...standout pitcher at Leon High School for coach Ronnie Young...played in 1980 North-South all-star game.

**Personal:** Majoring in computer science...member of Phi Delta Theta fraternity...21-years-old...born 6/19/62.

Career Statistics											
Year	W-L	ERA	App	GS	CG	IP	H	R	ER	BB	SO
1983	8-1	3.97	34	0	0	59.0	59	29	26	22	40

Metro Conference Tournament											
Year	W-L	ERA	App	GS	CG	IP	H	R	ER	BB	SO
1983	1-0	4.26	2	0	0	6.1	9	3	3	0	5

**#26 Catcher/Firstbase**  
**Tommy Zoeller**  
 6-0, 190, Sophomore  
 Shorewood, Wisconsin



**Last Year:** Hit .277 as backup catcher/designated hitter for the Seminoles...biggest games included five RBIs in 16-4 win over Georgia Southern on 4/19 and two for four night with home run and double during 7-5 win over Auburn (3/23)...credited with one game winning RBI last season.

**Career:** May also see action at designated hitter this season, as well as duties at first and behind the plate...selected all-district, all-conference and all-state at Marquette High School under head coach Bob Brezinski.

**Personal:** Nicknamed "Fuzzy"...grandfather Nick Etten played seven seasons of professional ball—leading the American League in home runs in 1944 and RBIs in 1945; as well as playing on a World Championship team...father works as international sales manager for AMF—a sporting goods company...age 19...will turn 20 when FSU hosts Jacksonville on Feb. 21...majoring in accounting...birthdate 2/21/64.

Career Statistics												
Year	Avg.	G	AB	R	H	2B	3B	HR	RBISB-SBA	BB	SO	
1983	.277	49	101	19	28	7	1	2	27 1-3	17	20	

Metro Conference Tournament												
Year	Avg.	G	AB	R	H	2B	3B	HR	RBISB-SBA	BB	SO	
1983	.000	3	7	0	0	0	0	0	1 0-0	1	0	

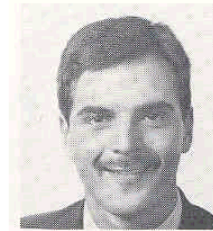
## NEWCOMERS

**#1** Secondbase  
**Luis Alicea**  
5-8, 150, Freshman  
Guaynabo, Puerto Rico



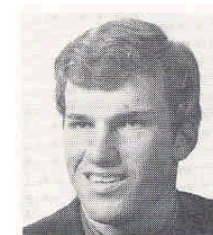
Will enter 1984 season as starting secondbaseman, replacing departed senior Matt Robinson...switch hitter, with the better power coming from the left side...lettered three years at Liceo International High School...broken left hand hampered fall practice...will major in business... 18-years-old...born 7/29/65.

**#5** Outfielder  
**Vince Calandra**  
6-1, 180, Junior  
Los Angeles, California



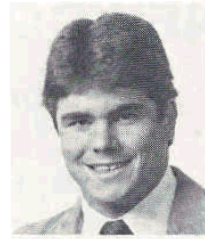
Helped pace College of the Canyons to second place in the 1982 California Junior College State Championships by hitting .300...selected all-metro and all-state last year...won MVP award for prestigious West Los Angeles Junior College Tournament...lettered in baseball three years El Camino High School...also earned all-conference and all-district recognition in football...majoring in political science...age 20...born 7/30/63.

**#20** Thirdbase  
**Greg Dennis**  
6-1, 170, Junior  
Chattanooga,  
Tennessee



Transfers to Florida State from McLennan Community College in Waco, Texas where he was a first team Junior College All-American at shortstop...will play third for the Seminoles to give FSU a strong left side of the infield with All-American candidate Jody Reed at short...led McLennan into the finals of Junior College World Series in 1982...selected to all-conference team last two seasons and all-region in 1983...all-tournament selection during World Series...considered by many as best defensive player in all of junior college ball last year...three time all-conference, all-city and all-state selection at Notre Dame High School under head coach Wendall Clowers...majoring in business...20-years-old...birthdate 9/16/62.

**#12** Secondbase  
**David Garrison**  
5-10, 170, Junior  
Birmingham, Alabama



Comes to Florida State from Jefferson Junior College in Alabama where he played for the last two seasons...selected all-region and all-state in each of his years at Jefferson and also tabbed MVP of state's junior college all-star game...will step in and immediately challenge for starter's job at second...has shown good power with 10 home runs last season...playing for Bessemer Elks this past summer in a highly competitive league, Garrison led his team with a .430 batting average...lettered three years in baseball at Haufman High School under Phil English—a former graduate assistant coach at Florida State...also lettered in both football and basketball...majoring in business administration...age 20...will turn 21 when Florida State meets arch-rival Florida in Gainesville on April 18...birthdate 4/18/63.

**#42** Pitcher  
**David Hanselman**  
5-10, 155, Freshman  
Tallahassee, Florida



Enters Florida State from Coach Ronnie Youngblood's fine program at Leon High School, which has produced several fine players for Florida State over the years...one of five Tallahassee players on Seminoles roster in 1984...a three-year letterman, Hanselman was tabbed first team all-state (AAA) and also played for the north team in the state's all-star game...team MVP in 1982 and 1983...four year combined ERA of 1.75 and batting average of .375...college major undecided...19-years-old...born 1/4/65.

**#18** Catcher  
**Ken Heath**  
6-0, 160, Freshman  
Layton, Utah



Lettered three years at Layton High under head coach Brad Hawkins...tabbed all-conference, all-district and all-region three times during high school career and also placed on all-state team during senior campaign...batting average of .575 during junior year was best in state for division 1 players in 1982...teammate of Seminole centerfielder Alan Gentry for two years at Layton High...also lettered in football...hobbies include snow and water skiing...age 19...birthdate 10/20/64.

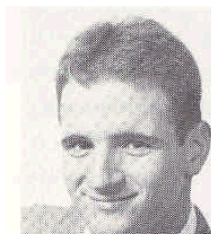


**#30** Outfielder  
**Andrew Kosco**  
6-0, 190, Freshman  
Youngstown, Ohio



All-conference and honorable mention all-state outfielder for Poland Seminary High School under head coach Bob Martinko...excellent all-around athlete, Kosco won a total of eight letters in football, basketball and baseball during high school years...tabbed all-state in football when he rushed for 900 yards and scored 10 touchdowns during senior season...all-conference selection in three sports...father Andy enjoyed fine professional career, including long stint in major leagues...majoring in business...18-years-old...will turn 19 when Seminoles host Jacksonville on Feb. 21...birthdate 2/21/65.

**#32** Pitcher  
**Loren Levy**  
5-11, 180, Junior  
Tallahassee, Florida



Appeared on 1982 Florida State roster as a backup catcher, before making team as walkon pitcher in 1984...comes to Florida State out of Jerry Whitmore's program over at Tallahassee's Florida High...three sport lettermen at Florida High, making All-Big Bend in track...appeared in two games on 1982 team...majoring in accounting...22-years-old...born 1/27/62.

**#19** Catcher  
**Jose Marzan**  
6-0, 185, Freshman  
Bayamon, Puerto Rico



Comes to Florida State from Colegio San Ignacio High School in Puerto Rico where he lettered three seasons as catcher...one of three players that are currently battling for playing time behind plate...possesses good defensive skills...majoring in accounting...nicknamed Chegui...age 18... born 11/5/65.

# Alphabetical Baseball Roster

NO.	NAME	POSITION	CLASS	B/T	HEIGHT	WEIGHT	HOMETOWN
1	Luis Alicea	2B	Fr.	S/L	5-8	150	Guaynabo, Puerto Rico
5	Vince Calandra	OF	Jr.	R/R	6-1	180	Los Angeles, California
10	Eric Deddens	3B, 1B	Jr.	L/R	6-2	180	Jacksonville, Florida
20	Greg Dennis	3B	Jr.	R/R	6-1	170	Chattanooga, Tennessee
6	Frank Fazzini	OF	So.	R/R	5-9	190	Belleville, New Jersey
12	David Garrison	2B	Jr.	R/R	5-10	170	Birmingham, Alabama
45	Steve Gelmine	P	Jr.	L/L	6-0	175	New Providence, New Jersey
7	Alan Gentry	OF	So.	L/L	5-9	165	Layton, Utah
27	Jeff Gray	P	Sr.	R/R	6-1	175	Miami, Florida
21	Bob Hallstrand	P	Fr.	R/R	6-2	185	Miami, Florida
42	David Hanselman	P	Fr.	L/L	5-10	155	Tallahassee, Florida
18	Kenny Heath	C	Fr.	R/R	6-0	160	Layton, Utah
43	Vince Insogna	C	So.	R/R	5-10	180	Ft. Pierce, Florida
14	Jimmy Jones	OF, DH	Jr.	L/R	6-0	180	Langley, Virginia
30	Drew Kosco	1B	Fr.	L/R	6-0	190	Youngstown, Ohio
2	Jeff Ledbetter	1B, DH	Jr.	R/R	6-4	210	Clearwater, Florida
32	Loren Levy	P	Jr.	R/R	5-11	180	Tallahassee, Florida
44	Mike Loynd	P	So.	R/R	6-2	170	Short Hill, New Jersey
25	Doug Little	P	So.	R/R	6-1	150	North Palm Beach, Florida
19	Jose Marzan	C	Fr.	R/R	6-0	185	Bayamon, Puerto Rico
23	David Maus	P, OF	Jr.	R/R	6-1	200	Tallahassee, Florida
4	Bart Mitchell	OF	Jr.	R/R	5-5	125	Tallahassee, Florida
13	Todd Morgan	P	Jr.	L/L	6-1	190	Church Road, Virginia
29	Chris Pinder	P	Fr.	L/L	6-2	180	Yorktown, Virginia
3	Jody Reed	SS	Sr.	R/R	5-8	170	Brandon, Florida
46	Ray Revak	P	Fr.	L/L	6-2	185	Key West, Florida
17	Joe Schlim	P	Fr.	R/L	6-1	170	Newport News, Virginia
15	Paul Sorrento	P, OF	Fr.	L/R	6-2	200	Peabody, Massachusetts
39	Paul Thomas	P	Fr.	L/L	6-6	200	Pittsburgh, Pennsylvania
34	Doug Treadway	P	Jr.	R/R	6-1	180	Tallahassee, Florida
26	Tommy Zoeller	C, 1B	So.	R/R	6-0	190	Shorewood, Wisconsin

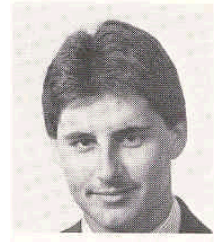
**Head Coach** — Mike Martin (11), **Assistant Coaches** — Randy Gailey (22), Mike McLeod (33), Rod Delmonico (8), Rick Hatcher (24), **Trainer** — Tad George.

# Numerical Roster

NO.	NAME	POSITION	B/T
1	Luis Alicea	2B	S/R
2	Jeff Ledbetter	1B, DH	R/R
3	Jody Reed	SS	R/R
4	Bart Mitchell	OF	R/R
5	Vince Calandra	OF	R/R
6	Frank Fazzini	OF	R/R
7	Alan Gentry	OF	L/L
10	Eric Deddens	3B, 1B	L/R
12	David Garrison	2B	R/R
13	Todd Morgan	P	L/L
14	Jimmy Jones	OF	L/R
15	Paul Sorrento	P, OF	L/R
17	Joe Schlim	P	R/L
18	Kenny Heath	C	R/R
19	Jose Marzan	C	R/R
20	Greg Dennis	3B	R/R
21	Bob Hallstrand	P	R/R
23	David Maus	P, OF	R/R
25	Doug Little	P	R/R
26	Tom Zoeller	C, 1B	R/R
27	Jeff Gray	P	R/R
29	Chris Pinder	P	L/L
30	Drew Kosco	1B	R/R
32	Loren Levy	P	R/R
34	Doug Treadway	P	R/R
39	Paul Thomas	P	L/L
42	David Hanselman	P	L/L
43	Vince Insogna	C	R/R
44	Mike Loynd	P	R/R
45	Steve Gelmine	P	L/L
46	Ray Revak	P	L/L



**#46** Pitcher  
**Ray Revak**  
6-2, 185, Freshman  
Key West, Florida



A three time letterwinner at Key West High, Revak was tabbed first team all-state after an excellent senior season...a hard throwing lefthander, Revak turned down a contract offer from the Boston Red Sox, after being drafted in the 13th round in the June 1983 draft...played summer ball for FSU's Jerry's Caterers team and compiled fine 5-1 record...described by Seminole pitching coaches as having "excellent mechanics and great potential"...19-years-old...born 8/13/64.

**#15** Outfielder/Pitcher  
**Paul Sorrento**  
6-2, 200, Freshman  
Peabody,  
Massachusetts



Hard hitting outfielder who impressed coaches during summer ball by cracking seven home runs for Jerry's Caterers, FSU's summer league team...comes to Florida State from St. John's Prep High School, where he had excellent credentials...made all-state teams in both football and basketball during high school career...could challenge for starting position in first year...age 18...birthdate 11/17/65.



**Florida State Baseball**

ETC: The Golden Spike Award and the Sporting News Player of the Year awards are the two most prestigious individual awards a baseball player can win on the college level. Three FSU players have been selected for one of these awards including Mike Fuentes (Golden Spike 1981) and Jeff Ledbetter (1983) and Terry Kennedy (1977) to the Sporting News Player of the Year.



# FSU: College Baseball At Its Best



## Florida State University: The Best in College Baseball

Few teams since 1948 have maintained the success that the FSU program has over that 36 year period.

But this is no surprise to the people associated with the college baseball scene. Long a dominant force from coast to coast, the Seminoles annually live up to their billing as the "Best in College Baseball."

Florida State's most recent trip to the College World Series in 1980 marked the seventh time the Seminoles made the prestigious "Final Eight" in the NCAA's post season championship. Consider that only five other teams have played in that many CWS.

Added to that statistic is the fact that Florida State has played in 21 NCAA regional tournaments, which easily places Florida State in the top five in number of regional tournaments participated in despite only playing baseball as a varsity sport for 36 years. FSU has been a member of the national championship tournament field every year since 1978.

A tribute to the Florida State baseball program is its overall record since its inaugural season. Although it plays a highly competitive schedule year in and out, Florida State has an overall record of 1121 wins, 441 losses and seven ties—good for a .717 winning percentage over the years. Of the 1121 wins, 56 have come in NCAA tournament play—again placing Florida State in the top five teams of all time.

Many former FSU players have gone on to play professional baseball. With four signings in 1983, the Florida State total of professional baseball contracts signed has risen to 87 since 1966.

Florida State's excellence is recognized around the country. Many future Seminoles are recommended to FSU coaches who have said "if there is a boy determined to get an education before turning pro we enthusiastically encourage him to consider Florida State".

"He is going to get as much or more training and game experience here as anywhere else in the country." High school and junior college coaches around the country recognize this. It's reflected in a Florida State roster that is dotted with players from 11 different states, as well as the commonwealth of Puerto Rico.

Florida State players are given the opportunity to play in 100 to 140 games per year. Following the conclusion of a 40 game fall exhibition schedule, the players take timeout for the annual FSU-Alumni game that attracts former Florida State stars like Dick Howser and Terry Kennedy back to Tallahassee. In February, when a lot of teams are still indoors because of cold climate, the Seminoles are starting their regular season schedule of 70 games. Following the playoff competition, many players stay in Tallahassee to participate on the summer league team sponsored by Jerry's Caterers.





In the off season, athletes have access to the FSU's weight training facilities—among the finest anywhere in terms of equipment and instruction.

With Tallahassee being in almost direct line between major league cities in the north and Florida training camps in the south, it is not unusual for major league players to stop by the Seminole camp and offer a few tips to Seminole coaches and players.

Even without this coaching "bonus", the Florida State baseball player receives some of the best coaching available.

An opportunity to play baseball year round does not mean FSU is not interested in academic life. Florida State employs a full time academic advisor, whose sole concern is to help the student athlete towards obtaining a marketable degree. If the player needs help in scheduling, tutoring or other



special assistance—someone will be there to help.

Keeping with the tradition of a first class program, it's not surprising to learn that facilities are nothing short of outstanding.

Seminole Stadium, home of FSU baseball, is often praised by coaches and players as the finest natural surface they have ever seen or played on. A great lighting system makes night games at FSU a popular attraction in the spring.

In addition to a professional style scoreboard, Seminole Stadium recently underwent a \$1 million overhaul that included replacing bleacher style seating behind home plate with a new concrete grandstand. New concession stands, restroom facilities, pressbox and access walks easily put Florida State's stadium among the best anywhere.

Under supervision of ground crew leader Robert Barrett, the Tribe has two full practice diamonds and an additional practice field available for use.

A training program, under the direction of the legendary Don Fauls, insures that each Florida State athlete receives the finest athletic training and sports medicine care available. An athletic trainer is available at every Seminole game and practice.

If playing before enthusiastic fans is important to the perspective athlete, FSU offers the answer. Annually a top ten team in attendance figures, over 1000 season tickets were sold last year. Florida State-Alabama regional play drew over 5100 fans to Seminole Stadium; while total attendance for all FSU games home and away came close to 100,000. Fan support did not stop at home games, however. Large contingents of FSU fans followed the Tribe on the road and Seminole Booster clubs often attend games when Florida State plays in their city.

Media attention is also high. Seminole baseball is front page news in Tallahassee and covered on a regular basis in the state's major newspapers. Over 50 writers and television station personnel requested credentials to the NCAA regional tournament in Tallahassee. ESPN, the national sports channel, has been no stranger to Seminole Stadium. WTNT radio carries 40 to 50 games live each season and WFSU-TV also telecasts some games locally. WCTV and WECA commercial television stations often carry Florida State baseball as their lead sports stories in the spring.

It is little wonder that Florida State is the model of several upcoming baseball programs. In terms of facilities, coaching, education, fan support and on field successes, Florida State lives up to its claim of the "Best in College Baseball."

# Seminoles in Championship Play



*1970 Seminoles: World Series Finalists*

With an appearance in the 1983 South Regional, Florida State has now appeared in 21 NCAA playoffs. Of those appearances, FSU has won seven regional tournaments and trips to the prestigious College World Series.

The 1970 season was Florida State's finest finish, losing to Southern California in the finals 2-1 for a second place NCAA finish. Pitcher Gene Ammann led the Tribe to a final record of 49-9-1 and was selected College World Series MVP.

Florida State's 56 wins in NCAA Championship play is the third highest among all division one schools and only six other schools can match Florida State's seven trips to the CWS.

Woody Woodward (1963), John Grubb (1970) and Ammann were all named to the College World Series all-tournament team.

### NCAA Tournament Results

	Appearances	Won	Lost	Pct.	1st	2nd	3rd
South Regional	18	47	38	.553	7	3	7
Atlantic Regional	1	0	2	.000	0	0	0
East Regional	1	0	2	.000	0	0	0
Central Regional	1	1	2	.333	0	0	0
World Series	7	8	14	.363	0	1	0
<b>Totals</b>		<b>56</b>	<b>56</b>	<b>.500</b>	<b>7</b>	<b>4</b>	<b>7</b>

### World Series Scores

<b>1957</b>		<b>1970</b>	
Penn State	0-7	Arizona	4-0
Connecticut	3-5	Dartmouth	6-0
		Texas	1-5
<b>1962</b>		Ohio	2-0
Santa Clara	5-1	Texas	11-2
Ithaca	5-4	Southern Cal	1-2
Michigan	7-10		
Santa Clara	6-11	<b>1975</b>	
<b>1963</b>		Eastern Michigan	1-2
Michigan	5-2	Seton Hall	0-11
Arizona	2-4	<b>1980</b>	
Southern Cal	3-4	Hawaii	6-7
<b>1965</b>		Arizona	3-5
Ohio	1-2		
Texas	3-2		
St. Louis	3-5		

# A Pipeline to the Pros

Few universities in the country have provided a pipeline into professional baseball as Florida State has. Since 1966, a total of 87 Seminoles have inked professional baseball contracts.

This past season was no different, as pitchers Tony Blasucci, David Smalley, and relief ace Bruce Tanner joined teammate Mike Yastrzemski in being included in the major league draft. A fifth player, All-American candidate Jody Reed, was also drafted but elected to remain in school for his senior year of eligibility.

Several former players are still active in the major leagues. Terry Kennedy made his second trip to the all-star game in 1983, and along with former FSU infielder Jaun Bonilla, starts for the San Diego Padres. John Grubb and Rick Langford both played in the majors last season; while FSU All-American and former head coach Dick Howser managed the Kansas City Royals.

Over 25 former Seminoles are still involved in professional ball at one level or another. Overall, the Seminoles have had two or more players sign professional contracts off of every team since 1968. In 1977, 11 players signed.

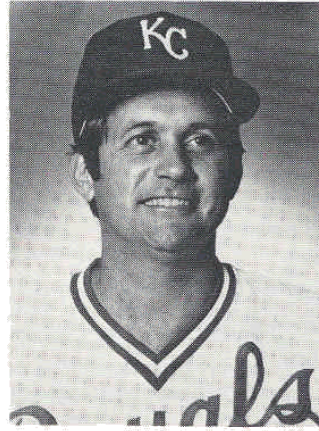
FSU, which holds an excellent reputation among professional teams, is often recommended to youngsters as an alternative to jumping into professional ball right away. A large contingent of scouts attend most Seminole games.

The tradition started at Florida State in 1961 when Dick Howser broke into the majors with Kansas City. He made an immediate impression by winning the American League Rookie of the Year award.

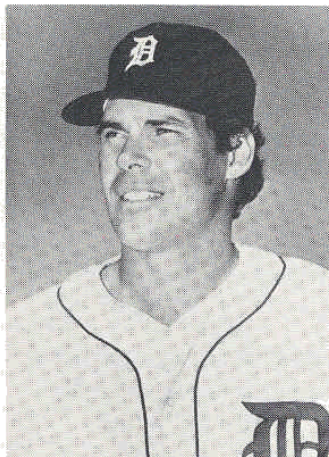
Howser, Grubb, and Kennedy hold the distinction of playing in a major league all-star game; while Cincinnati general manager Woody Woodward and Langford each played in a World Series.

The list below contains the names of former Seminoles that have signed professional contracts since 1966.

<b>1983</b>	
Bruce Tanner	Chicago
David Smalley	New York
Mike Yastrzemski	Texas
Tony Blasucci	Pittsburgh



**Dick Howser**



**Johnny Grubb**



<b>1982</b>			
Jeff Ledbetter	Boston		
Chris Cawthon	Cleveland		
Jay Keeler	Cleveland		
Tim Phillips	Toronto		
Jamey Shouppe	Houston		
Allen Swindle	Cincinnati		
<b>1981</b>			
Mike Fuentes	Montreal Expos		
Clem Freeman	Cincinnati Reds		
Rick Hatcher	Atlanta Braves		
Joe Licata	New York Mets		
Ed Schneider	Toronto Bluejays		
<b>1980</b>			
Ken Smith	N.Y. Yankees		
Jim Weaver	Minn. Twins		
<b>1979</b>			
Craig Patterson	Kansas City		
Joe Nichols	Montreal		
Rick Holloway	Oakland		
<b>1978</b>			
Blane McDonald	Atlanta		
Mark Gilbert	Chicago Cubs		
Brooks Carey	Baltimore		
Bob Benda	Detroit		
<b>1977</b>			
Guillermo Bonilla	Cleveland		
Ben Curry	Cleveland		
Larry Jones	Baltimore		
Terry Kennedy	St. Louis		
Carlos Lezcano	Chicago Cubs		
Jim McArdie	Cincinnati		
Rick McGlone	Kansas City		
Mike McLeod	N.Y. Yankees		
Jackie Smith	Chicago Cubs		
Joe Hicks	Chicago Cubs		
<b>1976</b>			
Craig Eaton	Kansas City		
Jeff Hardy	Chicago Cubs		
Bob Mayer	Cincinnati		
<b>1975</b>			
Jim Busby	Pittsburgh		
Randy Davidson	Cincinnati		
Danny O'Brien	St. Louis		
Larry Rothschild	Cincinnati		
Steve Tebbetts	Cincinnati		
<b>1974</b>			
Ron Herring	Montreal		
Marty Maier	Kansas City		
<b>1973</b>			
John Librandi	Pittsburgh		
Rick Coizie	Cincinnati		
Roger Smith	California		
Rick Snyder	Minnesota		
Rick Langford	Kansas City		
<b>1972</b>			
Dave Nichols	Minnesota		
Dan Roatche	Boston		
Herb Sikes	St. Louis		
<b>1971</b>			
Ron Cash	Detroit		
Al Cleveland	Detroit		
Greg Gromek	Detroit		
Mike Leber	Boston		
Harry Saferight	Philadelphia		
Mac Searce	Philadelphia		
<b>1970</b>			
Gene Ammann	Milwaukee		
John Grubb	San Diego		
Tom Henson	Cincinnati		
Dick Nichols	Boston		
Mike Slade	Texas		
Pat Osburn	Cincinnati		
<b>1969</b>			
Mike Easom	Montreal		
Jim Gurzynski	Los Angeles		
Chuck Hines	Pittsburgh		
Jeff Hogan	Detroit		
George Lott	Montreal		
Dave Moates	Texas		
Craig Skok	Boston		
Dick Gold	Cubs		
Chuck Cone	San Diego		
<b>1968</b>			
Tom Cook	Oakland		
Steve Mastin	Oakland		
Wayne Vincent	Seattle		
LaDon Boyd	Oakland		
<b>1966</b>			
Jim Lyttle	N.Y. Yankees		
Gary Sprague	Cleveland		
Eddie Howell	Kan. City A's		
Dick Fernandez	Kan. City A's		
Randy Brown	California		
Pete Sarron	Cleveland		
Mike Martin	New York Mets		
Maury Hopkins	New York Mets		

# Seminoles All-Americans

Name	Years	All-American Team
Dick Howser	1957-58	First Team (Coaches)
Bob Clem	1959	Second Team (Coaches)
Jack Dull	1961	Third Team (Coaches)
Buddy Teagle	1962	First Team (Coaches)
Mike Augustine	1963	First Team (Coaches)
Woody Woodward	1963	Third Team (Coaches)
Ken Saurez	1964	First Team (Coaches)
Jim Lyttle	1964	First Team (Coaches, Sporting News)
Gary Sprague	1966	Second Team (Sporting News)
Tom Cook	1968	Third Team (Coaches)
Dick Gold	1969	First Team (Sporting News)
Dick Nichols	1970	First Team (Sporting News)
John Grubb	1970	Honorable Mention (Sporting News)
Ron Cash	1970	Honorable Mention (Sporting News)
Pat Osburn	1970	Honorable Mention (Sporting News)
Greg Gromek	1970-71	First Team (CoSIDA Academic)
Carl Gromek	1970	First Team (CoSIDA Academic)
John LiBrandi	1972	Third Team (Coaches)
Danny O'Brien	1975	First Team (CoSIDA Academic) Honorable Mention (Coaches)
Randy Davidson	1975	Honorable Mention (Coaches)
Steve Tebbetts	1975	Honorable Mention (Sporting News)
Jim Busby	1975	Honorable Mention (Sporting News)
Terry Kennedy	1976-77	First Team (Sporting News)
Jaun Bonilla	1976	First Team (Coaches)
Blane McDonald	1978	Second Team (Coaches)
Craig Patterson	1979	Second Team (Coaches)
Mike Fuentes	1980-81	First Team (Coaches, Sporting News)
Jim Weaver	1980	First Team (Sporting News)
Jeff Ledbetter	1981-81	First Team (Sporting News, Collegiate Baseball, Baseball America)
Frank Fazzini	1983	First Team (Freshman All- American)
Doug Little	1983	First Team (Freshman All- American)

### **GOLDEN SPIKE AWARD**

Presented annually to top amateur player in nation by the Baseball Federation of America.

1981 — Mike Fuentes

### **SPORTING NEWS PLAYER OF YEAR**

Selected by Sporting News writers as best collegiate player in country.

1977 — Terry Kennedy

1982 — Jeff Ledbetter

## Summer League: Year Round Baseball for FSU Players

Many Seminole baseball players take advantage of year round baseball by electing to stay in Tallahassee in the summer and play for Jerry's Caterers. Coached by Seminole assistant coach Randy Gailey, Jerry's Caterers gives current players and incoming freshmen the opportunity to play an additional 35-45 games of highly competitive baseball in the summer.

This additional schedule gives the younger player or the new Seminole a chance to gain additional experience while attending summer school at the same time. The schedule is highlighted by an annual trip to the Lenoir National Invitational Tournament in North Carolina.

Jerry's Caterers finished the 1983 season with a 27-11 record and also won the prestigious Lenoir tournament. Sophomore Alan Gentry was named MVP of the tournament and was also selected to the all-tournament team along with newcomers Greg Dennis and Ray Revak.

During the summer season, Bart Mitchell led all hitters with a .389 average; while freshman Paul Sorrento and junior Jeff Ledbetter each hit seven home runs.



**1983 Jerry's Caterers. National Furniture City Invitational Champions.**





# The Record Book

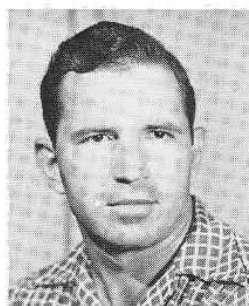
### Charlie Armstrong (1948-51)

Year	Won	Lost	Tied	Pct.
1948	9	8	0	.529
1949	11	8	0	.579
1950	13	7	0	.650
1951	16	6	0	.727
Totals	49	29	0	.628



### Ralph Matherly (1952-54)

Year	Won	Lost	Tied	Pct.
1952	17	4	0	.810
1953	13	10	1	.563
1954	13	8	0	.619
Totals	43	22	1	.659



### Danny Litwhiler (1955-63)

Year	Won	Lost	Tied	Pct.
1955	17	6	0	.739
1956	25	7	0	.781
1957	22	9	0	.710
1958	20	7	0	.741
1959	22	11	0	.667
1960	13	9	0	.591
1961	21	7	0	.750
1962	23	14	0	.622
1963	26	13	0	.667
Totals	189	82	0	.697



### Fred Hatfield (1964-1968)

Year	Won	Lost	Tied	Pct.
1964	23	13	0	.639
1965	32	11	1	.739
1966	39	13	0	.750
1967	32	14	0	.696
1968	35	6	0	.854
Totals	161	57	1	.737



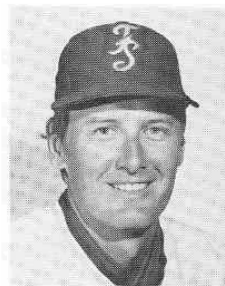
### Jack Stallings (1969-74)

Year	Won	Lost	Tied	Pct.
1969	38	13	1	.726
1970	49	9	1	.839
1971	41	16	0	.719
1972	45	23	0	.662
1973	38	21	0	.644
1974	37	25	0	.597
Totals	248	107	2	.697



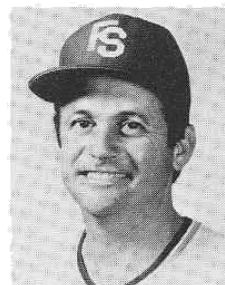
### Woody Woodward (1975-78)

Year	Won	Lost	Tied	Pct.
1975	49	10	0	.831
1976	40	16	0	.714
1977	37	13	0	.740
1978	44	18	0	.710
Totals	170	57	0	.749



### Dick Howser (1979)

Year	Won	Lost	Tied	Pct.
1979	43	17	1	.713



### Mike Martin (1980- )

Year	Won	Lost	Tied	Pct.
1980	51	12	0	.810
1981	56	23	0	.709
1982	56	17	1	.764
1983	55	18	1	.750
Totals	218	70	2	.755





# Seminoles Through The Years

Yr.	Coach	Captains	W-L-T	Runs	Opp.	BA	Opp.
1948	Charlie Armstrong	Ron Nettles	9 8 0	101	121		
1949	Charlie Armstrong	Sam Cox	11 8 0	126	103		
1950	Charlie Armstrong	Bob Trowbridge	13 7 0	122	104		
1951	Charlie Armstrong	Augie Pompelia	16 6 0	161	97	.292	.234
1952	Ralph Matherly	Bob Trowbridge	17 4 0	158	72	.266	.188
1953	Ralph Matherly	Cooter Mills	13 10 1	156	254		
1954	Ralph Matherly	Bob Hudson	13 8 0	164	102	.269	
1955	Danny Litwhiler	Billy Campbell Bob Hudson	17 6 0	189	98	.321	
1956	Danny Litwhiler	Max Long	25 7 0	244	121	.295	
1957	Danny Litwhiler	Carlee Hendrix	22 9 0	232	120	.297	
1958	Danny Litwhiler	Dick Howser	20 7 0	198	104	.295	.208
1959	Danny Litwhiler	Dale Koch	22 11 0	258	166	.282	.231
1960	Danny Litwhiler	Ray Bazzell	13 9 0	183	136	.313	.254
1961	Danny Litwhiler	Frank Davis Jack Dull	21 7 0	203	238	.301	.256
1962	Danny Litwhiler	Ray McShane Bob Madison	23 14 0	254	221	.296	.258
1963	Danny Litwhiler	Al Beccaccio	26 13 0	250	151	.278	.213
1964	Fred Hatfield	Jim Reed	23 13 0	244	171	.273	.247
1965	Fred Hatfield	Gerry Chmielewski	32 11 1	305	179	.281	.253
1966	Fred Hatfield	Dick Fernandez	39 13 0	417	192	.294	.214
1967	Fred Hatfield	Roy Mewbourne	32 14 0	214	155	.234	.220
1968	Fred Hatfield	Chuck Cone Bob Canty	35 6 0	291	120	.284	.215
1969	Jack Stallings	Dick Gold Mike Easom	38 13 1	303	158	.273	.219
1970	Jack Stallings	Dick Nichols	49 9 1	261	144	.277	.186
1971	Jack Stallings	Harry Saferight Ron Cash	41 16 0	341	208	.282	.208
1972	Jack Stallings	Ken Doria Mike Scarce	45 23 0	473	325	.291	.251
1973	Jack Stallings	John Librandi Denny Williams	38 21 0	331	218	.239	.218
1974	Jack Stallings	Randy Davidson	37 25 0	320	269	.268	.232
1975	Woody Woodward	Randy Davidson	49 10 0	371	162	.300	.198
1976	Woody Woodward	Craig Eaton	40 16 0	467	228	.302	.210
1977	Woody Woodward	Larry Jones	37 13 0	459	375	.271	.231
1978	Woody Woodward	Brooks Carey Greg Jones	44 18 0	457	303	.309	.269
1979	Dick Howser	Craig Patterson	43 17 1	494	272	.319	.277
1980	Mike Martin	Don DeLoach Craig Ramsey	51 12 0	630	306	.377	.281
1981	Mike Martin	Mike Fuentes Rick Hatcher	56 23 0	638	407	.303	.273
1982	Mike Martin	Jeff Ledbetter	56 17 1	752	375	.327	.243
1983	Mike Martin	Mike Yastrzemski Rick Figueredo	55 18 1	737	574	.302	.243

## Record Against All Opponents

Team	First Meeting	Last Meeting	Series Standing FSU-OPP-Tie
Alabama	1967	1983	2-2-0
Amherst	1952	1964	7-1-0
Arizona	1963	1980	1-2-0
Army	1975	1975	1-0-0
Auburn	1954	1983	56-36-0
Austin-Peay	1979	1979	2-0-0
Belmont Abbey	1969	1969	2-0-0
Biscayne College	1976	1976	4-0-0
Bowling Green	1970	1970	1-0-0
Bradley	1950	1950	1-1-0
Brooklyn	1980	1980	1-0-0
Brown	1971	1971	5-1-0
Campbellsville	1981	1981	1-0-0
Chicago State	1972	1972	3-0-0
Cincinnati	1953	1983	8-0-0
Clemson	1958	1983	24-14-1
Cleveland State	1981	1982	3-0-0
Columbus College	1974	1976	5-0-0
Connecticut	1957	1957	0-1-0
Cumberland	1973	1973	2-0-0
Dartmouth	1970	1970	1-0-0
Davidson	1954	1954	1-0-0
Dayton	1980	1980	1-0-0
Delaware	1979	1979	0-1-0
Duke	1954	1959	15-9-0
East Carolina	1962	1970	4-2-0
East Tennessee	1978	1978	2-0-0
Eastern Illinois	1980	1980	1-0-0
Eastern Michigan	1975	1982	0-2-0
Farleigh Dickinson	1973	1973	2-0-0
Flagler	1980	1982	4-1-0
Florida	1956	1983	61-52-0
Florida A & M	1971	1979	12-0-0
Florida International	1973	1975	5-1-0
Florida Southern	1949	1974	29-13-1
Furman	1955	1969	12-1-0
George Washington	1958	1959	2-0-0
Georgia	1951	1982	27-3-0
Georgia Southern	1948	1983	88-30-0
Georgia Southwestern	1976	1976	3-1-0
Georgia State	1981	1983	15-2-0
Georgia Tech	1959	1979	18-5-0
Hawaii	1977	1980	1-2-0
Holy Cross	1970	1970	2-0-0
Howard	1976	1976	1-1-0
Illinois	1956	1970	5-0-0
Indiana	1956	1956	2-0-0
Ithaca	1957	1962	3-0-0
Jackson State	1981	1981	1-0-0
Jacksonville State	1953	1973	3-0-0
Jacksonville University	1964	1983	49-19-0
Kearney State	1977	1977	2-0-0
Kentucky	1965	1977	6-1-0
Kentucky Wesleyan	1968	1968	2-0-0
Kenyon	1952	1952	2-0-0

**Record Against All Opponents** (continued)

Lafayette	1971	1971	3-0-0
Lenoir-Rhyne	1980	1980	1-0-0
Lewis	1974	1974	0-3-0
LSU	1955	1983	5-3-0
Louisville	1977	1983	6-2-0
Loyola (La.)	1952	1968	10-0-0
Marietta	1973	1977	1-1-0
Marshall	1978	1978	0-1-0
Maryland	1965	1970	4-0-0
Memphis State	1977	1983	13-6-0
Mercer	1948	1983	25-6-0
Mercer-Atlanta	1974	1982	9-0-0
Miami	1951	1983	62-41-2
Michigan	1959	1962	1-1-0
Michigan State	1957	1975	9-6-0
Middle Georgia	1948	1948	2-0-0
Millsaps	1949	1949	1-0-0
Minnesota	1981	1981	1-0-0
Mississippi	1949	1972	6-1-0
Mississippi College	1948	1951	13-4-0
Mississippi State	1964	1970	5-2-0
Missouri-Rolla	1980	1980	2-0-0
Monmouth	1980	1980	1-0-0
Morehead State	1978	1978	2-0-0
Navy	1960	1966	3-4-0
New Orleans	1980	1980	1-0-0
New York University	1970	1970	2-0-0
Nevada-Las Vegas	1977	1983	4-5-0
Niagra	1974	1976	7-0-0
North Carolina	1956	1970	14-4-0
North Carolina State	1962	1968	2-4-0
UNC-Wilmington	1974	1974	3-0-0
Northeast Louisiana	1964	1964	1-0-0
Northern Illinois	1971	1971	1-0-0
Northern Kentucky	1980	1980	1-0-0
North Central	1977	1977	3-0-0
Notre Dame	1956	1958	3-0-0
Oakland	1978	1979	4-0-0
Oglethorpe	1949	1949	0-1-0
Ohio	1970	1974	1-1-0
Ohio State	1960	1982	4-3-0
Oklahoma	1982	1982	0-1-0
Olivet	1977	1977	2-0-0
Otterbein	1976	1982	7-0-0
Parsons	1967	1967	0-2-0
Penn State	1957	1969	7-2-0
Pittsburgh	1983	1983	3-0-0
Richmond	1972	1972	1-0-0
Rider College	1970	1974	2-0-0
Ripon	1981	1981	2-0-0
Rollins	1948	1973	11-11-0
Rose Hulman	1978	1978	4-0-0
Rutgers	1966	1966	1-0-0
Santa Clara	1962	1962	1-1-0
Savannah	1948	1948	1-1-0
Seton Hall	1975	1975	0-1-0
South Alabama	1969	1983	20-16-1
South Carolina	1969	1981	4-4-0
South Florida	1969	1983	37-7-0



**Record Against All Opponents (continued)**

Southeastern Louisiana	1953	1953	1-1-0
Southeast Missouri	1982	1982	1-0-0
Southern	1982	1982	2-0-0
Southern California	1963	1977	1-3-0
Southern Illinois	1968	1970	6-1-0
Southern Mississippi	1982	1983	5-0-0
Southwestern Louisiana	1976	1983	4-0-0
Springfield	1967	1968	4-0-0
Springhill	1966	1966	4-0-0
St. Francis (Ill.)	1979	1979	3-1-0
St. Joseph's	1972	1973	4-0-0
St. Leo	1969	1979	28-3-0
St. Louis	1965	1981	1-1-0
St. Xavier	1982	1983	2-0-0
Stetson	1949	1979	31-18-0
Tampa	1949	1975	22-4-1
Tennessee	1951	1974	4-3-0
Tennessee Martin	1979	1979	2-0-0
Tennessee Tech	1983	1983	2-0-0
Texas	1965	1970	2-1-0
Troy State	1948	1980	10-2-0
Tulane	1967	1983	21-14-0
Union	1970	1970	5-0-0
Valdosta State	1963	1982	21-4-1
Valparaiso	1982	1982	1-0-0
Vanderbilt	1972	1972	2-1-0
Virginia	1972	1972	2-0-0
Virginia Tech	1967	1982	5-2-0
Wake Forest	1962	1983	18-5-0
Western Kentucky	1978	1980	5-0-0
Western Michigan	1959	1974	6-8-0
West Florida	1981	1982	3-0-0
West Virginia	1956	1962	3-2-0
William & Mary	1967	1967	1-0-0
Wingate	1980	1983	6-0-0
Wisconsin	1955	1958	8-1-0
Wright State	1979	1980	3-1-0
Yale	1957	1957	2-0-0

**OTHER AMATEURS**

Camp Lejune	1949	1954	3-1-0
Jacksonville Navy	1953	1954	2-2-0
Pensacola Navy	1965	1965	3-0-0
Valdosta Red Sox	1968	1968	4-0-0

**PROFESSIONAL TEAMS**

Birmingham (AA)	1968	1968	0-3-0
Knoxville (A)	1958	1958	1-0-0
Pittsfield (AA)	1968	1968	0-3-0
Tallahassee Citizens	1951	1951	1-0-0
Tallahassee Rebels	1954	1954	1-1-0
Pawtucket (AAA)	1970	1970	0-1-0
Baltimore (AL)	1970	1970	0-1-0
New York (AL)	1978	1978	0-1-0
Atlanta (NL)	1981	1982	1-1-0

# Single Season Leaders

## Leading Hitters

1948	Jack Wilson	.298	(20-67)
1950	Ron Melton	.361	(30-83)
1951	Lee Bailey	.352	(32-91)
1952	Ralph Blinn	.317	(20-63)
1953	Cooter Mills	.319	(29-91)
1954	Cooter Mills	.368	(32-87)
1955	Riley Seevers	.415	(27-65)
1956	Dick Howser	.415	(27-65)
1957	Dick Howser	.364	(32-88)
1958	Owen McCarron	.365	(35-96)
1959	Bob Clem	.436	(44-101)
1960	Bob Clem	.383	(36-94)
1961	Jack Dull	.370	(40-108)
1962	Woody Woodward	.365	(54-148)
1963	Mike Augustine	.399	(65-163)
1964	Ken Saurez	.404	(44-109)
1965	Gary Nichols	.333	(29-87)
1966	Gary Sprague	.369	(74-195)
1967	Bob Canty	.340	(18-53)
1968	Mike Easom	.386	(56-145)
1969	Dick Nichols	.336	(45-138)
1970	Dick Nichols	.338	(80-237)
1971	Ron Cash	.352	(58-165)
1972	Tom Rosa	.338	(69-204)
1973	Tom Rosa	.317	(66-208)
1974	Jaun Bonilla	.351	(82-232)
1975	Steve Tebbetts	.374	(76-203)
1976	Joe Hicks	.391	(45-115)
1977	Carlos Lezcano	.346	(63-182)
1978	Blane McDonald	.393	(79-201)
1979	Craig Patterson	.397	(95-239)
1980	Mike Fuentes	.408	(95-233)
1981	Mike Fuentes	.353	(106-300)
1982	Jeff Ledbetter	.381	(119-312)
1983	Frank Fazzini	.366	(86-235)

## Home Run Leaders

1.	Jeff Ledbetter	42	1982
2.	Mike Fuentes	27	1981
3.	Chris Cawthon	26	1982
4.	Jeff Ledbetter	23	1981
5.	Terry Kennedy	21	1976
	Mike Fuentes	21	1980
7.	Jeff Ledbetter	19	1980
8.	Jim Weaver	18	1980
	Mark Lacy	18	1982
10.	Frank Fazzini	17	1983
	Rick Figueredo	17	1983

## No-Hitters

1958	Frank Slusser vs. Miami	(18-0)
1967	Wayne Vincent vs. Georgia Southern	(7-0)
1968	Jeff Hill vs. Springfield	(18-0)
1968	Gene Ammann, Lin Garrett vs. Wake Forest	(3-0)
1970	Gene Ammann vs. South Florida	(7-0)
1977	Mike McLeod vs. Olivet	(23-0)

## RBI Leaders

1.	Jeff Ledbetter	124	1982
2.	Mike Fuentes	106	1981
3.	Chris Cawthon	103	1982
4.	Jeff Ledbetter	95	1981
5.	Joe Licata	91	1981
6.	Don DeLoach	87	1982
7.	Mike Fuentes	83	1980
8.	Jim Weaver	75	1981
9.	Jeff Ledbetter	73	1980
10.	Terry Kennedy	64	1976

# Florida State Team Records

## GAMES PLAYED

Most in Season - 79 in 1981 (56-23)  
Fewest in Season - 17 in 1948 (9-8)

## VICTORIES

Most in Season - 56 in 1981 (56-23)  
56 in 1982 (56-17-1)  
Fewest in Season - 9 in 1948 (9-8)

## WINNING PERCENTAGE

Highest in Season - .854, 1968 (35-6)  
Lowest in Season - .529, 1948 (9-8)

## WINNING STREAK

Longest - 21, 1968 (March 23-April 4)  
21, 1969 (March 29-April 24)

## LOSING STREAK

Longest - 5 in 1974

## ATTENDANCE

Single Home Game - 5,131, vs. Alabama, 1983  
Season Record Home Games - 71,050, 1983 (46 dates)  
Season Record All Games - 104,066, 1982 (70 dates)

## SHUTOUTS

Fewest Times Shutout in Season - 0, 1982 (74 games) and several other seasons with fewer games  
Most Times Shutout in Season - 5, 1974 (63 games)  
Longest Streak Without Being Shutout - 115 Games in 1980-81 (FSU has scored in 64 consecutive games entering the 1984 season)  
Most Recorded in Season — 15, 1970 (59 games)  
15, 1975 (59 games)  
Most Consecutive — 4, 1970 (59 games)  
4, 1973 (59 games)  
Consecutive Scoreless Innings Recorded — 40, 1973

## EXTRA INNING GAMES

Most in Season - 6, 1974  
6, 1981  
Longest Game - 15 Innings on numerous occasions

## AT BATS

Game - 53, vs. Hawaii, 1977  
Both Teams — 107, vs. Hawaii 1977 (FSU 53, Hawaii 54)  
Most in Season — 2,664, in 1981 (79 games)  
Fewest in Season — 752, 1951 (18 games)  
Most Plate Appearances in Inning — 19, vs. Cleveland State 1982  
19, vs. Jacksonville 1976

## RUNS

Most in Inning — 16 vs. Cleveland State 1982  
Most in Game — 31, vs. Georgia State 1982  
Most Allowed in Game — 24, vs. Clemson 1959  
Most Combined — 39, vs. Cleveland State 1982 (FSU 24, CS 15)  
Largest Winning Margin — 26, vs. Dayton 1980 (FSU 28, D 2)  
Largest Losing Margin — 22, vs. Clemson 1959 (C 24, FSU 2)  
Most Runs in Season - 752, 1982 (74 games)  
Most Runs Allowed in Season — 407, 1981 (79 games)  
Fewest Runs in Season - 101, 1948 (17 games)  
Fewest Runs Allowed in Season - 72, 1952 (21 games)

## HITS

Most in Inning - 11, vs. Jacksonville, 1976  
11, vs. Missouri-Rolla, 1980  
Most Allowed in Inning — 8, South Florida 1974  
Most in Game - 23, vs. Mississippi State, 1966  
23, vs. Florida, 1979  
23, vs. Georgia State, 1982 (2/14)  
23, vs. Georgia State, 1982 (4/4)



**Team Records (continued)**

- Most Allowed in Game — 23, vs. Nevada-Las Vegas 1978
- Most in Season - 839 in 1982 (74 games)
- Most Allowed in Season — 716, 1981 (79 games)
- Fewest in Season - 186 in 1952 (21 games)
- Fewest Allowed in Season — 130, 1952 (21 games)

**DOUBLES**

- Most in Game — 8, Brooklyn College 1980
- Most Allowed in Game — 6, several teams
- Most Combined — 10 vs. Cleveland State 1982 (FSU 5, CS 5)
- Most in Season — 159, 1982 (74 games)
- Most Allowed in Season — 115, 1982 (74 games)
- Fewest in Season — 24, 1951 (18 games)
- Fewest Allowed in Season — 19, 1951 (18 games)

**TRIPLES**

- Most in Game - 5, vs. Western Kentucky, 1968  
5, vs. Georgia State, 1982
- Most Allowed in Game — 3, several times
- Most Combined — 5, vs. Western Kentucky 1968 (FSU 5, WK 0)  
5, vs. Georgia State 1982 (FSU 5, GS 0)
- Most in Season - 35, 1969 (52 games)  
35, 1972 (68 games)
- Most Allowed in Season — 26, 1980 (63 games)
- Fewest in Season - 9, 1959 (33 games)

**HOME RUNS**

- Most in Game - 7, vs. Missouri-Rolla, 1980  
7, vs. Georgia State, 1982
- Most Allowed in Game — 5, vs. Florida 1981
- Most by Both Teams - 8, vs. Georgia State, 1982 (FSU 7, GS 1)
- Most in Season - 131, 1982 (74 games)
- Most Allowed in Season — 65, 1983 (74 games)
- Fewest in Season - 3, 1954 (21 games)
- Fewest Allowed in Season — 4, 1951 (18 games)
- Most Grandslams in Season - 5, 1979 (61 games)

**TOTAL BASES**

- Most in Game - 51, vs. Georgia State, 1982
- Most Combined - 75, vs. Georgia State, 1982 (FSU 51, GS 24)
- Most in Season - 1457, 1982 (74 games)
- Fewest in Season - 250, 1952 (21 games)

**SLUGGING AVERAGE**

- Highest in Season - .568, 1982 (74 games)

**RUNS BATTED IN**

- Most in Game - 27, vs. Georgia State, 1982
- Most by Both Teams - 32, vs. Georgia State, 1982 (FSU 27, GS 5)  
32, vs. Cleveland State, 1982 (FSU 23, CS 9)
- Most in Season - 658, 1982 (74 games)

**BASE ON BALLS**

- Most in Game - 20, vs. Cleveland State, 1982
- Most Allowed — 18, vs. Stetson 1976
- Most Combined - 26, vs. Valdosta State, 1980 (FSU 10, VS 16)
- Most in Season - 524, 1982 (74 games)
- Most Allowed in Season — 340, 1972 (68 games)
- Fewest in Season - 93, 1955 (22 games)

**STRIKEOUTS**

- Most in Game - 18, vs. Georgia 1968
- Most Recorded in Game — 23, vs. Furman 1956
- Most Combined - 29, vs. Georgia Southern, 1970 (GS 16, FSU 13)  
29, vs. Georgia, 1968 (FSU 18, G 11)
- Most in Season - 337, 1981 (79 games)
- Most Recorded in Season — 528, 1970 (59 games)
- Fewest in Season - 93, 1955 (22 games)
- Fewest Recorded in Season — 126, 1954 (21 games)

## **Team Records** (continued)

### **BATTING AVERAGE**

Highest in Season - .337, 1980 (63 games)  
Highest Allowed in Season — .281, 1980 (63 games)  
Lowest in Season - .237, 1967 (46 games)  
Lowest Allowed in Season — .186, 1970 (59 games)

### **STOLEN BASES**

Most in Game - 11, vs. Stetson, 1957  
Most Allowed in Game — 13, vs. Stetson 1973  
Most Combined - 13, vs. Stetson, 1973 (S 13, FSU 0)  
Most in Season - 129, 1983 (74 games)  
Most Allowed in Season — 84, 1982 (74 games)  
Fewest in Season - 20, 1954 (21 games)  
Fewest Allowed in Season - 7, 1962 (28 games)  
7, 1968 (41 games)

### **PUTOUTS**

Most in Season - 1997, 1981 (79 games)

### **ASSISTS**

Most in Season - 928, 1981 (79 games)  
Fewest in Season - 226, 1960 (22 games)

### **ERRORS**

Most in Game — 6, several times. Latest Florida (1983) and UNLV (1983)  
Most by Opponent — 5, several teams. Latest UNLV (1983)  
Most Combined — 11, vs. South Carolina 1981 (FSU 6, SC 5)  
11, vs. Nevada-Las Vegas 1983 (FSU 6, UNLV 5)  
Most in Season - 146, 1981 (79 games)  
Most by Opponent in Season - 163, 1983 (74 games)

### **FIELDING AVERAGE**

Highest in Season - .965, 1979 (77 errors in 2210 chances)  
Lowest in Season - .915, 1959 (33 games)

### **DOUBLE PLAYS**

Most in Game - 4, vs. Tulane 1983  
4, vs. Mercer, 1982  
4, vs. South Florida 1979  
Most in Season - 88, 1983 (74 games)

### **PITCHING APPEARANCES**

Most in Game - 7, vs. Georgia, 1982  
Most in Season - 212, in 1982 (74 games)

### **COMPLETE GAMES**

Most in Season - 27, 1969 (52 games)

### **INNINGS PITCHED**

Most in Season - 665.2, 1981 (79 games)  
Most by Opponent — 642.1, 1981 (79 games)

### **SAVES**

Most in Season - 27, 1971 (57 games)

### **NO HITTERS**

Most in Season - 2, 1968 (41 games)

### **ONE HITTERS**

Most in Season - 6, 1970 (59 games)

### **TWO HITTERS**

Most in Season - 6, 1970 (59 games)  
6, 1976 (56 games)

### **EARNED RUNS**

Most Allowed in Season — 319, 1981 (79 games)  
Consecutive Innings Without Allowing — 48, 1976

### **EARNED RUN AVERAGE**

Highest Allowed in Season - 4.31, 1981 (79 games)  
Lowest Allowed in Season - 1.49, 1970 (59 games)

# FSU Individual Records

## GAMES PLAYED

- Most in Season - 78, Mike Fuentes, 1981
- Most in Career - 279, Mike Yastrzemski, 1980-83
- Consecutively in Season - 74, Jody Reed, 1983
  - 74, Rick Figueredo, 1983
  - 74, Matt Robinson, 1983
  - 74, Jeff Ledbetter, 1982
  - 74, Mark Lacy, 1982
- Consecutively in Career - 167, Don DeLoach, 1977-81

## BATTING AVERAGE

- Highest in Season (0-125 at-bats) - .436, Bob Clem, 1959
  - (126-199 at-bats) — .399, Mike Augustine, 1963
  - (200-250 at-bats) — .409, Mike Fuentes, 1980
  - (251-325 at-bats) — .381, Jeff Ledbetter, 1982
- Highest in Career (100-600 at-bats) - .410, Bob Clem, 1959-60
  - (601-999 at-bats) — .373 Mike Fuentes, 1978-81

## SLUGGING PERCENTAGE

- Highest in Season - .875, Jeff Ledbetter, 1982 (273 TB/312 AB)
- Highest in Career - .727, Jeff Ledbetter, 1979-82 (704 TB/968 AB)

## AT BATS

- Most in Game - 7, several players
- Most in Season - 312, Jeff Ledbetter, 1982
- Most in Career - 968, Jeff Ledbetter, 1979-82

## RUNS SCORED

- Most in Game - 6, Mark Gilbert vs. Ohio State, 1978
- Most in Season - 105, Jeff Ledbetter, 1982
- Most in Career - 285, Jeff Ledbetter, 1979-82

## HITS

- Most in Inning - 2, by several players
- Most in Game - 5, by 13 players, most recently by Mark Lacy and Hal Cohen vs. Georgia State (4/4/82)
- Consecutive Hits — 8, four players, most recently by Mark Lacy, 1982
- Consecutive Games — 24, Rick Figueredo, 1982
- Consecutive Times on Base — 12, Mark Gilbert, 1978
  - 12, Guillermo (Jaun) Bonilla, 1976
- Most in Season - 119, Jeff Ledbetter, 1982
- Most in Career - 335, Jeff Ledbetter, 1979-82

## DOUBLES

- Most in Game - 4, Joe Licata vs. Georgia State, 1981
- Most in Season - 29, Don DeLoach, 1980
- Most in Career - 62, Mike Yastrzemski, 1980-83
  - 62, Jeff Ledbetter, 1979-82

## TRIPLES

- Most in Game - 2, by six players, most recently by Mark Lacy vs. Georgia State, 1981
- Most in Season - 9, Dick Gold, 1969
- Most in Career - 12, Mike Yastrzemski, 1980-83
  - 12, Dick Gold, 1967-69
  - 12, Bob Hudson, 1953-55

## HOME RUNS

- Most in Game - 4, Jeff Ledbetter vs. Georgia State, 1982
- Most in Season - 42, Jeff Ledbetter, 1982
- Most in Career - 97, Jeff Ledbetter, 1979-82
- Most Grand Slams in Game - 2, Craig Patterson vs. Wright State, 1979



## **Individual Records, (continued)**

### **HIT BY PITCHES**

Most in Game — 3, Mark Barineau, 1982  
Most in Season — 13, Mark Barineau, 1983  
Most in Career — 31, Mark Barineau, 1981-83

### **TOTAL BASES**

Most in Game - 17, Jeff Ledbetter vs. Georgia State, 1982  
Most in Season - 273, Jeff Ledbetter, 1982  
Most in Career - 704, Jeff Ledbetter, 1979-82

### **RUNS BATTED IN**

Most in Game - 9, Mike Fuentes vs. Jacksonville, 1979  
Most in Season - 124, Jeff Ledbetter, 1982  
Most in Career - 346, Jeff Ledbetter, 1979-82

### **BASE ON BALLS**

Most in Game - 5, by four players, most recently by Lionel Martinez  
vs. Virginia Tech, 1980  
Most in Season - 80, Mark Barineau, 1982  
80, Lionel Martinez, 1980  
Most in Career - 177, Jeff Ledbetter, 1979-82

### **STRIKEOUTS**

Most in Game - 5, Dick Nichols vs. Georgia Southern, 1970  
5, Dick Nichols vs. Southern California, 1970  
Most in Season - 58, Walt Sumner, 1969  
Most in Career - 131, Carlos Lezcano, 1974-77  
Fewest in Season (75 AB Min.) — 1, Cooter Mills, 1974 (87 AB)

### **STOLEN BASES**

Most in Game - 6, Chip Bifano vs. Kearney State, 1977  
Most in Season - 48, Mark Gilbert, 1978  
Most in Career - 81, Mark Barineau, 1981-83

### **PUTOUTS**

Most in Season - 552, Rick Figueredo, 1983  
Most in Career - 970, Jeff Ledbetter, 1979-82

### **ASSISTS**

Most in Season - 236, Don DeLoach, 1981  
Most in Career - 596, Don DeLoach, 1977-81

### **APPEARANCES**

Most in Season - 40, Bruce Tanner, 1983  
Most in Career - 63, Larry Jones, 1974-77

### **STARTS**

Most in Season - 18, Doug Little, 1983  
18, Marty Rice, 1972  
Most in Career - 55, Larry Jones, 1974-77

### **RELIEF APPEARANCES**

Most in Season - 40, Bruce Tanner, 1983  
Most in Career - 58, Bruce Tanner, 1982-83

### **COMPLETE GAMES**

Most in Season - 12, Brooks Carey, 1978 (15 starts)  
12, Danny O'Brien, 1975 (17 starts)  
Most in Career - 23, Wayne Vincent, 1966-68

## **Individual Records, (continued)**

### **INNINGS PITCHED**

Most in Season - 142.1, Marty Rice, 1972  
Most in Career - 399, Larry Jones, 1974-77

### **SAVES**

Most in Season - 18, Mac Scarce, 1971  
Most in Career - 30, Mac Scarce, 1970-71

### **SHUTOUTS**

Most in Season - 8, Gene Ammann, 1970  
Most in Career - 11, Gene Ammann, 1968-70  
Most Consecutive Shutouts - 4, Gene Ammann, 1970  
Most Consecutive Scoreless Innings - 41.1, Gene Ammann, 1970

### **VICTORIES**

Most in Season - 15, Larry Jones, 1975 (15-1)  
15, Danny O'Brien, 1975 (15-2)  
15, Gene Ammann, 1970 (15-0)  
Most in Career - 39, Larry Jones, 1974-77 (39-10)  
Consecutive in Season - 15, Larry Jones, 1975  
15, Gene Ammann, 1970  
Consecutive in Career - 18, Larry Jones, 1974-75

### **LOSSES**

Fewest in Season - 0, Gene Ammann, 1970 (15-0) and several others  
with fewer decisions  
Fewest in Career (30 decisions min.) - 2, Gene Ammann, 1968-70  
(31-2)  
Most in Season - 6, Danny O'Brien, 1974  
6, Marty Howell, 1964  
Most in Career - 13, Marv Stringfellow, 1965-67 (29 decisions)

### **EARNED RUN AVERAGE**

Lowest in Season - 0.66, Gene Ammann, 1970 (10 ER in 137 innings)  
Lowest in Career - 1.45, Wayne Vincent, 1966-68 (58 ER in 292 innings)  
Highest in Season (30 innings min.) - 6.86, David Smalley, 1982  
Highest in Career - 5.04, David Smalley, 1980-83

### **RUNS ALLOWED**

Fewest in Season - 18, Steve Mastin, 1968 (107 innings)  
18, Bruce Tanner, 1983 (66.1 innings)  
Most in Season - 60, Jeff Gray, 1983 (109.1 innings)  
Most in Career - 152, Larry Jones, 1974-77 (399 innings)

### **EARNED RUNS ALLOWED**

Fewest in Season - 8, Max Long, 1956 (45 innings)  
Most in Season - 53, Clem Freeman, 1981 (86.2 innings)  
53, Jeff Gray, 1983 (109.1 innings)  
Most in Career - 109, Jeff Gray, 1981-83 (234 innings)

### **HITS ALLOWED**

Fewest in Season — 13, Mac Scarce, 1971 (33.1 innings)  
Most in Season - 127, Marty Rice, 1972 (142.2 innings)  
Most in Career - 279, Bill Fuller, 1970-73 (293.1 innings)

### **HOME RUNS ALLOWED**

Most in Season - 17, Jeff Gray, 1983  
Most in Career — 33, Jeff Gray, 1981-83

### **STRIKEOUTS**

Most in Game - 14, Tony Avable vs. Furman, 1956  
Most in Season - 154, Pat Osburn, 1970  
Most in Career - 345, Larry Jones, 1974-77

### **BASE ON BALLS ALLOWED**

Most in Season - 72, Dave Fernald, 1972 (105.2 innings)  
Most in Career - 236, Larry Jones, 1974-77 (399 innings)

# NCAA Record Book



## TEAM

- GAMES PLAYED** — 91, San Diego State, 1982
- LONGEST GAME** — 22 innings, Colorado (2), Nebraska (1), 1974
- MOST VICTORIES** — 73, Wichita State, 1982
- MOST LOSSES** — 50, Long Beach State, 1980
- LONGEST WINNING STREAK** — 34 games, Texas, 1977
- LONGEST LOSING STREAK** — 30, Virginia Military Institute, 1981
- MOST SHUTOUTS** — 24, Arizona State, 1974
- MOST GAMES WITHOUT BEING SHUTOUT** — 264, Georgia Tech, 1976-83
- AT-BATS** — (Season) — 2,988, San Diego State, 1982
- AT-BATS** — (Game) — 78, Colorado (vs. Nebraska), 1974
- AT-BATS** — (Game-Combined) — 155, Colorado (78) vs. Nebraska (77), 1974
- RUNS** — (Season) — 858, Wichita State, 1982 (87 games)  
(FSU fourth on all-time list, 752 runs in 1982)
- RUNS** — (Game) — 41, Georgia Tech (41) vs. Earlham (0), 1975  
41, Clemson (41) vs. North Carolina State (9), 1979
- RUNS** — (Game-Combined) — 62, Denver (33) vs. Air Force (29), 1968
- RUNS** — (Innings) — 21, Penn (vs. Franklin & Marshall), 1983
- BATTING AVERAGE** — .384, Wichita State, 1979
- HITS** — (Season) — 989, Wichita State, 1982
- HITS** — (Game) — 41, Memphis State (vs. Delta State), 1978
- HITS** — (Game-Combined) — 59, Air Force (30) vs. Denver (29), 1968
- HITS** — (Inning) — 20, San Jose State (vs. Reno), 1980
- DOUBLES** — (Season) — 181, Arizona State, 1976  
181, Wichita State, 1979
- DOUBLES** — (Game) — 11, Wichita State (vs. Augustana), 1980  
11, Jacksonville (vs. Mariana), 1983
- DOUBLES** — (Game-Combined) — 12, Mississippi State (9) vs. Vanderbilt (3), 1966
- TRIPLES** — (Season) — 67, Wichita State, 1967
- TRIPLES** — (Game) — 6, several occasions
- TRIPLES** — (Game-Combined) — 7, Howard (4) vs. Clemson (3), 1978
- HOME RUNS** — (Season) — 131, Florida State, 1982
- HOME RUNS** — (Game) — 10, Virginia (vs. Maryland), 1978
- HOME RUNS** — (Game-Combined) — 12, Denver (8) vs. Air Force (4), 1968
- TOTAL BASES** — (Season) — 1,588, Wichita State, 1982  
(FSU sixth on all-time list; 1,457 in 1982)



## **NCAA Records** *(continued)*

- TOTAL BASES** — (Game) — 59, Virginia Tech (vs. Marshall ), 1960
- TOTAL BASE** — (Game-Combined) — 104, Denver (56) vs. Air Force (48), 1968
- RBI**s — (Season) — 755, Wichita State, 1981  
(FSU fourth on all-time list; 658, 1982)
- RBI**s — (Game) — 37, Clemson (vs. NC State), 1979
- SLUGGING PERCENTAGE** — (Season) — .667, Northern Colorado, 1981
- STRIKEOUTS** — (Season) — 467, San Diego State, 1982
- STRIKEOUTS** — (Game) — 24, Furman (vs. Florida State), 1956
- WALKS** — (Season) — 555, Wichita State, 1982  
(FSU fifth on all-time list; 524, 1982)
- INNINGS PITCHED** — (Season) — 756, San Diego State, 1982
- COMPLETE GAMES** — (Season) — 46, Wichita State, 1982
- SAVES** — (Season) — 28, South Alabama, 1971
- LOWEST ERA** — (1-24 games) — 0.94 Bradley, 1954  
(25-49 games) — 0.65, Missouri, 1964  
(50 + games) — 1.25, Pan American, 1972
- HITS ALLOWED** — (Fewest) — 79, MIT, 1972  
(Most) — 716, Florida State, 1981
- STRIKEOUTS** — (Season) — 732, Arizona State, 1972
- STRIKEOUTS** — (Game) — 26, Mississippi A&M (vs. LSU), 1909
- HIGHEST FIELDING AVERAGE** — .985, West Virginia, 1971
- MOST PUTOUTS** — 2,268, San Diego State, 1982
- MOST ASSISTS** — 1,027, San Diego State, 1982
- MOST ERRORS** — 158, Texas-El Paso, 1980
- MOST ERRORS** — (Game) — 13, Princeton (vs. Lafayette), 1946
- MOST TOTAL CHANCES** — 3,423, San Diego State, 1982  
(FSU fifth on all-time list; 2912, 1983)
- DOUBLE PLAYS** — 111, UCLA, 1982  
(FSU fifth on all-time list; 88, 1983)
- DOUBLE PLAYS** — (Game) — 7, Miami (vs. Southern Illinois), 1976

## **INDIVIDUAL RECORDS**

- GAMES PLAYED** — (Season) — 90, Rigo Rodriguez, San Diego State, 1982
- GAMES PLAYED** — (Career) — 288, Phil Stephenson, Wichita State, 1979-82  
(FSU's Mike Yastrzemski fourth; 279, 1980-83)
- BATTING AVERAGE** — (Season 1-99 AB) — .546, Jeff Torborg, Rutgers, 1963  
(Season 100-199 AB) — .546, Greg Daniels, Alcorn St., 1983  
(Season 200 + AB) — .551 Keith Hagman, New Mexico, 1980
- AT-BATS** — (Season) — 355, Jim Thomas, Wichita State, 1982
- AT-BATS** — (Career) — 1,062, Jim Thomas, Wichita State, 1979-82  
(FSU's Jeff Ledbetter fifth, 968; 1979-82)
- AT-BATS** — (Game) — 10, several players

**RUNS** — (Career) — 420, Phil Stephenson, Wichita State, 1979-82

**RUNS** — (Season) — 125, Loren Hibbs, Wichita State (1982)  
(FSU's Jeff Ledbetter fifth; 105, 1982)

**RUNS** — (Game) — 8, Kurt Wittmayer, San Diego State (vs. Utah) 1975

**HITS** — (Career) — 418, Phil Stephenson, Wichita State, 1979-82  
(FSU's Jeff Ledbetter fourth; 335, 1979-82)

**HITS** — (Season) — 126, Hubie Brooks, Arizona, 1978

**HITS** — (Game) — 9, John McBroom, Air Force (vs. Colorado College),  
1967

**HITS** — (Inning) — 3, by several players

**DOUBLES** — (Career) — 91, Phil Stephenson, Wichita State, 1979-82

**DOUBLES** — (Season) — 34, Joe Carter, Wichita State, 1980

**DOUBLES** — (Game) — 5, Tom Vanisdestine, Maine (vs. Miami), 1981

**TRIPLES** — (Career) — 31, Charles Shoemaker, Arizona, 1959-61

**TRIPLES** — (Season) — 17, Keith Hagman, New Mexico, 1980

**TRIPLES** — (Game) — 3, Several Players

**HOME RUNS** — (Career) — 97, Jeff S. Ledbetter, Florida State, 1979-82  
(FSU's Mike Fuentes second; 64, 1978-81)

**HOME RUNS** — (Season) — 42, Jeff Ledbetter, Florida State, 1982  
(FSU's Mike Fuentes fifth; 27, 1981 and  
FSU's Chris Cawthon sixth; 26, 1982)

**HOME RUNS** — (Game) — 4, five players including Jeff Ledbetter,  
Florida State, 1982

**LONGEST HITTING STREAK** — 47, Phil Stephenson, Wichita State

**CONSECUTIVE TIMES ON BASE** — 15, Deacon Winters, Air Force, 1980  
(FSU's Jaun Bonilla fourth; 12, 1976)

**RBI**s — (Career) — 346, Jeff Ledbetter, Florida State 1979-82

**RBI**s — (Season) — 130, Russ Mormon, Wichita State, 1982  
(FSU's Jeff Ledbetter second; 124, 1982 and  
FSU's Chris Cawthon sixth; 103, 1982)

**RBI**s — (Game) — 12, John McBroom, Air Force (vs. Colorado College),  
1967

**TOTAL BASES** — (Career) — 730, Phil Stephenson, Wichita State,  
1979-82  
(FSU's Jeff Ledbetter second; 704, 1979-82)

**TOTAL BASES** — (Season) — 273, Jeff Ledbetter, Florida State, 1982

**TOTAL BASES** — (Game) — 19, John McBroom, Air Force (vs. Colorado  
1967)

**SLUGGING PERCENTAGE** — (Career) — .811, Charlie Harrison, Texas  
Tech, 1961-62

**SLUGGING PERCENTAGE** — (Season 1-99 AB) — 1.100 Dave Simonis,  
Penn State, 1978  
(100-199 AB) — 1.098, Deacon Winters,  
Air Force, 1980  
(200 + AB) — .875, Jeff Ledbetter, Florida  
State, 1982

**STOLEN BASES** — (Career) — 206, Phil Stephenson, Wichita State,  
1979-82

**STOLEN BASES** — (Season) — 87, Phil Stephenson, Wichita State, 1982

**STOLEN BASES** — (Game) — 8, Lee Todd, Harvard, 1926

**HIT BY PITCH** — (Career) — 31, Mark Barineau, Florida State, 1981-83

**HIT BY PITCH** — (Season) — 18, Mike Walker, South Alabama, 1975

**HIT BY PITCH** — (Game) — 4, Rick Peters, Arizona State, 1977

**WALKS** — (Career) — 300, Phil Stephenson, Wichita State, 1979-82

**WALKS** — (Season) — 97, Phil Stephenson, Wichita State, 1982  
**STRIKEOUTS** — (Career) — 154, Bruce Castoria, Mississippi State,  
1979-82  
154, Brad Winkler, Mississippi State,  
1980-83  
**STRIKEOUTS** — (Season) — 81, Dave Grangaard, Arizona State, 1967

### **INDIVIDUAL PITCHING**

**APPEARANCES** — (Career) — 101, Mitch Hawley, California, 1978-81  
**APPEARANCES** — (Season) — 46, Dave Czosek, South Alabama, 1981  
(FSU's Bruce Tanner third; 41, 1983)  
**RELIEF APPEARANCES** — (Season) — 45, Dave Czosek, South Alabama  
1981  
(FSU's Bruce Tanner second; 41,  
1983)  
**SAVES** — (Career) — 30, Mac Scarce, Florida State, 1971-72  
**SAVES** — (Season) — 18, Mac Scarce, Florida State, 1971  
**STARTS** — (Career) — 65, Don Hinkle, Wichita State, 1979-82  
**STARTS** — (Season) — 23, Steve Housley, Cal-Fullerton, 1966  
**COMPLETE GAMES** — (Career) — 40, Herb Pryor, UNLV, 1971-73  
**COMPLETE GAMES** — (Season) — 17, Floyd Bannister, Arizona State,  
1976  
**SHUTOUTS** — (Career) — 12, Jim Crawford, Arizona State, 1969-72  
**SHUTOUTS** — (Season) — 8, Gene Ammann, Florida State  
**VICTORIES** — (Career) — 51, Don Hinkle, Wichita State, 1979-82  
**VICTORIES** — (Season) — 20, Derek Tatsuno, Hawaii, 1979  
**LOSSES** — (Career) — 26, Greg Unger, Pacific, 1979-82  
**LOSSES** — (Season) — 18, Steve Housley, Cal-Fullerton, 1966  
**INNINGS PITCHED** — (Career) — 496.2, Greg Unger, Pacific, 1979-82  
**INNINGS PITCHED** — (Season) — 186, Floyd Bannister, Arizona State,  
1976  
**STRIKEOUTS** — (Career) — 541, Derek Tatsuno, Hawaii, 1977-79  
**STRIKEOUTS** — (Season) — 234, Derek Tatsuno, Hawaii, 1979  
**STRIKEOUTS** — (Game) — 26, Willie Mitchell, Miss. St. (vs. LSU), 1909  
(FSU's Tony Auitable third, 24 (vs. Furman),  
1956)  
**EARNED RUNS ALLOWED** — (Career) — 213, Ron Sismondo, Arizona,  
1979-82  
**EARNED RUNS ALLOWED** — (Season) — 75, Paul Perry, Jacksonville,  
1983  
**HITS ALLOWED** — (Career) — 469, Greg Unger, Pacific, 1979-82  
**HITS ALLOWED** — (Season) — 154, Don Mundie, Mississippi State,  
1981  
**HITS ALLOWED** — (Career) — 293, John Oldham, San Jose State,  
1952-54  
**WALKS ALLOWED** — (Season) — 137, Al Churchman, San Diego State,  
1936  
**WALKS ALLOWED** — (Game) — 18, Rip Collins, Tulane  
(vs. Northwestern), 1940

### **INDIVIDUAL FIELDING**

**PUTOUTS** — (Career) — 2,042, Phil Stephenson, Wichita State, 1979-82  
**PUTOUTS** — (Season) — 685, Chris Campbell, Texas, 1981  
**ASSISTS** — (Career) — 725, Thad Reece, Hawaii, 1978-81  
(FSU's Don DeLoach fifth; 596, 1978-81)  
**ASSISTS** — (Season) — 267, Rod Booker, California, 1980  
(FSU's Don DeLoach sixth; 236, 1981)  
**ERRORS** — (Career) — 77, Mark Whipple, Brown, 1976-79  
**ERRORS** — (Season) — 46, Tom Francis, New Mexico, 1981





**The University**

# This is Florida State

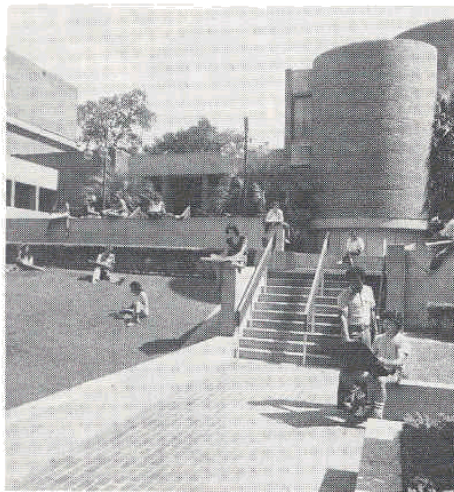
Florida State University, nestled in the center of Florida's capital city, is home to more than 22,000 students from all over the nation and from 115 foreign countries. FSU was founded in 1857 as the Seminary West of the Suwannee. Today, the main campus, with more than 340 green acres, is one of the prettiest in the South. Camellias, azaleas and dogwoods blossom under towering moss-draped oaks. From the stately Gothic-styled structures on the eastern end of the campus to the contemporary science complex on the west, FSU has grown and changed with the times. Enrollment has quadrupled since the school became coeducational in 1947, following nearly half a century as FSCW — Florida State College for Women.

Today, students at Florida State can choose from more than 100 career options made available by 14 schools and colleges including arts and sciences, business, communication, criminology, education, home economics, law, library science, music, nursing, social sciences, social work, theatre and visual arts. Also, the FAMU/FSU Institute of Engineering began this fall.

The University's location in the capital city of Florida affords excellent study and research opportunities in the areas of government, social sciences and policy sciences. Additionally, the presence of state government provides widespread opportunities for internships and on-the-job study.

When it comes to the performing arts, Florida State ranks among the best schools in the nation.

The School of Theatre is recognized nationally for its leadership and training of talented young people. Burt Reynolds, acclaimed for his work with aspiring theatre professionals at the Reynolds Institute for Theatre Training in Jupiter, Florida, is an adjunct professor of professional and regional theatre at FSU.



The Department of Dance is ranked as one of the top five in the country.

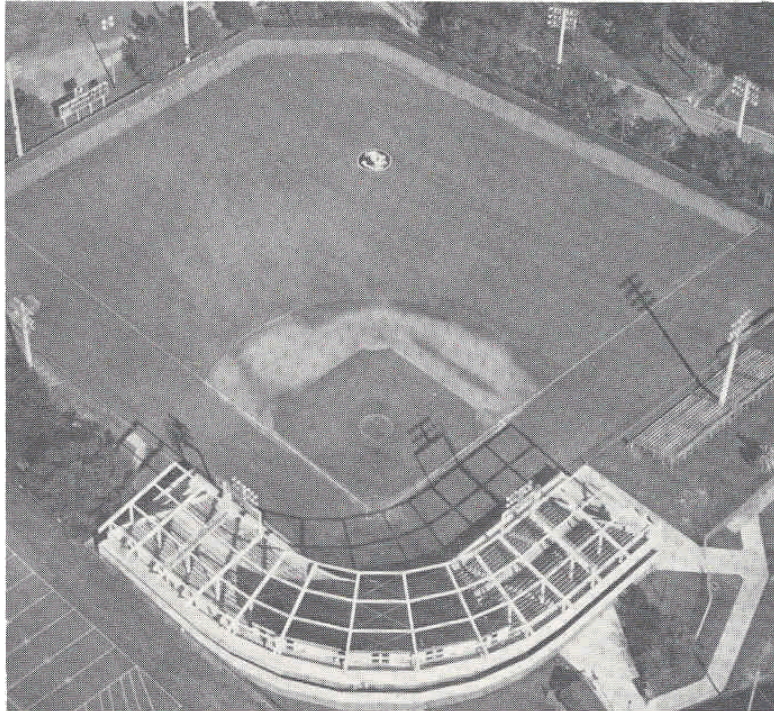
The University is home to the only collegiate circus in the country. The Flying High Circus carries a reputation of quality, professional aerial and stage entertainment for children of all ages.

When it comes to intercollegiate athletics, Florida State has established a winning tradition. The athletic program including both men's and women's athletics, is among the top 20 in the nation.

But it's not just good programs that make the University great. As President Bernard Sliger proclaims, it is the people who make Florida State the successful monument to learning that it is. He takes pride in the people —students, faculty, administrators and staff—who are Florida State University.



# Seminole Stadium



While new homes are often a source of pride for their owners, so is Seminole Stadium Complex a source of pride for Florida State University and the Seminole baseball team.

With the help of a \$1 million facility improvement grant, old Seminole Field underwent extensive renovation that resulted in the opening of Seminole Stadium on the night of March 28, 1983.

Florida State now boasts one of the finest natural playing surfaces in the country, surrounded by a stadium built with the fan's comfort in mind.

In essence all that was good with the old field remained unchanged. With the exception of the leveling off of a few low spots and the installation of a draining system, the infield surface and the bermuda grass outfield remained the same; as did the metal hylide 1500 watt lights which are mounted on concrete standards around the stadium.

The stadium itself has changed dramatically. Once a feature of the park, the wood bleachers have been replaced with a 2200 seat concrete grandstand. Additional bleachers brings capacity to 5,000. Park design allows for easy add on expansion for the future if needed.

Stadium dimensions measure 321 to right, 411 to center and 340 to left. An eight-foot wall, electronic scoreboard, new concessions, and a high quality public address system give Seminole Field a big league look.

A large pressbox, complete with five enclosed booths make the new facility complete.

Seminole Stadium Firsts:

<b>First Game:</b>	FSU vs. LSU (3/28/83)
<b>First Day Crowd:</b>	1305
<b>First Run:</b>	Tommy Zoeller
<b>First Hit:</b>	Zoeller, single to left
<b>First RBI:</b>	Danny Dowell single to score Zoeller
<b>First Batter:</b>	John Morse, LSU
<b>First Putout:</b>	Rick Figueredo, 5-3 putout on Morse
<b>First Assist:</b>	Mark Barineau on Morse's grounder
<b>First Double:</b>	Ronnie Corbett (LSU), sixth inning
<b>First Triple:</b>	Ronnie Corbett (LSU), eighth inning
<b>First Home Run:</b>	Rick Figueredo, fifth inning





## **Dr. Bernard Sliger** **University President**

In his sixth year as Florida State president, Bernard Sliger maintained that athletics are a vital aspect of the University. Although Sliger gives academics the top priority, he has been quoted as saying "The athletic program at Florida State is a means of identification for Florida State and a rallying point for anyone connected with the University."

Sliger became FSU's 10th president on June 10, 1977, after serving as executive vice president at Florida State since 1972. Prior to his arrival in Tallahassee, Sliger served for 19 years as a professor and administrator at the Louisiana State University.

Since taking over the chief administrator's job six years ago, Sliger has seen many of his goals for a better Florida State come to pass. One of his proudest achievements has been getting legislative approval for the Florida A&M/Florida State Institute for Engineering which opened in the fall of 1982.

Even with the time consuming demands of a university president, Sliger finds time to participate in Florida State sports as, he terms it, "an energetic spectator."

A native of Trout Creek, Michigan, Sliger has a Ph.D. in economics from Michigan State University.



## **Dr. James P. Jones** **Faculty Athletic Chairman**

Teacher, department chairman, historian, author, and athletic enthusiast are all terms that apply to faculty athletic committee chairman Dr. James P. Jones. A member of the athletic board since 1973, Jones was the first chairman of the board's academic subcommittee until 1980 when he was named board chairman. In this capacity, he serves as faculty representative to the NCAA.

Jones received his B.A., M.A. and Ph.D. degrees from the University of Florida. He accepted a post in the Florida State History Department in 1957 and was named to chair the Department in 1980.

An American Civil War historian, Jones has published five books and 35 articles on 19th century America. He has also written on several sports topics including minor league baseball, Hank Aaron and the Gator Bowl as well as serving as unofficial historian of FSU football. *FSU One Time! A History of Seminole Football*, penned by Jones, is in its fifth edition.



## **C.W. "Hootie" Ingram** **Athletic Director**

C.W. "Hootie" Ingram is in his third year as athletic director at Florida State. He came to the post after serving as associate commissioner of the Southeastern Conference.

Since his arrival in Tallahassee, Ingram has initiated a \$10 million dollar building program for athletic facilities—including the brand new Seminole Stadium baseball complex.

A native of Tuscaloosa, Alabama, Ingram played for the Crimson Tide from 1951 through 1954 and led the nation in interceptions as a sophomore. He also lettered in baseball as an infielder. Following a stint in the army, Ingram turned to coaching.

After several years of high school coaching, Ingram moved into collegiate athletics; making assistant coaching stops at Wake Forest, Virginia Tech, Georgia and Arkansas. He succeeded Frank Howard as head coach at Clemson, before joining the SEC as assistant commissioner three years later.



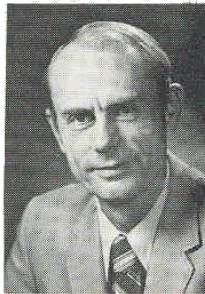
## **Bob Goin** **Associate Director**

Bob Goin joined the Florida State staff as associate athletic director on July 1, 1981 after serving two years as athletic director at California (Pa.) State College.

Goin, who received a bachelor's degree from Bethany (1959) and master's at West Virginia (1962), has a background in both coaching and athletic administration. Prior to taking the California State post, he was assistant director of athletics at West Virginia. Between 1960 and 1976 he served in various capacities at Bethany (W.Va.) College. Included among those duties were coaching responsibilities in football, basketball and baseball.

Immediately prior to moving to West Virginia, Goin served Bethany as associate professor and chairman of physical education and athletics. That assignment lasted for four years (1972-76). Goin was Bethany's head football coach between 1963 and 1972.

Goin was responsible for expanding the California athletic program. He formed the Cal State Athletic Scholarship Fund and Athletic Booster Club. He also developed a new office complex for coaches, helped equip a training room, exercise and weight training areas and renovated the football locker rooms.



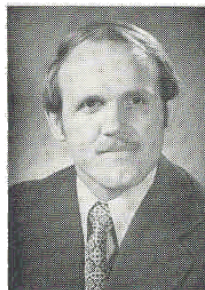
## **Claude Thigpen** **Assistant Director**

Claude Thigpen has been a member of the Florida State athletic department staff for 27 years. He has been in his present position as assistant athletic director since 1983.

Prior to taking his present role in the athletic department, Thigpen served as athletic business manager, accountant and ticket manager for the Seminoles.

He currently supervises the entire ticket operation of all sports and is responsible for game day operations of all sports. He coordinates season ticket drives for football, basketball and baseball. In addition, Thigpen is responsible for the athletic department courtesy car program.

In the fall, Thigpen takes on the added duties of supervising the travel for the Florida State football team and its official party. This includes making hotel and airplane reservations for the group of 100 traveling with the Tribe.



## **Larry Pendleton** **Assistant Director**

Larry Pendleton, a member of the Seminole athletic family since 1973, is serving as assistant to the athletic director. Until July of 1980, he had been the academic advisor.

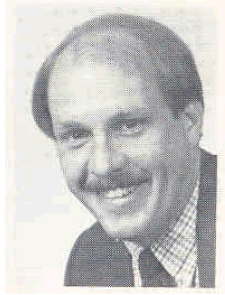
Pendleton's present role covers many areas within the athletic department. He is responsible for maintaining and scheduling of all the facilities in the athletic complex. Any building projects will be coordinated and supervised by Pendleton.

His duties also include scheduling for the basketball team and aiding the coaching staff with its travel arrangements during the season. He is also responsible for management of the athletic department insurance programs.

Pendleton is in his eighth year as a full-time member of the Seminole staff. He returned to his alma mater in 1973 as a graduate assistant football coach and spent the '74 season as an assistant coach.

During 1975 and '76 he served solely as the academic advisor for the football squad. Those duties were expanded to include all athletes in 1977.



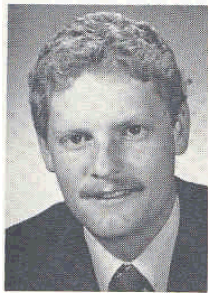


## **John Sheffield** **Sports Marketing Director**

John Sheffield is in his first year as director of marketing and promotions at Florida State, after serving as ticket manager of the Tampa Bay Buccaneers since 1978.

A 1975 Florida State graduate, Sheffield will work closely with the Seminole baseball program as coordinator of program sales, wall advertising and the many popular baseball promotions—including the Wendy's Swinging Singles Inning and Single Most Valuable Player award.

Prior to his stint with the Bucs, Sheffield worked for the Miami Dolphins, Atlanta Braves and Ft. Lauderdale Strikers. He worked as a member of the Tampa Super Bowl Task Force.



## **Wayne Hogan** **Sports Information Director**

Wayne Hogan, a 1979 FSU graduate, is in his second year as sports information director at Florida State. He is responsible for the entire public relations matters concerning all 16 varsity sports at Florida State.

Hogan returned to FSU from the University of New Mexico, where he worked as assistant sports information director for two years. Prior to that, he had professional baseball experience as Director of Public Relations and Broadcasting for the Albuquerque Dukes (AAA) in 1980 and the Charleston Charlies (AA) in 1979.

In addition to his duties as SID, Hogan handles the color commentary on the Seminole Basketball Network and also does color on select baseball broadcasts.



## **Dan Pearson** **Assistant Sports Information Director**

In his second year as assistant sports information director, Dan Pearson is in his third season of working with the Tribe baseball team.

As assistant sports information director, Pearson handles all publicity matters concerning the baseball team and also serves as chief statistician and official scorer. In addition to working with other athletic teams, Pearson also works closely with the Florida State football team.

A 1979 graduate of West Virginia, Pearson spent three years as a student and graduate assistant in the WVU sports information office before moving to Tallahassee in 1981 as a part-time assistant. He was elevated to full-time status in October of 1982.



# ROADTRIP HEADQUARTERS 1984

## **Florida Four Tournament**

Coral Gables, Florida  
Depart: February 2  
(from Tallahassee)  
Headquarters: Miami Marriott  
(305) 649-5000

## **South Florida**

Tampa, Florida  
Depart: February 9  
(from Tallahassee)  
Headquarters: Bay Harbor Inn  
(813) 885-2541

## **Miami University**

Coral Gables, Florida  
Depart: February 24  
(from Tallahassee)  
Headquarters: Miami Marriott  
(305) 649-5000

## **UNLV**

Las Vegas, Nevada  
Depart: March 5  
(from Tallahassee)  
Headquarters: Sands Hotel  
(702) 733-5000

## **California State-Fullerton**

Fullerton, California  
Depart: March 5  
(from Las Vegas)  
Headquarters: Anaheim Marriott  
(714) 750-8000

## **Macon University**

Macon, Georgia  
Depart: March 27  
(from Tallahassee)  
Headquarters: Howard Johnson's  
(912) 474-2665

## **Clemson University**

Clemson, South Carolina  
Depart: March 29  
(from Macon)  
Headquarters: Fike Hall  
(803) 656-2101

## **Georgia State**

Atlanta, Georgia  
Depart: March 30  
(from Clemson)  
Headquarters: Marriott Perimeter  
(404) 394-6500

## **Jacksonville University**

Jacksonville, Florida  
Depart: April 5  
(from Tallahassee)  
Headquarters: Ramada Inn  
(904) 725-5093

## **Georgia Southern**

Statesboro, Georgia  
Depart: April 7  
(from Tallahassee)  
Headquarters: Holiday Inn  
(912) 764-6121

## **Florida**

Gainesville, Florida  
Depart: April 17  
(from Tallahassee)  
Headquarters: Gainesville Hilton  
(904) 377-4000

## **South Alabama**

Mobile, Alabama  
Depart: April 30  
(from Tallahassee)  
Headquarters: Ramada Inn  
(205) 344-8030

## **Southern Mississippi**

Hattiesburg, Mississippi  
Depart: May 1  
(from Mobile)  
Headquarters: Days Inn  
(601) 268-2251

## **Memphis State**

Memphis, Tennessee  
Depart: May 3  
(from Hattiesburg)  
Headquarters: Ramada Inn  
(901) 362-8010

## Florida State University 1984 Baseball Schedule

DATE	OPPONENT	SITE	TIME
Feb. 3	South Florida	Miami, Fla.	3:00 p.m.
Feb. 4	Miami	Miami, Fla.	7:30 p.m.
Feb. 5	Florida	Miami, Fla.	1:00 p.m.
Feb. 10	South Florida	Tampa, Fla.	5:00 p.m.
Feb. 11	South Florida	Tampa, Fla.	2:00 p.m.
Feb. 12	South Florida	Tampa, Fla.	2:00 p.m.
Feb. 14	West Florida	Seminole Stadium	3:30 p.m.
Feb. 15	West Florida	Seminole Stadium	3:30 p.m.
Feb. 16	Tampa	Seminole Stadium	3:30 p.m.
Feb. 17	Tampa	Seminole Stadium	3:30 p.m.
Feb. 18	Georgia Tech	Seminole Stadium	2:00 p.m.
Feb. 19	Georgia Tech	Seminole Stadium	1:00 p.m.
Feb. 21	Jacksonville	Seminole Stadium	3:30 p.m.
Feb. 22	Jacksonville	Seminole Stadium	3:30 p.m.
Feb. 24	Miami	Miami, Fla.	7:30 p.m.
Feb. 25	Miami	Miami, Fla.	7:30 p.m.
Feb. 26	Miami	Miami, Fla.	2:00 p.m.
Feb. 28	Auburn	Seminole Stadium	3:30 p.m.
Feb. 29	Auburn	Seminole Stadium	3:30 p.m.
Mar. 1	Ball State	Seminole Stadium	3:30 p.m.
Mar. 2	Ball State	Seminole Stadium	3:30 p.m.
Mar. 3	Ball State	Seminole Stadium	1:00 p.m.
Mar. 4	Ball State	Seminole Stadium	2:00 p.m.
Mar. 6	Nevada-Las Vegas	Las Vegas, Nevada	2:00 p.m.
Mar. 7	Nevada-Las Vegas	Las Vegas, Nevada	2:00 p.m.
Mar. 8	Nevada-Las Vegas	Las Vegas, Nevada	2:00 p.m.
Mar. 9	Cal State-Fullerton	Fullerton, Calif.	7:00 p.m.
Mar. 10	Cal State-Fullerton	Fullerton, Calif.	7:00 p.m.
Mar. 11	Cal State-Fullerton	Fullerton, Calif.	1:00 p.m.
Mar. 13	Southern Mississippi	Seminole Stadium	7:00 p.m.
Mar. 14	Southern Mississippi	Seminole Stadium	7:00 p.m.
Mar. 15	Southern Mississippi	Seminole Stadium	7:00 p.m.
Mar. 16	South Florida	Seminole Stadium	7:00 p.m.
Mar. 17	South Florida	Seminole Stadium	7:00 p.m.
Mar. 18	South Florida	Seminole Stadium	2:00 p.m.
Mar. 19	Pittsburgh	Seminole Stadium	7:00 p.m.
Mar. 20	Pittsburgh	Seminole Stadium	7:00 p.m.
Mar. 21	Pittsburgh	Seminole Stadium	7:00 p.m.
Mar. 22	Tennessee Tech	Seminole Stadium	7:00 p.m.
Mar. 23	Alabama	Dothan, Ala.	7:30 p.m.
Mar. 24	Georgia Southern	Seminole Stadium	7:00 p.m.
Mar. 25	Georgia Southern	Seminole Stadium	2:00 p.m.
Mar. 27	Mercer	Mercer, Ga.	3:00 p.m.
Mar. 28	Mercer	Mercer, Ga.	3:00 p.m.
Mar. 29	Clemson	Clemson, S.C.	3:00 p.m.
Mar. 30	Clemson	Clemson, S.C.	3:00 p.m.
Mar. 31	Georgia State	Atlanta, Ga.	2:00 p.m.
Apr. 1	Georgia State	Atlanta, Ga.	2:00 p.m.
Apr. 3	Florida	Seminole Stadium	7:00 p.m.
Apr. 4	Florida	Seminole Stadium	7:00 p.m.
Apr. 5	Jacksonville	Jacksonville, Fla.	7:00 p.m.
Apr. 6	Jacksonville	Jacksonville, Fla.	2:30 p.m.
Apr. 7	Georgia Southern	Statesboro, Ga.	7:00 p.m.
Apr. 8	Georgia Southern	Statesboro, Ga.	2:00 p.m.
Apr. 10	Mercer	Seminole Stadium	7:00 p.m.
Apr. 11	Mercer	Seminole Stadium	3:30 p.m.
Apr. 13	Miami	Seminole Stadium	7:00 p.m.
Apr. 14	Miami	Seminole Stadium	7:00 p.m.
Apr. 15	Miami	Seminole Stadium	2:00 p.m.
Apr. 17	Florida	Gainesville, Fla.	7:00 p.m.
Apr. 18	Florida	Gainesville, Fla.	7:00 p.m.
Apr. 19	South Alabama	Seminole Stadium	7:00 p.m.
Apr. 20	South Alabama	Seminole Stadium	7:00 p.m.
Apr. 21	Florida International	Seminole Stadium	7:00 p.m.
Apr. 22	Florida International	Seminole Stadium	2:00 p.m.
Apr. 27	Tulane	Seminole Stadium	7:00 p.m.
Apr. 28	Tulane	Seminole Stadium	7:00 p.m.
Apr. 29	Tulane	Seminole Stadium	2:00 p.m.
Apr. 30	South Alabama	Mobile, Ala.	7:00 p.m.
May 1	Southern Mississippi	Hattiesburg, Miss.	2:00 p.m.
May 2	Southern Mississippi	Hattiesburg, Miss.	2:00 p.m.
May 3	Southern Mississippi	Hattiesburg, Miss.	2:00 p.m.
May 4	Memphis State	Memphis, Tenn.	7:00 p.m.
May 5	Memphis State	Memphis, Tenn.	7:00 p.m.
May 6	Memphis State	Memphis, Tenn.	2:00 p.m.
May 10-13	Metro Conference Tournament	Seminole Stadium	TBA