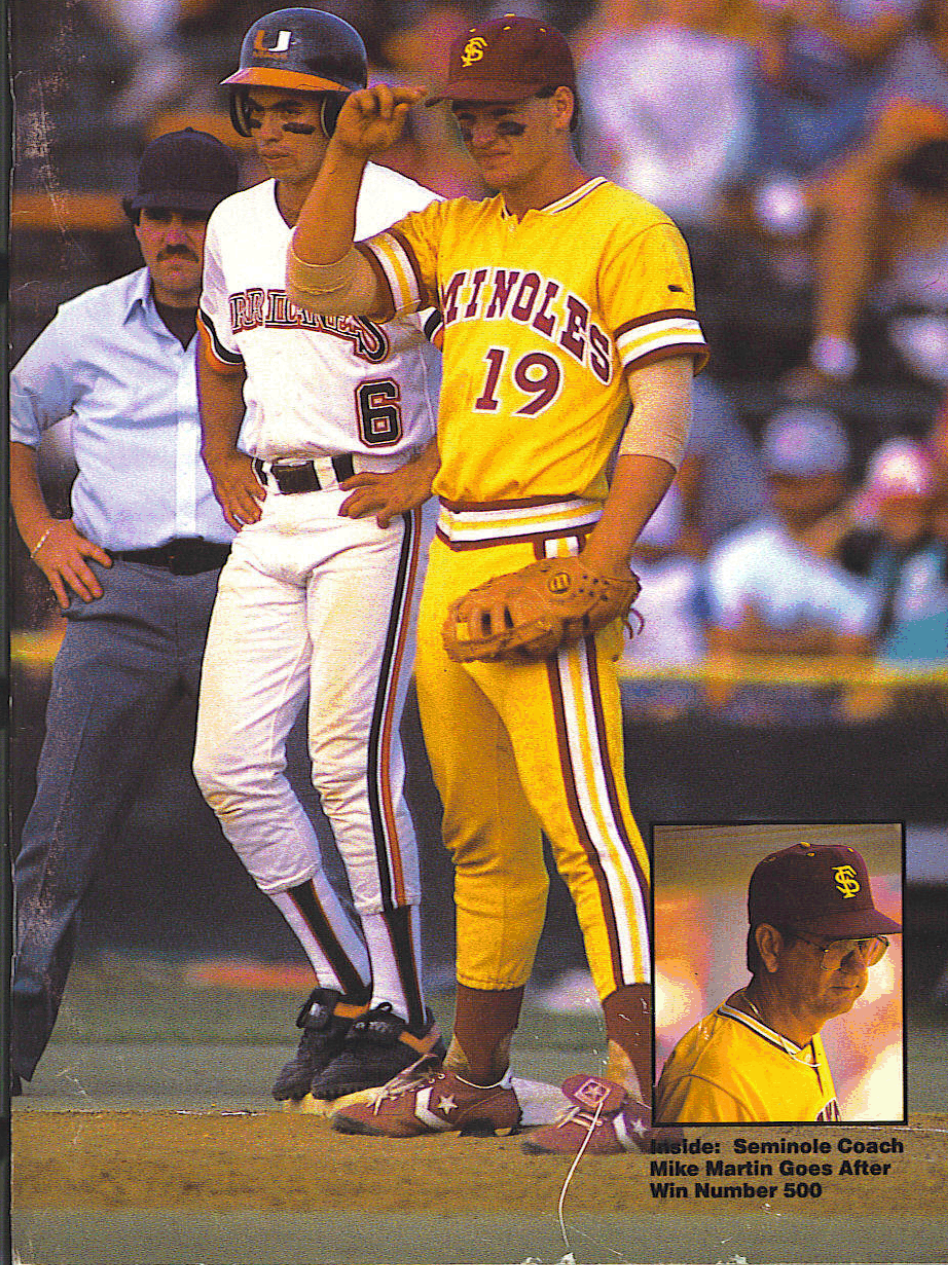


The 1989 Florida State Seminole Baseball Media Guide

The unique strength in the game of baseball as a team sport lies in the ingenious geometry of the diamond. It is really a game of individuals . . . It is almost impossible to find any other team sport that so critically and clearly tests the mettle of each man alone on almost every play and yet fuses them all together into a group working in team competition. That is the paradox of this game that makes it so well suited to the American temperament.

— Branch Rickey

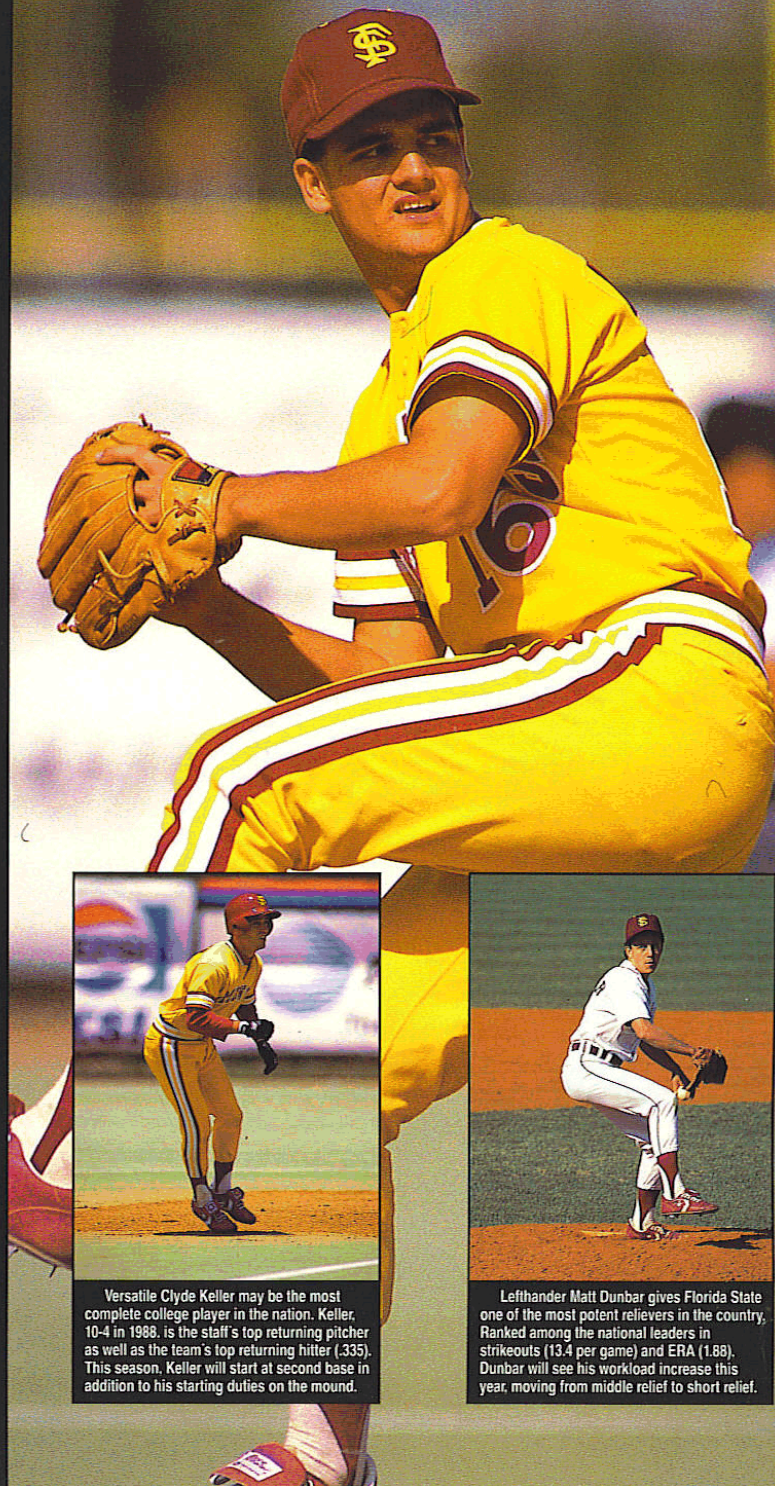


Inside: Seminole Coach
Mike Martin Goes After
Win Number 500

1989 Seminole Baseball Schedule

Date	Opponent	Location	Time
Feb.	4 Arizona State	Home	2:00 P.M.
	5 Arizona State	Home	8:00 P.M.
	6 Georgia Tech	Home	1:00 P.M.
	10 Grambling	Home	3:30 P.M.
	11 Grambling	Home	2:00 P.M.
	12 Grambling	Home	2:00 P.M.
	18 University of Florida	Gainesville	4:00 P.M.
	19 University of Florida	Gainesville	1:30 P.M.
	20 Baptist	Home	3:30 P.M.
	21 Baptist	Home	3:30 P.M.
	22 Baptist	Home	3:30 P.M.
	25 South Florida	Home	3:00 P.M.
	26 South Florida	Home	2:00 P.M.
	28 South Florida	Tampa	7:00 P.M.
March	1 South Florida	Tampa	3:00 P.M.
	3 Rice University	Home	3:30 P.M.
	4 Rice University	Home	2:00 P.M.
	5 Rice University	Home	2:00 P.M.
	7 Richmond	Home	3:30 P.M.
	8 Richmond	Home	7:00 P.M.
	9 Richmond	Home	3:30 P.M.
	10 Ball State	Home	3:30 P.M.
	11 Ball State	Home	2:00 P.M.
	12 Ball State	Home	2:00 P.M.
	14 Samford	Home	7:00 P.M.
	15 Samford	Home	7:00 P.M.
	17 South Carolina	Columbia SC	7:00 P.M.
	18 South Carolina	Columbia SC	7:00 P.M.
	19 South Carolina	Columbia SC	2:00 P.M.
	21 Jacksonville University	Jacksonville, FL	7:00 P.M.
	22 Jacksonville University	Jacksonville, FL	7:00 P.M.
	24 California State (Fullerton)	Home	7:00 P.M.
	25 California State (Fullerton)	Home	7:00 P.M.
	26 California State (Fullerton)	Home	2:00 P.M.
	28 Mercer	Home	7:00 P.M.
29 Mercer	Home	3:30 P.M.	
31 Southern Mississippi	Home	7:00 P.M.	
April	1 Southern Mississippi	Home	7:00 P.M.
	2 Southern Mississippi	Home	2:00 P.M.
	4 Jacksonville University	Home	7:00 P.M.
	5 Jacksonville University	Home	7:00 P.M.
	7 Miami	Home	7:00 P.M.
	8 Miami	Home	7:00 P.M.
	9 Miami	Home	1:00 P.M.
	11 University of Florida	Home	7:00 P.M.
	12 University of Florida	Home	5:30 P.M.
	14 Louisville	Home	7:00 P.M.
	15 Louisville	Home	7:00 P.M.
	16 Louisville	Home	2:00 P.M.
	21 Virginia Tech	Home	7:00 P.M.
	22 Virginia Tech	Home	7:00 P.M.
23 Virginia Tech	Home	2:00 P.M.	
29 Memphis State (Double Header)	Memphis, TN	1:00 P.M.	
30 Memphis State	Memphis, TN	1:00 P.M.	
May	5 Miami	Miami	7:30 P.M.
	6 Miami	Miami	7:30 P.M.
	7 Miami	Miami	8:00 P.M.
	12 Cincinnati	Cincinnati, OH	3:00 P.M.
	13 Cincinnati	Cincinnati, OH	1:00 P.M.
	14 Cincinnati	Cincinnati, OH	2:00 P.M.
	17-21 Metro Conference Tournament	Columbia, SC	

Hard-throwing Ricky Kimball returns for his sophomore season after completing his freshman campaign with a 7-2 record and eight saves. Kimball, a fifth round pick by the New York Mets in the '87 draft, struck out 77 batters in 77.1 innings last season in making the Baseball America Freshman All-America team.



Versatile Clyde Keller may be the most complete college player in the nation. Keller, 10-4 in 1988, is the staff's top returning pitcher as well as the team's top returning hitter (.335). This season, Keller will start at second base in addition to his starting duties on the mound.

Lefthander Matt Dunbar gives Florida State one of the most potent relievers in the country. Ranked among the national leaders in strikeouts (13.4 per game) and ERA (1.88), Dunbar will see his workload increase this year, moving from middle relief to short relief.

The 1989
Florida State University
**SEMINOLE
BASEBALL
MEDIA GUIDE**

Table of Contents

Media Information	2
1989 Outlook	3
<i>Pitching, Defense & Speed</i>	4
1989 Opponents	7
Travel Itinerary	10
1989 Seminoles	11
Head Coach Mike Martin: <i>Starting Number X</i>	12
<i>The Martin File</i> Gatefold, page 12	14
Assistant Coaches	14
Athletic Staff	15
1989 Baseball Seminole Players	16
Rosters Gatefold, page 28	28
1988 Review	29
<i>This Was A Rebuilding Year?</i>	30
1988 Statistics	32
Game-By-Game Results	33
Tournament Results	34
Baseball at Florida State	35
This is FSU Baseball	36
This is FSU	38
Dick Howser Stadium	39
Seminoles on the Air	40
Records	41
Team Records	42
Individual Records	43
Miscellaneous Records	45
Year-by-Year Records	46
All-Americans	47
Seminoles in the NCAA Record Book	47
Series Records vs. All Opponents	48
FSU in NCAA Championship Play	50
All-Time Coaching Records	51
All-Time Roster	52
Seminoles in the Pros	54
The Metro Conference	56

CREDITS

Editor: Chris Sears
Contributing Writer: Wayne Hogan
Research: Richard Kennedy

Photographers: Ray Stanyard
Sam Lewis • Phil DeGeorge
Ryals Lee • Ed O'Connor
FSU Photo Lab

Printing: Gandy Quality Printers
Tallahassee, Florida
Creative Design & Layout:
J.S. Goodson & Partners Advertising

Baseball is not a complex game. You could find 100 fans in the stands on any given day who could call the right strategy at the right time . . .

The manager's real job is to accomodate himself to 25 different personalities; to assess the amount of talent he has within that pool of 25 men and to exact the fruits of that talent.

— Bill Veeck
Veeck As In Wreck

MEDIA INFORMATION

The Sports Information Staff



Wayne Hogan
Director
H: (904) 668-9220



Rob Wilson
Assistant
Director



Donna Turner
Assistant
Director



Nick Gandy
Assistant
Director



Chris Sears
Baseball SID
H: (904) 222-5587

Florida State University's 1989 Baseball Guide has been designed for use by the news media and Seminole baseball fans. Any questions not covered in this brochure can be directed to the Florida State Sports Information Office.

All requests for working press, radio, television or photographers should be made to Sports Information Graduate Assistant Chris Sears at least one week prior to the day of the game.

Working Media: Working media will be admitted to Dick Howser Stadium and will be permitted to take their seats in the pressbox. Press credentials may be picked up prior to the game, or held at the Will Call window.

Requests will be evaluated and credentials issued according to the following criteria.

- (1) Local metropolitan press; wire services; national publications; opposing metropolitan press; student newspapers.
- (2) Other daily newspapers.
- (3) Radio and television personnel not actually broadcasting.

Parking: Easy access to Dick Howser Stadium from Doak Campbell Stadium

parking lot is available. No pass is required, but those with equipment will want to arrive early and avoid longer walks to the field.

Photographers: Accredited photographers, upon presenting a photo pass, will be admitted to shoot in designated areas on the field.

Television: Facilities are available for network broadcasts. Please have requests prepared several weeks prior to the expected broadcast.

Radio: Florida State will provide one booth for the opposing team's broadcast. Should an FSU opponent have more than one radio station, a platform will be made available in the stadium. When such a case occurs, the visiting team's SID will allocate the space.

Phone Lines: Florida State has three phone lines in the main pressbox, for media use. Visiting radio stations are required to secure their own phone service directly through Centel Telephone, (904) 681-6600. Seminole Flagship Station WTNT has in the past installed one phone line for use by visiting radio stations. Call Rod Meadows at (904) 893-4358 for details

concerning the use of this line.

Services: Florida State's Sports Information Office will provide scorecards, programs, statistics and game notes at all baseball games. A complete boxscore will be available approximately 15 minutes after the conclusion of the game.

Telecopiers/FAX: A FAX machine is available in the Sports Information Office.

Interviews: Florida State players will be available to the media prior to and during batting practice. FSU Head Coach Mike Martin and his players will be available for post-game interviews, approximately 10 minutes after each game. All interviews during off days should be arranged through Chris Sears of the FSU Sports Information Office.

Contact Us At: (904) 644-1060 – after 4:30 p.m. (904) 644-1403.

Address Inquiries To: Sports Information Office, P.O. Drawer 2195, Tallahassee, Florida 32316.

Ship Overnight Packages To: Sports Information Office, Moore Athletic Center, Pensacola Street, Tallahassee, Florida 32306.

Baseball Pressbox: (904) 644-1553, 644-1543 – FOR MEDIA USE ONLY.

FLORIDA STATE FINGERTIP FACTS

Location: Tallahassee, Florida
Enrollment: 26,000
Founded: 1857
Colors: Garnet and Gold
Nickname: Seminoles
Conference: Metro
Affiliation: NCAA Division I
President: Dr. Bernard F. Sliger
Faculty Representative:
 Dr. Charles Ehrhardt

ATHLETIC STAFF

Director: C.W. "Hootie" Ingram
Associate Director: Bob Goin
Assistant Director: Larry Pendleton
Assistant Director: Claude Thigpen
Assistant Director: Charles Hurst
Assistant Director: Dr. Jan Stocker
Business Manager: Joe Labat
Assistant to the Director: John Sheffield
Marketing and Promotions: Terry Hume

BASEBALL INFORMATION

Head Coach: Mike Martin
Year at FSU: 10th
Record at FSU: 498 - 171 - 3
Career Record: Same
Assistant Coaches: Rod Delmonico
 Chip Baker
 Mike McLeod
 Steve Winterling
Trainer: Jimmy Rider
Equipment Managers: Guy Gallagher
 Randy Burdette
1988 Record: 50 - 18 - 1, 17 - 6 Metro
Post Season Appearance: Host, NCAA
 East Regional
All-Time Record: 1401 - 542 - 17

1989 Outlook

... some lucky man determined that the bases should be ninety feet apart, a distance which enables a runner with a perfect sense of timing to steal second, while another just as swift but lacking that precision gets thrown out.

— James Michener
Sports in America





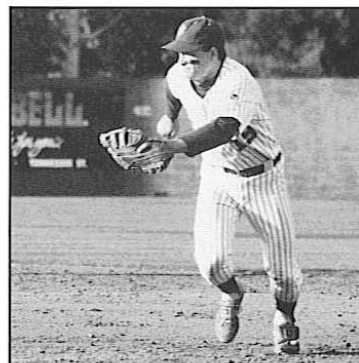
Florida State ace Ricky Kimball returns to the starting rotation after spending most of last season in the bullpen. The freshman All-American won seven games and earned eight saves in just his first year in a Seminole uniform.

PITCHING

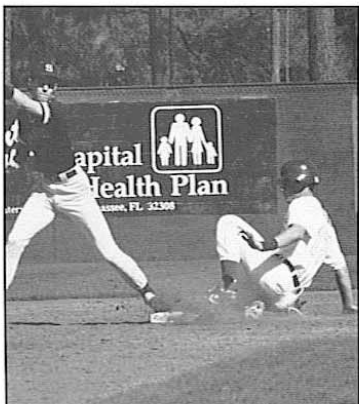
Whether pounding home runs or swiping bases, Florida State FSU Head Coach Mike Martin finds a way to win. A few short seasons ago, Martin assembled teams of muscle-bound power hitters who thought "stolen base" was a foreign word. While those teams all won over 50 games a season, FSU failed to advance to the College World Series.

DEFENSE

Enter the beginning of a new era under Martin, vintage hit-and-run style baseball. Martin has built his team around a strong pitching staff, sparkling defense and blazing speed. The results of the switch are obvious as the Tribe has made two trips to Omaha in the last three years and will challenge for a return trip in 1989.



Brad Parker made headline news last season as Seminole fans closely followed his 28-game hitting streak. It was Parker's defensive play that drew rave reviews from the coaching staff as the season wore on.



Sophomore Marc Ronan may be one of the best all-around talents on the 1989 team. Switching to catcher after starting in centerfield last year, Ronan is Florida State's top returning base stealer, after swiping 18 bases as a freshman.

& SPEED.

The "new" Seminole teams have opposing grounds keepers watering basepaths to stop FSU's constant base-stealing threat. During the last two seasons, FSU has led the nation in stolen bases, totalling an amazing 429 swipes. As part of the tradeoff, Florida State finished dead last in the Metro in home runs with a decade-low total of 61. The 1989 Seminoles return five starters off last season's 50-18-1 club - four of whom stole at least 10 bases.



Just as it did a year ago, Florida State's team will battle many of the top teams in the nation including 1988 College World Series participants Florida, Miami, Cal-State Fullerton, Georgia Tech and Arizona State for a third trip to Omaha in four years.

One of the top base thieves, Clyde Keller is a throwback to the days of old as the top returning hitter (.335) and pitcher who stole 13 bases.

A righthander, Keller leads a staff which posted a decade low 3.35 to rank ninth in the nation. In all, FSU returns seven pitchers, who accounted for 34 wins in 1988.

"This year's ballclub has as good a pitching staff as any I've seen in the 15 years I've been involved with the program," FSU Head Coach Mike Martin said. "With Clyde and Ricky Kimball in the rotation, I think we have two of the finest starters in the nation. We also feel we have an outstanding reliever in Matt Dunbar to back them up."

The rotation leads off with 1988 freshman All-America Ricky Kimball, who posted excellent numbers in his inaugural year. The starters are backed by strikeout artist Matt Dunbar, a formidable stopper out of the bullpen who ranked fourth in the nation last season with 13.4 strikeouts per nine innings.

Those kind of returning performers raise preseason expectations, not only among Tallahassee's loyal baseball community, but nationwide. FSU opens the season ranked third in the country

by *Collegiate Baseball* and 16th by *Baseball America*.

"I'm excited about the preseason rankings," said Martin, who with FSU's second victory of '89 will surpass the 500-victory milestone. "But we also realize keeping our place in the rankings will be a very difficult challenge with the tough early season schedule we face."

Florida State's February schedule includes dates with three '88 College World Series teams, Arizona State, Florida, and Cal-State Fullerton which will provide a stiff early season challenge.

Starting Pitching

The key for FSU this season is to improve on its starting pitching, which consistently provided 5-6 solid innings of work in 1988. This season, FSU hopes for 7-8 innings of quality performance from its starters.

After spending the final two months of the season working out of the bullpen as FSU's closer, sophomore Ricky Kimball returns as the ace of the starting rotation. Kimball, 7-2 with a 2.44 ERA last year, will take the mound against Arizona State in the season-opener.

Junior college transfer Gar Finnvoid

impressed coaches during the fall campaign with an excellent fastball, which won the 6-3 lefthander a spot as FSU's number two starter.

On every third day, Keller, the steadiest pitcher from a year ago, will take the mound. The shifty righthander returns after leading the Seminole staff in innings pitched (82.2), strikeouts (90), wins (10) and quality starts (10) last season. As a full-time starter, Keller could easily surpass those numbers, thus making him a candidate for the Golden Spike Award. Keller added a slider to his already effective assortment of pitches in the offseason.

The fourth and final spot in the rotation will be filled by any one of a number of pitchers. All indications point to a battle between returnees David Sorokowski (8-1, 2.53 ERA), Barry Johnson (1-0, 4.71), Mike Brady (1-0, 4.73) or Jerry Santos (4-1, 4.62) to round out the rotation, with some early season shuffling a distinct possibility.

Relief Pitching

An influx of new pitching talent combines with an impressive roster of returnees to give FSU a strong staff of middle relievers. Seminole coaches will

test candidates early in the year to find the right combination for the late innings of close games. After the battle for FSU's fourth starter is decided between Sorokowski, Johnson, Brady and Santos, the losers of the fight will make up the middle relieving corps. Newcomers Pat Underhill, Brad Gregory, Tim Nedin and Gary Painter will be counted on to provide spot starts and quality appearances in middle relief.

Dunbar, one of the biggest surprises of 1988, represents the key to FSU's relief fortunes as he moves from middle to short relief, taking over for Kimball. Dunbar hurled virtually unhittable baseball last year, ranking among the nation's leaders in strikeouts and earned run average.

Catcher

Despite the loss of All-America catcher Barry Blackwell, Florida State has an able replacement in Marc Ronan. Ronan, who caught in 14 games last season, should find no problem adjusting to the wear and tear of catching. One of only three players to play in all 69 games in 1988, Ronan impressed many as he was selected to the All-Metro, All-Metro Tournament and All-East Regional Tournament teams as a freshman. With a year of experience, Ronan's production is expected to improve his '88 numbers (.302, 5 HR, 44 RBI).

Off the bench, freshman Pedro Grifol battles Ronan for playing time. FSU coaches hint both Ronan and Grifol may make their way into the everyday line-up. If so, Grifol would catch, sending Ronan, a centerfielder in 1988, back to the outfield.

First Base

While most freshmen take time to adjust to collegiate baseball, Brad Parker began last year like a seasoned veteran. Parker continued the success he found at Tallahassee Leon High School across town at FSU. He hit safely in his first 28 games to break Luis Alicea's school mark for consecutive games hitting streak. Despite slumping in the middle of the season, Parker finished with a .302 batting average and was near the top of nearly every offensive category. Coaches expect Parker to show an increase in power this season after slugging nine home runs a year ago.

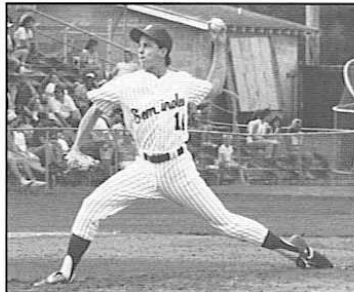
Last season's back-up at first base, Buddy Cribb earned a spot in the everyday line-up as the designated hitter, a duty he retains this season. Cribb, perhaps the best pure hitter on the club, will also be called upon to spell fellow sophomore Parker at first.

Second Base

A new era in Seminole baseball begins in 1989. For the first time in the last six years, an Alicea will not play second for the Seminoles. Between

brothers Luis (1983-86) and Edwin (1987-88), the FSU second baseman hit .320. Clyde Keller, last year's starter at third, makes the transition to second in 1989. However, Keller will not find second base a new surrounding as he was a second bagger throughout his high school and junior college career.

On days the versatile Keller pitches, one of two players are penciled in to play second. Junior Bob Reboin, the leading candidate to fill in for Keller, transferred to Florida State from Sacramento Junior College, the same school that sent Keller to FSU. He batted .317 last season at Sacramento City and his defensive skills impressed many this fall. Freshman Allen Bevis can also fill in at second. Bevis played high school baseball at Florida High, where he batted well over .500 in his two-year varsity career. The 1987 Tallahassee Democrat Player-of-the-Year, Bevis will need a year of experience before taking over the position full-time.



Junior lefthander Matt Dunbar remains in the FSU bullpen to provide relief in the latter innings of close ball games. Last year, Dunbar doubled his work load and finished among the national leaders in strikeouts per nine innings and ERA.

Shortstop

Slick-fielding junior Rocky Rau solidifies a position which presented a question mark in the preseason. Rau teams with Keller to form a new double-play combination. Rau not only provides tenacious defensive play, but bolsters FSU's hit-and-run style offense with his ability to spray the ball to all fields.

Junior college transfer Brian Gilliland backs up Rau. Gilliland comes to FSU from Chipola JC, where he batted .396 and was an all-state selection.

FSU coaches have not ruled out the possibility of moving Bevis or Garrett Blanton to fill in at shortstop if needed.

Third Base

Rob Bargas, FSU's most heralded 1988 recruit took over the third base starting duties in the fall and looks to have an immediate impact on the '89 team. FSU pirated away Bargas from the New York Yankees, who made him the team's 10th round pick following his

sophomore year at Sacramento City. Bargas, who batted .344 last season at Sac City, turned down a lucrative contract to finish his college career at Florida State.

Backing Bargas up, freshman Garrett Blanton could also gain experience as the year progresses.

Leftfield

Steady, dependable and heady all describe John Marc Tamayo, FSU's projected starter in leftfield. After transferring from Miami two years ago, the versatile Tamayo (.265, 15 SB) filled in wherever needed in 62 games during the season. Playing next to youngsters in the outfield, Tamayo adds a blend of experience that solidifies the outfield corps.

Centerfield

Patrolling a vast centerfield area, freshman Eduardo Perez impressed coaches with his skills during fall practices. On defense, Perez covers as much ground as any Seminole centerfielder in a number of years and possesses a powerful arm base-runners will come to respect. Perez, the son of former Cincinnati Reds star Tony Perez, will add power at the plate and speed on the base paths as well. At 6-3, Perez's future in the game is a bright one.

In reserve, FSU boasts several quality players who provide adequate replacements. Sophomore Michael Stubbs, also of Puerto Rico, played in 31 games last season, and was valuable coming off the bench as a pinch hitter. Freshman Ty Mueller and Scott Edwards figures to challenge for playing time either in centerfield or in right.

Rightfield

Perhaps the only preseason question surrounding the FSU team is posed in rightfield. Last year's starter, Dean Harrison, led the team in hitting for most of the season, but herniated a disk in his back and spent the fall in rehabilitation. His status for 1989 will not be known until late January. In Harrison's absence, several walk-ons caught the eyes of FSU coaches in the fall. Freshman Chris Brock played well during fall scrimmages, lending not only much-needed power, but also ground-covering defensive abilities. In the event of Harrison's return, Brock is bound to push him for the starting job.

Overall

With only one senior starter in the line-up, Florida State faces a difficult early season schedule. FSU faces baseball heavyweights Arizona State, Florida and Cal-State Fullerton with 15 new players on its 36-man roster. If the Seminoles can again rely on a pitching staff that surrenders less than 3.36 earned runs per game, Florida State could again find itself nearing a 50-win season and fighting for its third trip to Omaha in four years.

1989 BASEBALL OPPONENTS

ARIZONA STATE February 4 - 5

Nickname: Sun Devils
Colors: Maroon and Gold
Conference: PAC-10
1988 Record: 60 - 13 (21 - 9, first)
Location: Tempe, Arizona
Athletic Director: Charles S. Harris
Head Coach: Dr. Jim Brock (Arizona State)
Record at School/Overall: 848 - 316/848 - 316
Best Time to Call: Weekday mornings
FSU vs. Arizona State in 1988/Overall:
 0 - 0/1 - 0
Home Field: Packard Stadium (8,000)
Press Box Phone: (602) 965-1509
SID: Scott Dupree (O) (602) 965-6592
Baseball Contact: Scott Dupree
 (H) (602) 966-7114
Starters (Returning/Lost): 4/5
Pitchers (Returning/Lost): 4/6
Top Returning Veterans: Rusty Kilgo, LHP,
 Sr., (.12 - 3, 3.38 ERA, 78 Ks); Brian Dodd,
 LHP, Sr., (.6 - 1, 2.25 ERA); David Cassidy,
 LHP, Sr., (.9 - 2, 4.08 ERA); Kevin Higgins,
 2B, Sr., (.361, 10 HRs, 68 RBIs); Steve Willis,
 1B, Sr., (.367, 7 HRs, 65 RBIs)
Top Newcomers: Tommy Adams, OF, Fr.; Jim
 Austin, OF, Fr.; Steve Bivens, RHP, Jr.

GRAMBLING STATE February 10 - 12

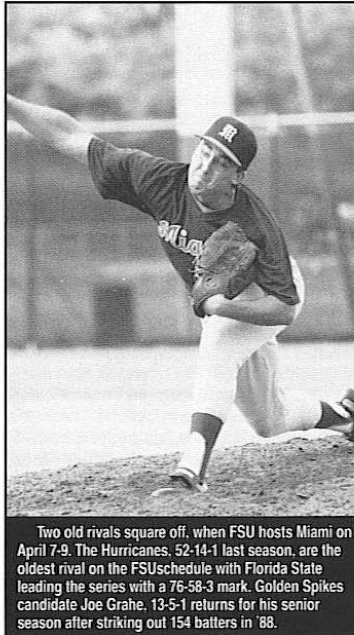
Nickname: Tigers
Colors: Black and Gold
Conference: Southwestern Athletic
1988 Record: 31 - 21 (18 - 5, first)
Location: Grambling, Louisiana
Athletic Director: Eddie Robinson
Head Coach: Wilbert Ellis (Grambling '60)
Record at School/Overall: 342 - 179/342 - 179
Best Time to Call: 9 a.m.-Noon
FSU vs. Grambling in 1988/Overall:
 3 - 0/10 - 2
Home Field: Haggard Diamond (3,000)
SID: Stanley O. Lewis (O) (318) 247-3062
Baseball Contact: Stanley O. Lewis
 (H) (318) 247-6519
Starters (Returning/Lost): 7/6
Pitchers (Returning/Lost): 3/4
Top Returning Veterans: Landon Williams,
 SS/2B, Sr., (.382, 1 HR, 18 RBIs);
 Bryant Hurks, P, Sr., (.6 - 4, 5.00 ERA);
 Wayne Coleman, OF, Sr., (.327, 1 HR,
 19 RBIs, 13 Steals)
Top Newcomers: David Edwards, OF, Fr.;
 Carlton Hardy, 3B, Fr.; Ron Lee, OF, Jr.

FLORIDA February 18 - 19, April 11 - 12

Nickname: Gators
Colors: Orange and Blue
Conference: Southeastern
1988 Record: 48 - 19 - 1 (21 - 6, first)
Location: Gainesville, Florida
Athletic Director: Bill Arnsparger
Head Coach: Joe Arnold (Arizona State '71)
Record at School/Overall: 193 - 103 - 2/509 -
 172 - 2
Best Time to Call: Weekday mornings
FSU vs. Florida in 1988/Overall: 1 - 2/68 -
 68 - 1
Home Field: Perry Field (4,000)
Press Box Phone: (904) 375-4683 ext. 4355,
 4356, 4357
SID: John Humenik (O) (904) 375-4683
Baseball Contact: Scott Burson
 (H) (904) 371-7302
Starters (Returning/Lost): 6/3
Pitchers (Returning/Lost): 6/3
Top Returning Veterans: Mario Linares, IF/DH,
 So., (.332, 12 HRs, 58 RBIs); Brian
 Reimsnyder, OF, Sr. (.274, 15 HRs, 49 RBIs);
 Jeff Gidcumb, RHP, Sr. (.16 - 7, 3.20 ERA)
Top Newcomers: Bill Minnis, IF, Jr.; Steve
 Georgradis, P, Fr.; Dave Majeski, OF, Fr.

BAPTIST February 20 - 22

Nickname: Buccaneers
Colors: Blue and Gold
Conference: Big South
1988 Record: 27 - 16 (10 - 8, second)
Location: Charleston, S.C.
Athletic Director: Howard Bagwell
Head Coach: Jamie Futrell (Baptist '87)
Record at School/Overall: 0 - 0/0 - 0
Best Time to Call: 9 a.m.-1 p.m.
FSU vs. Baptist in 1988/Overall: 3 - 0/3 - 0
Home Field: Baptist Baseball Field (500)
SID: Howie Bagwell (803) 797-4119
Baseball Contact: Jamie Futrell
 (H) (803) 835-2039
Starters (Returning/Lost): 7/2
Pitchers (Returning/Lost): 3/2
Top Returning Veterans: Dan Wolfe, CF, Sr.,
 (.378, 2 HRs, 31 RBIs); Hardy Ferguson,
 SS, Jr., (.338, 10 HRs, 38 RBIs)
Top Newcomers: Richard Murphy, 2B, So.;
 Steve Hayes, LHP, Fr.



Two old rivals square off, when FSU hosts Miami on April 7-9. The Hurricanes, 52-14-1 last season, are the oldest rival on the FSU schedule with Florida State leading the series with a 76-58-3 mark. Golden Spikes candidate Joe Grahe, 13-5-1 returns for his senior season after striking out 154 batters in '88.

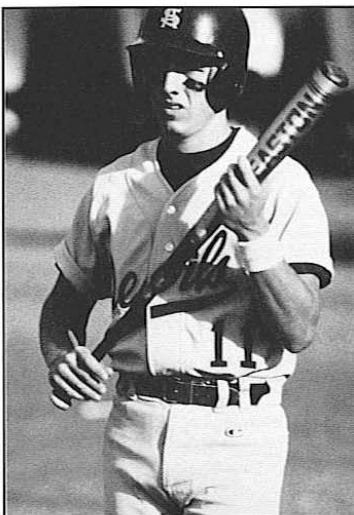
SOUTH FLORIDA February 25 - 26, February 28 - March 1

Nickname: Bulls
Colors: Green and Gold
Conference: Sun Belt
1988 Record: 26 - 33 (5 - 11, third)
Location: Tampa, Florida
Athletic Director: Paul Griffin
Head Coach: Eddie Cardieri (Florida
 Southern '77)
Record at School/Overall: 114 - 71/178 - 104
Best Time to Call: 10 a.m.-Noon
FSU vs. South Florida in 1988/Overall:
 3 - 1/54 - 12
Home Field: Red McEwen (1,200)
Press Box Phone: (813) 974-2125
SID: John Gerdes (O) (813) 974-2125
Baseball Contact: John Renneker
 (H) (813) 576-7784
Starters (Returning/Lost): 5/3
Pitchers (Returning/Lost): 5/5
Top Returning Veterans: Andy Brandon, SS,
 Sr., (.331); Scott Miller, 2B, Sr., (.322); Pete
 Tsotsos, 3B, Sr., (.293)
Top Newcomers: Bryan Manicchia, P, Jr.; Bob
 Undorf, P, Jr.; Ricky Ware, P, Jr.

1989 BASEBALL OPPONENTS

RICE March 3 - 5

Nickname: Owls
Colors: Blue and Gray
Conference: SWC
1988 Record: 31 - 28 (6 - 15, eighth)
Location: Houston, Texas
Athletic Director: Jerry Berndt
Head Coach: David Hall (Texas '71)
Record at School/Overall: 261 - 174 - 2/261 - 174 - 2
Best Time to Call: Weekdays, 10 a.m.-Noon
FSU vs. Rice in 1988/Overall: 0 - 0/0 - 0
Home Field: Cameron Field
SID: Bill Cousins (O) (713) 527-4034
Baseball Contact: Paul Augusta
 (H) (713) 527-4034
Starters (Returning/Lost): 6/3
Pitchers (Returning/Lost): 10/1
Top Returning Veterans: Mike Grace, 3B, Sr.,
 (.309, 6 HRs, 40 RBIs); Sean Broderick,
 1B/OF, Sr., (.284, 7 HRs, 42 RBIs), John
 Polasek, LHP, Jr., (.8 - 4, 4.23 ERA)
Top Newcomers: John Eierman, OF, Fr.; Taji
 Garcia, IF/SS, Fr.; Joe Racina, IF, Fr.



Florida State and Arizona State are two national powers synonymous with winning baseball. The Sundevils and Seminoles tangle for the first time since FSU defeated ASU 3-0 in the 1987 College World Series. Arizona State returns four starters off last season's 60-13 team. One of those starters, lefthander Rusty Kligo, 12-3, 3.38 ERA, is slated to start on the mound on February 4 in Tallahassee.

RICHMOND March 7 - 9

Nickname: Spiders
Colors: Red and Blue
Conference: Colonial Athletic Association
1988 Record: 26 - 33 (4 - 10, sixth)
Location: Richmond, Virginia
Athletic Director: Chuck Boone
Head Coach: Ronnie Atkins (Virginia Tech '67)
Record at School/Overall: 91 - 118 - 1/91 - 118 - 1
Best Time to Call: Mornings
FSU vs. Richmond in 1988/Overall: 3 - 0/8 - 0
Home Field: Pitt Field (500)
SID: Chris Moore (O) (804) 289-8365
Baseball Contact: Ronnie Atkins
 (H) (804) 359-1156
Starters (Returning/Lost): 7/2
Pitchers (Returning/Lost): 4/0
Top Returning Veterans: Andy Malloy, 1B, Sr.,
 (.315, 17 Hrs, 53 RBIs), C.P. Richardson,
 RHP, Sr., (.7 - 6, 4.53 ERA, 67 Ks)
Top Newcomers: Sean Gavaghan, RHP, Fr.;
 Jordan Matter, IF, Jr.; Craig Saccabino,
 RHP, Fr.

BALL STATE March 10 - 12

Nickname: Cardinals
Colors: Cardinal and White
Conference: Mid-American
1988 Record: 21 - 39 (9 - 23, ninth)
Location: Muncie, Indiana
Athletic Director: Don Purvis
Head Coach: Pat Quinn (Xavier '71)
Record at School/Overall: 159 - 175/173 - 207
Best Time to Call: 9 a.m.-Noon
FSU vs. Ball State in 1988/Overall: 1 - 0/10 - 2
Home Field: Ball Diamond (1,500)
SID: Earl Yestingsmeier (O) (317) 285-8242
Baseball Contact: John Ginter
 (H) (317) 282-3417
Starters (Returning/Lost): 8/1
Pitchers (Returning/Lost): 8/3
Top Returning Veterans: Dave Brust, C, Sr.,
 (.247, 9 HRs, 37 RBIs); Derrick Westfield,
 LF, Jr., (.299, 19 RBIs, 23 Steals); Mike
 Hepler, 3B, Sr., (.307, 7 HRs, 36 RBIs)
Top Newcomers: Louis Williams, RHP, Fr.; Paul
 Gogo, RHP, Jr.; Dean Sheperd, RHP, Jr.

SAMFORD March 14 - 15

Nickname: Bulldogs
Colors: Crimson and Blue
Conference: Trans America
1988 Record: 8 - 49 - 1 (5 - 12, fourth in East)
Location: Birmingham, Alabama
Athletic Director: Steve Allgood
Head Coach: Tommy Walker (Montevallo '82)
Record at School/Overall: 0 - 0/0 - 0
Best Time to Call: 9 a.m.-11 a.m.
FSU vs. Samford in 1988/Overall: 3 - 0/14 - 1
Home Field: Samford Field (500)
SID: Kent Partridge (O) (205) 870-2799
Baseball Contact: Kent Partridge
 (H) (205) 988-0634
Starters (Returning/Lost): 3/5
Pitchers (Returning/Lost): 1/8
Top Returning Veterans: Carl Tolbert, RHP/OF,
 Sr., (11 - 4, 4.53 ERA/266, 2 HRs, 14 RBIs);
 David Vaughn, 2B, Sr., (.243, 0 HR, 19 RBIs)
Top Newcomers: Robert Alvarado, RHP, Jr.;
 Tim Hogan, C, Jr.; Mark Barber, 1B, Jr.

SOUTH CAROLINA March 17 - 19

Nickname: Gamecocks
Colors: Garnet and Black
Conference: Metro
1988 Record: 43 - 21 (14 - 3, first)
Location: Columbia, S.C.
Athletic Director: King Dixon
Head Coach: June Raines (South Carolina '71)
Record at School/Overall: 483 - 192 - 1/483 - 192 - 1
Best Time to Call: Weekdays, 10 a.m.-Noon
FSU vs. South Carolina in 1988/Overall: 2 - 0/12 - 6
Home Field: Sarge Frye Field (4,000)
Press Box Phone: (803) 777-6648 or 6691
SID: Kerry Tharp (O) (803) 777-3829
Baseball Contact: Tom Price
 (H) (803) 787-2395
Starters (Returning/Lost): 6/3
Pitchers (Returning/Lost): 9/1
Top Returning Veterans: Adrian Adkins, DH,
 Sr., (.385, 12 HRs, 54 RBIs); Skeets Thomas,
 OF, So., (.338, 8 HRs, 52 RBIs); Brian
 Williams, OF/IF/P, (.332, 8 HRs, 29 RBIs, 18
 Steals/3 - 1, 2.76 ERA, 421 IP, 56 Ks); Joe
 Cardwell, LHP, Sr., (.20 - 3, 3.78 ERA)
Top Newcomers: Dave Willman, C, Fr.; Matt
 Threehouse, RHP, Fr.; Joe Gmitter, SS, Fr.

1989 BASEBALL OPPONENTS

JACKSONVILLE

March 21 - 22, April 4 - 5

Nickname: Dolphins
Colors: Green and Gold
Conference: Sun Belt
1988 Record: 39 - 24 (11 - 6, second)
Location: Jacksonville, Florida
Athletic Director: Donald O. Jacobs
Head Coach: Tom Bradley (Maryland '72)
Record at School/Overall: 347 - 249/347 - 249
Best Time to Call: Mornings
FSU vs. Jacksonville in 1988/Overall: 1 - 1/56 - 25
Home Field: Brest Field (1,000)
Press Box Phone: (904) 744-3950
SID: Gary F. Izzo (O) (904) 744-3950 ext. 3404
Baseball Contact: James Cramer (H) (904) 241-0060
Starters (Returning/Lost): 5/4
Pitchers (Returning/Lost): 8/3
Top Returning Veterans: Jose Rodríguez, 3B, Sr., (.299, 7 HRs, 44 RBIs); Jesus Rivera, 2B, Sr., (.366, 0 HRs, 4 RBIs); Tony McGee, C, Sr., (.366, 1 HR, 29 RBIs)
Top Newcomers: Rene Francisco, OF, Jr.; Mike Holman, SS, Jr.; Paul Gay, OF, Jr.

CALIFORNIA ST.-FULLERTON

March 24 - 26

Nickname: Titans
Colors: Orange and Blue
Conference: Big West
1988 Record: 43 - 18 (12 - 8, third)
Location: Fullerton, California
Athletic Director: Ed Carroll
Head Coach: Larry Cochell (Arizona State '64)
Record at School/Overall: 43 - 18/730 - 408 - 2
Best Time to Call: Mornings
FSU vs. California St.-Fullerton in 1988/Overall: 0 - 0/1 - 2
Home Field: Titan Field (1,000)
SID: Mel Franks (714) 773-3970
Baseball Contact: Tim Murphy
Starters (Returning/Lost): 16 - 11
Pitchers (Returning/Lost): 9 - 2
Top Returning Veterans: Brent Mayne, C, Sr., (.393, 1 HR, 31 RBIs); Rex Peters, 1B/RF, Sr., (.330, 2 HRs, 38 RBIs); Ralph Ramirez, 3B, Sr., (.331, 5 HRs, 27 RBIs)
Top Newcomers: Matthew Borgogno, 2B, So.; David Staton, 1B, Jr.; Rod Klopfer, RF, Jr.

MERCER

March 28 - 29

Nickname: Bears
Colors: Orange and Black
Conference: Transa America
1988 Record: 24 - 25 (7 - 10, third)
Location: Macon, Georgia
Athletic Director: Bill Bibb
Head Coach: Barry Myers (Marshall '60)
Record at School/Overall: 308 - 233 - 2763 - 404 - 3
Best Time to Call: Mornings
FSU vs. Mercer in 1988/Overall:
Home Field: Claud Smith Field (1,200)
SID: Bobby Pope (O) (912) 744-2994
Baseball Contact: Robbie Burns (H) (912) 474-3324
Starters (Returning/Lost): 8/2
Pitchers (Returning/Lost): 6/3
Top Returning Veterans: Kevin Hackinson, RHP, Sr., (6 - 3, 6.15 ERA); Mike Tanner, 1B, Sr., (.314, 0 HRs, 9 RBIs); Brannen Smith, C, Sr., (.311, 3 HRs, 15 RBIs)
Top Newcomers: Adams Ropp, RHP/OF, Fr.; Hubert Hammack, RHP, Jr.; Scott Steele, OF, Fr.

SOUTHERN MISSISSIPPI

March 31 - April 2

Nickname: Golden Eagles
Colors: Black and Gold
Conference: Metro
1988 Record: 36 - 26 (9 - 6, fourth)
Location: Hattiesburg, Mississippi
Athletic Director: Bill McClellan
Head Coach: Hill Denson (Southern Miss '66)
Record at School/Overall: 145 - 158 - 2/145 - 158 - 2
Best Time to Call: Mornings
FSU vs. Southern Miss in 1988/Overall: 2 - 4/27 - 9
Home Field: Pete Taylor Park (2,000)
SID: M. Regiel Napier (O) (601) 266-4503
Baseball Contact: Regiel Napier (H) (601) 268-7777
Starters (Returning/Lost): 5/4
Pitchers (Returning/Lost): 7/3
Top Returning Veterans: Fred Cooley, DH/P, Sr., (.355, 17 HRs, 70 RBIs/5 - 0, 4.13 ERA); Sedwick McCollum, 2B, Sr., (.315, 20 HRs, 49 RBIs); Chuck Shive, P, Sr., (8 - 1, 4.31 ERA, 82 Ks)
Top Newcomers: Todd Nace, OF, So.; Chad Van Kooten, OF, Jr.; Scotty Bonds, 1B, Jr.

MIAMI

April 7 - 9, May 5 - 7

Nickname: Hurricanes
Colors: Orange, Green and White
Conference: Independent
1988 Record: 52 - 14 - 1
Location: Coral Gables, Florida
Athletic Director: Sam Jankovich
Head Coach: Ron Fraser (Florida State '60)
Record at School/Overall: 1,069 - 380 - 9/1,069 - 380 - 9
Best Time to Call: Weekday mornings
FSU vs. Miami in 1988/Overall: 3 - 2 - 1/76 - 58 - 3
Home Field: Mark Light Stadium (5,000)
Press Box Phone: (305) 665-8300 or 665-1399
SID: Richard Dalrymple (O) (305) 284-3244
Baseball Contact: Ken Lee (H) (305) 821-4699
Starters (Returning/Lost): 3/5
Pitchers (Returning/Lost): 5/7
Top Returning Veterans: Joe Graha, RHP, Sr., (13 - 5 - 1, 2.91 ERA, 154 Ks); Rey Noriega, OF, So., (.301, 4 HRs, 43 RBIs); Will Vespe, RHP/OF, Sr., (5 - 1 - 1, 4.79 ERA/297, 6 HRs, 39 RBIs)
Top Newcomers: Alex Fernandez, RHP, Fr.; F.P. Santangelo, SS, Jr.; Jorge Fabregas, 1B, Fr.

LOUISVILLE

April 14 - 16

Nickname: Cardinals
Colors: Red and Black
Conference: Metro
1988 Record: 18 - 35 (3 - 15, seventh)
Location: Louisville, Kentucky
Athletic Director: Bill Olsen
Head Coach: John Mason (Louisville '81)
Record at School/Overall: 68 - 134/68 - 134
Best Time to Call: 8:30 a.m.-Noon
FSU vs. Louisville in 1988/Overall: 1 - 0/9 - 2
Home Field: Parkway Field (500)
SID: Kenny Klein (O) (502) 588-6581
Baseball Contact: Andy Dumstorf (H) (502) 636-3555
Starters (Returning/Lost): 6/3
Pitchers (Returning/Lost): 7/3
Top Returning Veterans: Jamie Fiepke, RF, Sr., (.351, 8 HRs, 35 RBIs); Doug Wingle, 2B, Jr., (.278, 11 HRs, 30 RBIs, 11 Steals); Richie Hawks, DH/1B, So., (.305, 10 HRs, 30 RBIs)
Top Newcomers: Rob Updike, CF, Jr.

1989 BASEBALL OPPONENTS

VIRGINIA TECH April 21 - 23

Nickname: Hokies
Colors: Maroon and Orange
Conference: Metro
1988 Record: 40 - 20 (11 - 7, third)
Location: Blacksburg, Virginia
Athletic Director: Dave Braine
Head Coach: Chuck Hartman (North Carolina '57)
Record at School/Overall: 391 - 154 - 2/391 - 154 - 2
Best Time to Call: Mornings
FSU vs. Virginia Tech in 1988/Overall: 1 - 0/9 - 3
Home Field: English field (1,500)
SID: Dave Smith (O) (703) 961-6726
Baseball Contact: Dave Smith (H) (703) 951-8024
Starters (Returning/Lost): 6/3
Pitchers (Returning/Lost): 3/2
Top Returning Veterans: Mike Conte, CF, Sr., (.352, 19 HRs, 59 RBIs); Len Wentz, 2B, Jr., (.314, 17 HRs, 46 RBIs); Casey Waller, 3B, Jr., (.314, 15 HRs, 59 RBIs)
Top Newcomers: Les Jenette, OF/P, Fr.; Brian Hastings, RHP, Fr.

FLORIDA INTERNATIONAL May 3

Nickname: Golden Panthers
Colors: Blue and Gold
Conference: Independent
1988 Record: 40 - 19
Location: Miami, Florida
Athletic Director: Dr. Richard A. "Dick" Young
Head Coach: Danny Price (Florida International '74)
Record at School/Overall: 360 - 172/360 - 172
Best Time to Call: Weekday mornings
FSU vs. Florida International in 1988/Overall: 1 - 2/11 - 3
Home Field: FIU Baseball Complex (1,500)
SID: Stuart Davidson (O) (305) 554-2084
Baseball Contact: Stuart Davidson (H) (305) 362-3568
Starters (Returning/Lost): 4/4
Pitchers (Returning/Lost): 3/8
Top Returning Veterans: Denny Wiseman, RHP, Sr., (9 - 6, 2.73 ERA); Anthony Hicks, OF, Jr., (.320, 22 RBIs); Steve Edwards, IF, Sr., (.299, 25 RBIs)
Top Newcomers: Larry Stanford, RHP, Sr.; Carlos Estevez, IF, Jr.; Chris Boutchie, RHP, Jr.

MEMPHIS STATE April 29 - 30

Nickname: Tigers
Colors: Blue and Gray
Conference: Metro
1988 Record: 27 - 22 (6 - 8, fifth)
Location: Memphis, Tennessee
Athletic Director: Charles Cavagnaro
Head Coach: Bobby Kilpatrick (Mississippi '61)
Record at School/Overall: 535 - 243 - 2/535 - 243 - 2
Best Time to Call: Mornings
FSU vs. Memphis State in 1988/Overall: 5 - 2/35 - 13
Home Field: Nat Burning Field (2,000)
Press Box Phone: (901) 678-2862
SID: Bob Winn (O) (901) 678-2337
Baseball Contact: Frank Bertelt (H) (904) 365-8144
Starters (Returning/Lost): 4/5
Pitchers (Returning/Lost): 3/5
Top Returning Veterans: Chris Marable, OF, Sr., (.376, 6 HRs, 42 RBIs); Tony Oohs, C/OF, Sr., (.320, 6 HRs, 29 RBIs); Steve Keighley, C, Sr., (.250, 9 HRs, 27 RBIs)
Top Newcomers: Brad Seitzer, 3B, Fr.; Brian Noack, SS, Jr.; Ron Clement, IF, Jr.

CINCINNATI May 12 - 14

Nickname: Bearcats
Colors: Red and Black
Conference: Metro
1988 Record: 28 - 21 (7 - 10, sixth)
Location: Cincinnati, Ohio
Athletic Director: TBA
Head Coach: Jim Schmitz (Wilmington '79)
Record at School/Overall: 59 - 42/120 - 104
Best Time to Call: 10 a.m.-Noon
FSU vs. Cincinnati in 1988/Overall: Home Field: Meyers Field (1,000)
SID: Tom Hathaway (O) (513) 556-5191
Baseball Contact: Brian Teter (H) (513) 598-1160
Starters (Returning/Lost): 6/3
Pitchers (Returning/Lost): 5/8
Top Returning Veterans: Todd Seymour, 1B, Sr., (.328, 8 HR, 46 RBIs); Chris Newton, 2B/OF, So., (.381, 2 HRs, 12 RBIs); K.B. Johnson, OF, Jr., (.376, 5 HRs, 20 RBIs)
Top Newcomers: Dave Hagen, RHP, So.; Jamie Baker, SS, Fr.; Jeff Rheude, 1B, Fr.

TRAVEL ITINERARY

GAINESVILLE, FLORIDA

Departure: February 17
Return: February 19
Gainesville Hilton
 2900 S.W. 13th Street
 Gainesville, Florida 32608
 (904) 377-4000

TAMPA, FLORIDA

Departure: February 27
Return: March 1
Howard Johnson Plaza Hotel
 700 N. Westshore Blvd.
 Tampa, Florida 33609
 (813) 873-7900

COLUMBIA, SOUTH CAROLINA

Departure: March 16
Return: March 19
Columbia Ramada Hotel
 8105 Two Notch Road
 Columbia, South Carolina
 (803) 736-5000

JACKSONVILLE, FLORIDA

Departure: from Columbia, SC March 20
Return: March 22
Jacksonville Marriott Hotel
 I-95 and J. Turner Butler Blvd.
 4670 Salisbury Road
 Jacksonville, Florida 33216
 (904) 739-5800

MEMPHIS, TENNESSEE

Departure: April 28
Return: April 30
The Peabody
 149 Union Avenue
 Memphis, Tennessee 38103
 (901) 529-4000

MIAMI, FLORIDA

Departure: May 3
Return: May 8
The Biltmore Hotel
 1200 Anastasia Avenue
 Coral Gables, Florida 33134
 (800) 445-2586 or (305) 445-1926

CINCINNATI, OHIO

Departure: May 11
Return: May 14
Holiday Inn Cincinnati Downtown
 800 West Eighth Street
 Cincinnati, Ohio 45203
 (513) 241-8660

COLUMBIA, SOUTH CAROLINA

Departure: May 15
Return: May 22
Columbia Ramada Hotel
 8105 Two Notch Road
 I-77 and U.S. 1
 Columbia, South Carolina 29223
 (803) 736-5600