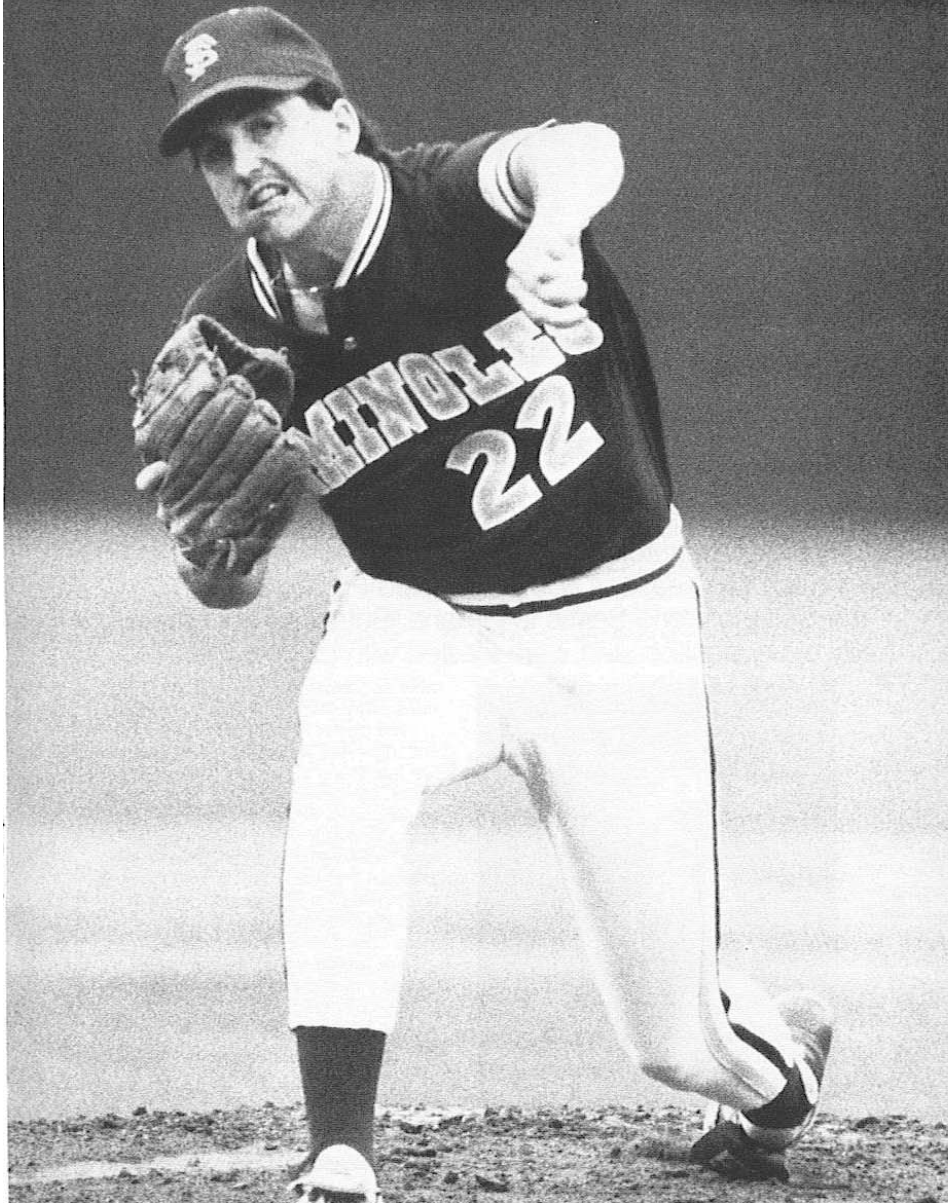


1988 Review



In my experience as a pitcher I have come to the following conclusions:

... A Pitcher needs very little power, provided he has control and uses his strength intelligently. For my part, I would rather have a pitcher who has only moderate speed and a fair curve, but knows how to use them.

In my own time, I have seen many boys with overpowering speed come and go. Indeed, their fast balls might make batsmen gape in wonder. But their catchers would be gaping too – at the various directions in which the ball was speeding.

— Christy Mathewson
“My Thoughts
on Pitching”

50-18-1 and the Metro Championship!

This Was A Rebuilding Year?

By transforming a team struggling to find an identity into a College World Series challenger, Florida State Head Coach Mike Martin performed a little magic in winning 50 games for the ninth straight season during the 1988 campaign.

Many expected 1988 to be a season in which opponents ganged up on the young Seminoles, taking the opportunity to avenge past beatings.

The season, starting more like a bumpy rollercoaster ride, finished as one of Martin's finest feats of coaching. Sure, in the two seasons prior, Martin led FSU to college baseball's promised land – the College World Series in Omaha. But those teams played with upperclassmen at virtually every position and were loaded with experience.

In 1988 Martin was forced to employ as many as six freshmen in the starting lineup, making his job much more challenging.

Martin could have panicked, following the 9-5 drubbing by LSU on national television or the three-game sweep suffered at the hands of Southern Mississippi. Undaunted, Martin pressed ahead, knowing the potential of his young team would show down the stretch.

One of FSU's brightest spots early on centered around the play of freshman first baseman Brad Parker. After stepping off the Tallahassee Leon High School campus just eight months earlier, Parker played like a seasoned veteran. He hit safely in each of his first 28 games to break current St. Louis Cardinal second baseman Luis Alicea's school mark of 27 games. Even more amazing was the composure the young freshman displayed as the streak

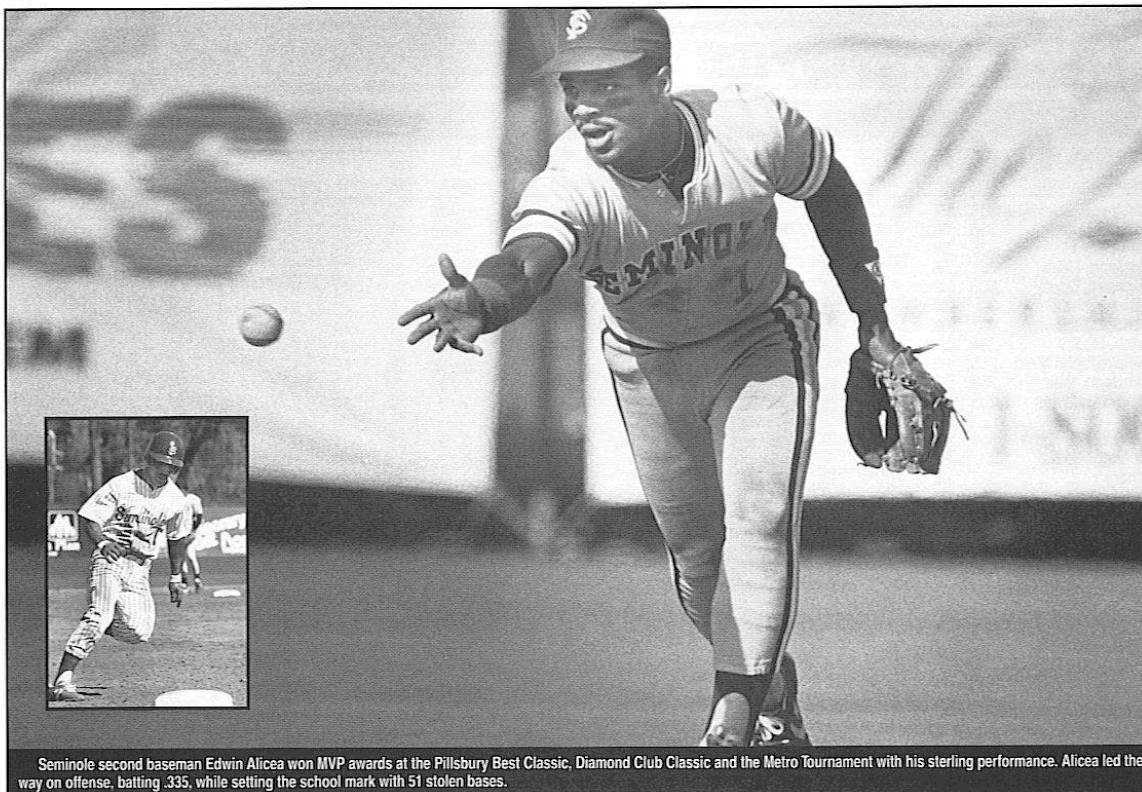


Senior left-hander Rod Byerly posted a 5-3 record as a starter in 1988. As one of the staff's most consistent hurlers, Byerly won decisions over Baptist, Miami, Maine and Memphis State (2).

wore on, despite becoming page one news every day, as the anticipation grew.

The play of Parker helped spark experienced players like Edwin Alicea in FSU's first true test of the season, at the Pillsbury Best Classic in Minneapolis, Minn. Keyed by the play of Alicea, the Seminoles responded with wins over Minnesota, Iowa, Washington State and Maine. The junior second baseman dazzled the large contingent of professional scouts with his 9 for 15 performance and was a unanimous choice for tournament MVP.

Just two days later, the Seminoles carried a new-found momentum into Mobile's Diamond Club Classic. FSU needed late-inning heroics from freshman pinch hitter Buddy Cribb, who drilled an 11th inning home run against Virginia Commonwealth, to propel themselves into the championship game against South



Seminole second baseman Edwin Alicea won MVP awards at the Pillsbury Best Classic, Diamond Club Classic and the Metro Tournament with his sterling performance. Alicea led the way on offense, batting .335, while setting the school mark with 51 stolen bases.

Alabama. The Seminoles went on to pull out an 11-7 win over the host Jaguars to notch their second consecutive tournament championship in a row.

As the season progressed, the FSU team came together — just as Martin had hoped. College World Series veterans Alicea, Donny Erickson and Barry Blackwell led the way, each batting well over .320, while providing solid defense up the middle.

While the veterans played as expected, newcomers like rightfielder Dean Harrison (.327, 3 HR, 27 RBI), centerfielder Marc Ronan (.302, 5 HR, 44 RBI), third baseman Clyde Keller (.325, 4 HR, 42 RBI), and utility player John Marc Tamayo (.265, 1 HR, 33 RBI) showed to all that the future of Seminole baseball was a bright one.

During FSU's stretch run to the Metro Championship, the Seminoles swept up-and-coming power Central Florida and won the season series against Miami, taking two out of three games at Mark Light Stadium in Miami.

The key to Florida State's winning formula rested in a pitching staff that yielded a decade-low ERA of 3.35 to finish among the national leaders in the category. The rotation of Clyde Keller (10-4, 3.59 ERA), Jerry Nielsen (4-3, 5.07), Rod Byerly (5-3, 2.81) and David Sorokowski (8-1, 3.50),

provided quality starts in most ball games. Nielsen even made a bit of history on March 23, when he became only the seventh pitcher in school history to hurl a no-hitter in a 7-0 Seminole win over Samford.

But success on the mound went farther than its starting rotation. If Martin's Seminoles were in need of quality work in the middle innings, lefthander Matt Dunbar and righthander Bret Davis combined to form one of the nation's most effective 1-2 relief punches. Dunbar finished the season among the national leaders in ERA (1.88) and strikeouts per nine innings (13.4).

FSU's overpowering closer, Ricky Kimball, earned eight saves and seven wins in just his first year of major college baseball. The Baseball America freshman All-America grew more dominant every game, as he did not surrender an earned run during the month of May.

With its pitching staff peaking during May, Florida State marched through the Metro Tournament with little difficulty in winning its sixth consecutive title. The Seminoles, seeded second behind South Carolina, defeated Louisville, Virginia Tech, Memphis State and South Carolina, twice to pick up the Conference trophy. Just as he had at the Pillsbury and Diamond Club classics, Alicea put on a show on his way to winning a third tournament MVP award.

FSU's impressive play during the later stages of the season earned the school its ninth consecutive NCAA Regional Tournament bid at Dick Howser Stadium. Florida State drew Tulane and Stetson and found little trouble disposing of its first two opponents. On the final two days of the tournament, though, FSU's inexperience started to show, when eventual regional champion Florida mowed over the Seminoles 9-3. Stetson later regrouped to eliminate Florida State 7-2 on the final day.

In the press room following the game, it was a proud Martin praising the tenacity of his young team. "I've never been more proud of a group of young men," said Martin after he fell just two games short of becoming the first coach in collegiate baseball history to win 500 games in only nine seasons. "This group scrapped all season long. There is no way anyone here can make me say anything bad about this club."

Little question lingers that the 1988 season far exceeded initial expectations. In the process, many onlookers wondered if Martin the magician used mirrors or smoke screens in leading his young team to within two games of playing in Omaha for a third consecutive season.

1988 STATISTICS

INDIVIDUAL

Batting

Player	Avg.	G	AB	R	H	2B	3B	HR	RBI	TB	SB-SA	BB	SO	HBP	S-SF	PO	A	E	Avg.
Blackwell, Barry	.348	64	227	59	79	17	1	9	68	126	20-25	53	44	11	3-7	516	62	8	.986
Alicea, Edwin	.335	69	257	86	86	14	6	10	62	140	51-57	71	37	6	3-4	120	162	16	.946
Keller, Clyde	.335	58	194	52	65	8	3	4	42	91	13-15	41	43	4	5-2	33	96	19	.872
Harrison, Dean	.327	56	147	28	48	6	1	3	29	62	7-10	26	27	0	3-0	60	1	2	.968
Erickson, Donny	.306	69	268	64	82	11	3	5	43	113	19-28	32	49	6	2-6	95	175	29	.903
Parker, Brad	.302	68	255	57	77	11	1	8	61	113	14-17	34	42	3	1-4	258	90	14	.961
Ronan, Marc	.302	69	232	56	70	5	1	5	44	94	18-21	36	39	7	4-2	200	52	13	.951
Cribb, Buddy	.294	52	126	31	37	7	0	8	25	67	3-5	31	26	1	1-0	18	0	1	.947
Tamayo, John Marc	.265	62	181	49	48	4	1	1	33	59	15-16	23	17	1	3-1	62	26	7	.926
Giordano, Marc	.258	28	93	13	24	6	0	3	22	38	4-9	28	27	3	0-2	21	0	1	.955
Clayborne, Greg	.203	61	143	26	29	5	0	3	17	43	7-9	14	37	2	6-1	58	2	2	.968
(Less Than 45 At-Bats)																			
Clements, Mat	.300	11	10	3	0	0	0	0	1	3	0-0	2	1	0	0-0	5	0	0	1.00
Stubbs, Michael	.161	31	31	7	5	0	0	1	10	8	4-5	6	8	1	2-0	9	0	1	.900
Others	.315	48	128	36	40	6	2	3	25	59	22-25	25	18	3	0-3	36	2	2	.950
Florida State	.302	69	2,292	567	690	99	19	63	482	1,018	197-242	422	415	48	33-321	823	698	128	.952
Opponents	.257	69	2,348	309	603	46	15	40	262	799	48-75	254	592	19	27-161	795	817	130	.953

Pitching

Player	W-L	S	ERA	A	GS	CG	IP	R	ER	H	BB	SO	HB	WP	Sh	Bk	Po	HR	PO	A	E	FA
Dunbar, Matt	3-0	1	1.88	23	0	0	52.1	13	11	38	22	77	3	4	0	0	0	0	3	7	2	.833
Kimball, Ricky	7-2	8	2.44	30	5	2	77.1	26	21	55	30	77	3	3	0	1	0	3	4	10	1	.933
Davis, Bret	7-4	2	2.46	23	0	0	80.1	37	22	78	29	77	2	3	0	0	4	3	4	49	0	1.00
Byerly, Rod	5-3	0	2.81	16	12	2	80.0	37	25	79	24	58	1	5	1	0	9	6	6	22	0	1.00
Sorokowski, Dave	8-1	0	3.50	19	14	2	79.2	50	31	77	42	80	2	6	1	0	0	8	3	8	2	.917
Keller, Clyde	10-4	3	3.59	22	13	1	82.2	45	35	92	30	90	3	5	0	3	3	8				(see batting)
Santos, Jerry	4-1	0	4.62	10	8	0	37.0	25	19	49	22	31	0	4	0	0	1	2	1	5	3	.667
Johnson, Barry	1-0	1	4.71	9	1	0	21.0	11	11	19	8	14	2	1	0	1	0	5	1	0	0	1.00
Brady, Mike	1-0	1	4.73	11	0	0	19.0	15	10	26	4	21	1	3	0	1	0	2	0	0	0	1.00
Nielsen, Jerry	4-3	0	5.07	16	15	2	72.2	50	41	89	45	67	0	7	1	0	4	2	1	10	2	.846
Florida State	50-18-1	16	3.35	179	68	9	607.2	309	226	602	256	592	17	41	3	6	21	39				(incl. in total)
Opponents	18-50-1	6	6.95	198	69	7	598.1	568	462	692	427	415	51	59	0	6	5	63				(incl. in total)

TEAM

Record: 50 - 18 - 1 (.714)

Home: 36 - 9 - 1 (.787)

Away: 10 - 8 (.555)

Neutral: 4 - 1 (.800)

Metro: 17 - 6 (.739)

Day: 26 - 7 - 1 (.771)

Night: 24 - 10 (.706)

Doubleheaders: 4 - 2 - 1 (.571)

Against Other Conferences: 23 - 8 (.742)

Against Independents: 8 - 4 - 1 (.643)

Extra Innings: 3 - 2 (.600)

One-Run Games: 6 - 8 (.429)

Avg. Runs Per Game: FSU 8.2; Opponents 4.5

Team ERA: FSU 3.35; Opponents 6.95

Left on Base: FSU 467; Opponents 509

Passed Balls: FSU 5; Opponents 18

Potential Basestealers Thrown Out: FSU 28-of-75; Opponents 46-of-241

Double Plays by: FSU 66; Opponents 54

Attendance: Home 86,628 (46 dates-1,884); Away 39,249 (23 dates-1,706)

Total: 125,877 (69 dates-1,825)

TALLAHASSEE, FLORIDA (March 3) — Florida State University's dedication of Dick Howser Stadium will go down in history as a truly "royal" occasion.

Not even a steady downpour during the ceremony could dampen the festivities, as dignitaries from around the nation were on hand to salute the late manager of the Kansas City Royals and former FSU All-American. American League President Bobby Brown, Governor Bob Martinez and Howser's wife Nancy spoke to 4,100 fans before Kansas City all-star George Brett and FSU standout Barry Blackwell unveiled a bronze bust of Howser. It now sits at the entrance of the stadium as a permanent addition to the stadium that bears Howser's name.

Following the ceremony, Florida State and Kansas City played four innings of an exhibition game before rain forced cancellation of the game. The rainout allowed both teams to move inside the Moore Athletic Center to meet and visit following the game.

"I enjoyed myself," Royals starting pitcher Ted Power said. "We were here for a great reason, playing Dick's old school."



GAME-BY-GAME RESULTS

Date	Opponent	Score	W/L	Winning Pitcher	Losing Pitcher	GW-RBI	Attendance	Record
Feb. 12	Grambling	11 - 7	W	Davis (1 - 0)	Watkins (0 - 1)	Colston (1)	1,562	1 - 0
Feb. 13	Grambling	16 - 3	W	Keller (1 - 0)	Shaw (0 - 1)	—	1,881	2 - 0
Feb. 14	Grambling	18 - 2	W	Santos (1 - 0)	Hurks (0 - 1)	Erickson (1)	1,435	3 - 0
Feb. 21	LSU	4 - 9	L	McDonald (2 - 0)	Keller (1 - 1)	—	2,733	3 - 1
Feb. 26 (m)	Southern Miss	6 - 3	W	Keller (2 - 1)	Ross (1 - 2)	Parker (1)	1,579	4 - 1
Feb. 27 (m)	Southern Miss	18 - 11	W	Davis (2 - 0)	Gessner (0 - 1)	Clayborne (1)	2,113	5 - 1
Feb. 28 (m)	Southern Miss	5 - 6	L	Shive (1 - 0)	Nielsen (0 - 1)	—	2,359	5 - 2
Feb. 29	Richmond	7 - 1	W	Santos (2 - 0)	Rehman (0 - 1)	Alicea (1)	752	6 - 2
Mar. 1	Richmond	11 - 4	W	Sorokowski (1 - 0)	Heinze (0 - 1)	Ronan (1)	642	7 - 2
Mar. 2	Richmond	6 - 1	W	Kimball (1 - 0)	Richardson (0 - 1)	Erickson (2)	465	8 - 2
Mar. 4	Ball State	6 - 4	W	Santos (3 - 0)	Shebek (0 - 2)	Clayborne (2)	323	9 - 2
Mar. 5	South Florida	6 - 4	W	Nielsen (1 - 1)	Dougherty (0 - 4)	—	945	10 - 2
Mar. 6	South Florida	4 - 2	W	Sorokowski (2 - 0)	Conrad (0 - 2)	Keller (1)	1,523	11 - 2
Mar. 8	at South Florida	4 - 1	W	Kimball (1 - 0)	Guasch (0 - 2)	Clayborne (3)	947	12 - 2
Mar. 9	at South Florida	3 - 6	L	Peters (2 - 2)	Byerly (0 - 1)	—	373	12 - 3
Mar. 11	Sanford	19 - 3	W	Santos (4 - 0)	Hare (1 - 4)	—	858	13 - 3
Mar. 12	Sanford	12 - 3	W	Sorokowski (3 - 0)	Bowden (0 - 4)	Blackwell (1)	751	14 - 3
Mar. 13	Sanford	7 - 2	W	Kimball (3 - 0)	Carroll (0 - 7)	Erickson (3)	1,201	15 - 3
Mar. 15	Lamar	10 - 9	W	Keller (3 - 1)	Juhl (1 - 1)	Blackwell (2)	540	16 - 3
Mar. 17	Alabama-Birmingham	10 - 4	W	Dunbar (1 - 0)	Taylor (1 - 4)	—	805	17 - 3
Mar. 19 (m)	at Southern Miss	4 - 5	L	Cooley (2 - 0)	Davis (2 - 1)	—	212	17 - 6
Mar. 19 (m)	at Southern Miss	1 - 2	L	Lindsey (5 - 0)	Kimball (3 - 1)	—	1,006	17 - 5
Mar. 20 (m)	at Southern Miss	7 - 9	L	Cooley (3 - 0)	Nielsen (1 - 2)	—	1,323	17 - 6
Mar. 21	Baptist	9 - 8	W	Johnson (1 - 0)	Inabinet (1 - 1)	Harrison (1)	1,006	18 - 6
Mar. 22	Baptist	15 - 1	W	Byerly (1 - 1)	Brownlee (1 - 1)	Erickson (4)	958	19 - 6
Mar. 23	Baptist	7 - 0	W	Nielsen (2 - 2)	Shoemaker (3 - 4)	Keller (2)	782	20 - 6
Mar. 26	Florida International	7 - 8	L	Grayson (5 - 3)	Davis (2 - 2)	—	1,499	20 - 7
Mar. 27	Florida International	5 - 2	W	Keller (4 - 1)	Wiseman (7 - 3)	Colston (2)	1,311	21 - 7
Mar. 29	Jacksonville	10 - 7	W	Davis (3 - 2)	Evans (3 - 1)	Erickson (5)	1,255	22 - 7
Mar. 30	Mercer	3 - 2	W	Kimball (4 - 1)	Tanner	Blackwell (4)	1,553	23 - 7
Mar. 30	Mercer	9 - 10	L	Fitzgibbons	Santos (4 - 1)	—	1,553	23 - 8
Apr. 1 (m)	at Minnesota	12 - 5	W	Keller (5 - 1)	Neagle	Alicea (3)	2,854	24 - 8
Apr. 2 (m)	Iowa	8 - 0	W	Sorokowski (4 - 0)	Driscoll	Blackwell (5)	2,000	25 - 8
Apr. 3 (m)	Washington State	5 - 1	W	Nielsen (3 - 2)	Gustafson	Tamayo (1)	1,643	26 - 8
Apr. 3 (m)	Maine	4 - 2	W	Byerly (2 - 1)	Plummer (1 - 4)	Blackwell (6)	1,026	27 - 8
Apr. 5	at Old Dominion	6 - 5	W	Kimball (5 - 1)	Hvizda (3 - 5)	Cribb (1)	500	28 - 8
Apr. 6	at South Alabama	11 - 7	W	Sorokowski (5 - 0)	Hale (1 - 1)	Parker (2)	1,466	29 - 8
Apr. 8	Miami	3 - 8	L	Grahe (7 - 2)	Kimball (5 - 2)	—	4,544	29 - 9
Apr. 9	Miami	20 - 8	W	Byerly (3 - 1)	Knowles (6 - 1)	Blackwell (5)	4,915	30 - 9
Apr. 10	Miami	5 - 5	T	—	—	—	4,569	30 - 9 - 1
Apr. 13	Florida	7 - 2	W	Sorokowski (6 - 0)	Johnson (0 - 2)	Tamayo (2)	3,815	31 - 9 - 1
Apr. 15	at Valdosta State	20 - 8	W	Brady (1 - 0)	Speth (1 - 2)	Parker (3)	1,511	32 - 9 - 1
Apr. 16 (m)	Memphis State	5 - 6	L	Bowlan (4 - 3)	Davis (3 - 3)	—	DH	32 - 10 - 1
Apr. 16 (m)	Memphis State	5 - 0	W	Byerly (4 - 1)	Nabors (3 - 3)	—	2,467	33 - 10 - 1
Apr. 17 (m)	Memphis State	1 - 2	L	Cook (7 - 3)	Keller (5 - 2)	—	1,412	33 - 11 - 1
Apr. 20	at Florida	5 - 8	L	Johnson (1 - 2)	Sorokowski (6 - 1)	—	2,033	33 - 12 - 1
Apr. 22	South Alabama	13 - 11	W	Kimball (6 - 2)	Buss (3 - 3)	—	1,549	34 - 12 - 1
Apr. 23	Georgia Tech	15 - 2	W	Nielsen (4 - 2)	Davis (6 - 4)	Giordano (2)	1,758	35 - 12 - 1
Apr. 24	Georgia Tech	2 - 10	L	Erwin (9 - 0)	Keller (5 - 3)	—	1,251	35 - 13 - 1
May 1	Central Florida	8 - 1	W	Keller (6 - 3)	Scott (7 - 2)	Ronan (2)	DH	36 - 13 - 1
May 1	Central Florida	2 - 1	W	Kimball (7 - 2)	Goins (7 - 3)	Ronan (3)	1,841	37 - 13 - 1
May 3	at Central Florida	11 - 3	W	Sorokowski (7 - 1)	Polak (5 - 2)	Keller (3)	2,257	38 - 13 - 1
May 4	at Florida International	1 - 2	L	Wiseman (9 - 3)	Byerly (4 - 2)	—	824	38 - 14 - 1
May 6	at Miami	6 - 5	W	Keller (7 - 3)	Joseph (10 - 4)	Parker (4)	5,561	39 - 14 - 1
May 7	at Miami	7 - 9	L	Joseph (4 - 1)	Davis (3 - 4)	—	5,808	39 - 15 - 1
May 8	at Miami	6 - 3	W	Davis (4 - 4)	Tucker (5 - 1)	—	3,072	40 - 15 - 1
May 10	at Jacksonville	2 - 5	L	Shapiro (5 - 4)	Byerly (4 - 3)	—	500	40 - 16 - 1
May 13 (m)	at Memphis State	14 - 3	W	Keller (8 - 3)	Cook (10 - 5)	Giordano (3)	500	41 - 16 - 1
May 14 (m)	at Memphis State	9 - 5	W	Davis (5 - 4)	Shrewsbury (3 - 3)	Ronan (4)	500	42 - 16 - 1
May 15 (m)	at Memphis State	21 - 1	W	Byerly (5 - 3)	Bowlan (5 - 5)	Giordano (4)	600	43 - 16 - 1
(METRO CONFERENCE TOURNAMENT)								
May 18	Louisville	18 - 4	W	Davis (6 - 4)	Patterson (5 - 8)	Cribb (2)	3,311	44 - 16 - 1
May 19	Virginia Tech	9 - 6	W	Keller (9 - 3)	Ferguson (5 - 5)	Giordano (5)	3,200	45 - 16 - 1
May 20	South Carolina	9 - 3	W	Davis (7 - 4)	Cardwell (10 - 2)	Keller (4)	4,099	46 - 16 - 1
May 21	Memphis State	4 - 2	W	Sorokowski (8 - 1)	Cook (10 - 7)	Keller (5)	—	47 - 16 - 1
May 21	South Carolina	9 - 1	W	Dunbar (2 - 0)	Menhart (5 - 4)	—	4,899	48 - 16 - 1
(NCAA EAST REGION TOURNAMENT)								
May 26	Stetson	10 - 3	W	Keller (10 - 3)	Tsaamis (6 - 9)	Ronan (5)	2,389	49 - 16 - 1
May 27	Tulane	8 - 6	W	Dunbar (3 - 0)	Herry (6 - 9)	—	2,539	50 - 16 - 1
May 28	Florida	3 - 9	L	Gidcumb (16 - 5)	Nielsen (4 - 3)	—	5,174	50 - 17 - 1
May 29	Stetson	2 - 7	L	Dryden (4 - 4)	Keller (10 - 4)	—	2,298	50 - 18 - 1

1988 TOURNAMENT RESULTS

METRO CHAMPIONSHIP

Florida State 18, Louisville 8

Louisville 004 000 000 -4 6 1
Florida State 132 003 72X -18 18 0
 Patterson, Mattingly (6), Logsdon (7),
 Grimes (9) and Cooper, Meeks (9);
 Sorokowski, Davis (3), Brady (8), Johnson (8)
 and Blackwell, Clements (9).
 WP - Davis (6 - 4); LP - Patterson (5 - 8)
 HR - Cribb (8), Blackwell (8), Erickson (5)

Florida State 9, South Carolina 3

South Carolina 002 000 010 -3 8 0
Florida State 003 001 50X -9 12 2
 Cardwell, Spires (7), Lewis (8) and Nelson;
 Byerly, Davis (3), Johnson (8) and Blackwell.
 WP - Davis (7 - 4); LP - Cardwell (10 - 2)
 HR - Williams (8); Tamayo (1); Alicea (8)

Florida State 9, Virginia Tech 6

Florida State 120 001 041 -9 10 2
Virginia Tech 000 003 030 -6 13 4
 Keller, Dunbar (6), Kimball (8) and
 Blackwell; Ferguson, Williams (3), Galla (6),
 Margheim (8), Hoffman (8), Jednorski (9)
 and Creed.
 WP - Keller (9 - 3); LP - Ferguson (5 - 5)

Florida State 9, South Carolina 1

Florida State 141 111 001 -9 8 0
South Carolina 001 000 000 -1 9 1
 Nielsen, Dunbar (5) and Blackwell;
 Menhart, Underwood (3), Yount (6), Beatson
 (6) and Nelson.
 WP - Dunbar (2 - 0); LP - Menhart (5 - 4)
 HR - Alicea (9), Cribb 2 (8)

NCAA EAST REGIONAL

Florida State 10, Stetson 3

Stetson 001 100 100 -3 9 0
Florida State 070 001 02X -10 16 1
 Tsamis, Natale (2), Connell (8) and
 Farrand; Keller, Davis (5), Dunbar (6), Kimball
 (9) and Blackwell.
 WP - Keller (10 - 3); LP - Tsamis (6 - 9)
 HR - Blackwell (FSU) (9); Weickel
 (Stetson) (2).

Florida State 8, Tulane 6

Florida State 120 102 200 -8 8 2
Tulane 401 001 000 -6 6 1
 Sorokowski, Davis (1), Dunbar (5), Kimball
 (9) and Blackwell; Lehieu (2), Rowley (2),
 Herry (5), Robin (9) and Parker.
 WP - Dunbar (3 - 0); LP - Herry (4 - 4)
 HR - Spahn (21), Elkins (4), Alicea (10)

Florida 9, Florida State 3

Florida 231 020 010 9 15 1
Florida State 000 011 100 1 12 1
 Gidcumb, Cox (9) and Fernandez; Nielsen,
 Johnson (3) and Blackwell.
 WP - Gidcumb (16 - 5); LP - Nielsen (4 - 3)
 HR - Fernandez (9); Linares (11)

Stetson 7, Florida State 2

Florida State 100 000 100 2 6 3
Stetson 003 022 00X 7 10 2
 Keller, Davis (6) and Blackwell; Dryden,
 Hickox (7) and Farrand.
 WP - Dryden (4 - 4); LP - Keller (10 - 4)

1988 NCAA Regional Attendance

1. Central (Texas) 31,479
2. South (Mississippi State) 31,338
3. Midwest (Oklahoma State) 30,889
4. West I (Fresno State) 27,183
5. West II (Arizona State) 26,665
6. East (FLORIDA STATE) 20,129
7. Atlantic (Miami) 11,873
8. Northeast (New Britain, Conn.) 4,084

ALL-TIME METRO TOURNAMENT RESULTS

Year	Site	Champion	Outstanding Player
1976	Memphis	Memphis State	Ron McNeely, Memphis State
1977	Memphis	Florida State	Terry Kennedy, Florida State
1978	Tallahassee	Memphis State	Terry Pressgrove, Memphis State
1979	Tallahassee	Tulane	Ken Francingues, Tulane
1980	Tallahassee	Florida State	Mike Fuentes, Florida State
1981	Tallahassee	Florida State	Mike Fuentes, Florida State
1982	Tallahassee	Tulane	Eric Lane, Tulane
1983	Tallahassee	Florida State	Danny Dowell, Florida State
1984	Tallahassee	Florida State	Jody Reed, Florida State
1985	Tallahassee	Florida State	Richie Lewis, Florida State
1986	Tallahassee	Florida State	Mike Loynd, Florida State
1987	Columbia	Florida State	Ed Porcelli, Florida State
1988	Tallahassee	Florida State	Edwin Alicea, Florida State

FLORIDA STATE'S METRO ALL-TOURNAMENT PICKS

Chip Bifano 1977	Mike Yastrzemski 1981 - 83	Vince Calandra 1984
Joe Hicks 1977	Joe Licata 1981	Doug Little 1984 - 86
Terry Kennedy 1977	Don DeLoach 1981	Jimmy Jones 1985
Larry Jones 1977	Chris Cawthon 1982	Richie Lewis 1985
Ron Traylor 1978	Mark Lacy 1982	Mike Loynd 1986
Bob Benda 1978	Jamey Shouppe 1982	Edwin Alicea 1987 - 88
Dave Mobley 1978	Frank Fazzini 1983 - 85	Barry Blackwell 1987 - 88
Brooks Caery 1978	Jody Reed 1983 - 84	Richie Lewis 1987
Mike Fuentes 1979 - 80 - 81	Mark Barineau 1983	Jose Marzan 1987
Bruce Huff 1979	Danny Dowell 1983	Ed Porcelli 1987
Craig Patterson 1979	David Smalley 1983	Deion Sanders 1987
Jeff Ledbetter 1979 - 81 - 82	Jeff Gray 1983 - 84	Donny Erickson 1988
Lionel Martinez 1980 - 81	Paul Sorrento 1984 - 86	Marc Giordano 1988
Rick Figueredo 1980 - 83	Eric Mangham 1984	Bret Davis 1988
Ken Fischer 1980	Luis Alicea 1984	

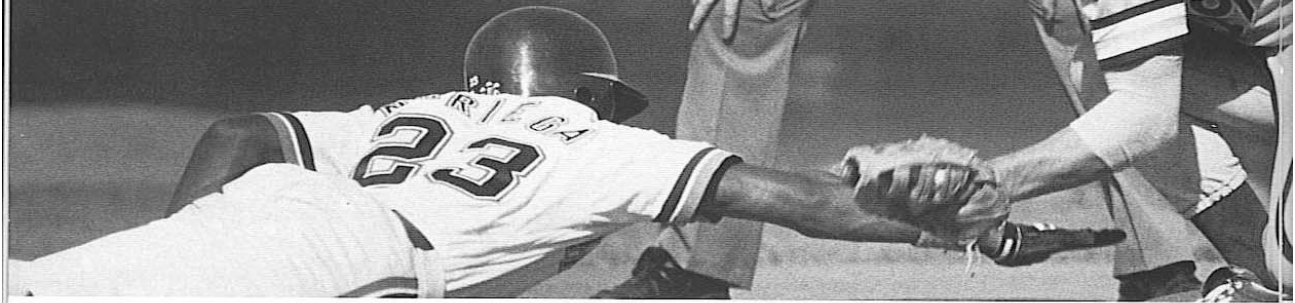
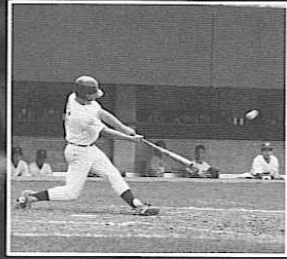
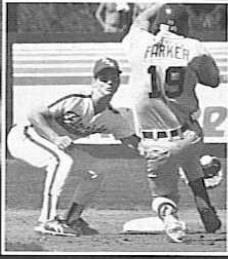
Baseball at Florida State



Most pitchers are paranoid about their arms. You live in terror that you're going to wake up one morning and not be able to pitch any more. You wake up in the middle of the night and you make a throwing motion to see if it's going to hurt. In the morning the first thing you do is check your arm to see how it feels. In fact one of the reasons it takes injured arms so long to heal is that pitchers are constantly testing the aggravated part and making it worse.

— Jim Bouton
Ball Four

THE TRADITION OF



THIS IS FSU BASEBALL

Florida State, one of the nation's most storied baseball programs, continues to lead the way. Not resting on its past glory, the Seminole baseball program's proud traditions grow every year under the direction of Head Coach Mike Martin.

Embodying the success of the program, Martin ranks among the nation's most respected coaches, guiding FSU to three College World Series appearances,

while winning at least 50 games in each of his nine seasons at FSU. Early in the 1989 season, Martin will win his 500th game, a milestone reached faster than any coach in history.

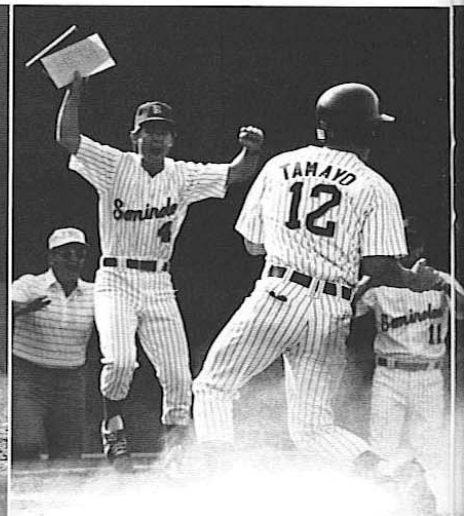
Martin directs a program, whose stature acts as a guide for others who build a program to follow. Quite simply, FSU is the measuring stick by which others are judged.

Others may boast longer histories, but no school has played the 41 seasons of winning baseball. In all, FSU teams visited the College World Series nine times,

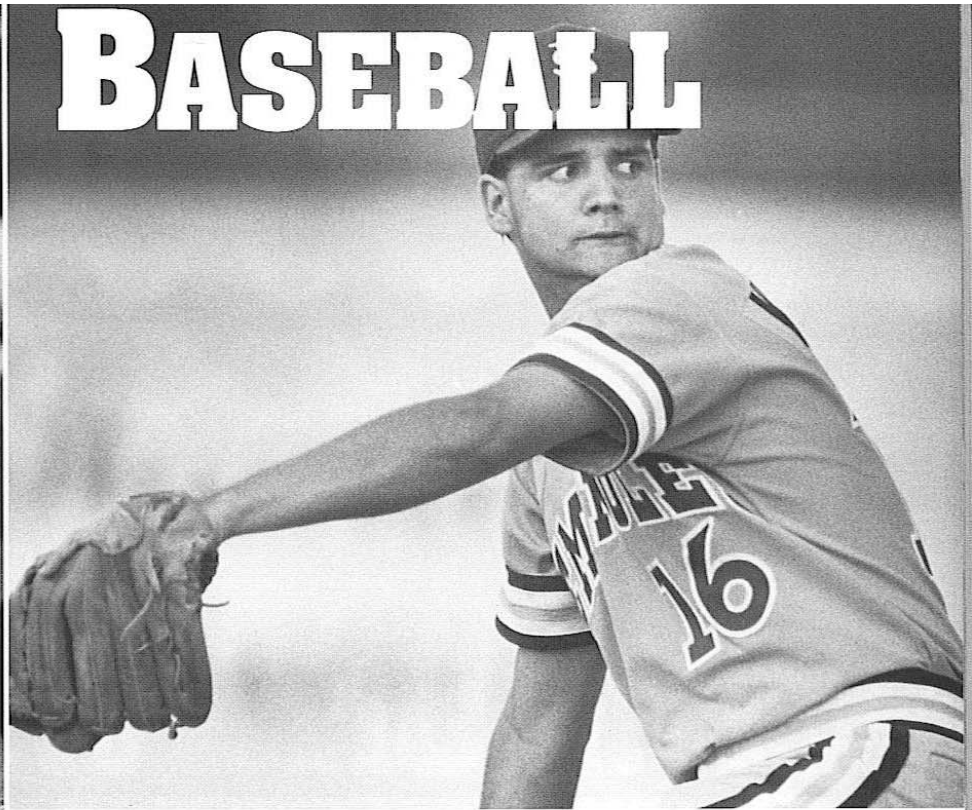
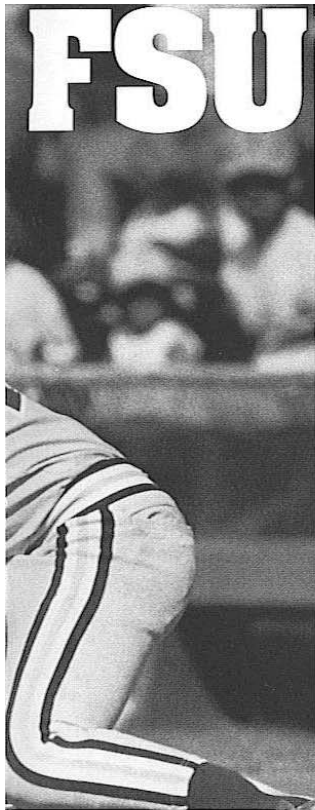
played in NCAA Regionals 26 times, and won nine Metro Conference Championships. In fact, since fielding its first team in 1948, the Seminoles have never once failed to post a winning record and is the only school in the nation to make such a claim.

Players like Dick Howser, Jody Reed, Terry Kennedy, Mike Loynd, John Grubb and Luis Alicea not only wore the FSU uniform, but went on to succeed in the Major Leagues. In all, professional teams drafted 115 Seminoles over the years.

With first class fan support from the



FSU BASEBALL



Tallahassee community and the 26,000 student body enrollment, Dick Howser Stadium is the place to be during the spring. Rivaling most minor league stadiums with a state-of-the-art matrix scoreboard, 2,500 chairback seats, roomy press and booster box, and lush playing surface, the 5,000 seat facility was dedicated last March in an exhibition game with the Kansas City Royals.

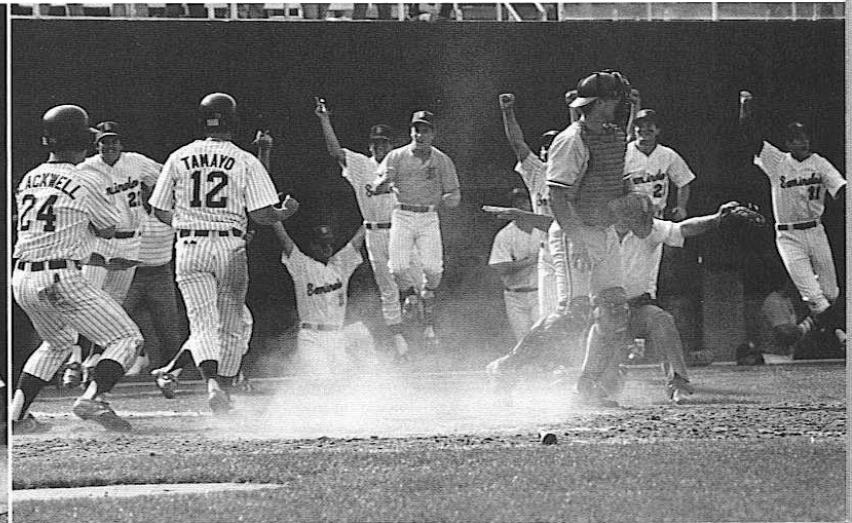
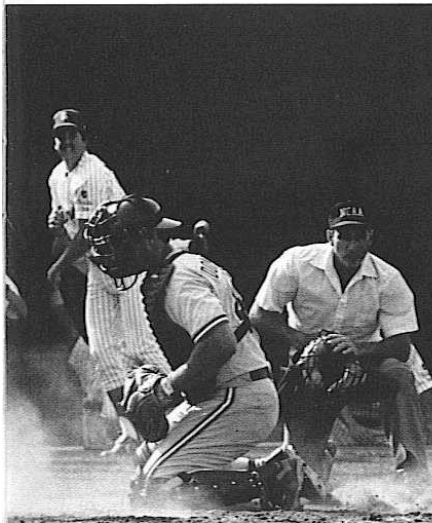
With that type of support, it's easy to see why Florida State attracts extensive State and national coverage. FSU baseball is page one news in Tallahassee and

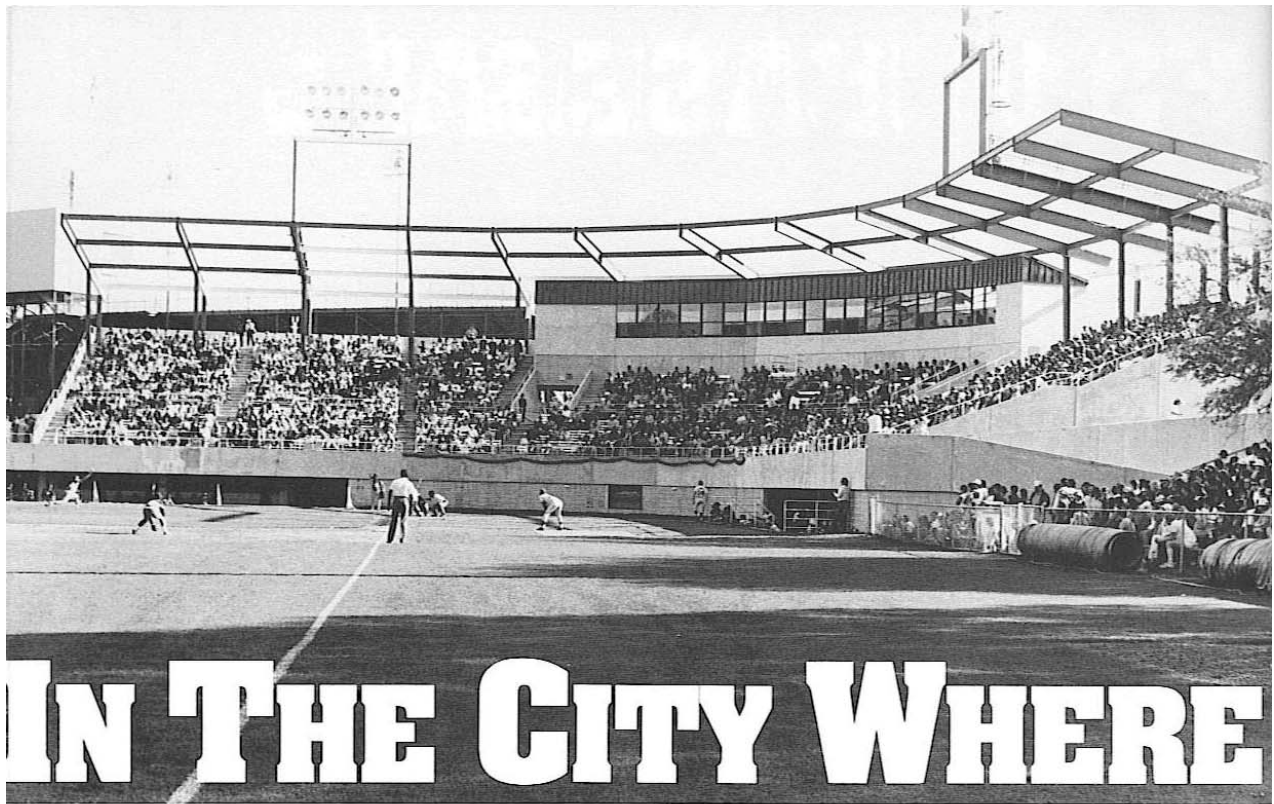
is covered on a regular basis by 10 major newspapers in Florida, reaching 1.3 million households. In addition, 50 Seminole games are broadcast each year by Tallahassee radio station WTNT with 15 of those games beamed across a seven state area on the Sunshine Network. Once again this season, ESPN visits Howser Stadium for a national telecast of the season-opening game against Arizona State.

Off the field, Seminole players make use of the Moore Athletic Center, the hub of Florida State athletics, located adjacent

to Dick Howser Stadium. Housing the baseball office and locker room facilities, the center also provides an academic area, where student athletes secure tutorial assistance and career counseling.

In the coming decade, Florida State will continue to face the challenge of keeping pace with its fabled past. Under Martin, you can be sure that Florida State will continue to play baseball as it has for the last 41 years – to have fun. It's just baseball the Seminole way.





IN THE CITY WHERE

This Is FSU

Florida State is the University which boasts of such diverse assets as the world's most powerful supercomputer and the greatest all-collegiate show on Earth, the Flying High Circus.

Located in Tallahassee, the capital of Florida, FSU is a public, coeducational university and a senior member of the State University System.

About 23,500 students representing all 50 states and more than 100 foreign countries work toward more than 250 different graduate and undergraduate degrees in the 15 schools and colleges of Florida State. The colleges of arts and sciences, business, communication, education, engineering, home economics, law and social sciences combine with the schools of criminology, library and information studies, music, nursing, social work, theatre and visual arts to make FSU a nationally acclaimed university.

The Florida State campus, located just a few blocks from the state Capitol, is one of the most beautiful in the southeast. Traditional Gothic-style structures combine with the latest in modern architecture, all brought together by an array of oaks, pines, palms, dogwoods and azaleas. The natural beauty of the 347-acre main

campus mirrors the picturesque features of the surrounding North Florida region.

Florida State was founded in 1857 as the Seminary West of the Suwannee River. Name changes over the years included Florida State College and, in 1909, Florida State College for Women. Governor Millard Caldwell signed a bill in 1947 which again made the institution coeducational and named it Florida State University.

Today, Florida State faculty and administrators generate more than \$35 million annually in external funding to supplement state sponsorship of research. In addition, almost \$13 million in private gifts was raised through the FSU Foundation during the past fiscal year. These contributions from alumni, friends, corporations, the university community and charitable foundations are for the sole benefit of Florida State's academic programs.

The FSU Supercomputer Computation Research Institute has attracted international attention to the University, home of the world's fastest supercomputer. The ETA10 has the capacity to perform 10 billion calculations per second.

Students from every academic major have a chance to become stars on the highwire of flying trapeze by participating in the Flying High Circus, the only one of its kind in the nation.

Florida State academic programs extend well beyond Tallahassee. The FSU Marine Laboratory is located on the Gulf of Mexico, 45 miles away. Students partici-

pate in professional training programs at the Asolo State Theater in Sarasota and the Burt Reynolds Institute for Theatre Training in Jupiter. The Panama City Campus of Florida State offers upper-level courses which lead to bachelor's and master's degrees. The Center for Professional Development and Public Service, housed in the Florida State Conference Center on the edge of Campus, manages educational outreach activities from Pensacola to Miami. In addition, Florida State maintains programs of study in England, Italy, Costa Rica, Switzerland, Yugoslavia, Panama Canal Zone, and even the People's Republic of China.

The physical growth of the University during the Sliger administration is best evidenced by such additions as the new wing of the Rovetta Business Building, the University Union expansion project, the new Paul A.M. Dirac Science Library Building, the Panama City Campus, the Jeffersonian Village Green project at the College of Law and the new building for the FAMU/FSU College of Engineering, now under construction.

Florida State is setting the pace as higher education in Florida prepares to enter the 21st century. And President Sliger takes pride not only in the academic programs and facilities of the University, but also in the people — students, faculty, alumni, administrators and staff — who make Florida State a successful monument to learning.



DICK HOWSER STADIUM

Dick Howser Stadium, dedicated last March before an exhibition game with the Kansas City Royals, stands as the sparkling home of the Florida State Seminoles.

As part of the Stadium dedication, Kansas City superstars George Brett and Bo Jackson, helped unveil a new \$150,000 matrix scoreboard and bronze bust of the late Kansas City and Florida State manager, both of which are now permanent additions to the ball park.

The two-year facelift to Howser Stadium continues this spring, when a mezzanine overhang is added above the 2,500 chairback seats behind homeplate.

At a cost in excess of \$1,000,000, old Seminole Field underwent extensive renovations at the conclusion of the 1982 season. As a result of that construction, Seminole Stadium was christened on March 28, 1983.

Florida State now boasts one of the finest playing surfaces in the country, surrounded by an ultra-modern stadium built with the fans comfort in mind.

As part of the 1983 expansion, the old wood bleachers were replaced by a two-tier concrete grandstand that seats 2,500. The lower level seating is arranged like box seats; while the upper level contains metal bleachers with backs.

Additional seating down both lines brings capacity to over 5,000 with close to 1,000 additional seats available for overflow. Park design also allows for future expansion if necessary.

Stadium dimensions measure 320 feet

Longtime FSU grounds chief Robert Barrett personally oversees the general upkeep of the playing surface and surroundings. Barrett's work is many times taken for granted but the hours of work daily by he and his capable grounds

Top Florida State Crowds

1. Miami, 1986	6,145
2. Memphis State, 1985 (Metro)	5,427
3. Miami, 1987	5,405
4. Miami, 1987	5,187
5. Florida, 1988 (NCAA Regional)	5,174
6. South Florida, 1983 (NCAA Regional)	5,160
7. Alabama, 1983 (NCAA Regional)	5,131
8. Miami, 1988	4,915
9. Miami, 1986	4,897
10. Miami, 1987	4,629

to right, 400 feet to center and 340 feet to left. A screen was installed prior to the 1986 season to the right field wall that gradually increases the height of the fence from 20 feet in the power alley to 30 feet in rightfield - giving the Seminoles a unique "green monster" effect similar to the one in Fenway Park. The new matrix scoreboard, a new high quality public address system, modern concession stands and vendors circulating the stands give Howser Stadium a big league look.

Another feature often compared to the Major Leagues is the lush playing surface.

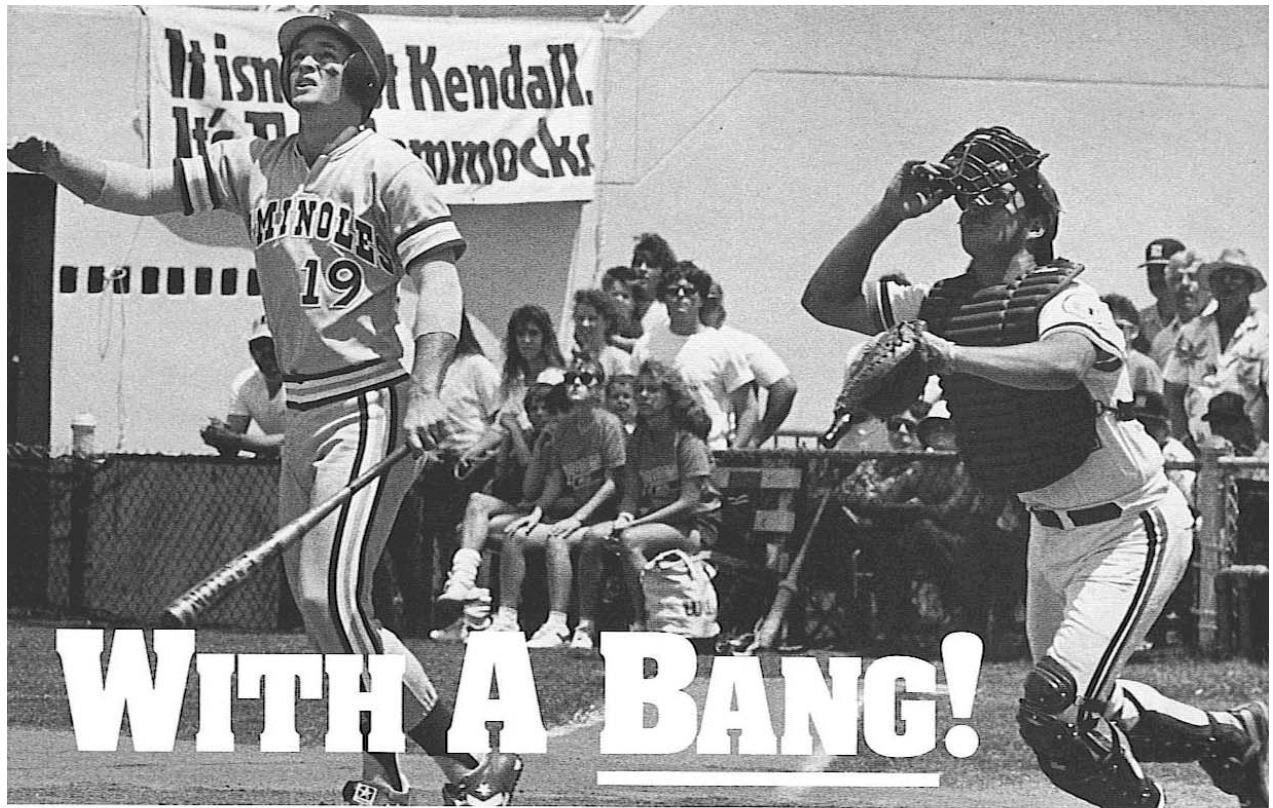
Stadium Firsts

First Game: FSU vs. LSU (3/23/83)
First Day Crowd: 1,305
First Run: Tommy Zoeller
First Hit: Zoeller, single to left
First RBI: Danny Dowell, single to score Zoeller
First Batter: John Morse, LSU
First Putout: Rick Figueredo, 5 - 3 putout on Morse
First Assist: Mark Barineau on Morse grounder
First Double: Ronnie Corbett (LSU), sixth inning
First Triple: Ronnie Corbett (LSU), eighth inning
First Home Run: Rick Figueredo, fifth inning

crew helps give Dick Howser Stadium a playing field surpassed by no other collegiate stadium.

Since the expansion was completed six years ago, fan interest is at an all-time high with some of the top draws in all of collegiate baseball. Florida State perennially sells out all 2,500 chairback seats.

In short, Dick Howser Stadium is a fitting tribute to one of Florida State's greatest alumni, while showcasing one of the nation's top teams, the Florida State Seminoles.



The Seminoles on the Air

THE MIKE MARTIN SHOW

FSU Head Coach Mike Martin and host David Murray airs every Tuesday night beginning with the season premiere on February 7 at 6:00 p.m. on the Sunshine Network. The 30-minute show will preview upcoming games, review the week's highlights and present player features.

RADIO

More than 40 Florida State baseball games can be heard live in 1989 as WTNT-FM (94.9) will once again follow the Seminoles home and away. The powerful 100,000 watt station gives the Seminoles one of the most extensive college baseball packages in the nation. This will be the ninth consecutive year WTNT has been the official Florida State baseball station.

Highlights of this year's package include six games with arch-rival Florida, four games with Florida, two games with Arizona State and three games in South Carolina. Once again, WTNT will broadcast the Metro Conference Tournament games and follow the Seminoles throughout the post-season.

Veteran announcer Rod Meadows will handle the play-by-play duties for the ninth year in a row. This year he'll be joined at the mike by former Seminole coach Dave Fannin.

1989 GAMES ON WTNT

Feb. 4	Arizona State	2:00
Feb. 5	Arizona State	8:00
Feb. 18	Florida	4:00
Feb. 19	Florida	1:30
Feb. 25	South Florida	2:00
Feb. 26	South Florida	2:00
Mar. 4	Rice	2:00
Mar. 5	Rice	2:00
Mar. 17	South Carolina	7:00
Mar. 18	South Carolina	7:00
Mar. 19	South Carolina	2:00
Mar. 24	Cal State-Fullerton	7:00
Mar. 25	Cal State-Fullerton	7:00
Mar. 26	Cal State-Fullerton	2:00
Mar. 31	Southern Miss	7:00
April 1	Southern Miss	7:00
April 2	Southern Miss	2:00
April 4	Jacksonville	7:00
April 5	Jacksonville	7:00
April 7	Miami	7:00
April 8	Miami	7:00
April 9	Miami	1:00
April 11	Florida	7:00
April 12	Florida	5:30
April 21	Virginia Tech	7:00
April 22	Virginia Tech	7:00
April 23	Virginia Tech	2:00
May 5	Miami	7:30
May 6	Miami	7:30
May 7	Miami	2:00
May 17-21	Metro Conference Tournament	TBA

TELEVISION

Sunshine Network, Florida's new sports cable network which reaches over 1.8 million homes, will feature Florida State baseball throughout the spring college season.

The network's 1.8 million homes makes it the second largest regional sports network in the country. The network's programming reaches a six-state area and includes Texas, New Mexico, Oklahoma, Arkansas, Louisiana and Florida.

In 1989, Sunshine will air 12 games, including games against Miami, Florida and Cal State-Fullerton.

1989 GAMES ON THE SUNSHINE NETWORK

Feb. 25	South Florida	2:00
Mar. 24	Cal State-Fullerton	7:00
Mar. 25	Cal State-Fullerton	7:00
Mar. 26	Cal State-Fullerton	2:00
April 5	Jacksonville	7:00
April 6	Miami	7:00
April 7	Miami	7:00
April 8	Miami	1:00
April 11	Florida	7:00
April 12	Florida	5:30
April 22	Virginia Tech	7:00
April 23	Virginia Tech	2:00