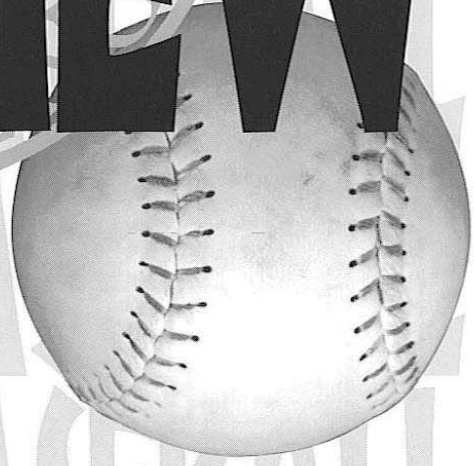


'96 FSU BASEBALL  
'96 FSU BASEBALL  
'96 FSU BASEBALL  
'96 FSU BASEBALL  
'96 FSU BASEBALL  
'96 FSU BASEBALL  
'96 FSU BASEBALL  
'96 FSU BASEBALL  
'96 FSU BASEBALL  
'96 FSU BASEBALL



'96

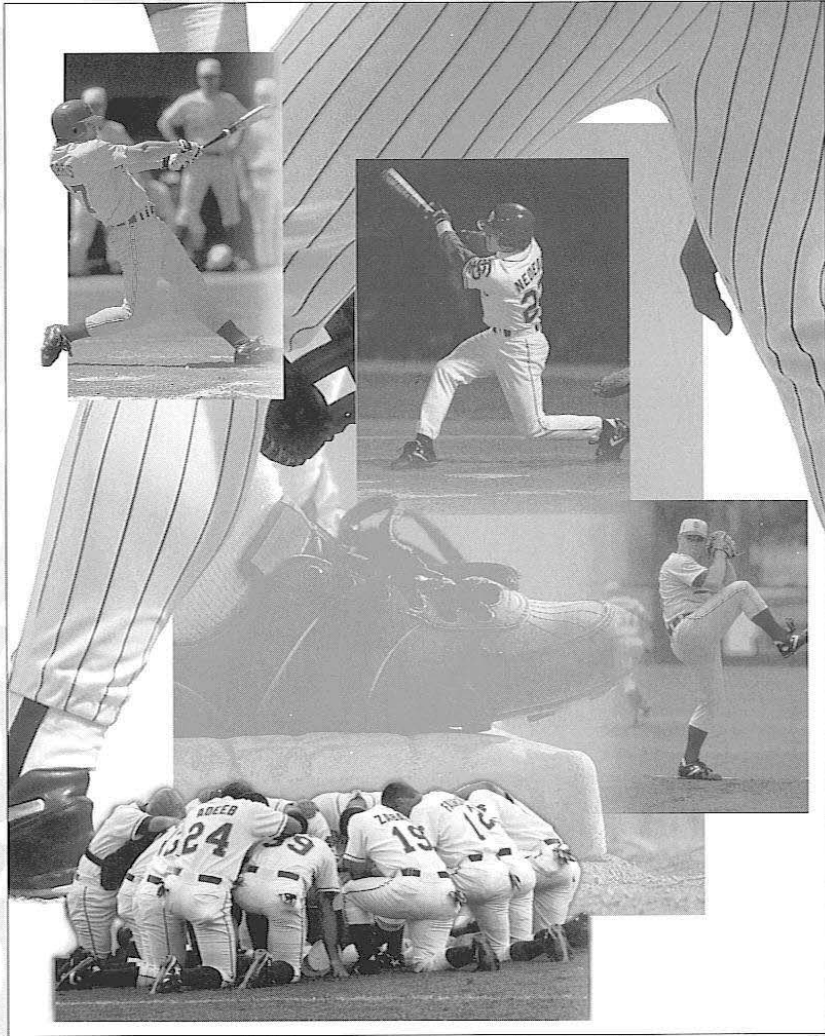
PREVIEW



1996 PREVIEW

'96 FSU BASEBALL

'96 FSU BASEBALL



'96 FSU BASEBALL

# '96 PREVIEW

On the heels of their first Atlantic Coast Conference championship and 18th consecutive NCAA post-season appearance, the Florida State squad has a new look this year. And, no, it's not their uniforms—it's 14 new names on the roster, made up of 11 true freshmen and three junior college transfers.

After losing 13 players from last season's College World Series team to the draft and graduation, including first-round picks Jonathan Johnson and David Yocum, the FSU coaching staff filled out their roster with *Collegiate Baseball's* third-ranked recruiting class in the nation. The very young FSU squad includes only two seniors, Scooby Morgan and Steve Nedecu, and four juniors.

Florida State's biggest void to fill was in what is usually the Seminoles' best asset—the pitching staff. With only four pitchers with game experience returning to "Pitching U.," and only 157.0 innings thrown between them last season, the pitching staff will be starting from scratch.

"I don't remember in my 20-plus years here at Florida State, having lost as much as we did from the 1995 team," commented head coach Mike Martin. "The loss of Johnson, Yocum, Cruz and Bell all

together was unlike any loss we've ever had. We always seem to have one starter returning and this year we're basically just starting over with our pitching staff."

Junior Chuck Howell (4-1, 3.05 ERA), senior Scooby Morgan (4-3, 1.46 ERA), and sophomore Randy Choate (1-0, 4.35 ERA) are the top three hurlers in the Seminoles' rotation. Howell showed signs of brilliance with a complete-game four-hitter over Clemson in the ACC Championship last year. Morgan, one of just two seniors on the team, will be expected to step up into a leadership role. Choate is one of the most improved pitchers on the squad and has increased the velocity of his pitches since last season.

Sophomore Randy Niles (2-0, 4.01 ERA) and redshirt freshman Chris Chavez will also factor into the pitching equation. True freshman Josh Davis, a 39th-round draft pick by the Detroit Tigers, will be expected to contribute immediately with the hardest slider on the staff. A transfer from Tallahassee C.C., Mike Davis, was listed as the top junior college pitching prospect by *Baseball America* is expected to work into a closing role.

"The area of pitching, of course, is our biggest



SOPHOMORE RANDY NILES WILL FACTOR INTO THE SEMINOLES YOUNG PITCHING STAFF.

**Pre-Game Party  
to Post-Game  
Celebration**



**The MONROE STREET GRILLE**

- A Winning Performance
- Prime Rib & Steaks
- Fresh Gulf Seafood
- Live Maine Lobster
- Mesquite or Hickory Grilled Entrees
- Our Famous 100 Item Soup, Salad and Potato Bar

**DOOLEY'S DOWN UNDER**

- For Food and Fun
- Giant Screen TV
- All New American Menu
- Daily Drink Specials

**Before or After ...  
This Time Ramada**

2900 North Monroe at I-10  
Phone 386-1027 • Reservations 385-1493

concern because of lack of experience. However, with patience, this pitching staff can develop into a very good one," Martin said.

Defensively, FSU returns four position players that started last season after losing four that were the backbone of the Seminole line-up.

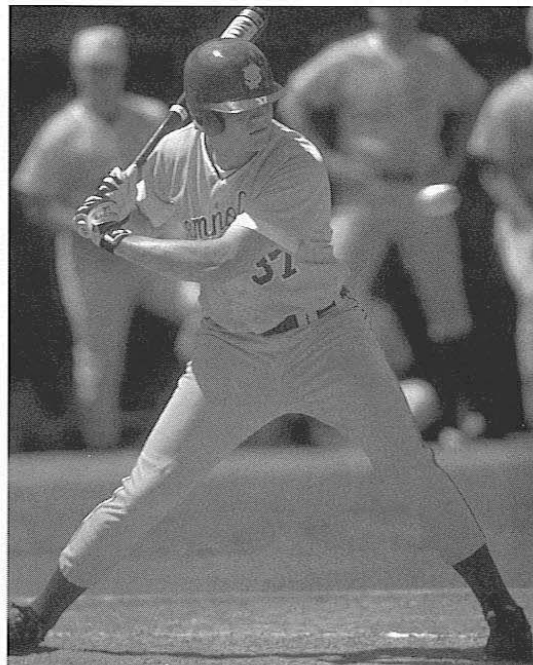
When you analyze the returning players, one automatically comes to mind, and that's sophomore centerfielder J.D. Drew. Drew, a *Collegiate Baseball* and *Baseball America* Freshman All-American, returns as the Seminoles' top home run hitter, blasted 17 out of the park last season. This past November, Drew participated in the USA Baseball Trials in Homestead, Fla., and was clocked as the second-fastest player at the combine.

Also returning for the Tribe is sophomore short-stop Brooks Badeaux, who has gained more confidence in the field since his rookie season. Badeaux is a clutch hitter, who knocked in 22 two-out RBI last season.

Junior leftfielder Jeremy Morris will be counted on to add some more punch to the Seminole line-up. Morris proved he could hit the long ball with five round-trippers last season.

Junior Scott Zech returns at the hot corner for the Tribe. Zech, who posted a .330 average last season, leads all returning starters in the batting category.

Florida State will look to fill the shoes of Mike Martin, Jr., behind the plate with sophomore Jeremy Salazar. Salazar gained valuable experience in late innings last season when relieving Martin.



**THE SEMINOLES WILL COUNT ON JEREMY MORRIS' POWER TO ADD PUNCH TO THEIR LINE-UP.**



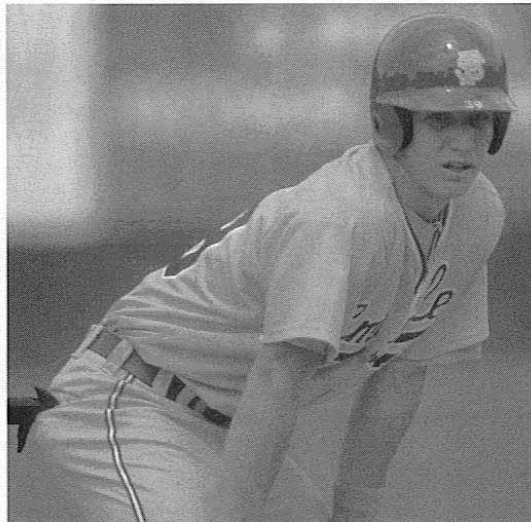
# TOP 25 PRESEASON POLLS

## COLLEGIATE BASEBALL

RANK	TEAM
1. ....	Cal State Fullerton
2. ....	Stanford
3. ....	Louisiana State
4. ....	Tennessee
5. ....	California
6. ....	Georgia Tech
7. ....	Pepperdine
8. ....	Wichita State
9. ....	Arizona State
10. ....	FLORIDA STATE
11. ....	Texas Tech
12. ....	Texas
13. ....	Southern California
14. ....	Miami (Fla.)
15. ....	Mississippi State
16. ....	Oklahoma
17. ....	Fresno State
18. ....	Oklahoma State
19. ....	Long Beach State
20. ....	Ohio State
21. ....	Texas A&M
22. ....	Alabama
23. ....	Clemson
24. ....	Notre Dame
25. ....	UCLA

## BASEBALL AMERICA

1. ....	Louisiana State
2. ....	Stanford
3. ....	Cal State Fullerton
4. ....	Wichita State
5. ....	Georgia Tech
6. ....	Tennessee
7. ....	California
8. ....	Clemson
9. ....	Mississippi State
10. ....	UCLA
11. ....	Arizona State
12. ....	Texas
13. ....	Southern California
14. ....	Oklahoma
15. ....	FLORIDA STATE
16. ....	Oklahoma State
17. ....	Long Beach State
18. ....	Alabama
19. ....	Texas Tech
20. ....	South Florida
21. ....	Miami
22. ....	Texas A&M
23. ....	N.C. State
24. ....	Auburn
25. ....	Rice



J.D. DREW HAS BEEN TOUTED A PRE-SEASON ALL-AMERICAN BY BASEBALL AMERICA AND COLLEGIATE BASEBALL.

At first base, sophomore Matt Woodward and JC transfer Geoff Sprague will platoon to replace last season's leading hitter Doug Mientkiewicz. The absence of Mickey Lopez at second base could be filled by either sophomore Adam Faurot or sophomore Jose Zabala. Faurot contributed offensively last season in the DH spot, batting .324 with 32 RBI. Zabala played in 47 games in 1995 and batted .339. Senior Steve Nedecu, one of 1994's leading hitters, and sophomore Bryan Senior will battle for the rightfield spot. Freshman Billy Brown, a third-round draft pick by Oakland, missed fall practice while playing for the football team, could also battle for a spot in the outfield.

"Our schedule is going to be very challenging early in the season, so we may not know anything about our ballclub until April and we have played all of these tough teams. We're going to get better each day," said Martin.

"We've got to make adjustments with this year's club, because we're not going to be as fast as we were last year, although we do have some people that can run. We'll probably do a lot more hitting and running to put pressure on the defense that way, instead of stealing a base."

"We always have the philosophy of pitching, defense and base-running. We have to focus on those three areas. Those areas don't have a lot of off nights, but there are a lot of nights when you don't hit the ball," Martin said.

Florida State opens the 1996 season at home on February 3, against Marshall. The Seminoles get an early season test in the Cal-State Fullerton Tournament, February 23-25, with Southern Cal and Oklahoma, three teams that participated in the 1995 College World Series.

The Tribe then delves into their tough ACC schedule and traditional home-and-home series with in-state rivals Florida and Miami. 🍌

# OVER 40 YEARS OF SEMINOLE BASEBALL AND BILL'S...A TRADITION THAT KEEPS GETTING BETTER WITH AGE

Get 25% OFF  
Proline Official  
FSU Hat



Year-after-year Bill's scores with the best selection of apparel around — and you won't be hit with high prices. Don't strike out — slide on into Bill's, where You Always Do Better!



**Bill's**  
Bookstore, Inc.

Toll Free: 1-800-476-1378 • Locally: 904-224-3178 • FAX: 904-224-1825 • 224 S. Copeland St. • Tallahassee, FL 32304  
Bill's II 561-1495 • Bill's Art City 877-0321

# '96 FLORIDA STATE ROSTERS

## ALPHABETICAL

NO.	NAME	POS.	B-T	HGT.	WGT.	CL.	HOMETOWN (JC or HS)
29	BROWN, Billy	OF	R-R	6-0	190	FR	Ft. Lauderdale, FL (St. Thomas Aquinas)
7	BADEAUX, Brooks	SS	S-R	5-10	160	SO	Scott, LA (Teurlings Catholic HS)
10	CHAVEZ, Chris	P	R-R	6-0	175	FR-R	Pensacola, FL (Washington HS)
21	CHOATE, Randy	P	L-L	6-2	175	SO	San Antonio, TX (Winston Church)
24	CRAWFORD, Wes	P	L-L	6-3	205	FR	Winter Haven, FL (Winter Haven HS)
17	DAVIS, Josh	P	R-R	6-3	200	FR	Pensacola, FL (Pensacola Cath HS)
6	DAVIS, Mike	P	R-R	6-0	180	JR	Rocky Face, GA (Tallahassee CC)
26	DIAZ, Zach	P	S-L	6-0	190	FR	Lakeland, FL (Santa Fe Catholic HS)
39	DREW, J.D.	OF	L-R	6-1	195	SO	Hahira, GA (Lowndes County HS)
1	FAUROT, Adam	2B/SS	R-R	6-0	170	JR	Blountstown, FL (Chipola JC)
32	HOWELL, Chuck	P	R-R	6-0	200	JR	Tallahassee, FL (Leon HS)
25	KLOSTERMAN, Jeremiah	C	S-R	5-9	175	FR	Jacksonville, FL (Bolles HS)
22	MAYFIELD, Henry	C	L-R	5-10	190	FR	Tallahassee, FL (Leon HS)
35	MORGAN, Steven	P	L-L	5-11	190	SR	Coral Springs, FL (Taravella HS)
37	MORRIS, Jeremy	OF	R-R	6-2	200	JR	Quincy, FL (Robert F. Munroe HS)
27	NEDEAU, Steve	OF	S-R	5-9	167	SR	N. Fort Meyers, FL (Tallahassee CC)
16	NEILL, Stephen	P	R-R	6-4	185	JR	Ft. Pierce, FL (Indian River CC)
33	NILES, Randy	P	R-R	6-2	190	SO	Key West, FL (Key West HS)
31	PROCTOR, Scott	P	R-R	6-0	163	FR	Stuart, FL (Martin County HS)
14	ROLAND, Shane	OF	R-R	6-3	190	FR	Adel, GA (Cook County HS)
12	SALAZAR, Jeremy	C	R-R	6-0	185	SO	Lafayette, LA (Northside HS)
23	SENIOR, Bryan	OF	R-R	6-2	200	SO	Columbus, GA (Brookstone HS)
2	SPRAGUE, Geoff	1B	S-R	6-0	175	JR	Tallahassee, FL (Indian River CC)
43	TRAMEL, Chris	P	L-L	5-9	165	JR	Daphne, AL (Southern Union CC)
44	TYREE, Robert	P	R-R	6-3	200	FR	Atlanta, GA (Dunwoody HS)
15	WOODWARD, Matt	1B	R-R	6-2	185	SO	Redmond, WA (Redmond HS)
5	ZABALA, Jose	2B	S-R	5-8	170	SO	Miami, FL (Columbus HS)
9	ZECH, Scott	3B/SS	R-R	5-10	175	JR	Boca Raton, FL (Boca Raton HS)

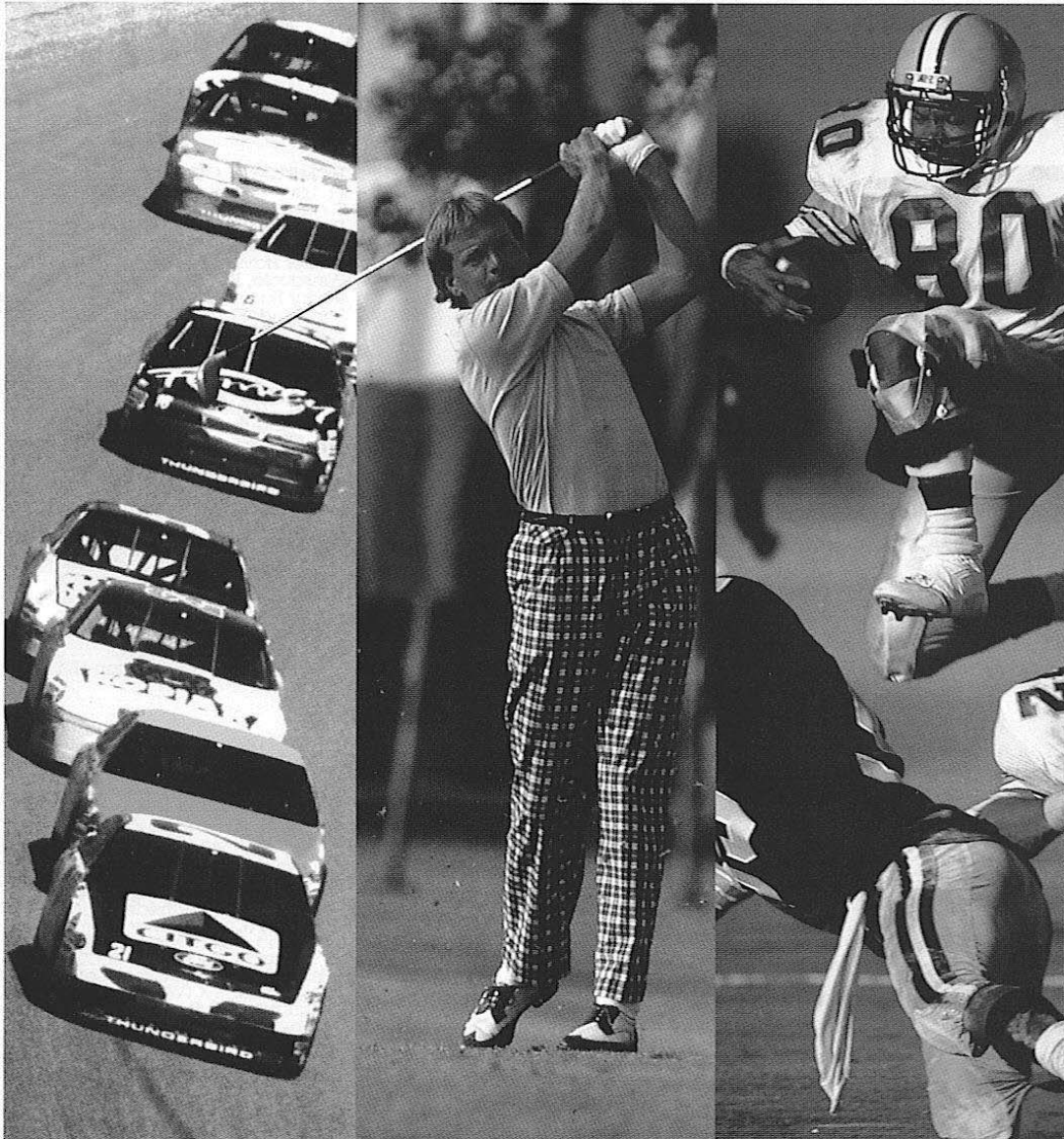
## NUMERICAL

NO.	NAME	POS.	B-T	HGT.	WGT.	CL.	HOMETOWN (JC or HS)
1	Adam Faurot	2B/SS	R-R	6-0	170	JR	Blountstown, FL (Chipola JC)
2	Geoff Sprague	1B	S-R	6-0	175	JR	Tallahassee, FL (Indian River CC)
5	Jose Zabala	2B	S-R	5-8	170	SO	Miami, FL (Columbus HS)
6	Mike Davis	P	R-R	6-0	180	JR	Rocky Face, GA (Tallahassee CC)
7	Brooks Badeaux	SS	S-R	5-10	160	SO	Scott, LA (Teurlings Catholic HS)
9	Scott Zech	3B/SS	R-R	5-10	175	JR	Boca Raton, FL (Boca Raton HS)
10	Chris Chavez	P	R-R	6-0	175	FR-R	Pensacola, FL (Washington HS)
12	Jeremy Salazar	C	R-R	6-0	185	SO	Lafayette, LA (Northside HS)
14	Shane Roland	OF	R-R	6-3	190	FR	Adel, GA (Cook County HS)
15	Matt Woodward	1B	R-R	6-2	185	SO	Redmond, WA (Redmond HS)
16	Stephen Neill	P	R-R	6-4	185	JR	Ft. Pierce, FL (Indian River CC)
17	Josh Davis	P	R-R	6-3	200	FR	Pensacola, FL (Pensacola Cath HS)
21	Randy Choate	P	L-L	6-2	175	SO	San Antonio, TX (Winston Church)
22	Henry Mayfield	C	L-R	5-10	190	FR	Tallahassee, FL (Leon HS)
23	Bryan Senior	OF	R-R	6-2	200	SO	Columbus, GA (Brookstone HS)
24	Wes Crawford	P	L-L	6-3	205	FR	Winter Haven, FL (Winter Haven HS)
25	Jeremiah Klosterman	C	S-R	5-9	175	FR	Jacksonville, FL (Bolles HS)
26	Zach Diaz	P	S-L	6-0	190	FR	Lakeland, FL (Santa Fe Catholic HS)
27	Steve Nedecau	OF	S-R	5-9	167	SR	N. Fort Meyers, FL (Tallahassee CC)
29	Billy Brown	OF	R-R	6-0	190	FR	Ft. Lauderdale, FL (St. Thomas Aquinas)
31	Scott Proctor	P	R-R	6-0	163	FR	Stuart, FL (Martin County HS)
32	Chuck Howell	P	R-R	6-0	200	JR	Tallahassee, FL (Leon HS)
33	Randy Niles	P	R-R	6-2	190	SO	Key West, FL (Key West HS)
35	Steven Morgan	P	L-L	5-11	190	SR	Coral Springs, FL (Taravella HS)
37	Jeremy Morris	OF	R-R	6-2	200	JR	Quincy, FL (Robert F. Munroe HS)
39	J.D. Drew	OF	L-R	6-1	195	SO	Hahira, GA (Lowndes County HS)
43	Chris Tramel	P	L-L	5-9	165	JR	Daphne, AL (Southern Union CC)
44	Robert Tyree	P	R-R	6-3	200	FR	Atlanta, GA (Dunwoody HS)

## FSU BASEBALL STAFF

Head Coach .....	#11 Mike Martin
Assistant Coaches .....	#3 Chip Baker (Third Base/Catchers); #8 Jamey Shouppe (Pitchers/Recruiting); #18 Jack Niles (First Base/Outfielders).
Equipment Coordinator/Clubhouse Manager .....	Guy Gallagher
Strength and Conditioning Coach .....	Mike Gibbons
Managers .....	George Shawhan (Clubhouse), Mark Bacchus (Field Supervisor), #41 John Rombough, #46 Keith Vandervoort, Rob Ford.

# WINNING DRIVES. MADE EASY.



The road to a winning performance is simple: Develop a solid game plan, and stick with it.

Same goes for your car. And CITGO gasoline helps make achieving top performance easy. Stick with CITGO.

