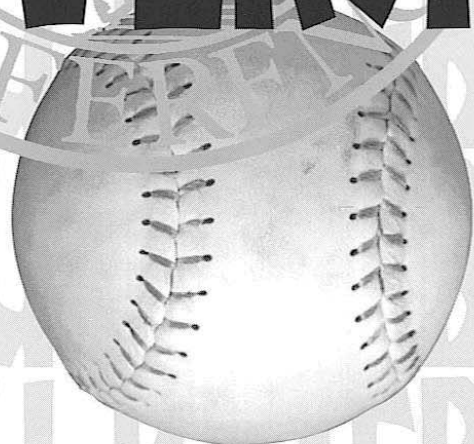


'96 FSU BASEBALL  
'96 FSU BASEBALL  
'96 FSU BASEBALL  
'96 FSU BASEBALL  
'96 FSU BASEBALL  
'96 FSU BASEBALL  
'96 FSU BASEBALL  
'96 FSU BASEBALL  
'96 FSU BASEBALL  
'96 FSU BASEBALL  
'96 FSU BASEBALL  
'96 FSU BASEBALL



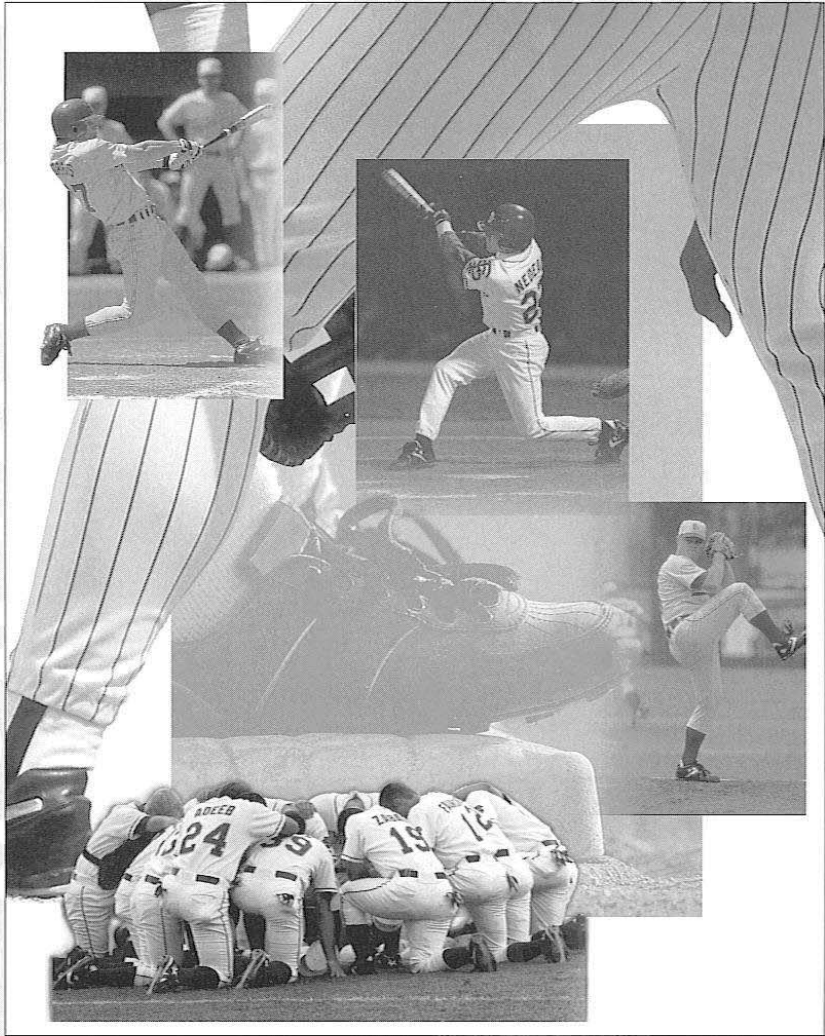
# THE UNIVERSITY



THE UNIVERSITY

# '96 FSU BASEBALL

# '96 FSU BASEBALL



# SECOND TO NONE

## FSU MARKETING & PROMOTIONS

**A**long with a nationally known baseball program and a top-notch facility, Florida State also heads the list when it comes to baseball marketing and promotions. Always in the forefront of baseball promotions, the FSU Sports Marketing Department has been recognized as a national leader in the field.

And for good reason. Fans of all ages cannot help but to have fun at the ballpark when there is an assortment of contests, giveaways and promotions to participate in, as well as exciting Seminole baseball action to be seen. Each game brings a variety of amusing and interesting activities as the Dick Howser Stadium crowd roots for their favorite team.

Whether playing a contest of chance or a game of skill, Florida State fans have plenty to see and do at the ballpark. Upon entering the stadium, fans are encouraged to sign up for contest ranging from catching water balloons in the outfield to looking for money under a base.

An annual favorite, "Youth Day" was recognized by *Collegiate Baseball* as the best promotion in college baseball in 1994. Once a season, area youth league ballplayers attend a selected game in their team jersey and gain free admittance. The youngsters huddle up by position along the leftfield foul line, and as the Seminole player playing their posi-

tion is announced, all the youth leaguers playing that same position follow their FSU player onto the field, where they stay for the playing of the National Anthem. The Dick Howser Stadium playing field is filled with hundreds of future Seminoles for this must-see spectacle.

Another crowd favorite, especially with college students, is "25 Cent Hot Dog Day." At one game each year, the stadium concession stands sell hot dogs for a mere 25 cents. Other annual special promotions include: Scout Day, St. Patty's Day, Mother's Day, Dollar Day and Fan Appreciation Day. Last year, Florida State started a new tradition as they held a Mardi Gras celebration in the stadium. In addition, corporate sponsors of Seminole baseball each have a special "Day at the Ballpark" to promote their products with special giveaways and promotions.

If your birthday falls during the baseball season, what better way to celebrate than with a "Birthday at the Ballpark." For a special price, the birthday person can reserve a block of 12 tickets to a game, receive a custom-made birthday cake along with public address and scoreboard wishes.

The 1996 Seminole baseball schedule features numerous season-long promotions and special single-game fanfares. So make a point to experience collegiate baseball the Seminole way. 🐾



FLORIDA STATE BASEBALL'S "YOUTH DAY" HAS BEEN RECOGNIZED AS ONE OF THE BEST PROMOTIONS IN THE NATION.

# THIS IS FLORIDA STATE

**A** senior member of the 10-member State University System, FSU was founded as an institution of higher learning in 1852 by legislative act and began in Tallahassee with its first students in 1857. Today, Florida State's operating budget is \$442 million. Faculty and administrators generate more than \$95 million annually in external funding to supplement state-sponsored research. Three direct-support organizations serve to bolster the University: the FSU Foundation, which raises millions in private gifts to support academics, the Seminole Boosters and the FSU Alumni Association.

Florida State continues to progress and grow — from its pre-Civil War foundation as the Seminary West of the Suwannee, through the early 20th century as the academically respected Florida State College for Women, returning to coeducational status as a university in 1947, to its modern development as an acclaimed research institution, a top-ranked competitor in intercollegiate athletics and as a standard-setter in the basic sciences and the performing arts. 🐾



THE DR. BOBBY E. LEACH CENTER, A STATE-OF-THE-ART STUDENT RECREATION FACILITY, WITH AN INDOOR POOL, SAUNAS, BASKETBALL AND RACQUET-SPORT COURTS, WAS COMPLETED IN 1991. AND IN JUNE, A 2300 SQUARE FOOT FREE WEIGHT AREA WAS COMPLETED.

*Florida State University, nearing its golden anniversary as a co-educational graduate research institution, has joined the nation's elite in both academics and athletics. Located on the oldest continuous site of higher education in Florida and building rapidly on the framework of a highly regarded liberal arts college for women, the University has emerged over the past 48 years as an institution of national and international esteem.*



WITH 1,568 MEMBERS, THE FSU FACULTY CURRENTLY INCLUDES FIVE MEMBERS OF THE NATIONAL ACADEMY OF SCIENCES AND EIGHT MEMBERS OF THE AMERICAN ACADEMY OF ARTS AND SCIENCES, AND HAS INCLUDED FIVE NOBEL LAUREATES. IT IS BACKED BY 2,987 ADMINISTRATIVE/PROFESSIONAL AND SUPPORT STAFF.



FSU RANKED 20TH IN THE NATION FOR 1990-91 IN THE NUMBER OF BLACK PH.D. STUDENTS IT GRADUATES. OVER THE FIVE YEARS FROM 1986 TO 1990, FSU RANKED EIGHTH NATIONALLY BY GRANTING DOCTORATES TO 70 AFRICAN-AMERICANS.



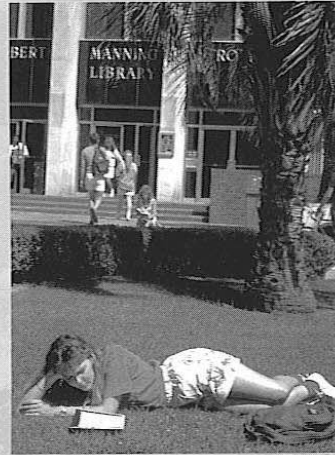
FSU'S HIGH-TECH PROGRAM IN STRUCTURAL BIOLOGY IN 1991 RECEIVED THE UNIVERSITY'S LARGEST SINGLE FOUNDATION GRANT, \$4 MILLION, TO POSITION IT AMONG THE LEADERS IN THE FIELD WORLDWIDE.



VICE PRESIDENT OF THE UNITED STATES AL GORE SPOKE AT THE DEDICATION OF THE NATIONAL HIGH MAGNETIC FIELD LABORATORY AT FLORIDA STATE IN OCTOBER 1994. THE NATIONAL SCIENCE FOUNDATION ESTABLISHED THE \$100 MILLION MAGNET LAB AT FLORIDA STATE, WHICH IS PARTNERED IN RESEARCH WITH THE LOS ALAMOS NATIONAL LABORATORY AND THE UNIVERSITY OF FLORIDA. IN 1990, A NOBEL LAUREATE IN PHYSICS AND A TOP RUSSIAN PHYSICIST WERE AMONG THE FIRST SCHOLARS DRAWN TO THE FACULTY BY THE MAGNET LAB. THE WORLD'S LARGEST MAGNET — TWO STORIES HIGH AND CAPABLE OF GENERATING 45 TESLA OR 1 MILLION TIMES THE EARTH'S MAGNETIC FIELD — IS TO BE INSTALLED IN 1995 AT THE NHMFL, LOCATED IN THE OFF-CAMPUS RESEARCH COMPLEX, INNOVATION PARK.



FLORIDA STATE UNIVERSITY ALUMNUS, DR. NORMAN THAGGARD ENDED THE LONGEST SPACE FLIGHT IN U.S. HISTORY IN JULY AFTER A HISTORIC MISSION ON THE RUSSIAN SPACE STATION MIR. THAGGARD WHO RECEIVED HIS UNDERGRADUATE DEGREE IN ENGINEERING AT FSU IN 1965 AND HIS MASTERS A YEAR LATER, IS AN AVID SEMINOLE FOOTBALL FAN AND BROUGHT HIS COSMONAUT COUNTERPARTS TO THEIR FIRST COLLEGE FOOTBALL GAME IN TALLAHASSEE LAST YEAR. THAGGARD'S FLORIDA STATE PENNANT COULD BE CLEARLY SEEN IN THE SPACE SHUTTLE ABOARD MIR DURING PRESS CONFERENCES. THAGGARD HAS BEEN ON THREE SPACE MISSIONS INCLUDING THE HISTORIC SIX-DAY FLIGHT ON THE CHALLENGER IN 1983 THAT INCLUDED SALLY RIDE.



LIBRARY HOLDINGS AT FLORIDA STATE INCLUDE 2.06 MILLION BOOK TITLES, 18,498 SERIALS AND 4.25 MILLION MICROFORMS. THE MAIN LIBRARY FACILITY, THE ROBERT M. STROZIER LIBRARY, IS LINKED VIA COMPUTERIZED INFORMATION SYSTEMS TO OTHER STATE UNIVERSITY AND NATIONAL RESEARCH LIBRARIES. THE PAUL A.M. DIRAC SCIENCE CENTER LIBRARY IS LOCATED AT THE HEART OF THE UNIVERSITY'S SCIENCE RESEARCH COMPLEX. FSU ALSO MAINTAINS EXTENSIVE MUSIC, LIBRARY SCIENCE AND LAW LIBRARIES, AND THE MILDRED AND CLAUDE PEPPER LIBRARY HOUSES THE PERSONAL AND PROFESSIONAL PAPERS OF ONE OF FLORIDA'S BEST KNOWN POLITICAL COUPLES.



FLORIDA STATE RANKS FIRST IN POPULARITY NATIONWIDE AMONG HIGH SCHOOL SENIORS, BASED ON THE NUMBER OF STUDENTS WHO REQUEST THEIR SCHOLASTIC APTITUDE TEST (SAT) AND AMERICAN COLLEGE TEST (ACT) SCORES BE SENT TO AN INSTITUTION. FSU WAS THE ONLY INSTITUTION LISTED AMONG THE TOP 10 CHOICES OF BOTH BLACK AND WHITE COLLEGE-BOUND STUDENTS. FLORIDA STATE IS ALSO TOPS IN THE STATE FOR COMMUNITY COLLEGE TRANSFERS AS FSU ADMITS OVER 3,000 TRANSFER STUDENTS EVERY FALL SEMESTER.



IN FALL 1994, THE FIRST TENANTS MOVED IN TO THE EAST SIDE OF THE \$82 MILLION UNIVERSITY CENTER, A CLASSROOM-AND-OFFICE FACILITY AT DOAK CAMPBELL STADIUM. THE STADIUM'S SOUTH END ZONE ALSO WAS ENCLOSED AND THE ADJACENT MOORE ATHLETIC CENTER EXPANDED. WHEN THE WEST SIDE IS COMPLETED IN 1996, THE UNIVERSITY CENTER WILL PROVIDE 550,000 SQUARE FEET OF MUCH NEEDED ACADEMIC SPACE AND A CENTRALIZED LOCATION FOR STUDENT SERVICES.

# THIS IS TALLAHASSEE

**N**ear, but far from the glaring strips of neon amusement, and the castles and crowds of Disney, lies another magical place in the Sunshine State — one of pow-wows, plantations, politics and great pride. Often described as "The Other Florida" with its deep-rooted history, rolling hills, canopy roads of moss-draped oaks, cool climate and Southern-style hospitality; it is a Florida few have seen. It is Tallahassee — Florida with a Southern accent.

Best known as Florida's capital, Tallahassee is an intimate neometropolitan city where the power of state government, the academic and the artistic are complimented by subtle, old-fashioned charm.

Tallahassee — derived from the words "talwa" meaning town and "ahasee" meaning old — has undergone many changes, but one thing remains the same — it is still a government town fiercely proud and dedicated to preserving its heritage.

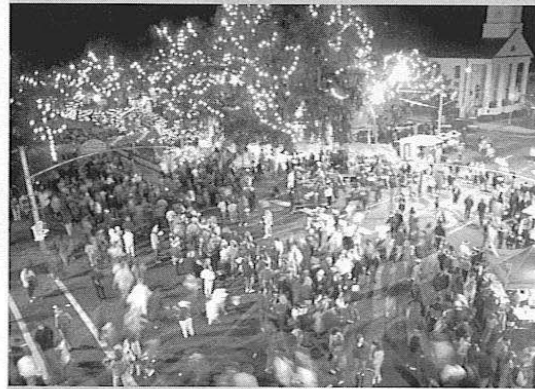
The famous Gulf beaches and major metropolitan areas of the South are a short trip from Tallahassee. As Florida's capital city, Tallahassee offers the grace and charm of a small city, while Atlanta, Jacksonville, Tampa, Orlando and New Orleans are within easy driving distance. 🐾

## CLIMATE:

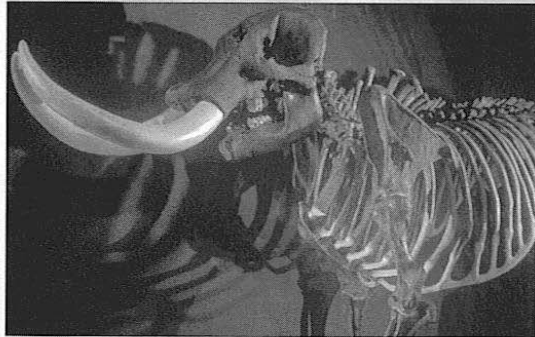
Tallahassee enjoys four distinct seasons with an average annual temperature of 67 degrees. Weather conditions are mild and moist due to close proximity to the Gulf. Summer temperatures are subtropical with an average of 83 degrees while winters average a pleasant 50 degrees.

*The Capitol buildings, both old and new, epitomize Tallahassee's perseverance. With the 22-story New Capitol towering overhead since 1977, the Old Capitol, erected in 1845, has been restored to its 1902 appearance complete with red-and-white candy-striped awnings and a gracious dome adorned with stained glass. The 22nd floor of the New Capitol reveals a spectacular view of the rolling hills of Leon County all the way to the shimmering Gulf of Mexico. Chambers of the House and Senate buzz with political zeal during the March through May legislative session.*

**74 FLORIDA STATE SEMINOLES**



THE WINTER FESTIVAL AND CELEBRATION OF LIGHTS, AN OUTDOOR CELEBRATION OF HOLIDAY LIGHTS, MUSIC AND THE ARTS WITH ACTIVITIES INCLUDING A NIGHT GLOW PARADE, JINGLE BELL RUN AND SANTA'S ENCHANTED FOREST HAS BECOME A POPULAR WINTERTIME EVENT IN TALLAHASSEE.



STANDING NINE FEET TALL, HERMAN, A SKELETAL PREHISTORIC MASTODON — ORIGINALLY WEIGHING ABOUT FIVE TONS — WAS PULLED FROM WAKULLA SPRINGS IN THE 1930S. THE MUSEUM OF FLORIDA HISTORY ALSO FEATURES THE PREHISTORIC FLORIDA EXHIBIT, SPANISH TREASURES, WAR RELICS AND EVEN A RIVERBOAT.



DOWNTOWN TALLAHASSEE GREW AS A TRADE CENTER WITH FLORIDA'S FIRST RAILROAD — A SIMPLE MULE-DRAWN, RAIL TROLLEY EPITOMIZING THE LEISURELY PACE OF SOUTHERN LIFE — CONNECTING TALLAHASSEE AND ST. MARKS. THE 16-MILE RAILROAD HAS NOW BEEN PAVED AS THE ST. MARK'S BIKE TRAIL, AND THE OLD TROLLEY REMAINS A STYLISH WAY TO GET AROUND.



ONLY 13 MILES FROM THE CAPITOL, AMID ALLIGATORS, ANHINGAS AND TRANQUILLITY IS THE 2,900-ACRE WAKULLA SPRINGS STATE PARK. VISITORS CAN DRIFT LAZILY ABOARD A JUNGLE CRUISE BOAT ON WAKULLA SPRINGS WHILE THE ALLIGATORS SUN ON THE SHORE. TALLAHASSEE'S UNDERWATER PASSAGES HAVE INTRIGUED ADVENTURERS FROM AROUND THE WORLD — EVEN NATIONAL GEOGRAPHIC MAGAZINE ATTEMPTS TO UNCOVER THE HIDDEN MYSTERIES OF THE SPRINGS IN MANY ISSUES.



THE FIRST CHRISTMAS MASS CELEBRATED IN THE UNITED STATES WAS HELD IN TALLAHASSEE.



AS ONE OF THE LARGEST ARENAS IN FLORIDA, THE TALLAHASSEE-LEON COUNTY CIVIC CENTER, SITUATED ON 22 DOWNTOWN ACRES, PROVIDES THE IDEAL SETTING FOR "STAR-STUDDED" EVENTS. THE CIVIC CENTER ARENA WAS THE SITE OF THE 1995 NCAA BASKETBALL SOUTHEAST REGIONAL WHILE JACKSONVILLE NATIVE JIMMY BUFFET MAKES REGULAR VISITS TO TALLAHASSEE.

### WHAT OTHERS ARE SAYING ABOUT TALLAHASSEE?

"Where else in the Sunshine state can you pretend to be the governor, peruse pirates' plunder, and peer breathlessly at a daring young man on a flying trapeze — all in the same day?"

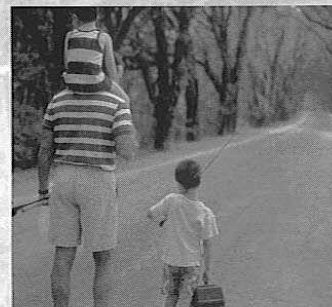
— SOUTHERN LIVING

"After a visit to Tallahassee, you'll leave Florida with a whole new image of the magic kingdom — and you won't have to worry about mouse ears getting smashed in your suitcase."

— DISCOVERY

"Tallahassee, Florida's capital city, has charm with a distinctly Southern accent..."

— BOSTON HERALD



LOW SPRAWLING OAKS, DRAPED WITH SPANISH MOSS CREATE DRAMATIC EMERALD TUNNELS OF DANCING SUNLIGHT ON TALLAHASSEE'S FAMOUS CANOPY ROADS.



SPRINGTIME TALLAHASSEE HAS BLOSSOMED OVER 25 YEARS INTO A FOUR-WEEK JUBILEE WITH PARADES, FESTIVALS, CONTESTS, CRAFTS AND AMUSEMENT.



RED WOLVES, FLORIDA PANTHERS, ALLIGATORS AND OTHER FASCINATING WILDLIFE IN A 52-ACRE HABITAT HIGHLIGHT THE TALLAHASSEE MUSEUM OF HISTORY AND NATURAL SCIENCE.



NOTED FOR WATER SPORTS, INCLUDING SAILING AND WIND SURFING, SHELL POINT RESORT IS LOCATED JUST 25 MILES SOUTH OF TALLAHASSEE.

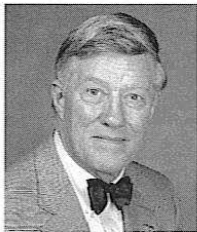
# ATHLETIC ADMINISTRATION

## TALBOT "SANDY" D'ALEMBERTE

**PRESIDENT**

**P**resident Talbot "Sandy" D'Alemberte is the 12th chief executive officer of Florida State University.

He was appointed president on Nov. 29, 1993, by the Florida Board of Regents and took office on Jan. 3, 1994.



D'Alemberte served as the fourth dean of the FSU College of Law from 1984 to 1989 and has continued teaching on the law school faculty.

In a special "Profiles in Power" section, the April 15, 1985, edition of the *National Law Journal* listed D'Alemberte as one of the 100 most powerful lawyers in the United States. He

was the only law dean on the list and one of only 10 members of law faculties.

He was the 1991-92 president of the American Bar Association and the 1982-84 president of the American Judicature Society.

D'Alemberte served in the Florida House of Representatives, representing Dade County from 1966 to 1972. He was chairman of the state Constitutional Revision Commission in 1977 and 1978.

As an attorney, D'Alemberte has been with the Steel Hector & Davis law firm in Miami and Tallahassee where he first began his law career in 1962 and was named partner in 1965.

Born June 1, 1933, in Tallahassee, D'Alemberte was educated in public schools in Tallahassee and Chattahoochee, Fla. In 1955, he earned his bachelor's degree with honors in political science from the University of the South in Sewanee, Tenn. After his military service as a lieutenant in the Naval Reserve, D'Alemberte studied on a Rotary Foundation Fellowship at the London School of Economics and Political Science. In 1961, he received his juris doctorate with honors from the University of Florida, where he was named to the Order of the Coif and served as president of the Student Bar Association and articles editor of the *UF Law Review*.

D'Alemberte's book, "The Florida Constitution," was published by Greenwood Press in 1991. He was co-editor of the 1990 four-volume work, "Florida Civil Trial Guide," and has written many published articles.

He is the father of two grown children, Gabrielle Lyn, a law student at the University of Denver, and Joshua Talbot, a senior at his father's alma mater, the University of the South. D'Alemberte is married to Patsy Palmer, children's policy coordinator in Florida Gov. Lawton Chiles' office. She is a former journalist, legislative aide and White House staff person, and she holds a degree from the University of Missouri in journalism and a master's from the Harvard Divinity School.

Numerous awards D'Alemberte has won include the 1993 Academy of Florida Trial Lawyers Perry Nichols Award; the 1993 Florida Academy of Criminal Defense Lawyers Annual Criminal Justice Award; the 1990 Jurisprudence Award from the Anti-Defamation League of South Florida; the 1986 National Sigma Delta Chi First Amendment Award; a 1985 American Academy of Television Arts and Sciences "Emmy" for his work in open government, particularly the opening of court proceedings to electronic journalists; the 1987 Florida Bar Foundation Medal of Honor Award, the 1984 Florida Civil Liberties Union "Nelson Poynter" Award and several honorary degrees.

As FSU president, D'Alemberte follows Dr. Bernard F. Sliger, president emeritus, who had served as the 10th FSU chief executive for 15 years before stepping down in 1991 and returned to the university's helm in September 1993 following the resignation of his successor.

### UNIVERSITY ADMINISTRATION

President ..... Talbot "Sandy" D'Alemberte

Provost ..... Larry Abele

Dean of the Faculties  
& Deputy Provost ..... Dr. Steve Edwards

Vice President  
for Research ..... Dr. Robert M. Johnson

Vice President  
for Student Affairs ..... Dr. Jon Dalton

Vice President for  
Finance & Administration ..... John R. Camaghi

Vice President  
for University Relations ..... Beverly B. Spencer



## DAVE HART, JR.

DIRECTOR OF ATHLETICS

**D**ave Hart, Jr., became Florida State's tenth athletic director after a national search settled on the former East Carolina athletic director in February, 1995. Hart, 45, has gained national recognition for his skills in the areas of athletic management, public relations, marketing and fundraising. He brings to Florida State an outstanding reputation as one of the country's most respected athletic directors after leading the ECU program since 1987.



ECU athletics enjoyed an enhanced image and reputation under Hart's leadership and he structured several programs of significance within the Department. The most notable is ECU's comprehensive Student Development Program for all student-athletes. Hart serves as Vice Chairman for the Missions and Values Committee of the I-A Athletic Director's Association in conjunction with the NCAA Foundation.

While at ECU, the athletic department made great strides in revenue growth and facility enhancement. The athletic budget doubled during Hart's tenure and he initiated programs that tripled the budget for women's athletics. He planned and managed growth in the Pirates' athletic facilities totaling nearly \$30 million.

Hart served on several prestigious committees during his tenure at East Carolina. He was appointed in January, 1995, to the NCAA Council. He also served on the NCAA's Special Events/Post Season Bowls Committee and chaired Colonial Athletic Association committees on marketing and gender equity.

A popular speaker at the national level and the author of a number of articles for national publications, Hart has made numerous speaking presentations to conventions and seminars on program management, marketing, fundraising and personnel transition. For the past seven years he has been an instructor at the National Association of College Directors of Athletics' Management Institute.

Just the 10th athletic director in FSU history, Hart succeeds Wayne Hogan who served as interim athletic director since Bob Goin's departure last summer after five years at the helm.

Hart first joined the ECU athletic department in 1983 as an assistant athletic director for marketing. He was named associate director for external relations and executive director of the Pirate Club in 1985, where his duties included raising funds for athletic scholarships.

A 1971 graduate of Alabama, Hart played basketball for the Crimson Tide and earned a masters in 1972 while serving as a graduate assistant basketball coach. He coached and taught at the high

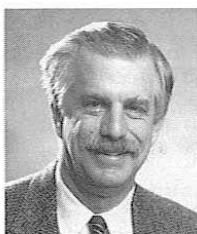
school level for 10 years before joining the Pirate athletic program.

Hart met his wife, the former Pam Humble, while at Alabama and they have three children — Ricky (22), Jamie (20) and Kelly (17).

## CHARLES W. EHRHARDT

FACULTY ATHLETIC  
COMMITTEE CHAIRMAN

**A**s the Chairman of the FSU Athletic Committee, Professor of Law Charles Ehrhardt is an important link for Florida State with the National Collegiate Athletic Association.



He is a member of the NCAA President's Commission Liaison Committee, the NCAA Special Committee which reviewed the Association's Enforcement and Infractions process, and the Committee on Infractions.

During his tenure as the athletic committee chair, Ehrhardt twice served as president of the Metro Conference and at one time was the chair of the Faculty Athletics Representatives Association. He was recently elected vice president of the Atlantic Coast Conference.

This is Ehrhardt's second stint on FSU's Athletic Committee. A professor of Law at Florida State since 1967, he first served as a member of the committee from 1969-71. He was reapointed to the board in 1983 and succeeded Dr. James Jones as chairman in 1984, thus becoming Florida State's representative to the NCAA.

A highly-respected expert in the field of Evidence, Ehrhardt is the Ladd Professor of Evidence in the Florida State College of Law. He wrote the Florida Evidence Code, passed by the state legislature in 1976, which deals with the admissibility of evidence in court trials. Ehrhardt has written a book on evidence, which is now in its third edition.

Ehrhardt is in demand as a lecturer and speaker. He works with lawyers and judges nationwide as a private consultant on evidence matters. He currently teaches in the areas of torts, evidence, trial advocacy and sports law. He has been honored four times as the outstanding professor in FSU's College of Law and was the recipient of a University Teaching Award in 1989.

A native of Elkader, Iowa, Ehrhardt received a bachelor's degree from Iowa State University in 1962. He went on to the University of Iowa, where he earned his law degree two years later. He became an Assistant United States Attorney in Iowa before coming to Tallahassee.

Ehrhardt and his wife, the former Judy Sutton, have three children. 🍀

# ATLANTIC COAST CONFERENCE

## THE TRADITION

**C**onsistency. It's the mark of true excellence in any endeavor.

However, in today's intercollegiate athletics, competition has become so balanced and so competitive that it is virtually impossible to maintain a high level of consistency.

Yet the Atlantic Coast Conference has defied the odds. Now in its 43rd year of competition, the ACC has long enjoyed the reputation as one of the strongest and most competitive intercollegiate conferences in the nation. And that is not mere conjecture, the numbers support it.

Since the league's inception in 1953, Atlantic Coast Conference schools have captured 55 NCAA and AIAW championships, including 30 in men's competition and 25 in women's. In addition, 90 men and 22 women have earned the coveted title of NCAA champion.

If success is best measured in terms of wins and losses, then the ACC is unrivaled in NCAA history. ACC teams have captured seven NCAA basketball championships, including three straight between 1991 and 1993.

The ACC also stands at the forefront of intercollegiate athletics in terms of academic accomplishments of its student athletes. A year ago, N.C. State's second-team All-ACC center Todd Fuller became the 31st ACC cager to earn first team Academic All-America honors.

In addition, seven times over the past 11 years, an ACC school has claimed the CFA Academic Achievement Award, recognizing the school with highest graduation rate among members of its football team. This past year, Duke captured the coveted award for the third straight year and sixth time overall. In addition, the ACC had four of the 20 CFA members who reported graduation rates of 70 percent or better.

## 1994-95 IN REVIEW

The 1994-95 academic year will be remembered as one of the best in the 42-year history of the ACC. Conference teams captured three national titles while two other ACC teams participated in national title games. In all, the ACC has won 21 national team crowns in the last five years.

The 1994-95 national champions from the ACC were Virginia in men's soccer, North Carolina in women's soccer and Maryland in women's lacrosse.

The two NCAA runners-up were Maryland in men's lacrosse and North Carolina in field hockey. Overall, ACC teams were 57-39-1 (.592) in NCAA Tournament play.

## THE SCHOOLS

### CLEMSON

Charter member of the SIAA in 1894, charter member of the SC in 1921, charter member of the ACC in 1953.

### DUKE

Joined the SC in December, 1928; charter member of the ACC in 1953.

### FLORIDA STATE

Charter member of the Dixie Conference in 1948, joined the Metro Conference in July, 1976; joined the ACC September 15, 1990.

### GEORGIA TECH

Charter member of the SIAA in 1894, charter member of SC in 1921, charter member of the SEC in 1932, joined the ACC in July, 1979.

### MARYLAND

Charter member of the SC in 1921, charter member of the ACC in 1953.

### NORTH CAROLINA

Charter member of the SIAA in 1894, charter member of the SC in 1921, charter member of the ACC in 1953.

### N.C. STATE

Charter member of the SC in 1921, charter member of the ACC in 1953.

### VIRGINIA

Charter member of the SIAA in 1894, charter member of the SC in 1921, resigned from SC in December 1936, joined the ACC in December, 1953.

### WAKE FOREST

Joined the SC in February, 1936, charter member of the ACC in 1953.

In addition, four ACC schools — North Carolina, Virginia, Duke and Florida State — were ranked in the top 25 of the Sears Directors' Cup, an all-sports award honoring the Division I school with the best performance by women's and men's athletic teams during the 1994-95 academic year.

Overall, the ACC placed at least one team in the top 10 nationally in 13 of the 23 sports sponsored by the league. Other records of note during the 1994-95 campaign include 79 teams competing at NCAA Championships, five bowl teams and 24 Top 10 showings.

Eight ACC teams, in seven different sports, representing five of the nine member institutions, earned a No. 1 ranking during the course of the 1994-95 academic year.

The ACC Academic Honor Roll record was broken for the ninth-straight year as 1,171 student-athletes were recognized for their work in the classroom.

## THE CHAMPIONSHIPS

The Atlantic Coast Conference currently conducts championship competition in 23 sports, including 12 for men and 11 for women.

The first ACC championship was held in swimming on February 25, 1954, while the league's inaugural basketball tournament took place March 4-6, 1954, at North Carolina State, drawing 36,000 fans over the three days. The conference did not conduct championships in cross country, wrestling or tennis during the first year.

The 12 sports for men include football, cross country, soccer, basketball, swimming, indoor and outdoor track, wrestling, baseball, tennis, golf and lacrosse. Fencing, which was started in 1971, was discontinued in 1981.

Women's sports were initiated in 1977 with the first championship meet being held in tennis at Wake Forest University, October 6-8. Conference championships for women are currently conducted in cross country, volleyball, field hockey, soccer, basketball, swimming, indoor and outdoor track, tennis, golf and softball. 🏆

## THE ACC OFFICE

### THE ACC OFFICE

6011 Landmark Center Blvd.  
P.O. Drawer ACC  
Greensboro, NC 27419-6999  
Phone: (910) 854-8787  
Fax: (910) 854-8797

### COMMISSIONER

Gene Corrigan

### ASSOCIATE COMMISSIONER

Fred Barakat, *Basketball*

### ASSISTANT COMMISSIONERS

Tom Mickle

Bradley Faircloth, *Football*

David Thompson, *Compliance*

Dee Todd, *Championships*

Rick Chryst, *Marketing & Legal Affairs*

### MEDIA RELATIONS

Brian Morrison, *Director of Media Relations*

Emily Watkins, *Assistant Media Relations*

*Director*

Ann-Tyler Sangston, *Media Relations Intern*



# Porta-Phone<sup>®</sup> PAGING

*Enjoy the Freedom. Stay in Touch!*

Paging • 2-Way Radio • Voice Mail  
**One-Stop Communications**


**Go, Noles**



**385-6400 1306 Thomasville Rd.**




# SEMINOLE BASEBALL

## A WINNING TRADITION

**B**aseball is definitely Tallahassee's favorite pastime, and nobody does it better than Florida State. With fans who pile into Dick Howser Stadium by the thousands each week during baseball season, you could say the proof is in the pudding. The reason they come is tradition, a winning tradition that is the essence of the Florida State baseball program.

But tradition doesn't last too long without people. People have made Seminole baseball a winning tradition.

In 48 seasons of intercollegiate play, through six decades and eight head coaches, Florida State has never had a losing season. The Tribe has made 18 consecutive trips to NCAA Regional competition, the second longest current streak in Division I baseball. Since 1948, 33 of FSU's 48 teams have advanced to NCAA Regional or District competition. Fourteen times, Florida State squads have won those tournaments to advance to the College World Series.

Along with the many achievements of Florida State's teams, Seminole players have picked up many individual awards. A pair of Seminole standouts—Mike Fuentes in 1981 and Mike Loynd in 1986—won the Golden Spikes Award, presented annually to the top amateur baseball player in the country. Two other players—Terry Kennedy in 1977 and Jeff Ledbetter in 1982—were named Player of the Year.

Over 136 Seminoles have signed professional contracts after leaving Florida State. In the 1990s alone, FSU has sent 38 players into professional baseball. Last year, Jonathan Johnson and David Yocum became the 11th and 12th Seminoles chosen in the first round of the major league baseball draft.

The 30-man list of Florida State stars who went on to play in the major leagues ranges from past major leaguers Ken Suarez, Woody Woodward, Jim Lyttle, John Grubb and Juan Bonilla, to current pros Paul Sorrento, Luis Alicea, Deion Sanders and Eduardo Perez. Every year, more former Seminoles are working their way up the professional ladder and into the limelight of professional baseball.

Undoubtedly, Florida State's winning tradition has been fueled by its fans. Over 85,137 people packed Dick Howser Stadium last year, an average of 2,432 per game.

Florida State enjoys the support of the entire University and the Tallahassee communities. And no matter where the Seminoles travel, they can expect the same rousing cheers they receive in their home stadium. Florida State baseball fans are the most loyal and knowledgeable fans in college baseball.

With that type of fan interest, Florida State baseball attracts extensive media coverage around the state and country. FSU baseball is first page news in Tallahassee, and 10 major newspapers in Florida cover the Seminoles on a daily basis. National baseball publications keep weekly tabs on the squad as well.

And if fans can't travel to watch their Seminoles play, what better way to find out about the action than on the radio. Florida State boasts the most extensive radio package in college baseball. Every game, home and away, will be broadcast live across the Tallahassee area this season.

Media coverage of the Seminoles extends to the television screen. In the past seven seasons, over 85 games have been broadcast on cable networks across the Southeast and the country. Already, 13 games have been scheduled for broadcast in 1996, including eight of Florida State's games against intrastate rivals Florida and Miami.

Local television stations offer extensive coverage



of the team, beginning in January with preseason practices and continuing through tournament time. "Seminole Uprising" and "The Mike Martin Show", a pair of half-hour shows focusing on Seminole baseball, air twice weekly on statewide cable and on local television.

While the Florida State baseball winning tradition began long ago under the first Seminole coaches, there is no question that tradition has reached unprecedented heights under current head coach Mike Martin. In his 16 seasons at the helm, Martin has led Florida State to eight College World Series appearances, including seven in the last nine years. All 16 of his teams have appeared in NCAA Regionals, and 14 of those 16 teams won at least 50 games. Martin coached FSU teams have won nearly 75 percent of their games. His career record of 867-296-3 makes Martin the fourth winningest active coach in Division I baseball.

Athletics and academics go hand in hand at Florida State University, and that is evidenced by the opportunities afforded to each and every student-athlete who attends FSU. The Florida State coaching staff and administration stress the pursuit of excellence in both baseball and academics. To help balance the two, all FSU student-athletes work with the academic support staff, which provides tutorial assistance, career development, scheduled study hall sessions, and computer facilities. One of the Seminole assistant coaches works closely with the academic support staff to monitor class attendance and resolve any conflicts which may arise

with scheduling, travel, etc. during the season.

Facilities don't necessarily make a winning tradition. Tradition in Florida State baseball has made the facilities great. Dick Howser Stadium is, simply put, one of the finest college baseball stadiums in the nation. The setting, with pine trees lining the rightfield wall, a 2,500-seat concrete grandstand and bleacher seats along both lines, is beautiful. The playing field itself is meticulously groomed year-round.

Located behind the Seminole dugout is a four-year-old lockerroom and clubhouse facility. The spacious, carpeted rooms include a large player room, an office with video equipment where players and coaches review videos, and a training area/weight room.

The Moore Athletic Center, adjacent to Dick Howser Stadium, houses the Seminole weight room and training complex, in addition to the baseball coaches' offices. In the state-of-the-art weight room, FSU baseball players have the opportunity to condition themselves under the direction of strength coach Dave Van Hdanger and his assistants, who run an off-season program for Seminole athletes. In the training room, athletes receive the finest care from the professional training staff, led by head trainer Randy Oravetz.

In the past 47 years, thousands of coaches, fans and administrators have contributed to the winning tradition of Seminole baseball. But it is the players who have built that tradition, one person at a time, one season at a time. 🍌

## '96 BATGIRLS

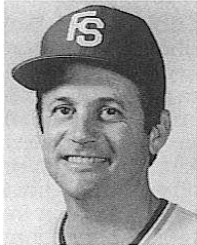
The Florida State Batgirls continue a great tradition of FSU Baseball. Enthusiasm, vitality, and eagerness establish the batgirls as an integral part of the baseball program. The Batgirls represent Florida State University with pride and all their energy through various activities. During the fall, they aid in Alumni and Homecoming events, and support the Ronald McDonald House with their efforts at the Garnet and Gold Game. When the season opens, the batgirls are busy helping and encouraging the Seminole baseball team, along with assisting the visiting teams and the spirited fans. They also provide support to the coaches, umpires and the athletic department. Traveling to away games and making spirit banners add yet another touch of zeal that this squad possesses. Every year, the Florida State Batgirls become more well-known, and it is because of their involvement with continuing the tradition of such a successful baseball program.



BACK ROW: Chastity Bailey, Anne-Marie DiCenzo, Maren Waskow, Jodi O'Brien, Sally Eldridge, Tori Eubanks, Mario Cervi, Allyson Innocenti, Mary Kay Fairnington, Lainey Giddings, Kelli Hampton, Sunny Freeman, Colleen Johnston, Rikki Priest; FRONT ROW: Lourdes Ramirez, Jennifer Johnson, Cynthia Alcobra, Danielle Futrell, Christina Wimberley, Nerissa Bayani, Rebecca Lesley, Brooke Arenovski, Melissa Warren, Amanda Vinson, Jaime Garzaniti, Bobbie Ray, Lisa Perez.

# DICK HOWSER STADIUM

Few collegiate baseball facilities rival the Seminoles' beautiful Dick Howser Stadium. Located on the campus of Florida State University, the stadium has provided over one million fans with the feeling of having "the best seat in the house" to watch the finest in college baseball action. Additions and improvements to the stadium since its 1983 opening have made it one the best ballparks in the country.



DICK HOWSER

The Seminole Baseball "Tradition Room" underneath the third base stands holds an attractive showcase which tells the story of the great players, award-winners and tremendous teams of the past. Trophies and plaques depicting Florida State's baseball success through the years adorn the walls. It also provides a comfortable lounge area adjacent to the FSU lockerroom, complete with VCR and big-screen

television, where Florida State players can relax before and after games.

Florida State's players and coaches enjoy the convenience and luxury of a clubhouse and lockerroom

## STADIUM QUICK FACTS

Capacity .....	5,000
Dimensions ....	320' right - 400' center - 340' left
Height of Wall .....	10'
Height of Right Field Screen .....	30'
Playing Surface .....	Natural Grass (Bermuda)
Opening Day .....	March 28, 1983
First Game Result .....	FSU 5, LSU 15
First FSU Win .....	FSU 10, LSU 5 (3/29/83)
First Day Crowd .....	1,305
First Run .....	Tommy Zoeller (FSU)
First Hit .....	Zoeller, single to left
First RBI .....	Danny Dowell (FSU), single to score Zoeller
First Batter .....	John Morse (LSU)
First Putout .....	Rick Figueroa (FSU), 5-3 putout on Morse
First Assist .....	Mark Barineau (FSU) on Morse grounder
First Double .....	Ronnie Corbett (LSU), sixth inning
First Triple .....	Ronnie Corbett (LSU), eighth inning
First Home Run .....	Rick Figueroa (FSU), fifth inning
FSU in Dick Howser Stadium .....	464-96-1
Percentage .....	.828



located behind the Seminole dugout. The main lockerroom area is fully-carpeted and contains personalized lockers for each player, a separate lockerroom for the Seminole coaches, a video area where FSU players and coaches do videotape analysis, and a coaches' office. A built-in stereo system blasts the players' latest favorites. Adjacent is a room which doubles as a weight and training area, complete with lifting machines.

There are on-going efforts to keep Dick Howser Stadium one of the top facilities in college baseball. Truly a "player's ballpark," the stadium has had many upgrades: the addition of a screen to the top of the right field wall, the addition of a roof to the grandstand and a state-of-the-art electronic scoreboard, complete with message center.

Dick Howser Stadium, named after the late Kansas City Royals and Florida State manager who was also Florida State's first-ever baseball All-American, is a showcase befitting one of the top collegiate teams in the nation. From the beautifully-manicured playing surface to the chairback seats and modern press box, Howser Stadium is one of the best places in the country to watch a game.

Last year, the one-millionth fan walked through the gates of Howser Stadium in only its 12th season of operation. For the fifth consecutive year the Seminoles averaged over 2,000 fans a game.

With a listed capacity of 5,000 in Dick Howser Stadium, Florida State continues to set attendance records. Every year, over 5,000 fans witness the home team take on the University of Miami. Florida State annually ranks in the top 10 nationally in attendance.

Florida State fans are simply the best and most knowledgeable in college baseball. Although they live and die with "their" Seminoles, the FSU faithful are known nationwide for their sportsmanship and appreciation of good baseball — by both teams, as well as their sometimes "creative" brand of support. They, along with the stadium and a professional game operation, are a large reason Dick Howser Stadium has been the site of 12 NCAA Regional tournaments in the 13 years since its opening in 1983.

The stadium was dedicated in honor of Dick Howser in March of 1988 prior to an exhibition game between Florida State and the Kansas City Royals, two of Howser's former teams. As part of the stadium dedication, Kansas City all-stars George Brett and Bo Jackson helped unveil a new \$150,000 matrix scoreboard and a bronze bust of Howser. Both items were permanent additions to the facility.

Old Seminole Field was christened Seminole Stadium March 28, 1983, after over one million dollars of renovations were completed on the park. Wooden bleachers were replaced with a two-tier concrete grandstand seating 2,500. Modern concession areas and restrooms, and a press box complete with separate booths for radio and television broadcasts was also added.

The lower level seating is arranged like box seats, while the upper level has metal bleachers with chair backs. All 2,500 grandstand seats annually sell out. Additional seating down both lines provides 2,500 more seats. Nearly 1,000 seats are available for overflow crowds and the park was designed to allow for

## SEASON HOME ATTENDANCE TOTALS

(Since opening of stadium in 1983)

YEAR	DATES	TOTAL	AVERAGE
1983 <sup>^</sup>	30*	57,575	1,919
1984	51*	72,518	1,422
1985	58*	103,552	1,785
1986	45*	118,897	2,642
1987	43*	86,209	2,005
1988	46*	86,628	1,884
1989	46*	87,240	1,896
1990	40	106,081	2,652
1991	40*	109,549	2,739
1992	41*	90,278	2,202
1993	40*	80,757	2,019
1994	42*	106,352	2,532
1995	35*	85,137	2,432
<b>TOTAL</b>	<b>557</b>	<b>1,190,773</b>	<b>2,138</b>

<sup>^</sup> Stadium opened in middle of 1983 season.

\* Includes NCAA Regional games.

Bold indicates FSU single-season record

## 1995 TOTALS

(Includes Tournaments)

	DATES	TOTAL	AVERAGE
Home*	35	85,137	2,432
Away	23	55,453	2,411
Neutral	11	65,982	5,998
<b>TOTAL</b>	<b>69</b>	<b>206,572</b>	<b>2,994</b>

\* Includes NCAA Regional (4 games).

future expansion.

The playing surface dimensions measure 320 feet to right-field, 400 feet to center and 340 feet to left. Prior to the 1986 season, a screen was added to the top of the right field wall; it rises from the 10-foot high wall, increasing in five-foot increments from 20 feet in the power alley to 30 feet in rightfield — giving a unique effect.

A matrix board which provides lineups, statistics and messages throughout the game, a high quality public address system, modern concession stands and vendors circulating the stands give Howser Stadium a "big league" look.

The playing field itself is also often compared to that of a major league park. Long-time FSU grounds chief Robert Barrett and his crew oversee the everyday upkeep of the playing surface and surroundings, spending hours on the field year-round. The hours of hard work put in by Barrett and his ground crew are often taken for granted, but they give Dick Howser Stadium a playing field unsurpassed by any

collegiate team in the nation.

The beautiful home of Florida State's baseball Seminoles, from the Tradition Room, clubhouse area and lockerroom to the top-notch playing field, chairback seats and overall family atmosphere, is indeed a fitting tribute to one of FSU's greatest alumni, Dick Howser.

## SEMINOLE BASEBALL TRADITION ROOM

The latest addition to Dick Howser Stadium is the Seminole Baseball Tradition Room. A beautiful area adjacent to the FSU clubhouse and lockerroom. This room, located underneath the stadium, holds an array of FSU baseball memorabilia and trophies which tell the story of Florida State baseball success.

Separate wall displays, attractively backlit, are devoted to Florida State All-Americans, former Seminoles in the pros, and FSU's 14 College World Series teams. Another wall is lined with FSU's most recent tournament and conference championship trophies, as well as replicas of the Golden Spikes Awards of Mike Loynd and Mike Fuentes.

Another corner contains a VCR and large-screen television where players can enjoy the latest videos. Couches line the room to provide a comfortable area for relaxed viewing.

The Seminole Baseball Tradition Room, built thanks to the generous donations of Florida State former players, friends and alumni, gives Seminole players an area

TOP CROWDS			
NO.	OPPONENT	DATE	ATTENDANCE
1.	Miami	4/11/86	6,145
2.	Miami	4/13/91	6,039
3.	Miami	4/12/91	6,032
4.	Miami	4/11/92	5,945
5.	Miami	4/14/90	5,877
6.	Miami	4/14/91	5,740
7.	Miami	4/08/94	5,524
8.	Florida	3/05/94	5,486
9.	Florida	3/09/91	5,450
10.	Florida	3/10/90	5,434
11.	Memphis State	4/21/85	5,423
12.	Arizona State	2/09/91	5,413
13.	Miami	4/11/87	5,405
14.	Miami	4/13/90	5,385
15.	Miami	4/09/94	5,375

in which to relax before and after games and practices, and serves as a showcase for the great tradition which is Florida State baseball. 🏆





# There's a Doctor in your Neighborhood.



The days of the house call may have long since past, but not the days of convenient, quality health care. Physician Care Clinics are there when you need them most, offering:

- Family Medicine
- Physical Exams
- Sports & School Physicals
- Drug Screens
- Business Health Services
- Worker's Comp.
- Fully Equipped Medical Treatment & Evaluation Center
- X-Ray and Lab Services On-Site

The Physician Care Clinics are open convenient hours in locations through out the Tallahassee - Quincy area. There's one near you.

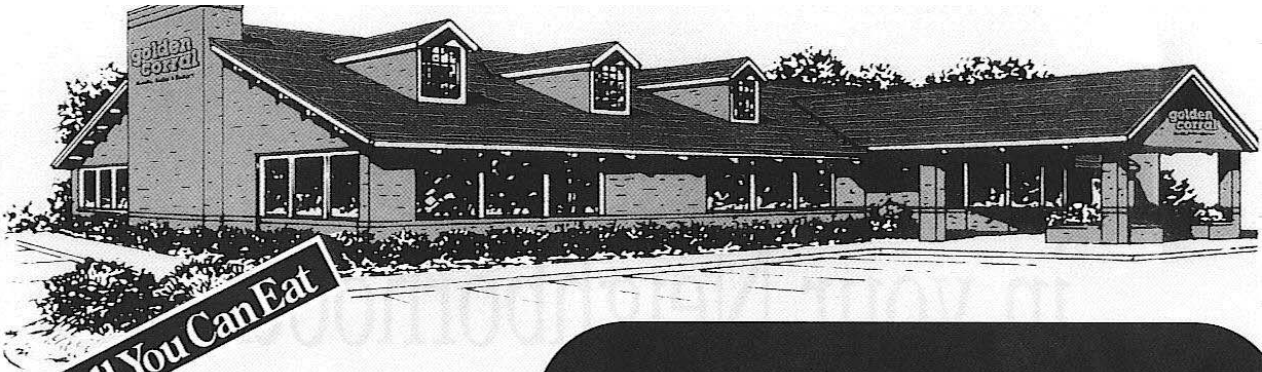
1690 North Monroe  
Tallahassee  
Open Daily 8am-8pm 385-2222

809 East Jefferson  
Quincy  
Open Weekdays 8am - 5pm  
875-2911

3401 Capital Circle N.E.  
Tallahassee  
Open Weekdays 8am - 8pm  
Weekends 9am - 6pm  
386-2266

**Physician**  
 **Care**

*We're there when you need us.*



# Golden Choice Buffet™

# golden corral®

Steaks, Buffet & Bakery



Now Golden Corral® is  
so close you can taste it!

*Come celebrate the Taste  
of our newest Golden Corral at*

*1630 N. Monroe St.  
222-3405*

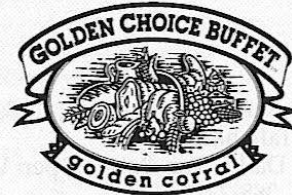
*Try our delicious Handbaked Rolls®. Enjoy the great  
variety of the Golden Choice Buffet® and our juicy  
USDA Choice Steaks, cut fresh daily. Indulge yourself  
at the Sweet Spot® dessert bar.*

**Now Golden Corral is so nearby,  
you can't miss us!**

**corral of tallahassee**  
a franchisee of golden corral restaurants

COUPON

*This coupon entitles you to*  
**ONE DOLLAR**  
*off your next purchase of  
any dinner on our menu.*



**golden corral®**  
Come Taste Our Celebration!™

This coupon is valid for everyone in your party.  
Good at Golden Corral, 1630 N. Monroe St., Tallahassee, Florida  
Until 5/30/96.  
Tax not included. Not good with any other discount or promotion.