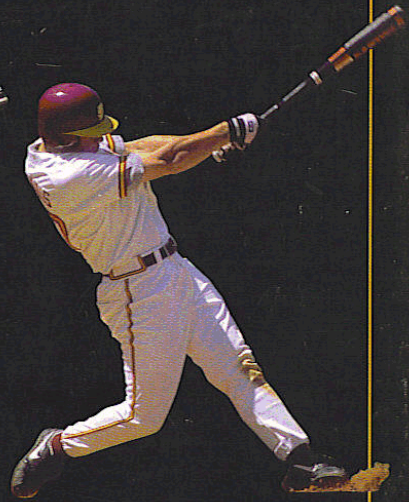
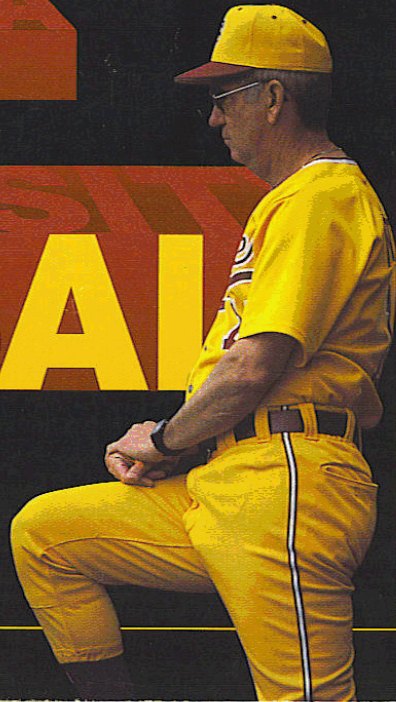


1997 MEDIA GUIDE

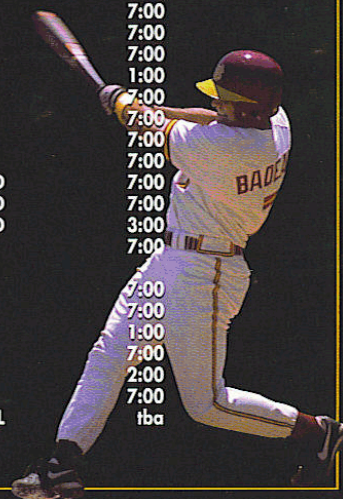


FLORIDA  
STATE  
UNIVERSITY  
BASEBALL





# 1997 FSU SCHEDULE



Sat.	Feb.	1	UNC-Asheville	Tallahassee	2:00
Sun.	Feb.	2	UNC-Asheville	Tallahassee	1:00
Fri.	Feb.	7	Arizona State	Tallahassee	3:30
Sat.	Feb.	8	Arizona State	Tallahassee	2:00
Sun.	Feb.	9	Arizona State	Tallahassee	1:00
Fri.	Feb.	14	Cal-State Fullerton	Tallahassee	3:30
Sat.	Feb.	15	Cal-State Fullerton	Tallahassee	2:00
Sun.	Feb.	16	Cal-State Fullerton	Tallahassee	12:30
Fri.	Feb.	21	Marshall	Tallahassee	3:30
Sat.	Feb.	22	Marshall	Tallahassee	2:00
Sun.	Feb.	23	Marshall	Tallahassee	2:00
Thu.	Feb.	27	Florida	Tallahassee	7:00
Fri.	Feb.	28	Florida	Tallahassee	7:00
Sat.	Mar.	1	Florida	Gainesville	7:00
Sun.	Mar.	2	Florida	Gainesville	1:30
Tue.	Mar.	4	UNC-Greensboro	Tallahassee	3:30
Wed.	Mar.	5	UNC-Greensboro	Tallahassee	3:30
Fri.	Mar.	7	Virginia	Tallahassee	7:00
Sat.	Mar.	8	Virginia	Tallahassee	6:00
Sun.	Mar.	9	Virginia	Tallahassee	2:00
Tue.	Mar.	11	St. Bonaventure	Daytona Beach Jamboree	7:00
Wed.	Mar.	12	Long Island University	Daytona Beach Jamboree	2:00
Fri.	Mar.	14	Wake Forest	Tallahassee	6:00
Sat.	Mar.	15	Wake Forest	Tallahassee	6:00
Sun.	Mar.	16	Wake Forest	Tallahassee	2:00
Tue.	Mar.	18	Florida Atlantic	Tallahassee	7:00
Wed.	Mar.	19	Florida Atlantic	Tallahassee	3:30
Fri.	Mar.	21	Duke	Durham, NC	3:00
Sat.	Mar.	22	Duke	Durham, NC	1:00
Sun.	Mar.	23	Duke	Durham, NC	1:00
Tue.	Mar.	25	Coastal Carolina	Tallahassee	6:00
Wed.	Mar.	26	Coastal Carolina	Tallahassee	3:30
Fri.	Mar.	28	N.C. State	Raleigh, NC	7:00
Sat.	Mar.	29	N.C. State	Raleigh, NC	7:00
Sun.	Mar.	30	N.C. State	Raleigh, NC	1:00
Tue.	Apr.	1	Mercer	Tallahassee	6:00
Wed.	Apr.	2	Mercer	Tallahassee	6:00
Fri.	Apr.	4	Clemson	Tallahassee	7:00
Sat.	Apr.	5	Clemson	Tallahassee	7:00
Sun.	Apr.	6	Clemson	Tallahassee	2:00
Wed.	Apr.	9	Jacksonville	Tallahassee	7:00
Fri.	Apr.	11	Miami	Tallahassee	7:00
Sat.	Apr.	12	Miami	Tallahassee	7:00
Sun.	Apr.	13	Miami	Tallahassee	1:00
Tue.	Apr.	15	Jacksonville	Jacksonville	7:00
Fri.	Apr.	18	Georgia Tech	Atlanta, GA	7:00
Sat.	Apr.	19	Georgia Tech	Atlanta, GA	7:00
Sun.	Apr.	20	Georgia Tech	Atlanta, GA	7:00
Sat.	Apr.	26	Maryland	College Park, MD	7:00
Sun.	Apr.	27	Maryland	College Park, MD	7:00
Mon.	Apr.	28	Maryland	College Park, MD	3:00
Wed.	Apr.	30	Mercer	Macon, GA	7:00
Fri.	May	2	Miami	Miami, FL	7:00
Sat.	May	3	Miami	Miami, FL	7:00
Sun.	May	4	Miami	Miami, FL	1:00
Fri.	May	9	North Carolina	Tallahassee	7:00
Sat.	May	10	North Carolina	Tallahassee	2:00
Sun.	May	11	North Carolina	Tallahassee	7:00
Tue.-Sun.	May	13-18	ACC Tournament	St. Petersburg, FL	tba



# 1997 FLORIDA STATE STATE BASEBALL MEDIA GUIDE

## Table of Contents

1997 Schedule .....	IFC
Media Information .....	2
Sports Information Directory .....	3
Seminole on the Air .....	4
1997 Preview .....	6
Top 25 Preseason Polls .....	7
Florida State Rosters .....	9
A Closer Look at the 'Noles .....	10
Head Coach Mike Martin .....	12
Assistant Coaches .....	16
Baseball Support Staff .....	18
1997 Seminole Biographies .....	20
1997 Seminole Newcomers .....	33
1997 Opponents .....	36
Travel Itinerary .....	48
1996: The Year in Review .....	50
1996 Honor Roll .....	51
1996 Florida State Statistics .....	52
1996 Results .....	55
1996 ACC Statistics .....	56
This is Florida State .....	60
This is Tallahassee .....	62
Athletic Administration .....	64
Atlantic Coast Conference .....	66
Seminole Baseball: A Winning Tradition .....	68
Dick Howser Stadium .....	70
Strength & Conditioning .....	73
Student Services & Academic Support .....	74
FSU Marketing & Promotions .....	76
Florida State Records .....	78
Career & Season Top 10 .....	82
Year-By-Year Records .....	89
Seminole Award Winners .....	90
Series Records vs. All Opponents .....	94
FSU All-Time Results .....	96
All-Time Roster .....	107
FSU in NCAA Championships .....	110
All-Time Coaching Records .....	112
Florida State & Team USA .....	113
Seminole in the Pros .....	114

### Credits

EDITOR: Amy Farnum; RESEARCH: Brian Battle; PHOTOGRAPHY: Ross Obley, Ryals Lee, Jr., FSU Photo Lab, Jeff Golden, Dennis Hubbard, Bob Libby; CONTRIBUTORS: Michael Leddy, Mike Martin, Chip Baker, Jamey Shouppe, John Rombough, Woody Woodward; PROOFREADERS: Craig O'Halloran, Carlton Cohen, David Peters; DESIGN & LAYOUT: Chameleon Graphics & Design; PRINTING: Boyd Brothers, Inc.  
This document is available upon request in alternate formats for individuals with print-related disabilities. Contact the ADA Office, 301 Westcott Building for more information.

## Seminole Baseball Facts

Head Coach .....	Mike Martin
Martin's Alma Mater, Year .....	Florida State '66
Record at FSU (Years) .....	919-313-3 (17)
Overall Record (Years) .....	919-313-3 (17)
Assistant Coaches .....	Chip Baker (High Point '80) Jamey Shouppe (Florida State '82), Jack Niles
1996 Record .....	52-17
Conference Record/Place .....	19-5/1st
Post Season Finish .....	1-2 at College World Series 4-0 at NCAA West Regional
Final Ranking .....	Baseball Weekly-5th Baseball America-6th, Collegiate Baseball-6th
Letterman Returning/Lost .....	15/13
Starters Returning/Lost .....	4/4
Pitchers Returning/Lost .....	1/5
Baseball SID .....	Amy Farnum
Farnum's Office Phone .....	(904) 644-0615
Farnum's Home Phone .....	(904) 514-1337
Baseball Secretary .....	Sandy Hough
Baseball Office Phone .....	(904) 644-1073
Howser Stadium Press Box Phone .....	(904) 644-1553
Academic Advisor .....	Amy White
Equipment Manager .....	John Rombough
Strength Coach .....	Steve Tamborra
Trainer .....	Hilton Barber
Stadium (Capacity) .....	Dick Howser Stadium (5,000)
Dimensions .....	LF 340, CF 400, RF 320
Years of Baseball .....	49
NCAA Regional Appearances .....	34
Consecutive NCAA Regional Appearances .....	19
College World Series Appearances .....	15
Conference Championships .....	1 ACC, 12 Metro

## University Facts

Location .....	Tallahassee, Florida
Founded .....	1857
Enrollment .....	30,200
Nickname .....	Seminole
Colors .....	Garnet & Gold
Conference .....	Atlantic Coast
President .....	Talbot "Sandy" D'Alemberte
Athletic Director .....	Dave Hart, Jr.
Faculty Representative .....	Charles E. Ehrhardt
Associate Athletic Directors .....	Charles Hurst, Charlie Carr, Bob Minnix, Kim Record
Assistant Athletic Directors .....	Andy Urbanic, Guy Morgan
Athletic Business Manager .....	Greg Phillips
Facilities Coordinator .....	Bernie Waxman
Acting Director of Academic Support Services .....	Mark Meloney
Director of Sports Marketing & Promotions .....	Kim McWilliams
Sports Information Director .....	Rob Wilson
Ticket Manager .....	Patrick Martin
Life Skills Coordinator .....	Pam Overton

# MEDIA INFORMATION

## Sports Information Office

The Sports Information office is located on the first floor of the Moore Athletic Center adjacent to the atrium. Assistant Sports Information Director Amy Farnum is the media coordinator for FSU baseball. Farnum will travel with the team and can be reached at team headquarters when on the road.

## Press Services

The 1997 Florida State Baseball Media Guide is a multi-purpose guide for use by media, fans and friends of the Seminole baseball team. Additional information, up-to-date statistics and photographs are available to members of accredited media upon request. Any questions not answered in the media guide should be directed to Assistant SID Amy Farnum in the FSU Sports Information Office at 904/644-0615.

## Credential Requests

All requests for working press, radio and television should be made to Baseball SID Amy Farnum as early as possible prior to game day. Requests should be made in writing if possible and can be picked up prior to the game at the Sports Information office or held at the Will Call window at Dick Howser Stadium for game day pick up.

## Parking

A limited number of parking passes are available to select members of the working media. Parking is available in the Moore Athletic Center lot on a first-come, first-serve basis. All media are encouraged to arrive as early as possible to avoid parking problems.



AMY FARNUM  
Assistant Sports Information  
Director for Baseball

## ACC Faxback Baseball Catalog

General Release  
31350

Stats Only  
31352

Schedule & Roster  
31354

Computer Stats  
3013

ACC Release  
5350

ACC Stats Only  
5352

NCAA Stats  
5355

## Photographers

Accredited photographers holding passes will be admitted to shoot in designated areas on the field. These areas are marked just inside the gates in the protected area at the corners of the home and visitors' dugouts. Still photographers are asked not to restrict views of the fans if at all possible.

## Television

Facilities are available for network broadcasts. Please contact Amy Farnum at the Sports Information Office for more information.

## Radio

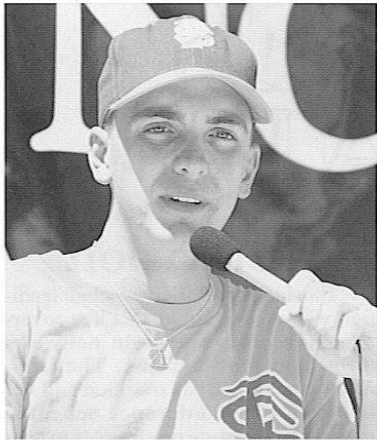
One booth is available for the opposing team's radio broadcast. If more than one booth is needed to accommodate visiting radio crews, an area will be made available in the stadium. When such a case occurs, the visiting team's SID will allocate booth space.

## Phone Lines

Florida State has three phone lines in the main press box for use by media before, during and after home games. Tallahassee radio station WNLS-AM, which carries broadcasts live, has installed two phone lines for use by visiting radio stations. Please contact WNLS' Lee Bowen at 904/386-6143 for details concerning the use of these lines. If other lines are needed, or WNLS' lines are not sufficient, visiting radio stations should contact the Florida State University Office of Telecommunications at 904/644-2414.

## Interviews

On game days, Florida State players are available to the media prior to and during batting practice. FSU Head Coach Mike Martin and his players will be available for post-game interviews following a 10-minute cooling off period. Martin will meet with



the media in the Florida State dugout immediately after talking with the team in the Seminole lockerroom. Requested Florida State players will be escorted to the interview area by Florida State Sports Information personnel after Coach Martin.

Florida State players are also available on the field at Dick Howser Stadium prior to practice on non-game days. Reporters who wish to interview players before practice should be at the field between 1:30-2:30 p.m. Please contact Amy Farnum at the Florida State Sports Information office to arrange off-day player phone interviews. Contact Coach Martin's office directly at 904/644-1073 to arrange interviews with him.

## ACC Media Services

In order to provide you with timely and accurate information, the ACC utilizes the ACC Faxback System. The Faxback allows members of the media 24-hour access to the latest press releases, notes and statistics from the ACC office and each of the nine member institutions.

Simply dial the Faxback number on your fax machine phone. You will then be instructed step-by-step on how to retrieve information. Connect your fax at the tone and the requested information will be transmitted to you. This system is in operation 24 hours a day and is constantly updated with new information. The ACC will only release the phone number to certified media sources. Please contact the ACC Media Relations department at 910/851-6062 or fax a request to 910/854-8797.

## Florida State Sports Information Directory

Florida State Sports Information  
P.O. Drawer 2195  
Tallahassee, FL 32316  
Phone: 904/644-1403 Fax: 904/644-3820

Overnight Address:  
Moore Athletic Center  
Pensacola Street & Stadium Drive  
Tallahassee, FL 32316

Rob Wilson, Sports Information Director  
904/644-1402 (H) 904/386-1619

Amy Farnum, Baseball SID  
904/644-0615 (H) 904/514-1337

Chris Walker, Assistant SID  
904/644-1077 (H) 904/878-8241

Tina Thomas, Assistant SID  
904/644-1065 (H) 904/514-3351

Joe Hornstein, Graduate Assistant  
904/644-5656

Lynn Hobby, Administrative Secretary  
904/644-1402

Kim McWilliams, Director of Sports Marketing  
904/644-8368

John Wesley, Assistant Director of Sports Marketing  
904/644-7291

Michael Leddy, Assistant for Baseball Marketing  
904/644-8494



# SEMINOLES ON THE AIR

## Radio

For the sixth consecutive season, Seminole baseball fans do not have to miss a minute of exciting Florida State baseball action. Tallahassee's Sportsradio 1270 will once again broadcast every inning of every in 1997. From the season opener February 1st through the Atlantic Coast Conference Tournament and NCAA Regional action in May, the radio home of the Seminole baseball is Sportsradio 1270.

In addition, a selection of four games will simulcast on WNLS' sister station, WTNT-FM (94.9). A powerful, 100,000-watt station, WTNT-FM will bring Seminole baseball to homes across North Florida and South Georgia once again in 1997.

WNLS-AM/WTNT-FM will broadcast Seminole baseball for the 16th consecutive season. With WNLS' complete coverage, the Seminoles have one of the best and most extensive radio packages in college baseball.

The voice of the baseball Seminoles for the eighth straight year is Lee Bowen, who continues a long association with the Florida State Radio Network in 1997. The producer of FSU's football and men's basketball radio network and local talk show host, Bowen had previously worked as a statistician for the Seminole Radio Network. Bowen has also called play-by-play for the minor league Burlington (N.C.) Indians, a rookie league team in the Appalachian League. WTNT's Jim Crosby will join Bowen in the booth for all home games. Crosby is a 15-year veteran of Seminole baseball broadcasts.

## WTNT-FM Broadcasts

- MARCH**  
 1 at Florida  
 7:00 p.m.  
 2 at Florida  
 1:30 p.m.  
 22 at Duke  
 1:00 p.m.  
 23 at Duke  
 1:00 p.m.

## 1997 Television

- FEBRUARY**  
 1 UNC-Asheville\* 2:00 p.m.  
 9 Arizona State\* 2:00 p.m.  
 27 Florida\* 7:00 p.m.  
**MARCH**  
 1 at Florida\* 7:00 p.m.  
 7 Virginia\* 7:00 p.m.  
 9 Virginia\* 2:00 p.m.  
 18 Florida Atlantic\* 7:00 p.m.  
**APRIL**  
 6 Clemson\* 2:00 p.m.  
 9 Jacksonville\* 7:00 p.m.  
 11 Miami\* 7:00 p.m.  
 15 at Jacksonville 7:00 p.m.  
 20 at Georgia Tech\*\* 7:00 p.m.

- MAY**  
 9 North Carolina\* 7:00 p.m.  
 11 North Carolina\*\* 7:00 p.m.  
*\*Sunshine Network, \*\*ACC Game of the Week*

## Television

Florida State's rich baseball tradition will once again attract live coverage from cable television networks throughout the Southeast. The Seminoles' strong baseball tradition and Atlantic Coast Conference schedule make Florida State no stranger to television exposure. This year, the FSU baseball team can be seen on television 14 times.

The Sunshine Network is once again the home of Seminole baseball in 1997. The Sunshine Network, a Florida-based cable network, will televise 11 games from Dick Howser Stadium. Broadcasting to over 2.5 million homes in Florida, the Sunshine Network takes Florida State baseball to all corners of the state. The 1997 Seminoles debut on Sunshine on February 1st, the season-opener against UNC-Asheville.

## The Mike Martin Show

Seminole fans who miss the baseball action on radio and television can still keep informed by tuning in to "The Mike Martin Show." The show, which will air weekly beginning in mid-February, gives a recap of the past week's action.

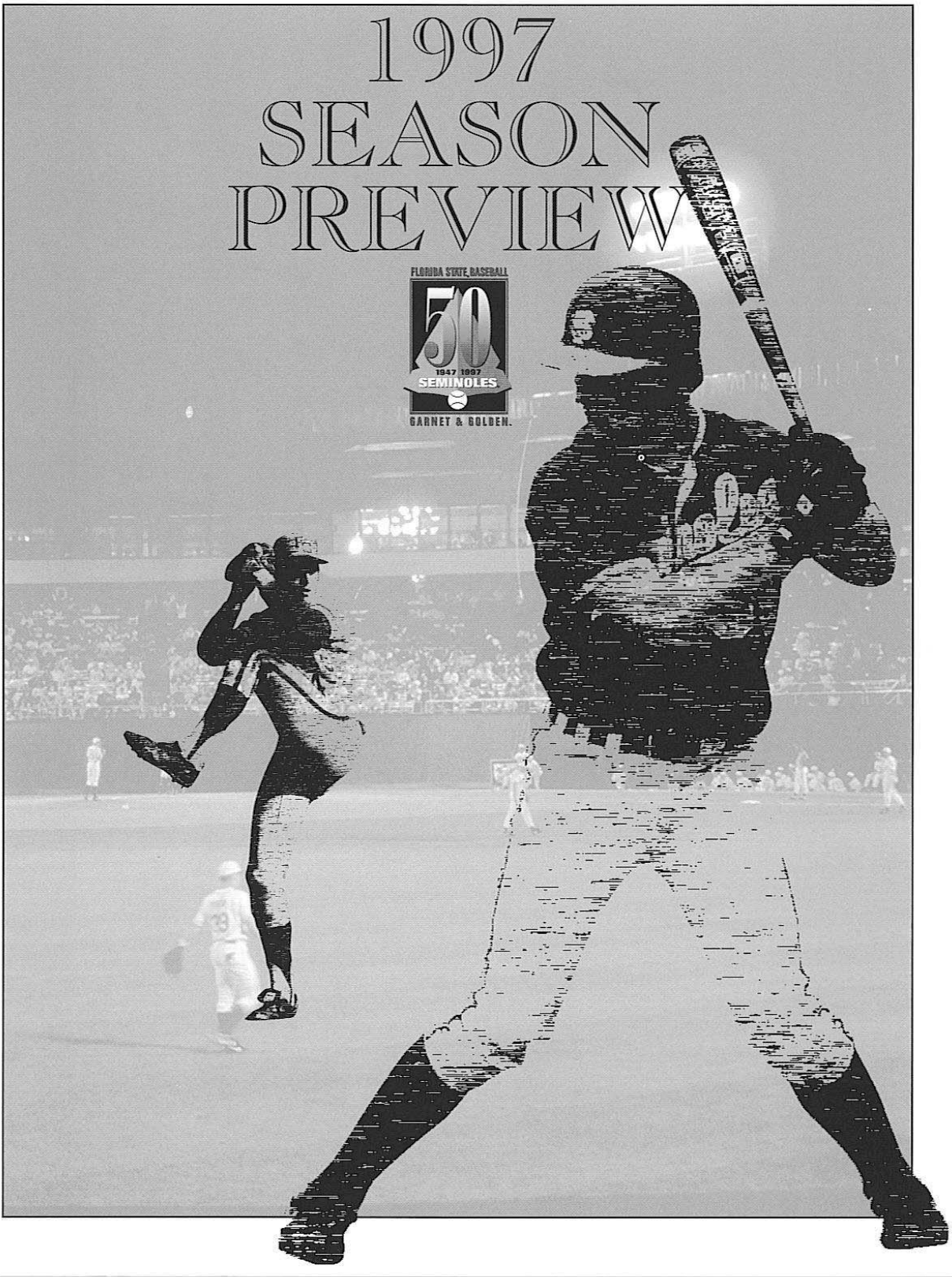
For 30 minutes each week, FSU Head Coach Mike Martin takes a look at recent highlights and gives his insight on upcoming opponents. The show also features player interviews and a weekly baseball tip from Coach Martin.

The show is produced by Mark Rodin of Seminole Productions and will air statewide on the Sunshine Network. Tallahassee residents can catch the coach's show on Fox-49. Check

local listings for dates and times.



# 1997 SEASON PREVIEW



# 1997 BASEBALL PREVIEW

After a very surprising and satisfying season for Seminole skipper Mike Martin, 1997 is expected to be even more rewarding for the Florida State baseball program. FSU has a wealth of talent returning which showcases four All-Americans and a senior class that has made three trips to the College World Series.

FSU, which posted a 52-17 record and made its third consecutive trip to the College World Series in 1996, will play an early challenging schedule as the Seminoles will host perennial powers Arizona State and Cal-State Fullerton in February before diving into its difficult Atlantic Coast Conference slate. The Seminoles will also take on Florida and Miami, both 1996 CWS participants, in their annual rivalries.

"There is no doubt our schedule speaks for itself," said head coach Mike Martin. "It ranks right up there with any schedule we have ever played in degree of difficulty."

## IN THE OUTFIELD

The core of last season's line-up, J.D. Drew and Jeremy Morris, both return to the Seminoles with added strength and confidence. Last year, the power-hitting duo combined for 34 home runs and 181 RBI, the most potent pair of FSU hitters since 1981 when Jeff Ledbetter and Joe Licata combined for 186 RBI. Drew, a junior centerfielder, spent two months playing with Team USA this summer and then went to work in the weight room.

"J.D. Drew has gone from 185 to 205 (pounds)," said FSU assistant coach Jamey Shoupe. "He's really increased his strength. You're look-

ing at a J.D. Drew that hit 21 home runs last year that's 20 pounds stronger. What he could do this year could be scary."

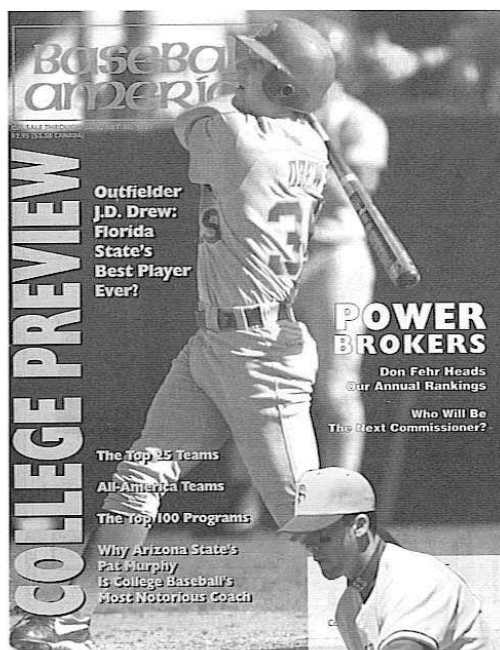
After being drafted by the Kansas City Royals in the ninth round last June, Jeremy Morris decided to stay with the Seminoles for his senior season. Morris, who already owns the NCAA single-season record with 36 doubles, returns to his leftfield position and will be one of the captains of the 1997 squad.

"Jeremy Morris is one of the finest outfielders to ever play for Florida State," said head coach Mike Martin. "He is a true baseball player in every sense of the word. He's got great baseball knowledge."

The Seminoles have two junior college transfers and a freshman in the running for the right field job — Brian Cox from Tallahassee C.C., and Terry Henderson and Shawn McCorkel, who is also a member of the FSU football squad.

## BEHIND THE PLATE

Behind the plate the Seminoles are sound with both starter Jeremy Salazar and backup Jeremiah Klosterman returning. Salazar batted .280 with five home runs and 36 RBI and played in all but eight games last year. Klosterman, who hit a grand slam in his first collegiate at bat, averaged .286 in 38 games during his freshman season. Both Salazar and Klosterman gained even more experience while playing in the Cape Cod League





and Jayhawk League, respectively, last summer.

### IN THE INFIELD

The Seminoles boast four returning starters in the infield, including the All-ACC tandem of secondbaseman Scott Zech and shortstop Brooks Badeaux. Zech and Badeaux were a key reason why the Seminoles led the nation with 87 double plays last year. Not only was the pair solid defensively, but each started every game and always came ready to go to bat. Zech, a third-team AFCA All-American, finished the season with a .347 average and drove in 59 RBI. Zech, a leader on and off the field, is also a co-captain of the 1997 squad. Badeaux, who batted .355 in 1996, is expected to be the Seminoles' lead-off man once again as he was kept off base in just three games last season.

"In batting practice Brooks Badeaux takes a better cut than anybody I think we've ever had. He'll take 25 cuts and 20 of them will fall in for base hits, which is almost unheard of," commented Shoupe.

Firstbaseman Matt Woodward, who platooned with Geoff Sprague last year, will get the nod for starting job. Woodward, who finished 1996 with a .278 average, has increased his strength and hit the ball hard in fall practice.

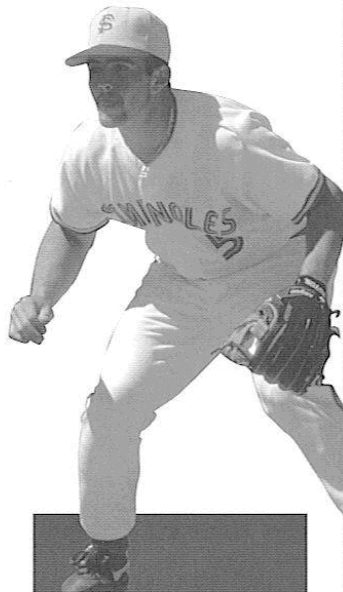
Rounding out the infield will be Geoff Sprague who is slated to start at third base in the spring. The switch-hitting Sprague, a .320 hitter last year, still has the ability to play at first base if needed.

Utility man Jose Zabala — who has seen time at second base, shortstop, third base and right field — will make appearances at third base while freshman Kevin Cash will also battle for playing time at the hot corner.

### ON THE MOUND

As for the Seminoles' pitching staff, the ace of the staff is clear cut. Junior left-hander Randy Choate, who led the nation with 15 wins in 1996 and received multiple post-season honors, is a force to be reckoned with once again.

"Randy Choate is the epitome of what FSU baseball is all about. The fact that he came in at 150 (pounds), dedicated himself to become the best he can be and will eventually leave as



## Top 25 Preseason Polls

### COLLEGIATE BASEBALL

RANK	TEAM
1. ....	FLORIDA STATE
2. ....	UCLA
3. ....	Florida
4. ....	Rice
5. ....	Oklahoma State
6. ....	Southern California
7. ....	Mississippi State
8. ....	Louisiana State
9. ....	Cal State Fullerton
10. ....	Georgia Tech
11. ....	Long Beach State
12. ....	Arizona State
13. ....	Wichita State
14. ....	Miami
15. ....	Stanford
16. ....	Alabama
17. ....	Clemson
18. ....	Texas A&M
19. ....	Missouri
20. ....	Texas
21. ....	Tulane
22. ....	Fresno State
23. ....	Stetson
24. ....	Texas Tech
25. ....	Arkansas

### BASEBALL AMERICA

1. ....	Stanford
2. ....	FLORIDA STATE
3. ....	Southern California
4. ....	Miami
5. ....	UCLA
6. ....	Georgia Tech
7. ....	Arizona State
8. ....	Texas A&M
9. ....	Mississippi State
10. ....	Rice
11. ....	Louisiana State
12. ....	Cal State Fullerton
13. ....	Tulane
14. ....	Wichita State
15. ....	Florida
16. ....	Stetson
17. ....	Tennessee
18. ....	Oklahoma State
19. ....	Alabama
20. ....	South Alabama
21. ....	South Florida
22. ....	Clemson
23. ....	Long Beach State
24. ....	Washington
25. ....	California

a top draft choice at some point in his career is what it's all about," said Martin.

"Randy Choate is stronger and seems to be throwing the ball as good as he ever has," added Shoupe.

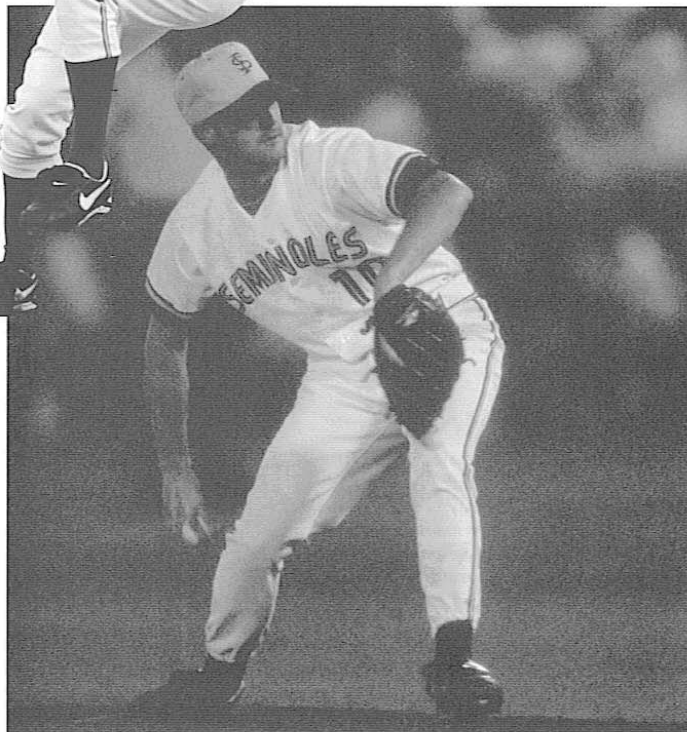
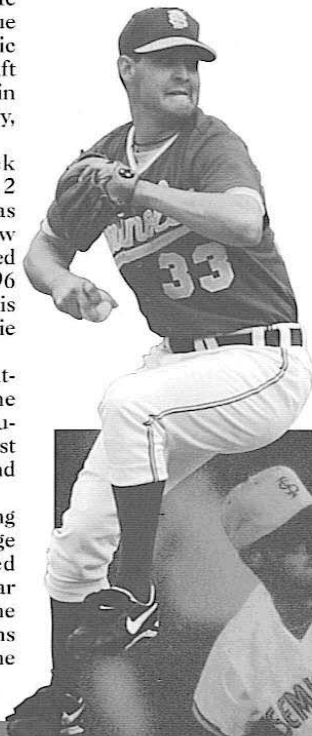
Junior right-hander Randy Niles is expected to earn a solid spot in the starting rotation. Niles, who saw time as both a closer and a starter last season, was 4-1 with three saves and a 5.27 ERA in 1996.

"Niles has probably come back with more experience and more confidence in himself," said Shoupe. "He was second in the Cape Cod League in earned run average, behind Eric Milton who was a first-round draft pick. He has got a lot of confidence in himself and has thrown the ball very, very well in (fall) scrimmages."

Senior right-hander Chuck Howell, who was the Seminoles No. 2 starter before ending the season as their closer last year, underwent elbow surgery during the summer and missed fall practice. Howell finished 1996 with a 9-3 record and six saves and is expected to return in the spring to vie for a spot in the starting rotation.

Chris Chavez, a sophomore right-hander, will start the spring as the Seminoles' closer after earning valuable experience in post-season play last year. Chavez posted a 4-0 record and one save in 28 relief appearances.

"Chavez has as good a breaking pitch as probably anybody in college baseball right now," commented Shoupe. "He has to have a big year for us as well. He's a guy that has the mentality to close, nothing ever seems to bother him regardless of what the situation is."



Sophomore Scott Proctor will also step into a starting role after posting a 7.41 ERA in 16 appearances last season. Sophomore Zach Diaz, who led FSU with 30 appearances last year, will be utilized as the Seminoles left-handed setup man.

The Seminoles have an exciting freshmen class coming in, however, the presence of solid veterans and two key injuries will limit the newcomers' playing time. Freshmen pitchers Nick Stocks and Jon McDonald both suffered elbow injuries and underwent surgery and could be lost for next season.

However, freshmen pitchers John Bentley and Mike DiBlasi have picked up the slack and are looking to gain valuable playing time in Stocks' and McDonald's absence. Bentley is expected to be used as FSU's right-handed setup man.

With an abundance of returning talent and a formidable schedule, there is no telling what new accomplishments are ahead for Florida State baseball. One thing is for sure — the 1997 Seminoles are eager for the challenge that awaits!!

**1997 Pre-Season  
All-Americans**

*BASEBALL AMERICA*

J.D. Drew

*COLLEGIATE BASEBALL\**

J.D. Drew

Jeremy Morris

Randy Choate

Brooks Badeaux (3rd Team)

*\*The 1997 Florida State Seminoles are the first team to have four Collegiate Baseball Pre-Season All-Americans on the same team since the publication started in 1958.*



# 1997 BASEBALL ROSTERS

## Alphabetical Roster

#	NAME	POS	B/T	HT	WT	CL	HOMETOWN (JC OR HS)
7	BADEAUX, Brooks	SS	S-R	5-10	160	JR	Scott, LA (Teurlings Catholic HS)
4	BENTLEY, John	P	R-R	6-0	175	FR	Tallahassee, FL (N. Fla. Christian HS)
24	BONENBERGER, Jimmy	OF	R-R	6-0	185	JR	Melbourne Beach, FL (Brevard CC)
20	BYRD, Clint	OF	R-R	6-1	188	FR	Miami, FL (Hialeah-Miami Lakes HS)
13	CASH, Kevin	3B/SS	R-R	6-0	180	FR	Tampa, FL (Gaither HS)
10	CHAVEZ, Chris	P	R-R	6-0	175	SO	Pensacola, FL (Washington HS)
21	CHOATE, Randy	P	L-L	6-2	175	JR	San Antonio, TX (Winston Church)
27	COX, Brian	OF	R-R	6-1	170	JR	Tallahassee, FL (Tallahassee CC)
26	DIAZ, Zach	P	S-L	6-0	190	SO	Lakeland, FL (Santa Fe Catholic HS)
29	DiBLASI, Mike	P	L-L	6-2	188	FR	Clearwater, FL (Countryside HS)
39	DREW, J.D.	OF	L-R	6-1	195	JR	Hahira, GA (Lowndes County HS)
51	GRIGGS, Reggie	1B	L-L	6-5	255	FR	West Palm Beach, FL (Wellington HS)
17	HENDERSON, Terry	OF	S-R	5-10	189	JR	Melbourne, FL (Brevard CC)
32	HOWELL, Chuck	P	R-R	6-0	200	SR	Tallahassee, FL (Leon HS)
44	HUDSON, Scott	P	R-L	6-2	180	FR	Ocilla, GA (Irwin County HS)
25	KLOSTERMAN, Jeremiah	C	S-R	5-9	175	SO	Jacksonville, FL (Bolles HS)
23	KOPCZYNSKI, Shaun	C	S-R	6-1	198	FR	Orlando, FL (Bishop Moore HS)
22	MAYFIELD, Henry	C	L-R	5-10	190	SO	Tallahassee, FL (Leon HS)
35	McCORKEL, Shawn	OF	R-R	6-0	185	FR	Dothan, AL (Northview HS)
41	McDONALD, Jon	P	R-R	6-2	170	FR	Orlando, FL (Edgewater HS)
37	MORRIS, Jeremy	OF	R-R	6-2	200	SR	Quincy, FL (Robert F. Monroe HS)
16	NEILL, Stephen	P	R-R	6-4	185	SR	Ft. Pierce, FL (Indian River CC)
33	NILES, Randy	P	R-R	6-2	190	JR	Key West, FL (Key West HS)
6	OTERO, George	OF	R-R	6-0	185	FR	Miami, FL (Pace HS)
31	PROCTOR, Scott	P	R-R	6-0	163	SO	Stuart, FL (Martin County HS)
1	PROLY, Ryan	P	L-L	5-8	150	FR	Clearwater, FL (Central Catholic HS)
12	SALAZAR, Jeremy	C	R-R	6-0	185	JR	Lafayette, LA (Northside HS)
2	SPRAGUE, Geoff	3B/IB	S-R	6-0	175	SR	Tallahassee, FL (Indian River CC)
19	STANFORD, Matt	P	R-R	5-10	175	SO	N. Fort Myers, FL (Chipola JC)
30	STOCKS, Nick	P	R-R	6-2	185	FR	Tampa, FL (Tampa Jesuit HS)
15	WOODWARD, Matt	1B	R-R	6-2	185	JR	Redmond, WA (Redmond HS)
5	ZABALA, Jose	UT	S-R	5-8	170	JR	Miami, FL (Columbus HS)
9	ZECH, Scott	2B	R-R	5-10	175	SR	Boca Raton, FL (Boca Raton HS)

## NUMERICAL ROSTER

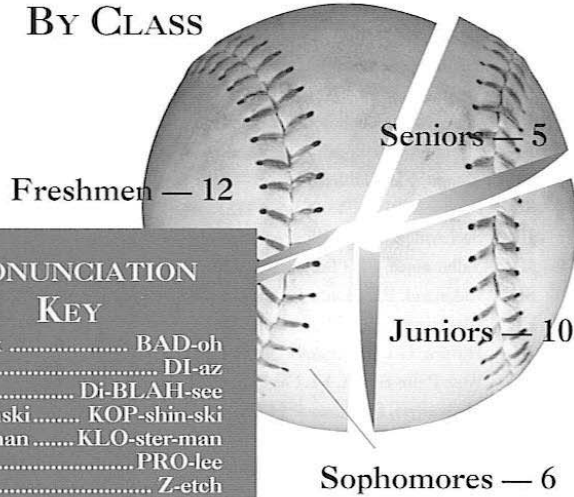
#	NAME
1	Ryan Proly
2	Geoff Sprague
4	John Bentley
5	Jose Zabala
6	George Otero
7	Brooks Badeaux
9	Scott Zech
10	Chris Chavez
12	Jeremy Salazar
13	Kevin Cash
15	Matt Woodward
16	Stephen Neill
17	Terry Henderson
19	Matt Stanford
20	Clint Byrd
21	Randy Choate
22	Henry Mayfield
23	Shaun Kopezynski
24	Jimmy Bonenberger
25	Jeremiah Klosterman
26	Zach Diaz
27	Brian Cox
29	Mike DiBlasi
30	Nick Stocks
31	Scott Proctor
32	Chuck Howell
33	Randy Niles
35	Shawn McCorkel
37	Jeremy Morris
39	J.D. Drew
41	Jon McDonald
44	Scott Hudson
51	Reggie Griggs

## FSU BASEBALL STAFF

Head Coach .....	#11 Mike Martin
Assistant Coaches .....	#3 Chip Baker (Third Base/Catchers); #8 Jamey Shoupe (Pitchers/Recruiting); #18 Jack Niles (First Base/Outfielders)
Equipment Coordinator/Clubhouse Manager .....	John Rombough
Strength and Conditioning Coach .....	Steve Tamborra
Trainer .....	Hilton Barber
Managers .....	George Shawhan (Clubhouse), Rob Ford (Field Supervisor), Keith Vandervoort

# A CLOSER LOOK AT THE 'NOLES

## BY CLASS



## PRONUNCIATION KEY

Badeaux ..... BAD-oh  
 Diaz ..... DI-az  
 DiBlasi ..... Di-BLAH-see  
 Kopczynski ..... KOP-shin-ski  
 Klosterman ..... KLO-ster-man  
 Proly ..... PRO-lee  
 Zech ..... Z-etch

## BY POSITION

- Pitcher*
- 4 John Bentley ..... FR
  - 10 Chris Chavez ..... SO
  - 21 Randy Choate ..... JR
  - 26 Zach Diaz ..... SO
  - 29 Mike DiBlasi ..... FR
  - 32 Chuck Howell ..... SR
  - 44 Scott Hudson ..... FR
  - 41 Jon McDonald ..... FR
  - 16 Stephen Neill ..... SR
  - 33 Randy Niles ..... JR
  - 31 Scott Proctor ..... SO
  - 1 Ryan Proly ..... FR
  - 19 Matt Stanford ..... SO
  - 30 Nick Stocks ..... FR
- Catcher*
- 25 Jeremiah Klosterman .. SO
  - 23 Shaun Kopczynski .... FR
  - 22 Henry Mayfield ..... SO
  - 12 Jeremy Salazar ..... JR
- First Base*
- 51 Reggie Griggs ..... FR
  - 2 Geoff Sprague ..... SR
  - 15 Matt Woodward ..... JR
- Second Base*
- 9 Scott Zech ..... SR
- Third Base*
- 13 Kevin Cash ..... FR
  - 2 Geoff Sprague ..... SR
- Shortstop*
- 7 Brooks Badeaux ..... JR
  - 13 Kevin Cash ..... FR
- Utility*
- 5 Jose Zabala ..... JR
- Outfielders*
- 24 Jimmy Bonenberger .... JR
  - 20 Clint Byrd ..... FR
  - 27 Brian Cox ..... JR
  - 39 J.D. Drew ..... JR
  - 17 Terry Henderson ..... JR
  - 35 Shaun McCorkel ..... FR
  - 37 Jeremy Morris ..... SR
  - 6 George Otero ..... FR

## BY STATES

Florida — 26 (Bentley, Bonenberger, Byrd, Cash, Chavez, Cox, Diaz, DiBlasi, Griggs, Henderson, Howell, Klosterman, Kopczynski, Mayfield, McDonald, Morris, Neill, Niles, Otero, Proctor, Proly, Sprague, Stanford, Stocks, Zabala, Zech)  
 Louisiana — 2 (Badeaux, Salazar)  
 Texas — 1 (Choate)  
 Georgia — 2 (Drew, Hudson)  
 Alabama — 1 (McCorkel)  
 Washington — 1 (Woodward)