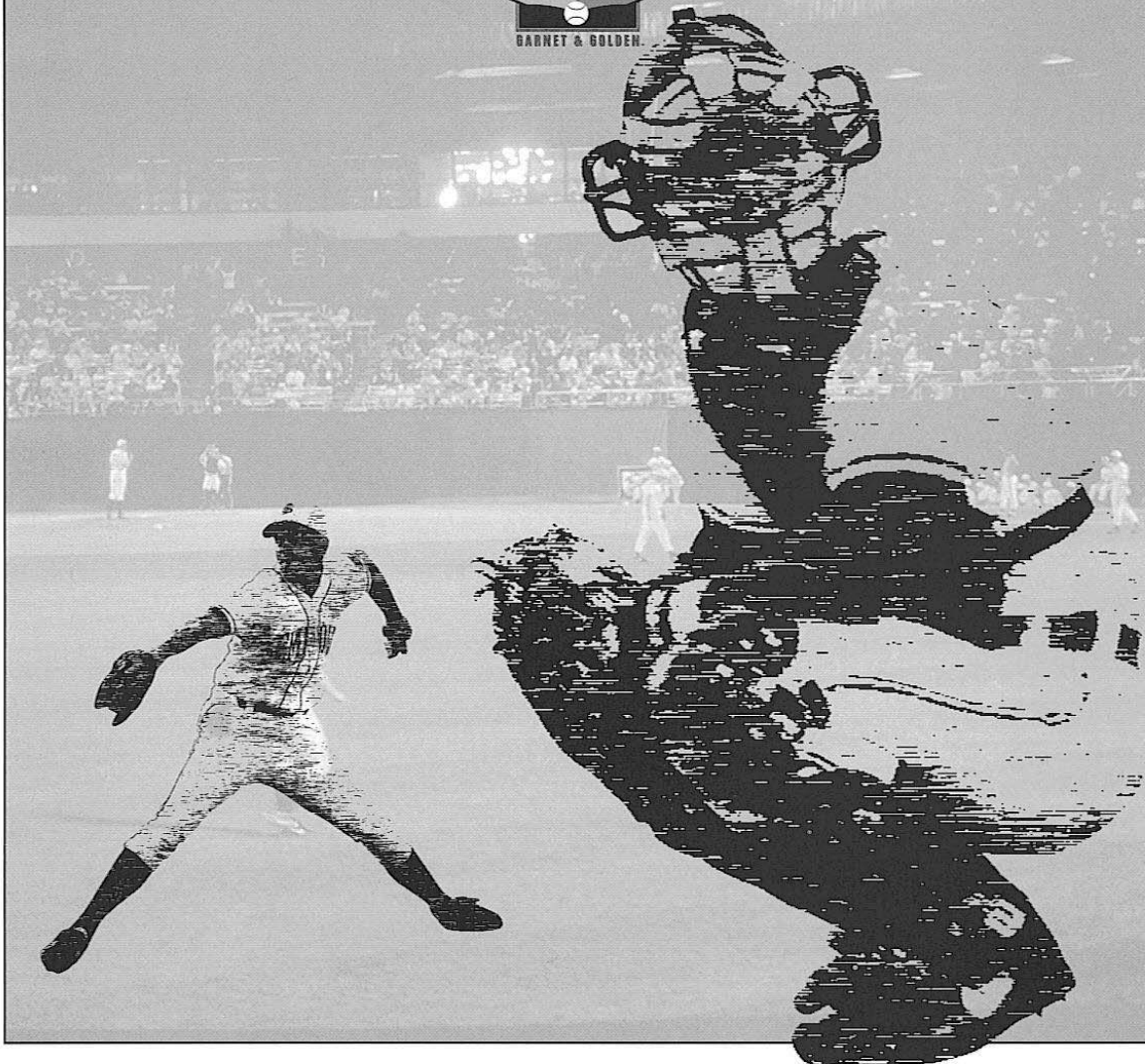


1997 SEMINOLE OPPONENTS



1997 SEMINOLE OPPONENTS

UNC-ASHEVILLE

February 1 • Tallahassee • 2 p.m.
February 2 • Tallahassee • 1 p.m.

Location Asheville, NC
Enrollment 3,200
Nickname Bulldogs
Colors Royal Blue & White
President Dr. Patsy Reed
Athletic Director Tom Hunnicutt
Stadium Greenwood Field (1,000)
Head Coach Bill Hillier
Record at UNC Asheville 30-71 (3 years)
Career Record 30-71 (3 years)
Office Phone (704) 251-6920
Assistant Coaches Jon Rion
1996 Record 18-34
Conference Record (Finish) 5-15 (7th)
Post-Season N/A
Starters Returning/Lost 5/4
Pitchers Returning/Lost 7/3
Top Returnees.... OF Chad Faircloth (Sr., .384, 10 HR, 41 RBI); 1B Scott Pastushok (Sr., .309, 8 HR, 47 RBI); INF Taylor Luthren (Sr., .265, 2 HR, 10 RBI); RHP Freddie Rask (Sr., 5-5, 5.26 ERA)
Series Record FSU leads 4-0
Martin vs. UNC Asheville 4-0
Sports Information Contact Mike Gore
Office Phone (704) 251-6923
Home Phone (704) 252-5378
Press Box Phone N/A
Fax Phone (704) 251-6386

8	Appalachian St.	3:00 p.m.
9	DAVIDSON	3:00 p.m.
11	NORTH CAROLINA A&T	2:00 p.m.
12	at UNC Greensboro (DH)	1:00 p.m.
13	at UNC Greensboro	1:00 p.m.
16	at Western Carolina	7:00 p.m.
17	FURMAN	3:00 p.m.
19	RADFORD (DH)	1:00 p.m.
20	RADFORD	1:00 p.m.
21	at North Carolina	3:00 p.m.
22	at East Tennessee St.	7:00 p.m.
25	at Liberty	3:00 p.m.
26	at Liberty (DH)	1:00 p.m.
29	at Furman	3:00 p.m.
30	WAKE FOREST	6:00 p.m.
<i>May</i>		
2	at Charleston Southern	3:00 p.m.
3	at Charleston Southern (DH)	1:00 p.m.
10	COASTAL CAROLINA (DH)	1:00 p.m.
11	COASTAL CAROLINA	1:00 p.m.
15-18	at Big South Tournament	tba

ARIZONA STATE

February 7 • Tallahassee • 3:30 p.m.
February 8 • Tallahassee • 2 p.m.
February 9 • Tallahassee • 1 p.m.

Location Tempe, AZ
Enrollment 42,426
Nickname Sun Devils
Colors Maroon & Gold
President Dr. Lattie F. Coor
Athletic Director Dr. Kevin White
Stadium Packard Stadium (7,875)
Head Coach Pat Murphy
Record at Arizona State 69-42
Career Record 442-213-3
Office Phone (602) 965-3677
Assistant Coaches Doug Schreiber, Nino Giarratano, David Sinnes
1995 Record 35-21
Conference Record (Finish) Pac-10, 14-16 (4th)
Post-Season N/A
Starters Returning/Lost 5/3
Pitchers Returning/Lost 2/4
Top Returnees.... LHP Phill Lowrey (Jr., 5-1, 4.71 ERA); RHP Ryan Bradley (Jr., 2-2, 3.88 ERA); OF Dan McKinley (.386, 9 HR, 57 RBI); UT Mikel Moreno (Jr., .378, 11 HR, 53 RBI)
Series Record FSU leads 11-4
Martin vs. Arizona State 11-4
Sports Information Contact Aimee Dombroski
Office Phone (602) 965-6592
Home Phone (602) 994-4691
Press Box Phone (602) 965-1509
Fax Phone (602) 965-5408

1997 BULLDOG SCHEDULE

<i>February</i>		
1	at Florida State	2:00 p.m.
2	at Florida State	1:00 p.m.
8	at Wofford	1:00 p.m.
9	at Wofford	1:00 p.m.
11	at Georgia	4:00 p.m.
15	WAGNER	1:00 p.m.
19	WAGNER	1:00 p.m.
19	APPALACHIAN ST.	1:00 p.m.
20	at North Carolina A&T	1:00 p.m.
22	at College of Charleston	1:00 p.m.
23	at College of Charleston	12:00 p.m.
25	at Tennessee	3:00 p.m.
26	at Davidson	3:00 p.m.
<i>March</i>		
4	at Wake Forest	2:30 p.m.
5	EAST TENNESSEE ST.	3:00 p.m.
7	OHIO UNIVERSITY	3:00 p.m.
8	OHIO UNIVERSITY	1:00 p.m.
9	OHIO UNIVERSITY	1:00 p.m.
11	at UNC Wilmington	3:00 p.m.
13	vs. Fairfield (at Wilmington)	11:00 a.m.
16	WOFFORD	3:00 p.m.
18	at East Tennessee St.	3:00 p.m.
19	WESTERN CAROLINA	3:00 p.m.
25	MARYLAND	3:00 p.m.
26	MARYLAND	2:00 p.m.
29	WINTHROP (DH)	1:00 p.m.
30	WINTHROP	1:00 p.m.
<i>April</i>		
1	at Furman	3:00 p.m.
2	at Western Carolina	3:00 p.m.
5	Maryland-Baltimore Co. (DH)	1:00 p.m.
6	Maryland-Baltimore Co.	1:00 p.m.

1997 SUN DEVIL SCHEDULE

<i>January</i>		
24	UC SANTA BARBARA	7:00 p.m.
25	UC SANTA BARBARA	1:00 p.m.
26	UC SANTA BARBARA	1:00 p.m.
31	at Southern Cal	7:00 p.m.
<i>February</i>		
1	at Southern Cal	1:00 p.m.

2	at Southern Cal	1:00 p.m.
4	ST. MARY'S	7:00 p.m.
5	ST. MARY'S	7:00 p.m.
7	at Florida State	7:00 p.m.
8	at Florida State	2:00 p.m.
9	at Florida State	1:00 p.m.
14	SOUTHERN ILLINOIS	7:00 p.m.
15	SOUTHERN ILLINOIS	1:00 p.m.
16	SOUTHERN ILLINOIS	1:00 p.m.
17	OKLAHOMA STATE	7:00 p.m.
21	at UCLA	5:00 p.m.
22	at UCLA	1:00 p.m.
23	at UCLA	1:00 p.m.
27	EASTERN MICHIGAN	1:00 p.m.
28	BYU	7:00 p.m.
<i>March</i>		
1	OKLAHOMA	7:00 p.m.
2	EASTERN MICHIGAN	1:00 p.m.
7	STANFORD	7:00 p.m.
8	STANFORD	7:00 p.m.
9	STANFORD	7:00 p.m.
11	UNLV	7:00 p.m.
12	UNLV	5:00 p.m.
14	at California	2:00 p.m.
15	at California	1:00 p.m.
16	at California	1:00 p.m.
21	at Arizona	7:00 p.m.
22	at Arizona	7:00 p.m.
23	at Arizona	1:00 p.m.
27	SOUTHERN CAL	7:00 p.m.
28	SOUTHERN CAL	7:00 p.m.
29	SOUTHERN CAL	1:00 p.m.
<i>April</i>		
1	GRAND CANYON	7:00 p.m.
4	UCLA	7:00 p.m.
5	UCLA	7:00 p.m.
6	UCLA	1:00 p.m.
11	at Stanford	7:00 p.m.
12	at Stanford	1:00 p.m.
13	at Stanford	1:00 p.m.
15	at Oklahoma	7:00 p.m.
18	CALIFORNIA	7:00 p.m.
19	CALIFORNIA	7:00 p.m.
20	CALIFORNIA	1:00 p.m.
25	ARIZONA	7:00 p.m.
26	ARIZONA	7:00 p.m.
27	ARIZONA	1:00 p.m.
30	GRAND CANYON	7:00 p.m.
<i>May</i>		
2	FRESNO STATE	7:00 p.m.
3	FRESNO STATE	7:00 p.m.
4	FRESNO STATE	1:00 p.m.
6	at Grand Canyon	7:00 p.m.
7	DENVER	7:00 p.m.

CAL-STATE FULLERTON

February 14 • Tallahassee • 3:30 p.m.
 February 15 • Tallahassee • 2 p.m.
 February 16 • Tallahassee • 12:30 p.m.

Location	Fullerton, CA
Enrollment	22,000
Nickname	Titans
Colors	Navy, Orange, & White
President	Dr. Milton A. Gordon
Athletic Director	John Easterbrook
Stadium	Titan Field (1,750)
Head Coach	George Horton
Record at Fullerton	1st Year
Career Record	1st Year
Office Phone	(714) 773-3789
Assistant Coaches	Dave Serrano, Rick Vanderhook, Mike Kirby
1996 Record	45-16
Conference Record (Finish)	13-8 (4th)
Post-Season	2-2 at NCAA Midwest Regional
Position Player Returning/Lost	5/3
Pitchers Returning/Lost	6/5
Top Returnees	1B C.J. Ankrum (Jr., .312, 5 HR, 60 HR); INF Jerome Alviso (Sr., .338, 2 HR, 21 RBI); RHP Scott Hild (Jr., 9-4, 3.66 ERA)

Series Record	4-9
Martin vs. Cal-State Fullerton	4-9
Sports Information Contact	Jason Pommier
Office Phone	(714) 773-3970
Home Phone	(714) 449-5327
Press Box Phone	(714) 449-5327
Fax Phone	(714) 773-3141

1997 TITAN SCHEDULE

<i>January</i>		
28	at Cal State Northridge	2:00 p.m.
31	STANFORD	7:00 p.m.
<i>February</i>		
1	STANFORD	7:00 p.m.
2	STANFORD	1:00 p.m.
6	at Arizona	2:30 p.m.
7	at Arizona	2:30 p.m.
8	at Arizona	1:00 p.m.
12	CAL STATE NORTHRIDGE	2:30 p.m.
14	at Florida State	3:30 p.m.
15	at Florida State	2:00 p.m.
16	at Florida State	12:30 p.m.
19	LOYOLA MARYMOUNT	7:00 p.m.
21	at Pepperdine	2:00 p.m.
22	PEPPERDINE	1:00 p.m.
23	PEPPERDINE	1:00 p.m.
25	at Fresno State	7:00 p.m.
26	at Fresno State	7:00 p.m.
28	SAN DIEGO	7:00 p.m.
<i>March</i>		
1	SAN DIEGO	7:00 p.m.
2	SAN DIEGO	1:00 p.m.
7	at Long Beach State	7:05 p.m.
8	at Long Beach State	7:05 p.m.
9	at Long Beach State	1:05 p.m.
11	at UCLA	6:00 p.m.
14	CAL POLY SLO	7:00 p.m.
15	CAL POLY SLO	7:00 p.m.
16	CAL POLY SLO	1:00 p.m.
18	at Southern Cal	7:00 p.m.
21	at UC Santa Barbara	2:30 p.m.
22	at UC Santa Barbara	1:00 p.m.
23	at UC Santa Barbara	1:00 p.m.
27	PACIFIC	7:00 p.m.
28	PACIFIC	7:00 p.m.
29	PACIFIC	1:00 p.m.
<i>April</i>		
1	at San Diego	2:30 p.m.
4	at Cal State Sacramento	2:00 p.m.
5	at Cal State Sacramento	1:00 p.m.
6	at Cal State Sacramento	1:00 p.m.
8	SOUTHERN CAL	7:00 p.m.
11	LONG BEACH STATE	7:00 p.m.
12	LONG BEACH STATE	7:00 p.m.
13	LONG BEACH STATE	1:00 p.m.
16	at Pepperdine	2:30 p.m.
18	NEW MEXICO STATE	7:00 p.m.
19	NEW MEXICO STATE	7:00 p.m.
20	NEW MEXICO STATE	1:00 p.m.
25	at Nevada	2:00 p.m.
26	at Nevada	1:00 p.m.
27	at Nevada	1:00 p.m.
29	UCLA	7:00 p.m.
<i>May</i>		
2	at Cal Poly SLO	7:00 p.m.
3	at Cal Poly SLO	1:00 p.m.
4	at Cal Poly SLO	1:00 p.m.
9	UC SANTA BARBARA	7:00 p.m.
10	UC SANTA BARBARA	7:00 p.m.
11	UC SANTA BARBARA	1:00 p.m.
15	Big West Conference Tournament	

MARSHALL

February 21 • Tallahassee • 3:30 p.m.
 February 22 • Tallahassee • 2 p.m.
 February 23 • Tallahassee • 2 p.m.

Location	Huntington, WV
Enrollment	12,500
Nickname	Thundering Herd
Colors	Green & White
President	J. Wade Gilley

1997 Seminole Opponents

Athletic Director..... Lance West
 Stadium St. Cloud Commons (3,500)
 Head Coach Craig Antush
 Record at Marshall 7-35-1 (1 year)
 Career Record 7-35-1 (1 year)
 Office Phone (304) 696-6454
 Assistant Coaches Dave Piepenbrink, Mike Fagan
 1996 Record 7-35-1
 Conference Record (Finish) 4-17 (9th)
 Post-Season N/A
 Starters Returning/Lost 8/0
 Pitchers Returning/Lost 7/2
 Top Returnees C Tim Frantz, SS Ryan Roush,
 P J.R. Watts
 Series Record FSU leads 4-0
 Martin vs. Marshall 4-0
 Sports Information Contact Archie Gleason
 Office Phone (304) 696-4662
 Home Phone (304) 522-4584
 Press Box Phone N/A
 Fax Phone (304) 696-2325

Athletic Director..... Jeremy N. Foley
 Stadium McKethan Stadium at Perry Field
 Head Coach Andy Lopez
 Record at Florida 32-24
 Career Record 441-283-5
 Office Phone (904) 375-4683 ext. 4457
 Assistant Coaches Gary Henderson,
 Steve Kling, Erik Ekdahl
 1996 Record 50-18
 Conference Record (Finish) 20-10 (T1st)
 Post-Season 3rd Place in CWS
 Position Players Returning/Lost 4/5
 Pitchers Returning/Lost 6/5
 Top Returnees RHP Tommy Bond (Jr., 4-0, 3.44 ERA);
 2B David Eckstein (Sr., .338, 9 HR,
 62 RBI); 1B Chuck Hazzard (Jr., .366, 18
 HR, 67 RBI); 1B/P Brad Wilkerson (.407, 9
 HR, 68 RBI, 5-2, 2.97 ERA, 6 SV)
 Series Record FSU leads 92-75
 Martin vs. Florida 38-30
 Sports Information Contact Steve Shaff
 Office Phone (904) 375-4683 ext. 6100
 Home Phone (904) 336-8834
 Press Box Phone (904) 375-4683 ext. 4355
 Fax Phone (904) 375-4809

1997 HERD SCHEDULE

February		
14	at Alabama	6:00 p.m.
15	at Alabama	2:00 p.m.
16	at Alabama	2:00 p.m.
21	at Florida State	3:30 p.m.
22	at Florida State	2:00 p.m.
23	at Florida State	2:00 p.m.
25	OHIO UNIVERSITY (DH)	1:00 p.m.
March		
1	VMI (DH)	12:00 p.m.
2	VMI	1:00 p.m.
4	at Cincinnati	3:00 p.m.
6	EASTERN MICHIGAN	3:00 p.m.
8	at Western Carolina (DH)	12:00 p.m.
9	at Western Carolina	1:00 p.m.
10	at Western Carolina	2:00 p.m.
11	at North Carolina	1:00 p.m.
13	at Va. Commonwealth	4:00 p.m.
15	APPALACHIAN STATE (DH)	12:00 p.m.
16	APPALACHIAN STATE	1:00 p.m.
18	at Virginia Tech	3:00 p.m.
20	MOREHEAD STATE	3:00 p.m.
22	THE CITADEL (DH)	12:00 p.m.
23	THE CITADEL	1:00 p.m.
25	CINCINNATI	3:00 p.m.
28	at Davidson (DH)	12:00 p.m.
29	at Davidson	1:00 p.m.
April		
1	VIRGINIA TECH	3:00 p.m.
2	at Ohio University (DH)	1:00 p.m.
3	at Eastern Kentucky	3:00 p.m.
5	at East Tennessee (DH)	12:00 p.m.
6	at East Tennessee	1:00 p.m.
8	at Miami (Ohio)	3:00 p.m.
9	at Kentucky	6:00 p.m.
12	FURMAN (DH)	12:00 p.m.
13	FURMAN	1:00 p.m.
15	WEST VIRGINIA (DH)	2:00 p.m.
16	EASTERN KENTUCKY	2:00 p.m.
17	at Morehead State	6:00 p.m.
19	at Georgia Southern (DH)	3:00 p.m.
20	at Georgia Southern	12:00 p.m.
22	at Auburn	1:00 p.m.
24-27	Southern Conference Tournament	3:00 p.m.

FLORIDA

February 28 • Gainesville • 7 p.m.

March 1 • Gainesville • 7 p.m.

March 2 • Tallahassee • 7 p.m.

March 3 • Tallahassee • 1:30 p.m.

Location Gainesville, FL
 Enrollment 40,000
 Nickname Gators
 Colors Orange & Blue
 President Dr. John Lombardi

1997 GATOR SCHEDULE

January		
31	WINTHROP	7:00 p.m.
February		
1	WINTHROP	1:00 p.m.
2	WINTHROP	1:30 p.m.
7	SANTA CLARA	7:00 p.m.
7	SANTA CLARA	1:00 p.m.
9	SANTA CLARA	1:30 p.m.
12	SW LOUISIANA	7:00 p.m.
15	MIAMI	2:00 p.m.
16	MIAMI	1:30 p.m.
18	JACKSONVILLE	7:00 p.m.
21	at Miami	7:00 p.m.
22	at Miami	7:00 p.m.
27	at Florida State	7:00 p.m.
28	at Florida State	7:00 p.m.
March		
1	FLORIDA STATE	7:00 p.m.
2	FLORIDA STATE	1:30 p.m.
4	CAMPBELL	7:00 p.m.
7	at Mississippi State	8:00 p.m.
8	at Mississippi State	3:00 p.m.
9	at Mississippi State	3:00 p.m.
10	MAINE	7:00 p.m.
12	PURDUE	7:00 p.m.
14	ALABAMA	7:00 p.m.
15	ALABAMA	7:00 p.m.
16	ALABAMA	1:30 p.m.
19	AKRON	7:00 p.m.
21	at Louisiana State	8:00 p.m.
22	at Louisiana State	4:00 p.m.
23	at Louisiana State	2:30 p.m.
25	HOUSTON	7:00 p.m.
28	at Mississippi	8:00 p.m.
29	at Mississippi	3:00 p.m.
30	at Mississippi	3:00 p.m.
April		
2	STETSON	7:00 p.m.
4	AUBURN	7:00 p.m.
5	AUBURN	3:00 p.m.
6	AUBURN	1:30 p.m.
8	FLORIDA ATLANTIC	7:00 p.m.
9	BETHUNE COOKMAN	7:00 p.m.
11	at Vanderbilt	8:00 p.m.
12	at Vanderbilt	3:00 p.m.
13	at Vanderbilt	1:00 p.m.
16	at Stetson	7:00 p.m.
18	KENTUCKY	7:00 p.m.
19	KENTUCKY	3:00 p.m.
20	KENTUCKY	1:30 p.m.
23	CENTRAL FLORIDA	7:00 p.m.
25	SOUTH CAROLINA	7:00 p.m.
26	SOUTH CAROLINA	7:00 p.m.
27	SOUTH CAROLINA	1:30 p.m.
May		
2	at Georgia	7:00 p.m.

3	at Georgia	7:00 p.m.
4	at Georgia	2:00 p.m.
9	TENNESSEE	7:00 p.m.
10	TENNESSEE	3:00 p.m.
11	TENNESSEE	1:00 p.m.
14-18	SEC Tournament (Columbus, Ga.)	tba

UNC GREENSBORO

March 4 • Tallahassee • 3:30 p.m.
March 5 • Tallahassee • 3:30 p.m.

Location	Greensboro, NC
Enrollment	12,100
Nickname	Spartans
Colors	Gold, White & Navy
Chancellor	Dr. Patricia A. Sullivan
Athletic Director	Nelson E. Bobb
Stadium	War Memorial Stadium (7,500)
Head Coach	Mike Gaski
Record at UNC Greensboro	146-109 (6 years)
Career Record	146-109 (6 years)
Office Phone	(910) 334-3247
Assistant Coaches	Neil Avent, Matt Faulkner, Tonka Maynor
1996 Record	28-24
Conference Record (Finish)	12-6 (3rd)
Post-Season	N/A
Starters Returning/Lost	3/5
Pitchers Returning/Lost	4/2
Top Returnees	CF Nicky Phillips (Sr., .352, 6 HR, 37 RBI); 2B Dominic Pattic (Jr., .360, 1 HR, 18 RBI); RHP Jonathan Jackson (So., 11-4, 3.79 ERA); RHP Jason Parsons (Jr., 4-1, 3.73 ERA)
Series Record	First meeting
Martin vs. UNC Greensboro	First meeting
Sports Information Contact	Chris Militello
Office Phone	(910) 334-5615
Home Phone	(910) 632-1232
Press Box Phone	N/A
Fax Phone	(910) 334-3182

1997 SPARTAN SCHEDULE

<i>February</i>		
8	at UNC Wilmington	2:00 p.m.
9	at UNC Wilmington	1:30 p.m.
12	NC A&T STATE	3:00 p.m.
15	NC A&T STATE	4:00 p.m.
16	APPALACHIAN STATE	1:00 p.m.
18	DAVIDSON	3:00 p.m.
19	at NC State	3:00 p.m.
22	MARYLAND	1:00 p.m.
23	MARYLAND	Noon
25	VCU	3:00 p.m.
26	NC STATE	3:00 p.m.
<i>March</i>		
1	Xavier at North Florida	4:00 p.m.
4	at Florida State	1:30 p.m.
5	at Florida State	3:30 p.m.
7	FAIRFIELD	6:00 p.m.
8	FAIRFIELD DICKINSON	3:00 p.m.
9	FAIRFIELD	3:00 p.m.
11	BALL STATE	3:00 p.m.
13	BALL STATE	3:00 p.m.
14	CLEVELAND STATE	6:00 p.m.
15	OHIO U.	3:00 p.m.
18	WAKE FOREST	6:00 p.m.
19	at NC A&T State	6:00 p.m.
20	RICHMOND	3:00 p.m.
22	UMBC	1:00 p.m.
23	UMBC	Noon
25	at Wofford	6:00 p.m.
26	WOFFORD	6:00 p.m.
29	at Radford	1:00 p.m.
<i>April</i>		
1	at Wake Forest	3:00 p.m.
3	at Richmond	3:00 p.m.
5	at Coastal Carolina	Noon
6	at Coastal Carolina	1:00 p.m.
8	at Davidson	3:00 p.m.

VIRGINIA

March 7 • Tallahassee • 7 p.m.
March 8 • Tallahassee • 6 p.m.
March 9 • Tallahassee • 2 p.m.

Location	Charlottesville, VA
Enrollment	18,398
Nickname	Cavaliers
Colors	Orange & Blue
President	John T. Casteen III
Athletic Director	Terry Holland
Stadium (Capacity)	UVa Baseball Field (2,300)
Head Coach	Dennis Womack
Record at Virginia	408-403-5
Career Record	408-403-5
Office Phone	(804) 982-5775
Assistant Coaches	Steve Heon, Kevin O'Sullivan, Tommy Crowley
1996 Record	44-21
Conference Record (Finish)	11-13 (5th)
Post-Season	NCAA Regional Finalist (3-1)
Lettermen Returning/Lost	22/7
Starters Returning/Lost	5/4
Pitchers Returning/Lost	5/3
Top Returnees	SS Adam Robinson (Sr., .336, 10 HR, 40 RBI), OF John Galloway (Sr., .335, 6 HR, 38 RBI), RHP Pat Daneker (Jr., 8-5, 4.21 ERA, 71 K)
Series Record	FSU leads 14-5
Martin vs. Virginia	12-5
Sports Information Contact	Charlie Bare
Office Phone	(804) 982-5500
Home Phone	(804) 923-0243
Press Box Phone	(804) 295-9262
Fax Phone	(804) 982-5525
Sports Information Contact	Gregory Fox

1997 CAVALIER SCHEDULE

<i>February</i>		
14	at UNC-Wilmington	3:00 p.m.
15	at UNC-Wilmington	12:00 p.m.
15	vs. Penn State @ Wilmington	3:30 p.m.
18	at William & Mary	2:00 p.m.
22	SETON HALL (DH)	12:00 p.m.
23	SETON HALL	1:00 p.m.
26	RADFORD	3:00 p.m.
27	NORFOLK STATE	2:00 p.m.
<i>March</i>		
1	at East Carolina (DH)	2:00 p.m.
2	at East Carolina	1:00 p.m.
4	LIBERTY	3:00 p.m.
5	HOWARD	3:00 p.m.
7	at Florida State	7:00 p.m.
8	at Florida State	6:00 p.m.
9	at Florida State	2:00 p.m.
10	at Mercer	3:00 p.m.
11	at Mercer	3:00 p.m.
12	at Georgia College	3:00 p.m.
14	at Clemson	3:00 p.m.
15	at Clemson	2:00 p.m.
16	at Clemson	2:00 p.m.
19	GEORGE WASHINGTON	3:00 p.m.
20	COPPIN STATE	3:00 p.m.
21	N.C. STATE	3:00 p.m.
22	N.C. STATE	2:00 p.m.
23	N.C. STATE	2:00 p.m.
25	at VMI	3:00 p.m.
26	WILLIAM & MARY	3:00 p.m.
27	at Old Dominion	5:00 p.m.
<i>April</i>		
1	GEORGE MASON	3:00 p.m.
2	at James Madison	3:00 p.m.
4	at Wake Forest	3:00 p.m.
5	at Wake Forest	7:00 p.m.
6	at Wake Forest	7:00 p.m.
8	RICHMOND	3:00 p.m.
9	at Virginia Tech	3:00 p.m.
11	GEORGIA TECH	3:00 p.m.
12	GEORGIA TECH	2:00 p.m.
13	GEORGIA TECH	2:00 p.m.
15	at Richmond	3:00 p.m.
16	JAMES MADISON	3:00 p.m.
18	at North Carolina	3:00 p.m.

1997 Seminole Opponents

19	at North Carolina	1:00 p.m.
20	at North Carolina	1:30 p.m.
22	V.A. COMMONWEALTH	3:00 p.m.
23	VIRGINIA TECH	3:00 p.m.
25	DUKE	3:00 p.m.
26	DUKE	2:00 p.m.
27	DUKE	2:00 p.m.
28	at Liberty	tba
29	at Va. Commonwealth	7:00 p.m.
<i>May</i>		
9	MARYLAND	4:00 p.m.
10	MARYLAND	2:00 p.m.
11	MARYLAND	2:00 p.m.
13-18	ACC Tournament @ St. Petersburg	tba

<i>May</i>		
3	University of Massachusetts	12:00 p.m.
4	University of Massachusetts	12:00 p.m.
10	Fordham University	12:00 p.m.
11	Fordham University	12:00 p.m.
14-18	A-10 Tournament	TBA
21-25	NCAA Regionals	TBA

ST. BONAVENTURE

Daytona Beach Spring Jamboree
March 11 • Daytona Beach • 7 p.m.

Location	St. Bonaventure, NY
Enrollment	2,700
Nickname	The Bonnies
Colors	Brown & White
President	Dr. Robert J. Wickenheiser
Athletic Director	Dr. David Diles
Stadium	McGraw-Jennings Field
Head Coach	Larry Sudbrook
Record at St. Bonaventure	299-253-2 (12 Years)
Career Record	299-253-2 (12 Years)
Office Phone	(716) 375-2641
Assistant Coaches	Tom Tegeler, Jon Phillips
1996 Record	19-19
Conference Record (Finish)	10-10 (3rd in East)
Post-Season	N/A
Position Players Returning/Lost	9/6
Pitchers Returning/Lost	5/6
Top Returnees	RF Joe Andreana (Sr., .414, 5 HR, 26 RBI); 1B Shawn Hennessey (Sr., .255, 3 HR, 21 HR); LHP Ryan LaMattina (Jr., 4-2, 3.86 ERA); RHP Ryan Rademacker (Jr., 4-5, 2.71 ERA)
Series Record	1st Meeting
Martin vs. Oklahoma	1st Meeting
Sports Information Contact	Jeremy Hartigan
Office Phone	(716) 375-2575
Home Phone	(716) 379-3843
Press Box Phone	N/A
Fax Phone	(716) 376-2383

1997 BONNIE SCHEDULE

<i>March</i>		
2	Fairmont St.	TBA
3	York College	10:00 p.m.
4	Xavier University	11:00 p.m.
5	Bethune Cookman	7:30 p.m.
7	Univ. of Pittsburgh	7:00 p.m.
8	Xavier University	1:00 p.m.
9	Siena College	10:00 a.m.
10	St. Joe's	2:00 p.m.
11	Florida State	7:00 p.m.
18	West Virginia University	1:00 p.m.
19	West Virginia University	1:00 p.m.
29	LaSalle University	12:00 p.m.
30	LaSalle University	12:00 p.m.
<i>April</i>		
1	LeMoyne College	1:00 p.m.
5	GEORGE WASHINGTON	12:00 p.m.
6	GEORGE WASHINGTON	12:00 p.m.
9	Bucknell University	1:00 p.m.
12	RHODE ISLAND	12:00 p.m.
13	RHODE ISLAND	12:00 p.m.
15	Canisius	6:00 p.m.
17	Cleveland State	2:00 p.m.
19	Temple	12:00 p.m.
20	Temple	12:00 p.m.
22	CANISIUS	1:00 p.m.
24	NIAGARA UNIVERSITY	3:00 p.m.
26	ST. JOSEPH'S	12:00 p.m.
27	ST. JOSEPH'S	12:00 p.m.
30	Niagara University	2:00 p.m.

LONG ISLAND UNIVERSITY

Daytona Beach Spring Jamboree
March 12 • 2:00 p.m.

Location	Brooklyn, NY
Enrollment	9,500
Nickname	Blackbirds
Colors	Blue & White
President	Dr. David J. Steinberg
Athletic Director	Alan Chaves
Stadium	LIU Athletic Field (500)
Head Coach	Frank Giannone
Record at Long Island	388-277-4
Career Record	388-277-4
Office Phone	(718) 488-1538
Assistant Coaches	Mike Ryan, Nick Doscher, Chris Bagley
1996 Record	22-19
Conference Record (Finish)	12-9 (4th)
Post-Season	2-2, NEC Tournament Runner-up
Position Players Returning/Lost	10/3
Pitchers Returning/Lost	7/1
Top Returnees	OF Chris Novelli (Sr., .372, 4 HR, 27 RBI), INF Joseph Reina (Sr., .362, 4 HR, 33 RBI), RHP Donato Pesce (Sr., 1-1, 2.60 ERA), RHP James Giancola (Sr., 3-6, 4.16 ERA)
Series Record	First meeting
Martin vs. Long Island	First meeting
Sports Information Contact	Gregory Fox
Office Phone	(718) 488-1420
Home Phone	(201) 329-9705
Press Box Phone	N/A
Fax Phone	(718) 780-4045

1997 BLACKBIRD SCHEDULE

<i>March</i>		
10	Bethune-Cookman College	7:00 p.m.
11	Lehigh University	2:00 p.m.
12	Florida State University	2:00 p.m.
14	University of Chicago	1:00 p.m.
15	Butler University	Noon
	& St. Joseph's University	& 4:00 p.m.
18	Lehigh University	3:00 p.m.
19	Lafayette College	3:00 p.m.
20	Fairfield University	3:00 p.m.
22	MONMOUTH UNIVERSITY	Noon
23	Monmouth University	Noon
25	FORDHAM UNIVERSITY	3:00 p.m.
27	LASALLE UNIVERSITY	3:00 p.m.
28	Wagner College	3:00 p.m.
29	WAGNER COLLEGE	Noon
<i>April</i>		
1	LaSalle University	3:00 p.m.
2	DELAWARE STATE	3:00 p.m.
5	Fairleigh Dickinson University	Noon
6	FAIRLEIGH DICKINSON	Noon
8	Columbia University	3:00 p.m.
10	Manhattan College	3:00 p.m.
12	RIDER UNIVERSITY	Noon
13	Rider University	Noon
15	St. John's University	3:00 p.m.
16	HOFSTRA UNIVERSITY	3:00 p.m.
17	C.W. POST COLLEGE	3:00 p.m.
19	Mount St. Mary's College	Noon
20	Mount St. Mary's College	Noon
21	SIENA COLLEGE	3:00 p.m.
22	Princeton University	3:00 p.m.
23	PACE UNIVERSITY	3:00 p.m.
26	St. Francis College-NY	Noon

1997 Seminole Opponents

27	ST. FRANCIS COLLEGE-NY	Noon
29	ST. PETER'S COLLEGE	3:30 p.m.
30	IONA COLLEGE	3:30 p.m.
<i>May</i>		
2	MANHATTAN COLLEGE	3:00 p.m.
3	MARIST COLLEGE	Noon
4	Marist College	Noon
9-11	Northeast Conference Championship	TBA

WAKE FOREST

March 14 • Tallahassee • 6 p.m.
 March 15 • Tallahassee • 6 p.m.
 March 16 • Tallahassee • 2 p.m.

Location	Winston-Salem, NC
Enrollment	3,620
Nickname	Demon Deacons
Colors	Old Gold & Black
President	Dr. Thomas K. Hearn
Athletic Director	Ron Wellman
Stadium	Hooks Stadium (2,500)
Head Coach	George Greer
Record at Wake Forest	277-183-2 (8 years)
Career Record	409-337-6 (15 years)
Office Phone	(910) 759-5570
Assistant Coaches	Bobby Moranda, Mike Rikard
1996 Record	26-32
Conference Record (Finish)	7-16 (8th)
Post-Season	N/A
Starters Returning/Lost	6/2
Pitchers Returning/Lost	3/2
Top Returnees	2B Jon Palmieri (So., .403, 1 HR, 21 RBI); OF Josh Itzoe (Sr., .325, 9 HR, 52 RBI); RHP Michael Holmes (Sr., 7-4, 4.45 ERA); RHP Mike Ramseyer (Sr., 3-2, 4.61 ERA)
Series Record	FSU leads 33-8
Martin vs. Wake Forest	15-3
Sports Information Contact	Dan Zacharias
Office Phone	(910) 759-5640
Home Phone	(910) 925-5577
Press Box Phone	(910) 759-9711
Fax Phone	(910) 759-5140

1997 DEMON DEACON SCHEDULE

<i>February</i>		
14	at E. Tenn. State	TBA
15	at Furman	TBA
16	at Citadel	TBA
20	APPALACHIAN ST.	2:30 p.m.
22	MARYLAND EAST SHORE	12:30 p.m.
23	MARYLAND EAST SHORE	1:00 p.m.
25	at Davidson	2:30 p.m.
26	NORTH CAROLINA A&T	2:30 p.m.
28	PROVIDENCE	2:30 p.m.
<i>March</i>		
1	OHIO UNIVERSITY	12:30 p.m.
2	OHIO UNIVERSITY	12:30 p.m.
3	DAVIDSON	2:30 p.m.
4	UNC-ASHEVILLE	2:30 p.m.
7	DUKE	2:30 p.m.
8	DUKE	1:00 p.m.
9	DUKE	1:00 p.m.
10	FAIRFIELD	1:00 p.m.
13	WILLIAM & MARY	12:00 p.m.
14	at Florida State	6:00 p.m.
15	at Florida State	6:00 p.m.
16	at Florida State	2:00 p.m.
18	UNC-GREENSBORO	3:00 p.m.
19	DAVIDSON	3:00 p.m.
21	at Georgia Tech	7:00 p.m.
22	at Georgia Tech	1:30 p.m.
23	at Georgia Tech	1:30 p.m.
25	KENT STATE	3:00 p.m.
26	KENT STATE	3:00 p.m.
28	CLEMSON	2:00 p.m.
29	CLEMSON	2:00 p.m.
30	CLEMSON	1:30 p.m.
31	at North Carolina A&T	6:00 p.m.
<i>April</i>		
1	at UNC- Greensboro	6:00 p.m.

2	at Campbell	6:00 p.m.
4	VIRGINIA	3:00 p.m.
5	VIRGINIA	7:00 p.m.
6	VIRGINIA	7:00 p.m.
8	UNC-CHARLOTTE	3:00 p.m.
9	at Appalachian State	7:00 p.m.
11	at UNC	3:00 p.m.
12	at UNC	1:00 p.m.
13	at UNC	1:30 p.m.
15	CAMPBELL	6:00 p.m.
16	at UNC-Charlotte	6:30 p.m.
18	at Maryland	7:00 p.m.
19	at Maryland	7:00 p.m.
20	at Maryland	2:00 p.m.
23	WOFFORD	3:00 p.m.
25	NC STATE	3:00 p.m.
26	NC State	2:00 p.m.
27	NC STATE	1:30 p.m.
29	at Davidson	3:00 p.m.
30	at UNC-Asheville	6:00 p.m.

13-18 ACC Tournament *May*

FLORIDA ATLANTIC

March 18 • 7 p.m.
 March 19 • 3:30 p.m.

Location	Boca Raton, FL
Enrollment	19,300
Nickname	Owls
Colors	Blue & Gray
President	Dr. Anthony J. Catanese
Athletic Director	Tom Cargill
Stadium	FAU Field (2,000)
Head Coach	Kevin Cooney
Record at Florida Atlantic	279-219-4
Career Record	419-269-9
Office Phone	(561) 367-3956
Assistant Coaches	John McCormack, Steve Whitaker, Kerwin Belle
1996 Record	39-23
Conference Record (Finish)	9-9 (2nd in tournament)
Post-Season	N/A
Starters Returning/Lost	14/10
Top Returnees	INF Kevin Connacher (Sr., .316, 1 HR, 30 RBI); INF Brennan Hervey (Sr., .304, 9 HR, 52 RBI); RHP Joe Cali (Sr., 5-4, 3.19 ERA); RHP Tony Von Dotteren (Sr., 6-4, 3.84 ERA)
Series Record	FSU leads 5-0
Martin vs. Florida Atlantic	5-0
Sports Information Contact	Katrina McCormack
Office Phone	(561) 367-3163
Home Phone	(561) 367-9467
Press Box Phone	N/A
Fax Phone	(561) 367-2996

1997 OWL SCHEDULE

<i>February</i>		
1	BETHUNE-COOKMAN	7:00 p.m.
2	BETHUNE-COOKMAN	1:00 p.m.
7	NORTH CAROLINA STATE	7:00 p.m.
8	NORTH CAROLINA STATE	7:00 p.m.
9	NORTH CAROLINA STATE	12:00 p.m.
15	ST. FRANCIS (NEW YORK)	7:00 p.m.
16	ST. FRANCIS (NEW YORK)	2:00 p.m.
18	SOUTH FLORIDA	7:00 p.m.
19	SOUTH FLORIDA	3:30 p.m.
21	ST. JOHN'S	7:00 p.m.
22	ST. JOHN'S	7:00 p.m.
24	at Bethune-Cookman	3:00 p.m.
28	VILLANOVA	7:00 p.m.
<i>March</i>		
1	VILLANOVA	7:00 p.m.
2	MICHIGAN STATE	2:00 p.m.
3	PITTSBURGH	4:00 p.m.
4	MICHIGAN STATE	7:00 p.m.
5	MONMOUTH	7:00 p.m.
8	ILLINOIS STATE	7:00 p.m.
9	ILLINOIS STATE	4:00 p.m.
11	MONTCLAIR STATE	7:00 p.m.
13	ILLINOIS STATE	4:00 p.m.

1 9 9 7 S e m i n o l e O p p o n e n t s

14	ILLINOIS STATE	4:00 p.m.
16	RUTGERS	2:00 p.m.
17	RUTGERS	2:00 p.m.
18	at Florida State	7:00 p.m.
19	at Florida State	6:00 p.m.
21	COLUMBIA	7:00 p.m.
22	COLUMBIA	7:00 p.m.
23	IONA	7:00 p.m.
24	BROWN	7:00 p.m.
26	IONA	7:00 p.m.
28	FLORIDA INTERNATIONAL	7:00 p.m.
29	FLORIDA INTERNATIONAL	3:30 p.m.
<i>April</i>		
5	at Stetson	7:00 p.m.
6	at Stetson	1:00 p.m.
8	at Florida	7:00 p.m.
11	CENTRAL FLORIDA	7:00 p.m.
12	CENTRAL FLORIDA	1:00 p.m.
18	STETSON	7:00 p.m.
19	STETSON	1:00 p.m.
23	at Miami	7:00 p.m.
25	at Central Florida	7:00 p.m.
26	at Central Florida	1:00 p.m.
30	at Miami	7:00 p.m.
<i>May</i>		
2	at Florida International	7:00 p.m.
3	at Florida International	1:00 p.m.
9-11	TAAC First Round	TBA
13-17	TAAC Championship Round	TBA
21-24	NCAA Regional	TBA

DUKE

March 21 • Durham • 3 p.m.
 March 22 • Durham • 1 p.m.
 March 23 • Durham • 1 p.m.

Location Durham, NC
 Enrollment 6,057
 Nickname Blue Devils
 Colors Royal Blue & White
 President Dr. Nannerl Keohane
 Athletic Director Tom Butters
 Stadium Jack Coombs Field
 Head Coach Steve Traylor
 Record at Duke 261-210-1 (9 years)
 Career Record 529-317-3 (16 years)
 Office Phone (919) 684-2358
 Assistant Coaches David Koblentz, Chris McMullan
 1996 Record 39-18
 Conference Record (Finish) 9-14 (7th)
 Post-Season N/A
 Starters Returning/Lost 7/1
 Pitchers Returning/Lost 5/3
 Top Returnees SS Frankie Chiou (Sr., 353, 1 HR, 42 RBI); C Greg Maluchnik (Jr., 347, 10 HR, 68 RBI); RHP Richard Dishman (Jr., 5-3, 3.56 ERA); RHP Jim Wendling (Jr., 1-3, 4.85 ERA)
 Series Record FSU leads 25-14
 Mike Martin vs. Duke 14-5
 Sports Information Contact Sean Moore
 Office Phone (919) 684-2633
 Home Phone (919) 403-8602
 Press Box Phone (919) 684-6074
 Fax Phone (919) 684-2489

1997 BLUE DEVIL SCHEDULE

<i>February</i>		
1	WOFFORD	1:00 p.m.
2	WOFFORD	1:00 p.m.
4	CAMPBELL	3:00 p.m.
7	NORFOLK STATE	3:00 p.m.
8	NAVY	1:00 p.m.
9	NAVY	1:00 p.m.
12	CAMPBELL	3:00 p.m.
14	OLD DOMINION	3:00 p.m.
15	GEORGETOWN	1:00 p.m.
16	GEORGETOWN	1:00 p.m.
18	at North Carolina A&T	3:00 p.m.
21	vs Tulane	4:00 p.m.

22	NC/LA CHALLENGE	7:00 p.m.
23	vs New Orleans	12:00 p.m.
25	vs Louisiana St.	3:00 p.m.
27	NORTH CAROLINA A&T	3:00 p.m.
28	PROVIDENCE	3:00 p.m.
	NORFOLK STATE	3:00 p.m.
<i>March</i>		
2	ELON	1:00 p.m.
3	APPALACHIAN STATE	3:00 p.m.
7	at Wake Forest	2:30 p.m.
8	at Wake Forest	1:00 p.m.
9	at Wake Forest	1:00 p.m.
12	BALL STATE	3:00 p.m.
14	N.C. STATE	3:00 p.m.
15	N.C. STATE	1:00 p.m.
16	N.C. STATE	1:00 p.m.
18	at Wofford	1:00 p.m.
19	at Wofford	1:00 p.m.
21	FLORIDA STATE	3:00 p.m.
22	FLORIDA STATE	1:00 p.m.
23	FLORIDA STATE	1:00 p.m.
26	at East Carolina	7:00 p.m.
28	at North Carolina	1:00 p.m.
29	at North Carolina	1:00 p.m.
30	at North Carolina	2:00 p.m.
<i>April</i>		
1	at Campbell	7:00 p.m.
4	MARYLAND	3:00 p.m.
5	MARYLAND	1:00 p.m.
6	MARYLAND	1:00 p.m.
8	at Campbell	7:00 p.m.
11	at Clemson	7:15 p.m.
12	at Clemson	7:00 p.m.
13	at Clemson	2:00 p.m.
16	DAVIDSON	3:00 p.m.
18	at Miami	7:00 p.m.
19	at Miami	7:00 p.m.
20	at Miami	1:00 p.m.
22	at Davidson	3:00 p.m.
25	at Virginia	3:00 p.m.
26	at Virginia	2:00 p.m.
27	at Virginia	2:00 p.m.
30	GREENSBORO	3:00 p.m.
<i>May</i>		
1	GEORGIA TECH	1:00 p.m.
2	GEORGIA TECH	1:00 p.m.
3	GEORGIA TECH	1:00 p.m.
11	at Virginia Commonwealth	1:00 p.m.
13-18	ACC Tournament	

COASTAL CAROLINA

March 25 • Tallahassee • 6 p.m.
 March 26 • Tallahassee • 3:30 p.m.

Location Conway, SC
 Enrollment 4,416
 Nickname Chanticleers
 Colors Coastal Green, Bronze & Black
 President Dr. Ronald R. Ingle
 Athletic Director George F. "Buddy" Sasser
 Stadium Coastal Carolina Stadium (2,000)
 Head Coach Gary Gilmore
 Record at Coastal Carolina 24-29 (1 year)
 Career Record 281-127 (7 years)
 Office Phone (803) 349-2816
 Assistant Coaches Bill Jarman, Matt Schilling
 1996 Record 24-29
 Conference Record (Finish) 11-10 (4th)
 Post-Season N/A
 Starters Returning/Lost 5/3
 Pitchers Returning/Lost 2/5
 Top Returnees 3B Matt Trahan (Sr., 340, 8 HR, 37 RBI); 1B Chip Weisgerber (Sr., 346, 7 HR, 44 RBI); RHP Bobby Richardson (Sr., 4-3, 4.65 ERA)
 Series Record FSU leads 8-0
 Martin vs. Coastal Carolina 8-0
 Sports Information Contact Kevin Hadsell
 Office Phone (803) 349-2822
 Home Phone (803) 272-8743
 Press Box Phone TBA
 Fax Phone (803) 349-2819

1997 CHANT SCHEDULE

<i>February</i>		
15	NORTH CAROLINA	1:00 p.m.
16	NORTH CAROLINA	1:00 p.m.
21	GEORGE MASON	3:00 p.m.
22	GEORGE MASON	1:00 p.m.
23	GEORGE MASON	1:00 p.m.
25	UNC-WILMINGTON	3:00 p.m.
26	FURMAN	3:00 p.m.
27	DELAWARE	3:00 p.m.
28	DELAWARE	3:00 p.m.
<i>March</i>		
1	WRIGHT STATE	3:00 p.m.
2	WRIGHT STATE	1:00 p.m.
4	GEORGIA SOUTHERN	3:00 p.m.
5	GEORGIA SOUTHERN	3:00 p.m.
7	at Clemson	3:00 p.m.
8	at Clemson	2:00 p.m.
9	at Clemson	2:00 p.m.
11	RICHMOND	5:00 p.m.
12	RICHMOND	5:00 p.m.
13	RICHMOND	3:00 p.m.
15	PRINCETON	1:00 p.m.
16	PRINCETON	12:00 p.m.
22	at Winthrop	12:00 p.m.
23	at Winthrop	1:00 p.m.
25	at Florida State	6:00 p.m.
26	at Florida State	3:00 p.m.
28	at Charleston Southern	3:00 p.m.
29	at Charleston Southern	12:00 p.m.
<i>April</i>		
1	at Georgia Southern	7:00 p.m.
2	at Georgia Southern	4:00 p.m.
5	UNC-GREENSBORO	12:00 p.m.
6	UNC-GREENSBORO	1:00 p.m.
10	at Citadel	7:00 p.m.
12	RADFORD	12:00 p.m.
13	RADFORD	1:00 p.m.
15	COLLEGE OF CHARLESTON	5:00 p.m.
16	CITADEL	5:00 p.m.
19	at Maryland-Baltimore County	12:00 p.m.
20	at Maryland-Baltimore County	1:00 p.m.
23	at North Carolina	6:00 p.m.
24	at North Carolina	12:00 p.m.
25	at Miami	7:00 p.m.
26	at Miami	7:00 p.m.
27	at Miami	1:00 p.m.
29	at UNC-Wilmington	7:00 p.m.
<i>May</i>		
2	LIBERTY	5:00 p.m.
3	LIBERTY	12:00 p.m.
10	at UNC-Asheville	12:00 p.m.
11	at UNC-Asheville	1:00 p.m.
16-18	Big South Conference Tournament	TBA

N.C. STATE

March 28 • Raleigh • 7 p.m.
 March 29 • Raleigh • 7 p.m.
 March 30 • Raleigh • 1 p.m.

Location Raleigh, NC
Enrollment 27,577
Nickname Wolfpack
Colors Red & White
President Dr. Larry Monteith
Athletic Director Les Robinson
Stadium Doak Field (3,000)
Head Coach Elliott Avent
Record at N.C. State 1st Year
Career Record 225-213 (8 Years)
Office Phone (919) 515-3612
Assistant Coaches Billy Best, Matt Donahue
1996 Record 42-19
Conference Record (Finish) 13-11 (T3rd)
Post-Season 0-2 NCAA East Regional
Position Players Returning/Lost 11/11
Pitchers Returning/Lost 10/4
Top Returnees OF Jake Weber (Jr., .354, 7 HR, 55 RBI); 2B Tom Sergio (Sr., .317, 3 HR, 34 RBI); RHP Brett Black (Sr., 12-3, 3.54 ERA); LHP Sean Gordon (So., 5-0, 4.76 ERA)
Series Record FSU leads 17-9

Martin vs. N.C. State 16-5
 Sports Information Contact Bruce Winkworth
 Office Phone (919) 515-2102
 Home Phone (919) 829-0136
 Press Box Phone (919) 515-7213
 Fax Phone (919) 515-2898

1997 WOLFPACK SCHEDULE

<i>February</i>		
7	at Florida Atlantic	7:00 p.m.
8	at Florida Atlantic	7:00 p.m.
9	at Florida Atlantic	2:00 p.m.
15	at Charleston Southern	2:30 p.m.
16	at UNC-Charlotte	1:00 p.m.
19	UNC-GREENSBORO	3:00 p.m.
21	at New Orleans	1:00 p.m.
22	at LSU	4:00 p.m.
23	at Tulane	6:00 p.m.
26	at UNC-Greensboro	3:00 p.m.
28	GEORGE WASHINGTON	3:00 p.m.
<i>March</i>		
1	GEORGE WASHINGTON	1:30 p.m.
2	GEORGE WASHINGTON	1:30 p.m.
4	at College of Charleston	2:30 p.m.
5	at College of Charleston	2:30 p.m.
7	NAVY	2:00 p.m.
8	NAVY	1:30 p.m.
9	NAVY	2:00 p.m.
11	GEORGE MASON	2:00 p.m.
12	GEORGE MASON	2:00 p.m.
14	at Duke	3:00 p.m.
15	at Duke	1:00 p.m.
16	at Duke	1:00 p.m.
18	YALE	3:00 p.m.
19	VIRGINIA COMMONWEALTH	3:00 p.m.
21	at Virginia	3:00 p.m.
22	at Virginia	2:00 p.m.
23	at Virginia	2:00 p.m.
25	OHIO UNIVERSITY	7:00 p.m.
28	FLORIDA STATE	7:00 p.m.
29	FLORIDA STATE	7:00 p.m.
30	FLORIDA STATE	1:00 p.m.
<i>April</i>		
1	CITADEL	7:00 p.m.
2	at East Carolina	7:00 p.m.
4	NORTH CAROLINA	7:00 p.m.
5	NORTH CAROLINA	7:00 p.m.
6	NORTH CAROLINA	7:00 p.m.
8	CHARLESTON SOUTHERN	7:00 p.m.
9	CHARLESTON SOUTHERN	7:00 p.m.
11	MARYLAND	7:00 p.m.
12	MARYLAND	7:00 p.m.
13	MARYLAND	3:00 p.m.
15	DAVIDSON	7:00 p.m.
16	at UNC-Wilmington	TBA
18	CLEMSON	7:00 p.m.
19	CLEMSON	7:00 p.m.
20	CLEMSON	1:30 p.m.
22	UNC-WILMINGTON	7:00 p.m.
23	EAST CAROLINA	7:00 p.m.
25	at Wake Forest	3:00 p.m.
26	at Wake Forest	2:00 p.m.
27	at Wake Forest	1:30 p.m.
<i>May</i>		
6	RADFORD	7:00 p.m.
7	RADFORD	7:00 p.m.
9	at Georgia Tech	TBA
10	at Georgia Tech	TBA
11	at Georgia Tech	TBA
13-18	ACC Tournament @ St. Petersburg, FL	

MERCER

April 1 • Tallahassee • 6 p.m.
 April 2 • Tallahassee • 6 p.m.
 April 30 • Mercer • 7 p.m.

Location Macon, GA
Enrollment 2,356
Nickname Bears
Colors Black & Orange
President Dr. R. Kirby Godsey

Athletic Director Bobby Pope
 Stadium Claude Smith Field (800)
 Head Coach Barry Meyers
 Record at Mercer 489-476-2 (19 years)
 Career Record 680-564-5 (25 years)
 Office Phone (912) 752-2738
 Assistant Coaches ... Craig Gibson, Jim Cole, Buck Phillips
 1996 Record 25-30
 Conference Record (Finish) 7-11 (4th)
 Post-Season N/A
 Starters Returning/Lost 5/4
 Pitchers Returning/Lost 3/5
 Top Returnees 3B Jason Florio (Sr., .328, 5 HR, 39 RBI); 1B Jeremy Avery (Jr., .293, 2 HR, 22 RBI); RHP Alton Kersey (So., 1-4, 6.04 ERA); RHP James Hudgins (Sr., 4-2, 5.06 ERA)
 Series Record FSU leads 47-8
 Martin vs. Florida 33-2
 Sports Information Contact Kevin Coulombe
 Office Phone (912) 752-2738
 Home Phone (912)746-4975
 Press Box Phone (912) 752-2339
 Fax Phone (912) 752-5350

CLEMSON

May 4 • Clemson • 7 p.m.
 May 5 • Clemson • 7 p.m.
 May 6 • Clemson • 2 p.m.

Location Clemson, SC
 Enrollment 16,327
 Nickname Tigers
 Colors Burnt Orange & Northwest Purple
 President Dr. Deno Curry
 Athletic Director Bobby Robinson
 Stadium Tiger Field
 Head Coach Jack Leggett
 Record at Clemson 162-49
 Career Record 539-336
 Office Phone (864) 656-1940
 Assistant Coaches Tim Corbin, John Pawlowski
 1996 Record 54-14
 Conference Record (Finish) 17-7 (2nd)
 Post-Season 4-0 in East Regional, 0-2 in CWS
 Starters Returning/Lost 5/4
 Pitchers Returning/Lost 1/3
 Top Returnees LF Gary Burnham (Jr., .344, 8 HR, 62 RBI); 3B Paul Galloway (Sr., .324, 9 HR, 47 RBI); C Matt LeCroy (So., .333, 15 HR, 72 RBI)
 Series Record FSU leads 34-28
 Martin vs. Clemson 15-13-1
 Sports Information Contacts Bob Bradley, Tim Bourret
 Office Phone (864) 656-1922
 Home Phone Bradley (864) 654-5419, Bourret (864) 654-6240
 Press Box Phone (864) 654-3326
 Fax Phone (864) 565-0299

1997 BEAR SCHEDULE

<i>January</i>		
27	SAVANNAH STATE	3:00 p.m.
28	SAVANNAH STATE	3:00 p.m.
<i>February</i>		
4	at Florida A&M	3:00 p.m.
5	at Florida A&M	3:00 p.m.
7	CAMPBELL	3:00 p.m.
8	CAMPBELL	12:00 p.m.
11	at Auburn	4:00 p.m.
15	TENNESSEE TECH	2:00 p.m.
16	TENNESSEE TECH	2:00 p.m.
18	GEORGIA TECH	3:00 p.m.
22	WOFFORD	12:00 p.m.
23	WOFFORD	2:00 p.m.
28	SAMFORD	3:00 p.m.
<i>March</i>		
1	SAMFORD	2:00 p.m.
2	SAMFORD	2:00 p.m.
5	at Georgia Tech	3:00 p.m.
6	STETSON	3:00 p.m.
10	VIRGINIA	6:00 p.m.
11	VIRGINIA	6:00 p.m.
12	JACKSONVILLE UNIV.	6:00 p.m.
13	JACKSONVILLE UNIV.	3:00 p.m.
17	at Georgia Southern	4:00 p.m.
24	at Jacksonville Univ.	7:00 p.m.
26	at Jacksonville Univ.	3:00 p.m.
28	at Campbell	1:00 p.m.
29	at Campbell	2:00 p.m.
<i>April</i>		
1	at Florida State	6:00 p.m.
2	at Florida State	6:00 p.m.
3	MACON BRAVES	7:00 p.m.
4	CHARLESTON	7:00 p.m.
5	CHARLESTON	4:00 p.m.
8	GEORGIA COLLEGE	7:00 p.m.
9	at Tennessee Tech	4:00 p.m.
12	GEORGIA STATE	4:00 p.m.
13	GEORGIA STATE	2:00 p.m.
15	at Auburn	7:00 p.m.
16	UNIVERSITY OF GEORGIA	7:00 p.m.
18	at Charleston	3:00 p.m.
19	at Charleston	12:00 p.m.
22	at Wofford	1:00 p.m.
23	at Georgia College	7:00 p.m.
26	FLORIDA A&M	7:00 p.m.
27	FLORIDA A&M	2:00 p.m.
29	GEORGIA SOUTHERN	7:00 p.m.
30	FLORIDA STATE	7:00 p.m.
<i>May</i>		
3	at Georgia State	1:00 p.m.
4	at Georgia State	1:30 p.m.
6	at University of Georgia	7:00 p.m.
9-11	TAAC Play-In	TBA
14-18	TAAC Tournament	TBA

1997 TIGER SCHEDULE

<i>February</i>		
14	MOREHEAD STATE	3:00 p.m.
15	MOREHEAD STATE	2:00 p.m.
16	MOREHEAD STATE	2:00 p.m.
21	CHARLESTON SOUTHERN	3:00 p.m.
22	KENTUCKY	3:00 p.m.
23	KENTUCKY	2:00 p.m.
27	at UNLV	1:00 p.m.
28	at UNLV	TBA
<i>March</i>		
1	at UNLV	TBA
2	at UNLV	TBA
4	JAMES MADISON	3:00 p.m.
5	JAMES MADISON	3:00 p.m.
7	COASTAL CAROLINA	3:00 p.m.
8	COASTAL CAROLINA	2:00 p.m.
9	COASTAL CAROLINA	2:00 p.m.
12	APPALACHIAN STATE	3:00 p.m.
14	VIRGINIA	3:00 p.m.
15	VIRGINIA	2:00 p.m.
16	VIRGINIA	7:00 p.m.
19	at Tennessee	7:00 p.m.
21	at Maryland	3:00 p.m.
22	at Maryland	2:00 p.m.
23	at Maryland	2:00 p.m.
25	at Western Carolina	3:00 p.m.
26	WESTERN CAROLINA	7:15 p.m.
28	at Wake Forest	2:00 p.m.
29	at Wake Forest	2:00 p.m.
30	at Wake Forest	1:00 p.m.
<i>April</i>		
1	at Georgia	7:00 p.m.
2	USC	7:15 p.m.
4	at Florida State	7:00 p.m.
5	at Florida State	7:00 p.m.
6	at Florida State	2:00 p.m.
8	FURMAN	7:15 p.m.
9	at USC	7:00 p.m.
11	DUKE	7:15 p.m.
12	DUKE	7:00 p.m.
13	DUKE	2:00 p.m.
15	TENNESSEE	7:15 p.m.
16	USC	7:15 p.m.
18	at NC State	7:00 p.m.
19	at NC State	7:00 p.m.
20	at NC State	1:30 p.m.

1 9 9 7 S e m i n o l e O p p o n e n t s

22	GEORGIA	7:15 p.m.	3	at Georgia Southern	7:00 p.m.
23	USC	7:00 p.m.	5	NEW ORLEANS	1:30 p.m.
25	GEORGIA TECH	7:15 p.m.	6	NEW ORLEANS	1:30 p.m.
26	GEORGIA TECH	7:00 p.m.	9	at Florida State	6:00 p.m.
27	GEORGIA TECH	2:00 p.m.	11	TEXAS-PAN AMERICAN	7:00 p.m.
	<i>May</i>		12	TEXAS-PAN AMERICAN	1:30 p.m.
4	UNC	2:00 p.m.	15	FLORIDA STATE	7:00 p.m.
5	UNC	2:00 p.m.	18	at Western Kentucky	5:00 p.m.
6	UNC	7:15 p.m.	19	at Western Kentucky	2:00 p.m.
9	U-CAL BERKELEY	7:15 p.m.	26	ARKANSAS STATE	1:30 p.m.
10	U-CAL BERKELEY	7:15 p.m.	27	ARKANSAS STATE	1:30 p.m.
11	U-CAL BERKELEY	2:00 p.m.	30	GEORGIA SOUTHERN	7:00 p.m.

JACKSONVILLE

April 9 • Tallahassee • 6 p.m.
April 15 • Jacksonville • 7 p.m.

Location	Jacksonville, FL
Enrollment	2,416
Nickname	Dolphins
Colors	Green & White
President	Paul S. Tipton
Athletic Director	Tom Seitz
Stadium	Brest Field
Head Coach	Terry Alexander
Record at Jacksonville	206-157-2 (6 years)
Career Record	206-157-2 (6 years)
Office Phone	(904) 745-7410
Assistant Coaches	Rusty Green, Johnny Wiggs
1996 Record	23-34
Conference Record (Finish)	12-14 (5th)
Post-Season	0-2 in Sun Belt Tournament
Starters Returning/Lost	10/5
Pitchers Returning/Lost	6/3
Top Returnees	1B Talmadge Nunnari (Sr., .333, 4 HR, 37 RBI); LF Joe Samples (Jr., .327, 2 HR, 38 RBI); RHP Joel Hegeman (So., 1-3, 3.21 ERA); RHP John Byrd (So., 2-3, 4.76 ERA)
Series Record	FSU leads 77-29
Martin vs. Jacksonville	40-16
Sports Information Contact	Brian Fremund
Office Phone	(904) 745-7402
Home Phone	(904) 641-3314
Press Box Phone	TBA
Fax Phone	(904) 743-0067

1997 DOLPHIN SCHEDULE

	<i>February</i>	
11	at Florida A&M	3:30 p.m.
14	NAVY	6:00 p.m.
15	NAVY	1:30 p.m.
16	NAVY	1:30 p.m.
19	at Florida	7:00 p.m.
20	at Stetson	7:00 p.m.
23	NORTH FLORIDA	1:30 p.m.
26	at Florida A&M	3:30 p.m.
	<i>March</i>	
1	JACKSONVILLE STATE	1:30 p.m.
2	NC-GREENSBORO	1:30 p.m.
4	SOUTH FLORIDA	3:00 p.m.
5	XAVIER	7:00 p.m.
7	ARKANSAS-LITTLE ROCK	7:00 p.m.
8	ARKANSAS-LITTLE ROCK	1:30 p.m.
11	PURDUE	12:00 p.m.
12	at Mercer	5:00 p.m.
13	at Mercer	3:00 p.m.
14	at Southwestern LA	8:00 p.m.
15	at Southwestern LA	2:00 p.m.
16	at Southwestern LA	2:00 p.m.
20	AKRON	12:00 p.m.
21	at Louisiana Tech	8:00 p.m.
22	at Louisiana Tech	8:00 p.m.
23	at Louisiana Tech	2:00 p.m.
24	MERCER	7:00 p.m.
25	STETSON	7:00 p.m.
26	MERCER	7:00 p.m.
27	ARKANSAS STATE	1:30 p.m.
28	SOUTH ALABAMA	7:00 p.m.
29	SOUTH ALABAMA	1:30 p.m.
30	SOUTH ALABAMA	1:30 p.m.
	<i>April</i>	
1	FLORIDA A&M	7:00 p.m.

3	at Lamar	6:00 p.m.
4	at Lamar	2:00 p.m.
6	SOUTH FLORIDA	7:00 p.m.
9	at Miami	7:00 p.m.
10	at Miami	7:00 p.m.
11	at Miami	1:30 p.m.
14-17	Sunbelt Conference Tournament	

MIAMI

April 11 • Tallahassee • 7 p.m.
April 12 • Tallahassee • 7 p.m.
April 13 • Tallahassee • 1 p.m.
May 2 • Miami • 7 p.m.
May 3 • Miami • 7 p.m.
May 4 • Miami • 1 p.m.

Location	Miami, FL
Enrollment	13,541
Nickname	Hurricanes
Colors	Orange, Green & White
President	Edward T. Foote II
Athletic Director	Paul Dee
Stadium	Mark Light Stadium (5,000)
Head Coach	Jim Morris
Record at Miami	147-45
Career Record	782-330-1
Office Phone	(305) 284-3244
Assistant Coaches	Turtle Thomas, Lazaro Collazo, Gino DiMare
1995 Record	50-14
Conference Record (Finish)	Independent
Post-Season	College World Series Runner-Up (7-2)
Lettermen Returning/Lost	15/13
Starters Returning/Lost	3/6
Pitchers Returning/Lost	12/2
Top Returnees	3B Pat Burrell (So., .484, 23 HR, 64 RBI), 1B/OF (So., .339, 14 HR, 51 RBI) LHP J.D. Artega (Sr., 12-1, 3.82 ERA)
Series Record	FSU leads 101-82-3
Mike Martin vs. Miami	49-48-1
Sports Information Contact	Phil de Montnollin
Office Phone	(305) 284-3244
Home Phone	(305) 461-3923
Press Box Phone	TBA
Fax Phone	(305) 284-2807

1997 HURRICANE SCHEDULE

	<i>January</i>	
16	at Hawaii	2:00 p.m.
17	at Hawaii	2:00 p.m.
18	at Hawaii	8:00 a.m.
19	at Hawaii	8:00 a.m.
30	ALUMNI GAME	7:00 p.m.
31	SOUTH ALABAMA	7:00 p.m.
	<i>February</i>	
1	SOUTH ALABAMA	7:00 p.m.
2	SOUTH ALABAMA	1:30 p.m.
7	STETSON	7:00 p.m.
8	STETSON	1:30 p.m.
9	STETSON	1:30 p.m.
15	at Florida	2:00 p.m.
16	at Florida	1:30 p.m.
17	at Florida	7:00 p.m.
21	FLORIDA	7:00 p.m.
22	FLORIDA	7:00 p.m.
25	BARRY	7:00 p.m.
28	at Texas	1:00 p.m.

1997 Seminole Opponents

<i>March</i>		
1	at Texas	1:00 p.m.
2	at Texas	1:00 p.m.
6	at Florida International	7:00 p.m.
7	FLORIDA INTERNATIONAL	7:00 p.m.
8	at Florida International	2:00 p.m.
9	FLORIDA INTERNATIONAL	6:00 p.m.
12	ILLINOIS STATE	7:00 p.m.
14	ILLINOIS	7:00 p.m.
15	ILLINOIS	7:00 p.m.
16	ILLINOIS	1:30 p.m.
19	LIBERTY	7:00 p.m.
21	C.W. POST	7:00 p.m.
22	TOLEDO	7:00 p.m.
24	at South Florida	7:00 p.m.
25	at South Florida	3:00 p.m.
27	HARVARD	7:00 p.m.
28	HARVARD	7:00 p.m.
29	HARVARD	7:00 p.m.
30	at Florida Marlins	1:05 p.m.
<i>April</i>		
4	GEORGIA TECH	7:00 p.m.
5	GEORGIA TECH	7:00 p.m.
6	GEORGIA TECH	1:30 p.m.
9	ST. THOMAS	7:00 p.m.
11	at Florida State	7:00 p.m.
12	at Florida State	7:00 p.m.
13	at Florida State	1:00 p.m.
18	DUKE	7:00 p.m.
19	DUKE	7:00 p.m.
20	DUKE	1:30 p.m.
23	FLORIDA ATLANTIC	7:00 p.m.
25	COASTAL CAROLINA	7:00 p.m.
26	COASTAL CAROLINA	7:00 p.m.
27	COASTAL CAROLINA	1:30 p.m.
30	FLORIDA ATLANTIC	7:00 p.m.
<i>May</i>		
2	FLORIDA STATE	7:00 p.m.
3	FLORIDA STATE	7:00 p.m.
4	FLORIDA STATE	1:30 p.m.
9	JACKSONVILLE	7:00 p.m.
10	JACKSONVILLE	7:00 p.m.
11	JACKSONVILLE	1:30 p.m.
15	ORAL ROBERTS	7:00 p.m.
16	ORAL ROBERTS	7:00 p.m.
17	ORAL ROBERTS	7:00 p.m.

1997 YELLOW JACKET SCHEDULE

<i>February</i>		
8	at Georgia Southern	1:30 p.m.
9	at Georgia Southern	1:30 p.m.
14	WESTERN KENTUCKY	4:00 p.m.
15	WESTERN KENTUCKY	1:30 p.m.
16	WESTERN KENTUCKY	1:30 p.m.
18	at Mercer	3:00 p.m.
22	EVANSVILLE	1:30 p.m.
23	EVANSVILLE	1:30 p.m.
26	JACKSONVILLE STATE	4:00 p.m.
<i>March</i>		
1	at Georgia	3:30 p.m.
2	GEORGIA	1:30 p.m.
4	STETSON	4:00 p.m.
5	MERCER	4:00 p.m.
8	at North Carolina	1:00 p.m.
9	at North Carolina	1:30 p.m.
10	at North Carolina	1:00 p.m.
11	WESTERN CAROLINA	4:00 p.m.
12	WESTERN CAROLINA	4:00 p.m.
14	VIRGINIA TECH	7:00 p.m.
15	VIRGINIA TECH	1:30 p.m.
16	VIRGINIA TECH	1:30 p.m.
21	WAKE FOREST	7:00 p.m.
22	WAKE FOREST	1:30 p.m.
23	WAKE FOREST	1:30 p.m.
25	CHARLESTON SOUTHERN	7:00 p.m.
26	CHARLESTON SOUTHERN	7:00 p.m.
28	MARYLAND	7:00 p.m.
29	MARYLAND	1:30 p.m.
30	MARYLAND	1:30 p.m.
<i>April</i>		
1	at Georgia State	6:00 p.m.
4	at Miami	7:00 p.m.
5	at Miami	7:00 p.m.
6	at Miami	1:30 p.m.
8	WINTHROP	7:00 p.m.
9	WINTHROP	4:00 p.m.
11	at Virginia	4:00 p.m.
12	at Virginia	2:00 p.m.
13	at Virginia	2:00 p.m.
15	GEORGIA	7:00 p.m.
18	FLORIDA STATE	7:00 p.m.
19	FLORIDA STATE	7:00 p.m.
20	FLORIDA STATE	7:00 p.m.
22	GEORGIA STATE	7:00 p.m.
25	at Clemson	7:15 p.m.
26	at Clemson	7:00 p.m.
27	at Clemson	7:00 p.m.
29	at Georgia	7:00 p.m.
<i>May</i>		
1	at Duke	1:00 p.m.
2	at Duke	1:00 p.m.
3	at Duke	1:00 p.m.
6	GEORGIA SOUTHERN	7:00 p.m.
7	GEORGIA SOUTHERN	5:00 p.m.
9	N.C. STATE	7:00 p.m.
10	N.C. STATE	7:00 p.m.
11	N.C. STATE	4:00 p.m.
13-18	at ACC Tournament	TBA

GEORGIA TECH

April 18 • Atlanta • 7 p.m.
April 19 • Atlanta • 7 p.m.
April 20 • Atlanta • 7 p.m.

Location	Atlanta, GA
Enrollment	13,000
Nickname	Yellow Jackets, Rambling Wreck
Colors	Old Gold & White
President	Dr. G. Wayne Clough
Athletic Director	Dr. Homer C. Rice
Stadium	Russ Chandler Stadium (2,500)
Head Coach	Danny Hall
Record at Georgia Tech	128-63 (3 years)
Career Record	336-180 (9 years)
Office Phone	(404) 894-5471
Assistant Coaches	Mike Trapasso, Jeff Guy
1996 Record	40-24
Conference Record (Finish)	13-11 (3rd)
Post-Season	NCAA South II Regional Runner-up
Starters Returning/Lost	6/3
Pitchers Returning/Lost	9/4
Top Returnees	OF Mark Fischer (Jr., 400, 14 HR, 66 RBI); RHP Kris Wilson (Jr., 5-3, 5.03 ERA); OF J.J. Thomas (So., 338, 21 HR, 68 RBI); RHP David Elder (Jr., 9-5, 5.25 ERA)
Series Record	FSU leads 37-16
Martin vs. Georgia Tech	18-10
Sports Information Contact	Mike Stamus
Office Phone	(404) 894-5445
Home Phone	(770) 951-1939
Press Box Phone	(404) 894-3167
Fax Phone	(404) 894-1248

MARYLAND

April 26 • College Park • 7 p.m.
April 27 • College Park • 7 p.m.
April 28 • College Park • 3 p.m.

Location	College Park, MD
Enrollment	30,371
Nickname	Terrapins
Colors	Red, White, Black, & Gold
President	Dr. William E. Kirwan
Athletic Director	Deborah A. Yow
Stadium	Shipley Field (2,200)
Head Coach	Tom Bradley
Record at Maryland	148-178-4
Career Record	579-469-4
Office Phone	(301) 314-7122
Assistant Coaches	Kelly Kulina, Jim Flack, Don Fontana
1996 Record	24-27
Conference Record (Finish)	7-17 (9th)
Post-Season	N/A
Position Players Returning/Lost	4/5

1997 Seminole Opponents

Pitchers Returning/Lost..... 4/3
 Top Returnees C Joe Clement (Sr., .353, 2 HR, 17 RBI);
 3B Scott Bronowicz (Jr., .346, 2 HR, 22 RBI);
 RHP Brandon Agamennone (Jr., 5-2, 6.88 ERA);
 RHP Mike Wooden (So., 4-4, 7.63 ERA)
 Series Record..... FSU leads 18-2
 Martin vs. Maryland..... 14-2
 Sports Information Contact..... Jeff Stauffer
 Office Phone (301) 314-7064
 Home Phone N/A
 Press Box Phone (301) 405-7808
 Fax Phone..... (301) 314-9094

Athletic Director..... John D. Swofford
 Stadium (Capacity) ... Cary C. Boshamer Stadium (3,000)
 Head Coach Mike Roberts
 Record at North Carolina..... 709-374-3
 Career Record 709-374-3
 Office Phone (919) 962-2351
 Assistant Coaches Roger Williams, Chad Holbrook
 1996 Record 33-25
 Conference Record (Finish) 11-13 (5th)
 Post-Season..... N/A
 Lettermen Returning/Lost 18/13
 Starters Returning/Lost 3/6
 Pitchers Returning/Lost 3/3
 Top Returnees..... RHP Jim Wallace (Jr., 6-8,
 3.72 ERA, 71 K), LHP A.Y. Loder (Sr., 7-5, 4.53 ERA),
 OF Jarrett Shearin (So., 290, 8 HR, 40 RBI),
 RHP Cory Richardson (Jr., 5-1, 4.24 ERA, 66 K)
 Series Record FSU leads 29-9
 Martin vs. North Carolina 15-4
 Sports Information Contact Matt Bowers
 Office Phone (919) 962-2123/1376
 Home Phone (919) 929-7814
 Press Box Phone (919) 962-1607
 Fax Phone..... (919) 962-0612

1997 TERP SCHEDULE

February		
22	at UNC Greensboro (DH)	12:00 p.m.
23	at UNC Greensboro	1:00 p.m.
March		
4	GEORGE WASHINGTON	2:30 p.m.
5	George Mason	2:30 p.m.
6	HOWARD	2:30 p.m.
7	Va. Commonwealth	2:00 p.m.
8	V.A. COMMONWEALTH	2:00 p.m.
9	V.A. COMMONWEALTH	1:00 p.m.
11	COPPIN STATE	2:30 p.m.
12	Towson State	2:30 p.m.
13	Georgetown	2:30 p.m.
14	NORTH CAROLINA	3:00 p.m.
15	NORTH CAROLINA	2:00 p.m.
16	NORTH CAROLINA	1:00 p.m.
18	at Maryland-Eastern Shore	2:30 p.m.
21	CLEMSON	3:00 p.m.
22	CLEMSON	2:00 p.m.
23	CLEMSON	2:00 p.m.
25	at UNC Asheville	3:00 p.m.
26	at UNC Asheville	3:00 p.m.
27	at Furman	3:00 p.m.
28	at Georgia Tech	tba
29	at Georgia Tech	tba
30	at Georgia Tech	tba
April		
1	at UM Baltimore County	3:00 p.m.
2	GEORGE MASON	2:30 p.m.
4	at Duke	3:00 p.m.
5	at Duke	2:00 p.m.
6	at Duke	1:00 p.m.
8	at James Madison	3:00 p.m.
9	NAVY	3:00 p.m.
11	at Virginia	3:00 p.m.
12	at Virginia	2:00 p.m.
13	at Virginia	1:00 p.m.
15	at George Washington	3:00 p.m.
16	COPPIN STATE	7:00 p.m.
18	WAKE FOREST	7:00 p.m.
19	WAKE FOREST	7:00 p.m.
20	WAKE FOREST	2:00 p.m.
22	HOWARD (DH)	1:00 p.m.
23	TOWSON STATE	7:00 p.m.
25	FLORIDA STATE	7:00 p.m.
25	FLORIDA STATE	7:00 p.m.
25	FLORIDA STATE	7:00 p.m.
29	GEORGETOWN	7:00 p.m.
30	UM BALTIMORE COUNTY	7:00 p.m.
May		
1	UM EASTERN SHORE	7:00 p.m.
3	at Richmond	2:00 p.m.
4	at Richmond	1:00 p.m.
5	RICHMOND	7:00 p.m.
6	JAMES MADISON	7:00 p.m.
9	at N.C. State	7:00 p.m.
10	at N.C. State	7:00 p.m.
11	at N.C. State	2:00 p.m.
13-18	at ACC Tournament	TBA

NORTH CAROLINA

May 9 • Tallahassee • 7 p.m.
 May 10 • Tallahassee • 2 p.m.
 May 11 • Tallahassee • 7 p.m.

Location Chapel Hill, NC
 Enrollment 24,439
 Nickname Tar Heels
 Colors Carolina Blue & White
 Chancellor Michael K. Hooker

1997 TAR HEEL SCHEDULE

February		
15	at Coastal Carolina	1:00 p.m.
16	at Coastal Carolina	1:00 p.m.
19	at Campbell	2:00 p.m.
21	LOUISIANA STATE	7:00 p.m.
22	at Tulane	1:00 p.m.
23	at New Orleans	3:00 p.m.
25	CAMPBELL	3:00 p.m.
28	SETON HALL	3:00 p.m.
March		
1	SETON HALL	11:00 a.m.
2	SETON HALL	12:00 p.m.
2	CONNECTICUT	3:00 p.m.
3	CONNECTICUT	3:00 p.m.
5	at East Carolina	3:00 p.m.
6	APPALACHIAN STATE	3:00 p.m.
8	GEORGIA TECH	1:00 p.m.
9	GEORGIA TECH	1:30 p.m.
10	GEORGIA TECH	3:00 p.m.
11	MARSHALL	1:00 p.m.
12	VIRGINIA COMMONWEALTH	1:00 p.m.
14	at Maryland	3:00 p.m.
15	at Maryland	1:30 p.m.
16	at Maryland	1:30 p.m.
19	TOWSON STATE	2:30 p.m.
21	YALE	3:00 p.m.
22	YALE	11:00 a.m.
22	KENT	2:30 p.m.
23	KENT	1:30 p.m.
24	KENT	3:00 p.m.
26	EAST TENNESSEE STATE	3:00 p.m.
28	DUKE	1:00 p.m.
29	DUKE	1:00 p.m.
30	DUKE	2:00 p.m.
April		
4	at N.C. State	7:00 p.m.
5	at N.C. State	7:00 p.m.
6	at N.C. State	1:30 p.m.
8	WILLIAM & MARY	3:00 p.m.
9	at UNC-Wilmington	7:00 p.m.
11	WAKE FOREST	3:00 p.m.
12	WAKE FOREST	1:00 p.m.
13	WAKE FOREST	1:30 p.m.
15	UNC-WILMINGTON	6:00 p.m.
16	RADFORD	6:00 p.m.
18	VIRGINIA	3:00 p.m.
19	VIRGINIA	1:00 p.m.
20	VIRGINIA	1:30 p.m.
21	UNC-ASHEVILLE	3:00 p.m.
22	EAST CAROLINA	6:00 p.m.
23	COASTAL CAROLINA	6:00 p.m.
24	COASTAL CAROLINA	1:00 p.m.
May		
4	at Clemson	2:00 p.m.
5	at Clemson	7:15 p.m.
6	at Clemson	7:15 p.m.
9	at Florida State	7:00 p.m.
10	at Florida State	2:00 p.m.
11	at Florida State	7:00 p.m.
13-18	at ACC Tournament	TBA

FSU TRAVEL ITINERARY

GAINESVILLE, FLORIDA

University of Florida • March 1&2
 DEPARTURE: Saturday, March 1 via bus
 RETURN: Sunday, March 2 via bus
 HEADQUARTERS: Radisson Hotel - Gainesville
 2900 Southwest 13th Street, Gainesville, FL 32608
 (352) 377-4000 FAX (352) 371-1159

DAYTONA BEACH, FLORIDA

Daytona Beach Spring Jamboree • March 11&12
 DEPARTURE: Monday, March 10 via bus
 RETURN: Wednesday, March 12 via bus
 HEADQUARTERS: Treasure Island Inn
 2025 South Atlantic Ave.
 Daytona Beach Shores, FL 32118
 (904)-255-8371 FAX (904)253-9935

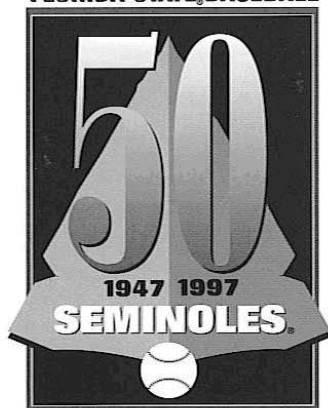
DURHAM, NORTH CAROLINA

Duke University • March 21, 22, 23
 DEPARTURE: Thursday, March 20 via Delta
 RETURN: Sunday, March 23 via Delta
 HEADQUARTERS: Doubletree Guest Suites
 2515 Meridian Parkway, Durham, NC 27713
 (919) 361-4660 FAX (919) 361-2256

RALEIGH, NORTH CAROLINA

N.C. State University • March 28, 29, 30
 DEPARTURE: Thursday, March 27 via Delta
 RETURN: Sunday, March 30 via Delta
 HEADQUARTERS: Raleigh Marriott Crabtree
 Valley, 4500 Marriott Drive, Raleigh, NC 27612
 (919) 781-7000 FAX (919) 571-7445

FLORIDA STATE BASEBALL



GARNET & GOLDEN.

JACKSONVILLE, FLORIDA

Jacksonville University • April 15
 DEPARTURE: Tuesday, April 15 via bus
 RETURN: Tuesday, April 15 via bus

ATLANTA, GEORGIA

Georgia Tech • April 18, 19, 20
 DEPARTURE: Thursday, April 17 via bus
 RETURN: Sunday, April 20 via bus
 HEADQUARTERS: Atlanta Marriott Marquis
 265 Peachtree Center Avenue, Atlanta, GA 30303
 (404) 521-0000 FAX (404) 586-6299

COLLEGE PARK, MARYLAND

University of Maryland • April 26, 27, 28
 DEPARTURE: Friday, April 25 via Delta
 TO MACON, GA: Tuesday, April 29 via Delta
 HEADQUARTERS: (April 25 only)
 Courtyard by Marriott, 6301 Golden Triangle Drive
 Greenbelt, MD 20770
 (301) 441-3311 FAX (301) 441-4978
 (April 26-29)
 Greenbelt Marriott, 6400 Ivy Lane
 Greenbelt, MD 20770
 (301) 441-3700 FAX (301) 474-9128

MACON, GEORGIA

Mercer University • April 30
 DEPART FROM COLLEGE PARK, MD:
 Tuesday, April 29 via Delta
 TRAVEL TO MIAMI: Thursday, May 1 via Delta
 HEADQUARTERS: Crown Plaza Hotel
 108 First Street, Macon, GA 31201

MIAMI, FLORIDA

University of Miami • May 2, 3, 4
 DEPART FROM MACON, GA: Thursday,
 May 1 via Delta
 RETURN: Sunday, May 4 via Delta
 HEADQUARTERS: Miami Airport Hilton and
 Marina, 5010 Blue Lagoon Drive, Miami, FL 33126
 (305) 262-1000 FAX (305) 262-5726

ST. PETERSBURG, FLORIDA

ACC Tournament • May 13-18
 DEPARTURE: Monday, May 12 via bus
 RETURN: TBA
 HEADQUARTERS: St. Petersburg Bayfront
 Hilton, 333 1st Street South
 St. Petersburg, FL 33701
 (813) 894-5000 FAX (813) 823-4749