

Baseball

1998 MEDIA GUIDE



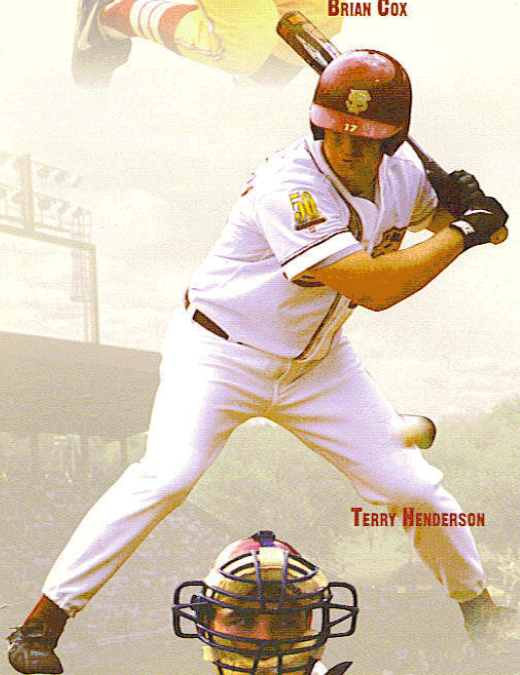
FLORIDA
STATE
UNIVERSITY



1998 FLORIDA STATE BASEBALL SCHEDULE



BRIAN COX



TERRY HENDERSON



JERIMMI KLOSTERMAN

DAY	DATE	OPPONENT	SITE	TIME
JANUARY				
<i>ACC Baseball Blast</i>				
Fri.	30	Notre Dame	Orlando, FL	7:00 TV
Sat.	31	Ohio State University	Orlando, FL	3:00
FEBRUARY				
Sun.	1	Tennessee	Orlando, FL	7:00 TV
Fri.	6	Arizona State	Tempe, AZ	7:00
Sat.	7	Arizona State	Tempe, AZ	1:00
Sun.	8	Arizona State	Tempe, AZ	1:00
Tues.	10	Hawaii Pacific	Honolulu, HI	4:00 (DH)
Wed.	11	University of Hawaii	Honolulu, HI	6:05
Thur.	12	University of Hawaii	Honolulu, HI	6:05
Fri.	13	University of Hawaii	Honolulu, HI	6:05
Sat.	14	University of Hawaii	Honolulu, HI	12:05
Tues.	17	Charleston Southern	Tallahassee	3:30
Wed.	18	Charleston Southern	Tallahassee	3:30
Sat.	21	Florida	Gainesville	2:00
Sun.	22	Florida	Gainesville	1:30
Tues.	24	The Citadel	Tallahassee	6:00
Wed.	25	The Citadel	Tallahassee	3:30
Thur.	26	Tampa Bay Devil Rays	St. Petersburg	1:00
Sat.	28	Florida	Tallahassee	1:00
MARCH				
Sun.	1	Florida	Tallahassee	3:00 TV
Tues.	3	UNC-Greensboro	Tallahassee	3:30
Wed.	4	UNC-Greensboro	Tallahassee	3:30
Fri.	6	N.C. State University	Tallahassee	7:00
Sat.	7	N.C. State University	Tallahassee	7:00 TV
Sun.	8	N.C. State University	Tallahassee	1:00 TV
<i>Daytona Beach Spring Jamboree</i>				
Tues.	10	Long Island University	Daytona Beach	7:00
Wed.	11	St. Joseph's University	Daytona Beach	2:00
Fri.	13	Wake Forest University	Winston-Salem, NC	1:30
Sat.	14	Wake Forest University	Winston-Salem, NC	1:30
Sun.	15	Wake Forest University	Winston-Salem, NC	1:30
Tues.	17	Morehead University	Tallahassee	6:00
Wed.	18	Morehead University	Tallahassee	6:00
Fri.	20	Duke University	Tallahassee	7:00
Sat.	21	Duke University	Tallahassee	4:00 TV
Sun.	22	Duke University	Tallahassee	2:00
Tues.	24	Florida Atlantic	Tallahassee	7:00
Wed.	25	Florida Atlantic	Tallahassee	3:30
Thur.	26	University of Maryland	Tallahassee	6:00
Fri.	27	University of Maryland	Tallahassee	6:00
Sat.	28	University of Maryland	Tallahassee	2:00 TV
Tues.	31	Mercer University	Tallahassee	6:00
APRIL				
Wed.	1	Mercer University	Tallahassee	6:00
Fri.	3	University of Miami	Tallahassee	7:00
Sat.	4	University of Miami	Tallahassee	7:00
Sun.	5	University of Miami	Tallahassee	1:00 TV
Wed.	8	Jacksonville University	Tallahassee	6:00
Fri.	10	North Carolina	Chapel Hill, NC	1:00
Sat.	11	North Carolina	Chapel Hill, NC	1:00
Sun.	12	North Carolina	Chapel Hill, NC	1:30
Wed.	15	Jacksonville University	Jacksonville	7:00
Fri.	17	Georgia Tech	Tallahassee	7:00
Sat.	18	Georgia Tech	Tallahassee	4:00 TV
Sun.	19	Georgia Tech	Tallahassee	3:00 TV
Fri.	24	Clemson University	Clemson, SC	7:15
Sat.	25	Clemson University	Clemson, SC	7:00
Sat.	26	Clemson University	Clemson, SC	1:00 TV
MAY				
Fri.	1	University of Miami	Miami	7:00
Sat.	2	University of Miami	Miami	7:00
Sun.	3	University of Miami	Miami	1:00
Fri.	8	University of Virginia	Charlottesville, Va	4:00
Sat.	9	University of Virginia	Charlottesville, Va	2:00
Sun.	10	University of Virginia	Charlottesville, Va	1:00
Tues.-Sun.	13-17	ACC Tournament	Durham, NC	TBA

1998 Media Guide



Seminole Baseball Facts

Head Coach	Mike Martin
Martin's Alma Mater, Year	Florida State '66
Record at FSU (Years)	969-330-3 (18)
Overall Career Record (Years)	969-330-3 (18)
Assistant Coaches	Chip Baker (High Point '80) Jamey Shouppe (Florida State '82) Mike Martin, Jr. (Florida State '94)
1997 Record	50-17
Conference Record (Place)	18-6 (ACC Champions)
Post Season Finish	4-2 at NCAA East Regional
Final Ranking	Baseball Weekly-9th Baseball America-9th, Collegiate Baseball-9th
Letterman Returning/Lost	16/6
Position Starters Returning/Lost	5/4
Pitchers Returning/Lost	7/3
Baseball SID	Amy Farnum
Farnum's Office Phone	(904) 644-0615
Farnum's Home Phone	(904) 514-1337
Baseball Office Phone	(904) 644-1073
Baseball Secretary	Sandy Hough
Howser Stadium Press Box Phone	(904) 644-1553
Academic Advisor	Amy White
Equipment Manager	John Rombough
Strength Coach	Steve Tamborra
Trainer	Duane Brooks
Stadium (Capacity)	Dick Howser Stadium (5,000)
Dimensions	LF 340, CF 400, RF 320
Years of Baseball	50
NCAA Regional Appearances	35
Consecutive NCAA Regional Appearances	20
College World Series Appearances	15
Conference Championships	2 ACC, 12 Metro

University Facts

Location	Tallahassee, Florida
Founded	1857
Enrollment	30,200
Nickname	Seminoles
Symbol	Chief Osceola & Renegade
Colors	Garnet & Gold
Conference	Atlantic Coast
President	Talbot "Sandy" D'Alemberte
Athletic Director	Dave Hart, Jr.
Faculty Representative	Charles E. Ehrhardt
Associate Athletic Directors	Charles Hurst, Charlie Carr Kim Record, Bob Minnix
Assistant Athletic Directors	Andy Urbanic, Greg Phillips Guy Morgan
Director of Facilities	Bernie Waxman
Director of Academic Support Services	Mark Melency
Sports Information Director	Rob Wilson
Director of Sports Marketing & Promotions	Scott Kull
Ticket Manager	Patrick Martin
Director of Student Development	Pam Overton

TABLE OF CONTENTS

1998 Schedule	IFC
Media Information	2
Sports Info Directory	3
Seminole on the Air	4
1998 Preview	6
1998 Florida State Roster	9
A Closer Look At The Seminoles	10
Head Coach Mike Martin	12
Assistant Coach Chip Baker	16
Assistant Coach Jamey Shouppe	17
Support Staff	18
Seminole Biographies	20
Seminole Newcomers	35
1998 Opponents	38
Travel Itinerary	50
1997 Year In Review	52
1997 Honor Roll	54
1997 Statistics	55
The Last Time It Happened	57
Season Highs & Lows	58
1997 Results	59
1997 Game-By-Game	60
1997 ACC Statistics	65
This is Florida State	70
This is Tallahassee	72
Athletic Administration	74
Atlantic Coast Conference	76
Baseball Tradition	78
Dick Howser Stadium	80
Academic Support	82
Life Skills & Student Development	84
Strength & Conditioning	85
Marketing & Promotions	86
Seminole Record Book	88
Career & Season Top 10	92
Year-By-Year Records	99
Year-By-Year Statistics	100
Seminole Award Winners	101
First Team All-Americans	102
Series Records	105
All-Time Results	107
All-Time Rosters	118
NCAA Championships	122
All-Time Coaching Records	124
Florida State & Team USA	125
Seminole in the Pros	126
Florida State Major Leaguers	128

ON THE COVER: Seniors Matt Woodward, Jose Zabala, Jeremy Salazar and Brooks Badeaux

CREDITS

EDITOR: Amy Farnum; PHOTOGRAPHY: Ross Obley, Ryals Lee, Jr., FSU Photo Lab, Jeff Golden, Kevin O'Donnell, Dennis Hubbard, Bob Libby; CONTRIBUTORS: Daniel Dodd, Christopher Dean, Patrick Lynch; PROOFREADERS: Craig O'Halloran, Patrick Cowen; DESIGN & LAYOUT: Chameleon Graphics & Design; COVERS: M&M Design Group; PRINTING: Boyd Brothers, Inc.

This document is available upon request in alternate formats for individuals with print-related disabilities. Contact the ADA Office, 301 Westcott Building for more information.

1 9 9 8 S E M I N O L E B A S E B A L L



Media Information

The Sports Information office is located on the first floor of the Moore Athletic Center adjacent to the atrium. Assistant Sports Information Director Amy Farnum is the media coordinator for FSU baseball. Farnum will travel with the team and can be reached at team headquarters when on the road.

PRESS SERVICES

The 1997 Florida State Baseball Media Guide is a multi-purpose guide for use



Amy Farnum
Assistant Sports Information
Director for Baseball

by media, fans and friends of the Seminole baseball team. Additional information, up-to-date statistics and photographs are available to members of accredited media upon request. Any questions not answered in the media guide should be directed to Assistant SID Amy Farnum in the FSU Sports Information Office at 904/644-0615.

CREDENTIAL REQUESTS

All requests for working press, radio and television should be made as early as possible prior to game day. Requests should be made in writing if possible and can be picked up prior to the game at the Sports Information office or held at the Will Call window at Dick Howser Stadium for game day pick up.

PARKING

A limited number of parking passes are available to select members of the working media. Parking is available in the Moore Athletic Center lot on a first-come, first-serve basis. All media are encouraged to arrive as early as possible to avoid parking problems.

PHOTOGRAPHERS

Accredited photographers holding passes will be admitted to shoot in design-

ated areas on the field. These areas are marked just inside the gates in the protected area at the corners of the home and visitors' dugouts. Still photographers are asked not to restrict views of the fans if at all possible.

TELEVISION

Facilities are available for network broadcasts. Please contact Amy Farnum at the Sports Information Office for more information.

RADIO

One booth is available for the opposing team's radio broadcast. If more than one booth is needed to accommodate visiting radio crews, an area will be made available in the stadium. When such a case occurs, the visiting team's SID will allocate booth space.

ACC Faxback Baseball Catalog

Stats Only.....	31352
Schedule & Roster.....	31354
Computer Stats.....	3013
ACC Release.....	5350
ACC Stats Only.....	5352
NCAA Stats.....	5355

PHONE LINES

Florida State has three phone lines in the main press box for use by media before, during and after home games. Tallahassee radio station WNLS-AM, which



F L O R I D A S T A T E U N I V E R S I T Y



carries broadcasts live, has installed two phone lines for use by visiting radio stations. Please contact WNLS' Lee Bowen at 904/386-6143 for details concerning the use of these lines. If other lines are needed, or WNLS' lines are not sufficient, visiting radio stations should contact the Florida State University Office of Telecommunications at 904/644-2414.

INTERVIEWS

On game days, Florida State players are available to the media prior to and during batting practice. FSU Head Coach Mike Martin and his players will be available for post-game interviews following a 10-minute cooling off period. Martin will meet with the media in the Florida State dugout immediately after talking with the team in the Seminole lockerroom. Requested Florida State players will be escorted to the interview area by Florida State Sports Information personnel after Coach Martin.

Florida State players are also available on the field at Dick Howser Stadium prior to practice on non-game days. Reporters who wish to interview players before practice should be at the field between 1:30-2:30 p.m. Please contact Amy Farnum at the Florida State Sports Information office to arrange off-day player phone interviews. Contact Coach Martin's office directly at 904/644-1073 to arrange interviews with him.

ACC MEDIA SERVICES

In order to provide you with timely and accurate information, the ACC utilizes the ACC Faxback System. The Faxback allows members of the media 24-hour access to the latest press releases, notes and statistics from the ACC office and each of

the nine member institutions.

Simply dial the Faxback number on your fax machine phone. You will then be instructed step-by-step on how to retrieve information. Connect your fax at the tone and the requested information will be transmitted to you. This system is in operation 24 hours a day and is constantly updated with new information. The ACC will only release the phone number to certified media sources. Please contact the ACC Media Relations department at

910/851-6062 or fax a request to 910/854-8797.

WWW.SEMINOLES.COM

Media, fans and alumni are encouraged to access Florida State baseball information via the internet at www.seminoles.com. Information and statistics are updated after every game; while schedules, rosters, player information and history are also available.

Florida State Sports Information Directory

ADDRESS P.O. Drawer 2195, Tallahassee, FL 32316
Phone: 904/644-1403 Fax: 904/644-3820

OVERNIGHT ADDRESS Mooie Athletic Center
Pensacola Street & Stadium Drive, Tallahassee, FL 32316

SPORTS INFORMATION DIRECTOR Rob Wilson
904/644-1402, (H) 904/386-1619

BASEBALL SID Amy Farnum
904/644-0615, (H) 904/514-1337

ASSISTANT SID Chris Walker
904/644-1077, (H) 904/878-8241
Tina Thomas
904/644-1065, (H) 904/514-3351

GRADUATE ASSISTANT Joe Hornstein
904/644-5656

ADMINISTRATIVE SECRETARY Lynn Hobby
904/644-1402

DIRECTOR OF SPORTS MARKETING Scott Kull
904/644-8368

ASSISTANT DIRECTOR OF SPORTS MARKETING John Wesley
904/644-7291

1 9 9 8 S E M I N O L E B A S E B A L L



RADIO

For the seventh consecutive season, Seminole baseball fans do not have to miss a minute of exciting Florida State baseball action. Tallahassee's Sportsradio 1270 will once again broadcast every inning of every game in 1998. From the season opener January 30th through the Atlantic Coast Conference Tournament and NCAA Regional action in May, the radio home of the Seminole baseball is Sportsradio 1270.

WNLS-AM will broadcast Seminole baseball for the 17th consecutive season. With WNLS' complete coverage, the Seminoles have one of the best and most extensive radio packages in college baseball.

The voice of the baseball Seminoles for the eighth straight year is Lee Bowen, who continues a long association with the Florida State Radio Network in 1998. The producer of FSU's football and men's basketball radio network and local talkshow host, Bowen had previously worked as a

statistician for the Seminole Radio Network. Bowen has also called play-by-play for the minor league Burlington (N.C.) Indians, a rookie league team in the Appalachian League. WTNT's Jim Crosby will join Bowen in the booth for all home games. Crosby is a 15-year veteran of Seminole baseball broadcasts.

TELEVISION

Florida State's rich baseball tradition will once again attract live coverage from cable television networks throughout the Southeast. The Seminoles' strong baseball tradition and Atlantic Coast Conference schedule make Florida State no stranger to television exposure. This year, the FSU baseball team can be seen on television 12 times.

The Sunshine Network is once again the home of Seminole baseball in 1998. The Sunshine Network, a Florida-based cable network, will televise 12 games from Dick Howser Stadium. Broadcasting to over 2.5 million homes in Florida, the Sunshine Network takes Florida State base-

ball to all corners of the state. The 1998 Seminoles debut on Sunshine on February 18th against Charleston Southern.

THE MIKE MARTIN SHOW

Seminole fans who miss the baseball action on radio and television can still keep informed by tuning in to "The Mike Martin Show." The show, which will air weekly beginning in mid-February, gives a recap of the past week's action.

For 30 minutes each week, FSU Head Coach Mike Martin takes a look at recent highlights and gives his insight on upcoming opponents. The show also features player interviews and a weekly baseball tip from Coach Martin.

The show is produced by Mark Rodin of Seminole Productions and will air statewide on the Sunshine Network. Tallahassee residents can catch the coach's show on Fox-49. Check local listings for dates and times.

1998 Television Schedule

WED. FEB. 18

Charleston Southern .. 3:30 p.m.

SAT. FEB. 21

at Florida 2:00 p.m.

SUN. MARCH 1

Florida 3:00 p.m.

TUES. MARCH 3

UNC-Greensboro 3:30 p.m.

SAT. MARCH 7

NC State 7:00 p.m.

SUN. MARCH 8

NC State 1:00 p.m.

SAT. MARCH 21

Duke 4:00 p.m.

SAT. MARCH 28

Maryland 2:00 p.m.

SUN. APRIL 5

Miami 1:00 p.m.

SAT. APRIL 18

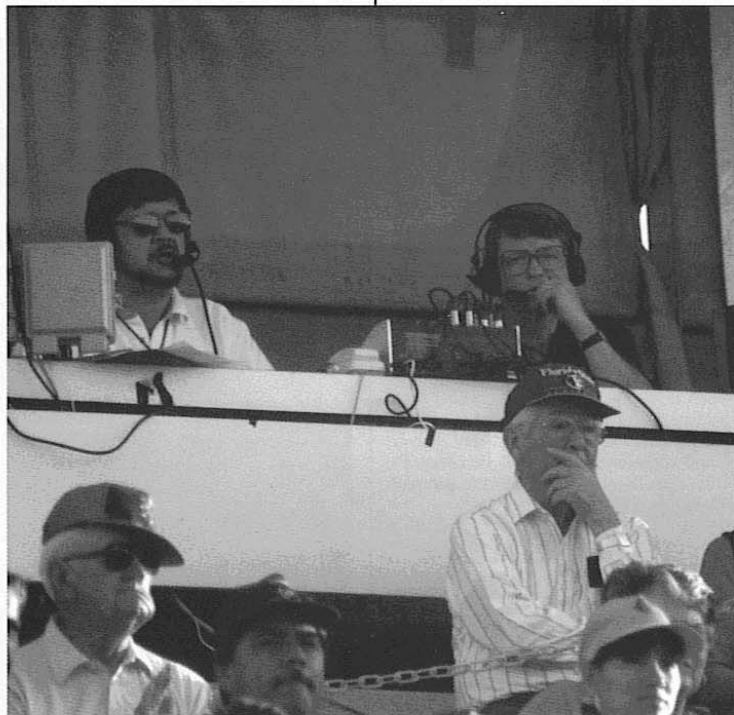
Georgia Tech 4:00 p.m.

SUN. APRIL 19

Georgia Tech 3:00 p.m.

SAT. APRIL 25

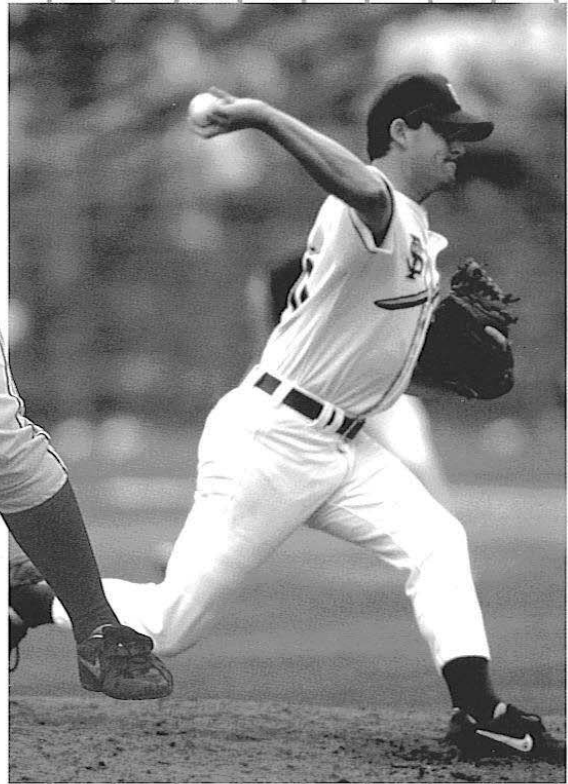
at Clemson 7:00 p.m.



Lee Bowen and Jim Crosby bring Seminole baseball into every home in Tallahassee.

FLORIDA STATE UNIVERSITY

1998 Season Preview





1998 Preview



"This will be the youngest team we've put on the field since 1984, when we started a group of freshmen that included Luis Alicea, Paul Sorrento and Mike Loynd."

— Coach Mike Martin

Pitching, defense and base running. It's the Seminole baseball philosophy — a philosophy that one of Mike Martin's youngest teams in his 19-year tenure will follow closely as it enters the 1998 season.

Florida State lost seven key members from its 1997 team, a group that accounted for 69 home runs, 328 RBI, and 29 pitching victories. However, the 1998 Seminoles will be led by six seniors, including four four-year veterans that have won two ACC Championships and visited Omaha twice in their careers.

"The loss of J.D. Drew, Jeremy Morris, Scott Zech and Geoff Sprague constituted 75 percent of last year's run production," said Martin, "but we do feel this year's squad can be successful in that we do like our young pitching staff."

"This will be the youngest team we've put on the field since 1984," commented Martin, "when we started a group of freshmen that included Luis Alicea, Paul Sorrento and Mike Loynd."

ON THE MOUND

Without a single senior, FSU's pitching staff will rely on leadership from jun-

iors Chris Chavez, Zach Diaz and Scott Proctor, who have gained valuable experience in their first two seasons. The Seminoles' returning pitchers combined to throw less than half of the innings pitched in 1997 after losing All-American Randy Choate, Randy Niles and Chuck Howell to the draft and graduation.

Chavez (4-1, 4.24 ERA), who was used as both a closer and starter last season, will enter 1998 as the Seminoles No. 1 starting pitcher. The right-hander ended the season on a high note as he hurled a complete-game shutout against Clemson in the ACC Championship game and earned a

FLORIDA STATE UNIVERSITY

9-7 win over Auburn in the NCAA East Regional.

Redshirt freshman Nick Stocks returns from elbow surgery and will begin the season as FSU's No. 2 pitcher in the starting rotation. The right-hander still boasts a 90 MPH fastball as he has worked relentlessly to fully recover from surgery.

Another freshman, Jason Hubbard, is expected to start the spring as the Seminoles' third man in the starting rotation. Hubbard will be the only left-handed starter for FSU at the beginning of the season.

Sophomore right-hander John Bentley (5-1, 3.86 ERA), who proved his effectiveness towards the end of last season, will begin the year as FSU's fourth starter. Bentley earned wins in the 1997 post-season against Duke and Marist after serving as a middle reliever for most of the year.

"I cannot remember ever going into a year with two freshmen in the starting rotation," commented Martin.

IN THE BULLPEN

Junior left-hander Zach Diaz returns as the Seminoles most experienced pitcher on the FSU staff. Diaz has appeared in 60 games over the last two years. He earned five saves and posted a team-leading 3.26 ERA as he garnered second-team All-ACC honors in 1997. Diaz will fill a middle relief role once again for Florida State.

Scott Proctor, a junior right-hander, started 10 games earning a 7-

1 record last season, but will most likely perform in a middle relief role this year. A host of newcomers, including left-handers Michael Smalley and Chris Ginn and right-hander Blair Varnes, will also be worked into the equation.

Florida State will use a "two-headed" closer this season as sophomore left-hander Mike DiBlasi and junior right-hander David Kelly will share time as the Seminoles' stopper. DiBlasi appeared in 21 games in 1997, posting a 2-1 record and earning two saves.

BEHIND THE PLATE

The Seminoles are defensively as strong as ever when it comes to the position of catcher. Senior Jeremy Salazar will start for the third consecutive season. Salazar peaked towards the end of last season as he helped lead FSU to the ACC Championship and earned All-Tournament Team honors for his efforts.

Junior Jeremiah Klosterman will back up Salazar once again. Klosterman has not only been solid behind the plate, but has also been used a designated hitter be-

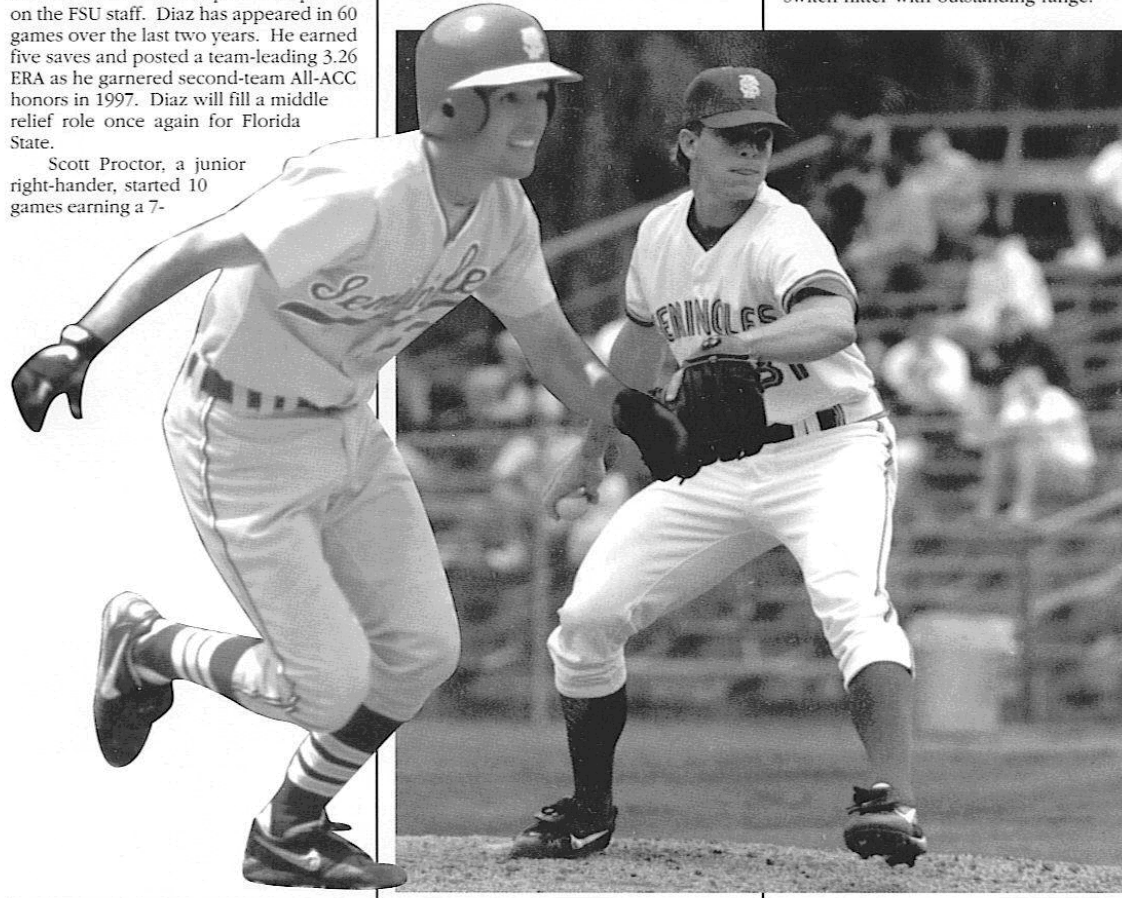
cause of his switch-hitting ability.

IN THE INFIELDF

This year's squad of infielders features a mix of tested veterans and young talent. The anchor of this group will be senior and four-year starter Brooks Badeaux. Badeaux is expected to move from his spot at shortstop to second base this season. He is the most consistent hitter on the squad as he reached base safely in every game last season.

Senior Matt Woodward and sophomore Kevin Cash will battle for playing time at first base. Woodward started 47 games at first base and turned in one of the team's best fielding percentages (.991). Cash saw limited action at first base in 1997, but also played shortstop and third base. Cash is one of FSU's most powerful hitters as 10 of his 16 hits last year were for extra bases.

The highly touted freshman Brett Groves is anticipated to start the spring at shortstop after working there most of the fall. Groves, a *USA Today* and *Baseball America* High School All-American, is a switch-hitter with outstanding range.



1 9 9 8 S E M I N O L E B A S E B A L L

Senior utility man Jose Zabala and freshman Karl Jernigan will contend for starting third baseman duties. Zabala, who has played third base, shortstop, second base and rightfield during his career, is the sparkplug of FSU's lineup and will see time regardless of what position he takes in the field. Jernigan impressed coaches in fall practice at third base and with his speed and can also play the outfield.

IN THE OUTFIELD

With the loss of J.D. Drew and Jeremy Morris, the Seminole outfield will see

THE YEAR AHEAD

Florida State's inexperience and difficult schedule give the Seminoles two strikes against them, however coaches are confident that this year's squad will be successful despite those challenges.

"For this team to be successful many things have to happen," commented Martin. "The pitching staff must carry the bulk of the load and the team must learn to win games in the seventh, eighth and ninth innings."

"Leadership will play a major role in this team's success and I feel somebody

will step forward to provide that ingredient," said Martin.

The Seminoles schedule consists of 24 games against opponents ranked in the preseason polls, including 21 games versus teams that are ranked ahead of FSU. Fourteen of Florida State's first 16 games are on the road.

"I cannot remember ever going into a year with a more difficult schedule than we are faced with this year," said Martin. "Playing 14 of our first 16 games on the road will present quite a challenge for this club."

"I cannot remember ever going into a year with a more difficult schedule than we are faced with this year. Playing 14 of our first 16 games on the road will present quite a challenge for this club."

— Coach Martin

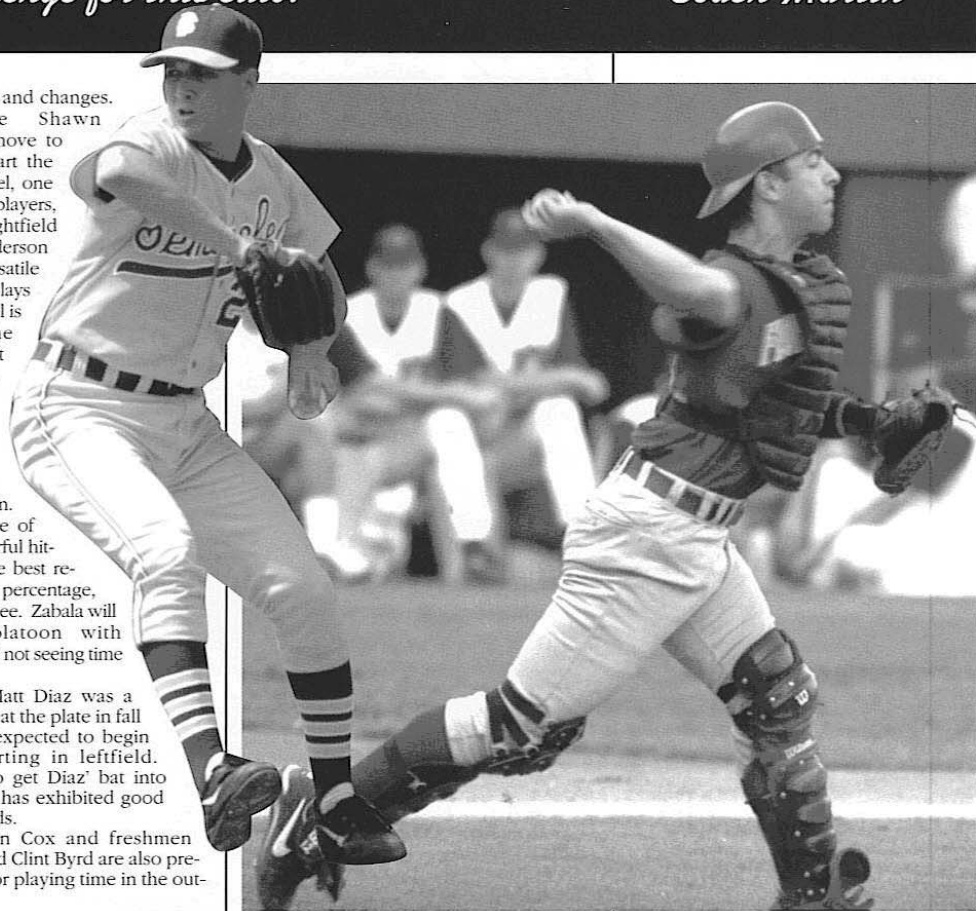
many new faces and changes.

Sophomore Shawn McCorkel will move to centerfield to start the season. McCorkel, one of FSU's fastest players, platooned in rightfield with Terry Henderson last year. A versatile athlete who also plays football, McCorkel is a threat on the bases and can hit for power as well.

In rightfield, senior Terry Henderson is expected to start once again. Henderson is one of FSU's most powerful hitters as he has the best returning slugging percentage, .535, of any returnee. Zabala will most likely platoon with Henderson if he is not seeing time at third base.

Freshman Matt Diaz was a pleasant surprise at the plate in fall practice and is expected to begin the season starting in leftfield. Coaches want to get Diaz' bat into the lineup as he has exhibited good power to all fields.

Senior Brian Cox and freshmen George Otero and Clint Byrd are also predicted to battle for playing time in the outfield.



FLORIDA STATE UNIVERSITY

1998 Seminole Roster



#	NAME	POS	B-T	HT	WT	YR	HOMETOWN (JC OR HS)
1	Brett Groves	SS	S-R	5-11	170	Fr.	Tampa, FL (Tampa Bay Tech)
4	John Bentley	RHP	R-R	6-0	175	So.	Tallahassee, FL (N. Fla. Christian HS)
5	Jose Zabala	UT	S-R	5-8	170	Sr.	Miami, FL (Columbus HS)
7	Brooks Badeaux	2B/SS	S-R	5-10	160	Sr.	Scott, LA (Teurlings Catholic HS)
9	Karl Jernigan	INF	S-R	6-1	175	Fr.	Milton, FL (Milton HS)
10	Chris Chavez	RHP	R-R	6-0	180	Jr.*	Tallahassee, FL (Washington HS)
12	Jeremy Salazar	C	R-R	6-0	185	Sr.	Breaux Bridge, LA (Northside HS)
13	Kevin Cash	1B/INF	R-R	6-0	180	So.	Tampa, FL (Gaither HS)
15	Matt Woodward	1B	R-R	6-2	190	Sr.	Redmond, WA (Redmond HS)
16	Jason Hubbard	LHP	L-L	6-3	208	Fr.	Jacksonville, FL (White HS)
17	Terry Henderson	OF	L-R	5-10	189	Sr.	Melbourne, FL (Brevard CC)
18	Eric Heath	OF/1B	R-R	6-2	165	Jr.	Palmetto, FL (Manatee CC)
19	Matt Stanford	RHP	R-R	5-10	175	Jr.	N. Ft. Myers, FL (Chipola JC)
21	Blair Varnes	RHP	R-R	6-2	185	Fr.	Pascagoula, MS (Pascagoula HS)
22	Henry Mayfield	C	L-R	5-10	190	Jr.	Tallahassee, FL (Leon HS)
23	Mike Smalley	LHP	R-L	6-1	190	Fr.	Orlando, FL (Bishop Moore HS)
24	Wes Crawford	LHP	L-L	6-3	195	So.*	Panama City, FL (Polk CC)
25	Jeremiah Klosterman	C	S-R	5-10	180	Jr.	Jacksonville, FL (Bolles HS)
26	Zach Diaz	LHP	S-L	6-0	190	Jr.	Lakeland, FL (Santa Fe Catholic HS)
27	Brian Cox	OF	R-R	6-1	170	Sr.	Tallahassee, FL (Tallahassee CC)
29	Mike DiBlasi	LHP	L-L	6-2	195	So.	Clearwater, FL (Countryside HS)
30	Nick Stocks	RHP	R-R	6-2	185	Fr.*	Tampa, FL (Tampa Jesuit HS)
31	Scott Proctor	RHP	R-R	6-1	190	Jr.	Jensen Beach, FL (Martin County HS)
32	Matt Diaz	C/OF	R-R	6-2	197	Fr.	Lakeland, FL (Santa Fe Catholic HS)
33	David Kelly	RHP	R-R	6-1	190	Jr.	Tallahassee, FL (Tallahassee CC)
35	Shawn McCorkel	OF	R-R	5-11	175	So.	Dothan, AL (Northview HS)
37	Chris Ginn	LHP	L-L	6-3	195	Fr.	Tallahassee, FL (Lincoln HS)
41	Jon McDonald	RHP	R-R	6-2	185	Fr.*	Orlando, FL (Edgewater HS)
43	Clint Byrd	OF	R-R	6-1	190	Fr.*	Miami, FL (Hialeah-Miami Lakes HS)
44	Scott Hudson	LHP	R-L	6-2	190	So.	Ocilla, GA (Irwin County HS)
45	George Otero	OF	R-R	6-0	190	Fr.*	Miami, FL (Pace HS)

*Redshirted

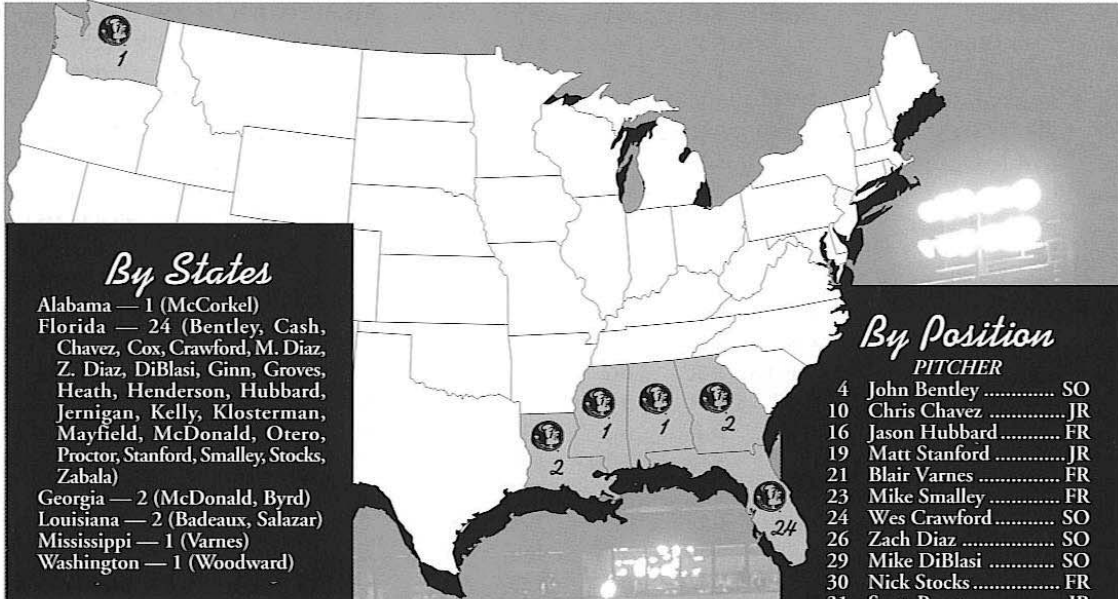
1998 FSU BASEBALL STAFF

HEAD COACH #11 Mike Martin
 ASSISTANT COACHES #3 Chip Baker (Third Base/Catchers); #8 Jamey Shouppe (Pitchers/Recruiting);
 #28 Mike Martin, Jr. (First Base/Outfielders)
 EQUIPMENT COORDINATOR/CLUBHOUSE MANAGER John Rombough
 STRENGTH & CONDITIONING COACH Steve Tamborra
 TRAINER Duane Brooks
 STUDENT TRAINER Pat Forand
 MANAGERS George Shawhan (Clubhouse); Rob Ford (Field); #46 Keith Vandervoort;
 Tom Bernier; Drew Repetti

1998 SEMINOLE BASEBALL



A Closer Look...



By States

Alabama — 1 (McCorkel)
 Florida — 24 (Bentley, Cash, Chavez, Cox, Crawford, M. Diaz, Z. Diaz, DiBlasi, Ginn, Groves, Heath, Henderson, Hubbard, Jernigan, Kelly, Klosterman, Mayfield, McDonald, Otero, Proctor, Stanford, Smalley, Stocks, Zabala)
 Georgia — 2 (McDonald, Byrd)
 Louisiana — 2 (Badeaux, Salazar)
 Mississippi — 1 (Varnes)
 Washington — 1 (Woodward)

By Position

- PITCHER**
- 4 John Bentley SO
 - 10 Chris Chavez JR
 - 16 Jason Hubbard FR
 - 19 Matt Stanford JR
 - 21 Blair Varnes FR
 - 23 Mike Smalley FR
 - 24 Wes Crawford SO
 - 26 Zach Diaz SO
 - 29 Mike DiBlasi SO
 - 30 Nick Stocks FR
 - 31 Scott Proctor JR
 - 33 David Kelly JR
 - 37 Chris Ginn FR
 - 41 John McDonald FR
 - 44 Scott Hudson SO
- CATCHER**
- 12 Jeremy Salazar SR
 - 22 Henry Mayfield JR
 - 25 Jeremiah Klosterman .. JR
 - 32 Matt Diaz FR
- FIRST BASE**
- 13 Kevin Cash SO
 - 15 Matt Woodward SR
 - 18 Eric Heath JR
- SECOND BASE**
- 7 Brooks Badeaux SR
- SHORTSTOP**
- 1 Brent Groves FR
 - 7 Brooks Badeaux SR
- UTILITY**
- 5 Jose Zabala SR
- INFELDERS**
- 9 Karl Jernigan FR
 - 13 Kevin Cash SO
- OUTFIELDERS**
- 17 Terry Henderson SR
 - 18 Eric Heath JR
 - 27 Brian Cox SR
 - 32 Matt Diaz FR
 - 35 Shawn McCorkel SO
 - 43 Clint Byrd FR
 - 45 George Otero FR

Pronunciation Key

Badeaux BAD-oh
 Chavez CHA-vez
 Diaz DI-az
 DiBlasi DI-BLAH-see
 Ginn gIN
 Klosterman KLO-ster-man

By Class

