

2003

SEMINOLE

BASEBALL

STEPHEN DREW
Sophomore, SS

DANIEL HODGES
Senior, LHP

MATT LYNCH
Senior, LHP



TONY RICHIE
Junior, C

FLORIDA STATE MEDIA GUIDE

COLLEGIATE BASEBALL TOP 10 FINISHES

(since 1990)

1. Florida State	12
2. LSU	10
3. Miami	8
Stanford	8
5. Clemson	7
6. Cal State Fullerton	6
Southern California	6
8. Wichita State	5
9. Arizona State	4
Georgia Tech	4
Oklahoma State	4
Texas	4

*Florida State is the only school in the country to finish among Collegiate Baseball's Top 10 in each of the last nine years.

DICK HOWSER STADIUM

COLLEGE WORLD SERIES APPEARANCES

(since 1990)

1. Florida State	8
LSU	8
Miami	8
4. Stanford	7
5. Cal State Fullerton	6
6. Clemson	5
7. Oklahoma State	4
Southern California	4
Wichita State	4

CONSECUTIVE YEARS IN NCAA REGIONALS

1. Miami	31
2. Florida State	25
3. Clemson	17
4. LSU	15
5. Cal State Fullerton	12
6. Southern California	11
7. Stanford	10
8. Rice	9
9. Auburn	7
Florida International	7
Mississippi State	7

MOST NCAA REGIONAL APPEARANCES

(since 1990)

1. Florida State	13
Clemson	13
LSU	13
Miami	13
5. Cal State Fullerton	12
Georgia Tech	12
South Alabama	12
Southern California	12
Stanford	12
Wichita State	12

50-WIN SEASONS

(since 1990)

1. Florida State	10
2. Wichita State	8
3. Clemson	7
LSU	7
5. Miami	6
6. Stanford	4
Georgia Tech	4

Construction and renovation of Dick Howser Stadium began in the summer of 2002. The \$12 million project will be partially complete when the Seminoles take the field this spring and completely finished prior to the start of the 2004 season. The two-year project consists of renovation and new construction improvements to the existing stadium, including: grandstand and bleacher seating, field and practice facilities, press boxes, locker rooms and training spaces, concessions, administrative offices, and the areas immediately around Howser Stadium. Capacity will be increased to more than 6,000 as both Seminole players and fans will be treated to an atmosphere unrivaled in college baseball. Pictured above is an artist's rendering of Dick Howser Stadium upon completion of the second year of construction.



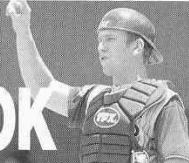
BASEBALL

2003 MEDIA GUIDE

TABLE OF CONTENTS

Media Information 2
 Sports Info Directory 3
 Florida State Media Outlets 4
 Seminoles on the Air 5
 Baseball Quick Facts 6

2003 OUTLOOK



2003 Season Outlook 8
 2003 Numerical Roster 11
 A Closer Look At The Seminoles 12

2003 COACHES



Head Coach Mike Martin 14
 Jamey Shoupe 19
 Mike Martin, Jr. 20
 Link Jarrett 21
 Chip Baker 22
 Strength & Conditioning 23
 Support Staff 24

PLAYER BIOS



Jerrold Brown 26
 Aaron Cheesman 27
 Daniel Davidson 28
 Stephen Drew 29
 Chris Hart 30
 Daniel Hodges 31
 Marc LaMacchia 32
 Kevin Lynch 33
 Matt Lynch 34
 Tony McQuade 35
 Trent Peterson 36
 Tony Richie 37
 Kevin Richmond 38
 Chris Whidden 39
 Bryan Zech 40
 Newcomer Bios 41

2003 OPPONENTS



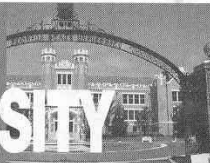
2003 Opponents' Profiles 44
 2003 ACC Composite Schedule 50
 Travel Itinerary 54

2002 REVIEW



2002 Season Review 56
 2002 Honor Roll 58
 2002 Statistics 59
 The Last Time It Happened 61
 2002 Game Highs 62
 2002 Results 63
 2002 Game-By-Game Recap 64
 2002 ACC Statistics 101

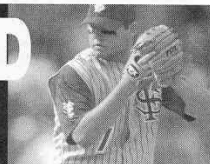
THE UNIVERSITY



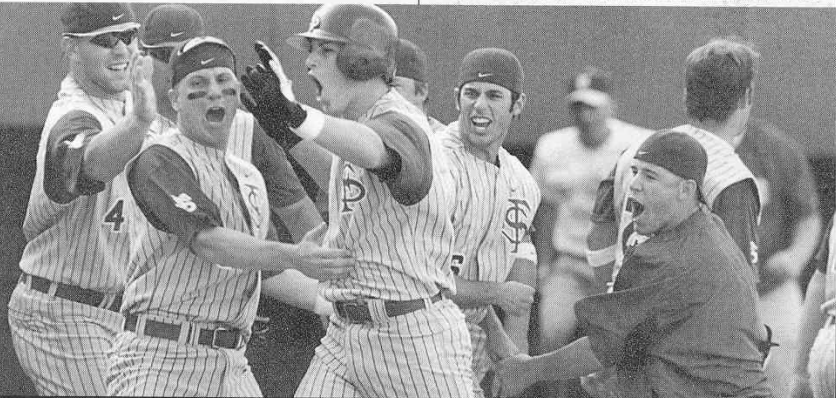
This is Tallahassee 106
 This is Florida State 110

Athletic Administration 114
 FSU Board of Trustees 116
 Life Skills & Student Services 117
 Atlantic Coast Conference 118
 Baseball Tradition 120
 Dick Howser Stadium 122
 Academic Support 125
 Scholarships & Endowments 127
 Marketing & Promotions 128

RECORD BOOK



Team & Individual Records 130
 Career & Season Top 10 135
 Year-By-Year Records 143
 Year-By-Year Statistics 144
 Seminole Award Winners 146
 First Team All-Americans 147
 Golden Spikes Award 152
 All-Time Lettermen 153
 Seminoles in the NAAs 157
 Florida State & Team USA 160
 Seminoles in the Pros 161
 Florida State Major Leaguers 163
 All-Time Coaching 168
 Series Records 169
 Year-By-Year vs. ACC Opponents 171
 All-Time Results 173
 2002 Schedule BC



Credits

EDITORS: Jeff Purinton, Michael Morrell; CONTRIBUTING WRITERS: Jessica Mikalavicius, Tony Suarez, Ben Tario; PHOTOGRAPHY: Russell Grace, Ross Obley, Ryals Lee, Jr., FSU Photo Lab, Kevin O'Donnell, Tom Casazza; DESIGN & LAYOUT: Chameleon Graphics & Design; PRINTING: Durra-Print, Inc.

This document is available upon request in alternate formats for individuals with print-related disabilities. Contact the ADA Office, 301 Westcott Building for more information.



INFORMATION

2003 MEDIA

The Sports Information Office is located on the ninth floor of the University Center, Bldg. C, in the middle of the football press box. Assistant Sports Information Director Jeff Purinton is the media coordinator for FSU baseball. Purinton or Michael Morrell will travel with the team and can be reached at team headquarters when on the road.

Press Services

The 2003 Florida State Baseball Media Guide is a multi-purpose guide for use by media, fans and friends of the Seminole baseball team. Additional information, up-to-date statistics and photographs are available to members of accredited media upon request.



JEFF PURINTON
Sports Information
Director for Baseball

Any questions not answered in the media guide should be directed to Assistant SID Jeff Purinton in the FSU Sports Information Office at 850/644-0615. Sports Information assistant Michael Morrell can also be reached for information regarding Seminole Baseball at 850/644-3920.

Credential Requests

All requests for working press, radio and television should be made as early as possible prior to game day. Credential requests should be made in writing if possible and can be picked up prior to the game at the Sports Information office or held at the Will Call window at Dick Howser Stadium for game day pick up.

Parking

A very limited number of parking passes are available to select members of the working media. Parking is available in university lots around Dick Howser Stadium on a first-come, first-serve basis. All media are encouraged to arrive as early as possible to avoid parking problems. Legally parked cars will not be ticketed on game days (two hours prior to first pitch).

Photographers

Accredited photographers holding passes will be admitted to shoot in designated areas on the field. These areas are marked just inside the gates in the protected area at the corners of the home and visitors' dugouts. Still photographers are

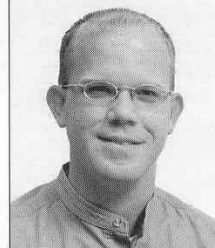
asked not to restrict views of the fans if at all possible.

Television

Facilities are available for network broadcasts. Please contact Jeff Purinton at the Sports Information Office for more information.

Radio

One booth is available for the opposing team's radio broadcast. If more than one booth is needed to accommodate visiting radio crews, an area will be made available in the stadium. When such a case occurs, the visiting team's SID will allocate booth space.



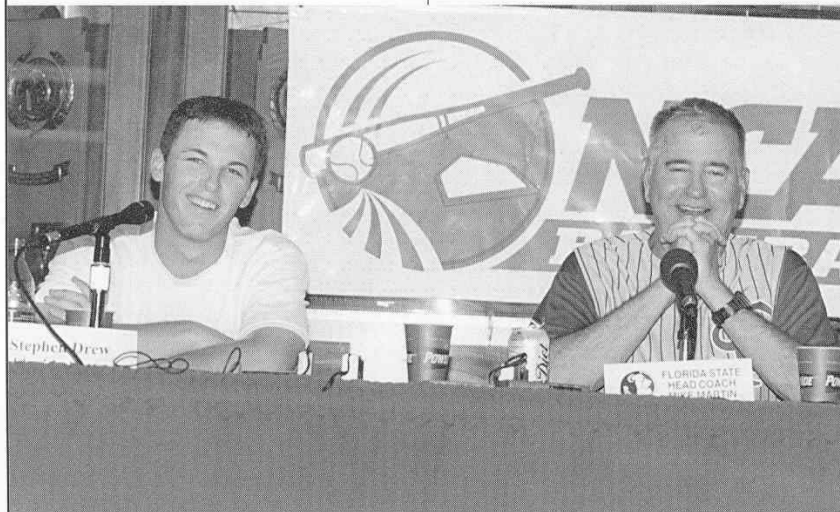
MICHAEL MORRELL
Assistant SID
for Baseball

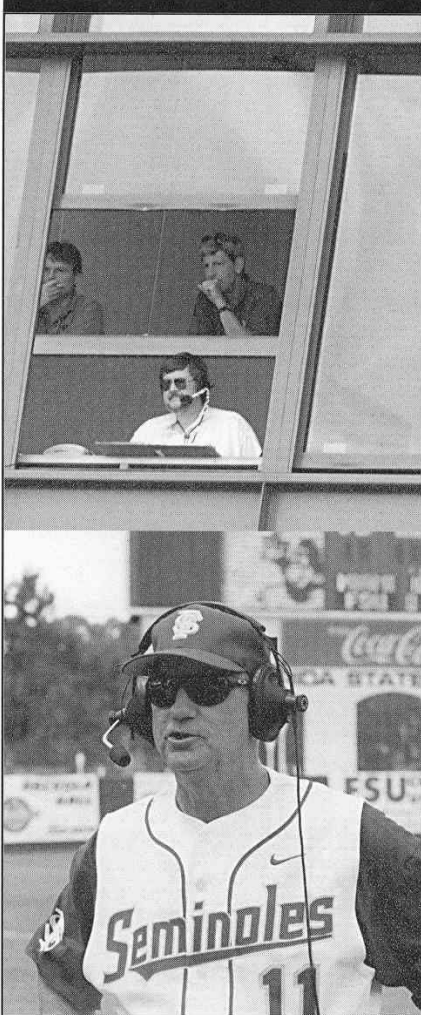
Phone Lines

Florida State has five phone lines in the main press box for use by media before, during and after home games. Tallahassee radio station WFLA-AM, which carries broadcasts live, has installed two phone lines for use by visiting radio stations. Please contact Lee Bowen at 850/644-2695 for details concerning the use of these lines. If other lines are needed, or WFLA's lines are not sufficient, visiting radio stations should contact the Florida State University Office of Telecommunications at 850/644-2414.

Interviews

On game days, Florida State head coach Mike Martin and his players will be available for post-game interviews following a 10-minute cooling off period. Martin will meet with the media in the Florida State dugout immediately after talking with the team in the Seminole locker room. Requested Florida State players will be escorted to the interview area by





FLORIDA STATE SPORTS INFORMATION DIRECTORY

Address

P.O. Drawer 2195, Tallahassee, FL 32316
Phone: 850/644-1403 Fax: 850/644-3820

Overnight Address

FSU Athletics, Sports Information, University Center C,
Room C5406, Tallahassee, FL 32306

**Assistant Athletics Director
for Media & Public Relations**

Rob Wilson, 850/644-2016, (H) 850/894-5801

**Assistant Sports Information
Directors for Baseball**

Jeff Purinton, 850/644-0615, (H) 850/298-4117

Associate Sports Information Directors

Tina Thomas, 850/644-1065, (H) 850/514-3351
Chuck Walsh, 850/644-1077, (H) 850/385-8466
Elliott Finebloom, 850/644-5656, (H) 850/402-1154

Graduate Assistants

Bill Baker, 850/644-4836
Jeff Clark, 850/644-5653
Michael Morrell, 850/644-3920

Program Assistant

Lynn Hobby, 850/644-2016

Promotions Director

Kay Scott, 850/644-1147

Promotions Assistant For Baseball

Guy Gaster, 850/644-4397

Florida State Sports Information personnel after Coach Martin.

Florida State players are also available on the field at Dick Howser Stadium prior to practice on non-game days. Reporters who wish to interview players before practice should be at the field between 1:30-2:00 p.m. Please contact Jeff Purinton at the Florida State Sports Information office to arrange player phone interviews. Contact Coach Martin's office directly before 12:00 noon at 850/644-1073 to arrange interviews with him.

**MediaTeamlink®
& InfoConnection®**

Releases, Standings, Statistics and other sports information are available by accessing www.mediateamlink.com. You can have documents delivered directly to your e-mail and/or fax the moment they are updated. You can also view documents online. MediaTeamlink® is FREE to all accredited Media.

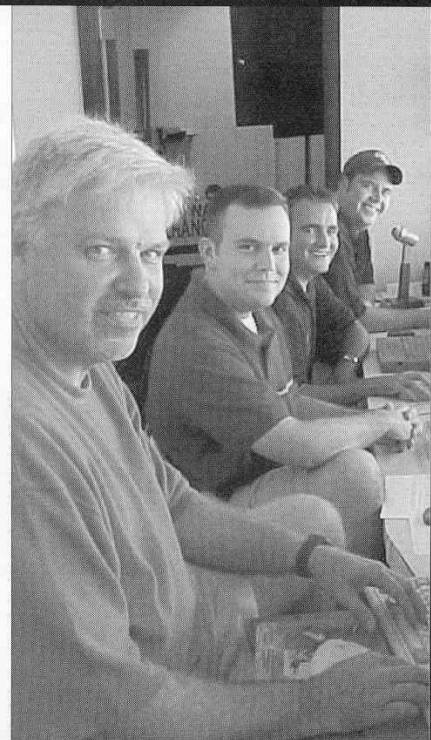
Log on to www.mediateam

link.com if you do not already have an account and click the "Sign Up Here" button and complete the short form. Documents requested via fax will incur a 15¢ per page fee. This site is for accredited media only. Pivotal will conduct an audit to eliminate non-accredited media.

Documents are also still available on InfoConnection®. To access, please dial (770) 558-6000 from the handset of your fax machine and enter your 10-digit PIN. If you do not have a PIN number, please call Pivotal Communications at (770) 399-0096.

www.seminoles.com

Media, fans and alumni are encouraged to access Florida State baseball information via the internet at www.seminoles.com. Information and statistics are updated after every game; while schedules, rosters, player information and history are also available. Live game broadcasts will also be available on www.seminoles.com.



MEDIA OUTLETS

FLORIDA STATE

PRINT MEDIA

- ASSOCIATED PRESS (LOCAL)** (850) 224-1211
 Fax (850) 224-2099 • Brent Kallestad
 336 E. College Ave., Suite 301, Tallahassee, FL 32301
- BRADENTON HERALD** (941) 745-7007
 102 Manatee Ave., W., Bradenton, FL 34205
- DAYTONA BEACH NEWS-JOURNAL** (904) 252-1511
 PO Box 431, Daytona Beach, FL 32015
- FLORIDA TIMES-UNION (LOCAL)** (850) 224-7515
 Fax (850) 681-2961 • Bob Thomas
 336 E. College Ave., Suite 304, Tallahassee, FL 32301
- FLORIDA TIMES-UNION** (800) 255-4679
 (904) 359-4246 • Fax (904) 359-4147
 PO Box 1949, Jacksonville, FL 32231
- FT. LAUDERDALE SUN-SENTINEL** (954) 356-4635
 Fax (954) 356-4676 • Craig Barnes
 New River Center, 200 E. Las Olas Blvd., Ft. Lauderdale, FL 33301
- FT. MYERS NEWS-PRESS** (941) 335-0358
 2442 Anderson Ave., Ft. Myers, FL 33901
- FSVIEW** (850) 561-6653
 Fax (850) 574-6578 • 1235 Airport Rd., Tallahassee, FL 32304
- GAINESVILLE SUN** (352) 378-1411
 Fax (352) 338-3128 • 2700 S.W. 13th Str., Gainesville, FL 32608
- LAKE CITY REPORTER** (904) 754-0421
 Fax (904) 752-9400 • P.O. Box 1709, Lake City, FL 32056
- LAKELAND LEDGER** (941) 802-7557
 Fax (941) 802-7812 • PO Box 408, Lakeland, FL 33802
- MIAMI HERALD** (305) 376-3487
 Fax (305) 376-2295 • One Herald Plaza, Miami, FL 33101
- OCALA STAR-BANNER** (352) 867-4144
 Fax (352) 867-4018 • PO Box 490, Ocala, FL 32670
- ORLANDO SENTINEL (LOCAL)** (850) 222-5564
 Fax (850) 224-0979 • Josh Robbins
 36 E. College Ave., Suite 303, Tallahassee, FL 32301
- ORLANDO SENTINEL** (407) 420-5474
 Fax (407) 420-5069 • Alan Schmadtke
 PO Box 28333, Orlando, FL 32802
- THE OSCEOLA** (850) 222-7733
 Fax (850) 224-3627 • Daniel Mitchell, Jim Henry
 402 Dunwoody St., Tallahassee, FL 32304
- PALATKA DAILY NEWS** (904) 328-2721
 1825 St. John's Ave., Palatka, FL 32177
- PALM BEACH POST** (561) 820-4440
 Fax (561) 820-4481 • Tom D'Angelo
 2751 S. Dixie Highway, W. Palm Beach, FL 33405
- PANAMA CITY NEWS-HERALD** (850) 747-5065
 Fax (850) 747-5097 • Jim Oberdier
 501 W. 11th St., Panama City, FL 32401
- PENSACOLA NEWS-JOURNAL** (850) 435-8558
 Fax (850) 434-6241 • Bill Vilona

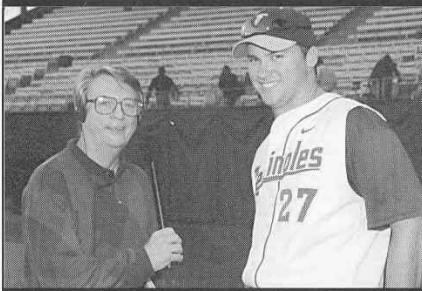
P.O. Box 12710, Pensacola, FL 32574

- SARASOTA HERALD-TRIBUNE** (941) 957-5172
 Fax (941) 957-5276 • Doug Fernandez
 801 S. Tamiami Trail, Sarasota, FL 34236
- ST. PETERSBURG TIMES** (813) 226-3347
 Fax (813) 893-8782 • Brian Landman
 P.O. Box 1121, St. Petersburg, FL 33731
- TALLAHASSEE DEMOCRAT** (850) 599-2167
 Fax (850) 599-2301 • Randy Beard, Steve Ellis
 PO Box 990, Tallahassee, FL 32302
- TAMPA TRIBUNE (LOCAL)** (850) 222-8382
 Fax (850) 222-4772 • Doug Carlson
 336 E. College Ave., Tallahassee, FL 32301
- TAMPA TRIBUNE** (813) 259-7566
 Fax (813) 258-8504 • PO Box 191, Tampa, FL 33601

ELECTRONIC MEDIA

- CABLE 47** (850) 487-3170
 WFSU Television Center
- FLORIDA NEWS CHANNEL** (850) 222-6397
 Fax (850) 894-5202 • Barry Milligan, Tom Block
 1801 Halstead Blvd., Tallahassee, FL 32308
- SUNSHINE NETWORK** (407) 648-1150
 Fax (407) 245-2571
 390 N. Orange Ave. Suite 1075, Orlando, FL 32801
- WCTV-TV (CBS)** (850) 906-0477
 Fax (850) 668-3851 • Lee Gordon, *Sports Director*
 4000 County Rd. 12, Tallahassee, FL 32312
- WFLA RADIO** (850) 422-3107
 Fax (850) 514-4441
 325 John Knox Rd, Bldg. G, Tallahassee, FL 32303
- WFSU** (850) 644-1360
 Fax (850) 644-8344 • Dennis Schnittker, Jay Wirth
- WTXL-TV (ABC)** (850) 893-1313
 (850) 668-1460 • Preston Scott, *Sports Director*
 7927 Thomasville Rd., Tallahassee, FL 32312





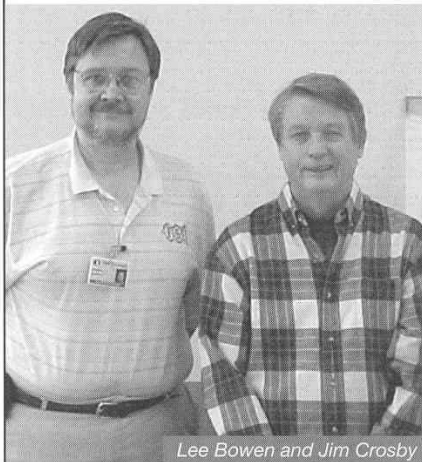
ON THE AIR

SEMINOLES

Radio

Florida State's flagship radio station, WFLA News Radio 1270, will again broadcast every inning of every Seminole baseball game in 2003. WFLA-AM will air Florida State baseball for the 22nd consecutive season. From the season opener in January to the Atlantic Coast Conference Tournament and NCAA Regional action in May, WFLA gives FSU fans the best coverage in college baseball. For out of town fans, the live radio broadcast for all FSU games (home and away) will be carried on www.seminoles.com.

The voice of Seminole baseball for the 14th year is Lee Bowen, who continues a long association with the Seminole Radio Network in 2003.



Lee Bowen and Jim Crosby

The broadcast coordinator for football and men's basketball on FSU's radio network, Bowen began his career as a statistician on the network. Bowen has also called play-by-play for the minor league Burlington (NC) Indians, a rookie league team in the Appalachian League. WFLA's Jim Crosby will join Bowen in the booth for all home games and select road games. Crosby is a 20-year veteran of Seminole baseball broadcasts.

play and color again for Sunshine in 2003. The Sunshine Network takes Florida State baseball to all corners of the state. The 2003 Seminoles debut on Sunshine against Virginia on March 16 in Dick Howser Stadium.

The Mike Martin Show

Seminole fans who miss the baseball action on radio and television can still keep informed by tuning in to "The Mike Martin Show." The show, which will air weekly beginning in mid-February, gives a recap of the past week's action.

For 30 minutes each week, FSU Head Coach Mike Martin takes a look at recent highlights and gives his insight on upcoming opponents. The show, hosted by Assistant Athletics Director for Media & Public Relations Rob Wilson, also features player interviews and a weekly baseball tip from Coach Martin.

The show is produced by Jim Garbarino of Seminole Productions and will air statewide on the Sunshine Network. Check local listings for dates and times.

Television

Florida State's rich baseball tradition will once again attract live coverage from cable television networks throughout the Southeast. The Seminoles' strong baseball tradition and Atlantic Coast Conference schedule make Florida State no stranger to television exposure. This year, the FSU baseball team can be seen on television 13 times.

The Sunshine Network is once again the home of Seminole baseball in 2003. The Sunshine Network, a Florida-based cable network, will televise 10 FSU games, both home and away. Gene Deckerhoff and Tom Block will handle the play-by-

2003 Sunshine Network Television Schedule

3/16	Virginia	1:00 p.m.
3/28	North Carolina	7:00 p.m.
4/5	Wake Forest	7:00 p.m.
4/11	Clemson	7:00 p.m.
4/12	Clemson	Tape Delay
4/13	Clemson	1:00 p.m.
4/16	Jacksonville	7:00 p.m.
4/25	Miami	7:00 p.m.
4/26	Miami	7:00 p.m.
4/27	Miami	1:00 p.m.
5/3	at Georgia Tech	1:00 p.m.
5/15	at Duke	7:00 p.m.

All TV game dates and times are tentative



BASEBALL

QUICK FACTS



GENERAL INFORMATION

Symbol Seminoles
 Location Tallahassee, Fla.
 Founded 1851
 Enrollment 35,462
 Colors Garnet & Gold
 Stadium (Capacity) Dick Howser (6,000)
 Surface/Dimensions Natural Grass
 (LF-340, CF-400, RF-320)
 Affiliation NCAA Division I
 Conference Atlantic Coast
 President Dr. T.K. Wetherell
 Athletics Director Dave Hart, Jr.
 Athletic Dept. Phone (850) 644-1904
 Ticket Office Phone (850) 644-1830 or
 1-888-FSU-NOLE
 Website www.seminoles.com

FLORIDA STATE BASEBALL HISTORY

First Year of Baseball 1948
 All-Time Record 2,138-788-9 (.730)
 Years in CWS (Last) 18 (2000)
 Years in NCAA Regionals (Last) 40
 (2002) 25 Consecutive
 Last Post-season Opponent Notre Dame (2002)
 Result Lost (2-1) Tallahassee Super Regional

FLORIDA STATE SPORTS INFORMATION

SID Office Phone (850) 644-1403
 Assistant SID/Baseball Contact Jeff Purinton
 Office Phone (850) 644-0615
 SID Fax (850) 644-3820
 Baseball SID E-mail jpurinto@mailier.fsu.edu
 Assistant Baseball SID Michael Morrell
 Office Phone (850) 644-3920
 Press Box Phone (850) 644-1553
 SID Mailing Address P.O. Drawer 2195
 Tallahassee, Fla. 32316
 Overnight Address FSU Athletics
 Sports Information, University Center C
 Room C5406, Tallahassee, Fla. 32306

COACHING STAFF

Head Coach Mike Martin (Florida State '66)
 At Florida State (Years) 1,239-416-3 (23)
 Career Record (Years) Same
 Baseball Office Phone (850) 644-1073
 Best Time to Reach Coach Arrange through SID
 Assistant Coaches Jamey Shoupe (Florida State '82)
 Mike Martin, Jr. (Florida State '95)
 Link Jarrett (Florida State '95)

SUPPORT STAFF

Director of Baseball Operations Chip Baker
 Athletic Trainer Jerry Hilker
 Videographer Billy Vizzini

Strength & Conditioning Kevin Fitzgerald
 Academic Advisor Amy Lord

2003 TEAM INFORMATION

2002 Finish 60-14 (Home: 34-4, Away: 17-8, Neutral: 9-2)
 2002 ACC Record 18-6 (Home: 12-0, Away: 6-6)
 2002 ACC Tournament Record 5-0
 2002 Conference Finish 1st -Regular Season,
 1st - ACC Tournament
 Conference Championships 15 (3 ACC, 12 Metro)
 Final Poll Rankings 7th - *Baseball America*
 9th - *Collegiate Baseball*
 9th - *Baseball Weekly/ESPN Coaches Poll*
 Letterman Returning/Lost 16/12
 Position Starters Returning/Lost 5/3
 Starting Pitchers Returning/Lost 3/2

MEDIA INFORMATION

Radio Station WFLA-AM 1270, Tallahassee
 Radio Contact Lee Bowen
 Phone (850) 644-2695
 Play-By-Play Announcer Lee Bowen
 Phone Same
 Color Announcer Jim Crosby
 Phone TBA

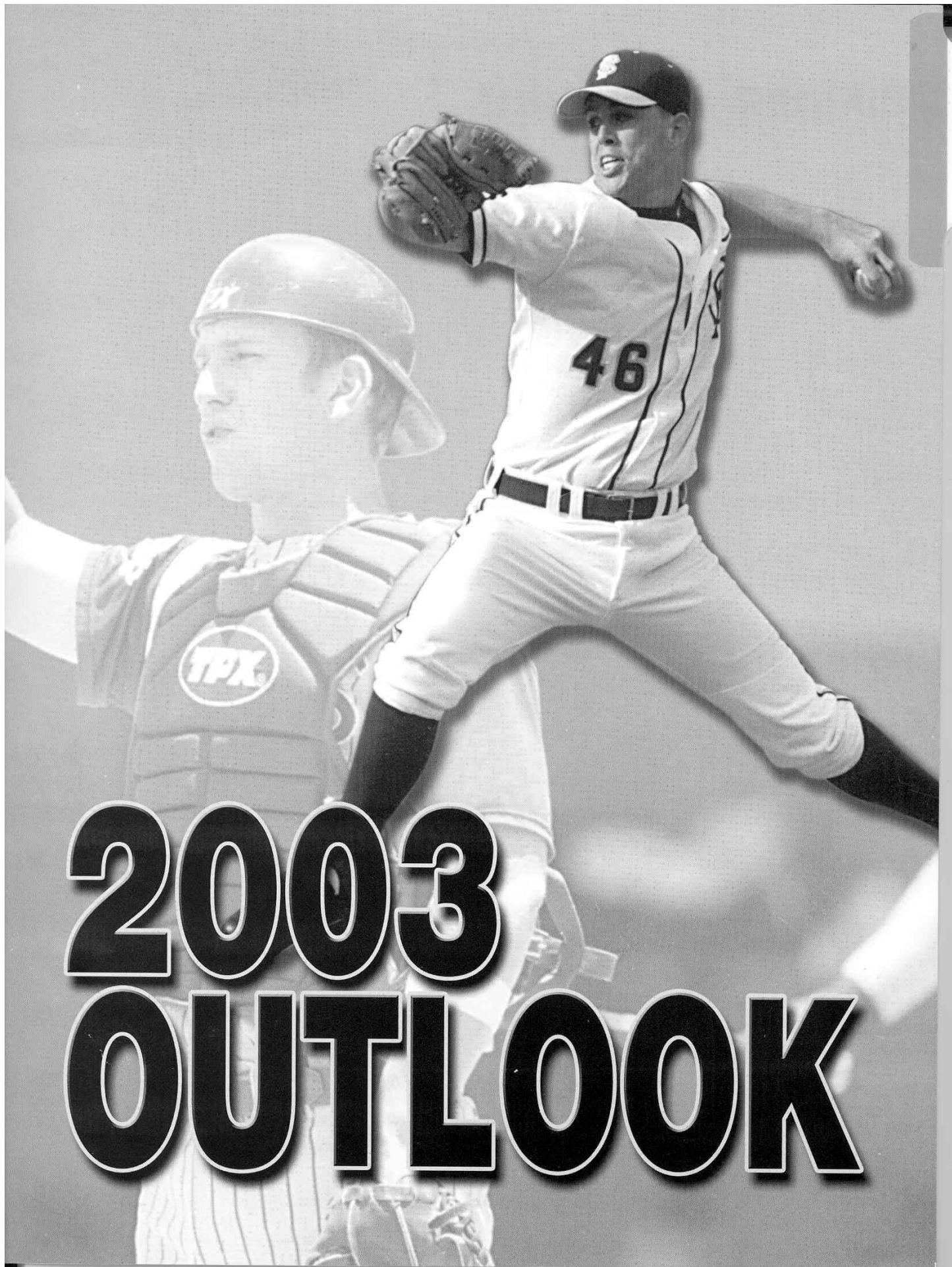
SEMINOLES ON THE WEB

Keep up with all the action of Florida State Athletics by visiting FSU's official website at:



The screenshot shows the website interface for Florida State Seminoles Official Athletics. The main heading is 'www.seminoles.com'. Below it, there are navigation tabs for 'HOME', 'ABOUT', 'CONTACT', 'SCHEDULE', 'STATS', 'ARCHIVES', 'NEWS', 'PHOTOS', and 'VIDEOS'. A prominent banner reads 'The story behind the first 50 years of the ACC' with a large 'BASEBALL' logo. A sidebar on the left contains links for 'MEN'S SPORTS', 'WOMEN'S SPORTS', 'ONLINE STORE', 'TICKETS', 'SPONSORSHIPS', 'RADIO/TV', 'SEMINOLE BOOSTERS', 'SUMMER CAMPS', 'ATHLETIC RECREATION', 'LINKS', 'TRAVEL', 'FACILITIES/DIRECTIONS', 'HARDY CLUB', 'WRESTLING TRAINING', 'SPORTS MEDICINE', 'NCAA COMPLIANCE', 'HALL OF FAME', 'COMMUNITY SERVICE', 'TRADITIONS', and 'SITE MAP'. The main content area features a 'Top Stories' section with a headline 'Florida State Baseball to Open 2003 Season in St. Petersburg' and a sub-headline '2002 ACC Regular Season and ACC Tournament'. A 'Seminoles Sidelines' sidebar on the right offers links for 'Click Here', '2003 Quick Facts', 'Schedule', 'Roster', 'Statistics', 'Weekly Releases', and 'Dick Howser Stadium'. At the bottom, there are sections for 'FSU BASEBALL LIVE STATS', 'COACHES CORNER', 'Upcoming Events Promotions', 'ACC', and 'NCAA BASEBALL'.





2003 OUTLOOK

SEASON OUTLOOK

2003 PREVIEW

25 CONSECUTIVE NCAA REGIONAL APPEARANCES

12 TOP 10 FINISHES IN THE LAST 13 SEASONS

20 50-WIN SEASONS

11 COLLEGE WORLD SERIES TRIPS IN THE LAST 17 YEARS

This year's Florida State baseball team will look to improve on a 2002 season that saw the Seminoles come up one game short of reaching the College World Series. FSU set a school record with a 25-game winning streak last year while tying an ACC mark

have a very good group of pitchers in 2003. The Seminoles led the ACC with an ERA of 3.96 a year ago and returns two weekend starters in Matt Lynch and junior right-hander Marc LaMacchia (11-2, 3.38 ERA). Junior lefty Trent Peterson (4-2, 3.35 ERA) is expected to open as

This year's squad will not only try and defend their ACC Championship, but will attempt to return to Omaha after a two-year hiatus for a chance at the national championship.

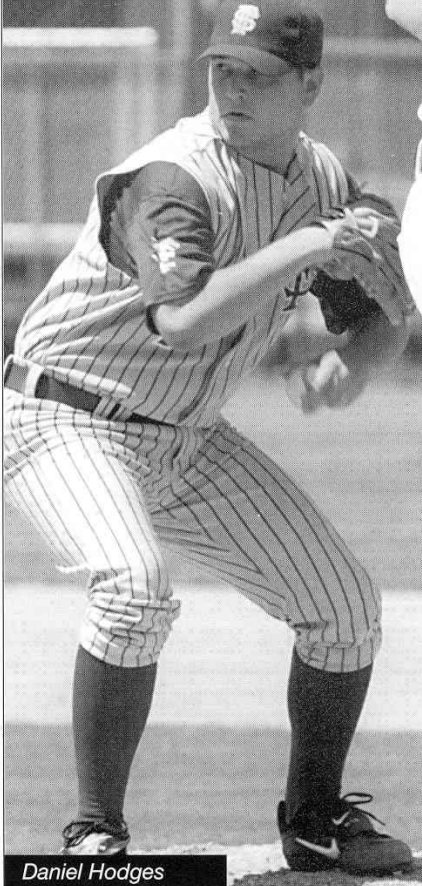
with 60 wins in a season. This year's squad will not only try and defend their ACC Championship, but will attempt to return to Omaha after a two-year hiatus for a chance at the national championship.

Four preseason All-Americans lead the way in 2003. Senior left-hander Matt Lynch (13-2, 3.59 ERA), drafted in the seventh round by the San Diego Padres, chose to return to school and will anchor the pitching staff as the No. 1 starter. Senior Daniel Hodges (12 saves, 2.56 ERA) is back as the team's closer and junior Tony Richie (.353, 13 HR, 75 RBI) will start for the third year at catcher. Sophomore Stephen Drew (.402, 16 HR, 54 RBI), the 2002 Baseball America Freshman of the Year, returns at short-stop and is regarded by many as the top player in the country at his position.

"It all starts with pitching," said head coach Mike Martin. "Matt Lynch coming back was as big as anything we've had happen to us last year. When you return a Matt Lynch, you return experience. We've got a good group of veterans and some talented young players that will be asked to step in and contribute. But, we have a lot of work ahead of us if we want to get back to Omaha and contend for a national title. We will have to continue to get better as the season progresses and hopefully avoid any significant injuries."

PITCHING

Always one of the top staffs in the nation, Florida State should once again



Daniel Hodges



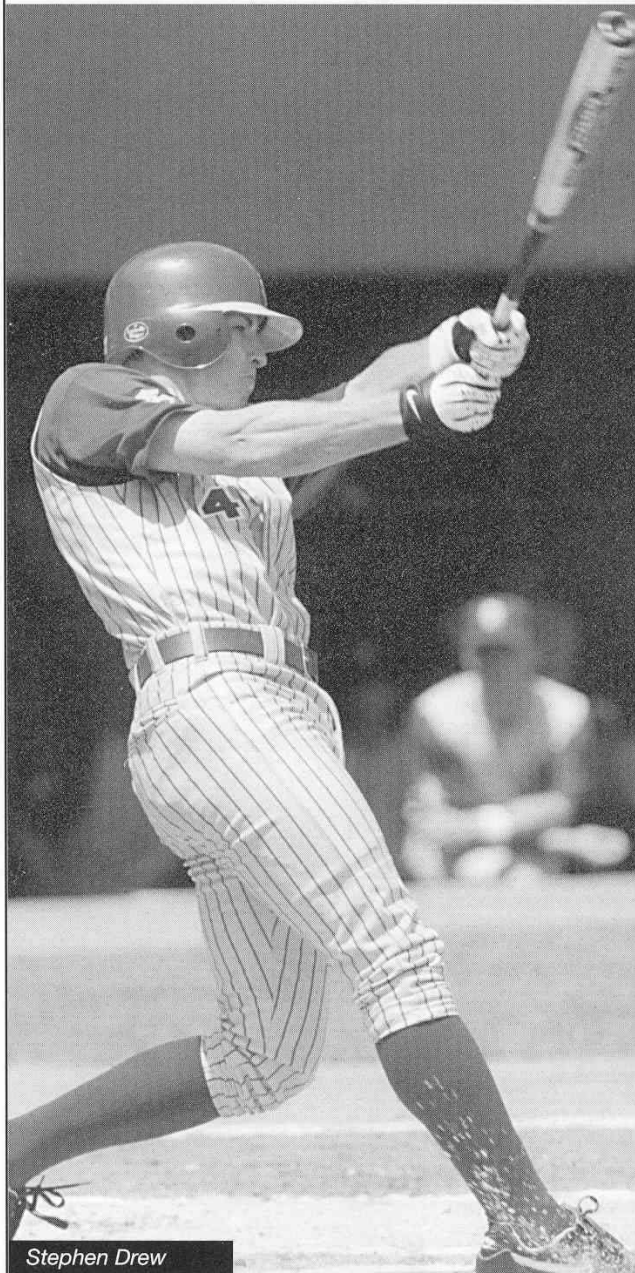
Matt Lynch



the No. 3 starter. Peterson will be challenged by Mark Sauls, a hard-throwing freshman who was drafted in the third round by the Minnesota Twins out of high school.

"We have a veteran pitching staff and they are all very good competitors," said Martin. "Getting Lynch back was the key. Every Friday night, you know the guy that takes the mound has been doing it for two years. The second guy (LaMacchia) has been doing it for two years. So it gives you a good feeling, but at the same time, now we've got to look at Mark Sauls or Trent Peterson as our third and fourth starters and that's where we are with that situation. One of them will probably emerge as the third starter, the other one the fourth starter, which would then position us for the future."

Hodges returns as the closer and is the most experienced pitcher in a deep Seminole bullpen. Sophomore right-hander Kevin Lynch (4-1, 4.64 ERA) and senior left-hander Daniel Davidson (6-0, 4.33 ERA) each pitched important innings a year ago and should see even more innings in 2003. Senior right-hander Chris Whidden (4-1, 2.56 ERA) is the only other returnee and he may also see action as a



Stephen Drew

COLLEGIATE BASEBALL'S PRESEASON TOP 25

RANK	TEAM	2002 FINAL RECORD	2002 FINAL RANK
1.	Texas	57-15	1
2.	FLORIDA STATE	60-14	9
3.	Southern California	37-24	12
4.	Rice	52-14	7
5.	Georgia Tech	52-16	5
6.	Louisiana State	44-22	11
7.	Cal. State Fullerton	37-22	28
8.	South Carolina	57-18	2
9.	Stanford	47-18	4
10.	Houston	48-17	10
11.	Mississippi St.	34-24-1	NR
12.	Arizona St.	37-21	26
13.	Long Beach St.	39-21	27
14.	Miami, Fla.	34-29	17
15.	Wake Forest	47-13-1	14
16.	Richmond	53-13	13
17.	Baylor	36-26	NR
18.	Clemson	54-18	3
19.	Notre Dame	50-18	6
20.	South Alabama	42-19	25
21.	Florida Atlantic	46-21	15
22.	Nebraska	47-21	8
23.	Tulane	36-27	NR
24.	S.W. Missouri St.	43-21	NR
25.	California	29-27	NR

BASEBALL AMERICA'S PRESEASON TOP 25

RANK	TEAM	W-L	2002 FINAL RANK
1.	Georgia Tech	52-16	8
2.	Rice	52-14	5
3.	Stanford	47-18	4
4.	FLORIDA STATE	60-14	7
5.	Texas	57-15	1
6.	Southern California	37-24	14
7.	Wake Forest	47-13	12
8.	Arizona State	37-21	22
9.	Louisiana State	44-22	11
10.	Baylor	36-26	NR
11.	Houston	48-17	10
12.	Notre Dame	50-18	6
13.	Cal State Fullerton	37-22	NR
14.	South Carolina	57-18	2
15.	Richmond	53-13	16
16.	Long Beach State	39-21	21
17.	Mississippi State	34-24	NR
18.	Stetson	42-19	NR
19.	Clemson	54-17	3
20.	Nebraska	47-21	9
21.	Auburn	34-26	NR
22.	North Carolina	43-21	17
23.	South Alabama	42-19	NR
24.	Florida Atlantic	46-21	19
25.	Va Commonwealth	38-27	NR



reserve in a thin FSU outfield. Mark Sauls leads a group of eight new pitchers looking to make an immediate impact in their first year in the garnet and gold.

"Hodges will come in and try to close the ball game again this year. He did a very good job last season and he's a guy that enjoys his role very much."

BEHIND THE PLATE

For the third straight season, the catching duties will be handled by one of the nation's best in junior Tony Richie. He finished 2002 with 75 RBI and will have a chance to improve on that total this year as he is expected to take over as the clean-up hitter. Named the top defensive catcher in the conference as well as the catcher with the best arm by *Baseball America*, Richie led the ACC with six pick-offs. He will be backed up by sophomore Aaron Cheesman, who will also see time at designated hitter.

"Tony Richie is a two-year starter and he has an excellent knowledge of the game," said Martin. "He does an outstanding job of working with our pitchers. We are also very fortunate to have a young man like Aaron Cheesman that you can count on to come in and do a good job behind the plate."

AROUND THE INFIELD

Sophomore shortstop Stephen Drew anchors the Florida State infield and he will be joined on the left side by freshman Eddy Martinez-Esteve, who also turned down third round money out from the Seattle Mariners out of high school to enroll at FSU. Stephen kept the Drew legacy going as he had one of the finest freshmen seasons in school history. Martinez-Esteve has already established himself as one of the team's top hitters and is still adjusting to third base after playing in the outfield in high school. Senior Jerrod Brown (.327, 4 HR, 56 RBI) returns at first base after a solid junior season in which he earned second team All-ACC honors.

Freshman Danny Wardell will serve as Brown's backup at first. The starting job at second base is still up for grabs and the Seminole coaching staff could go with one of four candidates there. Junior Bryan Zech (.294, 2 HR, 38 RBI) started 70 of FSU's 74 games at second last year, but mistakes in the field have opened the door for others to step up. Sophomore Kevin Richmond (.267, 13 RBI), senior Chris Hart (.262, 6 RBI) and freshman Brandon Manasa will all be competing with Zech to get into the starting lineup. Hart has also played first base and third base during his career and could time at the positions as well.

"We return three starters in the infield and they are a veteran group as well," said Martin. "There's not much you need to say about Stephen Drew. There have been a lot of outstanding players come in here and make contributions as freshmen, but not to the ex-

SPORTS WEEKLY/ESPN TOP 25 PRESEASON COLLEGE BASEBALL COACHES POLL

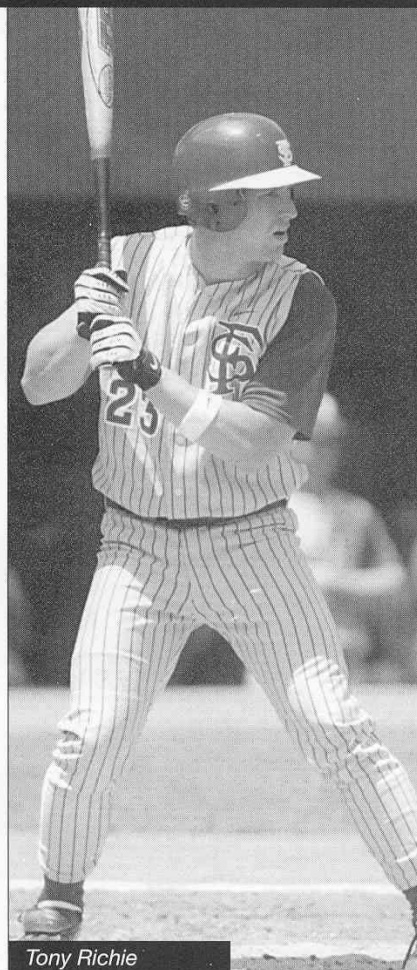
RANK	TEAM	2001 RANK	2001 RECORD
1.	Texas	1	57-15
2.	Georgia Tech	5	52-16
3.	FLORIDA STATE	9	60-14
4.	Rice	6	52-14
5.	Stanford	4	47-18
6.	Southern California	14	37-24
7.	LSU	11	44-22
8.	South Carolina	2	57-18
9.	Arizona State	19	37-21
10.	Cal State Fullerton	NR	37-22
11.	Houston	10	48-17
12.	Wake Forest	13	47-13-1
13.	Baylor	NR	36-26
14.	Notre Dame	7	50-18
15.	Clemson	3	54-17
16.	Long Beach State	NR	39-21
17.	Mississippi State	NR	34-24-1
18.	Richmond	16	53-13
19.	Nebraska	8	47-21
20.	Miami	20	34-29
21.	Auburn	NR	34-26
22.	South Alabama	NR	42-19
23.	Stetson	NR	42-19
24.	North Carolina	21	43-21
25.	Florida Atlantic	18	46-21

tent that he did. He's a difference-maker. We'll go with Martinez-Esteve at third and we get Brown back at first base. Second base is still a question mark. We need to get some consistent play defensively there."

IN THE OUTFIELD

Junior Tony McQuade (.376, 6 HR, 46 RBI) returns as the starter in left field and he will be joined in the outfield by a pair of newcomers. McQuade was second on the team in batting a year ago and will be expected to set the table at the top of the order this season. Two junior college transfers will start in their first year at FSU as Blake Balkcom takes over in right field and Matt Sauls gets the start in center field. Coach Martin has already labeled Balkcom's arm from right field one of the best he's ever seen. Balkcom's bat will be counted on in the middle of the Seminole order and Sauls (Mark's older brother) has the speed to close ground in center and make things happen on the base paths. The fourth outfielder is freshman Derrick Smith, a good hitter who will likely get into the lineup at designated hitter.

"Tony McQuade has established himself as an outstanding left fielder," said Martin. "He has improved defensively and, obviously, he was one of our top hitters last season. We'll count on him again this year. There are a couple question marks with the new guys in center and right, but Sauls and Balkcom continue to improve on a daily basis. They are both very talented and we expect good things from them."



Tony Richie



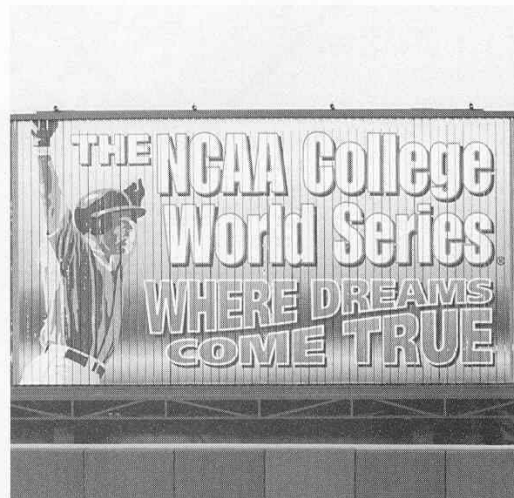
ROSTER

2003 NUMERICAL

NO	NAME	POS	B/T	HT	WT	YR	HOMETOWN (HIGH SCHOOL OR JC)
1	Tony McQuade	OF	S-R	6-2	205	JR	Gainesville, FL (Buchholz HS)
4	Stephen Drew	SS	L-R	6-0	185	SO	Hahira, GA (Lowndes Co. HS)
5	Jerrod Brown	1B	L-R	5-10	200	SR	Auburndale, FL (Hillsborough)
6	Brandon Manasa	INF	S-R	5-9	165	FR	Miami, FL (Miami Southridge HS)
7	Daniel Hodges	P	L-L	6-0	180	SR	Hilliard, FL (Bishop Kenny HS)
8	Matt Sauls	OF	R-R	6-1	215	JR	Panama City, FL (Gulf Coast CC)
9	Kevin Richmond	2B	S-R	6-0	170	SO	Clearwater, FL (Countryside HS)
10	Chris Hart	1B-3B	S-R	6-1	190	SR-R	Clearwater, FL (Clearwater Central Catholic HS)
13	Eddy Martinez-Estevé	3B	R-R	6-2	200	FR	Miami, FL (Westminister Christian HS)
14	Bryan Zech	2B-SS	R-R	5-10	175	JR	Wellington, FL (Wellington HS)
17	Chris Whidden	P-OF	R-R	6-0	185	SR-R	Tallahassee, FL (Leon HS)
18	Daniel Davidson	P	L-L	6-4	215	SR	Panama City, FL (Gulf Coast CC)
19	Aaron Cheesman	C	R-R	5-10	195	SO-R	Sarasota, FL (Sarasota HS)
21	Mark Sauls	P-3B	R-R	6-4	210	FR	Panama City, FL (Bay HS)
22	Rhett James	P	R-R	6-1	205	JR	Pensacola, FL (Pensacola JC)
23	Tony Richie	C	R-R	6-1	215	JR	Jacksonville, FL (Bishop Kenny HS)
24	Derrick Smith	OF	L-L	5-10	170	FR	Vienna, GA (Dooly Co. HS)
26	Kevin Lynch	P	L-R	6-2	185	SO	Ft. Pierce, FL (John Carroll HS)
27	Daniel Wardell	1B	R-R	6-2	225	SO	Wesley Chapel, FL (Zephyrhills HS)
29	Eddie Cannon	P	R-R	6-0	170	JR	Sebring, FL (South Florida CC)
30	Blake Balkcom	OF	R-R	6-2	225	JR	Chipley, FL (Chipola JC)
31	Marc LaMacchia	P	R-R	6-0	195	JR	Palm Harbor, FL (East Lake HS)
32	Matt DiBlasi	P	L-L	6-1	185	FR	Clearwater, FL (Countryside HS)
33	Kyle Patrick	P	R-R	6-4	210	FR	Apopka, FL (Apopka HS)
35	Hunter Jones	P	L-L	6-4	230	FR	Palm Beach Gardens, FL (W.T.D. HS)
43	Trent Peterson	P	R-L	6-1	180	JR	Tallahassee, FL (Florida HS)
44	Mark Culp	P	L-L	5-11	165	FR	Coral Springs, FL (Coral Springs HS)
45	Drew Stilley	P	R-L	6-8	235	FR	Jacksonville, FL (Bishop Kenny HS)
46	Matt Lynch	P	L-L	6-2	190	SR	Ft. Pierce, FL (John Carroll HS)
51	Glen Simon	P	R-R	6-2	220	FR	Lake Worth, FL (John I. Leonard HS)

Coaches & Support Staff

11	Mike Martin	Head Coach
12	Jamey Shoupe	Pitchers/Recruiting
16	Link Jarrett	First Base Coach/Infielders
28	Mike Martin, Jr.	Third Base Coach/Catchers/Recruiting Assistant
	Chip Baker	Director of Baseball Administration & Facilities
	Bob Holland	Equipment Coordinator/Clubhouse Manager
	Kevin Fitzgerald	Strength & Conditioning Coach
	Jerry Hilker	Head Baseball Trainer
	Sean Croteau	Student Trainer
	Justin Wilmot	Field Supervisor
	Tom Bernier	Head Student Manager
37	Garrett Robinson	Bullpen Catcher
	Travis Nafe	Manager
	Dane Smith	Manager
	Carlo Bruno	Manager



A CLOSER LOOK

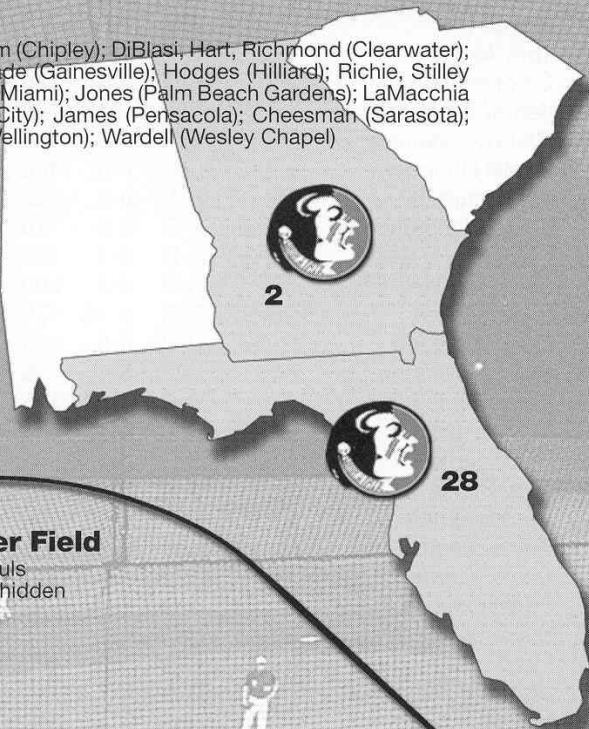
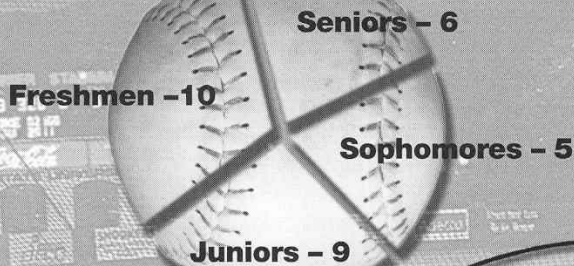
AT THE 2003 SEMINOLES

BY STATES

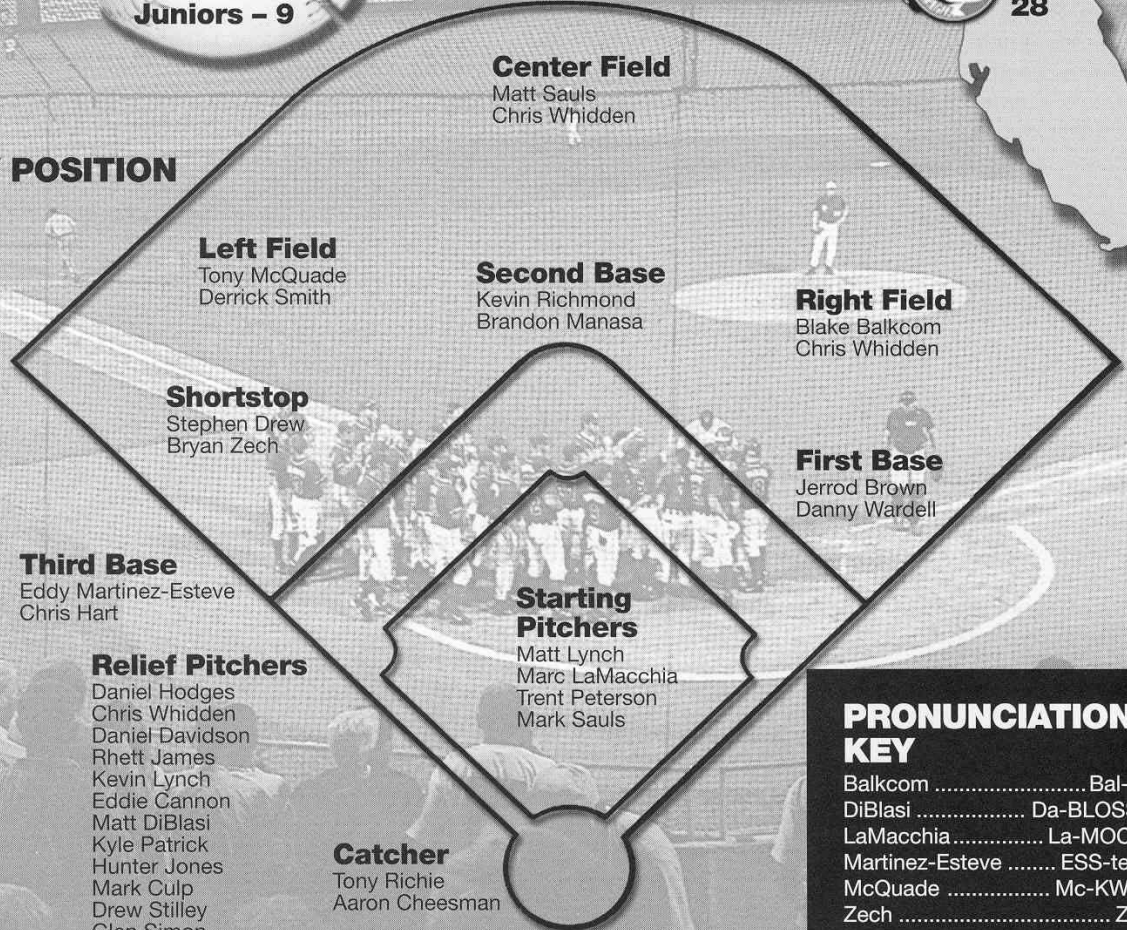
FLORIDA (28) — Patrick (Apopka); Brown (Auburndale); Balkcom (Chipley); DiBlasi, Hart, Richmond (Clearwater); Culp (Coral Springs); K. Lynch, M. Lynch (Ft. Pierce); McQuade (Gainesville); Hodges (Hilliard); Richie, Stillely (Jacksonville); Simon (Lake Worth); Manasa, Martinez-Esteve (Miami); Jones (Palm Beach Gardens); LaMacchia (Palm Harbor); Davidson, Mark Sauls, Matt Sauls (Panama City); James (Pensacola); Cheesman (Sarasota); Cannon (Sebring); Peterson, Whidden, (Tallahassee); Zech (Wellington); Wardell (Wesley Chapel)

GEORGIA (2) — Drew (Hahira); Smith (Vienna)

BY CLASS



BY POSITION



PRONUNCIATION KEY

Balkcom Bal-kum
DiBlasi Da-BLOSS-ee
LaMacchia La-MOCK-ia
Martinez-Esteve ESS-tev-ay
McQuade Mc-KWADE
Zech Zetch

