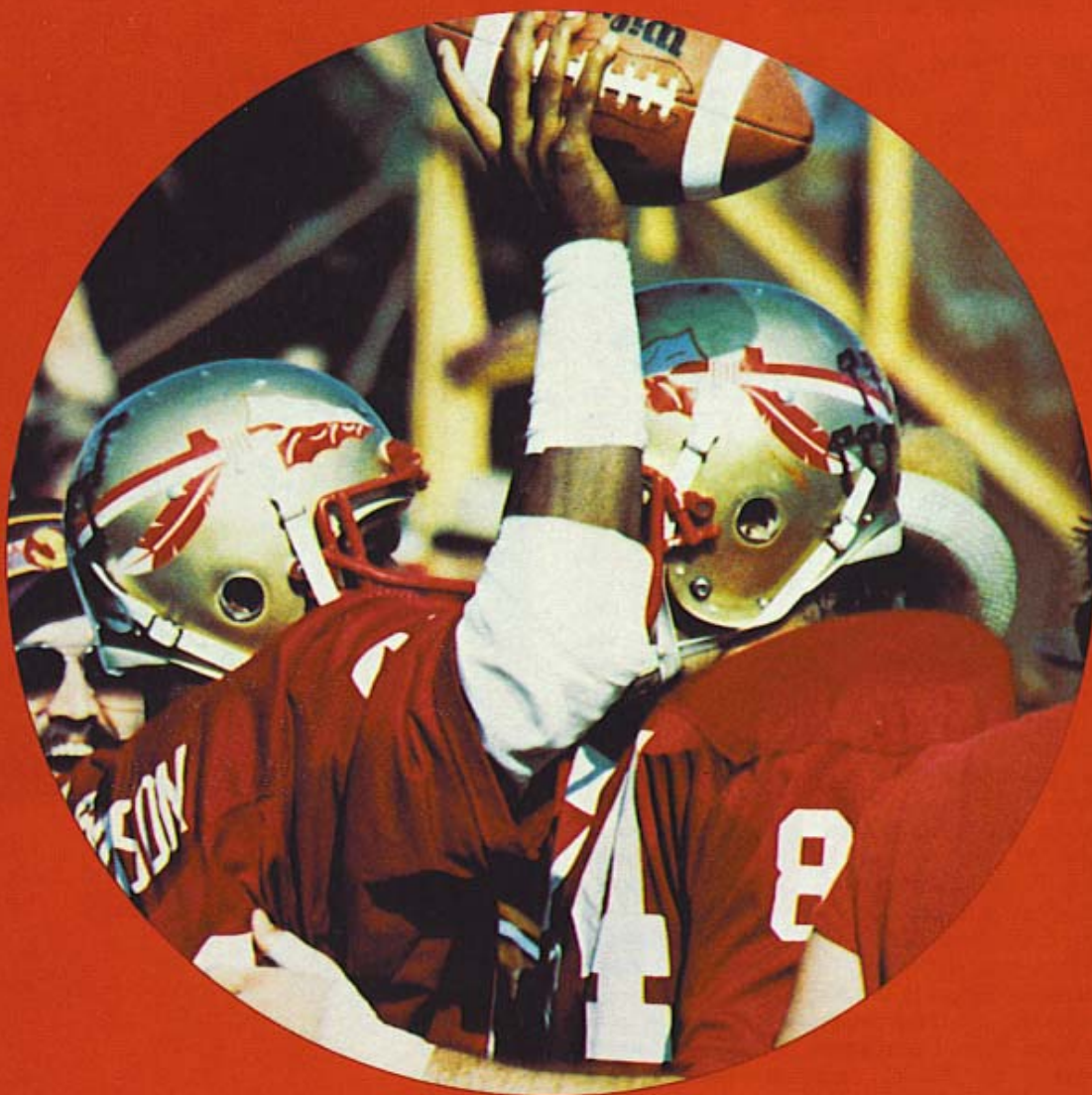


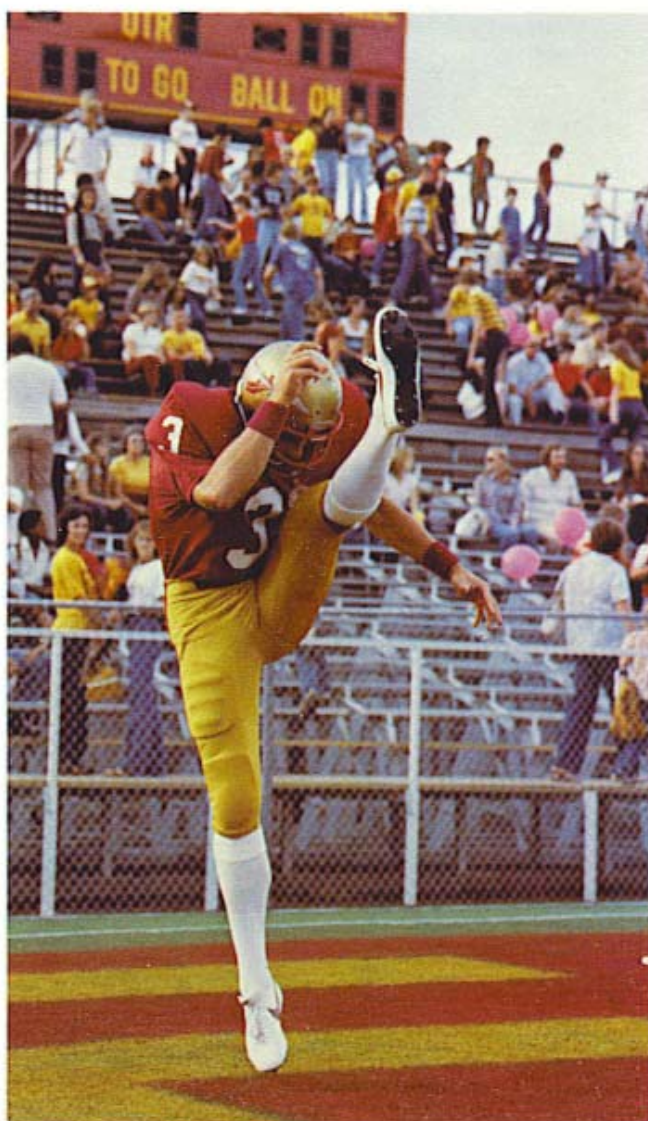
1981 Seminoles



Seminoles' Returning All-American



STARK, ROHN—Punter, 6-3, 195, Senior, Fifty Lakes, Minn.—has the chance this fall to become a two-time first team All-American . . . last fall he was picked by the FOOTBALL WRITERS, UNITED PRESS INTERNATIONAL and SPORTING NEWS . . . those honors came following a season where he kicked 57 times for 2,576 yards, a 45.1 yard average . . . that average is a new single season school record and if the current career rate of 41.5 yards per kick continues he'll also have a school record there . . . his longest boot last season was for 67 yards in the Pittsburgh game . . . his abilities became widely recognized against Nebraska and Pitt where he kicked seven times in each averaging 48.4 at Nebraska and 48.1 vs. Pitt . . . his final average probably could have been two or three yards better but several times in the campaign he was asked to put the ball out of bounds deep in opponent territory and the kick needed to travel only 30 to 35 yards . . . among Rohn's 57 kicks last season 18 went out of bounds between the 10 and 20 yard line, five were inside the 10 and 13 went to the end zone . . . Rohn is the first to admit that football is not his athletic love—it's track and field . . . he is a member of the FSU outdoor track and field team and participates in the decathlon . . . he was eighth in the NCAA championships last spring at Baton Rouge, La., and earned All-American honors after scoring a personal high for the two-day event . . . some day he hopes to participate in the Olympic Games as a decathlon athlete . . . as a freshman he won the Metro Conference championship in the event . . . he was red-shirted for the '80 season and this spring he passed up the Metro event to participate in the NCAA Fiesta Bowl Drug Prevention Program at Phoenix . . . a pre-season football All-American in at least one major publication . . . an amateur pilot and excellent student who was nominated for Academic All-American following '80 season . . . longest kick of his career is 72 yards vs. Miami in a regional TV game as a freshman . . . last fall became the first kicker ever honored by United Press International as its Southeastern Defensive Player of the Week . . . married while a college freshman . . . born May 4, 1959.



Year	Punts	Yards	Avg.	Longest
1978	57	2,279	40.0	72
1979	66	2,622	39.7	60
1980	57	2,576	45.1	67
TOTALS	180	7,477	41.5	72



BOWDEN, JEFF—Wide Receiver, 5-8, 170 Junior, Tallahassee, Fla.—for those who are asking—yes, he's the son of head coach Bobby . . . is the third son to have played for his father . . . the other boys, Tommy and Terry, are now on the Seminole coaching staff . . . Tommy is a part-time assistant and Terry, who's going to law school at FSU, is a volunteer coach . . . although limited in size, Jeff is a competitor and it earned him a slot on the special teams and travel squad last fall . . . he did win his first varsity letter . . . expect him to be in the same role this year if he can recover from a serious spring knee injury . . . is not a scholarship athlete—"the only scholarship Jeff has is the Bobby Bowden scholarship," cracks father . . . born December 30, 1959.



BRANNON, TOM—Offensive Guard, 6-3, 250, Senior, Albany, Ga.—is the only returning starter among the offensive linemen . . . his first start came last year as a junior . . . will be playing a new position this fall—was moved from tackle to guard during spring drills . . . has made steady improvement each year he has been with the Seminoles . . . not a vocal leader he goes about his work quietly and very few fans even realize he's playing . . . he will need to hold the young offensive line group together in early games this fall . . . when he took over at tackle last fall he replaced Nate Henderson, who also hails from Albany . . . added to his outside football responsibilities during the summer when he married . . . born May 22, 1959.



BROWNLEE, ROGER—Defensive End, 6-3, 215, Sophomore, Doctor's Inlet, Fla.—will probably draw starting assignment in opener if last year's starter Jarvis Coursey hasn't recovered from back problems . . . this is a new position for Roger who last season toiled at linebacker and with special teams . . . his playing time was enough to letter . . . switch came in spring when coaches were searching for depth at position . . . coaches are concerned about his size for playing here, but they admit he has good skills to play here . . . has already used his "red shirt" season since a knee injury sidelined him for '79 campaign . . . father is a member of the Orange Park High School coaching staff where Roger won nine letters . . . born September 17, 1961.



BURNETT, KEN—Fullback, 5-11, 200, Junior, Brandon, Fla.—was one of the Tribe's most pleasant surprises in the offensive backfield last fall . . . he was assigned the backup role for starting fullback Mike Whiting . . . finished the campaign as the fourth leading rusher with 145 yards in 32 carries, an average of 4.5 yards per attempt . . . first two touchdowns of his career came on runs of two and four yards vs. East Carolina . . . those are the only scores of his career . . . has good hands and is considered a capable receiver—last season two catches for 15 yards . . . will continue to have special team assignments and because of experience gained last fall will probably spell Whiting more in '81 . . . brother Mike was a defensive backfield starter at University of Tampa in early 70s and now coaches in the Tampa area . . . Ken was a high school quarterback . . . born January 29, 1962.

Year	Rushes-Yards	TD	Catches-Yards	TD	Pts.
1979	4-7	0	0-0	0	0
1980	32-145	2	2-15	0	12
TOTALS	36-152	2	2-15	0	12



CAMPBELL, ALLEN DALE—Defensive End, 6-4, 235, Sophomore, Perry, Fla.—once he fully understands the difficult Seminole defensive scheme expect Allen Dale to be an important pillar in the game plan . . . position coach Jim Gladden called Campbell the "most improved" of the defensive ends after spring practice . . . coaches still want him to improve his strength, but Gladden says: "Allen Dale has big time ability and talent" . . . because he participated in spring practice Campbell will operate with first team at start of fall drills . . . his chief foe for starting duty, Scott McLean, missed spring drills while participating with Seminole track and field team . . . quickness in rushing the passer is a strong suit . . . born April 16, 1962.



CARREKER, ALPHONSO—Defensive Tackle, 6-6, 235, Sophomore, Columbus, Ohio—unless something unforeseen happens he'll be in the starting lineup for Tribe opener with Louisville . . . when last season ended he was in a backup role at both tackle positions and saw considerable playing time . . . totaled 14 tackles in frosh season . . . of those 14 tackles, three were quarterback sacks . . . came from the same high school in Columbus that sent Seminoles Ken Lanier, a four-year starter at offensive tackle, who was drafted last winter by Denver Broncos . . . coach Bill Shaw: ". . . has unlimited ability with the size, height and agility we like to see from our defensive tackles . . . he has the potential to be a great one" . . . gets the opportunity to play in his hometown when Seminoles visit Ohio State . . . mother gave him the nickname "Chub" and it has carried over with FSU players and coaches . . . born May 25, 1962.



CHILDERS, SAM—Tight End, 6-2, 195, Senior, Tallahassee, Fla.—once again he's scheduled to divide first team duty with Zeke Mowatt . . . they alternated last season serving as the "messenger" in the Tribe's play-calling system . . . was FSU's third leading receiver last season with 20 catches for 157 yards . . . two of those catches were good for touchdowns . . . one of his TD catches came in the final moments of the Miami game where the Tribe lost a 10-9 verdict . . . the other TD grab came in 36-22 victory over Pittsburgh . . . has had two TD receptions in each of the last two seasons- after being blanked as a freshman . . . caught more passes in '80 than two previous years combined (12) . . . worked his way into starting lineup last fall even though he had surgery for bone chips two months prior to season start . . . another of the numerous players sent to FSU from Leon High School in Tallahassee . . . born December 2, 1959.

Year	Catches-Yards	TD	Pts.
1978	6-45	0	0
1979	6-34	2	14
1980	20-157	2	12
<hr/>			
TOTALS	32-236	4	26



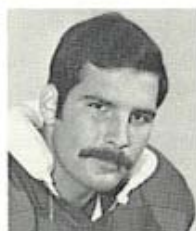
CLAYTON, HARVEY—Cornerback, 5-10, 170, Junior, Florida City, Fla.—after two years of backup duty the starting assignment should be his this fall . . . he has some mighty big assignments to fill—those of graduated Bobby Butler, who was a first round draft selection of the Atlanta Falcons . . . Harvey has been his backup for two seasons . . . Harvey's size shouldn't be a problem since he has about the same build as Butler . . . because he was playing behind such a standout, Harvey spent much of his first two seasons with the special teams . . . last fall he totaled nine tackles . . . first collegiate interception is still to come . . . ankle injury slowed his education process during spring . . . born April 4, 1961.



COGGIN, REDUS—Offensive Guard, 6-3, 230, Junior, Chipley, Fla.—with the exception of one game last fall his role was as a backup . . . he was a starter in the Miami (Fla.) game, not at guard, but center after being switched when both first team centers sustained injuries the previous week vs. East Carolina . . . has played every position in the offensive line . . . spring work was limited for the second consecutive year because he broke his left hand for the second straight spring . . . one of the better students on the football team he carries nearly a 3.0 average in business . . . was a walk-on with Seminoles . . . born July 28, 1960.



COLEMAN, JERRY—Center, 6-3, 235, Junior, Savannah, Ga.—was thrust into the spotlight last fall when the Tribe's first two centers were knocked out of action with injuries . . . Jerry drew the starting assignment against Nebraska and helped the Seminoles to their 18-14 upset victory in Lincoln . . . that was his first varsity assignment . . . at the time of the Nebraska game he was a non-scholarship walk-on . . . he now has a scholarship with the Seminoles . . . coaches picked him for center chores vs. Cornhuskers because he and Rick Stockstill worked together the previous season with scout team . . . spent his summer months as a "bouncer" at a Tallahassee restaurant . . . born January 17, 1961.



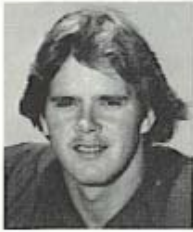
COLEMAN, MIKE—Offensive Tackle, 6-4, 250, Senior, Savannah, Ga.—could possibly find himself in the role of a student coach this fall helping varsity staff with administrative duties . . . brother Jerry is a Seminole center . . . Mike finds time to play football even though he is a pre-medical student . . . has played with Tribe junior varsity but never with varsity . . . born September 20, 1959.



COLLIER, DANNY—Offensive Tackle, 6-4, 250, Junior, Eau Gallie, Fla.—many felt he would contend for a starting job this season, but an ankle injury kept him from participating in much of spring practice . . . when he did practice he showed potential to become a good offensive lineman . . . played just one year of high school football . . . has a brother who was starter in offensive line at Georgia . . . an injury free fall could mean plenty of playing time . . . born August 16, 1960.



COURSEY, JARVIS—Defensive End, 6-5, 210, Senior, Gray, Ga.—the major medical question for the Tribe when it begins fall practice . . . he injured his back prior to the Orange Bowl and problem still plagued him during spring practice so he didn't participate . . . despite the painful injury he still managed to earn Defensive Most Valuable Player honors in Tribe's 18-17 Orange Bowl loss to Oklahoma . . . typical of many Seminole players he wasn't highly recruited out of high school and FSU was the only school to offer a full scholarship . . . split playing time with Scott McLean last fall although Jarvis was regarded as the starter . . . finished season with two recovered fumbles plus 54 total tackles, 22 solo and 32 assists . . . one of just eight players who will have an opportunity to letter four seasons while at FSU . . . if he's healthy, Jarvis will be a candidate for All-Star honors . . . again, if his health returns and he doesn't have more back problems in the fall, expect the pros to look at him closely . . . born November 1, 1959 . . . celebrated birthday last fall while Seminoles were dumping Tulsa, 45-2.



DAVIS, BOB—Quarterback, 6-4, 190, Sophomore, Warner Robins, Ga.—is a likely candidate for red-shirt this fall since he's low on the depth chart at quarterback . . . at one time during spring he was running the second unit, but fell back . . . comes from the same hometown and high school as departed All-American noseguard Ron Simmons . . . like fellow QB Rick Stockstill, his father was his high school coach . . . born February 17, 1962.



DAVIS, DARISH—Fullback, 5-11, 200, Junior, Augusta, Ga.—came to FSU from Georgia Tech where he had limited playing time as a freshman . . . sat out the '79 Seminole campaign and played sparingly last season . . . did run the ball for 86 yards in 13 carries last fall, a 6.6 yard average per carry, best on the team . . . progress was hindered last season by an injury and personal problems . . . if he's healthy this fall look for him to push Ken Burnett for the backup assignment to Michael Whiting . . . born November 12, 1958.

Year	Rushes-Yards	TD	Catches-Yards	TD	Pts.
1980	13-86	0	0-0	0	0



DIAMANTAS, JOHN—Noseguard, 6-3, 230, Junior, Merritt Island, Fla.—came to FSU as one of the most heralded high school players in the state his senior year . . . but, physical ailments have prevented him from ever getting started with Seminoles . . . each year he has been injured, starting with a sprained ankle in the first week of his college career . . . first year at FSU he was granted a medical red shirt . . . is back on defense after being tried last fall with the offensive line . . . progress during spring was hampered when he missed first two weeks with an infected cyst . . . born January 27, 1960.



FIELD, JEFF—Offensive Guard, 6-1, 225, Senior, Albany, Ga.—one of several linemen Bobby Bowden and his staff have pulled out of the Albany area . . . Tom Brannon is currently a starter at guard and departed ('79) tackle Nate Henderson hailed from the same region . . . Jeff's only playing time while at FSU has been with the junior varsity . . . this season could find him in the role of a student coach helping with the younger players . . . a physical education major he wants to follow his father in coaching field . . . born March 21, 1959.



FOJTIK, BRAD—Defensive End, 6-4, 215, Sophomore, Auburndale, Fla.—this is the third season he has been with the FSU program—he was red-shirted last season . . . coaches felt he made great improvement during spring . . . does not have any varsity game experience and that will keep him back during rugged 1981 campaign . . . however, he does have a good opportunity to work with speciality units . . . coach Jim Gladden would like Brad to be tougher and play with more intensity . . . has had trouble adjusting to the rugged college atmosphere, but coaches believe he got over that hump in last spring practice . . . born September 17, 1961.



FUTCH, GARRY—Defensive Tackle, 6-2, 240, Senior, Ocala, Fla.—position coach Bill Shaw likes to compare Garry to the graduated Mark Macek—they aren't known for the big plays, but always are in the lineup and getting the job done . . . this will be second year for Garry as a starter . . . he had the assignment for all 11 regular season games last fall and the Orange Bowl . . . was a second team choice on the Associated Press All-South Independent squad after '80 season . . . final stats compiled by the coaching staff showed Garry with 30 tackles . . . included in that number are two quarterback sacks and five tackles for loss . . . first two years of his FSU career he alternated between noseguard and defensive tackle . . . if enough depth develops at DT he could serve as backup for James Gilbert this fall at noseguard . . . brother Greg was a starting offensive guard and co-captain for Seminoles last fall . . . assistant coach Bill Shaw: "the game doesn't get too tough for Garry Futch . . . the more important the game the better he plays" . . . an interior design major . . . born May 12, 1960.



GILBERT, JAMES—Noseguard, 6-0, 250, Senior, Miami, Fla.—Seminole coaches believe he could be among the best noseguards in the country this fall . . . will be replacing an All-American, Ron Simmons, who has gone to the Cleveland Browns . . . James saw considerable playing time last fall and drew starting duty when Simmons was injured . . . also has seen duty at defensive tackle . . . starting assignments came vs. Louisville, East Carolina and Miami . . . has the same knack for making the big play as a healthy Simmons . . . final '80 defensive stats showed James with 45 tackles, including seven quarterback sacks and seven more tackles for loss . . . assistant coach Bill Shaw: "Florida State wouldn't have had the success it had last season without James being around . . . the defensive staff considered him a starter . . . his speed, strength and quickness makes him as good a noseguard as there is in the country this season . . . we're looking for James to be the quiet leader of our defensive football team this fall . . . he's not a rah-rah player but leads extremely well by example . . . the other players on defense respect James and his ability" . . . born February 2, 1959.



HARP, HERBERT—Offensive Tackle, 6-3, 270, Sophomore, Winter Garden, Fla.—was switched from defense to offense prior to start of spring practice and worked his way into a starting role . . . when he arrived on FSU campus most figured he would play defensive tackle . . . has outstanding speed for someone with his size . . . what coaches liked most about Herbert's spring performance was that he improved with each practice . . . this is his third season in the Seminole program . . . like many of the young linemen he was red-shirted last fall because there was depth at most of the offensive and defensive slots . . . will be celebrating his birthday when FSU entertains Southern Mississippi . . . born November 14, 1961.



HARRIS, JAMES—Cornerback, 6-0, 185, Senior, Gainesville, Fla.—this will be his second season of starting duty, but he will be the veteran in the Tribe defensive backfield . . . the three players who brought him along in difficult game situations last fall are graduated . . . James will now need to be the tutor for a secondary that will feature three others who never before have started a college game . . . was not spectacular, just steady, last fall in starting role . . . finished the season with a single interception . . . did total 47 tackles, 31 solo and 16 assists . . . is considered exceptional at defending the run-option . . . was credited with causing three opposition fumbles . . . if starting assignment at free safety falls to Larry Harris it will give Tribe two starters from Gainesville, Fla., in defensive backfield . . . born July 11, 1960.



HARRIS, LARRY—Free Safety, 6-1, 200, Sophomore, Gainesville, Fla.—will vie with Eric Riley for the starting assignment at free safety vs. Louisville in season opener . . . this is a new slot for the talented sophomore . . . he was a runningback for the Seminoles last fall as a freshman, gaining 52 yards in 19 carries before being sidelined by a knee injury . . . with five of eight defensive backs who traveled completing their eligibility, Larry moved across the ball to help clear up the vacancy situation . . . in addition to his rushing statistics last fall, Larry also returned five kickoffs for 57 yards . . . his hometown is also the home for the University of Florida . . . born September 11, 1961.



HENRY, GARY—Strong Safety, 6-1, 190, Senior, Orlando, Fla.—after three seasons serving as the "nickel" back in Tribe defensive scheme the starting assignment should be his this fall . . . defensive staff last fall credited him with eight tackles, including a tackle for loss and quarterback sack . . . returns most of the Tribe punts—21 for 124 yards last season . . . didn't return a punt for score in 1980 compared to '79 campaign when he had two—one for 66 yards vs. Southern Mississippi and another for 57 vs. Miami . . . punt return career totals show 53 returns for 421 yards, an average of nearly eight yards per return . . . has recorded one career pass interception . . . because he now draws a starting assignment it's possible he will lose his punt return role this fall . . . born May 15, 1960.



HESTER, RON—Linebacker, 6-2, 220, Senior, Umatilla, Fla.—moves into a starting role this fall after being the Tribe's third linebacker last fall... this is a "big play artist"... despite just having a part-time role last fall he totaled 50 tackles, fifth best on the defense... included in those totals were three quarterback sacks, five fumble recoveries, two interceptions, three tackles for loss and two blocked kicks... scored 12 points for Seminoles last fall with a 50-yard interception return for touchdown vs. Louisville in season opener and 33-yard return of a blocked punt in Homecoming Game vs. Boston College... was thrust into a starting role for Pittsburgh game after Paul Piurowski was felled by an appendicitis attack... Hester's report card—13 tackles and two fumble recoveries—got him Associated Press Southeastern Lineman of the Week honors... the Pitt game was his first career start... he also started against Boston College before Piurowski returned... had played tight end before move to linebacker... another walk-on who worked his way into a starting role for the Tribe... linebacker coach Gene McDowell: "Ron has the potential to be an outstanding linebacker, maybe the best in the country... he has outstanding speed—pro scouts have timed him anywhere between 4.2 and 4.56 in the 40... his tools are as good as anyone we've had here in some time"... born May 26, 1959.



HOLIDAY, CLIFF—Wide Receiver, 5-8, 165, Junior, Newnan, Ga.—for start of fall drills he's listed behind Dennis McKinnon and Weegie Thompson at flanker post... through two years as a Seminole he has yet to find the statistical column... has good speed and many Seminole coaches figured he would return punts and kickoffs while wearing the Garnet and Gold—that opportunity hasn't come yet although he has performed those chores with the junior varsity... born March 9, 1961.



HOUSTON, JOHN—Linebacker, 6-0, 210, Sophomore, Atlanta, Ga.—one of several good young linebacking prospects... work with special teams last fall brought him a varsity letter... described as being a good competitor who's also mean and aggressive... will begin fall practice as a second team player with an opportunity to work himself into a starting role... insiders expect him to see considerably more playing time this fall than just special teams... no, he's not related to Rick Houston who played tight end for Seminoles last fall... born September 10, 1962.



JOHNSON, HARDIS—Wide Receiver, 6-0, 185, Sophomore, Tampa, Fla.—has become known as the big play receiver for Tribe... 38 career catches and 12 have been for touchdowns... best day of his career came December 6, 1980 against Florida where he caught seven, two for touchdowns... caught five touchdown passes in three regular season games televised last fall... among receivers with more than one catch he led team in average yards per catch, 17.4, compared to 18.0 as a freshman which was also tops for team... had nine TD receptions last fall, four off the school record of 13 set in 1972 by Barry Smith... with two years still remaining Hardis already ranks sixth among the career touchdown reception leaders for FSU... three times last season he caught two scoring passes—vs. Louisville, Virginia Tech and Florida... statistics of freshman and sophomore years would indicate he will be one of the south's leading receivers as a junior and senior... was absent from spring practice while devoting time to academic requirements... born February 11, 1961.

Year	Catches-Yards	TD	Pts.
1979	14-253	3	18
1980	24-419	9	54
TOTALS	38-672	12	72



JOHNSON, TONY—Wide Receiver, 6-2, 175, Sophomore, Dothan, Ala.—should benefit after sitting out the 1980 season as a red-shirt... many believe he can become a premier wide receiver for Seminoles since he has great speed and runs pass routes better than most... caught one pass as a freshman for 14 yards... he and Ricky Render both played at Wicksburg (Ala.) High School... he had a better-than-average spring practice catching several balls in traffic drawing the attention of the Tribe's offensive coaches... born November 4, 1959.



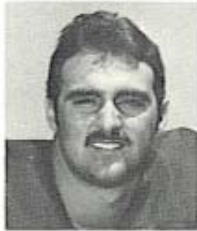
KERSHAW, DARRYL—Noseguard, 6-4, 240, Sophomore, Columbus, Ohio—noseguard or defensive tackle can be his position . . . played offense for the Tribe last fall and did make the travel squad . . . coaches would like him to have better speed but he could contribute to the defense this fall . . . he's very dedicated to being a good football player . . . part of the FSU-Columbus, Ohio, connection that includes graduated Ken Lanier and defensive tackle Alphonso Carreker . . . born April 12, 1962.



LEDBETTER, JEFF—Tight End, 6-4, 200, Sophomore, Clearwater, Fla.—no, this is not the same Jeff Ledbetter who plays for the FSU baseball team and is the school's second leading career home run hitter . . . this Jeff Ledbetter was a high school quarterback who has been converted since arriving at FSU . . . he made several important receptions during spring scrimmages, but with the Seminoles' roster showing three veterans at tight end this fall Jeff is a likely candidate for red-shirt year . . . born September 12, 1962.



LESTER, KEITH—Defensive Tackle, 6-4, 240, Sophomore, Clearwater, Fla.—depth at tight end allowed the coaching staff to move Keith during spring drills . . . earned varsity letter as a freshman while playing mostly with special teams . . . did make the travel squad . . . since he was moved in middle of spring he will be behind other defensive tackle candidates when fall drills begin . . . starts fall lacking the knowledge of what's expected from him at DT . . . staff indicates he could be a "surprise" before '81 season is completed . . . needs to become more aggressive . . . did not catch any passes in frosh season . . . born May 28, 1962.



LOWREY, KELLY—Defensive End, 6-2, 230, Sophomore, Lake City, Fla.—at his request he was moved from quarterback slot prior to spring practice and ended up here . . . was making excellent progress until he was injured in a motorcycle mishap and missed final three weeks of practice . . . will begin fall practice at the bottom of the depth chart . . . finished the '80 campaign as the Seminoles' second quarterback, playing in five games . . . he began '80 fall practice as the fourth team QB but worked his way into backup role . . . this is third season at FSU . . . was red-shirted as a freshman after sustaining knee injury in pre-season practice . . . born June 18, 1961.

Year	Att-Cmp	Int	Yds	TD	Rushes-Yds	Total "O"	Pts.
1980	10-6	2	66	1	1-1	67	6



MCCORMICK, TOM—Center, 6-2, 255, Sophomore, Panama City, Fla.—another walk-on story . . . he came to the Tribe without a scholarship in fall of '80 and his only duty was with scout and junior varsity teams . . . his scout team efforts drew the attention of the coaching staff and he was named defensive scout team MVP . . . this fall the coaching staff elected to try him at center and he worked his way into the backup role to Bob Merson . . . line coach George Henshaw says McCormick "has good quickness and is intelligent" . . . he made improvement each day of spring drills and impressed head coach Bobby Bowden enough that he will have a scholarship when fall practice begins . . . born August 26, 1962.



McKINNON, DENNIS—Wide Receiver, 6-1, 175, Junior, Miami, Fla.—was one of four wide receivers used extensively by coaches in '80 . . . had 12 catches for season, good for 195 yards and three touchdowns . . . did not have a reception in last three regular season games nor a touchdown in final eight . . . returned eight kickoffs for 141 yards and also saw limited duty bringing back punts . . . his 47-yard touchdown on a pass from Blair Williams against Louisville was the Seminoles' longest TD pass play of season . . . against Louisville he caught six for 113 yards, the best yards receiving total for any Seminole in '80 . . . if the right situations develop he could rival Hardis Johnson for "big play" assignments . . . speed makes him one of the most exciting players to ever wear Seminole uniform . . . born August 22, 1962.

Year	Catches-Yards	TD	KO-Yards	Pts.
1979	3-53	0	1-27	0
1980	12-195	3	8-141	18

TOTALS	15-248	3	9-168	18
---------------	--------	---	-------	----



McLEAN, JOHN—Defensive End, 6-2, 225, Sophomore, Clermont, Fla.—was one of the Tribe's most promising freshman last fall until he suffered a knee injury . . . that injury came in the 18-14 win at Nebraska and after surgery John missed remainder of season . . . he had made the Seminole travel squad and was assigned duty with all the special teams . . . coaches did award him a letter . . . totaled three tackles for his limited season . . . like his brother who also plays defensive end for Seminoles John is a intense player who relies on his football knowledge . . . coaching staff would like him to be quicker . . . born November 12, 1962.



McLEAN, SCOTT—Defensive End, 6-4, 240, Senior, Clermont, Fla.—was regarded as the Tribe's third defensive end last season, but saw just as much duty as the starters . . . has already earned three letters . . . missed all of spring practice while competing with Seminole track and field squad . . . considered by most to be the best athlete Tribe has at this position . . . a "technique" player . . . despite his sub role last fall he was still the sixth leading tackler with 58 hits that included three quarterback sacks and three tackles for loss . . . brother John is also on the roster and a candidate for defensive end post . . . until last fall most of his collegiate experience has been with the special teams . . . born December 16, 1960.



MACK, KIM—Cornerback, 6-0, 185, Sophomore, Port Orange, Fla.—when fall practice begins he will be the chief substitute for James Harris . . . Kim's learning process of the position was held back during the spring by an ankle injury that kept him away from the practice field for three weeks . . . his varsity experience this fall will probably come through duty with the special teams . . . will definitely have an opportunity to make travel squad . . . born October 29, 1961.



MATT, PRINCE—Linebacker, 5-10, 185, Sophomore, Bradenton, Fla.—this season will probably be a red-shirt campaign for Prince . . . that means he will work with the scout clubs and be able to learn more about the linebacking position . . . he was moved to linebacker in spring after a freshman campaign as a runningback . . . coaches have found that he's eager to play and has phenomenal quickness and reflexes . . . born July 8, 1962.



MERSON, BOB—Center, 6-2, 240, Junior, Seminole, Fla.—the starting assignment belongs to Bob at the start of fall practice . . . many felt he would have won a starting berth last fall until he was injured (knee) against East Carolina . . . his injury came just one play after starting center John Madden had been helped off the field with an ankle injury . . . offensive coordinator and line coach George Henshaw says: "Bob can be an outstanding center—an all-star candidate . . . he's stronger and quicker than the fellows we've had there the last two years . . . what really pleases us is that he's so quick" . . . Merson had the opportunity to improve himself during practice the last three years since he was either going against All-American Ron Simmons or James Gilbert, who will be the starting noseguard this fall . . . Merson is joined on the roster this fall by brother Scott, who graduated early from high school and participated in spring practice . . . Bob's FSU playing career began at guard . . . born August 3, 1960.



MITCHELL, TIM—Defensive Tackle, 6-3, 225, Sophomore, Miami, Fla.—more than likely this will be Tim's red-shirt season . . . he currently lacks the strength and size to compete at the varsity level . . . last season he was a starter for Seminole junior varsity that had 3-1 record . . . Miami Norland High School coach was Mike Fox, who was a part-time assistant with Seminoles last fall . . . born March 15, 1962.



MOWATT, ZEKE—Tight End, 6-4, 235, Junior, Wauchula, Fla.—after being shuffled between offense and defense as a freshman he has found a home at tight end . . . he alternated with Sam Childers as the starter here in '80 . . . season totals show four catches for 36 yards and one touchdown . . . the TD reception came in the Tribe's victory over Louisville . . . went through the final five regular season games without a reception . . . isn't considered in the same class with Childers for catching the ball, but most figure because of his size he's a better blocker . . . also drew special team duty last year . . . born March 5, 1961.

Year	Catches-Yards	TD	Pts.
1979	1-10	0	0
1980	4-36	1	6
<hr/>			
TOTALS	5-46	1	6



NICKRENZ, CHRIS—Offensive Tackle, 6-6, 250, Sophomore, Buffalo, N.Y.—after a crippling knee injury last fall while playing defense, Chris is back on offense . . . offense is where he started as a Seminole, but in the spring of 1980 the defensive coaches requested his services . . . they got it and Chris was scheduled for backup duty until the knee injury that took place before the opener . . . saw just minimal work during recent spring practice and will start fall behind Herbert Harp and Terry Widner at one tackle . . . showed as a freshman that he can play at the major college level . . . he had enough duty with special teams and offensive unit to letter . . . the '80 season will be regarded as a medical red shirt so Chris will have three more seasons of eligibility . . . born April 30, 1961.



PONDER, DAVID—Defensive Tackle, 6-3, 210, Sophomore, Cairo, Ga.—as a freshman made enough of an impression on the Tribe coaching staff to gain a berth on the special teams and slot with the travel squad . . . coaches want him to add weight since he's currently too light to play consistently inside . . . will start campaign as backup in defensive tackle slots and could also be used at noseguard to help James Gilbert . . . is ahead of other sophomores in Tribe program because he has gone through two spring practices . . . speed and strength are his assets . . . played high school football less than 50 miles from Tallahassee . . . born June 27, 1962.



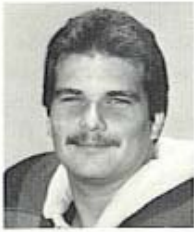
RENDER, RICKY—Offensive Guard, 6-5, 240, Sophomore, Ozark, Ala.—coming off a red-shirt season he's probably slated for backup work this season . . . played fullback in high school but was never tried there at FSU . . . first coaches experimented with him at defensive tackle before switching to offense . . . was injured last fall so couldn't take full advantage of red-shirting . . . coaches believe he needs to get stronger . . . hails from same high school as wide receiver Tony Johnson . . . born March 28, 1961.



RESTIVO, SAM—Center, 6-1, 225, Sophomore, Jamestown, N.Y.—unlike many players in spring who moved from offense to defense, Sam went the other way . . . is apparently ticketed to replace Trent Barnes as snapper for PATs, field goals and punts . . . Barnes, who has graduated, had the duty during the 1980 season and part of 1979 . . . Restivo, as a freshman, was used primarily at noseguard and with the special teams . . . he did earn a spot with the travel squad and had enough work to letter . . . was credited with two tackles . . . coming out of high school he was considered an outstanding linebacking prospect . . . born February 27, 1961.



RILEY, ERIC—Free Safety, 6-0, 170, Sophomore, Fort Myers, Fla.—will go into fall drills listed first team with Larry Harris at free safety . . . one of the two will draw the starting call vs. Louisville . . . a new position for Eric, who was a wide receiver for the Tribe last fall . . . saw limited action after breaking a bone in his hand during practice prior to first game . . . a high school quarterback he played role of Oklahoma's J. C. Watts in pre-Orange Bowl practices . . . blessed with outstanding speed he was a member of the Seminole track and field team during portion of spring . . . his spring progress was slowed by injury but he did show enough when practicing to show staff he can adapt to position . . . born August 15, 1962.



RIOPELLE, GERALD—Offensive Guard, 6-3, 245, Sophomore, Wyandotte, Mich.—if Seminoles continue their policy of red-shirt seasons for second-year linemen that will probably be Gerald's destiny for the upcoming campaign . . . starts fall practice listed behind Tom Brannon and Redus Coggin at split guard . . . only player on roster from Michigan . . . comes from the same hometown that gave FSU three-year starting defensive tackle Mark Macek . . . born August 6, 1962.



RODRIGUE, MARK—Defensive End, 6-2, 205, Senior, Tallahassee, Fla.—hometown is Fort Walton Beach where he played at Choctawhatchee High School for former Seminole QB Eddie Feely . . . father Ted played for the Seminoles and now resides in Tallahassee where he operates a motel . . . Mark saw his first varsity playing time last fall and lettered as a backup and special teams player . . . brother Mike is a wide receiver for University of Miami . . . knowledge of the position is a strong suit—he rarely makes a mental error that puts team in trouble . . . was a transfer into the FSU program and needed to sit out a season . . . played both the offensive and defensive line in high school . . . born November 20, 1958.



ROE, KEN—Linebacker, 6-1, 200, Sophomore, Cropwell, Ala.—called by position coach Gene McDowell "the most improved linebacker we had in spring practice" . . . will be a top candidate for starting assignment in season opener . . . made progress during the spring in areas of knowledge and poise . . . still needs to improve speed and leg strength to become a starter . . . more from McDowell: "Ken became a solid player during the spring . . . he executes the defense well, has total intensity, plays in high gear play after play, shows poise and leadership and loves to play football" . . . working his way to being close to a starting position hasn't been easy for Roe—he started the spring as the last linebacker on the depth chart ladder . . . born August 25, 1962.



RYAN, ERIC—Offensive Guard, 6-4, 255, Junior, Sarasota, Fla.—will begin fall practice as the first teamer at tight guard . . . operated in that role throughout spring practice . . . does have some varsity experience—he started for the Seminoles in their wins last fall over Nebraska and Pittsburgh . . . most of last season he was regarded as the third guard backing up both Lee Adams and Greg Futch . . . he helped own career by taking a red-shirt season which allowed him to practice and learn system . . . one of the youngest players to ever come to Seminoles . . . was just 17 when he came on campus . . . born December 30, 1960.



SIMS, ERNIE—Linebacker, 6-1, 215, Senior, Tampa, Fla.—is at a new position after four years (red-shirt included) as a runningback . . . switch came during spring practice and Ernie was making exceptional progress . . . coach Gene McDowell: "Ernie made as much progress in the spring as we could have expected . . . he has all the tools to be a great linebacker . . . he's tough and aggressive and has all the intangible personality traits we want for a linebacker" . . . the Tribe offensive staff was able to turn Ernie over to the defense because of the depth at fullback position . . . last season Sims rushed just eight times for 34 yards . . . some insiders believe that with the 29 practices before the opening game Ernie could improve enough to move into starting role . . . born August 12, 1958.

Year	Rushes-Yards	TD	Catches-Yards	TD	Pts.
1977	27- 94	0	2-(2)	0	0
1978	23-145	0	4-34	0	0
1980	8- 34	0	3-25	0	0
TOTALS	58-273	0	9-57	0	0



SIMS, MARK—Defensive Tackle, 6-3, 245, Junior, Bonifay, Fla.—returning to duty after two idle seasons . . . was red-shirted during '79 season and had academic problems last fall . . . will begin current campaign as backup for Alphonso Carreker . . . coaches believe he must produce for Tribe to have a good season on defense . . . had a slight knee injury during spring practice but was able to participate in spring game . . . born October 12, 1960.



SINGLETARY, ELLIS—Linebacker, 5-11, 200, Sophomore, Jasper, Fla.—a perfect example that in some players size doesn't matter . . . could be a very valuable member of the defensive corps if he can recover from missing last fall (red-shirt) and spring practice because of academic difficulty . . . totaled five tackles as a freshman . . . quickness and speed are his strong suits . . . in high school (Hamilton County) he was clocked at 9.7 in 100-yard dash and he has been timed in 4.6 for the 40 while at FSU . . . born September 26, 1960.



STOCKSTILL, RICK—Quarterback, 6-1, 185, Senior, Fernandina Beach, Fla.—started for the Tribe in all regular season games last fall plus Orange Bowl test against Oklahoma . . . won the starting assignment after he rode the bench for three seasons behind celebrated duo of Jimmy Jordan and Wally Woodham . . . Rick finished the campaign with a 60 percent completion ratio, hitting on 121 of 201 attempts . . . the completions went for 1,377 yards and 15 scores . . . just eight of the passes were intercepted . . . those passing stats helped Stockstill to an efficiency rating of 134.4, which tied him for 10th in individual statistics compiled by the NCAA . . . in Miami loss he completed 19 of 30 for 182 yards—all three totals were season highs . . . in Tribe's last quarter scoring drive vs. Hurricanes Rick was brilliant, completing seven of eight passes to push the Tribe into the end zone even though the drive was stalled by a 15-yard holding penalty . . . following the victory over Louisville Rick was named the Associated Press Southeastern Back of the Week after completing nine of 12 for 115 yards and four touchdowns . . . his 1980 season is remarkable when one remembers that he had thrown just eight passes previously in college competition . . . his starting assignment was never in doubt since before the 1979 regular season was completed head coach Bobby Bowden announced Stockstill was his quarterback of the future . . . Rick has more mobility than previous Tribe quarterbacks and for that reason the Seminole playbook does contain rollout pass plays . . . finished last season with minus yardage rushing, but in college quarterback sacks count against the players' individual rushing statistics . . . missed all scrimmages during '81 spring practice to rest an injured knee and also allow the coaching staff to search for a backup . . . brother Jeff is a wide receiver at Clemson and spent portion of summer on FSU campus working as a pass receiver for Rick . . . father Joel was Rick's head coach in high school . . . Rick will be the elder statesman of the Seminoles this fall, starting the season 24-years-old and celebrating a birthday on December 23.

Year	Att-Cmp	Int.	Yds.	TD	Rushes-Yards	Total '0'	TD	Pts.
1979	8-7	0	101	0	0-0	101	0	0
1980	201-121	8	1377	15	71-(95)	1282	2	12
TOTALS	209-128	8	1478	15	71-(95)	1383	2	12



TAYLOR, RICK—Quarterback, 6-1, 180, Sophomore, Port St. Joe, Fla.—challenged in spring for backup quarterback role, but isn't listed among the top three for start of fall practice . . . is probably a good candidate for red-shirt status . . . like Rick Stockstill and Bob Davis his father was Rick's high school head coach . . . Rick was tested during spring as the placekicker with Blair Williams and could be used there in fall if necessary . . . born July 28, 1962.



THOMPSON, GREG—Cornerback, 6-0, 180, Sophomore, Apopka, Fla.—made good progress during spring and will push Harvey Clayton for starting assignment . . . he's considered a "sleeper" by the Tribe staff . . . one of the quickest Seminoles . . . used his red-shirt season last fall so he has three seasons of eligibility remaining . . . much of his playing time this fall will probably come with the special units . . . born May 29, 1961.



THOMPSON, JIM—Offensive Guard, 6-6, 220, Sophomore, Midlothian, Va.—it was easy for the Seminoles to recruit this youngster—brother Weegie was already on the FSU roster . . . Jim didn't see varsity action last fall, playing with just the junior varsity, but he appears to be in the picture this fall as a backup for Eric Ryan at tight guard . . . Jim is also expected to be the backup for Sam Restivo on long snaps . . . the Tribe has two other brother combinations—the Colemans (Jerry and Mike) and Mersons (Scott and Bob) . . . Jim came to FSU as a center but was moved to take more advantage of his size . . . born March 30, 1962.



THOMPSON, WEEGIE—Wide Receiver, 6-6, 205, Sophomore, Midlothian, Va.—after two weeks of spring practice at quarterback he asked to be moved to wide receiver . . . this is his third year with FSU program, but he's just a sophomore in eligibility since he was red-shirted in '80 . . . coaches liked what they saw from Weegie at wide receiver during spring and some observers are already comparing him to Florida receiver Tyrone Young, who was also converted from quarterback position . . . Weegie has excellent speed for his size . . . he became interested in the Seminole football program while living in Pensacola, Fla., before moving to Virginia . . . brother Jim is a sophomore in Tribe football program . . . born March 21, 1961.



TURNER, BILLY—Defensive Back, 6-1, 185, Sophomore, Tampa, Fla.—came to Florida State to play football without a scholarship, but after a good spring practice he now has one . . . father Billy is the head football coach at Tampa Chamberlain High School and was line coach for University of Tampa when that school dropped its program . . . born September 23, 1962.



VOLTAPETTI, BARRY—Offensive Tackle, 6-7, 260, Senior, Miami, Fla.—this is his fifth campaign with the Garnet and Gold . . . will be used exclusively at tackle this fall after seeing some action in tight end slot last fall . . . Tribe coaches employed him as the second tight end in running situations . . . did catch one pass for 10 yards . . . his size makes him an outstanding pro prospect . . . red-shirt season was a bonus because it allowed him to mature on the football field and have an opportunity to practice every day against FSU's best defensive linemen . . . in tight running situations this fall you can expect FSU to try and pick up yardage behind Barry . . . hails from the same high school that gave FSU Bill Capece, FSU's outstanding placekicker last fall who was drafted by Houston Oilers . . . born August 30, 1959.



WHEELER, TOM—Tight End, 6-3, 210, Sophomore, Port Orange, Fla.—one of several quarterbacks in the '79 freshman class that have been converted to other positions . . . the group of switchers include Ken Burnett, Weegie Thompson and Kelly Lowrey . . . Tom was moved early in his freshman season and showed considerable promise at tight end while toiling with the junior varsity . . . had a good spring practice but was rusty after the long layoff . . . has an excellent set of 'soft' hands the type coaches want in receivers . . . born May 25, 1961.



WHITING, MICHAEL—Fullback, 6-2, 210, Senior, Largo, Fla.—returned to his natural position last fall after spending last portion of '79 campaign at tailback slot . . . could very well be the most under-rated member of the Seminole roster . . . in addition to being a good runner, he's also an outstanding pass catcher and blocker . . . rushed for an even 500 yards on 133 carries during the '80 regular season and now has career totals of 244 for 1,024 . . . he was the top pass receiver last season with 25 catches for 203 yards . . . the longest reception went for 43 yards, 20 yards longer than his best rush . . . needs just 15 more rushing yards to become 10th best on FSU career listing . . . has crossed 100-yard rushing barrier in a single game just once . . . against Florida in '79 where he gained 123 in 19 carries . . . best rushing totals last fall were 78 yards in 19 carries vs. Memphis State in ABC-TV regional game . . . born January 11, 1960.

Year	Rushes-Yards	TD	Catches-Yards	TD	Pts.
1978	2- 2	0	0- 0	0	0
1979	109-522	2	20-161	0	12
1980	133-500	6	25-203	0	36
TOTALS	244-1024	8	45-364	0	48



WIDNER, TERRY—Offensive Tackle, 6-4, 250, Sophomore, Donalsonville, Ga.—offensive coordinator George Henshaw calls Terry "the most improved lineman we had during spring practice" . . . his blocking improved tremendously during the 20 practice days and coaches were impressed with his one-on-one performance vs. Alphonso Carreker during Garnet vs. Gold game . . . still looking for his first varsity letter, he saw playing time as a freshman with the junior varsity . . . appears to have a backup role for '81 although with good early practices he could move into starting picture . . . born April 25, 1961.

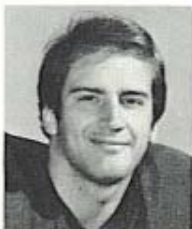


WILLIAMS, BLAIR—Quarterback, 6-1, 185, Junior, Tallahassee, Fla.—the winner in a four-way spring battle for the backup quarterback position . . . his No. 2 role was in doubt until spring game where he had a good performance in leading his team to victory . . . hails from the same high school (Leon) that gave the Seminoles Wally Woodham and Jimmy Jordan . . . current Seminole tight end Sam Childers comes from same high school and so does quarterback coach Billy Sexton . . . appeared in three games last fall, completing eight of 19 passes for 144 yards and three scores . . . was involved in Tribe's longest scoring pass of the season . . . 47 yards to Dennis McKinnon vs. Louisville . . . two of his three TD passes came vs. East Carolina . . . born March 26, 1961.

Year	Att-Cmp	Int.	Yards	TD	Rushes-Yards	Total "0"	Pts.	TD
1980	19-8	1	144	3	1- (7)	137	0	0



WILLIAMS, BRIAN—Linebacker, 6-1, 215, Sophomore, Winter Haven, Fla.—will start fall drills as a first team linebacker . . . earned that assignment after a good spring practice . . . after spring practice his position coach Gene McDowell noted Brian had made progress in three areas: (1) hustle, (2) knowledge of the game, and (3) poise in game situations . . . was one of eight freshmen who lettered last season for the Seminoles . . . his freshman defensive stats included four solo tackles and 10 assists . . . was also credited with a fumble recovery . . . much of his time was spent on special team duty . . . born February 26, 1962.



WILLIAMS, PHIL—Wide Receiver, 5-10, 170, Senior, Warner Robins, Ga.—a walk-on who made it . . . was never recruited out of high school and came to the FSU coaching staff asking for a chance to play . . . after an idle freshman season he came back as a sophomore and junior to share starting assignments . . . does not have outstanding speed but does run excellent routes to get open . . . was the fourth leading receiver last fall for the Tribe with 14 catches for 195 yards and a pair of TDs . . . also caught 14 as a sophomore for 211 yards when he was named first team Academic All-American . . . has caught 34 balls in three seasons . . . he was the primary receiver on the two-point conversion pass that failed in last season's 10-9 loss to Miami . . . hails from the same hometown that gave FSU two-time consensus All-American noseguard Ron Simmons, who was drafted last winter by Cleveland Browns . . . born August 25, 1959.

Year	Catches-Yards	TD
1978	6- 72	0
1979	14-211	0
1980	14-195	2

TOTALS	34-478	2
--------	--------	---



WILLIAMS, RICKY—Tailback, 5-10, 170, Junior, Griffin, Ga.—after having a good spring the top tailback assignment will be his . . . was the backup in the position last fall and did receive starting assignment against Boston College where he rushed for 109 yards in 12 carries . . . that is the only 100-yard rushing effort thus far in his Seminole career . . . finished as the Seminoles' third leading ground gainer with 383 yards on 73 carries, an average of 5.2 yards per carry, the best average among the top four ball carriers . . . offense now appears to be his permanent home after he was tested briefly last fall in the defensive backfield . . . ran for 99 yards in the Orange Bowl game vs. Oklahoma on 19 carries . . . was Georgia's 4-A Back of the Year as a senior . . . born March 28, 1961.

Year	Rushes-Yards	TD	Catches-Yards	TD	Pts.
1978	34- 31	1	7- 64	1	12
1980	73-383	1	2- 40	0	6

TOTALS	107-414	2	9-104	1	18
--------	---------	---	-------	---	----



YOUNG, TOMMY—Linebacker, 6-0, 195, Junior, Lake City, Fla.—is at a new position after starting his career at FSU as a fullback and tailback . . . was moved to linebacker in spring to help create depth at position . . . coaches felt he was making good progress until he suffered a dislocated elbow in weekly scrimmage . . . because of the injury he will start fall practice at the bottom of the depth chart and needs to work his way up . . . injuries have hindered Tommy throughout his Seminole career . . . he never had the opportunity to rush or catch a pass while working with the offense . . . born August 23, 1960.

1981 National Football Signees

BILLY ALLEN—Runningback, 6-0, 198, Cleveland, Ohio . . . was the surprise of spring practice . . . joined the Tribe as a walk-on but has scholarship now after working his way to a second team berth for fall practice . . . an Air Force veteran who played service ball in Europe who caught eye of Bobby Bowden when Seminole mentor was speaking at clinics there last summer . . . never recruited out of high school . . . if he can cure fumble problems in fall expect him to contribute.

GREG ALLEN, 5-11, 181, RB, Milton, Fla. (Milton) . . . extremely strong and powerful runner for his size . . . excellent speed (4.5) and agility . . . AAA all-state and All-South selection . . . rushed for over 2,000 yards as a senior . . .

TRACY ASHLEY, 5-10, 180, DB, Eastman, Ga. (Dodge Co.) . . . versatile all-stater as a defensive back but also played quarterback . . . solid 4.6 speed and great range in the secondary . . . hard hitter . . .

LENNY CHAVERS, 5-11, 245, NG, Deland, Fla. (Deland) . . . state heavy weight weight-lifting champion . . . has benched pressed over 400 pounds . . . 4.8 speed and good quickness in close . . . second team AAAA all-state . . . high school wrestler as well . . .

J. D. DOWELL, 6-3, 241, OL, Tampa, Fla. (Plant) . . . great technique player from a solid high school program . . . very intelligent and works hard . . . played some as a linebacker . . . second team AAAA all-state . . . should play early at FSU . . .

JOHN FEAGIN, 5-11, 175, DB, Tallahassee, Fla. (Leon) . . . hometown product from a great program that has produced nothing but starters at FSU . . . solid two-way performer as defensive back and wide receiver . . . AAA all-stater . . .

TIM FLASHER, 6-5, 210, OL, Hollywood, Fla. (South Broward) . . . good growth potential . . . strong blocker and hard worker . . . honorable mention all-state . . . FSU coaches say they will bring him along slowly . . .

DARYL GRAY, 6-2, 217, DE, Lake Wales, Fla. (Lake Wales) . . . outstanding all-around athlete . . . AAA second team all-state . . . very active player with good range . . .

JESSIE HESTER, 6-0, 175, WR, Belle Glade, Fla. (Belle Glade) . . . superior athlete . . . all-state and All-South selection . . . outstanding speed (9.6) and moves . . . should play immediately . . . great kick returner . . . his signing gave FSU an outstanding recruiting year . . .

MIKE HUTTO, 6-2, 220, DL, Marianna, Fla. (Marianna) . . . solid and versatile performer . . . has played fullback, linebacker and defensive line during his high school career . . . AAA all-state as a defensive lineman . . .

CEDRIC JONES, 5-10, 184, RB, Valdosta, Ga. (Lowndes Co.) . . . great potential . . . top back in the South last year . . . ran for 2,800 yards and 38 TDs for state AAAA champs . . . has run 9.4 in the 100 . . . all-state, All-South and All-American selection . . .

ROCKY KINSEY, 5-9, 170, DB, Madison, Fla. (Madison) . . . two way performer as runningback and defensive back . . . injured most of 1980 but still made third team all-state . . . ran 4.5 in football camp . . . great competitor . . .

BRIAN McCRARY, 5-10, 178, DB, Germantown, Tenn. (Germantown) . . . two-way player . . . UPI all-state first team and AP honorable mention . . . rushed for almost 2,000 yards in 1980 . . . also All-South . . . state Golden Gloves boxing champ in his weight class . . .

SCOTT MERSON, 6-0, 197, LB, Seminole, Fla. (Seminole) . . . brother of FSU starting center Bob Merson . . . strong and physical player . . . has been clocked at 10.0 in the 100 . . .

ORSON MOBLEY, 6-6, 240, DL/TE, Miami, Fla. (Palmetto) . . . played only one year of high school football and played well . . . All-Dade county and second team AAAA all-state . . . versatile athlete with tremendous potential . . . all-county in baseball and basketball . . .

RON MOORE, 6-0, 188, FB/LB, Tampa, Fla. (Jesuit) . . . well-rounded athlete . . . has played both runningback and defensive back . . . intelligent . . . although not highly heralded, FSU coaches think he will develop . . .

DAN MORRIS, 6-3, 238, OL, Lake Brantley, Fla. (Lake Brantley) . . . good solid line prospect . . . all-county selection as well as all-state mention . . . smart, hardworking and dedicated athlete . . .

STEVE NICKLAUS, 6-2, 180, WR, Palm Beach, Fla. (Benjamin) . . . solid all-around athlete . . . son of pro golfer Jack Nicklaus . . . consistent receiver with excellent hands and ability to get open . . . all-state class A . . .

PETE PANTON, 6-2, 220, LB, Venice, Fla. (Venice) . . . tough, determined and aggressive defender . . . played every minute of every game on a great team . . . AAA all-stater as a linebacker and played fullback also . . .

STEVE PLAYER, 6-0, 180, WR, Valdosta, Ga. (Lowndes Co.) . . . great hands and moves . . . ability to get open and catch in a crowd . . . all-state and All-South . . . member of Georgia AAAA state championship team . . .

QUINTON REED, 5-10, 175, RB/DB, Panama City, Fla. (Mosely) . . . two-way standout on a fine team . . . rushed for over 1,500 yards . . . great quickness and agility . . . potential on both offense and defense . . .

MIKE RENDINA, 5-9, 170, K, Pompano Beach, Fla. (Pompano Beach) ... premier kicking prospect in America ... punted for a 43 yard average ... has kicked a 54 yard FG and puts all kickoffs into the end zone ... AAAA all-state, All-South ... Parade Magazine All-American ... first time a kicker has been chosen on the Parade team ...

DAVE ROBERTS, 6-2, 225, C, Plantation, Fla. (Plantation) ... strong and fundamentally sound player at a position that needs help ... second team AAAA all-state selection ... intelligent and has good work habits ...

BRUCE SHOEMAKER, 6-0, 175, DB, Fort Lauderdale, Fla. (Stranahan) ... outstanding defender with a reputation for making big plays and big hits ... runs a 4.6 in the 40 yard dash ... AAAA all-state ...

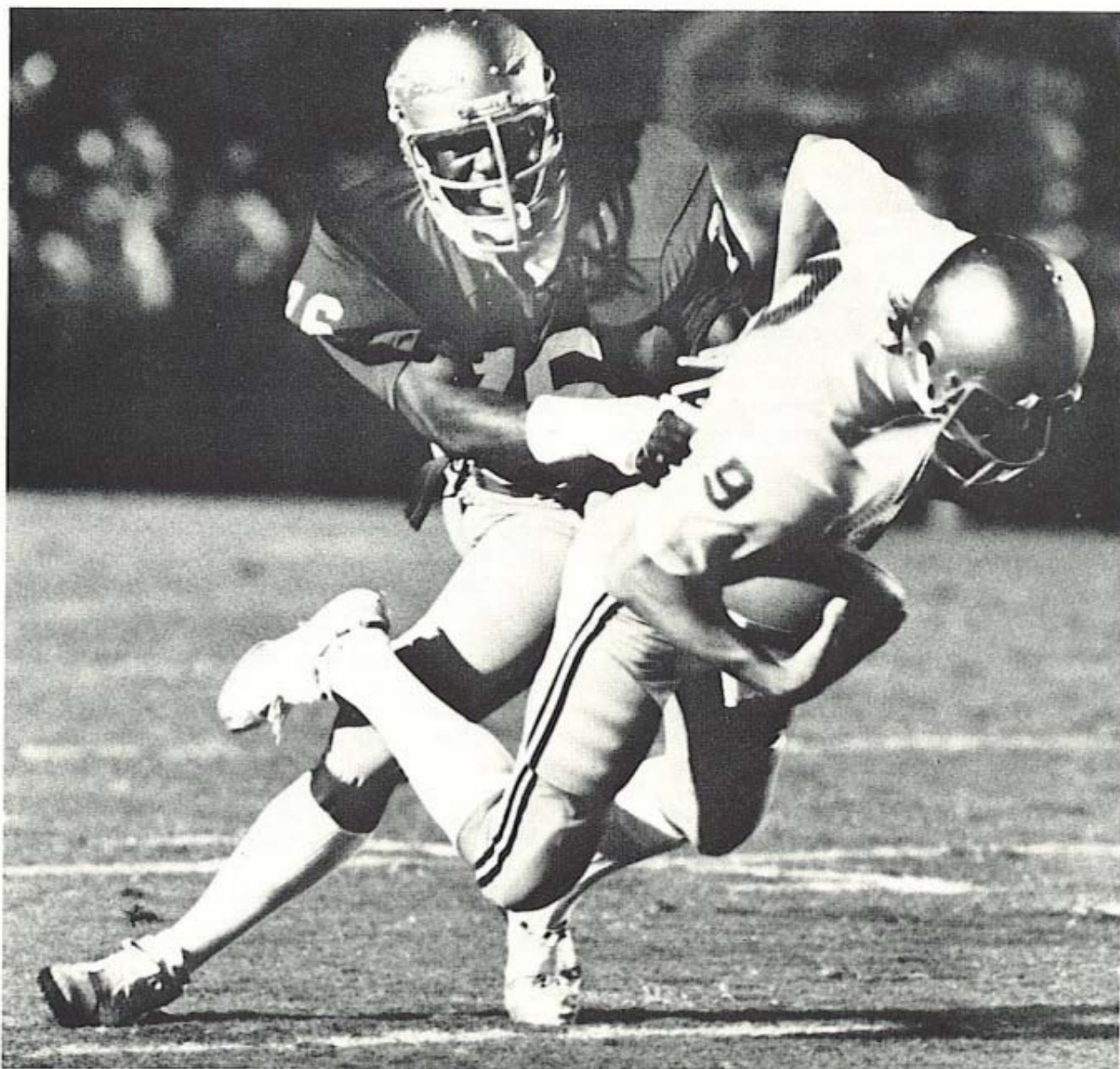
TONY SMITH, 5-9, 170, RB, Miami, Fla. (South Ridge) ... Dade County's all-time rushing leader ... AAAA all-state, All-South and All-American selection ... great quickness and "feel" for running the ball ...

HENRY TAYLOR, 5-11, 210, FB/LB, Milledgeville, Ga. (Baldwin Co.) ... excellent two-way performer ... strong runner and an even better hitter on the defensive side of the ball ... runs 4.7 in the 40 ...

ERIC THOMAS, 6-1, 185, DB, Valdosta, Ga. (Lowndes Co.) ... great combination of thrower and runner ... led team to state AAAA championship ... all-state and All-South selection ... attended spring practice at FSU ... one of three players from Lowndes signed by the Seminoles ...

MIKE WHIGHAM, 5-11, 180, DB, Miramar, Fla. (Miramar) ... very quick and tough competitor ... played both defensive back and runningback ... runs 4.6 in the 40 ... second team AAAA all-state ...

PAT WOOLFORK, 6-2, 245, DL, Vero Beach, Fla. (Vero Beach) ... strong and quick defender ... coached by former FSU player ... runs 4.8 ... a good weight man in the state track events ... AAAA all-stater ...



Florida State University 1981 Alphabetical Roster

NO.	NAME	POS.	HT.	WT.	CL. STATUS	DOB	HOMETOWN	HIGH SCHOOL	H. S. COACH
	Billy Allen	RB	6-0	198	Fr.	9/25/58	Cleveland, Ohio	Glenville	James Hubbard
	Greg Allen	RB	5-10	185	Fr.	6/04/63	Milton, Fla.	Milton	Hurley Manning
	Tracy Ashley	DB	5-10	185	Fr.	1/24/62	Eastman, Ga.	Dodge	Larry Green
88	Jeff Bowden	WR	5-8	170	Jr.	12/30/59	Tallahassee, Fla.	Lincoln	Jack Gaskins
75	Tom Brannon	OT	6-3	250	Sr.-2 VL	5/22/59	Albany, Ga.	Riverview Academy	Dale Dover
45	Roger Brownlee	DE	6-3	215	So.-1 VL	9/17/61	Doctor's Inlet, Fla.	Orange Park	Wink Criswell
20	Ken Burnett	FB	5-11	200	Jr.-1 VL	1/29/61	Brandon, Fla.	Brandon	Tom Schlarbaum
90	Allen Dale Campbell	DE	6-4	235	So.	4/16/62	Perry, Fla.	Taylor County	Elmer Coker
76	Alphonso Carreker	DT	6-6	235	So.-1 VL	5/25/62	Columbus, Ohio	Marion Franklin	Joe Hensel
	Quinton Chavers	DL	5-11	240	Fr.	7/29/62	Deland, Fla.	Deland	Don Stowers
84	Sam Childers	TE	6-2	195	Sr.-3 VL	12/02/59	Tallahassee, Fla.	Leon	Gene Cox
24	Harvey Clayton	DB	5-10	170	Jr.-1 VL	4/04/61	Florida City, Fla.	South Dade	Sam Miller
66	Redus Coggin	OG	6-3	230	Jr.-1 VL	7/28/60	Chipley, Fla.	Chipley	Walt Henders
	Jerry Coleman	C	6-3	235	Jr.-1 VL	1/17/61	Savannah, Ga.	Savannah County	B. J. Saunders
78	Mike Coleman	OT	6-4	250	Sr.	9/20/59	Savannah, Ga.	Savannah County	B. J. Saunders
74	Danny Collier	OT	6-4	250	Jr.-1 VL	8/16/60	Eau Gallie, Fla.	Eau Gallie	Larry Canaday
64	Jarvis Coursey	DE	6-4	210	Sr.-3 VL	11/01/59	Gray, Ga.	Jonesco Academy	Charlie Smith
10	Bob Davis	QB	6-4	190	So.	2/17/62	Warner Robins, Ga.	Warner Robins	Robert Davis
32	Darish Davis	FB	5-11	200	Jr.	11/12/58	Augusta, Ga.	Richard Academy	Paul Inglett
91	John Diamantas	NG	6-3	230	Jr.	1/27/60	Merritt Island, Fla.	Merritt Island	Gerald Odum
	J. D. Dowell	OL	6-3	235	Fr.	11/28/62	Tampa, Fla.	Plant	Roland Acosta
	John Feagin	DB	6-0	160	Fr.	3/10/63	Tallahassee, Fla.	Leon	Gene Cox
68	Jeff Field	OG	6-1	225	Sr.	3/21/59	Albany, Ga.	Westover	Johnny Palmer
	Tim Flasher	OL	6-5	200	Fr.	10/22/63	Hollywood, Fla.	South Broward	Ray Buscemi
98	Brad Fojtik	DE	6-4	215	So.	9/17/61	Auburdale, Fla.	Sante Fe	Earl Bramlett
79	Garry Futch	DT	6-2	240	Sr.-2 VL	5/12/60	Ocala, Fla.	Forest	Brent Hall
51	James Gilbert	NG	6-0	250	Sr.-3 VL	2/02/59	Miami, Fla.	Carroll City	Jerry Anderson
	Darryl Gray	DE	6-2	215	Fr.	8/04/63	Lake Wales, Fla.	Lake Wales	Bill Whaler
97	Herbert Harp	DT	6-3	270	So.	11/14/61	Winter Garden, Fla.	West Orange	Ron Lopsonzski
30	Larry Harris	DB	6-1	200	So.-1 VL	9/11/61	Gainesville, Fla.	Eastside	Harrell Harrison
33	James Harris	DB	6-0	185	Sr.-2 VL	7/11/60	Gainesville, Fla.	Bucholz	William McGowen
40	Gary Henry	DB	6-1	190	Sr.-3 VL	5/15/60	Orlando, Fla.	Oak Ridge	Paul Adams
	Jessie Hester	WR	6-0	175	Fr.	1/21/63	Belle Glade, Fla.	Glades Central	Ben McCoy
83	Ron Hester	LB	6-2	220	Sr.-1 VL	5/26/59	Umatilla, Fla.	Umatilla	Tom Comer
36	Cliff Holiday	WR	5-8	165	Jr.	3/09/61	Newnan, Ga.	Newnan	Max Bass
55	John Houston	LB	6-0	210	So.-1 VL	9/10/62	Atlanta, Ga.	Columbia	Ray Bonner
	Mike Hutto	DL	6-2	220	Fr.	7/27/63	Marianna, Fla.	Marianna	Rick Smith
22	Hardis Johnson	WR	6-0	170	Jr.-2 VL	2/11/61	Tampa, Fla.	Robinson	Jim Hadley
82	Tony Johnson	WR	6-2	175	So.	11/04/59	Dothan, Ala.	Wicksburg	Tom Vickers
	Cedric Jones	RB	5-9	185	Fr.	2/18/63	Valdosta, Ga.	Lowdnes County	Joe Wilson
	Darryl Kershaw	DL	6-4	240	So.	4/14/62	Columbus, Ohio	Columbus West	Gary Vanderson
	Rocky Kinsey	DB	5-9	165	Fr.	2/09/63	Madison, Fla.	Madison	Frank Yanosky
	Jeff Ledbetter	TE	6-4	200	So.	9/12/62	Clearwater, Fla.	Clearwater	John Nicely
	Keith Lester	DL	6-4	240	So.-1 VL	5/28/62	Clearwater, Fla.	Clearwater	John Nicely
12	Kelly Lowrey	DE	6-2	230	So.	6/18/61	Lake City, Fla.	Columbia	Bobby Simmons
48	Prince Matt	LB	5-10	185	So.	7/08/62	Bradenton, Fla.	Manatee	Bob James
13	Kim Mack	DB	6-0	185	So.	10/29/61	Port Orange, Fla.	Spruce Creek	Terry Manfredi
	Robert McCrary	DB	5-11	175	Fr.	5/13/62	Germantown, Tenn.	Germantown	Ken Netherland
92	Tom McCormick	C	6-2	225	So.	8/26/62	Panama City, Fla.	Bay High	John Cobb
6	Dennis McKinnon	WR	6-1	175	Jr.-1 VL	8/22/61	Miami, Fla.	South Miami	Dave Mosure
	John McLean	DE	6-2	225	So.-1 VL	10/12/62	Clermont, Fla.	Clermont	Quincy Clements
60	Scott McLean	DE	6-4	240	Sr.-3 VL	12/16/60	Clermont, Fla.	Clermont	Charles Foster
71	Bob Merson	C	6-2	240	Jr.-1 VL	8/03/60	Seminole, Fla.	Seminole	Fred Robinson
54	Scott Merson	LB	6-0	195	Fr.	11/27/62	Seminole, Fla.	Seminole	Fred Robinson
	Pat Milligan	DB	6-0	170	So.	1/17/62	Ft. Lauderdale, Fla.	Ft. Lauderdale	Carl Schneider
57	Tim Mitchell	DL	6-3	225	So.	3/15/62	Miami, Fla.	Norland	Mike Fox
	Orson Mobley	TE	6-6	240	Fr.	3/09/63	Miami, Fla.	Palmetto	Jessee Davis
	Ron Moore	LB	6-0	185	Fr.	2/03/63	Tampa, Fla.	Jesuit	Bill Minahan
	Daniel Morris	OL	6-3	240	Fr.	8/02/63	Lake Brantley, Fla.	Lake Brantley	David Tullis
81	Zeke Mowatt	TE	6-4	235	Jr.-1 VL	3/05/61	Wauchula, Fla.	Hardee County	Bob Martin
	Steve Nicklaus	WR	6-2	185	Fr.	4/11/63	N. Palm Beach, Fla.	Benjamin	Mickey Neal
77	Chris Nickrenz	OL	6-6	250	So.-1 VL	4/30/61	Buffalo, NY	St. Joseph	Tom Reddington
	Pete Panton	LB	6-2	220	Fr.	11/28/63	Laurel, Fla.	Venice	Jim Powell
	Steve Player	WR	6-2	180	Fr.	9/28/62	Valdosta, Ga.	Lowdnes County	Joe Wilson
85	David Ponder	DT	6-3	210	So.-1 VL	6/27/62	Cairo, Ga.	Cairo	Jack Johnson

NO.	NAME	POS.	HT.	WT.	CL.	STATUS	DOB	HOMETOWN	HIGH SCHOOL	H. S. COACH
	Quinton Reed	RB	5-10	175		Fr.	8/29/62	Panama City, Fla.	Mosley	George Dean
99	Ricky Render	OG	6-5	240		So.	3/28/61	Ozark, Ala.	Wicksburg	Tom Vickers
	Mike Rendina	KS	5-9	165		Fr.	8/09/63	Pompano Beach, Fla.	Pompano Beach	Donnell Sanders
52	Sam Restivo	C	6-1	225		So.-1 VL	2/27/61	Jamestown, NY	Jamestown	Joe Sangillippo
8	Eric Riley	DB	6-0	170		So.	8/15/62	Ft. Myers, Fla.	Ft. Myers	Sam Sirianni
	Gerald Riopelle	OG	6-3	245		So.	8/06/62	Wyandotte, Mich.	Roosevelt	Doak Markley
	David Roberts	C	6-2	225		Fr.	9/11/62	Plantation, Fla.	Plantation	Don Gatewood
46	Mark Rodrigue	DE	6-2	205		Sr.-1 VL	11/20/58	Ft. Walton, Fla.	Chactawhatchee	John Feley
	Ken Roe	LB	6-1	200		So.	8/25/62	Cropwell, Ala.	Pell City	Brian Ellard
62	Eric Ryan	OT	6-4	255		Jr.-1 VL	12/30/60	Sarasota, Fla.	Sarasota	Charlie Cleland
	Bruce Shoemaker	DB	6-0	175		Fr.	2/19/63	Ft. Lauderdale, Fla.	Stranahan	Rick Perry
31	Ernie Sims	LB	6-1	215		Sr.-3 VL	8/12/58	Tampa, Fla.	Jefferson	Clarence White
94	Mark Sims	DT	6-3	245		Jr.	10/12/60	Bonifay, Fla.	Holmes County	Al Simmons
80	Ellis Singletary	LB	5-11	200		So.	9/26/60	Jasper, Fla.	Hamilton County	Coy Whitney
	Tony Smith	RB	5-11	175		Fr.	3/10/63	Miami, Fla.	South Ridge	Don Soldingier
3	Rohn Stark	P	6-3	195		Sr.-3 VL	6/04/59	Fifty Lakes, Minn.	Pine River	Richard Rezanka
11	Rick Stockstill	QB	6-1	185		Sr.-2 VL	12/23/57	Fernandina Beach, Fla.	Fernandina	Joel Stockstill
	Henry Taylor	LB	5-11	210		Fr.	9/24/63	Milledgeville, Ga.	Baldwin County	Ricky Smith
7	Rick Taylor	QB	6-1	180		So.	7/28/62	Port St. Joe, Fla.	Port St. Joe	Wayne Taylor
1	Eric Thomas	QB	6-0	185		Fr.	6/05/62	Valdosta, Ga.	Lowdnes County	Joe Wilson
9	Greg Thompson	DB	6-0	180		So.	5/29/61	Apopka, Fla.	Apopka	Chip Gierke
	Jim Thompson	OG	6-6	220		So.	3/30/62	Midlothian, Va.	Midlothian	Gabe Hicks
18	Weegie Thompson	WR	6-6	205		So.	3/21/61	Midlothian, Va.	Midlothian	Gabe Hicks
	Billy Turner	DB	6-1	185		So.	9/28/62	Tampa, Fla.	Chamberlain	Bill Turner
73	Barry Voltapetti	OL	6-7	260		Jr.-1VL	8/30/59	Miami, Fla.	Chaminade	Vince Zappone
89	Tom Wheeler	TE	6-3	210		So.	5/25/61	Port Orange, Fla.	Spruce Creek	Terry Manfredi
	Michael Whigham	DB	5-11	180		Fr.	1/27/63	Miramir, Fla.	Miramir	Joe Buchinski
27	Michael Whiting	FB	6-2	210		Sr.-3VL	1/11/60	Largo, Fla.	Largo	Don Stowers
95	Terry Widner	OT	6-4	250		So.	4/25/61	Donaldsonville, Ga.	Seminole County	Marcus Holley
14	Blair Williams	QB	6-1	185		Jr.-1VL	4/26/61	Tallahassee, Fla.	Leon	Gene Cox
47	Brian Williams	LB	6-1	215		So.-1VL	2/26/62	Winter Haven, Fla.	Winter Haven	Tom Atwell
87	Phil Williams	WR	5-10	170		Sr.-3VL	8/25/59	Warner Robins, Ga.	Warner Robins	Robert Davis
44	Ricky Williams	TB	5-10	170		Jr.-2VL	3/28/61	Griffin, Ga.	Griffin	Lloyd Bohannon
	Pat Woolfork	DL	6-2	240		Fr.	9/15/63	Vero Beach, Fla.	Vero Beach	Billy Livings
	Tommy Young	LB	6-0	195		Jr.	8/23/60	Lake City, Fla.	Columbia	Bobby Simmons

1981 Numerical Roster

No.	Name	No.	Name	No.	Name
1	Eric Thomas	46	Mark Rodrigue	84	Sam Childers
3	Rohn Stark	47	Brian Williams	85	David Ponder
6	Dennis McKinnon	48	Prince Matt	87	Phil Williams
7	Rick Taylor	51	James Gilbert	88	Jeff Bowden
8	Eric Riley	52	Sam Restivo	89	Tom Wheeler
9	Greg Thompson	54	Scott Merson	90	Allen Dale Campbell
10	Bob Davis	55	John Houston	91	John Diamantas
11	Rick Stockstill	57	Tim Mitchell	92	Tom McCormick
12	Kelly Lowrey	60	Scott McLean	94	Mark Sims
13	Kim Mack	62	Eric Ryan	95	Terry Widner
14	Blair Williams	64	Jarvis Coursey	97	Herbert Harp
18	Weegie Thompson	66	Redus Coggin	98	Brad Fojtik
20	Ken Burnett	68	Jeff Field	99	Ricky Render
22	Hardis Johnson	71	Bob Merson		
24	Harvey Clayton	73	Barry Voltapetti		
27	Michael Whiting	74	Danny Collier		
30	Larry Harris	75	Tom Brannon		
31	Ernie Sims	76	Alphonso Carreker		
32	Darish Davis	77	Chris Nickrenz		
33	James Harris	78	Mike Coleman		
36	Cliff Holiday	79	Garry Futch		
40	Gary Henry	80	Ellis Singletary		
41	Tommy Young	81	Zeke Mowatt		
44	Ricky Williams	82	Tony Johnson		
45	Roger Brownlee	83	Ron Hester		

Pronunciation Guide

Sam Childers CHILL-ders
 Jarvis Coursey COOR-see
 Brad Fojtik FOY-tick
 Chris Nickrenz NICK-runs
 Terry Widner WIDE-ner