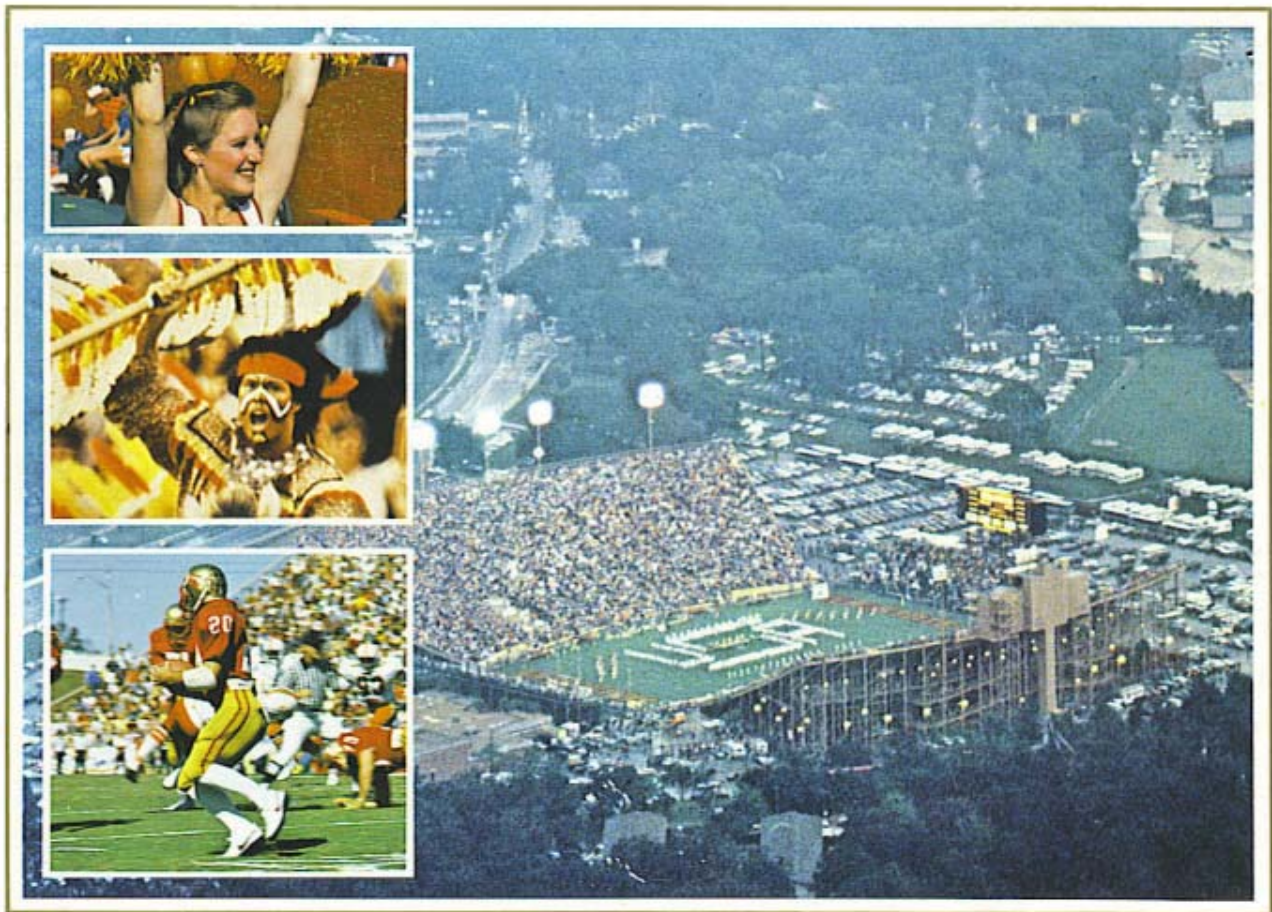


FLORIDA STATE UNIVERSITY

1982 FOOTBALL MEDIA GUIDE



1982 Seminole Schedule

Date	Opponent	Site	Local Time	Series
Sept. 4	CINCINNATI	TALLAHASSEE	7:00 EDT	3- 0-0
Sept. 18	PITTSBURGH	TALLAHASSEE	7:00 EDT	3- 3-0
Sept. 25	Southern Mississippi	Hattiesburg, Miss.	7:00 CDT	8- 7-1
Oct. 2	Ohio State	Columbus, Ohio	1:30 EDT	1- 0-0
Oct. 9	*SOUTHERN ILLINOIS	TALLAHASSEE	7:00 EDT	0- 0-0
Oct. 16	EAST CAROLINA	TALLAHASSEE	7:00 EDT	1- 0-0
Oct. 30	Miami (Fla.)	Miami, Fla.	4:00 EDT	11-14-0
Nov. 6	South Carolina	Columbia, S.C.	1:30 EST	7- 2-0
Nov. 13	LOUISVILLE	TALLAHASSEE	7:00 EST	6- 1-0
Nov. 20	Louisiana State	Baton Rouge, La.	7:30 CST	3- 1-0
Dec. 4	FLORIDA	TALLAHASSEE	7:00 EST	6-17-1

*Homecoming

1981 Results & Attendance

Won 6, Lost 5



FSU 17, Louisville 0	*50,735
FSU 10, Memphis State 5	*51,454
Nebraska 34, FSU 14	76,289
FSU 36, Ohio State 27	87,158
FSU 19, Notre Dame 13	59,075
Pittsburgh 42, FSU 14	52,112
FSU 38, Louisiana State 14	74,816
FSU 56, Western Carolina 31	*52,721
Miami 27, FSU 19	*52,685
Southern Mississippi 58, FSU 14	*51,819
Florida 35, FSU 3	64,437

*Seminole Home Game



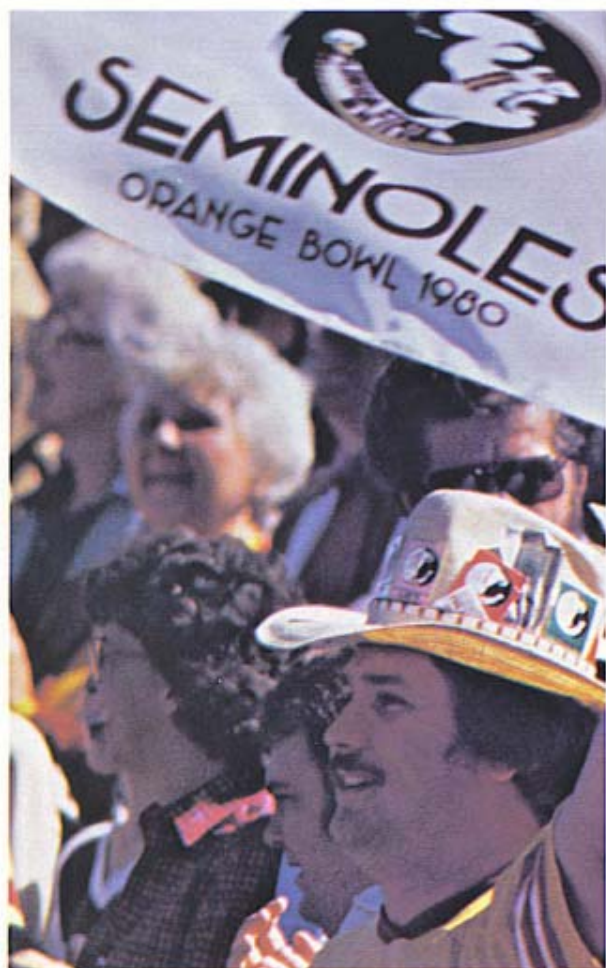
Quick Facts about Florida State

President:	Dr. Bernard F. Slinger	Nickname:	Seminoles
Location:	Tallahassee, Fla. 32306	Colors:	Garnet and Gold
Enrollment:	22,500	Conference:	Independent
Athletic Director:	C.W. "Hootie" Ingram Phone: 904/644-2793	Stadium:	Doak Campbell (55,246)
Athletic Board Chairman:	Dr. James P. Jones	Last Year:	6-5
Head Football Coach:	Bobby Bowden Phone: 904/644-2775	All-Time Record:	200-149-12
Sports Information Director:	Wayne Hogan Phone: 904/644-4038	Bowden FSU Record:	50-19 (Six Seasons)
		Bowden Career Record:	123-51-0 (15 Seasons)

Future Schedules

1983	1984	1985
Sept. 3—EAST CAROLINA	Sept. 1—EAST CAROLINA	Sept. 7—TULANE
10—@ LSU	15—@ Kansas	14—@ Nebraska
17—@ Tulane	22—@ Miami	21—CINCINNATI
24—LOUISVILLE	29—RICHMOND	28—KANSAS
Oct. 1—@ Auburn	Oct. 6—@ Memphis State	Oct. 12—@ Auburn
8—@ Pittsburgh	13—AUBURN	19—SOUTH CAROLINA
15—CINCINNATI	20—TULANE	26—@ North Carolina
29—@ Arizona State	Nov. 3—@ Arizona State	Nov. 2—MIAMI
Nov. 5—SOUTH CAROLINA	10—@ South Carolina	9—RICHMOND
12—MIAMI	17—TEXAS TECH	16—MEMPHIS STATE
26—@ Florida	Dec. 1—FLORIDA	30—@ Florida

TABLE OF CONTENTS



The 1982 Florida State Football Media Guide was prepared by the Seminole sports information staff. Assistant Director Lisa Morton served as editor for the publication while contributors were former sports information director Mark Carlson, assistant director Glenn Greenspan and assistant Dan Pearson. Contributing photographers include Pat Borelli, Tom Cawthon, Karl Hook, Bucky Parrish, Courtland Richards, Ron Smith and the University Photography Dept. Proofreading was by Judy Greve and Kim Phillips. This guide was designed and produced by Eric Lee and Associates, Inc. and printed by Rinaldi Printing Company of Tampa, Fla. Copies are available to the public at a cost of \$5.00.

Media Information	2
Travel Itinerary	2

Outlook

Can Wide Open Style Send Seminoles Back to the Top?	5
The Offense	8
The Defense	9
Pre-Fall Depth Chart	10

The Coaching Staff

Bobby Bowden	12
Assistant Coaches	14

1982 Seminoles

Player's Biographies	20
Alphabetical Roster	37
Numerical Roster	37
Geographic Distribution	gate fold

1982 Opponents

Team by Team	40
FSU vs. 1982 Opponents	51
Seminole Sports Network	52

1981 In Review

Game Stories	54
Season Statistics	58
Seminole Honor Roll	60

The Record Book

Individual and Team Records ..	62	Year By Year Results	80
Opponent Records	76	Bowl Games in Review	83
Homecoming Games.....	76	All-Time Lettermen	87
Coaches and Captains	77	FSU All-Americans	90
Record Against All Opponents ..	78	All-South Independents	91
Coaches Cumulative Records ..	78	Bob Crenshaw Award	92
		Seminoles on TV	92

The University

This is Florida State	95
Administrative Staff	96
Athletic Directory	101
Doak Campbell Stadium	102

Media Information

Florida State University's 1982 football guide has been designed for use by the media and Seminole fans. Any questions not covered in this brochure can be addressed to the FSU Sports Information Office.

Additional information, such as feature material and photos, will be made available to any accredited member of the media upon request.

All requests for working press, radio, television, photographer, or scouting credentials should be made to the Florida State Sports Information Director at least one week prior to the game.

Credentials: Space for the working press, radio, television and scouts is allocated by the Sports Information Office. All requests for working credentials should be directed to this office in writing at least one week prior to the game. Florida State's press box is located on the west side of Doak Campbell Stadium with elevator service to all three levels. Media representatives and scouts should enter through the Press Gate, located north of the elevator.

Policies: Working press will be admitted to the press deck, where approximately 90 seats are available. Credentials are issued by FSU according to the following criteria:

- (A) Local newspapers, wire services, national publications, newspapers from opponent's area and student newspapers from FSU and opponent's school.
- (B) Other daily newspapers with preference to those which regularly cover FSU.
- (C) Scouts.
- (D) Non-daily newspapers, with preference to those which have regularly covered FSU.
- (E) Radio and television personnel not actually broadcasting, but considered reporting (seats will be provided in the stands).

Seminole Travel Itinerary

SOUTHERN MISSISSIPPI: Fly. Depart Tallahassee via Air Florida charter, Friday September 24, at 2:00 p.m. EDT, arriving Hattiesburg at 2:00 p.m. CDT. Team Headquarters—Holiday Inn, US Highway 49, North, Hattiesburg (601/268-2170). Return Saturday, September 25, via Air Florida charter at 11:00 p.m. CDT, arriving at Tallahassee at 1:00 a.m. EDT.

OHIO STATE: Fly. Depart Tallahassee via Eastern charter Friday, October 1, at 1:00 p.m. EDT, arriving Columbus 2:30 p.m. EDT. Team headquarters—Arlington Arms of Columbus, 1335 Dublin Road, Columbus (614/486-0211). Return Saturday, October 2, via Eastern charter at 6:00 p.m. EDT, arriving Tallahassee 7:30 p.m. EDT.



Wayne Hogan—Sports Information Director

Wayne Hogan, a Tallahassee native and a graduate of Florida State, is the new Seminole Sports Information Director. Hogan, 26, was named SID on June 30 and replaces Mark Carlson, who resigned to take a position with CBS Sports.

Assistant Sports Information Director at the University of New Mexico for the past two years, Hogan was also an assistant in the FSU Sports Information office from 1975-79 during his undergraduate years.

While at FSU, Hogan served as engineer for the Seminole Sports Network football and basketball broadcasts and also was play-by-play announcer for baseball.

Prior to moving to New Mexico, Hogan worked as Director of Public Relations and Broadcasting for two minor league baseball teams—the Charleston Charlies of the Houston organization and the Los Angeles Dodgers' Albuquerque Dukes.

Radio-TV: The first level of the press box is designated for use by radio and television broadcasting crews, home and visiting coaches and stadium operations. Each booth is fully enclosed and sound-proof.

Photographers: Only accredited photographers will be issued credentials. The photo deck, or roof, of the press box offers an unobstructed view for TV, movie and still cameras. Darkroom space is also available in the stadium. Photographers will be allowed on the sidelines only after checking in at the press box and obtaining a special field photo pass. Only free-lance photographers shooting for the FSU Sports Information Office will be issued credentials.

Services: Play-by-play, half-time and complete statistics will be provided. When possible, post game comments from the coaches and players will be available. Refreshments are available on all decks.

Telecopiers: An independent telecopier service will be available for each game with a nominal fee being charged. Please contact the Sports Information Office in advance. If you plan to use your own telecopier and phone, please have them placed in the telecopier area of the press deck.

Telephone: Telephone service should be secured directly through Centel Telephone Company of Florida, Tallahassee (904/222-2236). Have them contact the Sports Information Office for location.

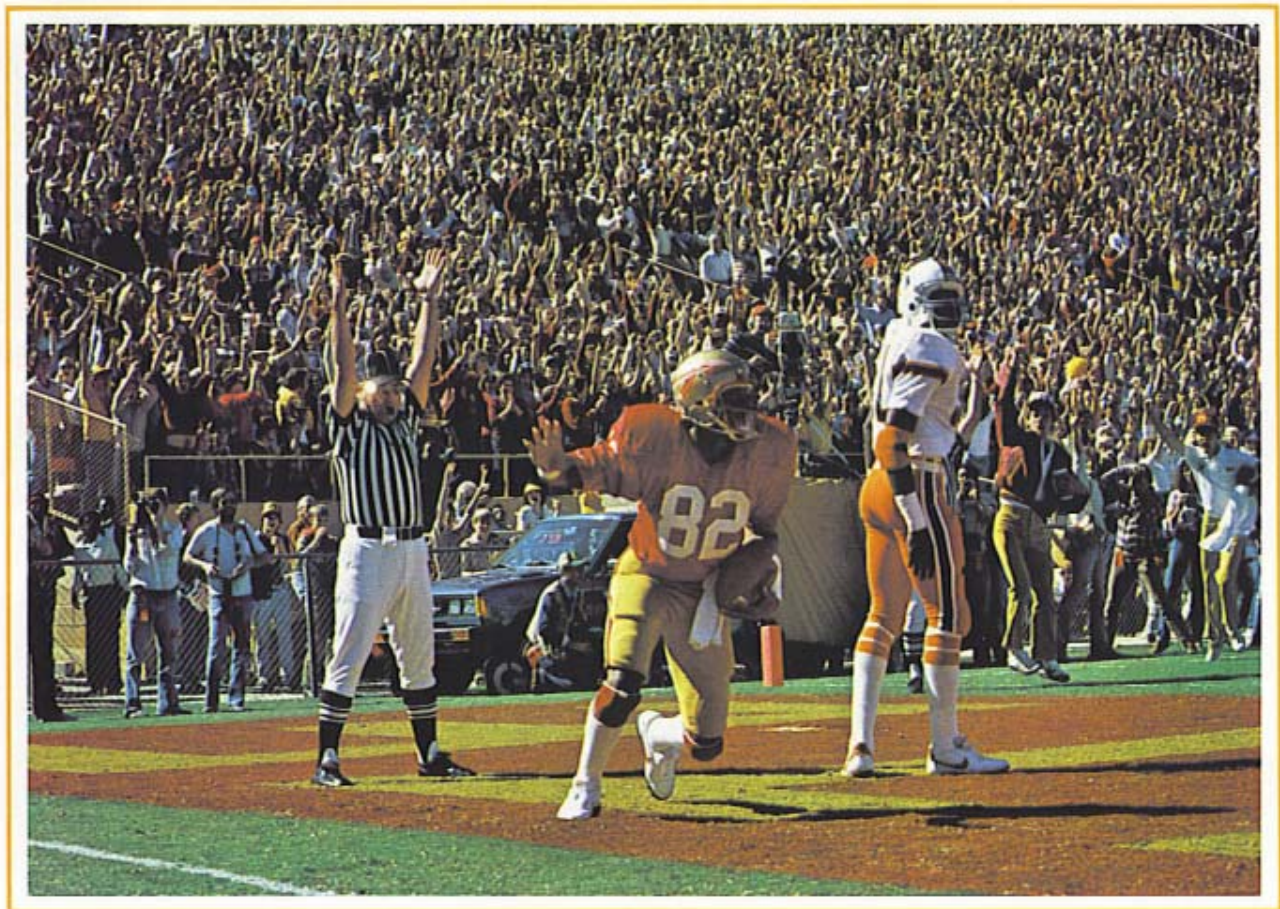
More Information: Anyone with questions or desiring assistance can contact the Sports Information Office, Florida State University, Tallahassee, Florida 32306, Phone 904/644-4038.

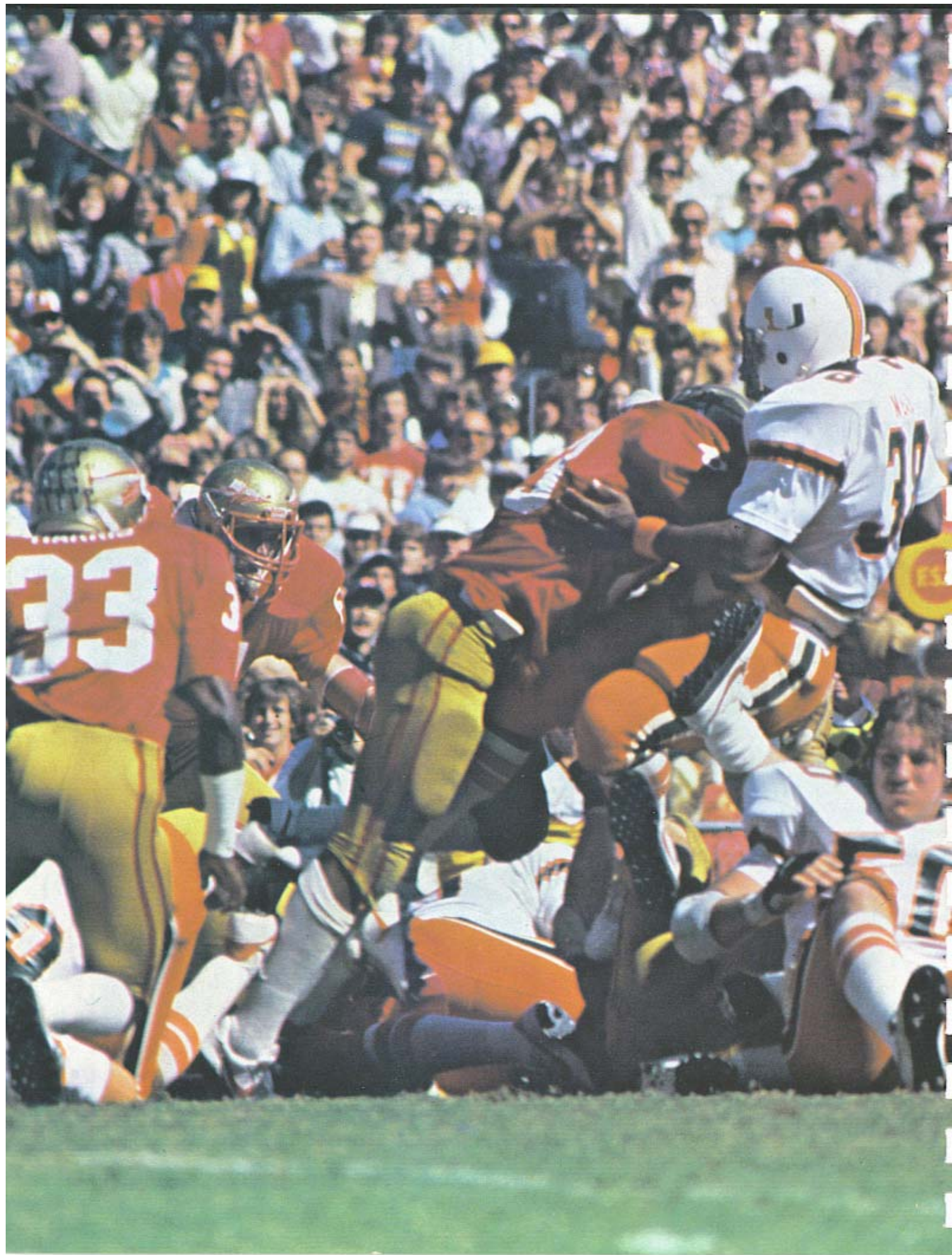
MIAMI: Fly. Depart Tallahassee via Eastern charter Friday, October 29, at 2:00 p.m. EDT, arriving Miami at 3:00 p.m. EDT. Team headquarters—Holiday Inn Airport Lakes, 1101 NW 57th Avenue, Miami (305/266-0000). Return Saturday, October 30, via Eastern charter at 8:00 p.m. EDT, arriving Tallahassee 9:00 p.m. EDT.

SOUTH CAROLINA: Fly. Depart Tallahassee via Air Florida charter Friday, November 5, at 2:00 p.m. EST, arriving Columbia at 3:00 p.m. EST. Team headquarters—Quality Inn, 1029 Briargate Circle, Columbia (803/772-0270). Return Saturday, November 6, via Air Florida charter at 6:00 p.m. EST, arriving Tallahassee 7:00 p.m. EST.

LSU: Fly. Depart Tallahassee via Air Florida charter Friday, November 19, at 2:00 p.m. EST, arriving Baton Rouge at 2:15 p.m. CST. Team headquarters—Bellemont Motor Hotel, 7370 Airline Highway, Baton Rouge (504/357-8612). Return Saturday, November 20, via Air Florida charter at 11:30 p.m. CST, arriving Tallahassee 1:45 a.m. EST.

1982 OUTLOOK





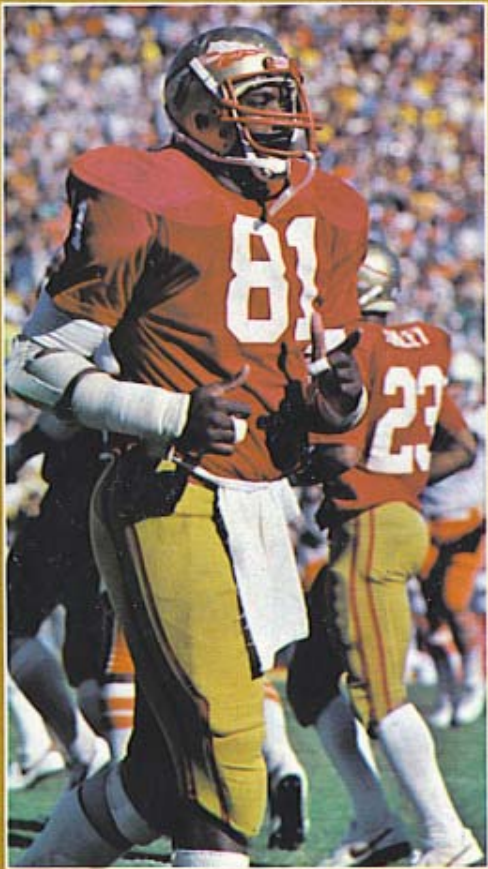
"I'm honest when I say we'll have to throw the ball more than any year since I've been here. We'll have to gamble, though that's not my style. But those are the things it's gonna take to win."

—Bobby Bowden

1982
SEMINOLE
SCHEDULE



DATE	OPPONENT	SITE
Sept. 4	Cincinnati	Tallahassee
Sept. 18	Pittsburgh	Tallahassee
Sept. 25	So. Mississippi	Hattiesburg
Oct. 2	Ohio State	Columbus
Oct. 9	So. Illinois	Tallahassee
Oct. 16	East Carolina	Tallahassee
Oct. 30	Miami	Miami
Nov. 6	So. Carolina	Columbia
Nov. 13	Louisville	Tallahassee
Nov. 20	Louisiana St.	Baton Rouge
Dec. 4	Florida	Tallahassee



Can Wide Open Style Send Seminoles Back to the Top?

1982 provides Florida State head football coach Bobby Bowden, his staff, and players with a different sort of challenge. In the two seasons prior to 1981, the Seminoles had combined for a 21-3 record, consecutive Orange Bowl appearances and back-to-back finishes in the Top 10.

Many thought following the first eight games of last season the Tribe had an opportunity to duplicate some of those feats. Certainly with a 6-2 record a major bowl invitation wasn't out of the question and with a good showing in the post-season the Tribe would have a very good chance of finishing again in the Top 10.





But, then disaster struck with three consecutive losses to close the season. The Seminoles spent the holidays at home and it wasn't a pleasant feeling.

Thus, Bowden & Company are now faced with the challenge of reversing the closing three games of last season. Unfortunately, though, there are many question marks concerning the Seminoles of '82.

Among the questions of immediate importance are:

- (1) Will the defense again return to its form of the two Orange Bowl seasons?
- (2) Is there an adequate replacement for the graduated Rick Stockstill at quarterback?
- (3) Can help be found in both the offensive and defensive lines where the "numbers" game is frightening?

Bowden spent much of his summer trying to find the answers to those concerns and others. He is worried about the upcoming campaign, but also realizes "rebuilding" is a part of college football and with the exception of just a few collegiate football schools everyone is going to go through a "down" period.

"It's a four-year cycle," says Bowden. "You build up to a peak, your kids graduate, and then you start again. You build, they graduate, you start again. And in the process, you go through different stages. You might have a couple of very productive years, but you always know that lean year is gonna come, too."

The Seminole mentor, who is in his seventh campaign with the Seminoles, compares his program with the likes of the other two Division I-A programs in Florida. He uses a circle for explaining his theories.

"See, right now, Miami's way up here (at the top)," Bowden explains. "And, Florida is on the way to the top; they're coming up this front side of the circle. But we're rollin' down the back side right now, and we gotta make that turn again. It might be '83 before we can get

ourselves headin' back up toward the top; we've got a lot of climbing to do.

"But I'm an optimist. I've gotta figure that somehow, something good is gonna happen this year. I don't know how, but I feel like it will."

Certainly Bowden has already built the reputation of being able to turn a program around. He did that in his first season with the Seminoles when he took a team that had won just four games in the previous three years and won five while finishing 5-6. There hasn't been a losing season at FSU since.

"It's a four-year cycle," says Bowden. "You build up to a peak, your kids graduate, and then you start again. You build, they graduate, you start again. And in the process, you go through different stages. You might have a couple of very productive years, but you always know that lean year is gonna come, too."

The early prognosis for the 1982 Seminoles is that this will be a team of tremendous offensive skills. It's expected that FSU will throw the ball more than it has in any of Bowden's previous six seasons. That, combined with an outstanding running attack that will feature tailbacks Ricky Williams and Greg Allen, who are both capable of rushing for 1,000 yards in a season, should mean a lot of points.

"I think our offense will be improved, that we will have more breakaway and big-play capability than we have ever had," Bowden says. "One big reason will be a

quarterback with a stronger arm."

Who will be the quarterback? That has been the most asked question of Seminole followers since the close of spring practice. More than likely that's a question which won't be answered until opening night.

"Right now we've got 'em listed in order as Blair Williams, Eric Thomas and Kelly Lowrey," Bowden says. "They're still in a pack, and we got three more weeks of practice."

"I feel like the first two have a slight edge over Kelly, but he came along real good in the spring. I thought Blair and Kelly really improved, and Eric has it all ahead of him."

"I look upon all of this as a positive thing, not a negative one."

No matter who finally wins the quarterback derby, that individual will have outstanding specialty players to work with. In addition to the running backs, there is an outstanding group of receivers returning. Three of those receivers (Dennis McKinnon, Tony Johnson and Jessie Hester) who are returning, combined to catch 50 passes for 735 yards and eight touchdowns last season.

Offensively the trouble spot will exist in the trenches. Starters return at nearly every position, but the potential starting unit from tackle to tackle never had a good opportunity because of injuries to work together during spring practice.

Still the major question mark involving this football team still revolves around the defensive unit. When fall practice begins, just one player (Harvey Clayton) will have been involved in the defensive scheme for four consecutive seasons.

Who will be the quarterback? That has been the most asked question of Seminole followers since the close of spring practice. More than likely that's a question which won't be answered until opening night.

"Defense is a question mark," Bowden candidly admits. "Several linemen did not come through in the spring like we had anticipated. We are behind in this area."

"The defensive coaches are definitely having trouble. This time a year ago, the defense had four of five starters returning along the line. This year, it's just the opposite."

"We'll have very few seniors on that defense. It's going to be predominantly sophomores and juniors. We'll probably be fighting a battle every game, scratchin' and clawin' for our lives defensively until we get these guys some experience."

The FSU coaching staff will be looking for the performers and not potential in the fall. Whoever wants the job the most, whoever hits the hardest, runs the fastest, and gives 100 percent will make the starting unit.

"We're looking for people who'll look the other team smack in the eye and go after them," Bowden says. "We need some surprises. Maybe it will come."



OFFENSE

WIDE RECEIVERS—The roster here is deep, talent laden and experienced. At the start of fall practice the starting assignments will fall to Weegie Thompson and Tony Johnson, but that won't mean a great deal since the coaching staff likes to alternate its receivers. Backups will include senior Dennis McKinnon, who will also be considered a starter, and sophomore Jessie Hester. McKinnon was the Tribe's second leading receiver last year with 28 catches for 377 yards and four touchdowns. Johnson caught 13 for 207 and three scores. Thompson was the major surprise of the spring for FSU coaches, earning the 'most improved' trophy. This is only his second year at the position, but he showed last fall and during the most recent spring drills that he's capable of making the big play. In varsity competition last year, he caught two for 73 yards. Hester came to FSU with an outstanding reputation last fall, but sustained a hamstring injury early and never fully recovered. He still managed to catch nine passes for 151 yards and a single score. Among the top four returning wide receivers, Hester is the game breaker. Others who could see action here are head coach Bobby Bowden's son, Jeff, and Steve Nicklaus. Bowden is a senior and Nicklaus a sophomore.

TIGHT END—Zeke Mowatt and Tom Wheeler give the Tribe an excellent combination here. Mowatt will be seeing considerable playing time for the third consecutive year. In the last two, he shared starting duties with the graduated Sam Childers. Last year Mowatt, considered an outstanding blocker, did catch 13 passes for 123 yards. Wheeler saw limited duty with the offense last fall, but showed during the spring he has the abilities to be an outstanding receiver. Wheeler lettered last season mostly for his specialty team work. Also in the picture is huge (6-6, 250 pounds) Orson Mobley, who apparently has found a place on offense after some defensive duty last year with the junior varsity.

INTERIOR LINE—Anchors here will be center Tom McCormick, who won an Associated Press All-South Independent first team berth last year, and guard Bob Merson. Both saw considerable duty last year with guard Ricky Render, a starter late in the season when injuries took their toll. The tackle positions are wide open and the possibility is strong that the two players drawing the starting call vs. Cincinnati will be competing at the varsity level for the first time ever. Sophomore Jim Thompson, brother of wide receiver Weegie, and Terry Widner, a junior, will start fall practice with the first unit. Thompson was red-shirted last season while Widner has played only junior varsity. Coaches are hoping that Eric Ryan, a starter last year at tackle can rebound after a poor spring to regain a starting slot. This area more than any other will certainly undergo numerous changes before the first game. It's even possible that a talented freshman could step in here, although Ken Lanier was the only freshman lineman who started for the Seminoles in the last six years.

QUARTERBACK—Prior to the start of spring practice this was a major area of concern. There were five candidates for the vacant starting assignment that had been held for two seasons by Rick Stockstill. In fact, this is the first time since 1977 the Tribe hasn't known the identity of its starting QB prior to spring practice. The field of five has been narrowed to senior Blair Williams, junior Kelly Lowrey and sophomore Eric Thomas. Williams has a very slight advantage over Thomas for the starting assignment entering fall practice. Williams is the most experienced of the three but he has just limited playing time, throwing just 61 passes last season for 31 completions and 468 yards. Thomas has yet to take a snap in varsity competition, but he did lead the Seminole junior varsity to a 4-0 record last fall.

TAILBACK—No other position on the Seminole football team has the depth that exists here. Senior Ricky Williams completed the spring practice with the first team and sophomore Greg Allen was second. That would seem like a natural progression to most until one realizes that Williams ran for 354 yards on 79 carries last fall, a 4.5 yard average compared to Allen's 888 on 139, a 6.4 yard average per tote. Williams had the starting assignment last season until he was felled by an injury. The job then went to Allen, who rushed for 202 in his first starting assignment at LSU, and followed that with a 322-yard effort the next week against Western Carolina to set an NCAA all-time freshman single game mark. The Tribe also can use Billy Allen and Tony Smith here. Allen ran for 222 yards last season as a freshman while Smith was riding the bench with an injury. Smith did have several outstanding spring scrimmages.

FULLBACK—Dependable and consistent Michael Whiting has graduated after serving here for two years. Senior Ken Burnett, who has been the backup, now gets the starting nod. Burnett isn't a spectacular player but he always manages to get the job completed. Last season he carried 21 times for 109 yards. Possibilities to back up here include transfer Manny Carballo, converted tailback Cedric Jones and incoming freshman Horace Wilmot, who will benefit from participating in spring practice with the Seminoles.



DEFENSE

ENDS—When spring practice began, most Tribe observers felt these two spots would fall to returnees Allen Dale Campbell and John McLean, who occupied backup roles last season. That didn't happen, however. Starting fall practice freshman Garth Jax will be at one post and the other will belong to sophomore Darryl Gray. Jax joined the Seminoles last winter after graduating early from high school while Gray was a junior varsity player last year. They both were regarded among the hardest workers the Seminoles had in spring practice. Campbell, who was used as the "third" defensive end last fall and saw considerable playing time, is listed as Gray's backup while converted linebackers Brian Williams and John Houston are pushing Jax. McLean has been moved to defensive tackle.

TACKLES—Veterans Alphonso Carreker and David Ponder are the mainstays along the forward wall. Carreker was a starter throughout last season and completed the campaign with 52 tackles, including three quarterback sacks. Ponder was the "swing" player here and although he had just 16 tackles, saw considerable playing time. McLean was moved here to help shore up what is a critical depth situation. There isn't a player behind either Carreker or Ponder with previous varsity playing time at the position. McLean could perform the "third tackle" role like Ponder did last season when Garry Futch was starting with Carreker. Others who will receive work here include freshman John Powell, who has the advantage of graduating from high school last winter and going through spring practice, sophomore Mike Hutto and veteran senior Mark Sims, who has been plagued throughout his career by injuries.

NOSEGUARDS—One of the most critical areas of the defense the coaches were not pleased with what took place here during the spring. Several moves will probably take place prior to fall practice. Included in the switches will probably be the move of offensive lineman Pete Panton to this slot. Sophomore Lenny Chavers was the backup last fall and did start against Florida when James Gilbert was injured. Also competing here is freshman Stan Gavin, who has been away from football for several years after graduating from high school in 1977.

LINEBACKERS—Two positions exist here and three players who saw starting duty last fall are returning. Heading the list is junior Ken Roe who the coaches called "our best" after spring practice. He was the fourth leading tackler last fall with 88 hits, including three quarterback sacks. Also back is Tommy Young, who finished the season with 97 tackles after getting his first start in the fourth game of the season against Ohio State where he had 16 tackles. He followed the next week with a similar number against Notre Dame and after both games was named the Associated Press Southeastern Lineman of the Week. The third

returnee is sophomore Henry Taylor, who started the final game of the season against Florida. Taylor had 32 tackles in spot duty last season. Roe is the only member of the trio who begins fall drills listed with the first team. The other spot will belong to sophomore Scott Merson, who was probably the major surprise of spring practice. Also in the picture here is converted defensive back Kim Mack.

CORNERBACK—Veteran Harvey Clayton, who led the team in interceptions with five last fall, returns and has the distinction of being the most senior member of the defensive unit. With the exception of Carreker, he's the only player who started in all 11 games last fall. Secondary coach Jack Stanton ranks Clayton right with the current ex-Seminoles Bobby Butler and Bobby Jackson, who now occupy starting assignments in the pros with Atlanta and the New York Jets, respectively. The other corner slot will probably go to senior Warren Hanna, who was regarded as one of the most improved defensive backs in the spring. A junior college transfer, he was a speciality team participant last fall. Also scheduled for duty here are sophomore Rocky Kinsey, the second fastest player on the squad in the 40, and converted wide receiver Cliff Holiday.

SAFETIES—The most experienced area of the defensive unit. Larry Harris, a starter last year at strong safety, returns and the weak safety slot presently has Gary Henry in a backup role. Two years ago Henry was the "nickle" back in the Tribe's defensive scheme. He wasn't a member of the squad last season. Sophomore Brian McCrary is listed just ahead of Henry on the fall depth chart after an outstanding spring practice. Also slated for work here is junior Pat Milligan, a walk-on two years ago, who earned a scholarship last year and even started early in the season.

KICKING GAME—The Tribe is seeking a punter for the first time in four seasons. Rohn Stark, who will be wearing the uniform of the Baltimore Colts this season, is gone after punting for a 46.0 average last season and 42.3 in his career. No clear-cut replacement was found during spring practice although the coaching staff tested quarterback Blair Williams and placekicker Mike Rendina. A strong possibility exists that the spot will go to a walk-on. If a walk-on doesn't come through, Rendina will get the call. This will be the second season for Rendina to handle the kickoff and placement assignments. He was the Tribe's leading scorer last fall with 52 points, connecting on 25 of 27 PAT attempts and nine of 15 field goals. His longest field goal was a 52-yard effort in the Seminoles' 36-27 upset victory at Ohio State. A number of players could be used in return duty. Greg Allen and Billy Allen each returned kickoffs last season for touchdowns. The punt return duties last year went to Cedric Jones and he will probably get the call again this fall.

PRE-FALL DEPTH CHART

Offense

SE—Weegie Thompson	(Jr.)*	Jessie Hester	(So.)*	Jeff Bowden	(Sr.)
QT—Jim Thompson	(So.)	Brad Fojtik	(Jr.)	Dan Morris	(So.)
QG—Ricky Render	(Jr.)*	Gerald Riopelle	(So.)		
C—Tom McCormick	(Jr.)*	Sam Restivo	(Jr.)*	Ron Moore	(So.)
SG—Bob Merson	(Sr.)**	J.D. Dowell	(So.)	David Roberts	(So.)
ST—Terry Widner	(Jr.)	Eric Ryan	(Sr.)**		
TE—Zeke Mowatt	(Sr.)**	Tom Wheeler	(Jr.)	Orson Mobley	(So.)
QB—Blair Williams	(Sr.)**	Eric Thomas	(So.)	Kelly Lowrey	(Jr.)*
FB—Ken Burnett	(Sr.)**	Manny Carballo	(Sr.)	Cedric Jones	(So.)*
TB—Ricky Williams	(Sr.)***	Greg Allen	(So.)*	Tony Smith	(Fr.)
FL—Tony Johnson	(Jr.)*	Dennis McKinnon	(Sr.)**	Steve Nicklaus	(So.)

Defense

E—Garth Jax	(Fr.)	John Houston	(So.)	Brian Williams	(So.)
T—David Ponder	(Jr.)**	Mike Hutto	(So.)	John Powell	(Fr.)
LB—Ken Roe	(Jr.)*	Henry Taylor	(So.)*	Tripp Wallace	(Jr.)
NG—Lenny Chavers	(So.)*	Stan Gavin	(Fr.)	Pete Panton	(So.)
LB—Scott Merson	(So.)	Tommy Young	(Sr.)*	Kim Mack	(Jr.)
T—Alphonso Carreker	(Jr.)**	John McLean	(Jr.)**	Mark Sims	(Sr.)
E—Darryl Gray	(So.)	Allen Dale Campbell	(Jr.)*		
CB—Harvey Clayton	(Sr.)**	Rocky Kinsey	(Fr.)		
SS—Larry Harris	(Jr.)**	Pat Milligan	(Jr.)*	Tracy Ashley	(So.)*
WS—Brian McCrary	(So.)	Gary Henry	(Sr.)***	Joe Wessel	(Jr.)
C—Warren Hanna	(Sr.)*	Cliff Holiday	(Jr.)	Lee Paige	(Sr.)

Lettermen Lost (15)

Tom Brannon (3), Sam Childers (4), Jarvis Coursey (4), Garry Futch (3), James Harris (3), Ron Hester (2), James Gilbert (4), Scott McLean (3), Mark Rodrigue (2), Ernie Sims (4), Rohn Stark (4), Rick Stockstill (3), Barry Voltapetti (2), Mike Whiting (4), Phil Williams (4)

Lettermen Returning (31)

Seniors (10) CB Harvey Clayton, OG Redus Coggin, CB Warren Hanna, WR Dennis McKinnon, C Bob Merson, TE Zeke Mowatt, OT Eric Ryan, QB Blair Williams, TB Ricky Williams, LB Tommy Young

Juniors (12) DE Allen Dale Campbell, DT Alphonso Carreker, WS Larry Harris, WR Tony Johnson, QB Kelly Lowrey, DE John McLean, C Tom McCormick, SS Pat Milligan, DT David Ponder, OG Ricky Render, LB Ken Roe, WR Weegie Thompson

Sophomores (9) TB Billy Allen, TB Greg Allen, SS Tracy Ashley, NG Lenny Chavers, WR Jessie Hester, FB Cedric Jones, PK Mike Rendina, WS Eric Riley, LB Henry Taylor

*Indicates letters won

