

FLORIDA STATE



***1984 SEMINOLE FOOTBALL
MEDIA GUIDE***

FLORIDA STATE FINGERTIP FACTS

President: Dr. Bernard F. Sliger
 Location: Tallahassee, Fla. 32306
 Enrollment: 22,500
 Athletic Director: C.W. "Hootie" Ingram
 Athletic Board Chairman: Chuck Ehrhardt
 Sports Information Director: Wayne Hogan
 Nickname: Seminoles
 Colors: Garnet and Gold
 Conference: Independent
 Stadium: Doak S. Campbell (55,246)
 Head Football Coach: Bobby Bowden
 1983 Record: 7-5
 Bowl Appearance: Peach
 All-Time Record: 216-157-12

1983 RECORD AND ATTENDANCE

Results	FSU	Opp	Attnd
East Carolina (H)	47	46	46,261
Louisiana State (A)	40	35	79,665
Tulane (A)	28	34	35,463
Pittsburgh (A)	16	17	52,102
Cincinnati (H)	43	17	55,102
Louisville (H)	51	7	42,117
Arizona State (A)	29	26	69,986
South Carolina (H)	45	30	52,542
Miami (H)	16	17	57,333
Florida (A)	14	53	74,113

Attendance: Home (253,355) Average (50,671)
 Away (387,506) Average (64,584)
 Total (640,861) Average (58,260)

The 1984 FSU Football Guide

Managing Editor	Wayne Hogan
Editor	Lisa Morton
Contributors	Dan Pearson Steve Ellis Rob Wilson
Photographers	Courtland Richards Bucky Parrish Bradley Photography FSU Photo Lab Tom Cawthon Dale Pearson
Watercolor Art	Julie Dean
Design	J. S. Goodson and Associates Tallahassee, Fla.
Printing	Cody Publications Inc.
Price	\$6.50



Date	Opponent
September 1	EAST CAROLINA
15	Kansas
22	Miami
29	TEMPLE
October 6	Memphis State
13	AUBURN
20	TULANE
November 3	Arizona State
10	South Carolina
17	TENNESSEE-CHATTANOOGA
December 1	FLORIDA



THE 1984 FLORIDA STATE UNIVERSITY FOOTBALL MEDIA GUIDE

TABLE OF CONTENTS

Media Information	2
OUTLOOK	
Back to Basics	6
The Offense	10
The Defense	11
Pre-Fall Depth Chart	12
THE COACHING STAFF	
Bobby Bowden: A Streak of Stubborn a Mile Wide	16
Assistant Coaches: 130 Years of Coaching Experience	19
Support Staff	24
1984 SEMINOLES	
Greg Allen: Flat Out Dangerous	28
All America Candidates	31
Player Biographies	32
Freshmen	44
FSU Players in the Pros	46
1984 Seminole Football Roster	47
Geographic Distribution	48
1984 OPPONENTS	
Week by Week	52
Travel Itinerary	63
FSU Record vs. 1984 Opponents	63
Seminole Sports Network	64
1983 REVIEW	
Game Stories	68
1983 Statistics	74
1983 Seminole Honor Roll	76
THE RECORD BOOK	
Individual and Team Records	81
Opponent Records	94
Homecoming Games	94
Coaches and Captains	95
Coaches Cumulative Records	95
Record Against All Opponents	97
Seminole on TV	97
Year-By-Year Results	98
Bowl Games In Review	101
1983 Peach Bowl	105
All-Time Lettermen	106
Bob Crenshaw Award	107
FSU All-Americans	108
All-South Independents	109
Burt Reynolds at FSU	110
THE UNIVERSITY	
This is Florida State	115
Seminole Strength Complex	117
Athletic Administration Staff	118
Doak Campbell Stadium	121
Athletic Department Directory	122
Opponent Schedules Week-By-Week	I.B.C.

SCHEDULE


Series	Site	Time
3-0-0	TALLAHASSEE, FLA.	7:00 p.m. EDT
2-2-0	Lawrence, Ks.	1:30 p.m. CDT
12-15-0	Miami, Fla.	4:00 p.m. EDT
0-0-0	TALLAHASSEE, FLA.	7:00 p.m. EDT
6-7-0	Memphis, Tn.	7:30 p.m. CDT
1-10-1	TALLAHASSEE, FLA.	7:00 p.m. EDT
0-1-0	TALLAHASSEE, FLA.	7:00 p.m. EDT
2-1-1	Tempe, Az.	7:30 p.m. MST
9-2-0	Columbia, S.C.	1:30 p.m. EST
0-0-0	TALLAHASSEE, FLA.	7:00 p.m. EST
6-19-0	TALLAHASSEE, FLA.	7:00 p.m. EST

To The Media:

We hope that the 1984 football guide will be a useful tool in your coverage of the Florida State Seminoles. Should there be any questions not covered in this brochure, please feel free to give any member of my staff a call. Additional requests for information, feature material, slides, photographs or video tape will also be made available to any accredited member of the media upon request.

The following paragraphs will outline our policies and procedures at Florida State University and should be most useful in answering your questions about all aspects of our program that involve the media.

Again, we are available to assist you in your coverage of FSU and don't hesitate to call on one of us.


Wayne Hogan
Sports Information Director

Credential Requests: All requests for working press, radio, television, photographer or scouting credentials should be directed to Sports Information Director Wayne Hogan no later than one week prior to the game. Requests for season credentials should be made two weeks prior to the first game.

Space for the working press, radio, television and scouts is allocated by the Sports Information Office.

Florida State's press box is located on the west side of Doak Campbell Stadium with elevator service to all levels. Media representatives and scouts should enter through the press gate, located north of the elevator. The Will Call booth, where media can pick up credentials anytime after 4:00 p.m. on game days, is located outside the gate at the base of the elevator. Will Call credentials will also be available in the Sports Information Office on Fridays prior to games or at the Ramada Inn hospitality room from 2:00-4:00 p.m. on game days.

Press Policies: Working press will be admitted to the press deck, where approximately 90 seats are available. Credentials are issued by FSU according to the following criteria:

- (a) Local newspapers, wire services, national publications, newspapers from opponent's area and student newspapers from FSU and opponent's school.
- (b) Other daily newspapers with preference to those which regularly cover FSU.
- (c) Scouts.
- (d) Non-daily newspapers, with preference to those which have regularly covered FSU.
- (e) Radio and television personnel not actually broadcasting, but considered reporting (seats will be provided in the stands).

Radio-TV: The sixth level of the press box is designated for use by radio and television broadcasting crews and home and visiting coaches. Each booth is fully enclosed and sound proof.

Photographers: Only accredited photographers or freelance photographers shooting for the FSU Sports Information Office will be issued working credentials.

The press box catwalk, or photo deck, offers an unobstructed view for TV and movie cameras. Holders of a photo deck pass will be assigned space in that area. Still photographers will not be admitted to the press box in 1984 and may have access to the sidelines only. Those holding a still photography credential should report to the Press Will Call window where they will be issued an armband, a set of rosters and a box lunch. A photographers' lounge area with tables and chairs will be made available outside the elevator area under Doak Campbell Stadium.

Special requests for photographers whose assignments warrant shooting from the photo deck may be made to Sports Information Director Wayne Hogan.

Press Parking: Parking is limited and passes will be issued on a priority basis within the same guidelines as working credentials. The press lot is located on the southwest corner of Doak Campbell Stadium. Access to the lot should be made from Stadium Drive.

Statistical Services: Play-by-play, half-time and complete statistics will be provided. Post game quotes from FSU head coach Bobby Bowden will also be available and opponent head coaches' quotes will be made available whenever possible.

Refreshments: A light pre-game meal will be served on Level Six of the press box at approximately 6:00 p.m. Refreshments will also be made available throughout the game.

Telecopiers: An independent telecopier service will be available for each game with a nominal fee being charged. Please contact the Sports Information Office in advance. If you plan to use your own telecopier and phone, please have them placed in the telecopier area of the press deck.

Telephones: Telephone service should be secured directly through Centel Telephone Company of Florida, Tallahassee (904/222-2236). Have them contact the Sports Information Office for location.

Post Game Interviews: Florida State's locker room will be open to the media after a brief five-minute cooling off period. Head coach Bobby Bowden will conduct his post-game interviews in the Projection Room on the second floor of the adjacent Moore Athletic Center. Access to that room will be made available by Sports Information Director Wayne Hogan immediately following the game.

Mid-Week Interviews: Media interviews with all FSU players should be arranged through the Sports Information Office. For phone interviews, the SID office will fill out a card informing the player to return the call. All player calls to the media will be made collect.

Anyone wishing to schedule an interview with head coach Bobby Bowden should contact his secretary, Sue Hall, at extension 112.

Breakfast with Bobby: Following each and every Seminole home game, head coach Bobby Bowden will join the media Sunday morning for breakfast at the Ramada Inn (press headquarters). Breakfast will be served at 8:00 a.m. with a question-and-answer session beginning at 8:15 a.m.

Conference Call: Media members again may contact Bowden for follow up material via a 3:00 p.m. Sunday conference call on road game weekends. Contact a member of the Sports Information Office to be put on the master list.

Road Game Credentials: Writers covering Florida State may make requests for road credentials with the opponent school or with the FSU Sports Information Office by Monday of game week.

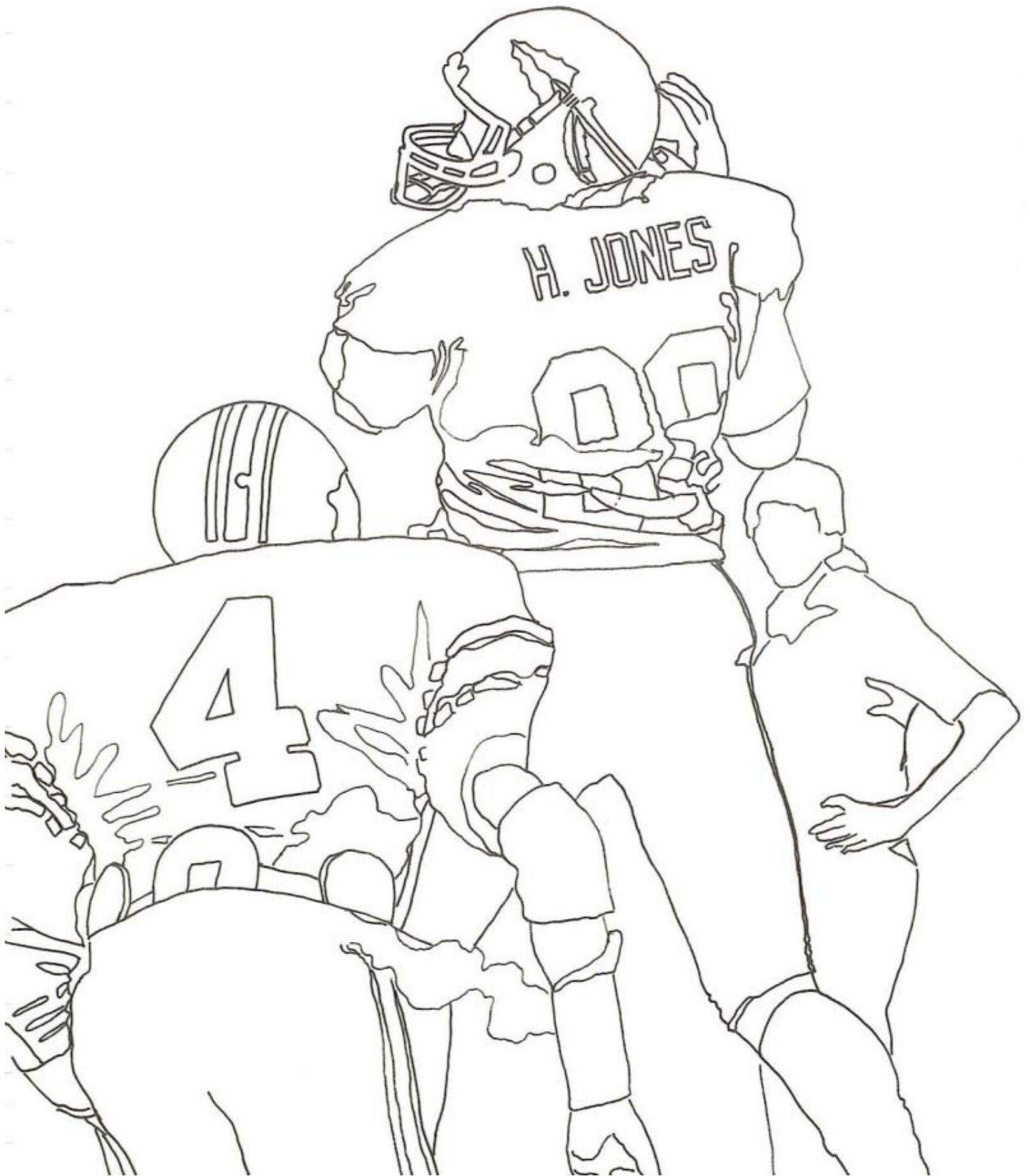
How to Contact Us:

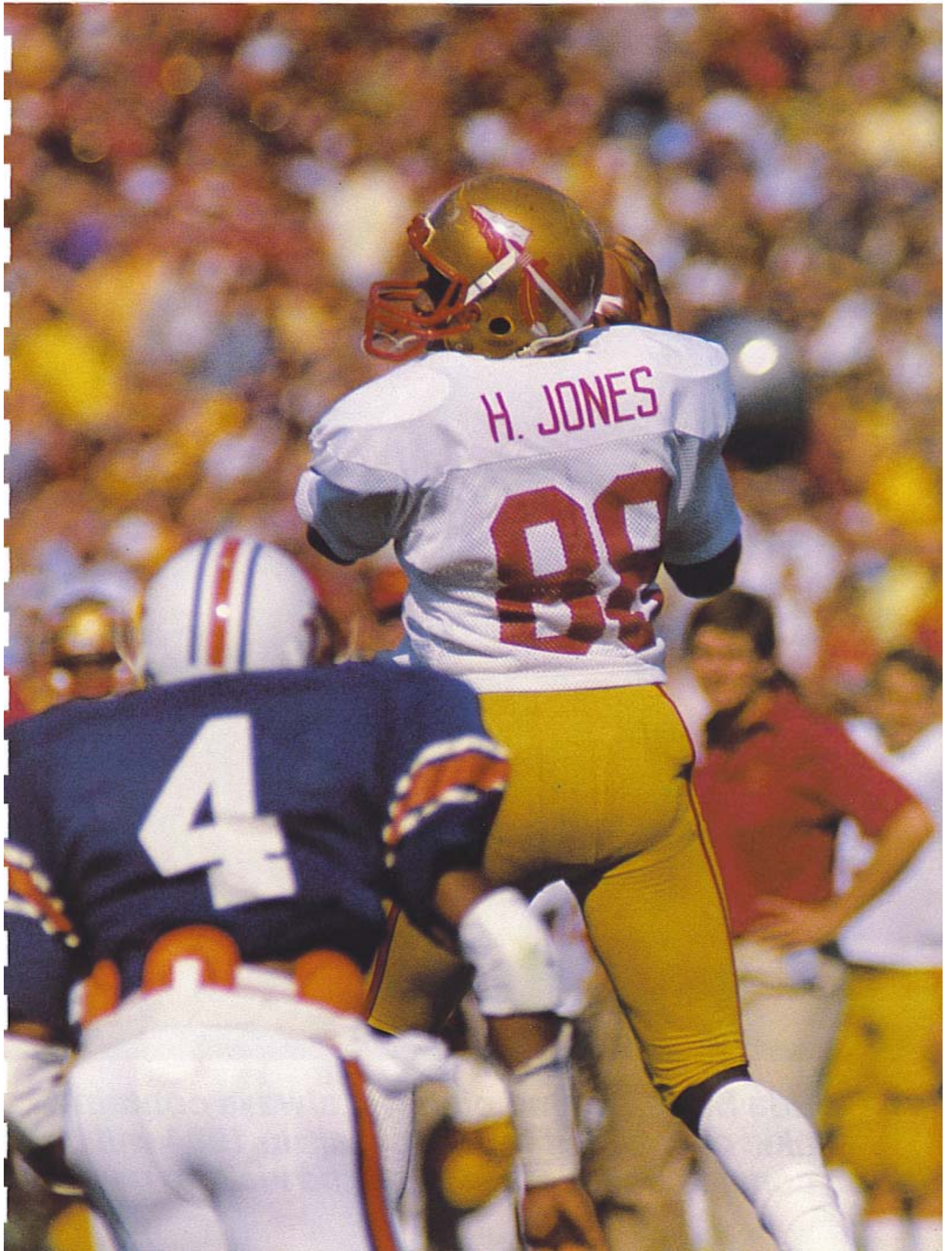
At The Office: The Florida State athletic telephone number is (904) 644-1060. Contact Sports Information Director Wayne Hogan at extension 147, Associate Director Lisa Morton at extension 151, Assistant Director Dan Pearson at extension 149 and secretary Judy Greve at extension 147. After hours number is 644-1403.

At Home: Hogan (904/386-5359), Morton (904/575-4773) and Pearson (904/562-4628).

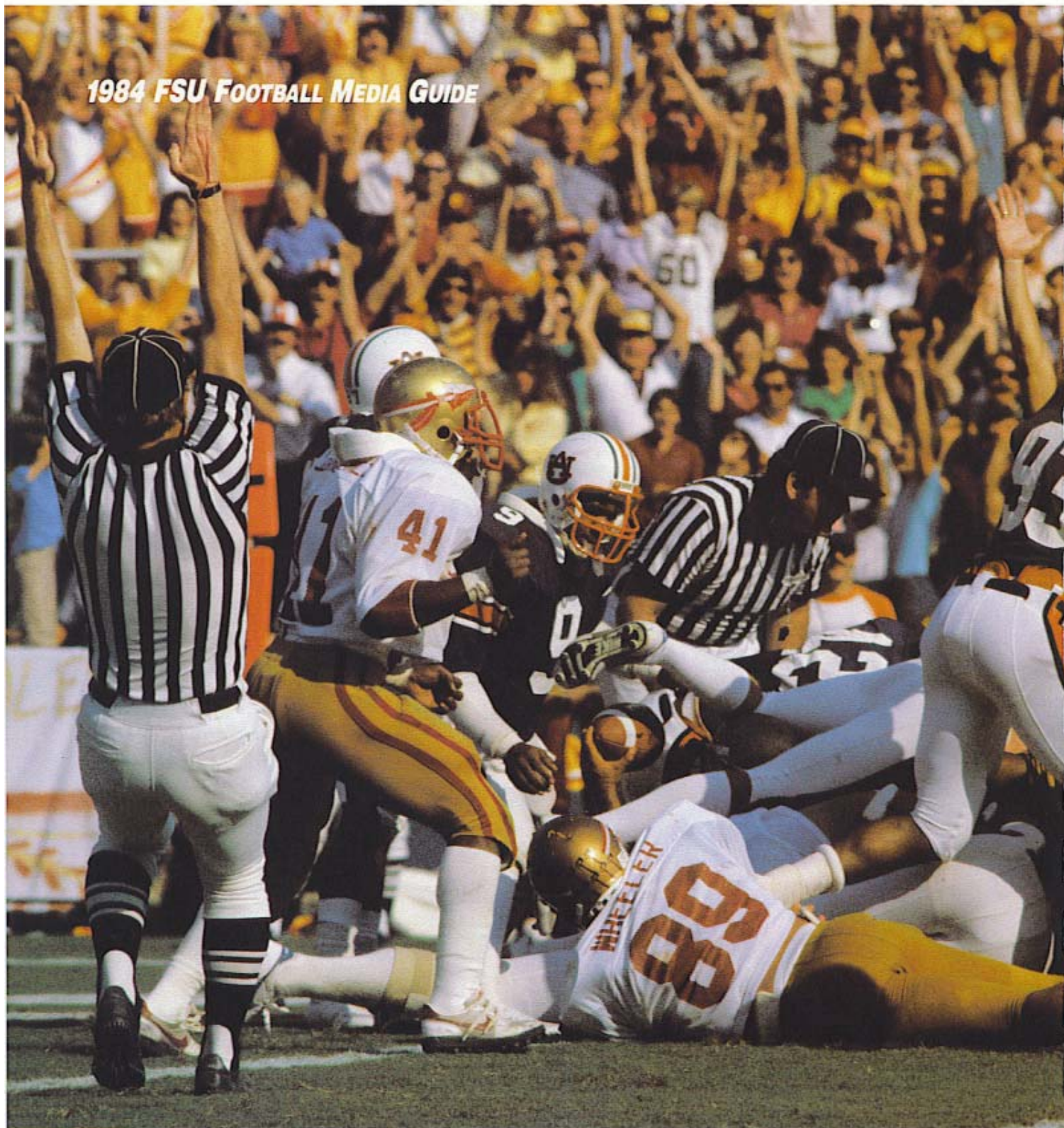
Through The Mail: Address all inquiries to: Sports Information Office, Florida State University, Moore Athletic Center, P.O. Drawer 2195, Tallahassee, FL 32316.

1984 OUTLOOK

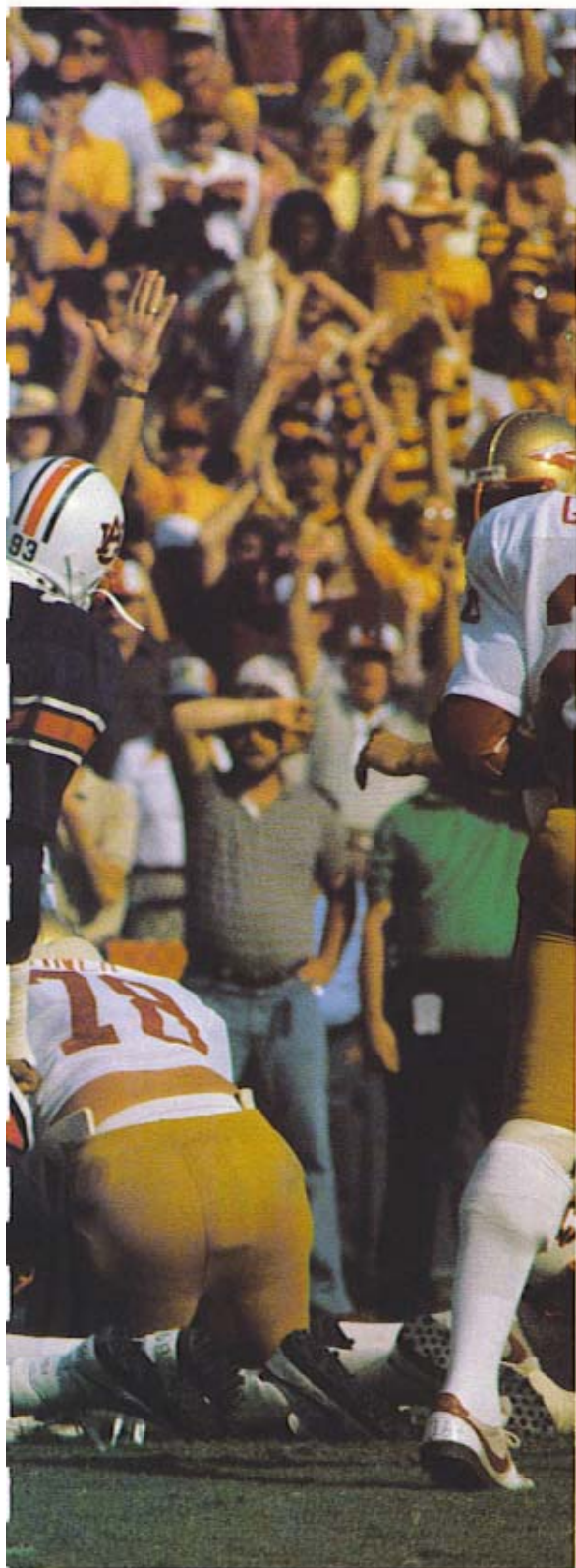




1984 FSU FOOTBALL MEDIA GUIDE



Florida State's game plan will always contain a wrinkle or two, but the emphasis in 1984 will be on consistency, defense and the kicking game.



The Seminoles once again proved in 1983 that they could play with the big boys of college football. Just fifteen points stood between FSU and an 11-1 season.

THIS YEAR, IT'S

BACK TO THE BASICS

By Wayne Hogan

Now that time has healed some of the wounds from last year's 7-5 campaign, Florida State coach Bobby Bowden probably feels a little like the great philosopher Mark Twain when he emerged from a long absence to say, "reports of my death were greatly exaggerated." Indeed, any report that Florida State's football program is even on shaky turf can be put to rest. Though it was tough to philosophize back in December about how close the Seminoles had come to a truly great year in '84, the months have made philosophers out of us all.

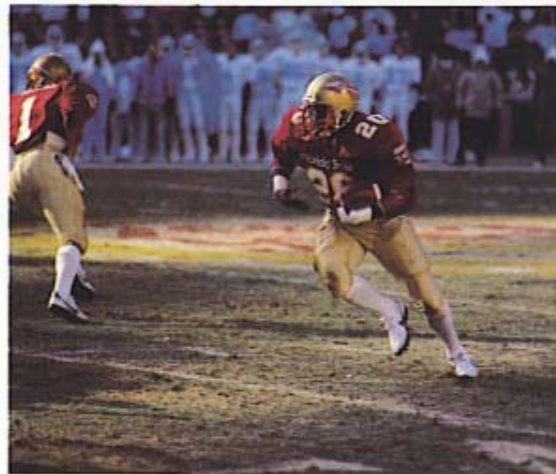
Yes, four of the five losses were decided in the last minute. And yes, 15 points in those four games would have made the final record read 11-1. And yes again, three of those four teams played in bowl games on January 2. Miami, to which FSU lost 18-17, was national champion. Auburn, to which the Seminoles bowed 27-24, finished as the nation's third best team.

"You sure can't live very long saying 'we almost beat them' and 'look how close we came to them,'" says Bowden, who enters his ninth season at FSU as the all-time winningest Seminole head coach. "But one thing about those close ballgames—you get a gauge as to what kind of talent you've got. You don't play people like that toe-to-toe till the last minute of a ballgame unless you got some people who can play. That is encouraging."

Thankfully, Florida State will play a much more sane schedule of games in 1984. The slate is probably the most favorable around these parts since before this decade began.

"Well to start with, we've got six homes games and not five like last year," Bowden says. "You like to get that extra one at your place. Secondly, we don't have a long string of games on the road. Remember last year when we played at LSU, at Tulane, at Auburn and at Pittsburgh all in a row. We lost three of the four. My feeling is that if they had all been played at home we would have done much better. You can't go on the road against great teams and expect to win time after time.

"We were lucky for a while," he continued. "We had a stretch there where we just went out and beat great teams at their place all the time. I mean what we were able to do is almost unbelievable. We beat Nebraska at



"Back-up" tailback Roosevelt Snipes contributed 629 yards to the exciting offense that earned FSU a spot in the 1983 Peach Bowl and a victory over North Carolina.

Lincoln, Notre Dame at South Bend, Ohio State at Columbus two years in a row and won four out of five times over LSU at Baton Rouge. Well, you can't keep that kind of thing up year after year. It's just too tough. I've always said the home field comes into play when it's a close game in the final minute or two. That's when the home crowd can give you that little extra lift."

When glancing at the FSU schedule for

be no different. Florida State fans got a bit of a sneak preview of things to come in the Seminoles' chilling 28-3 victory over North Carolina in the Peach Bowl.

That win was engineered to a great extent by Eric Thomas, a junior in 1984 and the top contender at quarterback despite the fact that he missed all of spring practice with a slight knee injury.

The play of the cool performer on a bitterly cold December afternoon along with

rely on razzle dazzle every week. When they work it's great, but you can't count on that every week. You don't beat great football teams like we play by trying to trick them. You've got to be able to line up and play football with them. You win with consistency, defense and kicking.

"Last year we were adding a new wrinkle or two every week," he explained. "By the end of the year we were trying to do so many things nobody could keep 'em straight."

So after a 6-5 regular season finish, Florida State's all-time winningest coach (66-27 in eight seasons) took a giant step—backward.

"We went back to the basics. I wanted to have just three or four basic plays and we were gonna run them over and over until we got it right. The same thing for our defense."

Part of the master plan was to call on Thomas, a Valdosta, Ga., product who played almost none at all in his three years (one as a redshirt) at Florida State. The reasons behind Thomas' background role varied, but at the top of the list was the fact that he was tagged as an "option quarterback." Unknown words around the Tallahassee campus and a school that has built a reputation over the years with a pro-style passing attack.

Bowden, however, had been talking for three years about "this kid Thomas."

"I like him," the coach once said, "cause he don't ever lose."

Indeed his high school career at Lowndes County bears that out. And though he's been used sparingly since arriving at FSU, the Seminoles responded in the Peach Bowl as if Thomas had been back there all along.

With the stable of fine running backs led by Allen, Snipes and steady fullback Cedric Jones, along with an experienced and improving offensive line it appears that the 1984 Seminoles will continue the "back-to-basics" approach.

"Oh, that doesn't mean we won't put the ball in the air a bunch," Bowden cautions. "Noooo . . . as long as we've got the skilled people—the throwers and catchers—and that we do, we'll always put the ball in the air. We'll just be more sensible about the whole thing."

"Hey, the last two years we've been in the top three offensive teams in the country. We must be doing something right. I'm not about to get away from something that we've been successful with. We just want to do it better and more consistently."

Thomas can throw the ball and throw it effectively. He silenced many of his critics in that area by tossing a pair of nifty touchdown passes in the Peach Bowl game that put North Carolina on the ropes early.

Among the likely candidates to battle Thomas for the quarterback job are junior Kirk Coker, a walkon who performed extremely well in the spring, and senior Bob Davis. Coker has played not at all in game action, while Davis started three games last

The Seminole backfield looks as strong as ever. Allen, a phenomenon since his freshman season, may very well be the frontrunner to win the '84 Heisman Trophy.



Allen, a preseason Playboy All-American, holds 19 Florida State school records and is just 155 yards short of the career rushing record.

'84, four games leap off the page—the real keys to a truly great season. Two of the four are at home—Auburn on October 13 and Florida on December 1. The other two are on the road—Miami on September 22 and Arizona State on November 3.

Not by any means to say the other seven games aren't equally important, just that on paper the Seminoles should be the favorite going in against East Carolina, Kansas, Temple, Memphis State, Tulane, South Carolina and Tennessee-Chattanooga.

Bowden should have the horses again in '84 to play with anybody. The Florida State offense has been among the nation's best the last two years and this season should

a dynamic supporting cast of All-American Greg Allen and flashy Roosevelt Snipes convinced Bowden it may be time for a slight remake of his overall plan.

"I am as guilty as anybody," Bowden said after the Peach Bowl win pushed the final '83 record to 7-5, well below the high expectations of the early season. "You get to where you want to come out there every week and play it wide open. Score as many points as you can, as quick as you can. No holds barred. Man, we could throw bombs, run reverses and trick plays with the best of 'em."

"Well all of that is fine. But I've been coaching football long enough to know that you can't build a great program when you

year. A fine passer, he completed 41 of 70 tosses for 566 yards and six touchdowns.

The Seminole backfield looks as strong as ever. Allen, a phenomenon since his freshman season, may very well be the front-runner to win the '84 Heisman Trophy. He holds 19 Florida State records and will become the most prolific runner in FSU history when he surpasses Larry Key's career rushing and all-purpose yardage records early next season. He was a first team UPI and Walter Camp All-American as a junior. He averages six yards every time he touches the ball.

Snipes will be a junior next season after gaining 629 yards on just 96 carries. He transferred to Florida State from Coffeyville, Ks., Junior College after his freshman year. He got his first start against Auburn and rushed for 100 yards in 11 carries against one of the nation's finest defenses. He went on to have four 100-yard rushing efforts before the year was over.

Jones was a teammate of Thomas in high school and Bowden credited him with providing tremendous stability on the Florida State offense. "He seems to always be in the right place," Bowden said. "Almost never makes a mistake. He's a steady, sound football player. Not big for a full-back (5-9, 195), he gained 434 yards in 83 carries despite missing the last four games with an ankle injury.

When the Seminoles do put the ball in the air, they'll be looking to a pair of burners at wideouts. Senior Jessie Hester led the '83 team with 31 catches and averaged a whopping 18.6 per reception. Hassan Jones, one of the nation's most heralded recruits two years ago, will be a junior. He caught 24 balls last year. Junior Pete Panton (6-2, 230), will be the top candidate at tight end along with freshman recruit Pat Carter who coaches feel could step in and help early.

Anchoring the offensive front in '84 will be a pair of All-South picks in juniors John Ionata (6-3, 260) and Jamie Dukes (6-1, 275). Two-year starter Jim Thompson (6-7, 240) returns for his senior season at tackle and massive sophomore Parrish Barwick (6-0, 280), a starter as a freshman, is back after a redshirt year. The only hole is at center where three-year All-South pick Tom McCormick and capable backup Sam Restivo both graduate. Converted guard Gerry Riopelle will step in there.

Bowden has also added a new offensive mind to his coaching staff by hiring veteran Art Baker from East Carolina as his quarterback coach.

"Art is a great fundamentalist and teacher and I think he will give us some of this stability that I'm looking for," Bowden said. "He will work closely with our offensive coordinator Wayne McDuffie and have a definite hand in our offensive strategy."

Defensively, the Seminoles need a quick fix. As productive as the Seminole offense has been, the defense has been a thorn. For

the first time in Bowden's time at Florida State he has changed his defensive coordinator. Jack Stanton has departed to become an assistant with the Atlanta Falcons and Mickey Andrews, another veteran, joins the FSU staff.

"I was looking for the finest secondary coach in the country and I found him in Mickey Andrews," said Bowden, who then quipped, "I want a defense so simple that even I can understand it."

at the other corner—junior Rocky Kinsey—will also be back.

Where Andrews will really have to go about filling holes, though, is along the defensive front. Both tackles and the nose-guard all have graduated, leaving junior Isaac Williams (6-1, 250) as probably the best of the returnees. As a youngster last year, Williams had big games late and showed much promise for the future.

The outside linebackers should be solid

"I was looking for the finest secondary coach in the country, and I found him in Mickey Andrews," said Bowden. "I want a defense so simple that even I can understand it."



A young defensive unit will be concentrating more on fundamental blocking and tackling—something it was successful in during last year's Peach Bowl when it held North Carolina's offensive unit to just three points.

Andrews, who built a national championship defense at Clemson in the late 70's, will inherit a defense that allowed 28 points and 380 yards a game in '83. But he'll also see a group that has several young players who began to shine late in the season—especially in the Peach Bowl where they held North Carolina to a mere three points and 198 total yards.

Top returnees on this side of the ball include senior linebacker Henry Taylor (6-0, 211), the team's second-leading tackler and free safety Brian McCrary, a senior who had five interceptions and was third on the team in total hits. Eric Riley, who started virtually all season, returns as a senior at one corner and a player who shared time

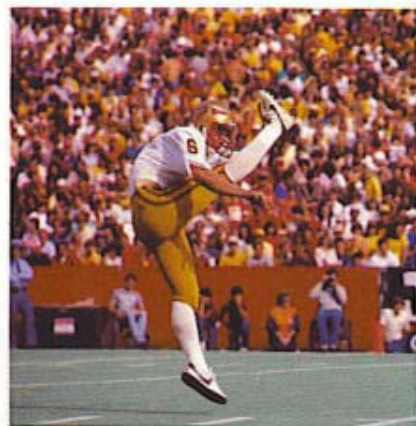
with Brian Williams (6-0, 210, senior), a starter most of last season and Garth Jax (6-2, 207, junior), an off-and-on starter for two years getting the early nod and junior Darryl Gray (6-2, 245) on their heels.

With a new coordinator and a host of young players who have yet to get their first test under fire, it's a sure bet the FSU defense will have a different look in '84.

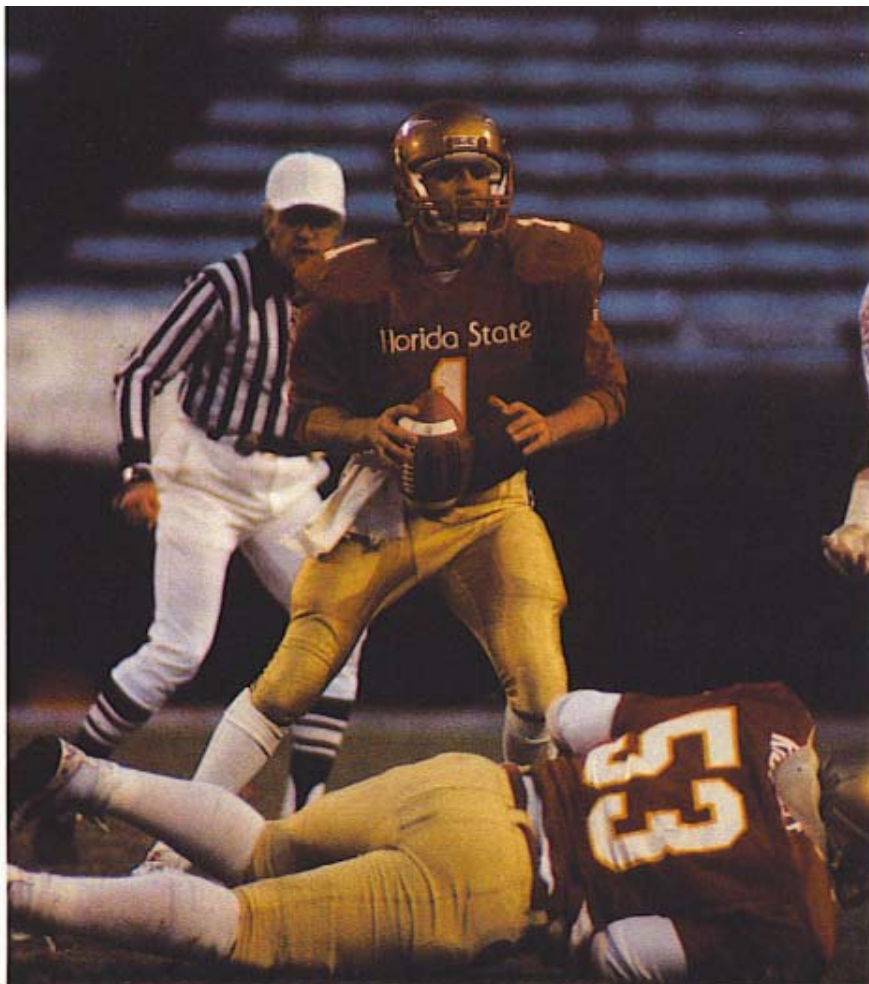
And the kicking game?

It appears that for the first time in two years the Seminole kicking game will be strong. Louis Berry had an outstanding freshman year as the punter (37 punts, 42.2 average) and has that spot locked up. Seminole coaches are putting their place-kicking stock in newly-recruited freshman

Punter Louis Berry (below) punted for FSU's top freshman average ever (42.2) while quarterback Eric Thomas (right) is a Bowden favorite because, he says, "he don't ever lose."



Some holes have also been filled in the kicking game, allowing Bowden to feel comfortable about that part of his team for the first time in a couple of seasons.



Derek Schmidt from Sarasota.

"Our top recruiting priority was a placekicker and we got just the guy we were looking for," Bowden said. "We have a lot of confidence in Derek. I think he'll be the guy that gets the job done."

The Seminoles do return Philip Hall, a walkon who has handled the kicking chores the last two seasons. His biggest problems have been consistency and strength. His absolute range is 40-45 yards.

THE OFFENSE

TAILBACK—The talent here has to be the envy of every college coach. So strong is it that Heisman Trophy candidate Greg Allen must first contend with teammates Roosevelt Snipes and Darrin Holloman before taking on his national competition. All three have speed and ability to spare. But senior Allen, who is just 155 yards shy of the all-time FSU rushing mark, gets the nod. The nation's leading scorer in 1982, he missed spring practice to run track. Snipes, a junior, enjoyed an outstanding spring in Allen's absence and should improve on the 629 yard total and 6.6 average of his 1983 "rookie" season. Holloman continued to excite coaches in the spring. Like Snipes, he is regarded as an excellent open field runner. The Seminoles also

welcome a bona-fide high school All-American in freshman Wayne Denson. With the offense adding the new-freeze option to its already large bag of tricks, watch out! What you have, says Bobby Bowden, is a "good problem. We're going to have to find a way to get those boys in the game."

FULLBACK—Keeping up with the Joneses could be a big order for opposing defensive linemen this year. Cletis Jones is an imposing figure who benches 395 pounds and likes contact. Cedric Jones (not related) rushed for 434 yards last year before a fractured foot sent him to the sidelines. But because that injury also kept Cedric out of spring, and Cletis' spring duty was also limited by injury, the fullback position is not where Bobby Bowden would like it to be. Finding a solid blocker is a top priority here. If Bowden can't find it among the Joneses he'll turn to sophomore Chuck Wells. Wells' future as a Seminole starter is likely to be a year away but his strength and speed have forced FSU coaches to take notice.

QUARTERBACK—How well Eric Thomas can come back from a knee injury may be the fall's biggest question. After his Peach Bowl performance, Bowden was convinced he had found his starting quarterback for the '84 season. But Thomas, who has been plagued by injuries since his

arrival at FSU, missed all but a week of spring practice because of the injury. He saw action in three regular season games last fall and went on to be named the MVP in the Peach Bowl when he started instead of Kelly Lowrey. In Kirk Coker, Bowden apparently has a solid No. 2 quarterback. Coker's solid spring performance earned the junior new respect. "His throwing improved quite a bit. He's disciplined and he showed confidence in running our offense," says Bowden. In addition to Coker, freshman Danny McManus and newcomer Tracy Sanders could figure in the quarterback slot as well as Bob Davis, the hero of last year's Arizona State game.

WIDE RECEIVER—It's not that Bobby Bowden is complaining. The veteran coach understands as well as anyone that in senior All-American candidate Jessie Hester and junior Hassan Jones he has one of the best receiving tandems in the nation. It's just that in addition to talent and experience, Bowden has come to expect there will be depth, too. But the graduation of Weegie Thompson and Tony Johnson means the '84 season will begin with depth as a major concern for the receiving corps. "We don't have the depth here we've come to expect," notes Bowden. "We'd like to have some help for Jessie and Hassan." That help may come out of the loaded running-back contingent. And there's also reserves

Steve Nicklaus and Herb Gainer. But if there is question about the supporting cast, there are nothing but rave reviews for the starters. Hester rightfully earned his wings as the 'Jet' last season with 31 catches for 576 yards and an 18.6 yard per catch average. He also had six touchdowns. A stint on the '84 track team has made this Jet even faster. During spring drills, Jones has apparently eliminated his major nemesis in '83—dropped passes. Like Hester, Jones is a potential big play maker everytime he steps on the field.

TIGHT END—Injuries make for a wide-open battle here. Senior Pete Pantan—the heir apparent—missed the entire spring. And his chief challenger—sophomore Gaylon White—was also limited by injuries. As a result, neither enter the pre-season with a firm handle on the starting spot. Pantan, who saw action behind Tom Wheeler last fall, is liked for his aggressive play. White is a youngster who needs to become more consistent as both a blocker and receiver. Newcomer Pat Carter has the size and reputation to contend early. Walkons Steve Cantwell and Craig Jones will get their chance, too.

INTERIOR LINE—Offensive coordinator Wayne McDuffie expects his linemen this fall to "play each down like a war." To lead his troops, McDuffie will turn to Jamie Dukes. Already a two-time All-South performer, Dukes is trimmer, faster and consequently should be even better this fall, says McDuffie. So impressive was the junior's spring performance at strong guard, he was named the team's MVP. Behind Dukes will be Tim Flasher. At quick guard, junior Dan Morris, a top reserve in '83, will be challenged by Par-

rish Barwick. A former starter, Barwick must fully recover from off-season foot surgery. There is cause for concern at strong tackle where freshman redshirt Pablo Lopez and often-injured senior Jim Thompson contend for the top spot. Experience is not of main concern at the other tackle spot where veteran John Ionata and sophomore John Bamber return. With the graduation of Tom McCormick, center was expected to be a trouble spot this fall. But former strong guard Gerry Riopelle had such a good spring, Bowden says he is no longer worried. Behind Riopelle is sophomore Doug Hill.

THE DEFENSE

TACKLES—The big story here, of course, is the graduation of All-American Alphonso Carreker. Line coach Chuck Amato says there is no replacing the two-year starter. "We don't have anyone with the range of a Carreker but we do have some big, strong guys who can anchor this area," he says. One such down lineman is junior left tackle Isaac Williams. A starter last season at right tackle, Williams does indeed provide the youthful line with needed size and strength. Jim Hendley should emerge as the key reserve behind Williams. At right tackle the concern is size . . . even though top contenders Gerald Nichols and Stanley Scott stand at least an inch taller than Williams. Scott, a former outside linebacker, set a summer goal to gain twenty pounds. Physical strength, however, is no problem here. And the new defensive scheme fits Nichols better than his 19-inch neck does most shirts. Scott, meanwhile, must gain experience at his new

position. A solid spring gives Nichols the edge.

NOSE GUARD—What FSU lacks in size—starter Todd Stroud is just 5-11—is made up in strength and technique. Stroud, pound-for-pound, is the strongest Seminole with a 430-pound bench to his credit. And second-teamer Lenny Chavers can press 435 pounds. Stroud, a starter throughout most of the '83 season, also has experience on his side. Chavers has ability enough to make the big play, but he must improve his consistency. Reserve Don Densenso has strength (485 pound press) and desire but played his first down of football just a year ago as an FSU walkon.

INSIDE LINEBACKER—Senior Henry Taylor heads a list of returning talent and combined with a promising group of newcomers, should make for a solid linebacking contingent. Taylor emerged from spring drills a spirited, most aggressive leader, says his coach, Gene McDowell. Only graduated Ken Roe made more tackles than Taylor (112) in '83. Fred Jones' path to a starting role along side Taylor has not been an easy one. Personal tragedy—a sister and his mother died of illnesses during the winter—as well as some tough competition stood in his way during spring drills. Ulysses Roberson and Jessie Soloman are the top challengers among the returnees. Soloman, a walkon and former outside linebacker, is regarded as a sleeper. Six freshmen linebackers, including All-American John Eaford and Tallahasseeans Mike Hittinger, Brian Davis and David Palmer, will each get a good chance to contribute early, says McDowell.

OUTSIDE LINEBACKER—For a defense that Bowden says must get better



Free safety Brian McCrary (left) and linebacker Henry Taylor (below) are two of the shining stars on defense and finished 2-3 on FSU tackle charts last year.



with each game, the outside linebacker spot is a key. There is experience here, and it's true many of the mental aspects have been taken away—no more flip-flopping of players, for instance. But this is certainly not a position without questions. Is the available talent strong enough to handle the tight end? What about the added responsibility in pass coverage this year? And are there players here than can develop into dominating pass rushers? The answers will most likely be supplied by the threesome of Garth Jax, Brian Williams and Darryl Gray. It is a group, says coach Jim Gladden, that enters the fall "more mature, more seasoned." Injuries hampered Jax' sophomore year. But after a healthy spring, he enters the fall with a slight edge over Gray. Senior Brian Williams should anchor the other spot. Williams was a sometimes-starter in '83 with two quarterback sacks and 48 tackles. Gray missed all of the '83 season with a knee injury but returned in spring with intentions of becoming a dominating player. "He could become our best since Willie Jones," says Gladden. In addition to this trio, a host of youngsters including Orlando Miles, Terry Warren and Bruce Heggie could challenge.

CORNERBACKS—Undoubtedly, Bowden's biggest concern lies in the defensive secondary. Sharing in that concern is new defensive coordinator Mickey Andrews who faces a major task in developing the mostly unproven talent. The quickest development should come at right cornerback where returning starter Eric Riley will be challenged with a talented sophomore Martin Mayhew. Last fall, Riley intercepted four interceptions and broke up seven other passes - a team best in '83. While Riley split his time between football and track in the spring, Mayhew took the opportunity to show he can make up for a lack of size with talent. At the other corner, '83 starter Rocky Kinsey must overcome injuries which have been his greatest enemy. Williams is talented but needs more experience. Don't count out Riley and Mayhew both starting, although they are currently listed at the same slot. Senior Anthony Smiley and freshman-redshirt Eric Williams will also challenge.

SAFETY—A walkon and two newcomers to the position makes for an interesting situation at strong safety. Jerome McCoy, a former junior college defender, exited spring as the top performer. But former linebackers Kim Mack and Prince Matt have strength and reputations as hard-hitting tacklers on their side. None of the three, however, have any FSU game experience at strong safety. At free safety, freshman redshirt Cleveland McNabb and walkon Greg Jacobs enter preseason with good springs under the belt. Returning starter Brian McCrary missed the spring after undergoing elbow surgery in the off-season. McCrary ranked third in tackles with 99 and led the Seminoles with five interceptions. Against both LSU and Tulane,

PRE-FALL DEPTH CHART

Offense

SE—Hassan Jones (Jr)**	Herb Gainer (Fr.)	Steve Nicklaus (Jr)*
ST—Pablo Lopez (Fr.)	Jim Thompson (Sr)**	Tim Hebron (So.)
SG—Danny Morris (Jr)*	Parrish Barwick (So)*	Marty Riggs (So.)
C—Gerald Riopelle (Sr)*	Doug Hill (So.)	David Schrenker (Fr.)
TG—Jamie Dukes (Jr)**	Tim Flasher (Jr.)	Randy Carter (So.)
TT—John Ionata (Jr)**	John Bamber (So.)	Roger Agne (So.)
TE—Pete Pantan (Jr)*	Gaylon White (Fr.)	Steve Cantwell (So.)
QB—Eric Thomas (Jr)*	Kirk Coker (Jr.)	Bob David (Sr)*
FB—Cletis Jones (Jr)*	Cedric Jones (Sr)**	Chuck Wells (So.)
TB—Greg Allen (Sr)**	Roosevelt Snipes (Jr)*	Darrin Holloman (Fr.)
FL—Jessie Hester (Sr)**	Randy White (Fr.)	Justin Owen (So.)

Defense

OLB—Garth Jax (Jr)**	Darryl Gray (Jr.)	Terry Warren (Fr.)
LT—Isaac Williams (Jr)**	Jim Hendley (So.)	Grady Martin (So.)
NG—Todd Stroud (Jr)*	Lenny Chavers (Jr)**	Don Desenso (So.)
RT—Gerald Nichols (So)*	Stanley Scott (Jr)*	Richard Cullifer (So.)
OLB—Brian Williams (Sr)**	Orlando Miles (Fr.)	Eric Stiehl (Fr.)
ILB—Henry Taylor (Sr)**	Ulysses Roberson (So)*	Pat Cicalese (So.)
ILB—Fred Jones (So)*	Jesse Soloman (Jr.)	Stuart Wyatt (So.)
CB—Martin Mayhew (Fr.)	Rocky Kinsey (So)**	Barry Ward (Jr.)
SS—Jerome McCoy (Sr.)	Prince Matt (Sr)**	Kim Mack (Sr.)
FS—Brian McCrary (Sr)**	Cleveland McNabb (Fr.)	Greg Jacobs (Jr.)
CB—Eric Riley (Sr)**	Anthony Smiley (Sr)*	Eric Williams (Fr.)

Specialists

FG—Philip Hall (Sr)**	Derek Schmidt (Fr.)
PATS—Philip Hall (Sr)**	Derek Schmidt (Fr.)
KO—Barry Barco (So)*	Derek Schmidt (Fr.)
P—Louis Berry (So)*	
SNAPS—J.D. Dowell (Jr)*	

*Varsity Letters Won

Lettermen Lost (20) (13-0, 7D, 0-SP)

Tracy Ashley (DB), Steve Bloodworth (DB), Alphonso Carreker (DT), Brad Fojtik (DT), Jim Graganella (WR), Kevin Griffis (TE), Herbert Harp (OT), Lenx Jackson (TE), Tony Johnson (WR), Kelly Lowrey (QB), Tom McCormick (C), John McLean (OLB), Pat Milligan (DB), David Ponder (DT), Ricky Render (OG), Sam Restivo (C), Weegie Thompson (WR), Terry Widner (OT), Horace Wilmot (FB), Tom Wheeler (TE)

Lettermen Returning (38) (17-0, 18-D, 3-SP)

Seniors—16—Billy Allen (DB), Greg Allen (TB), Bob Davis (QB), Philip Hall (KS), Jessie Hester (WR), Cedric Jones (FB), Kim Mack (DB), Prince Matt (DB), Brian McCrary (DB), Eric Riley (DB), Gerald Riopelle (C), Anthony Smiley (DB), Henry Taylor (LB), Jim Thompson (OT), Joe Wessel (DB), Brian Williams (OLB)

Juniors—17—Lenny Chavers (NG), J.D. Dowell (OL), Jamie Dukes (OG), John Ionata (OT), Garth Jax (OLB), Cletis Jones (FB), Hassan Jones (WR), Rocky Kinsey (DB), Ron Moore (FB), Dan Morris (OG), Steve Nicklaus (WR), Pete Pantan (TE), Stanley Scott (OLB), Roosevelt Snipes (TB), Todd Stroud (NG), Eric Thomas (QB), Isaac Williams (DT)

Sophomores—5—Barry Barco (KS), Bruce Heggie (OLB), Louis Berry (P), Fred Jones (LB), Ulysses Roberson (LB)

he picked off two interceptions. Freshmen are certain to get a look here as well.

KICKING GAME—Louis Berry is the reason Bowden feels good about the punting situation. As a freshman, Berry started every game in '83. His 42.2 average per punt is the highest ever for a freshman and third best among all FSU punters. The kicking game was a major concern of

Bowden's in 1983. Major relief should come with arrival of Sarasota freshman Derek Schmidt who impressed FSU coaches with his strong kicking leg. A host of walkons—including Mike Lively, Sam Zigelboim and Barry Barco—showed some promise in the spring. Those candidates could make it tough for incumbent Philip Hall to successfully defend his starting job.