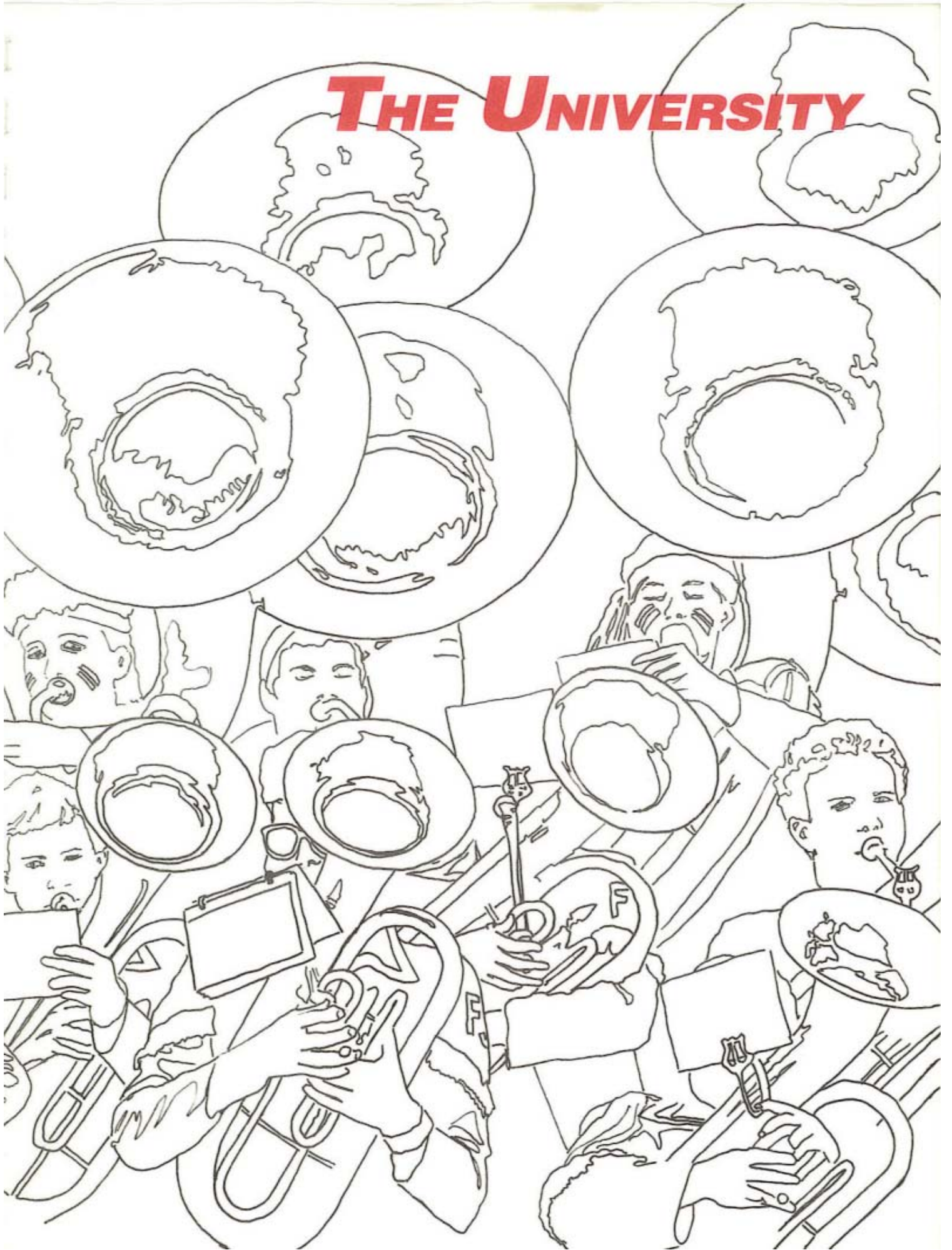


# ***THE UNIVERSITY***







***In the 37 years since going coed, Florida State has grown into a campus of over 150 buildings, 15 schools and colleges, and 21,500 students.***



The flora and fauna of Tallahassee is more like that of the deep south than the beaches and palm trees of the travel brochures.

# THIS IS FLORIDA STATE

**M**uch as the Seminole football program has fought in recent years to shoulder its way up among the nation's college football elite, Florida State University, as an institution of higher learning, has come a long, long way since going co-educational in 1947. Only 37 years after Florida State College for Women became Florida State University, FSU graduates can consider themselves as alumni of one of the great universities of the south.

Located in Tallahassee, FSU is in the center of a city which is the political focus of one of the fastest growing and most progressive states in the nation. Though the Gulf of Mexico is nearby, the geography of the Tallahassee area (population about 150,000) actually has more in common with the states of the deep south than with the palm trees and hotel-lined beaches found further downstate.

The beautiful 345 acre campus is wrapped in greenery that combines the blossoms of camelias, azaleas and dogwoods with moss-hung oaks and the occasional palm tree. During the winter, New York advertising agencies frequently use the older, gothic-style sections of the campus as backdrops for commercials calling for "halls of ivy" settings. In contrast, the western end of the campus is dominated by the contemporary, high-rise science complex.

The 21,500 students currently enrolled at FSU learn from a faculty and staff of nearly 4,000 that boasts of more members of the National Academy of Sciences than any other university in Florida, and also includes the state's only Nobel Laureate. The University leads the state in the number of Ph.D. graduates



The FSU campus sits in the center of the capital of one of the most dynamic states in the nation.

with approximately 400 annually.

Academic programs in the sciences (notably physics, chemistry, biology, meteorology and geology) and performing arts (music, theatre, visual arts and dance) have high national rankings. Other strong departments among the 15 schools and colleges include criminology, hospitality administration, accounting, statistics and interior design. FSU's pre-med program has a much higher than average medical school placement rate for its graduates.

Although FSU is now comprised of over 150 buildings, the University had a humble beginning. It all started January 1, 1857, when the governor of Florida, James E. Broome, signed a bill establishing the Seminary West of the Suwannee in Tallahassee. It consisted of one building located on ten acres of land.

By 1860, the school, not yet a college, had an enrollment of 250. The president of the seminary organized the school into a four-year liberal arts college in 1857. At its first commencement in June 1891, degrees were

conferred on two women and five men. The institution was renamed Florida State College ten years later. In 1905, it became Florida Female College, and in 1909 the name was changed to Florida State College for Women. Dr. Edward Conradi was named president and held that post until 1941.

In 1945, FSCW took on the additional title, Tallahassee Branch of the University of Florida (TBUF) due to the fact that GIs stationed nearby were attending classes at the women's school, but, as men, they couldn't legally enroll.

Gov. Millard Caldwell signed a bill in 1947 making both the University of Florida and FSCW co-educational. FSCW became Florida State University.

As a university, Florida State has had six chief executives: Doak Campbell (1941-57), Robert M. Strozier (1957-60), Gordon W. Blackwell (1960-65), John Champion (1965-69), J. Stanley Marshall (1969-76) and Bernard F. Sliger, who has been president since 1976.

Today, FSU offers students the opportunity to choose from more than 100 career options in arts and sciences, business, communication, criminology, education, home economics, law, library and information studies, music, nursing, social sciences, social work, theatre and visual arts. Also available is the Institute for Engineering, a relatively new program which operates in cooperation with Florida A&M University. The most popular majors at FSU are business, biology, computer science and communication.

Florida State's location in the state capital affords excellent study, research and internship opportunities in the areas of government, social sciences and policy sciences. The Capitol and Supreme Court are close to the FSU College of Law.

FSU excels as a basic research university in the area of natural science. The nuclear physics laboratory is ranked by the National Science Foundation as one of the top four in the nation. The University also maintains a marine laboratory on the nearby coast of the Gulf of Mexico.

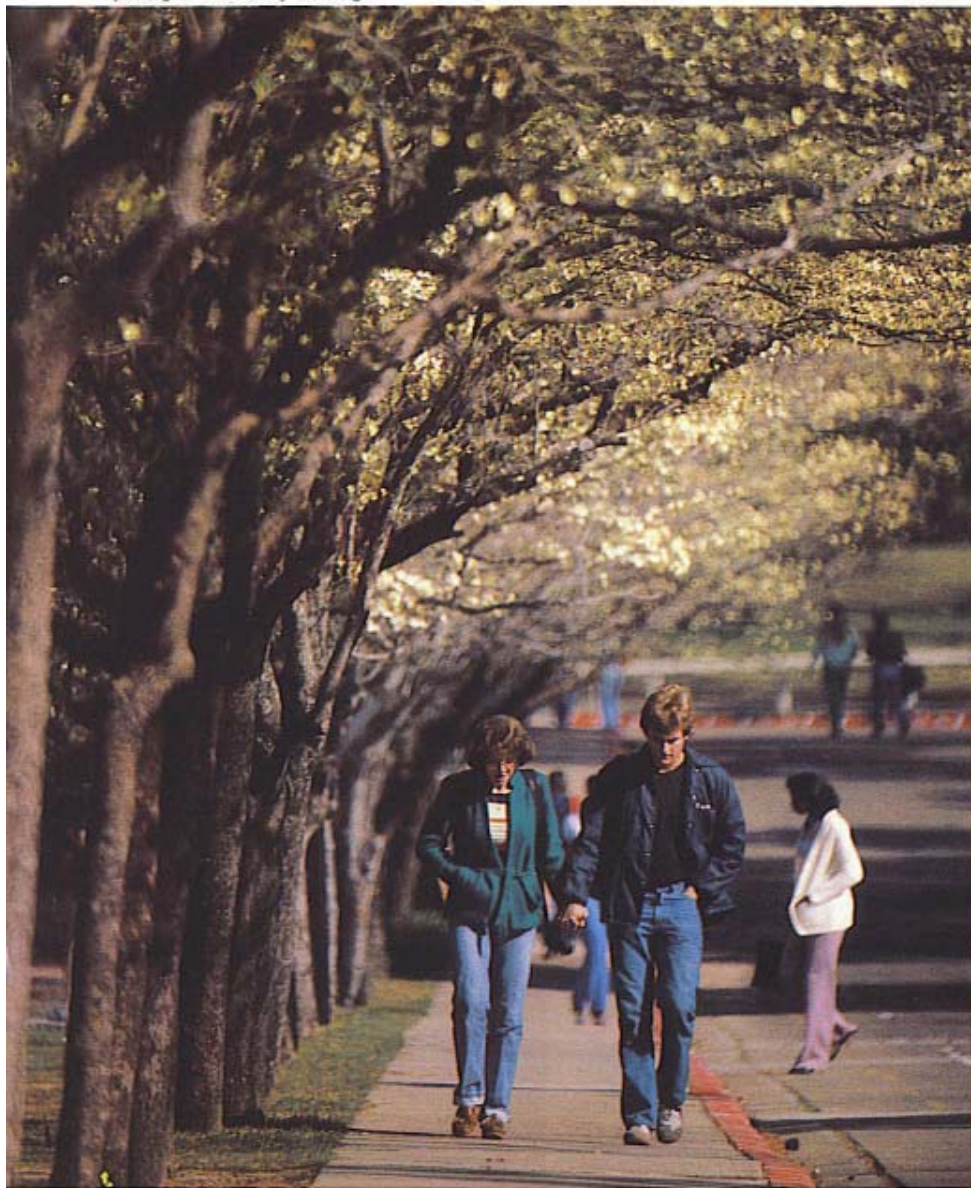
Florida State has honors programs for top students who qualify. Overseas study programs in fields ranging from law to hotel and restaurant administration are offered in Florence, Italy; Oxford and London, England; Switzerland, Yugoslavia and the Panama Canal Zone.

Social life for many centers around 24 fraternities and 20 sororities. Wind surfing, swimming and sunning are among the activities to be enjoyed at FSU's convenient lakeside "Reservation" or along the sandy beaches of nearby coasts. Every fall, the campus goes mad for football, supporting the Seminoles both at home and away.

A unique extracurricular activity is the Flying High Circus, the nation's only all-collegiate circus. Students from every academic major can become stars on the flying trapeze or highwire, or in clown acts.

Fine entertainment also is provided each year by the FSU Artist Series, which has

The beautiful FSU campus is used frequently as a backdrop for television commercials requiring a university setting.



*FSU President Bernard Silger takes pride not only in the programs, but also in the people—students, faculty, administrators and staff—who make Florida State the successful monument to learning that it is today.*

brought the Royal Philharmonic, the Hungarian State Folk Ensemble, the Feld Ballet and others to Tallahassee.

Student Campus Entertainment (formerly the Union Program Office) presents concerts, movies, lectures and other activities throughout the year.

Student Government at FSU is one of the most powerful in the country. Elected students spend an annual budget of about

1.7 million dollars. Student Government funds intramurals, activities at the Student Union, and more than 200 interest organizations.

When it comes to intercollegiate athletics, Florida State has established a winning tradition. Both the men's and women's athletic programs are among the nation's best.

Florida State is a university that is continuing to grow. The Panama City branch

campus, which FSU Acquired from the University of West Florida in July, 1982, now has an enrollment of 568 and 14 full-time faculty and staff members.

FSU President Bernard Sliger takes pride not only in the programs, but also in the people—students, faculty, administrators and staff—who make Florida State the successful monument to learning that it is today.

#

## Seminole Strength Complex

The strength program at Florida State University has taken on a new look. The first change is in the strength complex itself. Over \$100,000 of Nautilus and free weights fill the complex, making it one of the nation's finest. Every major muscle group in the body can be developed in at least six different exercise movements through workouts in the multi-equipped facility.

Dave Van Halanger is beginning his second year as the Florida State strength coach. He has implemented a year-round strength and conditioning program that begins to improve the athlete's strength as soon as he steps on campus. Not only

have excellent strength gains come from the new program, but the flexibility, quickness, explosion and speed of the athlete has also improved. Van Halanger's philosophy "the strong shall survive", is understood by FSU athletes after going through an off-season program.

Athletes at Florida State train in a three dimensional manner. The physical aspect of the body is not the only concern in the program. Says Van Halanger, "we believe that the mental aspect of conditioning combined with a solid spiritual base is vital for our athletes to perform to the peak of their physical potential."

### Strength Increases - Progress Report

#### Bench Press

##### Fall of 1983

over 400 - 3 athletes  
over 350 - 17 athletes  
over 300 - 24 athletes

##### Spring of 1984

over 500 - 1 athlete  
over 400 - 10 athletes  
over 350 - 22 athletes  
over 300 - 25 athletes

#### Squat

##### Fall of 1983

No results available

##### Spring of 1984

over 600 - 1 athlete  
over 500 - 9 athletes  
over 450 - 14 athletes  
over 400 - 21 athletes

#### Vertical Jump

##### Fall of 1983

over 30 inches - 16 athletes  
over 25 inches - 56 athletes

##### Spring of 1984

over 30 inches - 21 athletes  
over 25 inches - 62 athletes

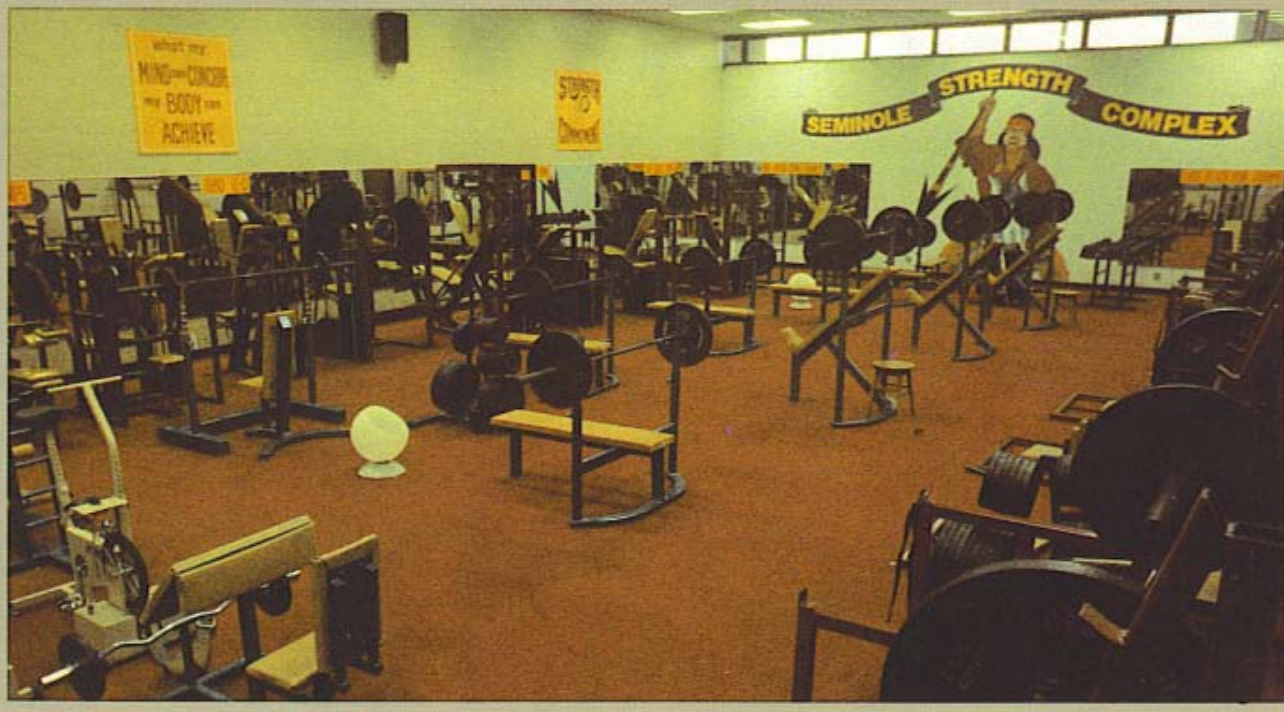
#### Individual Progress of Two Freshmen

##### Darrin Holloman - Freshman Running Back

	Body Weight	Bench	Squat	V.J.	40
Fall of 1983	155	250	-	26	4.75
Spring of 1983	172	330	385	28½	4.68

##### Pablo Lopez - Freshman Offensive Tackle

	Body Weight	Bench	V.J.	40
Fall of 1983	235	300	25	5.4
Spring of 1983	260	380	29	5.25



# ATHLETIC STAFF



**DR. BERNARD SLIGER**  
*University President*

Dr. Bernard F. Sliger, president of Florida State University, believes that a top quality athletic program enhances—rather than hurts—a university's academic program.

Sliger, a native of Trout Creek, MI, is the first Florida State president to earmark substantial funds from bowl games and TV appearances for academic pursuits.

Since assuming the FSU presidency on Feb. 7, 1977, Sliger has expanded his national reputation. In February 1984, he was appointed to the executive committee of the Universities Research Association. The association is comprised of 80 major research universities in the United States.

In 1983, he was named by the American Council on Education to a committee of 26 college and university presidents to seek solutions to abuses in intercollegiate athletics.

The American College Testing Program elected Sliger as vice chairman of the Board of Trustees in December, 1983. He has been on the 15-member board since 1981.

Sliger also holds memberships in 10 professional, scholastic and honor societies including Omicron Delta Kappa, Phi Kappa Phi and Alpha Kappa Psi. He is a member of the Tallahassee Kiwanis Club.

Prior to coming to Florida State University, Sliger worked as a professor and administrator at Louisiana State University and helped create the Louisiana Coordinating Council for Higher Education, of which he was executive director.

In 1972, Sliger joined the administrative team of FSU as executive vice-president. In 1976, he became interim university president until assuming his current position.

Sliger holds three degrees: the B.A., the M.A., and Ph.D. from Michigan State University, all in economics. He also has done postdoctoral study in mathematical economics at the University of Minnesota.

Dr. Sliger and his wife, Greta, have two sons, Paul and Sten, and two daughters, Nan and Greta.



**C. W. HOOTIE INGRAM**  
*Athletic Director*

Cecil Ingram, known to most of his friends and associates as simply "Hootie", has headed Florida State's athletic department for the past four years. He came to the position in January of 1981 after serving as associate commissioner of the Southeast Conference.

Since his arrival in Tallahassee, Ingram has initiated a \$10 million dollar building program for athletic facilities. The Moore Athletic Center that houses administration, coaches and ticket personnel, went from the blueprint stages under Ingram to reality when it opened in 1983. Fully equipped with locker rooms, weight rooms and a cafeteria, the complex also serves as a home for the Seminole football team.

The Seminole Baseball Stadium, second to none in the South, was completed during Ingram's second year at FSU while further improvements to Doak Campbell Stadium and the Bim Stults Aquatic Center were also completed.

A native of Tuscaloosa, Ala., the home of the University of Alabama, Ingram played football for the Crimson Tide from 1951 through 1954. He was All-SEC as a sophomore when he led the nation in pass interceptions. The '53 Alabama team played in the Orange Bowl and the '54 squad in the Cotton Bowl. Ingram also lettered for the Tide as an infielder.

After an Army stint, Ingram turned to coaching. He started as an assistant at Bradenton (Fla.) Manatee High School and was later head coach at Tuscaloosa High School for three years.

He later moved into college coaching and had assistant coaching assignments at Wake Forest, Virginia Tech, Georgia and Arkansas. His only college football head coaching job began in 1970 when he succeeded the veteran Frank Howard as head coach at Clemson. Three years later he joined the SEC as assistant commissioner.

During his eight-year tenure with the SEC, his duties included supervision of football

and basketball officials, rules interpretations and eligibility.

Ingram and his wife Toni have two daughters and a son.



**CHARLES W. EHRHARDT**  
*Faculty Athletic Committee Chairman*

Charles W. Ehrhardt, a professor of Law at Florida State University, is in his first full year as Chairman of the Athletic Committee and already he has gained the respect of the athletic community both locally and nationally.

He is currently in his second stint on the committee, serving from 1969-71 and then being reappointed to the board in 1983. As chairman, he succeeds Dr. James Jones, who served in that capacity since 1980. Ehrhardt becomes the University's representative to the NCAA.

A native of Elkader, Ia., Ehrhardt received his Bachelor's Degree from Iowa State University in 1962. Two years later he earned a Law Degree from the University of Iowa and then went on to become an Assistant United States Attorney in that state. He came to the Florida State University Law School in 1967.

A widely respected expert in the field of Evidence, Ehrhardt holds the FSU position as the Ladd Professor of Evidence. He is the author of the Florida Evidence Code, passed by the state legislature in 1976, which deals with the admissibility of evidence in court trials. Ehrhardt also authored a book on the subject, first published in 1977 and scheduled for a second edition soon.

Ehrhardt is frequently called upon for lectures, speaking engagements and private consultations with lawyers and judges nationwide on evidence matters.

He was honored last spring by being voted President of the Metro Conference, a position that makes him the chief representative of the league in matters dealing with the NCAA.

He is married to the former Judy Sutton and has three children.



**BOB GOIN**  
Associate Athletic  
Director

Bob Goin has been the associate athletic director at Florida State since July of 1981. All men's non-revenue sports' coaches report to Goin and he also assists athletic director Hootie Ingram in day-to-day operations of the athletic department. A large portion of responsibilities for football, basketball and baseball game day operations are also under his leadership.

He has also served as the tournament director for the 1982 and 1983 NCAA South Region baseball tournaments that FSU has hosted.

Goin is well-experienced both as an administrator and coach. He came to Florida State after serving two years as athletic director of California (Pa.) State College. Prior to taking the California post, he was assistant director of athletics at West Virginia. Between 1960 and 1976, he served in various capacities at Bethany (W. Va.) College. Included among his Bethany duties were coaching responsibilities in football, basketball and baseball.

At California State, Goin was responsible for expansion of the athletic department. He formed the Cal State Athletic Scholarship Fund and Athletic Booster Club.

Immediately prior to moving to West Virginia, Goin served Bethany as associate professor and chairman of physical education and athletics. That assignment lasted for four years (1972-76). Goin was Bethany's football coach between 1963 and 1972.

While coaching at Bethany, Goin saw two of his football and baseball teams win the President's Athletic Conference championship. He was also voted Tri-State Small College Coach of the Year, was named the winner of the Pittsburgh and Ohio Valley Dapper Dan awards and the Morgantown Touch-down Club Award.

Goin received a bachelor's degree from Bethany ('59) and a master's from West Virginia ('62).

He and his wife, Nancy, have four children. A son, Brian, is a graduate assistant football coach at Tulane.



**CLAUDE THIGPEN**  
Assistant Athletic  
Director

Claude Thigpen, a member of the Florida State athletic department staff for the past

29 years, has been in his present position as assistant athletic director since 1978. Only football assistant Bob Harbison has been with the athletic department longer than Thigpen.

Over the years, Thigpen has served many roles in the department, including athletic business manager, accountant and ticket manager.

He currently supervises the entire ticket operation of all sports and has coordinated season ticket drives for football, basketball and baseball. Among other responsibilities are game day operations for football and coordination of the athletic department courtesy car program.

In the fall, Thigpen takes on the added duties of supervising the travel for the Florida State football team and its official party. This includes making airplane and hotel reservations for the group of 145 traveling with the Tribe.

Thigpen, a native of Greenville, Fla. is married to the former Carleen Lindley.



**LARRY PENDLETON**  
Assistant Athletic  
Director

Larry Pendleton, a member of the Seminole athletic family since 1973, serves as an assistant athletic director. He had been FSU's academic advisor until July of 1980.

Pendleton's role includes many areas within the athletic department. He is responsible for maintaining and scheduling of all facilities in the athletic complex. All building projects are coordinated and supervised by Pendleton, including the year-old Moore Athletic Center, the baseball stadium, softball complex, Bim Stults Aquatic Center and Mike Long Track.

Additional duties include scheduling for the Seminole basketball team and aiding the coaching staff with its travel arrangements during the season. He is also responsible for management of the athletic department insurance programs.

Pendleton is in his 10th year as a full-time member of the Seminole staff. He returned to his alma mater in 1973 as a graduate assistant football coach and spent the 1974 season as an assistant coach.

A native of Winter Garden, Fla., Pendleton played linebacker and offensive guard for the Seminoles. Tribe offensive coordinator Wayne McDuffie and Pendleton were the two starting guards on FSU's 1967 Gator Bowl squad. Larry was twice selected to the Florida all-star team while starting 33 consecutive games.



**JOE LABAT**  
Athletic Business  
Manager

As athletic business manager, Joe Labat oversees the financial planning and directing of the entire athletic department. His six-person staff has responsibilities that entail the overall supervision of accounting, budgeting, financial reporting, internal control, payroll, purchasing and travel. Labat also serves as the athletic department representative for these areas in the University and external organizations.

Labat, who has just completed his sixth year with the department, joined the staff in 1978 from across campus where he served in the accountants payable section of the University's Comptroller's office.

An avid golfer and jogger, he also volunteers his time at track meets to serve as a reader of the accurack timing system.

Following graduation from Florida State in 1967, Labat taught and coached football and track at Rickards High School in Tallahassee for two years before moving on to Florida State.

A Tallahassee native, Labat is a member of the national business manager's association.

He is married to the former Jane Starling.



**BRIAN MAND**  
Academic Advisor

Brian Mand has served as the academic advisor for all men's varsity sports since 1980 when he joined the Florida State staff. He coordinates and supervises all athletic academic advisement and support programs.

Mand held similar positions at East Carolina (1979) and Rutgers (1977-79) before accepting the Tallahassee slot. While at Rutgers, Mand also served briefly as assistant to the director in the office of admission, registration and student services.

Mand is a '72 graduate of Wake Forest University where he earned a bachelor of business administration degree. In 1977, he received his master's degree in athletic administration from Ohio State. He has also taken graduate courses in counseling from Rutgers.

Mand is a member of the National Academic Athletic Advisor's Association and is



currently president-elect of that organization. He has also been a member of the American Alliance for Health, Physical Education and Recreation.

Mand is newly married to the former Roberta Lavette.



**JOHN SHEFFIELD**

*Assistant To  
The Athletic  
Director*

John Sheffield is in his second football season as director of marketing and promotions at Florida State after coordinating the ticket operations of the Tampa Bay Buccaneers for five years.

A 1975 graduate of Florida State, Sheffield worked in the Tribe's athletic department for a short period of time following graduation. He then moved on to the Atlanta Braves organization and later held positions with the Miami Dolphins (assistant ticket director) and Ft. Lauderdale Strikers (business manager).

At Florida State, Sheffield is involved with season ticket campaigns for football, basketball and baseball as well as organizing special event programs for the athletic department.

He also supervises the advertising for TRIBE magazine, FSU's football game program and serves as the contact in the athletic department for all printed advertising.

He remained on Tampa's Super Bowl Task Force Committee last year and helped coordinate the ticket distribution for that game.

He and his wife, Peggy, have a son.



**WAYNE HOGAN**

*Sports  
Information Director*

Wayne Hogan, a 1979 Florida State graduate, is in his third football season as director of the sports information department.

In that capacity, Hogan is responsible for all publicity and public relations matters concerning the FSU athletic department. The SID office distributes information on 16 intercollegiate sports, including both men's and women's athletics.

Hogan returned to his alma mater in 1982 after serving as assistant sports information director at New Mexico for two years. Prior to that move, he worked as Director of Public Relations and Broadcasting for two minor league baseball teams—the Charles-

ton Charlies and the Albuquerque Dukes.

Hogan got his start in the public relations and broadcasting field while a student at Florida State. From 1975-79, he was assigned duties that included working in the sports information office, engineering the Seminole Sports Network for football and basketball broadcasts and play-by-play announcing for baseball.

In addition to his duties as sports information director, Hogan has handled the color commentary for the Florida State basketball radio network for the last two seasons.

Wayne's father, Patrick Hogan, was a former FSU sports information director and now is a vice president for University relations at Florida State.

A Tallahassee native, Wayne and his wife, Elaine, have two daughters.



**LISA MORTON**

*Associate Sports  
Information Director*

Beginning her fifth year as associate sports information director, Lisa Morton works with publicizing the entire FSU sports program through the media. She serves as editor of the TRIBE, Florida State's football game program, and is responsible for many other publications produced by the athletic department. Her athletic department publications won six national awards in 1982, including the best football media guide in the nation.

A native of Pittsburgh, Pa., Morton

earned a bachelor's degree in sports management from West Virginia University in 1980. While at WVU, she worked two years as a sports information assistant under Mike Parsons, a former FSU assistant sports information director. She was also a member of the West Virginia women's basketball team.

In addition to duties with WVU, Morton worked with the Eastern Eight (now Atlantic Ten) basketball conference, producing the league's media guide in 1978.



**DAN PEARSON**

*Assistant Sports  
Information Director*

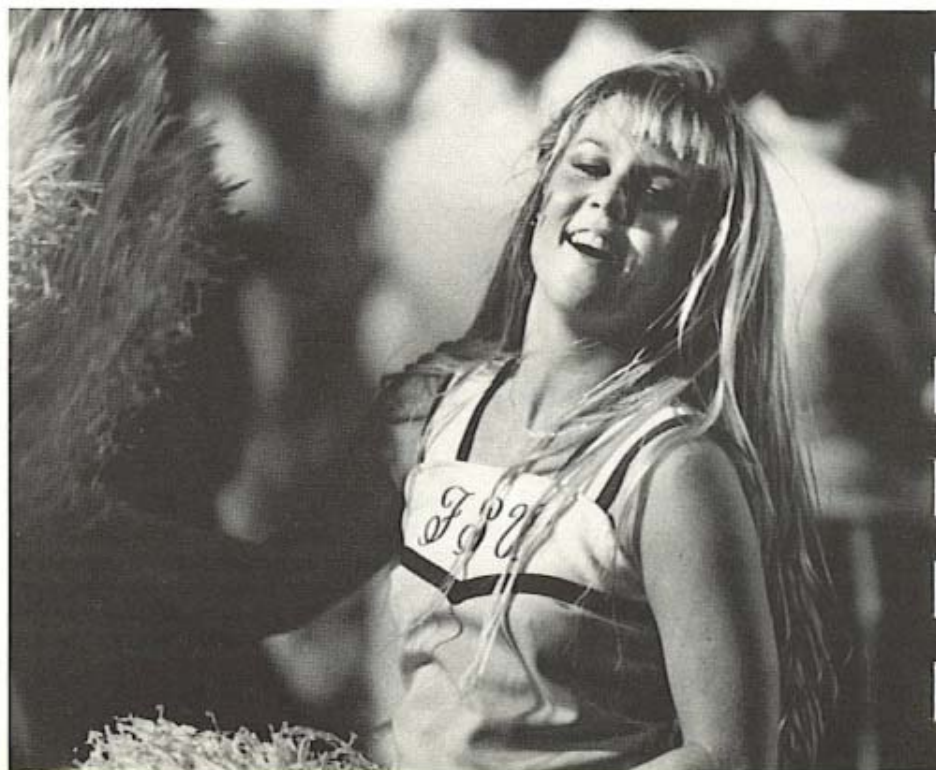
When the 1984 football season begins, Dan Pearson will be in his third year on the full-time Seminole athletic staff.

As assistant sports information director, Pearson works closely with the Seminole football team. In addition to other duties assigned by the director, Pearson also serves as publicity director for the FSU baseball team as well as several other sports.

Pearson came to Florida State from West Virginia, where he received a bachelor's degree in Journalism in 1979. While at WVU, he worked three years in the sports information office as both a student and graduate assistant.

After working the 1981 football season as a part-time assistant at FSU, Pearson was named assistant sports information director in October of 1982.

He is married to the former Kathryn Smith.





# DOAK CAMPBELL STADIUM

## From 9,676 To 57,369 In 24 Years

**F**lorida State University, a young school in existence as a co-ed institution for only 37 years, has built up an alumni following that resulted in 253,355 fans visiting Doak Campbell Stadium in 1983. An average of 50,671 fans per game, it was the second highest attendance total in FSU history. Only in 1982, when rival Florida and top-ten Pittsburgh came to town, did more Seminole fans turn out to see their team play. The largest single game crowd in history came on December

4, 1982, when 57,369 fans jammed the steel structure to see the Seminoles and the Gators play. Last season's Miami game, a script-written one point contest, fell just 37 fans short of topping that record.

In a short period of time, Florida State football has attracted many followers, including the local hometown folk as well as the die-hard Seminoles who make the 10-hour trek from Miami for each home game.

On October 8, 1950, just three years after Florida State had fielded its first football team, the Seminoles and the Randolph

Macon Yellowjackets played the first game in Doak Campbell Stadium. A record crowd of 9,676 watched the game under temporary lights as Florida State won 40-7.

Today, Doak Campbell Stadium is fully lighted for nighttime football—enabling FSU to be nationally televised under lights and seats a comfortable 55,246. Six expansions over the last 34 years have added over 40,000 seats, including the last 4,000 which were added prior to the 1982 season.

Doak Campbell's original 15,000 capacity in 1950 soon grew to 19,000 four years later and in 1961, a further expansion enabled

# FLORIDA STATE ATHLETIC DIRECTORY

Janice Dykehouse-Allen (women's basketball)	644-1091	Joe Labat (business manager)	644-1060
Wayne Allen (women's basketball)	644-1091	Marian Lee (ticket manager)	644-1060
Chuck Amato (football)	644-1060	Diane McCollister (ticket office)	644-1830
Mickey Andrews (football)	644-1060	Gene McDowell (football)	644-1060
Art Baker (football)	644-1060	Wayne McDuffie (football)	644-1060
Laverne Barrett (football secretary)	644-1060	Richard McKee (tennis)	644-1060
Cathy Beadnell (spring sports secretary)	644-1060	Brian Mand (academic advisor)	644-1060
Bobby Bowden (football)	644-1060	Patty Marker (accounting)	644-1060
John Brogle (cross country and track)	644-1060	Mike Martin (baseball)	644-1060
Dr. Emory Cain (dentist)	385-8419	Terry Maul (women's swimming)	644-1091
Jimmie Callaway (assistant equipment manager)	644-1060	John Mooney (athletic trainer)	644-1060
Vicki Callaway (football secretary)	644-1060	Rex Morgan (basketball)	644-1060
Elaine Clarke (women's athletic secretary)	644-1091	Lisa Morton (associate sports information director)	644-1060
Gary Cole (diving)	644-1091	Randy Oravetz (athletic trainer)	644-1060
Anne Davis (women's tennis)	644-1091	Cindy Owens (basketball secretary)	644-1060
Jennifer Dean (women's athletic trainer)	644-1091	Barbara Palmer (women's athletic director)	644-1091
Frank DeBord (equipment manager)	644-1060	Dan Pearson (assistant sports information director)	644-1060
Rod Delmonico (baseball)	644-1060	Larry Pendleton (assistant athletic director)	644-1060
Winnie Dodgion (softball)	644-1091	Patty Planchard (athletic secretary)	644-1060
Charlie Durbin (cinematographer)	644-1060	Jackie Pons (basketball)	644-1060
John Eason (football)	644-1060	Trudy Raybun (women's academic advisor)	644-1091
Pam Eaves (equipment)	644-1060	Cecile Reynaud (volleyball)	644-1091
Don Fauls (athletic trainer)	644-1060	Dick Roberts (track)	644-1060
Phyllis Fleet (athletic secretary)	644-1060	Jackie Ross (ticket manager)	644-1060
Jaye Flood (volleyball)	644-1091	Mary Lee Rouse (ticket office)	644-1830
Dee Frye (administrative assistant)	644-1060	Al Schmidt (women's cross country and track)	644-1091
Verlyn Giles (men's and women's golf)	644-1060	Billy Sexton (football)	644-1060
Jim Gladden (football)	644-1060	Tammy Sexton (women's athletic secretary)	644-1091
Charlotte Glover (women's athletic secretary)	644-1091	John Sheffield (assistant to the athletic director)	644-1060
Bob Goin (associate athletic director)	644-1060	Bill Shults (swimming)	644-1060
JoAnne Graf (softball)	644-1091	Seneca Smith (marketing and promotions secretary)	644-1060
Eugene Granger (equipment manager)	644-1060	Virginia Smith (accounting)	644-1060
Evelyn Green (accounting)	644-1060	Vince Sthair (spring sports strength coach)	644-1060
Judy Greve (sports information secretary)	644-1060	Claude Thigpen (assistant athletic director)	644-1060
Sue Hall (football secretary)	644-1060	Cheryl Turkington (accounting)	644-1060
Dr. Tom Haney (physician)	877-8174	Sharon Turner (ticket office)	644-1830
Bob Harbison (football)	644-1060	Dave Van Halanger (strength coach)	644-1060
Jo Heath (women's administrative assistant)	644-1091	Don Veller (administrative assistant)	644-1060
Dr. Doug Henderson (physician)	877-8174	Nancy Watson (women's athletic trainer)	644-1091
Wayne Hogan (sports information director)	644-1060	Michelle White (switchboard operator)	644-1060
Terry Hume (women's promotions)	644-1091	Joe Williams (basketball)	644-1060
Hootie Ingram (athletic director)	644-1060	Steve Williams (basketball)	644-1060
Gloria Jordan (women's athletic secretary)	644-1091	Gary Winckler (women's track)	644-1091
Kelly Jordan (women's basketball)	644-1091	Edith Yancy (women's athletic secretary)	644-1091
Clara Jump (football secretary)	644-1060		

## Doak Campbell Stadium (cont.)

25,000 to watch Seminoles. During the Bill Peterson era, the stadium was expanded to 40,500 and it remained at that capacity for the next 14 years. Between 1978 and 1982, three more additions became a reality for Florida State followers.

Named for FSU's first president, the stadium sits adjacent to the new athletic administration complex.



Named for Doak S. Campbell, the first president of Florida State University, the garnet and gold steel structure sits adjacent to the brand new athletic complex, just on the outskirts of the school's campus. The stadium's gold seats rise out of a natural Bermuda grass playing surface, enclosing the field except at the endzones where additional stands accommodate overflow crowds. Future expansions call for additional seating in the south endzone which will create a horseshoe-like structure.

The press box above the west stands accommodates the media and includes seating for up to 100 writers as well as broadcast booths for radio and television. A catwalk extending from the press box allows for additional working space for television cameras.

A skybox, erected in 1982, provides a viewing area for the Seminole Boosters, Inc. over the east stands. The plush box seats over 200 fans in its main section while six loge boxes are on another level.

A half-million dollar scoreboard, installed in 1980, sits above the south endzone. One of the first of its kind in the country,

it includes a computerized message center that updates offensive and defensive statistics throughout the game.

## CAMPBELL STADIUM'S TOP 20 CROWDS

ATTD.	YEAR	OPPONENT	FSU	OPP
1.	57,369	1982 Florida	10	13
2.	57,333	1983 Miami	16	17
3.	56,236	1982 Pittsburgh	17	37
4.	55,102	1983 Cincinnati	43	17
5.	53,772	1980 Florida	17	13
6.	52,894	1980 Pittsburgh	36	22
7.	52,721	1981 W. Carolina	56	31
8.	52,685	1981 Miami	19	27
9.	52,623	1980 Louisville	52	0
10.	52,542	1983 So. Carolina	45	30
11.	52,396	1980 Boston College	41	7
12.	51,819	1981 So. Mississippi	14	58
13.	51,487	1980 Virginia Tech	31	7
14.	51,454	1981 Memphis State	10	5
15.	51,233	1982 So. Illinois	59	8
16.	51,233	1982 Louisville	49	14
17.	50,735	1981 Louisville	17	0
18.	50,547	1980 E. Carolina	63	7
19.	49,490	1979 So. Carolina	27	7
20.	49,253	1982 Cincinnati	38	31

# FSU OPPONENTS

## WEEK BY WEEK SCHEDULES

	Aug 27	Sept 1	Sept 8	Sept 15	Sept 22	Sept 29	Oct 6	Oct 13	Oct 20	Oct 27	Nov 3	Nov 10	Nov 17	Nov 24	Dec 1
East Carolina	Open	@ Florida State	Temple	@ Central Michigan	Georgia Southern	@ N.C. State	@ Pitt	@ Tulsa	East Tennessee	@ South Carolina	@ SW. Louisiana	Southern Miss	Open	Open	Open
Kansas	Open	Open	Wichita State	Florida State	@ Vanderbilt	@ North Carolina	Iowa State	@ Kansas State	@ Oklahoma State	Oklahoma	@ Colorado	Nebraska	@ Missouri	Open	Open
Miami	Auburn @ Meadowlands	Florida @ Tampa	@ Michigan	@ Purdue	Florida State	Rice	@ Notre Dame	@ Cincinnati	Pitt	Open	@ Louisville	Maryland	Open	Boston College	Open
Temple	Open	Open	@ East Carolina	@ Rutgers	Pitt	@ Florida State	@ William & Mary	@ Boston College	Delaware	Virginia Tech	Cincinnati	West Virginia	Open	Open	(Nov. 30) Toledo @ Atl. City
Memphis State	Open	Arkansas State	@ Ole Miss	Open	Cincinnati	@ Southern Miss	Florida State	SW. Louisiana	Mississippi State	North Carolina	@ Georgia	Tennessee	@ Tulane	Open	Open
Auburn	Miami @ Meadowlands	Open	Open	@ Texas	Southern Miss	Tennessee	@ Ole Miss	@ Florida State	Georgia Tech	@ Mississippi State	@ Florida	Cincinnati	Georgia	Open	Alabama @ Birmingham
Tulane	Open	Mississippi State	Open	@ Florida	Kentucky	@ Ole Miss	@ Vanderbilt	Southern Miss	@ Florida State	Open	@ Virginia Tech	@ Pitt	Memphis State	@ LSU	Open
Arizona State	Open	Open	Oklahoma State	San Jose State	Southern Cal	@ Stanford	California	Open	Oregon State	UCLA	Florida State	@ Oregon	Colorado State	@ Arizona	Open
South Carolina	Open	Open	The Citadel	Open	Duke	Georgia	Kansas State	Pitt	@ Notre Dame	East Carolina	@ N.C. State	Florida State	@ Navy	@ Clemson	Open
Tennessee Chattanooga	Open	SW. Louisiana	Arkansas State	Western Carolina	Open	Furman	East Tennessee State	@ Georgia Southern	VMI	@ Marshall	Open	Appalachian State	@ Florida State	Open	Open
Florida	Open	Miami @ Tampa	LSU	Tulane	Open	Mississippi State	Syracuse	@ Tennessee	@ Cincinnati	Open	Auburn	Georgia @ Jacksonville	@ Kentucky	Open	@ Florida State

**FLORIDA STATE UNIVERSITY  
SPORTS INFORMATION OFFICE  
P.O. BOX 2195  
TALLAHASSEE, FL 32316  
PHONE 904-644-1060**

### ***FUTURE SCHEDULES***

#### **1985**

Sept. 7 @ Tulane  
Sept. 14 @ Nebraska  
Sept. 21 MEMPHIS STATE  
Sept. 28 KANSAS  
Oct. 12 @ Auburn  
Oct. 19 TULSA  
Oct. 26 @ North Carolina  
Nov. 2 MIAMI  
Nov. 9 SOUTH CAROLINA  
Nov. 16 WESTERN CAROLINA  
Nov. 30 @ Florida

#### **1986**

Sept. 6 TOLEDO  
Sept. 13 @ Nebraska  
Sept. 20 NORTH CAROLINA  
Sept. 27 @ Michigan  
Oct. 11 TULANE  
Oct. 18 WICHITA STATE  
Oct. 25 @ Louisville  
Nov. 1 @ Miami  
Nov. 8 @ South Carolina  
Nov. 15 SOUTHERN MISSISSIPPI  
Nov. 29 FLORIDA

#### **1987**

Sept. 5 TEXAS TECH  
Sept. 12 @ East Carolina  
Sept. 19 MEMPHIS STATE  
Sept. 26 @ Michigan State  
Oct. 3 MIAMI  
Oct. 10 @ Southern Mississippi  
Oct. 24 SOUTH CAROLINA  
Oct. 31 TULANE  
Nov. 7 @ Auburn  
Nov. 14 FURMAN  
Nov. 28 @ Florida