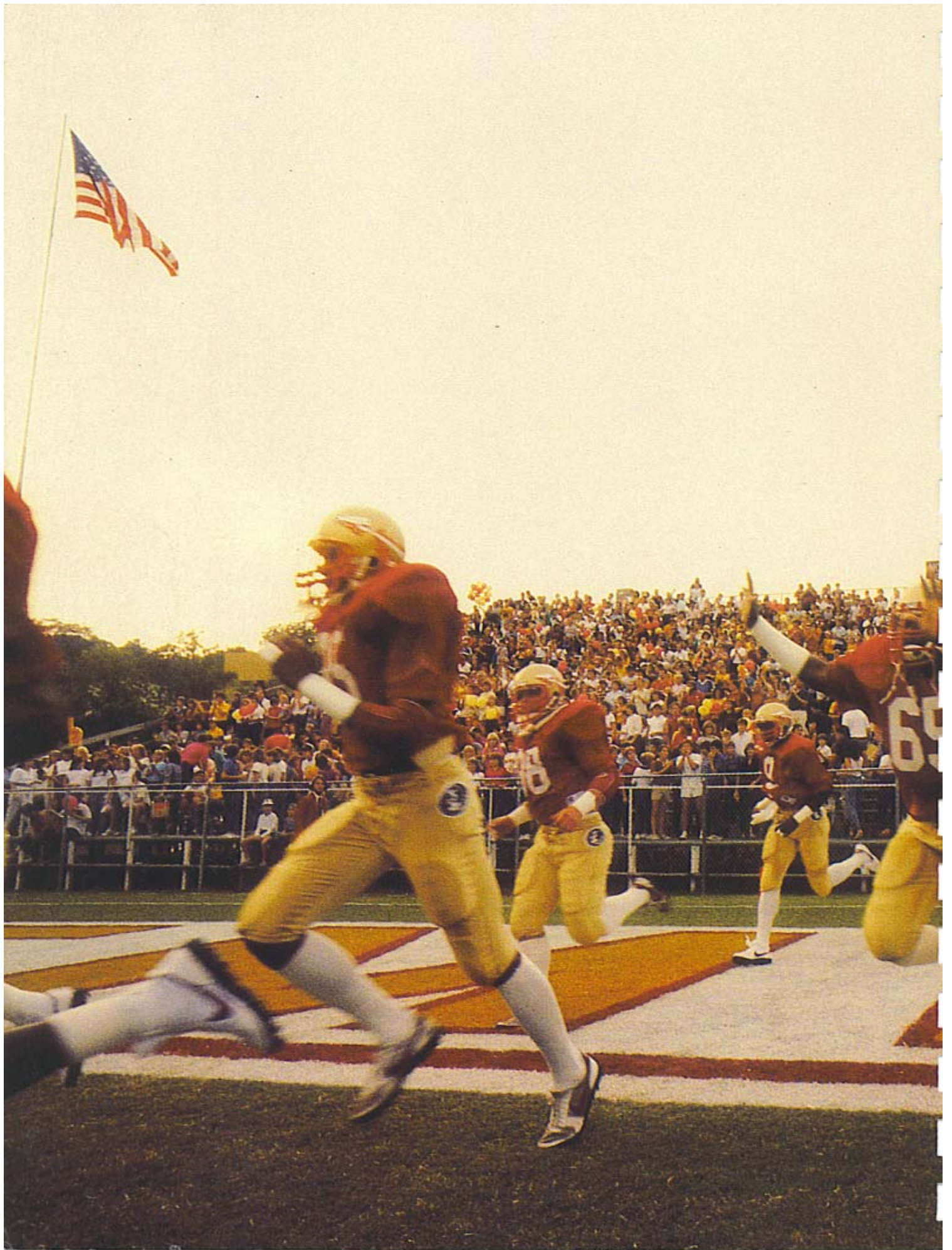


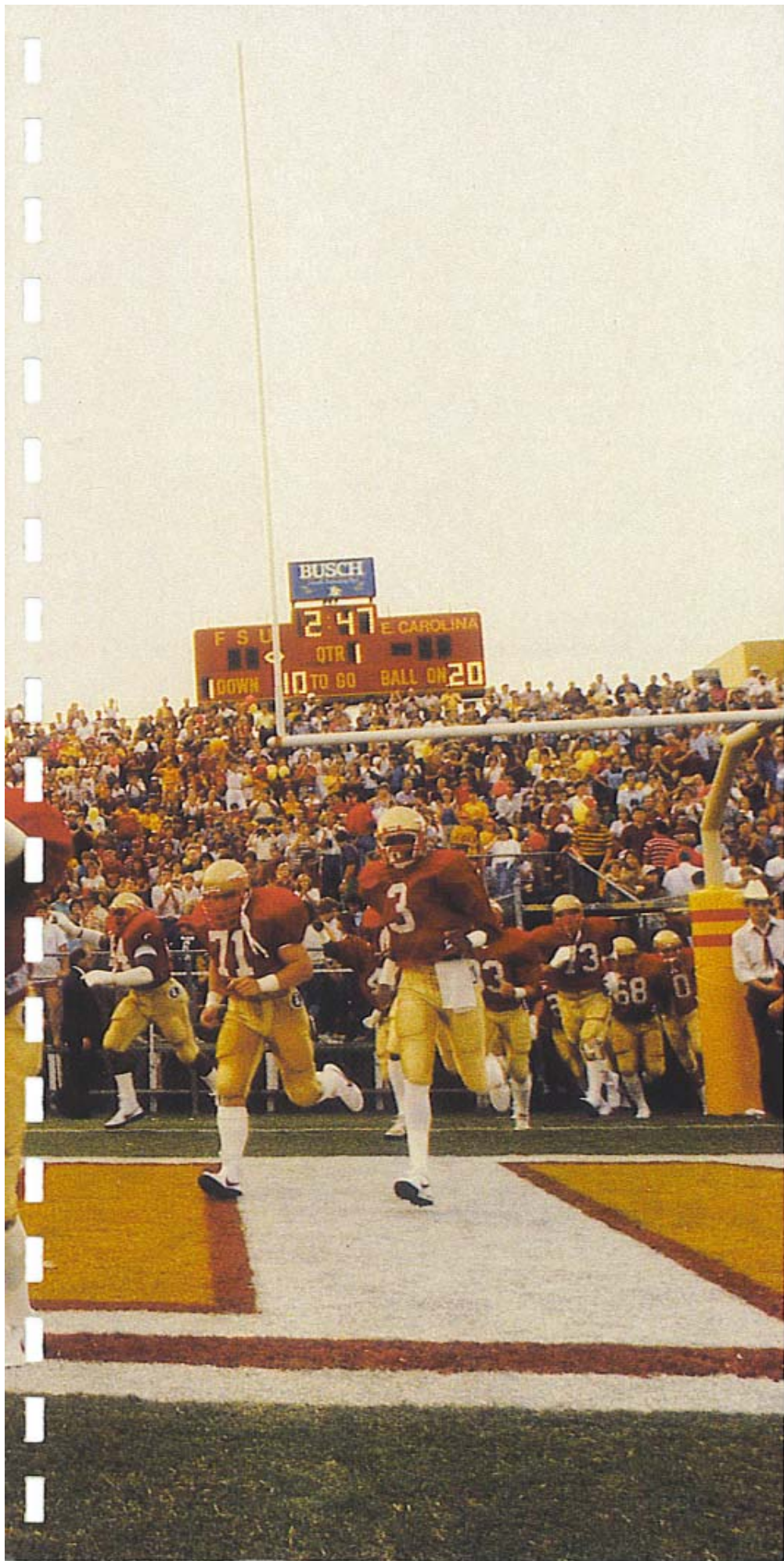
—Bowden's Xth 

**The  
1985  
Florida State  
University  
Football  
Media Guide**









## 1985 Seminole

Date	Opponent
August 31	Tulane
September 7	Nebraska
21	MEMPHIS STATE
28	KANSAS
October 12	Auburn
19	TULSA
26	North Carolina
November 2	MIAMI (Fla.)
9	SOUTH CAROLINA
16*	WESTERN CAROLINA
30	Florida

\*Homecoming

## 1984 Record and Attendance

OPPONENT	FSU	Opp.	Attd.
East Carolina (H)	47	17	54,211
Kansas (A)	42	16	38,600
Miami (A)	38	3	60,210
Temple (H)	44	27	56,892
Memphis State (A)	17	17	27,740
Auburn (H)	41	42	58,671
Tulane (H)	27	6	54,785
Arizona State (A)	52	44	68,574
South Carolina (A)	26	38	75,000
Tennessee-Chattanooga (H)	37	0	55,443
Florida (H)	17	27	58,930
Georgia (N) (Citrus Bowl)	17	17	51,821

ATTENDANCE: Home — 338,932 (56,489)

Away — 270,124 (54,024)

Total — 609,056 (55,369)

## Future Schedules

1986		1987		1988	
Sept. 6	— TOLEDO	Sept. 5	— TEXAS TECH	Sept. 3	— SOUTHERN MISS
13	— @ Nebraska	12	— @ East Carolina	10	— NORTH ILLINOIS
20	— NO. CAROLINA	19	— MEMPHIS ST.	17	— @ Clemson
27	— @ Michigan	26	— @ Michigan St.	24	— MICHIGAN ST.
Oct. 11	— TULANE	Oct. 3	— MIAMI	Oct. 1	— @ Tulane
18	— WICHITA ST.	10	— @ Southern Miss	8	— @ Memphis St.
25	— @ Louisville	24	— SO. CAROLINA	15	— EAST CAROLINA
Nov. 1	— @ Miami	31	— TULANE	29	— @ Miami
8	— @ So. Carolina	Nov. 7	— @ Auburn	Nov. 5	— @ So. Carolina
15	— SOUTHERN MISS	14	— FURMAN	12	— VIRGINIA TECH
29	— FLORIDA	28	— @ Florida	26	— FLORIDA

All game times are tentative for the purposes of media planning. The time times should be obtained from the Florida State Sports Information Office.



## Football Schedule

Series	Site	Time
(1-1-0)	New Orleans, La.	TBA CDT
(1-1-0)	Lincoln, Neb.	2:30 p.m. CDT
(6-7-1)	TALLAHASSEE, FLA.	TBA CDT
(3-2-0)	TALLAHASSEE, FLA.	7:00 p.m. EDT
(1-11-1)	Auburn, Ala.	1:30 p.m. CDT
(1-0-0)	TALLAHASSEE, FLA.	7:00 p.m. EDT
(1-0-0)	Chapel Hill, N.C.	1:00 p.m. EDT
(13-15-0)	TALLAHASSEE, FLA.	7:00 p.m. EST
(9-3-0)	TALLAHASSEE, FLA.	7:00 p.m. EST
(1-0-0)	TALLAHASSEE, FLA.	7:00 p.m. EST
(6-20-1)	Gainesville, Fla.	12:30 p.m. EST

# The 1985 Florida State University Football Media Guide

## Table of Contents

Media Information .....	2
<b>Outlook</b>	
<i>Minor Adjustments, Major Goals</i> .....	4
Pre-Fall Depth Chart .....	8
The Offense .....	8
The Defense .....	11
<b>Coaching Staff</b>	
<i>Bobby Bowden: Going On Ten</i> .....	14
Assistant Coaches .....	18
Graduate Assistants .....	22
Support Staff .....	22
<b>1985 Seminoles</b>	
<i>All-American Jamie Dukes</i> .....	24
All-American Candidate	
Hassan Jones .....	25
Player Biographies .....	26
Freshmen .....	42
FSU Players in the Pros .....	44
1985 Seminole Football Roster .....	45
Geographic Distribution .....	46
<b>1985 Opponents</b>	
Opponents Profiles Week-by-Week .....	48
Travel Itinerary .....	59
FSU Record vs. 1985 Opponents .....	59
Seminole Sports Network .....	60
<b>1984 Review</b>	
Game Stories .....	62
1984 Seminole Honor Roll .....	68
1984 Statistics .....	69
<b>The University</b>	
<i>This is Florida State</i> .....	74
Doak Campbell Stadium .....	77
Seminole Strength Complex .....	78
Athletic Administration Staff .....	79
Athletic Department Directory .....	82
<b>The Record Book</b>	
Individual and Team Records .....	84
Records Against All Opponents .....	98
Seminoles On Television .....	99
Opponent Records .....	100
Homecoming Games .....	100
Coaches and Captains .....	101
Coaches Cumulative Records .....	101
FSU All-Americans .....	102
All-South Independents .....	103
All-Time Lettermen .....	104
Bob Crenshaw Award .....	105
Year-By-Year Results .....	106
Bowl Game Stories .....	109
1984 Citrus Bowl .....	113
FSU Bowl Game Records .....	115
Opponent Schedules Week-By-Week .....	I.B.C.

## Florida State Fingertip Facts

<b>President:</b>	Dr. Bernard F. Sliger
<b>Location:</b>	Tallahassee, Fla. 32306
<b>Enrollment:</b>	22,500
<b>Athletic Director:</b>	C.W. "Hootie" Ingram
<b>Athletic Board Chairman:</b>	Charles Ehrhardt
<b>Sports Information Director:</b>	Wayne Hogan
<b>Nickname:</b>	Seminoles
<b>Founded:</b>	1857
<b>Colors:</b>	Garnet and Gold
<b>Conference:</b>	Independent
<b>Stadium:</b>	Doak S. Campbell (60,519)
<b>Head Football Coach:</b>	Bobby Bowden
<b>Coach's Record at FSU:</b>	73-30-2 (9 yrs)
<b>Coach's Overall Record:</b>	146-62-2 (19 yrs)
<b>1984 Record:</b>	7-3-2
<b>1984 Bowl Appearance:</b>	Citrus
<b>1984 Final Ranking:</b>	AP (17th), UPI (19th)
<b>FSU All-Time Record:</b>	223-160-14

## The 1985 FSU Football Guide

<b>Editors:</b>	Wayne Hogan Lisa Morton
<b>Contributors:</b>	Donna Turner Dan Pearson Jonathan Dukes Bonnie Doyle
<b>Photographers:</b>	Courtland Richards Bucky Parrish Kal Lunt Dale Pearson Bradley Photography The Tallahassee Democrat FSU Photo Lab Hank Young Ross Ohley
<b>Design:</b>	J.S. Goodson and Associates Tallahassee, Fla.
<b>Typography:</b>	RapidoGraphics, Inc. Tallahassee, Fla.
<b>Printing:</b>	Boyd Brothers Printing Panama City, Fla.
<b>Price:</b>	\$7.50

of kickoff for all games is subject to change. Latest information on kickoff



### To The Media:

We hope that the 1985 football guide will be a useful tool in your coverage of the Florida State Seminoles. Should there be any questions not covered in this brochure, please feel free to give any member of my staff a call. Additional requests for information, feature material, slides, photographs or video tape will also be made available to any accredited member of the media upon request.

The following paragraphs will outline our policies and procedures at Florida State University and should be most useful in answering your questions about all aspects of our program that involve the media.

Again, we are available to assist you in your coverage of FSU and don't hesitate to call on one of us.



Wayne Hogan  
Sports Information Director

**Credential Requests:** All requests for working press, radio, television, photographer or scouting credentials should be directed to Sports Information Director Wayne Hogan no later than one week prior to the game. Requests for season credentials should be made two weeks prior to the first game.

Space for the working press, radio, television and scouts is allocated by the Sports Information Office.

Florida State's press box is located on the west side of Doak Campbell Stadium with elevator service to all levels. Media representatives and scouts should enter through the press gate, located north of the elevator. The Will Call booth, where media can pick up credentials anytime after 4:00 p.m. on game days, is located outside the gate at the base of the elevator. Will Call credentials will also be available in the Sports Information Office on Fridays prior to games or at the Ramada Inn hospitality room from 2:00-4:00 p.m. on game days.

**Press Policies:** Working press will be admitted to the press deck, where approximately 90 seats are available. Credentials are issued by FSU according to the following criteria:

- (a) Local newspapers, wire services, national publications, newspapers from opponent's area and student newspapers from FSU and opponent's school.
- (b) Other daily newspapers with preference to those which regularly cover FSU.
- (c) Scouts.
- (d) Non-daily newspapers, with preference to those which have regularly covered FSU.
- (e) Radio and television personnel not actually broadcasting, but considered reporting (seats will be provided in the stands).

**Radio-TV:** The sixth level of the press box is designated for use by radio and television broadcasting crews and home and visiting coaches. Each booth is fully enclosed and sound proof.

**Photographers:** Only accredited photographers or freelance photographers shooting for the FSU Sports Information Office will be issued working credentials.

The press box catwalk, or photo deck, offers an unobstructed view for TV and movie cameras. Holders of a photo deck pass will be assigned space in that area. Still photographers will not be admitted to the press box in 1985 and may have access to the sidelines only. Those holding a still photography credential should report to the gate specified on the pass where they will be issued an armband, a set of rosters and a box lunch. A photographers' lounge area with tables and chairs will be made available.

Special requests for photographers whose assignments warrant shooting from the photo deck may be made to Sports Information Director Wayne Hogan.

**Press Parking:** Parking is limited and passes will be issued on a priority basis within the same guidelines as working credentials. The press lot is located on the southwest corner of Doak Campbell Stadium. Access to the lot should be made from Stadium Drive.

**Statistical Services:** Play-by-play, half-time and complete statistics will be provided. Post game quotes from FSU head coach Bobby Bowden will also be available whenever possible.

**Refreshments:** A light pre-game meal will be served on Level Six of the press box at approximately 6:00 p.m. Refreshments will also be made available throughout the game.

**Telecopiers:** An independent telecopier service will be available for each game with a nominal fee being charged. Please contact the Sports Information Office in advance. If you plan to use your own telecopier and phone, please have them placed in the telecopier area of the press deck.

**Post Game Interviews:** Florida State's locker room will be open to the media after a brief five-minute cooling off period. Head coach Bobby Bowden will conduct his post-game interviews in the Projection Room on the second floor of the adjacent Moore Athletic Center. Access to that room will be made available by Sports Information Director Wayne Hogan immediately following the game.

**Mid-Week Interviews:** Media interviews with all FSU players should be arranged through the Sports Information Office. For phone interviews, the SID office will fill out a card informing the player to return the call. All player calls to the media will be made collect.

Anyone wishing to schedule an interview with head coach Bobby Bowden should contact his secretary, Sue Hall, at extension 112.

**Breakfast with Bobby:** Following each and every Seminole home game, head coach Bobby Bowden will join the media Sunday morning for breakfast at the Ramada Inn (press headquarters). Breakfast will be served at 8:00 a.m. with a question-and-answer session beginning at 8:15 a.m.

**Conference Call:** Media members again may contact Bowden for follow up material via a 3:00 p.m. Sunday conference call on road game weekends. Contact a member of the Sports Information Office to be put on the master list.

**Road Game Credentials:** Writers covering Florida State may make requests for road credentials with the opponent school or with the FSU Sports Information Office by Monday of game week.

**Telephones:** Telephone service should be secured directly through Centel Telephone Company of Florida, Tallahassee (904/222-2236). Have them contact the Sports Information Office for location. Due to deregulation, you must bring your own phone with you. Centel will provide lines only. When contacting Centel, please be specific as to the type of line you need (i.e. touchtone, etc.).

### How to Contact Us:

**At The Office:** The Florida State athletic telephone number is (904) 644-1060. Contact Sports Information Director Wayne Hogan at extension 147, Associate Director Lisa Morton at extension 151, Assistant Director Dan Pearson at extension 149 and secretary Judy Greve at extension 147. After hours number is 644-1403.

**At Home:** Hogan (904/386-5359), Morton (904/575-4773) and Pearson (904/562-4628).

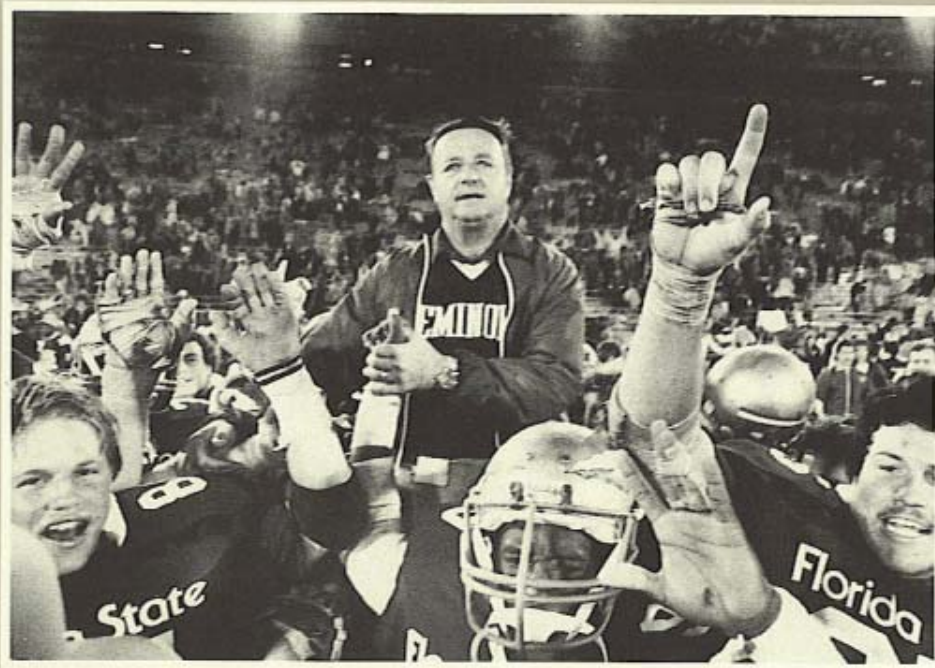
**Through The Mail:** Address all inquiries to: Sports Information Office, Moore Athletic Center, P.O. Drawer 2195, Tallahassee, FL 32316.



## **Bowden's Xth**

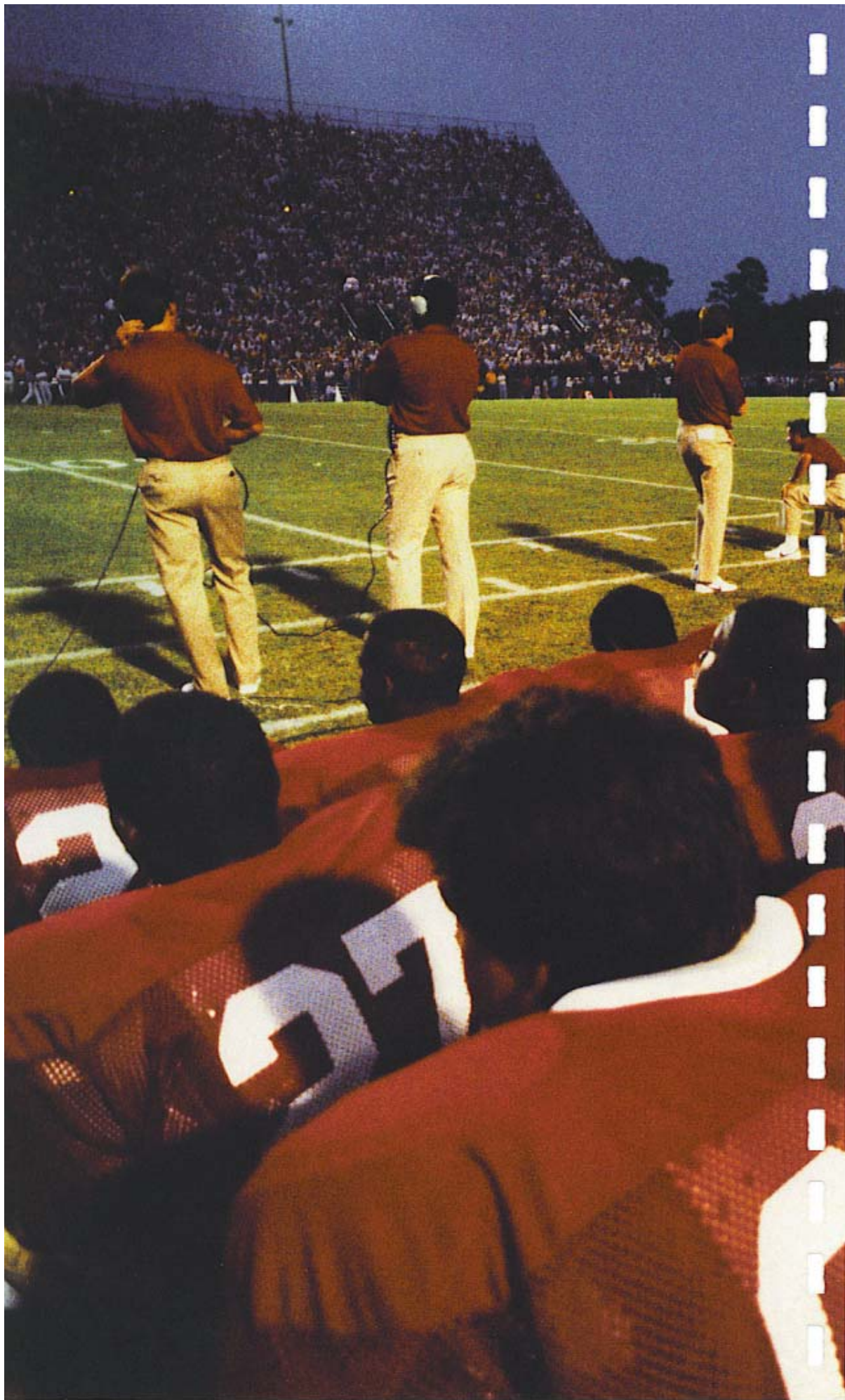
***“Seminoles fans would have you believe that the clouds parted one winter day back in 1976. This beam of light descended from on high, speaking a single word: Bowden. Florida State fans remember it well. They were looking for a coach following successive seasons of 0-11, 1-10, and 3-8.”***

***—Joe Henderson, Tampa Tribune***



***“When I was at West Virginia, all I heard was ‘Beat Pitt’. When I was at Alabama, all I heard was ‘Beat Auburn’. When I got to Florida State, their bumper stickers said ‘Beat Anybody’.”***







FLORIDA STATE UNIVERSITY

17	FIRST DOWN	6:58	E. GORRARD	FIRST DOWN	5
1077	YDS. PASSING	313	3	YDS. PASSING	22
170	YDS. RUSHING	313	3	YDS. RUSHING	76
277	TOTAL YDS.	626	6	TOTAL YDS.	98

TIME OF GAME 1:10  
 TIME OF CLOCK 4:45  
 QTR 2

SEMINOLE TERRITORY

COCA-COLA  
 INVESTOR'S REALTY  
 BUSCH

# 1985 Outlook







The 1985 FSU Football Media Guide

# Minor Adjustments, Major Goals

**F**lorida State Head Football Coach Bobby Bowden is entering his 10th year in Tallahassee and his 20th as a college head coach. You've heard that you can't teach an old dog new tricks—well, you'd be hard-pressed to find one this guy doesn't have in his arsenal.

"No, we're not going to go out and change a bunch of things," said Bowden. "What we really need is to do the things we are doing better. When you finish in the top three or four in the nation on offense for three straight years you don't want to change a lot."

One of the things Bowden wants to "do better" is pass. Gone is the "freeze option" of 1984, but according to the FSU coach, that does not mean the offensive scheme will change dramatically.

"What we want to do is make some minor adjustments," Bowden said. "It's like taking a car and replacing the bumpers, not the whole engine. We want to throw better, not necessarily more."

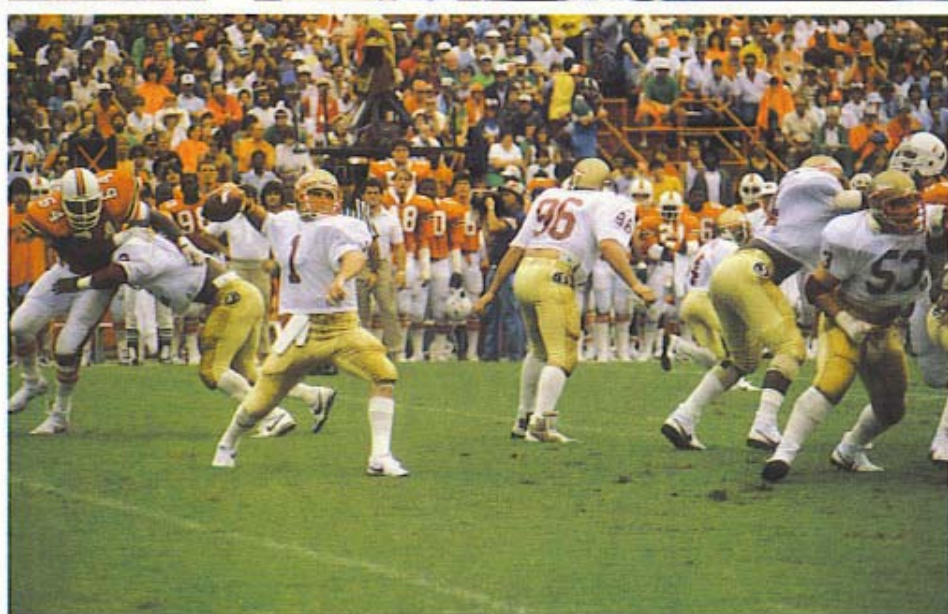
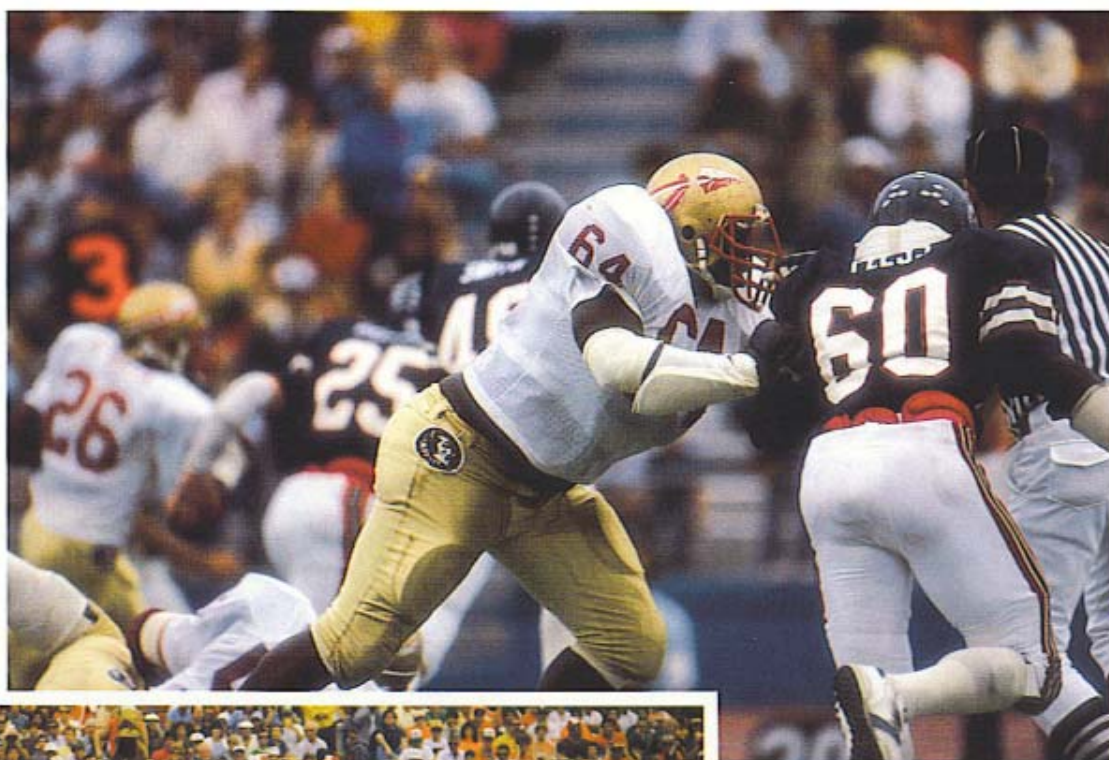






## Outlook

Jamie Dukes (64) is the heart and soul of the Seminole offense. Some coaches, including his own, say he may be the best offensive lineman in the country this year. Dukes has started every game since he arrived at Florida State as a freshman.



The battle for the starting quarterback role at Florida State is still up for grabs. Eric Thomas (1) started all last year until he was sidelined with injuries. With his status still a question, Bowden must look closely at Kirk Coker (11) and Danny McManus (14). Coker started three games in 1984, but McManus emerged from the spring with a slight edge.

Surprisingly, there is a question at quarterback. Eric Thomas, last year's starter, returns for his senior season, but he had surgery on his right shoulder in January and was able to throw almost none at all during the spring. A full recovery in time for the season is cautiously anticipated.

With Thomas out last spring, the battle shifted to last year's backup Kirk Coker, a junior, and Danny McManus, a sophomore with a rifle arm. After the allowed 20 workouts and a spring game finale, McManus was given the slightest of edges. All of this means that the 1985 starting quarterback will be Eric Thomas . . . or Danny McManus . . . or Kirk Coker. The problem here is evident.

"I would say that right now everything depends on how well Eric can come back," says Bowden. "If he's healthy he'll have every opportunity to keep the starting job. If not, we'll let Kirk and Danny go at it in the fall. I would say that Danny may have a little edge going in."

The hope for Thomas also lies in an improved throwing arm after the surgery that removed some nagging bone chips from the area of the rotator cuff. Thomas was a very inconsistent passer last year and feels the arm problem may have been a factor.

"I'm a better passer than what I showed last year," Thomas says. "It was a combination of a lot of things, but I'm anxious to see what happens when I throw without any pain. It was just something that was bothering me and we had to go ahead and get it fixed."

On defense, Bowden plans to continue using the present system, but in 1985 leadership shifts to the defensive line where Isaac Williams and Todd Stroud return for their senior seasons and Gerald Nichols for his third year.

Two of the four starting linebackers also return. Although leading tackler Henry Taylor will be missed, Fred Jones, his partner at inside linebacker and 1984's second leading tackler, is back, as are Darryl Gray, Ulysses Roberson and Garth Jax at outside linebacker. Barring injuries, experience will not be a problem for either of these areas.

"We've got to count heavily on our defensive front," said Bowden. "That's where all the experience is and that's where we feel we are solid. It's a situation where those guys will have to help the secondary all the time—keep the pressure on the other team. If we can't do that I'm afraid we're going to have a lot of trouble."

In the defensive secondary the departure of seven seniors, including all of the safeties, has left a gaping hole in the FSU defense. Bowden must look to second year cornerbacks Eric Williams and Martin Mayhew to lead the pack. Sophomore Stanley Shiver had an excellent spring at safety. Terry Griggley and Greg Newell are other likely



candidates. Still, the experience is definitely lacking.

"I'll tell you what scares me," Bowden explains. "Whenever we are evaluating our opponents we always look for the most inexperienced people in the secondary and then we try to go at them as much as we can. If I was looking at our team I would sure see some areas to work against."

"The thing we need to do is just line up and throw into the secondary time and again in the pre-season. The more they see it, the better they'll get," says the coach. "One thing we were able to accomplish in the spring was that not only did our quarterbacks throw a lot, but the secondary got a chance to look at it from its side."

While there were no mass defections off an offense that ranked third in the nation in scoring and fourth in total offense, the search began in the spring for replacements for two of the Tribe's MVPs of 1984, tailback Greg Allen and wide receiver Jessie Hester.

"We have to find somebody to replace Jessie and Greg," Bowden said. "We're going to miss all our seniors, but those two especially."

Senior Tony Smith, although injury prone, will have the first team tailback slot if he can hold off the challenge of another Smith, incoming All-American Sammie. Roosevelt Snipes, barring academic problems, also returns.

Whoever comes on to replace Allen, who holds 26 FSU rushing and scoring records, will have a powerful offensive line and an experienced fullback to run behind. Seniors Jamie Dukes and John Ionata, a pair of three-year starters, will anchor the line from their guard and tackle positions.

Dukes could very well be the best all-around offensive lineman in America. He has started all 36 games since he walked on to the FSU campus three seasons ago and has done nothing but improve.

"He is the most consistent, intelligent offensive lineman I've seen in a long, long time," says Bowden. "I've seen guys that are bigger, guys that are stronger and guys that have some better movements, but I'll guarantee you this guy does so many things to perfection that it's scary."

Dukes' position coach is Wayne McDuffie, who coached the offensive line during Herschel Walker's stint at Georgia and then with the Atlanta Falcons. A man of few words, McDuffie says simply: "Jamie Dukes is the best offensive lineman I've ever coached."

And when you line senior John Ionata up next to Dukes at the tackle slot, you have built one whale of a wall to run behind. The thought of that tandem brings a smile to Bowden's face.

"John Ionata and Jamie Dukes could be a big factor in our offense," Bowden said. "We expect them to be leaders of our offense and we're also ready for big things from Cletis and Hassan Jones."

Cletis is senior fullback Cletis Jones who gained 631 yards on 120 carries last year and had 100-yard games against Kansas and Tennessee-Chattanooga. Hassan Jones will be the most experienced member of 1985's receiving corps.

But quarterbacks Thomas, Coker and McManus will not have a shortage of talented catchers. Jones and sophomores Darrin Holloman and Herb Gainer will be the primary targets at the wide receiver positions and off the line three experienced tight ends come back, including sophomore Pat Carter and senior Pete Pantan.

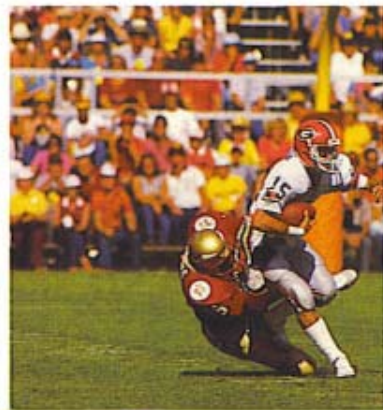
While Bowden likes the way the offense and defense shape up for 1985, he does have one worry about the special teams.

"We have got to find someone to take Joe Wessel's place," Bowden said. "He was probably the biggest factor in our success last year, and we need someone to come in and do what he did next year."

"What he did" was block five kicks, score four touchdowns off of blocked kicks and turn several games FSU's way.

The rest of the kicking game appears to be strong with both Derek Schmidt, the top freshman scorer in the nation last year, and Louis Berry, who averaged 42.3 yards a punt, returning for their sophomore and junior seasons, respectively.

Tackle Gerald Nichols (79) and linebacker Fred Jones (55), just juniors, represent the youthful but experienced portion of the Seminole defense. Both players emerged as solid defenders in their sophomore seasons and should lead the assault for two more seasons.



Senior Isaac Williams is truly a prime candidate for post-season honors. He should be the Seminoles' big-play man in 1985. Improving in virtually every game he's played, Williams has become a brilliant performer and sports a personality to match.







Eric Williams (17), just a sophomore, played like a veteran in 1984. He'll be called on to lead a young defensive secondary that must replace three starters this season. Williams made his first big splash against Bernie Kosar and Miami in FSU's 38-3 victory . . . not bad for a freshman. Stanley Scott (83) should be a big contributor at tackle even though he hasn't cracked the starting lineup.

# 1985 FSU Seminole

## OFFENSE

Position	SE	ST	SG	C	TG
Player	Hassan Jones	Pablo Lopez	Mark Salva	David Schrenker	Jamie Dukes
	Herb Gainer	Joe Ionata	Don Desenso	Parrish Barwick	Jason Kuipers
	Randy White	Jim Hendley	Roger Agne	Marty Riggs	

## DEFENSE

Position	OLB	LT	SLB	N	WLB
Player	Darryl Gray	Isaac Williams	Fred Jones	Todd Stroud	Paul McGowan
	Ulysses Roberson	Stanley Scott	Felton Hayes	Lenny Chavers	Jesse Solomon
	Bruce Heggie	Steve Gabbard	Stuart Wyatt	Thomas Harp	John Eaford

### LETTERMEN LOST (O-7, D-10)

Billy Allen, Greg Allen, J. D. Dowell, Jessie Hester, Greg Jacobs, Cedric Jones, Jerome McCoy, Brian McCrary, Kim Mack, Dan Morris, Eric Riley, Gerald Riopelle, Anthony Smiley, Henry Taylor, Jim Thompson, Joe Wessel, Brian Williams

### LETTERMEN RETURNING (O-19, D-22, SP-3)

Barry Barco, Parrish Barwick, Louis Berry, Pat Carter, Lenny Chavers, Pat Cicalese, Kirk Coker, Dwayne Denson, Jamie Dukes, John Eaford, Herb Gainer, Darryl Gray, Terry Griggley, Bruce Heggie, Jim Hendley, Darrin Holloman, John Ionata, Garth Jax, Cletis Jones, Fred Jones, Hassan Jones, Pablo Lopez, Paul McGowan, Martin Mayhew, Greg Newell, Gerald Nichols, David Palmer, Peter Panton, Ulysses Roberson, Mark Salva, Derek Schmidt, Carlton Scott, Stanley Scott, Tony Smith, Roosevelt Snipes, Jesse Solomon, Eric Stiehl, Todd Stroud, Eric Thomas, Gaylon White, Terry Warren, Keith Southwood, Eric Williams, Isaac Williams

This year's schedule features the earliest start in Florida State history with a game at Tulane on August 31. As if that won't be tough enough, opening against a program with a brand new coach in ex-Seminole Mack Brown, the Tribe rides straight into Lincoln, Nebraska the very next week for an ABC nationally-televised bout with the always vicious Cornhuskers. Both the Tulane opener and the Memphis State game following Nebraska have been selected by TBS for national telecasts as well.

With schedules becoming more and more fair since those murderer's row days of the early '80's, this year's still has a throwback or two. The road slate is ominous. Read it: at Tulane, at Nebraska, at Auburn, at North Carolina, at Florida.

*"It will be extremely important for us to get off to a good start. Our first three games will be seen coast-to-coast and that will set the stage for the rest of the year."*

The Seminoles do play six at home again in 1985. Regional foes Memphis State, South Carolina and Miami spice up the home card.

"It will be extremely important for us to get off to a good start," says Bowden. "Our first three games will be seen coast-to-coast and that will set the stage for the rest of the year. The networks have paid us a great tribute and I hope we can accept the challenge."

Overall, Bowden has a good feeling about this '85 team. He has experience along both offensive and defensive lines, a strong kicking game and a good nucleus of returning players. With the right answers to questions in the secondary and at quarterback, Bowden's 10th season at Florida State could be a memorable one.

### The Offense

**Quarterback**—This is a position that has head coach Bobby Bowden a little worried. Incumbent starter (when he wasn't injured) Eric Thomas had shoulder surgery and sat out most of the spring workouts. Thomas completed just 48.4 percent of his passes but threw for 1,218 yards, 14 touchdowns and just four interceptions. Fellow senior Kirk Coker has proven himself to be a good major college backup but he has not grabbed the first string job. That leaves sophomore Danny McManus with the first string job entering fall workouts. McManus, a redshirt freshman in 1984, took snaps in just two games, completing five of 10 passes for 41 yards. Two others are also taking snaps,



# Depth Chart

TT	TE	QB	B	B	FL
John Ionata	Pete Pantone	Danny McManus	Tony Smith	Cletis Jones	Darrin Holloman
Tim Hebron	Pat Carter	Kirk Coker	Victor Floyd	Chuck Wells	Phillip Bryant
John Bamber	Gaylon White	Eric Thomas	Roosevelt Snipes	David Palmer	Justin Owen

RT	OLB	LC	SS	FS	RC
Gerald Nichols	Garth Jax	Martin Mayhew	Stan Shiver	Greg Newell	Eric Williams
Stanley Scott	Terry Warren	Bill Richardson	Brian Davis	John Hadley	Curtis Thomas
Grady Martin	Eric Stiehl	Terry Robinson	Rocky Hanna	Terry Griggley	

## STARTERS LOST (O-5, D-5)

Billy Allen (SS), Greg Allen (TB), Jessie Hester (WR), Brian McCrary (WS), Dan Morris (OG), Eric Riley (CB), Gerald Riopelle (C), Henry Taylor (ILB), Jim Thompson (OT), Brian Williams (OLB)

## STARTERS RETURNING (O-6, D-6, SP-2)

Louis Berry (P), Pat Carter (TE), Jamie Dukes (OG), John Ionata (OT), Garth Jax (OLB), Cletis Jones (FB), Fred Jones (ILB), Hassan Jones (WR), Gerald Nichols (DT), Derek Schmidt (KS), Todd Stroud (NG), Eric Thomas (QB), Eric Williams (CB), Isaac Williams (DT)

There are no aliases needed with this Smith and Jones duo. Florida State will bank heavily on tailback Tony Smith (49) and fullback Cletis Jones (42) to power the running attack. Smith will attempt to fill the big shoes of departed All-American Greg Allen. Jones will be the solid starter for the second straight season. This tandem gives the 'Noles what every team likes in the backfield—speed and power.



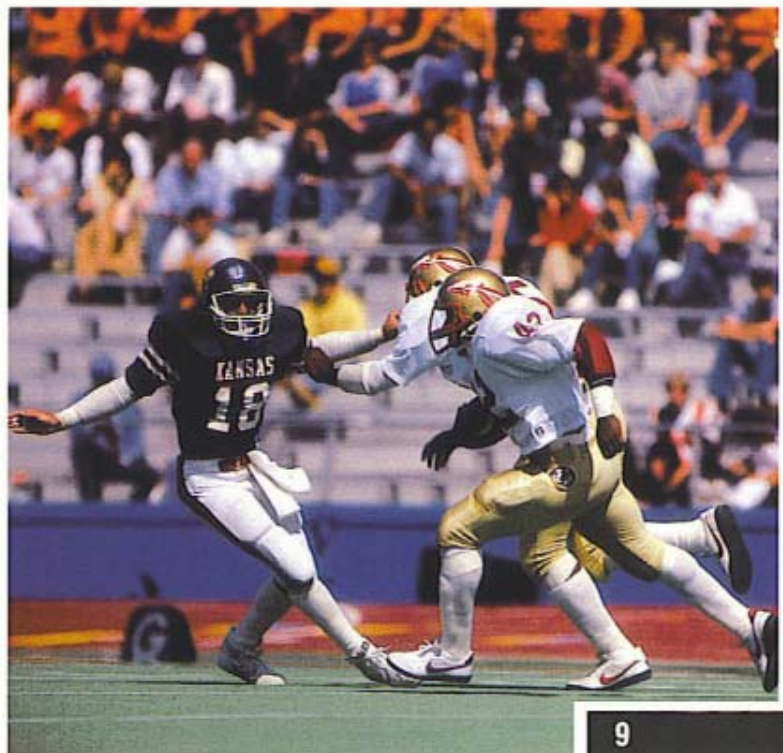
including sophomore J.P. Connolly and freshman redshirt Tracy Sanders.

Passing	G	Att	Comp	Pct.	Yards	TD	Int
Thomas	10	161	78	48.4	1218	14	4
Coker	8	63	34	54.0	652	4	3
McManus	2	10	5	50.0	41	1	2

**Tailback**—Anytime a two-time All-American is gone, there will be a void to fill. Gone is the great Greg Allen but back is senior Tony Smith, who has the first team position entering fall workouts. Freshman Victor Floyd probably isn't ready to contribute yet but he had an outstanding spring and will be listed at the second position. Senior Rosie Snipes will be hard to hold back if he overcomes academic problems. Ditto for soph Dwayne Denson. Newcomers Sammie Smith and Keith Ross will arrive with credentials that could warrant early playing time and wide receiver Darrin Holloman could shift back here if depth becomes a problem.

Rushing	G	Att	Net	Avg.	TD
Snipes	10	118	756	6.4	6
Smith	7	34	212	6.2	0
Denson	8	13	62	4.8	0

**Fullback**—Florida State is talented and deep in this position. Returning starter Cletis Jones rushed for 631 yards last year and gives FSU an excellent combination of runner-blocker. Second teamer Chuck Wells spent the '84 season on the injured reserve list but he's improved to the point where he'll contribute. Sophomore David Palmer is





## Outlook

listed right behind Wells. He was called upon to play as a freshman and can provide the game experience that Wells lacks.

Rushing	G	Att	Gain	Loss	Net	Avg.	TD
Cl. Jones	11	120	633	2	631	5.3	3
Palmer	2	1	2	0	2	2.0	0

**Wide Receiver**—A great one is gone but a great one returns. Senior Hassan Jones won't have to share the spotlight with NFL-bound Jessie Hester, instead, he'll be a cinch to improve on his 28 catches and seven TDs from a year ago. Joining Jones on the other side will be sophomore Darrin Holloman, a multi-dimensional player who once played tailback. The backups are solid too, with sophomore Herb Gainer having game experience and freshman redshirt Phillip Bryant possessing all the tools to be a top caliber player. The Seminoles can even go deeper with sophomore Randy White and walkon Justin Owen showing potential. Sophomore Carlton Scott, if he can settle his academics, is a speedster with potential.

Receiving	G	No.	Yards	Avg.	TD
H. Jones	11	28	501	17.9	7
Gainer	9	9	149	16.5	0
Holloman	11	6	48	8.0	0
Scott	6	1	44	44.0	0

Sophomores Herb Gainer (3) and Darrin Holloman (24) have displayed the potential to be extremely dangerous at wide receiver. Not only can these two get deep and catch the football, but in Bobby Bowden's scheme they may come at you from any number of directions, including a Bowden favorite—the reverse.



Senior Hassan Jones (88) is a bonified All-American Candidate. He is the thoroughbred of this group on wide-outs. One of the most highly-touted signees in FSU history he'll have his chance to shine in 1985. Out from behind the shadow of Jessie Hester now, Jones appears ready as he caught everything in sight during the spring.



**Tight End**—Can there be a deeper and more experienced position on the Florida State roster? Position coach Brad Scott must deal with the question of who to start. Going into the fall, he's tabbed senior Pete Pantone as the first stringer but that has an asterisk by it. He'll play huge sophomore Pat Carter (6-4, 255) just as much. Both players split starting duties last year and Carter caught 13 passes and two TDs. Third teamer Gaylon White will get a bunch of playing time, too, and he's experienced. Pat Cicalese will occupy the fourth slot and redshirt freshman Tom O'Malley, who has bounced around to center and defense, may return here, too.

Receiving	G	No.	Yards	Avg.	TD
Carter	11	13	75	13.5	2
Pantone	7	7	87	12.4	1

**Offensive Tackle**—Youth and depth will be the concerns for offensive coordinator and line coach Wayne McDuffie. The first team positions are nailed down by All-South Independent senior John Ionata and rising junior Pablo Lopez. There is no experience beyond the two. Redshirt freshman Joe Ionata and junior Tim Hebron look as though they will earn second team slots with a pair of juniors, Jim Hendley and John Bamber, also in the hunt. The freshman class of '85 could also step in and add depth.

**Offensive Guard**—Again, youth and depth are big concerns in this position once past senior All-American candidate Jamie Dukes. Billed by McDuffie as "the best offensive lineman I've ever coached" (no weak statement considering the six pro draftees McDuffie has coached at Georgia), Dukes' presence can make any line a good one. At the split guard position will be sophomore Mark Salva, who played enough to letter a year ago. Beyond the two are Jason Kuipers, Roger Agne and Don Desenso, all players without experience. The incoming freshman class is sure to get a long look here.



**Center**—Sophomore David Schrenker won the position based on spring performance but he will be challenged in the fall by junior Parrish Barwick, who was forced to sit out yet another spring with a foot injury. Barwick started at offensive guard in 1982, sat out 1983 and was a part-time starter at center a year ago. Behind Schrenker and Barwick is former walkon Marty Riggs, who should end up being the team's snapper.

**The Defense**

**Outside Linebacker**—The starters are a pair of good ones in seniors Darryl Gray and Garth Jax, both who have played big roles in the past. Gray has position coach Jim Gladden excited about his big play ability while Jax is his steady counterpart. Backing up Gray are juniors Ulysses Roberson and Bruce Heggie, who have received much of their playing time on the specialty teams, while sophomores Terry Warren and Eric Stiehl back up Jax. Warren and Stiehl have also lettered on the specialty teams.

Name	Tackles	Assists	Totals	QS	TFL
Jax	24	27	51	2	1
Gray	26	20	46	3	4
Roberson	11	8	19	0	0
Stiehl	7	4	11	0	0
Warren	3	4	7	0	0
Heggie	4	1	5	0	0

**Defensive Tackle**—Position coach Chuck Amato believes he's got three great tackles to put into two starting positions. Senior and All-South Independent Isaac Williams and junior Gerald Nichols are returning starters but up-and-rising senior Stanley Scott provides Amato with a quick substitute without losing quality. Williams had nine tackles behind the line of scrimmage and five quarterback sacks while Nichols led in sacks with eight. An improved Scott had five sacks a year ago. Two inexperienced players, freshman redshirt Steve Gabbard and sophomore redshirt Grady Martin, have earned third team slots. Also figuring here is another freshman redshirt, Anthony Johnson, whose playing time will come in the future.

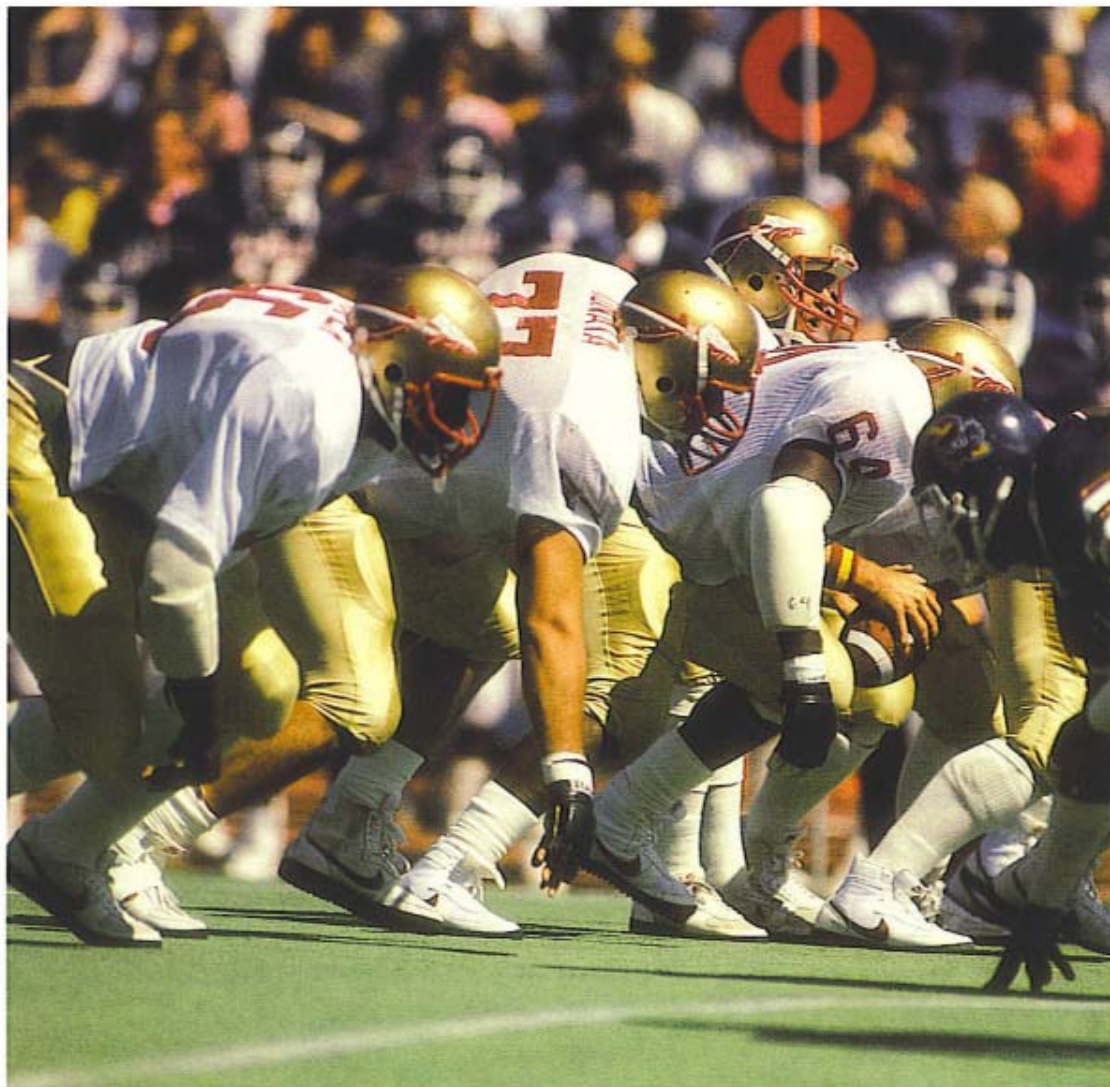
Name	Tackles	Assists	Totals	QS	TFL
Williams	42	38	80	5	9
Nichols	26	33	59	8	2
Scott	18	12	30	5	1

**Noseguard**—In starter Todd Stroud and second teamer Lenny Chavers, a pair of seniors, Florida State can count on quality and depth. Although Stroud gets the call based on his leadership, Chavers will see a lot of action. Newcomer and third stringer Thomas Harp, a junior college transfer, has potential and may find himself with some playing time once he adjusts to the FSU system. A

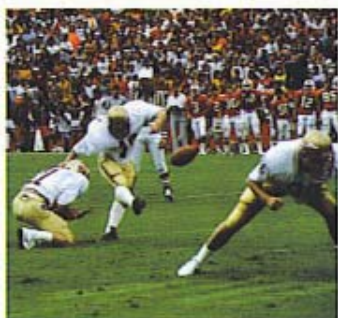
This pair of performers came from the same high school team and made a big impact as freshmen in 1984. Tight end Pat Carter (85) has unlimited potential. A giant of a man, he has, as they say, all the tools. Derek Schmidt (18) was the answer to a Seminole prayer at placekicker. He was the leading freshman scorer in the nation last year, kicking 17-of-24 field goals and making all of his 42 extra point tries. His credentials also include a school-record 54-yarder against Miami.



Seniors are always vital to a football team and Bowden will count on these two heavily. Tackle John Ionata (77) will line up right next door to Jamie Dukes and should give the Tribe a whale of a wall on that side of the line. Outside linebacker Garth Jax (84) has been a steady, consistent performer since his freshman year and had an excellent spring heading into his final campaign.







Punter Louis Berry (6) found a home with the Seminoles the day he showed up on campus. Last year, as a sophomore, he had one of the top punting averages in the nation. He looks to be another in the mold of FSU's All-American Rohn Stark. Berry has good bloodlines—his uncle is long-time NFL great John James. Derek Schmidt (18) gives the Tribe a solid all-around kicking game. He booted a clutch field goal with no time remaining to help the Seminoles salvage a tie with Memphis State. Darryl Gray (65) will make life miserable for more than one opposing quarterback this fall. The senior outside linebacker is the master of the big play.

fourth player, walkon Keith Southwood, gets specialty team work.

Name	Tackles	Assists	Totals	QS	TFL
Chavers	16	16	32	1	2
Stroud	13	18	31	0	1
Southwood	3	1	4	0	0

**Inside Linebacker**—Position coach Wally Burnham has a stable of young players to work with, but there is talent available. The lone player with a coup of experience is junior Fred Jones, who can be a dominating big-play performer. He'll be the starter at the strong side with sophomore Paul McGowan penciled in at the weak side. McGowan will be pushed hard in the fall by senior Jesse Solomon, who was in on a fair number of plays in '84. Also figuring to challenge McGowan is redshirt freshman Felton Hayes, who is currently listed as Jones' backup. Junior Stuart Wyatt and sophomore John Eaford, a special teams letterman, are the third teamers.

Name	Tackles	Assists	Totals	QS	TFL
Jones	65	40	105	5	1
Solomon	29	29	58	0	2
McGowan	14	17	31	0	0
Eaford	16	8	24	0	0

*Overall, Bowden has a good feeling about this '85 team. With the right answers to questions in the secondary and at quarterback, Bowden's 10th season at Florida State could be a memorable one.*

**Safety**—This is without a doubt the biggest area of inexperience on the Seminole team. Only one player, Greg Newell, has been at Florida State more than a year. Newell goes into the fall with the free safety job while freshman

redshirt Stan Shiver owns the starting job at strong safety. Newell was in on just a handful of plays in the defensive backfield in '84 and Shiver has no game experience. Brian Davis, who backs up Shiver, has game experience only on the specialty teams while third teamer Rocky Hanna is a walkon. Behind Newell is redshirt frosh John Hadley while sophomore Terry Griggley has been shifted from cornerback and is working at a third team slot.

Name	Tackles	Assists	Totals	Int
Griggley	5	1	6	0
Newell	1	1	2	0

**Cornerback**—Sophomores Martin Mayhew and Eric Williams are young but experienced. Williams started all 11 games as a redshirt freshman, finishing with four interceptions, and Mayhew was a part-time starter. There is no game experience behind them, and two of the players are walkons. Backing up Mayhew at left corner is senior walkon Bill Richardson, with freshman redshirt Terry Robinson at a third team slot. Behind Williams at right corner is walkon Curtis Thomas. Depth and experience will be big worries for defensive coordinator Mickey Andrews.

Name	Tackles	Assists	Totals	Int
E. Williams	17	13	30	4
Mayhew	18	6	24	2

**The Kicking Game**

This is one area where head coach Bobby Bowden can sit back and smile a lot. There should be no worries in 1985. Two-year starter Louis Berry returns to resume the punting chores after averaging more than 42 yards his first two seasons. Sophomore placekicker Derek Schmidt, the owner of FSU's longest kick at 54 yards, had a super freshman season and came through in the clutch. Junior Barry Barco handles the kickoff chores. And Bowden signed Ft. Lauderdale native Scott Johnston, an all-USA Today punter and placekicker, for insurance.

Field Goals/PAT	FG-FGA	XP-A
Schmidt	17-24	42-42

Punting	No.	Yards	Avg.
Berry	49	2072	42.3