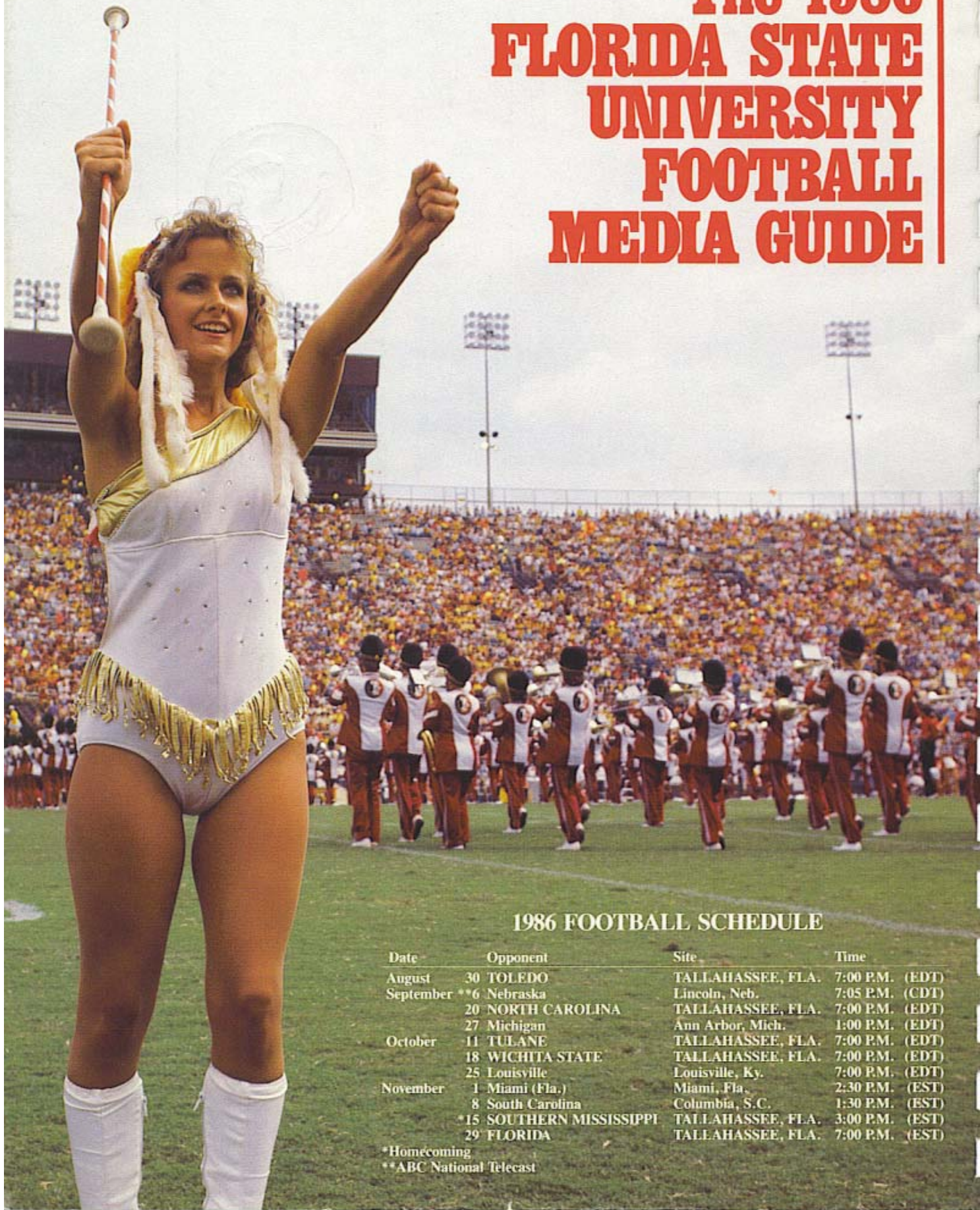


**1986
SEMINOLES**



THE 1986
FLORIDA STATE
UNIVERSITY
FOOTBALL
MEDIA GUIDE

The 1986 FLORIDA STATE UNIVERSITY FOOTBALL MEDIA GUIDE



1986 FOOTBALL SCHEDULE

Date	Opponent	Site	Time
August 30	TOLEDO	TALLAHASSEE, FLA.	7:00 P.M. (EDT)
September **6	Nebraska	Lincoln, Neb.	7:05 P.M. (CDT)
	NORTH CAROLINA	TALLAHASSEE, FLA.	7:00 P.M. (EDT)
	27 Michigan	Ann Arbor, Mich.	1:00 P.M. (EDT)
October 11	TULANE	TALLAHASSEE, FLA.	7:00 P.M. (EDT)
	WICHITA STATE	TALLAHASSEE, FLA.	7:00 P.M. (EDT)
	25 Louisville	Louisville, Ky.	7:00 P.M. (EDT)
November 1	Miami (Fla.)	Miami, Fla.	2:30 P.M. (EST)
	8 South Carolina	Columbia, S.C.	1:30 P.M. (EST)
	*15 SOUTHERN MISSISSIPPI	TALLAHASSEE, FLA.	3:00 P.M. (EST)
	29 FLORIDA	TALLAHASSEE, FLA.	7:00 P.M. (EST)

*Homecoming

**ABC National Telecast



OUTLOOK

4



COACHING STAFF

16



1986 SEMINOLES

28



1986 OPPONENTS

54



1985 REVIEW

68



THE UNIVERSITY

86



THE RECORD BOOK

98

Media Information	2
<i>Great Moments in FSU Football History</i>	chapt. flyleaves
Outlook	4
<i>A Low Score Last Spring Means Good News This Fall</i>	7
The Offense	10
Pre-Fall Depth Chart	12
The Defense	13
The Coaching Staff	16
<i>A Winner . . . On Any Field</i>	18
<i>King of the Road</i>	21
Assistant Coaches	23
Graduate Assistants	27
Support Staff	27
The 1986 Seminoles	28
Player Biographies	30
Freshmen	47
1986 Seminole Football Roster	49
Geographic Distribution	50
Pronunciation Guide	50
Seminole in the Pros	51
<i>Is FSU Becoming a Pipeline to the Pros?</i>	52
FSU NFLers in 1985	53
1986 Opponents	54
Opponent Profiles Week-by-Week	56
Travel Itinerary	67
FSU Record vs. 1986 Opponents	67
1985 Review	68
Game Stories	71
1985 Statistics	82
1985 Seminole Honor Roll	85
The University	86
<i>This is Florida State</i>	89
<i>Dook Campbell Stadium</i>	90
<i>Seminole Saturday Night Fever</i>	91
<i>Seminole Strength Program</i>	92
Athletic Staff	93
Athletic Directory	96
Seminole Radio Network	97
The Record Book	98
Individual and Team Records	100
Team Season Records	115
Record Against All Opponents	116
Seminole on T.V.	117
The Bob Crenshaw Award	117
Best Performances by Opponents	118
Homecoming Games	118
Coaches and Captains	119
Coaches' Cumulative Records	119
Florida State All-Americans	120
All-South Independents	121
All-Time Lettermen	122
Year-by-Year Record	124
Bowl Game Stories	127
1985 Gator Bowl	132
FSU Bowl Records	135
Opponents Week-by-Week Schedule	IBC

4

16

28

54

68

86

98

Florida State Fingertip Facts

President:	Dr. Bernard F. Sliger
Location:	Tallahassee, Fla. 32306
Enrollment:	22,500
Athletic Director:	C.W. "Hootie" Ingram
Athletic Board Chairman:	Charles Ehrhardt
Sports Information Director:	Wayne Hogan
Nickname:	Seminoles
Founded:	1857
Colors:	Garnet and Gold
Conference:	Independent
Stadium:	Doak S. Campbell (60,519)
Head Football Coach:	Bobby Bowden
Coach's Record at FSU:	83-32-2 (10 yrs.)
Coach's Overall Record:	156-64-2 (20 yrs.)
1985 Record:	9-3
1985 Bowl Appearance:	Gator
1985 Final Ranking:	UPI (13), AP (15)
FSU All-Time Record:	232-162-14

Final 1985 National Rankings

Associated Press	United Press International	USA Today/CNN	The Sporting News
1. Oklahoma (11-1-0)	Oklahoma (11-1-0)	Oklahoma (11-1-0)	Oklahoma (11-1-0)
2. Michigan (10-1-1)	Michigan (10-1-1)	Penn State (11-1-0)	Michigan (10-1-1)
3. Penn State (11-1-0)	Penn State (11-1-0)	Michigan (10-1-1)	Penn State (11-1-0)
4. Tennessee (9-1-2)	Tennessee (9-1-2)	Tennessee (9-1-2)	Florida (9-1-1)
5. Florida (9-1-1)	Air Force (12-1-0)	Florida (9-1-1)	Tennessee (9-1-2)
6. Texas A&M (10-2-0)	UCLA (9-2-1)	Miami (10-2-0)	Miami (10-2-0)
7. UCLA (9-2-1)	Texas A&M (10-2-0)	Air Force (12-1-0)	Texas A&M (10-2-0)
8. Air Force (12-1-0)	Miami (10-2-0)	Texas A&M (10-2-0)	UCLA (9-2-1)
9. Miami (10-2-0)	Iowa (10-2-0)	UCLA (9-2-1)	Air Force (12-1-0)
10. Iowa (10-2-0)	Nebraska (9-3-0)	Iowa (10-2-0)	Iowa (10-2-0)
11. Nebraska (9-3-0)	Ohio State (9-3-0)	Nebraska (9-3-0)	Alabama (9-2-1)
12. Arkansas (10-2-0)	Arkansas (10-2-0)	Alabama (9-2-1)	Nebraska (9-3-0)
13. Alabama (9-2-1)	Florida State (9-3-0)	Ohio State (9-3-0)	Arkansas (10-2-0)
14. Ohio State (9-3-0)	Alabama (9-2-1)	Florida State (9-3-0)	Baylor (9-3-0)
15. Florida State (9-3-0)	Baylor (9-3-0)	Arkansas (10-2-0)	Ohio State (9-3-0)
16. Brigham Young (11-3-0)	Fresno State (11-0-1)	Brigham Young (11-3-0)	Florida State (9-3-0)
17. Baylor (9-3-0)	Brigham Young (11-3-0)	Maryland (9-3-0)	Georgia Tech (9-2-1)
18. Maryland (9-3-0)	Georgia Tech (9-2-1)	Georgia Tech (9-2-1)	Auburn (8-4-0)
19. Georgia Tech (9-2-1)	Maryland (9-3-0)	Baylor (9-3-0)	Louisiana State (9-2-1)
20. Louisiana State (9-2-1)	Louisiana State (9-2-1)	Auburn (8-4-0)	Brigham Young (11-3-0)
			Fresno State (11-0-1)

1985 Record and Attendance

9-3-0; Home: 5-1; Neutral: 1-0; Away: 3-2

Schedule and Results	FSU	OPP	Attendance
Tulane (A)	38	12	37,478
Nebraska (A)	17	13	75,943
MEMPHIS STATE (H)	19	10	54,877
KANSAS (H)	24	20	57,135
Auburn (A)	27	59	75,000
TULSA (H)	76	14	53,500
North Carolina (A)	20	10	50,132
MIAMI (H)	27	35	61,250
SOUTH CAROLINA (H)	56	14	54,121
WESTERN CAROLINA (H)	50	10	52,778
Florida (A)	14	38	74,461
Oklahoma State (N)	34	23	79,417

Attendance: Home—333,661 (55,610 avg.)
 Away—313,014 (62,603 avg.)
 Total—646,675 (58,789 avg.)

Future Schedules

1987 Schedule

Sept.	5	Texas Tech
	12	@ East Carolina
	19	Memphis State
	26	@ Michigan State
Oct.	3	Miami
	10	@ Southern Mississippi
	24	South Carolina
	31	Tulane
Nov.	7	@ Auburn
	14	Furman
	28	@ Florida

1988 Schedule

Sept.	3	Southern Mississippi
	10	Northern Illinois
	17	@ Clemson
	24	Michigan State
Oct.	1	@ Tulane
	8	@ Memphis State
	15	East Carolina
	29	@ Miami
Nov.	5	@ South Carolina
	12	Virginia Tech
	26	Florida

1989 Schedule

Sept.	9	Clemson
	16	@ Louisiana State
	23	Tulane
Oct.	7	@ Syracuse
	14	@ Virginia Tech
	21	Auburn
	28	Miami
Nov.	4	South Carolina
	11	@ Southern Mississippi
	18	Memphis State
Dec.	2	@ Florida

The 1986 FSU Football Guide

Editors: Lisa Morton, Wayne Hogan
 Contributors: Dan Pearson, Chris Sears, Nick Gandy, Ryals Lee, Jr., Ray Stanyard, Bucky Parrish, Larry Hymowitz, Dale Pearson, Kal Lunt, Ross Obley, Dave Finn, Bradley Photography, The Tallahassee Democrat, the FSU Photo Lab, Visuals Unlimited, Inc.
 Design: J.S. Goodson & Associates, Tallahassee, Fla.
 Typography: RapidoGraphics, Inc., Tallahassee, Fla.
 Printing: Boyd Bros., Panama City, Fla.
 Price: \$7.50 plus \$1.50 postage

To the Media and Fans:

We are fortunate at Florida State University to have the resources to develop this multi-purpose 1986 Football Guide. No school over the last five years has consistently produced publications that rank as high as Florida State's. Twice our guides have been selected as the nation's best.

I hope that you enjoy this guide and that it will provide interesting insight into the 1986 Seminoles. If you are a member of the media covering FSU, I think that you will find the pertinent information well-organized and easily accessible.

Additional requests by accredited media representatives for items such as feature materials, photographs, slides and video tapes should be directed to the sports information office. We are always standing ready to serve you.

My office also stands ready to handle any inquiries directed by our fans and supporters. I think you will find our entire staff the most media conscious and public-oriented anywhere.

I would urge all media personnel to take a moment to read the guidelines below which will aid you in your coverage of FSU football in 1986. Most of your questions should be answered here. Again, we are available to assist you in any way in your coverage of the Seminoles. Best of luck in 1986.



Wayne Hogan
Sports Information Director

Media Information

Credential Requests: All requests for working press, radio, television, photographer or scouting credentials should be directed to Sports Information Director Wayne Hogan no later than one week prior to the game. Requests for season credentials should be made two weeks prior to the first game.

Space for the working press, radio, television and scouts is allocated by the Sports Information Office.

Florida State's press box is located on the west side of Doak Campbell Stadium with elevator service to all levels. Media representatives and scouts should enter through the press gate, located north of the elevator. The Will Call booth, where media can pick up credentials anytime after 4:00 p.m. on game days, is located outside the gate at the base of the elevator. Will Call credentials will also be available in the Sports Information Office on Fridays prior to games or at the Ramada Inn-West hospitality room from 2:00-4:00 p.m. on game days.

Press Policies: Working press will be admitted to Level 5, where approximately 90 seats are available. Credentials are issued by FSU according to the following criteria:

- (a) Local newspapers, wire services, national publications, newspapers from opponent's area and student newspapers from FSU and opponent's school.
- (b) Other daily newspapers with preference to those which regularly cover FSU.
- (c) Scouts.
- (d) Non-daily newspapers, with preference to those which have regularly covered FSU.
- (e) Radio and television personnel not actually broadcasting, but considered reporting (seats will be provided in the stands).

Radio-TV: The sixth level of the press box is designated for use by radio and television broadcasting crews and home and visiting coaches. Each booth is fully enclosed and sound proof.

Photographers: Only accredited photographers or freelance photographers shooting for the FSU Sports Information Office will be issued working credentials.

The press box catwalk, or photo deck, offers an unobstructed view for TV and movie cameras. Holders of a photo deck pass will be assigned space in that area. Still photographers will not be admitted to the press box in 1986 and may have access to the sidelines only. Those holding a still photography credential should report to the gate specified on the pass where they will be issued an armband, a set of rosters and a box lunch. A photographers' lounge area with tables and chairs will be made available.

Special requests for photographers whose assignments warrant shooting from the photo deck may be made to Sports Information Director Wayne Hogan.

Press Parking: Parking is limited and passes will be issued on a priority basis within the same guidelines as working credentials. The press lot is located on the southwest corner of Doak Campbell Stadium. Access to the lot should be made from Stadium Drive.

Statistical Services: Play-by-play, half-time and complete statistics will be provided. Post game quotes from FSU head coach Bobby Bowden will also be available.

Refreshments: A light pre-game meal will be served on Level Six of the press box at approximately 6:00 p.m. Refreshments will also be made available throughout the game.

Telecopiers: An independent telecopier service will be avail-

able for each game with a nominal fee being charged. Please contact the Sports Information Office in advance. If you plan to use your own telecopier and phone, please have them placed in the telecopier area of the press deck.

Mid-Week Interviews: Media interviews with all FSU players should be arranged through the Sports Information Office. For phone interviews, the SID office will fill out a card informing the player to return the call. All player calls to the media will be made collect.

Anyone wishing to schedule an interview with head coach Bobby Bowden should contact his secretary, Sue Hall, at extension 112.

Breakfast with Bobby: Following each and every Seminole home game, head coach Bobby Bowden will join the media Sunday morning for breakfast at the Ramada Inn-West (press headquarters). Breakfast will be served at 8:30 a.m. with a

question-and-answer session beginning at 8:45 a.m.

Conference Call: Media members again may contact Bowden for follow up material via a 3:00 p.m. Sunday conference call on road game weekends. Contact a member of the Sports Information Office to be put on the master list.

Road Game Credentials: Writers covering Florida State may make requests for road credentials with the opponent school or with the FSU Sports Information Office by Monday of game week.

Telephones: Telephone service should be secured directly through Centel Telephone Company of Florida, Tallahassee (904/681-6600). Have them contact the Sports Information Office for location. Due to deregulation, you must bring your own phone with you. Centel will provide lines only. When contacting Centel, please be specific as to the type of line you need (i.e. touchtone, etc.).

Post Game Interview Policy

Florida State University's athletic staff is well aware of the importance of media coverage and is briefed continually on the role of the media insofar as it interacts with their respective duties. At no time is this cooperation more important than in our post-game interview and locker room procedures. To insure the most workable situation for members of the media and for the FSU staff the following procedures *must* be observed:

(1) Entrance to the Florida State locker room can be made *only* through the second floor interview room. All members of the media will be directed to this room by the FSU sports information staff immediately at the conclusion of the game. It is most helpful if all media personnel assemble at the tunnel entrance in the north end zone immediately at game's end. You will *not* be allowed access to the locker room through the player's entrance so follow closely.

(2) Florida State coach Bobby Bowden will be brought directly to the interview room as soon as he dismisses the team and declares the locker room open.

(3) When Coach Bowden makes his appearance in the interview room, those media members wishing to go to the locker room will be instructed as to the proper route. Down one flight of stairs leads directly into the player dressing area.

(4) FLORIDA STATE'S LOCKER ROOM IS OPEN TO ALL MEDIA MEMBERS, MALE AND FEMALE. HOWEVER, IT IS IMPERATIVE THAT FEMALE REPORTERS INFORM FSU INFORMATION PERSONNEL DURING THE GAME THAT THEY WILL NEED LOCKER ROOM ACCESS. (FSU players have been assured that they will be told on a game-by-game basis when there will be female reporters in the locker room—a courtesy we feel must be extended.)

(5) Exit from the locker room and access back to the press box can be made through the player's entrance to the stadium. It is our desire at Florida State to make the post-game procedures as painless as possible for both the media and our staff. Remember, both groups have important tasks and are under extreme pressure.

The Florida State Athletic Department cannot and will not be responsible for problems incurred by any media member not following the above procedure. Security personnel will facilitate only those following the proper guidelines. If, however, you encounter a problem while following this procedure from any member of our staff or security, please inform a sports information staff member immediately.

How to Contact Us:

At The Office: The Florida State athletic telephone number is (904) 644-1060 and (904) 644-1403 after 5:00 p.m. Contact Sports Information Director **Wayne Hogan** at extension 147, Associate Director **Lisa (Morton) Franson** at extension 151, Assistant Director **Dan Pearson** at extension 149 and secretary **Judy Greve** at extension 147.

At Home: Hogan (904/386-5359), Franson (904/575-4773) and Pearson (904/562-4628).

Through The Mail: Address all inquiries to: Sports Information Office, Moore Athletic Center, P.O. Drawer 2195, Tallahassee, FL 32316.

Florida State Sports Information Staff



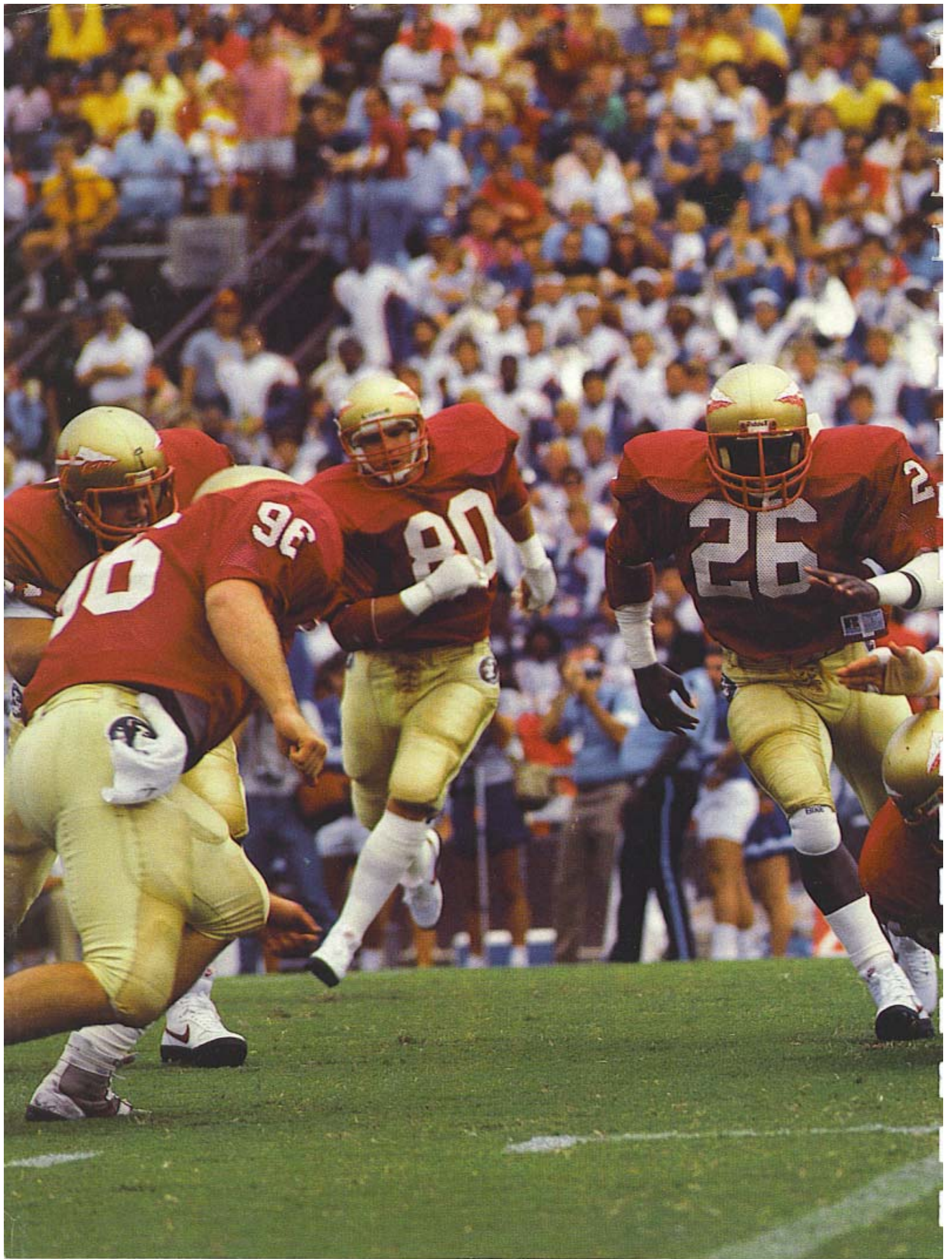
Wayne Hogan



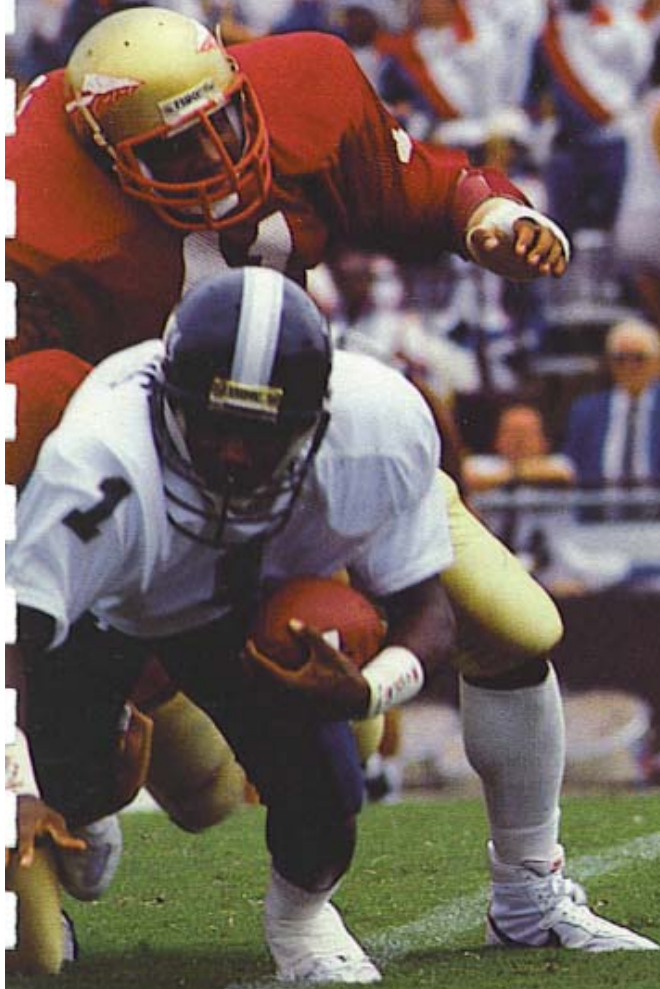
Lisa (Morton) Franson



Dan Pearson



1986 OUTLOOK



**GREAT MOMENTS
IN FSU HISTORY**



Henry's Return

1979

Sure, everybody remembers the 11-0 perfect season of 1979. But not everyone remembers how it almost never came about on September 8, 1979.

Going into the 1979 season the Florida State offense had been billed as one of the finest in the country, but in the fourth quarter against a stubborn Southern Mississippi team, the Seminoles found themselves down 14-3 in front of a home opening crowd of 45,467.



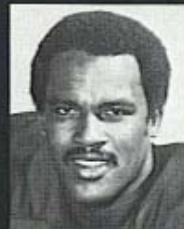
Luckily for FSU, its defense was in top form. With 11:40 remaining, cornerback Monk Bonasorte blocked a Southern Miss punt and the Seminoles took over at the Eagle 15.

Three plays later, quarterback Jimmy Jordan hit Jackie Flowers in the endzone and after a failed two-point conversion, the Seminoles stood closer at 14-9.

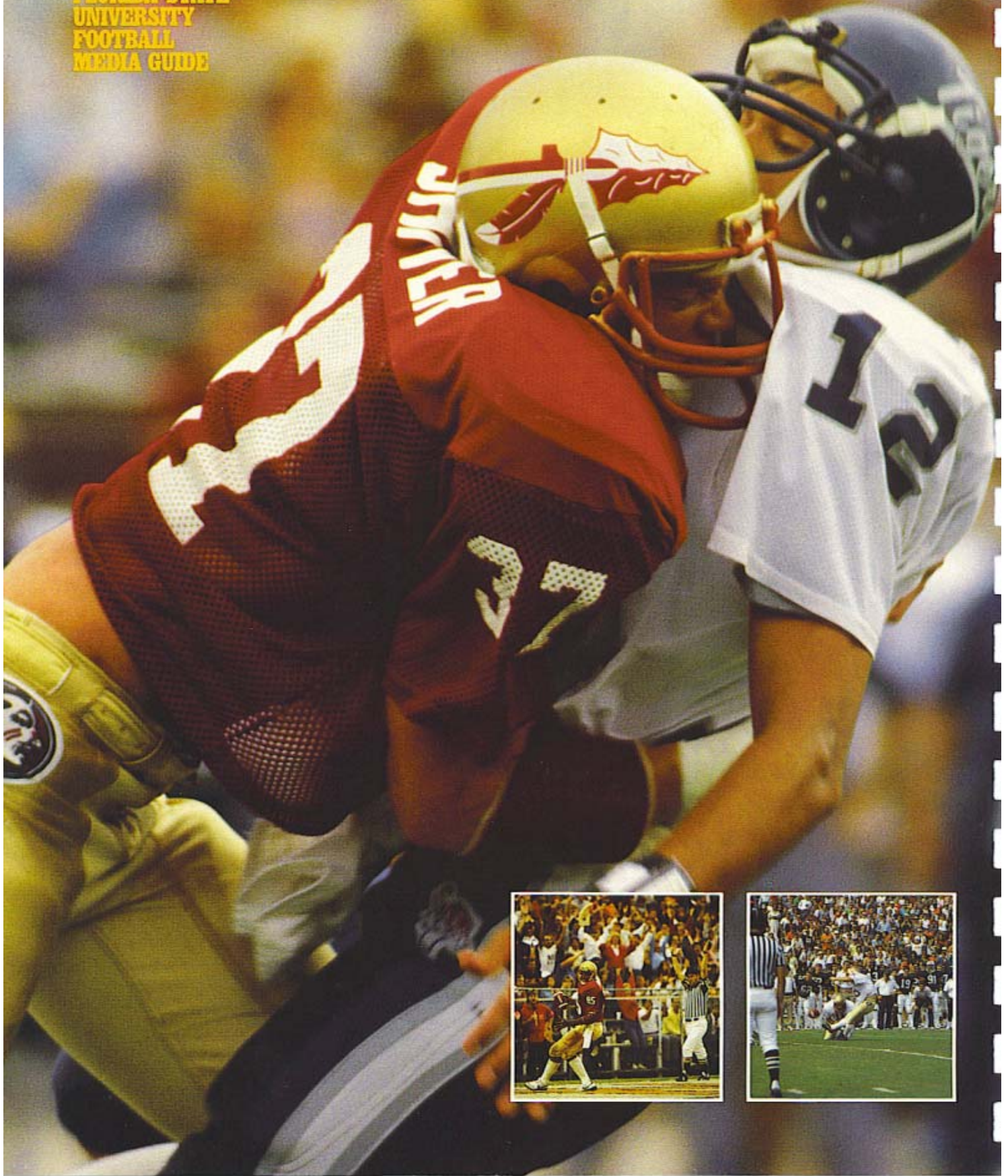
On the following Eagle series, the pesky Seminole defense held tough, forcing Southern Miss to punt deep from their own territory.

With 6:28 remaining in the game, Gary Henry took over. On the preceding six punts Henry had called fair catches, the last two being much to the disapproval of the record-setting crowd.

But on lucky number seven, Henry took the ball at the Seminole 35, headed for the sidelines and got a crucial block from Ed Richardson. He then cut across the field and ran untouched for the go-ahead score. The following two-point conversion was good giving the Seminoles a 17-14 lead which they held, giving them a 1-0 record on their way to the famed 11-0 season.



The 1986
FLORIDA STATE
UNIVERSITY
FOOTBALL
MEDIA GUIDE



A LOW SCORE LAST SPRING MEANS GOOD NEWS THIS FALL

Seminole head coach Bobby Bowden's offense couldn't put up very many points in the spring Garnet and Gold Game. Yet the coach is *happy*? You bet!

Four springs ago Florida State head football coach Bobby Bowden watched as his football team put 103 points on the scoreboard in the annual Garnet and Gold Game.

"That was some offensive show," he said after the Garnet beat the Gold 65-38 on April 17, 1982. "The only thing that worries me is that anybody will tell you that national championships are won with defense and a kicking game."

On that day it became glaringly obvious that FSU had neither.

It seems that starting with that very day, Bowden began a building process. Oh, it wasn't as if the program had gone completely sour. Dozens of offensive records were broken over the next four seasons. Four consecutive bowl games were achieved and Florida State's 32-14-2 record over that span was good



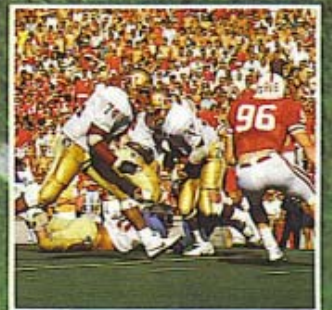
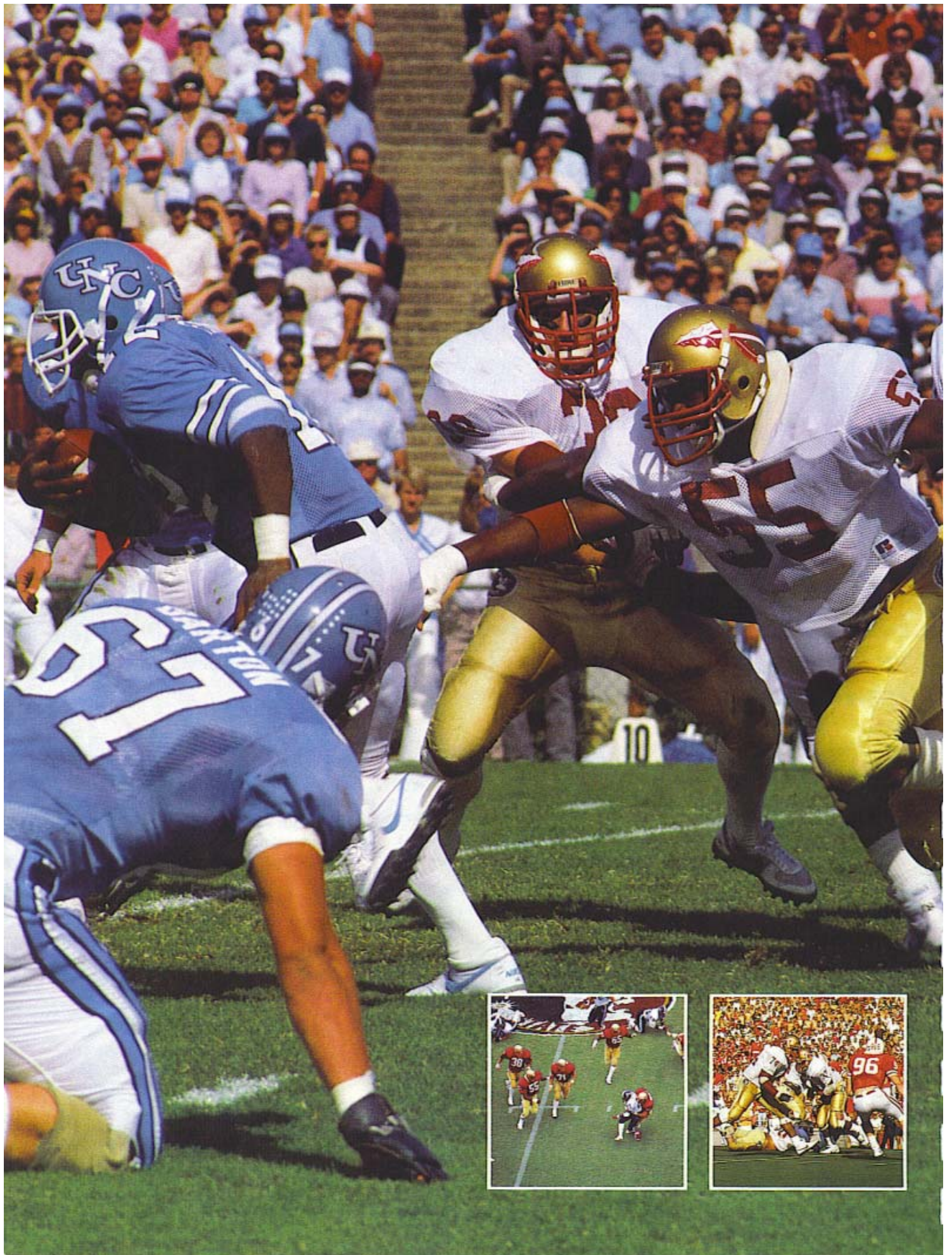
Florida State expects big things from "Hit Man" Stan Shiver (opp. page), junior tight end Pat Carter (l. inset)—who is high on the pros' lists already—and Derek Schmidt (r. inset), who is half the reason the FSU's kicking game is one of the nation's best. Sophomore tailback and kick returner Keith Ross (above) is one of three at his position who have coaches smiling.

enough for the Seminoles to finish each year in the nation's Top Twenty.

"Just look back to 1979 and '80," Bowden stresses. "We go to two straight Orange Bowls and have a shot at the national championship both years. And do you know what got us there? Defense and kicking. That's what it takes."

The 1980 Florida State defense gave up a total of 85 points. That total went to 286 the following year and peaked at an incredible 312 in 1983. Bowden, the nation's 10th winningest active coach, knew that the trend had to change.

First, he brought in two of America's best kickers. Placement specialist Derek Schmidt ranked ninth in field goals and scoring last year and has never missed an extra point. Punter Louis Berry had the nation's 15th-best average. Both return in 1986.



Slowly, the coach began to re-mold his defense. He brought in the highly-regarded Mickey Andrews as his defensive coordinator in 1984. Assistant Head Coach Chuck Amato began to work wonders with the defensive line. Linebacker coach Wally Burnham came on board in 1985. It all began to come together.

Now, as Bowden watched his 1986 Garnet and Gold game just last April, he had a broad smile on his face. The final score was 14-13.

"Defensively," he said, "this was a great ballgame. You know three of the four touchdowns were the result of turnovers forced by the defense. I don't think there is any indication that our offense is lacking, either. We've just got things coming together on defense and that's encouraging."

The biggest area of focus during the off-season has been in stopping the big play. All three of the Florida State losses in 1985 can be attributed to the opponents scoring from long range. Encouraging was the fact that a 30-yard pass from Chip Ferguson to Darrin Holloman was the longest scrimmage play of that spring game.

If experience means improvement, the Seminoles should be in great shape at both inside linebacker slots and in the secondary. All six of those positions are filled with returning starters. But new faces will be the order of the day at outside linebacker, nose-guard and at one tackle slot.

The lone returnee in this group is senior tackle Gerald Nichols (6-2, 260) who had 53 tackles and 5½ sacks a year ago. An intense player, Nichols was the class of the down linemen in the spring and showed great desire and leadership.

Help for Nichols appears to be on the horizon. Thomas Harp (6-1, 287, Jr.) seems to be solid at the nose-guard slot. Harp is a converted offensive lineman who seemed right at home at nose the day after the switch.

Eric Hayes, another giant freshman (6-3, 283) may have the best shot at the vacant tackle job. He'll be pushed by sophomore Steve Gabbard (6-5, 265).

Terry Warren, a junior who earned a couple of starts in 1985, will likely be a starter at one outside linebacker slot. But flashy red-shirt freshman Shelton Thompson had a great spring and may seriously challenge on the pass-rush side. Sophomores Felton Hayes and Ed Clark will battle for the second OLB position, one that requires hard-nosed pass defense.

Florida State has a bona fide All-American possibility in linebacker Paul McGowan, still only a junior. His statistics a year ago were phenomenal. In on 136 tackles, McGowan was credited with 80 initial hits. He had 13 tackles for loss, caused two fumbles, had a quarterback sack and three interceptions. Fellow linebacker Fred Jones is entering his senior year and may actually have outplayed McGowan in the spring.

"You can just talk about those guys in the same breath," Bowden says. "I don't know if there is a better tandem anywhere in college football. Both are not only great



Road games with Nebraska, Michigan, and Miami give FSU three away games with teams that will probably be ranked in the top-10 in the pre-season. A home game with Florida gives the Seminoles another potential top-10 opponent.

players but great team leaders. I feel totally confident at that position."

In the secondary, Florida State returns seven players (including five full or part-time starters) with game experience. The leaders of this group are flashy sophomore Deion Sanders, hard hitting safety Stan Shiver and cornerbacks Martin Mayhew and Eric Williams. FSU may also get additional help here from an excellent recruiting class, one that will be judged among the best in the nation for defensive backs.

"These are the guys that will need to improve for us to be a sound defensive football team," Bowden says. "As a group they played well last year but we still had too many instances of receivers getting behind our coverage."

Bowden is particularly high on Shiver, a 6-2, 197-pound sophomore strong safety, whose punishing tackles are becoming almost legendary around the Seminole camp.

"Every time I saw somebody getting popped real good I could just count on it being number 37," Bowden said. "The guy is just devastating. There's no telling how many carry-offs he's responsible for."

Florida State's linebacking combination of Fred Jones (#55) and Paul McGowan (#38) could be the nation's best; Gerald Nichols (l. inset, #79) is the senior leader of FSU's defense while tailback Sammie Smith (r. inset) represents the youth on an offense with just one senior. Quarterback Chip Ferguson (above), after a strong freshman season, has earned the number-one quarterback job.

Offensively, there may be some early concern about replacing seven years of starting experience on the strong side of the line where All-American guard Jamie Dukes (48 straight starts) and tackle John Ionata (three-year starter) are gone.

"It just won't be the same without those two," Bowden says. "It was automatic. You lined up on Saturday and they were going to do the job. I think both of them graded out above 90 percent for the season."

Fortunately, Florida State returns three linemen and a couple of centers who have a substantial amount of playing time. Big Pat Tomberlin (6-3, 298) secured a starting spot after the third game last season and should provide the anchor on this year's line. Pablo Lopez (6-4, 281), Mark Salva (6-2, 244) and David Schrenker (6-3, 243) were all part-time starters in 1985. Jim Hendley (6-3, 258) returns at center. Junior transfer Jimmy Holton, who started for Georgia against FSU in the 1984 Citrus Bowl, is now eligible and also will figure into the Seminole plans at either guard or tackle.

Injuries played a major role in the offensive line picture last spring and Bowden will be watching this area closely early this fall.

If he can get things patched up along the offensive line, Bowden can then get back to more pleasant tasks. The steady improvement of starting quarterback Chip Ferguson has the head man smiling.

"I see more and more things I like about Chip every day," Bowden said. "I really think he's destined to be a big-timer before he's through. When he's a senior I think they'll be talking him up like they are Testaverde (Miami's Vinny) and Bell (Florida's Kerwin)."

Ferguson took over for injured Danny McManus and showed great promise. His season culminated in a Gator Bowl MVP performance in which he led FSU to an impressive win over Oklahoma State. McManus, a rising junior, may well come back to challenge for the job. He was impressive in Florida State's first two victories of the season. By sitting out the last eight games of last season, he should be given the go-ahead for a fall return from team doctors.

Put Ferguson and McManus in a group that includes highly-impressive redshirt freshman Peter Tom Willis and the Seminoles appear to be solid.

"Last year when it was obvious that we were going to have to play a freshman quarterback, and it was a dead heat between Chip and Peter Tom," Bowden recalls. "I remember calling them in and telling them that whoever I redshirt would probably be the lucky one. As it turned out, Chip ended up starting for us and Peter Tom got an extra year of eligibility. Going into the fall Chip is the definite number one."

All three players have shown the ability to be exceptional passers and because of that, the throwing game will play a more prominent role in the Seminole offensive scheme this year.

With that in mind, look for the Seminoles to show more pro-set formations this year. A traditional 'I' team for the past couple of years, FSU believes the pro-set may be better suited to returning talent. "We'll still use the 'I,'" Bowden says. "But I think you'll see a greater use of the pro-set. With our returning talent at quarterback and running back I believe it will give us more options."

FSU's running game is sound. Four backs with loads of experience return. Two of those—Victor Floyd and Keith Ross—return at tailback. Both just sophomores in 1986, Floyd averaged 6.9 yards on a 619 total while Ross came on strong to finish with 315 yards on just 50 attempts.

But standing above them all in the loaded Seminole stable of backs is the much-heralded Sammie Smith. The high school All-American from Apopka is perhaps the most prized FSU recruit ever. Last year he was granted a medical hardship when he suffered a stress fracture after three games. Now, says Bowden, he may be about ready to show his stuff.

"I am very encouraged with the strides he has made," relates the coach. "He's been under a lot of pressure since he got here. Everybody expected him to step in and be another Herschel Walker right away. He's had a very good year to get himself adjusted and I think he showed last spring that he may very well have what it takes to be a star."

Bowden was particularly encouraged by Smith's stamina.

"I saw him take some tremendous licks in the spring and bounce right back. That's always a good sign. He really needed a lot of work and he made every practice in the spring. That gave him a tremendous advantage."

About Sammie's ability, Bowden simply says: "He's got danger written all over him."

There is a log-jam of talent at fullback, where five quality athletes are vying for the lead role. Steady junior David Palmer ended the spring at the number one slot but senior Tanner Holloman and junior Chuck Wells each lettered in 1985. Add sophomore transfer Dayne Williams, a surprise performer who at 6-2 and 218 pounds has the size that Bowden wants at the position.

Although the Seminoles lost standout wide receiver Hassan Jones to graduation, three excellent players return. Add this to the fact that Florida State probably recruited the best wide receiver group in the nation, and FSU appears to be both deep and talented here in 1986. To start with, FSU returns Darrin Holloman (20 catches, 323 yards) and speedster Phillip Bryant, who averaged 21.2 yards on his 17 catches. Junior Herb Gainer, who replaced Jones in the Gator Bowl and caught seven passes for 148 yards and two touchdowns, may finally be starting to reach his potential; while Randy White also had a big Gator Bowl—catching four passes for 87 yards while replacing the injured Bryant.

FSU has depth at tight end also. Two-year starter Pat Carter (14 catches, 147 yards)

returns as do backups Gaylon White and Tom O'Malley.

Special teams should be another strong point. Punter Louis Berry (43.1 avg., Sr.) and kicker Derek Schmidt (18-25 FG, 86 consecutive extra points, Jr.) are among the best and most consistent kicking tandems in the nation. Throw in punt returner Deion Sanders and kickoff return ace Keith Ross and it is evident that FSU has few worries in this area.

One problem is a highly competitive schedule. Road games with Nebraska, Michigan and Miami gives FSU three away games with teams that will probably be ranked in the top 10 in the pre-season. A home game with Florida gives the Seminoles another potential top 10 opponent. "Sure it's tough," Bowden adds. "But we can't be concerned about the schedule. We can't change it, so we'll just have to do our best to prepare for each game as we approach it."



"I think you'll see a greater use of the pro-set. With our returning talent at quarterback and running back I believe it will give us more options."

—Bobby Bowden

Redshirt freshman Sammie Smith (above) proved in the three games he played last year that big things are in his future—he has earned the starting tailback job for '86. Quarterback Chip Ferguson (opp. page) certainly has his share of quality receivers to work with. He won the Gator Bowl MVP award, with seven of his passes going to Herb Gainer (l. inset, #3). Ferguson will also be throwing more to fullbacks like Chuck Wells (r. inset), who are adept at catching out of the backfield.

The Offense

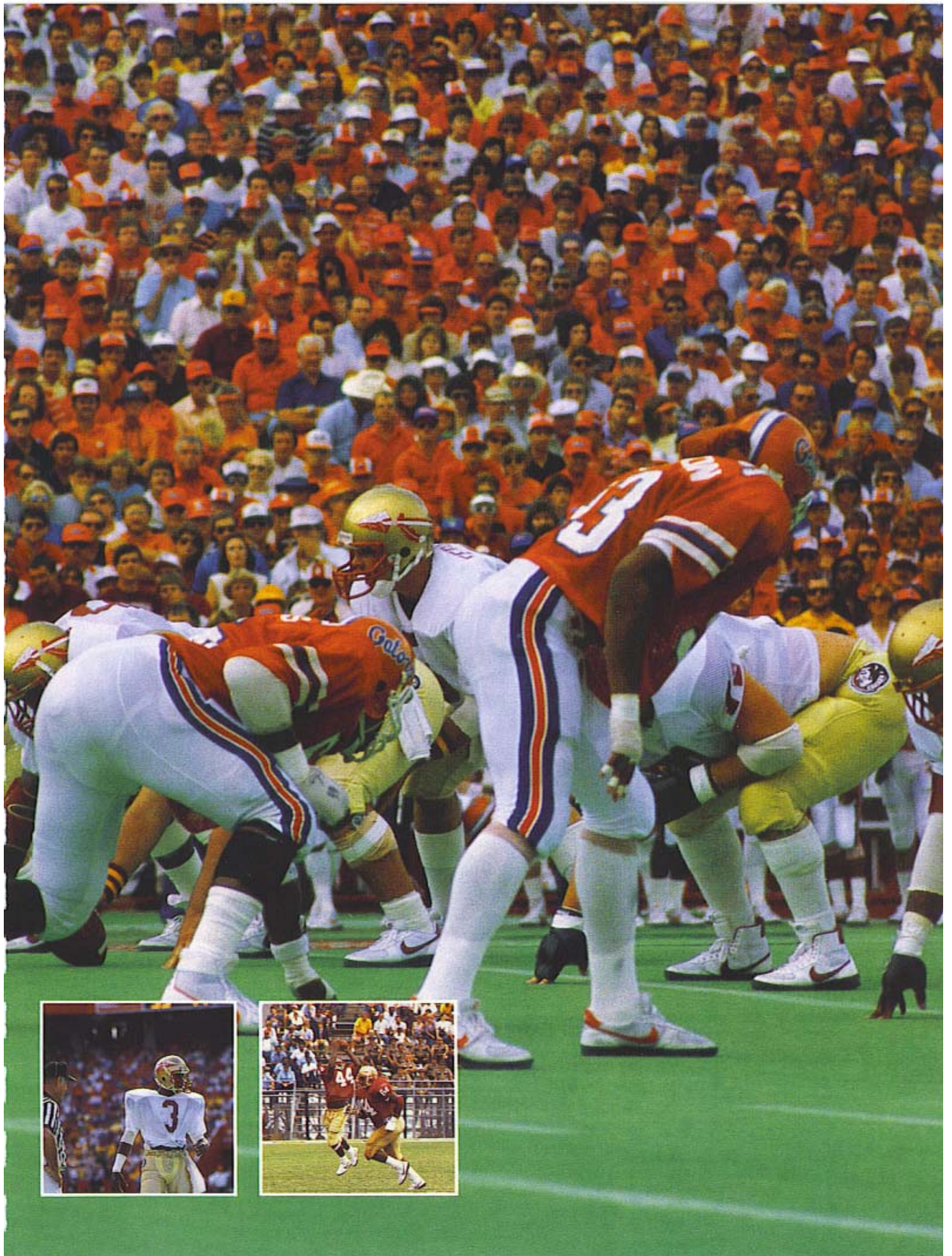
Quarterback—There may be a few questions here, but they are the type that coaches don't mind having. The solid number one at the position is sophomore Chip Ferguson. Coming off a Gator Bowl game where he was the MVP, Ferguson has given the FSU program a superstar-ability leader. He'll be challenged in the fall by junior Danny McManus, a player who has done nothing but win for FSU. McManus suffered a pair of knockout punches in two of the Seminoles' first five games in 1985 and was sidelined for the season. With medical clearance to practice in the fall, McManus could return to the form that helped him lead FSU to victories over Tulane and Nebraska as well as a lead over the Auburn Tigers. Also in the picture is freshman redshirt Peter Tom Willis, who got plenty of reps during the spring. Junior J. P. Connolly and freshman redshirt Alan Stewart add depth.

Passing	G	Att	Comp	Pct.	Yards	TD	Int
Ferguson	9	130	70	53.8	990	11	8
McManus	4	69	40	58.0	513	3	1

Tailback—No worries here. Returning starter Victor Floyd and his backup in 1985, Keith Ross, are back. AND neither one is first team entering the fall workouts. That honor was earned by freshman redshirt Sammie Smith, who rushed for 121 yards in three games in 1985 before an injury shelved him for the year. A Parade All-American in 1984, Smith's 90 yards and TD in the spring game gave him the edge over Floyd and Ross after spring workouts. Floyd was last season's second leading rusher with 619 yards—that included a game of 212 yards—and a 6.9 average while Ross came on at season's end and contributed a pair of 100-yard games in compiling his total of 315 for the year. Floyd has also proven that he can catch the ball out of the backfield—last year he had 10 catches. Any one of them can do the job for Florida State.

Rushing	G	Att	Net	Avg.	TD
Floyd	10	90	619	6.9	4
Ross	11	50	315	5.0	4
S. Smith	3	28	121	4.3	0

Fullback—This position may have the most depth of any on the offense, and that depth is experienced. Though starter Cletis Jones has departed, three who saw playing time return. Junior David Palmer has won the starting job but he'll be pushed again in the fall. Chuck Wells, a junior who got a few starts in '85 at both tailback and fullback but missed much of the spring with a broken hand and ankle injury, fits into the number three slot and senior Tanner Holloman, another letterman, sits in the fourth position. The second team slot is currently held by sophomore transfer Dayne Williams, a former baseball player who showed up for spring practice ready to play. Williams actually spent most of the spring number one on



OFFENSE

Position	SE	ST	SG	C	TG
Player	Herb Gainer	Pablo Lopez	Jason Kuipers	Jim Hendley	Mark Salva
	Hoffman Brown	Tim Hebron	Michael Tanks	David Schrenker	Jimmy Holton
	Pat White	Kenny Carr	Parrish Barwick		Joey Ionata

DEFENSE

Position	OLB	LT	SLB	NG	WLB
Player	Felton Hayes	Eric Hayes	Fred Jones	Thomas Harp	Paul McGowan
	Ed Clark	Steve Gabbard	John Eaford	John Brown	Keith Carter
	Kevin Grant	Bart Schucts	Odell Haggins		Odell Haggins

LETTERMEN LOST

Offense (9): Barry Barco (KS), Kirk Coker (QB), Jamie Dukes (OG), John Ionata (OT), Cletis Jones (FB), Hassan Jones (WR), Pete Panton (TE), Tony Smith (TB), Eric Thomas (QB)

Defense (10): Lenny Chavers (NG), Darryl Gray (OLB), Garth Jax (OLB), Bill Richardson (DB), Terry Robinson (CB), Stanley Scott (DT), Jesse Solomon (ILB), Keith Southwood (NG), Todd Stroud (NG), Isaac Williams (DT)

LETTERMEN RETURNING

Offense (22): Phillip Bryant (WR), Pat Carter (TE), Chip Ferguson (QB), Victor Floyd (TB), Herb Gainer (WR), Tim Hebron (OT), Jim Hendley (C), Darrin Holloman (WR), Tanner Holloman (FB), Pablo Lopez (OT), Danny McManus (QB), Tom O'Malley (TE), David Palmer (FB), Marty Riggs (C), Keith Ross (TB), Mark Salva (OG), Derek Schmidt (KS), David Schrenker (C), Pat Tomberlin (OG), Chuck Wells (FB), Gaylon White (TE), Randy White (WR)

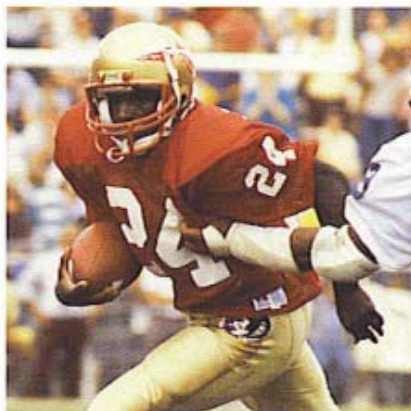
Defense (21): Louis Berry (P), Ed Clark (OLB), Brian Davis (OLB), Steve Gabbard (DT), John Hadley (FS), Felton Hayes (ILB), Bruce Heggie (OLB), Fred Jones (ILB), Martin Mayhew (CB), Paul McGowan (ILB), Greg Newell (FS), Gerald Nichols (DT), John Parks (FS), Deion Sanders (CB), Tracy Sanders (FS), Stan Shiver (SS), Eric Stiehl (OLB), Curtis Thomas (CB), Terry Warren (OLB), Alphonso Williams (SS), Eric Williams (CB)

the depth chart. The fifth player who will figure here is freshman redshirt Reno Fells, who could also play tailback if need be.

Rushing	G	Att	Net	Avg.	TD
Wells	10	33	120	3.6	1
T. Holloman	10	12	57	4.8	1
Palmer	11	9	56	6.2	0

Wide Receiver—Florida State lost a great one but returns his partner. Gone is the dependable and durable Hassan Jones but back is Darrin Holloman, who should start to reap his share of the post-season honors. Holloman was the Seminoles' second leading receiver behind Jones with 20 catches and he scored three TDs. Florida State has three others who can complement Holloman. On the other side filling Jones' shoes will be Herb Gainer, who had an excellent spring and was outstanding in the Gator Bowl. Backups to Holloman and Gainer will be Randy White, the deep threat of the group who also had himself a fine Gator Bowl, and walk-on Hoffman Brown. Sophomore Phillip Bryant's name hasn't been mentioned thus

far because he spent the spring on the track circuit—but Bryant had five touchdown catches a year ago. FSU also was able to recruit what generally is considered as the finest group of receivers in the nation and that talent pool may be called upon early.



Junior wide receiver Darrin Holloman (above) is both exciting and dangerous when he touches the ball.

Receiving	G	No.	Yards	Avg.	TD
D. Holloman	10	20	323	16.2	3
Bryant	11	17	360	21.2	5
Gainer	10	5	87	17.4	0

Tight End—Bowden has nothing but smiles for this group. It is good, it is deep and it is experienced. Starter Pat Carter, a junior at 6-4, and 250, is one of the best in the nation and his name should start appearing on many all-star ballots. His backup currently is Tom O'Malley, a redshirt last year who had a very good spring. Third on the depth chart only because he had to sit out the spring is junior Gaylon White, who has experience and quickness. All three of these young men will see much playing time in 1986. FSU recruited three tight ends from the high school ranks and will be looking for one of them to step to the front to take the fourth position.

Receiving	G	No.	Yards	Avg.	TD
P. Carter	11	14	154	11.0	3
G. White	11	5	42	8.4	0
O'Malley	11	3	40	13.3	0

Depth Chart

TT	TE	QB	TB	FB	FL
Pat Tomberlin	Pat Carter	Chip Ferguson	Sammie Smith	David Palmer	Darrin Holloman
Joey Ionata	Tom O'Malley	Peter Tom Willis	Victor Floyd	Dayne Williams	Randy White
	Gaylon White	Alan Stewart	Keith Ross	Chuck Wells	Phillip Bryant

RT	OLB	LC	SS	FS	RC
Gerald Nichols	Terry Warren	Martin Mayhew	Stan Shiver	Greg Newell	Eric Williams or Deion Sanders
Eric Krohn	Shelton Thompson	Curtis Thomas	Lenny Sutton	Dedrick Dodge	
Anthony Johnson	Bruce Heggie/ Eric Stiehl	Tracy Sanders	Alphonso Williams	John Parks	Gary Snells

STARTERS LOST

Offense (4): Jamie Dukes (OG), John Ionata (OT), Cletis Jones (FB), Hassan Jones (WR)

Defense (4): Darryl Gray (OLB), Garth Jax (OLB), Todd Stroud (NG), Isaac Williams (DT)

STARTERS RETURNING

Offense (7): Pat Carter (TE), Chip Ferguson (QB), Victor Floyd (TB), Jim Hendley (C), Darrin Holloman (WR), Pablo Lopez (OT), Pat Tomberlin (OG)

Defense (7): Fred Jones (ILB), Martin Mayhew (CB), Paul McGowan (ILB), Greg Newell (FS), Gerald Nichols (DT), Stan Shiver (SS), Eric Williams/Deion Sanders (CB)

Offensive Tackle—Gone at tight tackle is starter John Ionata and any team minus his presence has a void to fill. In will step huge sophomore Pat Tomberlin, an all-star candidate based on his performances last year as the Seminoles' starting guard in the last nine games of the season. Behind Tomberlin will be sophomore Joey Ionata, younger brother of John. At the split tackle slot, coaches didn't get much of a chance to look at the first two players at the position during spring drills. They expect a battle in the fall between junior Pablo Lopez and senior Tim Hebron. Lopez won the starting job a year ago and Hebron got some playing time when Lopez went down with an ankle injury in the second half of the season. At a third team slot is freshman redshirt Kenny Carr.

Offensive Guard—The player who started more games (48) than any other in Seminole history will be sorely missed. All-American Jamie Dukes has departed and for the first time in four years, coaches have some question marks. For now, pencil in often-injured and part-time starter Mark Salva at Dukes' old tight guard spot. He'll be challenged in

All-American Jamie Dukes has departed and for the first time in four years, coaches have some question marks.

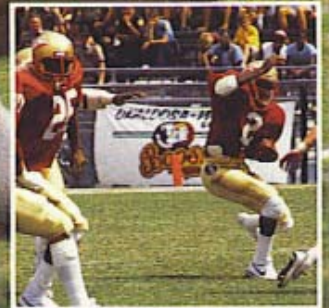
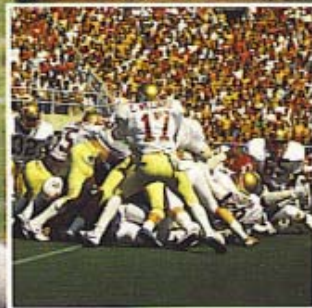
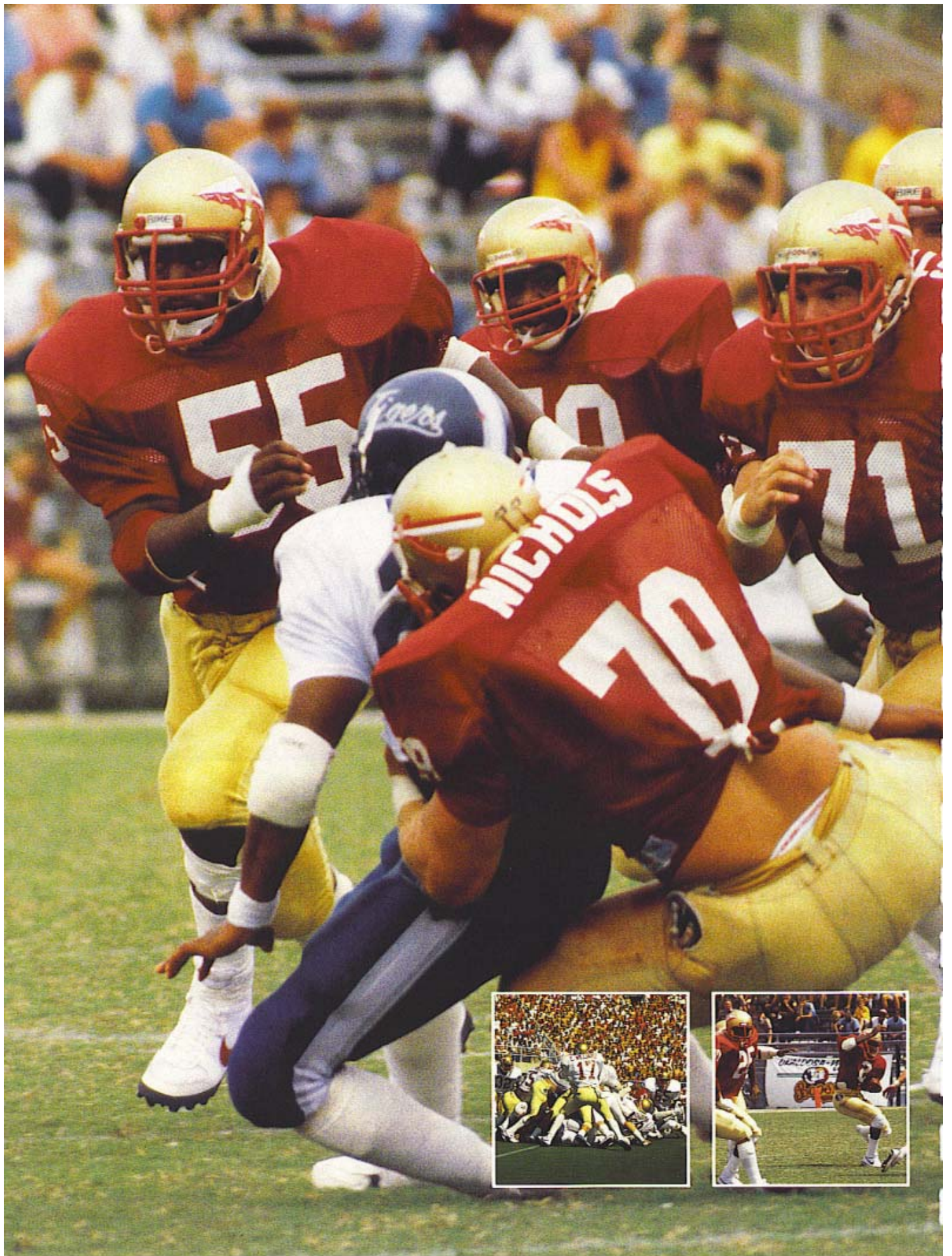
the fall by Georgia transfer Jimmy Holton. Sophomore Jason Kuipers has won the split guard slot but freshman redshirt Michael Tanks, after switching over from offense, is on his heels. Also count in senior Parrish Barwick, who had his foot operated on during the spring after breaking it for the umpteenth time.

Center—Two players return here, both whom have also started at other positions on the offensive line. Senior Jim Hendley enters the fall in the number one position after finishing off last season as the starter. Junior David Schrenker started out last season as the first team center, and he hasn't given up the battle yet. In terms of experience, count the center position as a plus.

The Defense

Outside Linebacker—Junior Terry Warren and sophomore Felton Hayes have grabbed the two first-team positions. Warren is a part-time starter from 1985 while Hayes has switched from inside linebacker since coaches wanted to get the best 11 players on the field. Florida State's depth is evident here as freshman redshirt Shelton Thompson fits in behind Warren and specialty teams performers Eric Stiehl and Bruce Heggie are neck-and-neck for the number three slot. Behind Hayes at the other slot are sophomore Ed Clark and freshman redshirt Kevin Grant. Both are running in a tie for that slot. Coaches feel that all seven players will contribute.

Name	Tackles	Assists	Totals	QS	TFL
Warren	19	25	44	2	5
Hayes	21	29	50	2	6
Heggie	8	7	15	0	0
Stiehl	3	9	12	0	0
Clark	7	7	14	0	0



Defensive Tackle—Gone is big play man Isaac Williams, but back is a solid field general Gerald Nichols at right tackle. Coaches describe him as E. F. Hutton—“when Gerald talks, the players listen”. On the field, Nichols lets his play do the talking to the tune of 5½ quarterback sacks and six tackles for loss. After spring practice, big freshman redshirt (6-3, 285) Eric Hayes owned the starting job at left tackle but he'll be challenged come fall by sophomore Steve Gabbard, a 1985 letterman who had arthroscopic knee surgery during the spring. Another redshirt freshman, Eric Krohn, looks like he'll be the fourth player on the depth chart. Behind that group is Bart Schucts, a 6-3, 220 walk-on who impressed coaches in workouts, and sophomore Anthony Johnson.

Name	Tackles	Assists	Totals	QS	TFL
Nichols	26	27	53	5½	6
Gabbard	11	11	22	0	0

Noseguard—This position may be the most questionable of any on the defense and quite possibly on the team. Both Todd Stroud, last year's starter, and backup Lenny Chavers have departed. Beyond those two, no player has played a down of defensive football for Florida State in a varsity contest. In spring workouts, junior redshirt Thomas Harp (a former offensive player) won the starting role, but he must clear up the academic area. His backup is freshman redshirt John Brown. Coaches will be looking at a few freshman, quite possibly Pensacola native Lamar Williams, for security in this position.

Inside Linebacker—Both starters return, and Florida State has a pair of gems in senior Fred Jones and junior Paul McGowan. The pair were 1-2 in tackles last year and McGowan had 13 tackles for loss while Jones had nine. There may not be a better combination in college football. Behind those two are a pair of former *Parade* All-Americans in Keith Carter and John Eaford. Carter, McGowan's backup, has potential written all over him but still is green with inexperience. Eaford took a redshirt year in 1985 and will be the third linebacker in Seminole strategy. He is greatly improved and will see a lot of playing time.

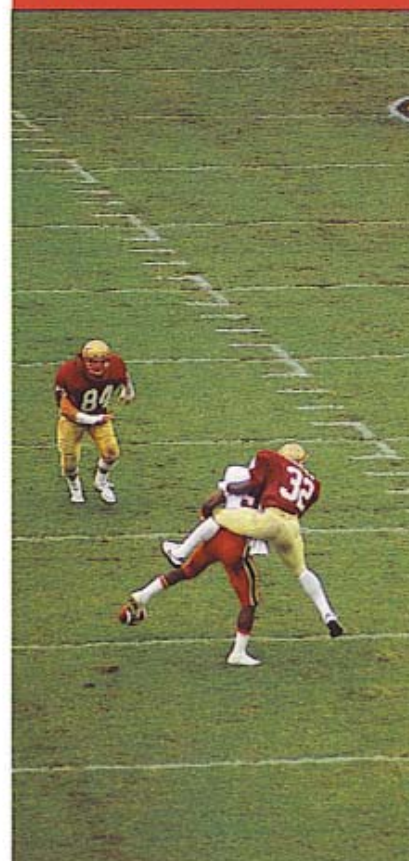
Name	Tackles	Assists	Totals	QS	TFL
McGowan	80	56	136	1	13
Jones	55	50	105	3	9

Safety—Unlike a year ago, Florida State isn't counting on any freshman to HAVE to contribute at this position. At strong safety is the hard-hitting #37, as Bowden refers to sophomore Stan Shiver. Before he graduates, the honors will be plenty for the 6-2, 197 pounder. Behind him is the only senior of the group, walkon Lenny Sutton, and at a third team position because he's recovering from

arthroscopic knee surgery is sophomore Alphonso Williams, one of the freshmen called upon last year to contribute. At free safety is returning starter Greg Newell but he has a couple of talented players breathing down his neck in a battle for the first team job. Freshman redshirt Dedrick Dodge trails Newell and just behind him is sophomore John Parks. One other player to consider here is sophomore John Hadley, who has had to fight some injury problems.

Name	Tackles	Assists	Totals	PBU	INT
Newell	42	48	90	7	1
Shiver	32	22	54	7	2
A. Williams	11	6	17	1	1
Hadley	2	7	9	0	0

There can be no doubt that Florida State has one of the top kicking games in the country.



A swarming defense (opp. page, 1. inset) is a new look for the Seminoles of '86. It was the Tribe's defense instead of its highly publicized offense that dominated the spring game. The Seminoles' return game features cornerback Deion Sanders (r. inset), who returned a punt for a TD a year ago. Cornerback Martin Mayhew (above) is a leader in the Seminoles' young secondary—not only does Mayhew excel on the field but also in the classroom.

Cornerback—Coaches consider that they have three starters at this position. Between juniors Martin Mayhew and Eric Williams and sophomore Deion Sanders, the position will be well-manned. Mayhew is a two-year starter while Williams started in 1984 and was a part-timer last season. He shared the position with Sanders, who made an immediate impact as a freshman. The backups are experienced and it is interesting to note that there is not a senior in this group. A pair of walkons—Curtis Thomas and Gary Snells—provide that quality depth. A sixth player, Tracy Sanders, played safety last year but has been moved to cornerback for 1986. He missed the spring with shoulder surgery but look for him to move in and contribute at his new position.

Name	Tackles	Assists	Totals	PBU	INT
Mayhew	41	28	69	9	3
D. Sanders	22	20	42	4	1
E. Williams	22	16	38	2	4
T. Sanders	17	17	34	1	1

The Kicking Game

The Kickers—There can be no doubt but that Florida State has one of the top kicking games in the country. Both punter Louis Berry, a three-year starter and placement kicker Derek Schmidt, a two-year starter, are members of the All-South Independent team. Berry improved his average to 43.1 as a junior (15th in the nation) and Schmidt's field goal total was ninth best in the country and his scoring total eighth. Schmidt has never missed an extra point.

Punting	No.	Yards	Avg.
Berry	50	1254	43.1

Field Goal/PAT	FG-FGA	PAT	Scoring
Schmidt	18-25	44-44	98

The Kick Returners—Again, Florida State has a duo that returns here. The punt returner is Deion Sanders, who ran one back for a TD against Florida last year. With the highly publicized punt-block team in operation the last half dozen years, FSU returners haven't gotten much blocking to surmount any kind of a flashy average. But with the talents of Sanders back there, the Seminoles will most likely split the punt blocking plays with returns set up to cater to Sanders' dazzling ability. Sophomore Keith Ross is the deep man on kickoff returns and his average of 24.6 tied for eighth in NCAA stats a year ago.

Returns	No.	Yards	Avg.	TD
Ross	17	418	24.6	0
Sanders	30	255	8.5	1