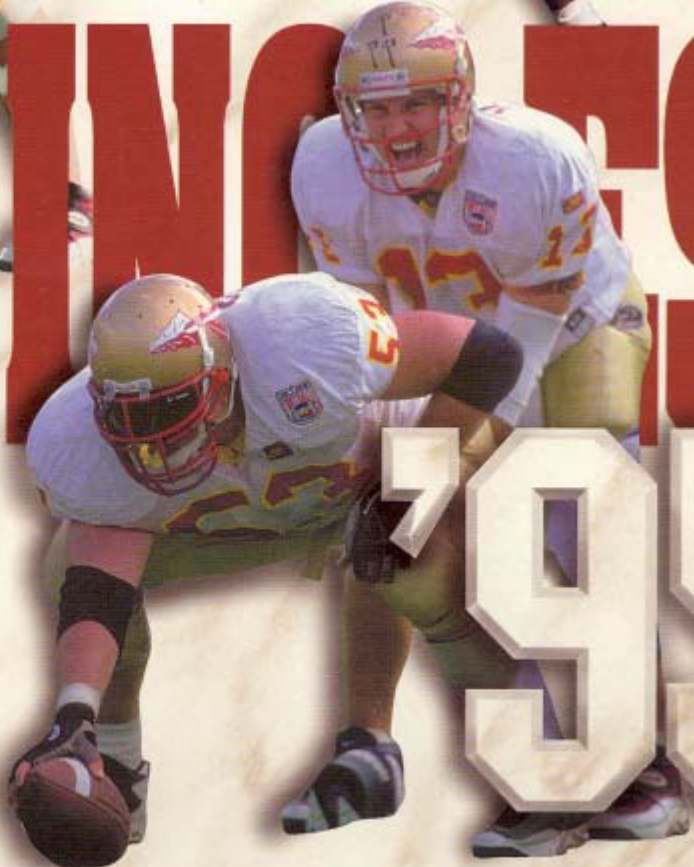


SEMINOLES



'95

1994 RESULTS

10-1-1, 8-0 ACC

RANKED: 4th Associated Press; 5th CNN/USA Today

DATE	OPPONENT	FSU	OPP	ATT
Sept. 3	VIRGINIA*	41	17	74,551
Sept. 10	at Maryland*	52	20	38,014
Sept. 17	at Wake Forest*	56	14	20,317
Sept. 24	NORTH CAROLINA*	31	18	78,111
Oct. 8	at Miami	20	34	77,010
Oct. 22	CLEMSON*	17	0	75,902
Oct. 29	DUKE*	59	20	73,899
Nov. 5	at Georgia Tech*	41	10	45,206
Nov. 12	NOTRE DAME (at Orlando)	23	16	72,868
Nov. 19	at N.C. State*	34	3	52,400
Nov. 26	FLORIDA	31	31	80,210
Jan. 2	Florida (Sugar Bowl)	23	17	76,224

*ACC Game

ATTENDANCE

Total (12 Games)	877,680	Average	73,140
Home (5 Games)	382,663	Average	76,533
Away (5 Games)	232,947	Average	46,589
Neutral (2 Games)	189,092	Average	74,546

Seminole Sideline 70

The Tribe

SEMINOLE

THE SUGAR BOWL

THE TRIBE

THE TRIBE

Tribe

TRIBE

TRIBE

TRIBE

TRIBE

TRIBE

TRIBE

TRIBE

FLORIDA STATE
WAKE FOREST

TRIBE

Tribe

TRIBE

Seminole Sideline 70

The Tribe

SEMINOLE

ATTENDANCE

TRIBE

TRIBE

TRIBE

FLORIDA STATE
WAKE FOREST

TRIBE

Tribe

TRIBE

Seminole Sideline 70

The Tribe

SEMINOLE

ATTENDANCE

TRIBE

TRIBE

TRIBE

FLORIDA STATE
WAKE FOREST

TRIBE

Tribe

TRIBE

Seminole Sideline 70

The Tribe

SEMINOLE

ATTENDANCE

TRIBE

TRIBE

TRIBE

FLORIDA STATE
WAKE FOREST

TRIBE

Tribe

TRIBE

Seminole Sideline 70

The Tribe

SEMINOLE

ATTENDANCE

TRIBE

TRIBE

TRIBE

FLORIDA STATE
WAKE FOREST

TRIBE

Tribe

TRIBE

Seminole Sideline 70

The Tribe

SEMINOLE

ATTENDANCE

TRIBE

TRIBE

TRIBE

FLORIDA STATE
WAKE FOREST

TRIBE

Tribe

TRIBE

Seminole Sideline 70

The Tribe

SEMINOLE

ATTENDANCE

TRIBE

TRIBE

TRIBE

FLORIDA STATE
WAKE FOREST

TRIBE

Tribe

TRIBE

Seminole Sideline 70

The Tribe

SEMINOLE

ATTENDANCE

TRIBE

TRIBE

TRIBE

FLORIDA STATE
WAKE FOREST

TRIBE

Tribe

TRIBE

Seminole Sideline 70

The Tribe

SEMINOLE

ATTENDANCE

TRIBE

TRIBE

TRIBE

FLORIDA STATE
WAKE FOREST

TRIBE

Tribe

TRIBE

Seminole Sideline 70

The Tribe

SEMINOLE

ATTENDANCE

TRIBE

TRIBE

TRIBE

FLORIDA STATE
WAKE FOREST

TRIBE

Tribe

TRIBE

Seminole Sideline 70

The Tribe

SEMINOLE

ATTENDANCE

TRIBE

TRIBE

TRIBE

FLORIDA STATE
WAKE FOREST

TRIBE

Tribe

TRIBE

Seminole Sideline 70

The Tribe

SEMINOLE

ATTENDANCE

TRIBE

TRIBE

TRIBE

FLORIDA STATE
WAKE FOREST

TRIBE

Tribe

TRIBE

Seminole Sideline 70

The Tribe

SEMINOLE

ATTENDANCE

TRIBE

TRIBE

TRIBE

FLORIDA STATE
WAKE FOREST

TRIBE

Tribe

TRIBE

Seminole Sideline 70

The Tribe

SEMINOLE

ATTENDANCE

TRIBE

TRIBE

TRIBE

FLORIDA STATE
WAKE FOREST

TRIBE

Tribe

TRIBE

Seminole Sideline 70

The Tribe

SEMINOLE

ATTENDANCE

TRIBE

TRIBE

TRIBE

FLORIDA STATE
WAKE FOREST

TRIBE

Tribe

TRIBE

Seminole Sideline 70

The Tribe

SEMINOLE

ATTENDANCE

TRIBE

TRIBE

TRIBE

FLORIDA STATE
WAKE FOREST

TRIBE

Tribe

TRIBE

Seminole Sideline 70

The Tribe

SEMINOLE

ATTENDANCE

TRIBE

TRIBE

TRIBE

FLORIDA STATE
WAKE FOREST

TRIBE

Tribe

TRIBE

Seminole Sideline 70

The Tribe

SEMINOLE

ATTENDANCE

TRIBE

TRIBE

TRIBE

FLORIDA STATE
WAKE FOREST

TRIBE

Tribe

TRIBE

Seminole Sideline 70

The Tribe

SEMINOLE

ATTENDANCE

TRIBE

TRIBE

TRIBE

FLORIDA STATE
WAKE FOREST

TRIBE

Tribe

TRIBE

Seminole Sideline 70

The Tribe

SEMINOLE

ATTENDANCE

TRIBE

TRIBE

TRIBE

FLORIDA STATE
WAKE FOREST

TRIBE

Tribe

TRIBE

Seminole Sideline 70

The Tribe

SEMINOLE

ATTENDANCE

TRIBE

TRIBE

TRIBE

FLORIDA STATE
WAKE FOREST

TRIBE

Tribe

TRIBE

Seminole Sideline 70

The Tribe

SEMINOLE

ATTENDANCE

TRIBE

TRIBE

TRIBE

FLORIDA STATE
WAKE FOREST

TRIBE

Tribe

TRIBE

Seminole Sideline 70

The Tribe

SEMINOLE

ATTENDANCE

TRIBE

TRIBE

TRIBE

FLORIDA STATE
WAKE FOREST

TRIBE

Tribe

TRIBE

Seminole Sideline 70

The Tribe

SEMINOLE

ATTENDANCE

TRIBE

TRIBE

TRIBE

FLORIDA STATE
WAKE FOREST

TRIBE

Tribe

TRIBE

Seminole Sideline 70

The Tribe

SEMINOLE

ATTENDANCE

TRIBE

TRIBE

TRIBE

FLORIDA



The crowd noise rises to a deafening crescendo as the garnet and gold of Florida State pours from the tunnel led by Chief Osceola and Renegade. While opponents fight the temptation to watch, the air inside Doak Campbell Stadium seems electric as the rider, flaming spear in hand, charges for midfield. Poised for a moment over the target, Renegade rares on hind legs before the spear is thrust into the hallowed turf and college football's most exciting team is ready for action.

The 1995 season promises to be another thrilling chapter in what has become one of college football's most incredible stories. Bobby Bowden begins his 20th year at the helm of an FSU program that he has built into the best in college football. Until his arrival at Florida State, no team had ever finished among the Associated Press' top five for eight consecutive seasons, and never had a program won 10 straight bowl games or had eight straight 10 win seasons.

The challenge for the Seminoles in 1995 will be keeping those streaks alive.

Danny Kanell and Warrick Dunn will use the blocking of Outland Trophy candidate Clay Shiver at center to lead a talented FSU offense.

The NFL snatched six defenders from last year's team, including three from the secondary, but there should be a great race to see who will emerge as the next great FSU defensive back.

Florida State has not lost an ACC game since joining the league three years ago and they must defend their crown in addition to taking on in-state rivals Miami and Florida.

Listen, you can almost hear the chant. ■

1995 FLORIDA STATE FOOTBALL MEDIA GUIDE

TABLE OF CONTENTS

MEDIA INFORMATION

MEDIA INFORMATION	4
FLORIDA STATE FAST FACTS	5
POST-GAME INTERVIEWS	7
FOOTBALL MEDIA OUTLETS	8
SEMINOLE RADIO NETWORK	9
SEMINOLES ON TV	10
TELEVISION APPEARANCES	11
FUTURE SCHEDULES	12

1995 OUTLOOK

1995 OUTLOOK	13
PRESEASON DEPTH CHART	18
PERSONNEL CHART	19
HOMETOWN ROSTER	20
1995 FSU ROSTERS	PULL-OUT

COACHES

HEAD COACH BOBBY BOWDEN	22
ASSISTANT COACHES	28

TRAINERS & MANAGERS	36
GRADUATE ASSISTANTS	37
FOOTBALL SUPPORT STAFF	38

1995 SEMINOLES

PLAYER BIOGRAPHIES	40
1995 SIGNEES	73

1995 OPPONENTS

OPPONENT PROFILES	78
SERIES RECORDS vs. '95 OPPONENTS	89
'95 TRAVEL PLANS	90
OPPONENTS WEEK-BY-WEEK	91
THE ATLANTIC COAST CONFERENCE	92

1994 REVIEW

SEASON IN REVIEW	94
1994 STATISTICS	109
1994 HIGHS & LOWS	112
'94 HONOR ROLL	113



M E D I A I N F O R M A T I O N

NCAA RANKINGS	114
'94 ACC FINAL STANDINGS & ALL-CONFERENCE TEAM	115
ACC INDIVIDUAL STATISTICS	116
ACC TEAM STATISTICS	119

THE UNIVERSITY

THIS IS TALLAHASSEE	122
THIS IS FLORIDA STATE	124
ADMINISTRATION	126
SEMINOLE SPIRIT	128
SEMINOLES HEROIC SYMBOL	129
DOAK CAMPBELL STADIUM	130
ACADEMIC SUPPORT	132
STRENGTH & CONDITIONING	134

COLLEGE FOOTBALL

'94 NCAA STATISTICAL LEADERS	136
NCAA ALL-TIME LEADERS	138
BOWL SCHEDULE & RESULTS	142
BOWL COALITION	142
BOWL INFORMATION	143
ALL-TIME BOWL RECORDS	144
COLLEGE FOOTBALL AWARD WINNERS ...	145
ACC CHAMPIONS & AWARD WINNERS ...	148
FINAL POLLS SINCE 1936	149

THE RECORD BOOK

INDIVIDUAL RECORDS	154
TEAM RECORDS	158
YEARLY LEADERS	161
SEASON LEADERS	163
CAREER LEADERS	165

BEST SINGLE-GAME PERFORMANCES	167
LONGEST PLAYS	168
THE LAST TIME IT HAPPENED	169
TEAM SEASON RECORDS	171
FSU vs. ALL OPPONENTS	172
BEST PERFORMANCES BY OPPONENTS	173
COACHES & CAPTAINS	174
ACADEMIC AWARD WINNERS	175
HOMECOMING RESULTS	176
ALL-TIME LETTERMEN	177
SEMINOLE ALL-AMERICANS	181
SEMINOLE CONSENSUS ALL-AMERICANS ..	183
ALL-ACC & OTHER HONORS	184
SEMINOLES IN THE PROS	186
ALL-TIME NFL LIST	189
SEMINOLE RETIRED NUMBERS	191
FSU AWARD WINNERS	192
FSU & WEEKLY AP RANKINGS	196
YEAR-BY-YEAR RECORD	198
BOWL GAMES IN REVIEW	205
FSU BOWL RECORDS	223

CREDITS

EDITOR – Rob Wilson; **ASSISTANT EDITORS** – Bob Burda, Debra Crews; **WRITING & RESEARCH** – Brent Haley, Brian Moore, Tina Thomas, Joanna Sparkman, FSU Media Relations, ACC Media Relations; **PHOTOGRAPHY** – Ryals Lee, Jr., Ross Obley, Bucky Parrish, Bob Rosato, Allen Steele, Richard Lewis, FSU Photo Lab, Action Sports of America, Phil Coale, Tallahassee Chamber of Commerce; **PRINTING** – Boyd Brothers, Inc.



1995 FLORIDA STATE MEDIA INFORMATION

Media facilities for the 1995 season will be interesting at best. We ask your patience in this transition year as we will operate essentially without a press box throughout the season. Our plan is to house the network television, radio and coaches in the shell of our new press box, while the rest of the media will be placed in the new skyboxes in the northwest corner of the stadium. We will have specific instructions mailed with your credentials. However, we will be even more discriminating with press passes this season. Thanks!

CREDENTIAL REQUESTS

All requests for working press, radio, television, photography or scouting credentials should be directed to Football Media Relations Director Rob Wilson no later than one week prior to the game. Requests for season credentials should be made at least two weeks prior to the first game.

Space for the working press, radio and television is allocated by the FSU Sports Information Office.

The press will be located in the shell of new skyboxes currently under construction above the northwest corner of the endzone. Access to the new press box is still being determined but will likely be through Gate One (the same as last year) and through the ramps to the right. Press Will Call will be located in the main ticket office at the Moore Athletic Center.

PRESS POLICIES

Working press only will be admitted to the temporary press box where approximately 110 seats will be credentialed by FSU according to the following criteria:

1. State newspapers by circulation, wire services, national publications, newspapers from opponents' area, and student newspapers from FSU and opponents' schools.
2. Other daily newspapers with preference to those which regularly cover FSU.
3. Radio and television personnel not broadcasting, but considered reporting (seats may be provided in the stands and locker room access granted).
4. Non-daily newspapers, with preference to those which regularly cover FSU.
5. Scouts.

Freelance and/or non-daily writers may be asked to produce copies of actual publications in

which their work has appeared. In some cases, these materials will be required as verification of the writers' status. Your cooperation and understanding is requested in such instances.

MEDIA HEADQUARTERS

The official FSU media headquarters hotel for the 1995 home football season is the Ramada Inn - North. It is located at North Monroe Street (U.S. 27 North) and I-10. Most media functions, including the Sunday morning "Breakfast with Bobby," will be held there.

The Florida State University Sports Information Office has a number of rooms set aside for accredited media representatives during home game weekends. Contact Debbie Crews of the Sports Information Office (904/644-1402) to make arrangements for these rooms. Priority is determined in the same manner spelled out above under "Press Policies."

[SPECIAL NOTE — Media reservations for the Ramada Inn - North on home game weekends will require a TWO NIGHT MINIMUM. There will be no exceptions. The 1995 rate is \$85 per night on football weekends. When reserving a room through FSU, it will be necessary to give a credit card number to guarantee the room.]

Florida State also maintains a minimal number of rooms for the media at the team headquarters for all road games. Check with Crews for information on availability of these rooms.

RADIO-TV

If construction allows, Florida State plans to host network television and the official radio networks of the participating teams to broadcast from the shell of the new press box being erected on the west side of the stands. Information on how to access the area will be forthcoming.

PHOTOGRAPHERS

Only accredited photographers and those shooting for the FSU Sports Information Office will be issued working credentials.

Florida State reserves the right to admit only those photographers deemed to be on the premises for legitimate media purposes. All photographers working FSU games should be prepared to show a media ID card and equipment designed to photograph major college football.

Florida State uses a double photo line system on its sidelines. Only those photographers actually shooting the game will be allowed on the "front" line. These shooters will be given photo armbands upon check-in to allow them front line access. All other photo personnel will be required to stay behind a second line so as not to obstruct the view of the shooters. This would include grips, runners and sideline reporters. Violation of the double-line system will result in removal from the sideline. No media personnel are allowed in the team area of the sidelines at any time during a game. They must shoot in designated areas only.

Please be aware that there is no high level (press box catwalk) view for local television stations this year. Sideline passes for local television will be severely curtailed for televised games and each station will be restricted to two passes. Still photographers may have access to the sidelines only. Those holding a still photography credential should report to the gate specified on the pass, where they will be issued an armband, rosters and a pre-game meal. A photographers' lounge area with tables and chairs is available. Late-arriving photographers must check in on the field with a member of the Sports Information staff. The only access to the field is through the gate at the northwest (flagpole) corner of the stadium.

VIDEO SERVICES

Florida State's Sports Information Office has the ability to assist networks and television stations by providing video services through Seminole Productions, Inc. The FSU athletic department has a working relationship with SPI and its general manager, Mark Rodin, whose office is located in the Moore Athletic Center. Seminole Productions has editing and studio facilities on site and can produce virtually any material upon request. In most cases, there will be a nominal fee charged for these services. Please call Rodin at 904/644-0019 to arrange for these services.

REFRESHMENTS

At media guide press time it had not been determined whether Florida State will be able to accommodate a pregame meal for the press. However, every effort will be made to accomplish the standard refreshment service and media will be notified of the policy in the credential mailing.

PRESS PARKING

Once again, parking is extremely limited in 1995 and passes will be issued on a priority basis within the same guidelines as working credentials.

STATISTICAL SERVICES

Play-by-play, halftime and complete final statistics will be provided. Post-game quotes from FSU Head Coach Bobby Bowden, selected players and the visiting coach will be distributed after the game.

TELEPHONES

Telephone service should be secured directly through the Florida State University Office of Telecommunications at 904/644-2414. Have them contact the Sports Information Office for location. The Telecommunications Office can provide both lines and phones. When contacting them, please specify the type of line you need (i.e. touchtone, etc.).

FAX SERVICE

An independent fax service will be available for each game. Please contact a member of the Sports Information Office staff during the game to secure post-game fax service.

INTERVIEWS

Media interviews with all FSU players should be arranged through the Sports Information Office. For phone interviews, a staff member will fill out a card asking the player to return the call. Please give one day advance notice when requesting players for mid-week interviews. All player calls to the media will be made collect.

Seminole players are

FLORIDA STATE FAST FACTS

PRESIDENT
TALBOT "SANDY" D'ALEMBERTE

LOCATION
TALLAHASSEE, FLORIDA

ENROLLMENT
28,500

FOUNDED
1857

NAME
SEMINOLES

SYMBOL
CHIEF OSCEOLA & RENEGADE

COLORS
GARNET & GOLD

CONFERENCE
ATLANTIC COAST

STADIUM
DOAK S. CAMPBELL (77,500)

TURF
GRASS

ATHLETIC DIRECTOR
DAVE HART, JR.

FACULTY ATHLETIC REPRESENTATIVE
CHARLES EHRHARDT

HEAD FOOTBALL COACH
BOBBY BOWDEN (SAMFORD '53)

OVERALL RECORD
249-79-4 (29 YEARS)

RECORD AT FSU
176-47-4 (19 YEARS)

OFFENSIVE FORMATION
PRO SET

DEFENSIVE FORMATION
4-3 MULTIPLE

ALL-TIME RECORD
326-177-17

SEASONS
48

BOWL APPEARANCES
24

CONSECUTIVE BOWL APPEARANCES
13

available to the media on a daily basis during the lunch hours in the atrium area of the Moore Athletic Center. Contact the Sports Information staff member working lunch with your request. Advance notice is helpful in setting up face-to-face interviews to ensure that the player requested will be present that day.

Anyone wishing to schedule an interview with Head Coach Bobby Bowden should contact his assistant, Sue Hall, at 904/644-0097.

ACC FAXBACK

Florida State no longer mails its football releases each week. Instead, all Florida State football releases, including the daily practice trainer, are available on the ACC Faxback.

The Faxback gives media the capability to request and receive the releases from the conference office or any Atlantic Coast Conference school, including Florida State, simply by dialing a phone number from a fax machine. The ACC Faxback gives the media 24-hour

access to the latest press releases and information.

Use of the Faxback is limited to members of the media ONLY. To get the Faxback phone and code numbers, contact the ACC Media Relations Office (910/854-8787) or the Florida State Sports Information Office.

ACC TELECONFERENCE

Each Wednesday during the 1995 football season, Coach Bowden will be available to the media on the ACC football teleconference call, along with the other eight league coaches. Bowden will be on the call from 11:20-11:30 p.m. every Wednesday from Aug. 30 through Nov. 22. Contact the FSU Sports Information Office or the Atlantic Coast Conference Office to get the number for the call, as well as a complete listing of the coaches and times. This is the only weekly conference call Coach Bowden will conduct in 1995.

ACC SATELLITE FEED

Video highlights and taped interviews with Florida State players and coaches can be obtained each week via an ACC satellite feed put up by JP Sports. The feed, which will contain at least six minutes of Florida State information, will run weekly beginning the first week in September. Contact FSU or the ACC to get the coordinates and time for the feed.

BREAKFAST WITH BOBBY

Following each Seminole home game, Head Coach Bobby Bowden will join the media Sunday morning at 8:30 a.m. for a continental breakfast, followed by a question and answer session. Breakfast with Bobby will be held at the Ramada Inn North, FSU's media hotel.

CONFERENCE CALL

On road game weekends, media may talk to Bowden via a Sunday conference call. Contact a member of the Sports Information Office during the previous day's game for further information.

ROAD GAME CREDENTIALS

Writers covering Florida State on a regular basis may make requests for road credentials with the opponent school or with the FSU Sports Information Office by Monday of game week. ■

HOW TO USE THE ACC FAXBACK

ACC standings and statistics will be updated by no later than 5 p.m. each Monday during the course of the 1995 season. Each school will also update its respective release by 5 p.m.

Simply dial the Faxback phone number from your fax phone. You will be instructed on how to retrieve the information. Connect your fax at the tone, and the requested information will start transmitting to your machine. The ACC will not release this phone number except to certified media sources. Contact the ACC Media Relations Department at 910/854-8787, or fax in your request to 910/854-8797.

A PARTIAL LIST OF FOOTBALL FAXBACK CODES:

5050	ACC Football Release
5051	ACC Football Notes Only
5052	ACC Football Stats Only
5060	ACC Football Schedule
5070	NCAA Football Stats
31050	FSU Football Release
31051	FSU Football Notes Only
31052	FSU Football Stats Only
31053	FSU Football Box Score
31055	FSU Daily Football Trainer
31060	FSU Football Schedule

POST-GAME INTERVIEWS

Florida State University's athletic staff is well aware of the importance of media coverage and is briefed continually on the role of the media insofar as it interacts with their respective duties. At no time is this cooperation more important than in the post-game interview and locker room procedures. To ensure the most workable situation for members of the media and for the FSU staff, the following procedures *must* be observed:

1 Entrance to the Florida State locker room can be made *only* through the second floor interview room. All members of the media will be directed to this room by the FSU Sports Information staff *immediately* at the conclusion of the game. It is helpful if all media personnel assemble at the tunnel entrance in the north end zone following the conclusion of the game. You will *not* be allowed access to the locker room through the player entrance, so follow closely.

2 Florida State Coach Bobby Bowden will be brought directly to the interview room as soon as he dismisses the team and declares the locker room open.

3 When Coach Bowden makes his appearance in the interview room, members of the media who wish to go to the locker room will be shown the proper route. Down one flight of stairs leads directly into the player dressing area.

4 FLORIDA STATE'S LOCKER ROOM IS OPEN TO ALL MEDIA. HOWEVER, IT IS IMPERATIVE THAT FEMALE REPORTERS INFORM FSU SPORTS INFORMATION PERSONNEL DURING THE GAME THAT THEY WILL NEED LOCKER ROOM ACCESS. (FSU players have been assured they will be told on a game-by-game basis whether there will be female reporters in the locker room — a courtesy we feel must be extended.)

5 Exit from the locker room and access back to the press box can be made through the player entrance to the stadium.

Each visiting team will set its own post-game interview policy, which will be announced on the inside public address system in the fourth quarter. Check with the opposing team's sports information personnel in the press box if you have any other questions.

There is an interview room outside the visitors locker room, where the visiting head coach and/or

players may be brought for interviews following the game. The visiting team locker room and interview area is located through the gate at the southeast corner of the field.

It is our desire at Florida State to make the post-game procedure as painless as possible for both the media and our staff. Remember, both groups have important tasks and are under extreme pressure.

The Florida State Athletic Department cannot and will not be responsible for problems incurred by any member of the media not following the above procedures. Security personnel will facilitate only those following the proper guidelines. However, if you encounter a problem while following this procedure, please inform a Sports Information staff member immediately.



Rob Wilson



Bob Burda



Tina Thomas



Debbie Crews

FLORIDA STATE SPORTS INFORMATION

CONTACT US AT:
904/644-1403; FAX 904/644-3820

ADDRESS INQUIRIES TO:
Sports Information
P.O. Drawer 2195
Tallahassee, Florida 32316

SHIP OVERNIGHT PACKAGES TO:
Sports Information
Moore Athletic Center
Pensacola Street
Tallahassee, Florida 32306

SPORTS INFORMATION DIRECTOR
Rob Wilson — 904/644-7292 (O);
904/386-1619 (H)

ASSISTANT SPORTS INFORMATION
DIRECTORS
Bob Burda — 904/644-1077 (O);
904/562-1160 (H)
Tina Thomas — 904/644-1065 (O)

ADMINISTRATIVE SECRETARY
Debbie Crews — 904/644-1402 (O)

GRADUATE ASSISTANT
Vicki Zinkil — 904/644-9942 (O)



FOOTBALL MEDIA OUTLETS

PRINT MEDIA

ASSOCIATED PRESS (Local) (904) 224-1211
 Brent Kallestad*, 336 E. College Ave., Suite 301, Tallahassee, FL 32301
BRADENTON HERALD (813) 745-7007
 Willie Hiatt, 102 Manatee Ave., West, Bradenton, FL 34205
DAYTONA BEACH NEWS-JOURNAL (904) 252-1511
 Godwin Kelly*, P.O. Box 431, Daytona Beach, FL 32015
FLAMBEAU, THE (904) 681-6695
 TBA*, P.O. Box 20287, Tallahassee, FL 32316
FLORIDA TIMES-UNION (Local) (904) 224-7515
 Garry Smits*, 336 E. College Ave., Suite 304, Tallahassee, FL 32301
FLORIDA TIMES-UNION (904) 359-4246
 Joe DeSalvo, Gene Frenette, Tim McDonald (C), One Riverside Ave., Jacksonville, FL 32202
FT. LAUDERDALE SUN-SENTINEL (305) 356-4645
 Craig Barnes*, Dave Hyde (C), New River Center, 200 E. Las Olas Blvd., Ft. Lauderdale, FL 33301
FT. MYERS NEWS-PRESS (813) 335-0358
 Scott Karzenowski (C), 2442 Anderson Ave., Ft. Myers, FL 33901
FSVIEW (904) 561-6653
 Jerome Dorsey, P.O. Box 20331, Tallahassee, FL 32316
GAINESVILLE SUN (904) 378-1411
 Paul Jenkins*, Mike Bianchi (C), Pat Dooley, P.O. Drawer A, Gainesville, FL 32602
LAKELAND LEDGER (813) 687-7010
 Mike Cobb*, P.O. Box 408, Lakeland, FL 33802
MIAMI HERALD (305) 376-3487
 Gary Long*, Edwin Pope (C), One Herald Plaza, Miami, FL 33101
NORTHWEST FLORIDA DAILY NEWS (904) 863-1111
 Arnold Feliciano, 200 Racetrack, Ft. Walton Beach, FL 32548
OCALA STAR-BANNER (904) 867-4144
 Dwight Collins*, P.O. Box 490, Ocala, FL 32670
ORLANDO SENTINEL (Local) (904) 222-5564
 Alan Schmadtke*, 336 E. College Ave., Suite 303, Tallahassee, FL 32301
ORLANDO SENTINEL (407) 420-5474
 Larry Guest (C), Steve Doyle, P.O. Box 28333, Orlando, FL 32802
OSCEOLA, THE (904) 222-7733
 Jerry Kutz*, Daniel Mitchell*, 402 Dunwoody St., Tallahassee, FL 32304
PALATKA DAILY NEWS (904) 328-2721
 Kerry Dunning*, 1825 St. John's Ave., Palatka, FL 32177
PALM BEACH POST (407) 820-4440
 Dan Moffett (C), Steve Moore, 2751 S. Dixie Highway, W. Palm Beach, FL 33405
PANAMA CITY NEWS-HERALD (904) 763-7621
 Jeff Carpenter*, P.O. Box 1940, Panama City, FL 32401
PENSACOLA NEWS-JOURNAL (904) 435-8558
 Bill Vilona*, One News-Journal Plaza, Pensacola, FL 32501
SARASOTA HERALD-TRIBUNE (813) 957-5171
 Tom Spousta*, 801 S. Trail, Sarasota, FL 34236
ST. PETERSBURG TIMES (813) 893-8123
 Bob Harig*, Hubert Mizell (C), Gary Shelton (C), P. O. Box 1121, St. Petersburg, FL 33731
TALLAHASSEE DEMOCRAT (904) 599-2166
 Steve Ellis*, John Nagowski (C), P.O. Box 990, Tallahassee, FL 32302
TAMPA TRIBUNE (Local) (904) 385-9961
 Jim Henry*, 2001 Scenic Road, Tallahassee, FL 32303
TAMPA TRIBUNE (813) 272-7655
 Tom McEwen (C), David Whitley (C), Paul C. Smith, P.O. Box 191, Tampa, FL 33601
UNITED PRESS INTERNATIONAL (305) 445-1750
 Les Kjos*, 800 Douglas Rd., Suite 565, Coral Gables, FL 33134

ELECTRONIC MEDIA

CAPITOL NEWS SERVICE (904) 224-5546
 Mike VoSilinda, Alia Faraj, 311 N. Adams St., Tallahassee, FL 32301
FLORIDA RADIO NETWORK (407) 859-1100
 Tom Morgan, 6000 S. Rio Grande Ave., Suite 201, Orlando, FL 32809

SEMINOLE RADIO NETWORK (904) 893-2576
 Gene Deckerhoff* (Play-by-Play), 2704 Vasser Road, Tallahassee, FL 32308
 Vic Prinzi* (Color Analyst), P.O. Box 1109, Tampa, FL 33601
SUNSHINE NETWORK (407) 648-1150
 Paul Kennedy* (Play-by-Play), Thom Hastings, Jeff DeMoss, 390 N. Orange Ave., Suite 275, Orlando, FL 32801
WALB-TV (912) 883-0154
 Ducky Wall, P.O. Box 3130, Albany, GA 31706
WCTV-TV (904) 893-2126
 Randy Ruditz, Sandra Golden, P. O. Box 3048, Tallahassee, FL 32315
WEAR-TV (904) 455-4599
 Dan Shugart, P.O. Box 12278, Pensacola, FL 32581
WESH-TV (407) 539-7895
 Mark Middleton, 1021 N. Wymore Rd., Winter Park, FL 32789
WFTV-TV (407) 244-8367
 Pat Clarke, P.O. Box 999, Orlando, FL 32802
WJHG-TV (904) 234-2128
 Scott Rassman, P.O. Box 2349, Panama City, FL 32401
WJKS-TV (904) 646-5024
 Ken Rodriguez, P.O. Box 17000, Jacksonville, FL 32216
WJXT-TV (904) 393-9845
 Sam Kouvaris, P.O. Box 5270, Jacksonville, FL 32207
WMBB-TV (904) 769-2313
 Paul Joseph, P.O. Box 1340, Panama City, FL 32401
WTAL RADIO (904) 671-1450
 Tom Llewellyn, 1820 E. Park Ave., Tallahassee, FL 32302
WTLV-TV (904) 633-8806
 Dan Hicken, 1070 E. Adams St., Jacksonville, FL 32202
WTNT RADIO (904) 385-9868
 Jim Crosby, Rick Ballou, 325 John Knox Rd., Suite E-200, Tallahassee, FL 32303
WTXL-TV (904) 893-1313
 John Peterson*, Tom Block, 8927 Thomasville Rd., Tallahassee, FL 32312
 *Beat writer. (C) Columnist.

FLORIDA STATE FAX DIRECTORY

Media

AP (Tallahassee) 904/224-2099
 Tallahassee Democrat 904/599-2301
 Florida Flambeau 904/681-3577
 Florida Times Union 904/359-4147
 Ft. Lauderdale Sun-Sentinel 305/356-4676
 Gainesville Sun 904/338-3128
 Miami Herald 305/376-2295
 Ocala Star-Banner 904/867-4018
 Orlando Sentinel 407/420-5069
 Osceola 904/224-3627
 Palm Beach Post 407/820-4481
 Sarasota Herald-Tribune 813/957-5276
 St. Pete Times 813/893-8782
 Tampa Tribune 813/258-8504
 WCTV 904/668-3851
 WTXL 904/668-1460

Opponents

Virginia 804/982-5525
 Maryland 301/314-9094
 Wake Forest 910/759-5140
 North Carolina 919/962-0612
 Miami 305/284-2807
 Clemson 803/656-0299
 Duke 919/684-2489
 Georgia Tech 404/853-2674
 N.C. State 919/515-2898
 Florida 904/375-4809
 Central Florida 407/823-5266

SEMINOLE RADIO NETWORK



WHETHER FLORIDA STATE PLAYS AT HOME OR ON THE ROAD, FANS ACROSS THE SOUTH-EAST CAN FOLLOW EVERY DOWN ON THE SEMINOLE SPORTS NETWORK. The regional network brings all the

excitement and action of FSU football, as well as pre-game predictions and post-game analysis, to fans, alumni and college football enthusiasts across a five state area. In addition to a strong presence throughout Florida, Georgia and Alabama, stations from North and South Carolina will carry the Seminole football broadcast in 1995.

The Seminole Sports Network is owned and operated by Host Communications, Inc., one of the nation's leaders in collegiate sports broadcasting. Florida State joined forces with the Lexington, Ky., based company to establish a comprehensive marketing opportunity which includes radio, television, print and corporate sponsorship components.

In addition to Florida State, Host owns the rights to the networks of other outstanding schools like Texas, Virginia, Kentucky, Tennessee, South Carolina and Mississippi State. Host has a long-term broadcast and print relationship with the National Collegiate Athletic Association.

The Seminole Sports Football Network will reach into nearly 60 markets in 1995, including some of the largest markets in the country. In Tallahassee, all the Seminole football action can be heard on flagship station WTNT-FM (94.9).

Florida State's professional broadcast crew is known as one of the nation's best as they provide insight and entertainment, as well as detailed and expert play-by-play.

The broadcast team features award-winning play-by-play announcer Gene Deckerhoff, a 17-year veteran of the FSU radio network, and color analyst Vic Prinzi, who begins his 14th year in that role in 1995. They are joined for portions of the pre- and post-game shows by Tallahassee television sportscaster John Peterson. After the game, the popular "Seminole Calls" show allows listeners to call in with their questions and opinions on the just-completed game.

Deckerhoff is nationally known as one of the finest announcers in the South. The "Voice of the

Seminoles" for the past 17 years, he is a seven-time Florida Sportscaster of the Year. In 13 of the past 16 years, Deckerhoff has been named the best college and pro football play-by-play announcer in the state by the Florida Sportscasters Association.

A native of Jacksonville, Fla., Deckerhoff also serves as the play-by-play announcer for the Tampa Bay Buccaneers of the NFL, making for some very busy fall weekends. Deckerhoff is also the producer and co-host of "The Bobby Bowden Show", and co-host of Bowden's weekly call-in radio show. He runs Gene Deckerhoff Productions, a firm specializing in sports broadcasting and the production of radio and television commercials.

Prinzi, a resident of Tampa, Fla., played quarterback for the Seminoles from 1954-57. Following graduation from FSU, he went on to a brief professional football career with the New York Giants and Denver Broncos before going into coaching. After a 12-year coaching career in the high school and college ranks, Prinzi joined Dulin Brokerage in Tampa, where he is vice president of the wholesale division.

Florida State's game-day broadcasts begin 90 minutes prior to every kickoff on the stations listed. ■

1995 FOOTBALL STATION LIST

CITY	STATION	FREQ.
Belle Glade	WBGF-FM	93.5
Brooksville	WWJB-AM	1450
Brunswick, Ga.	WPIQ-AM	790
Cherryville, N.C.	WCSS-AM	1590
Clemson, S.C.	WCCP-AM	1560
Cocoa Beach	WMYM-AM	1350
Daleville, Ala.	WTKN-AM	1550
Daytona Beach	WR0D-AM	1340
DeFuniak Springs	WZEP-AM	1460
Deland	WXVQ-AM	1490
Donaldsonville, Ga.	WGMK-FM	106.3
Donaldsonville, Ga.	WSEM-AM	1500
Dothan, Ala.	WWNT-AM	1450
Englewood	WENG-AM	1530
Fort Myers	WINK-AM	1240
Fort Pierce	WIRA-AM	1400
Ft. Walton Beach	WFTW-AM	1260
Gastonia, N.C.	WGNC-AM	1450
Graceville	WYDA-FM	101.7
High Springs	WYOC-FM	104.9
Islamorada	WCTH-FM	100.3
Jacksonville	WOKV-FM	690
Key West	WKIZ-AM	1500
LaGrange, Ga.	WTRP-AM	620
Lake City	WGRO-AM	960
Lakeland	WLKF-AM	1430
Leesburg	WKIQ-AM	1240
Lincolnton, N.C.	WLON-AM	1050
Live Oak	WQHL-FM	98.1
Macclenny	WJXR-FM	92.1
Marianna	WTYS-AM	1340
Marianna	WBNF-FM	94.1
Massillon, Ohio	WTIG-AM	990
Miami	WQAM-AM	560
Milton	WEBY-AM	1330
Mobile, Ala.	WNSP-FM	105.5
Myrtle Beach, S.C.	WDAI-FM	98.5
Naples	WNOG-AM	1270
Ocala	WCOA-AM	1370
Orlando	WD80-AM	580
Palatka	WPLK-AM	800
Panama City	WYOO-FM	101.3
Pensacola	WZNO-AM	1230
Perry	WPRY-AM	1400
Perry	WNFK-FM	105.5
Punta Gorda	WCCF-AM	1580
Rome, Ga.	WLAQ-AM	1410
Salisbury, N.C.	WSAT-AM	1280
Sarasota	WSPB-AM	1450
Sebring	WJCM-AM	960
Shelby, N.C.	WOHS-AM	730
St. Augustine	WAOC-AM	1420
Tallahassee	WTNT-FM	94.9
Tampa	WNZE-AM	820
Tifton, Ga.	WKAA-FM	97.7
Valdosta, Ga.	WGOV-AM	950
Vero Beach	WAXE-AM	1370
Wauchula	WZZS-FM	106.9

Subject to change.

SEMINOLES ON TELEVISION

THE BOBBY BOWDEN SHOW

Televised weekly during the football season, "The Bobby Bowden Show" is one of the most entertaining and informative coaches shows in the nation. Combine the downhome commentary of the Florida State head coach with some of the most exciting action in the nation, and the result is an insightful half-hour of football and fun.

Each week, co-host Gene Deckerhoff leads Seminole Head Coach Bobby Bowden through a review of Florida State's previous game, with Bowden offering commentary on the action. The two also take a look at FSU's upcoming opponent.

In a special weekly segment, the Seminoles' self-proclaimed No. 1 fan — actor Burt Reynolds — and former FSU teammate Vic Prinzi present a "Great Moment in Florida State History."

"The Bobby Bowden Show", a syndicated production of Host Communications, Inc., is seen in some of the Southeast's top media markets and throughout the state of Florida each week. Check local listings of the stations below to find the day and time the show airs in each market.

COUPLE FLORIDA STATE'S ATLANTIC COAST CONFERENCE LINEUP WITH GAMES AGAINST NON-CONFERENCE FOES MIAMI AND FLORIDA, AND IT'S HARD TO IMAGINE A MORE DIFFICULT COLLEGE FOOTBALL SLATE. Every fall, FSU's schedule catches the attention of television sports executives.

Lately, the Seminoles have become a cornerstone of the networks' weekly TV lineups.

That fact was evident again last year when for the second year in a row 11 of FSU's 12 contests were broadcast through regional syndication (JP Sports) or on one of the

national networks. Once again, Florida State did not disappoint as its games earned high ratings.

Indeed, Florida State football and Bobby Bowden have developed a following that stretches outside the state and region. The speed, excitement and unpredictability of the FSU team makes Seminole football a fan favorite across the nation.

Since Bowden became Florida State head coach in 1976, his Seminole teams have been featured on one of the six major networks 85 times on 69 national broadcasts. In 19 years, that averages out to four network TV appearances a year. But over the past nine seasons, that number has increased to nearly seven showings a year. More often than not, Bowden's teams have starred under the television lights with a record of 65-22-3 on network TV.

In each of the past eight years, Florida State's contests with Miami and Florida have been picked up for national television airing. Since 1968, 28 of FSU's games with its intrastate rivals were televised nationally. Now that the Tribe annually battles for the Atlantic Coast Conference crown, league games with Clemson, Georgia Tech, North Carolina, N.C. State and Virginia pose attractive matchups for national and regional audiences.

The Seminoles will be on display for the entire nation again in 1995. The Miami, Clemson, Virginia and Florida games are certain to attract network attention this season.

All-time, the Seminoles' record on television is 71-29-4 since the first appearance, in the 1958 Bluegrass Bowl against Oklahoma State, aired by ABC. FSU has appeared on that network more than any other, with 46 showings. CBS has televised 11 Tribe contests, WTBS nine and ESPN 20, including five games in 1989.

Florida State's membership in the Atlantic Coast Conference ensures that FSU football will be seen up and down the eastern seaboard on Jefferson Pilot Sports broadcasts. Through JP's relationship with the conference, the 1994 Seminoles were featured four times on the "ACC Game of the Week", and are scheduled for several more appearances in '95. JP's impressive list of affiliates includes stations throughout Florida, Georgia, the Carolinas, Virginia, Maryland and Washington, D.C.

Whether on ESPN, ABC, NBC, regionally on stations across the ACC, or statewide, the Seminoles' television attractiveness is clear. Want to see the Seminoles in Charlotte? Minneapolis? Los Angeles? Just turn on the TV. ■

BOWDEN SHOW STATION LIST

STATION	MARKET	CHANNEL
WFTS-TV (FOX)	Tampa/St. Petersburg	28
WJTC-TV (IND)	Pensacola/Mobile	44
WJHG-TV (NBC)	Panama City	7
WJKS-TV (ABC)	Jacksonville	7
WCTV-TV (CBS)	Tallahassee	6
WTLK-TV (IND)	Atlanta, Ga.	14
WPLG-TV (ABC)	Miami	10
WCPX-TV (CBS)	Orlando/Daytona Beach	6
WPEC-TV (CBS)	West Palm Beach	12
WFTX-TV (FOX)	Ft. Myers/Naples	36
Sunshine Network (Cable)		
SportsSouth Network (Cable)		

FLORIDA STATE TELEVISION APPEARANCES

Won 75, Lost 29, Tied 4

YEAR	OPPONENT	SITE	SCORE	NETWORK	BOWL
1958	Oklahoma State	Louisville, KY	6-15	ABC*	Bluegrass
1959	Virginia Tech	Blacksburg, VA	7-6	ABC	-
1965	Oklahoma	Jacksonville, FL	36-19	ABC*	Gator
1966	Virginia Tech	Blacksburg, VA	21-23	ABC	-
	Wyoming	El Paso, TX	20-28	NBC*	Sun
1967	Memphis State	Memphis, TN	26-7	ABC	-
	Penn State	Jacksonville, FL	17-17	ABC*	Gator
1968	Florida	Tallahassee, FL	9-3	ABC	-
	Louisiana State	Atlanta, GA	27-31	TV-Sports*	Peach
1969	N.C. State	Tallahassee, FL	33-22	ABC	-
1970	Houston	Tampa, FL	21-53	ABC	-
1971	Miami	Miami, FL	20-17	ABC	-
	Arizona State	Tempe, AZ	38-45	Mizlou	Fiesta
1972	Auburn	Auburn, AL	14-27	ABC	-
1977	Florida	Gainesville, FL	37-9	ABC	-
	Texas Tech	Orlando, FL	40-17	Mizlou*	Tangerine
1978	Miami	Miami, FL	31-21	ABC	-
	Navy	Tallahassee, FL	38-6	ABC	-
1979	Virginia Tech	Blacksburg, VA	17-10	ABC	-
	Louisiana State	Baton Rouge, LA	24-19	ABC	-
	Florida	Gainesville, FL	27-16	ABC*	-
	Oklahoma	Miami, FL	7-24	NBC*	Orange
1980	Memphis State	Memphis, TN	24-3	ABC	-
	Virginia Tech	Tallahassee, FL	31-7	ABC	-
	Florida	Tallahassee, FL	17-13	ABC*	-
	Oklahoma	Miami, FL	17-18	NBC*	Orange
1981	Miami	Tallahassee, FL	19-27	ABC	-
	Southern Miss	Tallahassee, FL	14-58	ABC	-
1982	Miami	Miami, FL	24-7	CBS	-
	Louisville	Tallahassee, FL	49-14	WTBS*	-
	West Virginia	Jacksonville, FL	31-12	ABC*	Gator
1983	Louisiana State	Baton Rouge, LA	40-35	ABC	-
	Louisville	Tallahassee, FL	51-7	WTBS*	-
	Florida	Gainesville, FL	14-53	CBS*	-
	North Carolina	Atlanta, GA	28-3	CBS*	Peach
1984	South Carolina	Columbia, SC	26-38	ABC*	-
	Florida	Tallahassee, FL	17-27	ABC*	-
	Georgia	Orlando, FL	17-17	NBC*	Citrus
1985	Tulane	New Orleans, LA	38-12	WTBS*	-
	Nebraska	Lincoln, NE	17-13	ABC*	-
	Memphis State	Tallahassee, FL	19-10	WTBS*	-
	Auburn	Auburn, AL	28-59	WTBS*	-
	Miami	Tallahassee, FL	27-35	ABC	-
	South Carolina	Tallahassee, FL	56-14	ESPN*	-
	Oklahoma State	Jacksonville, FL	34-23	ABC	Gator
1986	Nebraska	Lincoln, NE	17-34	ABC*	-
	North Carolina	Tallahassee, FL	10-10	WTBS*	-
	Miami	Miami, FL	23-41	CBS*	-
	Indiana	Birmingham, AL	27-13	WTBS*	All-American
1987	Miami	Tallahassee, FL	25-26	CBS*	-
	Auburn	Auburn, AL	34-6	CBS*	-
	Florida	Gainesville, FL	28-14	CBS*	-
1988	Nebraska	Tempe, AZ	31-28	NBC*	Fiesta
	Miami	Miami, FL	0-31	CBS*	-
	Clemson	Clemson, SC	24-21	CBS*	-
	Michigan State	Tallahassee, FL	30-7	ESPN*	-
	South Carolina	Columbia, SC	59-0	ESPN*	-
	Florida	Tallahassee, FL	52-17	ESPN*	-
1989	Auburn	New Orleans, LA	13-7	ABC*	Sugar
	Southern Miss	Jacksonville, FL	26-30	WTBS*	-
	Clemson	Tallahassee, FL	23-34	ESPN*	-
	Louisiana State	Baton Rouge, LA	31-21	ESPN*	-
	Auburn	Tallahassee, FL	22-14	ESPN*	-
	Miami	Tallahassee, FL	24-10	ESPN*	-
	Florida	Gainesville, FL	24-17	ESPN*	-
	Nebraska	Tempe, AZ	41-17	NBC*	Fiesta
1990	Miami	Miami, FL	22-31	CBS*	-



	Auburn	Auburn, AL	17-20	ESPN*	-
	Louisiana State	Tallahassee, FL	42-3	WTBS*	-
	Florida	Tallahassee, FL	45-30	ESPN*	-
	Penn State	Miami, FL	24-17	Raycom*	Blockbuster
1991	Brigham Young	Anaheim, CA	44-28	Raycom*	-
	Michigan	Ann Arbor, MI	51-31	ABC*	-
	Syracuse	Tallahassee, FL	46-14	ABC	-
	Louisiana State	Baton Rouge, LA	27-16	ESPN*	-
	Miami	Tallahassee, FL	16-17	ABC*	-
	Florida	Gainesville, FL	9-14	ABC*	-
	Texas A&M	Dallas, TX	10-2	CBS*	Cotton
1992	Clemson	Clemson, SC	24-20	ESPN*	-
	N.C. State	Raleigh, NC	34-13	JP Sports	-
	Miami	Miami, FL	16-19	ABC*	-
	North Carolina	Tallahassee, FL	36-13	JP Sports	-
	Georgia Tech	Atlanta, GA	29-24	ESPN*	-
	Maryland	Tallahassee, FL	69-21	JP Sports	-
	Florida	Tallahassee, FL	45-24	ABC*	-
	Nebraska	Miami, FL	27-14	NBC*	Orange
1993	Kansas	E. Rutherford, NJ	42-0	ABC*	-
	Clemson	Tallahassee, FL	57-0	JP Sports	-
	North Carolina	Chapel Hill, NC	33-7	ESPN*	-
	Georgia Tech	Tallahassee, FL	51-0	ABC	-
	Miami	Tallahassee, FL	28-10	ABC*	-
	Virginia	Tallahassee, FL	40-14	ESPN*	-
	Maryland	College Park, MD	49-20	JP Sports	-
	Notre Dame	South Bend, IN	24-31	NBC*	-
	N.C. State	Tallahassee, FL	62-3	ESPN*	-
	Florida	Gainesville, FL	33-21	ABC*	-
	Nebraska	Miami, FL	18-16	NBC*	Orange
1994	Virginia	Tallahassee, FL	41-17	ABC	-
	Maryland	College Park, MD	52-20	JP Sports	-
	North Carolina	Tallahassee, FL	31-18	ESPN*	-
	Miami	Miami, FL	20-34	ESPN*	-
	Clemson	Tallahassee, FL	17-0	JP Sports	-
	Duke	Tallahassee, FL	59-20	JP Sports	-
	Georgia Tech	Atlanta, GA	41-10	JP Sports	-
	Notre Dame	Orlando, FL	23-16	ABC*	-
	N.C. State	Raleigh, NC	34-3	ESPN*	-
	Florida	Tallahassee, FL	31-31	ABC*	-
	Florida	New Orleans, LA	23-17	ABC*	Sugar

*Nationally televised

FLORIDA STATE FUTURE SCHEDULES

1996

SEPTEMBER

- 7 DUKE*
- 14 NORTH CAROLINA*
- 21 at Wake Forest*

OCTOBER

- 5 at Maryland*
- 12 at Miami
- 19 VIRGINIA*
- 26 at Georgia Tech*

NOVEMBER

- 9 CLEMSON*
- 16 SOUTHERN MISS
- 23 at N.C. State*
- 30 FLORIDA

1998

SEPTEMBER

- 5 DUKE*
- 12 NORTH CAROLINA*
- 19 at Wake Forest*
- 26 SOUTHERN CAL

OCTOBER

- 3 at Maryland*
- 10 at Miami
- 17 VIRGINIA*
- 24 at Georgia Tech*

NOVEMBER

- 7 CLEMSON*
- 21 at N.C. State*
- 28 FLORIDA

*All schedules are tentative and subject to change. Home Games in ALL CAPS. *ACC game*

1997

SEPTEMBER

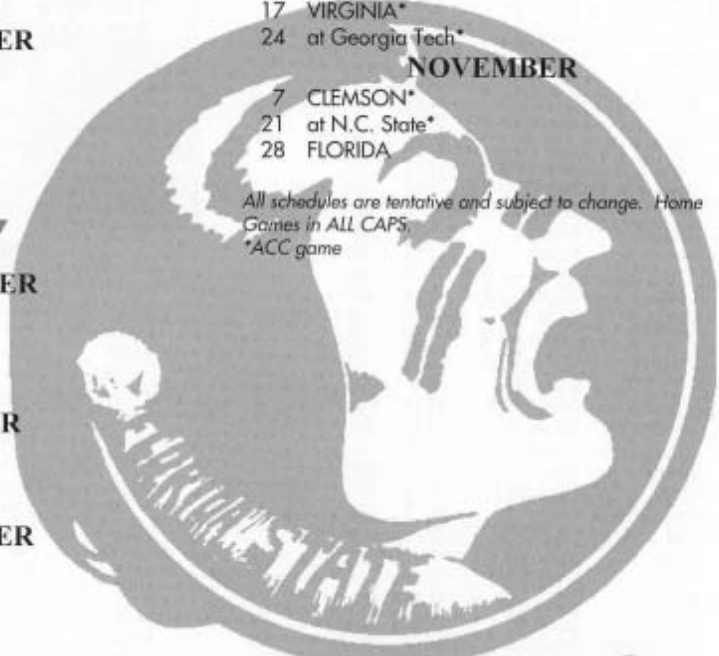
- 6 at Duke*
- 13 at Southern Cal
- 20 WAKE FOREST*
- 27 at North Carolina*

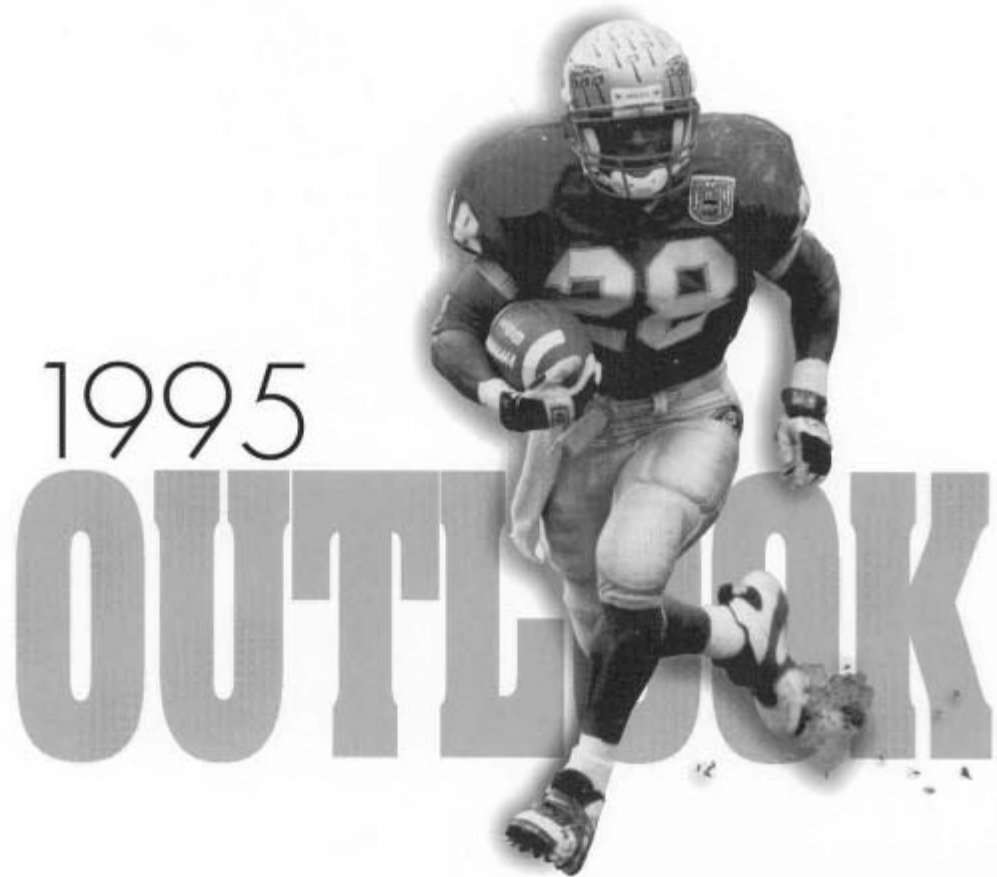
OCTOBER

- 4 MIAMI
- 18 at Virginia*
- 25 GEORGIA TECH*

NOVEMBER

- 1 MARYLAND*
- 8 at Clemson*
- 22 N.C. STATE*
- 29 at Florida





1995

OUTLOOK



#





50





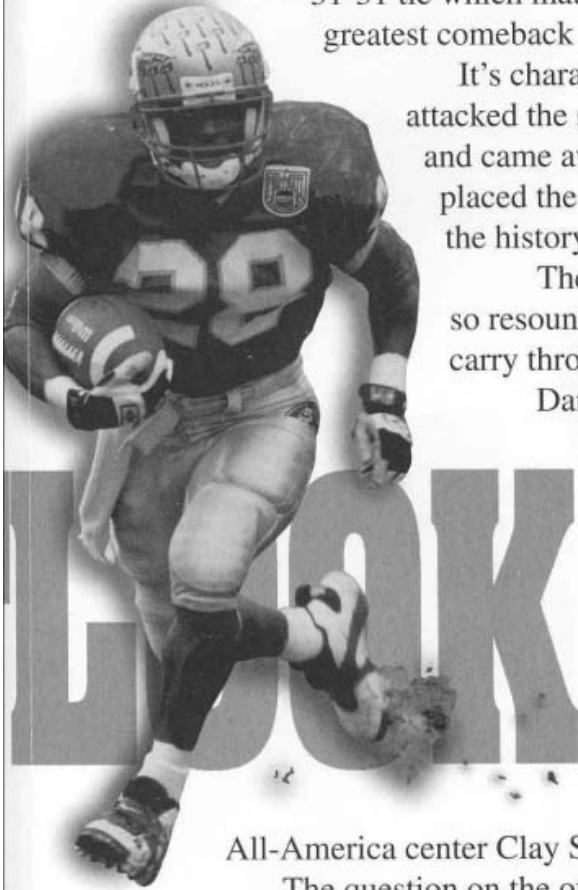
In one of the most amazing fourth quarters in college football history, the Tribe fought all the way back to a 31-31 tie which matched the NCAA record for the greatest comeback ever.

1995
OUT

Florida State begins the 1995 campaign with 14 starters returning, including just five on defense, and Seminole football insiders must be cautious not to look at how promising the season might be had underclassmen Derrick Alexander and Devin Bush not opted for the NFL. However, it is a great testimony to just how solid FSU's program is in Bobby Bowden's 20th year that some are predicting the Seminoles to finish as national champions again in 1995.

Many of the questions that would have faced Bowden and his team during the upcoming preseason were answered late in the 1994 season, hence much of the optimism. Florida State took on arch-rival Florida in Tallahassee with the fourth-ranked Gators favored. With 13:00 left in the game it looked like the "experts" were all over the prediction. Florida had made big plays on the stingy FSU defense and held a 31-3 fourth quarter lead. FSU players would admit that they had reached a point where they were wondering "how embarrassing it would get."

It was at this moment, which surely was a crossroads, that Bowden told his team it was time to define the character of the talented team. In one of the most amazing fourth quarters in college football history, the Tribe fought all the way back to a



31-31 tie which matched the NCAA record for the greatest comeback ever.

It's character defined, last year's Seminoles attacked the same UF team in the Sugar Bowl and came away with a 23-17 victory that placed the Florida State football program in the history books – for good.

The dramatic end to last season was so resounding, so satisfying, that it is sure to carry through seasons to come.

Danny Kanell finally trusted his coaches' insistence that his talent was great enough to win games and he will enter his senior year as one of the nation's top signal callers. He will have FSU's fifth 1,000 yard rusher behind him in Warrick Dunn who will have the luxury of running behind an offensive line that returns all but one starter and is anchored by

All-America center Clay Shiver.

The question on the offensive side comes at receiver where the Tribe must replace stars Kez McCorvey and 'OMar Ellison. However, the receiving corps has both talent and determination with Andre Cooper and E.G. Green likely to emerge as the go to receivers.

Defensively, the Seminoles lose both talent and leadership that will be impossible to replace. All-American Derrick Brooks has graduated and sure All-Americans Alexander and Bush headed to the professional ranks. The biggest concern among the defenders is a young secondary that returns just one starter and, for the first time in seven years, no All-American at cornerback.

The Tribe's strength will come from a deep and talented linebacker corps led by senior Todd Rebol. The defensive front should also be as deep as it has been in several season with Orpheus Roye and Reinard Wilson expected to make life frustrating for opposing quarterbacks.

The Seminoles have not lost an ACC game since joining the conference three years ago and their top priority will be repeating as conference champs. In fact, FSU's schedule is identical to the past two years with the exception of Notre Dame which is replaced on the schedule by Central Florida.

1995

SEMINOLE OUTLOOK

Florida State lost both starting wide receivers, including Kez McCorvey who is the Seminoles second all-time leading receiver, but return a talented corps of pass catchers in 1995. Sophomore E.G. Green, had 18 catches last year and is one of several FSU receivers who are expected to lead the always potent aerial attack.

BOBBY BOWDEN HAD FIELDLED A NUMBER OF QUESTIONS following Florida State's win over rival Florida and the legendary coach was in a familiar position. Bowden leaned on the Sugar Bowl podium, relaxed after his 10th consecutive bowl win, eighth consecutive finish in the AP Top Five and eighth straight 10 win season (all NCAA records), but the familiar question seemed so premature.

"What are your feelings on next year, Coach," a reporter shouted.

"Well, I think if I can just convince my

juniors not to rush to the NFL, we could be an awfully good team," Bowden said.

And that may be the only thing Bobby Bowden has not accomplished over the last decade.

How Florida State adjusts to the early departure of All-American defensive tackle Derrick Alexander and underrated safety Devin Bush may be the key to just how far an extremely talented lineup takes the Seminoles in 1995. Not that they were the only important losses. Indeed, the Seminoles must replace All-Americans Derrick Brooks and Clifton Abraham on defense as well as the school's second most successful receiver ever in Kez McCorvey, rock solid fullback Zack Crockett, and All-ACC offensive guard Patrick McNeil.

But Bobby Bowden, who is entering his 20th season as head coach at FSU, has that twinkle in his eye when he talks about the 1995 season.

The Seminoles return seven starters on offense, five on defense, both kicking specialists and may begin the 1995 season ranked number one for the fourth time in school history.

OFFENSE

Florida State enters spring drills with three All-America candidates right up the middle. Clay Shiver could be the favorite to win the Seminoles' first Outland Trophy as he is the top returning offensive lineman in the country. Shiver plays a complicated position for FSU taking the lead on both run and pass blocking, snapping for the shotgun and traditional offense, and calling all the Tribe's blocking schemes at the line of scrimmage.

"He's one of the finest offensive linemen we've had since I've been at Florida State," said Bowden. "We ask a lot of him physically and mentally during a game. For our offense to be successful, we've got to have a great center and for the past two years, Clay Shiver has been as good as any in the country."

When Shiver snaps the ball, he sends it to a quarterback who came into his own over the second half of his junior season and will enter 1995 as a candidate for the Heisman Trophy. Danny Kanell actually heard boos while guiding the Seminoles through the nation's third toughest schedule last year and, after a loss to Miami at midseason, was at a turning point in his young career. He would finish gloriously with All-ACC first team honors after resurrecting the Seminoles in the greatest comeback in school history against



Florida in the regular season and then a dissection of the Gator defense in the Sugar Bowl victory.

"If I had one thing to do over last season I would not have taken Danny out against Miami," admitted Bowden. "We knew all along he had the skills to be great in our offense. He just might have pulled off the comeback he did against Florida in the Miami game if we had let him. Once he turned it loose, he was as good as there is."

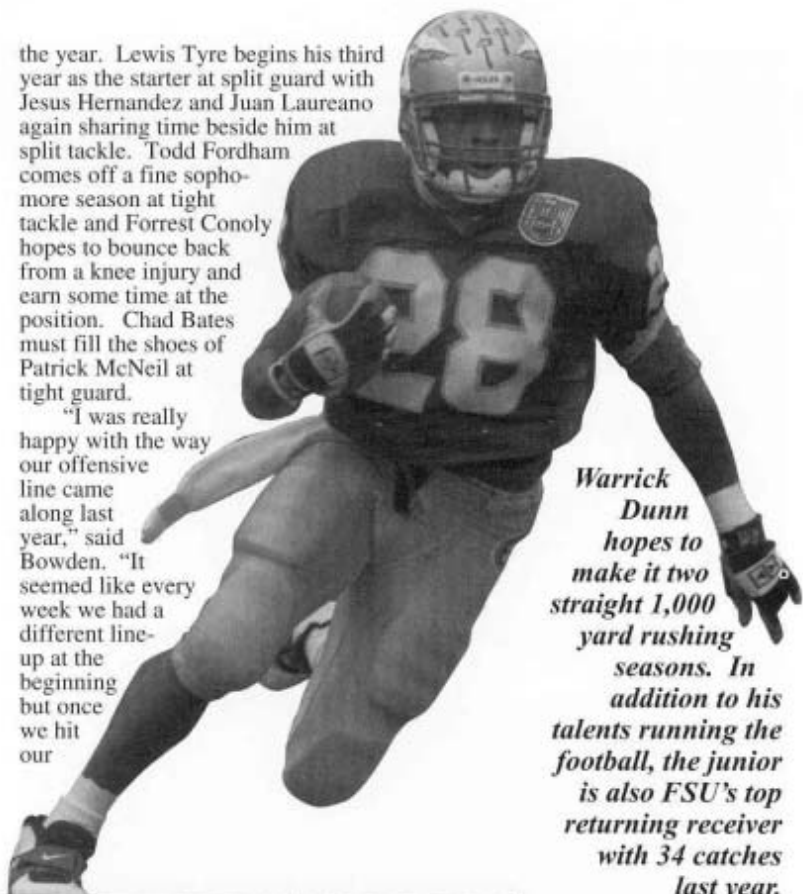
Talented Thad Busby waits anxiously for his chance to be the Seminole signal caller. The gifted sophomore possesses a big league passing arm as well as the best mobility among the FSU quarterbacks.

When Kanell is not passing defenses into retreat he gives the ball to a tailback that is as dangerous as any in college football. Warrick Dunn can make the best tacklers look lost with his tremendous speed and elusive moves, and he forces defensive coaches to face the problem of trying to cover the lightning quick receiver in the flats. After literally tugging on Bowden's coat tail to suggest he could reach 1,000 yards rushing on the season if he got the ball enough, Dunn became only the fifth player in FSU history to reach the milestone. He finished his sophomore year as the MVP of the Sugar Bowl. He'll be joined by equally evasive Rock Preston to make a solid 1-2 punch at tailback.

The Seminoles return four of five starters along the offensive line which finished 1994 as one of the Tribe's strongest positions after the lineup had to be juggled most of the first half of

the year. Lewis Tyre begins his third year as the starter at split guard with Jesus Hernandez and Juan Laureano again sharing time beside him at split tackle. Todd Fordham comes off a fine sophomore season at tight tackle and Forrest Conoly hopes to bounce back from a knee injury and earn some time at the position. Chad Bates must fill the shoes of Patrick McNeil at tight guard.

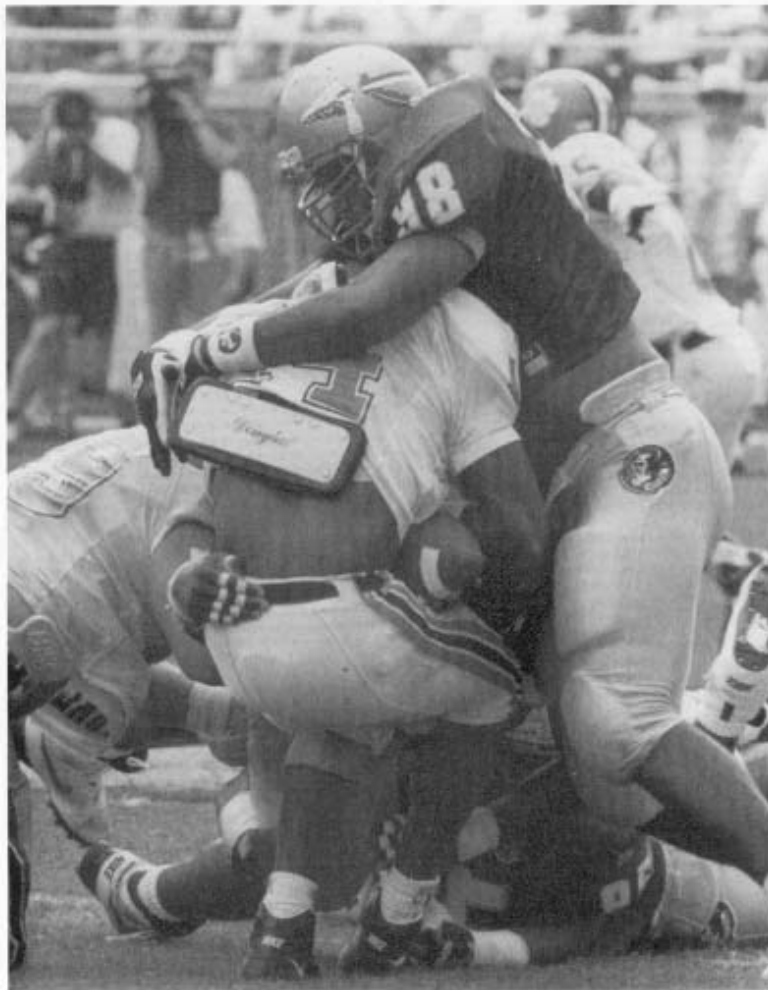
"I was really happy with the way our offensive line came along last year," said Bowden. "It seemed like every week we had a different line-up at the beginning but once we hit our



Warrick Dunn hopes to make it two straight 1,000 yard rushing seasons. In addition to his talents running the football, the junior is also FSU's top returning receiver with 34 catches last year.



Optimism runs high in the Seminole camp with the return of four starting offensive linemen led by Outland Trophy candidate Clay Shiver at center. The line hopes to keep opponents off talented quarterback Danny Kanell who proved last year that he is as good as any in the country.



Stuffing the run and pressuring the quarterback were the keys to FSU's defensive success last season. With only one starter returning in the secondary, FSU coaches will lean on tackle Orpheus Roye and the rest of the defensive front to stop the opposition early.

stride they really played well. To make a run at a great season, you've got to have a cohesive unit up front and I think we could have that."

The biggest question for the Seminoles will be among the talented receiving corps, where the Tribe must replace both McCorvey and 'OMar Ellison. Wayne Messam brings both size (6'4") and speed to the split end spot but he lacks experience. He will be pushed by sophomore E.G. Green who made some big plays over the second half of his rookie season. Andre Cooper was fourth among FSU receivers last year with 27 receptions and must carry the load in 1995. He led all Seminoles with five touchdown receptions in 1994. Phillip Riley has world class speed and will back-up Cooper, while Aaron Dely provides a solid reserve at the crucial position.

Pooh Bear Williams probably faces the most pressure as fall drills begin. He must improve to take over at fullback for Crockett who emerged as one of the top two fullbacks in the country last year. Williams hopes to completely recover from knee surgery which kept him out of the lineup last year. Dennis Andrews emerged from spring drills

as the man to beat. Redshirt freshman Lamarr Glenn will also push for time.

Melvin Pearsall returns at tight end where he has proven he can break a game open should the offense turn to him. His back-up Myron Jackson lacks experience after coming off an injury in 1994.

DEFENSE

"Defense is the key to maintaining a consistent program," said Bowden. "If you want to look at why we've finished in the Top Five for eight straight years take a look at the defensive side of the ball. We've had a defense here for the last few years capable of stopping just about any offense. One that made big plays and had players step up at crucial times. I think just how well our defense gels will determine how things go next season. Spring drills will be critical in formulating our defensive plans for next year."

The defense welcomes the return of five starters from a unit that was ranked 7th in the nation in 1994 and allowed just two rushing touchdowns over the last six games.

The strength will be in FSU's corps of linebackers and an experienced defensive line.

Todd Rebol returns for his senior year at the bandit position where he's free to roam the field and use his speed and nose for the football to create havoc. Rebol will contend for All-America honors if he performs at the level he did last fall when he totalled 73 tackles. Redshirt freshman Hank Grant will back-up Rebol at the outside linebacker position.

Returning up the middle will be Daryl Bush who will contend for All-ACC honors and plays like he is chiseled from the Butkus Trophy itself. Bush fills the holes and punishes ball carriers up the middle. He'll be joined by outside linebacker Sam Cowart, who should have a big junior season after sharing time over his first two years. Cowart can run with the best of them and has the knack for the spectacular hits in the big games. Henri Crockett will be a solid reserve behind Bush in his junior year and redshirt freshman Lamont Green will also play in the middle. Freshman Demetro Stephens will back-up Cowart along with senior James D'Amico.

"Our strength should be in our linebackers," admitted Bowden. "We've got great athletes at those positions who can run to the football. What we were able to do last year was put such great pressure on the quarterback up front and cover backs with the linebackers. We've got the speed to handle the backs this year, but we need to get that pressure up front."

Remarkably, Florida State will enter fall drills with depth at the defensive line despite the loss of the likes of the All-American Alexander. It should not be that surprising as an astonishing 16 different Seminoles recorded a sack in 1994. Reinard Wilson led the ACC with 11 quarterback sacks and came just one away from the FSU record. He will split time at defensive end with sophomore Peter Boulware who recorded five

sacks of his own last year.

Orpheus Roye returns at defensive tackle and should be FSU's primary weapon in stopping the run. Sophomore Julian Pittman should see considerable playing time at the position as well.

A pair of experienced players will battle for playing time at noseguard. Andre Wadsworth was one of the real surprises last season and finished the year as the starter. He missed most of the spring after undergoing shoulder surgery in the offseason. Connell Spain also returns along the defensive front where he can play several positions.

Tyrant Marion should return to his starting position at the other defensive end spot where he was slowed over the second half of last fall by a knee injury. He will be backed-up by Greg Spires in the spring.

The Seminoles' secondary, which has produced an All-American cornerback in each of the last five years, is as young as it has been in years. The Tribe must replace both starting cornerbacks and the strong safety.

Sean Hamlet was pressed into action just prior to the Miami game last year and emerged as one of the conference's top safeties. He must show the maturity and leadership which allowed him to succeed as a sophomore. He will be backed-up by walk-on Marlin Green and talented sophomore Shevin Smith.

Highly-touted sophomore Robert Hammond will begin fall drills as the starter at strong safety where he will fill the shoes of Devin Bush who left early for the NFL. Hammond has all the tools along with a love of contact that should make him successful at safety. Harold Battles and Deon Humphrey have both gained a year of experience and should be ready to contribute this spring behind Hammond.

Cornerback, a position which has become synonymous with success at Florida State, will be wide open during spring practice.

Samari Rolle could be the man to beat at the field corner. The 6-1, sophomore has the size and speed to be successful in FSU's most scrutinized position. He gained valuable experience as a nickel back and as a substitute last year, but must carry the load in 1995. Pushing him will be James Colzie, who has made a name for himself with the big play, including the interception to set up the tying score in the comeback against Florida. He emerged from the spring as the first teamer.

Byron Capers is the other player in the hot seat as pre-season drills begin. He must step in at the boundary corner and face some of the nation's top receivers man-on-man. Capers has seen considerable playing time over his first three years. Sophomore Rodney Wells and redshirt freshman Troy Saunders will also get a long look at the position this fall.

SPECIAL TEAMS

FSU's kicking game should be solid in 1995 with Sean Liss returning as the starting punter

after averaging 38.4 yards per kick last year. Liss has a big-time leg, but has been willing to sacrifice his average for the finesse punt. He has come up big when he had to over the last two years.

Scott Bentley will have the placekicking chores all to himself with the departure of Dan Mowrey. Bentley, who kicked off most of last season and was 4-of-7 on field goals and 25-of-27 on extra points, lost the scoring honors to Mowrey after the Clemson game, but should be primed for a fine junior campaign.

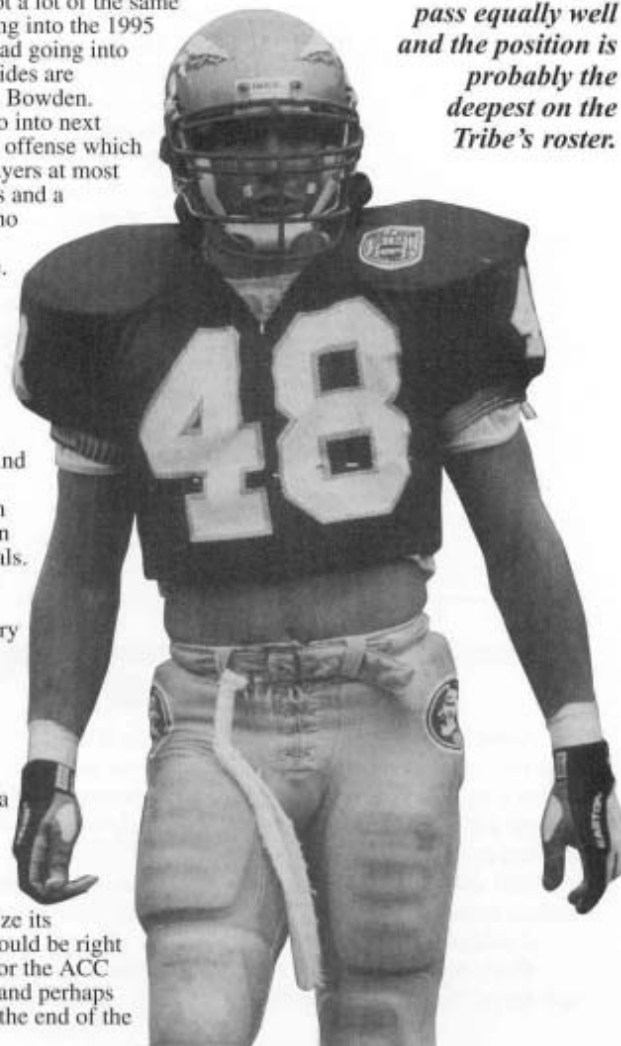
The 1995 schedule should look familiar. The Seminoles will play the same opponents as they have for the last two years with the exception of Notre Dame which will be replaced by Central Florida. The good news for FSU is they will play eight of 11 games in the state of Florida. The bad news is they must play three of their last four away from home against ACC frontrunners Virginia and North Carolina and finish the season at intrastate rival Florida.

"We've got a lot of the same challenges going into the 1995 season as we had going into 1994, but the sides are reversed," said Bowden. "We hope to go into next season with an offense which has veteran players at most of the positions and a quarterback who knows how to run the offense. Our defense, however, will be very young in the secondary and will probably need some time to find itself.

"This team must be solid in the fundamentals. So many times things come down to the very basics of football — blocking, tackling, throwing and catching. We have got to be a solid team.

"If this squad will work hard enough to realize its potential, we could be right there playing for the ACC championship and perhaps beyond that at the end of the season." ■

Senior Todd Rebol leads Florida State's linebackers which have been called the best group in the country. Junior Sam Cowart and sophomore Daryl Bush give FSU a trio that can stop the run and the pass equally well and the position is probably the deepest on the Tribe's roster.



' 9 5 D E P T H C H A R T

FLORIDA STATE OFFENSE

SE	89	Wayne Messam	6-4, 210, Jr.
	19	E.G. Green	5-11, 185, So.
	7	Aaron Dely	6-0, 175, Sr.
ST*	67	Juan Laureano	6-5, 283, Sr.
	70	Tra Thomas	6-8, 319, So.
	73	Greg Frey	6-4, 302, Sr.
SG*	66	Lewis Tyre	6-5, 272, Sr.
	64	Tim Johnson	6-4, 295, Sr.
	69	Gideon Brown	6-2, 276, So.
	74	Danny Campbell	6-1, 240, Sr.
C*	53	Clay Shiver	6-2, 280, Sr.
	51	Kevin Long	6-5, 262, So.
	61	Dale Valente	6-4, 294, Fr.
TG	65	Chad Bates	6-3, 269, Jr.
	77	Jesus Hernandez	6-2, 288, Sr.
	78	Marcus Long	6-3, 320, Jr.
TT*	71	Todd Fordham	6-5, 292, Jr.
	79	Forrest Conoly	6-6, 325, Sr.
	60	Anthony Phillips	6-5, 295, Fr.
TE*	81	Melvin Pearsall	6-1, 242, So.
	59	Andy Crowe	6-3, 262, Sr.
	84	Myron Jackson	6-5, 255, Fr.
QB*	13	Danny Kanell	6-4, 215, Sr.
	12	Thad Busby	6-3, 215, So.
FB	22	Pooh Bear Williams	6-1, 266, So.
	36	Dennis Andrews	6-4, 247, Sr.
	31	Lamarr Glenn	6-1, 235, Fr.
TB*	28	Warrick Dunn	5-9, 178, Jr.
	24	Rock Preston	5-9, 183, So.
	42	Jermaine Green	5-8, 170, So.
FL	1	Andre Cooper	6-2, 194, Jr.
	15	Phillip Riley	5-11, 185, Sr.

FLORIDA STATE DEFENSE

DE	55	Reinard Wilson	6-2, 245, Jr.
	58	Peter Boulware	6-5, 238, So.
DT*	98	Orpheus Roye	6-4, 275, Sr.
	95	Julian Pittman	6-3, 265, So.
	57	Billy Rhodes	6-1, 240, Fr.
NG*	85	Andre Wadsworth	6-4, 270, So.
	96	Connell Spain	6-2, 285, Jr.
RE	86	Tyrant Marion	6-2, 252, Sr.
	54	Greg Spires	6-2, 260, So.
OLB	56	Sam Cowart	6-3, 239, Jr.
	40	Lamont Green	6-3, 220, Fr.
	46	Travis Sherman	6-1, 222, Jr.
MLB*	44	Daryl Bush	6-2, 230, So.
	52	Demetro Stephens	6-3, 236, Fr.
	39	Hank Grant	6-2, 224, Fr.
BANDIT*	48	Todd Rebol	6-0, 215, Sr.
	45	Henri Crockett	6-2, 238, Jr.
	21	Deon Humphrey	6-4, 215, Fr.
FC	20	James Colzie	5-10, 160, Jr.
	2	Samari Rolle	6-1, 170, So.
SS	6	Robert Hammond	6-3, 185, So.
	41	Shevin Smith	6-0, 191, So.
	or 26	Harold Battles	6-0, 200, Jr.
FS*	18	Sean Hamlet	6-0, 218, Jr.
	14	Marlin Green	6-0, 190, Jr.
BC	23	Byron Capers	6-1, 194, Jr.
	27	Rodney Wells	5-10, 185, So.
	or 16	Troy Saunders	5-10, 185, Fr.

SEMINOLE SIDELINES



Florida State could start three college graduates along its offensive front this season. Lewis Tyre, Juan Laureano and Forrest Conoly have already earned their undergraduate degrees at Florida State and all are working on graduate courses in the fall. In addition, defensive end Tyrant Marion and free safety Marlin Green have already achieved the most important standard for an FSU student-athlete as they have their degrees.

FSU's starting linebackers have been ranked the best in the country and they are academic heavyweights as well. Todd Rebol, Daryl Bush and Sam Cowart have a combined GPA of 3.15 and opponents say they can also run and hit.

Florida State placed five players on the ACC All-Academic first team last season trailing only Duke and Virginia for conference honors.

FLORIDA STATE SPECIALISTS

KO*	3	Scott Bentley	5-11, 178, Jr.
PK	3	Scott Bentley	5-11, 178, Jr.
P*	29	Sean Liss	6-4, 220, Jr.
DS*	59	Andy Crowe	6-3, 262, Sr.
HO*	13	Danny Kanell	6-4, 215, Sr.
PR*	20	James Colzie	5-9, 160, Jr.
KOR*	24	Rock Preston	5-9, 183, So.
	15	Phillip Riley	5-11, 185, Sr.

*Indicates returning starters

' 9 5 P E R S O N N E L C H A R T

STARTERS RETURNING 14

OFFENSE 7

DEFENSE 5

SPECIALISTS 2

Offense — OT-Jesus Hernandez, OG-Lewis Tyre, C-Clay Shiver, OT-Todd Forham, TE-Melvin Pearsall, QB-Danny Kanell, TB-Warrick Dunn.

Defense — DT-Orpheus Roye, NG-Andre Wadsworth, MLB-Daryl Bush, OLB-Todd Rebol, FS-Sean Hamlet.

Specialists — KS-Scott Bentley, P-Sean Liss.

STARTERS LOST 10

OFFENSE 4

DEFENSE 6

SPECIALISTS 1

Offense — WR-Kez McCorvey, OG-Patrick McNeil, FB-Zack Crockett, WR-O'Mar Ellison.

Defense — DE-James Roberson, DE-Derrick Alexander, OLB-Derrick Brooks, CB-Clifton Abraham, SS-Devin Bush, CB-Corey Fuller.

Specialists — KS-Dan Mowrey.

LETTERMEN RETURNING 54

OFFENSE 29

DEFENSE 23

SPECIALISTS 2

Offense — FB-Dennis Andrews, OG-Chad Bates, OG-Gideon Brown, QB-Thad Busby, OG-Danny Campbell, OT-Forrest Conoly, WR-Andre Cooper, C-Andy Crowe, WR-Aaron Dely, TB-Warrick Dunn, TE-Larry Fleming, OT-Todd Fordham, OT-Greg Frey, WR-E.G. Green, TB-Jermaine Green, OT-Jesus Hernandez, OG-Tim Johnson, QB-Danny Kanell, OT-Juan Laureano, C-Kevin Long, OG-Marcus Long, FB-Rendell Long, WR-Wayne Messam, TE-Melvin Pearsall, TB-Rock Preston, WR-Phillip Riley, C-Clay Shiver, OT-Tra Thomas, OG-Lewis Tyre.

Defense — SS-Harold Battles, DE-Peter Boulware, ILB-Daryl Bush, CB-Byron Capers, CB-James Colzie, ILB-Sam Cowart, ILB-Henri Crockett, ILB-James D'Amico, FS-Marlin Green, FS-Sean Hamlet, FS-Robert Hammond, DE-Tyrant Marion, DE-Julian Pittman, ILB-Todd Rebol, CB-Samari Rolle, DT-Orpheus Roye, ILB-Travis Sherman, CB-Shevin Smith, NG-Connell Spain, NG-Greg Spires, NG-Andre Wadsworth, CB-Rodney Wells, OLB-Reinard Wilson.

Specialists — PK-Scott Bentley, P-Sean Liss.

LETTERMEN LOST 17

OFFENSE 7

DEFENSE 9

SPECIALISTS 1

Offense — FB-Zack Crockett, WR-O'Mar Ellison, TE-Billy Glenn, WR-Kez McCorvey, TB-Tiger McMillan, OG-Patrick McNeil, QB-Jon Stark.

Defense — CB-Clifton Abraham, DE-Derrick Alexander, OLB-Derrick Brooks, SS-Devin Bush, CB-Corey Fuller, OLB-Dulack Guerrier, OLB-James Roberson, ILB-Kendrick Scott, OLB-Eric Smith.

Specialists — K-Dan Mowrey.

Positions are for last year.



H O M E T O W N R O S T E R

ALABAMA (1)

Aliceville Walter Jones

COLORADO (1)

Aurora Scott Bentley

CONNECTICUT (1)

Berlin Forrest Conoly

FLORIDA (67)

Altamonte Springs .. Daryl Bush
 Apopka Jeremi Rudolph
 Bradenton Charles Tomeo
 Peter Warrick
 Brooksville Jermaine Green
 Marlin Green
 Cape Coral Greg Spires
 Clearwater Greg Frey
 Cocoa Chris Walker
 Coral Springs .. James D'Amico

Crescent City .. Pooh Bear Williams
 Davie Khalid Abdullah
 Richard Brown
 Daytona Beach ... Lamarr Glenn
 Marcus Long
 Deland Tra Thomas
 Ft. Lauderdale Billy Brown
 Danny Kanell
 Ft. Pierce Jerry Johnson
 Ft. Walton Beach E.G. Green
 Hialeah Lakes Sean Key
 Jacksonville Harold Battles
 Danny Campbell
 Andre Cooper
 Sam Cowart
 Lake City Reinard Wilson
 Lake Wales Ronney Daniels
 Melvin Pearsall
 Lake Worth Deon Humphrey
 Live Oak Todd Frier
 Melbourne Connell Spain
 Miami James Colzie
 Lamont Green
 Damian Harrell
 Jesus Hernandez
 Rock Preston
 Samari Rolle
 Orpheus Roye
 Troy Saunders
 Shevin Smith
 Eric Thomas
 Andre Wadsworth
 Niceville Julian Pittman
 Okeechobee Myron Jackson
 Orlando Juan Laureano
 Phillip Riley
 Dale Valente
 Pace Thad Busby
 Palm Bay Rendell Long
 Panama City ... Jason Whitaker
 Pensacola Marcus Bullock
 Plantation Rodney Wells
 Pompano Beach .. Henri Crockett
 Tyrant Marion
 Port St. Lucie ... Anthony Phillips
 Punta Gorda Todd Rebol
 Quincy Dexter Jackson
 St. Petersburg Hank Grant
 Sean Liss
 South Bay Wayne Messam

Spring Hill Brian Erb
 Tallahassee Andy Crowe
 Aaron Dely
 Ron Dugans
 Jason Poppell
 Theon Rackley
 Valrico Travis Sherman

GEORGIA (8)

Folkston Larry Smith
 Jesup Sean Mitchell
 Marietta Byron Capers
 Sandersville Jeremy Brett
 Demetro Stephens
 Surrency Lewis Tyre
 Tifton Todd Fordham
 Clay Shiver

KENTUCKY (1)

Elizabethtown ... Scott Scharinger

LOUISIANA (2)

Baton Rouge Warrick Dunn
 Opelousas ... Robert Hammond

MISSISSIPPI (2)

Laurel Dennis Andrews
 Pascagoula Mario Edwards

NORTH CAROLINA (1)

Fayetteville Tim Johnson

PENNSYLVANIA (1)

Bethlehem Dan Kendra

SOUTH CAROLINA (5)

Columbia Chad Bates
 Peter Boulware
 Rock Hill Dee Feaster
 Summerville Gideon Brown
 Kevin Long

TENNESSEE (1)

Gallatin David Walker

TEXAS (1)

Texas City ... Vernon Crawford

VIRGINIA (1)

Hampton Sean Hamlet

PRONUNCIATION KEY

Peter Boulware BOWL-where
 Byron Capers CAY-pers
 Samuel Cowart COW-art
 Henri Crockett Henry
 Aaron Dely DELL-ee
 Warrick Dunn WOR-ick
 Greg Frey Fry
 Jesus Hernandez Hay-Zeus
 Danny Kanell Kuh-NELL
 Juan Laureano Wahn Lore-ee-AHN-oh
 Rendell Long Wren-DELL
 Tyrant Marion TIE-runt Mare-EE-un
 Melvin Pearsall PIER-sall
 Todd Rebol REE-bowl
 Samari Rolle Suh-MAHR-ee
 Orpheus Roye Or-FEE-us
 Troy Saunders SAWN-ders
 Sean (Hamlet, Liss, Mitchell) Shawn
 Clay Shiver SHY-ver
 Connell Spain Con-NELL
 Demtro Stephens Duh-MEET-roe
 Tra Thomas TRAY
 Lewis Tyre Tire
 Reinard Wilson Ruh-NARD

THE '95 SEMINOLES

A L P H A B E T I C A L R O S T E R

NO.	NAME	POS.	HGT.	WGT.	CLASS	HOMETOWN	HIGH SCHOOL	COACH
32	Khalid Abdullah	FB	6-0	218	FR	Davie, FL	Nova	Mike Manning
36	Dennis Andrews	FB	6-4	247	SR	Laurel, MS	R.H. Watkins	Larry Ishee
65	Chad Bates	OG	6-3	269	JR	Columbia, SC	Spring Valley	Jim Bonneville
26	Harold Battles	SS	6-0	200	JR	Jacksonville, FL	Andrew Jackson	Ellis McSwain
3	Scott Bentley	KS	5-11	178	JR	Aurora, CO	Overland	Tony Manfredi
58	Peter Boulware	DE	6-5	238	SO	Columbia, SC	Spring Valley	Jim Bonneville
72	Jeremy Brett	DL	6-3	310	FR	Sandersville, GA	Washington County	Rick Tomberlin
7	Billy Brown	WR	6-0	180	FR	Ft. Lauderdale, FL	St. Thomas Aquinas	George Smith
69	Gideon Brown	OG	6-2	276	SO	Summerville, SC	Stratford	Ray Stackley
14	Richard Brown	CB	6-1	189	FR	Davie, FL	Nova	Mike Manning
37	Marcus Bullock	WR	6-0	180	FR	Pensacola, FL	Catholic	Brad Naggatz
12	Thad Busby	QB	6-3	215	SO	Pace, FL	Pace	Mickey Lindsey
44	Daryl Bush	MLB	6-2	230	SO	Altamonte Springs, FL	Lake Brantley	Fred Almon
74	Danny Campbell	OG	6-1	240	SR	Jacksonville, FL	Bishop Kenny	Mike Healey
23	Byron Capers	CB	6-1	194	JR	Marietta, GA	Wheeler	Jeff Hollis
20	James Colzie	CB	5-10	160	JR	Miami, FL	South Miami	Oris Collier
79	Forrest Conoly	OT	6-6	325	SR	Berlin, CT	Berlin	Al Pelligrinelli
1	Andre Cooper	FLK	6-2	194	JR	Jacksonville, FL	Fletcher	Joe Reynolds
56	Sam Cowart	OLB	6-3	239	JR	Jacksonville, FL	Mandarin	Ricky Medlock
47	Vernon Crawford	LB	6-2	230	JR	Texas City, TX	San Francisco CC	George Rush
45	Henri Crockett	BLB	6-2	238	JR	Pompano Beach, FL	Ely	Rocky Gillis
59	Andy Crowe	TE	6-3	262	SR	Tallahassee, FL	Florida	Mike Hickman
43	Ronney Daniels	WR	6-2	211	FR	Lake Wales, FL	Lake Wales	Ron Schafer
49	James D'Amico	MLB	5-11	230	SR	Coral Springs, FL	Taravella	Mike Bonafiglio
7	Aaron Dely	WR	6-0	175	SR	Tallahassee, FL	N. Fla. Christian	Howard Cone
80	Ron Dugans	WR	6-3	187	FR	Tallahassee, FL	Florida A&M High	Harry Jacobs
28	Warrick Dunn	TB	5-9	178	JR	Baton Rouge, LA	Catholic	Dale Weiner
38	Mario Edwards	FS	6-2	180	FR	Pascagoula, MS	Pascagoula	Bill Matthews
76	Brian Erb	DE	6-5	238	SO	Spring Hill, FL	Hudson	Gary Hall
33	Dee Feaster	RB	5-9	175	FR	Rock Hill, SC	Northwestern	Jimmy Wallace
71	Todd Fordham	OT	6-5	292	JR	Tifton, GA	Tift County	Gene Brodie
73	Greg Frey	OT	6-4	302	SR	Clearwater, FL	Clearwater	Tom Basic
35	Todd Frier	FS	5-10	180	FR	Live Oak, FL	Suwannee	Mike Pittman
31	Lamarr Glenn	FB	6-1	235	FR	Daytona Beach, FL	Seabreeze	Rocky Yocum
39	Hank Grant	MLB	6-2	224	FR	St. Petersburg, FL	Boca Ciega	John Bolen
19	E.G. Green	WR	5-11	185	SO	Ft. Walton Beach, FL	Ft. Walton Beach	Jimmy R. Stephens
42	Jermaine Green	TB	5-8	170	SO	Brooksville, FL	Hernando	Mike Imhoff
40	Lamont Green	OLB	6-3	220	FR	Miami, FL	Southridge	Don Solindger
14	Marlin Green	FS	6-0	190	SR	Brooksville, FL	Hernando	Mike Imhoff
18	Sean Hamlet	FS	6-0	218	JR	Hampton, VA	Hampton	Mike Smith
6	Robert Hammond	FS	6-3	185	SO	Opelousas, LA	Opelousas	Larry Dauterive
8	Damian Harrell	WR	6-3	190	JR	Miami, FL	San Francisco CC	George Rush
77	Jesús Hernandez	OG	6-2	288	SR	Miami, FL	Jackson	Roder Coffey

14	FS	0-0	170	JR	Hampton, VA	Hampton	Mike Smith
18	FS	6-3	218	SO	Opelousas, LA	Opelousas	Larry Daulerive
6	WR	6-3	185	JR	Miami, FL	San Francisco CC	George Rush
8	WR	6-3	190	JR	Miami, FL	Jackson	Roger Coffey
77	OG	6-2	288	SR	Lake Worth, FL	Lake Worth	Don Rosser
21	BLB	6-4	215	FR	Quincy, FL	Shanks	Johnnie Williams
11	QB	6-1	185	FR	Okeechobee, FL	Okeechobee	Kerry McKeel
84	TE	6-5	255	FR	Ft. Pierce, FL	Central	Joey Wiles
92	DL	6-2	270	FR	Fayetteville, NC	Jones CC	Robert Dykes
64	OG	6-4	295	SR	Alliceville, AL	Holmes CC	Parker Poole
76	OL	6-5	285	JR	Fort Lauderdale, FL	Westminster Academy	Bill Murton
13	QB	6-4	215	SR	Bethlehem, PA	Central Catholic	Bob Stem
10	QB	6-2	225	FR	Hialeah Lakes, FL	American	Charlie Yanda
16	CB	6-1	180	FR	Orlando, FL	Colonial	Al Brown
67	OT	6-5	283	SR	Orlando, FL	Colonial	John Bolen
29	P	6-4	220	JR	St. Petersburg, FL	Boca Ciega	John McKissick
51	C	6-5	262	SO	Summerville, SC	Summerville	Doug Stanley
38	OG	6-3	323	JR	Daytona Beach, FL	Mainland	Arthur Ulmer
86	FB	6-2	220	SR	Palm Bay, FL	Palm Bay	Mike Facteau
89	DE	6-2	252	SR	Pompano Beach, FL	Ely	Rick Casco
94	WR	6-4	210	JR	South Bay, FL	Central	Paul Conner
81	DE	6-4	255	FR	Jesup, GA	Wayne County	Paul Conner
60	TE	6-1	242	SO	Lake Wales, FL	Lake Wales	Rod Shafer
95	OT	6-5	295	FR	Port St. Lucie, FL	Ft. Pierce Central	Paul Lombardo
41	DE	6-3	265	SO	Niceville, FL	Niceville	Frank Sorrells
24	FS	5-11	189	SO	Tallahassee, FL	Lincaln	David Wilson
5	TB	5-9	183	SO	Miami, FL	Hialeah Senior	Bill Foley
48	SS	6-2	215	FR	Tallahassee, FL	Florida A&M High	Harry Jacobs
75	BLB	6-0	215	SR	Punta Gorda, FL	Charlotte	Jim Refasco
15	DE	6-1	240	FR	Eustis, FL	Eustis	Kevin McClelland
2	CB	5-11	185	SR	Orlando, FL	Jones	Ernest Swift
98	DT	6-4	275	SO	Miami, FL	Miami Beach	Jim Kroll
30	TB	5-10	185	FR	Apopka, FL	Miami Springs	Buddy Goins
4	CB	5-10	185	FR	Miami, FL	Apopka	Chip Gierke
46	OLB	6-1	222	JR	Valrico, FL	Miami Springs	Buddy Goins
53	C	6-2	280	SR	Tifton, GA	Bloomingdale	Bobby Bennett
99	DL	6-5	275	FR	Folkston, GA	Tift County	Gene Brodie
41	SS	6-0	191	SO	Miami, FL	Valley Forge Prep	Richard McWhorter
96	NG	6-2	285	JR	Melbourne, FL	Southridge	Don Soldinger
90	NG	6-2	260	SO	Cape Coral, FL	Melbourne	Joey Wiles
52	MLB	6-3	236	FR	Sandersville, GA	Mariner	Joe Roles
57	OL	6-3	253	FR	Miami, FL	Washington County	Rick Tomberlin
70	OT	6-8	319	SO	Deland, FL	Columbus	Dennis Lavelle
14	QB	6-0	184	SO	Bradenton, FL	Deland	David Hiss
66	OG	6-5	272	SR	Surrency, GA	Manatee	Joe Kinnan
61	C	6-4	294	FR	Orlando, FL	Appling County	Steve Pennington
85	NG	6-4	270	SO	Miami, FL	Cypress Creek	Dave Langdon
62	DL	6-6	225	FR	Cocoa, FL	Florida Christian	Jim Arnold
93	OLB	6-0	196	SR	Gallatin, TN	Cocoa Beach	Don Sonnemaker
62	WR	6-0	175	FR	Bradenton, FL	Gallatin	Calvin Short
9	OL	6-5	265	FR	Panama City, FL	Southeast	Paul Maeschle
27	CB	5-10	185	SO	Plantation, FL	Moseley	Charlie Tate
22	FB	6-1	266	SO	Crescent City, FL	Plantation	Frank Hepler
55	DE	6-2	245	JR	Lake City, FL	Crescent City	Paul Landry
						Columbia	Skip Wolf

THE '95 SEMINOLLES

N U M E R I C A L R O S T E R

NO.	NAME	POS.	HGT.	WGT.	CLASS	HOMETOWN	HIGH SCHOOL	COACH
1	Andre Cooper	FLK	6-2	194	JR	Jacksonville, FL	Fletcher	Joe Reynolds
2	Samari Rolle	CB	6-1	170	SO	Miami, FL	Miami Beach	Jim Kroll
3	Scott Bentley	KS	5-11	178	JR	Aurora, CO	Overland	Tony Manfredi
4	Troy Saunders	CB	5-10	185	FR	Miami, FL	Miami Springs	Buddy Gains
5	Theon Rackley	SS	6-2	215	FR	Tallahassee, FL	Florida A&M High	Harry Jacobs
6	Robert Hammond	FS	6-3	185	SO	Opelousas, LA	Opelousas	Larry Dauterive
7	Billy Brown	WR	6-0	180	FR	Ft. Lauderdale, FL	St. Thomas Aquinas	George Smith
7	Aaron Dely	WR	6-0	175	SR	Tallahassee, FL	N. Fla. Christian	Howard Cone
8	Damian Harrell	WR	6-3	190	JR	Miami, FL	San Francisco CC	George Rush
9	Peter Warrick	WR	6-0	175	FR	Bradenton, FL	Southeast	Paul Maeschtle
10	Dan Kendra	QB	6-2	225	FR	Bethlehem, PA	Central Catholic	Bob Stem
11	Dexter Jackson	QB	6-1	185	FR	Quincy, FL	Shanks	Johnnie Williams
12	Thad Busby	QB	6-3	215	SO	Pace, FL	Pace	Mickey Lindsey
13	Danny Kanell	QB	6-4	215	SR	Fort Lauderdale, FL	Westminster Acad.	Bill Murrton
14	Richard Brown	CB	6-1	189	FR	Davie, FL	Nova	Mike Manning
14	Marlin Green	FS	6-0	190	SR	Brooksville, FL	Hernando	Mike Imhoff
14	Charles Tomeo	QB	6-0	184	SO	Bradenton, FL	Manatee	Joe Kinnan
15	Phillip Riley	FLK	5-11	185	SR	Orlando, FL	Jones	Ernest Swift
16	Sean Key	CB	6-1	180	FR	Hialeah Lakes, FL	American	Charlie Yanda
18	Sean Hamlet	FS	6-0	218	JR	Hampton, VA	Hampton	Mike Smith
19	E.G. Green	WR	5-11	185	SO	Ft. Walton Beach, FL	Ft. Walton Beach	Jimmy R. Stephens
20	James Colzie	CB	5-10	160	JR	Miami, FL	South Miami	Otis Collier
21	Deon Humphrey	BLB	6-4	215	FR	Lake Worth, FL	Lake Worth	Don Rosser
22	Pooh Bear Williams	FB	6-1	266	FR	Crescent City, FL	Crescent City	Paul Landry
23	Byron Capers	CB	6-1	194	JR	Marietta, GA	Wheeler	Jeff Hollis
24	Rock Preston	TB	5-9	183	SO	Miami, FL	Hialeah Senior	Bill Foley
26	Harold Battles	SS	6-0	200	JR	Jacksonville, FL	Andrew Jackson	Ellis McSwain
27	Rodney Wells	CB	5-10	185	SO	Plantation, FL	Plantation	Frank Hepler
28	Warrick Dunn	TB	5-9	178	JR	Baton Rouge, LA	Catholic	Dale Weiner
29	Sean Liss	P	6-4	220	JR	St. Petersburg, FL	Boca Ciega	John Bolen
30	Jeremi Rudolph	RB	5-10	185	FR	Apopka, FL	Apopka	Chip Gierke
31	Lamarr Glenn	FB	6-1	235	FR	Daytona Beach, FL	Seabreeze	Rocky Yocum
32	Khalid Abdullah	FB	6-0	218	FR	Davie, FL	Nova	Mike Manning
33	Dee Feaster	RB	5-9	175	FR	Rock Hill, SC	Northwestern	Jimmy Wallace
35	Todd Frier	FS	5-10	180	FR	Live Oak, FL	Suwannee	Mike Pittman
36	Dennis Andrews	FB	6-4	247	SR	Laurel, MS	R.H. Watkins	Larry Ishee
37	Marcus Bullock	WR	6-0	180	FR	Pensacola, FL	Catholic	Brad Naggatz
38	Mario Edwards	DB	6-2	211	FR	Pascagoula, MS	Pascagoula	Bill Matthews
38	Rendell Long	FB	6-2	220	SR	Palm Bay, FL	Palm Bay	Arthur Ulmer
39	Hank Grant	MLB	6-2	224	FR	St. Petersburg, FL	Boca Ciega	John Bolen
40	Lamont Green	OLB	6-3	220	FR	Miami, FL	Southridge	Don Solindger
41	Jason Poppell	FS	5-11	189	SO	Tallahassee, FL	Lincoln	David Wilson

39	Hank Grant	MLB	6-2	224	FR	St. Petersburg, FL	Boca Ciega	John Bolen
40	Lamont Green	OLB	6-3	220	FR	Miami, FL	Southridge	Don Solindger
41	Jason Poppell	FS	5-11	189	SO	Tallahassee, FL	Lincoln	David Wilson
41	Shevin Smith	SS	6-0	191	SO	Miami, FL	Southridge	Don Soldinger
42	Jermaine Green	TB	5-8	170	SO	Brooksville, FL	Hernando	Mike Imhoff
43	Ronney Daniels	WR	6-2	211	FR	Lake Wales, FL	Lake Wales	Ron Schafer
44	Daryl Bush	MLB	6-2	230	SO	Altamonte Springs, FL	Lake Brantley	Fred Almon
45	Henri Crockett	BLB	6-2	238	JR	Pompano Beach, FL	Ely	Rocky Gillis
46	Travis Sherman	OLB	6-1	222	JR	Valrico, FL	Bloomingdale	Bobby Bennett
47	Vernon Crawford	LB	6-2	230	JR	Texas City, TX	San Francisco CC	George Rush
48	Todd Rebol	BLB	6-0	215	SR	Punta Gorda, FL	Charlotte	Jim Refasco
49	James D'Amico	MLB	5-11	230	SR	Coral Springs, FL	Taravella	Mike Bonifiglio
51	Kevin Long	C	6-5	262	SO	Summerville, SC	Summerville	John McKissick
52	Demetro Stephens	MLB	6-3	236	FR	Sandersville, GA	Washington County	Rick Tamberlin
53	Clay Shiver	C	6-2	280	SR	Tifton, GA	Tift County	Gene Brodie
55	Reinard Wilson	DE	6-2	245	JR	Lake City, FL	Columbia	Skip Wolf
56	Sam Cowart	OLB	6-3	239	JR	Jacksonville, FL	Mandarin	Ricky Medlock
57	Eric Thomas	OL	6-3	253	FR	Miami, FL	Columbus	Dennis Lavelle
58	Peter Baulware	DE	6-5	238	SO	Columbia, SC	Spring Valley	Jim Bonneville
59	Andy Crowe	TE	6-3	262	SR	Tallahassee, FL	Florida	Mike Hickman
60	Anthony Phillips	OT	6-5	295	FR	Port St. Lucie, FL	Ft. Pierce Central	Paul Lombardo
61	Dale Valente	C	6-4	294	FR	Orlando, FL	Cypress Creek	Dave Langdon
62	David Walker	OLB	6-0	196	SR	Gallatin, TN	Gallatin	Calvin Short
64	Tim Johnson	OG	6-4	295	SR	Fayetteville, NC	Jones CC	Parker Dykes
65	Chad Bates	OG	6-3	269	JR	Columbia, SC	Spring Valley	Jim Bonneville
66	Lewis Tyre	OG	6-5	272	SR	Surrency, GA	Appling County	Steve Pennington
67	Juan Laureano	OT	6-5	283	SR	Orlando, FL	Colonial	Al Brown
68	Jason Whitaker	OL	6-5	265	FR	Panama City, FL	Mosely	Charlie Tate
69	Gideon Brown	OG	6-2	276	SO	Summerville, SC	Stratford	Ray Stackley
70	Tra Thomas	OT	6-8	319	SO	Deland, FL	Deland	David Hiss
71	Todd Fordham	OT	6-5	292	JR	Tifton, GA	Tift County	Gene Brodie
72	Jeremy Brett	DL	6-3	310	FR	Sandersville, GA	Washington County	Rick Tamberlin
73	Greg Frey	OT	6-4	302	SR	Clearwater, FL	Clearwater	Tom Bostic
74	Danny Campbell	OG	6-1	240	FR	Jacksonville, FL	Bishop Kenny	Mike Healey
75	Billy Rhodes	DE	6-1	240	FR	Eustis, FL	Hudson	Kevin McClelland
76	Brian Erb	DE	6-5	238	SO	Spring Hill, FL	Eustis	Gary Hall
76	Walter Jones	OL	6-5	285	JR	Aliceville, AL	Holmes CC	Robert Poole
77	Jesus Hernandez	OG	6-2	288	SR	Miami, FL	Jackson	Roger Coffey
78	Marcus Long	OG	6-3	323	JR	Daytona Beach, FL	Mainland	Doug Stanley
79	Forrest Conoly	OT	6-6	325	FR	Berlin, CT	Berlin	Al Pelligrinelli
80	Ron Dugans	WR	6-3	187	FR	Tallahassee, FL	Florida A&M High	Harry Jacobs
81	Melvin Pearsall	TE	6-1	242	SO	Lake Wales, FL	Lake Wales	Rod Shafer
84	Myron Jackson	TE	6-5	255	FR	Okeechobee, FL	Okeechobee	Kerry McKee
85	Andre Wadsworth	NG	6-4	270	SO	Miami, FL	Florida Christian	Jim Arnold
86	Tyrant Marion	DE	6-2	252	SR	Pompano Beach, FL	Ely	Mike Facticeu
89	Wayne Messam	WR	6-4	210	JR	South Bay, FL	Central	Rick Casko
90	Greg Spires	NG	6-2	260	SO	Cape Coral, FL	Mariner	Joe Roles
92	Jerry Johnson	DL	6-2	270	FR	Ft. Pierce, FL	Central	Joey Wiles
93	Chris Walker	DL	6-6	225	FR	Cocoa, FL	Cocoa Beach	Don Sonnemaker
94	Sean Mitchell	DE	6-4	255	FR	Jesup, GA	Wayne County	Paul Conner
95	Julian Pittman	DE	6-3	265	SO	Niceville, FL	Niceville	Frank Sorrels
96	Cannell Spain	NG	6-2	285	JR	Melbourne, FL	Melbourne	Joey Wiles
98	Orpheus Roye	DT	6-4	275	SR	Miami, FL	Miami Springs	Buddy Goins
99	Larry Smith	DL	6-5	275	FR	Folkston, GA	Valley Forge Prep	Richard McWharter

