

FLORIDA STATE FOOTBALL



1 9 9 9 M E D I A G U I D E

PETER WARRICK
Returning All-American

SEBASTIAN JANIKOWSKI
Returning All-American

JASON WHITAKER
Returning All-American

COREY SIMON
Returning All-American

THE DYNASTY

YEAR	RECORD	AP RANKING
1987	11-1	#2
1988	11-1	#3
1989	10-2	#3
1990	10-2	#4
1991	11-2	#4
1992	11-1	#2
1993	12-1	#1
1994	10-1-1	#4
1995	10-2	#4
1996	11-1	#3
1997	11-1	#3
1998	11-2	#3

Ron Duggins

Dan Kendra

Laveranues Cole

Bobby Rhodes

CONTINUES...

1999 SCHEDULE

Aug. 28	LOUISIANA TECH.....5:00 pm
Sept. 11	GEORGIA TECH8:00 pm (Varsity Weekend)
Sept. 18	NC STATE3:30 pm
Sept. 25	at North Carolina3:30 pm
Oct. 2	Duke12:00 noon (in Jacksonville)
Oct. 9	MIAMI.....12:00 noon
Oct. 16	WAKE FOREST7:00 pm (Homecoming)
Oct. 23	at Clemson7:00 pm
Oct. 30	at Virginia7:00 pm
Nov. 13	MARYLAND.....12:00 noon (Parents Weekend/Youth Day)
Nov. 20	at Florida.....3:30 pm

Eric Thomas

Sean Key

Reggie Durden

Germaine Stringer

Theon Rackley



FSU

TABLE OF CONTENTS

1999 FLORIDA STATE FOOTBALL MEDIA GUIDE

SEMINOLE SIDeline



Seminole On The Web

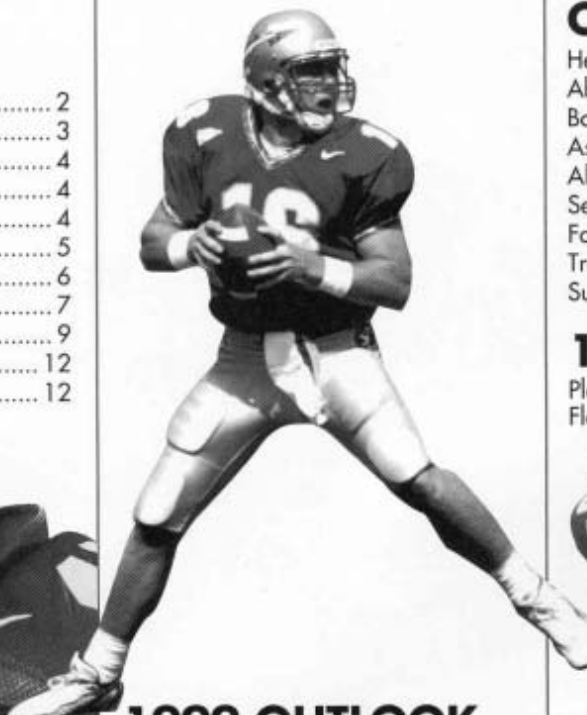
KEEP UP WITH ALL the action of Florida State Athletics by visiting FSU's official website at:

www.seminoles.com



MEDIA INFORMATION

Media Information	2
Sports Information Directory	3
Post-Game Interviews	4
Florida State Fast Facts	4
ACC Faxback	4
Football Media Outlets	5
Seminole On Television	6
Television Appearances	7
Doak Campbell Stadium	9
Seminole Radio Network	12
Radio Station List	12

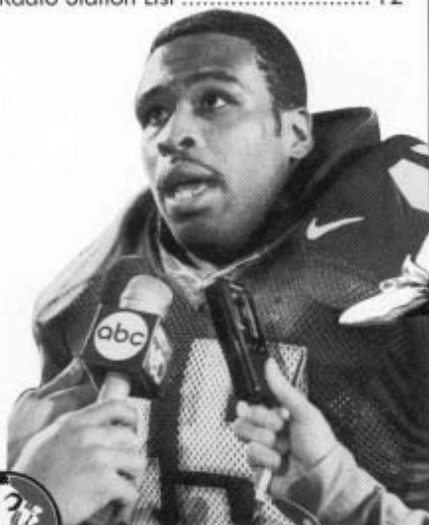


COACHES

Head Coach Bobby Bowden	28
About Bobby Bowden	32
Bowden vs. The Opposition	33
Assistant Coaches	34
All-Time FSU Assistant Coaches	43
Seminole Strength & Conditioning ..	44
Football Staff	46
Training Staff	47
Support Staff	48

1999 PLAYERS

Player Biographies	50
Florida State Signees	102



1999 OUTLOOK

Preseason Outlook	14
Personnel Chart	20
Depth Chart	21
Alphabetical Roster	22
Numerical Roster	24
Hometown Roster	26





1999 OPPONENTS

Opponent Profiles 106
 Opponents Week-By-Week 117
 1999 Travel Plans 118

1998 REVIEW

1998 Statistics 120
 Game-By-Game Statistics 122
 Highs & Lows 124
 Honor Roll 125
 Game-by-Game Review 126
 ACC Statistics 139
 The Atlantic Coast Conference 145



CREDITS

EDITOR: Rob Wilson; **ASSISTANT EDITORS:** Amy Farnum, Tina Thomas, Chris Walker, Joe Hornstein, Craig O'Halloran, Jeff Purinton; **RESEARCH AND HISTORY:** Mr. Vaughn Mancha; **PHOTOGRAPHY:** Ryals Lee, Jr., Ross Obley, Kevin O'Donnell, Rick Jones, The Osceola, FSU Photo Lab, Bill Lax, Photo Plus, Marc Hageameier, Bob Rosato, Action Sports of America; David Holliday; **PRINTING:** Boyd Brothers, Inc.

THE UNIVERSITY

This Is Tallahassee 148
 This Is Florida State University 150
 Florida State Administration 152
 Student Services & Academic Support 156
 Student Development & Life Skills .. 158

COLLEGE FOOTBALL

1998 NCAA Statistical Leaders 160
 NCAA All-Time Leaders 162
 1999 Bowl Championship Series .. 167
 NCAA All-Time Bowl Records 168
 AP Final Polls Since 1936 169
 UPI Coaches' Final Polls Since 1950/171
 ESPN/USA Today Final Polls Since 1991 173
 The Sod Cemetery 174



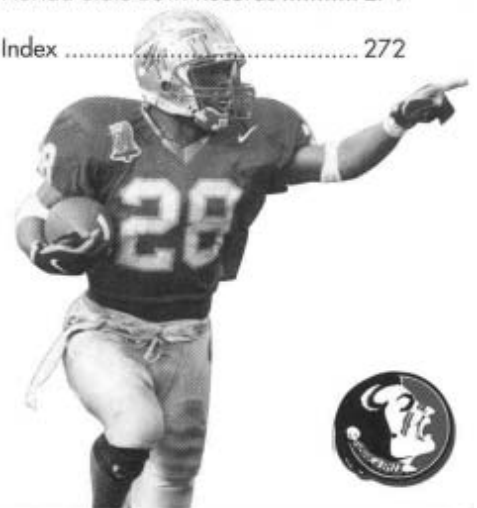
HONORS & AWARDS

Seminole Retired Numbers/Jerseys 176
 Seminole Award Winners 179
 College Football Award Winners .. 182
 Consensus All-Americans 185
 Seminole All-Americans 189
 ACC Champions & Award Winners 191
 Seminole All-ACC Picks 192
 All-South Independent 193

Coaches & Captains 194
 Academic & Crenshaw Awards 195
 All-Time Lettermen 196
 Players In The Pros 199
 FSU Professional Drafts & Free-Agent Signings 201
 FSU's All-Time Professional List 204

RECORD BOOK

Rushing 214
 Passing 219
 Receiving 224
 Total Offense 229
 Defense 232
 Interceptions 235
 Scoring 236
 Kicking 238
 Punting 239
 Punt Returns 240
 Kickoff Returns 241
 Block Kicks/Punts 242
 Miscellaneous 242
 The Last Time It Happened 243
 Florida State vs. All Opponents 245
 Best Performances By Opponents .. 246
 Homecoming Results 246
 Year-By-Year Record 247
 AP Weekly Rankings 251
 Year-By-Year Team Statistics 253
 Florida State vs Opponents
 Ranked by the AP 255
 Bowl Games In Review 257
 Florida State Bowl Records 271
 Index 272



All media, with the exception of the live network telecast crew, will work from the 9th level of the press box. Media can access the press box only through the designated elevator in the northwest tower of the University Center. Media should proceed down Stadium Drive after parking and move towards the first gate (Gate B) in the northwest corner of the endzone. Do not enter the stadium, however, as you must proceed to the right and enter through the external doors marked "Press Entrance."

Credential Requests

All requests for working press, radio, television, photography or scouting credentials should be directed to Sports Information Director Rob Wilson no later than four days prior to the game. Requests for season credentials should be made at least two weeks prior to the first game.

Space for the working press, radio and television is allocated by the FSU Sports Information Office.

Press Policies

Working press only will be admitted to the press box where seats will be credentialed by FSU according to the following criteria:

1. State newspapers by circulation, wire services, national publications, newspapers from opponents' area and student newspapers from FSU and opponents' schools.
2. Other daily newspapers with preference to those which regularly cover FSU.
3. Radio and television personnel not broadcasting, but considered reporting (seats may be provided in the stands and locker room access granted).
4. Non-daily newspapers, with preference to those which regularly cover FSU.
5. Scouts.

Freelance and/or non-daily writers may be asked to produce copies of actual publications in which their work has appeared. In some cases, these materials will be required as verification of the writers' status. Your cooperation and understanding is requested in such instances.

In accordance with NCAA and FSU policies, internet sites, other than that of the opposing team will not be credentialed – regardless of media affiliation.

Media Headquarters

The media headquarters hotel for Florida State football will be the Clarion Hotel located at 316 West Tennessee Street in downtown Tallahassee. Most media functions, including the Sunday morning "Breakfast with Bobby," will be held at the Clarion. The FSU sports information office has a limited number of rooms set aside for accredited media during home football weekends. Contact Lynn Hobby of the SID office at (850/644-2016) to make reservations for these rooms. Priority will be determined in the same manner spelled out under "press policies."

SPECIAL NOTE — Media reservations for the Clarion will require a TWO NIGHT MINIMUM. There will be no exceptions. When reserving a room through FSU, it will be necessary to give a credit card number to guarantee the room. Florida State may have a limited number of rooms available at the team hotel for road games. Media should contact Hobby for information on availability of these rooms.

Radio-TV

Florida State will host network television and both home and visiting radio in booths in the press box. Network television (or the network broadcasting live) will be working from a mid-field booth on the 8th Level (one below working press). Both home and visiting radio will broadcast from booths at the south end of the 9th Level.

Photographers

Only accredited photographers and those shooting for the FSU Sports Information Office will be issued working credentials.

Florida State reserves the right to admit only those photographers deemed to be on the premises for legitimate media purposes. All photographers working FSU games should be prepared to show a media ID card and equipment designed to photograph major college football.

Florida State uses a double photo line system on its sidelines. Only those photographers actually shooting the game will be allowed on the "front" line. These shooters will be given photo armbands upon check-in to allow them front line access. All other photo personnel will be required to stay behind a second line so as not to obstruct the view of the shooters. This would include grips, runners and sideline reporters. Violation of the double-line system will result in removal from the sideline. No media personnel are allowed in the team area of the sidelines at any time during a game.

Sideline passes for local television will be severely curtailed for televised games and each station will be restricted to two passes. Still photographers may have access to the sidelines only. Those holding a photography credential should report to the Press Box where they will be issued an armband, rosters and a pre-game meal. The only access to the field is through the gate at the northwest corner of the stadium near Gate A.

Video Services

Florida State's Sports Information Office has the ability to assist networks and television stations by providing video services through Seminole Productions, Inc. (SPI). The FSU athletic department has a working relationship with SPI and its general manager, Mark Rodin. Seminole Productions has editing and studio facilities on site and can produce material upon request. In most cases, there will be a nominal fee charged for these services. Please call Rodin at 850/644-8624 to arrange for these services.

Press Parking

Once again, parking is extremely limited in 1999 and passes will be issued on a priority basis within the same guidelines as working credentials.

Telephones

Telephone service should be secured directly through the Florida State University Office of Telecommunications at 850/644-2414. Have them contact the Sports Information Office for location. The Telecommunications Office can provide both lines and phones. Please specify the type of line needed (i.e. touchtone, etc.).

Fax Service

An independent fax service will be available for each game. Please contact a member of the Sports Information Office staff during the game to secure post-game fax service.

Interviews

Media interviews with all FSU players should be arranged through the Sports Information Office. For phone interviews, a staff





member will fill out a card asking the player to return the call. Please give one day advance notice when requesting players for mid-week interviews. All player calls to the media will be made collect.

Seminole players are available to the media on a daily basis during the lunch hours in the atrium area of the Moore Athletic Center. Contact the Sports Information staff member working lunch with your request. Advance notice is helpful in setting up face-to-face interviews to ensure that the player requested will be present that day.

Anyone wishing to schedule an interview with Head Coach Bobby Bowden should contact his assistant, Sue Hall, at 850/644-0097.

ACC Faxback

Florida State no longer mails its football releases each week. Instead, all Florida State football releases, including the daily practice trainer, are available on the ACC Faxback.

The Faxback gives media the capability to request and receive the releases from the conference office or any Atlantic Coast Conference school, including Florida State, simply by dialing a phone number from a fax machine. The ACC Faxback gives the media 24-hour access to the latest press releases and information.

Use of the Faxback is limited to members of the media ONLY. To get the Faxback phone and code numbers, contact the ACC Media Relations Office (336/851-6062) or the Florida State Sports Information Office.

ACC Teleconference

Each Wednesday during the 1999 football season, Coach Bowden will be available to the media on the ACC football teleconference call, along with the other eight league coaches. Bowden will be on the call from 11:20-11:30 a.m. every Wednesday from Sept. 1 through Nov. 17. Contact the FSU Sports Information Office or the Atlantic Coast Conference Office to get the number for the call, as well as a complete listing of the coaches and times. This is the only weekly conference call Coach Bowden will conduct in 1999.

ACC Satellite Feed

Video highlights and taped interviews with Florida State players and coaches can be obtained each week via an ACC satellite feed put up by JP Sports. The feed, which will contain at least six minutes of Florida State information, will run weekly beginning the first week in September. Contact FSU or the ACC to get the coordinates and time for the feed.

Breakfast With Bobby

Following each Seminole home game, Head Coach Bobby

SPORTS INFORMATION DIRECTORY

CONTACT US AT
850/644-1403; FAX 850/644-3820

ADDRESS INQUIRIES TO
Sports Information
P.O. Drawer 2195, Tallahassee, Florida 32316

SHIP OVERNIGHT PACKAGES TO
Sports Information, Moore Athletic Center,
Pensacola St., Tallahassee, Florida 32306

SPORTS INFORMATION DIRECTOR
Rob Wilson, (850) 644-1403

ASSISTANT SPORTS INFORMATION DIRECTORS
Tina Thomas, (850) 644-1065
Chris Walker, (850) 644-1077

ADMINISTRATIVE SECRETARY
Lynn Hobby, (850) 644-2016

GRADUATE ASSISTANT
Jeff Purinton, (850) 644-4836
Mandi Copeland, (850) 644-1403
Jason Byrne, (850) 644-1403

Bowden will join the media Sunday morning at 8:30 a.m., for a continental breakfast, followed by a question and answer session. Breakfast with Bobby will be held at the Clarion, FSU's media hotel.

Conference Call

On road game weekends, media may talk to Bowden via a Sunday conference call. Contact a member of the Sports Information Office during the previous day's game for further information.

Road Game Credentials

Writers covering Florida State on a regular basis may make requests for road credentials with the opponent school or with the FSU Sports Information Office by Monday of game week.



Rob Wilson



Jeff Purinton



Tina Thomas



Chris Walker



Lynn Hobby



POST-GAME INTERVIEWS

Florida State University's athletic staff is well aware of the importance of media coverage and is briefed continually on the role of the media insofar as it interacts with their respective duties. At no time is this cooperation more important than in the post-game interview and locker room procedures. To ensure the most workable situation for members of the media and for the FSU staff, the following procedures *must* be observed:

1. Entrance to the Florida State locker room can be made *only* through the second floor interview room. All members of the media will be directed to this room by the FSU Sports Information staff *immediately* at the conclusion of the game. It is helpful if all media personnel assemble at the tunnel entrance in the north end zone following the conclusion of the game. You will *not* be allowed access to the locker room through the player entrance, so follow closely.
2. Florida State Coach Bobby Bowden will be brought directly to the interview room as soon as he dismisses the team and declares the locker room open.

HOW TO USE THE ACC FAXBACK

ACC standings and statistics will be updated by no later than 5 p.m. each Monday during the course of the 1999 season. Each school will also update its respective release by 5 p.m.

Simply dial the Faxback phone number from your fax phone. You will be instructed on how to retrieve the information. Connect your fax at the tone, and the requested information will start transmitting to your machine. The ACC will not release this phone number except to certified media sources. Contact the ACC Media Relations Department at 336/851-6062, or fax in your request to 336/854-8797.

A PARTIAL LIST OF FOOTBALL FAXBACK CODES:

5050	ACC Football Release
5051	ACC Football Notes Only
5052	ACC Football Stats Only
5060	ACC Football Schedule
5070	NCAA Football Stats
31050	FSU Football Release
31051	FSU Football Notes Only
31052	FSU Football Stats Only
31053	FSU Football Box Score
31055	FSU Daily Football Trainer
31060	FSU Football Schedule

3. When Coach Bowden makes his appearance in the interview room, members of the media who wish to go to the locker room will be shown the proper route. Down one flight of stairs leads directly into the player dressing area.

4. FLORIDA STATE'S LOCKER ROOM IS OPEN TO ALL MEDIA. HOWEVER, IT IS IMPERATIVE THAT FEMALE REPORTERS INFORM FSU SPORTS IN-

FLORIDA STATE FAST FACTS

President	Talbot "Sandy" D'Alemberte
Location	Tallahassee, Florida
Enrollment	30,519
Founded	1857
Name	Seminoles
Symbol	Chief Osceola & Renegade
Colors	Garnet & Gold
Conference	Atlantic Coast
Stadium	Doak S. Campbell (80,000)
SURFACE	Natural Grass (PAT)
Athletics Director	Dave Hart, Jr.
Faculty Athletic Representative	
to Athletic Board Chair	Charles Ehrhardt
Head Football	
Coach	Bobby Bowden (Samford '53)
Overall Record	292-85-4 (33 Years)
Record at FSU	219-53-4 (23 Years)
Offensive Formation	Pro Set
Defensive Formation	4-3 Multiple
All-Time Record	369-183-17
Seasons	52
Bowl Appearances	28
Consecutive Bowl Appearances	17

FORMATION PERSONNEL DURING THE GAME THAT THEY WILL NEED LOCKER ROOM ACCESS. (FSU players have been assured they will be told on a game-by-game basis whether there will be female reporters in the locker room — a courtesy we feel must be extended.)

5. Exit from the locker room and access back to the press box can be made through the player entrance to the stadium.

Each visiting team will set its own post-game interview policy, which will be announced on the inside public address system in the fourth quarter. Check with the opposing team's sports information personnel in the press box if you have any other questions.

There is an interview room outside the visitors' locker room, where the visiting head coach and/or players may be brought for interviews following the game. The visiting team locker room and interview area is located through the gate at the southeast corner of the field.

It is our desire at Florida State to make the post-game procedure as effective as possible for both the media and our staff. Remember, both groups have important tasks and are under extreme pressure.

The Florida State Athletic Department cannot and will not be responsible for problems incurred by any member of the media not following the above procedures. Security personnel will facilitate only those following the proper guidelines. However, if you encounter a problem while following this procedure, please inform a Sports Information staff member immediately.





FOOTBALL MEDIA OUTLETS

Print Media

ASSOCIATED PRESS (Local)
(850) 224-1211 • Fax (850) 224-2099
Brent Kallestad*, 336 E. College Ave., Suite 301, Tallahassee, FL 32301

BRADENTON HERALD
(941) 745-7007
Willie Hiatt, 102 Manatee Ave., W., Bradenton, FL 34205

DAYTONA BEACH NEWS-JOURNAL
(904) 252-1511
David Markowitz*, P.O. Box 431, Daytona Beach, FL 32015

FLORIDA TIMES-UNION (Local)
(850) 224-7515
Bob Thomas*, 336 E. College Ave., Suite 304, Tallahassee, FL 32301

FLORIDA TIMES-UNION
(904) 359-4246 • Fax (904) 359-4478
Jim Nasella, Gene Frenette, Mike Bianchi (C)
One Riverside Ave., Jacksonville, FL 32202

FT. LAUDERDALE SUN-SENTINEL
(954) 356-4645 • Fax (954) 356-4676
Craig Barnes*, Dave Hyde (C), New River Center, 200 E. Las Olas Blvd., Ft. Lauderdale, FL 33301

FT. MYERS NEWS-PRESS
(941) 335-0358
Scott Korzenowski (C), 2442 Anderson Ave., Ft. Myers, FL 33901

FSVIEW
(850) 561-6653 • Fax (850) 574-6578
TBA, 1235 Airport Rd., Tallahassee, FL 32304

GAINESVILLE SUN
(352) 378-1411 • Fax (352) 338-3128
Pat Dooley, P.O. Drawer A, Gainesville, FL 32602

LAKELAND LEDGER
(941) 802-7569 • Fax (941) 802-7812
Rick Brown*, P.O. Box 408, Lakeland, FL 33802

MIAMI HERALD
(941) 376-3487 • Fax (305) 376-2295
Gary Long*, Edwin Pope (C), One Herald Plaza, Miami, FL 33101

NORTHWEST FLORIDA DAILY NEWS
(850) 863-1111
Arnold Feliciano, 200 Racetrack, Ft. Walton Beach, FL 32548

OCALA STAR-BANNER
(352) 867-4144 • Fax (352) 867-4018
Dwight Collins*, P.O. Box 490, Ocala, FL 32670

ORLANDO SENTINEL (Local)
(850) 222-5564
Steve Elling*, 336 E. College Ave., Suite 303, Tallahassee, FL 32301

ORLANDO SENTINEL
(407) 420-5474 • Fax (407) 420-5069

Larry Guest (C), Van McKenzie, P.O. Box 28333, Orlando, FL 32802

OSCEOLA, THE
(904) 222-7733 • Fax (904) 224-3627
Jerry Kutz*, Daniel Mitchell*, 402 Dunwoody St., Tallahassee, FL 32304

PALATKA DAILY NEWS
(904) 328-2721
Kerry Dunning*, 1825 St. John's Ave., Palatka, FL 32177

PALM BEACH POST
(561) 820-4440 • Fax (561) 820-4481
Dan Moffett (C), Elizabeth Clark*, 2751 S. Dixie Highway, W. Palm Beach, FL 33405

PANAMA CITY NEWS-HERALD
(850) 763-7621
Pat McCann*, P.O. Box 1940, Panama City, FL 32401

PENSACOLA NEWS-JOURNAL
(850) 435-8558
Bill Vilona*, One News-Journal Plaza, Pensacola, FL 32501

SARASOTA HERALD-TRIBUNE
(941) 957-5171 • Fax (941) 957-5276
Tom Spousta (C), Doug Fernandez, 801 S. Trail, Sarasota, FL 34236

ST. PETERSBURG TIMES
(813) 893-8123 • Fax (813) 893-8782
Brian Landman*, Hubert Mizell (C), Gary Shelton (C), P.O. Box 1121, St. Petersburg, FL 33731

TALLAHASSEE DEMOCRAT
(850) 599-2166 • Fax (850) 599-2301
Steve Ellis*, John Nogowski (C), P.O. Box 990, Tallahassee, FL 32302

TAMPA TRIBUNE (Local)
(850) 385-9961
Doug Carlson*, 2001 Scenic Road, Tallahassee, FL 32303

TAMPA TRIBUNE
(813) 272-7655 • Fax (813) 258-8504
Tom McEwen (C), David Whitley (C), P.O. Box 191, Tampa, FL 33601

UNITED PRESS INTERNATIONAL
(305) 445-1750
Les Kajos, 800 Douglas Rd., Suite 565, Coral Gables, FL 33134

Electronic Media

CABLE 47
(850) 487-3170
Charlie Allen, WFSU Television Center

CAPITOL NEWS SERVICE
(850) 224-5546
Jeff Hogan, Alia Faraj, 311 N. Adams St., Tallahassee, FL 32301

FLORIDA NEWS CHANNEL
(850) 222-6397 • Fax (850) 894-5202

Dave Reid, Keith Weiss, 1801 Halstead Blvd., Tallahassee, FL 32308

FLORIDA RADIO NETWORK
(407) 875-0740
Tom Morgan, 6000 S. Rio Grande Ave., Suite 201, Orlando, FL 32809

SEMINOLE RADIO NETWORK
(850) 893-2576
Gene Deckerhoff* (Play-by-Play), 2704 Vasser Road, Tallahassee, FL 32308

SUNSHINE NETWORK
(407) 648-1150
Paul Kennedy* (Play-by-Play), Jeff DeMoss
390 N. Orange Ave. Suite 275, Orlando, FL 32801

WCTV-TV (CBS)
(850) 893-2126 • Fax (850) 668-3851
Randy Ruditz, Mark Rushing, Dennis Schnittker,
P. O. Box 3048, Tallahassee, FL 32315

WEAR-TV
(850) 455-4599
Dan Shugart, P.O. Box 12278, Pensacola, FL 32581

WESH-TV
(407) 539-7895
Mark Middleton, 1021 N. Wymore Rd., Winter Park, FL 32789

WFTV-TV
(407) 244-8367
Pat Clarke, P.O. Box 999, Orlando, FL 32802

WJHG-TV
(850) 234-2128
Scott Rossman, P.O. Box 2349, Panama City, FL 32401

WJXT-TV
(904) 393-9845
Sam Kouvaris, P.O. Box 5270, Jacksonville, FL 32207

WMBB-TV
(904) 769-2313
Brian Davis, P.O. Box 1340, Panama City, FL 32401

WNLS RADIO
(850) 386-6143
Lee Bowen, 325 John Knox Rd, Suite E-200, Tallahassee, FL 32303

WTLV-TV
(904) 633-8806
Dan Hicken, 1070 E. Adams St., Jacksonville, FL 32202

WTNT RADIO
(850) 385-9868
Jim Crosby, 325 John Knox Rd., Suite E-200, Tallahassee, FL 32303

WTWC-TV (NBC)
(850) 893-9892 • Fax (850) 893-6974
Jim Taylor, Jason Alpert, 8440 Deer Lake Rd., Tallahassee, FL 32312

WTXL-TV (ABC)
(850) 893-1313 • Fax (850) 668-1460
Sean Woodland, Seth Grossman,
8927 Thomasville Rd., Tallahassee, FL 32312

*Beat writer (C) Columnist



FSU

MEDIA INFORMATION

SEMINOLES ON TELEVISION

Couple Florida State's Atlantic Coast Conference lineup with annual games against non-conference foes Miami and Florida, and it's hard to imagine a more difficult college football slate. Every fall, FSU's schedule catches the attention of television sports executives. Lately, the Seminoles have become a cornerstone of the networks' weekly TV lineups.

That fact was evident once again last year when all of FSU's 13 contests were broadcast through regional syndication (JP Sports) or on one of the national networks. Florida State did not disappoint as its games earned high ratings, again!

Indeed, Florida State football and Bobby Bowden have developed a following that stretches from coast to coast. The speed, excitement and tradition of the Seminoles make FSU football a fan favorite across the nation.

Since Bowden became Florida State head coach in 1976, his Seminole teams have been featured on one of the six major networks 123 times on 96 national broadcasts. In 22 years, that averages out to four network TV appearances a year. But over the past 10 seasons, that number has increased to more than eight showings a year. More often than not, Bowden's teams have starred under the television lights with a record of 98-28-3 on network TV.

In each of the past 12 years, Florida State's contests with Miami and Florida have been picked up for national television airing. Since 1968, 36 of FSU's games with its intrastate rivals were televised nationally. Now that the Tribe annually battles for the Atlantic Coast Conference crown, league games with Clemson,

Bowden Show Station List

MARKET	STATION	AFFILIATION
Ft. Myers	WFTX	FOX
Jacksonville	WJXX	ABC
Miami	WAMI	IND
Orlando	WESH	NBC
Panama City	WJHG	NBC
Pensacola	WEAR	ABC
Tallahassee	WCTV	CBS
Tampa	WFLA	NBC
W. Palm Beach	WPEC	CBS
Sunshine Network, Fox Sports South and HTS (Cable)		

Station Listing subject to change.

Georgia Tech, North Carolina, N.C. State and Virginia pose attractive matchups for national and regional audiences.

All-time, the Seminoles' record on television is 116-35-4 since the first appearance in the 1958 Bluegrass Bowl against Oklahoma State, aired by ABC. FSU has appeared on that network more than any other, with 69 showings. CBS has televised 15 Tribe contests, WTBS nine and ESPN 32, including five games in 1989.

Florida State's membership in the Atlantic Coast Conference ensures that FSU football will be seen up and down

The Bobby Bowden Show

Televised weekly during the football season, "The Bobby Bowden Show" is one of the most entertaining and informative coaches shows in the nation. Combine the downhome commentary of the Florida State head coach with some of the most exciting action in the nation, and the result is an insightful half-hour of football and fun.

Each week, co-host Gene Deckerhoff leads Seminole Head Coach Bobby Bowden through a review of Florida State's previous game, with Bowden offering commentary on the action. The two also take a look at FSU's upcoming opponent.

In a special weekly segment, the Seminoles' self-proclaimed No. 1 fan — actor Burt Reynolds — will present a "Great Moment in Florida State History."

"The Bobby Bowden Show," a syndicated production of Host Communications, Inc., is seen in some of the Southeast's top media markets and throughout the state of Florida each week. Check local listings of the stations below to find the day and time the show airs in each market.

the eastern seaboard on Jefferson Pilot Sports broadcasts. Through JP's relationship with the conference, the 1997 Seminoles were featured four times on the "ACC Game of the Week," and are scheduled for several more appearances in 1998. JP's impressive list of affiliates includes stations throughout Florida, Georgia, the Carolinas, Virginia, Maryland and Washington, D.C.

Whether on ESPN, ABC, NBC, regionally on stations across the ACC, or statewide, the Seminoles' television attractiveness is clear. Want to see the Seminoles in Charlotte? Minneapolis? Los Angeles? Just turn on the TV.





FSU TELEVISION APPEARANCES

Won 116, Lost 35, Tied 4

YEAR	OPPONENT	SITE	SCORE	NETWORK	BOWL
1958	Oklahoma State	Louisville, KY	6-15	ABC*	Bluegrass
1959	Virginia Tech	Blacksburg, VA	7-6	ABC	-
1965	Oklahoma	Jacksonville, FL	36-19	ABC*	Gator
1966	Virginia Tech	Blacksburg, VA	21-23	ABC	-
	Wyoming	El Paso, TX	20-28	NBC*	Sun
1967	Memphis State	Memphis, TN	26-7	ABC	-
	Penn State	Jacksonville, FL	17-17	ABC*	Gator
1968	Florida	Tallahassee, FL	9-3	ABC	-
	Louisiana State	Atlanta, GA	27-31	TV-Sports*	Peach
1969	N.C. State	Tallahassee, FL	33-22	ABC	-
1970	Houston	Tampa, FL	21-53	ABC	-
1971	Miami	Miami, FL	20-17	ABC	-
	Arizona State	Tempe, AZ	38-45	Mizlou	Fiesta
1972	Auburn	Auburn, AL	14-27	ABC	-
1977	Florida	Gainesville, FL	37-9	ABC	-
	Texas Tech	Orlando, FL	40-17	Mizlou*	Tangerine
1978	Miami	Miami, FL	31-21	ABC	-
	Navy	Tallahassee, FL	38-6	ABC	-
1979	Virginia Tech	Blacksburg, VA	17-10	ABC	-
	Louisiana State	Baton Rouge, LA	24-19	ABC	-
	Florida	Gainesville, FL	27-16	ABC*	-
	Oklahoma	Miami, FL	7-24	NBC*	Orange
1980	Memphis State	Memphis, TN	24-3	ABC	-
	Virginia Tech	Tallahassee, FL	31-7	ABC	-
	Florida	Tallahassee, FL	17-13	ABC*	-
	Oklahoma	Miami, FL	17-18	NBC*	Orange
1981	Miami	Tallahassee, FL	19-27	ABC	-
	Southern Miss	Tallahassee, FL	14-58	ABC	-
1982	Miami	Miami, FL	24-7	CBS	-
	Louisville	Tallahassee, FL	49-14	WTBS*	-
	West Virginia	Jacksonville, FL	31-12	ABC*	Gator
1983	Louisiana State	Baton Rouge, LA	40-35	ABC	-
	Louisville	Tallahassee, FL	51-7	WTBS*	-
	Florida	Gainesville, FL	14-53	CBS*	-
	North Carolina	Atlanta, GA	28-3	CBS*	Peach
1984	South Carolina	Columbia, SC	26-38	ABC*	-
	Florida	Tallahassee, FL	17-27	ABC*	-
	Georgia	Orlando, FL	17-17	NBC*	Citrus
1985	Tulane	New Orleans, LA	38-12	WTBS*	-
	Nebraska	Lincoln, NE	17-13	ABC*	-
	Memphis State	Tallahassee, FL	19-10	WTBS*	-
	Auburn	Auburn, AL	28-59	WTBS*	-
	Miami	Tallahassee, FL	27-35	ABC	-
	South Carolina	Tallahassee, FL	56-14	ESPN*	-
	Oklahoma State	Jacksonville, FL	34-23	ABC*	Gator
1986	Nebraska	Lincoln, NE	17-34	ABC*	-
	North Carolina	Tallahassee, FL	10-10	WTBS*	-
	Miami	Miami, FL	23-41	CBS*	-
	Indiana	Birmingham, AL	27-13	WTBS*	All-American
1987	Miami	Tallahassee, FL	25-26	CBS*	-
	Auburn	Auburn, AL	34-6	CBS*	-
	Florida	Gainesville, FL	28-14	CBS*	-
1988	Nebraska	Tempe, AZ	31-28	NBC*	Fiesta
	Miami	Miami, FL	0-31	CBS*	-

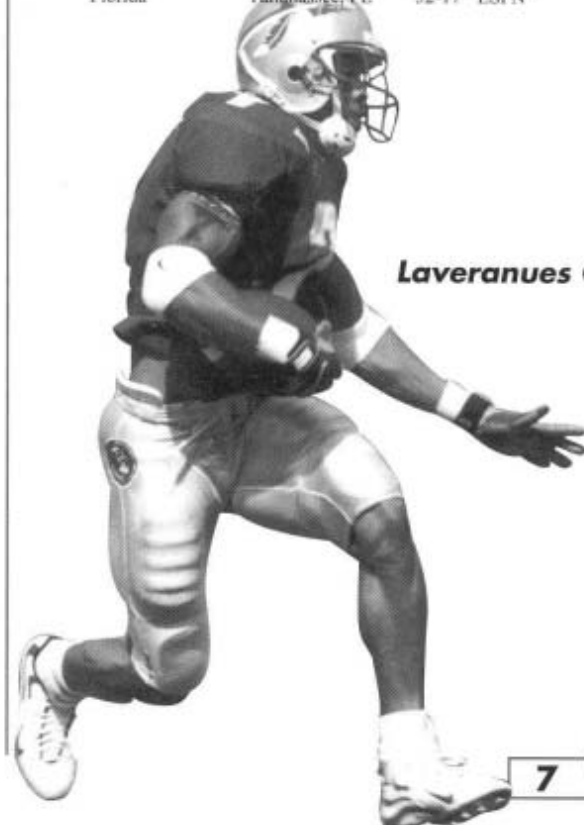
SEMINOLE SIDELINE



Streaks Aiming For 13

FLORIDA STATE BEGINS the 1999 season with several records on the line, but perhaps the most impressive are the string of consecutive 10-win seasons and the Associated Press Top Four finishes. FSU is the only program in college football history which has finished among the Top Four in the AP poll for 12 consecutive years. In fact, the next longest streak was Miami's seven-year run among the Top Four from 1986-92. Currently, FSU's 12-year streak's closest challenger is just a three-year appearance by Florida. The Seminoles also own an NCAA record 10 or more wins in 12 straight seasons. The achievements have made Florida State the most successful program in the '90s, as well as the most successful over the last decade. ■

Clemson	Clemson, SC	24-21	CBS*	-
Michigan State	Tallahassee, FL	30-7	ESPN*	-
South Carolina	Columbia, SC	59-0	ESPN*	-
Florida	Tallahassee, FL	52-17	ESPN*	-



Laveranues Coles





1989	Auburn	New Orleans, LA	13- 7	ABC*	Sugar	Virginia	Tallahassee, FL	31-24	ABC	-	
	Southern Miss	Jacksonville, FL	26-30	WTBS*	-	Georgia Tech	Atlanta, GA	49- 3	ESPN*	-	
	Clemson	Tallahassee, FL	23-34	ESPN*	-	Wake Forest	Orlando, FL	44- 7	JP Sports	-	
	Louisiana State	Baton Rouge, LA	31-21	ESPN*	-	Southern Miss	Tallahassee, FL	54-14	ESPN2*	-	
	Auburn	Tallahassee, FL	22-14	ESPN*	-	Maryland	Miami, FL	48-10	ABC	-	
	Miami	Tallahassee, FL	24-10	ESPN*	-	Florida	Tallahassee, FL	24-21	ABC*	-	
	Florida	Gainesville, FL	24-17	ESPN*	-	Florida	New Orleans, LA	20-52	ABC*	Sugar	
	Nebraska	Tempe, AZ	41-17	NBC*	Fiesta	1997	USC	Los Angeles	14- 7	ABC*	-
1990	Miami	Miami, FL	22-31	CBS*	-	Maryland	Tallahassee, FL	50- 7	ABC	-	
	Auburn	Auburn, AL	17-20	ESPN*	-	Clemson	Clemson, SC	35-28	ABC	-	
	Louisiana State	Tallahassee, FL	42- 3	WTBS*	-	Miami	Tallahassee, FL	47- 0	ABC	-	
	Florida	Tallahassee, FL	45-30	ESPN*	-	Duke	Durham, NC	51- 27	JP	-	
	Penn State	Miami, FL	24-17	Raycom*	Blockbuster	Georgia Tech	Tallahassee, FL	38- 0	ABC	-	
1991	Brigham Young	Anaheim, CA	44-28	Raycom*	-	Virginia	Charlottesville, VA	47-21	ESPN*	-	
	Michigan	Ann Arbor, MI	51-31	ABC*	-	N.C. State	Tallahassee, FL	48-35	ABC	-	
	Syracuse	Tallahassee, FL	46-14	ABC	-	North Carolina	Chapel Hill, NC	20- 3	ESPN*	-	
	Louisiana State	Baton Rouge, LA	27-16	ESPN*	-	Wake Forest	Tallahassee, FL	58- 7	JP	-	
	Miami	Tallahassee, FL	16-17	ABC*	-	Florida	Gainesville, FL	29-32	CBS*	-	
	Florida	Gainesville, FL	9-14	ABC*	-	Ohio State	New Orleans, LA	31-14	ABC*	Sugar	
	Texas A&M	Dallas, TX	10- 2	CBS*	Cotton	1998	Texas A&M	E. Rutherford, NJ	23-14	ABC*	-
1992	Clemson	Clemson, SC	24-20	ESPN*	-	N.C. State	Raleigh, NC	7-24	ABC	-	
	N.C. State	Raleigh, NC	34-13	JP Sports	-	Duke	Tallahassee, FL	62-13	Sunshine	-	
	Miami	Miami, FL	16-19	ABC*	-	USC	Tallahassee, FL	30-10	ABC	-	
	North Carolina	Tallahassee, FL	36-13	JP Sports	-	Maryland	College Park, MD	24-10	Sunshine	-	
	Georgia Tech	Atlanta, GA	29-24	ESPN*	-	Miami	Miami, FL	26-14	CBS	-	
	Maryland	Tallahassee, FL	69-21	JP Sports	-	Clemson	Tallahassee, FL	48- 0	ESPN*	-	
	Florida	Tallahassee, FL	45-24	ABC*	-	Georgia Tech	Atlanta, GA	34- 7	ESPN*	-	
	Nebraska	Miami, FL	27-14	NBC*	Orange	North Carolina	Tallahassee, FL	39-13	ESPN*	-	
1993	Kansas	E. Rutherford, NJ	42- 0	ABC*	-	Virginia	Tallahassee, FL	45-14	ABC	-	
	Clemson	Tallahassee, FL	57- 0	JP Sports	-	Wake Forest	Winston-Salem, NC	24- 7	ESPN2*	-	
	North Carolina	Chapel Hill, NC	33- 7	ESPN*	-	Florida	Tallahassee, FL	23-12	ABC*	-	
	Georgia Tech	Tallahassee, FL	51- 0	ABC	-	Tennessee	Tempe, AZ	16-23	ABC*	Fiesta	
	Miami	Tallahassee, FL	28-10	ABC*	-						
	Virginia	Tallahassee, FL	40-14	ESPN*	-						
	Maryland	College Park, MD	49-20	JP Sports	-						
	Notre Dame	South Bend, IN	24-31	NBC*	-						
	N.C. State	Tallahassee, FL	62- 3	ESPN*	-						
	Florida	Gainesville, FL	33-21	ABC*	-						
	Nebraska	Miami, FL	18-16	NBC*	Orange						
1994	Virginia	Tallahassee, FL	41-17	ABC	-						
	Maryland	College Park, MD	52-20	JP Sports	-						
	North Carolina	Tallahassee, FL	31-18	ESPN*	-						
	Miami	Miami, FL	20-34	ESPN*	-						
	Clemson	Tallahassee, FL	17- 0	JP Sports	-						
	Duke	Tallahassee, FL	59-20	JP Sports	-						
	Georgia Tech	Atlanta, GA	41-10	JP Sports	-						
	Notre Dame	Orlando, FL	23-16	ABC*	-						
	N.C. State	Raleigh, NC	34- 3	ESPN*	-						
	Florida	Tallahassee, FL	31-31	ABC*	-						
	Florida	New Orleans, LA	23-17	ABC*	Sugar						
1995	Duke	Orlando, FL	70-26	ABC	-						
	Clemson	Clemson, SC	45-26	ABC*	-						
	N.C. State	Tallahassee, FL	77-17	JP Sports	-						
	Miami	Tallahassee, FL	41-17	ESPN*	-						
	Georgia Tech	Tallahassee, FL	42-10	ABC	-						
	Virginia	Charlottesville, VA	28-33	ESPN*	-						
	North Carolina	Chapel Hill, NC	28-12	JP Sports	-						
	Maryland	Tallahassee, FL	59-17	JP Sports	-						
	Florida	Gainesville, FL	24-35	ABC	-						
	Notre Dame	Miami, FL	31-26	CBS*	Orange						
1996	Duke	Tallahassee, FL	44- 7	ABC	-						
	N.C. State	Raleigh, NC	51-17	ESPN*	-						
	North Carolina	Tallahassee, FL	13- 0	ABC	-						
	Clemson	Tallahassee, FL	34- 3	ESPN*	-						
	Miami	Miami, FL	34-16	CBS*	-						

*Nationally televised



The Symbol: Seminoles

FLORIDA STATE WOULD PLAY TWO football games in 1947 before students demanded the school acquire a symbol.

SEMINOLE SIDELINE



While details conflict, most believe the account of a poll of the student body is accurate. *The Florida Flambeau* reported that "Seminoles" had won by 110 votes over "Statesmen." The rest of the top contenders in order were "Rebels," "Tarpons," "Fighting Warriors" and "Crackers." In the 1950s, a pair of students dressed in "Indian" costumes and joined the cheerleaders on the field which eventually evolved into the majestic symbol of Osceola and Renegade that FSU enjoys today. Today, the Seminole Indian Tribe is invited to participate in many campus activities, including Homecoming (photo).

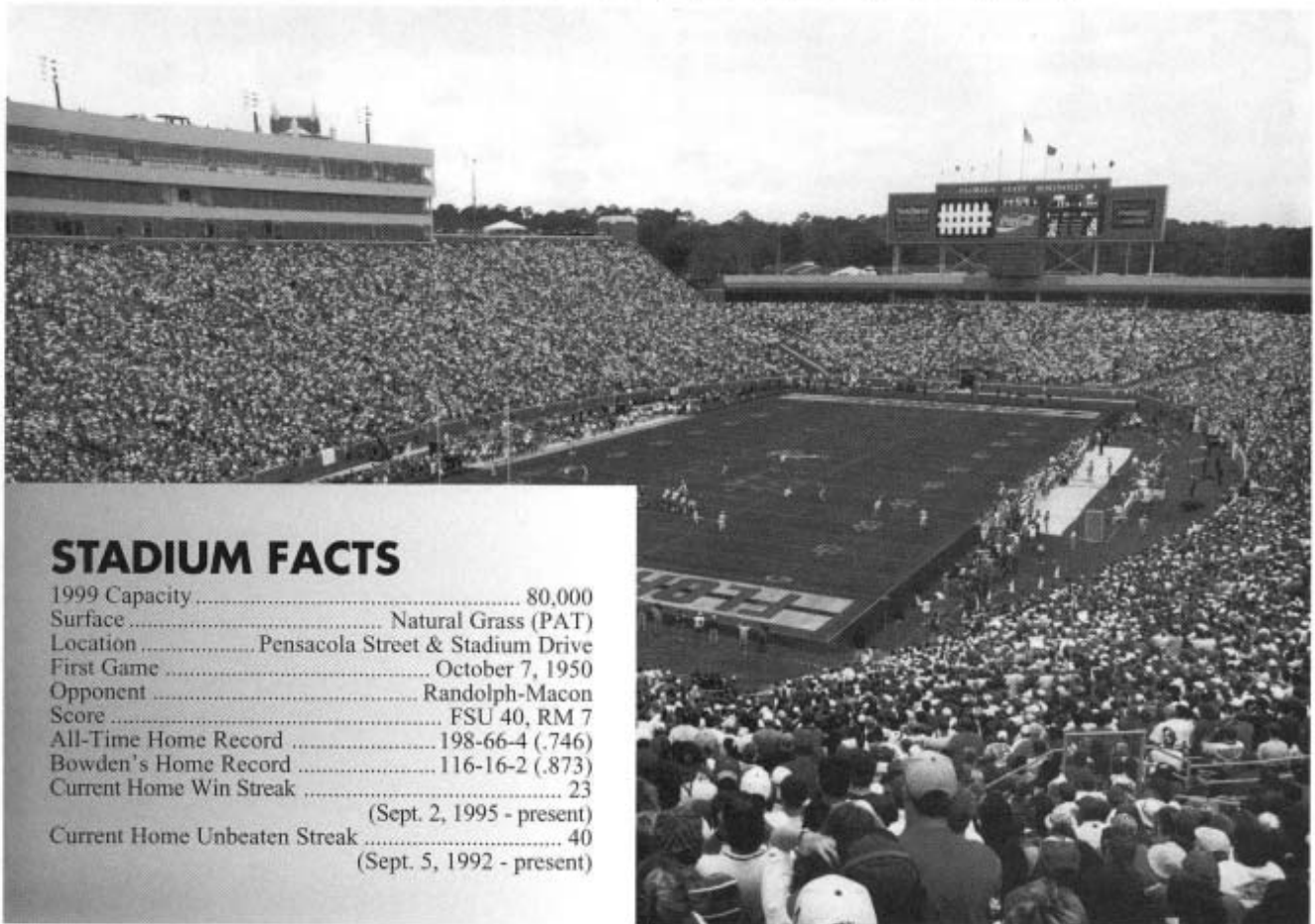
Florida State University is proud of its longstanding cooperative relationship with the Seminole Tribe of Florida. The Seminole people have suffered many hardships and injustices but they have remained brave, dignified and proud. They are unconquered. They symbolize what we hope will be the traits of all of our graduates, including our student athletes.

We know you cannot win all of the time on the playing field or in life, but we want our students to be unconquered and always ready to try again. ■





50 YEARS IN DOAK CAMPBELL STADIUM



STADIUM FACTS

1999 Capacity	80,000
Surface	Natural Grass (PAT)
Location	Pensacola Street & Stadium Drive
First Game	October 7, 1950
Opponent	Randolph-Macon
Score	FSU 40, RM 7
All-Time Home Record	198-66-4 (.746)
Bowden's Home Record	116-16-2 (.873)
Current Home Win Streak	23
	(Sept. 2, 1995 - present)
Current Home Unbeaten Streak	40
	(Sept. 5, 1992 - present)

From a maximum capacity of 15,000 in 1953 to a record crowd of 81,614 against Florida in 1998, Doak S. Campbell Stadium has risen alongside the Florida State football program to the top of the college football ladder. With final phases of construction completed, Seminole fans are welcomed with state-of-the-art additions.

The newest portion of the stadium is the south end zone, where the last bricks have been placed on the exterior of the stadium wall and the interior received its final finishing touches. The south end zone houses the Florida State school of hospitality education where students in the program receive hands-on experience in various aspects of the food and beverage industry. The multi-level facility includes a food court, a restaurant and a sports grill on the top floor that gives a panoramic view of Doak Campbell Stadium.

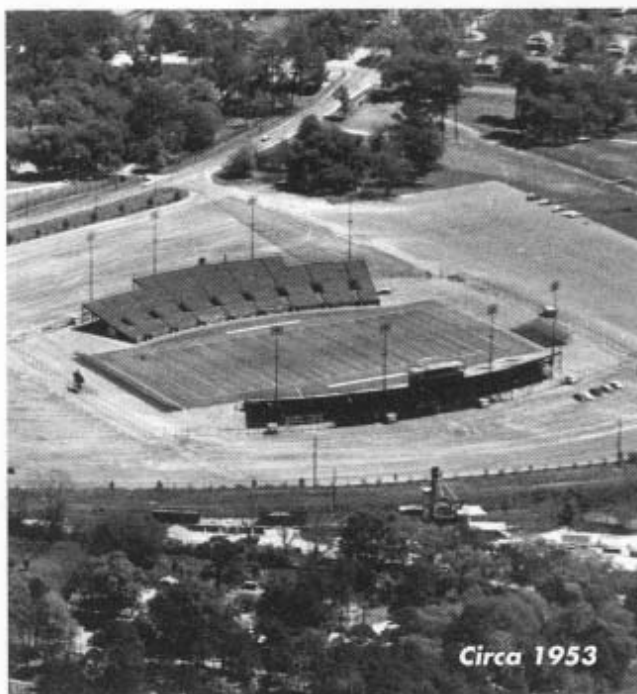
The north endzone, which consisted of wooden bleachers until the 1994 season kicked off, is topped by the offices of the

football coaches. The offices, which also overlook the field, are just part of the Daisy Parker Flory wing of the Moore Athletic Center which include a number of new amenities for the football staff. In addition, the new wing allowed athletic offices housed in Tully Gym to move over to the Moore Athletic Center and be under one roof for the first time in school history.

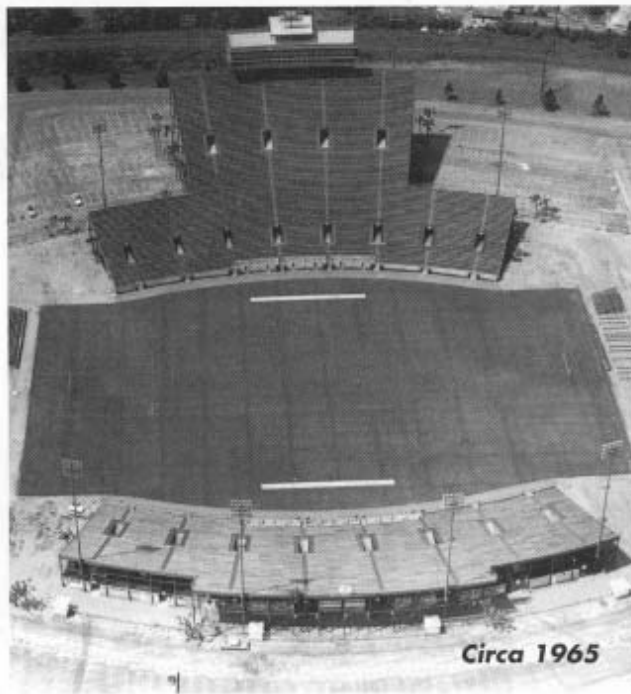
Towering above college football action below from the east side are skyboxes which stretch from goal line to goal line. Newly added skyboxes are located above the west stands on the eighth floor. The new west addition also houses the president's level on the seventh floor (which includes an open air terrace in the northwest corner) and one of the largest press boxes in college football that seats over 200 members of the media.

A brick facade surrounds the stadium, matching the architectural design of many of Florida State's campus buildings. The University Center surrounds Doak





Circa 1953



Circa 1965

Campbell Stadium and houses numerous offices that were formerly located on the interior of the FSU campus.

Inside Doak Campbell, the lowest tier of field level seats has been removed, providing increased sideline space and better viewing lines for the first few rows of fans. A matching brick wall has been constructed along the east and west sidelines, limiting field access, increasing safety and giving the inside of the stadium a whole new look.

The increased seating capacity of Doak Campbell Stadium, now at 80,000, means more fans, and no place for all the noise they make to go. That means an even louder stadium. As if Bobby Bowden and his team needed any more home field advantage!

The Seminoles currently own a 23-game home winning streak and have not been beaten in their last 40. In its last 68 home games, FSU is 65-2-1. Bobby Bowden's Florida State teams have lost only 16 games at home in 23 years, giving the coach an impressive 116-16-2 record and .873 winning percentage in Tallahassee. A milestone was reached on September 28, 1996 when Bowden won his 100th game in Doak Campbell Stadium as Florida State's head coach with a 13-0 victory over North Carolina.

But the winning feeling of Doak Campbell Stadium goes back before Bowden. All-time, Florida State is 198-66-4 in 268 home games for a winning percentage of .746.

Since the stadium first opened on Oct. 7, 1950 with Florida State taking a 40-7 victory over the Randolph-Macon Yellowjackets, millions of fans have packed Doak Campbell to see the finest in college football action. In 1998, Florida State set a single season attendance mark by drawing 482,941 fans over six home games.

The latest expansion is the ninth in the history of the stadium. The current capacity of 80,000 reflects an increase of 19,481 since the end of the 1991 season.

Florida State first began play at Centennial Field for the

CAMPBELL STADIUM'S TOP 25 CROWDS

NO.	ATT.	YEAR	OPPONENT	FSU	OPP
1.	81,614	1998	Florida	23	12
2.	81,120	1998	Virginia	45	14
3.	80,932	1996	Florida	24	21
4.	80,350	1995	Miami	41	17
5.	80,310	1998	Clemson	48	0
6.	80,237	1996	Virginia	31	24
7.	80,210	1994	Florida	31	31
8.	80,165	1997	Miami	47	0
9.	80,120	1996	North Carolina	13	0
10.	80,050	1998	North Carolina	39	13
11.	80,032	1998	Duke	62	13
12.	79,815	1998	Southern Cal	30	10
13.	78,157	1997	Georgia Tech	38	0
14.	78,111	1994	North Carolina	31	18
15.	77,813	1993	Miami	28	10
16.	77,280	1996	Southern Miss	54	14
17.	76,607	1993	Virginia	40	14
18.	76,600	1995	Central Florida	46	14
19.	76,400	1995	Georgia Tech	42	10
20.	76,360	1996	Clemson	34	3
21.	75,902	1994	Clemson	17	0
22.	74,991	1993	Clemson	57	0
23.	74,611	1993	Georgia Tech	51	0
24.	74,551	1994	Virginia	41	17
25.	73,899	1994	Duke	59	20





Circa 1978

SEMINOLE SIDeline



Home Sweet Home

WHILE BOBBY BOWDEN has not felt the need to tag a nickname on Doak Campbell Stadium, the Seminoles home field has proven an impossible place, literally, for opponents to win. Florida State enters 1999 with a 40-game home unbeaten streak that dates back to Miami's dramatic 17-16 win in Tallahassee in 1991. Bowden has a sparkling 116-16-2 record at Doak Campbell Stadium and is 65-2-1 at home since the middle of the 1987 season.

FSU's 31-31 tie against Florida in 1995 set an NCAA record for the biggest comeback (28 points) in NCAA history, and its the only home game FSU has not won since 1991. ■

TOP SINGLE SEASON HOME ATTENDANCES

NO.	YEAR	GAMES	TOTAL	AVERAGE
1.	1998	6	482,941	80,490
2.	1996	6	465,200	77,533
3.	1994	5	382,663	76,533
4.	1995	6	447,950	74,658
5.	1997	5	372,001	74,400
6.	1993	6	443,811	73,968
7.	1992	6	376,784	62,797
8.	1989	6	368,185	61,364
9.	1991	6	367,833	61,305
10.	1990	6	367,374	61,229

STADIUM CAPACITIES SINCE 1950

YEARS	CAPACITY
1950-53	15,000
1954-60	19,000
1961-63	25,000
1964-77	40,500
1978-79	47,413
1980-81	51,094
1982-84	55,246
1985-91	60,519
1992	70,123
1993	72,589
1994	75,000
1995	77,500
1996-99	80,000

inaugural 1947 season. In the three seasons that the Seminoles called Centennial Field their home, FSU had an overall home record of 8-4, including Coach Don Veller's undefeated 8-0 home mark in the 1948 and '49 seasons, respectively.

It's hard to imagine the first Doak Campbell Stadium, with a capacity of 15,000 back in 1950. In 1954, the stadium grew to a capacity of 19,000. Six thousand more seats were added in 1961. During the Bill Peterson era (1960-70), the stadium was expanded to 40,500 seats, and it remained at that capacity for the next 14 years. Between 1978 and 1982, there were three more additions.

Named for Doak S. Campbell, the first president of Florida State University, the stadium sits adjacent to the Moore Athletic Center on the edge of the main campus. The stadium seats, each one offering an unrestricted view, rise out of a Bermuda grass turf enclosing the field. Fans enjoy all the modern conveniences with spacious aisles, numerous concession areas and plenty of rest room facilities. A professional public address system, first aid booths and effective security system operate at every Seminole home game.

The field itself is one of the finest in college football, carefully managed and manicured year-round. A prescription athletic turf (PAT) system installed in 1988 and completely resodded over two ago, quickly alleviates drainage problems through a series of underground pumps. The field can go from seemingly flooded to merely wet in a matter of minutes, thanks to the pumps, which allow a deeper root system in the natural turf.

Both stadium scoreboards are new. The large scoreboard made its debut in 1992 and features the most technologically advanced scoreboard computer animation system in existence. Entertaining graphics, as well as factual information, make the board a valuable addition to FSU home games.

The 160-foot wide structure was raised to sit on top of the new wing of the Moore Athletic Center in the north end zone following the '93 season. The newest scoreboard is above the south end zone and clearly and conveniently provides all basic information.

With the changes already made since last season, Doak Campbell is growing and improving faster than ever before. Like its residents, the most successful college football program over the past decade, Doak Campbell Stadium has become a fitting showcase for Florida State University.



SEMINOLE ATHLETICS NETWORK

Florida State fans can follow their Seminoles whether on the road or at home by listening to one of the nation's finest sports broadcasts when Gene Deckerhoff, Peter Tom Willis and the entire pre-game crew bring you all the action on the Seminole Athletics Network. The show brings pre-game predictions, all the game action, and post-game analysis, to fans, alumni and college football enthusiasts across a five state area. In addition to a strong presence throughout Florida, Georgia and Alabama, stations from North and South Carolina will carry the Seminole football broadcast in 1999.



Gene Deckerhoff

The Seminole Athletics Network is owned and operated by Host/USA Sports, one of the nation's leaders in collegiate sports broadcasting. Florida State joined forces with the Lexington, Ky., based company to establish a comprehensive marketing opportunity which includes radio, television, print and corporate sponsorship components.

In addition to Florida State, Host owns the rights to the networks of other outstanding schools like Texas, Virginia, Kentucky, Tennessee, South Carolina and Mississippi State. Host has a long-term broadcast and print relationship with the National Collegiate Athletic Association.

The Seminole Athletics Network will reach into nearly 60 markets in 1999, including some of the largest in the country. In Tallahassee, all the Seminole football action can be heard on flagship station WTNT-FM (94.9).

Florida State's professional broadcast crew is known as one of the nation's best as they provide insight and entertainment, as well as detailed and expert play-by-play.

The broadcast features award-winning play-by-play announcer Gene Deckerhoff, a 21-year veteran of the FSU radio network. He is joined for portions of the pre- and post-game shows by Tallahassee television sportscaster Tom Block. After the game, the popular "Seminole Calls" show allows listeners to call in with their questions and opinions on the just-completed game.

Deckerhoff is nationally known as one of the finest announcers in the South. The "Voice of the Seminoles" for the past 20 years, he is an eight-time Florida Sportscaster of the Year. In 17 of the past 21 years, Deckerhoff has been named the best college



Peter Tom Willis

and pro football play-by-play announcer in the state by the Florida Sportscasters Association.

A native of Jacksonville, Fla., Deckerhoff has been the play-by-play announcer for the Tampa Bay Buccaneers of the NFL for the past 10 years, making for some very busy fall weekends. Deckerhoff is also the producer and co-host of "The Bobby Bowden Show," and co-host of Bowden's weekly call-in radio show. He runs Gene Deckerhoff Productions, a firm specializing in sports broadcasting and the production of radio and television commercials.

Last year, Peter Tom Willis joined the announcing crew as the color commentator. Willis, a former FSU and NFL quarterback, currently plays for the Tampa Bay Storm. He is a member of the FSU Sports Hall of Fame and is considered one of the finest players in FSU history. Willis replaced the late Vic Prinzi who passed away in 1997 after serving as the long time partner with Deckerhoff on football Saturdays.

Florida State's game-day broadcasts begin 90 minutes prior to every kickoff on the stations listed in the chart on this page.

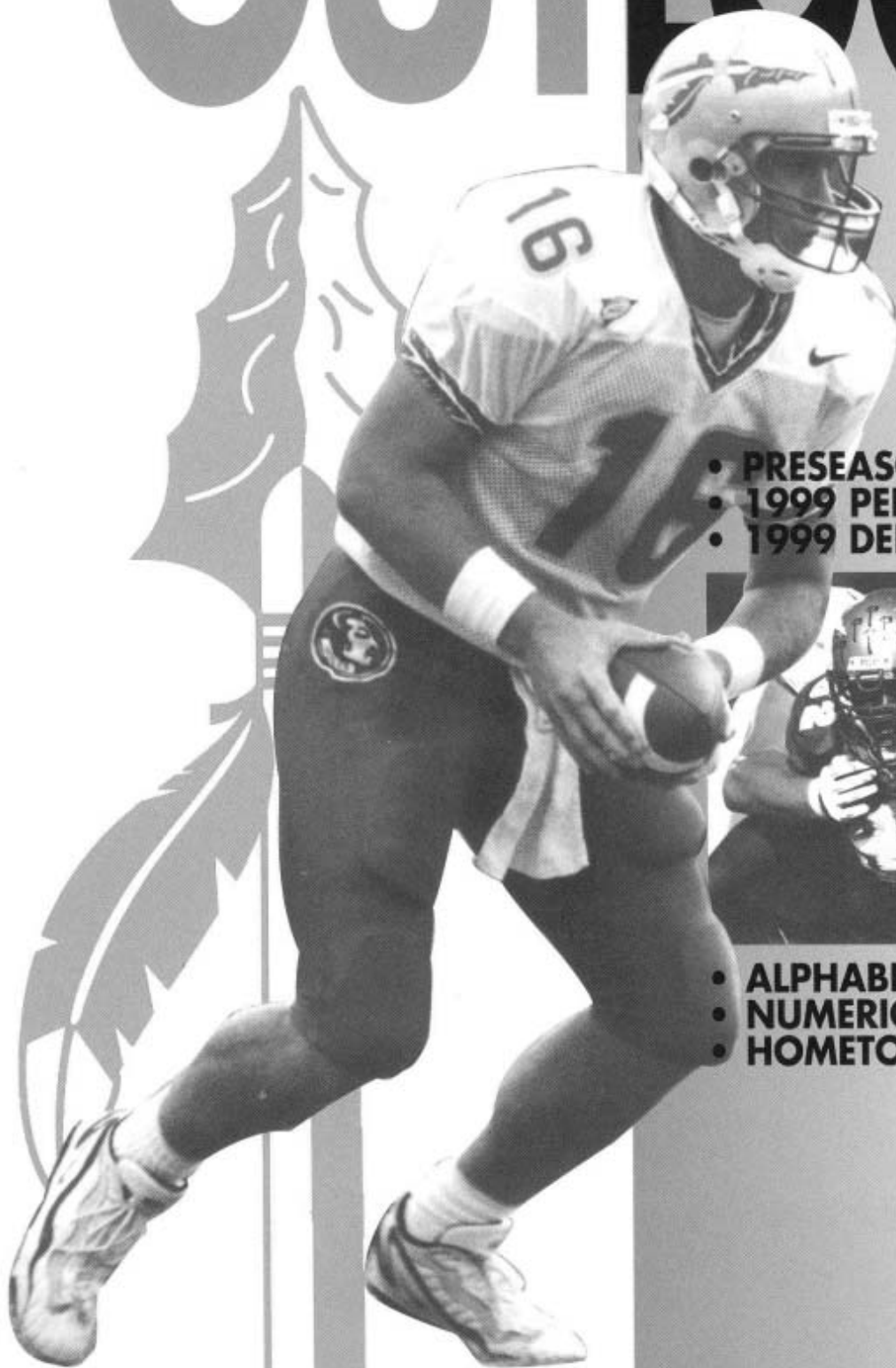
1999 Radio Station List

Market	Station	Freq.
Apalachicola	WOYS-FM	100.5
Belle Glade	WBGP-FM	93.5
Bradenton	WSPB-AM	1450
Chattahoochee	WTCL-AM	1580
Chiefland	WLQH-AM	940
Cocoa	WMMB-AM	1240
Crawfordville	WAKU-FM	94.1
Crystal River	WXOF-FM	97.1
Daytona Beach	WKRO-FM	93.1
DeFuniak Springs	WZEP-AM	1460
Destin	WMMK-FM	92.1
Donaldsonville, GA	WBBK-FM	93.1
Dothan, AL	WBBK-FM	93.1
Eastpoint	WOCY-FM	106.5
Englewood	WENG-AM	1530
Eustis	WKIQ-AM	1240
Ft. Lauderdale	WQAM-AM	560
Ft. Myers	WJST-FM	106.3
Ft. Pierce	WAXE-AM	1370
Ft. Walton	WMMK-FM	92.1
Gainesville	WSKY-FM	97.3
Graceville	WYDA-FM	101.7
Jacksonville	WBGB-FM	106.5
Lake City	WGRO-AM	960
Lakeland	WLKF-AM	1430
Leesburg	WKIQ-AM	1240
Live Oak	WQHL-FM	98.1
Macclenny	WJXR-FM	92.1
Madison	WMAF-AM	1230
Marco Island	WGCQ-FM	92.1
Marianna	WJAQ-FM	100.9
	WTOT-AM	980
Melbourne	WMV-AM	1350
Miami	WINZ-AM	940
Milton	WEBY-AM	1330
Naples	WGCQ-FM	92.1
Ocala	WOCA-AM	1370
Orlando	WKRO-FM	93.1
Palatka	WPLK-AM	1260
Panama City	WYOO-FM	101.3
Pensacola	WPFL-FM	105.1
Perry	WNFK-FM	105.5
	WPRY-AM	1400
Sarasota	WSPB-AM	1400
St. Augustine	WFOY-AM	1240
Stuart	WSTU-AM	1450
Tallahassee	WTNT-FM	94.9
	WNLS-AM	1270
Tampa/St. Pete	WDAE-AM	1250
Vero Beach	WAXE-AM	1370
West Palm Beach	WDJA-AM	850

Stations Subject to Change



1999 OUTLOOK



- PRESEASON OUTLOOK
- 1999 PERSONNEL
- 1999 DEPTH CHART



- ALPHABETICAL ROSTER
- NUMERICAL ROSTER
- HOMETOWN ROSTER

FSU

1999 PREVIEW

1999 PRESEASON OUTLOOK

Florida State returns 16 starters and all its primary special teams players from last year's team that finished 11-2 and just short of a second national championship. The Seminoles did keep their incredible streak of 12 consecutive years of finishing among the Associated Press Top Four in tact and

have had in a long time," said Bobby Bowden, who begins his 24th season at FSU in 1999. "When I reflect on last year I think if we were just a little bit better we win it all. Now, we have most of these kids back. I see the key this year as being hungry. Is this team hungry? That's the thing about being around the top all the time,

"We have as many returning players as we have had in a long time," said Bobby Bowden. "When I reflect on last year I think if we were just a little bit better we win it all...I see the key this year as being hungry...They look like they have worked real hard and the coaches haven't let up."

also extended college football's longest run of consecutive 10-win seasons to a dozen.

While Florida State must replace some talented players at key positions, the Tribe's roster will look awfully familiar to opponents in 1999. The Seminoles return all their wide receivers from last year, each of their quarterbacks, their top five rushers, nine of their top 10 scorers and nine of their top 15 tacklers. In addition, the guys with no individual stats return as FSU offensive line coach Jimmy Heggins will have his entire starting unit back along with all of his reserves.

"We have as many returning players as we

you are always afraid someone is going to lose their hunger. We haven't seen any indication of it. When you go through the off-season program, you look to see if you see a bunch of kids

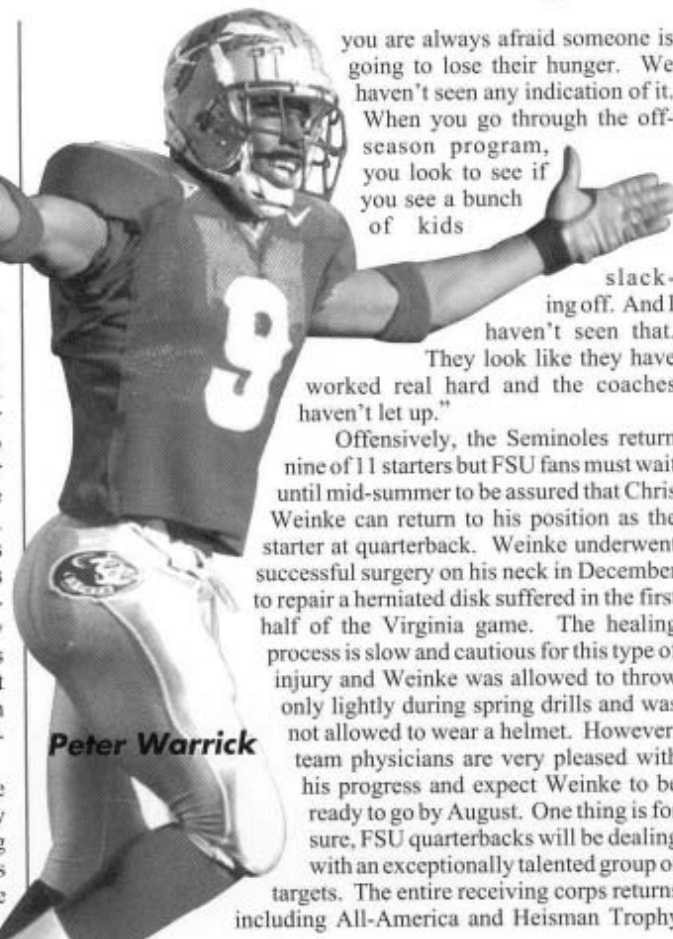
slack-ing off. And I haven't seen that.

They look like they have worked real hard and the coaches haven't let up."

Offensively, the Seminoles return nine of 11 starters but FSU fans must wait until mid-summer to be assured that Chris Weinke can return to his position as the starter at quarterback. Weinke underwent successful surgery on his neck in December to repair a herniated disk suffered in the first half of the Virginia game. The healing process is slow and cautious for this type of injury and Weinke was allowed to throw only lightly during spring drills and was not allowed to wear a helmet. However, team physicians are very pleased with his progress and expect Weinke to be ready to go by August. One thing is for sure, FSU quarterbacks will be dealing with an exceptionally talented group of targets. The entire receiving corps returns including All-America and Heisman Trophy



Chris Weinke



Peter Warrick





candidate Peter Warrick, Ron Dugans and Laveranues Coles. They have a chance to become the Seminole's finest group of receivers ever. Another all-star candidate returns at running back in Travis Minor and all five offensive linemen return from last year's squad, including All-America guard Jason Whitaker and All-ACC tackle Ross Brannon.

"We do expect to have Weinke back and we will be a lot better with him because of his experience and leadership, but we've got to prepare in case he won't be there," said Bowden. "Weinke brings so much to our offensive scheme and if he picks up where he left off against Virginia then we will be way ahead of the game offensively. However, I still like the entire group of quarterbacks. We've got Marcus Outzen with three starts under his belt and we got a lot of work for Jared Jones in the spring. They actually enter the fall in a dead heat for the spot behind Weinke. Walk-on Rich Maher is a tough competitor as well and then we get a chance to see what the freshmen will look like.

"With all our receivers back and most of our top running backs, we might have the quickest skill players we've ever had here. The key for the season will probably be the improvement of the offensive line. We have a line back that took us to No. 3 in the nation last year, but they have got to improve, and they should with experience. So, that and staying away from key injuries will be as vital as any part of our football team."

Graduation and the NFL draft impacted the defensive side of the football more than the offensive side, but the Seminoles still return seven starters from last year's unit which ranked No. 1 in the nation. All-American Corey Simon returns at defensive tackle and teams with Jerry Johnson to give the Tribe the nation's top inside pair. Roland Seymour is back at left defensive end and will book-end with Jamal Reynolds for another formidable FSU defensive front. Reynolds was the most dominant player in spring drills and talented junior David Warren will see a lot of time in a reserve role on either side. The linebackers will be young and talented. Tommy Polley is the lone returning starter but Bobby Rhodes started five games last year and is experienced and tough. Coaches are very high on Brian Allen, who emerged from a fierce battle as the starter on the strong side with veteran Theon Rackley pushing him all the way. Big-hitter Bradley Jennings came out of spring as the starter at middle linebacker, and several young players will get into the mix during the fall. The secondary looks extremely tough with All-America candidates at both corners in Mario Edwards and Tay Cody teaming with a trio of hitters Derrick Gibson, Sean Key and Chris Hope playing the safety spots. In addition, the secondary is a legit two-deep at every spot.

"We need some young players to come through and be able to play on the defensive line," said Bowden. "There is opportunity there for some young players to get on the field. We feel very good about Corey (Simon) and Jerry (Johnson), but

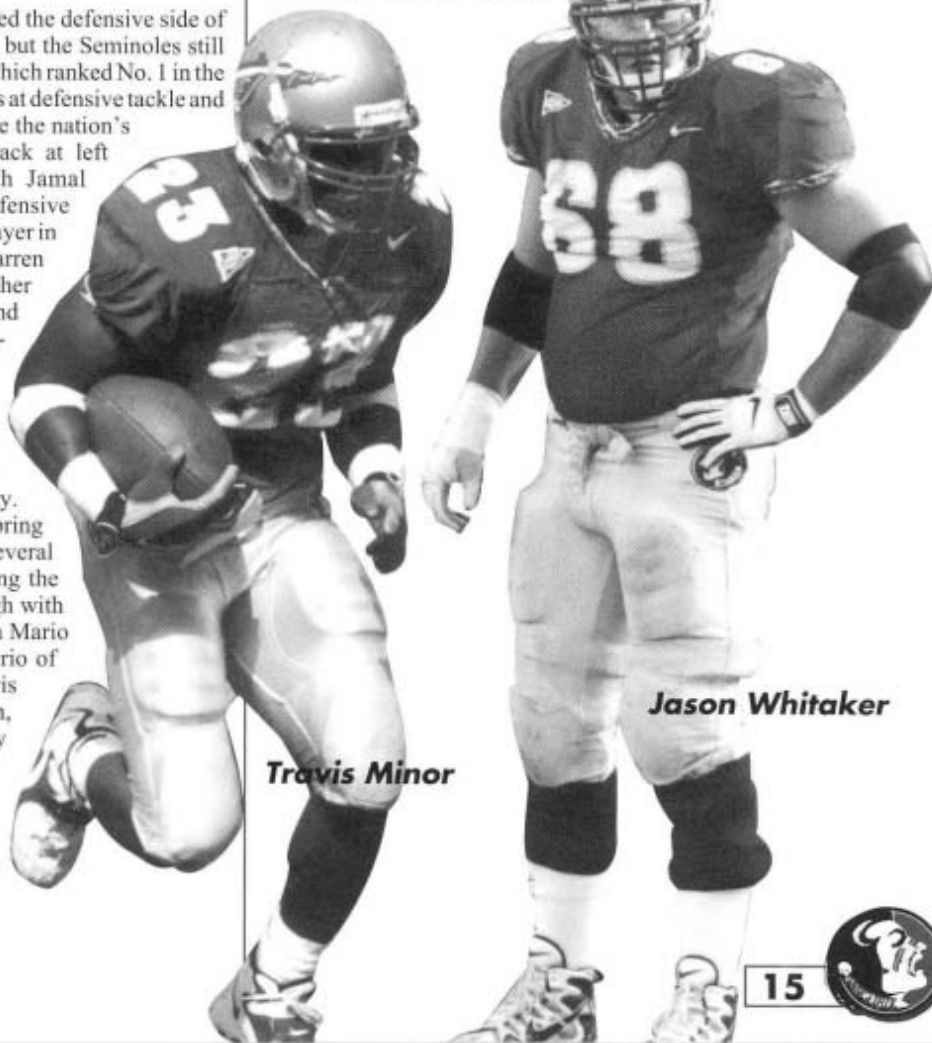
one of the ways we have been successful is to play a lot of players so fatigue is not as much of a factor. We lost some leadership on the defensive side of the ball and we will need to fill some spots, but I like the talent there."

Remarkably, the Seminoles will return virtually all the components of their special teams for the second consecutive year and they are led by last year's Lou Groza Award winner Sebastian Janikowski.

"Veteran special team units allow you to do a lot of things," said Bowden. "They let you gamble a little with field position or maybe you can try some things offensively and defensively that you would not if you were concerned about how your special teams would hold up. We've got the whole package if they all stay healthy."

QUARTERBACKS

The Seminoles will enter fall drills with **Chris Weinke** at 100 percent after missing the entire spring session as part of his rehabilitation from a serious neck injury suffered last year against Virginia. Weinke has progressed nicely all along, but was not full speed until just a couple of months before the season-



Travis Minor

Jason Whitaker

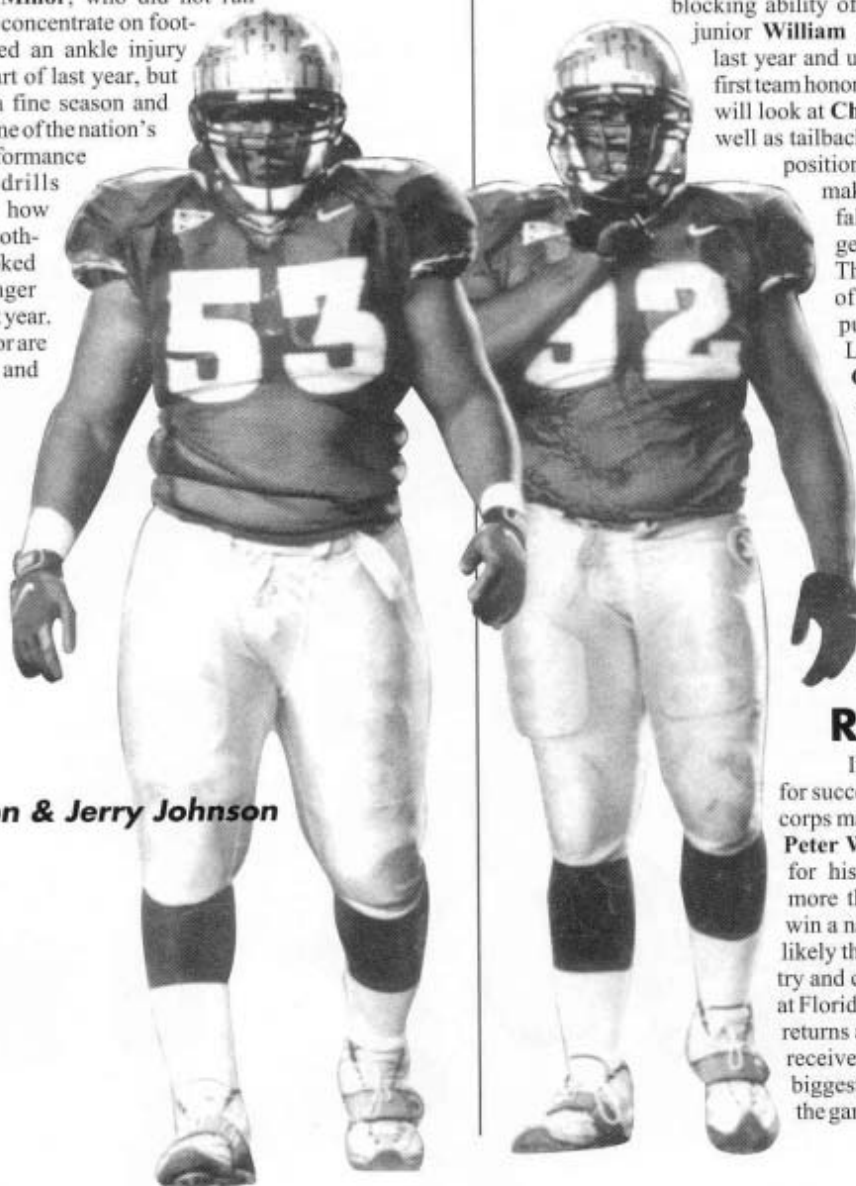




opener. Weinke may have been playing the best football of any quarterback in the country when he was hurt as he had not thrown an interception in 228 consecutive pass attempts. Coaches expect to have him back to run the high powered offense, but will practice for his absence. Late-season hero **Marcus Outzen** will enter the fall locked with sophomore **Jared Jones** on the depth chart as the back-up quarterback. Outzen's 2-1 record as the starter last year should give him the confidence and experience to run the Tribe offense. Jones played just a few plays against Wake Forest as a true freshman last year, but had a fine spring that showed coaches he was ready to run the FSU offense. Also in the mix is tough walk-on **Rich Maher**, who has impressed coaches with his play.

RUNNING BACKS

Running backs coach Billy Sexton has several experienced players in his stable this fall and they are led by All-America candidate **Travis Minor**, who did not run track this spring to concentrate on football. Minor battled an ankle injury during the early part of last year, but came on to have a fine season and will enter 1999 as one of the nation's top backs. His performance during spring drills showed folks just how much his ankle bothered him as he looked quicker and stronger than at any time last year. Listed behind Minor are a pair of talented and



Corey Simon & Jerry Johnson

experienced players. **Jeff Chaney** came in for Minor early last year and was a tremendous threat from the tailback position. Chaney showed so much talent that coaches may try him at fullback as well to get him on the field more often. Listed as co-second team is **Davy Ford** who missed the entire 1998 season after undergoing knee surgery following the Sugar Bowl win over Ohio State. Ford started some as a true freshman and played in all but two games in 1998, however he re-injured his knee during the spring and will be questionable for the early part of the season. The absence of Ford may mean more playing time for senior **Raymont Skaggs** who showed real talent in his first year with the Seminoles last season. Skaggs may also return punts and kickoffs in 1999. The group will also make room for heralded freshman **Nick Maddox**, who will get a chance to play as a true freshman if he proves ready.

One of the concerns going into spring was the vacant starting fullback spot and the Seminoles will likely miss the leadership and blocking ability of Lamarr Glenn. However, junior **William McCray** backed-up Glenn last year and used a terrific spring to take first team honors going into the fall. Coaches will look at **Chaney** at the fullback spot as well as tailback. Another contender at the position really will not be able to make his serious push until the fall drills begin, but do not forget about senior **Dan Kendra**. The former quarterback is tired of watching the action and will push to be the starter against Louisiana Tech. Walk-on **Chad Maeder** used the spring to show coaches that he can do the job as well and probably earned playing time on special teams as well as at fullback. True freshman **Randy Golightly** will not redshirt and will see playing time on special teams as well as compete for playing time at fullback.

RECEIVERS

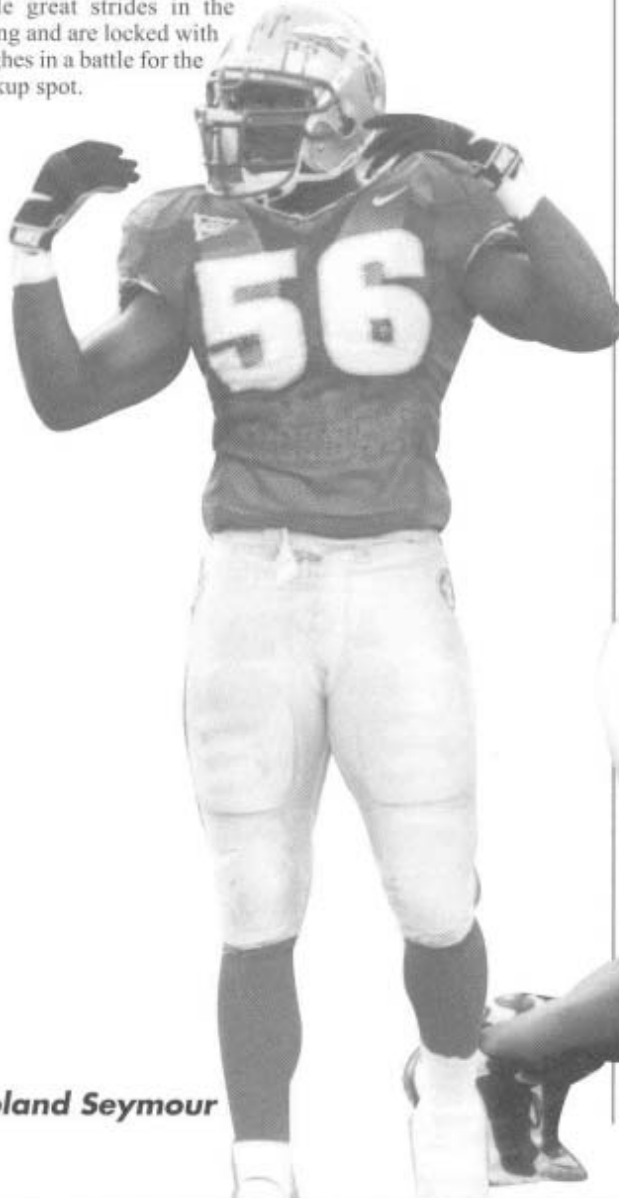
If hunger is the prescription for success this season, the receiving corps may be the leaders of the pack. **Peter Warrick's** decision to return for his senior season was driven more than anything by a desire to win a national championship. He is likely the finest receiver in the country and certainly one of the best ever at Florida State. Senior **Ron Dugans** returns as the other starter in the two receiver set and he made some of the biggest plays last season including the game-winning touchdown catch



against Florida. Classmate **Laveranues Coles** is the fastest Seminole ever and he is determined to have a big senior season. Junior **Marvin Minnis** is the emotional leader and he has a penchant for the big play. **Robert Morgan**, a sophomore, proved to be a sure-handed receiver in his first action last year and is very dangerous after he catches the ball. Senior **Germaine Stringer**, sophomore **Atreus Bell**, and freshmen **Talman Gardner** and **Greg Moore** will use the fall to contend for playing time among one of the most talented groups in FSU history.

TIGHT END

Myron Jackson graduated leaving the tight end spot wide open and that was the scene of one of the spring's biggest battles. **Nick Franklin** played a lot last year and he will enter the fall listed atop the depth chart. Talented sophomore **Patrick Hughes** can stretch the field with his speed and is anxious to show coaches what he can do at the position. **Ryan Sprague** and **Carver Donaldson** made great strides in the spring and are locked with Hughes in a battle for the backup spot.



Roland Seymour

OFFENSIVE LINE

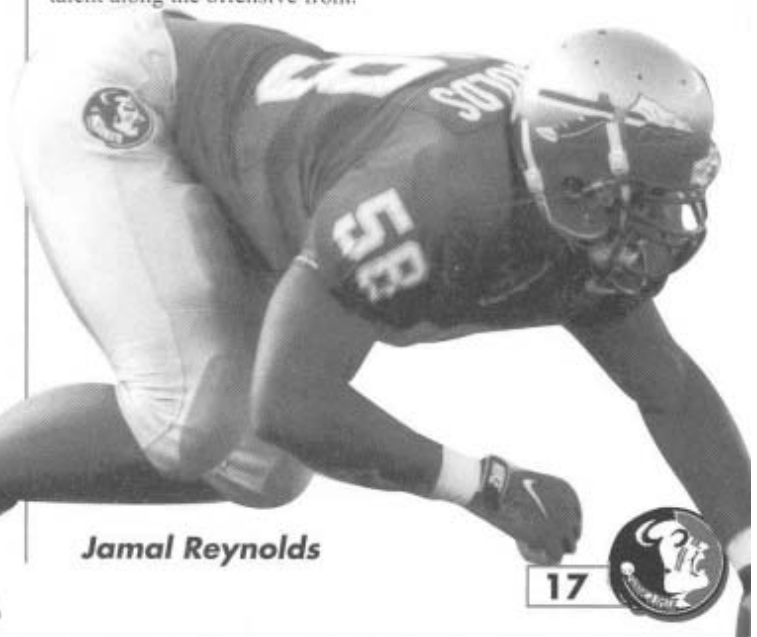
The Seminoles return all five starting offensive linemen from last year and most of the reserves, however the positions along the offensive front will be the site of some of the most intense competition during fall practice. First team Football Writer's All-American **Jason Whitaker** will again lead the offensive unit from his offensive guard position. **Justin Amman** will line up behind Whitaker at split guard and he will have a chance to prove himself this fall. Freshman **Corey Whitaker** enrolled in January and will also be in the mix at split guard.

Two other starters, split tackle **Ross Brannon** and tight guard **Jerry Carmichael**, missed the spring after having surgery following the regular season. Brannon should be back at his split tackle position for pre-season drills, but Carmichael's surgery may take longer to heal. If Carmichael is not ready by August, veteran **Donald Heaven**, who earned freshman All-America honors two years ago, will line up in Carmichael's spot to begin 1999 at tight guard. He will be pushed by redshirt freshman **Montrae Holland**, who had a huge spring, and junior **Ronald Boldin**. Brannon's back-up at the split tackle will be **Otis Duhart**, who hopes to fight off talented redshirt freshman **Brett Williams**, who is pushing everyone for playing time.

Tarlos Thomas started every game at tight tackle last year, but he will have to have a good pre-season to keep his job on this competitive line. Right on his heels is **Char-ron Dorsey**, who has recovered from a neck injury that kept him on the sidelines most of last year and he will try to win the tight tackle job. Redshirt freshman **Todd Williams** got a long look this spring and the possibility of moving players around in the fall is always present.

Center may be the most hotly contested position on the roster with senior **Eric Thomas** listed as the starter following spring drills. He and **Jarad Moon** will likely battle all fall, just as they did last season, when they basically shared starting duties. Sophomore **Antoine Mirambeau** impressed coaches in the spring and looks like he will earn playing time this season as well.

The bottom line for the Seminoles is a lot of depth and a lot of talent along the offensive front.



Jamal Reynolds



DEFENSIVE LINE

Florida State's tremendous success over recent seasons can be directly attributed to its dominating defensive line. Jim Gladden and Odell Haggins hope to use the same recipe for 1999, but they are still not sure of their ingredients.

One thing is for sure, the Seminoles will have the nation's best inside duo in defensive tackles **Corey Simon** and **Jerry Johnson**. Simon earned first team *Associated Press* All-America honors last year despite splitting starting honors with Larry Smith. Simon is the leader of this Seminole team and while he plays in a down linemen's stance, he chases ball carriers with the speed and agility of a linebacker. Johnson is an extremely physical player whose strength allows him to work opposing lines. Backing up Simon at tackle will be either freshman **Chris Woods**, who must grow up fast in the FSU system, or junior **Randy Wilkins**. Backing up Johnson at the other tackle will be another redshirt freshman, **Tony Benford**.

Defensive end at Florida State has become one of the true glamour positions in all of college football and 1999 should be no exception.

Roland Seymour returns to his starting position at left end and he should be ready to have a break-out season. Backing him up will be junior **David Warren**, who has proven to be a play maker each time he is in the game. Freshman **Kevin Emanuel**, who joined the team in January, was impressive in spring drills and should get some playing this fall. At the other end, **Jamal Reynolds** comes off a fantastic spring in which he was named the most dominant player on the team. He was virtually unblockable all spring and will give the Seminoles a pair of pass rushing defensive ends that should remind fans of Peter Boulware and Reinard Wilson from a couple of years ago. Veteran **Chris Walker** is slated for reserve duty here as well as redshirt freshman **Octavis Jackson**.

LINEBACKERS

This group is the least experienced on the team, but coaches are excited about the talent at the position. **Tommy Polley** returns at weakside linebacker where he made great strides last season. He should benefit from another year of increased strength and should have a big season. The linebacking corps got a real shot in the arm when **Bobby Rhodes**, who started five games last year, decided to return for a fifth season. He is listed behind Polley going into the fall but can play any of the three linebacking positions. Redshirt freshman **Michael Hamilton** will get his first taste of game action in 1999.

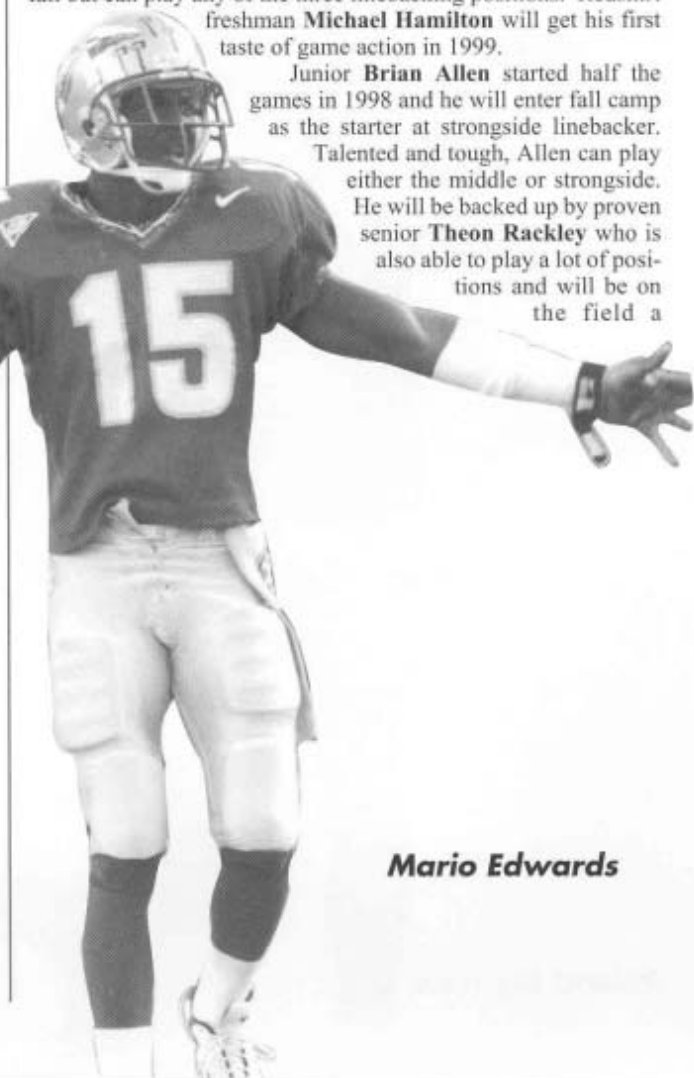
Junior **Brian Allen** started half the games in 1998 and he will enter fall camp as the starter at strongside linebacker.

Talented and tough, Allen can play either the middle or strongside.

He will be backed up by proven senior **Theon Rackley** who is also able to play a lot of positions and will be on the field a



Tay Cody



Mario Edwards





great deal this season.

Sophomore **Bradley Jennings** emerged from a very competitive battle in the spring to enter pre-season camp as the starter in the middle. A ferocious hitter, Jennings routinely stopped practice with bone-jarring tackles that sent defensive players into celebration. Freshman **Jerel Hudson** also made a name for himself in spring and coaches hope he trims a bit of weight and comes into fall drills ready to make a run for playing time.

SECONDARY

FSU defensive coordinator and secondary coach Mickey Andrews can not wait to hit the practice field this fall as he welcomes a very deep talent pool at all four positions in the secondary. He returns three of the four starters from last year's defensive backfield that played tremendously well with the exception of a couple of big plays.

Both cornerbacks return to the Seminole roster although they still must win their positions back in the fall. **Mario Edwards** is an All-America candidate at left cornerback, having finished among the top 10 players in the country in interceptions last year. However, he could begin the fall at second team behind the talented **Reggie Durden**, who made the most of his first year with the Seminoles in 1998 and had a great spring. **Stanford Samuels** is a redshirt freshman who should see his first action at corner this season. Over at right cornerback **Tay Cody** has been a steady starter for two years and should contend for honors as well. He finished spring drills behind **Clevan Thomas**, however, who played very well over the second half of last season and had an outstanding spring practice. Redshirt freshman **Malcolm Tatum** got his first real chance to show the coaches what he can do this spring and he produced with a knack for the big play.

Sean Key and **Chris Hope** will use pre-season drills to establish starting honors at free safety, but both will play a lot this season. Key has the edge coming out of spring with the experience that comes from being a senior. Hope saw playing time at the position last year and is both big and fast with the intelligence to play beyond his experience. **Todd Frier** will play here and on special teams, but was limited to non-contact work in the spring following surgery.

Derrick Gibson returns at rover where his love of the big

hit has made him someone all opposing receivers try to find. **Abdual Howard** will begin the pre-season as the back-up having missed last year with a thumb injury. **Jean Jeune** saw considerable playing time last year and is slated for some in 1999, but was held out of most of spring drills with an injury.

SPECIALISTS

Sebastian Janikowski set the Florida State and ACC records for field goals in a season last year with 27. He was named the Lou Groza winner as the nation's top place-kicker and led the country with 2.25 field goals per game. In addition, 47 of his 79 kickoffs were not returned by opponents.

Also returning is punter **Keith Cottrell** who will begin his third year as the starter. Coaches are very pleased with the one-two punch of Janikowski and Cottrell. In addition, the Tribe welcomes back its deep snapper in **Clay Ingram** and holder **Marcus Outzen**. The Seminoles even return all their primary return men in **Peter Warrick** and **Reggie Durden** on punts and Durden and **Laveranues Coles** on kickoffs.



Sebastian Janikowski

Marcus Outzen

SEMINOLE SIDeline

Seminoles Get Scholarships In '51

IT WAS NOT UNTIL 1951 that Florida State began to grant athletic scholarships. The move put added pressure on the program to win. FSU left the Dixie Conference and membership in the Southeastern Conference was denied. Interestingly, it was the University of Florida that sponsored FSU for admission to the SEC. ■





1999 PERSONNEL CHART

STARTERS RETURNING 16
OFFENSE 9
DEFENSE 7
KICKER/PUNTER 2

Offense:

OT- Ross Brannon	OG- Jerry Carmichael	WR- Ron Dugans
RB- Travis Minor	C- Eric Thomas	OT- Tarlos Thomas
WR- Peter Warrick	QB- Chris Weinke	OG- Jason Whitaker

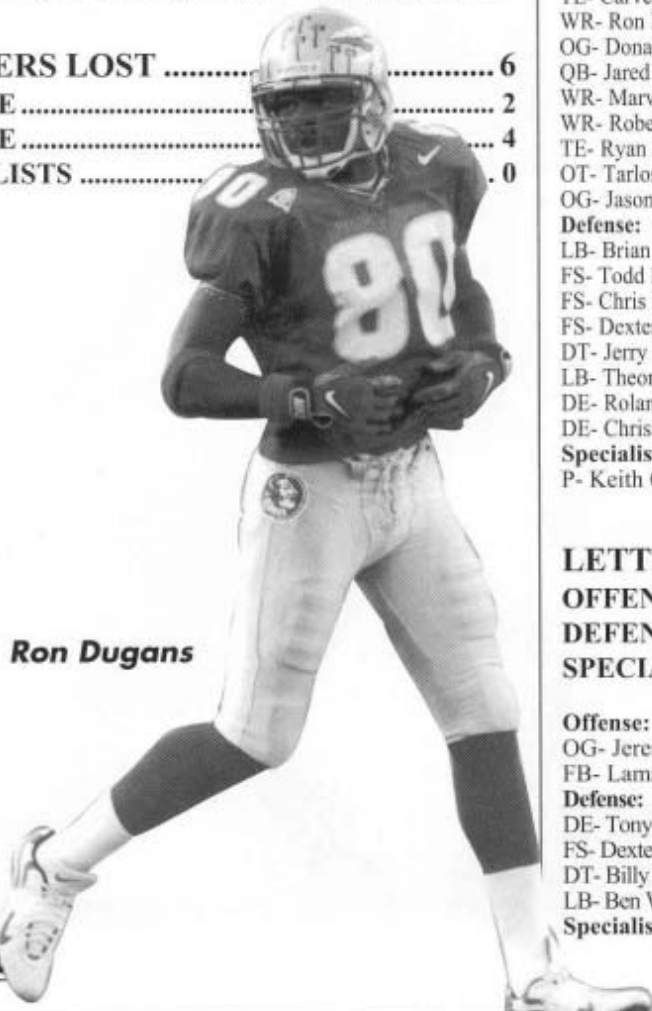
Defense:

CB- Tay Cody	CB- Mario Edwards	RV- Derrick Gibson
DT- Jerry Johnson	LB- Tommy Polley	DE- Roland Seymour

Specialists:

PK- Sebastian Janikowski	P- Keith Cottrell	PR- Peter Warrick/ Reggie Durden
KR- Laveranues Coles	KR- Reggie Durden	HO- Marcus Outzen

STARTERS LOST 6
OFFENSE 2
DEFENSE 4
SPECIALISTS 0



Ron Dugans

Offense:

FB- Lamarr Glenn TE- Myron Jackson

Defense:

DE- Tony Bryant LB- Lamont Green FS- Dexter Jackson
 LB- Demetro Stephens

Specialists: None

LETTERMEN RETURNING 57
OFFENSE 31
DEFENSE 24
PUNTER/KICKER 2

Offense:

OG- Justin Amman	WR- Atreus Bell	OT- Ross Brannon
OT- Jerry Carmichael	RB- Jeff Chaney	WR- Laveranues Coles
TE- Carver Donaldson	OT- Char-ron Dorsey	OT- Otis Duhart
WR- Ron Dugans	RB- Davy Ford	TE- Nick Franklin
OG- Donald Heaven	TE- Patrick Hughes	C- Clay Ingram
QB- Jared Jones	FB- Dan Kendra	FB- William McCray
WR- Marvin Minnis	RB- Travis Minor	C- Jarad Moon
WR- Robert Morgan	QB- Marcus Outzen	RB- Raymont Skaggs
TE- Ryan Sprague	WR- Germaine Stringer	C- Eric Thomas
OT- Tarlos Thomas	WR- Peter Warrick	QB- Chris Weinke
OG- Jason Whitaker		

Defense:

LB- Brian Allen	CB- Tay Cody	CB- Reggie Durden
FS- Todd Frier	RV- Derrick Gibson	FS- Pete Henderson
FS- Chris Hope	RV- Abdul Howard	LB- Deon Humphrey
FS- Dexter Jackson	LB- Bradley Jennings	RV- Jean Jeune
DT- Jerry Johnson	FS- Sean Key	LB- Tommy Polley
LB- Theon Rackley	DE- Jamal Reynolds	LB- Bobby Rhodes
DE- Roland Seymour	DT- Corey Simon	CB- Clevan Thomas
DE- Chris Walker	DE- David Warren	DT- Randy Wilkins

Specialists:

P- Keith Cottrell PK- Sebastian Janikowski

LETTERMEN LOST 15
OFFENSE 5
DEFENSE 10
SPECIALISTS 0

Offense:

OG- Jeremy Brett RB- Dee Feaster WR- Jason Floyd
 FB- Lamarr Glenn TE- Myron Jackson

Defense:

DE- Tony Bryant LB- Lamont Green LB- Deon Humphrey
 FS- Dexter Jackson DT- Bryne Malone S- Shawn McCorkel
 DT- Billy Rhodes CB- Troy Saunders DT- Larry Smith
 LB- Ben Waldrop

Specialist: None





PRESEASON DEPTH CHART

OFFENSE

SE	80	RON DUGANS	6-3	190	Sr.
	7	Laveranues Coles	6-1	195	Sr.
	87	Robert Morgan	6-0	180	So.
ST	76	ROSS BRANNON	6-8	310	Jr.
	74	Otis Duhart	6-4	290	Jr.
	72	Brett Williams	6-6	315	Fr.
SG	68	JASON WHITAKER	6-5	300	Sr.
	64	Justin Amman	6-4	305	Jr.
	70	Corey Whitaker	6-4	290	Fr.
C	57	ERIC THOMAS	6-3	300	Sr.
	54	Jarad Moon	6-4	300	Jr.
	52	Antoine Mirambeau	6-4	280	So.
TG	78	Donald Heaven	6-5	305	Jr.
	61	Montrae Holland	6-3	325	Fr.
	51	Ronald Boldin	6-5	291	Jr.
TT	60	TARLOS THOMAS	6-5	320	Jr.
	75	Char-ron Dorsey	6-7	325	Jr.
	79	Todd Williams	6-6	300	Fr.
TE	81	Nick Franklin	6-3	255	Sr.
	85	Ryan Sprague	6-5	260	Jr.
	or 82	Patrick Hughes	6-5	245	So.
	or 88	Carver Donaldson	6-6	245	So.
QB	16	CHRIS WEINKE	6-5	240	Jr.
	14	Marcus Outzen	6-2	220	Jr.
	or 11	Jared Jones	6-5	235	So.
FB	36	William McCray	6-0	225	Jr.
	10	Dan Kendra	6-2	255	Sr.
	39	Chad Maeder	6-3	240	So.
TB	23	TRAVIS MINOR	6-1	190	Jr.
	24	Jeff Chaney	6-0	200	Jr.
	20	Raymont Skaggs	5-8	173	Sr.
FL	9	PETER WARRICK	6-0	195	Sr.
	86	Germaine Stringer	5-11	185	Sr.
	13	Marvin Minnis	6-1	185	Jr.

*Injured 71 JERRY CARMICHAEL 6-4 310 Jr.

DEFENSE

RE	58	Jamal Reynolds	6-4	2540	Jr.
	93	Chris Walker	6-6	230	Sr.
	94	Octavis Jackson	6-2	255	Fr.
DT	92	JERRY JOHNSON	6-2	280	Sr.
	97	Tony Benford	6-4	270	Fr.
NG	53	COREY SIMON	6-4	275	Sr.
	98	Chris Woods	6-3	250	Fr.
	91	Randy Wilkens	6-3	245	Jr.
LE	56	ROLAND SEYMOUR	6-4	264	Jr.
	99	David Warren	6-5	250	Jr.
	90	Kevin Emanuel	6-4	250	Fr.
WLB	29	TOMMY POLLEY	6-5	233	Jr.
	49	Bobby Rhodes	6-1	215	Sr.
	46	Michael Hamilton	6-3	215	Fr.
MLB	44	Bradley Jennings	6-3	230	So.
	42	Jerel Hudson	6-3	230	Fr.
SLB	55	Brian Allen	6-2	225	Jr.
	5	Theon Rackley	6-2	228	Sr.
LC	1	Reggie Durden	5-9	175	Sr.
	15	MARIO EDWARDS	6-2	195	Sr.
	30	Stanford Samuels	5-10	180	Fr.
FS	18	Sean Key	6-1	190	Sr.
	4	Chris Hope	6-2	195	So.
	35	Todd Frier	5-10	180	Sr.
RV	6	DERRICK GIBSON	6-2	207	Jr.
	12	Abdual Howard	6-1	190	So.
	32	Jean Jeune	5-9	195	Jr.
RC	8	Clevan Thomas	6-0	175	Jr.
	27	TAY CODY	5-11	180	Jr.
	3	Malcolm Tatum	6-1	170	Fr.

SPECIALISTS

KS	38	SEBASTIAN JANIKOWSKI	6-2	255	Jr.
P	47	KEITH COTTRELL	6-4	205	Jr.
LSN	73	CLAY INGRAM	6-1	265	Sr.
HO	14	MARCUS OUTZEN	6-2	220	Jr.
PR	9	PETER WARRICK	6-0	195	Sr.
	1	REGGIE DURDEN	5-9	175	Sr.
KR	7	LAVERANUES COLES	6-1	195	Sr.
	1	REGGIE DURDEN	5-9	175	Sr.

RETURNING STARTERS IN ALL CAPS.





1999 ALPHABETICAL ROSTER

NO	NAME	POS	HGT	WGT	CLASS	HOMETOWN (HIGH SCHOOL/CC)
55	Brian Allen	LB	6-2	225	JR	Lake City, FL (Columbia)
64	Justin Amman	OG	6-4	305	JR	Eustis, FL (Eustis)
67	Josh Baggs	C	6-1	305	SO	Camilla, GA (Mitchell-Baker)
26	Atrews Bell	FLK	5-11	201	SO	Jacksonville, FL (Lee)
97	Tony Benford	DT	6-4	270	FR	Denver, CO (Jefferson)
6	Anquan Boldin	QB	6-2	205	FR	Pahokee, FL (Pahokee)
51	Ronald Boldin	OG	6-5	291	JR	Pahokee, FL (Pahokee)
76	Ross Brannon	OT	6-8	310	JR	Marietta, GA (Lassiter)
7	Rufus Brown	DB	5-10	185	FR	El Paso, TX (Austin)
71	Jerry Carmichael	OG	6-4	310	JR	Plantation, FL (Plantation)
95	Rian Cason	DT	6-5	285	FR	College Park, GA (Woodward)
24	Jeff Chaney	RB	6-0	200	JR	Lake Wales, FL (Lake Wales)
27	Tay Cody	CB	5-11	180	JR	Blakely, GA (Early County)
7	Laveranues Coles	SE	6-1	195	SR	Jacksonville, FL (Ribault)
5	Cornelius Collier	LB	6-1	220	FR	Miami, FL (Palmetto)
47	Keith Cottrell	P	6-4	205	JR	Orlando, FL (Boone)
45	Darnell Dockett	DL	6-4	260	FR	Burtonsville, MD (Paint Branch)
88	Carver Donaldson	TE	6-6	245	SO	Lakeland, FL (Kathleen)
75	Char-ron Dorsey	OT	6-7	325	JR	Jacksonville, FL (Bolles)
80	Ron Dugans	SE	6-3	190	SR	Tallahassee, FL (FAMU)
74	Otis Duhart	OT	6-4	290	SO	Belle Glades, FL (Central)
1	Reggie Durden	CB	5-9	175	SR	Houston, TX (Copiah-Lincoln CC)
15	Mario Edwards	CB	6-2	195	SR	Gautier, MS (Pascagoula)
90	Kevin Emanuel	DE	6-4	250	FR	Waco, TX (Waco)
22	Davy Ford	TB	5-11	188	SO	W. Palm Beach, FL (Cardinal Newman)
81	Nick Franklin	TE	6-3	255	SR	St. Petersburg, FL (SW Miss. JC)
35	Todd Frier	FS	5-10	180	SR	Live Oak, FL (Suwannee)
21	Talman Gardner	SE	6-2	195	FR	New Orleans, LA (McDonough 35)
6	Derrick Gibson	RV	6-2	207	JR	Miami, FL (Killian)
43	Randy Golightly	FB	6-2	237	FR	Tallahassee, FL (N. Florida Christian)
46	Michael Hamilton	LB	6-3	215	FR	Greenville, FL (Madison County)
78	Donald Heaven	OG	6-5	305	JR	Miami, FL (Carol City)
37	Pete Henderson	DB	6-0	180	SR	Tarpon Springs, FL (Tarpon Springs)
61	Montrae Holland	OG	6-3	325	FR	Ore City, TX (Jefferson)
28	Chris Hope	FS	6-2	195	SO	Rock Hill, SC (Rock Hill)
12	Abdual Howard	RV	6-1	190	SO	Quincy, FL (Shanks)
42	Jerel Hudson	LB	6-3	230	FR	Homestead, FL (South Dade)
82	Patrick Hughes	TE	6-5	245	SO	Nacogdoches, TX (Nacogdoches)
73	Clay Ingram	LSN	6-1	265	SR	Cantonment, FL (Tate)
89	Alonzo Jackson	DL	6-4	245	FR	Americus, GA (Americus)
84	Gennaro Jackson	SE	6-1	182	JR	Jacksonville, FL (Raines)
94	Octavis Jackson	DE	6-2	255	FR	Miami, FL (Carol City)
38	Sebastian Janikowski	PK	6-2	255	JR	Daytona Beach, FL (Seabreeze)
44	Bradley Jennings	LB	6-3	230	SO	Miami, FL (Carol City)
32	Jean Jeune	RV	5-9	195	JR	Boynton Beach, FL (Atlantic)
92	Jerry Johnson	DT	6-2	280	SR	Ft. Pierce, FL (Central)
11	Jared Jones	QB	6-5	235	SO	Walla Walla, WA (Walla Walla)
10	Dan Kendra	FB	6-2	255	SR	Bethlehem, PA (Catholic)
18	Sean Key	FS	6-1	190	SR	Miami, FL (American)
20	Nick Maddox	RB	6-0	190	FR	Kannapolis, NC (A.L. Brown)
39	Chad Maeder	FB	6-3	240	SO	Brooksville, FL (Central)
10	Rich Maher	QB	5-11	195	JR	Spring Hill, FL (Springstead)
36	William McCray	RB	6-0	225	JR	Jacksonville, FL (Bolles)
13	Marvin Minnis	FLK	6-1	185	JR	Miami, FL (Northwestern)
23	Travis Minor	TB	6-1	190	JR	Baton Rouge, LA (Catholic)
52	Antoine Mirambeau	C	6-4	280	FR	Miami, FL (Miami Beach)





54	Jarad Moon	C	6-4	300	JR	Panama City, FL (Bay)
19	Greg Moore	FLK	6-1	185	FR	Bartow, FL (Bartow)
87	Robert Morgan	SE	6-0	180	SO	East Point, GA (Tri-Cities)
14	Marcus Outzen	QB	6-2	220	JR	Ft. Walton Beach, FL (Ft. Walton)
29	Tommy Polley	LB	6-5	233	JR	Baltimore, MD (Dunbar)
5	Theon Rackley	LB	6-2	228	SR	Tallahassee, FL (FAMU)
58	Jamal Reynolds	DE	6-4	254	JR	Aiken, SC (Aiken)
49	Bobby Rhodes	LB	6-1	215	SR	Eustis, FL (Eustis)
69	W.D. Rodeffer	DL	6-4	250	JR	Fernandina, FL (Fernandina Beach)
30	Stanford Samuels	CB	5-10	180	FR	Miami, FL (Carol City)
56	Roland Seymour	DE	6-4	264	JR	New Orleans, LA (St. Augustine)
53	Corey Simon	NG	6-4	275	SR	Pompano Beach, FL (Ely)
20	Raymont Skaggs	TB	5-8	173	SR	Los Angeles, CA (West LA College)
85	Ryan Sprague	TE	6-5	260	JR	Augusta, GA (Lakeside)
86	Germaine Stringer	FLK	5-11	185	SR	Atlanta, GA (SW Dekalb)
3	Malcolm Tatum	CB	6-1	170	FR	Miami, FL (Killian)
8	Clevan Thomas	CB	6-0	175	JR	Miami, FL (Miami Senior)
57	Eric Thomas	C	6-3	300	SR	Miami, FL (Columbus)
60	Tarlos Thomas	OT	6-5	320	JR	Monticello, FL (Jefferson County)
93	Chris Walker	DE	6-6	230	SR	Cocoa, FL (Cocoa)
28	B.J. Ward	DB	6-4	200	FR	Dallas, TX (Kimball)
99	David Warren	DE	6-5	250	JR	Tyler, TX (John Tyler)
9	Peter Warrick	FLK	6-0	195	SR	Bradenton, FL (Southeast)
16	Chris Weinke	QB	6-5	240	JR	St. Paul, MN (Cretin-Derham)
70	Corey Whitaker	OG	6-4	290	FR	Pace, FL (Pace)
68	Jason Whitaker	OG	6-5	300	SR	Panama City, FL (Mosley)
96	Randy Wilkins	NG	6-3	245	JR	Jacksonville, FL (Nease)
72	Brett Williams	OT	6-6	315	FR	Kissimmee, FL (Osceola)
79	Todd Williams	OT	6-6	300	FR	Bradenton, FL (Southeast)
91	Jeff Womble	DL	6-3	295	FR	Dunwoody, GA (Dunwoody)
98	Chris Woods	NG	6-3	250	FR	Orlando, FL (Jones)

Pronunciation Guide

Justin Amman	ah-MON
Atreus Bell	A-trues
Anquan Boldin	an-KWAN
Rian Cason	Ryan KAY-sawn
Laveranues Coles	lah-VER-knee-us
Keith Cottrell	COT-trull
Char-ron Dorsey	sha-RON DOOR-see
Ron Dugans	DOO-gans
Otis Duhart	DOO-heart
Randy Golightly	GO-light-lee
Montrae Holland	mon-TRAY
Abdual Howard	Ab-DOOL
Jerel Hudson	Je-RELL
Octavis Jackson	Oc-TAY-vis
Jean Jeune	gene June
Antoine Mirambeau	an-TWAN mir-RAM-bo
Jarad Moon	JER-ed
Marcus Outzen	OUT-sin
Tommy Polley	Paul-E
Kendyl Pope	KIN-duhl
Theon Rackley	THEE-on
Roland Seymour	SEE-more
Malcolm Tatum	TAY-tum
Clevan Thomas	klee-VON
Tarlos Thomas	tar-LOS
Fabian Walker	FAY-b-un
Chris Weinke	WINK-e
Jeff Womble	wohm-BULL

FSU's Grad Rate Among Tops

WITH ONE WEEK LEFT in the 1998 season, *USA Today* published a story which ranked the current Top 25 by graduation rate. Just three of the schools listed in the ESPN/*USA Today* polls top 10 were also listed in the "graduation rate poll."

Florida State's 62% graduation rate ranked it seventh in the nation, while the team was ranked fifth at the time of the story (eventually finishing third). Wisconsin (61%) and UCLA (57%) were the only other Top 10 schools that made the transition to the other Top 10.

The graduation rate poll follows:

SCHOOL (RANK IN POLL)	GRAD RATE
1. Notre Dame (13)	80%
2. Penn State (17)	74%
Tulane (14)	74%
Virginia (22)	74%
5. Nebraska (11)	66%
6. Oregon (19)	65%
7. FLORIDA STATE (5)	62%
8. Syracuse (T-25)	61%
Wisconsin (6)	61%
Miami (24)	61%
11. Michigan (16)	59%
12. UCLA (3)	57%
13. Missouri (15)	56%
Texas (21)	56%
15. Virginia Tech (12)	55%

SEMINOLE SIDeline





1999 NUMERICAL ROSTER

NO	NAME	POS	HGT	WGT	CLASS	HOMETOWN (HIGH SCHOOL/CC)
1	Reggie Durden	CB	5-9	175	SR	Houston, TX (Copiah-Lincoln CC)
3	Malcolm Tatum	CB	6-1	170	FR	Miami, FL (Killian)
5	Cornelius Collier	LB	6-1	220	FR	Miami, FL (Palmetto)
5	Theon Rackley	LB	6-2	228	SR	Tallahassee, FL (FAMU)
6	Anquan Boldin	QB	6-2	205	FR	Pahokee, FL (Pahokee)
6	Derrick Gibson	RV	6-2	207	JR	Miami, FL (Killian)
7	Rufus Brown	DB	5-10	185	FR	El Paso, TX (Austin)
7	Laveranues Coles	SE	6-1	195	SR	Jacksonville, FL (Ribault)
8	Clevan Thomas	CB	6-0	175	JR	Miami, FL (Miami Senior)
9	Peter Warrick	FLK	6-0	195	SR	Bradenton, FL (Southeast)
10	Dan Kendra	FB	6-2	255	SR	Bethlehem, PA (Catholic)
10	Rich Maher	QB	5-11	195	JR	Spring Hill, FL (Springstead)
11	Jared Jones	QB	6-5	235	SO	Walla Walla, WA (Walla Walla)
12	Abdual Howard	RV	6-1	190	SO	Quincy, FL (Shanks)
13	Marvin Minnis	FLK	6-1	185	JR	Miami, FL (Northwestern)
14	Marcus Outzen	QB	6-2	220	JR	Ft. Walton Beach, FL (Ft. Walton)
15	Mario Edwards	CB	6-2	195	SR	Gautier, MS (Pascagoula)
16	Chris Weinke	QB	6-5	240	JR	St. Paul, MN (Cretin-Derham)
18	Sean Key	FS	6-1	190	SR	Miami, FL (American)
19	Greg Moore	FLK	6-1	185	FR	Bartow, FL (Bartow)
20	Nick Maddox	RB	6-0	190	FR	Kannapolis, NC (A.L. Brown)
20	Raymont Skaggs	TB	5-8	173	SR	Los Angeles, CA (West LA College)
21	Talman Gardner	SE	6-2	195	FR	New Orleans, LA (McDonough 35)
22	Davy Ford	TB	5-11	188	SO	W. Palm Beach, FL (Cardinal Newman)
23	Travis Minor	TB	6-1	190	JR	Baton Rouge, LA (Catholic)
24	Jeff Chaney	RB	6-0	200	JR	Lake Wales, FL (Lake Wales)
26	Atrews Bell	FLK	5-11	201	SO	Jacksonville, FL (Lee)
27	Tay Cody	CB	5-11	180	JR	Blakely, GA (Early County)
28	Chris Hope	FS	6-2	195	SO	Rock Hill, SC (Rock Hill)
28	B.J. Ward	DB	6-4	200	FR	Dallas, TX (Kimball)
29	Tommy Polley	LB	6-5	233	JR	Baltimore, MD (Dunbar)
30	Stanford Samuels	CB	5-10	180	FR	Miami, FL (Carol City)
32	Jean Jeune	RV	5-9	195	JR	Boyton Beach, FL (Atlantic)
35	Todd Frier	FS	5-10	180	SR	Live Oak, FL (Suwannee)
36	William McCray	RB	6-0	225	JR	Jacksonville, FL (Bolles)
37	Pete Henderson	DB	6-0	180	SR	Tarpon Springs, FL (Tarpon Springs)
38	Sebastian Janikowski	PK	6-2	255	JR	Daytona Beach, FL (Seabreeze)
39	Chad Maeder	FB	6-3	240	SO	Brooksville, FL (Central)
42	Jerel Hudson	LB	6-3	230	FR	Homestead, FL (South Dade)
43	Randy Golightly	FB	6-2	237	FR	Tallahassee, FL (N. Florida Christian)
44	Bradley Jennings	LB	6-3	230	SO	Miami, FL (Carol City)
45	Darnell Dockett	DL	6-4	260	FR	Burtonsville, MD (Paint Branch)
46	Michael Hamilton	LB	6-3	215	FR	Greenville, FL (Madison County)
47	Keith Cottrell	P	6-4	205	JR	Orlando, FL (Boone)
49	Bobby Rhodes	LB	6-1	215	SR	Eustis, FL (Eustis)
51	Ronald Boldin	OG	6-5	291	JR	Pahokee, FL (Pahokee)
52	Antoine Mirambeau	C	6-4	280	FR	Miami, FL (Miami Beach)
53	Corey Simon	NG	6-4	275	SR	Pompano Beach, FL (Ely)
54	Jarad Moon	C	6-4	300	JR	Panama City, FL (Bay)
55	Brian Allen	LB	6-2	225	JR	Lake City, FL (Columbia)
56	Roland Seymour	DE	6-4	264	JR	New Orleans, LA (St. Augustine)
57	Eric Thomas	C	6-3	300	SR	Miami, FL (Columbus)
58	Jamal Reynolds	DE	6-4	254	JR	Aiken, SC (Aiken)
60	Tarlos Thomas	OT	6-5	320	JR	Monticello, FL (Jefferson County)
61	Montrae Holland	OG	6-3	325	FR	Ore City, TX (Jefferson)
64	Justin Amman	OG	6-4	305	JR	Eustis, FL (Eustis)





67	Josh Baggs	C	6-1	305	FR	Camilla, GA (Mitchell-Baker)
68	Jason Whitaker	OG	6-5	300	SR	Panama City, FL (Mosley)
69	W.D. Rodeffer	DL	6-4	250	JR	Fernandina, FL (Fernandina Beach)
70	Corey Whitaker	OG	6-4	290	FR	Pace, FL (Pace)
71	Jerry Carmichael	OG	6-4	310	JR	Plantation, FL (Plantation)
72	Brett Williams	OT	6-6	315	FR	Kissimmee, FL (Osceola)
73	Clay Ingram	LSN	6-1	265	SR	Cantonment, FL (Tate)
74	Otis Duhart	OT	6-4	290	SO	Belle Glades, FL (Central)
75	Char-ron Dorsey	OT	6-7	325	JR	Jacksonville, FL (Bolles)
76	Ross Brannon	OT	6-8	310	JR	Marietta, GA (Lassiter)
78	Donald Heaven	OG	6-5	305	JR	Miami, FL (Carol City)
79	Todd Williams	OT	6-6	300	FR	Bradenton, FL (Southeast)
80	Ron Dugans	SE	6-3	190	SR	Tallahassee, FL (FAMU)
81	Nick Franklin	TE	6-3	255	SR	St. Petersburg, FL (SW Miss. JC)
82	Patrick Hughes	TE	6-5	245	SO	Nacogdoches, TX (Nacogdoches)
84	Gennaro Jackson	SE	6-1	182	JR	Jacksonville, FL (Raines)
85	Ryan Sprague	TE	6-5	260	JR	Augusta, GA (Lakeside)
86	Germaine Stringer	FLK	5-11	185	SR	Atlanta, GA (SW Dekalb)
87	Robert Morgan	SE	6-0	180	SO	East Point, GA (Tri-Cities)
88	Carver Donaldson	TE	6-6	245	SO	Lakeland, FL (Kathleen)
89	Alonzo Jackson	DL	6-4	245	FR	Americus, GA (Americus)
90	Kevin Emanuel	DE	6-4	250	FR	Waco, TX (Waco)
91	Jeff Womble	DL	6-3	295	FR	Dunwoody, GA (Dunwoody)
92	Jerry Johnson	DT	6-2	280	SR	Ft. Pierce, FL (Central)
93	Chris Walker	DE	6-6	230	SR	Cocoa, FL (Cocoa)
94	Octavis Jackson	DE	6-2	255	FR	Miami, FL (Carol City)
95	Rian Cason	DT	6-5	285	FR	College Park, GA (Woodward)
96	Randy Wilkins	NG	6-3	245	JR	Jacksonville, FL (Nease)
97	Tony Benford	DT	6-4	270	FR	Denver, CO (Jefferson)
98	Chris Woods	NG	6-3	250	FR	Orlando, FL (Jones)
99	David Warren	DE	6-5	250	JR	Tyler, TX (John Tyler)

Pronunciation Guide

Justin Amman	ah-MON
Atrewns Bell	A-trues
Anquan Boldin	an-KWAN
Rian Cason	Ryan KAY-sawn
Laveranues Coles	lah-VER-knee-us
Keith Cottrell	COT-trull
Char-ron Dorsey	sha-RON DOOR-see
Ron Dugans	DOO-gans
Otis Duhart	DOO-heart
Randy Golightly	GO-light-lee
Montrae Holland	mon-TRAY
Abdual Howard	Ab-DOOL
Jerel Hudson	Je-RELL
Octavis Jackson	Oc-TAY-vis
Jean Jeune	gene June
Antoine Mirambeau	an-TWAN mir-RAM-bo
Jarad Moon	JER-ed
Marcus Outzen	OUT-sin
Tommy Polley	Paul-E
Kendyll Pope	KIN-duhl
Theon Rackley	THEE-on
Roland Seymour	SEE-more
Malcolm Tatum	TAY-tum
Clevan Thomas	klee-VON
Tarlos Thomas	tar-LOS
Fabian Walker	FAY-b-un
Chris Weinke	WINK-e
Jeff Womble	wohm-BULL



Tough To Beat In Tallahassee

WHILE BOBBY BOWDEN has not felt the need to tag a nickname

SEMINOLE SIDELINE



on Doak Campbell Stadium, the Seminole's home field has proven an impossible place, literally, for opponents to win. Florida State enters 1999 with a 40-game home unbeaten streak that dates back to Miami's dramatic 17-16 win in Tallahassee in 1991. Bobby Bowden has a sparkling 116-16-2 record at Doak Campbell Stadium and has lost just four home games since 1986. FSU's 31-31 tie against Florida in 1995 set an NCAA record for the biggest comeback (28 points) in NCAA history, and it's the only home game FSU has not won since 1991. ■





HOMETOWN ROSTER



**Jared Jones —
Walla Walla, Wash.**

CALIFORNIA 1
Raymont Skaggs (Los Angeles)

COLORADO 1
Tony Benford (Denver)

FLORIDA 58
Greg Moore (Bartow); Otis Duhart (Belle Glade); Jean Jeune (Boynton Beach); Peter Warrick, Todd Williams (Bradenton); Chad Maeder (Brooksville); Clay Ingram (Cantonment); Chris Walker (Cocoa); Sebastian Janikowski (Daytona Beach); Justin Amman, Bobby Rhodes (Eustis); W.D. Rodeffer (Fernandina Beach); Jerry Johnson (Fort Pierce); Marcus Outzen (Fort Walton Beach); Jerel Hudson (Homestead); Atreus Bell, Laveranues Coles, Char-ron Dorsey, Gennaro Jackson, William McCray, Randy Wilkins (Jacksonville); Brett Williams (Kissimmee); Brian Allen, Kendyll Pope (Lake City); Carver Donaldson (Lakeland); Jeff Chaney (Lake Wales); Todd Frier (Live Oak); Michael Hamilton (Madison); Cornelius Collier, Derrick Gibson, Donald Heaven, Octavis Jackson, Bradley Jennings, Sean Key, Marvin Minnis, Antoine Mirambeau, Stanford Samuels, Malcolm Tatum, Clevan Thomas, Eric Thomas (Miami); Tarlos Thomas (Monticello); Keith Cottrell, Chris Woods (Orlando); Corey Whitaker (Pace); Anquan Boldin, Ronald Boldin (Pahokee); Jarad Moon, Jason Whitaker (Panama City); Jerry Carmichael (Plantation); Corey Simon (Pompano Beach);

Rich Maher (Spring Hill); Abdual Howard (Quincy); Nick Franklin (St. Petersburg); Ron Dugans, Randy Golightly, Theon Rackley (Tallahassee); Pete Henderson (Tarpon Springs); Davy Ford (West Palm Beach)

GEORGIA 10
Alonzo Jackson, Fabian Walker (Americus); Germaine Stringer (Atlanta); Ryan Sprague (Augusta); Tay Cody (Blakely); Josh Baggs (Camilla); Rian Cason (College Park); Jeff Womble (Dunwoody); Robert Morgan (East Point); Ross Brannon (Marietta)

LOUISIANA 3
Travis Minor (Baton Rouge); Talman Gardner, Roland Seymour (New Orleans)

MARYLAND 2
Tommy Polley (Baltimore); Darrell Dockett (Burtonsville)

MINNESOTA 1
Chris Weinke (St. Paul)

MISSISSIPPI 1
Mario Edwards (Gautier)

NORTH CAROLINA 1
Nick Maddox (Kannapolis)

PENNSYLVANIA 1
Dan Kendra (Bethlehem)

SOUTH CAROLINA 2
Jamal Reynolds (Aiken); Chris Hope (Rock Hill)

TEXAS 7
Rufus Brown (El Paso); B.J. Ward (Dallas); Reggie Durden (Houston); Patrick Hughes (Nacogdoches); Montrae Holland (Ore City); David Warren (Tyler); Kevin Emanuel (Waco)

WASHINGTON 1
Jared Jones (Walla Walla)