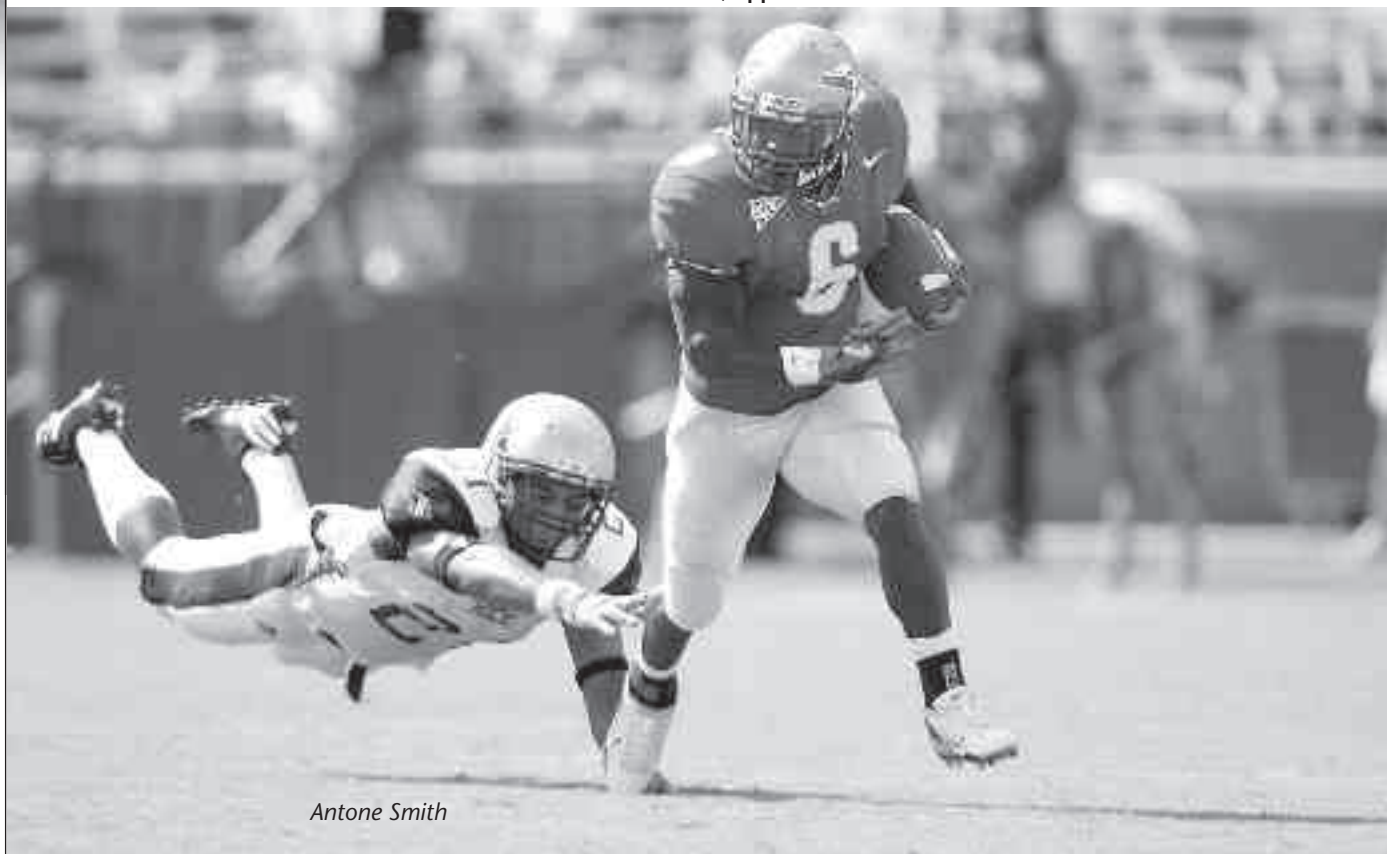


# Year-By-Year Team Statistics

Florida State statistics listed on first row; opponent statistics on second row



Antone Smith

YEAR	POINTS PER GAME	TDs	RUSHING		PASSING		PASS YARDS	PASS YDS PER GAME	TOTAL OFF PLAY - YARDS	YARDS PER GAME	PENALTIES	FUMBLES
			ATT - YARDS - AVG		ATT - COMP - INT							
2006	26.5	42	363 - 1255 - 96.5		439 - 239 - 16	3039	233.8	802 - 4294	330.3	89	26-11	
	19.8	31	421 - 1203 - 92.5		414 - 227 - 12	2578	198.3	835 - 3781	290.8	82	19- 7	
2005	28.9	46	376 - 1222 - 94.0		526 - 303 - 19	3674	282.6	902 - 4896	376.6	114	19- 8	
	22.0	34	492 - 1409 - 108.4		404 - 239 - 12	2611	200.8	896 - 4020	309.2	93	25-11	
2004	25.2	40	460 - 1944 - 162.0		402 - 215 - 15	2526	210.5	862 - 4470	372.5	116	16- 7	
	14.1	13	418 - 997 - 83.1		380 - 204 - 16	2409	200.8	798 - 3406	283.8	82	22-13	
2003	32.2	52	469 - 1734 - 133.4		438 - 249 - 13	3505	269.6	907 - 5239	403.0	91	29-12	
	16.7	23	472 - 1552 - 119.4		449 - 247 - 15	2768	212.9	921 - 4320	332.3	90	28-18	
2002	30.6	53	562 - 2618 - 187.0		419 - 217 - 10	2955	211.1	981 - 5513	398.1	109	22-11	
	21.5	35	497 - 1831 - 130.8		465 - 249 - 16	3293	235.2	962 - 5124	366.0	104	30-16	
2001	33.9	48	434 - 1756 - 192.2		325 - 184 - 13	2931	266.5	759 - 4687	426.1	93	15- 8	
	26.1	36	398 - 1386 - 154.5		373 - 206 - 15	2534	230.4	771 - 3920	356.4	93	20-10	
2000	42.4	67	455 - 1980 - 165.0		469 - 290 - 14	4608	384.0	924 - 6588	549.0	123	10- 7	
	10.2	15	387 - 887 - 73.9		447 - 220 - 19	2437	203.1	834 - 3324	277.0	132	29-14	
1999	34.3	49	397 - 1356 - 123.5		423 - 250 - 17	3332	302.9	820 - 4683	425.7	109	11- 4	
	14.5	20	357 - 1057 - 98.8		305 - 217 - 22	2264	205.8	672 - 3351	304.6	96	18- 7	
1998	32.1	43	515 - 1797 - 149.8		357 - 185 - 9	3019	251.6	872 - 4816	401.3	117	22-12	
	11.5	16	412 - 958 - 79.8		335 - 138 - 18	1620	135.0	747 - 2578	214.8	78	27-14	
1997	39.7	55	344 - 1233 - 112.1		440 - 262 - 11	3740	340.0	784 - 4973	452.1	113	18- 6	
	15.2	22	379 - 571 - 51.9		338 - 164 - 22	2084	189.5	717 - 2655	241.4	82	20-10	
1996	38.7	54	423 - 1958 - 178.2		335 - 181 - 14	2541	231.0	759 - 4499	409.0	94	18- 9	
	11.1	15	418 - 649 - 59.0		358 - 162 - 11	1875	170.5	775 - 2524	229.5	60	26-12	
1995	44.3	72	420 - 2451 - 222.8		465 - 297 - 14	3616	328.7	885 - 6067	551.5	76	18- 6	
	18.3	27	446 - 1452 - 132.0		376 - 194 - 16	2347	213.4	822 - 3799	345.4	76	32-19	
1994	36.8	53	412 - 2080 - 189.1		264 - 441 - 18	3234	294.0	853 - 5314	483.1	85	18-13	
	16.6	22	377 - 1077 - 97.9		180 - 376 - 15	1860	169.1	753 - 2937	267.0	73	21-13	
1993	43.2	70	470 - 2667 - 222.3		327 - 469 - 6	3909	325.8	939 - 6576	548.0	102	18-12	
	9.4	15	397 - 1182 - 98.5		181 - 376 - 15	2232	186.0	773 - 3414	284.5	68	15- 9	
1992	38.1	56	464 - 2252 - 204.7		214 - 387 - 17	2828	257.1	851 - 5080	461.8	89	27-14	
	15.6	19	400 - 1103 - 100.3		182 - 386 - 18	2114	192.2	786 - 3217	292.5	62	24-13	
1991	36.6	57	507 - 2287 - 190.6		234 - 390 - 11	3114	259.5	897 - 5401	450.1	89	15- 6	
	15.5	23	398 - 994 - 82.8		192 - 378 - 25	2381	198.4	776 - 3375	281.3	62	23-12	
1990	39.5	57	422 - 2137 - 194.3		348 - 222 - 10	2785	253.2	770 - 4922	447.5	89	14- 6	
	17.2	22	465 - 1646 - 149.6		318 - 163 - 21	1830	166.4	783 - 3476	316.0	72	34-16	
1989	34.8	48	393 - 1517 - 137.9		387 - 230 - 11	3448	313.5	780 - 4965	451.4	89	23-14	
	16.5	20	456 - 1496 - 136.0		325 - 161 - 23	2063	187.5	781 - 3559	323.5	74	26-16	

## The Record Book

1988	40.2	58	443 - 2195 - 199.5	319 - 188 - 18	2676	243.3	762 - 4871	442.8	93	16 - 7
	15.0	21	481 - 1662 - 151.1	278 - 110 - 18	1443	131.2	759 - 3105	282.3	83	29 - 9
1987	40.9	55	530 - 2995 - 272.3	318 - 173 - 11	2366	215.1	848 - 5361	487.4	78	20-14
	12.3	15	422 - 1453 - 132.1	310 - 129 - 15	1563	142.1	732 - 3016	274.2	59	31-17
1986	33.2	45	464 - 2055 - 186.8	301 - 164 - 14	2142	194.7	775 - 4197	381.6	81	29-12
	18.6	26	466 - 1432 - 130.2	290 - 141 - 15	1845	167.7	756 - 3277	297.9	65	34-14
1985	33.5	45	503 - 2369 - 215.4	277 - 149 - 17	2078	188.9	781 - 4447	404.3	79	35-15
	21.4	30	457 - 1617 - 147.0	308 - 164 - 22	1924	174.9	765 - 3541	321.9	67	21 - 8
1984	35.3	48	571 - 3021 - 274.6	236 - 119 - 9	1938	176.2	807 - 4959	450.8	89	34-15
	21.3	29	452 - 1719 - 156.3	308 - 157 - 14	2390	217.3	760 - 4109	373.6	83	27-11
1983	32.1	49	518 - 2522 - 229.3	313 - 176 - 14	2367	215.2	830 - 4889	444.5	73	25-18
	28.1	37	476 - 1977 - 179.7	295 - 173 - 10	2202	200.2	772 - 4179	379.9	69	20 - 8
1982	35.3	53	477 - 2339 - 212.6	348 - 190 - 14	2785	253.2	825 - 5124	465.8	70	33-17
	22.0	31	529 - 2181 - 198.3	283 - 135 - 24	1912	173.8	812 - 4030	366.4	65	27-10
1981	21.8	31	492 - 1955 - 177.7	309 - 157 - 18	1888	171.6	801 - 3843	349.4	56	24-13
	26.0	36	481 - 1836 - 166.9	312 - 169 - 11	2367	215.2	793 - 4203	382.1	52	29-14
1980	32.0	41	603 - 2138 - 194.4	232 - 136 - 11	1597	145.2	835 - 3735	339.6	49	23 - 6
	7.7	10	408 - 984 - 89.5	241 - 106 - 18	1306	118.7	649 - 2290	208.2	57	27-19
1979	29.0	39	515 - 1861 - 169.2	340 - 174 - 17	2214	201.3	855 - 4075	370.5	63	17 - 8
	12.4	18	448 - 1304 - 118.6	267 - 91 - 23	1365	124.1	715 - 2669	242.6	48	45-15
1978	28.4	42	476 - 1773 - 161.2	369 - 206 - 16	2749	249.9	845 - 4522	411.1	53	19 - 9
	18.9	29	494 - 2000 - 181.8	228 - 117 - 17	1587	144.3	722 - 3587	326.1	49	32-18
1977	24.9	34	462 - 1637 - 148.8	323 - 176 - 16	2466	224.2	785 - 4103	373.0	58	22-14
	13.9	16	560 - 1773 - 161.2	215 - 91 - 14	1167	106.1	775 - 2940	267.3	48	33-14
1976	18.6	26	488 - 1826 - 166.0	247 - 137 - 14	2040	185.5	741 - 3866	351.5	40	33-19
	23.5	33	630 - 3069 - 279.9	135 - 68 - 5	949	86.3	770 - 3942	358.4	51	32-17
1975	17.0	25	519 - 1803 - 163.9	252 - 136 - 12	1885	171.4	771 - 3688	335.3	71	33-16
	19.4	26	594 - 2755 - 250.5	116 - 53 - 11	698	63.5	710 - 3453	313.9	53	41-23
1974	11.8	17	432 - 1703 - 154.8	293 - 153 - 20	1769	160.8	725 - 3472	315.6	85	33-19
	26.3	38	641 - 3069 - 279.0	161 - 81 - 8	1399	127.2	802 - 4468	406.2	46	42-24
1973	8.9	13	377 - 1166 - 106.0	325 - 138 - 21	1698	154.4	702 - 2864	260.3	63	39-22
	30.1	43	605 - 3041 - 276.5	252 - 130 - 15	1855	168.7	857 - 4896	445.1	75	36-15
1972	26.2	39	421 - 1500 - 136.4	389 - 209 - 23	2974	270.4	810 - 4474	406.7	74	28-16
	20.4	31	533 - 1919 - 174.5	268 - 125 - 22	1709	155.4	801 - 3628	329.2	51	30-14
1971	24.6	33	411 - 1305 - 118.6	338 - 186 - 20	2750	250.0	749 - 4055	368.6	61	32-20
	11.7	15	514 - 1472 - 133.8	259 - 122 - 17	1389	126.3	773 - 2861	260.1	50	33-16
1970	23.1	31	442 - 1379 - 125.4	345 - 175 - 16	2838	258.0	787 - 4217	383.4	71	31-22
	17.7	26	519 - 1861 - 169.2	296 - 133 - 17	1661	151.0	815 - 3532	320.2	52	32-15
1969	22.0	27	421 - 1049 - 104.9	356 - 191 - 19	2550	255.0	777 - 3599	359.9	62	42-27
	18.2	25	468 - 1560 - 156.0	225 - 103 - 20	1239	123.9	693 - 2799	279.9	51	36-20
1968	28.1	37	436 - 1484 - 148.4	356 - 195 - 13	2844	284.4	792 - 4328	432.8	55	13 - 9
	18.0	24	462 - 1811 - 181.1	226 - 115 - 25	1392	139.2	688 - 3203	320.3	44	27-12
1967	23.3	30	371 - 1202 - 120.2	352 - 190 - 21	2584	258.4	723 - 3786	378.6	57	21-13
	17.0	22	445 - 1509 - 150.9	194 - 86 - 17	1146	114.6	639 - 2655	265.5	54	30-12
1966	25.4	34	384 - 1277 - 127.7	350 - 187 - 14	2467	246.7	734 - 3744	374.4	53	10 - 5
	18.7	23	384 - 1453 - 145.3	229 - 112 - 18	1543	154.3	613 - 2996	199.6	46	22-14
1965	12.1	15	384 - 1396 - 139.6	256 - 114 - 15	1296	129.6	640 - 2692	269.2	53	13 - 5
	11.9	16	436 - 1835 - 183.5	181 - 89 - 5	1212	121.2	577 - 2517	251.7	50	21-14
1964	22.7	29	409 - 1386 - 138.6	249 - 147 - 10	2029	202.9	658 - 3415	341.5	58	17 - 9
	6.6	10	349 - 750 - 75.0	195 - 76 - 10	1061	106.1	545 - 1811	181.1	62	32-23
1963	16.7	23	380 - 1344 - 134.4	181 - 90 - 11	1156	115.6	561 - 2500	250.0	52	29-15
	9.3	12	446 - 1384 - 138.4	172 - 83 - 10	885	88.5	618 - 2269	226.9	28	24-10
1962	17.0	23	450 - 1541 - 154.1	223 - 118 - 9	1596	159.6	673 - 3137	313.7	60	19-11
	6.9	10	379 - 1301 - 130.1	148 - 67 - 14	693	69.3	527 - 1994	199.4	51	28-12
1961	9.3	12	454 - 1484 - 148.4	140 - 69 - 9	672	67.2	594 - 2156	215.6	49	19-10
	12.8	18	424 - 1526 - 152.6	178 - 89 - 12	1132	113.2	602 - 2658	265.8	66	29-14
1960	11.1	16	425 - 1289 - 128.9	200 - 96 - 14	1046	104.6	625 - 2335	233.5	49	18-12
	13.6	18	479 - 1840 - 184.0	153 - 80 - 10	993	99.3	632 - 2833	283.3	51	32-16
1959	14.9	22	435 - 1267 - 126.7	212 - 104 - 10	1222	122.2	647 - 2489	248.9	42	27-16
	13.2	10	474 - 1591 - 159.1	163 - 75 - 14	1090	109.0	637 - 2681	268.1	74	17 - 9
1958	21.2	29	441 - 1773 - 177.3	176 - 80 - 15	1043	104.3	617 - 2816	281.6	64	26-16
	10.9	15	482 - 1646 - 164.6	126 - 51 - 14	675	67.5	608 - 2321	232.1	53	31-20
1957	13.6	20	443 - 1642 - 164.2	164 - 71 - 17	786	78.6	607 - 2428	242.8	56	27-18
	16.5	24	512 - 2127 - 212.7	126 - 61 - 10	789	78.9	628 - 2916	291.6	52	36-26
1956	17.8	26	443 - 1727 - 172.7	151 - 82 - 7	960	96.0	594 - 2687	268.7	69	22-15
	11.6	19	476 - 1827 - 182.7	123 - 61 - 11	812	81.2	599 - 2639	263.9	58	29-17
1955	14.7	22	424 - 1517 - 151.7	147 - 75 - 12	990	99.0	571 - 2507	250.7	57	26-14
	18.6	27	500 - 1960 - 196.0	146 - 73 - 10	1089	108.9	646 - 3049	304.9	60	29-18
1954	23.4	39	432 - 1689 - 153.6	216 - 107 - 21	1745	158.6	648 - 3428	311.6	67	29-16
	13.0	22	469 - 1798 - 163.5	187 - 72 - 20	900	81.8	656 - 2698	245.3	52	44-25
1953	18.3	27	507 - 2142 - 214.2	165 - 63 - 20	936	93.6	672 - 3078	307.8	76	24-15
	14.6	22	438 - 1595 - 159.5	149 - 50 - 8	628	62.8	587 - 2223	222.3	48	34-22
1952	10.1	15	640 - 1600 - 160.0	174 - 64 - 20	821	82.1	814 - 2421	242.1	61	34-19
	26.1	38	626 - 2048 - 204.8	153 - 74 - 15	1162	116.2	779 - 3210	321.0	64	28-18
1951	24.3	29	n/a	n/a	n/a	n/a	n/a	n/a	n/a	n/a
	9.0	10	n/a	n/a	n/a	n/a	n/a	n/a	n/a	n/a
1950	27.4	33	420 - 1807 - 225.9	119 - 44 - 12	939	117.4	539 - 2746	343.3	n/a	n/a
	6.8	8	352 - 818 - 102.2	138 - 60 - 19	572	71.5	490 - 1390	173.8	n/a	n/a
1949	30.2	41	2187 - 243.0	107 - 35 - 13	716	79.6	84 - 2403	322.6	n/a	44-19
	5.9	8	741 - 82.3	175 - 61 - 24	671	74.6	118 - 1351	156.9	n/a	41-17
1948	19.0	24	1682 - 210.3	84 - 35 - 11	721	90.1	107 - 2903	300.4	n/a	18 - 7
	8.0	10	721 - 90.1	118 - 47 - 21	630	78.8	175 - 1412	168.9	n/a	15 - 9
1947	3.6	3	287 - 57.4	87 - 32 - 14	400	80.0	87 - 687	137.4	n/a	n/a
	18.0	14	n/a	n/a	n/a	n/a	n/a	n/a	n/a	n/a