

YEAR BY YEAR RESULTS

| | | |
|-------------------|---|-----|
| Alabama | W | 9-0 |
| Northern Illinois | W | 9-0 |
| Rollins | W | 7-2 |
| Oglethorpe | W | 7-2 |
| Furman | W | 9-0 |
| Auburn | W | 8-1 |
| Miami (FL) | L | 2-7 |
| Valdosta State | W | 9-0 |
| Rollins | W | 5-4 |
| Georgia Tech | W | 5-4 |
| Valdosta State | W | 9-0 |
| Georgia Tech | W | 8-1 |
| Columbus | W | 6-3 |

1969-Lex Wood (22-5-1)

| | | |
|-------------------|---|-----|
| Mississippi State | W | 9-0 |
| Houston | L | 4-5 |
| Rice | L | 1-6 |
| Louisiana State | W | 7-2 |
| Tulane | T | 3-3 |
| Presbyterian | W | 9-0 |
| Florida | L | 2-7 |
| Michigan State | W | 7-2 |
| Southern Illinois | W | 6-3 |
| Valdosta State | W | 9-0 |
| Kalamazoo | W | 9-0 |
| Calvin | W | 9-0 |
| Kalamazoo | W | 8-1 |
| Virginia | W | 8-1 |
| Virginia | W | 6-3 |
| Indiana | W | 7-2 |
| Rollins | W | 6-3 |
| Florida | L | 1-8 |
| Columbus | W | 7-2 |
| Miami (FL) | L | 4-5 |
| Eastern Kentucky | W | 9-0 |
| Valdosta State | W | 9-0 |
| Georgia Southern | W | 9-0 |
| Mississippi State | W | 6-3 |
| Jacksonville | W | 9-0 |
| Georgia Tech | W | 5-4 |
| Columbus | W | 7-2 |
| South Florida | W | 9-0 |

1970-Pete Barizon (21-12)

| | | |
|--------------------|---|-----|
| Mississippi State | L | 3-6 |
| Louisiana State | W | 6-3 |
| Pan American | L | 1-6 |
| Texas Tech | L | 2-5 |
| Baylor | W | 5-2 |
| Georgia Southern | W | 8-1 |
| Houston | L | 1-8 |
| Furman | W | 8-1 |
| Florida | W | 6-3 |
| Presbyterian | W | 5-4 |
| Georgia | W | 5-0 |
| Middle Tenn. State | W | 9-0 |
| Northwestern | W | 8-1 |
| Northwestern | W | 7-1 |
| Calvin | W | 8-1 |
| North Carolina | L | 3-5 |
| Illinois | W | 5-2 |
| Miami (FL) | L | 0-9 |
| Georgia | L | 1-8 |
| Georgia Tech | W | 6-3 |
| Columbus | W | 6-3 |
| Florida | L | 0-9 |
| Tampa | W | 9-0 |
| Rollins | L | 4-5 |
| South Florida | W | 9-0 |
| Miami (FL) | L | 0-9 |
| Jacksonville | W | 9-0 |
| Florida A&M | W | 5-1 |
| Columbus | W | 5-4 |

1971-Pete Barizon (18-3)

| | | |
|-------------------|---|-----|
| Mississippi State | W | 8-0 |
| Miami (FL) | L | 1-8 |
| Florida | W | 6-3 |
| Presbyterian | W | 5-3 |
| Southern Illinois | W | 5-4 |
| Kalamazoo | W | 7-2 |
| West Florida | W | 7-0 |
| Florida A&M | W | 9-0 |
| Alabama | W | 5-4 |

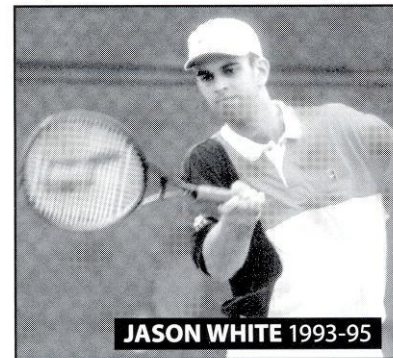
| | | |
|------------------|---|-----|
| Georgia Tech | L | 4-5 |
| South Carolina | W | 7-2 |
| Wingate | W | 6-3 |
| Tulane | W | 6-3 |
| Rollins | W | 6-3 |
| Georgia | L | 0-9 |
| Georgia Southern | W | 5-4 |
| South Florida | W | 7-2 |
| Florida | W | 5-4 |
| Jacksonville | W | 8-1 |
| Valdosta State | W | 9-0 |
| Columbus | W | 8-1 |

1972-Scott Bristol (18-4)

| | | |
|-------------------|---|-----|
| West Florida | W | 9-0 |
| Middle Tennessee | W | 7-2 |
| Presbyterian | W | 6-3 |
| Tennessee Tech | W | 7-2 |
| Minnesota | W | 7-2 |
| Southern Illinois | W | 6-3 |
| Kalamazoo | W | 8-1 |
| South Carolina | W | 6-3 |
| Northern Illinois | W | 8-1 |
| Florida | W | 5-4 |
| Wake Forest | W | 6-3 |
| Virginia | W | 5-4 |
| Jacksonville | W | 7-2 |
| Miami (FL) | L | 1-8 |
| Georgia | L | 3-6 |
| Pan American | L | 4-5 |
| Rollins | L | 3-6 |
| South Florida | W | 9-0 |
| Georgia Southern | W | 8-1 |
| Valdosta State | W | 9-0 |
| Columbus | W | 8-1 |
| Alabama | W | 5-2 |

1973-Randy Jobson (11-4)

| | | |
|-------------------|---|-----|
| Mississippi State | W | 9-0 |
| Florida Int'l | W | 9-0 |
| Miami (FL) | L | 2-7 |
| North Carolina | L | 2-7 |
| Kentucky | W | 7-2 |
| Kalamazoo | W | 7-2 |
| Minnesota | W | 8-1 |
| South Florida | W | 7-2 |
| Valdosta State | W | 9-0 |
| Cumberland (TN) | W | 9-0 |
| Florida Tech | W | 7-2 |
| Rollins | W | 9-0 |
| Georgia | L | 2-7 |



JASON WHITE 1993-95

| | | |
|----------|---|-----|
| Columbus | W | 7-1 |
| Florida | L | 3-6 |

1974-Randy Jobson (10-8)

| | | |
|-------------------|---|-----|
| Furman | W | 9-0 |
| Presbyterian | W | 9-0 |
| Duke | W | 8-1 |
| Eastern Kentucky | W | 9-0 |
| Pan American | W | 6-0 |
| Trinity | L | 4-5 |
| Rice | L | 4-5 |
| Houston | L | 2-7 |
| Southern Illinois | L | 3-6 |
| Kalamazoo | W | 7-2 |

| | | |
|----------------|---|-----|
| Samford | W | 7-2 |
| South Carolina | W | 5-4 |
| Clemson | W | 5-4 |
| Miami (FL) | L | 2-7 |
| South Florida | W | 6-3 |
| Alabama | L | 3-6 |
| Florida | L | 1-8 |
| Georgia | L | 3-6 |

1975-Randy Jobson (14-6)

| | | |
|-------------------|---|-----|
| Samford | W | 7-2 |
| Florida | L | 3-6 |
| Duke | W | 6-3 |
| North Carolina | L | 2-7 |
| East Kentucky | W | 9-0 |
| Florida Tech | W | 8-1 |
| South Carolina | L | 4-5 |
| Kentucky | L | 4-5 |
| Southern Illinois | L | 3-6 |
| Louisiana State | W | 7-2 |
| Flagler | W | 9-0 |
| Alabama | W | 5-4 |
| Kalamazoo | W | 8-1 |
| Georgia | W | 5-4 |
| Wake Forest | W | 5-4 |
| Valdosta State | W | 6-0 |
| Rollins | W | 7-2 |
| Florida Int'l | W | 6-3 |
| Miami (FL) | L | 1-8 |
| South Florida | W | 7-2 |

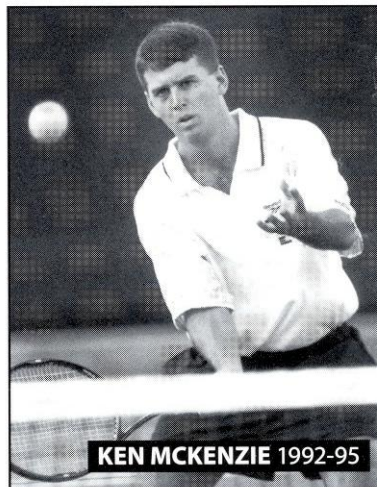
1976-Ken Vinson (4-19)

| | | |
|------------------|---|-----|
| Flagler | W | 5-4 |
| Middle Tennessee | W | 5-4 |
| Hampton | L | 3-6 |
| North Carolina | L | 4-5 |
| Duke | L | 1-8 |
| Kentucky | L | 1-8 |
| Kansas | L | 3-6 |
| Clemson | L | 4-5 |
| Tennessee | L | 1-8 |
| Calvin | W | 9-0 |
| Kalamazoo | L | 2-7 |
| Wake Forest | L | 2-7 |
| Miami (FL) | L | 0-9 |
| Florida | L | 1-8 |
| SW Louisiana | L | 3-6 |
| Louisiana State | L | 1-8 |
| Alabama | L | 2-7 |
| Rollins | L | 1-8 |
| Florida Tech | W | 5-4 |

| | | |
|----------------|---|-----|
| Flagler | L | 3-6 |
| South Carolina | L | 1-8 |
| Georgia | L | 1-8 |
| South Florida | L | 2-7 |

1977-Ken Vinson (5-15-1)

| | | |
|-------------------|---|-----|
| SE Louisiana | L | 3-6 |
| Valdosta State | W | 9-0 |
| South Florida | L | 3-6 |
| Furman | L | 2-7 |
| Mississippi State | L | 0-9 |
| Duke | L | 0-9 |
| Kansas | L | 4-5 |
| Wake Forest | L | 2-7 |



KEN MCKENZIE 1992-95

| | | |
|------------------|---|-----|
| Kent State | W | 7-2 |
| Auburn | L | 3-6 |
| Kalamazoo | W | 4-5 |
| Texas-Dallas | W | 6-0 |
| Illinois State | W | 5-4 |
| Flagler | L | 0-9 |
| Georgia Southern | L | 2-7 |
| Rollins | L | 2-7 |
| Florida Tech | L | 0-9 |
| South Florida | L | 0-9 |
| Miami (FL) | L | 0-9 |
| Florida Int'l | T | 3-3 |
| Florida | L | 0-9 |

1978-Juan Ortiz (17-5)

| | | |
|---------------------------|---|-----|
| South Florida | L | 1-8 |
| Georgia Southern | W | 5-4 |
| Furman | W | 5-4 |
| Jacksonville | L | 4-5 |
| Old Dominion | W | 5-4 |
| Mississippi | W | 5-4 |
| Cincinnati | W | 8-1 |
| Louisville | W | 7-2 |
| Kalamazoo | W | 6-3 |
| Indiana | W | 6-3 |
| The Citadel | W | 7-2 |
| Central FL CC | W | 8-1 |
| Central FL CC | W | 8-1 |
| Abraham Baldwin Ag. Coll. | W | 9-0 |
| Florida Int'l | W | 6-3 |
| Florida Tech | L | 3-6 |
| Rollins | L | 4-5 |
| Florida | L | 2-7 |
| Flagler | W | 6-3 |
| Central FL CC | W | 5-4 |
| Alabama | W | 5-4 |
| Flagler | W | 5-4 |

1979-Juan Ortiz (17-8)

| | | |
|-------------------|---|-----|
| Boston College | W | 9-0 |
| South Florida | L | 2-7 |
| Ark.-Little Rock | W | 8-1 |
| Mississippi State | L | 4-5 |
| Western Michigan | W | 7-2 |
| North Carolina | W | 6-3 |
| Old Dominion | W | 6-3 |
| Miami (FL) | L | 4-5 |
| Appalachian State | W | 5-4 |
| Southern Illinois | W | 6-3 |
| Western Kentucky | W | 9-0 |
| Alabama | L | 4-5 |
| Mississippi | W | 5-4 |
| Illinois | W | 7-2 |
| St. Francis | W | 6-3 |
| South Carolina | L | 3-6 |
| South Alabama | W | 8-1 |
| Indiana | W | 5-4 |
| Nicholls State | L | 1-8 |

| | | |
|---------------|---|-----|
| New Orleans | W | 8-1 |
| SE Louisiana | W | 5-4 |
| Rollins | W | 8-1 |
| Florida | L | 3-6 |
| NE Louisiana | W | 6-3 |
| South Florida | L | 4-5 |

1980-Randy Jobson (12-7)

| | | |
|------------------|---|-----|
| South Florida | W | 5-4 |
| Ala.-Birmingham | W | 7-2 |
| Valdosta State | W | 6-3 |
| Flagler | L | 4-5 |
| Georgia Southern | W | 7-2 |
| Miami (FL) | W | 9-0 |
| Furman | L | 3-6 |
| North Carolina | L | 2-7 |
| Illinois-Chicago | W | 9-0 |
| Pan American | W | 5-4 |
| South Alabama | W | 8-1 |
| Alabama | L | 2-7 |
| Auburn | L | 2-7 |
| Valdosta State | W | 8-1 |
| SE Louisiana | L | 2-7 |
| South Florida | W | 7-2 |
| Rollins | L | 2-7 |
| Florida | W | 5-4 |
| Flagler | W | 7-0 |

1981-Randy Jobson (12-14)

| | | |
|----------------------|---|-----|
| South Florida | W | 8-1 |
| Central Florida | W | 9-0 |
| Valdosta State | W | 9-0 |
| Ala.-Birmingham | L | 4-5 |
| Jacksonville | W | 7-2 |
| Georgia Southern | L | 2-7 |
| Western Michigan | W | 7-2 |
| Auburn | L | 1-8 |
| Purdue | W | 8-1 |
| North Carolina | L | 2-7 |
| Alabama | L | 1-8 |
| Clemson | L | 1-8 |
| Michigan | L | 3-6 |
| North Carolina State | L | 3-6 |
| Princeton | L | 3-6 |
| Flagler | W | 7-2 |
| Georgia Southern | W | 5-4 |
| Georgia | L | 1-8 |
| South Carolina | L | 3-6 |
| Florida Int'l | W | 8-1 |
| Florida | L | 3-6 |
| Valdosta State | W | 8-1 |
| Rollins | L | 4-5 |
| Nicholls State | L | 4-5 |
| South Alabama | W | 5-4 |
| Ala.-Birmingham | W | 7-2 |

1982-Randy Jobson (23-10)

| | | |
|-----------------|---|-----|
| Louisiana State | L | 2-7 |
| Nicholls State | W | 9-0 |

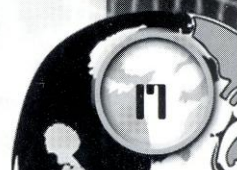
| | | |
|-------------------|---|-----|
| SW Louisiana | L | 2-7 |
| Flagler | W | 8-1 |
| Jacksonville | W | 7-2 |
| Rollins | W | 7-2 |
| South Florida | W | 5-4 |
| Ala.-Birmingham | W | 7-2 |
| Georgia Southern | W | 6-3 |
| Florida A&M | W | 9-0 |
| Michigan | L | 2-7 |
| Miami (FL) | L | 2-7 |
| Auburn | L | 4-5 |
| Florida Int'l | W | 6-3 |
| Western Michigan | W | 8-1 |
| Georgia Southern | W | 8-1 |
| Georgia | L | 0-9 |
| Purdue | W | 8-1 |
| Hampton | W | 9-0 |
| Anderson JC. | W | 7-2 |
| Mississippi | W | 6-3 |
| Miami (FL) | L | 1-8 |
| Southern Illinois | W | 7-2 |
| Maryland | W | 5-4 |
| South Carolina | W | 5-4 |
| Furman | W | 5-4 |
| Nebraska | W | 7-2 |
| Jacksonville | W | 7-2 |
| Auburn | L | 4-5 |
| Alabama | L | 3-6 |
| Valdosta State | W | 8-1 |
| Florida Atlantic | W | 9-0 |
| Florida | L | 3-5 |

1983-Randy Jobson (19-13)

| | | |
|---------------------------|---|-----|
| Abraham Baldwin Ag. Coll. | W | 7-2 |
| Auburn-Montgomery | W | 9-0 |
| Michigan | L | 3-6 |
| South Alabama | W | 6-3 |
| Cal.-Irvine | L | 4-5 |
| Central Florida | W | 6-3 |
| Georgia Southern | L | 2-7 |
| Jacksonville | W | 9-0 |
| South Florida | L | 3-6 |
| South Alabma | L | 4-5 |
| Rollins | W | 7-2 |
| Rice | W | 6-3 |
| Furman | W | 6-2 |
| Florida Atlantic | W | 9-0 |
| North Carolina | W | 6-3 |
| Lander | W | 6-3 |
| Anderson JC | W | 9-0 |
| Wake Forest | W | 6-3 |
| NC-Asheville | W | 9-0 |
| Texas A&M | L | 2-7 |
| South Alabama | W | 7-2 |
| Austin Peay | W | 7-2 |
| Ohio State | W | 7-2 |
| Florida JC | W | 9-0 |
| Auburn | L | 2-7 |
| SW Louisiana | L | 4-5 |
| Abraham Baldwin Ag. Coll. | W | 6-1 |
| Florida | L | 2-7 |
| Miami (FL) | L | 1-5 |
| Louisiana State | L | 4-5 |
| Georgia | L | 4-5 |
| Georgia Southern | L | 3-6 |

1984-Richard McKee (30-8)

| | | |
|-------------------|---|-----|
| OWCC | W | 9-0 |
| Auburn-Montgomery | W | 8-1 |
| Florida JC | W | 9-0 |
| Georgia Southern | W | 8-1 |
| South Florida | W | 7-2 |
| Central FL CC | W | 5-1 |
| Tulane | W | 9-0 |
| New Orleans | W | 8-1 |
| Texas A&M | L | 2-7 |
| SE Louisiana | W | 8-1 |
| Louisiana State | L | 1-5 |
| South Carolina | L | 2-7 |
| Virginia Tech | W | 9-0 |
| Memphis State | W | 5-1 |
| Evansville | W | 9-0 |
| Furman | W | 8-1 |
| Florida | W | 6-3 |
| Georgia Southern | W | 5-4 |



YEAR BY YEAR RESULTS

| | | |
|---------------------------|---|-----|
| Georgia | L | 3-6 |
| Palm Beach CC | W | 7-2 |
| Florida Int'l | W | 9-0 |
| So. Mississippi | W | 9-0 |
| Mississippi | L | 4-5 |
| Wake Forest | W | 5-4 |
| Western Carolina | W | 8-1 |
| Anderson JC | W | 9-0 |
| Georgia State | W | 9-0 |
| Kalamazoo | W | 9-0 |
| Akron | W | 8-1 |
| Flagler | W | 6-3 |
| New Orleans | W | 5-1 |
| Alabama | L | 1-8 |
| Abraham Baldwin Ag. Coll. | W | 6-3 |
| SW Louisiana | L | 1-8 |
| Murray State | W | 5-1 |
| Maryland | L | 4-5 |
| NE Louisiana | W | 5-4 |
| CA State-Long Beach | W | 9-0 |

1985-Richard McKee (25-4)

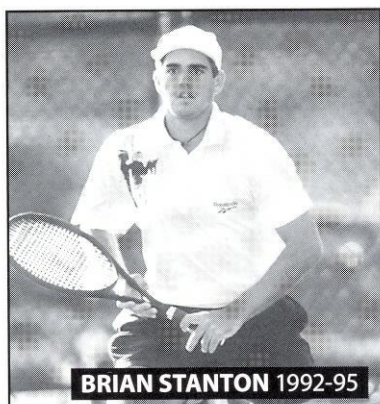
| | | |
|--------------------|---|-----|
| Auburn-Montgomery | W | 8-1 |
| North Florida | L | 4-5 |
| Florida Jun. Coll. | W | 9-0 |
| Yale | W | 8-1 |
| South Florida | W | 9-0 |
| Auburn | W | 7-2 |
| Florida | L | 4-5 |
| Emory | W | 8-1 |
| Furman | W | 8-1 |
| So. Mississippi | W | 9-0 |
| West Virginia | W | 9-0 |
| Miami (FL) | W | 5-4 |
| Alabama | W | 6-3 |
| South Alabama | W | 6-0 |
| Flagler | W | 6-3 |
| Georgia Southern | W | 6-3 |
| Alabama-Birmingham | W | 8-1 |
| Jacksonville | W | 8-1 |
| Miami (FL) | L | 4-5 |
| South Carolina | L | 3-5 |
| Kentucky | W | 5-3 |
| Auburn | W | 7-2 |
| SW Louisiana | W | 5-1 |
| SW Louisiana | W | 5-4 |
| Auburn | W | 6-3 |
| McNeese State | W | 5-4 |
| Florida | W | 6-3 |
| Rollins | W | 5-0 |
| Tennessee-Martin | W | 5-1 |

1986-Richard McKee (10-13)

| | | |
|---------------------------|---|-----|
| Tulane | W | 6-3 |
| Auburn-Montgomery | L | 4-5 |
| West Florida | W | 9-0 |
| North Florida | W | 7-2 |
| Arizona State | L | 0-9 |
| Florida | L | 2-7 |
| South Florida | L | 3-6 |
| Auburn | L | 3-6 |
| Furman | W | 6-3 |
| Louisiana Tech | L | 3-6 |
| Kentucky | L | 3-6 |
| Baylor | W | 5-4 |
| Arkansas-Little Rock | L | 2-7 |
| Oklahoma State | L | 1-5 |
| West Virginia | W | 5-4 |
| Southern Illinois | W | 7-2 |
| Mississippi State | W | 6-3 |
| Southwest Louisiana | L | 0-9 |
| Tulane | W | 5-1 |
| Alabama | L | 2-7 |
| South Florida | L | 4-5 |
| Florida | L | 1-8 |
| Abraham Baldwin Ag. Coll. | W | 8-1 |

1987-Richard McKee (13-10)

| | | |
|--------------------|---|-----|
| Indiana | L | 5-4 |
| Auburn-Montgomery | W | 9-0 |
| Florida Jun. Coll. | W | 8-1 |
| SW Louisiana | L | 2-7 |
| North Florida | W | 7-2 |
| Florida Atlantic | W | 8-1 |
| South Alabama | W | 6-3 |



BRIAN STANTON 1992-95

| | | |
|---------------------------|---|-----|
| Florida | L | 4-5 |
| Furman | W | 5-4 |
| Vanderbilt | L | 4-5 |
| SE Louisiana | L | 3-6 |
| Alabama | L | 3-6 |
| Belhaven | W | 8-1 |
| Hampton | L | 4-5 |
| Miami (FL) | L | 3-6 |
| North Carolina | L | 2-7 |
| Louisville | W | 8-1 |
| Florida | W | 6-3 |
| Kalamazoo | W | 6-3 |
| Abraham Baldwin Ag. Coll. | W | 7-2 |
| McNeese State | L | 2-7 |
| Georgia Southern | W | 5-4 |
| So. Mississippi | W | 9-0 |

1988-Richard McKee

| | | |
|---------------------------|---|-----|
| Auburn-Montgomery | W | 9-0 |
| So. Mississippi | W | 9-0 |
| Virginia Tech | W | 9-0 |
| Abraham Baldwin Ag. Coll. | W | 9-0 |
| Mississippi State | L | 2-7 |
| Alabama | L | 1-5 |
| North Carolina | L | 4-5 |
| South Florida | L | 3-6 |
| Rice | L | 4-5 |
| Furman | W | 6-0 |
| Arkansas | L | 4-5 |
| Nebraska | W | 5-4 |
| Clemson | L | 1-5 |
| McNeese State | L | 3-5 |
| Georgia Southern | W | 7-2 |
| Kalamazoo | W | 5-1 |
| Florida | W | 6-3 |
| Georgia State | W | 8-1 |
| SE Louisiana | L | 4-5 |
| South Alabama | W | 7-2 |
| Florida | W | 6-3 |
| North Florida | W | 6-3 |

1989-Richard McKee (18-12)

| | | |
|-------------------------|---|-----|
| Trinity College-Ireland | W | 6-0 |
| Trinity College-Ireland | W | 7-2 |
| Valdosta State | W | 8-1 |
| Tennessee Tech | W | 5-4 |
| Auburn | L | 2-5 |
| Auburn-Montgomery | L | 2-5 |
| Huntingdon | W | 5-1 |
| Jacksonville | W | 7-2 |
| Flagler | W | 6-2 |
| South Florida | W | 5-4 |
| Florida | L | 2-7 |
| South Alabama | L | 3-6 |
| San Diego State | L | 1-5 |
| Oklahoma | L | 2-5 |
| Kansas | W | 5-4 |
| SW Louisiana | L | 4-5 |
| Georgia Southern | W | 5-4 |
| Virginia Tech | W | 6-2 |
| Columbia | W | 8-1 |
| Georgia State | W | 5-4 |
| VA Commonwealth | W | 6-0 |
| Huntingdon | L | 0-9 |
| Furman | L | 4-5 |
| DePaul | W | 5-4 |
| Central Florida | W | 5-1 |

| | | |
|-----------------|---|-----|
| Miami (FL) | L | 1-5 |
| Florida Int'l | L | 2-5 |
| So. Mississippi | W | 6-3 |
| SE Louisiana | L | 0-6 |
| North Florida | W | 5-4 |

1990-Richard McKee (19-8)

| | | |
|---------------------------|---|-----|
| Georgia State | W | 5-4 |
| Georgia Tech | W | 4-3 |
| Auburn | L | 2-5 |
| Flagler | W | 9-0 |
| Georgia Southern | L | 4-5 |
| Jacksonville | W | 9-0 |
| Florida | L | 2-7 |
| North Florida | W | 9-0 |
| SW Louisiana | W | 7-2 |
| Abraham Baldwin Ag. Coll. | W | 9-0 |
| Georgia Southern | W | 6-3 |
| Furman | W | 6-3 |
| Clemson | L | 2-7 |
| Tennessee Tech | W | 6-3 |
| DePaul | W | 9-0 |
| SE Louisiana | W | 5-1 |
| Texas A&M | L | 1-5 |
| McNeese State | W | 7-2 |
| Southern Miss | W | 5-4 |
| SW Louisiana | L | 4-5 |
| Cal State-Long Beach | W | 6-3 |
| Cal State-Santa Barbara | W | 5-1 |
| Virginia | L | 4-5 |
| Florida Int'l | W | 5-1 |
| Miami (FL) | L | 4-5 |
| South Florida | W | 6-3 |
| SE Louisiana | W | 5-1 |

1991-David Barron (16-7)

| | | |
|---------------------------|---|-----|
| Arkansas | L | 3-6 |
| Georgia Tech | L | 3-6 |
| South Alabama | W | 6-4 |
| North Florida | W | 9-0 |
| SW Louisiana | W | 8-1 |
| Abraham Baldwin Ag. Coll. | W | 9-0 |
| Georgia Southern | W | 9-0 |
| Furman | W | 9-0 |
| SW Texas State | W | 6-0 |
| Memphis State | W | 7-0 |
| SE Louisiana | W | 5-1 |
| Texas A&M | L | 1-5 |
| SW Louisiana | W | 5-4 |
| CA State-Long Beach | W | 5-4 |
| CA State-Santa Barbara | W | 6-0 |
| Virginia | L | 4-5 |
| Florida Int'l | W | 5-1 |
| Ohio State | L | 4-5 |
| Miami (FL) | L | 3-6 |
| South Florida | W | 6-3 |
| Alabama-Birmingham | L | 4-5 |
| SE Louisiana | W | 5-1 |
| Rollins | W | 8-0 |

1992-David Barron (14-9)

| | | |
|--------------------|---|-----|
| Rollins | W | 5-4 |
| North Florida | W | 6-3 |
| Florida Int'l | L | 4-5 |
| South Florida | L | 4-5 |
| Florida | L | 2-7 |
| Georgia Southern | W | 5-1 |
| North Carolina St. | W | 5-4 |

| | | |
|-------------------|---|-----|
| North Carolina | L | 3-6 |
| Notre Dame | L | 1-5 |
| Texas A&M | L | 4-5 |
| So. Methodist | W | 7-2 |
| Middle Ten. State | W | 5-1 |
| Georgia State | W | 7-0 |
| SW Louisiana | W | 6-3 |
| Wake Forest | W | 5-1 |
| Georgia Tech | W | 5-4 |
| Clemson | W | 5-4 |
| Furman | W | 5-1 |
| Maryland | W | 5-2 |
| Miami (FL) | L | 3-5 |
| Duke | L | 2-5 |
| Wake Forest | W | 5-3 |
| Duke | L | 3-5 |

1993-David Barron (17-8)

| | | |
|--------------------|---|-----|
| Jacksonville | W | 7-0 |
| SW Louisiana | W | 6-1 |
| Georgia Southern | W | 7-0 |
| Georgia State | W | 7-0 |
| Furman | W | 5-2 |
| Clemson | W | 6-1 |
| Mississippi State | L | 2-5 |
| Mississippi | L | 3-4 |
| Colorado | L | 2-4 |
| South Alabama | L | 3-4 |
| Wisconsin | W | 4-3 |
| Florida | L | 1-6 |
| Maryland | W | 7-0 |
| Virginia | W | 6-1 |
| West Virginia | W | 6-1 |
| Wake Forest | W | 6-1 |
| Duke | L | 0-7 |
| North Carolina | L | 1-6 |
| North Carolina St. | W | 4-3 |
| Georgia Tech | W | 4-3 |
| South Florida | W | 4-3 |
| Florida Int'l | W | 4-3 |
| Miami (FL) | W | 4-3 |
| Clemson | W | 5-2 |
| North Carolina | L | 2-5 |

1994-David Barron (15-9)

| | | |
|--------------------|---|-----|
| Georgia Southern | W | 7-0 |
| Georgia State | W | 7-0 |
| Mississippi State | L | 1-6 |
| Jacksonville | W | 7-0 |
| SW Louisiana | W | 5-2 |
| Miami (FL) | W | 5-2 |
| Florida Int'l | W | 4-3 |
| North Carolina | L | 3-4 |
| Wake Forest | W | 6-1 |
| South Florida | W | 5-2 |
| North Carolina St. | W | 7-0 |
| Miami, Ohio | W | 5-2 |
| VA Commonwealth | L | 1-6 |
| Furman | W | 5-2 |
| Clemson | L | 3-4 |
| Texas A&M | L | 1-6 |

| | | |
|-----------------|---|-----|
| Texas Christian | L | 3-4 |
| West Virginia | W | 4-3 |
| Maryland | W | 7-0 |
| Virginia | W | 6-1 |
| Georgia Tech | W | 4-3 |
| Clemson | L | 3-4 |
| Georgia Tech | L | 2-4 |

1995-David Barron (18-8)

| | | |
|--------------------|---|-----|
| Georgia Southern | W | 7-0 |
| Georgia State | W | 7-0 |
| SW Louisiana | W | 5-2 |
| Jacksonville | W | 7-0 |
| Central Florida | W | 6-1 |
| Florida | W | 5-2 |
| Furman | W | 7-0 |
| Old Dominion | W | 7-0 |
| South Alabama | L | 2-5 |
| Georgia | L | 1-6 |
| Virginia | W | 7-0 |
| Texas A&M | W | 5-2 |
| Wake Forest | W | 5-2 |
| North Carolina St. | W | 6-1 |
| VA Commonwealth | W | 6-1 |
| Maryland | W | 7-0 |
| North Carolina | W | 4-3 |
| Duke | L | 3-4 |
| Georgia Tech | W | 5-2 |
| Clemson | W | 4-3 |
| South Florida | L | 3-4 |
| Miami (FL) | L | 2-5 |
| Florida Int'l | L | 3-4 |
| Virginia | W | 5-1 |
| Clemson | L | 2-4 |
| VA Commonwealth | L | 2-4 |

1996-David Barron (15-13)

| | | |
|--------------------|---|-----|
| Georgia Southern | W | 7-0 |
| Georgia State | W | 5-1 |
| SW Louisiana | W | 6-1 |
| Kansas | L | 1-6 |
| South Alabama | L | 2-5 |
| Jacksonville | W | 7-0 |
| Central Florida | W | 5-2 |
| South Florida | L | 2-5 |
| North Carolina | L | 1-6 |
| Florida | L | 2-5 |
| North Carolina St. | W | 7-0 |
| Duke | W | 4-3 |
| Wake Forest | W | 6-1 |
| Kansas | L | 3-4 |
| Texas | L | 3-4 |
| Alabama | L | 1-4 |
| Furman | W | 7-0 |
| Clemson | L | 3-4 |
| Florida Int'l | W | 4-3 |
| Mississippi State | L | 0-7 |
| Maryland | W | 7-0 |
| Virginia | W | 5-2 |
| VA Commonwealth | L | 0-4 |
| Georgia Tech | W | 4-3 |
| Wake Forest | W | 4-2 |

| | | |
|----------------|---|-----|
| Duke | L | 2-4 |
| South Carolina | W | 4-2 |
| Duke | L | 0-4 |

1997-David Barron (16-12)

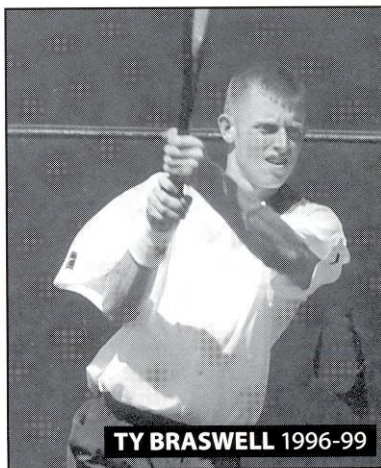
| | | |
|----------------------|---|------|
| Mississippi State | L | 0-7 |
| Georgia Southern | W | 6-0 |
| Georgia State | W | 7-0 |
| Florida Atlantic | W | 6-1 |
| So. Mississippi | W | 5-2 |
| Jacksonville | W | 5-0 |
| Central Florida | W | 5-1 |
| Florida | W | 4-3 |
| Furman | W | 6-1 |
| Florida Int'l | W | 4-3 |
| Miami | L | 3-4 |
| Old Dominion | W | 5-2 |
| Virginia | L | 3-4 |
| Kansas | L | 2-4 |
| Tulane | L | Def. |
| North Carolina | L | Def. |
| South Florida | L | 3-4 |
| Duke | L | 2-5 |
| North Carolina | L | 2-5 |
| New Mexico | W | 6-1 |
| Clemson | L | 3-4 |
| Georgia Tech | W | 4-3 |
| Maryland | W | 5-0 |
| Wake Forest | W | 4-0 |
| North Carolina State | W | 4-3 |
| North Carolina | W | 4-2 |
| Clemson | L | 2-4 |
| VA Commonwealth | L | 0-4 |

1998-David Barron (17-8)

| | | |
|--------------------|---|-----|
| Stetson | W | 7-0 |
| Jacksonville | W | 6-1 |
| Old Dominion | W | 6-1 |
| Georgia Southern | W | 7-0 |
| Georgia State | W | 5-2 |
| So. Mississippi | W | 6-1 |
| South Alabama | W | 4-3 |
| Florida Atlantic | W | 7-0 |
| Florida | L | 1-6 |
| Wake Forest | W | 5-2 |
| North Carolina | L | 2-5 |
| Ten.-Chattanooga | W | 6-1 |
| Duke | L | 2-4 |
| North Carolina St. | W | 5-2 |
| Furman | W | 5-2 |
| Clemson | W | 5-2 |
| Florida Int'l | W | 6-1 |
| Miami, FL | L | 3-4 |
| Maryland | W | 6-0 |
| Virginia | L | 2-5 |
| Georgia Tech | L | 3-4 |
| Georgia Tech | W | 4-1 |
| Duke | L | 0-4 |
| Flagler College | W | 5-1 |
| Virginia (NCAA) | L | 1-4 |

1999-David Barron (13-10)

| | | |
|--------------------|---|-----|
| Stetson | W | 5-2 |
| Jacksonville | W | 6-1 |
| Troy State | W | 5-2 |
| Georgia Southern | W | 6-1 |
| Georgia | L | 1-6 |
| Florida Int'l | W | 6-1 |
| Miami | L | 3-4 |
| So. Mississippi | W | 4-3 |
| Furman | W | 6-1 |
| Florida | L | 2-5 |
| Wake Forest | L | 3-4 |
| Maryland | W | 7-0 |
| Duke | L | 1-6 |
| Virginia | W | 4-3 |
| Clemson | L | 1-6 |
| UNC-Asheville | W | 7-0 |
| North Carolina St. | W | 5-2 |
| North Carolina | L | 3-4 |
| South Florida | L | 2-5 |
| Florida Atlantic | W | 5-2 |
| Georgia State | W | 4-3 |
| Georgia Tech | L | 1-6 |
| Georgia Tech (ACC) | L | 2-4 |

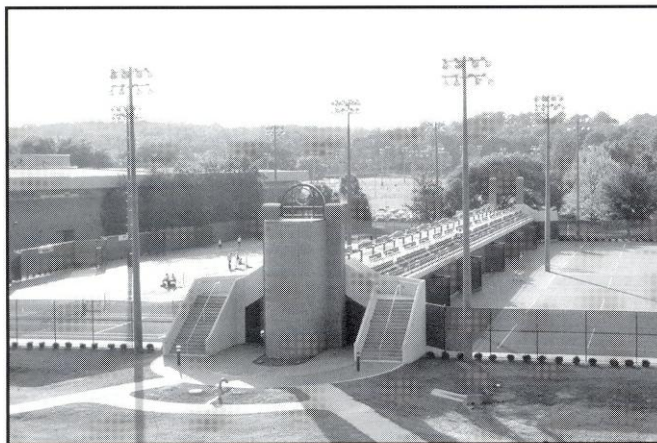


TY BRASWELL 1996-99

SCOTT SPEICHER TENNIS CENTER

With the first stage of construction completed in the Summer of 1993, the Scott Speicher Tennis Center at the Donald Loucks Courts opened its gates to the public for the first time at a Children's Miracle Network charity tournament. Since then, many successful tournaments including the NCAA Women's Championships, have graced the courts at one of Florida State University's premier athletic facilities.

Costing \$1.2 million to build and then another \$800,000 for recent additions, Florida State's Speicher



Tennis Center has become an example of the increasing dedication and commitment the University has to all of its 17 varsity athletic programs.

The Speicher Tennis Center houses 12 lighted hard courts, over 1,000 court level seats, coaching offices, men's and women's lockerrooms, equipment and storage rooms, a team lounge and a public address system. The growing pride Florida State has for its tennis program and its premier tennis center was honored just after its opening in 1994, when the United States Tennis Association (USTA) awarded the structure with its "Top Notch" facility award.

The Speicher Tennis Center was named in honor of Lieutenant Commander Michael Scott Speicher, a graduate of Florida State University and the first American casualty during Operation Desert Storm. By Presidential directive, the facility bears the name the "Scott Speicher Tennis Center."

H. Donald Loucks was the program's first tennis coach and is aptly

known as the pioneer of Florida State tennis. He began his coaching career in 1936 at the University School of Florida State College for Women where he coached all sports. This was the beginning of an association with Florida State which crossed six decades, 1936 - 1980, ending in his retirement as Professor Emeritus of Physical Education. In 1942, while serving as an officer in the Army, Loucks was stationed at West Point where he coached plebe basketball and tennis teams.

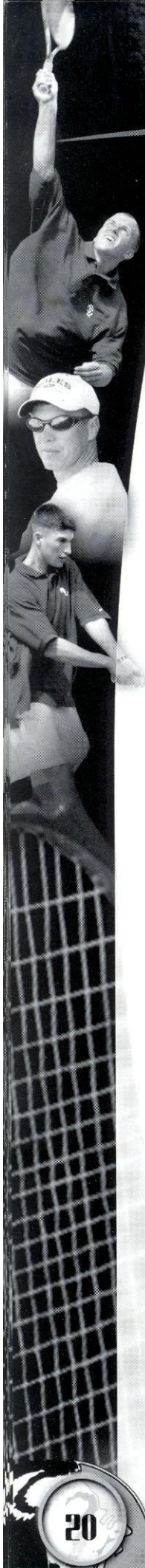
In 1947, Loucks became Florida State's first basketball coach and a year later was named the schools' first tennis coach. His tennis team was the first athletic team to have a winning season. The varsity tennis courts were named for him in 1981. He served as Dean of Men from 1957 - 1967 and was known as a servant of leadership, service and devotion to many worthy causes.

The Speicher Tennis Center was designed by EMO/Architects, Inc., a Tallahassee-based architectural firm, in collaboration with Global Consult Group, Inc., an internationally recognized Tennis Facility Design Consultant. The complex was funded by private sources and supervised through the state university system of Florida.

Through its short four year existence, the Scott Speicher Tennis Center at the Donald Loucks Courts has served as the home courts for all Florida State men's and women's home dual matches, the annual Seminole Fall Classics, City of Tallahassee tennis championships, various USTA regional and zonal tournaments, the 1994 and 1995 Men's intercollegiate men's tournament and the annual Children's Miracle Network Charity Invitational benefitting Shands Hospital in Gainesville.



ALL-TIME DUAL MATCH ROSTER



Marco Abilhoa, 1979-84
 Kenny Alcorn, 1963
 Greg Anderson, 1988-89
 Enrique Andrade, 1974-76
 Thomas Babione, 1950-52
 Dale Baker, 1969, 1970
 Mike Baldwin, 1963
 Adam Baron, 1993-96
 Mike Barton, 1966
 Mick Bassinger, 1970-73
 Tom Batchelor, 1955
 Stephan Becouarn, 1996
 Allan Bellamy, 1976-79
 Rebel Bellamy, 1959-61
 Paul Bennett, 1963-65
 Chet Benson, 1976
 Andris Bergvalds, 1978-79
 Ricardo Bernd, 1972-74
 Jeff Bingo, 1987
 Donald Blair, 1991
 Scott Blessing, 1982-84
 Dan Boda, 1950-53
 Robert Boland, 1972-73
 Anthony Bouille, 1980-82
 Richard Bradley, 1950
 David "Ty" Braswell, 1996-99
 Shelby Brewer, 1955
 Scott Bristol, 1968-70
 Stewart Bruner, 1964-66
 Mark Burchett, 1979
 Robert Burgess, 1980-82
 Steve Burt, 1963
 Dave Calvert, 1974-76
 Randy Cameron, 1963
 Andre Cantin, 1974-76
 Joe Carnley, 1996-97
 Don Caton, 1963
 Henri Cawthon, 1973
 Don Chao, 1966-67
 Todd Collins, 1987-88
 Robert Cooney, 1988-89
 Gerald Casas, 1998-99
 Jim Costello, 1948-50
 Shelby Creagh, 1950-55
 Casey Creely, 1988-89

Ken Crosina, 1984
 Jim Crowther, 1953
 Tom Cundy, 1952-55
 David Danielson, 1967-69
 Jim DeLoach, 1948
 John de Zeeuw, 1966-71
 Steve Diamond, 1972-74
 Reggie Dickey, 1963
 Lawrence Dickson, 1949-51
 Charlie Diggans, 1972-74
 Martin Dundics, 1966-68
 Chris Durham, 1988-91
 John Dwight, 1977-80
 Dean Ehrlich, 1991-95
 Jack Egan, 1953
 Scott Espenship, 1987
 Mike Etchevarria, 1977
 Myrin Falinski, 1982-1984
 Hamid Faquir, 1969-70
 Dick Fischer, 1963
 Patrik Filipsson, 1993
 Jim Gardner, 1965-67
 Rejean Genois, 1972-74
 Sterling Gibson, 1974
 Scott Gilmore, 1976-79
 Robert Golin, 1979-80
 Alex Golub, 1995-98
 Jason Green, 1994
 Kevin Green, 1980-81
 Steve Guse, 1965-66
 Greg Gusky, 1989-91
 Paul Haarhuis, 1987-88
 Chris Hagman, 1978-79
 Joe Harris, 1955
 Herb Hathcox, 1955
 Jack Heiss, 1980-81
 Lex Hester, 1957-59
 Jeff Horine, 1983-84
 Bernard Houle, 1972
Michael Ingham, 1997-
 Rick Jacob, 1992-93
 Jack Jemison, 1963
 Randy Jobson, 1966-68
 Gordon Jones, 1974-76
 Neal Karadbil, 1972-73

Dave Kennedy, 1953
 Shawn Kerns, 1982-83
 Muhammed Baber Ali Khan, 1978-79
 Drew Kirkley, 1993-94
 Bruce Knittle, 1976-78
 Davidson Kozlowski, 1998-99
 Nel Krefsky, 1989-92
 Shannon Krieger, 1987-88
 Jeff Krotenberg, 1976
 Brian Lafferman, 1989-90
 Brad Lamontagne, 1977-78
 Ford Lankford, 1992
 Russ Langstroth, 1966
 Robert Lanigan, 1950
 Steve Layton, 1978-80
 Richard Legendre, 1972-73
 Mike Lelievre, 1972
 Henner Lenhardt, 1987
 Richard Lewis, 1966-67
 Hernan Luque, 1980-1983
 Bobby Marcher, 1966-68
 George Martin, 1950
 Joel Martin, 1976
 Art Martinez, 1993-94
 Dave McElroy, 1953
 Ken McKenzie, 1992-95
 John McLean, 1980-83
 Don Monk, 1963
Chad Mooney, 1998-
 Tom Morgan, 1953-55
 Clint Murphy, 1966-68
 Clifford Murphy, 1966-68
 Bob Neinken, 1976
 Yvo Niks, 1996-99
 Jose Salibi Neto, 1978-80
 Stephen Notebloom, 1990-91
 Mike O'Neal, 1972, 1973-74
 Juan Ortiz, 1972, 1973-74
 Murphy Payne, 1994-97
 Craig Pendrys, 1982
 Terry Poore, 1964-66
 Antonio Prieto, 1994-95, 96-97
 Peter Prinos, 1979-81
 Al Procopio, 1968-70
 Herbert Quay, 1950

Herb Rapp, 1968-70
 Joey Rive, 1982-84
 Jack Rogers, 1966-68
 Geoff Roper, 1984
 Alex Rucker, 1987-88
 Jeff Russell, 1978
Jeff Scarella, 1999-
 Hal Schaus, 1953-56
 Brian Schleiffer, 1991
Noah Schnell, 1999-
 Scott Schuhriemen, 1993-96
 Adam Schwartz, 1989-92
 Donald Seifert, 1950
 Sonny Sellers, 1957
 Scott Shepard, 1989
 Scott Shields, 1988-91
 Sam Smith, 1950
 Cary Sochin, 1987-88
 Brian Stanton, 1992-95
 Sidney Stringer, 1950
 John Stupka, 1989-90
 Hiro Takata, 1991-92
 Rick Thomas, 1974-77
 Matt Thoren, 1989
Jay Travis, 1997-
 Nathan Turney, 1995-96
 Erik Ullsten, 1991-92
 Doug Vepchula, 1963
 Jim Vick, 1968
 Jean Paul Vissepo, 1996
 Jimmy Wade, 1955
 Dick Walker, 1955
 Bill Weeks, 1966, 1968
 Darryl Weiner, 1981-82
 Steve Weinstein, 1996-99
 Jason White, 1993-96
 George Williams, 1955
 Lex Wood, 1963-65
 Don Wyly, 1953, 1955

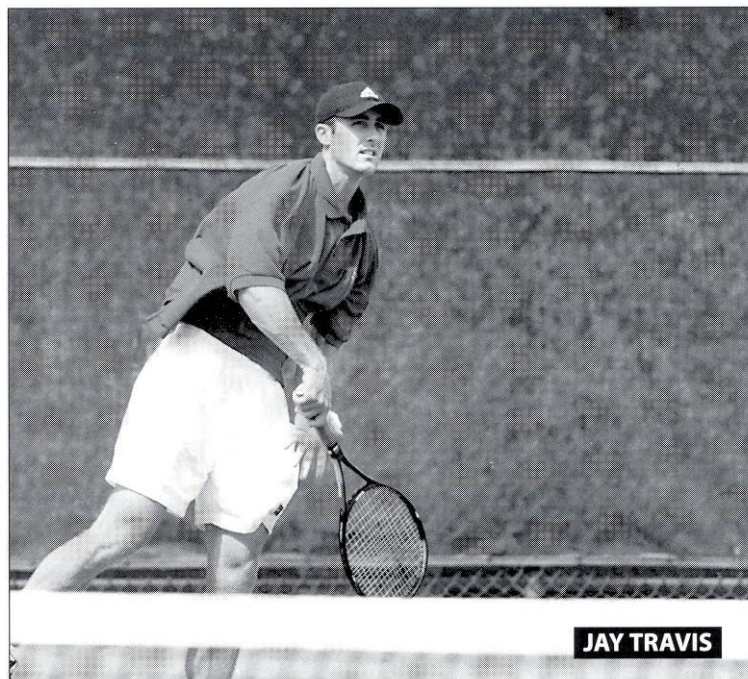
Men's Tennis All-Time Records vs. Opponents

*bold denotes 1999-00 opponents
 677-400-3 overall (1,080 total)

| Opponent | W | L | First | Last | Opponent | W | L | First | Last | Opponent | W | L | First | Last |
|---------------------------|----|----|-------|------|----------------------------|----------|----------|-------------|-------------|------------------|----------|-----------|-------------|-------------|
| Abraham Baldwin Ag. Coll. | 9 | 0 | 1978 | 1991 | Baylor | 2 | 0 | 1970 | 1986 | Citadel | 2 | 0 | 1962 | 1978 |
| Akron | 1 | 0 | 1984 | 1984 | Belhaven | 1 | 0 | 1987 | 1987 | Clemson | 8 | 13 | 1962 | 1999 |
| Alabama | 8 | 11 | 1961 | 1996 | Birmingham Southern | 0 | 1 | 1950 | 1950 | Colorado | 0 | 1 | 1993 | 1993 |
| Alabama - Birmingham | 4 | 2 | 1980 | 1991 | Boston College | 1 | 0 | 1979 | 1979 | Columbia | 5 | 0 | 1963 | 1989 |
| Amherst | 7 | 0 | 1960 | 1967 | California - Irvine | 0 | 1 | 1983 | 1983 | Columbus | 8 | 0 | 1968 | 1973 |
| Anderson Jun. Coll. | 3 | 0 | 1982 | 1984 | Cal. St. - Long Beach | 3 | 0 | 1984 | 1991 | Concordia | 4 | 0 | 1951 | 1960 |
| Appalachian State | 1 | 0 | 1979 | 1979 | Cal. St. - Santa Barbara | 2 | 0 | 1991 | 1991 | Cumberland (TN) | 1 | 0 | 1973 | 1973 |
| Arizona State | 0 | 1 | 1986 | 1986 | Calvin | 3 | 0 | 1969 | 1976 | Davidson | 1 | 2 | 1950 | 1954 |
| Arkansas | 0 | 2 | 1988 | 1991 | Central Florida | 6 | 0 | 1983 | 1997 | DePaul | 4 | 0 | 1967 | 1990 |
| Arkansas - Little Rock | 1 | 1 | 1979 | 1986 | Central Florida Comm.Coll. | 4 | 0 | 1978 | 1981 | Duke | 3 | 14 | 1957 | 1999 |
| Auburn | 13 | 9 | 1953 | 1990 | Chapultepec Sporting Club | 0 | 1 | 1950 | 1950 | East Carolina | 1 | 0 | 1961 | 1961 |
| Auburn - Montgomery | 5 | 2 | 1983 | 1989 | Charleston | 1 | 0 | 1949 | 1949 | Eastern Kentucky | 3 | 0 | 1969 | 1975 |
| Austin - Peay | 1 | 0 | 1983 | 1983 | Cincinnati | 3 | 0 | 1962 | 1978 | Emory | 15 | 1 | 1948 | 1985 |

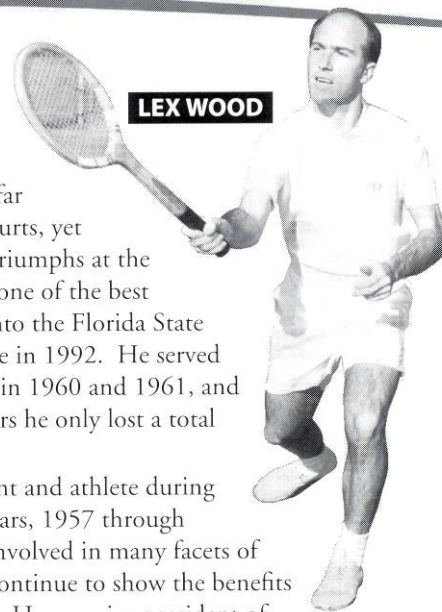
ALL-TIME RECORDS

| Opponent | W | L | First | Last | Opponent | W | L | First | Last | Opponent | W | L | First | Last |
|-----------------------------------|-----------|--------------|-------------|-------------|-----------------------------|-----------|-----------|-------------|-------------|------------------------|-----------|----------|-------------|-------------|
| Evansville | 1 | 0 | 1984 | 1984 | Northeast Missouri State | 1 | 0 | 1965 | 1965 | Southwestern Louisiana | 10 | 9 | 1976 | 1996 |
| Flagler | 12 | 3 | 1975 | 1998 | Northern Illinois | 2 | 0 | 1968 | 1972 | Southwest Texas State | 1 | 0 | 1991 | 1991 |
| Florida | 19 | 39 | 1956 | 1999 | Northwestern | 2 | 3 | 1963 | 1970 | Spring Hill | 1 | 0 | 1953 | 1953 |
| Florida A&M | 3 | 0 | 1970 | 1982 | Notre Dame | 2 | 1 | 1964 | 1992 | Stetson | 10 | 3 | 1948 | 1999 |
| Florida Atlantic | 6 | 0 | 1982 | 1999 | Oglethorpe | 2 | 0 | 1949 | 1968 | Tampa | 3 | 0 | 1954 | 1970 |
| Florida International | 14 | 3(1) | 1973 | 1999 | Ohio State | 3 | 1 | 1955 | 1991 | Tennessee | 1 | 3 | 1966 | 1976 |
| Florida Jun. College | 4 | 0 | 1983 | 1987 | Ohio Wesleyan | 2 | 0 | 1966 | 1966 | Tennessee-Chattanooga | 1 | 0 | 1998 | 1998 |
| Florida Southern | 15 | 3 | 1948 | 1961 | Okaloosa-Walton Comm. Coll. | 1 | 0 | 1984 | 1984 | Tennessee - Martin | 1 | 0 | 1985 | 1985 |
| Florida Tech | 3 | 2 | 1973 | 1978 | Oklahoma | 1 | 1 | 1968 | 1989 | Tennessee Tech | 3 | 0 | 1972 | 1990 |
| Fort Eustis | 2 | 0 | 1963 | 1963 | Oklahoma State | 0 | 1 | 1986 | 1986 | Texas | 0 | 1 | 1996 | 1996 |
| Furman | 22 | 4 | 1962 | 1999 | Old Dominion | 5 | 0 | 1978 | 1998 | Texas A&M | 1 | 6 | 1983 | 1995 |
| Georgia | 15 | 24(1) | 1950 | 1999 | Orlando AFB | 1 | 0 | 1952 | 1952 | Texas Christian | 0 | 1 | 1994 | 1994 |
| Georgia - Savannah | 2 | 0 | 1948 | 1948 | Palm Beach Comm. Coll. | 1 | 0 | 1984 | 1984 | Texas - Dallas | 1 | 0 | 1977 | 1977 |
| Georgia Southern | 25 | 5 | 1969 | 1999 | Pan American | 2 | 2 | 1970 | 1980 | Texas Tech | 0 | 1 | 1970 | 1970 |
| Georgia State | 11 | 0 | 1984 | 1999 | Pennsylvania | 1 | 0 | 1962 | 1962 | Trinity | 0 | 1 | 1974 | 1974 |
| Georgia Tech | 29 | 20 | 1954 | 1999 | Pensacola Navy | 5 | 2 | 1950 | 1967 | Trinity of Ireland | 2 | 0 | 1989 | 1989 |
| Hampton | 1 | 2 | 1976 | 1987 | Presbyterian | 8 | 6 | 1950 | 1974 | Troy State | 2 | 0 | 1948 | 1999 |
| Hope | 3 | 0 | 1962 | 1964 | Princeton | 0 | 1 | 1981 | 1981 | Tulane | 4 | 2(1) | 1964 | 1997 |
| Houston | 0 | 3 | 1969 | 1974 | Purdue | 2 | 0 | 1981 | 1982 | Valdosta State | 27 | 0 | 1952 | 1989 |
| Howard | 2 | 0 | 1958 | 1959 | Rice | 1 | 3 | 1969 | 1988 | Vanderbilt | 0 | 1 | 1987 | 1987 |
| Huntingdon | 1 | 1 | 1989 | 1989 | Rollins | 18 | 21 | 1951 | 1992 | Virginia | 10 | 4 | 1968 | 1999 |
| Illinois | 2 | 0 | 1970 | 1979 | Rutgers | 2 | 0 | 1965 | 1965 | Virginia Commonwealth | 2 | 4 | 1989 | 1997 |
| Illinois - Chicago | 1 | 0 | 1980 | 1980 | Saint Francis | 1 | 0 | 1979 | 1979 | Virginia Tech | 3 | 0 | 1984 | 1989 |
| Illinois State | 1 | 0 | 1977 | 1977 | Samford | 2 | 0 | 1974 | 1975 | Wake Forest | 13 | 3 | 1972 | 1999 |
| Indiana | 6 | 8 | 1950 | 1987 | San Diego State | 0 | 1 | 1989 | 1989 | Washington (MO) | 1 | 0 | 1966 | 1966 |
| Jacksonville | 22 | 1 | 1959 | 1999 | South Alabama | 10 | 5 | 1979 | 1998 | West Florida | 3 | 0 | 1971 | 1986 |
| Jacksonville Navy | 0 | 1 | 1951 | 1951 | South Carolina | 5 | 6 | 1971 | 1996 | West Virginia | 4 | 0 | 1985 | 1994 |
| Jacksonville State (AL) | 2 | 0 | 1953 | 1958 | South Florida | 18 | 15 | 1969 | 1999 | Western Carolina | 1 | 0 | 1984 | 1984 |
| Kalamazoo | 15 | 1 | 1967 | 1988 | Southeastern Louisiana | 6 | 4 | 1979 | 1991 | Western Kentucky | 1 | 0 | 1979 | 1979 |
| Kansas | 1 | 5 | 1976 | 1997 | Southern Illinois | 10 | 2 | 1956 | 1986 | Western Michigan | 3 | 0 | 1979 | 1982 |
| Kent State | 1 | 0 | 1977 | 1977 | Southern Methodist | 1 | 0 | 1992 | 1992 | Wingate | 1 | 0 | 1971 | 1971 |
| Kentucky | 5 | 3 | 1960 | 1986 | Southern Mississippi | 9 | 0 | 1984 | 1999 | Wisconsin | 1 | 0 | 1993 | 1993 |
| Kenyon | 1 | 0 | 1953 | 1953 | Southwestern (TN) | 1 | 0 | 1966 | 1966 | Yale | 1 | 0 | 1985 | 1985 |
| Lamar Tech | 0 | 1 | 1962 | 1962 | | | | | | | | | | |
| Lander | 1 | 0 | 1983 | 1983 | | | | | | | | | | |
| Louisiana State | 5 | 8 | 1953 | 1984 | | | | | | | | | | |
| Louisiana Tech | 0 | 1 | 1986 | 1986 | | | | | | | | | | |
| Louisville | 2 | 0 | 1978 | 1987 | | | | | | | | | | |
| Loyola (LA) | 1 | 2 | 1951 | 1953 | | | | | | | | | | |
| Maryland | 9 | 1 | 1982 | 1999 | | | | | | | | | | |
| McNeese State | 2 | 2 | 1985 | 1990 | | | | | | | | | | |
| Memphis (State) | 2 | 0 | 1984 | 1991 | | | | | | | | | | |
| Mercer | 19 | 0 | 1948 | 1963 | | | | | | | | | | |
| Miami (FL) | 5 | 41 | 1951 | 1999 | | | | | | | | | | |
| Miami (OH) | 1 | 0 | 1994 | 1994 | | | | | | | | | | |
| Michigan | 0 | 4 | 1952 | 1983 | | | | | | | | | | |
| Michigan State | 5 | 3 | 1957 | 1969 | | | | | | | | | | |
| Middle Georgia | 2 | 0 | 1948 | 1948 | | | | | | | | | | |
| Middle Tennessee State | 4 | 0 | 1970 | 1992 | | | | | | | | | | |
| Milsaps | 1 | 0 | 1949 | 1949 | | | | | | | | | | |
| Minnesota | 4 | 0 | 1959 | 1973 | | | | | | | | | | |
| Mississippi | 4 | 2 | 1955 | 1993 | | | | | | | | | | |
| Mississippi Coll. | 4 | 0 | 1949 | 1950 | | | | | | | | | | |
| Mississippi Southern | 1 | 0 | 1960 | 1960 | | | | | | | | | | |
| Mississippi State | 10 | 16 | 1958 | 1997 | | | | | | | | | | |
| Murray State | 5 | 0 | 1957 | 1984 | | | | | | | | | | |
| Navy | 9 | 0 | 1960 | 1966 | | | | | | | | | | |
| Nebraska | 2 | 0 | 1982 | 1988 | | | | | | | | | | |
| New Orleans | 3 | 0 | 1979 | 1984 | | | | | | | | | | |
| New Mexico | 1 | 0 | 1997 | 1997 | | | | | | | | | | |
| Nicholls State | 1 | 2 | 1979 | 1982 | | | | | | | | | | |
| North Carolina | 5 | 18 | 1966 | 1999 | | | | | | | | | | |
| North Carolina - Asheville | 2 | 0 | 1983 | 1989 | | | | | | | | | | |
| North Carolina State | 7 | 2 | 1981 | 1999 | | | | | | | | | | |
| North Florida | 7 | 1 | 1985 | 1992 | | | | | | | | | | |
| Northeast Louisiana | 2 | 0 | 1979 | 1984 | | | | | | | | | | |



JAY TRAVIS



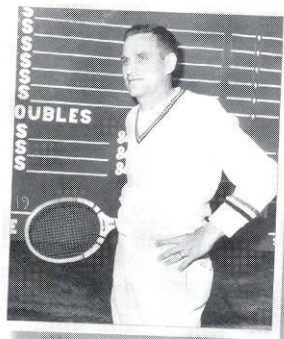


LEX WOOD

In 1982, **Lex Wood** became the first player from the Florida State tennis program to be inducted into the FSU Athletics Hall of Fame. He was first a player for the Seminoles from 1961 through the 1963 season, then the program's head coach from the 1965 through 1969.

When Wood arrived from his native South Africa in 1962, head coach Eddie Cubbon knew he had a leader amongst his new crop of tennis players. For the following three seasons he would become a mainstay among the nation's top twenty players, playing at No. 1 singles and doubles.

In 1964, his singles match record was 22-1 and his career mark was 51 victories in 54 singles matches. In the course of his Florida State career, Wood defeated many great collegiate players including a former U.S. Davis Cup player, Marty Riessen. As the head coach, his Seminoles went an impressive 89-33 during his tenure. His last two teams in 1968 and 1969 went 19-3 and 23-5 in dual match play, respectively.



A fine student, Wood received his masters and doctoral degrees from FSU in Education. Following his near-decade with FSU, Wood traveled south to the University of Central Florida, where he served as an educator and coach for many more years to follow.

Over six decades of service to Florida State athletics, **Don Loucks** was inducted to the Florida State Athletic Hall of Fame in 1985. In 1936, Loucks started off his relationship with FSU as the coach of all sports for the University School of Florida State College for Women. He was the "pioneer" of many of the successful athletic programs that currently thrive.

In 1947, he was the first basketball coach for the men's basketball team and a year later was named the first tennis coach. His hoops team scored the first victory for the newly-formed athletic program. His tennis team was the first to have a winning season, going 9-4.

He served as Dean of Men from 1957 through 1967 and during this time he served as a lead figure in the Seminole athletic program, as well as in the department of education. He retired from the Athletic Department in 1980 as Professor Emeritus of Physical Education. His dedication did not go unnoticed as the Varsity Tennis Courts were renamed in his honor. The Scott Speicher Tennis Center was built around his courts.

His accolades go far beyond the tennis courts, yet **Dr. Ray Bellamy's** triumphs at the net still stand out as one of the best as he was inducted into the Florida State Athletic Hall of Fame in 1992. He served as his team's captain in 1960 and 1961, and during those two years he only lost a total of three matches.

As a model student and athlete during his undergraduate years, 1957 through 1961, Bellamy was involved in many facets of the University that continue to show the benefits of his early presence. He was vice-president of his senior class, a member of the Gold Key honorary society and Omicron Delta Kappa honorary fraternity. In addition, Bellamy was president of the Sigma Chi Fraternity. He then went on to earn a doctorate in medical studies.

After leaving FSU and joining the United States Navy, Bellamy went onto become the All-Navy doubles champion and played on the All-Navy team in 1967 and 1968 while serving as flight surgeon. After returning to the state of Florida to begin his practice, Bellamy became the state's 35-and-over singles and doubles champion during the 1970's.

Paul Haarhuis, the "Dutchman" from Eindhoven, The Netherlands, came to Florida State in 1986 after transferring from Armstrong State College in Savannah, Georgia. He went on to become the best tennis player ever to come out of FSU. His induction into the Florida State Athletic Hall of Fame in 1993 is a symbol of the university's appreciation for the positive presence he added to the program during his undergraduate years, 1986 through 1988.

His first two seasons prior to joining the Seminoles went quickly as he garnered a 64-2 overall record, including a 35-0 sophomore season. With the Seminoles, his first season was a true success as he went 35-5 in singles competition and 25-5 in doubles. His biggest feat was claiming the first-ever Men's Intercollegiate Invitational Tennis Championships held in Panama City.

At one point, he had 24 consecutive wins, including his reign as the Metro Conference Most Valuable Player. He was given this honor by way of winning the number one singles and doubles crowns, including an invitation to the NCAA Championships for doubles.

Once his collegiate career was finished he had a 72-9 overall singles record for his two years and consecutive

Metro Conference MVP awards. In the pro's he still thrives. His list of victories over top-opponents includes John McEnroe and Boris Becker.

Marco Abilhoa, the native of Brazil was one of the great Florida State Seminole tennis players make an impact on the collegiate scene. Prior to enrolling, he was ranked No. 3 in the Brazilian Juniors, when former FSU head coach Randy Jobson discovered him.

A five-year member of the Seminole tennis program from 1980 through 1984, Abilhoa was at the tops of the Metro Conference. He was the No. 1 singles and doubles champion in 1981 and 1982. After dominating for his first two seasons he was then sidelined and redshirted for the 1983 season. Upon his return in 1984, he went straight back to the place where he left off, at the top of the Metro Conference. His dominating presence earned him a record three Metro MVP awards in 1981, 1982, and 1984.

"If Marco can get himself so that he's pumped and psyched to play, and can keep his mind clear of distractions, there isn't anyone in the country that he can't beat," added Jobson.



Joey Rive, a West Palm Beach native, played for the Seminoles from 1981 through 1985. He was one of the top players ever to compete at Florida State, Rive won over 100 matches in his career and he led the team in wins in 1983, 1984 and 1985. During his period at number one singles, he was nationally ranked among the Top 25 in the nation.

In September of 1999, Rive was inducted into the FSU Hall of Fame.

His stellar performance for the Tribe resulted in three Metro Conference singles championships in 1983, 1984 and 1985 and two doubles championships in 1983 and 1985, including the conference's top crown, the MVP in 1985. His Metro success led to his invitation to the 1985 NCAA tournament and to the 1987 Tennis Magazine Sportsman of the Year award.

Following his FSU career, Rive played the ATP tour where he reached as high as No. 57 in the world in 1988. He returned back to Tallahassee, where he served as an assistant coach from 1993 to 1994. He is currently the head coach at the University of Alabama.

After earning All-American honors at NAIA Huntington College in Montgomery, Ala., Stephen

Notebloom, the second "Dutchman" to thrive at Florida State joined the Seminoles for the 1990 through 1992 seasons.

Almost immediately making his presence known, Notebloom grabbed the Metro Conference's coveted MVP award for winning the title at No. 1 singles and doubles. That same year he earned an invitation to the 1991 NCAA Championships for singles. A feat that has been duplicated by very few Seminoles Notebloom went onto the professional level following graduation.

Brian Stanton of Coral Springs and **Ken McKenzie** of Tallahassee finished up their playing careers with the Tribe in 1995. As a doubles team the duo ended their final campaign earning collegiate tennis' top honor, ITA All-America.

The doubles pair received the 1995 award after a superb run in the NCAA Championships. What may be the most impressive feat for them was being ranked among the nation's top 10 doubles tandems throughout the season.

During his stay at FSU, Stanton won back to back Junior Davis Cup singles titles in 1993 and 1994, won the 1993 Junior Davis Cup in doubles and was named to the All-ACC team his sophomore and junior seasons. He then served as graduate assistant coach in 1996.

McKenzie leaves behind a void in doubles that will be a great challenge to fill. He and Stanton guided No. 1 doubles to an impressive No. 3 national ranking, the highest ranking the program has ever received. He also was also impressive on the singles side earning ACC Flight Championships at No. 2 singles in 1994 and No. 3 singles in 1995.

Jason White recently finished up his four-year run with the Seminoles in 1995, his best season as a player by far. As the top singles and doubles player, White was charged with a lot of responsibility as the team's captain.

Even though he won the ACC Championship at No. 4 singles in 1994 and a pair of championships at No. 2 doubles in 1994 and 1995, White was still on top of ACC tennis 1996. The senior from Longwood, who was nationally ranked in singles and doubles for nearly the entire season, went down to the wire and was edged out of the championship at No. 1 singles by just one loss. Not to go unnoticed he received an invitation to the 1996 NCAA Championships in singles for his conference efforts.

Men's Honors History

FSU Athletic Hall of Fame (Inducted)

Alexander T. "Lex" Wood (1982)
H. Donald Loucks (1985)
Dr. Ray Bellamy (1992)
Paul Haarhuis (1993)
Joey Rive (1999)

Atlantic Coast Conference

Affiliation began in 1992

| Year | Team Champion | Head Coach | Runner-Up | Tournament Site |
|------|----------------|--------------|----------------|---------------------------|
| 1992 | North Carolina | Allen Morris | Duke | Charlotte, North Carolina |
| 1993 | Duke | Jay Lapidus | North Carolina | Charlotte, North Carolina |
| 1994 | Duke | Jay Lapidus | Georgia Tech | Charlotte, North Carolina |
| 1995 | Duke | Jay Lapidus | Clemson | Greenwood, South Carolina |
| 1996 | Duke | Jay Lapidus | North Carolina | Greenwood, South Carolina |
| 1997 | Clemson | Chuck Kriese | Duke | Norcross, Georgia |
| 1998 | Duke | Jay Lapidus | Virginia | Atlanta, Georgia |
| 1999 | Duke | Jay Lapidus | Georgia Tech | Atlanta, Georgia |

Post-Season Honors

| Year | Tournament MVP | Coach of the Year | Player of the Year | Rookie of the Year |
|------|------------------------|-------------------------|------------------------------|------------------------|
| 1992 | Bryan Jones, UNC | Allen Morris, UNC | Bryan Jones, UNC | |
| 1993 | Willy Quest, Duke | Jay Lapidus, Duke | Roland Thornqvist, UNC | |
| 1994 | Chris Pressley, Duke | Jean Desdunes, Ga. Tech | David Caldwell, UNC | Paul Harsanyi, UNC |
| 1995 | Phillippe Moggio, Duke | Jay Lapidus, Duke | David Caldwell, UNC | Bruce Li, Clemson |
| 1996 | Rob Chess, Duke | Sam Paul, UNC | David Caldwell, UNC | Dmitry Muzyka, Duke |
| 1997 | Bruce Li, Clemson | Chuck Kriese, Clemson | Mitch Sprengelmeyer, Clemson | Doug Root, Duke |
| 1998 | Dmitry Muzyka, Duke | Jay Lapidus, Duke | Roberto Bracone, NC State | Brian Vahaly, Virginia |
| 1999 | Pedro Escudero, Duke | Kenny Thorne, Ga. Tech | Benjamin Cassaigne, Ga. Tech | Bjorn Rencken, UNC |

Singles and Doubles Flight Champions

No. 1 Singles

| | |
|------|--|
| 1992 | Geoff Grant, Duke |
| 1993 | Rob Givone, Ga. Tech Roland Thornqvist, UNC |
| 1994 | David Caldwell, UNC |
| 1995 | David Caldwell, UNC |
| 1996 | David Caldwell, UNC |
| 1997 | Roberto Bracone, NC State |
| 1998 | Roberto Bracone, NC State |
| 1999 | Benjamin Cassaigne, Ga. Tech |

No. 2 Singles

| | |
|------|---|
| 1992 | Bryan Jones, UNC |
| 1993 | David Caldwell, UNC |
| 1994 | Ken McKenzie, FSU Brint Morrow, UNC |
| 1995 | B.J. Traub, Ga. Tech |
| 1996 | Rob Tedesco, UNC |
| 1997 | Alberto Brause, Duke |
| 1998 | Alberto Brause, Duke |
| 1999 | Matt Cozad, Ga. Tech |

No. 3 Singles

| | |
|------|--------------------------|
| 1992 | Chris Pressley, Duke |
| 1993 | Peter Ayers, Duke |
| 1994 | Peter Ayers, Duke |
| 1995 | Ken McKenzie, FSU |
| 1996 | Brint Morrow, UNC |
| 1997 | Paul Harsanyi, UNC |
| 1998 | Adam Seri, UNC |
| 1999 | Josh Goffi, Clemson |

No. 4 Singles

| | |
|------|------------------------------|
| 1992 | Glen Philp, N.C. State |
| 1993 | Mark Ottinger, Ga. Tech |
| 1994 | Mitch Sprengelmeyer, Clemson |
| 1995 | Jason White, FSU |
| 1996 | Bear Schofield, Virginia |
| 1997 | Tony Thomas, UNC |
| 1998 | Hyon You, UVA |
| 1999 | Tomasz Boniecki, Clemson |

No. 5 Singles

| | |
|------|---------------------------|
| 1992 | Chris Mumford, UNC |
| 1993 | Brint Morrow, UNC |
| 1994 | B.J. Traub, Ga. Tech |
| 1995 | Cris Robinson, Clemson |
| 1996 | Alex Golub, FSU |
| 1997 | Pablo Bellagamba, Clemson |
| 1998 | John Winer, Virginia |
| 1999 | Tommy Croker, Virginia |

No. 6 Singles

| | |
|------|-------------------------------|
| 1992 | Joe Frierson, UNC |
| 1993 | Cooper Pulliam, UNC |
| 1994 | Scott Schuhriemen, FSU |
| 1995 | David Britt, UNC |
| 1996 | Tony Thomas, UNC |
| 1997 | Ryan Bauer, Clemson |
| 1998 | Marko Cerenko, Duke |
| 1999 | Marko Cerenko, Duke |

No. 1 Doubles

| | |
|------|--|
| 1992 | Mike Herb/Glen Philp, NC State |
| 1993 | Roland Thornqvist/Daryl Wyatt, UNC |
| 1994 | Scott Cotton/Rob Givone, Ga. Tech |
| 1995 | Frank Salazar/Mitch Sprengelmeyer, Clemson |
| 1996 | Mitch Sprengelmeyer/Bruce Li, Clemson |
| 1997 | Doug Root/Jordan Wile, Duke |
| 1998 | Myles Clouston/ Raul Munoz, Wake Forest |
| 1999 | Myles Clouston/ Raul Munoz, Wake Forest |

No. 2 Doubles

| | |
|------|--|
| 1992 | Scott Cotton/Mark Ottinger, Ga. Tech |
| 1993 | Peter Ayers/Rob Chess, Duke |
| 1994 | Art Martinez/Jason White, FSU |
| 1995 | Antonio Prieto/Jason White, FSU |
| 1996 | Tony Thomas/Tripp Phillips, UNC |
| 1997 | Ty Braswell/Yvo Niks, FSU |
| 1998 | Huntley Montgomery/ Brian Vahaly, Virginia |
| 1999 | Tommy Croker/ John Winter, Virginia |

No. 3 Doubles

| | |
|------|---|
| 1992 | Ford Lankford/Brian Stanton, FSU |
| 1993 | David Caldwell/Brint Morrow, UNC |
| 1994 | Scott Athey/Quentin Huff, Wake Forest |
| 1995 | Charly Rasheed/ Cris Robinson, Clemson |
| 1996 | Paul Harsanyi/ Rob Tedesco, UNC |
| 1997 | Matt Lee/Markus Magnusson, Ga. Tech |
| 1998 | Roberto Suarez/ Robert Wright, Ga. Tech |
| 1999 | Sergio Aguirre/ Matt Cozad, Ga. Tech |

The Tradition

Consistency. It's the mark of true excellence in any endeavor. However, in today's intercollegiate athletics, competition has become so balanced and so competitive that it is virtually impossible to maintain a high level of consistency.

Yet the Atlantic Coast Conference has defied the odds. Now in its 46th year of competition, the ACC has long enjoyed the reputation as one of the strongest and most competitive intercollegiate conferences in the nation. And that is not mere conjecture, the numbers support it.

Since the league's inception in 1953, ACC schools have captured 72 national championships, including 37 in men's competition and 35 in women's. In addition, 108 men and 26 women have earned the coveted title of NCAA champion.

1998-99 in Review

The 1998-99 academic year concluded with the league pocketing three more national team titles and seven individual NCAA crowns. In all, the ACC has won 32 national team titles in the last nine years. The past year, the ACC was the only Division 1-A conference to have a team play in the national championship game in men's and women's basketball and football.

The ACC's 1998-99 national champions were Maryland in women's lacrosse, Virginia in men's lacrosse and Duke in women's golf. In addition, the ACC had six other teams participate in national title games — Florida State in football and baseball, Virginia in women's lacrosse, Duke in men's and women's basketball and North Carolina in women's soccer. Overall, ACC teams posted a 66-45-1 (.595) mark in NCAA Tournament play.

The ACC placed at least one team in the Top 10 nationally in 15 of the 24 sports sponsored by the league. Other records of note during the 1998-99 season include 76 teams competing at NCAA Championships, five bowl teams and 28 Top 10 showings.

Seven ACC teams, in seven different sports representing six of the nine member institutions, earned a No. 1 ranking during the course of the past academic year.

The ACC Academic Honor Roll record was broken for the 12th-straight year in 1998-99 as 1,552 student-athletes were recognized for their work in the classroom.

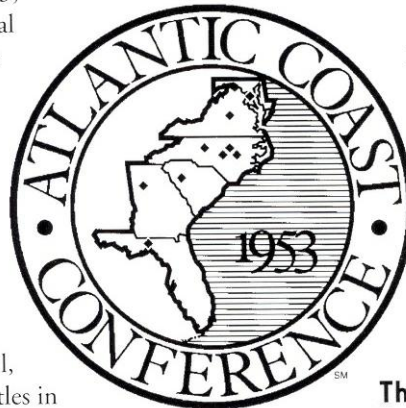
The Championships

The conference will conduct championship competition in 25 sports during the 1999-2000 academic year — 12 for men and 13 for women.

The first ACC championship was held in swimming on February 25, 1954. The conference did not conduct championships in cross country, wrestling or tennis during the first year.

The 12 sports for men include football, cross country, soccer, basketball, swimming, indoor and outdoor track, wrestling, baseball, tennis, golf and lacrosse. Fencing, which was started in 1971, was discontinued in 1981.

Women's sports were initiated in 1977 with the first championship meet being held in tennis at Wake Forest University, October 6-8. Conference championships for women are currently conducted in cross country, volleyball, field hockey, soccer, basketball, swimming, indoor and outdoor track, tennis, golf, lacrosse, softball and rowing.



The History

The Atlantic Coast Conference was founded on May 8, 1953, at the Sedgefield Inn near Greensboro, N.C., with seven charter members - Clemson, Duke, Maryland, North Carolina, North Carolina State, South Carolina and Wake Forest - drawing up the conference bylaws.

The withdrawal of seven schools from the Southern Conference came early on the morning of May 8, 1953, during the Southern Conference's annual spring meeting. On June 14, 1953, the seven members met in Raleigh, N.C., where a set of bylaws was adopted and the name officially became the Atlantic Coast Conference.

On December 4, 1953, conference officials met again at Sedgefield and officially admitted the University of Virginia. The first, and only, withdrawal of a school from the ACC came on June 30, 1971 when the University of South Carolina tendered its resignation.

The conference operated with seven members until April 3, 1978, when Georgia Tech was admitted. The Atlanta school withdrew from the Southeastern Conference in January of 1964. The ACC expanded to nine members on July 1, 1991, with the addition of Florida State.



CONFERENCE HISTORY SINCE JOINING THE ACC

ALL-TIME VS. ACC

Team by Team (since joining the conference in 1992 to the Present)

vs. Clemson

| Year | W/L | Score |
|--------------|------------|--------------|
| 1992 | W | 5-4 |
| 1993 | W | 6-1 |
| | W | 5-2 |
| 1994 | L | 3-4 |
| | L | 3-4 |
| 1995 | W | 4-3 |
| | L | 2-4 |
| 1996 | L | 3-4 |
| 1997 | L | 3-4 |
| | L | 2-4 |
| 1998 | W | 5-2 |
| 1999 | L | 1-6 |
| Total | 5-7 | 42-42 |

vs. Duke

| Year | W/L | Score |
|--------------|-------------|--------------|
| 1992 | L | 2-5 |
| | L | 3-5 |
| 1993 | L | 0-7 |
| 1994 | L | 3-4 |
| 1995 | L | 3-4 |
| 1996 | W | 4-3 |
| | L | 2-4 |
| | L | 0-4 |
| 1997 | L | 2-5 |
| 1998 | L | 2-4 |
| | L | 0-4 |
| 1999 | L | 1-6 |
| Total | 1-11 | 22-55 |

vs. Georgia Tech

| Year | W/L | Score |
|--------------|------------|--------------|
| 1992 | W | 5-4 |
| 1993 | W | 4-3 |
| 1994 | W | 4-3 |
| | L | 2-4 |
| 1995 | W | 5-2 |
| 1996 | W | 4-3 |
| 1997 | W | 4-3 |
| 1998 | L | 3-4 |
| | W | 4-1 |
| 1999 | L | 1-6 |
| | L | 2-4 |
| Total | 7-4 | 38-37 |

vs. Maryland

| Year | W/L | Score |
|--------------|------------|-------------|
| 1992 | W | 5-2 |
| 1993 | W | 7-0 |
| 1994 | W | 7-0 |
| 1995 | W | 7-0 |
| 1996 | W | 7-0 |
| 1997 | W | 5-0 |
| 1998 | W | 6-0 |
| 1999 | W | 7-0 |
| Total | 8-0 | 51-2 |

vs. North Carolina

| Year | W/L | Score |
|--------------|------------|------------|
| 1992 | L | 3-6 |
| 1993 | L | 1-6 |
| | L | 2-5 |
| 1994 | L | 3-4 |
| 1995 | W | 4-3 |
| 1996 | L | 1-6 |
| 1997 | L | 2-5 |
| | W | 4-2 |
| 1998 | L | 2-5 |
| 1999 | L | 3-4 |
| Total | 2-8 | 25- |

vs. NC State

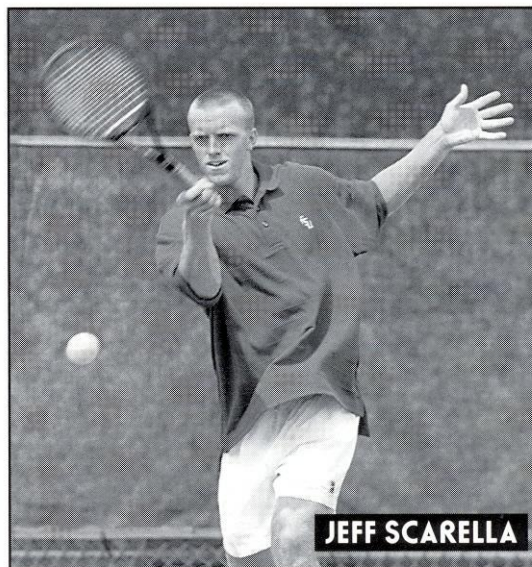
| Year | W/L | Score |
|--------------|------------|--------------|
| 1992 | W | 5-4 |
| 1993 | W | 4-3 |
| 1994 | W | 7-0 |
| 1995 | W | 6-1 |
| 1996 | W | 7-0 |
| 1997 | W | 4-3 |
| 1998 | W | 5-2 |
| 1999 | W | 5-2 |
| Total | 8-0 | 43-15 |

vs. Virginia

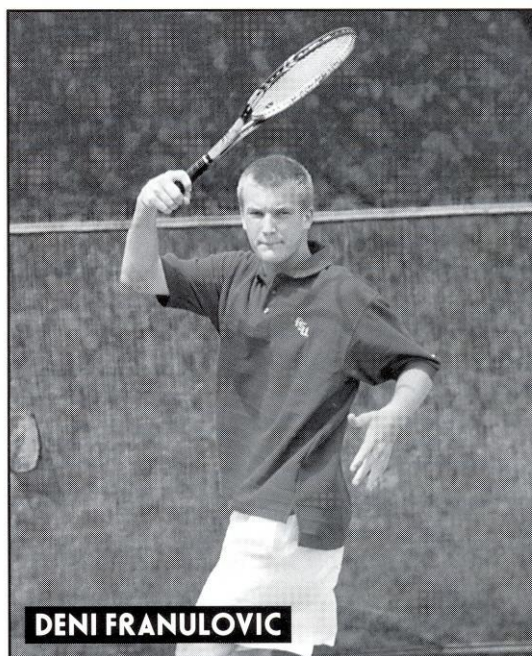
| Year | W/L | Score |
|--------------|------------|--------------|
| 1992 | --- | --- |
| 1993 | W | 6-1 |
| 1994 | W | 6-1 |
| 1995 | W | 7-0 |
| | W | 5-1 |
| 1996 | W | 5-2 |
| 1997 | L | 3-4 |
| 1998 | L | 2-5 |
| | L | 1-4 |
| 1999 | W | 4-3 |
| Total | 6-3 | 39-21 |

vs. Wake Forest

| Year | W/L | Score |
|--------------|------------|--------------|
| 1992 | W | 5-1 |
| | W | 5-3 |
| 1993 | W | 6-1 |
| 1994 | W | 6-1 |
| 1995 | W | 5-2 |
| 1996 | W | 6-1 |
| 1997 | W | 4-0 |
| 1998 | W | 5-2 |
| 1999 | L | 3-4 |
| Total | 8-1 | 45-15 |



JEFF SCARELLA



DENI FRANULOVIC

Dixie Conference Affiliation (1949-51)

The 1949, 1950 and 1951 teams, coached by Florida State tennis pioneer, H. Don Loucks (1949-50) and Ralph Matherly (1951), won the Dixie Conference team championship for three consecutive years. The Dixie Conference was made up of seven small schools within the Southeast, including Florida State, Stetson, Millsaps, Mercer, Howard, Lambuth and Ogelthorpe.

Metro Conference Championship History (1976-91)

The Metro Conference, originally tabbed the Metro Six, was formed on June 13, 1975. It's charter members included the Cincinnati, Georgia Tech, Louisville, Memphis State, St. Louis and Tulane.

Expansion was soon on the horizon, as the league membership increased to its size to seven schools when the Florida State University was admitted on July 28, 1976.

After Georgia Tech left the conference following the 1978 season, Virginia Tech quickly filled the void. Then St. Louis left the Metro. But waiting in the wings was the University of South Carolina who joined in 1983 to increase the membership to eight schools. However, Tulane forfeited its membership when its basketball program was discontinued following the 1984-85 season.

TEAM COMPETITION

| Year | Team Champion | Head Coach | Runner-Up | Site |
|------|----------------------|---------------|----------------------|------------------|
| 1976 | Memphis State | | Georgia Tech | Memphis, TN |
| 1977 | Memphis State | | Cincinnati | Memphis, TN |
| 1978 | Memphis State | | Florida State | Tallahassee, FL |
| 1979 | Memphis State | | Virginia Tech | Tallahassee, FL |
| 1980 | Memphis State | | Florida State | Tallahassee, FL |
| 1981 | Florida State | Randy Jobson | Memphis State | Tallahassee, FL |
| 1982 | Virginia Tech | | Memphis State | Memphis, TN |
| 1983 | Florida State | Randy Jobson | Memphis State | New Orleans, LA |
| 1984 | Florida State | Richard McKee | Memphis State | New Orleans, LA |
| 1985 | South Carolina | | | Memphis, TN |
| 1986 | South Carolina | | | Columbia, SC |
| 1987 | South Carolina | | Florida State | Hattiesburg, MS |
| 1988 | Florida State | Richard McKee | South Carolina | Tallahassee, FL |
| 1989 | South Carolina | | Florida State | Cincinnati, Ohio |
| 1990 | South Carolina | | Florida State | Louisville, KY |
| 1991 | South Carolina | | Florida State | Memphis, TN |

POST-SEASON HONORS

| Year | Tournament MVP | Year | Tournament MVP |
|------|-------------------------------------|------|------------------------------|
| 1976 | Keith West, Memphis State | 1984 | Marco Abilhoa, Florida State |
| 1977 | Roger Webb, Memphis State | 1985 | Joey Rive, Florida State |
| 1978 | Jim Ladyman, Memphis State | 1986 | Jan Sandberg, S. Carolina |
| 1979 | Bob Kronauge, Cincinnati | 1987 | Paul Haarhuis, Florida State |
| 1980 | Jeff Horine, Virginia Tech | 1988 | Paul Haarhuis, Florida State |
| 1981 | Marco Abilhoa, Florida State | 1989 | Mike Longley, S. Carolina |
| 1982 | Marco Abilhoa, Florida State | 1990 | Stephane Simian, S. Carolina |
| 1983 | Jon Ramthun, Virginia Tech | | |

Florida State

Team Champion, 1949-51

Donald Seiffert

Class A Doubles Champion, 1949

Herbert Quay

Class B Singles Champion, 1949

Class A Doubles Champion, 1949

Robert Lanigan

Class C Singles Champion, 1949

FSU Athletic Hall of Fame

Alexander T. "Lex" Wood (1982)
H. Donald Loucks (1985)
Dr. Ray Bellamy (1992)
Paul Haarhuis (1993)

All-Americans

Ken McKenzie - 1995 (doubles)
Brian Stanton - 1995 (doubles)

NCAA Invitations

Team

1983

Singles

Ricardo Bernd - 1972
Rejean Genois - 1973
Gordon Jones - 1976
Joey Rive - 1985
Paul Haarhuis - 1988
Stephen Notebloom - 1991
Brian Stanton - 1995
Antonio Prieto - 1995
Jason White - 1996

Doubles

Paul Haarhuis - 1987
Henner Lenhardt - 1987
Ken McKenzie - 1995
Brian Stanton - 1995

Metro Conference Champions

1981, 1983, 1984, 1988

Dixie Conference Champions

1949-51

Metro Conference Coach of the Year

Randy Jobson - 1981

Metro Conference Tournament MVP

Marco Abilhoa - 1981-82, 1984
Joey Rive - 1985
Paul Haarhuis - 1987-88

Dixie Conference Singles Champions

Herbert Quay, Class "B" - 1949
Robert Lanigan, Class "C" - 1949

Dixie Conference Doubles Champions

Donald Seiffert, Class "A", 1949
Herbert Quay, Class "B", 1949

All-ACC

Ken McKenzie - 1992, 1993, 1994, 1995
Brian Stanton - 1993, 1994, 1995
Jason White - 1995
Antonio Prieto - 1995
Jason White - 1996

ACC Flight Champions

Brian Stanton - 1992, No. 3 doubles
Ford Lankford - 1992, No. 3 doubles
Ken McKenzie - 1994, No. 2 singles; 1995, No. 3 singles
Jason White - 1994, No. 2 doubles; 1995, No. 4 singles & No. 2 doubles
Scott Schuhriemen - 1994, No. 6 singles
Art Martinez - 1994, No. 2 doubles
Antonio Prieto - 1995, No. 2 doubles
Alex Golub - 1996, No. 5 singles
Ty Braswell - 1997, No. 2 doubles
Yvo Niks - 1997, No. 2 doubles

Metro Conference Flight Champions

Scott Gilmore - 1977, No. 5 singles
Allan Bellamy - 1979, No. 3 singles & No. 1 doubles
Jose Salibi Neto - 1979, No. 1 doubles
John McLean - 1980, No. 2 singles; 1981, No. 1 doubles; 1983, No. 3 doubles
Marco Abilhoa - 1980, No. 2 doubles; 1981,

No. 1 singles & No. 1 doubles; 1982, No. 1 singles
Hernan Luque - 1980, No. 2 doubles; 1981, No. 3 doubles; 1982, No. 3 doubles; 1983, No. 1 doubles
Steve Layton - 1980, No. 5 singles
Robert Burgess - 1981, No. 5 singles & No. 3 doubles
Jeff Horine - 1983, No. 3 singles & No. 2 doubles
Scott Blessing - 1983, No. 5 singles & No. 2 doubles
Myron Falinski - 1983, No. 3 doubles
Joey Rive - 1983, No. 4 singles & No. 1 doubles; 1984, No. 1 singles; 1985, No. 1 singles & No. 1 doubles
Paul Haarhuis - 1987, No. 1 singles & No. 1 doubles; 1988, No. 1 singles & No. 1 doubles
Todd Collins - 1987, No. 5 singles
Neil Krefsky - 1991, No. 1 doubles
Stephen Notebloom - 1991, No. 1 doubles

Miscellaneous Championships

Florida Intercollegiate Champions

Lex Wood - 1965 (No. 1 singles)
Hernan Luque - 1980 (No. 2 singles)
Darryl Weiner - 1980 (No. 4 singles)

Intercollegiate Tennis Association (ITA)

Championships

Paul Haarhuis - 1987 (singles)

Rolex Region II Champions

Brian Stanton - 1995 (doubles)
Ken McKenzie - 1995 (doubles)

Seminole Fall Classic

Ken McKenzie - 1991-94 (singles)
Brian Stanton - 1991-94 (doubles)
Ford Lankford - 1991-92 (doubles)
Rick Jacob - 1993, (doubles)
Jason White - 1993-94 (singles); 1994 (doubles)
Antonio Prieto - 1994 (singles & doubles)
Alex Golub - 1994 (singles)

Scott Schuhriemen - 1994 (singles)

Ty Braswell - 1995 (singles), 1998 (singles)
Steve Weinstein - 1996 (singles)
Mike Ingham 1998 (singles & doubles)
Chad Mooney 1998 (doubles)

National Collegiate Tennis Single Classic Champion

Jason White - 1995 (singles)
Antonio Prieto - 1996 (singles)

Clemson Fall Classic Champions

Adam Baron - 1993-94
Antonio Prieto - 1994
Yvo Niks - 1996
Jay Travis - 1996

Crimson Tide Classic

Jeff Horine - 1983 (singles)
Myron Falinski - 1983 (singles & doubles)
John McLean - 1983 (doubles)

San Destin Invitational

Stephen Notebloom (champion)

Davis Cup Play

Ricardo Bernd, Brazil, 1971-72
Rejean Genois, Canada, 1973-74
Enrique Andrade, Ecuador, 1975-76
Hernan Luque, Ecuador, 1979-80

Golden Torch Award (Highest Men's G.P.A.)

Team - 1987-1991, 1998

ACC Honor Roll

Dean Erlich - 1992, 1993
Adam Baron - 1993, 1996
Jason White - 1993-95
Ty Braswell - 1996, 98, 99
Michael Ingham - 1997, 98, 99
Yvo Niks - 1997, 98, 99
Jay Travis - 1997, 98
Chad Mooney - 1998

AN OVERVIEW OF AN ACADEMIC SUPPORT PROGRAM ON THE RISE

Academic, personal and professional support are essential to college success. At the Florida State University, we have developed an outstanding support program which enables student-athletes to reach their full potential.

Our philosophy is "to offer an academic support program integrated with the total university that will assist all student-athletes with the transition into college and provide continued support in all phases of academic and professional development culminating with graduation, job placement or graduate school."

To accomplish this goal we have developed an academic environment which facilitates the academic success of student-athletes. Student success is encouraged through competent academic counseling, career exploration, planning and placement and academic assistance through tutorial programs.

Our program operates on a "proactive" rather than "reactive" approach. At Florida State, our academic staff does not wait for academic crises to occur. We

gather important background information and build an academic profile on all student-athletes to assess their needs in advance. We also stay informed on the daily progress of each student-athlete.

Our academic support staff includes a director, five counselors, and three graduate interns forming a group of professionals serving the needs of all

our student-athletes. Mark Meloney is entering his second year as the director of the Athletics Academic Support after serving as one of the program's academic counselors for eight years prior. Academic Counselor Kevin White will handle the women's tennis program duties in 1999-2000.

In 1994, the academic programs moved to the state-of-the-art University Center and are located on the 6th

floor of the \$126,000,000 facility. It includes private study carrels, a tutorial study area and a computer lab outfitted with 16 state-of-the-art IBM computers and laser printers. In addition, athletic sky boxes are utilized for group and individualized tutorial instruction sessions.



Mark Meloney
Director

Mark Meloney became Florida State's Director of Athletic Academic Support Programs in 1997 and brings 12 years of advising experience to the position. Over the past five years, Meloney has played an integral role in the development of a comprehensive program of student athlete support, which in 1996 won the "Program of Excellence" award from Athletic Management Magazine.

A native of Iowa, Meloney began his college education at Buena Vista College, where he earned varsity letters in football and baseball. Upon transferring to Florida State, he earned Bachelor's degrees in Management and Finance in 1986 and received a Master's in Athletic Administration from FSU in 1997. He is currently pursuing his Ph.D. in Athletic Administration.

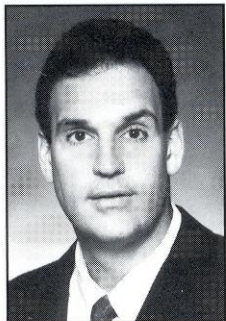
Meloney oversees an academic staff comprised of five academic counselors, and administrative assistant, several graduate assistants, individualized learning specialists and a cadre of about 70 tutors and mentors.

Meloney and his wife Sarah are the parents of a five-year-old daughter, Montana Shea.

STRENGTH AND CONDITIONING

"THE STRONG SHALL SURVIVE."

It's the motto of Florida State strength and conditioning coach Dave Van Halanger and his staff in the FSU weight room. It's also the philosophy that has made Seminole athletes in all sports among the strongest, fastest, fittest and most flexible anywhere.



Dave Van Halanger
Strength Coach

The Seminole weight room is a state-of-the-art facility that covers 7,200 square feet and is conveniently located in the Moore Athletic Center. The gym is a carpeted and mirrored room which includes exercise systems by Cybex Eagle as well as free weight equipment. A variety of exercise bicycles, rowing machines and Stairmasters incorporate both strength and conditioning and cardiovascular endurance.

The words of encouragement and guidance come from FSU Strength Coach Dave Van Halanger and his staff, who take a personal interest in each and every Seminole student-athlete. Van Halanger has specially designed a weight program for the men's golf team which works on their legs, backs, stomachs, wrists, and forearms. Van Halanger's well thought out plan helps players in all aspects of their game.

"With strength there is added confidence," Van Halanger said. "Also it will help cut down the threat of injuries and give the players a mental



JOE BASSETT

A black and white photograph of a tennis player, Joe Bassett, in a ready stance on a tennis court. He is wearing a dark long-sleeved shirt, light-colored shorts, a white cap, and white sneakers. He is holding a tennis racket with both hands.

THE N.O.L.E.S. PROGRAM

New
Opportunities for
Leadership,
Education and
Service

Developed by the Florida State University Department of Athletics, the NOLES program represents a commitment to the total growth and development of the student-athlete. This program establishes an administrative commitment to academic and athletic excellence. Those efforts will be supported with programs and services in personal development, career development and community service.

Personal Development

Fostering the development of personal growth is a fundamental component of the NOLES program. These support programs ensure that the student-athlete will be provided opportunities to focus on personal growth issues such as values clarification, goal setting, fiscal planning, decision making and personal responsibility. Programming focuses on helping student-athletes develop a healthy lifestyle while they are at Florida State and habits that will benefit them for life.

Career Development

Preparing for life after college sports is a major focus of the NOLES Career Development program. The program is designed to work cooperatively with the University's Career Services to acquaint students with the job search process, provide networking opportunities and ultimately assist with job placement. This program places a priority on the development of the total person, with the goal of developing individuals who will have rewarding careers and productive lifestyles after they leave Florida State.

Community Service

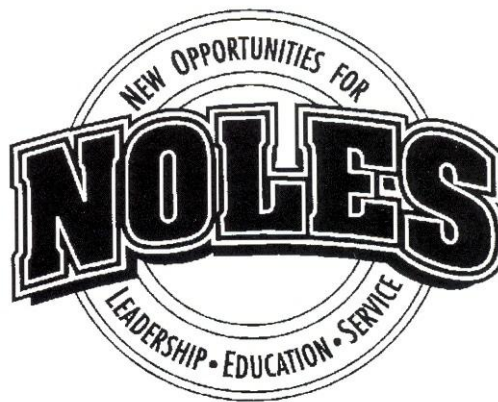
Serving the community is the focus of our Seminole Spirit program. Student-athletes are challenged to give

service to our community and individuals who are in need. With a clearly defined program of service, student-athletes are given the opportunity to develop the foundation for a lifelong commitment to volunteerism. The Seminole Spirit Student-Athlete Speakers' Bureau enables student-athletes to improve their speaking skills, develop effective communication and impact the lives of others through their service as role models in our community.

Leadership Development

The Florida State University Department of Athletics is committed to developing programs of excellence that foster leadership development. The foundation of the leadership development program will be the two councils that represent the student-athletes at the University.

The Student-Athlete Advisory Council (SAAC) serves as the advisory board to the NOLES program and the athletics administration. The prestigious board, comprised of two representatives of each athletic team at FSU, also recommends programming and serves as a liaison between student-athletes and the athletics administration. The Advisory Council plans and implements various events for student-athletes and serves as the department's most visible ambassadors. The SAAC planned and hosted the annual Golden Nole banquet for the first time last year.



The following information is provided by the Florida State Office of Compliance for prospective student athletes. It is intended as a guideline to introduce some of the rules governing NCAA athletic involvement.

WHO IS PERMITTED TO RECRUIT FOR FSU?

Only Florida State University coaches who have successfully completed the NCAA R2s may not make any recruiting contacts. This includes letters, telephone calls or face-to-face contact on or off campus with a prospect or the prospect's parents.

KEY TERMS YOU SHOULD KNOW

You become a prospective student-athlete if you have started classes for the ninth grade. Before the ninth grade, you become a prospective student-athlete if the college provides you (or your relatives or friends) any financial aid or other benefits that the college does not provide to prospective students generally.

A contact is any face-to-face encounter between a prospect or the prospect's legal guardian and an institutional staff member or athletic representative during which any dialogue occurs in excess of an exchange of greeting. **NOTE:** At the Division I level, athletic representatives (boosters) may not contact you for the purpose of recruiting. A college coach may contact you in person off the college campus beginning July 1 after completion of your junior year in high school.

An evaluation is any off-campus activity designed to assess your academic qualifications or athletic ability, including any visit to your high school (during which no contact occurs) or the observation of any practice or competition in which you participate.

During your senior year, you can have one expense-paid official visit to a particular campus. You may receive no more than five visits. During your official visit, which may not exceed 48 hours, you may receive round-trip

transportation between your home and the campus, and you (and your parents) may receive meals, lodging and complimentary admission to campus athletics events.

PHONE CALLS AND LETTERS

Phone calls from faculty members and coaches (but not boosters) are permitted beginning July 1 (August 15 for football) after completion of your junior year. A college coach or faculty member is limited to one telephone call per week except when it is:

- During the five days immediately before your official visit to the university
- On the day of a coach's off-campus contact with you
- During the time beginning with the initial National Letter of Intent signing date in your sport through the two days after signing date
- In the sport of football only, during the permissible off-campus contact periods and during the 48 hours prior to and 48 hours after 8:00 a.m. on the initial signing date for the National Letter of Intent.

Letters from coaches and faculty members (but not boosters) are not permitted until September 1 at the beginning of your junior year in high school. A Division I university may provide you with the following printed materials:

- General correspondence, including letters, U.S. Postal Service postcards and institutional note cards
- Game programs which may not include posters and one Student Athlete Handbook can be provided only during official or unofficial visits to the university's campus
- NCAA educational information
- Pre-enrollment information subsequent to signing a National Letter of Intent with the university

- One athletic publication which may include only one color of printing inside the covers
- Official academic, admissions and student services publications published or videotapes produced by the institution and available to all students
- Schedule cards
- Questionnaires which may be provided prior to your junior year
- Summer camp brochures which may be provided prior to your junior year.

ALUMNI AND BOOSTERS DO'S AND DON'TS

You may forward information about prospective student-athletes to the appropriate coaches.

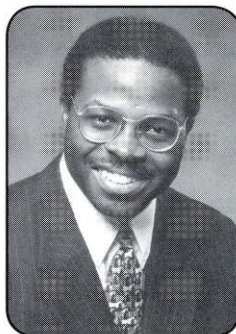
You may have contact with a prospect regarding permissible pre-enrollment activities such as summer employment, provided the prospect has already signed a National Letter of Intent and the Compliance Office is aware that you are making these contacts in regard to employment.

You may have a telephone conversation with a prospect only if the prospect initiates the call. Such a call may not be prearranged by an institutional staff member and you are not permitted to have a recruiting conversation, but may exhibit normal civility. You must refer any questions about

our athletics programs to an athletics department staff member/coach.

You may view a prospect's contest at your own initiative provided you do not contact the prospect or his/her parents. In addition, you may not contact a prospect's coach, principal, or counselor in an attempt to evaluate the prospect.

You may continue established family relationships.



Robert Minnix
Assoc. AD for Compliance
and Legal Affairs



YEAR-BY-YEAR RECORDS

| Year | Coach | Asst. Coach | W-L-T | PCT | Conf. (finish) | Post-Season (seed) | Final Ranking |
|------|-----------------|-----------------|--------|------|----------------|-------------------------|---------------|
| 1948 | Don Loucks | | 9-4 | .692 | Dixie (2nd) | | |
| 1949 | Don Loucks | | 11-2 | .846 | Dixie (1st) | | |
| 1950 | Don Loucks | | 9-7 | .562 | Dixie (1st) | | |
| 1951 | Ralph Matherly | | 7-8 | .467 | Dixie (1st) | | |
| 1952 | Don Loucks | | 9-5 | .643 | Independent | | |
| 1953 | Don Loucks | | 15-2 | .882 | Independent | | |
| 1954 | Keith Pitchford | | 13-5 | .722 | Independent | | |
| 1955 | Keith Pitchford | | 10-6 | .625 | Independent | | |
| 1956 | Keith Pitchford | | 8-7 | .533 | Independent | | |
| 1957 | Keith Pitchford | | 5-11 | .313 | Independent | | |
| 1958 | Keith Pitchford | | 9-7 | .563 | Independent | | |
| 1959 | John Powless | | 14-6 | .700 | Independent | | |
| 1960 | John Powless | | 11-8-1 | .550 | Independent | | |
| 1961 | Bubba McGowan | | 16-5 | .762 | Independent | | |
| 1962 | Eddie Cubbon | | 11-8 | .579 | Independent | Eastern Intercol. (1st) | |
| 1963 | Eddie Cubbon | | 18-5 | .783 | Independent | | |
| 1964 | Paul Scarpa | | 12-10 | .546 | Independent | | |
| 1965 | Lex Wood | | 11-7 | .611 | Independent | | |
| 1966 | Lex Wood | | 13-10 | .565 | Independent | | |
| 1967 | Lex Wood | | 16-7 | .696 | Independent | | T 29th NCAA |
| 1968 | Lex Wood | | 21-3 | .875 | Independent | | |
| 1969 | Lex Wood | | 22-5-1 | .786 | Independent | | T 23th NCAA |
| 1970 | Pete Barizon | | 21-12 | .636 | Independent | | |
| 1971 | Pete Barizon | | 18-3 | .857 | Independent | | T15th NCAA |
| 1972 | Scott Bristol | | 18-4 | .818 | Independent | NCAA Chmps. (16th) | T 33th NCAA |
| 1973 | Randy Jobson | | 11-4 | .733 | Independent | | T19th NCAA |
| 1974 | Randy Jobson | | 10-8 | .555 | Independent | | |
| 1975 | Randy Jobson | | 14-6 | .700 | Independent | | T 25th NCAA |
| 1976 | Ken Vinson | | 4-19 | .174 | Independent | | |
| 1977 | Ken Vinson | | 5-15-1 | .238 | Metro (3rd) | | |
| 1978 | Juan Ortiz | | 17-5 | .773 | Metro (2nd) | | |
| 1979 | Juan Ortiz | | 17-8 | .680 | Metro (3rd) | | |
| 1980 | Randy Jobson | | 12-7 | .632 | Metro (2nd) | | |
| 1981 | Randy Jobson | | 12-14 | .462 | Metro (1st) | | |
| 1982 | Randy Jobson | | 23-10 | .697 | Metro (3rd) | | |
| 1983 | Randy Jobson | | 19-13 | .594 | Metro (1st) | | |
| 1984 | Richard McKee | | 30-8 | .790 | Metro (1st) | | |
| 1985 | Richard McKee | | 25-4 | .862 | Metro (2nd) | | #16 |
| 1986 | Richard McKee | | 10-13 | .435 | Metro (2nd) | | |
| 1987 | Richard McKee | John Vinson | 13-10 | .565 | Metro (2nd) | | |
| 1988 | Richard McKee | John Vinson | 14-10 | .583 | Metro (1st) | | |
| 1989 | Richard McKee | Shannon Krieger | 18-12 | .600 | Metro (2nd) | | |
| 1990 | Richard McKee | Casey Creely | 19-8 | .701 | Metro (2nd) | | |
| 1991 | David Barron | Peter Maller | 16-7 | .696 | Metro (2nd) | | |
| 1992 | David Barron | Peter Maller | 14-9 | .610 | ACC (3rd) | | |
| 1993 | David Barron | Joey Rive | 17-8 | .680 | ACC (3rd) | | ARV |
| 1994 | David Barron | Joey Rive | 15-9 | .625 | ACC (3rd) | NCAA Regionals (2nd) | #35 |
| 1995 | David Barron | John Vinson | 18-9 | .692 | ACC (2nd) | NCAA Regionals (2nd) | #24 |
| 1996 | David Barron | John Vinson | 15-13 | .536 | ACC (2nd) | NCAA Regionals (3rd) | #37 |
| 1997 | David Barron | John Vinson | 16-12 | .571 | ACC (6th) | NCAA Regionals (7th) | #34 |
| 1998 | David Barron | John Vinson | 17-8 | .680 | ACC (5th) | NCAA Regionals (6th) | #47 |
| 1999 | David Barron | John Vinson | 13-10 | .565 | ACC (7th) | | #56 |

Note: Up until 1977, the NCAA champion was decided by the total of the individual scoring of all players on each team. One point was awarded for each match won, including singles and doubles. A single-elimination tournament featuring 16 teams began in 1977 and has since expanded to 32.

Past FSU Tennis Coaches



Donald Loucks
1948-1950, 1952-1953



Ralph Matherly
1951



Keith Pitchford
1954-1958



Bubba McGowan
1961



Eddie Cubbon
1962-1963



Paul Scarpa
1964



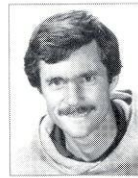
Lex Wood
1965-1969



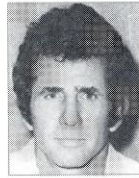
Pete Barizon
1970-1971



Scott Bristol
1972



Randy Jobson
1973-1975, 1980-1983



Ken Vinson
1976-1977



Juan Ortiz
1978-1979



Richard McKee
1984-1990



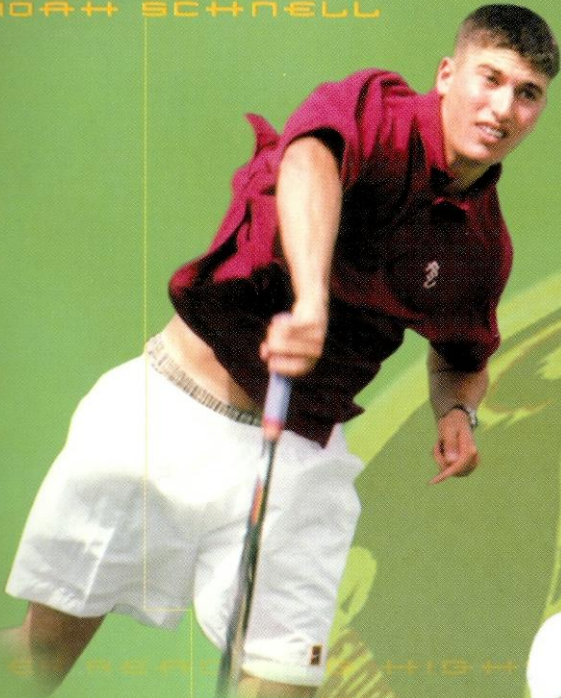
David Barron
1991-1999



Dwayne Hultquist
2000-

1999-2000 FLORIDA STATE MEN'S TENNIS

NORTH SCHNELL



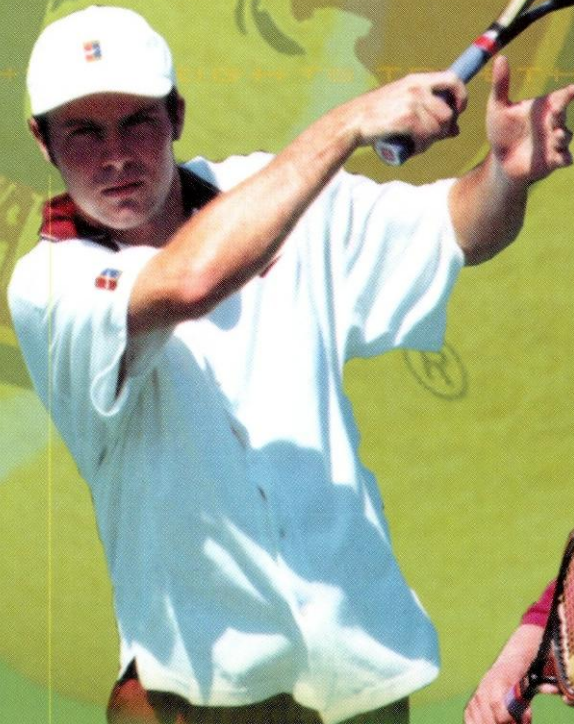
10 wins were the most by an FSU freshman in four years

CHARO MOONEY



Led the team in victories last year with 19 wins

MIKE INGHAM



Combined he has over a 100 career singles and doubles wins at FSU

JAY TRAVIS



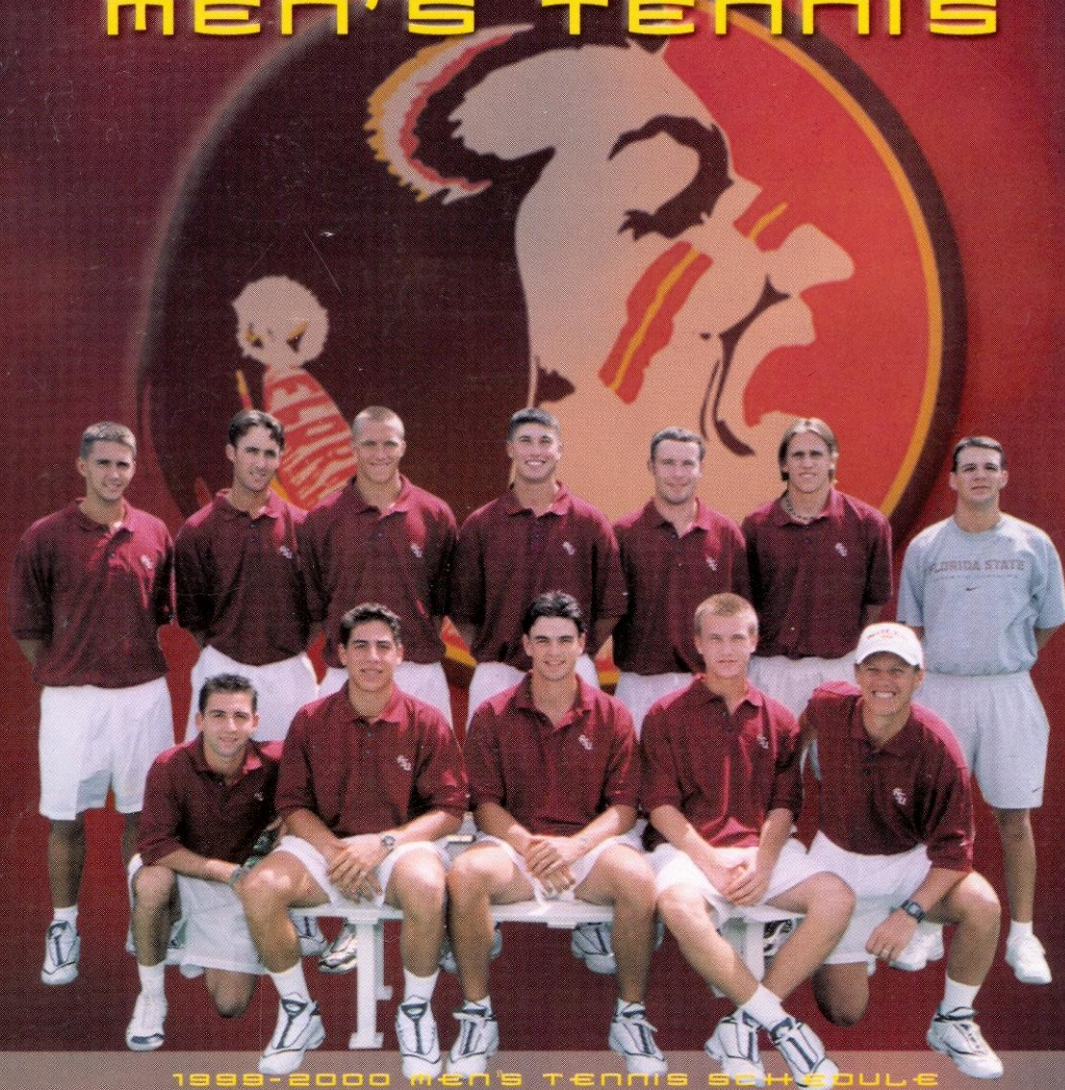
Went undefeated as a freshman, winning all nine of his singles matches

JEFF SCARELLA



Finished 1999 Dual Match Season playing No. 1 doubles for the Noles

1999-2000 FLORIDA STATE MEN'S TENNIS



1999-2000 MEN'S TENNIS SCHEDULE

FALL 1999

| | | | | | |
|--------------------|-------|-----------|---------------------------|---------------------|----------|
| October | 7-10 | Thur-Sun | Southern Intercollegiates | Athens, GA | All Day |
| October | 22-24 | Fri-Sun | Seminole Fall Classic | Tallahassee, FL | All Day |
| November | 11-14 | Thur-Sun | ITA Rolex | Chapel Hill, NC | All Day |
| SPRING 2000 | | | | | |
| January | 20-23 | Thurs-Sun | ACC Indoor | Clemson, SC | All Day |
| January | 28 | Fri | New Mexico | Albuquerque, NM | Noon |
| January | 29 | Sat | Texas Christian | Albuquerque, NM | 2:00pm |
| February | 4 | Fri | Georgia Southern | Tallahassee, FL | 3:30 pm |
| February | 5 | Sat | Central Florida | Tallahassee, FL | 2:00 pm |
| February | 12 | Sat | Jacksonville | Tallahassee, FL | 10:00 am |
| February | 12 | Sat | North Carolina-Asheville | Tallahassee, FL | 3:30 pm |
| February | 18 | Fri | Florida Atlantic | Tallahassee, FL | 3:30 pm |
| February | 20 | Sun | Southern Mississippi | Tallahassee, FL | Noon |
| February | 20 | Sun | Stetson | Tallahassee, FL | 4:00 pm |
| February | 25 | Fri | Georgia State | Tallahassee, FL | 3:30 pm |
| February | 27 | Sun | Miami | Tallahassee, FL | Noon |
| March | 5 | Sun | Wake Forest | Tallahassee, FL | 2:00 pm |
| March | 8 | Wed | Texas | Austin, TX | 2:00 pm |
| March | 12 | Sun | Clemson | Clemson, SC | 1:00 pm |
| March | 18 | Sat | North Carolina | Tallahassee, FL | 2:00 pm |
| March | 22 | Wed | Florida | Gainesville, FL | 5:00 pm |
| March | 25 | Sat | Maryland | Charlottesville, VA | 10:00 am |
| March | 26 | Sun | Virginia | Charlottesville, VA | Noon |
| March | 30 | Thur | North Carolina State | Tallahassee, FL | 3:30 pm |
| April | 1 | Sat | Duke | Tallahassee, FL | 2:00 pm |
| April | 5 | Wed | South Alabama | Tallahassee, FL | 3:30 pm |
| April | 9 | Sun | South Florida | Tampa, FL | 1:00 pm |
| April | 15 | Sat | Furman | Greenville, SC | 1:00 pm |
| April | 16 | Sun | Georgia Tech | Atlanta, GA | 1:00 pm |
| April | 21-23 | Fri-Sun | ACC | Atlanta, GA | All Day |
| May | 12-14 | Fri-Sun | NCAA Regional | TBA | All Day |
| May | 19-26 | Fri-Fri | NCAA | Athens, GA | All Day |

TOGETHER REACHING NEW HEIGHTS

