

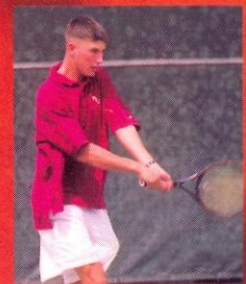
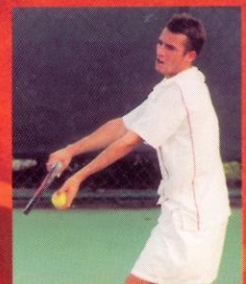
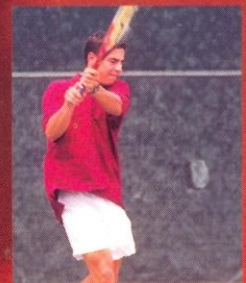
TENNIS

Florida State

University

Men's Tennis

2000-2001



1999-2000 MEN'S TENNIS ACCOMPLISHMENTS

- ▶ Completed the program's 14th straight winning season with a record of 14-10.
- ▶ Opened spring season winning nine of first 10 dual matches.
- ▶ From December 7, 1999 to March 8, 2000, the Seminoles were the hottest team in the country jumping 27 spots in the rankings to their highest ranking of the season at No. 42.
- ▶ No. 1 player Xavier Luscan was the highest ranked Seminole peaking at No. 28 on March 15th.
- ▶ Posted three "7-0" shutouts in 2000 against Maryland, Jacksonville and UNC-Asheville.
- ▶ Freshman Rodrigo Laub won the Southern Collegiates Division IV Singles Championship in October.
- ▶ Luscan defeated the country's 10th-ranked player from New Mexico on January 28th.
- ▶ Had two Seminoles named to the All-ACC team (Ingham and Luscan).
- ▶ Remained undefeated all-time against Southern Mississippi (10-0), Central Florida (7-0), Florida Atlantic (7-0), Florida A&M (4-0) and New Mexico (2-0).
- ▶ With four conference wins in 2000, FSU improved to 9-0 against Maryland and N.C. State since joining the ACC in 1992 and to 9-1 against Wake Forest and 8-4 against Georgia Tech.
- ▶ Nine of 10 losses in 2000 were to teams ranked in the top 38 in the country.
- ▶ Six of 14 wins came against ranked opponents.
- ▶ Defeated three teams that won conference championships (New Mexico, FAMU and FAU).
- ▶ Senior Mike Ingham cracked the singles rankings for the first time in his career landing at No. 97 on April 26th.
- ▶ Won seven of nine "4-3" matches in 2000 including their highest-ranked win of the season against No. 31 New Mexico on January 28th.
- ▶ Ingham capped career with six wins in his last nine matches including three over players ranked No. 51 or better.



QUICK FACTS

Florida State University

Location	Tallahassee, Florida
Founded	1851
Enrollment	34,500
Symbol	Seminoles
School Colors	Garnet and Gold
President	Talbot "Sandy" D'Alemberte

Florida State Athletics

Affiliation	NCAA Division I
Conference	Atlantic Coast
Athletics Director	Dave Hart, Jr.
Associate Athletics Director	Kim Record
Sports Information Director	Rob Wilson
SID Tennis	Jennifer Dowling
SID Office Phone	(850) 644-1403
SID Fax	(850) 644-3820
Mailing Address	P.O. Box 2195 Tallahassee, Fl. 32316

FSU Men's Tennis

Home Facility	Scott Speicher Tennis Center
Head Coach	Dwayne Hultquist (2nd Season)
Assistant Coach	Ty Braswell (1st Season)
Tennis Office Phone	(850) 644-5946
Tennis Office Fax	(850) 644-3451

1999-2000 Review

Overall Record	14-10
ACC Record/Finish	4-4 record / 5th in the ACC
Final ITA Ranking	46th

A Note to the Media, Fans and Opponents

Florida State tennis contact Jennifer Dowling of the Sports Information Office is ready to assist you with any questions or requests you may have about the 2000-2001 Seminole Tennis program, media guide, coaches and student-athletes. Please do not hesitate to phone, fax or write a letter to the sports information office at P.O. Box 2195; Tallahassee, Florida 32316; (850) 644-1403 phone; (850) 644-3820 fax, if we can further assist you.

How to cover the Seminoles

Members of the media are supplied with weekly press releases, including updated individual tournament and career statistics, as well as conference and national rankings and information on upcoming matches or events. Results and statistics may be obtained in the sports information office or off the www.seminoles.com. Pertinent team and player information will also be available at the Scott Speicher Tennis Center for all home matches. If you would like to schedule personal interviews with the coaches or players contact Dowling in the FSU Sports Information office at least 24 hours in advance. Head Coach Dwayne Hultquist is generally available in his office during weekday mornings.

Where the home matches will be

All 2000-2001 Seminole Tennis home matches take place at the Scott Speicher Tennis Center (capacity 1000). The courts are located off of Chieftain Way directly behind the Bobby E. Leach Center. Parking for the facility is located to the west of the site. Media members will be provided parking passes and will be seated in a designated area. Please notify the sports information office prior to home matches for credentials to be assigned. Any accredited photographer wishing to shoot the matches must check in with Dowling prior to gameday so proper credentials can be assigned.

FSU on the web

Check out the Florida State tennis program on the web. Go to your internet site and type in www.seminoles.com. Once you are in the site follow the directions to the home of the Seminoles web page.



TABLE OF CONTENTS

Media Information	1
This is Tallahassee	2
This is FSU	4
2000-2001 Preview/Golden Ace Girls	6
Hultquist Bio	8
Braswell Bio / Team Roster	9
Player Bios	10-13
Athletic Administration	14
1999-2000 Review	15
1999-2000 Dual Match Results	16
Year by Year Results	17-19
Scott Speicher Tennis Center	20
All-Time Dual Match Roster	21
All-Time Records	22
USTA Challenger	23
Around the ACC	24
ACC Biography	25
Conference History	26-27
Academic Support	28
Strength and Conditioning	29
Life Skills	30
NCAA Information	31
Year by Year Records	32

Florida State University Media Outlets

Newspapers:

TALLAHASSEE DEMOCRAT
P.O. Box 990; Tallahassee, Florida 32302
phone: (850) 599-2166 fax: (850) 599-2301
FSVIEW

P.O. Box 20331; Tallahassee, Florida 32316
phone: (850) 561-6653 fax: (850) 561-6578
THE OSCEOLA

402 Dunwoody Street; Tallahassee, Florida 32304
phone: (850) 222-7733 fax: (850) 224-3627
FLORIDA TIMES-UNION

One Riverside Avenue, Suite 304; Tallahassee, Florida 32301
phone: (850) 224-7515 fax: (850) 681-2961
ORLANDO SENTINEL

336 East College Avenue, Suite 303; Tallahassee, Florida 32301
phone: (850) 222-5564 fax: (850) 224-0979

Television/Radio:

WCTV - TV (CBS affiliate)
P.O. Box 3048; Tallahassee, Florida 32315
phone: (850) 893-2126 fax: (850) 668-3851
WTLX - TV (ABC affiliate)

8927 Thomasville Road; Tallahassee, Florida 32312
phone: (850) 893-1313 fax: (850) 668-3851
WTWC - TV (NBC affiliate)

8440 Deerlake Road; Tallahassee, Florida 32312
phone: (850) 893-9892 fax: (850) 893-3646
WNLS - Sports Radio 1270 AM

325 John Knox Road, Suite E-200; Tallahassee, Florida 32303
phone: (850) 386-6143 fax: (850) 385-8789

MEDIA GUIDE CREDITS

The 2000-2001 Seminole Tennis media guide is a publication of the Florida State University Sports Information Office. Edited and written by Jennifer Dowling and Tina Thomas. Writing and research assistance by Jason Byrne, Elliot Finebloom, Alayne Ruzyla and John Levesque and Courtney Simmons. Designed by Cade & Associates Advertising. Photography by Tom Casazza, Landa Oz Photography, Ross Obley, Ryals Lee and the University Photo Lab. Printing by FSU Printing Services.

The Florida State University offers equal opportunity in its employment and educational activities in compliance with Title IX, Section 5-4 of the Rehabilitation Act of 1973 and other civil rights laws. This document is available upon request in alternate formats for individuals with print related disabilities. Contact the ADA office, 301 Westcott Administration Building, for more information.



Sandy D'Alemberte
FSU President



Dave Hart, Jr.
Director of Athletics



Kim Record
Associate Director
of Athletics



Jennifer Dowling
Tennis SID



Laura Mettes
Sports Promotions



T H I S I S T A



Near, but far from the glaring strips of neon amusement, and the castles and crowds of Disney, lies another magical place in the Sunshine State — one of plantations, politics and great pride. Often described as “The Other Florida” with its deep-rooted history, rolling hills, canopy roads of moss-draped oaks, cool climate and Southern-style hospitality; it is a Florida few have seen. It is Tallahassee — Florida with a Southern accent.

Best known as Florida’s capital, Tallahassee is an intimate neo-metropolitan city where the power of state government, the academic and the artistic are complemented by subtle, old-fashioned charm. It is the perfect two- or three-day diversion for the more than 41 million annual visitors to Florida and 13 million residents.

Tallahassee touts a menagerie of sights including one of the world’s deepest freshwater springs, site of America’s first Christmas, a wildlife habitat, Capitol buildings, fascinating museums of history, sprawling plantations, highly acclaimed fishing and hunting adventures and nearby beaches. Spirited area festivals range from celebrations of Tallahassee’s spectacular spring and swamp stomps to genuine rattlesnake roundups and seafood festivals.

With the Gulf of Mexico just 20 miles south and the Georgia border only 14 miles north, Tallahassee rests between the foothills of the Appalachian

Mountains and the juncture of Florida’s panhandle and peninsula. Nearer in miles to Atlanta than to Miami, Tallahassee more closely resembles its Southern neighbors than Florida in topography, climate and lifestyle.

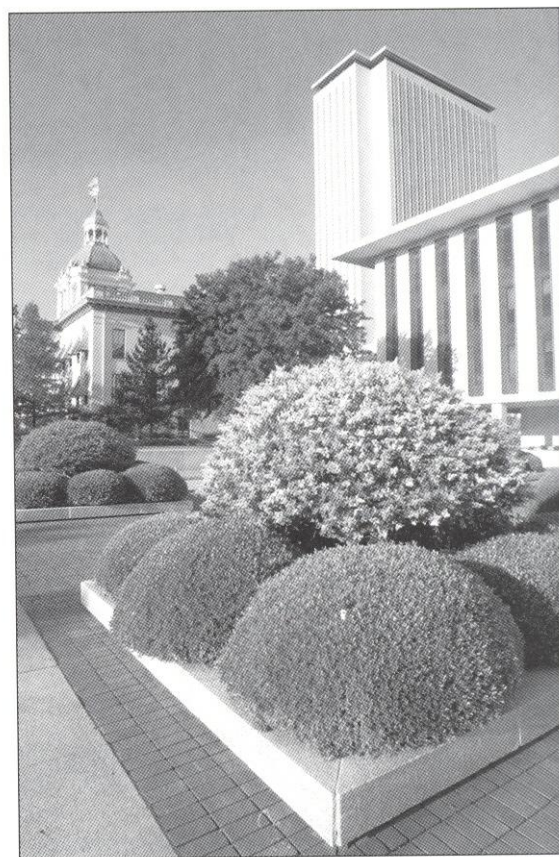
Accentuating Tallahassee’s Southern persona are lush rolling hills, likened to the seven hills of Rome, and five “official” canopy roads of patriarch oaks. The fertile, rich soil and four distinct, yet pleasant, seasons breed floral brilliance and natural vitality year-round.

Like the city itself, the story of how Tallahassee was chosen as the state capital is rich in history. In 1823, two explorers set out — one on horseback from St. Augustine and the other by boat from Pensacola — to find a permanent, central location for the Legislature to convene. The two met at a beautiful site that the Creek and Seminole Indians called “tallahassee” — derived from the words “talwa” meaning town and “ahasee” meaning old. The rendezvous point remains Florida’s capital.

The “old town” has undergone many changes, but one thing remains the same — it is still a government town fiercely proud and dedicated to preserving its heritage. The Capitol buildings, both old and new, epitomize Tallahassee’s perseverance. The 22nd floor of the New Capitol provides a panoramic scope of a sophisticated Southern city awash in a sea of flowering azaleas, snowy dogwoods, towering pines, fragrant magnolias, and hundreds of shimmering lakes, springs, swamps, rivers and sink holes. Special legislative viewing galleries are open during the legislative session.

Below, in the shade of giant live oaks, proudly stands the Old Capitol, originally constructed in 1845 and restored to its 1902 splendor complete with red-and-white candy-striped awnings, a dome adorned with stained glass, antique furnishings and political memorabilia.

Across from the Old Capitol are the 40-foot twin granite towers of the Vietnam Veteran’s Memorial, and the blue stone Union Bank, Florida’s oldest surviving financial institution. The nostalgic Old Town Trolley, a replica turn-of-the-century street car, carries passengers through restored Adams Street Commons to numerous other historical downtown shops for free — unheard of even 100 years ago.



L L A H A S S E E



Minutes from downtown lies the Governor's Mansion, which resembles the home of Florida's military hero Andrew Jackson; and the 52-acre natural animal habitat and 1880s farm of the Tallahassee Museum of History and Natural Science, which provide the rare chance to walk and talk with native Florida animals

Tallahassee remains firmly linked with the past as evidenced by the unearthed 1539 winter encampment of Spanish Hernando de Soto, the site of the first Christmas celebration in America. Visitors travel back through time as they stand in the shadow of a giant 12,000-year-old American Mastodon at the Museum of Florida History or explore other historical spots including The Knott House that Rhymes, The Columns, San Luis Mission, Lake Jackson State Archaeological Site, Natural Bridge Battlefield, First Presbyterian Church, Brokaw-McDougall House, Goodwood Plantation and Adams Street Commons.

Nearby, alligators lazing in the sunshine and anhinga "snake birds" perched on twisted cypress branches are seen at Wakulla Springs, one of the world's deepest fresh water springs and site of many underwater scenes in the "Tarzan" movies with Johnny Weissmuller and Maureen O'Sullivan. Safaris aboard glass-bottomed and jungle cruise boats whisk visitors within arm's length of "The Other Florida."

Outdoor enthusiasts enjoy adventures including boating and fishing on area lakes, rivers, ponds and the Gulf — just 30 minutes away. Lakes Seminole, Jackson and Talquin are renowned in the bass fishing world for yielding the "big ones," and dense forests offer an abundance of prize-winning game.

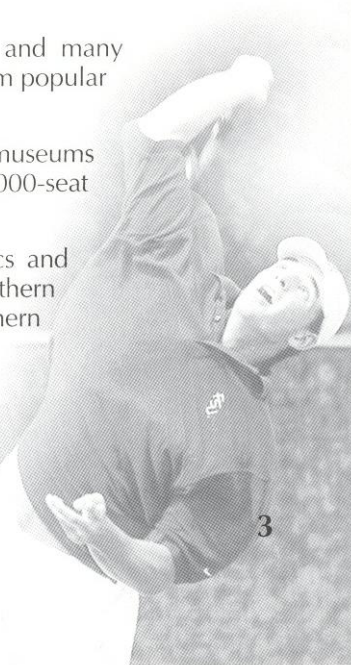
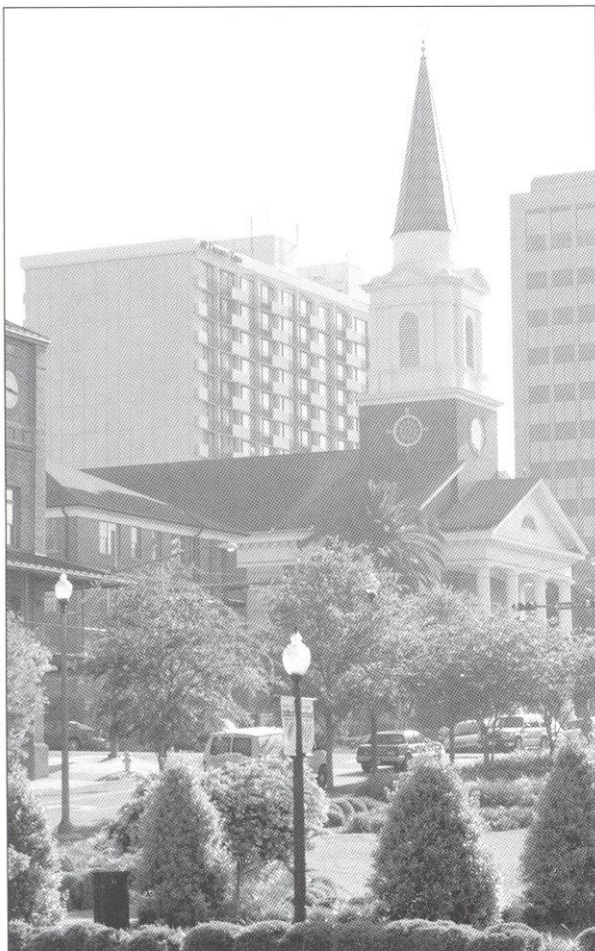
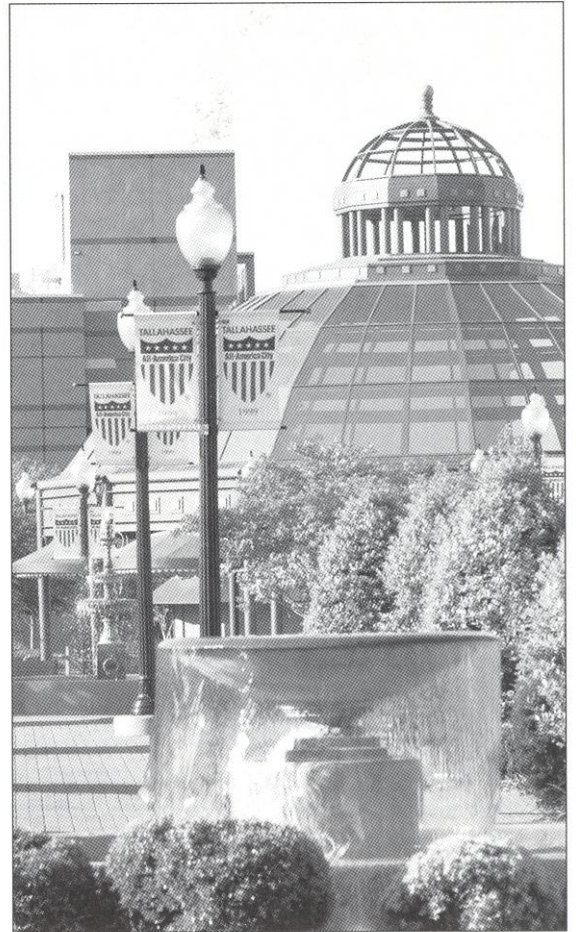
Local wildlife areas such as the Florida National Scenic Trail, St. Marks National Wildlife Refuge and Apalachicola National Forest are among many spots for camping, picnicking, swimming, biking and exploring.

Appealing to the strokes of different folks, Tallahassee also features 99 holes of golf on six courses and a proliferation of tennis centers. Sideline athletes cheer the nationally-ranked Florida State Seminoles, Florida A&M Rattlers and the Tallahassee Tiger Sharks, of the East Coast Hockey League, Tallahassee Thunder of Arena 2 football league. And always a sure bet are the nearby greyhound races.

A sport of sorts, shopping at two regional malls and many specialty centers offer many "playing options" — from popular chains to curiosity and antique shops.

Cultural interests are sparked by widely-acclaimed museums and galleries and elaborate entertainment at the 14,000-seat Tallahassee-Leon County Civic Center.

Tallahassee is a collaboration of power-play politics and classical character splashed with a twist of Southern beauty and charm. Tallahassee is Florida with a Southern accent.





T H I S

Florida State University, a coeducational graduate research institution, stands among the nation's elite in both academics and athletics, as it celebrates its sesquicentennial anniversary in 2001.

Located on the oldest continuous site of higher education in Florida and building upon the impeccable reputation of its beginnings as a distinguished liberal arts college for women, the university has grown in the past 53 years as an institution of national and international esteem. Its stature is evident in its recent record of excellence:



*In 1994, Florida State was classified a "**Research University I**" by the Carnegie Foundation, placing it among the nation's top research universities.

*In 2000, following approval by the 2000 Florida Legislature, FSU created the Institute of Medical Sciences as a transitional unit that will evolve into the College of Medicine by fall 2001. The college will increase the quality of Florida medical care by training primary care physicians with a focus on treating the elderly and people in underserved areas such as rural communities and inner cities.

*In 2000, FSU bought the **most powerful university-owned supercomputer in the world**. The IBM RS/6000 Supercomputer can perform 2.5 trillion calculations per second. Located in the School of Computational Science and Information Technology, the supercomputer will be used by FSU researchers to predict hurricanes and compare DNA sequences as complex as those of the human genome.

*In 2000, FSU was ranked 18th among universities in the "America's Most Wired Colleges" ranking by Yahoo! Internet Life Magazine.

***The Challenger Learning Center of Tallahassee**, a project of the FAMU-FSU College of Engineering, is scheduled to open in March 2002. The center, to be built on Kleman Plaza in downtown Tallahassee, will feature a space mission simulator common to all of the centers, and a 300 seat IMAX theater and a domed planetarium laser theater. It will serve middle schools in a 66-county area of North Florida, Southeast Alabama and South Georgia. The 39 Challenger Learning Centers throughout the United States, Canada and Europe introduce more than 350,000 middle school students annually to the exciting possibilities of science, engineering and technology.

***LEXIS®-NEXIS® Academic Universe**, the online information service that FSU helped develop and test from 1995 to 1998, is now used at more than 1,200 universities and colleges.

*As a testament to FSU's effort to foster a spirit of community service among its students, FSU ranks second in Florida and third in the Southeast for producing 27 currently serving Peace Corps volunteers. The Center for Civic Education and Service was established in 1994 to promote civic responsibility and community involvement through service as integral elements of the liberal arts education at FSU. Through ServScript, students' service may be recorded on their official academic transcript.

*In 2000, the Ph.D. program in the College of Business has the highest minority enrollment of any Ph.D. business program in the United States. In recent years, it has graduated more minority doctoral students than any other Ph.D. granting institution.

*In 2000, the National Geographic Society and FSU started the **Florida Geographic Alliance** that will bolster geographic education among Florida school children by preparing and equipping Florida's K-12 teachers with better information and tools.

*In 1999, FSU was selected by the U.S. Department of Energy to become one of the research institutions to operate the Oak Ridge National Laboratory (ORNL), a multiprogram science and





technology laboratory in Oak Ridge, Tenn., headed by the University of Tennessee-Battelle. The five-year management and operations contract is valued at about \$2.5 billion. FSU was invited to join ORNL because of its strong faculty research activities in material sciences, structural biology, computational sciences and magnet technologies.

*In fiscal year 1999-2000, FSU reached the highest level of external funding for research in its history, attracting more than \$116.9 million. The amount represents a 15.5 percent increase over last year's award level.

*In fiscal year 1999-2000, the FSU Foundation raised \$89.7 million, the largest amount ever raised in a single year at FSU. The amount represents a 21 percent increase over the previous year.

*At more than \$287.4 million, FSU's endowment has been ranked 150th in the nation by the National Association of College and University Business Officers, the benchmark of higher education fundraising success, in 2000. Since 1994, FSU's endowment ranking has surpassed 156 other institutions.

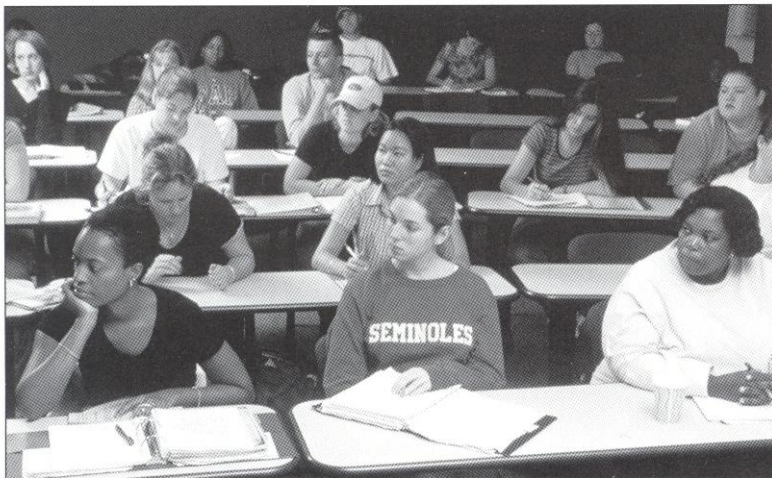
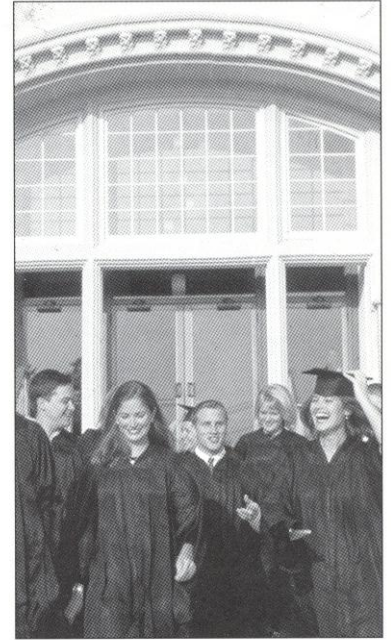
*Among public institutions with National Merit Scholars in 1999, FSU was ranked No. 12 with 284. Among those with National Achievement Scholars, FSU was ranked No. 3 with 73.

*In December 1999, researchers at the National High Magnetic Field Laboratory used a hybrid magnet to conduct the lab's first research in continuous magnetic fields of 45 tesla, or one million times the Earth's magnetic field. The \$100 million magnet lab, which was established in 1990 by the National Science Foundation, is run by FSU in partnership with the University of Florida and the Los Alamos National Laboratory. Vice President Al Gore spoke at the dedication of the magnet lab in October 1994.

*In 1999, FSU created the Institute on World War II and the Human Experience to "save the memories of those who saved the world" by collecting letters, diaries, memoirs and photos from participants in the war effort, in order to preserve the materials for classroom teaching, scholarly research and public viewing.

As this list of highlights attests, Florida State has excelled in the 1990s with exceptional strength, energy and vision for the future. Under the leadership of the university's 12th president, Talbot "Sandy" D'Alemberte, who took office in January 1994, FSU will continue to build on the foundation of its history of excellence in scholarship, research and service.

A senior member of the 10-member State University System, FSU was founded as an institution of higher learning in 1851 by legislative act and began in Tallahassee with its first students in 1857.

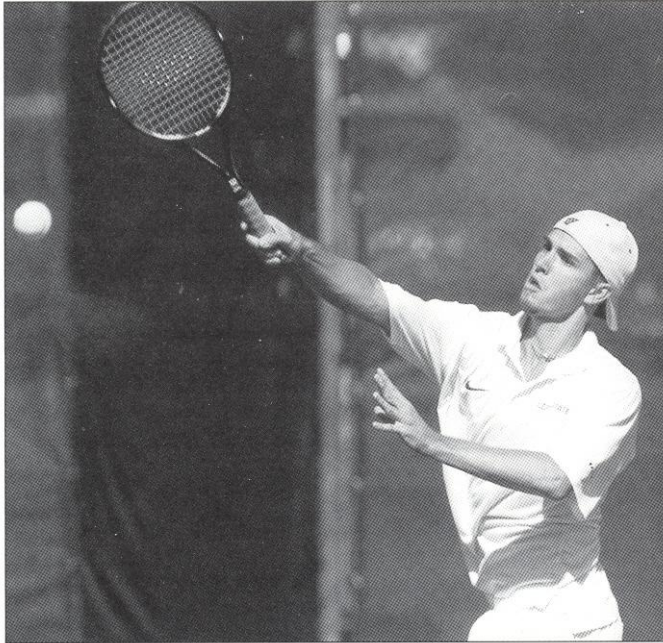




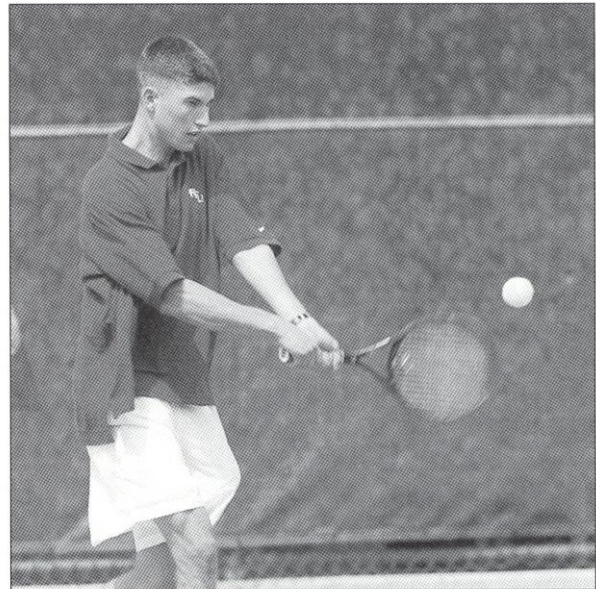
2000 - 2001

As Dwayne Hultquist enters his second season as the head coach of the Florida State men's tennis team, his optimism for the program continues to grow. Florida State has had 14 consecutive winning seasons, and is entering the 2000-2001 season ranked 46th in the country. Last season ended abruptly for the Noles as they were the highest ranked team in the country not to be invited to the field of 64 at the NCAA Tournament.

This season, the Seminoles are more motivated than ever to prove they have what it takes to succeed and make it to the NCAA Tournament. The Seminoles are heading into a season filled with promise. They accomplished many goals last year that were first thought to be unobtainable. For the men's tennis team, it is felt anything is possible.



CHAD MOONEY



NOAH SCHNELL

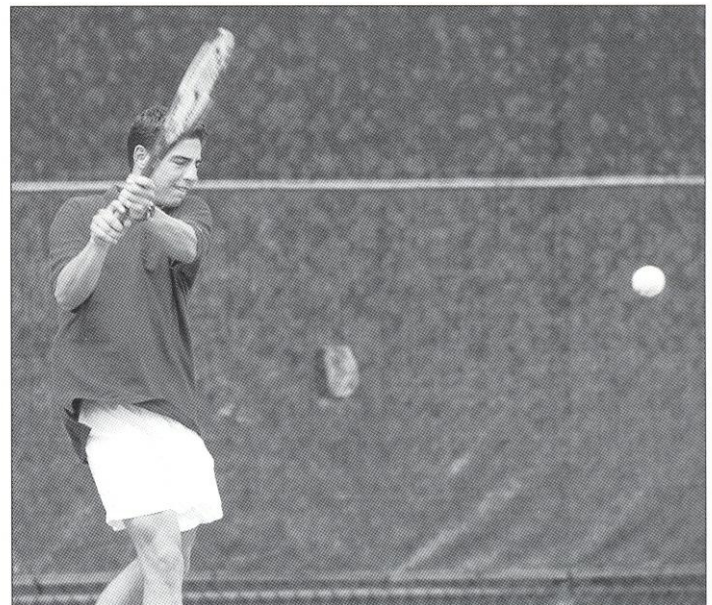
"This team made great progress last year, and that progress should continue throughout the year," Hultquist said. "This season we added a lot of players who will contribute immediately. Each day they continue to improve and play better as a team. I am looking for great success to come out of this year's squad."

Assisting Hultquist this season will be a familiar face in former Seminole Ty Braswell. Hultquist added the former Florida State men's tennis team captain to his coaching staff in July. Braswell will serve as assistant coach after coming from Laurel Oak Country Club, where he worked as the assistant tennis pro.

Braswell will be able to offer his leadership and knowledge of the game that is sure to be of benefit to each of the players.

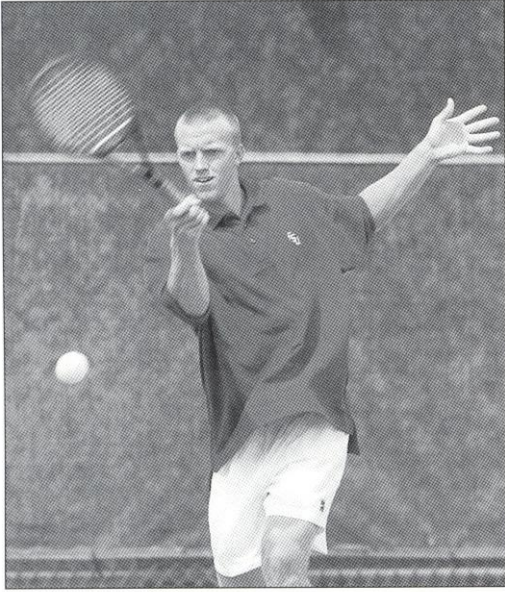
"We have a great group of leaders on our team this year with a lot of potential," Braswell said. "I am excited about the opportunity to see what our guys are made of."

The 2000-01 Florida State men's tennis team returns six of 11 players including four of its starters from a dual match season that saw the Seminoles go 14-10. The Noles opened last season by winning nine of their first 10 dual matches, and this year's squad is ready to prove that they can do the same. Hultquist's squad is made up of one senior, two juniors, four sophomores and four freshmen.



RODRIGO LAUB

P R E V I E W



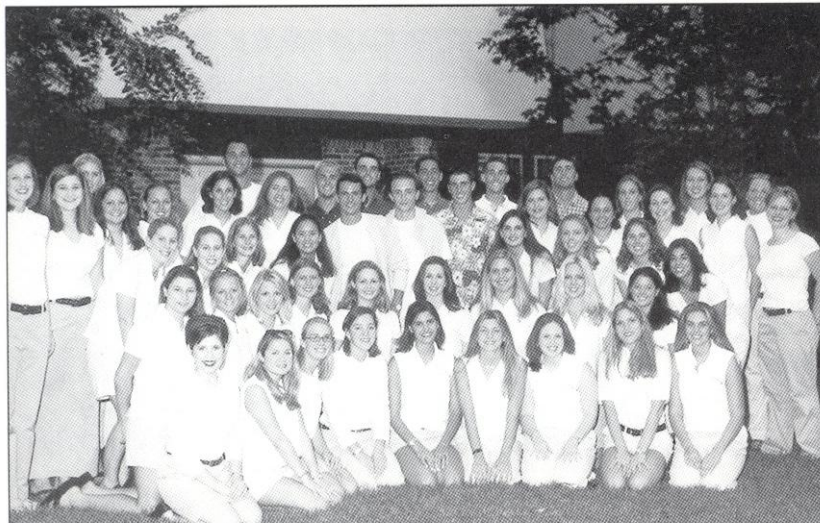
JEFF SCARELLA

"Xavier has proven to be one of the best in the country," Hultquist said. "He has worked hard to improve his game and should continue to prove to be one of the best."

Other sophomores returning to the Seminole squad include Rodrigo Laub, Joe Basset and Elliot Elias. Laub enters his second season with the Noles after winning the Southern Collegiate Division IV Singles Championships in October of 1999. Laub, who played primarily at No. 6 singles last season, holds a career record of 20-9. Rodrigo has a good all-around game with good skills and he is improving each year."

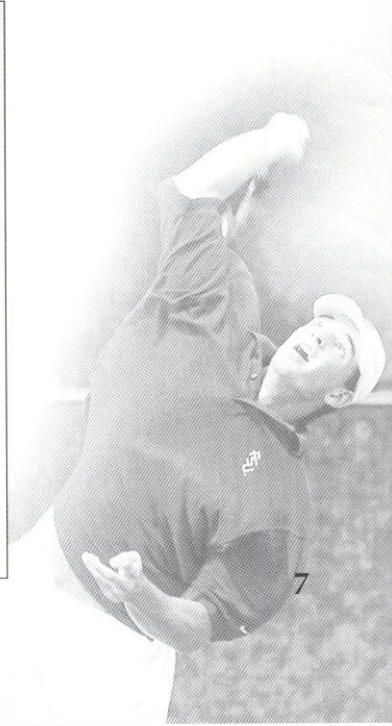
Hultquist brings four newcomers to the tennis program this year in freshmen Jerrod Owen, Alex Herrera, Romain Jurd and Reid McCree. After distinguished careers in high school, these rookies will look to build on the early success of last year's team. In 1999-00, the Seminoles won nine of their first 10 matches, and remain undefeated all-time against Southern Mississippi (10-0), Central Florida (7-0), Florida Atlantic (7-0), Florida A & M (4-0) and New Mexico (2-0).

This year's schedule will consist of two teams that were ranked in the top 10 at the end of last year in Duke and Florida, and three others that were ranked in the top 30. The month of February will set the stage for Florida State's spring dual match season, when the Seminoles will host the University of Florida and Georgia Southern, as well as hosting the 2001 Seminole Spring Tournament all in the friendly confines of the Scott Speicher Tennis Center in Tallahassee. In the final match of the month, the Seminoles will head south to play rival Miami.



2000-2001 MEN'S TENNIS WITH THE GOLDEN ACE GIRLS

When Dwayne Hultquist came to Florida State, one of his top priorities was to develop more enthusiasm and support for the Seminole tennis program. Within the first two weeks of being named the Seminole head tennis coach, Hultquist put together a group of intelligent, professional and hard-working women that would help the tennis program in areas of marketing, public relations and hospitality. Working hand and hand with athletic department personnel and the coaching staff, these young ladies are getting an experience of a lifetime. Led by diligent workers, Angeline Talcott and Stacey Chester, the Golden Ace Girls are quickly becoming a valued part of the Florida State tennis program. Their hard work has not gone unnoticed and on behalf of Coach Hultquist and Coach Braswell, we thank you.





HEAD COACH

DWAYNE HULTQUIST

Pennsylvania State '86



With a passion for the sport of tennis, Dwayne Hultquist has always wanted to accomplish one thing. That one thing has always been the desire to become a successful Division I collegiate coach. On July 20, 1999, Hultquist's hiring as the Seminole head men's tennis coach culminated a decade-long journey to fulfill this dream. Hultquist's immediate goal for FSU was to strengthen its schedule and to provide for upward movement in the rankings. He is a firm believer that better opponents will bring about higher rankings. Entering his second year as head coach of the FSU men's tennis team, Hultquist has high hopes for the future of his Seminole program.

Hultquist has continued the success of the men's tennis program bringing the Noles to their 14th consecutive winning season, with a 14-10 record last season. The Seminoles come into the season ranked 46th in the country, and he continues to set his sights on improvement.

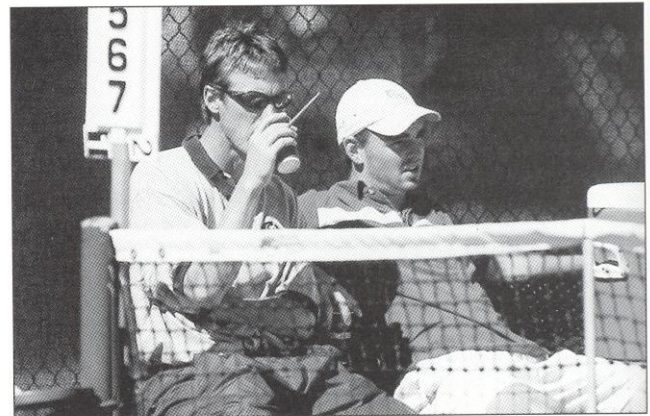
Hultquist arrived at Florida State in 1999 after serving eight seasons as an assistant coach at the University of Texas. While working under legendary coach Dave Snyder at Texas, Hultquist became known for his excellent recruiting abilities. He was also responsible for scheduling, fund-raising, individualized coaching and many of the day-to-day operations of the program. While at Texas, Hultquist helped lead the Longhorns to the NCAA Tournament Sweet 16 in each of his eight years.

"This is a great situation here at Florida State" said Hultquist. "We have some skilled players who just need more experience and if we can add a few more talented players, we can begin to move to the next level."

Hultquist began his tennis career at Penn State where he was a four-year letterman, and team captain in 1986. During that same year, he was an NCAA Tournament qualifier in doubles, and earned all-conference honors in both singles and doubles. After graduating from Penn State, Hultquist turned pro, playing in the United States, Israel and Asia. During his career, Hultquist was selected to play on national teams that traveled to Korea and China for competition. He also participated in a goodwill tour for the United States in Okinawa, Japan, where he participated in exhibition matches and helped direct clinics for the U.S. Military.

Hultquist's coaching career began after his playing days were over when he accepted a job with the USTA in 1988. His playing experience helped prepare him to become the USTA's Boy's National Team Coach. There he was able to travel overseas for international tournaments, as well as tournaments such as the Orange Bowl, Easter Bowl and the Reebok Cup. Hultquist also received the opportunity to coach at the Nick Bollettieri Tennis Academy. It was at the Bollettieri Academy that he coached world class players like Lihini Weerasuriya, who went on to win a USTA National Championship as well as another talented junior who went on to win the doubles championship at the 1989 Orange Bowl. During his year at the Academy, Hultquist was promoted to women's traveling coach.

In 1991, Hultquist began his collegiate coaching career when he accepted a graduate assistant position at the University of Kentucky, where he was responsible for individualized coaching, recruiting and co-directing the National Collegiate Indoor Team Championships. When the position at Texas opened up, Hultquist jumped at the chance and has never looked back. Hultquist is married to the former Angela White. The couple has a three-year old daughter, Devan, and newborn baby girl Avery Lynn.



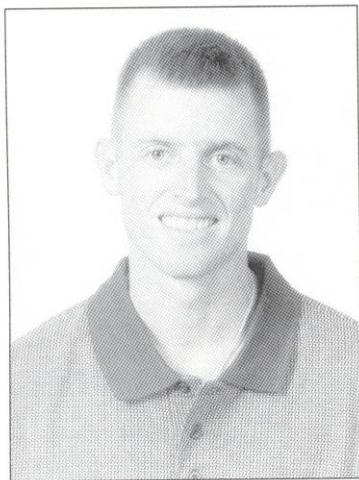
COACH HULTQUIST AND SOPHOMORE XAVIER LUSCAN

ASSISTANT COACH



TY BRASWELL

Florida State University '99



Ty Braswell became the newest member of the Florida State University coaching staff when he accepted the position as assistant men's tennis coach on July 1, 2000. Accepting this position on the tennis team Braswell switched from player to coach. Braswell will attempt to help head coach Dwayne Hultquist take the Seminole men's tennis program to another level. In his first year as assistant coach, Braswell will be able to offer his leadership and knowledge of the game, that is sure to be of benefit to each of the players. Having graduated from Florida State two years ago, where he was a celebrated member of the men's tennis team himself, and team captain from 97-99, Braswell knows what it takes to lead this team to victory.

"I am thankful to have the opportunity to work for such a great university," said Braswell. "I am excited about helping Dwayne take this program to the next level. We

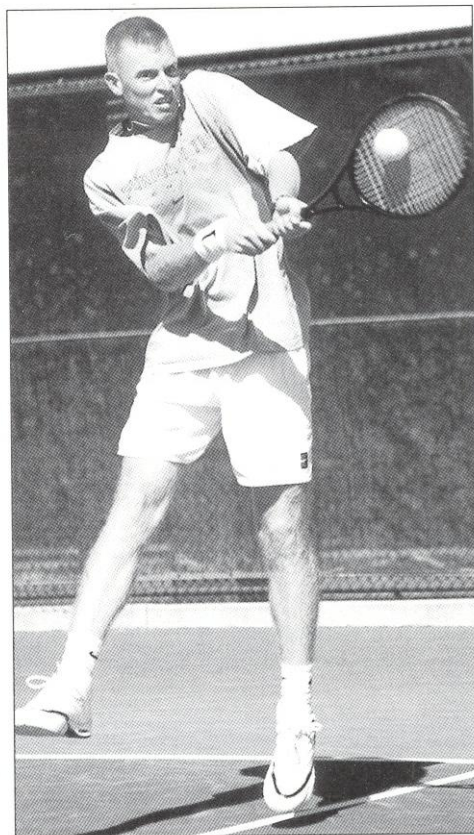
have a great group of guys this year that are willing to make the commitment to be leaders both on and off the court."

During his senior year in 1998-99, Braswell was the only ranked Seminole in singles and tied his career high with 19 wins. He also won the Flight One Singles Championship at the Seminole Fall Classic and advanced to the quarterfinals of the ITA Region II Indoor Championships where he defeated a nationally ranked player.

In his 1997-98 season, he boasted 17 victories in doubles and gained an ACC tournament victory over Georgia Tech's nationally ranked doubles team. He was also invited to the qualifying rounds of the ITA National Claycourt Championship in Baltimore MD, and as a doubles tandem to that same tournament.

The previous season (1996-97) Braswell primarily played at the No. 1 and 2 singles positions. He also climbed the ACC No. 2 doubles throughout most of the dual match season and finished 19th in overall wins, and 15 dual match singles wins. Braswell also defeated five nationally ranked players and was No. 2 during most of the dual match season.

His freshman season, 1995-96, Braswell played at No. 3, 4 and 5 singles where he put together a respectable 18-13 singles record which was third best on the team. In addition, Braswell was 10-7 at No. 2 and 3 doubles where he and his partner defeated a nationally ranked tandem in the team's biggest win of the season. He also clinched the flight 4 singles championship in the Seminole Fall Classic.



2000-2001 ROSTER

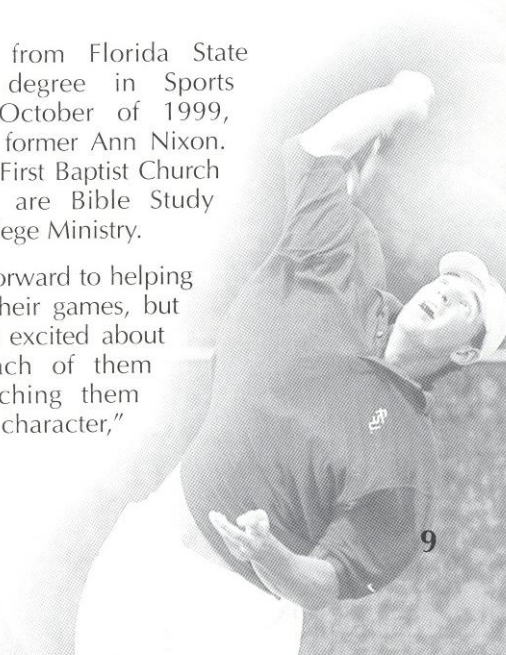
Joe Basset	Sophomore	Monticello, FL
Elliot Elias	Sophomore	Plantation, FL
Alex Herrera	Freshman	Gadsen, AL
Romain Jurd	Freshman	Paris, France
Rodrigo Laub	Sophomore	Atlanta, GA
Xavier Luscan	Sophomore	Paris, France
Reid McCree	Freshman	Stuart, FL
Chad Mooney	Senior	St. Albans, WV
Jerrod Owen	Freshman	Vero Beach, FL
Jeff Scarella	Junior	New Smyrna Beach, FL
Noah Schnell	Junior	W. Palm Beach, FL

Braswell graduated from Florida State in 1999 with a degree in Sports Administration. In October of 1999, Braswell married the former Ann Nixon. Both are members at First Baptist Church in Tallahassee, and are Bible Study Teachers with the College Ministry.

"I am really looking forward to helping these guys improve their games, but more importantly I'm excited about getting to know each of them personally and watching them become men with character," said Braswell.

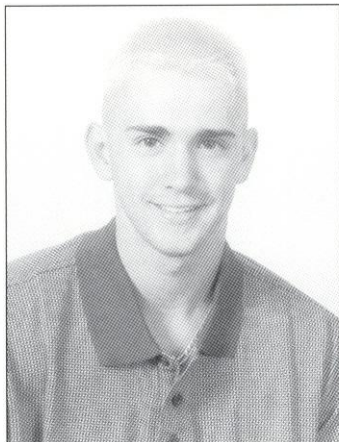
Dwayne Hultquist (*Head Coach*)
Ty Braswell (*Assistant Coach*)

Mike George (*Manager*)





PLAYER BIO



CHAD MOONEY

Senior-St. Albans, West Virginia (Canturbury School)

HULTQUIST ON CHAD:

"Chad has an excellent groundstroke game and a very impressive net game. He plays every game with great intensity."

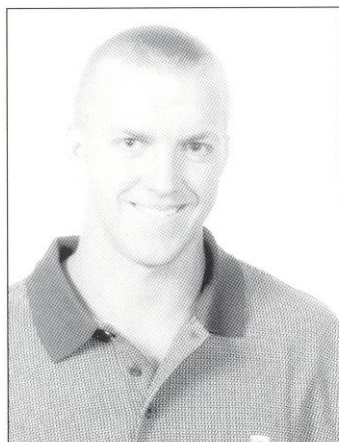
1999-00: Only Seminole with a winning record at No. 3 singles position...played at No. 3 doubles with Michael Ingham...the combo won four of seven matches at No. 3 doubles... 12-6 all-time record at No. 5 singles... had five-match winning streak in February...**1998-99:** Opened spring with six consecutive wins...tied for team lead in victories with 19...had eight-match winning streak during the spring...posted a 10-2 record at No. 5 singles...16 of 19 wins were straight set victories...had two come-from-behind victories and won three of seven three-set matches...won the only two tiebreakers he played in...had a combined 10-9 doubles record with six different teammates...played doubles with Mike Ingham at the Seminole Fall Classic winning the Flight 2 Championship...1997-98: Finished his freshman season with a 4-1 record in spring dual matches and overall record of 5-5 in singles competition...won three of last four singles matches...undefeated in four doubles matches in the spring last year, all at No. 3...overall doubles record was 6-5 as a freshman playing with Gerald Casas, Michael Ingham and Jay Travis...in the fall, competed in singles and doubles at the Southern Collegiate Championships, doubles with Gerald Casas...also teamed with Casas at the

Seminole Fall Classic...defeated Marko Grguric of Central Florida while substituting for an injured Alex Golub in flight 3 of the Seminole Fall Classic...**High School and other accomplishments:** Named to the All-State team as a sophomore at St. Albans High School...also a county and team MVP during freshman and sophomore seasons...concentrated on junior standings after transferring to the Canterbury School of Florida for junior and senior years...won the backdraw of the National 16's Indoor championships...also a backdraw semifinalist for the National 18's Indoor championships...advanced to the round of 16 at the National Hardcourts doubles championships...ranked among the top 50 national in boys 16-U singles...also had a national singles ranking of 70 in boys 18-U singles...held a top 10 ranking in boys 18-U singles, western region...**Personal:** A member of the National Honor Society and Spanish National Honor Society...has played tennis competitively for 11 years...son of Bob and Donna Mooney...father, Bob, is a tennis teaching pro...majoring in hospitality administration.

MOONEY CAREER STATISTICS

SINGLES									
Year	@1	@2	@3	@4	@5	@6	Duals	Other	Total
97-98				4-1		4-1		1-4	5-5
98-99		6-5	10-2				16-7	3-4	19-11
99-00	4-1	3-7	2-4	1-0			10-12	3-2	13-14
Totals	4-1	9-12	12-6	5-1			30-20	7-10	37-30

DOUBLES						
Year	@1	@2	@3	Duals	Other	Total
97-98	4-0	4-0	2-5		6-5 w/ Casas, Ingham and Travis	
98-99	2-1	9-8	11-9	4-2	5-11 w/ Niks, Scarella, Schnell, Casas, Braswell and Weinstein	
99-00	8-5	8-5	2-3		10-8 w/ Bassett, Ingham and Luscan	
Totals	2-1	21-13	23-14	8-10		31-24



JEFF SCARELLA

Junior-New Smyrna Beach, Florida (New Smyrna Beach High)

HULTQUIST ON JEFF:

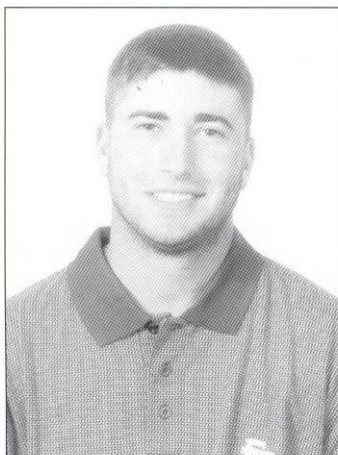
"Jeff has a huge serve. He is mentally tough on and off the court and maintains his emotions well during play."

1999-00: Won eight of first 10 matches...played in three fall tournaments comprising a 6-2 record...went 1-1 in ACC competition including a win at No. 5 against Kenshalo from Maryland... played doubles with Ingham, Schnell, Travis and Dusan...finished season on a three-match winning streak in singles...**1998-99:** Finished the season playing No. 1 doubles with senior Davidson Kozlowski...compiled an overall doubles record of 11-9 with five different partners during the spring...started nine matches in the spring dual match season, winning three matches at No. 6 singles and one at No. 5...played in two tournaments in the fall of his rookie season posting a 2-5 singles record... won two of his last four singles matches in the Seminole Fall Classic...**High School and other accomplishments:** Earned district title as a senior at New Smyrna Beach High School...most valuable player on high school tennis team as a sophomore, junior and senior...also played basketball at New Smyrna High...**Personal:**...Born March 21, 1980...earned distinction as a Superintendent Scholar all four years of high school...also an Honor Roll student all four years...pursuing a degree in sports medicine...coached by his father in high school...father (Bob) is a tennis pro and mother (Sue) ran track in college...nicknamed "The Shocker" in high school.

SCARELLA CAREER STATISTICS

SINGLES									
Year	@1	@2	@3	@4	@5	@6	Duals	Other	Total
98-99		1-2	3-3				4-5	2-5	6-10
99-00	0-2	3-2	3-3				6-5	8-3	14-8
Totals	0-2	4-2	6-6				10-10	10-8	20-18

DOUBLES						
Year	@1	@2	@3	Duals	Other	Total
98-99	4-3	1-2	3-2	8-7	3-2	11-9 w/Ingham, Mooney, Braswell, Casas, Koslowski, Schnell
99-00	2-3	2-2	5-4	9-9	5-4	14-13 w/Ingham, Schnell, Travis
Totals	6-6	3-4	8-6	17-16	8-6	25-22



NOAH SCHNELL

HULTQUIST ON NOAH:
"Noah has a huge serve and a good forehand. He is a quick player."

Junior-Jupiter, Florida (Jupiter High)

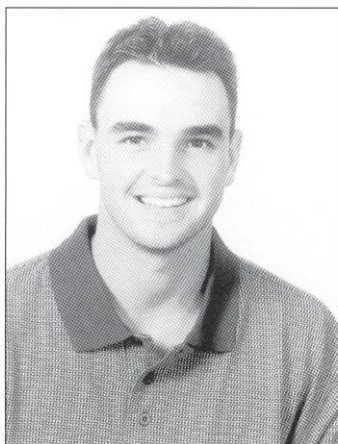
1999-00: One of four Seminoles to win over 15 matches...had a four-match and three-match winning streak in February...went 5-2 at No.5...has 25 career wins...won six of 13 three-set matches... teamed with Travis to form FSU's No.2 doubles tandem... the duo had a five-match winning streak in January, culminating with the Rice University Indoor Doubles Consolation Championship (BDraw)...**1998-99:** 10 wins were most by a freshman in four years...had four match winning streak at the end of March...eight of his 10 victories were in two sets...won two of four three-set matches...started at No. 6 singles in 11 of FSU's 23 dual matches... played with Jeff Scarella in three matches at No. 2 doubles during the spring and six matches with Chad Mooney at No. 3 doubles...won his first ever college match in the fall against Furman's Jete O'Keefe 6-1, 6-4...teamed with Yvo Niks in fall doubles finishing 4-2 and advancing to the finals of the Seminole Fall Classic...**High School and other**

accomplishments: Ranked among the Top 150 singles players in the country as a senior at Jupiter High in 1997...ranked among the Top 20 in the country in doubles last year...runner-up for 5A state championship last year...two-time district singles and doubles champion...named first team All-Area by the Palm Beach Post...MVP at Jupiter High as a junior and senior...played in national hardcourt, clay court and national indoors in 1997...won backdraw championship at '97 Gator Bowl tournament...**Personal:** Born November 4, 1979...made the honor roll for three years in high school...involved with student government throughout high school...son of Steven and Beth Schnell...also enjoys fishing, biking and golf.

SCHNELL CAREER STATISTICS

SINGLES									
Year	@1	@2	@3	@4	@5	@6	Duals	Other	Total
98-99			1-2	6-5			7-7	3-3	10-10
99-00	2-6	3-6	5-2				10-14	5-4	15-18
Totals	2-6	3-6	6-4	6-5			17-21	8-7	25-28

DOUBLES						
Year	@1	@2	@3	Duals	Other	Total
98-99		1-2	2-4	3-7	4-2	7-9 w/Mooney, Niks, and Scarella
99-00	0-7	7-8		7-15	8-4	15-19 w/Travis, Scarella
Totals	0-7	8-10	2-4	10-22	12-6	22-28



JOE BASSETT

HULTQUIST ON JOE:
"Joe is a great athlete, an extremely hard worker, and a good teacher."

Sophomore-Monticello, Florida (Aucilla Christian Academy)

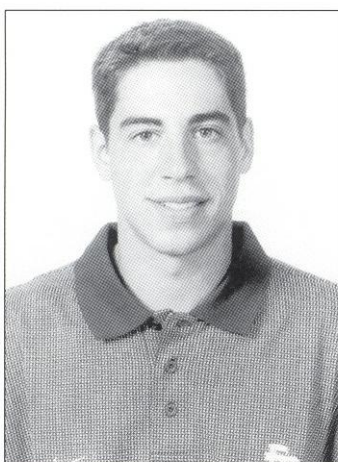
1999-00: Won the first dual match of his career on Feb. 12th against UNC-Asheville...won only ACC match of the season against Maryland...advanced to the semifinals in the "B" Draw of the Seminole Fall Classic in October...**High School and other**

accomplishments: MVP of tennis team all four years...named MVP of basketball team junior and senior seasons...earned seven letters in high school between basketball and tennis...**Personal:** Son of Bill and Donna Bassett...father, Bill, played tight end at the University of Georgia...majoring in business...born on August 24, 1981.

BASSETT CAREER STATISTICS

SINGLES									
Year	@1	@2	@3	@4	@5	@6	Duals	Other	Total
98-99	2-1	2-1	3-4	4-4					
Totals	2-6	3-6	6-4	6-5			17-21	8-7	25-28

DOUBLES						
Year	@1	@2	@3	Duals	Other	Total
98-99	1-0	1-0	0-1		1-1 w/Mooney	
Totals	0-7	8-10	2-4	10-22	12-6	22-28



RODRIGO LAUB

HULTQUIST ON RODRIGO:
"Rodrigo has a huge forehand. He is an all-around player, and a hard worker."

Sophomore-Atlanta, Georgia (Chamblee High School)

1999-00: Started off his collegiate career with six straight wins including the Southern Intercollegiate Flight IV Championship...excelled in conference competition by posting a 5-2 record in the ACC...impressed during freshman campaign by holding down No. 6 spot with a 9-4 record...earned a straight set victory against Clemson's Marko Dojanovic, the only ranked competitor he faced all year... had the most wins by an FSU freshman since Ingham's 26 in 1996-97...**High School and other accomplishments:** Named MVP of high school tennis team his senior year...won the state championship his senior year going undefeated...in two years at Chamblee he lost only one match, to a top 10 nationally

ranked high school player...competed in the Orange Bowl tournament his junior year as well as the Eddie Herr tournament...has ATP ranking in doubles...**Personal:** Enjoys playing soccer in his free time...majoring in international marketing...born on April 28, 1980.

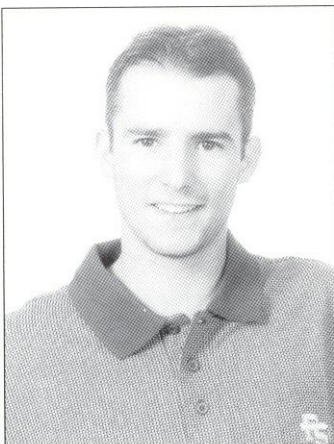
LAUB CAREER STATISTICS

SINGLES									
Year	@1	@2	@3	@4	@5	@6	Duals	Other	Total
99-00	2-2	9-4					11-6	9-3	20-9
Totals	2-2	9-4					11-6	9-3	20-9

DOUBLES						
Year	@1	@2	@3	Duals	Other	Total
99-00	4-8	1-3	2-0	7-11	0-0	7-11 w/Luscan
Totals	4-8	1-3	2-0	7-11	0-0	7-11



PLAYER BIO



XAVIER LUSCAN

Sophomore-Paris, France

1999-00: Finished the season ranked No. 63 in the nation...defeated 10th-ranked Matt Amgerwerd of New Mexico in late January...performed well in No. 1 position, winning 15 of 22 matches...an All-ACC selection...won three of seven matches against ranked opponents including two against top 20 ranked players...teamed with Laub to play No. 1 doubles... led team with 16 dual match wins and a 5-3 conference record...**Personal:** Transferred from UCLA in January of 2000...son of Richard and Anne Luscan...a communications major...lives with teammate Rodrigo Laub.

HULTQUIST ON XAVIER:
"Xavier proved to be one of the best in the country this past season. He has worked very hard to improve his game and should again prove to be one of the best."

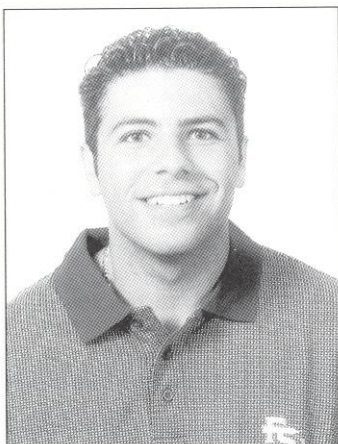
LUSCAN CAREER STATISTICS

SINGLES

Year	@1	@2	@3	@4	@5	@6	Duals	Other	Total
99-00	15-7						15-7	1-1	16-8

DOUBLES

Year	@1	@2	@3	Duals	Other	Total
99-00	3-7	1-4	4-2	8-13	0-0	8-13 w/Mooney, Scarella Laub

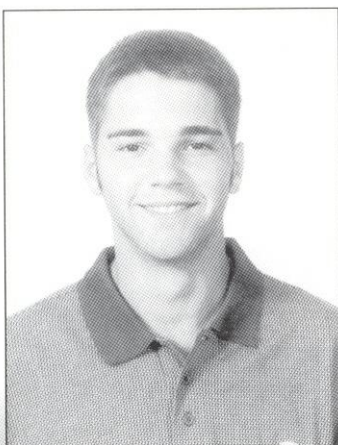


ELLIOT ELIAS

Freshman-Plantation, Florida (South Plantation High School)

High School and Other Accomplishments: Member of honor roll all four years...captain of tennis team, as well as a member of the cross country and track and field team...**Personal:** Son of Dr. Uri Elias and Ruth Landles...biology major...born on March 12, 1981.

HULTQUIST ON ELLIOT:
"In addition to his on court tennis skills, Elliot is a great scholar."



ALEX HERRARA

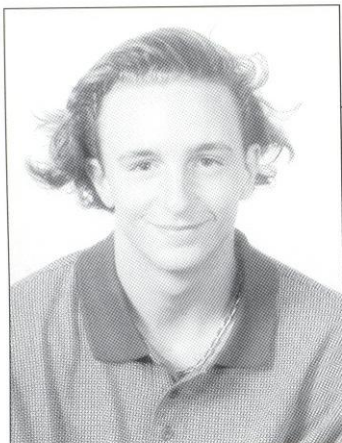
Freshman-Gadsden, Alabama (Cossa Christian High School)

An outstanding athlete with a variety of abilities...should be a key contributor to the team in the future...plays aggressively...**High School and Other Accomplishments:** Played soccer, baseball, basketball and tennis...made all-state and all-tournament in basketball in junior and senior seasons...won tennis Alabama qualifier three years...was ranked No. 1 tennis player in Alabama and No. 5 in the South...finalist in singles at Peachtree National and Florida Open... semifinalist in doubles at National Indoors and Florida Open...four time Academic Honor Roll 4 years...**Personal:** Son of Pat and Margaret Herrera...majoring in psychology...born on November 8, 1981.

HULTQUIST ON ALEX
"Alex always plays big. He has a huge serve and powerful forehand. He is an aggressive player and an excellent athlete."

POINTS OF INTEREST

- FSU men's tennis completed its 14th straight winning season
- The 1999-2000 team was the hottest in the country, jumping 27 spots in the rankings in the month of February



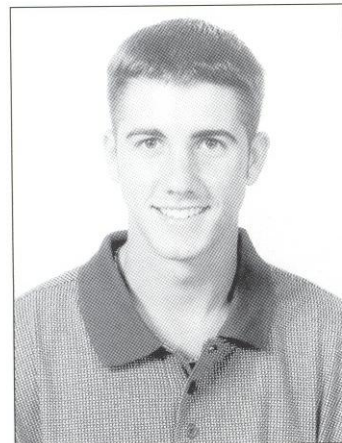
ROMAIN JURD

Freshman-Paris, France (Notre Dame de Boulogne)

Started off his collegiate career with a win at his first tournament of the fall season for Florida State at the Southern Intercollegiate...won his first career doubles match at the Seminole Fall Classic with teammate Jerrod Owen advancing them to the final round of doubles competition...will make an immediate impact on this year's team...**High School and Other Accomplishments:** Ranked in the top ten for junior in the 18 and under division in France...was in the quarterfinals in the National French Championship...played in the Orange Bowl Tennis Tournament in Miami...**Personal:** Son of Bernard Jurd and Françoise Margo...mother Françoise, was his first coach at the age of five...roommate is Xavier Luscan.

HULTQUIST ON ROMAIN:

"Will be a great asset to this team. He maintains great focus at practice. Romain is a player who always gives 100% on the court."



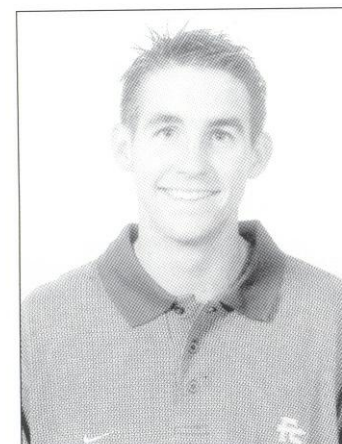
RIED MCCREE

Freshman-Stuart, Florida (Martin County High School)

Started off his collegiate career with a win in his first singles match for FSU at the Southern Collegiate Championships at the University of Georgia...won both his first career singles and doubles matches at FSU...talented player who rarely makes unforced errors...will make an immediate impact on this year's team...**High School and Other Accomplishments:** Made the honor roll all four years... was the number one-seed on his high school tennis team all four years...**Personal:** Son of Max and Jacquelin McCree...undecided on a major...celebrates a February 3, 1982 birthday.

HULTQUIST ON REID:

"Reid is a good all around athlete with a great attitude, but needs to learn to play bigger."



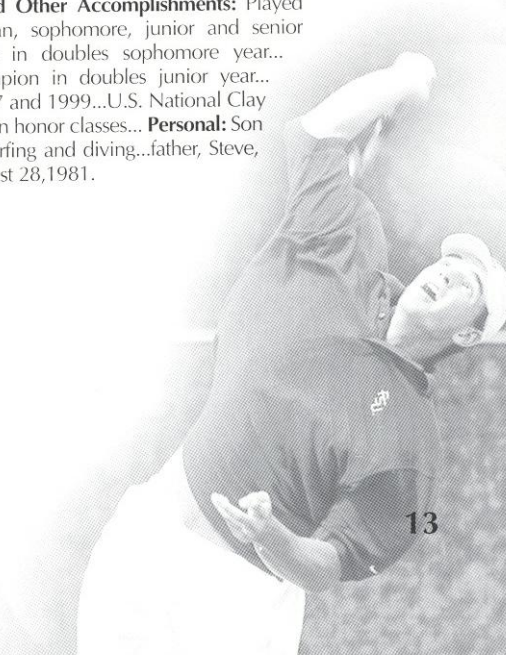
JARROD OWEN

Freshman-Vero Beach, Florida (Vero Beach High School)

Should immediately contend for a starting spot in doubles...**High School and Other Accomplishments:** Played basketball and tennis... regional champion in singles and doubles freshman, sophomore, junior and senior years...three-time district champion in singles and doubles...district finalist in doubles sophomore year... state finalist in singles and doubles freshman and senior years...state champion in doubles junior year... state doubles semifinalist sophomore year...Florida Open Doubles finalist in 1997 and 1999...U.S. National Clay Court semifinalist in 2000...maintained a 3.0 grade point average while enrolled in honor classes... **Personal:** Son of Steve and Mitzi Owen...lives with twin brother Josh...enjoys golf, fishing, surfing and diving...father, Steve, played in U.S. and British Amateur Golf...undecided on a major... born on August 28, 1981.

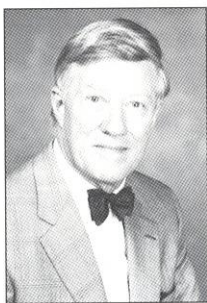
HULTQUIST ON JERROD:

"Jerrod plays with great intensity. He is an all around athlete and great doubles player."





ATHLETIC ADMINISTRATION



TALBOT "SANDY" D'ALEMBERTE

President, The Florida State University

Talbot "Sandy" D'Alemberte was appointed president of The Florida State University on Nov. 29, 1993, by the Florida Board of Regents, and took office on Jan. 3, 1994. D'Alemberte served as the fourth dean of the FSU College of Law from 1984-89 and continues to teach as a member of the university faculty.

D'Alemberte is an active member of many legal and higher educational committees and boards, including numerous American Bar Association committees, state and regional bar associations, the American College of Trial Lawyers, the Lawyers' Committee on Civil Rights Under Law, the NAACP Legal Defense and Education Fund, the Florida Council of 100, the Business-Higher Education Forum, the Campus Compact Board, the First Amendment Center Board at Vanderbilt University, the Southeastern Universities Research Association Board, the National Association of State Universities and Land Grant Colleges Board, the Mildred and Claude Pepper Foundation Board, and several FSU committees and boards including the FSU Foundation, the FSU Alumni Association, the Collins Center for Public Policy, the Caribbean Law Institute and the Seminole Boosters, Inc.

D'Alemberte was the 1991-92 president of the American Bar Association and the 1982-1984 president of the American Judicature Society. He represented Dade County in the Florida House of Representatives from 1966-72 and chaired several legislative committees. After leaving the Florida Legislature he chaired the Florida Constitution Revision Commission in 1977-1978 and the Florida Commission on Ethics in 1974-75.

D'Alemberte practiced law with the Steel Hector & Davis law firm in Miami and Tallahassee where he first began his legal career in 1962, and was named partner in 1965.

D'Alemberte's book, *The Florida Constitution*, was published by Greenwood Press in 1991. He co-edited the 1990 four-volume work, *The Florida Civil Trial Guide*, and has authored more than twenty published articles.

The numerous awards D'Alemberte has won include the 1998 ABA Section of Legal Education Robert J. Kutak Award, the 1998 ABA World Order Under Law Award, 1996 American Judicature Society's Justice Award, the 1996 National Council of Jewish Women's Hanaah G. Soloman Award, the 1993 Academy of Florida Trial Lawyers "Perry Nichols" Award, the 1993 Florida Academy of Criminal Defense Lawyers Annual Criminal Justice Award, the 1990 Jurisprudence Award from the Anti-defamation League of South Florida, the 1987 Florida Bar Foundation Medal of Honor, the 1986 National Sigma Delta Chi First Amendment Award, an American Academy of Television Arts and Sciences "Emmy" in 1985 for his work in open government, particularly in the opening of court proceedings to electronic journalists, and the 1984 Florida Civil Liberties Union "Nelson Poynter" Award.



DAVE HART

Director of Athletics

Dave Hart, Jr., became Florida State's 10th Athletic Director after a national search selected the former East Carolina athletics director in February 1995. Hart, 49, has gained national recognition for his skills in the areas of athletics management, public relations, marketing and fund-raising. Prior to being named athletics director at FSU, Hart was the architect of significant growth in East Carolina's athletics program from 1987-1995.

Hart has served on several prestigious committees at conference and national levels during his career in athletics administration. He is currently the president of the Division IA Athletics Directors Association and is the immediate past president of the National Association of Collegiate Directors of Athletics. He is a member of the NCAA Council, the NCAA Honors and Awards Committee and the NCAA Special Events and Post Season Bowls Committee as well as a consultant to the NCAA Student-Athlete Advisory Council. He is also a member of NCAA Football's Board of Directors where he serves with commissioners of Division I-A conferences and the NCAA president.

A popular speaker at the national level and the author of a number of articles for national publications, Hart has made numerous speaking presentations to conventions and seminars on program management, student-athlete welfare, marketing, fund-raising and personal transition. For the past 11 years, he has been an instructor at the National Association of College Directors of Athletics, Management Institute.

Just the 10th athletics director in FSU history, Hart is in his sixth year as Florida State's Athletic Director where he oversees the Seminoles, 31 million dollar athletics budget. Since his arrival at Florida State, Hart has negotiated several major multi-million dollar contracts for the department, guided the development of a comprehensive athletics facilities master plan, initiated an extensive Student Development/Life Skills program for all student-athletes at FSU and spearheaded the rewriting of the department's Mission Statement to put the student-athlete at the core of everything the athletics department does in building comprehensive excellence throughout the athletics program.

A 1971 graduate of Alabama, Hart played basketball for the Crimson Tide and earned a master's degree in 1972 while serving as a graduate assistant basketball coach. He coached and taught at the high school level before joining the East Carolina athletics program in 1983.

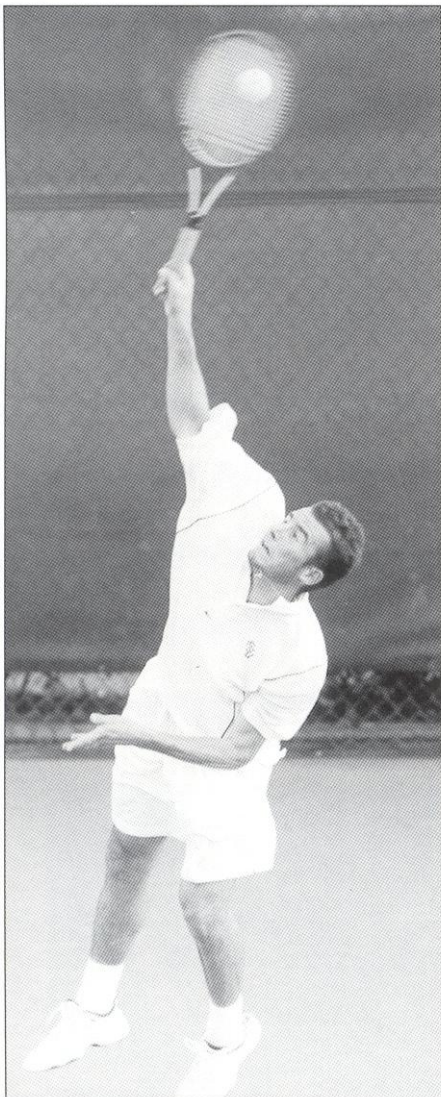
Hart met wife, the former Pam Humble, while at Alabama and they have three children, Rick (28), Jamie (26) and Kelly (23).

1999-2000 REVIEW



The Florida State men's tennis program accepted a new member into its family in July of 1999, just one month before the team was to report for workouts. Former University of Texas assistant coach Dwayne Hultquist became FSU's 15th head coach in the school's 52-year program and was determined to rebuild a Seminole team that had lost its three top players from the previous year.

Hultquist started off quickly bringing in five new faces including the former University of Georgia All-American singles and doubles player, John Roddick, to become his assistant. Roddick and Hultquist welcomed back Jay Travis who had sat out a year after showing potential his first two years. Along with Travis, Hultquist brought transfer Xavier Luscan and freshmen Rodrigo Laub and Joe Bassett to the squad. With returning veterans Noah Schnell, Jeff Scarella, Chad Mooney and senior team-leader Mike Ingham all back, Hultquist went into the 2000 dual match season with a well-balanced team but one with very little actual playing experience.



XAVIER LUSCAN

and Travis. The match would come down to the match at No. 6, where Laub was battling Fabio Campos in a third-set tiebreaker. Laub would win the tiebreaker 7-5 to give the Noles the victory and improve their record to 13-9 heading into the ACC Tournament.

In the ACC Tournament, the Seminoles faced Virginia, a team they lost to by one point in a controversial regular season match. FSU needed a victory this time around to solidify its position in the NCAA Tournament. The Seminoles lost to the Cavaliers 4-1 with the Noles winning the other two matches when play was stopped. Another close match was no consolation for Hultquist as he quickly scheduled another match to help the Noles gain entry into the field of 64. Florida State faced local rival and MEAC Conference Champions FAMU on April 28th. FAMU was ranked one spot ahead of the Noles at No. 53. Florida State won the match handily 5-2 and awaited word from the NCAA.

On May 4th, the Noles listened to the tournament selection committee chairman announce the field. FSU was not one of the teams that had been selected. The Noles were the highest ranked team in the country not to be selected into the tournament that included four schools ranked below the Seminoles. An up-and-down season had come to an end and fittingly, Luscan would end up being the highest ranked player not to make the NCAA Tournament's Singles Championship. Florida State had overachieved all season and came up just short of obtaining goals that were meant to be reached in the future not in the first year of Hultquist's reign. The 2000 team bounced back from disappointments throughout the year and the final two disappointments should only provide more motivation to rebound once again.

The lack of experience did not show early for the Seminoles as they won their first match, on the road, at the University of New Mexico, 4-3. New Mexico was ranked 31st in the country and to top off the upset, FSU's Xavier Luscan upset the nation's 10th-ranked player Matt Amgerwerd. The road trip to New Mexico would culminate with a 6-1 loss to 10th-ranked Texas Christian but the Noles had gained some confidence heading back home for their first home match of the season and subsequently a nine-match homestand.

When the Seminoles returned to Tallahassee a bit of unfortunate news was waiting for them. Freshman recruit Deni Franulovic had decided to return home to Switzerland for family reasons. Franulovic was to be a key new edition to the 2000 team but his loss would soon be overcome by other young players who were waiting for their opportunity to shine and the Noles did just that, running off seven consecutive wins putting the Franulovic decision behind them. At the end of February, with the team 8-1, in-state rival and the 28th-ranked team in the nation, the Miami Hurricanes were headed to town to face the 42nd-ranked Seminoles, who were the hottest team in the country in the ITA National Rankings rising 27 spots in just over a month.

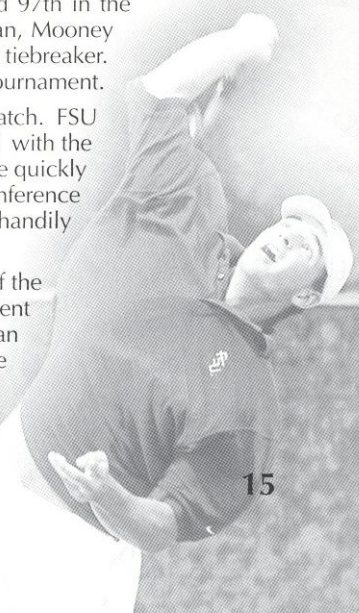
The match with Miami was scheduled for February 27th. Rain swept in just hours before the match was to begin forcing a delay and then ultimately a cancellation. Miami had to leave to get back for class on Monday and the match was never made up. The Seminoles again looked past disappointment and focused on the upcoming ACC schedule. Their first conference opponent was 40th-ranked Wake Forest. The Noles beat the Demon Deacons 5-2 to improve to 9-1 and 1-0 in the conference heading into their Spring Break tour that would take them to Texas to play Hultquist's old school and then to Clemson, S.C., to face the Tigers.

In Texas, the Seminoles were out-played by the 12th-ranked Longhorns and lost 7-0. It was the first time the Seminoles had been shut out since the 1998 ACC Tournament when they lost 4-0 to the seven-time conference champions Duke Blue Devils. The loss carried over into the match against Clemson and for the next two matches before the Noles could stop the tide against Maryland. FSU defeated Maryland 7-0 for their third shutout of the season and stopped its four-match skid.

Heading into the final month of the season, the Noles were 11-6 and hovering around the top 50 in the rankings. Luscan was continuing to battle the opponent's top player and was continuing to win most of those matches. Ingham was marching towards the 80th win of his career and had solidified the No. 2 spot in the lineup. Laub was improving with each match during his freshman campaign and was anchoring the bottom of the lineup. The Noles were beginning to gel solidly as a team and with five regular season matches remaining they were preparing to make their mark in the postseason.

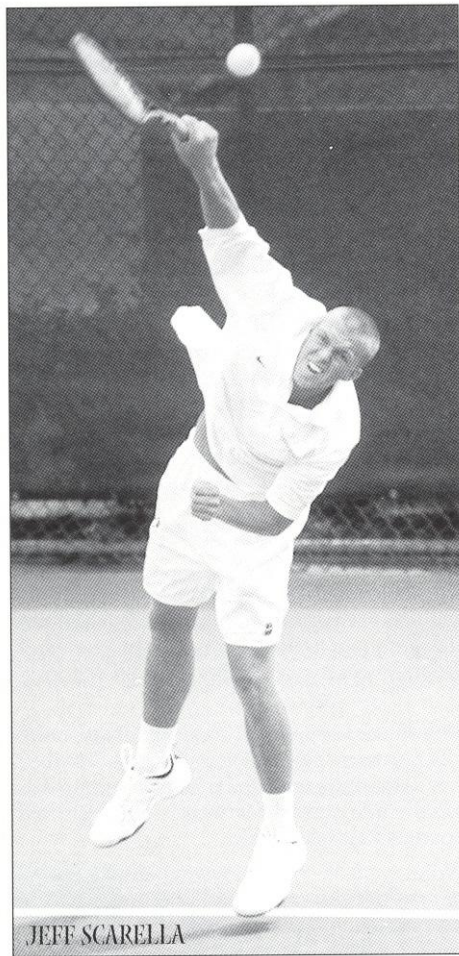
Two quick losses to No. 5 Duke and No. 22 South Alabama left the Seminoles 11-8 and the pressure began to mount. A good South Florida team handed the Noles their third-consecutive loss and postseason hopes were dimming. On April 15th, the Seminoles ended the slide with a convincing 6-1 win at Furman and entered their final regular season match of the year against Georgia Tech in Atlanta with a record of 12-9.

The Seminoles had beaten the Yellow Jackets seven of 11 times since joining the conference but had lost the last two meetings. Things started off slowly for the Noles, dropping the doubles point and then Ingham lost in straight sets at No. 2 to put the Seminoles down 2-0. Ingham had just cracked the ITA's singles rankings for the first time in his career that week and was ranked 97th in the country. The Seminoles would fight back however behind wins by Luscan, Mooney





DUAL MATCH RESULTS

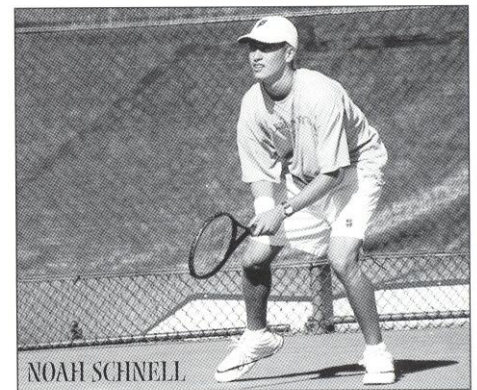


JEFF SCARELLA

COACH DWAYNE HULTQUIST (14-10)

Georgia Southern	W	4-3
Central Florida	W	4-3
Jacksonville	W	7-0
UNC-Asheville	W	7-0
Florida Atlantic	W	4-3
So. Mississippi	W	4-3
Stetson	W	6-1
Wake Forest	W	5-2
Texas	L	0-7
Clemson	L	2-5
North Carolina	L	1-6
Florida	L	0-7
Maryland	W	7-0
Virginia	L	3-4
N.C. State	W	4-3
Duke	L	2-5
South Alabama	L	3-4
South Florida	L	1-6
Furman	W	6-1
Georgia Tech	W	4-3
Florida A & M	W	5-2
Virginia (ACC)	L	1-4

Doubles	Overall	Dual	Streak	ACC	1	2	3
Ingham/Scarella	11-11	8-9	W2	3-2	1-3	2-2	5-4
Mooney/Luscan	3-2	3-2	W3	0-0	0-0	0-0	3-2
Schnell/Travis	13-17	7-15	L2	3-4	0-7	7-8	0-0
Laub/Luscan	7-11	7-11	W1	2-6	4-8	1-3	2-0
Ingham/Mooney	6-5	4-3	L1	2-1	0-0	0-0	4-3
Scarella/Schnell	2-2	0-0	L1	0-0	0-0	0-0	0-0
Bassett/Mooney	1-1	1-0	W1	1-0	0-0	0-0	1-0
Scarella/Travis	1-0	1-0	W1	0-0	1-0	0-0	0-0
Luscan/Scarella	0-1	0-1	L1	0-0	0-0	0-1	0-0
Team Totals	44-50	31-41		11-13	6-18	10-14	15-9



NOAH SCHNELL

Singles	Overall	Dual	Streak	ACC	1	2	3	4	5	6
Joseph Bassett	4-4	2-1	W2	1-0	0-0	0-0	0-0	0-0	0-0	2-1
Mike Ingham	18-14	13-10	W2	4-3	0-0	11-9	1-0	0-1	1-0	0-0
Rodrigo Laub	20-9	11-6	L1	5-2	0-0	0-0	0-0	0-0	2-2	9-4
Xavier Luscan	17-9	16-8	W1	5-3	16-8	0-0	0-0	0-0	0-0	0-0
Chad Mooney	13-14	10-12	W2	3-5	0-0	0-0	4-1	3-7	2-4	1-0
Jeff Scarella	14-8	6-5	W3	1-1	0-0	0-0	0-0	0-2	3-0	3-3
Noah Schnell	15-18	10-14	L3	2-6	0-0	0-0	2-6	3-6	5-2	0-0
Jay Travis	6-16	5-13	L1	2-5	0-0	1-3	2-8	0-1	2-1	0-0
Team Totals	107-92	73-69		23-25	16-8	12-12	9-15	6-17	15-9	15-8