

2002 WOMEN'S BIOGRAPHIES



All-ACC for both the indoor and outdoor seasons ... finished the season with a season-best 100m time of 12.01 at the outdoor conference championships, crossing the finish line in fourth place to help the Lady Seminoles take three of the top-four spots in that event ... also notched a season-best time in the 200m with a time of 24.83 at the same meet ... owns the squad's third-best returning 400m time with a mark of 57.76 at the Florida Relays ... sprinted her way to a third-place finish at the indoor conference championships in the 60m dash when she crossed the finish line in Blacksburg, Va., with a time of 7.60 ... added another top-10 finish at the ACC Indoor Championships when she placed eighth in the 200m dash ... continued her success in Blacksburg, Va., when she finished fourth and seventh in the 60m and 200m, respectively, at the Virginia Tech Invitational ... **1999:** Redshirted during the outdoor season ... finished as FSU's second-fastest runner in the 55m and first in the 200m at the Florida Intercollegiates during the indoor season ... added another second-place finish among FSU sprinters in the 55m at the SEC/ACC Challenge ... had the fourth-best time in the conference in the 55m and the 10th best time in the 60m dash ... **1998:** Ran indoor best 55m time of 7.07 at the Florida Invitational ... turned in top indoor 200m mark at ACC/SEC Challenge (25.84) ... finished sixth overall in the ACC Indoor 55m with a time of 7.59 ... placed second only to Kim Batten at the FSU Relays in the 100m (11.77) ... took second in the 100m (11.64) and fourth in the 200m (24.62) at the Florida Intercollegiates ... scored at the ACC Outdoors with a fifth place effort and collegiate best time of 11.61 in the 100m ... placed third in the 100m (11.79) and the 200m (24.18) at the FSU-Nebraska-UF tri-meet ... **PREP:** Ranked in the top ten nationally in both the 100m and 200m ... Ohio state champion in the 100m and 200m as a junior ... also ran on state championship 4x100m and 4x200m relay teams as a junior ... set the Ohio state record in the 55m with a time of 7.12 ... state MVP in 1996 ... **PERSONAL:** A psychology major ... born on Valentine's Day, 1979 ... sister, Adrienne, ran track at Kentucky.



Tamara Campbell

Collegiate Bests:
55m (7.51)
200m (25.46)
400m (57.17)



SPRINTS

SO

2001: Gave the Lady Seminoles depth in several sprints, including the 55m, the 200m and the 400m...member of the 400m relay team which placed third at the ACC meet and provisionally qualified for NCAA's...set her personal best in the 200m at the Georgia Bulldog Classic, finishing in 25.46...showed marked improvement in the 400m throughout the outdoor season, earning two fifth-place finishes and one third place finish (FSU Relays). **PREP:** Four-year member of the Evans High School track team...attended the same high school as her brother, and teammate, Sean.



Chigozie Chuku

Throws
Houston, Texas
(Houston/FAMU)



THROWS

SR

At FAMU: Was the Indoor conference champion in the shot put...finished second at the 2001 MEAC Outdoor Championship in the heptathlon and shot put. **At Houston:** Competed for two years at the University of Houston under head coach and U.S. Olympic gold medalist Leroy Burrell...finished second at the 2000 Conference USA Outdoor Championship in the heptathlon and third in the shot put at the indoor conference meet ... won the 1999 C-USA title in the shot put at the indoor and outdoor championships. **PERSONAL:** Daughter of Uche Okeke...born on July 28, 1978...majoring in pre-physical therapy...earned Dean's List honors at FAMU in 2000-2001.



29



Crystal Couey

Throws
Titusville, Fla.
(Astronaut)
Collegiate Bests:
Discus (123-09)
Hammer (127-11)
Javelin (101-00)



THROWS

SO

2001: Set her personal best in the discus throw at the FSU Season Opener, hitting 123-09...finished third overall at the FSU Quad meet...in the same meet, set her PERSONAL best in the hammer throw with a distance of 127-11...best javelin throw of the season was 101-00, tossed at the ACC Outdoor Championship. **PREP:** Competed on USA Track and Field Club team in high school ... competed on both the track and field and volleyball teams at Astronaut High School, having prominent careers in both ... captained her volleyball team, as well as being a four-year letter-winner ... was named track and field team's "Most Improved," and "Most Dedicated," in two of her four years in high school ... named track team's MVP in her senior season ... was the state runner-up in the discus in 1998 ... **PERSONAL:** Majoring in pre-med ... most admired athlete is former Lady Seminole volleyball player, Gabby Reece ... daughter of JoAnn and Harlon Couey.



2002 WOMEN'S BIOGRAPHIES



Carrie Crandall

Pole Vault
Jacksonville, Fla.
(Episcopal)
Collegiate Best:
Pole Vault (11-10)



VAULT

SO

2001: Added strong depth to the pole vaulting squad as a freshman...set a personal best mark at the ACC Outdoor Championship by clearing 11-10 to finish ninth...won the pole vault event at the FSU Season Opener and FAMU Relays...vaulted over 11 feet five times. **PREP:** Competed on Jacksonville Area Vault Club team ... competed on high school cross country team in 1994-95 and competed on the track and field team from 1996-2000 ... earned all-state honors four times, as well as earning an individual state championship twice and being named her team's Most Valuable Athlete in her senior year ... earned the "Coaches' Award" as a junior ... was named to her high school's Dean's List in her senior year ... **PERSONAL:** Majoring in business and management information systems ... roommate is co-freshman Jordanna Whittington ... lists most admired athlete as Jackie Joyner Kersey ... daughter of Pat and Jackie Crandall ...celebrates a birthday on February 23.



30



Nakeya Crutchfield

Junior, Sprints
Coatesville, Penn.
(Coatesville)
Collegiate Bests:
100m (11.47)
200m (23.45)
55m (7.16)



SPRINTS

SR

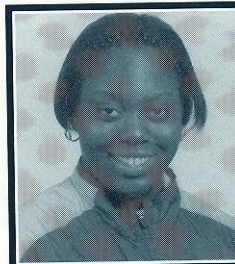
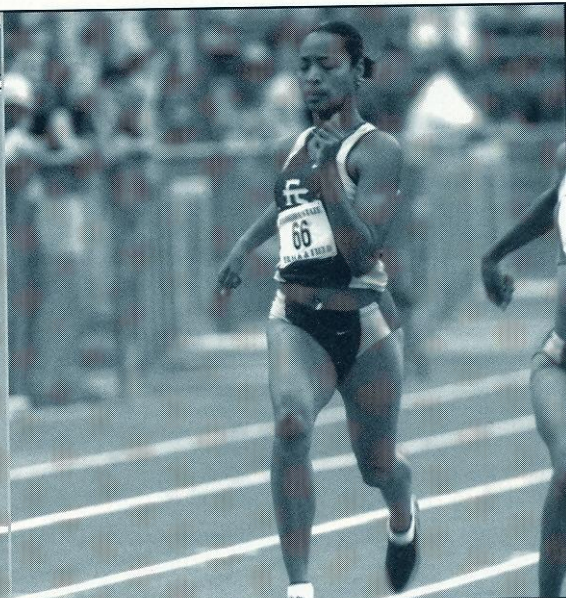
2001: Earned All-ACC honors in the 100m and 200m dashes...placed third in the 100m (11.79) and 200m (23.51) at the ACC Outdoor Championship...won the 200m three times...set personal-best times in the 200m and 55m dashes...won the 200m at the Georgia Bulldog Classic with a personal-best time of 23.45...finished eighth at the Gator Last Chance meet with a personal-best mark of 7.16 in the 55m...ran a season-best 11.76 in 100m at the Clemson Quad meet. **2000:** Competed primarily in the 100m and 200m dash, while owning an important role as a member of the FSU 4x100m relay team ... Crutchfield's 4x100m relay team ran a NCAA qualifying time of 44.67 at the USTCA Meet, when they finished in first place ... garnered All-ACC Outdoor honors when her 4x100m relay team won the conference crown with a time of 44.82 ... owns the squad's top returning time in both the 100m and the 200m, with marks of 11.68 and 23.88, respectively ... had a strong performance at the Seminole Twilight Meet where she finished fourth and fifth in the 200m and 100m, respectively ... finished seventh in the 200m dash at the Air Force

Invitational, crossing the finish line in 25.49 ... **1999:** Recorded a 7.27 in the 55m dash in her first two collegiate competitions ... took home first place in the 100m competition at the FSU Relays ... finished third in the 100m at the ACC Outdoors with a PERSONAL best time of 11.47 ... placed fourth in the 200m at the Seminole Twilight Relays with a time of 24.12 ... member of 4x100m relay team that took home first place at the FSU Relays ... **PREP:** A three-year all-state selection in track and field ... turned in personal bests of 11.64 in the 100m and 23.85 in the 200m ... an all-state basketball selection as a senior at Coatesville ... played four years of each sport ... also participated in student council and the National Honor Society ... **PERSONAL:** Born September 16, 1980 ... enrolled in FSU's undergraduate studies program ... rooms with senior thrower Makiba Batten.



NAKEYA CRUTCHFIELD

SR



Jennifer Curry

Throws
Macon, Ga.
(Northeast)
Collegiate Bests:
Shot Put (42-07)
Weight Throw (47-11.25)



THROWS

SO

2001: Gained valuable experience during the indoor season in the shot put and weight throw...threw the shot put a season-best 42-07 at the Virginia Tech Invite...had a season-best mark of 47-11.25 in the weight throw at the ACC Indoor Championship to place 11th...saw limited action in the outdoor season...finished fourth in the hammer throw (FSU Season Opener) and second in the discus (FAMU Relays) in her only competition in

2002 WOMEN'S BIOGRAPHIES



those events. **PREP:** Competed for the Middle Georgia Flyers track and field club when in high school ... named Rookie of the Year as a freshman at Northeast High School ... named squad's "Best Field Athlete," three of her four years in high school ... worked her way to both the state discus title as well as the Junior Olympics discus title ... named all-region and all-city ... **PERSONAL:** Lists most admired athlete as Jackie Joyner Kersey ... majoring in bio-medical engineering ... maintained a 4.0 grade point average in high school ... named salutatorian of her high school class ... daughter of Kathy and George Curry.

conference for the indoor season ... took home second place in the triple jump at the Seminole Twilight competition ... displayed her versatility by competing in the 100m hurdles and long jump events ... **PREP:** Had a career best 40' mark in the triple jump at the 1997 AAU Nationals earning her second place ... 1997 State of North Carolina champion in the indoor and outdoor triple jumps ... member of the National Honor Society and a Mu Alpha Theta member ... **PERSONAL:** A nutrition and movement science major ... lives with teammates Laura Gerber and Shauna Quinn ... born June 3, 1980.



Teresa Davis

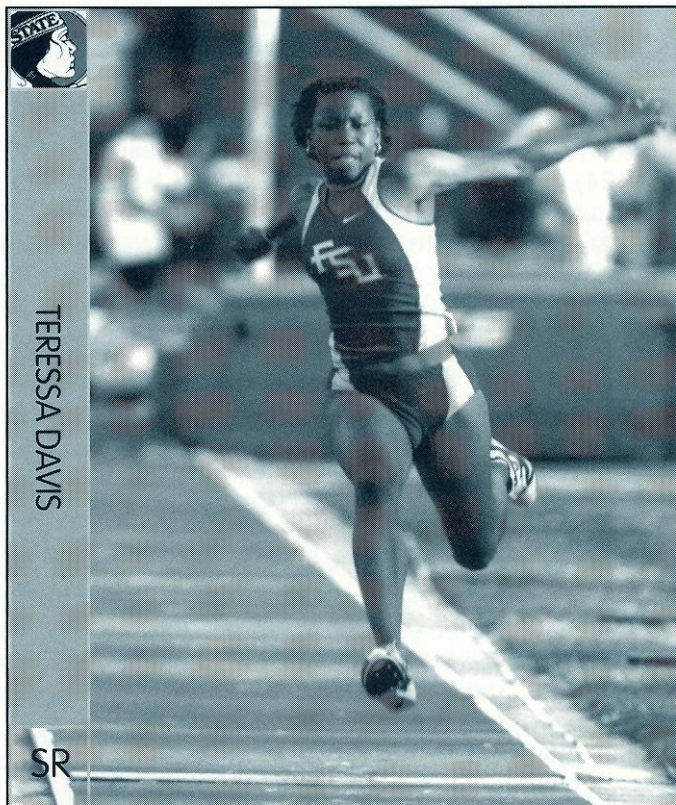
Jumps
Durham, NC
(Southern Durham)
Collegiate Bests:
Triple Jump (39-01.25)
Long Jump (17-02)
Heptathlon (3,887)
100m Hurdles (15.77)



JUMPS

SR

2001: Earned All-ACC honors for the indoor season in the long jump...placed second at the indoor conference meet with a mark of 15-07 in the long jump...had a successful outdoor season in the triple jump...won the triple jump at the FSU Relays and placed third on two other occasions...finished eighth in the triple jump at the ACC Outdoor Championship with a season-best mark of 38-08.75...competed in the heptathlon at the conference outdoor meet and placed 16th (3,849)...also competed in the 55m hurdles, 200m dash, 100m high hurdles, high jump and javelin throw for the Lady Seminoles. **2000:** breakthrough season in the triple jump, nailing a fourth-place jump at the Florida State Relays with a mark of 39-01.25, for the Lady 'Noles' 10th-best mark ever ... will look to strengthen her 200m dash time, as she returns the Tribe's sixth-best 200m dash time ... will bolster three strong returning 100m hurdlers, of which she holds the second-fastest time with a 15.77 time at the FSU Relays ... ended last season with a season-best performance in the heptathlon, garnering 3,887 points, which places her behind only Karen Rademeyer (4,204) for returning heptathlon athletes ... finished in the top-10 at the ACC Indoor Championships when she landed a 39-01.25, tying her career-best mark, and finished eighth overall ... added another top-10 finish at the University of Florida when she jumped 38-10.50 and again finished eighth ... took a shot at the javelin late in the season when she tossed a mark of 75-08.00 at the USTCA Meet ... **1999:** Started the year with two top 10 finishes in the triple jump competition at the Florida Intercollegiates and Florida Invitational ... mark of 39-0.25 in the triple jump placed her in the top ten in the

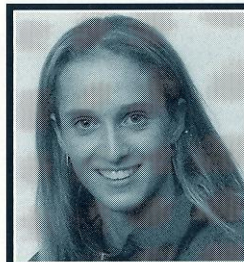


TERESSA DAVIS

SR



31



Laura Gerber

Middle Distance
Geneva, Switzerland
(Chisipite Senior)
Collegiate Bests:
800m (2:06)
400m (53.71)



MID-DIST

SR

2001: Earned All-America honors for her accomplishments during the indoor season and established herself as one of the top 800m runners in the nation...finished third at the NCAA Indoor National Championship in the 800m with a time of 2:08.84...qualified for the NCAA Outdoor National Championship and finished 14th in the nation in the 800m (2:07.69)...named to the All-ACC indoor and outdoor teams in the 800m...finished second at both the

2002 WOMEN'S BIOGRAPHIES

conference's indoor (2:07.32) and outdoor (2:06.95) meets... set a personal-best time in the 800m at the Georgia Tech Invite with a time of 2:06 to finish second... set a career-best mark in the 400m with a time of 53.71 to finish third at the FSU Quad meet. **2000:** Had an incredible season which included NCAA and national honors ... was an Olympic Trials Qualifier for Zimbabwe after setting the national record in the 400m for her native country ... integral part of the women's 4x400m relay team which was crowned the conference champion after running a 3:38.77 ... named All-ACC for the outdoor championships after helping her 4x400m team to a first-place finish ... NCAA Championships Qualifier as part of relay team ... returns the squad's top mark in both the 400m dash as well as the 800m run ... finished in third place after running a season-best 53.88 in the 400m dash at the Seminole Twilight Meet ... ran the squad's fastest 800m time of the season in 2000 (2:11.24) at the USTCA Meet ... added a solid 400m performance at the Georgia Tech Meet where she ran 54.27 ... **1999:** Showed improvement in her marks over the course of the indoor season ... took home first place at the Iowa State Invitational in the 800m competition ... captured the ACC title in the 800m and posted the conference best time in the event for the indoor season ... member of the 4x400m relay team that placed 11th at the NCAA Indoor Championships and competed in the NCAA Outdoor Championships ... recorded a season-best time of 54.21 in the 400m competition at the FSU Relays ... took home first place at the Florida Relays in the 800m event with a team best 2:08.78 ... finished the season as one of the top five ACC performers in both the 400m and 800m ... **PREP:** Recorded a time of 55.06 in the 400m and 26.40 in the 200m at the age of 16 ... broke the Zimbabwe Senior record in the 400m and 4x400m ... participated in track, horseback riding, squash and tennis in high school ... **PERSONAL:** Brother, David, was chosen to run the 800m in the Olympics for South Africa ... plans to pursue a career in coaching ... born October 29, 1980.



32



Vicky Gill
Distance
Lancashire, England
(St. Andrews University)
Collegiate Bests:
5K (16:26)



DISTANCE

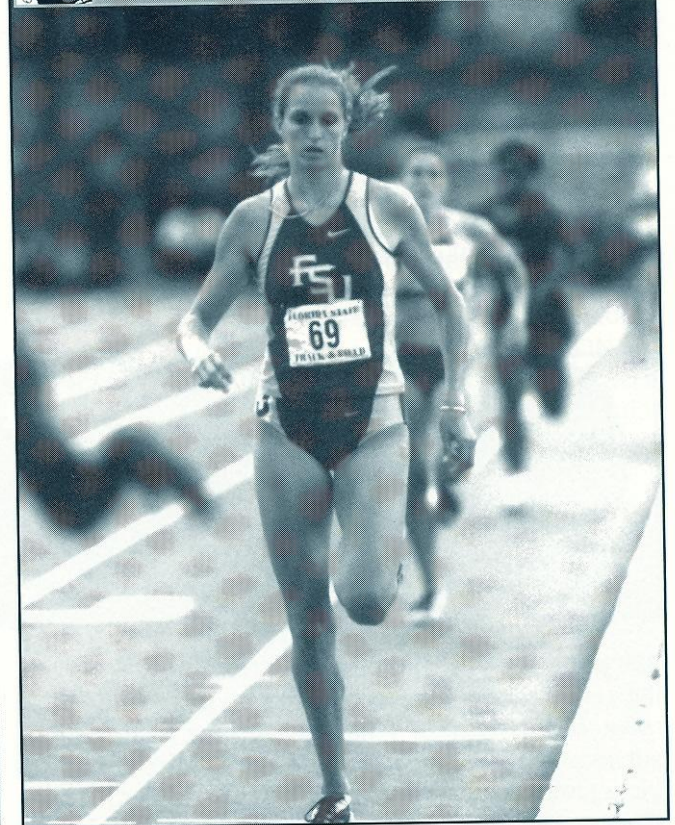
JR

Potential All-American at 5K and 10K ... 2001: (CROSS COUNTRY) Finished at the NCAA National Championship in 122nd place with a time of 22:20 for the 6K course... Earned All-South Region honors following her fourth-place finish, crossing the finish line of the 6K course at 20:20... placed fifth at the ACC Championship, which was the highest finish in school history, earning her All-ACC honors... placed first at the Auburn Invitational, earning her ACC Cross Country Performer



LAURA GERBER

JR



of the Week honors... led all Lady Seminoles at the NCAA Pre-Nationals with a time of 21:47 for the 6K course... won the Florida State Intercollegiate Championship running unattached. **PRIOR TO FSU:** Finished ninth in the United Kingdom Senior World Cross Country Trials as a 20-year old... missed making the U.K. national team by two spots with less than three-years of cross country experience. **PERSONAL:** Daughter of Anthony and Netta Gill... born October 21, 1980.



Misty Harper
Collegiate Bests:
3000m (10:30.84)
5000m (18:09.90)
10K (37:48)
3 mile (17:10)



DISTANCE

SO

2001: Adds depth in the distance events, following a strong season in cross country ... set season best in the 5000m at the FSU Relays, finishing in 18:09.90... her time of 18:47.52 earned eighth overall at the Snowbird Invite. **2001: (CROSS COUNTRY)** Time of 22:01 was good for a sixth-place finish at the Florida Intercollegiate Championships ... finished 12th at the Appalachian

2002 WOMEN'S BIOGRAPHIES



State Invitational with a time of 18:32.00 ... finished third for the Seminoles at the NCAA Pre-Nationals with a time of 22:55 ... placed 27th at the ACC Championship at 22:23. **High School:** Earned All-Conference honors in her senior year. **PERSONAL:** Daughter of J.P. and Revonda Harper...born December 11, 1980...majoring in psychology.



Natalie Hughes
Mid-Distance/Steeplechase
Grand Junction, Co.
(Palisade)
Collegiate Bests:
Mile (5:00)
800m (2:12)
5K (17:32)



2001 (CROSS COUNTRY) Earned All-South Region honors following her ninth-place finish at the regional meet with a time of 21:35...placed second for the Seminoles and 27th overall at the ACC Championship at 22:37...took 19th-place at the Appalachian State Invitational with a time of 18:41 for the 5K course...improved to 13th overall and fourth for FSU at the Florida Intercollegiate Championships with a time of 22:24...her climb up the ranks for the Lady Seminoles continued at the Auburn Invitational, crossing the line in 17:32, good for third among FSU runners and 24th overall. **High School:** Was that state cross country champion in 1997, 1999, and 2000 ... awards earned include Varsity Online Athlete of the Year, Who's Who in Sports and Schoolsports.com Greater Denver Girls cross country Player of the Year. **Personal:** Daughter of Gene and Beverly Hughes...born December 18, 1982...majoring in sport management ... chose FSU over NCAA cross country champions, Colorado.



Lacy Janson
Pole Vault
Sarasota, Fla.
(Cardinal Mooney)



Potential All-American at Pole Vault...Prep: Had an impressive prep career that included a successful stint on the U.S. national team...was the champion at the 2001 Junior Pan American Games in Argentina...placed second for the U.S. Junior Team at a dual meet against the Britain Junior Team in Edinburgh, England...was the 2001 high school national champion in the pole vault...holds the Florida high school record in the pole vault with a mark of 13-01.5...earned MVP honors on her high school team during her junior and senior years...lettered in track and field for two years at Cardinal Mooney High School...competed in volleyball

for four years...earned all-state honors in volleyball her junior and senior seasons. **Personal:** Daughter of Chuck and Laurie Janson...born on February 20, 1983...earned honor roll honors all four years of high school...member of the National Honors Society...made the Dean's List her first semester at FSU...major is undecided.



Katie Jeffrey
Distance
Kanata, Ontario
(Holy Trinity)
Collegiate Bests:
3K (10:01)
4K (14:08)
5K (17:30)



2001: Finished first overall at the Clemson Quad meet with a time of 18:48.10...her time of 10:31.95 was good for fifth at the FSU Quad Meet...should provide the Lady Seminoles with good depth in the distance events following another successful cross country season. **(CROSS COUNTRY)** Earned All-South Region honors for the third time following her 24th-place finish at the regional meet with her season-best time of 22:17 on the 6K course...became the first Lady Seminole to win all-region honors three years in a row...finished in the top five for the Lady Seminoles in every meet...placed third for the Lady Seminoles at the ACC Championship with a time of 23:03...turned in FSU's second-best finish at the NCAA Pre-National, placing 96th...finished 38th at the Auburn Invitational...placed 14th at the Florida State Intercollegiate Championship to help the Lady Seminoles finish second overall...placed 29th at the Appalachian State Invitational. **2000:** Had a solid year competing in the middle distance and distance events, while turning in her strongest performances of the season in the 5,000m ... had a season-best time in the 1500m when she turned in a 5:00.22 time as well as a seventh-place finish in the USTCA Collegiate Series meet ... ran a 10:22.58 in the 3K at the first USTCA Meet of the season, competing against Kansas State, Air Force and South Florida, her time was the second-fastest mark for the Lady Seminoles in 2000 ... had her strongest performance of the season in the 5K when she ran a 18:03.17 at the ACC Outdoor Championships, helping her squad to the conference crown ... had the second-best time on the 2000 team in the 5K (Cynthia Campbell) and ran her way to the 10th-best time in Florida State history ... **PREP:** Came to FSU as a highly regarded high school runner where she finished in the top-15 in the Canadian National Junior cross country Championships ... versatile athlete who competed in basketball, soccer, badminton and cross country in high school ... named MVP of the track and cross country teams in her freshman, sophomore and senior years ... honored as Athlete of the Year for her high school freshman and sophomore years ... earned a fifth-place finish in the 3000m at the National Track Championships ... **PERSONAL:** Roommate is fellow freshman Kristy Connell ... majoring in business ... celebrates an April 23, 1980 birthday.



2002 WOMEN'S BIOGRAPHIES



Kimberly Jones

Hurdles/Jumps
Greensboro, NC
Collegiate Bests:
Long Jump (19-09.75)
Triple Jump (39-04.5)
100m Hurdles (13.81),
60m Hurdles (8.58)



HURDLES
JR

2001: Earned All-ACC honors in both the 60m hurdles and long jump...placed third at the ACC Indoor Championship in the 60m hurdles with a career-best time of 8.58...placed third in the long jump at the ACC Outdoor Championship with a personal-best mark of 19-09.75 and finished fifth in the 100m hurdles (13.97)...her time of 8.04 in the 60m hurdles was the top mark in the ACC...placed 10th in the long jump (18-07.75) and ninth in the triple jump (39-04.5) at the conference's indoor championship...won the long jump twice (Clemson Quad meet and Florida Field Event meet) and also placed second and third twice...placed fifth or better in the 100m hurdles at six meets including winning the FSU Relays...one of the most versatile athletes for the Lady Seminoles who has competed in nine different events. **2000:** Talented athlete who shows off her sprinting capabilities both on the track and in her approach was an NCAA Qualifier as part of the 4x100m relay team, as well as earning the outdoor conference crown as part of the relay team ... FSU's top returner in the 100m hurdles, running a season-best 13.81 last season, crossing the finish line in second place at the Florida State Relays leads all returners in the long jump, clearing a season-best 18-06.75 at the Florida State Relays also competed in the 100m dash, shot put and javelin ... owned season-best marks in the shot put and javelin of 28-05.75 and 99-00.00, respectively, earning both marks at the Snowbird Invitational ... ran a 12.31 at the ACC Outdoor Championships, in the 100m dash for a season-best mark **PREP:** Three-sport star at Grimsley ... competed in track and field, volleyball and basketball ... two-time National Champion in the long jump (junior and senior) ... won the national championship in the 100m hurdles as a senior ... top jump in high school was 20'3" ... top time in the 100m hurdles was 13.77...a national merit scholar who graduated with honors **PERSONAL:** A biological science major ... plays the clarinet in her spare time ... was born on June 13, 1981.



KIM JONES



JR



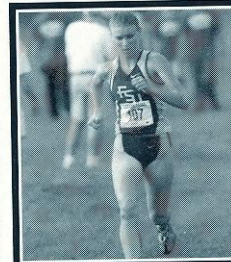
Amanda Kinney

Throws
Lawrenceville, Ga.
(Brookwood H.S. /
Univ. of Wyoming)



THROWS
JR

2001: Redshirted at the University of Wyoming before transferring to Florida State ... NCAA qualifier in shot put. **PREP:** Junior All-American who was a four-year letterwinner in track and field at Brookwood High School under coach Sitton ... national champion in the shot and weight throw...Georgia state record holder in the discus...won the Georgia state championship in the shot put and discus...competed in softball and basketball and was a member of the cheerleading squad...earned athletic academic honor roll honors all four years. **PERSONAL:** Daughter of Jackie and Reggie Kinney...born on March 26, 1981...majoring in exercise science.



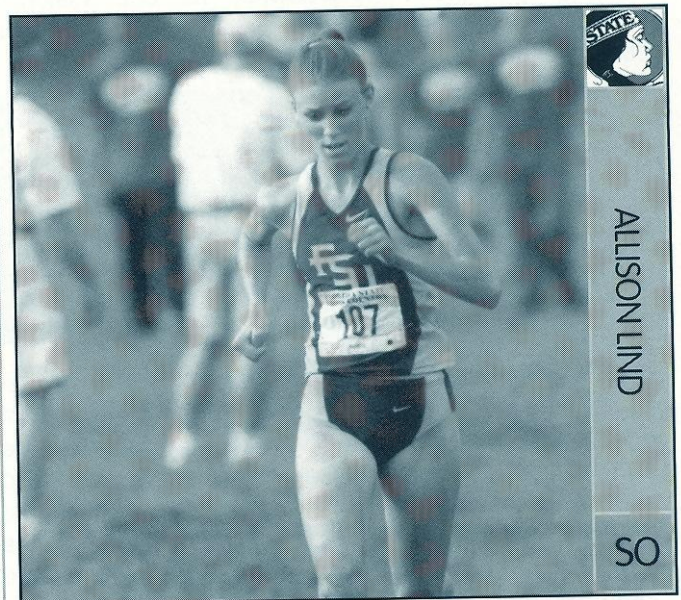
Allison Lind

Distance/Steeplechase
Woodbury, Conn.
(South Dakota State)
Collegiate Bests:
5K (16:40)



DISTANCE
SO

2001: (CROSS COUNTRY) Earned ACC Performer of the Week honors following her sixth-place finish at the



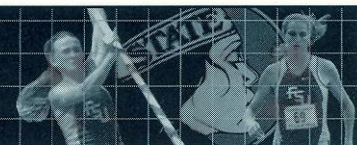
ALLISON LIND

SO

Appalachian State Invitational...FSU's top finisher at the Appalachian State Invitational and Florida State Intercollegiate Championship (third-place)...finished 15th at the Auburn Invitational with a time of



2002 WOMEN'S BIOGRAPHIES



17:23...hampered by injuries at the NCAA Pre-National and South Regional meets and missed the ACC Championship. **At SDSU:** Earned All-America honors in cross country and track...two-time all-conference selection...SDSU record holder in the 5K indoor run. **High School:** Graduated from Nonnewaug High School...participated in cross country, track and basketball. **PERSONAL:** Daughter of Darrell and Ellen Lind...born on January 2, 1981...majoring in biology.

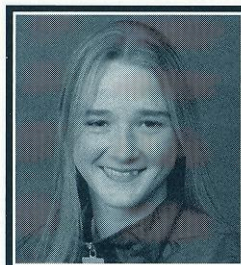


Rachel Marsh

Distance
Kissimmee, Fla.
(Osceola)
Collegiate Bests:
1500m (4:47.25)
5K (18:27.52)

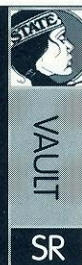


2001: Provided depth for the Lady Seminoles in distance events...had a strong season in the 1500m...turned in a collegiate-best time of 4:47.25 in the 1500m at the FSU Quad meet to finish fifth...placed second in the 1500m at the FSU Season Opener...competed at the ACC Outdoor Championship in the 5000m and placed 19th (18:27.52). **PREP:** Earned MVP of the cross country team three times...was also named most improved in cross country ... also played four years of varsity soccer. **PERSONAL:** Born May 19, 1982 ... majoring in sports management.

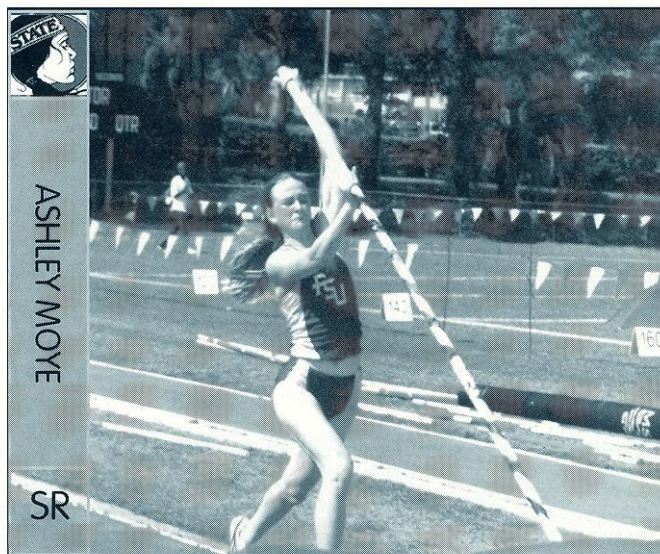


Ashley Moye

Pole Vault
Wauchula, Fla.
(Hardee)
Collegiate Best:
Pole Vault (10-11.75)



2001: Returns as part of a strong pole vaulting squad...set a personal-best mark at the FSU relays, clearing 10-11.75...top finish came at the FSU Season Opener where she placed second (10-06)...finished in the top 10 in four meets during the outdoor season. **2000:** Top performance of 2000 came at the ACC Outdoor Championships when she helped her squad capture a conference championship ... competed in the pole vault at the ACC Championships, clearing the bar at 10-10.00 for the Tribe's second-best returning mark (Lindsay Osborn) ... **PREP:** Competed in cross country (1 yr), track and field (3 yrs) and volleyball (2 yrs) in high school ... named to the All-Heartland Team in 1998, as well as earning the "Coach's Award" in 1998 ... served as the team captain in 1997 and 1998 ... **PERSONAL:** Majoring in exercise physiology ... impressive academic history that includes Florida Academic Honors Award as well as



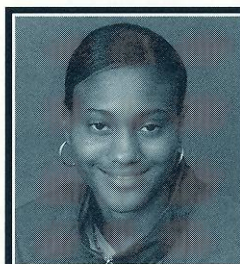
ASHLEY MOYE

SR

the Top Scholar Award ... daughter of Carrol and Lucy Moye ... celebrates a birthday on August 24 ... greatest sports memory is when women began competing competitively in the pole vault in 1981.



35

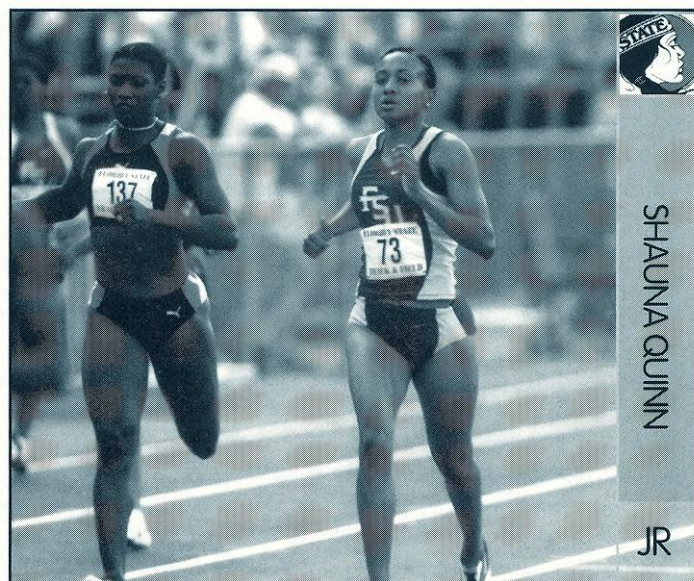


Shauna Quinn

Sprints
Uniondale, NY
(Uniondale)
Collegiate Bests:
400m Dash (54.81)
200m Dash (25.11)
400m Hurdle (64.16)



2001: Enjoyed a strong outdoor season in the 400m dash, earning several second and third-place finishes ... set her personal best in the 400m dash at the ACC Outdoor Championship, placing seventh overall ... saw

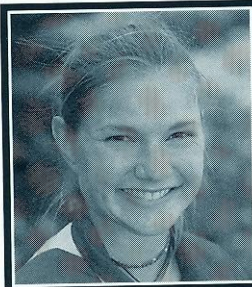


SHAUNA QUINN

JR

2002 WOMEN'S BIOGRAPHIES

limited action in the 200m and 600m dash ... placed second at the FSU Season Opener in the 600m with a time of 1:35.61. **2000:** Is the Lady Seminoles' top returner in the 400m hurdles, running a 1:04.16 at the USTCA Collegiate Series Meet where she finished fifth ... also returns as part of a solid corps of 200m runners who return all of the top-five sprinters from last season, including Quinn who crossed the line with a time of 25.26 for the squad's fourth-best time ... **1999:** Redshirted ... **PREP:** A high school All-American at Uniondale ... earned all-state recognition for six consecutive years between grades seven through 12 ... a two-time team MVP ... also an honor roll student ... **PERSONAL:** A political science major ... rooms with teammates Teressa Davis and Laura Gerber ... born January 23, 1980.



Karen Rademeyer

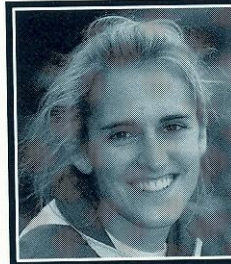
Throws
Tulsa, OK
(Jenks HS, Oklahoma State)
Collegiate Bests:
Javelin (147-11)
Heptathlon (4,699) Hammer
Throw (159-08)
High Jump (5-02.5)



THROWS

SR

2001: Earned All-ACC honors in both the javelin throw and heptathlon...finished third in the javelin at the conference outdoor championship (143-05) and scored a personal-best 4,699 in the heptathlon to place second...won the javelin four times and finished fourth or better in the event at 10 outdoor meets ... set a personal-best mark in the javelin at the Georgia Tech Invite with a throw of 147-11 ... had a strong showing in the hammer throw...won the hammer throw at the Seminole Twilight meet with a career-best toss of 159-08 ... one of the most versatile athletes for the Lady Seminoles, competing in 11 different events throughout the season. **2000:** Owns the team's top returning mark in the javelin when she went 140-3 at the USTCA Meet ... added a 5-4 high jump at the same meet for her season-best in that event ... added the 100m hurdles to her repertoire when she ran a 16.86 and finished seventh ... also competed in the long jump and the discus in which she turned in marks of 16-feet and 93-11.00, respectively ... had her strongest showing of the season in the hammer in which she consistently competed with LaKesha Mose and Sara White for the squad's top mark ... Rademeyer tossed the hammer 153-feet, landing her in the record books with Florida State's fourth-best mark of all-time ... also ended the season with the squad's top heptathlon mark with 4,204 points ... **PREP:** Competed in both track and field and gymnastics in high school ... all-state in gymnastics for three years ... helped lead team to two state championships in track and field ... **PERSONAL:** Dean's List all four semesters while at OSU ...a Big XII Academic All-American ... father played basketball at the University of Tulsa ... pursuing a degree in English education ... born on October 12, 1978.



Megan Robbins

Jumps
Edmond, Okla.
(Edmond North HS,
Oklahoma State)
Collegiate Best:
Pole Vault (12-08.25)



JUMPS

SR

2001: Broke the FSU school record and Mike Long Track record in the outdoor pole vault, clearing a height of 12-08.25...earned All-ACC honors at the indoor meet, placing third...won the Florida Intercollegiate meet and the FSU Quad meet with a marks of 12-01.25 and 12-06.25, respectively...finished fourth at the ACC Outdoor Championship (12-04)...finished fourth or better in eight outdoor meets. **2000:** Redshirted ... **PREP:** Two-sport athlete who participated in both basketball and track and field ... **PERSONAL:** Dean's List member during the 1998-1999 school year at OSU ... majoring in business ... celebrates a November 3, 1978.



Amber Russell

Sprints
Knoxville, Tenn.
Collegiate Bests:
55m Dash (7.59)
200m Dash (25.58)
400m Dash (58.09)



SPRINTS

JR

2001: Saw most action in the 200m and 400m dash events...best meet of the season was the Clemson Quad, where she set personal records in the 200m dash (25.58) and 400m dash (58.09)...best 200m finish of the season was at the FSU Season Opener, where she took fourth. **PREP:** Was a three-time track MVP at Bearden High School ... as a junior, earned Athletic/Academic Achievement Award. **PERSONAL:** Daughter of Pamela and Mervyn Marcano ... born August 28, 1981 ... majoring in communications.



Nicole Scott

Throws
Willingboro, NJ
(Willingboro)
Collegiate Bests:
Discus (111-1)
Hammer (163-09)
Shot Put (45-02.25)



THROWS

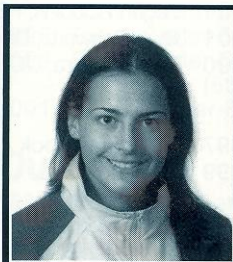
SR

2001: Added to her school-record throws in the shot and hammer, setting both her personal records in 2001 ... her toss of 45-02.25 in the shot was good for seventh overall at the ACC Outdoor Championship ... earned a

2002 WOMEN'S BIOGRAPHIES



first-place finish at the Seminole Twilight meet in the shot put...earned three, second-place finishes and three, third-place finishes in the shot ... in the hammer throw, her toss of 163-09 was good for second at the Clemson Quad meet and bettered her PERSONAL best by over three feet...earned first-place finishes at the FSU Quad and Snowbird Invite meets in the hammer throw. **2000:** Competed in the discus, hammer and shot put ... owns the Lady Seminoles' second-best returning mark in the shot put, behind All-American Makiba Batten ... returns the third-best mark for FSU in both the discus and the hammer ... moved into fifth-place all time at Florida State with her hammer throw of 145-09 at the Florida Relays ... had her second top-10 performance of the season when she tossed the shot 42-05.50 at the USTCA Meet, where she finished fourth and moved into ninth-place on the all-time records list at FSU ... **1999:** Started the season with top 10 finishes in the shot put and weight throw at the Florida Invitational ... had best outing of the year at the Seminole Twilight Meet where she finished sixth in both the shot put and hammer events ... her mark of 131-2 in the hammer competition ranked fifth all time at FSU ... placed third in the discus throw at the North Florida Invitational ... **PREP:** An All-County selection in 1995, '96 & '97 ... the school's athlete of the year in '97 and rookie of the year in '95 ... named All-South Jersey in '97 ... placed sixth in the shot at the AAU National Championships ... **PERSONAL:** Plans to major in business law ... brother, Jeff, is a thrower at Florida A&M ... celebrates a January 2, 1980 birthday.



Stacey Taylor
High Jump
West Misslin, Penn.
(Pittsburgh / West Misslin)



Potential All-American at High Jump... University of Pittsburgh: As a Panther, Taylor earned several honors, including NCAA Indoor All-American honors as a junior...placed second at the Big East Indoor Championship in the high jump...two-time Big East Champion in the pentathlon (sophomore and junior years)...awards include three-time All-ECAC honors...All Big East honors (freshman)...as a sophomore, won the college division of the Penn Relays...placed fourth at the Championships of America-Penn Relays as a junior. **PREP:** Placed seventh in the long jump in her senior year. **PERSONAL:** Daughter of Lucy Ann Taylor and Lester Woolie...born May 24, 1980...majoring in psychology.



Kim Walker
Trinidad & Tobago
Collegiate Bests:
400m Dash (57.77)
800m Run (2:13.16)



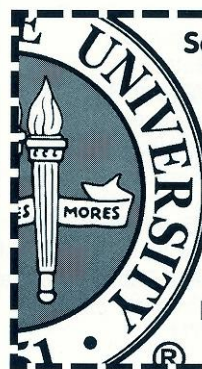
PREP: Was named the Trinidad & Tobago 1999 National Under 17 Most Outstanding Female Athlete...also captured Most Improved Athlete in her running club, the Memphis Pioneers...participated in the 2000 Central American Caribbean Games in Puerto Rico, posting a PERSONAL-best time of 11.78 in the 100m...from 1997-2000 was the Champion Sprinter in her schools (Sixth Form and Diego Martin Secondary School) in both the 100m and 200m. **PERSONAL:** Daughter of Earnest and Juliet Walker...born January 20, 1983...majoring in geology.



Jordana Whittington
Distance
Sarnia, Ontario, Canada
(St. Christopher's)
Collegiate Bests:
400m Dash (57.77)
800m Run (2:13.16)



2001: Best run of the season in the 400m came at the FSU Relays, where her time of 57.77 earned her second place...set her season best in 800m run at the FSU Quad meet, taking first place with a run of 2:13.16...also appeared in the 600m dash at the FSU Season Opener, finishing fifth. **(CROSS COUNTRY)** Placed 50th at the Florida State Intercollegiate Championship at 24:13...top finisher for the Lady Seminole Striders at the Disney CROSS COUNTRY Classic with a time of 19:04 for the 5K course...finished 26th for the Striders at the Jacksonville University Invitational with a time of 20:46. **PREP:** Earned Outstanding Performance Award for track all four years...won seven OFSAA medals...made the honor roll every year. **PERSONAL:** Daughter of Lorraine Whittington...born on October 30, 1981...majoring in political science.



Scholarships Since '51

It was not until 1951 that Florida State began to grant athletic scholarships. The move put added pressure on the program to win. FSU left the Dixie Conference and membership in the Southeastern Conference was denied. Interestingly, it was the University of Florida that sponsored FSU for admission to the SEC.



FLORIDA STATE T&F WOMEN'S RECORDS

100 meter Dash

FSU Outdoor Record	11.20	1986	Michelle Finn
Mike Long Track Record	11.27	1984	Randy Givens, FSU
ACC Outdoor Record	11.27	2001	Cydonie Mothersill, Clemson
Collegiate Record	10.78	1989	Dawn Sowell, LSU

200 meter Dash

FSU Outdoor Record	22.31	1983	Randy Givens
Mike Long Track Record	23.08	1986	Pauline Davis, Alabama
ACC Outdoor Record	22.57	2001	Cydonie Mothersill, Clemson
Collegiate Record	22.04	1989	Dawn Sowell, LSU

400 meter Dash

FSU Outdoor Record	49.91	1984	Marita Payne
Mike Long Track Record	52.04	2001	Samantha George
ACC Outdoor Record	51.30	1993	Nelrae Pasha, Georgia Tech
Collegiate Record	49.91	1984	Marita Payne-Wiggins, FSU

800 meter Run

FSU Outdoor Record	2:03.54	1997	Erica Shepard
Mike Long Track Record	2:01.10	1996	Joetta Clark
ACC Outdoor Record	2:02.07	1983	Tina Krebs, Clemson
Collegiate Record	1:58.33	1985	Claudette Groenendaal, Oregon

1500 meter Run

FSU Outdoor Record	4:18.56	1985	Nancy Rettie
Mike Long Track Record	4:16.42	1988	Evelyn Adiru, Alabama
ACC Outdoor Record	4:13.42	1988	Rosalind Taylor, Maryland
Collegiate Record	4:05.81	1991	Sonia O'Sullivan, Villanova

5000 meter Run

FSU Outdoor Record	16:39.4	1981	Darien Andreu
Mike Long Track Record	15:54.00	2001	Breda Dennehy, Wilii
ACC Outdoor Record	15:33.43	1983	Betty Jo Springs, N.C. State
Collegiate Record	15:07.56	1985	Kathy Branta, Wisconsin

10,000 meter Run

FSU Outdoor Record	34:42.74	1981	Darien Andrew
Mike Long Track Record	34:27.75	1987	Kerrie Yenchak Edinboro
ACC Outdoor Record	32:36.20	1986	Kathy Ormsby, NC. State
Collegiate Record	32.22.97	1992	Carole Zajac, Villanova

100 meter Hurdles

FSU Outdoor Record	13.06	1991	Kim Batten
Mike Long Track Record	12.92	1988	Kim McKenzie, FSU
ACC Outdoor Record	12.86	1999	Andria King, Georgia Tech
Collegiate Record	12.61	1988	Gail Devers, UCLA

400 meter hurdles

FSU Outdoor Record	53.98	1991	Kim Batten
Mike Long Track Record	54.41	1996	Kim Batten, Reebok
ACC Outdoor Record	56.64	1999	Nikkie Boyer, Clemson
Collegiate Record	53.47	1984	Janeen Vickers, UCLA

3,000m Steeplechase

FSU Outdoor Record	10:50.77	2001	Brooke Bastien
Mike Long Track Record	10:50.77	2001	Brooke Bastien, FSU
ACC Outdoor Record	10:23.42	2001	Katie Sabino, NC State
Collegiate Record	9:49.73	2001	Elizabeth Jackson, BYU

4 X 100M Relay

FSU Outdoor Record	42.94	1982	Wright, Payne, Cliette, Givens
Mike Long Track Record	43.9	1984	Finn, Payne, Cliette, Givens, FSU
ACC Outdoor Record	43.62	2001	Clemson
Collegiate Record	42.50	1989	LSU

4 X 400M Relay

FSU Outdoor Record	3:27.72	1984	Davis, Cliette, Givens, Payne
Mike Long Track Record	3:31.92	1997	Edwards, Embon, Shepard, Ronholt, FSU
ACC Outdoor Record	3:31.18	1996	FSU
Collegiate Record	3:27.53	1992	Florida

Long Jump

FSU Outdoor Record	21-8 1/2	1990	Sonya Blades
Mike Long Track Record	21-6 3/4	1986	Esmeralda Garcia, FSU
ACC Outdoor Record	22-1 3/4	1994	Marion Jones, UNC
Collegiate Record	23-9	1985,87	Jackie Joyner, UCLA

Triple Jump

FSU Outdoor Record	44-10 3/4	1986	Esmeralda Garcia
Mike Long Track Record	44-2 3/4	2000	Karine Black, FSU
ACC Outdoor Record	44-3 3/4	1999	Nicole Gamble, UNC
Collegiate Record	46-0 3/4	1990	Shela Hudson-Strudwick, California

High Jump

FSU Outdoor Record	6-1 3/4	1991	Holly Kelly
Mike Long Track Record	6-2 3/4	1992	Tisha Walker
ACC Outdoor Record	6-3 1/2	1987	Kathy Harrison, Georgia Tech
Collegiate Record	6-6	1992	Tisha Waller, UNC
			Amy Acuff, UCLA

Pole Vault

FSU	12-8 1/4	2001	Megan Robbins
Mike Long Track Record	12-8 1/4	2001	Megan Robbins, FSU
ACC Record	13-9 1/4	2001	Jillian Schwartz, Duke
College	14-7 1/4	2000	Tracy O'Hara, UCLA

Shot Put

FSU Outdoor Record	51-10	1997	Shannon Cook
Mike Long Track Record	57-7 3/4	1999	Dawn Dumble, Bruin Reebok
ACC Outdoor Record	58-2 1/2	2001	Jamine Moton, Clemson
Collegiate Record	62-3 3/4	1983	Meg Ritchie, Arizona

Discus

FSU Outdoor Record	172-10	2000	Makiba Batten
Mike Long Track Record	189-3	1986	Kathy Landry, Alabama
ACC Outdoor Record	182-2	2001	Jamine Moton, Clemson
Collegiate Record	221-5	1983	Meg Ritchie, Arizona

Javelin

FSU Outdoor Record	174-10	1990	Kari Keith
Mike Long Track Record	182-8	1985	Susie Ray, UF
ACC Outdoor Record	188-3	1999	Ann Crouse, UVA
Collegiate Record	211-5	1981	Karin Smith, Cal Poly SLO

Heptathlon

FSU Outdoor Record	5410	1991	Carmelia Shivers
Mike Long Track Record	5457	1995	Rebecca Grube, FSU
ACC Outdoor Record	5578	1992	Nicky Hudson, UNC
Collegiate Record	6718	1985	Jackie Joyner, UCLA

FLORIDA STATE T&F WOMEN'S ALL-AMERICANS



Cross Country

1981 Darien Andreau

Indoor

- 1981 Darien Andreau-5,000m (5th); Alice Bennett-Long Jump (4th); Esmeralda Garcia-Long Jump (2nd); 60m (2nd); Angela Wright-400m (4th); Alice Bennett, Esmeralda Garcia, Randy Givens, Marita Payne-4X200 (1st); Margaret Coomer-1,000m (3rd); Scooby Golden, Debbie Moore, Marita Payne, Angela Wright-4X400 (4th)
- 1982 Tanya Brown-60 yd. Hurdles (7th); Orrill Dwyer- Brown-600 yards (5th); Margaret Coomer-1,000 yards (8th); Carolyn Faison -60 yd. Hurdles (6th); Randy Givens-300 yards(4th); Angela Wright-440 yards (6th); Carla Borovicka, Ovrill Dwyer-Brown, Margaret Coomer-4X800 (1st); Alice Bennett, Randy Givens, Marita Payne, Janette Wood-4X200 (2nd); Tonya Brown, Orrill Dwyer-Brown, Scooby Golden, Angela Wright-4X400 (2nd)
- 1983 Wendy Markham-High Jump (3rd)
- 1984 Carla Borovicka-1,500m (6th), Margaret Coomer-1,500m (5th); Michelle Finn-55m(4th); Orrill Dwyer-Brown, Brenda Cliette, Janet Davis, Janet Levy, 4X400(2nd)
- 1985 Michelle Finn-55m (1st); Esmeralda Garcia-Triple Jump(1st); Nancy Rettie-1,000m (3rd); Kelly Hackler, Chris McKay, Brenda Moore, Nancy Rettie-4X800 (5th)
- 1986 Michelle Finn-55m (2nd); Esmeralda Garcia-Long Jump (2nd)
- 1987 Michelle Finn-55m (2nd)
- 1989 Kim Batten- Triple Jump (5th)
- 1990 Kim Batten- Triple Jump (5th); Carrie Boyd-4X800 (6th); Sonya Blades-long jump (9th); Carrie Boyd, Tracey Howze, Karla Severs, Angela Harris- 4X800 (6th); Holly Kelly-High Jump(4th), Patrice Verdun-200m (6th), 55m
- 1991 Holly Kelly-High Jump (4th); Kim Batten-Triple Jump (5th)
- 1993 Sheryl Covington-55m (8th), 200m (7th); Trinetta Johnson- Long Jump (8th)
- 1996 Erica Shepard-800m (7th), Sophia Danvers, Yashiva Edwards, Maria Embon, Erica Shepard-4x400 (2nd)
- 1997 Sophia Danvers, Yashiva Edwards, Maria Embon, Erica Shepard-4x400 (4th)
- 1999 Tonya Carter-60m (9th)
- 2000 Tonya Carter-60m dash (1st), Samantha George-400m dash (6th)
- 2001 Laura Gerber-800m run (3rd)

Outdoor

- 1981 Esmeralda Garcia-Long Jump (2nd), 100m (5th);Randy Givens-200m (3rd); Marita Payne-400m (2nd); Angela Wright-400m (6th); Alice Bennett, Esmeralda Garcia, Randy Givens, Marita Payne-4X100(1st); Alice Bennett, Esmeralda Garcia, Randy Givens, Marita Payne-800m Medley Relay, (6th) Marita Payne, Angela Wright, Janette Wood-4X400 (4th)
- 1982 Alice Bennett-Long Jump (8th); Tonya Brown-100m Hurdles (4th), 400m IM hurdles (1st); Margaret Coomer-1,500m (7th), 200m (3rd); Wendy Markham-High Jump (tied 5th); Marita Payne- 200m (4th), 400m (7th); Orrill Dwyer-Brown, Randy Givens, Marita Payne, Angela Wright-4X400 (2nd); Alice Bennett, Randy Givens, Marita Payne, Angela Wright-4X100 (2nd)
- 1983 Orrill Dwyer-Brown-400m IH (8th); Brenda Cliette 100 (3rd), 200m (4th), Randy Givens-100m (6th), 200m (3rd); Wendy Markham-High Jump (2nd); Marita Payne-200m (6th), 400m (5th); Angela Wrigh 400m IH (3rd); Brenda Cliette, Randy Givens, Marita Payne, Angela Wright-4X100 (1st); Brenda Cliette, Randy Givens, Marita Payne, Angela Wright-4X400 (1st)
- 1984 Orrill Dwyer-Brown-400m IM hurdles (8th); Brenda Cliette-100 (2rd), 200m (2nd); Janet Davis-200m (6th); Michelle Finn-100m (4th); Randy Givens-100m (1st),

- 200m (6th); Marita Payne-200m (3rd), 400m (1st); Brenda Cliette, Michelle Finn, Randy Givens, Marita Payne-4x100 (1st); Brenda Cliette, Janet Davis, Randy Givens, Marita Payne-4X400 (1st)
- 1985 Michelle Finn-100m (1st), 200m (2nd); Esmeralda Garcia-Triple Jump(1st), Long Jump (5th), 100m (3rd); Michelle Finn, Esmeralda Garcia, Andrea Thompson, Janet Levy -4X100 (3rd)
- 1986 Michelle Finn-100m (5th), 200m (7th); Michelle Finn, Esmeralda Garcia, Janet Levy, Andrea Thompson 4X400 (5th) Esmeralda Garcia- Triple Jump (2nd)
- 1987 Janet Davis- 400m (5th); Michelle Finn-100m (4th); 200m (6th); Michelle Finn, Janet Davis, Janet Levy, Andre Thompson-4X100 (1st)
- 1990 Kari Keith-Javelin (8th); Kim Batten - 100m IH (8th), 400m IH (2nd); Carmelia Shivers-Heptathlon (9th); Patrice Verdun, Lida Horton, Trinetta Johnson, Kim Batten-4X100 (4th)
- 1991 Holly Kelly-High Jump (4th); Carmelia Shivers-Heptathlon (10th); Kim Batten-100m IH (4th), 400m IH (3rd); Andi Lyons, Sheryl Covington, Verdun, Kim Batten-4X100 (6th)
- 1992 Trinetta Johnson-Long Jump (6th); Patrice Verdun-200m (9th); Trinetta Johnson, Patrice Verdun, Andi Lyons, Sheryl Covington-4X100 (7th)
- 1993 Trinetta Johnson-Long Jump (7th)
- 1994 Sheryl Covington-400m (5th); Sheryl Covington, Sophia Danvers, Erica Shepard, Radhiya Teagle-4X400 (8th)
- 1996 Sophia Danvers, Yashiva Edwards, Maria Embon, Erica Shepard-4X400 (2nd)
- 1997 Casey Custer, Sophia Danvers, Yashiva Edwards, Zuzette Mullings-4X100 (7th); Sophia Danvers, Yashiva Edwards, Maria Embon, Rikke Ronholt-4X400 (2nd)
- 1999 Samantha George-400m (6th)
- 2000 Makiba Batten-discus (9th), Tonya Carter-100m (3rd)



39



Individual NCAA Champions

- 1982 Tonya Brown-Outdoor 400m IH
- 1985 Michelle Finn-Indoor 55m, Outdoor 100m Esmeralda Garcia-Indoor Triple Jump, Outdoor Triple Jump
- 1984 Randy Givens-Outdoor 100m, Outdoor 200m Marita Payne-Outdoor 400m
- 1982 Marita Payne-Outdoor 400m
- 2000 Tonya Carter-Outdoor Champion, Indoor 60m

NCAA Championship Relay Teams

- 1981 Indoor 800-Meter Relay 1:36.88 Esmeralda Garcia, Alice Bennett, Marita Payne, Randy Givens
- 1981 Outdoor 400-Meter Relay 44.35 Esmeralda Garcia, Alice Bennett, Marita Payne, Randy Givens
- 1982 Indoor Two-Mile Relay 8:47.27 Janette Wood, Orrill Dwyer-Brown, Carla Borovicka, Margaret Coomer
- 1983 Outdoor 400-Meter Relay 42.94 Angela Wright, Marita Payne, Brenda Cliette, Randy Givens
- 1984 Outdoor 1600-Meter Relay 3:28.46 Angela Wright, Marita Payne, Brenda Cliette, Randy Givens
- 1987 Outdoor 400-Meter Relay 43.19 Janet Levy, Andrea Thompson, Janet Davis, Michelle Finn

Lady Seminoles in the Olympics

- 1984 Los Angeles, Marita Payne (Canada) 400m (4th), 4x100 (Silver), 4x400 (Silver) Randy Givens (USA) 200m (6th) Esmeralda Garcia (Brazil) 100m, Long Jump Brenda Cliette (USA) 4x100 (alternate) Angela Wright-Scott, Orville Dwyer-Brown (Jamaica) 400m Hurdles
- 1988 Seoul, Marita Payne (Canada) 400m
- 1992 Barcelona, Michelle Finn (USA) 4x100 (Gold)
- 1996 Atlanta, Kim Batten (USA) 400m IH (Silver)
- 2000 Kim Batten (USA), Samantha George (Canada) 400m IH, 400m

FLORIDA STATE T&F WOMEN'S TOP-TEN

100 meters

1. Michelle Finn	11.20	1986
Randy Givens	11.06	1984
3. Brenda Cliette	11.23	1983
4. Randy Givens	11.27	1984
5. Tonya Carter	11.30	2000
6. Esmeralda Garcia	11.32	1985
7. Andrea Thompson	11.35	1988
8. Patrice Verdun	11.40	1992
9. Sheryl Covington	11.41	1991

200 meters

1. Randy Givens	22.31	1983
2. Marita Payne	22.62	1983
3. Michelle Finn	22.77	1986
4. Brenda Cliette	22.81	1984
5. Patrice Verdun	23.24	1992
6. Yashiva Edwards	23.27	1997
7. Casey Custer	23.29	1996
8. Janet Davis	23.36	1987
9. Sheryl Covington	23.39	1993
10. Keya Crutchfield	23.45	2000

400 meters

1. Marita Payne	49.91	1984
2. Sheryl Covington	51.85	1994
3. Brenda Cliette	51.92	1984
4. Samantha George	51.98	1999
5. Sophia Danvers	52.18	1997
6. Janet Davis	52.37	1987
7. Kim Batten	52.53	1991
8. Angela Wright	52.61	1982
9. Yashiva Edwards	52.64	1997

800 meters

1. Erica Shepard	2:03.54	1997
2. Orvill Dwyer-Brown	2:04.90	1982
3. Samantha George	2:05.14	2000
4. Rikke Ronholt	2:05.84	1998
5. Laura Gerber	2:06.08	2001
6. Scooby Golden	2:06.60	1983
Angela Harris	2:06.60	1992
8. Nancy Rettie	2:07.04	1985
9. Maria Embon	2:07.10	1997
10. Janet Wood	2:07.20	1981
Kelley Hackler	2:07.20	1985

1,500 meters

1. Nancy Rettie	4:18.56	1985
2. Margaret Coomber	4:19.60	1983
3. Carla Borovicka	4:19.92	1983
4. Carrie Boyd	4:23.26	1990
5. Jennie Messinese	4:23.50	1986
6. Kirsten Birmelin	4:28.82	1996
7. Brenda Moore	4:31.82	1985
8. Tracy Pepoon	4:33.55	1993
9. Kerstin Hoffman	4:33.62	1995
10. Angela Harris	4:34.39	1991

5,000 meters

1. Darien Andreu	16:39.4	1981
2. Janie Regis	16:43.5	1985
3. Tracy Pepoon	17:12.66	1993
4. Brooke Bastien	17:16.76	2001
5. Natalie Reid	17:29.00	1999
6. Barbara Mathews	17:42.38	1988
7. Cynthia Campbell	17:49.78	2000
8. Diana Hartnup	17:52.5	1999
9. Michelle Farrell	17:56.78	1989
10. Katie Jeffrey	18:03.00	2000

10,000 meters

1. Darien Andreu	34:42.74	1981
2. Janie Regis	35:01.78	1985
3. Janet Bassford	35:52.20	1982
4. Barbara Mathews	36:11.70	1988
5. Michelle Farrell	37:04.90	1989
6. Cynthia Campbell	37:21.46	2000
7. Misty Harper	37:49.01	2001

100 meter hurdles

1. Kim Batten	13.06	1991
2. Tonja Brown	13.42	1982
3. Mary Hawkins	13.44	1988
Andrea Thompson	13.44	1988
5. Joana Brown	13.52	1985
6. Carolyn Faison	13.60	1982
7. Kristen Thorne	13.61	1996
8. Carmellia Shivers	13.62	1991
9. Ayana Townsend	13.64	1999
10. Peggy Armand	13.66	1994

400 meter hurdles

1. Kim Batten	53.98	1991
2. Tonja Brown	56.46	1982
3. Angela Wright	56.74	1983
4. Orvill Dwyer-Brown	56.94	1983
5. Rikke Ronholt	57.30	1997
6. Radhiya Teagle	57.72	1995
7. Kristin Thorne	58.06	1997
8. Carmellia Shivers	58.55	1991
9. Ayana Townsend	58.75	1999
10. Chris McKay	58.86	1995

3000m Steeplechase

1. Brooke Bastien	10:50.77	2001
2. Beth Lukens	11:36.79	2001

Long Jump

1. Sonya Blades	21'8 1/2"	6.61	1990
2. Esmeralda Garcia	21'7 1/2"	6.59	1986
3. Trinette Johnson	21'6"	6.55	1993
4. Kim Batten	20'9"	6.32	1988
5. Alice Bennett	20'6"	6.24	1983
6. Zuzette Mullings	20'5 1/4"	6.23	1999
7. Michelle Finn	20'1 1/2"	6.15	1986
8. Felicia Evans	19'11 1/2"	6.08	1993
9. Petena Moultrie	19'9 3/4"	6.04	1995
Kim Jones	19'9 3/4"	6.04	2001

Triple Jump

1. Esmeralda Garcia	44'10 3/4"	13.68	1986
2. Kim Batten	42'6"	12.95	1991
3. Zuzette Mullings	41'10"	12.75	1998
4. Petena Moultrie	41'8 3/4"	12.72	1996
Teresa Bundy	41'8 3/4"	12.72	2001
6. Chinette Johnson	40'11.50"	12.48	1998
7. Janet Levy	40'8 1/4"	12.40	1987
8. Felicia Evans	40'3 1/4"	12.27	1994
9. Shelby Connor	38'9 3/4"	11.83	1997
10. Peggy Armand	38'9 1/2"	11.77	1995

High Jump

1. Wendy Markham	6'1 3/4"	1.87	1993
2. Holly Kelly	6'1 3/4"	1.87	1989
3. Indianne Henry	6'0 1/2"	1.84	1993
4. Christine Daniels	5'10"	1.78	1997
5. Carmelia Shivers	5'9"	1.75	1990
6. Michaela Steele	5'8 3/4"	1.75	1999
7. Latashia Crews	5'8"	1.73	1985
8. Peggy Armand	5'7 1/4"	1.71	1995
9. Shannon Steele	5'7"	1.68	1998

Shot Put

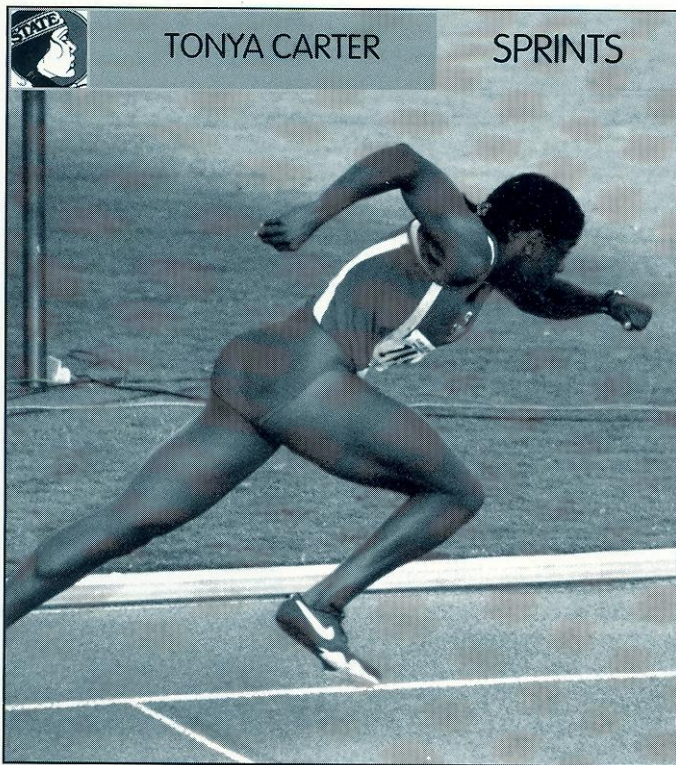
1. Shannon Cook	51'10"	15.80	1997
2. Lakeisha Mose	49'8 3/4"	15.16	2000
3. Makiba Batten	48'6"	14.78	2001
4. Cathy Erickson	47'7 1/4"	14.51	1996
5. Vicki Smith	46'7 1/2"	14.21	1977
6. Donna Williams	46'3"	14.09	1984
7. Eleanor Majors	45'8"	13.92	1982
8. Nicole Scott	45'2 1/4"	13.77	2001
9. Andrea Pappas	44'5 1/2"	13.55	1997
10. Tony Granneman	42'3"	12.88	1992

11 National Championships

Florida State's women's programs were brought to national prominence in the early 1980s when the Seminoles earned five national championships in four sports within a four-year period. The golf program earned the AIAW championship in 1981 while the softball team had back-to-back AIAW titles in 1981 and 1982. The women's track and field program ran away with the 1984 NCAA Outdoor and 1985 NCAA Indoor championships. Florida State's other national titles include men's gymnastics in 1950-51 and again in 1951-52. The men's volleyball team won the national championship in 1955 and 1957, while football claimed their No.1 rankings in 1993 and 1999.



FLORIDA STATE T&E WOMEN'S TOP-TEN



TONYA CARTER

SPRINTS

Discus

1. Makiba Batten	172'10"	52.68	2000
2. Shannon Cook	162'6"	45.59	1997
3. Cathy Erickson	153'6"	46.79	1995
Andrea Pappas	153'6"	46.79	1997
5. Tonya Granneman	150'5"	45.86	1990
6. Donna Williams	148'7"	45.57	1984
7. Rena Antanelis	145'2"	44.26	1990
8. Laura Goens	143'5"	43.71	1996
9. Kim Travers	140'	42.68	1976
10. Vanessa Fuchs	136'10"	41.71	1998

Pole Vault

1. Megan Robbins	12'8 1/2"	3.87	2001
2. Lindsay Osborn	12'8"	3.86	2001
3. Carrie Crandall	11'10"	3.70	2001
4. Nikki Allen	11'5 3/4"	3.61	2000
5. Ashley Moye	10'11 3/4"	3.35	2001

Javelin

1. Kari Kieth	174'10"	53.30	1990
2. Cheryl Coker	167'	50.90	1985
3. Nancy Townsend	154'9"	47.18	1980
4. Shannon Steele	150'4"	45.82	2000
5. Rena Antanelis	149'8"	45.62	1983
6. Laura Gibbons	149'6"	45.58	1972
7. Karen Rademeyer	147'11"	45.10	2001
8. Rosa Diaz	145'6"	44.36	1989
9. Kim Stephens	145'3"	44.28	1991

Hammer

1. Lakeisha Mose	187'9"	57.22	2000
2. Sara White	172'8"	52.64	2001
3. Nicole Scott	163'9"	49.92	2001
4. Karen Rademeyer	159'8"	48.67	2001
5. Shannon Cook	157'6"	48.01	1997
6. Alanyia Johnson	133'4"	40.64	2000
7. Jennifer Curry	130'11"	39.90	2001
8. Crystal Couey	127'11"	38.99	2001
9. Molly Castner	115'3"	35.14	2001

10. Emily Yambaski	114'4"	34.84	2001
--------------------	--------	-------	------

heptathlon

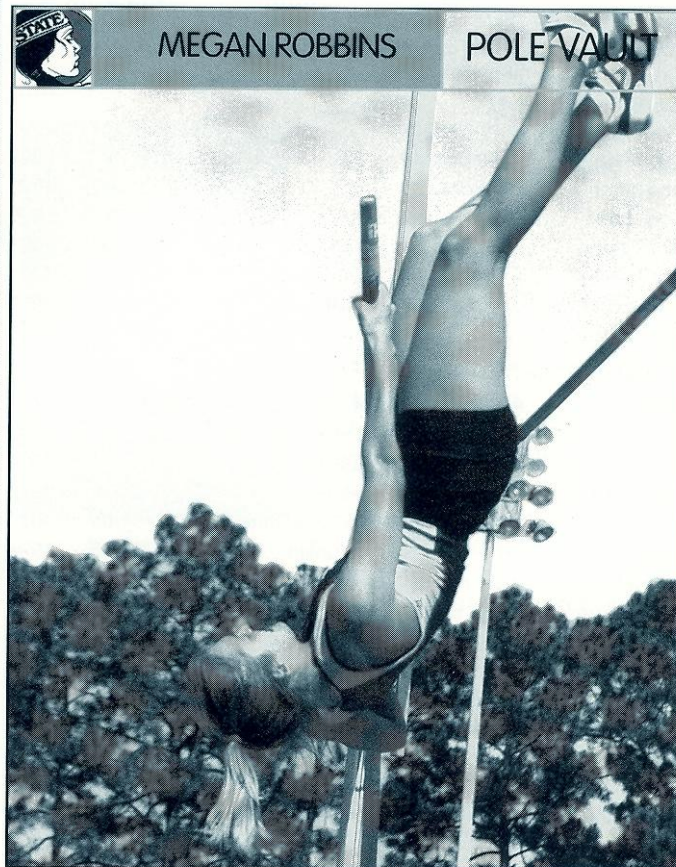
1. Carmellia Shivers	5410	1991
2. Chinette Johnson	5262	2000
3. Kim Stephens	5251	1991
4. Kim Mann	5143	1990
5. Candi Odom	4911	1991
6. Latoshia Crews	4900	1985
7. Karen Rademeyer	4699	2001

4X100 Relay

1. Wright, Payne, Cliette, Givens	42.94	1982
2. Levy, Thompson, Davis, Finn	43.19	1987
3. Finn, Payne, Cliette, Givens	43.54	1984
4. Wright, Payne, Cliette, Givens	43.73	1983
5. Garcia, Finn, Thompson, Levy	43.98	1985
6. Levy, Finn, Thompson, Davis	44.12	1986
7. Horton, Thompson, Davis, Curry	44.13	1988
8. Johnson, Covington, Verdun, Lyons	44.27	1992
9. Batten, Horton, Verdun, Johnson	44.30	1990
10. Garcia, Payne, Bennett, Givens	44.35	1981

4x400 Relay

1. Davis, Cliette, Givens, Payne	3:27.72	1984
2. Givens, Cliette, Wright, Payne	3:28.46	1983
3. Wright, Dwyer-Brown, Golden, Payne	3:28.70	1982
4. Wright, Dwyer-Brown, Givens, Payne	3:28.93	1984
5. Danvers, Edwards, Embon, Ronholt	3:30.17	1997
6. Danvers, Embon, Shepard, Edwards	3:31.18	1996
7. Embon, Edwards, Shepard, Ronholt	3:31.92	1997
8. Danvers, Teagle, Shepard, Covington	3:33.44	1994
9. Levy, Thompson, Davis, Curry	3:34.07	1987
10. Wright, Golden, Wood, Payne	3:34.80	1981



MEGAN ROBBINS

POLE VAULT



FSU MEN'S & WOMEN'S INDOOR RECORDS

women

lady seminole

Event	Athlete, School	Time/Mark	Year
60m Dash	Tonya Carter	7.15	2000
60m Hurdles	Kim Batten	7.67	1991
200m Dash	Yashinda Edwards	23.73	1997
400m Dash	Samantha George	53.18	2000
800m Run	Rikke Ronholt	2:05.84	1999
Mile Run	Margaret Coomber	4:45.79	1984
3,000m Run	Gale Grant	9:55.90	1981
5,000m Run	Brooke Bastien	17:41.53	2001
4X400m Relay	Sophia Danvers, Maria Embon, Erica Shepard, Yashiva Edwards	3:33.59	1996
Long Jump	Sonya Blades	21'8 1/2"	1990
Triple Jump	Esmeralda Garcia	44'4"	1985
High Jump	Holly Kelly	6'1/4"	1989
Shot Put	Shannon Cook	49'3"	1997
20lb. Weight	Lakeisha Mose	62'5"	1998
Pole Vault	Lindsay Osborn	12'7 1/4"	2001

ACC women's indoor

Event	Athlete School	Time/Mark	Year
60m dash	Tonya Carter, FSU	7.15	2000
60m hurdles	LaTasha Colander, UNC	8.15	1998
200m Dash	Cydonie Mothersill, Clemson	22.84	2001
400m Dash	Monique Hennagan, North Carolina	52.88	1998
800m	Rebecca Russell, UNC	2:06.62	1992
Mile Run	Shalane Flanagan, UNC	4:37.41	2001
3,000m Run	Sara Day, Wake Forest	9:23.60	2001
5,000m Run	Laurie Gomez, N.C. State	15:55.26	1991
4X400m Relay	Florida State (Danvers, Embon, Shepard, Edwards)	3:33.59	1996
Distance			
Medley Relay	North Carolina	11:11.11	2001
High Jump	Natasha Alleyne, GA Tech	6'2 1/4"	1992
Long Jump	Ola Sesay, UNC	21'2 1/4"	2000
Triple Jump	Nicole Gamble, N. Carolina	44'8 1/4"	1999
Shot Put	Jamine Moton, Clemson	53'8 1/2"	2001
20lb. Weight	Jamine Moton, Clemson	68' 1/2"	2001
Pole Vault	Jillian Schwartz, Duke	13'5 1/2"	2001

NCAA women's indoor

Event	Athlete, School	Time/Mark	Year
60m Dash	Carlette Guidry, Texas	7.14	1991
60m Hurdles	Vonette Dixon, Auburn	7.94	2000
200m Dash	Merlene Otley, Nebraska	22.79	1982
400m Dash	Maicel Malone, Arizona State	51.05	1991
800m Run	Amy Wickus, Wisconsin	2:01.65	1994
Mile Run	Vicki Huber, Villanova	4:28.31	1988
3,000m Run	Pattie Sue Plummer, Stanford	8:53.54	1983
5,000m Run	Sonia O'Sullivan, Villanova	15:17.28	1991
High Jump	Lisa Bernhagen, Stanford	6'5 1/2"	1987
Long Jump	Carol Lewis, Houston	22'3"	1985
Triple Jump	Sheila Hudson, California	45'9"	1990
Shot Put	Regina Cavanaugh, Rice	57'11 3/4"	1986
4x400m Relay	Texas	3:30.27	1999
Pole Vault	Tracy O'Hara, UCLA	14'6"	2000

men

seminole indoor

Event	Athlete, School	Time/Mark	Year
60m Dash	Philip Riley	6.56	1994
60m Hurdles	Arthur Blake	7.56	1988
200m Dash	Jonathan Carter	21.09	1994
400m Dash	Kevin Ansley	46.73	1993
800m Run	Rob Circelli	1:48.86	1991
Mile Run	Cliff Cook	4:05.60	1979
3,000m Run	Herb Wills	8:04.10	1982
5,000m Run	Herb Wills	14:00.10	1982
4X400m Relay	Leander McKenzie, Charlie Carr, Vince Washington, Reggie Ross	3:08.67	1984
Shot Put	Mike Bell	59'0"	1987
Pole Vault	Jeff Bray	18'1/2"	1993
High Jump	Shawn Brown	7'3 3/4"	2001
Long Jump	Joe Allen	25'9"	2001
Triple Jump	Kelsey Nash	53'11 1/4"	1994
35lb. Weight	Jody Lawrence	65'2 1/4"	1999

ACC men's indoor

Event	Athlete, School	Time/Mark	Year
60m Dash	Shawn Crawford, Clem.	6.56	2000
60m Hurdles	Sutton Tucker, Clemson	7.69	2001
200m Dash	Shawn Crawford, Clem.	20.43	2000
400m Dash	Reggie Harris, North Carolina	45.94	1992
800m Run	David Krummenacker, GA Tech	1:47.40	1998
Mile Run	Tony Waldrop, North Carolina	3:56.4	1974
3,000m Run	Nolan Swanson, Wake Forest	8:03.50	1999
5,000m Run	Yehezkel Halifa, Clem.	14:04.79	1989
4x400m Relay	Georgia Tech (T. Motiejunas, J. Motiejunas, Johnson, Taylor)	3:06.00	1998
Distance			
Medley Relay	Wake Forest	9:37.51	2001
High Jump	Eric Bishop, North Carolina	7'6"	1997
Long Jump	Allen Johnson, North Carolina	26'8 1/2"	1993
Triple Jump	Mike Patton, N.C. State	54'4 1/2"	1988
Pole Vault	Jeff Bray, Florida State	18' 1/2"	1993
Shot Put	Mike Spiritoso, Clemson	63'4"	1987
Weight Throw	Isaiah Olgesby, N.C. State	68' 3 3/4"	2001

NCAA men's indoor

Event	Athlete, School	Time/Mark	Year
60m Dash	Leonard Miles-Mills, BYU	6.45	1999
60m Hurdles	Rod Woodson, Purdue	7.61	1987
200m Dash	Shawn Crawford, Clemson	20.26	2000
400m Dash	Brandon Coutts, Baylor	45.60	2000
800m Run	Paul Ereng, Virginia	1:44.84	1989
Mile Run	Tony Waldrop, North Carolina	3:55	1974
3,000m Run	Adam Goucher, Colorado	7:46.03	1998
5,000m Run	Suleiman Nyambui, Texas El Paso	13:20.4	1981
High Jump	Hollis Conway, SW Louisiana	7'9 1/4"	1989
Long Jump	Carl Lewis, Houston	27'10 1/4"	1981
Triple Jump	Charlie Simpkins, Baptist	57'5"	1981
Pole Vault	Jacob Davis, Texas	19'2 1/4"	1999
Shot Put	Terry Albritton, Stanford	70'6 1/2"	1977
4X400m Relay	Oklahoma	3:04.25	1998





Academic Support

Academic, personal and professional support are essential to college success. At Florida State University, we have developed an outstanding support program which enables student-athletes to reach their full potential.

FSU's academic support philosophy is "to offer an academic support program integrated with the total university. This will assess all student-athletes with the transition into college and provide continued support in all



Pam Overton,
Director of Student Services

phases of academic and professional development, culminating with graduation, job placement or graduate school."

To accomplish this goal, FSU has developed an academic environment which facilitates the academic success of student-athletes.

Student success is encouraged through competent academic counseling, career exploration, planning and placement and academic assistance through tutorial programs and mentors.

The program operates on a "proactive" rather "reactive" approach. At Florida State, the academic staff does not wait for an academic crisis to occur.

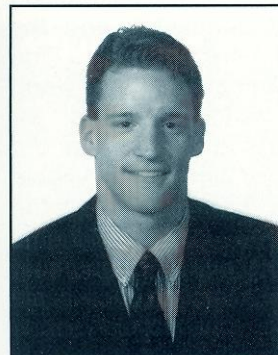
They gather important background information and build an academic profile on all student-athletes to assess their needs in advance. Coaches also stay informed on the daily progress of each student athlete.

The academic support services are located in the state-of-the-art University Center and are on the sixth floor of the \$126 million facility. It includes private study desks, a tutorial study area and a computer lab outfitted with 16 new IBM computers and laser printers. In addition, athletic sky boxes are utilized for group and individual tutorial instruction.

FSU offers 16 Schools and Colleges with 99 undergraduate degrees and 75 post-baccalaureate degrees.

Strength and Conditioning

"The Strong Shall Survive" is the motto of the strength and conditioning staff at Florida State. It is also this philosophy that has made Seminole athletes in all sports among the strongest, fastest and most fit anywhere.



Craig Acker,
Strength and Conditioning

Craig Acker is now in his third year as a graduate assistant coach on Florida State's strength and conditioning staff. Prior to his GA position, Acker served as a part time student assistant and later as a full time intern. The primary sports Acker has worked with in his past two seasons at FSU are football and track and field.

Acker received his bachelor's degree in exercise science from the University of Wisconsin – LaCrosse in 1996. Following graduation, Acker moved to south Florida where he worked as a personal trainer for three and a half years. In the fall of 1999, Acker came to FSU to pursue a master's degree in exercise physiology, which he completed in April 2001.

Medical Care and Treatment

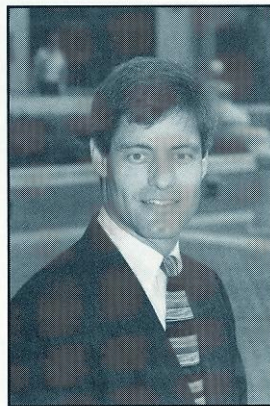
An athlete can expect to receive the best care and treatment possible with the athletic training staff at Florida State University. Prior to competition, all FSU student-athletes undergo screening in order to detect any potential injuries.

If a problem is detected, the athlete may be placed on a prevention care system which may include any kind of treatment from icing to exercising. Graduate Assistant trainer Joshua Nichter will handle the athletic training duties for the Lady Seminole track and field team this season.

Though the prevention of injuries is the main objective, some injuries are unavoidable. Rehabilitation is another facet of the Florida State training room. The FSU athletic training staff will work with the athlete and provide an intense rehabilitation schedule that will allow the athlete to successfully recover after an injury. Some injuries and illnesses may be referred to the Seminole team physicians at the Tallahassee Orthopedic Center, who, for many years, have worked in conjunction with the FSU athletic training staff in successfully rehabilitating athletes after an injury.

Drug testing is also the responsibility of the athletic training team. This program is dedicated to providing the best care possible for all FSU student-athletes.

In addition to his degrees, Acker is a certified personal trainer by the American Council on Exercise, a certified strength and conditioning specialist by the National Strength and Conditioning Association and is certified by the United States Weightlifting Club.



Mark Meloney,
Director of Athletic
Academic Support

Athletic Academic Support Program

Mark Meloney became Florida State's Director of Athletic Academic Support Programs in 1997 and brings 13 years of advising experience to the position. Over the past six years, Meloney has played an integral role in the development of a comprehensive program of student athlete support, which in 1996 won the "Program of

Excellence" award from Athletic Management Magazine. Meloney oversees an academic staff comprised of five academic counselors, and administrative assistant, several graduate assistants, individualized learning specialists and a cadre of about 70 tutors and mentors.

Meloney and his wife Sarah are the parents of a six-year-old daughter, Montana Shea.





Andi Lyons, Academic Advisor

Andi Lyons enters her second year as an academic advisor with the men's and women's track and field teams. Lyons career with Florida State track and field extends far beyond academic advising, back to 1988 when she began her college education at Florida State. Lyons competed on the Lady Seminoles' track and field squad, collecting All-America honors as part of the 4x100m relay team in 1991 and 1992, until she graduated from the University four years later. In 1992, Lyons moved to Starkville, Miss., where she started her coaching career as

an assistant with the Mississippi State University track and field program. Lyons coached hurdles and sprints, along with the field events for four years at MSU.

In 1996, Lyons returned to her alma mater to join the Seminoles' coaching staff. Lyons coached the sprints and relays as an assistant at FSU, and got an early start on her current career by working with the team's academics and compliance issues. Some of her coaching accolades include coaching the 1997 4x100m relay team to a seventh-place finish, while also coaching Tonya Carter, a future NCAA Champion, at the 1997 USA Indoor Championships. At FSU, Lyons also coached several senior football players in speed and quickness as they PREPARED for the NFL Draft.

Lyons received her bachelor's degree from Florida State in communications in 1992, and earned a master's degree in sports administration from Mississippi State in 1996.

Life Skills Career Development

Preparing for life after college sports is a major focus of the New Opportunities for leadership, Education and Service (N.O.L.E.S.) Career Development program. N.O.L.E.S. is designed to work cooperatively with the University's Career Services to acquaint students with the job search process, provide networking opportunities and ultimately assist with job placement. This program Places a priority on the development of the total person, with the goal of developing individuals who will have rewarding and productive lifestyles after they leave Florida State.

Community Service

Serving the community is the focus of our Seminole Spirit program. Student-athletes are challenged to give service to our community and individuals who are in need. With a clearly defined program of service, student-athletes are given the opportunity to develop the foundation for a lifelong commitment to volunteerism. The Seminole Spirit Student-Athlete Speakers' Bureau enables student-athletes to improve their speaking skills, develop effective communication and impact the lives of others through their service as role models in our community.

Leadership Development

The Florida State University Department of Athletics is committed to developing programs of excellence that foster leadership development. The foundation of the leadership development program are the Seminole Leadership Institutes that are held four times a year.

These Institutes offer student-athletes the opportunity to learn skills that will benefit them as students, as athletes, and as they pursue their goals after leaving Florida State. The Institutes are based on building communication skills. Students have the opportunity to use the values and work ethic taught by athletic participation as the framework for their leadership development. The Institutes attract outstanding guest speakers who challenge Seminole student-athletes to achieve their leadership skills to positively influence others.

The Student-Athlete Advisory Council (SAAC) serves as the advisory board to the N.O.L.E.S. program and the athletics administration. The prestigious board, comprised of two representatives of each athletic team at FSU, also recommends programming and serves as a liaison between student-athletes and the athletics administration. The Advisory Council plans and implements various events for student-athletes and serves as the department's most visible ambassadors. The SAAC hosts the annual Golden Nole banquet and plans such events as orientation for incoming student-athletes and the back-to-school picnic.

2001 ACC Academic Honor Roll Members

- Nathan Adams (2)**
- Ryan Atkins (2)**
- Steve Augustine (3)**
- Brooke Bastien (2)**
- Geary Bland (3)**
- Patrick Brett (3)**
- Cynthia Campbell (3)**
- Carrie Crandall**
- Jason Dean (3)**
- Allison Eagen**
- Trinetta Fisher**
- Danny Fritz (2)**
- Patrick Gerberich (2)**
- Gregory Gorski (2)**
- Katie Jeffrey**
- Kimberly Jones (2)**
- Erica Lazarus (3)**
- Beth Lukens**
- Lindsay Osborn**
- Karen Rademeyer**
- Megan Robbins**
- Amber Russell (2)**
- Jared Sweetser (2)**
- Gary Visser (3)**
- Danielle Walker**
- Sara White (4)**
- Mason Yost (3)**

THIS IS THE ATLANTIC COAST CONFERENCE



The Tradition

Consistency. It's the mark of true excellence in any endeavor.

However, in today's intercollegiate athletics, competition has become so balanced and so competitive that it is virtually impossible to maintain a high level of consistency.

Yet the Atlantic Coast Conference has defied the odds. Now in its 49th year of competition, the ACC has long enjoyed the reputation as one of the strongest and most competitive intercollegiate conferences in the nation. And that is not mere conjecture, the numbers support it.

Since the league's inception in 1953, ACC schools have captured 82 national championships, including 40 in men's competition and 42 in women's. In addition, 120 men and 31 women have earned the coveted title of NCAA champion.

The ACC also stands at the forefront of intercollegiate athletics in terms of the academic accomplishments of its student-athletes. Since 1983, 321 women's basketball players have received ACC Academic Honor Roll recognition. The 2000-01 academic year included 29 selections. In addition ACC basketball players have earned first-team Academic All-America honors six times. In 1997 NC State's Jennifer Howard was tabbed GTE CoSIDA Academic Player of the Year after posting a 4.0 grade point average throughout her career. 11 players have earned ACC Postgraduate scholarships, while three others were named NCAA Postgraduate Scholars.

2000-01 in Review

The 2000-01 academic year concluded with the league pocketing three more national team titles and four individual NCAA crowns. In all, the ACC has

won 39 national team titles over the last 11 years.

The ACC's 2000-01 national championships were North Carolina in women's soccer, Duke in men's basketball and Maryland in women's lacrosse. Overall, ACC teams posted a 73-56 (.566) mark in NCAA Tournament play.

The ACC placed at least one team in the Top 10 nationally in 15 of the 25 sports sponsored by the league. Other records of note during the 2000-01 season include 98 teams competing at NCAA Championships, five bowl teams and 43 Top 10 showings.

◆ The ACC Academic Honor Roll record was broken for the 14th-straight year in 1999-2000 as 1,664 student-athletes were recognized for their work in the classroom.

A History

The Atlantic Coast Conference was founded on May 8, 1953, at the Sedgefield Inn near Greensboro, N.C., with seven charter members — Clemson, Duke, Maryland, North Carolina, North Carolina State, South Carolina and Wake Forest — drawing up the conference bylaws.

The withdrawal of seven schools from the Southern Conference came early on the morning of May 8, 1953, during the Southern Conference's annual spring meeting. On June 14, 1953, the seven members met in Raleigh, N.C., where a set of bylaws was adopted and the name became officially the Atlantic Coast Conference.

On December 4, 1953, conference officials met again at Sedgefield and officially admitted the University of Virginia. The first, and only, withdrawal of a school from the ACC came on June 30, 1971

when the University of South Carolina tendered its resignation.

The ACC operated with seven members until April 3, 1978, when Georgia Tech was admitted. The Atlanta school withdrew from the Southeastern Conference in January of 1964.

The ACC expanded to nine members on July 1, 1991, with the addition of Florida State.

FLORIDA STATE BOARD OF TRUSTEES

ERICH BLOCH
2001-03 • Washington, D.C.

JUNEDUDA
2001-05 • Oviedo, FL

DAVID FORD
2001-04 • Rosemont, PA

DR. JESSIE FURLLOW
2001-03 • Quincy, FL

MANNY GARCIA, III
2001-05 • Winter Springs, FL

LEE HINKLE
2001-04 • Tallahassee, FL

DELMAR JOHNSON
2001-02 • Englewood, FL

HAROLD KNOWLES
2001-05 • Tallahassee, FL

DR. STANLEY MARSHALL
2001-03 • Tallahassee, FL

DR. E. ANN MCGEE
2001-04 • Winter Springs, FL

ALAN SUNDBERG
2001-03 • Tallahassee, FL

JOHN THRASHER
2001-05 • Orange Park, FL

STEVE UHLFELDER
2001-04 • Tallahassee, FL



45



ATHLETICS DEPARTMENT MISSION STATEMENT

The Mission of the Department of Intercollegiate Athletics at Florida State University shall be to produce National Collegiate Athletic Association (NCAA) Division I programs for men and women equally characterized by excellence. In addition, the Department strives to be recognized as a campus leader in terms of its ethics, non-discrimination and unquestioned fiscal integrity.

Excellence in intercollegiate athletics programs is determined by academic achievement in the classroom, as well as development of character, maturity and a sense of fair play in athletic competition. Such excellence engenders support for the University among its constituent groups including students, faculty, alumni, and friends at all levels of interest. The Department shall subscribe fully to the philosophy and regulations set forth by the National Collegiate Athletic Association and operate within the fiscal regulations and non-discriminatory procedures established by the Florida State University Board of Trustees and the Florida Legislature.

It is the explicit philosophy of the Department that our student-athletes will be strongly encouraged and supported in their endeavors to progress toward a degree while simultaneously participating in intercollegiate athletic program whose environment is consistent with the highest standards of academic scholarship, sportsmanship, ethics, and institutional loyalty. Finally, the decisions and priorities of the Department should always focus on our student-athletes first, as individuals; second, as students; and third, as athletes.

THIS IS TALLAHASSEE, FL

Among low, rolling hills, down moss-draped canopy roads, within picturesque historical districts, and across seas of flowering azaleas lies a magical part of the Sunshine State—Tallahassee, Florida's capital city. With its intriguing combination of power-play politics and classic character splashed with a twist of Southern beauty and charm, Tallahassee is a side of Florida few expect to find.

With the Gulf of Mexico just 25 miles south and the Georgia border only 14 miles north, Tallahassee rests between the foothills of the Appalachian Mountains and the juncture of Florida's panhandle and peninsula in an area known as "The Big Bend." Nearer in miles to Atlanta than to Miami, Tallahassee more closely resembles its Georgia neighbor than Florida in topography, climate and lifestyle.

Like the city itself, the story of how Tallahassee was chosen as the state capital is rich in history. In 1823, two explorers set out — one on horseback

from St. Augustine and the other by boat from Pensacola — to establish a permanent, central location for the seat of government. The two met at a beautiful site that the Creek and Seminole Indians called "tallahassee" — derived from the words "talwa," meaning town, and "ahassee," meaning old. This historic meeting place remains Florida's capital today.

Boasting more than 145 properties listed on the National Register of Historic Places, Tallahassee is a living showcase of Florida history and heritage. The crowning jewel of Florida's historic "Capitol Hill" is the Old Capitol, beautifully restored to its 1902 splendor complete with the red-and-white striped awnings, a dome adorned with stained glass, antique furnishings and political memorabilia. The 22nd-floor observatory of the New Capitol Building offers a breathtaking view of this surprising Southern city, awash in flowering aza-



leas, snowy dogwoods, towering pines, fragrant magnolias, and hundreds of lakes, springs, swamps, rivers and sink holes.

Charming downtown historic districts graced with lush linear parks lead visitors to the Knott House Museum, The Columns, First Presbyterian Church, John G. Riley House Museum and Old City Cemetery. Free walking tours and replica turn-of-the-century street cars carry passengers to antebellum mansions, picturesque churches and other downtown delights. Minutes from downtown lies the lush 52-acre natural habitat and 1880s farm of the Tallahassee Museum of History and Natural Science, home to the rare Florida panther and other furry "natives."

The area surrounding Tallahassee reveals numerous other historic and archaeological treasures, such as De Soto State Archaeological and Historical Site, Lake Jackson State Archaeological Site, Mission San Luis, Natural Bridge Battlefield and San Marcos de Apalache. Visitors can explore prehistoric Florida at the Museum of Florida History, where they are greeted by a giant 12,000-year-old mastodon pulled from nearby Wakulla Springs.

On the shores of Wakulla Springs, alligators still laze under the watchful eyes of "snake birds" perched on twisted cypress trees. The site of many underwater scenes in "Tarzan" movies, it's one of the world's deepest freshwater springs. Glass-bottomed boat tours across these mystical waters are available.

Other sightseeing favorites include the floral masterpiece of Alfred B. Maclay State Gardens; Bradley's Country Store; FAMU Black Archives; and the Tallahassee Antique Car Museum. Nearby small towns offer fascinating excursions to places such as Pebble Hill Plantation, Florida Caverns State Park, Monticello Opera House and St. George Island.

Tallahassee is almost as rich in cul-



TALLAHASSEE

In 1823, the first civilian governor, William Pope DuVal, desired a central location for the legislature to meet. He sent one explorer on horseback from St. Augustine and another by boat from Pensacola — their rendezvous point was declared Florida's capital. Nestled among the rolling foothills of the Appalachian Mountains and located in a region of the Gulf of Mexico known as the Big Bend, the Capital region is known for its Southern characteristics, gracious hospitality and lush topography.

THIS IS TALLAHASSEE, FL



Tallahassee- Leon County Civic Center

It is easy to understand why over one million people a year flock to the Tallahassee-Leon County Civic Center, what with the varied array of attractions it offers. Consider: a \$33.8 million versatile, contemporary complex with excellent facilities and a cooperative and efficient staff that knows its business. The Civic Center hosts a wide variety of concerts, family shows, Broadway shows, ice shows and sporting events. Some people come to the Civic Center to enjoy the sounds of rock, country, pop and urban concerts. Some come for the thrills of basketball, ice hockey, rodeos, arena football and three-ring spectaculars.



"Fame" — The musical



"Riverdance" — The show



Blaine Wilson — The T.J. Maxx 2000 Tour of World Gymnastics Champions



Physiography

Tallahassee's rolling landscape, typical of regions further north, is unique among the major cities of Florida. Some areas of the county, including the downtown ridge encompassing the Capitol complex, City Hall and the County Courthouse, exceed elevations of 200 feet. The highest elevation in Leon County is 288 feet, found in the northern part of the county. To the south of the city, the hills yield to the flat terrain that is typical throughout the peninsula of Florida.

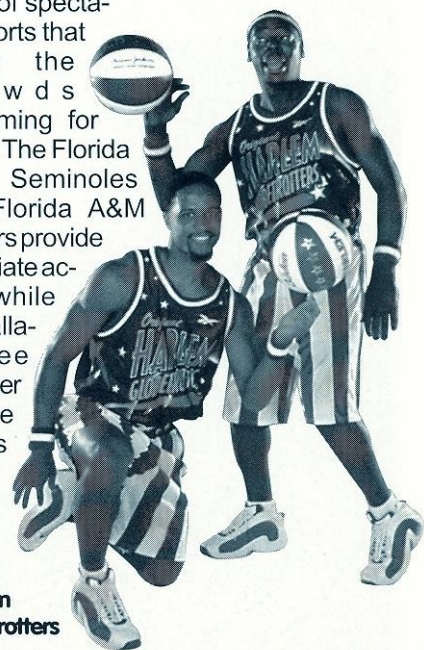


tural treasures as it is in history. A widely-acclaimed collection of art, science and history museums and galleries, year-round festivals and non-stop entertainment at the 14,000-seat Tallahassee-Leon County Civic Center, feed a variety of cultural appetites.

Visitors with a hunger for the great outdoors will find Tallahassee ideal for all types of outdoor recreation—from canoeing down dark, cypress-lined rivers and biking up steep slopes to exploring backcountry wildernesses and hunting for bobwhite quail. Area lakes, rivers, ponds and the Gulf — just 30 minutes away — offer a paradise for boating and fishing. Lakes Jackson and Talquin are renowned in the bass fishing world for yielding the "big ones." Local wild life areas, such as the St. Marks National Wildlife Refuge and Apalachicola National Forest, are perfect spots for camping, picnicking, swimming, biking and exploring.

And while Tallahassee also features

eight golf courses and plenty of places to raise a racquet, it's a wild array of spectator sports that leave the crowds screaming for more. The Florida State Seminoles and Florida A&M Rattlers provide collegiate action while the Tallahassee Thunder is the city's



The Harlem Globetrotters



THIS IS TALLAHASSEE, FL

featured arena football team. And always a sure bet are the nearby greyhound races.

For another favorite "sport" — shopping — two large regional malls and many specialty centers offer an array of "playing options," from popular chains to curiosity and antique shops.

Unique shopping locales include downtown parks, lakeside cottages and small Southern towns. Tallahassee serves a scrumptious selection of tantalizing restaurants ranging from fast food to five-star. Local specialties include homemade country sausage, melt-in-your-mouth steaks, wild game and succulent seafood fresh from the Gulf.

From luxury to economy, accommodations are plentiful and include restored bed and breakfast's, rustic "gentlemen" lodges, beachside escapes and comfortable chain hotels. For those who choose to follow in the footsteps of early travelers, Tallahassee also boasts 15 beautiful campsites. Continuous air service, Amtrak and four major highways make it easy for visitors to get to Tallahassee. But no matter how you arrive, the history and hospitality of Tallahassee make it difficult to ever leave for long.

Climate

Tallahassee has the mild, moist climate characteristics of the Gulf States and experiences a subtropical summer similar to the rest of Florida. In contrast to the Florida peninsula, however, the panhandle, of which Tallahassee is a part, experiences four seasons.

Annual January temperature:
40-63° F

Annual July temperature:
72-91° F

Yearly average maximum temperature:
78.7°

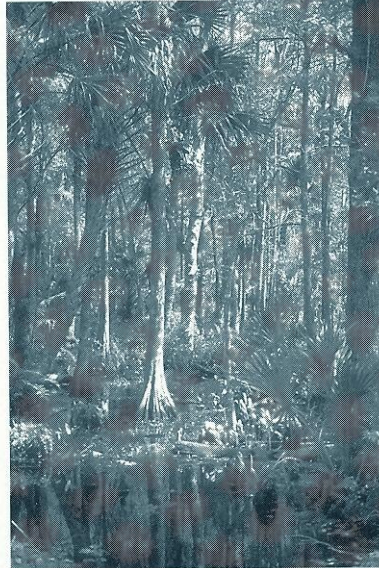
Yearly average minimum temperature:
55.7°

Yearly average days above 90 degrees:
91.0

Yearly average days below 32 degrees:
35.7

Population

City of Tallahassee 148,400
Leon County 243,300



Above: The Black Archives at Carnegie Library; Left: The Tallahassee Museum

Museums and Culture

The federal Institute of Museum and Library Services (IMLS) named the Tallahassee Museum of History and Natural Science as one of the nation's exemplary museums on September 19, 2000. The Tallahassee Museum, along with 176 other museums, was selected out of a field of 823 applications from museums throughout the nation in a highly competitive competition. The museum features a 52-acre natural habitat zoo, nature trails, authentic 1880s farmstead, hands-on Discovery Center, birds of prey aviary, reptile exhibits, annual events and more!

Other points of interest include:

Mary Brogan Museum of Art & Science

Interactive hands-on science center and national traveling art and science exhibitions.

Mission San Luis

Site of Spanish/Indian village settled from 1656-1704. Ongoing excavations/ exhibits/reconstructions.

Museum of Florida History

Permanent exhibits include a nine-foot mastodon, Spanish galleon treasures, Civil War memorabilia, reconstructed steamboat and Prehistoric Florida plus traveling exhibits.

Old Capitol Museum

Restored to 1902 appearance featuring red candy-striped awnings, stained glass dome, House and Senate Chambers, Supreme Court and Governor's office.

Maclay State Gardens

Enchanting floral architecture surrounds 1930s home of NY financier Alfred B. Maclay. Impressive grounds feature 200+ floral varieties plus hiking, biking and nature trails, swimming, fishing and boating.

Tallahassee Antique Car Museum

Impressive showroom features award winning Chevys, one-of-a-kind Ford Roadster, 1913 CarNation Tourer, 1931 Duesenberg, 1956 T-Bird, Delorean, Cadillacs, Corvettes and more. Plus two original Bat Mobiles.

The Capitol

One of 5 tower Capitols in the U.S. features panoramic view from 22-floor observatory/art gallery, House and Senate viewing galleries.



48



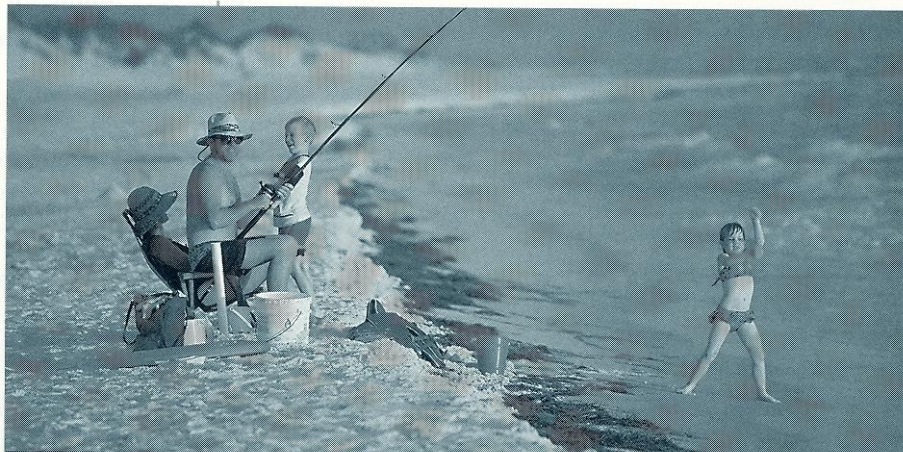
THIS IS TALLAHASSEE, FL



Tallahassee's An All-America City!

On June 26, 1999, judges from the National Civic League named Tallahassee as one of 10 cities to win the prestigious All-America City (AAC) award from the 1999 All-America City conference in Philadelphia. The All-America City award is the most prestigious and coveted award a community can win. The annual award recognizes exemplary, grassroots and problem-solving efforts of communities that cooperatively tackle challenges and achieve measurable results. Judging is based on the overall level of community involvement in solving critical local problems, including public-private partnerships.

"This is clearly one of the most exciting things to ever happen to Tallahassee," said a jubilant Mayor Scott Maddox. "For those of us who call Tallahassee home, the All-America City award verifies what we've known for so long — that we have one of the greatest cities in all of America!"



Where's the Beach?

Where sunny days are filled with the great outdoors ... where time is measured by tides and life's rhythms move with the surf ... beaches are just a short drive from Tallahassee.

Alligator Point

Natural dune public beach, 45 miles south of Tallahassee

Carrabelle

Coarse public beach, featuring swimming and shelling, 60 miles southwest of Tallahassee

Dekle Beach

Pristine sandy beach, clear water featuring boating, swimming, picnicking and more, 70 miles east of Tallahassee

MASHES SANDS BEACH

Public beach, shallow bay water featuring swimming and crabbing, 40 miles southwest of Tallahassee

St. George Island

Pristine 29-mile barrier island beach, clear water, featuring swimming, shelling, boating, and fishing, 80 miles southwest of Tallahassee

Shell Point

Lovely, small peninsula surrounded by St. Marks Wildlife refuge. Secluded beach and clear water that is popular for sailing and windsurfing, 25 miles south of Tallahassee

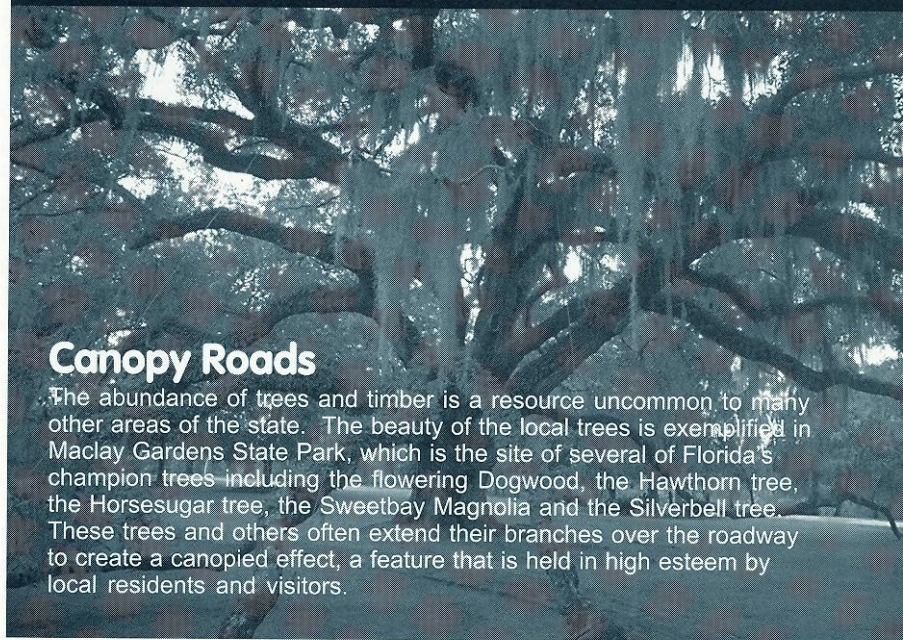


49



Canopy Roads

The abundance of trees and timber is a resource uncommon to many other areas of the state. The beauty of the local trees is exemplified in Maclay Gardens State Park, which is the site of several of Florida's champion trees including the flowering Dogwood, the Hawthorn tree, the Horsesugar tree, the Sweetbay Magnolia and the Silverbell tree. These trees and others often extend their branches over the roadway to create a canopied effect, a feature that is held in high esteem by local residents and visitors.



THIS IS FLORIDA STATE UNIVERSITY

Florida State University, a graduate research institution, stands among the nation's elite in both academics and athletics, as it celebrates its sesquicentennial anniversary in 2001.

Located on the oldest continuous site of higher education in Florida, the university is situated in the heart of the state's capital city. The university's main campus blends Jacobean Revival and modern styles of architecture with the oaks, pines, dogwoods and azaleas of North Florida.

As the university has progressed and grown — from its pre-Civil War beginnings as the Seminary West of the Suwannee, to the Florida State College for Women and, finally, returning to coeducational status as a university in 1947 — it has developed into an acclaimed research institution, a top-ranked competitor in intercollegiate athletics and as a standard-setter in the basic sciences and the performing arts.

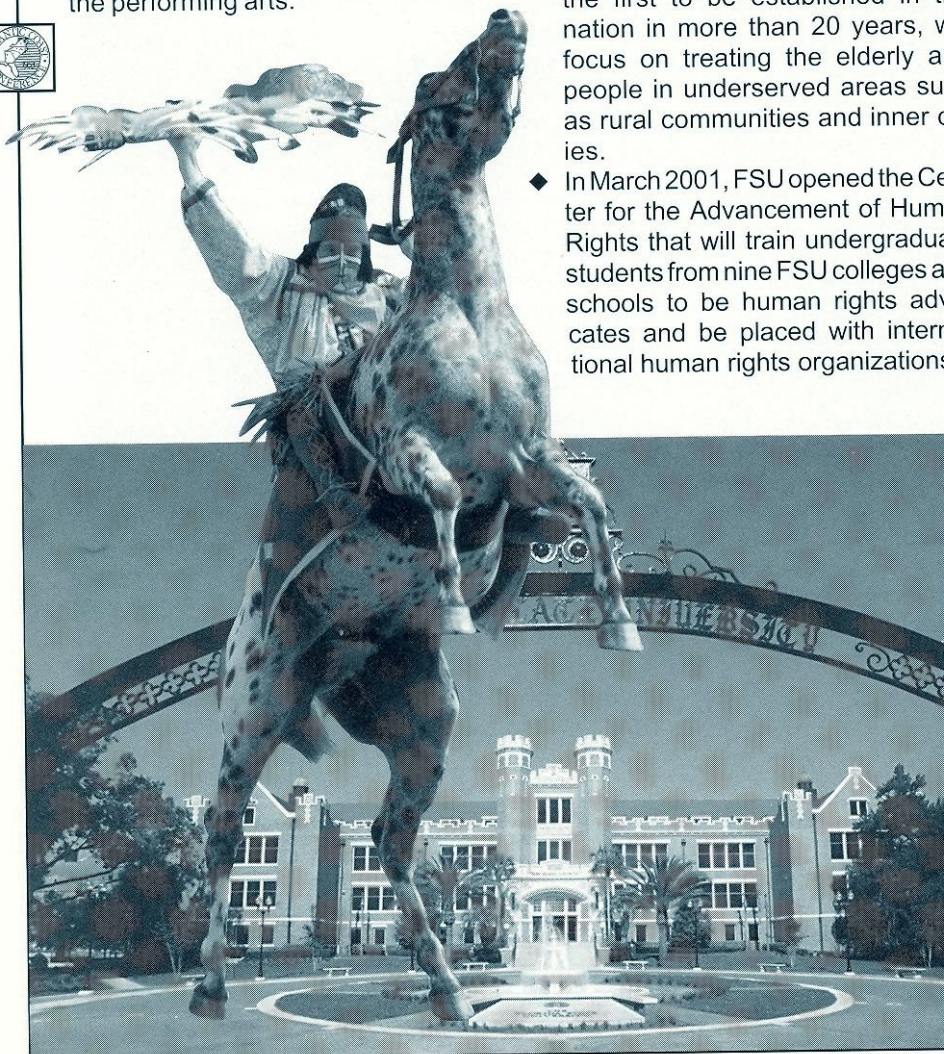
The university has entered the 21st century with excellence in all areas of its mission — teaching, research and public service, including such milestones as:

- ◆ In June 2001, NBC Nightly News anchor Tom Brokaw donated more than 5,000 collections of World War II memorabilia that had been sent to him as the result of his three-book series on "The Greatest Generation" to the FSU Institute on World War II and the Human Experience. FSU created the institute in 1998 to "save the memories of those who saved the world" by collecting letters, diaries, memoirs and photos from participants in the war effort, in order to preserve the materials for classroom teaching, scholarly research and public viewing.
- ◆ In May 2001, FSU welcomed the charter class of its College of Medicine. The allopathic medical school, the first to be established in the nation in more than 20 years, will focus on treating the elderly and people in underserved areas such as rural communities and inner cities.
- ◆ In March 2001, FSU opened the Center for the Advancement of Human Rights that will train undergraduate students from nine FSU colleges and schools to be human rights advocates and be placed with international human rights organizations.

- ◆ In the blackenterprise.com 2001 "Top Fifty Colleges for African Americans" rankings, FSU was rated 23rd in the nation, up from 26th in 1999.
- ◆ In the March-April 2001 issue of National Jurist that rated the nation's "most wired" law schools, the FSU College of Law was ranked 13th.
- ◆ The FSU School of Motion Picture, Television and Recording Arts was named among the nation's top 12 film schools in the fall 2000 "special showbiz issue" of Entertainment Weekly magazine.
- ◆ During the fall of 2000, FSU had 243 National Merit Scholars, 77 National Achievement Scholars and 28 Hispanic Scholars enrolled.
- ◆ In 2000, the Florida Legislature placed under FSU's control the Ringling Center for the Cultural Arts in Sarasota, which includes the John and Mable Ringling Museum of Art, the state art museum of Florida.
- ◆ In 2000, FSU bought the most powerful university-owned supercomputer in the world. The IBM RS/6000 Supercomputer can perform 2.5 trillion calculations per second. Located in the School of Computational Science and Information Technology, the supercomputer will be used by FSU researchers to predict hurricanes and compare DNA sequences as complex as those of the human genome.
- ◆ The Challenger Learning Center of Tallahassee, a project of the FAMU-FSU College of Engineering, is scheduled to open in March 2002. The center, to be built on Kleman Plaza in downtown Tallahassee, will feature a space mission simulator common to all of the centers, and a 300-seat IMAX theater and a domed planetarium laser theater. It will serve middle schools in a 66-county area of North Florida, Southeast Alabama and South Georgia.
- ◆ In 2000, the doctoral program in the College of Business had the highest minority enrollment of any Ph.D. business program in the United States. In recent years, it has graduated more minority doctoral students than any other Ph.D. granting institution.



50



THIS IS FLORIDA STATE UNIVERSITY



- ◆ In 2000, the National Geographic Society and FSU started the Florida Geographic Alliance to bolster geographic education among Florida school children by PREParing and equipping Florida's K-12 teachers with better information and tools.
- ◆ In 1999, FSU was selected by the U.S. Department of Energy to become one of the research institutions to operate the Oak Ridge National Laboratory (ORNL), a multiprogram science and technology laboratory in Oak Ridge, Tenn., headed by the University of Tennessee-Battelle. The five-year management and operations contract is valued at about \$2.5 billion. FSU was invited to join ORNL because of its strong faculty research activities in material sciences, structural biology, computational sciences and magnet technologies.
- ◆ At more than \$287.4 million, FSU's endowment has been ranked 150th in the nation by the National Association of College and University Business Officers, the benchmark of higher education fundraising success, in 2000. Since 1994, FSU's endowment ranking has surpassed 156 other institutions.
- ◆ In December 1999, researchers at the National High Magnetic Field Laboratory used a hybrid magnet to conduct the lab's first research in continuous magnetic fields of 45 tesla, or one million times Earth's magnetic field. The \$100 million magnet lab, which was established in 1990 by the National Science Foundation, is run by FSU in partnership with the University of Florida and the Los Alamos National Laboratory.
- ◆ In 1994, Florida State was classified a "Research University I" by the Carnegie Foundation, placing it among the nation's top research universities. In 2000, the distinction was renamed "Doctoral/Research University-Extensive."

Under the leadership of the university's 12th president, Talbot "Sandy" D'Alemberte, who took office in January 1994, FSU continues to build on the foundation of its history of excellence in scholarship, research

and service.

A senior member of the State University System, FSU was founded as an institution of higher learning in 1851 by legislative act. It began in Tallahassee with its first class of male students in 1857 and added women in 1858.

FSU's operating budget is \$656 million. Faculty and administrators generate more than \$116 million annually in external funding to supplement state-sponsored research. Three direct-support organizations serve to bolster the university: the FSU Foundation, which raised \$301 million in private gifts during the university's first capital campaign, Seminole Boosters and the FSU Alumni Association.

The main campus is spread over 463.4 acres in Tallahassee; FSU, which has one of the smallest campuses in the SUS, has been actively acquiring land in the 1990s. FSU encompasses 1,422.7 acres in Leon, Bay, Franklin, Gadsden and Sarasota counties.

Within the state, the university maintains facilities at its 25-acre campus in Panama City, its Marine Laboratory at Turkey Point on the Gulf of Mexico, the Appleton Museum in Ocala and the Asolo Performing Arts Center in Sarasota. The Center for Professional Development and Public Service, housed in the Augustus B. Turnbull III Florida Conference Center on the edge of the campus, provides extensive credit and non-credit continuing education programs statewide.

For years, FSU has reached far beyond Florida through international programs in Switzerland, France, Panama, Costa Rica, Spain, Russia, Vietnam and the Caribbean. FSU's student centers in Florence, Italy, and London, England, are considered by many to be the nation's best in Europe.

Florida State offers 294 graduate and undergraduate degree programs through its nine colleges — Arts and Sciences; Business; Communication; Education; Engineering (operated jointly with Florida A&M University); Human Sciences; Law; Medicine; and Social Sciences (which also incorporates the Reubin O'D Askew School of Public Administration and Policy) — and eight schools — Criminology and Criminal



Justice; Information Studies; Motion Picture, Television and Recording Arts; Music; Nursing; Social Work; Theatre; and Visual Arts and Dance. With 1,897 members, the FSU faculty has included nine National Academy of Sciences elected members, 10 American Academy of Arts and Sciences fellows and five Nobel laureates. It is backed by 3,136 administrative/professional and support staff.

Library holdings at Florida State include 2.3 million book titles and 6.6 million microforms. The main library facility, the Robert M. Strozier Library, is linked by computer to other state university and national research libraries. The Paul A.M. Dirac Science Library is located at the heart of the university's science research complex. FSU also maintains music, library science and law libraries, and the Mildred and Claude Pepper Library.

FSU's 6,367 graduate students pursue advanced degrees in fields as diverse as business administration and theoretical particle physics. A majority of research done at FSU is the direct result of student effort, culminating in numerous books, monographs and journal articles relating to the whole spectrum of intellectual interests and the practical needs of society.

Of FSU's 34,477-student population, 43.8 percent are male; 56.2 percent are female; 22.3 percent are minorities; and 3.7 percent are foreign students.

THIS IS FLORIDA STATE UNIVERSITY



BACKGROUND: The Florida State University is one of 10 universities of the State University System of Florida ... It was established as the Seminary West of the Suwannee by an act of the Florida Legislature in 1851 and first offered instruction at the postsecondary level in 1857 ... Its Tallahassee campus has been the site of an institution of higher education longer than any other site in the state ... In 1905, the Buckman Act reorganized higher education in the state and designated the Tallahassee school as the Florida Female College ... In 1909, it was renamed Florida State College for Women ... In 1947, the school returned to co-educational status, and the name was changed to The Florida State University ... It has grown from an enrollment of 2,583 in 1946 to an enrollment of 34,477 in the Fall Semester 2000.

ENROLLMENT (FALL 2000): Total, 35,000 ... in-state, 26,522 ... out-of-state, 2,958 ... undergrad, 26,422 ... graduate, 6,367 ... other, 1688 ... international, 3.7% ... minority, 22.3% ... male, 43.8% ... female, 56.2% ... students from all 50 states are in attendance ... 10 foreign countries contributed over 50 students each ... 19 states contributed over 100 students each

ACREAGE: 463.3 acres in Tallahassee, Leon County (Main campus) ... 25.6 acres in Panama City, Bay County. The university owns a total of 1,422.6 acres in Leon, Bay, Franklin, Sarasota, & Gadsden counties.

OPERATING BUDGET 2000-01: \$656,239,344

COLLEGES/PROGRAMS: Arts and Sciences ... Business (largest) ... Education ... Human sciences ... Information studies ... Nursing ... Criminology and Criminal justice ... Law ... Social sciences ... Social work ... Communication ... Motion picture, TV and Radio ... Music ... Theatre ... Visual arts and dance ... Engineering ... Undecided/Special

DEGREE PROGRAMS: 93 possible degrees at Bachelor's level ... 99 possible degrees at Master's level

DEGREES GRANTED FOR 1999-2000: Bachelor, 5,342 ... Masters, 1,460 ... Total, 7,285

ENTERING FRESHMAN FACTS (FALL 2000): High school GPA 3.3-4.0 ... SAT score 1090-1280 ... ACT score 23-27

RETENTION RATE: First year, 100% ... second year, 85.1% ... third year, 74% ... fourth year, 70.7%

FACULTY/STAFF: Full time 1,520 ... Part time 377 ... Total 1,897 ... Highly qualified faculty includes five Nobel Laureates ... 10 members of the National Academy of Sciences ... 4 members of the American Academy of Arts and Sciences ... a former astronaut

EDUCATIONAL ADVANTAGES: Ranks as one of top 10 universities in the country in revenues generated from scientific research and discoveries ... The country's newest Medical School ... The world's largest magnet at the National High Magnetic Field Laboratory ... Florida's most wired campus and 18th most wired campus nationally (Yahoo! Internet Life), and an Internet 2 site ... IBM hired 29 grads in 1998 ... FSU is one of only six universities from which Revlon recruits.

EDUCATIONAL OPPORTUNITIES ABROAD: The University is strongly committed to its mission in international education and offers a wide variety of educational opportunities during both the year and the summer sessions to places including London, Florence, Czech Republic, Prague, Costa Rica and Switzerland.

EXTRACURRICULAR ACTIVITIES: There are over 250 student organizations in which to become involved

FINANCIAL AID: Over \$160 million given away for financial assistance every year

STUDENT/FACULTY RATIO: 18-1 ... Many of the general education classes are large lecture classes, however over 80 percent of major classes have less than 40 students.

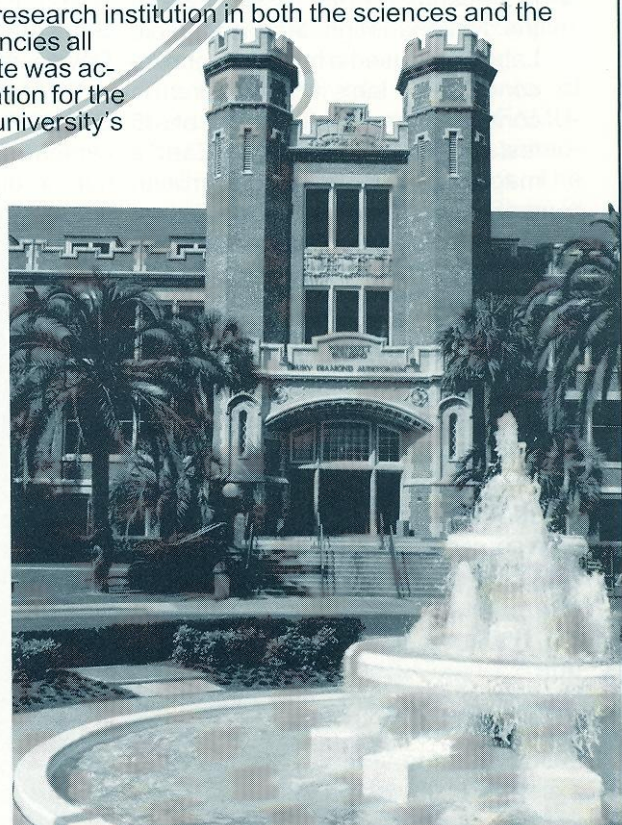
RESEARCH: Florida State University has built a reputation as a strong research institution in both the sciences and the humanities ... Private foundations, industries, and government agencies all provide funding to support research at FSU ... In 1994, Florida State was accorded the status of Research I University by the Carnegie Foundation for the Advancement of Teaching, an elite distinction that recognizes the university's strengths in doctoral programs and federal funding.

SPONSORED RESEARCH: \$102,018,403

LIBRARIES: The University libraries have volume holdings totaling over 2,300,000 books and periodicals, over 5,600 computer files and over 900,000 government documents ... The University libraries contain over 6,600,000 microforms including film, cards, print and fiche ... The Library's on-line catalog includes materials from FSU and the other nine State University System libraries, as well as access to many data bases in a variety of subjects ... Campus libraries include: The Robert Manning Strozier Library, the main library; the Paul A.M. Dirac Science Library, the Warren D. Allen Music Library; the Harold Goldstein Library School Library, the Mildred and Claude Pepper Library and the Law Library.

10 Leading States of Origin

(Enrollment)	
Florida	26,552
Georgia	865
Virginia	369
New York	293
North Carolina	260
Texas	248
Pennsylvania	241
Alabama	235
Illinois	227
New Jersey	220



52



FAMOUS ALUMNI

RITA COOLIDGE

Rita Coolidge is a two-time Grammy Award winner. She has worked with Joe Cocker (backup singer and soloist) on his "Mad Dog and Englishman" tour. She has also toured and recorded with the likes of Eric Clapton, Jimi Hendrix, Bob Dylan, Leon Russell and Stephen Stills. Coolidge co-wrote "Superstar" which was a huge hit for the Carpenters.

LEE CORSO

Lee Corso, College football Analyst for ESPN. Corso joined ESPN in 1987 after 28 years of football coaching experience at the college and professional levels – including 17 seasons as a head coach – serves as a game analyst for the Thursday night telecasts and as a studio analyst for College GameDay and the half-time and scoreboard shows. He is a member of the FSU Hall of Fame, received four varsity letters in both football and baseball at FSU.

PAUL GLEASON

A teammate of Burt Reynolds, is a very successful actor who has played a number of memorable roles including that of Clarence Beaks, the maligned courier of crop reports in "Trading Places" and the assistant principal in "The Breakfast Club."

BARBARA HARRIS

Barbara Harris is currently the Editor-In-Chief of SHAPE Magazine, the largest national monthly health and fitness publication for women in the United States. SHAPE has a current circulation of 808,634 and over 2.2 million readers. Harris, who lettered in volleyball at FSU from 1974-77, frequently appears on national and local television, radio talk shows, and is interviewed regularly by the newspaper media, sharing her experience in the areas of exercise, health, wellness, and women's issues.

TRAYLOR HOWARD

Traylor Howard, an actress best known for her role as "Sharon" in the hit TV Series "Two Guys and a Girl" (ABC). Howard appeared in more than 30 national commercials before winning the role of Joy on the comedy series "Boston Commons." Her feature film credits include "Me, Myself & Irene," with Jim Carey (2000), "Dirty Work," and "Confessions of a Sexist Pig."

GABRIELLE REECE

Gabrielle Reece is best known for her career in volleyball and as a model. Reece began modeling in 1989 and has appeared on the covers of Women's Sports & Fitness, Outside, SHAPE, Elle, Life and others. She is internationally recognized as a top fashion model and spokesperson for several companies, including Nike. Reece has co-wrote a book with Karen Karbo (July 1997) about her life as a pro volleyball player "Big Girl in the Middle" and writes a column for Women's Sports & Fitness.

BURT REYNOLDS

Academy award nominee and Golden Globe winner, Burt Reynolds has enjoyed enormous success as an actor and director in feature films, television and stage productions. Some of Burt's most prominent films include: "Mystery Alaska", "Striptease", "Citizen Ruth", "Deliverance", "Stroker Ace", "Smokey and the Bandit" and many more. Reynolds also starred in the hit television series "Evening Shade".

DR. TONEA STEWART

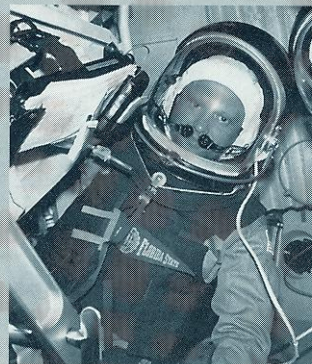
Dr. Tonia Stewart is a professional actress, tenured Professor and Director of Theatre Arts at Alabama State University. As an actor, Dr. Stewart is best known for her recurring role in "In the Heat of the Night" as Aunt Etta Kibbe. Dr. Stewart also had roles in John Grisham's film "A Time To Kill" portraying Samuel L. Jackson's wife. She won an NAACP Image Award nomination as best supporting actress in 1997. Dr. Stewart was the first African American female to receive a doctorate from the FSU School of Theatre and the first McKnight Doctoral Fellow in Theatre Arts.

NORM THAGARD

Former NASA Astronaut, Norm Thagard was a mission specialist on STS-7 in 1983 on Orbiter Challenger, the flight engineer on STS-51B in 1985, also aboard Challenger and STS-30 in 1989, on Orbiter Atlantis. He also served as the payload commander on STS-42 in 1992, aboard the Shuttle Discovery and was the cosmonaut researcher on the Russian Mir 18 mission in 1995, which required he live and train at the Gagarin Cosmonaut Training Center at Star City, Russia for more than one year prior to the mission. He logged over 140 days in space during five space flights.

ROBERT URICH

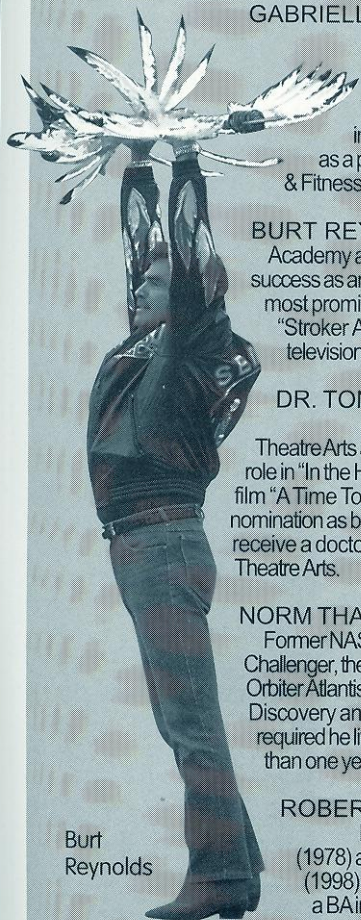
Robert Urich, actor, is best known for his roles as a private investigator on Vegas (1978) and "Spenser: For Hire" (1985) and Captain on UPN's Love Boat: The Next Wave (1998). Urich came to FSU on a four-year football scholarship. While at FSU, he earned a BA in Communications and later received an MA at Michigan State University.



ABOVE:
Norm
Thagard; RIGHT:
Robert Urich



OTHER FAMOUS ALUMNI:
Paul Azinger, professional golfer
Allan Ball, award-winning writer, received the 1999 Academy Award for Best Original Screenplay for "American Beauty"
John W. Bradley, actor, "The New Adventures of Robin Hood"
Clifton Campbell, playwright
Davis Gaines, performer, "The Phantom of the Opera"
Jane Geddes, professional golfer
Tony LaRussa, Manager, St. Louis Cardinals
Scott Maddox, Tallahassee Mayor
Victor Rivers, actor and spokesperson for The National Network To End Domestic Violence
Steven Sears, writer and producer
Randy Ser, theatrical director
Sonny Shroyer, actor, "The Dukes of Hazard"
Dr. Valint Vazsonyi, international concert pianist
Claudia Waite, award-winning Soprano.



Burt
Reynolds



Lee Corso



Paul Gleason



Gabrielle Reece



Traylor Howard



Rita Coolidge



Barbara Harris



Dr. Tonia Stewart

MEN'S NCAA QUALIFICATION MARKS



division I/indoor (sea level)

EVENT	AUTOMATIC		PROVISIONAL	
	FAT	MT	FAT	MT
55 Meters	6.16@	-	6.26@	-
60 Meters	6.62@	-	6.72@	-
55-Meter Hurdles	7.23@	-	7.39@	-
60-Meter Hurdles	7.74@	-	7.90@	-
200 Meters				
(Under 200m/220 yds)*	21.25	-	21.65	-
(200m/220 yds)*	21.10	-	21.50	-
(Banked or Over 200m/220 yds)*	20.85	-	21.25	-
400 Meters				
(Under 200m/220 yds)*	46.97	46.7	47.95	47.6
(200m/220 yds)*	46.72	46.4	47.65	47.4
(Banked or Over 200m/220 yds)*	46.32	46.0	47.25	47.0
800 Meters				
(200m/220 yds or less)*	1:48.9	1:48.6	1:50.8	1:50.5
(Banked or Over 200m/220 yds)*	1:48.3	1:48.0	1:50.2	1:49.9
Mile#				
(200m/220 yds or less)*	4:01.5	4:01.2	4:06.0	4:05.7
(Banked or Over 200m/220 yds)*	4:00.7	4:00.4	4:05.2	4:04.9
3,000 Meters#				
(200m/220 yds or less)*	8:01.3	8:01.0	8:12.0	8:11.7
(Banked or Over 200m/220 yds)*	8:00.0	7:59.7	8:10.70	8:10.4
5,000 Meters#				
(200m/220 yds or less)*	14:00.0	13:59.7	14:20.0	14:19.7
(Banked or Over 200m/220 yds)*	13:58.15	13:57.9	14:18.15	14:17.9
1,600-Meter Relay				
(Under 200m/220 yds)*	3:10.0	3:09.7	3:13.5	3:13.2
(200m/220 yds)*	3:08.5	3:08.2	3:12.0	3:11.7
(Banked or Over 200m/220 yds)*	3:06.9	3:06.6	3:10.4	3:10.1
Mile Relay				
(Under 200m/220 yds)*	3:11.2	3:10.9	3:14.7	3:14.4
(200m/220 yds)*	3:09.7	3:09.4	3:13.20	3:12.9
(Banked or Over 200m/220 yds)*	3:08.1	3:07.8	3:11.6	3:11.3
Distance Medley Relay-Meters#				
(200m/220 yds or less)*	9:40.0	9:39.7	9:48.0	9:47.7
(Banked or Over 200m/220 yds)*	9:37.75	9:37.5	9:45.75	9:45.5
Distance Medley Relay-Yards#				
(200m/220 yds or less)*	9:43.50	9:43.2	9:51.50	9:51.2
(Banked or Over 200m/220 yds)*	9:41.25	9:41.0	9:49.25	9:49.0

@ Qualifying times attained at altitude of 6,000 feet and above, add .04 seconds. Times attained at altitude of 3,000-5,999 feet, add .02 seconds.

EVENT	METRIC	METRIC
High Jump	2.25	2.16
Pole Vault	5.50	5.20
Long Jump	7.85	7.55
Triple Jump	16.20	15.60
Shot Put	19.00	17.50
35-Pound Weight	21.35	19.00

*-Size of track.
#-Altitude adjustment available.

division I/outdoor (sea level)

EVENT	AUTOMATIC		PROVISIONAL		ALTITUDE
	FAT	MT	FAT	MT	ADJ.
100 Meters	10.16	-	10.34	-	+ .03/+ .06
200 Meters	20.5	-	20.85	-	+ .07/+ .12
400 Meters	45.4	45.1	46.3	46.0	+ .11/+ .21
800 Meter	1:47.5	1:47.2	1:40.00	1:48.7	
1,500 Meters#	3:41.5	3:41.2	3:45.00	3:44.7	
Mile#	3:59.2	3:58.9	#		
3,000-Meter Steeplechase#	8:43.0	8:42.7	8:54.00	8:53.7	
5,000 Meters#	13:46.0	13:45.7	14:07.00	14:06.7	
10,000 Meters#	29:00.0	28:59.7	29:45.00	29:44.7	
110-Meter Hurdles	13.72	-	13.9	-	+ .04/+ .08
400-Meter Hurdles	50.1	49.8	51.2	50.9	+ .11/+ .21
400-Meter Relay	39.2	38.9	40.1	39.8	+ .12/+ .24
440-Yard Relay	39.4	39.1	40.3	40.0	+ .12/+ .24
1,600-Meter Relay	3:04.0	3:03.7	3:07.5	3:07.2	+ .44/+ .84
Mile Relay	3:05.2	3:04.9	3:08.7	3:08.4	+ .44/+ .84

EVENT	METRIC	METRIC
High Jump	2.25	2.18
Pole Vault	5.55	5.25
Long Jump	7.95	7.65
Triple Jump	16.30	15.70
Shot Put	19.20	17.80
Discus	60.00	56.00
Javelin	72.00	67.00
Hammer	68.00	61.00
Decathlon	7,500 points	7,150 points

#-Altitude adjustment available.

Division I Men's & Women's Indoor
TRACK & FIELD
CHAMPIONSHIPS
— Randal Tyson Track Center —
University of Arkansas • Fayetteville, Arkansas



55





WOMEN'S NCAA QUALIFICATION MARKS

division I/indoor (sea level)

EVENT	AUTOMATIC		PROVISIONAL	
	FAT	MT	FAT	MT
55 Meters	6.80 [@]	-	6.94 [@]	-
60 Meters	7.30 [@]	-	7.44 [@]	-
55-Meter Hurdles	7.64 [@]	-	7.90 [@]	-
60-Meter Hurdles	8.17 [@]	-	8.43 [@]	-
200 Meters				
(Under 200m/220 yds)*	23.90	-	24.45	-
(200m/220 yds)*	24.25	-	24.25	-
(Banked or Over 200m/220 yds)*	23.50	-	24.05	-
400 Meters				
(Under 200m/220 yds)*	54.10	-	55.30	55.0
(200m/220 yds)*	53.80	-	55.00	54.7
(Banked or Over 200m/220 yds)*	53.50	-	54.70	54.4
800 Meters				
(200m/220 yds or less)*	2:07.30	2:07.0	2:10.00	2:09.70
(Banked or Over 200m/220 yds)*	2:06.9	2:06.6	2:09.6	2:09.3
Mile#				
(200m/220 yds or less)*	4:43.2	-	4:49.0	4:48.7
(Banked or Over 200m/220 yds)*	4:42.6	-	4:48.4	4:48.1
3,000 Meters#				
(200m/220 yds or less)*	9:24.0	9:23.7	9:38.0	9:37.7
(Banked or Over 200m/220 yds)*	9:23.2	9:22.9	9:37.2	9:36.9
5,000 Meters#				
(200m/220 yds or less)*	16:21.55	16:20.3	16:50.0	16:49.7
(Banked or Over 200m/220 yds)*	16:20.0	16:19.7	16:48.45	16:48.2
1,600-Meter Relay				
(Under 200m/220 yds)*	3:39.0	3:38.7	3:45.00	3:44.7
(200m/220 yds)*	3:37.0	3:36.7	3:43.0	3:42.7
(Banked or Over 200m/220 yds)*	3:35.8	3:35.5	3:41.8	3:41.5
Mile Relay				
(Under 200m/220 yds)*	3:40.25	3:40.0	3:46.25	3:46.0
(200m/220 yds)*	3:38.25	3:44.0	3:44.25	3:44.0
(Banked or Over 200m/220 yds)*	3:37.05	3:36.8	3:43.05	3:42.8
Distance Medley Relay-Meters#				
(200m/220 yds or less)*	11:21.00	11:20.7	11:38.0	11:37.7
(Banked or Over 200m/220 yds)*	11:19.00	11:18.7	11:36.0	11:37.7
Distance Medley Relay-Yards#				
(200m/220 yds or less)*	11:25.20	11:24.9	11:42.2	11:41.9
(Banked or Over 200m/220 yds)*	11:23.2	11:22.9	11:40.2	11:39.9

[@] Qualifying times attained at altitude of 6,000 feet and above, add .04 seconds. Times attained at altitude of 3,000-5,999 feet, add .02 seconds.

EVENT	METRIC	METRIC
High Jump	1.83	1.77
Pole Vault	4.10	3.65
Long Jump	6.40	6.10
Triple Jump	13.15	12.55
Shot Put	16.10	14.90
20-Pound Weight	19.50	17.70

*-Size of track.

#-Altitude adjustment available.

division I/outdoor (sea level)

EVENT	AUTOMATIC		PROVISIONAL		ALTITUDE
	FAT	MT	FAT	MT	3k-5,999/6k+
100 Meters	11.3	-	11.55	-	+3/+07
200 Meters	23.1	-	23.6	-	+7/+14
400 Meters	52.4	52.1	53.7	53.4	+11/+21
800 Meter	2:05.0	2:04.7	2:07.5	2:07.2	
1,500 Meters#	4:19.0	4:18.7	4:24.0	4:23.7	
Mile#	4:39.64	4:39.4	4:43.39	4:41.1	
3,000-Meter Steeplechase#	10:00.0	9:59.7	10:40.0	10:39.7	
5,000 Meters#	16:08.0	16:07.7	16:48.0	16:47.7	
10,000 Meters#	34:10.0	34:09.7	35:15.0	35:14.7	
100-Meter Hurdles	13.1	-	13.6	-	+04/+08
400-Meter Hurdles	57.3	57.0	59.2	58.9	+11/+21
400-Meter Relay	44.0	43.7	45.1	44.8	+12/+28
440-Yard Relay	44.2	43.9	45.3	45.0	+12/+28
1,600-Meter Relay	3:33.0	3:32.7	3:39.0	3:38.7	+44/+84
Mile Relay	3:34.2	3:33.9	3:40.2	3:39.9	+44/+84

EVENT	METRIC	METRIC
High Jump	1.83	1.79
Pole Vault	4.15	3.80
Long Jump	6.50	6.20
Triple Jump	13.30	12.80
Shot Put	16.10	14.90
Discus	54.50	50.00
Javelin	51.50	46.00
Hammer	61.00	56.00
Decathlon	5,550 points	5,175 points

#-Altitude adjustment available.

Division I Men's & Women's Indoor
TRACK & FIELD
CHAMPIONSHIPS
— Randal Tyson Track Center —
University of Arkansas • Fayetteville, Arkansas



Mike Long Track Records

MEN	EVENT	WOMEN
1988 Andre Cason 10.11	100m	1984 Randy Givens 11.27
1988 Reggie McCray 20.42	200m	1986 Pauline Davis 23.08
1999 Ken Harnden 45.32	400m	2001 Samantha George 52.04
1994 Mark Everett 1:46.24	800m	1996 Joetta Clark 2:01.10
1986 Ocky Clark 3:43.02	1500m	1988 Evelyn Adiru 4:16.42
1982 Barry Brown 13:45.20	5000m	2001 Breeda Dennehy-Willis 15:54
1983 Jim Sapiezza 29:06.56	10,000m	1987 Kerrie Yenchak 34.27.8
1986 Brian Abshire 8:26.46	3000m STEEPLE	2001 Brooke Bastien 10:50.77
1987 Arthur Blake 13.27	110H/100H	1988 Kim McKenzie 12.92
1992 Derrick Adkins 48.64	400M HURDLES	1996 Kim Batten 54.41
1992 Jeff Bray 18' 6 1/2" (5.65m)	POLE VAULT	2001 Megan Robbins 12' 8 1/4" (3.87m)
1997 Cameron Wright 7' 6" (2.29m)	HIGH JUMP	1992 Tisha Waller 6' 2 3/4" (1.90m)
1982 Larry Myricks 27' 6 3/4" (8.40m)	LONG JUMP	1986 Esmeralda Garcia 21' 6 3/4" (6.57m)
2000 Johnathon Edwards 56' 5 1/4" (17.20m)	TRIPLE JUMP	2000 Karine Black 44' 2 3/4" (13.48m)
1988 Chris Volgenau 65'9" (20.04m)	SHOT PUT	1999 Dawn Dumble 57' 7 3/4" (17.57m)
1986 Bradley Cooper 211' 4" (64.41m)	DISCUS	1986 Kathy Landry 189' 3" (57.68m)
1987 Jim Driscoll 223' 11" (68.26m)	HAMMER	2000 Lakeisha Mose 179' 4" (54.66m)
1994 Sigg Einarson 255' 9 1/4" (77.96m)	JAVELIN	1994 Cindy Herceg 182' 11 1/4" (55.76m)
1987 Gary Armstrong 8203 Points	DEC/HEP	1995 Rebecca Grube 5457 Points
1984 Bud Light Track Club 39.15	4x100m	1984 Florida State University 43.9
James Butler, Marty Krulee,	RELAY	Michelle Finn, Marita Payne,
Calvin Smith, Mel Lattany		Brenda Cliette, Randy Givens
1985 Georgia Tech 3:03.34	4x400m	1996 Florida State University 3:32.7
Mike Krehnbrink, Tom Hind,	RELAY	Yashiva Edwards, Maria Embon,
Carlyle Bernard, Mike Armour		Erica Shepard, Sophia Danvers

HOME OF THE SEMINOLES 2 136 429 MIKE LONG TRACK

2002 Florida State Track & Field Schedule

INDOOR

January

- | | | |
|-------|--------------------------|---------------------|
| 12 | Florida Intercollegiates | @ Gainesville, Fla. |
| 18-19 | UNC Invitational | @ Chapel Hill, N.C. |
| 25-26 | UNC Classic | @ Chapel Hill, N.C. |

February

- | | | |
|-------|---------------------------|---------------------|
| 1-2 | Adidas Invite | @ Lincoln, Neb. |
| 9-10 | Gator Invitational | @ Gainesville, Fla. |
| 15-16 | ACC Indoor Championship | @ Chapel Hill, N.C. |
| 26-27 | Virginia Tech Last Chance | @ Blacksburg, Vir. |
| 27 | Gator Last Chance | @ Gainesville, Fla. |

March

- | | | |
|-----|----------------------------|----------------------|
| 1 | Iowa State Last Chance | @ DeMoines, Iowa |
| 1-2 | USATF Indoor Championships | |
| 7-9 | NCAA Indoor Championships | @ Fayetteville, Ark. |

OUTDOOR

March

- | | | |
|-------|-----------------------|---------------------|
| 2 | FSU Season Opener | @ Mike Long Track |
| 9 | FAMU Relays | @ Tallahassee, Fla. |
| 15-16 | Snowbird Invitational | @ Mike Long Track |
| 20-23 | FSU Relays | @ Mike Long Track |
| 28-30 | Florida Relays | @ Gainesville, Fla. |
| 29-30 | Stanford Invitational | @ Palo Alto, Calif. |

April

- | | | |
|-------|---------------------------|-------------------------|
| 4-6 | Texas Relays | @ Austin, Texas |
| 6 | Georgia Tech Invitational | @ Atlanta, Ga. |
| 13 | FSU Quad Meet | @ Mike Long Track |
| 19-20 | ACC Outdoor Championships | @ Charlottesville, Vir. |
| 25-27 | Penn Relays | @ Philadelphia, Penn. |

May

- | | | |
|--------|----------------------------|-------------------------------------|
| 4 | Georgia Bulldog Classic | @ Athens, Ga. |
| 5 | Jesse Owens Invitational | @ Columbus, Ohio (Invited Athletes) |
| 11 | Seminole Twilight | @ Mike Long Track |
| 17-18 | Reebok Invitational | @ Atlanta, Ga. |
| 29- | NCAA Outdoor Championships | @ Baton Rouge, La. |
| June 1 | | |

