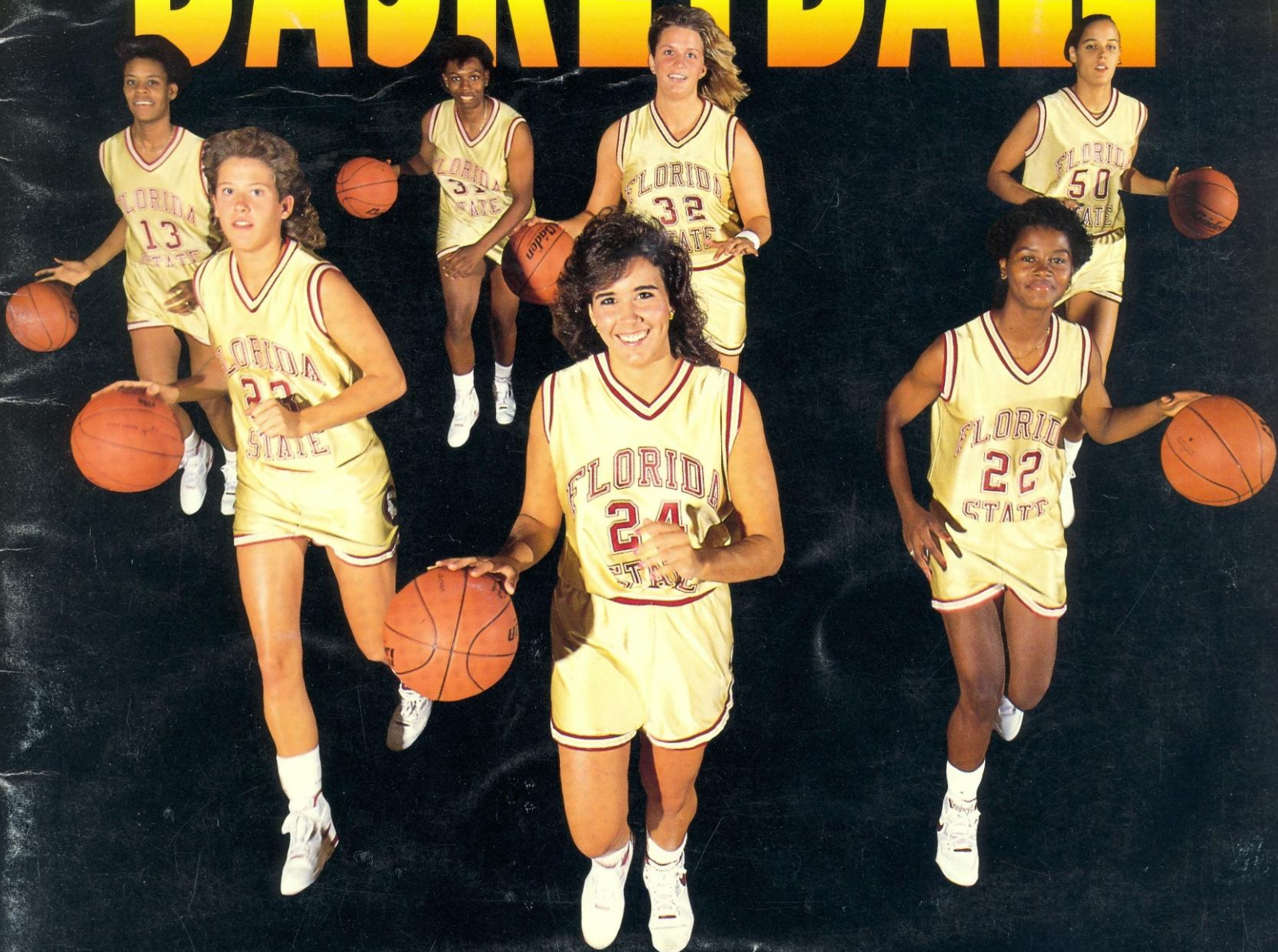


FLORIDA STATE UNIVERSITY

L A D Y  
**SEMINOLE**  
**BASKETBALL**



1989-1990

## 1989-90 FLORIDA STATE LADY SEMINOLE BASKETBALL SCHEDULE

	OPPONENT	TIME	SITE
<b>LSU CRAWFISH CLASSIC, BATON ROUGE, LA</b>			
Nov. 24	South Alabama	6:30 pm	Baton Rouge, LA
Nov. 25	LSU/George Washington	TBA	Baton Rouge, LA
<b>TALLAHASSEE HILTON CLASSIC, TALLAHASSEE, FL</b>			
Dec. 1-2	UNC-Charlotte vs. Stetson	5:30 pm	Tallahassee, FL
	Florida State vs. vs. Mississippi State	7:30 pm	Tallahassee, FL
Dec. 6	Alabama	7:30 pm	Tuscaloosa, AL
Dec. 18	Stetson	7:30 pm	DeLand, FL
Dec. 30	APPALACHIAN STATE	7:00 pm	Tallahassee, FL
Jan. 4	Georgia Southern	7:30 pm	Statesboro, GA
Jan. 6	Virginia Tech	7:30 pm	Blacksburg, VA
Jan. 8	TULANE *	4:00 pm	Tallahassee, FL
Jan. 10	FLORIDA	7:00 pm	Tallahassee, FL
Jan. 13	LOUISVILLE	7:00 pm	Tallahassee, FL
Jan. 15	CINCINNATI	7:00 pm	Tallahassee, FL
Jan. 17	Auburn	7:00 pm	Auburn, AL
Jan. 22	SOUTH CAROLINA	7:00 pm	Tallahassee, FL
Jan. 27	Southern Mississippi	7:30 pm	Hattiesburg, MS
Jan. 29	Memphis State	7:30 pm	Memphis, TN
Feb. 3	VIRGINIA TECH	7:00 pm	Tallahassee, FL
Feb. 5	Tulane	7:30 pm	New Orleans, LA
Feb. 10	Louisville	3:00 pm	Louisville, KY
Feb. 12	Cincinnati	7:30 pm	Cincinnati, Ohio
Feb. 15	@ Florida A&M *	7:00 pm	Tallahassee, FL
Feb. 17	MIAMI *	4:00 pm	Tallahassee, FL
Feb. 21	GEORGIA	7:00 pm	Tallahassee, FL
Feb. 24	SOUTHERN MISSISSIPPI	4:00 pm	Tallahassee, FL
Feb. 26	MEMPHIS STATE	7:00 pm	Tallahassee, FL
Mar. 3	South Carolina	1:00 pm	Columbia, SC
Mar. 8-10	<b>Metro Conference Tournament</b>		Cincinnati, OH
Mar. 14	NCAA Tournament, First Round		Campus Sites
Mar. 17	NCAA Tournament, Second Round		Campus Sites
Mar. 23-25	NCAA Regional Tournament		Campus Sites
Mar. 30-Apr. 1	NCAA Final Four		Knoxville, TN

\* Denotes game to be played at the Tallahassee-Leon County Civic Center, all other home games will be played at Tully Gym

## TABLE OF CONTENTS

1989-90 Schedule .....	IFC
University and Athletic Department	
Quick Facts .....	1
1989-90 Season Outlook: .....	2-3
Head Coach Marynell Meadors .....	4
Olympic Festival Gold Medal .....	5
Assistant Coaches: Freda Glover, Robyn Markey, Julie Brown .....	6-7
Lady Seminole Support Staff .....	7
1989-90 Travel Itinerary .....	7
<b>LADY SEMINOLES ROSTER</b>	
Numerical & Alphabetical Roster .....	8
<b>PLAYER BIOGRAPHIES: .....</b>	
Maria Lardie .....	9
Wanda Burns .....	10
Robin Corn .....	11
Chris Davis .....	12
Karen Galloway .....	13
Kelli Test .....	14
Karen Thomas .....	15
Tanya Fowler .....	16
Luz Lopez, Shannon Hodge .....	17
Chantelle Dishman, Tia Paschal .....	18
Danielle Ryan, Tracy Walker .....	19
<b>1989-90 STATS AND RESULTS: .....</b>	
Florida State Game-by-Game Results .....	20
Final Lady Seminole Basketball Statistics .....	21
Metro Conference Statistics .....	21
Improvement with Meadors .....	21
Florida State Highs/Lows 1988/89 .....	22
1988/89 Florida State Individual Highs .....	22
Team Game-by-Game Totals .....	23
Individual Points/Rebounds Game-by-Game .....	24
Team Game-by-Game Totals .....	23
Metro Conference Tournaments .....	24
1988-89 Honors .....	25
Commissioner's List .....	25
"Buzz" Narbut Award .....	25
<b>1989 FSU OPPONENTS .....</b>	
Records Against Opponents .....	30
All-Time Letterwinners .....	31
Individual Single Game Records for FSU and Opponents .....	32
Florida State Single Game Highs .....	32
Single Season Records .....	33
Career Records .....	34
Year-by-Year .....	35-37
Coaching Records .....	37
This is Florida State University .....	38-39
Metro Conference .....	40
1989/90 Lady Seminoles .....	IBC

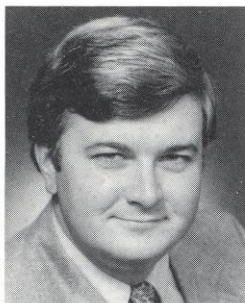
### BROCHURE CREDITS

Editor .....	Nick Gandy
Editorial Assistance .....	Donna Turner
Research Assistance .....	Keven Lerner
Photography .....	Jerry Kutz Sam Lewis Jim Midgett Steve Spencer Ray Stanyard
Graphic Design .....	Vision Marketing, Inc. Tallahassee, FL
Printing .....	Gandy Printing, Tallahassee, FL

### ON THE COVER

The 1989-90 version of the Florida State Lady Seminole basketball team has more upperclassmen than any other FSU team coached by Marynell Meadors. Pictured here are the six juniors (Kelli Test, Wanda Burns, Chris Davis, Karen Thomas, Karen Galloway and Robin Corn) and one senior (Maria Lardie) which will hit the floor at Tully Gym. Photo by Ray Stanyard.

## NOTE TO MEDIA



Nick Gandy  
Assistant SID  
(Women's  
Basketball)

**OBTAINING PRESS CREDENTIALS:** Requests for working credentials should be made to Nick Gandy, FSU Sports Information Office (904) 644-1091, at least one week prior to the game for which credentials are being requested. For FSU home games at Tully Gymnasium, media will be placed along the press table on the floor in front of the North stands. Ample parking is readily available and no pass is required.

**PHOTOGRAPHERS:** Accredited photographers will be admitted to Tully Gym upon presentation of appropriate credentials. Working credentials should be requested at least one week in advance from the FSU Sports Information Office.

**PLAYER AND COACH INTERVIEWS:** Head coach Marynell Meadors and her players will be more than happy to accommodate the media with interviews. Media representatives may contact Nick Gandy at (904) 644-1091 to set up telephone or personal interviews with players for a convenient time. The best time to reach Coach Meadors by phone is in the mornings before 11AM. If unable to reach the coach, contact Gandy for interview times.

**POST GAME INTERVIEWS:** Following a five- to ten-minute cooling off period, Coach Meadors and her team will be available for media interviews in Room 100 of Tully Gymnasium.

**RADIO:** Sections for radio broadcast are reserved at Tully Gym for opponents. WVFS-FM (89.7) will broadcast all games locally.

**TELEPHONES:** Telephone service is available at Tully Gym. In order to obtain an individual line for broadcasting, contact Centel Telephone Company of Tallahassee. Call Centel at (904) 681-6600 and have them contact FSU Sports Information for placement.

**GAME SERVICES:** A running play-by-play will be provided along with shot charts, half time and final statistics.

## UNIVERSITY AND ATHLETIC DEPARTMENT

### About Florida State

Enrollment	26,000
Founded	1857
Nickname	Lady Seminoles
Colors	Garnet and Gold
Conference	Metro
Affiliation	NCAA Division I
President	Dr. Bernard F. Sliger

### About the Athletic Staff

Acting Athletic Director	Bob Goin
Assistant Director	Dr. Jan Stocker
Administrative Asst.	Missy Garrett
Academic Advisors	Trudy Raybun Dr. Beverly Yerg

### About Women's Basketball

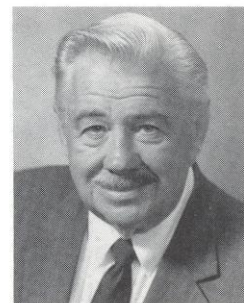
Head Coach	Marynell Meadors, Middle Tennessee St., 1965
Record at FSU/Years	34-48/Three (3) years
Career Record/Years	397-187/Nineteen (19) years
Assistant Coaches	Robyn Markey, Tennessee Tech, 1982 Freda Glover, Cheyney, 1981 Julie Brown, Rhodes College, 1987 Kim Ferrill Stephanie Hensley, Juli Jacoby, Danna Marlot
Graduate Asst.	(904) 644-1091
Athletic Trainer	Mornings 9-11 AM
Managers	16-11
Basketball Office Phone	7-5, Third
Best Time to reach Meadors	
1988-89 Record	
Conference Record/Finish	

### Breakdown by Class

Seniors:	One (1); Maria Lardie
Juniors:	Six (6); Chris Davis, Wanda Burns, Robin Corn, Kelli Test, Karen Thomas, Karen Galloway
Sophomores:	Three (3); Shannon Hodge, Luz Lopez, Tanya Fowler
Freshmen:	Four (4); Tia Paschal (Redshirt), Danielle Ryan, Tracy Walker, Chantelle Dishman

### About the Sports Information Staff

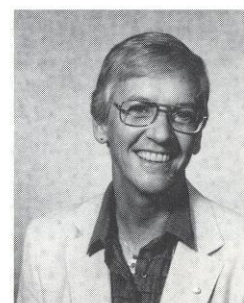
Director	Wayne Hogan
SID Office Phone	(904) 644-1403
SID for Women's Basketball	Nick Gandy
Office Phone	(904) 644-1091
Gandy Home Phone	(904) 877-0668
SID Fax Phone	(904) 644-3820



Dr. Bernard F. Sliger  
President



Bob Goin  
Acting Athletic Director



Dr. Jan Stocker  
Assistant Athletic Director

## Size Adds New Dimension to Florida State Attack

---

Take notice. The Florida State Lady Seminole basketball team will no longer be out-rebounded.

With the addition of players taller than six feet, opponents will no longer easily reach over FSU players for rebounds. Not only will these players be able to stand with the tall trees, they'll outrun them.

"The average collegiate post player stands about 6-1," said Meadors. "This year we will have players that size, but much quicker."

Quickness. A part of the game Marynell Meadors loves. In her first three years at Florida State, she has used speed to her (teams') advantage. Now with height in the lineup, she and the Lady Seminoles are looking to complete a puzzle which has been minus a few pieces.

Added to the Florida State lineup for the 1989-90 season is junior Karen Galloway (6-2), and freshmen Chantelle Dishman (6-1), Tia Paschal (6-1) and Tracy Walker (6-1). Along with returnees Maria Lardie (6-3), Karen Thomas (5-11) and Shannon Hodge (5-11), these players give the Lady Seminoles the height to control the boards.

"Our rebounding and put-back possibilities are much greater," Meadors said. "In the past, we had to rely on positioning to rebound. Now we'll be able to go up with the opponent and have a good chance to score."

In past seasons, FSU has been known to rely on a single scoring threat. With the additional height, Florida State can score from the inside as well as the outside.

The Lady Seminoles are not without a talented guard corps. Returning for their third complete seasons are Robin Corn and Chris Davis. The pair have been on the court since their freshmen

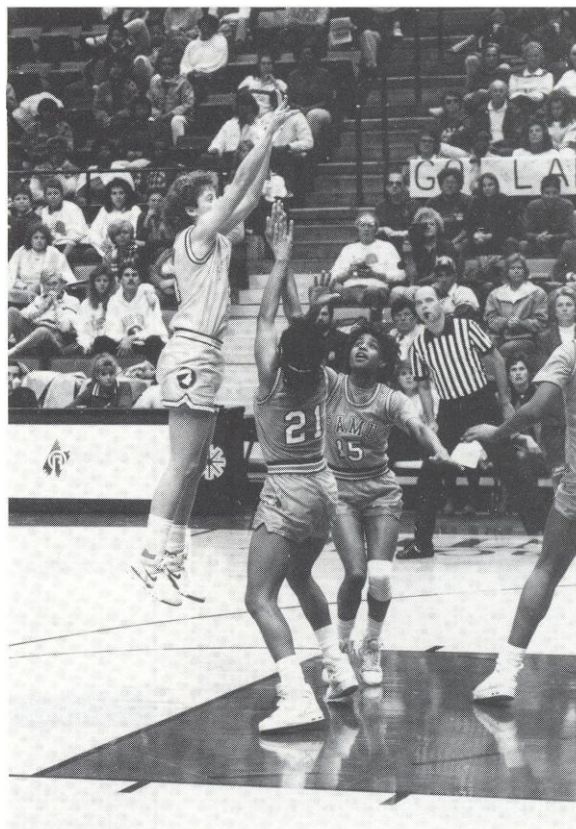
seasons and have, without a doubt, improved with age.

The feisty Corn, a starter in 52 of her 54 collegiate games, should be more of an offensive threat in 1989-90 and Davis, who is beginning to appear among career leaders in several categories, will continue where she left off last season.

"This could be a year people see a Chris Davis no one has ever seen," said Meadors of Davis, who has averaged 12.7 ppg in her first two seasons. "In her first two seasons, she might have taken a back seat in certain situations. She now has a chance to be a tremendous contributor on offense this season."

Another projected offensive threat is the lightning-quick Wanda Burns. In Burns first year, she averaged 11.4 ppg and led the team with 92 assists. Meadors predicts more scoring and assists for Burns this season.

"Wanda's passes are so quick that on occasion our post players were not ready for them," Meadors said. "This year, we've got players inside



Junior Robin Corn, FSU's starting point guard for the past two seasons, ranks among career assist leaders, with 150. In the 1989-90 season, the coaching staff hopes she will take on more of a scoring role with jumpers like this.

that can react to that kind of quickness."

Other guards expected to contribute are junior Kelli Test, a three-point threat, sophomores Tanya Fowler and Luz Lopez, along with freshman Danielle Ryan.

One of FSU's delightful dilemma's this season will be how to best use redshirt freshman Tia Paschal. Meadors hinted that the talented Georgian could be used at a wing, or could be used as a post player. The only problem could be the reconstructive knee surgery she underwent last season.

"Providing she stays healthy," Meadors said. "She will be one of the great ones. She rebounds, scores, passes and can shoot three pointers. She can score from the outside as well as inside."

Defensively, Florida State will once again use its quickness to frustrate opponents. Last season, the Lady Seminoles led the Metro Conference in turnover ratio with a +4.5 margin. Between Burns, Corn and Davis, the trio combined for 136 steals and will look to top that mark using an intense pressure defense.

"Teams will know that we are going to press," Meadors said. "They just won't know when. We've got players on our team that would rather steal than score."

Facing the Lady Seminoles in 1989-90 is perhaps the toughest FSU schedule ever, certainly since Meadors has come aboard. Following a pair of season-opening tournaments, the LSU Crawfish Classic and the fourth annual Tallahassee Hilton Classic, FSU will play a well-rounded schedule of regional opponents.

Besides a 14-game schedule of Metro Conference opponents, Florida State will face six teams from the Southeastern Conference, long-regarded as the toughest competition in women's basketball. The Lady Seminoles will meet Mississippi State, Florida and Georgia at home, and has road games against Alabama, LSU and national runner-up Auburn.

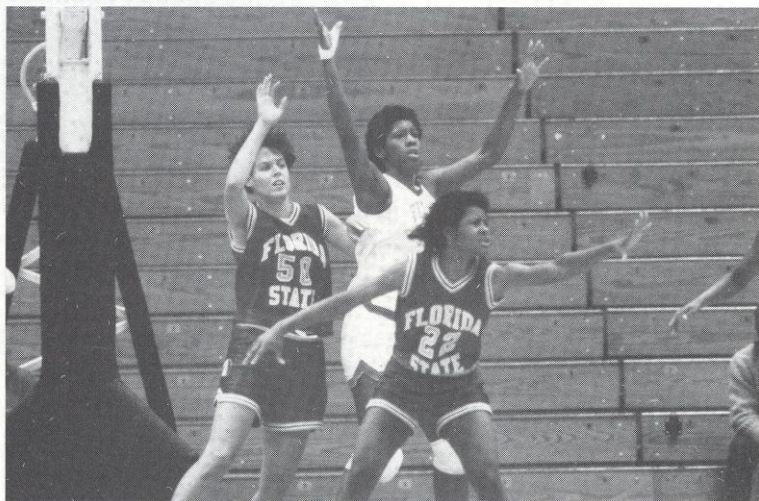
With the burden of consecutive losing seasons lifted, the Lady Seminoles established themselves with a 16-11 record in 1988-89. The best is yet to come, according to Meadors.

"We have a chance to start a great tradition at Florida State," she said. "But this could be a very interesting year. We had great depth last season, but we've got strong players at every position and an abundance of them."

Take notice. The Florida State Lady Seminoles have arrived.

## GUARDS

12	Luz Lopez	5-6, Sophomore	0.0 ppg,	0.0 rpg
13	Chris Davis	5-9, Junior	12.7 ppg,	4.7 rpg
14	Tanya Fowler	5-9, Sophomore	0.9 ppg,	0.7 rpg
22	Wanda Burns	5-7, Junior	11.4 ppg,	3.0 rpg
23	Robin Corn	5-9, Junior	4.6 ppg,	2.5 rpg
24	Kelli Test	5-9, Junior	2.0 ppg,	0.6 rpg
33	Danielle Ryan	5-10, Freshman		



The quickness of Maria Lardie (left) and Wanda Burns (right) typify Florida State's tenacious defense.

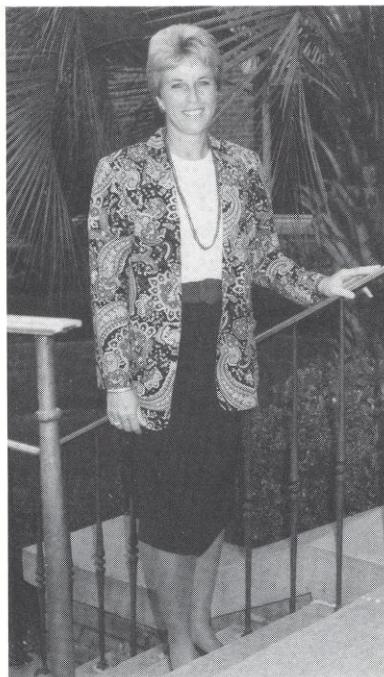
## FORWARDS

10	Shannon Hodge	5-11, Sophomore	0.4 ppg,	0.8 rpg
30	Tia Paschal	6-1, Freshman		
31	Karen Thomas	5-10, Junior	3.8 ppg,	3.0 rpg
44	Chantelle Dishman	6-1, Freshman		

## CENTERS

32	Karen Galloway	6-2, Junior	First Season	
34	Tracy Walker	6-1, Freshman		
50	Maria Lardie	6-3, Senior	5.3 ppg,	3.8 rpg

**HEAD COACH**  
**MARYNELL MEADORS**  
 MIDDLE TENNESSEE  
 STATE, 1965  
**OVERALL RECORD:**  
 397-187 (.668), 19 years  
 FLORIDA STATE  
 RECORD:  
 34-48 (.415),  
 Entering fourth season



Marynell Meadors enters the 1989-90 season, her fourth at Florida State, with a burden off her shoulders.

She has finally put all skeptics aside. The ones that scoffed when she said that in three years, she would field a winner for Florida State women's basketball. The 1988-89 version of the Lady Seminoles finished the season with a 16-11 slate and an even more surprising third place finish in the Metro Conference. After all, league coaches picked Florida State to finish fifth.

Now with three recruiting classes behind her, Meadors can boast of a team which will feature a run-and-gun offense and a highly intense pressure defense. It was these kind of athletes she pursued to put an exciting brand of basketball on the court at Tully Gym.

After the successful 1988-89 season, Meadors took that same brand of basketball to the 1989 Olympic Festival in Oklahoma City, OK as the coach of the north team. Following an opening round loss to the east team, her squad rebounded to win its other two games and avenge the earlier loss to take the gold medal.

The Festival victory puts Meadors in line to coach other international teams in competition such as the Pan American Games, World Games and the United States Olympic team.

In a successful 19 year coaching career, Meadors has proven herself a winner prior to Florida State. In 16 seasons at Tennessee Technological University, Meadors accumulated 363 wins after starting the program from scratch in 1970. She became the first women's coach to win 300 games at one institution

and ranks among national leaders in career wins.

In her 19 years as a head coach, Meadors has produced 13 20-win seasons, won the Ohio Valley Conference Championship four times while at Tennessee Tech and was named the Ohio Valley Conference Coach of the Year in 1978 and 1984. Twelve times, under Meadors, Tennessee Tech advanced into post-season play.

As one of the spokespersons on the sport, Meadors has been honored with positions on several selection committees during her coaching career. Since 1976, she has been a member of the Selection Committee for Women's Basketball Top 20. She has also held posts on the Kodak All-American Selection Committee, the Stayfree Coach and Player of the Year Awards, the Converse Coach of the Year Award, the National Sports Festival Selection Committee, the U.S. Olympic trials and the NCAA Mideast Basketball Committee.

At Florida State, Meadors has worked to educate the community on women's basketball. She is a regular speaking guest at local functions and has worked to publicize Lady Seminole basketball through newspapers by being available for interviews at any time. The 1988-89 season produced another landmark as Meadors initiated the broadcast of all FSU games on radio and also appeared on a weekly television show reviewing past games and previewing the upcoming opponents.

The burden of Meadors first two seasons is long in the past. Florida State women's basketball has begun a new tradition, a winning tradition.

### MEADORS COACHING RECORD

YEAR	SCHOOL	RECORD	ACCOMPLISHMENTS
1970-71	Tenn Tech	23-7 .767	TCWSF State Runner-up
1971-72	Tenn Tech	26-6 .813	TCWSF State Champion, Qualified for AIA National Tournament
1972-73	Tenn Tech	24-6 .800	TCWSF State Champion, AAU National Tournament
1973-74	Tenn Tech	26-5 .839	TCWSF State Champion, AIAW National Championship (6th place)
1974-75	Tenn Tech	27-5 .844	TCWSF State Champion, AIAW Regional Champion, AIAW National Championship (12th place finish)
1975-76	Tenn Tech	28-2 .933	TCWSF State Champion, AIAW Regional Champion, AIAW National Championship, (5th place)
1976-77	Tenn Tech	28-8 .778	TCWSF State Champion, AIAW National Championship (7th place)
1977-78	Tenn Tech	19-14 .576	Ohio Valley Conference Championship
1978-79	Tenn Tech	23-10 .697	AIAW Regional Bid
1979-80	Tenn Tech	23-11 .676	AIAW Regional Championship Bid
1980-81	Tenn Tech	23-11 .676	OVC Champion, NWIT Tournament
1981-82	Tenn Tech	20-11 .645	OVC Champion, NCAA Championships
1982-83	Tenn Tech	14-13 .519	OVC 2nd Place
1983-84	Tenn Tech	17-11 .607	OVC 2nd Place
1984-85	Tenn Tech	20-9 .690	OVC 2nd Place, NCAA at-large selection
1985-86	Tenn Tech	22-10 .688	OVC 2nd Place, WNIT participant
1986-87	FSU	9-19 .231	Tallahassee Hilton Classic Champion
1987-88	FSU	9-18 .333	Tallahassee Hilton Classic Champion
1988-89	FSU	16-11 .593	Tallahassee Hilton Classic Champion, selected coach of the Olympic Festival North team
<b>TOTAL</b>		<b>397-187 .668</b>	



## *Meadors Leads North Team to Olympic Festival Gold Medal*

In the midst of the 1988-89 season, Marynell Meadors got an offer she could not refuse. It was not from the Godfather.

It was from the Amateur Basketball Association of the United States of America (ABAUSA). She was being asked to coach the north team in the 1989 Olympic Festival.

"It gave me a chance to be involved in something that represents the United States," said Meadors. "I was selected by a committee of my peers. It's a chance that you never think you'll get."

During a summer that was dedicated to rest and relaxation for many, Meadors continued at a torrid pace. In April, tryouts were held at Purdue University to trim a band of 175 Olympic Festival north team hopefuls to a crack squad of 10. In mid-July, she then needed to bring that squad to a competitive level of play, with only five days of practice.

The 1989 Olympic Festival gathered potential Olympic stars together as a starting point for the 1992 games which will be held in Barcelona, Spain.

"It was an entry level to the Olympics for players as well as coaches," said Meadors. "You had to be there to advance."

The opening ceremony featured all the same glamour and festivities of the real thing; hot air balloons, parachutists, red, white and blue torches and the likes of former President Ronald Reagan and Bob Hope. The games were officially started when Florence Griffith-Joyner lit the Olympic torch. Flag waving and patriotic fervor filled the 75,000 in attendance at Owen Field.

Following an opening round loss to the East team after building a 21-point lead, Meador's North squad decided it was now or never facing a 16 point deficit at the half of its second game against the South team.

Rebounding from the point of eliminating itself from a gold medal, the north team won its final two games of the round robin competition. This set up a rematch of the opening game against the East team and a chance to bring home the gold.

Late in the gold medal game, the North team found

itself down by five, 67-62. During a timeout, Meadors told her team that the East team was "leaving the door open and it needed to be shut."

Applying a full-court, man-to-man press, the North team raised its intensity level and aggressiveness to hold the East scoreless for the last 4:41 of the game. Meadors and the North team walked away with a 76-67 victory to wear the gold.

"It was an experience that I'll never forget," said Meadors. "The only thing that could be better would be to coach Florida State to a national championship team."



*With a gold medal in the 1989 Olympic Festival, Marynell Meadors put herself in line to coach the United States Olympic Team.*

## COACHING STAFF

**ASSISTANT  
COACH  
ROBYN MARKEY  
FOURTH YEAR,  
(Tennessee Tech,  
1982)**



Entering her fourth season on the Florida State coaching staff, Robyn Markey, has learned the ins and outs of the women's basketball world as one of the finest recruiters in the nation. As recruiting coordinator, Markey has established direct linet to the player of the year in the states of Florida and Georgia.

Markey's recruiting talents over the past three years has brought in a new corps of players to fulfill the Marynell Meadors dream of bringing FSU to the top of the women's basketball pack.

Markey is no stranger to the Meadors' style of coaching. She was the starting point guard for the Meadors-led Tennessee Tech Golden Eaglettes from 1977-81, a period which Tennessee Tech won 88 games. She holds a spot in the Tech record book with 134 games played to rank first and also is listed in five all-time categories including scoring and rebounding. She capped her career at Tech as the captain of the squad her senior year.

After serving as a volunteer coach at Tennessee Tech for the 1981-82 season, Markey moved on to an assistant coach position at the University of Delaware for the 1982-83 season. She then accepted the head coach position at the University of Vermont.

In addition to her collegiate coaching experience, Markey has served as director of several basketball camps—including ones in Vermont, New Jersey and Belgium. She currently assists in the Marynell Meadors Basketball Camp. She also has gained valuable promotional experience working with the Kargaroo and Pro Keds shoe companies.

Besides her recruiting talents which she devotes to FSU women's basketball, Markey tutors the Lady Seminole guards and assists with on-floor coaching duties.

**ASSISTANT  
COACH  
FREDA GLOVER  
THIRD YEAR,  
(Cheyney, 1981)**



Freda Glover enters her third season as an assistant coach for the Lady Seminoles as one who can take care of business both on the court and off.

While Glover, a former collegiate post player, can be found sweating it out on the floor with FSU post players, she also assists to keep the Florida State operation running smooth in the office.

With a bachelor's degree in business administration from Cheyney and a master's degree in public administration from Missouri, Glover heads up the FSU scouting procedure and follows the academic progress of Lady Seminole athletes. She also assists Robyn Markey in the recruiting progress, as well as her on-court duties. In the off-season, she assists with the Marynell Meadors Basketball Camp.

During her four years as a player at Cheyney University in Cheyney, Pennsylvania, Glover started for the highly successful basketball team at center and consistently ranked among national scoring and rebounding leaders.

Following graduation, Glover continued her education at Missouri while beginning her coaching career. As an assistant coach at Missouri, the Lady Tigers won the Big 8 Conference in the 1982-83 season.

A noted speaker, Glover is an active member in the Fellowship of Christian Athletes.



Julie Brown begins her second season as a graduate assistant for the 1989-90 Lady Seminoles while working toward a master's degree in sports psychology.

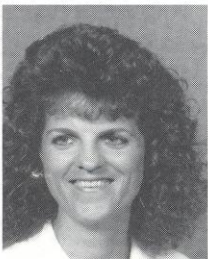
A graduate of Rhodes College with a degree in psychology, Brown handles team travel arrangements, maintains and keeps an inventory of all equipment, situates team housing and readies Tully Gym for daily practices. In the off-season, she will assist in the Marynell Meadors Basketball Camp.

A spot starter her first three years at Rhodes, a division III institution in Memphis, Brown earned a full-time starting spot at the wing position her senior and averaged 12.0 ppg.

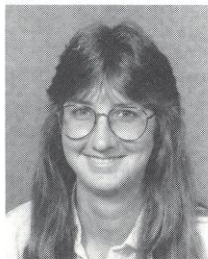


**GRADUATE ASSISTANT  
JULIE BROWN  
SECOND YEAR,  
(Rhodes College,  
1987)**

## LADY SEMINOLE BASKETBALL SUPPORT STAFF



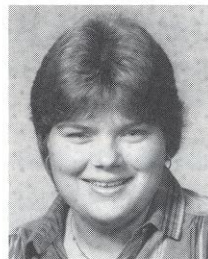
**KIM FERRILL**  
Athletic Trainer



**JULI JACOBY**  
Manager



**STEPHANIE HENSLEY**  
Manager



**TRUDY RAYBUN**  
Academic Advisor



**TERRY HUME**  
Promotions & Marketing



**GEI-NAM LIM**  
Strength Coach

## 1989-90 TRAVEL ITINERARY

Date	Opponent	Hotel
November 22-26	LSU Invitational Tournament	The Bellemont Hotel (504/357-8612)
December 5-6	University of Alabama	Shoney's Inn (205/556-7950)
December 16-18	Stetson University	Deland Hilton (904/738-5200)
January 3-4	Georgia Southern	Aldred's Trellis Garden Inn (912/489-8781)
January 5-6	Virginia Tech	Blacksburg Marriott (703/552-7001)
January 16-17	Auburn University	Auburn University Hotel (205/821-8200)
January 26-27	Southern Mississippi	Hampton Inn (601/264-8080)
January 28-29	Memphis State	Omni Memphis Hotel (901/684-6664)
February 4-6	Tulane	Hyatt Regency New Orleans (504/561-1234)
February 9-10	Louisville	The Seelbach (502/585-3200)
February 11-12	Cincinnati	Clarion Hotel (513/352-2100)
March 2-3	South Carolina	Columbia Marriott (803/771-7000)
March 6-11	Metro Championship	Vernon Manor Hotel (513/281-3300)

# ROSTER



**The Florida State roster has quite a geographical breakdown. Featuring four players from both Florida and Georgia, FSU has one player from Kentucky, New Jersey, N. Carolina, Ohio, Pennsylvania and Puerto Rico.**

## NUMERICAL ROSTER

#	NAME	POS	HT	CL	HOMETOWN (HS OR JC)
11	Shannon Hodge	F	5-11	SO	Mechanicsburg, PA (Mechanicsburg)
12	Luz Lopez	G	5-6	SO	Bayamon, PR (Nuestra Sra. Belen)
13	Chris Davis	G/F	5-9	JR	Pensacola, FL (B.T. Washington)
14	Tanya Fowler	G	5-9	SO	Live Oak, FL (Suwannee)
22	Wanda Burns	G	5-7	JR	Macon, GA (Southwest)
23	Robin Corn	G	5-9	JR	Asheville, NC (Roberson)
24	Kelli Test	G	5-9	JR	Ringgold, GA (Ringgold)
30	Tia Paschal	F	6-1	FR	Thomson, GA (Thomson)
31	Karen Thomas	F	5-10	JR	Macon, GA (Southwest)
32	Karen Galloway	C	6-2	JR	Lake Wales, FL (Lake Wales)
33	Danielle Ryan	G	5-10	FR	Medford Lakes, NJ (Shawnee)
34	Tracy Walker	C/F	6-1	FR	Quincy, FL (Shanks)
44	Chantelle Dishman	F	6-1	FR	Lexington, KY (Bryan Station)
50	Maria Lardie	F/C	6-3	SR	Shaker Heights, Ohio (Cuyahoga CC)

HEAD COACH: Marynell Meadors, enters fourth season at Florida State

ASSISTANTS: Freda Glover, Robyn Markey

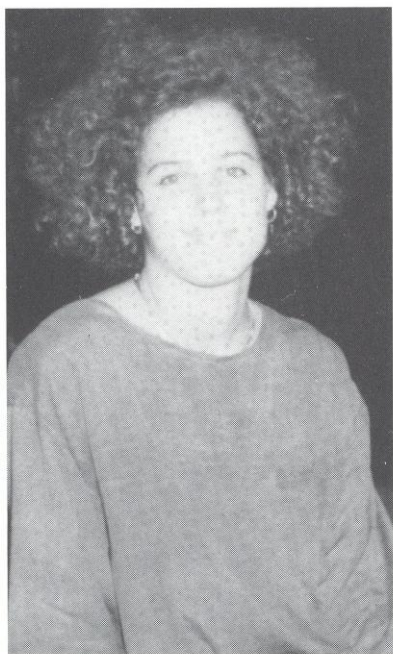
GRADUATE ASSISTANT: Julie Brown

MANAGERS: Stephanie Hensley, Juli Jacoby, Danna Marlot

TRAINER: Kim Ferrill

## ALPHABETICAL ROSTER

#	NAME	POS	HT	CL	HOMETOWN (HS OR JC)
22	Wanda Burns	G	5-7	JR	Macon, GA (Southwest)
23	Robin Corn	G	5-9	JR	Asheville, NC (Roberson)
13	Chris Davis	G/F	5-9	JR	Pensacola, FL (B.T. Washington)
44	Chantelle Dishman	F	6-1	FR	Lexington, KY (Bryan Station)
14	Tanya Fowler	G	5-9	SO	Live Oak, FL (Suwannee)
32	Karen Galloway	C	6-2	JR	Lake Wales, FL (Lake Wales)
11	Shannon Hodge	F	5-11	SO	Mechanicsburg, PA (Mechanicsburg)
50	Maria Lardie	F/C	6-3	SR	Shaker Heights, Ohio (Cuyahoga CC)
12	Luz Lopez	G	5-6	SO	Bayamon, PR (Nuestra Sra. Belen)
30	Tia Paschal	F	6-1	FR	Thomson, GA (Thomson)
33	Danielle Ryan	G	5-10	FR	Medford Lakes, NJ (Shawnee)
24	Kelli Test	G	5-9	JR	Ringgold, GA (Ringgold)
31	Karen Thomas	F	5-10	JR	Macon, GA (Southwest)
34	Tracy Walker	C/F	6-1	FR	Quincy, FL (Shanks)



## #50 MARIA LARDIE SENIOR, CENTER, 6-3

SHAKER HEIGHTS, OHIO  
(CUYAHOGA CC)

a number 12 national ranking with a 25-5 record her sophomore year... contributed 16.2 ppg... led the team with 12.0 rpg and 2.0 blocked shots per game... participated in track as a freshman and advanced to National Junior College competition in the 200 meters, 4 X 100 and 4 X 400 relays... **PERSONAL:** Born September 12, 1967... daughter of James and Diane Lardie... an exercise physiology major...

### CAREER HIGHS

POINTS	11, vs. Memphis State (1/9/89)
REBOUNDS	10, vs. Cincinnati (3/9/89)
ASSISTS	2, vs. UNC-Asheville (12/2/88)
BLOCKS	3, vs. Alabama-Birmingham (12/19/88)
STEALS	4, vs. Georgia Southern (12/3/88)

... saw action in all 27 Lady Seminole games of 1988-89 starting in 17... averaged 17 minutes of playing time per game... must improve on her 5.3 ppg and 3.8 rpg totals of the 1988-89 season... is the lone senior on the 1989-90 team... the key to her success, according to Meadors, is staying out of foul trouble... **1988-89:** scored a season-high 11 points in a 95-75 win over Memphis State... shot five of eight from floor against Lady Tigers and grabbed seven offensive rebounds... Lardie's only other double figure scoring game came against South Carolina when she totalled 10... high rebounding mark came against Cincinnati in the Metro Tournament when she grabbed 10... leading rebounder in five games... led Lady Seminoles with 17 blocked shots... season high of three blocks came in an 84-68 win over Alabama-Birmingham... over a four-game stretch against Stetson, Alabama-Birmingham, Southern Miss and Memphis State, Lardie rejected nine shots... showed quickness with 24 steals... an important part of FSU's pressing defense... **JUNIOR COLLEGE:** helped lead Cuyahoga CC to an Ohio Junior College Conference Championship and



### LARDIE AT FSU

	<u>G</u>	<u>FG-FGA</u>	<u>PCT</u>	<u>FT-FTA</u>	<u>PCT</u>	<u>PTS-Avg</u>	<u>REB-Avg</u>	<u>A</u>	<u>S</u>
1988-89	27	63-158	.399	18-36	.500	144-5.3	102-3.8	7	24

# 1988-89 METRO CONFERENCE (ALL-ROOKIE SELECTION)

## #22 WANDA BURNS JUNIOR, GUARD, 5-8

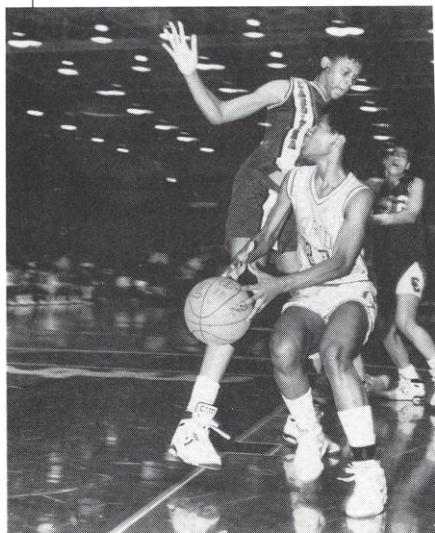
MACON, GA (Southwest)

... burst onto the Lady Seminole scene and became a fan favorite with her lightning-quick moves... selected to the Metro Conference All-Rookie Team... a great ball-handler with tremendous court sense... one of the quickest defensive players, according to Meadors... "She loves to play defense. She would rather steal than score"... should be a three-point threat her junior year... **1988-89:** saw action in all 27 games of the year... drew 13 starts... averaged 24 minutes of playing time... played role of first off the bench for the latter part of the year... third leading scorer averaging 11.4 ppg... leading scorer on eight occasions... scored a season-high 22 points against



### CAREER HIGHS

POINTS	22, vs. South Florida (1/24/89)
REBOUNDS	8, vs. Stetson (12/17/88)
ASSISTS	10, vs. Howard (2/6/89)
BLOCKS	N/A
STEALS	4, vs. Florida (12/13/89) and Stetson (12/17/89)



South Florida... her two best scoring games of the season came in a pair of games against USF... totalled 41 points and was a combined 17 of 29 from the floor... scored in double figures in 19 of 27 games... led team with 92 assists... season-high of 10 assists came against Howard... collected a season-high eight rebounds against Stetson... leading Lady Seminole rebounder in the 70-64 win over the Lady Hatters... earned a spot on the Tallahassee Hilton Classic All-Tournament team scoring 26 points in wins over UNC-Asheville and Georgia Southern... **HIGH SCHOOL:** teamed with Karen Thomas and Debra Collins at Macon Southwest High School and with Thomas on the 1987 National Championship 18-and-under Macon AAU team... led Macon Southwest to a *USA Today* Top 20 ranking during the 1986-87 year... averaged 21 points, eight assists, and four steals per game... garnered several honors her senior year, including *USA Today* honorable mention All-America, first team all-State, All-Middle Georgia and All-City... scored 1,134 points in three years at Macon Southwest... **PERSONAL:** born November 17, 1969... daughter of Patricia Burns... a social work major at FSU...

### BURNS AT FSU

	<u>G</u>	<u>FG-FGA</u>	<u>PCT</u>	<u>FT-FTA</u>	<u>PCT</u>	<u>PTS-Avg</u>	<u>REB-Avg</u>	<u>A</u>	<u>S</u>
1988-89	27	138-295	.468	31-52	.596	307-11.4	80-3.0	92	36



## #23 ROBIN CORN JUNIOR, GUARD, 5-9

ASHEVILLE, NC (Roberson)

10 points, eight rebounds and six assists... earned the best defensive player award... accumulated 37 steals including a season-high five against Wisconsin in the Tallahassee Hilton Classic... **HIGH SCHOOL:** named Student-Athlete of the Year in Western North Carolina and Western North Carolina MVP after her 17 ppg, 7 rpg senior season... closed out her high school career as the first female to letter in four sports (basketball, softball, track and field and volleyball)... won 11 total high school letters...**PERSONAL:** born March 11, 1969,...daughter of Bob & Kathy Corn,... a business major...

### CAREER HIGHS

POINTS	12, vs. Howard (2/6/89)
REBOUNDS	8, vs. Memphis State (1/16/88)
ASSISTS	8, vs. Southern Miss (2/4/89)
BLOCKS	1, on two occasions
STEALS	5, vs. Wisconsin (12/4/87)

... has been the starting point guard in 52 of 54 games in her career at FSU... plays the point guard position to the tee, with 75 assists each of the last two seasons... her 150 career assists ranks tenth on all-time list... Florida State coaching staff hopes for more offensive output from her this season...**1988-89:** played in 27 games with 25 starting assignments... two non-starts came after Meadors juggled the lineup following two consecutive losses... averaged 21 minutes of playing time... scored in double figures three times during the 1988-89 season... established a new career high with 12 points vs. Howard... scored 11 vs. Alabama and 10 vs. Memphis State... also had career-high eight assists against Southern Miss... had five or more assists on five occasions... recipient of the Buzz Narbut award which is presented annually to the player that exhibits outstanding character, dedication and desire... an intense defensive player... **1987-88:** only player to start all 27 games of the season... averaged 4.8 ppg and led the squad with 75 assists at point guard last year... combined with Chris Davis as one of the only freshmen guard tandems in the country... season-highs in points, rebounds and assists came against Memphis State Jan. 16, 1988 accumulating



### CORN AT FSU

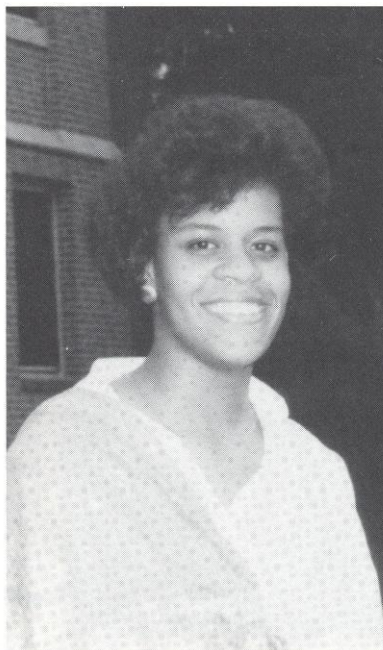
	<u>G</u>	<u>FG-FGA</u>	<u>PCT</u>	<u>FT-FTA</u>	<u>PCT</u>	<u>PTS-Avg</u>	<u>REB-Avg</u>	<u>A</u>	<u>S</u>
<b>1987-88</b>	27	59-125	.472	12-24	.500	130-4.8	79-2.9	75	37
<b>1988-89</b>	27	55-111	.495	15-21	.714	125-4.6	68-2.5	75	44
	54	114-236	.483	27-48	.563	255-4.7	147-2.7	150	81

# 1989-90 ALL-METRO CONFERENCE (SECOND TEAM SELECTION)

## #13 CHRIS DAVIS JUNIOR, GUARD, 5-9

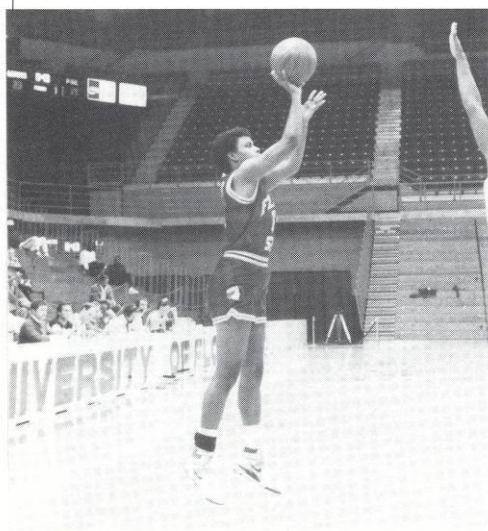
PENSACOLA, FL (Washington)

... following two full seasons, Davis is in a leadership position entering her junior year... 12.7 ppg over two seasons ranks 10th and .473 field goal percentage ranks sixth... with the departure of Bev Burnett from the Lady Seminole lineup, Davis is in the position to become FSU's premier scoring threat... her deceptive offensive moves could turn her into a tremendous contributor...**1988-89:** played in all 27 games of season, starting in 19... team leader averaging 27 minutes of playing time per game... leading scorer in four games of 1988-89... reached double-figure scoring in 19 games... had career-high 28 points in 105-78 win over Georgia Southern in Tallahassee Hilton Classic... scored 20 or more points four times... besides a scoring threat, Davis also dished off 76 assists and led team with 56 steals... team leader in steals both her freshman and sophomore year... averaged 4.7 rebounds per game, highest mark of any Lady Seminole guard... season high of 11 re-



### CAREER HIGHS

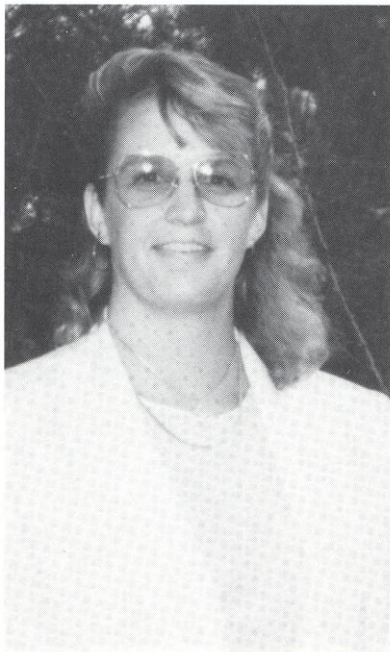
POINTS	28, vs. Georgia Southern (12/3/88)
REBOUNDS	11, vs. Louisville (1/16/89)
ASSISTS	7, vs. Miami (12/11/88)
BLOCKS	2, on four occasions
STEALS	7, vs. Howard (2/6/89)



bounds against Louisville established a new career high... showcasing her great leaping ability, Davis has blocked 21 shots in two seasons... plays taller than her 5-9 height, according to Meadors... earned All-Tournament status in Lady Sunshine Classic and Tallahassee Hilton Classic... closed out season with second team All-Metro Conference selection... **1987-88:** saw action in 21 games, starting 10... averaged 25 minutes of playing time... scored 16 points per game before injuring the ankle in a mid-January game against Memphis State... finished the season with a 12.7 ppg average... FSU's leading scorer in two games... a season-high 27 points in the first round game of the Metro Tournament against Cincinnati... led a second-half charge by scoring 19 second half points to bring FSU back from a 15-point deficit with 10 minutes to play in the game... earned Metro Player of the Week honors for her performance in late-season wins against Louisville and Cincinnati... led the team in steals with 41, despite missing seven games... **HIGH SCHOOL:** Following her 22 ppg, 7 rpg senior season at Booker T. Washington High School, Davis was named to the Gatorade National team as its Florida Player of the Year, *USA Today* Honorable Mention All-America, *Orlando Sentinel* Dixie Dozen Player of the Year and *Pensacola News-Journal* all-area Player of the Year... scored a total of 1,657 points to become the school's second leading all-time scorer... **PERSONAL:** born August 29, 1969... daughter of Joe and Nancy Davis... majoring in business administration... earned Metro Conference Commissioner's List for Academic Excellence honors for performance during 1988-89 academic year...

### DAVIS AT FSU...

	G	FG-FGA	PCT	FT-FTA	PCT	PTS-Avg	REB-Avg	A	S
1987-88	21	106-240	.441	54-80	.675	267-12.7	89-4.2	32	41
1988-89	27	151-303	.498	41-70	.586	343-12.7	128-4.7	76	56
	48	257-543	.473	95-150	.633	610-12.7	217-4.5	108	97



## #32 KAREN GALLOWAY JUNIOR, CENTER, 6-2

LAKE MARY, FL (Lake Mary)

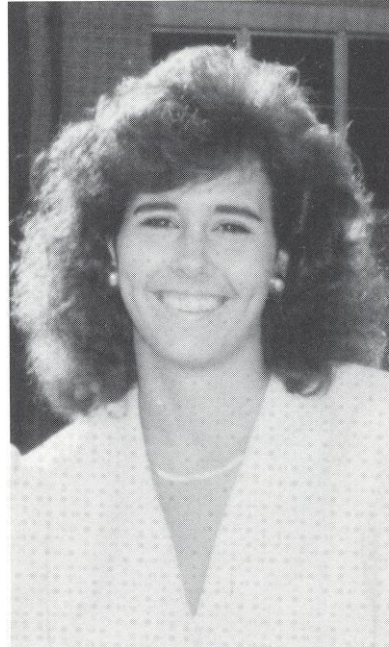
... joins Lady Seminole lineup after sitting out 1988-89 season following transfer from national championship runner-up Auburn... worked out with team for a full season and is now familiar with the Lady Seminole game plan... will be a welcome addition to the inside game with her size and experience... should be a valuable asset with offensive rebounding abilities, according to Meadors... **1988-89:** sat out the season after transferring from Auburn... worked out in daily practices... **1987-88 (At Auburn):** scored 14 points in 13 games for an average of 1.1 per game... grabbed 29 rebounds for a 2.2 per game average... **1986-87 (At Auburn):** saw action in 21 games and scored 23 points... had 38 rebounds for a 1.8 per game average... **PERSONAL:** born June 12, 1968... daughter of Tom and Kathe Galloway... majoring in nutrition, fitness, and dietetics...

First Season at Florida State



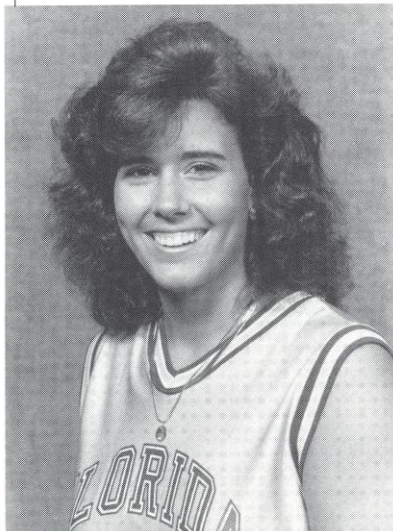
	GALLOWAY...							
	<u>G</u>	<u>FG-FGA</u>	<u>PCT</u>	<u>FT-FTA</u>	<u>PCT</u>	<u>PTS-Avg</u>	<u>REB-Avg</u>	<u>A</u>
1987-88	21	10-21	.476	3-5	.600	23-1.1	38-1.8	5
<u>1988-89</u>	<u>13</u>	<u>7-15</u>	<u>.467</u>	<u>0-4</u>	<u>.0</u>	<u>14-1.1</u>	<u>29-2.2</u>	<u>2</u>
	34	7-36	.472	3-9	.333	37-1.1	67-2.0	7

**#24 KELLI TEST**  
**JUNIOR,**  
**GUARD, 5-9**  
*RINGGOLD, GA (Ringgold)*



**CAREER HIGHS**

POINTS	7, vs. Miami (12/11/89)
REBOUNDS	2, on three occasions
ASSISTS	3, vs. Virginia Tech (1/21/89)
BLOCKS	N/A
STEALS	1, on eight occasions



...saw increased playing time as a sophomore... has been a secondary three-point threat and now is in the position to be the Lady Seminole's leading three-point gunner with the departure of Robin Storey... her passing skills could open up three point scoring opportunities, Meadors said... **1988-89:** averaged four minutes of playing time in 22 games... averaged 2.0 ppg... nine of her 15 field goals went for three points... season high of seven points came against Miami... proved to be an effective passer with 15 assists ... **1987-88:** played in only 13 games and scored nine points... all three of her field goals were three pointers... scored six of her 1987-88 points in the first game of the year against DePaul in a come-from-behind effort... credited with two steals her freshman season... **HIGH SCHOOL:** averaged 18.8 ppg her senior season at Ringgold HS... named the *Chattanooga News-Free Press* MVP... high school retired her jersey after her senior year... **PERSONAL:** born October 10, 1969... daughter of Eddie and Nora Test... a business major at FSU...

	TEST AT FSU...									
	G	FG-FGA	PCT	FT-FTA	PCT	PTS-Avg	REB-Avg	A	S	
1987-88	13	3-14	.214	0-0	.000	9-0.7	3-0.2	0	2	
<u>1988-89</u>	<u>22</u>	<u>15-42</u>	<u>.357</u>	<u>4-6</u>	<u>.667</u>	<u>43-2.0</u>	<u>13-0.6</u>	<u>15</u>	<u>6</u>	
	35	18-56	.321	4-6	.667	52-1.5	16-0.5	15	8	





## #31 KAREN THOMAS JUNIOR, FORWARD, 5-11

MACON, GA (Southwest)

**PERSONAL:** born November 4, 1968... daughter of Elizabeth Thomas... a computer science major at FSU...

### CAREER HIGHS

POINTS	13, vs. Howard (2/6/89)
REBOUNDS	14, vs. Southern Miss (2/4/89)
ASSISTS	1, on four occasions
BLOCKS	1, on two occasions
STEALS	2, on two occasions

proved to be a capable inside player last season seeing action in 22 games.... will be used as a role player in the coming season, according to Meadors... "Karen's very versatile. She can go to the boards, rebound and score."... **1988-89:** drew three starts against Stetson, Alabama-Birmingham and Southern Miss, all Florida State wins... averaged 3.8 ppg and 3.0 rpg... reached double figure scoring on three occasions... scored a season high 13 points against Howard and had 12 vs. Memphis State and 10 vs. Southern Miss... one of five Lady Seminoles to record a double-double when she scored 10 points and collected a season-high 14 rebounds against Southern Miss... **HIGH SCHOOL:** averaged 14 points, 12 rebounds and four assists per game her senior year at Macon Southwest High School, where she was a teammate of guard Wanda Burns... claimed Georgia all-state honorable mention, all-middle Georgia and all-city awards before moving on to FSU... named the Best Offensive Player of the *USA Today* Top 20 ranked Macon SW team... also competed with Burns on the 1987 National Championship 18-and-under Macon AAU team...

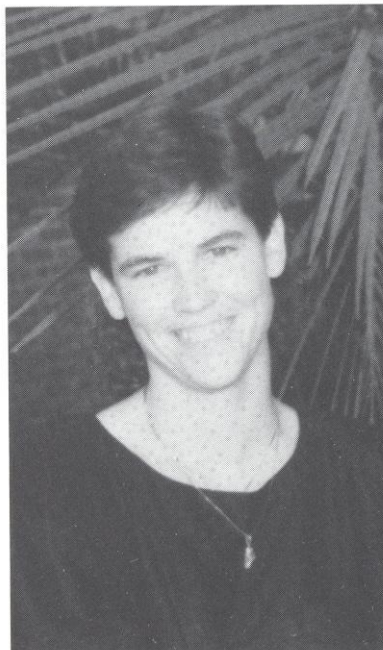


### THOMAS AT FSU

	<u>G</u>	<u>FG-FGA</u>	<u>PCT</u>	<u>FT-FTA</u>	<u>PCT</u>	<u>PTS-Avg</u>	<u>REB-Avg</u>	<u>A</u>	<u>S</u>
1988-89	22	34-76	.447	16-25	.640	84-3.8	67-3.0	4	14

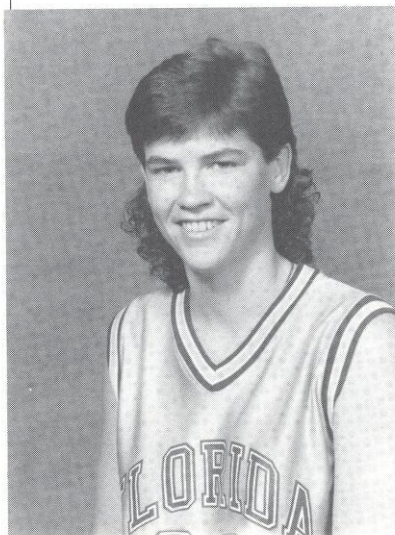
**#14 TANYA FOWLER**  
**SOPHOMORE,**  
**GUARD, 5-9**

*LIVE OAK, FL (Suwannee)*



**CAREER HIGHS**

POINTS	8, vs. UNC-Asheville (12/2/89)
REBOUNDS	2, on two occasions
ASSISTS	1, on two occasions
BLOCKS	N/A
STEALS	1, vs. UNC-Asheville (12/2/89)



... spent her freshman season learning the Florida State system and gaining experience... with the experience, coaches are hoping that Fowler is ready to step forward and score... "Tanya is a tremendous shooter from anywhere," said Meadors... spent the summer months practicing three point shots... **1988-89:** averaged four minutes of playing time in seven games... scored 13 points for an average of 1.9 per game... eight of her points came against North Carolina-Asheville in a 99-58 Tallahassee Hilton Classic victory... grabbed six rebounds and had one steal... was seven for eight from the free throw line... **HIGH SCHOOL:** averaged 18.8 ppg in her four years at Suwannee while grabbing 6.8 rpg... holds school season records in scoring average, total points and assists and career records in total points, assists and steals... once scored 32 points in a single game... lettered in three sports (basketball, volleyball and softball) during her high school career... twice named All-Big Bend at Suwannee... drew a recommendation from United States congressman Bill Grant... **PERSONAL:** born March 18, 1970... daughter of Ivie Fowler... plans to major in secondary education at Florida State...

**FOWLER AT FSU**

	<u>G</u>	<u>FG-FGA</u>	<u>PCT</u>	<u>FT-FTA</u>	<u>PCT</u>	<u>PTS-Avg</u>	<u>REB-Avg</u>	<u>A</u>	<u>S</u>
1988-89	7	3-6	.500	7-8	.875	13-1.9	6-0.9	2	1



## #12 LUZ LOPEZ SOPHOMORE, GUARD, 5-6

*BAYAMON, PR (Nuestra Sra. Belen)*

provides depth at the point guard position... a great, left-handed ball handler, Meadors says... directs team well when in the game... has a great attitude to inspire teammates... **1988-89:** saw action in four games scoring no points... clocked nine minutes of action in latter stages of Central Michigan, North Carolina-Asheville, Georgia Southern and Howard games... had one assist and two steals... **HIGH SCHOOL:** played on the Puerto Rican National team which competed in the Central American Games in Mexico City... coached a junior team while competing on her Nuestra Sra. Belen high school team... a determined player, according to Meadors... **PERSONAL:** born September 4, 1970... daughter of Felix Lopez and Elena Santiago... an advertising major at Florida State... earned Metro Conference Commissioner's List honors for Academic Excellence for her scholastic performance during the 1988-89 academic year...

### LOPEZ AT FSU

	<u>G</u>	<u>FG-FGA</u>	<u>PCT</u>	<u>FT-FTA</u>	<u>PCT</u>	<u>PTS-Avg</u>	<u>REB-Avg</u>	<u>A</u>	<u>S</u>
1988-89	4	0-0	.000	0-1	.000	0-0.0	0-0.0	1	2



## #11 SHANNON HODGE SOPHOMORE, FORWARD, 5-11

*MECHANICSBURG, PA (Mechanicsburg)*

a key reserve who is good for team morale... always vocal whether in practice or games... has made a tremendous improvement from her freshman season, Meadors said... **1988-89:** stepped in to fill gaps left by mid-season injuries... played 22 minutes in eight games... played out of position, according to Meadors... played an inside position, when ideally she should play on wing... scored three points and grabbed six rebounds... had two rebounds in games against North Carolina-Asheville and Virginia Tech... blocked a shot in FSU's 105-78 Tallahassee Hilton Classic championship against Georgia Southern... **PERSONAL:** born February 27, 1970... daughter of Robert and Ruth Hodge... undecided on a major...

### HODGE AT FSU ...

	<u>G</u>	<u>FG-FGA</u>	<u>PCT</u>	<u>FT-FTA</u>	<u>PCT</u>	<u>PTS-Avg</u>	<u>REB-Avg</u>	<u>A</u>	<u>S</u>
1988-89	8	1-2	.500	1-4	.250	3-0.4	6-0.8	0	0



## #44 CHANTELE DISHMAN FRESHMAN, FORWARD, 6-1

LEXINGTON, KY (*Bryan Station*)

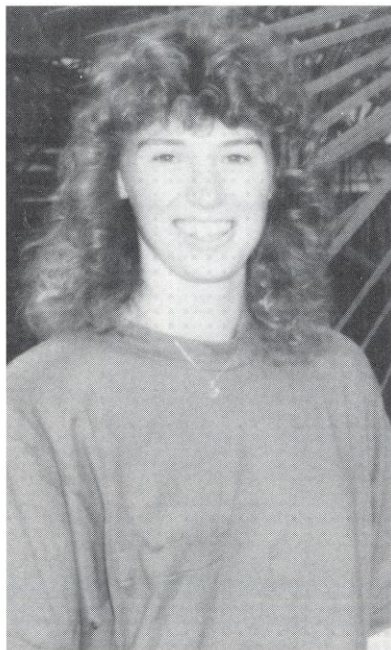
... one of three new post players which Meadors is counting on to contribute immediately... has all the tools for a productive post player... "She plays good defense, boxes out, rebounds and scores," said Meadors... quick for her size... **HIGH SCHOOL:** a high school All-America nomination by the Kentucky National High School Association... participant in the Kentucky/Indiana All-Star game... paced Bryan Station HS averaging 23 ppg, 13 rpg and 2.5 steals per game her senior year... named first team all-city, all-region and all-state by both the *Louisville Courier-Journal* and *Lexington Herald-Leader*... holds high school career records with 1,593 points, 983 rebounds and 136 blocked shots... chose FSU over Louisville and Kentucky... **PERSONAL:** born May 19, 1971... daughter of Patricia Dishman... plans to major in business at FSU...



## #30 TIA PASCHAL FRESHMAN, FOWARD, 6-1

THOMSON, GA, (*Thomson*)

Following reconstructive knee surgery, Paschal will attempt to hit the floor for the Lady Seminoles in 1989-90... provided she stays healthy, she will be a great one, according to Meadors... will be used as a number three forward with the ability to shoot or play inside... besides inside scoring and rebounding, Paschal can also shoot three pointers from the outside... could be one of FSU's most prolific scorers this season... **1988-89:** injured knee in pre-season workouts and underwent reconstructive surgery... medically redshirted for the 1988-89 season... FSU's lone signee of the November 1987 signing period... **HIGH SCHOOL:** captured the 1987-88 Miss Georgia Basketball Player of the Year... earned first team All-State and was named District 3A Player of the Year... **PERSONAL:** born March 22, 1969... daughter of Percy Lee and Ola Paschal... a movement science major...



## #33 DANIELLE RYAN FRESHMAN, GUARD, 5-10

*MEDFORD LAKES, NJ (Shawnee)*

... a 5-10 point guard who averaged 20.1 ppg, 5.7 rpg, 6.9 assists and 6.2 steals per game her senior season at Shawnee High... will be used as a point guard this year, but could be moved to a shooting guard later in her career... "a great passer who sees the entire court," Meadors said... needs experience at collegiate level... **HIGH SCHOOL:** chosen all-state in New Jersey where only five are selected to the team... an excellent passing guard, according to Meadors... awarded South Jersey, *Philadelphia Inquirer* and *New Jersey Courier Post* Player of the Year... South Jersey and Shawnee High career leading scorer for both men and women with 2,115 total points... prior to her freshman season, Shawnee High compiled a 4-21 record, her senior season the team finished 28-2... also a standout soccer player at Shawnee... **PERSONAL:** born December 20, 1970... daughter of David and Noreen Ryan... plans to major in physical education... chose FSU over Rutgers and Seton Hall...



## #34 TRACY WALKER FRESHMAN, FORWARD, 6-1

*QUINCY, FL (Shanks)*

... the 1989 Big Bend Women's Basketball Player of the Year keeps a local flavor on the Lady Seminoles with the departure of Bev Burnett... Meadors is very impressed with her abilities, "she's tall, strong, can rebound and has experience in pressure defense,"... excellent shot from within 15 feet... **HIGH SCHOOL:** averaging 25.5 ppg and 13.2 rpg, she led Shanks to the finals of the State 3A Tournament her senior season... selected Converse All-American and to the Class 3A All-State second team... **PERSONAL:** born November 16, 1971... daughter of Johnny and Ida Walker... plans to major in accounting at FSU... heavily recruited and chose FSU over Florida, Clemson and South Florida...

## 1988-89 STATISTICS AND RESULTS

**1988-89  
IN REVIEW**  
**Overall: 16-11**  
**Metro Conf: 7-5**  
**Home Record: 11-1**  
**Away Record: 4-8**  
**Neutral Record: 1-2**



To open the 1988-89 home season, the Lady Seminoles claimed their three consecutive Tallahassee Hilton Classic championship. Wanda Burns (first on front row left), Bev Burnett (second on back row left) and Chris Davis (third on back row left) claimed All-Tournament honors.

### FLORIDA STATE GAME-BY-GAME RESULTS

DATE	OPPONENT	W/L	SCORE	HIGH SCORER	HIGH REBOUNDER
November 25	Central Michigan <sup>1</sup>	W	100-78	Davis, 24	Harvis, 8
November 26	Miami <sup>1</sup>	L	96-85	Burns, 16	Collins, 7
December 2	North Carolina-Asheville <sup>2</sup>	W	99-58	Davis, 21	Burnett, 14
December 3	Georgia Southern <sup>2</sup>	W	105-78	Davis, 28	Harvis, 7
December 11	@ Miami	L	88-79	Burns, 15	Harvis, 7
December 13	@ Florida	L	63-60	Burns, 12	Harvis, 7
December 17	Stetson	W	70-64	Collins, 13	Burns, 8
December 19	@ Alabama- Birmingham	W	84-68	Storey, 24	Collins, 10
January 7	Southern Mississippi	W	78-75	Burnett, 31	Davis, 7
January 14	@ Cincinnati	L	66-45	Collins, 7	Collins, 8
January 16	@ Louisville	W	65-64	Burns, Davis, 16	Davis, 11
January 21	@ Virginia Tech	L	68-67	Storey, 13	Lardie, 8
January 23	@ South Carolina	L	99-82	Davis, 17	Davis, 9
January 25	South Florida	W	85-74	Burns, 22	Davis, 7
January 28	Virginia Tech	W	69-66	Burns, 14	Collins, 8
January 30	@ Alabama	L	70-68	Burnett, 24	Lardie, 9
February 4	@ Southern Mississippi	L	84-66	Burns, 14	Thomas, 14
February 6	Howard University	W	101-73	Harvis, 19	Harvis, 10
February 9	Florida A&M	W	75-68	Burnett, 24	Lardie, 9
February 11	Cincinnati	W	62-57	Burnett, 18	Burnett, Collins, 7
February 13	Louisville	W	82-76	Burnett, 18	Collins, 13
February 16	@ Georgia	L	90-70	Collins, 20	Collins, 11
February 20	South Carolina	L	76-68	Burnett, 19	Lardie, 6
February 24	@ South Florida	W	94-85	Burnett, 24	Burnett, 6
March 2	@ Memphis State	W	89-80	Storey, 22	Collins, 7
March 9	Cincinnati <sup>3</sup>	L	57-47	Burns, Burnett, 8	Lardie, 10

<sup>1</sup>Lady Sunshine Classic, Lake Mary, Florida (2nd Place)

<sup>2</sup>Tallahassee Hilton Classic, Tallahassee, Florida (1st Place)

<sup>3</sup>Metro Conference Tournament, Memphis, Tennessee