

**THIS FLORIDA STATE**

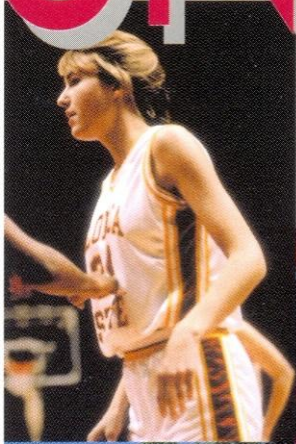
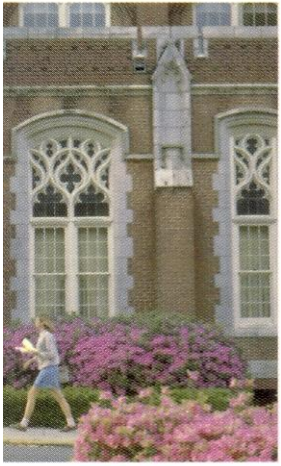
**1994-95 LADY SEMINOLE**

**BASKETBALL**

1994-95 LADY SEMINOLE

1976  
1995

# FLORIDA STATE UNIVERSITY



# 1994-95 FLORIDA STATE UNIVERSITY LADY SEMINOLE BASKETBALL

2  
Notes to Media

3  
ACC Faxback Directory

4  
FSU Quick Facts

5  
'94-95 Outlook: The Real Lady  
Seminoles Are Back!

8  
'94-95  
Lady Seminole Rosters

9  
Head Coach Marynell Meadors

11  
Assistant Coaches & Support Staff

13  
Lady Seminole Bios

26  
A Closer Look at the Lady Seminoles

27  
'94-95 Opponents Preview

39  
'94 San Juan Shootout

40  
Travel Itinerary

41  
This Is Florida State University

44  
A National Leader...  
Florida State Athletics

46  
Florida State Administration  
& Athletic Staff

53  
Florida With A Southern Accent  
...Tallahassee & North Florida

54  
Academic Support  
& Student Services

57  
'93-94 Season In Review:  
A Prerequisite To Success

59  
'93-94 Statistics:  
Individual - All Games

60  
Team and Opponent Highs & Lows

61  
Game-by-Game Results

62  
Game-by Game Team Statistics

63  
Individual Season & Career Highs

64  
ACC Statistics:  
Florida State Individual

65  
ACC Final Statistics

68  
ACC Final Standings  
and NCAA Tournament

69  
ACC Tournament

70  
The Atlantic Coast Conference

73  
Individual & Team Records

75  
Series Record Against Opponents

80  
Single-Season Statistical Leaders

81  
Single-Game Statistical Leaders

82  
Career Statistical Leaders

83  
Individual Year-by-Year Leaders

85  
All-Time Letterwinners

86  
Year-by-Year Results

## CREDITS

Editor ..... Bob Burda  
 Writing ..... Bob Burda, Sheldon Bream,  
 Brian Moore, ACC Media  
 Relations, FSU Media Relations  
 Research ... Bob Burda, Tim Kenney, Brian  
 Kenney, Slade Cassey, Craig O'Halloran  
 Proofing ..... Bob Burda, Debbie Powell,  
 Scott Wherley, Brian Moore  
 Photography ..... Phil Sears, Ross Obley,  
 Bucky Parrish, Terry Hume, FSU Photo Lab  
 Design ..... Vision Advertising & Design  
 Printing ..... Boyd Brothers, Inc.

# NOTES TO THE MEDIA

## PRESS CREDENTIALS

REQUESTS FOR WORKING PRESS credentials should be directed to the sports information office. Media representatives should contact the office least one day in advance by calling (904) 644-1403. For FSU home games, media will be seated along the press table in front of the north stands. A metered parking lot is available out the west entrance.

## PHOTOGRAPHERS

Photographers are to contact the SID office as well. Flashes are not permitted in the gymnasium. Working area for all photographers will include the floor area at both ends

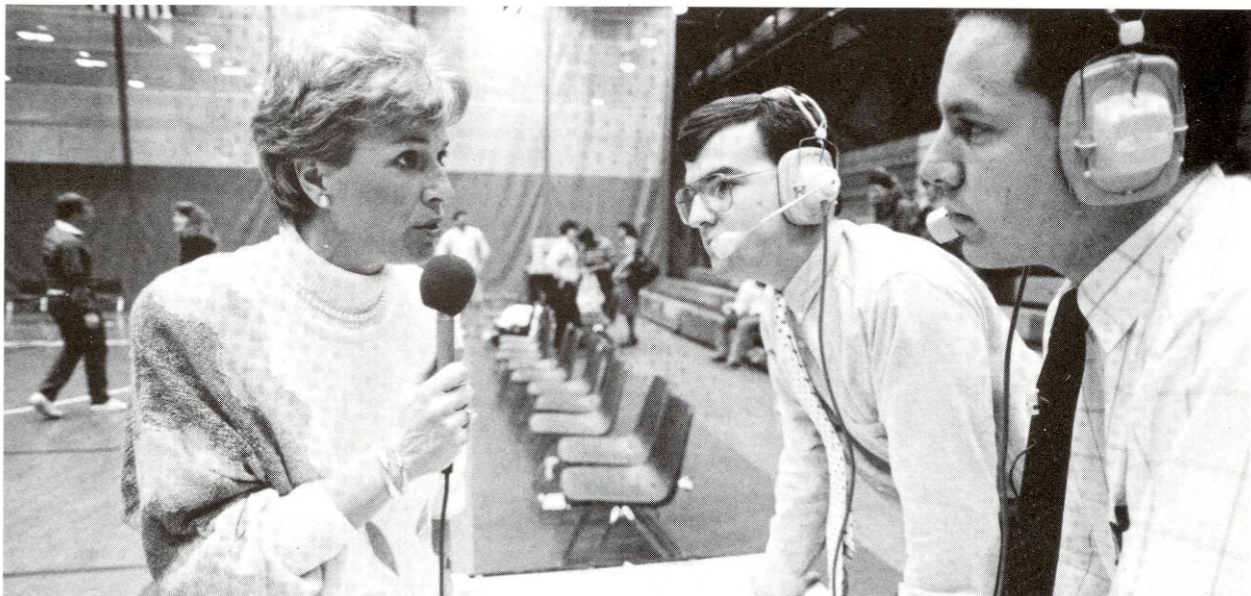
of the court and along the media side of the playing floor opposite the benches. Television camera persons should abide by the same guidelines as still photographers.

## RADIO

A complimentary radio line is available for visiting teams. The SID office must be notified at least three days in advance.

## GAME OPERATIONS

Pre-game notes, rosters and a running play-by-play will be provided along with half time and final statistics. A FAX machine is also available upon request.



Many Lady Seminole games can be heard on Florida State's student radio station WVFS, 89.7 FM, The Voice of Florida State.

**PLAYER & COACHES INTERVIEWS**

All player interviews must be arranged through the SID office. Coach Meadors can be reached at her office, or the SID office will be happy to set up any interviews. NO INTERVIEWS WILL BE GIVEN NEAR OR DURING PRACTICE TIMES.

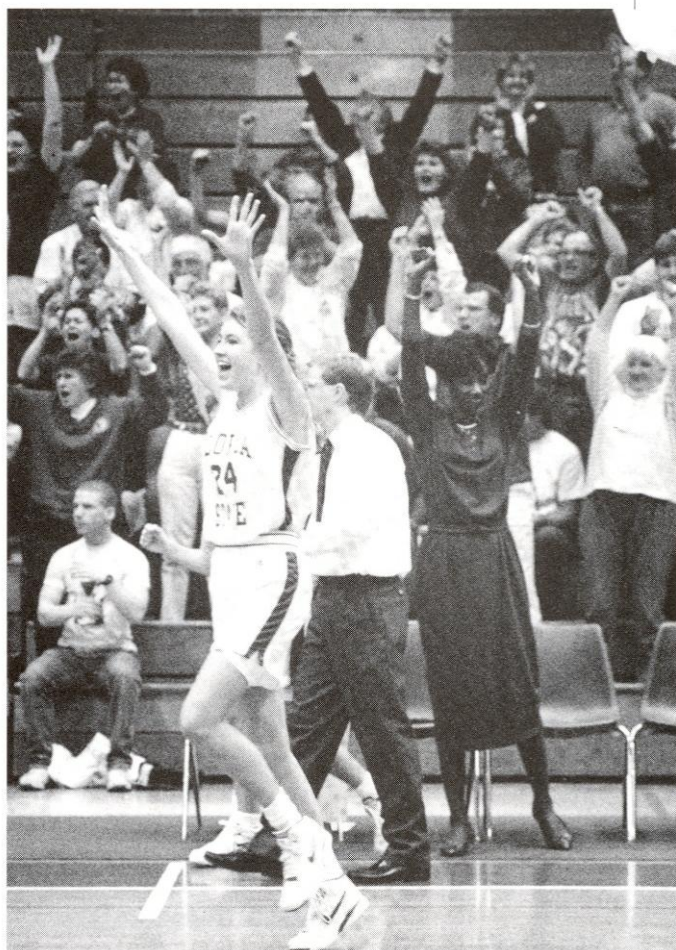
**POST-GAME INTERVIEWS**

Coach Meadors will be available in Room 100 of Tully Gym after a ten-minute cooling-off period. No interviews will be given on the floor immediately following the game. Any players or visiting coach will be brought in on a request basis only.

**ACC FAXBACK SERVICE**

Two years ago, Florida State began to implement a move away from mailing weekly releases and sending all information by FAX machine. The Atlantic Coast Conference made a decision to be on the "cutting edge" of technology in regard to meeting the media's demands. The ongoing process started with the addition of the ACC faxback. It allows members of the media 24-hour access to the latest press releases (notes and statistics) from the ACC office AND from each of the nine school's sports information offices as well. Several of the ACC faxback features are listed below.

Simply dial the faxback machine phone number on your fax phone. You will then be instructed step-by-step on how to retrieve the information. Connect your fax at the tone and the requested information will start transmitting through your machine. ♦



The Seminoles 1994-95 home schedule includes 10 contests in Tully Gym and four games at the Leon County Civic Center including three double headers with the men's team.

**ACC LADIES' BASKETBALL FAXBACK DIRECTORY**

**ACC**

Tournament Preview/Results .....	5200
Release .....	5250
Notes Only .....	5251
Stats Only .....	5252
Schedule/Roster .....	5254

**Clemson**

Release .....	11250
Notes Only .....	11251
Stats Only .....	11252
Box Score .....	11253
Schedule/Roster .....	11254

**Duke**

Release .....	21250
Notes Only .....	21251
Stats Only .....	21252
Box Score .....	21253
Schedule/Roster .....	21254

**Florida State**

Release .....	31250
---------------	-------

Notes Only .....	31251
Stats Only .....	31252
Box Score .....	31253
Schedule/Roster .....	31254

**Georgia Tech**

Release .....	41250
Notes Only .....	41251
Stats Only .....	41252
Box Score .....	41253
Schedule/Roster .....	41254

**Maryland**

Release .....	51250
Notes Only .....	51251
Stats Only .....	51252
Box Score .....	51253
Schedule/Roster .....	51254

**North Carolina**

Release .....	61250
Notes Only .....	61251
Stats Only .....	61252

Box Score .....	61253
Schedule/Roster .....	61254

**N.C. State**

Release .....	71250
Notes Only .....	71251
Stats Only .....	71252
Box Score .....	71253
Schedule/Roster .....	71254

**Virginia**

Release .....	81250
Notes Only .....	81251
Stats Only .....	81252
Box Score .....	81253
Schedule/Roster .....	81254

**Wake Forest**

Release .....	91250
Notes Only .....	91251
Stats Only .....	91252
Box Score .....	91253
Schedule/Roster .....	91254

**FSU QUICK FACTS**

Location ..... Tallahassee, Florida  
 Founded ..... 1857  
 Enrollment ..... 29,000  
 President ..... Talbot "Sandy" D'Alemberte  
 Symbol ..... Lady Seminoles  
 Home Arena ..... Tully Gym (2,500)  
 Affiliation ..... NCAA Division I  
 Conference ..... Atlantic Coast

**Athletic Administration**

Interim Athletic Director ..... Wayne Hogan  
 Assistant Athletic Director,  
 Basketball ..... Guy Morgan  
 Athletic Director Phone ..... (904) 644-7330  
 Assistant Director Phone ..... (904) 644-2547

**Sports Information Office**

Sports Information Director ..... Rob Wilson  
 Assistant SID, Women's Basketball ..... TBA  
 Address ..... P.O. Box 2195, Tallahassee, FL 32316  
 Phone ..... (904) 644-1403  
 FAX ..... (904) 644-3820

**Basketball Staff**

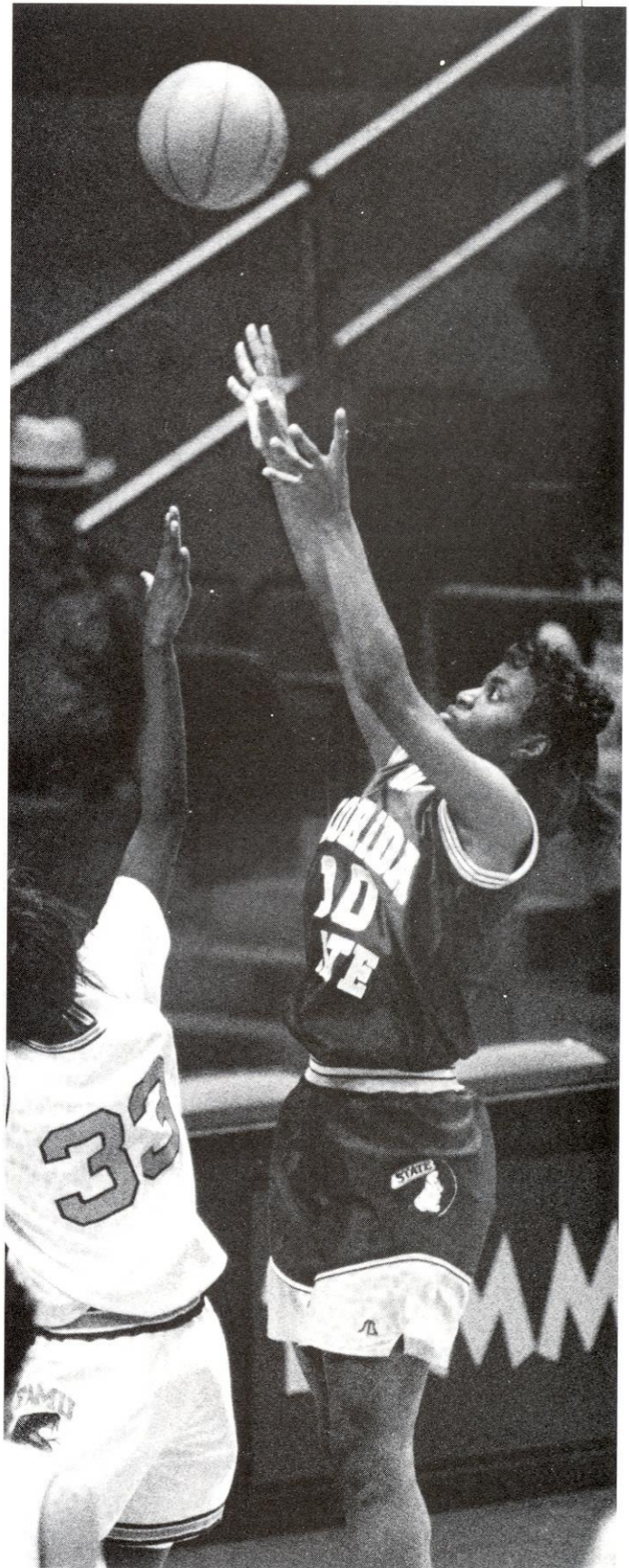
Head Coach ..... Marynell Meadors  
 (Middle Tennessee State '65)  
 Years at FSU ..... 8  
 Record at FSU ..... 116-110 (.513)  
 Years Coaching ..... 24  
 Career Record ..... 479-249 (.658)  
 Assistants ..... Mark Schmidt (Luther '85),  
 Sue Panek (Maryland '93), Jonelle Polk (Illinois '88)  
 Basketball Office Phone ..... (904) 644-3641  
 Basketball Trainer ..... Angela Sehgal  
 Training Room Phone ..... (904) 644-1091

**1993-94 Season Results**

Record ..... 6-21  
 Conference Record ..... 3-13  
 Conference Place ..... 9th  
 Starters Returning/Lost ..... 3/2  
 Letterwinners Returning/Lost ..... 4/7  
 Newcomers ..... 8

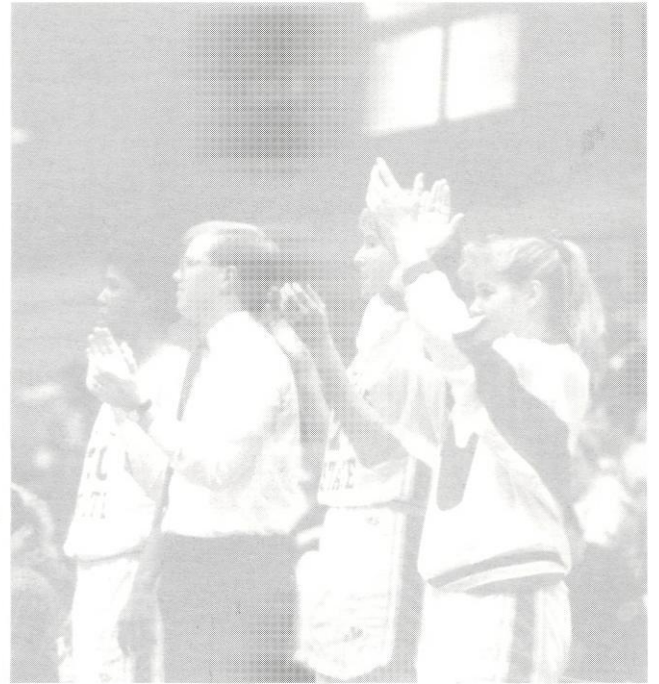
**Florida State Fax Directory**

ACC Week ..... (910) 727-4083  
 Tallahassee Democrat ..... (904) 599-2295  
 Florida Flambeau ..... (904) 681-3577  
 FSView ..... (904) 561-6578  
 Osceola ..... (904) 224-3627  
 WCTV ..... (904) 668-3851  
 WTXL ..... (904) 668-1460



The Seminoles head into the 1994-95 season with one of head coach Marynell Meadors' best ever recruiting classes.

# ADVANCE OUTLOOK SEMINOLES







# LADY SEMINOLE OUTLOOK

THE REAL LADY SEMINOLES ARE BACK!

**J**UST AS THE PHOENIX CONSUMED ITSELF with fire and arose from its own ashes, the Florida State women's basketball team will attempt to rise from the memory of the worst season in FSU history and return to a position of respectability in the Atlantic Coast Conference.

Head Coach Marynell Meadors and her staff have the burden of mixing the ingredients of eight newcomers and four returnees into a cohesive unit that can compete in one of the toughest conferences in the country.

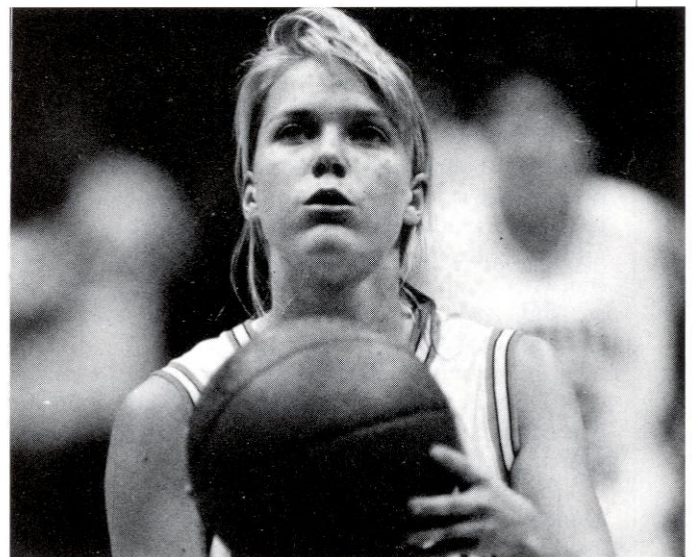
"I feel as though we filled in some of the holes with some outstanding recruits this year," Meadors said. "But we are going to be as green as green can be. I truly love working with freshmen because they are so eager to learn and they are not afraid to play."

The Seminoles are looking to return to a style of basketball that has not been seen in Tallahassee the past two years.

"We are going to press, play excellent aggressive defense and then we will run," Meadors explained. "We will have an up tempo game. If our defense is playing great then we are going to get a lot of fast break opportunities. We will push it up the floor but only if we are playing defense. We have a tremendous amount of depth and we are going to keep everybody fresh by substituting constantly. There are twelve players on our roster right now and they will all play every game. It is going to be an aggressive type team that some of the ACC schools haven't seen in the past two years because we have not had the depth."

Leading the team on the floor will be senior point guard Allison Peercy. The 1994-95 team captain is the squad's top returning scorer. She led FSU a year ago with 3.7 assists per game while contributing 11 points per contest. Peercy has been a mainstay in the backcourt for three years, playing in 81 contests for the Tribe.

"Allison will be the organizer on the court," Meadors said. "She will make sure that everybody is



Senior guard Allison Peercy is one of four returnees leading eight newcomers into the 1994-95 campaign.



Sophomore forward Kaila Walker gained valuable seasoning as a member of the ACC All-Stars this summer.

doing their assignments. She has been in this program for three years and knows what the coaches expect of her. She has embraced the role of the team leader and is looking forward to making this season her best so far."

The new faces at the guard spots for the Lady Seminoles include Aletha Penn, Tanisha Rickman and Anja Pedersen. Penn, a freshman from Kansas City, Missouri, has been called the best defender of the eight newcomers by Coach Meadors. She has the skills to push the ball up the court and hit the three point shot. She fits in nicely with the style of play the coaches are trying to employ.

Rickman, a freshman from nearby Ft. Walton Beach High School, led her high school to the 5-A state championship while averaging 24 points per game. A very knowledgeable player, she could see some time in the starting lineup before the season is over.

Pedersen is the first foreign player to play for Coach Meadors. A junior college transfer from Florida Community College in Jacksonville, the coaches believe she will be in the starting lineup at either the big guard or small forward spot for the season opener with Fresno State. She shot a remarkable 45 percent from behind the three point arc while leading FCC to a No. 2 national junior college ranking last year.

Junior forward Katina Cobbins returns to the front court with her strong rebounding ability and good low post offense. She led the team in rebounding last year and shot 53 percent from the field.

"Katina is not a great offensive player but she does a tremendous job on defense," Meadors said. "She spent a lot of time on the court as a sophomore and has a lot of experience. She is capable of scoring in the 10 to 12 point

range for us but her main contribution to this team will be on defense."

The newcomers at the forward spot range in height from 5-11 to 6-1, giving the Lady Seminoles some much needed size.

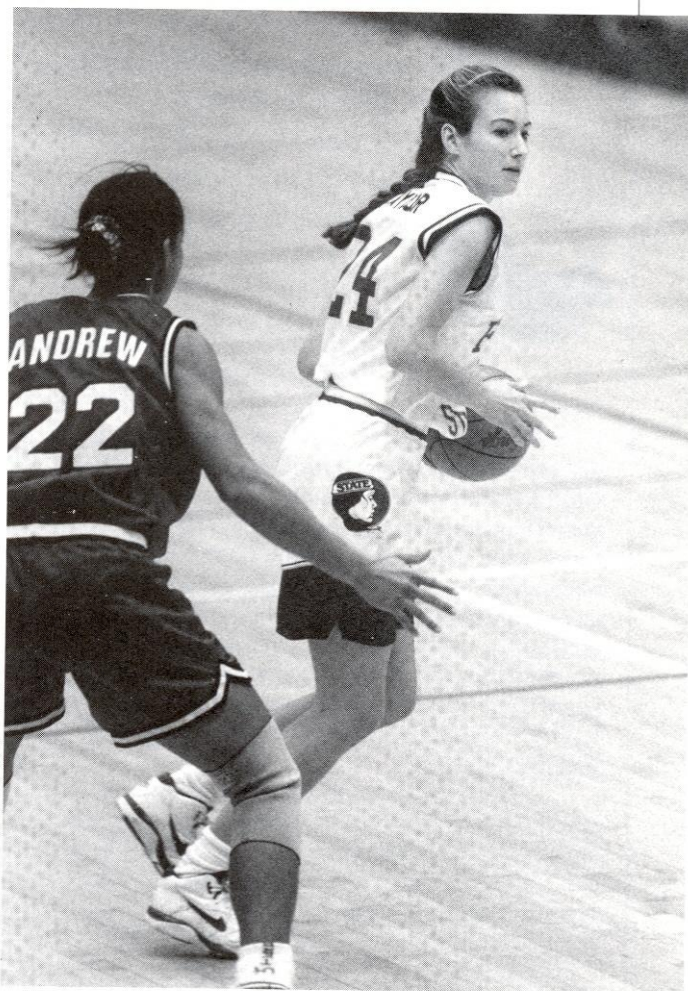
Latrice McLin, a six foot freshman from Rossville, GA, has been described as the type of player that can pull down a rebound, make the outlet pass and run the wing for the layup at the other end. She averaged 20 points and 10 rebounds a game for Ridgeland High School.

"I don't see how we are going to keep Latrice on the bench," Meadors said. "I don't want to keep her on the bench because I think she is very good."

Carla Williams will bring two years of junior college experience to a very young FSU team. A native of Graceville, the six footer led Pensacola JC to a 46-12 two year record while averaging 18 points and 15 boards per game.

"Carla is the type of player who is not afraid to get down on the floor and scrap for the loose ball," Meadors said.

Wendy Hampton is the most versatile of the eight newcomers. She has the ability to play every position but will concentrate on small forward. Wendy is the strongest player to come into the Lady Seminole basketball



Liberty Taylor is one of two seniors on this year's squad.



*Katina Cobbins' 6.0 rebounds per game average last season led the Seminoles and she will be counted on to give needed experience underneath this year.*

program during the Meadors coaching era.

"Wendy is a very quiet player," Meadors announced. "You don't realize what she is doing for you until you look at the box score after the game and see she has double figures in points and rebounds."

Adding experience to the forward position are returnees Liberty Taylor and Kaila Walker. Taylor, one of two seniors on the squad, possesses a soft shooting touch and is one of the team's most accurate free throw shooters. The only sophomore on the club, Walker averaged 22.6 minutes a game as a true freshman last year.

The post position for the Tribe will be the most inexperienced but may have the best talent. Freshmen Lysa Moorefield and Leslie Waugh come to FSU from dominant high school programs.

Moorefield averaged 20 points and 12 rebounds a game for Lake Brantley High School. Her team lost to Tanisha Rickman's in the 5-A state championships.

Waugh was selected the Most Valuable Player at the Louisiana state tournament. Her team was a pre-season *USA Today* No. 1 pick and finished the season No. 2 in the country after winning its second consecutive state championship.

"All of these new players bring an air of confidence and winning attitudes to the team," Meadors said. "I feel confident that when we put everything together this is going to be a good team. Early in the season we are going to be looking at a lot of people that will just be learning the system and we won't be as good. But by the time we get to January and February I think we are going to be very strong."

"I would like to see us finish in the top half of the conference. If we do that, we have made one giant step. We are going out each game with the attitude that we can beat every team we play because the real Lady Seminoles are back." ♦

# 19495 ROSTERS

## A L P H A B E T I C A L

10	Katina Cobbins	F	JR	6-1	Baton Rouge, LA
45	Wendy Hampton	F	FR	5-11	Mt. Ulla, NC
5	Latrice McLin	G/F	FR	6-0	Rossville, GA
31	Lysa Moorefield	F/C	FR	6-1	Altamonte Springs, FL
44	Anja Pedersen	G	JR	5-8	Glostrup, Denmark
32	Allison Peercy	G	SR	5-7	McMinnville, TN
20	Aletha Penn	G	FR	5-5	Kansas City, MO
30	Tanisha Rickman	G	FR	5-5	Fort Walton Beach, FL
24	Liberty Taylor	G/F	SR	6-1	Destrehan, LA
33	Kaila Walker	F	SO	6-1	Atlanta, GA
42	Leslie Waugh	C	FR	6-2	Shreveport, LA
22	Carla Williams	F	JR	6-0	Graceville, FL

## N U M E R I C A L

5	Latrice McLin	G/F	FR	6-0	Rossville, GA
10	Katina Cobbins	F	JR	6-1	Baton Rouge, LA
20	Aletha Penn	G	FR	5-5	Kansas City, MO
22	Carla Williams	F	JR	6-0	Graceville, FL
24	Liberty Taylor	G/F	SR	6-1	Destrehan, LA
30	Tanisha Rickman	G	FR	5-5	Fort Walton Beach, FL
31	Lysa Moorefield	F/C	FR	6-1	Altamonte Springs, FL
32	Allison Peercy	G	SR	5-7	McMinnville, TN
33	Kaila Walker	F	SO	6-1	Atlanta, GA
42	Leslie Waugh	C	FR	6-2	Shreveport, LA
44	Anja Pedersen	G	JR	5-8	Glostrup, Denmark
45	Wendy Hampton	F	FR	5-11	Mt. Ulla, NC

HEAD COACH ..... Marynell Meadors (Middle Tennessee State '65)  
 ASSISTANT COACH ..... Mark Schmidt (Luther College '85)  
 ASSISTANT COACH ..... Jonelle Polk (Illinois '88)  
 ASSISTANT COACH ..... Sue Panek (Maryland '92)  
 TRAINER ..... Angela Sehgal  
 MANAGER ..... Angela Atkinson  
 MANAGER ..... Rick Horton



LADY



COACHES

SEMINOLES





# HEAD COACH MARYNELL MEADORS

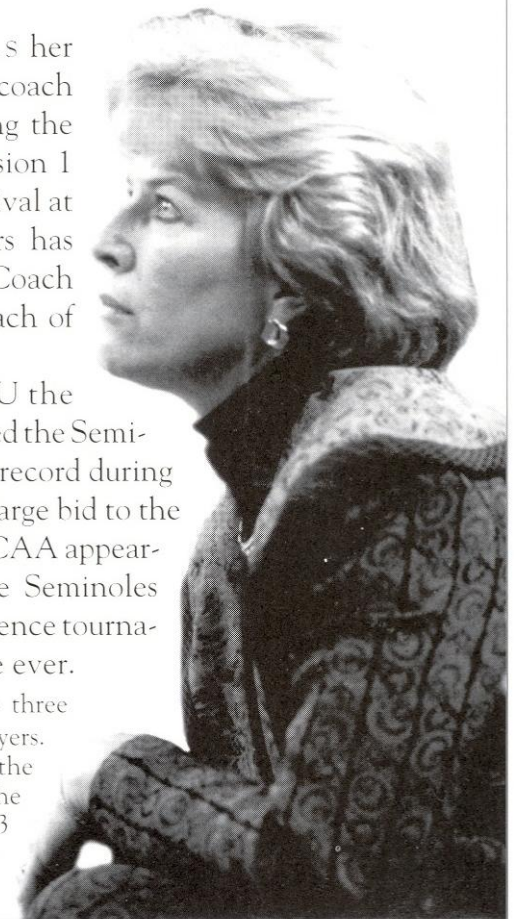
MIDDLE TENNESSEE STATE '65  
 CAREER RECORD: 479-249, 24 YEARS  
 FSU RECORD: 116-110, 8 YEARS

M

ARYNELL MEADORS ENTERS her 25th year as a head basketball coach ranked fifth, by victories, among the all-time winningest active Division I women's coaches. Since her arrival at Florida State in 1987, Meadors has been named Metro Conference Coach of the Year (1990) and Co-Coach of the Year (1991).

In her eight seasons at FSU the Tennessee native has twice guided the Seminoles into NCAA post-season play. After amassing a 21-8 record during the 1989-90 regular season, Meadors' squad received an at-large bid to the national championship tournament, marking the second NCAA appearance in the program's history. The following season the Seminoles captured an automatic berth after winning the Metro Conference tournament and advanced into the second round for the first time ever.

Since Florida State's entry into the Atlantic Coast Conference three seasons ago, Meadors has produced first and second team All-ACC players. Competing in one of the premier women's basketball conferences in the nation, Tia Paschal became FSU's first All-ACC selection when the second team All-American was voted to the squad following the 1992-93 campaign. Christy Derlak followed suit the following year when the ACC's third leading scorer was named to the second team.





Head Coach Marynell Meadors' 479 career victories ranks fifth among all-time winningest active Division I coaches.

Before arriving at Florida State, Coach Meadors spent a successful 16 years at Tennessee Tech where she built the program from scratch. During her tenure there, Meadors compiled 363 wins becoming the first women's coach to win 300 games at one institution. She also had 16 20-plus win seasons, advanced her team into post-season play 12 times, won four Ohio Valley Championships and was twice named coach of the year in that conference. The many accomplishments of Meadors were honored in 1992 when she was inducted into the Ohio Valley Conference Hall of Fame and the Tennessee Tech Hall of Fame.

Most impressive is Meadors' success on the international level. Three of Meadors' former athletes have gone on to compete in the International League in Europe and Meadors herself spent two summers in Taiwan. In 1992, she was the assistant coach for the Jones Cup Senior women's team which won a gold medal, and in 1993 she served as head coach for the bronze medalling junior national team which competed in the same Jones Cup Tournament. In 1989, Meadors stayed state-side as head

coach of the Olympic Festival's North team which also won a gold medal.

Meadors has served on several selection committees during her coaching career. Since 1976, she has been a member of the selection committee for Women's Basketball Top 25. She has also held posts on the Kodak All-American selection committee, the Stayfree Coach and Player of the Year Awards, the Converse Coach of the Year Award, the Olympic Sports Festival selection committee, the U.S. Olympic Trials and the NCAA Midwest Basketball Committee.

Meadors has been instrumental in strumming up community support for Lady Seminole Basketball. She instituted the weekly Marynell Meadors Basketball Show where she reviews past games and previews upcoming opponents as well as started booster programs and the Little 'Nole Club.

In the off season, when Meadors is not on the recruiting tour she enjoys golfing in the Florida sunshine. ♦

## MEADORS' RECORD AT FSU

1986-87	9- 19	(.321)
1987-88	9- 18	(.333)
1988-89	16- 11	(.593)
1989-90	21- 9	(.700)
1990-91	25- 7	(.781)
1991-92	17- 11	(.607)
1992-93	13- 14	(.481)
1993-94	6- 21	(.222)
<b>TOTAL</b>	<b>116-110</b>	<b>(.513)</b>

### NCAA APPEARANCES

**1989-90**

(At-Large Bid)

1st Round - Lost to Penn State, 83-73

**1990-91**

Metro Bid

1st Round - Beat Appalachian State, 96-51  
2nd Round - Lost to Western Kentucky, 69-72



# LEAD ASSISTANT COACHES

## SUPPORT STAFF

### MARK SCHMIDT

*Third Year, Luther College '85*

**A**SSISTANT COACH MARK SCHMIDT begins his third season as a member of the Lady Seminole coaching staff. He serves as the coordinator for recruiting, supervisor of fall conditioning, and assistant in game coaching as well.



A nine-year coaching veteran, Schmidt began his stint as an assistant after relinquishing his post as the head coach at the University of Hartford. During his two years at Hartford, Schmidt implemented a tough denial defense, one that complements the press and run style that Meadors brought to Florida State.

Schmidt was head coach of the women's basketball program at the University of Tulsa from 1985-87. He then spent three seasons at the United States Military Academy at West Point as an assistant coach to former professional player Lynn Chiavaro.

Schmidt helped Chiavaro form one of the stingiest defenses in the nation at Army. The Lady Knights finished among the top three nationally in Division II scoring defense during each of Schmidt's three seasons at the New York state school.

A 1985 graduate of Luther College in Decorah, Iowa, Schmidt received his degree in physical education and is in the process of finishing his master's degree in athletic administration from the University of Tulsa. He and his wife, Mary Jo, were married in May of 1992.



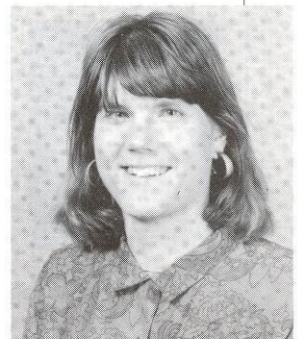
Assistant coach Mark Schmidt begins his third season on the Seminole staff after holding head coaching positions at the University of Hartford and the University of Tulsa.

### SUE PANEK

*Second Year, Maryland '91*

**L**ILY, PENNSYLVANIA native Sue Panek begins her second year as an assistant coach with the Lady Seminoles. After a successful four-year career as a University of Maryland forward which included a Final Four and Final Eight finish, Panek served as a student assistant under Terp's head coach Chris Weller.

Panek's primary responsibili-



ties include handling team travel, scouting opponents and on-court coaching.

Panek graduated from Maryland with a degree in Kinesiology in 1991.

**JONELLE POLK**  
*First Year, Illinois '88*

**J**ONELLE POLK BEGINS HER FIRST season as an assistant to Head Coach Marynell Meadors. She comes to FSU after a three year stint as an assistant in charge of conditioning and post player development at the University of Northern Illinois.

Prior to becoming a collegiate coach, Polk spent three years playing professionally in both Italy and France. She began her playing career at Peoria Manual High School in Illinois where she graduated 13th out of a senior class of 289. Polk lettered four years in basketball and track before moving on to the University of Illinois.

In her four years with the Illini, Polk accumulated 933 rebounds and 1,984 points to become the Fightin' Illini's all-time leader in both categories. The two-time All-Big Ten selection scored 627 points in 1986-87 to place second on the Illinois single season scoring list. She was also a member of the United States' pre-Olympic National Selection Team in 1987. Polk was selected to the University of Illinois All-Decade Team for the 1980's.



Polk became a member of a very elite group of women in 1992 when she dunked a basketball during the Gus Macker three-on-three tournament in Rockford, IL.

She graduated from the University of Illinois with a bachelor of science degree in Liberal Arts and Sciences with an emphasis on mathematics and economics. ♦



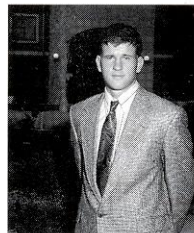
**BASKETBALL SUPPORT STAFF**



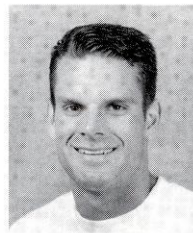
ANGELA ATKINSON  
*Manager*



PATTI GRIFFITH  
*Basketball Secretary*



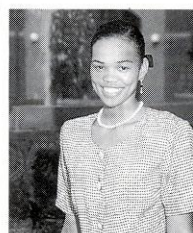
RICK HORTON  
*Manager*



RON MILLER  
*Strength & Conditioning Coach*



GREG MORGAN  
*Student Trainer Assistant*



ANGELA SEGHAL  
*Trainer*

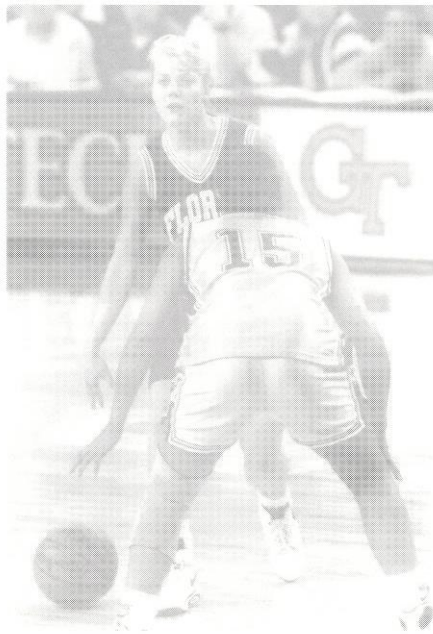


94-105  
94-95

READY

PLAYERS

SEMINOLES





# #10 KATINA COBBINS

6-1 • JUNIOR • FORWARD  
BATON ROUGE, LA (McKINLEY)



**A** NATURAL ATHLETE who looks to expand her role...a tough and motivated player who is not afraid to go underneath and mix it up...hopes to become a consistent scorer...one of the strongest players on the team...can make her presence felt underneath...**1993-94:** Grabbed a team-leading 156 rebounds...started in 22 of 26 contests...came down with 18 boards against Wake Forest in the ACC tournament to mark the highest single game rebounding total by a Seminole during the season...hit on 49-of-92 from the floor...shooting percentage of .533 was tops on the squad...scored in double figures on three occasions...dropped a career-best 14 points in first meeting with Wake Forest...garnered team high rebounding totals in 16 games...**1992-93:** Sat out as a redshirt...**1991-92:** Played in 21 games as a freshman...shot a strong 44 percent from the floor...had 24 boards for the season averaging just over one a game...averaged five minutes of playing time per game...provided much needed relief for starters...**HIGH SCHOOL:** Played in the Louisiana All-Star games...also selected to the 8AAA District teams for volleyball, basketball, softball and track at McKinley High...received scholastic awards in all four sports...named All-District in volleyball and basketball three times and twice in softball...placed in district, regional and state throwing

shot put for the McKinley track team...AAU squad placed first at the regional championship...named All-State in volleyball and basketball her junior and senior years...received several coaches awards for her performances...graduated from high school with magnacum laude honor...**PERSONAL:** Enjoys meeting new people and playing all kinds of sports...majoring in social work...born June 22, 1973. ♦

### SEASON HIGHS

POINTS..... 14 vs. Wake Forest (1/22)  
REBOUNDS..... 18 vs. Wake Forest (3/4)

### CAREER HIGHS

POINTS..... 14 vs. Wake Forest (1/22/94)  
REBOUNDS..... 18 vs. Wake Forest (3/4/94)



## COBBINS' CAREER STATISTICS

YEAR	G-GS	MIN	FGM-FGA	PCT	3FGM-3FGA	PCT	FTM-FTA	PCT	REB-AVG	AS	ST	BK	TO	PF-DQ	PTS-AVG
91-92	21- 0	5.0	4- 9	.444	0-0	.000	2-15	.133	24-1.1	4	3	1	4	12-0	10-0.5
93-94	26-22	29.7	49-92	.533	0-0	.000	30-52	.577	156-6.0	4	48	11	37	75-2	128-4.9
<b>TOTAL</b>	<b>47-22</b>	<b>18.6</b>	<b>53-101</b>	<b>.525</b>	<b>0-0</b>	<b>.000</b>	<b>32-67</b>	<b>.477</b>	<b>180-3.8</b>	<b>8</b>	<b>51</b>	<b>12</b>	<b>41</b>	<b>87-2</b>	<b>138-2.9</b>

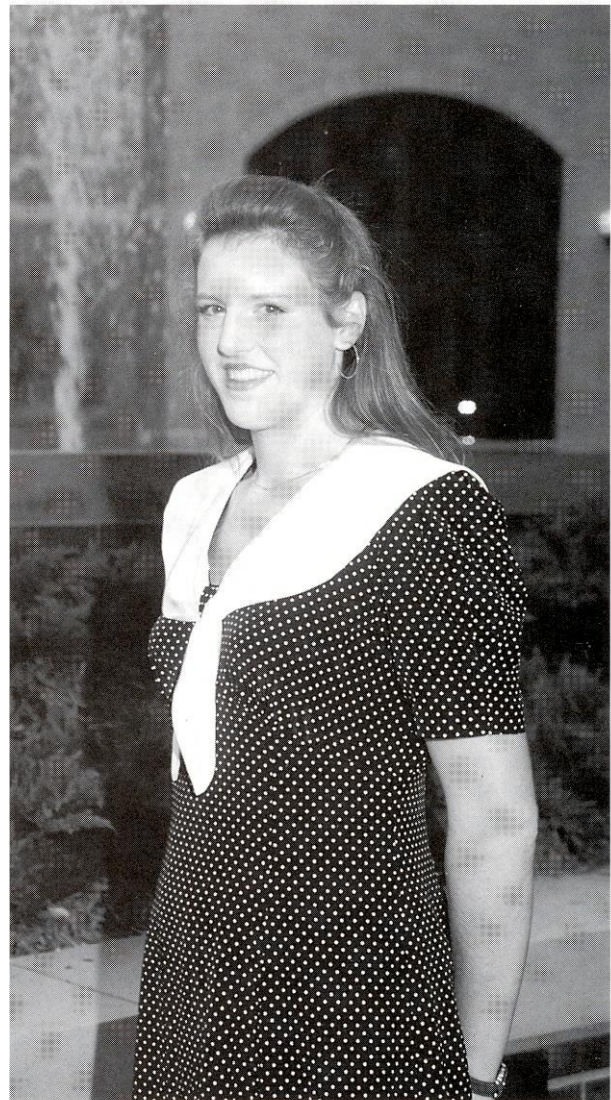
# #4 WENDY HAMPTON

5 - 1 1 • FRESHMAN • FORWARD  
M T . U L L A , N C ( W E S T R O W A N )



• ONE OF THE FINEST players to come out of the North Carolina area in recent years...can play all five positions...has the ability to post up or move outside and hit the three point shot...strong passer...runs the court well...one of the strongest freshmen ever signed at FSU...a very quiet contributor...goes about her business without a lot of flash...will strengthen the team's rebounding and defense...

**HIGH SCHOOL:** Led team to sectional finals and a 24-3 record...averaged 24 points and 11 rebounds per game...played in the North Carolina East-West All-Star game...named to the All-Piedmont and the All-Conference teams...also named Rowan County Player of the Year...**PERSONAL:** Majoring in biology...born September 13, 1976. ♦



# LATRICE #5 McCLIN

6-0 • FRESHMAN • GUARD/FORWARD  
ROSSVILLE, GA (RIDGELAND)



**H**AS THE TALENT and ability to make a name for herself...one of the best prep players to come out of the state of Georgia last year...will play the small forward position...runs the court extremely well...possesses a good shooting touch...strong rebounder...good all around player who can pull down a rebound, make the outlet pass and be the first one down at the other end for the layup...a tremendous hustler...could draw starting assignments if she shows signs of growth and confidence in the early part of the season..**HIGH SCHOOL:** Earned All-State and Terrific Ten honors...named All-Tri-State and All-North Georgia Player of the Year...voted Northwest Georgia Tip-Off Club MVP...played in the Georgia All-Star and Georgia/Tennessee All-Star games...a Moore Athlete of the Year finalist and *The Chattanooga Times/News Channel* Twelve Athlete of the Year finalist...graduated with honors (3.1 gpa)...had perfect attendance in school her sophomore through senior years...**PERSONAL:** Enrolled in the undergraduate studies program...born July 10, 1976. ♦



# #1 BLYSSA

# MOOREFIELD

6-1 • FRESHMAN • FORWARD/CENTER  
ALTAMONTE SPRINGS, FL (LAKE BRANTLEY)



**B** RINGS MUCH NEEDED height to the lineup...very strong physical player in the paint...has improved her scoring ability...averaged 10 points per game as a junior at Lake Brantley but had games as a senior of 30 and 35 points...good range on jumper...can hit from the outside...has impressed the FSU coaching staff...showed ability to hit the foul line extended jumper as well as scoring from the low

post...will be a challenge defensively for centers that have to step out and guard her...**HIGH SCHOOL:** Named third team All-State, first team All-Seminole County, and first team All-Conference...averaged 20 points, 12 rebounds, and five blocks per game...led team to a 23-9 record and to a final eight appearance in the state tournament...**PERSONAL:** Enrolled in undergraduate studies...date of birth is May 2, 1976. ♦





# ANJA # PEDERSEN

5 - 8 • JUNIOR • GUARD

GLOSTRUP, DENMARK (SCHNEEKLOTH/FLORIDA CC)



**W**ILL PLAY EITHER the shooting guard or small forward position...a tremendous three point shooter...shot 45 percent from behind the three point arc in 1993-94 at FCC...the first foreign player in Florida State Lady Seminole history...will be looked upon by the FSU staff to fill a starting position at the beginning of the season...**JUNIOR COLLEGE:** Played two seasons at Florida Community College in Jacksonville...named Mid-Florida All-Conference...member of the Region VIII All-Tournament Team...played the role of sixth man...led FCC to a No. 2 national junior college ranking and a two year combined record of 57-7...a Pizza Hut Challenge All-Tournament selection...received the academic award for women's basketball in '93 and '94...named to Who's Who in American Colleges...**HIGH SCHOOL:** High school team won Danish Championship in 1991...once scored 76 points in a high school game...played on the Denmark Youth National Team for four years and the Senior National Team for one...also played soccer...**PERSONAL:** A nutrition and fitness major...born February 27, 1972. ♦



# #3 ALLISON PEERCY

5 - 7 • SENIOR • GUARD  
 McMINNVILLE, TN (MANCHESTER)



**T** E A M L E A D E R W H O W I L L be the Seminoles' spark plug this season... durable player who has started in 53 consecutive games...expected to take up more of a scorer's role ...quick defensively...excellent free throw

shooter and ranks fourth all-time at FSU in that category (74.9%)...unselfish team player with a great attitude...**1993-94:** Started all 27 games for the Seminoles...saw majority of playing time at point guard after starting the year at the No. 2 position...netted double figures in eight of the last nine games...her 11.0 points per game average was the team's second highest...led squad to its first victory of the season with a career-best 25 point performance against Dayton...averaged 3.7 assists per contest to rank amongst the ACC leaders...one of the Seminoles top free throw shooters at 75.7 percent...garnered team-high scoring honors on six occasions...secured win at N.C. State by hitting 3-of-4 free throws in the game's final 30 seconds...an iron-horse who played 40 or more minutes in four games...an Academic All-ACC selection...**1992-93:** Led the Tribe in assists with 129 (5.0 apg) and placed fourth in the Atlantic Coast Conference in that category...handed out a career high 11 assists against Florida...started and



## SEASON HIGHS

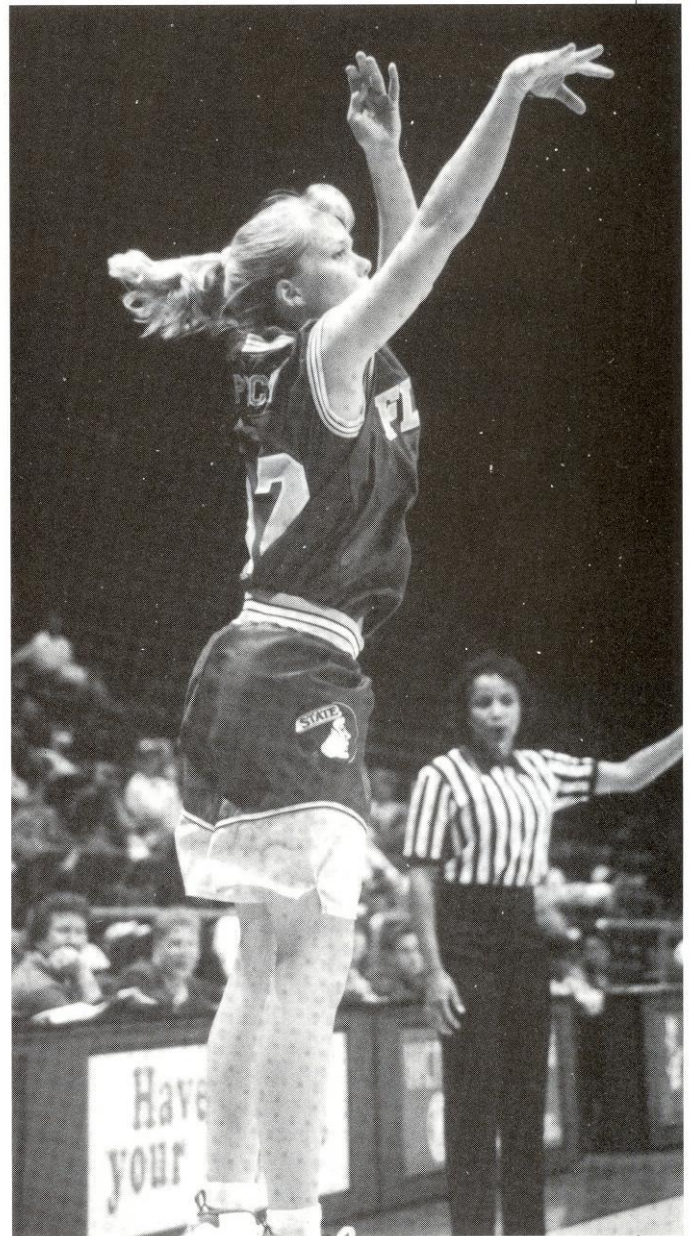
POINTS..... 25 vs. Dayton (12/4)  
 REBOUNDS... 7 vs. Dayton (12/4); vs. Kentucky (12/30)  
 ASSISTS ..... 8 vs. Georgia Tech (12/18);  
 at Virginia (12/21); at Wake Forest (2/18)

## CAREER HIGHS

POINTS..... 25 vs. Dayton (12/4/93)  
 REBOUNDS..... 7 vs. Dayton (12/4/93);  
 vs. Kentucky (12/30/93)  
 ASSISTS ..... 11 vs. Florida (2/3/93)

played in 26 games, averaging 36 minutes per contest...showed remarkable durability, playing a full 40 minutes in six games...lit up Georgia Tech's back-court for a career-best 24 points in a 79-71 FSU victory in Atlanta...finished fourth in the ACC in steals (2.4 spg) and swiped seven vs. North Carolina in an 85-66 Tribe win in Chapel Hill...scored 18 points, with six assists, and six steals at home against Clemson...scored in double figures ten times...shot 77 percent from the foul line (72-94)...led Florida State in scoring twice...**1991-92:** Appeared in all 28 Lady Seminole games, averaging over 15 minutes a game...second on the team in 3-point shots made and third in 3-point field goal percentage...scored a season best 12 points against Butler...had eight points and six assists against top-ranked Maryland...final 12 games of the season she averaged 7.4 points, 2.1 rebounds, and close to two assists per game...hit 38 of 48 free throws placing her second best on the team...**HIGH SCHOOL:** Earned All-District, All-Region, and All-Mid-State honors

while at Central...participated in the All-State Games in Tennessee...voted MVP and "Miss Hustle" by her teammates...named MVP of the Kiwanis Christmas Tournament her senior year...also lettered in track...excelled in the classroom with a 4.0 grade point average...had offers from 14 Division I schools...named Homecoming Queen her senior year...**PERSONAL:** Would like to teach school in Tennessee after graduating with her elementary education degree at Florida State...born October 7, 1973. ♦



Allison Peercy is the team's top returning scorer averaging 11.0 points per contest last season.

PEERCY'S CAREER STATISTICS

YEAR	G-GS	MIN	FG-FGA	PCT	3P-3PA	PCT	FT-FTA	PCT	REB-AVG	AS	ST	BK	TO	PF-DQ	PTS-AVG
91-92	28- 0	15.0	35- 99	.354	9- 37	.243	38- 48	.792	45-1.6	30	15	0	43	31-0	117- 4.2
92-93	26-26	35.5	70-177	.395	15- 59	.254	72- 94	.766	53-2.0	129	63	5	122	69-3	227- 8.7
93-94	27-27	33.4	99-264	.375	14- 56	.250	84-111	.757	86-3.2	100	36	3	112	92-4	296-11.0
<b>TOTAL</b>	<b>81-53</b>	<b>27.4</b>	<b>204-540</b>	<b>.377</b>	<b>38-152</b>	<b>.250</b>	<b>194-253</b>	<b>.767</b>	<b>180-2.2</b>	<b>259</b>	<b>114</b>	<b>8</b>	<b>277</b>	<b>192-7</b>	<b>640- 7.9</b>