

training programs, the FSU/Asolo Conservatory of Professional Actor Training and FSU/Asolo Conservatory of Motion Picture, Television and Recording Arts, are both located in FSU's Asolo Performing Arts Center in Sarasota. The Center for Professional Development and Public Service, housed in the Augustus B. Turnbull III Florida State Conference Center on the edge of the campus, provides extensive credit and non-credit continuing education programs statewide.

For years FSU has reached far beyond Florida through international programs in Switzerland, France, Panama, Costa Rica and the Caribbean. FSU's study centers in Florence, Italy, and London, England, are considered by many to be the nation's best in Europe.

Florida State offers 273 graduate and undergraduate degree programs through its eight colleges — Arts and Sciences; Business; Communication; Education; Engineering (operated jointly with Florida A&M University, a historically black institution); Human Sciences; Law; and Social Sciences (which also incorporates the School of Public Administration and Policy) — and eight schools — Criminology and Criminal Justice; Library and Information Studies; Motion Picture, Television and Recording Arts; Music; Nursing; Social Work; Theatre; and Visual Arts and Dance.

With 1,558 members, the FSU faculty currently includes five members of the National Academy of Sciences and eight members of the American Academy of Arts and Sciences, and has included five Nobel laureates. It is backed by 2,915 administrative/professional and support staff.

Library holdings at Florida State include 2.03 million book titles, 18,420 serials and 4.1 million microforms. The main library facility, the Robert M. Strozier Library, is linked via computerized information systems to other state university and national research libraries. The Paul A.M. Dirac Science Center Library is located at the heart of the university's main science research complex. FSU also maintains extensive music, library science and law libraries, and the Mildred and Claude Pepper Library houses the personal and professional papers of one of Florida's best known political couples.

On the top floor of the Dirac Library is the headquarters of the Supercomputer Computations Research Institute, a multidisciplinary, multinational program established in 1984 that brings together some 50 scientists, engineers and technicians. SCRI is electronically linked to an off-campus research complex at Innovation Park and FSU's two supercomputers.

Also providing unique research opportunities is the physics department's tandem Van de Graaff Superconducting Accelerator Laboratory, which houses two powerful atom smashers and is ranked among the top four nuclear research centers in the nation by the National Science Foundation.

Graduate students, who number more than 5,700, pursue advanced degrees in fields as diverse as business administration and theoretical particle physics. A majority of research done at FSU is the direct result of student effort, culminating in numerous books, mono-

graphs and journal articles relating to the whole spectrum of intellectual interests and the practical needs of society.

FSU, a residential campus, places a high priority on its 28,700 students and their needs and interests (of the student population: 46 percent are male; 54 percent are female; 16.1 percent are minorities; and 2.6 percent are foreign students). The Honors and Scholars Program, Disabled Student Services, International Student Center, Distinguished Lecture Series, Student Government, Flying High Circus and intramural sports are among more than 200 organizations and activities in which students can participate.

Situated in the heart of the state's thriving capital city, Florida State's main campus blends Gothic and modern styles of architecture with the oaks, pines, dogwoods, palms and azaleas of North Florida.

Florida State continues to progress and grow — from its pre-Civil War foundation as the Seminary West of the Suwannee, through the early 20th century as the academically respected Florida State College for Women, returning to coeducational status as a university in 1947, to its modern development as an acclaimed research institution, a top-ranked competitor in intercollegiate athletics and as a standard-setter in the basic sciences and the performing arts.

In all areas of its mission of excellence in teaching, research and public service, Florida State University is advancing boldly into the 21st century. ♦



One of the campuses many focal points, the Westcott Building houses the Office of the University President.



# A NATIONAL LEADER...

## FLORIDA STATE ATHLETICS

**F** LORIDA STATE UNIVERSITY athletics soared to new heights during the 1993-94 season continuing to earn the distinction as one of the nation's top athletic programs. Both on the playing field and in the classroom, Florida State athletes established a mark of excellence.

FSU ushered in 1994 with its first-ever national championship in football. Quarterback Charlie Ward brought a Heisman Trophy, along with literally every other trophy, to Tallahassee when he was recognized as college football's most outstanding performer for the '93 season.



The 1993 Florida State football team captured the National Championship trophy after defeating Nebraska 18-16 in the Orange Bowl.

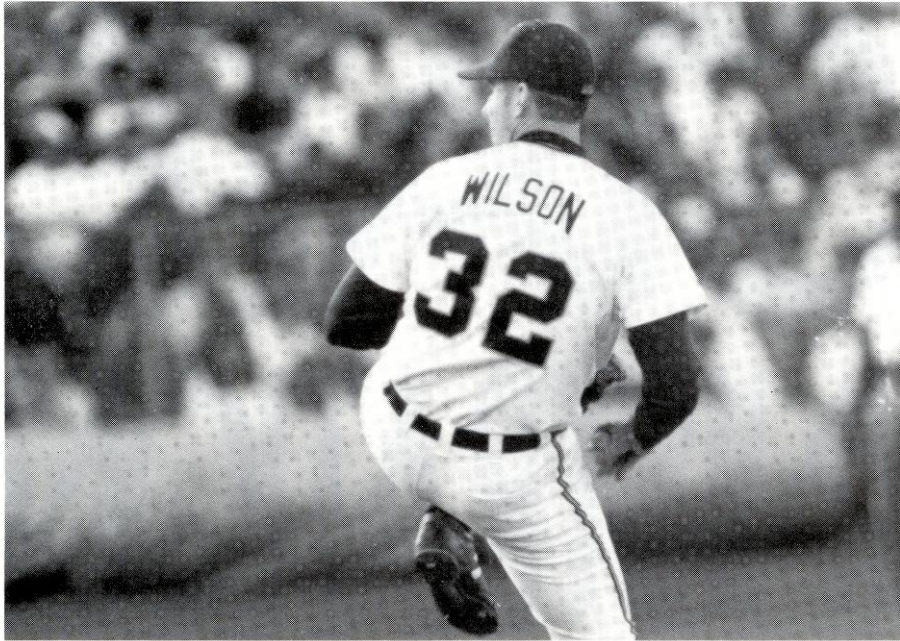
As a program, Florida State qualified nine teams for NCAA post-season competition. The volleyball team made history by advancing to the second round of the National Championship tournament for the first time in eight NCAA appearances. The women's tennis team culminated a historic season by qualifying for the NCAA Tournament for the first time ever.

The baseball Seminoles advanced to the College World Series for the 13th time. Both the men's and women's golf teams placed high enough in NCAA Regionals to earn automatic berths into their respective National Championship Tournaments. For the ninth straight year, the Lady Seminole softball team qualified for NCAA Regional play. Men's tennis advanced to the opening round of the NCAA Regionals, while track took 15 athletes to the NCAA Outdoor Championship and six to the Indoor.

Individually, Florida State athletes qualified for NCAA post-season competition in men's swimming and tennis, and women's swimming and tennis.

FSU athletes also excelled in the classroom. This past academic year saw 26 Florida State student-athletes receive their degrees. The Seminoles placed a school record 113 athletes on the ACC's Academic Honor Roll.





*Pitcher Paul Wilson made Florida State history when he became the first Seminole ever taken as the number one pick of any professional draft when the New York Mets chose him with the first pick in Major League Baseball's amateur draft last June.*

These student-athletes maintained a grade point average of 3.0 or higher for both the fall and spring semesters. Among FSU's 16 teams, the Lady Seminole golf squad took top team honors for the second straight year. The Lady linksters ended the school year with 3.1 cumulative grade point average.

Student-athlete standouts Kristy Derlak and Ken Alexander were ACC Post Graduate Scholarship recipients. Derlak, who played forward for the basketball Lady Seminoles, led the team in scoring and was the ACC's third leading scorer. Alexander, who began graduate school prior to embarking on his senior year of eligibility, completed his undergraduate degree requirements in three years while starting at linebacker for two seasons.

Florida State's first-ever Heisman Trophy winner Charlie Ward set 17 single season and career records and along the way was named the Atlantic Coast Conference Player of the Year for the second straight season.

Florida State's women's tennis team made a clean sweep of the ACC Most Valuable Player awards when two-time All-American Audra Brannon was named Player of the Year and Lori Sowell was selected Rookie of the Year.

Seminole pitching ace Paul Wilson put his name in the national headlines when the New York Mets made him the No. 1 selection in Major League Baseball's draft of amateur players.

Florida State produced 19 first team All-Americans in 1993-94. Ward and Derrick Brooks were named consensus All-Americans, while teammates Corey Sawyer and Derrick Alexander garnered first-team honors. Other first team All-Americans included Wilson (baseball), Bobby Cochran (golf), Audra Brannon (tennis), Bob Sura (basketball), Lew Anelo, Kevin Ansley, John Rothell, Jonathan Carter, Marcus Dixon, Kelsy Nash,

Phillip Riley, Sheryl Covington, Sophia Danvers, Radhiya Teagle and Erica Shepard (track).

A trio of Florida State head coaches received the ACC's highest honor. After guiding his team to its second consecutive perfect conference record, Bobby Bowden was named ACC Coach of the Year. After breaking Clemson's five year indoor track reign and coming within four points of winning the outdoor championship, track coach Terry Long was also chosen ACC Coach of the Year. Alice Reen's accomplishments with the women's tennis team were recognized when her ACC peers voted her conference Coach of the Year. Women's golf coach Debbie Dillman was named

Coach of the Year in the southeast region.

The support student-athletes receive at Florida State is second to none. The nearly completed expansion of the Moore Athletic Center as part of the University Center project houses the athletic department's academic support services. Under the direction of Dr. Roger Grooters, FSU student-athletes have access to tutors, one-on-one academic counseling, study areas, the latest in computer technology, and a study hall and research area.

The expansion and renovation of Doak Campbell Stadium puts it on a par with the finest football facilities in the nation. The 12-court, 1,000 seat Scott Speicher Tennis Center will be the host site of the 1996 NCAA Women's Championship.

Tallahassee will get a dose of "March Madness" when Florida State hosts the first and second rounds of the 1995 NCAA Basketball Championship Tournament at the home court of the basketball Seminoles, the Tallahassee/Leon County Civic Center, in mid-March.

For the 11th time in 12 years Dick Howser Stadium was selected to host NCAA Regional baseball action this past spring. During the year, the Atlantic Coast Conference parted with tradition when it held the conference championship swimming and diving meet at Florida State's Bobby E. Leach Center, marking the first time in eight years that the meet was held outside of North Carolina. And for the second straight year Florida State also played host to the ACC's softball championship tournament.

With Florida State's commitment to winning and dedication to serving the needs of its student-athletes both academically and athletically, Florida State University athletics has secured its place among the nation's elite. ♦



# FLORIDA STATE ADMINISTRATION AND ATHLETIC STAFF

**TALBOT "SANDY" D'ALEMBERTE**  
*President, Florida State University*

**P**RESIDENT TALBOT "SANDY" D'ALEMBERTE is the 12th chief executive officer of Florida State University. He was appointed president on Nov. 29, 1993, by the Florida Board of Regents and took office on Jan. 3, 1994.



D'Alemberte served as the fourth dean of the FSU College of Law from 1984 to 1989 and has continued teaching on the law school faculty.

In a special "Profiles in Power" section, the April 15, 1985, edition of the National Law Journal listed D'Alemberte as one of the 100 most powerful lawyers in the United States. He was the only law dean on the list and one of only 10 members of law faculties.

He was the 1991-92 president of the American Bar Association and the 1982-84 president of the American Judicature Society.

D'Alemberte served in the Florida House of Representatives, representing Dade County from 1966 to 1972. He was chairman of the state Constitutional Revision Commission in 1977 and 1978.

As an attorney, D'Alemberte has been with the Steel Hector & Davis law firm in Miami and Tallahassee where he first began his law career in 1962 and was named partner in 1965.

Born June 1, 1933, in Tallahassee, D'Alemberte was educated in public schools in Tallahassee and Chattahoochee, Fla. In 1955, he earned his bachelor's degree

with honors in political science from the University of the South in Sewanee, Tenn. After his military service as a lieutenant in the Naval Reserve, D'Alemberte studied on a Rotary Foundation Fellowship at the London School of Economics and Political Science. In 1961, he received his juris doctorate with honors from the University of Florida, where he was named to the Order of the Coif and served as president of the Student Bar Association and articles editor of the UF Law Review.

D'Alemberte's book, "The Florida Constitution," was published by Greenwood Press in 1991. He was co-editor of the 1990 four-volume work, "Florida Civil Trial Guide," and has written many published articles.

He is the father of two grown children, Gabrielle Lyn, a law student at the University of Denver, and Joshua Talbot, a senior at his father's alma mater, the University of the South. D'Alemberte is married to Patsy Palmer, children's-policy coordinator in Florida Gov. Lawton Chiles' office. She is a former journalist, legislative aide and White House staff person, and she holds a

## UNIVERSITY ADMINISTRATION

- President* ..... Talbot "Sandy" D'Alemberte
- Interim Provost* ..... Larry Abele
- Dean of the Faculties*
- & Deputy Provost* ..... Dr. Steve Edwards
- Vice President for Research* ..... Dr. Robert M. Johnson
- Vice President for Student Affairs* ..... Dr. Jon Dalton
- Vice President for Finance*
- & Administration* ..... John R. Carnaghi
- Vice President*
- for University Relations* ..... Beverly B. Spencer



degree from the University of Missouri in journalism and a master's from the Harvard Divinity School.

Numerous awards D'Alemberte has won include the 1993 Academy of Florida Trial Lawyers Perry Nichols Award; the 1993 Florida Academy of Criminal Defense Lawyers Annual Criminal Justice Award; the 1990 Jurisprudence Award from the Anti-Defamation League of South Florida; the 1986 National Sigma Delta Chi First Amendment Award; a 1985 American Academy of Television Arts and Sciences "Emmy" for his work in open government, particularly the opening of court proceedings to electronic journalists; the 1987 Florida Bar Foundation Medal of Honor Award, the 1984 Florida Civil Liberties Union "Nelson Poynter" Award and several honorary degrees.

As FSU president, D'Alemberte follows Dr. Bernard F. Sliger, president emeritus, who had served as the 10th FSU chief executive for 15 years before stepping down in 1991 and returned to the university's helm in September 1993 following the resignation of his successor.

### WAYNE HOGAN *Interim Athletic Director*

**F**LORIDA STATE BLOOD RUNS DEEP within Interim Athletic Director Wayne Hogan. Named to the top post last July, Hogan has spent nearly 20 years with the athletic program and a lifetime in and around the FSU community.



Hogan, 38, was elevated from his position as the department's Communications chief during a tumultuous summer at Florida State. He has been credited with quelling a number of public relations storms and generally restoring the stability and credibility earned by the department through the years.

Hogan's selection should have come as no surprise when President Talbot D'Alemberte quickly and confidently called upon him during the difficult times.

"No one," D'Alemberte said, "has better knowledge of all phases of the operation than Wayne Hogan. He has served our department for 13 years and he is a talented communicator."

Perhaps no words describe Wayne Hogan better. A graduate of the prestigious FSU College of Communication, Hogan has spent all of his professional life learning every phase of the business. He has been a sportswriter, broadcaster and network producer as well as handling public and media relations in professional and collegiate sports. He was even called back for a three-year stint recently to serve his former college as an instructor in sports information and marketing.

Over the last three years as an Assistant Athletic Director at Florida State, Hogan took on all of the department's marketing, promotions and advertising

decisions, negotiated network contracts and served as the primary strategist and spokesman. It has become very common over the last decade to see him out on the road speaking to various Seminole Club gatherings around the country. People are his business. Especially Seminoles.

Hogan's work with the media over the years has been heralded nationwide. Florida State has long been a favorite destination of national networks and prominent sportswriters who feel the FSU system is a model in media relations. Much of that goodwill was reflected during the Seminoles' drive to a National Football Championship in 1993. Hogan has also directed media campaigns resulting in 10 of FSU's 14 alltime consensus football All-Americans and all eight national football awards won by FSU players, including the 1993 Heisman Trophy.

But perhaps more important than his recent accomplishments are Hogan's roots, founded deeply in Seminole Territory. While Hogan was learning to walk, his father, Pat, was running as FSU's sports information director. Before starting elementary school, Hogan was already an officiano on FSU sports. The elder Hogan recently retired after 33 years with the university, finishing a stellar career as the University's Vice President for University Relations.

Hogan has expended great effort through his career in keeping tabs on FSU alumni and letter-winners, many of whom he followed as a young fan. Through his work on the FSU Hall of Fame Committee and the planning of a future Sports Museum, Hogan hopes to give credit to all who built the foundation for the magnificent success of recent years.

Hogan has also long been involved with women's sports programs, cutting his teeth as a sports information assistant during the first years of FSU's volleyball and women's basketball programs. During the 1970's, he was the department's first and primary women's sports media contact.

After serving a stint as a sportswriter for the *Tallahassee Democrat* in 1974-75, Hogan began his public relations career while an FSU student. He worked as the top assistant in the sports information office while also coordinating Seminole radio networks for football and basketball. He was the baseball play-by-play voice of the Seminoles and handled color commentary on the basketball network.

After his graduation from Florida State he handled play-by-play and public relations duties for the Houston Astros and Los Angeles Dodgers Triple A affiliates in Charleston, W.V., and Albuquerque, N.M. In late 1980, he was named marketing director and assistant SID at the University of New Mexico, where he worked under former FSU Athletic Director John Bridgers.

In June of 1982, Hogan, then 26, was named Sports Information Director at FSU by then-Athletic Director C.W. "Hootie" Ingram. He was promoted to Assistant Athletic Director in 1992.

Hogan has two daughters — Lindsay, 13, and Kelly, 10. He and his wife, the former Dawn Dewberry of Treasure Island, Fla., have a three-year-old son, Justis Patrick.

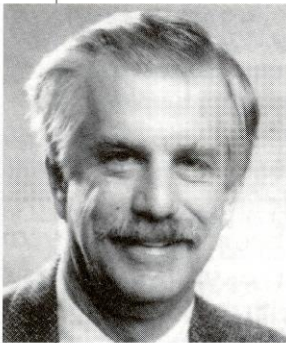


## FSU'S ATHLETIC DIRECTORS

TENURE	NAME	YEARS
1990-94	Bob Goin .....	5
1981-89	C.W. "Hootie" Ingram .....	9
1980	Phil Fordyce ( <i>acting</i> ) .....	1
1973-79	John Bridgers .....	7
1971-72	Clay Stapleton .....	2
1960-70	Vaughn Mancha .....	11
1959	Perry Moss .....	1
1957-58	Tom Nugent .....	2
1947-56	Dr. Howard G. Danford .....	10

### CHARLES W. EHRHARDT *Faculty Athletic Committee Chairman*

AS THE CHAIRMAN of the FSU Athletic Committee, Professor of Law Charles Ehrhardt is an important link for Florida State with the National Collegiate Athletic Association.



He is a member of the NCAA President's Commission Liaison Committee and the NCAA Special Committee which reviewed the Association's Enforcement and Infractions process.

During his tenure as the athletic committee chair, Ehrhardt twice served as president of the Metro Conference and at one time was the chair of the Faculty Athletics Representatives Association.

He was recently elected secretary/treasurer of the Atlantic Coast Conference.

This is Ehrhardt's second stint on FSU's Athletic Committee. A professor of Law at Florida State since 1967, he first served as a member of the committee from 1969-71. He was reappointed to the board in 1983 and succeeded Dr. James Jones as chairman in 1984, thus becoming Florida State's representative to the NCAA.

A highly-respected expert in the field of Evidence, Ehrhardt is the Ladd Professor of Evidence in the Florida State College of Law. He wrote the Florida Evidence Code, passed by the state legislature in 1976, which deals with the admissibility of evidence in court trials. Ehrhardt has written a book on evidence, which is now in its third edition.

Ehrhardt is in demand as a lecturer and speaker. He works with lawyers and judges nationwide as a private consultant on evidence matters. He currently teaches in the areas of torts, evidence, trial advocacy and sports law. He has been honored four times as the outstanding professor in FSU's College of Law and was the recipient of a University Teaching Award in 1989.

A native of Elkader, Iowa, Ehrhardt received a bachelor's degree from Iowa State University in 1962.

He went on to the University of Iowa, where he earned his law degree two years later. He became an Assistant United States Attorney in Iowa before coming to Tallahassee.

Ehrhardt and his wife, the former Judy Sutton, have three children.

### CHARLES HURST *Associate Athletic Director*

AFTER FIVE YEARS as an assistant athletic director, Charles Hurst begins his third year as an associate athletic director in 1994 with responsibility over all of the athletic department's financial and business affairs.

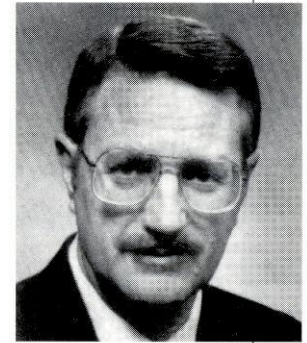
Hurst's specific duties include supervision of the annual budget, business and ticket office operation, facilities management, personnel records administration and coordination of legal and administrative matters with university officials.

The Talladega, Ala. native came to Tallahassee after a stint at the University of Florida, where he was Director of Internal Management Auditing from 1983-1987. While there, he guided a staff of nine in developing all internal auditing programs within the university. He was Manager of Internal Auditing at the University of South Alabama from 1981-1983.

Hurst received his bachelor's degree from Jacksonville State (Ala.) University with a major in accounting and a minor in economics. He earned CPA status in 1975 while employed by the private firm of Brook and Freeman in Anniston, Ala.

Hurst is affiliated with several organizations related to his field, including the American Institute of Certified Public Accountants and the Florida and Alabama societies of Certified Public Accountants.

He and his wife, Juanita, have one daughter.



### BRIAN MAND *Assistant Athletic Director*

IN 1994, BRIAN MAND BEGINS his 15th year on the athletic staff at Florida State. He is in his third year as assistant athletic director in charge of compliance and student services.

Mand's duties include coordinating and overseeing NCAA, Atlantic Coast Conference and institutional compliance, implementing and directing FSU's rules education programs, and serving as the liaison to the NCAA and conference for legislative interpretations.

Mand organizes the agent registration program and serves on various compliance-related committees. He supervises administrative staff in the areas of scholarships





and financial aid, student services and eligibility certification, and the compliance assistance/student athlete data base computer network.

Prior to taking over his current job, Mand served as assistant to the athletic director and compliance coordinator for three years, and as academic advisor to FSU athletes from 1980-88. Before coming to Tallahassee, Mand held academic coordinator positions in

the athletic departments at East Carolina and Rutgers.

Mand earned a bachelor's degree in business administration from Wake Forest University in 1972. He earned his master's degree in sports management from Ohio State in 1977 and is currently completing a doctorate in athletic administration from Florida State, which he expects to earn this December.

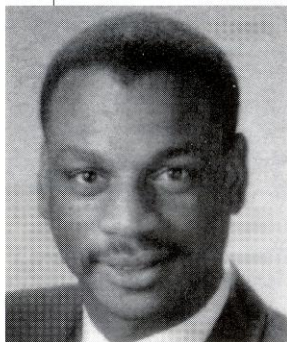
He was inducted into the Phi Kappa Phi National Honor Society in 1988. Mand is a frequent lecturer in athletic administration classes at FSU and has taught an NCAA compliance class for high school and college coaches.

Mand is a past president of the National Association of Academic Advisors for Athletics (NAAAA) and is a current member of the National Association of Athletics Compliance Coordinators (NAACC).

He and his wife, Roberta, have a son, Brandon, and a daughter, Krystina.

**M. GUY MORGAN**  
*Assistant Athletic Director*

**G**UY MORGAN IS THE NEWEST MEMBER OF the Florida State athletic staff as he begins his first year as Assistant Athletic Director.



In addition to assisting athletic director Bob Goin in the day-to-day operation of the FSU program, Morgan will concentrate on the coordination and administration of the men's and women's basketball teams. Morgan's duties will include coordinating team travel, dormitory supervision, practice and facility scheduling, along with the planning and coordination of game operations. He will be involved in matters related to opponent

scheduling and budgets as well. He will also assist in an enrichment program for all FSU student-athletes.

Morgan brings a great deal of experience to the newly created position. A 1984 graduate of Wake Forest University, he was the Most Valuable Player for the Demon Deacon basketball team as a junior and senior.

He co-captained the team in his senior season (1981-82).

Morgan played professional basketball with the Indiana Pacers during the 1982-83 season. After his playing career, he worked in the furniture industry as a national sales consultant for four years.

From 1988-94, Morgan worked as the assistant manager of the Vantage Golf Tour. In that position, he served as a liaison between the Sports Marketing Enterprises division of the RJR Nabisco Company and the PGA Tour.

Morgan, 33, and his wife Tonya moved to Tallahassee in July.

**CECILE REYNAUD**  
*Interim Assistant Athletic Director*

**C**ECILE REYNAUD ENTERS HER 19TH year as a member of the Florida State University athletic department and, while she will continue as head coach of her very successful Lady Seminole volleyball program, she was given additional duties over the summer as interim assistant athletic director.

Her added responsibilities include overseeing the operation of the Olympic Sports at FSU including: men's and women's golf, tennis, track, swimming, softball and volleyball programs.

An outstanding coach and administrator, Reynaud is well qualified for her new position.

One of the nation's most successful coaches, Reynaud's first victory of the 1994 season will be the 500th of her career. She has compiled a sparkling 499-206 mark in her 18 seasons at the helm of the FSU program.

A 1975 graduate of Southwest Missouri State, Reynaud enjoyed an outstanding volleyball career and was twice listed among the Outstanding College Athletes in America. In 1983, she was inducted into the school's Women's Athletic Hall of Fame.

A two-time Metro Conference Coach of the Year and the 1992 Atlantic Coast Conference Coach of the Year, Reynaud was also named the American Volleyball Coaches Association South Region Coach of the Year in 1989.

Presently, Reynaud is a member of the Volleyball Hall of Fame selection committee. She also serves on the AVCA ethics committee and is active on the USVBA board of directors and executive committee. Since 1991, she has served as the volleyball commissioner of the Olympic Festival.

After receiving her undergraduate degree from SW Missouri State, Reynaud completed her master's work at Florida State in 1979 and is currently enrolled in the Ph.D program in athletic administration at FSU.





**ANDY URBANIC**  
*Assistant Athletic Director*

**I**N 1994, ANDY URBANIC BEGINS his fifth season as FSU's assistant athletic director in charge of football operations. He is directly responsible for all aspects of the football operation, including team travel, home game operations, practice, class attendance, and dining hall and dormitory operations.



He is charged with setting up Florida State's future football schedules and smoothly negotiated the Seminoles' football move into the Atlantic Coast Conference with regard to scheduling. He also assists the athletic director in day-to-day operations of the department.

Urbanic came to Tallahassee with more than 20 years of experience in collegiate athletics, mostly as a football coach. Prior to taking the administrative post at Florida

State, he was at the University of Akron (Ohio), as offensive backfield coach and recruiting coordinator from 1986-87, and as assistant head football coach and offensive coordinator from 1987-88.

From 1980-86, Urbanic was the offensive backfield coach at the University of Pittsburgh, where he also directed the Pitt Panther and Fogo Fazio football clinics.

Several Pennsylvania high school football programs benefitted from Urbanic's coaching abilities. He coached six undefeated seasons and earned eight state championships while coaching high school football. From 1976-78, his Pittsburgh Penn Hills Senior High School team posted a 32-game winning streak.

Urbanic is a past president and member of the board of directors of the Pennsylvania State High School Coaches Association and remains active in the American Football Coaches Association.

He and his wife, Dorothy, have two daughters.

**JOE LABAT**  
*Assistant to the Athletic Director*

**A** 16-YEAR VETERAN OF THE SEMINOLE athletic staff, Joe Labat begins his fifth year as assistant to the athletic director in 1994. Labat's primary duty is to coordinate scholarships and financial aid assistance for Florida State student athletes in all 16 sports.

Labat is also involved in a variety of other activities as assigned by the athletic director. He served as tournament director for the 1994 NCAA Baseball Regional held at Dick Howser Stadium in Tallahassee. It was the fourth consecutive regional Labat has directed.

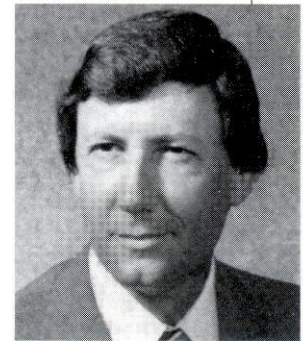
Labat, a native of Tallahassee, joined the athletic staff in 1978 after working in the accounts payable

section of the Florida State Controller's office across campus. He spent the next nine years handling the day-to-day fiscal operations of the athletic department as the athletic business manager prior to moving into his current position.

Upon graduation from Florida State in 1967, Labat began teaching and coaching football and track at Tallahassee's Rickards High School. After five years at Rickards, he moved to Florida State.

Labat is a member of the Collegiate Business Administrators Association and the Florida Institute of Certified Public Accountants.

He and his wife, Marcia, have a daughter, Sarah.



**JOHN SHEFFIELD**  
*Assistant to the Athletic Director*

**J**OHN SHEFFIELD BEGINS HIS 12<sup>TH</sup> season with the Florida State athletic department in 1994. A native of Georgia, Sheffield's responsibilities lie in the areas of tickets and special events.

As ticket coordinator, Sheffield directs the FSU season ticket campaigns for football, basketball and baseball, and oversees the Florida State ticket office operation. He works closely with the FSU Sports Information and Sports Marketing offices to increase ticket sales and awareness.

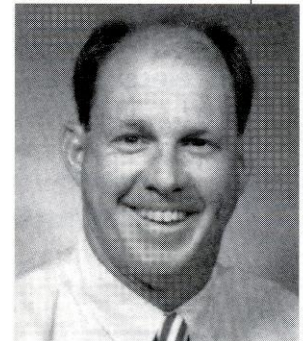
Sheffield brought the first computers into the Seminole Ticket Office, and his six-person staff handles FSU ticket sales at all athletic events. Under his direction, Florida State's football season ticket sales have increased almost every season; the Seminoles set a new record for season ticket sales again in 1994.

A 1975 graduate of Florida State, Sheffield served as director of ticket operations for the Tampa Bay Buccaneers from 1977 to 1982 before returning to his alma mater as ticket manager in 1983.

Following graduation, Sheffield worked for the FSU athletic department and the Atlanta Braves before joining the Miami Dolphins as assistant director of tickets. He was the business manager for the Ft. Lauderdale Strikers of the North American Soccer League before taking the post with the expansion Buccaneers in Tampa.

Sheffield retains many ties with the National Football League and has worked the last 15 Super Bowls.

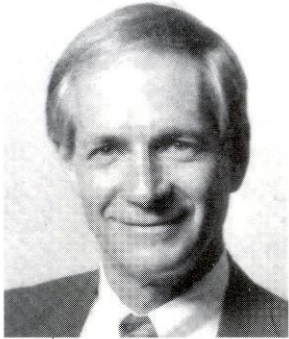
He and his wife, Peggy, have two sons—John Jr. and Sam.





**DR. ROGER GROOTERS**  
*Director of Academic Support Services*

**D**R. ROGER GROOTERS WAS CHARGED with making Florida State's Academic Support Services one of the finest in the country, and after just one year on the job, he has convinced all who come in contact with FSU that he will do that and more. Few employees have had the impact that Grooters has had in his first year as he has restructured FSU's Academic Support System with impressive results.



Grooters is responsible for evaluating recruits for academic potential, monitoring completion of degree requirements, and overseeing the professional staff who deliver advising and tutorial services to all Florida State athletes.

Grooters came to Tallahassee from the University of Nebraska where he was the director of athletic academic programs since 1986. His academic advising program was honored as the nation's best in 1990. Under

Grooters' direction, Nebraska consistently led the Big Eight Conference in academic and honor roll selections.

Prior to that, Grooters was the athletic director of South Washington County Schools in Cottage Grove, Minnesota.

A graduate of North Dakota State, Grooters has coached in the collegiate and high school ranks. He led the cross country programs and was an assistant track coach at both Oklahoma and Missouri. He taught physical education for eight years and coached track at his alma mater from 1968-74.

Grooters received both his bachelor's and master's degrees from North Dakota State. He also has a sixth-year degree in educational administration from St. Cloud State, and a doctorate in educational administration from Nebraska.

He has served as president of Region IV of the National Association of Academic Advisors for Athletics (N-4A) and as a member of the N-4A national executive board.

Grooters is married to Vicki Schurke-Grooters and they have seven children — Steve, Mark, Jon, Lisa, Ben, Kol and Josh.

**KIM McWILLIAMS**  
*Director of Sports Marketing & Promotions*

**K**IM McWILLIAMS BEGINS HER second year as FSU's Director of Sports Marketing and Promotions after serving as an assistant Sports Information Director for two years.

A graduate of North Carolina State University, McWilliams handles all the marketing efforts and campaigns as well as game promotions for FSU's 16 sports. McWilliams also sells sponsorships, oversees the

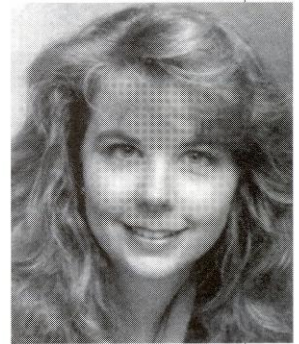
University's spirit groups, and assists in coordination of FSU's annual Hall of Fame Banquet and "Say No To Drugs" campaign.

A native of Tallahassee, McWilliams was a four-year letterwinner at N.C. State as an outside hitter for the volleyball team. She served as a co-captain her senior season while earning a degree in speech communication.

While at N.C. State, McWilliams was a member of the Fellowship of Christian Athletes and made the Outstanding College Students of America list. She was named to the Atlantic Coast Conference honor roll.

In 1993, McWilliams was inducted into the Hall of Fame of her high school, North Florida Christian. She also served on the board of directors of the Friendship at the Leon County Library and is currently marketing director of her church. McWilliams has been involved in several committees and associations to promote women's athletics in the Tallahassee area.

McWilliams' husband, Shannon McWilliams of Michigan, also graduated from North Florida Christian.



**GREG PHILLIPS**  
*Athletic Business Manager*

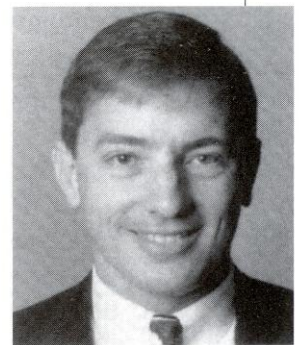
**F**LORIDA STATE ALUMNUS Greg Phillips starts his sixth year as FSU's Athletic Business Manager in 1994, and has logged a total of eight years with the Seminole business office since 1986.

Phillips handles the day-to-day fiscal operations of the department and assists the associate athletic director in the formulation and implementation of fiscal policies and procedures, including internal accounting controls. He participates in budget preparation and is responsible for the department's accounting, cashing, financial reporting, Title IX reporting, payroll, purchasing, and travel functions. Phillips also handles departmental computer operations.

Phillips completed his master's degree in accounting at Florida State in 1986 and joined the athletic staff in the fall of that year as an Assistant to the Athletic Business Manager. Working up through the ranks, he took over his current position in the fall of 1989.

A member of the College Athletic Business Management Association, Phillips also completed a master's degree in sports management at the United States Sports Academy.

The Bartow, Fla. native is married to the former Deanna Porter. The couple had a son, Payton, over the summer.



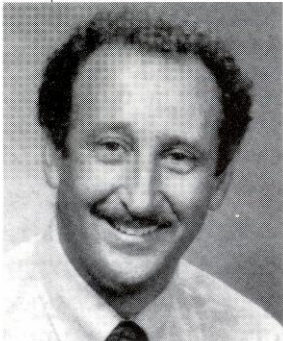


**BERNIE WAXMAN**  
*Facilities Coordinator*

**I**N HIS FOURTH YEAR as facilities coordinator, Bernie Waxman is currently one of the busiest people in the Florida State athletic department. He is overseeing the expansion of Doak Campbell Stadium and the addition to the Coyle E. Moore Athletic Center going on with the University Center project. Waxman was also in charge of planning and development of the recently-constructed Scott Speicher Tennis Center at Don Loucks Court. Several other expansions and improvements are in the plans for the near future.

Waxman oversees all scheduling and maintenance of FSU's many athletic facilities, including Mike Long Track, Dick Houser Stadium (baseball), Doak Campbell Stadium (football), the Moore Athletic Center, the football practice fields and Lady Seminole Field (softball). He directs the upkeep of these buildings and is involved in all additions and construction work on the facilities.

In one way or another, Waxman has been involved with Seminole athletics for 26 years. A 1971 graduate of Florida State, he earned three letters as a member of the FSU track and field team, and captained the squad in 1972. He also earned his master's degree from FSU that year.



*Chief Osceola and Renegade are one of the many ingredients that make football Saturdays in Tallahassee a memorable experience.*

Waxman worked for the Tallahassee Parks and Recreation Department for two years before returning to FSU as assistant intramurals director in 1974. He later became director of intramurals, a post he held for more than 10 years before moving over to the athletic department in 1991.

During his tenure at the intramural office, Waxman served as a master official for track and field, and as the head statistician for all Florida State men's and women's basketball and football games. In that capacity, he directed the crew which compiled statistics for all Seminole home games.

Waxman has completed course-work for a doctorate in Athletic Administration and is currently writing his dissertation. He is married to the former Lisa Kinch, also a former FSU track and field athlete. The couple has a five-year-old daughter, Gabrielle.

**ROB WILSON**  
*Sports Information Director*

**R**OB WILSON BEGINS HIS EIGHTH year on the Florida State sports information staff, but his first as its director. In his new role, Wilson will oversee all publicity and public relations matters concerning the Florida State athletic department and the Seminoles' 16 intercollegiate sports.

A 1983 Florida State graduate, Wilson returned to his alma mater as Assistant Sports Information Director from 1986 until his promotion to Associate SID in 1991. In addition to duties associated with the football program, he served as the primary contact for the Florida State basketball program where he produced a number of award winning publications including his 1988-89 media guide, judged Best in the Nation by CoSIDA.

After graduating from FSU with a bachelor of arts degree in communication and a minor in chemistry, Wilson spent the 1983-84 school year as a graduate assistant in the FSU sports information office.

In the summer of 1984, Wilson joined the staff at East Carolina University, serving as assistant sports information director for three years. While at the Greenville, NC school, he worked with ECU's football and basketball programs and served as the color analyst on the Pirate Sports Network radio telecasts.

A native of San Diego, Calif., Wilson graduated from Niceville High School in Niceville, Fla. where he was a three-sport letterman.

He began his college career at Ole Miss where he played wide receiver for the Rebels under Steve Sloan. He earned an associate of arts degree in 1981 from Okaloosa-Walton Community College.

Wilson, 33, married the former Sherrill Sturgis of Ocala, Fla., in 1992. ♦





# FLORIDA WITH A SOUTHERN ACCENT

## TALLAHASSEE & NORTH FLORIDA

**W**ITH ITS DEEP-ROOTED HISTORY, rolling hills, canopy roads of moss-draped oaks and proximity to the Gulf's beaches, Tallahassee truly is Florida — with a southern accent.

Best known as Florida's capital, Tallahassee is a thriving city with natural treasures. The beautiful setting makes the city one of the state's most popular locations for both television commercials and major motion pictures.

A rich cultural interest in the community is fueled by both Florida State University and Florida A&M University. Art, in all its forms, is present throughout the area.

Outdoor enthusiasts enjoy numerous adventures including boating and fishing on area lakes and the Gulf of Mexico, just 30 minutes away. Dense forests offer an abundance of prize-winning game for those who hunt with a gun or camera.

The Sunshine State has become one of the nation's most diversified regions. One of the most popular attractions for tourists around the world, Florida's 8,426 miles of coastline virtually surround a state that is one of the world leaders in agriculture, industry and finance.

Walt Disney World and surrounding theme parks are nestled in the middle of the state with the Kennedy Space Center not far away. The region is the top tourist attraction in the entire country.

The Florida Keys stretch almost to Cuba and add spice to the fast-paced lifestyle that can be found in the southernmost portion of the state.

Historic north Florida features legendary cities on both coasts. St. Augustine on the east coast is the nation's oldest city and Pensacola has seen five nations rule her on the west coast.

The state's sports scene is second to none. With Florida State leading the way among great college action, the NBA (Orlando Magic, Miami Heat), NFL (Miami Dolphins, Tampa Bay Buccaneers), major league baseball (Florida Marlins) and NHL (Tampa Bay Lightning, Miami Panthers) all vie for fans' attention.

From its crystal white beaches to the majestic southern oaks, from quaint tourist towns to the big city splash — Florida has it all. ♦





# ACADEMIC SUPPORT AND STUDENT SERVICES

## FLORIDA STATE UNIVERSITY ATHLETICS — AN OVERVIEW OF AN ACADEMIC SUPPORT PROGRAM ON THE RISE

**A**CADEMIC, PERSONAL AND professional support are essential to college success. At Florida State University, we have developed an outstanding support program



*The Academic Support Staff: (back row) Kevin Carr, Magdi El Shahawy, Bryan Maggard, Mark Meleney; (front row) Trudy Rayburn, Roger Grooters, Kerry Maggard, and Chris Helms. (Not pictured: Heather Lowe)*

which enables student-athletes to reach their full potential.

Our philosophy is “to offer an academic support program integrated with the total university that will assist all student-athletes with the transition into college and provide continued support in all phases of academic and professional development culminating with graduation, job placement or graduate school.”

To accomplish this goal we have developed an academic environment which facilitates the academic success of student-athletes. Student success is encouraged through competent academic counseling, career exploration, planning and placement and academic assistance through tutorial programs.

Our program operates on a “proactive” rather than “reactive” approach. At Florida State, our academic staff does not wait for academic crises to occur. We gather important background information and build an academic profile on all student-athletes to assess their needs in advance. We also stay informed on the daily progress of each student-athlete.

Our academic support staff includes a director, five counselors, and three graduate interns forming a group of professionals serving the needs of all our student-athletes. The director, Dr. Roger Grooters, is starting his second year as the head of the program coming to FSU after developing a premier program at the University of Nebraska in his 6-year tenure.

The academic programs are moving to the state-of-the-art University Center and will be located on the 6th floor of the \$126,000,000 facility. It includes private study carrels, a tutorial study area and a computer lab outfitted with 16 new IBM computers and laser printers. In addition, athletic sky boxes are utilized for group and individualized tutorial instruction.



## TUTORIAL PROGRAM

The Athletic Department at Florida State University has made a commitment to providing our student-athletes with one of the finest and most comprehensive tutorial programs in the nation. The tutorial program is just one of several key support programs that are available to all student-athletes as they progress towards their ultimate goal of obtaining a college degree.

The Academic Support Program has a staff of between 80 and 90 tutors each semester who are committed to providing a proactive and individualized approach to insure academic success. The tutors are usually seniors or graduate students who have outstanding academic backgrounds. Through an orientation session provided each semester by the Tutorial Coordinator, they acquaint themselves with the purposes, objectives, and responsibilities involved with the tutorial program.

Tutorial assistance is available for all academic coursework that is offered by the university and it is the responsibility of the Tutorial Coordinator to provide each student-athlete with this assistance in a timely fashion. Student-athletes may request a tutor or one may be assigned to them depending upon the circumstances.

## ACADEMIC MENTORS

Mentors are academic role models who have demonstrated the ability to teach and give guidance in areas of academic developmental skills.

Each semester mentors begin the process by sitting down with their assigned student-athletes and assist them in identifying their academic responsibilities. A calendar is developed which becomes a visual blueprint of each course's academic requirements. This tool introduces the student-athlete to the concept of time management. Students learn to plan projects days and weeks in advance. Such planning aids them in developing strong study habits.

Mentors are also responsible for providing assistance in the development of skills such as note taking, test preparation, and communication with faculty. In essence, mentors become an extension of the academic counselor as they keep the academic performance of their student-athletes under close observation.

A mentor will spend two to three hours per week during the first few weeks of the semester and normally one or two hours a week with their assigned student-athlete thereafter. In ideal relationships, by mid semester, the mentor becomes a strong study partner, there to assist the student-athlete through the learning process.

## STUDY HALL

In an effort to help ensure academic success of the student-athletes, professionally supervised study sessions for each of its athletic teams are required. The main focus of the study hall program is to help students develop consistent and appropriate study patterns by providing a

structured setting to work on class assignments, and to provide tutorial assistance before academic problems arise.

Although the criteria for mandatory study hall is left to the discretion of the academic counselor for their respective sport, typically, all freshmen, first year transfers, and upperclassmen who have not achieved a satisfactory cumulative grade point average will be required to attend. Additionally, each coach is regularly notified of any absences, tardiness, or inappropriate use of study time of student-athletes who are attending study hall.

## LIFE SKILLS PROGRAM

The comprehensive NCAA Life Skills Program consists of commitments toward academics, athletics, personal development, service/outreach, and career development. Our academic support program has embraced the Life Skills commitments by weaving their rich resources into our already existing programs, thus providing stronger, more comprehensive programming for our student-athletes. The foundation of this program is supported on the same principles essential for success in athletics such as excellence, persistence and possessing a winning attitude. Therefore by applying these principles to "real world" situations student-athletes better prepare themselves for life after college through the Life Skills Program.

## CAREER COUNSELING/ PROFESSIONAL DEVELOPMENT

Florida State student-athletes are provided with the opportunity to explore career interests and enhance employability skills through the Career Counseling/Professional Development Program offered through the office of Athletic Academic Support Services. This program, in conjunction with the University Career Center, utilizes various resources geared toward career orientation and planning, exploration, implementation and placement.

## CAREER ORIENTATION & PLANNING

Many student-athletes enter college undecided about an academic major or career interest. Through career orientation and planning, student-athletes are introduced to resources which help identify career interests and develop career opportunities. Florida state student-athletes are oriented to the University Career Center through tours and individual appointments and have access to advising and counseling from Career Center counselors and academic support staff members. Computerized career exploration programs such as Discover, Sigi Plus and Choices, along with interest inventories, are provided to give students the opportunity to discover a variety of options, matching personal and academic interests, skills, values and goals with career possibilities.



In addition, student-athletes have the opportunity to enroll in SDS 3340 — Intro to Career Development, a course that introduces principles of career planning using self-assessment and Career Center resources.

### CAREER EXPLORATION

Student-athletes are given assistance with career clarification and selection. Each semester students are encouraged to attend monthly Career Nights which give them the opportunity to gather career information and discuss internship opportunities with area professionals from a variety of career fields. Career Expositions, sponsored by the Career Center's Office of Career Placement Services, are also held each semester, giving student-athletes the opportunity to talk with many different employers in a single setting. Through shadowing experiences FSU student-athletes are able to receive a first hand look at careers, through arrangements made by professional staff members, to visit and observe various corporations and the tasks performed within them. With assistance from the Career Center's Career Experience Opportunities office and the Seminole Career Network, student-athletes can acquire internships which offer valuable experience and enhance marketability for the future.

### CAREER IMPLEMENTATION

An important facet of the Career Counseling/Professional Development Program is teaching job development skills to enhance employment opportunities. Student-athletes are encouraged to attend resume writing, cover letter writing and interviewing workshops, offered by the University Career Center and may also work individually with Academic Support personnel. Through on-campus presentations students can gain information as to where and how to find employment. Assistance is also provided in preparing for Graduate, Law and Professional School placement.

### CAREER PLACEMENT

Searching for a job after graduation can be challenging and intimidating. The Career Placement phase provides Florida State student-athletes assistance in securing full-time employment once they complete their degrees. Student-athletes are educated in using the Career Placement Services office, located with the University Career Center, which matches potential employers with FSU graduates. Access to the Seminole Career Network, a networking system comprised of Florida State boosters nationwide who have agreed to facilitate career goals of student-athletes in various capacities, provides yet another vehicle for employment opportunities.

It is the goal of the office of Athletic Academic Support Services, through this comprehensive Career Counseling/Professional Development Program, to provide all student-athletes with the opportunities to pre-

pare for a meaningful education and career.

## ACADEMIC HONORS & AWARDS

Florida State University student-athletes have achieved great success in obtaining recognition for academic excellence throughout the past year. Over \$40,000 in postgraduate award monies have been granted to FSU's student-athletes through the 1993-94 academic year, in addition to various other academic honors and awards.

Florida State had 109 student-athletes recognized to the 1993-94 ACC Honor Roll, boasted three G.T.E. Academic All-Americans and had two ACC postgraduate awards winners and one NCAA postgraduate winners. In addition, two Florida State student-athletes received \$3,500 in scholarship monies through the Department of Undergraduate Studies to be used in their pursuit of graduate degrees from FSU.

The Academic Support Program is committed to recognizing academic success of all student-athletes. Florida State University's Golden Torch Gala is an annual black tie banquet, given to honor top GPA winners in each sport throughout an academic year, ACC Honor Roll members and top male and female GPA winners.

The academic support staff assists all student-athletes in obtaining recognition and awards for academic success. Team meetings are held each year, during which time student-athletes are notified of potential honors and awards and criteria for each. Individual sport counselors encourage student-athletes to compete for awards and participate in the nomination process.

Combining a strong GPA with athletic accomplishments and community service activities, create a student-athlete capable of attaining unlimited academic honors, awards and postgraduate opportunities. ♦



The 1993-94 school year saw 26 Florida State student-athletes receive their degrees.



194-195



FLORIDA

R E V I E W



SEMINOLES









# 1993-94 SEASON

# IN REVIEW

## A PREREQUISITE TO SUCCESS

**I**f having to graduate from the “School of Hardknocks” is a prerequisite to success, then last year’s struggle is a certain guarantee of future riches. The 1993-94 Lady Seminole basketball team suffered through a 6-21 campaign, the lowest win total for a Marynell Meadors coached team in eight seasons at Florida State.

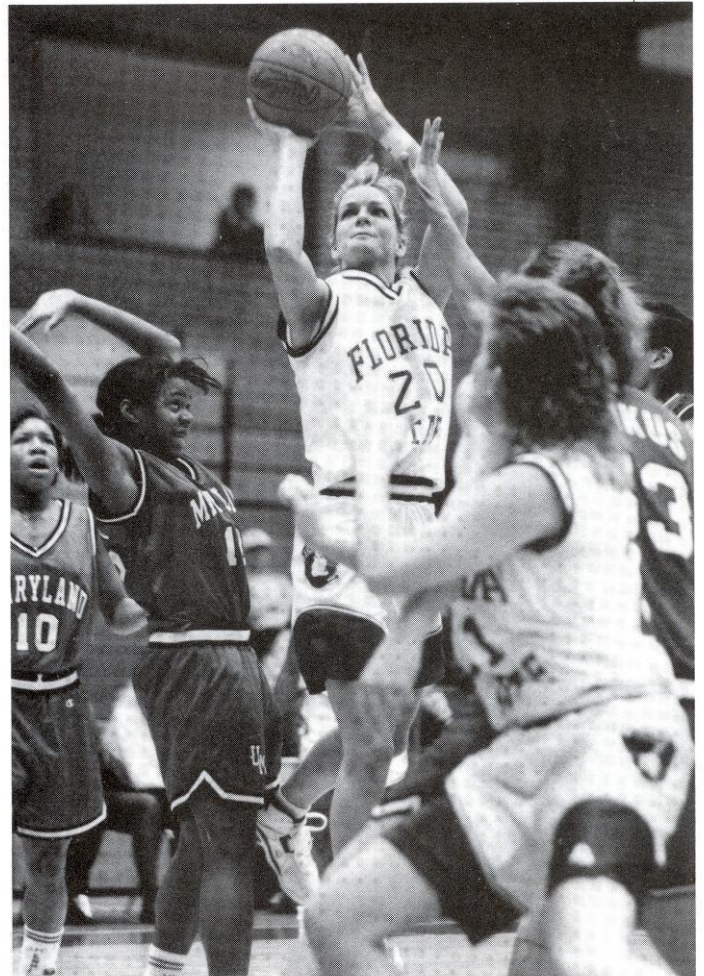
With a roster of 11 players, the coaching staff was hard pressed to find a supporting cast for starters Alison Arnoldi, Christy Derlak and Allison Percy as depth and playing experience were at a premium.

To the team’s credit they did not know the meaning of the word “quit.”

“We may not have had the depth necessary to compete at the top-level of the ACC,” commented Head Coach Marynell Meadors. “But, this team came ready to play every night. I am extremely proud of their effort and think that this is an experience we can build from.”

The 1993-94 Lady Seminoles did leave their mark on the record book. The Tribe began the season by establishing a new record for 3-pointers in a game when they connected on 11 treys in the opener at UT-Chattanooga. Christy Derlak left her mark by hitting on seven 3s in the contest, establishing a new individual single game mark.

When it came to launching three-pointers last season the Seminoles were not bashful. The team shattered



*Last season’s leading scorer Christy Derlak took team high scoring honors in 18 games.*



the old school record of 72 treys in a year set during the 1992-93 campaign by dropping 106 bonus-point shots. Meadors' long distance bombers also set a new record for three-point attempts (319) and tied the mark for three-point shooting percentage (.332).

Individually, the duo of Alison Arnoldi and Christy Derlak assaulted the three-point records. Derlak tied Robin Storey atop the single season 3-point field goals made chart by netting 47 shots from behind the bonus arc. Arnoldi finished the year tied for third on the single season list with 41 treys.

Derlak, a second team All-ACC selection, was the only Seminole to break the 30-point barrier on the season, pouring in 33 at UT-Chattanooga and 30 in a victory over Duke. She also gained membership in the 1,000 Point Club with her last bucket on January 14 against North Carolina. Derlak ended her career with 1,193 points.

With a few breaks the Seminoles' 6-21 record could have had a nicer look. Of the Tribe's 27 games, 13 were decided by six-or-less points. The Seminoles went 5-8 in those 13 games.

Derlak carried the majority of the offensive burden finishing as the Seminoles' leading scorer in 18 contests. Her 17.4 points per game scoring average ranked among the top in the Atlantic Coast Conference. The 5-10 forward scored in double figures in 24 of 27 games.

The Seminoles got into the win column four games into the season with a 78-65 triumph over Dayton in the

consolation game of the Dial Soap Classic. Derlak's field goal at the buzzer gave the Tribe a 70-68 triumph over cross-town rival Florida A&M two nights later and a modest two game winning streak which proved to be the club's longest.

Florida State's lack of height underneath was a contributing factor to the team's record as the Seminoles were outrebounded in 25 of its games. Katina Cobbins proved to be the club's only rebounding threat with a team leading 6.0 per game average. She took team-high rebounding honors in 16 games. Coming down with missed shots was FSU's achilles heel as it was outrebounded offensively by nearly a two-to-one margin (228-410). The Seminoles averaged 28.7 carooms per game while allowing the opposition 40.9.

The 1993-94 club consisted of four players who made over 70 percent of their free throws. Leslie Adams and Liberty Taylor shared team high shooting percentage numbers from the charity stripe at 78.9 percent. They were followed closely by Allison Peercy (75.7) and Christy Derlak (74.4).

In addition to hosting the Dial Soap Classic, FSU also participated in the Citrus Travel Sports Holiday Classic in Orlando, FL. The six team field featured some of the nation's top basketball programs. After an opening round 70-66 triumph over Richmond, coach Meadors' troops suffered a tough 58-55 setback to Kentucky. Day 3 of the tournament pitted FSU against Alabama with the Crimson Tide coming out on the top end of an 87-33 score.

In Atlantic Coast Conference play Florida State finished tied with Wake Forest in the league basement with 3-14 records. The two teams split their regular season meeting with each victorious on its home court. Florida State finished the conference schedule by winning two of its last three games. The Tribe snapped a seven game losing streak with a 59-58 win over N.C. State for its only road conference victory of the season. FSU then lost a heartbreaking 82-79 overtime decision at Wake Forest before returning home to take a 78-73 win over Duke in the regular season finale.

Florida State appeared poised to break its two year ACC Tournament winless streak with its play-in game match up against Wake Forest. The Demon Deacons were too much to handle as they put an end to the Seminoles' 1993-94 season with a 72-57 victory. ♦



Thirteen of the Seminoles' games last season were decided by six or less points.



# 76-94 103-91 STATISTICS

## INDIVIDUAL • ALL GAMES

Record: 6-21

Home: 3-8

Away: 2-10

Neutral: 1-3

PLAYER	G-GS	MIN-AVG	FG-FGA	PCT	3P-3PA	PCT	FT-FTA	PCT	OFF-DEF	TOT-AVG	PF-FD	AT	TO	BS	ST	PTS-AVG
Derlak	27-27	932-34.5	150-388	.387	47-138	.341	122-164	.744	41-89	130-4.8	69-3	41	79	1	40	469-17.4
Peercy	27-27	902-33.4	99-264	.375	14- 56	.250	84-111	.757	24-62	86-3.2	92-4	100	112	3	36	296-11.0
Arnoldi	25-23	846-33.8	92-251	.367	41-104	.394	43- 62	.694	13-29	42-1.7	28-0	45	51	1	13	268-10.7
Cobbins	26-22	771-29.7	49- 92	.533	0- 0	.000	30- 52	.577	63-93	156-6.0	75-2	4	37	11	48	128- 4.9
Walker	27-11	610-22.6	47-121	.388	0- 0	.000	35- 53	.660	19-70	89-3.3	82-2	14	39	13	32	129- 4.8
Taylor	26- 4	451-17.3	34- 98	.347	1- 3	.333	30- 38	.789	29-53	82-3.2	74-4	10	33	11	15	99- 3.8
Preston	23- 6	338-14.7	28- 77	.364	1- 14	.071	20- 35	.571	8-19	27-1.2	31-0	28	54	2	17	77- 3.3
Atkinson	9- 0	57- 6.3	5- 20	.250	0- 0	.000	8- 14	.571	4- 6	10-1.1	4-0	1	9	0	2	18- 2.0
Adams	23- 6	243-10.6	14- 41	.341	0- 0	.000	15- 19	.789	18-11	29-1.3	30-0	3	20	0	12	43- 1.9
Washington	15- 1	115- 7.7	8- 33	.242	1- 3	.333	5- 15	.333	4-14	18-1.2	8-0	4	20	1	7	22- 1.5
Frank	17- 7	182-10.7	12- 24	.500	1- 1	1.000	1- 6	.167	5- 6	11-0.6	10-0	8	13	0	2	26- 1.5
<b>TEAM</b>																<b>95</b>

Florida State	27	5447	538-1409	.382	106-319	.332	393-569	.691	228-452	775-28.7	503	258	467	43	224	1575-58.3
Opponents	27	5447	751-1562	.481	73-217	.336	346-544	.636	410-693	1103-40.9	505	405	498	79	242	1921-71.1

### Score By Halves

	1	2	OT	TOTAL	DEADBALL REBOUNDS
Florida State	745	860	22	1627	90
Opponents	875	1032	26	1933	88

### Per Game Averages

PLAYER	G	FG	FGA	3P	3PA	FT	FTA	AT	TO	BS	ST
Derlak	27	5.6	14.4	1.7	5.1	4.5	6.1	1.5	2.9	0.0	1.5
Peercy	27	3.7	9.8	0.5	2.1	3.1	4.1	3.7	4.1	0.1	1.3
Arnoldi	25	3.7	10.0	1.6	4.2	1.7	2.5	1.8	2.0	0.0	0.5
Cobbins	26	1.9	3.5	0.0	0.0	1.2	2.0	0.2	1.4	0.4	1.8
Walker	27	1.7	4.5	0.0	0.0	1.3	2.0	0.5	1.4	0.5	1.2
Preston	23	1.2	3.3	0.0	0.6	0.9	1.5	1.2	2.3	0.1	0.7
Atkinson	9	0.6	2.2	0.0	0.0	0.9	1.6	0.1	1.0	0.0	0.2
Adams	23	0.6	1.8	0.0	0.0	0.7	0.8	0.1	0.9	0.0	0.5
Taylor	26	1.3	3.8	0.0	0.1	1.2	1.5	0.4	1.3	0.4	0.6
Washington	15	0.5	2.2	0.1	0.2	0.3	1.0	0.3	1.3	0.1	0.5
Frank	17	0.7	1.4	0.1	0.1	0.1	0.4	0.5	0.8	0.0	0.1
Florida State	27	19.9	52.2	3.9	11.8	14.6	21.1	9.6	17.3	1.6	8.3
Opponents	27	27.8	57.9	2.7	8.0	12.8	20.1	15.0	18.4	2.9	9.0



# TEAM AND OPPONENTS' HIGHS & LOWS

## Florida State

CATEGORY	HIGH	LOW
Points 1st Half	45 vs. Dayton	14 vs. Wake Forest
Points 2nd Half	59 vs. NC State	11 vs. Clemson
Total Points	85 vs. UT-Chattanooga	26 vs. Clemson
Field Goals Made	29 vs. UT-Chattanooga	8 vs. Clemson
Field Goals Att	71 vs. Wake Forest	35 vs. Clemson
Field Goal %	.560 vs. Wake Forest	.214 vs. Alabama
3-Pt Field Goals Made	11 vs. UT-Chattanooga	0 vs. North Carolina
3-Pt Field Goals Att	24 vs. Florida	2 vs. Clemson
3-Pt Field Goal %	.636 vs. Richmond	.000 vs. North Carolina
Free Throws Made	28 vs. Duke	5 vs. Kentucky
Free Throws Att	36 vs. North Carolina	6 vs. Kentucky
Free Throw %	.909 vs. Maryland	.533 vs. Mid Tennessee State
Offensive Rebounds	21 vs. Wake Forest	4 vs. UT-Chattanooga
Defensive Rebounds	28 vs. Florida Atlantic	6 vs. Maryland
Total Rebounds	42 vs. Wake Forest	13 vs. Maryland
Assists	21 vs. UT-Chattanooga	3 vs. NC State
Blocked Shots	5 vs. Florida Atlantic	0 vs. Virginia
Steals	14 vs. Wake Forest	4 vs. Richmond
Turnovers	28 vs. Alabama	9 vs. NC State & Duke
Personal Fouls	27 vs. Florida Atlantic	14 vs. Virginia

## Opponents

CATEGORY	HIGH	LOW
Points 1st Half	45 by Virginia	20 by Wake Forest
Points 2nd Half	58 by North Carolina	22 by Kentucky
Total Points	102 by North Carolina	51 by NC State
Field Goals Made	40 by North Carolina	20 by NC State
Field Goals Att	81 by UT-Chattanooga	43 by NC State
Field Goal %	.739 by Maryland	.359 by Georgia Tech
3-Pt Field Goals Made	8 by Florida A&M	0 by Mid Tennessee State
3-Pt Field Goals Att	19 by Florida A&M	0 by Maryland
3-Pt Field Goal %	1.000 by Clemson	.000 by Mid Tennessee State
Free Throws Made	22 by Mid Tennessee State	7 by Florida
Free Throws Att	33 by Florida Atlantic	12 by Florida
Free Throw %	.929 by Maryland	.500 by Florida A&M
Offensive Rebounds	27 by Georgia Tech	7 by Maryland
Defensive Rebounds	34 by North Carolina	16 by Wake Forest
Total Rebounds	61 by North Carolina	30 by Wake Forest
Assists	27 by Alabama	8 by Florida
Blocked Shots	13 by North Carolina	0 by Richmond
Steals	18 by Clemson	3 by Wake Forest
Turnovers	25 by Georgia Tech	11 by Rhode Island
Personal Fouls	26 by North Carolina	10 by Wake Forest

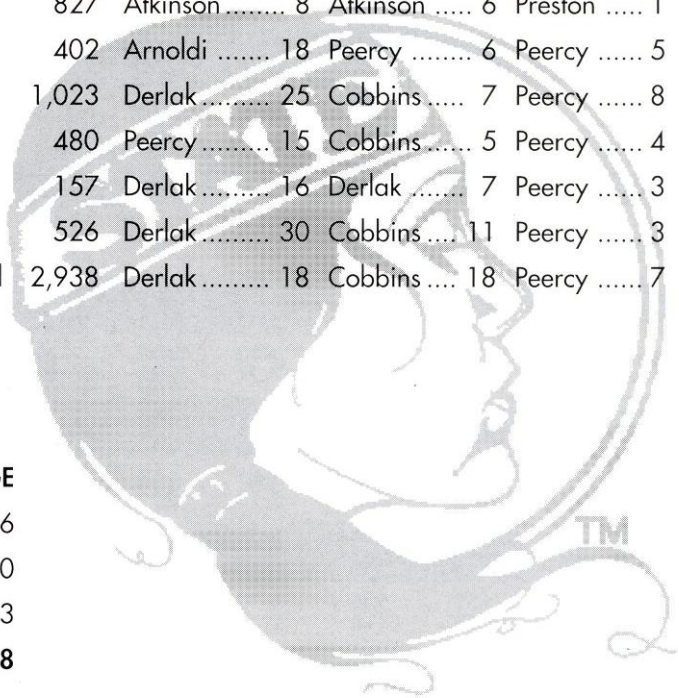


# GAME-BY-GAME RESULTS

DATE	OPPONENT	RESULT	SCORE	SITE	ATT.	FSU HIGH SCORER	FSU HIGH REBOUNDER	FSU HIGH ASSISTS
11/26	UT-Chattanooga	Lost	85- 86	Away	626	Derlak ..... 33	Taylor ..... 8	Preston ..... 8
11/28	Middle Tenn St	Lost	43- 66	Away	1,200	Derlak ..... 16	Derlak ..... 9	Arnoldi ..... 3
12/03	Rhode Island	Lost	71- 76	Home	309	Derlak ..... 23	Cobbins ..... 5	Derlak ..... 4
12/04	Dayton	Won	78- 65	Home	309	Peercy ..... 25	Walker ..... 8	Peercy ..... 5
12/06	Florida A&M	Won	70- 68	Neutral	629	Derlak ..... 26	Derlak ..... 10	Peercy ..... 5
12/11	North Carolina	Lost	61-102	Away	1,285	Peercy ..... 19	Derlak ..... 7	Derlak ..... 3
12/18	Georgia Tech	Lost	62- 65	Home	428	Arnoldi ..... 19	Derlak ..... 8	Peercy ..... 8
12/21	Virginia	Lost	56- 82	Away	3,688	Arnoldi ..... 22	Derlak ..... 7	Peercy ..... 8
12/29	Richmond	Won	70- 66	Neutral	183	Derlak ..... 25	Cobbins ..... 5	Peercy ..... 6
12/30	Kentucky	Lost	55- 58	Neutral	150	Derlak ..... 22	Cobbins ..... 7	Peercy ..... 4
12/31	Alabama	Lost	33- 87	Neutral	100	Derlak ..... 7	Walker ..... 5	Peercy ..... 2
01/05	Maryland	Lost	54- 69	Home	304	Derlak ..... 23	Cobbins ..... 7	Peercy ..... 5
01/08	Florida Atlantic	Lost	64- 67	Away	178	Derlak ..... 17	Cobbins ..... 10	Peercy ..... 5
01/14	North Carolina	Lost	48- 71	Home	427	Derlak ..... 16	Cobbins ..... 9	Peercy ..... 3
01/16	Duke	Lost	60- 66	Away	1,000	Derlak ..... 13	Cobbins ..... 9	Arnoldi ..... 4
01/22	Wake Forest	Won	66- 60	Home	428	Arnoldi ..... 15	Cobbins ..... 6	Peercy ..... 6
01/24	NC State	Lost	46- 51	Home	300	Derlak ..... 15	Cobbins ..... 9	Peercy ..... 2
01/28	Maryland	Lost	39- 81	Away	1,202	Washington .. 9	Cobbins ..... 4	Taylor ..... 2
02/01	Georgia Tech	Lost	51- 63	Away	1,306	Peercy ..... 15	Cobbins ..... 7	Preston ..... 4
02/04	Virginia	Lost	50- 59	Home	328	Peercy ..... 15	Derlak ..... 6	Peercy ..... 3
02/07	Clemson	Lost	26- 80	Away	827	Atkinson ..... 8	Atkinson ..... 6	Preston ..... 1
02/15	Florida	Lost	54- 73	Home	402	Arnoldi ..... 18	Peercy ..... 6	Peercy ..... 5
02/18	Wake Forest	Lost	79- 82	Away	1,023	Derlak ..... 25	Cobbins ..... 7	Peercy ..... 8
02/20	NC State	Won	59- 58	Away	480	Peercy ..... 15	Cobbins ..... 5	Peercy ..... 4
02/23	Clemson	Lost	60- 75	Home	157	Derlak ..... 16	Derlak ..... 7	Peercy ..... 3
02/25	Duke	Won	78- 73	Home	526	Derlak ..... 30	Cobbins ..... 11	Peercy ..... 3
03/04	Wake Forest	Lost	57- 72	Neutral	2,938	Derlak ..... 18	Cobbins ..... 18	Peercy ..... 7

## Attendance

SITE	GAMES	TOTAL	AVERAGE
Home:	11	3,918	356
Away	12	13,444	1,120
Neutral:	4	3,371	843
<b>Total:</b>	<b>27</b>	<b>20,733</b>	<b>768</b>





# GAME-BY-GAME TEAM STATISTICS

	FG-FGA	PCT	3PT-3PTA	PCT	FT-FTA	PCT	REB	PF-DQ	PTS	AST	TO	BLK	STL
UTC FSU	36-81 29-62	.444 .468	4-12 11-20	.333 .550	10-19 16-22	.562 .727	43 30	19-1 20-0	86 85	11 21	15 20	2 3	10 6
MTS FSU	22-60 15-53	.367 .283	0- 4 5-11	.000 .455	22-31 8-15	.710 .533	55 34	12-0 25-1	66 43	15 5	20 23	4 1	10 12
RIU FSU	28-60 22-52	.467 .423	4- 5 7-13	.800 .538	16-27 20-25	.593 .800	37 34	24-0 21-0	76 71	18 8	15 24	1 2	12 6
DU FSU	25-59 27-58	.424 .466	1-12 3-11	.083 .273	14-22 21-29	.636 .724	37 38	24-0 18-1	65 78	10 12	21 17	1 4	9 8
FAM FSU	25-60 27-54	.416 .500	8-19 2- 4	.421 .500	10-20 14-21	.500 .666	37 37	16-1 19-1	68 70	19 13	18 20	3 3	12 10
UNC FSU	40-76 17-46	.526 .370	7-15 3- 9	.467 .333	15-18 24-36	.833 .667	49 25	26-0 17-1	102 61	21 9	17 19	5 1	10 5
GT FSU	23-64 21-50	.359 .420	1- 5 5-12	.200 .416	18-27 15-24	.666 .625	48 28	21-2 23-2	65 62	10 14	18 16	4 1	7 10
UVA FSU	34-68 20-49	.500 .408	4-10 5-16	.400 .313	14-18 11-14	.778 .786	48 20	17-0 14-0	86 56	23 12	14 17	1 0	7 5
RU FSU	21-53 19-41	.396 .463	2- 8 7-11	.250 .636	22-32 25-31	.688 .806	33 29	21-0 21-0	66 70	10 15	11 14	0 0	10 4
KU FSU	23-52 22-54	.442 .407	3-11 6-20	.273 .300	9-16 5- 6	.563 .833	33 29	13-0 19-0	58 55	11 12	23 21	2 1	10 10
ALA FSU	34-52 9-42	.654 .214	7-10 1- 5	.700 .200	12-19 14-21	.632 .667	37 21	17-0 17-0	87 33	27 4	23 28	6 1	8 9
MD FSU	27-44 21-54	.614 .389	0- 1 5-13	.000 .385	15-23 7-12	.652 .583	34 24	16-0 21-0	69 54	22 9	16 16	2 0	8 8
FAU FSU	25-51 20-52	.490 .385	0- 2 8-15	.000 .533	17-33 16-27	.515 .593	41 38	22-1 27-2	67 64	11 11	16 18	5 5	11 7
UNC FSU	28-74 16-53	.378 .302	2-13 0- 6	.154 .000	13-20 16-29	.650 .552	61 32	24-0 17-2	71 48	15 8	22 13	13 5	6 9
DU FSU	29-56 19-44	.517 .432	0- 1 1- 7	.000 .143	8-14 21-29	.571 .724	37 21	24-0 19-0	66 60	10 6	18 24	2 0	12 6
WFU FSU	23-52 28-50	.442 .560	3-13 2- 4	.231 .500	11-15 8-11	.733 .727	30 26	15-0 14-0	60 66	14 14	20 17	3 3	8 14
NCSU FSU	20-43 18-56	.465 .321	2- 5 5-18	.400 .278	9-14 5- 8	.643 .625	37 27	15-0 14-0	51 46	13 3	19 13	1 1	6 12
MD FSU	34-46 14-49	.739 .286	0- 0 1- 6	.000 .167	13-14 10-11	.929 .909	36 13	15-0 18-0	81 39	21 6	21 19	2 1	4 5
GT FSU	25-62 17-56	.403 .304	1- 3 3-14	.333 .214	12-18 14-24	.667 .583	50 36	22-0 19-1	63 51	15 9	25 17	4 0	11 11
UVA FSU	23-43 18-59	.535 .305	0- 1 3-15	.000 .200	13-23 11-18	.565 .611	41 26	18-0 23-1	59 50	9 5	24 15	4 1	7 13
CU FSU	34-59 8-35	.576 .229	2- 8 0- 2	.250 .000	10-15 10-17	.667 .588	40 20	20-1 17-1	80 26	23 4	17 28	5 3	18 10
UF FSU	31-69 17-51	.449 .333	4-10 7-24	.400 .292	7-12 13-18	.583 .722	44 32	17-0 16-0	73 54	8 7	12 20	2 0	11 4
WFU FSU	30-61 27-55	.492 .491	4-11 8-18	.364 .444	18-28 17-25	.643 .680	39 30	18-2 21-2	82 79	15 16	13 10	1 1	3 4
NCSU FSU	23-44 19-52	.523 .365	5-11 3-13	.455 .231	7-14 18-23	.500 .783	36 22	21-0 16-0	58 59	16 9	21 9	3 0	4 10
CU FSU	32-54 20-53	.593 .377	2- 2 1-12	1.00 .083	9-17 19-28	.529 .679	36 29	15-0 14-0	75 60	13 7	20 19	1 4	14 9
DU FSU	30-59 24-58	.508 .414	3-12 2- 8	.250 .250	10-16 28-34	.625 .824	38 32	23-1 16-0	73 78	11 8	20 9	1 1	5 8
WFU FSU	26-60 24-71	.433 .338	4-13 2-12	.308 .167	16-23 7-11	.696 .636	46 42	10-1 19-0	72 57	14 11	19 16	1 1	9 9



# INDIVIDUAL SEASON & CAREER HIGHS

NAME	SEASON	CAREER
Leslie Adams	6 points, three times 6 rebounds, vs. WFU (3/4)	First Year
Alison Arnoldi	23 points, at WFU (2/18) 5 rebounds, vs. NCSU (1/24) 6 assists, at UTC (11/26)	23 points, at WFU (2/18/94) 7 rebounds, vs. WFU (2/14/93) 6 assists, at UTC (11/26/93)
Angela Atkinson	8 points, at Clemson (2/7) 6 rebounds, at Clemson (2/7)	Freshman
Katina Cobbins	14 points, vs. Wake Forest (1/22) 18 rebounds, vs. WFU (3/4)	14 points, vs. Wake (1/22/94) 18 rebounds, vs. WFU (3/4/94)
Christy Derlak	33 points, at UTC (11/26) 10 rebounds, at FAMU (12/6)	33 points, at UTC (11/26/93) 10 rebounds, at FAMU (12/6/93)
Michelle Frank	5 points, vs. Alabama (12/31) 3 rebounds, vs. Virginia (2/4)	5 points, vs. Alabama (12/31/93) 3 rebounds, vs. Virginia (2/4)
Allison Peercy	25 points, vs. Dayton (12/4) 7 rebounds, twice 8 assists, three times	25 points, vs. Dayton (12/4) 7 rebounds, twice 11 assists, vs. Florida (2/3/93)
Antonette Preston	11 points, twice 3 rebounds, twice 8 assists, at UTC (11/26)	First Year
Liberty Taylor	17 points, vs. Dayton (12/4) 8 rebounds, many times	17 points, vs. Dayton (12/4/93) 8 rebounds, many times
Kaila Walker	12 points, at FAMU (12/6) 8 rebounds, vs. Dayton (12/4)	Freshman
Sharron Washington	9 points, at Maryland (1/28) 4 rebounds, twice	First Year

## Season Superlatives

<b>30-POINT GAMES</b> .....	Derlak-2 (33 at UTC, 30 vs. Duke)	..... Atkinson-1 (CU) ..... Washington-1 (MD) ..... Arnoldi/Derlak-2 (UVA, WFU) ..... Derlak/Peercy-1 (DU)
<b>20-POINT GAMES</b> .....	Derlak-7 (23 vs. RIU, 26 at FAMU, 22 at UVA, 25 vs. RU, 22 vs. KY, 23 vs. MD, 25 at WFU) ..... Arnoldi-2 (22 at UVA, 23 at WFU) ..... Peercy-1 (25 vs. DU)	<b>GAMES AS LEADING REBOUNDER</b> .....
<b>10-REBOUND GAMES</b> .....	Cobbins-3 (10 at FAU, 11 vs. Duke, 18 vs. Wake Forest) ..... Derlak-1 (10 at FAMU)	Cobbins-13 (RU-5, MD-7, FAU-10, UNC-9, DU-9, WFU-6, NCSU-9, MD-4, GT-7, WFU-7, NCSU-5); Duke-11, WFU-18) ..... Derlak-7 (MTSU-9, FAMU-10, UNC-7, GT-8, UVA-7, UVA-6, CU-7) ..... Atkinson-1 (CU-6) ..... Taylor-1 (UTC-8) ..... Walker-1 (ALA-5) ..... Peercy/Cobbins-2 (RIU-5, KU-7) ..... Cobbins/Peercy/Walker-1 (UF-4) ..... Derlak/Peercy/Taylor-1 (DU-7)
<b>GAMES AS LEADING SCORER</b> .....	Derlak-15 (UTC, MTSU, RIU, FAMU, RU, KU, ALA, MD, FAU, UNC, NCSU, WFU, CU, DU, WFU) ..... Peercy-5 (DU, UNC, GT, UVA, NCSU) ..... Arnoldi-2 (GT, UF)	



# AAC STATISTICS

## FLORIDA STATE INDIVIDUAL

Record: 3-13

Home: 2-6

Away: 1-7

Neutral: 0-1

PLAYER	G-GS	MIN-AVG	FG-FGA	PCT	3P-3PA	PCT	FT-FTA	PCT	OFF-DEF	TOT-AVG	PF-FD	AT	TO	BS	ST	PTS.-AVG
Derlak	17-17	574-33.8	87-236	.369	19-75	.253	72-101	.713	21-51	72-4.2	42-2	24	47	1	25	265-15.6
Peercy	17-17	584-34.4	65-177	.367	6-36	.167	48-65	.738	9-35	44-2.6	55-2	66	67	0	24	184-10.8
Arnoldi	17-15	575-33.8	61-171	.357	22-63	.349	28-41	.683	8-16	24-1.4	16-0	25	31	0	11	172-10.1
Cobbins	16-15	522-32.6	40-65	.615	0-0	.000	23-41	.561	49-61	110-6.9	49-2	2	24	10	32	103-6.4
Walker	17-9	362-21.3	28-78	.359	0-0	.000	23-33	.697	9-34	43-2.5	53-1	6	15	5	22	79-4.6
Preston	13-1	122-9.4	12-32	.375	0-6	.000	7-15	.467	5-6	11-0.8	11-0	7	25	1	7	31-2.4
Atkinson	6-0	46-7.7	4-14	.286	0-0	.000	6-9	.667	3-6	9-1.5	3-0	1	7	0	1	14-2.3
Adams	15-2	174-11.6	10-33	.303	0-0	.000	15-19	.789	14-7	21-1.4	17-0	2	12	0	9	35-2.3
Taylor	16-2	237-14.8	11-42	.262	1-2	.500	14-18	.778	17-19	36-2.3	42-3	7	16	6	10	37-2.3
Washington	10-1	82-8.2	5-24	.208	1-3	.333	4-7	.571	3-10	13-1.3	4-0	3	11	0	5	15-1.5
Frank	13-6	147-11.3	8-18	.444	0-0	.000	1-5	.200	4-4	8-0.6	9-0	7	10	0	2	17-1.3

**TEAM**

62

Florida State	17	3425	331-890	.372	49-185	.265	241-354	.681	142-249	453-26.6	301	150	265	23	148	952-56.0
Opponents	17	3425	481-965	.498	40-124	.323	207-313	.661	256-450	706-41.5	320	265	324	53	139	1209-71.1

**Score By Halves**

	1	2	OT	TOTAL	DEADBALL REBOUNDS
Florida State	451	525	9	985	54
Opponents	551	677	12	1240	49

**Per Game Averages**

PLAYER	G	FG	FGA	3P	3PA	FT	FTA	AT	TO	BS	ST
Derlak	17	5.1	13.9	1.1	4.4	4.2	5.9	1.4	2.8	0.1	1.5
Peercy	17	3.8	10.4	0.4	2.1	2.8	3.8	3.9	3.9	0.0	1.4
Arnoldi	17	3.6	10.1	1.3	3.7	1.6	2.4	1.5	1.8	0.0	0.6
Cobbins	16	2.5	4.1	0.0	0.0	1.4	2.6	0.1	1.5	0.6	2.0
Walker	17	1.6	4.6	0.0	0.0	1.4	1.9	0.4	0.9	0.3	1.3
Preston	13	0.9	2.5	0.0	0.5	0.5	1.2	0.5	1.9	0.1	0.5
Atkinson	6	0.7	2.3	0.0	0.0	1.0	1.5	0.2	1.2	0.0	0.2
Adams	15	0.7	2.2	0.0	0.0	1.0	1.3	0.1	0.8	0.0	0.6
Taylor	16	0.7	2.6	0.1	0.1	0.9	1.1	0.4	1.0	0.4	0.6
Washington	10	0.5	2.4	0.1	0.3	0.4	0.7	0.3	1.1	0.0	0.5
Frank	13	0.6	1.4	0.0	0.0	0.1	0.4	0.5	0.8	0.0	0.2
Florida State	17	19.5	52.4	2.9	10.9	14.2	20.8	8.8	15.6	1.4	8.7
Opponents	17	28.3	56.8	2.4	7.3	12.2	18.4	15.6	19.1	3.1	8.2



# ACC FINAL STATISTICS

## Individual Scoring - All Games

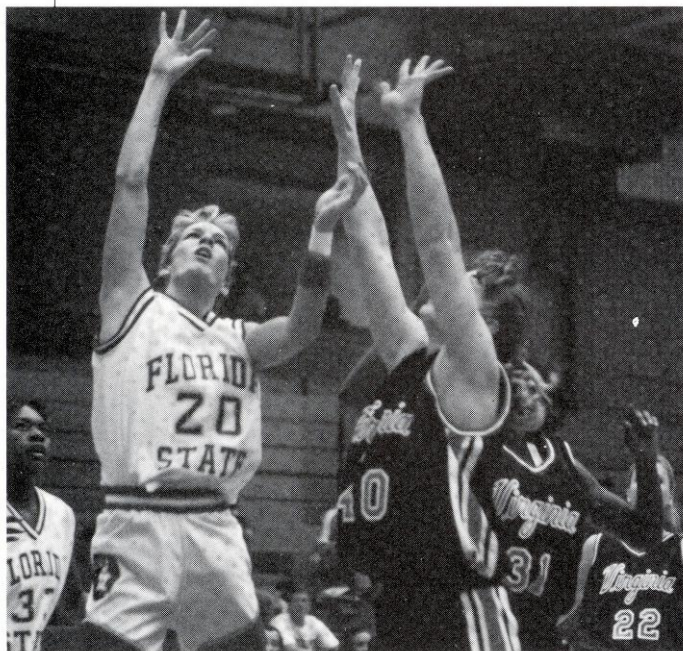
PLAYER, SCHOOL	G	FG	3P	PT	PTS	AVG
Jessica Barr, CU	30	237	16	104	594	19.8
Bonnie Rimkus, UM	28	207	19	77	510	18.2
Tonya Sampson, NC	34	210	53	121	594	17.5
<b>Christy Derlak, FS</b>	<b>27</b>	<b>150</b>	<b>47</b>	<b>122</b>	<b>469</b>	<b>17.4</b>
Wendy Palmer, UVA	32	221	1	97	540	16.9
Kisha Ford, GT	27	171	6	89	437	16.2
Nicole Levesque, WF	27	140	50	95	425	15.7
Charlotte Smith, NC	33	196	9	112	513	15.5
Jennifer Howard, ST	27	110	66	118	404	15.0
Marion Jones, NC	35	198	21	77	494	14.1
Sylvia Crawley, NC	35	195	0	87	477	13.6
Michele Andrew, UM	28	142	7	90	381	13.6
Demieta Keener, GT	27	154	0	53	361	13.4
Kolleen Kreul, ST	25	120	0	89	329	13.2
Carey Kauffman, DU	27	142	0	59	343	12.7

## Field Goal Percentage

PLAYER	G	FG	ATT	PCT
Wendy Palmer, UVA	32	221	389	.568
Jessica Barr, CU	30	237	429	.552
Sylvia Crawley, NC	35	195	354	.551
Marion Jones, NC	35	198	374	.529
Carey Kauffman, DU	27	142	274	.518
Charlotte Smith, NC	33	196	390	.503
Michele Andrew, UM	28	142	301	.472
Demieta Keener, GT	27	154	328	.470
Bonnie Rimkus, UM	28	207	445	.465
Val Hodge, WF	27	144	315	.457

## Free Throw Percentage

PLAYER	G	FTM	FTA	PCT
Jennifer Howard, ST	27	118	127	.929
Nicole Levesque, WF	27	95	109	.872
Tonya Sampson, NC	34	121	148	.818
Michele Andrew, UM	28	90	116	.776
<b>Allison Percy, FS</b>	<b>27</b>	<b>84</b>	<b>111</b>	<b>.757</b>
<b>Christy Derlak, FS</b>	<b>27</b>	<b>122</b>	<b>164</b>	<b>.744</b>
Bonnie Rimkus, UM	28	77	108	.726
Kolleen Kreul, ST	25	89	123	.724
Kisha Ford, GT	27	89	123	.724
Jeffra Gausepchi, UVA	32	100	139	.719



Christy Derlak's 17.4 points per game average ranked fourth in the ACC last season.

## Rebounds

PLAYER	G	REB	AVG
Wendy Palmer, UVA	32	323	10.1
Bonnie Rimkus, UM	28	282	10.1
Charlotte Smith, NC	33	304	9.2
Kisha Ford, GT	27	233	8.6
Jessica Barr, CU	30	256	8.5
Carey Kauffman, DU	27	223	8.3
Tonya Sampson, NC	34	267	7.9
Kathy Dortch, GT	27	201	7.4
Demieta Keener, GT	27	195	7.2
Two tied averaging			7.1

## Assists

PLAYER	G	NO	AVG
Nicole Levesque, WF	27	156	5.8
Karon Ferguson, UM	28	148	5.3
Jenny Boucek, UVA	30	125	4.2
Bonnie Rimkus, UM	28	114	4.1
Kisha Ford, GT	27	108	4.0
Tora Suber, UVA	32	126	3.9



<b>Allison Peercy, FS</b>	<b>27</b>	<b>100</b>	<b>3.7</b>
Tonya Sampson, NC	34	123	3.6
Gretchen Hollifield, WF	27	93	3.4
Two tied averaging			3.3

*Three-Point Field Goal Percentage*

PLAYER	G	FG	FGA	PCT
Tara Saunooke, CU	30	67	163	.411
S. Lawrence, NC	35	60	148	.405
<b>Alison Arnoldi, FS</b>	<b>25</b>	<b>41</b>	<b>104</b>	<b>.394</b>
Jan Howard, ST	27	66	170	.388
Tora Suber, UVA	32	57	154	.370
Nicole Levesque, WF	27	50	137	.365
<b>Christy Derlak, FS</b>	<b>27</b>	<b>47</b>	<b>138</b>	<b>.341</b>
Tonya Sampson, NC	34	53	176	.301

*Three-Point Field Goals Per Game*

PLAYER	G	FG	FGA	AVG
Jen Howard, ST	27	66	170	2.4
Tara Saunooke, CU	30	67	163	2.2
Nicole Levesque, WF	27	50	137	1.9
Tora Suber, UVA	32	57	154	1.8
<b>Christy Derlak, FS</b>	<b>27</b>	<b>47</b>	<b>138</b>	<b>1.7</b>
S. Lawrence, NC	35	60	148	1.7
<b>Alison Arnoldi, FS</b>	<b>25</b>	<b>41</b>	<b>104</b>	<b>1.6</b>
Tonya Sampson, NC	34	53	176	1.6

*Blocks*

PLAYER	G	NO	AVG
Jaci Stimson, CU	24	33	1.4
Kathy Dortch, GT	27	37	1.4
Sylvia Crawley, NC	35	40	1.1
G. Gillingham, NC	31	34	1.1
Demieta Keener, GT	27	29	1.1
Tonya Sampson, NC	34	33	1.0
Monica Adams, UM	28	24	0.9
Marion Jones, NC	35	29	0.8
Bonnie Rimkus, UM	28	23	0.8
Jeffra Gausepchi, UVA	32	26	0.8

*Steals*

PLAYER	G	NO	AVG
Tonya Sampson, NC	34	119	3.5
Kisha Ford, GT	27	92	3.4
Marion Jones, NC	35	111	3.2
Tiffany Martin, GT	23	56	2.4
Wendy Palmer, UVA	32	73	2.3
Jessica Barr, CU	30	65	2.2
Umeki Webb, ST	27	56	2.1
Bonnie Rimkus, UM	28	58	2.1
Tora Suber, UVA	32	64	2.0
Nicole Levesque, WF	27	52	1.9



Alison Arnoldi finished her senior year ranked among the conference leaders in 3-point field goals per game and 3-point shooting percentage.

*Scoring Offense*

SCHOOL	G	PTS	AVG
North Carolina	35	2955	84.4
Duke	27	2055	76.1
Virginia	32	2395	74.8
Clemson	30	2146	71.5
Maryland	28	1969	70.3
NC State	27	1817	67.3
Wake Forest	27	1739	64.4
Georgia Tech	27	1739	64.4
<b>Florida State</b>	<b>27</b>	<b>1575</b>	<b>58.3</b>

*Scoring Defense*

SCHOOL	G	PTS	AVG
Maryland	28	1712	61.1
Clemson	30	1842	61.4
North Carolina	35	2171	62.0
Virginia	32	2010	62.8
Duke	27	1787	68.2
Georgia Tech	27	1839	68.1
NC State	27	1875	69.4
Wake Forest	27	1921	71.1
<b>Florida State</b>	<b>27</b>	<b>1925</b>	<b>71.3</b>

*Scoring Margin*

SCHOOL	AVG
North Carolina	22.4
Virginia	12.0
Clemson	10.1
Duke	9.9
Maryland	9.2
NC State	-2.1
Georgia Tech	-3.7
Wake Forest	-6.7
<b>Florida State</b>	<b>-13.0</b>



*Field Goal Percentage*

SCHOOL	FGM	FGA	PCT.
Virginia	893	1897	.471
Maryland	766	1635	.469
Duke	804	1744	.461
North Carolina	1113	2436	.457
Clemson	836	1829	.457
Wake Forest	641	1502	.427
NC State	657	1584	.415
Georgia Tech	684	1789	.382
<b>Florida State</b>	<b>538</b>	<b>1409</b>	<b>.382</b>

*Field Goal Percentage Defense*

SCHOOL	FGM	FGA	PCT.
North Carolina	810	2128	.381
Clemson	631	1616	.390
NC State	684	1712	.400
Virginia	770	1906	.404
Maryland	685	1639	.418
Georgia Tech	669	1584	.422
Duke	689	1577	.437
Wake Forest	769	1664	.462
<b>Florida State</b>	<b>751</b>	<b>1562</b>	<b>.481</b>

*Three-Point Field Goal Percent*

SCHOOL	3PM	3PA	PCT
Wake Forest	134	350	.383
Clemson	113	308	.367
Duke	84	252	.333
NC State	108	325	.332
<b>Florida State</b>	<b>106</b>	<b>319</b>	<b>.332</b>
Virginia	95	297	.320
North Carolina	169	535	.316
Maryland	45	155	.290
Georgia Tech	41	181	.227

*Free Throw Percentage*

SCHOOL	FTM	FTA	PCT
Maryland	392	535	.733
Wake Forest	323	449	.719
North Carolina	560	780	.718
NC State	395	564	.700
<b>Florida State</b>	<b>393</b>	<b>569</b>	<b>.591</b>
Duke	363	529	.686
Virginia	514	761	.675
Clemson	361	544	.664
Georgia Tech	330	527	.626

*Blocked Shots*

SCHOOL	G	NO	AVG
North Carolina	35	167	5.3
Georgia Tech	27	95	3.5
Clemson	30	100	3.3

Duke	27	82	3.0
NC State	27	77	2.9
Virginia	32	70	2.2
Maryland	28	60	2.1
<b>Florida State</b>	<b>27</b>	<b>43</b>	<b>1.6</b>
Wake Forest	27	17	0.6

*Steals*

SCHOOL	G	NO	AVG
North Carolina	35	454	13.0
Georgia Tech	27	335	12.4
Clemson	30	334	11.1
Duke	27	286	10.6
Maryland	28	271	9.7
Virginia	32	281	8.8
<b>Florida State</b>	<b>27</b>	<b>224</b>	<b>8.3</b>
Wake Forest	27	208	7.7
NC State	27	199	7.4

*Turnover Margin*

SCHOOL	OPP	FOR	MAR
North Carolina	865.0	675.0	5.4
Clemson	621.0	496.0	4.2
Duke	586.0	476.0	4.1
Maryland	595.0	536.0	2.1
Georgia Tech	568.0	536.0	1.2
<b>Florida State</b>	<b>498.0</b>	<b>475.0</b>	<b>0.9</b>
Virginia	575.0	562.0	0.4
Wake Forest	462.0	481.0	-0.7
NC State	431.0	549.0	-4.4

*Rebound Margin*

SCHOOL	G	FOR	OPP	AVG
Virginia	32	41.4	32.4	9.0
North Carolina	35	44.1	37.9	6.2
Maryland	28	36.9	34.1	2.8
Duke	27	36.9	36.1	2.8
NC State	27	40.8	38.1	2.7
Georgia Tech	27	43.4	40.9	2.5
Clemson	30	38.7	37.2	1.5
Wake Forest	27	31.1	39.5	-8.4
<b>Florida State</b>	<b>27</b>	<b>28.7</b>	<b>40.9</b>	<b>-12.1</b>

*3-Point Field Goals Per Game*

SCHOOL	G	FGM	FGA	AVG
Wake Forest	27	134	350	5.0
North Carolina	35	169	535	4.8
NC State	27	108	325	4.0
<b>Florida State</b>	<b>27</b>	<b>106</b>	<b>319</b>	<b>3.9</b>
Clemson	30	113	308	3.8
Duke	27	84	252	3.1
Virginia	32	95	297	3.0
Maryland	28	45	155	1.6
Georgia Tech	27	41	181	1.5