

Leslie Waugh

#42 LESLIE WAUGH
 6-2 ■ Redshirt Freshman ■ Center
 Shreveport, LA

Worked extremely hard in rehabilitating her injured knee...will be heavily relied on to make solid contributions in the inside game... comes to FSU from one of the most powerful high school programs in the country...very strong inside...takes up a lot of space down low... high expectations for her as a rebounder and low post scorer.
1994-95: Opted to redshirt, after suffering a knee injury at the 1994 Olympic Festival tryouts...will have four years of eligibility remaining.
High School: Selected as the MVP in the Louisiana State Tournament... led her C.E. Byrd team to back to back State Championships... team finished as the number two team in the nation by USA Today... averaged 12.0 ppg, and 10.0 rpg. **Personal:** Majoring in biology... celebrates a patriotic birthday being born on July 4, 1976.



Arleshia Davidson

#23 ARLESHIA DAVIDSON
 6-2 ■ Freshman ■ F
 Marietta, GA

Could be one of the most versatile forwards ever to don the garnet and gold...an excellent ball handler who will also be strong as a rebounder...is quick and will be effective in an up tempo game. **High School:** A three-year letterwinner...named the Most Valuable Player as a junior and senior for her Marietta High School team...averaged a team-leading 13.0 points and 12.0 rebounds per game last year...garnered second team all-county honors as a senior and was an honorable-mention all-county selection as a junior...a four year Dean's List member. **Personal:** Is majoring in elementary education...born January 19, 1977.





J. Rob

#24 JEN ROBINSON

5-8 ▪ Freshman ▪ G
Albany, GA

Has the potential to be one of the most powerful guards to ever play at FSU...is a very accurate shooter and has the ability to be a three-point scoring threat. **High School:** Averaged 26.0 points, 5.0 rebounds, 6.0 assists and 5.0 steals as a senior for her Dougherty High School team...led the squad to a 54-6 record the past two seasons... named Georgia's Player of the Year for the South in 1994-95...was a two-year first-team all-state and all-region selection...scored 1,658 points – the most of any female ever in Dougherty County...Class IAAA Player of the Year...named the Georgia Coaches Association's Athlete of the Year...selected Most Valuable Player at the Tennessee-Georgia All-Star game...Dougherty County Athlete of the Year...also competed in track, cross country and softball...an honor roll member...Presidential Award recipient.

Personal: Graduated from high school with a 3.2 GPA...major is undecided... born February 29, 1977.



Kristy Parker

#12 KRISTY PARKER

5-6 ▪ Freshman ▪ G
Richland, MI

Will walk on to the squad this season...is a very solid performer... a tremendous competitor...will add depth to the guard positions.

High School: Earned All-American honors at the Junior Nationals this summer...was runnerup at the "Best of the Midwest" Shootout... averaged 14.0 points, 6.0 assists and 6.0 steals as a senior at Gull Lake High School...was an all-conference, all-area and all-regional selection as a junior and senior...led her team to a 22-1 record and to the regional finals...holds school records in field goal, three-point field goal and free throw percentages...also played softball for four years. **Personal:** Major is undecided...would like to get involved in sports photography...born May 5, 1977.



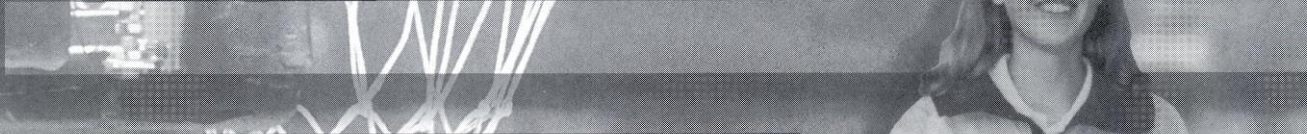


Meghan Heaps

#32 MEHGAN HEAPS

5-8 ■ Freshman ■ G
Lancaster, PA

An exceptional ballhandler...very versatile player...solid three point shooter...possesses a tremendous amount of knowledge about the game. **High School:** Led her Lancaster Catholic High squad to a 54-5 record over the past two seasons...averaged 17.0 points and 5.0 assists per game as a senior... was an all-State selection as a senior, all-District selection... was the 3pt-shot champion at both the Lancaster Lebanon Shootout and the Pennsylvania Roundball Classic...named a *USA Today* Pennsylvania preseason All-American...was listed among the Blue Star Top 300... earned all-district and all-league honors last two seasons...also played two seasons of volleyball and softball. **Personal:** An honor student...is undecided on a major...was born January 13, 1977.



Jennifer A. Miller

#13 JENNIFER MILLER

5-8 ■ Freshman ■ G
Charleston, WV

An extremely versatile player who has the ability to play all three guard positions...very energetic...will add tremendous depth to the outside game. **High School:** Voted "Most Outstanding Athlete" by the student body at Charleston Catholic...led her team and the county in points per game with a 24.8 average...was a *USA Today* All-American Honorable Mention selection in junior and senior seasons...was a two-time first team all-state selection...team captain...recorded five games of 31 or more points...had back-to-back 38 point contests...scored over 1,700 points in her career...competed in the West Virginia North-South All-Star game...started every game in four-year basketball career...also ran track. **Personal:** Graduated with a 3.2 grade point average...is majoring in criminology...celebrates a December 7, 1976 birthday.





Kristy White

#21 KRISTY WHITE

6-4 ■ Freshman ■ F/C
Inverness, FL

Plays defense and runs the court very well for an athlete of her size...has the ability to dominate in scoring, rebounding and blocking shots...will provide FSU with a tremendous threat in its inside game.

High School: A preseason *USA Today* all-state selection in 1994-95...averaged 22.0 points and 13.0 rebounds as a senior at Citrus High School...earned second team all-state and first team all-county and all conference honors...was tabbed the conference's Player of the Year as a senior...was listed among *Student Sports Magazine's* top 50 girls in the state of Florida...was a two-time team Most Valuable Player selection...also competed in track and volleyball...was a member of the Principal and Dean's Lists. **Personal:** Is undecided on a major...was born January 13, 1977.

THE LADY SEMINOLES...

'95 PERSONNEL CHART

RETURNING STARTERS (3)

F	Carla Williams	Sr.	6-0	10.9 ppg, 7.5 rpg
F	Latrice McLin	So.	6-0	7.7 ppg, 3.7 rpg
C	Lysa Moorefield	So.	6-1	6.6 ppg, 4.0 rpg

OTHER LETTERWINNERS

LOST (3)

F	Liberty Taylor	3.0 ppg, 3.1 rpg
F	Katina Cobbins	3.9 ppg, 4.9 rpg
G	Anja Pedersen	4.0 ppg, 2.1 rpg

OTHER RETURNING PLAYERS (2)

F	Wendy Hampton	So.	5-11	4.9 ppg, 2.3 rpg
G	Aletha Penn	So.	5-5	1.2 ppg, 0.5 rpg, 1.0 apg

NEWCOMERS (7)

G	Mehgan Heaps	Fr.	5-8	Lancaster, Pa.
G	Jennifer Miller	Fr.	5-8	Charleston, W. Va.
G	Kristy Parker	Fr.	5-6	Richland, Mich.
G	Jen Robinson	Fr.	5-8	Albany, Ga.
F	Arleshia Davidson	Fr.	6-2	Marietta, Ga.
F/C	Leslie Waugh	R-Fr.	6-3	Shreveport, La.
F/C	Kristy White	Fr.	6-4	Inverness, Fla.

STARTERS LOST (2)

G	Allison Peercy	12.9 ppg, 3.1 rpg, 4.1 apg
G	Tanisha Rickman	9.8 ppg, 3.3 rpg, 3.2 apg

A CLOSER LOOK AT

THE LADY SEMINOLES

BY POSITION

Guards (5): Mehgan Heaps, Jennifer Miller, Kristy Parker, Aletha Penn, Jen Robinson

Forwards (5): Arleshia Davidson, Wendy Hampton, Latrice McLin, Lysa Moorefield, Carla Williams

Centers (3): Lysa Moorefield, Kristy White, Leslie Waugh

BY HEIGHT

Penn	5-5
Parker	5-6
Miller	5-8
Robinson	5-8
Heaps	5-8
Hampton	5-11
McLin	6-0
Williams	6-0
Moorefield	6-1
Davidson	6-2
Waugh	6-3
White	6-4

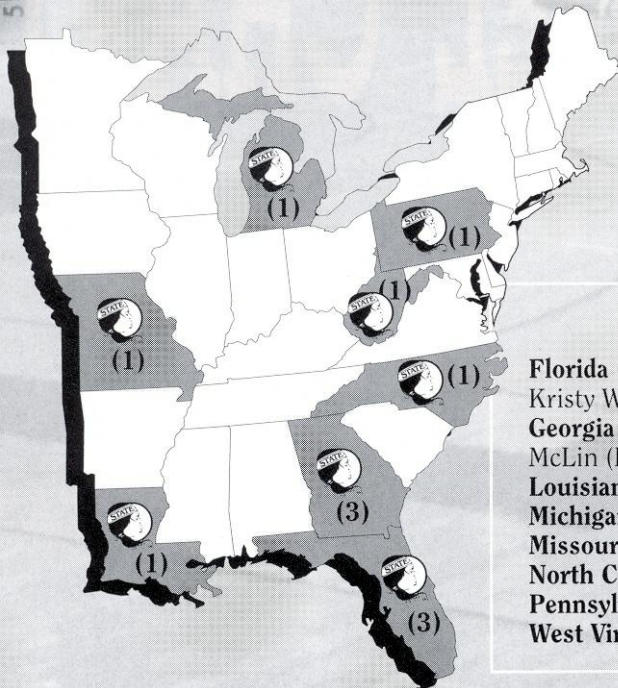
BY CLASS

[Juniors: (None)]

Seniors (1):
Carla Williams

Sophomores (4):
Wendy Hampton
Latrice McLin
Lysa Moorefield
Aletha Penn

Freshmen (7):
Arleshia Davidson
Mehgan Heaps
Jennifer Miller
Kristy Parker
Jen Robinson
Leslie Waugh
Kristy White



BY STATE

Florida (3): Lysa Moorefield (Altamonte Springs), Kristy White (Inverness), Carla Williams (Graceville)

Georgia (3): Arleshia Davidson (Marietta), Latrice McLin (Rossville), Jen Robinson (Albany)

Louisiana (1): Leslie Waugh (Shreveport)

Michigan (1): Kristy Parker (Richland)

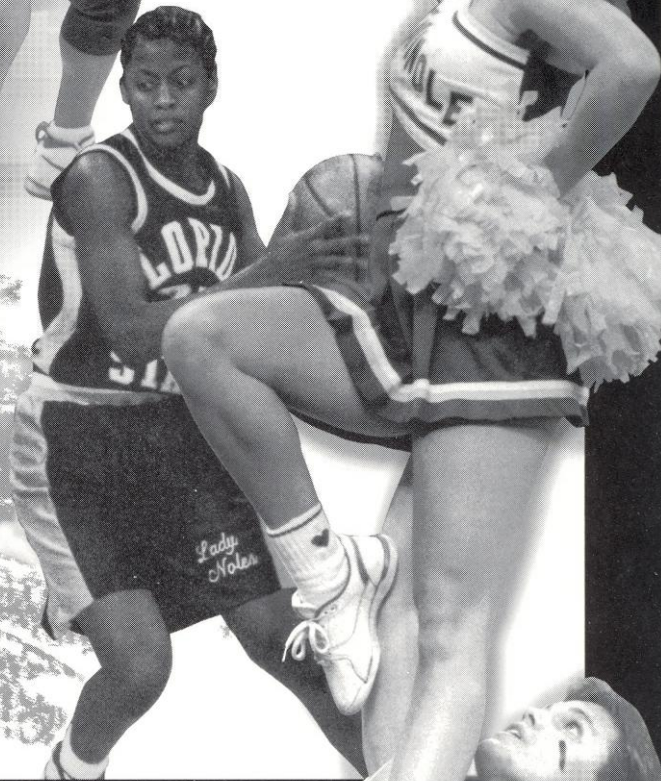
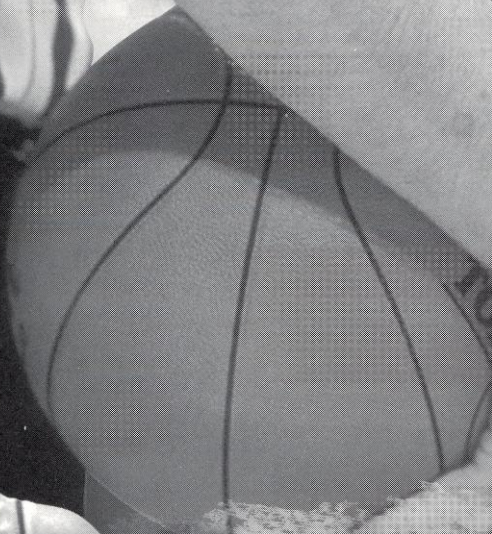
Missouri (1): Aletha Penn (Kansas City)

North Carolina (1): Wendy Hampton (Mt. Ulla)

Pennsylvania (1): Mehgan Heaps (Columbia)

West Virginia (1): Jennifer Miller (Charleston)

OPPONENTS



OPPONENTS

' 9 5 - 9 6 P R E V I E W



FLORIDA ATLANTIC

November 27

Quick Facts

LOCATION Boca Raton, FL
 SYMBOL Owls
 ENROLLMENT 17,500
 COLORS Blue and Gray
 CONFERENCE Trans America
 ARENA/CAPACITY FAU Gymnasium/5,000
 ATHLETIC DIRECTOR Tom Cargill

Basketball Facts

HEAD COACH Wayne Allen
 RECORD AT SCHOOL/YEARS 129-95/7
 CAREER RECORD/YEARS Same
 OFFICE PHONE (407) 367-3712
 ASSISTANT COACHES Teresa Baker; Paulette King

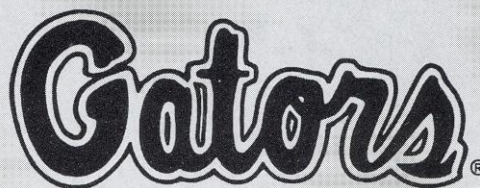
Sports Information

OFFICE PHONE (407) 367-3063
 FAX NUMBER (407) 367-2996
 BASKETBALL CONTACT Katrina McCormick
 HOME PHONE (407) 367-9467

Team Information

1994-1995 RECORD 9-18
 CONFERENCE RECORD 5-11
 CONFERENCE FINISH 7th
 CONFERENCE TOURNAMENT FINISH 7th
 STARTERS RETURNING/LOST 4/1
 LETTERWINNERS RETURNING/LOST 12/4

RETURNING STARTERS (POS/CLASS) Angie Smith (F/Sr.); Amanda Whitney (F/Jr.); Ngina Parks (G/Jr.); Roberta Quant (C/Jr.)
 TOP RETURNING SCORER Angie Smith (16.9 ppg)
 TOP RETURNING REBOUNDER Angie Smith (7.2 rpg)
 TOP NEWCOMERS (POS/HGT) Telma Bias (C/6-2)



FLORIDA

*December 1 at Dial Soap Challenge
 & February 26*

Quick Facts

LOCATION Gainesville, FL
 SYMBOL Lady Gators
 ENROLLMENT 36,000
 COLORS Orange and Blue
 CONFERENCE Southeast Conference
 ARENA/CAPACITY Stephen C. O'Connell Center/12,000
 ATHLETIC DIRECTOR Jeremy Foley

Basketball Facts

HEAD COACH Carol Ross
 RECORD AT SCHOOL/YEARS 97-50/5
 CAREER RECORD/YEARS Same
 OFFICE PHONE (904) 375-4683 ext. 5500
 ASSISTANT COACHES Ron Aldy; Joi Williams

Sports Information

OFFICE PHONE (904) 375-4683 ext. 6100
 FAX NUMBER (904) 375-4809
 BASKETBALL CONTACT Steven Shaff
 HOME PHONE (904) 336-8834

Team Information

1994-95 RECORD 24-9
 CONFERENCE RECORD 7-4
 CONFERENCE FINISH t4th
 CONFERENCE TOURNAMENT FINISH 1-1
 STARTERS RETURNING/LOST 3/2
 LETTER WINNERS RETURNING/LOST 8/4
 RETURNING STARTERS (POS/CLASS) Dana Smith
 (G/So.); Murriel Page (F/So.); DeLisha Milton (C/Jr.)
 TOP RETURNING SCORER DeLisha Milton (13.5 ppg)
 TOP RETURNING REBOUNDER Murriel Page (7.2 rpg)
 TOP NEWCOMERS (POS/HGT) Tonika Bruce (G/5-7);
 Talatha Bingham (G/5-8); Tonika Bright (G/5-7);
 Jackie Wright (F/6-0)



SOUTH FLORIDA

*December 1-2
 at Dial Soap Challenge*

Quick Facts

LOCATION Tampa, FL
 SYMBOL Bulls
 ENROLLMENT 36,000
 COLORS Green and Gold
 CONFERENCE Conference USA
 ARENA/CAPACITY Sun Dome/10,411 and
 The Corral/1,000
 ATHLETIC DIRECTOR Paul Griffin

Basketball Facts

HEAD COACH Trudi Lacey
 RECORD AT SCHOOL/YEARS 80-110/7
 CAREER RECORD/YEARS 134-122/9
 OFFICE PHONE (813) 974-4023
 ASSISTANT COACHES Loy Moore; Susan Montgomery

Sports Information

OFFICE PHONE (813) 974-2125
 FAX NUMBER (813) 974-5328
 BASKETBALL CONTACT Tracey Judd
 HOME PHONE (813) 831-5288

Team Information

1994-95 RECORD 7-19
 CONFERENCE RECORD 0-12
 CONFERENCE FINISH 7th
 CONFERENCE TOURNAMENT FINISH 0-1
 STARTERS RETURNING/LOST 2/3
 LETTER WINNERS RETURNING/LOST 8/5
 RETURNING STARTERS (POS/CLASS) Rachel Brown
 (F,C/Sr.); Jenny Koepfel (G/Jr.)
 TOP RETURNING SCORER Jenny Koepfel (13.5 ppg)
 TOP RETURNING REBOUNDER Rachel Brown (6.2 rpg)
 TOP NEWCOMERS (POS/HGT) Haylee Ahu (G/5-8);
 Tanya Gary (G/5-11); Carlisa Hamagaki (G/5-9);
 Heather LeVan (F/6-0); Joyce Robinson (G/5-6);
 Amanda Soborowski (C/6-4); Sonya Swick (F/5-11)



MIAMI

MIAMI (FL)

*December 1-2
 at Dial Soap Challenge*

Quick Facts

LOCATION Coral Gables, FL
 SYMBOL Hurricanes
 ENROLLMENT 13,734
 COLORS Orange, Green, and White
 CONFERENCE Big East
 ARENA/CAPACITY Knight Sports Complex/1,200
 ATHLETIC DIRECTOR Paul Dee

Basketball Facts

HEAD COACH Ferne Labati
 RECORD AT SCHOOL/YEARS 143-68/8
 CAREER RECORD/YEARS 279-190/17
 OFFICE PHONE (305) 284-5802
 ASSISTANT COACHES Robin Harmony; Toni Smiley;
 Nina Wagner

Sports Information

OFFICE PHONE (305) 284-3244
 FAX NUMBER (305) 284-2807
 BASKETBALL CONTACT Samuel Henderson
 HOME PHONE (305) 442-2616

Team Information

1994-1995 RECORD 11-16
 CONFERENCE RECORD 8-10
 CONFERENCE FINISH 6th
 CONFERENCE TOURNAMENT FINISH Lost in quarterfinals
 STARTERS RETURNING/LOST 4/2*
**(Thomas is returning starter from 1993-1994 season but missed entire 1994-1995 season due to injury)*
 LETTERWINNERS RETURNING/LOST 10/4
 RETURNING STARTERS (POS/CLASS) Octavia Blue (F/So.); Sheron Murray (F/Jr.); Maureen Faulkner (G/Sr.); Desma Thomas (F/Jr.)
 TOP RETURNING SCORER Octavia Blue (14.4 ppg)
 TOP RETURNING REBOUNDER Octavia Blue (7.2 rpg)
 TOP NEWCOMERS (POS/HGT) Beth Barnhart (G/5-9); Kym Hope (F,C/6-2)



DUKE

December 6 & January 27

Quick Facts

LOCATION Durham, NC
 SYMBOL Blue Devils
 ENROLLMENT 6,057
 COLORS Royal Blue and White
 CONFERENCE Atlantic Coast
 ARENA/CAPACITY Cameron Indoor Stadium/9,314
 ATHLETIC DIRECTOR Tom Butters

Basketball Facts

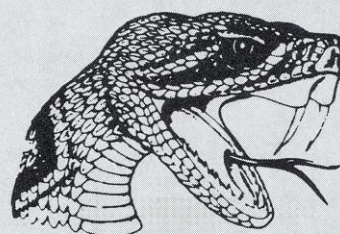
HEAD COACH Gail Goestenkors
 RECORD AT SCHOOL/YEARS 50-35/3
 CAREER RECORD/YEARS Same
 OFFICE PHONE (919) 684-2120
 ASSISTANT COACHES Joanne Boyle; Gale Valley; Shonta Tabourn

Sports Information

OFFICE PHONE (919) 684-2633
 FAX NUMBER (919) 684-2489
 BASKETBALL CONTACT Lori Winters
 HOME PHONE (919) 493-3842

Team Information

1994-1995 RECORD 22-9
 CONFERENCE RECORD 10-6
 CONFERENCE FINISH 4th
 CONFERENCE TOURNAMENT FINISH Lost in championship game
 STARTERS RETURNING/LOST 4/1
 LETTERWINNERS RETURNING/LOST 6/5
 RETURNING STARTERS (POS/CLASS) Ali Day (C/Sr.); Jen Scanlon (G/Sr.); Kira Orr (F/Jr.); Tyish Hall (F/Jr.)
 TOP RETURNING SCORER Ali Day (16.1 ppg)
 TOP RETURNING REBOUNDER Ali Day (6.6 rpg)
 TOP NEWCOMERS (POS/HGT) Hilary Howard (G/5-8); Payton Black (F/6-4)



FLORIDA A&M

December 10

Quick Facts

LOCATION Tallahassee, FL
 SYMBOL Rattlerettes
 ENROLLMENT 10,069
 COLORS Orange and Green
 CONFERENCE Mid-Eastern Athletic
 ARENA/CAPACITY Gaither Gym/3,365
 ATHLETIC DIRECTOR Mr. Kenneth Riley

Basketball Facts

HEAD COACH Claudette Farmer
 RECORD AT SCHOOL/YEARS 86-57/5
 CAREER RECORD/YEARS Same
 OFFICE PHONE (904) 561-2193
 ASSISTANT COACHES Beverly Burnett; Ernest Rozier

Sports Information

OFFICE PHONE (904) 599-3200
 FAX NUMBER (904) 599-3206
 BASKETBALL CONTACT Michelle Jinks
 HOME PHONE (904) 224-3840

Team Information

1994-95 RECORD 24-6
 CONFERENCE RECORD 14-2

CONFERENCE FINISH..... 1st
 CONFERENCE TOURNAMENT FINISH Champions
 STARTERS RETURNING/LOST 3/2
 LETTER WINNERS RETURNING/LOST 11/2
 RETURNING STARTERS (POS/CLASS) Cathy Robinson
 (F/C/Sr.); Angela McPhaul (F/Sr.); Delicia Walker (G/Jr.)
 TOP RETURNING SCORER Cathy Robinson (19.8 ppg)
 TOP RETURNING REBOUNDER Cathy Robinson
 (8.7 rpg)
 TOP NEWCOMERS (POS/HGT) Ha Tran (G/5-2);
 Lanenna Joiner (G/5-6)



TENNESSEE- CHATTANOOGA

December 17

Quick Facts

LOCATION Chattanooga, TN
 SYMBOL Lady Mocs
 ENROLLMENT 8,325
 COLORS Navy Blue and Old Gold
 CONFERENCE Southern
 ARENA/CAPACITY Maclellan Gym/4,177
 ATHLETIC DIRECTOR Ed Farrell

Basketball Facts

HEAD COACH Craig Parrot
 RECORD AT SCHOOL/YEARS 132-97/8
 CAREER RECORD/YEARS Same
 OFFICE PHONE (615) 755-4376
 ASSISTANT COACHES Lynn Jarrett; Rosa Stokes

Sports Information

OFFICE PHONE (615) 755-4618
 FAX NUMBER (615) 755-4610
 BASKETBALL CONTACT Kimberli Pemberton
 HOME PHONE (615) 892-2944

Team Information

1994-95 RECORD 10-17
 CONFERENCE RECORD 6-9
 CONFERENCE FINISH 6th

CONFERENCE TOURNAMENT FINISH 6th
 STARTERS RETURNING/LOST 2/3
 LETTER WINNERS RETURNING/LOST 7/4
 RETURNING STARTERS (POS/CLASS) Tracy Brown
 (F/Sr.); Stacey Brown (F/Sr.)
 TOP RETURNING SCORER Tracy Brown (9.0 ppg)
 TOP RETURNING REBOUNDER Tracy Brown (4.5 rpg)
 TOP NEWCOMERS (POS/HGT) JoLyn Adams (F/6-1);
 Michelle Handford (G/5-9); Zayed Henry (G/5-4);
 Carlise Oglesby (G/5-10); Renae Perry (F/6-0);
 Valerie Singleton (G/5-5)



•University of New Orleans

Privateers

NEW ORLEANS

December 20

Quick Facts

LOCATION New Orleans, LA
 SYMBOL Buc-kettes
 ENROLLMENT 14,625
 COLORS Royal Blue and Silver
 CONFERENCE Sun Belt
 ARENA/CAPACITY Lakefront Arena/10,000
 ATHLETIC DIRECTOR Ron Maestri

Basketball Facts

HEAD COACH Joey Favaloro
 RECORD AT SCHOOL/YEARS 275-158/15
 CAREER RECORD/YEARS Same
 OFFICE PHONE (504) 286-7022
 ASSISTANT COACHES Gay Nix; Nancy Walsh

Sports Information

OFFICE PHONE (504) 286-7027 or 286-6284
 FAX NUMBER (504) 286-7240
 BASKETBALL CONTACT TBA
 HOME PHONE TBA

Team Information

1994-1995 RECORD 11-16
 CONFERENCE RECORD 6-8
 CONFERENCE FINISH 5th
 CONFERENCE TOURNAMENT FINISH 0-1, tied for
 fifth, lost in quarterfinals

STARTERS RETURNING/LOST 2/3
 LETTERWINNERS RETURNING/LOST 6/3
 RETURNING STARTERS (POS/CLASS) Dani Maziur
 (G/Sr.); Twalla Powell (G/Jr.)
 TOP RETURNING SCORER Twalla Powell (11.9 ppg)
 TOP RETURNING REBOUNDER Twalla Powell (4.2 rpg)
 TOP NEWCOMERS (POS/HGT) Vasso Beskaki (C/6-8);
 Susan Syljebeck(F/6-0); Amber Magner (G/5-8)



CENTRAL FLORIDA

*December 28-30
 at Holiday Tournament*

Quick Facts

LOCATION Orlando, FL
 SYMBOL Golden Knights
 ENROLLMENT 26,500
 COLORS Black and Gold
 CONFERENCE Trans America
 ARENA/CAPACITY UCF Arena/5,100
 ATHLETIC DIRECTOR Steve Sloan

Basketball Facts

HEAD COACH Jerry Richardson
 RECORD AT SCHOOL/YEARS 27-55/3
 CAREER RECORD/YEARS Same
 OFFICE PHONE (407) 823-5802
 ASSISTANT COACHES LaSandra Pugh; Shann Hart;
 Yolanda Rhodes

Sports Information

OFFICE PHONE (407) 823-2729
 FAX NUMBER (407) 823-5266
 BASKETBALL CONTACT TBA
 HOME PHONE TBA

Team Information

1994-1995 RECORD 11-16
 CONFERENCE RECORD 7-9
 CONFERENCE FINISH 5th
 CONFERENCE TOURNAMENT FINISH . Lost in semifinals
 STARTERS RETURNING/LOST 4/1
 LETTERWINNERS RETURNING/LOST 9/3

RETURNING STARTERS (POS/CLASS) Tamika Coley
 (F/Sr.); Gylanda Henderson (G/Jr.);
 Priscilla Smith (G/Sr.); Stephanie Finley (F/Jr.)
 TOP RETURNING SCORER Tamika Coley (18.3 ppg)
 TOP RETURNING REBOUNDER ... Tamika Coley (11.1 rpg)
 TOP NEWCOMERS (POS/HGT) Chasity McClendon
 (F/6-0); Kate Fetzek (G/5-7); Chariya Davis (G/5-7);
 Shantrice Saxson (F/6-0); Lakesha Anderson (G/5-9);
 Beth Young (C/6-4)



TENNESSEE STATE

*December 28-30
 at Holiday Tournament*

Quick Facts

LOCATION Nashville, TN
 SYMBOL Lady Tigers
 ENROLLMENT 8,470
 COLORS Royal Blue and White
 CONFERENCE Ohio Valley
 ARENA/CAPACITY Howard C. Gentry Complex/10,500
 ATHLETIC DIRECTOR Howard Gentry Jr.

Basketball Facts

HEAD COACH Teresa Lawrence Phillips
 RECORD AT SCHOOL/YEARS 92-73/7
 CAREER RECORD/YEARS 154-111/11
 OFFICE PHONE (615) 963-5886 or (615) 963-5887
 ASSISTANT COACHES Valencia Jordan;
 Jennifer Bell-Mitchell

Sports Information

OFFICE PHONE (615) 963-5851
 FAX NUMBER (615) 963-5895
 BASKETBALL CONTACT Johnny Franks
 HOME PHONE (615) 367-0700

Team Information

1994-1995 RECORD 22-7
 CONFERENCE RECORD 12-4
 CONFERENCE FINISH t1st
 CONFERENCE TOURNAMENT FINISH 1st
 STARTERS RETURNING/LOST 1/4

LETTERWINNERS RETURNING/LOST 9/5
 RETURNING STARTERS (POS/CLASS) Kim Graves
 (G/Sr.)
 TOP RETURNING SCORER Kim Graves (4.7 ppg)
 TOP RETURNING REBOUNDER Kim Graves (3.7 rpg)
 TOP NEWCOMERS (POS/HGT) April Bennett (C/6-0);
 Shayla Cooper (G/5-7); Starr Shaife (G/5-8)



*December 28
 at Holiday Tournament*

Quick Facts

LOCATION Columbia, MO
 SYMBOL Tigers
 ENROLLMENT 22,136
 COLORS Old Gold and Black
 CONFERENCE Big Eight
 ARENA/CAPACITY Hearnest Center/13,300
 ATHLETIC DIRECTOR Joe Castiglione

Basketball Facts

HEAD COACH Dr. Joann Rutherford
 RECORD AT SCHOOL/YEARS 387-213/20
 CAREER RECORD/YEARS Same
 OFFICE PHONE (314) 882-0723
 ASSISTANT COACHES Missy Bequette; Jeni Garber;
 Marcia Brooks

Sports Information

OFFICE PHONE (314) 882-0712
 FAX NUMBER (314) 882-4720
 BASKETBALL CONTACT Paige Monestime
 HOME PHONE (314) 499-1872

Team Information

1994-95 RECORD 15-12
 CONFERENCE RECORD 5-9
 CONFERENCE FINISH 6th
 CONFERENCE TOURNAMENT FINISH 0-1
 STARTERS RETURNING/LOST 4/1
 LETTER WINNERS RETURNING/LOST 8/4
 RETURNING STARTERS (POS/CLASS) Erika Martin

(F/Sr.); Mandy Bryan (G,F/Sr.); Andrea Siemer (F/Sr.);
 Tanisha Johnson (G/So.)
 TOP RETURNING SCORER Erika Martin (18.6 ppg)
 TOP RETURNING REBOUNDER Erika Martin (7.6 rpg)
 TOP NEWCOMERS (POS/HGT) Julie Helm (G/5-11);
 Lindsay Thornton (C,F/6-2); Kesha Bonds (F,C/6-1);
 Leslie Woehrer (G/5-10); Shatenita Whitfield (C/6-3)



TEMPLE
*December 28-30
 at Holiday Tournament*

Quick Facts

LOCATION Philadelphia, PA.
 SYMBOL Owls
 ENROLLMENT 32,000
 COLORS Cherry and White
 CONFERENCE Atlantic 10
 ARENA/CAPACITY McGonigle Hall/3,900
 ATHLETIC DIRECTOR R.C. Johnson

Basketball Facts

HEAD COACH Kristen Foley
 RECORD AT SCHOOL/YEARS 0-0/1st year
 CAREER RECORD/YEARS 26-56/3
 OFFICE PHONE (215) 204-1955
 ASSISTANT COACHES Kim Foley; Kelley Watts;
 Vicky Picott

Sports Information

OFFICE PHONE (215) 204-7445
 FAX NUMBER (215) 204-7499
 BASKETBALL CONTACT Marla Rodriguez
 HOME PHONE (215) 281-9174

Team Information

1994-95 RECORD 2-25
 CONFERENCE RECORD 0-16
 CONFERENCE FINISH 9th
 CONFERENCE TOURNAMENT FINISH 9th
 STARTERS RETURNING/LOST 4/2
 LETTER WINNERS RETURNING/LOST 10/2
 RETURNING STARTERS (POS/CLASS) Tamara Davis

(C/Sr.); Wendi Goods (G/Jr.); Claudrena Harold (G/So.); Mickey Wetzel (F/Jr.)

TOP RETURNING SCORER ... Claudrena Harold (17.2 ppg)
 TOP RETURNING REBOUNDER Shememe Williams (7.1 rpg)

TOP NEWCOMERS (POS/HGT) Dawn Ingram (G/5-9); Tania Bailey (G/5-8)



FURMAN

*December 28-30
 at Holiday Tournament*

Quick Facts

LOCATION Greenville, SC
 SYMBOL Lady Paladins
 ENROLLMENT 2,500
 COLORS Purple and White
 CONFERENCE Southern
 ARENA/CAPACITY Herman Lay Physical Activities Center/1,000
 ATHLETIC DIRECTOR Ray Parlier

Basketball Facts

HEAD COACH Sherry Carter
 RECORD AT SCHOOL/YEARS 186-169/13
 CAREER RECORD/YEARS Same
 OFFICE PHONE (803) 294-3429
 ASSISTANT COACHES Sherri Pickard; Adrienne Shuler; Jennifer Jones

Sports Information

OFFICE PHONE (803) 294-3065
 FAX NUMBER (803) 294-3061
 BASKETBALL CONTACT Teri Brinkman
 HOME PHONE (803) 834-2528

Team Information

1994-95 RECORD 18-12
 CONFERENCE RECORD 10-4
 CONFERENCE FINISH 3rd
 CONFERENCE TOURNAMENT FINISH 1st
 STARTERS RETURNING/LOST 1/4
 LETTER WINNERS RETURNING/LOST 6/7

RETURNING STARTERS (POS/CLASS) Tonya Bristow (F/So.)

TOP RETURNING SCORER Tonya Bristow (9.5 ppg)
 TOP RETURNING REBOUNDER Tonya Bristow (5.6 rpg)
 TOP NEWCOMERS (POS/HGT) Julie Johnson (F/5-10); Heidi Hensley (G/5-6)



OKLAHOMA STATE

*December 28-30
 at Holiday Tournament*

Quick Facts

LOCATION Stillwater, OK
 SYMBOL Cowgirls
 ENROLLMENT 18,209
 COLORS Orange and Black
 CONFERENCE Big 8
 ARENA/CAPACITY Gallagher-Iba Arena/6,381
 ATHLETIC DIRECTOR Terry Don Phillips

Basketball Facts

HEAD COACH Dick Halterman
 RECORD AT SCHOOL/YEARS 219-139/12
 CAREER RECORD/YEARS Same
 OFFICE PHONE (405) 744-7500
 ASSISTANT COACHES Jack Easley; Rae Rippetoe Blair; Jennifer Hepner

Sports Information

OFFICE PHONE (405) 744-5749
 FAX NUMBER (405) 744-7754
 BASKETBALL CONTACT Lee Eiland
 HOME PHONE (405) 743-2904

Team Information

1994-95 RECORD 17-12
 CONFERENCE RECORD 7-7
 CONFERENCE FINISH 4th
 CONFERENCE TOURNAMENT FINISH t3rd
 STARTERS RETURNING/LOST 4/1
 LETTER WINNERS RETURNING/LOST 8/5
 RETURNING STARTERS (POS/CLASS) Amy Scales (F/Sr.); Stacy Coffey (F/Sr.); Gina Shaterkina (C/Sr.);

Yogi York (G/Sr.)
 TOP RETURNING SCORER Amy Scales (12.3 ppg)
 TOP RETURNING REBOUNDER Gina Shaterkina
 (6.3 rpg)
 TOP NEWCOMERS (POS/HGT) Kourtney Bower (G/5-7);
 Nikki Harmon (F/5-11); Shelly Jackson (G/5-9);
 Kelly Folsom (C/6-2)



WILLIAM & MARY

*December 28-30
 at Holiday Tournament*

Quick Facts

LOCATION Williamsburg, VA
 SYMBOL Tribe
 ENROLLMENT 6,364
 COLORS Green, Gold, and Silver
 CONFERENCE Colonial Athletic Association
 ARENA/CAPACITY William and Mary Hall/10,000
 ATHLETIC DIRECTOR John Randolph

Basketball Facts

HEAD COACH Trina Thomas Patterson
 RECORD AT SCHOOL/YEARS 46-57/4
 CAREER RECORD/YEARS Same
 OFFICE PHONE (804) 221-3391
 ASSISTANT COACHES Kara McVey; Kerri Nemeth

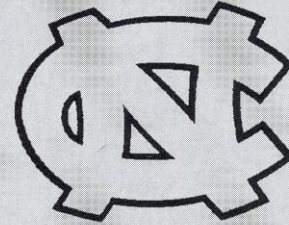
Sports Information

OFFICE PHONE (804) 221-3344 or 3370
 FAX NUMBER (804) 221-3412
 BASKETBALL CONTACT Mike Lynch
 HOME PHONE (804) 565-3453

Team Information

1994-95 RECORD 8-21
 CONFERENCE RECORD 3-11
 CONFERENCE FINISH 6th
 CONFERENCE TOURNAMENT FINISH 4th
 STARTERS RETURNING/LOST 3/2
 LETTER WINNERS RETURNING/LOST 8/3
 RETURNING STARTERS (POS/CLASS) Yolanda Settles
 (G/Sr.); Julie Hamiel (F/Jr.); Bridget Wagner (F,C/Jr.)

TOP RETURNING SCORER Yolanda Settles (8.3 ppg)
 TOP RETURNING REBOUNDER ... Nina McIntyre (5.6 rpg)
 TOP NEWCOMERS (POS/HGT) ... Katherine Averyt (G/5-7);
 Carrie Conklin(C/6-2); Lisa LaMonte (F/6-0);
 Tawana Lucas (G/5-9); Julie Sommer (G/5-10)



NORTH CAROLINA

January 3 & February 9

Quick Facts

LOCATION Chapel Hill, NC
 SYMBOL Tar Heels
 ENROLLMENT 24,463
 COLORS Carolina Blue and White
 CONFERENCE Atlantic Coast
 ARENA/CAPACITY Carmichael Auditorium/10,000
 ATHLETIC DIRECTOR John Swofford

Basketball Facts

HEAD COACH Sylvia Hatchell
 RECORD AT SCHOOL/YEARS 172-101/9
 CAREER RECORD/YEARS 444-181/20
 OFFICE PHONE (919) 962-5187
 ASSISTANT COACHES Andrew Calder;
 Ann Hancock; Emily Johnson

Sports Information

OFFICE PHONE (919) 962-2123/1376
 FAX NUMBER (919) 962-0612
 BASKETBALL CONTACT Mike Bowers
 HOME PHONE (919) 929-7814

Team Information

1994-1995 RECORD 30-5
 CONFERENCE RECORD 12-4
 CONFERENCE FINISH 2nd
 CONFERENCE TOURNAMENT FINISH 1st
 STARTERS RETURNING/LOST 2/3
 LETTERWINNERS RETURNING/LOST 8/5
 RETURNING STARTERS (POS/CLASS) Marion Jones
 (G/Jr.); Tracy Reid (G,F/So.)
 TOP RETURNING SCORER Marion Jones (17.9 ppg)
 TOP RETURNING REBOUNDER Tracy Reid (7.0 rpg)

TOP NEWCOMERS (POS/HGT) Alicia Alford (F,C/6-2);
 Yanick Clay (F/6-1); Natasha Davis (F,C/6-2);
 Jessica Gaspar (G/5-7); Tracy Sadler (G/5-10);
 Chanel Wright (F,G/6-0)



CLEMSON

January 7 & February 3

Quick Facts

LOCATION Clemson, SC
 SYMBOL Lady Tigers
 ENROLLMENT 16,296
 COLORS Orange and Purple
 CONFERENCE Atlantic Coast
 ARENA/CAPACITY Littlejohn Coliseum/11,020
 ATHLETIC DIRECTOR Bobby Robinson

Basketball Facts

HEAD COACH Jim Davis
 RECORD AT SCHOOL/YEARS 166-83/8
 CAREER RECORD/YEARS 185-91/9
 OFFICE PHONE (803) 656-2212
 ASSISTANT COACHES Carey Green; Courtney Johnson;
 Shandy Bryan

Sports Information

OFFICE PHONE (803) 656-2114
 FAX NUMBER (803) 656-0299
 BASKETBALL CONTACT Sam Blackman
 HOME PHONE (803) 639-4400

Team Information

1994-1995 RECORD 21-11
 CONFERENCE RECORD 9-7
 CONFERENCE FINISH 5th
 CONFERENCE TOURNAMENT FINISH t5th
 STARTERS RETURNING/LOST 4/1
 LETTERWINNERS RETURNING/LOST 8/4
 RETURNING STARTERS (POS/CLASS) Stephanie
 Ridgeway (G/Sr.); Laura Cottrell (F/Jr.);
 Jaci Stimson (F,C/Jr.); Angie Salyer (G/Jr.)
 TOP RETURNING SCORER Stephanie Ridgeway
 (12.9 ppg)

TOP RETURNING REBOUNDER Laura Cottrell (8.5 rpg)
 TOP NEWCOMERS (POS/HGT) Natasha Anderson
 (F/6-0); Nikki Blassingame (F,C/6-3); Amy Geren (G/5-11);
 Autumn Sam (F/6-2); Ito Umoh (G/5-7)



NORTH CAROLINA STATE

January 9 & February 11

Quick Facts

LOCATION Raleigh, NC
 SYMBOL Wolfpack
 ENROLLMENT 27,156
 COLORS Red and White
 CONFERENCE Atlantic Coast
 ARENA/CAPACITY Reynolds Coliseum/12,400
 ATHLETIC DIRECTOR Todd Turner

Basketball Facts

HEAD COACH Kay Yow
 RECORD AT SCHOOL/YEARS 431-173/20
 CAREER RECORD/YEARS 488-192/24
 OFFICE PHONE (919) 515-2880
 ASSISTANT COACHES Stephanie Gance; Robin Pate;
 Jen Price

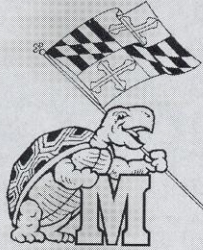
Sports Information

OFFICE PHONE (919) 515-2102
 FAX NUMBER (919) 515-2898
 BASKETBALL CONTACT Joan von Thron
 HOME PHONE (919) 233-9823

Team Information

1994-1995 RECORD 21-10
 CONFERENCE RECORD 11-5
 CONFERENCE FINISH 3rd
 CONFERENCE TOURNAMENT FINISH Lost in
 semifinals
 STARTERS RETURNING/LOST 3/2
 LETTERWINNERS RETURNING/LOST 8/4

RETURNING STARTERS (POS/CLASS) Jennifer Howard (G/5-7); Umeki Webb (G,F/5-10); Chasity Melvin (F/6-3)
 TOP RETURNING SCORER Chasity Melvin (16.4 ppg)
 TOP RETURNING REBOUNDER ... Chasity Melvin (7.0 rpg)
 TOP NEWCOMERS (POS/HGT) LySchale Jones (G/5-10); Tasha Newman (F/6-0); Kenyatta Williams (G/5-5)



MARYLAND

January 14 & February 18

Quick Facts

LOCATION College Park, MD
 SYMBOL Terrapins
 ENROLLMENT 30,371
 COLORS Red, White, Black and Gold
 CONFERENCE Atlantic Coast
 ARENA/CAPACITY Cole Field House/14,500
 ATHLETIC DIRECTOR Deborah A. Yow

Basketball Facts

HEAD COACH Chris Weller
 RECORD AT SCHOOL/YEARS 401-184/20
 CAREER RECORD/YEARS Same
 OFFICE PHONE (301) 314-1747
 ASSISTANT COACHES Boe Pearman; Traci Gorman; Katrina Colleton

Sports Information

OFFICE PHONE (301) 314-7062
 FAX NUMBER (301) 314-9094
 BASKETBALL CONTACT Heather Czczok
 HOME PHONE (301) 680-2270

Team Information

1994-1995 RECORD 11-18
 CONFERENCE RECORD 2-14
 CONFERENCE FINISH 9th
 CONFERENCE TOURNAMENT FINISH 8th
 STARTERS RETURNING/LOST 3/2
 LETTERWINNERS RETURNING/LOST 8/2
 RETURNING STARTERS (POS/CLASS) Nina Ohman (C/Jr.); Lillian Purvis (G/Jr.); Sonia Chase (G/So.)
 TOP RETURNING SCORER Stephanie Cross (11.5 ppg)

TOP RETURNING REBOUNDER Sonia Chase (6.7 rpg)
 TOP NEWCOMERS (POS/HGT) Kim Bretz (G/5-5); Marika Rasmussen (F/6-1)



VIRGINIA

January 16 & February 16

Quick Facts

LOCATION Charlottesville, VA
 SYMBOL Cavaliers
 ENROLLMENT 18,011
 COLORS Blue and Orange
 CONFERENCE Atlantic Coast
 ARENA/CAPACITY University Hall/8,547
 ATHLETIC DIRECTOR Terry Holland

Basketball Facts

HEAD COACH Debbie Ryan
 RECORD AT SCHOOL/YEARS 413-140/18
 CAREER RECORD/YEARS Same
 OFFICE PHONE (804) 982-5800
 ASSISTANT COACHES Shawn Campbell; Tammi Reiss; Audra Smith

Sports Information

OFFICE PHONE (804) 982-5500
 FAX NUMBER (804) 982-5525
 BASKETBALL CONTACT Cathy Tapogna
 HOME PHONE (804) 293-4022

Team Information

1994-1995 RECORD 27-5
 CONFERENCE RECORD 16-0
 CONFERENCE FINISH 1st
 CONFERENCE TOURNAMENT FINISH Lost in semifinals
 STARTERS RETURNING/LOST 5/0
 LETTERWINNERS RETURNING/LOST 8/4
 RETURNING STARTERS (POS/CLASS) Monick Foote (F/So.); Wendy Palmer (F/Sr.); Jeffra Gausepohl (C/Sr.); Jenny Boucek (G/Sr.); Tora Suber (G/Jr.)
 TOP RETURNING SCORER Wendy Palmer (17.6 ppg)
 TOP RETURNING REBOUNDER Wendy Palmer (10.5 rpg)

TOP NEWCOMERS (POS/HGT) Tiffany Bower (G/5-8);
Lesley Brown (F/6-3); Kate Mooney (F/6-1);
Demya Walker (F/6-4)



WAKE FOREST

January 20 & February 22

Quick Facts

LOCATION Winston-Salem, NC
SYMBOL Demon Deacons
ENROLLMENT 3,620
COLORS Old Gold and Black
CONFERENCE Atlantic Coast
ARENA/CAPACITY Reynolds Gym/2,000 and
Lawrence Joel Veterans Memorial Coliseum/14,407
ATHLETIC DIRECTOR Ron Wellman

Basketball Facts

HEAD COACH Karen Freeman
RECORD AT SCHOOL/YEARS 33-49/3
CAREER RECORD/YEARS Same
OFFICE PHONE (910) 759-5763
ASSISTANT COACHES Shelley Patterson;
Gretchen Browne; Marsha Long

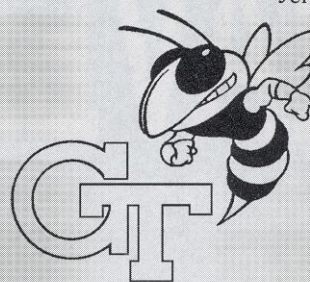
Sports Information

OFFICE PHONE (910) 759-5640
FAX NUMBER (910) 759-5140
BASKETBALL CONTACT Theresa Kelly Gegen
HOME PHONE (910) 272-3516

Team Information

1994-1995 RECORD 11-16
CONFERENCE RECORD 4-12
CONFERENCE FINISH 7th
CONFERENCE TOURNAMENT FINISH 0-1
STARTERS RETURNING/LOST 5/0
LETTERWINNERS RETURNING/LOST 10/0
RETURNING STARTERS (POS/CLASS) Tracy Connor
(C/Jr.); Raeanna Mulholland (G,F/Jr.); Val Hodge (F/Sr.);
Gretchen Hollifield (G/Sr.); Lindsay Seawright (F/Jr.)
TOP RETURNING SCORER Tracy Connor (16.4 ppg)

TOP RETURNING REBOUNDER Tracy Connor (9.0 rpg)
TOP NEWCOMERS (POS/HGT) Cynthia Kelley (G/5-10);
Jenn Miklic (F/6-0)



GEORGIA TECH

January 22 & 31

Quick Facts

LOCATION Atlanta, GA
SYMBOL Yellow Jackets
ENROLLMENT 13,000
COLORS Old Gold and White
CONFERENCE Atlantic Coast
ARENA/CAPACITY Alexander Memorial/10,026
ATHLETIC DIRECTOR Dr. Homer Rice

Basketball Facts

HEAD COACH Agnus Berenato
RECORD AT SCHOOL/YEARS 104-99/7
CAREER RECORD/YEARS 164-154/11
OFFICE PHONE (404) 894-5406
ASSISTANT COACHES Debbie Richardson;
Lara Kauffman; Charleata Beale

Sports Information

OFFICE PHONE (404) 894-5445
FAX NUMBER (404) 853-2674
BASKETBALL CONTACT Erika Austin
HOME PHONE (404) 875-7078

Team Information

1994-1995 RECORD 14-16
CONFERENCE RECORD 5-11
CONFERENCE FINISH 6th
CONFERENCE TOURNAMENT FINISH 0-1
STARTERS RETURNING/LOST 4/1
LETTERWINNERS RETURNING/LOST 9/4
RETURNING STARTERS (POS/CLASS) Kisha Ford
(G,F/5-11); Kathy Dortch (F/6-2); Carla Munnion (G/5-11)
TOP RETURNING SCORER Kisha Ford (18.6 ppg)
TOP RETURNING REBOUNDER Kisha Ford (8.4 rpg)
TOP NEWCOMERS (POS/HGT) Joya Collier (F/6-0);
Jennifer Scott (C/6-2)

TRAVEL ITINERARY

& ROAD HEADQUARTERS

FLORIDA ATLANTIC

November 26, 27

DEPARTURE Nov. 26, 11:45 AM, Delta
 ARRIVAL Nov. 26, 3:20 PM
 HOTEL Holiday Inn-Glades, 1950 Glades Rd.,
 Boca Raton, FL 33431, (407) 368-5200
 RETURN Nov. 28, 8:50 AM, Delta

DIAL SOAP CLASSIC

November 30-December 1, 2

DEPARTURE Nov. 30, 1:35 PM, Delta
 ARRIVAL Nov. 30, 5:20 PM
 HOTEL Sheraton Biscayne Bay, 495 Brickell Ave.,
 Miami, FL 33131 (305) 373-6300
 RETURN Dec. 3, 8:50 AM, Delta

DUKE

December 5, 6

DEPARTURE Dec. 5, 1:40 PM, Delta
 ARRIVAL Dec. 5, 5:05 PM
 HOTEL Durham Hilton, 3800 Hillsborough Lane,
 Durham, NC 27705, (919) 383-8033
 RETURN Dec. 7, 7:15 AM

CENTRAL FLORIDA TOURNAMENT

December 27-31

DEPARTURE Dec. 27, 2:00 PM, Chartered Bus
 ARRIVAL Dec. 27, 6:00 PM
 HOTEL Holiday Inn-UCF Arena, 12125 High Tech Ave.,
 Orlando, FL 32817, (407) 275-9000
 RETURN Dec. 31, 6:00 PM, Chartered Bus

NORTH CAROLINA

January 2, 3

DEPARTURE Jan. 2, 11:40 AM, Delta
 ARRIVAL Jan. 2, 3:05 PM
 HOTEL Omni Europa, #1 Europa Dr.,
 Chapel Hill, NC 27514, (919) 968-4900
 RETURN Jan. 4, 9:30 AM, Delta

VIRGINIA

January 15, 16

DEPARTURE Jan. 15, TBA, Chartered Flight
 ARRIVAL Jan. 15, 6:00 PM
 HOTEL Omni Charlottesville, 235 W. Main St.,
 Charlottesville, VA 22902, (804) 971-5500
 RETURN Jan. 16, immediately after game, TBA,
 Chartered Flight

GEORGIA TECH

January 21, 22

DEPARTURE Jan. 21, 1:40 PM, Delta
 ARRIVAL Jan. 21, 2:40 PM
 HOTEL Courtyard Marriott-Midtown, 1132 Techwood Dr.,
 Atlanta, GA 30318, (404) 607-1112
 RETURN Jan. 23, 8:23 AM, Delta

CLEMSON

February 2, 3

DEPARTURE Feb. 2, 1:40 PM, Delta
 ARRIVAL Feb. 2, 4:25 PM
 HOTEL Ramada Inn, US Highway 76 & 123 Bypass,
 Clemson, SC 29633 (803) 654-7501
 RETURN Feb. 4, 10:05 AM, Delta

NORTH CAROLINA STATE

February 10, 11

DEPARTURE Feb. 10, 11:40 PM, Delta
 ARRIVAL Feb. 10, 3:05 PM
 HOTEL Ramada Inn Blue Ridge, 1520 Blue Ridge Rd.,
 Raleigh, NC 27607, (919) 832-4100
 RETURN Feb. 11, 6:25 PM, Delta

MARYLAND

February 17, 18

DEPARTURE Feb. 17, 11:40 AM, Delta
 ARRIVAL Feb. 17, 3:25 PM
 HOTEL Greenbelt Marriott, 6400 Ivy Lane,
 Greenbelt, MD 20770, (301) 441-3700
 RETURN Feb. 19, 9:00 AM, Delta

WAKE FOREST

February 21, 22

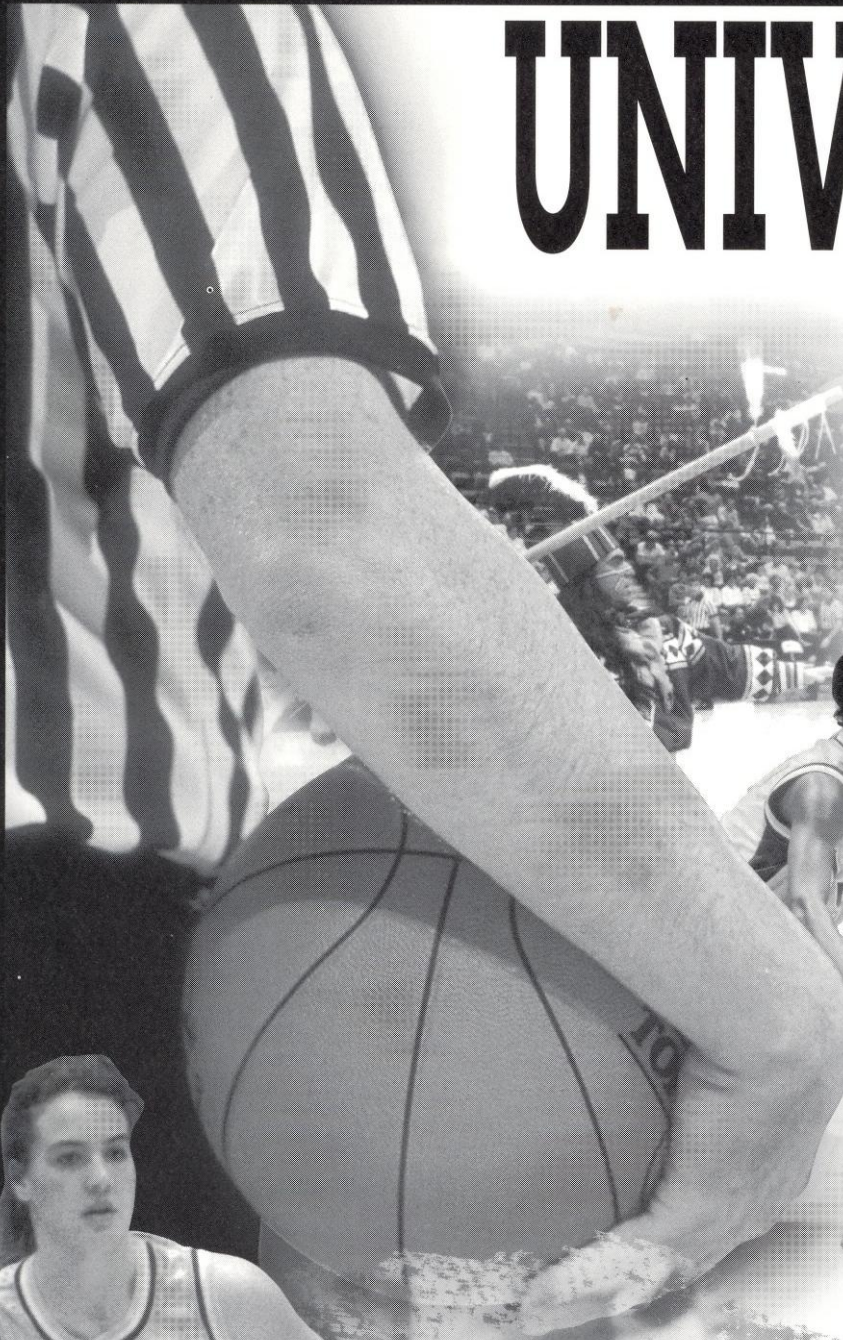
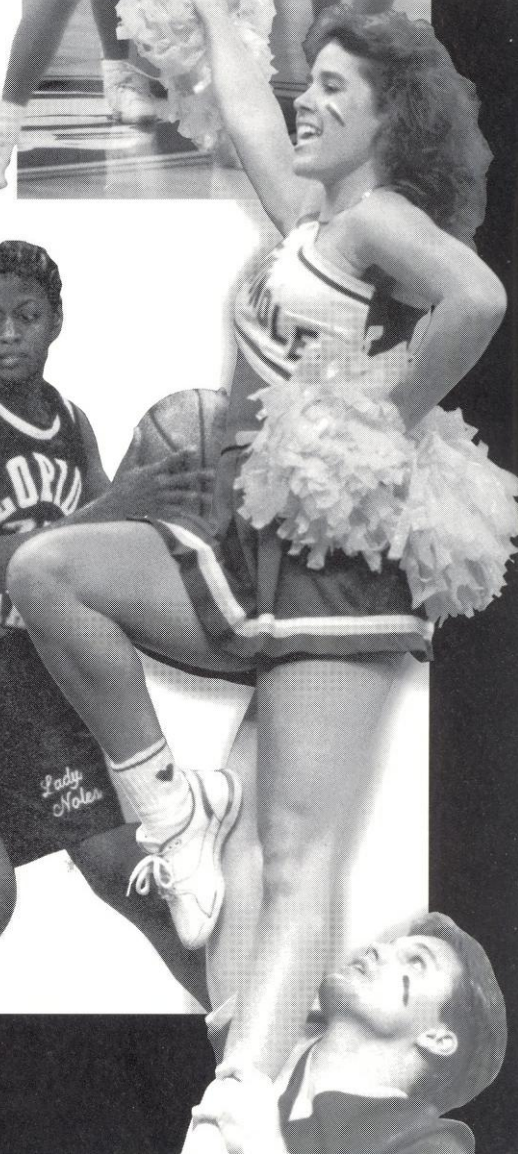
DEPARTURE Feb. 21, TBA, Chartered Flight
 ARRIVAL Feb. 21, 5:00 PM
 HOTEL Adams Mark, 425 N. Cherry St.,
 Winston-Salem, NC 27101, (910) 725-3500
 RETURN Feb. 22, immediately after game, TBA,
 Chartered Flight

ACC TOURNAMENT

February 29-March 3

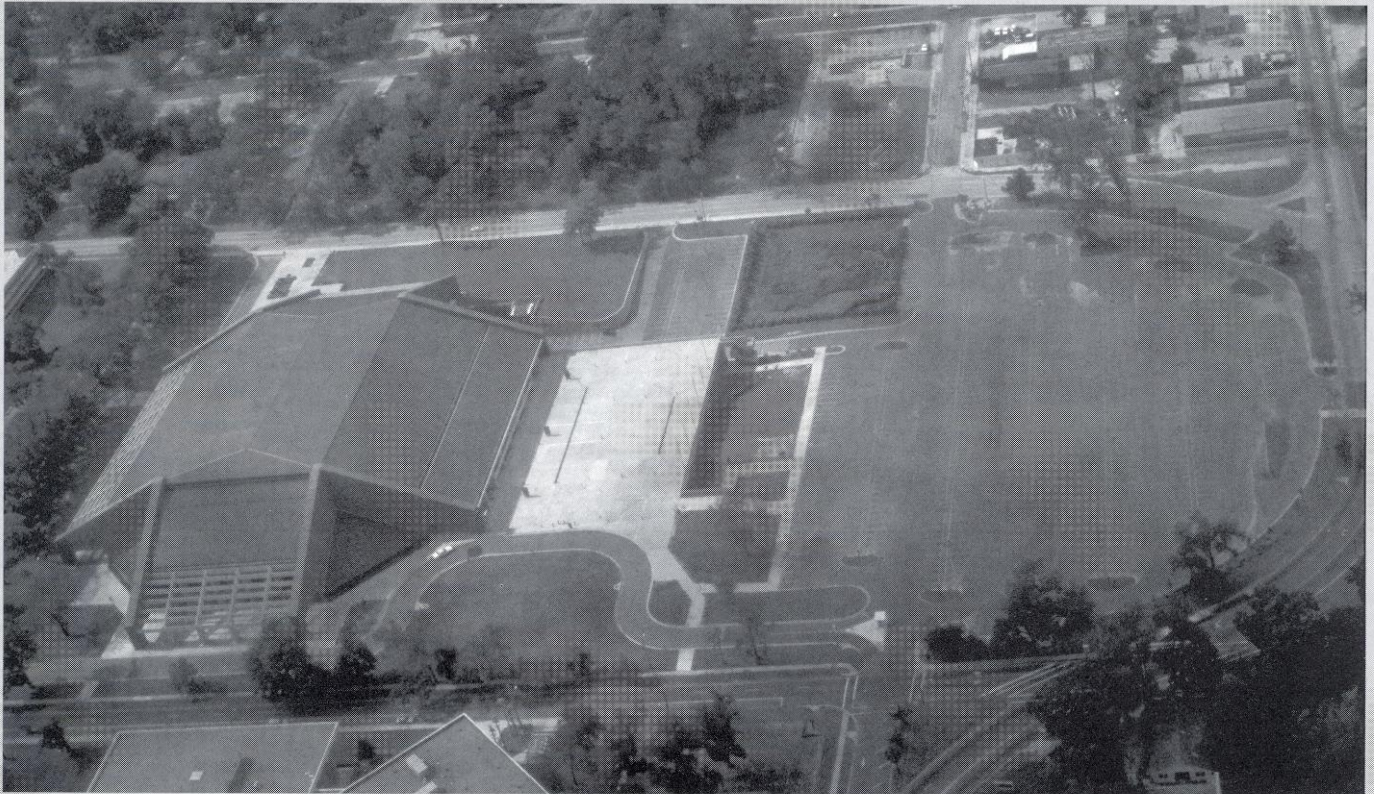
DEPARTURE TBA
 ARRIVAL TBA
 HOTEL Holiday Inn, 2640 N. Cherry Rd.,
 Rock Hill, SC 29730, (803) 329-1122
 RETURN TBA

UNIVERSITY



TALLAHASSEE-LEON

C O U N T Y C I V I C C E N T E R



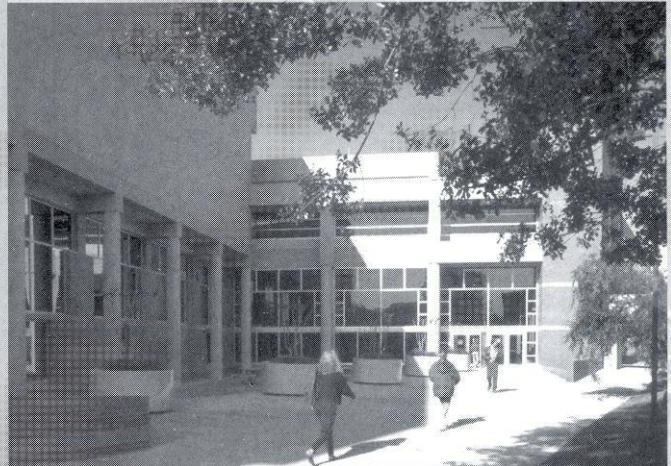
- ① A Florida State basketball game is as exciting as it gets. FSU fans are spoiled by more than just a great basketball team playing in the nation's finest conference, they also get to watch the game in surroundings that are as modern as any in the country.
- ① The Tallahassee-Leon County Civic Center is now the home for Lady Seminole basketball as the FSU women's basketball squad will play eight contests in the arena in 1995-96.
- ① 12,500 seats are available for fans of FSU basketball who are treated to one of the most spectacular shows in college hoops. Two big screen video systems are mounted in the corners of the arena opposite the state-of-the-art scoreboards. When there is a break in the action, the big screens come alive with highlight tapes, animated games and other crowd pleasing bits. The screens place Florida State among only three teams in the country that play their home games in a facility with big screen capability.
- ① The multi-purpose facility, which opened its doors in 1981, covers over 22 acres in the heart of Tallahassee's thriving downtown district. The Civic Center is only two blocks from the Capitol building and is just across the street from FSU's Center for Professional Development and nationally-acclaimed Law School.
- ① The complex covers over 18,000 square feet with 119 foot ceilings in the main arena. The Civic Center is actually three different areas combined under one roof. The main arena, where FSU hosts its home games, is also the center for East Coast Hockey League contests featuring the Tallahassee Tiger Sharks, some of the nation's top musical concerts as well as Broadway plays and even a circus. The Exhibition Hall, which joins the main arena via a spatial hallway, can seat 5,000 for an event or serve as an indoor display area. The complex also features a terrace which is popular for outdoor hosting.
- ① So impressive is the facility and the general atmosphere of an FSU basketball game that the Civic Center and Florida State University served as host of the first round of the 1995 Men's NCAA Basketball Tournament.

FLORIDA STATE

U N I V E R S I T Y

A senior member of the 10-member State University System, FSU was founded as an institution of higher learning in 1852 by legislative act and began in Tallahassee with its first students in 1857. Today, Florida State's operating budget is \$442 million. Faculty and administrators generate more than \$95 million annually in external funding to supplement state-sponsored research. Three direct-support organizations serve to bolster the University: the FSU Foundation, which raises millions in private gifts to support academics, the Seminole Boosters and the FSU Alumni Association.

Florida State continues to progress and grow — from its pre-Civil War foundation as the Seminary West of the Suwannee, through the early 20th century as the academically respected Florida State College for Women, returning to coeducational status as a university in 1947, to its modern development as an acclaimed research institution, a top-ranked competitor in intercollegiate athletics and as a standard-setter in the basic sciences and the performing arts. ●

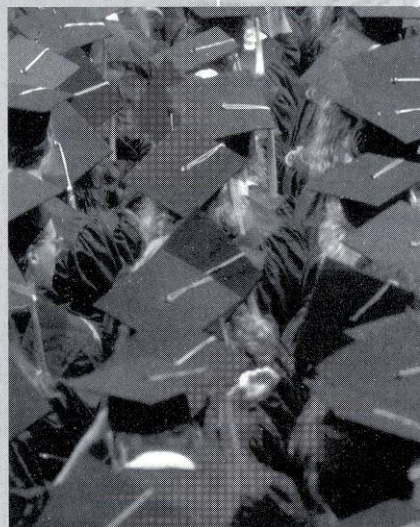


THE DR. BOBBY E. LEACH CENTER, A STATE-OF-THE-ART STUDENT RECREATION FACILITY, WITH AN INDOOR POOL, SAUNAS, BASKETBALL AND RACQUET-SPORT COURTS, WAS COMPLETED IN 1991. AND IN JUNE, A 2300 SQUARE FOOT FREE WEIGHT AREA WAS COMPLETED.

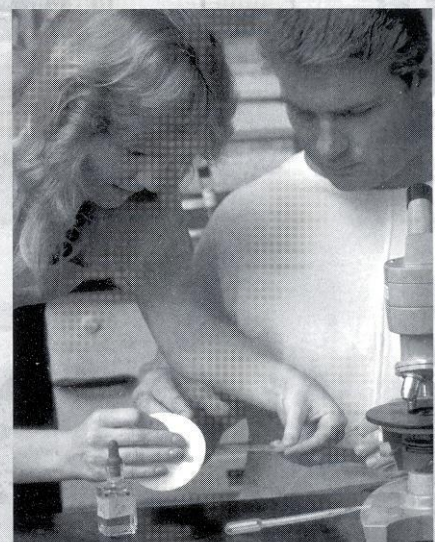
Florida State University, nearing its golden anniversary as a co-educational graduate research institution, has joined the nation's elite in both academics and athletics. Located on the oldest continuous site of higher education in Florida and building rapidly on the framework of a highly regarded liberal arts college for women, the University has emerged over the past 48 years as an institution of national and international esteem.



WITH 1,568 MEMBERS, THE FSU FACULTY CURRENTLY INCLUDES FIVE MEMBERS OF THE NATIONAL ACADEMY OF SCIENCES AND EIGHT MEMBERS OF THE AMERICAN ACADEMY OF ARTS AND SCIENCES, AND HAS INCLUDED FIVE NOBEL LAUREATES. IT IS BACKED BY 2,987 ADMINISTRATIVE/PROFESSIONAL AND SUPPORT STAFF.



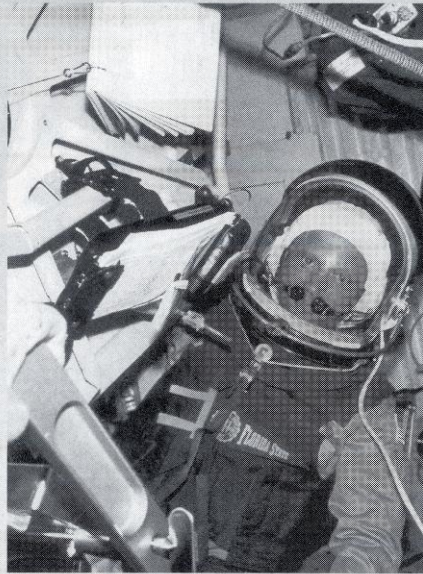
FSU RANKED 20TH IN THE NATION FOR 1990-91 IN THE NUMBER OF BLACK PH.D. STUDENTS IT GRADUATES. OVER THE FIVE YEARS FROM 1986 TO 1990, FSU RANKED EIGHTH NATIONALLY BY GRANTING DOCTORATES TO 70 AFRICAN-AMERICANS.



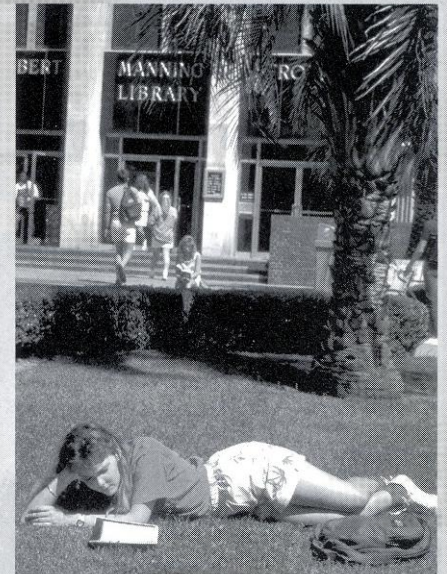
FSU'S HIGH-TECH PROGRAM IN STRUCTURAL BIOLOGY IN 1991 RECEIVED THE UNIVERSITY'S LARGEST SINGLE FOUNDATION GRANT, \$4 MILLION, TO POSITION IT AMONG THE LEADERS IN THE FIELD WORLDWIDE.



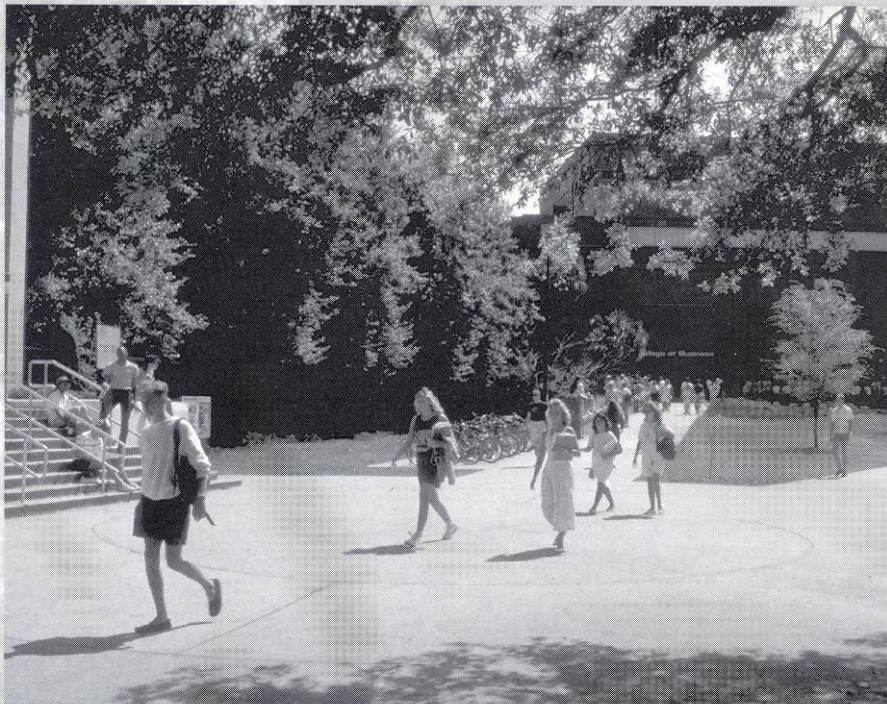
VICE PRESIDENT OF THE UNITED STATES AL GORE SPOKE AT THE DEDICATION OF THE NATIONAL HIGH MAGNETIC FIELD LABORATORY AT FLORIDA STATE IN OCTOBER 1994. THE NATIONAL SCIENCE FOUNDATION ESTABLISHED THE \$100 MILLION MAGNET LAB AT FLORIDA STATE, WHICH IS PARTNERED IN RESEARCH WITH THE LOS ALAMOS NATIONAL LABORATORY AND THE UNIVERSITY OF FLORIDA, IN 1990. A NOBEL LAUREATE IN PHYSICS AND A TOP RUSSIAN PHYSICIST WERE AMONG THE FIRST SCHOLARS DRAWN TO THE FACULTY BY THE MAGNET LAB. THE WORLD'S LARGEST MAGNET — TWO STORIES HIGH AND CAPABLE OF GENERATING 45 TESLA OR 1 MILLION TIMES THE EARTH'S MAGNETIC FIELD — IS TO BE INSTALLED IN 1995 AT THE NHMFL, LOCATED IN THE OFF-CAMPUS RESEARCH COMPLEX, INNOVATION PARK.



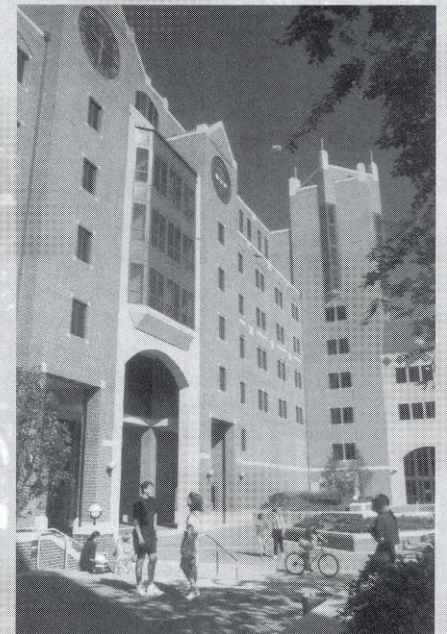
FLORIDA STATE UNIVERSITY ALUMNUS, DR. NORMAN THAGGARD ENDED THE LONGEST SPACE FLIGHT IN U.S. HISTORY IN JULY AFTER A HISTORIC MISSION ON THE RUSSIAN SPACE STATION MIR. THAGGARD WHO RECEIVED HIS UNDERGRADUATE DEGREE IN ENGINEERING AT FSU IN 1965 AND HIS MASTERS A YEAR LATER, IS AN AVID SEMINOLE FOOTBALL FAN AND BROUGHT HIS COSMONAUT COUNTERPARTS TO THEIR FIRST COLLEGE FOOTBALL GAME IN TALLAHASSEE LAST YEAR. THAGGARD'S FLORIDA STATE PENNANT COULD BE CLEARLY SEEN IN THE SPACE SHUTTLE ABOARD MIR DURING PRESS CONFERENCES. THAGGARD HAS BEEN ON THREE SPACE MISSIONS INCLUDING THE HISTORIC SIX-DAY FLIGHT ON THE CHALLENGER IN 1983 THAT INCLUDED SALLY RIDE.



LIBRARY HOLDINGS AT FLORIDA STATE INCLUDE 2.06 MILLION BOOK TITLES, 18,498 SERIALS AND 4.25 MILLION MICROFORMS. THE MAIN LIBRARY FACILITY, THE ROBERT M. STROZIER LIBRARY, IS LINKED VIA COMPUTERIZED INFORMATION SYSTEMS TO OTHER STATE UNIVERSITY AND NATIONAL RESEARCH LIBRARIES. THE PAUL A.M. DIRAC SCIENCE CENTER LIBRARY IS LOCATED AT THE HEART OF THE UNIVERSITY'S SCIENCE RESEARCH COMPLEX. FSU ALSO MAINTAINS EXTENSIVE MUSIC, LIBRARY SCIENCE AND LAW LIBRARIES, AND THE MILDRED AND CLAUDE PEPPER LIBRARY HOUSES THE PERSONAL AND PROFESSIONAL PAPERS OF ONE OF FLORIDA'S BEST KNOWN POLITICAL COUPLES.



FLORIDA STATE RANKS FIRST IN POPULARITY NATIONWIDE AMONG HIGH SCHOOL SENIORS, BASED ON THE NUMBER OF STUDENTS WHO REQUEST THEIR SCHOLASTIC APTITUDE TEST (SAT) AND AMERICAN COLLEGE TEST (ACT) SCORES BE SENT TO AN INSTITUTION. FSU WAS THE ONLY INSTITUTION LISTED AMONG THE TOP 10 CHOICES OF BOTH BLACK AND WHITE COLLEGE-BOUND STUDENTS. FLORIDA STATE IS ALSO TOPS IN THE STATE FOR COMMUNITY COLLEGE TRANSFERS AS FSU ADMITS OVER 3,000 TRANSFER STUDENTS EVERY FALL SEMESTER.



IN FALL 1994, THE FIRST TENANTS MOVED IN TO THE EAST SIDE OF THE \$82 MILLION UNIVERSITY CENTER, A CLASSROOM-AND-OFFICE FACILITY AT DOAK CAMPBELL STADIUM. THE STADIUM'S SOUTH END ZONE ALSO WAS ENCLOSED AND THE ADJACENT MOORE ATHLETIC CENTER EXPANDED. WHEN THE WEST SIDE IS COMPLETED IN 1996, THE UNIVERSITY CENTER WILL PROVIDE 550,000 SQUARE FEET OF MUCH NEEDED ACADEMIC SPACE AND A CENTRALIZED LOCATION FOR STUDENT SERVICES.

TALLAHASSEE

& NORTH FLORIDA

Near, but far from the glaring strips of neon amusement, and the castles and crowds of Disney, lies another magical place in the Sunshine State — one of pow-wows, plantations, politics and great pride. Often described as “The Other Florida” with its deep-rooted history, rolling hills, canopy roads of moss-draped oaks, cool climate and Southern-style hospitality; it is a Florida few have seen. It is Tallahassee — Florida with a Southern accent.

Best known as Florida’s capital, Tallahassee is an intimate neometropolitan city where the power of state government, the academic and the artistic are complimented by subtle, old-fashioned charm.

Tallahassee — derived from the words “talwa” meaning town and “ahasee” meaning old — has undergone many changes, but one thing remains the same — it is still a government town fiercely proud and dedicated to preserving its heritage.

The famous Gulf beaches and major metropolitan areas of the South are a short trip from Tallahassee. As Florida’s capital city, Tallahassee offers the grace and charm of a small city, while Atlanta, Jacksonville, Tampa, Orlando and New Orleans are within easy driving distance. ☉

CLIMATE:

Tallahassee enjoys four distinct seasons with an average annual temperature of 67 degrees. Weather conditions are mild and moist due to close proximity to the Gulf. Summer temperatures are subtropical with an average of 83 degrees while winters average a pleasant 50 degrees.

The Capitol buildings, both old and new, epitomize Tallahassee’s perseverance. With the 22-story New Capitol towering overhead since 1977, the Old Capitol, erected in 1845, has been restored to its 1902 appearance complete with red-and-white candy-striped awnings and a gracious dome adorned with stained glass. The 22nd floor of the New Capitol reveals a spectacular view of the rolling hills of Leon County all the way to the shimmering Gulf of Mexico. Chambers of the House and Senate buzz with political zeal during the March through May legislative session.



THE WINTER FESTIVAL AND CELEBRATION OF LIGHTS, AN OUTDOOR CELEBRATION OF HOLIDAY LIGHTS, MUSIC AND THE ARTS WITH ACTIVITIES INCLUDING A NIGHT GLOW PARADE, JINGLE BELL RUN AND SANTA’S ENCHANTED FOREST HAS BECOME A POPULAR WINTERTIME EVENT IN TALLAHASSEE.



STANDING NINE FEET TALL, HERMAN, A SKELETAL PREHISTORIC MASTODON — ORIGINALLY WEIGHING ABOUT FIVE TONS — WAS PULLED FROM WAKULLA SPRINGS IN THE 1930S. THE MUSEUM OF FLORIDA HISTORY ALSO FEATURES THE PREHISTORIC FLORIDA EXHIBIT, SPANISH TREASURES, WAR RELICS AND EVEN A RIVERBOAT.



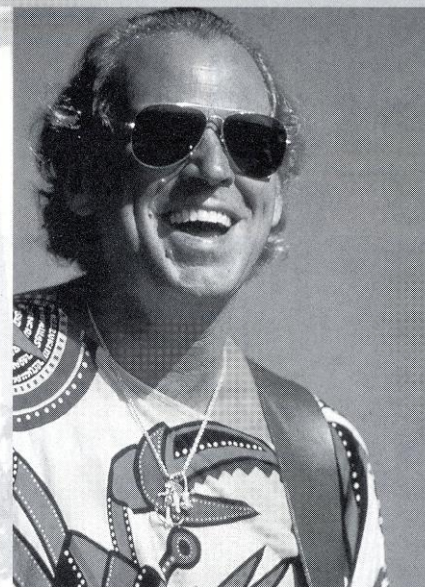
DOWNTOWN TALLAHASSEE GREW AS A TRADE CENTER WITH FLORIDA’S FIRST RAILROAD — A SIMPLE MULE-DRAWN, RAIL TROLLEY EPITOMIZING THE LEISURELY PACE OF SOUTHERN LIFE — CONNECTING TALLAHASSEE AND ST. MARKS. THE 16-MILE RAILROAD HAS NOW BEEN PAVED AS THE ST. MARK’S BIKE TRAIL, AND THE OLD TROLLEY REMAINS A STYLISH WAY TO GET AROUND.



ONLY 13 MILES FROM THE CAPITOL, AMID ALLIGATORS, ANHINGAS AND TRANQUILITY IS THE 2,900-ACRE WAKULLA SPRINGS STATE PARK. VISITORS CAN DRIFT LAZILY ABOARD A JUNGLE CRUISE BOAT ON WAKULLA SPRINGS WHILE THE ALLIGATORS SUN ON THE SHORE. TALLAHASSEE'S UNDERWATER PASSAGES HAVE INTRIGUED ADVENTURERS FROM AROUND THE WORLD — EVEN NATIONAL GEOGRAPHIC MAGAZINE ATTEMPTS TO UNCOVER THE HIDDEN MYSTERIES OF THE SPRINGS IN MANY ISSUES.



THE FIRST CHRISTMAS MASS CELEBRATED IN THE UNITED STATES WAS HELD IN TALLAHASSEE.



AS ONE OF THE LARGEST ARENAS IN FLORIDA, THE TALLAHASSEE-LEON COUNTY CIVIC CENTER, SITUATED ON 22 DOWNTOWN ACRES, PROVIDES THE IDEAL SETTING FOR "STAR-STUDDED" EVENTS. THE CIVIC CENTER ARENA WAS THE SITE OF THE 1995 NCAA BASKETBALL SOUTHEAST REGIONAL WHILE JACKSONVILLE NATIVE JIMMY BUFFET MAKES REGULAR VISITS TO TALLAHASSEE.

WHAT OTHERS ARE SAYING ABOUT TALLAHASSEE:

"Where else in the Sunshine state can you pretend to be the governor, peruse pirates' plunder, and peer breathlessly at a daring young man on a flying trapeze — all in the same day?"

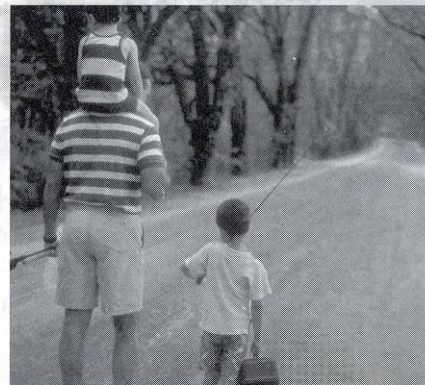
— SOUTHERN LIVING

"After a visit to Tallahassee, you'll leave Florida with a whole new image of the magic kingdom — and you won't have to worry about mouse ears getting smashed in your suitcase."

— DISCOVERY

"Tallahassee, Florida's capital city, has charm with a distinctly Southern accent..."

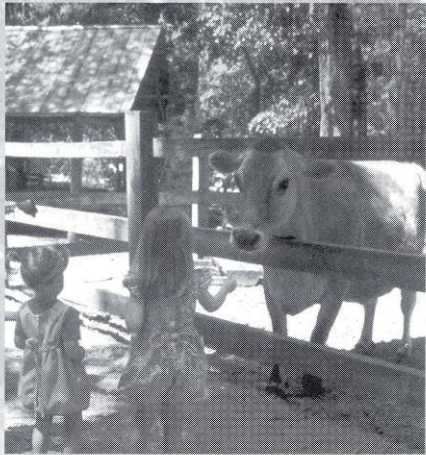
— BOSTON HERALD



LOW SPRAWLING OAKS, DRAPED WITH SPANISH MOSS CREATE DRAMATIC EMERALD TUNNELS OF DANCING SUNLIGHT ON TALLAHASSEE'S FAMOUS CANOPY ROADS.



SPRINGTIME TALLAHASSEE HAS BLOSSOMED OVER 25 YEARS INTO A FOUR-WEEK JUBILEE WITH PARADES, FESTIVALS, CONTESTS, CRAFTS AND AMUSEMENT.



RED WOLVES, FLORIDA PANTHERS, ALLIGATORS AND OTHER FASCINATING WILDLIFE IN A 52-ACRE HABITAT HIGHLIGHT THE TALLAHASSEE MUSEUM OF HISTORY AND NATURAL SCIENCE.



NOTED FOR WATER SPORTS, INCLUDING SAILING AND WIND SURFING, SHELL POINT RESORT IS LOCATED JUST 25 MILES SOUTH OF TALLAHASSEE.