

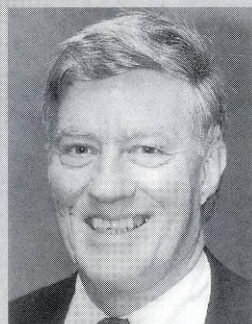
ATHLETIC

& UNIVERSITY ADMINISTRATION

TALBOT "SANDY" D'ALEMBERTE

President

President Talbot "Sandy" D'Alemberte is the 12th chief executive officer of Florida State University. He was appointed president on Nov. 29, 1993, by the Florida Board of Regents and took office on Jan. 3, 1994.



D'Alemberte served as the fourth dean of the FSU College of Law from 1984 to 1989 and has continued teaching on the law school faculty.

In a special "Profiles in Power" section, the April 15, 1985, edition of the *National Law Journal* listed D'Alemberte as one of the 100 most powerful lawyers in the United States. He was the only law dean on the list and one of only 10 members of law faculties.

He was the 1991-92 president of the American Bar Association and the 1982-84 president of the American Judicature Society.

D'Alemberte served in the Florida House of Representatives, representing Dade County from 1966 to 1972. He was chairman of the state Constitutional Revision Commission in 1977 and 1978.

As an attorney, D'Alemberte has been with the Steel Hector & Davis law firm in Miami and Tallahassee where he first began his law career in 1962 and was named partner in 1965.

Born June 1, 1933, in Tallahassee, D'Alemberte was educated in public schools in Tallahassee and Chattahoochee, Fla. In 1955, he earned his bachelor's degree with honors in political science from the University of the South in Sewanee, Tenn. After his

military service as a lieutenant in the Naval Reserve, D'Alemberte studied on a Rotary Foundation Fellowship at the London School of Economics and Political Science. In 1961, he received his juris doctorate with honors from the University of Florida, where he was named to the Order of the Coif and served as president of the Student Bar Association and articles editor of the *UF Law Review*.

D'Alemberte's book, "The Florida Constitution," was published by Greenwood Press in 1991. He was co-editor of the 1990 four-volume work, "Florida Civil Trial Guide," and has written many published articles.

He is the father of two grown children, Gabrielle Lyn, a law student at the University of Denver, and Joshua Talbot, a senior at his father's alma mater, the University of the South. D'Alemberte is married to Patsy Palmer, children's policy coordinator in Florida Gov. Lawton Chiles' office. She is a former journalist, legislative aide and White House staff person, and she holds a degree from the University of Missouri in journalism and a master's from the Harvard Divinity School.

Numerous awards D'Alemberte has won include the 1993 Academy of Florida Trial Lawyers Perry Nichols Award; the 1993 Florida Academy of Criminal Defense Lawyers Annual Criminal Justice Award; the 1990 Jurisprudence Award from the Anti-Defamation League of South Florida; the 1986 National Sigma Delta Chi First Amendment Award; a 1985 American Academy of Television Arts and Sciences "Emmy" for his work in open government, particularly the opening of court proceedings to electronic journalists; the 1987 Florida Bar Foundation Medal of Honor Award, the 1984 Florida Civil Liberties Union "Nelson Poynter" Award and

several honorary degrees.

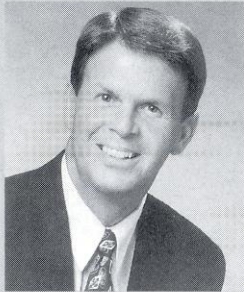
As FSU president, D'Alemberte follows Dr. Bernard F. Sliker, president emeritus, who had served as the 10th FSU chief executive for 15 years before stepping down in 1991 and returned to the university's helm in September 1993 following the resignation of his successor.

UNIVERSITY ADMINISTRATION

- President* Talbot "Sandy" D'Alemberte
- Provost* Larry Abele
- Dean of the Faculties & Deputy Provost* Dr. Steve Edwards
- Vice President for Research* Dr. Robert M. Johnson
- Vice President for Student Affairs* Dr. Jon Dalton
- Vice President for Finance & Administration* ... John R. Carnaghi
- Vice President for University Relations* Beverly B. Spencer

DAVE HART, JR.
Director of Athletics

Dave Hart, Jr., became Florida State's tenth athletic director after a national search settled on the former East Carolina athletic director in February, 1995. Hart, 45, has gained national recognition for his skills in the areas of athletic management, public relations, marketing and fundraising. He brings to Florida State an outstanding reputation as one of the country's most respected athletic directors after leading the ECU program since 1987.



ECU athletics enjoyed an enhanced image and reputation under Hart's leadership and he structured several programs of significance within the Department. The most notable is ECU's

comprehensive Student Development Program for all student-athletes. Hart serves as Vice Chairman for the Missions and Values Committee of the I-A Athletic Director's Association in conjunction with the NCAA Foundation.

While at ECU, the athletic department made great strides in revenue growth and facility enhancement. The athletic budget doubled during Hart's tenure and he initiated programs that tripled the budget for women's athletics. He planned and managed growth in the Pirates' athletic facilities totaling nearly \$30 million.

Hart served on several prestigious committees during his tenure at East Carolina. He was appointed in January, 1995, to the NCAA Council. He also served on the NCAA's Special Events/Post Season Bowls Committee and chaired Colonial Athletic Association committees on marketing and gender equity.

A popular speaker at the national level and the author of a number of articles for national publications, Hart has made numerous speaking presentations to conventions and seminars on program management, marketing, fundraising and personnel transition. For the past seven years he has been an instructor at the National Association of College Directors of Athletics' Management Institute.

Just the 10th athletic director in FSU history, Hart succeeds Wayne Hogan who served as interim athletic director since Bob Goin's departure last summer after five years at the helm.

Hart first joined the ECU athletic department in 1983 as an assistant athletic director for marketing. He was named associate director for external relations and executive director of the Pirate Club in 1985, where his duties included raising funds for athletic scholarships.

A 1971 graduate of Alabama, Hart played basketball for the Crimson Tide and earned a masters in 1972 while serving as a graduate assistant basketball coach. He

coached and taught at the high school level for 10 years before joining the Pirate athletic program.

Hart met his wife, the former Pam Humble, while at Alabama and they have three children — Ricky (22), Jamie (20) and Kelly (17).

CHARLES W. EHRHARDT
*Faculty Athletic
Committee Chairman*

As the Chairman of the FSU Athletic Committee, Professor of Law Charles Ehrhardt is an important link for Florida State with the National Collegiate Athletic Association.



He is a member of the NCAA President's Commission Liaison Committee, the NCAA Special Committee which reviewed the Association's Enforcement and Infractions process, and the Committee on Infractions. During his tenure as the athletic committee chair, Ehrhardt twice served as president of the Metro Conference and at one time was the chair of the Faculty Athletics

Representatives Association. He was recently elected vice president of the Atlantic Coast Conference.

This is Ehrhardt's second stint on FSU's Athletic Committee. A professor of Law at Florida State since 1967, he first served as a member of the committee from 1969-71. He was reappointed to the board in 1983 and succeeded Dr. James Jones as chairman in 1984, thus becoming Florida State's representative to the NCAA.

A highly-respected expert in the field of Evidence, Ehrhardt is the Ladd Professor of Evidence in the Florida State College of Law. He wrote the Florida Evidence Code, passed by the state legislature in 1976, which deals with the admissibility of evidence in court trials. Ehrhardt has written a book on evidence, which is now in its third edition.

Ehrhardt is in demand as a lecturer and speaker. He works with lawyers and judges nationwide as a private consultant on evidence matters. He currently teaches in the areas of torts, evidence, trial advocacy and sports law. He has been honored four times as the outstanding professor in FSU's College of Law and was the recipient of a University Teaching Award in 1989.

A native of Elkader, Iowa, Ehrhardt received a bachelor's degree from Iowa State University in 1962. He went on to the University of Iowa, where he earned his law degree two years later. He became an Assistant United States Attorney in Iowa before coming to Tallahassee.

Ehrhardt and his wife, the former Judy Sutton, have three children.

M. GUY MORGAN
Assistant Athletic Director

Guy Morgan is in his second year as Assistant Athletic Director at Florida State University where he is responsible for the coordination and administration of the men's and women's basketball teams. Morgan's duties include coordinating team travel, dormitory supervision, practice and facility scheduling, along with the planning and coordination of game operations. He is involved in matters related to opponent scheduling and budgets as well. He also assists in an enrichment program for all FSU student-athletes.



A 1984 graduate of Wake Forest University, Morgan was the Most Valuable Player for the Demon Deacon basketball team as a junior and senior. He co-captained the team in his senior season (1981-1982).

Morgan played professional basketball with the Indiana Pacers during the 1982-83 season. After

his playing career, he worked in the furniture industry as a national sales consultant for four years.

From 1988-94, Morgan worked as the assistant manager of the Vantage Golf Tour. In that position, he served as a liaison between the Sports Marketing Enterprises division of the RJR Nabisco Company and the PGA Tour.

Morgan, 35, and his wife Tonya are the proud parents of Guy II, who will turn one in December.

KIM RECORD
*Associate Athletic Director/
 Senior Woman Administrator*

Kim Record joined Dave Hart's athletic department team in August when she was named to the newly created position of Associate Athletic Director and Senior Woman Administrator at Florida State.



Although new to Florida State, Record is not new to the Atlantic Coast Conference. Record served as associate athletic director for administration at her alma mater, the University of Virginia, for the last three years. Prior to that, she spent four years as associate director for marketing and promotions at UVA and two years as director of athletic promotions

from 1986-88.

Record's responsibilities at Florida State will include coordinating multi-media contracts, overseeing the areas of sports marketing and sports information as well as overseeing Title IX and gender equity compliance within the department. She will also supervise certain sport programs still being determined.

A native of Troy, Va., Record received her bachelor's degree in sociology in 1984. She and her husband, Kevin, have two sons, Kyle (7) and Joshua (2). ☺



THE FLORIDA STATE LAW SCHOOL IS LOCATED ACROSS FROM THE LEON COUNTY CIVIC CENTER WHERE MANY OF THE LADY SEMINOLE BASKETBALL GAMES ARE PLAYED.

ACADEMIC SUPPORT

& STUDENT SERVICES

AN OVERVIEW OF AN ACADEMIC SUPPORT PROGRAM ON THE RISE

Academic, personal and professional support are essential to college success. At Florida State University, we have developed an outstanding support program which enables student-athletes to reach their full potential.



DR. ROGER GROOTERS

Our philosophy is "to offer an academic support program integrated with the total university that will assist all student-athletes with the transition into college and provide continued support in all phases of academic and professional development culminating with graduation, job placement or graduate school."

To accomplish this goal we have developed an academic environment which facilitates the academic success of student-athletes. Student success is encouraged through competent academic counseling, career exploration, planning and placement and academic assistance through tutorial programs.

Our program operates on a "proactive" rather than "reactive" approach. At Florida State, our academic staff does not wait for academic crises to occur. We gather important background information and build an academic profile on all student-athletes to assess their needs in advance. We also stay informed on the daily progress of each student-athlete.

Our academic support staff includes a director, five counselors, and three graduate interns forming a group of professionals serving the needs of all our student-athletes. The director, Dr. Roger Grooters, is starting his third year as the head of the program coming to FSU after developing a premier program at the University of Nebraska in his 6-year tenure.

In 1994, the academic programs moved to the state-of-the-art University Center and are located on the 6th floor of the \$126,000,000 facility. It includes private study carrels, a tutorial study area and a computer lab outfitted with 16 new IBM computers and laser printers. In addition, athletic sky boxes are utilized for group and individualized tutorial instruction.

TUTORIAL PROGRAM

The Athletic Department at Florida State University has made a commitment to providing our student-athletes with one of the finest and most comprehensive tutorial programs in the nation. The tutorial program is just one of several key support programs that are available to all student-athletes as they progress towards their ultimate goal of obtaining a college degree.

The Academic Support Program has a staff of between 80 and 90 tutors each semester who are committed to providing a proactive and individualized approach to insure academic success. The tutors are usually seniors or graduate students who have outstanding academic backgrounds. Through an orientation session provided each semester by the Tutorial Coordinator, they acquaint themselves with the purposes, objectives, and responsibilities involved with the tutorial program.

Tutorial assistance is available for all academic coursework that is offered by the university and it is the responsibility of the Tutorial Coordinator to provide each student-athlete with this assistance in a timely fashion. Student-athletes may request a tutor or one may be assigned to them depending upon the circumstances.

ACADEMIC MENTORS

Mentors are academic role models who have demonstrated the ability to teach and give guidance in areas of academic developmental skills.

Each semester mentors begin the process by sitting down with their assigned student-athletes and assist them in identifying their academic responsibilities. A calendar is developed which becomes a visual blueprint of each course's academic requirements. This tool introduces the student-athlete to the concept of time management. Students learn to plan projects days and weeks in advance. Such planning aids them in developing strong study habits.

Mentors are also responsible for providing assistance in the development of skills such as note taking, test preparation, and communication with faculty. In essence, mentors become an extension of the academic counselor as they keep the academic performance of their student-athletes under close observation.

A mentor will spend two to three hours per week

during the first few weeks of the semester and normally one or two hours a week with their assigned student-athlete thereafter. In ideal relationships, by mid semester, the mentor becomes a strong study partner, there to assist the student-athlete through the learning process.

STUDY HALL

In an effort to help ensure academic success of the student-athletes, professionally supervised study sessions for each of its athletic teams are required. The main focus of the study hall program is to help students develop consistent and appropriate study patterns by providing a structured setting to work on class assignments, and to provide tutorial assistance before academic problems arise.

Although the criteria for mandatory study hall is left to the discretion of the academic counselor for their respective sport, typically, all freshmen, first year transfers, and upperclassmen who have not achieved a satisfactory cumulative grade point average will be required to attend. Additionally, each coach is regularly notified of any absences, tardiness, or inappropriate use of study time of student-athletes who are attending study hall.

FSU PERSONAL SUPPORT PROGRAM FOR STUDENT ATHLETES LIFE SKILLS PROGRAM

The comprehensive NCAA Life Skills Program consists of commitments toward academics, athletics, personal development, service/outreach, and career development. Our academic support program has embraced the Life Skills commitments by weaving their rich resources into our already existing programs, thus providing stronger, more comprehensive programming for our student-athletes. The foundation of this program is supported on the same principles essential for success in athletics such as excellence, persistence and possessing a winning attitude. Therefore by applying these principles to "real world" situations student-athletes better prepare themselves for life after college through the Life Skills Program.

CAREER COUNSELING/ PROFESSIONAL DEVELOPMENT

Florida State student-athletes are provided with the opportunity to explore career interests and enhance employability skills through the Career Counseling/Professional Development Program offered through the office of Athletic Academic Support Services. This program, in

conjunction with the University Career Center, utilizes various resources geared toward career orientation and planning, exploration, implementation and placement.

CAREER ORIENTATION & PLANNING

Many student-athletes enter college undecided about an academic major or career interest. Through career orientation and planning, student-athletes are introduced to resources which help identify career interests and develop career opportunities. Florida State student-athletes are oriented to the University Career Center through tours and individual appointments and have access to advising and counseling from Career Center counselors and academic support staff members. Computerized career exploration programs such as Discover, Sigi Plus and Choices, along with interest inventories, are provided to give students the opportunity to discover a variety of options, matching personal and academic interests, skills, values and goals with career possibilities. In addition, student-athletes have the opportunity to enroll in SDS 3340 - Intro to Career Development, a course that introduces principles of career planning using self-assessment and Career Center resources.

CAREER EXPLORATION

Student-athletes are given assistance with career clarification and selection. Each semester students are encouraged to attend monthly Career Nights which give them the opportunity to gather career information and discuss internship opportunities with area professionals from a variety of career fields. Career Expositions, sponsored by the Career Center's Office of Career Placement Services, are also held each semester, giving student-athletes the opportunity to talk with many different employers in a single setting. Through shadowing experiences FSU student-athletes are able to receive a first hand look at careers, through arrangements made by professional staff members, to visit and observe various corporations and the tasks performed within them. With assistance from the Career Center's Career Experience Opportunities office and the Seminole Career Network, student-athletes can acquire internships which offer valuable experience and enhance marketability for the future. Career Implementation

An important facet of the Career Counseling/Professional Development Program is teaching job development skills to enhance employment opportunities. Student-athletes are encouraged to attend resume writing, cover letter writing and interviewing workshops, offered by the University Career Center and may also work individually with Academic Support personnel. Through on-campus presentations students can gain information as to where and how to find employment. Assistance is also provided in preparing for Graduate, Law and Professional School placement.



1995-96 ACADEMIC SUPPORT STAFF (FROM LEFT): MARK MELENEY, TRUDY RAYBUN, CHRIS HELMS, MAGDI EL SHAHAWY, KEVIN CARR, DR. ROGER GROOTERS, AMY WHITE

CAREER PLACEMENT

Searching for a job after graduation can be challenging and intimidating. The Career Placement phase provides Florida State student-athletes assistance in securing full-time employment once they complete their degrees. Student-athletes are educated in using the Career Placement Services office, located with the University Career Center, which matches potential employers with FSU graduates. Access to the Semi-nole Career Network, a networking system comprised of Florida State boosters nationwide who have agreed to facilitate career goals of student-athletes in various capacities, provides yet another vehicle for employment opportunities.

It is the goal of the office of Athletic Academic Support Services, through this comprehensive Career Counseling/Professional Development Program, to provide all student-athletes with the opportunities to prepare for a meaningful education and career.

ACADEMIC HONORS & AWARDS

Florida State University student-athletes have achieved great success in obtaining recognition for academic excellence throughout the past year. Over \$40,000 in

postgraduate award monies have been granted to FSU's student-athletes through the 1994-95 academic year, in addition to various other academic honors and awards.

Florida State had 109 student-athletes recognized to the 1993-94 ACC Honor Roll, boasted a G.T.E. Academic All-Americans and had two ACC postgraduate awards winners and one NCAA postgraduate winners. In addition, two Florida State student-athletes received \$6,000 in scholarship monies through the Department of Undergraduate Studies to be used in their pursuit of graduate degrees from FSU.

The Academic Support Program is committed to recognizing academic success of all student-athletes. Florida State University's Golden Torch Gala is an annual black tie banquet, given to honor top GPA winners in each sport throughout an academic year, ACC Honor Roll members and top male and female GPA winners.

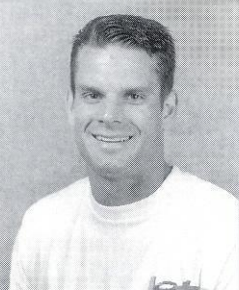
The academic support staff assists all student-athletes in obtaining recognition and awards for academic success. Team meetings are held each year, during which time student-athletes are notified of potential honors and awards and criteria for each. Individual sport counselors encourage student-athletes to compete for awards and participate in the nomination process.

Combining a strong GPA with athletic accomplishments and community service activities, create a student-athlete capable of attaining unlimited academic honors, awards and postgraduate opportunities. Ⓞ

SUPPORT SERVICES

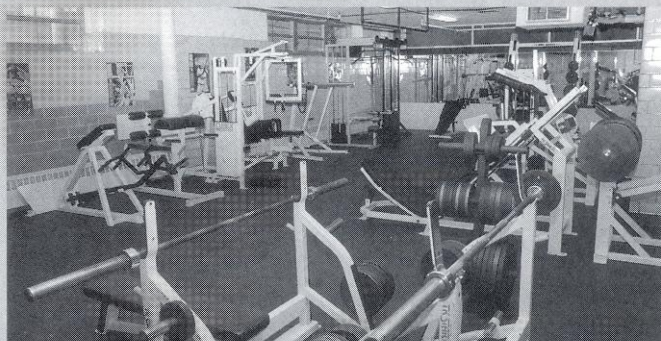
FLORIDA STATE STRENGTH & CONDITIONING

Strength training and conditioning is an important part of an athlete's performance on the field. At Florida State, a supervised program has been developed for women's basketball, emphasizing the objectives of not building bodies, but strengthening and conditioning them.



RON MILLER

Strength coach Ron Miller, a former ACC Senior Scholarship Athlete of the Year for the FSU men's basketball team, individually customizes programs for each of the athletes beginning with pre-conditioning before the season gets underway. Miller, who is a member of both the National Strength and Conditioning Association and Aerobics and Fitness Association of America, works with the players in sport specific training which includes conditioning the major muscle groups used in basketball. FSU takes pride in customizing the programs to help student-athletes reach their maximum potential.



prevention care system which may include any kind of treatment from icing to exercising. Assistant Trainer Angela Sehgal has handled the athletic training duties for Lady Seminole women's basketball team for three years.



ANGELA SEHGAL

Though the prevention of injuries is the main objective, some injuries are unavoidable. Rehabilitation is another component of the Florida State training room. The FSU athletic training staff will work with the athlete and provide an intense rehabilitation schedule that will allow the athlete to successfully rehabilitate after an injury. Some injuries and illnesses may be referred to the Seminole team physicians at the Tallahassee Orthopedic Center, who, for many years, have worked in conjunction with the FSU athletic training staff in successfully rehabilitating athletes after an injury.

Nutrition counseling and drug testing are also responsibilities of the athletic training team which is dedicated to providing the best care possible for all FSU student-athletes. Ⓞ

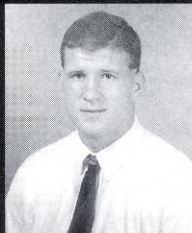
FLORIDA STATE MEDICAL CARE & TREATMENT

An athlete can expect to receive the best care and treatment possible with the athletic training team at Florida State University. Prior to competition, all FSU student-athletes undergo screening in order to detect any potential injuries. If a problem is detected, the athlete may be placed on a

BASKETBALL SUPPORT STAFF



Patti Griffith
Senior Secretary/
Administrative Assistant



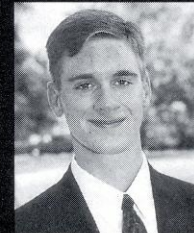
Rick Horton
Manager



Heather Klinger
Recruiting
Secretary

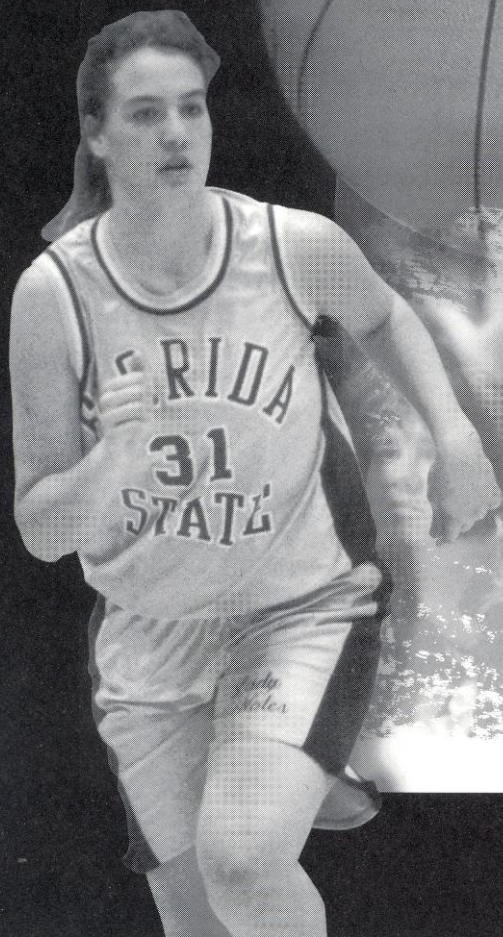


Matt Pitts
Student Athletic
Trainer



Jeremy Rombaugh
Manager

REVIEW



'94-95 REVIEW

“MORE THAN MEETS THE EYE”

The old saying “more than meets the eye” could definitely apply to the last year’s Florida State women’s basketball team. It may be difficult for the average person to find positives in an 8-22 season, but for those close to the Lady Seminole program, the 1994-95 season proved that the numbers don’t always tell the story.

The season started off well as the Lady ‘Noles produced victories in three of their first four contests, including decisive victories over in-state foes Central Florida (74-59) and South Florida (64-45). The squad took a 4-3 record into the Christmas break when disaster set in. Florida State would lose 10 straight, including five Atlantic Coast Conference games. Although several of the games were



COACH MEADORS IS JOINED BY LATRICE McLIN AND LYSA MOOREFIELD, WHO ARE PROUDLY DISPLAYING THEIR ROOKIE OF THE YEAR AWARDS.

1994-95 TEAM AWARDS

- Best Defensive Player** Katina Cobbins
- Best Offensive Player** Allison Peercy
- Most Improved Player** Aletha Penn
- Spirit Award** Liberty Taylor
- Co-Rookies of the Year** Lysa Moorefield
Latrice McLin
- Sixth Player Award** Wendy Hampton
- Buzz Nurbirt Award** Carla Williams
- Co-Players of the Year** Carla Williams
Allison Peercy

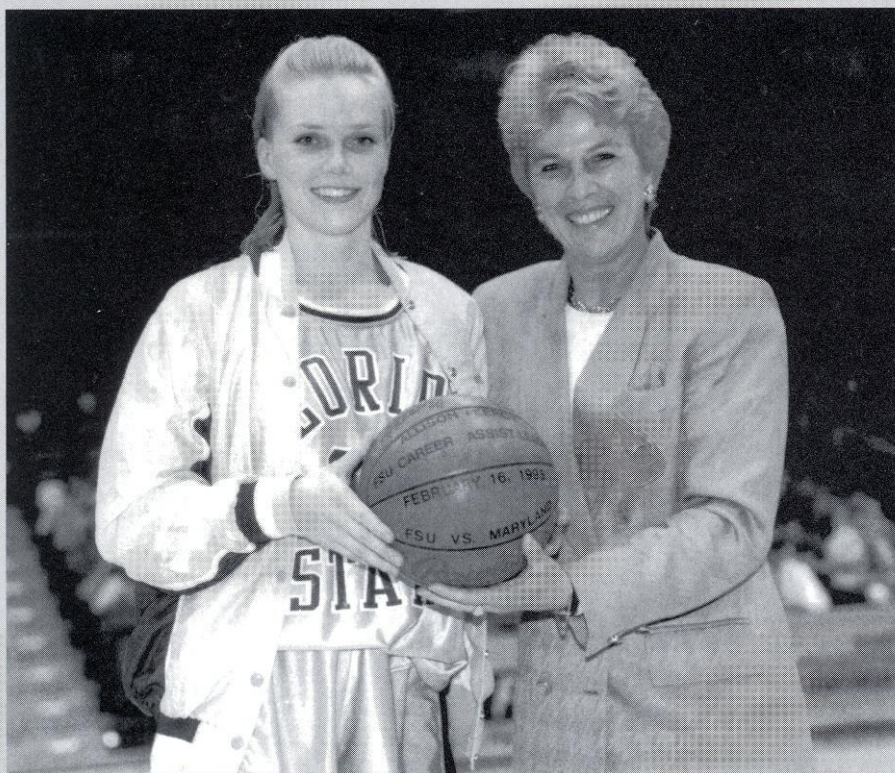
close, Florida State just couldn’t seem to get over the hump.

“That streak took a lot out of all of us,” head coach Marynell Meadors said. “But one thing was for sure, we never gave up. It would have been easy to just throw in the towel, but this team wouldn’t do that. Sure, we got frustrated, but together we worked through it.”

There was light at the end of the tunnel and victory would once again come FSU’s way. The Lady Seminoles took a commanding 31-19 first half lead over the Demon Deacons at Wake Forest and built a lead of as many as 20 points early in the second half. But Wake Forest came storming back and even took a two-point advantage with four minutes to go. Florida State held its composure though and behind 15 strong points from both Allison Peercy and Latrice McLin, the Lady Seminoles pulled out a 68-61 win. Alas, the streak had been broken. The celebration continued two days later when in front of a televised audience, Florida State again showed the kind of team it had the ability to be. The Georgia Tech game was close from the tip-off, but FSU managed a 32-28 lead at the break. The second half saw five lead changes, but with the game tied at 58 apiece with 12 seconds left, Florida State had a chance to pull off the upset and that they did. FSU’s Carla Williams snagged a Lysa Moorefield miss and put it back up and in as time expired. Florida State needed all of Williams’ career-high 20 points and career-high 14 rebounds in the dramatic victory.

Florida State would win only two more games the rest of the season, but one of those victories will for two reasons, go down in the FSU record books.

With 8:10 remaining in the second half at Maryland on February 16, Peercy made Florida State women’s basketball



ALLISON PEERCY BECAME FLORIDA STATE'S ALL-TIME ASSISTS LEADER IN THE 1994-95 SEASON.

history. It was the assist to freshman Wendy Hampton that notched the senior's 365th career assist, making her FSU's all-time assist leader. The previous record was 364 held by Robin Corn, who played for the Lady 'Noles from 1988-92. The evening was even more special for Peercy as her team went on to record a 66-59 victory — marking FSU's first-ever win at Maryland and its first since the 1992-93 season.

But the accomplishment was just another day at the office for Peercy, because day in and day out, the senior from McMinneville, Tenn., provided the leadership, both on and off the court, that the young Florida State squad needed.

"I just can't say enough about Allison," Meadors said. "She played her heart out every time she stepped onto the floor, both in games and in practice. She provided a wonderful example of the student-athlete to our young team."

Peercy averaged a team-high 12.9 points in starting all 30 games in 1994-95. She scored in double figures a team-high 23 times, including a season-high 23 points against nationally-ranked Florida. In that game, Peercy shot 56 percent from the field. She also led the squad in scoring a team-high 12 times — an incredible accomplishment, considering she was also the team's assist leader.

Other individuals contributed as well, especially newcomer Carla Williams. When junior Katina Cobbins went down with injuries, the Lady Seminoles needed someone to step up and fill the void in the rebounding department. Williams did just that and so much more. Williams led the squad on the boards 11 of the last 14 games, six of which were double-digit rebounding. Overall,

she averaged 10.9 points and a team-high 7.5 rebounds per game. She tallied double figures in 18 games, including three games of 20 or more points, and led the team in scoring eight times.

Williams and Peercy proved to be the most consistent of the Lady Seminoles, but it seemed everybody had their day, especially this season's other returnees. McLin's best outing was an 18-point performance at Clemson, in which she scored all her points in the second half. She scored in every game she played in, including nine games in double figures. Lysa Moorefield used her size and strength to be a force inside for the Lady Seminoles. She missed just one game and only because she was ill and started on 23 occasions. Moorefield scored in double figures in seven games, including a career-high 16 against rival Florida. She tallied double figure rebounding in three games and led the team with 13 blocks. Wendy Hampton played in all 30 games and scored in 24 of those contests. She tallied a career-high 17

points against Michigan State and recorded a season-high and team-leading seven rebounds in the effort. Aletha Penn played in 28 of FSU's 30 games, and served as a competent back up to Peercy. She scored in 12 games and made a solid contribution in the Clemson game, coming in and dishing out seven assists.

"One great thing about having a young team is that everyone has the opportunity to play and learn," Meadors said. "All of the players saw quality minutes and all of them contributed in their own way. And the players improved greatly with each game."

Senior Liberty Taylor was the squad's spark plug many times during the season. Playing in 29 games, Taylor scored 10 points, off the bench, in FSU's dramatic victory at Georgia Tech. She also recorded her career high in rebounding with 12 against Maryland. Tanisha Rickman battled injuries throughout the season, but still played in 26 games. She scored a career-high 21 points in the first game of the year. Anja Pedersen played in all 30 games and ranked third on the team with 21 three-pointers. Cobbins was hampered with various injuries throughout the season and missed 10 games overall. When she did play though, she contributed, especially on the boards, including a season-high 14 rebounds vs. Clemson.

Last year's victories may have been few, but the experience that was gained on and off the court was very valuable.

"Sometimes, when you are looking for positives, you have to go beyond the numbers," Meadors said. "And although our victories may have been few in 1994-95, the experience that our young players gained on and off the court was great. And the benefits from that will be evident in the future." 🏀

THIS IS...

LADY SEMINOLE BASKETBALL



1994-95 SENIORS ALLISON PEERCY AND LIBERTY TAYLOR WERE PRESENTED WITH THEIR GAME JERSEYS, ENCASED IN A WOODEN FRAME AND MONOGRAMMED, AT LAST YEAR'S AWARDS PICNIC.



AT LAST YEAR'S AWARDS PICNIC, IT WAS PAY-BACK TIME FOR ALLISON PEERCY, THE TEAM'S PRACTICAL JOKER FOR FOUR YEARS. THE ENTIRE TEAM WAS BEHIND THIS "PIE-EATING" PRANK ON THE LIKABLE GUARD.



WENDY HAMPTON, LYSA MOOREFIELD, ALETHA PENN AND LESLIE WAUGH PROUDLY DISPLAY THEIR USA BASKETBALL JERSEYS. THE FOURSOME COMPETED IN OLYMPIC SPORTS FESTIVAL TRYOUTS LAST SUMMER.



ACADEMICS IS VERY IMPORTANT IN THE DAILY LIFE OF A LADY SEMINOLE BASKETBALL PLAYER. HERE, ACADEMIC ASSISTANCE ADVISOR MARK MELENEY HELPS LATRICE MCLIN WITH A COMPUTER PROJECT WHILE JEN ROBINSON GETS READY TO TYPE A PAPER.



LOCATED WITHIN THE WOMEN'S BASKETBALL SUITE, THE LADY SEMINOLE WAR ROOM IS WHERE THE SQUAD CONDUCTS ITS MEETINGS AND WATCHES FILM. THE ROOM IS EQUIPPED WITH A STATE-OF-THE-ART THEATREVIEW BIG SCREEN TELEVISION AND VIDEO CASSETTE RECORDER.



IN ADDITION TO TRAVELING TO ALL OF THE ATLANTIC COAST CONFERENCE SCHOOLS, THE LADY SEMINOLES ALSO COMPETE IN TOURNAMENTS FROM COAST TO COAST. LAST YEAR, THE SQUAD OPENED THE SEASON AT THE MONTANA STATE CLASSIC AND COMPETED AT THE SAN JUAN SHOOTOUT JUST BEFORE CHRISTMAS.

'94-95 STATISTICS

INDIVIDUAL • ALL GAMES

Record: 8-22 Home: 4-10 Away: 3-7 Neutral: 1-5

PLAYER	G-GS	MIN-AVG	FG-FGA	PCT	3P-3PA	PCT	FT-FTA	PCT	OFF-DEF	TOT-AVG	PF-FD	AT	TO	BS	ST	PTS-AVG
32 Peercy, A	30-30	1058-35.3	128-319	.401	28-87	.322	104-140	.743	23-70	93-3.1	100-4	123	129	3	51	388-12.9
22 Williams, C	30-24	881-29.4	87-189	.460	0-2	.000	153-216	.708	104-120	224-7.5	94-6	22	77	7	39	327-10.9
30 Rickman, T	26-22	636-24.5	95-254	.374	31-117	.265	34-65	.523	23-62	85-3.3	69-2	29	83	2	24	255-9.8
05 McLin, L	29-19	710-24.5	86-247	.348	4-21	.190	46-95	.484	43-63	106-3.7	37-0	20	61	4	27	222-7.7
31 Moorefield, L	29-23	660-22.8	82-201	.408	8-0	.000	26-36	.722	56-60	116-4.0	91-4	9	50	13	20	190-6.6
45 Hampton, W	30-3	457-15.2	56-162	.346	15-46	.326	20-32	.625	24-44	68-2.3	34-0	20	50	3	28	147-4.9
44 Pedersen, A	30-15	521-17.4	43-144	.299	21-67	.313	12-16	.750	19-43	62-2.1	51-1	24	50	0	8	119-4.0
10 Cobbins, K	20-9	378-18.9	28-70	.400	0-1	.000	22-43	.512	41-56	97-4.9	42-0	5	19	6	13	78-3.9
24 Taylor, L	29-4	417-14.4	28-81	.346	1-1	1.000	29-39	.744	34-57	91-3.1	91-5	8	29	5	10	86-3.0
33 Walker, K	5-0	54-10.8	5-10	.500	0-0	.000	3-7	.429	4-7	11-2.2	6-0	4	8	3	2	13-2.6
20 Penn, A	28-1	227-8.1	13-46	.283	2-14	.143	6-9	.667	1-13	14-0.5	32-0	29	37	0	12	34-1.2
TEAM										121						
Florida State	30	5999	651-1723	.378	102-356	.287	455-698	.652	372-595	1088-36.3	647	293	593	46	234	1859-62.0
Opponents	30	5999	800-1713	.467	66-198	.333	466-754	.618	433-763	1196-39.9	623	362	548	97	297	2132-71.1

PER GAME AVERAGES

PLAYER	G	FG	FGA	3P	3PA	FT	FTA	AT	TO	BS	ST
32 Peercy, A	30	4.3	10.6	0.9	2.9	3.5	4.7	4.1	4.3	0.1	1.7
22 Williams, C	30	2.9	6.3	0.0	0.1	5.1	7.2	0.7	2.6	0.2	1.3
30 Rickman, T	26	3.7	9.8	1.2	4.5	1.3	2.5	1.1	3.2	0.1	0.9
05 McLin, L	29	3.0	8.5	0.1	0.7	1.6	3.3	0.7	2.1	0.1	0.9
31 Moorefield, L	29	2.8	6.9	0.0	0.0	0.9	1.2	0.3	1.7	0.4	0.7
45 Hampton, W	30	1.9	5.4	0.5	1.5	0.7	1.1	0.7	1.7	0.1	0.9
44 Pedersen, A	30	1.4	4.8	0.7	2.2	0.4	0.5	0.8	1.7	0.0	0.3
10 Cobbins, K	20	1.4	3.5	0.0	0.1	1.1	2.2	0.3	1.0	0.3	0.7
24 Taylor, L	29	1.0	2.8	0.0	0.0	1.0	1.3	0.3	1.0	0.2	0.3
33 Walker, K	5	1.0	2.0	0.0	0.0	0.6	1.4	0.8	1.6	0.6	0.4
20 Penn, A	28	0.5	1.6	0.1	0.5	0.2	0.3	1.0	1.3	0.0	0.4
Florida State	30	21.7	57.4	3.4	11.9	15.2	23.3	9.8	19.8	1.5	7.8
Opponents	30	26.7	57.1	2.2	6.6	15.5	25.1	12.1	18.3	3.2	9.9

TEAM AND OPPONENTS' HIGHS & LOWS

CATEGORY	FLORIDA STATE UNIVERSITY		OPPONENT
POINTS 1ST HALF	High	41 vs Florida	50 by Michigan State
	Low	17 vs Maryland-ACC	19 by Wake Forest
POINTS 2ND HALF	High	44 vs Duke	51 by Wisconsin Green Bay
	Low	20 vs Fresno State	26 by South Florida
TOTAL POINTS	High	80 vs Florida	92 by North Carolina
	Low	44 vs Texas Tech	45 by South Florida
FIELD GOALS MADE	High	28 vs Florida	37 by Florida
	Low	15 vs North Carolina	18 by Florida Atlantic
FIELD GOALS ATT	High	72 vs Tampa	69 by Wake Forest
	Low	46 vs Central Florida	45 by South Florida
FIELD GOAL %	High	.475 vs Florida	.633 by Wisconsin Green Bay
	Low	267 vs Southern Illinois	.290 by Wake Forest
3-PT FIELD GOALS MADE	High	10 vs Florida	11 by North Carolina
	Low	1 vs Wisconsin Green Bay	0 by South Florida
3-PT FIELD GOALS ATT	High	23 vs Texas Tech	18 by Fresno State
	Low	3 vs Wisconsin Green Bay	0 by Maryland
3-PT FIELD GOAL %	High	.556 vs Florida	.733 by NC State
	Low	.100 vs Florida A&M	.000 by South Florida
FREE THROWS MADE	High	31 vs Central Florida	28 by North Carolina
	Low	5 vs Texas Tech	3 by South Florida
FREE THROW ATT	High	39 vs Central Florida	38 by North Carolina
	Low	11 vs Texas Tech	12 by North Carolina State
FREE THROW %	High	.952 vs North Carolina	.833 by North Carolina State
	Low	.348 vs Florida A&M	.231 by South Florida
OFFENSIVE REBOUNDS	High	24 vs Tampa	24 by Central Florida
	Low	8 vs Virginia	8 by Wisconsin Green Bay
DEFENSIVE REBOUNDS	High	34 vs Florida Atlantic	34 by North Carolina
	Low	13 vs North Carolina State	17 by NC State
TOTAL REBOUNDS	High	49 vs Florida A&M	51 by North Carolina
	Low	27 vs Florida	30 by NC State
ASSISTS	High	19 vs Clemson	23 by North Carolina State
	Low	2 vs Texas Tech	6 by Tampa
BLOCKED SHOTS	High	5 vs New Orleans	10 by North Carolina
	Low	0 vs Fresno State	1 by Florida A&M
STEALS	High	17 vs Central Florida	17 by Virginia
	Low	2 vs Maryland	3 by Duke
TURNOVERS	High	28 vs Central Florida & Florida A&M	29 by Central Florida
	Low	11 vs Duke & Clemson	11 by Clemson, Virginia & Wake Forest
PERSONAL FOULS	High	41 vs Clemson	28 by Central Florida
	Low	16 vs North Carolina State	12 by Texas Tech

GAME-BY-GAME

RESULTS & ATTENDANCE

DATE	OPPONENT	RESULT	SCORE	SITE	ATT	HIGH SCORER	HIGH REBOUNDER	HIGH ASSISTS
11/25	Fresno State	Won	67- 62	Neutral	617	Rickman, T 21	Cobbins, K 7	Pedersen, A 3
11/26	Wisconsin Green Bay	Lost	60- 88	Neutral	617	Peercy, A 18	Peercy, A 6	Peercy, A 4
11/29	CENTRAL FLORIDA	Won	74- 59	Home	885	Rickman, T 15	Cobbins, K 10	Peercy, A 3
12/02	SOUTH FLORIDA	Won	64- 45	Home	692	Peercy, A 14	Williams, C 8	Rickman, T 3
12/03	FLORIDA	Lost	80- 91	Home	581	Peercy, A 23	Williams, C 6	Peercy, A 5
12/07	Duke	Lost	68- 84	Away	375	Peercy, A 19	Williams, C 9	Rickman, T 3
12/10	TAMPA	Won	64- 62	Home	702	Peercy, A 15	Moorefield, L 11	Peercy, A 8
12/16	FLORIDA A&M	Lost	65- 73	Home	671	Peercy, A 18	Cobbins, K 9	Peercy, A 3
12/19	Texas Tech	Lost	44- 66	Neutral	89	Pedersen, A 12	Taylor, L 5	Cobbins, K 1
12/20	Southern Illinois	Lost	52- 56	Neutral	100	Rickman, T 13	Cobbins, K 8	Peercy, A 6
12/21	Michigan State	Lost	69- 82	Neutral	100	Hampton, W 17	Hampton, W 7	Peercy, A 6
12/31	New Orleans	Lost	67- 75	Away	313	Rickman, T 14	Moorefield, L 10	Peercy, A 7
01/04	NORTH CAROLINA	Lost	52- 77	Home	532	Rickman, T 13	Williams, C 6	Pedersen, A 2
01/08	Clemson	Lost	68- 72	Away	1,214	McLin, L 18	Cobbins, K 14	Peercy, A 8
01/11	North Carolina St.	Lost	68- 91	Away	4,097	Peercy, A 18	Cobbins, K 8	Peercy, A 7
01/14	MARYLAND	Lost	56- 70	Home	420	Williams, C 15	Williams, C 14	Peercy, A 5
01/17	VIRGINIA	Lost	60- 76	Home	382	Peercy, A 19	Williams, C 11	Peercy, A 4
01/21	Wake Forest	Won	68- 61	Away	2,120	McLin, L 15	Williams, C 13	Peercy, A 5
01/23	Georgia Tech	Won	60- 58	Away	1,015	Williams, C 20	Williams, C 14	Peercy, A 4
01/28	DUKE	Lost	71- 75	Home	426	Williams, C 21	Williams, C 11	Peercy, A 4
01/30	GEORGIA TECH	Lost	57- 68	Home	355	Williams, C 13	Williams, C 6	Peercy, A 3
02/03	North Carolina	Lost	47- 92	Away	1,704	Peercy, A 13	McLin, L 7	Penn, A 3
02/06	CLEMSON	Lost	64- 67	Home	574	Peercy, A 20	Williams, C 8	Peercy, A 4
02/12	NC STATE	Lost	55- 70	Home	414	Peercy, A 14	Rickman, T 5	Williams, C 2
02/13	FLORIDA ATLANTIC	Won	69- 55	Home	303	Williams, C 17	Moorefield, L 10	Peercy, A 3
02/16	Maryland	Won	66- 59	Away	440	Williams, C 19	Williams, C 9	Peercy, A 7
02/18	Virginia	Lost	45- 79	Away	6,887	Rickman, T 14	Williams, C 7	Peercy, A 7
02/21	Florida	Lost	62- 81	Away	1,625	Peercy, A 19	Williams, C 5	Williams, C 2
02/23	WAKE FOREST	Lost	61- 66	Home	439	Williams, C 20	Taylor, L 10	Peercy, A 3
03/02	Maryland-ACC	Lost	56- 72	Neutral	2,436	Williams, C 17	Williams, C 14	Peercy, A 3

ATTENDANCE

SITE	G	TOTAL	AVERAGE
HOME:	14	7,376	527
AWAY:	10	19,790	1,979
NEUTRAL:	6	3,959	660
TOTAL:	30	31,125	1,038

*HOME GAMES IN ALL CAPS

GAME - BY - GAME TEAM STATISTICS

			FG-FGA	FG%	3FG-A	FT-FTA	FT%	REB	PF-D	TP	A	TO	BLK	S
1.	FSU	W	23-58	.397	2-7	19-27	.704	32	21-1	67	10	17	0	7
	Fresno State		20-49	.408	7-18	15-22	.682	43	24-1	62	8	25	2	5
2.	FSU	L	17-52	.327	1-3	25-37	.676	37	26-0	60	7	25	1	6
	Wisc. Green Bay		31-49	.633	2-3	24-33	.727	31	27-0	88	15	20	2	11
3.	FSU	W	21-46	.457	1-7	31-39	.795	40	24-0	74	12	28	1	17
	Central Florida		23-64	.359	4-12	9-25	.360	44	28-0	59	9	29	3	15
4.	FSU	W	21-58	.362	1-5	21-34	.618	39	19-0	64	10	22	2	9
	South Florida		21-45	.362	0-3	13-23	.565	35	26-0	55	9	28	4	10
5.	FSU	L	28-59	.475	10-18	14-27	.519	27	22-0	80	11	17	2	7
	Florida		37-60	.617	1-2	16-25	.640	38	26-1	91	13	18	4	9
6.	FSU	L	27-65	.415	4-10	10-12	.833	33	18-0	68	9	20	0	6
	Duke		34-57	.596	2-7	14-20	.700	32	17-0	84	20	17	3	10
7.	FSU	W	23-72	.319	3-12	15-27	.556	47	17-0	64	12	14	1	3
	Tampa		26-60	.433	2-5	8-18	.444	48	24-2	62	6	21	4	8
8.	FSU	L	28-67	.417	1-10	8-23	.348	49	25-1	65	8	28	3	14
	Florida A&M		26-54	.481	1-2	20-30	.666	33	21-0	73	6	23	1	16
9.	FSU	L	16-53	.302	7-23	5-11	.455	28	21-0	44	2	22	4	5
	Texas Tech		24-52	.462	1-4	17-28	.607	47	12-0	66	20	17	5	11
10.	FSU	L	16-60	.267	3-14	17-22	.773	36	28-0	52	8	19	2	6
	S. Illinois		22-53	.415	1-4	11-32	.344	44	16-0	56	7	21	3	13
11.	FSU	L	26-64	.406	8-23	9-18	.500	32	26-0	69	17	15	0	7
	Michigan State		28-53	.528	2-8	24-34	.706	32	17-0	82	14	20	2	12
12.	FSU	L	28-62	.452	1-7	10-18	.556	46	28-2	67	13	21	5	5
	New Orleans		29-68	.426	1-9	16-36	.444	49	19-1	75	18	17	3	9
13.	FSU	L	15-54	.278	2-7	20-21	.952	38	21-1	52	7	27	2	9
	North Carolina		27-59	.458	2-10	21-28	.750	4-	17-0	77	7	20	10	14
14.	FSU	L	26-70	.371	7-19	9-17	.529	41	21-2	68	19	18	0	15
	Clemson		26-51	.510	0-2	20-30	.667	40	15-0	72	13	21	6	11
15.	FSU	L	25-67	.373	4-11	14-18	.778	33	16-0	68	13	16	1	5
	N.C. State		36-61	.590	9-14	10-12	.833	38	17-1	91	23	18	3	9
16.	FSU	L	23-61	.377	1-8	9-18	.500	39	23-1	56	10	23	1	10
	Maryland		26-52	.500	0-0	18-32	.563	40	17-0	70	7	19	1	10
17.	FSU	L	20-54	.370	4-14	16-30	.533	29	24-2	60	7	19	3	8
	Virginia		34-64	.531	0-3	8-24	.333	47	27-0	76	15	15	1	6
18.	FSU	W	23-55	.418	1-6	21-31	.677	42	19-0	68	9	15	3	7
	Wake Forest		20-69	.290	2-10	19-24	.792	49	25-1	61	6	15	6	6
19.	FSU	W	20-63	.317	2-9	18-23	.783	43	16-0	60	13	17	1	11
	Georgia Tech		22-52	.423	2-5	12-17	.706	36	20-0	58	15	18	2	10
20.	FSU	L	24-60	.400	3-10	10-20	.645	35	21-1	71	6	11	2	5
	Duke		30-54	.556	4-6	11-19	.579	36	22-2	75	16	16	4	3
21.	FSU	L	22-61	.361	5-17	8-12	.667	32	16-0	57	9	18	0	6
	Georgia Tech		29-59	.492	0-7	10-17	.588	44	19-0	68	9	20	1	7
22.	FSU	L	18-57	.316	2-8	9-20	.450	31	26-2	47	9	26	0	9
	North Carolina		31-60	.517	2-8	28-38	.737	51	17-0	92	14	18	5	15
23.	FSU	L	19-56	.399	7-17	19-26	.731	37	20-1	64	10	11	2	7
	Clemson		21-58	.362	4-10	21-29	.724	45	21-1	67	6	11	2	8
24.	FSU	L	21-49	.429	1-8	12-20	.600	30	21-0	55	8	24	2	7
	N.C. State		21-48	.438	11-15	17-26	.654	30	20-0	70	7	18	4	16
25.	FSU	W	21-52	.403	2-9	25-32	.781	43	24-1	69	10	17	1	10
	Florida Atlantic		18-61	.295	2-9	17-27	.629	39	23-1	55	8	16	3	11
26.	FSU	W	23-50	.460	3-7	17-28	.607	38	18-0	66	13	18	4	2
	Maryland		22-61	.361	1-2	14-19	.737	41	26-1	59	14	15	3	6
27.	FSU	L	16-46	.348	6-20	7-11	.636	27	17-1	45	12	26	1	3
	Virginia		33-68	.485	0-9	13-17	.765	44	19-0	79	23	11	5	17
28.	FSU	L	20-49	.408	3-15	19-23	.826	32	25-1	62	5	23	0	9
	Florida		33-61	.541	1-7	14-23	.609	35	24-0	81	16	16	2	12
29.	FSU	L	19-52	.365	5-22	18-27	.667	40	26-3	61	7	21	0	5
	Wake Forest		23-51	.451	2-3	18-31	.581	30	20-0	66	9	11	2	6
30.	FSU	L	22-51	.431	2-10	10-15	.667	32	23-1	56	7	23	2	4
	Maryland		27-60	.450	0-1	18-25	.720	39	17-0	72	9	14	1	11

THE LADY SEMINOLES RECORD WHEN...

In tournaments	3-6
Shooting 50% or above from the field	0-0
Shooting below 50% from the field	8-22
FSU has rebound advantage	3-6
Opponent has rebound advantage	5-14
Rebounds are the same	0-2
FSU outshoots opponent from the field	4-1
Opponents outshoots FSU from the field	4-21
Shooting tie from the field	0-0
FSU bench outscores opponent's bench	7-11
Opponent bench outscores FSU's bench	1-9
Bench scoring is tied	0-2
FSU has fewer turnovers than opponent	5-7
FSU has more turnovers than opponent	2-14
Turnovers are the same	1-1
FSU leads at halftime	6-3
Opponent leads at halftime	2-19
Teams are tied at halftime	0-0
Game goes into overtime	0-0
Playing during the day	1-5
Playing at night	7-17



ALLISON PEERCY'S 23 POINTS VS. FLORIDA WAS AN INDIVIDUAL TEAM HIGH IN 1994-95.

INDIVIDUAL BEST PERFORMANCES

POINTS	23, Allison Peercy vs. Florida (12/3)
FIELD GOALS	9, Allison Peercy vs. Florida (12/3) and Tanisha Rickman vs. Fresno State (11/28)
FIELD GOAL ATTEMPTS	19, Latrice McLin vs. Clemson (1/8)
FIELD GOAL PERCENTAGE (10 attempts min)700, Lysa Moorefield vs. Florida (2/22, 7-10) and Carla Williams vs. Maryland (2/17, 7-10)
THREE-POINT FIELD GOALS	5, Tanisha Rickman vs. Florida (12/3)
THREE-POINT FIELD GOAL ATTEMPTS	11, Tanisha Rickman vs. Michigan State (12/20)
THREE-POINT FIELD GOAL PERCENTAGE (6 attempts min)571, Allison Peercy vs. Florida (12/3, 4-7)
FREE THROWS	13, Carla Williams vs. Duke (1/28)
FREE THROW ATTEMPTS (10 attempts min)	19, Carla Williams vs. Duke (1/28)
FREE THROW PERCENTAGE (10 attempts min)909, Carla Williams vs. North Carolina (1/4, 10-11)
REBOUNDS	14, Carla Williams vs. Maryland-ACC (3/5), vs. Georgia Tech (1/23), vs. Maryland (1/15) and Katina Cobbins vs. Clemson (1/8)
ASSISTS	8, Allison Peercy vs. Clemson (1/8), vs. Tampa (12/12)
STEALS	5, Allison Peercy vs. Tampa (12/12)
BLOCKED SHOTS	2, Lysa Moorefield five times

SEASON SUPERLATIVES

COMPLETE GAMES PLAYED (7)	Peercy (5), Williams (2)
DOUBLE-FIGURE SCORING GAMES (79)	Peercy (23), Williams (18), Rickman (13) McLin (9), Moorefield (7), Hampton (5), Cobbins (2), Pedersen (1), Taylor (1)
20 POINT (OR MORE) SCORING GAMES (7)	Williams (3), Rickman (2), Peercy (2)
DOUBLE-FIGURE REBOUNDING GAMES (13)	Williams (6), Moorefield (3), Cobbins (2), Taylor (2)
DOUBLE-FIGURE SCORING/REBOUNDING GAMES (7)	Williams (5), Cobbins (1), Moorefield (1)
GAMES LEADING FSU IN SCORING	Peercy (12t), Williams (8), Rickman (6), McLin (2t), Pedersen (1), Hampton (1)
GAMES LEADING FSU IN REBOUNDING	Williams (15t), Cobbins (6), Moorefield (4t), Taylor (2), Hampton (1), Peercy (1), McLin (1), Rickman (1)
GAMES LEADING FSU IN ASSISTS	Peercy (24t), Pedersen (3t), Rickman (2), Penn, Cobbins (1)
BENCH SCORING AVERAGE	FSU 536 (17.9), Opponents 538 (17.9)

ACC STATISTICS

FLORIDA STATE INDIVIDUAL

Record: 3-13 Home: 0-8 Away: 3-5 Neutral: 0-0

	PLAYER	G-GS	MIN-AVG	FG-FGA	PCT	3P-3PA	PCT	FT-FTA	PCT	OFF-DEF	TOT-AVG	PF-FD	AT	TO	BS	ST	PTS-AVG
32	Peercy, A	16-16	592-37.0	73-170	.429	19-51	.373	49- 72	.681	7- 31	38- 2.4	52- 2	69	70	2	24	214-13.4
22	Williams, C	16-14	509-31.8	53-118	.449	0- 1	.000	88-123	.715	69- 69	138- 8.6	51-4	10	40	5	20	194-12.1
05	McLin, L	15-13	419-27.9	53-152	.349	3-14	.214	17- 43	.395	25- 39	64- 4.3	18- 0	11	32	2	14	126- 8.4
30	Rickman, T	12- 8	259-21.6	35-100	.350	16-57	.281	13- 18	.722	9- 27	36- 3.0	23- 1	11	33	0	8	99- 8.3
31	Moorefield, L	15-11	359-23.9	41-114	.360	0- 0	.000	19- 25	.760	32- 23	55- 3.7	50- 3	4	25	6	10	101- 6.7
45	Hampton, W	16- 3	278-17.4	31- 94	.330	11-29	.379	8- 14	.571	8- 27	35- 2.2	20- 0	11	34	3	20	81- 5.1
10	Cobbins, K	9- 3	149-16.6	13- 26	.500	0- 0	.000	7- 13	.538	14- 26	40- 4.4	18- 0	3	8	0	7	33- 3.7
24	Taylor, L	16- 4	237-14.8	16- 48	.333	0- 0	.000	19- 27	.704	20- 30	50- 3.1	50- 3	6	13	4	3	51- 3.2
44	Pedersen, A	16- 7	252-15.8	19- 70	.271	7-34	.206	5- 6	.833	9- 25	34- 2.1	22- 0	14	24	0	3	50- 3.1
33	Walker, K	1- 0	6- 6.0	1- 1	1.000	0- 0	.000	0- 0	.000	0- 1	1- 1.0	1- 0	0	0	0	0	2- 2.0
20	Penn, A	15- 1	140- 9.3	6- 27	.222	1- 7	.143	2- 4	.500	0- 7	7- 0.5	20- 0	22	26	0	6	15- 1.0

TEAM

	Florida State	16	3200	341-920	.371	57-193	.295	227-345	.658	193-305	568-35.5	325	161	305	22	115	966-60.4
	Opponents	16	3200	435-924	.471	41-111	.369	254-383	.663	228-415	643-40.2	319	204	263	58	154	1165-72.8

PER GAME AVERAGES

	PLAYER	G	FG	FGA	3P	3PA	FT	FTA	AT	TO	BS	ST
32	Peercy, A	16	4.6	10.6	1.2	3.2	3.1	4.5	4.3	4.4	0.1	1.5
22	Williams, C	16	3.3	7.4	0.0	0.1	5.5	7.7	0.6	2.5	0.3	1.3
05	McLin, L	15	3.5	10.1	0.2	0.9	1.1	2.9	0.7	2.1	0.1	0.9
30	Rickman, T	12	2.9	8.3	1.3	4.8	1.1	1.5	0.9	2.8	0.0	0.7
31	Moorefield, L	15	2.7	7.6	0.0	0.0	1.3	1.7	0.3	1.7	0.4	0.7
45	Hampton, W	16	1.9	5.9	0.7	1.8	0.5	0.9	0.7	2.1	0.2	1.3
10	Cobbins, K	9	1.4	2.9	0.0	0.0	0.8	1.4	0.3	0.9	0.0	0.8
24	Taylor, L	16	1.0	3.0	0.0	0.0	1.2	1.7	0.4	0.8	0.3	0.2
44	Pedersen, A	16	1.2	4.4	0.4	2.1	0.3	0.4	0.9	1.5	0.0	0.2
33	Walker, K	1	1.0	1.0	0.0	0.0	0.0	0.0	0.0	0.0	0.0	0.0
20	Penn, A	15	0.4	1.8	0.1	0.5	0.1	0.3	1.5	1.7	0.0	0.4
	Florida State	16	21.3	57.5	3.6	12.1	14.2	21.6	10.1	19.1	1.4	7.2
	Opponents	16	27.2	57.8	2.6	6.9	15.9	23.9	12.8	16.4	3.6	9.6

ACC FINAL STATISTICS

PLAYER, SCHOOL	G	FG	3P	FT	PTS	AVG
Charlotte Smith, NC	16	109	6	87	311	19.4
Wendy Palmer, VA	16	129	7	44	309	19.3
Marion Jones, NC	16	115	14	61	305	19.1
Kisha Ford, GT	15	105	8	48	264	17.6
Chastity Melvin, ST	16	115	0	46	276	17.3
Tammy Gibson	17	109	43	29	290	17.1
Alison Day, DU	16	102	5	44	253	15.8
Tara Saunooke, CU	16	84	32	53	253	15.8
Carla Munnion, GT	17	93	13	57	256	15.1
Stephanie Ridgeway, CU	16	88	1	52	229	14.3
Carey Kauffman, DU	16	93	0	34	220	13.8
Allison Peercy, FS	16	73	19	49	214	13.4
RaeAnna Mulholland, WF	16	77	18	37	209	13.1
Jennifer Howard, ST	16	58	42	50	208	13.0
Stephanie Cross, UM	15	76	7	34	193	12.9

Field Goal Percentage

PLAYER	G	FG	ATT	PCT
Chastity Melvin, ST	16	115	186	.618
Wendy Palmer, UVA	16	129	221	.584
Jeffra Guasepohl, UVA	16	81	148	.547
Alison Day, DU	16	102	187	.545
Charlotte Smith, NC	16	109	207	.527
Marion Jones, NC	16	116	237	.485
Carey Kauffman, DU	16	93	195	.477
Tammy Gibson, ST	17	109	237	.460
Val Hodge, WF	16	85	195	.438
S. Ridgeway, CU	16	88	205	.429

Free Throw Percentage

PLAYER	G	FTM	FTA	PCT
Tara Saunooke, CU	16	53	64	.828
Jennifer Howard, ST	16	50	61	.820
Alison Day, DU	16	44	54	.815
Laura Cotrell, CU	15	42	56	.750
Carla Munnion, GT	17	57	77	.740
Carla Williams, FS	16	88	123	.715
Wendy Palmer, UVA	16	44	62	.710
S. Ridgeway, CU	16	52	75	.693
Allison Peercy, FS	16	49	72	.681
Charlotte Smith, NC	16	87	132	.659

Assists

PLAYER	G	NO	AVG
Tiffany Martin, GT	16	113	7.1
Gretchen Hollifield, WF	16	105	6.6
Tora Suber, UVA	16	78	4.9
Karon Ferguson, UM	16	71	4.4
Kira Orr, DU	16	71	4.4
Allison Peercy, FS	16	69	4.3
Marion Jones, NC	16	68	4.3
Jenny Boucek, NC	16	66	4.1

Tammy Gibson, ST	17	62	3.6
Jennifer Howard, ST	16	58	3.6

Three-Point Goal Percentage

PLAYER	G	FG	FGA	PCT
Jennifer Howard, ST	16	42	84	.500
Gretchen Hollifield, WF	16	25	53	.472
Tammy Gibson, ST	17	43	112	.384

Rebounds

PLAYER	G	REB	AVG
Charlotte Smith, NC	16	168	11.8
Wendy Palmer, UVA	16	148	9.3
RaeAnn Mulholland, WF	16	140	8.8
Carla Williams, FS	16	138	8.6
Kisha Ford, GT	15	115	7.7
Carey Kauffman, DU	16	119	7.4
Laura Cotrell, CU	15	111	7.4
Chastity Melvin, ST	16	113	7.1
Stephanie Cross, UM	15	104	6.9
Two Tied Averaging			6.8

Blocks

PLAYER	G	NO	AVG
Jeffra Gausepohl, UVA	16	23	1.4
Gwendolyn Gillingham, NC15		21	1.4
Kerri Thomas, CU	16	19	1.2
Lindsay Seawright, WF	15	17	1.1
Joannah Kauffman, GT	16	18	1.1
Tonya Jackson, NC	16	17	1.1
Tyish Hall, DU	16	16	1.0
Jaci Stimson, CU	16	16	1.0
Chastity Melvin, ST	16	14	0.9
Two Tied Averaging			0.8

Steals			
PLAYER	G	NO	AVG
Marin Jones, NC	16	55	3.4
Tiffany Martin, GT	16	46	2.9
Tammy Gibson, ST	17	41	2.4
Wendy Palmer, UVA	16	35	2.2
Umeld Webb, ST	16	35	2.2
Kira Orr, DU	16	35	2.2
Chastity Melvin, ST	16	32	2.0
Sonia Chase, UM	16	29	1.8
Karon Ferguson, UM	16	29	1.8
Five Tied Averaging			1.6

Florida State	-12.4
Wake Forest	-14.1

3-Point Goals Per Game				
PLAYER	G	FG	FGA	AVG
Jennifer Howard, ST	16	42	84	2.5
Tammy Gibson, ST	17	43	112	2.5
S. Lawrence, NC	13	32	97	2.5

Field Goal Percentage			
SCHOOL	FGM	FGA	PCT
Virginia	487	999	.487
NC State	460	955	.477
Duke	463	1018	.455
North Carolina	469	1047	.448
Clemson	406	909	.447
Georgia Tech	398	989	.402
Wake Forest	379	961	.386
Maryland	373	1002	.372
Florida State	341	920	.371

Scoring Offense			
SCHOOL	G	PTS	AVG
North Carolina	16	1280	80.0
Virginia	16	1239	77.4
NC State	16	1221	76.3
Duke	16	1163	72.7
Clemson	16	1097	68.6
Georgia Tech	16	1043	65.2
Wake Forest	16	994	62.1
Florida State	16	966	60.4
Maryland	16	963	60.2

Field Goal Percentage Defense			
SCHOOL	FGM	FGA	PCT
Virginia	347	920	.377
North Carolina	402	1058	.380
Clemson	382	958	.399
NC State	403	961	.419
Georgia Tech	441	1047	.421
Duke	441	1028	.461
Wake Forest	469	1017	.461
Florida State	435	924	.471
Maryland	456	919	.496

Scoring Defense			
SCHOOL	G	PTS	AVG
Virginia	16	925	57.8
North Carolina	16	1060	66.3
Clemson	16	1064	67.8
NC State	16	1103	68.9
Georgia Tech	16	1116	69.8
Duke	16	1133	70.8
Maryland	16	1160	72.5
Florida State	16	1165	72.8
Wake Forest	16	1220	76.8

3-Point Field Goal PCT			
SCHOOL	3PM	3PA	PCT
NC State	105	237	.443
Virginia	57	174	.328
Maryland	19	58	.328
Duke	60	186	.323
Clemson	37	119	.311
Wake Forest	62	200	.310
Georgia Tech	67	223	.300
Florida State	57	193	.295
North Carolina	70	242	.269

Scoring Margin	
SCHOOL	AVG
Virginia	19.6
North Carolina	13.8
NC State	7.4
Duke	1.9
Clemson	0.8
Georgia Tech	-4.6
Maryland	-12.3

Free Throw Percentage			
SCHOOL	FTM	FTA	PCT
Clemson	248	354	.701
Duke	177	255	.694
Maryland	196	287	.690
Florida State	227	345	.658
Virginia	206	317	.656
Wake Forest	174	266	.654
North Carolina	272	430	.633
NC State	196	314	.624
Georgia Tech	180	291	.619

Blocked Shots

SCHOOL	G	NO	AVG
North Carolina	16	74	4.6
Virginia	16	55	3.4
Clemson	16	54	3.4
Wake Forest	16	49	3.1
NC State	16	38	2.3
Georgia Tech	16	34	2.1
Duke	16	28	1.8
Florida State	16	22	1.4
Maryland	16	20	1.3

3-Point Field Goals Per Game

SCHOOL	G	FGM	FGA	AVG
NC State	16	105	237	6.6
North Carolina	16	70	242	4.4
Georgia Tech	16	67	223	4.2
Wake Forest	16	62	200	3.9
Duke	16	60	186	3.8
Virginia	16	57	174	3.6
Florida State	16	57	193	3.6
Clemson	16	37	119	2.3
Maryland	16	19	58	1.2

Steals

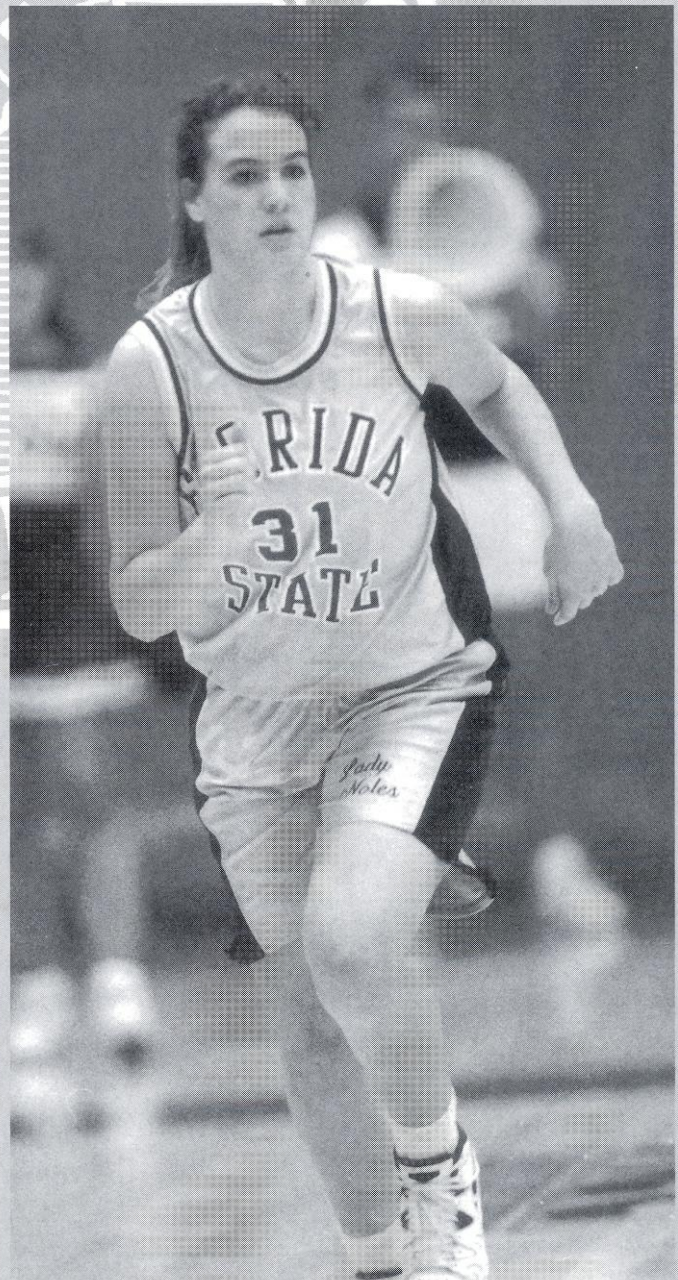
SCHOOLS	G	NO	AVG
North Carolina	16	158	9.9
NC State	16	149	9.3
Virginia	16	146	9.1
Georgia Tech	16	131	8.2
Clemson	16	131	8.2
Maryland	16	127	7.9
Duke	16	119	7.4
Florida State	16	115	7.2
Wake Forest	16	103	6.4

Turnover Margin

SCHOOL	OPP	FOR	MAR
Virginia	19.1	14.4	4.7
Maryland	18.9	16.3	2.6
North Carolina	20.4	18.6	1.9
NC State	18.6	18.2	0.4
Georgia Tech	17.7	18.3	-0.6
Duke	15.5	17.1	-1.6
Clemson	16.2	18.1	-1.9
Wake Forest	15.1	17.6	-2.4
Florida State	16.4	19.4	-2.9

Rebound Margin

SCHOOL	G	FOR	OPP	AVG
North Carolina	16	46.4	39.9	6.5
Virginia	16	40.0	34.6	5.4
Clemson	16	40.0	36.9	3.1
Duke	16	39.2	37.5	1.7
NC State	16	37.6	36.8	0.8
Maryland	16	36.6	39.3	-2.7
Georgia Tech	16	38.7	43.2	-4.5
Florida State	16	35.5	40.2	-4.7
Wake Forest	16	36.3	42.4	-5.9



LYSA MOOREFIELD WAS THE SQUAD'S TOP SHOT BLOCKER IN 1994-95.

ACC FINAL STANDINGS

North Carolina - ACC Champion & NCAA Regional Semifinalist
Virginia - NCAA Tournament Regional Finalist
N.C. State - NCAA Tournament Regional Semifinalist
Duke - NCAA Tournament Participant
Clemson - NWIT Tournament Participant

TEAM	ACC GAMES					ALL GAMES					NEA
	W	L	PCT	HM	RD	W	L	PCT	HM	RD	
Virginia	16	0	1.000	8-0	8-0	27	5	.844	14-0	9-2	4-3
North Carolina	12	4	.750	7-1	5-3	30	5	.857	14-1	7-3	9-1
N.C. State	11	5	.688	7-1	5-3	21	10	.677	9-3	9-5	3-2
Duke	10	6	.625	6-2	4-4	22	9	.710	12-2	5-6	5-1
Clemson	9	7	.563	5-3	4-4	21	11	.656	10-3	6-5	5-1
Georgia Tech	5	11	.313	3-5	2-6	14	16	.467	8-5	4-8	2-3
Wake Forest	4	12	.250	2-6	2-6	11	16	.407	6-6	3-8	2-2
Florida State	3	13	.188	0-8	3-5	8	22	.267	4-10	3-7	1-5
Maryland	2	14	.125	1-7	1-7	11	18	.279	7-9	3-8	1-1

TOURNAMENT SUMMARY

NCAA TOURNAMENT

East Regional (1st Round) - Duke d. Oklahoma State 76-64, Virginia d. Dartmouth 71-68. (2nd Round) Alabama d. Duke 121-120 (4 OT), Virginia d. Florida 72-67. (Regional Semifinals) - Virginia d. Louisiana Tech 63-62. (Regional Final) - Connecticut d. Virginia 67-63. Midwest Regional (1st Round) - N.C. State d. Marquette 77-62. (2nd Round) N.C. State d. Penn State 76-74. (Regional Semifinal) - Georgia d. N.C. State 98-79. West Regional (1st Round) - North Carolina d. Western Illinois 89-48. (2nd Round) North Carolina d. Seton Hall 59-45. (Regional Semifinal) - Stanford d. North Carolina 81-71.

ACC TOURNAMENT

March 2-5, Winthrop Coliseum, Rock Hill, S.C.: First Round - #9 Maryland d. #8 Florida State 72-56. Quarterfinals - #4 Duke d. #5 Clemson 78-71; #1 Virginia d. #9 Maryland 68-46; #2 North Carolina d. #7 Wake Forest 71-51. #3 N.C. State d. #6 Georgia Tech 88-70. Semifinals - Duke d. Virginia 83-82 (OT); North Carolina d. N.C. State 90-71. Finals - North Carolina d. Duke 95-70.

ALL-ATLANTIC COAST CONFERENCE

First Team - Alison Day, Duke; Marion Jones, UNC; Wendy Palmer, UVA; Tara Saunooke, Clem; Charlotte Smith, UNC. Second Team - Jenny Boucek, UVA; Kisha Ford, GaT; Tammy Gibson, NCS; Jennifer Howard, NCS; Carey Kauffman, Duke.

ALL-ACC FRESHMAN TEAM

Stephanie Cross, Md; Monick Foote, UVA; Chasity Melvin, NCS; Carla Munnion, GaT; Tracy Reid UNC.

ACC PLAYER OF THE YEAR

Wendy Palmer, Virginia

ACC FRESHMAN OF THE YEAR

Chasity Melvin, N.C. State

ACC COACH OF THE YEAR

Debbie Ryan, Virginia

NCAA EAST REGION ALL-TOURNAMENT TEAM

Wendy Palmer, UVA; Tora Suber, UVA.

NCAA MIDWEST REGION ALL-TOURNAMENT TEAM

Jennifer Howard, NCS.

NCAA WEST REGIONAL ALL-TOURNAMENT TEAM

Marion Jones, UNC.

ACC ALL-TOURNAMENT TEAM

First Team - Marion Jones, UNC; Chasity Melvin, NCS; Kira Orr, Duke; Wendy Palmer, UVA; Charlotte Smith, UNC. Second Team - Alison Day, Duke; Jeffra Gausepohl, UVA; Stephanie Lawrence, UNC; Tracy Reid, UNC; Tara Saunooke, Clem.

ACC TOURNAMENT MVP

Charlotte Smith, North Carolina.

ALL-AMERICAS

Charlotte Smith, UNC (1st team-AP, Kodak, 2nd Team-USBWA). Wendy Palmer, UVa (1st team-Kodak, USBWA, 2nd-team AP)

FINAL ASSOCIATED PRESS POLL

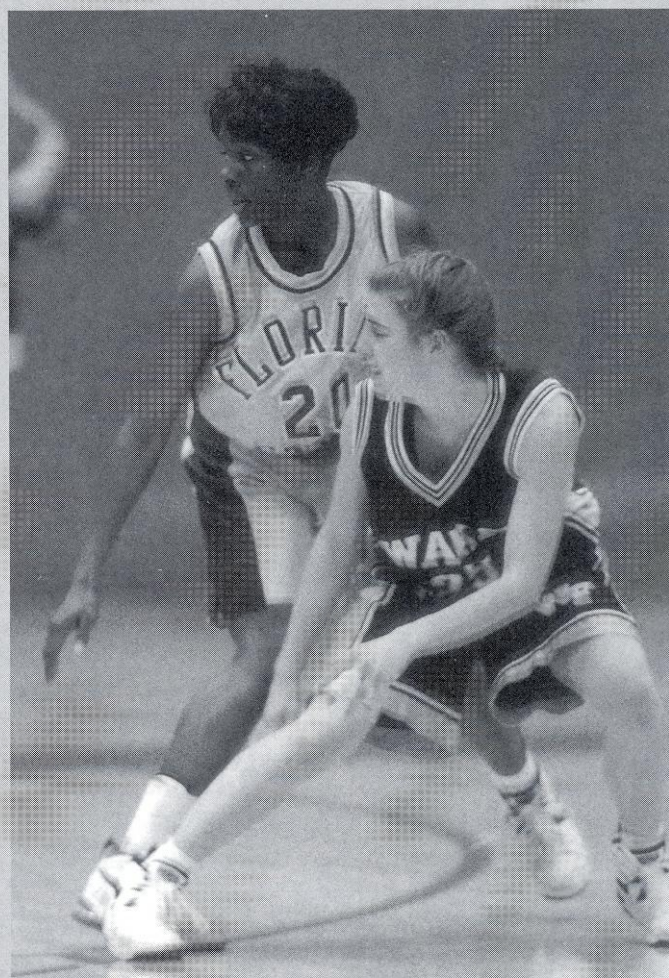
1-Connecticut, 2-Colorado, 3-Tennessee, 4-Stanford, 5-Texas, 6-Vanderbilt, 7-Penn State, 8-Louisiana Tech, 9-Western Kentucky, 10-Virginia, 11-North Carolina, 12-Georgia, 13-Alabama, 14-Washington, 15-Arkansas, 16-Purdue, 17-Florida, 18-George Washington, 19-Mississippi, 20-Duke, 21-Oregon State, 22-San Diego State, 23-Kansas, 24-N.C. State, 25-Old Dominion.

FINAL USA TODAY/CNN POLL

1-Connecticut, 2-Tennessee, 3-Stanford, 4-Georgia, 5-Colorado, 6-Virginia, 7-Texas Tech, 8-Vanderbilt, 9-Purdue, 10-Louisiana Tech, 11-North Carolina, 12-Western Kentucky, 13-Washington, 14-Alabama, 15-George Washing-



LATRICE McLIN IMPROVED HER SCORING AVERAGE TO 8.4 POINTS PER GAME IN ACC CONTESTS.



SOPHOMORE ALETHA PENN EARNED HER FIRST CAREER START AGAINST MARYLAND LAST YEAR.

ton, 16-Penn State, 17-Duke, 18-Florida, 19-N.C. State, 20-Arkansas, 21-Oregon State, 22-Mississippi, 23-Kansas, 24-Drake, 25-Montana.

ACC PLAYERS OF THE WEEK

Wendy Palmer, UVa (D5); Charlotte Smith, UNC (D5); Alison Day, Duke (D12); Alison Day, Duke (D19); Jeffra Gausepohl, UVa (J13); Marion Jones, UNC (J13); Carey Kauffman, Duke (J9); Marion Jones, UNC (J16); Wendy Palmer, UVa (J23); Alison Day, Duke (J30); Wendy Palmer, UVa (J30); Charlotte Smith, UNC (F6); Tara Saunooke, Clem (F13); Tammy Gibson, NCS (F20); Tammy Gibson, NCS (F27); Charlotte Smith, UNC* (M6); (ACC Tournament MVP)

ACC ROOKIES OF THE WEEK

Tracy Reid, UNC (D5); Tracy Reid, UNC (D12); Jeanette Davis, Clem (D19); Tracy Reid, UNC (J3); Tracy Reid, UNC (J9); Chasity Melvin, NCS (J16); Chasity Melvin, NCS (J23); Chasity Melvin, NCS (J30); Carla Munnion, GaT (F6); Monick Foote, UVa (F13); Chasity Melvin, NCS (F20); Chasity Melvin, NCS (F27).

THE ATLANTIC COAST

C O N F E R E N C E

THE TRADITION

Consistency. It's the mark of true excellence in any endeavor. However, in today's intercollegiate athletics, competition has become so balanced and so competitive that it is virtually impossible to maintain a high level of consistency.

Yet the Atlantic Coast Conference has defied the odds. Now in its 43rd year of competition, the ACC has long enjoyed the reputation as one of the strongest and most competitive intercollegiate conferences in the nation. And that is not mere conjecture, the numbers support it.

Since the league's inception in 1953, Atlantic Coast Conference schools have captured 55 NCAA and AIAW championships, including 30 in men's competition and 25 in women's. In addition, 90 men and women have earned the coveted title of NCAA champion.

If success is best measured in terms of wins and losses, then the ACC is unrivaled in NCAA history. The men and women's basketball programs have combined for 14 consecutive trips to the Final Four, and 35 appearances overall. Following North Carolina's women's national championship season of 1994, the first ever for the league, ACC teams have claimed eight titles while finishing second on 10 occasions.

The league's women's basketball program ranks among the best in the country in terms of overall NCAA Tournament record. With 66 wins in 55 appearances, the conference is listed second best in total wins and total appearances.

On the men's side, North Carolina, the nation's all-time winningest team with 1,626 wins, has won NCAA championships in 1957, 1982 and 1993. N.C. State walked away with the coveted crown in 1974 and 1983, while Duke won back-to-back titles in 1991 and 1992.

Over the years, ACC basketball teams have gained global recognition through their NCAA Tournament exposure. More than 200 regular season games, plus all of the men's conference tournament and the semifinals and finals of the women's tournament will be televised. Conference teams will be seen on all three major networks, ESPN and the Prime Network.

ACC Basketball is more than numbers though. The faces behind the men's and women's programs account for 23 national player of the year honors and ten national coach of the year awards, including Dawn Staley's player recognition in 1991 and 1992, and coach's distinction for North Carolina's Sylvia Hatchell (1994), Maryland's Chris

Weller (1992), Virginia's Debbie Ryan (1991) and N.C. State's Kay Yow (1990). The ACC has produced 16 first-team All-America's, 30 Olympians, including coaches and players. N.C. state's Yow headed up the 1988 gold-winning Olympic team, assisted by Sylvia Hatchell of North Carolina. Maryland's Vicky Bullet was a member of the 1988 and 1992 Olympic teams and Virginia's Dawn Staley will participate in the 1996 Olympics in Atlanta.

The ACC also stands at the forefront of intercollegiate athletics in terms of academic accomplishments of its student-athletes. That accomplishment is nowhere better reflected than in the CFA Academic Achievement Award which is awarded to a CFA member institution with the highest graduation rate among members of its football team. This past year, Duke captured the coveted award for the third straight year and sixth time overall. In addition, the ACC had four of the 20 CFA members who reported graduate rates of 70 percent or better.

Since 1983, 162 women's basketball players have received ACC Honor Roll recognition. The 1994-95 academic year included 28 selections. In addition, ACC basketball players have earned first-team Academic All-America honors four times.

THE 1994-95 SEASON IN REVIEW

The 1994-95 academic year will be remembered as one of the best in the 43-year history of the ACC. Conference teams captured three national titles while two other ACC teams participated in national title games. In all, the ACC has won 21 national team crowns in the last five years.

National champions from the ACC for the 1994-95 season were Virginia in men's soccer, North Carolina in women's soccer and Maryland in women's lacrosse.

The two NCAA runners-up were Maryland in men's lacrosse and North Carolina in field hockey. Overall, ACC teams were 57-39-1 (.592) in NCAA Tournament play.

In addition, four ACC schools - North Carolina, Virginia, Duke and Florida State - were ranked in the top 25 of the Sears Directors' Cup, an all-sports award honoring the Division I school with the best performance by women's and men's athletic teams during the 1994-95 academic year.

Overall, the ACC placed at least one team in the top 10 nationally in 13 of the 23 sports sponsored by the league. Other records of note during the 1994-95 campaign include 79 teams competing at NCAA championships, five

bowl teams and 24 Top 10 showings.

Eight ACC teams, in seven different sports, representing five of the nine member institutions, earned a No. 1 ranking during the course of the 1994-95 academic year.

THE HISTORY

The Atlantic Coast Conference was founded May 8, 1953, at Sedgefield Inn near Greensboro, North Carolina. The conference's seven charter members from three states included Clemson University, University of Maryland, University of North Carolina, North Carolina State University, University of South Carolina and Wake Forest University.

The withdrawal of the seven schools from the Southern Conference came early on the morning of May 8, 1953, during the annual spring meeting of the conference. On June 14, 1953, the seven members met in Raleigh, N.C., where a set of bylaws were adopted and the name Atlantic Coast Conference was officially recognized.

Dr. James T. Penney of the University of South Carolina was elected temporary chairman and became the ACC's first president when the school's met again on June 14, 1953. Professor F.W. Clonts of Wake Forest was named vice president and Dr. Oliver Cornwell of North Carolina was elected secretary-treasurer.

On December 4, 1953, the Conference again met at Sedgefield Inn and officially admitted the University of Virginia to the league. Virginia began active championship participation with the 1953-54 basketball season.

The ACC set up office at the King Cotton Hotel in Greensboro, N.C., on July 1, 1954. The office was moved to 338 North Elm Street on July 1, 1966 and then moved to 2100-N West Cornwallis Drive in April of 1980. The conference moved to its current site at 6011 Landmark Center in April 1989.

The first and only withdrawal of a member from the ACC occurred on June 30, 1971 when the University of South Carolina tendered its resignation. The Conference continued with seven members until April 3, 1978, when Georgia Institute of Technology was admitted. The Atlanta, Ga. school became a playing member of the ACC on July 1, 1979, but did not become eligible for the football championship until the 1983 season. The Conference expanded to nine teams with the admittance of Florida State University on September 15, 1990. The Seminoles became a playing member of the ACC on July 1, 1991, but did not become eligible for the football championship until the 1992 season.

THE SCHOOLS

CLEMSON — Charter member of the SIAA in 1894, charter member of the SC in 1921, charter member of the ACC in 1953.

DUKE — Joined the SC in December, 1928, charter member of the ACC in 1953.

FLORIDA STATE — Charter member of the Dixie Conference in 1948, joined the Metro Conference in July, 1976, joined the ACC September 15, 1990.

GEORGIA TECH — Charter member of the SIAA in 1894, charter member of SC in 1921, charter member of the SEC in 1932, joined the ACC in July, 1979.

MARYLAND — Charter member of the SC in 1921, charter member of the ACC in 1953.

NORTH CAROLINA — Charter member of the SIAA in 1894, charter member of the SC in 1921, charter member of the ACC in 1953.

N.C. STATE — Charter member of the SC in 1921, charter member of the ACC in 1953.

VIRGINIA — Charter member of the SIAA in 1894, charter member of the SC in 1921, resigned from SC in December, 1936, joined the ACC in December, 1953.

WAKE FOREST — Joined the SC in February, 1936, charter member of the ACC in 1953. Ⓞ

ACC QUICK FACTS

The ACC Office

6011 Landmark Center Blvd.

P.O. Drawer ACC

Greensboro, NC 27419-6999

Phone: (910) 854-8787; Fax: (910) 854-8797

Commissioner

Gene Corrigan

Associate Commissioner

Fred Barakat, Basketball

Assistant Commissioners

Tom Mickle

Bradley Faircloth, Football Officiating

David Thompson, Compliance

Dee Todd, Championships

Rick Chryst, Marketing & Legal Affairs

Assistant To The Director of Compliance

Carole Anne Gilmore

Assistant To The Commissioner

Brian Morrison, Director of Media Relations

Assistant Media Relations Director

Emily Watkins

Media Relations Intern

Ann-Tyler Sangston