

#24 • 5-8 • Sophomore • G • Albany, GA

Jen ROBINSON



Has the potential to be one of the most powerful guards to ever play at FSU...is a very accurate shooter and has the ability to be a three-point scoring threat...has tremendous speed...has good vision on

the court...can run the floor from the point...aggressive offensively and will accelerate down the floor...teamed with players from the University of Florida, Central Florida and South Florida to place first at the Sunshine State Games in Gainesville over the summer. **1995-96:**



Made an immediate contribution to the team as a freshman, playing in all 28

games and earning 12 starts...twice tallied double figures in scoring and came within a basket of doing so six other times...scored a season-high 13 points and dished out a season-high 10 assists vs. FAMU for her first career "double-double"...her 10 assists vs. the Rattlerettes set the season's single-game superlative for assists...led the squad with 78 assists and was tied for third with 28 steals on the year...a threat from the outside, she finished second on the team in three-pointers with 12...snatched a season-high six steals vs. N.C. State...started the first six games of the season and averaged 6.7 points during that time.

High School: Averaged 26.0 points, 5.0 rebounds, 6.0 assists and 5.0 steals as a senior for her

Robinson's Career Highs

POINTS	13 (12/10/95 vs. FAMU)
FGM	6 (12/10/95 vs. FAMU)
FGA	14 (1/4/96 vs. North Carolina)
3FGM	2 (1/22/96 vs. Georgia Tech and 2/18/96 vs. Maryland)
3FGA	5 (twice)
FTM	6 (12/20/95 vs. UNO)
FTA	8 (12/20/95 vs. UNO)
OFF. REB	2 (twice)
DEF. REB	5 (twice)
TOT. REB	7 (1/9/96 vs. NC State)
ASSISTS	10 (12/10/95 vs. FAMU)
BLOCKS	1 (12/10/95 vs. FAMU)
STEALS	6 (1/9/96 vs. NC State)

Dougherty High School team...led the squad to a 54-6 record her last two seasons...named Georgia's Player of the Year for the South in 1994-95...was a two-year first-team all-state and all-region selection...scored 1,658 points--the most of any female ever in Dougherty County...pegged Class IAAA Player of the Year...named the Georgia Coaches Association's Athlete of the Year...selected Most Valuable Player at the Tennessee-Georgia All-Star game...earned Dougherty County Athlete of the Year honors...also competed in track, cross country and softball...an honor roll member and Presidential Award recipient.

Personal: Major is undecided...born February 29, 1977.

Robinson's Career Numbers

YEAR	G-GS	MPG	FGM-FGA	PCT	3FG-3FGA	PCT	FTM-FTA	PCT	REB-AVG	AS	ST	BK	TO	PF-DQ	PTS-AVG
95-96	28-12	22.8	53-184	.288	12-51	.235	22-41	.537	68-2.4	78	28	2	110	62-2	140-5.0
ACC	16-6	22.8	28-106	.264	8-29	.276	13-26	.500	39-2.4	42	17	0	57	38-2	77-4.8

#42 • 6-2 • Sophomore • C • Shreveport, LA

Leslie WAUGH



Size allows her to be a threat inside both offensively and defensively...will be heavily relied on to make solid contributions in the inside game...comes to FSU from

one of the most powerful high school programs in the country...very strong inside

...takes up a lot of space down low...high expectations for her as a rebounder and low post scorer. **1995-96:**

Played her first season in the Garnet and Gold after recovering from a knee injury...saw limited action in redshirt

freshman season, playing in 18 games...best outing came against Wake Forest in the last regular-season game when she scored a

season-high six points...in six minutes of play, she went 3-for-3 from the field and recorded an assist...she entered the game with FSU leading 14-13 and scored six of the team's next nine points, sparking the squad to it biggest lead of the game at seven points. **1994-95:**

Opted to redshirt, after suffering a knee injury at the 1994 Olympic Festival tryouts. **High School:** Selected as the MVP in the Louisiana State Tournament...led her C.E. Byrd team to back to back State Championships...team finished as the number two team in the nation by *USA Today*...averaged 12.0 ppg, and 10.0 rpg. **Personal:** Is a nutrition and fitness major...celebrates a patriotic birthday being born on July 4, 1976.



Waugh's Career Highs

POINTS	6 (2/22/96 vs. Wake Forest)
FGM	3 (2/22/96 vs. Wake Forest)
FGA	3 (2/22/96 vs. Wake Forest and 2/26/96 vs. Florida)
FTM	2 (12/29/95 vs. Temple and 2/3/96 vs. Clemson)
FTA	2 (12/29/95 vs. Temple and 2/3/96 vs. Clemson)
OFF. REB	2 (2/26/96 vs. Florida)
DEF. REB ...	2 (12/20/95 vs. UNO and 2/11/96 vs. NC State)
TOT. REB ..	3 (2/11/96 vs. NC State and 2/26/96 vs. Florida)
ASSISTS	1 (11/27/95 vs. Florida Atlantic and 2/22/96 vs. Wake Forest)
BLOCKS	1 (2/26/96 vs. Florida and 2/29/96 vs. GaTech)
STEALS	1 (12/30/95 vs. Furman)



Waugh's Career Numbers

YEAR	G-GS	MPG	FGM-FGA	PCT	3FG-3FGA	PCT	FTM-FTA	PCT	REB-AVG	AS	ST	BK	TO	PF-DQ	PTS-AVG
95-96	18-0	3.6	8-13	.615	0-0	.000	4-5	.800	6-11	2	1	2	6	9-0	20-1.1
ACC	8-0	2.6	3-5	.600	0-0	.000	2-2	1.000	4-0.5	1	0	0	2	4-0	8-1.0

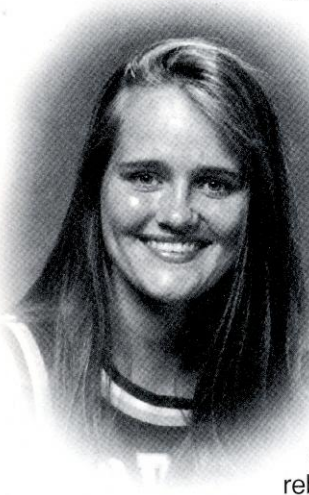
#21 • 6-4 • Sophomore • F/C • Inverness, FL

Kristy WHITE



Plays defense and runs the court very well for an athlete of her size...at 6-4, is the tallest player on the squad...has the ability to dominate in scoring, rebounding and blocking shots...provides FSU with a tremendous threat in its inside game.

1995-96: Made the greatest impact of all the newcomers as she played in all 28 games, including four starts...ranked second on the team in scoring (7.9) and rebounding (5.3) in ACC games...dominated the inside, tally-ing a team-high 26 blocks...ranked among the league's top 10 in blocks per game...gave a glimpse of what's ahead when she recorded her first career "double-double" with 12 points and 11 rebounds against FAMU...scored



in double-figures in seven games, including a season-high 15 points vs. Wake Forest...tallied double-digit rebounds in two games...led the team in scoring one time and in rebounding six times...notched her second career "double-double" with 10 points and a season-high 13 rebounds vs. Maryland...scored in all but three games...swatted a season-high four blocks vs. Georgia Tech. **High School:** A pre-season *USA Today* all-state selection in 1994-95...averaged 22.0 points and 13.0 rebounds as a senior at Citrus High School...earned second team all-state and first team all-county and all conference honors...was tabbed the conference's Player of the Year as a senior...was listed among *Student Sports Magazine's* top 50 girls in the state of Florida...was a two-time team Most Valuable Player selection...also competed in track and volleyball...was a member of the Principal's and Dean's Lists.

White's Career Highs

POINTS	15 (1/20/96 vs. Wake Forest)
FGM	7 (1/20/96 vs. Wake Forest)
FGA	18 (1/14/96 vs. Maryland)
FTM	7 (12/28/95 vs. Missouri)
FTA	9 (12/28/95 vs. Missouri)
OFF. REB	6 (1/14/96 vs. Maryland)
DEF. REB	7 (12/10/95 vs. FAMU and 1/14/96 vs. Maryland)
TOT. REB	13 (1/14/96 vs. Maryland)
ASSISTS	2 (12/28/95 vs. Missouri and 2/22/96 vs. Wake Forest)
BLOCKS	4 (1/31/96 vs. Georgia Tech)
STEALS	2 (2/16/96 vs. Virginia)

Personal: Is undecided on a major...was born January 13, 1977.



White's Career Numbers

YEAR	G-GS	MPG	FGM-FGA	PCT	3FG-3FGA	PCT	FTM-FTA	PCT	REB-AVG	AS	ST	BK	TO	PF-DQ	PTS-AVG
95-96	28-4	21.0	83-191	.435	0-0	.000	26-50	.520	134-4.8	10	9	26	48	76-2	192-6.9
ACC	16-3	23.7	58-124	.468	0-0	.000	11-26	.423	85-5.3	7	6	16	25	38-1	127-7.9

Lady Seminole NEWCOMERS

Latavia Coleman

#30 • 5-10 • Freshman
F • Macon, GA

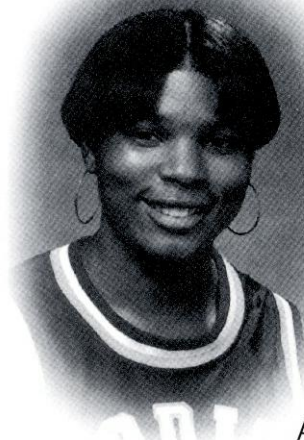
A very durable inside player...has potential to make an immediate impact...can shoot from outside and penetrate...a solid athlete...all-around contributor...participated in the Tennessee-Georgia High School

All Star game and recorded three points, five rebounds, two steals and two blocks for the victorious Georgians.

High School: A preseason *Street & Smith's* honorable mention All-American... averaged 17.0 ppg, 8.0 rpg and 6.0 apg...led Southwest Macon team to the state regional finals... pegged team's most valuable player...was an all-city, all-state and all-middle Georgia selection...also excelled in the classroom... earned school's Scholar

Athlete Award... achieved a 3.6 GPA...an Honor Roll and Principal's

List student. **Personal:** Was born April 14, 1978...is majoring in criminology.



Jasmine Rodmon

#3 • 5-8 • Freshman
G • Miramar, FL

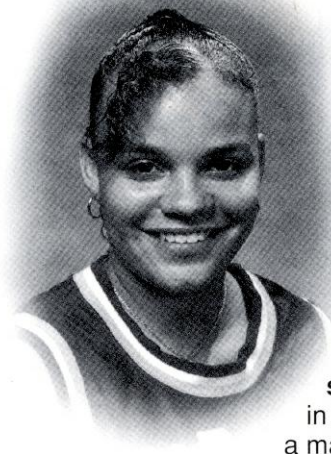
Will add a tremendous amount of speed to the team... has good vision on the court...tremendous ability to find the open player. **High School:**

Transferred to Miramar High School for senior season and was not able to compete...

was the starting point guard as a junior at American Senior...averaged 12.0 points, 10.0 assists, 5.0 steals and 4.0 rebounds as a junior...a two-time All-Dade County selection...was chosen the preseason player of the year for Dade County before the season. **Per-**

sonal: Was an honor student in high school...plans to pursue a major in law...was born April 20,

1978...completed eight hours of credit at FSU over the summer.



'96 Personnel Chart

RETURNING STARTERS (4)

F	Latrice McLin	Jr.	6-0	7.0 ppg, 5.3 rpg
C	Lysa Moorefield	Jr.	6-1	7.6 ppg, 4.5 rpg
G	Aletha Penn	Jr.	5-5	5.7 ppg, 2.6 apg
G	Wendy Hampton	Jr.	5-11	6.6 ppg, 3.5 rpg

OTHER RETURNING PLAYERS (7)

G	Mehgan Heaps	So.	5-8	1.3 ppg, 0.4 rpg
G	Jennifer Miller	So.	5-8	0.5 ppg, 0.2 rpg
G	Kristy Parker	So.	5-6	1.6 ppg, 0.5 rpg
G	Jen Robinson	So.	5-8	5.0 ppg, 2.8 apg

F	Arleshia Davidson	So.	6-2	2.9 ppg, 1.5 rpg
F/C	Leslie Waugh	So.	6-3	1.1 ppg, 0.9 rpg
F/C	Kristy White	So.	6-4	6.9 ppg, 4.8 rpg

STARTERS LOST (1)

F	Carla Williams	6-0	15.8 ppg, 8.4 rpg
---	----------------	-----	-------------------

NEWCOMERS (2)

G	Jasmine Rodmon	Fr.	5-8	Woodstock, Ga.
F	Latavia Coleman	Fr.	5-10	Macon, Ga.

A Closer Look At

The Lady SEMINOLES

By State

Florida (3): Lysa Moorefield (Altamonte Springs), Kristy White (Inverness)
Georgia (4): Latavia Coleman (Macon), Arleshia Davidson (Marietta), Latrice McLin (Rossville), Jen Robinson (Albany)
Louisiana (1): Leslie Waugh (Shreveport)
Michigan (1): Kristy Parker (Richland)
Missouri (1): Aletha Penn (Kansas City)
North Carolina (1): Wendy Hampton (Mt. Ulla)
Pennsylvania (1): Meghan Heaps (Columbia)
West Virginia (1): Jennifer Miller (Charleston)

By Height

Penn 5-5
 Parker 5-6
 Miller 5-8
 Robinson 5-8
 Rodman 5-8
 Heaps 5-8
 Coleman 5-10
 Hampton 5-11
 McLin 6-0
 Moorefield 6-1
 Davidson 6-2
 Waugh 6-3
 White 6-4

By Class
Seniors: None

Freshmen (2):
 Latavia Coleman
 Jasmine Rodmon

Juniors (4):
 Wendy Hampton
 Latrice McLin
 Lysa Moorefield
 Aletha Penn

By Position

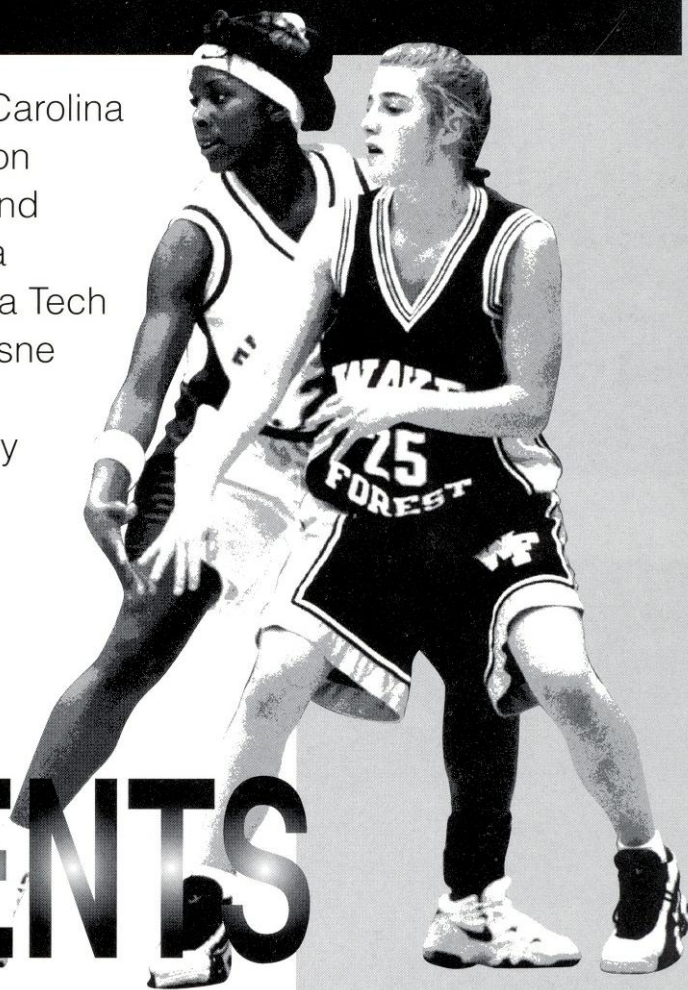
Guards (7): Meghan Heaps, Latrice McLin, Jennifer Miller, Kristy Parker, Aletha Penn, Jen Robinson, Jasmine Rodmon
Forwards (7): Latavia Coleman, Arleshia Davidson, Wendy Hampton, Latrice McLin, Lysa Moorefield, Leslie Waugh, Kristy White
Centers (3): Lysa Moorefield, Kristy White, Leslie Waugh

Sophomores (7):
 Arleshia Davidson
 Meghan Heaps
 Jennifer Milller
 Kristy Parker
 Jen Robinson
 Leslie Waugh
 Kristy White



Inside...

- ▶ South Florida
- ▶ Miami
- ▶ Southwest Missouri
- ▶ FAMU
- ▶ NC State
- ▶ Florida
- ▶ Florida Atlantic
- ▶ Central Florida
- ▶ Stetson
- ▶ Mississippi
- ▶ Duke
- ▶ Wake Forest
- ▶ North Carolina
- ▶ Clemson
- ▶ Maryland
- ▶ Virginia
- ▶ Georgia Tech
- ▶ Duquesne
- ▶ Travel Itinerary



OPPONENTS

1996-97 OPPONENTS



November 22—Dial Soap Challenge

QUICK FACTS

Location Tampa, FL
 Nickname Bulls
 Enrollment 36,000
 Colors Green & Gold
 Conference Conference USA
 Arena/Capacity Sun Dome/10,411 & The Corral 1,000

BASKETBALL FACTS

Head Coach Jerry Ann Winters
 Record at School/Years First Year
 Career Record/Years 304-240/20
 Office Phone (813) 974-4023
 Assistant Coaches Ron Gaithright,
 John Hughs, Jennifer Wasson

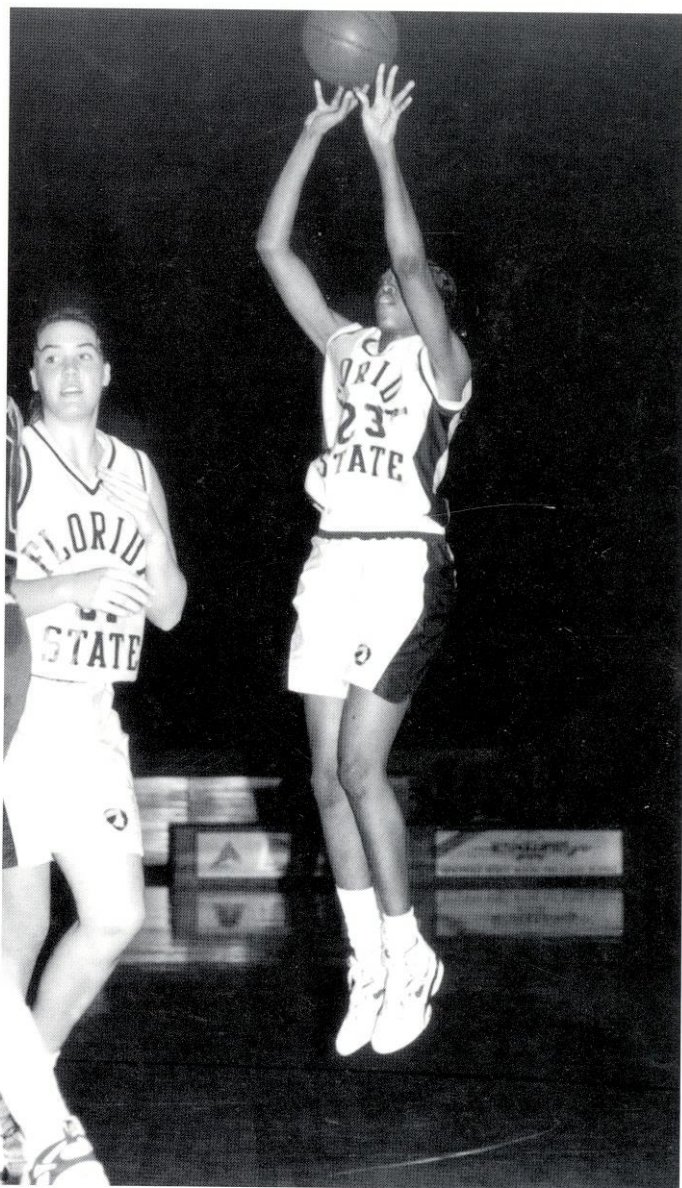
SPORTS INFORMATION

Office Phone (813) 974-2125
 Fax Number (813) 974-5328
 Basketball Contact Tracey Judd
 Home Phone (813) 968-7529

TEAM INFORMATION

1995-96 Record 6-21
 Conference Record/Finish 2-12/11
 Conference Tourney Finish 0-1
 Starters Returning/Lost 4/1
 Letterwinners Returning/Lost 11/3
 Returning Starters (Pos/Class) ... Jenny Koeppel (G/Sr.),
 Haylee Ahu (G/Sr.), Sonya Swick (F-G/So.),

Tanya Gary (F/So.)
 Top Returning Scorer Jenny Koeppel (9.1 ppg.)
 Top Returning Rebounder Jenny Koeppel (3.2 rpg.)
 Top Newcomers (Pos/Hgt) Shari Ross (G/5-9)
 Sarah Wilson (F/6-0)



Arleshia Davidson



November 22-23 • Dial Soap Challenge

QUICK FACTS

Location Coral Gables, FL
 Nickname Hurricanes
 Enrollment 13,541
 Colors Orange, Green & White
 Conference Big East
 Arena/Capacity Knight Sports Complex/1,200

BASKETBALL FACTS

Head Coach Ferne Labati
 Record at School/Years 155-79/8
 Career Record/Years 291-201/17
 Office Phone (305) 284-5802
 Assistant Coaches Robin Harmony, Toni Smiley,
 Nina Wagner

SPORTS INFORMATION

Office Phone (305) 284-3244
 Fax Number (305) 284-2807
 Basketball Contact Samuel Henderson
 Home Phone (305) 674-7914

TEAM INFORMATION

1995-96 Record 14-13
 Conference Record/Finish 9-9
 Conference Tourney Finish 0-1
 Starters Returning/Lost 3/2
 Letterwinners Returning/Lost 9/5
 Returning Starters (Pos/Class) Octavia Blue (F/Jr.),
 Desma Thomas (F/Sr.), Cassandra Wimes (G/Jr.)
 Top Returning Scorer Octavia Blue (16.0 ppg.)
 Top Returning Rebounder Octavia Blue (6.4 rpg.)
 Top Newcomers (Pos/Hgt) Carly Collins (C/6-5),
 Jamie Lilly (F/5-11), Yashica Williams (G-F/5-11),
 Shannon Drury (G/5-8), Gina Graziani (G/5-8)

*Southwest
 Missouri State*



November 30

QUICK FACTS

Location Springfield, MO
 Nickname Lady Bears
 Enrollment 17,441

Colors Maroon & White
 Conference Missouri Valley
 Arena/Capacity Hammons Student Center/8,858

BASKETBALL FACTS

Head Coach Cheryl Burnett
 Record at School/Years 185-85/9
 Career Record/Years Same
 Office Phone (417) 836-4136
 Assistant Coaches Lynnette Robinson, Karen Rapier,
 Clint Kinnamon

SPORTS INFORMATION

Office Phone (417) 836-5402
 Fax Number (417) 836-4868
 Basketball Contact Brad Hainje
 Home Phone (417) 886-3511

TEAM INFORMATION

1995-96 Record 25-5
 Conference Record/Finish 16-2/1st
 Conference Tourney Finish 1st
 Starters Returning/Lost 3/2
 Letterwinners Returning/Lost 6/4
 Returning Starters (Pos/Class) Roshanda Reed
 (G-F/So.), Jessie McVay (G/Sr.), Lisa Davies (F/Jr.)
 Top Returning Scorer Roshanda Reed (12.6 ppg.)
 Top Returning Rebounder Roshanda Reed (6.7 rpg.)
 Top Newcomers (Pos/Hgt) Patrice Cleem (F/6-1),
 Rachel Johnson (F/6-1), Tiffany Johnson (C/6-4),
 Sarah Singer (G/5-9), Kenya Tuttle (F/6-1)



December 3

QUICK FACTS

Location Tallahassee, FL
 Nickname Rattlerettes
 Enrollment 10,395
 Colors Orange & Green
 Conference Mid-Eastern Athletic
 Arena/Capacity Gaither Gymnasium/3,365

BASKETBALL FACTS

Head Coach Claudette Farmer
 Record at School/Years 107-64/6
 Career Record/Years Same
 Office Phone (904) 561-2193
 Assistant Coaches Beverly Burnett, Ernest Rozier

SPORTS INFORMATION

Office Phone (904) 599-3200
 Fax Number (904) 599-3206
 Basketball Contact Michelle Jinks
 Home Phone (904) 224-3840

TEAM INFORMATION

1995-96 Record 21-7
 Conference Record/Finish 14-2
 Conference Tourney Finish 1-1
 Starters Returning/Lost 3/2
 Letterwinners Returning/Lost 7/4
 Returning Starters (Pos/Class) Delicia Walker (G/Sr.),
 Glenda Lee (PG/So.), Shantell Jackson (C/Jr.)
 Top Returning Scorer Delicia Walker (10.4 ppg.)
 Top Returning Rebounder Shantell Jackson (3.8 rpg.)
 Top Newcomers (Pos/Hgt) Damelia Glenn (G-F/5-11),
 Tomekia Peterson (F-C/6-2), Crystal Worlds (F/5-10),
 Temiya Brown (G-F/5-10), Karen Marshall (G/5-6)

*North
 Carolina State*



December 7 & January 26

QUICK FACTS

Location Raleigh, NC
 Nickname Wolfpack
 Enrollment 27,537
 Colors Red & White
 Conference Atlantic Coast
 Arena/Capacity Reynolds Coliseum/12,400

BASKETBALL FACTS

Head Coach Kay Yow
 Record at School/Years 451-183/21
 Career Record/Years 508-202/25
 Office Phone (919) 515-2880
 Assistant Coaches Stephanie Glance, Robin Pate,
 Jennifer Price

SPORTS INFORMATION

Office Phone (919) 515-2102
 Fax Number (919) 515-2898
 Basketball Contact Wendi McLendon-Pruett
 Home Phone (919) 847-2400

TEAM INFORMATION

1995-96 Record 20-10
 Conference Record/Finish 11-8/3rd
 Conference Tourney Finish 1-1

Starters Returning/Lost 4/1
 Letterwinners Returning/Lost 11/1
 Returning Starters (Pos/Class) Jennifer Howard
 (G/Sr.), Nicole Mitchell (G/Sr.),
 Umecki Webb (G-F/Sr.), Chasity Melvin (C/Jr.)
 Top Returning Scorer Chasity Melvin (16.3 ppg)
 Top Returning Rebounder Umecki Webb (7.7 rpg)
 Top Newcomers (Pos/Hgt) Kristen Gillespie (G/5-11),
 Linda Pshigoda (P/6-2), Katie Smrcka-Duffy (G/5-9),
 Nailah Wallace (G/6-0)



November 22-23
 at Dial Soap Challenge & December 14

QUICK FACTS

Location Gainesville, FL
 Nickname Lady Gators
 Enrollment 39,500
 Colors Orange and Blue
 Conference Southeast Conference
 Arena/Capacity Stephen C. O'Connell Center/12,000

BASKETBALL FACTS

Head Coach Carol Ross
 Record at School/Years 118-59/6
 Career Record/Years Same
 Office Phone (352) 375-4683 ext.5511
 Assistant Coaches Ron Aldy, Joi Williams,
 Amanda Butler

SPORTS INFORMATION

Office Phone (352) 375-4683
 Fax Number (352) 375-4809
 Basketball Contact Kathy Cafazzo
 Home Phone (352) 377-7868

TEAM INFORMATION

1995-96 Record 21-9
 Conference Record/Finish 6-5/T 5th
 Conference Tourney Finish 2-1
 Starters Returning/Lost 5/0
 Letterwinners Returning/Lost 8/2
 Returning Starters (Pos/Class) . Delisha Milton (F-C/Sr.),
 Murriel Page (F-C/Jr.), Dana Smith (G/Jr.),
 Mahogany Hudson (G/Jr.), Talatha Bingham (G-F/So.)
 Top Returning Scorer Delisha Milton (15.4 ppg.)
 Top Returning Rebounder Murriel Page (9.0 rpg.)
 Top Newcomers (Pos/Hgt) Kelly Freeman (F/6-1),
 Akita Heatly (G/5-8), Bea Jacobs (F-C/6-2),
 Erin O'Neil (C/6-3), Tiffany Travis (G-F/5-10)



December 18

QUICK FACTS

Location Boca Raton, FL
 Nickname Owls
 Enrollment 18,500
 Colors Blue and Gray
 Conference Trans America
 Arena/Capacity FAU Gymnasium/5,000

BASKETBALL FACTS

Head Coach Wayne Allen
 Record at School/Years 142-111/8
 Career Record/Years 142-111/8
 Office Phone 561)367-3712
 Assistant Coaches Teresa Baker-Atkinson;
 Paulette King

SPORTS INFORMATION

Office Phone (561) 367-3063
 Fax Number (561) 367-2996
 Basketball Contact Brian Miller
 Home Phone (954) 677-2827

TEAM INFORMATION

1995-96 Record 13-16
 Conference Record/Finish 8-8/5th
 Conference Tourney Finish 2nd
 Starters Returning/Lost 5/0
 Letterwinners Returning/Lost /3
 Returning Starters (Pos/Class) Kim Newson (F/Jr.);
 Amanda Whitney (F/Sr.); Sherri Pla (G/Jr.);
 Yonka Moses (G/Jr.); Tee Bias (C/Sr.)
 Top Returning Scorer Kim Newson (12.3 ppg.)
 Top Returning Rebounder Amanda Whitney (6.1 rpg.)
 Top Newcomers (Pos/Hgt) Rita Mosley (G/5-7);
 Katrina Turner (C-F/6-2); Tammy Vaughn (F/5-11);
 April Gibson (C-F/6-0); Sanja Culana (C/6-3)



December 20

QUICK FACTS

Location Orlando, FL
 Nickname Golden Knights
 Enrollment 28,000
 Colors Black and Gold
 Conference Trans America
 Arena/Capacity UCF Arena/5,100

BASKETBALL FACTS

Head Coach TBA
 Record at School/Years
 Career Record/Years
 Office Phone (407) 823-5802
 Assistant Coaches TBA

SPORTS INFORMATION

Office Phone (407) 823-2142
 Fax Number (407) 823-5266
 Basketball Contact Lara Thornton
 Home Phone (407) 679-4121

TEAM INFORMATION

1995-96 Record 15-14
 Conference Record/Finish 7-8/6th
 Conference Tourney Finish 1st
 Starters Returning/Lost 3/2
 Letterwinners Returning/Lost 6/4
 Returning Starters (Pos/Class) Gylannda Henderson
 (G/Sr.), Shantrice Jackson (F/Sr.),
 Chariya Davis (G/So.)
 Top Returning Scorer .. Gylannda Henderson (12.9 ppg.)
 Top Returning Rebounder Shantrice Saxon (6.4 rpg.)
 Top Newcomers (Pos/Hgt) Ladonna Larry (G/5-6),
 Michelle Tom (G/5-10)



December 22

QUICK FACTS

Location DeLand, Florida
 Nickname Hatters
 Enrollment 2,248

Colors Green & White
 Conference Trans America Athletic
 Arena/Capacity Edmunds Center/5,000

BASKETBALL FACTS

Head Coach Dee Romine
 Record at School/Years 50-32/3
 Career Record/Years 172-136/12
 Office Phone (904) 822-8116
 Assistant Coaches Anthony Cemelich, Debbie Gadd

SPORTS INFORMATION

Office Phone (904) 822-8131
 Fax Number (904) 822-8132
 Basketball Contact Tom McClellan
 Home Phone (904) 738-7677

TEAM INFORMATION

1995-96 Record 19-9
 Conference Record/Finish 12-4/2nd
 Conference Tourney Finish 1-1
 Starters Returning/Lost 3/2
 Letterwinners Returning/Lost 9/2
 Returning Starters (Pos/Class) Liz Hufford (G/Sr.),
 Cheryl Patton (F/Jr.), Shannon Menapace (G/Jr.)
 Top Returning Scorer Cheryl Patton (10.3 ppg.)
 Top Returning Rebounder Cheryl Patton (4.1 rpg.)
 Top Newcomers (Pos/Hgt) Dana Bodner (G/5-6),
 Nicole Knappmiller (C/6-2), Jennifer Williams (G/5-9),
 Joy Fraley (F-C/6-0)



December 30

QUICK FACTS

Location Oxford, Mississippi
 Nickname Lady Rebels
 Enrollment 12,542
 Colors Red & Blue
 Conference Southeastern
 Arena/Capacity: C.M. "Tad" Smith Coliseum/8,135

BASKETBALL FACTS

Head Coach Van Chancellor
 Record at School/Years 423-143/18
 Career Record/Years Same
 Office Phone (601) 232-7592
 Assistant Coaches Peggie Gillom, Steve Curtis,
 Tiffany King

SPORTS INFORMATION

Office Phone (601) 232-7522
 Fax Number (601) 232-7006
 Basketball Contact Lamar Chance
 Home Phone (601) 236-5055

TEAM INFORMATION

1995-96 Record 18-11
 Conference Record/Finish 6-5/T 5th
 Conference Tourney Finish 1-1
 Starters Returning/Lost 3/2
 Letterwinners Returning/Lost 9/4
 Returning Starters (Pos/Class) Lisa Miller (G/Sr.),
 Regan Seybert (G/Sr.), Christie Sides (G/So.)
 Top Returning Scorer Lisa Miller (11.7 ppg.)
 Top Returning Rebounder Niesha Dobbs (3.4 rpg.)
 Top Newcomers (Pos/Hgt) Tiffany Adkins (F-G/6-2),
 Myquita Mackey (F/5-11), Stephanie Murphy (F/5-11),
 Julianne Signaigo (F/6-2), Leslie Vollrath (F-C/6-3),
 Sinissia Wysinger (F/6-1)



January 3 & February 2

QUICK FACTS

Location Durham, NC
 Nickname Blue Devils
 Enrollment 6,057
 Colors Royal Blue & White
 Conference Atlantic Coast
 Arena/Capacity Cameron Indoor Stadium/9,314

BASKETBALL FACTS

Head Coach Gail Goestenkors
 Record at School/Years 76-42/4
 Career Record/Years Same
 Office Phone (919) 613-7528
 Assistant Coaches Gale Valley, Joanne Boyle,
 Shonta Tabourn

SPORTS INFORMATION

Office Phone (919) 684-2633
 Fax Number (919) 684-2489
 Basketball Contact Lori Winters
 Home Phone (919) 493-3842

TEAM INFORMATION

1995-96 Record 26-7
 Conference Record/Finish 12-4/2nd
 Conference Tourney Finish 2-1/2nd
 Starters Returning/Lost 3/2
 Letterwinners Returning/Lost 10/2
 Returning Starters (Pos/Class) Kira Orr (G/Sr.),
 Windsor Coggeshall (F/Sr.), Tyish Hall (F/Sr.)
 Top Returning Scorer Tyish Hall (15.1 ppg.)
 Top Returning Rebounder Tyish Hall (7.0 rpg.)

Top Newcomers (Pos/Hgt) Peppi Brown (G-F/Fr.),
 Nicole Erickson (G/Jr.), Jennifer Forte (C/Fr.),
 Lauren Rice (F/Fr.), Michele VanGorp (C/Jr.),
 Missy West (G/Fr.)

Colors Carolina Blue & White
 Conference Atlantic Coast
 Arena/Capacity Carmichael Auditorium/10,000



January 5 & February 23

QUICK FACTS

Location Winston-Salem, NC
 Nickname Demon Deacons
 Enrollment 3,620
 Colors Old Gold & Black
 Conference Atlantic Coast
 Arena/Capacity Lawrence Joel Veterans Coliseum/
 14,407

BASKETBALL FACTS

Head Coach Karen Freeman
 Record at School/Years 46-63/4
 Career Record/Years Same
 Office Phone (910) 759-5763
 Assistant Coaches Shelley Patterson, Jody Adams

SPORTS INFORMATION

Office Phone (910) 759-5640
 Fax Number (910) 759-5140
 Basketball Contact Theresa Kelly Gegen
 Home Phone (910) 272-3516

TEAM INFORMATION

1995-96 Record 13-14
 Conference Record/Finish 6-10/7th
 Conference Tourney Finish 0-1
 Starters Returning/Lost 4/1
 Letterwinners Returning/Lost 10/3
 Returning Starters (Pos/Class) ... Heidi Coleman (G/So.),
 Tracy Connor (C/Sr.), RaeAnna Mulholland (F/Sr.),
 Lindsay Seawright (F/Sr.)
 Top Returning Scorer Tracy Connor (17.8 ppg.)
 Top Returning Rebounder Tracy Connor (10.2 rpg)
 Top Newcomers (Pos/Hgt) Brenda-Mock Kirkpatrick
 (F/6-0), Alisha Mosley (PG/5-6)



January 8 & February 14

QUICK FACTS

Location Chapel Hill, NC
 Nickname Tar Heels
 Enrollment 24,439

BASKETBALL FACTS

Head Coach Sylvia Hatchell
 Record at School/Years 185-115/10
 Career Record/Years 458-195/21
 Office Phone (919) 962-5187
 Assistant Coaches Andrew Calder,
 Ann Hancock, Emily Johnson

SPORTS INFORMATION

Office Phone (919) 962-2123/0083
 Fax Number (919) 962-0612
 Basketball Contact Beth McNichol
 Home Phone (919) 929-7922

TEAM INFORMATION

1995-96 Record 13-14
 Conference Record/Finish 8-8
 Conference Tourney Finish 0-1
 Starters Returning/Lost 5/0
 Letterwinners Returning/Lost 12/3
 Returning Starters (Pos/Class) Marion Jones (G/Jr.),
 Tracy Reid (G-F/Jr.), Chanel Wright (G-F/So.),
 Jessica Gaspar (G/So.), Sheneika Walker (F-C/Jr.)
 Top Returning Scorer Tracy Reid (19.1 ppg.)
 Top Returning Rebounder Tracy Reid (8.9 rpg.)
 Top Newcomers (Pos/Hgt) Melissa Johnson (C/6-5)



January 11 & February 19

QUICK FACTS

Location Clemson, SC
 Nickname Lady Tigers
 Enrollment 16,327
 Colors Orange and Purple
 Conference Atlantic Coast
 Arena/Capacity Littlejohn Coliseum/11,020

BASKETBALL FACTS

Head Coach Jim Davis
 Record at School/Years 189-91/9
 Career Record/Years 208-99/10
 Office Phone (864) 656-2212
 Assistant Coaches Carey Green, Courtney Johnson,
 Tonya Booker

SPORTS INFORMATION

Office Phone (864) 656-2114
 Fax Number (864) 656-0299
 Basketball Contact Sam Blackman
 Home Phone (864) 639-4400

TEAM INFORMATION

1995-96 Record 23-8
 Conference Record/Finish 9-7/4th
 Conference Tourney Finish 1st
 Starters Returning/Lost 3/2
 Letterwinners Returning/Lost 11/2
 Returning Starters (Pos/Class) Laura Cottrell (F/Sr.),
 Angie Salyer (G/Sr.)
 Top Returning Scorer Laura Cottrell (10.9 ppg.)
 Top Returning Rebounder Laura Cottrell (8.7 rpg.)
 Top Newcomers (Pos/Hgt) Damita Bullock (G/5-10),
 Marta Forns (F/6-3), Anette Percy (F/6-1)



January 15 & 30

QUICK FACTS

Location College Park, MD
 Nickname Terrapins (Terps)
 Enrollment 30,371
 Colors Red, White, Black & Gold
 Conference Atlantic Coast
 Arena/Capacity Cole Field House/14,500

BASKETBALL FACTS

Head Coach Chris Weller
 Record at School/Years 414-198/21
 Career Record/Years 414-198/21
 Office Phone (301) 314-1747
 Assistant Coaches Boe Pearman,
 Trudi Lacey, Katrina Colleton

SPORTS INFORMATION

Office Phone (301) 314-703
 Fax Number (301) 314-9094
 Basketball Contact Tricia Harris
 Home Phone (301) 847-8384

TEAM INFORMATION

1995-96 Record 13-14
 Conference Record/Finish 7-9/6th

Conference Tourney Finish 0-1
 Starters Returning/Lost 5/0
 Letterwinners Returning/Lost 9/1
 Returning Starters (Pos/Class) Kelley Gibson (G/So.),
 Sonia Chase (G-F/Jr.), Stephanie Cross (F/Jr.),
 Lillian Purvis (G/Sr.), Kalisa Davis (C-F/Jr.)
 Top Returning Scorer Stephanie Cross (13.2 ppg.)
 Top Returning Rebounder Stephanie Cross (6.9 rpg.)
 Top Newcomers (Pos/Hgt) Brandi Barnes (F/6-3),
 Tiffany Brown G/5-6), Kim McCray (G/5-8)



January 19 & February 16

QUICK FACTS

Location Charlottesville, VA
 Nickname Cavaliers
 Enrollment 18,398
 Colors Blue and Orange
 Conference Atlantic Coast
 Arena/Capacity University Hall/8,457

BASKETBALL FACTS

Head Coach Debbie Ryan
 Record at School/Years 439-147/19
 Career Record/Years Same
 Office Phone (804) 982-5800
 Assistant Coaches Shawn Campbell, Audra Smith

SPORTS INFORMATION

Office Phone (804) 982-5500
 Fax Number (804) 982-5525
 Basketball Contact Cathy Tapogna
 Home Phone (804) 293-4022

TEAM INFORMATION

1995-96 Record 26-7
 Conference Record/Finish 13-3/1st
 Conference Tourney Finish 1-1
 Starters Returning/Lost 3/2
 Letterwinners Returning/Lost 8/2
 Returning Starters (Pos/Class) Tora Suber (G/Sr.),
 Monick Foote (G-F/Jr.), Demya Walker (F-C/So.)
 Top Returning Scorer Tora Suber (17.6 ppg.)
 Top Returning Rebounder Demya Walker (6.3 rpg.)
 Top Newcomers (Pos/Hgt) Renee Robinson (G/5-6),
 Lisa Hosac (F/6-2), Lauren Swierzak (G-F/5-11)



January 22 & February 10

QUICK FACTS

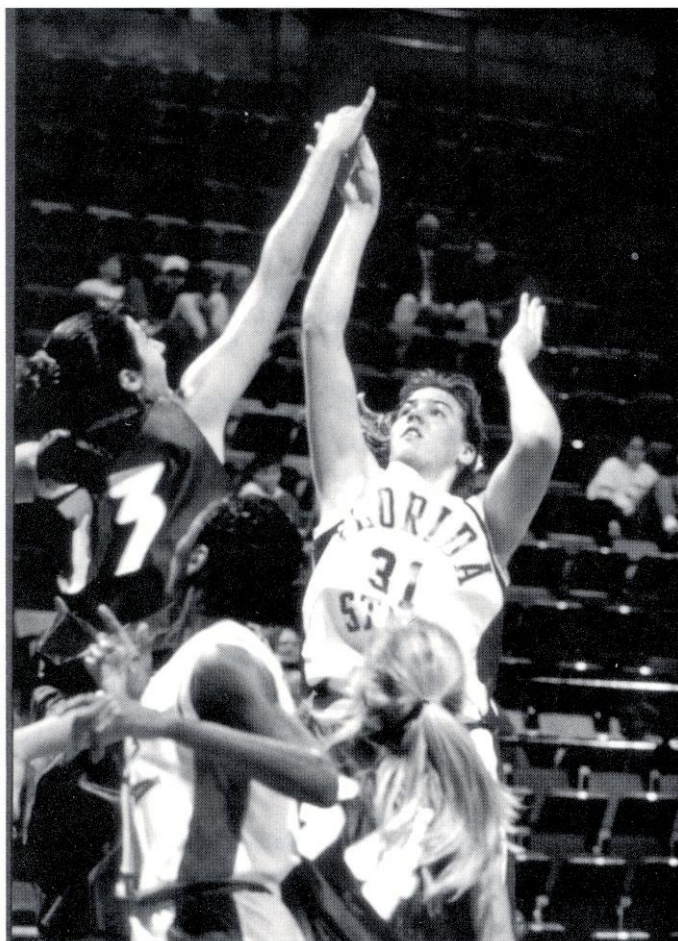
Location Atlanta, GA
 Nickname Yellow Jackets
 Enrollment 13,000
 Colors Old Gold & White
 Conference Atlantic Coast
 Arena/Capacity Alexander Memorial/10,026

BASKETBALL FACTS

Head Coach Agnus Berenato
 Record at School/Years 118-112/8
 Career Record/Years 178-167/12
 Office Phone (404) 894-5406
 Assistant Coaches Candy Cage, Debbie Richardson

SPORTS INFORMATION

Office Phone (404) 894-5445
 Fax Number (404) 894-1248



Lysa Moorefield

Basketball Contact Erika Austin
 Home Phone (404) 256-5017

TEAM INFORMATION

1995-96 Record 14-13
 Conference Record/Finish 5-11/8th
 Conference Tourney Finish 0-1
 Starters Returning/Lost 5/0
 Letterwinners Returning/Lost 8/1
 Returning Starters (Pos/Class) Carla Munnion
 (G-F/Jr.), Kisha Ford (G-F/Sr.), Shea Matlock (G/Jr.),
 Kathy Dertch (C/Sr.), Tiffany Martin (G/Sr.)
 Top Returning Scorer Kisha Ford, Carla Munnion
 Top Returning Rebounder Kisha Ford
 Top Newcomers (Pos/Hgt) Danielle Donehew (G/5-7)



February 5

QUICK FACTS

Location Pittsburgh, PA
 Nickname Lady Dukes
 Enrollment 9,001
 Colors Red & Blue
 Conference Atlantic 10
 Arena/Capacity A.J. Palumbo Center/6,200

BASKETBALL FACTS

Head Coach Dan Durkin
 Record at School/Years 32-48/3
 Career Record/Years Same
 Office Phone (412) 396-6565
 Assistant Coaches Kristen Lamb, Alvis Rogers,
 Kris Witfill

SPORTS INFORMATION

Office Phone (412) 396-6560
 Fax Number (412) 396-6210
 Basketball Contact Michelle Lukacsko
 Home Phone (412) 688-9333

TEAM INFORMATION

1995-96 Record 13-14
 Conference Record/Finish 8-8/4th West Division
 Conference Tourney Finish Tied 3rd West Division
 Starters Returning/Lost 4/1
 Letterwinners Returning/Lost: 10/3
 Returning Starters (Pos/Class) Korie Hlede (G/Jr.),
 Gail Wilkins (G/Sr.), Jill Tate (F/So.),
 Sheri Hannan (G/So.)
 Top Returning Scorer Korie Hlede (22.6 ppg.)
 Top Returning Rebounder Korie Hlede (6.7 rpg.)
 Top Newcomers (Pos/Hgt) LynnDee Howell (G/5-9),
 Gina Naccarato (G/5-3)

Road Headquarters TRAVEL ITINERARY

Dial Soap/Florida Four November 21-24

Departure Nov. 21, 3:05 PM USAir
 Arrival Nov. 21, 4:10 PM
 Hotel Tampa Marriott West Shore, 1001 North West Shore Blvd.,
 Tampa, FL 33607, (813) 287-2550
 Return Nov. 24, 12:05 PM USAir

SW Missouri State November 29-30-December 1

Departure Nov. 29, 9:30 AM USAir
 Arrival Nov. 29, 4:43 PM
 Hotel University Plaza, Holiday Inn, 333 John Q. Hammons Pkwy.,
 Springfield, MO 65806, (417) 864-7333
 Return Dec. 1, 3:50 PM USAir

Florida December 13, 14

Departure Dec. 13, Chartered Bus, TBD
 Arrival Dec. 13, TBD
 Hotel Cabot Lodge, 3726 S.W. 40th Blvd.,
 Gainesville, FL 32608 (352) 335-22321
 Return Dec. 14, Chartered Bus, TBD

Mississippi December 29-31

Departure Dec. 29, 10:05 AM Delta
 Arrival Dec. 29, 12:32 PM
 Hotel Ramada Inn University, 2201 W. Jackson Ave.,
 Oxford, MS 38655, (601) 234-7013
 Return Dec. 31, 12:32 PM Delta

Duke January 2, 3

Departure Jan. 2, 10:05 AM Delta
 Arrival Jan. 2, 12:32 PM
 Hotel Omni Europa, 1 Europa Drive,
 Chapel Hill, NC 27514, (919) 968-4900
 Return Depart for Winston-Salem

Wake Forest January 4, 5

Departure Jan. 4, Chartered Bus
 Arrival TBD
 Hotel Adam's Mark Hotel, 425 N. Cherry St.
 Winston-Salem, NC 27101 (910) 725-3500
 Return Jan. 5, 8:01 PM Delta

Clemson January 10-12

Departure Jan. 10, 2:55 PM Delta
 Arrival Jan. 10, 6:20 PM

Hotel Hampton Inn, 851 Tiger Blvd.,
 Clemson, SC 29631, (864) 653-7744
 Return Jan. 12, 12:51 PM Delta

Georgia Tech January 21, 22

Departure Jan. 21, 2:55 PM Delta
 Arrival Jan. 21, 4:00 PM
 Hotel Atlanta Marriott Marquis, 265 Peachtree Center Ave.,
 Atlanta, GA 30303, (404) 586-6045
 Return Chartered Flight After Game

North Carolina State January 25, 26

Departure Jan. 25, 10:05 AM Delta
 Arrival Jan. 25, 1:38 PM
 Hotel Ramada Inn Blue Ridge, 1520 Blue Ridge Road,
 Raleigh, NC 27607, (919) 832-4100
 Return Jan. 26, 9:45 PM, Delta

Maryland January 29, 30

Departure Jan. 29, Chartered Flight
 Arrival Jan. 29
 Hotel Greenbelt Marriott, 6400 Ivy Lane
 Greenbelt, MD 20770, (301) 614-8215
 Return Jan. 30, Chartered Flight

North Carolina February 13, 14

Departure Feb. 13, 2:55 PM Delta
 Arrival Feb. 13, 6:59 PM Delta
 Hotel Durham Hilton, 3800 Hillsborough Rd,
 Durham, NC 27705, (919) 383-8033
 Return TBA

Virginia February 15, 16

Departure Feb. 15, Chartered Bus
 Arrival Feb. 15, Charlottesville, VA
 Hotel Omni Charlottesville, 235 W. Main
 Charlottesville, VA 22902, (804) 971-5500
 Return Feb. 16, 9:55 PM USAir

ACC Tournament February 26-March 2

Departure Feb. 26, 4:05 PM USAir
 Arrival Feb. 26, 5:50 PM
 Hotel Double Tree Club Hotel, 895 W. Trade
 Charlotte, NC 28202, (704) 347-0070
 Return Mar. 2, 6:50 PM USAir



Inside...

- ▶ North Florida
and Tallahassee
- ▶ Florida State University
- ▶ Florida State Athletics
- ▶ Florida State
Administration
- ▶ Student Services &
Academic Support
- ▶ Support Staff
- ▶ Lady Seminole Facilities



UNIVERSITY

This Is *North Florida &* **TALLAHASSEE**

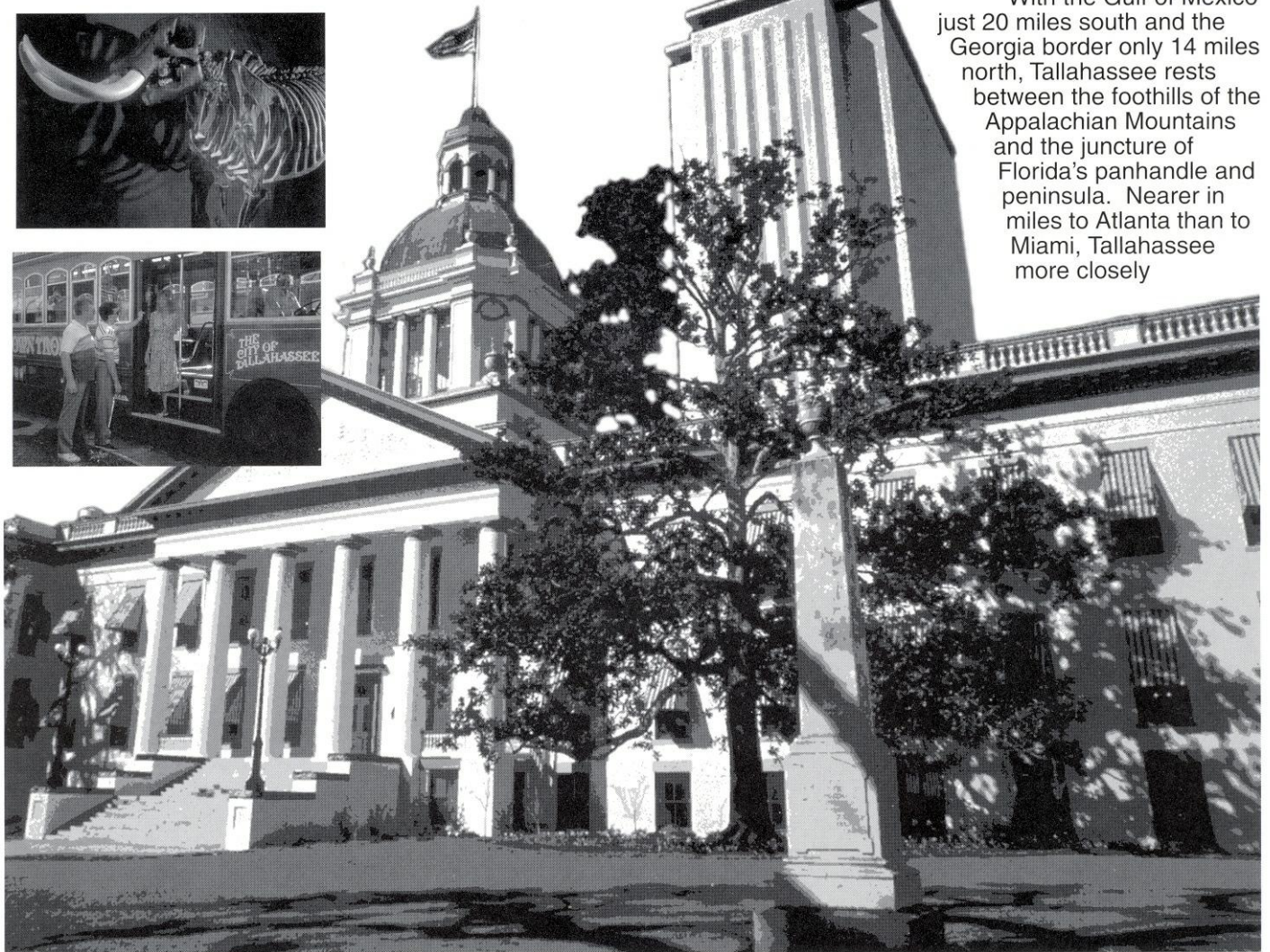
Near, but far from the glaring strips of neon amusement, and the castles and crowds of Disney, lies another magical place in the Sunshine State — one of pow-wows, plantations, politics and great pride. Often described as “The Other Florida” with its deep-rooted history, rolling hills, canopy roads of moss-draped oaks, cool climate and Southern-style hospitality; it is a Florida few have seen. It is Tallahassee — Florida with a Southern accent.

Best known as Florida’s capital, Tallahassee is an intimate neo-metropolitan city where the power of state government, the academic and the artistic are comple-

mented by subtle, old-fashioned charm. It is the perfect two- or three-day diversion for the more than 41 million annual visitors to Florida and 13 million residents.

Tallahassee touts a menagerie of sights including one of the world’s deepest freshwater springs, site of America’s first Christmas, a wildlife habitat, Capitol buildings, fascinating museums of history, sprawling plantations, highly acclaimed fishing and hunting adventures and nearby beaches. Spirited area festivals range from celebrations of Tallahassee’s spectacular spring and swamp stomps to genuine rattlesnake roundups and seafood festivals.

With the Gulf of Mexico just 20 miles south and the Georgia border only 14 miles north, Tallahassee rests between the foothills of the Appalachian Mountains and the juncture of Florida’s panhandle and peninsula. Nearer in miles to Atlanta than to Miami, Tallahassee more closely



resembles its Southern neighbors than Florida in topography, climate and lifestyle.

Accentuating Tallahassee's Southern persona are lush rolling hills, likened to the seven hills of Rome, and five "official" canopy roads of patriarch oaks. The fertile, rich soil and four distinct, yet pleasant, seasons breed floral brilliance and natural vitality year-round.

Like the city itself, the story of how Tallahassee was chosen as the state capital is rich in history. In 1823, two explorers set out — one on horseback from St. Augustine and the other by boat from Pensacola — to find a permanent, central location for the Legislature to convene. The two met at a beautiful site that the Creek and Seminole Indians called "tallahassee" — derived from the words "talwa" meaning town and "ahasee" meaning old. The rendezvous point remains Florida's capital.

The "old town" has undergone many changes, but one thing remains the same — it is still a government town fiercely proud and dedicated to preserving its heritage. The Capitol buildings, both old and new, epitomize Tallahassee's perseverance.

The 22nd floor of the New Capitol provides a panoramic scope of a sophisticated Southern city awash in a sea of flowering azaleas, snowy dogwoods, towering pines, fragrant magnolias, and hundreds of shimmering lakes, springs, swamps, rivers and sink holes. Special legislative viewing galleries are open during the legislative session.

Below, in the shade of giant live oaks, proudly stands the Old Capitol, originally constructed in 1845 and restored to its 1902 splendor complete with red-and-white candy-striped awnings, a dome adorned with stained glass, antique furnishings and political memorabilia.

Across from the Old Capitol are the 40-foot twin granite towers of the Vietnam Veteran's Memorial, and the blue stone Union Bank, Florida's oldest surviving financial institution. The nostalgic Old Town Trolley, a replica turn-of-the-century street car, carries passengers through restored Adams Street Commons to numerous other historical downtown shops for *free* — unheard of even 100 years ago.

Minutes from downtown lies the Governor's Mansion, which resembles the home of Florida's military hero Andrew Jackson; and the 52-acre natural animal habitat and 1880s farm of the Tallahassee Museum of History and Natural Science, which provide the rare chance to walk and talk with native Florida animals.

Tallahassee remains firmly linked with the past as evidenced by the unearthed 1539 winter encampment of Spanish Hernando de Soto, the site of the first Christmas celebration in America. Visitors travel back through time as they stand in the shadow of a giant 12,000-year-old American Mastodon at the Museum of Florida History or explore other historical spots including The Knott House that Rhymes, The Columns, San Luis

Mission, Lake Jackson State Archaeological Site, Natural Bridge Battlefield, First Presbyterian Church, Brokaw-McDougall House, Goodwood Plantation and Adams Street Commons.

Nearby, alligators lazing in the sunshine and aninga "snake birds" perched on twisted cypress branches are seen at Wakulla Springs, one of the world's deepest freshwater springs and site of many underwater scenes in the "Tarzan" movies with Johnny Weissmuller and Maureen O'Sullivan. Safaris aboard glass-bottomed and jungle cruise boats whisk visitors within arm's length of "The Other Florida."

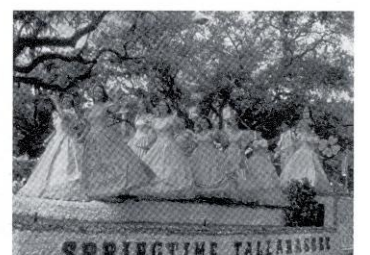
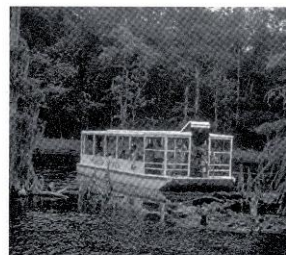
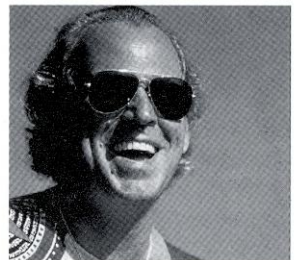
Outdoor enthusiasts enjoy adventures including boating and fishing on area lakes, rivers, ponds and the Gulf — just 30 minutes away. Lakes Seminole, Jackson and Talquin are renowned in the bass fishing world for yielding the "big ones," and dense forests offer an abundance of prize-winning game. Local wildlife areas such as the Florida National Scenic Trail, St. Marks National Wildlife Refuge and Apalachicola National Forest are among many spots for camping, picnicking, swimming, biking and exploring.

Appealing to the strokes of different folks, Tallahassee also features 99 holes of golf on six courses and a proliferation of tennis centers. Sideline athletes cheer the nationally-ranked Florida State Seminoles, Florida A&M Rattlers and the Tallahassee Tiger Sharks, of the East Coast Hockey League. And always a sure bet are the nearby greyhound races.

A sport of sorts, shopping at two regional malls and many specialty centers offer many "playing options" — from popular chains to curiosity and antique shops.

Cultural interests are sparked by widely-acclaimed museums and galleries and elaborate entertainment at the 14,000-seat Tallahassee-Leon County Civic Center.

Tallahassee is a collaboration of power-play politics and classical character splashed with a twist of Southern beauty and charm. Tallahassee is Florida with a Southern accent.



This Is

Florida State

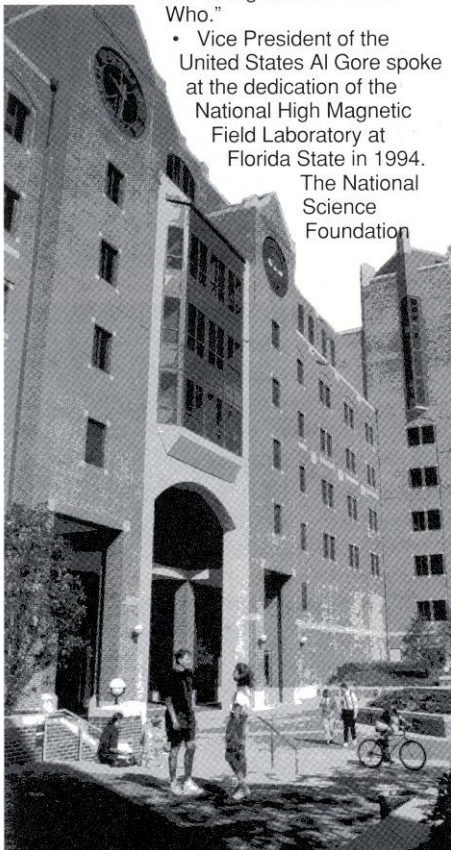
UNIVERSITY

Florida State University, which will mark its golden anniversary as a coeducational graduate research institution in 1997, has joined the nation's elite in both academics and athletics.

Located on the oldest continuous site of higher education in Florida and building rapidly on the framework of a highly regarded liberal arts college for women, the University has emerged over the past 49 years as an institution of national and international esteem. Its stature is evidenced by a number of additions to its record of excellence in the 1990s:

- In 1994, Florida State was classified a "Research University I" by the Carnegie Foundation, placing it among the nation's top research universities.
- In 1994, the college referral service, "Who's Who Among American High School Students," placed FSU among its top 10 — with such universities as Harvard, Duke, Stanford, North Carolina-Chapel Hill, Michigan-Ann Arbor and Yale — of most frequent choices of more than 100,000 of the nation's best and brightest high school students who asked that a specific college be notified of their recognition in "Who's Who."

- Vice President of the United States Al Gore spoke at the dedication of the National High Magnetic Field Laboratory at Florida State in 1994. The National Science Foundation



established the \$100 million magnet lab at FSU, which is partnered in research with the Los Alamos National Laboratory and the University of Florida, in 1990. A Nobel laureate in physics and a top Russian physicist were among the first scholars drawn to the facility. The world's largest magnet — two stories high and capable of generating 45 tesla or 1 million times the Earth's magnetic field — was installed in 1995 at the NHMFL, located in the off-campus research complex, Innovation Park. In 1996, the NSF renewed and increased by 50 percent the NHMFL's funding for another five years.

- FSU created the first multipurpose student identification/banking card. The Card Application Technology Center is a national leader in "smart card" systems.
- At the forefront of supercomputing since obtaining its first high speed computer in 1985, FSU took yet another step in ultrafast and parallel computing in 1990 when it acquired two supercomputers, the Thinking Machine Corp. Connection Machine and the Cray Y-MP.
- In fall 1994, the first tenants moved into the east side of the \$100 million University Center, a classroom-and-office facility at Doak Campbell Stadium; the stadium's south end zone was also enclosed and the adjacent Moore Athletic Center expanded. When the west side is completed in 1996, University Center will provide 550,000 square feet of much needed academic space and a centralized location for student services.
- One of the first academic areas to make its home in University Center, was the FSU School of Motion Picture, Television and Recording Arts. Offering training for one of Florida's fastest growing industries, FSU conferred its first master's degree in film in 1991 and it's first bachelor's in film in 1993. The film school's students have already produced national and international award-winning films.
- The Center for Civic Education and Service was established in 1994 aimed at promoting community involvement and civic responsibility as integral elements of a liberal arts education at FSU. The center supports such service-learning programs as Project Amistades, which provides educational services to migrant farmworkers. Through ServScript, student's service may be recorded on their official academic transcript.
- In 1990, Florida State ranked second in popularity nationwide among high school seniors, based on the number of students who request that their Scholastic Aptitude Test (SAT) scores be sent to an institution. FSU was the only institution listed among the top 10 choices of both black and white college-bound students.
- FSU's high-tech program in structural biology in 1991 received the University's largest single foundation grant, \$4 million.
- Capping more than a decade of national prominence in intercollegiate athletics, Florida State's athletic teams, nicknamed "Seminoles," joined the Atlantic Coast Conference as its ninth member in 1990. The FSU football team won the 1993 National Championship and its quarterback, Charlie Ward, won the University's first Heisman Trophy.
- To better understand the world's cultural diversity, FSU undergraduate students are required to complete at least two courses that focus on diverse traditions beyond Western civilization. The multicultural study requirement, in effect since 1991, complements a long-established liberal studies program at Florida State.
- The Dr. Bobby E. Leach Center, a state-of-the-art student

recreation facility, with a pool, saunas, basketball and racquet-sport courts, was completed in 1991.

- The Appleton Museum of Art in Ocala, its vast art collection and an eminent scholar chair were donated to FSU and Central Florida Community College in 1990.
- FSU ranked 20th in the nation for 1990-91 in the number of black Ph.D. students it graduates. Over the five years, 1986 to 1990, FSU ranked eighth nationally by granting doctorates to 70 African-Americans.
- FSU acquired the Asolo Performing Arts Center in Sarasota, home to the graduate theater program, the FSU/Asolo Conservatory of Professional Actor Training.

As this list of highlights attests, Florida State is excelling in the 1990's with exceptional strength, energy and vision for the future. Under the leadership of the University's 12th president, Talbot "Sandy" D'Alemberte, who took office in January 1994, FSU will continue to build on the foundation of its history of excellence in scholarship, research and service.

A senior member of the 10-member State University System, FSU was founded as an institution of higher learning in 1851 by legislative act and began in Tallahassee with its first students in 1857.

Today, FSU's operating budget is \$452.5 million. Faculty and administrators generate more than \$99.9 million annually in external funding to supplement state-sponsored research. Three direct-support organizations serve to bolster the University: FSU Foundation, which raises millions in private gifts to support academics, Seminole Boosters and FSU Alumni Association.

The main campus is spread over 450.6 acres in Tallahassee; FSU, which has one of the smallest campuses in the SUS, has been actively acquiring land in the 1990s after years of being landlocked at 847 acres. FSU owns 1,303 acres in Leon, Bay, Franklin and Sarasota counties.

Within the state, the University maintains facilities at its 25-acre campus in Panama City, its Marine Laboratory on the Gulf of Mexico, the Appleton Museum in Ocala and the Asolo Performing Arts Center in Sarasota. The Center for Professional Development and Public Service, housed in the Augustus B. Turnbull III Florida State Conference Center on the edge of the campus, provides extensive credit and non-credit continuing education programs statewide.

For years FSU has reached far beyond Florida through international programs in Switzerland, France, Panama, Costa Rica and the Caribbean. FSU's study centers in Florence, Italy and London, England are considered by many to be the nation's best in Europe.

Florida State offers 283 graduate and undergraduate degree programs through its eight colleges — Arts and Sciences; Business; Communication; Education; Engineering (operated jointly with Florida A&M University, a historically black institution); Human Sciences; Law; and Social Sciences (which also incorporates the Reubin Askew School of Public Administration and Policy) — and eight schools — Criminology and Criminal Justice; Library and Information Studies; Motion Picture, Television and Recording Arts; Music; Nursing; Social Work; Theatre; and Visual Arts and Dance.

With 1,671 members, the FSU faculty has five National Academy of Sciences members and eight American Academy of Arts and Sciences members, and has included five Nobel laureates. It is backed by 2,990 administrative/professional and support staff.

Library holdings at Florida State include 2.1 million book titles, 18,296 serials and 4.4 million microforms. The main library facility, the Robert M. Strozier Library, is linked by computer to other state university and national research libraries. The Paul A.M. Dirac Science Center Library is located at the heart of the University's science research complex. FSU also maintains extensive music, library science and law libraries.

On the top floor of the Dirac Library is the headquarters of the Supercomputer Computations Research Institute, a multidisciplinary, multinational program established in 1984 that brings together some 50 scientists, engineers and technicians.

Also providing research opportunities is the tandem Van de Graff Superconducting Accelerator Laboratory, which houses two powerful atom smashers and has been ranked among the top four nuclear research centers in the nation by the National Science Foundation.

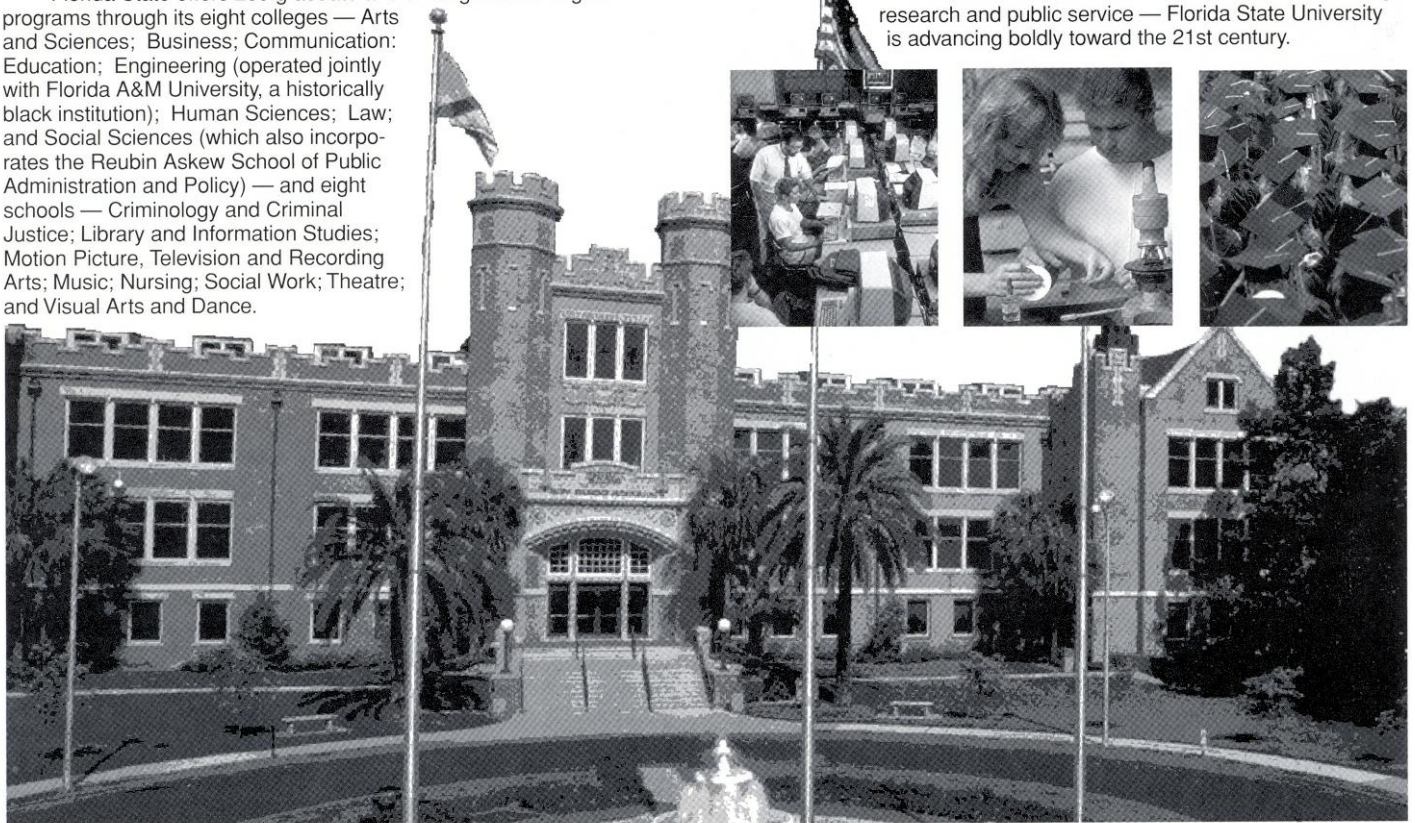
Graduate students, who number more than 5,856, pursue advanced degrees in fields as diverse as business administration and theoretical particle physics. A majority of research done at FSU is the direct result of student effort, culminating in numerous books, monographs and journal articles relating to the whole spectrum of intellectual interests and the practical needs of society.

FSU, a residential campus, places a high priority on its 30,268 students and their needs and interests (of the student population: 45 percent are male; 55 percent are female; 18.5 percent are minorities; and 2.4 percent are foreign students). The University Honors Program, Disabled Student Services, International Student Center, Student Government, Flying High Circus and intramural sports are among more than 200 organizations and activities in which students can participate.

Situated in the heart of the state's thriving capital city, Florida State's main campus blends Gothic and modern styles of architecture with the oaks, pines, dogwoods, palms and azaleas of North Florida.

Florida State continues to progress and grow from its pre-Civil War foundation as the Seminary West of the Suwannee, through the early 20th century as the academically respected Florida State College for Women, returning to coeducational status as a university in 1947, to its modern development as an acclaimed research institution, a top-ranked competitor in intercollegiate athletics and as a standard-setter in the basic sciences and the performing arts.

In all areas of its mission — excellence in teaching, research and public service — Florida State University is advancing boldly toward the 21st century.



Garnet & Golden

Florida State

ATHLETICS

Garnet and Golden. In its 50 years of existence, Florida State University athletics has earned the distinction as one of the nation's top athletic programs. Both in the athletic arena and in the classroom, Florida State athletes have established a mark of excellence.

From its nationally-renowned football program to women's soccer — its newest sport, Florida State has made a commitment to being a strong contender not only within the Atlantic Coast Conference, but in the nation as well.

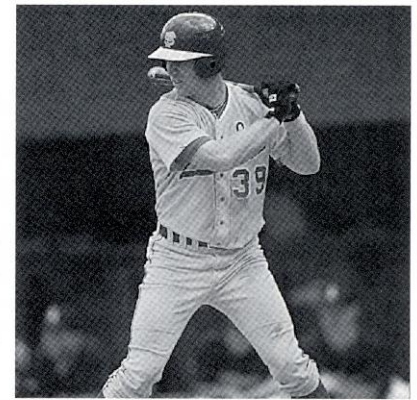
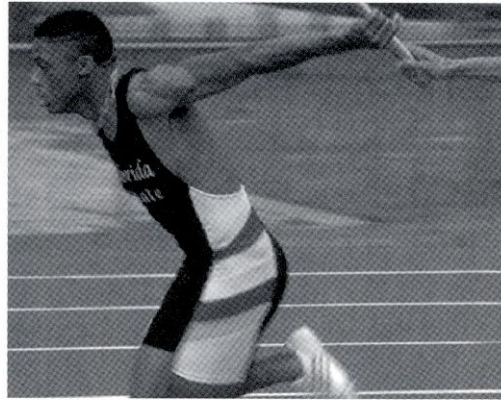
The Florida State football program has established itself as the winningest program in the 1990's, posting a record of 73-11-1 heading into the 1996 season. The Seminoles ushered in 1994 with their first-ever national championship in football. Quarterback Charlie Ward

brought a Heisman Trophy, along with literally every other trophy, to Tallahassee when he was recognized as college football's most outstanding performer for 1993. College football has never seen a run like the one Florida State is on in bowl games. The Seminoles hold the NCAA record with 11 straight bowl wins. The 1995 season's 10-2 record and No. 4 final ranking made Florida State the only school in college football history to record nine straight seasons in the top four.

As a program, Florida State was represented in NCAA post-season competition in 11 sports in 1995-96. The baseball Seminoles advanced to the College World Series for their 15th time overall and fifth time in six years. Florida State's softball team notched its fourth ACC softball title in five years, advanced to regionals for the 11th straight time and came within two games of its sixth World Series appearance.

FSU's track teams had three individuals and two relay teams earn All-America status at the NCAA Championships. Jonathan Carter led the way for FSU as he earned All-America honors in three events. FSU football's Warrick Dunn became the first two-sport All-American at FSU since Rohn Stark (1981) when he earned the honor as part of the Seminoles' All-American 4x100-meter relay team. The women's 4x400-meter relay team finished second in the nation, recording its best time of the year at 3:31.18.





Women's tennis player Lori Sowell's became a two-time All-American in 1996 as she qualified for NCAA Championships competition as an individual as well as with doubles partner Elke Juul. Both the men's and women's tennis teams participated in NCAA regional tournaments.

The men's swimming team earned its highest finish in FSU history at 18th. The Seminoles captured four ACC Championship titles and had six NCAA consolation finalists. The Lady Seminole swimming team recorded two ACC Championship titles and had one NCAA consolation finalist. The Lady Seminole golf team advanced to NCAA regional play for the fifth straight season, while the men's team made its fourth consecutive trip to Nationals.

FSU athletes also excelled in the classroom. The past academic year saw 65 Florida State student-athletes receive their degrees. Two graduated magna cum laude while three others earned cum laude honors. Florida State placed a school-record 132 athletes on the ACC's Academic Honor Roll. These students maintained a grade point average of 3.0 or higher for both the fall and spring semesters.

The support student-athletes receive at Florida State is second to none. The newly-constructed University Center which surrounds the football stadium, houses the athletic department's academic support services. FSU student-athletes have access to tutors, one-on-one academic counseling, study areas, the latest in computer

technology and a study hall and research area.

Providing quality facilities for student-athletes continues to be a priority at Florida State University. The expansion and renovation of Doak Campbell Stadium, which now seats 80,000 fans, has made it one of the premier football facilities in the country. The 12-court, 1,000 seat Scott Speicher Tennis Center, constructed in 1993, served as the host site of the 1996 NCAA Division I Women's Tennis Championship. Over the past summer, the women's weight room at Tully Gymnasium underwent a complete renovation. New lockerrooms for both men's and women's basketball are currently under construction. Future projects include new soccer and softball stadiums to be completed for the 1997 and 1998 seasons, respectively.

Although the NCAA women's tennis tournament was the first time that Florida State staged a national championship, the athletic department is no stranger to hosting NCAA events. FSU hosted the Southeast Regional first and second rounds of the 1995 NCAA men's basketball tournament and has been home to NCAA baseball, tennis and softball regional action. Florida State has hosted baseball tournaments in 12 of the last 14 years and has been the site for four softball and three tennis regionals.

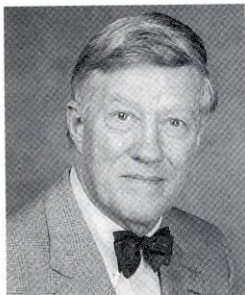
With Florida State's commitment to excellence and its dedication to serving the needs of its student-athletes both academically and athletically, the University has secured its place among the nation's elite.



This Is

Florida State ADMINISTRATION

Talbot "Sandy" D'Alemberte PRESIDENT



President Talbot "Sandy" D'Alemberte was appointed president on Nov. 29, 1993, by the Florida Board of Regents, took office on Jan. 3, 1994, and was officially installed as president at a December 17, 1994, investiture.

D'Alemberte served as the fourth dean of the FSU College of Law from 1984 to 1989 and

continues to teach as a member of the University faculty.

In a special "Profiles in Power" section, the April 15, 1985, edition of the *National Law Journal* listed D'Alemberte as one of the 100 most powerful lawyers in the United States. He was the only law school dean listed and one of only ten members of law school faculties.

He is an active member of many legal and higher educational committees and boards, including numerous American Bar Association committees, state and regional bar associations, the American College of Trial Lawyers, the Lawyers' Committee on Civil Rights Under Law, the NAACP Legal Defense and Education Fund, the Florida Council of 100, the Business-Higher Education Forum, the Campus Compact, the Mildred and Claude Pepper Foundation Board of Directors, and several FSU committees and boards including the FSU

Foundation, the FSU Alumni Association, the Collins Center for Public Policy, the Caribbean Law Institute and the Seminole Boosters, Inc.

D'Alemberte practiced law with the Steel, Hector & Davis law firm in Miami and Tallahassee where he first began his legal career in 1962 and was named partner in 1965.

D'Alemberte was the 1991-92 president of the American Bar Association and the 1982-84 president of the American Judicature Society. He represented Dade County in the Florida House of Representatives from 1966 to 1972 and chaired several legislative committees. After leaving the Florida Legislature he chaired the Florida Constitution Revision Commission in 1977-78 and the Florida Commission on Ethics in 1974-75.

D'Alemberte's book, *The Florida Constitution*, was published by Greenwood Press in 1991. He co-edited the 1990 four-volume work, *Florida Civil Trial Guide*, and has authored over twenty published articles.

The numerous awards D'Alemberte has won include the 1996 National Council of Jewish Women's Hannah G. Soloman Award for women's issues advocacy, the 1993 Academy of Florida Trial Lawyers "Perry Nichols" Award, the 1993 Florida Academy of Criminal Defense Lawyers Annual Criminal Justice Award, the 1990 Jurisprudence Award from the Anti-defamation League of South Florida, the 1986 National Sigma Delta Chi First Amendment Award, the 1987 Florida Bar Foundation Medal of Honor, the 1984 Florida Civil Liberties Union "Nelson Poynter" Award, an American Academy of Television Arts and Sciences "Emmy" in 1985 for his work in open government, particularly in the opening of court proceedings to electronic journalists, and, most recently, the 1996 American Judicature Society's Justice Award for his efforts to improve the administration of justice in the United States.

D'Alemberte holds honorary degrees from Cleveland State University, Hofstra University, Nova Southeastern University, Stetson University, the Universities of the South (Sewanee), of Bridgeport, and of Denver.

Born June 1, 1933, in Tallahassee, D'Alemberte was educated in public schools in Tallahassee and Chattahoochee, Florida. In 1955, he earned his bachelor of arts degree with honors in political science from the University of the South in Sewanee, Tennessee and also attended summer school at FSU and the University of Virginia. After military service as a lieutenant in the Naval Reserve, D'Alemberte studied on a Rotary

University Administration

President

Talbot "Sandy" D'Alemberte

Provost

Larry Abele

Dean of the Faculties & Deputy Provost

Dr. Steve Edwards

Vice President for Research

Dr. Robert M. Johnson

Vice President for Student Affairs

Dr. Jon Dalton

Vice President for Finance & Administration

John R. Carnaghi

Vice President for University Relations

Beverly B. Spencer

Foundation Fellowship at the London School of Economics and Political Science. In 1962, he received his juris doctorate with honors from the University of Florida, where he was named to the Order of the Coif and served as president of the Student Bar Association and articles editor of the *University of Florida Law Review*.

He is the father of two grown children, Gabrielle Lyn, a graduate of the University of Denver Law School, and Joshua Talbot, a graduate of his father's alma mater, the University of the South, and a public school teacher in Homestead, Florida. D'Alemberte is married to Patsy Palmer, former children's policy coordinator in Florida Governor Lawton Chiles' office. She has been a journalist, legislative aide and White House staff member; she holds a degree from the University of Missouri in journalism and a master's degree from the Harvard Divinity School. D'Alemberte's personal interests include racquetball, tennis, sailing, reading, and flying.

Dave Hart, Jr.
DIRECTOR OF ATHLETICS



Dave Hart, Jr., became Florida State's 10th athletics director after a national search selected the former East Carolina athletics director in February, 1995. Hart, 46, has gained national recognition for his skills in the areas of athletics management, public relations, marketing and fund-raising. He brought to Florida State an outstanding reputation as one of the

country's most respected athletics directors after leading the ECU program since 1987.

ECU athletics enjoyed an enhanced image and reputation under Hart's leadership and he structured several programs of significance within the Department. The most notable is ECU's comprehensive Student Development Program for all student-athletes.

While at East Carolina, the athletic department made great strides in revenue growth and facility enhancement. The athletics budget doubled during Hart's tenure and he initiated programs that tripled the budget for women's athletics. He planned and managed growth in the Pirates' athletic facilities totaling nearly \$30 million.

Hart served on several prestigious committees during his tenure at East Carolina. He was appointed in January, 1993, to the NCAA Council. He also served on the NCAA's Special Events/Post Season Bowls Committee and chaired Colonial Athletic Association committees on marketing and gender equity. He currently serves as Chairman for the Missions and Values Committee of the I-A Athletics Directors' Association in conjunction with the NCAA Foundation and is a member of the National Association of Collegiate Athletics Directors' Executive Committee.

A popular speaker at the national level and the author of a number of articles for national publications, Hart has made numerous speaking presentations to conventions and seminars on program management, marketing, fund-raising and personnel transition. For the past eight years he has been an instructor at the National Association of College Directors of Athletics'

Management Institute.

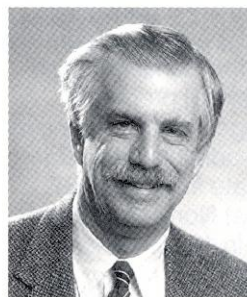
Just the 10th athletic director in FSU history, Hart officially began his duties at FSU on March 20, 1995, succeeding Wayne Hogan who served as interim athletic director following Bob Goin's departure after five years at the helm.

During his first year at FSU, Hart has restructured the administrative staff, negotiated four major contracts totaling more than 19 million dollars, overseen the planning of a women's soccer/softball complex which is a priority within the development of a broad athletics facilities master plan, initiated plans for an expansive Life Skills program for all student-athletes and set a stated departmental goal for comprehensive excellence through the pursuit of improvement toward the Sears Directors' Cup, which is emblematic of total program success in intercollegiate athletics.

A 1971 graduate of Alabama, Hart played basketball for the Crimson Tide and earned a master's degree in 1972 while serving as a graduate assistant basketball coach. He coached and taught at the high school level for 10 years before joining the Pirates' athletics program.

Hart met his wife, the former Pam Humble, while at Alabama and they have three children — Rick (24), Jamie (22) and Kelly (19).

Charles W. Ehrhardt
FACULTY ATHLETIC COMMITTEE CHAIRMAN



As the Chairman of the FSU Athletic Committee, Professor of Law Charles Ehrhardt is an important link for Florida State with the National Collegiate Athletic Association.

He is a member of the NCAA President's Commission Liaison Committee, the NCAA Special Committee which reviewed the Association's Enforcement and Infractions process, and the NCAA Eligibility Committee.

During his tenure as the athletic committee chair, Ehrhardt twice served as president of the Metro Conference and at one time was the chair of the Faculty Athletics Representatives Association. He currently serves as the president of the Atlantic Coast Conference.

This is Ehrhardt's second stint on FSU's Athletic Committee. A professor of Law at Florida State since 1967, he first served as a member of the committee from 1969-71. He was reappointed to the board in 1983 and succeeded Dr. James Jones as chairman in 1984, thus becoming Florida State's representative to the NCAA.

A highly-respected expert in the field of Evidence, Ehrhardt is the Ladd Professor of Evidence in the Florida State College of Law. He wrote the Florida Evidence Code, passed by the state legislature in 1976, which deals with the admissibility of evidence in court trials. Ehrhardt has written a book on evidence, which is now in its third edition.

Ehrhardt is in demand as a lecturer and speaker. He works with lawyers and judges nationwide as a private consultant on evidence matters. He currently teaches in the areas of torts, evidence, trial advocacy and sports law. He has been honored four times as the

outstanding professor in FSU's College of Law and was the recipient of a University Teaching Award in 1989.

A native of Elkader, Iowa, Ehrhardt received a bachelor's degree from Iowa State University in 1962. He went on to the University of Iowa, where he earned his law degree two years later. He became an Assistant United States Attorney in Iowa before coming to Tallahassee.

Ehrhardt and his wife, the former Judy Sutton, have three children.

Charlie Carr

SENIOR ASSOCIATE DIRECTOR OF ATHLETICS



Charlie Carr enters his second year as senior associate athletics director at Florida State. FSU athletics director Dave Hart named his longtime associate to his staff five months after he accepted the job last year.

Prior to coming to FSU, Carr served under Hart as an associate athletics director at East Carolina University for four years and was

executive director of ECU's educational foundation from 1988 until his elevation to associate AD.

Carr's responsibilities at Florida State include assisting in managing all phases of the department's daily operation. He serves as the department's spokesman in the AD's absence and acts as the athletics department's contact and liaison for campus and community organizations. Carr also is charged with overseeing departmental personnel in addition to the administration of the Seminole baseball, cross country, golf, track and volleyball programs.

A well-known member of the college athletics scene in North Carolina as a player, coach and administrator, Carr was athletics director at Mississippi State from 1985-87.

Carr played football and baseball at North Carolina where he earned his master's degree in 1970. He played two years of professional baseball in the N.Y. Mets organization before becoming an assistant football coach at his alma mater from 1971-75 under Bill Dooley. He then coached at Rice University from 1975-78.

He returned to UNC in 1978 to begin administrative work as senior associate athletics director where he worked until his appointment at Mississippi State.

Carr and his wife, Dee, have one daughter Caitlin (12).

Charles Hurst

EXECUTIVE ASSOCIATE DIRECTOR OF ATHLETICS FOR INTERNAL AFFAIRS



Charles Hurst enters his 10th year with the Florida State athletic department and his first as executive associate director of athletics for internal affairs.

Hurst was elevated to his new post after three years as an associate athletics director where he oversaw all of the department's financial and business affairs.

During his first five years at FSU,

Hurst served as assistant athletics director for business.

In addition to assisting in the daily management of

the department, Hurst's duties include supervision of the annual budget, business and ticket office operation, facilities management, personnel records, departmental contracts and negotiations.

The Talladega, Ala., native came to Tallahassee after a stint at the University of Florida, where he was Director of Internal Management Auditing from 1983-87. He was Manager of Internal Auditing at the University of South Alabama from 1981-83.

Hurst received his bachelor's degree from Jacksonville State (AL) University with a major in accounting and a minor in economics. He earned CPA status in 1975 while employed by the private firm of Brook and Freeman in Anniston, Ala.

He and his wife, Juanita, have one daughter, Maria (18).

Kim Record

ASSOCIATE DIRECTOR OF ATHLETICS/ SENIOR WOMEN'S ADMINISTRATOR



Kim Record joined Florida State's staff in August of 1995 when she was named to the newly created position of associate athletics director and senior women's administrator at Florida State.

Although new to FSU, Record is a veteran of Atlantic Coast Conference circles. She served as associate athletic director for administration at her alma mater, the University of Virginia, for three years. Prior to that, she spent four years as associate director for marketing and promotions at UVa and two years as director of athletic promotions for the Cavaliers from 1986-88.

Record's responsibilities at Florida State include coordination and oversight of all multimedia contracts, supervising Title IX and gender equity compliance with the department, and overseeing the areas of sports marketing and sports information. She is also the primary administrator over the Seminole soccer, softball, swimming and tennis programs.

A native of Troy, Va., Record received her bachelor's degree in sociology in 1984. She and her husband, Kevin, have two sons, Kyle (8) and Joshua (3).

Bob Minnix

ASSOCIATE DIRECTOR OF ATHLETICS FOR COMPLIANCE AND LEGAL AFFAIRS



News spread quickly in August of 1995 when Bob Minnix, a director of enforcement at the NCAA since 1975 and a former star running back at Notre Dame, announced he would leave his post to accept the newly created position of associate athletics director for compliance and legal affairs at Florida State University.

In his role at the NCAA, Minnix oversaw enforcement issues with regard to the NCAA and its member institutions including the preparation and

presentation of cases to be heard by the committee of infractions. He has served on a number of NCAA committees including the Leadership and Development Training Committee, Special Events Committee, Post-Season Football Subcommittee, and staff task forces that concentrated on public relations, compensation, and employment opportunities for women and ethnic minorities.

At Florida State, Minnix is charged with overseeing all departmental compliance issues, implementing and directing FSU's rules education programs, and serving as the department's liaison and contact with university General Counsel as well as other legal interests. He is directly involved in the strategic planning of long range departmental goals regarding student-athlete welfare and life skills training.

Minnix has continued FSU's stance as a pro-active leader in addressing NCAA and ACC issues, and in educating coaches, staff, student-athletes and donors to the serious nature and ramifications of non-compliance.

A native of Spokane, Wash., Minnix attended Notre Dame where he played in back-to-back Cotton Bowls in 1970 and '71. He led the Fighting Irish in rushing as a senior in 1971. He graduated from Notre Dame in 1972 and entered law school at the University of Washington where he received his Juris Doctorate degree in 1975.

Minnix and his wife, Genny, have two sons, Brennan (17) and Blair (12).

Andy Urbanic

ASSISTANT DIRECTOR OF ATHLETICS FOR FOOTBALL OPERATIONS AND SPECIAL PROJECTS



Andy Urbanic begins his seventh season in charge of football operations at Florida State. He recently added the responsibility of coordinating special projects within the athletics department.

He is directly responsible for all aspects of football operations, including team travel and home game operations. He also coordinates post-season logistics and

travel for all Seminole teams and supervises the equipment, strength and conditioning, and training room staffs.

A member of the Pennsylvania Sports Hall of Fame, Urbanic came to Tallahassee with more than 20 years experience in collegiate athletics, most of which came as an assistant coach at the Division 1 level. Prior to taking the administrative post at FSU, he served at the University of Akron as offensive backfield coach and recruiting coordinator from 1986-87, and as assistant head football coach and offensive coordinator from 1987-88. From 1980-86, Urbanic was the offensive backfield coach at the University of Pittsburgh. Urbanic is a legendary figure in high school coaching in Pennsylvania where he coached six undefeated teams and earned eight state championships.

Urbanic is a past president and member of the board of directors of the Pennsylvania State High School Coaches Association and remains active in the American Football Coaches Association.

He and his wife, Dorothy, have two daughters.

Guy Morgan

ASSISTANT DIRECTOR OF ATHLETICS FOR BASKETBALL OPERATIONS



Guy Morgan is in his third year as assistant athletics director at Florida State University. He is responsible for the coordination and administration of the men's and women's basketball programs.

Morgan's duties include coordinating team travel, dormitory supervision, practice and facility scheduling, along with the planning and coordination of game operations. He is involved in matters

related to opponent scheduling and budgets as well. He also assists in enrichment programs for all FSU student-athletes.

A graduate of Wake Forest, Morgan was the Most Valuable Player for the Demon Deacon basketball team as a junior and senior. He co-captained the team in his senior year (1981-82).

Morgan played professional basketball with the Indiana Pacers during the 1982-83 season. After his playing career, he worked in the furniture industry as a national sales consultant for four years.

From 1988-94, Morgan worked for Sports Marketing Enterprises, Inc., a division of RJR Nabisco Co. In that position, he served as a liaison between the RJR Nabisco Co., and the Senior PGA Tour for the Vantage Golf Tour sponsorship.

Morgan and his wife, Tonya, are the proud parents of one-year-old Guy II.



Greg Phillips
Assistant Athletics Director
Business & Systems Mgmt.



Patrick Martin
Athletics Ticket
Manager



Kim McWilliams
Director of Athletics
Marketing



Bernie Waxman
Director of Facilities
& Operations



Rob Wilson
Sports Information
Director



Pam Overton
Director of Student
Development and Life Skills

Student Services & **ACADEMIC SUPPORT**

Athletic Academic Support Mission Statement

The Primary focus of the Athletic Academic Unit is to provide an environment which facilitates the academic success of the student-athlete. Student success is encouraged through competent academic counseling, study skills development, and additional academic assistance through the tutorial program.

An Overview of an Academic Support Program on the Rise

Academic, personal and professional support are essential to college success. At Florida State University, we have developed an outstanding support program which enables student-athletes to reach their full potential.

Our philosophy is "to offer an academic support program integrated with the total university that will assist all student-athletes with the transition into college and provide continued support in all phases of academic and professional development culminating with graduation, job placement or graduate school."

To accomplish this goal we have developed an academic environment which facilitates the academic success of student-athletes. Student success is encouraged through competent academic counseling, career exploration, planning and



**MAGDI
EL SHAHAWY**
*Women's Basketball
Academic
Coordinator*

placement and academic assistance through tutorial programs.

Our program operates on a "proactive" rather than "reactive" approach. At Florida State, our academic staff does not wait for academic crises to occur. We gather important background information and build an academic profile on all student-athletes to assess their needs in advance. We also stay informed on the daily progress of each student-athlete.

In 1994, the academic programs moved to the state-

of-the-art University Center and are located on the 6th floor of the \$126,000,000 facility. It includes private study carrels, a tutorial study area and a computer lab outfitted with 16 new IBM computers and laser printers. In addition, athletic sky boxes are utilized for group and individualized tutorial instruction.

Personal Support Orientation

The goal of our orientation program is to make freshmen and transfer student-athletes' transition to Florida State University as smooth as possible. Student-athletes attend the University's Orientation to learn about University policies and procedures and campus life, and to get acquainted with University administration and faculty. Student-athletes also attend the Athletic Academic Support Orientation which is designed to cover a variety of topics. Before classes begin, student-athletes meet with their academic counselor to discuss potential academic majors and select fall classes. An extensive career exploration program is initiated in the fall semester and continues until the student-athlete selects an appropriate career path and academic major. In addition, NCAA and ACC rules are outlined by the Athletic Compliance Office. After classes begin, academic tutors provide individualized instruction on study skills and time management. Small group seminars are also scheduled to address personal health and social development issues.

Mentoring Program: Athlete 2 Athlete (A2A)

Florida State University's Athlete 2 Athlete program provides assistance and support to freshmen and