

transfer students to help make their transfer to Florida State as smooth as possible. The project pairs volunteer upper class FSU student-athletes with incoming athletes. Although they are not professional counselors, these peer mentors are trained to provide support and information to their fellow student-athletes. And, since they themselves have been successful both academically and athletically at FSU, they can help new student-athletes "learn the ropes" during their crucial first year. Programming includes seminars on topics such as balancing academics and athletics, as well as one-on-one rap sessions.

Social Development

This program is designed to give student-athletes an opportunity to participate in a variety of on and off-campus activities that will help them build social skills. The focus is on helping participants identify and use university resources, and expanding the scope of their educational experience. Throughout the program, students are exposed to issues that will help prepare them for life after graduation.

Cultural Development

A campus environment that reflects both diversity and inclusiveness is critical to the success of all students, and especially those who are members of minority groups. The cultural development program provides minority student-athletes with social and cultural experiences designed to encourage a positive multicultural setting within the university. The program offers an array of workshops and enrichment activities that stress the importance of both diversity and cohesiveness. Athletic department staff receive information and training about cultural diversity and sensitivity.

Academic Support Tutorial Program

The Athletic Department at Florida State University has made a commitment to providing our student-athletes with one of the finest and most comprehensive tutorial programs in the nation. The tutorial program is just one of several key support programs that are available to all student-athletes as they progress towards their ultimate goal of obtaining a college degree.

The Academic Support Program has a staff of between 80 and 90 tutors each semester who are committed to providing a proactive and individualized approach to insure academic success. The tutors are usually seniors or graduate students who have outstanding academic backgrounds. Through an orientation session provided each semester by the Tutorial Coordinator, they acquaint themselves with the purposes, objectives, and responsibilities involved with the tutorial program.

Tutorial assistance is available for all academic coursework that is offered by the university and it is the responsibility of the Tutorial Coordinator to provide each student-athlete with this assistance in a timely fashion. Student-athletes may request a tutor or one may be assigned to them depending upon the circumstances.

Academic Mentors

Mentors are academic role models who have demonstrated the ability to teach and give guidance in areas of academic developmental skills.

Each semester mentors begin the process by sitting down with their assigned student-athletes and assisting them in identifying their academic responsibilities. A calendar is developed which becomes a visual blueprint of each course's academic requirements. This tool introduces the student-athlete to the concept of time management. Students learn to plan projects days and weeks in advance. Such planning aids them in developing strong study habits.

Mentors are also responsible for providing assistance in the development of skills such as note taking, test preparation, and communication with faculty. In essence, mentors become an extension of the academic counselor as they keep the academic performance of their student-athletes under close observation.

A mentor will spend two or three hours per week during the first few weeks of the semester and normally one or two hours a week with their assigned student-athlete thereafter. In ideal relationships, by mid semester, the mentor becomes a strong study partner, there to assist the student-athlete through the learning process.

Study Hall

In an effort to help ensure academic success of the student-athletes, professionally supervised study sessions for each of its athletic teams are required. The main focus of the study hall program is to help students develop consistent and appropriate study patterns by providing a structured setting to work on class assignments, and to provide tutorial assistance before academic problems arise.

Although the criteria for mandatory study hall is left to the discretion of the academic counselor for their respective sport, typically, all freshmen, first year transfers, and upperclassmen who have not achieved a satisfactory cumulative grade point average will be required to attend. Additionally, each coach is regularly notified of any absences, tardiness, or inappropriate use of study time of student-athletes who are attending study hall.

Career Counseling/Professional Development

Florida State student-athletes are provided with the opportunity to explore career interests and enhance

employability skills through the Career Counseling/ Professional Development Program offered through the office of Athletic Academic Support Services. This program, in conjunction with the University Career Center, utilizes various resources geared toward career orientation and planning, exploration, implementation and placement.

Career Orientation and Planning

Many student-athletes enter college undecided about an academic major or interest. Through career orientation and planning, student-athletes are introduced to resources which help identify career interests and develop career opportunities. Florida State student-athletes are oriented to the University Career Center through tours and individual appointments and have access to advising and counseling from Career Center counselors and academic support staff members. Computerized career exploration programs such as Discover, Sigi Plus and Choices, along with interest inventories, are provided to give students the opportunity to discover a variety of options, matching personal and academic interests, skills, values and goals with career possibilities. In addition, student-athletes have the opportunity to enroll in SDS 3340 - Intro to Career Development, a course that introduces principles of career planning using self-assessment and Career Center resources.

Career Exploration

Student-athletes are given assistance with career clarification and selection. Each semester students are encouraged to attend monthly Career Nights which give them the opportunity to gather career information and discuss internship opportunities with area professionals from a variety of career fields. Career Expositions, sponsored by the Career Center's Office of Career Placement Services, are also held each semester, giving student-athletes the opportunity to talk with many different employers in a single setting. Through shadowing experiences, FSU student-athletes are able to receive a first hand look at careers, through arrangements made by professional staff members, to visit and observe various corporations and the tasks performed within them. With assistance from the Career Center's Career Experience Opportunities office and the Seminole Career Network, student-athletes can acquire internships which offer valuable experience and enhance marketability for the future.

Career Implementation

An important facet of the Career Counseling/ Professional Development Program is teaching job development skills to enhance employment opportunities. Student-athletes are encouraged to attend resume writing, cover letter writing and interviewing workshops, offered by the University Career Center

and may also work individually with Academic Support personnel. Through on-campus presentations, students can gain information as to where and how to find employment. Assistance is also provided in preparing for Graduate, Law and Professional School placement.

Career Placement

Searching for a job after graduation can be challenging and intimidating. The Career Placement phase provides Florida State student-athletes assistance in securing full-time employment once they complete their degrees. Student-athletes are educated in using the Career Placement Services office, located with the University Career Center, which matches potential employers with FSU graduates. Access to the Seminole Career Network, a networking system comprised of Florida State boosters nationwide who have agreed to facilitate career goals of student-athletes in various capacities, provides yet another vehicle for employment opportunities.

It is the goal of the office of Athletic Academic Support Services, through this comprehensive Career Counseling/Professional Development Program, to provide all student-athletes with the opportunities to prepare for a meaningful education and career.

Academic Honors & Awards

Florida State University student-athletes have achieved great success in obtaining recognition for academic excellence. More than \$90,000 in post-graduate award monies have been granted to FSU's student-athletes over the past three years, as well as a number of other academic honors and awards.

Florida State had 132 student-athletes named to the 1995-96 ACC Honor Roll and boasted an ACC Weaver James Postgraduate award winner, numerous G.T.E. District 3 Academic All-Americans, and four All-ACC Academic Team football players.

The Academic Support Program is committed to recognizing academic success of all student-athletes. Florida State University's Golden Torch Gala is an annual black tie banquet, given to honor top GPA winners in each sport throughout an academic year, ACC Honor Roll members and top male and female GPA winners.

The academic support staff assists all student-athletes in obtaining recognition and awards for academic success. Team meetings are held each year, during which time student-athletes are notified of potential honors and awards and criteria for each. Individual sport counselors encourage student-athletes to compete for awards and participate in the nomination process.

Combining a strong GPA with athletic accomplishments and community service activities, create a student-athlete capable of attaining unlimited academic honors, awards and postgraduate opportunities.

FSU Personal Support Program for Student Athletes Champs / Life Skills Program

The NCAA CHAMPS/Life Skills Program, developed by the NCAA Foundation, helps student-athletes prepare for life.

The challenges that today's college student-athletes face, both on and off the playing field, are unparalleled in the history of education. Unfortunately, many collegiate student-athletes are unprepared to face the biggest challenge of all, life after graduation, or what is called "real life."

The NCAA Foundation has developed the Life Skills Program for student-athletes to help students not only bridge the gap from college life to professional life in the business world, but to make meaningful contributions to their communities in the process.

While the program is entitled "Life Skills" and will be available for all NCAA divisions, the Division I-A Athletics Directors Association has emphasized promotion of the program among its members. Because of this focus, it has chosen to give the program for Division I-A institutions its own name, "Champs."

A portion of the program materials will be developed by noted professionals in each program discipline area, and the rest of the program information consists of existing material presently being used on university campuses across the country.

The Life Skills Program is designed to help student-athletes realize higher academic achievement, increased likelihood of retention, graduation and entering a chosen

profession, a higher level of maturity, self-responsibility and greater overall success.

Developing Skills for Life: A Five-Point Program of Learning

The focus of the program is on five commitments viewed as critical to personal growth: academic excellence, athletics excellence, personal development, service and career development.

Each commitment addresses specific topic areas in depth. For instance, the academic commitment focuses on topics such as study skills and goal-setting, and time management, while the personal development commitment highlights topics including values, clarification, fiscal responsibility, stress management and sports nutrition.

Program materials have been developed by nationally-recognized providers of customized training, professional organizations and/or associations. Several components include model programs from institutions with a proven success record in a particular component topic. Models are included so that participating institutions can choose the model that best fits their campus environment. Institutions are encouraged to use the CHAMPS/Life Skills Program in cooperation with pre-existing programming on their campus, in an effort to create stronger alliances between the athletics department and the campus, and greater involvement of the student-athlete in the campus community.

The Academic Support Staff.



Lady Seminole SUPPORT STAFF

Florida State Strength & Conditioning

Strength training and conditioning is an important part of an athlete's performance on the field. At Florida State, a supervised program has been developed for women's basketball, emphasizing the objectives of not building bodies, but strengthening and conditioning them. Strength coach Ron Miller, a former ACC Senior Scholarship Athlete of the Year for the FSU men's basketball team, individually customizes programs for each of the athletes beginning with pre-conditioning before the season gets underway. Miller, who is a member of both the National Strength and Conditioning Association and Aerobics and



RON MILLER
M.S. & C.S.C.S.

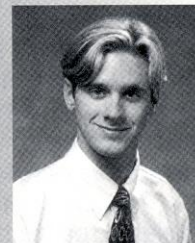
Basketball Support Staff



Patti Griffith
Senior Secretary/
Administrative Assistant



Cherish Butwala
Student Athletic
Trainer



Jeremy Rombough
Manager





Fitness Association of America, works with the players in sport specific training which includes conditioning the major muscle groups used in basketball. FSU takes pride in customizing the programs to help student-athletes reach their maximum potential.

Florida State Medical Care & Treatment

An athlete can expect to receive the best care and treatment possible with the athletic training team at Florida State University. Prior to competition, all FSU student-athletes undergo screening in order to detect any potential injuries. If a problem is detected, the athlete may be placed on a prevention care system which may include any kind of treatment from icing to exercising. Assistant Trainer Angela Sehgal has handled the athletic training duties for Lady Seminole women's basketball team for four years.



ANGELA SEHGAL
M.S., ATC, LAT

Though the prevention of injuries is the main objective, some injuries are unavoidable. Rehabilitation

is another component of the Florida State training room. The FSU athletic training staff will work with the athlete and provide an intense rehabilitation schedule that will allow the athlete to successfully rehabilitate after an injury. Some injuries and illnesses may be referred to the Seminole team physicians at the Tallahassee Orthopedic Center, who, for many years, have worked in conjunction with the FSU athletic training staff in successfully rehabilitating athletes after an injury.

Nutrition counseling and drug testing are also responsibilities of the athletic training team which is dedicated to providing the best care possible for all FSU student-athletes.

Weight Room

The Tully Gymnasium weight room recently took on a whole new look following a complete renovation this past summer. The facility, which was expanded by 2,000 square feet, is now 3,500 square feet in size fresh with a new stereo system, drop ceiling, lighting and mondo rubber flooring.

Over \$140,000 worth of new exercise equipment has been added to the Lady Seminole weight room, including 16 cardiovascular pieces such as Life Fitness, Stairmaster and Tatrix. All Florida State women's athletes train in the state-of-the-art facility, as well as the Seminole men's tennis team.

Lady Seminole FACILITIES

Tully Gymnasium

The Florida State women's basketball program has played at the friendly confines of Tully Gymnasium since its first season in 1973-74.

The facility, which was constructed in 1956, was named for the late Robert Henry (Bobby) Tully, a 1952 FSU graduate who played football. Active on campus, Tully was a member of the Gold Key, ODK, the Arnold Air Society and Alpha Tau Omega fraternity. He died in May 1954 after battling a long illness.

The 2,500 capacity gymnasium underwent a \$250,000 renovation prior to the 1993-94 season. The gym floor was resurfaced and repainted. The bleachers were replaced on one side with pull out arena-style padded seating with armrests to create a movie theater experience while watching the Lady Seminoles.

Aside from exciting Lady Seminole Basketball, Tully Gymnasium is home to Florida State volleyball and also houses the University's physical education department.



Tallahassee-Leon County Civic Center

A Florida State basketball game, at the Leon County Civic Center, is as exciting as it gets. FSU fans are spoiled by more than just a great basketball team playing in the nation's finest conference, they also get to watch the game in surrounds that are as modern as any in the country.

12,500 seats are available for fans of FSU basketball who are treated to one of the most spectacular shows in college hoops. Two big screen video systems are mounted in the corners of the arena opposite the state-of-the-art scoreboards. When there is a break in the action, the big screens come alive with highlight tapes, animated games and other crowd pleasing bits. The screens place Florida State among only three teams in the country that play their home games in a facility with big screen capability.

The multipurpose facility, which opened its doors in 1981, covers over 22 acres in the heart of Tallahassee's thriving downtown district. The Civic Center is only two blocks from the Capitol building and is just across the street from FSU's Center for Professional Development and nationally-acclaimed Law School.

The complex covers over 18,000 square feet with 119 foot ceilings in the main arena. The Civic Center is actually three different areas combined under one roof. The main arena, where FSU hosts its home games, is also the center for East Coast Hockey League contests featuring the Tallahassee Tiger Sharks, some of the nation's top musical concerts as well as Broadway plays and even a circus. The Exhibition Hall, which joins the main arena via a spacial hallway, can seat 5,000 for an event or serve as an indoor display area. The complex also features a terrace which is popular for outdoor hosting.

So impressive is the facility and the general atmosphere of an FSU basketball game that the Civic Center and Florida State University served as host of the first round of the 1995 Men's NCAA Basketball Tournament.



Tully Gym Quick Facts

Capacity	2,500
Location	Chieftan Way between the Scott Speicher Tennis Center and the Bobby E. Leach Center
First Season	1973-74
Year Completed	1956
Full Name	Robert Henry Tully Gymnasium



Inside...

- ▶ 1995-96 Review
- ▶ 1995-96 Statistics
- ▶ Game-By-Game Results
- ▶ ACC Final Standings
- ▶ ACC Conference



REVIEW

1995-96 SEASON REVIEW

The 1995-96 Florida State women's basketball season was kind of like a season of *The Brady Bunch*. Like in every episode of one of the all-time greatest sitcoms, the Lady Seminoles experienced some laughter, some tears, some triumphs and some disappointments. But every episode had the same underlying message and purpose which was joining a number of individuals whom with time, effort, support and dedication, became one successful unit. And every episode happened to have a happy ending where every crisis was solved.

With one senior, four sophomores and seven freshmen, however, things for Florida State couldn't be solved so easily. But that didn't stop the Tribe from putting forth a great deal of effort and working together as a team. FSU went 5-5 prior to league play, but the young Lady Seminoles would struggle much of the 1995-96 season, especially in the Atlantic Coast Conference as they opened ACC action losing its first eight games.



Jen Robinson

Despite the losses, the season didn't pass by without some positives. First and foremost was the outstanding play of senior forward Carla Williams, who provided the Lady Seminoles with solid leadership on and off the court. Williams led the team in scoring in 22 games and in rebounding 15 times as she finished the season with a team-leading 15.8 points per game average. The Graceville, Fla., native recorded nine games of double digit points and rebounds and seven games of 20 or more points, including a career-high 27 points vs. North Carolina State. Williams aggressive play allowed her many trips to the free throw line, an area in which she was unstoppable. Williams connected on 189 free throws, which was 142 more than another FSU player. She recorded double-digit free throws in seven games including a season-high 15 vs. N.C. State which set an ACC 1995-96-season superlative. Williams' efforts were rewarded as she earned ACC Player of the Week honors after averaging 23.0 points and 7.5 rebounds for the week which marked the first time in three seasons that a Florida State player earned the honor. Although Williams' numbers seemed to improve with each and every game, the team's results did not. It was evident that if Florida State was to be successful, Williams was going to need some help from her teammates. She got that help in a big way as Florida State put together two straight home ACC wins.

The Lady Seminoles first ACC win of the season was a thrilling triple overtime victory over Georgia Tech, which snapped an eight-game losing streak for FSU. Florida State led the entire game and was leading by as many as 12 points with just over nine minutes to play. But FSU would not score again until the 3:25 mark during which time the Lady Jackets tied the game. Georgia Tech's Kisha Ford hit a jumper with five seconds to play to force the game into the first overtime and then the Lady Jackets built a three-point lead and looked as though they would pull off the comeback victory.

However, sophomore Wendy Hampton wasn't finished playing yet and with two seconds left and with three defenders in her face, launched a three-pointer that went in to surge the game into another OT. FSU would not trail again and recorded the 90-85 win. Hampton tallied a career-high 19 points, including connecting on a career-high four, three pointers. The win was not only FSU's first ACC win of the season, but the Tribe's first home ACC victory in Tallahassee since the 1993-94 season. Indeed a notable accomplishment,



Carla Williams

but what turned out to be probably the biggest highlight of the season was just 10 days later in the win over North Carolina. Florida State shot a season-high 62 percent from the field, including an amazing 81 percent in the second half, as the Tribe took it to the Tar Heels, downing North Carolina 73-64 on Feb. 9, for its second straight home ACC win. Williams scored her 25 points, but the real story was the play of sophomore Aletha Penn who had a career night, scoring 18 points. The victory marked FSU's first win over North Carolina since Jan. 10, 1993 and its first win over UNC in Tallahassee since the 1992 season. Defense played a key role in the win as the Lady Seminoles held the Tar Heels to well below their season-average of 75.9 points and also to their lowest points total in ACC competition all season.

Florida State would not win another regular-season game, but would not rest until at least one more feat was accomplished. Since joining the ACC in July 1991, the Lady Seminoles had yet to register a "w" in four tourney appearances. The 1995-96 team decided it was time for that to change. In truly a team effort, #9 seed Florida State defeated eighth-seeded Georgia Tech 64-51 in the play-in game. Williams led the way with 17 points, while Hampton had 15 and sophomore Latrice McLin added 13 points.

Although FSU would win just two regular season ACC games, the Lady Seminoles showed improvement against nearly every opponent the second time around. And every Nole had her day. All five of the returning players recorded career highs. Williams scored 27

points vs. N.C. State had grabbed an amazing 19 rebounds in FSU's win over Furman. Hampton notched career highs in her 19 point, eight rebound performance vs. Georgia Tech. Lysa Moorefield scored 28 points vs. FAMU in a game where the sophomore tied her previous career-high of 16 points by halftime. She twice grabbed 12 rebounds in games during the season. McLin improved her rebounding high from seven to 12, grabbing a dozen in two games. Penn's 18 points in the win over North Carolina was just one career mark the sophomore set. She also attained career highs in rebounding (seven vs. Georgia Tech) assists (eight vs. Temple) and steals (seven vs. FAMU). Each and every one of the seven newcomers contributed in her own way as well. Arleshia Davidson tallied 13 points in just 20 minutes of play vs. Virginia. Meghan Heaps hit four treys on her way to a season-high 12 points vs. Florida. Jennifer Miller, who had played just 12 minutes total in ACC action, saw 14 minutes of play against Maryland. She scored four points, including a three-pointer, dished out four assists, had a steal and a block. Kristy Parker hit double digits with 10 points vs. Wake Forest and also recorded four assists in the game. Jen Robinson twice scored in double digits, but recorded her own "double-double" with 13 points and 10 assists vs. FAMU. Redshirt freshman Leslie Waugh entered the Wake Forest game with FSU leading 14-13 and went on to score six of the Tribe's next nine points, sparking FSU to its biggest lead of the game (23-16). Kristy White recorded two "double-doubles" this season and notched season-highs of 15 points vs. Wake Forest and 13 rebounds vs. Maryland.



Aletha Penn

1995-96 STATISTICS

INDIVIDUAL - ALL GAMES

Record: 8-20 Home: 3-8 Away: 2-8 Neutral: 3-4

Player	G-GS	Min-Avg	FG-FGA	Pct	3P-3P	Pct	FT-FTA	Pct	Off-Def	Tot-Avg	PF-FD	AT	TO	BS	ST	Pts-Avg
22 Williams, C	28-28	974-34.8	127-243	.523	0- 0	.000	189-244	.775	94-140	234-8.4	79-3	25	88	0	20	443-15.8
31 Moorefield, L	28-24	662-23.6	95-229	.415	0- 0	.000	23- 43	.535	46- 80	126-4.5	73-2	15	53	21	11	213-7.6
05 McLin, L	28-25	868-31.0	73-217	.336	2-13	.154	47-108	.435	57- 91	148-5.3	48-0	45	81	4	28	195-7.0
21 White, K	28- 4	611-21.8	83-191	.435	0- 0	.000	26- 50	.520	56- 78	134-4.8	76-2	10	48	26	9	192-6.9
45 Hampton, W	28-19	621-22.2	70-195	.359	28-75	.373	16- 26	.615	30- 67	97-3.5	53-1	28	75	11	33	184-6.6
20 Penn, A	28-22	726-25.9	57-139	.410	9-19	.474	37- 57	.649	22- 51	73-2.6	77-4	77	112	4	48	160-5.7
24 Robinson, J	28-12	638-22.8	53-184	.288	12-51	.235	22- 41	.537	11- 57	68-2.4	62-2	78	110	2	28	140-5.0
23 Davidson, A	22- 3	187- 8.5	26- 57	.456	0- 0	.000	12- 18	.667	11- 23	34-1.5	31-0	12	31	6	9	64-2.9
12 Parker, K	19- 3	167- 8.8	10- 26	.385	0- 1	.000	11- 20	.550	3- 6	9-0.5	13-0	18	31	0	0	31-1.6
32 Heaps, M	20- 0	120- 6.0	9- 41	.220	8-34	.235	0- 0	.000	2- 6	8-0.4	7-0	5	7	0	1	26-1.3
42 Waugh, L	18- 0	65- 3.6	8- 13	.615	0- 0	.000	4- 5	.800	6- 11	17-0.9	9-0	2	6	2	1	20-1.1
13 Miller, J	13- 0	38- 2.9	2- 12	.167	1- 2	.500	2- 5	.400	0- 3	3-0.2	3-0	4	2	1	1	7-0.5
Team																109

Florida State	28	5677	613-1547	.396	60-195	.308	389-617	.630	338-613	1060-37.9	531	319	644	77	189	1675-59.8
Opponents	28	5677	752-1732	.434	63-232	.272	421-630	.668	417-669	1086-38.8	557	377	517	68	363	1988-71.0

SCORE BY HALVES

	1	2	OT	Total	Deadball Rebounds
Florida State	789	857	34	1680	111
Opponents	941	1013	29	1983	95

PER GAME AVERAGES

Player	G	FG	FGA	3P	3PA	FT	FTA	AT	TO	BS	ST
22 Williams, C	28	4.5	8.7	0.0	0.0	6.8	8.7	0.9	3.1	0.0	0.7
31 Moorefield, L	28	3.4	8.2	0.0	0.0	0.8	1.5	0.5	1.9	0.8	0.4
05 McLin, L	28	2.6	7.8	0.1	0.5	1.7	3.9	1.6	2.9	0.1	1.0
21 White, K	28	3.0	6.8	0.0	0.0	0.9	1.8	0.4	1.7	0.9	0.3
45 Hampton, W	28	2.5	7.0	1.0	2.7	0.6	0.8	1.0	2.7	0.4	1.2
20 Penn, A	28	2.0	5.0	0.3	0.7	1.3	2.0	2.8	4.0	0.1	1.7
24 Robinson, J	28	1.9	6.6	0.4	1.8	0.8	1.5	2.8	3.9	0.1	1.0
23 Davidson, A	22	1.2	2.6	0.0	0.0	0.5	0.8	0.5	1.4	0.3	0.4
12 Parker, K	19	0.5	1.4	0.0	0.1	0.6	1.1	0.9	1.6	0.0	0.0
32 Heaps, M	20	0.5	2.1	0.4	1.7	0.0	0.0	0.3	0.4	0.0	0.1
42 Waugh, L	18	0.4	0.7	0.0	0.0	0.2	0.3	0.1	0.3	0.1	0.1
13 Miller, J	13	0.2	0.9	0.1	0.2	0.2	0.4	0.3	0.2	0.1	0.1
Florida State	28	21.9	55.3	2.1	7.0	13.9	22.0	11.4	23.0	2.8	6.8
Opponents	28	26.9	61.9	2.3	8.3	15.0	22.5	13.5	18.5	2.4	13.0

TEAM & OPPONENTS' HIGHS & LOWS

CATEGORY		FLORIDA STATE	OPPONENT
POINTS 1ST HALF	High	43 vs Florida A&M	50 by Virginia
	Low	12 vs Duke	17 by Florida Atlantic
POINTS 2ND HALF	High	47 vs Florida A&M	51 by Duke
	Low	18 vs Duke	22 by Furman
TOTAL POINTS	High	90 vs Florida A&M	97 by Georgia Tech
	Low	30 vs Duke	46 by Florida Atlantic
FIELD GOALS MADE	High	38 vs Florida A&M	40 by Duke
	Low	13 vs Missouri	13 by Florida Atlantic
FIELD GOALS ATT	High	69 vs WAKE FOREST	77 by GEORGIA TECH
	Low	37 vs NORTH CAROLINA	48 by UT-CHATTANOOGA
FIELD GOAL %	High	.622 vs NORTH CAROLINA	.588 by Duke
	Low	.236 vs Missouri	.255 by Florida Atlantic
3-PT FIELD GOALS MADE	High	5 vs Georgia Tech	8 by Virginia
	Low	0 vs UT-CHATTANOOGA	0 by Florida Atlantic
3-PT FIELD GOALS ATT	High	18 vs Florida	18 by FLORIDA
	Low	1 vs UT-CHATTANOOGA	1 by Missouri
3-PT FIELD GOAL %	High	.750 vs NORTH CAROLINA	.714 by WAKE FOREST
	Low	.000 vs UT-CHATTANOOGA	.000 by Florida Atlantic
FREE THROWS MADE	High	33 vs GEORGIA TECH	28 by Virginia
	Low	1 vs Duke	7 by FLORIDA
FREE THROWS ATT	High	51 vs GEORGIA TECH	43 by Virginia
	Low	5 vs Duke	0 by Duke
FREE THROW %	High	.846 vs MARYLAND	.923 by MARYLAND
	Low	.200 vs Duke	.407 by N.C. State
OFFENSIVE REBOUNDS	High	23 vs NEW ORLEANS	24 by NEW ORLEANS
	Low	5 vs Florida	7 by WAKE FOREST
DEFENSIVE REBOUNDS	High	38 vs Florida Atlantic	37 by Florida
	Low	14 vs VIRGINIA	13 by NORTH CAROLINA
TOTAL REBOUNDS	High	55 vs Florida Atlantic	56 by Florida
	Low	26 vs VIRGINIA	23 by Florida A&M
ASSISTS	High	23 vs Florida A&M	23 by Duke
	Low	3 vs Duke	6 by Florida Atlantic
BLOCKED SHOTS	High	7 vs MARYLAND	7 by NEW ORLEANS
	Low	0 vs South Florida	0 by Florida A&M
STEALS	High	11 vs Florida Atlantic	22 by GEORGIA TECH
	Low	1 vs Georgia Tech	5 by NEW ORLEANS
TURNOVERS	High	35 vs Georgia Tech	29 by North Carolina
	Low	11 vs Wake Forest	9 by Duke, Wake Forest
PERSONAL FOULS	High	29 vs Virginia	37 by GEORGIA TECH
	Low	12 vs Duke	11 by DUKE

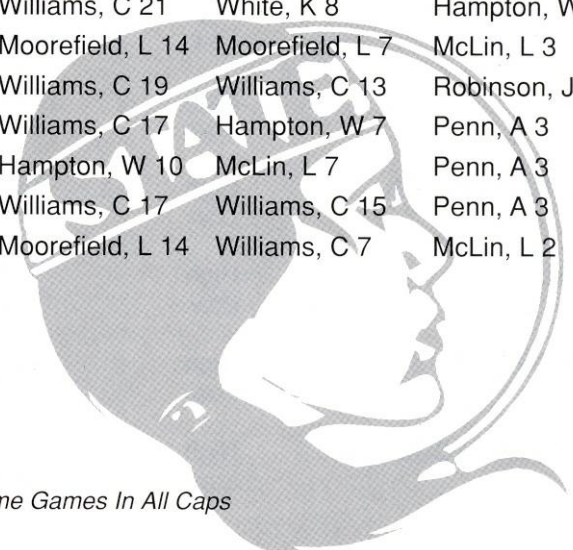
Game-By-Game RESULTS

DATE	OPPONENT	RESULT	SCORE	SITE	ATT	HIGH SCORER	HIGH REBOUNDER	HIGH ASSISTS
11/27	Florida Atlantic	Won	69-46	Away	150	Williams, C 16	McLin, L 12	Robinson, J 6
12/01	Florida	Lost	56-74	Neutral	214	Williams, C 25	Williams, C 8	McLin, L 2
12/02	South Florida	Won	56-55	Neutral	258	Williams, C 12	Williams, C 10	Robinson, J 4
12/06	Duke	Lost	30-92	Away	800	Williams, C 13	White, K 7	Penn, A 1
12/10	Florida A&M	Won	90-65	Away	565	Moorefield, L 28	White, K 11	Robinson, J 10
12/17	UT-CHATTANOOGA	Lost	58-60	Home	243	Williams, C 15	Williams, C 8	Robinson, J 5
12/20	NEW ORLEANS	Won	62-51	Home	321	White, K 14	McLin, L 12	Penn, A 3
12/28	Missouri	Lost	47-61	Neutral	200	McLin, L 12	McLin, L 9	Penn, A 2
12/29	Temple	Lost	67-72	Neutral	300	Williams, C 17	White, K 9	Penn, A 8
12/30	Furman	Won	60-56	Neutral	100	Williams, C 16	Williams, C 19	Parker, K 2
01/03	North Carolina	Lost	59-67	Away	682	Williams, C 17	McLin, L 7	Williams, C 3
01/07	CLEMSON	Lost	74-87	Home	219	Williams, C 26	Williams, C 11	Robinson, J 6
01/09	NC STATE	Lost	71-76	Home	361	Williams, C 27	White, K 8	Penn, A 6
01/14	MARYLAND	Lost	49-72	Home	256	Williams, C 12	White, K 13	Davidson, A 2
01/16	Virginia	Lost	58-91	Away	3,510	Williams, C 15	Moorefield, L 12	Robinson, J 4
01/20	WAKE FOREST	Lost	71-88	Home	532	Williams, C 22	Davidson, A 7	Parker, K 4
01/22	Georgia Tech	Lost	65-97	Away	537	Williams, C 16	Williams, C 9	Robinson, J 6
01/27	DUKE	Lost	47-61	Home	348	Moorefield, L 12	Williams, C 6	McLin, L 4
01/31	GEORGIA TECH	Won	90-85	Home	353	Williams, C 21	Williams, C 13	Penn, A 4
02/03	Clemson	Lost	53-70	Away	2,412	Moorefield, L 16	Moorefield, L 8	McLin, L 5
02/09	NORTH CAROLINA	Won	73-64	Home	424	Williams, C 25	Williams, C 9	Penn, A 3
02/11	NC State	Lost	64-78	Away	1,756	Williams, C 21	White, K 8	Hampton, W 5
02/16	VIRGINIA	Lost	40-81	Home	357	Moorefield, L 14	Moorefield, L 7	McLin, L 3
02/18	Maryland	Lost	63-75	Away	1,372	Williams, C 19	Williams, C 13	Robinson, J 5
02/22	Wake Forest	Lost	52-54	Away	888	Williams, C 17	Hampton, W 7	Penn, A 3
02/26	FLORIDA	Lost	37-76	Home	745	Hampton, W 10	McLin, L 7	Penn, A 3
02/29	Georgia Tech	Won	64-51	Neutral	2,181	Williams, C 17	Williams, C 15	Penn, A 3
03/01	Virginia	Lost	50-83	Neutral	2,914	Moorefield, L 14	Williams, C 7	McLin, L 2

Attendance

SITE	G	TOTAL	AVERAGE
HOME:	11	4,159	378
AWAY:	10	12,672	1,267
NEUTRAL:	7	6,167	881
TOTAL:	28	22,998	821

*Home Games In All Caps



1995-96 FSU GAME-BY-GAME STATISTICS

		FG-FGA	FG%	3FG-A	FT-FTA	FT%	REB	PF-D	TP	A	TO	BLK	S
1.	at Florida Atlantic	13-51	.255	0-2	20-35	.571	26	20-0	46	6	22	4	10
	FSU	29-57	.509	2-3	9-23	.391	55	27-2	69	12	25	1	11
2.	vs. Florida	28-65	.431	4-11	14-22	.636	56	22-0	74	11	19	1	9
	FSU	17-54	.315	4-18	18-25	.720	29	20-0	56	12	14	2	8
3.	vs. So. Florida	19-57	.333	3-8	14-22	.636	31	17-0	55	8	18	3	18
	FSU	19-45	.422	4-7	14-19	.737	43	18-0	56	11	29	0	8
4.	at Duke	40-68	.588	3-13	9-10	.900	39	12-0	92	23	9	4	15
	FSU	14-54	.259	1-7	1-5	.200	29	12-0	30	3	27	1	4
5.	at FAMU	26-73	.356	3-12	10-15	.667	23	14-0	65	17	14	0	14
	FSU	38-64	.594	3-6	11-18	.611	55	17-0	90	23	28	4	10
6.	UT-Chatt.	22-48	.458	3-10	13-22	.591	28	18-1	60	9	25	0	15
	at FSU	21-43	.488	0-1	16-22	.727	29	19-0	58	11	26	5	10
7.	New Orleans	20-66	.303	3-16	8-16	.500	54	32-2	51	11	27	7	5
	at FSU	20-64	.313	1-2	21-36	.583	47	18-0	62	11	16	2	7
8.	Missouri	24-54	.444	0-1	13-19	.684	36	22-0	61	12	23	2	13
	FSU	13-55	.236	0-6	21-29	.724	38	18-1	47	5	23	1	5
9.	Temple	25-56	.446	3-7	19-29	.655	34	25-0	72	10	23	0	16
	FSU	23-54	.426	0-3	21-28	.750	35	21-0	67	14	25	1	7
10.	Furman	20-62	.323	0-12	16-23	.696	36	17-0	56	14	22	0	12
	FSU	22-56	.393	4-12	12-17	.706	48	22-0	60	8	30	3	11
11.	No. Carolina	25-57	.439	0-7	17-27	.630	45	21-0	67	12	29	3	17
	FSU	20-60	.300	2-5	17-22	.773	35	18-1	59	9	24	3	9
12.	Clemson	30-67	.448	6-11	21-32	.656	41	18-0	87	13	12	4	15
	FSU	26-58	.448	2-6	20-31	.645	44	22-1	74	10	22	1	7
13.	NC State	28-54	.519	0-2	20-31	.645	38	16-0	76	14	28	3	7
	FSU	28-68	.412	2-6	13-20	.650	36	24-2	71	14	19	2	10
14.	Maryland	30-68	.441	0-4	12-13	.923	38	14-0	72	15	16	0	14
	FSU	19-60	.317	0-5	11-13	.846	40	13-0	49	8	28	7	5
15.	Virginia	30-59	.508	3-8	28-43	.651	47	18-0	91	16	17	1	18
	FSU	23-60	.383	2-9	10-23	.435	34	29-2	58	14	22	3	6
16.	Wake Forest	35-62	.565	5-7	13-15	.867	34	17-0	88	23	9	2	5
	FSU	30-69	.435	2-12	9-16	.563	35	16-1	71	14	11	2	2
17.	Georgia Tech	34-63	.540	1-3	28-39	.718	44	17-0	97	13	12	3	13
	FSU	23-63	.365	5-14	14-19	.737	35	25-0	65	18	21	5	1
18.	Duke	25-58	.431	1-9	10-15	.667	44	11-0	61	14	18	3	10
	FSU	22-57	.386	1-5	2-5	.400	28	13-0	47	11	16	5	6
19.	Georgia Tech	32-77	.416	0-5	21-31	.677	41	37-5	85	12	28	3	22
	FSU	26-62	.419	5-7	33-51	.647	55	23-3	90	14	35	6	10
20.	Clemson	25-69	.362	0-4	20-38	.714	41	18-0	70	13	11	2	11
	FSU	19-45	.422	0-3	15-26	.577	39	22-0	53	15	22	4	3
21.	No. Carolina	25-62	.403	3-15	11-15	.733	23	28-0	64	7	16	0	15
	FSU	23-37	.622	3-4	24-32	.750	29	17-0	73	11	28	3	4
22.	NC State	33-69	.478	1-4	11-27	.407	47	20-0	78	21	19	3	11
	FSU	21-57	.368	2-9	20-32	.625	38	20-0	64	10	23	2	5
23.	Virginia	29-53	.547	5-11	18-24	.750	42	23-0	81	13	23	2	19
	FSU	13-43	.302	0-4	14-27	.519	26	20-0	40	10	29	0	10
24.	Maryland	31-65	.477	1-3	12-15	.800	33	17-1	75	16	12	3	13
	FSU	26-55	.473	3-4	8-14	.571	36	12-0	63	17	25	1	5
25.	Wake Forest	20-56	.357	0-5	14-21	.667	45	11-0	54	11	19	5	11
	FSU	22-57	.386	2-5	6-9	.667	31	19-0	52	11	18	2	5
26.	Florida	33-71	.465	3-18	7-10	.700	42	16-0	76	18	14	1	16
	FSU	16-47	.340	3-10	2-9	.222	32	16-0	37	6	32	1	8
27.	GaTech	19-56	.339	4-8	9-13	.692	31	25-0	51	9	17	5	9
	FSU	22-49	.449	3-9	17-27	.630	46	18-0	64	8	18	4	10
28.	Virginia	31-66	.470	8-16	13-18	.722	47	22-0	83	16	15	4	10
	FSU	18-54	.333	4-13	10-19	.526	32	13-1	50	9	19	6	2

Miscellaneous STATISTICS

LADY SEMINOLES RECORD WHEN...

In tournaments	3-4
Shooting 50% or above from the field	3-0
Shooting below 50% from the field	5-20
FSU has rebound advantage	7-7
Opponent has rebound advantage	1-13
Rebounds are the same	0-0
FSU outshoots opponent from the field	7-3
Opponent outshoots FSU from the field	1-16
Shooting tie from the field	0-1
FSU bench outscores opponent's bench	3-4
Opponent bench outscores FSU's bench	5-15
Bench scoring is tied	0-1
FSU has fewer turnovers than opponent	1-5
FSU has more turnovers than opponent	7-14
Turnovers are the same	0-1
FSU leads at halftime	7-1
Opponent leads at halftime	1-18
Teams are tied at halftime	0-1
Game goes into overtime	1-0
Playing during the day	2-7
Playing at night	6-13

RECORD BREAKDOWN

Florida State was 8-20 overall, 38 at home, 2-8 away, 3-4 on neutral courts, 1-0 in November, 4-5 in December, 1-8 in January, 3-6 in February, 0-1 in March, 1-2 on Monday, 0-2 on Tuesday, 2-2 on Wednesday, 1-2 on Thursday, 1-4 on Friday, 2-3 on Saturday, 1-5 on Sunday.

SEASON SUPERLATIVES

Complete games (7): Williams (3), McLin (4)
 Double-figure scoring games (63): Williams (25), McLin (9), Moorefield (6), Heaps (1), Hampton (7), Robinson (2), White (7), Penn (3), Davidson (2), Parker (1)



Meghan Heaps

20 point (or more) scoring games (8): Williams (7), Moorefield (1)
 Double-figure rebounding games (15): Williams (9), Moorefield (2), White (2), McLin (2)
 Double-figure scoring/rebounding games (13): Williams (9), McLin (2), White (2)
 Games leading FSU in scoring: Williams (21t), Moorefield (6t), Hampton (2t), White (1t), McLin (1t)
 Games leading FSU in rebounding: Williams (15t), McLin (5t), Moorefield (5t), White (6t), Davidson (1), Hampton (1)

ACC FINAL STANDINGS

CLEMSON • ACC Champion & NCAA Regional Participant
VIRGINIA • NCAA Tournament Regional Finalist
DUKE • NCAA Tournament Participant
N.C. STATE • NCAA Tournament Participant

TEAM	ACC GAMES					ALL GAMES					NEU
	W	L	PCT	HM	RD	W	L	PCT	HM	RD	
Virginia	13	3	.813	6-2	7-1	26	7	.788	15-3	9-3	2-1
Duke	12	4	.750	6-2	6-2	26	7	.788	11-3	9-3	6-1
N.C. State	10	6	.625	6-2	4-4	20	10	.667	8-2	6-5	6-3
Clemson	9	7	.563	6-2	3-5	23	8	.742	12-3	7-5	4-0
North Carolina	8	8	.500	5-3	3-5	13	14	.481	7-3	5-5	1-6
Maryland	7	9	.438	4-4	3-5	13	14	.481	8-5	4-6	1-3
Wake Forest	6	10	.375	3-5	3-5	13	14	.481	4-7	6-6	3-1
Georgia Tech	5	11	.313	4-4	1-7	14	13	.519	8-4	3-8	3-1
Florida State	2	14	.125	2-6	0-8	8	20	.288	3-8	2-8	3-4

TOURNAMENT SUMMARY

NCAA Tournament

East Regional (1st Round) - Virginia d. Manhattan 100-55. (2nd Round) Virginia d. George Washington 62-43. (Regional Semifinals) - Virginia d. Old Dominion 72-80. (Regional Final) - Tennessee d. Virginia 52-46. *Midwest Regional* (1st Round) - Duke d. James Madison 85-53. (2nd Round) San Francisco d. Duke 64-60. *West Regional* (1st Round) - Clemson d. Austin Peay 79-52. (2nd Round) Stephen F. Austin d. Clemson 93-88 (ot). *Midwest Regional* (1st Round) - N.C. State d. Montana 77-68. (2nd Round) - Alabama d. N.C. State 88-68.

ACC Tournament

Feb 29-Mar 3, Winthrop Coliseum, Rock Hill, S.C.: *First Round* - #9 Florida State d. #8 Georgia Tech 64-51. *Quarterfinals* - #4 Clemson d. #5 North Carolina 67-49; #1 Virginia d. #9 Florida State 83-50; #2 Duke d. #7 Wake Forest 67-61; #3 N.C. State d. #6 Maryland 83-81. *Semifinals* - Clemson d. Virginia 75-67; Duke d. N.C. State 79-62. *Finals* - Clemson d. Duke 71-54.

All-Atlantic Coast Conference

First Team - Wendy Palmer, UVa; Tracy Reid, UNC; Tora Suber, UVa; Tracy Connor, WFU; Stephanie Ridgeway, Clem. *Second Team* - Tyish Hall, Duke; Chasity Melvin, NCS; Kisha Ford, GaT; Alison Day, Duke; Jennifer Howard, NCS.

All-ACC Freshman Team

Chanel Wright, UNC; Payton Black, Duke; DeMya Walker, UVa; Kelley Gibson, Maryland; Amy Geren, Clem.

ACC Player of the Year

Wendy Palmer, UVa.

ACC Freshman of the Year

Chanel Wright, UNC.

ACC Coach of the Year

Gail Goestenkors, Duke.

NCAA East Region All-Tournament Team

Tora Suber & DeMya Walker, UVa.

ACC All-Tournament Team

First Team - Laura Cottrell, Clem; Chasity Melvin, NCS; Kira Orr, Duke; Stephanie Ridgeway, Clem; Tora Suber, UVa. *Second Team* - Payton Black, Duke; Wendy Palmer, UVa; Jaci Stimson, Clem; Amy Geren, Clem; Sonia Chase, Md.

ACC Tournament MVP

Laura Cottrell, Clem.

All-Americans

Wendy Palmer, UVa (1st team-Kodak/WBCA, USBWA, *Basketball America*, 2nd-team AP, UPI, 3rd team-*College Sports*); Tyish Hall, Duke (HM-Kodak/WBCA, UPI); Stephanie Ridgeway, Clem (Kodak/WBCA, UPI); Tora Suber, UVa (HM-AP).

Final Associated Press Poll

1-Louisiana Tech, 2-Connecticut, 3-Stanford, 4-Tennessee, 5-Georgia, 6-Old Dominion, 7-Iowa, 8-Penn State, 9-Texas Tech, 10-Alabama, 11-Virginia, 12-Vanderbilt, 13-Duke, 14-Clemson, 15-Purdue, 16-Florida, 17-Colorado, 18-Wisconsin, 19-Auburn, 20-Kansas, 21-Notre Dame, 22-Oregon State, 23-N.C. State, 24-Mississippi, 25-Texas.

Final USA Today/CNN Poll

1-Tennessee, 2-Georgia, 3-Connecticut, 4-Stanford, 5-Louisiana Tech, 6-Virginia, 7-Vanderbilt, 8-Auburn, 9-Iowa, 10-Old Dominion, 11-Alabama, 12-Texas Tech, 13-Penn State, 14-Stephen F. Austin, 15-Kansas, 16-San Francisco, 17-Clemson, 18-Colorado, 19-Duke, 20-Wisconsin, 21-Notre Dame, 22-Florida, 23-DePaul, 24-Colorado State, 25-Texas.

ACC Players of the Week

Tyish Hall, Duke (N27); Carla Munnion, GaT (D4); Tyisha Hall, Duke (D11); Carla Munnion GaT (D18); Tracy Connor, WFU (J2); Jennifer Howard, NCS (J9); Tora Suber, UVa (J15); Wendy Palmer, UVa (J22); Tyish Hall, Duke (J22); Tyish Hall, Duke (J29); Wendy Palmer, UVa (F5); Carla Williams FSU (F12); Tracy Reid, UNC (F19); Stephanie Ridgeway, Clem (F19); Tora Suber, UVa (F27).

ACC Rookies of the Week

Payton Black, Duke (N27); Naz Medhanie, Duke (D4); Ito Umoh, Clem (D11); Payton Black, Duke (J2); DeMya Walker, UVa (J2); Amy Geren, Clem (J9); Chanel Wright, UNC (J15); Payton Black, Duke (F5); Kelley Gibson, Md (F12); Kelley Gibson, Md (F19); Payton Black, Duke (F27)



Atlantic Coast CONFERENCE

The Tradition

Consistency. It's the mark of true excellence in any endeavor. However, in today's intercollegiate athletics, competition has become so balanced and so competitive that it is virtually impossible to maintain a high level of consistency.

Yet the Atlantic Coast Conference has defied the odds. Now in its 44th year of competition, the ACC has long enjoyed the reputation as one of the strongest and most competitive intercollegiate conferences in the nation. And that is not mere conjecture, the numbers support it.

Since the league's inception in 1953, Atlantic Coast Conference schools have captured 56 NCAA and AIAW championships, including 27 in men's competition and 29 in women's. In addition, 96 men and 24 women have earned the coveted title of NCAA champion.

If success is measured best in terms of wins and losses, then the ACC is unrivaled in NCAA history. The men's and women's basketball programs have combined for 14 trips to the Final Four in the last 15 years, and 35 appearances overall. Following North Carolina's women's national championship season of 1994, the first ever in the league, ACC teams have claimed eight titles while finishing second on ten occasions.

The league's women's basketball program ranks among the best in the country in terms of overall NCAA Tournament record. With 72 wins in 59 appearances, the conference is listed second best in total wins and total appearances.

Over the years, ACC basketball teams have gained global recognition through their NCAA Tournament exposure. About 150 regular season games, plus all of the men's conference tournament and the semifinals of the women's tournament will be televised. Conference teams will be seen on all three major networks, ESPN and Prime Network.

ACC basketball is more than numbers though. The faces behind the men's and women's programs account for 23 national player of the year honors and 17 national coach of the year awards, including Dawn Staley's player recognition in 1991 and 1992, and coach's distinction for North Carolina's Sylvia Hatchell (1994), Maryland's Chris Weller (1992), Virginia's Debbie Ryan (1991) and N.C. State's Kay Yow (1990). In women's play, the ACC has produced 16 first-team All-Americans, seven Olympians, including coaches and players. N.C.

State's Kay Yow headed up the 1988 gold medal-winning Olympic team, assisted by Sylvia Hatchell of North Carolina. Maryland's Vicky Bullet was a member of the 1988 and 1992 Olympic teams and Virginia's Dawn Staley was a member of the 1996 gold medal-winning Olympic squad in Atlanta.

The ACC also stands at the forefront of intercollegiate athletics in terms of academic accomplishments of its' student-athletes. Since 1983, 179 women's basketball players have received ACC Honor Roll recognition. The 1995-96 academic year included 30 selections. In addition, ACC basketball players have earned first-team Academic All-America honors five times.

The 1995-96 Season in Review

The 1995-96 academic year concluded with the league pocketing two more national team titles and seven individual NCAA crowns. In all, the ACC has won 23 national team crowns in the last six years.

The ACC's 1995-96 national champions were North Carolina in field hockey and Maryland in women's lacrosse. The league also had four teams participate in national title games — Duke in men's soccer, Virginia in men's lacrosse, North Carolina in women's lacrosse and Maryland in field hockey. Overall, the ACC posted a 67-48-1 (.575) mark in NCAA Tournament play.

In addition, seven ACC schools — North Carolina (6), Virginia (21), Florida State (23), Clemson (27), N.C. State (32) and Duke (39) — were ranked in the Top 40 of the Sears Directors' Cup, an all-sports award honoring the Division I school with the best performance by women's and men's athletic teams during the 1995-96 academic year.

The ACC placed at least one team in the Top 10 nationally in 13 of 23 sports sponsored by the league. Other records of note during the 1995-96 season include 77 teams competing at NCAA Championships, four bowl teams and 24 Top 10 showings.

Six ACC teams, in six different sports, representing three of nine member institutions, earned a No. 1 ranking during the course of the past academic year.

The ACC Academic Honor Roll record was broken for the 10th-straight year as 1,185 student-athletes were recognized for their work in the classroom.

The History

The Atlantic Coast Conference was founded May 8, 1953, at Sedgefield Inn near Greensboro, North Carolina. The conference's seven charter members from three states included Clemson University, University of Maryland, University of North Carolina, North Carolina State University, University of South Carolina and Wake Forest University.

The withdrawal of the seven schools from the Southern Conference came early on the morning of May 8, 1953, during the annual spring meeting of the conference. On June 14, 1953, the seven members met in Raleigh, N.C., where a set of bylaws were adopted and the name Atlantic Coast Conference was officially recognized.

Dr. James T. Penney of the University of South Carolina was elected temporary chairman and became the ACC's first president when the school's met again on June 14, 1953. Professor F.W. Clonts of Wake Forest was named vice president and Dr. Oliver Cornwell of North Carolina was elected secretary-treasurer.

On December 4, 1953, the Conference again met at Sedgefield Inn and officially admitted the University of Virginia to the league. Virginia began active championship participation with the 1953-54 basketball season.

The ACC set up office at the King Cotton Hotel in Greensboro, N.C., on July 1, 1954. The office was moved to 338 North Elm Street on July 1, 1966 and then moved to 2100-N West Cornwallis Drive in April of 1980. The conference moved to its current site at 6011 Landmark Center in April 1989.

The first and only withdrawal of a member from the ACC occurred on June 30, 1971 when the University of South Carolina tendered its resignation. The Conference continued with seven members until April 3, 1978, when Georgia Institute of Technology was admitted. The Atlanta, Ga. school became a playing member of the ACC on July 1, 1979, but did not become eligible for the football championship until the 1983 season. The Conference expanded to nine teams with the admittance of Florida State University on September 15, 1990. The Seminoles became a playing member of the ACC on July 1, 1991, but did not become eligible for the football championship until the 1992 season.

The Schools

CLEMSON — Charter member of the SIAA in 1894, charter member of the SC in 1921, charter member of the ACC in 1953.

DUKE — Joined the SC in December, 1928, charter member of the ACC in 1953.

FLORIDA STATE — Charter member of the Dixie Conference in 1948, joined the Metro Conference in July, 1976, joined the ACC September 15, 1990.

GEORGIA TECH — Charter member of the SIAA in 1894, charter member of SC in 1921, charter member of the SEC in 1932, joined the ACC in July, 1979.

MARYLAND — Charter member of the SC in 1921, charter member of the ACC in 1953.

NORTH CAROLINA — Charter member of the SIAA in 1894, charter member of the SC in 1921, charter member of the ACC in 1953.

N.C. STATE — Charter member of the SC in 1921, charter member of the ACC in 1953.

VIRGINIA — Charter member of the SIAA in 1894, charter member of the SC in 1921, resigned from SC in December, 1936, joined the ACC in December, 1953.

WAKE FOREST — Joined the SC in February, 1936, charter member of the ACC in 1953.

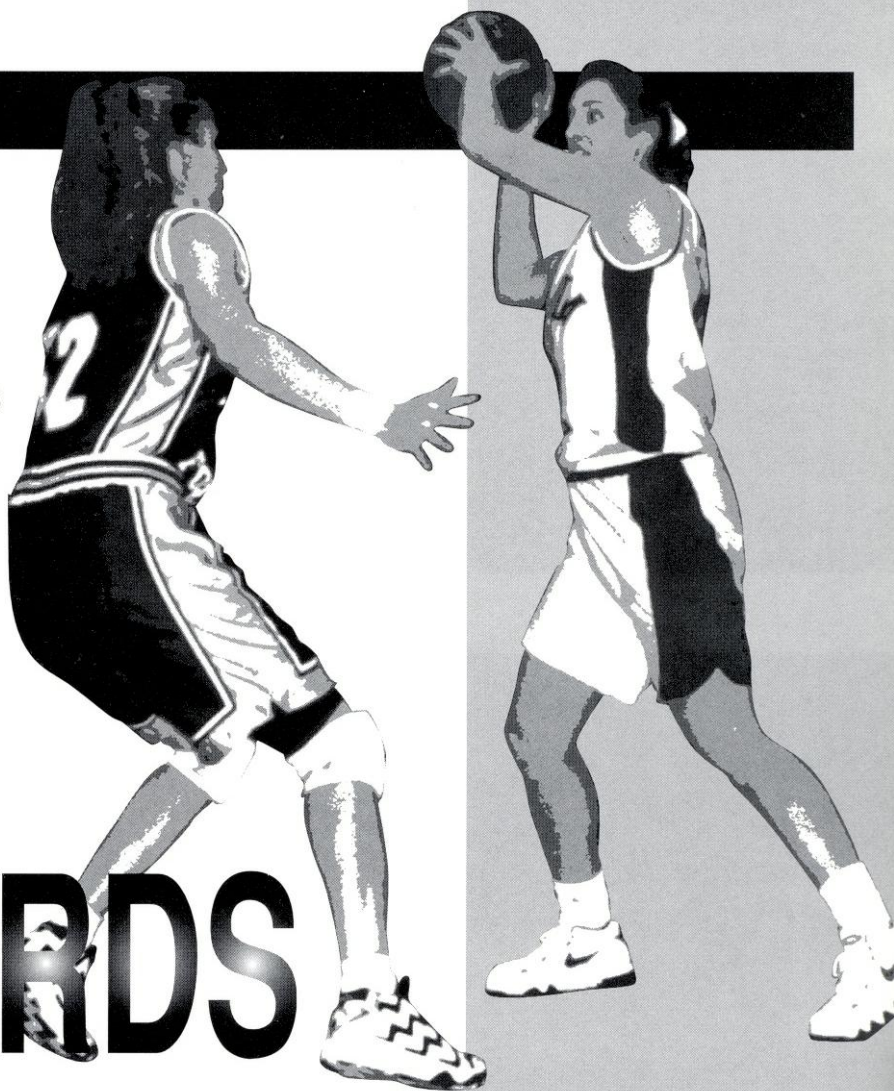
ACC Quick Facts

The ACC Office 6011 Landmark Center Blvd.
P.O. Drawer ACC, Greensboro, NC 27419-6999
Phone (910) 854-8787; Fax: (910) 854-8797
Commissioner Gene Corrigan
Associate Commissioner Fred Barakat,
Basketball
Assistant Commissioners Tom Mickle
Bradley Faircloth, Football Officiating
David Thompson, Compliance
Dee Todd, Championships
Rick Chryst, Marketing & Promotions
Assistant To The
Director of Compliance Carol Anne Gilmore
Director of Media Relations Brian Morrison
Assistant Media
Relations Director Emily Watkins
Media Relations Intern Joanna Sparkman



Inside...

- ▶ Individual Records
- ▶ Team Records
- ▶ Season Records
- ▶ Career Leaders
- ▶ Year-By-Year Leaders
- ▶ Postseason Play
- ▶ Honors and Awards
- ▶ Record Against Opponents
- ▶ Gobrecht's Record
- ▶ Year-By-Year Results
- ▶ Photo Roster



RECORDS

Lady Seminole RECORD BOOK

INDIVIDUAL RECORDS

Points

GAME — 38, T. Paschal vs. UNC (1/10/93)
SEASON — 710, S. Galkantas (1981-82)
CAREER — 2323, S. Galkantas (1980-84)

Galkantas vs. Tulane (2/5/83) & Memphis State (2/14/83)
SEASON — 282, S. Galkantas (1981-82)
CAREER — 485, S. Galkantas (1980-84)

Field Goals Made

GAME — 17, L. Lasseter vs. S.W. Louisiana (12/16/79)
SEASON — 282, S. Galkantas (1981-82)
CAREER — 919, S. Galkantas (1980-84)

Free Throw Attempts
GAME — 19, T. Paschal vs. Florida (12/15/91); C. Williams vs. Duke (1/28/95)
SEASON — 244, C. Williams (1995-96)
CAREER — 651, S. Galkantas (1980-84)

Field Goal Percentage

SEASON — .656, C. Dishman (1990-91)
CAREER — .605, C. Dishman (1989-92)

Free Throw Percentage
SEASON — .857, W. Burns (1989-90)
CAREER — .788, L. Foglio (1981-83)

Scoring Average

SEASON — 21.6, S. Galkantas (1981-82)
CAREER — 19.4, S. Galkantas (1980-84)

Rebounds
GAME — 23, L. Lasseter vs. S. Florida (12/2/78)
SEASON — 336, C. Rivers (1977-78)
CAREER — 1029, C. Rivers (1976-80)

Field Goals Attempted

GAME — 34, B. Burnett vs. Georgia Southern (12/16/87)
SEASON — 536, S. Galkantas (1981-82)
CAREER — 1753, S. Galkantas (1980-84)

Rebound Average
SEASON — 14, C. Rivers (1977-78)
CAREER — 10.8, B. Cliette (1982-87)

3 Point Field Goals

GAME — 7, C. Derlak vs. UT Chattanooga (11/26/93)
SEASON — 47, R. Storey (47-99) (1988-89); C. Derlak (47-138) (1993-94)
CAREER — 88, C. Derlak (1990-94)

Assists
GAME — 14, S. Silsby vs. Flagler (2/6/76)
SEASON — 184, S. Silsby (1977-78)
CAREER — 382, A. Peercy (1991-95)

3 Point Field Goal Percentage

SEASON — .475, R. Storey (47-99) (1988-89)
CAREER — .342, C. Derlak (1990-94)

Steals
GAME — 10, W. Burns vs. Alabama (1/24/89)
SEASON — 96, T. Paschal (1992-93)
CAREER — 269, T. Paschal (1989-93)

Free Throws Made

GAME — 14, T. Paschal vs. UNC (1/10/93) & Florida (12/15/91); W. Burns vs. Memphis State (1/19/91); S.

Blocks
GAME — 6, B. Cliette vs. Army (1/2/83); L. Lasseter vs. Mercer (11/17/78)
SEASON — 48, L. Lasseter (1980-81)
CAREER — 70, G. Stokes (1979-83)

TEAM RECORDS

Points

MOST GAME — 114 vs. Stetson (2/6/91)
MOST SEASON — 2,883 (1981-82)
LEAST GAME — 26 vs. Clemson (2/7/94)
LEAST SEASON — 488 (1973-74)

Field Goals Made

MOST GAME — 49 vs. Stetson (2/6/91)
MOST SEASON — 1,171 (1981-82)
LEAST GAME — 8 vs. Clemson (2/7/94)
LEAST SEASON — 538 (1993-94)

Field Goal Attempts

MOST GAME — 97 vs. Florida (12/4/78)
MOST SEASON — 2,384 (1979-80)
LEAST GAME — 35 vs. Clemson (2/7/94)
LEAST SEASON — 1,051 (1973-74)

Field Goal Percentage

HIGH GAME — .731 vs. Denver (12/15/80)
HIGH SEASON — .520 (1990-91)
LOW GAME — .214 vs. Alabama (12/31/93)
LOW SEASON — .340 (1973-74)

3 Point Field Goals Made

MOST GAME — 11 vs. UT-Chattanooga (11/26/93)
MOST SEASON — 106 (1993-94)
LEAST GAME — 0 Several Times
LEAST SEASON — 32 (1991-92)

3 Point Field Goal Attempts

MOST GAME — 31 vs. Auburn (1/17/91)
MOST SEASON — 356 (1994-95)
LEAST GAME — 0 vs. Lamarr (11/29/91)
LEAST SEASON — 120 (1991-92)

Free Throws Made

MOST GAME — 36 vs. Fordham (12/31/84)
MOST SEASON — 573 (1990-91)
LEAST GAME — 1 vs. Georgia S. Western (1986) and Duke (1995-96)
LEAST SEASON — 332 (1988-89)

Free Throw Attempts

MOST GAME — 51 vs. Georgia Tech (1995-96) (3OT)
MOST SEASON — 826 (1990-91)
LEAST GAME — 3 vs. S. Carolina (1982)
LEAST SEASON — 534 (1988-89)

Free Throw Percentage

HIGH GAME — .952 (20-21) vs. N. Carolina (1/4/95)
HIGH SEASON — .701 (1991-92)
LOW GAME — .200 vs. Duke (1995-96)
LOW SEASON — .510 (1973-74)

Rebounds

HIGH GAME — 71 vs. Stetson (11/29/87)
HIGH SEASON — 1,545 (1981-82)
LOW GAME — 13 vs. Maryland (1994)
LOW SEASON — 774 (1993-94)

Rebound Average

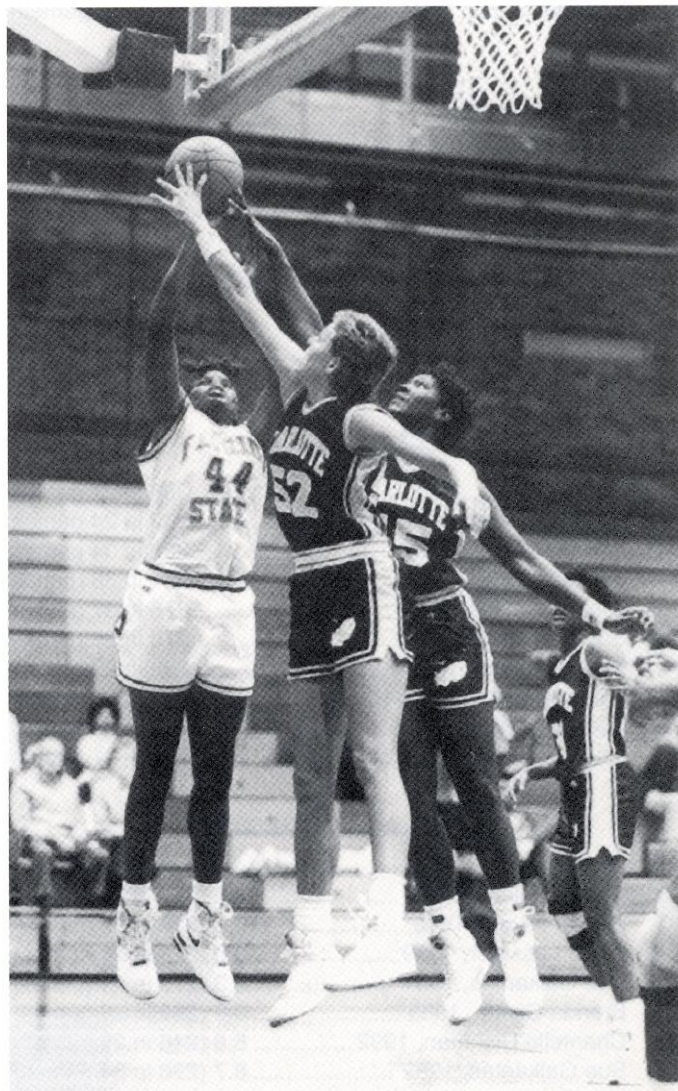
HIGH SEASON — 45.5 (1986-87)
LOW SEASON — 28.7 (1993-94)

Assists

HIGH GAME — 29 vs. FAMU (1/20/82) & (1/21/91)
HIGH SEASON — 601 (1981-82)
LOW GAME — 2 vs. Tulane (1984-85), Texas Tech (1994-95)
LOW SEASON — 169 (1973-74)

Steals

HIGH GAME — 29 vs. S. Alabama (1989-90)
HIGH SEASON — 406 (1981-82)
LOW GAME — 1 vs. Georgia Tech (1995-96)
LOW SEASON — 224 (1993-94)



Chantelle Dishman

SEASON RECORDS

Points

1. Sue Galkantas, 1982 710 pts in 29 games
2. Sue Galkantas, 1981 627 pts in 34 games
3. Wanda Burns, 1991 572 pts in 31 games
4. Bev Burnette, 1988 533 pts in 25 games
5. Tia Paschal, 1993 524 pts in 27 games
6. Wanda Burns, 1990 515 pts in 29 games
7. Cherry Rivers, 1980 514 pts in 31 games
8. Chantelle Dishman, 1991 503 pts in 31 games
9. Sue Galkantas, 1984 495 pts in 28 games
10. Sue Galkantas, 1983 491 pts in 29 games

Scoring Average

1. Sue Galkantas, 1982 21.6 (627 pts in 29 games)
2. Bev Burnett, 1988 21.3 (533 pts in 25 games)
3. Sue Galkantas, 1981 20.9 (710 pts in 34 games)
4. Tia Paschal, 1993 19.4 (524 pts in 27 games)
5. Wanda Burns, 1991 18.5 (572 pts in 31 games)
6. Laine Lasseter, 1979 18.4 (415 pts in 22 games)
7. Wanda Burns, 1990 17.8 (515 pts in 29 games)
- Cherry Rivers, 1979 17.8 (464 pts in 26 games)
- Jackie Arnold, 1978 17.8 (410 pts in 23 games)
10. Sue Galkantas, 1984 17.7 (495 pts in 31 games)

Steals

1. Tia Paschal, 1993 96 in 27 games
2. Brenda Cliette, 1987 94 in 24 games
3. Brenda Cliette, 1983 77 in 29 games
- Wanda Burns, 1990 77 in 30 games
5. Tia Paschal, 1991 75 in 32 games
6. Glenda Stokes, 1992 68 in 37 games
7. Chris Davis, 1991 66 in 32 games
8. Danielle Ryan, 1991 65 in 32 games
9. Lisa Foglio, 1982 64 in 26 games
10. Allison Peercy, 1993 63 in 26 games

Rebounds

1. Cherry Rivers, 1977 336 in 24 games
2. Brenda Cliette, 1987 302 in 24 games
3. Sue Galkantas, 1982 296 in 34 games
4. Glenda Stokes, 1980 294 in 35 games
5. Glenda Stokes, 1982 276 in 37 games
6. Sue Galkantas, 1981 270 in 29 games
7. Brenda Cliette, 1983 269 in 29 games
- Lorraine Rimson, 1984 269 in 31 games
9. LeeVayn Oliver, 1982 260 in 35 games
10. Cherry Rivers, 1980 257 in 31 games

Rebound Average

1. Cherry Rivers, 1977 14.0 (336 in 24 games)
2. Brenda Cliette, 1987 12.6 (302 in 24 games)
3. Cherry Rivers, 1978 10.3 (226 in 22 games)
4. Laine Lasseter, 1979 10.0 (222 in 22 games)
5. Sue Galkantas, 1981 9.3 (270 in 29 games)
- Brenda Cliette, 1983 9.3 (269 in 29 games)
7. Chantelle Dishman, 1992 8.8 (246 in 28 games)
8. Sue Galkantas, 1982 8.7 (296 in 34 games)
- Lorraine Rimson, 1984 8.7 (269 in 31 games)
10. Glenda Stokes, 1980 8.4 (294 in 35 games)

Assists

1. Shirley Silsby, 1977 184 in 23 games
2. Sheri Kaminski, 1984 155 in 31 games
3. Wanda Burns, 1991 136 in 31 games
4. Lynn Marnie, 1982 135 in 36 games
5. Allison Peercy, 1993 129 in 26 games
6. Rose Harper, 1980 125 in 35 games
- Sunnie Harper, 1980 125 in 35 games
8. Allison Peercy, 1995 123 in 30 games
9. Robin Corn, 1990 119 in 30 games
10. Wanda Burns, 1990 103 in 29 games

Blocks

1. Laine Lasseter, 1980-81 48
2. Mary Buchanon, 1986-87 34
3. Brenda Cliette, 1982-83 32
- Sarah Hall, 1985-86 32
5. Sarah Hall, 1984-85 30
6. Chris Davis, 1989-90 27
- Chantelle Dishman, 1990-91 27
8. Kristy White, 1995-96 26
9. Sarah Hall, 1986-87 24
10. Veronica Bouknight, 1985-86 21
- Lysa Moorefield, 1995-96 21

Field Goal Attempts

1. Sue Galkantas, 1981-82 536
2. Sue Galkantas, 1980-81 520
3. Tia Paschal, 1992-93 418
4. Wanda Burns, 1989-90 404
5. Wanda Burns, 1990-91 396
6. Christy Derlak, 1993-94 388
7. Lorraine Rimson, 1983-84 376
8. Sue Galkantas, 1983-84 374
9. Chris Davis, 1989-90 372
10. Lisa Foglio, 1982-83 357



Kristy White

Field Goals

1. Sue Galkantas, 1981-82	282
2. Sue Galkantas, 1980-81	261
3. Tia Paschal, 1992-93	219
4. Sue Galkantas, 1983-84	192
5. Lisa Foglio, 1981-82	190
6. Chantelle Dishman, 1991-92	187
7. Wanda Burns, 1989-90	186
Wanda Burns, 1991-92	186
9. Sue Galkantas, 1982-83	184
Lisa Foglio, 1982-83	184

Field Goal Percentage

(Minimum of 100)

1. Chantelle Dishman, 1991	.656 (191-291 in 31 games)
2. Glenda Stokes, 1983	.602 (103-171 in 29 games)
3. Lisa Foglio, 1982	.596 (190-319 in 26 games)
4. Chantelle Dishman, 1992	.582 (146-251 in 28 games)
5. Sue Galkantas, 1983	.570 (184-323 in 29 games)
6. Chantelle Dishman, 1990	.565 (131-232 in 29 games)
7. Laine Lasseter, 1980	.560 (162-290 in 21 games)
8. LeeVayn Oliver, 1984	.534 (140-262 in 31 games)
9. Sue Galkantas, 1982	.526 (282-535 in 34 games)
10. Tia Paschal, 1993	.524 (219-418 in 27 games)

Free Throw Percentage

(Minimum of 50)

1. Wanda Burns, 1991	.827 (115-139 in 29 games)
2. Lisa Foglio, 1983	.819 (77-94 in 29 games)
3. Chris Davis, 1990	.809 (76-94 in 30 games)
Sheri Kaminski, 1985	.809 (51-63 in 24 games)
5. Danielle Ryan, 1992	.805 (91-113 in 28 games)
6. Lisa Foglio, 1981	.802 (65-81 in 27 games)
7. Danielle Ryan, 1993	.800 (72-90 in 27 games)
8. Sue Galkantas, 1983	.799 (123-154 in 29 games)
9. Wanda Burns, 1991	.791 (125-158 in 31 games)
10. Bev Burnett, 1988	.775 (131-169 in 25 games)
Carla Williams, 1996	.775 (189-244 in 28 games)

Three Point Attempts

1. Christy Derlak, 1993-94	138
2. Tanisha Rickman, 1994-95	117
3. Wanda Burns, 1990-91	111
4. Alison Arnoldi, 1993-94	102
5. Wanda Burns, 1989-90	100
6. Robin Storey, 1988-89	99
7. Allison Peercy, 1994-95	87
8. Wendy Hampton, 1995-96	75
9. Anja Pedersen, 1994-95	67
10. Allison Peercy, 1992-93	59

3-Point Field Goals Made

(Minimum of 10)

1. Robin Storey, 1989	47 in 27 games
2. Wanda Burns, 1991	41 in 31 games
3. Tanisha Rickman, 1995	31 in 26 games
4. Wanda Burns, 1990	28 in 29 games
Allison Peercy, 1995	28 in 30 games
Wendy Hampton, 1996	28 in 28 games
7. Christy Derlak, 1993	23 in 27 games
8. Anja Pederson, 1995	21 in 30 games
9. Danielle Ryan, 1993	19 in 27 games
10. Wendy Hampton, 1995	15 in 30 games

3-Point Field Goal Percentage

(Minimum of 10 Made)

1. Robin Storey, 1989	.475 (47-99 in 27 games)
2. Danielle Ryan, 1993	.422 (19-45 in 27 games)
3. Wendy Hampton, 1996	.373 (28-75 in 28 games)
4. Christy Derlak, 1993	.348 (23-66 in 27 games)
5. Alison Arnoldi, 1993	.333 (12-36 in 25 games)
Wanda Burns, 1991	.333 (41-123 in 31 games)
7. Wendy Hampton, 1995	.326 (15-46 in 30 games)
8. Allison Peercy, 1995	.322 (28-87 in 30 games)
9. Anja Pedersen, 1995	.313 (21-67 in 30 games)
10. Christy Derlak, 1992	.286 (10-35 in 28 games)

30-Point Club

38	Tia Paschal vs. UNC (1993)
37	Sue Galkantas vs. Florida (1980)
36	Tia Paschal vs. Maryland (1993)
34	Sue Galkantas vs. Tulane (1983), Florida A&M (1986)
34	Laine Lasseter vs. SE Louisiana (1980)
34	Bev Burnett vs. Florida A&M (1986), Virginia Tech (1988)
34	Chantelle Dishman vs. Marquette (1991)
33	Danielle Ryan vs. Maryland (1993)
33	Sue Galkantas vs. Middle Tennessee State (1983), vs. Georgia State (1980), vs. Virginia Tech (1982)
33	Laine Lasseter vs. Mercer (1981)
33	Christy Derlak vs. UT-Chattanooga (1993)
32	Bev Burnett vs. South Florida (1986)
32	Sue Galkantas vs. South Alabama (1986)
32	Laine Lasseter vs. Florida (1986)
31	Bev Burnett vs. Southern Mississippi (1989)
31	Wanda Burns vs. Southern Mississippi (1990)
31	Laine Lasseter vs. Florida (1979)
30	Bev Burnett vs. Southern Mississippi, Louisville, Georgia Southern (1988)
30	Lisa Foglio vs. Miami (1982)
30	Sue Galkantas vs. Kent State, Memphis State, Tulane (1982)
30	Cherry Rivers vs. Miami (1980)
30	Christy Derlak vs. Duke (1994)

Rebound Club

23	Laine Lasseter vs. South Florida (1978)
21	Glenda Stokes vs. Virginia Tech (1982)
19	Chris Brokas vs. Troy State (1979)
19	LeeVayn Oliver vs. Cincinnati (1981)
19	Carla Williams vs. Furman (1996)
18	Sarah Hall vs. Central Florida (1986)
17	Ursula Woods vs. Maryland (1993)
17	Chantelle Dishman vs. Miami (1991)
17	Brenda Cliette vs. Montclair State (1983)
17	Sue Galkantas vs. Florida (1979), vs. Georgia Tech (1980)
17	Laine Lasseter vs. Florida (1979)
17	Sarah Hall vs. West Georgia (1986)
17	Lorraine Rimson vs. Georgetown, vs. Radford (1986)
16	Sarah Hall vs. Memphis State (1988)
16	Laine Lasseter vs. Alabama-Birmingham (1978), vs. Appalachian State (1979)
16	Lorraine Rimson vs. Florida A&M, vs. Cincinnati (1984)
16	Cherry Rivers vs. Louisville (1979), vs. Miami (1980)
16	Tracy Walker vs. Miami (1990)

CAREER STATISTICAL LEADERS

Points

1. Sue Galkantas, 1980-84 2323 in 120 games
2. Tia Paschal, 1989-93 1662 in 116 games
3. Cherry Rivers, 1976-80 1636 in 103 games
4. Bev Burnett, 1984-89 1509 in 97 games
5. Wanda Burns, 1988-91 1394 in 87 games
6. Chris Davis, 1987-91 1365 in 110 games
7. Danielle Ryan, 1989-93 1289 in 117 games
8. Chantelle Dishman, 1989-93 1278 in 94 games
9. Laine Lasseter, 1978-82 1265 in 86 games
10. Lisa Foglio, 1980-83 1227 in 82 games

Scoring Average

1. Sue Galkantas, 1980-83 19.4 (2323 in 120 games)
2. Wanda Burns, 1988-91 16.0 (1394 in 87 games)
3. Cherry Rivers, 1976-80 15.9 (1636 in 103 games)
4. Jackie Arnold, 1977-79 15.8 (727 in 46 games)
5. Bev Burnett, 1984-89 15.6 (1509 in 97 games)
6. Lisa Foglio, 1980-83 15.0 (1227 in 82 games)
7. Laine Lasseter, 1978-82 14.6 (1265 in 86 games)
8. Lorraine Rimson, 1983-85 14.6 (1138 in 78 games)
9. Tia Paschal, 1989-93 14.3 (1662 in 116 games)
10. Brenda Cliette, 1982-87 14.1 (746 in 53 games)

Steals

1. Tia Paschal, 1989-93 269 in 116 games
2. Chris Davis, 1987-91 221 in 110 games
3. Glenda Stokes, 1979-83 201 in 110 games
4. Danielle Ryan, 1989-93 197 in 117 games
5. Cherry Rivers, 1976-80 189 in 103 games
6. Lisa Foglio, 1980-83 181 in 82 games
7. Robin Corn, 1987-92 175 in 42 games
8. Wanda Burns, 1988-91 172 in 87 games
9. Brenda Cliette, 1982-87 171 in 53 games
10. Sheri Kaminski, 1980-84 171 in 98 games

Rebounds

1. Cherry Rivers, 1976-80 1026 in 103 games
2. Sue Galkantas, 1980-84 1006 in 120 games
3. Glenda Stokes, 1979-83 938 in 130 games
4. LeeVayn Oliver, 1980-84 869 in 122 games
5. Sarah Hall, 1984-88 785 in 110 games
6. Chantelle Dishman, 1989-93 777 in 94 games
7. Tia Paschal, 1989-93 703 in 116 games
8. Lorraine Rimson, 1983-86 652 in 78 games
9. Laine Lasseter, 1978-82 624 in 86 games
10. Chris Brokas, 1976-79 580 in 64 games

Rebound Average

1. Brenda Cliette, 1982-87 10.8 (571 in 53 games)
2. Cherry Rivers, 1976-80 10.0 (1029 in 103 games)
3. Chris Brokas, 1976-79 9.1 (530 in 64 games)
4. Sue Galkantas, 1980-84 8.4 (652 in 78 games)
5. Lorraine Rimson, 1983-85 8.4 (1006 in 122 games)

6. Chantelle Dishman, 1989-93 8.2 (777 in 94 games)
7. Glenda Stokes, 1979-83 7.2 (938 in 130 games)
8. Laine Lasseter, 1978-82 7.2 (624 in 86 games)
9. Sarah Hall, 1984-88 7.1 (785 in 110 games)
10. LeeVayne Oliver, 1980-84 7.1 (869 in 122 games)
11. Jackie Arnold, 1977-79 7.1 (325 in 46 games)

Assists

1. Allison Peercy, 1992-95 382 in 111 games
2. Robin Corn, 1987-92 360 in 112 games
3. Sheri Kaminski, 1983-87 355 in 98 games
4. Shirley Silsby, 1976-79 348 in 69 games
5. Wanda Burns, 1988-91 331 in 69 games
6. Danielle Ryan, 1989-93 301 in 87 games
7. Lynn Marnie, 1980-83 293 in 86 games
8. Chris Davis, 1987-91 282 in 110 games
9. Lisa Foglio, 1980-83 274 in 82 games
10. Rose Harper, 1977-81 268 in 111 games

Field Goal Percentage

1. Chantelle Dishman, 1989-93601 (483-803 in 94 games)
2. Lisa Foglio, 1980-83542 (513-946 in 82 games)
3. Sue Galkantas, 1980-84524 (919-1753 in 120 games)
4. Laine Lasseter, 1978-82521 (540-1036 in 86 games)
5. LeeVayn Oliver, 1980-84520 (498-957 in 122 games)
6. Danielle Ryan, 1989-93514 (508-989 in 117 games)
7. Glenda Stokes, 1979-83504 (417-827 in 130 games)
8. Tia Paschal, 1989-91502 (683-1360 in 116 games)
9. Carla Williams, 1994-96495 (214-432 in 58 games)
10. Chris Davis, 1987-91481 (527-1134 in 110 games)

Free Throw Percentage

1. Lisa Foglio, 1980-83788 (201-255 in 82 games)
2. Wanda Burns, 1988-91777 (271-349 in 87 games)
3. Danielle Ryan, 1989-92761 (251-330 in 114 games)
4. Allison Peercy, 1992-95738 (298-393 in 111 games)
5. Sue Galkantas, 1980-84745 (485-651 in 120 games)
6. Allison Peercy, 1991-93743 (110-148 in 54 games)
7. Carla Williams, 1994-96743 (342-460 in 58 games)
8. Sheri Kaminski, 1983-87732 (208-284 in 98 games)
9. Bev Burnett, 1984-87708 (354-500 in 97 games)
10. Tia Paschal, 1989-93703 (286-407 in 116 games)

Games Played

1. Glenda Stokes, 1979-83 130
2. LeeVayne Oliver, 1980-84 122
3. Sue Galkantas, 1980-84 120
4. Danielle Ryan, 1989-93 117
5. Tia Paschal, 1989-93 116
6. Christy Derlak, 1990-94 113
7. Robin Corn, 1988-89 112
8. Allison Peercy, 1992-95 111
9. Rose Harper, 1977-81 111
10. Chris Davis, 1987-91 110
11. Sarah Hall, 1984-88 110
12. Jan Piatnik, 1984-88 110

INDIVIDUAL YEAR-BY-YEAR LEADERS

Points

YEAR	NAME	GAMES	POINTS	AVG
1996	C. Williams	28	443	15.8
1995	A. Peercy	30	388	12.9
1994	C. Derlak	27	464	17.1
1993	T. Paschal	27	524	19.4
1992	T. Paschal	29	440	15.7
1991	W. Burns	28	490	17.5
1990	W. Burns	29	515	17.8
1989	B. Burnette	23	365	15.9
1988	B. Burnette	25	533	21.3
1987	V. Harris	26	358	13.8
1986	S. Hall	28	298	10.6
1985	L. Rimson	24	391	16.3
1984	S. Galkantas	28	495	17.6
1983	S. Galkantas	29	491	16.9
1982	S. Galkantas	29	710	24.4
1981	S. Galkantas	34	637	18.4
1980	C. Rivers	31	514	16.5
1979	C. Rivers	36	464	12.8
1978	J. Arnold	23	410	17.8
1977	C. Rivers	24	336	14.0
1976	C. Brokas	29	389	13.4
1974	M. Graham	18	153	8.5

Field Goal Percentage

YEAR	NAME	GAMES	FG/FGA	PERCENT
1996	C. Williams	28	127/243	.460
1995	C. Williams	30	87/189	.460
1994	K. Cobbins	26	49/92	.532
1993	T. Paschal	27	219/418	.524
1992	C. Dishman	28	146/251	.582
1991	C. Dishman	31	191/291	.656
1990	T. Walker	28	74/125	.592
1989	A. Harvis	27	77/139	.554
1988	S. Grimes	16	14/23	.609
1987	V. Harris	26	107/249	.440
1986	V. Bournight	25	81/167	.485
1985	C. Slater	28	152/316	.481
1984	L. Oliver	31	140/262	.534
1983	G. Stokes	29	103/171	.602
1982	L. Foglio	26	190/319	.595
1981	L. Lasseter	28	154/296	.520
1980	L. Lasseter	21	162/290	.560
1979	L. Lasseter	22	173/348	.497
1974	M. Graham	18	86/208	.410

Field Goals Made

YEAR	NAME	NUMBER
1996	C. Williams	127
1995	A. Peercy	128
1994	C. Derlak	150
1993	T. Paschal	219
1992	T. Paschal	176
1991	W. Burns	203
1990	W. Burns	186
1989	C. Davis	151
1988	C. Burnett	201
1987	V. Harris	161
1986	B. Burnett	141
1985	L. Rimson & C. Slater	152
1984	S. Galkantas	192
1983	S. Galkantas & L. Foglio	184
1982	S. Galkantas	282
1981	S. Galkantas	261
1980	C. Rivers	216

Field Goal Attempts

YEAR	NAME	ATTEMPTS
1996	C. Williams	243
1995	A. Peercy	319
1994	C. Derlak	388
1993	T. Paschal	418
1992	T. Paschal	349
1991	W. Burns	435
1990	W. Burns	404
1989	B. Burnett	311
1988	B. Burnett	459
1987	V. Harris	374
1986	B. Burnett	299
1985	L. Rimson	334
1984	L. Rimson	376
1983	L. Foglio	357
1982	S. Galkantas	536
1981	S. Galkantas	520
1980	C. Rivers	476

Free Throw Percentage

YEAR	NAME	GAMES	FT/FTA	PERCENT
1996	C. Williams	28	189/244	.775
1995	A. Peercy	30	104/140	.743
1994	A. Peercy	22	84/111	.757
1993	D. Ryan	27	72/90	.800
1992	L. Taylor	11	10/10	1.000
1991	W. Burns	29	115/139	.827
1990	C. Davis	30	76/94	.809
1989	A. Harvis	27	47/67	.701
1988	B. Burnette	25	131/169	.775
1987	T. McCarty	24	32/42	.760
1986	S. Kaminski	17	38/51	.745
1985	S. Kaminski	24	51/63	.809
1984	S. Galkantas	28	111/144	.771
1983	L. Foglio	29	77/94	.819
1982	L. Foglio	26	59/80	.739
1981	L. Foglio	27	65/81	.802
1980	L. McDonald	28	103/150	.687
1979	R. Harper	27	39/56	.696
1976	L. DeJong	29	67/97	.691
1975	Y. McKinney	37	29/38	.760
1974	M. Graham	18	62/94	.660

Free Throws Made

YEAR	NAME	NUMBER
1996	C. Williams	189
1995	C. Williams	153
1994	C. Derlak	122
1993	C. Derlak	90
1992	C. Dishman	104
1991	W. Burns	125
1990	W. Burns	115
1989	B. Burnett	87
1988	B. Burnett	131
1987	B. Cliette	65
1986	B. Burnett	81
1985	L. Rimson	87
1984	S. Galkantas	111
1983	S. Galkantas	123
1982	S. Galkantas	146
1981	S. Galkantas	105
1980	L. McDonald	103

Free Throw Attempts

YEAR	NAME	ATTEMPTS
1996	C. Williams	244
1995	C. Williams	216
1994	C. Derlak	164
1993	C. Derlak	147
1992	C. Dishman	145
1991	C. Dishman	173
1990	W. Burns	139
1989	B. Burnett	139
1988	B. Burnett	133
1987	B. Cliette	130
1986	B. Burnett	115
1985	L. Rimson	127
1984	S. Galkantas	144
1983	S. Galkantas	154
1982	S. Galkantas	214
1981	S. Galkantas	139
1980	L. McDonald	150

Steals

YEAR	NAME	GAMES	STEALS
1996	A. Penn	28	48
1995	A. Percy	30	51
1994	C. Derlack	27	40
1993	T. Paschal	27	96
1992	G. Stokes	37	68
1991	T. Paschal	32	75
1990	W. Burns	29	77
1989	C. Davis	27	56
1988	C. Davis	21	41
1987	B. Cliette	24	91
1986	S. Kaminski	17	32
1985	C. Slater	28	42
1984	S. Kaminski	31	55
1983	B. Cliette	29	77
1982	G. Stokes	36	65
1981	G. Stokes	36	65
1980	G. Stokes	35	54

Rebounding

YEAR	NAME	GAME	REBOUNDS	AVG
1996	C. Williams	28	234	8.4
1995	C. Williams	30	224	7.5
1994	K. Cobbins	26	156	6.0
1993	T. Paschal	27	200	7.4
1992	C. Dishman	28	246	8.8
1991	C. Dishman	29	228	7.9
1990	C. Dishman	29	203	7.0
1989	D. Collins	26	145	5.6
1988	S. Hall	27	173	6.4
1987	B. Cliette	24	302	12.6
1986	S. Hall	28	233	8.3
1985	S. Hall	27	189	7.0
1984	L. Rimson	31	269	8.7
1983	B. Cliette	29	269	9.3
1982	S. Galkantas	34	296	8.7
1981	S. Galkantas	29	269	9.3
1980	G. Stokes	35	294	8.4
1979	L. Lasseter	22	222	10.0
1978	C. Rivers	22	226	10.3
1977	C. Rivers	24	336	14.0
1976	P. Harstvedt	29	247	8.5

Assists

YEAR	NAME	GAMES	ASSISTS
1996	J. Robinson	28	78
1995	A. Percy	30	123
1994	A. Percy	27	100
1993	A. Percy	26	129
1992	D. Ryan	28	94

1991	W. Burns	31	136
1990	R. Corn	30	119
1989	W. Burns	27	92
1988	R. Corn	27	75
1987	S. Kaminski	25	87
1986	J. Piatnik	27	80
1985	C. Slater	28	74
1984	S. Kaminski	31	155
1983	L. Foglio	29	96
1982	L. Marnie	36	135
1981	L. Foglio	27	98
1980	R. Harper	35	125
1979	T. Tinsley	27	102
1977	S. Silsby	23	184

Three-Point Percentage

YEAR	NAME	GAMES	PERCENTAGE
1996	A. Penn	28	.474
1995	W. Hampton	30	.326
1994	A. Arnoldi	25	.394
1993	D. Ryan	27	.422
1992	C. Derlak	27	.286
1991	W. Burns	31	.333
1990	W. Burns	29	.280
1989	R. Storey	27	.475

Three-Pointers Made

YEAR	NAME	GAMES	MADE
1996	W. Hampton	28	28
1995	T. Rickman	26	31
1994	C. Derlak	27	47
1993	C. Derlak	27	23
1992	C. Derlak	27	10
1991	W. Burns	31	41
1990	W. Burns	29	28
1989	R. Storey	27	47

Three-Point Attempts

YEAR	NAME	GAMES	ATTEMPTS
1996	W. Hampton	28	75
1995	T. Rickman	26	117
1994	C. Derlak	27	138
1993	C. Derlak	27	66
1992	A. Percy	28	37
1991	W. Burns	31	123
1990	W. Burns	29	100
1989	R. Storey	27	99

Blocked Shots

YEAR	NAME	GAMES	MADE
1996	K. White	28	26
1995	L. Moorefield	29	13
1994	K. Walker	27	13
1993	T. Paschal	27	13
1991	C. Dishman	22	28
1991	C. Davis	27	32
1990	C. Davis	27	30
1989	M. Lardie	27	17
1988	S. Hall	27	24
1987	M. Buchanan	27	34
1986	S. Hall	28	32
1985	S. Hall	27	30
1984	S. Galkantas	28	12
1983	B. Cliette	29	32
1982	G. Stokes	37	16
1981	L. Lasseter	28	48
1980	L. Lasseter	21	28

MISCELLANEOUS RECORDS

Most Consecutive Wins

10 1981-82, 1982-83, 1990-91

Most Consecutive Losses

10 1994-95

Season Openers

YEAR	OPPONENT	SCORE, W/L	SITE	DATE
1973-74	Florida	39-41, L	n/a	n/a
1974-75	Albany State	62-55, W	n/a	n/a
1975-76	Rollins	56-43, W	n/a	n/a
1976-77	Albany State	38-87, L	n/a	n/a
1977-78	Valdosta State	57-92, L	n/a	n/a
1978-79	Mississippi State	60-64, L	n/a	n/a
1980-81	Georgia Tech	84-97, L	A	11/20/80
1981-82	Stetson	81-54, W	H	11/23/81
1982-83	UT-Chattanooga	94-77, W	N	11/26/82
1983-84	Arizona State	70-85, L	N	11/18/83
1984-85	Albany State	66-60, W	H	11/14/84
1985-86	West Georgia	67-57, W	H	11/23/85
1986-87	Albany State	71-72, L (OT)	H	12/1/86
1987-88	New Mexico State	73-64, W	N	11/27/87
1988-89	Central Michigan	100-78, W	N	11/25/88
1989-90	South Alabama	89-82, W(2OT)	N	11/24/89
1990-91	UM-Kansas City	66-52, W	N	11/23/90
1991-92	Miami	71-69, W (OT)	H	11/23/91
1992-93	Florida Atlantic	97-67, W	H	12/1/92
1993-94	UT-Chattanooga	85-86, L	A	11/26/93



Tia Pascal

1994-95	Fresno State	67-62, W	N	11/25/94
1995-96	Florida Atlantic	69-46, W	A	11/27/95

Home Openers

YEAR	OPPONENT	SCORE, W/L	DATE
1980-81	Florida	90-48, W	12/3/80
1981-82	Stetson	81-54, W	11/23/81
1982-83	Albany State	94-52, W	12/1/82
1983-84	Mid Tennessee St.	75-67, W	11/26/83
1984-85	Albany State	66-60, W	11/14/84
1985-86	West Georgia	67-57, W	11/23/85
1986-87	Albany State	71-72, L (OT)	12/1/86
1987-88	Wisconsin	100-67, W	12/4/87
1988-89	UNC-Asheville	99-58, W	12/2/88
1989-90	Mississippi State	86-62, W	12/1/89
1990-91	Marquette	110-75, W	12/1/90
1991-92	Miami	71-69, W (OT)	11/23/91
1992-93	Florida Atlantic	97-67, W	12/1/92
1993-94	Rhode Island	71-76, L	12/3/93
1994-95	Central Florida	74-59, W	11/29/94
1995-96	UT-Chattanooga	58-60, L	12/17/95

Overtime Games

YEAR	OPPONENT	SCORE, W/L	SITE	DATE
1977-78	South Florida	84-76, W	n/a	n/a
1982-83	Montclair State	89-81, W	H	1/10/83
1983-84	Missouri	82-75, W	N	1/5/84
1984-85	South Florida	71-69, W	H	1/14/85
1985-86	Monmouth (3OT)	81-69, W	N	11/30/85
	Radford	80-87, L	H	12/7/85
1986-87	Albany State	71-72, L	A	1/30/86
1987-88	West Virginia	68-58, W	H	12/4/87
	Georgia Southern	83-77, W	A	12/16/87
	Memphis State	90-91, L	H	12/16/88
1989-90	S. Alabama (2OT)	89-82, W	N	11/24/89
	Louisville	69-66, W	H	1/13/90
1990-91	S. Carolina (2OT)	91-92, L	H	2/4/91
1991-92	Miami	71-69, W (OT)	H	11/23/91
	Louisiana State	88-96, L	A	11/30/91
	Florida	90-78, W	H	12/15/91
1995-96	Georgia Tech (3OT)	90-85, W	H	1/31/96

Notable Florida State Victories

DATE	OPPONENT	SCORE	LOCATION
First Win			
1973-74	vs. Barry College	50-33	n/a
Win 50			
1977-78	vs. South Florida (OT)	84-76	n/a
Win 100			
Dec. 4, 1981	vs. Kent State	80-66	W. Lafayette, IN
Win 150			
Dec. 5, 1983	vs. Central Florida	67-60	Tallahassee, FL
Win 200			
Dec. 3, 1988	vs. Georgia Southern	105-78	Tallahassee, FL
Win 250			
Jan. 11, 1992	vs. Georgia Tech	77-66	Atlanta, GA
Win 300			
Jan. 23, 1995	vs. Georgia Tech	60-58	Atlanta, GA
All-Time Record			
311-327 (.487)			