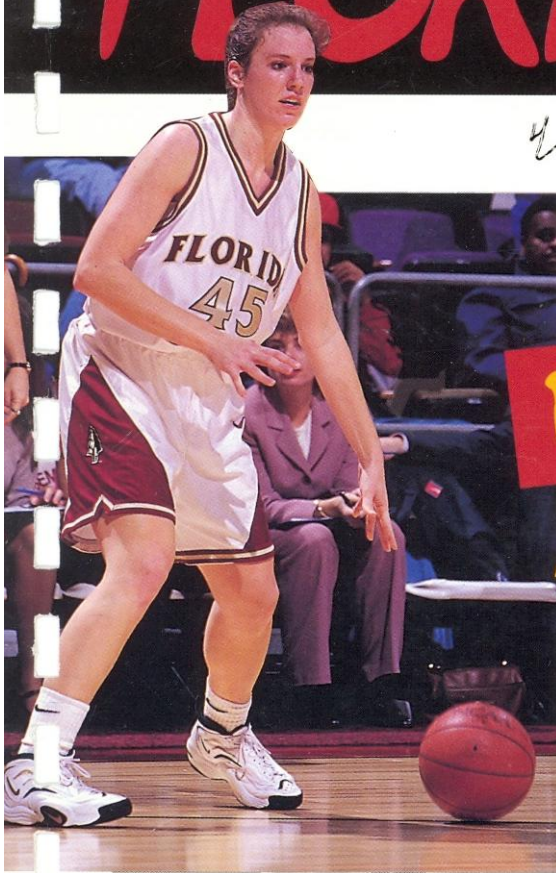


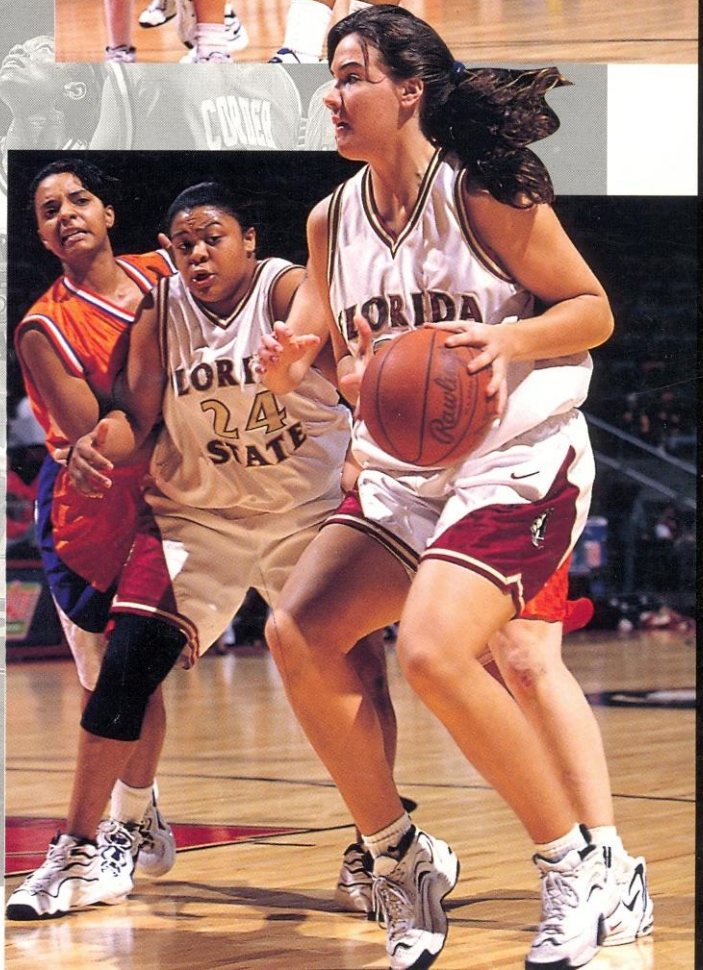
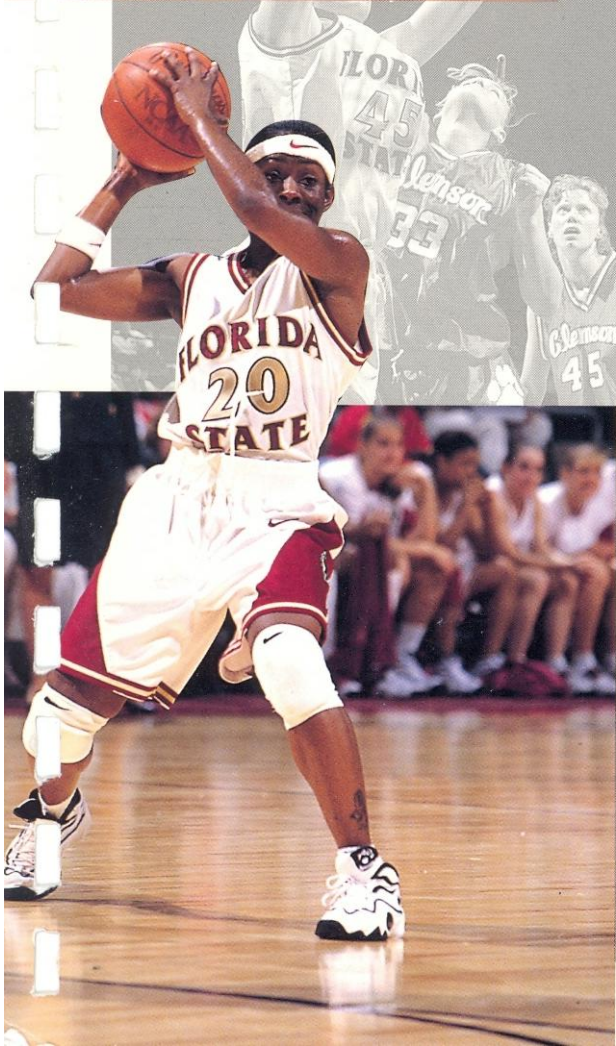
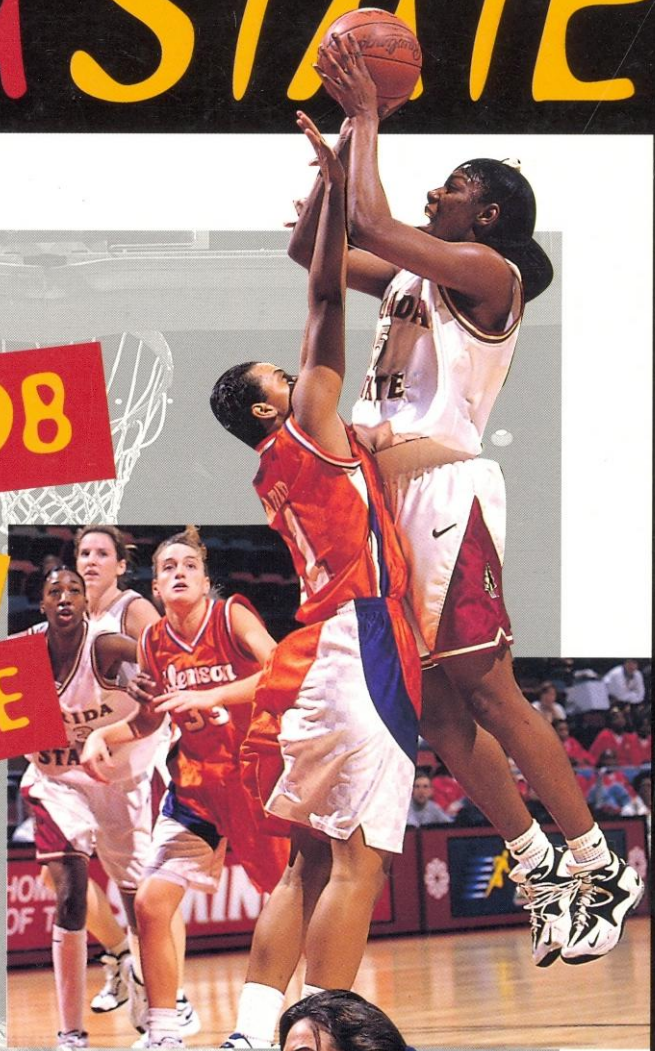
FLORIDA STATE



1997-98

MEDIA

GUIDE



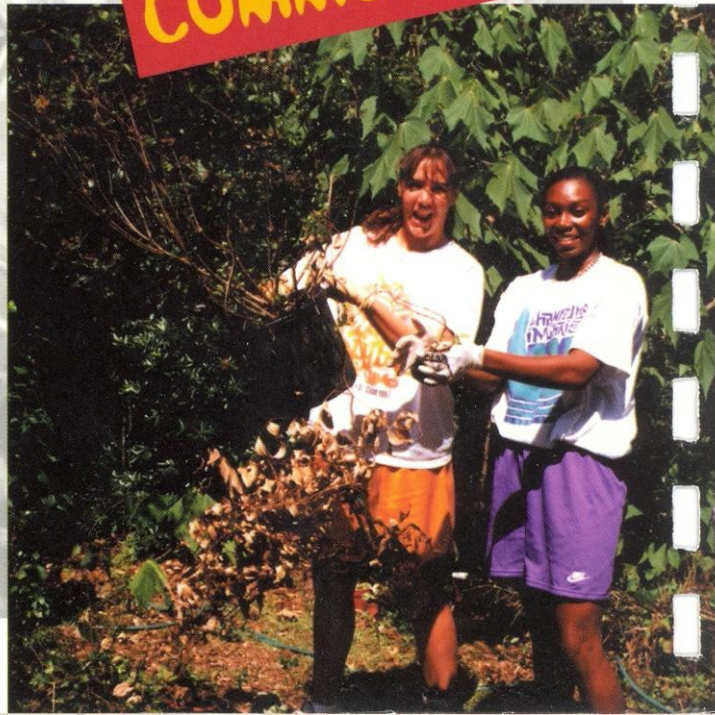
WOMEN'S BASKETBALL

FLORIDA STATE

WOMEN'S BASKETBALL



HELPING
HANDS
IN THE
COMMUNITY



FLORIDA STATE

1997-98 WOMEN'S BASKETBALL MEDIA GUIDE

TABLE OF CONTENTS



Check out our website at seminoles.com

Notes to the Media	2
ACC Fax Directory	3
FSU Quick Facts	4

1997-98 Outlook

Preview	6
Women's Basketball Rosters	8

Coaches

Head Coach Sue Semrau	10
Florida State Assistant Coaches	11

Women's Bios

Wendy Hampton	14
Latrice McLin	16
Lysa Moorefield	18
Aletha Penn	20
Arleshia Davidson	22
Jen Robinson	24
Leslie Waugh	26
Latavia Coleman	28
Women's Basketball Newcomers	30
'97-98 Personnel Chart	31
A Closer Look at the Women's Basketball Squad	32

1997-98 Opponents

Opponents' Preview	34
Travel Itinerary	42

CREDITS

Editor Tina Thomas
 Writing/Research Mandi Copeland,
 Danielle Felter, Greg Hulen, Aaron Vause
 Photography Ross Obley, Ryals Lee, Jr.,
 FSU Photo Lab, Bob Rosato, Allen Kee
 Design Chameleon Graphics & Design
 Printing Boyd Brothers, Inc.

The University

This Is Tallahassee	44
This Is Florida State University	46
Florida State Administration	48
Academic Support & Student Services	52
Women's Basketball Support Staff	54
Life Skills	56
NCAA Information	57
Women's Basketball Facilities	58

1996-97 Season In Review

'96-97 Season In Review	60
'96-97 Statistics	61
Team and Opponent Highs & Lows	62
Game-by-Game Summary	63
Game-by Game Statistics	64
ACC Final Standings & Tournament Summary	65
The Atlantic Coast Conference	66

The Record Book

Individual Records	68
Team Records	69
Season Records	70
Career Statistical Leaders	72
Individual Year-by-Year Leaders	73
Miscellaneous Records	75
All-Time Letterwinners	77
Women's Basketball Jersey Numbers	78
Sue Galkantas: Retired Number 43	79
Florida State in Postseason Play	80
Women's Basketball Honors and Awards	81
Series Record Against Opponents	83
Year-By-Year Results	88
Coaches Year-By-Year	93
Women's Basketball Photo Roster	94

NOTES TO THE MEDIA

1997-98 WOMEN'S BASKETBALL

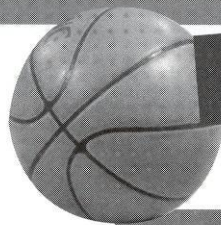
INFORMATION

Press Credentials

Requests for working press credentials should be directed to the sports information office. Media representatives should contact the office at least one day in advance by calling (850) 644-1065. For FSU home games, media will be seated along the press table in front of the north stands at Tully Gymnasium and in front of the east stands at the Leon County Civic Center.

Photographers

Photographers are to contact the SID office as well. Flashes are not permitted at Tully Gymnasium. Working area for all photographers will include the floor area at both ends of the court and



TINA THOMAS
Women's Basketball
Sports Information Director

along the media side of the playing floor opposite the benches. Television camera persons should abide by the same guidelines as still photographers.

Radio

A complimentary radio line is available for visiting teams. The SID office must be notified at least three days in advance.

Game Operations

Pre-game notes, rosters and a running play-by-play will be provided along with halftime and final statistics. A FAX machine is also available upon request.

Player & Coaches Interviews

All player and coaches interviews must be arranged through the SID office (850) 644-1065. Players and coaches will be available to give interviews before and after, but not during practice times.

Post-Game Interviews

Coach Semrau and requested players will be available after a 10-minute cooling-off period. No interviews will be given on the floor immediately following the game. The visiting coach and players will be brought in on a request basis only.

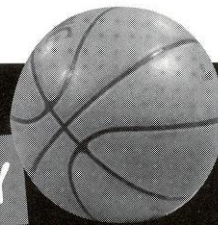
ACC Faxback Service

Through the services of FaxBack, Florida State University — as well as the other eight members of the Atlantic Coast Conference — distributes its press information via fax machine distribution. FaxBack is an automated, 24-hour-a-day, seven-day-a-week service that instantly sends the latest media information from Florida State to your fax machine. This service is for MEDIA USE ONLY! To access FaxBack, you must call the system from the handset of your fax machine. You will then be instructed step-by-step on how to receive information. To receive the FaxBack phone number and other detailed information on how the system works, please contact the Florida State sports information office. The ACC women's basketball Fax-Back directory can be found on the following page.



ACC WOMEN'S BASKETBALL

FAXBACK DIRECTORY



ACC

Tournament Preview/Results	5200
Release	5250
Notes Only	5251
Stats Only	5252
Schedule/Roster	5254

MARYLAND

Release	51250
Notes Only	51251
Stats Only	51252
Box Score	51253
Schedule/Roster	51254

CLEMSON

Release	11250
Notes Only	11251
Stats Only	11252
Box Score	11253
Schedule/Roster	11254

NORTH CAROLINA

Release	61250
Notes Only	61251
Stats Only	61252
Box Score	61253
Schedule/Roster	61254

DUKE

Release	21250
Notes Only	21251
Stats Only	21252
Box Score	21253
Schedule/Roster	21254

NC STATE

Release	71250
Notes Only	71251
Stats Only	71252
Box Score	71253
Schedule/Roster	71254

FLORIDA STATE

Release	31250
Notes Only	31251
Stats Only	31252
Box Score	31253
Schedule/Roster	31254

VIRGINIA

Release	81250
Notes Only	81251
Stats Only	81252
Box Score	81253
Schedule/Roster	81254

GEORGIA TECH

Release	41250
Notes Only	41251
Stats Only	41252
Box Score	41253
Schedule/Roster	41254

WAKE FOREST

Release	91250
Notes Only	91251
Stats Only	91252
Box Score	91253
Schedule/Roster	91254

Florida State Fax Directory

AP (Tallahassee)	(850) 224-2099
Atlanta Constitution	(404) 526-5977
Florida Flambeau	(850) 681-3577
Florida Times Union	(904) 359-4147
FSView	(850) 561-6578
Ft. Lauderdale Sun-Sentinel	(954) 356-4676
Gainesville Sun	(352) 338-3128
Miami Herald	(305) 376-2295
Ocala Star-Banner	(352) 867-4018
Orlando Sentinel	(407) 420-5069
Osceola	(850) 224-3627
Palm Beach Post	(561) 820-4481
Sarasota Herald-Tribune	(941) 957-5276
St. Pete Times	(813) 893-8782
Tallahassee Democrat	(850) 599-2301
Tampa Tribune	(813) 258-8504
WCTV	(850) 668-3851
WTWC	(850) 893-6974
WTXL	(850) 668-1460



FSU QUICK FACTS

Location Tallahassee, Florida
 Founded 1857
 Enrollment 30,200
 President Talbot "Sandy" D'Alemberte
 Nickname Seminoles
 Colors Garnet & Gold
 Home Court Tully Gymnasium (2,500)
 Tully Press Row Phone (850) 644-0486
 Affiliation NCAA Division I
 Conference Atlantic Coast

Athletic Administration

Athletic Director Dave Hart, Jr.
 Hart's Phone (850) 644-2526
 Assistant Athletic Director/
 Basketball Operations Guy Morgan
 Morgan's Phone (850) 644-2547

Sports Information

Sports Information Director Rob Wilson
 Assistant SID/Women's Basketball Tina Thomas
 Address P.O. Box 2195, Tallahassee, FL 32316
 SID Phone (850) 644-1065
 Thomas' Home Phone (850) 514-3351
 SID Fax (850) 644-3820

Basketball Staff

Head Coach Sue Semrau (California-San Diego '85)
 Record at FSU (Years) First Year

Career Record (Years) First Year
 Assistant Coaches ... Theresa Gernatt (Georgia Tech '91)
 Angie Johnson (Louisville '91)
 Leslie Davies (Northern Illinois '95)
 Basketball Office Phone (850) 644-3641
 Basketball Secretaries Patti Griffith
 Stacy Wilkshire-Martin
 Basketball Trainer Angela Sehgal
 Training Room Phone (850) 644-1899

1996-97 Results

Record 5-22
 Conference Record/Place 0-16/9th

1997-98 Personnel

Starters Returning/Lost 5/0
 Letterwinners Returning/Lost 8/3
 Returning Starters 5
 Latrice McLin (G-F/Sr., 5.4 ppg, 4.4 rpg)
 Lysa Moorefield (C/Sr., 10.9 ppg, 4.1 rpg)
 Jen Robinson (G/Jr., 10.1 ppg, 4.1 apg)
 Wendy Hampton (G-F/Sr., 10.1 ppg, 4.3 rpg)
 Latavia Coleman (F/So., 11.5 ppg, 6.5 rpg)
 Newcomers 5
 Brooke Wyckoff (Fr., 6-1, F, West Chester, OH)
 Lako Brown (Fr., 5-11, G/F, Eastman, GA)
 Vanessa Fuchs (Fr., 5-10, G/F, Pompano Beach, FL)
 Tamara Gracey* (Sr., F, 6-0, Guthrie, OK)
 Val Linley (Jr., 5-5, G, Emerson, GA)

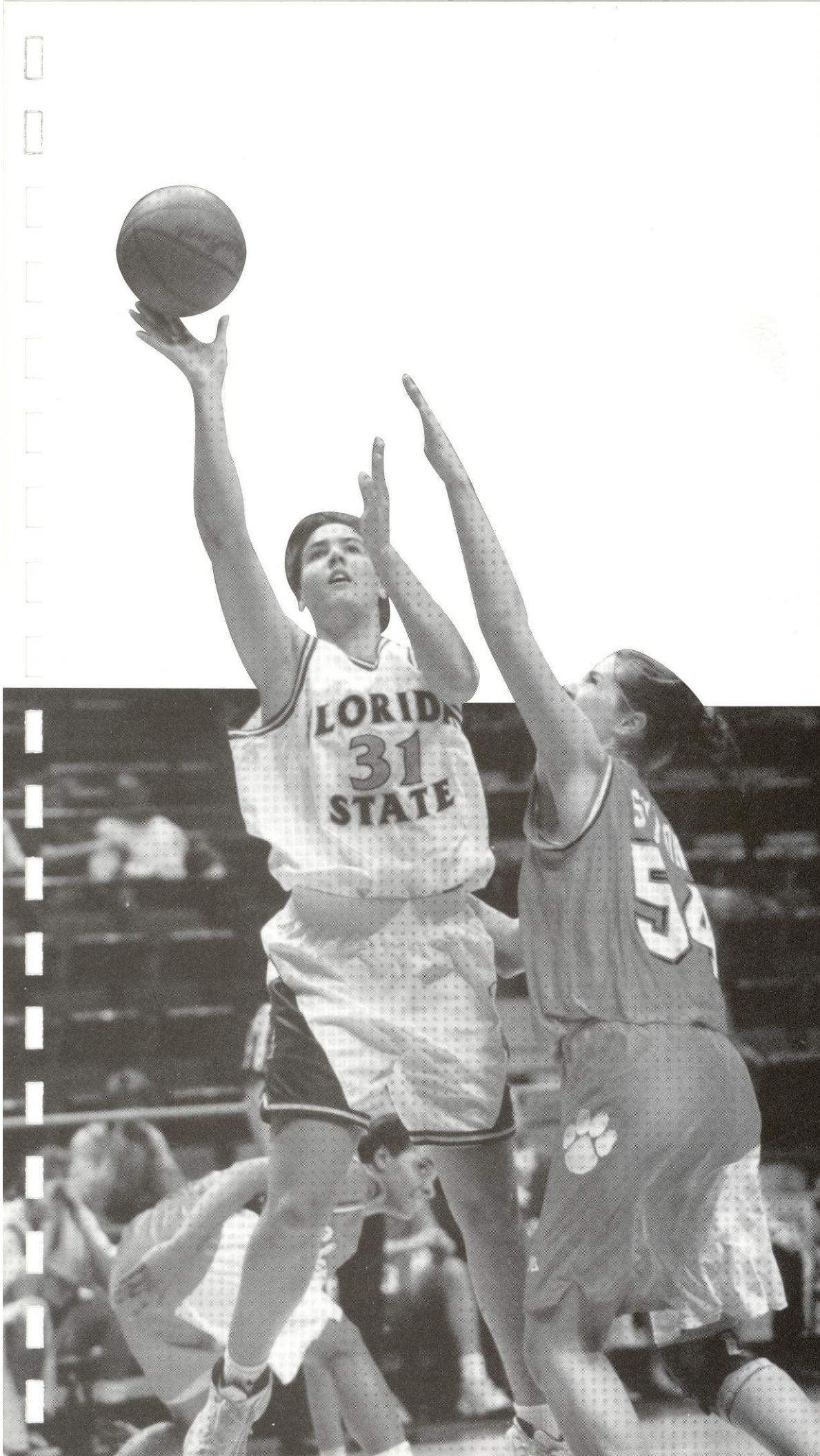
*Gracey will redshirt 1997-98 season



President D'Alemberte and wife Patsy Palmer are big fans of FSU women's basketball.



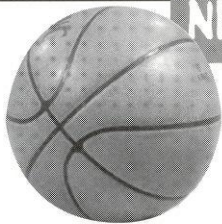
Florida State will have eight games televised this season.



OUTLOOK

- '97-98 Preview
- Rosters
Numerical
Alphabetical

'97-98 PREVIEW



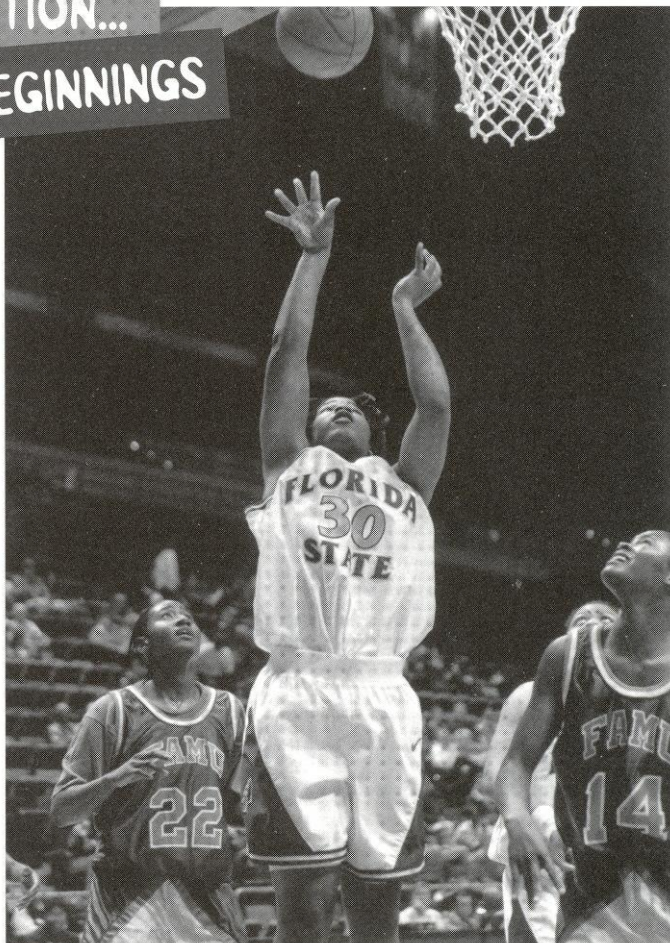
NEW DIRECTION...

NEW BEGINNINGS

From the moment she stepped onto the Florida State campus, first-year head coach Sue Semrau has brought hope and excitement back to the Florida State women's basketball program. With vast coaching experience at two Division I schools, Semrau brings a great deal of wisdom and vision to a program starving for such nourishment. Semrau has introduced a unique approach to the Florida State program. Her philosophy is simple. Semrau intends to run her program in such a way where players are treated as people first, students second and athletes third. She is a relationship coach who believes in going out and initiating relationships rather than waiting on the athletes to do so. Priority one in the task that faced her was building relationships with the athletes who were already on board.



Latrice McLin



Latavia Coleman

"I was going to be recruiting during the month of July, so rather than wait until August when the players came back to school, I made an effort to go out and visit each of the players and their families in their homes," Semrau said. "I wanted them to understand that they are important as people and not just athletes."

Eight letterwinners, including all five starters, return from last year's squad, while five new faces have come on board including four players who had committed to Florida State prior to Semrau's arrival. Semrau has spent much of the preseason simply getting to know her players.

"Both the players and I chose FSU, so we have that in common," Semrau said. "I hope to build on that common ground, develop relationships and work toward a common goal. I am looking forward to developing a chemistry on this team that really pushes us to win some games that no one thought we could win, because of the strength of our unity."

The squad is comprised of four seniors, one redshirt senior, three juniors, one sophomore and four freshmen. Despite the fact that all 13 players will be new to Semrau's style of coaching, it will be the four seniors she will rely on most.

"The senior class is always one of the key elements of any team," Semrau said. "I have talked to each of them individually about how much I expect them to be leaders to set examples, to set a standard, and to make this not only their best year but the best yet for everybody around them. Communication with the seniors is going to be crucial. It is great that there are four of them."

Four of FSU's five returning starters averaged more than 10 points per game last season led by sophomore Latavia Coleman's 11.5 points and 6.1 rebounds per game. Coleman, who became the first FSU freshman to lead the team in scoring since all-time leading scorer Sue Galkantas did in 1981, was an ACC All-Freshman Team selection. Seniors Lysa Moorefield and Wendy Hampton, averaged 10.9 and 10.1 points, respectively while junior point guard Jen Robinson produced 10.1 points and a team-leading 4.1 assists per game. Look for Hampton, FSU's all-time leader in three-point field goals with 94, to continue to provide a threat from beyond the arc. Senior starter Latrice McLin has the athletic ability to play at both the forward and guard positions and will continue to contribute in the FSU lineup.

Returnees Aletha Penn, Arleshia Davidson and Leslie Waugh all saw a great deal of playing time in 1996-97 and should once again be a vital part of the Seminoles lineup. Davidson probably showed the most improvement of all returnees last season elevating her numbers to 9.0 points and 4.8 rebounds per game over the final six contests of the year. FSU's five newcomers will be looked upon to offer immediate assistance. West Chester, Ohio, native Brooke Wyckoff, a *Street and Smith's* and *USA Today* honorable mention All-American, stands 6-1 and along with Moorefield and Waugh will



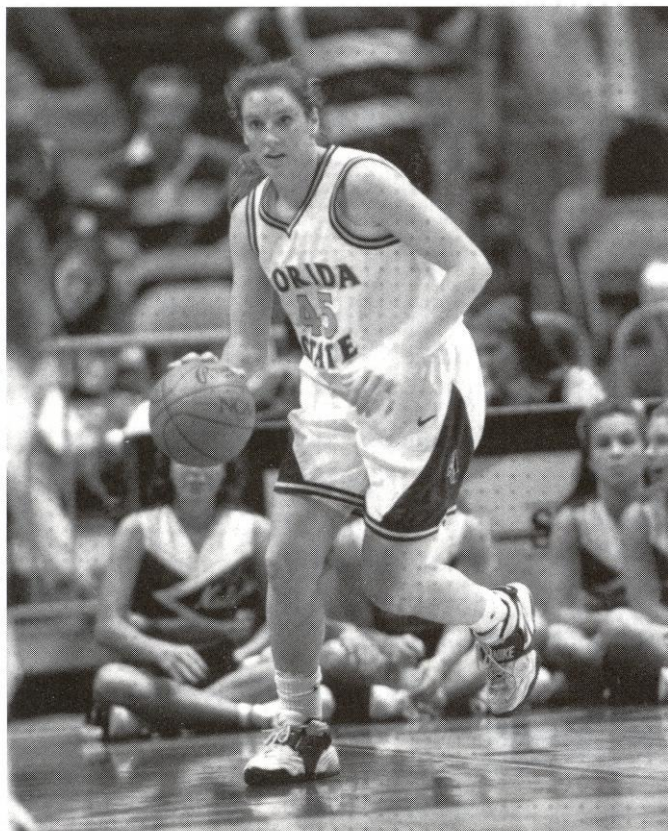
Aletha Penn

provide the squad with a solid force in the rebounding and blocking departments. She averaged 14.0 points and 11.0 rebounds per game as a senior. Junior transfer Val Linley's great quickness, court sense and leadership skills will supply the squad with valuable depth at the point guard position of which Robinson has handled the past two seasons. Freshman Lako Brown's 5-11 frame will allow her to contribute at both the forward and guard positions while Vanessa Fuchs' strong outside shooting will be a welcomed addition to the Tribe's perimeter game. Fuchs set her high school's single-season record for three-pointers with 68 last season. Redshirt transfer Tamara Gracey must sit out the season but will provide the squad with an outstanding practice player.

Only time will answer the many questions that confront Semrau and the 1997-98 Florida State women's basketball team. Although the program has had its share of difficulties in recent years, Semrau sees a great deal in terms of potential for the program as well as for its current players.

"I think that the players have been through a lot, but it obviously helped build character," Semrau said. "If you talk to any one of them, they are ready to go, they are anxious to get after it. I believe a nice foundation has been laid for what they want to do. They set some goals that they really want to achieve, and they have been working hard to prepare for that."

The strength of Florida State's schedule would present a great challenge for even a veteran team. Aside from the always rigorous Atlantic Coast Conference slate, the Tribe will face national powers Southwest Missouri State and Louisiana Tech and could potentially play Georgia in the *Tallahassee Democrat* Seminole Classic in early December.



Wendy Hampton

ROSTERS

WOMEN'S BASKETBALL

1997-98



NUMERICAL

NO.	NAME	POS.	HT.	YR.	HOMETOWN (HIGH SCHOOL/PREVIOUS SCHOOL)
5	Latrice McLin	F/G	6-0	Sr.	Rossville, Ga. (Ridgeland)
10	Val Linley	G	5-5	Jr.	Emerson, Ga. (Hiwassee JC (TN))
20	Aletha Penn	G	5-5	Sr.	Kansas City, Mo. (Center)
21	Brooke Wyckoff	F	6-1	Fr.	West Chester, Ohio (Lakota)
23	Arleshia Davidson	F	6-2	Jr.	Marietta, Ga. (Marietta)
24	Jen Robinson	G	5-8	Jr.	Albany, Ga. (Dougherty)
25	Lako Brown	G/F	5-11	Fr.	Eastman, Ga. (Dodge County)
30	Latavia Coleman	F	5-10	So.	Macon, Ga. (Southwest)
31	Lysa Moorefield	F/C	6-1	Sr.	Altamonte Springs, Fla. (Lake Brantley)
33	Vanessa Fuchs	G/F	5-10	Fr.	Pompano Beach, Fla. (Cardinal Gibbons)
41	Tamara Gracey*	F	6-0	Sr.	Guthrie, Okla. (Guthrie/Kansas/Tulsa)
42	Leslie Waugh	F/C	6-3	Jr.	Shreveport, La. (Byrd)
45	Wendy Hampton	F	5-11	Sr.	Mt. Ulla, N.C. (West Rowan)

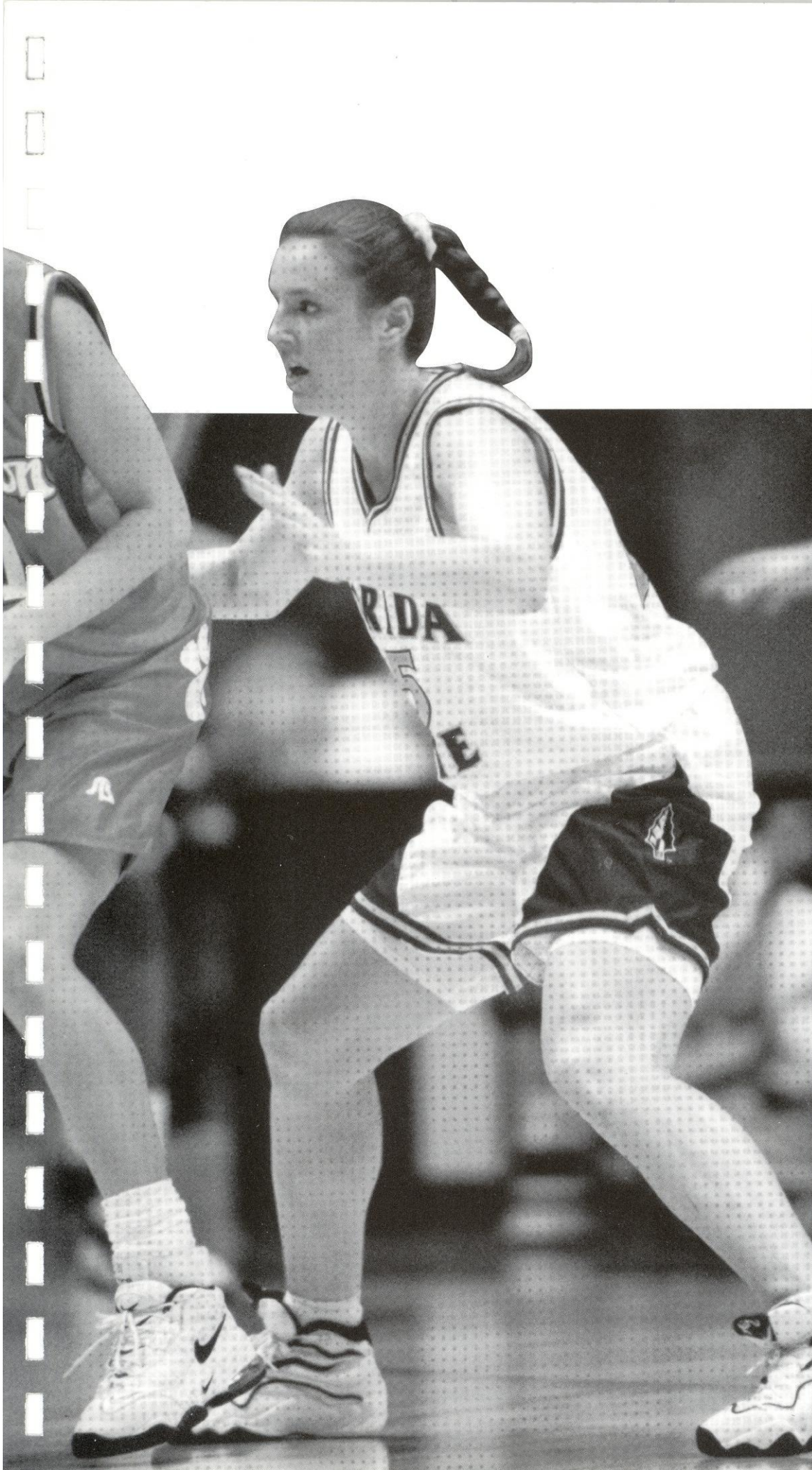
*Will redshirt 1997-98 season

HEAD COACH: Sue Semrau (California-San Diego '85)

ASSISTANT COACHES: Theresa Gernatt (Georgia Tech '91), Angie Johnson (Louisville '91), Leslie Davies (Northern Illinois '95)

ALPHABETICAL

NO.	NAME	POS.	HT.	YR.	HOMETOWN (HIGH SCHOOL/PREVIOUS SCHOOL)
25	Lako Brown	G/F	5-11	Fr.	Eastman, Ga. (Dodge County)
30	Latavia Coleman	F	5-10	So.	Macon, Ga. (Southwest)
23	Arleshia Davidson	F	6-2	Jr.	Marietta, Ga. (Marietta)
33	Vanessa Fuchs	G/F	5-10	Fr.	Pompano Beach, Fla. (Cardinal Gibbons)
41	Tamara Gracey*	F	6-0	Sr.	Guthrie, Okla. (Guthrie/Kansas/Tulsa)
45	Wendy Hampton	F	5-11	Sr.	Mt. Ulla, N.C. (West Rowan)
10	Val Linley	G	5-5	Jr.	Emerson, Ga. (Hiwassee JC (TN))
5	Latrice McLin	F/G	6-0	Sr.	Rossville, Ga. (Ridgeland)
31	Lysa Moorefield	F/C	6-1	Sr.	Altamonte Springs, Fla. (Lake Brantley)
20	Aletha Penn	G	5-5	Sr.	Kansas City, Mo. (Center)
24	Jen Robinson	G	5-8	Jr.	Albany, Ga. (Dougherty)
42	Leslie Waugh	F/C	6-3	Jr.	Shreveport, La. (Byrd)
21	Brooke Wyckoff	F	6-1	Fr.	West Chester, Ohio (Lakota)



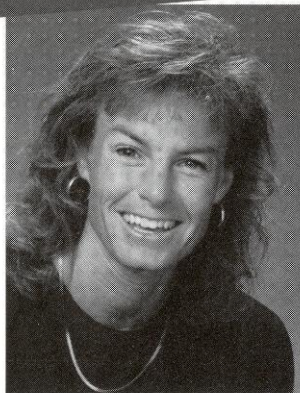
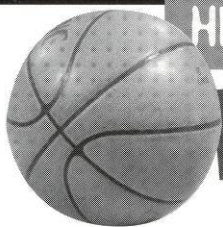
COACHES

- Head Coach
Sue Semrau
- Assistant Coaches
Theresa Gernatt
Angie Johnson
Leslie Davies

SUE SEMRAU

HEAD COACH · FIRST YEAR

CALIFORNIA-SAN DIEGO · 1985



Energy, positiveness and new life was brought back into the Lady Seminole women's basketball program when Sue Semrau, formerly the top assistant at the University of Wisconsin, became head coach at Florida State on June 13, 1997. It was these characteristics and others that led Director of Athletics Dave Hart to the hiring of Semrau.

"Sue's integral role in the building process at two different programs, along with her tremendous energy and reputation as a recruiter, were the most important profile characteristics in her selection as our women's basketball coach at Florida State University," Hart said. "We all look forward to continuing our collective efforts to establish a competitive women's basketball program at Florida State."

Semrau becomes head coach at FSU after serving three years as top assistant coach and recruiting coordinator at the University of Wisconsin under Badger Head Coach Jane Albright-Dieterle. Semrau joined Albright-Dieterle at Northern Illinois in 1991 where she assisted in leading NIU to three consecutive NCAA tournament appearances.

In her three seasons at Wisconsin, Semrau contributed to the Badgers' three straight winning seasons and

two NCAA tournament appearances, including the program's first ever back-to-back 20-win seasons. Wisconsin also posted its best record in program history, a 21-8 mark in 1995-96, and the school's highest national ranking of 8th, during Semrau's tenure.

"With the hiring of Sue Semrau, Florida State has demonstrated its commitment to the total student-athlete," Wisconsin head coach Jane Albright-Dieterle said. "Sue will very much be a player's coach. Every athlete in her program will become a better person, student and athlete. She is an accomplished recruiter, and her knowledge of the game is exceptional. This hire ensures a positive future for Florida State women's basketball."

Semrau has also been noted for her recruiting efforts at Wisconsin with a 1995 recruiting class that ranked eighth in the country by *Blue Star Index*. The Badgers' 1997 class features the program's first WBCA Prep All-American and the first multiple *Parade Magazine* honoree.

Last summer, Semrau was the head coach of a team of college alumni that competed in the Athletes in Action Spring Australian Tour.

Semrau came to Northern Illinois after serving as head women's basketball coach and assistant athletic director at Occidental College in Los Angeles for four years where she compiled a 51-47 overall record. She also coached soccer for two seasons and was responsible for the administrative duties of fundraising and promotions at the Division III institution. At Occidental, Semrau was a member of the NCAA regional selection committee and chaired the Southern California Intercollegiate Athletic Conference for women's basketball.

Prior to her appointment at Occidental, Semrau worked as the public relations and promotions director for the L.A. Heat professional soccer team from 1986-87, and the public relations director for the Seattle Storm soccer team in the previous year. In 1986-87, she also served as an assistant basketball coach at Santa Monica High School.

A 35-year-old native of Seattle, Wash., Semrau is a graduate of Shorecrest High School where she earned all-state honors in her senior year. She went on to attend the University of Puget Sound for two years, garnering Freshman of the Year honors. Semrau transferred to the University of California-San Diego in 1984 where she ranks 13th in all-time scoring and fourth in all-time assists. In 1985, she graduated from the University of California-San Diego with a bachelor's degree in communications, and received her master's degree in athletic administration from the University of Southern California in 1988.



! THERESA GERNATT

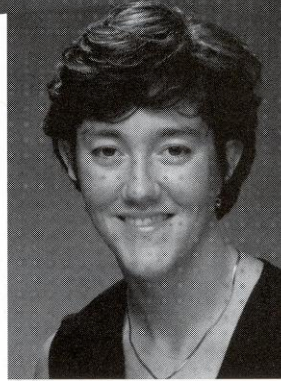
ASSISTANT COACH · SECOND YEAR

GEORGIA TECH · 1991



Although in just her second year at Florida State, Theresa Gernatt could be considered the veteran of this young Seminole staff. Gernatt's familiarity with the FSU system will be an advantage to first-year coach Sue Semrau as will her familiarity with the coaching staff that has been put in place. Gernatt worked with Semrau and Angie Johnson back in 1994-95 when she served one year as an administrative assistant for the Wisconsin women's basketball program.

Gernatt came to FSU after serving one year as an assistant coach at Mississippi State. At MSU, Gernatt monitored the academic progress of the student-athletes, managed the program's tape-ex-



change and assisted with on-court responsibilities.

A native of Marietta, Ga., Gernatt has several ties to the Atlantic Coast Conference. She was a four-year letterwinner at Georgia Tech, where she earned a degree in management in 1991, and then served as an assistant coach at the University of Maryland the following season during which time the Terrapins reached a No. 1 national ranking. Gernatt returned to her alma mater the for the next two years and worked as an assistant to the athletic director while pursuing her master's degree.



W o m e n ' s B a s k e t b a l l 1 9 9 7 - 9 8

ANGIE JOHNSON

ASSISTANT COACH • FIRST YEAR

LOUISVILLE • 1991



When Sue Semrau came to Florida State, she knew that her selection of assistant coaches would play a vital role in the success of the future of Florida State's women's basketball program. She moved a step closer to that goal with the hiring of Angie Johnson.

Johnson, like Semrau, comes to Florida State from the University of Wisconsin, where she served as the Badgers' third assistant since 1994. Some of her responsibilities at UW included opponent scouting, coordinating video exchange and arranging student-athletes community service. Last season, she also served as the team's academic liaison. Johnson was also active with the BadgerBall Booster Club, the Jane's Gem



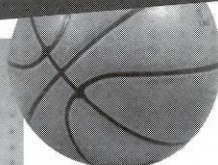
kids club and was co-director of the BadgerBall Girls Hoops Camp for two summers.

Prior to joining the Badger staff, Johnson was the assistant basketball coach at Paul G. Blazer High School in her hometown of Ashland, Ky. She was a four-year letterwinner at the University of Louisville from 1987-91. A 6-0 center, she still ranks among the top 10 in career rebounds (621) and games played (120). A biology major, Johnson was the recipient of the Ed Kallay Senior Award in 1991 and was a Woodford R. Porter Scholar.

LESLIE DAVIES

ASSISTANT COACH • FIRST YEAR

NORTHERN ILLINOIS • 1995

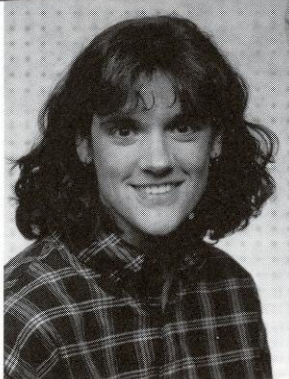


If the Lady Seminoles were to look for someone to help them adjust to Sue Semrau's style of coaching, first-year assistant coach Leslie Davies would be a likely candidate. Known then as

Leslie Pottinger, Davies was a four-year letterwinner at Northern Illinois while Semrau was an assistant coach.

Davies has remained active as both a coach and player in the sport of basketball since her graduation from NIU in 1995. As a coach, Davies most recently served as an assistant coach at St. Joseph's College in Indiana. Prior to that, she coached for the Lakeside Recreation Center Clinics and Youth League Teams in Australia. As a player, Davies was the leading scorer on the Athletes in Action traveling squad in 1995 and played professionally on the Lakeside Basketball Team in Australia in 1996.

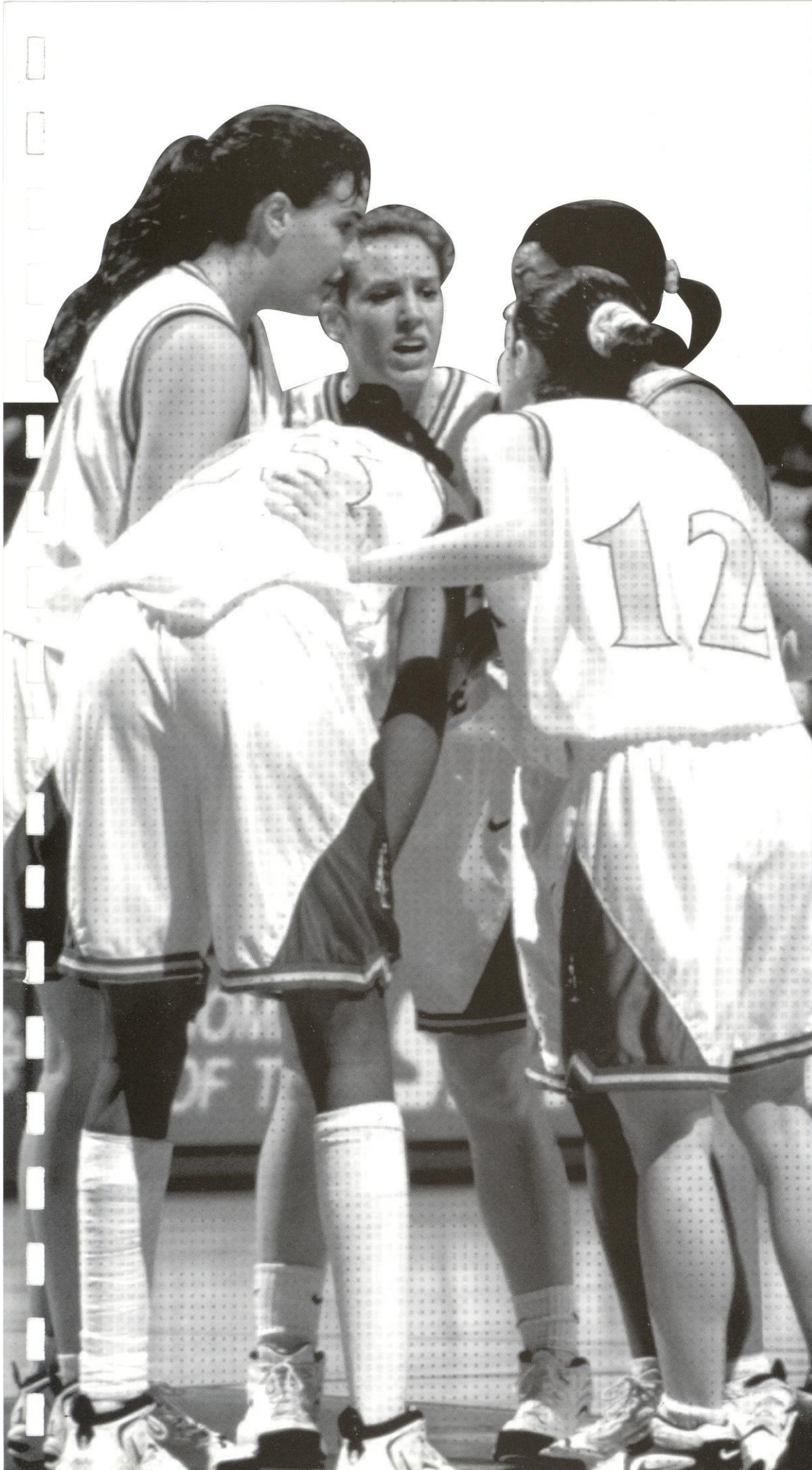
While at Northern Illinois, Davies led the Huskies in



scoring (17.7) in her senior year and co-captained the squad in both her junior and seniors seasons and participated in four NCAA tournaments during her career. She capped off her career earning Mid-Continent Conference first team honors and flourished in the classroom as well adding GTE CoSIDA District V All-Academic honors to her resumé. She is NIU's

all-time career steals leader (276) and recorded one of only two triple-doubles in school history.

Davies, who holds a bachelor's degree in English from NIU, has been active in summer camps, clinics and speaking engagements throughout her career. She and her husband Dave were married August 3, 1997.



PLAYERS

- Player Biographies
 - Wendy Hampton
 - Latrice McLin
 - Lysa Moorefield
 - Aletha Penn
 - Arleshia Davidson
 - Jen Robinson
 - Leslie Waugh
 - Latavia Coleman
- Newcomers
- A Closer Look...

WENDY HAMPTON



5-11 • SENIOR • F

MT. ULLA, NC



Has the ability to score quickly...has gained greater confidence...intense player who shows little emotion, but gets the job done...can play all five positions...has the ability to post up or move outside and hit the three point shot...strong passer...runs the court well...a very quiet player...don't realize what she has done on the floor until you look at her statistics at the end of a game. **1996-97:** Was the only player to start all 27 games...started the season with a bang, tallying double figures in the first 10 contests...averaged 10.1 points (tied 3rd) and 4.3 rebounds (4th) per game...scored in double figures in 15 games...led the team in rebounding for the first time with eight at NC State and again with eight vs. Duquesne...led the team in scoring five times...set the FSU career record for threes with 94 and the new single season record for treys with a team leading 51...recorded a career-high 23 points vs. Stetson...ranked first on the team with 58 steals...tied an FSU record for threes in a game with seven vs. Stetson...recorded a

career-high eight steals vs. FAMU...one of three team captains. **1995-96:** Played in all 28 games, including 19 starts, 11 of which closed out the season...had the game of her career in FSU's overtime win over Georgia Tech, scoring a career-high 19 points, including a career-high four three-pointers...her last three points came in dramatic fashion when with :03 left on the clock and three defenders in her face, she drained a trey to force the game into a second OT...also grabbed a career-high eight rebounds in the game vs. the Lady Jackets...ranked first on the team with 28 three-pointers, improving her total by 13 treys from the year before...recorded seven double-digit games, four of which were against ACC opponents...twice led the team in scoring...led the team in rebounding in one game...finished the season off strong, averaging 9.7 points and 4.5 rebounds over final four games...also contributed defensively, ranking second on the team in steals (33) and third in blocks (11). **1994-95:** Averaged 4.9 points and 2.3 rebounds in 15 minutes of play per game...played in all 30 games and had three starts...tallied double figures in five games, including a team-leading and career-high 17 points vs. Michigan State...scored in 24 of 30 games...scored 12 off the bench vs. Georgia Tech...led the team in rebounding with a career-high seven boards vs. Michigan State...matched that total with seven boards vs. Georgia Tech...ranked fourth on the team with 15 treys...had 28 steals. **HIGH SCHOOL:** Led West Rowan team to sectional finals and a 24-3 record...high school coach was Tina Yost...averaged 24 ppg and 11 rpg...played in the North Carolina East-West All-Star game...named to the All-Piedmont team and the All-Conference team...also named Rowan County Player of the Year. **PERSONAL:** Majoring in biology...born Sept. 13, 1976.



Career Highs

POINTS 23, 12/22/96 vs. Stetson
 REBOUNDS 8, 1/31/96 vs. Ga. Tech,
 1/26/97 vs. NC State,
 2/5/97 vs. Duquesne

1996-97 Season Highs

POINTS 23, 12/22/96 vs. Stetson
 REBOUNDS 8, 1/26/97 vs. NC State,
 2/5/97 vs. Duquesne

HAMPTON'S CAREER NUMBERS

YEAR	G-GS	MPG	FGM-FGA	PCT	3FG-3FGA	PCT	FTM-FTA	PCT	REB-AVG	AS	ST	BK	TO	PF-DQ	PTS-AVG
94-95	30- 3	15.2	56-162	.346	15- 46	.326	20-32	.625	68-2.3	20	28	3	50	34-0	147- 4.9
95-96	28-19	22.2	70-195	.359	28- 75	.373	16-26	.615	97-3.5	28	33	11	75	53-1	184- 6.6
96-97	27-27	32.2	96-268	.358	51-163	.313	30-41	.732	115-4.3	24	58	9	51	73-5	273-10.1
TOTALS	85-49		222-625	.355	94-284	.331	66-99	.667	280-3.3	72	119	23	176	160-6	604- 7.1

HAMPTON'S ACC NUMBERS

YEAR	G-GS	MPG	FGM-FGA	PCT	3FG-3FGA	PCT	FTM-FTA	PCT	REB-AVG	AS	ST	BK	TO	PF-DQ	PTS-AVG
94-95	16- 3	17.4	31- 94	.330	11- 29	.379	8-14	.571	35-2.2	11	20	3	34	20-0	81-5.1
95-96	16-10	21.5	37-116	.319	16- 46	.348	9-15	.600	59-3.5	16	13	8	43	31-1	99-5.8
96-97	16-16	32.3	43-136	.316	24- 89	.270	22-28	.786	61-3.8	11	29	3	24	41-2	132-8.3
TOTALS	48-29		111-346	.321	51-164	.311	39-57	.684	155-3.2	38	62	14	101	92-3	312-6.5



Women's Basketball 1997-98

LATRICE MCLIN

6-0 · SENIOR · F/G



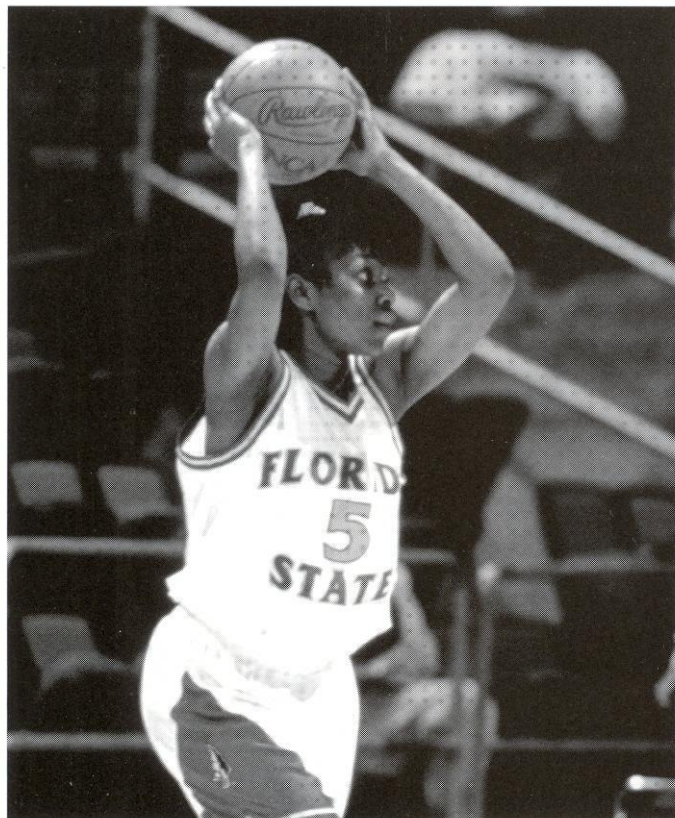
ROSSVILLE, GA



A genuine athlete...very internally motivated...has the talent and ability to make a name for herself...runs the court extremely well...possesses a good shooting touch...strong rebounder...good all around player who can pull down a rebound, make the outlet pass and be the first one down at the other end for the layup...a tremendous hustler. **1996-97:** Started 24 games at forward..averaged 5.4 points per game (5th on team) and 4.4 rebounds (3rd) per game...led the team in rebounding seven times...scored a team-high 16 points vs. South Florida in season-opener — just two shy of her career-high of 18 points...recorded her first double-double of the season and third in her career with 13 points and a season-high 10 rebounds vs. Central Florida...scored in double figures in three games...was one of three team captains. **1995-96:** Was a mainstay in the Lady Seminole lineup, playing in all 28 games while starting 25 of them...was one of only two players (Carla Williams was the other) to play a complete game and she recorded four of

them...ranked second on the team in rebounds with a 5.3 average and third on the squad in scoring at 7.0 points per game...scored in double figures in nine games and led the team in scoring one time...recorded her first career "double-double" in the first game of the season with 15 points and a career-high 12

rebounds at Florida Atlantic...grabbed a dozen boards again and coupled that with 13 points as she recorded her second career "double-double" in the New Orleans game...became more aggressive on the boards, seizing the team's top rebounding honors in five contests...scored in every game but one...was an all-around contributor, ranking third on the team in assists (45) and steals (28). **1994-95:** Averaged 7.7 points and 3.7 rebounds per game in 25 minutes of play per outing...saw action in 29 games, including 19 starts...missed two games with a foot injury...scored in every game she played in, including nine games in double figures...scored a career-high 18 points at Clemson — all in the second half — on 8-of-19 from the field, including a trey, and hit a free throw...ranked fourth on the team in steals with 27. **HIGH SCHOOL:** Played at Ridgeland...high school coach was Sharon Vantrese...was the All-State, Terrific Ten, All-Tri-State, and All North Georgia player of the year...named the Northwest Georgia Tip-off Club MVP and team MVP...played in the Georgia All-Star game and the Georgia/Tennessee All-Star game...a Scrapy Moore Athlete of the Year finalist and *The Chattanooga Times/News Channel* Twelve Athlete of the Year finalist...graduated with honors (3.1 gpa)...had perfect attendance in school her sophomore through senior years. **PERSONAL:** Major is family and child sciences...born July 10, 1976.



Career Highs

POINTS 18, 1/8/95 vs. Clemson
REBOUNDS 12, 11/27/95 vs. FAU,
12/20/95 vs. New Orleans

1996-97 Season Highs

POINTS 16, 11/22/96 vs. South Florida
REBOUNDS 10, 12/20/96 vs. Central Florida

McLIN'S CAREER NUMBERS

YEAR	G-GS	MPG	FGM-FGA	PCT	3FG-3FGA	PCT	FTM-FTA	PCT	REB-AVG	AS	ST	BK	TO	PF-DQ	PTS-AVG
94-95	29-19	24.5	86-247	.348	4-21	.190	46- 95	.484	106-3.7	20	27	4	61	37-0	222-7.7
95-96	28-25	31.0	73-217	.336	2-13	.154	47-108	.435	148-5.3	45	28	4	81	48-0	195-7.0
96-97	26-24	28.2	55-138	.399	1-12	.083	30- 61	.492	114-4.4	19	15	7	51	35-0	141-5.4
TOTALS	83-68		214-602	.355	7-46	.152	123-264	.466	368-4.4	84	70	15	193	120-0	558-6.7

McLIN'S ACC NUMBERS

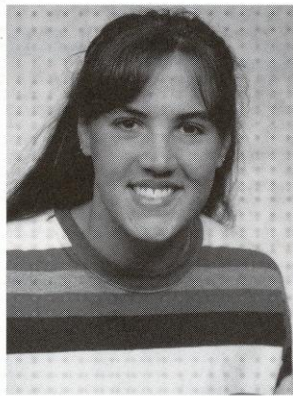
YEAR	G-GS	MPG	FGM-FGA	PCT	3FG-3FGA	PCT	FTM-FTA	PCT	REB-AVG	AS	ST	BK	TO	PF-DQ	PTS-AVG
94-95	15-13	27.9	53-152	.349	3-14	.214	17- 43	.395	64-4.3	11	14	2	32	18-0	126-8.4
95-96	16-13	29.1	29-110	.264	1- 5	.200	22- 58	.379	68-4.3	24	14	0	44	24-0	81-5.1
96-97	16-15	28.0	21- 70	.300	0- 7	.000	16- 29	.552	54-3.4	11	9	4	23	20-0	58-3.6
TOTALS	47-41		103-332	.310	4-26	.154	55-130	.423	186-4.0	46	37	6	99	62-0	265-5.6



LYSA MOOREFIELD !

6-1 • SENIOR • F/C

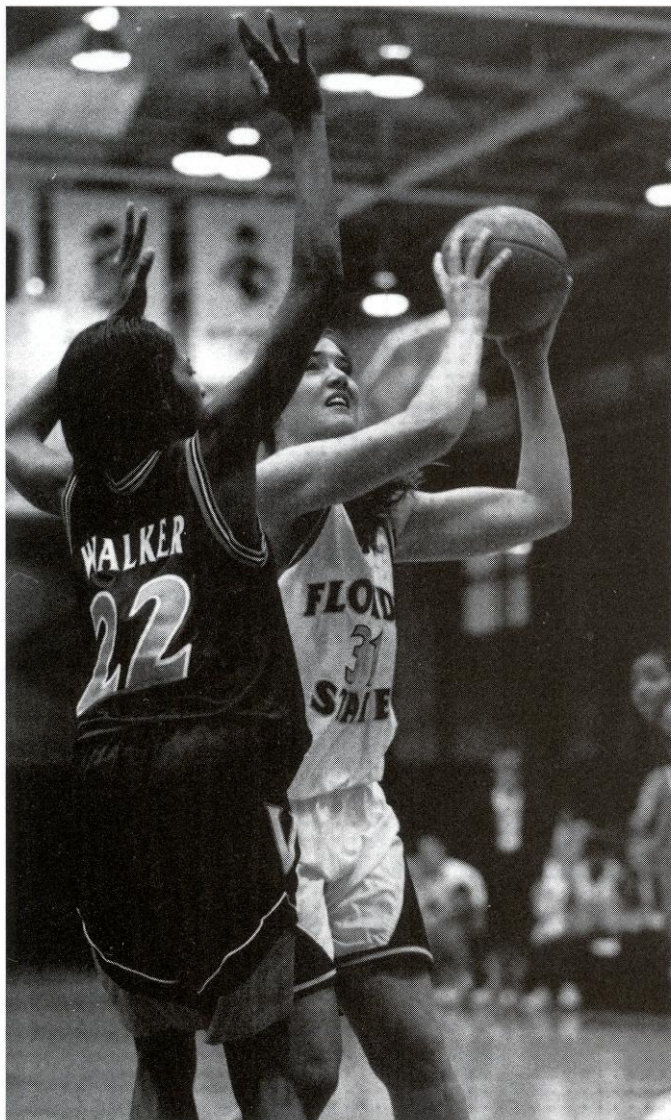
ALTAMONTE SPRINGS, FL



Hard worker...a shot-blocking threat...very strong physical player in the paint...has improved her scoring ability...has good range on the jumper...can hit from the outside...has showed ability to hit the foul line extended jumper as well as scoring from the low post...has improved defensively. **1996-97:** Started 23 games at center.. averaged 10.9 ppg (second on the team) and 4.8 rebounds (2nd)...led the team in scoring six times..scored in double figures in 14 games...was the team-leader with 24

blocks...recorded her first double-double of the year and second in her career with 23 points and 10 rebounds vs. FAMU...led the team in rebounding five times...led the team in field goal percentage at .479. **1995-96:** Made a valuable contribution as the squad's starting center...used her height effectively, blocking 21 shots...

played in all 28 games with 24 starts...recorded six games in double figures, including a career-high 28 points vs. FAMU...shot 69 percent from the field, 67 percent from the free throw line and tallied six rebounds against the Rattlerettes...started the season off strong with a career-high 12 rebounds vs. Florida Atlantic...also grabbed 12 boards vs. Virginia...scored and rebounded in all 28 games...led the team in scoring six times...was tops on the squad in rebounding five times. **1994-95:** Averaged 6.6 points and 4.0 rebounds in 23 minutes of play per game...missed the Virginia game due to the flu, but came back strong against Florida and scored a career-high 16 points... played in 29 games and started 23 contests...recorded her first double-double with 11 points and 10 rebounds vs. Florida Atlantic...scored in double figures in seven games and rebounded in double figures in three... grabbed a season-high 11 boards against Tampa which led the team...was first on the team in blocks with 13. **HIGH SCHOOL:** Named 3rd Team All-State, 1st team All Seminole County, and 1st team All-Conference... high school coach was Karen Szweyck...averaged 20 ppg, 12 rpg, and 5 bpg...led Lake Brantley team to a 23-9 record and to a final eight appearance in the state tournament. **PERSONAL:** Major is criminology...born May 2, 1976.



Career Highs

POINTS 28, 12/10/95 vs. Florida A&M
REBOUNDS 12, 11/27/95 vs. FAU,
1/16/96 vs. Virginia

1996-97 Season Highs

POINTS 23, 12/3/96 vs. Florida A&M
REBOUNDS 10, 12/3/96 vs. Florida A&M,
12/18/96 vs. FAU

Florida State University

MOOREFIELD'S CAREER NUMBERS

YEAR	G-GS	MPG	FGM-FGA	PCT	3FG-3FGA	PCT	FTM-FTA	PCT	REB-AVG	AS	ST	BK	TO	PF-DQ	PTS-AVG
94-95	29-23	22.8	82-201	.408	0-0	.000	26- 36	.722	116-4.0	9	20	13	50	91- 4	190- 6.6
95-96	28-24	23.6	95-229	.415	0-0	.000	23- 43	.535	126-4.5	15	11	21	53	73- 2	213- 7.6
96-97	27-23	26.4	124-159	.479	0-1	.000	47- 69	.681	130-4.8	18	26	24	62	83- 4	295-10.9
TOTALS	84-70		301-589	.511	0-1	.000	96-148	.649	372-4.4	42	57	58	165	247-10	698- 8.3

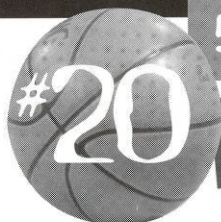
MOOREFIELD'S ACC NUMBERS

YEAR	G-GS	MPG	FGM-FGA	PCT	3FG-3FGA	PCT	FTM-FTA	PCT	REB-AVG	AS	ST	BK	TO	PF-DQ	PTS-AVG
94-95	15-11	23.9	41-114	.360	0-0	.000	19-25	.760	55-3.7	4	10	6	25	50-3	101-6.7
95-96	16-13	22.5	47-130	.362	0-0	.000	13-22	.591	64-4.0	11	5	12	26	40-1	107-6.7
96-97	16-13	26.4	63-150	.420	0-0	.000	28-42	.667	69-4.3	9	13	11	37	47-2	154-9.6
TOTALS	47-37		151-394	.383	0-0	.000	60-89	.674	188-4.0	24	28	29	88	137-6	362-7.7



Women's Basketball 1997-98

ALETHA PENN



5-5 • SENIOR • G

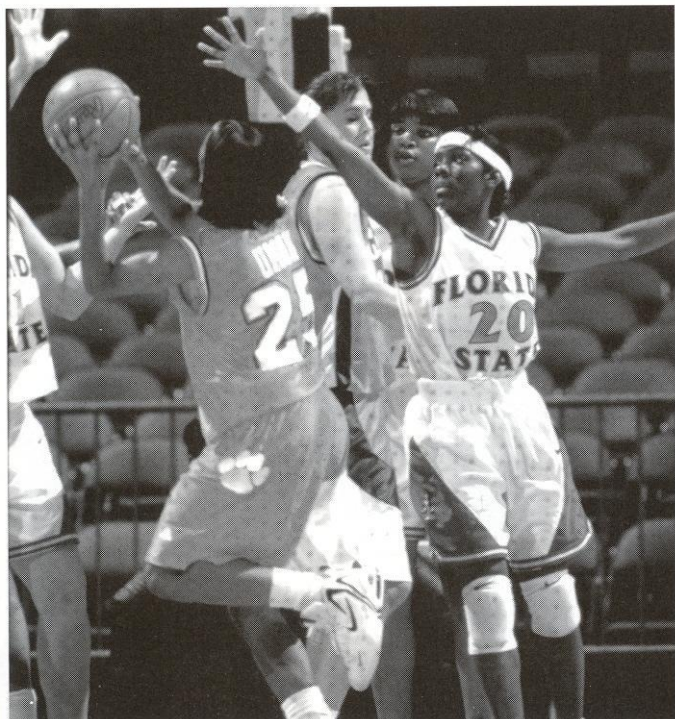
KANSAS CITY, MO



A talented backcourt player...a hard worker who is never satisfied and is always striving to improve...a very scrappy and aggressive player who will always dive for the loose ball...her extreme quickness allows her to push the ball upcourt...has good shooting range...has been nicknamed "Penny" by her teammates. **1996-97:** Saw action in all 27 games, including seven starts...averaged 4.3 points and 1.3 assists per game...led all FSU scorers with 13 points at NC State...scored 12 points vs. Wake Forest, including two three-pointers...contributed 11 points vs. No. 8 Virginia...broke back into the starting lineup at Florida with absence of McLin and nailed two threes...grabbed a career-high eight rebounds vs. Stetson...has led the team in assists in four games...contributed six points and two steals in just 10 minutes of play vs. FAMU. **1995-96:** Emerged as a leader on and off the court...team co-captain as chosen by her teammates...improved her scoring by nearly five points as she played in all 28 games, starting 22 of them...notched double figures in three games, including a career-high 18 points in the win over North Carolina on Feb. 9th...went 5-for-8 from the field, 1-for-1 from three-point and 7-for-9 from the free throw

line...the team won the most games when she was running the floor...grabbed a career-high seven rebounds against Georgia Tech...scored 10 points vs. NC State in 34 minutes, during which time she did not commit a turnover...was very aggressive on the floor, recording four times as many steals as she did the prior season with a

team-leading 48...tallied a career-high seven steals vs. FAMU...tied with teammate Jen Robinson for team-high honors in assists per game average at 2.8...dished out a career-high eight assists vs. Temple at the Central Florida Holiday Classic in Orlando. **1994-95:** Averaged 1.2 points and 0.5 rebounds per game in eight minutes of play per outing...saw limited action in 28 of 30 games, including a start against Maryland...a two-guard, but saw most of her minutes as a backup at point...scored in 12 contests...ranked tied for second on the team in assists with 29...made a solid contribution against Clemson, coming in at the point and dishing out seven assists...best offensive performance came against Michigan State in the San Juan Shootout as she tallied a season-high five points on 2-for-3 shooting, including a three pointer in a season-high 15 minutes of play. **HIGH SCHOOL:** Led Center team to a 20-7 record and District runner-up...high school coach was Ann Fritz...named 1st team 3A All-State...named All-District junior and senior seasons...played in the Kansas City Metro All-Star game and the Kansas/Missouri All-Star game...four-year starter...team captain junior and senior year...averaged 21 ppg, 7 steals, 4 rpg, and 4 apg...a member of the Honor Roll with Distinction with 3.7 GPA. **PERSONAL:** Pursuing a degree in apparel design and technology...is a member of the Student Athletic Advisory Council...born August 22, 1976.



Career Highs

POINTS 18, 2/9/96 vs. North Carolina
 REBOUNDS 8, 12/22/96 vs. Stetson
 ASSISTS 8, 1/26/95 vs. Temple

1996-97 Season Highs

POINTS 13, 1/26/97 vs. NC State
 REBOUNDS 8, 12/22/96 vs. Stetson
 ASSISTS 5, 12/18/96 vs. Florida Atlantic

PENN'S CAREER NUMBERS

YEAR	G-GS	MPG	FGM-FGA	PCT	3FG-3FGA	PCT	FTM-FTA	PCT	REB-AVG	AS	ST	BK	TO	PF-DQ	PTS-AVG
94-95	28- 1	8.1	13- 46	.283	2-14	.143	6- 9	.667	14-0.5	29	12	0	37	32-0	34-1.2
95-96	28-22	25.9	57-139	.410	9-19	.474	37-57	.649	73-2.6	77	48	4	112	77-4	160-5.7
96-97	27- 7	21.1	41-135	.304	17-65	.262	18-29	.621	48-1.8	35	36	0	61	69-0	117-4.3
TOTALS	83-30		111-320	.347	28-98	.286	61-95	.642	135-1.6	141	96	4	210	179-4	311-3.7

PENN'S ACC NUMBERS

YEAR	G-GS	MPG	FGM-FGA	PCT	3FG-3FGA	PCT	FTM-FTA	PCT	REB-AVG	AS	ST	BK	TO	PF-DQ	PTS-AVG
94-95	15- 1	9.3	6-27	.222	1- 7	.143	2- 4	.500	7-0.5	22	6	0	26	20-0	15-1.0
95-96	16-15	26.2	36-84	.429	5-10	.500	18-24	.750	43-2.7	42	17	4	67	50-4	95-5.9
96-97	16- 1	20.4	26-82	.317	10-41	.244	16-26	.615	27-1.7	18	22	0	37	40-0	78-4.9
TOTALS	47-17		68-193	.352	16-58	.276	36-54	.667	77-1.6	82	45	4	130	110-4	188-4.0



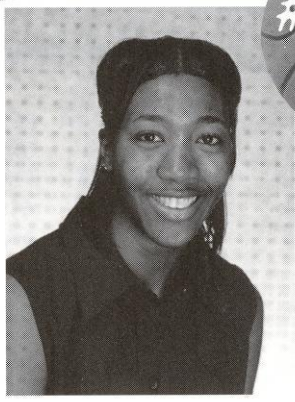
Women's Basketball 1997-98

ARLESHIA DAVIDSON !

Florida State University

6-2 • JUNIOR • F

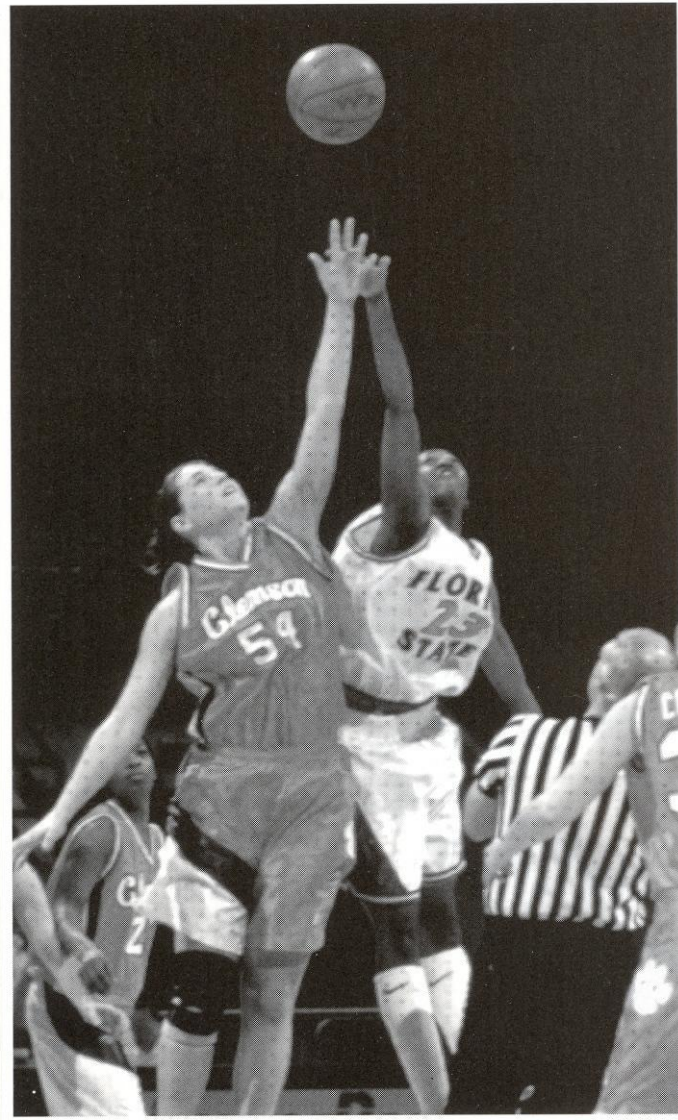
MARIETTA, GA



A very versatile forward...an excellent ball handler who has the ability to be a force as a rebounder...is very lean and athletic...is quick and will be effective in an up tempo game...has gained valuable experience in first two seasons and should be a more mature, consistent player on the court. **1996-97:** Earned her first start of the year against Clemson on Feb. 19th and started the last two games of the season...really came into her own as the season progressed...averaged

3.7 points and 3.1 rebounds per game but elevated her numbers to 9.0 points and 4.8 rebounds over last six games of the season ...scored a career-high 16 points and led

the team vs. Georgia Tech...also scored 14 points vs. Maryland on 7-for-9 shooting...played in all 27 games this season and scored in 17 of them...scored in double figures three times...grabbed a career-high seven boards in regular-season finale vs. Wake Forest... grabbed six rebounds in four games...led the team with six boards at North Carolina...played just eight minutes vs. South Florida in season-opener, but grabbed five rebounds. **1995-96:** Saw action in 22 games, including three starts against ACC opponents...in her first career start, she scored a season-high 13 points, good for second-best on the team, against nationally-ranked Virginia...also dished out two assists, grabbed three rebounds, had two blocks and four steals in 20 minutes of play...scored in double figures in her second start vs. Wake Forest with 10 points and a season-high seven rebounds...once led the squad in rebounding...missed three games with an ankle injury. **HIGH SCHOOL:** A three-year letterwinner...named the Most Valuable Player as a junior and senior for her Marietta High School team...high school coach was Cynthia Groover ...averaged a team-leading 13.0 points and 12.0 rebounds per game in senior season...garnered second team all-county honors as a senior and was an honorable-mention all-county selection as a junior...a four year Dean's List member. **PERSONAL:** Is majoring in mathematics education...born January 19, 1977.



Career Highs

POINTS 16, 2/10/97 vs. Georgia Tech
 REBOUNDS 7, 1/20/96 vs. Wake Forest, 2/23/97 vs. Wake Forest

1996-97 Season Highs

POINTS 16, 2/10/97 vs. Georgia Tech
 REBOUNDS 7, 2/28/97 vs. Wake Forest

DAVIDSON'S CAREER NUMBERS

YEAR	G-GS	MPG	FGM-FGA	PCT	3FG-3FGA	PCT	FTM-FTA	PCT	REB-AVG	AS	ST	BK	TO	PF-DQ	PTS-AVG
95-96	22-3	8.5	26- 57	.456	0-0	.000	12-18	.667	34-1.5	12	9	6	31	31-0	64-2.9
96-97	27-3	13.2	43-106	.406	0-1	.000	15-27	.556	84-3.1	19	17	11	54	73-5	101-3.7
TOTALS	49-6		69-163	.423	0-1	.000	27-45	.600	118-2.4	31	26	17	85	104-5	165-3.4

DAVIDSON'S ACC NUMBERS

YEAR	G-GS	MPG	FGM-FGA	PCT	3FG-3FGA	PCT	FTM-FTA	PCT	REB-AVG	AS	ST	BK	TO	PF-DQ	PTS-AVG
95-96	13-3	12.8	26- 53	.491	0-0	.000	11-16	.688	32-2.5	12	9	6	28	25-0	63-4.8
96-97	16-2	14.6	32- 71	.451	0-1	.000	13-21	.619	53-3.3	9	9	4	33	51-5	77-4.8
TOTALS	29-5		58-124	.468	0-1	.000	24-37	.649	85-2.9	21	18	10	61	76-5	140-4.8

