

JEN ROBINSON

Florida State University



5-8 • JUNIOR • G

ALBANY, GA



Has the potential to be one of the most powerful guards to ever play at FSU...is a very accurate shooter and is three-point scoring threat...has tremendous speed...has good vision on the court... can run the floor from the point...aggressive offensively and will accelerate down the floor. **1996-97:** Started 26 games at guard..averaged 10.1 points (tied 3rd on team) and a team-leading 4.1 assists per game...led the team in scoring the last two regular-season games...tied her career-high with 19 points vs. No. 8 Virginia...led the team in assists in 23 games...led the team in scoring six times...with 24 treys, was second on the team and doubled her total of 12 last season...played 30 minutes at Wake Forest and had seven assists and no turnovers...led the team in scoring (18), rebounding (5) and assists (4) at No. 20 Clemson...recorded a career-high 19 points (17 in second half) at Florida and connected on a career-high three treys in the game...scored in double figures in 13 games...tied her career high with seven rebounds vs.

Florida...was one of three team captains... had a season-high eight assists in FAMU and Wake games. **1995-96:** Made an immediate contribution to the team as a freshman, playing in all 28 games and earning 12 starts...twice tallied double figures in scoring and came within a basket of doing so six other times...scored a season-high 13 points and dished out a season-high 10 assists vs. FAMU for her first career double-double...her 10 assists vs.

the Rattlerettes set the season's single-game superlative for assists...led the squad with 78 assists and ranked tied for third with 28 steals on the year..a threat from the outside, she ranked second on the team in three-pointers with 12...snatched a season-high six steals vs. NC State...started the first six games of the season and averaged 6.7 points during that time. **HIGH SCHOOL:** Averaged 26.0 points, 5.0 rebounds, 6.0 assists and 5.0 steals as a senior for her Dougherty High School team... high school coach was Laura Blackwell...led the squad to a 54-6 record her last two seasons...named Georgia's Player of the Year for the South in 1994-95...was a two-year first-team all-state and all-region selection...scored 1,658 points — the most of any female ever in Dougherty County...pegged Class IAAA Player of the Year...named the Georgia Coaches Association's Athlete of the Year...selected Most Valuable Player at the Tennessee-Georgia All-Star game...earned Dougherty County Athlete of the Year honors...also competed in track, cross country and softball...an honor roll member and Presidential Award recipient. **PERSONAL:** Is a sports management major...born February 29, 1977.



Career Highs

POINTS 19, 12/14/96 vs. Florida,
1/19/97 vs. Virginia
REBOUNDS 7, 1/9/96 vs. NC State,
12/14/96 vs. Florida
ASSISTS 10, 12/10/95 vs. Florida A&M

1996-97 Season Highs

POINTS 19, 12/14/96 vs. Florida,
1/19/97 vs. Virginia
REBOUNDS 7, 12/14/96 vs. Florida,
1/12/97 vs. Ga. Tech
ASSISTS 8, 12/3/96 vs. Florida A&M,
2/23/97 vs. Wake Forest

ROBINSON'S CAREER NUMBERS

YEAR	G-GS	MPG	FGM-FGA	PCT	3FG-3FGA	PCT	FTM-FTA	PCT	REB-AVG	AS	ST	BK	TO	PF-DQ	PTS-AVG
95-96	28-12	22.8	53-184	.288	12-51	.235	22-41	.537	68-2.4	78	28	2	110	62-2	140-5.0
96-97	27-26	31.8	106-331	.320	24-101	.238	36-65	.554	70-2.6	110	23	0	124	72-2	272-10.1
TOTALS	55-38		159-515	.309	36-152	.237	58-106	.547	138-2.5	188	51	2	234	134-4	412-7.5

ROBINSON'S ACC NUMBERS

YEAR	G-GS	MPG	FGM-FGA	PCT	3FG-3FGA	PCT	FTM-FTA	PCT	REB-AVG	AS	ST	BK	TO	PF-DQ	PTS-AVG
95-96	16-6	22.8	28-106	.264	8-29	.276	13-26	.500	39-2.4	42	17	0	57	38-2	77-4.8
96-97	16-15	32.1	71-197	.360	16-59	.271	19-34	.559	35-2.2	59	15	0	74	46-1	177-11.1
TOTALS	32-21		99-303	.327	24-88	.273	32-60	.533	74-2.3	101	32	0	131	84-3	254-7.9

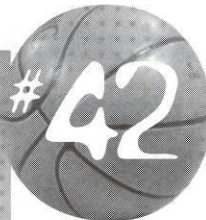


LESLIE WAUGH

6-2 • JUNIOR • C

SHREVEPORT, LA

Size allows her to be a threat inside both offensively and defensively ...will be heavily relied on to make solid contributions in the inside game...comes to FSU from one of the most powerful high school programs in the country...takes up a lot of space down low...high expectations for her as a rebounder and low post scorer. **1996-97:** Made steady progress and increased playing time throughout the season...had the best game of her career vs. Florida Atlantic when she scored a career-high 10 points and



grabbed a then-career-high four rebounds ...snatched a career-high seven boards at Wake Forest in just 11 minutes of play...saw action in 16 games and scored in nine of them. **1995-96:** Played her first season in the Garnet and Gold after recovering from a knee injury...saw limited action in redshirt

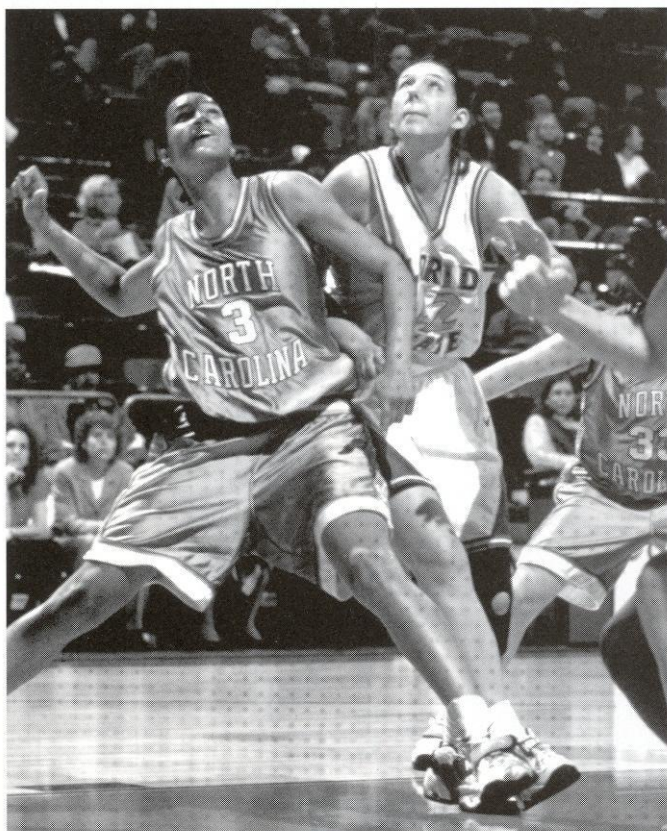
freshman season, playing in 18 games...best outing came against Wake Forest in the last regular-season game when she scored a season-high six points...in six minutes of play, she went 3-for-3 from the field and recorded an assist...she entered the game with FSU leading 14-13 and scored six of the team's next nine points, sparking the squad to its biggest lead of the game at seven points. **1994-95:** Opted to redshirt, after suffering a knee injury at the 1994 Olympic Festival tryouts. **HIGH SCHOOL:** Selected as the MVP in the Louisiana State Tournament...high school coach was Gay Nix...led her C.E. Byrd team to back to back State Championships... team finished as the number two team in the nation by *USA Today*...averaged 12.0 ppg, and 10.0 rpg. **PERSONAL:** Is a health education major...celebrates a patriotic birthday being born on July 4, 1976...is a member of the Student Athletic Advisory Council...is on target to graduate in April.

Career Highs

POINTS 10, 12/18/96 vs. FAU
REBOUNDS 7, 1/5/97 vs. Wake Forest

1996-97 Season Highs

POINTS 10, 12/18/96 vs. FAU
REBOUNDS 7, 1/5/97 vs. Wake Forest

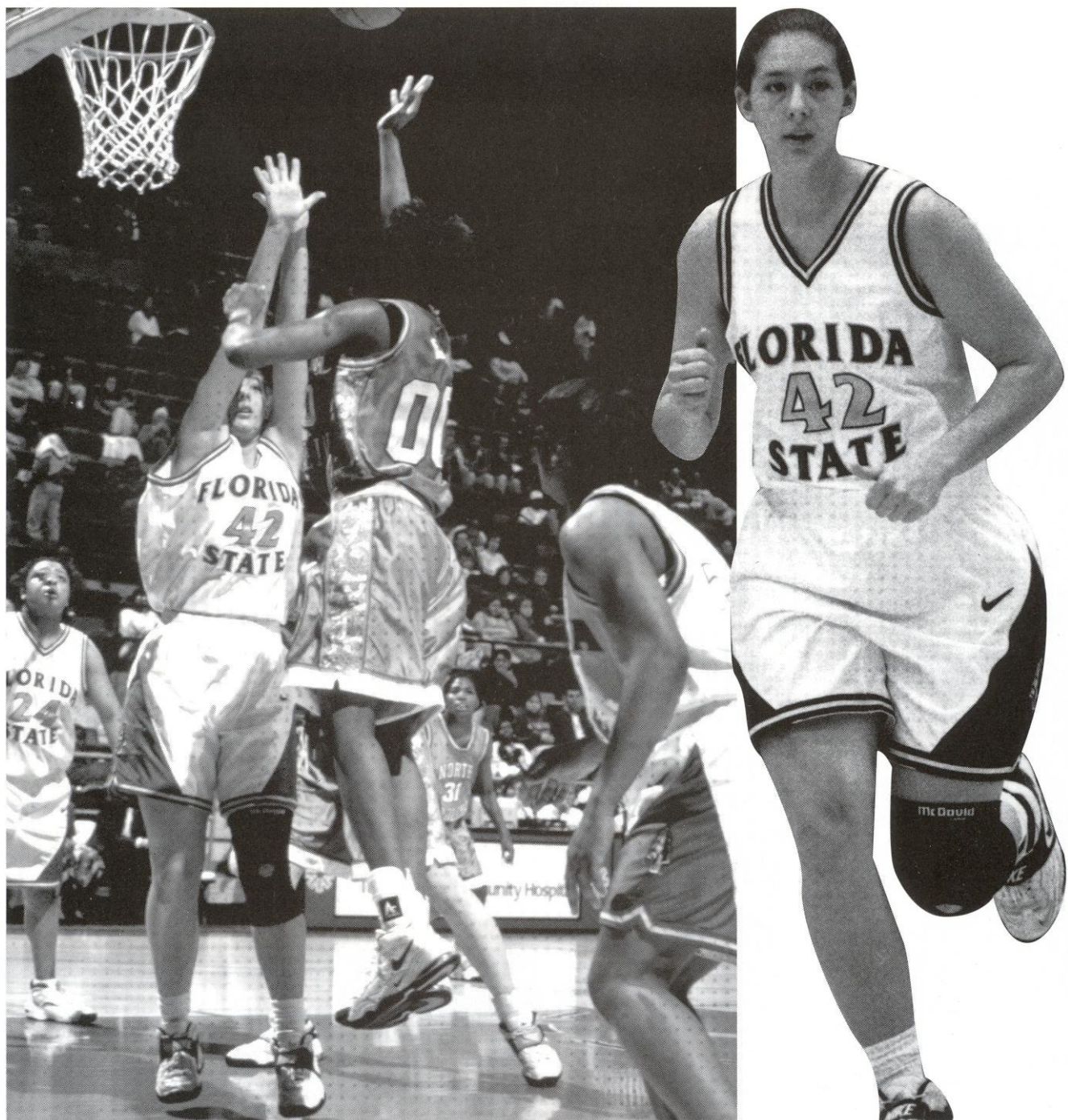


WAUGH'S CAREER NUMBERS

YEAR	G-GS	MPG	FGM-FGA	PCT	3FG-3FGA	PCT	FTM-FTA	PCT	REB-AVG	AS	ST	BK	TO	PF-DQ	PTS-AVG
95-96	18-0	3.6	8-13	.615	0-0	.000	4-5	.800	17-0.9	2	1	2	6	9-0	20-1.1
96-97	16-0	8.3	17-30	.567	0-0	.000	7-8	.875	35-2.2	3	9	3	3	17-0	41-2.6
TOTALS	34-0		25-43	.581	0-0	.000	11-13	.846	52-1.5	5	10	5	9	26-0	61-1.8

WAUGH'S ACC NUMBERS

YEAR	G-GS	MPG	FGM-FGA	PCT	3FG-3FGA	PCT	FTM-FTA	PCT	REB-AVG	AS	ST	BK	TO	PF-DQ	PTS-AVG
95-96	8-0	2.6	3-5	.600	0-0	.000	2-2	1.000	4-0.5	1	0	0	2	4-0	8-1.0
96-97	8-0	8.9	4-13	.308	0-0	.000	6-6	1.000	22-2.8	1	3	1	2	10-0	14-1.8
TOTALS	16-0		7-18	.389	0-0	.000	8-8	1.000	26-1.6	2	3	1	4	14-0	22-1.4



Women's Basketball 1997-98

LATAVIA COLEMAN !

5-10 • SOPHOMORE • F

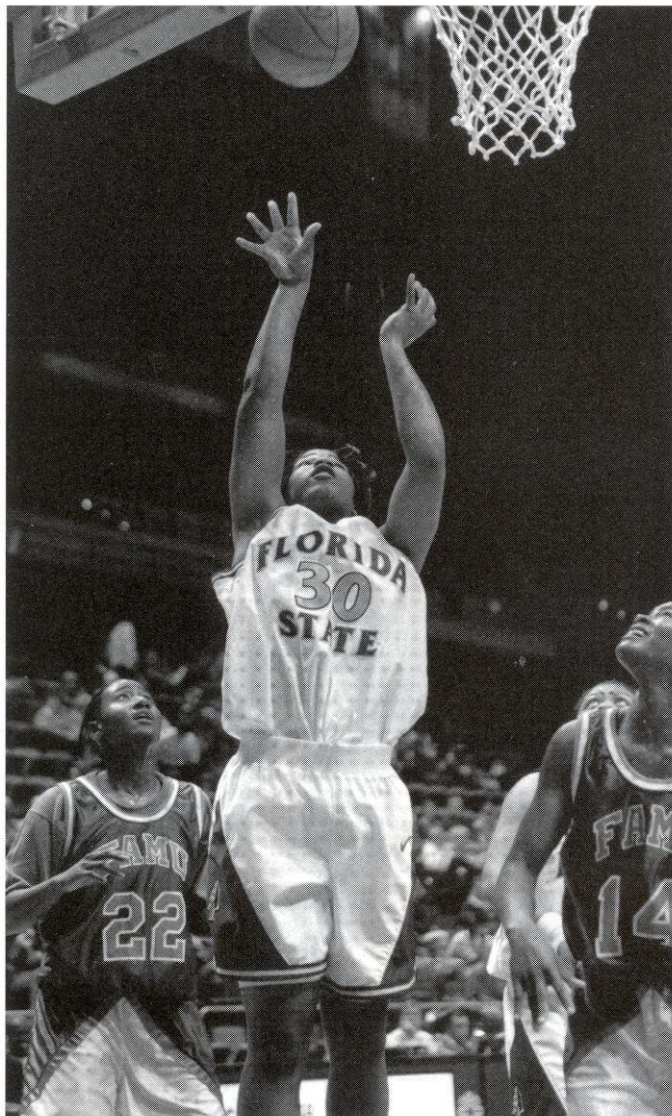
MACON, GA



and was also first in rebounds at 6.1 rpg... became the first freshman at FSU to lead the team in scoring since 1981...was chosen the squad's Golden Nole recipient, given to the top player on the team... capped off her rookie season with a career-high 21 points in the ACC Tournament... was named the ACC Rookie of the Week for the week ending Jan. 19 after averaging

A very durable inside player...made an immediate impact in rookie season and was the team's most valuable player...can shoot from outside and penetrate...a solid athlete...all-around contributor...very focused and intense. **1996-97:** An ACC all freshman team selection...led the team in scoring at 11.5 ppg

ing 12.5 points and 8.5 rebounds for the Tribe in two games...recorded her second and third career double-doubles with a team-high 18 points and 11 rebounds vs. Maryland on Jan. 15 and 18 and 10 vs. Maryland on Jan. 30...began the season off of the bench in first four games and earned a starting role vs. NC State on Dec. 7...played in all 27 games and started 23 contests...led the squad in scoring six times and in rebounding in 12 games...scored in double figures in 18 games...led the team in assists with six vs. Central Florida on Dec. 20... ranked second on the team with 38 steals...notched her first career double-double with a 18 points and 13 rebounds vs. FAU and led the team in both categories in the game... was named to the Dial Soap Classic/ Florida Four all-tournament team after averaging 13.0 points and 5.0 rebounds through the two games, including a team-high 16 points vs. No. 20 Florida... snagged four steals, four times. **HIGH SCHOOL:** A 1995-96 preseason *Street & Smith's* honorable mention All-American...participated in the Tennessee-Georgia High School All Star game following senior season and recorded three points, five rebounds, two steals and two blocks for the victorious Georgians...averaged 17.0 ppg, 8.0 rpg and 6.0 apg as a senior...led Southwest Macon team to the state regional finals...pegged team's most valuable player...was an all-city, all-state and all-middle Georgia selection...high school coach was Willie Goosby...also excelled in the classroom...earned school's Scholar Athlete Award...achieved a 3.6 GPA...an Honor Roll and Principal's List student. **PERSONAL:** Was born April 14, 1978...is undecided on a major.



Career Highs

POINTS 21, 2/27/97 vs. Wake Forest
REBOUNDS 13, 12/18/96 vs. Florida Atlantic
ASSISTS 13, 12/18/96 vs. Central Florida

COLEMAN'S CAREER NUMBERS

YEAR	G-GS	MPG	FGM-FGA	PCT	3FG-3FGA	PCT	FTM-FTA	PCT	REB-AVG	AS	ST	BK	TO	PF-DQ	PTS-AVG
96-97	27-23	28.8	130-312	.417	9-40	.225	41-77	.532	164-6.1	40	38	5	64	80-5	310-11.5

COLEMAN'S ACC NUMBERS

YEAR	G-GS	MPG	FGM-FGA	PCT	3FG-3FGA	PCT	FTM-FTA	PCT	REB-AVG	AS	ST	BK	TO	PF-DQ	PTS-AVG
96-97	16-16	29.6	74-190	.389	7-28	.250	23-43	.535	93-5.8	18	12	2	42	48-3	178-11.1



NEWCOMERS

LAKO BROWN

Versatile athlete who runs the floor well...possesses a solid jump shot and great leaping ability...plays with intelligence and maturity...comes from a strong high school program...coaches see great potential in her development. **HIGH SCHOOL:** Lettered in basketball, softball and track and field all four years...helped lead her Dodge County basketball team to a perfect 22-0 record as a senior...high school coach was Dick Kelly...was named team's Most Valuable Player as a senior...team did not lose a home game during all four years of prep career... participated in the North/South and Georgia/Tennessee All-Star basketball games...squad was pegged the GHSA Girls AA All-State First Team of the Year... earned Best Defensive Player honors in softball as a senior...participated in the North/South Softball All-Star game as was voted Best Defensive Player...was chosen most outstanding in field events in track all four years...served as president of the Fellowship of Christian Athletes in high school...was presented the National Sojourners and American Legion Auxiliary Awards for outstanding attributes of Americanism and Leadership...was a JROTC Cadet for three years. **PERSONAL:** Is undecided on a major...was born December 18, 1978.



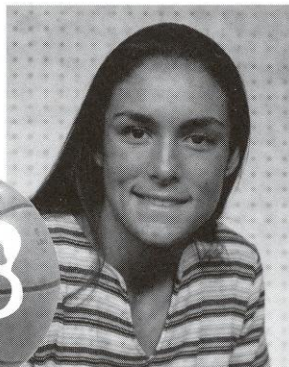
LAKO BROWN

5-11 · G/F · FR · EASTMAN, GA

senior...chosen the Most Athletic Female of the senior class...participated in the Broward vs. Dade County All-Star game... was a first team all-conference choice as a senior...holds school record for the discus and shot put...was a three-time state champion in the discus...was a four-year honor roll member and a Broward County Athletic Association Scholar Athlete as a senior...was active in the Fellowship of Christian Athletes and the National Honor Society. **PERSONAL:** Father Donald pole vaulted for FSU...was born November 5, 1978...is majoring in biological science.

VAL LINLEY

Has great quickness, court sense and leadership skills...displays quick hands and feet on defense...possesses tremendous vision and timing. **JUNIOR COLLEGE:** Served as team captain in final season at Hiwassee Junior College...helped team reach the Sweet Sixteen both years during her career...pegged team's Best Defensive Player...averaged 7.0 points and 8.5 assists per game. **HIGH SCHOOL:** Lettered in basketball three years at Cass...missed senior season with a torn ACL on left leg... earned NGHSA all-region team honors throughout career... high school coach was



VANESSA FUCHS

5-10 · G/F · FR · POMPANO BEACH, FL

Clarissa Bagwell chosen team's Most Valuable Player all three seasons...earned Most Valuable and All Tournament Team honors at the Calhoun Tourney in sophomore and junior seasons...active with the Fellowship of Christian Athletes. **PERSONAL:** Is majoring in Management Information Systems...was born April 9, 1977.

VANESSA FUCHS

Finesse player...possesses pure strength, form and technique in her shot with almost unlimited range...capable of mastering any skill. **HIGH SCHOOL:** Was a four-year letterwinner in both basketball and track at Cardinal Gibbons...high school coach was Todd Faber...averaged 16.0 points and 8.0 rebounds per game as a senior...was a second team all-conference and honorable-mention all-state selection as a senior...set the school record for three-pointers in a season with 68 and in a single game with eight...earned team's Most Valuable Player honors... served as the team captain as a



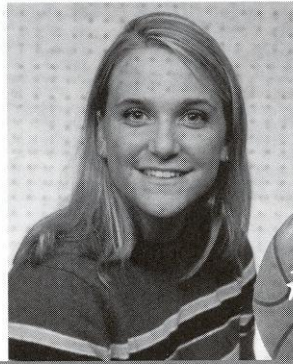
VAL LINLEY

5-5 · G · JR · EMERSON, GA

BROOKE WYCKOFF

Well-rounded, versatile athlete...has a positive attitude and is very enthusiastic...will contribute in many aspects of the game.

HIGH SCHOOL: Averaged 14.0 points, 11.0 rebounds, 5.0 assists, 5.0 steals and 4.0 blocks per game as a senior at Lakota ...high school coach was Cindy Feltman... was a four-year letterwinner in basketball, volleyball and track...pegged a *Street and Smith's*, *USA Today* honorable mention All-American as a junior and senior and a Nike/WBCA honorable mention All American as a senior...helped lead the Columbus Lions to the AAU 17-under National Championship in senior season... twice selected to the All-Ohio first team...chosen the district Player of the Year and team Most Valuable Player in final two seasons...earned all-conference and Butler



BROOKE WYCKOFF

6-1 • F • FR • WEST CHESTER, OH

County Player of the Year honors three years...holds numerous school records in basketball and track... was an all-city and all-conference performer and team captain in volleyball...a four-year honor roll member...all-conference academic honoree for all three sports, all four years. **PERSONAL:** Is majoring in education...was born March 30, 1980.

TAMARA GRACEY

Will have one year of eligibility after sitting out this season. **AT**

TULSA: Played in 15 games and averaged 14.1 points and a team-leading 8.1 rebounds per game. **AT**

KANSAS: Saw limited action in two seasons...was a member of the 1996 Big Eight Conference championship and NCAA Tournament "Sweet 16" team. **HIGH**

SCHOOL: Averaged 14.0 points and 9.0 rebounds her senior season at Guthrie High School Coach was Gene Hawk...was named a *Street and Smith's* All-American... led her team to a 41-10 record as a junior and senior...earned first team all-conference accolades both her junior and senior

seasons...was named the Oklahoma Player of the Year by the Daily Oklahoman as a senior...honor roll student. **PERSONAL:** Is majoring in sociology...was born April 6, 1976.

seasons...was named the Oklahoma Player of the Year by the Daily Oklahoman as a senior...honor roll student. **PERSONAL:** Is majoring in sociology...was born April 6, 1976.

seasons...was named the Oklahoma Player of the Year by the Daily Oklahoman as a senior...honor roll student. **PERSONAL:** Is majoring in sociology...was born April 6, 1976.

seasons...was named the Oklahoma Player of the Year by the Daily Oklahoman as a senior...honor roll student. **PERSONAL:** Is majoring in sociology...was born April 6, 1976.

seasons...was named the Oklahoma Player of the Year by the Daily Oklahoman as a senior...honor roll student. **PERSONAL:** Is majoring in sociology...was born April 6, 1976.

seasons...was named the Oklahoma Player of the Year by the Daily Oklahoman as a senior...honor roll student. **PERSONAL:** Is majoring in sociology...was born April 6, 1976.

seasons...was named the Oklahoma Player of the Year by the Daily Oklahoman as a senior...honor roll student. **PERSONAL:** Is majoring in sociology...was born April 6, 1976.

seasons...was named the Oklahoma Player of the Year by the Daily Oklahoman as a senior...honor roll student. **PERSONAL:** Is majoring in sociology...was born April 6, 1976.



TAMARA GRACEY

6-0 • F • SR • GUTHRIE, OK

1997-98

PERSONNEL CHART

Returning Starters (5)

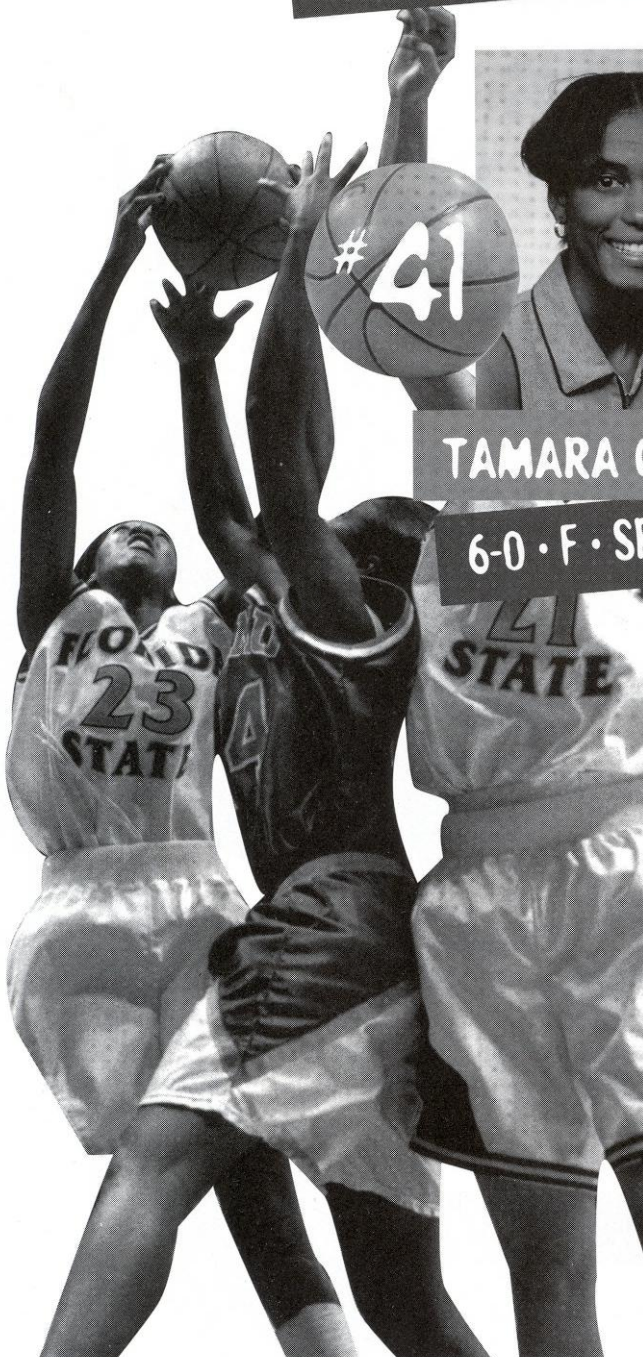
F/G	Latrice McLin	Sr.	6- 0	5.4 ppg, 4.4 rpg
F	Latavia Coleman	So.	5-10	11.5 ppg, 6.1 rpg
C	Lysa Moorefield	Sr.	6- 1	10.9 ppg, 4.8 rpg
G/F	Wendy Hampton	Sr.	5-11	10.1 ppg, 4.3 rpg
G	Jen Robinson	Jr.	5- 8	10.1 ppg, 4.18 rpg

Other Returning Players (3)

G	Aletha Penn	Sr.	5- 5	4.3 ppg, 1.3 rpg
F	Arleshia Davidson	Jr.	6- 2	3.7 ppg, 3.1 rpg
C	Leslie Waugh	Jr.	6- 3	2.6 ppg, 2.2 rpg

Newcomers (5)

G/F	Lako Brown	Fr.	5-11	Eastman, GA
G/F	Vanessa Fuchs	Fr.	5-10	Pompano Beach, FL
F	Tamara Gracey	Sr.	6- 0	Guthrie, OK
G	Val Linley	Jr.	5- 5	Emerson, GA
F	Brooke Wyckoff	Fr.	6- 1	West Chester, OH

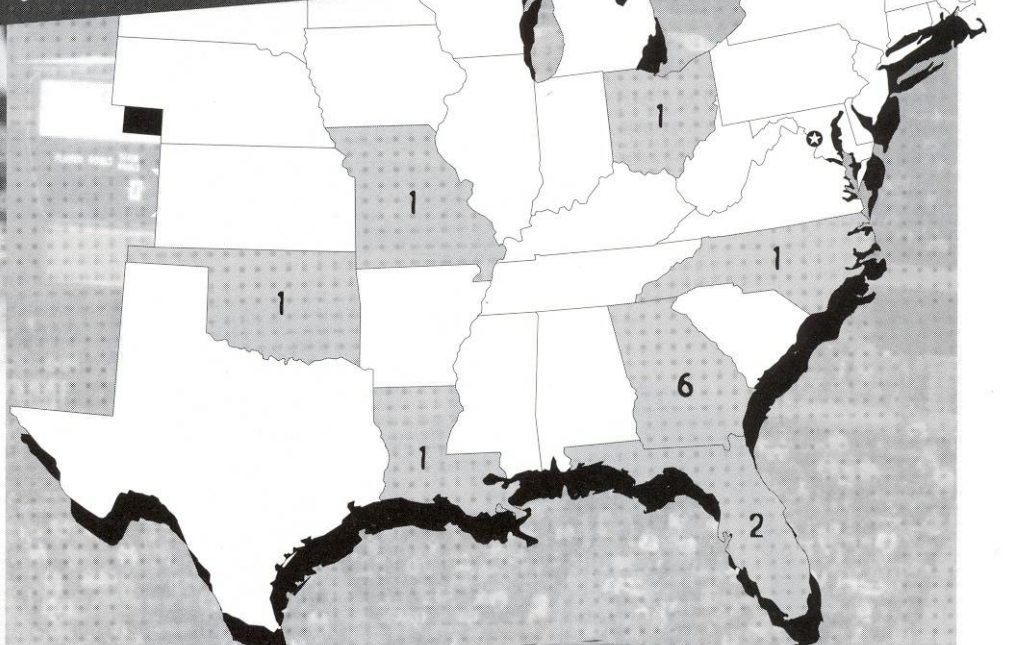


W o m e n ' s B a s k e t b a l l 1 9 9 7 - 9 8

A CLOSER LOOK...

AT THE 1997-98

WOMEN'S BASKETBALL SQUAD



BY HEIGHT

Penn	5-5
Linley	5-5
Robinson	5-8
Coleman	5-10
Fuchs	5-10
Brown	5-11
Hampton	5-11
Gracey	6-0
McLin	6-0
Moorefield	6-1
Wyckoff	6-1
Davidson	6-2
Waugh	6-3

BY CLASS

SENIORS (5): Tamara Gracey, Wendy Hampton, Latrice McLin, Lysa Moorefield, Aletha Penn

JUNIORS (4): Arleshia Davidson, Val Linley, Jen Robinson, Leslie Waugh

FRESHMAN (3): Lako Brown, Vanessa Fuchs, Brooke Wyckoff

SOPHOMORES (1): Latavia Coleman

BY STATE

FLORIDA (2): Vanessa Fuchs (Pompano Beach), Lysa Moorefield (Altamonte Springs)

GEORGIA (6): Lako Brown (Eastman), Arleshia Davidson (Marietta), Val Linley (Emerson), Latrice McLin (Rossville), Jen Robinson (Albany), Latavia Coleman (Macon)

LOUISIANA (1): Leslie Waugh (Shreveport)

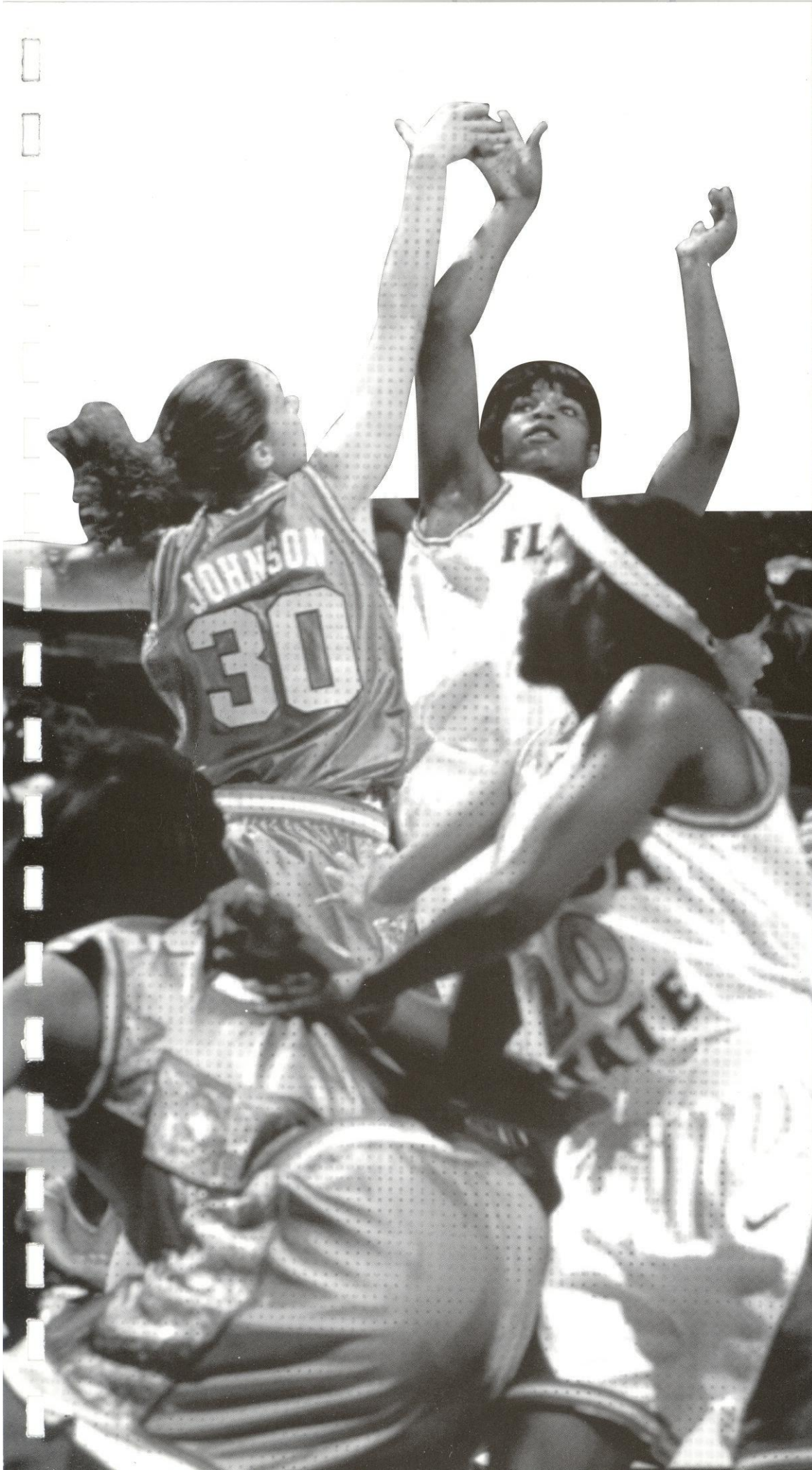
MISSOURI (1): Aletha Penn (Kansas City)

NORTH CAROLINA (1): Wendy Hampton (Mt. Ulla)

OHIO (1): Brooke Wyckoff (West Chester)

OKLAHOMA (1): Tamara Gracey (Guthrie)

*Gracey will redshirt 1997-98 season.



OPPONENTS

- **Opponent Profiles**

Florida A&M

Florida

Miami

South Florida

Ole Miss

NC State

Florida International

Georgia

Charleston Southern

Louisiana Tech

Clemson

Duquesne

SW Missouri State

Virginia

North Carolina

Wake Forest

Duke

Georgia Tech

Maryland

- **Travel Itinerary**

1997-98 OPPONENTS

Florida State University



FLORIDA A&M

Nov. 16 • Tallahassee, FL

QUICK FACTS

Location Tallahassee, FL
 Nickname Rattlerettes
 Enrollment 10,397
 Colors Orange & Green
 Conference Mid-Eastern Athletic
 Arena/Capacity Gaither Gymnasium/3,350
 Press Row # n/a

BASKETBALL FACTS

Head Coach Claudette Farmer
 Record at School/Years 127-73/7
 Career Record/Years Same
 Office Phone (850) 561-2193
 Assistant Coaches Beverly Burnett; Oliver Hill;
 Bryant Hobbs

SPORTS INFORMATION

Office Phone (850) 561-2701
 Fax Number (850) 599-3206
 Basketball Contact Michelle Jinks
 Home Phone (850) 580-4864



TEAM INFORMATION

1996-97 Record 20-9
 Conference Record/Finish 13-3/2nd
 Starters Returning/Lost 3/2
 Letterwinners Returning/Lost 10/2
 Top Returning Scorer Aquenda Clark (15.8ppg)
 Top Returning Rebounder Aquenda Clark (8.2rpg)
 Returning Starters (Pos/Class) Aquenda Clark (F/Sr.);
 Shantell Jackson (C/Sr.);
 Crystal Worlds (F/So.)
 Top Newcomers (Pos/Hgt) Thomesia Cammon
 (G/5-6); Sharmaine Deans (G/5-9);
 Jerkita McClendon (G/5-9)



FLORIDA

Nov. 20-21 • Dial Soap/Florida Four
 Challenge • Gainesville, FL

Jan. 21 • Tallahassee, FL

QUICK FACTS

Location Gainesville, FL
 Nickname Lady Gators
 Enrollment 40,000
 Colors Orange & Blue
 Conference Southeast Conference
 Arena/Capacity Stephen C. O'Connell Center/12,000
 Press Row # (352) 371-0357

BASKETBALL FACTS

Head Coach Carol Ross
 Record at School/Years 142-68/7
 Career Record/Years Same
 Office Phone (352) 375-4683 ext. 5511
 Assistant Coaches Joi Williams; Beth Dukenburger;
 Michael Peck

SPORTS INFORMATION

Office Phone (352) 375-4683
 Fax Number (352) 375-4809
 Basketball Contact Kathy Cafazzo
 Home Phone (352) 377-7868

TEAM INFORMATION

1996-97 Record 24-9
 Conference Record/Finish 9-3/tied 3rd
 Conference Tourney Finish 2-1

Conference Southeastern
 Arena/Capacity C.M. "Tad" Smith Coliseum/8,135
 Press Row # (601) 236-1931

BASKETBALL FACTS

Head Coach Ron Aldy
 Record at School/Years First Year
 Career Record/Years 79-40/4
 Office Phone (601) 232-7592
 Assistant Coaches John Ishee; Kathy Wilson;
 Tiffany King

SPORTS INFORMATION

Office Phone (601) 232-7522
 Fax Number (601) 232-7006
 Basketball Contact Kim Bremer
 Home Phone (601) 234-8525

TEAM INFORMATION

1996-97 Record 16-11
 Conference Record/Finish 5-7/7td
 Starters Returning/Lost 2/3
 Letterwinners Returning/Lost 6/5
 Top Returning Scorer Tarsha Bethley (10.6ppg)
 Top Returning Rebounder Tarsha Bethley (5.4rpg)
 Returning Starters (Pos/Class) .. Tiffany Adkins (F-G/So.);
 Tarsha Bethley (F/Jr.)
 Top Newcomers (Pos/Hgt) Heather Bantz (G-F/6-0);
 Stephanie Murphy (F/5-11);
 Chandra Dorsey (G/5-3);
 Becky Myatt (G/5-8);
 Julianne Signaigo (F-C/6-3);
 Chatica Hathaway (C/6-3)



NC STATE

Dec. 3 • Raleigh, NC

Jan. 25 • Tallahassee, FL

QUICK FACTS

Location Raleigh, NC
 Nickname Wolfpack
 Enrollment 27,537
 Colors Red & White
 Conference Atlantic Coast
 Arena/Capacity Reynolds Coliseum/12,400
 Press Row # (919) 515-3393

BASKETBALL FACTS

Head Coach Kay Yow
 Record at School/Years 470-195/22

Career Record/Years 527-214/26
 Office Phone (919) 515-2880
 Assistant Coaches Stephanie Glance; Robin Pate;
 Jennifer Price

SPORTS INFORMATION

Office Phone (919) 515-2102
 Fax Number (919) 515-2898
 Basketball Contact Wendi McLendon-Pruett
 Home Phone (919) 847-2400

TEAM INFORMATION

1996-97 Record 19-12
 Conference Record/Finish 9-7/3rd
 Starters Returning/Lost 2/3
 Letterwinners Returning/Lost 8/4
 Top Returning Scorer Chasity Melvin (16.1ppg)
 Top Returning Rebounder Chasity Melvin (8.6rpg)
 Returning Starters (Pos/Class) LySchale Jones (G/Jr.);
 Chasity Melvin (F-C/Sr.)
 Top Newcomers (Pos/Hgt) Summer Erb (C/6-6);
 Monica Bates (F/6-2); DeDe Hutcherson (PG/5-8);
 Tynesha Lewis (G/5-10)



FLORIDA INTERNATIONAL

**Dec. 5-6 • Tallahassee Democrat
 Seminole Classic • Tallahassee, FL**

QUICK FACTS

Location Miami, FL
 Nickname Golden Panthers
 Enrollment 30,000
 Colors Blue, Yellow, & Red
 Conference Trans America Athletic Conference
 Arena/Capacity Golden Panther Arena/ 5,000
 Press Row # (305) 348-3702

BASKETBALL FACTS

Head Coach Cindy Russo
 Record at School/Years 371-141/18
 Career Record/Years 411-163/20
 Office Phone (305) 348-3160
 Assistant Coaches Inge Nissen; Kathy Russell

SPORTS INFORMATION

Office Phone (305) 348-2084
 Fax Number (305) 348-2963
 Basketball Contact J. Darin Darst
 Home Phone (954) 441-9847

TEAM INFORMATION

1996-97 Record	21-9
Conference Record/Finish	12-4/1st
Starters Returning/Lost	5/0
Letterwinners Returning/Lost	12/0
Top Returning Scorer	Gergana Branzova (16.2ppg)
Top Returning Rebounder	Zuzana Michalcova (9.4rpg)
Returning Starters (Pos/Class)	Gergana Branzova (C/Sr.); Dalma Ivanyi (G/Jr.); Zuzana Michalcova (F/Jr.); Donna Carrell (G/Jr.); Maesha Freeney (F/Sr.)
Top Newcomers (Pos/Hgt)	Jane Ciperova (F-G/6-0); Diane Lewis (G/5-9)

GEORGIA

Dec. 5-6 • Tallahassee Democrat
Seminole Classic • Tallahassee, FL

QUICK FACTS

Location	Athens, GA
Nickname	Lady Bulldogs
Enrollment	30,000
Colors	Red & Black
Conference	Southeastern Conference
Arena/Capacity	Stegeman Coliseum/10,523
Press Row #	(706) 542-8052

BASKETBALL FACTS

Head Coach	Andy Landers
Record at School/Years	442-130/18
Career Record/Years	524-151/22
Office Phone	(706) 542-1176
Assistant Coaches	Sharon Baldwin; Terri Williams; Michael Shafer

SPORTS INFORMATION

Office Phone	(706) 542-1621
Fax Number	(706) 542-9339
Basketball Contact	Mike Mobley
Home Phone	(770) 813-8373

TEAM INFORMATION

1996-97 Record	25-6
Conference Record/Finish	11-1/1st
Starters Returning/Lost	0/5
Letterwinners Returning/Lost	5/8
Top Returning Scorer	Pam Irwin (7.8ppg)

Top Returning Rebounder	Kiesha Brown (2.5rpg)
Returning Starters (Pos/Class)	None
Top Newcomers (Pos/Hgt)	Cormisha Cotton (F/6-1); Coco Miller (G/5-10); Kelly Miller (G/5-10); Tawyna Nash (F/6-1); Peaches Vaughn (F/6-1); Elena Vishniakova (F/6-3)



CHARLESTON SOUTHERN

Dec. 5-6 • Tallahassee Democrat
Seminole Classic • Tallahassee, FL

QUICK FACTS

Location	Charleston, SC
Nickname	Lady Buccaneers
Enrollment	2,500
Colors	Blue & Gold
Conference	Big South
Arena/Capacity	CSU Fieldhouse/1,500
Press Row #	(803) 863-7688

BASKETBALL FACILITIES

Head Coach	Fred Francello
Record at School/Years	36-73/4
Career Record/Years	77-131/8
Office Phone	(803) 863-7684
Assistant Coaches	Larry Riggs

SPORTS INFORMATION

Office Phone	(803) 863-7688
Fax Number	(803) 863-7676
Basketball Contact	Ken Gerlinger
Home Phone	(803) 572-2272

TEAM INFORMATION

1996-97 Record	12-14
Conference Record/Finish	8-6/4th
Starters Returning/Lost	2/3
Letterwinners Returning/Lost	1/3
Top Returning Scorer	Kate Sanford (C-F/11.7ppg)
Top Returning Rebounder	Kate Sanford (C-F/10.5rpg)
Returning Starters (Pos/Class)	Kate Sanford (C-F/So.); Joy Taylor (G/So.)
Top Newcomers (Pos/Hgt)	Kristia Davis (C/6-3); Amy Hannis (F/5-9); Kendra Nichols (F/5-11); Shareon Patterson (F/5-11); Lauren Peddle (F/5-9); Christine Slep (G/5-6)



LOUISIANA TECH

Dec. 12 • Ruston, LA

QUICK FACTS

Location Ruston, LA
 Nickname Lady Techsters
 Enrollment 9,313
 Colors Red & Columbia Blue
 Conference Sun Belt
 Arena/Capacity Thomas Assembly Center / 8,000
 Press Row # (318) 257-3144

BASKETBALL FACTS

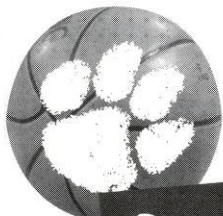
Head Coach Leon Barmore
 Record at School/Years 428-67/15
 Career Record/Years same
 Office Phone (318) 257-4111
 Assistant Coaches Kim Mulkey-Robertson;
 Kristy Sims Curry; Mike Ensley

SPORTS INFORMATION

Office Phone (318) 257-3144
 Fax Number (318) 257-3757
 Basketball Contact Brian Miller
 Home Phone (318) 251-8863

TEAM INFORMATION

1996-97 Record 31-4
 Conference Record/Finish 12-2/tied 1st
 Starters Returning/Lost 5/0
 Letterwinners Returning/Lost 11/1
 Top Returning Scorer Alisa Burras (C/18.2ppg)
 Top Returning Rebounder Alisa Burras (C/9.5rpg)
 Returning Starters (Pos/Class) Alisa Burras (C/Sr.);
 Tamicha Jackson (G/So.); Monica Maxwell (F/Jr.);
 Amanda Wilson (F/Jr.); LaQuan Stallworth (G/Jr.)
 Top Newcomers (Pos/Hgt) .. Melshika Bowman (C/6-2);
 Danielle Butler (C/6-2)



CLEMSON

Dec. 16 • Tallahassee, FL

Jan. 29 • Clemson, SC

QUICK FACTS

Location Clemson, SC
 Nickname Lady Tigers
 Enrollment 16,526

Colors Orange & Purple
 Conference Atlantic Coast
 Arena/Capacity Littlejohn Coliseum/11,020
 Press Row # (864) 654-3326

BASKETBALL FACTS

Head Coach Jim Davis
 Record at School/Years 208-102/10
 Career Record/Years 227-110/11
 Office Phone (864) 656-2212
 Assistant Coaches Carey Green; Courtney Johnson;
 Tonya Booker

SPORTS INFORMATION

Office Phone (864) 656-2114
 Fax Number (864) 656-0299
 Basketball Contact Sam Blackman
 Home Phone (864) 639-4400

TEAM INFORMATION

1996-97 Record 19-11
 Conference Record/Finish 8-8/6th
 Starters Returning/Lost 2/3
 Letterwinners Returning/Lost 10/4
 Top Returning Scorer Ito Umoh (G/9.3ppg)
 Top Returning Rebounder Jeanette Davis (G-F/5.1rpg);
 Ito Umoh (G/5.1rpg)
 Returning Starters (Pos/Class) ... Jeanette Davis (G-F/Sr.);
 Ito Umoh (G/Jr.)
 Top Newcomers (Pos/Hgt) Erin Batth (C/6-4);
 Andrea Gaines (G/5-9); Nuria Forns (G-F/6-1)



DUQUESNE

Dec. 19 • Pittsburgh, PA

QUICK FACTS

Location Pittsburgh, PA
 Nickname Lady Dukes
 Enrollment 9,400
 Colors Red & Blue
 Conference Atlantic 10
 Arena/Capacity A.J. Palumbo Center/6,200
 Press Row # (412) 396-4925

BASKETBALL FACTS

Head Coach Dan Durkin
 Record at School/Years 44-64/4
 Career Record/Years Same
 Office Phone (412) 396-6565
 Assistant Coaches Alvis Rogers; Jill Poe; Kelly Fitzpatrick

SPORTS INFORMATION

Office Phone (412) 396-6560
 Fax Number (412) 396-6210
 Basketball Contact Michelle Lukacsko
 Home Phone (412) 688-9333

TEAM INFORMATION

1996-97 Record 12-16
 Conference Record/Finish 8-8
 Starters Returning/Lost 5/1
 Letterwinners Returning/Lost 8/5
 Top Returning Scorer Korie Hlede (G/22.6ppg)
 Top Returning Rebounder: Korie Hlede (G/7.0rpg)
 Returning Starters (Pos/Class) Korie Hlede (G/Sr.);
 Krista Thomas (C/Jr.); Jill Tate (F/Jr.);
 Sherri Hannan (G/Jr.); Kelly Eberhardt (G/Jr.)
 Top Newcomers (Pos/Height) Jaime VanderZanden
 (C/6-3); Brittney Scarberry (F/5-11);
 Shawna Williams (F/6-1)



SW MISSOURI STATE

Dec. 21 • Tallahassee, FL

QUICK FACTS

Location Springfield, MO
 Nickname Lady Bears
 Enrollment 17,570
 Colors Maroon & White
 Conference Missouri Valley
 Arena/Capacity Hammons Student Center/8,858
 Press Row # (417) 836-4150

BASKETBALL FACTS

Head Coach Cheryl Burnett
 Record at School/Years 202-95/10
 Career Record/Years Same
 Office Phone (417) 836-4136
 Assistant Coaches Lynnette Robinson; Karen Rapier;
 Clint Kinnamon

SPORTS INFORMATION

Office Phone (417) 836-5402
 Fax Number (417) 836-4868
 Basketball Contact Brad Hainje
 Home Phone (417) 886-3511

TEAM INFORMATION

1996-97 Record 17-10
 Conference Record/Finish 13-5/2nd
 Starters Returning/Lost 4/1

Letterwinners Returning/Lost 7/2
 Top Returning Scorer Lisa Davies (F/13.2ppg)
 Top Returning Rebounder Roshanda Reed (7.9rpg.)
 Returning Starters (Pos/Class) .. Roshanda Reed (G-F/So.);
 Lisa Davies (F/Jr.); Jamie Bartlett (G/Jr.);
 Sarah Singer (G/So.)
 Top Newcomers (Pos/Hgt) ... Melody Campbell (G/5-7);
 Carly Deer (F-G/6-0); Kimberly McDowell (F/6-2);
 Yen Quach (G/5-2); Starr Ryan (G/5-8);
 Jackie Stiles (G/5-8)



VIRGINIA

Jan. 2 • Charlottesville, VA

Feb. 1 • Tallahassee, FL

QUICK FACTS

Location Charlottesville, VA
 Nickname Cavaliers
 Enrollment 18,398
 Colors Blue & Orange
 Conference Atlantic Coast
 Arena/Capacity University Hall/8,457
 Press Row # (804) 296-5910

BASKETBALL FACTS

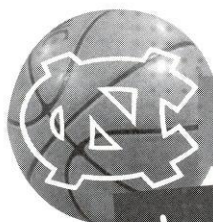
Head Coach Debbie Ryan
 Record at School/Years 462-155/20
 Career Record/Years Same
 Office Phone (804) 982-5800
 Assistant Coaches Shawn Campbell; Audra Smith;
 Jenny Kuziemski

SPORTS INFORMATION

Office Phone (804) 982-5500
 Fax Number (804) 982-5525
 Basketball Contact Cathy Topagna
 Home Phone (804) 296-0726

TEAM INFORMATION

1996-97 Record 23-8
 Conference Record/Finish 12-4/2nd
 Starters Returning/Lost 3/2
 Letterwinners Returning/Lost 10/2
 Top Returning Scorer Monick Foote (G-F/14.0ppg)
 Top Returning Rebounder DeMya Walker (7.5rpg.)
 Returning Starters (Pos/Class) Monick Foote (G-F/Sr.);
 DeMya Walker (F-C/Jr.);
 Renee Robinson (G/So.)
 Top Newcomers (Pos/Hgt) Elena Kravchenko (C/6-10);
 Chalois Lais (F/6-1); Deanna Mitchelson (F/6-2);
 Erin Stovall (G/5-9)



NORTH CAROLINA

Jan. 4 • Chapel Hill, NC

Feb. 4 • Tallahassee, FL

QUICK FACTS

Location Chapel Hill, NC
 Nickname Tar Heels
 Enrollment 24,143
 Colors Carolina Blue & White
 Conference Atlantic Coast
 Arena/Capacity Carmichael Auditorium/10,000
 Press Row # TBA

BASKETBALL FACTS

Head Coach Sylvia Hatchell
 Record at School/Years 214-118/11
 Career Record/Years 467-198/22
 Office Phone (919) 962-5187
 Assistant Coaches Andrew Calder; Ann Hancock; Emily Murphy

SPORTS INFORMATION

Office Phone (919) 962-2123/0083
 Fax Number (919) 962-0612
 Basketball Contact Beth McNichol
 Home Phone (919) 929-7922

TEAM INFORMATION

1996-97 Record 29-3
 Conference Record/Finish 15-1/1st
 Starters Returning/Lost 3/2
 Letterwinners Returning/Lost 10/2
 Top Returning Scorer Tracy Reid (20.8ppg)
 Top Returning Rebounder Tracy Reid (10.1rpg)
 Returning Starters (Pos/Class) Tracy Reid (F/Sr.); Chanel Wright (F/Jr); Sheneika Walker (C/Sr.)
 Top Newcomers (Pos/Hgt) Nikki Teasley (G/6-1); Juana Brown (G-F/5-10)



WAKE FOREST

Jan. 8 • Tallahassee, FL

Feb. 8 • Winston-Salem, NC

QUICK FACTS

Location Winston-Salem, NC
 Nickname Demon Deacons

Enrollment 3,771
 Colors Old Gold & Black
 Conference Atlantic Coast
 Arena/Capacity Lawrence Joel Veterans Coliseum /14,407
 Press Row # (910) 727-2945

BASKETBALL FACTS

Head Coach Charlene Curtis
 Record at School/Years First Season
 Career Record/Years 162-150/11
 Office Phone (910) 758-5763
 Assistant Coaches Fred Applin; Stacy Cox; Stephanie Lawrence

SPORTS INFORMATION

Office Phone (910) 759-5640
 Fax Number (910) 759-5140
 Basketball Contact Jen Hoover
 Home Phone (910) 724-4948

TEAM INFORMATION

1996-97 Record 12-16
 Conference Record/Finish 3-13/8th
 Starters Returning/Lost 3/2
 Letterwinners Returning/Lost 5/2
 Top Returning Scorer Heidi Coleman (10.2ppg)
 Top Returning Rebounder Cynthia Kelley (4.0rpg)
 Returning Starters (Pos/Class) Heidi Coleman (G/So.); Cynthia Kelley (G/Jr.); Alisha Mosley (G/So.)
 Top Newcomers (Pos/Hgt) Megan Anderson (F/6-1); Olivia Dardy (F/6-1); Kristen Shaffer (G-F/5-10); Janae Whiteside (G/5-7)



DUKE

Jan. 16 • Durham, NC

Feb. 15 • Tallahassee, FL

QUICK FACTS

Location Durham, NC
 Nickname Blue Devils
 Enrollment 6,085
 Colors Royal Blue & White
 Conference Atlantic Coast
 Arena/Capacity Cameron Indoor Stadium/9,314
 Press Row # (919) 684-6186

BASKETBALL FACTS

Head Coach Gail Goestenkors
 Record at School/Years 95-53/5
 Career Record/Years Same
 Office Phone (919) 613-7528

Assistant Coaches Gale Valley; Joanne Boyle;
Shonta Tabourn

SPORTS INFORMATION

Office Phone (919) 684-2633
Fax Number (919) 684-2489
Basketball Contact Lori Winters
Home Phone (919) 493-3842

TEAM INFORMATION

1996-97 Record 19-11
Conference Record/Finish 9-7/tied 3rd
Starters Returning/Lost 3/2
Letterwinners Returning/Lost 10/3
Top Returning Scorer Payton Black (13.7ppg)
Top Returning Rebounder Payton Black (5.9rpg)
Returning Starters (Pos/Class) Payton Black (C/Jr.);
Hiliary Howard (G/Jr.); Peppi Browne (G-F/So.)
Top Newcomers (Pos/Hgt) Rochelle Parent (F/6-0);
Georgia Schweitzer (G/6-0)



GEORGIA TECH

Jan. 18 • Atlanta, GA

Feb. 19 • Tallahassee, FL

QUICK FACTS

Location Atlanta, GA
Nickname Yellow Jackets
Enrollment 13,000
Colors Old Gold & White
Conference Atlantic Coast
Arena/Capacity Alexander Memorial/10,026
Press Row # n/a

BASKETBALL FACTS

Head Coach Agnus Berenato
Record at School/Years 133-124/9
Career Record/Years 193-179/13
Office Phone (404) 894-5406
Assistant Coaches Candy Cage; Debbie Richardson;
Monique Holland

SPORTS INFORMATION

Office Phone (404) 894-5445
Fax Number (404) 894-1248
Basketball Contact Erika Austin
Home Phone (404) 256-5017

TEAM INFORMATION

1996-97 Record 15-12
Conference Record/Finish 7-9
Starters Returning/Lost 2/3

Letterwinners Returning/Lost 6/5
Top Returning Scorer Carla Munnion (15.3ppg.)
Top Returning Rebounder Kenya Williams (5.6rpg.)
Returning Starters (Pos/Class) Carla Munnion (G/Sr.);
Kenya Williams (F/Jr.); Joannah Kauffman (C/Jr.);
Danielle Donehew (G/So.)
Top Newcomers (Pos/Hgt) Aisha Howard (C/6-4);
Valerie Chaney (C/6-4); Candice McCallum (F/6-1);
Jamie Kruppa (F/6-0); Betsy Foy (G/5-8);
Regina Tate (G/5-8)



MARYLAND

Jan. 23 • Tallahassee, FL

Feb. 22 • College Park, MD

QUICK FACTS

Location College Park, MD
Nickname Terrapins
Enrollment 30,371
Colors Red, White, Black & Gold
Conference Atlantic Coast
Arena/Capacity Cole Field House/14,500
Press Row # (301) 314-8624

BASKETBALL FACTS

Head Coach Chris Weller
Record at School/Years 432-208/22
Career Record/Years Same
Office Phone (301) 314-1747
Assistant Coaches Andrea Morrison; Christy Winters;
Lisa Cermignano

SPORTS INFORMATION

Office Phone (301) 314-7064
Fax Number (301) 314-9094
Basketball Contact Mark Ragonese
Home Phone (301) 982-3868

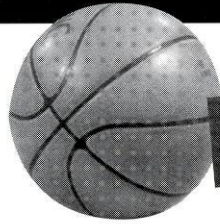
TEAM INFORMATION

1996-97 Record 18-10
Conference Record/Finish 9-7/3rd
Starters Returning/Lost 5/3
Letterwinners Returning/Lost 6/4
Top Returning Scorer Stephanie Cross (11.9ppg)
Top Returning Rebounder Stephanie Cross (6.7rpg)
Returning Starters (Pos/Class) Kelley Gibson (G/So.);
Sonia Chase (G-F/Jr.); Stephanie Cross (F/Jr.);
Kalisa Davis (C-F/Jr.); Tiffany Brown (G/So.)
Top Newcomers (Pos/Hgt) Antwanette Gabrielle
(F/5-11); Charmaine Leslie (F/5-11);
Meghan McIntyre (F/6-1);
Michelle Miller (G/5-8)

W o m e n ' s B a s k e t b a l l 1 9 9 7 - 9 8

TRAVEL ITINERARY !

Florida State University



ROAD HEADQUARTERS

DIAL SOAP/FLORIDA FOUR

NOVEMBER 19-21

Departure Nov. 19, TBA, Chartered Bus
Arrival Nov. 19, TBA
Hotel University Centre, 1535 SW Archer Road,
Gainesville, FL, 32608, (352) 371-3333
Return Nov. 21, Chartered Bus, after game

NORTH CAROLINA STATE

DECEMBER 2-3

Departure Dec. 2, 2 p.m., Chartered Flight
Arrival Dec. 2, 3:30 p.m.
Hotel Marriott Crab Tree, 4500 Marriott Drive,
Raleigh, NC, 27612, (919) 781-7000
Return Dec. 3, Chartered Flight, after game

LOUISIANA TECH

DECEMBER 12-14

Departure Dec. 12, 10:05 a.m., Delta #526
Arrival Dec. 12, 12:58 p.m.
Hotel Hampton Inn, 1315 N. Trenton Street,
Ruston, LA, 71270, (318) 257-3090
Return Dec. 14, TBA

DUQUESNE

DECEMBER 18-20

Departure Dec. 18, 12:25 p.m., USAir #3374
Arrival Dec. 18, 4:40 p.m.
Hotel Marriott City Center, 112 Washington Place,
Pittsburgh, PA, 15219, (412) 471-4000
Return Dec. 20, 8:35 a.m., USAir #118

VIRGINIA

JANUARY 1-2

Departure Jan. 1, 10:05 a.m., Delta #526
Arrival Jan. 1, 1:40 p.m., Richmond
International Airport
Hotel Omni Charlottesville, 235 West Main Street,
Charlottesville, VA, 22902, (804) 971-5500
Return Jan. 2, Chartered Bus, depart for
Chapel Hill after game

NORTH CAROLINA

JANUARY 2-4

Departure Jan. 2, Chartered Bus, depart from
Charlottesville after game
Arrival Jan. 2, 11:30 p.m.
Hotel Omni Europa, 1 Europa Drive,

Chapel Hill, NC, (919) 969-2148
Return Jan. 4, 6:55 p.m., Delta #1232

DUKE

JANUARY 15-17

Departure Jan. 15, 1:40 p.m., Delta #1242
Arrival Jan. 15, 5:10 p.m.
Hotel Washington Duke Inn & Golf Course, 3001
Cameron Blvd., Durham, NC, 27706, (919) 490-0999
Return Jan. 17, 11:10 a.m., Delta #1472 to Atlanta

GEORGIA TECH

JANUARY 17-18

Departure Jan. 17, 11:10 a.m., Delta #1472
from Raleigh
Arrival Jan. 17, 12:27 p.m.
Hotel .. Sheraton at Colony Square, 188 14th Street NE,
Atlanta, GA, 30361, (404) 892-6000
Return Jan. 18, 5:10 p.m., Delta #1069

CLEMSON

JANUARY 28-29

Departure Jan. 28, 2 p.m., Chartered Flight
Arrival Jan. 28, 3 p.m.
Hotel Hampton Inn, 851 Tiger Blvd.,
Clemson, SC, 29631, (864) 653-7744
Return Jan. 29, Chartered Flight, after game

WAKE FOREST

FEBRUARY 7-8

Departure Feb. 7, 9:05 a.m., Delta #526
Arrival Feb. 7, 1 p.m.
Hotel Adam's Mark Hotel, 425 N. Cherry Street,
Winston-Salem, NC, (910) 725-3500
Return Feb. 8, 6:55 p.m., Delta #1259

MARYLAND

FEBRUARY 21-22

Departure Feb. 21, 11:40 a.m., Delta #2078
Arrival Feb. 21, 3:18 p.m.
Hotel Greenbelt Marriott, 6400 Ivy Lane,
Greenbelt, MD, 20770, (301) 614-8215
Return Feb. 22, 6:15 p.m., Delta #871

ACC TOURNAMENT

FEBRUARY 25-MARCH 1
Travel Information TBA



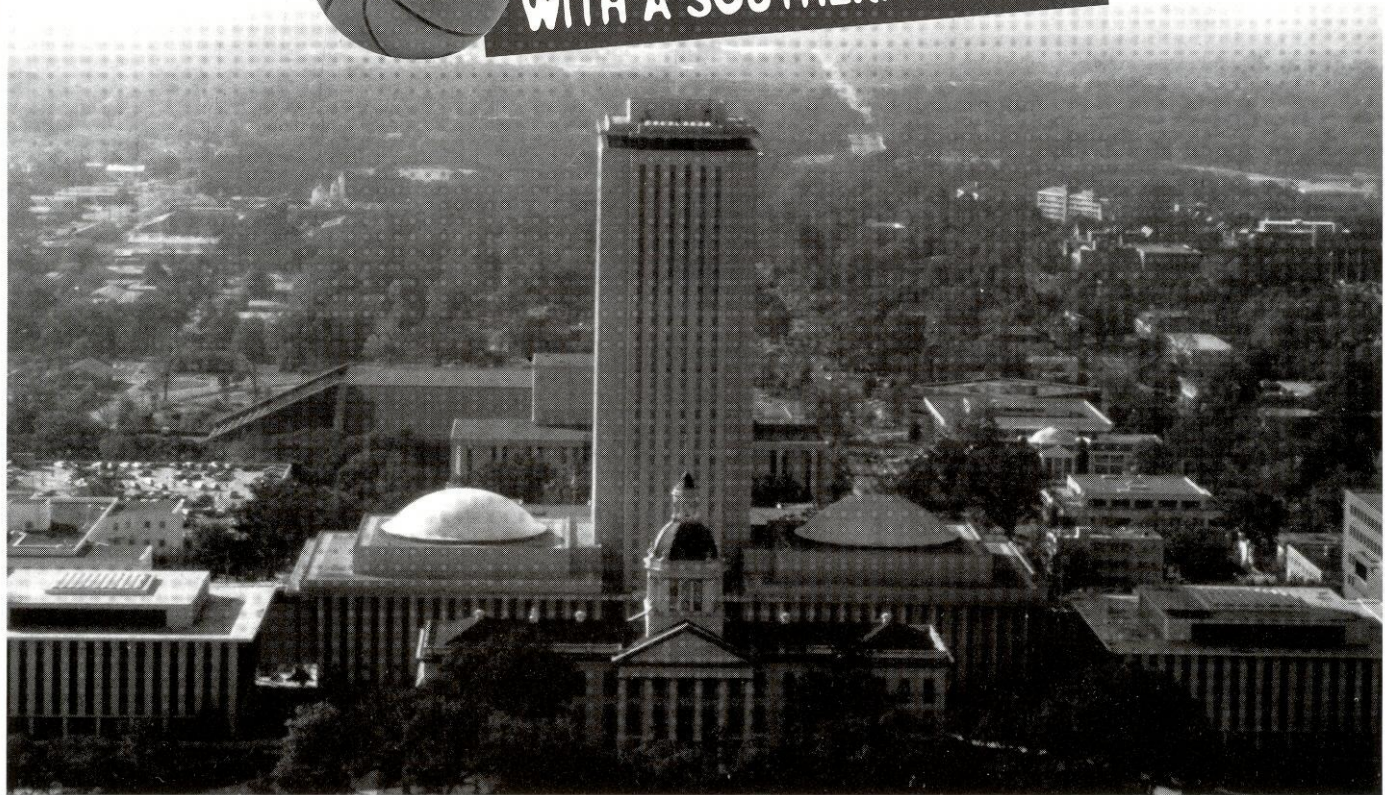
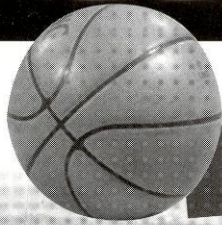
UNIVERSITY

- Tallahassee
- Florida State
- Administration
- Academic Support
- Support Staff
- Life Skills
- NCAA Info
- Facilities

TALLAHASSEE

FLORIDA...

WITH A SOUTHERN ACCENT



Near, but far from the glaring strips of neon amusement, and the castles and crowds of Disney, lies another magical place in the Sunshine State — one of pow-wows, plantations, politics and great pride. Often described as “The Other Florida” with its deep-rooted history, rolling hills, canopy roads of moss-draped oaks, cool climate and Southern-style hospitality; it is a Florida few have seen. It is Tallahassee — Florida with a Southern accent.

Best known as Florida’s capital, Tallahassee is an intimate neo-metropolitan city where the power of state government, the academic and the artistic are complemented by subtle, old-fashioned charm. It is the perfect two- or three-day diversion for the more than 41 million annual visitors to Florida and 13 million residents.

Tallahassee touts a menagerie of sights including one of the world’s deepest freshwater springs, site of America’s first Christmas, a wildlife habitat, Capitol buildings, fascinating museums of history, sprawling plantations, highly acclaimed fishing and hunting adventures and nearby beaches. Spirited area festivals range from celebrations of Tallahassee’s spectacular spring and swamp stomps to genuine rattlesnake roundups and seafood festivals.

With the Gulf of Mexico just 20 miles south and the Georgia border only 14 miles north, Tallahassee rests

between the foothills of the Appalachian Mountains and the juncture of Florida’s panhandle and peninsula. Nearer in miles to Atlanta than to Miami, Tallahassee more closely resembles its Southern neighbors than Florida in topography, climate and lifestyle.

Accentuating Tallahassee’s Southern persona are lush rolling hills, likened to the seven hills of Rome, and five “official” canopy roads of patriarch oaks. The fertile, rich soil and four distinct, yet pleasant, seasons breed floral brilliance and natural vitality year-round.

Like the city itself, the story of how Tallahassee was chosen as the state capital is rich in history. In 1823, two explorers set out — one on horseback from St. Augustine and the other by boat from Pensacola — to find a permanent, central location for the Legislature to convene. The two met at a beautiful site that the Creek and Seminole Indians called “tallahassee” — derived from the words “talwa” meaning town and “ahasee” meaning old. The rendezvous point remains Florida’s capital.

The “old town” has undergone many changes, but one thing remains the same — it is still a government town fiercely proud and dedicated to preserving its heritage. The Capitol buildings, both old and new, epitomize Tallahassee’s perseverance.

The 22nd floor of the New Capitol provides a panoramic scope of a sophisticated Southern city awash in a sea of flowering azaleas, snowy dogwoods, tower-

Florida State University

ing pines, fragrant magnolias, and hundreds of shimmering lakes, springs, swamps, rivers and sink holes. Special legislative viewing galleries are open during the legislative session.

Below, in the shade of giant live oaks, proudly stands the Old Capitol, originally constructed in 1845 and restored to its 1902 splendor complete with red-and-white candy-striped awnings, a dome adorned with stained glass, antique furnishings and political memorabilia.

Across from the Old Capitol are the 40-foot twin granite towers of the Vietnam Veteran's Memorial, and the blue stone Union Bank, Florida's oldest surviving financial institution. The nostalgic Old Town Trolley, a replica turn-of-the-century street car, carries passengers through restored Adams Street Commons to numerous other historical downtown shops for *free* — unheard of even 100 years ago.

Minutes from downtown lies the Governor's Mansion, which resembles the home of Florida's military hero Andrew Jackson; and the 52-acre natural animal habitat and 1880s farm of the Tallahassee Museum of History and Natural Science, which provide the rare chance to walk and talk with native Florida animals.

Tallahassee remains firmly linked with the past as evidenced by the unearthed 1539 winter encampment of Spanish Hernando de Soto, the site of the first Christmas celebration in America. Visitors travel back through time as they stand in the shadow of a giant 12,000-year-old American Mastodon at the Museum of Florida History or explore other historical spots including The Knott House that Rhymes, The Columns, San Luis Mission, Lake Jackson State Archaeological Site, Natural Bridge Battlefield, First Presbyterian Church, Brokaw-McDougall House, Goodwood Plantation and

Adams Street Commons.

Nearby, alligators lazing in the sunshine and anhinga "snake birds" perched on twisted cypress branches are seen at Wakulla Springs, one of the world's deepest freshwater springs and site of many underwater scenes in the "Tarzan" movies with Johnny Weissmuller and Maureen O'Sullivan. Safaris aboard glass-bottomed and jungle cruise boats whisk visitors within arm's length of "The Other Florida."

Outdoor enthusiasts enjoy adventures including boating and fishing on area lakes, rivers, ponds and the Gulf — just 30 minutes away. Lakes Seminole, Jackson and Talquin are renowned in the bass fishing world for yielding the "big ones," and dense forests offer an abundance of prize-winning game. Local wildlife areas such as the Florida National Scenic Trail, St. Marks National Wildlife Refuge and Apalachicola National Forest are among many spots for camping, picnicking, swimming, biking and exploring.

Appealing to the strokes of different folks, Tallahassee also features 99 holes of golf on six courses and a proliferation of tennis centers. Sideline athletes cheer the nationally-ranked Florida State Seminoles, Florida A&M Rattlers and the Tallahassee Tiger Sharks, of the East Coast Hockey League. And always a sure bet are the nearby greyhound races.

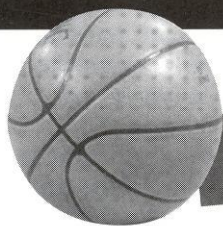
A sport of sorts, shopping at two regional malls and many specialty centers offer many "playing options" — from popular chains to curiosity and antique shops.

Cultural interests are sparked by widely-acclaimed museums and galleries and elaborate entertainment at the 14,000-seat Tallahassee-Leon County Civic Center.

Tallahassee is a collaboration of power-play politics and classical character splashed with a twist of Southern beauty and charm. Tallahassee is Florida with a Southern accent.



FLORIDA STATE



EXCELLENCE IN

TEACHING, RESEARCH AND PUBLIC SERVICE

Florida State University

Florida State University, celebrating its golden anniversary as a coeducational graduate research institution in 1997, has joined the nation's elite in both academics and athletics. Located on the oldest continuous site of higher education in Florida and building rapidly on the framework of a highly regarded liberal arts college for women, the University has emerged over the past 50 years as an institution of national and international esteem. Its stature is evidenced by a number of additions to its record of excellence in the 1990s:

- In 1994, Florida State was classified a "Research University I" by the Carnegie Foundation, placing it among the nation's top research universities.
- In 1994, the college referral service, "Who's Who Among American High School Students," placed FSU among its top 10 — with such universities as Harvard, Duke, Stanford, North Carolina-Chapel Hill, Michigan-Ann Arbor and Yale — of most frequent choices of more than 100,000 of the nation's best and brightest high school students who asked that a specific college be notified of their recognition in "Who's Who."
- Vice President of the United States Al Gore spoke at the dedication of the National High Magnetic Field Laboratory at Florida State in 1994. The National Science Foundation established the \$100 million magnet lab in 1990 at FSU, which is partnered in research with the Los Alamos National Laboratory and the University of Florida. A Nobel laureate in physics and a top Russian physicist were among the first scholars drawn to the faculty. The world's largest magnet — two stories high and capable of generating 45 tesla or 1 million times the Earth's magnetic field — was installed in 1995 at the NHMFL, located in the off-campus research complex, Innovation Park. In 1996, the NSF renewed and increased by 50 percent the NHMFL's funding for another five years.
- FSU created the first multipurpose student identification/banking card. The Card Application Technology Center is a national leader in "smart card" systems.
- At the forefront of supercomputing since obtaining its first high-speed computer in 1985, FSU took yet another step in ultrafast and parallel computing in 1990 when it acquired two supercomputers, the Thinking Machine Corp. Connection Machine and the Cray Y-MP.
- In fall 1994, the first tenants moved into the east side of the \$100 million University Center, a classroom-and-office facility at Doak Campbell Stadium; the stadium's south end zone also was



enclosed and the adjacent Moore Athletic Center expanded. With the completion of the west side in 1996, University Center now provides 550,000 square feet of much needed academic space and a centralized location for student services.

- One of the first academic areas to make its home in University Center, in state-of-the-art film production facilities, was the FSU School of Motion Picture, Television and Recording Arts. Offering training for one of Florida's fastest growing industries, FSU conferred its first master's degrees in film in 1991 and its first bachelor's in film in 1993. The film school's students have already produced national and international award-winning films.
- The Center for Civic Education and Service was established in 1994, aimed at promoting community involvement and civic responsibility as integral elements of the liberal arts education at FSU. The center supports such service-learning programs as Project Amistades, which provides educational services to migrant farmworkers. Through ServScript, students' service may be recorded on their official academic transcript.
- In 1990, Florida State ranked second in popularity nationwide among high school seniors, based on the number of students who request that their Scholastic Aptitude Test (SAT) scores be sent to an institution. FSU was the only institution listed among the top 10 choices of both black and white college-bound students.
- FSU's high-tech program in structural biology in 1991 received the University's largest single foundation grant, \$4 million.
- Capping more than a decade of national prominence in intercollegiate athletics, Florida State's athletic teams, nicknamed "Seminoles," joined the Atlantic Coast Conference as its ninth member in

1990. The FSU football team won the 1993 National Championship and its quarterback, Charlie Ward, won the University's first Heisman Trophy.

- To better understand the world's cultural diversity, FSU undergraduate students are required to complete at least two courses that focus on diverse traditions beyond Western civilization. The multicultural study requirement, in effect since 1991, complements a long-established liberal studies program at Florida State.
- The Dr. Bobby E. Leach Center, a state-of-the-art student recreation facility, with a pool, saunas, basketball and racquet-sport courts, was completed in 1991.

As this list of highlights attests, Florida State is excelling in the 1990s with exceptional strength, energy and vision for the future. Under the leadership of the University's 12th president, Talbot "Sandy" D'Alemberte, who took office in January 1994, FSU will continue to build on the foundation of its history of excellence in scholarship, research and service.

A senior member of the 10-member State University System, FSU was founded as an institution of higher learning in 1851 by legislative act and began in Tallahassee with its first students in 1857.

Today, FSU's operating budget is \$474.3 million. Faculty and administrators generate more than \$102 million annually in external funding to supplement state-sponsored research. Three direct-support organizations serve to bolster the University: FSU Foundation, which raises millions in private gifts to support academics, Seminole Boosters and FSU Alumni Association.

The main campus is spread over 451.6 acres in Tallahassee; FSU, which has one of the smallest campuses in the SUS, has been actively acquiring land in the 1990s after years of being landlocked at 347 acres. FSU owns 1,281 acres in Leon, Bay, Franklin and Sarasota counties.

Within the state, the University maintains facilities at its 25-acre campus in Panama City, its Marine Laboratory on the Gulf of Mexico, the Appleton Museum in Ocala and the Asolo Performing Arts Center in Sarasota. The Center for Professional Development and Public Service, housed in the Augustus B. Turnbull III Florida State Conference Center on the edge of the campus, provides extensive credit and non-credit continuing education programs statewide.

For years FSU has reached far beyond Florida through international programs in Switzerland, France, Panama, Costa Rica and the Caribbean. FSU's study centers in Florence, Italy, and London, England, are considered by many to be the nation's best in Europe. Florida State offers 286 graduate and undergraduate degree programs through its eight colleges — Arts and Sciences; Business; Communication; Education; Engineering (operated jointly with Florida A&M University, a historically black institution); Human Sciences; Law; and Social Sciences (which also incorporates the Reubin Askew School of Public Administration and Policy) — and eight schools — Criminology and Criminal Justice; Information Studies; Motion Picture, Television and Recording Arts; Music; Nursing; Social Work; Theatre; and Visual Arts and Dance.

With 1,655 members, the FSU faculty has included nine National Academy of Sciences elected members, nine American Academy of Arts and Sciences fellows

and five Nobel laureates. It is backed by 2,887 administrative/professional and support staff.

Library holdings at Florida State include 2.1 million book titles, 16,384 serials and 4.5 million microforms. The main library facility, the Robert M. Strozier Library, is linked by computer to other state university and national research libraries. The Paul A.M. Dirac Science Center Library is located at the heart of the University's science research complex. FSU also maintains extensive music, library science and law libraries.

On the top floor of the Dirac Library is the headquarters of the Supercomputer Computations Research Institute, a multidisciplinary, multinational program established in 1984 that brings together some 50 scientists, engineers and technicians.

Graduate students, who number more than 5,929, pursue advanced degrees in fields as diverse as business administration and theoretical particle physics. A majority of research done at FSU is the direct result of student effort, culminating in numerous books, monographs and journal articles relating to the whole spectrum of intellectual interests and the practical needs of society.

FSU, a residential campus, places a high priority on its 30,264 students and their needs and interests (of the student population: 45 percent are male; 55 percent are female; 20.1 percent are minorities; and 2.5 percent are foreign students). The University Honors Program, Disabled Student Services, International Student Center, Student Government, Flying High Circus and intramural sports are among more than 200 organizations and activities in which students may participate.

Situated in the heart of the state's thriving capital city, Florida State's main campus blends Gothic and modern styles of architecture with the oaks, pines, dogwoods, palms and azaleas of North Florida.

Florida State continues to progress and grow — from its pre-Civil War foundation as the Seminary West of the Suwannee, through the early 20th century as the academically respected Florida State College for Women, returning to coeducational status as a university in 1947, to its modern development as an acclaimed research institution, a top-ranked competitor in intercollegiate athletics and as a standard-setter in the basic sciences and the performing arts.

In all areas of its mission — excellence in teaching, research and public service — Florida State University is advancing boldly toward the 21st century.



ADMINISTRATION !

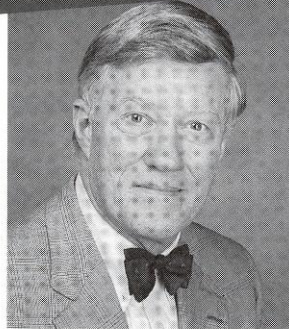
ATHLETICS

AND EDUCATION



TALBOT "SANDY" D'ALEMBERTE

President



TALBOT "SANDY" D'ALEMBERTE

Talbot "Sandy" D'Alemberte was appointed president of The Florida State University on November 29, 1993, by the Florida Board of Regents, and took office on January 3, 1994. His grandfather attended the Seminary West of the Suwannee and his mother attended the Florida State College for Women; the two institutions were predecessors to The Florida State University.

D'Alemberte served as the fourth dean of the FSU College of Law from 1984 to 1989 and continues to teach as a member of the University faculty. He was the 1991-1992 president of the American Bar Association and represented Dade County in the Florida House of Representatives from 1966 to 1972 where he chaired several legislative committees. After leaving the Florida Legislature, he chaired the Florida Constitution Revision Commission in 1977-1978 and the Florida Commission on Ethics in 1974-1975.

The numerous awards D'Alemberte has won include the 1996 American Judicature Society's Justice Award, the 1996 National Council of Jewish Women's Hannah G. Soloman Award, the 1993 Academy of Florida Trial Lawyers "Perry Nichols" Award, the 1993 Florida Academy of Criminal Defense Lawyers Annual Criminal Justice Award, the 1990 Jurisprudence Award from the Anti-defamation League of South Florida, the 1987 Florida Bar Foundation Medal of Honor, the 1986 National Sigma Delta Chi First Amendment Award, an American Academy of Television Arts and Sciences "Emmy" in 1985 for his work in open government, (particularly in the opening of court proceedings to electronic journalists), the 1984 Florida Civil Liberties Union "Nelson Poynter" Award, and was recently made an honorary member of the Torchbearer Chapter of the Mortar Board College Senior Honor Society.

Born June 1, 1933, in Tallahassee, D'Alemberte was educated in public schools in Tallahassee and Chattahoochee, Florida. In 1955 he earned his bachelor of arts degree with honors in political science from the University of the South in Sewanee, Tennessee and also attended summer school at FSU and the University of Virginia. After military service as a

lieutenant in the Naval Reserve, D'Alemberte studied on a Rotary Foundation fellowship at the London School of Economics and Political Science. In 1962 he received his juris doctor with honors from the University of Florida where he was named to the Order of the Coif, served as president of the Student Bar Association, was captain of the moot court team, served as articles editor of the University of Florida Law Review and received the J. Hillis Miller Award as the outstanding law graduate.

He is the father of two grown children, Gabrielle Lyn, a graduate of the University of Denver Law School, and Joshua Talbot, a graduate of his father's alma mater, the University of the South, and a public school teacher in Homestead, Florida.

D'Alemberte is married to Patsy Palmer, former children's policy coordinator in Florida Governor Lawton Chiles' office. She has been a journalist, legislative aide and White House staff member; she holds a bachelor's degree from the University of Missouri in journalism and a master's degree from the Harvard Divinity School. D'Alemberte's personal interests include racquetball, tennis, sailing, reading, and flying.

DAVE HART, JR.

Director of Athletics

Dave Hart, Jr., became Florida State's 10th athletics director after a national search selected the former East Carolina athletics director in February, 1995. Hart, 47, has gained national recognition for his skills in the areas of athletics management, public relations, marketing and fund-raising. He brought to Florida State an outstanding reputation as one of the country's most respected athletics directors.

East Carolina University athletics enjoyed an enhanced image and reputation under Hart's leadership and he structured several programs of significance within the department. The most notable is ECU's comprehensive Student Development Program for all student-athletes.

While at East Carolina, the athletics department made great strides in revenue growth and facility enhancement. The athletics budget doubled during Hart's tenure and he initiated programs that tripled the budget for women's athletics. He planned and managed growth in the Pirates' athletic facilities totaling nearly \$30 million. Hart has served on several prestigious committees



DAVE HART, JR.