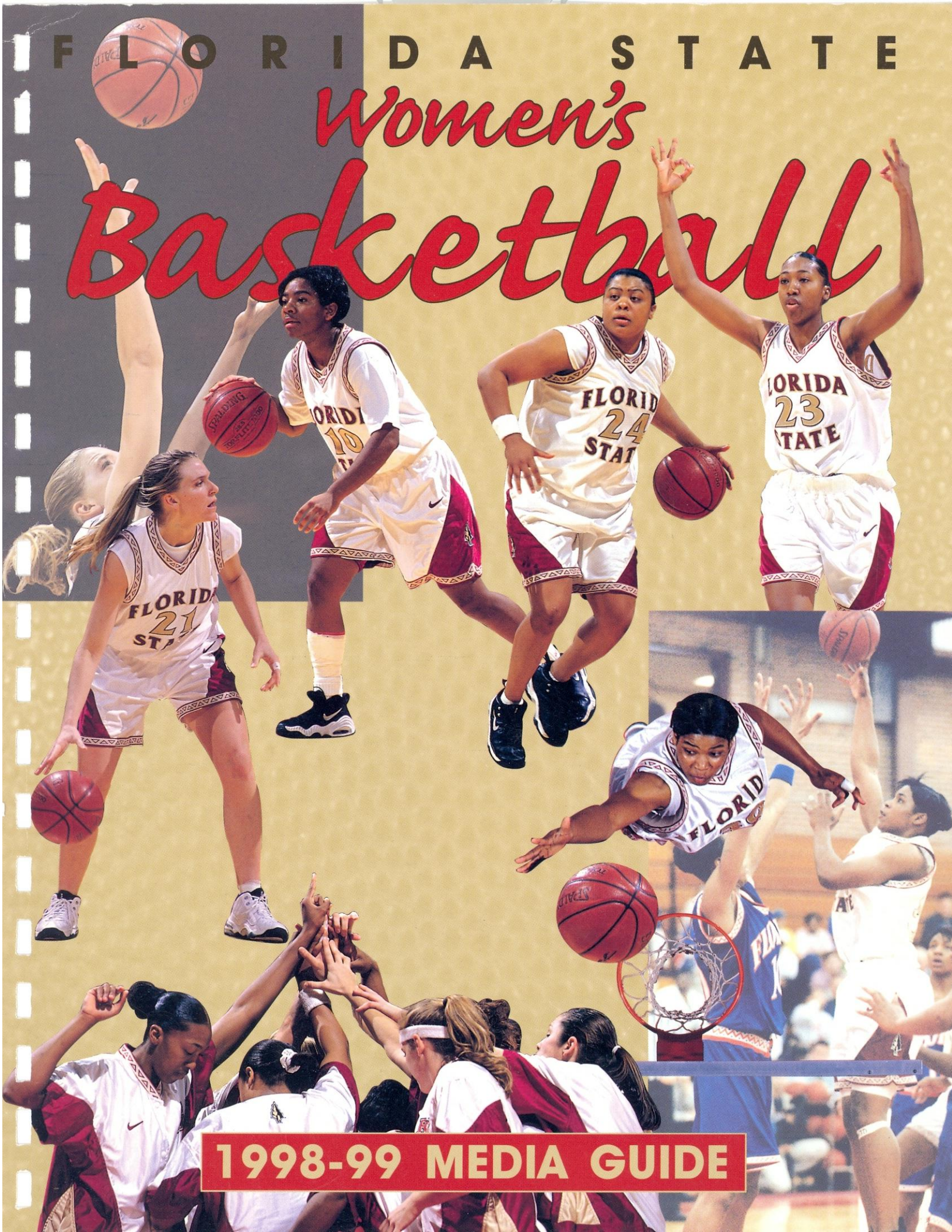


F L O R I D A S T A T E

Women's Basketball



1998-99 MEDIA GUIDE



The 1997-98 women's basketball squad defeated Georgia Tech 77-56 in the final game played at Tully Gym.

The Women's Basketball Class of 1998

Coaches Sue Semrau and Theresa Gernatt met with legendary coach John Wooden over the summer.



Sunshine Network helped celebrate the Class of 1998's final home game with a special interview with the Seminole seniors.

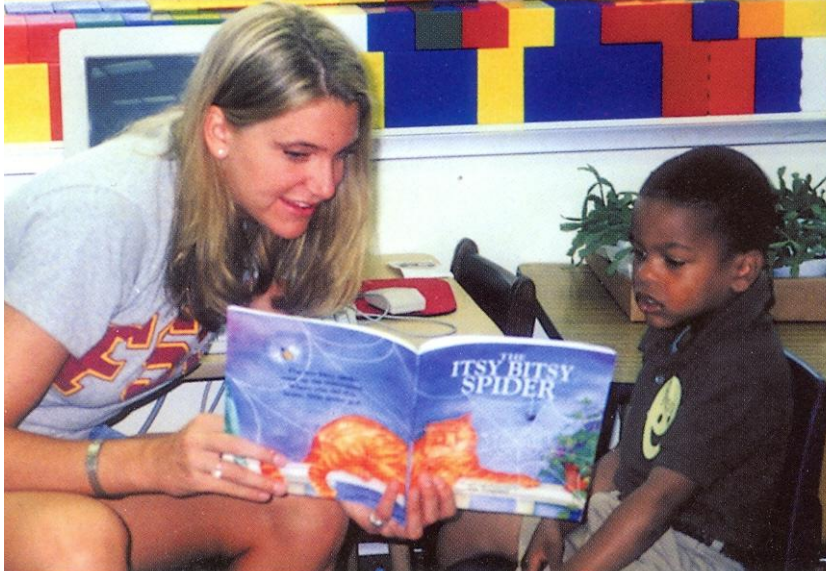


The 1997-98 women's basketball team earned the Athletics Director's Cup for Service, which is given annually to the team that performs the most hours of community service throughout the year.

Florida State Women's Basketball



Head Coach Sue Semrau and Athletics Director Dave Hart congratulate 1998 Golden 'Nole recipient Latavia Coleman.



Brooke Wyckoff volunteers her time to read to area youngsters.

1998-99 FLORIDA STATE

*Women's
Basketball*



WOMEN'S ATHLETICS

Florida State University
1968 • 1998

Table of Contents

Notes to the Media	2	Academic Support & Student Services	40	Career Statistical Leaders	74
ACC Fax Directory	3	Women's Basketball Support Staff	42	Individual Year-by-Year Leaders ...	75
FSU Quick Facts	4	Life Skills	44	All-Time Letterwinners	79
1998-99 Outlook		NCAA Compliance	45	Women's Basketball Jersey Numbers	80
Preview	6	Women's Athletics 30th Year Celebration	46	Sue Galkantas: Retired Number 43	81
Coaches		Leon County Civic Center	48	Postseason Play	82
Head Coach Sue Semrau	10	1998-99 Opponents		Honors and Awards	83
Assistant Coaches	12	Opponents' Preview	50	Series Records Against Opponents	85
1998-99 Rosters	14	Road Headquarters	58	Coaches Year-By-Year	90
Women's Bios		1997-98 Season In Review		Year-By-Year Results	91
Arleshia Davidson	16	Review	60	Team Photo Roster	96
Val Linley	18	Statistics	62		
Jen Robinson	20	Highs & Lows	63		
Latavia Coleman	22	Game-by-Game Summary	64		
Lako Brown	24	ACC Statistics	66		
Vanessa Fuchs	25	ACC Final Standings & Tournament Summary	67		
Brooke Wyckoff	26	The Atlantic Coast Conference ...	68		
Tamara Gracey	28	The Record Book			
Newcomers	29	Individual & Team Records	70		
'98-99 Personnel Chart	29	Season Records	72		
A Closer Look at the Women's Basketball Squad	30				
The University					
This Is Tallahassee	32				
This Is Florida State University	34				
Florida State Administration	36				

CREDITS
EDITOR: Tina Thomas
WRITING/ RESEARCH: Mandi Copeland, Sam Kauffman
PHOTOGRAPHY: Ross Obley, Ryals Lee, Jr., FSU Photo Lab, Bob Rosafo, Paul Chapman, Allen Kee
DESIGN: Chameleon Graphics & Design
PRINTING: Boyd Brothers, Inc.

This document is available upon request in alternate formats for individuals with print-related disabilities. Contact the ADA Office, 301 Westcott Administration Building, for more information.

Notes to the Media

Press Credentials

Requests for working press credentials should be directed to the sports information office.



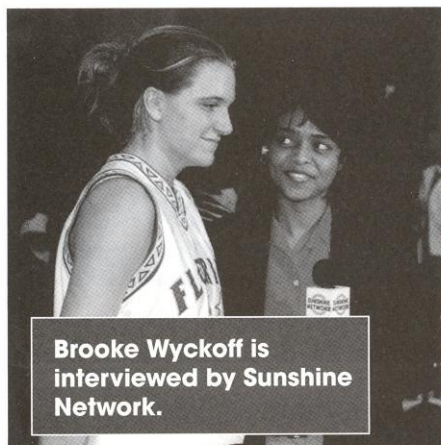
Tina Thomas

Media representatives should contact Assistant SID Tina Thomas at least one day in advance by calling (850) 644-1065. For FSU home games, media will be seated in front of the east stands at the

Leon County Civic Center.

Photographers

Photographers are to contact the SID office as well. Working area for



Brooke Wyckoff is interviewed by Sunshine Network.

all photographers will include the floor area at both ends of the court. Television camera persons should abide by the same guidelines as still photographers.

Radio

A complimentary radio line is available for visiting teams. The SID office must be notified at least three days in advance.

Game Operations

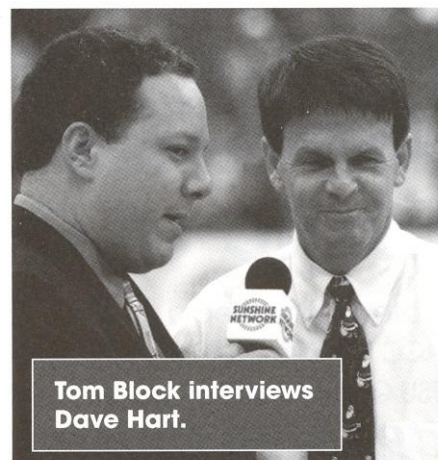
Pre-game notes, rosters and a running play-by-play will be provided along with halftime and final statistics. A fax machine is also available upon request.

Player & Coaches Interviews

All player and coaches interviews must be arranged through the SID office (850) 644-1065. Players and coaches will be available to give interviews before and after, but not during practice times.

Post-Game Interviews

Coach Semrau and requested players will be available after a 10-minute cooling-off period. No interviews will be given on the floor immediately following the game. The visiting coach and players will be brought in on a request basis only.



Tom Block interviews Dave Hart.

FSU Online

Information regarding FSU women's basketball and FSU's other 16 intercollegiate sports can be found by accessing the Florida State athletics website at www.seminoles.com.

ACC FaxBack

Through the services of FaxBack, Florida State University — as well as the other eight members of the Atlantic Coast Conference — distributes its press information via fax machine distribution. FaxBack in an automated, 24-hour-a-day, seven-day-a-week service that instantly sends the latest media information from Florida State to your fax machine. This service is for **MEDIA USE ONLY!** To access FaxBack, you must call the system from the handset of your fax machine. You will then be instructed step-by-step on how to receive information. To receive the FaxBack phone number and other detailed information on how the system works, please contact the Florida State sports information office. The ACC women's basketball FaxBack directory can be found on the following page. ■

FLORIDA STATE FAX DIRECTORY

AP (Tallahassee)	(850) 224-2099
Atlanta Constitution	(404) 526-5977
Florida Times Union	(904) 359-4147
FSView	(850) 561-6578
Ft. Lauderdale Sun-Sentinel	(954) 356-4676
Gainesville Sun	(352) 338-3128
Miami Herald	(305) 376-2295
Ocala Star-Banner	(352) 867-4018
Orlando Sentinel	(407) 420-5069
Osceola	(850) 224-3627
Palm Beach Post	(561) 820-4481
Sarasota Herald-Tribune	(941) 957-5276
St. Pete Times	(813) 893-8782
Tallahassee Democrat	(850) 599-2301
Tampa Tribune	(813) 258-8504
WCTV	(850) 668-3851
WTWC	(850) 893-6974
WTLX	(850) 668-1460

ACC FaxBack Directory

ACC

Tournament Preview/Results	5200
Release	5250
Notes Only	5251
Stats Only	5252
Schedule/Roster	5254

CLEMSON

Release	11250
Notes Only	11251
Stats Only	11252
Box Score	11253
Schedule/Roster	11254

DUKE

Release	21250
Notes Only	21251
Stats Only	21252
Box Score	21253
Schedule/Roster	21254

FLORIDA STATE

Release	31250
Notes Only	31251
Stats Only	31252
Box Score	31253
Schedule/Roster	31254

GEORGIA TECH

Release	41250
Notes Only	41251
Stats Only	41252
Box Score	41253
Schedule/Roster	41254

MARYLAND

Release	51250
Notes Only	51251
Stats Only	51252
Box Score	51253
Schedule/Roster	51254

NORTH CAROLINA

Release	61250
Notes Only	61251
Stats Only	61252
Box Score	61253
Schedule/Roster	61254

NC STATE

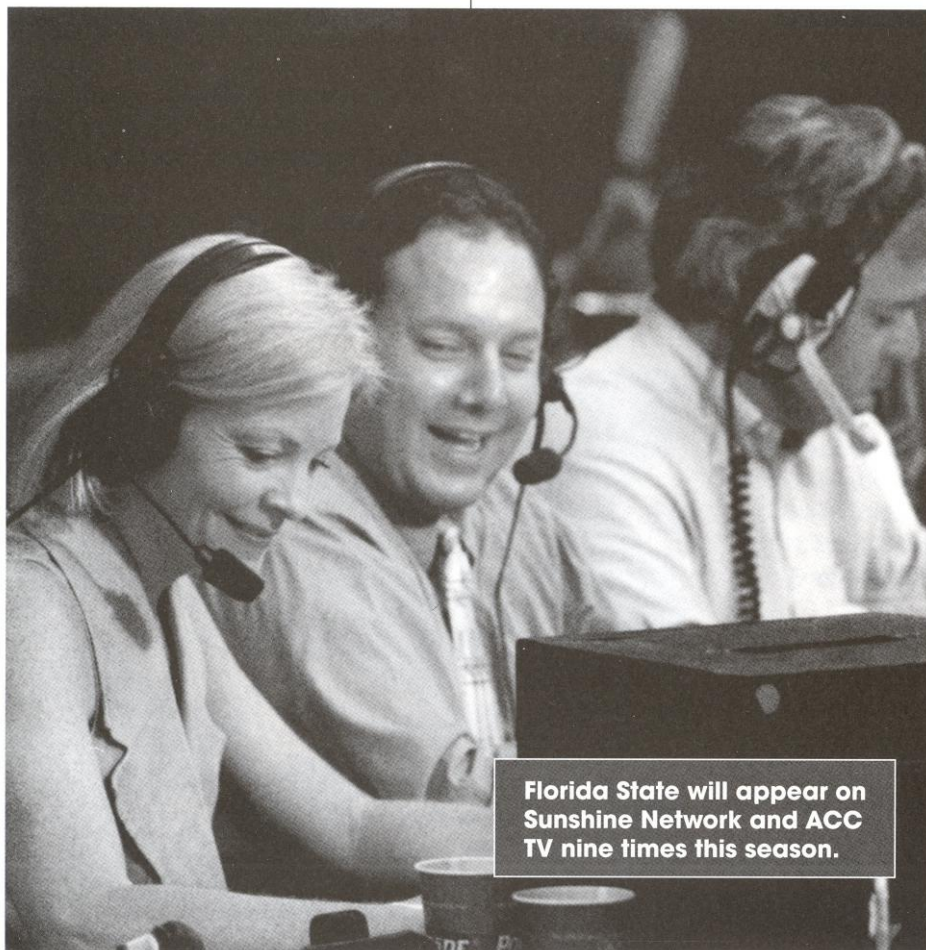
Release	71250
Notes Only	71251
Stats Only	71252
Box Score	71253
Schedule/Roster	71254

VIRGINIA

Release	81250
Notes Only	81251
Stats Only	81252
Box Score	81253
Schedule/Roster	81254

WAKE FOREST

Release	91250
Notes Only	91251
Stats Only	91252
Box Score	91253
Schedule/Roster	91254



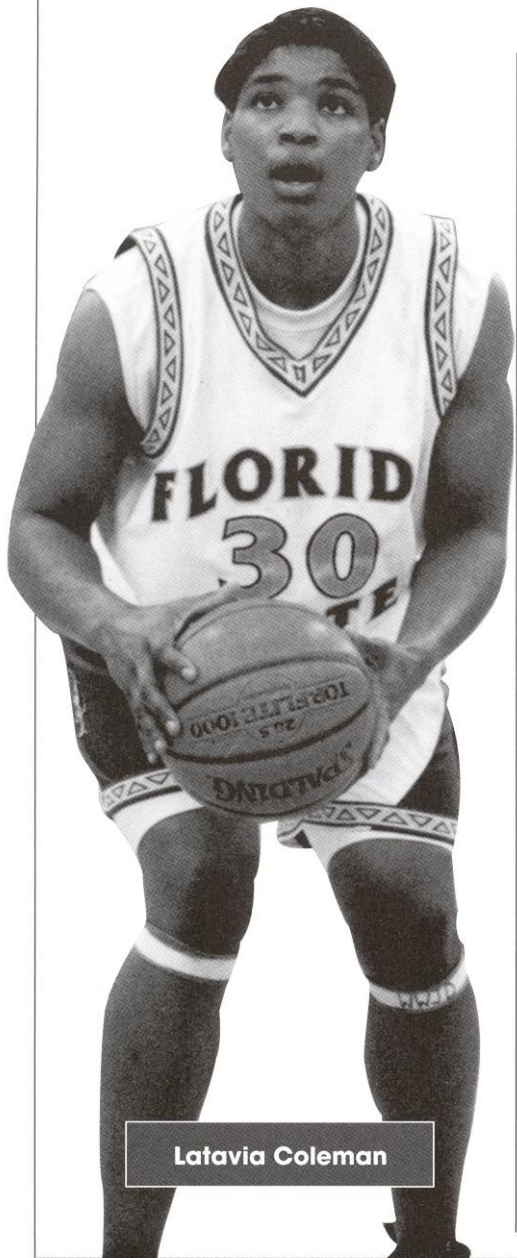
Florida State will appear on Sunshine Network and ACC TV nine times this season.

1998-99 Season Preview



For Such A Time As This

1998-99 Preseason Outlook



Latavia Coleman

For such a time as this. At first glance, this phrase may seem a bit peculiar but for the Florida State women's basketball team, it is a meaningful theme for the upcoming 1998-99 season. In other words, the Seminoles have the opportunity this season to respond to a challenge of elevating the Florida State program to a new level. For second-year Head Coach Sue Semrau, last year was a step in the right direction as her players learned a new system and played with an increased level of confidence and intensity. This year holds a great deal of promise for a team possessing an unmistakable desire to reach new heights.

"Last year, we made some great strides as we built a strong foundation and our players became familiar with an entirely new system," Semrau said. "Although we didn't achieve all of our goals for the season, we did gain the momentum we needed as a team. This year, the expectations will be different because our players will be more comfortable on the court and better able to make adjustments within our system. There's a lot to be said for those programs around the country whose longevity has been a result of consistent development in every area. Consistency in every aspect of our program is a critical element in the overall growth."

Florida State returns seven letter-winners, including three starters from last year's squad that recorded its best record and highest ACC finish since the 1992-93 season. Gone are four seniors, who assumed major roles on the team throughout their careers.

"One of the things that we (coaches) are often asked is 'How is the team looking for next year?,'" Semrau said. "When you look at our situation, we lost four players with a lot of experience and we gained five new players. We're going to be young, but a number of our key players return and will bring with them a knowledge of the system already in place."

FSU has the luxury of returning two veterans at the point guard position in seniors Jen Robinson and Val Linley. Robinson, who has been the team's starting point guard for much of the past three seasons, averaged 6.1 points and 3.7 assists per game. She ranked sixth in the ACC in assists per game average and was second on the team with 23 three-pointers. Linley, a junior college transfer, made an immediate contribution in her first season at FSU, playing in 26 of 27 games. Incoming freshman Lakesha Springle from nearby Thomasville, Georgia, was an all-state and all-region player. Although young, she will compete for playing time at the point guard and shooting guard positions.

"We've got two veterans coming

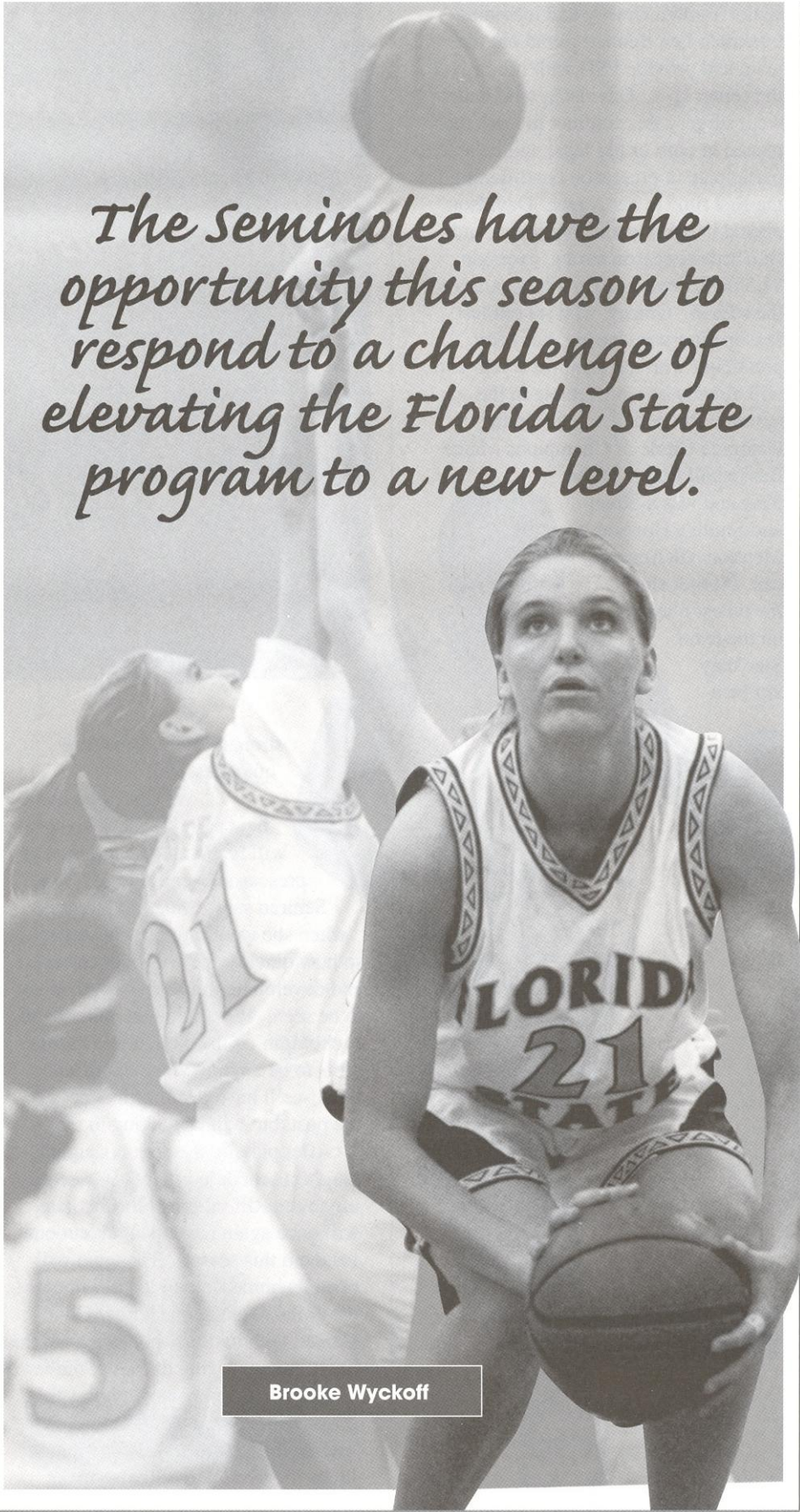
back at the point guard spot who are seniors with a great deal of experience and that will be an asset to our program," Semrau said. "We also have a freshman coming in who led her team to back-to-back state championships and was the Georgia state 2A player of the year. I think we will be very strong at the point spot."

The two-guard position is wide open. The loss of Wendy Hampton, who leaves FSU as the program's career leader in three-pointers, presents a void in the FSU lineup. Returning sophomore Vanessa Fuchs, who saw limited action behind the veteran Hampton, is a strong outside shooter and is a likely candidate to fill that role. She'll be challenged by newcomers Angela Sutton, a Street and Smith's Honorable Mention All-American who hails from Cleveland, Tennessee and *Parade* All-American April Traylor, a freshman who hails from Martinsville, Indiana.

The Seminoles will also have strength at the forward positions. USA Select Team member Brooke Wyckoff and returning all-ACC player Latavia Coleman headline the group. Coleman, who ranked second in the ACC in scoring (17.7) and fifth in rebounding (7.8) last year, returns stronger than ever after suffering a broken ankle late in the season. Wyckoff averaged 9.9 points and 8.0 rebounds as a rookie and earned ACC All-Freshman Team honors. Although playing the wing much of last year, she gained valuable experience at the post position this summer as a member of the USA Select Team. Returning sophomore Lako Brown will add depth to this area.

"Brooke started nearly every game at the three spot last year," Semrau said, "but she played this summer on the USA team as a four and really learned a lot and grew at that position. She could play more at that position this year which could free up other players to get playing time on the wing. Inside, I don't think there's any question with Latavia. She looks stronger than ever after her broken ankle and has been working extremely hard this summer."

Senior Arleshia Davidson, redshirt



The Seminoles have the opportunity this season to respond to a challenge of elevating the Florida State program to a new level.

Brooke Wyckoff

senior Tamara Gracey and incoming freshman Lea Bennett round out the team and provide FSU with promise at the center spot. Davidson, who underwent surgery this summer to have rods placed in both of her legs, will be able to participate in preseason conditioning for the first time in her career. Davidson played in every game as a junior and finished the season strong, averaging 11.5 points over the final five games of the season. Gracey, who sat out last season after transferring, has been practicing with the team for a year and will already be comfortable in the system. Bennett was selected the Gatorade Circle of Champions Maine Basketball Player of the Year and was a Street and Smith's Honorable Mention All-American. At 6-3, she is the tallest player on the team.

Size may not be a



Jen Robinson

1998-99 PERSONNEL CHART

Returning Starters (3)

G	Jen Robinson	Sr.	5-8	6.1 ppg, 3.7 apg
F	Latavia Coleman	Jr.	5-10	17.7 ppg, 7.8 rpg
C	Brooke Wyckoff	So.	6-1	9.9 ppg, 8.0 rpg

Other Returnees (5)

F	Arleshia Davidson	Sr.	6-2	7.8 ppg, 3.5 rpg
G	Val Linley	Sr.	5-5	2.0 ppg, 1.3 rpg
G/F	Lako Brown	So.	5-11	.9 ppg, .5 rpg
G/F	Vanessa Fuchs	So.	5-10	.3 ppg

REDSHIRT RETURNEE

F	Tamara Gracey	Sr.	6-0	Guthrie, OK
---	---------------	-----	-----	-------------

Newcomers (4)

C	Lea Bennett	Fr.	6-3	Windham, ME
G	Lakesha Springle	Fr.	5-3	Thomasville, GA
G	Angela Sutton	Fr.	5-10	Cleveland, TN
G	April Traylor	Fr.	5-10	Martinsville, IN

strength of the team, but quickness will be.

"Arleshia, who has a new pair of legs, so to speak, will be going through her first preseason ever at Florida State."

Semrau said, "She lost strength when she went through the surgery, so how quickly she will bounce back and develop her muscle strength is yet to be seen. Tamara, on the other hand, is chompin' at the bit and Lea has the tools to be an immediate contributor. I think we'll have a lot of quickness at the post, but will be lacking in size."

After playing the nation's eighth-toughest schedule in 1997-98 according to the RPI ratings, Florida State will once again have its work cut out for them this season. The team will open its home slate in its new home, the Tallahassee Leon County Civic Center, with national-power Louisiana Tech, make a swing through Southern California and play at perennial Top 25-power Georgia — all before the highly-competitive ACC schedule kicks in. The team will also make

stops at Tulsa and rival-Florida.

"We'll ask our seniors every year where they want to travel and this year's senior class wanted to go to Southern California," Semrau said. "We'll also go to Tulsa, Oklahoma which is where Tamara Gracey's family lives. We want to play in front of the families of all of our players by the time they are seniors."

There's definitely an excitement that surrounds the Florida State women's basketball program...one that has been absent in recent years. While progress is evident, it will be important to savor and learn with each step of the journey.

"The most important thing that we'll need to carry over from last year is chemistry and the ability to trust one another," Semrau said. "In doing so, we will all have to be on the same page, have the same vision, allow no excuses and keep a positive attitude with our eyes fixed on the goals that we set." ■



Coaching Staff

- **HEAD COACH**
Sue Semrau
- **ASSISTANT COACHES**
Theresa Gernatt
Angie Johnson
Leslie Davies

Sue Semrau

Head Coach • Second Year California-San Diego, 1985

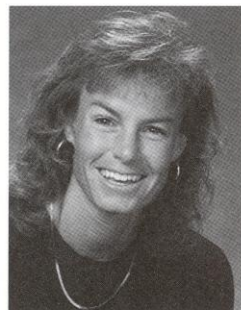
“I had a passion and desire to build something,” Florida State women’s basketball head coach Sue Semrau said upon her hiring in June of 1997.

It’s a passion that quickly became contagious.

“But that Seminole spirit, that sense that victory is in that next shot, that next

pass, that next steal...” one sportswriter wrote about the 1997-98 Seminoles.

Semrau believed in the team and soon the team began to believe in itself and then the results



Sue Semrau

became evident. In just one season at the helm, Semrau led Florida State to its most victories since 1992-93 and its best ACC record and finish since 1992-93, including its largest victory by margin over an ACC opponent.

Energy, positiveness and new life was brought back into the Seminole women’s basketball program when Semrau became Florida State’s head coach. It was these characteristics and others that led Director of Athletics Dave Hart to the hiring of Semrau.

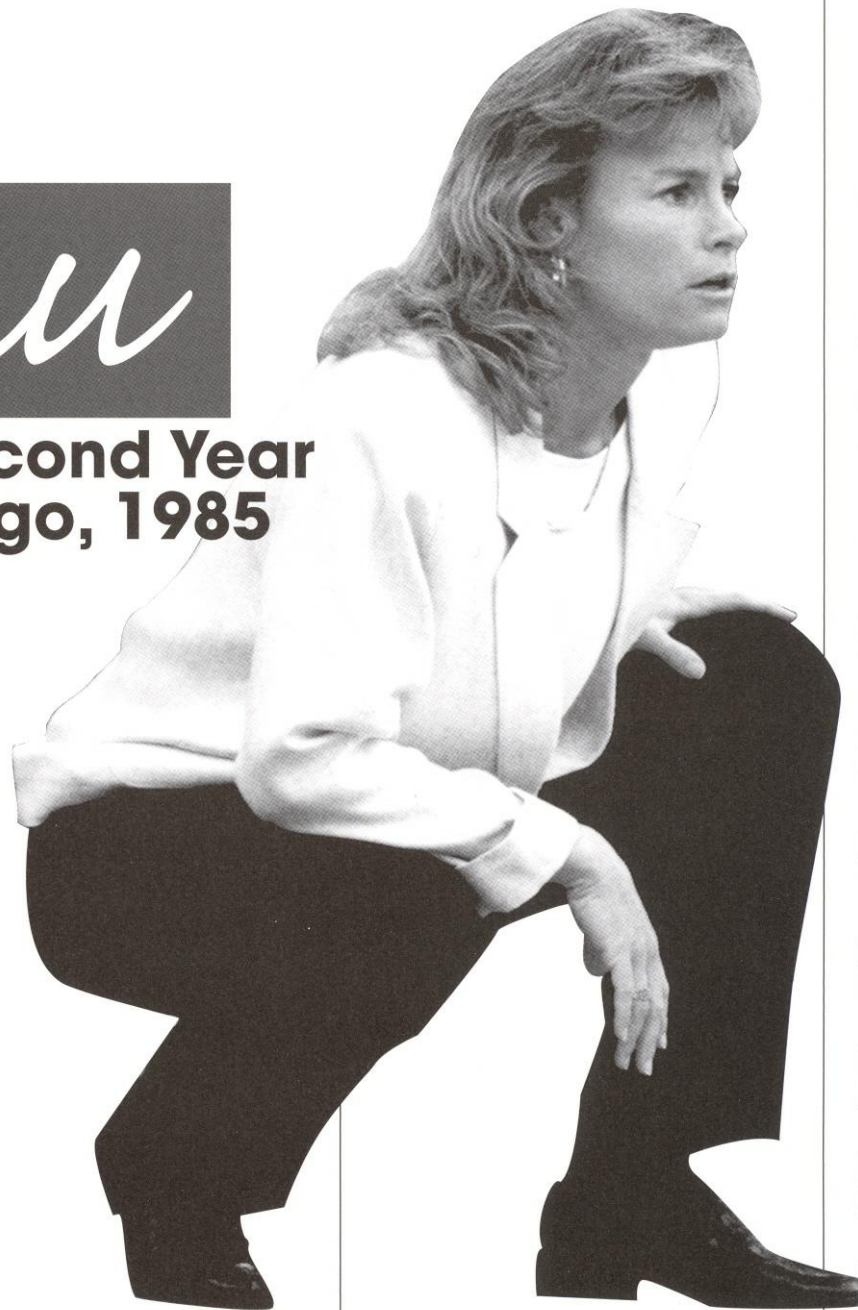
“Sue’s integral role in the building process at two different programs, along

with her tremendous energy and reputation as a recruiter, were the most important profile characteristics in her selection as our women’s basketball coach at Florida State University,” Hart said. “We all look forward to continuing our collective efforts to establish a competitive women’s basketball program at Florida State.”

Prior to coming to FSU, Semrau served three years as an assistant coach and recruiting coordinator at the University of Wisconsin under Badger

Head Coach Jane Albright-Dieterle. Semrau joined Albright-Dieterle at Northern Illinois in 1991 where she assisted in leading NIU to three consecutive NCAA tournament appearances.

In her three seasons at Wisconsin, Semrau contributed to the Badgers’ three straight winning seasons and two NCAA tournament appearances, including the program’s first ever back-to-back 20-win seasons. Wisconsin also posted its best record in program



history, a 21-8 mark in 1995-96, during Semrau's tenure.

"With the hiring of Sue Semrau, Florida State has demonstrated its commitment to the total student-athlete," Wisconsin head coach Jane Albright-Dieterle said. "Sue will very much be a player's coach. Every athlete in her program will become a better person, student and athlete. She is an accomplished recruiter, and her knowledge of the game is exceptional. This hire ensures a positive future for Florida State women's basketball."

Semrau has also been noted for her recruiting efforts at Wisconsin with a 1995 recruiting class that ranked eighth in the country by *Blue Star Index*. The Badgers' 1997 class features the program's first WBCA Prep All-American and the first multiple *Parade Magazine* honoree.

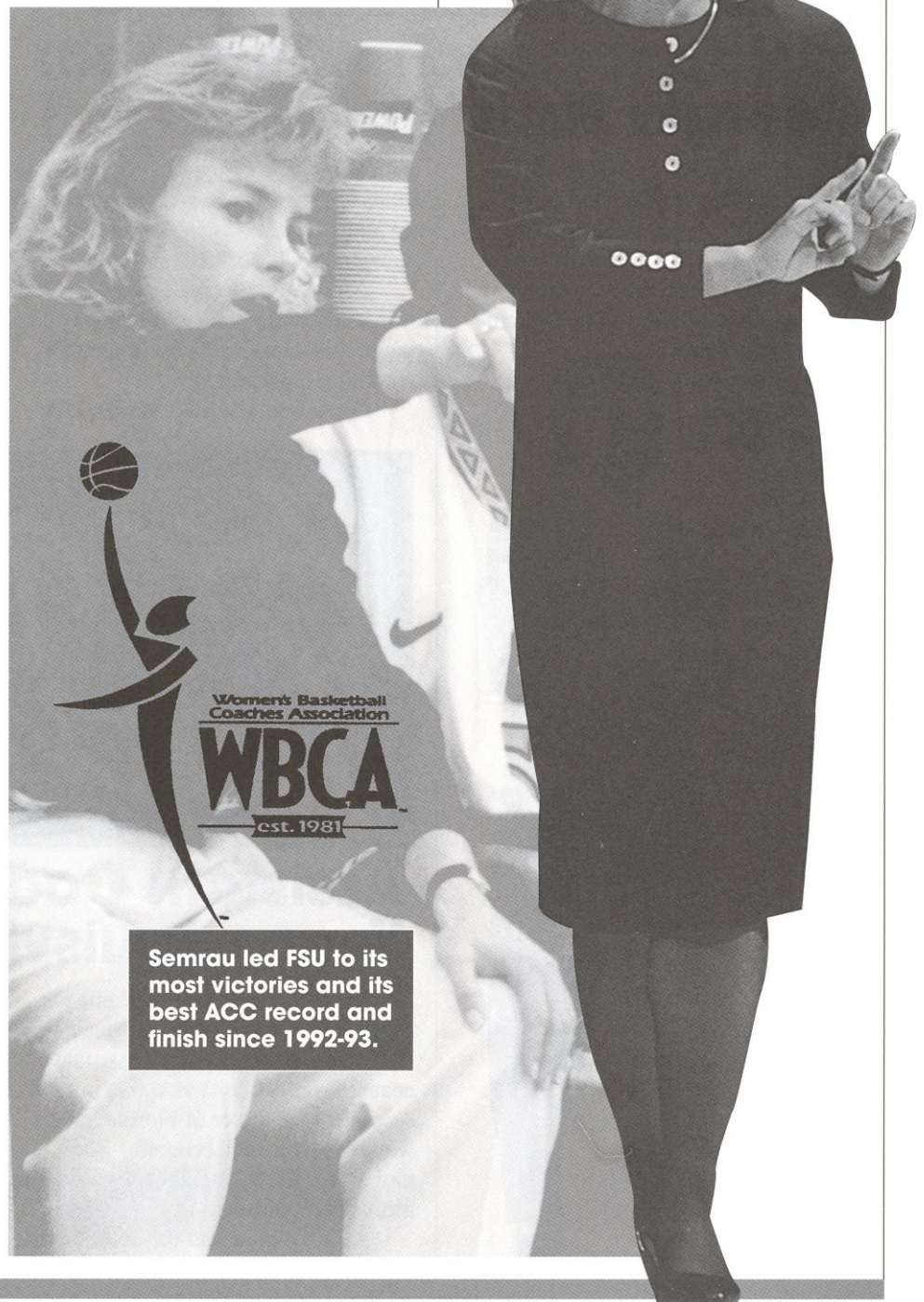
In the summer of 1996, Semrau was the head coach of a team of college alumni that competed in the Athletes in Action Spring Australian Tour.

Semrau came to Northern Illinois after serving as head women's basketball coach and assistant athletic director at Occidental College in Los Angeles for four years where she compiled a 51-47 overall record. She also coached soccer for two seasons and was responsible for the administrative duties of fundraising and promotions at the Division III institution. At Occidental, Semrau was a member of the NCAA regional selection committee and chaired the Southern California Intercollegiate Athletic Conference for women's basketball.

Prior to her appointment at Occidental, Semrau worked as the public relations and promotions director for the L.A. Heat professional soccer team from 1986-87, and the public relations director for the Seattle Storm soccer team in the previous year. In 1986-87, she also served as an assistant basketball coach at Santa Monica High School.

A 36-year-old native of Seattle, Wash., Semrau is a graduate of Shorecrest High School where she earned all-conference honors in her senior year. She went on to attend the

University of Puget Sound for two years, garnering Freshman of the Year honors. Semrau transferred to the University of California-San Diego in 1984 where she ranks 13th in all-time scoring and fourth in all-time assists. In 1985, she graduated from the University of California-San Diego with a bachelor's degree in communications, and received her master's degree in athletic administration from the University of Southern California in 1988. ■



Theresa Gernatt

Assistant Coach • Third Year Georgia Tech '91

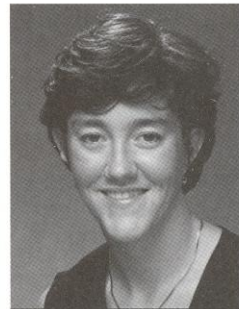
Entering her third year at Florida State, Theresa Gernatt is considered the veteran of this young Seminole staff. Gernatt's familiarity with the FSU system was a great advantage to Head Coach Sue Semrau last year in her first season as was her familiarity with the coaching staff that Semrau assembled. Gernatt worked



with Semrau and Angie Johnson back in 1994-95 when she served one year as an administrative assistant for the Wisconsin women's basketball program.

As Semrau's top assistant, Gernatt is instrumental in Florida State's recruiting process, serving as the program's recruiting coordinator.

Gernatt came to FSU in 1996 after



Theresa Gernatt

...serving one year as an assistant coach at Mississippi State. At MSU, Gernatt monitored the academic progress of the student-athletes, managed the program's tape-exchange and assisted with on-

court responsibilities.

A native of Marietta, Ga., Gernatt has several ties to the Atlantic Coast Conference. She was a four-year letter-winner at Georgia Tech, where she earned a degree in management in 1991, and then served as an assistant coach at the University of Maryland the following season during which time the Terrapins reached a No. 1 national ranking. Gernatt returned to her alma mater the for the next two years and worked as an assistant to the athletic director while pursuing her master's degree. ■

Angie Johnson

Assistant Coach • Second Year • Louisville '91

When Sue Semrau came to Florida State, she knew that her selection of assistant coaches would play a vital role in the success of the future of Florida State's women's basketball program. She moved a step closer to that goal with the hiring of Angie Johnson.

Aside from her on-the-court coach-

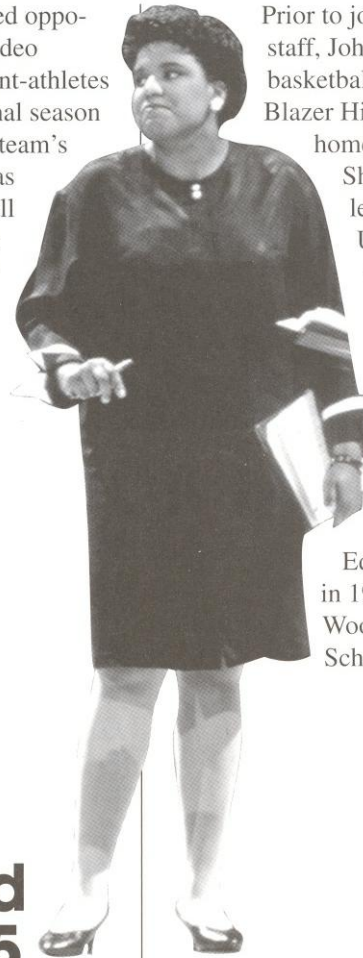
ing duties, Johnson is responsible for monitoring the academic progress of the Seminoles. Last season, seven women's basketball players earned ACC Honor Roll recognition — the most players since FSU joined the league. Johnson also works closely with the newly-formed women's basketball support club, the Hoop Troop.



Angie Johnson

Johnson, like Semrau, came to Florida State in 1997 from the University of Wisconsin, where she served as the Badgers' third assistant for three years. Some of her

responsibilities at UW included opponent scouting, coordinating video exchange and arranging student-athletes community service. In her final season at UW, she also served as the team's academic liaison. Johnson was also active with the BadgerBall Booster Club, the Jane's Gem kids club and was co-director of the BadgerBall Girls Hoops Camp for two summers.



Prior to joining the Badger staff, Johnson was the assistant basketball coach at Paul-G. Blazer High School in her hometown of Ashland, Ky. She was a four-year letterwinner at the University of Louisville from 1987-91. A 6-0 center, she still ranks among the top 10 in career rebounds (621) and games played (120). A biology major, Johnson was the recipient of the Ed Kallay Senior Award in 1991 and was a Woodford R. Porter Scholar. ■

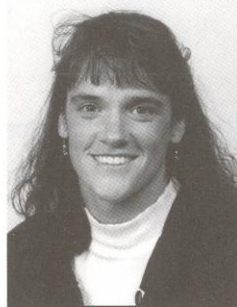
Leslie Davies

Assistant Coach • Second Year • Northern Illinois '95

If the Seminoles are looking for someone to help them adjust to Sue Semrau's style of coaching, second-year assistant coach Leslie Davies would be a likely candidate. Known then as Leslie Pottinger, Davies was a four-year letterwinner at Northern Illinois while Semrau was an assistant coach.

At Florida State, Davies main responsibilities include opponent scouting, coordinating video exchange and preseason conditioning.

Prior to her arrival at Florida State, Davies remained active as both a coach and player in the sport of basketball since her graduation from NIU in 1995. As a coach, Davies served as an assistant coach at St. Joseph's College in Indiana. She also coached for the Lakeside Recreation Center Clinics and Youth League Teams in Australia. As a player, Davies was the leading scorer on the Athletes in Action traveling squad in



Leslie Davies

1995 and played professionally on the Lakeside Basketball Team in Australia in 1996.

While at Northern Illinois, Davies led the Huskies in scoring (17.7) in her senior year and co-captained

the squad in both her junior and seniors seasons and participated in four NCAA tournaments during her career. She capped off her career earning Mid-Continent Conference first team honors and flourished in the classroom as well adding GTE CoSIDA District V All-Academic honors to her resumé. She is NIU's all-time career steals leader (276) and recorded one of only two triple-doubles in school history.

Davies, who holds a bachelor's degree in English from NIU, has been active in summer camps, clinics and speaking engagements throughout her career. She and her husband Dave, the head varsity basketball coach at North Florida Christian in Tallahassee, were married August 3, 1997. ■



Seminole Rosters

PRONUNCIATION GUIDE

Lako Brown Lay-koh
 Arleshia Davidson .. Are-leesh-ah
 Val Linley Lin-lee
 Vanessa Fuchs Fyouchs
 Sue Semrau Sem-rouw
 Lakesha Springle Lah-kee-shah
 Sandra Ulyssee You-leese
 Brooke Wyckoff Y-koff

NUMERICAL ROSTER

NO.	NAME	POS.	HT.	YR.	HOMETOWN (HIGH SCHOOL)
00	Lakesha Springle	G	5-3	Fr.	Thomasville, Ga. (Thomasville)
10	Val Linley	G	5-5	Sr.	Emerson, Ga. (Hiwassee JC)
11	Angela Sutton	G	5-10	Fr.	Cleveland, Tenn. (Bradley Central)
12	April Traylor	G	5-10	Fr.	Martinsville, Ind. (Martinsville)
15	Sandra Ulyssee	G	5-7	Jr.	Ft. Lauderdale, Fla. (Hallandle)
21	Brooke Wyckoff	F	6-1	So.	West Chester, Ohio (Lakota)
23	Arleshia Davidson	F	6-2	Sr.	Marietta, Ga. (Marietta)
24	Jen Robinson	G	5-8	Sr.	Albany, Ga. (Dougherty)
25	Lako Brown	G/F	5-11	So.	Eastman, Ga. (Dodge County)
30	Latavia Coleman	F	5-10	Jr.	Macon, Ga. (Southwest)
33	Vanessa Fuchs	G/F	5-10	So.	Pompano Beach, Fla. (Cardinal Gibbons)
41	Tamara Gracey	F	6-0	Sr.	Guthrie, Okla. (Guthrie/Kansas/Tulsa)
51	Lea Bennett	C	6-3	Fr.	Windham, Me. (Windham)

HEAD COACH: Sue Semrau (California-San Diego, '85)

ASSISTANT COACHES: Theresa Gernatt (Georgia Tech, '91), Angie Johnson (Louisville, '91),
 Leslie Davies (Northern Illinois, '95)

ALPHABETICAL ROSTER

51	Lea Bennett	C	6-3	Fr.	Windham, Me. (Windham)
25	Lako Brown	G/F	5-11	So.	Eastman, Ga. (Dodge County)
30	Latavia Coleman	F	5-10	Jr.	Macon, Ga. (Southwest)
23	Arleshia Davidson	F	6-2	Sr.	Marietta, Ga. (Marietta)
33	Vanessa Fuchs	G/F	5-10	So.	Pompano Beach, Fla. (Cardinal Gibbons)
41	Tamara Gracey	F	6-0	Sr.	Guthrie, Okla. (Guthrie/Kansas/Tulsa)
10	Val Linley	G	5-5	Sr.	Emerson, Ga. (Hiwassee JC)
24	Jen Robinson	G	5-8	Sr.	Albany, Ga. (Dougherty)
00	Lakesha Springle	G	5-3	Fr.	Thomasville, Ga. (Thomasville)
11	Angela Sutton	G	5-10	Fr.	Cleveland, Tenn. (Bradley Central)
12	April Traylor	G	5-10	Fr.	Martinsville, Ind. (Martinsville)
15	Sandra Ulyssee	G	5-7	Jr.	Ft. Lauderdale, Fla. (Hallandle)
21	Brooke Wyckoff	F	6-1	So.	West Chester, Ohio (Lakota)



- **PLAYER BIOGRAPHIES**

Arleshia Davidson

Val Linley

Jen Robinson

Latavia Coleman

Lako Brown

Vanessa Fuchs

Brooke Wyckoff

Tamara Gracey

- **NEWCOMERS**

- **A CLOSER LOOK...**

1998-99 Player Biographies



#23 Arleshia Davidson

F, 6-2, Sr., Marietta, GA (Marietta)

Aggressive forward who plays with great intensity...had rods surgically placed in both legs this summer...has seen playing time increase with each season...has the skills to be a starter, but prefers to come off of the bench...team spark plug...**1997-98:** Played in all 27 games and started the regular-season finale in place of the injured Latavia Coleman...averaging 19.1 minutes of play, 7.8 ppg and 3.5 rpg...improved with each game and averaged 11.5 ppg over last five contests...led the team in scoring and rebounding once...scored a season-high 15 points in Duke home game...grabbed a career-high 10 boards in win vs. Maryland on Jan. 23...hit double figures in nine games...was second on the team with 18 blocks...**1996-97:** Earned her first start of the year against Clemson on Feb. 19th and started the last two games of the season...really came into her own as the season progressed...averaged 3.7 points and 3.1 rebounds per game but elevated her numbers to 9.0 points and 4.8 rebounds over last six games of the season...scored a career-high 16 points

and led the team vs. Georgia Tech...also scored 14 points vs. Maryland on 7-for-9 shooting...played in all 27 games this season and scored in 17 of them...scored in double figures three times...grabbed a career-high seven boards in regular-season finale vs. Wake Forest...grabbed six rebounds in four games...led the team with six boards at North Carolina...played just eight minutes vs. South Florida in season-opener, but grabbed five rebounds...**1995-96:** Saw action in 22 games, including three starts against ACC opponents...in her first career start, she scored a season-high 13 points, good for second-best on the team, against nationally-ranked Virginia...also dished out two assists, grabbed three rebounds, had two blocks and four steals in 20 minutes of play...scored in double figures in her second start vs. Wake Forest with 10 points and a season-high seven rebounds...once led the squad in rebounding...missed three games with an ankle injury...**HIGH SCHOOL:** A three-year letterwinner...named the Most Valuable Player as a junior and senior for her Marietta High School team...high

school coach was Cynthia Groover...averaged a team-leading 13.0 points and 12.0 rebounds per game in senior season...garnered second team all-county honors as a senior and was an honorable-mention all-county selection as a junior...a four year Dean's List member...**PERSONAL:** Is majoring in mathematics education...was an ACC honor roll selection the past two years...born January 19, 1977. ■

CAREER HIGHS

POINTS: 16 vs. Georgia Tech (2/10/97)

REBOUNDS: 10 vs. Maryland (1/23/98)

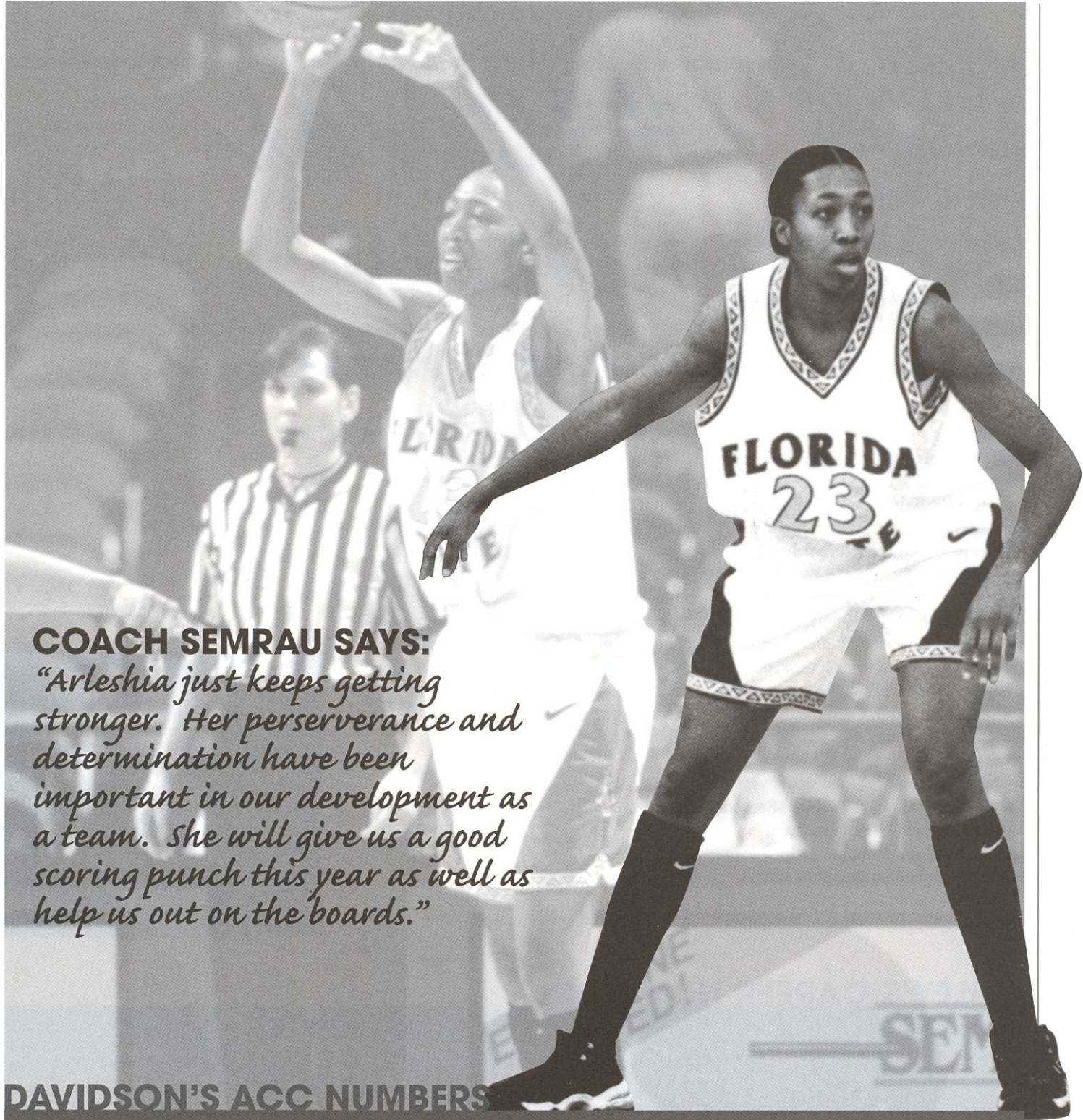
1997-98 SEASON HIGHS

POINTS: 15 vs. Duke(2/15/98)

REBOUNDS: 10 vs. Maryland (1/23/98)

DAVIDSON'S CAREER NUMBERS

YEAR	G-GS	MPG	FGM-FGA	PCT	3FG-3FGA	PCT	FTM-FTA	PCT	REB-AVG	AS	ST	BK	TO	PF-DQ	PTS-AVG
95-96	22-3	8.5	26-57	.456	0-0	.000	12-18	.667	34-1.5	12	9	6	31	31-0	64-2.9
96-97	27-3	13.2	43-106	.406	0-1	.000	15-27	.556	84-3.1	19	17	11	54	73-5	101-3.7
97-98	27-1	19.1	86-189	.455	1-3	.333	37-69	.536	95-3.5	18	32	18	63	81-2	210-7.8
Totals	76-7		155-352	.440	1-4	.250	64-114	.561	213-2.8	49	58	35	148	185-7	375-4.9



COACH SEMRAU SAYS:

“Arleshia just keeps getting stronger. Her perserverance and determination have been important in our development as a team. She will give us a good scoring punch this year as well as help us out on the boards.”

DAVIDSON'S ACC NUMBERS

YEAR	G-GS	MPG	FGM-FGA	PCT	3FG-3FGA	PCT	FTM-FTA	PCT	REB-AVG	AS	ST	BK	TO	PF-DQ	PTS-AVG
95-96	13-3	12.8	26-53	.491	0-0	.000	11-16	.688	32-2.5	12	9	6	28	25-0	63-4.8
96-97	16-2	14.6	32-71	.451	0-1	.000	13-21	.619	53-3.3	9	9	4	33	51-5	77-4.8
97-98	16-1	19.8	49-117	.419	1-2	.500	27-49	.551	55-3.4	13	21	10	46	52-1	126-7.9
Totals	45-6		107-241	.444	1-3	.333	51-86	.600	140-3.2	34	39	20	107	128-6	266-5.8



#10 Val Linley

G, 5-5, Sr., Emerson, GA (Hiwassee JC)

Speedy point guard...disciplined floor leader...will challenge for starting role...**1997-98:** Played in 26 games and averaged 2.0 points, 2.2 assists in 14.9 minutes per outing in first season...aggressive defender with 38 steals, which ranked fourth on the team and was the most of the non-starters...scored in 19 games...led the team in assists in five games...earned first career start vs. Florida International...had season-high six assists vs. Charleston Southern and a season-high six points vs. North Carolina...grabbed a season-high four rebounds in final regular season game with Maryland...recorded season-high five steals vs. NC State...**JUNIOR COLLEGE:** Served as team captain in final season at Hiwassee Junior College...helped team reach the Sweet Sixteen both years during her career...pegged team's Best Defensive Player...averaged 7.0 points

and 8.5 assists per game...**HIGH SCHOOL:** Lettered in basketball three years at Cass...missed senior season with a torn ACL on left leg...earned NGHSA all-region team honors throughout career...high school coach was Clarissa Bagwell chosen team's Most Valuable Player all three seasons...earned Most Valuable and All Tournament Team honors at the Calhoun Tourney in sophomore and junior seasons...active with the Fellowship of Christian Athletes...**PERSONAL:** Is majoring in Management Information Systems...was born April 9, 1977. ■

CAREER HIGHS

POINTS: 6 vs. North Carolina (1/4/98)
REBOUNDS: 4 vs. Maryland (2/22/98)
ASSISTS: 6 vs. Charleston Southern (12/5/97)
STEALS: 5 vs. NC State (1/25/98)

LINLEY'S CAREER NUMBERS

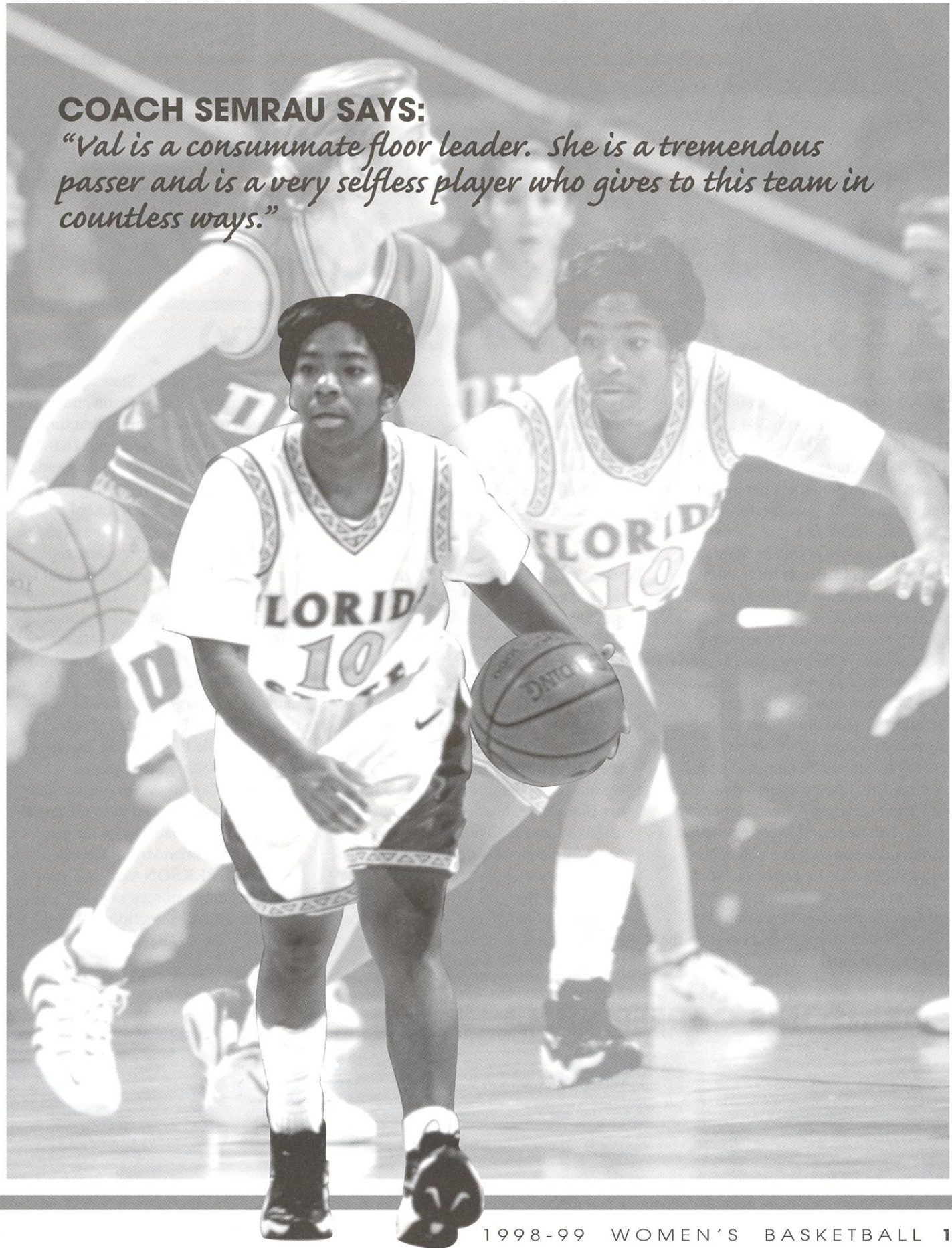
YEAR	G-GS	MPG	FGM-FGA	PCT	3FG-3FGA	PCT	FTM-FTA	PCT	REB-AVG	AS	ST	BK	TO	PF-DQ	PTS-AVG
97-98	26-2	14.9	8-36	.222	0-4	.000	35-48	.729	34-1.3	57	38	0	62	35-1	51-2.0

LINLEY'S ACC NUMBERS

YEAR	G-GS	MPG	FGM-FGA	PCT	3FG-3FGA	PCT	FTM-FTA	PCT	REB-AVG	AS	ST	BK	TO	PF-DQ	PTS-AVG
97-98	15-0	14.7	5-25	.200	0-3	.000	24-31	.774	22-1.5	34	20	0	37	13-0	34-2.3

COACH SEMRAU SAYS:

"Val is a consummate floor leader. She is a tremendous passer and is a very selfless player who gives to this team in countless ways."





#24 Jen Robinson

G, 5-8, Sr., Albany, GA (Dougherty)

Floor leader...three-year starter... worked hard in the weight room this summer...with 284 assists, ranks eighth on FSU's all-time list...

1997-98: Averaged 6.1 points, 3.7 assists and 25.8 minutes per game...best outing was an 18-point performance at Duke...hit double digits in scoring three times...scored 14 points vs. Florida, tying Latavia Coleman for team-high honors...team's assist leader...ranked sixth in the ACC in assists per game...was second on the team with 23 treys...missed FIU game and played in just five minutes vs. Charleston Southern after spraining her right ankle...led the team in assists in 11 games, including a season-high 10 vs. Virginia...

1996-97: Started 26 games at guard... averaged 10.1 points (tied 3rd on team) and a team-leading 4.1 assists per game...led the team in scoring the last two regular-season games...tied her career-high with 19 points vs. No. 8 Virginia...led the team in assists in 23 games...led the team in scoring six times...with 24 treys, was second on the team and doubled her total of 12 last

season...played 30 minutes at Wake Forest and had seven assists and no turnovers...led the team in scoring (18), rebounding (5) and assists (4) at No. 20 Clemson...recorded a career-high 19 points (17 in second half) at Florida and connected on a career-high three treys in the game...scored in double figures in 13 games...tied her career high with seven rebounds vs. Florida...was one of three team captains... had a season-high eight assists in FAMU and Wake games

1995-96: Made an immediate contribution to the team as a freshman, playing in all 28 games and earning 12 starts...twice tallied double figures in scoring and came within a basket of doing so six other times...scored a season-high 13 points and dished out a season-high 10 assists vs. FAMU for her first career double-double...her 10 assists vs. the Rattlerettes set the season's single-game superlative for assists...led the squad with 78 assists and ranked tied for third with 28 steals on the year...a threat from the outside, she ranked second on the team in three-pointers with 12...snatched a season-

high six steals vs. NC State...started the first six games of the season and averaged 6.7 points during that time...

HIGH SCHOOL: Averaged 26.0 points, 5.0 rebounds, 6.0 assists and 5.0 steals as a senior for her Dougherty High School team...high school coach was Laura Blackwell...led the squad to a 54-6 record her last two seasons... named Georgia's Player of the Year for the South in 1994-95...was a two-year first-team all-state and all-region selection...scored 1,658 points — the most of any female ever in Dougherty County... pegged Class IAAA Player of the Year... named the Georgia Coaches Association's Athlete of the Year...selected Most Valuable Player at the Tennessee-Georgia All-Star game...earned Dougherty County Athlete of the Year honors...also competed in track, cross country and softball...an honor roll member and Presidential Award recipient...**PERSONAL:** Is a sports management major...was a 1997-98 ACC honor roll selection...born February 29, 1977. ■

ROBINSON'S CAREER NUMBERS

YEAR	G-GS	MPG	FGM-FGA	PCT	3FG-3FGA	PCT	FTM-FTA	PCT	REB-AVG	AS	ST	BK	TO	PF-DQ	PTS-AVG
95-96	28-12	22.8	53-184	.288	12-51	.235	22-41	.537	68-2.4	78	28	2	110	62-2	140-5.0
96-97	27-26	31.8	106-331	.320	24-101	.238	36-65	.554	70-2.6	110	23	0	124	72-2	272-10.1
97-98	26-25	25.8	57-183	.311	23-83	.277	21-45	.467	62-2.4	96	16	1	126	49-2	158-6.1
Totals	81-63		216-698	.309	59-235	.251	79-151	.523	200-2.5	284	67	3	360	183-6	570-7.0

COACH SEMRAU SAYS:

"Jen is more ready this year physically than ever before. She is a very explosive player and can do a lot of things off of the drive. She's exciting to watch."

CAREER HIGHS

POINTS: 19 vs. Florida (12/14/96); vs. Virginia (1/19/97)

REBOUNDS: 7 vs. NC State (1/9/96); vs. Florida (12/14/96)

ASSISTS: 10 vs. FAMU (12/10/95); vs. Virginia (1/2/98)

SEASON HIGHS

POINTS: 18 vs. Duke (1/16/98)

REBOUNDS: 5 vs. Wake Forest (1/8/98)

ASSISTS: 10 vs. Virginia (1/2/98)

ROBINSON'S ACC NUMBERS

YEAR	G-GS	MPG	FGM-FGA	PCT	3FG-3FGA	PCT	FTM-FTA	PCT	REB-AVG	AS	ST	BK	TO	PF-DQ	PTS-AVG
95-96	16-6	22.8	28-106	.264	8-29	.276	13-26	.500	39-2.4	42	17	0	57	38-2	77-4.8
96-97	16-15	32.1	71-197	.360	16-59	.271	19-34	.559	35-2.2	59	15	0	74	46-1	177-11.1
97-98	16-16	26.3	35-107	.327	17-51	.333	9-22	.409	38-2.4	69	8	1	81	25-0	96-6.0
Totals	48-37		134-410	.327	41-139	.295	41-82	.500	112-2.3	170	40	1	212	109-3	350-7.3



#30 Latavia Coleman

F, 5-10, Jr., Macon, GA (Southwest)

Strong athlete...consisten performer...two-year starter...has ability to take over a game...team leader ...**1997-98:** A second-team All-ACC selection...was lost for last two games of the season with right ankle fracture... scored in double figures in all but two games...averaged a team-leading 32.5 minutes of play and started 25 games ...ranked second in the ACC in scoring and fifth in rebounding...was the team scoring leader at 17.7 ppg and was second in rebounding with a 7.8 rpg average...led the team in scoring in 17 of 25 games, including 13 games of 21 points or more...led the team in rebounding in 10 games...scored a career-high 26 points in South Florida win... recorded six double-doubles...was named to the Dial Soap/Florida Four Challenge all-tourney team for second straight season...earned all-tourney honors at the FSU Classic...**1996-97:** An ACC all freshman team selection... led the team in scoring at 11.5 ppg and was also first in rebounds at 6.1 rpg... became the first freshman at FSU to lead the team in scoring since 1981... was chosen the squad's Golden Nole

recipient, given to the top player on the team...capped off her rookie season with a career-high 21 points in the ACC Tournament...was named the ACC Rookie of the Week for the week ending Jan. 19 after averaging 12.5 points and 8.5 rebounds for the Tribe in two games ...recorded her second and third career double-doubles with a team-high 18 points and 11 rebounds vs. Maryland on Jan. 15 and 18 and 10 vs. Maryland on Jan. 30...began the season off of the bench in first four games and earned a starting role vs. NC State on Dec. 7... played in all 27 games and started 23 contests...led the squad in scoring six times and in rebounding in 12 games... scored in double figures in 18 games... led the team in assists with six vs. Central Florida on Dec. 20...ranked second on the team with 38 steals... notched her first career double-double with a 18 points and 13 rebounds vs. FAU and led the team in both categories in the game...was named to the Dial Soap Classic/Florida Four all-tournament team after averaging 13.0 points and 5.0 rebounds through the two games, including a team-high 16 points

vs. No. 20 Florida...snagged four steals, four times...**HIGH SCHOOL:** A 1995-96 preseason *Street & Smith's* honorable mention All-American...participated in the Tennessee-Georgia High School All Star game following senior season and recorded three points, five rebounds, two steals and two blocks for the victorious Georgians...averaged 17.0 ppg, 8.0 rpg and 6.0 apg as a senior...led Southwest Macon team to the state regional finals...pegged team's most valuable player...was an all-city, all-state and all-middle Georgia selection ...high school coach was Willie Goosby ...also excelled in the classroom... earned school's Scholar Athlete Award ...achieved a 3.6 GPA...an Honor Roll and Principal's List student...**PERSONAL:** Was born April 14, 1978...is undecided on a major. ■

COLEMAN'S CAREER NUMBERS

YEAR	G-GS	MPG	FGM-FGA	PCT	3FG-3FGA	PCT	FTM-FTA	PCT	REB-AVG	AS	ST	BK	TO	PF-DQ	PTS-AVG
6-97	27-23	28.8	130-312	.417	9-40	.225	41-77	.532	164-6.1	40	38	5	64	80-5	310-11.5
97-98	25-25	32.5	164-356	.461	3-18	.167	112-163	.687	194-7.8	47	42	4	72	64-0	443-17.7
Totals	52-48		294-668	.439	12-58	.196	153-213	.610	358-6.95	87	80	9	136	144-5	753-14.6

COACH SEMRAU SAYS:

"Latavia is one of the strongest post players in the ACC. There's just so many things she can do and as a second team all-ACC performer and the second leading scorer in the league last year, we expect she will continue this success this season."

CAREER HIGHS

POINTS: 26 vs. South Florida (11/21/97)

REBOUNDS: 13 vs. Virginia (1/2/98) and vs. FAU (12/18/96)

SEASON HIGHS

POINTS: 26 vs. South Florida (11/21/97)

REBOUNDS: 13 vs. Virginia (1/2/98)

COLEMAN'S ACC NUMBERS

YEAR	G-GS	MPG	FGM-FGA	PCT	3FG-3FGA	PCT	FTM-FTA	PCT	REB-AVG	AS	ST	BK	TO	PF-DQ	PTS-AVG
96-97	16-16	29.6	74-190	.389	7-28	.250	23-43	.535	93-5.8	18	12	2	42	48-3	178-11.1
97-98	15-15	33.5	90-206	.437	2-12	.167	74-102	.725	110-7.3	29	31	2	40	36-0	256-17.1
Totals	31-31	63.1	164-396	.413	9-40	.210	97-145	.630	203-6.1	47	43	4	82	84-3	434-14.1