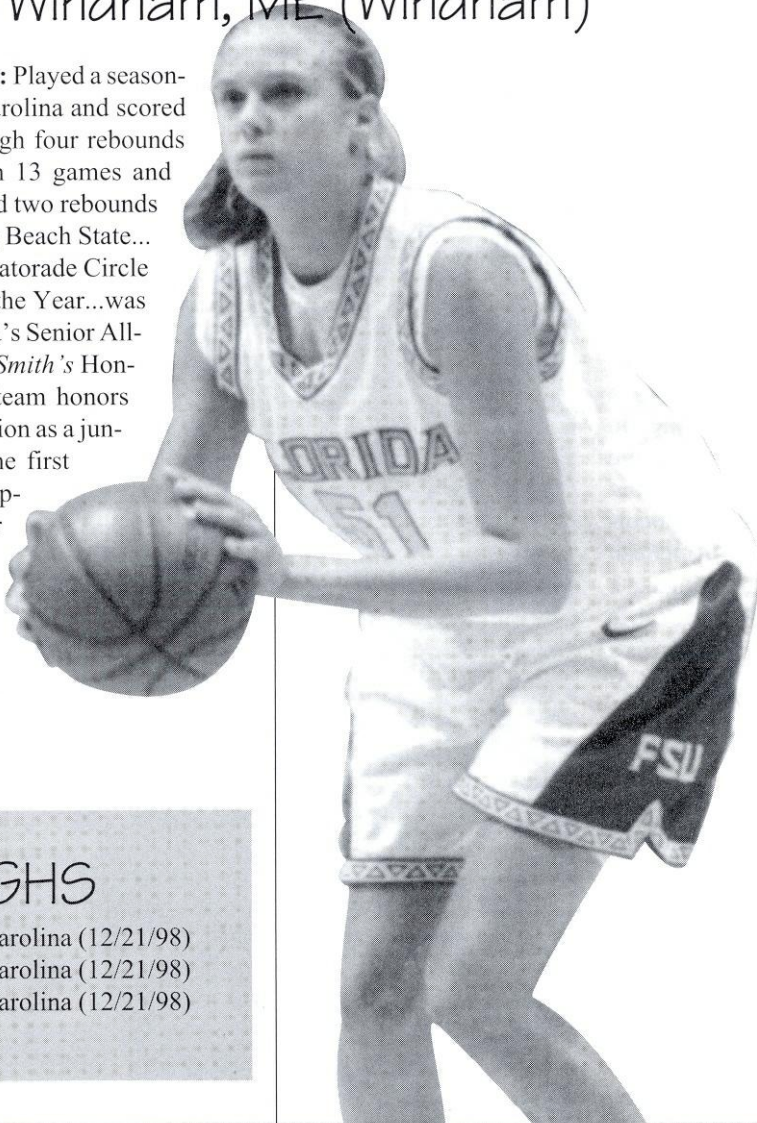


# #51 LEA BENNETT

C • 6-3 • So. • Windham, ME (Windham)

**S**olid inside player...**1998-99:** Played a season-high 17 minutes vs. Western Carolina and scored five points, grabbed a career-high four rebounds and had two blocks...played in 13 games and scored in three of them...grabbed two rebounds in four minutes of play vs. Long Beach State...**HIGH SCHOOL:** The 1998 Gatorade Circle of Champions Maine Player of the Year...was a member of the 1998 McDonald's Senior All-Star team...garnered *Street and Smith's* Honorable Mention All-American team honors...was a first team all-state selection as a junior and senior...was a three-time first team all-conference choice...captained her Windham team in her final two seasons...was a four-year letterwinner...coach was Denise Holmes...**PERSONAL:** Was born on May 31, 1980...is undecided on a major.



## CAREER HIGHS

POINTS ..... 5 vs. W. Carolina (12/21/98)  
 REBOUNDS .... 4 vs. W. Carolina (12/21/98)  
 BLOCKS ..... 2 vs. W. Carolina (12/21/98)

## BENNETT'S CAREER NUMBERS

YEAR	G-GS	MPG	FGM-FGA	PCT	3FG-3FGA	PCT	FTM-FTA	PCT	REB-AVG	AS	ST	BK	TO	PF-DQ	PTS-AVG
98-99	13-0	4.9	3-7	.429	0-0	.000	4-6	.667	10-0.8	0	0	6	4	4-0	10-0.8

## BENNETT'S ACC NUMBERS

YEAR	G-GS	MPG	FGM-FGA	PCT	3FG-3FGA	PCT	FTM-FTA	PCT	REB-AVG	AS	ST	BK	TO	PF-DQ	PTS-AVG
98-99	7-0	3.4	1-2	.500	0-0	.000	3-4	.750	3-0.4	0	0	3	2	1-0	5-0.7



# #10 LAKESHA SPRINGLE

G • 5-3 • So. • Thomasville, GA (Thomasville)

**S**peedy point guard...**1998-99:** Averaged 1.7 points and 1.1 assists per game...played in all 27 games, including two starts...tallied a season-high eight points vs. USF...had season-high five assists vs. USF and recorded five rebounds vs. CS-Fullerton and Georgia Tech...scored in 12 games...tallied a season-high six steals vs. Western Carolina...**HIGH SCHOOL:** The Georgia state Class AA Player of the Year...was a first team all-state and all-region selection at Thomasville High School...also garnered all-region and all-area Player of the Year honors...averaged 19.0 points, 6.0 rebounds, 4.0 assists and 3.0 steals per game as a senior...was a member of the Georgia Terrific Ten and the GACA and Georgia-Tennessee all star teams...was a four-year letterwinner...played for Margie York...became the first female athlete in the history of Thomasville High School to have her jersey retired...**PERSONAL:** Is majoring in sports management...was born November 2, 1979...was named to the 1998-99 ACC Academic Honor Roll.



## CAREER HIGHS

POINTS ..... 8 vs. USF (12/14/98)  
 REBOUNDS ..... 5 (twice)  
 ASSISTS ..... 5 vs. USF (12/14/98)  
 STEALS ..... 6 vs. W. Carolina (12/21/98)

## SPRINGLE'S CAREER NUMBERS

YEAR	G-GS	MPG	FGM-FGA	PCT	3FG-3FGA	PCT	FTM-FTA	PCT	REB-AVG	AS	ST	BK	TO	PF-DQ	PTS-AVG
98-99	27-3	14.2	14-49	.286	0-3	.000	17-28	.607	39-1.4	29	26	0	50	28-0	45-1.7

## SPRINGLE'S ACC NUMBERS

YEAR	G-GS	MPG	FGM-FGA	PCT	3FG-3FGA	PCT	FTM-FTA	PCT	REB-AVG	AS	ST	BK	TO	PF-DQ	PTS-AVG
98-99	16-1	13.1	7-24	.292	0-2	.000	6-11	.545	20-1.3	11	11	0	26	13-0	20-1.3



# #12 APRIL TRAYLOR

G • 5-10 • So. • Martinsville, IN (Martinsville)

**A**ggressive perimeter player who plays with confidence...**1998-99:** Averaged 12.7 points and 3.2 rebounds per game...was an ACC All-Freshman selection...scored in double figures in 17 games, including 15 of last 16 games of the season...scored 20 or more points in four games...recorded a career-high 29 points vs. Florida... established a new FSU record with 22 FT attempts vs. UF...led the team with 20 points vs. #12 Clemson and vs. NC State...scored 13 vs. Georgia Tech in second game back after injury and tied her season-high with seven rebounds...led the team with 23 points in season-opener vs. Tulsa and recorded seven rebounds...was twice named ACC Rookie of the Week...**HIGH SCHOOL:** A 1998 *Parade* All-American...was the 1998 Indiana Miss Basketball runner-up...her Martinsville High School team was ranked No. 2 in the nation...earned 1998 Nike Honorable Mention honors...set eight school records including most career points with 1,836...was a three-time first team all-state honoree...was pegged a 1997 and 1998 Indiana all-star...team lost just two games throughout her four-year career...played for Jan Conner...**PERSONAL:** Was born on April 25, 1980...is undecided on a major.



## CAREER HIGHS

POINTS ..... 29 vs. Florida (2/11/99)  
 REBOUNDS ..... 8 vs. Maryland (1/17/99)  
 ASSISTS ..... 5 vs. Florida (2/11/99)  
 STEALS ..... 6 vs. Tulsa (11/14/98)



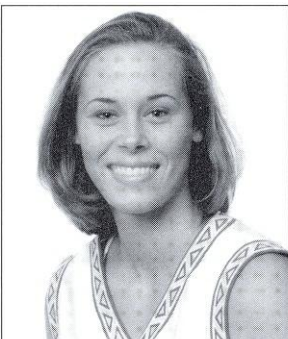
## TRAYLOR'S CAREER NUMBERS

YEAR	G-GS	MPG	FGM-FGA	PCT	3FG-3FGA	PCT	FTM-FTA	PCT	REB-AVG	AS	ST	BK	TO	PF-DQ	PTS-AVG
98-99	25-23	28.0	103-305	.338	21-75	.280	90-153	.588	81-3.2	46	34	6	103	95-10	317-12.7

## TRAYLOR'S ACC NUMBERS

YEAR	G-GS	MPG	FGM-FGA	PCT	3FG-3FGA	PCT	FTM-FTA	PCT	REB-AVG	AS	ST	BK	TO	PF-DQ	PTS-AVG
98-99	16-15	30.4	70-208	.337	15-54	.278	63-99	.636	56-3.5	27	22	5	71	65-8	218-13.6

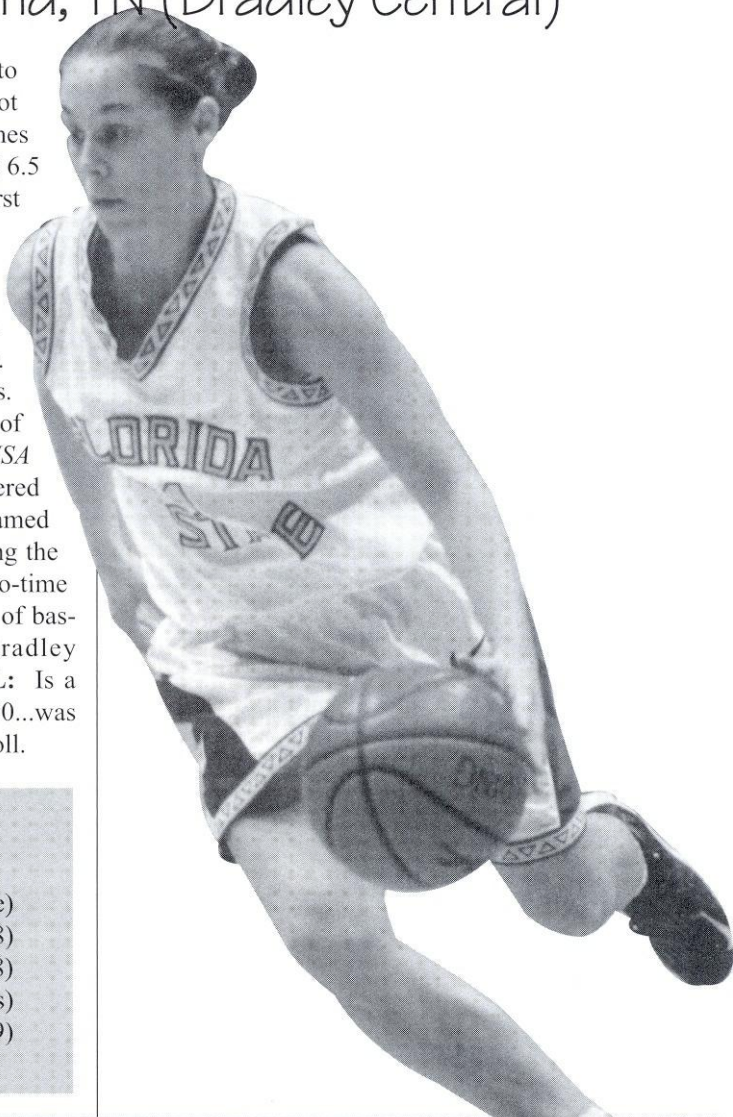




# #11 ANGELA SUTTON

G • 5-8 • So. • Cleveland, TN (Bradley Central)

**A**ggressive defender who worked her way into a starting role...**1998-99:** Suffered mid-right foot sprain in practice on Dec. 26 and missed six games ...played in 21 games with eight starts...averaged 6.5 points and 3.7 rebounds per game...recorded her first career double-double with 13 points and 11 rebounds vs. USF...scored in double figures in six games...recorded a career-high seven steals in finale vs. Duke...had six steals in USF and Western Carolina games...scored a season-high 17 points vs. LB State in 16 minutes off the bench and again vs. Duke on Jan. 25...was named the ACC co-Rookie of the Week on Nov. 23rd...**HIGH SCHOOL:** A *USA Today* honorable mention All-American...garnered *Street and Smith's* All-America honors...was named all-state as a junior and senior...was listed among the Best of the Preps the past two seasons...was a two-time all-Tri-State Area selection...played three years of basketball and one year of volleyball at Bradley Central...coach was Paul Cretton...**PERSONAL:** Is a leisure studies major...was born March 31, 1980...was named to the 1998-99 ACC Academic Honor Roll.



## CAREER HIGHS

POINTS ..... 17 (twice)  
 REBOUNDS ..... 11 vs. USF (12/14/98)  
 BLOCKS ..... 1 vs. W. Carolina (12/21/98)  
 ASSISTS ..... 3 (three times)  
 STEALS ..... 7 vs. Duke (2/26/99)

## SUTTON'S CAREER NUMBERS

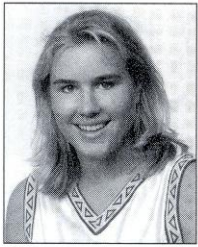
YEAR	G-GS	MPG	FGM-FGA	PCT	3FG-3FGA	PCT	FTM-FTA	PCT	REB-AVG	AS	ST	BK	TO	PF-DQ	PTS-AVG
98-99	21-8	22.3	56-131	.427	3-16	.188	22-35	.629	78-3.7	27	43	1	31	56-3	137-6.5

## SUTTON'S ACC NUMBERS

YEAR	G-GS	MPG	FGM-FGA	PCT	3FG-3FGA	PCT	FTM-FTA	PCT	REB-AVG	AS	ST	BK	TO	PF-DQ	PTS-AVG
98-99	11-4	24.5	28-69	.406	3-11	.273	6-13	.462	39-3.5	14	14	0	13	35-2	65-5.9



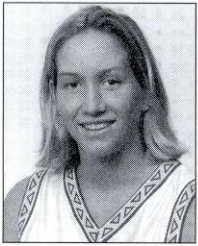
# NEWCOMERS



## #32 Molly Beal

FR. • 5-11 • G • MISSION HILLS, KS (PEMBROKE)

A 1999 *USA Today* honorable mention All-American...was chosen the 1999 Gatorade Circle of Champions Missouri Player of the Year...garnered 1999 first team Kansas City All-Metro honors...was a three-time, first team all-state selection...averaged 20.2 points, 7.0 rebounds and 5.0 assists per game as a senior and added 48 blocks...with 1,904 points, is The Pembroke High's all-time leading scorer...led team to the 1999 state title...was coached by Mark Spigarelli...an honor roll student...**PERSONAL:** Celebrates an August 7, 1980 birthday...is undecided on a major.



## #44 Lauren Bradley

FR. • 6-3 • C • LAKE MARY, FL (LAKE MARY)

A 1999 *USA Today* honorable mention All-American...was named the Florida Class 6A Player of the Year following senior season...was runner up for Miss Florida Basketball...was a three-time first team all-state honoree...holds career averages of 15.4 points, 8.3 rebounds and 3.2 blocks per game...was a member of the 1998-99 All-Southeast Team...was a four-time, first team all-conference selection...was pegged the 1997 and 1998 *Orlando Sentinel* Seminole County Player of the Year...led Lake Mary to a 113-10 record, four conference and district championships and one state championship over her career...played for Coach Carl Brown...an honor roll student...**PERSONAL:** Is majoring in criminology...was born May 7, 1981.

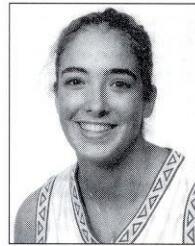


## #13 Levys Torres

JR. • 6-4 • C • COLOMBIA, SOUTH AMERICA (CHIPOLA JC)

Averaged 20.0 points, 15.0 rebounds, 5.0 steals and 3.0 assists in her two seasons at Chipola Junior College where she played for Coach Hilary Allen...competed in the 1996-97 and 1997-98 seasons and spent the past season completing her academic degree...was the team's leading

rebounder in both her freshman and sophomore years and ranked third on the squad in scoring...earned first team All-Panhandle Conference honors in 1997-98...was pegged the team's Most Valuable Player in 1997-98...was born and raised in Colombia, South America...was a member of the Colombian National Team and helped lead the squad to the South American Championship title in the summer of 1997...**PERSONAL:** Is majoring in information studies...was born April 2, 1978.



## #20 Katelyn Yujas

FR. • 6-3 • C • WADSWORTH, OH (WADSWORTH)

A 1999 *USA Today* honorable mention All-American...was listed among the Blue Star Top 25...earned first team all-state honors as a junior and senior...was the district and regional MVP in final two seasons...was a two-time county MVP...helped lead her team to the 1997 Division I state championship...is Wadsworth High School's all-time leading scorer with 1,127 career points, which ranks 11th on the Medina County all-time career scoring list...played for Coach Todd Osborne...also played volleyball for four years and ran track for two years...**PERSONAL:** Is majoring in communications...was born May 25, 1981.



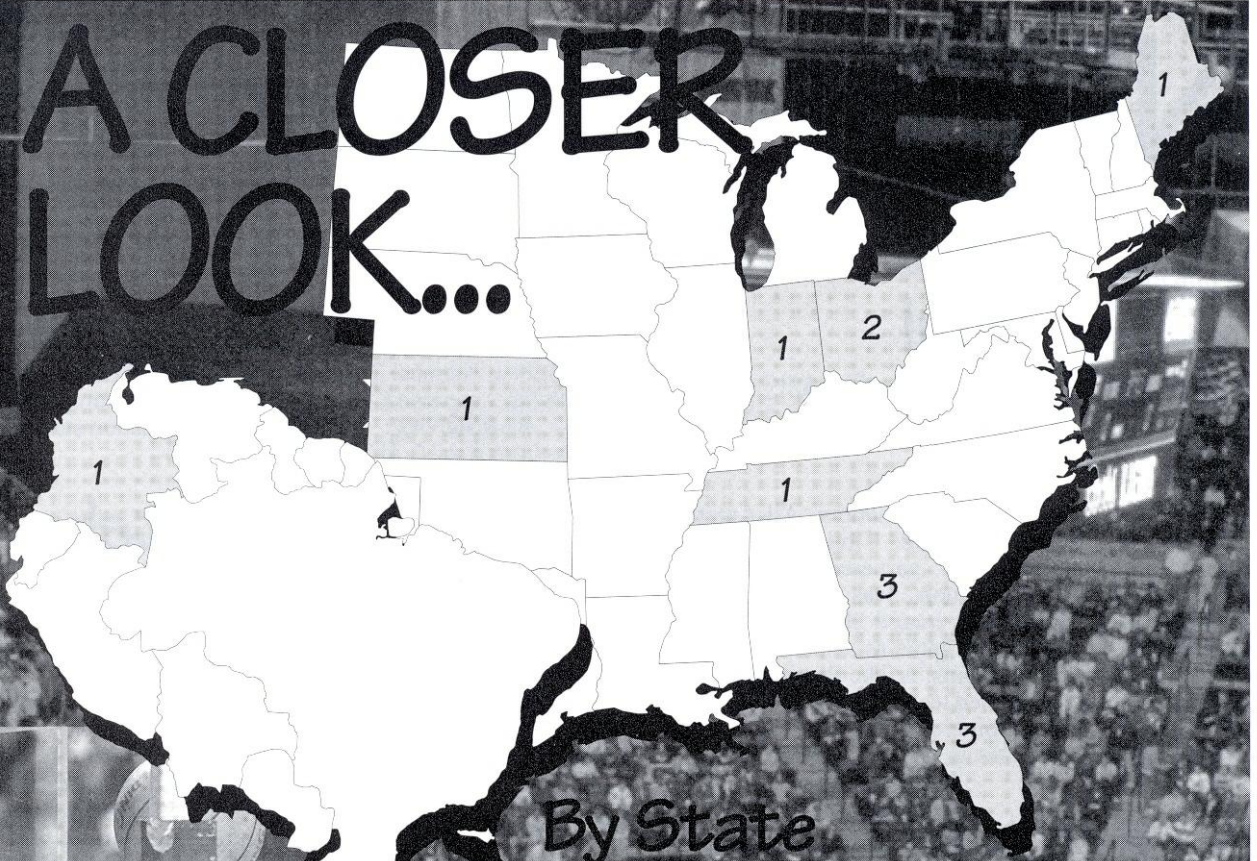
## #23 Shinikki Whiting

FR. • 5-9 • G • CLEARWATER, FL (CLEARWATER)

The *USA Today* 1999 All-America Player of the Year for the state of Florida...was pegged the 1999 Miss Florida Basketball...earned *Street and Smith's* and *Parade* honorable mention All-America honors...was chosen the 1999 Gatorade Circle of Champions Florida Player of the Year...had a #22 national ranking in the 1999 All Star Girls Report...garnered Florida Class 5A Player of the Year honors in junior and senior seasons...was a three-time all-state selection and a three-time all-county Player of the Year...established the scoring record at Clearwater with 1,499 career points...is Clearwater High's record-holder in 15 individual records, including points in a game (56)...played for Coach Tom Shaneyfelt...led Clearwater to a 109-22 record, two conference and four district titles, three Final Fours and one state runner-up in her four-year career...was invited to the USA Basketball World Youth Games Trials and Nike All-American Camp in 1998...**PERSONAL:** Father Mike was a running back at Florida State from 1979-81...was born February 6, 1981...is majoring in psychology.



# A CLOSER LOOK...



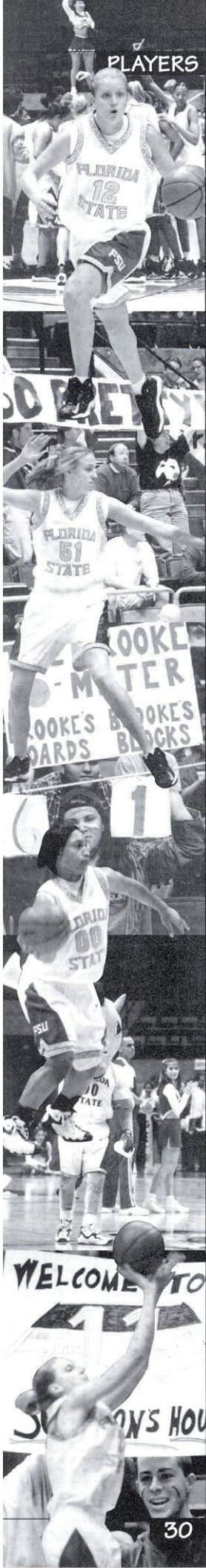
## By State

**FLORIDA (3):** Lauren Bradley (Lake Mary), Vanessa Fuchs (Pompano Beach), Shirikki Whiting (Clearwater)  
**GEORGIA (3):** Lako Brown (Eastman), Latavia Coleman (Macon), Lakesha Springle (Thomasville)  
**INDIANA (1):** April Traylor (Martinsville)  
**KANSAS (1):** Molly Beal (Mission Hills)  
**MAINE (1):** Lea Bennett (Windham)  
**OHIO (1):** Brooke Wyckoff (West Chester), Katelyn Vujas (Wadsworth)  
**TENNESSEE (1):** Angela Sutton (Cleveland)  
**SOUTH AMERICA (1):** Levys Torres (Colombia)

## By Height

Torres .....	6-4
Bennett .....	6-3
Bradley .....	6-3
Vujas .....	6-3
Wyckoff .....	6-1
Coleman .....	6-0
Beal .....	5-11
Brown .....	5-11
Fuchs .....	5-10
Traylor .....	5-10
Whiting .....	5-9
Sutton .....	5-8
Springle .....	5-3

## By Class

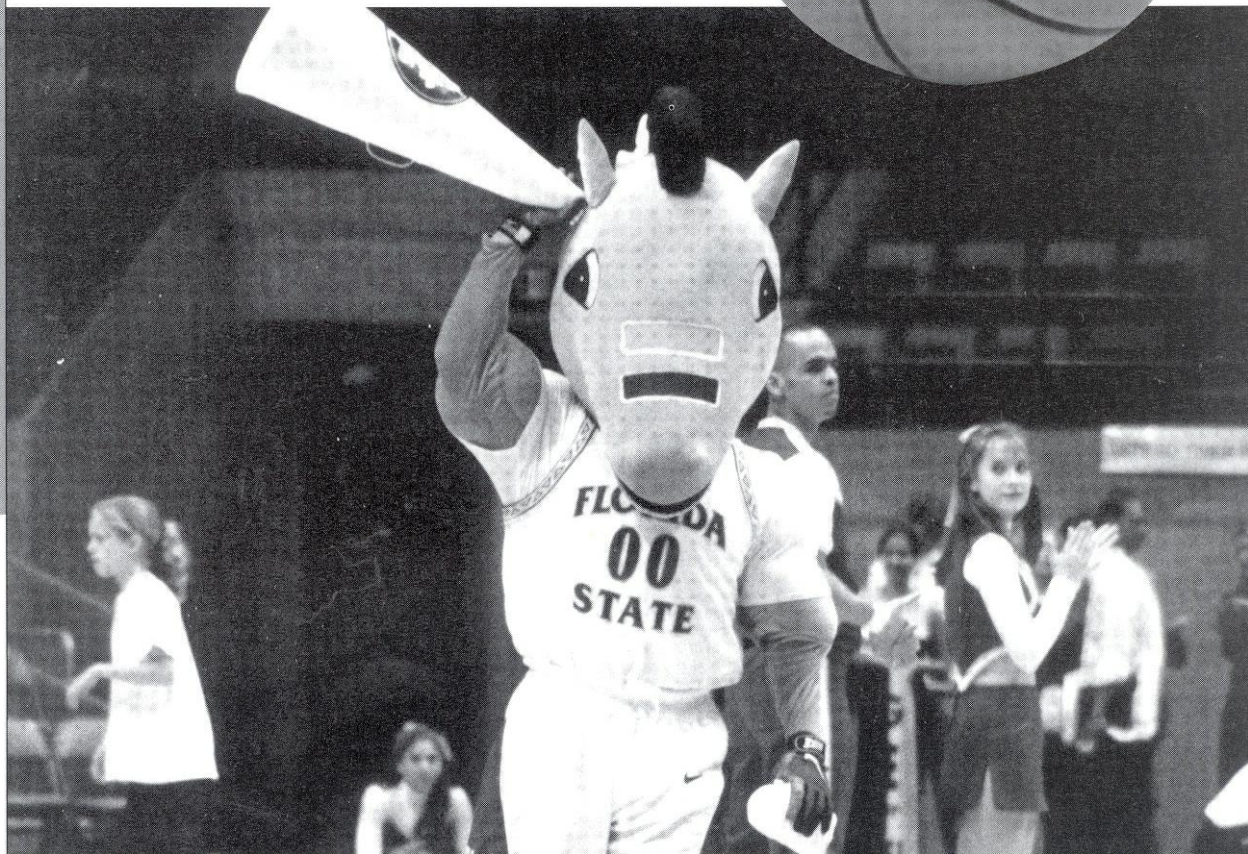


1999-2000 *Women's Seminole Basketball*

E  
X  
C  
E  
L  
L  
E  
N  
C  
E  
T  
O  
G  
E  
T  
H  
E  
R

# THE UNIVERSITY

- This Is Tallahassee
- This Is Florida State
- Administration
- Academic Support
- Support Staff
- Life Skills
- NCAA Info
- Community Service
- The Leon County Civic Center





# THIS IS TALLAHASSEE

**N**ear, but far from the glaring strips of neon amusement, and the castles and crowds of Disney, lies another magical place in the Sunshine State — one of pow-wows, plantations, politics and great pride. Often described as “The Other Florida” with its deep-rooted history, rolling hills, canopy roads of moss-draped oaks, cool climate and Southern-style hospitality; it is a Florida few have seen. It is Tallahassee — Florida with a Southern accent.

Best known as Florida’s capital, Tallahassee is an intimate neo-metropolitan city where the power of state government, the academic and the artistic are complemented by subtle, old-fashioned charm. It is the perfect two- or three-day diversion for the more than 41 million annual visitors to Florida and 13 million residents.

Tallahassee touts a menagerie of sights including one of the world’s deepest freshwater springs, site of America’s first Christmas, a wildlife habitat, Capitol buildings, fascinating museums of history, sprawling plantations, highly acclaimed fishing and hunting adventures and nearby beaches. Spirited area festivals range from celebrations of Tallahassee’s spectacular spring and swamp stomps to genuine rattlesnake roundups and sea-

food festivals.

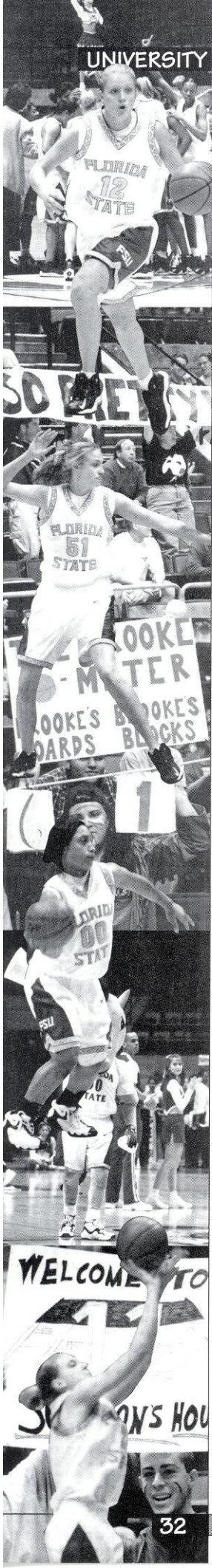
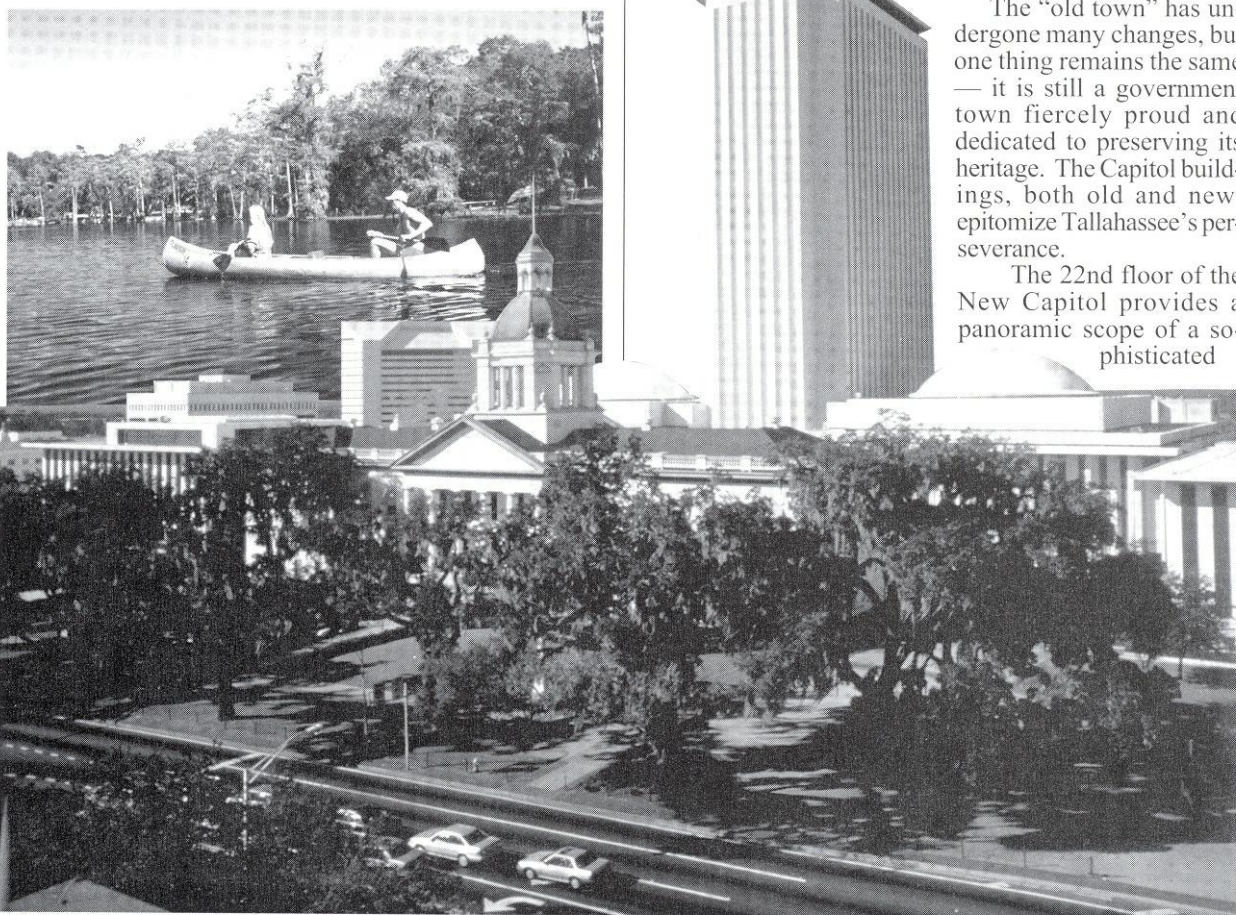
With the Gulf of Mexico just 20 miles south and the Georgia border only 14 miles north, Tallahassee rests between the foothills of the Appalachian Mountains and the juncture of Florida’s panhandle and peninsula. Nearer in miles to Atlanta than to Miami, Tallahassee more closely resembles its Southern neighbors than Florida in topography, climate and lifestyle.

Accentuating Tallahassee’s Southern persona are lush rolling hills, likened to the seven hills of Rome, and five “official” canopy roads of patriarch oaks. The fertile, rich soil and four distinct, yet pleasant, seasons breed floral brilliance and natural vitality year-round.

Like the city itself, the story of how Tallahassee was chosen as the state capital is rich in history. In 1823, two explorers set out — one on horseback from St. Augustine and the other by boat from Pensacola — to find a permanent, central location for the Legislature to convene. The two met at a beautiful site that the Creek and Seminole Indians called “tallahassee” — derived from the words “talwa” meaning town and “ahasee” meaning old. The rendezvous point remains Florida’s capital.

The “old town” has undergone many changes, but one thing remains the same — it is still a government town fiercely proud and dedicated to preserving its heritage. The Capitol buildings, both old and new, epitomize Tallahassee’s perseverance.

The 22nd floor of the New Capitol provides a panoramic scope of a sophisticated





Southern city awash in a sea of flowering azaleas, snowy dogwoods, towering pines, fragrant magnolias, and hundreds of shimmering lakes, springs, swamps, rivers and sink holes. Special legislative viewing galleries are open during the legislative session.

Below, in the shade of giant live oaks, proudly stands the Old Capitol, originally constructed in 1845 and restored to its 1902 splendor complete with red-and-white candy-striped awnings, a dome adorned with stained glass, antique furnishings and political memorabilia.

Across from the Old Capitol are the 40-foot twin granite towers of the Vietnam Veteran's Memorial, and the blue stone Union Bank, Florida's oldest surviving financial institution. The nostalgic Old Town Trolley, a replica turn-of-the-century street car, carries passengers through restored Adams Street Commons to numerous other historical downtown shops for free — unheard of even 100 years ago.

Minutes from downtown lies the Governor's Mansion, which resembles the home of Florida's military hero Andrew Jackson; and the 52-acre natural animal habitat and 1880s farm of the Tallahassee Museum of History and Natural Science, which provide the rare chance to walk and talk with native Florida animals.

Tallahassee remains firmly linked with the past as evidenced by the unearthed 1539 winter encampment of Spanish Hernando de Soto, the site of the first Christmas celebration in America. Visitors travel back through time as they stand in the shadow of a giant 12,000-year-old American Mastodon at the Museum of Florida History or explore other historical spots including The Knott House that Rhymes, The Columns, San Luis Mission, Lake Jackson State Archaeological Site, Natural Bridge Battlefield, First Presbyterian Church, Brokaw-McDougall House, Goodwood Plantation and Adams



Street Commons.

Nearby, alligators lazing in the sunshine and anhinga "snake birds" perched on twisted cypress branches are seen at Wakulla Springs, one of the world's deepest freshwater springs and site of many underwater scenes in the "Tarzan" movies with Johnny Weissmuller and Maureen O'Sullivan. Safaris aboard glass-bottomed and jungle cruise boats whisk visitors within arm's length of "The Other Florida."

Outdoor enthusiasts enjoy adventures including boating and fishing on area lakes, rivers, ponds and the Gulf — just 30 minutes away. Lakes Seminole, Jackson and Talquin are renowned in the bass fishing world for yielding the "big ones," and dense forests offer an abundance of prize-winning game. Local wildlife areas such as the Florida National Scenic Trail, St. Marks National Wildlife Refuge and Apalachicola National Forest are among many spots for camping, picnicking, swimming, biking and exploring.

Appealing to the strokes of different folks, Tallahassee also features 99 holes of golf on six courses and a proliferation of tennis centers. Sideline athletes cheer the nationally-ranked Florida State Seminoles, Florida A&M Rattlers and the Tallahassee Tiger Sharks, of the East Coast Hockey League. And always a sure bet are the nearby greyhound races.

A sport of sorts, shopping at two regional malls and many specialty centers offer many "playing options" — from popular chains to curiosity and antique shops.

Cultural interests are sparked by widely-acclaimed museums and galleries and elaborate entertainment at the 14,000-seat Tallahassee-Leon County Civic Center.

Tallahassee is a collaboration of power-play politics and classical character splashed with a twist of Southern beauty and charm. Tallahassee is Florida with a Southern accent.



## WE WON!

**TALLAHASSEE'S AN ALL-AMERICA CITY!** On June 26, judges from the National Civic League named Tallahassee as one of 10 cities to win the prestigious All-America City (AAC) award from the 1999 All-America City conference in Philadelphia. The All-America City award is the most prestigious and coveted award a community can win. The annual award recognizes exemplary, grassroots and problem-solving efforts of communities that cooperatively tackle challenges and achieve measurable results. Judging is based on the overall level of community involvement in solving critical local problems, including public-private partnerships.

"This is clearly one of the most exciting things to ever happen to Tallahassee," said a jubilant Mayor Scott Maddox. "For those of us who call Tallahassee home, the All-America City award verifies what we've known for so long — that we have one of the greatest cities in all of America!"

# THIS IS FLORIDA STATE

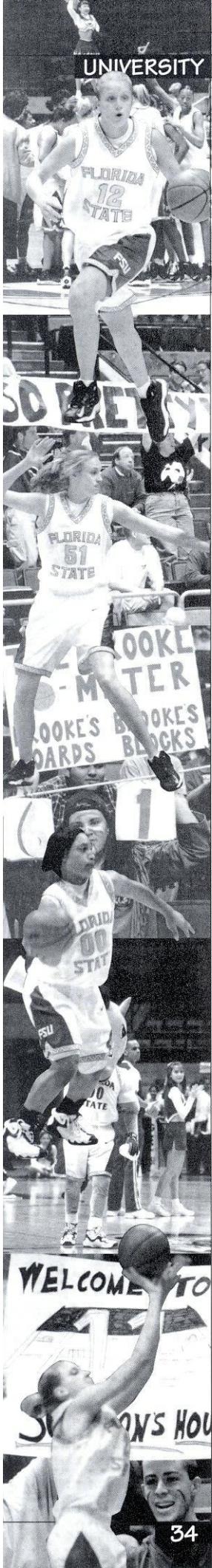
**F**lorida State University, a coeducational graduate research institution, stands among the nation's elite in both academics and athletics.

Located on the oldest continuous site of higher education in Florida and building rapidly on the framework of a highly regarded liberal arts college for women, the university has emerged over the past 52 years as an institution of national and international esteem. Its stature is evidenced by a number of additions to its record of excellence in the 1990s:

- In 1994, Florida State was classified a "Research University I" by the Carnegie Foundation, placing it among the nation's top research universities.
- In 1999, FSU was ranked as the most wired university in Florida, and 44th in the nation, in the "100 Most Wired Colleges" ranking by *Yahoo! Internet Life* magazine.
- FSU established the Bryan Hall Living-Learning Community in fall 1994, a unique academic residential program for freshmen designed to create a close-knit learning environment that benefits from

the assets of a large research university. Building on the success of the Bryan Hall program, the Broward Hall Social Sciences Residential Program in Public and International Affairs was launched in fall 1999.

- Vice President of the United States Al Gore spoke at the dedication of the National High Magnetic Field Laboratory at FSU in 1994. The National Science Foundation established the \$100 million magnet lab in 1990 at FSU, which runs the facility in partnership with the Los Alamos National Laboratory and the University of Florida. A Nobel laureate in physics and a top Russian physicist were among the first scholars drawn to the faculty. The world's largest magnet — two stories high and capable of generating 45 tesla or 1 million times the Earth's magnetic field — was installed in 1995 at the NHMFL, located in Innovation Park, an off-campus research complex.
- FSU created the first multipurpose student identification/banking card. The Card Application Technology Center is a national leader in "smart card" systems.
- In fall 1994, the first tenants moved into the east side of the \$85 million University Center, a classroom and office facility at Doak Campbell Stadium. With the completion of the west side in 1996, University Center now provides 550,000 square feet of much needed academic space and a centralized location for student services.
- In 1998, the FSU School of Motion Picture, Television and Recording Arts' graduate film program was ranked in the top 10 in the nation and third among public university film programs. Offering training for one of Florida's fastest growing industries, FSU conferred its first master's degrees in film in 1991 and its first bachelor's in film in 1993. The film school's students have produced numerous national and international award-winning films.
- The Center for Civic Education and Service was established in 1994, aimed at promoting community involvement and civic responsibility as integral elements of the liberal arts education at FSU. The center supports such service-learning programs as Into the Streets, a one-day community service project for freshmen, and Gadsden ESL (English as a Second Language), which provides educational services to migrant farmworkers. Through ServScript, students' service may be recorded on their official academic transcript.
- Florida State ranked eighth in popularity nationwide among all prospective students, fifth among prospective African-American students and fourth among prospective Hispanic/Latino students, based on the number of students who request that their Scholastic Aptitude Test (SAT) scores be sent to an



institution. FSU was the only institution listed among the top 10 choices of all three prospective student categories.

- FSU ranked 7th in the nation among public universities for 1993-97 in the number of African-American Ph.D. students it graduated.
- To better understand the world's cultural diversity, FSU undergraduate students are required to complete at least two courses that focus on diverse traditions beyond Western civilization. The multicultural study requirement, in effect since 1991, complements a long-established liberal studies program at FSU.
- In 1999, FSU created the Institute on War World II and the Human Experience to "save the memories of those who saved the world" by collecting letters, diaries, memoirs and photos from participants in the war effort, in order to preserve the materials for classroom teaching, scholarly research and public viewing.
- Capping more than a decade of national prominence in inter-collegiate athletics, Florida State's athletic teams, nicknamed "Seminoles," joined the Atlantic Coast Conference as its ninth member in 1990. The FSU football team won the 1993 National Championship and its quarterback, Charlie Ward, won the university's first Heisman Trophy.
- The Dr. Bobby E. Leach Center, a state-of-the-art student recreation facility, with weight-training facilities, a pool, saunas, basketball and racket-sport courts, was completed in 1991.
- The Appleton Museum of Art in Ocala, its vast art collection and an eminent scholar chair were donated to FSU and Central Florida Community College in 1990.
- FSU acquired the Asolo Performing Arts Center in Sarasota, home to the graduate theater program, the FSU/Asolo Conservatory of Professional Actor Training.

As this list of highlights attests, Florida State has excelled in the 1990s with exceptional strength, energy and vision for the future. Under the leadership of the university's 12th president, Talbot "Sandy" D'Alemberte, who took office in January 1994, FSU will continue to build on the foundation of its history of excellence in scholarship, research and service.

A senior member of the 10-member State University System, FSU was founded as an institution of higher learning in 1851 by legislative act and began in Tallahassee with its first students in 1857.

Today, FSU's operating budget is \$525 million. Faculty and administrators generate more than \$112 million annually in external funding to supplement state-sponsored research. Three direct-support organizations serve to bolster the university: the FSU Foundation, which raised \$301 million in private gifts during the university's first capital campaign, Seminole Boosters and the FSU Alumni Association.

The main campus is spread over 455.5 acres in Tallahassee; FSU, which has one of the smallest campuses in the SUS, has been actively acquiring land in the 1990s after years of being landlocked at 347 acres. FSU owns 1,308 acres in Leon, Bay, Franklin and Sarasota counties.

Within the state, the university maintains facilities at its 25-acre campus in Panama City, its Marine Laboratory in the Gulf of Mexico, the Appleton Museum in Ocala and the Asolo Performing Arts Center in Sarasota. The Center for Professional Development and Public Service, housed in the Augustus B. Turnbull III Florida

Conference Center on the edge of the campus, provides extensive credit and non-credit continuing education programs statewide.

For years, FSU has reached far beyond Florida through inter-national programs in Switzerland, France, Panama, Costa Rica, Spain, Russia and the Caribbean. FSU's student centers in Florence, Italy, and London, England, are considered by many to be the nation's best in Europe.

Florida State offers 289 graduate and undergraduate degree programs through its eight colleges — Arts and Sciences; Business; Communication; Education, Engineering (operated jointly with Florida A&M University, a historically black institution); Human Sciences, Law, and Social Sciences (which also incorporates the Reubin Askew School of Public Administration and Policy) — and eight schools — Criminology and Criminal Justice; Information Studies; Motion Picture, Television and Recording Arts; Music; Nursing; Social Work; Theatre; and Visual Arts and Dance.

With 1,731 members, the FSU faculty has included nine National Academy of Sciences elected members, nine American Academy of Arts and Sciences fellows and five Nobel laureates. It is backed by 3,002 administrative/professional and support staff.

Library holdings at Florida State include 2.2 million book titles, 16,384 serials and 4.7 million microforms. The main library facility, the Robert M. Strozier Library, is linked by computer to other state university and national research libraries. The Paul A.M. Dirac Science Center Library is located at the heart of the university's science research complex. FSU also maintains extensive music, library science and law libraries.

Also providing research opportunities is the tandem Van de Graaff Superconducting Accelerator Laboratory, which houses two powerful atom smashers.

Graduate students, who number more than 5,685, pursue advanced degrees in fields as diverse as business administration and theoretical particle physics. A majority of research done at FSU is the direct result of student effort, culminating in numerous books, monographs and journal articles relating to the whole spectrum of intellectual interests and the practical needs of society.

FSU, a residential campus, places a high priority on its 31,193 students and their needs and interests (of the student population: 45 percent are male; 55 percent are female; 21.7 percent are minorities; 2.6 percent are foreign students). The University Honors Program, Disabled Student Services, International Student and Scholar Center, Student Government Association, Flying High Circus and intramural sports are among more than 200 organizations and activities in which students may participate.

Situated in the heart of the state's thriving capital city, Florida State's main campus blends Jacobean Revival and modern styles of architecture with the oaks, pines, dogwoods, palms and azaleas of North Florida.

Florida State continues to progress and grow — from its pre-Civil War foundation as the Seminary West of the Suwannee, through the early 20th century as the academically respected Florida State College for Women, returning to coeducational status as a university in 1947, to its modern development as an acclaimed research institution, a top-ranked competitor in inter-collegiate athletics and as a standard-setter in the basic sciences and the performing arts.

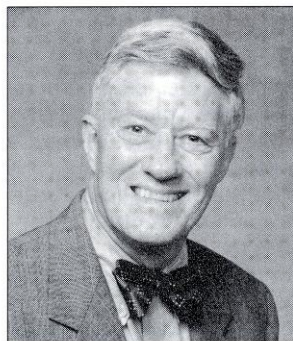
Florida State University enters the 21st century with excellence in all areas of its mission — teaching, research and public service.



# FLORIDA STATE ADMINISTRATION

## TALBOT "SANDY" D'ALEMBERTE

President, The Florida State University



**TALBOT "SANDY" D'ALEMBERTE**, president of The Florida State University since January 3, 1994, has had strong ties with the school since its inception. His grandfather attended the Seminary West of the Suwannee and his mother attended the Florida State College for Women, institutions that are predecessors to The Florida State University.

D'Alemberte served as the fourth dean of the FSU College of Law from 1984 to 1989 and continues to teach as a member of the university faculty. He was the 1991-92 president of the American Bar Association and represented Dade County in the Florida House of Representatives from 1966 to 1972 where he chaired several legislative committees and was recognized by the *St. Petersburg Times* in 1972 as the most outstanding member of the House. After leaving the Florida Legislature, he chaired the Florida Constitution Revision Commission in 1977-1978 and the Florida Commission on Ethics in 1974-1975.

D'Alemberte has won numerous awards, notably the 1985 National Academy of Television Arts and Sciences "Emmy" that he received for his work in open government, particularly in the opening of court proceedings to electronic journalists. In 1998, he was honored with the ABA Section of Legal Education Robert J. Kutak and the ABA World Order Under Law Awards. He has received recognition for his work in civil rights.

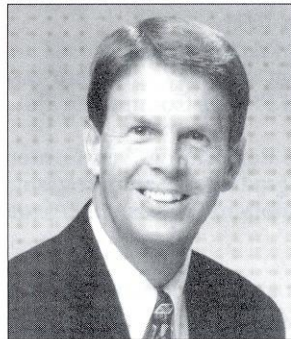
Born June 1, 1933, in Tallahassee, D'Alemberte was educated in public schools in Tallahassee and Chattahoochee, Florida. In 1955, he earned a bachelor of arts degree with honors in political science from the University of the South in Sewanee, Tennessee, and also attended summer school at FSU and the University of Virginia. After military service in the Navy, D'Alemberte studied on a Rotary Foundation fellowship at the London School of Economics and Political Science. In 1962, he received his juris doctor with honors from the University of Florida where he was named to the Order of the Coif, served as president of the Student Bar Association, was captain of the moot court team, served as articles editor of the *University of Florida Law Review* and received the J. Hillis Miller Award as the outstanding law graduate.

He is the father of two grown children, Gabrielle D'Alemberte Powell, a graduate of the University of

Denver Law School, and Joshua Talbot D'Alemberte, a graduate of his father's alma mater, the University of the South, and a public school teacher. D'Alemberte is married to Patsy Palmer, former children's policy coordinator in the late Florida Governor Lawton Chiles' office. She has worked as a journalist, legislative aide and White House staff member. She holds a bachelor's degree from the University of Missouri in journalism, a master's degree from the Harvard Divinity School and a master's degree in conflict resolution from Antioch University. D'Alemberte's personal interests include tennis, squash, sailing, reading and travel.

## DAVE HART, JR.

Director of Athletics



**DAVE HART, JR.**, became Florida State's 10th athletics director after a national search selected the former East Carolina athletics director in February 1995. Hart, 49, has gained national recognition for his skills in the areas of athletics management, public relations, marketing and fund-raising. He brought to Florida State an outstanding

reputation as one of the country's most respected athletics directors. Prior to being named athletics director at FSU, Hart was the architect of significant growth in East Carolina's athletics program from 1987-1995. Under his leadership, ECU dramatically enhanced its reputation and image while demonstrating marked strides in fund-raising and facilities as well as funding for women's athletics.

Hart has served on several prestigious committees at conference and national levels during his career in athletics administration. He has been a member of the NCAA Council, the NCAA Honors and Awards Committee and the NCAA Special Events and Post Season Bowls Committee as well as a consultant to the NCAA Student-Athlete Advisory Council. Hart currently holds positions of considerable influence within conference and national circles. He serves as president of the National Association of Collegiate Directors of Athletics and becomes president of the Division I-A Athletics Directors Association in October of this year. He also is a member of NCAA Football's Board of Directors where he serves with commissioners of Division I-A conferences and the NCAA president. In addition to serving in prominent leadership roles nationally, Hart also chairs the Atlantic Coast Conference Television Committee as well as its Marketing Committee.

A popular speaker at the national level and the author of a number of articles for national publications, Hart has made numerous speaking presentations at con-

ventions and seminars on program management, student-athlete welfare, marketing, fund-raising and personnel transition. For the past 11 years, he has been an instructor at the National Association of College Directors of Athletics' Management Institute.

Just the 10th athletics director in FSU history, Hart is in his fifth year as Florida State's Athletics Director where he oversees the Seminoles' 31 million dollar athletics budget. Since his arrival at Florida State, Hart has negotiated several major multi-million dollar contracts for the department, guided the development of a comprehensive athletics facilities master plan, initiated an extensive Student Development/Life Skills program for all student-athletes at FSU and spearheaded the rewriting of the department's Mission Statement to put the student-athlete at the core of everything the athletics department does in building comprehensive excellence throughout the athletics program.

He has also made major hires within coaching and administrative components of the department and under his guidance, Florida State's Compliance and Academic Support programs have made continued strides and are considered model programs within intercollegiate athletics.

Since Hart's arrival, FSU has formed a Varsity Club to encourage the participation of former student-athletes in current athletics department activities and a new focus has been placed on the growth of women's athletics at FSU. That commitment is reflected in the increased allocation of funding and facility improvements during Hart's tenure.

Football and baseball continue to flourish nationally during Hart's tenure as athletics director as evidenced most recently this past year when both the football and baseball programs played in the national championship game. The commitment to build men's and women's basketball into a conference and national contender is very tangible.

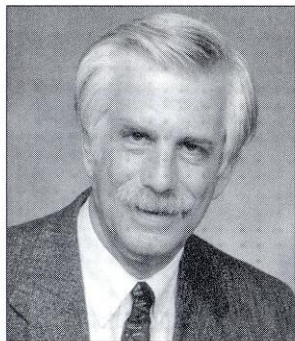
"We've been so fortunate to have Dave leading the university's athletic programs," said President Sandy D'Alemberte. "We hired him because of his record in building successful programs, his commitment to gender equity, his innovative approach to shaping the student behind the athlete, and the stability he offered. He proved us right and has certainly lifted Florida State athletics to a new level."

A 1971 graduate of Alabama, Hart played basketball for the Crimson Tide and earned a master's degree in 1972 while serving as a graduate assistant basketball coach. He coached and taught at the high school level before joining the East Carolina athletics program in 1983.

Hart met his wife, the former Pam Humble, while at Alabama and they have three children — Rick (27), Jamie (25) and Kelly (22).

## CHARLES W. EHRHARDT

*Athletics Board Chair*



**AS CHAIR OF THE FSU ATHLETICS BOARD**, Professor of Law Charles Ehrhardt is an important link for Florida State with the National Collegiate Athletic Association and Atlantic Coast Conference.

He has served as President of the ACC and as a member of the NCAA's Eligibility Committee. Last year he served as chair of the ACC Sportsmanship Committee.

Earlier during his tenure as the athletics board chair,

he was elected president of the NCAA's Faculty Athletic Representative Association, was a member of the NCAA President's Commission Liaison Committee and the Special Committee to Study the NCAA Enforcement and Infractions Process. He twice served as president of the Metro Conference. As a Commissioner to the National Conference of Commissioners on Uniform State Laws, Ehrhardt is involved in drafting legislation for a uniform state law regulating the activities of sports agents.

A highly-respected expert in the field of evidence, Ehrhardt is the Ladd Professor of Evidence in the Florida State University College of Law, where he has taught for over 30 years. He wrote the Florida Evidence Code, passed by the Florida Legislature, which regulates the admissibility of evidence during court trials. Ehrhardt has written books on evidence and trial objections, which are frequently cited and relied upon by courts.

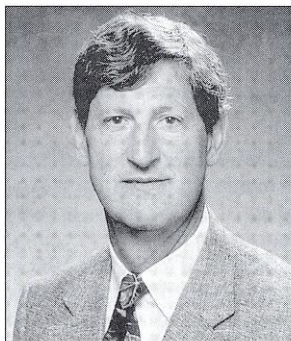
Ehrhardt is in demand as a lecturer and speaker. He works with lawyers and judges nationwide as a consultant on evidence matters. He currently teaches in the areas of torts, evidence, trial advocacy and sports law. He has been honored as the FSU College of Law outstanding professor in six different years. He was the recipient of a University Teaching Award in 1989 and the Professorial Excellence Award in 1997.

A native of Elkader, Iowa, Ehrhardt received a bachelor's degree from Iowa State University. He went on to the University of Iowa, where he earned his law degree in 1964. Before coming to Tallahassee, he was an Assistant United States Attorney.

Ehrhardt and his wife, the former Judy Sutton, have three children.

## CHARLIE CARR

*Senior Associate Athletics Director*



**CHARLIE CARR ENTERS HIS FIFTH** year as senior associate athletics director at Florida State in 1999. FSU athletics director Dave Hart named his longtime associate to the number two spot on his staff when he accepted the job in 1995.

Prior to coming to FSU, Carr served under Hart as an associate athletics director at East Carolina University for four years and was executive director of ECU's educational foundation from 1988 until his elevation to associate AD.

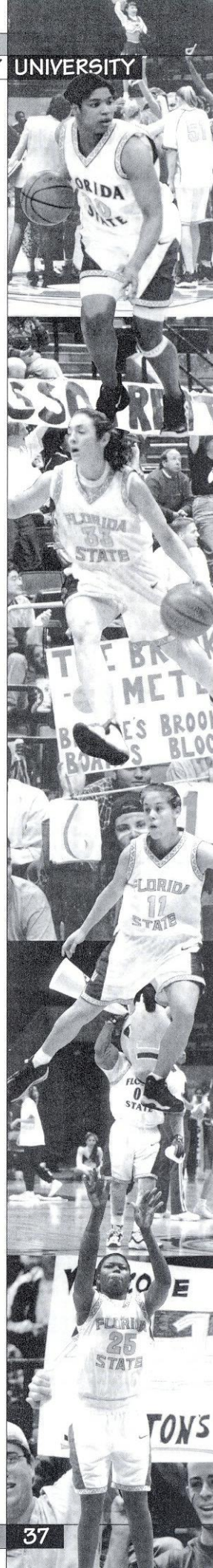
Carr's responsibilities since coming to Florida State include assisting in managing all phases of the department's daily operation. He serves as the department's spokesman in the AD's absence and acts as the athletics department's contact and liaison for campus and community organizations.

Carr also is charged with overseeing departmental personnel in addition to the administration of the Seminole baseball, cross country, golf, track and volleyball programs.

A well-known member of the college athletics scene in North Carolina as a player, coach and administrator, Carr was athletics director at Mississippi State from 1985-87.

Carr played football and baseball at North Carolina where he earned his master's degree in 1970. He played two years of professional baseball in the N.Y. Mets organization before becoming an assistant football coach at his alma mater from 1971-75 under Bill Dooley. He then coached at Rice University from 1975-78.

He returned to UNC in 1978 to begin administra-



tive work as senior associate athletics director until his appointment at Mississippi State.

Carr and his wife, Dee, have one daughter Caitlin (15).

## CHARLES HURST

Executive Associate Director of Athletics for Internal Affairs



### CHARLES HURST ENTERS

**HIS** 13th year the Florida State athletic department. Hurst was promoted to his present position in 1995 after three years as an associate athletics director, where he oversaw all of the department's financial and business affairs.

In addition to assisting in the daily management of the department, Hurst's duties include supervision of

the annual budget, business and ticket office operation, facilities management, personnel records, departmental contracts and negotiations.

The Talladega, Ala., native came to Tallahassee after a stint at the University of Florida, where he was Director of Internal Management Auditing from 1983-87. He was Manager of Internal Auditing at the University of South Alabama from 1981-83.

Hurst received his bachelor's degree from Jacksonville State (Ala.) University with a major in accounting and a minor in economics. He earned CPA status in 1975 while employed by the private firm of Brook and Freeman in Anniston, Ala.

He and his wife, Juanita, have one daughter, Maria (21).

## KIM RECORD

Associate Director of Athletics/Senior Women's Administrator



**KIM RECORD JOINED** Florida State's staff in August of 1995 when she was named to the newly created position of associate athletics director and senior women's administrator at Florida State.

Record is a veteran of Atlantic Coast Conference circles having served as an associate athletics director at her alma mater, the Univer-

sity of Virginia, for seven years.

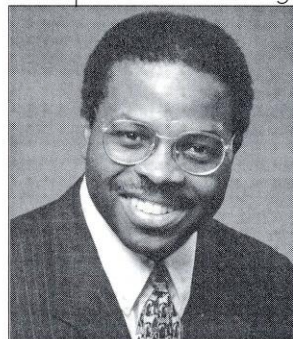
Record's responsibilities at Florida State include coordination and oversight of all multi-media contracts, supervising Title IX and gender equity compliance with the department, and overseeing the areas of sports marketing and sports information. She is also the primary administrator over the Seminole basketball, soccer, softball, swimming and tennis programs.

Prominent on the national scene as well, Record serves on NACDA's executive committee and on the NCAA women's soccer committee.

A native of Troy, Va., Record received her bachelor's degree in sociology in 1984 and earned a master's from FSU this spring. She has two sons, Kyle (11) and Joshua (6).

## BOB MINNIX

Associate Director of Athletics for Compliance and Legal Affairs



### NEWS SPREAD QUICKLY

in August of 1995 when Bob Minnix, a Director of Enforcement at the NCAA since 1975 and a former star running back at Notre Dame, announced he would leave his post to accept the newly created position of associate athletics director for compliance and legal affairs at Florida State University.

In his role at the NCAA, Minnix oversaw enforcement issues with regard to the NCAA and its member institutions including the preparation and presentation of cases to be heard by the Committee of Infractions. He has served on a number of NCAA committees including the Leadership and Development Training Committee, Special Events Committee, Post-Season Football Subcommittee, and staff task forces that concentrated on public relations, compensation, and employment opportunities for women and ethnic minorities.

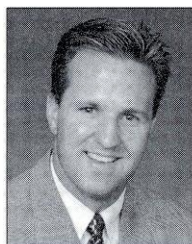
He is presently the chair of the NCAA Committee on Sportsmanship and Ethical Conduct and a member of the board of directors of the Black Coaches Association. He is also on the board of directors for the national association of athletics compliance coordinators. He frequently participates in panel discussions on current topics at the National Association of Collegiate Directors Association and the American Bar Association.

At Florida State, Minnix is charged with overseeing all departmental compliance issues, implementing and directing FSU's rules education programs, and serv-

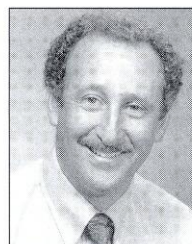
## Athletics Staff



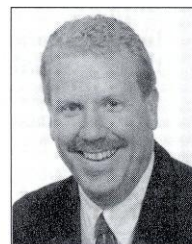
**PATRICK MARTIN**  
Athletics Ticket  
Manager



**SCOTT KULL**  
Director of Athletics  
Marketing



**BERNIE WAXMAN**  
Director of Facilities  
& Operations



**ROB WILSON**  
Sports Information  
Director



**PAM OVERTON**  
Director of Student  
Development

ing as the department's liaison and contact with university General Counsel as well as other legal interests. He is directly involved in the strategic planning of long range departmental goals regarding student-athlete welfare and life skills training.

Minnix has continued FSU's stance as a pro-active leader in addressing NCAA and ACC issues, and in educating coaches, staff, student-athletes and donors to the serious nature and ramifications of non-compliance.

A native of Spokane, Wash., Minnix attended Notre Dame, where he played in back-to-back Cotton Bowls in 1970 and 1971. He led the Fighting Irish in rushing as a senior in 1971. A 1972 Notre Dame graduate, Minnix attended law school at the University of Washington where he received his Jurist Doctorate degree in 1975.

Minnix and his wife, Genny, have two sons, Brennan (20) and Blair (15).

## ANDY URBANIC

Associate Director of Athletics for Football Operations & Special Projects



**ANDY URBANIC BEGINS** his 11th season in charge of football operations at Florida State. He added the responsibility of coordinating special projects within the athletics department two years ago and was elevated to the position of Associate Athletic Director this summer.

Urbanic is directly responsible for all aspects of football operations, including team travel and home

game operations. He also coordinates post-season logistics and travel for all Seminole teams and supervises the equipment, strength and conditioning, and training room staffs.

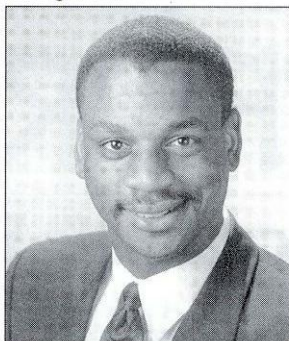
A member of the Pennsylvania Sports Hall of Fame, Urbanic came to Tallahassee with more than 20 years experience in collegiate athletics (most of which came as an assistant coach at the Division 1 level). Prior to taking the administrative post at FSU, he was at the University of Akron as offensive backfield coach and recruiting coordinator from 1986-87, and as assistant head football coach and offensive coordinator from 1987-88. From 1980-86, Urbanic was the offensive backfield coach at the University of Pittsburgh. Urbanic is a legendary figure in high school coaching in Pennsylvania, where he coached six undefeated teams and earned eight state championships.

Urbanic is a past president and member of the board of directors of the Pennsylvania State High School Coaches Association and remains active in the American Football Coaches Association.

He and his wife, Dorothy, have two daughters.

## GUY MORGAN

Assistant Director of Athletics for Program Services



**GUY MORGAN** is in his sixth year at Florida State University and his second under the title, Assistant Director of Athletics for Program Services.

Morgan's duties include assisting in securing employment for student-athletes, coordination of game events for Olympic sports and marketing for Olympic sports tournaments and special events. He previously served as assistant athletics director for the coordination and administration of the men's and women's basketball programs.

A graduate of Wake Forest, Morgan was the Most Valuable Player for the Demon Deacon basketball team as a junior and senior. He co-captained the team in his senior year (1981-82).

Morgan played professional basketball with the Indiana Pacers during the 1982-83 season. After his playing career, he worked in the furniture industry as a national sales consultant for four years.

From 1988-94, Morgan worked for Sports Marketing Enterprises, Inc., a division of RJR Nabisco Co. In that position, he served as a liaison between Vantage Brands and the PGA Tour for the Vantage Golf sponsorship.

Morgan and his wife, Tonya, are the proud parents of Guy II (4) and Sterling, born last February.

## GREG PHILLIPS

Assistant Director of Athletics for Business & Systems Management

**FLORIDA STATE ALUMNUS** Greg Phillips enters his fifth

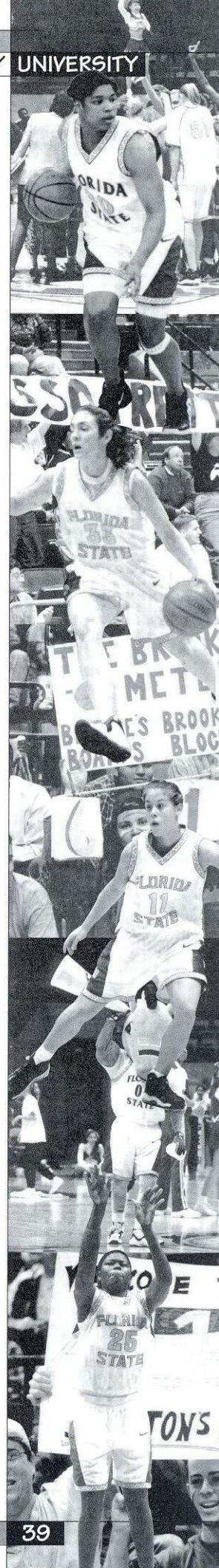


year as the assistant director of athletics for business and systems management in 1999. He was elevated to the position in 1995 after spending six years as the athletics department's business manager, and has served the department a total of 13 years.

Phillips oversees the day-to-day fiscal operations of the department and assists in the formulation and implementation of fiscal policies and procedures, including internal accounting controls. He participates in budget preparation and is responsible for the department's accounting, financial reporting, payroll, purchasing, travel and cashing functions. Phillips is also charged with managing the department's information technology and directing hosted NCAA championships.

Phillips joined the athletics staff in 1986 after earning bachelor's and master's degrees in accounting from Florida State and a master's degree in sports administration from the United States Sports Academy.

The Bartow, Fla., native currently serves as First Vice President of the College Athletic Business Management Association and also serves on the ACC Finance Committee. He and his wife Deanna have a son, Payton (5), and a daughter, Kathryn (3).





# ACADEMIC SUPPORT

## Athletic Academic Support Mission Statement

*The primary focus of the Athletic Academic Support Program is to provide an environment which facilitates the academic success of each student athlete. Student success is encouraged through competent academic counseling, study skills development, individualized assessment and support, and a wide array of tutorial services.*

### An Overview of an Award-Winning Academic Support Program

**A**cademic, personal, and professional support are essential to college success. At The Florida State University, we have developed an outstanding support program which enables student athletes to reach their full potential.

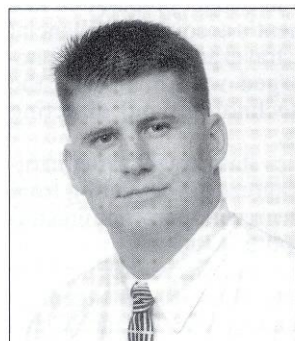
Director Mark Meloney states "Our philosophy is to offer an academic support program integrated with the total University that will assist all student athletes with the transition into college and provide continued support in all phases of academic and professional development, culminating with graduation, job placement, or graduate school".



Mark Meloney

Our program operates on a "proactive" rather than "reactive" approach. Our academic staff does not wait for crises to occur. We gather important background information on each entering student athlete, build an academic profile, and develop individualized support programs which are tailored to the unique needs of each student athlete. We also stay informed on the daily progress of the student athletes through consistent communication with our faculty.

The academic support unit is housed in the \$126 million dollar, state-of-the-art University Center Complex. It includes private study carrels, a tutorial



Matt Schmauch

study area, and a computer lab outfitted with 16 IBM compatible computers and laser jet printers. In addition, the athletic sky boxes are used for group and individualized tutorial instruction. The academic support staff is comprised of a Director, an Administrative Assistant, five Academic Counselors, several graduate assistants, individualized learning specialists, and a cadre of about 70 tutors and mentors.

Mark Meloney was named the program's Director in 1997 and brings 12 years of advising experience to the position. Over the past five years, Meloney has played an integral role in the development of a comprehensive program of student athlete support, which in 1996 won the "Program of Excellence" award from Athletic Management Magazine.

Matt Schmauch is the academic counselor for the women's basketball team. Schmauch, a native of Allen Park, Mich., has been a member of the FSU Academic Support staff since the fall of 1997. He earned a bachelor's degree in finance from Florida State in 1995 and went on to receive a master's degree in athletic administration from FSU in 1996.

A former student-athlete himself, Schmauch was a member of the Seminole swimming team from 1994-96 after transferring from the University of Florida. During his career, Schmauch was an Atlantic Coast Conference finalist while achieving ACC Honor Roll and Academic All-American status. An active member of the FSU athletics department, Schmauch was involved with the Say "No" to Drugs program and was also a member of the Student Athlete Advisory Board. He also served as an intern with the Seminole Boosters while pursuing his master's degree.

In addition to working with the women's basketball team, Schmauch is also the academic counselor for the softball and men's and women's swimming and diving teams. Schmauch's duties include coordinating support services for the student-athletes including assigning tutors, assisting in course and major selection, teaching study skills and advising about eligibility requirements while monitoring their day-to-day academic re-

sponsibilities in an effort to ensure they maintain progress toward their degrees. Schmauch also actively participates in the recruitment process of all prospective student-athletes. In addition, Schmauch serves as the Eligibility Coordinator, Admissions Coordinator and as the liaison to the NCAA Clearinghouse for the FSU Academic Support Program.

## Academic Support Tutorial Program

The Athletic Department at Florida State University has made a commitment to providing our student athletes with one of the finest and most comprehensive tutorial programs in the nation. The tutorial program is just one of several key support services that is available to all student athletes as they progress towards their ultimate goal of obtaining a college degree. We hire approximately 70 tutors a year, from a variety of academic departments, who are committed to providing a proactive, individualized approach in assisting student athletes with course comprehension and study skills. The tutors are usually seniors or graduate level students who have outstanding academic backgrounds.

Tutorial assistance is available for all academic coursework and may be obtained by filling out a tutorial request form at the beginning of the semester, or as needed.

## Mentor Program

Academic Mentors are academic role models who have demonstrated the ability to teach and give guidance in areas of academic developmental skills. Each semester, mentors begin the process by sitting down with their assigned student athletes and assist them in identifying all of their academic responsibilities for that semester. A calendar is developed which becomes a visual blueprint of each course's academic requirements. This tool introduces the student athlete to the concept of time management. Students learn to plan projects days and weeks in advance. Such planning aids them in developing strong study and organizational habits.

Mentors are also responsible for providing assistance in the development of skills such as note taking, test preparation, and communication with faculty. In essence, mentors become an extension of the academic counselor as they keep the academic performance of their student athletes under close observation and report to the academic counselors each week.

## Study Hall

In an effort to help ensure the academic success of the student athletes, professionally supervised study sessions for each athletic team are organized. The main focus of the study hall program is to help students develop consistent and appropriate study patterns by providing a structured setting to work on class assignments and to provide tutorial assistance before academic problems arise. Although the criteria for study hall is left to

the discretion of each academic counselor, typically most freshmen, first year transfers, and upperclassmen who have not yet achieved a satisfactory cumulative grade point average are asked to attend study hall.

## Academic Honors & Awards

Florida State University student athletes have achieved great success in obtaining recognition for academic excellence. More than \$120,000 in postgraduate monies have been granted to FSU's student athletes over the past four years, as well as a number of other academic honors and awards.

Florida State University had a record 154 student athletes on the 1997 Atlantic Coast Conference Honor Roll and boasted two Weaver-James-Corrigan Postgraduate Award Winners, numerous GTE District Academic All-Americans, a National Football Foundation and College Hall of Fame \$18,000 Postgraduate Award Winner, a Burger King Scholar Athlete, and a National Scholar Athlete of the Year.

The Academic Support Program is committed to recognizing the academic success of all student athletes. The Athletic Department, in conjunction with Seminole Boosters, Inc., puts on the annual "Golden Torch Gala", a black-tie academic awards banquet, each fall. The ACC Honor Roll student athletes, as well as the individuals with the highest GPA on their respective teams, and the men's and women's teams with the highest GPA are recognized at this event.

Team meetings are held each year, during which time student athletes are notified of potential honors and awards and are encouraged to apply. Combining a strong grade point average with athletic accomplishments, community service activities, and leadership experiences make for a student athlete capable of obtaining unlimited academic honors, awards, and postgraduate opportunities.

## 1998-99 ACC Academic Honor Roll

Arleshia Davidson  
Vanessa Fuchs  
Val Linley  
Jen Robinson  
Lakesha Springle  
Angela Sutton  
Brooke Wyckoff



# SUPPORT STAFF

## Florida State Strength & Conditioning

**T**he *Strong Shall Survive* is the motto of the strength and conditioning staff at Florida State University. It is also this philosophy that has made Seminole athletes in all sports among the strongest, fastest and fittest anywhere. At Florida State, the strong not only survive, they win too!



*Sterling Brown*

Florida State has developed a supervised program for women's basketball, emphasizing the objectives of not only building bodies, but strengthening and conditioning them. Strength coach Sterling Brown, who is now in his third year on the Florida State strength and conditioning staff, individually customizes programs for each of the athletes beginning with pre-conditioning before the season gets underway.

The Florida State women's basketball team achieves its goals in a state-of-the-art facility at the Coyle E. Moore Athletics Center, located in the same building as the coaches' offices, practice gym, women's basketball locker room and team meeting room. The weight room is a spacious area encompassing over 7,000 square feet. The newly-renovated weight room is complete with a rubberized floor surface, drop-ceilings with enhanced lighting, stereo sound system, cooled water fountains and a mirrored area which includes exercise systems by Cybex Eagle as well as free weight equipment. A variety of bicycles, rowing machines and Stairmasters com-

plete both the strength and conditioning and cardiovascular experience. The weight room used by the Seminole football team has banners commemorating FSU's bowl victories which hang from the rafters and inspirational slogans cover the walls.

Brown, a native of Fort Lee, New Jersey, was a four-year football letterwinner at the University of Richmond. As a starting wide receiver, Brown set numerous reception records for the Spiders. Brown is married to the former Myssi Calkins. The couple has a daughter, Jaden, who was born in August.

Along with women's basketball, he also trains the women's soccer and golf teams at Florida State. FSU takes pride in customizing the programs to help student-athletes reach their maximum potential.

## Florida State Medical Care & Treatment



*Kari Langley*

An athlete can expect to receive the best care and treatment possible with the athletic training team at Florida State University. Prior to competition, all FSU student-athletes undergo screening in order to detect any potential injuries. If a problem is detected, the athlete may be placed on a prevention care system which may include any kind of treatment from icing to exercising. Second-year Assistant Athletic Trainer Kari Langley will handle the athletic training duties for the women's basketball team again this season.

Langley is a 1996 graduate of Valdosta State University where she earned a bachelor's degree with honors in sports medicine. She joined the Florida State staff in July of 1998 after working two years as a graduate assistant athletic trainer at Michigan State University while pursuing a master's degree in Kinesiology.

At MSU, Langley's primary responsibility was serving as the head women's gymnastics athletic trainer. In addition to coordinating all phases of health care for the MSU gymnasts, some of Langley's other responsibilities included assisting with



*The Women's Basketball team locker room and meeting room.*



The weight room at Coyle E. Moore Athletics Center.

preseason football and student-athlete drug testing and coordinating mass physicals for 14 of MSU's athletic teams.

In addition to her women's basketball athletic training duties, Langley also supervises the athletic training of women's tennis and coordinates annual drug testing of all FSU female athletes.

A native of Akron, Ohio, Langley is a certified member of the National Athletic Trainers Association and is also a certified Red Cross CPR/First Aid Instructor.

Though the prevention of injuries is the main objective, some injuries are unavoidable. Rehabilitation is another component of the Florida State training room. The FSU athletic training staff will work with the athlete and provide an intense rehabilitation schedule that will allow the athlete to successfully rehabilitate after an injury. Some injuries and illnesses may be referred to the Seminole team physicians at the Tallahassee Ortho-

pedic Center, who, for many years, have worked in conjunction with the FSU athletic training staff in successfully rehabilitating athletes after an injury.

## Locker Room

The Florida State women's basketball team utilizes a recently completed three-room locker room facility located in the Moore Athletic Center where the squad trains and practices. The locker room was specifically designed to meet the needs of the Florida State women's basketball players as people, students and athletes. The locker room features a lounge and study area, equipped with study carrels, couches and entertainment center, an area equipped with individual wooden lockers, seating and meeting area and a section which includes individual shower and dressing units.



# BASKETBALL STAFF



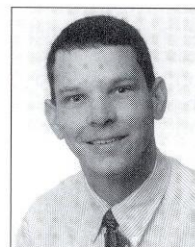
KRISTIN BROOKENS  
Senior Secretary/  
Recruiting Manager



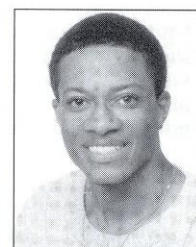
STACEY BURCH  
Administrative  
Assistant



JENNIFER FEQUIERE  
Manager



DAVID HOLTZCLAW  
Promotions



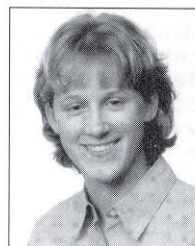
DAMION JONES  
Manager



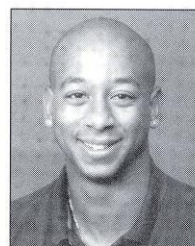
VAL LINLEY  
Student  
Assistant Coach



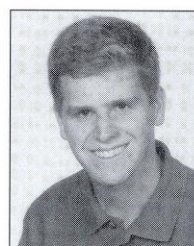
JAIME OSER  
Student Assistant  
Athletic Trainer



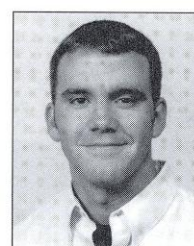
TRACY RAKSNIS  
Manager



ANTWAN SMITH  
Video Coordinator,  
Seminole  
Productions



PETE WAGES  
Video Assistant,  
Seminole  
Productions



CHANDLER YOUNT  
Manager

# STUDENT DEVELOPMENT & LIFE SKILLS

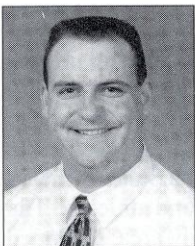


## THE N.O.L.E.S. PROGRAM: NEW OPPORTUNITIES FOR LEADERSHIP, EDUCATION & SERVICE

**D**eveloped by the Florida State University Department of Athletics, the NOLES program represents a commitment to the total growth and development of the student-athlete. This program establishes an administrative commitment to academic and athletic excellence. Those efforts will be supported with programs and services in personal development, career development and community service.

### PERSONAL DEVELOPMENT

Fostering the development of personal growth is a fundamental component of the NOLES program. These support programs ensure that the student-athlete will be provided opportunities to focus on personal growth issues such as values clarification, goal setting, fiscal planning, decision making and personal responsibility. Programming focuses on helping student-athletes develop a healthy lifestyle while they are at Florida State and habits that will benefit them for life.



BILL SHIRK  
Coordinator



AMY MAGNUSON  
Sports  
Nutritionist

### CAREER DEVELOPMENT

Preparing for life after college sports is a major focus of the NOLES Career Development program. The program is designed to work cooperatively with the University's Career Services to acquaint students with the job search process, provide networking opportunities and ultimately assist with job placement. This program places a priority on the devel-



Student Development Director Pam Overton was presented with the first annual Dr. Gene Hooks Award for the outstanding CHAMPS program coordinator as chosen by the Division I-A Athletics Directors.

opment of the total person, with the goal of developing individuals who will have rewarding careers and productive lifestyles after they leave Florida State.

### COMMUNITY SERVICE

Serving the community is the focus of our Seminole Spirit program. Student-athletes are challenged to give service to our community and individuals who are in need. With a clearly defined program of service, student-athletes are given the opportunity to develop the foundation for a lifelong commitment to volunteerism. The Seminole Spirit Student-Athlete Speakers' Bureau enables student-athletes to improve their speaking skills, develop effective communication and impact the lives of others through their service as role models in our community.

### LEADERSHIP DEVELOPMENT

The Florida State University Department of Athletics is committed to developing programs of excellence that foster leadership development. The foundation of the leadership development program are the Seminole Leadership Institutes that are held four times a year. These institutes offer student-athletes the opportunity to learn skills that will benefit them as students, as athletes, and as they pursue their goals after leaving Florida State. The Institutes have the opportunity to use the values and work ethic taught by athletic participation as the framework for their leadership development. The Institutes attract outstanding guest speakers who challenge Seminole student-athletes to achieve their greatest potential and use their leadership skills to positively influence others.

The Student-Athlete Advisory Council (SAAC) serves as the advisory board to the NOLES program and the athletics administration. The prestigious board, comprised of two representatives of each athletic team at FSU, also recommends programming and serves as a liaison between student-athletes and the athletics administration. The Advisory Council plans and implements various events for student-athletes and serves as the department's most visible ambassadors. The SAAC hosts the annual Golden Nole banquet and plans such events as orientation for incoming student-athletes and the back-to-school picnic.



Vanessa Fuchs enjoys a kayak ride at the back-to-school picnic.



# NCAA INFORMATION

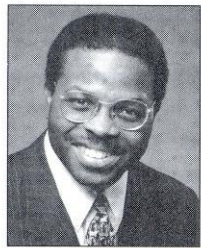
THE FOLLOWING INFORMATION IS PROVIDED BY THE FLORIDA STATE OFFICE OF COMPLIANCE FOR PROSPECTIVE STUDENT ATHLETES. IT IS INTENDED AS A GUIDELINE TO INTRODUCE SOME OF THE RULES GOVERNING NCAA ATHLETIC INVOLVEMENT.

## WHO IS PERMITTED TO RECRUIT FOR FSU?

Only Florida State University coaches who have successfully completed the NCAA Recruiting Rules Examination on an annual basis may be involved in the recruitment process. Representatives of our athletics interests **may not** make any recruiting contacts. This includes letters, telephone calls or face-to-face contact on or off campus with a prospect or the prospect's parents.

## KEY TERMS YOU SHOULD KNOW

You become a **PROSPECTIVE STUDENT-ATHLETE** if you have started classes for the ninth grade. Before the ninth grade, you become a prospective student-athlete if the college provides you (or your relatives or friends) any financial aid or other benefits that the college does not provide to prospective students generally.



**BOB MINNIX**  
Associate Director  
for Compliance &  
Legal Affairs

A **CONTACT** is any face-to-face encounter between a prospect or the prospect's legal guardian and an institutional staff member or athletic representative during which any dialogue occurs in excess of an exchange of greeting. **NOTE:** At the Division I level, athletic representatives (boosters) may not contact you for the purpose of recruiting. A college coach may contact you in person off the college campus beginning July 1 after completion of your junior year in high school.

An **EVALUATION** is any off-campus activity designed to assess your academic qualifications or athletic ability, including any visit to your high school (during which no contact occurs) or the observation of any practice or competition in which you participate.

During your senior year, you can have one expense-paid **OFFICIAL VISIT** to a particular campus. You may receive no more than five visits. During your official visit, which may not exceed 48 hours, you may receive round-trip transportation between your home and the campus, and you (and your parents) may receive meals, lodging and complimentary admission to campus athletics events.

## PHONE CALLS AND LETTERS

Phone calls from faculty members and coaches (but not boosters) are permitted beginning July 1 after completion of your junior year. A college coach or faculty member is limited to **ONE TELEPHONE CALL PER WEEK** except when it is:

- On the day of a coach's off-campus contact with you
- During the time beginning with the initial National Letter of Intent signing date in your sport through the two days after signing date

Letters from coaches and faculty members (but not boosters) are not permitted until September 1 at the beginning of your junior year in high school. A Division I university may provide you with the following printed materials:

- General correspondence, including letters, U.S. Postal Service postcards and institutional note cards
- Game programs which may not include posters and one Student Athlete Handbook can be provided only during official or unofficial visits to the university's campus
- NCAA educational information
- Pre-enrollment information subsequent to signing a National Letter of Intent with the university
- One athletic publication which may include only one color of printing inside the covers
- Official academic, admissions and student services publications published or videotapes produced by the institution and available to all students
- Schedule cards
- Questionnaires which may be provided prior to your junior year
- Summer camp brochures which may be provided prior to your junior year.

## ALUMNI AND BOOSTERS DO'S & DON'TS

**YOU MAY** forward information about prospective student-athletes to the appropriate coaches.

**YOU MAY** have contact with a prospect regarding permissible pre-enrollment activities such as summer employment, provided the prospect has already signed a National Letter of Intent and the Compliance Office is aware that you are making these contacts in regard to employment.

**YOU MAY** have a telephone conversation with a prospect **only** if the prospect initiates the call. Such a call may not be prearranged by an institutional staff member and you are not permitted to have a recruiting conversation, but may exhibit normal civility. You must refer any questions about our athletics programs to an athletics department staff member/coach.

**YOU MAY** view a prospect's contest at your own initiative provided you do not contact the prospect or his/her parents. In addition, you may not contact a prospect's coach, principal, or counselor in an attempt to evaluate the prospect.

**YOU MAY** continue established family relationships with friends and neighbors. Contacts with sons and daughters of these families are permitted as long as they are not made for recruiting purposes or encouraged by Florida State University coaches.

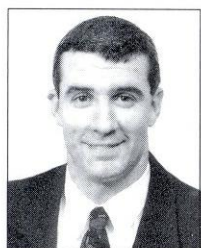
**YOU MAY NOT** become involved in making arrangements to receive money or financial aid of any kind for a prospect or the prospect's family and friends.

**YOU MAY NOT** make contact with a prospective student-athlete and his/her parents when the prospect is on campus for an official or unofficial recruiting visit.

**YOU MAY NOT** transport, pay or arrange for payment of transportation costs for a prospect, and his/her relatives or friends to visit campus (or elsewhere).

**YOU MAY NOT** pay or arrange for payment of summer camp registration fees for a prospect.

**YOU MAY NOT** provide **anything** to a prospect, the prospect's family or friends without prior approval from the athletics' Compliance Office.



**BRIAN BATTLE**  
Director of  
Compliance



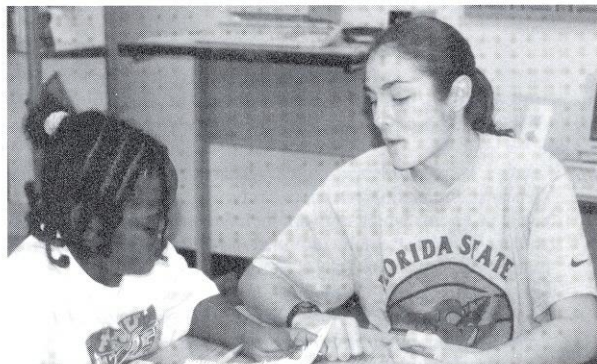
**PENNY PARKER**  
Assistant Director  
of Compliance

- During the five days immediately before your official visit to the university



# COMMUNITY SERVICE

*"To whom much has been given, much is required"*



**T**he Florida State women's basketball team makes community service a priority.

For Florida State women's basketball Head Coach Sue Semrau, her philosophy is simple. Semrau runs her program in such a way that players are treated as people first, students second and athletes third. She is a relationship coach who believes in going and initiating relationships rather than waiting for others to do so. It's this philosophy that has filtered into the actions of her staff and players at Florida State, both on and off the court.

There's a pride that Semrau has instilled in her players — a pride that they find delight in sharing. Florida State knows how important the community is in the development of the women's basketball program and the Seminoles appreciate the support that they receive. Because of this, the Seminoles believe in "giving back" and that's why community service is a priority to the Florida State women's basketball team. It all starts on the court. Following every Seminole home game, fans are invited to circle the court to meet the players and coaches. The Seminoles are sure to greet each and every person — no matter how long it takes to get around the court!

"The fans are always there supporting us and it's just so important for us to let them know how much they are appreciated," said senior Latavia Coleman.

But that's just the beginning. "To whom much has been given, much is required" — words that Semrau and her team choose to live by. To help practice this, the women's basketball team, in conjunction with the Florida State Athletics Life Skills/Student Development Department, has devised a program in which each player performs at least three hours of community service per month





while in season and six hours of service per month when not in season. The Seminoles have performed a variety of services, including the Walker Ford Tutorial Program, in which the players donate two hours of their time on Saturday mornings to tutor elementary-aged children. They have helped package and deliver meals with Elder Care Services for the "Meals on Wheels" program, cleaned and cooked at the Ronald McDonald House, done lawn work and helped plant a garden at a local women's shelter, gone Christmas caroling at a retirement home and visited children in the Pediatrics Ward.

"We think it's important that the players are involved with as many different projects as possible," said FSU Assistant Coach Leslie Davies, who coordinates the Seminoles' community service efforts. "We are all blessed with so much and there are so many needy causes in Tallahassee that we feel it's important that we reach as many people as possible. It's a learning experience every time we set out to do something. We also have the opportunity to educate people about women's basketball and at the same time we open our players' eyes to how society really is."

The Seminoles also perform service as a group. The entire team spent a Saturday afternoon helping to build a house as part of the "Habitat for Humanity" program. Players did everything from carrying supplies, to hammering nails, to placing "hurricane clips" onto the roof.

"It was kind of hot, but it was a lot of fun," said junior Vanessa Fuchs. "It was neat to be able to meet the person we were building the house for. She was so excited and



appreciative and I think we even picked up a new fan."

Although Semrau is in just her third season at Florida State, the community service facet of her program has been a priority from day one and it is an area that has already had much success. In the spring of 1998 at Florida State's annual Golden 'Nole Awards Banquet, honoring all FSU student-athletes, the women's basketball team was awarded the first Athletics Director's Cup for Service, which is given annually to the team that performs the most hours of community service throughout the year. Semrau's Seminoles earned the distinction again in 1999.

"It's really important for us to get involved in the community," said junior Lako Brown. "The people are excited to meet us and amazed that we have the opportunity to play college basketball. It also gives us a chance to help others. We can talk to kids about the importance of staying in school and not quitting at anything."





# TALLAHASSEE-LEON COUNTY CIVIC CENTER

**A** Florida State basketball game at the Tallahassee-Leon County Civic Center is as exciting as it gets! FSU fans are spoiled by more than just a great basketball team playing in the nation's finest conference. They also get to watch the game in surrounds that are as modern as any in the country. While the FSU women's basketball team has played games in the Tallahassee-Leon County Civic Center over the years, the facility became the new home for the Seminoles in 1998-99.

So impressive is the facility and the general atmosphere of an FSU basketball game that the Civic Center and Florida State University served as the host of the first round of the 1995 Men's NCAA Basketball Tournament. Since that time, numerous improvements have been made to the already-outstanding structure.

In October, the Civic Center completed a 21-million luxury suites and club seat expansion project which began in March of 1998. The Civic Center added 34 luxury suites and 468 club seats at mid-level in the arena. In addition, the upper level seating has been configured to offer better viewing and additional concession stands and restrooms have been added. 12,200 seats are available for fans of FSU Basketball, who are treated to one of the most spectacular shows in college hoops. A new four-sided center hung Megavision video display, a state-of-the-art sound system and four new scoreboards in the upper corners of the arena have also been added. When there is a break in the action, the video display comes alive with highlight tapes, animated games and

other crowd pleasing bits.

Adding even more appeal to the facility is the Civic Center's new restaurant, the Spotlight Grill, which was completed in November. This 450 seat arena-view restaurant includes an outdoor patio and ledge seating for viewing arena events.

The multipurpose facility, which opened its doors in 1981, covers over 22 acres in the heart of Tallahassee's thriving downtown district. The Civic Center is only two blocks from the Capitol building and is just across the street from FSU's Center for Professional Development and nationally-acclaimed Law School.

The complex covers over 18,000 square feet with 119 foot ceilings in the main arena. The Civic Center is actually three different areas combined under one roof. The main arena, where FSU hosts its home games, is also the center for East Coast Hockey League contests featuring the Tallahassee Tiger Sharks, some of the nation's top musical concerts as well as Broadway plays and even a circus. The Exhibition Hall, which joins the main arena via a special hallway, can seat 5,000 for an event or serve as an indoor display area. The complex also features a terrace which is popular for outdoor hosting.

As one of Florida's busiest venues, the Civic Center will begin a \$1.2 million renovation to its six meeting rooms covering some 16,000 sq. ft. in April of 2000 with completion in July of 2000. Because of its versatility and accessibility, the Civic Center continues to be a popular location for trade shows and conventions.

