

*Wyckoff's Career Numbers*

YEAR	G-GS	MPG	FGM-FGA	PCT	3FG-3FGA	PCT	FTM-FTA	PCT	REB-AVG	AS	ST	BK	TO	PF-DQ	PTS-AVG
97-98	27-27	29.0	96-204	.471	6-25	.240	70-113	.619	216-8.0	53	52	80	99	71-2	268-9.9
98-99	27-27	32.3	136-314	.433	5-18	.278	93-140	.664	214-7.9	40	56	64	62	102-7	370-13.7
99-00	24-24	30.2	92-225	.409	16-54	.296	59-79	.747	170-7.1	61	45	34	78	60-1	259-10.8
<b>Totals</b>	<b>78-78</b>		<b>325-743</b>	<b>.430</b>	<b>27-97</b>	<b>.270</b>	<b>222-332</b>	<b>.660</b>	<b>600-7.7</b>	<b>154</b>	<b>108</b>	<b>178</b>	<b>161</b>	<b>233-10</b>	<b>897-11.5</b>

*Wyckoff's ACC Numbers*

YEAR	G-GS	MPG	FGM-FGA	PCT	3FG-3FGA	PCT	FTM-FTA	PCT	REB-AVG	AS	ST	BK	TO	PF-DQ	PTS-AVG
97-98	16-16	29.2	59-123	.480	5-19	.263	31-56	.554	128-8.0	31	32	53	56	37-0	154-9.6
98-99	16-16	31.8	74-175	.423	2-11	.182	64-88	.727	114-7.1	20	32	38	32	64-7	214-13.4
99-00	16-16	32.6	65-162	.401	10-38	.263	35-46	.761	117-7.3	45	29	23	45	36-0	175-10.9
<b>Totals</b>	<b>48-48</b>		<b>198-460</b>	<b>.430</b>	<b>17-68</b>	<b>.250</b>	<b>130-190</b>	<b>.684</b>	<b>359-7.5</b>	<b>96</b>	<b>93</b>	<b>114</b>	<b>133</b>	<b>137-7</b>	<b>543-11.3</b>





# PLAYER BIOGRAPHIES

2000-2001  
WOMEN'S BASKETBALL

# #10 Lakesha Springle

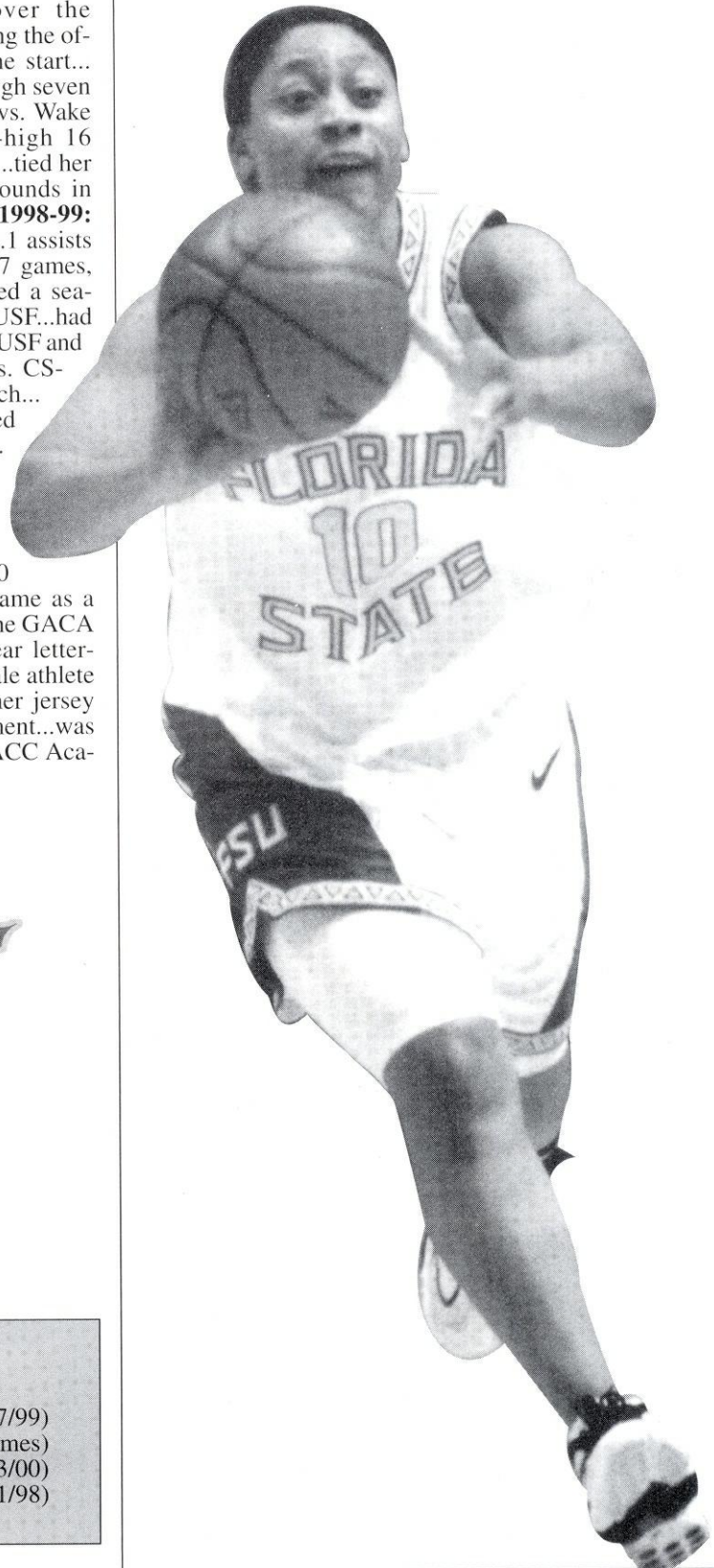
G • 5 - 3 • SO • THOMASVILLE, GA • THOMASVILLE

**SPEEDY POINT GUARD...**worked hard over the summer...should see a great deal of playing time directing the offense...**1999-2000:** Played in 28 games, including one start...averaged 15.1 minutes per game...dished out a career-high seven

assists in just 15 minutes vs. Wake Forest...scored a career-high 16 points in start vs. Oakland...tied her career-high with five rebounds in season-opener vs. Tulsa...**1998-99:** Averaged 1.7 points and 1.1 assists per game...played in all 27 games, including two starts...tallied a season-high eight points vs. USF...had season-high five assists vs. USF and recorded five rebounds vs. CS-Fullerton and Georgia Tech...scored in 12 games... tallied a season-high six steals vs. Western Carolina...**HIGH**



**SCHOOL:** The Georgia state Class AA Player of the Year...was a first team all-state and all-region selection at Thomasville High School...also garnered all-region and all-area Player of the Year honors...averaged 19.0 points, 6.0 rebounds, 4.0 assists and 3.0 steals per game as a senior...was a member of the Georgia Terrific Ten and the GACA and Georgia-Tennessee all star teams...was a four-year letter-winner...played for Margie York...became the first female athlete in the history of Thomasville High School to have her jersey retired...**PERSONAL:** Is majoring in sports management...was born November 2, 1979...was named to the 1998-99 ACC Academic Honor Roll.



## Career Highs

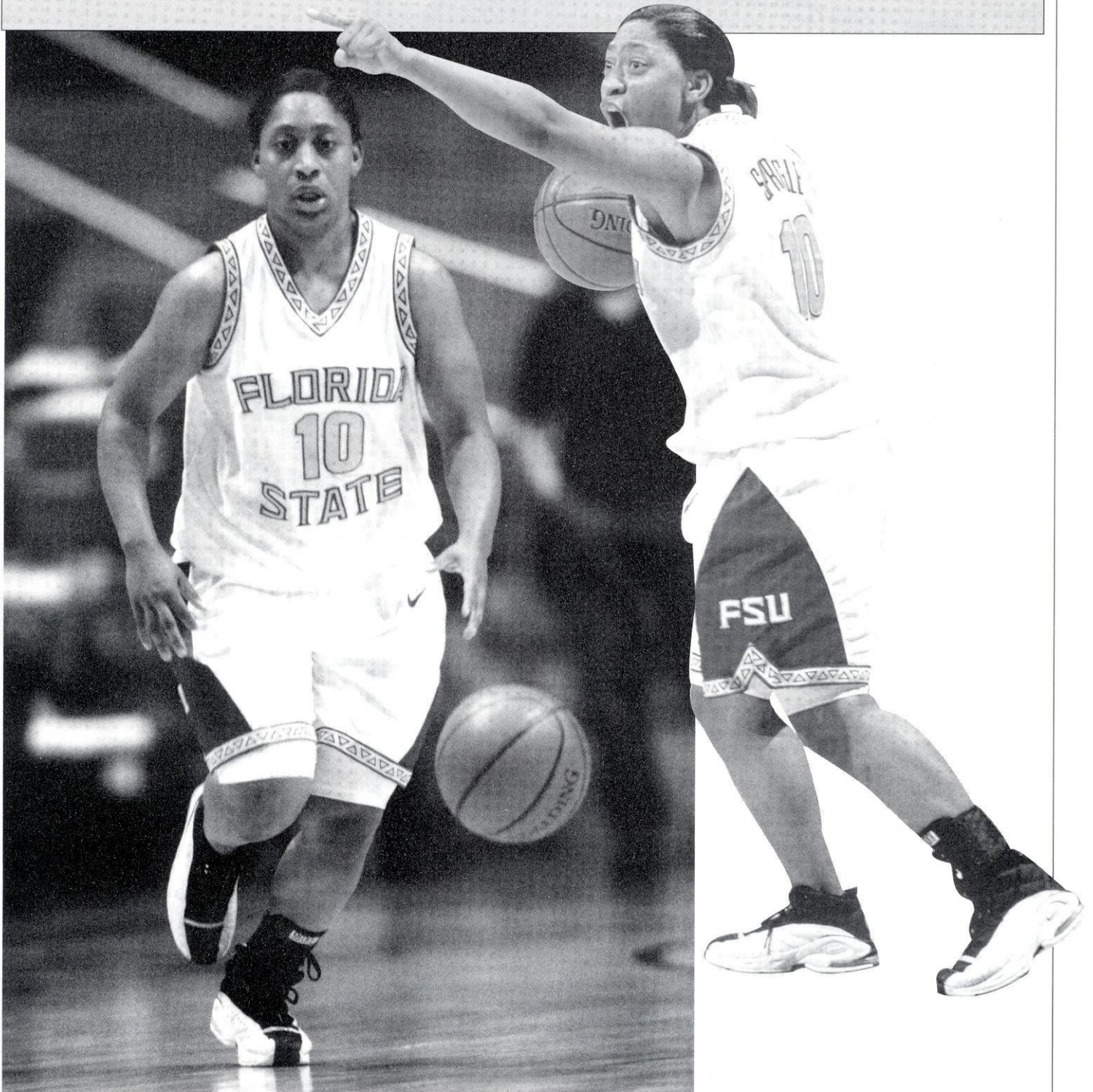
POINTS .....	16 vs. Oakland (11/27/99)
REBOUNDS .....	5 (three times)
ASSISTS .....	7 vs. Wake Forest (2/3/00)
STEALS .....	6 vs. W. Carolina (12/21/98)

*Springle's Career Numbers*

YEAR	G-GS	MPG	FGM-FGA	PCT	3FG-3FGA	PCT	FTM-FTA	PCT	REB-AVG	AS	ST	BK	TO	PF-DQ	PTS-AVG
98-99	27-3	14.2	14-49	.286	0-3	.000	17-28	.607	39-1.4	29	26	0	50	28-0	45-1.7
99-00	28-1	15.1	21-47	.447	7-11	.636	24-34	.706	47-1.7	38	20	0	53	29-0	73-2.6
<b>TOTAL</b>	<b>55-4</b>		<b>35-96</b>	<b>.365</b>	<b>7-14</b>	<b>.500</b>	<b>41-62</b>	<b>.661</b>	<b>86-1.6</b>	<b>67</b>	<b>46</b>	<b>0</b>	<b>103</b>	<b>57-0</b>	<b>118-2.1</b>

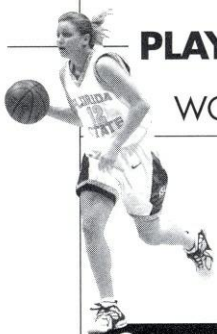
*Springle's ACC Numbers*

YEAR	G-GS	MPG	FGM-FGA	PCT	3FG-3FGA	PCT	FTM-FTA	PCT	REB-AVG	AS	ST	BK	TO	PF-DQ	PTS-AVG
98-99	16-1	13.1	7-24	.292	0-2	.000	6-11	.545	20-1.3	11	11	0	26	13-0	20-1.3
99-00	16-0	12.3	10-24	.417	4-7	.571	11-14	.786	20-1.3	22	12	0	26	13-0	35-2.2
<b>TOTAL</b>	<b>32-1</b>		<b>17-48</b>	<b>.354</b>	<b>4-9</b>	<b>.444</b>	<b>17-25</b>	<b>.680</b>	<b>40-1.3</b>	<b>33</b>	<b>23</b>	<b>0</b>	<b>52</b>	<b>26-0</b>	<b>55-1.7</b>



# PLAYER BIOGRAPHIES

2000-2001  
WOMEN'S BASKETBALL



# #12 April Traylor

G • 5 - 10 • SO • MARTINSVILLE, IN • MARTINSVILLE

**AGGRESSIVE AND FEARLESS PLAYER** who can take it to the hoop or dish it off...two-year starter...**1999-2000:** The starter at point guard, not her natural position...ranked second on the team at 12.7 points per game...averaged a team-leading 5.2 assists per game, which ranked second in the ACC...garnered All-ACC honorable mention honors...averaged a team-high 33.1 minutes per game and started 28 games...was second on the the team with 67 steals...scored 28 points, one shy of her career-high, vs. UT-Chattanooga...earned *Tallahassee Democrat* Seminole Classic All-Tournament Team honors...scored in double figures in 16 games...had 22 points, including a career-high four treys vs. Florida...



also had 22 vs. Georgia Tech...had 23 points vs. No. 3 NC State...recorded a career-high 10 assists at Clemson and vs. Duke in the ACC Tourney...played all 40 minutes vs. Auburn...**1998-99:** Averaged 12.7 points and 3.2 rebounds per game...was an ACC All-Freshman selection...scored in double figures in 17 games, including 15 of last 16 games of the season...scored 20 or more points in four games...recorded a career-high 29 points vs. Florida...established a new FSU record with 22 FT attempts vs. UF...led the team with 20 points vs. #12 Clemson and vs. NC State...scored 13 vs. Georgia Tech in second game back after injury and tied her season-high with seven rebounds...led the team with 23 points in season-opener vs. Tulsa and recorded seven rebounds...was twice named ACC Rookie of the Week...**HIGH SCHOOL:** A 1998 *Parade* All-American...was the 1998 Indiana Miss Basketball runner-up...her Martinsville High School team was ranked No. 2 in the nation...earned 1998 Nike Honorable Mention honors...set eight school records including most career points with 1,836...was a three-time first team all-state honoree...was pegged a 1997 and 1998 Indiana all-star...team lost just two games throughout her four-year career...played for Jan Conner...**PERSONAL:** Was born on April 25, 1980...is majoring in sports management.



## Career Highs

POINTS .....	29 vs. Florida (2/11/99)
REBOUNDS .....	8 (three times)
ASSISTS .....	10 vs. Clemson (2/27/00); vs. Duke (3/5/00)
STEALS .....	6 (three times)

*Traylor's Career Numbers*

YEAR	G-GS	MPG	FGM-FGA	PCT	3FG-3FGA	PCT	FTM-FTA	PCT	REB-AVG	AS	ST	BK	TO	PF-DQ	PTS-AVG
98-99	25-23	28.0	103-305	.338	21-75	.280	90-153	.588	81-3.2	46	34	6	103	95-10	317-12.7
99-00	28-28	33.1	127-342	.371	22-88	.250	79-134	.590	99-3.5	145	67	3	173	87-3	355-12.7
<b>TOTAL</b>	<b>53-51</b>		<b>230-647</b>	<b>.355</b>	<b>43-163</b>	<b>.263</b>	<b>169-287</b>	<b>.589</b>	<b>180-3.4</b>	<b>191</b>	<b>101</b>	<b>9</b>	<b>276</b>	<b>182-13</b>	<b>672-12.7</b>

*Traylor's ACC Numbers*

YEAR	G-GS	MPG	FGM-FGA	PCT	3FG-3FGA	PCT	FTM-FTA	PCT	REB-AVG	AS	ST	BK	TO	PF-DQ	PTS-AVG
98-99	16-15	30.4	70-208	.337	15-54	.278	63-99	.636	56-3.5	27	22	5	71	65-8	218-13.6
99-00	16-16	33.3	73-191	.382	12-40	.300	42-70	.6000	51-3.2	83	30	1	106	53-3	200-12.5
<b>TOTAL</b>	<b>32-31</b>		<b>143-399</b>	<b>.358</b>	<b>27-94</b>	<b>.287</b>	<b>105-169</b>	<b>.621</b>	<b>107-3.3</b>	<b>110</b>	<b>52</b>	<b>6</b>	<b>177</b>	<b>118-11</b>	<b>418-13.1</b>



**PLAYER BIOGRAPHIES**

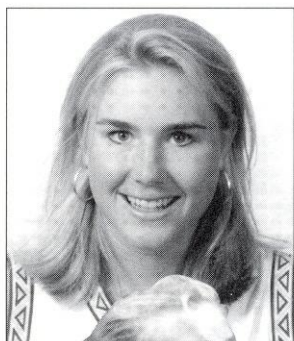
2000-2001  
WOMEN'S BASKETBALL

# #32 Molly Beal

**G • 5 - 11 • SO • MISSION HILLS, KS • PEMBROKE**

**STRONG PERIMETER PLAYER...**a scoring threat, especially from three-point land...**1999-2000:** Saw action in 27 games with one start and averaged 11.3 minutes per game...averaged 3.8 points and 1.2 rebounds per game...led the team with 11 points at Clemson

along with a season-high seven rebounds...had a team-high 27 three-pointers...hit 5-of-7 treys vs. Virginia for a season-high 15 points...hit 4-of-5 threes against Clemson...scored in double figures three times... had seven points vs. Loyola...grabbed three rebounds vs. NC State and Maryland...played season-high 28 minutes at Clemson...**HIGH SCHOOL:** A 1999 *USA Today* honorable mention All-American...was chosen the 1999 Gatorade Circle of Champions Missouri Player of the Year...garnered



1999 first team Kansas City All-Metro honors...was a three-time, first team all-state selection... averaged

20.2 points, 7.0 rebounds and 5.0 assists per game as a senior and added 48 blocks...with 1,904 points, is The Pembroke High's all-time leading scorer...led team to the 1999 state title...was coached by Mark Spigarelli...an honor roll student...**PERSONAL:** Celebrates an August 7, 1980 birthday...was named to the ACC Academic Honor Roll...is majoring in communications.

## Career Highs

POINTS ..... 15 vs. Virginia (1/9/00)  
REBOUNDS ..... 7 vs. Clemson (2/27/00)  
ASSISTS ..... 3 vs. Clemson (2/27/00)  
STEALS ..... 2 vs. Clemson (2/27/00)



## Beal's Career Numbers

YEAR	G-GS	MPG	FGM-FGA	PCT	3FG-3FGA	PCT	FTM-FTA	PCT	REB-AVG	AS	ST	BK	TO	PF-DQ	PTS-AVG
99-00	27-1	11.3	34-99	.343	27-85	.318	8-14	.571	32-1.2	13	4	0	19	18-0	103-3.8

## Beal's ACC Numbers

YEAR	G-GS	MPG	FGM-FGA	PCT	3FG-3FGA	PCT	FTM-FTA	PCT	REB-AVG	AS	ST	BK	TO	PF-DQ	PTS-AVG
99-00	16-0	11.9	27-67	.403	23-60	.383	3-4	.750	23-1.4	7	3	0	11	9-0	80-5.0

# #44 Lauren Bradley

C • 6 - 3 • S O • L A K E M A R Y , F L • L A K E M A R Y

**A VERY MATURE AND PATIENT PLAYER...**strong rebounder..1999-2000: Played in 19 games, with nine starts, and averaged 18.5 minutes per game...was out four weeks with a fractured foot and missed nine games...returned to action on Feb. 10th

vs. Virginia and had four points and five rebounds...averaged 6.6 points and 3.8 rebounds per game...led the team in rebounding three times...scored a season-high 15 points vs. St. John's...had 12 points at Mercer, Loyola and Wake Forest...twice grabbed nine rebounds vs. Tulsa and Mercer...had at least eight points in nine games and seven rebounds in four games...recorded four steals in Oakland game...**HIGH SCHOOL:**

A 1999 *USA Today* honorable mention All-American ...was named the Florida Class 6A Player of the Year following senior season...was runner up for Miss Florida Basketball ...was a three-time first team all-state honoree...holds career averages of 15.4 points, 8.3 rebounds and 3.2 blocks per game...

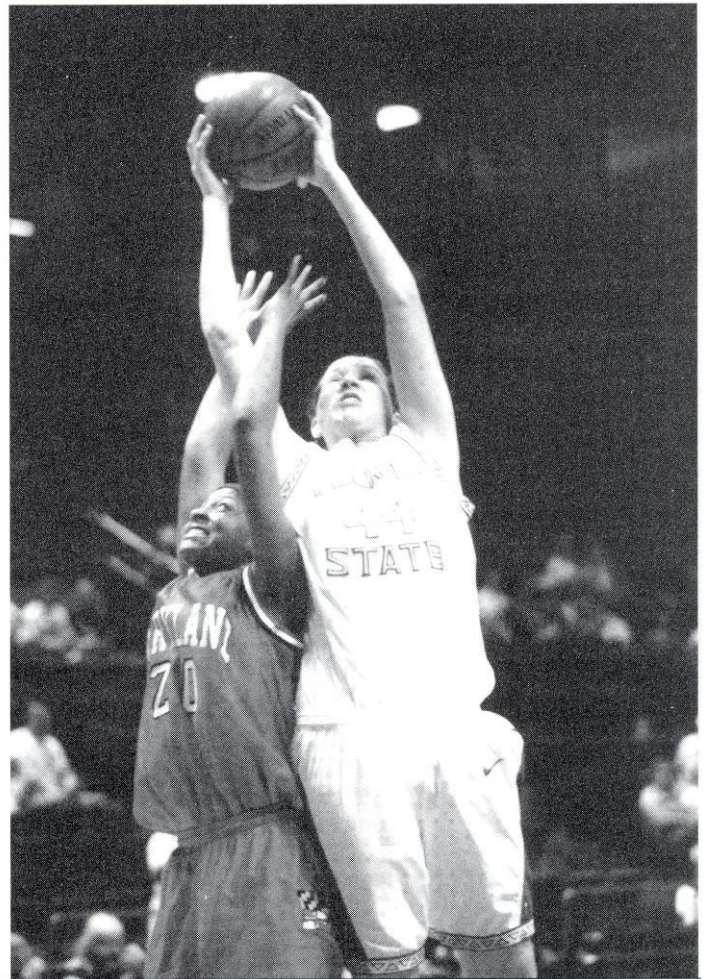
was a member of the 1998-99 All-Southeast Team...was a four-time, first team all-conference selection...was pegged the 1997 and 1998 *Orlando Sentinel* Seminole County Player of the Year ...led Lake Mary to a 113-10 record, four conference and district championships and one state championship over her career...played for Coach Carl Brown...an honor roll student...

**PERSONAL:** Is majoring in criminology...was named to the ACC Academic Honor Roll... was born May 7, 1981.



## Career Highs

POINTS ..... 15 vs. St. John's (12/29/99)  
 REBOUNDS ..... 9 vs. Tulsa (11/19/99) and Mercer (11/30/99)  
 BLOCKS ..... 3 vs. St. John's (12/29/99)  
 STEALS ..... 4 vs. Oakland (11/27/99)



## Bradley's Career Numbers

YEAR	G-GS	MPG	FGM-FGA	PCT	3FG-3FGA	PCT	FTM-FTA	PCT	REB-AVG	AS	ST	BK	TO	PF-DQ	PTS-AVG
99-00	19-9	18.5	55-117	.470	0-0	.000	16-25	.640	73-3.8	14	14	23	26	54-2	126-6.6

## Bradley's ACC Numbers

YEAR	G-GS	MPG	FGM-FGA	PCT	3FG-3FGA	PCT	FTM-FTA	PCT	REB-AVG	AS	ST	BK	TO	PF-DQ	PTS-AVG
99-00	8-2	16.9	19-44	.432	0-0	.000	6-9	.667	22-2.8	5	3	10	13	21-1	44-5.5



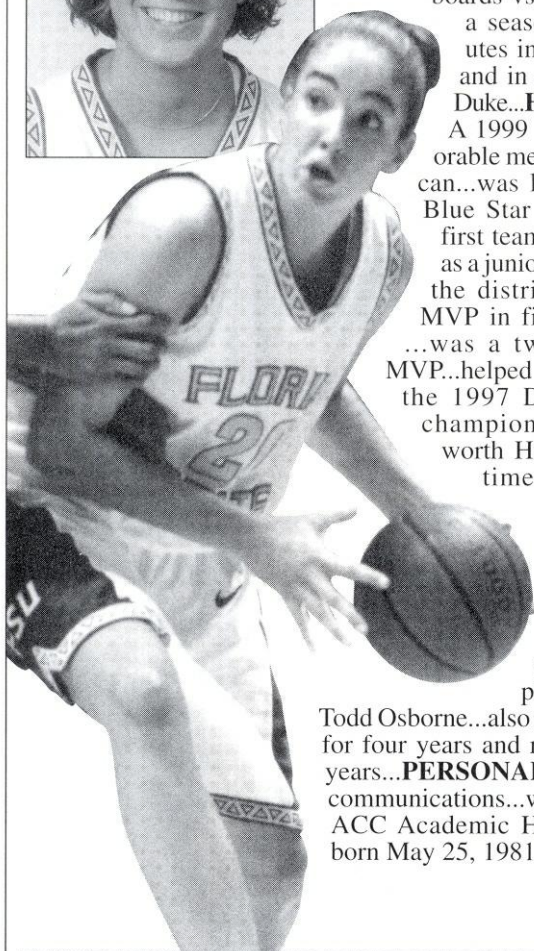
# #20 *Katelyn Yujas*

C • 6 - 3 • S O • W A D S W O R T H , O H • W A D S W O R T H

**VERSATILE ATHLETE...**can power herself inside or hit the short jumper...solid rebounder...**1999-2000:** Played in all 29 games, with seven starts, and averaged 19.3 minutes of play — the most of all newcomers...averaged 7.2 points and 4.0 rebounds per game...



scored a season-high 18 points vs. Loyola...grabbed a season-high nine boards vs. Wake Forest...scored in double figures in nine games, including 15 vs. Duke in ACC Tournament ...grabbed eight rebounds to lead the team vs. Oakland...also had eight boards vs. Loyola...played



a season-high 27 minutes in Virginia contest and in season-finale vs. Duke...**HIGH SCHOOL:**

A 1999 *USA Today* honorable mention All-American...was listed among the Blue Star Top 25...earned first team all-state honors as a junior and senior...was the district and regional MVP in final two seasons ...was a two-time county MVP...helped lead her team to the 1997 Division I state championship...is Wadsworth High School's all-time leading scorer with 1,127 career points, which ranks 11th on the Medina County all-time career scoring list...played for Coach

Todd Osborne...also played volleyball for four years and ran track for two years...**PERSONAL:** Is majoring in communications...was named to the ACC Academic Honor Roll...was born May 25, 1981.

## *Career Highs*

POINTS .....	18 vs. Loyola (12/19/99)
REBOUNDS .....	9 vs. Wake Forest (2/3/00)
ASSISTS .....	4 vs. Duke (3/5/00)
STEALS .....	3 vs. Maryland (2/13/00)



## *Yujas' Career Numbers*

YEAR	G-GS	MPG	FGM-FGA	PCT	3FG-3FGA	PCT	FTM-FTA	PCT	REB-AVG	AS	ST	BK	TO	PF-DQ	PTS-AVG
99-00	29-7	19.3	93-190	.489	0-3	.000	23-29	.793	117-4.0	225	20	13	47	65-3	209-7.2

## *Yujas' ACC Numbers*

YEAR	G-GS	MPG	FGM-FGA	PCT	3FG-3FGA	PCT	FTM-FTA	PCT	REB-AVG	AS	ST	BK	TO	PF-DQ	PTS-AVG
99-00	16-4	19.7	49-101	.485	0-0	.000	9-13	.692	59-3.7	17	12	6	22	34-1	107-6.7

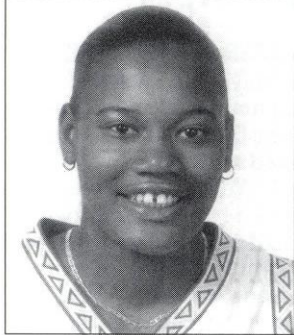




# #3 Shinikki Whiting

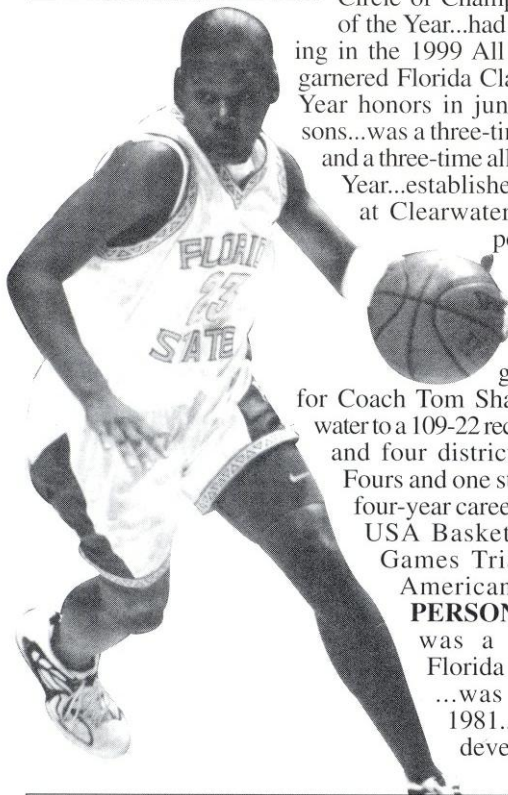
G • 5 - 9 • SO • CLEARWATER, FL • CLEARWATER

**EXPLOSIVE PLAYER...**possesses a great deal of natural talent ...expected to make an impact by conference play after recovering from a torn ACL suffered in the spring...**1999-2000:** Played in 19 games with three starts...averaged 12.9 minutes per game...averaged 3.9 points and 1.7 rebounds per game



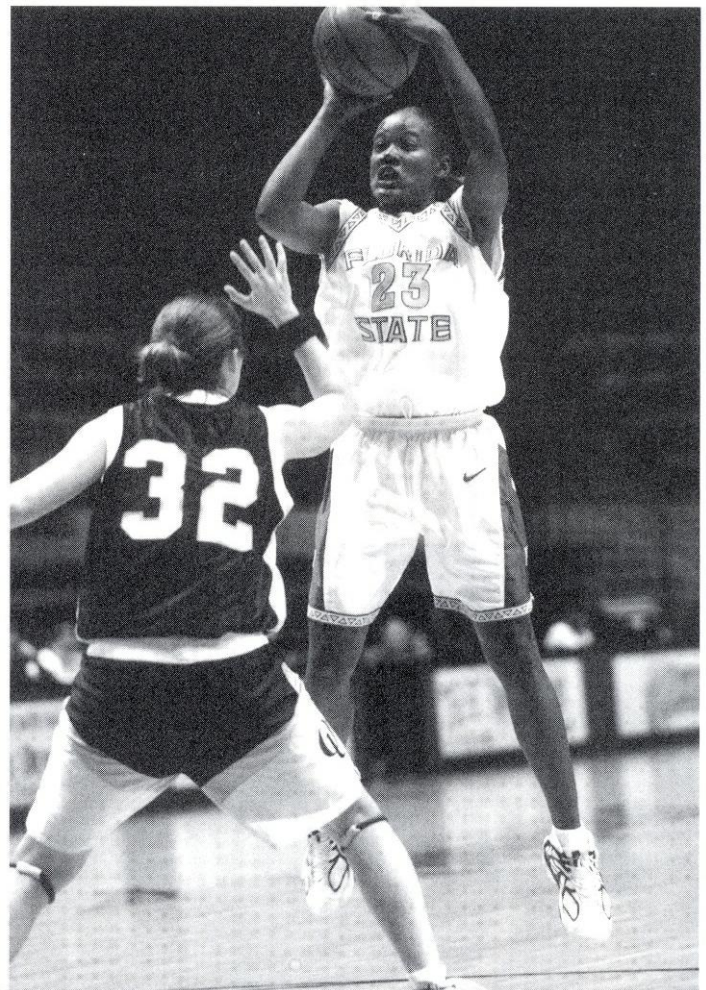
...came into her own with a team-high 21 points in 28 minutes off the bench and helped the Tribe to a come-from-behind win over Oakland...also had a season-high five rebounds in the game...**HIGH SCHOOL:** The *USA Today* 1999 All-America Player of the Year for the state of Florida...was pegged the 1999 Miss Florida Basketball...earned *Street and Smith's* and *Parade* honorable mention All-America honors...was chosen the 1999 Gatorade Circle of Champions Florida Player of the Year...had a #22 national ranking in the 1999 All Star Girls Report...garnered Florida Class 5A Player of the Year honors in junior and senior seasons...was a three-time all-state selection and a three-time all-county Player of the Year...established the scoring record at Clearwater with 1,499 career points...is Clearwater High's record-holder in 15 individual records, including points in a game (56)...played for Coach Tom Shaneyfelt...led Clearwater to a 109-22 record, two conference and four district titles, three Final Fours and one state runner-up in her four-year career...was invited to the USA Basketball World Youth Games Trials and Nike All-American Camp in 1998...

**PERSONAL:** Father Mike was a running back at Florida State from 1979-81 ...was born February 6, 1981...is majoring in child development.



## Career Highs

POINTS ..... 21 vs. Oakland (11/27/99)  
 REBOUNDS ..... 5 vs. Oakland (11/27/99)  
 ASSISTS ..... 3 vs. Oakland (11/27/99)  
 STEALS ..... 3 (three times)



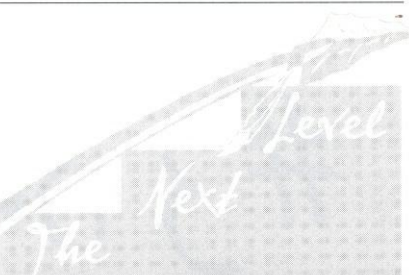
## Whiting's Career Numbers

YEAR	G-GS	MPG	FGM-FGA	PCT	3FG-3FGA	PCT	FTM-FTA	PCT	REB-AVG	AS	ST	BK	TO	PF-DQ	PTS-AVG
99-00	19-3	12.9	29-80	.363	3-14	.214	14-23	.609	33-1.7	8	14	4	23	32-0	75-3.9

## Whiting's ACC Numbers

YEAR	G-GS	MPG	FGM-FGA	PCT	3FG-3FGA	PCT	FTM-FTA	PCT	REB-AVG	AS	ST	BK	TO	PF-DQ	PTS-AVG
99-00	8-0	9.1	6-21	.286	0-2	.000	4-6	.667	10-1.3	2	4	1	8	12-0	16-2.0

# Newcomers



F L O R I D A S T A T E S E M I N O L E S

#4 *Petra Hofmann*  
G • 5-8 • Jr. Pecs, Hungary  
(Cowley County CC/Kansas)



**A JUNIOR COLLEGE TRANSFER** with two years of eligibility remaining...was a two-time all-region performer...averaged 10.8 points, 7.0 assists, 5.1 rebounds and 3.2 steals per game in 1999-2000 ...also earned all-league honors the past two years in the Jayhawk Conference — one of the top junior college conferences in the nation...was a member of the Hungarian Junior National Team...helped guide her high school squad to the national title...selected Florida State over Clemson and Providence...

**PERSONAL:** Is a social science major...birthday is January 14, 1980.

#33 *Tasheika Morris*  
F • 6-0 • So. • Huntsville, AL  
(Butler HS/Tenn.)



**A TRANSFER FROM TENNESSEE...**will have three years of eligibility remaining after sitting out the 2000-01 season per NCAA regulations...played in 23 games as a rookie for the Lady Vols and recorded season-highs of 11 points and four rebounds vs. Memphis. **High School:** Was a two-time first team *Parade* All-American...was listed as the fifth best senior in the nation by the Blue Star Index...named a 1999 first-team All-American by *USA Today* and the Women's Basketball Coaches Association (WBCA)...

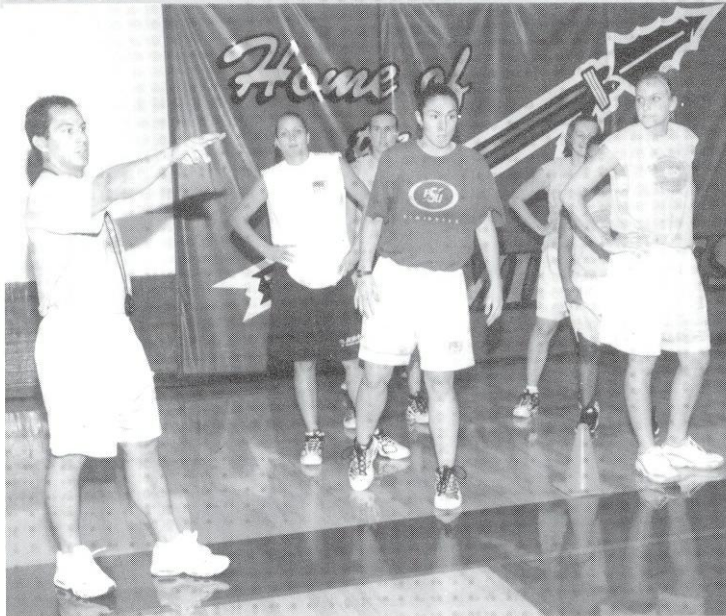
tallied 2,920 points and 1,805 rebounds during her career at Butler High School...was pegged the 1999 Miss Alabama Basketball...averaged 21.8 points, 12.9 rebounds and 3.4 assists as a senior while leading her team to a 32-2 record and to the nation's top prep ranking...was the Class 6A Player of the Year in 1998 and 1999...led squad to three consecutive state championships in 1997, 1998 and 1999...**PERSONAL:** Is undecided on a major...was born January 17, 1980.





# THE UNIVERSITY

- This Is Tallahassee
- This Is Florida State
- Administration
- Academic Support
- Support Staff
- NCAA Info
- Life Skills
- Community Service
- International Play
- European Experience
- Travel Headquarters
- The Leon County Civic Center
- The ACC



# This Is Tallahassee

FLORIDA WITH A SOUTHERN ACCENT

**NEAR, BUT FAR FROM THE GLARING STRIPS OF NEON AMUSEMENT**, and the castles and crowds of Disney, lies another magical place in the Sunshine State — one of pow-wows, plantations, politics and great pride. Often described as “The Other Florida” with its deep-rooted history, rolling hills, canopy roads of moss-draped oaks, cool climate and Southern-style hospitality; it is a Florida few have seen. It is Tallahassee — Florida with a Southern accent.

Best known as Florida’s capital, Tallahassee is an intimate neo-metropolitan city where the power of state government, the academic and the artistic are complemented by subtle, old-fashioned charm. It is the perfect two- or three-day diversion for the more than 41 million annual visitors to Florida and 13 million residents.

Tallahassee touts a menagerie of sights including one of the world’s deepest freshwater springs, site of America’s first Christmas, a wildlife habitat, Capitol buildings, fascinating museums of history, sprawling plantations, highly acclaimed fishing and hunting adventures and nearby beaches. Spirited area festivals range from celebrations of Tallahassee’s spectacular spring and swamp stomps to genuine rattlesnake roundups and seafood festivals.

With the Gulf of Mexico just 20 miles south and the Georgia border only 14 miles north, Tallahassee rests between the foothills of the Appalachian Mountains and the juncture of Florida’s panhandle and peninsula. Nearer in miles to Atlanta than to Miami, Tallahassee more closely resembles its Southern neighbors than Florida in topography, climate and lifestyle.

Accentuating Tallahassee’s Southern persona

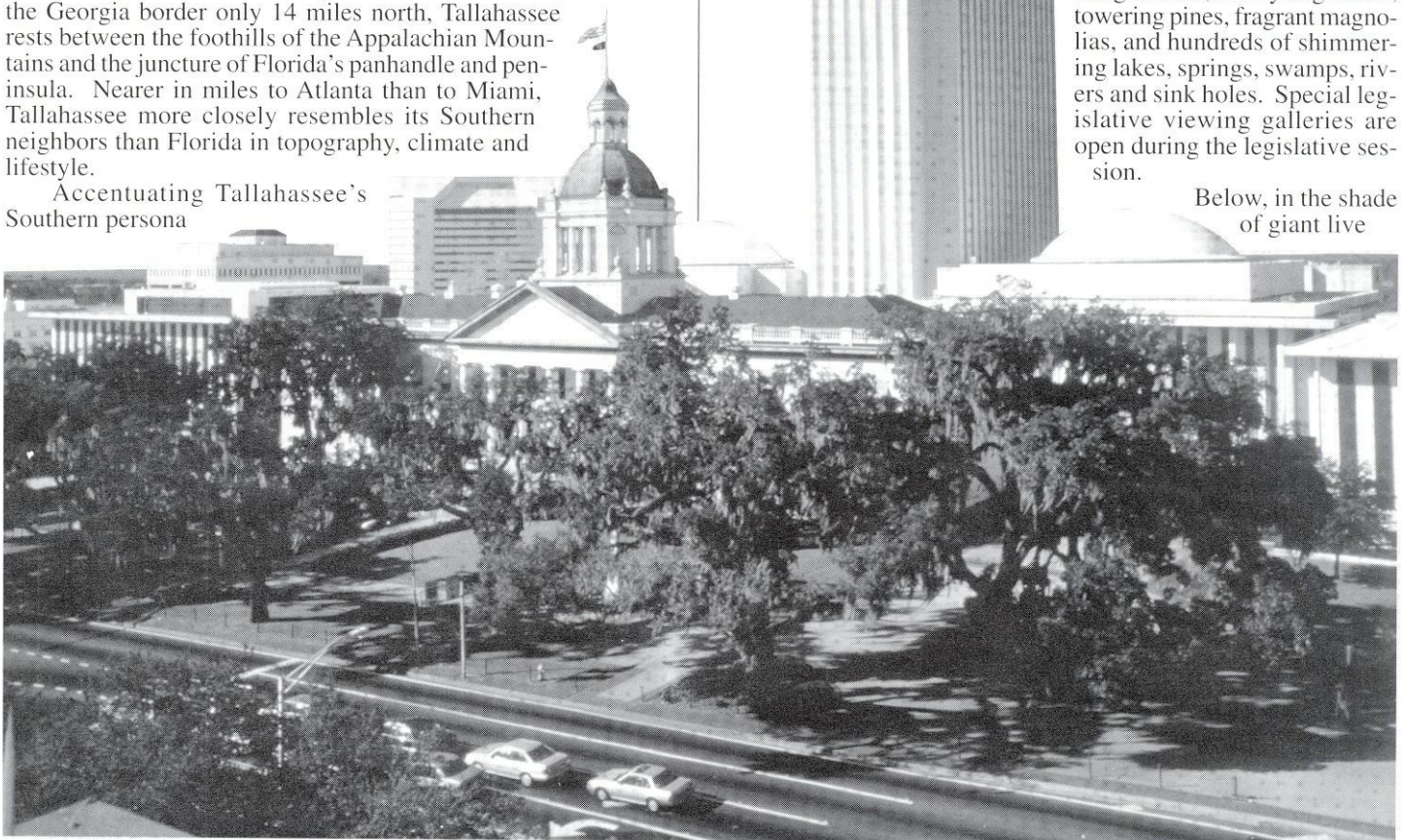
are lush rolling hills, likened to the seven hills of Rome, and five “official” canopy roads of patriarch oaks. The fertile, rich soil and four distinct, yet pleasant, seasons breed floral brilliance and natural vitality year-round.

Like the city itself, the story of how Tallahassee was chosen as the state capital is rich in history. In 1823, two explorers set out — one on horseback from St. Augustine and the other by boat from Pensacola — to find a permanent, central location for the Legislature to convene. The two met at a beautiful site that the Creek and Seminole Indians called “tallahassee” — derived from the words “talwa” meaning town and “ahasee” meaning old. The rendezvous point remains Florida’s capital.

The “old town” has undergone many changes, but one thing remains the same — it is still a government town fiercely proud and dedicated to preserving its heritage. The Capitol buildings, both old and new, epitomize Tallahassee’s perseverance.

The 22nd floor of the New Capitol provides a panoramic scope of a sophisticated Southern city awash in a sea of flowering azaleas, snowy dogwoods, towering pines, fragrant magnolias, and hundreds of shimmering lakes, springs, swamps, rivers and sink holes. Special legislative viewing galleries are open during the legislative session.

Below, in the shade of giant live



oaks, proudly stands the Old Capitol, originally constructed in 1845 and restored to its 1902 splendor complete with red-and-white candy-striped awnings, a dome adorned with stained glass, antique furnishings and political memorabilia.

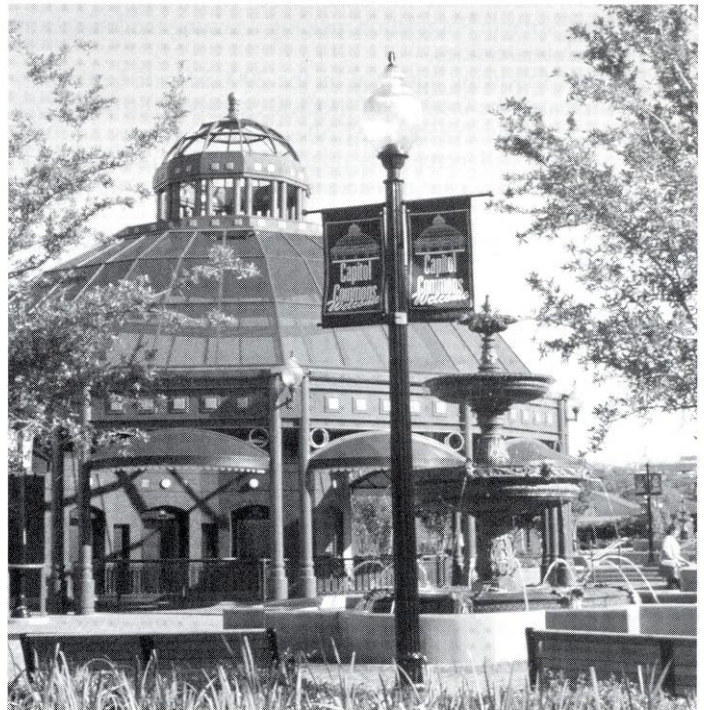
Across from the Old Capitol are the 40-foot twin granite towers of the Vietnam Veteran's Memorial, and the blue stone Union Bank, Florida's oldest surviving financial institution. The nostalgic Old Town Trolley, a replica turn-of-the-century street car, carries passengers through restored Adams Street Commons to numerous other historical downtown shops for *free* — unheard of even 100 years ago.

Minutes from downtown lies the Governor's Mansion, which resembles the home of Florida's military hero Andrew Jackson; and the 52-acre natural animal habitat and 1880s farm of the Tallahassee Museum of History and Natural Science, which provide the rare chance to walk and talk with native Florida animals.

Tallahassee remains firmly linked with the past as evidenced by the unearthed 1539 winter encampment of Spanish Hernando de Soto, the site of the first Christmas celebration in America. Visitors travel back through time as they stand in the shadow of a giant 12,000-year-old American Mastodon at the Museum of Florida History or explore other historical spots including The Knott House that Rhymes, The Columns, San Luis Mission, Lake Jackson State Archaeological Site, Natural Bridge Battlefield, First Presbyterian Church, Brokaw-McDougall House, Goodwood Plantation and Adams Street Commons.

Nearby, alligators lazing in the sunshine and anhinga "snake birds" perched on twisted cypress branches are seen at Wakulla Springs, one of the world's deepest freshwater springs and site of many underwater scenes in the "Tarzan" movies with Johnny Weissmuller and Maureen O'Sullivan. Safaris aboard glass-bottomed and jungle cruise boats whisk visitors within arm's length of "The Other Florida."

Outdoor enthusiasts enjoy adventures including boating and fishing on area lakes, rivers, ponds and the Gulf — just 30 minutes away. Lakes Seminole, Jackson and Talquin are renowned in the bass fishing world for yielding the "big ones," and dense forests offer an abundance of prize-winning game. Local wildlife areas such as the Florida National Scenic Trail, St. Marks National Wildlife Refuge and Apalachicola National Forest are among



many spots for camping, picnicking, swimming, biking and exploring.

Appealing to the strokes of different folks, Tallahassee also features 99 holes of golf on six courses and a proliferation of tennis centers. Sideline athletes cheer the nationally-ranked Florida State Seminoles, Florida A&M Rattlers and the Tallahassee Tiger Sharks, of the East Coast Hockey League. And always a sure bet are the nearby greyhound races.

A sport of sorts, shopping at two regional malls and many specialty centers offer many "playing options" — from popular chains to curiosity and antique shops.

Cultural interests are sparked by widely-acclaimed museums and galleries and elaborate entertainment at the 14,000-seat Tallahassee-Leon County Civic Center.

Tallahassee is a collaboration of power-play politics and classical character splashed with a twist of Southern beauty and charm. Tallahassee is Florida with a Southern accent.

# This Is Florida State

A M O N G T H E N A T I O N ' S E L I T E

**FLORIDA STATE UNIVERSITY**, a coeducational graduate research institution, stands among the nation's elite in both academics and athletics, as it celebrates its sesquicentennial anniversary in 2001.

Located on the oldest continuous site of higher education in Florida and building upon the impeccable reputation of its beginnings as a distinguished liberal arts college for women, the university has grown in the past 53 years as an institution of national and international esteem.

Its stature is evident in its recent record of excellence:

- ◆ In 1994, Florida State was classified a "Research University I" by the Carnegie Foundation, placing it among the nation's top research universities.
- ◆ In 2000, following approval by the 2000 Florida Legislature, FSU created the Institute of Medical Sciences as a transitional unit that will evolve into the College of Medicine by fall 2001. The college will increase the quality of Florida medical care by training primary care physicians with a focus on treating the

elderly and people in underserved areas such as rural communities and inner cities.

- ◆ In 2000, FSU bought the most powerful university-owned supercomputer in the world. The IBM RS/6000 Supercomputer can perform 2.5 trillion calculations per second. Located in the School of Computational Science and Information Technology, the supercomputer will be used by FSU researchers to predict hurricanes and compare DNA sequences as complex as those of the human genome.
- ◆ In 2000, FSU was ranked 18th among universities in the "America's Most Wired Colleges" ranking by Yahoo! Internet Life Magazine.
- ◆ The Challenger Learning Center of Tallahassee, a project of the FAMU-FSU College of Engineering, is scheduled to open in March 2002. The center, to be built on Kleman Plaza in downtown Tallahassee, will feature a space mission simulator common to all of the centers, and a 300 seat IMAX theater and a domed planetarium laser theater. It will serve middle schools in a 66-county area of North Florida, Southeast Alabama and South Georgia. The 39 Challenger Learning Centers throughout the United States, Canada and Europe introduce more than 350,000 middle school students annually to the exciting possibilities of science, engineering and technology.
- ◆ LEXIS®-NEXIS® Academic Universe, the online information service that FSU helped develop and test from 1995 to 1998, is now used at more than 1,200 universities and colleges.
- ◆ As a testament to FSU's effort to foster a spirit of community service among its students, FSU ranks second in Florida and third in the Southeast for producing 27 currently serving Peace Corps volunteers. The Center for Civic Education and Service was established in 1994 to promote civic responsibility and community involvement through service as integral elements of the liberal arts education at FSU. Through ServScript, students' service may be recorded on their official academic transcript.
- ◆ In 2000, the Ph.D. program in the College of Business has the highest minority enrollment of any Ph.D. business program in the United States. In recent years, it has graduated more minority doctoral students than any other Ph.D. granting institution.
- ◆ In 2000, the National Geographic Society and FSU started the Florida Geographic Alliance that will bolster geographic education among Florida school children by preparing and equipping Florida's K-12 teachers with better information and tools.
- ◆ In 1999, FSU was selected by the U.S. Department of Energy to become one of the research institutions to operate the Oak Ridge National Laboratory (ORNL), a multiprogram science and technology laboratory in Oak Ridge, Tenn., headed by the University of Tennessee-Battelle. The five-year management and operations contract is valued at about \$2.5 billion. FSU was invited to join ORNL because of its strong faculty research activities in material sciences, structural biology, computational sciences and magnet technologies.
- ◆ In fiscal year 1999-2000, FSU reached the highest level of external funding for research in its history, attracting more than \$116.9 million. The amount represents a 15.5 percent increase



- over last year's award level.
- ◆ In fiscal year 1999-2000, the FSU Foundation raised \$89.7 million, the largest amount ever raised in a single year at FSU. The amount represents a 21 percent increase over the previous year.
- ◆ At more than \$287.4 million, FSU's endowment has been ranked 150th in the nation by the National Association of College and University Business Officers, the benchmark of higher education fundraising success, in 2000. Since 1994, FSU's endowment ranking has surpassed 156 other institutions.
- ◆ Among public institutions with National Merit Scholars in 1999, FSU was ranked No. 12 with 284. Among those with National Achievement Scholars, FSU was ranked No. 3 with 73.
- ◆ In December 1999, researchers at the National High Magnetic Field Laboratory used a hybrid magnet to conduct the lab's first research in continuous magnetic fields of 45 tesla, or one million times the Earth's magnetic field. The \$100 million magnet lab, which was established in 1990 by the National Science Foundation, is run by FSU in partnership with the University of Florida and the Los Alamos National Laboratory. Vice President Al Gore spoke at the dedication of the magnet lab in October 1994.
- ◆ In 1999, FSU created the Institute on World War II and the Human Experience to "save the memories of those who saved the world" by collecting letters, diaries, memoirs and photos from participants in the war effort, in order to preserve the materials for classroom teaching, scholarly research and public viewing.

As this list of highlights attests, Florida State has excelled in the 1990s with exceptional strength, energy and vision for the future. Under the leadership of the university's 12th president, Talbot "Sandy" D'Alemberte, who took office in January 1994, FSU will continue to build on the foundation of its history of excellence in scholarship, research and service.

A senior member of the 10-member State University System, FSU was founded as an institution of higher learning in 1851 by legislative act and began in Tallahassee with its first students in 1857.

Today, FSU's operating budget is \$600 million. Faculty and administrators generate more than \$116 million annually in external funding to supplement state-sponsored research. Three direct-support organizations serve to bolster the university: the FSU Foundation, which raised \$301 million in private gifts during the university's first capital campaign, Seminole Boosters and the FSU Alumni Association.

The main campus is spread over 463.4 acres in Tallahassee; FSU, which has one of the smallest campuses in the SUS, has been actively acquiring land in the 1990s after years of being landlocked at 347 acres. FSU owns 1,368.5 acres in Leon, Bay, Franklin, Gadsden and Sarasota counties.

Within the state, the university maintains facilities at its 25-acre campus in Panama City, its Marine Laboratory in the Gulf of Mexico, the Appleton Museum in Ocala and the Asolo Performing Arts Center in Sarasota. The Center for Professional Development and Public Service, housed in the Augustus B. Turnbull III Florida Conference Center on the edge of the campus, provides extensive credit and non-credit continuing education programs statewide.

For years, FSU has reached far beyond Florida through international programs in Switzerland, France, Panama, Costa Rica, Spain, Russia, Vietnam and the Caribbean. FSU's student centers in Florence, Italy, and London, England, are considered by many to be the nation's best in Europe.

Florida State offers 292 graduate and undergraduate degree programs through its eight colleges — Arts and Sciences; Business; Communication; Education, Engineering (operated jointly with Florida A&M University, a historically black institution); Human Sciences, Law, and Social Sciences (which also incorporates the Reubin Askew School of Public Administration and Policy) — and eight schools — Criminology and Criminal Justice; Information Studies; Motion Picture, Television and Recording Arts; Music; Nursing; Social Work; Theatre; and Visual Arts and Dance.

With 1,784 members, the FSU faculty has included nine Na-



tional Academy of Sciences elected members, nine American Academy of Arts and Sciences fellows and five Nobel laureates. It is backed by 3,136 administrative/professional and support staff.

Library holdings at Florida State include 2.2 million book titles, 15,511 serials and 4.7 million microforms. The main library facility, the Robert M. Strozier Library, is linked by computer to other state university and national research libraries. The Paul A.M. Dirac Science Center Library is located at the heart of the university's science research complex. FSU also maintains extensive music, library science and law libraries.

FSU's 6,215 graduate students pursue advanced degrees in fields as diverse as business administration and theoretical particle physics. A majority of research done at FSU is the direct result of student effort, culminating in numerous books, monographs and journal articles relating to the whole spectrum of intellectual interests and the practical needs of society.

FSU, a residential campus, places a high priority on its 33,327 students and their needs and interests (of the student population: 44.4 percent are male; 55.6 percent are female; 22.3 percent are minorities; 3.5 percent are foreign students). The University Honors Program, Disabled Student Services, International Student and Scholar Center, Student Government Association, Flying High Circus and intramural sports are among more than 200 organizations and activities in which students may participate.

Situated in the heart of the state's thriving capital city, Florida State's main campus blends Jacobean Revival and modern styles of architecture with the oaks, pines, dogwoods, palms and azaleas of North Florida.

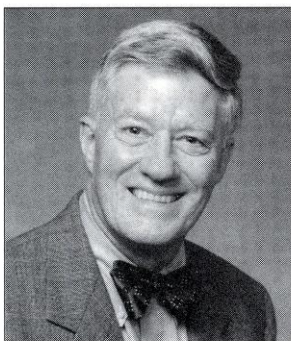
Florida State continues to progress and grow — from its pre-Civil War foundation as the Seminary West of the Suwannee, through the early 20th century as the academically respected Florida State College for Women, returning to coeducational status as a university in 1947, to its modern development as an acclaimed research institution, a top-ranked competitor in intercollegiate athletics and as a standard-setter in the basic sciences and the performing arts.

Florida State University enters the 21st century with excellence in all areas of its mission — teaching, research and public service.

# Athletic Administration

**F L O R I D A S T A T E U N I V E R S I T Y**

## Talbot "Sandy" D'Alemberte President, The Florida State University



Talbot D'Alemberte was appointed president of The Florida State University on November 29, 1993, by the Florida Board of Regents, and took office on January 3, 1994. D'Alemberte served as the fourth dean of the FSU College of Law from 1984 to 1989 and continues to teach as a member of the University faculty.

President D'Alemberte is an active member of many legal and higher educational committees and boards, including numerous American Bar Association committees, state and regional bar associations, the American College of Trial Lawyers, the Lawyers' Committee on Civil Rights Under Law, the NAACP Legal Defense and Education Fund, the Florida Council of 100, the Business-Higher Education Forum, the Campus Compact Board, the First Amendment Center Board at Vanderbilt University, the Southeastern Universities Research Association Board, the National Association of State Universities and Land Grant Colleges Board, the Mildred and Claude Pepper Foundation Board, and several FSU committees and boards including the FSU Foundation, the FSU Alumni Association, the Collins Center for Public Policy, the Caribbean Law Institute, and the Seminole Boosters, Inc.

D'Alemberte was the 1991-1992 president of the American Bar Association and the 1982-1984 president of the American Judicature Society. He represented Dade County in the Florida House of Representatives from 1966 to 1972 and chaired several legislative committees. After leaving the Florida Legislature he chaired the Florida Constitution Revision Commission in 1977-1978 and the Florida Commission on Ethics in 1974-1975.

D'Alemberte practiced law with the Steel Hector & Davis law firm in Miami and Tallahassee where he first began his legal

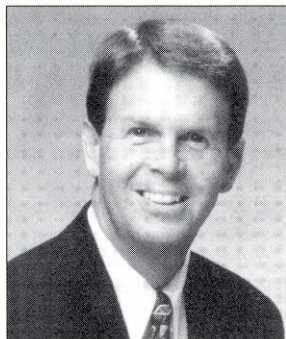
career in 1962 and was named partner in 1965.

D'Alemberte's book, *The Florida Constitution*, was published by Greenwood Press in 1991. He co-edited the 1990 four-volume work, *The Florida Civil Trial Guide*, and has authored over twenty published articles.

The numerous awards D'Alemberte has won include the 1998 ABA Section of Legal Education Robert J. Kutak Award, the 1998 ABA World Order Under Law Award, 1996 American Judicature Society's Justice Award, the 1996 National Council of Jewish Women's Hannah G. Soloman Award, the 1993 Academy of Florida Trial Lawyers "Perry Nichols" Award, the 1993 Florida Academy of Criminal Defense Lawyers Annual Criminal Justice Award, the 1990 Jurisprudence Award from the Anti-defamation League of South Florida, the 1987 Florida Bar Foundation Medal of Honor, the 1986 National Sigma Delta Chi First Amendment Award, an American Academy of Television Arts and Sciences "Emmy" in 1985 for his work in open government, particularly in the opening of court proceedings to electronic journalists, and the 1984 Florida Civil Liberties Union "Nelson Poynter" Award.

D'Alemberte holds honorary degrees from Cleveland State University, Hofstra University, Nova Southeastern University, Stetson University, the Universities of the South (Sewanee), of Bridgeport, of Denver, the University of the West Indies, and the Open University of Great Britain.

## Dave Hart, Jr. Director of Athletics



Dave Hart, Jr., became Florida State's 10th athletics director after a national search selected the former East Carolina athletics director in February 1995. Hart has gained national recognition for his skills in the areas of athletics management, public relations, student-athlete welfare, marketing and fund-raising. He brought to Florida State an outstanding reputation as one of the country's most respected athletics directors. Prior to being named athletics director at FSU, Hart was the architect of

significant growth in East Carolina's athletics program from 1987-1995. Under his leadership, ECU dramatically enhanced its reputation and image while demonstrating marked strides in fund-raising and facilities as well as funding for women's athletics.

Hart has served on several prestigious committees at conference and national levels during his career in athletics administration. He has been a member of the NCAA Council, the NCAA Honors and Awards Committee and the NCAA Special Events and Postseason Bowls Committee as well as a consultant to the NCAA Student-Athlete Advisory Council. Hart has held positions of considerable influence within conference and national circles. He served this past year as President of both the National

## University Administration

President ..... Talbot "Sandy" D'Alemberte  
Provost ..... Lawrence G. Abele  
Dean of the Faculties & Deputy Provost ... Dr. Steve Edwards  
Vice President for Research ..... Dr. Ray Bye  
Vice President for Student Affairs ..... Winston Scott  
Vice President for Finance  
& Administration ..... John R. Carnaghi  
Vice President for University Relations ... Beverly B. Spencer



Association of Collegiate Directors of Athletics and the Division I-A Athletics Directors Association. He currently is a member of NCAA Football's Board of Directors where he serves with commissioners of Division I-A conferences and the NCAA president. In addition to serving in prominent leadership roles nationally, Hart also chairs the Atlantic Coast Conference Television Committee where he played an integral role in the renegotiations of the ACC's football and basketball television contracts, considered to be the nation's best.

This past June Hart was recognized by his Division I-A peers when he was awarded the honor of Athletics Director of the Year in the Southeast Region.

A popular speaker at the national level and the author of a number of articles for national publications, Hart has made numerous speaking presentations at conventions and presented seminars on such topics as program management, student-athlete welfare, marketing, fund-raising and personnel transition. For the past 12 years, he has been an instructor at the National Association of College Directors of Athletics' Management Institute.

Just the 10th athletics director in FSU history, Hart begins his sixth year as Florida State's Athletics Director where he oversees the Seminoles' 33 million dollar athletics budget. Since his arrival at Florida State, Hart has negotiated unprecedented multimillion dollar contracts for the department, guided the development of an extensive and comprehensive athletics facilities master plan, initiated a multi-faceted Student Development/Life Skills program for all student-athletes at FSU, which was recently recognized nationally with a "Program of Excellence" award, and spearheaded the rewriting of the department's mission statement to put the student-athlete at the core of everything the athletics department does in its goal to build comprehensive excellence throughout the program.

Hart has restructured the athletics department including major hires within coaching and administrative components of the department. Under his guidance, Florida State's compliance and academic support programs have made continued strides and are now considered model programs within intercollegiate athletics. Exposure for all Seminole Athletics has escalated tremendously since Hart's arrival at FSU through the negotiation of television contracts with Sunshine Network as well as ACC contracts with regional sports carriers and ABC and ESPN.

Since Hart's arrival, FSU has formed a Varsity Club to encourage the participation of former student-athletes in current athletics department activities and a new focus has been placed on the growth of women's athletics at FSU. That commitment is reflected in the increased allocation of funding and facility improvements during Hart's tenure. Also during Hart's tenure, FSU has become home to the inaugural National Student-Athlete of the Year (Daryl Bush) as well as the NCAA's State of Florida Woman of the Year (Casey Jo Custer). A record number of FSU student-athletes have made the ACC Academic Honor Roll and been recipients of NCAA post-graduate scholarship awards during the past five years. Student-athlete's community service involvement has also become a priority since Hart's arrival. This past year, student-athletes at FSU contributed nearly 3,000 hours to community outreach projects with the women's soccer team winning the athletics Director's Cup for community involvement.

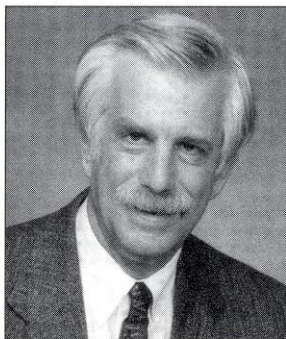
Football and baseball have continued to flourish nationally during Hart's tenure as athletics director as evidenced most recently the past two years when both the football and baseball programs played in national championship games. The commitment to build men's and women's basketball into a conference and national contender is very tangible. A 20 million-dollar renovation to the Leon County Civic Center is now completed and a new basketball practice facility is being planned for construction.

"We've been so fortunate to have Dave leading the university's athletics programs," said President Sandy D'Alemberte. "We hired him because of his record in building successful programs, his commitment to gender equity, his innovative approach to shaping the student behind the athlete, and the stability he offered. He proved us right and has certainly lifted Florida State athletics to a new level."

A 1971 graduate of Alabama, Hart played basketball for the Crimson Tide and earned a master's degree in 1972 while serving as a graduate assistant basketball coach. He coached and taught at the high school level before joining the East Carolina athletics program in 1983.

Hart met his wife, the former Pam Humble, while at Alabama and they have three children — Rick (28), Jamie (26) and Kelly (23). The Harts also have one grandchild, one year old Trevor.

## *Charles W. Ehrhardt* **Athletics Board Chair**



As Chair of the FSU Athletics Board, Professor of Law Charles Ehrhardt is an important link for Florida State with the National Collegiate Athletic Association and Atlantic Coast Conference.

He has served as President of the ACC and as a member of the NCAA's Eligibility Committee. For the last years he has served as chair of the ACC Sportsmanship Committee. Earlier during his tenure as the athletics board chair, he was elected president of the NCAA's Faculty

Athletic Representative Association, was a member of the NCAA President's Commission Liaison Committee and the Special Committee to Study the NCAA Enforcement and Infractions Process. He twice served as president of the Metro Conference. As a Commissioner to the National Conference of Commissioners on Uniform State Laws, Ehrhardt is involved in drafting legislation for a uniform state law regulating the activities of sports agents.

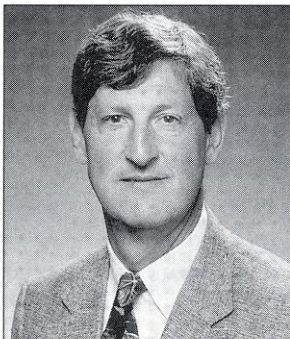
A highly-respected expert in the field of evidence, Ehrhardt is the Ladd Professor of Evidence in the Florida State University College of Law, where he has taught for over 30 years. He wrote the Florida Evidence Code, passed by the Florida Legislature, which regulates the admissibility of evidence during court trials. Ehrhardt has written books on evidence and trial objections, which are frequently cited and relied upon by courts.

Ehrhardt is in demand as a lecturer and speaker. He works with lawyers and judges nationwide as a consultant on evidence matters. He currently teaches in the areas of torts, evidence, trial advocacy and sports law. He has been honored as the FSU College of Law outstanding professor in six different years. He was the recipient of a University Teaching Award in 1989 and the Professorial Excellence Award in 1997.

A native of Elkader, Iowa, Ehrhardt received a bachelor's degree from Iowa State University. He went on to the University of Iowa, where he earned his law degree in 1964. Before coming to Tallahassee, he was an Assistant United States Attorney.

Ehrhardt and his wife, the former Judy Sutton, have three children.

## *Charlie Carr* **Senior Associate Athletics Director**



Charlie Carr enters his sixth year as senior associate athletics director at Florida State in 1999. FSU athletics director Dave Hart named his longtime associate shortly after he accepted the job in 1995.

Prior to coming to FSU, Carr served under Hart as an associate athletics director at East Carolina University for four years and was executive director of ECU's educational foundation from 1988 until his elevation to associate AD.

Carr's responsibilities since coming to Florida State include assisting in managing all phases of the department's operation. He serves as the department's spokesman in the AD's absence and acts as the athletics department's contact and liaison for campus and community organizations.

Carr also is charged with overseeing departmental personnel in addition to the administration of the Seminole baseball, cross country, golf, track and volleyball programs.

A well-known member of the college athletics scene in North Carolina as a player, coach and administrator, Carr was athletics director at Mississippi State from 1985-87.

Carr played football and baseball at North Carolina where he earned his master's degree in 1970. He played two years of professional baseball in the N.Y. Mets organization before becoming an assistant football coach at his alma mater from 1971-75 under Bill Dooley. He then coached at Rice University from 1975-78.

He returned to UNC in 1978 to begin administrative work as senior associate athletics director until his appointment at Mississippi State.

Carr and his wife, Dee, have one daughter Caitlin (16).

### *Charles Hurst*

#### **Executive Associate Director of Athletics for Internal Affairs**



Charles Hurst enters his 14th year with the Florida State athletic department. Hurst was promoted to his present position in 1995 after three years as an associate athletics director, where he oversaw all of the department's financial and business affairs.

In addition to assisting in the daily management of the department, Hurst's duties include supervision of the annual budget, business and ticket office operation, facilities management, personnel records, departmental contracts and negotiations.

The Talladega, Ala., native came to Tallahassee after a stint at the University of Florida, where he was Director of Internal Management Auditing from 1983-87. He was Manager of Internal Auditing at the University of South Alabama from 1981-83.

Hurst received his bachelor's degree from Jacksonville State (Ala.) University with a major in accounting and a minor in economics. He earned CPA status in 1975 while employed by the private firm of Brook and Freeman in Anniston, Ala.

He and his wife, Juanita, have one daughter, Maria (21).

### *Kim Record*

#### **Senior Associate Director of Athletics/ Senior Women's Administrator**



Kim Record joined Florida State's staff in August of 1995 when she was named to the newly created position of associate athletics director and senior women's administrator at Florida State.

Record is a veteran of Atlantic Coast Conference circles having served as an associate athletics director at her alma mater, the University of Virginia, for seven years.

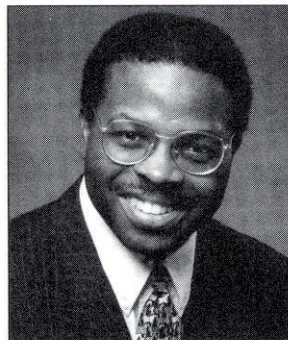
Record's responsibilities at Florida State include coordination and oversight of all multi-media contracts, supervising Title IX and gender equity compliance with the department, and overseeing the areas of sports marketing and sports information. She is also the primary administrator over the Seminole basketball, soccer, softball, swimming and tennis programs.

Prominent on the national scene as well, Record serves on NACDA's executive committee and on the NCAA women's soccer committee.

A native of Troy, Va., Record received her bachelor's degree in sociology in 1984 and a master's from FSU. She has two sons, Kyle (12) and Joshua (7).

### *Bob Minnix*

#### **Associate Director of Athletics for Compliance & Legal Affairs**



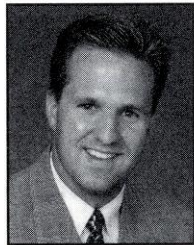
News spread quickly in August of 1995 when Bob Minnix, a Director of Enforcement at the NCAA since 1975 and a former star running back at Notre Dame, announced he would leave his post to accept the newly created position of associate athletics director for compliance and legal affairs at Florida State University.

In his role at the NCAA, Minnix oversaw enforcement issues with regard to the NCAA and its member institutions including the preparation and presentation of cases to be heard by the Committee of Infractions. He has served on a number of NCAA committees including the Leadership and Development Training Com-

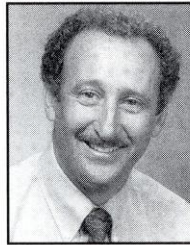
## *Athletics Staff*



**Patrick Martin**  
*Athletics Ticket Manager*



**Scott Kull**  
*Director of Athletics Marketing*



**Bernie Waxman**  
*Assistant Athletics Director for Facilities, Operations & Event Management*



**Rob Wilson**  
*Assistant Athletics Director for Media & Public Relations*



**Pam Overton**  
*Associate Athletics Director for Student Services*

mittee, Special Events Committee, Post-Season Football Subcommittee, and staff task forces that concentrated on public relations, compensation, and employment opportunities for women and ethnic minorities.

He is presently the chair of the NCAA Committee on Sportsmanship and Ethical Conduct and a member of the board of directors of the Black Coaches Association. He is also on the board of directors for the nation association of athletics compliance coordinators. He frequently participates in panel discussions on current topics at the National Association of Collegiate Directors Association and the American Bar Association.

At Florida State, Minnix is charged with overseeing all departmental compliance issues, implementing and directing FSU's rules education programs, and serving as the department's liaison and contact with university General Counsel as well as other legal interests. He is directly involved in the strategic planning of long range departmental goals regarding student-athlete welfare and life skills training.

Minnix has continued FSU's stance as a pro-active leader in addressing NCAA and ACC issues, and in educating coaches, staff, student-athletes and donors to the serious nature and ramifications of non-compliance.

A native of Spokane, Wash., Minnix attended Notre Dame, where he played in back-to-back Cotton Bowls in 1970 and 1971. He led the Fighting Irish in rushing as a senior in 1971. A 1972 Notre Dame graduate, Minnix attended law school at the University of Washington where he received his Jurist Doctorate degree in 1975.

Minnix and his wife, Genny, have two sons, Brennan (21) and Blair (16).

*Andy Urbanic*

**Associate Director of Athletics for Football Operations & Special Projects**



Andy Urbanic begins his 12th season in charge of football operations at Florida State. He added the responsibility of coordinating special projects within the athletics department two years ago and was elevated to the position of Associate Athletic Director last summer.

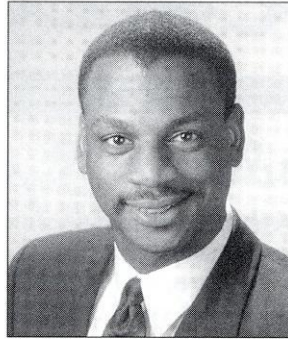
Urbanic is directly responsible for all aspects of football operations, including team travel and home game operations. He also coordinates post-season logistics and travel for all Seminole teams and supervises the equipment, strength and conditioning, and training room staffs.

A member of the Pennsylvania Sports Hall of Fame, Urbanic came to Tallahassee with more than 20 years experience in collegiate athletics (most of which came as an assistant coach at the Division I level). Prior to taking the administrative post at FSU, he was at the University of Akron as offensive backfield coach and recruiting coordinator from 1986-87, and as assistant head football coach and offensive coordinator from 1987-88. From 1980-86, Urbanic was the offensive backfield coach at the University of Pittsburgh. Urbanic is a legendary figure in high school coaching in Pennsylvania, where he coached six undefeated teams and earned eight state championships.

Urbanic is a past president and member of the board of directors of the Pennsylvania State High School Coaches Association and remains active in the American Football Coaches Association.

He and his wife, Dorothy, have two daughters.

*Guy Morgan*  
**Assistant Athletics Director for Community Relations & Career Services**



Guy Morgan is in his seventh year at Florida State University as Assistant Director of Athletics.

In his role at Florida State, Morgan coordinates the special events and projects sponsored by the Department as well as serving as the department liaison with the University Career Center. Morgan continues to coordinate the department's jobs program and maintains records for NCAA compliance regarding job placement of FSU student-athletes.

Morgan joined the FSU athletics department after working for Sports Marketing Enterprises, Inc. from 1988-94. In that position, he served as a liaison with the PGA Tour and the Vantage Golf sponsorship.

Morgan and his wife, Tonya, are the proud parents of Guy II (5) and Sterling (1).

*Greg Phillips*  
**Assistant Director of Athletics for Business, Tickets & Systems Management**



Florida State alumnus Greg Phillips enters his sixth year as the assistant director of athletics for business and systems management. This year he will also oversee the athletics ticket operations. He was elevated to the position of assistant athletic director in 1995 after spending six years as the athletics department's business manager, and has served the department a total of 13 years.

Phillips oversees the day-to-day fiscal operations of the department and assists in the formulation and implementation of fiscal policies and procedures, including internal accounting controls. He participates in budget preparation and is responsible for the department's accounting, financial reporting, payroll, purchasing, travel and cashiering functions. Phillips is also charged with managing the department's information technology and directing hosted NCAA championships.

Phillips joined the athletics staff in 1986 after earning bachelor's and master's degrees in accounting from Florida State and a master's degree in sports administration from the United States Sports Academy.

The Bartow, Fla., native currently serves as First Vice President of the College Athletic Business Management Association and also serves on the ACC Finance Committee. He and his wife Deanna have a son, Payton (6), and a daughter, Kathryn (4).

# Academic Support

F L O R I D A S T A T E U N I V E R S I T Y

## Athletic Academic Support Mission Statement

**The primary focus of the Athletic Academic Support Program is to provide an environment which facilitates the academic success of each student athlete. Student success is encouraged through competent academic counseling, study skills development, individualized assessment and support, and a wide array of tutorial services.**

## An Overview of An Award-Winning Academic Support Program

**ACADEMIC, PERSONAL, AND PROFESSIONAL SUPPORT** are essential to college success. At The Florida State University, we have developed an outstanding support program which enables student athletes to reach their full potential.

Director, Mark Meloney states "Our philosophy is to offer an academic support program integrated with the total University that will assist all student athletes with the transition into college and provide continued support in all phases of academic and professional development, culminating with graduation, job placement, or graduate school".

Our program operates on a "proactive" rather than "reactive" approach. Our academic staff does not wait for crises to occur. We gather important background information on each entering student athlete, build an academic profile, and develop individualized support programs which are tailored to the unique needs of each student athlete. We also stay informed on the daily progress of the student athletes through consistent communication with our faculty.

The academic support unit is housed in the \$126 million dollar, state-of-the-art University Center Complex. It includes private study carrels, a tutorial study area, and a computer lab outfitted with 20 IBM compatible computers and laser jet printers. In addition, the athletic sky boxes are used for group and individualized tutorial instruction. The academic support staff is comprised of a Director, an Administrative Assistant, five Academic Counselors, several graduate assistants, individualized learning specialists, and a cadre of approximately 50 tutors and mentors.

Mark Meloney was named the program's Director in 1997 and brings 12 years of advising experience to the position. Over the past six years, Meloney has played an integral role in the development of a comprehensive program of student athlete support, which in 1996 won the "Program of Excellence" award from Athletic Management Magazine.

## Academic Support Tutorial Program

The Athletic Department at Florida State University has made a commitment to providing our student athletes with one of the finest and most comprehensive tutorial programs in the nation. The tutorial program is just one of several key support services that is available to all student athletes as they progress towards

their ultimate goal of obtaining a college degree. We hire approximately 70 tutors a year, from a variety of academic departments, who are committed to providing a proactive, individualized approach in assisting student athletes with course comprehension and study skills. The tutors are usually seniors or graduate level students who have outstanding academic backgrounds. Tutorial assistance is available for all academic course work and may be obtained by filling out a tutorial request form at the beginning of the semester, or as needed.

## Mentor Program

Academic Mentors are academic role models who have demonstrated the ability to teach and give guidance in areas of academic developmental skills. Each semester, mentors begin the process by sitting down with their assigned student athletes and assist them in identifying all of their academic responsibilities for that semester. A calendar is developed which becomes a visual blueprint of each course's academic requirements. This tool introduces the student athlete to the concept of time management. Students learn to plan projects days and weeks in advance. Such planning aids them in developing strong study and organizational habits.

Mentors are also responsible for providing assistance in the development of skills such as note taking, test preparation, and communication with faculty. In essence, mentors become an extension of the academic counselor as they keep the academic performance of their student athletes under close observation and report to the academic counselors each week.

## Study Hall

In an effort to help ensure the academic success of the student athletes, professionally supervised study sessions for each athletic team are organized. The main focus of the study hall program is to help students develop consistent and appropriate study patterns by providing a structured setting to work on class assignments and to provide tutorial assistance before academic problems arise. Although the criteria for study hall is left to the discretion of each academic counselor, typically most freshmen, first year transfers, and upperclassmen who have not yet achieved a satisfactory cumulative grade point average are asked to attend study hall.

## Academic Honors & Awards

Florida State University student athletes have achieved great success in obtaining recognition for academic excellence. More than \$135,000 in postgraduate monies have been granted to FSU's



**MARK P. MELENEY**

*Mark Meloney begins his fifth year as the Director of the Athletic Academic Support Program. He brings to the position twelve years of advising experience at FSU. Over the past six years, Mark has played an integral role in the development of a comprehensive program of student athlete support, which in 1996 won an "Award of Excellence" from Athletic Management Magazine. Mr. Meloney directs a staff of five professional counselors, two graduate assistants, and an administrative assistant.*

*In addition to his duties directing the Academic Support Program, Mr. Meloney evaluates all recruits for their academic potential, monitors academic progress and eligibility for student athletes, and serves as a liaison to the academic community. Mark also serves as a member of the administrative team for both the Athletic Department and the Division of Undergraduate Studies.*

*A native of Iowa, Meloney began his college education at Buena Vista College, where he earned varsity letters in football and baseball. Upon transferring to Florida State University, he earned Bachelor's degrees in Management and Finance in 1986 and received his M.S. degree in Athletic Administration in April 1997. He is currently pursuing his Ph.D. in Athletic Administration as well. A member of the National Association of Academic Advisors for Athletes (N4A), Meloney is married to the former Sarah Cawthon and they have a 7 year old daughter, Montana Shea.*



**MATTHEW SCHMAUCH**

*Matt Schmauch, who has been a member of the FSU Academic Support staff since the fall of 1997, is in his second year as the academic counselor for the women's basket-*

*ball team. Schmauch, a native of Allen Park, Mich, earned a bachelor's degree in finance from Florida State in 1995 and went on to receive a master's degree in athletic administration from FSU in 1996. A former student-athlete himself, Schmauch was a member of the Seminole swimming team from 1994-96 after transferring from the University of Florida. During his career, Schmauch was an Atlantic Coast Conference finalist while achieving ACC Honor Roll and Academic All-American status. An active member of the FSU athletics department, Schmauch was involved with the Say "No" to Drugs program and was also a member of the Student Athlete Advisory Board. He also served as an intern with the Seminole Boosters while pursuing his master's degree.*

*In addition to working with the women's basketball team, Schmauch is also the academic counselor for the defensive football players. Schmauch's duties include coordinating support services for the student-athletes including assigning tutors, assisting in course and major selection, teaching study skills and advising about eligibility requirements while monitoring their day-to-day academic responsibilities in an effort to ensure they maintain progress toward their degrees. Schmauch also actively participates in the recruitment process of all prospective student-athletes. In addition, Schmauch serves as the Eligibility Coordinator, Admissions Coordinator and as the liaison to the NCAA Clearinghouse for the FSU Academic Support Program.*

*1999-2000  
ACC Academic Honor Roll*

- Molly Beal**
- Lauren Bradley**
- Latavia Coleman**
- Vanessa Fuchs**
- Levys Torres**
- Katelyn Vujas**
- Brooke Wyckoff**

student athletes over the past five years, as well as a number of other academic honors and awards. Florida State University had a record 183 student athletes on the 1999 Atlantic Coast Conference Honor Roll and boasted a Weaver-James-Corrigan Postgraduate Award Winner, a NACDA Minority Postgraduate Scholarship Award Winner, and two NCAA Postgraduate Scholarship Award Winners.

The Academic Support Program is committed to recognizing the academic success of all student athletes. The Athletic Department, in conjunction with Seminole Boosters, Inc., puts on the annual "Golden Torch Gala", a black-tie academic awards banquet, each fall. The ACC Honor Roll student athletes, as well as the individuals with the highest GPA on their respective teams, and the Men's & Women's Teams with the highest GPA are recognized at this event.

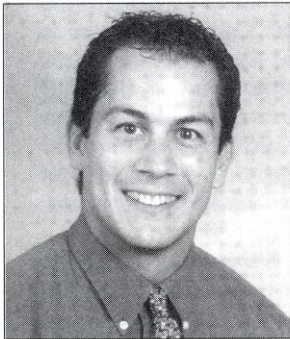
Team meetings are held each year, during which time student athletes are notified of potential honors and awards and are encouraged to apply. Combining a strong grade point average with athletic accomplishments, community service activities, and leadership experiences make for a student athlete capable of obtaining unlimited academic honors, awards, and postgraduate opportunities.

# Support Staff

F L O R I D A S T A T E U N I V E R S I T Y

## Florida State Strength & Conditioning

The *Strong Shall Survive* is the motto of the strength and conditioning staff at Florida State University. It is also this philosophy that has made Seminole athletes in all sports among the strongest, fastest and fittest anywhere. At Florida State, the strong not only survive, they win too!



**Dave Plettl**

Florida State has developed a supervised program for women's basketball, emphasizing the objectives of not only building bodies, but strengthening and conditioning them. Strength coach Dave Plettl, who is in his first year on the Florida State strength and conditioning staff, individually customizes programs for each of the athletes beginning with pre-conditioning before the season gets underway.

The Florida State women's basketball team achieves its goals in a state-of-the-art facility at the Coyle E. Moore Athletics Center, located in the same building as the coaches' offices, practice gym, women's basketball locker room and team meeting room. The weight room is a spacious area encompassing over 7,000 square feet. The newly-renovated weight room is complete with a rubberized floor surface, drop-ceilings with enhanced lighting, stereo sound system, cooled water fountains and a mirrored area which includes exercise systems by Cybex Eagle as well as free

weight equipment. A variety of bicycles, rowing machines and Stairmasters complete both the strength and conditioning and cardiovascular experience. The weight room used by the Seminole football team has banners commemorating FSU's bowl victories which hang from the rafters and inspirational slogans cover the walls.

Plettl, a native of Bailey, Colo., is a 1991 graduate of the University of Colorado, where he earned a Bachelor's degree in political science and history. He comes to Florida State from the University of Texas where he served the past two years as an assistant strength and conditioning coach with the football, men's tennis, women's golf and rowing programs.

While at Colorado, Plettl worked as a student assistant athletic trainer his first year and then moved to the strength and conditioning staff in 1987 where he spent the next 10 years. Plettl was a student assistant/graduate assistant from 1987-92, the interim coach from 1992-93 and associate strength and conditioning coach from 1993-97. He worked primarily with the football, men's and basketball, volleyball and soccer programs at CU.

Plettl, who is a certified Level II specialist in sports conditioning, works with both the men's and women's basketball programs at Florida State. He is married to the former Christa Miller. The couple is expecting their first child in April.

## Florida State Medical Care & Treatment

An athlete can expect to receive the best care and treatment possible with the athletic training team at Florida State Univer-



**The weight room at Coyle E. Moore Athletics Center.**

# Basketball Staff



**KRISTIN BROOKENS**  
Senior Secretary/  
Recruiting Manager



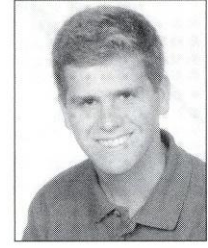
**STACEY BURCH**  
Administrative  
Assistant



**DAVID HOLTZCLAW**  
Promotions



**CHERYL TINGLE**  
Student Assistant  
Athletic Trainer



**PETE WAGES**  
Video Assistant,  
Seminole  
Productions

sity. Prior to competition, all FSU student-athletes undergo screening in order to detect any potential injuries. If a problem is detected, the athlete may be placed on a prevention care system which may include any kind of treatment from icing to exercising. Third-year Assistant Athletic Trainer Kari Langley will handle the athletic training duties for the women's basketball team again this season.

Langley is a 1996 graduate of Valdosta State University where she earned a bachelor's degree with honors in sports medicine. She joined the Florida State staff in July of 1998 after working two years as a graduate assistant athletic trainer at Michigan State University while pursuing a master's degree in Kinesiology.



**Kari Langley**

At MSU, Langley's primary responsibility was serving as the head women's gymnastics athletic trainer. In addition to coordinating all phases of health care for the MSU gymnasts, some of Langley's other responsibilities included assisting with pre-season football and student-athlete drug testing and coordinating mass physicals for 14 of MSU's athletic teams.

In addition to her women's basketball athletic training duties, Langley also supervises the athletic training for women's tennis and coordinates annual drug testing of all FSU female athletes.

A native of Akron, Ohio, Langley is a certified member of the National Athletic Trainers Association and is also a certified Red Cross CPR/First Aid Instructor.

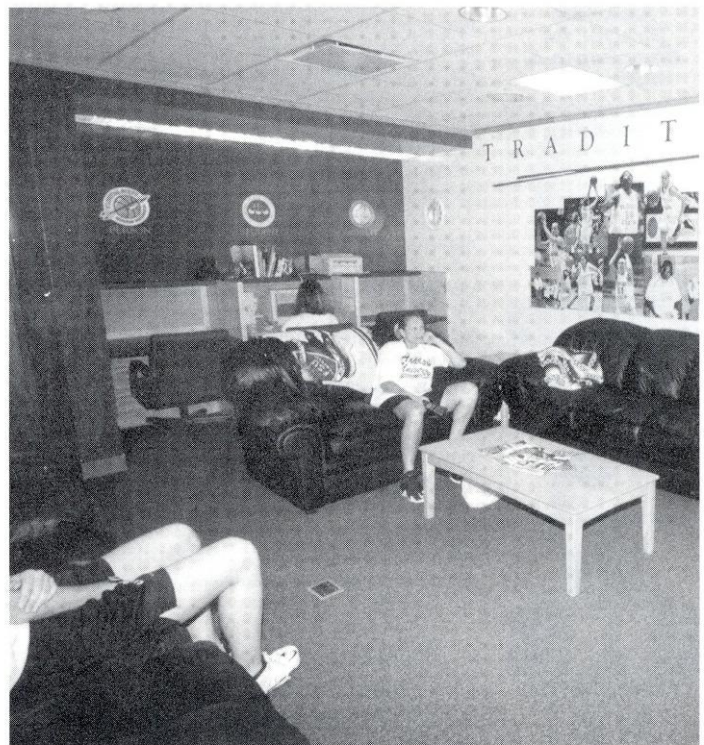
Though the prevention of injuries is the main objective, some injuries are unavoidable. Rehabilitation is another component of the Florida State training room. The FSU athletic training staff will work with the athlete and provide an intense rehabilitation schedule that will allow the athlete to successfully rehabilitate after an injury. Some injuries and illnesses may be referred to the Seminole team physicians at the Tallahassee Orthopedic Center, who, for many years, have worked in conjunction with the FSU athletic training staff in successfully rehabilitating athletes after an injury.

## Locker Room

The Florida State women's basketball team utilizes a three-room locker room facility located in the Moore Athletic Center where the squad trains and practices. The locker room was specifically designed to meet the needs of the Florida State women's basketball players as people, students and athletes. The locker room features a lounge and study area, equipped with study carrels, couches and entertainment center, an area equipped with individual wooden lockers, seating and meeting area and a section which includes individual shower and dressing units.



**Florida State basketball managers Stefanie Gainey, Lynn Bourdon, Chris Brann and Rebecca Graef**



**The Women's Basketball team locker room and meeting room.**

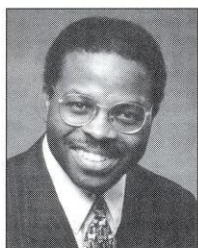
# NCAAd Information

## FLORIDA STATE OFFICE OF COMPLIANCE

**THE FOLLOWING INFORMATION IS PROVIDED BY THE FLORIDA STATE OFFICE OF COMPLIANCE FOR PROSPECTIVE STUDENT ATHLETES. IT IS INTENDED AS A GUIDELINE TO INTRODUCE SOME OF THE RULES GOVERNING NCAA ATHLETIC INVOLVEMENT.**

### *Who is Permitted to Recruit for FSU?*

Only Florida State University coaches who have successfully completed the NCAA Recruiting Rules Examination on an annual basis may be involved in the recruitment process. Representatives of our athletics interests **may not** make any recruiting contacts. This includes letters, telephone calls or face-to-face contact on or off campus with a prospect or the prospect's parents.



**BOB MINNIX**  
Associate  
Director for  
Compliance &  
Legal Affairs



**PENNIE PARKER**  
Director of  
Compliance



**BRIAN BATTLE**  
Assistant  
Director of  
Compliance

### *Key Terms You Should Know*

You become a **prospective student-athlete** if you have started classes for the ninth grade. Before the ninth grade, you become a prospective student-athlete if the college provides you (or your relatives or friends) any financial aid or other benefits that the college does not provide to prospective students generally.

A **contact** is any face-to-face encounter between a prospect or the prospect's legal guardian and an institutional staff member or athletic representative during which any dialogue occurs in excess of an exchange of greeting. **NOTE:** At the Division I level, athletic representatives (boosters) may not contact you for the purpose of recruiting. A college coach may contact you in person off the college campus beginning July 1 after completion of your junior year in high school.

An **evaluation** is any off-campus activity designed to access your academic qualifications or athletic ability, including any visit to your high school (during which no contact occurs) or the observation of any practice or competition in which you participate.

During your senior year, you can have one expense-paid **official visit** to a particular campus. You may receive no more than five visits. During your official visit, which may not exceed 48 hours, you may receive round-trip transportation between your home and the campus, and you (and your parents) may receive meals, lodging and complimentary admission to campus athletics events.

### *Phone Calls and Letters*

Phone calls from faculty members and coaches (but not boosters) are permitted beginning July 1 after completion of your junior year. A college coach or faculty member is limited to **one telephone call per week** except when it is:

- During the five days immediately before your official visit to the university
- On the day of a coach's off-campus contact with you
- During the time beginning with the initial National Letter of Intent signing date in your sport through the two days after signing date

Letters from coaches and faculty members (but not boosters) are not permitted until September 1 at the beginning of your junior year in high school. A Division I university may provide you with the following printed materials:

- General correspondence, including letters, U.S. Postal Service post-cards and institutional note cards
- Game programs which may not include posters and one Student Athlete Handbook can be provided only during official or unofficial visits to the university's campus
- NCAA educational information
- Pre-enrollment information subsequent to signing a National Letter of Intent with the university
- One athletic publication which may include only one color of printing inside the covers
- Official academic, admissions and student services publications published or videotapes produced by the institution and available to all students
- Schedule cards
- Questionnaires which may be provided prior to your junior year
- Summer camp brochures which may be provided prior to your junior year.

### *Alumni and Boosters Do's & Don'ts*

**You may** forward information about pro-spective student-athletes to the appropriate coaches.

**You may** have contact with a prospect regarding permissible pre-enrollment activities such as summer employment, provided the prospect has already signed a National Letter of Intent and the Compliance Office is aware that you are making these contacts in regard to employment.

**You may** have a telephone conversation with a prospect **only** if the prospect initiates the call. Such a call may not be prearranged by an institutional staff member and you are not permitted to have a recruiting conversation, but may exhibit normal civility. You must refer any questions about our athletics programs to an athletics department staff member/coach.

**You may** view a prospect's contest at your own initiative provided you do not contact the prospect or his/her parents. In addition, you may not contact a prospect's coach, principal, or counselor in an attempt to evaluate the prospect.

**You may** continue established family relationships with friends and neighbors. Contacts with sons and daughters of these families are permitted as long as they are not made for recruiting purposes or encouraged by Florida State University coaches.

**You may not** become involved in making arrangements to receive money or financial aid of any kind for a prospect or the prospect's family and friends.

**You may not** make contact with a prospective student-athlete and his/her parents when the prospect is on campus for an official or unofficial recruiting visit.

**You may not** transport, pay or arrange for payment of transportation costs for a prospect, and his/her relatives or friends to visit campus (or elsewhere).

**You may not** pay or arrange for payment of summer camp registration fees for a prospect.

**You may not** provide **anything** to a prospect, the prospect's family or friends without prior approval from the athletics' Compliance Office.

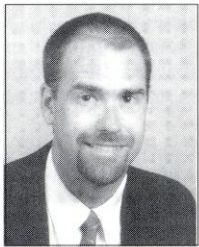


# Life Skills

& S T U D E N T D E V E L O P M E N T

## *The N.O.L.E.S. Program: New Opportunities for Leadership, Education & Service*

Developed by the Florida State University Department of Athletics, the NOLES program represents a commitment to the total growth and development of the student-athlete. This program establishes an administrative commitment to academic and athletic excellence. Those efforts will be supported with programs and services in personal development, career development and community service.



**JOHN LATA**  
Coordinator

### *Personal Development*

Fostering the development of personal growth is a fundamental component of the NOLES program. These support programs ensure that the student-athlete will be provided opportunities to focus on personal growth issues such as values clarification, goal setting, fiscal planning, decision making and personal responsibility. Programming focuses on helping student-athletes develop a healthy lifestyle while they are at Florida State and habits that will benefit them for life.



**AMY MAGNUSON**  
Sports  
Nutritionist

### *Career Development*

Preparing for life after college sports is a major focus of the NOLES Career Development program. The program is designed to work cooperatively with the University's Career Services to acquaint students with the job search process, provide networking opportunities and ultimately assist with job placement. This program places a priority on the development of the total person, with the goal of developing individuals who will have rewarding careers and productive lifestyles after they leave Florida State.

### *Community Service*

Serving the community is the focus of our Seminole Spirit program. Student-athletes are challenged to give service to our community and individuals who are in need. With a clearly defined program of service, student-athletes are given the opportunity to develop the foundation for a lifelong commitment to volunteerism. The Seminole Spirit Student-Athlete Speakers' Bureau enables student-athletes to improve their speaking skills, develop effective communication and impact the lives of others through their service as role models in our community.

### *Leadership Development*

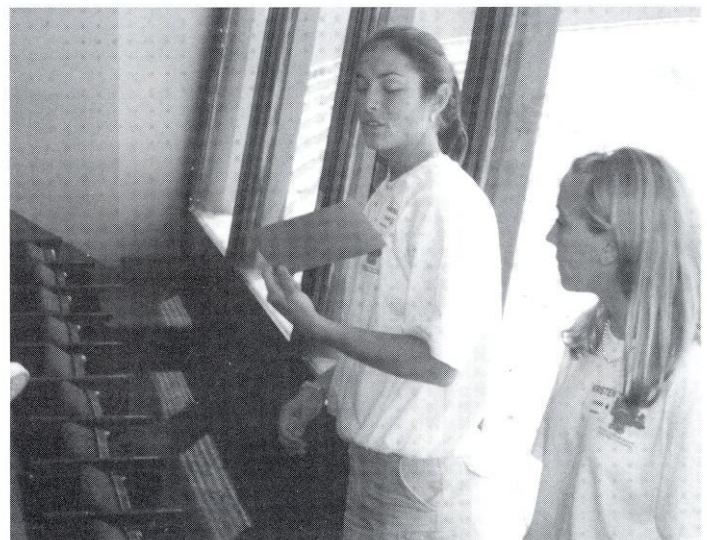
The Florida State University Department of Athletics is committed to developing programs of excellence that foster leadership development. The foundation of the leadership development program are the Seminole Leadership Institutes that are held four times a year. These institutes offer student-athletes the opportunity to learn skills that will benefit them as students, as athletes, and as they pursue their goals after leaving Florida State. The Institutes have the opportunity to use the values and work ethic taught by athletic participation as the framework for their leadership development. The Institutes attract outstanding guest speakers who



**Student Development Director Pam Overton was presented with the first annual Dr. Gene Hooks Award for the outstanding CHAMPS program coordinator as chosen by the Division I-A Athletics Directors.**

challenge Seminole student-athletes to achieve their greatest potential and use their leadership skills to positively influence others.

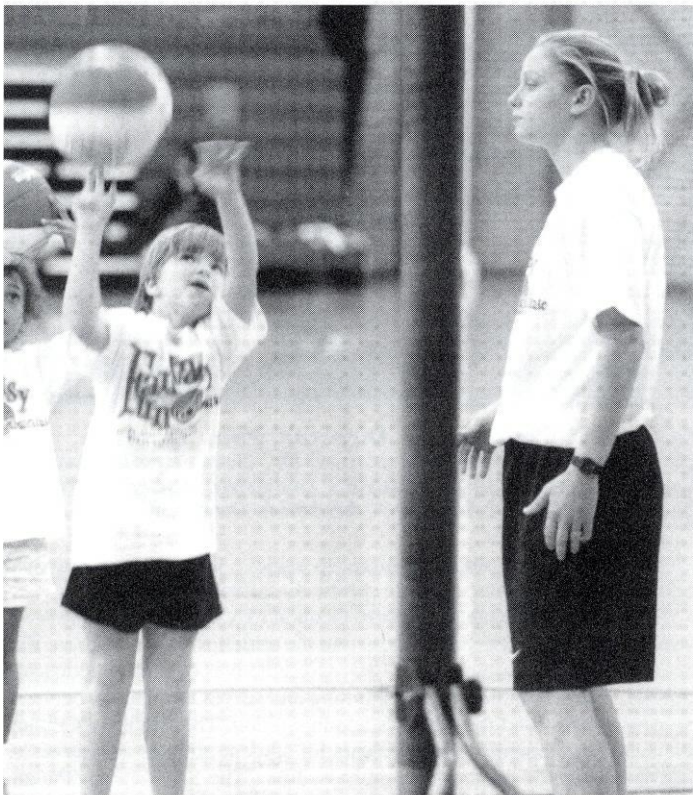
The Student-Athlete Advisory Council (SAAC) serves as the advisory board to the NOLES program and the athletics administration. The prestigious board, comprised of two representatives of each athletic team at FSU, also recommends programming and serves as a liaison between student-athletes and the athletics administration. The Advisory Council plans and implements various events for student-athletes and serves as the de-partment's most visible ambassadors. The SAAC hosts the annual Golden Nole banquet and plans such events as orientation for incoming student-athletes and the back-to-school picnic.



**Vanessa Fuchs is vice president of the Student Athlete Advisory Council.**

# Community Service

*"To whom much has been given, much is required"*



## THE FLORIDA STATE WOMEN'S BASKETBALL TEAM

makes community service a priority.

For Florida State women's basketball Head Coach Sue Semrau, her philosophy is simple. Semrau runs her program in such a way that players are treated as people first, students second and athletes third. She is a relationship coach who believes in going and initiating relationships rather than waiting for others to do so. It's this philosophy that has filtered into the actions of her staff and players at Florida State, both on and off the court.

There's a pride that Semrau has instilled in her players — a pride that they find delight in sharing. Florida State knows how important the community is in the development of the women's basketball program and the Seminoles appreciate the support that they receive. Because of this, the Seminoles believe in "giving back" and that's why community service is a priority to the Florida State women's basketball team. It all starts on the court. Following every Seminole home game, fans are invited to circle the court to meet the players and coaches. The Seminoles are sure to greet each and every person — no matter how long it takes to get around the court!

"It helps us get closer to the fans so they know that we appreciate their support at the games," senior Levys Torres said. "It's pretty cool that we get to say hi to them and thank them for being there."

But that's just the beginning. "To whom much has been given, much is required" — words that Semrau and her team choose to live by. To help practice this, the women's basketball team, in conjunction with the Florida State Athletics Life Skills/Student Development Department, has devised a program in which each player performs at least three hours of community service per month while in season and six hours of service per month when not in season. The Seminoles have performed a variety of services, including the Walker Ford Tutorial Program, in which the players donate two hours of their time on Saturday mornings to tutor



elementary-aged children. They have helped package and deliver meals with Elder Care Services for the "Meals on Wheels" program, cleaned and cooked at the Ronald McDonald House, done lawn work and helped plant a garden at a local women's shelter, gone Christmas caroling at a retirement home and visited children in the Pediatrics Ward.

"One of the biggest reasons we do community service is because we as coaches and players feel so blessed that we have received so much and have the opportunity to do so much here at FSU," said FSU Assistant Coach Roy Heintz, who coordinates the Seminoles' community service efforts. "Giving back to the community allows us to use our platform as coaches and players to impact the world around us, inspire some young kids or athletes to strive to do bigger and better things and help the elderly and afflicted to feel a little bit better even just for one minute during a day. It's very important for us and for our players to develop a giving heart and understand how blessed we are for all we receive. It makes us feel better in our hearts when we can give back to the world around us."

The Seminoles also perform service as a group. The entire team spent a Saturday afternoon helping to build a house as part of the "Habitat for Humanity" program. Players did everything from carrying supplies, to hammering nails, to placing "hurricane clips" onto the roof. The squad has also sponsored a child through the Compassion International Program. "Francesca," who lives in Haiti, has been a Seminole the past two years.

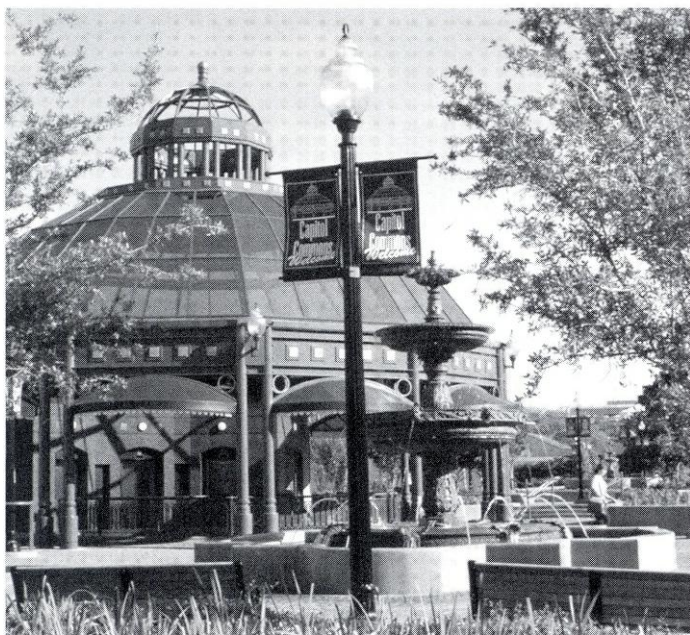
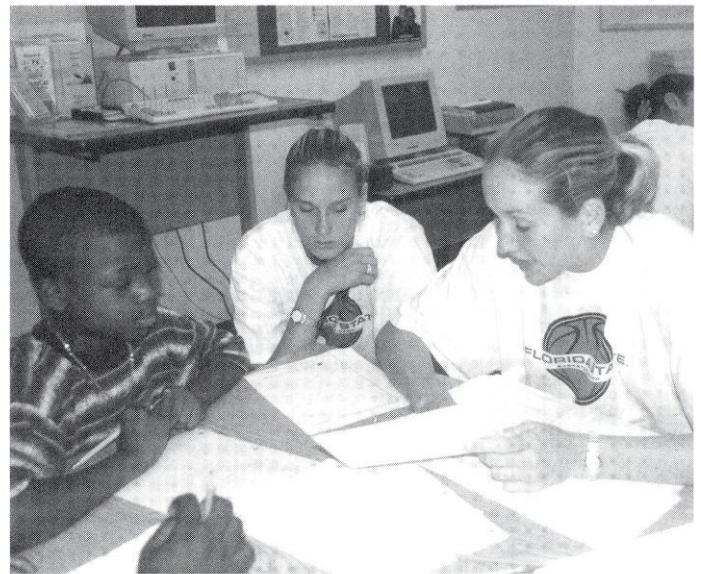
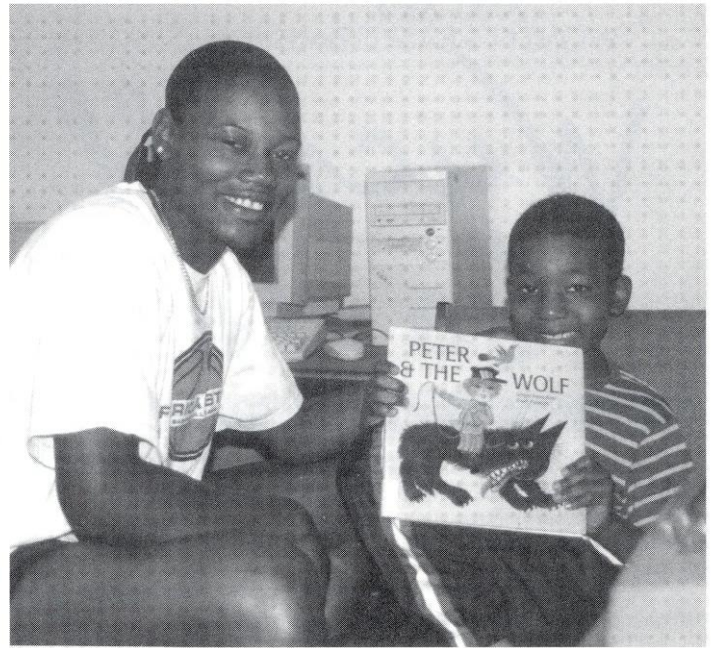
"Francesca is like our adopted kid," senior Vanessa Fuchs said. "We donate money to her each month and take turns writing her letters every couple of weeks. She'll write us back about the new dress she was able to buy with our help. It's such a good feeling knowing that our letters and donations have encouraged and helped her."

Last spring the Seminoles donated their time to the "Fantasy Fun League," which was a weekly clinic designed to help area youngsters learn the game of basketball. The FSU players served as coaches of the teams which played each other on Saturday mornings.

"It was a great experience," junior Lakesha Springle said. "Before the spring league, I always said I would never want to coach, but after it, it made me kind of think about it. The kids were great and I saw them improving from week to week and my team made it to the championship game which was fun. I could tell how much the kids appreciated it by how hard they worked and how eager they were to be there."

For Semrau, the community service facet of her program has been a priority from day one and it is an area that has had much success. In the spring of 1998 at Florida State's annual Golden 'Nole Awards Banquet, honoring all FSU student-athletes, the women's basketball team was awarded the first Athletics Director's Cup for Service, which is given annually to the team that performs the most hours of community service throughout the year. Semrau's Seminoles earned the distinction again in 1999.

"It's really important for us to get involved in the community," said senior Lako Brown. "The people are excited to meet us and amazed that we have the opportunity to play college basketball. It also gives us a chance to help others. We can talk to kids about the importance of staying in school and not quitting at anything."



# Wyckoff & Torres Go International

## F S U I N T E R N A T I O N A L P L A Y

**AS THE FLORIDA STATE WOMEN'S BASKETBALL TEAM PREPARED FOR ITS EUROPE TOUR IN AUGUST**, seniors Brooke Wyckoff and Levys Torres gave their teammates a few pointers on international basketball, because both earned international experience over the summer.

According to Torres, the team needs to "play hard and be ready for anything," while Wyckoff's advice was more specific.

"The biggest thing is that the game is really fast-paced," Wyckoff said. "They pass extremely well, are really good outside shooters and it is a very physical game."

Wyckoff spent her third straight summer with USA Basketball where she was a co-captain and starter on the gold medal-winning Jones Cup Team that competed in Taipei, Taiwan. Torres spent a week playing for her Colombian national team at the Pan American Games in German, Puerto Rico.

The 2000 USA Basketball Women's R. Williams Jones Cup Team, comprised of 12 of the nation's top college players, trained at the U.S. Olympic Training Center in Colorado Springs, Colo., from July 2-11, before departing for Taipei to compete in the five-day, six-team tournament. The United States went a perfect 4-0 with victories over the Republic of China (85-53), Korea (73-49), Japan (83-80) and Malaysia (79-24). Wyckoff averaged 6.0 points and 3.0 rebounds per game. Her best outings were 12-point performances against the Republic of China and Japan.

"They (USA Basketball) look at me as a versatile player," Wyckoff said. "So I tried to go with my strengths. What they look for is basically players who will work really hard. I think being a big guard and being able to post up on the smaller players who were guarding me, adding height to the lineup and helping with rebounding was how I contributed most."

"In terms of leadership, I think I was helpful with the little things along the way like helping the players who hadn't been overseas before adjust to the style of play and show them the way USA Basketball wants to

be represented."

For Torres, it was the second time she represented her native country. In the summer of 1997, the 6-4 center helped lead the Colombian National Team to the South American championship title. This time around, Torres arrived in German on July 28th and practiced two days with the team before competition began on July 31st and concluded on August 5th. The squad was comprised mostly of college players from South America. There was just one other collegiate player who plays in the United States on the 10-member team. Torres started for the team that played against teams from Mexico, Puerto Rico, the Virgin Islands and the Dominican Republic and placed third with a 3-2 record.

"Even though I practiced with them for only two days, it wasn't that hard to adjust," Torres said. "Once I learned the plays, it was pretty easy. I best helped the team in rebounding."

While both Wyckoff and Torres saw significant playing time with their respective teams, the experience gained both on and off the court was immeasurable.

"What I learned most was how to take different types of people and learn to play as a team," Torres said. "It was a great week. We had a lot of fun."

Wyckoff and the Jones Cup Team, which was later referred to as the Women's Select Team, reassembled in late August in Honolulu, Hawaii, and trained for a September 3rd exhibition game against the USA Basketball Women's Senior National Team. The contest, held at the University of Hawaii's Stan Sheriff Center, was nationally televised on ESPN2 and was the final domestic exhibition game for the USA Senior National Team before leaving for the 2000 Olympics in Sydney, Australia.

"Making it for the third year in a row really increased my confidence and it motivated me to work as hard as I have ever worked," Wyckoff said. "This momentum has continued into being back home and working hard for this upcoming season. I am using the confidence and work ethic I've gained and learned through this experience."

