

2000 European Tour

FLORIDA STATE WOMEN'S BASKETBALL

WOMEN'S BASKETBALL TEAM GROWS ON AND OFF THE COURT

By Senior Vanessa Fuchs

My first three years as a member of the Florida State women's basketball team has been a blast, and I can't think of a better way to begin my senior season than with a 10-day adventure to Europe. Not only did the trip we took this summer give the team a confident head start for the upcoming season, but it also brought us closer as a group as we toured through the beautiful European cities.

After 10 days of practice in Tallahassee, we departed for Paris, France on August 10th. We stayed three days at a hotel that was just one street over from the famous Champs d' Elysees. Paris was the shopping hot spot where art was the favorite purchase of almost everyone. Many of us bought original works. Then there were the few of us who bought what we thought to be original black and white pencil sketches, but upon applying the eraser test, we found that that was not necessarily the case.

Our group of 29, which included players, coaches, staff took scheduled tours of the Notre Dame Cathedral, Eiffel Tower, Arc Du' Triomphe, Palace of Versailles, The Louvre Art Museum, The Monmarthe District and took a boat tour down the Seine River. We definitely made the most of our time in Paris. It was very educational.

Our next adventure was a six-hour drive to Lyon, where the main attraction was our first basketball game. Led by Lauren Bradley's 22 points and nine rebounds, we defeated A.L.G.M., 86-40. It was exciting to take the court for the first time in five days, but it was an even bigger thrill to see everyone contribute in big ways. In an effort to fit in with the natives, we broke from our team huddles by shouting words in French. However, that backfired on us. Coach Sue asked our tour guide what the French word was for "win" and he misunder-

stood her as saying "when." So there we were, cheering "quand" (pronounced con) instead of "gagner" (pronounced gonyay). After about three of those huddles, the guide came over to us and informed us of the mixup! From that point on, we stuck with good old-fashioned English.

Switzerland was our next destination. After a three-hour bus ride, we arrived the city of Vevey. Our hotel was very quaint had a breathtaking view of Lake Geneva. The mountains along with the grape vineyards and comfy Swiss cottages made for magnificent scenery. To start things off, we scaled to the top of a tower overlooking the Alps to get a panoramic view. The pictures we took were great! Our two-day stay in Vevey was my favorite part of the trip. Switzerland had the best scenery, the tastiest food and unbelievable chocolate. Did I mention that we took a tour through the Nestle Chocolate Factory?? We definitely took advantage of the free samples. Those who did not go to the factory went water skiing on the lake. Many of them were sore and stiff-armed for the next couple of days since only a few had ever been before.

The stiff arms did not seem to affect us much on the court as we picked up two more wins in Switzerland. Again, every player got solid minutes for us. Our biggest victory of the trip came against Sion Helios — a 133-43 final. With the big lead, we had a chance to try some new things on offense and defense. I really benefited from this game and led the team with 25 points. The next night we defeated Troistorrents, a team had a couple of Swiss National Team players, 108-79. Seniors Brooke Wyckoff and Levys Torres came up big for us with 21 and 19 points, respectively. Would you believe that prior to the game Levys was sick and had to seclude herself in the hotel room? Maybe we should keep her sick throughout the season as long as she keeps putting up those numbers.

Our final stop was the French Riviera in Nice. We flew in from Vevey and as soon as we got our bags up to the rooms, we suited up in our best beach attire and made our way to the beach of the Mediterranean Sea. We all enjoyed a relaxing day in the sun and as far as beach toys go, we played with them all. Parasailing, jet skiing, tubing — we had a blast! The view along the beach was gorgeous, but you just don't get the full experience unless you go up and see it while parasailing. What a peaceful ride! For a not-so-peaceful ride, try tubing. Some players decided to be dare devils and went twice. I guess they like soreness, whiplash and elbow burns, because those things abuse your body.

Our fourth and final game of the trip came against Nice University. We handled them pretty easily as well, winning 97-54. We were pumped to go through the entire trip undefeated. It was no easy accomplishment though, as we faced tough calls by the officiating and had to adjust to the different rules and ball sizes that the European game uses.

We spent our final day getting a last dose of the Riviera sun, and later in the evening we drove to Monaco, where we saw the Prince's palace and did some more shopping. The Monte Carlo Casino was right next door to the restaurant where we ate dinner. While waiting for some of our group to finish their meals, many of us stood along the street outside the casino doors and gawked at all the hot cars that pulled up. We were definitely among Monaco's elite.

This trip definitely left its mark on all of our lives. Seeing these places firsthand gave us the full feel for how wonderful Europe really is. We are all so thankful for the opportunity to grow in so many ways. It was great to get back to the states, enjoy an ice cold coke, talk in English, and share with everyone our experience of a lifetime!

Seminole Travel Journal

Seminole Travel Journal

AUGUST 11, 2000

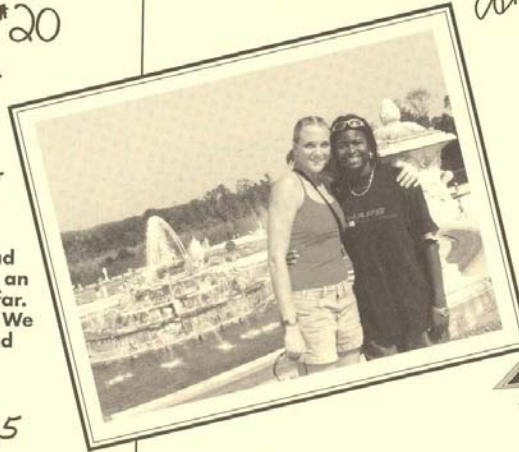
Hi everyone! We made it safely to Paris at about 8:30 Friday morning. After we went through customs and picked up our luggage, we began an extensive bus tour of Paris. As we drove around the city, we saw the Louvre, Notre Dame Cathedral, the Eiffel Tower and the Arc de Triomphe. During the tour, we stopped and had some wonderful French pastries. We took a tour of the inside of Notre Dame Cathedral. We were in awe of how big and beautiful the Cathedral was. We took the Metro, the Paris subway system, to the Arc de Triomphe. Some of us went right up, but most waited to go to the top when it was a little darker out and the lights of the city would be shining bright. It was such a beautiful view of the city. Although we were all very tired, it was a great first day and we are so excited to see all the many more wonderful sites of Europe!



Katelyn Vivas #20

AUGUST 12, 2000

Bon jour Seminole fans! Today was a long but fun day. We went to the Palace of Versailles. The tour took us room by room and we saw some unbelievable paintings and decoration. It was amazing and beautiful and we took a lot of pictures. Outside in the back of the Palace was a HUGE garden with many flowers, sculptured hedges, water fountains and statues. It was so big, we didn't have enough time to go around the whole thing. We had about four hours for lunch and free time. Some of us went shopping, and some of us went back to the hotel to nap. We had dinner, as a group, at the Brasserie Café de la Paix. It was an awesome restaurant — by far the best meal we've had so far. We ended the evening with a boat tour on the Seine River. We saw the Eiffel Tower light up like a flashing Christmas tree and saw some familiar sites like Notre Dame Cathedral and the Louvre.



Lahikalo Brown, A. #25

AUGUST 13, 2000

Hello friends and family! Today started with an early wake up call. After breakfast we boarded the bus for a day of sightseeing. Our first stop was to Rodin's "The Thinker." We posed for a picture and all looked as if we were "thinking" ourselves. We then went to the Louvre, where we had two hours to see it all. When we finally found the Mona Lisa we could not get within 10 feet of it, because of the people that surrounded it. After lunch at a local café, we headed to Sacre Coeur — a beautiful church with one of the best views of Paris that I have seen. Outside the back of the church were several little shops with anything and everything you could imagine in them. We were on our own for dinner. Me and some of my teammates had a delicious Italian meal. Tomorrow, we hit the road for Lyon, where we'll play our first game.

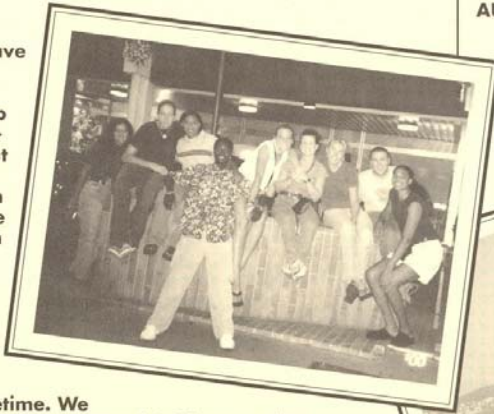


Laysha Spruige #1



AUGUST 14, 2000

Hello all! We didn't leave Paris today until 1 p.m., which gave everyone one last opportunity to finish up their shopping in the morning. The bus ride was about seven hours to Lyon, so most took this time to catch up on their sleep. I took the time to write about Paris in my journal. All of the architecture and history behind the French culture was an amazing experience. The pictures and memories everyone will take away from this trip are ones that will last a lifetime. We finally arrived at our hotel in Lyon around 8:30 p.m., after driving in Lyon for about an hour to find it. Tony, our bus driver, stopped buses, driving cars and people on the street to ask directions. It was really funny. We all went as a group to a local restaurant called Pizza Pino that was packed with people and desert hot. Everyone enjoyed their meals and the service was very good. We walked back to our hotel and went right up to our rooms so we could all get rest for tomorrow when we play our first game.



Lauren Bradley #44

AUGUST 18, 2000

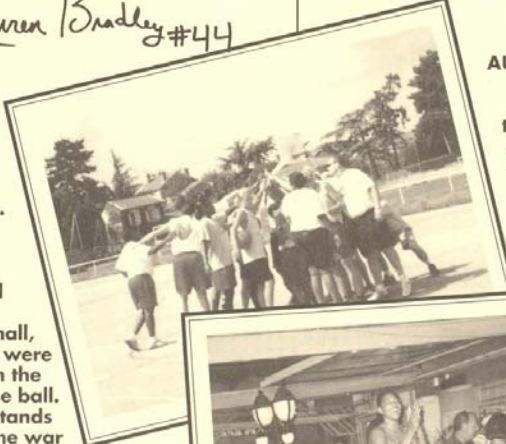
Hello Americans! Today we were up, dressed, fed and on the bus by 8 a.m. to take a flight to the French Riviera. It was not even 2:00 and we were lying on the beach just 20 feet from the Mediterranean Sea. The temperature was hot, hot, hot. We did all kinds of water sports like tubing, parasailing and jet skiing. They were all fun and adventurous in their own way. Finally, it was time to take our sun burned bodies in for a couple of hours and clean up for dinner. We walked to the restaurant, Le Cocodile, which was across the street from the beach. To my surprise, the highlight of dinner was watching our waiter cook Nikki (Whiting) and I fish in front of everyone by lighting it on fire right next to our table. After dinner some of us walked around the city. There were many people out walking around as if it were a Saturday afternoon. The shops were open, people were eating at cafes, and artists were painting pictures. To say the least, Nice is very, very nice. Au Revoir and Bonne Soire.



Molly Beal #32

AUGUST 15, 2000

Good day Seminole fans! We started our day with another tour. This one was to the Basilique Notre Dame de Fourviere. In English, a very big and pretty church. We also saw a dynamic view of Lyon. We then headed to an outdoor court for practice. The backboards were small and they didn't have nets, but worst of all was the broken glass all over the court. Despite the distractions, we did our best to get a few shots and drills in. Later on after pregame meal, we headed for the game. The gym was very small, dark and warm with no ventilation. But we were still excited to play. It felt good to be back in the swing of things and actually get to play some ball. We actually had some "French fans" in the stands and some of our support staff taught them the war chant. It was great. It didn't take us long to put points on the scoreboard! We won the game 86-40.



AUGUST 19, 2000

Hola Seminole fans! Just about everyone spent the day at the beach. It was a blast and although we were really tired after all of the water rides, it was worth it. By the time 4:00 rolled around, we had about as much sun and fun that we could handle. We ate a wonderful pregame meal in the hotel. Following our meal, we had just enough time to rest for awhile before our last European game against Nice Universite. The gym was the worst of the four we played in on the trip. It was so hot and stuffy. We had a slow start, probably because we had had a full day of fun in the sun, but we managed to pull out another victory to go a perfect 4-0. The game was very physical. After the game, the Nice team had a reception for us with pizza and pastries. Since we had played our last game, Coach Sue let us stay out



AUGUST 16, 2000

Bon jour! Today we began a three-hour journey to the land of the Swiss, no not Swiss cheese, but beautiful Switzerland. After we grabbed a quick bite, we headed for a tour of the Swiss Alps. The sight of the mountain was unbelievable. We arrived at the hotel and ate our pregame meal, before even checking in. Our hotel rooms remind me of the Flintstones. There are twin beds in each room and no air conditioning. Finally, we arrived at the gym for the game. We had to drive about 45 minutes from Vevey to Sion. I felt out of place being in coach's attire rather than a uniform, but until my knee gets better, I have to settle for taking stats. We played great today and won the game by 90 points. The trip is making us a better team on and off the court. After the game, we returned to the hotel where some of us experienced our first taste of horse meat. Then a few of us took a walk around the town and others took a walk along Lake Geneva, which also happens to be very pretty.

Mike Mike #5

AUGUST 17, 2000

Hi everyone! Today, we were given a long list of possible activities to try and fit in before the game at 8:15 p.m. Because I am hopelessly addicted to chocolate, I couldn't pass up the chance to visit the Nestle factory. It was like a real live Willy Wonka Factory. Afterwards, a lot of the team and staff went water skiing. Coach Sue was the star of the show. She's an expert skier and made it look effortless! The town where we stayed, Vevey, was very quaint and a lot less touristy than Paris and there were a lot of neat little shops and cafés in walking distance of the hotel. Almost everyone managed to get a little shopping in. A couple of hours later we were on our way up a mountain to our game. This was our toughest game so far although we ended up winning by 29 points. We had a lot of fun and continued to learn a lot about each other on the court. Switzerland is so beautiful. It was definitely my favorite place so far.

Brooke Wyckoff #21



a time later. Some of us went dancing, while others did some late-night shopping or went out to eat. The beach, the game and the dancing made the day really great.

Levy's Jones #13

August 20, 2000

Hi ya'll. We spent much of our last day at the beach. I must say, three days on the beach has brought out skin color tones that I never knew we had! Later on in the afternoon we got cleaned up, put on some spiffy clothes, and headed for the luxurious country of Monaco. There was plenty of scenery to pass the time — Elton John's mansion, several capes and harbors filled with boats, and the Monaco soccer stadium. We stopped by the palace of the king, watched the changing of the guards, and had some free time to shop and, of course, take pictures. Our whole entourage ate dinner at a fancy restaurant called Café Du Paris. They seated us on the outdoor patio right across from the famous Monte Carlo Casino. There must have been some high rollers in the casino because the cars parked outside were impressive. We left Monaco about 9:30 p.m., and headed back to Nice and even on Sunday, the place was hopping. Life in the French Riviera! We've had a great trip, but we are ready to come home!

Vanessa Fuller #22



On The Road

2 0 0 0 - 2 0 0 1 T R A V E L H E A D Q U A R T E R S

Florida

Nov. 20-21

University of Florida Hotel & Conference
1714 SW 34th Street
Gainesville, FL 32607
(352) 371-3600 • (352) 371-0306 (fax)

Central Florida

Nov. 27-28

Downtown Marriott
400 W Livingston Street
Orlando, FL 32801
(407) 843-6664 • (407) 648-5414 fax

Tennessee-Chattanooga

Dec. 1-2

Marriott
2 Charter Plaza
Chattanooga, TN 37402
(423) 756-0002 • (423) 265-8735 fax

St. Francis and Fordham

Dec. 15-20

The Waldorf
301 Park Avenue
New York, NY 10022
(212) 355-3000 • (212) 872-7272 fax

Georgia Tech

Jan. 4-5

Ritz-Carlton
181 Peachtree Street NE
Atlanta, GA 30303
(404) 659-0400 • (404) 221-6578 fax

Wake Forest

Jan. 13-14

Adam's Mark
425 N. Cherry Street
Winston-Salem, NC 27101
(336) 725-3500 • (336) 721-2240 fax

Clemson

Jan. 20-21

James Martin Inn
100 Madren Center Drive
Clemson, SC 29634
(864) 654-9020 • (864) 656-7154 fax

NC State

Jan. 28-29

Marriott
4500 Marriott Drive
Raleigh, NC 27612
(919) 781-7000 • (919) 571-5339 fax

Xavier

Jan. 31-Feb. 1

The Cincinnati
Sixth and Vine
Cincinnati, OH 45202
(513) 381-3000 • (513) 651-0256 fax

Duke

Feb. 7-8

Washington Duke Inn
Durham, NC 27706
(919) 490-0999 • (919) 493-0015 fax

Maryland

Feb. 10-11

Greenbelt Marriott
6400 Ivy Lane
Greenbelt, MD 20770
(301) 441-3700 • (301) 474-9128 fax

North Carolina

Feb. 17-18

Sheraton Chapel Hill
1 Europa Drive
Chapel Hill, NC 27514
(919) 968-4900 • (919) 942-3557 fax

Virginia

Feb. 24-25

Omni Charlottesville
235 W. Main Street
Charlottesville, VA 22902
(804) 971-5500 • (804) 979-4456 fax

ACC Tournament

March 2-5

O. Henry Hotel
624 Green Valley Road
Greensboro, NC 27408
(336) 854-2000 • (336) 854-2223 fax

Tallahassee-Leon County Civic Center

2 0 0 0 - 2 0 0 1 S E M I N O L E S

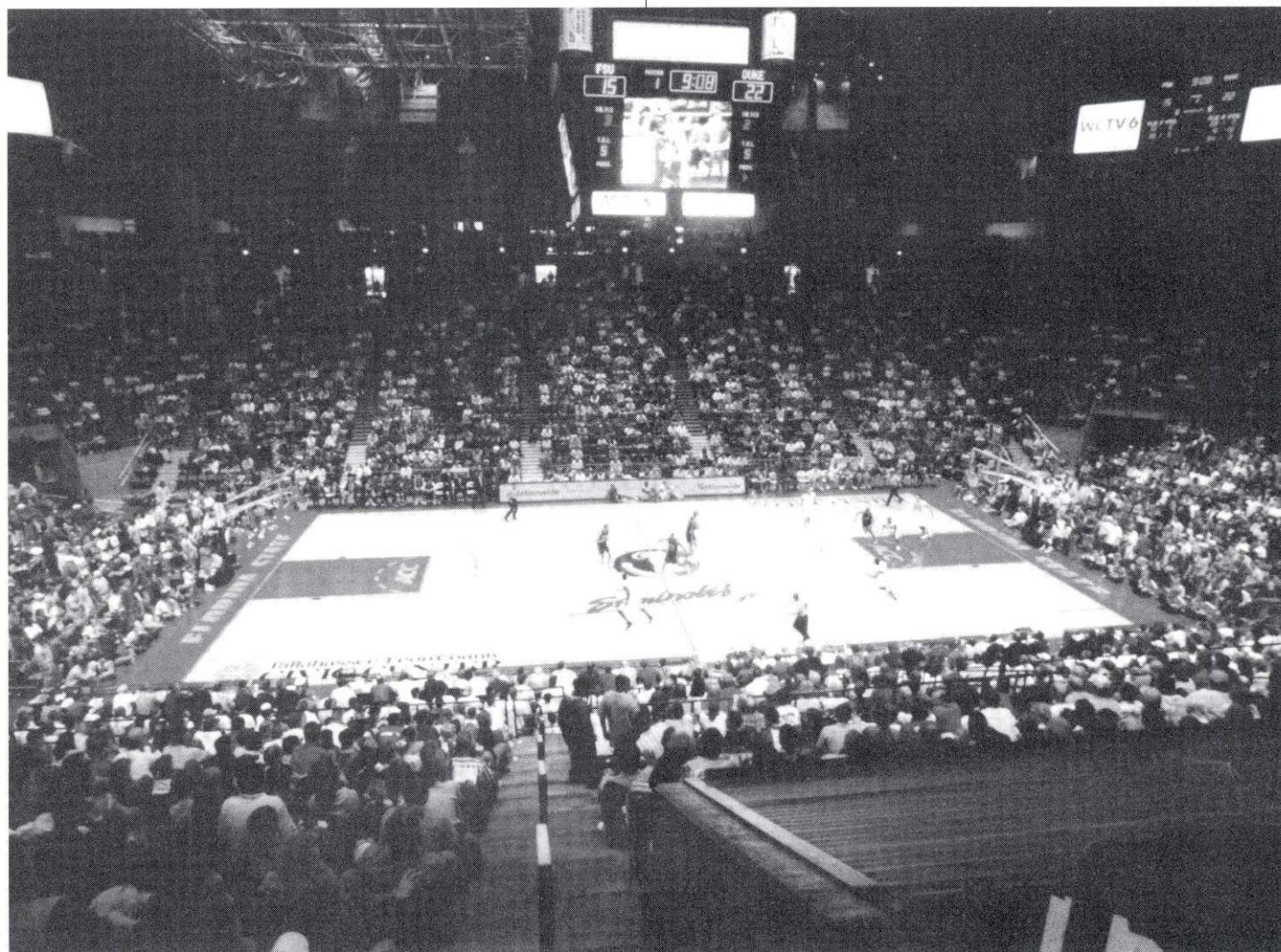
A FLORIDA STATE BASKETBALL GAME at the Tallahassee-Leon County Civic Center is as exciting as it gets! FSU fans are spoiled by more than just a great basketball team playing in the nation's finest conference. They also get to watch the game in surrounds that are as modern as any in the country. While the FSU women's basketball team has played games in the Tallahassee-Leon County Civic Center over the years, the facility became the new home for the Seminoles in 1998-99.

So impressive is the facility and the general atmosphere of an FSU basketball game that the Civic Center and Florida State University served as the host of the first round of the 1995 Men's NCAA Basketball Tournament. Since that time, numerous improvements have been made to the already-outstanding structure.

The Civic Center completed a 21-million luxury suites and

club seat expansion project which began in October of 1998 in which 34 luxury suites and 468 club seats at mid-level in the arena were added. In addition, the upper level seating has been configured to offer better viewing and additional concession stands and restrooms have been added. 12,200 seats are available for fans of FSU Basketball, who are treated to one of the most spectacular shows in college hoops. A new four-sided center hung Megavision video display, a state-of-the-art sound system and four new scoreboards in the upper corners of the arena have also been added. When there is a break in the action, the video display comes alive with highlight tapes, animated games and other crowd pleasing bits.

Adding even more appeal to the facility is the Civic Center's new restaurant, the Spotlight Grill, which was completed in



November. This 450 seat arena-view restaurant includes an outdoor patio and ledge seating for viewing arena events.

The multipurpose facility, which opened its doors in 1981, covers over 22 acres in the heart of Tallahassee's thriving downtown district. The Civic Center is only two blocks from the Capitol building and is just across the street from FSU's Center for Professional Development and nationally-acclaimed Law School.

The complex covers over 18,000 square feet with 119 foot ceilings in the main arena. The Civic Center is actually three different areas combined under one roof. The main arena, where FSU hosts its home games, is also the center for East Coast Hockey League contests featuring the Tallahassee Tiger Sharks, some of the nation's top musical concerts as well as Broadway plays and even a circus. The Exhibition Hall, which joins the main arena via a spacial hallway, can seat 5,000 for an event or serve as an indoor display area. The complex also features a terrace which is popular for outdoor hosting.

As one of Florida's busiest venues, the Civic Center completed a \$1.2 million renovation to its six meeting rooms covering some 16,000 sq. ft. in July. Because of its versatility and accessibility, the Civic Center continues to be a popular location for trade shows and conventions.



A New Home For the Seminoles

The Seminole men's and women's basketball programs are close to seeing the foundation laid for their new \$6 million home. The 40,000-square-foot office and practice complex will be owned by the athletic department and attached to the Tallahassee Leon County Don Tucker Civic Center, providing the teams with a permanent home for practice and games. Each team will have its own practice floor, locker rooms, coaches offices, meeting rooms and players' lounge with a reception area, tradition room and offices for support staff.



The ACC

A T R A D I T I O N O F E X C E L L E N C E

The Tradition

CONSISTENCY. It's the mark of true excellence in any endeavor. However, in today's intercollegiate athletics, competition has become so balanced and so competitive that it is virtually impossible to maintain a high level of consistency.

Yet the Atlantic Coast Conference has defied the odds. Now in its 48th year of competition, the ACC has long enjoyed the reputation as one of the strongest and most competitive intercollegiate conferences in the nation. And that is not mere conjecture, the numbers support it.

Since the league's inception in 1953, ACC schools have captured 79 national championships, including 39 in men's competition and 40 in women's. In addition, 118 men and 28 women have earned the coveted title of NCAA champion.

If success is best measured in terms of wins and losses, then the ACC is unrivaled in NCAA history. The men's and women's basketball programs have combined for 20 trips to the Final Four in the last 19 years, and 41 appearances overall. Following the North Carolina women's national championship season of 1994, the first-ever for the league, ACC men's and women's teams have claimed eight titles while finishing second on 12 occasions.

The league's women's basketball program ranks among the best in the country in terms of the NCAA Tournament. With 78 appearances and 105 wins, the conference is listed second best in total appearances and total wins.

Over the years, ACC women's basketball teams have gained global recognition through their NCAA Tournament success and television exposure. The 2000-01 schedule will feature 19 TV games on the league's regional sports network, five games on ESPN2, one game on FOX, one Game on FOX Sports Net, and one on the Oxygen network.

ACC Basketball is more than numbers though. The faces behind both programs account for 26 national player of the year honors and 19 national coach of the year awards, including Dawn Staley's player recognition in 1991 and 1992. Coach's distinctions include Duke's Gail Goestenkors (1999), North Carolina's Sylvia Hatchell (1994), Maryland's Chris Weller (1992), Virginia's Debbie Ryan (1991) and NC State's Kay Yow (1990). In women's play, the ACC has produced 27 first-team All-Americans, eight Olympians, including coaches and student-athletes. NC State's Kay Yow, assisted by Sylvia Hatchell of North Carolina, headed up the 1988 gold medal-winning Olympic team. Maryland's Vicky Bullett was a member of both the 1988 and 1992 Olympic teams and Virginia's Dawn Staley was a member of the 1996 gold-medal winning Olympic squad in Atlanta.

The ACC also stands at the forefront of intercollegiate athletics in terms of academic accomplishments of its student-athletes. Since 1983, 292 women's basketball players have received ACC Academic Honor Roll recognition. The 1999-2000 academic year included 33 selections. In addition ACC basketball players have earned first-team Academic All-America honors six times. In 1997 NC State's Jennifer Howard was tabbed GTE CoSIDA Academic Player of the Year after posting a 4.0 grade point average throughout her career. Eight players have earned ACC Postgraduate scholarships, while three others were named NCAA Postgraduate Scholars.

1999-2000 In Review

The 1999-2000 academic year concluded with the league

pocketing four more national team titles and five individual NCAA crowns. In all, the ACC has won 36 national team titles the last ten years.

The ACC's 1999-2000 national champions were Maryland in field hockey and women's lacrosse, North Carolina in women's soccer and Florida State in football. Overall, ACC teams posted a 62-46 (.574) mark in NCAA Tournament play.

The ACC placed at least one team in the Top 10 nationally in 19 of the 25 sports sponsored by the league. Other records of note during the 1999-2000 season include 90 teams competing at NCAA Championships, five bowl teams and 34 Top 10 showings.

Fourteen ACC teams, in ten different sports, representing seven of the nine member institutions, earned a No. 1 ranking during the course of the past academic year.

The ACC Academic Honor Roll record was broken for the 13th-straight year in 1998-99 as 1,631 student-athletes were recognized for their work in the classroom.

The Championships

The conference will conduct championship competition in 25 sports during the 1999-2000 academic year — 12 for men and 13 for women.

The first ACC championship was held in swimming on February 25, 1954. The conference did not conduct championships in cross country, wrestling or tennis during the first year.

The 12 sports for men include football, cross country, soccer, basketball, swimming, indoor and outdoor track, wrestling, baseball, tennis, golf and lacrosse. Fencing, which was started in 1971, was discontinued in 1981.

Women's sports were initiated in 1977 with the first championship meet being held in tennis at Wake Forest University. Championships for women are currently conducted in cross country, volleyball, field hockey, soccer, basketball, swimming, indoor and outdoor track, tennis, golf, lacrosse, softball and rowing.

A History

The Atlantic Coast Conference was founded on May 8, 1953, at the Sedgefield Inn near Greensboro, N.C., with seven charter members — Clemson, Duke, Maryland, North Carolina, North Carolina State, South Carolina and Wake Forest — drawing up the conference by-laws.

The withdrawal of seven schools from the Southern Conference came early on the morning of May 8, 1953, during the Southern Conference's annual spring meeting. On June 14, 1953, the seven members met in Raleigh, N.C., where a set of bylaws was adopted and the name became officially the Atlantic Coast Conference.

On December 4, 1953, conference officials met again at Sedgefield and officially admitted the University of Virginia. The first, and only, withdrawal of a school from the ACC came on June 30, 1971 when the University of South Carolina tendered its resignation.

The ACC operated with seven members until April 3, 1978, when Georgia Tech was admitted. The Atlanta school withdrew from the Southeastern Conference in January of 1964.

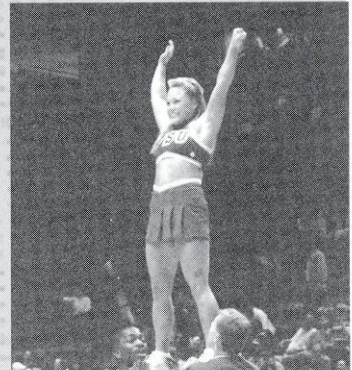
The ACC expanded to nine members on July 1, 1991, with the addition of Florida State.

2000-01 OPPONENTS

• OPPONENT PROFILES

- UNC-Asheville
- Florida
- Chicago State
- Virginia Tech
- Michigan State
- Central Florida
- UT-Chattanooga
- Mercer
- St. Francis
- Fordham
- Coppin State
- NC State
- Georgia Tech
- Duke
- Maryland
- Wake Forest
- North Carolina
- Clemson
- Virginia
- Xavier

Level
Next
ive



2001 NCAA
WOMEN'S
FINAL
FOUR
ARCH MADNESS
St. Louis

QUICK FACTS

Location Blacksburg, VA
 Founded 1892
 Nickname Hokies
 Enrollment 25,000
 Colors Chicago Maroon & Burnt Orange
 Conference Big East
 Arena/Capacity Cassell Coliseum/10,052
 Press Row # 540/231-4905

BASKETBALL FACTS

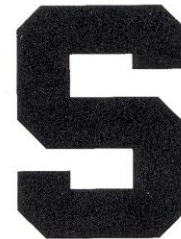
Head Coach Bonnie Henrickson
 Record at School/Years 70-24/3
 Career Record/Years 70-24/3
 Office Phone 540/231-4998
 Assistant Coaches Joe Mathews, Tisha Hill, Karen Clayton

SPORTS INFORMATION

Office Phone 540/231-8823
 Fax Number 540/231-6984
 Basketball Contact Mike Montoro
 Home Phone 540/961-3353
 Website hokiesports.com

TEAM INFORMATION

1999-00 Record 20-11
 Conference Record/Finish 11-5/3rd West
 Starters Returning/Lost 5/0
 Letterwinners Returning/Lost 8/3
 Top Returning Scorer F, Tere Williams, 15.2 ppg
 Top Returning Rebounder F, Tere Williams, 8.1 rpg
 Top Newcomers G, Lisa Guarneri; C, Ieva Kublina;
 F, Davina Simmons



Michigan State★

Tallahassee Democrat Seminole Classic, Nov. 26

QUICK FACTS

Location East Lansing, MI
 Founded 1855
 Nickname Spartans
 Enrollment 43,189
 Colors Green & White
 Conference Big Ten
 Arena/Capacity Jack Breslin Students Events Center/15,138
 Press Row # 517/353-1626

BASKETBALL FACTS

Head Coach Joanne P. McCallie
 Record at School/Years first year
 Career Record/Years 167-73/8
 Office Phone 517/353-8613
 Assistant Coaches Katie Abrahamson, Felisha-Legette-Jack,
 Janel Grimm, Trena Anderson

SPORTS INFORMATION

Office Phone 517/355-2271
 Fax Number 517/353-9636
 Basketball Contact Lori Schulze
 Home Phone 517/887-8250
 Website www.msuspartans.com

Fax Number 352/375-4809
 Basketball Contact Kathy Cafazzo
 Home Phone 352/377-7868
 Website www.uaa.ufl.edu

TEAM INFORMATION

1999-00 Record 21-13
 Conference Record/Finish 6-8/tied 6th
 Starters Returning/Lost 3/2
 Letterwinners Returning/Lost 9/6
 Top Returning Scorer F, Naomi Mobley, 11.4 ppg
 Top Returning Rebounder F, Naomi Mobley, 11.4 rpg
 Top Newcomers G, Sherisha Hills; C, Vanessa Randall;
 G/F, Tara Taylor



Chicago State

Sat., Nov. 25, Tallahassee Democrat Seminole Classic

QUICK FACTS

Location Chicago, IL
 Founded 1867
 Nickname Cougars
 Enrollment 8,416
 Colors Green & White
 Conference Mid-Continent
 Arena/Capacity Jacoby Dickens Center/2,500
 Press Row # 773/995-3641

BASKETBALL FACTS

Head Coach Bridgett Williams (Southern Illinois, '87)
 Record at School/Years 0-27/2nd
 Career Record/Years 0-27/2nd
 Office Phone 773/995-2289
 Assistant Coaches ... Dana McGraw, Tracee Jones, Jim Cartisser

SPORTS INFORMATION

Office Phone 773/995-3238
 Fax Number 773/995-3656
 Basketball Contact Terrence Jackson
 Home Phone 773/731-6516
 Website www.csu.edu

TEAM INFORMATION

1999-00 Record 0-27
 Conference Record/Finish 0-14/9th
 Starters Returning/Lost 4/1
 Letterwinners Returning/Lost 5/2
 Top Returning Scorer F, Olithia Eames, 11.1 ppg
 Top Returning Rebounder C, Jodie Kammes, 7.4 rpg
 Top Newcomer G/F, Loretta Ellul; G, Tyina Jordan



Virginia Tech★

Tallahassee Democrat Seminole Classic, Nov. 26

OPPONENTS
2000-2001
WOMEN'S BASKETBALL

TEAM INFORMATION

1999-00 Record 19-12
Conference Record/Finish 8-8/T-5th
Starters Returning/Lost 3/2
Letterwinners Returning/Lost 9/4
Top Returning Scorer F, Becky Cummings, 15.1 ppg
Top Returning Rebounder F, Becky Cummings, 7.4 rpg
Top Newcomers G, Tashawna Adams; G, Candice Jackson;
F, Julie Pagel



Central Florida
Tue., Nov. 28, Orlando, Fla.

QUICK FACTS

Location Orlando, FL
Founded 1963
Nickname Golden Knights
Enrollment 32,014
Colors Black & Gold
Conference Trans America Athletic
Arena/Capacity UCF Arena/5,100
Press Row # 407/823-2477

BASKETBALL FACTS

Head Coach Gail Striegler
Record at School/Years 9-20/1
Career Record/Years 9-20/1
Office Phone 407/823-6266
Assistant Coaches LaTosha Lewis, Christi Martin,
Maureen Smith

SPORTS INFORMATION

Office Phone 407/823-2464
Fax Number 407/823-2477
Basketball Contact TBA
Home Phone TBA
Website www.athletics.ucf.edu

TEAM INFORMATION

1999-00 Record 9-20
Conference Record/Finish 5-13/5th
Starters Returning/Lost 4/1
Letterwinners Returning/Lost 7/4
Top Returning Scorer F, LaToya Graham, 12.8 ppg
Top Returning Rebounder F, LaToya Graham, 6.4 rpg
Top Newcomers C/F, Adrienne Billings; F, Kristy Colligan;
G, Nichole Hearn



Tennessee-Chattanooga
Sat., Dec. 2, Chattanooga, Tenn.

QUICK FACTS

Location Chattanooga, TN
Founded 1886
Nickname Lady Mocs
Enrollment 8,682
Colors Navy & Old Gold
Conference Southern
Arena/Capacity The McKenzie Arena/11,218
Press Row # 423/755-4706

BASKETBALL FACTS

Head Coach Wes Moore (Johnson Bible College, '84)
Record at School/Years 36-22/3
Career Record/Years 236-78/12
Office Phone 423/755-4376
Assistant Coaches Jill Jameson, Angela Crosby,
Laura Cottrell

SPORTS INFORMATION

Office Phone 423/755-4618
Fax Number 423/755-4610
Basketball Contact Trevor Parks
Home Phone 423/755-0920
Website www.gomocs.com

TEAM INFORMATION

1999-00 Record 26-5
Conference Record/Finish 17-1/1st
Starters Returning/Lost 5/0
Letterwinners Returning/Lost 9/5
Top Returning Scorer: G, Damita Bullock, 18.3 ppg
Top Returning Rebounder: F, Tishay Lewis, 7.3 rpg
Top Newcomers G, Katie Galloway; G, Heather McDivitt;
C, Natalie Stephens



Mercer
Sun., Dec. 10, Tallahassee, Fla.

QUICK FACTS

Location Macon, GA
Founded 1833
Nickname Bears
Enrollment 7,000
Colors Black & Orange
Conference Trans America
Arena/Capacity Porter Gym/500
Press Row # 478/301-2059

BASKETBALL FACTS

Head Coach Billy Holmes (Louisiana College, '64)
Record at School/Years 70-95/6
Career Record/Years 70-95/6
Office Phone 478/301-2739
Assistant Coaches Sybil Blalock, Pete Ranson

SPORTS INFORMATION

Office Phone 478/301-2735
Fax Number 478/752-5350
Basketball Contact Kevin Coulombe
Home Phone 478/476-0952
Website www.Mercer.edu

TEAM INFORMATION

1999-00 Record 14-14

Conference Record/Finish 9-9/5th
 Starters Returning/Lost 3/2
 Letterwinners Returning/Lost 6/5
 Top Returning Scorer F, Tracy Henry, 10.2 ppg
 Top Returning Rebounder: F, Tracy Henry, 8.4 rpg
 Top Newcomers C, Megan Fannon; G, JoJo Carter;
 F, Gemma Collins



St. Francis
Sun., Dec. 17,
Brooklyn Heights, NY

QUICK FACTS

Location Brooklyn Heights, NY
 Founded 1884
 Nickname Terriers
 Enrollment 2,150
 Colors Red & Blue
 Conference Northeast
 Arena/Capacity Pope Physical Education Center/1,250
 Press Row # 718/489-5412

BASKETBALL FACTS

Head Coach Christine Cunningham
 Record at School/Years first year
 Career Record/Years first year
 Office Phone 718/489-5421
 Assistant Coaches Brenda Milano, Jamie Hoffman

SPORTS INFORMATION

Office Phone 718/489-5489
 Fax Number 718/797-2140
 Basketball Contact Jim Hoffman
 Home Phone 718/980-0788
 Website www.stfranciscollege.edu/athletics

TEAM INFORMATION

1999-00 Record 2-25
 Conference Record/Finish 1-17/12th
 Starters Returning/Lost 3/2
 Letterwinners Returning/Lost 5/7
 Top Returning Scorer C, Jazmine Rhodes, 14.7 ppg
 Top Returning Rebounder C, Jazmine Rhodes, 8.4 rpg
 Top Newcomers F, Amy Krueger; F, Caitlin O'Mailey;
 F, Sheena Harrington



Fordham
Sun., Dec. 19, Bronx, NY

QUICK FACTS

Location Bronx, NY
 Founded 1841
 Nickname Rams
 Enrollment 6,578
 Colors Maroon & White

Conference Atlantic 10
 Arena/Capacity Rose Hill Gym/3,470
 Press Row # 718/817-4236

BASKETBALL FACTS

Head Coach Jim Lewis
 Record at School/Years first year
 Career Record/Years 201-177/14
 Office Phone 718/817-4272
 Assistant Coaches Marcel Arribi, Angela Jackson,
 Kristin Donahoe

SPORTS INFORMATION

Office Phone 718/817-4240
 Fax Number 718/817-4244
 Basketball Contact Cathy Cyran
 Home Phone 914/576-3912
 Website www.fordham.edu/athletics

TEAM INFORMATION

1999-00 Record 4-24
 Conference Record/Finish 3-13/5th East
 Starters Returning/Lost 5/0
 Letterwinners Returning/Lost 8/3
 Top Returning Scorer F, Nailah Wallace, 14.0 ppg
 Top Returning Rebounder G, Maureen Garvey, 4.4 rpg
 Top Newcomers F, Caitlin Chiaramonte; G/F,
 Patty Williams; F/C, Lauren Fleischer



Coppin State
Thu., Dec. 28, Tallahassee, Fla.

QUICK FACTS

Location Baltimore, MD
 Founded 1900
 Nickname Lady Eagles
 Enrollment 3,844
 Colors Royal Blue & Gold
 Conference Mid-Eastern Athletic
 Arena/Capacity Coppin Center/1,720
 Press Row # 410/462-5143

BASKETBALL FACTS

Head Coach Derek Brown
 Record at School/Years 10-9/1
 Career Record/Years 10-9/1
 Office Phone 410/383-5823
 Assistant Coaches Billie Harris, Ollie Matson

SPORTS INFORMATION

Office Phone 410/383-5981
 Fax Number 410/383-2511
 Basketball Contact Kia Mason
 Home Phone n/a
 Website www.coppin.edu

TEAM INFORMATION

1999-00 Record 13-15
 Conference Record/Finish 11-7/t4th
 Starters Returning/Lost 3/2
 Letterwinners Returning/Lost 8/5
 Top Returning Scorer F, Kiesha Brooks, 20.0 ppg

OPPONENTS
2000-2001
WOMEN'S BASKETBALL

Top Returning Rebounder F, Kiesha Brooks, 10.3 rpg
Top Newcomers G, Denita Plain; G/F, Antoinette Reese



NC State
Sat., Dec. 30, Tallahassee, Fla.
Mon., Jan. 29, Raleigh, N.C.

QUICK FACTS

Location Raleigh, NC
Founded 1887
Nickname Wolfpack
Enrollment 28,011
Colors Red & White
Conference Atlantic Coast
Arena/Capacity Reynolds Coliseum/12,400
Press Row # 919/515-3393

BASKETBALL FACTS

Head Coach Kay Yow (East Carolina '64)
Record at School/Years 532-223/25
Career Record/Years 589-242/29
Office Phone 919/515-2880
Assistant Coaches Stephanie Glance, Charisse Mapp,
Jenny Kusiemski

SPORTS INFORMATION

Office Phone 919/515-1183
Fax Number 919/515-2898
Basketball Contact Pam Monk
Home Phone 919/859-1412
Website www.gopack.com

TEAM INFORMATION

1999-00 Record 20-9
Conference Record/Finish 11-5/3rd
Starters Returning/Lost 4/1
Letterwinners Returning/Lost 11/2
Top Returning Scorer F/C, Kaayla Chones, 11.4 ppg
Top Returning Rebounder F/C, Kaayla Chones, 7.9 rpg
Top Newcomers F, Adeola Olanrewaju; G, Nanna Rivers



Georgia Tech
Fri., Jan. 5, Atlanta, Ga.
Mon., Feb. 5, Tallahassee, Fla.

QUICK FACTS

Location Atlanta, GA
Founded 1885
Nickname Yellow Jackets, Rambling Wreck
Enrollment 14,000
Colors Old Gold & White
Conference Atlantic Coast
Arena/Capacity Alexander Memorial Coliseum
at McDonald's Center/10,000
Press Row # 404/894-5458 and 404/894-5459

BASKETBALL FACTS

Head Coach Agnus Berenato (Mount St. Mary's '80)
Record at School/Years 174-169/12
Career Record/Years 234-224/16
Office Phone 404/894-5406
Assistant Coaches Candy Cage (Associate),
Monique Holland, Mark Miller

SPORTS INFORMATION

Office Phone 404/894-5445
Fax Number 404/894-1248
Basketball Contact Melanie McCullough
Home Phone 770/438-0476
Website www.ramblinwreck.com

TEAM INFORMATION

1999-00 Record 17-14
Conference Record/Finish 7-9/6th
Starters Returning/Lost 4/1
Letterwinners Returning/Lost 11/1
Top Returning Scorer F, Jaime Kruppa, 10.4 ppg
Top Returning Rebounder F, Jaime Kruppa, 7.7 rpg
Top Newcomers F, Fallon Stokes; G, Jasmina Pacariz



Duke
Mon., Jan. 8, Tallahassee, Fla.
Thu., Feb. 8, Durham, N.C.

QUICK FACTS

Location Durham, NC
Founded 1838
Nickname Blue Devils
Enrollment 6,207
Colors Royal Blue & White
Conference Atlantic Coast
Arena/Capacity Cameron Indoor Stadium/9,314
Press Row # 919/684-6186

BASKETBALL FACTS

Head Coach Gail Goestenkors (Saginaw Valley State '85)
Record at School/Years 176-74/8
Career Record/Years 176-74/8
Office Phone 919/613-7548
Assistant Coaches Gale Valley, Joanne Boyle,
Shonta Tabourn

SPORTS INFORMATION

Office Phone 919/684-2633
Fax Number 919/684-2489
Basketball Contact Lindy Brown
Home Phone 919/684-0683
Website www.goduke.com

TEAM INFORMATION

1999-00 Record 28-6
 Conference Record/Finish 12-4/2nd
 Starters Returning/Lost 4/1
 Letterwinners Returning/Lost 10/3
 Top Returning Scorer F/G, Georgia Schweitzer, 15.6 ppg
 Top Returning Rebounder F, Rochelle Parent, 6.8 rpg
 Top Newcomers G/F, Alana Beard; F, Iciss Tillis;
 C, Crystal White



Maryland

**Wed., Jan 10, Tallahassee, Fla.
 Sun., Feb. 11, College Park, Md.**

QUICK FACTS

Location College Park, MD
 Founded 1807
 Nickname Terrapins
 Enrollment 33,006
 Colors Red, White, Black & Gold
 Conference Atlantic Coast
 Arena/Capacity Cole Field House/14,500
 Press Row # 301/314-8624

BASKETBALL FACTS

Head Coach Chris Weller (Maryland '66)
 Record at School/Years 469-257/25
 Career Record/Years 469-257/25
 Office Phone 301/314-1747
 Assistant Coaches Christy Winters-Scott, Allison Jones,
 Jimmy Howard

SPORTS INFORMATION

Office Phone 301/314-7064
 Fax Number 301/314-9094
 Basketball Contact Stephanie Mociun
 Home Phone 301/847-1398
 Website www.umterps.com

TEAM INFORMATION

1999-00 Record 16-15
 Conference Record/Finish 5-11/7th
 Starters Returning/Lost 4/1
 Letterwinners Returning/Lost 9/4
 Top Returning Scorer G, Marché Strickland, 14.3 ppg
 Top Returning Rebounder F, Deedee Warley and F/C,
 Rosita Melbourne, 5.1 rpg
 Top Newcomers C, Jamecca Harrell; G, Sarah Jenkins;
 F/C, Crystal Washington



Wake Forest

**Sun., Jan. 14, Winston-Salem, N.C.
 Thu., Feb. 15, Tallahassee, Fla.**

QUICK FACTS

Location Winston-Salem, NC
 Founded 1834
 Nickname Demon Deacons
 Enrollment 3,850
 Colors Old Gold & Black
 Conference Atlantic Coast
 Arena/Capacity Joel Coliseum/14,407
 Press Row # 336/727-2945

BASKETBALL FACTS

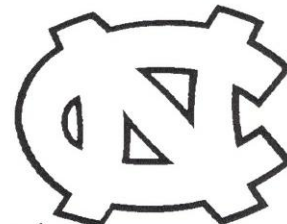
Head Coach Charlene Curtis (Radford '76)
 Record at School/Years 19-64/3
 Career Record/Years 181-214/14
 Office Phone 336/758-5763
 Assistant Coaches Wray Cannaday,
 Stephanie Lawrence Yelton, Larry Leonard

SPORTS INFORMATION

Office Phone 336/758-5640
 Fax Number 336/758-5140
 Basketball Contact Joanna Sparkman
 Home Phone 336/682-7342
 Website www.wakeforestsports.com

TEAM INFORMATION

1999-00 Record 7-21
 Conference Record/Finish 3-13/17th
 Starters Returning/Lost 4/1
 Letterwinners Returning/Lost 11/2
 Top Returning Scorer F, Brenda Mock Kirkpatrick, 8.9 ppg
 Top Returning Rebounder F, Brenda Mock Kirkpatrick, 7.3 rpg
 Top Newcomers F, Tracy Alston; G, Bianca Brown;
 F, Eafton Hill



North Carolina

**Thu. Jan. 18, Tallahassee, Fla.
 Sun. Feb. 18, Chapel Hill, N.C.**

QUICK FACTS

Location Chapel Hill, NC
 Founded 1789
 Nickname Tar Heels
 Enrollment 24,180
 Colors Carolina Blue & White
 Conference Atlantic Coast
 Arena/Capacity Carmichael Auditorium/10,180
 Press Row # 919/843-9509

BASKETBALL FACTS

Head Coach Sylvia Hatchell (Carson-Newman '74)
 Record at School/Years 289-146/14
 Career Record/Years 561-226/25
 Office Phone 919/962-5187
 Assistant Coaches Andrew Calder, Sylvia Crawley,
 Tracey Williams

SPORTS INFORMATION

Office Phone 919/962-0083/2123
 Fax Number 919/962-0612
 Basketball Contact Dana Gelin
 Home Phone 919/969-8915
 Website www.TarHeelBlue.com

OPPONENTS
2000-2001
WOMEN'S BASKETBALL

TEAM INFORMATION

1999-00 Record 20-13
Conference Record/Finish 8-8/5th
Starters Returning/Lost 4/1
Letterwinners Returning/Lost 8/4
Top Returning Scorer F, LaQuanda Barksdale, 17.6 ppg
Top Returning Rebounder F, LaQuanda Barksdale, 8.6 rpg
Top Newcomers G/F Chrystal Baptist; C, Carrie Davis;
C, Candace Sutton



Clemson

Sun., Jan. 21, Clemson, S.C.
Thu., Feb. 22, Tallahassee, Fla.

QUICK FACTS

Location Clemson, SC
Founded 1889
Nickname Tigers
Enrollment 16,982
Colors Orange & Purple
Conference Atlantic Coast
Arena/Capacity Littlejohn Coliseum/11,020
Press Row # 864/654-3326

BASKETBALL FACTS

Head Coach Jim Davis (Tennessee-Wesleyan '70)
Record at School/Years 278-128/13
Career Record/Years 297-136/14
Office Phone 864/656-2212
Assistant Coaches Sam Dixon, Jody Henson

SPORTS INFORMATION

Office Phone 864/656-1924
Fax Number 864/656-0299
Basketball Contact Sam Blackman
Home Phone 864/639-4400
Website www.clemsonigers.com

TEAM INFORMATION

1999 -00 Record 19-12
Conference Record/Finish 9-7/4th
Starters Returning/Lost 3/2
Letterwinners Returning/Lost 8/6
Top Returning Scorer G, Chrissy Floyd, 12.3 ppg
Top Returning Rebounder F/C, Erin Bath, 7.4 rpg
Top Newcomers G/F, Marci Glenney; G, Kenetra Queen;
F, Liz Holbrook



Virginia

Wed., Jan. 24, Tallahassee, Fla.
Sun., Feb. 25, Charlottesville, Va.

QUICK FACTS

Location Charlottesville, VA

Founded 1819
Nickname Cavaliers
Enrollment 18,417
Colors Blue & Orange
Conference Atlantic Coast
Arena/Capacity University Hall/8,394
Press Row # 804/296-5910

BASKETBALL FACTS

Head Coach Debbie Ryan (Ursinus '75)
Record at School/Years 526-183/23
Career Record/Years 526-183/23
Office Phone 804/982-5800
Assistant Coaches Tim Taylor, Audra Smith, Nikki Caldwell

SPORTS INFORMATION

Office Phone 804/982-5500
Fax Number 804/982-5525
Basketball Contact TBA
Home Phone TBA
Website www.virginiasports.com

TEAM INFORMATION

1999-00 Record 25-9
Conference Record/Finish 13-3/1st
Starters Returning/Lost 3/2
Letterwinners Returning/Lost 7/3
Top Returning Scorer F, Schuye LaRue, 14.4 ppg
Top Returning Rebounder F, Schuye LaRue, 8.0 rpg
Top Newcomers F, Joanna Kemp; G, Kristin Ambrose;
G, Chelsea Whitaker



Fri., Feb. 2, Cincinnati, Ohio

QUICK FACTS

Location Cincinnati, OH
Founded 1831
Nickname Musketeers
Enrollment 6,500
Colors Navy Blue, Gray & White
Conference Atlantic 10
Arena/Capacity Cintas Center/10,200
Press Row # 513/745-3929

BASKETBALL FACTS

Head Coach Melanie Balcomb (Trenton State, '84)
Record at School/Years 92-56/5
Career Record/Years 120-83/7
Office Phone 513/745-3414
Assistant Coaches Vicky Picott, Toby Metoyer,
Kristin Schneider

SPORTS INFORMATION

Office Phone 513/745-2058
Fax Number 513/745-2825
Basketball Contact Pete Holtermann
Home Phone 513/351-8638
Website www.xu.edu/athletics

TEAM INFORMATION

1999-00 Record 26-5
Conference Record/Finish 13-3/2nd
Starters Returning/Lost 4/1
Letterwinners Returning/Lost 9/4
Top Returning Scorer C/F, Taru Tuukkanen, 14.5 ppg
Top Returning Rebounder C/F, Taru Tuukkanen, 7.0 rpg
Top Newcomers C, Colleen Yukes; G, Shavon Bell;
F, Aida Sarajlija

*Possible Opponents

1999-00 SEASON REVIEW



- 1999-00 Review
- 1999-00 Statistics
- Game-By-Game Results
- Team Highs & Lows
- Game-By-Game Statistics
- ACC Statistics
- ACC Final Standings

Level

Next

The



1999-2000 Season In Review

F L O R I D A S T A T E U N I V E R S I T Y

Tough Slate

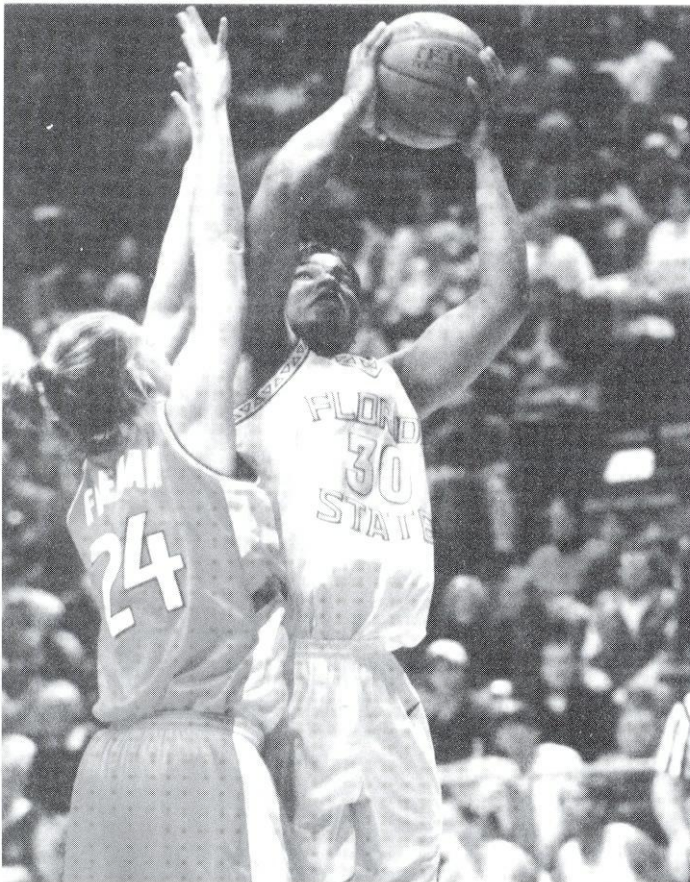
The Seminoles played eight games against ranked opponents in the 1999-2000 season. FSU also played 12 games against NCAA Tournament teams. According to the RPI rankings in *Collegiate Basketball News*, the Atlantic Coast Conference was listed second among the Top 10 Conferences in the nation. The SEC ranked first, followed by the ACC, Big East, Big 12, Big Ten, Conference USA, Pac 10, Sun Belt, Missouri Valley and West Coast.

League Honors

Three Seminoles were recognized for outstanding performances this season:

All ACC

Latavia Coleman 2nd Team
Brooke Wyckoff 3rd Team
April Traylor Honorable Mention
All Defensive Team . Brooke Wyckoff



Latavia Coleman

Tay In The Tournament

Although a senior, this year's ACC Tournament was just second tourney appearance for Latavia Coleman. Coleman missed the last two tourneys with injuries. In her freshman season Coleman led FSU with 21 points and five rebounds in 33 minutes of play in the loss vs. Wake Forest. She made the most of her appearance this season — scoring 31 points vs. Maryland and averaging 23 points and six rebounds for the two games. She earned ACC Tournament First Team honors, becoming the first FSU player to do so since Tia Paschal in 1993.

Tay and the 30-Point Club

Latavia Coleman's 31 points vs. Maryland in the ACC Tournament was the second time this season and the fourth time in her career that the senior hit the 30-point plateau. Her season-high was 32 points vs. Tulsa in the season-opener. Coleman did it twice last season with 30 vs. No. 3 La. Tech and a career-high 38 vs. No. 8 North Carolina.

ACC Tourney Records

Latavia Coleman's 15 field goals vs. Maryland in the ACC Tournament tied the ACC Tournament record for most field goals in a single game and was a season-high for the senior. It had been done three times before in ACC Tourney history with the last time being in 1993 by FSU's Tia Paschal, also vs. Maryland. The 31 points also tied for fifth best in single-game points in ACC Tourney history.

Notables

- ① FSU's 12 wins is the program's most since the 1992-93 season when the Seminoles finished 13-14. FSU went 9-18 in Semrau's first season. FSU's last winning season was in 1991-92 at 17-11.
- ① FSU's win at Georgia Tech was the program's first ACC road win since the Seminoles defeated Wake Forest in Winston-Salem on February 8, 1998.
- ① FSU's wins over Maryland and Georgia Tech mark the first time since 1994-95 that the Tribe has won back-to-back ACC games.
- ① 29-point wins over Ga. Tech and Wake Forest were FSU's second biggest by margin since joining the ACC.
- ① Seven of 12 ACC losses were by five points or less
- ① FSU outrebounded its opponent in 10 of 16 league games.
- ① In six of 12 ACC losses, FSU had either been tied, down a point, or up a point around the one-minute mark of the second half.

Bombs Away For Brooke

Brooke Wyckoff scored a season-high 22 points, including 7 of 8 from the free throw line and 3-for-3 from three-point land, in FSU's win at Georgia Tech. It was a career-high in three-pointers for the junior.

Second Half Team?

FSU's 68 percent shooting in the second half of the Maryland game in the ACC Tournament was a season-high in the second half, but the sixth time the Tribe shot 60 percent or better in the second half of a game this year. The Seminoles were 6-0 in those games.

Still Among The Best

Despite missing the majority of her junior season with a torn ACL, Latavia Coleman will still finish her career among FSU's best in three statistical areas: She now ranks 5th in points with 1,428 in 91 games, 5th in scoring average at 15.7 points per game and 10th in rebounds with 603.

Threes Please

The Seminoles were 5-for-9 from three-point land in both Georgia Tech wins. Four different players hit treys in the first game ... including junior Lako Brown. It was her first career three pointer! In the second game with Tech, Brooke Wyckoff hit a career-high three treys.

FSU hit a season-high seven threes in the first UVA game. The Seminoles have hit five or more threes in a game seven times this season. Last year, FSU hit 63 three-pointers for the year. The Tribe had 87 this year.

Good Golly Miss Molly!

Freshman Molly Beal's team-leading 27 three-pointers helped the Seminoles improve in the category. The Seminoles hit five or more threes in a game seven times this season, including a season-high seven vs. Virginia and Beal had five of them. Last year, FSU hit 63 three-pointers for the year, while the Tribe had 87 this year. The Seminoles were 5-for-9 from three point land in both Georgia Tech wins. Four different players hit treys in the home game with Tech, including Lake Brown. It was her first career three-pointer!

FSU and Free Throws

The Tribe had its best outing from the free throw line at Georgia Tech, shooting 86 percent on 18-of-21. April Traylor was a perfect 8-of-8 in that game.

Getting To The Line

With 51 total fouls called in the first UNC game, the Tribe made it to the free throw line a season-high 32 times! FSU made 30 or more free throw attempts seven times this season, including a season-high 36 attempts in the season-opener vs. Tulsa. FSU averaged 21.0 free throw attempts per game. It's season-low attempts was 10 in the final regular-season game at Clemson.

April Traylor

A Team Win Indeed!

It took everyone to beat the Yellow Jackets the first time around. Five Seminoles hit double figures in FSU's win over Georgia Tech. The only other time this season that this has happened was in the Oakland game. Everyone who could, played against the Yellow Jackets and 10 of 12 Seminoles scored!

Double Trouble

Latavia Coleman recorded her second double-double of the season at Virginia with 12 points and a game-high 10 rebounds. Her first double-double of the season was 13 points and 11 rebounds vs. St. John's. Brooke Wyckoff earned her first double-double of the year with 12 points and 10 boards vs. NC State and had another with 18 points and 10 rebounds in the first game vs. Virginia. April Traylor picked up a double-double of her own with 12 points and 10 assists vs. Duke in the ACC Tournament.

Watch Your Back

The Seminoles ranked first in the ACC in blocked shots per game average at 3.4 and was second in the ACC with a 11.1 steals per game average.

Torres Takes Control

Levys Torres led all players with 10 rebounds vs. Wake Forest — a season-high for the junior.

Springle Sets Mark

Lakesha Springle recorded a career-high seven assists in just 15 minutes in the Wake win.

Swat Team

As a team, FSU recorded nearly double the blocks than its opponents. The Tribe had 100 swats to its opponents' 57. Brooke Wyckoff led the team with 34.

Shooting Accuracy

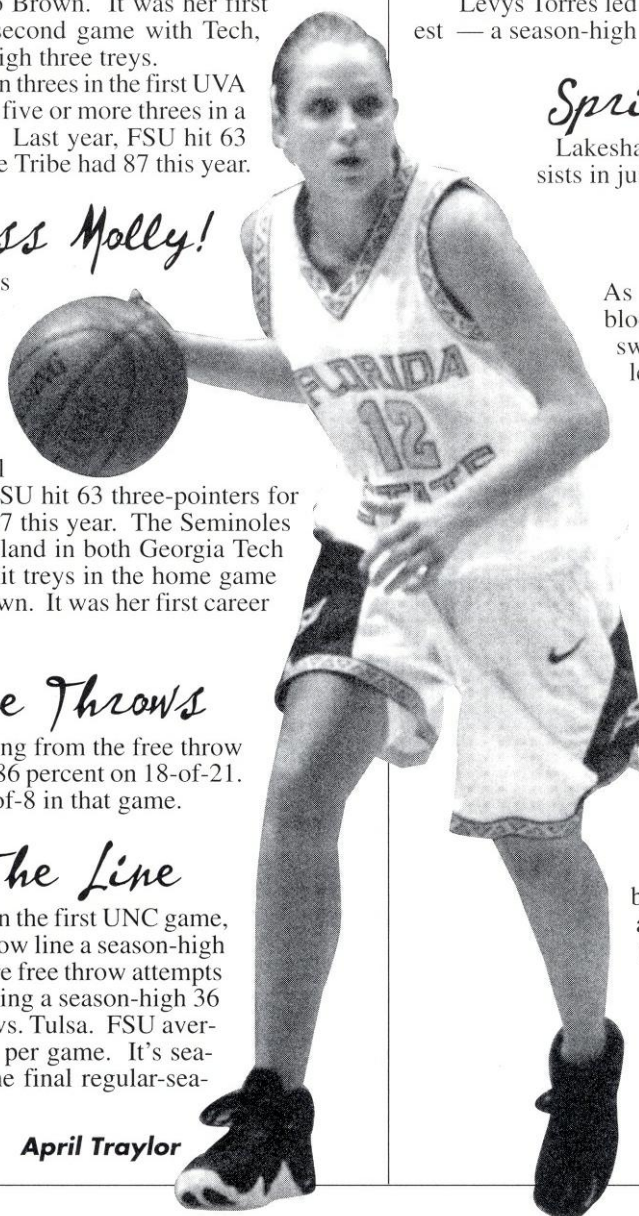
Latavia Coleman, who was second in the ACC in scoring at 16.1 points per game, was among the league leaders in field goal percentage. Coleman shot 51 percent from the field (3rd in ACC) overall and is was first at 50 percent in ACC games.

Wyckoff Takes Over On The Boards

Brooke Wyckoff led the team in rebounding in 11 of 16 ACC games. She averaged 7.3 rebounds per game in league action.

All Around

Brooke Wyckoff is truly an all-around player. Wyckoff recorded at least one assist, block, steal, rebound and point in 18



of 24 games this season.

April's New Position

Sophomore April Traylor played point guard this season — a new position for the young Seminole. Her 5.2 assists per game ranked second in the ACC. But she was still a scoring threat. Traylor led the team in scoring seven times, including a game-high 22 points in the Tribe's first ACC win of the season. She scored in double figures in 16 games total, including four games of 22 points or more!

Rebound That Basketball

Florida State added height to its roster this season and it paid off in the rebounding department. FSU outrebounded its opponent in 16 of 29 games, including 10 of 16 ACC games, and six different players led the team. The Tribe's largest rebounding margin this season was 24 vs. Loyola while in ACC action, FSU recorded a season-high 55 rebounds vs. Wake Forest and outrebounded the Deacons by 21.

Revenge Time

Florida State's win over Florida International not only snapped a two-game losing streak to the Golden Panthers, but the Sun & Fun tournament title also gave the Seminoles some sweet revenge. FIU won FSU's tournament in both 1997-98 and 1998-99.

Classic Honors

Latavia Coleman, who averaged 16.0 points and 8.0 rebounds through the two games at the FIU Sun & Fun Classic, earned tournament Most Valuable Player honors while Brooke Wyckoff was named to the All-Tournament Team with averages of 11.0 points and 6.5 rebounds.

Coleman a ACC Player Of The Week Honors

Latavia Coleman was named the Atlantic Coast Conference Women's Basketball Player of the Week on Monday, November 22, after scoring a game-high 32 points and grabbing a team-high nine rebounds in FSU's 77-70 win over visiting Tulsa. Coleman shot 80 percent from the field on 12-of-15 shooting, 62 percent from the free throw line on 8-of-13 and had nine rebounds.

Coleman's MVP performance at the FIU Sun & Fun Classic earned the senior her second ACC Player of the Week honor Jan. 3rd. She averaged 16.0 pts and 8.0 rebs and had her first double-double of the season.

Our Kind Of Town - Chicago Was!

The Seminoles won their two games in Chicago by a margin of 23 points and outrebounded their opponents by an average of 19.5 boards.

Vujas Had Ramblers' Number

Freshman Katelyn Vujas had her best game of the season with 18 points and eight rebounds vs. Loyola. The rookie center

shot 82 percent from the field on 9-11 and her eight boards tied for team honors. Vujas made the start vs. Chicago State in place of Lauren Bradley, who was ill, and again scored in double figures with 12 points.

Century Mark

Florida State's 102 points vs. Loyola was the first time the Tribe has reached the century mark this season and 21st time in the program's history. FSU did it last year in its 112-101 overtime loss to North Carolina. The Seminoles nearly reached the plateau earlier this season with 99 points vs. Oakland.

Season Superlatives All In One Game!

FSU shot a season-high 59 percent vs. Loyola and had its largest margin of victory this season at 32 points. FSU outrebounded the Ramblers by 24 — also a season-high.

Springle Springs It On 'Em

Lakesha Springle not only scored a career-high 16 points against Oakland, but the total was the first time in her career that she has scored in double digits and she doubled her previous high of eight points vs. USF last year.

Whiting Wow's 'Em

After starting the first two games of the season, Shinikki Whiting came off the bench to score a game-high 21 points and helped the Seminoles overcome a 17-point deficit to defeat Oakland, 99-90. Whiting also had five rebounds, three assists and two steals.

Attendance Is On The Rise

The Seminoles enjoyed their best-ever following this season. More than 1,700 fans were in attendance to watch the Tribe take on rival-Florida. Overall, FSU women's basketball attendance increased by 16 percent from the previous year.

Seminoles Are Strong In The Classroom

The Florida State women's basketball program has always prided itself for its strong academic standards. The 1999-2000 Seminoles have carried on this tradition. Here's a look at some of the Tribe's academic superlatives...

Team GPA for Fall, 1999 2.985
 Current Team Cum GPA 3.03

Dean's List & 3.0 Club Members

Molly Beal 3.900
 Lauren Bradley 3.550
 Vanessa Fuchs 3.732
 Brooke Wyckoff 3.813

Additional 3.0 Club Members

Lea Bennett 3.196
 Levys Torres 3.250
 Katelyn Vujas 3.150
 Student's with Cum GPA's over 3.0 Molly Beal,
 Lea Bennett, Lauren Bradley, Vanessa Fuchs,
 Levys Torres, Katelyn Vujas, Brooke Wyckoff

1999-2000 Statistics

FLORIDA STATE UNIVERSITY

Individual Statistics — All Games

Record: 12-17 • Home: 5-8 Away: 5-8 • Neutral: 2-1

#	Player	G-GS	Min-Avg	FG-FGA	Pct	3P-3PA	Pct	FT-FTA	Pct	Off-Def	Tot-Avg	PF-FD	AT	TO	BL	ST	Pts-Avg	
30	COLEMAN, L	29-29	885-30.5	180-352	.511	1-13	.077	106-151	.702	71-104	175-6.0	73-1	37	78	7	55	467-16.1	
12	TRAYLOR, A	28-28	927-33.1	127-342	.371	22-88	.250	79-134	.590	26- 73	99-3.5	87-3	145	173	3	67	355-12.7	
21	WYCKOFF, B	24-22	724-30.2	92-225	.409	16-54	.296	59- 79	.747	52-118	170-7.1	56-0	61	78	34	45	259-10.8	
20	VUJAS, K	29- 7	561-19.3	93-190	.489	0- 3	.000	23- 29	.793	40- 77	117-4.0	65-3	25	47	13	20	209- 7.2	
11	SUTTON, A	29-28	733-25.3	81-178	.455	4-20	.200	35- 58	.603	42- 47	89-3.1	86-5	62	80	4	68	201- 6.9	
44	BRADLEY, L	19- 9	351-18.5	55-117	.470	0- 0	.000	16- 25	.640	30- 43	73-3.8	54-2	14	26	23	14	126- 6.6	
23	WHITING, S	19- 3	245-12.9	29- 80	.363	3-14	.214	14- 23	.609	12- 21	33-1.7	32-0	8	23	4	14	75- 3.9	
32	BEAL, M	27- 1	305-11.3	34- 99	.343	27-85	.318	8- 14	.571	15- 17	32-1.2	18-0	13	19	0	4	103- 3.8	
13	TORRES, L	29-13	448-15.4	41- 83	.494	0- 0	.000	27- 56	.482	46- 69	115-4.0	37-1	9	30	9	12	109- 3.8	
10	SPRINGLE, L	28- 1	422-15.1	21- 47	.447	7-11	.636	24- 34	.706	14- 33	47-1.7	29-0	38	53	0	20	73- 2.6	
33	FUCHS, V	17- 3	96- 5.6	9- 29	.310	6-19	.316	2- 2	1.000	5- 8	13- .8	6-5	6	10	0	2	26- 1.5	
51	BENNETT, L	11- 0	40- 3.6	5- 14	.357	0- 1	.000	0- 0	.000	4- 9	13-1.2	3-0	0	3	3	1	10- .9	
25	BROWN, L	10- 0	33- 3.3	2- 7	.286	1- 2	.500	2- 4	.500	2- 3	5- .5	2-0	2	1	0	0	7- .7	
Team											130			6				
FLORIDA STATE		29	5770	769-1763	.436	87-310	.281	395-609	.649	359-622	1111- 38.3	548	420	627	100	322	2020- 69.7	
Opponents		29	5770	723-1681	.430	123-359	.343	436-618	.706	353-681	1034- 35.7	545	391	626	57	330	2005- 69.1	

Score by Halves

	1	2	OT	Total	Deadball	Rebounds
FLORIDA STATE	854	1142	0	1996	0	97
Opponents	934	1071	0	2005	0	106

Per-Game Averages

#	Player	G	FG	FGA	3P	3PA	FT	FTA	AT	TO	BS	ST
30	COLEMAN, L	29	6.2	12.1	0.0	0.4	3.7	5.2	1.3	2.7	0.2	1.9
12	TRAYLOR, A	28	4.5	12.2	0.8	3.1	2.8	4.8	5.2	6.2	0.1	2.4
21	WYCKOFF, B	24	3.8	9.4	0.7	2.3	2.5	3.3	2.5	3.3	1.4	1.9
20	VUJAS, K	29	3.2	6.6	0.0	0.1	0.8	1.0	0.9	1.6	0.4	0.7
11	SUTTON, A	29	2.8	6.1	0.1	0.7	1.2	2.0	2.1	2.8	0.1	2.3
44	BRADLEY, L	19	2.9	6.2	0.0	0.0	0.8	1.3	0.7	1.4	1.2	0.7
23	WHITING, S	19	1.5	4.2	0.2	0.7	0.7	1.2	0.4	1.2	0.2	0.7
32	BEAL, M	27	1.3	3.7	1.0	3.1	0.3	0.5	0.5	0.7	0.0	0.1
13	TORRES, L	29	1.4	2.9	0.0	0.0	0.9	1.9	0.3	1.0	0.3	0.4
10	SPRINGLE, L	28	0.8	1.7	0.3	0.4	0.9	1.2	1.4	1.9	0.0	0.7
33	FUCHS, V	17	0.5	1.7	0.4	1.1	0.1	0.1	0.4	0.6	0.0	0.1
51	BENNETT, L	11	0.5	1.3	0.0	0.1	0.0	0.0	0.0	0.3	0.3	0.1
25	BROWN, L	10	0.2	0.7	0.1	0.2	0.2	0.4	0.2	0.1	0.0	0.0
FLORIDA STATE		29	26.5	60.8	3.0	10.7	13.6	21.0	14.5	21.6	3.4	11.1
Opponents		29	24.9	58.0	4.2	12.4	15.0	21.3	13.5	21.6	2.0	11.4

Game-By-Game Results

FLORIDA STATE UNIVERSITY

Date	Opponent	Result	Score	Site	Att	High Scorer	High Rebounder	High Assists
11/19	Tulsa	Won	77-70	Home	732	COLEMAN, L 32	COLEMAN, L 9	SUTTON, A 3
11/22	South Florida	Lost	74-84	Away	540	COLEMAN, L 21	TORRES, L 7	SPRINGLE, L 2
11/26	UT-Chattanooga	Lost	69-78	Home	606	TRAYLOR, A 28	COLEMAN, L 9	TRAYLOR, A 4
11/27	Oakland	Won	99-90	Home	465	WHITING, S 21	VUJAS, K 8	SPRINGLE, L 3
11/30	Mercer	Won	74-62	Away	527	TRAYLOR, A 17	BRADLEY, L 9	TRAYLOR, A 8
12/07	Florida	Lost	74-82	Home	1702	COLEMAN, L 26	COLEMAN, L 9	TRAYLOR, A 4
12/19	Loyola	Won	102-70	Away	527	COLEMAN, L 20	VUJAS, K 8	TRAYLOR, A 5
12/21	Chicago State	Won	73-49	Away	59	COLEMAN, L 14	TORRES, L 9	TRAYLOR, A 9
12/29	St. John's	Won	64-56	Neutral	375	BRADLEY, L 15	COLEMAN, L 11	TRAYLOR, A 5
12/30	Florida Int'l	Won	76-55	Away	479	COLEMAN, L 19	TORRES, L 8	TRAYLOR, A 8
01/03	Wake Forest	Lost	59-64	Away	276	BRADLEY, L 12	WYCKOFF, B 11	SUTTON, A 3
01/06	#3 NC State	Lost	58-62	Home	495	TRAYLOR, A 23	WYCKOFF, B 10	TRAYLOR, A 2
01/09	Virginia	Lost	73-76	Home	852	WYCKOFF, B 18	WYCKOFF, B 10	TRAYLOR, A 8
01/12	Maryland	Lost	67-68	Away	970	COLEMAN, L 28	TORRES, L 7	TRAYLOR, A 7
01/16	Georgia Tech	Won	93-64	Home	527	TRAYLOR, A 22	WYCKOFF, B 8	TRAYLOR, A 8
01/20	#23 N Carolina	Lost	67-77	Away	1128	COLEMAN, L 20	WYCKOFF, B 7	TRAYLOR, A 3
01/24	#9 Duke	Lost	54-59	Home	802	COLEMAN, L 13	WYCKOFF, B 8	WYCKOFF, B 5
01/27	Clemson	Lost	61-73	Home	623	BEAL, M 12	TORRES, L 6	TRAYLOR, A 6
01/30	#11 Auburn	Lost	52-55	Home	1107	WYCKOFF, B 18	COLEMAN, L 11	WYCKOFF, B 5
02/03	Wake Forest	Won	76-47	Home	803	TRAYLOR, A 17	TORRES, L 10	SPRINGLE, L 7
02/06	#8 NC State	Lost	62-72	Away	4318	COLEMAN, L 21	TRAYLOR, A 8	TRAYLOR, A 4
02/10	#21 Virginia	Lost	59-74	Away	2931	TRAYLOR, A 19	COLEMAN, L 10	WYCKOFF, B 5
02/13	Maryland	Won	66-52	Home	694	COLEMAN, L 20	SUTTON, A 7	SUTTON, A 5
02/17	Georgia Tech	Won	77-74	Away	3223	WYCKOFF, B 22	TRAYLOR, A 6	TRAYLOR, A 8
02/22	North Carolina	Lost	74-78	Home	1076	TRAYLOR, A 19	WYCKOFF, B 8	TRAYLOR, A 8
02/24	#8 Duke	Lost	52-87	Away	4721	WYCKOFF, B 15	WYCKOFF, B 9	TRAYLOR, A 4
02/27	Clemson	Lost	58-75	Away	3544	BEAL, M 11	VUJAS, K 7	TRAYLOR, A 10
03/04	Maryland	Won	65-60	Neutral	6185	COLEMAN, L 31	TRAYLOR, A 6	TRAYLOR, A 5
03/05	#10 Duke	Lost	65-92	Neutral	6640	VUJAS, K 15	WYCKOFF, B 9	TRAYLOR, A 10



Team Highs & Lows

F L O R I D A S T A T E U N I V E R S I T Y

Category		FLORIDA STATE	Opponent
Points 1st Half	High	43 vs Loyola	47 by #12 Duke
	Low	1 vs Mercer	20 by Wake Forest
Points 2nd Half	High	59 vs Loyola	51 by UT-Chattanooga
	Low	26 vs Clemson	21 by Florida Int'l
Total Points	High	102 vs Loyola	92 by Duke
	Low	52 vs #11 Auburn	47 by Wake Forest
Field Goals Made	High	42 vs Loyola	34 by #12 Duke
	Low	18 vs #11 Auburn	16 by Florida Int'l
Field Goals Att	High	73 vs Wake Forest	71 by St. John's
	Low	45 vs Clemson	47 by #3 NC State
Field Goal %	High	.592 vs Loyola	.576 by #12 Duke
	Low	.317 vs #12 Duke	.298 by Wake Forest
3-Pt Field Goals Made	High	7 vs Virginia	9 by #12 Duke
	Low	0 vs St. John's	0 by St. John's
3-Pt Field Goals Att	High	21 vs Clemson	22 by Oakland
	Low	2 vs St. John's	6 by South Florida
3-Pt Field Goal %	High	.636 vs Virginia	.833 by Mercer
	Low	.000 vs St. John's	.000 by St. John's
Free Throws Made	High	23 vs Tulsa	24 by Florida
	Low	5 vs North Carolina	5 by Chicago State
Free Throws Att	High	36 vs Tulsa	32 by South Florida
	Low	10 vs Clemson	9 by Chicago State
Free Throw %	High	.857 vs Georgia Tech	.882 by Mercer
	Low	.417 vs North Carolina	.500 by St. John's
Offensive Rebounds	High	26 vs Wake Forest	22 by St. John's
	Low	5 vs Clemson	6 by Clemson
Defensive Rebounds	High	33 vs Loyola	36 by Florida
	Low	12 vs #12 Duke	16 by Maryland
Total Rebounds	High	55 vs Wake Forest	48 by Florida
	Low	21 vs Clemson	27 by Clemson
Assists	High	24 vs Loyola	19 by Virginia
	Low	6 vs South Florida	7 by St. John's
Blocked Shots	High	7 vs St. John's	6 by #11 NC State
	Low	1 vs Florida	0 by South Florida
Steals	High	18 vs Loyola	20 by Maryland
	Low	6 vs Georgia Tech	4 by Oakland
Turnovers	High	32 vs Maryland	30 by Maryland
	Low	13 vs Oakland	14 by Clemson
Personal Fouls	High	25 vs Georgia Tech	28 by North Carolina
	Low	11 vs Chicago State	11 by Virginia

Game-By-Game Statistics

FLORIDA STATE UNIVERSITY

Date	Opponent	S	Attnd	FG-FGA	Pct	3P-3PA	Pct	FT-FTA	Pct	Off-Def	Tot	PF	AT	TO	BS	ST	Pts
11/19/99		H	732	26-58	.448	2-9	.222	23-36	.639	19-29	48	24	10	28	4	10	77
	Tulsa			23-67	.343	4-15	.267	20-26	.769	17-19	36	26	10	23	1	13	70
11/22/99	South Florida	A	540	31-68	.456	3-6	.500	9-13	.692	16-17	33	24	6	24	5	16	74
11/26/99	UT-Chattanooga	H	606	29-51	.569	4-6	.667	22-32	.688	12-24	36	16	12	26	0	12	84
11/27/99	Oakland	H	465	22-65	.338	3-12	.250	22-31	.710	21-24	45	22	9	23	4	15	69
11/30/99	Mercer	A	527	25-52	.481	6-14	.429	22-31	.710	8-26	34	24	12	21	0	15	78
12/07/99	Florida	H	1,702	37-71	.521	4-10	.400	21-32	.656	16-23	39	21	16	13	4	12	99
12/19/99	Loyola	A	527	31-61	.508	8-22	.364	20-26	.769	10-20	30	25	12	20	2	4	90
12/21/99	Chicago State	A	59	29-65	.446	2-13	.154	14-19	.737	16-19	35	16	18	20	2	14	74
12/29/99	St. John's	N	375	21-51	.412	5-6	.833	15-17	.882	10-19	29	18	14	29	1	7	62
12/30/99	Florida Int'l	A	479	27-68	.397	5-16	.313	15-26	.577	12-21	33	24	8	18	1	9	74
01/03/00	Wake Forest	H	495	27-57	.474	4-7	.571	24-31	.774	12-36	48	25	17	24	5	10	82
01/06/00	NC State	H	495	42-71	.592	5-15	.333	13-23	.565	19-33	52	18	24	27	5	18	102
01/09/00	Virginia	H	852	27-62	.435	5-15	.333	11-21	.524	9-19	28	19	15	24	1	17	70
01/12/00	Maryland	H	852	30-69	.435	2-8	.250	11-20	.550	20-28	48	11	18	16	5	13	73
01/16/00	Georgia Tech	H	527	20-56	.357	4-10	.400	5-9	.556	10-23	33	14	11	22	1	10	49
01/20/00	North Carolina	A	1,128	23-53	.434	0-2	.000	18-30	.600	13-32	45	21	15	24	7	16	64
01/24/00	Duke	H	802	23-71	.324	0-12	.000	10-20	.500	22-25	47	22	7	20	0	11	56
01/27/00	Clemson	H	623	26-64	.406	1-6	.167	23-30	.767	12-26	38	21	10	18	3	17	76
01/30/00	Auburn	H	1,107	16-50	.320	2-8	.250	21-30	.700	13-31	44	26	8	27	2	14	55
02/03/00	Wake Forest	H	803	20-60	.333	3-13	.231	16-26	.615	19-28	47	18	9	19	3	9	59
02/06/00	NC State	A	4,318	24-59	.407	3-10	.300	13-19	.684	9-27	36	19	16	16	4	7	64
02/10/00	Virginia	A	2,931	19-48	.396	2-12	.167	18-30	.600	10-23	33	18	9	19	3	9	58
02/13/00	Maryland	H	694	20-47	.426	5-10	.500	17-23	.739	7-23	30	23	1223	2	9	62	
02/17/00	Georgia Tech	A	3,223	27-59	.458	7-11	.636	12-15	.800	14-20	34	14	19	25	4	12	73
02/22/00	North Carolina	A	4,721	31-59	.525	7-15	.467	7-10	.700	9-19	28	11	19	22	4	15	76
02/24/00	Duke	H	802	27-63	.429	0-4	.000	13-17	.765	12-27	39	18	18	16	4	11	67
02/27/00	Clemson	H	1,076	25-58	.431	6-13	.462	12-19	.632	10-27	37	16	17	16	2	9	68
03/04/00	Maryland	N	6,640	37-67	.552	5-9	.556	14-22	.636	16-25	41	16	19	18	6	8	93
03/05/00	Duke	N	6,640	24-64	.375	1-6	.167	15-19	.789	14-18	32	19	14	20	0	7	64
	FLORIDA STATE		46,927	22-53	.415	2-9	.222	21-32	.656	10-18	28	23	10	18	1	14	67
	Opponents		723-1681	25-49	.510	7-11	.636	20-30	.667	10-28	38	28	13	23	0	12	77
				22-55	.400	3-8	.375	7-11	.636	10-25	35	16	15	21	6	9	54
				22-58	.379	4-16	.250	11-13	.846	12-26	38	15	14	17	2	12	59
				23-45	.511	6-13	.462	9-14	.643	5-16	21	21	16	28	1	7	61
				26-53	.491	4-6	.667	17-20	.850	12-19	31	14	16	21	1	16	73
				18-54	.333	4-19	.211	12-16	.750	15-24	39	12	12	19	3	8	52
				21-63	.333	3-18	.167	10-13	.769	20-23	43	12	12	17	4	9	55
				33-73	.452	2-9	.222	8-17	.471	26-29	55	15	20	23	5	9	76
				17-57	.298	2-12	.167	11-16	.688	14-20	34	14	9	25	4	11	47
				23-67	.343	4-17	.235	12-22	.545	16-22	38	21	13	19	1	13	62
				27-55	.491	4-16	.250	14-22	.636	10-34	44	18	11	22	6	10	72
				23-59	.390	2-9	.222	11-15	.733	13-27	40	20	12	22	2	7	59
				28-67	.418	6-18	.333	12-18	.667	15-24	39	15	17	18	4	5	74
				25-49	.510	2-5	.400	14-20	.700	10-28	38	14	16	32	5	15	66
				20-60	.333	4-18	.222	8-11	.727	12-16	28	19	8	30	4	20	52
				27-57	.474	5-9	.556	18-21	.857	12-22	34	25	22	19	5	6	77
				28-61	.459	0-8	.000	18-31	.581	18-17	35	22	15	15	4	13	74
				34-61	.557	1-6	.167	5-12	.417	10-25	35	20	19	24	3	7	74
				28-67	.418	3-12	.250	19-23	.826	15-19	34	16	18	15	0	15	78
				20-63	.317	1-10	.100	11-15	.733	15-12	27	17	12	21	1	11	52
				34-59	.576	9-19	.474	10-17	.588	17-26	43	17	18	25	1	13	87
				23-57	.404	6-21	.286	6-10	.600	16-24	40	19	19	27	4	9	58
				26-55	.473	5-16	.313	18-24	.750	6-21	27	15	19	14	1	16	75
				28-60	.467	1-8	.125	8-13	.615	14-20	34	17	8	21	2	8	65
				23-48	.479	3-8	.375	11-16	.688	9-22	31	17	8	23	0	6	60
				25-61	.410	4-21	.190	11-21	.524	13-24	37	25	18	25	1	10	65
				32-64	.500	5-12	.417	23-31	.742	11-30	41	20	17	18	1	12	92
				769-1763	.436	87-310	.281	395-609	.649	420-691	1111	551	420	627	100	322	2020
				723-1681	.430	123-359	.343	436-618	.706	353-681	1034	545	391	616	57	330	2005

1999-2000 ACC Statistics

FLORIDA STATE UNIVERSITY

Individual Statistics — All Games

Record: 4-12 • Home: 3-5 Away: 1-7 • Neutral: 0-0

#	Player	G-GS	Min-Avg	FG-FGA	Pct	3P-3PA	Pct	FT-FTA	Pct	Off-Def	Tot-Avg	PF-FD	AT	TO	BL	ST	Pts-Avg #	
30	COLEMAN, L	16-16	475-29.7	85- 169	.503	0- 5	.000	48- 67	.716	32- 46	78- 4.9	44- 0	24	44	2	24	218- 13.6	
12	TRAYLOR, A	16-16	532-33.3	73- 191	.382	12- 40	.300	42- 70	.600	11- 40	51- 3.2	53- 3	83	106	1	30	200- 12.5	
21	WYCKOFF, B	16-16	522-32.6	65- 162	.401	10- 38	.263	35- 46	.761	36- 81	117- 7.3	36- 0	45	45	23	29	175- 10.9	
20	VUJAS, K	16- 4	315-19.7	49- 101	.485	0- 0	.000	9- 13	.692	17- 42	59- 3.7	34- 1	17	22	6	12	107- 6.7	
11	SUTTON, A	16-15	410-25.6	38- 84	.452	1- 7	.143	18- 32	.563	21- 27	48- 3.0	49- 3	35	47	2	33	95- 5.9	
44	BRADLEY, L	8- 2	135-16.9	19- 44	.432	0- 0	.000	6- 9	.667	5- 17	22- 2.8	21- 1	5	13	10	3	44- 5.5	
32	BEAL, M	16- 0	190-11.9	27- 67	.403	23- 60	.383	3- 4	.750	10- 13	23- 1.4	9- 0	7	11	0	3	80- 5.0	
13	TORRES, L	16-10	297-18.6	27- 54	.500	0- 0	.000	15- 32	.469	26- 36	62- 3.9	21- 1	5	20	8	5	69- 4.3	
10	SPRINGLE, L	16- 0	196-12.3	10- 24	.417	4- 7	.571	11- 14	.786	7- 13	20- 1.3	13- 0	22	26	0	12	35- 2.2	
23	WHITING, S	8- 0	73- 9.1	6- 21	.286	0- 2	.000	4- 6	.667	4- 6	10- 1.3	12- 0	2	8	1	4	16- 2.0	
51	BENNETT, L	5- 0	20- 4.0	4- 10	.400	0- 1	.000	0- 0	.000	3- 4	7- 1.4	2- 0	0	2	1	1	8- 1.6	
25	BROWN, L	6- 0	17- 2.8	2- 5	.400	1- 2	.500	2- 4	.500	2- 1	3- .5	0- 0	0	1	0	0	7- 1.2	
33	FUCHS, V	6- 1	18- 3.0	0- 4	.000	0- 3	.000	2- 2	1.000	1- 4	5- .8	1- 0	3	3	0	0	2- .3	
Team											80			4				
FLORIDA STATE		16	3200	405- 936	.433	51-165	.309	195-299	.652	175-330	585- 36.6	295	248	352	54	156	1056- 66.0	
Opponents		16	3200	405- 928	.436	70-206	.340	222-315	.705	190-364	554- 34.6	281	236	327	39	190	1102- 68.9	

Score by Halves

	1	2	OT	Total	Deadball	Rebounds
FLORIDA STATE	470	586	0	1056	0	51
Opponents	519	583	0	1102	0	61

Per-Game Averages

#	Player	G	FG	FGA	3P	3PA	FT	FTA	AT	TO	BS	ST
30	COLEMAN, L	16	5.3	10.6	0.0	0.3	3.0	4.2	1.5	2.8	0.1	1.5
12	TRAYLOR, A	16	4.6	11.9	0.8	2.5	2.6	4.4	5.2	6.6	0.1	1.9
21	WYCKOFF, B	16	4.1	10.1	0.6	2.4	2.2	2.9	2.8	2.8	1.4	1.8
20	VUJAS, K	16	3.1	6.3	0.0	0.0	0.6	0.8	1.1	1.4	0.4	0.8
11	SUTTON, A	16	2.4	5.3	0.1	0.4	1.1	2.0	2.2	2.9	0.1	2.1
44	BRADLEY, L	8	2.4	5.5	0.0	0.0	0.8	1.1	0.6	1.6	1.3	0.4
32	BEAL, M	16	1.7	4.2	1.4	3.8	0.2	0.3	0.4	0.7	0.0	0.2
13	TORRES, L	16	1.7	3.4	0.0	0.0	0.9	2.0	0.3	1.3	0.5	0.3
10	SPRINGLE, L	16	0.6	1.5	0.3	0.4	0.7	0.9	1.4	1.6	0.0	0.8
23	WHITING, S	8	0.8	2.6	0.0	0.3	0.5	0.8	0.3	1.0	0.1	0.5
51	BENNETT, L	5	0.8	2.0	0.0	0.2	0.0	0.0	0.0	0.4	0.2	0.2
25	BROWN, L	6	0.3	0.8	0.2	0.3	0.3	0.7	0.0	0.2	0.0	0.0
33	FUCHS, V	6	0.0	0.7	0.0	0.5	0.3	0.3	0.5	0.5	0.0	0.0
FLORIDA STATE		16	25.3	58.5	3.2	10.3	12.2	18.7	15.5	22.0	3.4	9.8
Opponents		16	25.3	58.0	4.4	12.9	13.9	19.7	14.8	20.4	2.4	11.9

ACC Final Standings



F L O R I D A S T A T E U N I V E R S I T Y

CLEMSON - NCAA Tournament Second Round
DUKE - ACC Champion & NCAA Tournament Regional Semifinalist
NORTH CAROLINA - NCAA Tournament Second Round
NC STATE - NCAA Tournament First Round
VIRGINIA - NCAA Tournament Second Round
GEORGIA TECH - Women's NIT Third Round
MARYLAND - Women's NIT Third Round

ACC Games

All Games

TEAM	W	L	PCT	HM	RD	W	L	PCT	HM	RD	NEU
Virginia	13	3	.813	8-0	5-3	25	9	.735	16-1	6-5	3-3
Duke	12	4	.750	7-1	5-3	28	6	.824	16-2	7-3	5-1
NC State	11	5	.688	6-2	5-3	20	9	.690	11-2	6-4	3-3
Clemson	9	7	.563	5-3	4-4	19	12	.613	9-3	8-6	2-3
North Carolina	8	8	.500	6-2	2-6	20	13	.606	12-2	3-7	5-4
Georgia Tech	7	9	.438	4-4	3-5	17	14	.548	9-6	7-6	1-2
Maryland	5	11	.313	2-6	3-5	16	15	.516	10-7	4-6	2-2
Florida State	4	12	.250	3-5	1-7	12	17	.414	5-6	4-10	3-1
Wake Forest	3	13	.188	2-6	1-7	7	21	.250	4-9	3-11	0-1

ACC TOURNAMENT

March 3-6, Greensboro Coliseum, Greensboro, NC

First Round - #8 Florida State def. #7 Maryland 65-60; #1 Virginia def. #9 Wake Forest 72-47. *Second Round* - #5 North Carolina def. #4 Clemson 56-54; #2 Duke def. Florida State 92-65; #6 Georgia Tech def. #3 NC State 71-62. *Semifinals* - North Carolina def. Virginia 67-63; Duke def. Georgia Tech 77-65. *Final* - Duke def. North Carolina 79-76.

ACC ALL-TOURNAMENT TEAM

First Team - Latavia Coleman, FSU; LaQuanda Barksdale, UNC; Lauren Rice, Duke; Georgia Schweitzer, Duke; Nikki Teasley, UNC. *Second Team* - Missy West, Duke; Renee Robinson, UVA; Schuye LaRue, UVA; Sheana Mosch, Duke; Milli Martinez, GaTech.

ACC ALL-ATLANTIC COAST CONFERENCE

First Team - Georgia Schweitzer, Duke; Summer Erb, NC State; Svetlana Volnaya, UVA; Peppi Browne, Duke; LaQuanda Barksdale, UNC. *Second Team* - Chrissy Floyd, Clemson; Latavia Coleman, FSU; Schuye LaRue, UVA; Renee Robinson, UVA; Tynesha Lewis, NC State. *Third Team* - Tiffany Brown, MD; Angie Cossey, Clemson, Brooke Wyckoff, FSU; Marché Strickland, MD; Nikki Teasley, UNC.

ACC ALL-FRESHMAN TEAM

Schuye LaRue, UVA; Chrissy Floyd, Clemson, Kaayla Chones, NC State; Sheana Mosch, Duke; Michelle Matyasovsky, Duke.

ACC ALL-DEFENSIVE TEAM

Erin Bath, Clemson; Peppi Browne, Duke; Rochelle Parent, Duke; Renee Robinson, UVA; Brooke Wyckoff, FSU.

ACC COACH OF THE YEAR

Debbie Ryan, Virginia

ACC PLAYER OF THE YEAR

Georgia Schweitzer, Duke

ACC ROOKIE OF THE YEAR

Schuye LaRue, Virginia

ACC PLAYERS OF THE WEEK

N22-Latavia Coleman, FSU; N29-Georgia Schweitzer, Duke; D6-Georgia Schweitzer, Duke; D13-LaQuanda Barksdale, UNC; D20-Summer Erb, NC State; J3-Latavia Coleman, FSU; J10-Tynesha Lewis, NC State; J17-Svetlana Volnaya, UVA; J24-Summer Erb, NC State; J31-Svetlana Volnaya, Virginia; F7-Summer Erb, NC State; F14-Nikki Teasley, UNC; F21-Telisha Quarles, UVA; F28-Nikki Teasley, UNC; M6-Nikki Teasley, UNC.

ACC ROOKIE OF THE WEEK

N22-Kaayla Chones, Duke; N29-Schuye LaRue, UVA; D6-Jennifer Thomas, UNC; D13-Kaayla Chones, Duke; D20-Jennifer Thomas, UNC; J3-Schuye LaRue, UVA; J10-Kaayla Chones, Duke; J17-Chrissy Floyd, Clemson; J24-Amy Simpson, NC State; J31-Schuye LaRue, UVA; F7-Chrissy Floyd, Clemson; F14-Terah James, NC State; F21-Schuye LaRue, UVA; F21-Schuye LaRue, UVA.

THE SEMINOLES IN THE FINAL ACC STATISTICS

SCORING	Latavia Coleman, 2nd, 16.1 ppg
	April Traylor, 10th, 12.7 ppg
FIELD GOAL PERCENTAGE	Latavia Coleman, 3rd, .511
REBOUNDING	Brooke Wyckoff, 9th, 7.1 rpg
ASSISTS	April Traylor, 2nd, 5.2 apg
BLOCKS	Brooke Wyckoff, 1st, 1.4
STEALS	April Traylor, 2nd, 2.4 spg
	Angela Sutton, 3rd, 2.3 spg
	Latavia Coleman, T7th, 1.9 spg
	Brooke Wyckoff, T7th, 1.9 spg

SEMINOLE RECORD BOOK

- Individual Records
- Team Records
- Season Records
- Career Leaders
- Year-By-Year Leaders
- All-Time Letterwinners
- All-Time Jersey Numbers
- Sue Galkantas Retired #43
- Postseason Play
- Honors & Awards
- Record Against Opponents
- Year-By-Year Results
- Photo Roster

Level



Individual & Team Records

F L O R I D A S T A T E U N I V E R S I T Y

Individual Records Points

Game — 38, L. Coleman vs. UNC (12/5/98); T. Paschal vs. UNC (1/10/93)

Season — 710, S. Galkantas (1981-82)

Career — 2323, S. Galkantas (1980-84)

Field Goals Made

Game — 17, L. Lasseter vs. S.W. Louisiana (12/16/79)

Season — 282, S. Galkantas (1981-82)

Career — 919, S. Galkantas (1980-84)



Cherry Rivers averaged a record 14 rebounds per game in 1977-78.

Field Goal Percentage

Season — .656, C. Dishman (1990-91)

Career — .605, C. Dishman (1989-92)

Scoring Average

Season — 21.6, S. Galkantas (1981-82)

Career — 19.4, S. Galkantas (1980-84)

Field Goals Attempted

Game — 34, B. Burnett vs. Georgia Southern (12/16/87)

Season — 536, S. Galkantas (1981-82)

Career — 1753, S. Galkantas (1980-84)

3 Point Field Goals

Game — 7, C. Derlak vs. UT Chattanooga (11/26/93)

Season — 51, W. Hampton (51-163) (1996-97)

Career — 134, W. Hampton (1994-98)

3 Point Field Goal Percentage

Season — .475, R. Storey (47-99) (1988-89)

Career — .342, C. Derlak (1990-94)

Free Throws Made

Game — 14, T. Paschal vs. UNC (1/10/93) & Florida (12/15/91);
W. Burns vs. Memphis State (1/19/91); S. Galkantas vs.
Tulane (2/5/83) & Memphis State (2/14/83)

Season — 282, S. Galkantas (1981-82)

Career — 485, S. Galkantas (1980-84)

Free Throw Attempts

Game — 22, A. Traylor vs. Florida (2/11/99)

Season — 244, C. Williams (1995-96)

Career — 651, S. Galkantas (1980-84)

Free Throw Percentage

Season — .857, W. Burns (1989-90)

Career — .788, L. Foglio (1981-83)

Rebounds

Game — 23, L. Lasseter vs. S. Florida (12/2/78)

Season — 336, C. Rivers (1977-78)

Career — 1029, C. Rivers (1976-80)

Rebound Average

Season — 14, C. Rivers (1977-78)

Career — 10.8, B. Cliette (1982-87)