



Florida State

2002-2003
WOMEN'S BASKETBALL

ONE ...

All of us together represent the Seminole family with ONE purpose and ONE heartbeat. We are ONE team and ONE family that shares in the commitment to reach ONE goal: winning both on and off the court in all facets of life.

TABLE OF CONTENTS

Notes to the Media	2
Media Outlets/Seminole.com	3
Seminole On The Air	4
WFLA Radio/Sunshine Network	5
FSU Quick Facts	6
Season Preview	8
'02-'03 Rosters	11
A Closer Look	12
Head Coach Sue Semrau	14
Assistant Coach Theresa Gernatt	18
Assistant Coach Angie Johnson	19
Assistant Coach Scott Stoehr	20
Kristin Brookens	21
Support Staff	22
Trinetta Moore	24
Katelyn Vujas	26
Shinikki Whiting	28
Lauren Bradley	30
Tasheika Morris	32
Angela Sutton	34
Genesis Choice	35
Linnea Liljestrand	36
LaQuinta Neely	37
Ganiyat Adeduntan	38
Francine Houston	38
Holly Johnson	39
Hannah Linqvist	39
Get to Know the 'Noles	40
This is Tallahassee	42
This is Florida State	46
Florida State Administration	50
FSU Board of Trustees	55
The ACC	56
Academic Support	58
Strength and Conditioning	60
Medical Care	62
FSU Basketball Training Center	63

CREDITS

EDITOR: Tina Thomas; **RESEARCH:** Katy Baker, William Clark, Dan Flaherty, Justin Gallagher, Courtney Hastings, Kellen Love, Angel Maldonado, Kris Sowers; **PHOTOGRAPHY:** Paul Chapman, FSU Photo Lab, Allen Kee, Bill Lax, Ryals Lee, Jr., Cory Lum, Ross Obley, Bob Rosato, USA Basketball; **DESIGN:** Chameleon Graphics & Design; **PRINTING:** Host Communications Printing and Publishing

MEDIA GUIDE

NCAA Compliance	64
Life Skills and Student Services	65
Community Service	66
Booster Support	68
Leon County Civic Center	69
Seminole Spirit	70
'02-'03 Opponents	72
ACC Tournament Dates	79
NCAA Tournament Dates	80
Travel Headquarters	80
'01-'02 Review	82
'01-'02 Statistics	86
'01-'02 Game-by-Game Results	87
'01-'02 Highs and Lows	88
'01-'02 Game-by-Game Stats	89
'01-'02 Box Scores	90
'01-'02 ACC Standings and Stats	94
Retired No. 43	98
FSU Athletics Hall of Fame	99
All-Americans	100
All-Conference Honors	101
Academic Awards	102
Seminole in the WNBA	103
All-time Letterwinners	105
All-time Jersey Numbers	106
Postseason Play	108
Conference History	109
Individual/Team Records	110
Career Records	112
Year-by-Year Records	112
Miscellaneous Records	114
Series Records vs. Opponents	116
Coaches Year-by-Year	119
Results Year-by-Year	120
Team Photo Chart	124



Top returning scorer Tasheika Morris.

Outlook **7**

What's INSIDE ...

7 Outlook

With nine returning letterwinners and a group of highly-touted newcomers, the Florida State women's basketball team will have numerous offensive weapons and size in the middle, making them solid on both ends of the court. Get a glimpse of the season preview here.

13 Coaches

Sue Semrau begins her sixth season at the helm of the Florida State women's basketball program. Assistants Theresa Gernatt and Angie Johnson have been with her every step of the way. The staff welcomes Assistant Scott Stoehr to the program in 2002-03. Take a look at the women's basketball staff here.

23 Players

Florida State has three seniors, three juniors, three sophomores and four freshmen on this year's squad, hailing from eight different states and two countries. While there are differences in where they're from, they're all here now. Learn all about the 2002-03 Seminoles here.

41 University

Being a student-athlete at Florida State means not only going to school at a great university in a great city, but so much more. Seminole student-athletes train and compete in state-of-the-art facilities and receive quality support in a number of areas thus assuring a positive and successful academic and athletic collegiate experience. Here's a look at the advantages of FSU and Tallahassee.

71 Opponents

Florida State has a very challenging schedule in 2002-03. The Seminoles will play 12 games against teams that advanced to last year's NCAA Tournament, highlighted by a visit from defending national champion Connecticut. The season gets underway at home with the annual Seminole Classic, November 22 and 23. Size up the competition here.

81 Review

The Seminoles saw a great deal of adversity in the 2001-02 season but learned a lot in the process. Here's everything you want to know about last season including news and notes of the year as well as team and individual statistics, results and box scores.

97 Honors/Awards

All-Americans, Academic Honors, FSU Athletics Hall of Fame — the Florida State women's basketball program has had it all and continues to strive for such success. Take a look at the Seminoles, of both the past and present, who have made their mark on FSU women's basketball.

107 Records

Did you know the most prolific scorer in Florida State basketball is a woman? It's true. Sue Galkantas scored an unbelievable 2,323 points in her career — the most of any basketball player, male or female, in Florida State history. Check out all the FSU records and much more here.

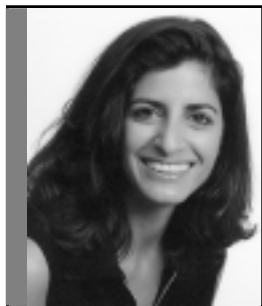
MEDIA

INFORMATION

PRESS CREDENTIALS

REQUESTS FOR WORKING PRESS CREDENTIALS should be directed to the sports information office. Media representatives should contact Associate SID Tina Thomas at least one day in advance by calling (850) 644-1065. For FSU home games, media will be seated in front of the east stands at the Leon County Civic Center.

PHOTOGRAPHERS



Tina Thomas

Photographers are to contact the SID office as well. Working area for all photographers will include the floor area at both ends of the court. Television camera persons should abide by the same guidelines as still photographers.

RADIO

A complimentary radio line is available for visiting teams. The SID office must be notified at least three days in advance.

GAME OPERATIONS

Pre-game notes, rosters and a running play-by-play will be provided along with halftime and final statistics. A fax machine is also available upon request.

PLAYER & COACHES INTERVIEWS

All player and coaches interviews must be arranged through the SID office (850) 644-1065. Players and coaches will be available to give interviews before and after, but not during practice times.

POST-GAME INTERVIEWS

Coach Semrau and requested players will be available after a 10-minute cooling-off period. No interviews will be given on the floor immediately following the game. The visiting coach and players will be brought in on a request basis only.

MEDIATEAMLINK® & INFOCONNECTION®

Releases, Standings, Statistics and other sports information are available by accessing www.mediateamlink.com. You can have documents delivered directly to

SPORTS INFORMATION DIRECTORY

CONTACT US AT: 850/644-1403; FAX 850/644-3820

ADDRESS INQUIRIES TO: Florida State Sports Information, PO Drawer 2195, Tallahassee, FL 32316

SHIP OVERNIGHT PACKAGES TO: FSU Athletics, Sports Information, University Center C, Room C5406, Tallahassee, FL 32306

ASSISTANT ATHLETICS DIRECTOR FOR MEDIA & PUBLIC RELATIONS: Rob Wilson, 850/644-1403

ASSOCIATE SPORTS INFORMATION DIRECTORS: Tina Thomas, 850/644-1065; Chuck Walsh, 850/644-1077

ASSISTANT SPORTS INFORMATION DIRECTORS: Jeff Purinton, 850/644-0615; Elliott Finebloom, 850/644-5656

ADMINISTRATIVE SECRETARY: Lynn Hobby, 850/644-2016

GRADUATE ASSISTANTS: Bill Baker, 850/644-4836; Michael Morrell, 850/644-3920; Jeff Clark, 850/644-5653

your e-mail and/or fax the moment they are updated. You can also view documents online. MediaTeamlink® is FREE to all accredited Media.

Log on to www.mediateamlink.com if you do not already have an account and click the "Sign Up Here" button and complete the short form. Documents requested via fax will incur a 15¢ per page fee. This site is for accredited media only. Pivotal will conduct an audit to eliminate non-accredited media.

Documents are also still available on InfoConnection®. To access, please dial

(770) 558-6000 from the handset of your fax machine and enter your 10-digit PIN. If you do not have a PIN number, please call Pivotal Communications at (770) 399-0096.

SEMINOLES ON THE WEB

Keep up with all of the action of Florida State Athletics by visiting FSU's official website at:





FLORIDA STATE MEDIA OUTLETS

PRINT MEDIA

ASSOCIATED PRESS (Local) (850) 224-1211
 Fax (850) 224-2099 • Brent Kallestad
 336 E. College Ave., Suite 301, Tallahassee, FL 32301

BRADENTON HERALD (941) 745-7007
 Fax (850) 745-7097
 102 Manatee Ave., W., Bradenton, FL 34205

DAYTONA BEACH NEWS-JOURNAL (386) 252-1511
 Fax (386) 253-8433 • Bob Pockrass
 PO Box 431, Daytona Beach, FL 32015

FLORIDA TIMES-UNION (Local) (850) 224-7515
 Fax (850) 681-2961 • Bob Thomas
 336 E. College Ave., Suite 304, Tallahassee, FL 32301

FLORIDA TIMES-UNION (800) 255-4679
 (904) 359-4246 • Fax (904) 359-4147
 PO Box 1949, Jacksonville, FL 32231

FT. LAUDERDALE SUN-SENTINEL (954) 356-4645
 Fax (954) 356-4566 • Craig Barnes
 New River Center, 200 E. Las Olas Blvd., Ft. Lauderdale, FL 33301

FT. MYERS NEWS-PRESS (941) 335-0357
 Fax (941) 334-0708
 2442 Anderson Ave., Ft. Myers, FL 33901

FSView/Florida Flambeau (850) 561-6653
 Fax (850) 574-6578 • 1235 Airport Rd., Tallahassee, FL 32304

GAINESVILLE SUN (352) 378-1411
 Fax (352) 338-3128 • 2700 S.W. 13th Str., Gainesville, FL 32608

LAKE CITY REPORTER (904) 754-0421
 Fax (904) 752-9400 • P.O. Box 1709, Lake City, FL 32056

LAKELAND LEDGER (941) 802-7557
 Fax (813) 802-7812 • PO Box 408, Lakeland, FL 33802

MIAMI HERALD (305) 376-2387
 Fax (305) 376-2295
 One Herald Plaza, Miami, FL 33101

OCALA STAR-BANNER (352) 867-4144
 Fax (352) 867-4018 • PO Box 490, Ocala, FL 32670

ORLANDO SENTINEL (Local) (850) 222-5564
 Fax (850) 224-0979 • Josh Robbins
 36 E. College Ave., Suite 303, Tallahassee, FL 32301

ORLANDO SENTINEL (407) 420-5474
 Fax (407) 420-5069 • Alan Schmadtke
 PO Box 28333, Orlando, FL 32802

THE OSCEOLA (850) 222-7733
 Fax (850) 224-3627 • Jim Lamar, Ira Schoffel, Rick Jones
 402 Dunwoody St., Tallahassee, FL 32304

PALATKA DAILY NEWS (904) 328-2721
 Fax (904) 312-5209
 1825 St. John's Ave., Palatka, FL 32177

PALM BEACH POST (561) 820-4440
 Fax (561) 820-4481 • Tom D'Angelo
 2751 S. Dixie Highway, W. Palm Beach, FL 33405

PANAMA CITY NEWS-HERALD (850) 747-5065
 Fax (850) 747-5097 • Jim Oberdier
 501 W. 11th St., Panama City, FL 32401

PENSACOLA NEWS-JOURNAL (850) 435-8552
 Fax (850) 434-6241 • Bill Vilona
 PO Box 12710, Pensacola, FL 32574

SARASOTA HERALD-TRIBUNE (941) 957-5172
 Fax (941) 957-5276 • Doug Fernandez
 801 S. Tamiami Trail, Sarasota, FL 34236

ST. PETERSBURG TIMES (813) 226-3347
 Fax (813) 226-3381 • Brian Landman
 P.O. Box 1121, St. Petersburg, FL 33731

TALLAHASSEE DEMOCRAT (850) 599-2167
 Fax (850) 599-2301 • Randy Beard, Jack Corcoran, Steve Ellis
 PO Box 990, Tallahassee, FL 32302

TAMPA TRIBUNE (Local) (850) 222-8382
 Fax (850) 222-4772 • Doug Carlson
 336 E. College Ave., Tallahassee, FL 32301

TAMPA TRIBUNE (813) 259-7655
 Fax (813) 259-8148 • PO Box 191, Tampa, FL 33601

ELECTRONIC MEDIA
CABLE 47 (850) 487-3170
 WFSU Television Center

FLORIDA NEWS CHANNEL (850) 222-6397
 Fax (850) 894-5202 • Barry Milligan, Tom Block
 1801 Halstead Blvd., Tallahassee, FL 32308

SUNSHINE NETWORK (407) 648-1150
 Fax (407) 245-2571
 390 N. Orange Ave. Suite 1075, Orlando, FL 32801

WCTV-TV (CBS) (850) 906-0477
 Fax (850) 668-3851 • Lee Gordon, *Sports Director*
 4000 County Rd. 12, Tallahassee, FL 32312

WFLA RADIO (850) 422-3107
 Fax (850) 514-4441 • Jeff Cameron
 325 John Knox Rd, Bldg. G, Tallahassee, FL 32303

WFSU (850) 644-1360
 Fax (850) 644-8344 • Dennis Schnittker, Jay Wirth

WTXL-TV (ABC) (850) 893-1313
 (850) 668-1460 • Preston Scott, *Sports Director*
 7927 Thomasville Rd., Tallahassee, FL 32312

SEMINOLES

ON THE AIR



SEMINOLE PRODUCTIONS

THE FLORIDA STATE WOMEN'S BASKETBALL PROGRAM enjoys some of the finest video production in the country through Seminole Productions.

Seminole Productions is an educational auxiliary of the Florida State University Department of Communication. The department began in 1988 by producing an athletics television series called "Seminole Uprising."

Since then, the relationship with FSU athletics has grown. SP now provides virtually every video service in the athletics area including the Bobby Bowden Show, Seminole Basketball Highlights with Sue Semrau and Leonard Hamilton, The Mike Martin Show and Seminole Sports Magazine, which are aired weekly in the Southeast Region on Sunshine Network. SP also handles the production for In-Game Entertainment of FSU football and men's and women's basketball.

Under the direction of Mark Rodin, Seminole Productions provides complete professional-quality video production services to University Departments, Schools, Colleges, Divisions, and other activities. Seminole Productions also provides services to state government, local government, and FSU related entities. SP has also produced nature documentaries, informational and training videos, and even an op-

era for television.

Utilization of Seminole Productions services does more than just provide great video productions. Seminole Productions provides an opportunity for students of television design, production, performance, and broadcasting to participate in actual, professional television activities.

Projects are supervised by the industry's finest professional producers while seniors in the Media Communication program in the Department of Communication provide the crews.

Seminole Productions' award-winning productions are produced using high-end, network-quality video equipment. SP uses Betacam SP and Digital DVcam for videotaping, and do master editing on Avid Non-Linear, digital editors and Betacam SP in order to assure a high-quality finished product.

SP also has sophisticated digital video effects equipment and can perform complicated 3-D animation and multi-layer compositing effects. Complete studio facilities are also available.

THE SEMINOLES ON RADIO

Florida State University's marketing office announced in May of 2001 that it had extended the contract with WTNT-FM and WFLA-AM of Tallahassee to continue as the

flagship stations for Seminole athletics through the 2002-2003 athletic season.

The three-year deal features expanded coverage of Seminole athletics with all football and men's basketball games carried live on WTNT while 20 regular-season women's basketball games will be carried live on WFLA this season.

"We have enjoyed our relationship with our flagship stations and are very pleased that we are able to extend and expand on that relationship in this contract," FSU Director of Athletics Dave Hart said.

"Clear Channel is thrilled to be a long-term partner with Florida State to present the premiere sports program in the Southeast," John Hunt, Vice President and Market Manager, Clear Channel Communications said. "Our continued affiliation with the Seminoles organization is a long term strategic goal for both Newsradio 1270 WFLA and 94.9 WTNT. This alliance gives us a competitive advantage that allows us to continue our ratings dominance across the radio dial."

FLORIDA STATE UNIVERSITY & SUNSHINE NETWORK

Florida State University and Sunshine Network announced a multi-year contract in August of 2000 that ensured Sunshine Network will continue to be the exclusive Florida cable home of FSU athletics for many





1st in Florida Sports
www.sunshinenetwork.com

years to come. Six regular-season women's basketball games will be shown on Sunshine Network in 2002-03.

Since 1988, Sunshine Network has been the exclusive regional sports network home of FSU athletics in Florida. Available in over 5.5 million homes statewide via cable and satellite, Sunshine Network provides more coverage of FSU athletics than any other Florida television outlet.

Each year, Sunshine network airs over 100 games/programs for FSU, including its own production of every FSU regular season football game, which replay statewide on Sunshine Sunday evenings at 7 p.m. during "Prime Time 'Noles."

Also included in the agreement are the rights to a minimum of 10 baseball games and a minimum of 14 women's events including basketball, volleyball, soc-

2002-03 REGULAR-SEASON RADIO SCHEDULE

11/22	Alabama State	8:00 p.m.
11/26	at Florida	7:00 p.m.
11/29	Wright State	7:00 p.m.
12/3	Indiana	7:00 p.m.
12/7	at South Florida	7:00 p.m.
12/18	at Jacksonville	7:00 p.m.
12/21	at No. Arizona	9:05 p.m.
12/30	Connecticut	7:00 p.m.
1/2	at Wake Forest	7:00 p.m.
1/5	at UCF	3:00 p.m.
1/8	NC State	7:00 p.m.
1/12	North Carolina	1:00 p.m.
1/16	at Maryland	7:00 p.m.
1/20	Georgia Tech	4:30 p.m.
1/23	Virginia	7:00 p.m.
1/26	at Duke	2:00 p.m.
1/30	at Clemson	7:00 p.m.
2/13	at North Carolina	7:00 p.m.
2/19	at Georgia Tech	7:00 p.m.
2/27	Duke	7:00 p.m.

cer and softball.

Other programming includes highlight shows for fall and spring sports, call-in and/or coaches shows, "Seminole Summer Showcase," highlighting replays or highlights of previous FSU events, "Seminole Sports Magazine," "Seminole Uprising" and more. Additional FSU athletic events, including men's and women's basketball, are available to Sunshine Network from the Atlantic Coast Conference and its rightsholders.

In addition to game coverage, Sunshine Network also provides fans with daily reports and features on its two sports news shows, "Sunshine Network LIVE!," weeknights at 6:30 p.m. and "NEXTEL Florida Sports News," weeknights at 10 p.m. Keith Jones, Tom Block and Barry Milligan cover the 'Noles for both sports news shows on Sunshine Network.

An agreement with the ACC provides Sunshine Network with additional FSU games and events, including the conference's new Sunday night ACC basketball package which begins this fall on regional sports networks nationwide (exclusively on Sunshine in Florida). The network also airs "ACC Live!," Mondays at 7 p.m., and numerous other games/events for the ACC, giving FSU fans coverage of not only their home team, but FSU's conference opponents as well.

"Our contractual partnership with Sunshine Network provides an extremely valuable distribution avenue for Florida State University events which are showcased within our own state and well beyond," FSU Director of Athletics Dave Hart said. "This extension affords us a very comprehensive means of exposure which enhances every facet of our athletics program. We are pleased to extend our contract and relationship with the people at Sunshine Network." ■ ■

WFLA NEWSRADIO



Todd Van Dyke

Newsradio 1270 AM will carry 20 Florida State women's basketball games during the 2002-03 season.

Todd Van Dyke, the voice of FSU women's basketball, begins his fourth season with the program while former Seminole Liberty Taylor returns as color analyst for the fifth straight year.

Van Dyke is a native of Rochelle, Ill., but has lived in Tallahassee for eight years. Also very active with the Florida State athletics marketing and promotions and sport information departments, Van Dyke serves as the public address announcer for Seminole baseball and volleyball.

Taylor, who hails from New Orleans, La., lettered in women's basketball at Florida State from 1991-95. She graduated from FSU in 1996 with a degree in nutrition and fitness and went on to earn a master's degree in communications in 1999. Taylor works for Porter Novell, a public relations and marketing firm, and is also teaching in FSU's department of communications as an adjunct professor.



Liberty Taylor

QUICK FACTS

FLORIDA STATE

UNIVERSITY INFORMATION

Location Tallahassee, Florida
 Founded 1851
 Enrollment 35,462
 President Talbot "Sandy" D'Alemberte
 Symbol Seminoles
 Colors Garnet & Gold
 Home Court Tallahassee-Leon County Civic Center/12,200
 LCCC Press Row Phone (850) 224-8790
 Affiliation NCAA Division I
 Conference Atlantic Coast

ATHLETIC ADMINISTRATION

Athletics Director Dave Hart, Jr.
 Hart's Phone (850) 644-2526
 Senior Associate Athletics Director,
 Basketball Operations Kim Record
 Record's Phone (850) 644-3354

SPORTS INFORMATION

Sports Information Director Rob Wilson
 Associate SID, Women's Basketball Tina Thomas
 Email Address tthomas@mailers.fsu.edu
 Address FSU Athletics, University Center C,
 Room C5406, Tallahassee, FL 32306
 SID Phone (850) 644-1065
 Thomas' Home Phone (850) 514-3351
 SID Fax (850) 644-3820
 Website www.seminoles.com

PROGRAM HISTORY

First Year of Basketball 1973-74
 Overall All-time Record 376-431 (.466)
 Overall ACC Record 46-130 (.261)
 No. Years in NCAA Tourney 4
 NCAA Tourney Record 2-4



First NCAA Appearance 1983
 Last NCAA Appearance 2001
 Result 1st Round, defeated Tulane, 72-70;
 2nd Round, lost to Iowa State, 85-70
 No. Years in WNIT 1 (1982)
 WNIT Record 2-1

BASKETBALL STAFF

Head Coach Sue Semrau (California-San Diego '85)
 Record at FSU (Years) 60-82 (5)
 Career Record (Years) 60-82 (5)
 Assistant Coaches Theresa Gernatt (Georgia Tech '91)
 Angie Johnson (Louisville '91)
 Scott Stoehr (Nebraska Wesleyan '97)
 Basketball Office Phone (850) 644-3641
 Director of Basketball Operations Kristin Brookens
 Basketball Trainer Tricia Perez
 Training Room Phone (850) 644-1206

2001-02 RESULTS

Record 13-15
 Home 8-6
 Away 3-8
 Neutral 2-1
 Conference Record/Place 4-12/9th
 Home 3-5
 Away 1-7

2002-03 PERSONNEL

Starters Returning/Lost 3/2
 Letterwinners Returning/Lost *9/3
 Newcomers 4
**Sutton last lettered in 1999-2000.*

Starters Returning:

Tasheika Morris (Jr., 6-0, F) 13.2 ppg, 5.7 rpg
 Shinikki Whiting (Sr., 5-9, G) 11.0 ppg, 5.1 rpg
 Katelyn Vujas (Sr., 6-3, F) 7.5 ppg, 4.2 rpg

Other Key Returnees:

Lauren Bradley (Jr., 6-3, C) 5.1 ppg, 2.7 rpg
 Linnea Liljestrand (So., 5-0, G) 6.0 ppg, 1.9 rpg
 Genesis Choice (So., 6-3, F) 4.2 ppg, 2.8 rpg
 Trinetta Moore (Sr., 6-2, C) 3.9 ppg, 3.3 rpg

Key Losses:

April Traylor, G 13.0 ppg, 3.6 rpg, 2.8 apg
 Lakesha Springle, G 2.3 ppg, 2.4 rpg, 1.4 apg

Key Newcomers:

Holly Johnson Fr., 5-8, G, Phoenix, Ariz.
 Ganiyat Adeduntan Fr., 6-1, F, Athens, Ga.
 Hannah Linquist Fr., 6-3, C, Swannanoa, N.C.
 Francine Houston Fr., 5-8, G, Bradenton, Fla.