

# fsu opponents

2004-2005



**Kevin McGuff**  
Head Coach



**Tara Boothe**  
Forward

## XAVIER

Nov. 19, 2004 • 8:00 p.m. • Tallahassee, Fla.

### QUICK FACTS

Location ..... Cincinnati, Ohio  
 Founded ..... 1831  
 Nickname ..... Musketeers  
 Enrollment ..... 6,600  
 Colors ..... Navy Blue, Gray and White  
 Conference ..... Atlantic 10  
 Arena/Capacity ..... The Cintas Center/10,250  
 Press Row # ..... 513-745-3929

### BASKETBALL FACTS

Head Coach ..... Kevin McGuff  
 Record at School/Years ..... 37-23/2  
 Career Record/Years ..... 37-23/2  
 Office ..... 513-745-3414  
 Assistant Coaches .... Mike Bradbury, Kristin Cole, Amber Stocks

### SPORTS INFORMATION

Office Phone ..... 513-745-2058  
 Fax Number ..... 513-745-2825  
 Basketball Contact ..... Pat McKenna  
 Email Address ..... McKennap@Xavier.edu  
 Cell Phone ..... 513-503-4863  
 Website ..... www.xavier.edu/athletics

### TEAM INFORMATION

2003-04 Record ..... 17-13  
 Conference Record/Finish ..... 8-8/4th (West)  
 Starters Returning/Lost ..... 5/0  
 Letterwinners Returning/Lost ..... 9/4  
 Top Returning Scorer ..... F, Tara Boothe, 18.1 ppg  
 Top Returning Rebounder ..... F, Tara Boothe, 7.6 rpg



**Carolyn Peck**  
Head Coach



**Bernice Mosby**  
Forward

## FLORIDA

Nov. 22, 2004 • 7:00 p.m. • Gainesville, Fla.

### QUICK FACTS

Location ..... Gainesville, FL  
 Founded ..... 1853  
 Nickname ..... Gators  
 Enrollment ..... 48,500  
 Colors ..... Orange & Blue  
 Conference ..... SEC  
 Arena/Capacity ..... Stephen C. O'Connell Center/12,000  
 Press Row # ..... 352-367-1801

### BASKETBALL FACTS

Head Coach ..... Carolyn Peck  
 Record at School/Years ..... 28-30/2  
 Career Record/Years ..... 85-41/4  
 Office Phone ..... 352-375-4683, x5511  
 Assistant Coaches ..... Jose Mori, Michael Peck, Charlene Thomas-Swinson

### SPORTS INFORMATION

Office Phone ..... 352-375-4683 x6133  
 Fax Number ..... 352-375-4809  
 Basketball Contact ..... Kathy Cafazzo  
 Email Address ..... KathyC@gators.uva.ufl.edu  
 Home Phone ..... 352-377-7868  
 Website ..... www.gatorzone.com

### TEAM INFORMATION

2003-04 Record ..... 19-11  
 Conference Record/Finish ..... 8-6/t-4th  
 Starters Returning/Lost ..... 4/1  
 Letterwinners Returning/Lost ..... 10/4  
 Top Returning Scorer ..... F, Tashia Morehead, 12 ppg  
 Top Returning Rebounder ..... F, Bernice Mosby, 6.7 rpg



**Larry Joe Inman**  
Head Coach



**Miranda Eckerle**  
Forward

## EASTERN KENTUCKY

Nov. 26, 2004 • 8:00 p.m. • Tallahassee, Fla.

### QUICK FACTS

Location ..... Richmond, KY  
 Founded ..... 1906  
 Nickname ..... Lady Colonels  
 Enrollment ..... 15,733  
 Colors ..... Maroon and White  
 Conference ..... Ohio Valley  
 Arena/Capacity ..... Alumni Coliseum/Mcbrayer Arena/6,500  
 Press Row # ..... 859-622-2226

### BASKETBALL FACTS

Head Coach ..... Larry Joe Inman  
 Record at School/Years ..... 263-184(16)  
 Career Record/Years ..... 424-257(24)

# 2004-05 Opponents

FLORIDA STATE

Office Phone ..... 859-622-6501  
 Assistant Coaches ... Jenny Sledge, Curtis Metten, Laphelia Doss

## SPORTS INFORMATION

Office Phone ..... 859-358-8359  
 Fax Number ..... 859-622-1230  
 Basketball Contact ..... Amy Ratcliff  
 Email Address ..... Amy.Ratcliff@EKU.EDU  
 Home Phone ..... 859-358-8360  
 Website ..... EKUSports.com

## TEAM INFORMATION

2003-04 Record ..... 15-15  
 Conference Record/Finish ..... 9-7 (6th)  
 Starters Returning/Lost ..... 4/1  
 Letterwinners Returning/Lost ..... 9/6  
 Top Returning Scorer ..... G, Katie Kelly, 17 ppg  
 Top Returning Rebounder ..... C, Pam Garrett, 5.2 rpg



**Adrienne Shuler**  
Head Coach



**Kiki Conyers**  
Guard

## APPALACHIAN STATE

**Nov. 27, 2004 • TBA • Tallahassee, Fla.**  
Possible Opponent

### QUICK FACTS

Location ..... Boone, NC  
 Founded ..... 1899  
 Nickname ..... Mountaineers  
 Enrollment ..... 13,500  
 Colors ..... Black and Gold  
 Conference ..... Southern  
 Arena/Capacity ..... Holmes Center/8,325  
 Press Row # ..... 828-262-7060

### BASKETBALL FACTS

Head Coach ..... Adrienne Shuler  
 Record at School/Years ..... 16-40/2  
 Career Record/Years ..... Same  
 Office Phone ..... N/A  
 Assistant Coaches ..... Kim Thomson, Mary Brock, TBA

### SPORTS INFORMATION

Office Phone ..... 828-262-2268  
 Fax Number ..... 828-262-6106  
 Basketball Contact ..... TBA  
 Email Address ..... TBA  
 Home Phone ..... TBA  
 Website ..... www.goasu.edu

### TEAM INFORMATION

2003-04 Record ..... 7-21  
 Conference Record/Finish ..... 6-14/9th  
 Starters Returning/Lost ..... 3/2  
 Letterwinners Returning/Lost ..... 9/3  
 Top Returning Scorer ..... G, Kiki Conyers, 11.0 ppg  
 Top Returning Rebounder ..... F, Jessica Jank, 5.5 rpg



**Maria Fantanarosa**  
Head Coach



**Nicki Motto**  
Guard

## MIAMI (OHIO)

**Nov. 27, 2004 • TBA • Tallahassee, Fla.**  
Possible Opponent

### QUICK FACTS

Location ..... Oxford, OH  
 Founded ..... 1809  
 Nickname ..... Redhawks  
 Enrollment ..... 16,300  
 Colors ..... Red & White  
 Conference ..... MAC  
 Arena/Capacity ..... Millett Hall/9,200  
 Press Row # ..... 513-529-7276

### BASKETBALL FACTS

Head Coach ..... Maria Fantanarosa  
 Record at School/Years ..... 103-70/7th  
 Career Record/Years ..... 110-90/8th  
 Office Phone ..... N/A  
 Assistant Coaches ..... Jessica Smith, Lisa Hayden, Lisa Oesterle

### SPORTS INFORMATION

Office Phone ..... 513-529-4330  
 Fax Number ..... 513-529-6729  
 Basketball Contact ..... Vince Frieden  
 Email Address ..... friedevt@muohio.edu  
 Home Phone ..... 513-524-8093  
 Website ..... www.MURedhawks.com

### TEAM INFORMATION

2003-04 Record ..... 22-9  
 Conference Record/Finish ..... 14-2/1st  
 Starters Returning/Lost ..... 3/2  
 Letterwinners Returning Lost ..... 6/3  
 Top Returning Scorer ..... G, Cindi Merrill, 13.7 ppg  
 Top Returning Rebounder ..... G, Kim Smith, 5.7 rpg



**Debra Clark**  
Head Coach



**Elana Greene**  
Forward/Center

## FLORIDA A&M

**Dec. 2, 2004 • 7:00 p.m. • Tallahassee, Fla.**

### QUICK FACTS

Location ..... Tallahassee, FL  
 Founded ..... 1887  
 Nickname ..... Lady Rattlers  
 Enrollment ..... TBA  
 Colors ..... Orange and Green  
 Conference ..... MEAC

# 2004-05 Opponents

FLORIDA STATE

Arena/Capacity ..... Gaither Gym/3,365  
 Press Row # ..... N/A

## BASKETBALL FACTS

Head Coach ..... Debra Clark  
 Record at School/Years ..... 44-41/3rd  
 Career Record/Years ..... 155-126/10  
 Office ..... 850-561-2193  
 Assistant Coaches ..... John Clark, Nikki Washington,  
 Kenya Grissett (GA)

## SPORTS INFORMATION

Office Phone ..... 850-561-2701  
 Fax Number ..... 850-599-3206  
 Basketball Contact ..... Ronnie Johnson  
 Email Address ..... ronjon\_2001@yahoo.com  
 Home Phone ..... 850-671-2353  
 Website ..... www.thefamurattlers.com

## TEAM INFORMATION

2003-04 Record ..... 17-12  
 Conference Record/Finish ..... 12-6/T-4th  
 Starters Returning/Lost ..... 3/2  
 Letterwinners Returning/Lost ..... 10/4  
 Top Returning Scorer ..... F/C, Elana Greene, 11.8 ppg  
 Top Returning Rebounder ..... F/C, Elana Greene, 7.1 rpg



**Amy Champion**  
Head Coach



**Jovone Markey**  
Center

## NEW ORLEANS

Dec. 12, 2004 • 3:00 p.m. • New Orleans, La.

### QUICK FACTS

Location ..... New Orleans, LA  
 Founded ..... 1958  
 Nickname ..... Privateers  
 Enrollment ..... 17,360  
 Colors ..... Royal Blue, Silver and Red  
 Conference ..... Sun Belt  
 Arena/Capacity ..... Lakefront Arena/10,000  
 Press Row # .....

### BASKETBALL FACTS

Head Coach ..... Amy Champion  
 Record at School/Years ..... 1st season  
 Career Record/Years ..... 1st season  
 Office Phone ..... 504-280-7022  
 Assistant Coaches .... Mitch White, Sally Jeter, Keeshawn Carter

### SPORTS INFORMATION

Office Phone ..... 504-280-6284  
 Fax Number ..... 504-280-7240  
 Basketball Contact ..... Nick Galiano  
 Email Address ..... NGaliano@uno.edu  
 Home Phone ..... 504-309-3295  
 Website ..... www.unoprivateers.com

### TEAM INFORMATION

2003-04 Record ..... 10-17  
 Conference Record/Finish ..... 5-10/6th (West)  
 Starters Returning/Lost ..... 1/4

Letterwinners Returning/Lost ..... 5/10  
 Top Returning Scorer ..... G, Susan Griffee, 4.9 ppg  
 Top Returning Rebounder ..... C, Jovone Markey, 6.0 rpg



**Chancellor Dugan**  
Head Coach



**Shontavia Williams**  
Guard

## FLORIDA ATLANTIC

Dec. 15, 2004 • 7:00 p.m. • Tallahassee, Fla.

### QUICK FACTS

Location ..... Boca Raton, FL  
 Founded ..... 1961  
 Nickname ..... Lady Owls  
 Enrollment ..... 25,000  
 Colors ..... Blue and Grey  
 Conference ..... Atlantic Sun  
 Arena/Capacity ..... FAU Gymnasium/5,000  
 Press Row # ..... 561-338-1682

### BASKETBALL FACTS

Head Coach ..... Chancellor Dugan  
 Record at School/Years ..... 67-77/5 years  
 Career Record/Years ..... 226-150/12 years  
 Office Phone ..... 561-297-3712  
 Assistant Coaches ..... Shannon Litton and Natalie Glaser

### SPORTS INFORMATION

Office Phone ..... 561-297-3063  
 Fax Number ..... 561-297-3499  
 Basketball Contact ..... John McMahon  
 Email Address ..... owlsvoice@aol.com  
 Home Phone ..... 561-752-4240  
 Website ..... www.fausports.com

### TEAM INFORMATION

2003-04 Record ..... 12-16  
 Conference Record/Finish ..... 11-9/T-5th  
 Starters Returning/Lost ..... 4/1  
 Letterwinners Returning/Lost ..... 9/5  
 Top Returning Scorer ..... G, Shontavia Williams, 12.5 ppg  
 Top Returning Rebounder ..... G, Shontavia Williams, 5.4 rpg



**Donna Capps**  
Head Coach



**Rola Ogunoye**  
Forward

## UT-ARLINGTON

Dec. 18, 2004 • 2:00 p.m. • Tallahassee, Fla.

### QUICK FACTS

Location ..... Arlington, TX 76019  
 Founded ..... 1895  
 Nickname ..... Lady Mavs  
 Enrollment ..... 24,979



# 2004-05 Opponents

FLORIDA STATE

Colors ..... Royal Blue and White  
 Conference ..... Southland Conference  
 Arena/Capacity ..... Texas Hall/4,200  
 Press Row # ..... 817-272-3795

## BASKETBALL FACTS

Head Coach ..... Donna Capps  
 Record at School/Years ..... 54-61/4 years  
 Career Record/Years ..... same  
 Office Phone ..... 817-272-2243  
 Assistant Coaches ..... Shannon Brown, Laura Skeen, Ron Powell

## SPORTS INFORMATION

Office Phone ..... 817-272-5706  
 Fax Number ..... 817-272-2254  
 Basketball Contact ..... John Brush  
 Email Address ..... jbrush@uta.edu  
 Cell Phone ..... 817-658-3438  
 Website ..... www.utamavs.com

## TEAM INFORMATION

2003-04 Record ..... 19-12  
 Conference Record/Finish ..... 11-5  
 Starters Returning/Lost ..... 4/1  
 Letterwinners Returning/Lost ..... 6/3  
 Top Returning Scorer ..... F, Rola Ogunoye, 15.2ppg  
 Top Returning Rebounder ..... F, Rola Ogunoye, 7.8 rpg



**Jim Lewis**  
Head Coach



**Monica Mack**  
Guard

## FORDHAM

**Dec. 20 • 4:30 p.m. • San Juan, P.R.**

## QUICK FACTS

Location ..... Bronx, NY  
 Founded ..... 1841  
 Nickname ..... Rams  
 Enrollment ..... 7,403  
 Colors ..... Maroon and White  
 Conference ..... Atlantic 10  
 Arena/Capacity ..... Rose Hill Gym/3,200  
 Press Row # ..... N/A

## BASKETBALL FACTS

Head Coach ..... Jim Lewis  
 Record at School/Years ..... 36-79/4 years  
 Career Record/Years ..... 237-256/18 years  
 Office Phone ..... 718-817-4270  
 Assistant Coaches .. Niki Reid, Jeff Osterman, Michael Bozeman

## SPORTS INFORMATION

Office Phone ..... 718-817-4240  
 Fax Number ..... 718-817-4244  
 Basketball Contact ..... Scott Kwaitkowski  
 Email Address ..... sjk5579@hotmail.com  
 Home Phone ..... 914-699-7016  
 Website ..... www.fordham.edu/athletics

## TEAM INFORMATION

2003-04 Record ..... 11-17  
 Conference Record/Finish ..... 4-12/5th

Starters Returning/Lost ..... 3/2  
 Letterwinners Returning/Lost ..... 9/4  
 Top Returning Scorer ..... G, Monica Mack, 13.6 ppg  
 Top Returning Rebounder ..... F, Stacy Price, 5.6, rpg



**Joe Mathews**  
Head Coach



**Kacy O'Brien**  
Guard

## TOWSON

**Dec. 21 • TBA • San Juan, P.R.**  
Possible Opponent

## QUICK FACTS

Location ..... Towson, MD  
 Founded ..... 1866  
 Nickname ..... Tigers  
 Enrollment ..... 17,481  
 Colors ..... Gold, White and Black  
 Conference ..... Colonial Athletic Association  
 Arena/Capacity ..... Towson Center/5,000  
 Press Row # ..... N/A

## BASKETBALL FACTS

Head Coach ..... Joe Mathews  
 Record at School/Years ..... 14-70/4th season  
 Career Record/Years ..... Same  
 Office Phone ..... 410-704-5787  
 Assistant Coaches ..... Stacy Alexander, Derek Jordan, Felicia Burroughs

## SPORTS INFORMATION

Office Phone ..... 410-704-2202  
 Fax Number ..... 410-704-3861  
 Basketball Contact ..... Megan Bradshaw  
 Email Address ..... mbradshaw@towson.edu  
 Home Phone ..... N/A  
 Website ..... www.TowsonTigers.com

## TEAM INFORMATION

2003-04 Record ..... 9-19  
 Conference Record/Finish ..... 1-18/10th  
 Starters Returning/Lost ..... 5/0  
 Letterwinners Returning/Lost ..... 11/0  
 Top Returning Scorer ..... G, Kacy O'Brien, 14.9 ppg  
 Top Returning Rebounder ..... G, Kelly Robinson, 6.4 rpg



**Mark Ehlen**  
Head Coach



**Karin Hoogendam**  
Forward

## TOLEDO

**Dec. 21 • TBA • San Juan, P.R.**  
Possible Opponent

## QUICK FACTS

Location ..... Toledo, OH

# 2004-05 Opponents

FLORIDA STATE

Founded ..... 1872  
 Nickname ..... Rockets  
 Enrollment ..... 19,019  
 Colors ..... Midnight Blue and Gold  
 Conference ..... Mid-Atlantic  
 Arena/Capacity ..... John F. Savage Hall/9,000  
 Press Row # ..... 419-530-2027

## BASKETBALL FACTS

Head Coach ..... Mark Ehlen  
 Record at School/Years ..... 190-81/9  
 Career Record/Years ..... 312-211/18  
 Office Phone ..... 419-530-5461  
 Assistant Coaches ..... Tandy Bradford, Bernard Scott, Tamie Wilson

## SPORTS INFORMATION

Office Phone ..... 419-530-4919  
 Fax Number ..... 419-530-4930  
 Basketball Contact ..... Brian Debenedictis  
 Email Address ..... bdebene@utnet.utoledo.edu  
 Mobile Phone ..... 419-262-4234  
 Website ..... www.utrockets.com

## TEAM INFORMATION

2003-04 Record ..... 13-16  
 Conference Record/Finish ..... 8/-8/4th  
 Starters Returning/Lost ..... 2/3  
 Letterwinners Returning/Lost ..... 6/5  
 Top Returning Scorer ..... G, Karin Hoogendam, 11.9 ppg  
 Top Returning Rebounder ..... G, Karin Hoogendam, 6.4 rpg



**Tom Collen**  
Head Coach



**Jazz Covington**  
Forward

## LOUISVILLE

**Dec. 28, 2004 • 7:00 p.m. • Missoula, Mont.**

## QUICK FACTS

Location ..... Louisville, KY  
 Founded ..... 1798  
 Nickname ..... Cardinals  
 Enrollment ..... 22,000  
 Colors ..... Red, Black and White  
 Conference ..... Conference USA  
 Arena/Capacity ..... Freedom Hall/18,865  
 Press Row # ..... 502-852-5567

## BASKETBALL FACTS

Head Coach ..... Tom Collen  
 Record at School/Years ..... 20-10/1  
 Career Record/Years ..... 149-43/6  
 Office Phone ..... 502-852-7801  
 Assistant Coaches ..... Tim Eaton, Zenarae Pieters Antoine, Greg Collins

## SPORTS INFORMATION

Office Phone ..... 502-852-6581  
 Fax Number ..... 502-852-7401  
 Basketball Contact ..... Kim Pemberton  
 Email Address ..... kapemb01@louisville.edu  
 Cell Phone ..... 502-852-7401  
 Website ..... www.uoflsports.com

## TEAM INFORMATION

2003-04 Record ..... 20-10  
 Conference Record/Finish ..... 11-3/T-2nd  
 Starters Returning/Lost ..... 4/1  
 Letterwinners Returning/Lost ..... 9/3  
 Top Returning Scorer ..... Jazz Covington, 16.1 ppg  
 Top Returning Rebounder ..... Jazz Covington, 8.2 rpg



**Sharon Versyp**  
Head Coach



**Kim Corbitt**  
Guard

## MAINE

**Dec. 29, 2004 • TBA • Missoula, Mont.**  
Possible Opponent

## QUICK FACTS

Location ..... Orono, ME  
 Founded ..... 1865  
 Nickname ..... Black Bears  
 Enrollment ..... 11,200  
 Colors ..... Blue and White  
 Conference ..... America East  
 Arena/Capacity ..... Harlod Alford Sports Arena (5,712)  
 Press Row # ..... 207-581-1049

## BASKETBALL FACTS

Head Coach ..... Sharon Versyp (Purdue '89)  
 Record at School/Years ..... 78-41/4  
 Career Record/Years ..... Same  
 Office Phone ..... 207-581-1107  
 Assistant Coaches ..... Jody Benner, Tara Morrison, Don Adams

## SPORTS INFORMATION

Office Phone ..... 207-581-4158  
 Fax Number ..... 207-581-3297  
 Basketball Contact ..... TBA  
 Email Address ..... TBA  
 Home Phone ..... TBA  
 Website ..... www.GoBlackBears.com

## TEAM INFORMATION

2003-04 Record ..... 25-7 (9-3 home, 12-2 away, 4-2 neutral)  
 Conference Record/Finish ..... 17-1/1st  
 Starters Returning/Lost ..... 2/3  
 Letterwinners Returning/Lost ..... 9/5  
 Top Returning Scorer ..... G, Missy Traversi,, 7.7 ppg  
 Top Returning Rebounder ..... F, Monica Peterson, 5.9 rpg



**Robin Selvig**  
Head Coach



**Hollie Tyler**  
Center

## MONTANA

**Dec. 29, 2004 • TBA • Missoula, Mont.**  
Possible Opponent

# 2004-05 Opponents

FLORIDA STATE

## QUICK FACTS

Location ..... Missoula, MT  
 Founded ..... February 17, 1893  
 Nickname ..... Lady Griz  
 Enrollment ..... 13,352  
 Colors ..... Maroon and Silver  
 Conference ..... Big Sky  
 Arena/Capacity ..... Dahlberg Arena/7,500  
 Press Row ..... 406-243-4281

## BASKETBALL FACTS

Head Coach ..... Robin Selvig  
 Record at School/Years ..... 602-173/26 years  
 Career Record/Years ..... Same  
 Office Phone ..... 406-243-5334  
 Assistant Coaches ..... Annette Rocheleau, Shannon Schweyen, Trish Duce

## SPORTS INFORMATION

Office Phone ..... 406-243-5402  
 Fax Number ..... 406-243-6859  
 Basketball Contact ..... Joel Carlson  
 Email Address ..... joel.carlson@mso.umt.edu  
 Home Phone ..... 406-243-5414  
 Website ..... www.MontanaGrizzlies.com

## TEAM INFORMATION

2003-04 Record ..... 27-5  
 Conference Record/Finish ..... 14-0/1st  
 Starters Returning/Lost ..... 3/2  
 Letterwinners Returning/Lost ..... 8/2  
 Top Returning Scorer ..... C, Hollie Tyler, 13.6ppg  
 Top Returning Rebounder ..... C, Hollie Tyler, 7.2 rpg



**Kristin Hughes**  
Head Coach



**Emily Braseth**  
Forward

## COLGATE

**Dec. 31, 2004 • 2:00 p.m. • Tallahassee, Fla.**

## QUICK FACTS

Location ..... Hamilton, NY  
 Founded ..... 1819  
 Nickname ..... Raiders  
 Enrollment ..... 2,800  
 Colors ..... Maroon, Gray and White  
 Conference ..... Patriot League  
 Arena/Capacity ..... Cotterell Court/3,100  
 Press Row # ..... 315-228-6864

## BASKETBALL FACTS

Head Coach ..... Kristin Hughes  
 Record at School/Years ..... 1st Season  
 Career Record/Years ..... 120-156/  
 Office Phone ..... 315-228-7124  
 Assistant Coaches ..... Debby Ghezzi, Kamilah Cunningham

## SPORTS INFORMATION

Office Phone ..... 315-228-7860  
 Fax Number ..... 215-228-7977  
 Basketball Contact ..... Michele Kelley  
 Email Address ..... mkelley@mail.colgate.edu

Home Phone ..... 315-420-8868  
 Website ..... www.goColgateRaiders.com

## TEAM INFORMATION

2003-04 Record ..... 21-10  
 Conference Record/Finish ..... 10-4/1st  
 Starters Returning/Lost ..... 4/1  
 Letterwinners Returning/Lost ..... 11/3  
 Top Returning Scorer ..... F, Emily Braseth, 16.3ppg  
 Top Returning Rebounder ..... F, Milaina Lagzdins, 7.4 rpg



**MaChelle Joseph**  
Head Coach



**Kasha Terry**  
Forward/Center

## GEORGIA TECH

**Jan. 6, 2005 • 7:00 p.m. • Tallahassee, Fla.**  
**Feb. 27, 2005 • 2:00 p.m. • Atlanta, Ga.**

## QUICK FACTS

Location ..... Atlanta, GA  
 Founded ..... 1885  
 Nickname ..... Yellow Jackets, Rambling Wreck  
 Enrollment ..... 16,000  
 Colors ..... Old Gold and White  
 Conference ..... Atlantic Coast  
 Arena/Capacity ..... Alexander Memorial Coliseum  
 at McDonald's Center/9,191  
 Press Row # ..... 404-894-5458

## BASKETBALL FACTS

Head Coach ..... MaChelle Joseph  
 Record at School/Years ..... 14-15/1  
 Career Record/Years ..... Same  
 Office ..... 404-894-5406  
 Assistant Coaches ..... Mark McCarthy, Art Prevost, Sytia Messer

## SPORTS INFORMATION

Office Phone ..... 404-894-5445  
 Fax Number ..... 404-894-1248  
 Basketball Contact ..... Cheryl Watts  
 Email Address ..... cwatts@at.gtaa.gatech.edu  
 Home Phone ..... N/A  
 Website ..... www.ramblinwreck.com

## TEAM INFORMATION

2003-04 Record ..... 14-15  
 Conference Record/Finish ..... 5-11/8th  
 Starters Returning/Lost ..... 2/3  
 Letterwinners Returning/Lost ..... 9/5  
 Top Returning Scorer ..... F/C, Kasha Terry, 6.0 ppg  
 Top Returning Rebounder ..... F, Jessica Williams, 5.7 rpg



**Ferne Labati**  
Head Coach



**Tamara James**  
Guard/Forward

## MIAMI

Jan. 9, 2005 • 1:00 p.m. • Tallahassee, Fla.  
Jan. 27, 2005 • 7:00 p.m. • Miami, Fla.

### QUICK FACTS

Location ..... Coral Gables, FL  
Founded ..... 1926  
Nickname ..... Hurricanes  
Enrollment ..... 15,248  
Colors ..... Orange, Green and White  
Conference ..... Atlantic Coast  
Arena/Capacity ..... The Convocation Center/7,000  
Press Row # ..... TBA

### BASKETBALL FACTS

Head Coach ..... Ferne Labati  
Record at School/Years ..... 290-179/16  
Career Record/Years ..... 426-301/25  
Office Phone ..... 305-284-5802  
Assistant Coaches ..... Robin Harmony,  
Meghan Burke, Jackie Moore

### SPORTS INFORMATION

Office Phone ..... 305-284-3244  
Fax Number ..... 305-284-2807  
Basketball Contact ..... Scott Moody  
Email Address ..... smoody@miami.edu  
Home Phone ..... N/A  
Website ..... www.hurricanesports.com

### TEAM INFORMATION

2003-04 Record ..... 22-7  
Conference Record/Finish ..... 11-5/4th  
Starters Returning/Lost ..... 3/2  
Letterwinners Returning/Lost ..... 8/4  
Top Returning Scorer ..... G/F, Tamara James, 16.6 ppg  
Top Returning Rebounder ..... G/F, Tamara James, 4.6 rpg



**Jim Davis**  
Head Coach



**Julie Talley**  
Guard

## CLEMSON

Jan. 13, 2005 • 7:00 p.m. • Clemson, S.C.  
Feb. 9, 2005 • 7:00 p.m. • Tallahassee, Fla.

### QUICK FACTS

Location ..... Clemson, SC  
Founded ..... 1889  
Nickname ..... Lady Tigers  
Enrollment ..... 16,403

Colors ..... Orange and Purple  
Conference ..... Atlantic Coast  
Arena/Capacity ..... Littlejohn Coliseum/10,000  
Press Row # ..... 864-654-3326

### BASKETBALL FACTS

Head Coach ..... Jim Davis  
Record at School/Years ..... 347-177/17  
Career Record/Years ..... 366-185/18  
Office Phone ..... (864) 656-1919  
Assistant Coaches ..... Tina Langley, Mike Hodge, Itoro Coleman

### SPORTS INFORMATION

Office Phone ..... 864-656-2114  
Fax Number ..... 864-656-0299  
Basketball Contact ..... Phil Sikes  
Email Address ..... philips@clemson.edu  
Home Phone ..... N/A  
Website ..... www.clemsonigers.com

### TEAM INFORMATION

2003-04 Record ..... 17-12  
Conference Record/Finish ..... 7-9/T-5  
Starters Returning/Lost ..... 2/3  
Letterwinners Returning/Lost ..... 7/4  
Top Returning Scorer ..... G, Julie Talley, 7.6 ppg  
Top Returning Rebounder ..... C, Amanda White 4.9 rpg



**Brenda Frese**  
Head Coach



**Shay Doron**  
Guard

## MARYLAND

Jan. 16, 2005 • 4:00 p.m. • Tallahassee, Fla.

### QUICK FACTS

Location ..... College Park, MD  
Founded ..... 1807  
Nickname ..... Terrapins  
Enrollment ..... 35,329  
Colors ..... Red, White Black and Gold  
Conference ..... Atlantic Coast  
Arena/Capacity ..... Comcast Center/17,950  
Press Row # ..... 301-314-7063

### BASKETBALL FACTS

Head Coach ..... Brenda Frese  
Record at School/Years ..... 28-31/2  
Career Record/Years ..... 85-61/5  
Office Phone ..... 301-314-1747  
Assistant Coaches ..... Jeff Walz, Erica Floyd, Joanna Bernabei

### SPORTS INFORMATION

Office Phone ..... 301-314-7063  
Fax Number ..... 301-314-9094  
Basketball Contact ..... Natalia Ciccone  
Email Address ..... nciccone@umd.edu  
Home Phone ..... 814-880-9062  
Website ..... www.umterps.com

### TEAM INFORMATION

2003-04 Record ..... 18-13  
Conference Record/Finish ..... 8-8/T-3



Starters Returning/Lost ..... 3/2  
 Letterwinners Returning/Lost ..... 7/5  
 Top Returning Scorer ..... G, Shay Doron, 13.5 ppg  
 Top Returning Rebounder ..... G, Kalika France, 6rpg



**Sylvia Hatchell**  
Head Coach



**Nikita Bell**  
Forward/Guard

## NORTH CAROLINA

Jan. 20, 2005 • 7:00 p.m. • Tallahassee, Fla.

### QUICK FACTS

Location ..... Chapel Hill, NC  
 Founded ..... 1789  
 Nickname ..... Tar Heels  
 Enrollment ..... 25,480  
 Colors ..... Carolina Blue and white  
 Conference ..... Atlantic Coast  
 Arena/Capacity ..... Carmichael Auditorium/10,180  
 Press Row # ..... 919-843-9509

### BASKETBALL FACTS

Head Coach ..... Sylvia Hatchell  
 Record at School/Years ..... 382-182/18  
 Career Record/Years ..... 654-262/29  
 Assistant Head Coach ..... Andrew Calder  
 Office Phone ..... N/A  
 Assistant Coaches ..... Charlotte Smith-Taylor, Tracey Williams

### SPORTS INFORMATION

Office Phone ..... 919-962-0083  
 Fax Number ..... 919-962-0612  
 Basketball Contact ..... Dana Gelin  
 Email Address ..... dgelin@unca.unc.edu  
 Home Phone ..... 919-969-8915  
 Website ..... www.tarheelblue.com

### TEAM INFORMATION

2003-04 Record ..... 24-7  
 Conference Record/Finish ..... 12-4/2nd  
 Starters Returning/Lost ..... 4/1  
 Letterwinners Returning/Lost ..... 9/2  
 Top Returning Scorer ..... F, Camille Little, 14.3 ppg  
 Top Returning Rebounder ..... G/F, La'Tangela Atkinson, 8.1 rpg



**Beth Dunkenberger**  
Head Coach



**Carrie Mason**  
Guard

## VIRGINIA TECH

Jan. 24, 2005 • 7:00 p.m. • Blacksburg, Va.

### QUICK FACTS

Location ..... Blacksburg, VA  
 Founded ..... 1872

Nickname ..... Hokies  
 Enrollment ..... 28,000  
 Colors ..... Chicago Maroon, Burnt Orange  
 Conference ..... ACC  
 Arena/Capacity ..... Cassell Coliseum/10,052  
 Press Row # ..... (540)231-4905

### BASKETBALL FACTS

Head Coach ..... Beth Dunkenberger  
 Record at School/Years ..... 0-0/1st Year  
 Career Record/Years ..... 65-50/5th year  
 Office Phone ..... 540-231-4998  
 Assistant Coaches ..... Shellie Greenman, Bobbie Kelsey, Stacy Cantley

### SPORTS INFORMATION

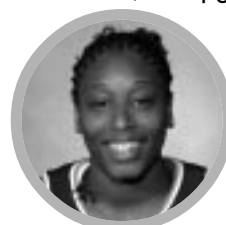
Office Phone ..... (540)-231-8823  
 Fax Number ..... (540)-231-6984  
 Basketball Contact ..... Torye Hurst  
 Email Address ..... tohurst@vt.edu  
 Home Phone ..... (540)-382-6505  
 Website ..... hokiesports.com

### TEAM INFORMATION

2003-04 Record ..... 23-8  
 Conference Record/Finish ..... 9-7/8th  
 Starters Returning/Lost ..... 4/1  
 Letterwinners Returning/Lost ..... 10/2  
 Top Returning Scorer ..... G, Carrie Mason, 11.5 ppg  
 Top Returning Rebounder ..... F/C, Erin Gibson, 6.9 rpg



**Debbie Ryan**  
Head Coach



**Brandi Teamer**  
Forward/Center

## VIRGINIA

Jan. 31, 2005 • 7:00 p.m. • Tallahassee, Fla.

### QUICK FACTS

Location ..... Charlottesville, VA  
 Founded ..... 1819  
 Nickname ..... Cavaliers  
 Enrollment ..... 19,197  
 Colors ..... Orange and Blue  
 Conference ..... ACC  
 Arena/Capacity ..... John Paul Jones Arena/ 15,000  
 Press Row # ..... 434-296-5910

### BASKETBALL FACTS

Head Coach ..... Debbie Ryan  
 Record at School/Years ..... 578-224/26  
 Career Record/Years ..... 578-224/26  
 Office Phone ..... 434-982-5800  
 Assistant Coaches ..... Tim Taylor, Jennifer Hoover, Curtis Loyd

### SPORTS INFORMATION

Office Phone ..... 434-982-5500  
 Fax Number ..... 434-982-5525  
 Basketball Contact ..... Cathy Bongiovi Stewart  
 Email Address ..... cab5er@virginia.edu  
 Home Phone ..... N/A  
 Website ..... www.virginiaspports.com



## TEAM INFORMATION

2003-04 Record	13-16
Conference Record/Finish	6-10/6th
Starters Returning/Lost	3/2
Letterwinners Returning/Lost	8/5
Top Returning Scorer	Brandi Teamer, 11.5 ppg
Top Returning Rebounder	Brandi Teamer, 5.6 rpg



**Frank Bennett**  
Head Coach



**Courtney Boynton**  
Guard

## LIPSCOMB

Feb. 3, 2005 • 7:00 p.m. • Nashville, Tenn.

### QUICK FACTS

Location	Nashville, TN
Founded	1891
Nickname	Lady Bisons
Enrollment	2,643
Colors	Purple and Gold
Conference	Atlantic Sun
Arena/Capacity	Allen Arena/5,028
Press Row #	615-279-7051

### BASKETBALL FACTS

Head Coach	Frank Bennett
Record at School/Years	520-266/24
Career Record/Years	520-266/24
Office Phone	615-279-6479
Assistant Coaches	Billy Snell, Cheryl Smith

### SPORTS INFORMATION

Office Phone	615-279-5862
Fax Number	615-269-1806
Basketball Contact	Mark McGee
Email Address	mark.mcgee@lipscomb.edu
Home Phone	615-684-1581
Website	www.lipscombsports.com

### TEAM INFORMATION

2003-04 Record	20-12
Conference Record/Finish	14-6
Starters Returning/Lost	3/2
Letterwinners Returning/Lost	9/4
Top Returning Scorer	G, Courtney Boynton, 14.9 ppg
Top Returning Rebounder	C, Katie Beth Pate, 9.6 rpg



**Gail Goestenkors**  
Head Coach



**Monique Currie**  
Guard/Forward

## DUKE

Feb. 6, 2005 • 4:00 p.m. • Durham, N.C.

### QUICK FACTS

Location	Durham, NC
Founded	1838
Nickname	Blue Devils
Enrollment	6,347
Colors	Royal Blue & White
Conference	ACC
Arena/Capacity	Cameron Indoor Stadium/9,314
Press Row #	(919) 684-6186

### BASKETBALL FACTS

Head Coach	Gail Goestenkors
Record at School/Years	302-88/12
Career Record/Years	302-88/12
Office Phone	(919) 613-7548
Assistant Coaches	Gale Valley, LaVonda Wagner, Shannon Perry

### SPORTS INFORMATION

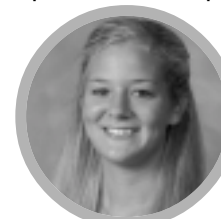
Office Phone	(919) 684-2633
Fax Number	(919) 684-2489
Basketball Contact	Lindy Brown
Email Address	lbrown@duaa.duke.edu
Home Phone	(919) 596-4204
Website	www.GoDuke.com

### TEAM INFORMATION

2003-04 Record	30-4
Conference Record/Finish	15-1/1st
Starters Returning/Lost	3/2
Letterwinners Returning/Lost	7/6
Top Returning Scorer	G/F Monique Currie, 12.3ppg
Top Returning Rebounder	G/F Monique Currie, 6.1 rpg



**Mike Petersen**  
Head Coach



**Liz Strunk**  
Forward/Center

## WAKE FOREST

Feb. 13, 2005 • 3:00 p.m. • Winston-Salem, N.C.

### QUICK FACTS

Location	Winston-Salem, NC
Founded	1834
Nickname	Demon Deacons
Enrollment	3,950
Colors	Old Gold and Black
Conference	ACC
Arena/Capacity	14,407
Press Row #	336-727-2945

### BASKETBALL FACTS

Head Coach	Mike Petersen
Record at School/Years	1st Season
Career Record/Years	188-127
Office Phone	336-758-5763
Assistant Coaches	Fred Applin, Natasha Adair, Amy Waugh

### SPORTS INFORMATION

Office Phone	336-758-5640
Fax Number	336-758-5140
Basketball Contact	Samantha Perry
Email Address	perrysgb@wfu.edu

Home Phone ..... 336-918-3760  
 Website ..... www.wakeforestsports.com

## TEAM INFORMATION

2003-04 Record ..... 12-17  
 Conference Record/Finish ..... 4-12  
 Starters Returning/Lost ..... 5-0  
 Letterwinners Returning/Lost ..... 11-3  
 Top Returning Scorer ..... Liz Strunk  
 Top Returning Rebounder ..... Liz Strunk



**Kay Yow**  
Head Coach



**Kendra Bell**  
Guard

## NC STATE

Feb. 17, 2005 • 7:00 p.m. • Raleigh, N.C.

## QUICK FACTS

Location ..... Raleigh, NC  
 Founded ..... 1887  
 Nickname ..... Wolfpack  
 Enrollment ..... 29,637  
 Colors ..... Red & White  
 Conference ..... ACC  
 Arena/Capacity ..... RBC Center/19,722  
 Press Row # .....

## BASKETBALL FACTS

Head Coach ..... Kay Yow  
 Associate Head Coach ..... Stephanie Glance  
 Record at School/Years ..... 596-281/30  
 Career Record/Years ..... 653-300/34  
 Office Phone ..... 919-515-2880  
 Assistant Coaches ..... Jenny Palmateer, Trena Trice-Hill

## SPORTS INFORMATION

Office Phone ..... 919-515-1183  
 Fax Number ..... 919-515-2898  
 Basketball Contact ..... Chennelle Miller  
 Email Address ..... chennelle\_miller@ncsu.edu  
 Home Phone ..... 919-819-8334  
 Website ..... www.GoPack.com

## TEAM INFORMATION

2003-04 Record ..... 17-15  
 Conference Record/Finish ..... 8-8/3rd  
 Starters Returning/Lost ..... 2/3  
 Letterwinners Returning/Lost ..... 10/6  
 Top Returning Scorer ..... G/F, Marquetta Dickens, 8.3 ppg  
 Top Returning Rebounder ..... F, Keisha Brown, 3.1 rpg



## 28TH ANNUAL ACC TOURNAMENT

GREENSBORO COLISEUM, GREENSBORO, N.C.  
 FRIDAY-MONDAY, MARCH 4-MARCH 7

### Friday, March 4

Game 1: Seed #8 vs. Seed #9 (RSN) ..... 11:00  
 Game 2: Seed #7 vs. Seed #10 ..... 6:00  
 Game 3: Seed #6 vs. Seed #11 ..... 8:00

### Saturday, March 5

Game 4: Seed #1 vs. Gm 1 win (RSN) ..... 12:00  
 Game 5: Seed #4 vs. Seed #5 (RSN) ..... 2:00  
 Game 6: Seed #2 vs. Gm 2 win ..... 6:00  
 Game 7: Seed #3 vs. Gm 3 win ..... 8:00

### Sunday, March 6

Game 8: ACC Semifinal 1 (FSN) ..... 1:00  
 Game 9: ACC Semifinal 2 (FSN) ..... 3:00

### Monday, March 7

Game 10: Championship Game (FSN) ..... 7:30

2004-2005 Travel  
**headquarters**

**November 21-22, 2004**  
**@ Florida**

Hilton University of Florida  
& Conference Center  
1714 SW 34th Street  
Gainesville, FL 32607  
Phone: 352-371-3600  
Fax: 352-371-0306

**December 11 - 12, 2004**  
**@ New Orleans**

Doubletree Lakeside  
3838 N. Causeway Blvd.  
Metairie, LA 70002  
Phone: 504-836-5253  
Fax: 504-836-5258

**December 19-23, 2004**  
**@ San Juan Shootout**

Wyndham Condado Plaza  
999 Ashford Ave.  
San Juan, PR 00907  
Phone: 787-721-1000  
Fax: 787-253-0178

**December 26-30, 2004**  
**@ Montana Invitational**

Holiday Inn Missoula-Parkside  
200 South Pattee St.  
Missoula, MT 59802  
Phone: 406-721-8550  
Fax: 406-728-3472

**January 12-13, 2005**  
**@ Clemson**

James Martin Inn  
100 Madren Center Dr.  
Clemson, SC 29634  
Phone: 864-654-9020  
Fax: 864-654-9021

**January 23-24, 2005**  
**@ Virginia Tech**

AmeriSuite Blacksburg Hotel  
1020 Plantation Rd.  
Roanoke, VA 24060  
Phone: 540-552-5636  
Fax: 540-552-5138

**January 26-27, 2005**  
**@ Miami**

OMNI Colonnade Hotel  
180 Aragon Ave.  
Coral Gables, FL 33134  
Phone: 305-441-2600  
Fax: 305-445-3929

**February 2-3, 2005**  
**@ Lipscomb**

Nashville Marriott  
2555 West End Ave.  
Nashville, TN 37203  
Phone: 615-321-1300  
Fax: 615-321-1400

**February 5-6, 2005**  
**@ Duke**

Washington Duke Inn  
3001 Cameron Blvd  
Durham, NC 27705  
Phone: 919-490-0999  
Fax: 919-688-0105

**February 12-13, 2005**  
**@ Wake Forest**

Adam's Mark Hotel  
425 N. Cherry Street  
Winston-Salem, NC 27101  
Phone: 336-725-3500  
Fax: 336-728-4025

**February 16-17, 2005**  
**@ NC State**

Raleigh Marriott Crabtree Valley  
4500 Marriott Dr.  
Raleigh, NC 27612  
Phone: 919-781-7000  
Fax: 919-781-3059

**February 26-27, 2005**  
**@ Georgia Tech**

Ritz-Carlton Atlanta  
181 Peachtree Street NE  
Atlanta, GA 30303  
Phone: 404-659-0400  
Fax: 404-239-0078

**March 3-8, 2004**  
**@ ACC Tournament**

O'Henry Hotel  
624 Green Valley Rd.  
Greensboro, NC 27408  
Phone: 336-854-2000  
Fax: 336-854-2223

**2005 NCAA TOURNAMENT**

**FIRST & SECOND ROUNDS: MARCH 19-22, 2005**

**MARCH 19/21**

Reunion Arena	Dallas, TX	hosts, Texas and Texas Tech
Save Mart Center	Fresno, CA	host, California State
Williams Arena	Minneapolis, MN	host, Twin Cities
Bank of America Arena	Seattle, WA	host, Washington

**MARCH 20/22**

Dean E. Smith Center	Chapel Hill, NC	host, North Carolina
Comcast Center	College Park, MD	host, Maryland
Thompson-Boling Arena	Knoxville, TN	host, Tennessee
Harry A Gampel Pavillion	Storrs, CT	host, Connecticut

**MARCH 18/20 or 19/21**

Allstate Arena	Chicago	host, DePaul
Pepsi Center	Denver, CO	host, Colorado
Memorial Gymnasium	Nashville, TN	host, Vanderbilt
Ted Constant Convocation Center	Norfolk, VA	host, Old Dominion
Sovereign Bank Arena	Trenton, NJ	hosts, Rider and Metro Atlantic Conference
McKale Center	Tucson, AZ	host, Arizona
Bryce Jordan Center	University Park, PA	host, Penn State
Mackey Arena	West Lafayette, IN	host, Purdue

**REGIONALS: MARCH 26 -29, 2005**

Chattanooga Regional	Chattanooga, TN
Tempe Regional	Tempe, AZ
Philadelphia Regional	Philadelphia, PA
Kansas City Regional	Kansas City, MO

**FINAL FOUR: APRIL 3 & 5, 2005**

RCA Dome ..... Indianapolis, IN

