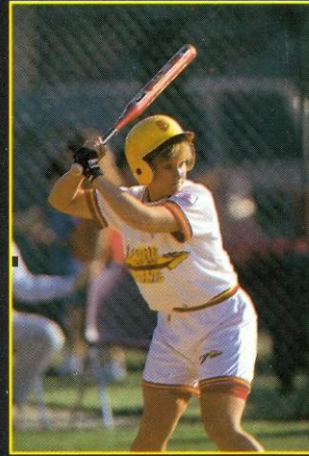
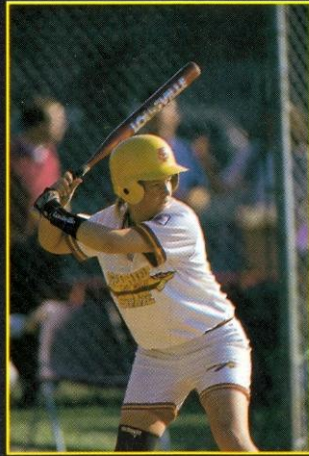
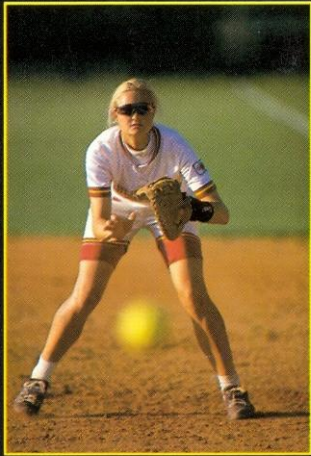


1995 LADY SEMINOLES SOFTBALL



LADY SEMINOLE SOFTBALL FACTS

Head Coach..... Dr. JoAnne Graf
Alma Mater Florida State, '75
Years at FSU 16
Record at FSU 759-184-4 (.806)
Assistant Coach Connie Clark
Alma Mater Cal State Fullerton, '87
Second Assistant Coach Penny Siqueiros
Alma Mater Florida State, '92
Softball Office Phone..... (904) 644-6425
1994 Record 50-19
1994 ACC Record 9-2
Conference Finish 2nd
Final National Ranking Tied 9th
Years at Regional Tournament..... 9 (1986-94)
Years at World Series..... 5 (1987, 1990-93)
Home Field Lady Seminole Field
Softball SID..... Tina Thomas
SID Office Phone (904) 644-1091
SID Home Phone (904) 878-0464
SID Office Fax (904) 644-3451
SID Graduate Assistant Vicki Zinkil

UNIVERSITY FACTS

Location Tallahassee, Florida
Founded 1857
Enrollment 28,500
Nickname Lady Seminoles
Colors Garnet & Gold
Conference Atlantic Coast
President Talbot "Sandy" D'Alemberte
Athletic Director Dave Hart, Jr.
Faculty Representative ... Charles W. Ehrhardt
Associate Athletic Director Charles Hurst
Assistant Athletic

Directors Brian Mand, Guy Morgan,
Cecile Reynaud, Andy Urbanic

Assistants to the

Athletic Director ... Joe Labat, John Sheffield
Athletic Business Manager Greg Phillips
Facilities Coordinator Bernie Waxman
Director of Academic

Support Services Dr. Roger Grooters
Director of Sports Marketing
& Promotions Kim McWilliams
Sports Information Director Rob Wilson

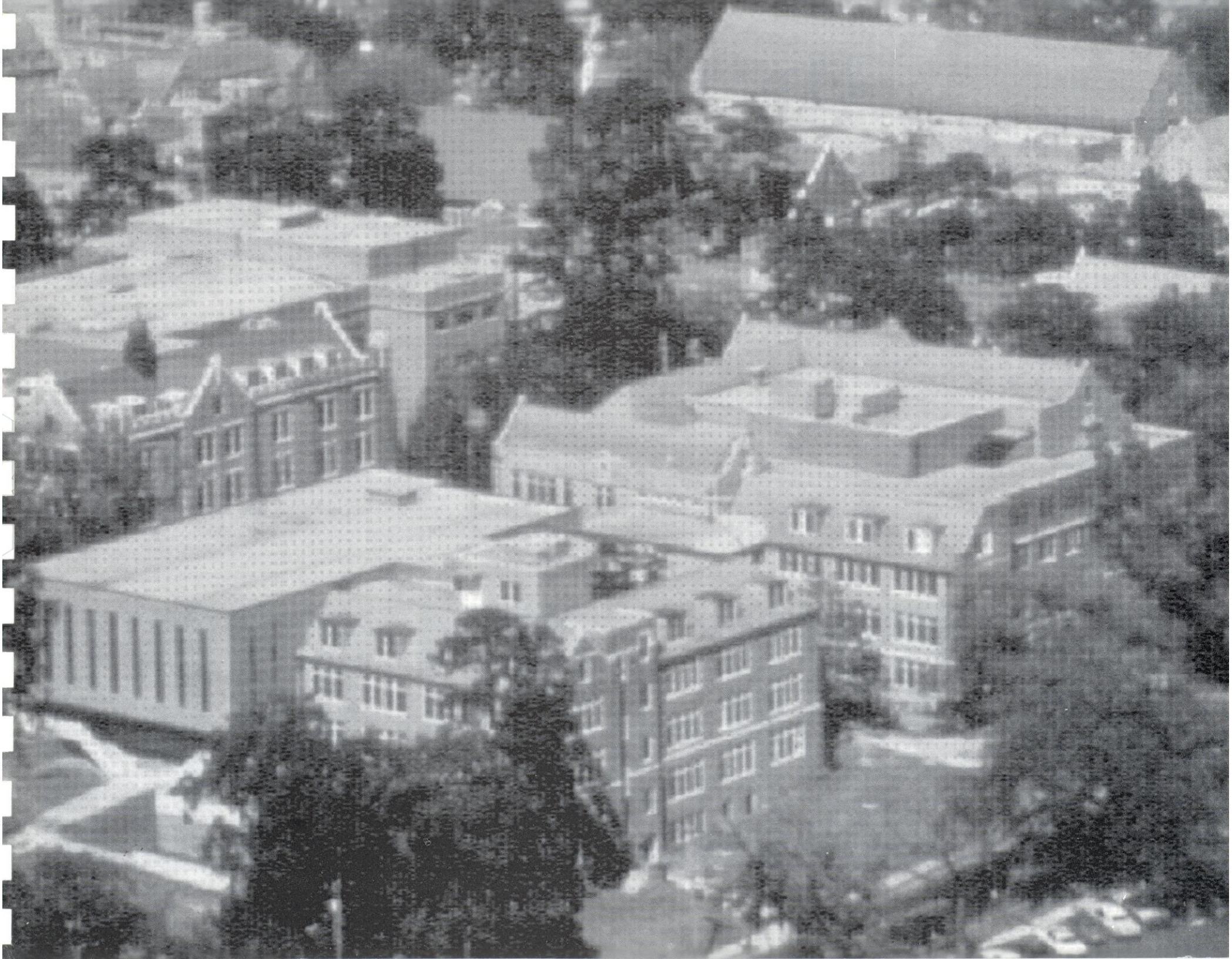
CREDITS

Writers..... Tina Thomas, Toni Parziale
Research Vicki Zinkil, Toni Parziale
Designer..... Melanie Mitchell,
Peter Mitchell Associates, Inc.
Printer..... FSU Print Shop
Cover Photography..... Ross Obley
Other Photography..... University Photo Lab,
Ross Obley, Ryals Lee, Bucky Parrish



Contents

Quick Facts	Inside Front Cover
The University	1
1995 Softball Outlook	4
Roster	6
Head Coach	7
Assistant Coaches	8
Player Profiles	9
Letterwinners	23
Review – 1994 Season	24
1994 Statistics	25
Game by Game Scores	26
NCAA Results	27
ACC Statistics	28
Record Book	29
Year by Year Records	32
Tournament Play	Inside Back Cover
1995 Schedule	Outside Back Cover



The University

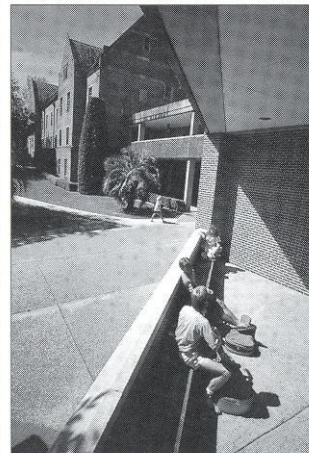
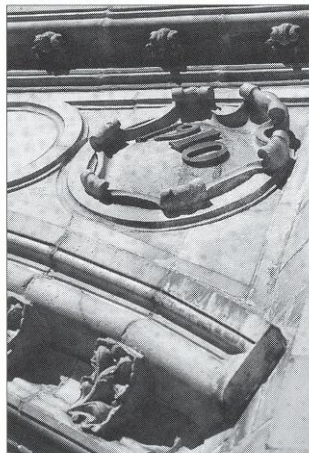
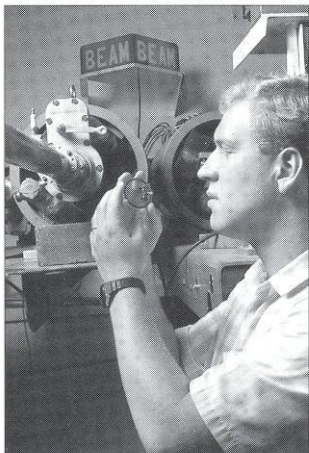
Florida State University, nearing its golden anniversary as a coeducational graduate research institution, is poised on the brink of joining the nation's academic elite.

Located on the oldest continuous site of higher education in Florida and building rapidly on the framework of a highly regarded liberal arts college for women, the university has emerged over the past 46 years as an institution of national and international esteem. Its stature is evidenced by a number of exciting additions to its record of excellence since the decade of the 1990s began:

- In 1990, the National Science Foundation established the \$100 million National High Magnetic Field Laboratory at Florida State, which is partnered in research with the Los Alamos National Laboratory and University of Florida. A Nobel laureate in physics and a top Russian physicist were among the first scholars drawn to the FSU faculty by the magnet lab. The new facility will be fully operational in fall 1993.
- At the forefront of supercomputing since obtaining its first high-speed computer in 1985, FSU took yet another step in ultrafast and parallel computing in 1990 when it acquired two supercomputers, the Thinking Machine Corp. Connection Machine and the Cray Y-MP.
- In 1990, Florida State ranked second in popularity nationwide among high school seniors, based on the number of students who request that their Scholastic Aptitude Test (SAT) scores be sent to an institution. FSU was the only institution listed among the top 10 choices of both black and white college-bound

students.

- FSU's high-tech program in structural biology in 1991 received the university's largest single foundation grant, \$4 million, to position it among the leaders in the field worldwide.
- The Appleton Museum of Art in Ocala, its vast and varied art collection and an eminent scholar chair were donated to FSU and Central Florida Community College in 1990. Valued at \$42 million, the gift is the largest ever received at Florida State.
- In 1990, the FSU School of Theatre reached out to the then-Soviet Union to begin a mutual student-and-faculty exchange program with the renowned Moscow Art Theatre.
- Now the professional training ground for film production, one of Florida's fastest growing industries, FSU graduated the first class of graduate film students from its School of Motion Picture, Television and Recording Arts in 1991 and its first undergraduate class in 1993. The school offers a bachelor's degree program in Tallahassee and a master of fine arts program in Sarasota. Its students are already producing award-winning films at national and international levels.
- To instill an awareness and understanding of the world's cultural diversity, FSU undergraduate students, beginning with the 1991 freshman class, are required to complete at least two courses that focus on diverse traditions beyond Western civilization. The multicultural study requirement complements a long-



established liberal studies program for undergraduates at Florida State.

- Florida's Office of Campus Volunteers, which matches college students with agencies in need of community service volunteers, is located at Florida State. It opened in 1990.
- The Dr. Bobby E. Leach Center, a state-of-the-art student recreation facility including an indoor pool, saunas, basketball and racquet-sport courts, was completed in 1991.
- Construction of the \$82 million University Center got under way in 1991 adjacent to Doak Campbell Stadium. When completed, the University Center will provide 550,000 square feet of classroom and office space and a centralized location for student services. The three-phase project includes two eight-story buildings and three four-story buildings on the east and west sides of the stadium, enclosure of the south end zone and expansion of Moore Athletic Center.
- Capping more than a decade of national prominence in intercollegiate athletics, Florida State's athletic teams, nicknamed "Seminoles," joined the Atlantic Coast Conference as its ninth member in 1990.
- FSU ranked 20th in the nation for 1990-91 in the number of black Ph.D. students it graduates. Over the five years from 1986 to 1990 FSU ranked eighth nationally by granting doctorates to 70 African-Americans.

As this list attests, Florida State has begun the 1990s with exceptional strength, energy and vision for the future. And, under the leadership of the university's 12th president, Talbot "Sandy" D'Alemberte, who took office in January, 1994, FSU will continue to build on the foundation of its long history of excellence in scholarship, research and service.

A senior member of the 10-member State University System of Florida, FSU was founded as an institution of higher learning in 1851 by legislative act

and began operating in Tallahassee with its first students in 1857.

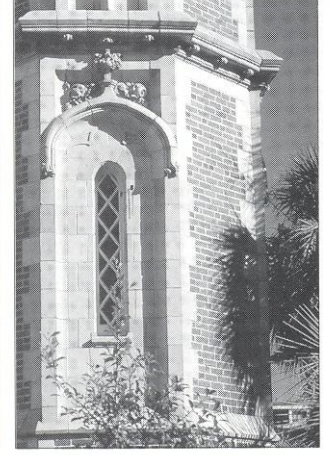
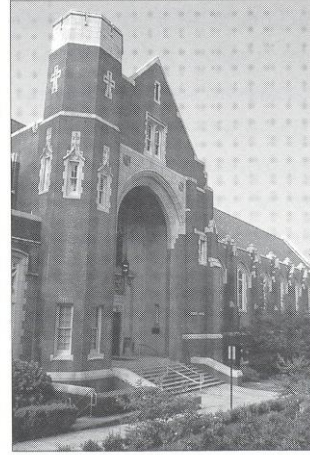
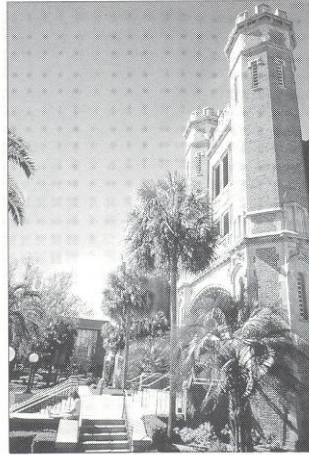
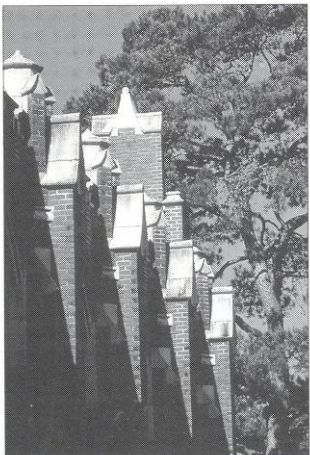
Today, Florida State's operating budget is \$415 million. Faculty and administrators generate more than \$100 million annually in external funding to supplement state-sponsored research. Three direct-support organizations serve to bolster the university: the private, non-profit FSU Foundation, which raises millions in private gifts to support academics, the Seminole Boosters and the FSU Alumni Association.

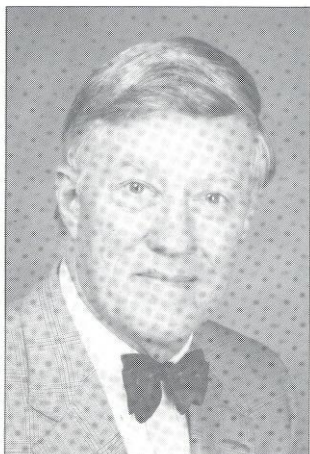
The main campus is spread over 418 acres in Tallahassee. FSU has the smallest campus in the SUS, after many years of acquiring land and after many years of being landlocked at 347 acres. The university owns a total of 1,230 acres in Leon, Bay and Franklin counties.

Within the state, FSU maintains facilities at its 25-acre campus in Panama City, its Marine Laboratory on the Gulf of Mexico and the Appleton Museum in Ocala. The university's graduate theater and film professional-training programs, the FSU/Asolo Conservatory of Professional Actor Training and FSU/Asolo Conservatory of Motion Picture, Television and Recording Arts, are both located in the Asolo Performing Arts Center in Sarasota. The Center for Professional Development and Public Service, housed in the Florida State Conference Center on the edge of the main campus, provides extensive credit and non-credit continuing education programs statewide.

For years FSU has reached far beyond Florida through international programs in Switzerland, France, Panama, Costa Rica and the Caribbean. FSU's study centers in Florence, Italy, and London, England, are considered by many to be the nation's best in Europe.

Florida State offers 275 graduate and undergraduate degree programs through its eight colleges — Arts and Sciences; Business; Communication; Education; Engineering (operated jointly with Florida A&M University, a historically black institution); Human Sciences; Law; and Social Sciences (which also incorporates





Talbot "Sandy" D'Alemberte
President

the School of Public Administration and Policy) — and eight schools — Criminology and Criminal Justice; Library and Information Studies; Motion Picture, Television and Recording Arts; Music; Nursing; Social Work; Theatre; and Visual Arts and Dance.

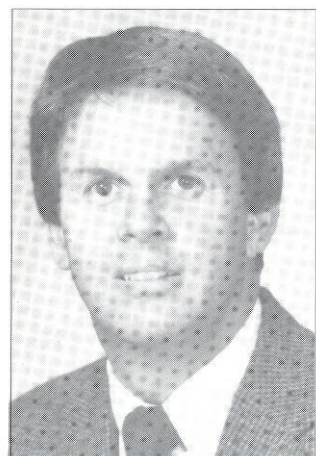
With 1,558 members, the FSU faculty currently includes five members of the National Academy of Sciences and eight of the American Academy of Arts and Sciences, and has included five Nobel laureates. It is backed by 2,915 administrative, professional and support staff.

Library holdings at Florida State include 2.03 million book titles, 18,420 serials and 4.1 million microforms. The main library facility, the Robert M. Strozier Library, is linked via a computerized information system to other state university and national research libraries. The Paul A.M. Dirac Science Center Library is located at the heart of the university's main science research complex. FSU also maintains extensive music, library science and law libraries, and the Mildred and Claude Pepper Library houses the personal and professional papers of one of Florida's best known political couples.

On the top floor of the Dirac Library is the headquarters of the Supercomputer Computations Research Institute, a multidisciplinary, multinational program established in 1984 that brings together some 50 scientists, engineers and technicians. SCRI is electronically linked to an off-campus research complex at Innovation Park and the university's two powerful supercomputers.

Also providing unique research opportunities is the physics department's tandem Van de Graaff Superconducting Accelerator Laboratory, which houses two powerful atom smashers and is ranked among the top four nuclear research centers in the nation by the National Science Foundation.

Graduate students, who number more than 5,700, pursue advanced degrees in fields as diverse as business administration and theoretical particle physics. A majority of research done at FSU is the direct result of student effort, culminating in



Dave Hart, Jr.
Athletic Director

numerous books, monographs and journal articles relating to the whole spectrum of intellectual interests and the practical needs of society.

FSU, a residential campus, places a high priority on its 28,700 students and their needs and interests. The Honors and Scholars program, the Distinguished Lecture Series, Student Government, the all-collegiate Flying High Circus and intramural sports are among more than 200 organizations and activities in which students can participate.

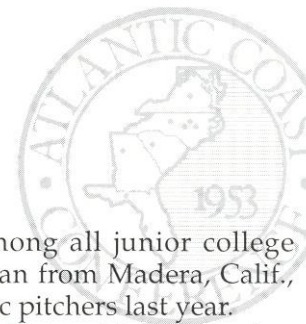
Situated in the heart of the state's thriving capital city, Florida State's main campus blends Gothic and modern styles of architecture with the oaks, pines, dogwoods, palms and azaleas of North Florida.

Florida State continues to progress and grow — from its pre-Civil War foundation as the Seminary West of the Suwannee, through the early 20th century as the academically respected Florida State College for Women, returning to coeducational status as a university in 1947, to its modern development as an acclaimed research institution, a top-ranked competitor in intercollegiate athletics and as a standard-setter in the basic sciences and the performing arts.

In all areas of its mission of excellence in teaching, research and public service, Florida State University is advancing boldly into the 21st century.



1995 Softball Outlook



Many teams would be happy with a 50-19 record and an NCAA Regional appearance. And Florida State was pleased, but satisfied ... not even close. Although the 1994 season saw the Lady Seminoles reach the 50-win plateau for the eighth time in Dr. JoAnne Graf's reign and fourth year in a row, the 1995 Lady Seminoles have taken the attitude that has allowed Graf to be so successful over the years. Always strive to be better and never be satisfied. And the Lady Seminoles hope it is this attitude that takes them back to Oklahoma City and the College World Series this May.

"Of course our goal is always to get to the College World Series," Graf said. "Having not gone last year will give everyone a little more motivation this season. Many of these players have been there and know what it takes to get there. But this team is made up of a group of talented returnees and a lot of new, young players. We'll have our work cut out for us."

Florida State returns the majority of their starters, including its top three batters from a season ago. But with the graduation of pitchers Rebecca Aase and Marla Looper, the question mark lies on the mound.

THE PITCHING

Marla Looper and Rebecca Aase started 52 of FSU's 69 games last season, but a pleasant surprise in the Florida State rotation was freshman Kristy Fuentes. Appearing in 22 games and starting 17, Fuentes posted an 11-2 record while recording five shutouts and a no-hitter. Although young, Graf is comfortable with Fuentes on the mound.

"Losing your one and two pitchers gives us a pretty big hole to fill," Graf said. "But I have a lot of confidence in Kristy Fuentes. She threw well last year, but needs to work on her confidence level. When she's in those big games, she needs to believe that she can win them."

Joining Fuentes on the hill are newcomers Renee Espinoza and Niki Zenger. Espinoza, a transfer from Central Arizona Junior College, brings a great deal of experience with her to FSU. A first-team Junior College All-American,

Espinoza ranked third nationally among all junior college pitchers last season. Zenger, a freshman from Madera, Calif., was one of just five U.S. Junior Olympic pitchers last year.

"Renee has quite a bit of experience which makes her very, very valuable," Graf said. "Because of this, I expect her to step up to the challenge. Niki is young and will need to work on improving her skills as well as getting accustomed to going against better hitters on the Division I collegiate level. With some experience, I expect both of these players to contribute."

THE INFIELD

The Lady Seminoles will have a fairly experienced infield returning with senior Heather Feltmann at first base, senior Laurie Shepard at shortstop, senior Cindy Lawton at third base and sophomore Wendy Braye at catcher. Sophomore Windy Weltz will step in at the second base position vacated by Lisa Davidson. The loss of Davidson, a three-year starter, will be felt most dominantly in the batting order. Davidson, who ranks among the top five FSU career leaders in seven statistical categories, was fourth on the team in hits (52) last season and led the team with seven home runs while tying Shamalene Wilson for the team honors with 10 doubles. But Shepard (.326), Lawton (.317) and Feltmann (.283) represent three of FSU's top four returning hitters and Weltz was one of four FSU players named to last year's ACC All-Tournament team.

Florida State will also enjoy a great deal of depth in the infield this season. Sophomore returnee Stacie Symonds saw a good deal of action at shortstop during fall competition and looked very good. A confident and aggressive player, Symonds can play at short, third base as well as the outfield and will provide the Lady Seminoles with a solid utility player. Freshman Kristy Hull will play catcher and utility while freshman Misty Molin will see action either at first base or in the outfield. Freshman Stephanie Ferlita will serve as backup at catcher or at third base.

"Having the majority of our infield returning is





important as far as our stability defensively," Graf said. "But we have a number of athletes that will challenge for playing time. I anticipate a great deal of action for a number of these players. Kristy is very aggressive, just the kind of player you want in your lineup while Misty hits well from the left side and has good speed. Stephanie has a lot of offensive potential and could see time at designated player."

THE OUTFIELD

Junior Shamalene Wilson, a second-team All-American in 1994, highlights a young outfield for the Lady Seminoles. Wilson, who moved to center field from left field last season, led the team in seven statistical categories including at bats (213), runs (55), hits (81), total bases (124), triples (9), slugging percentage (.582) and batting average (.380). She struck out just 11 times and tallied 25 multiple hit games. Sophomore Myssi Calkins returns as the starter in left field. Having played in 67 games, 49 of which were in left field, Calkins contributes good speed to the lineup and bunts and slaps well from the left side. Senior Adrienne Pearson was a backup outfielder last year and will serve as a solid utility outfielder in 1995. She proved to be a valuable pinch-runner, scoring 19 runs for the Lady Seminoles, and will provide stability and emotional maturity to the outfield. Providing depth to the outfield are freshmen Kelly Schnute and Jennifer Butler. Schnute plays with confidence and is very aggressive while Butler possesses good speed and is a smart base runner.

"Shamalene has a lot of natural ability," Graf said. "She can do everything at the plate and is pretty much an all-around player. She is playing a lot smarter, but knows she still has the potential to improve. Myssi has good range and is a solid defensive player. She needs to improve her hitting so she can utilize that speed by getting on base more often. Adrienne has become a very intelligent base runner and really makes things happen. Both Kelly and Jennifer will provide depth to the outfield. Kelly has a good arm and is very aggressive. She needs to work on her strategies at the plate while Jennifer will provide us with a solid pinch-runner."

THE SCHEDULE

As always, Florida State will face a number of Top 20 teams that participated in post season last year. The Lady Seminoles will play in a number of top tournaments,

including the Arizona State Tournament in which Florida State will face defending national-champion Arizona as well as College World Series' participant Oklahoma State.

"This will definitely be a challenging season, especially early on," Graf said. "At Arizona State, we'll face a number of Top-20 teams and will have the opportunity to see early, what kind of team we have."

The ACC has expanded to five teams for the 1995 season with the addition of Maryland. Florida State posted a 9-2 record in the ACC regular season, but bowed to Virginia in the ACC Tournament.

"Virginia is the defending champion and will likely be the favorite again," Graf said. "But North Carolina, Georgia Tech and new-kid-on-the-block Maryland, will provide a very challenging tournament and league race."

Another interesting addition to the Florida State softball schedule this season is participation in the ACC/Metro Softball Conference. This conference aligns the four ACC schools from last season (Florida State, Georgia Tech, North Carolina and Virginia) with UNC-Charlotte and South Florida. The six teams will play a double round-robin throughout the season and the team with the best record from that competition will receive an automatic bid to NCAA regionals.

"We're very excited about this league," Graf said. "The six teams make up a very strong softball conference and it's a very good thing for all of the teams participating. This will place more emphasis on in-season play and will allow us to focus more on those doubleheaders."

OVERALL

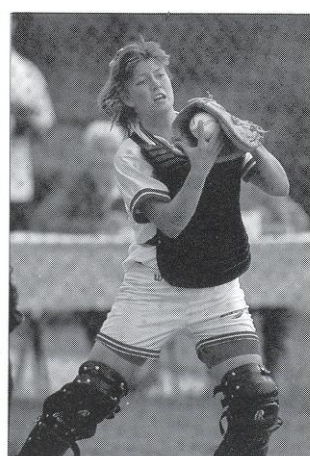
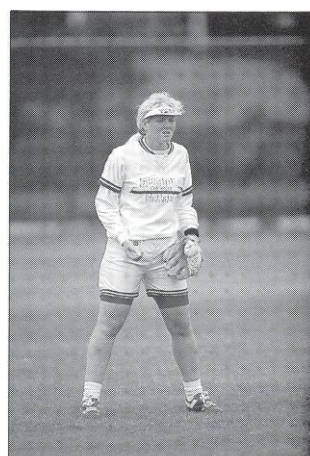
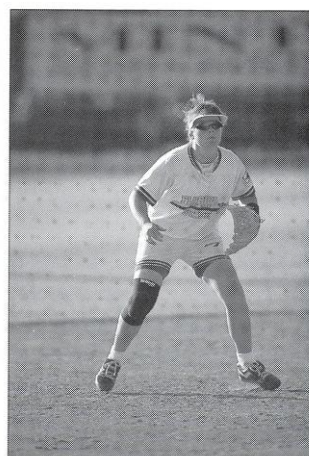
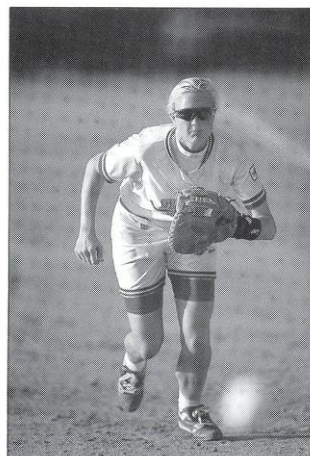
"I expect the seniors to provide a good deal of leadership this season because this team is made up of a lot of new, young players," Graf said. "Most of the new players have played against top-level teams and although young, I don't think they will be overwhelmed. This year's squad is a very cohesive group that is focused and working very hard. We have a lot of good players which will make it hard to set a consistent starting line up. But this is a good problem to have because the players will challenge each other."

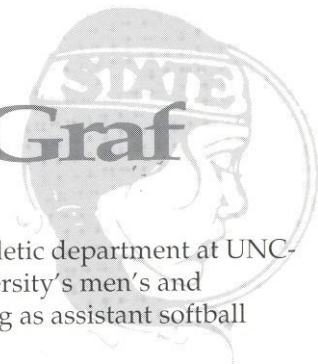


1995 Roster

No.	NAME	POST.	YR.	T/B	HOMETOWN (HS/JC)
1	Heather Feltmann	IF	SR	R/R	St. Louis, Mo. (Oklahoma State)
2	Shamalene Wilson	OF	JR	R/L	Dade City, Fla. (Pasco Comprehensive H.S.)
4	Michelle Bishop	IF	FR	R/R	Casselberry, Fla. (Lyman H.S.)
5	Windy Weltz	IF	SO	S/R	Mesa, Ariz. (Mountain View H.S.)
9	Kristy Hull	UTL	FR	R/S	Phoenix, Ariz. (Moon Valley H.S.)
10	Kristy Fuentes	P	SO	R/R	Whittier, Calif. (St. Paul H.S.)
11	Kelly Schnute	OF	FR	R/R	Marietta, Ga. (Lassiter H.S.)
12	Myssi Calkins	OF	SO	S/R	Littleton, Co. (Ponderosa H.S.)
16	Adrienne Pearson	OF	SR	R/R	W. Palm Bch, Fla. (Santa Fe CC)
17	Niki Zenger	P	FR	R/R	Madera, Calif. (Madera H.S.)
18	Renee Espinoza	P	JR	R/R	Tucson, Ariz. (Central Arizona JC)
19	Cindy Lawton	IF	SR	R/R	Waddell, Ariz. (Central Arizona JC)
20	Stacie Symonds	IF	SO	R/R	Palm Beach, Fla. (John Leonard H.S.)
21	Misty Molin	1B/OF	FR	R/L	Jackson, Calif. (Argonaut H.S.)
22	Laurie Shepard	IF	SR	R/R	Cordele, Ga. (Crisp County H.S.)
24	Jennifer Butler	OF	FR	R/R	Folsom, N.J. (Hammonton H.S.)
27	Stephanie Ferlita	3B/C	JR	R/R	Tampa, Fla. (Plant H.S.)
33	Wendy Braye	C	SO	R/R	Arvada, Co. (Arvada West H.S.)

Head Coach: Dr. JoAnne Graf Assistant Coach: Connie Clark Second Assistant: Penny Siqueiros





Head Coach - Dr. JoAnne Graf



Florida State '75
 17th Season- 759-184-4 .806
 1992 and 1993 ACC Coach of the Year

Dr. JoAnne Graf knows that hard work and dedication produce positive results. And she's got the numbers to prove it. After sixteen years at the helm of the Florida State softball program, there are not many things that Graf has not accomplished.

With 759 career victories, Graf ranks second all-time by victories among Division I softball coaches. Her 540-131-4 (.803) record in fast-pitch competition only, ranks her second by percentage and eighth by victories among all Division I active softball coaches. But the accolades don't stop there. Graf has twice been named the ACC Coach of the Year after leading the Lady Seminoles to consecutive conference titles in 1992 and 1993. She has led FSU to eight seasons of 50 wins or more, including two seasons when the Lady 'Noles recorded more than 60 victories.

Under Coach Graf's direction, Florida State has been to the NCAA College World Series in Oklahoma City five times in the past eight years. And in 11 years of fast-pitch competition, Graf has directed the Lady Seminoles to 9 regional tournament appearances. But the success didn't begin there. In her first five years at Florida State, she accumulated 219 wins playing the best slow-pitch competition in the nation and claimed two national titles, establishing a solid basis to build upon.

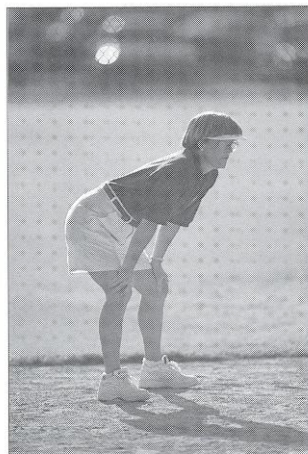
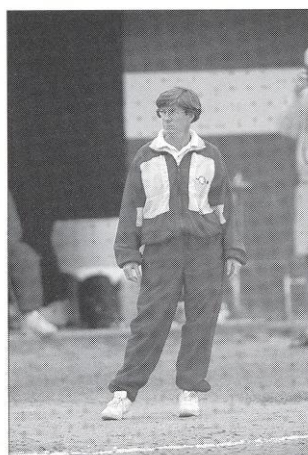
Graf, who was voted the South Region Coach-of-the-Year in 1986, has seen 40 of her players selected to NCAA All-South Region teams, including six players in 1994. Her coaching has produced seven All-Americans, including two first team selections in second baseman Lisa Davidson (1993) and shortstop Tiffany Daniels (1987). Last season, sophomore outfielder Shamalene Wilson became the third FSU player to garner second team All-American honors in the last three years.

A 1975 graduate of Florida State, Graf returned to her alma mater after two years at the University of North Carolina-Greensboro where she earned her master's degree in physical

education. Graf also worked in the athletic department at UNC-Greensboro as head coach for the university's men's and women's swim teams while also serving as assistant softball coach.

Graf, who serves as director of the FSU softball camp each summer, is a former president of the Florida Collegiate Athletic Association. She has also served as a member of the NCAA Softball Committee and chaired the NCAA Softball Advisory Committee for the South Region. She is presently serving on the NSCA All-American Committee and was one of 16 coaches interviewed for U.S. Olympic Coach position.

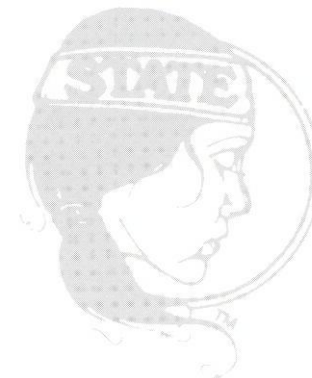
In 1992, Graf added "Dr." to her name after completing her doctorate degree in athletic administration at FSU.



Lady Seminole Softball Under Dr. JoAnne Graf

1979	26-15	.634
1980	37-10	.787
1981	54-7	.882
1982	56-10	.848
1983	46-11	.807
1984	41-5-2	.875
1985	50-12-2	.797
1986	42-7	.857
1987	50-14	.781
1988	44-14	.759
1989	39-14	.736
1990	47-16	.750
1991	62-12	.838
1992	63-9	.875
1993	52-9	.852
1994	50-19	.724
Career	759-184-4	.806

Assistant Coaches



*Connie Clark
Assistant Coach*

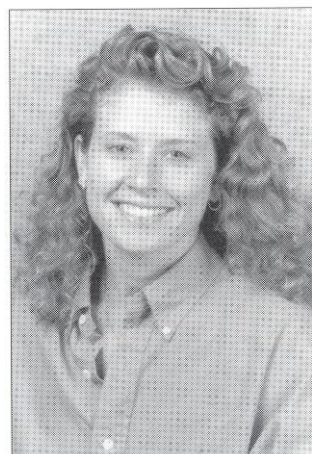
Connie Clark
Assistant Coach
Cal State Fullerton, '87
Sixth Year

Under the guidance of Connie Clark, nearly every Florida State pitching record has been broken in the last five years. A former All-American pitcher, Clark joined the Lady Seminole softball staff at the start of the 1990 season, bringing several years of teaching on the national level as well as the international level to Florida State. In her six seasons as the head pitching coach, Clark has tutored three pitchers, Christy Larson, Toni Gutierrez and Marla Looper to the top of the NCAA statistics and the top of the FSU record books. In 1993, one of Clark's proteges, Rebecca Aase, set the NCAA record for most consecutive victories with 50 and the FSU pitching staff set the NCAA mark for most consecutive scoreless innings with 124.2.

After earning a Bachelor of Science degree from Cal State Fullerton in Physical Education in 1987, Clark worked as a private instructor at the Rod Carew Baseball School in California and conducted clinics in Tokyo, Japan; Auckland, New Zealand; and Shanghai, China.

While at Cal State Fullerton, Clark twice participated in the Women's College World Series and defeated Florida State 4-0 in the first round of the 1987 World Series. In 1986, she led the nation with a 0.18 earned run average pitching for the national championship Titan team. Her senior season, she finished third in the nation with 33 wins and was named an All-American and won the prestigious Broderick Award for Collegiate Softball Player of the Year.

A recognized clinician speaker on pitching, Clark is extensively involved in recruiting new athletes to FSU and coordinates the Florida State summer fast-pitch camps. Clark is currently working on her Master's degree in sports administration at Florida State.



*Penny Siqueiros
Second Assistant Coach*

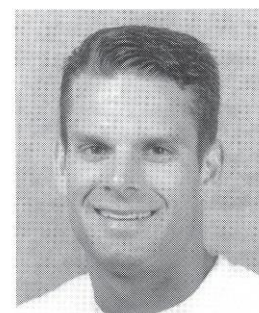
Penny Siqueiros
Second Assistant Coach
Florida State '93
Second Year

After a celebrated softball career at Florida State, Penny Siqueiros begins her second season as an assistant coach at her alma mater.

A shortstop on the Lady Seminole squad from 1989-1992, Siqueiros etched her name in the FSU record books in several categories. The Orlando, Florida, native holds the Lady Seminole season records for most games played and runs batted in. She is also listed among the top five in 10 FSU career records including runs, hits, runs batted in and batting average. Siqueiros helped lead the Lady Seminoles to three World Series' trips during her tenure at Florida State. Also strong in the classroom, Siqueiros was FSU's female recipient of the 1992 ACC Senior Scholar Athlete Award for academic and athletic leadership.

Siqueiros' primary responsibility is tutoring the outfielders and hitters in practice. She will also assist Dr. Graf and Connie Clark with recruiting.

A 1993 graduate of Florida State, Siqueiros is currently pursuing a Masters Degree in athletic administration.



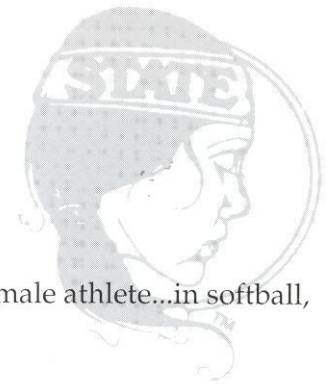
*Ron Miller
Strength Coach*



*Robin Gibson
Trainer*

#33 Wendy Braye

Catcher-Sophomore-Arvada, CO

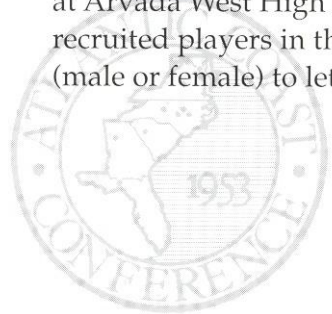


Pure catcher...will handle duties behind the plate again this season...maintains good attitude and competitive spirit...possesses powerful bat...expected to provide leadership with young pitching staff...**1994:** Saw significant action as a freshman, stepping in at the catcher position and playing in 63 games...drove in three runs in both the UNC-Charlotte and South Florida games, setting a personal single game season high...was among the team leaders with nine doubles...**High School:** Played softball, basketball and golf at Arvada West High in Colorado...one of the most highly recruited players in the country in 1993...was the first athlete (male or female) to letter in three sports all four



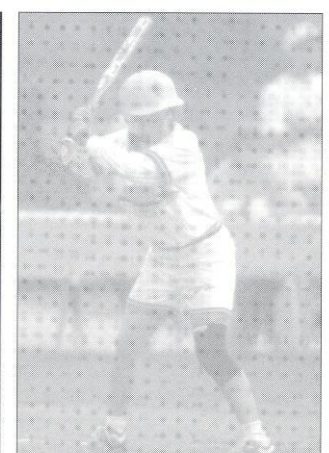
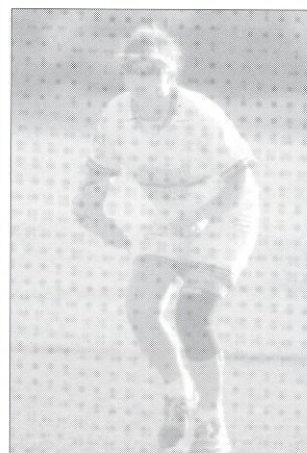
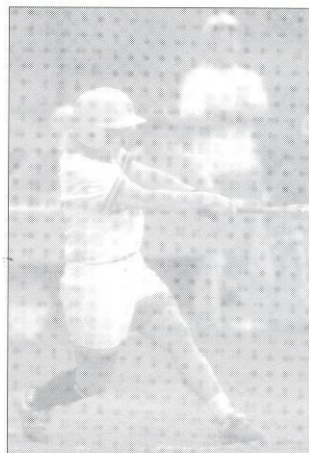
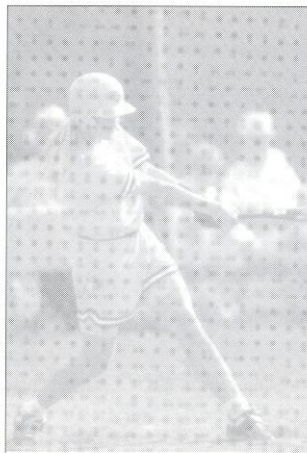
years...selected as the outstanding female athlete...in softball, named the

6A Player of the Year after junior and senior year...tabbed to the All-State squad her final two years...named to the All-Conference team three consecutive years in basketball and all four years in golf...inducted into the Hall of Fame for Academic, Athletic and Citizenship accomplishments...named the Outstanding Senior Girl...voted "Most Promising" Sportswoman of the Year in 1991 in Colorado...**Personal:** Tutored Special Education students in spare time in high school...majoring in physical education.



Braye at the plate...

	Avg.	G	AB	R	H	RBI	2B	3B	HR	BB	SO	SB-SBA
1994	.228	63	171	9	39	17	9	3	0	8	24	0-0



#12 Melissa (Myssi) Calkins

Outfield-Sophomore-Littleton, CO

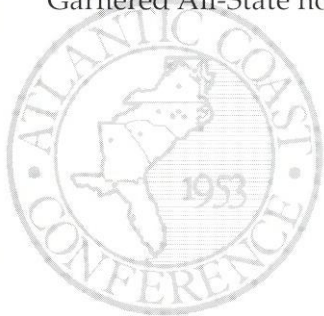


Returns as the FSU starter in left field...possesses good speed which will be utilized on the base paths this season...consistent performer who keeps a positive attitude...bunts and slaps well from the left side...has good range and is solid defensively...**1994:** Greatly contributed in her first season in the Garnet and Gold, seeing action in all but two games... established a new FSU single-season record for steals with 44 thefts, shattering the previous mark of 35 set in 1992...led the team with 21 sacrifice hits...**High School:** Garnered All-State honors in softball, soccer and basketball



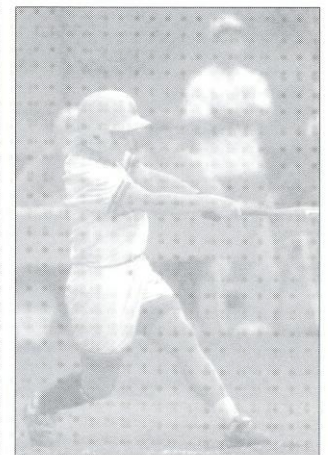
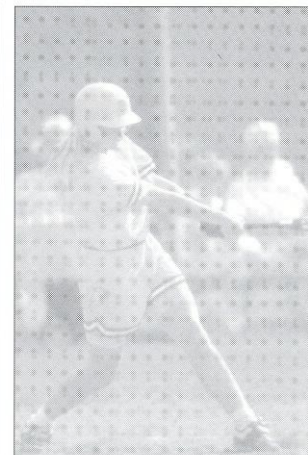
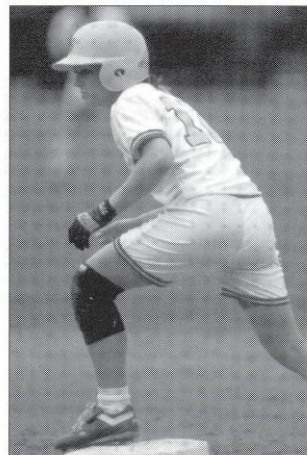
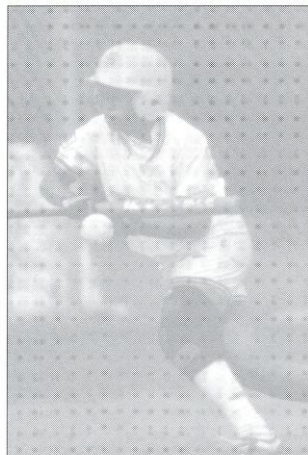
as a senior at Ponderosa High School in Parker, CO...chosen to the All-League team in softball and soccer after junior and senior years...played on the final four state softball team in Colorado...an

All-League selection in basketball as a senior...a member of the Coaches All-State soccer squad two consecutive years...earned the All-Academic award...**Personal:** Acted as a Peer Counselor in high school...undecided on major.



Calkins at the plate...

	Avg.	G	AB	R	H	RBI	2B	3B	HR	BB	SO	SB-SBA
1994	.254	67	185	34	47	10	0	0	0	7	28	44-48



#1 Heather Feltmann

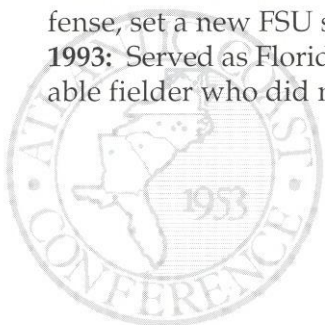
First Base-Senior-St. Louis, MO



Will handle full-time first base duties for second straight season...chosen a team co-captain...will provide maturity and stability to the infield...a versatile athlete who came to FSU as a pitcher but moved to first base after undergoing shoulder surgery...**1994:** Moved into a starting role at first base after playing as a reserve the previous season...ranked among the top five on the team in eight statistical categories...hit safely in seven consecutive games during the season...one of the team's top five hitters with a .283 batting average...demonstrated hitting skill with three hits against both UNC-Charlotte and South Florida...also solid on defense, set a new FSU single-season record with 480 putouts...**1993:** Served as Florida State's reserve first baseman...dependable fielder who did not commit an error last season...played

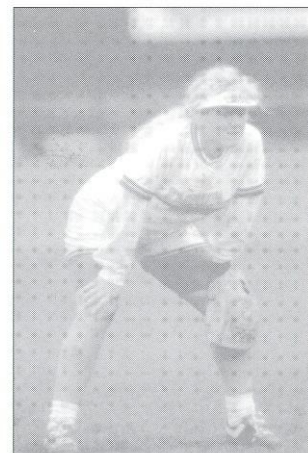
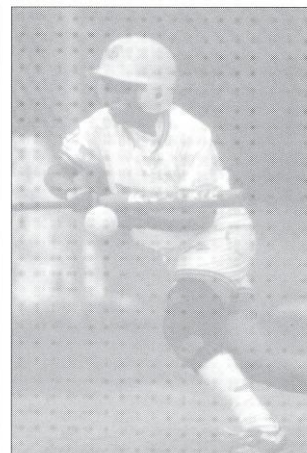
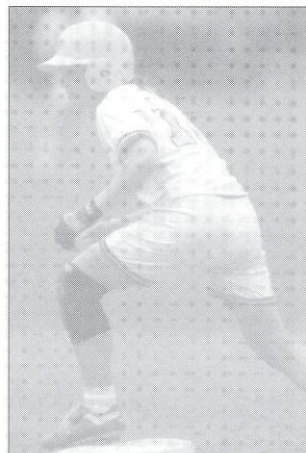
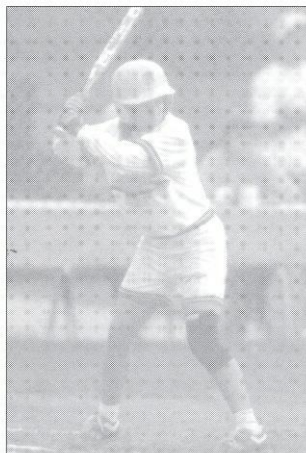
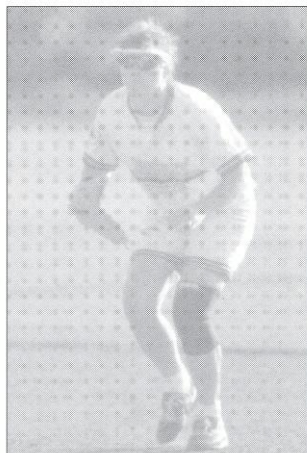


a key role in the Tribe's ACC Tournament Championship ...went 2-2 with a walk in an elimination game victory over Georgia Tech...followed that with a dramatic pinch-hit two-run home run in the eleventh inning to provide the game's only runs in a win over Virginia that forced a final game...**1992:** transferred into the Florida State program from Oklahoma State...sat out the entire season while rehabilitating from shoulder surgery...**1991:** lettered in her first season at the collegiate level...compiled a 2-0 mark on the mound with an ERA of 0.90 in 23 1/3 innings...**HIGH SCHOOL:** won seven letters in three sports at Cor Jesu Academy...was the softball team MVP all four years...broke or tied 14 season and career records in softball...also played basketball and soccer...**PERSONAL:** Majoring in civil engineering.



Feltmann at the plate ...

	Avg.	G	AB	R	H	RBI	2B	3B	HR	BB	SO	SB-SBA
1993	.250	38	56	5	14	12	3	0	1	4	8	0-1
1994	<u>.283</u>	<u>67</u>	<u>177</u>	<u>21</u>	<u>50</u>	<u>24</u>	<u>6</u>	<u>5</u>	<u>2</u>	<u>28</u>	<u>28</u>	<u>5-5</u>
Totals	.275	105	233	26	64	36	9	5	3	32	36	5-6



#10 Kristy Fuentes

Pitcher-Sophomore-Whittier, CA



Only FSU returnee on the mound...will provide leadership to a young pitching staff...the latest in the line of talented West Coast pitchers to don the Garnet and Gold...has potential to be a top pitcher once techniques are refined...**1994:** Was a pleasant surprise in the Seminole rotation last season...posted an 11-2 record...recorded five



shutouts... threw a no-hitter against Mercer...drove in seven runs —the most among the FSU pitchers...**High School:** Played softball all four years at St. Paul High School in Whittier, CA...voted the All-Angeles League first team pitcher...earned All-State first team honors...a member of the Honor Roll...**Personal:** Is a criminology major.

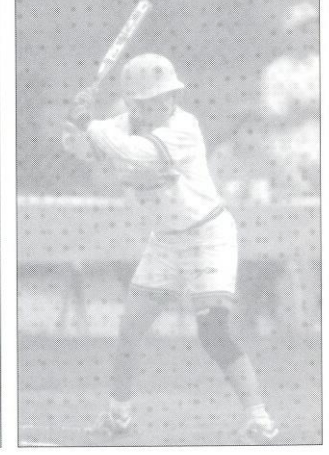
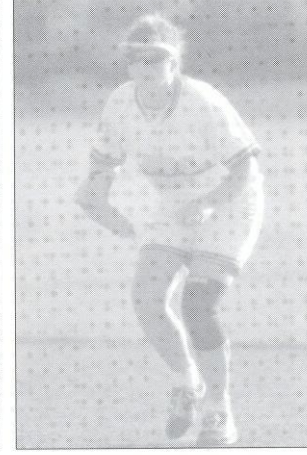
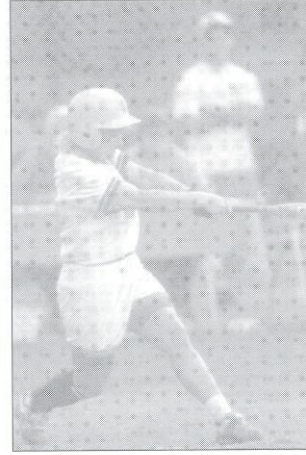
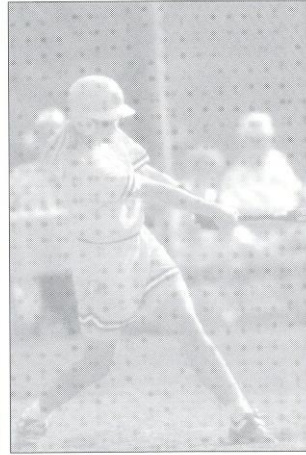
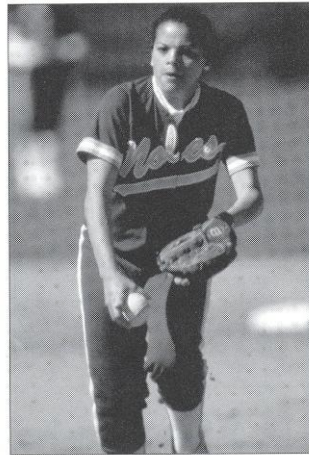
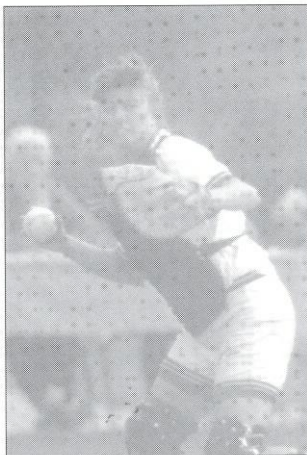


Fuentes at the plate...

	Avg.	G	AB	R	H	RBI	2B	3B	HR	BB	SO	SB-SBA
1994	.143	25	28	2	4	7	0	1	1	4	5	0-0

Fuentes on the mound...

	W-L	SV	ERA	APP	GS	CG	IP	R	ER	H	BB	SO
1994	11-2	0	1.55	22	17	9	103.2	34	23	74	47	79

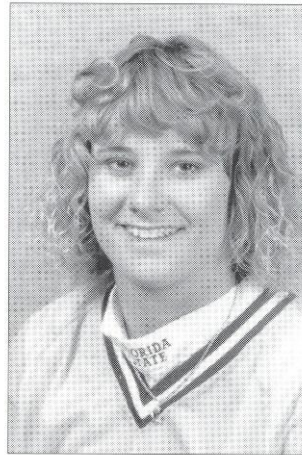


#19 Cindy Lawton

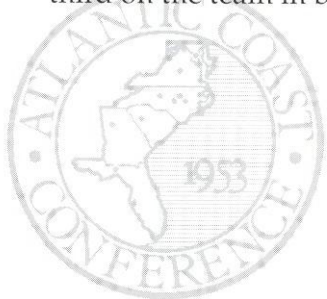
Third Base-Senior-Waddell, AZ



Will serve more of a full-time role at third base after seeing 24 games at that position last season...the team's top returning RBI producer with 34...will be counted on to rally the team at the plate...transferred into the FSU program from Central Arizona Junior College...consistent performer who possesses good power...**1994:** Was a major offensive contributor in the lineup...was selected to the Southeast All-Region second team at designated player...played in all but two games as a designated player or at third base...ranked third on the team in batting and hit safely in 10 consecutive

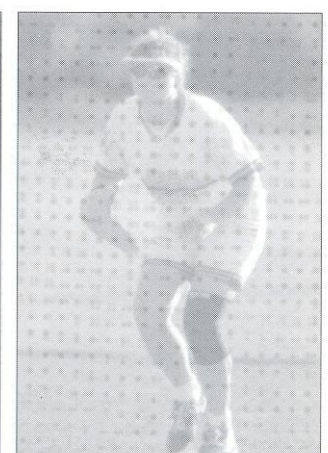
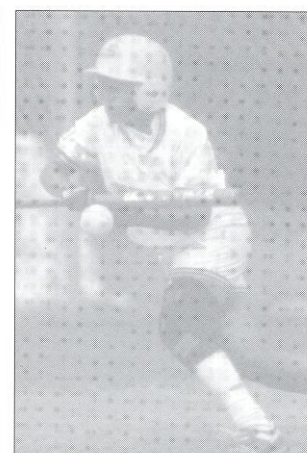
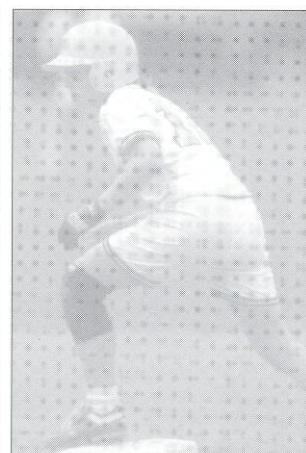
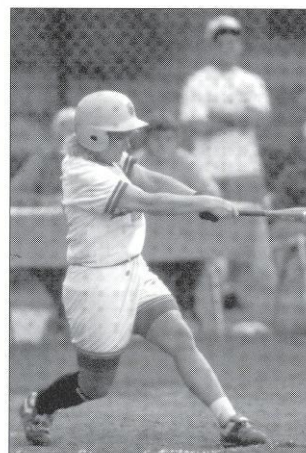
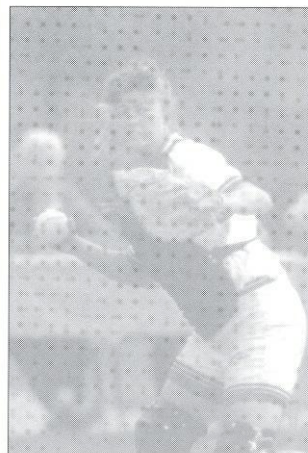
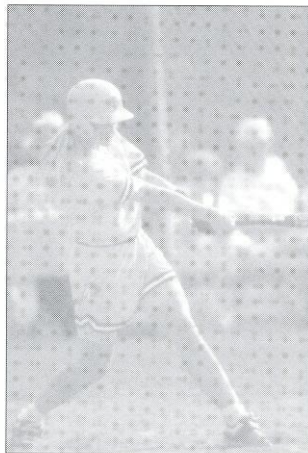


games...was selected to the South Florida All-Tournament team...drove in a personal-high four runs in the Eastern Illinois game...ranked second on the team with 36 runs and nine doubles...**Central Arizona Junior College:** Helped lead CAJC to the Junior College National Championship in 1992...**High School:** Three-time All-State honoree at Agua Fria High School in Waddell, AZ...also played basketball and volleyball as a prep ...**Personal:** Selected a major in criminology...has plans to get married in August.



Lawton at the plate...

	Avg.	G	AB	R	H	RBI	2B	3B	HR	BB	SO	SB-SBA
1994	.317	67	184	36	60	34	9	2	4	14	27	7-9

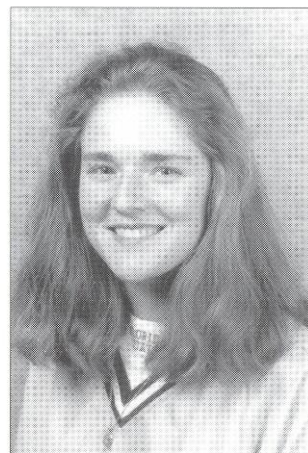


#16 Adrienne Pearson

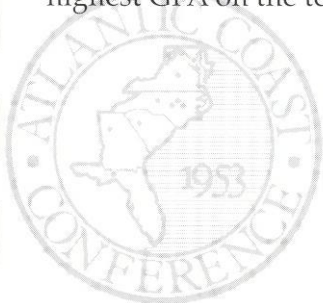
Outfield-Senior-West Palm Beach, FL



A walk on who has provided quality depth in the outfield...will serve as a solid utility outfielder this season...has become a valuable pinch-runner...**1994:** Played in all three outfield positions but saw most action as a designated player...provided a great deal of speed to the team...proved to be a valuable pinch-runner, scoring 19 runs...**Santa Fe Community College:** A member of the Santa Fe Junior College State Championship team as a freshman...voted the squad's Unsung Hero in 1993...had the highest GPA on the team in 1993 with a 3.61 ...graduated

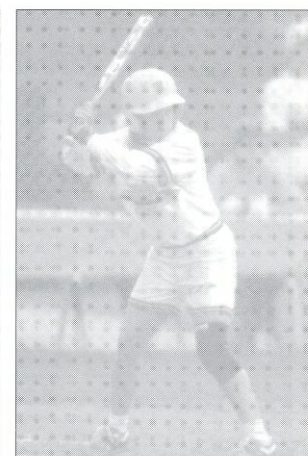
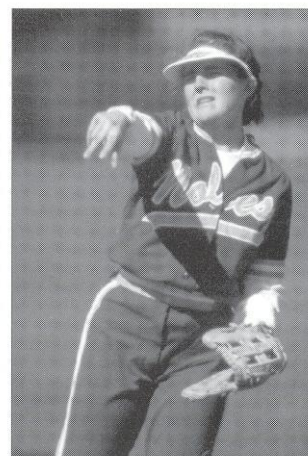
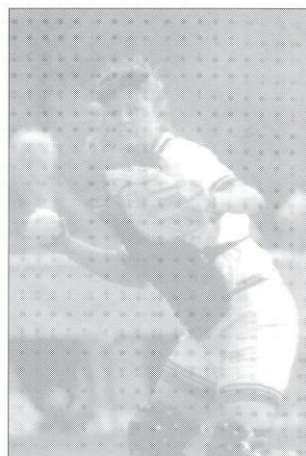
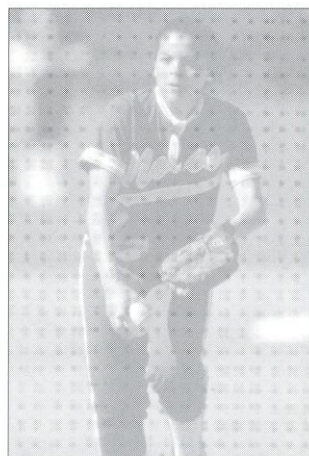
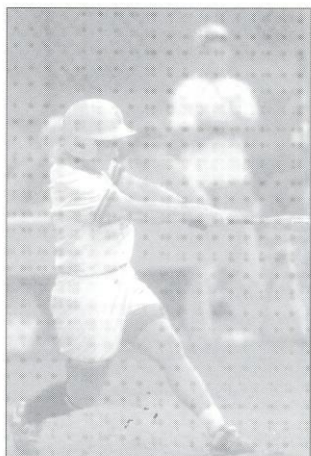


with honors...selected to the Junior College All-Academic Team during freshman and sophomore year...**High School:** Played at Palm Beach High School in West Palm Beach, FL...named to the All-American Softball Team all four years...the Most Valuable Player her senior year...**Personal:** Majoring in criminology...in doing an internship at the Tallahassee Police Department in the Crime Scene Division...has twice been on FSU's Dean's List...was the Golden Torch recipient for having the highest GPA on the team...was a member of the ACC Honor Roll.



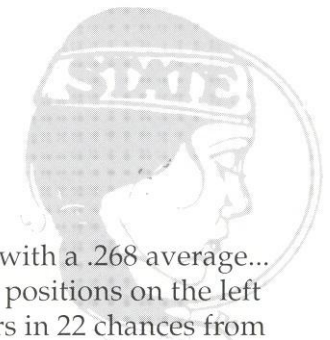
Pearson at the plate...

	Avg.	G	AB	R	H	RBI	2B	3B	HR	BB	SO	SB-SBA
1994	.000	48	8	19	0	0	0	0	0	0	6	1-1



#22 Laurie Shepard

Outfield-Senior-West Palm Beach, FL



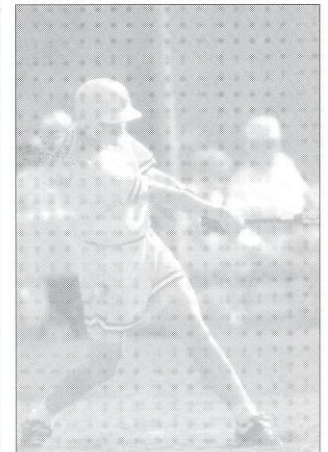
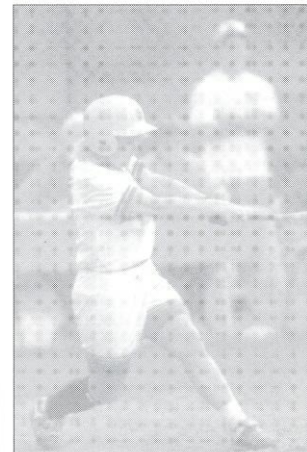
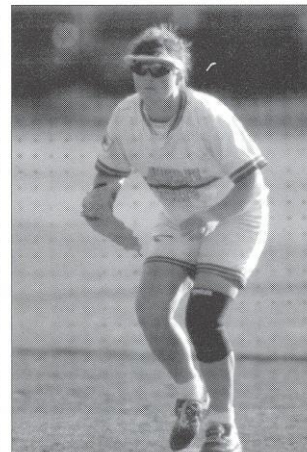
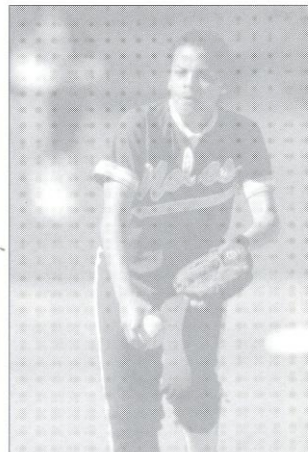
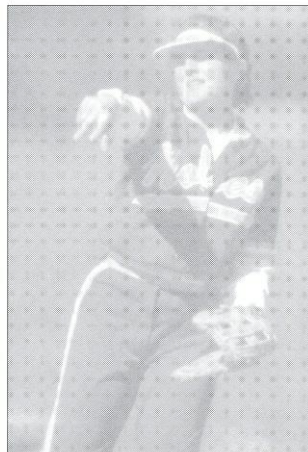
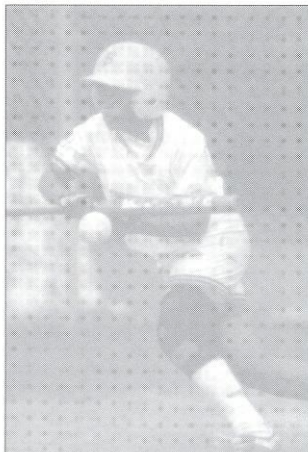
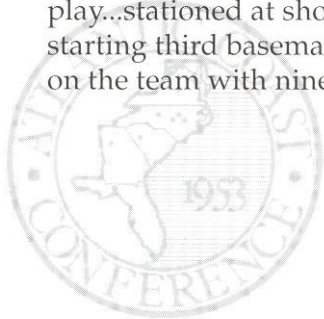
Returns as FSU's shortstop for the second straight season...chosen a team co-captain...will provide leadership to the infield...is a sound defensive player with good range and a strong arm...one of the Tribe's top bunters...hard worker who is driven by competitiveness...**1994:** Ranked second on the team in batting (.317) and hits (60)...missed four games due to a shoulder injury, but returned and had an impressive .473 batting average the rest of the season, going 9-for-19, with 2 RBI and 3 runs scored...selected to the 1994 Southeast Region first team...hit safely in 10 consecutive games...ended the season with a seven-game hitting streak...**1993:** Hit the game-winning RBI against Kansas in game 5 of regional play...stationed at shortstop for the regional... Florida State's starting third baseman for the latter half of the season...third on the team with nine sacrifice bunts...her average climbed



steadily throughout the year ending with a .268 average...**1992:** provided backup at the infield positions on the left side...fielded flawlessly with no errors in 22 chances from third base and shortstop...gained valuable experience after playing slow pitch in high school...**HIGH SCHOOL:** Participated in softball and tennis at Crisp County High School...chosen Middle Georgia Player of the Year as a senior...named Outstanding Player of the Georgia North-South All-Star Game...member of the Georgia Bandits team that won the 1991 USSSA World Championship...voted most athletic in her senior class...**PERSONAL:** Majoring in nutrition and fitness...was a member of the 1993 and 1994 ACC Honor Roll...earned the 1993 Academic Achievement Award...worked at the All-American Foundation over the summer.

Shepard at the plate ...

	Avg	G	AB	R	H	2B	3B	HR	BB	SO	SB-SBA
1992	.200	25	25	3	5	0	0	0	4	3	1-1
1993	.268	48	148	16	38	1	1	1	9	17	0-0
1994	<u>.326</u>	<u>65</u>	<u>184</u>	<u>19</u>	<u>60</u>	<u>6</u>	<u>1</u>	<u>1</u>	<u>5</u>	<u>17</u>	<u>2-2</u>
Totals	.289	138	357	38	103	7	2	2	18	37	3-3

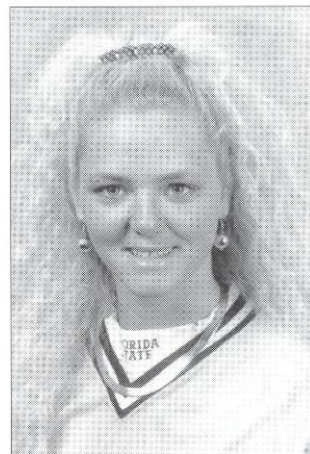


#20 Stacie Symonds

Outfield-Sophomore-Palm Beach, FL



A versatile athlete ... can play shortstop, third base and in the outfield...saw action at shortstop in fall competition...will provide FSU with a solid utility player...is a confident, aggressive player who has a strong arm...**1994:** An all-around, utility player...appeared in 30 games last season in left field...**1993:** Sat out with a medical redshirt...**High School:** Hails from John Leonard High School where she was named Player of the Year three

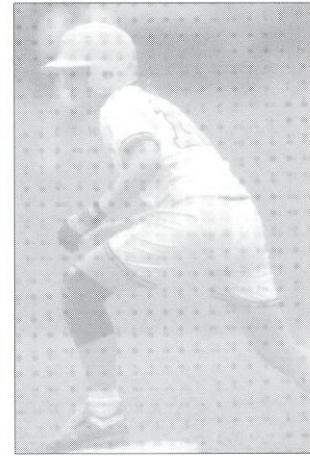
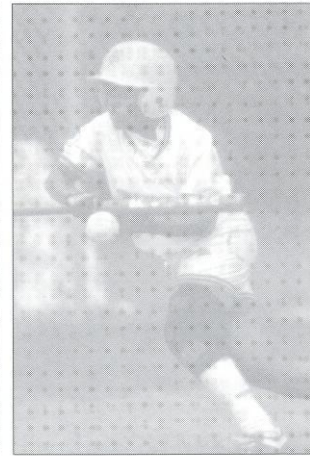
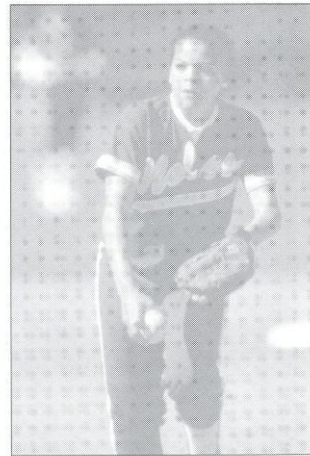
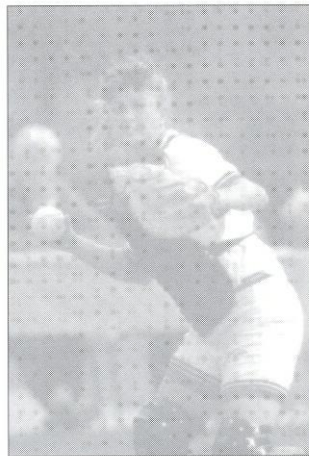
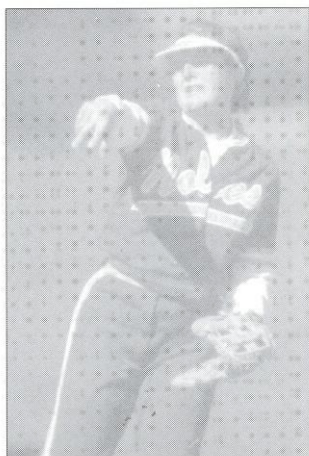


seasons...also a four-time all-county and all-conference selection...named all-state her junior and senior seasons...also honored as Scholar Athlete of the Year her senior year at Leonard...a four-year varsity volleyball letter winner and played one year of soccer in addition to four seasons on the softball team...**Personal:** Undecided on major.



Symonds at the plate...

	Avg.	G	AB	R	H	RBI	2B	3B	HR	BB	SO	SB-SBA
1994	.250	30	36	8	9	1	0	1	0	4	10	0-0



#5 Windy Weltz

Infield-Sophomore-Mesa, AZ



One of four players to hail from Arizona on this year's squad...will step into the second base position vacated by Lisa Davidson...a talented player who is working on defensive consistency...**1994:** A reserve who played 14 games at catcher and 10 games at second base...had two hits against Virginia in the ACC Tournament— a performance allowing her to garner ACC All-Tournament honors...**High School:** The starting catcher for three years at Mountain



View High School in Mesa, AZ...earned All-East Valley honors three consecutive years...the MVP of the squad in 1992 and 93...acted as team captain during junior and senior years...a four-time softball scholar athlete...also played basketball and volleyball...listed on the Honor Roll all four years...**Personal:** Worked as a DARE counselor...majoring in business.



Weltz at the plate...

	Avg.	G	AB	R	H	RBI	2B	3B	HR	BB	SO	SB-SBA
1994	.250	26	48	4	12	6	0	0	0	6	7	1-1

