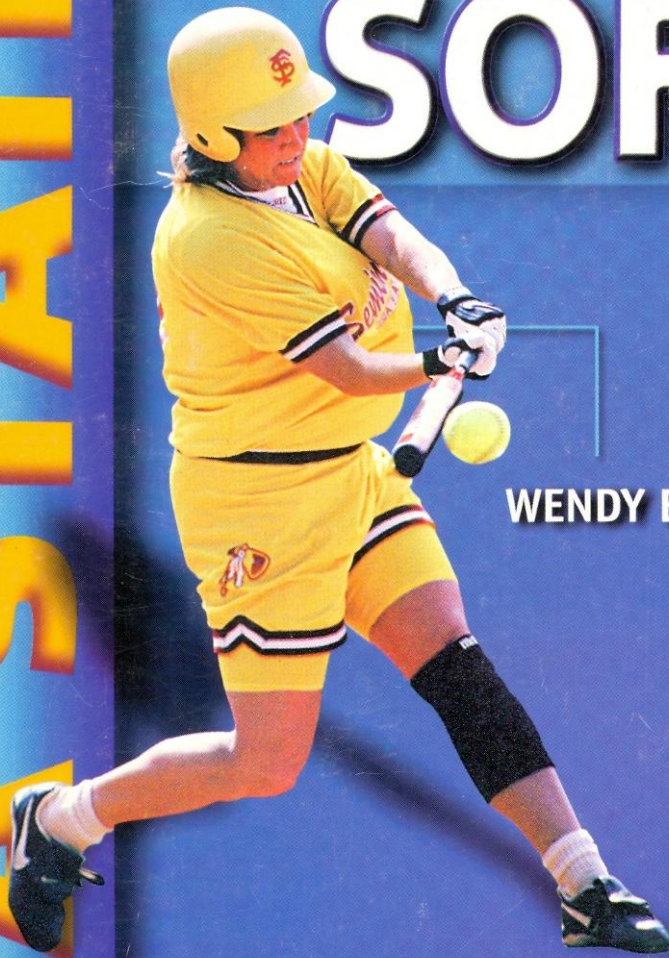


FLORIDA STATE

# SOFTBALL



KRISTY FUENTES

WENDY BRAYE



WINDY WELTZ



MYSSI CALKINS



# LADY SEMINOLE SOFTBALL



Shama Wilson and football's Danny Kanell were chosen the 1995-96 Atlantic Coast Conference Scholar Athletes of the Year. The award, which is based on 75 percent athletic achievement and 25 percent academic excellence and citizenship, is given to the top male and female athlete at all nine member schools. The pair were honored at Florida State's Golden 'Nole All Sports Banquet. Wilson will graduate in criminology this spring. Kanell graduated in April 1995 with a degree in business and now plays professionally for the New York Giants.



All-Americans Myssi Calkins, Shama Wilson and Renee Espinoza were honored at a banquet at the 1996 College World Series in Columbus, Ga.



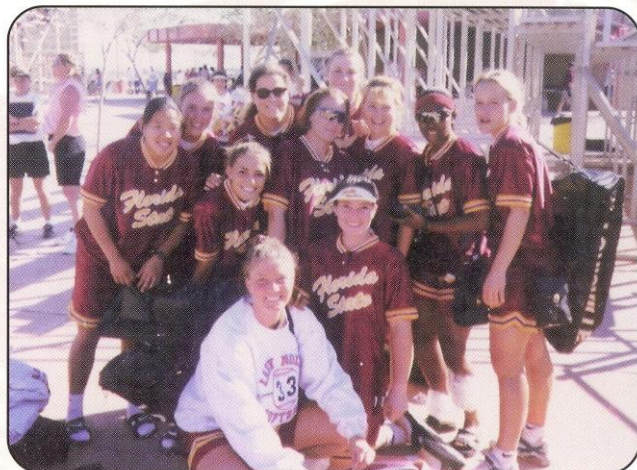
The Lady Seminole won their second consecutive Tar Heel Invitational in 1996.



The Lady Seminole posed for a picture following the Atlantic Coast Conference Championships banquet in Raleigh, N.C. The squad went on to win its fourth ACC title in five years.



Each year, Florida State honors those student-athletes who earn academic honor roll status at the Golden Torch Gala. Pictured here at the prestigious event are Myssi Calkins, Wendy Braye and Jesse McGregor.



Florida State plays in numerous regular-season tournaments throughout the season. In 1996, the Lady Seminole competed in the Arizona State Classic, the NSCA Leadoff Classic, the Lady Seminole Invitational, the Tar Heel Invitational and are pictured here at the South Florida Invitational in Tampa.



# MEDIA INFORMATION

## PLAYER & COACHES INTERVIEWS

All player and coaches interviews can be arranged through the sports information office by contacting Tina Thomas at (904) 644-1065 at least 24 hours in advance. Players home phone numbers will not be released.

## PRESS SERVICES

Media members will be supplied with weekly press releases, including updated results and statistics, updated conference and national rankings, as well as information on upcoming games. This information may be obtained in the sports information office or by accessing the ACC Faxback Service. For details on ACC Faxback, please contact the sports information office.

## CREDITS

The 1997 Lady Seminole softball guide is a product of the Florida State University sports information office.

**Editor:** Tina Thomas, *Assistant Sports Information Dir.*

**Writing and Research:** Danielle Felter

**Photography:** FSU Photo Lab, Ross Obley, Lance Rothstein.

**Cover Photography:** Bill Langford (*team*), Ross Obley (*action*)

**Design:** Marsiglio & Murphy Design Group, Inc. *Tallahassee, FL*

**Printing:** Rapid Press

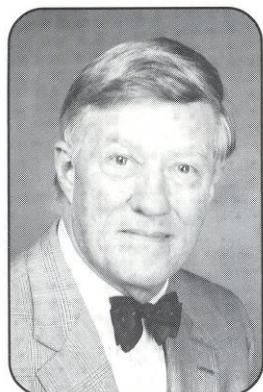
## ON THE COVER

**Front:** Seniors Wendy Braye, Myssi Calkins, Kristy Fuentes, and Windy Weltz will provide the leadership to a young Seminole squad in 1997. **Back:** The Lady Seminoles off the field and the 1997 schedule.

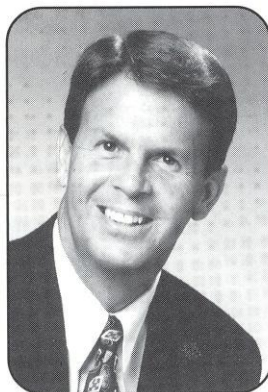
The Florida State University offers equal opportunity in its employment and educational activities in compliance with Title IX, Section 5-4 of the Rehabilitation Act of 1973 and other civil rights laws.

## TABLE OF CONTENTS

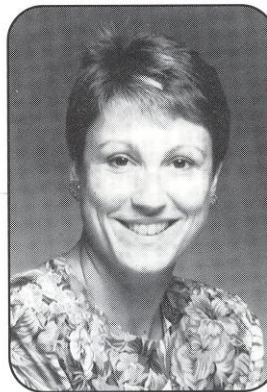
This is Tallahassee .....	2
This is Florida State .....	4
1997 Outlook .....	6
FSU Quickfacts .....	9
Head Coach Bio .....	10
Assistant Coach .....	12
Player Bios .....	13
Newcomer Bios .....	22
Lady Seminole Field .....	24
Academic Support .....	25
Strength and Conditioning .....	26
Medical Care and Treatment .....	27
1996 Season Review .....	28
1996 Statistics .....	31
1996 Team Results .....	32
1996 ACC Statistics .....	33
About the ACC .....	34
Post-Season Play .....	36
Series Records .....	37
Honors and Awards .....	38
All-Time Letterwinners .....	40
Record Book .....	41
Year by Year Records .....	45



**Sandy D' Alemberte**  
*President*



**Dave Hart**  
*Athletic Director*



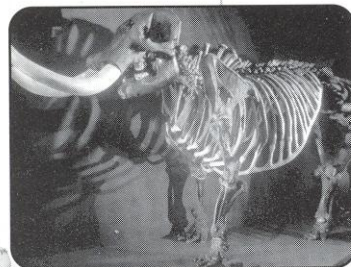
**Kim Record**  
*Associate Athletic Director*



**Tina Thomas**  
*Softball SID*



# THIS IS TALLAHASSEE



Near, but far from the glaring strips of neon amusement, and the castles and crowds of Disney, lies another magical place in the Sunshine State — one of pow-wows, plantations, politics and great pride. Often described as “The Other Florida” with its deep-rooted history, rolling hills, canopy roads of moss-draped oaks, cool climate and Southern-style hospitality; it is a Florida few have seen. It is Tallahassee — Florida with a Southern accent.

Best known as Florida’s capital, Tallahassee is an intimate neo-metropolitan city where the power of state government, the academic and the artistic are complemented by subtle, old-fashioned charm. It is the perfect two- or three-day diversion for the more than 41 million annual visitors to Florida and 13 million residents.

Tallahassee touts a menagerie of sights including one of the world’s deepest freshwater springs, site of America’s first Christmas, a wildlife habitat, Capitol buildings, fascinating museums of history, sprawling plantations, highly acclaimed fishing and hunting adventures and nearby beaches. Spirited area festivals range from celebra-

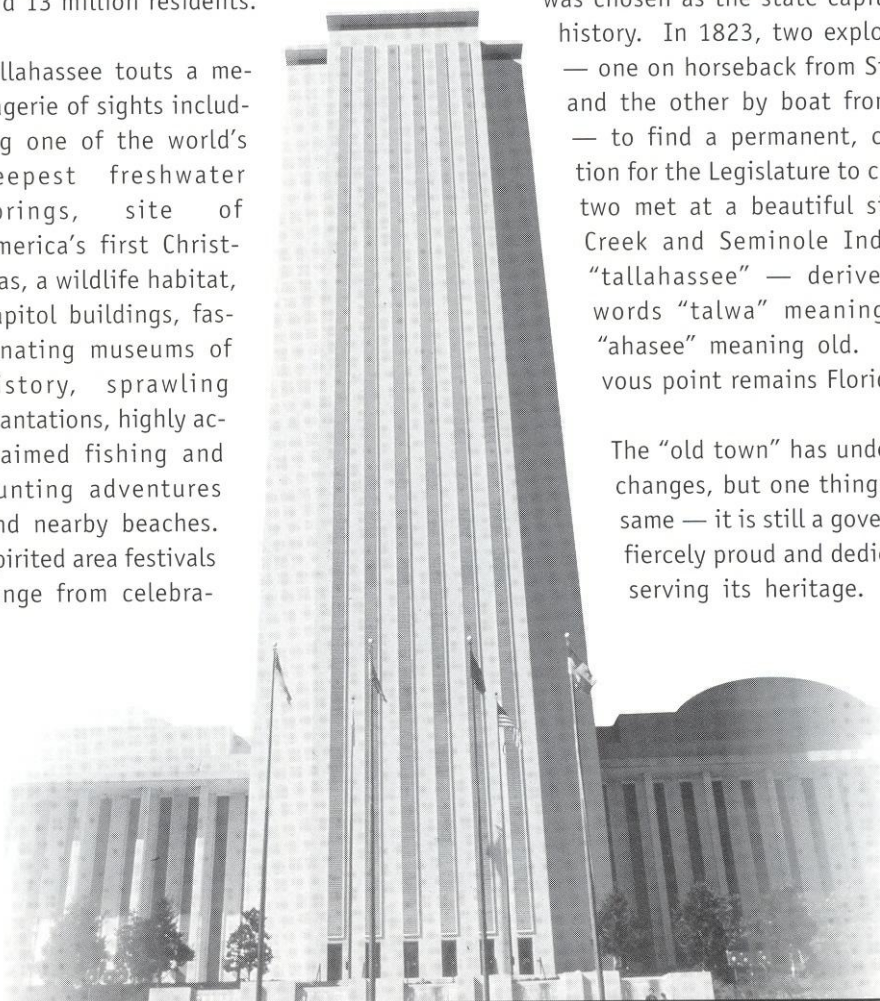
tions of Tallahassee’s spectacular spring and swamp stomps to genuine rattlesnake roundups and seafood festivals.

With the Gulf of Mexico just 20 miles south and the Georgia border only 14 miles north, Tallahassee rests between the foothills of the Appalachian Mountains and the juncture of Florida’s panhandle and peninsula. Nearer in miles to Atlanta than to Miami, Tallahassee more closely resembles its Southern neighbors than Florida in topography, climate and lifestyle.

Accentuating Tallahassee’s Southern persona are lush rolling hills, likened to the seven hills of Rome, and five “official” canopy roads of patriarch oaks. The fertile, rich soil and four distinct, yet pleasant, seasons breed floral brilliance and natural vitality year-round.

Like the city itself, the story of how Tallahassee was chosen as the state capital is rich in history. In 1823, two explorers set out — one on horseback from St. Augustine and the other by boat from Pensacola — to find a permanent, central location for the Legislature to convene. The two met at a beautiful site that the Creek and Seminole Indians called “tallahassee” — derived from the words “talwa” meaning town and “ahasee” meaning old. The rendezvous point remains Florida’s capital.

The “old town” has undergone many changes, but one thing remains the same — it is still a government town fiercely proud and dedicated to preserving its heritage. The Capitol





buildings, both old and new, epitomize Tallahassee's perseverance.

The 22nd floor of the New Capitol provides a panoramic scope of a sophisticated Southern city awash in a sea of flowering azaleas, snowy dogwoods, towering pines, fragrant magnolias, and hundreds of shimmering lakes, springs, swamps, rivers and sink holes. Special legislative viewing galleries are open during the legislative session.

Below, in the shade of giant live oaks, proudly stands the Old Capitol, originally constructed in 1845 and restored to its 1902 splendor complete with red-and-white candy-striped awnings, a dome adorned with stained glass, antique furnishings and political memorabilia.

Across from the Old Capitol are the 40-foot twin granite towers of the Vietnam Veteran's Memorial, and the blue stone Union Bank, Florida's oldest surviving financial institution. The nostalgic Old Town Trolley, a replica turn-of-the-century street car, carries passengers through restored Adams Street Commons to numerous other historical downtown shops for free — unheard of even 100 years ago.

Minutes from downtown lies the Governor's Mansion, which resembles the home of Florida's military hero Andrew Jackson; and the 52-acre natural animal habitat and 1880s farm of the Tallahassee Museum of History and Natural Science, which provide the rare chance to walk and talk with native Florida animals.

Tallahassee remains firmly linked with the past as evidenced by the unearthed 1539 winter encampment of Spanish Hernando de Soto, the site of the first Christmas celebration in America. Visitors travel back through time as they stand in the shadow of a giant 12,000-year-old American Mastodon at the Museum of Florida History or explore other historical spots including The Knott House that Rhymes, The Columns, San Luis Mission, Lake Jackson State Archaeological Site, Natural Bridge Battlefield, First Presbyterian Church, Brokaw-

McDougall House, Goodwood Plantation and Adams Street Commons.

Nearby, alligators lazing in the sunshine and anhinga "snake birds" perched on twisted cypress branches are seen at Wakulla Springs, one of the world's deepest freshwater springs and site of many underwater scenes in the "Tarzan" movies with Johnny Weissmuller and Maureen O'Sullivan. Safaris aboard glass-bottomed and jungle cruise boats whisk visitors within arm's length of "The Other Florida."

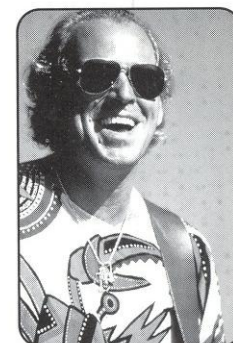
Outdoor enthusiasts enjoy adventures including boating and fishing on area lakes, rivers, ponds and the Gulf — just 30 minutes away. Lakes Seminole, Jackson and Talquin are renowned in the bass fishing world for yielding the "big ones," and dense forests offer an abundance of prize-winning game. Local wildlife areas such as the Florida National Scenic Trail, St. Marks National Wildlife Refuge and Apalachicola National Forest are among many spots for camping, picnicking, swimming, biking and exploring.

Appealing to the strokes of different folks, Tallahassee also features 99 holes of golf on six courses and a proliferation of tennis centers. Sideline athletes cheer the nationally-ranked Florida State Seminoles, Florida A&M Rattlers and the Tallahassee Tiger Sharks, of the East Coast Hockey League. And always a sure bet are the nearby greyhound races.

A sport of sorts, shopping at two regional malls and many specialty centers offer many "playing options" — from popular chains to curiosity and antique shops.

Cultural interests are sparked by widely-acclaimed museums and galleries and elaborate entertainment at the 14,000-seat Tallahassee-Leon County Civic Center.

Tallahassee is a collaboration of power-play politics and classical character splashed with a twist of Southern beauty and charm. Tallahassee is Florida with a Southern accent.



# TALLAHASSEE

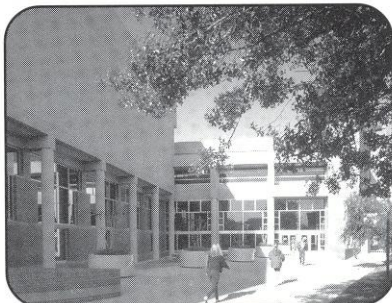
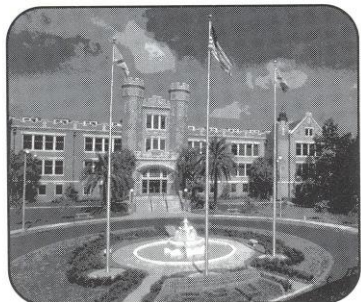


# THIS IS FLORIDA STATE

Florida State University, which will mark its golden anniversary as a coeducational graduate research institution in 1997, has joined the nation's elite in both academics and athletics.

Located on the oldest continuous site of higher education in Florida and building rapidly on the framework of a highly regarded liberal arts college for women, the University has emerged over the past 49 years as an institution of national and international esteem. Its stature is evidenced by a number of additions to its record of excellence in the 1990s:

- In 1994, Florida State was classified a "Research University I" by the Carnegie Foundation, placing it among the nation's top research universities.
- In 1994, the college referral service, "Who's Who Among American High School Students," placed FSU among its top 10 — with such universities as Harvard, Duke, Stanford, North Carolina-Chapel Hill, Michigan-Ann Arbor and Yale — of most frequent choices of more than 100,000 of the nation's best and brightest high school students who asked that a specific college be notified of their recognition in "Who's Who."
- Vice President of the United States Al Gore spoke at the dedication of the National High Magnetic Field Laboratory at Florida State in 1994. The National Science Foundation established the \$100 million magnet lab at FSU, which is partnered in research with the Los Alamos National Laboratory and the University of Florida, in 1990. A Nobel laureate in physics and a top Russian physicist were among the first scholars drawn to the facility. The world's largest magnet — two stories high and capable of generating 45 tesla or 1 million times the Earth's magnetic field — was installed in 1995 at the NHMFL, located in the off-campus research complex, Innovation Park. In 1996, the NSF renewed and increased by 50 percent the NHMFL's funding for another five years.
- FSU created the first multipurpose student identification/banking card. The Card Application Technology Center is a national leader in "smart card" systems.
- At the forefront of supercomputing since obtaining its first high speed computer in 1985, FSU took yet another step in ultrafast and parallel computing in 1990 when it acquired two supercomputers, the Thinking Machine Corp. Connection Machine and the Cray Y-MP.
- In fall 1994, the first tenants moved into the east side of the \$100 million University Center, a classroom-and-office facility at Doak Campbell Stadium; the stadium's south end zone was also enclosed and the adjacent Moore Athletic Center expanded. When the west side is completed in 1996, University Center will provide 550,000 square feet of much needed academic space and a centralized location for student services.
- One of the first academic areas to make its home in University Center, was the FSU School of Motion Picture, Television and Recording Arts. Offering training for one of Florida's fastest growing industries, FSU conferred its first master's degree in film in 1991 and its first bachelor's in film in 1993. The film school's students have already produced national and international award-winning films.
- The Center for Civic Education and Service was established in 1994 aimed at promoting community involvement and civic responsibility as integral elements of a liberal arts education at FSU. The center supports such service-learning programs as Project Amistades, which provides educational services to migrant farmworkers. Through ServScript, student's service may be recorded on their official academic transcript.
- In 1990, Florida State ranked second in popularity nationwide among high school seniors, based on the number of students who request that their Scholastic Aptitude Test (SAT) scores be sent to an institution. FSU was the only institution listed among the top 10 choices of both black and white college-bound students.
- FSU's high-tech program in structural biology in 1991 received the University's largest single foundation grant, \$4 million.
- Capping more than a decade of national prominence in intercollegiate athletics, Florida State's athletic teams, nicknamed "Seminoles," joined the Atlantic Coast Conference as its ninth member in 1990. The FSU football team won the 1993 National Championship and its quarterback, Charlie Ward, won the University's first Heisman Trophy.





- To better understand the world's cultural diversity, FSU undergraduate students are required to complete at least two courses that focus on diverse traditions beyond Western civilization. The multicultural study requirement, in effect since 1991, complements a long-established liberal studies program at Florida State.
- The Dr. Bobby E. Leach Center, a state-of-the-art student recreation facility, with a pool, saunas, basketball and racquet-sport courts, was completed in 1991.

As this list of highlights attests, Florida State is excelling in the 1990's with exceptional strength, energy and vision for the future. Under the leadership of the University's 12th president, Talbot "Sandy" D'Alemberte, who took office in January 1994, FSU will continue to build on the foundation of its history of excellence in scholarship, research and service.

A senior member of the 10-member State University System, FSU was founded as an institution of higher learning in 1851 by legislative act and began in Tallahassee with its first students in 1857.

Today, FSU's operating budget is \$452.5 million. Faculty and administrators generate more than \$99.9 million annually in external funding to supplement state-sponsored research. Three direct-support organizations serve to bolster the University; FSU Foundation, which raises millions in private gifts to support academics, Seminole Boosters and FSU Alumni Association.

The main campus is spread over 450.6 acres in Tallahassee; FSU, which has one of the smallest campuses in the SUS, has been actively acquiring land in the 1990s after years of being landlocked at 847 acres. FSU owns 1,303 acres in Leon, Bay, Franklin and Sarasota counties.

Florida State offers 283 graduate and undergraduate degree programs through its eight colleges — Arts and Sciences; Business; Communication; Education; Engineering (operated jointly with Florida A&M University, a historically black institution); Human Sciences; Law; and Social Sciences (which also incorporates the Reubin Askew School of Public Administration and Policy) — and eight schools — Criminology and Criminal Justice; Library and

Information Studies; Motion Picture, Television and Recording Arts; Music; Nursing; Social Work; Theatre; and Visual Arts and Dance.

Library holdings at Florida State include 2.1 million book titles, 18,296 serials and 4.4 million microforms. The main library facility, the Robert M. Strozier Library, is linked by computer to other state university and national research libraries. The Paul A.M. Dirac Science Center Library is located at the heart of the University's science research complex. FSU also maintains extensive music, library science and law libraries.

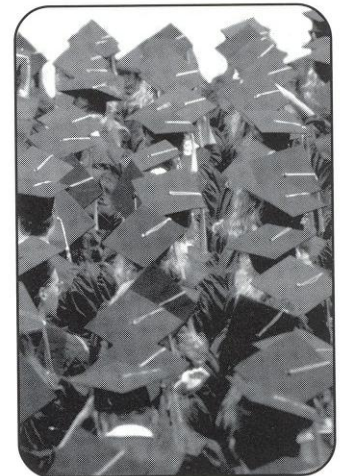
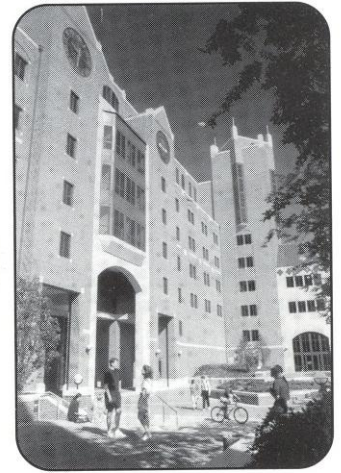
Graduate students, who number more than 5,856, pursue advanced degrees in fields as diverse as business administration and theoretical particle physics. A majority of research done at FSU is the direct result of student effort, culminating in numerous books, monographs and journal articles relating to the whole spectrum of intellectual interests and the practical needs of society.

FSU, a residential campus, places a high priority on its 30,268 students and their needs and interests (of the student population: 45 percent are male; 55 percent are female; 18.5 percent are minorities; and 2.4 percent are foreign students). The University Honors Program, Disabled Student Services, International Student Center, Student Government, Flying High Circus and intramural sports are among more than 200 organizations and activities in which students can participate.

Situated in the heart of the state's thriving capital city, Florida State's main campus blends Gothic and modern styles of architecture with the oaks, pines, dogwoods, palms and azaleas of North Florida.

Florida State continues to progress and grow from its pre-Civil War foundation as the Seminary West of the Suwannee, through the early 20th century as the academically respected Florida State College for Women, returning to coeducational status as a university in 1947, to its modern development as an acclaimed research institution, a top-ranked competitor in athletics and as a standard-setter in the basic sciences and the performing arts.

In all areas of its mission — excellence in teaching, research and public service — Florida State University is advancing boldly toward the 21st century.



# FLORIDA STATE



# 1997 OUTLOOK

Year in and year out, the Florida State University softball program enjoys national recognition and success. With 11 consecutive NCAA Regional appearances, the Lady Seminoles have proven themselves to be one of the most consistent athletic teams at Florida State. The 1997 season should be no different, however, Head Coach Dr. JoAnne Graf, entering her 19th year at FSU, will have the task of replacing one of the most talented athletes to ever don the garnet and gold in Shamalene Wilson. Last year, the All-American centerfielder led the team in hitting with a .402 batting average and led the nation with 69 stolen bases. Through her four-year career, Wilson became the FSU record holder in hits, stolen bases, triples and runs scored.

"Shama is just not replaceable," Graf said. "She's the type of player you just don't see very often, because she just had it all. She's an awesome athlete and we are definitely going to miss her tremendously. I will realize it a lot and I already have. It's a big void, but I have a lot of confidence that our younger kids will come along and learn how to play without Shama."

Another challenge facing the Tribe will be in the pitching department. Renee Espinoza, a 1996 second team All-American, was the team's ace on the mound with a 30-8 record and a 0.83 ERA last year as a senior. Her departure will leave some mighty big shoes to fill. With Niki Zenger transferring, FSU returns just one pitcher in senior Kristy Fuentes.

"Losing two pitchers in one year, we haven't had that in a long, long time," Graf said. "That is going to be an adjustment because anytime you have an unknown, you just don't really know what's going to happen. Renee was such a competitor and I think the team had a lot of confidence playing behind her. The three pitchers we have are earning the team's confidence and will continue to im-

prove throughout the season.

In Graf's own words, here's a position-by-position look at what's in store for the 1997 Florida State softball team:

## INFIELD

**Graf:** "We really return the entire infield which is nice because last year, we totally had to rebuild our infield. At first base we return Corrie Williams and Misty Molin. They will be alternating there. Both players have played a lot of first base and are pretty experienced. Either one of them is very capable of holding down that position. Becky Wallace, a walk-on, will be available as a backup at first base as well. She will develop once she learns the college game."

Williams played in 68 of 72 games at first base as a rookie in 1996. She batted just .206, but was among the leaders in doubles with six on the year. She also ranked fourth on the team with 26 RBI. Molin batted .259 in 50 games played. She split her time between first base and the outfield and was a very valuable pinch-hitter.

**Graf:** "At second base, we have Windy Weltz returning. This will be her third season as a starter. A senior, she's really the vocal leader of the infield. Corrie will become more of that this year, but Windy really provides that

senior stability for the infield. Backing her up will be Sarah King who is a transfer student from Tallahassee Community College. She will play in a backup role but will be pretty valuable for us throughout the season. She will also be utilized as a pinch runner."

Weltz played and started all but one game last season as she recorded 20 RBI off of 37 hits. The Mesa, Ariz., native batted .500 with a team-leading four hits, scored two runs and drove in another on her way to all-tournament team honors



**Dr. Joanne Graf**  
Head Coach



at the Atlantic Coast Conference Championships.

**Graf:** "At shortstop we've got Jesse McGregor who is a sophomore. She had a lot of errors last year but I think it was merely adjusting and becoming comfortable in the position. This fall, she has looked much more solid defensively and is also a lot more confident. Backing her up will be Teresa Edenfield from Maclay High School. She's a local talent who we're really looking forward to playing. She has a lot of ability and really right now just needs seasoning, experience and confidence. She's got the tools. She's just having to adjust to the little things, but she's very talented and is going to continue to improve. We're excited to be getting some talent out of Tallahassee now."

McGregor may have been inconsistent in the field, but she was solid at the plate. The rookie shortstop started all 72 games and ranked second on the team with 33 RBI. She showed her strength at the plate with her 60 hits, including a team-leading nine doubles.

**Graf:** "Tami Post, our starter at third base, just improved with every game last year and toward the end of the season she was playing as good defensively as anyone in the country. I think you find that there are players who produce under pressure. Tami is one of those players and that's why you keep her in the lineup. Learning third base, which was a new position for her last year, she was a little nervous in the beginning. She really didn't know positioning and her reaction time has improved tremendously. She has the quickest release of anybody on the team as far as her throw. She is going to be one of the best third basemen in the country this year as a sophomore."

#12 Myssi Calkins



Post's 49 hits ranked second among the rookies last season. She played in all but two games and drove in 19 runs.

**Graf:** "At catcher, we have two veteran players in Wendy Braye and Kristy Hull, so I feel real comfortable with the catching position. They both have a tremendous amount of experience. Both play very well, have a lot of confidence and provide a lot of stability to the pitching staff. They will share time."

Braye was one of only two players to hit for the cycle in 1996. The Arvada, Colo., native recorded 33 hits, five of which were doubles, two were triples and she also had one home run. Braye played in 60 games.

When Hull wasn't assuming duties behind the plate, she was playing in right field. The second team All-Southeast region selection played in all 72 games and batted .337 with a team-high 45 RBI. Hull, who was honored as the conference player of the week during the season, earned ACC all-tournament team honors and was selected to the Lady Seminole Invite's all-tournament team early in the season.

## PITCHING

As previously mentioned, Florida State pitching will have a new look as the Tribe returns just one pitcher from last season in Kristy Fuentes and welcomes two new faces to the Lady Seminole rotation.

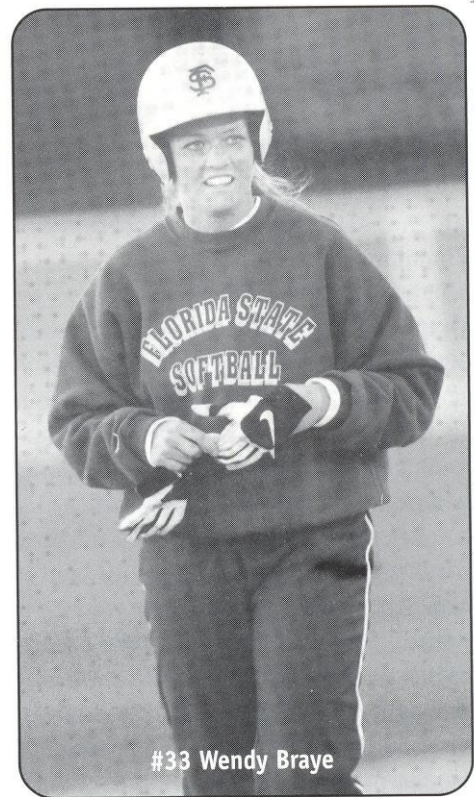
**Graf:** "Pitching-wise, we have three players, two of whom are new this year, so that's going to be the position that is going to be a question mark this year. Kristy Fuentes will be back as a senior. She's going to be our leader. She's going to have to take charge, which is really not normally her personality but it will have to be this year and she knows that. She's talented and the most experienced pitcher that we have."



# 1997 FLORIDA STATE SOFTBALL ROSTER

No.	Name	Pos.	Yr.	B/T	Hometown (previous school)
5	Windy Weltz	2B	SR	R/R	Mesa, Ariz. (Mountain View HS)
6	Dana Bailey	CF	SO	R/R	Bossier City, La. (Parkway HS)
7	Jesse McGregor	SS	SO	R/R	Houston, Tex. (St. John's HS)
8	Windy Taff	OF	SR	R/R	Crawfordville, Fla. (Tallahassee CC)
9	Kristy Hull	C/RF	JR	L/R	Phoenix, Ariz. (Moon Valley HS)
10	Kristy Fuentes	P	SR	R/R	Whittier, Calif. (St. Paul HS)
12	Myssi Calkins	LF	SR	L/R	Littleton, Co. (Ponderosa HS)
14	Teresa Edenfield	SS	FR	R/R	Marianna, Fla. (Maclay HS)
15	Corrie Williams	1B	SO	R/R	Bakersfield, Calif. (North HS)
17	Becky Wallace	IF	FR	R/R	Naples, Fla. (Barron Collier HS)
18	Meggan Matson	P	FR	R/R	Baton Rouge, La. (Parkview Baptist HS)
19	Sarah King	IF	JR	R/R	Huntington Beach, Calif. (Tallahassee Comm. College)
20	Rosalind Chou	C/3B	SO	R/R	Ocala, Fla. (Ocala Forest HS)
21	Misty Molin	1B/OF	JR	L/L	Jackson, Calif. (Argonaut HS)
22	Stacy Venable	P	SO	R/R	Choctaw, Okla. (Northeastern Oklahoma A&M JC)
25	Tami Post	3B	SO	R/R	Citrus Heights, Calif. (Del Campo HS)
27	Stephanie Ferlita	UTL	JR	R/R	Tampa, Fla. (Plant HS) (*REDSHIRT 1997)
33	Wendy Braye	C	SR	R/R	Arvada, Co. (Arvada West HS)

**Head Coach:** Dr. JoAnne Graf  
**Assistant Coach:** Michelle Bolster  
**Second Assistant:** Chandelle Schulte  
**Trainer:** Robin Gibson



#33 Wendy Braye

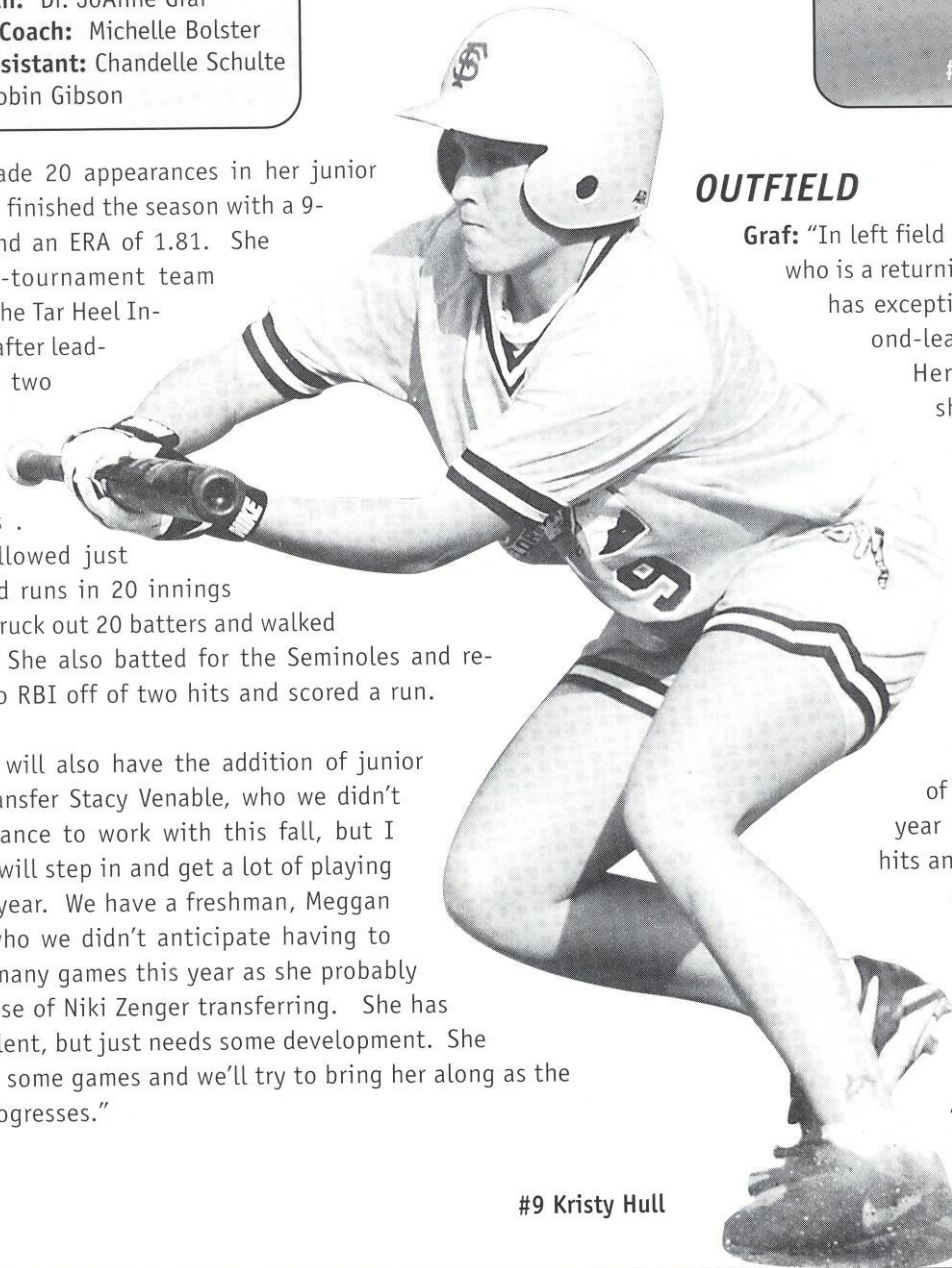
Fuentes made 20 appearances in her junior season and finished the season with a 9-8 record and an ERA of 1.81. She earned all-tournament team honors at the Tar Heel Invitational after leading FSU to two victories in three complete games. Fuentes allowed just two earned runs in 20 innings of work, struck out 20 batters and walked just two. She also batted for the Seminoles and recorded two RBI off of two hits and scored a run.

**Graf:** "We will also have the addition of junior college transfer Stacy Venable, who we didn't have a chance to work with this fall, but I think she will step in and get a lot of playing time this year. We have a freshman, Meggan Matson, who we didn't anticipate having to throw as many games this year as she probably will because of Niki Zenger transferring. She has a lot of talent, but just needs some development. She will throw some games and we'll try to bring her along as the season progresses."

## OUTFIELD

**Graf:** "In left field starting will be Myssi Calkins who is a returning All-American for us. Myssi has exceptional speed and was our second-leading base stealer last year. Her offense has improved as she's gotten stronger physically in the weight room. She's a bigger threat now that she can hit away and not just slap. Backing her up will probably be Windy Taff some and Misty Molin who will rotate in out there as well."

Calkins had the best season of her career in 1996. The three-year starter batted .358 with 69 hits and 21 RBI. She ranked second on the team with 54 steals and 48 runs scored. Calkins' play did not go unnoticed. In addition to second team All-American honors, Calkins was chosen first team All Southeast Region, All-ACC and to the Tar Heel Invitational all-tournament team.



#9 Kristy Hull



**Graf:** "Dana Bailey will move over to centerfield. Last year she shared time in right field. She hadn't played much outfield before because she was a high school shortstop, but she's really looking very good in center. She's got a very strong arm and I think she's going to make an impact quicker than we thought. She's gaining confidence and once again has to learn a new position. As a talented athlete, I think she can step up and do the job for us. In right field, we've got Kristy Hull as a starter. She'll do that when she's not catching. Backing her up will be Misty Molin and Windy Taff."

## THE SCHEDULE

**Graf:** "It's once again, a really tough schedule. We are going back out to Arizona State and playing some top teams out there. Then we are also going to go to the Leadoff Classic again where we'll play some West Coast programs. Then we will jump into the South Florida Tournament, our tournament, we'll have North Carolina's tournament and the ACC Tournament. There will be some new rivals in Auburn, Alabama and Florida as we begin playing some SEC schools. That's going to be an exciting chapter as we start developing some new rivalries."

Florida State, along with the four other ACC schools that sponsor softball, will once again join with South Florida and UNC-Charlotte to form the Southern Atlantic Alliance Conference. The schools will play a round-robin schedule throughout the season and the team with the best record will receive an automatic bid to regionals. As in 1996, there will be an Atlantic Coast Conference tournament to cap off conference play.



## 1997 FLORIDA STATE SOFTBALL FACTS

### FSU QUICK FACTS

Location	Tallahassee, FL
Enrollment	30,200
Founded	1857
Colors	Garnet & Gold
Nickname	Lady Seminoles
President	Sandy D'Alemberte
Conference	Atlantic Coast (NCAA Div. I)

### ATHLETIC ADMINISTRATION

Athletic Director	Dave Hart, Jr.
Associate Athletic Director	Kim Record
AD's Phone	904/644-1079

### SPORTS INFORMATION STAFF

SID	Rob Wilson
Asst. SID/Softball Contact	Tina Thomas
SID Address	PO Box 2195, Tallahassee, FL, 32316
SID Phone	904/644-1065
SID FAX	904/644-3820
Thomas' Home Phone	904/514-3351
Press Box Phone	904/222-8086
ACC Faxback	910-854-5859, release - 32550, statistics - 32351, schedule/roster - 32554

### SOFTBALL STAFF

Head Coach	Dr. JoAnne Graf (FSU, '75)
Career and FSU Record	868-220-4
Season at FSU	Entering 19th
Assistant Coaches	Michelle Bolster (Michigan '89); Chandelle Schulte (Eastern Michigan '91)
SB Office Phone	904/644-2386
Trainer	Robin Gibson
Equipment Manager	Melissa Dawson

### 1996 RESULTS/1997 OUTLOOK

Record	51-21
ACC Record	5-3/2nd
ACC Tournament	3-0/1st
Postseason	lost to Arizona in regionals (placed 2nd at south regional)
Final National Ranking	T9th
NCAA Regional Appearances	11 (1986-96)
World Series Appearances	5 (1987, 1990, 1991, 1992, 1993)
Letterwinners Returning/Lost	12/4
Starters Returning/Lost	7/2
Home Field/Capacity	Lady Seminole Field/1500

### TOP RETURNING PLAYERS

Myssi Calkins	Sr., LF, .358, 69 hits, 21 RBI, 54 steals 2nd team All-American • 1st team All-Southeast Region ACC All-Conference
Kristy Hull	Jr., C/OF, .337, 70 hits, 45 RBI 2nd team All-Southeast Region ACC All-Tournament Team
Kristy Fuentes	Sr., P, 9-8, 1.81 ERA, 72 SO



# DR. JOANNE GRAF

FLORIDA STATE '75 868-220-4  
19TH SEASON  
head coach



If you were to look up the word success in the dictionary, Florida State's Dr. JoAnne Graf's name may just be part of the definition. Because after 18 years at the helm of the Florida State softball program, Graf and the Lady Seminoles have enjoyed plenty of it. Over the years, Graf has maintained the philosophy that hard work and dedication produce positive results. And because of this attitude, there are not many things that Graf has not accomplished in her coaching career.

Graf has reached many milestones in her career. On April 7, 1995, the Lady Seminoles handed Graf her 800th career victory as the Tribe defeated North Carolina by a score of 15-0, making her just the second coach in NCAA Division I softball history to accomplish such a feat. In 1996, Graf's 850th victory came in a 4-0 win over Florida A&M on April 1st.

With 868 career victories, Graf ranks second all-time by victories among Division I softball coaches. Her 649-167-4 (.799) record in fast-pitch competition only, ranks her third by percentage and by victories among all Division I active softball coaches. But the accolades don't stop there. Graf has twice been named the ACC Coach of the Year after leading the Lady Seminoles to consecutive conference titles in 1992 and 1993. In 1995, she was selected the ACC/Metro Conference Coach of the Year after guiding Florida State to a 9-1



league record and an automatic bid to NCAA regional play. She has led FSU to 10 seasons of 50 wins or more, including two seasons when the Lady 'Noles recorded more than 60 victories.

Under Coach Graf's direction, Florida State has been to the NCAA College World Series in Oklahoma City five times in the past 10 years. And in 13 years of fast-pitch competition, Graf has directed the Lady Seminoles to 11 consecutive regional tournament appearances. Florida State has also finished among the nation's top 13 teams the past 11 seasons, with its highest ranking coming in 1990 when the Lady Seminoles placed third at the College World Series. But the success didn't begin there. In her first

five years at Florida State, Graf accumulated 219 wins playing the best slow-pitch competition in the nation and claimed two national titles, establishing a solid basis to build upon.

Graf, who was voted the South Region Coach-of-the-Year

**The softball careers of many former Lady Seminoles and FSU assistant coaches did not end once they moved on from the friendly confines of Lady Seminole Field in Tallahassee. Here's a look at some FSU alumni and former assistant coaches who are currently serving in the softball coaching field.**

- |   |  |
|---|--|
| Rebecca Aase (player, 1990-93)                        | Assistant Coach, Virginia Tech                 |
| Louie Berndt (asst. coach, 1989)                      | Head Coach, Marshall University                |
| Connie Clark (asst. coach, 1990-95)                   | Head Coach, University of Texas                |
| Tina Kyler Deese (player, 1984-85, asst. coach, 1986) | Head Coach, Auburn University                  |
| Jo Evans (asst. coach, 1984)                          | Head Coach, Texas A&M                          |
| Becky Harrison (player, 1988-91)                      | Head Coach, Samford University                 |
| Kelley Kirkland (asst. coach, 1992-93)                | Head Coach, Georgia Southern                   |
| Marla Looper (player, 1993-94)                        | Assistant Coach, University of Kansas          |
| Susan Painter (player, 1981-1984)                     | Head Coach, Gulf Coast Community College       |
| Renee Espinoza (player, 1992-1996)                    | Assistant Coach, Tallahassee Community College |



in 1986, has seen 49 of her players selected to NCAA All-South Region teams, including four players in 1996. Her coaching in fast pitch competition has produced 10 All-Americans, including three first team selections in centerfielder Shama Wilson (1996), second baseman Lisa Davidson (1993) and shortstop Tiffany Daniels (1987).

A 1975 graduate of Florida State, Graf returned to her alma mater after two years at the University of North Carolina-Greensboro where she earned her master's degree in physical education. Graf also worked in the athletic department at UNC-Greensboro as head coach for the university's men's and women's swim teams while also serving as assistant softball coach.

Graf, who serves as director of the FSU softball camp each summer, is a former president of the Florida Collegiate Athletic Association. She has also served as a member of the NCAA Softball Committee, chaired the NCAA Softball Advisory Committee for the South Region, and the NSCA All-American Committee.

In 1992, Graf added "Dr." to her name after completing her doctorate degree in athletic administration at FSU.

### LADY SEMINOLE SOFTBALL UNDER DR. JOANNE GRAF

1979	26-15	.634
1980	37-10	.787
1981	54-7	.882
1982	56-10	.848
1983	46-11	.807
1984	41-5-2	.875
1985	50-12-2	.797
1986	42-7	.857
1987	50-14	.781
1988	44-14	.759
1989	39-14	.736
1990	47-16	.750
1991	62-12	.838
1992	63-9	.875
1993	52-9	.852
1994	50-19	.724
1995	58-15	.795
1996	51-21	.708
Career	868-220-4	.797

### DIVISION I SOFTBALL

#### TOP 10 MOST WINNINGEST COACHES

(By Victories) All-Time

COACH, TEAM	YRS	RECORD
1. Judi Garman, Cal St. Fullerton	25	1027-332-4
2. <b>DR. JOANNE GRAF, FLORIDA STATE</b>	<b>18</b>	<b>868-220-4</b>
3. Bill Galloway, Louisiana Tech	18	770-278-0
4. Bob Brock, Texas A&M	17	731-301-0
5. Mike Candrea, Arizona	16	730-200-0
6. Sandy Fischer, Oklahoma State	18	717-264-0
7. Margie Wright, Fresno State	17	715-255-0
8. Liz Miller, Notre Dame	21	706-210-0
9. Gayle Blevins, Iowa	17	668-329-4
10. Carol Spanks, UNLV	17	662-347-5

### DIVISION I SOFTBALL

#### TOP 10 MOST WINNINGEST COACHES

(By Percentage) Includes NCAA competition only

COACH, TEAM	YRS	RECORD	PCT
1. Sharron Backus, UCLA	21	847-167-3	.834
2. Mike Candrea, Arizona	11	566-134-0	.809
3. <b>DR. JOANNE GRAF, FLORIDA STATE</b>	<b>13</b>	<b>649-167-4</b>	<b>.794</b>
4. Yvette Girouard, Southwestern La.	16	578-191-0	.752
5. Judi Garman, Cal St. Fullerton	17	816-290-4	.737
6. Margie Wright, Fresno State	17	713-255-3	.736
7. Mike McGovern, Ill.-Chicago	7	309-111-1	.735
8. Sandy Fischer, Oklahoma State	18	689-248-3	.735
9. Bill Galloway, Louisiana Tech	18	726-267-2	.731
10. Cathy Compton, LSU	9	312-117-4	.725





ASSISTANT COACH

# MICHELLE BOLSTER

UNIVERSITY OF MICHIGAN '89 • SECOND YEAR AT FSU



In her second season as an assistant coach at Florida State, Michelle Bolster brings the Lady Seminoles a unique perspective on the sport of softball. With her experience as both a player and a coach, Bolster offers insight at all levels of competition.

Bolster's work experience makes her an asset to the Lady Seminoles coaching staff. After receiving a degree in Physical Education at the University of Michigan in 1989, Bolster served as a graduate assistant coach for the Wolverine softball team where she provided pitching instruction, viewed recruiting tapes and organized practices.

Just prior to coming to Florida State, Bolster worked as the pitching and hitting instructor at the Tri-State Academy in Avondale, Pa., where she specialized in individual pitching and hitting instruction as well as coordinating and directing summer camps and clinics. Prior to working at Tri-State, Bolster was an

assistant coach at Bowling Green State University in Ohio from 1992-94.

Bolster coached at the high school level in 1990-91 at Milan High School in Milan, Mich. Serving as the school's head coach, Bolster implemented the entire program from on the field instruction to fundraising for the team.



Bolster has had a decorated playing career as well. While at Michigan, Bolster was named the 1988 Big Ten Player of the Year and earned first team all-region honors. Following her collegiate career, she played for many nationally ranked fast-pitch teams including the Raybestos Brakettes. Bolster has garnered such awards as ASA All-American honors and has also participated in three Olympic Sports Festivals.

At Florida State, Bolster responsibilities include recruiting and working with the Lady Seminole pitching staff.

ASSISTANT COACH

# CHANDELLE SCHULTE

EASTERN MICHIGAN UNIVERSITY '91 • FIRST YEAR AT FSU



The success of the Florida State University softball program was definitely a draw for first year assistant coach Chandelle Schulte, because success is what she's used to. After three seasons at the helm of the Concordia College softball program and three trips to the National Christian College Athletic Association's College World Series, including a second-place finish in 1995, Schulte's knowledge and postseason experience will be an asset to the Lady Seminoles.

As head coach at Concordia in Ann Arbor, Mich., Schulte's responsibilities went way beyond coaching. Her duties also included recruiting, scheduling, team travel and fundraising — just to name a few. In 1996, she was honored as the Wolverine Hoosier Athletic Conference Coach of the Year

after leading the squad to the league's co-championship. Schulte's coaching produced four All-Americans and over the three-year period, her teams broke every softball record in the school's history.

While coaching at Concordia, Schulte worked as the Director of Residential Life at the school and also served as an intern in the compliance office at the University of Michigan. The East Pointe, Mich., native received a bachelor's degree in English Literature and Language from Eastern Michigan in May of 1991 and a master's degree in Sports Management from Wayne State in June.

At Florida State, Schulte will work with the outfielders as well as serve as co-coordinator of the JoAnne Graf softball camps.



**“Wendy** is a mainstay behind the plate which is critical in having a successful season. She does a great job with the pitchers and is a team-leader because of her intensity. She doesn’t settle for less and that drives the rest of us.”

Will share time at catcher with Kristy Hull... a team player... vocal player and team motivator... possesses power at the plate... plays with confidence and will provide stability to a young pitching staff... **1996:** Had solid junior campaign... handled the catching duties in 60 games... drove in 16 runs off of 33 hits... with five doubles, two triples and a home run, was one of just two players to hit for the cycle... now ranks 3rd in FSU career records with 24 doubles... **1995:** Started all 73 games behind the plate... ranked second on the team with 10 doubles... a clutch hitter with 37 RBI's off 60 hits... earned all-tournament team honors at both the Gladstone's/USF Softball Classic and the Atlantic Coast Conference Tournament... garnered All-ACC honors... put together a seven-game hitting streak... had a team-high 22 walks...

**1994:** Saw significant action as a freshman, stepping in at the catcher position and playing in 63 games... drove in three runs in both the UNC-Charlotte and South Florida games, setting a personal single game season high... was among the team leaders with nine doubles... **High School:** Played softball, basketball and golf at Arvada West High in Colorado... one of the most

highly recruited players in the country in 1993... was the first athlete (male or female) to letter in three sports all four years... selected as the outstanding female athlete... in softball, named the 6A Player of the Year after junior and senior year... tabbed to the All-State squad her final two years... named to the All-Conference team three consecutive years in basketball and all four years in golf... inducted into the Hall of Fame for Academic, Athletic and Citizenship accomplishments... named the Outstanding Senior Girl... voted “Most Promising” Sportswoman of the Year in 1991 in Colorado... **Personal:** Born December 25, 1974... Was named to the 1995-96 ACC Academic Honor Roll... tutored Special Education students in spare time in high school... majoring in physical education.



Senior CATCHER  
ARVADA WEST HS

ARVADA, CO.

WENDY BRAYE

#33

wendy

AT THE PLATE

	Avg.	G	AB	R	H	RBI	2B	3B	HR	BB	SO	SB-SBA
1994	.228	63	171	9	39	17	9	3	0	8	24	0-0
1995	.305	73	197	17	60	37	10	4	1	22	17	1-1
1996	.217	60	152	9	33	16	5	2	1	7	23	0-0
Totals	.254	196	520	35	132	70	24	9	2	37	64	1-1

BRAYE



**"Myssi** has a great smile, a great personality and is one of the very personable people on our team. She's an outstanding individual and a team-leader without a doubt."



LITTLETON, CO

PONDEROSA H.S.

**MYSSI CALKINS**

senior LEFT FIELD

Returning All-American who is coming off of her best season of her career... will handle the starting job in left field for fourth straight year... possesses great speed... with 124 steals, is second only to former teammate Shama Wilson among FSU career steals leaders... team's top returning hitter... bunts and slaps well from the left side... has good range and is solid defensively...can ignite a lot of things for the team at the plate... has gotten physically stronger... **1996:** Had a glittering junior campaign... one of just four players to start all 72 games... earned second team Louisville Slugger/NSCA All-American honors... was a first team All-Southeast Region selection... batted a career-high .358... received first team All-Atlantic Coast Conference honors... was second on the team with 48 runs scored and third with 69 hits... was named to the Tar Heel Invitational all-tournament team... reached the century mark in career stolen bases with 54 steals on the year... recorded four doubles and two triples, her first extra-base hits of her Seminole career... put together a hitting streak of eight games during the season... **1995:** Finished the season strong hitting safely in 17 of the last 19 games... ranked

second on the team with 26 stolen bases... garnered ACC Player of the Week honors for the week of April 16 after batting .545... chosen to the ACC Championship all-tournament team... put together a hitting streak of 12 consecutive games... improved her batting average from .254 to .329 and tallied eight more hits from the previous season... **1994:** Greatly contributed in her first season in the garnet and gold, seeing action in all but two games... established a new FSU single-season record for steals with 44 thefts, shattering the previous mark of 35 set in 1992... led the team with 21 sacrifice hits... **High**

**School:** Garnered All-State honors in softball, soccer and basketball as a senior at Ponderosa High School in Parker, CO... chosen to the All-League team in softball and soccer after junior and senior years... played on the final four state softball team in Colorado... an All-League selection in basketball as a senior... a member of the Coaches All-State soccer squad two consecutive years... earned the All-Academic award... **Personal:** Was named to the 1995-96 ACC Academic Honor Roll... acted as a peer counselor in high school... has chosen to major in child development... born July 12, 1975.



myssi

**AT THE PLATE**

	Avg.	G	AB	R	H	RBI	2B	3B	HR	BB	SO	SB-SBA
1994	.254	67	185	34	47	10	0	0	0	7	28	44-48
1995	.329	67	167	29	55	12	0	0	0	8	22	26-33
1996	.358	72	193	48	69	21	4	2	0	18	12	54-57
Totals	.314	206	545	111	171	43	4	2	0	33	62	124-138

#12

CALKINS



“As a senior, **Kristy** is poised to have her best season at Florida State. I think she’s ready for the challenge of being the go-to and number one pitcher for us.”



Entering her fourth season at FSU... the only returning pitcher from last year’s team... will provide much needed leadership and consistency to this year’s pitching staff... **1996:** Made just 20 appearances, but earned nine wins... recorded staff’s only save... held opponents to a .218 batting average... was named to the all-tournament team at the Tar Heel Invitational after recording two victories and leading the squad to its second consecutive tournament title... also drove in two runs off of two hits and scored a run at the Tar Heel Invite... **1995:** Recorded 20 wins for the Tribe including pitching the Lady Seminoles to victory in the Atlantic Coast Conference Tournament championship game... had three, one-hit games... recorded five shutouts... garnered all-ACC honors... was chosen to the ACC Championship’s all-tournament team... at the plate, tallied 10 more hits than the previous season, including three doubles... **1994:** Was a pleasant surprise in the Seminole rotation in her first season... posted an 11-2 record... recorded five shutouts... threw a no-hitter against Mercer... drove in seven runs —the most among the FSU pitchers... **High School:** Played softball all four years at St. Paul High School in Whittier, CA... voted the All-Angeles League first team pitcher... earned All-State first team honors... a member of the Honor Roll... **Personal:** Is a criminology major... born February 10, 1975.



**SENIOR PITCHER**  
 ST. PAUL H.S. WHITTIER, CA

**KRISTY FUENTES**

FUENTES

#10

kristy

**AT THE PLATE**

	Avg.	G	AB	R	H	RBI	2B	3B	HR	BB	SO	SB-SBA
1994	.143	25	28	2	4	7	0	1	1	4	5	0-0
1995	.226	42	62	7	14	5	3	0	0	6	8	0-0
1996	.194	17	36	1	7	2	0	0	0	1	9	0-0
Totals	.198	84	126	10	25	14	3	1	1	11	22	0-0

**ON THE MOUND**

	W-L	SV	ERA	APP	GS	CG	IP	R	ER	H	BB	SO
1994	11-2	0	1.55	22	17	9	103.2	34	23	74	47	79
1995	20-4	1	1.99	33	24	15	179.2	65	51	151	71	110
1996	9-8	1	1.81	20	17	13	104.2	36	27	86	46	72
Totals	40-14	2	1.82	75	58	37	388.1	135	101	311	164	261



**"Windy"** is the vocal leader of infield and is one of the most intense players we have at Florida State. She has the ability to bring people up when they're down."



The vocal leader of the infield... begins her third straight season as the starter at second base... a talented athlete who has shown consistent improvement both offensively and defensively throughout her career... **1996:** Started all but one game and recorded 20 RBI off of 37 hits... earned Atlantic Coast Conference all-tournament team honors after batting .500 with a team-leading four hits... also scored two runs and drove in another at ACC Tourney... was the only veteran in the young Seminole infield...

**1995:** Fit in nicely as the only new-comer to a veteran infield... was FSU's number two hitter in the line up the entire season... missed just two games... was the team-leader with 16 sacrifices... more than half of her hits produced runs as she recorded 27 RBI's off 52 hits...

**1994:** A reserve who played 14 games at catcher and 10 games at second base... had two hits against Virginia in the ACC Tournament—a performance allowing her to garner ACC All-Tournament honors...

**High School:** The starting catcher for three years at Mountain View

High School in Mesa, AZ... earned All-East Valley honors three consecutive years... the MVP of the squad in 1992 and 93... acted as team captain during junior and senior years... a four-time softball scholar athlete... also played basketball and volleyball... listed on the Honor Roll all four years...

**Personal:** Worked as a DARE counselor... majoring in marketing and multi-national business... born July 2, 1975.



windy

#5

**AT THE PLATE**

	Avg.	G	AB	R	H	RBI	2B	3B	HR	BB	SO	SB-SBA
1994	.250	26	48	4	12	6	0	0	0	6	7	1-1
1995	.248	71	210	25	52	27	5	2	0	13	19	4-4
1996	.218	71	170	26	37	20	0	1	0	16	14	5-5
Totals	.236	168	428	55	101	53	5	3	0	35	40	10-10

MESA, AZ

MOUNTAIN VIEW HS

senior SECOND BASE

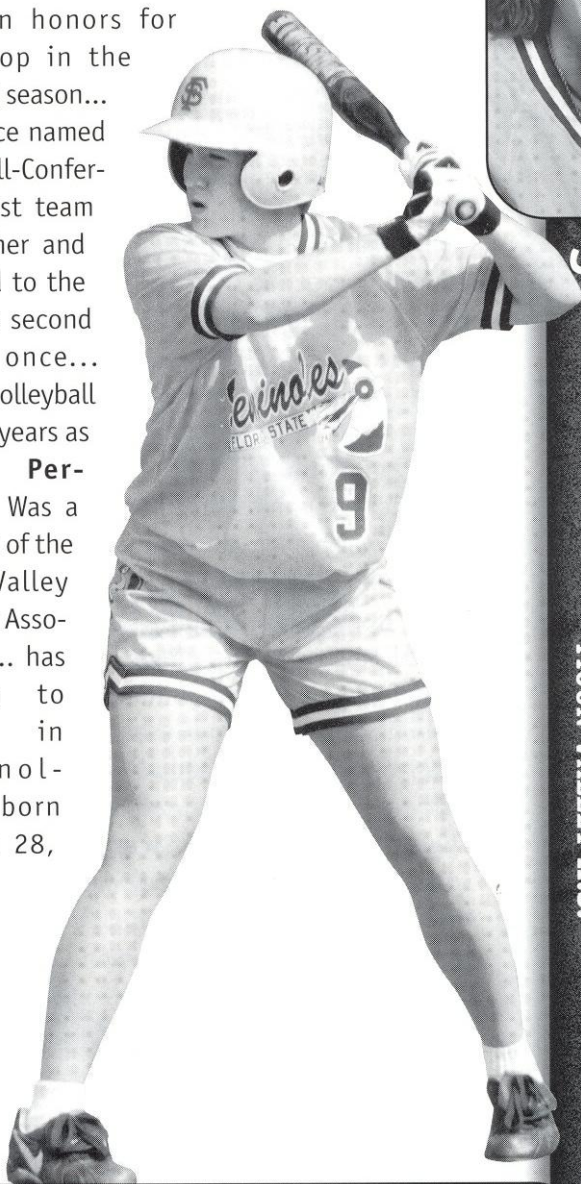
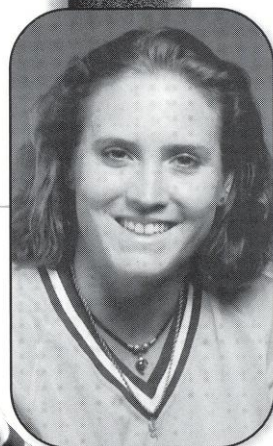
WINDY WELTZ



**"Kristy** is a key player for us in many ways. She's a good utility player who wants to hit in pressure situations. She's a pressure-type player and always comes through."

A versatile athlete... will play either in right field or behind the plate... intense player... makes things happen in a game... power-hitter... has started in every game of her two-year career... ranks second in all-time career batting with a .357 hitting percentage... **1996:** Was one of just four players to start all 72 games... shared her time between right field and catcher... earned second team All-Southeast Region honors... was named to the Atlantic Coast Conference all-tournament team... was pegged the Southern Atlantic Alliance Player of the Week for April 7 after batting .692 in leading FSU to a 5-0 record for the week... was selected to the Lady Seminole Invitational's all-tournament team... twice had hitting streaks of seven games during the season... led the team with 45 rbi's, just four shy of tying the FSU single-season record... was perfect in the field with no errors in 220 chances... was second on the team with 70 hits... led the team with 20 walks and 20 sacrifices... ranked third on the team with 16 steals... **1995:** Chosen the Atlantic Coast Conference Rookie of the Year... earned All-South Region honors... earned all-tournament team honors at the Lady Seminole Invitational and the ACC Championships... along with teammate Cindy Lawton, set the FSU single-season record for hits with a team-leading 87... was one of only four players and the only freshman to play in all 73 games... ranked second on the team in batting average at .375 and in runs scored with 44... put together two hitting streaks of 12 and 9 games during the season... struck out just five times in 232 at

bats... displayed speed on the basepaths with 11 stolen bases... **High School:** Played both shortstop and catcher at Moon Valley High School in Phoenix, AZ ... was the team's Most Valuable Player as a senior ... received All-Conference 5A Honorable Mention honors for shortstop in the 1990-91 season... was twice named to the All-Conference first team at catcher and selected to the league's second team once... played volleyball for four years as well... **Personal:** Was a member of the Moon Valley Athletic Association... has chosen to major in criminology... born August 28, 1976.



JUNIOR CATCHER/RIGHT FIELD  
MOON VALLEY H.S. PHOENIX, AZ

KRISTY HULL

#9

kristy

AT THE PLATE

	Avg.	G	AB	R	H	RBI	2B	3B	HR	BB	SO	SB-SBA
1995	.375	73	232	44	87	32	9	2	0	13	5	11-13
1996	.337	72	208	31	70	45	4	4	0	20	11	16-17
Totals	.357	145	440	75	157	77	13	6	0	33	16	27-30



**"Misty"** is another pretty versatile player. As she has improved her self-confidence, she has become a better player because she has a lot of natural ability."



Has experience in the outfield and at first base... hits well from the left side... reliable player... should share time at first base... came on strong at the end of last season... possesses a great deal of natural ability... **1996:** Played in 50 games... recorded a hitting streak of six games during the season... proved to be a valuable pinch-hitter and drove in 13 runs... **1995:** Saw a great deal of action in her freshman campaign as designated hitter... pegged an all-ACC selection... garnered all-tournament team honors at the Lady Seminole Invitational and Tar Heel Invitational... recorded five stolen bases... **High School:** Coming out of Argonaut High School, she had been appointed to the All-League team her last three years in the program... was named All-State and was on the All-Star Optimist team her senior season... named Most Valuable Player of the team during her junior campaign... was a four-year letterwinner in basketball and twice earned Most Valuable Player honors... also played soccer one season... made Honor Roll twice... **Personal:** Is a criminology and psychology major... born July 18, 1975.



misty

#21

**AT THE PLATE**

	Avg.	G	AB	R	H	RBI	2B	3B	HR	BB	SO	SB-SBA
1995	.301	56	136	24	41	19	5	0	0	12	10	5-6
1996	.259	50	116	11	30	13	3	2	0	8	11	2-3
Totals	.282	106	252	35	71	32	8	2	0	20	21	7-9

**MISTY MOLIN**

**Junior** FIRST BASE/OUTFIELD  
ARGONAUT H.S.

JACKSON, CA

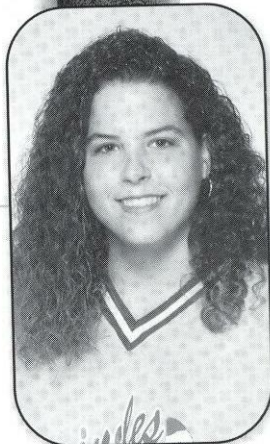


**"Stephanie** is a solid backup in the infield and a good strong hitter. This redshirt year will help her learn more about the pitchers and help her to contribute more offensively."

## STEPHANIE FERLITA

JUNIOR • UTILITY • PLANT H.S. • TAMPA, FL

Will redshirt this season after undergoing arthroscopic surgery during the fall... **1996:** Made a solid contribution in limited action... played in 24 games and batted .257... drove in five runs off of just nine hits and also scored six runs... **1995:** Saw limited action playing behind veteran Cindy Lawton at third base... played in 27 games, mostly at designated player... made the most of every at bat, driving in nine runs off eight hits... displayed power at the plate with three triples... **High School:** Hails from H.B. Plant High School in Tampa where she was selected to the Western Conference's first team... was named Most Valuable Player her senior year... also claimed first team All-County honors... chosen as an Army Reserve Scholar Athlete... also played basketball for two years... **Personal:** Is majoring in business... was born December 28, 1976.



### STEPHANIE AT THE PLATE

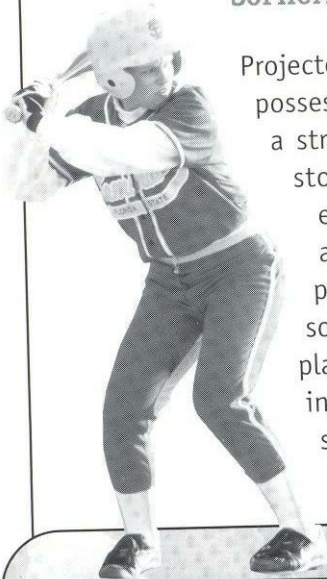
	Avg.	G	AB	R	H	RBI	2B	3B	HR	BB	SO	SB-SBA
1995	.222	27	36	3	8	9	3	1	0	3	1	0-0
1996	.257	24	35	6	9	5	1	0	0	6	3	0-0
Totals	.239	51	71	9	17	14	4	1	0	9	4	0-0

#27

## DANA BAILEY

SOPHOMORE • CENTERFIELD • PARKWAY H.S. • BOSSIER CITY, LA

Projected starter in centerfield... possesses great speed and has a strong arm... played shortstop in high school... talented athlete who has the ability to play at several positions... **1996:** Was a solid contributor as a rookie playing in 52 games including 37 starts in right field... showed some power at the plate as six of her 23 hits were doubles... drove in nine runs and walked 10 times... **High School:** Was a three-sport athlete at Parkway High School ...received All-District MVP honors for four years in high school...was named to the Louisiana All Stars as a senior.. received all-City accolades as a freshman, sophomore and senior...was pegged an All-State Honorable Mention as a freshman...was a member of the Honor Roll, National Honor Society and Who's Who at Parkway High School... **Personal:** Is undecided on a major... born February 16, 1977.



### DANA AT THE PLATE

	Avg.	G	AB	R	H	RBI	2B	3B	HR	BB	SO	SB-SBA
1996	.221	52	104	15	23	9	6	0	0	10	21	0-1

#6

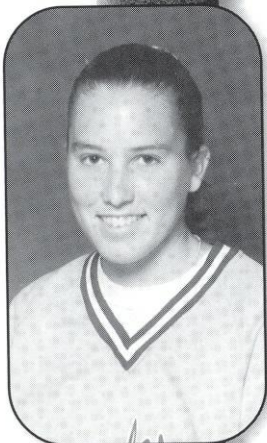
"We are asking **Dana** to move over and replace Shama (Wilson) in centerfield and the exciting part about that is that she's up for the challenge. Dana will be - Dana Bailey and will be a great player in her own right."



"In the fall, **Jesse** showed great improvement and is ready to step it up and become a solid Division I shortstop. She's a very quiet player but is also very hardworking and demanding on herself."

## JESSE MCGREGOR

SOPHOMORE • SHORTSTOP • ST. JOHN'S H.S. • HOUSTON, TX



Powerful hitter... will assume the starting duties at shortstop for the second straight season... showed signs of improvement defensively this fall... **1996:** Stepped in at shortstop and was the only rookie to start all 72 games... led the team with nine doubles... drove in 33 runs - second best on the team... also ranked second in at bats with 214... recorded a hitting streak of seven games during the season... was fourth on the team and led all newcomers with a .280 batting average and 60 hits... **High School:** Lettered in softball, basketball and volleyball at St. John's High School... achieved all-conference honors four years for softball...was

selected the team's Most Valuable Player as a sophomore and junior... was also pegged an all-conference performer for volleyball and basketball in junior and senior seasons... pegged school's Best Female Athlete all four years... **Personal:** Is a psychology major... named to the 1995-96 ACC Academic Honor Roll... born July 6, 1977.



### JESSE AT THE PLATE

	Avg.	G	AB	R	H	RBI	2B	3B	HR	BB	SO	SB-SBA
1996	.280	72	214	18	60	33	9	1	0	10	10	6-6

#7

## TAMI POST

SOPHOMORE • THIRD BASE • DEL CAMPO H.S. • CITRUS HEIGHTS, CA

20



One of the best players on the team defensively... will once again be the starter at third base - a position new to her last year as a rookie... produces well under pressure... possesses quickest release on the team... **1996:** Was projected to serve as a backup at second base, but developed into a solid player at third base after playing in 70 games at the position... ranked second among all newcomers with 49 hits and a .244 batting average... showed strength at the plate with four doubles and two triples... drove in 19 runs... **High School:** Was

a two sport athlete at Del Campo High School... earned All-League Softball honors from 1991-95... was a three-year All-Metro softball selection... garnered all-league honors in basketball from 1993-95... **Personal:** Is majoring in criminology... born May 26, 1977.



### TAMI AT THE PLATE

	Avg.	G	AB	R	H	RBI	2B	3B	HR	BB	SO	SB-SBA
1996	.244	70	201	19	49	19	4	2	0	15	21	1-1

#25

"**Tami** is one of the most solid players in the infield. She's very quiet, but always gets the job done. She handles pressure well, adjusts to any situation and is very, very coachable."



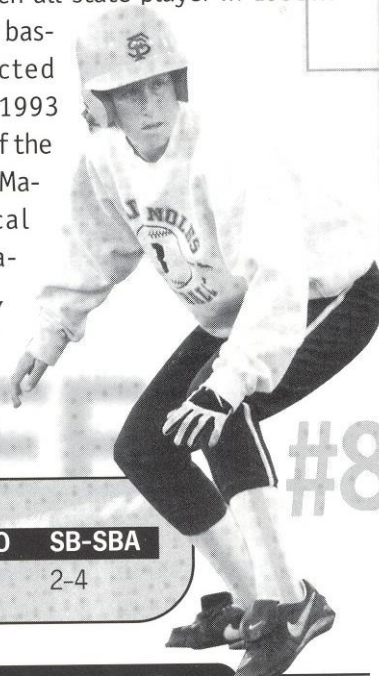
"Windy is a real contributor in a lot of ways that people don't recognize. She's a very important part of our team and is a team-leader as far as camaraderie and keeping people having fun."

## WINDY TAFF

SENIOR • OUTFIELD • TALLAHASSEE CC • CRAWFORDVILLE, FL

Has both fastpitch and slowpitch softball experience... will be one of the top players off the bench... will provide solid backup to veteran Myssi Calkins in left field... **1996:** Played in 35 games in first season as a Seminole... was used primarily as a base runner... crossed the plate 13 times... drove in one run... **Tallahassee Community College:** Was a two-year letterwinner for the Eagles... played right field... earned Panhandle All-Conference second team honors last season in TCC's first season of fastpitch competition... was a member of the 1994 Junior College National Championship team... **High School:** Garnered Big Bend Player of the Year honors for soft-

ball and volleyball while at Wakulla High... was pegged a slowpitch all-state player in 1993... also competed in basketball... selected Wakulla High's 1993 Scholar-Athlete of the Year... **Personal:** Major is physical education... father, Houston, played baseball at Florida State... born July 16, 1975.



### WINDY AT THE PLATE

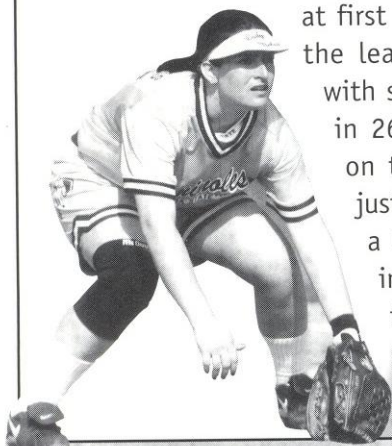
	Avg.	G	AB	R	H	RBI	2B	3B	HR	BB	SO	SB-SBA
1996	.000	35-0	5	13	0	1	0	0	0	4	1	2-4

## CORRIE WILLIAMS

SOPHOMORE • FIRST BASE • NORTH H.S. • BAKERSFIELD, CA

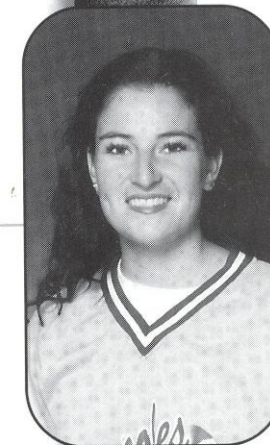
Solid athlete... returns as starter at first base... vocal leader... **1996:** Contributed immediately in freshman season, playing in 68 of 72 games at first base... was among the leaders on the team with six doubles... drove in 26 runs, fourth best on team... was one of just three players to hit a home run... led all infielders with a .974 fielding percentage... was third among the rook-

ies with 40 hits... **High School:** Was a two-sport athlete, playing softball and soccer for four years at North High School... garnered 1995 Louisville Slugger Second Team All-American honors... was a member of the All Western Regional and All-State first teams... was pegged the All Area MVP and softball team MVP... was a first team all-league selection for both softball and soccer... received the Sam Lynn Award, making her the Most Valuable Female Athlete at North... was also a first-team all-league and all-area selection for softball in 1994... an Honor Roll member... **Personal:** Undecided on major... born April 1, 1977.



### CORRIE AT THE PLATE

	Avg.	G	AB	R	H	RBI	2B	3B	HR	BB	SO	SB-SBA
1996	.206	68	194	11	40	26	6	0	1	9	33	2-2



"I think Corrie has gotten over the freshman adjustment period and has improved a great deal. She has become smarter as a ball player and is more focused."



"From last spring to this fall, **Rosalind** has improved more than any other player. She's willing to do whatever role we ask her to do. She has really worked hard and knows that she contributes to Florida State softball."

## ROSALIND CHOU

#20

SOPHOMORE • CATCHER/THIRD BASE • OCALA FOREST H.S. • OCALA, FL



Adds depth at both third base and catcher... second-year walk on... has shown vast improvement.... **1996:** Played in just six games with four at bats, but recorded a hit... **High School:** Was a four-year varsity letterwinner... was a first team all-county selection as a senior... pegged team's most athletic and best offensive player... was the recipient of the Silver Garland Award

Scholarship... earned most improved honors as a junior... also played basketball for three seasons... also excelled in the classroom... was a four-year honor roll member... was a two-year member of the county All-Star Academic Team... **Personal:** Is majoring in sociology... named to the 1995-96 ACC Academic Honor Roll... was born September 1, 1977.

### ROSALIND AT THE PLATE

	Avg.	G	AB	R	H	RBI	2B	3B	HR	BB	SO	SB-SBA
1996	.250	6	4	1	1	0	0	0	0	0	1	0-0

## TERESA EDENFIELD

#14

FRESHMAN • SHORTSTOP • MACLAY H.S. • MARIANNA, FL



An accomplished athlete... played both the shortstop and pitching positions in high school... expected to back up Jesse McGregor at shortstop... **High School:** Letterwinner in softball and volleyball... earned all-state honors in both sports in junior and senior seasons... played her senior season at Maclay after transferring from Marianna High School... earned team most valu-

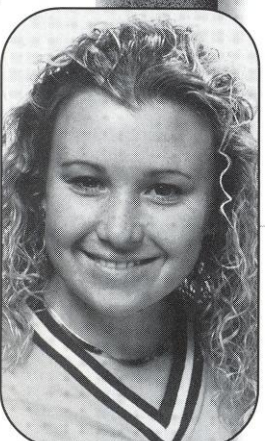
able player honors for her junior and senior years... recipient of the team's Best Offensive Player award her freshman and sophomore years... also voted Best Defensive Player as a sophomore... excelled in academics as well in garnering National Honor and Beta Society recognition... a consistent honor roll student throughout high school... **Personal:** Majoring in fashion merchandising... born April 4, 1978.

"**Teresa** will be learning a lot this year. She will be a solid backup infielder for us and will get a lot of playing time as we develop her not only for the present but for the future."

## SARAH KING

#19

JUNIOR • INFIELD • TALLAHASSEE C.C. • HUNTINGTON BEACH, CA



Transfer from Tallahassee Community College... will provide depth at second base... strong player defensively... played one season with current Seminole Windy Taff at TCC... **Tallahassee Community College:** Earned second team all-con-

ference honors while playing two seasons at second base for the Golden Eagles... was a member of the Dean's List in 1996... **Personal:** Is a criminology major... born March 30, 1976.

"**Sarah** has a good background coming from TCC where they have excellent coaching. She will be a very solid player for us and is a vocal, energetic person who will keep people on the upbeat."



## MEGGAN MATSON

FRESHMAN • PITCHER • PARKVIEW BAPTIST H.S. • BATON ROUGE, LA #18

Right-handed pitcher... will add depth to a young pitching staff... **High School:** Was a four-year letterwinner at Parkview Baptist... achieved all-state honors her junior year... was a first team all-district selection in sophomore, junior and senior years... earned team most valuable player honors as a senior... **Personal:** Major is undecided... born Sept. 19, 1978.

"We are expecting **Meggan** to continue to improve every year that she is at Florida State. She's a strong player who has an enormous amount of potential."

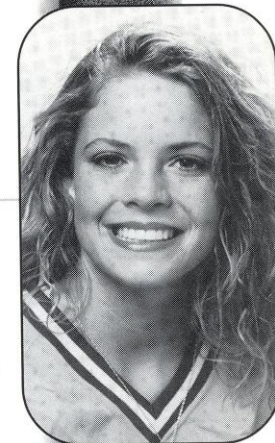


## STACY VENABLE

SOPHOMORE • PITCHER • NORTHEASTERN OKLAHOMA A&M JC • CHOCTAW, OK #22

Will be looked on to step in and contribute immediately... intense player who enjoys a challenge... **NE Oklahoma Junior College:** Earned Junior College All-America honors... played one season and was the team's starting pitcher... named an all-region, all-conference selection... **High School:** Was a three-sport athlete, playing softball, basketball and running track at Choctaw High... garnered all-city, all-region and all-conference softball honors as a junior and senior... was selected an all-state pitcher after leading her squad to the 5A championship in senior season... Dean's List and honor roll student... **Personal:** Is majoring in exercise physiology... celebrates a Nov. 29, 1976 birthday.

"We are expecting a lot of things from **Stacy** in the pitching role. She's a very intense player and is not afraid of any challenge. She wants the ball in tough situations and that's the kind of player we like on the mound for Florida State."

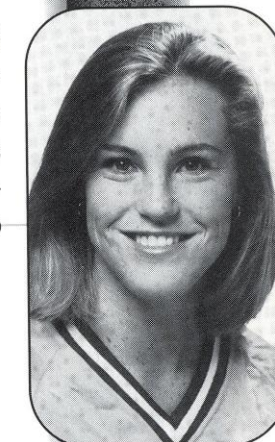


## BECKY WALLACE

FRESHMAN • INFIELD • BARRON COLLIER H.S. • NAPLES, FL #17

Will provide depth to the infield...should contribute off the bench...is solid fundamentally... **High School:** Was a two-sport athlete at Barron Collier High School, lettering four years in both softball and volleyball... named all-county in both sports all four years... tabbed a third team all-state choice in softball as a senior... was twice named the team's most valuable player in volleyball and once in softball... captained the volleyball squad in 1995... was the runner-up for athlete of the year honors in season season... solid student, earning high honors all four years with a 4.0 GPA... **Personal:** Major is elementary education... was named to the Dean's List in fall... born May 8, 1978.

"**Becky** is a real solid player with good fundamentals. She will learn the college game this year and we look for her to develop into a valuable player in the future."





# LADY SEMINOLE FIELD

The Florida State University softball team has played its games at the friendly confines of Lady Seminole Field since the 1984 season. The facility, which seats 1,500 including outfield seating, is equipped with a press box and concession stand. Lady Seminole Field has been the site of four NCAA softball regionals, including last season when Florida State hosted Arizona, South Florida and Troy State.



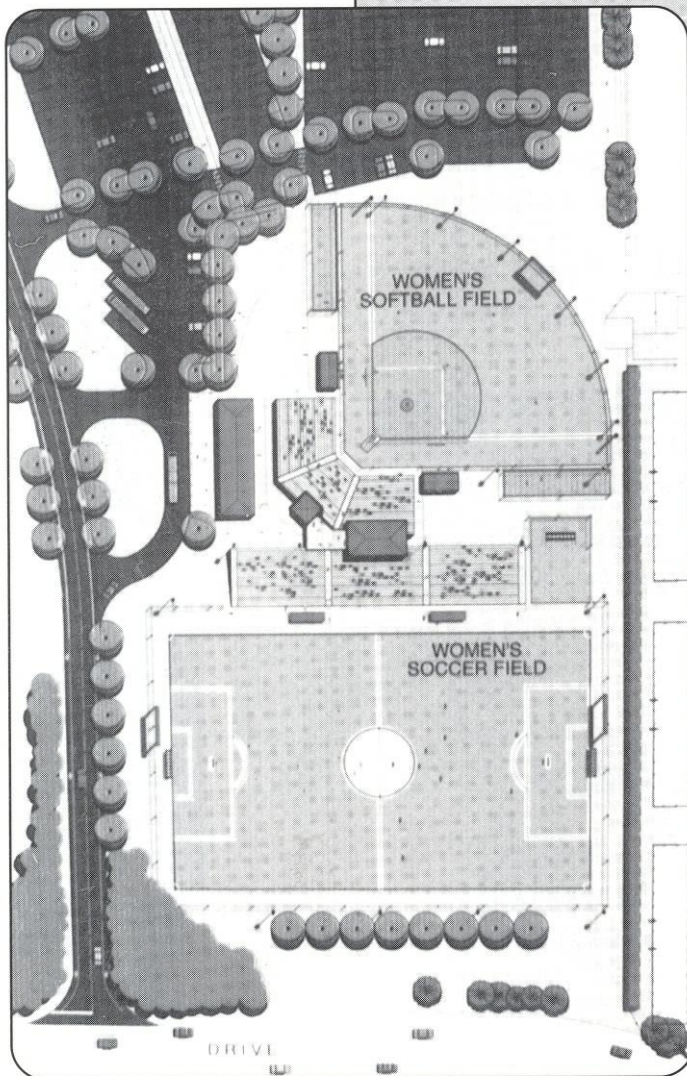
## LADY SEMINOLE FIELD QUICK FACTS

Capacity: 1,500

Location: Stadium Drive, south of Doak  
Campbell Stadium

First Season: 1984

Year Facility was completed: 1986



## The field of the future ..

Plans for the construction of a new first-class softball stadium are underway at Florida State. The architect firm of Gilchrist and Crowe, designers of Florida State's Leach Center, a state-of-the-art student recreation facility completed in 1991, will put its plans to work when construction begins this spring. The new stadium will be located in between Dick Howser Stadium, FSU's baseball field and Mike Long Track, on Chieftan Way. Florida State's new soccer stadium will also be located within this complex. Plans for the new facility include additional seating, a larger press box, concession stands and locker rooms.

Architects: Gilchrist and Crowe

Construction: begins Spring 1997

First Season: 1998 (projected)

Location: Chieftan Way