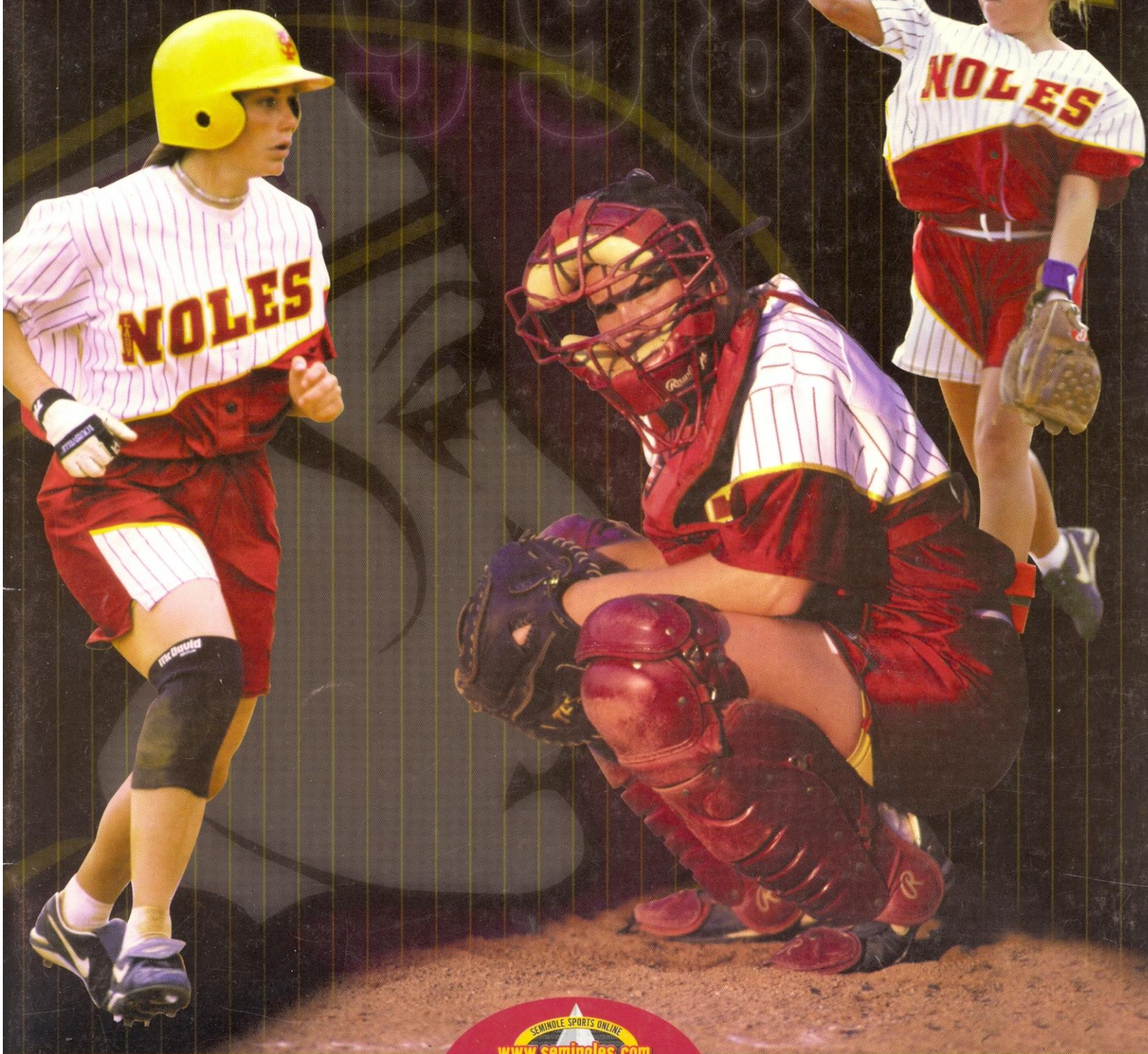


FLORIDA STATE UNIVERSITY

SOFTBALL

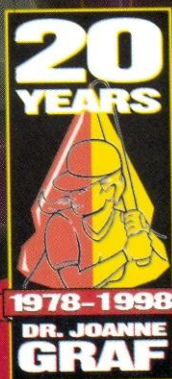
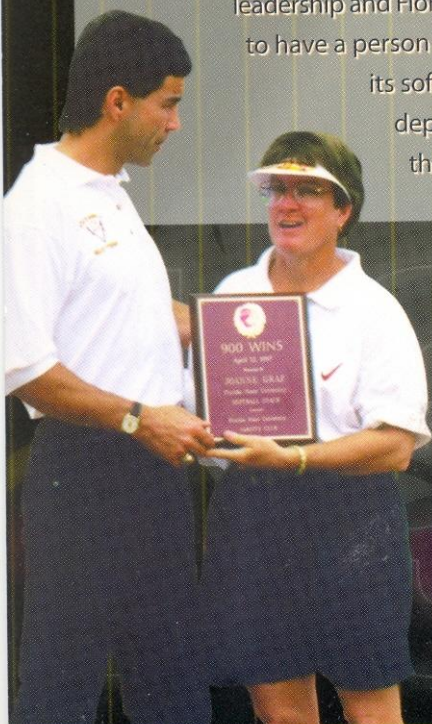


SEMINOLE SPORTS ONLINE
www.seminoles.com
OFFICIAL FSU SPORTS WEBSITE

DR. JOANNE GRAF

How many people can say that they were the second person in history to accomplish anything? Not many. But Florida State softball head coach Dr. JoAnne Graf could. That is, if she wanted to. But you'd never find Graf telling anyone that her 913 coaching victories makes her just the second softball coach in NCAA Division I history to accomplish such a feat. She seems to have forgotten the fact that she has led the Lady Seminoles to five World Series, 11 NCAA Regional appearances and owns two National Championships when Florida State played slowpitch softball. Even though she and the Lady Seminoles have practically owned every Atlantic Coast Conference title since the league adopted softball as a sport in 1992, you wouldn't know it from Graf's attitude. Because, perhaps Graf's most impressive accomplishment isn't in the form of a trophy or a plaque or a listing in the all-time records books. Rather it's in the form of something much more substantial. Graf exemplifies a great sense of pride, Seminole pride that is, laced with humility and loyalty.

She possesses qualities of commitment and leadership and Florida State has been fortunate to have a person of this caliber representing its softball program, athletic department and University for the past two decades.



media information

PLAYERS & COACHES INTERVIEWS

All players and coaches interviews can be arranged through the sports information office by contacting Tina Thomas at (850) 644-1065 at least 24 hours in advance. Players home phone numbers will not be released.

PRESS SERVICES

Media members will be supplied with weekly press releases, including updated results and statistics, updated conference and national rankings, as well as information on upcoming games. This information may be obtained in the sports information office or by accessing the ACC Faxback Service. For details on ACC Faxback, please contact the sports information office.

CREDITS

The 1998 Lady Seminole softball guide is a product of the Florida State University sports information office.

Editors: Tina Thomas, Assistant Sports Information Dir.
Greg Hulen, Student Sports Information Dir.

Writing and Research: Danielle Felter, David Peters

Photography: FSU Photo Lab, Ross Obley, Ryals Lee

Design: Marsiglio & Murphy Design Group, Inc. Tallahassee, FL

Printing: FSU Printing Services

Special thanks to the Georgia Pride for photos on page 40.

ON THE COVER

Front: Seniors Kristy Hull, Misty Molin, Sarah King. **Back:** The Lady Seminoles off the field and the 1998 schedule.

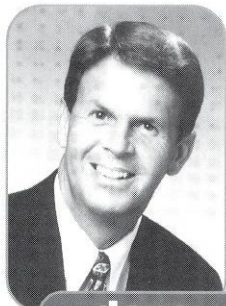
The Florida State University offers equal opportunity in its employment and educational activities in compliance with Title IX, Section 5-4 of the Rehabilitation Act of 1973 and other civil rights laws.

TABLE OF CONTENTS

This is Tallahassee	2-3
This is Florida State	4-5
Quick Facts/Season Outlook/Roster	6-9
JoAnne Graf Bio	10-11
Assistant Coaches Bios/Support Staff	12-13
Players Bios	14-21
Newcomers Bios	21-24
Lady Seminole Field	25
Support Services	26-27
Life Skills	28
NCAA Information	29
'97 Season Review	30-32
'97 Stats	33
'97 Results	34
ACC Review	35
About the ACC	36-37
Post Season Play	38
Series Records	39
Seminole Pros	40
All-time Letterwinners	41
All-Americans/Hall of Fame	42-43
Records	44-52
FSU in Tourney Play	IBC
Team Photo/1998 Schedule	BC



sandy d'alemberte
President



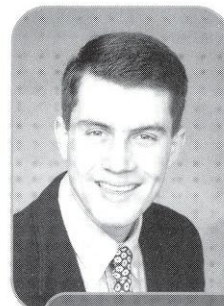
dave hart
Athletic Director



kim record
Associate Athletic Director



tina thomas
Softball S.I.D.



greg hulen
Student Softball S.I.D.

this is tallahassee

Near, but far from the glaring strips of neon amusement, and the castles and crowds of Disney, lies another magical place in the Sunshine State — one of pow-wows, plantations, politics and great pride. Often described as “The Other Florida” with its deep-rooted history, rolling hills, canopy roads of moss-draped oaks, cool climate and Southern-style hospitality; it is a Florida few have seen. It is Tallahassee — Florida with a Southern accent.

Best known as Florida’s capital, Tallahassee is an intimate neo-metropolitan city where the power of state government, the academic and the artistic are complemented by subtle, old-fashioned charm. It is the perfect two- or three-day diversion for the more than 41 million annual visitors to Florida and 13 million residents.

Tallahassee touts a menagerie of sights including one of the world’s deepest freshwater springs, site of America’s first Christmas, a wildlife habitat, Capitol buildings, fascinating museums of history, sprawling plantations, highly acclaimed fishing and hunting adventures and nearby beaches. Spirited area festivals range from celebrations of Tallahassee’s spectacular spring and swamp stomps to genuine rattlesnake roundups and seafood festivals.

With the Gulf of Mexico just 20 miles south and the Georgia border only 14 miles north, Tallahassee rests between the foothills of the Appalachian Mountains and the juncture of Florida’s panhandle and peninsula. Nearer in miles to Atlanta than to Miami, Tallahassee more closely resembles its Southern neighbors than Florida in topography, climate and lifestyle.

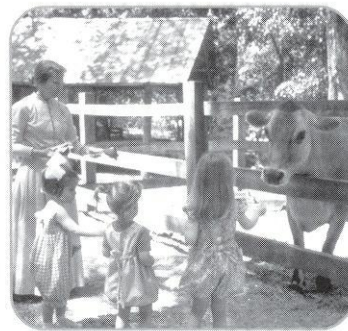
Accentuating Tallahassee’s Southern persona are lush roll-

ing hills, likened to the seven hills of Rome, and five “official” canopy roads of patriarch oaks. The fertile, rich soil and four distinct, yet pleasant, seasons breed floral brilliance and natural vitality year-round.

Like the city itself, the story of how Tallahassee was chosen as the state capital is rich in history. In 1823, two explorers set out — one on horseback from St. Augustine and the other by boat from Pensacola — to find a permanent, central location for the Legislature to convene. The two met at a beautiful site that the Creek and Seminole Indians called “tallahassee” — derived from the words “talwa” meaning town and “ahasee” meaning old. The rendezvous point remains Florida’s capital.

The “old town” has undergone many changes, but one thing remains the same — it is still a government town fiercely proud and dedicated to preserving its heritage. The Capitol buildings, both old and new, epitomize Tallahassee’s perseverance.

The 22nd floor of the New Capitol provides a panoramic scope of a sophisticated Southern city awash in a sea of flowering azaleas, snowy dogwoods, towering pines, fragrant magnolias, and hundreds of shimmering lakes, springs, swamps, rivers and sink holes. Special legislative viewing galleries are open during the legislative session.



Below, in the shade of giant live oaks, proudly stands the Old Capitol, originally constructed in 1845 and restored to its 1902 splendor complete with red-and-white candy-striped awnings, a dome adorned with stained glass, antique furnishings and political memorabilia.

Across from the Old Capitol are the 40-foot twin granite towers of the Vietnam Veteran’s Memorial, and the blue stone Union Bank, Florida’s oldest surviving financial in-



stitution. The nostalgic Old Town Trolley, a replica turn-of-the-century street car, carries passengers through restored Adams Street Commons to numerous other historical downtown shops for free — unheard of even 100 years ago.

Minutes from downtown lies the Governor's Mansion, which resembles the home of Florida's military hero Andrew Jackson; and the 52-acre natural animal habitat and 1880s farm of the Tallahassee Museum of History and Natural Science, which provide the rare chance to walk and talk with native Florida animals.



O'Sullivan. Safaris aboard glass-bottomed and jungle cruise boats whisk visitors within arm's length of "The Other Florida."

Outdoor enthusiasts enjoy adventures including boating and fishing on area lakes, rivers, ponds and the Gulf — just 30 minutes away. Lakes Seminole, Jackson and Talquin are renowned in the bass fishing world for yielding the "big ones," and dense forests offer an abundance of prize-winning game. Local wildlife areas such as the Florida National Scenic Trail, St. Marks National Wildlife Refuge and Apalachicola National Forest are among many spots for camping, picnicking, swimming, biking and exploring.



Tallahassee remains firmly linked with the past as evidenced by the unearthed 1539 winter encampment of Spanish Hernando de Soto, the site of the first Christmas celebration in America. Visitors travel back through time as they stand in the shadow of a giant 12,000-year-old American Mastodon at the Museum of Florida History or explore other historical spots including The Knott House that Rhymes, The Columns, San Luis Mission, Lake Jackson State Archaeological Site, Natural Bridge Battlefield, First Presbyterian Church, Brokaw-McDougall House, Goodwood Plantation and Adams Street Commons.



Appealing to the strokes of different folks, Tallahassee also features 99 holes of golf on six courses and a proliferation of tennis centers. Sideline athletes cheer the nationally-ranked Florida State Seminoles, Florida A&M Rattlers and the Tallahassee Tiger Sharks, of the East Coast Hockey League. And always a sure bet are the nearby greyhound races.

A sport of sorts, shopping at two regional malls and many specialty centers offer many "playing options" — from

popular chains to curiosity and antique shops.

Cultural interests are sparked by widely-acclaimed museums and galleries and elaborate entertainment at the 14,000-seat Tallahassee-Leon County Civic Center.

Nearby, alligators lazing in the sunshine and anhinga "snake birds" perched on twisted cypress branches are seen at Wakulla Springs, one of the world's deepest freshwater springs and site of many underwater scenes in the "Tarzan" movies with Johnny Weissmuller and Maureen

Tallahassee is a collaboration of power-play politics and classical character splashed with a twist of Southern beauty and charm. Tallahassee is Florida with a Southern accent.

this is florida s

Florida State University, celebrating its golden anniversary as a coeducational graduate research institution in 1997, has joined the nation's elite in both academics and athletics.

Located on the oldest continuous site of higher education in Florida and building rapidly on the framework of a highly regarded liberal arts college for women, the University has emerged over the past 50 years as an institution of national and international esteem. Its stature is evidenced by a number of additions to its record of excellence in the 1990s:

- In 1994, Florida State was classified a **"Research University I"** by the Carnegie Foundation, placing it among the nation's top research universities.

- In 1994, the college referral service, "Who's Who Among American High School Students," placed FSU among its top 10 — with such universities as Harvard, Duke, Stanford, North Carolina-Chapel Hill, Michigan-Ann Arbor and Yale — of most frequent choices of more than 100,000 of the nation's best and brightest high school students who asked that a specific college be notified of their recognition in "Who's Who."

- Vice President of the United States Al Gore spoke at the dedication of the **National High Magnetic Field Laboratory** at Florida State in 1994. The National Science Foundation established the \$100 million magnet lab in 1990 at FSU, which is partnered in research with the Los Alamos National Laboratory and the University of Florida. A Nobel laureate in physics and a top Russian physicist were among the first scholars drawn to the faculty. The **world's largest magnet** — two stories high and capable of generating 45 tesla or 1 million times the Earth's magnetic field — was installed in 1995 at the NHMFL, located in the **off-campus research complex**, Innovation Park. In 1996, the NSF renewed and increased by 50 percent the NHMFL's funding for another five years.

- FSU created the first multipurpose student identification/banking card. The **Card Application Technology Center** is a national leader in "smart card" systems.

- At the forefront of supercomputing since obtaining its first high-speed computer in 1985, FSU took yet another step in ultrafast and parallel computing in 1990 when it acquired **two supercomputers**, the Thinking Machine Corp. Connection Machine and the Cray Y-MP.

- In fall 1994, the first tenants moved into the east side of the \$100 million **University Center**, a classroom-and-office facility at Doak Campbell Stadium; the stadium's south end zone also was enclosed and the adjacent Moore Athletic Center expanded. With the completion of the west side in 1996, University Center now provides 550,000 square feet of much needed academic space and a centralized location for student services.

- In 1990, Florida State **ranked second in popularity nationwide** among high school seniors, based on the number of students who request that their Scholastic Aptitude Test (SAT) scores be sent to an institution. FSU was the only institution listed among the top 10 choices of both black and white college-bound students.

- FSU's high-tech program in **structural biology** in 1991 received the University's largest single foundation grant, \$4 million.

- Capping more than a decade of national prominence in intercollegiate athletics, Florida State's athletic teams, nicknamed **"Seminoles,"** joined the **Atlantic Coast Conference** as its ninth member in 1990. The FSU football team won the **1993 National Championship** and its quarterback, Charlie Ward, won the University's first **Heisman Trophy**.

- The **Dr. Bobby E. Leach Center**, a state-of-the-art student recreation facility, with a pool, saunas, basketball and racquet-sport courts, was completed in 1991.

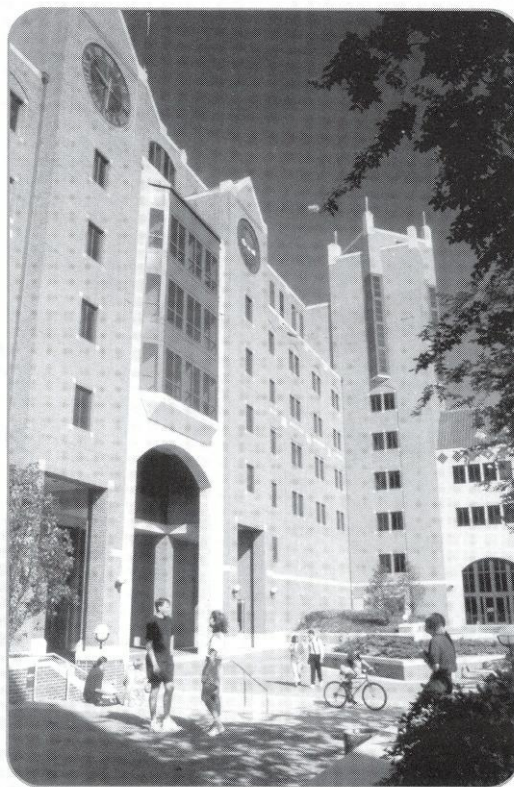
completed in 1991.

- **FSU ranked 20th in the nation for 1990-91 in the number of black Ph.D. students it graduates.** Over the five years, 1986 to 1990, FSU ranked eighth nationally by granting doctorates to 70 African-Americans.

As this list of highlights attests, Florida State is excelling in the 1990s with exceptional strength, energy and vision for the future.

Under the leadership of the University's 12th president, **Talbot "Sandy" D'Alemberte**, who took office in January 1994, FSU will continue to build on the foundation of its history of excellence in scholarship, research and service.

A senior member of the 10-member **State University System**, FSU was founded as an institution of higher learning in 1851 by legislative act and began in Tallahassee with its first students in 1857.



ate

Today, FSU's operating budget is **\$474.3 million**. Faculty and administrators generate more than **\$102 million** annually in external funding to supplement state-sponsored research. Three direct-support organizations serve to bolster the University: **FSU Foundation**, which raises millions in private gifts to support academics, **Seminole Boosters** and **FSU Alumni Association**.

The main campus is spread over **451.6 acres in Tallahassee**; FSU, which has one of the smallest campuses in the SUS, has been actively acquiring land in the 1990s after years of being landlocked at 347 acres. FSU owns 1,281 acres in Leon, Bay, Franklin and Sarasota counties.

Within the state, the University maintains facilities at its **25-acre campus in Panama City**, its **Marine Laboratory** on the Gulf of



Mexico, the Appleton Museum in Ocala and the Asolo Performing Arts Center in Sarasota. The **Center for Professional Development and Public Service**, housed in the **Augustus B. Turnbull III Florida State Conference Center** on the edge of the campus, provides extensive credit and non-credit continuing education programs statewide.

Florida State offers **286 graduate and undergraduate degree programs** through its **eight colleges** — Arts and Sciences; Business; Communication; Education; Engineering (operated jointly with Florida A&M University, a historically black institution); Human Sciences; Law; and Social Sciences (which also incorporates the Reubin Askew School of Public Administration and Policy) — and **eight schools** — Criminology and Criminal Justice; Information Studies; Motion Picture, Television and Recording Arts; Music; Nursing; Social Work; Theatre; and Visual Arts and Dance.

With 1,655 members, the FSU faculty has included **nine National Academy of Sciences elected members, nine American Academy of Arts and Sciences fellows** and **five Nobel laureates**. It is backed by 2,887 administrative/professional and support staff.

Library holdings at Florida State include **2.1 million book titles, 16,384 serials and 4.5 million microforms**. The main library facility, the **Robert M. Strozier Library**, is linked by computer to other state university and national research libraries. The **Paul A.M. Dirac Science Center Library** is located at the heart of the University's science research complex. FSU also maintains extensive music, library science and law libraries.

Graduate students, who number more than 5,929, pursue advanced degrees in fields as diverse as business administration and theoretical particle physics. A majority of research done at FSU is the direct result of student effort, culminating in numerous books, monographs and journal articles relating to the whole spectrum of intellectual interests and the practical needs of society.

FSU, a residential campus, places a high priority on its **30,264 students** and their needs and interests (of the student population: 45 percent are male; 55 percent are female; 20.1 percent are minorities; and 2.5 percent are foreign students). The **University Honors Program, Disabled Student Services, International Student Center, Student Government, Flying High Circus** and intramural sports are among more than 200 organizations and activities in which students may participate.

In all areas of its mission — excellence in teaching, research and public service — **Florida State University** is advancing boldly toward the 21st century.



Florida State offers 286 graduate and undergraduate degree programs through its eight colleges.

1998 outl

There's no star power hitter, no ace on the mound, no standout speedster on the base paths, rather, the 1998 Florida State softball team will feature that old fashioned thing called teamwork. Head coach Dr. JoAnne Graf will put every one of her 19 years of coaching experience to work as she prepares a young, but talented group of athletes for major Division I softball competition.

"I think we have probably more balance offensively, but we are young," Graf said. "We replaced a lot of very good players that we lost last year, so it's not really a rebuilding year, but it is one that the kids are going to have to adjust and learn what they can and can't do and what they still have to work on. There is no one dominant player right now, but hopefully one or two will step forward as the season comes along."

Although a notably younger Florida State team, the Tribe will not be without its senior leadership. Returning starters Kristy Hull and Misty Molin will guide the squad while a host of juniors and sophomores and a group of highly-touted newcomers will help to create a unique Florida State team that has Coach Graf excited about the prospects.

"With young kids, it's kind of nice because they do want to work hard and work their way into a starting position," Graf said. "I think the competition for playing time will be tough this year and that's going to be a good thing. Youthful exuberance is sometimes pretty nice. All our players are competitors and they are all very good ball players, so I'm excited about what this season holds."

PITCHING

Freshman Jennifer White will likely be the Lady Seminoles number one pitcher this spring, followed by sole returnee Stacy Venable and newly reassigned Corrie Will-

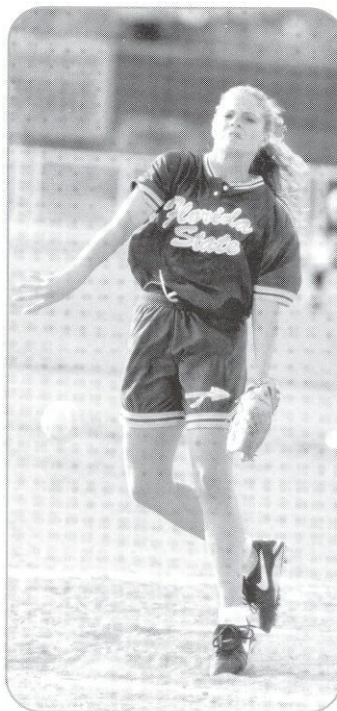
iams, who has played primarily first base her first two seasons at FSU. White, a two-time high school All-American, gained valuable experience in fall competition. Venable went 11-9 with a 2.21 ERA in 23 appearances in her first season on the mound for Florida State while Williams, who pitched in high school and in summer league ball, threw for the first time in collegiate action during the fall.

"It's a young pitching staff," Graf said. "We're going to see a little more finesse in our pitchers than we have in the past. I think Jennifer White is going to really develop into a strong, strong pitcher as the season progresses. Stacy learned a lot about Division I pitching last year and Corey is pretty calm on the mound. These three will be pretty good as far as keeping a balance in the pitching department."

Both White and Williams will also have an opportunity to contribute offensively as both are capable of hitting for themselves in the starting lineup.

INFIELD

First base represents versatility as Florida State has a great deal of depth at the position. Fresh-



ookk



man Kelly Miller looks to have the edge as the starter, followed by sophomore Becky Wallace. FSU will also have the flexibility of putting either Corrie Williams or last year's starter Misty Molin at that corner.

"We have a number of people who can play first base very well," Graf said. "It will likely depend on who's hitting well, but any one of those players are capable of successfully handling the duties at first base."

Another newcomer, freshman Christy Cerecedes, will take over the duties at second base for the graduated Windy Weltz who assumed the position for the past three seasons. Returnee Sarah King will back up Cerecedes.

"Right now, Christy is a little bit ahead in the battle for starting rights just because of offense," Graf said. "It's kind of a new position for her because she has basically played outfield and third base throughout her career, but she is a very smart ball player and picked up things real quickly in the fall."

Junior Jesse McGregor returns to take the reigns at shortstop for the third straight season. Returning sophomore Teresa Edenfield will also see action at the position.

"Jesse had a great season last year and showed a lot of improvement," Graf said, "so we expect her to once again be the starter. Teresa had a great fall. We had her play a

number of positions and her bat started coming around, so I think she's going to earn herself an opportunity to get some at bat's pretty early in the season."

Like second base, third base will be occupied by a seasoned veteran as Tami Post enters her third season at the position. Freshman Lisa Hall will provide depth to that corner.

"Tami has been a starter at third base since she was a freshman and is pretty solid at that position, but it will be good to have Lisa ready to handle the duties if necessary."

Senior Kristy Hull is as solid as it gets when it comes to the catching duties. After sharing the starting duties the past two seasons, Hull enters as the squad's number one catcher. She will be assisted by freshman Jennifer Brown.

"Kristy Hull will probably catch about two-thirds of the games this season," Graf said. "She is obviously very solid behind the plate, but she is much more. She is kind of your 'coach's

division one softball

1998 florida state softball roster listed by number

NO.	NAME	POS.	YR.	B/T	HOMETOWN (PREVIOUS SCHOOL)
00	Jennifer Brown	C	FR	R/R	La Habra, CA (Sonora HS)
2	Danielle Cox	OF	JR	L/L	Anniston, AL (Gulf Coast CC)
4	Lisa Hall	IF	FR	R/R	Jacksonville, FL (Mandarin HS)
6	Dana Bailey	OF	JR	L/R	Bossier City, LA (Parkway HS)
7	Jesse McGregor	SS	JR	R/R	Houston, TX (St. John's HS)
9	Kristy Hull	C/RF	SR	L/R	Phoenix, AZ (Moon Valley HS)
12	Jennifer White	P	FR	R/R	Tuttle, OK (Tuttle HS)
13	Christy Cerecedes	2B	FR	R/R	Hacienda Heights, CA (Los Altos HS)
14	Teresa Edenfield	SS	SO	R/R	Marianna, FL (Maclay HS)
15	Corrie Williams	P	JR	R/R	Bakersfield, CA (North HS)
17	Becky Wallace	IF	SO	R/R	Naples, FL (Barron Collier HS)
19	Sarah King	IF	SR	R/R	Huntington Beach, CA (Tall. Com. College)
20	Kelly Miller	1B	FR	R/R	Vallejo, CA (Vallejo HS)
21	Misty Molin	1B/OF	SR	L/L	Jackson, CA (Argonaut HS)
22	Stacy Venable	P	JR	R/R	Choctaw, OK (NE Oklahoma A&M JC)
25	Tami Post	3B	JR	R/R	Citrus Heights, CA (Del Campo HS)

Head Coach: Dr. JoAnne Graf (Florida State '75)

Assistant Coaches: Michelle Bolster (Michigan '89), Chandelle Schulte (Eastern Michigan '91)

Volunteer Assistant: Carrie Partlowe (Miami Ohio '97)

Athletic Trainer: Robin Gibson (San Diego State '84)

1998 outlook

(continued)

ballplayer" because she knows the game, pays attention, and will get down and get dirty because she loves the game. Jennifer was out a lot of the fall with injuries so she missed a lot of valuable time, but once she picks up our system she'll be a solid contributor. I have confidence in both of these players as catchers."

OUTFIELD

Junior Dana Bailey, who returns for her second season in center field, will provide stability to a solid outfield that has a bit of a new look. Junior newcomer Danielle Cox will likely undertake the starting responsibilities in left field while veterans Misty Molin and Kristy Hull will rotate in right field.

"All four of these players are very good hitters and excellent defensive players," Graf said. "We may be a little short on depth but high in quality in the outfield, so I'm real excited about that. We can mix any of those players in any position, so even if we happen to get an injury, we won't drop off talent-wise."

ABOUT THE ACC

This season will represent the seventh season that the Atlantic Coast Conference has sponsored softball. Along with FSU, Georgia Tech, Maryland, North Carolina and Virginia currently field teams and competition between the schools seems to get more heated each season.

"The ACC has made a commitment to softball," Graf said. "It's one of the fastest growing sports and now it's an Olympic sport. It's also on television a lot now and has become a potential revenue sport. I think too that we have been challenged by the SEC with nearly every school in the conference adding the sport."

After two seasons away from the friendly confines of Lady Seminole Field, the ACC Tournament will once again be held in Tallahassee.

"It will be good to have the ACC Tournament back at home," Graf said. "We've done as well in the tournament away as we have at home, but it will be good for our fans to see it here because I think it's going to be a very competitive conference tournament this year as it was last year."



THE SCHEDULE

While Florida State played the majority of its games away last season, it's time for those teams to take a trip to Tallahassee in 1998. With the recent surge of new teams in the south, the FSU schedule will once again feature some new rivalries.

"There are now over 60 teams in the south region alone, which has enabled us to begin some new rivalries and we began many of them last year," Graf said. "Auburn, Alabama and Florida, along with others, will all be coming to our place this season and we'll

be playing many of our traditional rivals like South Carolina, Arizona and Fresno State in tournaments."

The Lady Seminoles will once again compete in the Arizona State Tournament in Tempe, Ariz., the NFCA Classic in Columbus, Ga., the South Florida Classic in Tampa and have added the Buzz Classic, hosted by Georgia Tech to its slate.

"We have a lot more home games this year which will be good as it will let the kids stay in classes a bit more," Graf said. But it's still a very competitive schedule and we're going to be facing a lot of the top teams in the country again this year."

florida state quick facts

Location - Tallahassee, FL
 Enrollment - 30,200
 Founded - 1857
 Colors - Garnet & Gold
 Nickname - Lady Seminoles
 President - Sandy D'Alemberte
 Conference - Atlantic Coast (NCAA Div. I)

ATHLETIC ADMINISTRATION

Athletic Director - Dave Hart, Jr.
 Associate Athletic Director - Kim Record
 AD's Phone - 850/644-1079

SPORTS INFORMATION STAFF

SID - Rob Wilson
 Asst. SID/Softball Contact - Tina Thomas
 Student Assistant SID - Greg Hulen
 SID Address - PO Box 2195, Tallahassee, FL, 32316
 SID Phone - 850/644-1065
 SID FAX - 850/644-3820
 Thomas' Home Phone - 850/514-3351
 Press Box Phone - 850/644-9294
 ACC Faxback - 910/854-5859, box score - 32552, release - 32550, statistics - 32351, schedule/roster - 32554
 Internet Site- www.seminoles.com

SOFTBALL STAFF

Head Coach - Dr. JoAnne Graf (FSU '75)

Career and FSU Record - 913-239-5
 Season at FSU - Entering 20th
 Assistant Coaches - Michelle Bolster (Michigan '89);
 Chandelle Schulte (Eastern Michigan '91)
 Volunteer Assistant - Carrie Partlowe (Miami Ohio '97)
 SB Office Phone - 850/644-2386
 Best time to call - Mornings
 Athletic Trainer - Robin Gibson
 Equipment Manager - Melissa Dawson

1997 RESULTS/1998 OUTLOOK

Record - 45-19-1
 ACC Record - 9-2/1st
 ACC Tournament - 2-1/Tied, 1st
 NCAA Regional Appearances - 11 (1986-96)
 World Series Appearances - 5 (1987, 1990, 1991, 1992, 1993)
 Letterwinners Returning/Lost - 10/7
 Starters Returning/Lost - 5/4
 Home Field/Capacity - Lady Seminole Field/1500

TOP RETURNING PLAYERS -

Misty Molin, Sr., LF/1B, .370, 38 RBI, 71 H, 9 2B, 10 Stolen Bases
 First Team All South Region, All ACC
 Kristy Hull, Sr., C/RF, .322, 22 RBI, 58 H, 9 Stolen Bases
 Second Team All South Region, All-ACC; ACC All-Tournament Team
 Jesse McGregor, Jr., SS, .303, 24 RBI, 54 H
 Stacy Venable, Jr., P, 11-9, 2.21 ERA, 50 SO, 4 SHO

head coach dr. joanne graf

breakdown



If reaching milestones was meant to occur occasionally, then Florida State's Dr. JoAnne Graf is not following the rules, because it seems with each and every year, Graf celebrates yet another landmark accomplishment and 1997 was no exception. Graf became just the second coach in NCAA Division I softball history to notch 900 victories when the Lady Seminoles defeated North Carolina 6-0 in Chapel Hill on April 10th. The win also clinched

the Atlantic Coast Conference regular-season title for Florida State for the fifth time in six years.

Over the years, Graf has maintained the philosophy that hard work and dedication produce positive results. And because of this attitude, there are not many things that Graf has not accomplished in her 19-year coaching career.

With 913 career victories, Graf ranks second all-time by victories among Division I softball coaches. Her 694-186-5 (.797) record in fast-pitch competition only, ranks her second by percentage and sixth by victories among all Division I active softball coaches. But the accolades don't stop there. Graf has been named the ACC Coach of the Year three times after leading the Lady Seminoles to consecutive conference titles in 1992 and 1993 and co-championship status in 1997. In 1995, she was selected the ACC/Metro Conference Coach of the Year after guiding Florida State to a 9-1 league record and an automatic bid to NCAA regional play. She has led FSU to 10 seasons of 50 wins or more, including two seasons when the Lady 'Noles recorded more than 60 victories.

Under Coach Graf's direction, Florida State has been to the NCAA College World Series in Oklahoma City five times and in 14 years of fast-pitch competition, she has directed the Lady Seminoles to 11 regional tournament appearances. Florida State has also finished among the nation's top 13 teams in 11 of the past 12 seasons, with its highest ranking coming in 1990 when the Lady Seminoles placed



The softball careers of many former Lady Seminoles and FSU assistant coaches did not end once they moved on from the friendly confines of Lady Seminole Field in Tallahassee. Here's a look at some FSU alumni and former assistant coaches who are currently serving in the softball coaching field.

Louie Berndt (asst. coach, 1989)	Head Coach, Marshall
Connie Clark (asst. coach, 1990-95)	Head Coach, Texas
Tina Kyler Deese (player, 1984-85, asst. coach, 1986)	Head Coach, Auburn
Renee Espinoza (player, 1994-96)	Assistant Coach, North Carolina
Jo Evans (asst. coach, 1984)	Head Coach, Texas A&M
Becky Harrison (player, 1988-91)	Head Coach, Samford
Kelley Kirkland (asst. coach, 1992-93)	Head Coach, Georgia Southern
Marla Looper (player, 1993-94)	Assistant Coach, Kansas
Susan Painter (player, 1981-84)	Head Coach, Gulf Coast Community College
Windy Weltz (player, 1993-97)	Assistant Coach, Lake City Community College

vital info

Alma Mater
Florida State '75
Season at FSU
20
All-Time Record
913-239-5
1997 Record
45-19-1

graf

third at the College World Series. But the success didn't begin there. In her first five years at Florida State, Graf accumulated 219 wins playing the best slow-pitch competition in the nation. She claimed two national titles while coaching five All-Americans as she established a solid basis to build upon.

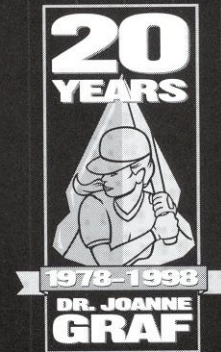
Graf, who was voted the South Region Coach-of-the-Year in 1986, has seen 49 of her players selected to NCAA All-South Region teams, including four players in 1996. Her coaching has produced 10 All-Americans in the 1990s alone, including three first team selections in centerfielder Shama Wilson (1996), second baseman Lisa Davidson (1993) and shortstop Tiffany Daniels (1987).

lady seminole softball

under

dr. joanne graf

1979	26-15	.634
1980	37-10	.787
1981	54-7	.882
1982	56-10	.848
1983	46-11	.807
1984	41-5-2	.875
1985	50-12-2	.797
1986	42-7	.857
1987	50-14	.781
1988	44-14	.759
1989	39-14	.736
1990	47-16	.750
1991	62-12	.838
1992	63-9	.875
1993	52-9	.852
1994	50-19	.724
1995	58-15	.795
1996	51-21	.708
1997	45-19-1	.700
Career	913-239-5	.797



division one softball

top 10 most winningest active coaches (By Percentage) Includes Fast Pitch competition only

COACH, TEAM	YRS	RECORD	PCT
1. Mike Candrea, Arizona	12	627-139-0	.819
2. DR. JOANNE GRAF, FLORIDA STATE	14	694-186-5	.787
3. Yvette Girouard, Southwestern La.	17	624-209-0	.749
4. Margie Wright, Fresno State	18	768-269-3	.740
5. Joyce Compton, South Carolina	15	638-235-1	.731
6. Cathy Compton, LSU	10	356-131-4	.729
7. Sandy Fischer, Oklahoma State	19	729-270-3	.729
8. Bill Galloway, Louisiana Tech	19	761-284-2	.728
9. Judi Garman, Cal St. Fullerton	18	845-316-4	.727
10. Mike McGovern, III.-Chicago	8	361-139-1	.722

division one softball

top 10 most winningest coaches (By Victories) all time

COACH, TEAM	YRS	RECORD
1. Judi Garman, Cal St. Fullerton	26	1056-358-4
2. DR. JOANNE GRAF, FLORIDA STATE	19	913-239-5
3. Sharron Backus, UCLA	21	847-167-3
4. Bill Galloway, Louisiana Tech	19	805-295-2
5. Mike Candrea, Arizona	12	791-205-0
6. Margie Wright, Fresno State	18	768-269-3
7. Bob Brock, Texas A@M	17	731-301-1
8. Sandy Fischer, Oklahoma State	19	729-270-3
9. Gayle Blevins, Iowa	18	717-338-4
10. Liz Miller, Notre Dame	21	706-210-0

A 1975 graduate of Florida State, Graf returned to her alma mater after two years at the University of North Carolina-Greensboro where she earned her master's degree in physical education. Graf also worked in the athletic department at UNC-Greensboro as head coach for the university's men's and women's swim teams while also serving as assistant softball coach.

Graf, who serves as director of the FSU softball camp each summer, is a former president of the Florida Collegiate Athletic Association. She has also served as a member of the NCAA Softball Committee and chaired the NCAA Softball Advisory Committee for the South Region.

In 1992, Graf added "Dr." to her name after completing her doctorate degree in athletic administration at FSU.



assistant coaches

breakdown

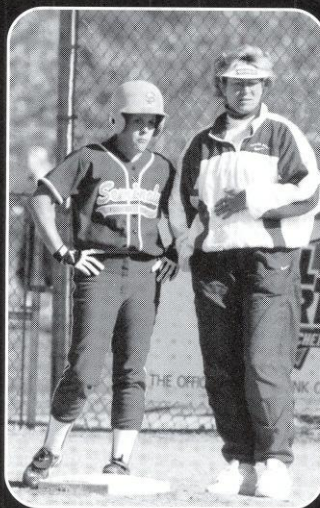


Michelle Bolster

ASSISTANT COACH
UNIVERSITY OF MICHIGAN '89
THIRD YEAR AT FSU

In her third season as an assistant coach at Florida State, Michelle Bolster brings the Lady Seminoles a unique perspective on the sport of softball. With her experience as both a player and a coach, Bolster offers insight at all levels of competition.

an assistant coach at Bowling Green State University in Ohio from 1992-94.



Bolster's work experience makes her an asset to the Lady Seminoles coaching staff. After receiving a degree in Physical Education at the University of Michigan in 1989, Bolster served as a graduate assistant coach for the Wolverine softball team where she provided pitching instruction, viewed recruiting tapes and organized practices.

Bolster coached at the high school level in 1990-91 at Milan High School in Milan, Mich. Serving as the school's head coach, Bolster implemented the entire program from on the field instruction to fundraising for the team.

Bolster has had a decorated playing career as well. While at Michigan, Bolster was named the 1988 Big Ten Player of the Year and earned first team all-region honors. Following her collegiate career, she played for many nationally ranked fast-pitch teams including the Raybestos Brakettes. Bolster has garnered such awards as ASA All-American honors and has also participated in three Olympic Sports Festivals.

Just prior to coming to Florida State, Bolster worked as the pitching and hitting instructor at the Tri-State Academy in Avondale, Pa., where she specialized in individual pitching and hitting instruction as well as coordinating and directing summer camps and clinics. Prior to working at Tri-State, Bolster was

At Florida State, Bolster responsibilities include recruiting and working with the Lady Seminole pitching staff.





breakdown

chandelle schulte

ASSISTANT COACH
EASTERN MICHIGAN UNIVERSITY '91
SECOND YEAR AT FSU

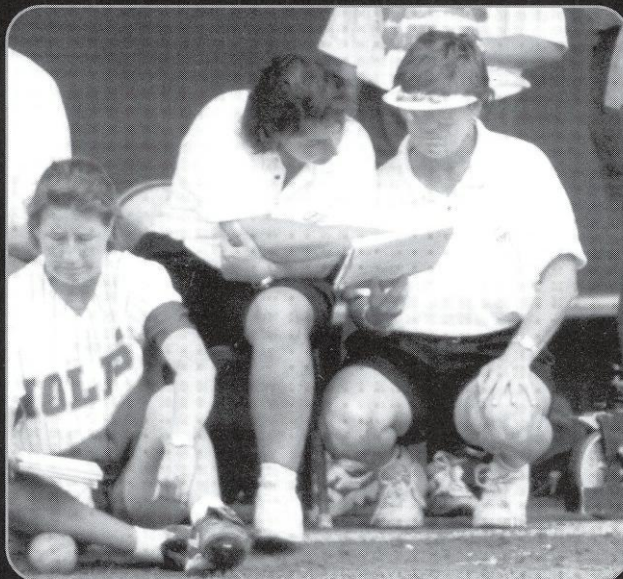
The success of the Florida State University softball program was definitely a draw for second year assistant coach Chandelle Schulte, because success is what she's used to. After three seasons

at the helm of the Concordia College softball program and three trips to the National Christian College Athletic Association's College World Series, including a second-place finish in 1995, Schulte's knowledge and postseason experience will be an asset to the Lady Seminoles.

ence Coach of the Year after leading the squad to the league's co-championship. Schulte's coaching produced four All-Americans and over the three-year period, her teams broke every softball record in the school's history.

at the helm of the Concordia College softball program and three trips to the National Christian College Athletic Association's College World Series, including a second-place finish in 1995, Schulte's knowledge and postseason experience will be an asset to the Lady Seminoles.

As head coach at Concordia in Ann Arbor, Mich., Schulte's responsibilities went way beyond coaching. Her duties also included recruiting, scheduling, team travel and fundraising — just to name a few. In 1996, she was honored as the Wolverine Hoosier Athletic Confer-



While coaching at Concordia, Schulte worked as the Director of Residential Life at the school and also served as an intern in the compliance office at the University of Michigan. The East Pointe, Mich., native received a bachelor's degree in English Literature and Language from Eastern Michigan in May of 1991 and a master's degree in Sports Management from Wayne State in June.

At Florida State, Schulte works with the outfielders as well as serve as co-coordinator of the JoAnne Graf softball camps.



breakdown

carrie partlowe

VOLUNTEER ASSISTANT
MIAMI OHIO '89
1ST YEAR AT FSU

Destin, Florida native Carrie Partlowe joined the Florida State softball staff this summer and is serving as a volunteer assistant coach while pursuing a master's degree at FSU in sports administration.

an appearance in NCAA regional play. Partlowe played summer ball with the Columbus Jets and has been active as a softball clinician.

A 1997 graduate of Miami University in Oxford, Ohio, Partlowe served as the softball team captain in 1996 and 1997. She began her collegiate softball career at Georgia State and helped lead the squad to the 1994 TAAC championship and

An all-academic team member for both the Trans American and Mid-Atlantic Conferences, Partlowe was a Dean's List member and graduated from Miami with a 3.48 grade point average in health and sports studies.

She will work with all aspects of the FSU softball program.

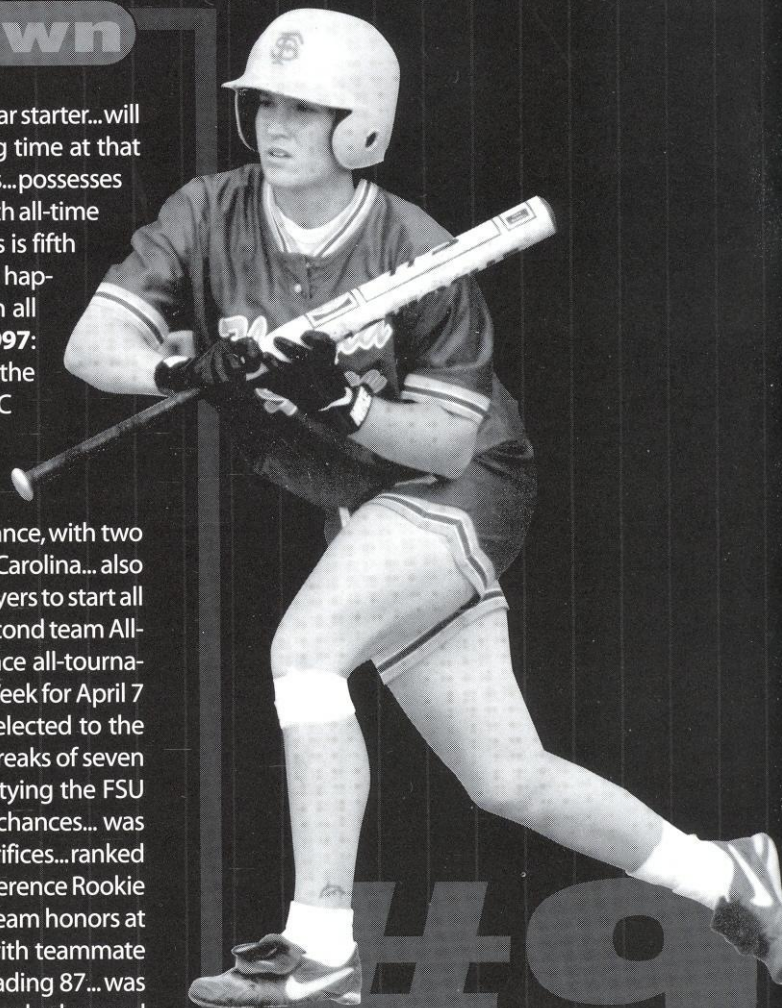
kristy hull



breakdown

Team captain...a versatile athlete...a three-year starter...will move in as the starting catcher after sharing time at that position and right field the past three seasons...possesses a .331 career batting average which ranks sixth all-time in the FSU records books... her 99 career RBIs is fifth all-time at FSU...intense player...makes things happen in a game... power-hitter... has started in all but one game of her three-year career... **1997:**

Had another solid season... played in 64 of 65 games... was named to the Louisville Slugger All-Southeast Region's second team...garnered All-ACC accolades... earned Atlantic Coast Conference All-Tournament team honors for third straight season after batting .600 with six hits and three RBIs... had nine multiple hit games... ranked second on the team with 38 runs and third with 58 hits... best outing was a 4-for-4 performance, with two singles, a triple and her first career home run with four RBIs vs. North Carolina... also went 4-for-4 and scored a run vs. Bradley... **1996:** Was one of just four players to start all 72 games...shared her time between right field and catcher...earned second team All-Southeast Region honors... was named to the Atlantic Coast Conference all-tournament team... was pegged the Southern Atlantic Alliance Player of the Week for April 7 after batting .692 in leading FSU to a 5-0 record for the week... was selected to the Lady Seminole Invitational's all-tournament team... twice had hitting streaks of seven games during the season... led the team with 45 rbi's, just four shy of tying the FSU single-season record... was perfect in the field with no errors in 220 chances... was second on the team with 70 hits...led the team with 20 walks and 20 sacrifices...ranked third on the team with 16 steals... **1995:** Chosen the Atlantic Coast Conference Rookie of the Year... earned All-South Region honors... earned all-tournament team honors at the Lady Seminole Invitational and the ACC Championships... along with teammate Cindy Lawton, set the FSU single-season record for hits with a team-leading 87... was one of only four players and the only freshman to play in all 73 games...ranked second on the team in batting average at .375 and in runs scored with 44... put together two hitting streaks of 12 and 9 games during the season... struck out just five times in 232 at bats...displayed speed on the basepaths with 11 stolen bases... **High School:** Played both shortstop and catcher at Moon Valley High School in Phoenix, AZ ...was the team's Most Valuable Player as a senior ... received All-Conference 5A Honorable Mention honors for shortstop in the 1990-91 season... was twice named to the All-Conference first team at catcher and selected to the league's second team once...played volleyball for four years as well... **Personal:** Was a member of the Moon Valley Athletic Association... has chosen to major in criminology... born August 28, 1976.



vital info

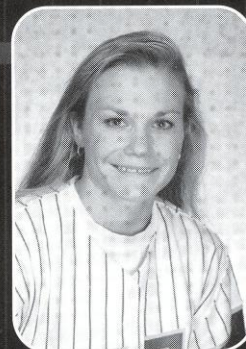
Hometown
Phoenix, AZ
High School
Moon Valley H.S.
Year
Senior
Position
Catcher/Right Field
Bats
Left

kristy at the plate

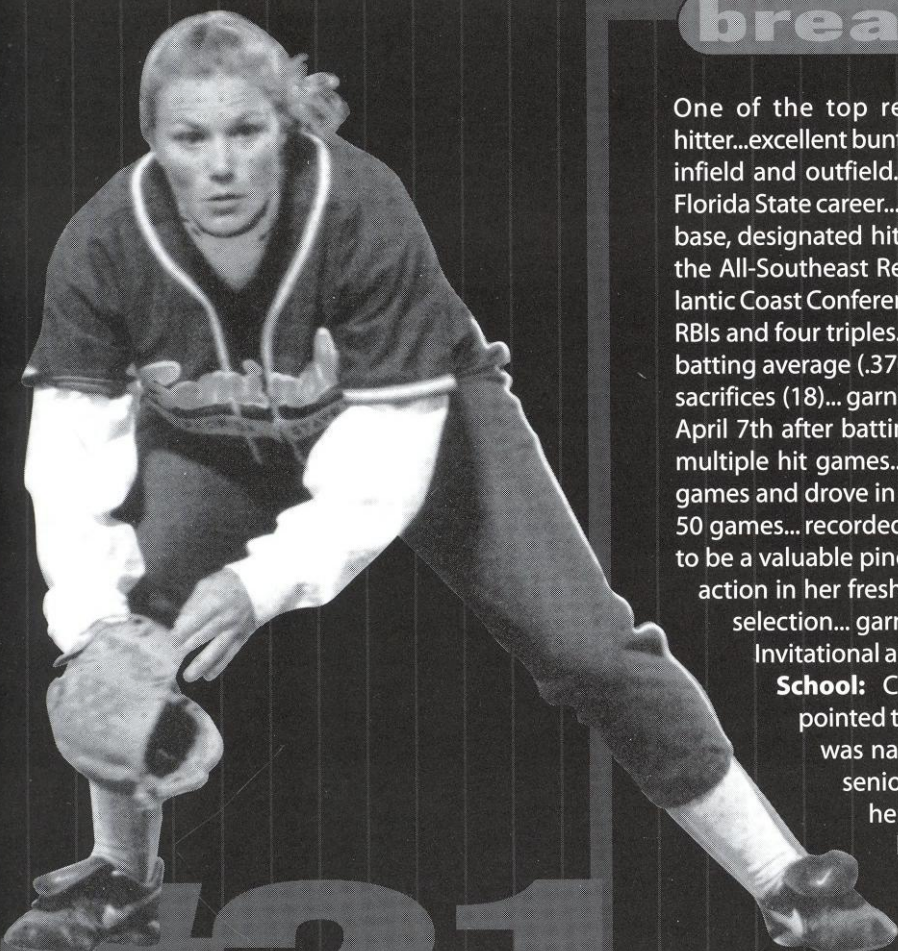
	Avg.	G	AB	R	H	RBI	2B	3B	HR	BB	SO	SB-SBA
1995	.375	73	232	44	87	32	9	2	0	13	5	11-13
1996	.337	72	208	31	70	45	4	4	0	20	11	16-17
1997	.322	64	180	38	58	22	2	3	1	13	16	9-11
Totals	.331	209	620	113	205	99	15	9	1	46	32	36-41

misty molin

breakdown



One of the top returning players... consistent hitter...excellent bunter...reliable player...can play both infield and outfield...**1997:** Had best season of her Florida State career...played all 65 games at either first base, designated hitter or right field...was named to the All-Southeast Region's first team... earned all-Atlantic Coast Conference honors...led the team with 38 RBIs and four triples... ranked second on the squad in batting average (.370), at bats (192), hits (71), walks (21), stolen bases (10) and sacrifices (18)... garnered ACC Player of the Week honors for the week ending April 7th after batting .571 with eight hits, two runs and three RBIs... had 19 multiple hit games... hit safely in 48 games... recorded a hitting streak of 10 games and drove in at least one run in nine of those games... **1996:** Played in 50 games... recorded a hitting streak of six games during the season... proved to be a valuable pinch-hitter and drove in 13 runs... **1995:** Saw a great deal of action in her freshman campaign as designated hitter... pegged an all-ACC selection... garnered all-tournament team honors at the Lady Seminole Invitational and Tar Heel Invitational... recorded five stolen bases... **High School:** Coming out of Argonaut High School, she had been appointed to the All-League team her last three years in the program... was named All-State and was on the All-Star Optimist team her senior season... named Most Valuable Player of the team during her junior campaign... was a four-year letterwinner in basketball and twice earned Most Valuable Player honors... also played soccer one season... made Honor Roll twice... **Personal:** Is a criminology and psychology major... born July 18, 1975.



#21

vital info

Hometown
Jackson, CA
High School
Argonaut H.S.
Year
Senior
Position
First Base/Outfield
Bats
Left

misty at the plate

	Avg.	G	AB	R	H	RBI	2B	3B	HR	BB	SO	SB-SBA
1995	.301	56	136	24	41	19	5	0	0	12	10	5-6
1996	.259	50	116	11	30	13	3	2	0	8	11	2-3
1997	.370	65	192	27	71	38	9	4	0	21	13	10-14
Totals	.320	171	444	62	142	70	17	6	0	41	34	17-23

dana bailey



breakdown

A leader in the outfield ...possesses great speed and has a strong arm...played shortstop in high school...talented athlete who has the ability to play at several positions... **1997:** Started all 65 games in centerfield... recorded 11 multiple hit games...tied for third on the team with nine stolen bases...nearly doubled her hits from the previous season with 45...had a solid season defensively with 101 putouts and just two errors... **1996:** Was a solid contributor

as a rookie playing in 52 games including 37 starts in right field... showed some power at the plate as six of her 23 hits were doubles... drove in nine runs and walked 10 times... **High School:** Was a three-sport athlete at Parkway High School ...received All-District MVP honors for four years in high school...was named to the Louisiana All Stars as a senior.. received all-City accolades as a freshman, sophomore and senior...was pegged an All-State Honorable Mention as a freshman...was a member of the Honor Roll, National Honor Society and Who's Who at Parkway High School... **Personal:** Is an English major... born February 16, 1977.



#6



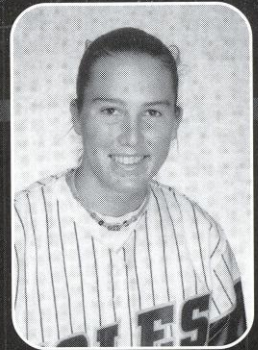
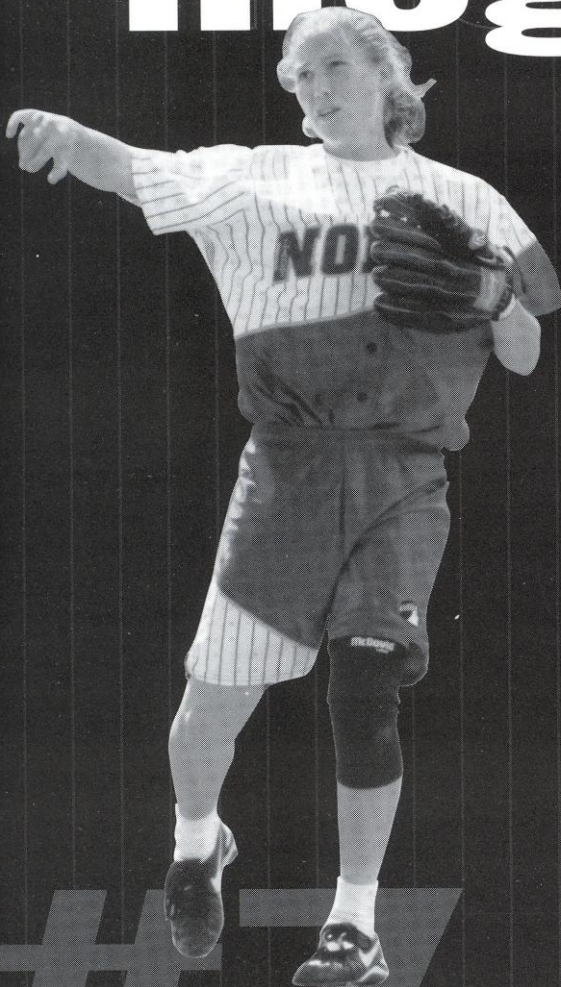
vital info

Hometown _____
 Bossier City, LA
 High School _____
 Parkway H.S.
 Year _____
 Junior
 Position _____
 Centerfield
 Bats _____
 Left

dana at the plate

	Avg.	G	AB	R	H	RBI	2B	3B	HR	BB	SO	SB-SBA
1996	.221	52	104	15	23	9	6	0	0	10	21	0-1
1997	.256	65	176	19	45	14	3	3	0	13	20	9-13
Totals	.243	117	280	34	68	23	9	3	0	23	41	9-14

jesse mcgregor



breakdown

Quiet team leader...Team captain...powerful hitter... **1997:** Showed tremendous improvement defensively in second season as starter at shortstop... knocked in 24 runs which was third best on team... was among the top five on the team with 54 hits... finished the season strong hitting safely in 22 of her last 25 games... had 11 multiple hit games...suffered a knee injury in collision with Myssi Calkins in ACC tourney and missed four games... **1996:** Stepped in at shortstop and was the only rookie to start all 72 games... led the team with nine doubles...drove in 33 runs - second best on the team...also ranked second in at bats with 214... recorded a hitting streak of seven games during the season... was fourth on the team and led all newcomers with a .280 batting average and 60 hits... **High School:** Lettered in softball, basketball and volleyball at St. John's High School... achieved all-conference honors four years for softball...was selected the team's Most Valuable Player as a sophomore and junior... was also pegged an all-conference performer for volleyball and basketball in junior and senior seasons... pegged school's Best Female Athlete all four years... **Personal:** Is a psychology major...a two-time ACC Academic Honor Roll member... born July 6, 1977.



vital info

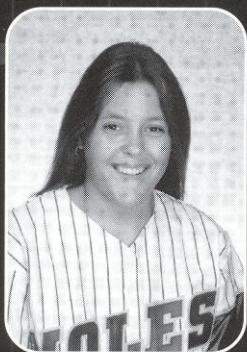
Hometown
Houston, TX
High School
St. John's H.S.
Year
Junior
Position
Shortstop
Bats
Right

jesse at the plate

	Avg.	G	AB	R	H	RBI	2B	3B	HR	BB	SO	SB-SBA
1996	.280	72	214	18	60	33	9	1	0	10	10	6-6
1997	.303	60	178	19	54	24	4	1	0	16	9	9-11
Totals	.291	132	392	37	114	57	13	2	0	26	19	15-17

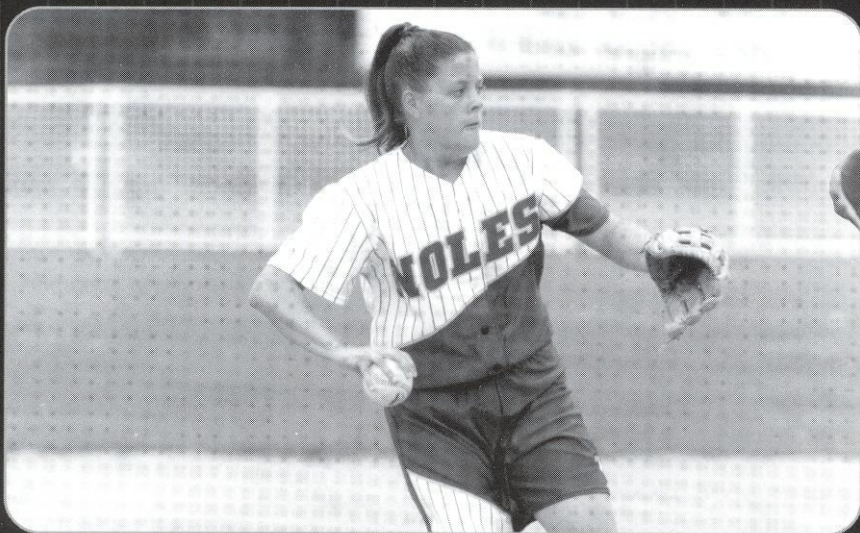
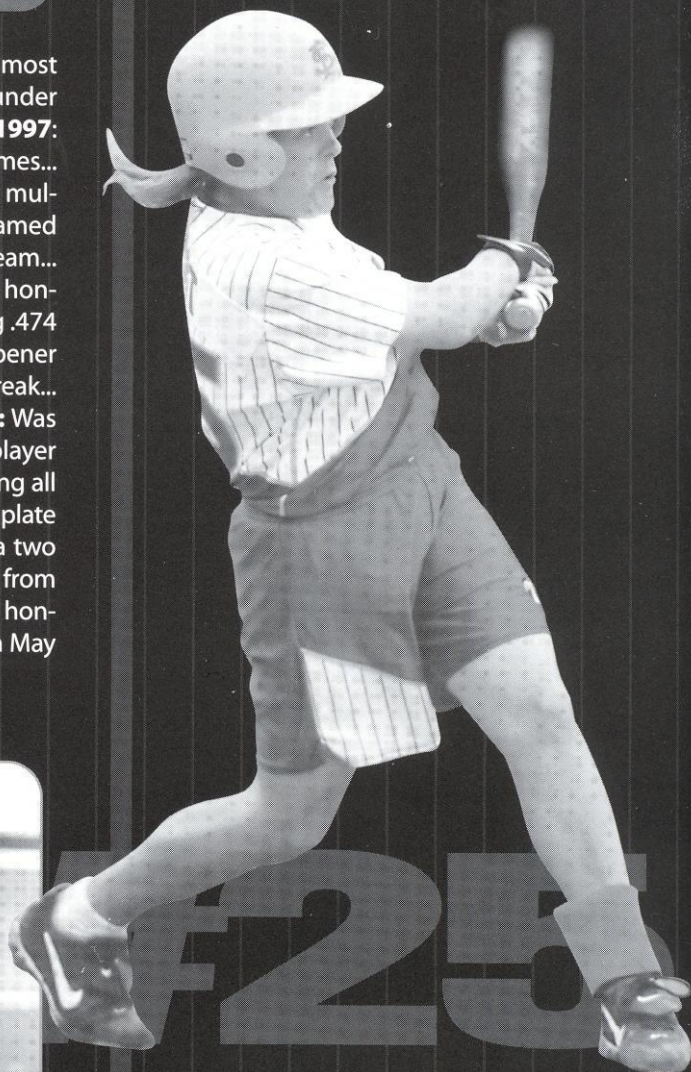
tami post

breakdown



Solid defensively...has improved range...one of the most consistent players on the team...produces well under pressure...possesses quickest release on the team... **1997:** Had a solid sophomore season... started all 65 games... finished second on the team with 31 RBIs... had 12 multiple hit games, including a four-hit outing... was named to the Atlantic Coast Conference All-Tournament team... earned Tar Heel Invitational All-Tournament team honors...

... was named the ACC/SAA Player of the Week on April 14th after batting .474 with nine hits and nine RBIs... twice recorded four RBIs in a game in season-opener vs. Georgia Southern and again vs. North Carolina... had a six-game hitting streak... was among the team leaders with seven doubles and 12 sacrifices... **1996:** Was projected to serve as a backup at second base, but developed into a solid player at third base after playing in 70 games at the position... ranked second among all newcomers with 49 hits and a .244 batting average... showed strength at the plate with four doubles and two triples... drove in 19 runs... **High School:** Was a two sport athlete at Del Campo High School... earned All-League Softball honors from 1991-95... was a three-year All-Metro softball selection... garnered all-league honors in basketball from 1993-95... **Personal:** Is majoring in criminology... born May 26, 1977.



vital info

Hometown
Citrus Heights, CA
High School
Del Campo H.S.
Year
Junior
Position
Third Base
Bats
Right

tami at the plate

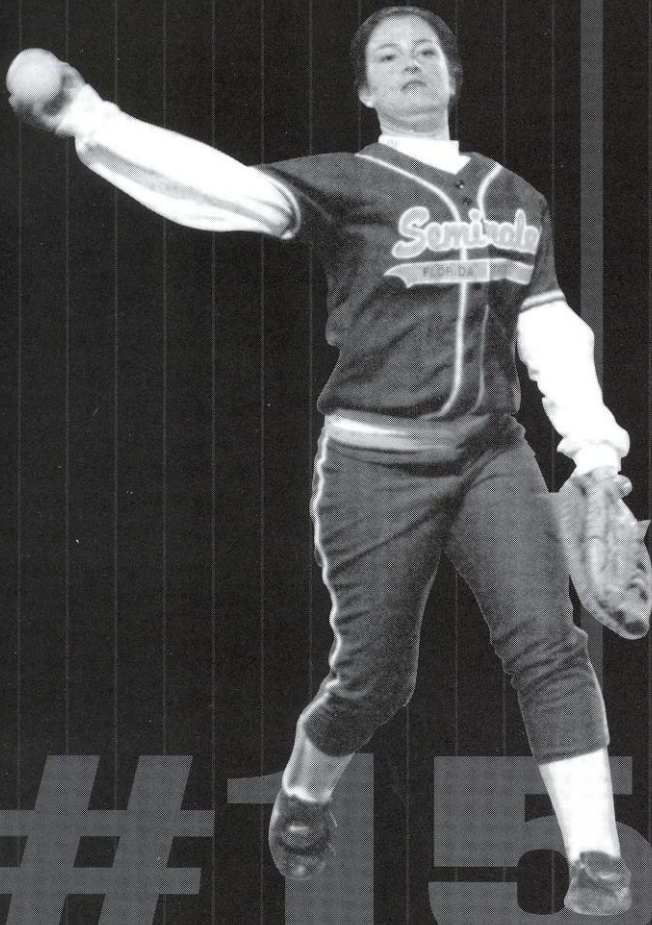
	Avg.	G	AB	R	H	RBI	2B	3B	HR	BB	SO	SB-SBA
1996	.244	70	201	19	49	19	4	2	0	15	21	1-1
1997	.243	65	189	24	46	31	7	3	0	13	9	4-5
Totals	.244	135	390	43	95	50	11	5	0	28	30	5-6

corrie williams



breakdown

Moved from first base/designated hitter to pitcher in the fall...solid athlete...vocal leader... **1997:** Came back from off-season knee surgery to play in 46 games... finished third on the team with eight doubles... earned ACC Player of the Week honors on March 2nd after batting .556 at the NFCA Leadoff Classic and leading the team with five RBIs... contributed with 22 hits... **1996:** Contributed immediately in freshman season, playing in 68 of 72 games at first base... was among the leaders on the team with six doubles... drove in 26 runs, fourth best on team... was one of just three players to hit a home run... led all infielders with a .974 fielding percentage... was third among the rookies with 40 hits... **High School:** Was a two-sport athlete, playing softball and soccer for four years at North High School... garnered 1995 Louisville Slugger Second Team All-American honors... was a member of the All Western Regional and All-State first teams... was pegged the All Area MVP and softball team MVP... was a first team all-league selection for both softball and soccer... received the Sam Lynn Award, making her the Most Valuable Female Athlete at North... was also a first-team all-league and all-area selection for softball in 1994... an Honor Roll member... **Personal:** Undecided on major... born April 1, 1977.



#15

vital info

Hometown
Bakersfield, CA

High School
North H.S.

Year
Junior

Position
Pitcher

Bats
Right



corrie at the plate

	Avg.	G	AB	R	H	RBI	2B	3B	HR	BB	SO	SB-SBA
1996	.206	68	194	11	40	26	6	0	1	9	33	2-2
1997	.198	48	111	9	22	10	8	0	0	11	19	0-0
Totals	.203	116	305	20	62	36	14	0	1	20	52	2-2

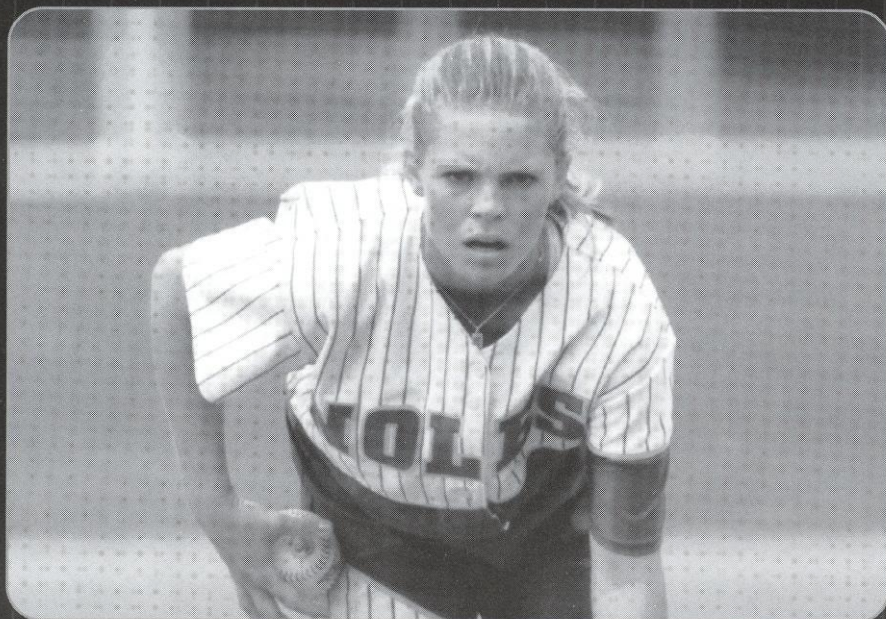
stacy venable



breakdown

Had a solid fall season...gained valuable Division I experience in first season...intense player who enjoys a challenge... **1997:** Was the No. 2 arm in her first season in the garnet and gold...made a solid contribution appearing in 23 games and recording an 11-9 record...pitched a no-hitter in FSU's 3-0 victory over Maryland on March 25th and struck out eight batters in the game...had four shutouts on the season... recorded 13 complete

games...Was named to the Dean's List and the ACC honor roll...**NE Oklahoma A&M Junior College:** Earned Junior College All-America honors... played one season and was the team's starting pitcher... named an all-region, all-conference selection... **High School:** Was a three-sport athlete, playing softball, basketball and running track at Choctaw High... garnered all-city, all-region and all-conference softball honors as a junior and senior...was selected an all-state pitcher after leading her squad to the 5A championship in senior season...Dean's List and honor roll student... **Personal:** Is majoring in exercise physiology...celebrates a Nov. 29, 1976 birthday.



vital info

Hometown
Choctaw, OK
Previous School
N.E. Oklahoma A&M J.C.
Year
Junior
Position
Pitcher
Bats
Right

stacy on the mound

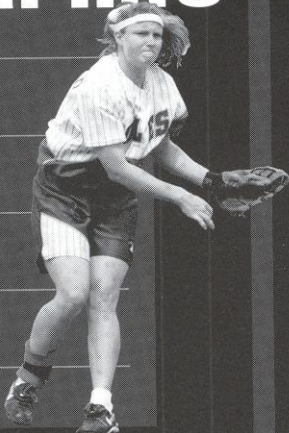
	ERA	W/L	APP	GS	CG	SHO	IP	H	SV	H	R	ER	BB	SO
1997	2.21	11-9	23	22	13	4	117	95	0	95	54	37	45	50

teresa edenfield



vital info

Hometown
Marianna, FL
High School
Maclay H.S.
Year
Sophomore
Position
Shortstop/DH
Bats
Right



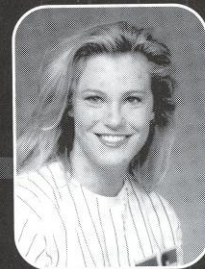
breakdown

An accomplished athlete...played both the shortstop and pitching positions in high school... has great versatility...**1997:** Saw most playing time of all rookies... played in 32 games as designated player or shortstop including 22 starts... was solid at shortstop in replacing the injured Jesse McGregor for four games... finished with three multiple hit games...**High School:** Letterwinner in softball and volleyball... earned all-state honors in both sports in junior and senior seasons... played her senior season at Maclay after transferring from Marianna High School... earned team most valuable player honors for her junior and senior years... recipient of the team's Best Offensive Player award her freshman and sophomore years... also voted Best Defensive Player as a sophomore... excelled in academics as well in garnering National Honor and Beta Society recognition... a consistent honor roll student throughout high school...**Personal:** Majoring in fashion merchandising... born April 4, 1978.

teresa at the plate

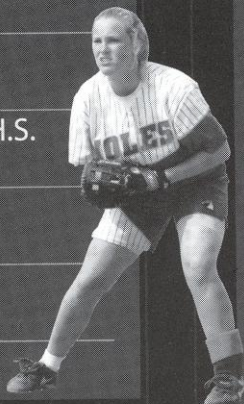
	Avg.	G	AB	R	H	RBI	2B	3B	HR	BB	SO	SB-SBA
1997	.238	32	63	7	15	5	2	0	0	5	11	1-3

becky wallace



vital info

Hometown
Naples, FL
High School
Barron Collier H.S.
Year
Sophomore
Position
Infield
Bats
Right



breakdown

Provides depth to the infield...good defensive player...is solid fundamentally... **1997:** Saw limited action as a rookie but provided depth to the team... saw action in 15 games...**High School:** Was a two-sport athlete at Barron Collier High School, lettering four years in both softball and volleyball... named all-county in both sports all four years... tabbed a third team all-state choice in softball as a senior... was twice named the team's most valuable player in volleyball and once in softball... captained the volleyball squad in 1995... was the runner-up for athlete of the year honors in season season... solid student, earning high honors all four years with a 4.0 GPA... **Personal:** Major is elementary education... was named to the Dean's List I... was named to the ACC honor roll... born May 8, 1978.

becky at the plate

	Avg.	G	AB	R	H	RBI	2B	3B	HR	BB	SO	SB-SBA
1997	.095	15	21	2	2	0	0	0	0	2	5	0-0

sarah king



vital info

Hometown
 Huntington Beach, CA
 Previous School
 Tallahassee C.C.
 Year
 Senior
 Position
 Infielder
 Bats
 Right



breakdown

Transfer from Tallahassee Community College... capable player...clutch hitter...**1997:** Saw action in 22 games... was used primarily as a pinch-hitter to provide the team a spark... scored six runs and had seven hits... drove in three runs...**Tallahassee Community College:** Earned second team all-conference honors while playing two seasons at second base for the Golden Eagles... was a member of the Dean's List in 1996...**Personal:** Is a criminology major... born March 30, 1976.

sarah at the plate #19

	Avg.	G	AB	R	H	RBI	2B	3B	HR	BB	SO	SB-SBA
1997	.280	25	6	7	3	0	0	0	1	9	13	1-2



jennifer brown



vital info

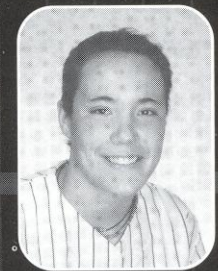
Hometown
La Habra, CA
High School
Sonora H.S.
Year
Freshman
Position
Catcher
Bats
Right

breakdown

Will back up Kristy Hull at catcher... will provide power at the plate...should see plenty of playing time in a designated hitter role when not catching... **High School:** Earned Most Valuable Player honors following her senior year... named to the all-league team three years... played two years of volleyball along with four years of softball... **Personal:** Majoring in education... born on September 26, 1979... nickname is JB... father has been a cross country coach for 10 years.

#00

christy cerecedes



vital info

Hometown
Hacienda Heights, CA
High School
Los Altos H.S.
Year
Freshman
Position
Second Base
Bats
Right

breakdown

Looks to be the starter at second base... a smart, versatile player... adjusts quickly... has most experience at third base and outfield... fierce competitor... very enthusiastic... **High School:** Named the San Gabriel Valley Player of the Year... earned first team all-league and all-valley team honors two years and also garnered Most Valuable Player honors for both... honored as Los Altos High School Female Athlete of the Year... was a first team all-state pick as a junior... earned Rookie of the Year honors as a freshman... well-rounded athlete who also played three years of basketball... a four-year honor roll student... **Personal:** Majoring in communications... was born on Christmas day in 1978.

#13

danielle cox



vital info

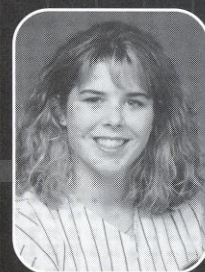
Hometown
Anniston, AL
Previous School
Gulf Coast C.C.
Year
Junior
Position
Outfield
Bats
Left

breakdown

A junior college transfer... is projected to start in left field... strong defensively... possesses a lot of speed... a raw talent... **Gulf Coast Community College:** Named an All-American her freshman year... was an second team all-state selection her sophomore year... played one year of basketball along with two years of softball... **High School:** Earned Alabama Player of the Year honors at Saks High School... **Personal:** Majoring in sports management... born June 6, 1976... nickname is Coxie.

#2

lisa hall



vital info

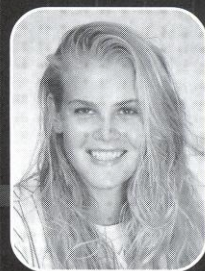
Hometown
Jacksonville, FL
High School
Mandarin H.S.
Year
Freshman
Position
Infield
Bats
Right

breakdown

Will provide depth in the infield, primarily backing up three-year starter Tami Post at third base... possesses a positive attitude... will use rookie season to gain experience and develop skills for the future... **High School:** Was a four-year letterwinner in softball and also played volleyball for three years... earned softball all-conference honors her sophomore, junior and senior seasons... played for the FACA senior all-stars... **Personal:** Is undecided on a major... was born September 27, 1978.

#4

kelly miller



vital info

Hometown
Vallejo, CA
High School
Vallejo H.S.
Year
Freshman
Position
First Base
Bats
Right

breakdown

Slated to start at first base... vocal player... imposing presence at first base... has potential to establish herself as a threat powerwise at the plate... **High School:** Four year letterwinner in softball at Vallejo High School...also played three years of volleyball and two years of soccer... **Personal:** Majoring in psychology... born on August 22, 1979... nickname is Moose.

#20

jennifer white



vital info

Hometown
Tuttle, OK
High School
Tuttle H.S.
Year
Freshman
Position
Pitcher
Bats
Right

breakdown

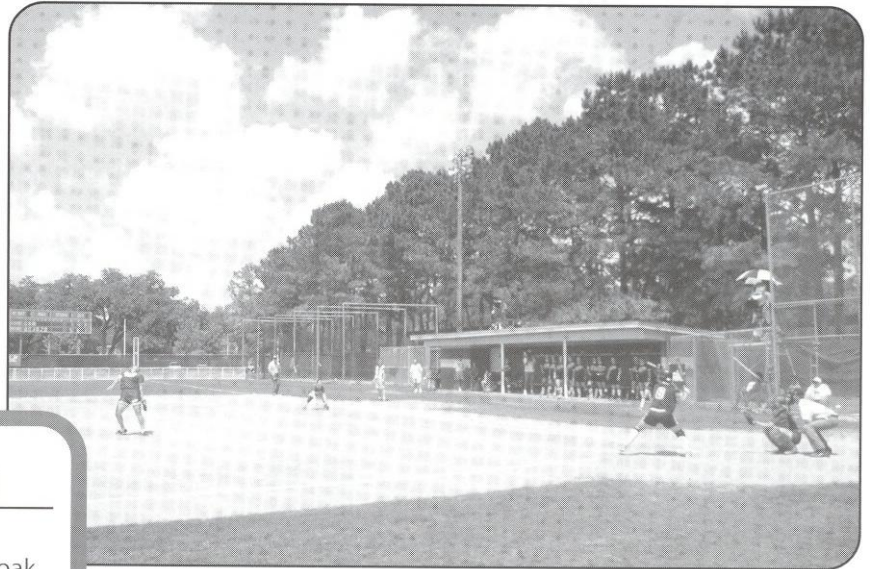
Will be the squad's number one pitcher... also strong at the plate and will likely hit for herself... should make an immediate impact... has tremendous potential and could develop into one of FSU's best on the mound... **High School:** two-time high school All-American... four-year letterwinner in softball and basketball... named to the Principal's honor roll... **Personal:** Majoring in communications... born on Feb. 1, 1978... nickname is JW.

#12

lady seminole field

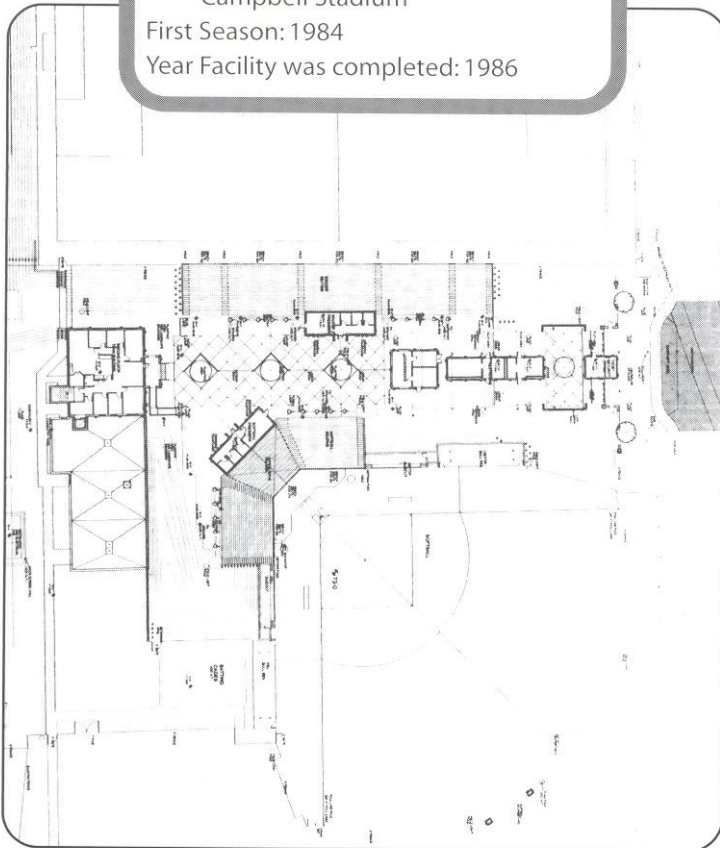


The Florida State University softball team will play its last season at the friendly confines of Lady Seminole Field in 1998. Since 1984, the facility, which seats 1,500 including outfield seating, is equipped with a press box and concession stand. Lady Seminole Field has been the site of four NCAA softball regionals and four ACC Championship tournaments.



florida state university lady seminole field

Capacity: 1,500
 Location: Stadium Drive, south of Doak Campbell Stadium
 First Season: 1984
 Year Facility was completed: 1986



The field of the future ...

Next year will usher in a new era for Florida State softball with the opening of the program's new stadium. The complex, which will also house Florida State's new soccer stadium, will include locker rooms, a larger press box, concession stands and coaches offices which will make it one of the finest facilities in the nation. The architect firm of Gilchrist and Crowe, designers of Florida State's Leach Center, a state-of-the-art student recreation facility completed in 1991, will begin construction this spring. The new stadium will be located in between Dick Howser Stadium, FSU's baseball field, and Mike Long Track on Chieftan Way.

Architects: Gilchrist and Crowe
Construction: begins Spring 1998
First Season: 1999 (projected)
Location: Chieftan Way

support services

an overview of an academic support program on the rise

Academic, personal and professional support are essential to college success. At Florida State University, we have developed an outstanding support program which enables student-athletes to reach their full potential.

all student-athletes to assess their needs in advance. We also stay informed on the daily progress of each student athlete.

The academic programs have moved to the state-of-the-art University Center and are located on the sixth floor of the

FSU's academic support philosophy is "to offer an academic support program integrated with the total university that will assess all student-athletes with the transition into college and provide continued support in all phases of academic and professional development culminating with graduation, job placement or graduate school."



Trudy Raybun
Softball Academic Advisor

To accomplish this goal we have developed an academic environment which facilitates the academic success of student-athletes. Student success is encouraged through competent academic counseling, career exploration, planning and placement and academic assistance through tutorial programs.

Our program operates on a "proactive" rather than a "reactive" approach. At Florida State, our academic staff does not wait for an academic crisis to occur. We gather important background information and build an academic profile on

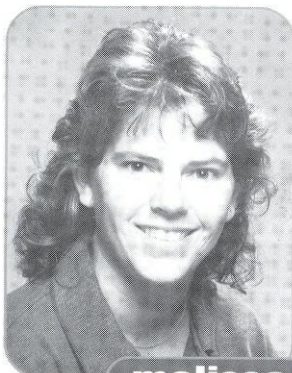


academic support staff

\$126 million facility. It includes private study carrels, a tutorial study area and a computer lab outfitted with 16 IBM computers and laser printers. In addition, athletic sky boxes are utilized for group and individual tutorial instruction.

FSU offers 16 Schools and Colleges with 99 undergraduate degrees and 75 post-baccalaureate degrees.

softball support staff



melissa dawson
Intercollegiate Athletics Coordinator



gloria jordan
Softball Secretary



jamie oser
Student Athletic Trainer



kay scott
sports marketing