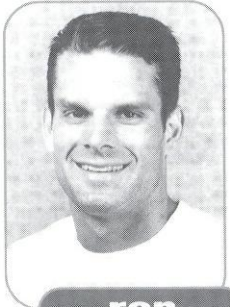


## strength, conditioning, medical care & treatment



**ron miller**  
Strength & Conditioning Coach

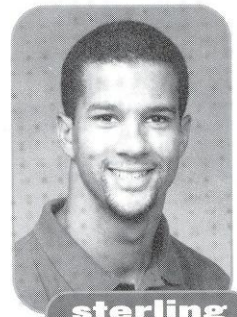
Strength training and conditioning is an important part of an athlete's performance on the field. At Florida State, a supervised program has been developed for softball, emphasizing the objectives of not building bodies, but strengthening and conditioning them. Strength and condition coach Ron Miller and assistant strength and conditioning coach Sterling Brown work together

in customizing programs for each of the athletes beginning with pre-conditioning before the season gets underway. Brown, a four-year letterman for the University of Richmond football team, works with the softball players in sport specific training which includes conditioning the major muscle groups used in the sport. FSU takes pride in customizing

the programs to help student-athletes reach their maximum potential.

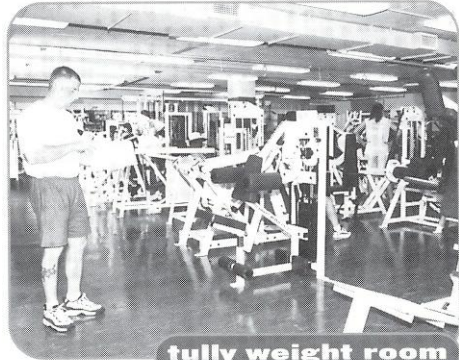
### WEIGHT ROOM

The Tully Gymnasium weight room recently took on a whole new look following a complete renovation in the summer of 1996. The facility, which was expanded by 2,000 square feet, is now 3,500 square feet in size fresh with a new stereo system, drop ceiling, lighting and mondo rubber flooring.



**sterling brown**  
Assistant Strength & Conditioning Coach

Over \$140,000 worth of new exercise equipment has been added to the Lady Seminole weight room, including 16 cardiovascular pieces such as Life Fitness, Stairmaster and Tatrix. All Florida State women's athletes train in the state-of-the-art facility.



tully weight room



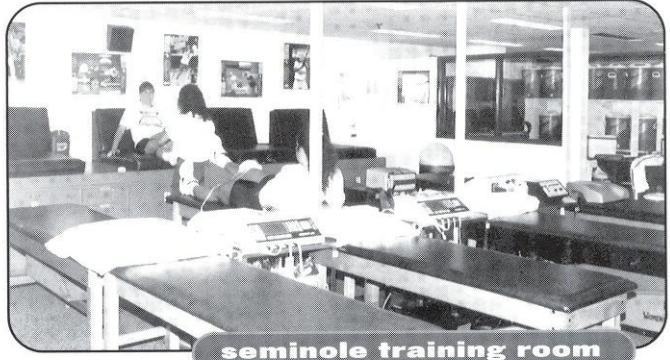
**robin gibson**  
ATC, LAT

An athlete can expect to receive the best care and treatment possible with the athletic training team at Florida State University. Prior to competition, all FSU student-athletes undergo screening in order to detect any potential injuries. If a problem is detected, the athlete may be placed on a prevention care system which may include any kind of treatment from icing to exercising. Head women's trainer Robin Gibson handles the athletic training duties for the Lady Seminole softball team.

Though the prevention of injuries is the main objective, some injuries are unavoidable. Rehabilitation is another component of the Florida State training room. The FSU athletic training staff will work with the athlete and provide an intense rehabilitation schedule that will allow the athlete to successfully rehabilitate after an injury. Some injuries and illnesses

may be referred to the Seminole team physicians at the Tallahassee Orthopedic Center, who, for many years, have worked in conjunction with the FSU athletic training staff in successfully rehabilitating athletes after an injury.

Nutrition counseling and drug testing are also responsibilities of the athletic training team which is dedicated to providing the best care possible for all FSU student-athletes.



seminole training room

# life skills

## The N.O.L.E.S. Program

### **NEW OPPORTUNITIES FOR LEADERSHIP, EDUCATION AND SERVICE**

Developed by the Florida State University Department of Athletics, the NOLES program represents a commitment to the total growth and development of the student-athlete. This program establishes an administrative commitment to academic and athletic excellence. Those efforts will be supported with programs and services in personal development, career development and community service.

### **PERSONAL DEVELOPMENT**

Fostering the development of personal growth is a fundamental component of the NOLES program. These support programs ensure that the student-athlete will be provided opportunities to focus on personal growth issues such as values clarification, goal setting, fiscal planning, decision making and personal responsibility. Programming focuses on helping student-athletes develop a healthy lifestyle while they are at Florida State and habits that will benefit them for life.

### **CAREER DEVELOPMENT**

Preparing for life after college sports is a major focus of the NOLES Career Development program. The program is designed to work cooperatively with the University's Career Services to acquaint students with the job search process, provide networking opportunities and ultimately assist with job placement. This program places a priority on the development of the total person, with the goal of developing individuals who will have rewarding careers and productive lifestyles after they leave Florida State.

### **COMMUNITY SERVICE**

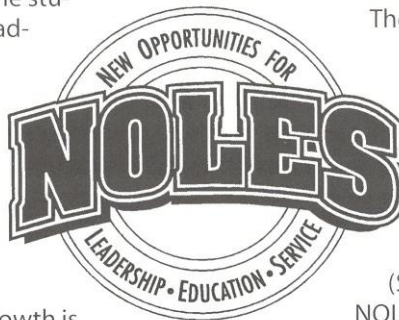
Serving the community is the focus of our Seminole Spirit program. Student-athletes are challenged to give service to our community and individuals who are in need. With a clearly defined program of service, student-athletes are given the opportunity to develop the foundation for a lifelong commitment to volunteerism. The Seminole Spirit Student-Athlete Speakers' Bureau enables student-athletes to improve their speaking skills, develop effective communication and impact the lives of others through their service as role models in our community.

### **LEADERSHIP DEVELOPMENT**

The Florida State University Department of Athletics is committed to developing programs of excellence that foster leadership development. The foundation of the leadership development program will be the two councils that represent the student-athletes at the University.

The Student-Athlete Advisory Council (SAAC) serves as the advisory board to the NOLES program and the athletics administration.

The prestigious board, comprised of two representatives of each athletic team at FSU, also recommends programming and serves as a liaison between student-athletes and the athletics administration. The Advisory Council plans and implements various events for student-athletes and serves as the department's most visible ambassadors. The SAAC planned and hosted the annual Golden Nole banquet for the first time last year and have recently planned such events as orientation for incoming student-athletes and the back-to-school picnic.



**Student Athletic Advisory Council**

# ncaa information

The following information is provided by the Florida State Office of Compliance for prospective student athletes. It is intended as a guideline to introduce some of the rules governing NCAA athletic involvement.

## WHO IS PERMITTED TO RECRUIT FOR FSU?

Only Florida State University coaches who have successfully completed the NCAA Recruiting Rules Examination on an annual basis may be involved in the recruitment process. Representatives of our athletics interests **may not** make any recruiting contacts. This includes letters, telephone calls or face-to-face contact on or off campus with a prospect or the prospect's parents.

## KEY TERMS YOU SHOULD KNOW

You become a **prospective student-athlete** if you have started classes for the ninth grade. Before the ninth grade, you become a prospective student-athlete if the college provides you (or your relatives or friends) any financial aid or other benefits that the college does not provide to prospective students generally.

A **contact** is any face-to-face encounter between a prospect or the prospect's legal guardian and an institutional staff member or athletic representative during which any dialogue occurs in excess of an exchange of greeting. NOTE: At the Division I level, athletic representatives (boosters) may not contact you for the purpose of recruiting. A college coach may contact you in person off the college campus beginning July 1 after completion of your junior year in high school.

An **evaluation** is any off-campus activity designed to access your academic qualifications or athletic ability, including any visit to your high school (during which no contact occurs) or the observation of any practice or competition in which you participate.

During your senior year, you can have one expense-paid **official visit** to a particular campus. You may receive no more than five visits. During your official visit, which may not exceed 48 hours, you may receive round-trip transportation between your home and the campus, and you (and your parents) may receive meals, lodging and complimentary admission to campus athletics events.

## PHONE CALLS AND LETTERS

Phone calls from faculty members and coaches (but not boosters) are permitted beginning July 1 (August 15 for football) after completion of your junior year. A college coach or faculty member is limited to **one telephone call per week** except when it is:

- During the five days immediately before your official visit to the university
- On the day of a coach's off-campus contact with you
- During the time beginning with the initial National Letter of Intent signing date in your sport through the two days after signing date
- In the sport of football only, during the permissible off-campus contact periods and during the 48 hours prior to and 48 hours after 8:00 a.m. on the initial signing date for the National Letter of Intent.
- Letters from coaches and faculty members (but not boosters) are not permitted until September 1 at the beginning of your junior year in high school. A Division I university may provide you with the following printed materials:
  - General correspondence, including letters, U.S. Postal Service postcards and institutional note cards
  - Game programs which may not include posters and one Student Athlete Handbook can be provided only during official or unofficial visits to the university's campus
  - NCAA educational information
  - Pre-enrollment information subsequent to signing a National Letter of Intent with the university
  - One athletic publication which may include only one color of printing inside the covers
  - Official academic, admissions and student services publications published or videotapes produced by the institution and available to all students
  - Schedule cards
  - Questionnaires which may be provided prior to your junior year
  - Summer camp brochures which may be provided prior to your junior year.

## ALUMNI AND BOOSTERS DO'S AND DON'TS

**You may** forward information about prospective student-athletes to the appropriate coaches.

**You may** have contact with a prospect regarding permissible pre-enrollment activities such as summer employment, provided the prospect has already signed a National Letter of Intent and the Compliance Office is aware that you are making these contacts in regard to employment.

**You may** have a telephone conversation with a prospect **only** if the prospect initiates the call. Such a call may not be prearranged by an institutional staff member and you are not permitted to have a recruiting conversation, but may exhibit normal civility. You must refer any questions about our athletics programs to an athletics department staff member/coach.

**You may** view a prospect's contest at your own initiative provided you do not contact the prospect or his/her parents. In addition, you may not contact a prospect's coach, principal, or counselor in an attempt to evaluate the prospect.

**You may** continue established family relationships with friends and neighbors. Contacts with sons and daughters of these families are permitted as long as they are not made for recruiting purposes or encouraged by Florida State University coaches.

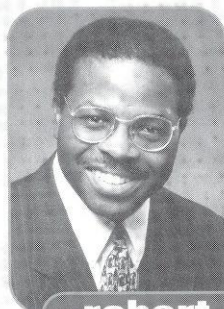
**You may not** become involved in making arrangements to receive money or financial aid of any kind for a prospect or the prospect's family and friends.

**You may not** make contact with a prospective student-athlete and his/her parents when the prospect is on campus for an official or unofficial recruiting visit.

**You may not** transport, pay or arrange for payment of transportation costs for a prospect, and his/her relatives or friends to visit campus (or elsewhere).

**You may not** pay or arrange for payment of summer camp registration fees for a prospect.

**You may not** provide **anything** to a prospect, the prospect's family or friends without prior approval from the athletics' Compliance Office.



**robert minnix**  
Assoc. AD for Compliance  
and Legal Affairs



**brian mand**  
Director of Compliance



**sheila benton**  
Assistant Director of  
Compliance

# 1997 review

## CALKINS, FUENTES EARN ALL-AMERICAN HONORS

Seniors Myssi Calkins and Kristy Fuentes were selected Louisville Slugger NFCA All-Americans. Calkins received second team honors for the second straight season while Fuentes earned third team accolades.

## COACH'S CORNER

After 19 seasons at the helm of the Florida State softball program, Dr. JoAnne Graf holds a 913-239-5 career record, including a 45-19-1 mark in 1997. She has led Florida State to five College World Series appearances and 11 NCAA Regional appearances. Her coaching has produced 11 All-Americans, including three first team selections. Graf has led FSU to 10 seasons of 50 wins or more, including two seasons when the Lady 'Noles recorded more than 60 victories.

## ACADEMIC HONORS

The Lady Seminoles had success off the field as well in 1997. Wendy Braye, Myssi Calkins and Stacy Venable all earned Dean's List status, and Rosalind Chou, Jesse McGregor, Windy Taff and Becky Wallace joined them on the ACC Honor Roll.

## FINAL ATLANTIC COAST CONFERENCE STANDINGS

### ACC Overall

<b>Florida State</b>	<b>7-1</b>	<b>.875</b>	<b>45-19-1</b>	<b>.700</b>
Virginia	6-2	.750	17-16	.515
<b>Maryland</b>	<b>3-5</b>	<b>.375</b>	<b>26-23</b>	<b>.531</b>
Georgia Tech	2-6	.250	22-34	.393
North Carolina	2-6	.250	21-33	.389

**Bold** indicates tournament champions  
*Italics* indicates regular-season champions

## FSU IN THE USA TODAY/NFCA COACHES POLL...

Preseason	#17	April 2	#18
February 26	#16	April 9	#19
March 5	#17	April 16	#18
March 12	#18	April 23	#17
March 19	#21	April 30	#17
March 26	#18	May 7	#15

## SOUTHERN ATLANTIC ALLIANCE FINAL STANDINGS

South Florida	12-0 (AUTOMATIC BID)
Florida State	9-3
Virginia	8-4
Maryland	5-7
UNC-Charlotte	3-9
North Carolina	3-9
Georgia Tech	2-10

## WHAT A YEAR

As the only returning pitcher, senior Kristy Fuentes had a lot of responsibility placed on her shoulders ... and boy did she respond. As the team's ace on the mound, she finished 32-10 on the year with a team-leading 1.15 ERA. She had 38 complete games in 48 appearances. In 1996, the Whittier, Calif., native had just nine wins on the year. Fuentes earned her ninth and final win of the season in 1996 on April 30th and didn't have a win against a ranked opponent. Three of her wins in 1997 were vs. ranked foes.



**Kristy Fuentes**

• Fuentes is one of only four players in FSU fastpitch softball history to have earned 30 or more wins in a single season. The other three are Christy Larsen, 1991 with 33, Toni Gutierrez, 1992 with 35 and Renee Espinoza in 1995 with 30.

## FUENTES IN THE FSU RECORD BOOKS...

	Career	Place
Appearances:	125	1st
Innings Pitched:	698.1	3rd
Single Season Appearances:	48	new record
Games Started:	41	tied for 1st
Wins:	32	record is 35



Wendy Braye

**FIVE SEMINOLES RECEIVE ALL-REGION HONORS**

Five Lady Seminoles earned All-Region honors, including three first team selections. Seniors Kristy Fuentes (pitcher), Myssi Calkins (LF) and junior Misty Molin (1B) were pegged first-team selections while senior catcher Wendy Braye and junior right fielder Kristy Hull received second team recognition. This marked the second straight season that Calkins earned first team honors and Hull received second team accolades.

**LEAGUE-HIGH FIVE SEMINOLES EARN ALL-ACC**

A league-high five Florida State players earned All-ACC Softball honors. For the second straight season, LF Myssi Calkins was selected to the team. Joining Calkins this season were C Wendy Braye, 1B Misty Molin, RF/C Kristy Hull and P Kristy Fuentes. It is the second such honor for Braye and Molin as well, who each received the distinction in 1995. Hull was pegged the ACC Rookie of the Year that season.

**HISTORY WAS MADE APRIL 10TH**

Head Coach Dr. JoAnne Graf notched her 900th victory when FSU defeated North Carolina 6-0 in Chapel Hill on April 10th. She is just the second softball coach in history to reach the mark. The series with Carolina also clinched the ACC regular season title for the Tribe. Graf began her coaching career in North Carolina. As a graduate assistant at UNC-Greensboro, Graf served as head coach for the men's and women's swimming programs and was also the assistant softball coach. She notched win #800 on April 7, 1995 and win #850 on April 1, 1996.

**GRAF NAMED ACC COACH OF THE YEAR**

FSU's Dr. JoAnne Graf was named the ACC Coach of the Year for the third time since FSU joined the league in 1992. Graf led the Seminoles to a 7-1 conference record, a number one seed for the tournament, and a share of the ACC title. Since joining the league, Graf's teams have won both the regular season and the ACC championship title five times.



Calkins & Graf

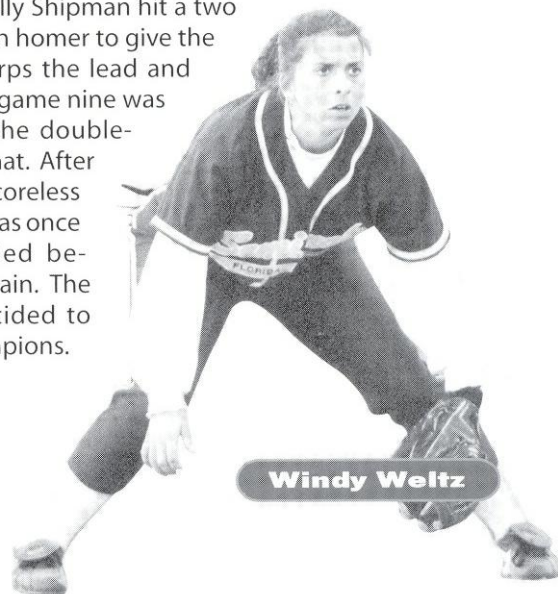
**FSU AND MARYLAND DECLARED CO-CHAMPIONS**

Weather played a factor in the final day of the ACC Tournament. With FSU leading 1-0 in the sixth inning of the championship game, the game was temporarily suspended due to lightning and rain. Following a 1:20 delay, the game resumed and Maryland's Kelly Shipman hit a two run homer to give the Terps the lead and

then the win. A game nine was forced due to the double-elimination format. After four innings of scoreless play, the game was once again suspended because of heavy rain. The conference decided to declare co-champions.

**PLAYERS OF THE WEEK**

Wendy Braye	SAA Player of the Week (May 5)
Tami Post	ACC & SAA Player of the Week (April 14)
Misty Molin	ACC Player of the Week (April 7)
Kristy Fuentes	ACC Pitcher of the Week (April 1, 14; March 2, 23)
	SAA Pitcher of the Week (April 1)
Windy Weltz	ACC & SAA Player of the Week (March 23)
Corrie Williams	ACC Player of the Week (March 2)
Myssi Calkins	ACC Player of the Week (Feb. 23)



Windy Weltz

**FSU AT THE ACC TOURNAMENT**

With the share of the title with Maryland, FSU has now won five of the past six league titles, having had already won the crown in 1992, 1993, 1995 and 1996.

**BACK TO THE NO. 1 SEED**

For the fifth time in six years, FSU was the top seed in the ACC Tournament. In 1996, the Tribe entered the tourney as the No. 2 seed for the first time in league history. It didn't seem to matter though as FSU defeated Georgia Tech (5-4), Maryland (3-0) and North Carolina (3-1) for its fourth ACC title. Co-champion Maryland was the tourney's third seed.

**FOUR SELECTED TO ACC TOURNAMENT TEAM**

Pitcher Kristy Fuentes, who pitched all of the games for FSU in the ACC Tournament received co-MVP honors with Maryland's Kelly Shipman. For the second straight season, Kristy Hull was named to the team while it was also the second time for senior Myssi Calkins and the first for sophomore Tami Post. FSU's four honorees was the most by any team.

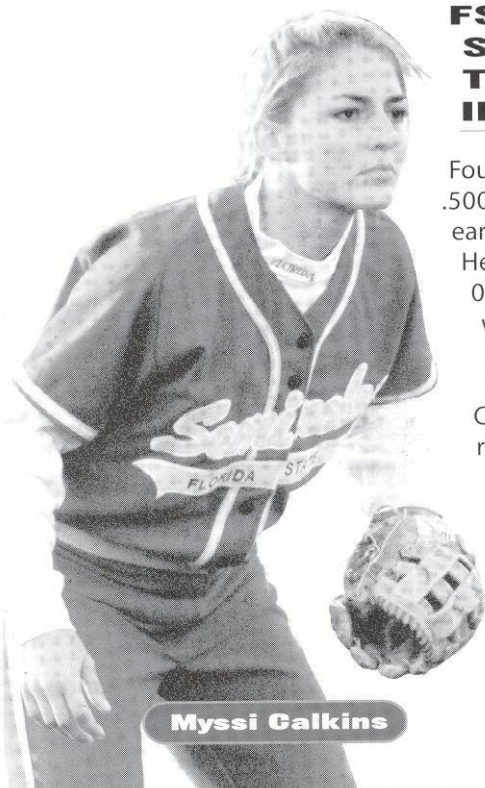


**FOUR EARN TAR HEEL INVITE ALL TOURNEY**

LF Myssi Calkins (second straight year), 3B Tami Post, 1B Misty Molin and P Kristy Fuentes (second straight year) were each named to the all-tournament team at the Tar Heel Invite. Calkins batted a team-high .643 with nine hits and three RBI. Post batted .500 with six hits and four RBI while Molin batted .438 with seven hits including a double and two triples and four RBI. Fuentes went 2-0 and sported a 0.50 ERA. She struck out 10 batters and walked just three in 14.0 innings pitched.

**FSU WINS 3RD STRAIGHT TAR HEEL INVITE**

Four Seminoles starters batted .500 or better as Florida State earned its third consecutive Tar Heel Invitational title, going 5-0 in the tournament. FSU went 3-0 in the first day, defeating Florida Atlantic 5-1, Campbell 4-1 and Coastal Carolina 12-2. Day two was rained out, but in the final day of the tournament, the Tribe dismissed Coastal Carolina 2-1 and FAU in the championship game, 4-0.



**Myssi Calkins**



**Kristy Hull**

# 1997 statistics

## 1997 STATISTICS

Record - 45-19-1 (Home 14-6; Away 13-4-1; Neutral 18-9)

Name	AVG	GP-GS	AB	R	H	2B	3B	HR	RBI	TB	SLG%	BB	HBP	SO	OB%	SF	SH	SB-SBA	PO	A	E	FLD%
Calkins, M	.374	65-65	219	55	82	2	0	1	23	87	.397	15	2	9	.419	0	9	61-67	137	3	4	.972
Molin, M	.370	65-64	192	27	71	9	4	0	38	88	.458	21	0	13	.426	3	15	10-14	252	13	6	.978
Taff, W	.333	42-0	6	12	2	0	0	0	2	2	.333	0	0	0	.286	1	0	1-2	4	0	0	1.000
Braye, W	.352	63-62	166	18	54	11	1	4	22	79	.476	18	1	21	.392	1	4	0-0	294	40	5	.985
Hull, K	.322	64-64	180	38	58	2	3	1	22	69	.383	13	2	16	.374	0	8	9-11	86	15	2	.981
McGregor, J	.303	60-60	178	19	54	4	1	0	24	60	.337	14	0	9	.361	0	9	1-2	92	108	14	.935
King, S	.280	22-8	25	6	7	0	0	0	3	7	.280	1	0	2	.308	0	2	1-2	0	0	0	.000
Bailey, D	.256	65-65	176	19	45	3	3	0	14	54	.307	13	1	20	.311	0	13	9-13	101	10	2	.982
Chou, R	.250	8-0	4	0	1	1	0	0	2	2	.500	0	0	2	.250	0	2	0-0	1	0	0	1.000
Post, T	.243	65-65	189	24	46	7	3	0	31	59	.312	13	1	9	.291	3	9	4-5	60	135	18	.915
Edenfield, T	.238	32-22	63	7	15	2	0	0	5	17	.280	5	0	11	.294	0	3	1-3	9	12	4	.840
Weltz, W	.224	65-65	152	28	3	4	1	0	11	40	.263	30	1	14	.355	0	25	5-6	197	62	8	.970
Poole, K	.200	8-0	5	0	1	0	0	0	2	1	.200	2	0	1	.429	0	0	0-0	0	0	0	.000
Williams, C	.198	48-36	111	9	22	8	0	0	10	30	.270	11	0	19	.270	0	2	0-0	77	8	2	.977
Wallace, B	.095	15-5	21	2	2	0	0	0	0	2	.095	2	1	5	.208	0	1	0-0	22	2	1	.960
Fuentes, K	.048	49-42	21	0	1	0	0	0	0	1	.048	1	0	1	.092	0	1	0-0	9	31	2	.952

### TOTALS

Florida State	.290	65-65	1708	264	495	53	16	6	209	598	.350	161	9	154	.353	8	103	102-125	1345	466	69	.963
Opponents	.203	65-65	1612	141	327	55	8	23	112	467	.290	146	13	297	.274	4	60	40-57	1300	666	109	.947

### PITCHING STATISTICS

Name	ERA	W-L	APP	GS	CG	SHO/CBO	SV	IP	H	R	ER	BB	SO	2B	3B	HR	BF	B/AVG	BK	HBP	WP
Fuentes, K	1.15	32-10	48	41	38	13/0	1	310.0	214	67	51	83	240	36	5	11	1236	.194	0	7	12
Venable, S	2.21	11-9	23	22	13	4/0	0	117.0	95	54	37	45	50	17	3	11	494	.220	0	4	4
Matson, M	5.41	2-0	6	2	2	0/0	0	22.0	18	19	17	18	7	2	0	1	106	.231	0	2	2

### TOTALS

Florida State	1.64	45-19	65	65	53	17/0	1	449.0	327	140	105	146	297	55	8	23	1836	.203	0	13	18
Opponents	2.91	19-45	65	65	45	2/0	2	433.1	495	259	180	141	154	53	16	6	1991	.290	0	9	18



# 1997 results

**record: 45-19-1**

**(home 14-6; away 13-4-1; neutral 18-9)**

Date	Opponent	Result	Score	FSU Pitcher (Record)					
2/9	Georgia Southern	W	8-0	Fuentes (1-0)	3/15	Eastern Michigan	W	5-1	Fuentes (15-4)
2/9	Georgia Southern	W	5-3	Venable(1-0)	3/18	UConn	L	0-1	Fuentes (15-5)
2/12	Florida A&M	W	7-0	Fuentes (2-0)	3/18	UConn	W	8-2	Venable (7-7)
2/14	Nebraska	W	2-1	Fuentes (3-0)	3/23	Georgia Tech	W	5-1	Fuentes (16-5)
2/14	Fresno State	L	0-2	Venable (1-1)	3/23	Georgia Tech	W	8-5	Venable (8-7)
2/15	Oregon	L	1-6	Venable (1-2)	3/25	Maryland	W	1-0	Fuentes (17-5)
2/15	Utah	L	2-6	Venable (1-3)	3/25	Maryland	W	3-0	Venable (9-7)
2/16	Ohio State	W	7-2	Fuentes (4-0)	3/27	Youngstown State	W	8-2	Fuentes (18-5)
2/16	Cal State Fullerton	W	4-2	Fuentes (5-0)	3/27	Youngstown State	W	6-3	Fuentes (19-5)
2/19	Florida	L	1-3	Fuentes (5-1)	4/2	Troy State	W	3-2	Fuentes (20-5)
2/19	Florida	W	8-1	Venable (2-3)	4/2	Troy State	T	1-1	N/A
2/22	Mercer	W	1-0	Fuentes (6-1)	4/4	Florida A&M	L	1-2	Fuentes (20-6)
2/22	Mercer	W	5-1	Matson (1-0)	4/6	Virginia	W	8-0	Fuentes (21-6)
2/23	Florida A&M	W	8-0	Venable (3-3)	4/6	Virginia	L	3-6	Venable (9-8)
2/28	Northwestern	W	2-0	Fuentes (7-1)	4/10	North Carolina	W	6-0	Fuentes (22-6)
3/1	Washington	L	3-8	Venable (3-4)	4/10	North Carolina	W	12-4	Fuentes (23-6)
3/1	Oklahoma	W	2-1	Fuentes (8-1)	4/11	Florida Atlantic	W	5-1	Fuentes (24-6)
3/2	UConn	W	10-3	Venable (4-4)	4/11	Campbell	W	4-1	Venable (10-8)
3/3	Louisiana Tech	L	2-6	Fuentes (8-2)	4/11	Coastal Carolina	W	12-2	Matson (2-0)
3/7	Ball State	W	4-0	Venable (5-4)	4/13	Coastal Carolina	W	2-1	Venable (11-8)
3/7	East Carolina	W	10-0	Fuentes (9-2)	4/13	Florida Atlantic	W	4-0	Fuentes (25-6)
3/7	Michigan State	L	2-6	Fuentes (9-3)	4/18	North Carolina	W	5-4	Fuentes (26-6)
3/8	Hofstra	L	1-2	Venable (5-5)	4/18	Maryland	W	4-3	Fuentes (27-6)
3/8	Arkansas	W	4-0	Fuentes (10-3)	4/19	Maryland	L	1-2	Fuentes (27-7)
3/8	Indiana	W	3-2	Fuentes (11-3)	4/27	Florida A&M	W	7-0	Fuentes (28-7)
3/9	Iowa	L	1-7	Venable (5-6)	4/29	UNC Charlotte	W	6-1	Fuentes (29-7)
3/11	Miami (OH)	W	2-1	Fuentes (12-3)	4/29	UNC Charlotte	W	3-1	Fuentes (30-7)
3/13	Louisiana Tech	L	2-3	Fuentes (12-4)	5/1	Alabama	W	2-0	Fuentes (31-7)
3/14	Wisconsin	L	3-12	Venable (5-7)	5/1	Alabama	L	5-6	Venable (11-9)
3/14	UT-Chattanooga	W	3-1	Fuentes (13-4)	5/2	Auburn	W	2-0	Fuentes (32-7)
3/14	UConn	W	2-1	Fuentes (14-4)	5/2	Auburn	L	1-2	Fuentes (32-8)
3/15	Bradley	W	4-0	Venable (6-7)	5/9	South Florida	L	3-4	Fuentes (32-9)
					5/9	South Florida	L	1-3	Fuentes (32-10)





# 1997 acc review

## 1997 ACC TOURNAMENT

(April 17-19 Marietta, Ga.)

**Thursday** - #5 N. Carolina d. #4 Ga. Tech 8-7; **Friday** - #3 Maryland d. #2 Virginia 4-3; #1 Florida St. d. N. Carolina 5-4; Ga. Tech d. Virginia 7-2; Florida State d. Maryland 4-3; **Saturday** - Ga. Tech d. N. Carolina 3-2 (8); Maryland d. Georgia Tech 9-0; Maryland d. Florida State 2-1.

## 1997 ACC ALL-TOURNAMENT TEAM

Florida State (3) - MYSSI CALKINS, KRISTY HULL, TAMI POST. Georgia Tech (3) - Laura Williams, Lori Steiner, Beth Warren. Maryland (2) - Maureen Klee, Tricia Hunt. North Carolina (2) - Kim Stewart, Colleen Lefferts. Virginia (1) - Stacy Holmes. Tournament MVP: KRISTY FUENTES, FSU; Kelly Shipman, Maryland

## 1997 ALL-ACC TEAM

Florida State (5)- WENDY BRAYE, MYSSI CALKINS, KRISTY FUENTES, KRISTY HULL, MISTY MOLIN. Maryland (3) - Tricia Hunt, Cortney Makes, Kelly Shipman. Georgia Tech (2) - Lauren Webb, Laura Williams. North Carolina (1)- Brandy Arthur. Virginia (1) - Stacy Holmes.

## 1997 ACC PLAYER OF THE YEAR

Laura Williams, Georgia Tech

## 1997 ACC ROOKIE OF THE YEAR

Anne Knobbe, Georgia Tech

## 1997 COACH OF THE YEAR

DR. JOANNE GRAF, FLORIDA STATE



## FINAL STANDINGS

### FLORIDA STATE - MARYLAND ACC CO-CHAMPIONS

Team	Conference				Overall			
	W	L	T	PCT.	W	L	T	PCT.
Florida State	7	1	0	.875	45	19	1	.700
Virginia	6	2	0	.750	17	16	0	.515
Maryland	3	5	0	.375	26	23	0	.531
Georgia Tech	2	6	0	.250	22	34	0	.393
North Carolina	2	6	0	.250	21	33	0	.389

# ACC

ATLANTIC COAST CONFERENCE

# about the acc

## ACC SCHOOLS THAT SPONSOR SOFTBALL

Florida State, Georgia Tech, Maryland, North Carolina, Virginia

### ANNUAL ACC SOFTBALL CHAMPIONS

Year	Champion	Head Coach	Runnerup	Site
1992	Florida State	Dr. JoAnne Graf	Virginia	Tallahassee, Fla.
1993	Florida State	Dr. JoAnne Graf	Virginia	Tallahassee, Fla.
1994	Virginia	Peggy Kellers	Florida State	Tallahassee, Fla.
1995	Florida State	Dr. JoAnne Graf	Georgia Tech	Tallahassee, Fla.
1996	Florida State	Dr. JoAnne Graf	North Carolina	Raleigh, N.C.
1997	FSU/Maryland	Graf/Gina LeMandre		Marietta, Ga.

### ATLANTIC COAST CONFERENCE HONORS

Year	Player of the Year	Coach of the Year	Rookie of the Year	Tourney MVP
1992	Toni Gutierrez, FSU	Dr. JoAnne Graf, FSU	Stephanie Weitman, GAT	Susan Buttery, FSU
1993	Eileen Schmidt, UVA	Dr. JoAnne Graf, FSU	Shamalene Wilson, FSU	Lisa Davidson, FSU
1994	Beverly Smith, UNC	Peggy Kellers, UVA	Laura Williams, GAT	Michelle Collins, UVA
1995	Cindy Lawton, FSU	Regina Tomaselli, GAT	Kristy Hull, FSU	Cindy Lawton, FSU
1996	Shama Wilson, FSU	Donna Papa, UNC	Kelly Shipman, MD	Renee Espinoza, FSU
1997	Laura Williams, GAT	Dr. JoAnne Graf, FSU	Anne Knobbe, GAT	Kristy Fuentes, FSU Kelly Shipman, MD

### teams of the acc

<b>CLEMSON</b>	Charter member of the SIAA in 1894, charter member of the SC in 1921, charter member of the ACC in 1953.
<b>DUKE</b>	Joined the SC in December, 1928, charter member of the ACC in 1953.
<b>FLORIDA STATE</b>	Charter member of the Dixie Conference in 1948, joined the Metro Conference in July, 1976, joined the ACC September 15, 1990.
<b>GEORGIA TECH</b>	Charter member of the SIAA in 1894, charter member of SC in 1921, charter member of the SEC in 1932, joined the ACC in July, 1979.
<b>MARYLAND</b>	Charter member of the SC in 1921, charter member of the ACC in 1953.
<b>NORTH CAROLINA</b>	Charter member of the SIAA in 1894, charter member of the SC in 1921, charter member of the ACC in 1953.
<b>N.C. STATE</b>	Charter member of the SC in 1921, charter member of the ACC in 1953.
<b>VIRGINIA</b>	Charter member of the SIAA in 1894, charter member of the SC in 1921, resigned from SC in December, 1936, joined the ACC in December, 1953.
<b>WAKE FOREST</b>	Joined the SC in February, 1936, charter member of the ACC in 1953.



## THE TRADITION

Consistency. It's the mark of true excellence in any endeavor.

However, in today's intercollegiate athletics, competition has become so balanced and so competitive that it is virtually impossible to maintain a high level of consistency.

Yet the Atlantic Coast Conference has defied the odds. Now in its 45th year of competition, the ACC has long enjoyed the reputation as one of the strongest and most competitive intercollegiate conferences in the nation. And that is not mere conjecture, the numbers support it.

Since the league's inception in 1953, ACC schools have captured 59 NCAA and AIAW championships, including 27 in men's competition and 32 in women's.

## 1996-97 IN REVIEW

The 1996-97 academic year concluded with the league pocketing three more national titles and four individual NCAA crowns. The ACC's 1996-97 national champions were North Carolina in women's soccer and field hockey and Maryland in women's lacrosse. In addition, the ACC had two other teams participate in national championship title games — Florida State in football and Maryland in men's lacrosse. Overall, the ACC posted a 54-48 (.529) mark in NCAA tournament play.

The ACC placed at least one team in the Top 10 nationally in 16 of the 24 sports sponsored by the league. Other records

of note during the 1996-97 season include 84 teams competing at NCAA Championships, four bowl teams and 33 Top 10 showings.

Seven ACC teams, in six different sports representing five of the nine member institutions, earned a No. 1 ranking during the course of the past academic year.

## THE HISTORY

The Atlantic Coast Conference was founded on May 8, 1953, near Greensboro, NC with seven charter members - Clemson, Duke, North Carolina, North Carolina State, South Carolina and Wake Forest.

On December 4, 1953, conference officials met again and officially admitted the University of Virginia. The only withdrawal of a school from the ACC came on June 30, 1971 when the University of South Carolina tendered its resignation.

The conference operated with seven members until April 3, 1978, when Georgia Tech was added. The ACC expanded to nine members on July 1, 1991, with the addition of Florida State.



# post season

## 1986 South Regional

### Ruston, Louisiana

Opponent	FSU	OPP	W-L
Louisiana Tech	0	4	L
Louisiana Tech	0	1	L
Final National Ranking - 9th			

## 1987 South Regional

### Tallahassee, Florida

Opponent	FSU	OPP	W-L
Adelphi	1	0	W
Adelphi	3	1	W

## College World Series

Opponent	FSU	OPP	W-L
Cal-State Fullerton	0	4	L
Central Michigan	0	1	L
Final National Ranking - 7th			

## 1988 South Regional

### Ruston, Louisiana

Opponent	FSU	OPP	W-L
Texas A&M	0	1	L
Louisiana Tech	1	6	L
Final National Ranking - 9th			

## 1989 South Regional

### Tallahassee, Florida

Opponent	FSU	OPP	W-L
South Carolina	1	2	L
Louisiana Tech	1	3	L
Final National Ranking - 9th			

## 1990 South Regional

### Lafayette, Louisiana

Opponent	FSU	OPP	W-L
Texas A&M	5	0	W
SW Louisiana	4	3	W
SW Louisiana	2	1	W

## FSU IN THE NCAA PLAYOFFS

(Regional/District 3)

All-Time Record	18-13
Appearances	11
First Appearance	1986
Last Appearance	1996
Consecutive Appearances	11

## College World Series

Opponent	FSU	OPP	W-L
Fresno State	1	0	W
Oklahoma State	1	4	L
Nevada-Las Vegas	4	1	W
UCLA	1	3	L
Final National Ranking - 3rd			

## 1991 South Regional

### Lafayette, Louisiana

Opponent	FSU	OPP	W-L
SW Louisiana	1	0	W
Oklahoma State	2	0	W
Oklahoma State	4	3	W

## College World Series

Opponent	FSU	OPP	W-L
UCLA	0	1	L
UNLV	1	0	W
Fresno State	0	3	L
Final National Ranking - 5th			

## 1992 South Regional

### Lafayette, Louisiana

Opponent	FSU	OPP	W-L
SW Louisiana	1	0	W
UNLV	4	0	W
SW Louisiana	1	0	W

## College World Series

Opponent	FSU	OPP	W-L
California	0	3	L
UMASS	2	4	L
Final National Ranking - 7th			

## 1993 South Regional

### Tallahassee, Florida

Opponent	FSU	OPP	W-L
Kansas	0	1	L
Iowa	5	3	W
Kansas	5	0	W
Kansas	2	1	W

## College World Series

Opponent	FSU	OPP	W-L
Connecticut	1	2	L
Final National Ranking - 7th			

## 1994 South Regional

### Stillwater, Oklahoma

Opponent	FSU	OPP	W-L
Oklahoma State	2	5	L
Providence	1	2	L
Final National Ranking - 9th			

## 1995 West Regional

### Tucson, Arizona

Opponent	FSU	OPP	W-L
Nebraska	1	6	L
Ohio	2	0	W
Nebraska	6	2	W
Arizona	0	15	L
Final National Ranking - 9th			

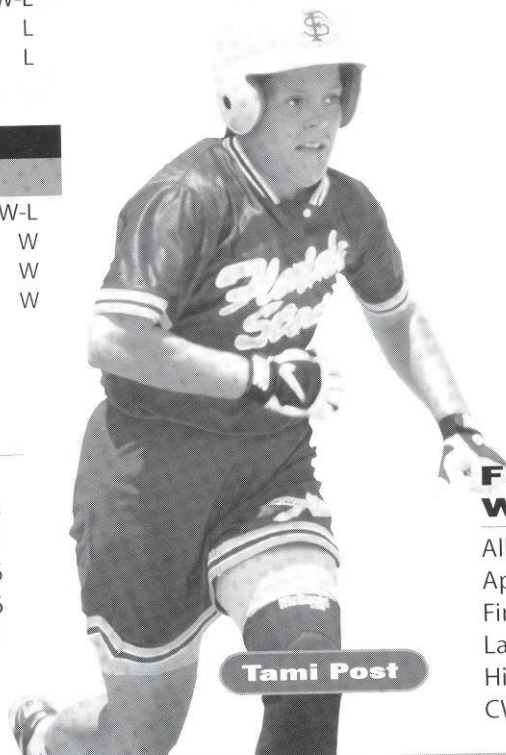
## 1996 South Regional

### Tallahassee, Florida

Opponent	FSU	OPP	W-L
South Florida	3	1	W
Arizona	6	9	L
South Florida	6	0	W
Arizona	3	10	L
Final National Ranking - 9th			

## FSU IN THE COLLEGE WORLD SERIES

All-Time CWS Record	3-10
Appearances	5
First Appearance	1987
Last Appearance	1993
Highest Final Ranking	3rd, 1990
CWS Appearances	1987, 90, 91, 92, 93



**Tami Post**

# series records

OPPONENT	W	L	T								
Adelphi	5	1	0	Georgia Tech	19	1	0	No. Carolina-Wilmington	7	0	0
Alabama	1	1	0	Grambling State	5	0	0	Northeast Louisiana	3	0	1
Arizona	0	7	0	Hofstra	7	1	0	Northern Illinois	4	3	0
Arizona State	1	2	0	Illinois-Chicago	3	1	0	Northern Iowa	5	1	0
Auburn	1	1	0	Illinois State	5	0	0	Northwest Louisiana	2	0	0
Austin Peay	1	0	0	Indiana	7	1	0	Northwestern	2	1	0
Ball State	7	0	1	Iowa	3	2	0	Notre Dame	2	1	0
Baylor	2	2	0	Iowa State	2	0	0	Ohio	5	0	0
Bowling Green	6	0	0	Kansas	5	3	0	Ohio State	10	1	0
Bradley	5	0	0	Kent	4	0	0	Oklahoma	4	3	0
Brown	2	0	0	Liberty	1	0	0	Oklahoma City College	2	0	0
Cal - Berkeley	0	2	0	Limestone	4	0	0	Oklahoma State	6	7	0
Cal - Poly Pomona	1	0	0	Long Beach State	0	1	0	Onondaga CC	4	0	0
Cal - State Fullerton	2	5	0	Louisiana Tech	2	11	2	Oregon	2	1	0
Cal - State Northridge	0	2	0	Maine	2	0	0	Pacific	1	0	0
Campbell	4	0	0	Marshall	2	0	0	Penn State	2	0	0
Central Michigan	3	1	0	Maryland	7	1	0	Princeton	6	0	0
Coastal Carolina	3	0	0	Massachusetts	8	2	0	Providence	0	1	0
Connecticut	14	3	0	Mercer	12	0	0	Quincy College	2	0	0
Creighton	2	1	0	Miami (Ohio)	8	4	0	Radford College	1	0	0
Davis & Elkins	1	0	0	McNeese	0	1	0	Rhode Island	2	0	0
Dayton	1	0	0	Michigan	1	4	0	Rider College	2	0	0
Detroit	3	0	0	Michigan State	5	1	0	Robert Morris	3	1	0
Drake	2	0	0	Millikin	1	0	0	Rutgers	5	0	0
Drexel	4	0	0	Minnesota	1	0	0	Sacramento State	1	0	0
East Carolina	16	1	0	Mississippi State	4	0	0	Saginaw Valley State	3	0	0
East Central CC	2	0	0	Mississippi Univ.-Women	3	0	0	Samford	2	0	0
Eastern Illinois	7	0	0	Missouri	1	4	0	Sam Houston State	1	1	0
Eastern Michigan	13	0	0	Nebraska	3	5	0	South Carolina	16	14	0
Florida	1	1	0	Nevada-Las Vegas UNLV	2	1	0	South Florida	34	10	0
Florida A & M	54	1	0	New Mexico	3	0	0	Southern Illinois	4	2	0
Florida Atlantic	2	1	0	New Mexico State	1	0	0	Southern Mississippi	6	0	0
Fresno State	0	1	0	New Orleans	2	0	0	Southwestern Louisiana	9	3	0
Georgia Southern	4	0	0	Nicholls State	8	2	0	Southwest Missouri State	2	1	0
Georgia State	7	1	0	North Carolina	26	5	0	St. Louis CC	2	0	0
				North Carolina-Charlotte	8	0	0	Stanford	1	0	0
								Stephen F. Austin	1	1	0
								Stetson	12	1	0
								Susquehanna	2	0	0
								Temple	12	1	0
								Tennessee - Chattanooga	2	0	0
								Tennessee Tech	3	0	0
								Texas A&M	1	4	0
								Texas-Arlington	0	1	0
								Toledo	7	1	0
								Troy State	4	1	1
								UCLA	0	5	0
								Utah	2	3	0
								Utah State	2	1	0
								Valparaiso	2	0	0
								Virginia	30	10	0
								Washington	0	3	0
								West Florida	38	4	0
								Western Illinois	7	2	0
								Wichita State	1	0	0
								Winthrop	5	0	0
								Wisconsin	0	1	0
								Yale	1	0	0
								Youngstown State	2	0	0

## LADY SEMINOLE INVITATIONAL CHAMPIONS & MVP

YEAR	CHAMPION	MVP
1984	Florida State	Tina Kyler, Florida State
1985	Florida State	Beth Hawkins, Bradley
1986	South Florida	Debbie Morash, South Florida
1987	South Florida	Lisa Lines, South Florida
1988	Florida State	Tiffany Daniels, Florida State
1989	Northern Illinois	Jill Justin, Northern Illinois
1990	Pool Champions: Southwestern Louisiana, Illinois State, Nebraska and South Florida; no MVP's or All-Tournament Team was chosen.	
1991	Florida State and Creighton	No MVP's were chosen
1992	Florida State	Toni Gutierrez, Florida State
1993	Florida State	Leslie Adams, Florida State
1994	Texas A&M	Jennifer McFalls, Texas A&M
1995	Michigan	Sarah Griffin, Michigan
1996	South Florida	Monica Triner, South Florida
1997	Michigan State	Stefanie Noffsinger, Michigan State

# seminoles

## in the pros



**laurie shepard**  
silver bullets



**myssi calkins**  
georgia pride



**renee espinoza**  
georgia pride



**shama wilson**  
georgia pride



**shannon mitchem**  
silver bullets

FLORIDA STATE UNIVERSITY SOFTBALL 1998

# all-time letterwinners

1984-1997 SOFTBALL ROSTER

**A**  
 Rebecca Aase ..... 1991-94  
 Leslie Adams ..... 1992-93  
 Shannon Aiken ..... 1989  
 Kim Averill ..... 1989

**B**  
 Greta Bahn ..... 1984-86  
**Dana Bailey ..... 1996-97**  
 Leslie Barton ..... 1990-93  
 Jill Bellamy ..... 1986-88  
 Shelley Berube ..... 1984  
 Michelle Bishop ..... 1995  
 Wendy Braye ..... 1994-97  
 Jodie Bullock ..... 1990  
 Jennifer Butler ..... 1995  
 Susan Buttery ..... 1990-93

**C**  
 Myssi Calkins ..... 1994-97  
 Rosalind Chou ..... 1996-97  
 Teresa Collins ..... 1984  
 Heather Conway ..... 1992-93  
 Dina Cooper ..... 1984  
 Suzanne Cooper ..... 1987  
 Shawnda Corbin ..... 1988  
 Lori Crouse ..... 1986-89

**D**  
 Tiffany Daniels ..... 1986-89  
 Lisa Davidson ..... 1991-94  
 Wendy Davis ..... 1984  
 Judi Davison ..... 1985-87  
 Debbie DeJohn ..... 1987-90  
 Jennie Dillmore ..... 1992-93  
 Tabitha Doka ..... 1994  
 Jennifer Drawdy ..... 1994

**E**  
**Teresa Edenfield ..... 1997**  
 Sherri Emetario ..... 1986-87  
 Renee Espinoza ..... 1995  
 Bonnie Evans ..... 1988

**F**  
 Heather Feltmann ..... 1993-95  
 Stephanie Ferlita ..... 1995-96  
 Carolyn Fiero ..... 1986-87  
 Kelly Flaczinski ..... 1988-91  
 Kristy Fuentes ..... 1994-97

**G**  
 Tina Getherall ..... 1990-92  
 Barbara Gillespie ..... 1985-86  
 Cathy Gooding ..... 1984  
 Cindy Gordon ..... 1992-93  
 Toni Gutierrez ..... 1990-93

**H**  
 Roxanne Hantelmann ..... 1986  
 LeAnn Harrell ..... 1984  
 Becky Harrison ..... 1988-91  
 B.J. Hodges ..... 1990-91  
 Laurie Holler ..... 1985-86  
**Kristy Hull ..... 1995-97**

**K**  
 Kari Keith ..... 1986-89  
**Sarah King ..... 1997**  
 Tina Kyler ..... 1984

**L**  
 Hunter LaFountain ..... 1989-90  
 Christy Larsen ..... 1988-91  
 Julie Larsen ..... 1985-88  
 Monica Lawfield ..... 1984  
 Cindy Lawton ..... 1994-95  
 Marla Looper ..... 1993-94

**M**  
 Sandy Martinez ..... 1988-89  
 Meggan Matson ..... 1997  
**Jesse McGregor ..... 1996-97**  
 Lora Migliaccio ..... 1988-91  
 Shannon Mitchem ..... 1989-92  
 Leslie Miller ..... 1984  
**Misty Molin ..... 1995-97**

**N**  
 Heidi Nelson ..... 1984

**O**  
 Cricket Olafson ..... 1984  
 Jennifer Olow ..... 1991-94  
 Sunnie O'Neal ..... 1984  
 Sherri Owens ..... 1988

**P**  
 Robin Pace ..... 1984  
 Susan Painter ..... 1984  
 Adrienne Pearson ..... 1994-95  
**Tami Post ..... 1996-97**  
 Chris Priestler ..... 1986

**R**  
 Julie Rice ..... 1988-91  
 Brenda Richardson ..... 1989  
 Daphne Russell ..... 1987-88

**S**  
 Kelly Schnute ..... 1995-96  
 Laurie Shepard ..... 1992-95  
 Tracy Simmons ..... 1987  
 Penny Siqueiros ..... 1989-92  
 Debbie Smith ..... 1986  
 Amy Snider ..... 1984-86  
 Lynn Steele ..... 1985-87  
 Stacie Symonds ..... 1994

**T**  
 Windy Taff ..... 1996-97  
 Laurie Tiedt ..... 1984-87  
 Kelly Tillman ..... 1984

**V**  
**Stacy Venable ..... 1997**

**W**  
**Becky Wallace ..... 1997**  
 Windy Weltz ..... 1994-97  
**Corrie Williams ..... 1996-97**  
 Shamalene Wilson ..... 1993-96  
 Tina Wood ..... 1993-94

**Z**  
 Niki Zenger ..... 1995-96

**BOLD INDICATES CURRENT PLAYER**

# honors & awards

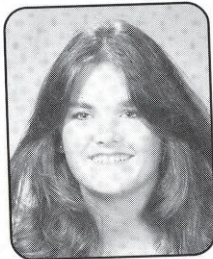
## FLORIDA STATE ALL-AMERICANS – 1980'S



**Darby Cottle**  
1981, 1982



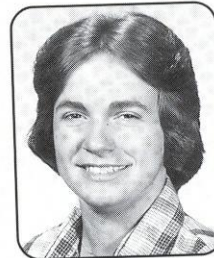
**Natalie Drouin**  
1982



**Susan Painter**  
1982



**Toni Robinette**  
1982



**Jan Sikes**  
1982

## 1990'S



**Susan Buttery**  
2nd Team, 1993



**Myssi Calkins**  
2nd Team 1996, 1997



**Tiffany Daniels**  
1st Team, 1987



**Lisa Davidson**  
1st Team, 1993



**Renee Espinoza**  
2nd Team, 1996



**Kristy Fuentes**  
3rd Team, 1997



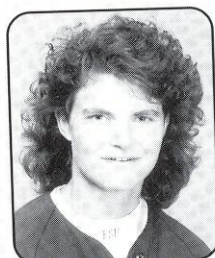
**Toni Gutierrez**  
2nd Team, 1992



**Christy Larsen**  
3rd Team, 1991



**Cindy Lawton**  
3rd Team, 1995



**Marla Looper**  
3rd Team, 1994



**Shamalene Wilson**  
1st Team, 1996, 3rd Team,  
1995, 2nd Team, 1994

## ALL-REGION

- 1982 Darby Cottle, Toney Donaldson, Natalie Drouin, Susan Painter, Toni Robinette, Kelly Shaw, Jan Sikes
- 1984 Greta Bahn, Laurie Holler - 1<sup>st</sup> team  
Teresa Collins - 2<sup>nd</sup> team
- 1985 Greta Bahn, Laurie Holler, Tina Kyler,  
Julie Larsen
- 1986 Carolyn Fiero, Julie Larsen - 1<sup>st</sup> team  
Laurie Holler - 2<sup>nd</sup> team
- 1987 Tiffany Daniels, Carolyn Fiero, Julie  
Larsen - 1<sup>st</sup> team
- 1988 Tiffany Daniels, Christy Larsen - 1<sup>st</sup> team  
Julie Larsen - 2<sup>nd</sup> team
- 1989 Debbie DeJohn, Christy Larsen - 1<sup>st</sup> team
- 1990 Christy Larsen, Penny Siqueiros - 1<sup>st</sup> team  
Debbie DeJohn, Julie Rice - 2<sup>nd</sup> team

- 1992 Susan Buttery, Toni Gutierrez - 1<sup>st</sup> team  
Leslie Adams - 2<sup>nd</sup> team  
Leslie Barton - honorable mention
- 1993 Lisa Davidson, Marla Looper - 1<sup>st</sup> team
- 1994 Marla Looper, Laurie Shepard,  
Shamalene Wilson - 1<sup>st</sup> team  
Rebecca Aase, Lisa Davidson, Cindy  
Lawton - 2<sup>nd</sup> team
- 1995 Renee Espinoza, Kristy Hull, Shamalene  
Wilson - 1<sup>st</sup> team
- 1996 Myssi Calkins, Renee Espinoza,  
Shamalene Wilson - 1<sup>st</sup> team  
Kristy Hull - 2<sup>nd</sup> team
- 1997 Myssi Calkins, Kristy Fuentes, Misty  
Molin - 1st team  
Wendy Braye, Kristy Hull - 2nd Team

## ALL-ATLANTIC COAST CONFERENCE

- 1992 Rebecca Aase, Leslie Adams, Susan  
Buttery
- 1993 Rebecca Aase, Leslie Barton, Susan  
Buttery, Lisa Davidson, Toni  
Gutierrez, Marla Looper
- 1994 Lisa Davidson, Marla Looper,  
Shamalene Wilson
- 1995 Wendy Braye, Renee Espinoza, Kristy  
Fuentes, Cindy Lawton, Misty Molin,  
Laurie Shepard, Shamalene Wilson,  
Niki Zenger
- 1996 Myssi Calkins, Renee Espinoza,  
Shamalene Wilson
- 1997 Wendy Braye, Myssi Calkins, Kristy  
Fuentes, Kristy Hull, Misty Molin



**ALL-TOURNAMENT TEAMS**

- 1981 Charlotte Cates, Darby Cottle, Natalie Drouin, Carol O'Domski, Susan Painter - National Championships
- Charlotte Cates, Darby Cottle, Jan Sikes - Florida Invitational
- Darby Cottle, Pat Mangan, Carol O'Domski, Venus Ross, Jan Sikes - South Florida Invitational
- Charlotte Cates, Darby Cottle, Toni Robinette, Venus Ross - North Carolina State Invitational
- Darby Cottle, Natalie Drouin, Cathy Gooding, Carol O'Domski, Venus Ross - AIAW Region III
- 1982 Darby Cottle, Cathy Gooding, Susan Painter - Florida Invitational
- Toni Robinette - Florida State Invitational
- Darby Cottle, Toney Donaldson, Cathy Gooding - South Florida Invitational
- Darby Cottle, Toney Donaldson, Natalie Drouin, Susan Painter, Jan Sikes, Sandie Williams - N.C. State Invitational
- Darby Cottle, Toney Donaldson, Cathy Gooding, Susan Painter, Toni Robinette, Kelly Shaw, Jan Sikes - Regional Championships
- Darby Cottle, Susan Painter, Toni Robinette, Linda Tyrrell, Sandie Williams - National Championships
- 1983 Cathy Gooding, LeAnn Harrell, Kelly Tillman - Florida Invitational
- Darby Cottle, Toney Donaldson, LeAnn Harrell, Carla Long - South Florida Invitational
- Teresa Collins, Toney Donaldson, Cathy Gooding, LeAnn Harrell - Florida State Invitational
- Teresa Collins, Darby Cottle (MVP), LeAnn Harrell, Carla Long, Cricket Olafson, Sunnie O'Neal, Susan Painter - N.C. State Invitational
- Darby Cottle, LeAnn Harrell, Susan Painter - State Championships
- Darby Cottle, Toney Donaldson, LeAnn Harrell, Carla Long, Cricket Olafson, Susan Painter - National Championships
- 1984 Shelley Berube, Cathy Gooding, Tina Kyler (MVP), Leslie Miller, Susan Painter - Lady Seminole Invitational
- Teresa Collins, Tina Kyler - Lady Flame Invitational
- 1985 Greta Bahn, Laurie Holler, Wendy Rogers - Lady Seminole Invitational
- Amy Snider - South Carolina Invitational

- Greta Bahn, Shelley Berude, Tina Kyler, Leslie Miller (MVP)
- Wendy Rogers - Florida Collegiate Championship
- 1986 Carolyn Fiero, Julie Larsen - Lady Seminole Invitational
- Barbara Gillespie, Julie Larsen (MVP) - South Carolina Invitational
- 1987 Tiffany Daniels, Judi Davison, Carolyn Fiero - South Florida Invitational
- Kari Keith - Lady Seminole Invitational
- 1988 Tiffany Daniels - South Florida Invitational
- Lori Crouse, Tiffany Daniels (MVP), Kari Keith, Christy Larsen
- Julie Larsen - Lady Seminole Invitational
- Tiffany Daniels, Christy Larsen - National Invitational Championship
- 1989 Debbie DeJohn, Kelly Flaczinski, Christy Larsen - Frost Cutlery Invitational
- Kelly Flaczinski - Lady Seminole Invitational
- 1990 Leslie Barton, Debbie DeJohn - NCAA Women's College World Series
- 1991 Tina Getherall - Lady Seminole Invitational
- 1992 Leslie Barton, Toni Gutierrez (MVP) - Lady Seminole Invitational
- Rebecca Aase, Leslie Adams, Leslie Barton, Susan Buttery (MVP), Toni Gutierrez, Shannan Mitchem, Penny Siqueiros - ACC Championships
- Lisa Davidson - South Florida Invitational
- Toni Gutierrez (MVP) - Tar Heel Invitational
- 1993 Lisa Davidson - Tar Heel Invitational
- Marla Looper - Lady Seminole Invitational
- Leslie Barton, Susan Buttery, Heather Conway, Lisa Davidson (MVP), Toni Gutierrez, Marla Looper - ACC Championships
- 1994 Cindy Lawton, Shamalene Wilson - South Florida Invitational
- Marla Looper, Jennifer Olow, Windy Weltz, Shamalene Wilson - ACC Championships
- Shamalene Wilson - Lady Seminole Invitational
- Jennifer Olow, Shamalene Wilson - Tar Heel Invitational
- 1995 Wendy Braye, Myssi Calkins, Renee Espinoza, Heather Feltmann, Kristy Fuentes, Kristy Hull - ACC Championships
- Renee Espinoza, Cindy Lawton, Misty Molin - Tar Heel Invitational
- Wendy Braye, Renee Espinoza (MVP), Cindy Lawton - Gladstone's/USF

- Softball Classic
- Krsity Hull, Cindy Lawton, Misty Molin, Laurie Shepard - Lady Seminole Invitational
- 1996 Renee Espinoza, Shamalene Wilson - Speedline/USF Softball Classic
- Kristy Hull, Shamalene Wilson - Lady Seminole Invitational
- Myssi Calkins, Kristy Fuentes - Tar Heel Invitational
- Renee Espinoza (MVP), Kristy Hull, Windy Weltz, Shamalene Wilson - ACC Championships
- 1997 Wendy Braye - Speedline/USF Softball Classic
- Myssi Calkins, Kristy Fuentes, Misty Molin, Tami Post - Tar Heel Invitational
- Myssi Calkins, Kristy Fuentes (Co-MVP), Kristy Hull, Tami Post - ACC Championships

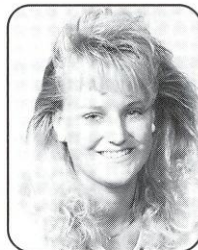
**OTHER ACCOMPLISHMENTS**

- 1981 ASA Outstanding Athlete - Darby Cottle
- USOC Best Amateur Softball Player in the Nation - Darby Cottle
- FAIAW Softball Coach of the Year - JoAnne Graf
- 1982 Olympia Award - Darby Cottle
- Broderick Award - Darby Cottle
- 1992 ACC Player of the Year - Toni Gutierrez
- ACC Coach of the Year - JoAnne Graf
- Most Valuable Pitcher in the South Florida Invitational - Toni Gutierrez
- 1993 ACC Rookie of the Year - Shamalene Wilson
- ACC Coach of the Year - JoAnne Graf
- 1995 ACC Rookie of the Year - Kristy Hull
- ACC Player of the Year - Cindy Lawton
- 1996 ACC Player of the Year - Shamalene Wilson
- 1997 Coach of the Year - Dr. JoAnne Graf

**florida state university sports hall of fame**



**Darby Cottle-Vezey**  
(inducted 1988)



**Julie Larsen-Baker**  
(inducted 1995)

# record book

## YEARLY LEADERS-OFFENSIVE (SINCE 1984)

### BATTING AVERAGE

1984 Greta Bahn	.....331
1985 Greta Bahn	.....274
1986 Carolyn Fiero	.....352
1987 Tiffany Daniels	.....391
1988 Tiffany Daniels	.....340
1989 Tiffany Daniels	.....350
1990 Penny Siqueiros	.....313
Leslie Barton	.....313
1991 Penny Siqueiros	.....329
1992 Penny Siqueiros	.....381
1993 Susan Buttery	.....377
1994 Shamalene Wilson	.....380
1995 Cindy Lawton	.....383
1996 Shamalene Wilson	.....402
1997 Myssi Calkins	.....374

### RUNS

1984 Greta Bahn	.....36
1985 Greta Bahn	.....35
1986 Barbara Gillespie	.....24
1987 Tiffany Daniels	.....63
1988 Tiffany Daniels	.....39
1989 Tiffany Daniels	.....35
1990 Christy Larsen	.....30
1991 Susan Buttery	.....43
1992 Susan Buttery	.....59
1993 Susan Buttery	.....58
1994 Shamalene Wilson	.....55
1995 Shamalene Wilson	.....55
1996 Shamalene Wilson	.....72
1997 Myssi Calkins	.....55

### HITS

1984 Greta Bahn	.....39
1985 Greta Bahn	.....54
1986 Carolyn Fiero	.....42
1987 Tiffany Daniels	.....79
1988 Tiffany Daniels	.....55
1989 Tiffany Daniels	.....56
1990 Penny Siqueiros	.....56
1991 Penny Siqueiros	.....71
1992 Susan Buttery	.....84
1993 Susan Buttery	.....78
1994 Shamalene Wilson	.....81
1995 Cindy Lawton	.....87
Kristy Hull	
1996 Shamalene Wilson	.....92
1997 Myssi Calkins	.....82

### DOUBLES

1984 Teresa Collins	.....7
1985 Greta Bahn	.....4
1986 Carolyn Fiero	.....5
1987 Carolyn Fiero	.....6
1988 Christy Larsen	.....5
1989 Tiffany Daniels	.....8
1990 Christy Larsen	.....7

1991 Penny Siqueiros	.....7
1992 Leslie Barton	.....11
1993 Leslie Barton	.....8
Lisa Davidson	
1994 Lisa Davidson	.....10
Shamalene Wilson	
1995 Cindy Lawton	.....16
1996 Jesse McGregor	.....9
1997 Wendy Braye	.....11

### TRIPLES

1984 Greta Bahn	.....6
1985 Laurie Holler	.....9
1986 Carolyn Fiero	.....5
1987 Tiffany Daniels	.....11
1988 Tiffany Daniels	.....6
1989 Christy Larsen	.....4
1990 Leslie Barton	.....3
Toni Gutierrez	
Julie Rice	
1991 Penny Siqueiros	.....5
1992 Susan Buttery	.....9
1993 Lisa Davidson	.....9
1994 Shamalene Wilson	.....9
1995 Shamalene Wilson	.....11
1996 Shamalene Wilson	.....7
1997 Misty Molin	.....4

### HOME RUNS

1984 Teresa Collins	.....7
1985 Wendy Rogers	.....5
1986 Carolyn Fiero	.....6
1987 Tiffany Daniels	.....10
1988 Tiffany Daniels	.....6
1989 Tiffany Daniels	.....6
1990 Leslie Barton	.....5
1991 Susan Buttery	.....3
1992 Lisa Davidson	.....6
1993 Leslie Barton	.....5
1994 Lisa Davidson	.....7
1995 Shamalene Wilson	.....5
1996 Shamalene Wilson	.....3
1997 Wendy Braye	.....4

### RUNS BATTED IN

1984 Greta Bahn	.....25
Teresa Collins	
1985 Wendy Rogers	.....31
1986 Carolyn Fiero	.....25
1987 Tiffany Daniels	.....41
1988 Lori Crouse	.....33
1989 Tiffany Daniels	.....28
1990 Penny Siqueiros	.....23
1991 Penny Siqueiros	.....31
1992 Penny Siqueiros	.....49
1993 Leslie Barton	.....47
1994 Shamalene Wilson	.....36
1995 Cindy Lawton	.....46
1996 Shamalene Wilson	.....45

1997 Misty Molin	.....38
------------------	---------

### STOLEN BASES

1984 Sunnie O'Neal	.....11
1985 Greta Bahn	.....15
Barbara Gillespie	
1986 Greta Bahn	.....20
1987 Tiffany Daniels	.....23
1988 Christy Larsen	.....12
1989 Tiffany Daniels	.....25
1990 Jodie Bullock	.....7
1991 Tina Getherall	.....11
1992 Leslie Barton	.....35
1993 Shamalene Wilson	.....25
1994 Myssi Calkins	.....44
1995 Shamalene Wilson	.....39
1996 Shamalene Wilson	.....69
1997 Myssi Calkins	.....61

### BASES ON BALLS

1984 Greta Bahn	.....21
1985 Greta Bahn	.....25
1986 Laurie Holler	.....24
1987 Tiffany Daniels	.....39
1988 Tiffany Daniels	.....26
1989 Tiffany Daniels	.....24
1990 Jodie Bullock	.....17
1991 Susan Buttery	.....23
1992 Leslie Barton	.....29
1993 Lisa Davidson	.....28
1994 Jen Olow	.....23
1995 Wendy Braye	.....22
1996 Kristy Hull	.....20
1997 Windy Weltz	.....30

### SACRIFICE HITS

1984 Tina Kyler	.....11
1985 Tina Kyler	.....17
1986 Karyn Palgut	.....13
1987 Lynn Steele	.....18
1988 Kari Keith	.....14
1989 Kelly Flaczinski	.....17
1990 Shannan Mitchem	.....18
1991 Kelly Flaczinski	.....15
Tina Getherall	
1992 Shannan Mitchem	.....25
1993 Shamalene Wilson	.....17
1994 Myssi Calkins	.....21
1995 Windy Weltz	.....16
1996 Kristy Hull	.....18
1997 Windy Weltz	.....25

## YEARLY LEADERS-PITCHING (SINCE 1984)

### APPEARANCES

1984 Tina Kyler	.....23
1985 Tina Kyler	.....26
1986 Julie Larsen	.....33
1987 Julie Larsen	.....37
1988 Julie Larsen	.....24

FLORIDA STATE UNIVERSITY SOFTBALL 1998

1989 Debbie DeJohn .....	32
1990 Debbie DeJohn .....	35
1991 Christy Larsen .....	43
1992 Toni Gutierrez .....	44
1993 Marla Looper .....	25
1994 Marla Looper .....	36
1995 Renee Espinoza .....	39
1996 Renee Espinoza .....	40
1997 Kristy Fuentes .....	48

**INNINGS PITCHED**

1984 Tina Kyler .....	157
1985 Tina Kyler .....	182
1986 Julie Larsen .....	225

1994 Marla Looper .....	21
1995 Renee Espinoza .....	26
1995 Renee Espinoza .....	30
1997 Kristy Fuentes .....	32

**STRIKEOUTS**

1984 Tina Kyler .....	248
1985 Tina Kyler .....	209
1986 Julie Larsen .....	271
1987 Julie Larsen .....	224
1988 Julie Larsen .....	164
1989 Christy Larsen .....	166
1990 Christy Larsen .....	201
1991 Christy Larsen .....	307

**BASES ON BALLS**

1984 Shelley Berube .....	16
1985 Julie Larsen .....	30
1986 Roxanne Hantelmann .....	18
1987 Debbie DeJohn .....	56
1988 Debbie DeJohn .....	32
1989 Debbie DeJohn .....	35
1990 Christy Larsen .....	22
1991 Toni Gutierrez .....	38
1992 Toni Gutierrez .....	54
1993 Toni Gutierrez .....	28
1994 Marla Looper .....	39
1995 Kristy Fuentes .....	71
1996 Niki Zenger .....	47
1997 Kristy Fuentes .....	83



**HITS**

1984 Shelley Berube .....	33
1985 Tina Kyler .....	63
1986 Roxanne Hantelmann .....	65
1987 Julie Larsen .....	114
Debbie DeJohn .....	114
1988 Christy Larsen .....	54
1989 Christy Larsen .....	83
1990 Christy Larsen .....	57
1991 Toni Gutierrez .....	87
1992 Rebecca Aase .....	96
1993 Rebecca Aase .....	66
1994 Rebecca Aase .....	108
1995 Renee Espinoza .....	142
1996 Niki Zenger .....	124
1997 Kristy Fuentes .....	214

1987 Julie Larsen .....	237
1988 Julie Larsen .....	174
1989 Debbie DeJohn .....	223
1990 Debbie DeJohn .....	225
1991 Christy Larsen .....	275
1992 Toni Gutierrez .....	285
1993 Marla Looper .....	165.2
1994 Marla Looper .....	191.1
1995 Renee Espinoza .....	221.1
1996 Renee Espinoza .....	253.0
1997 Kristy Fuentes .....	310.0

1992 Toni Gutierrez .....	295
1993 Marla Looper .....	143
1994 Marla Looper .....	167
1995 Renee Espinoza .....	212
1996 Renee Espinoza .....	220
1997 Kristy Fuentes .....	240

**EARNED RUN AVERAGE**

1984 Shelley Berube .....	0.22
1985 Julie Larsen .....	0.29
1986 Julie Larsen .....	0.37
1987 Debbie DeJohn .....	0.51
1988 Christy Larsen .....	0.90
1989 Debbie DeJohn .....	0.53
1990 Toni Gutierrez .....	0.14
1991 Toni Gutierrez .....	0.59
1992 Toni Gutierrez .....	0.47
1993 Marla Looper .....	0.42
1994 Marla Looper .....	1.10
1995 Renee Espinoza .....	1.33
1996 Renee Espinoza .....	0.83
1997 Kristy Fuentes .....	1.15

**RUNS**

1984 Shelley Berube .....	10
1985 Julie Larsen .....	10
1986 Roxanne Hantelmann .....	17
1987 Julie Larsen .....	41
Debbie DeJohn .....	
1988 Christy Larsen .....	25
1989 Debbie DeJohn .....	33
1990 Christy Larsen .....	17
1991 Toni Gutierrez .....	22
1992 Rebecca Aase .....	31
1993 Rebecca Aase .....	16
Toni Gutierrez .....	
1994 Rebecca Aase .....	43
1995 Renee Espinoza .....	55
1996 Renee Espinoza .....	51
1997 Kristy Fuentes .....	67

**WINS**

1984 Shelley Berube .....	18
1985 Julie Larsen .....	18
1986 Julie Larsen .....	25
1987 Julie Larsen .....	25
Debbie DeJohn .....	
1988 Debbie DeJohn .....	18
1989 Debbie DeJohn .....	22
1990 Debbie DeJohn .....	25
1991 Christy Larsen .....	33
1992 Toni Gutierrez .....	35
1993 Marla Looper .....	20

**CAREER RECORDS**

**GAMES**

Myssi Calkins .....	271	1994-97
Wendy Braye .....	259	1994-97
Shamalene Wilson .....	262	1993-96
Shannan Mitchem .....	258	1989-92
Susan Buttery .....	256	1990-93

**AT BATS**

Shamalene Wilson .....	846 1993-96
Susan Buttery .....	767 1990-93
Myssi Calkins .....	764 1994-97
Leslie Barton .....	695 1990-93
Christy Larsen .....	687 1988-91
Wendy Braye .....	686 1994-97

**RUNS**

Shamalene Wilson .....	223 1993-96
Susan Buttery .....	170 1990-93
Myssi Calkins .....	166 1994-97
Tiffany Daniels .....	148 1986-89
Leslie Barton .....	131 1990-93

**HITS**

Shamalene Wilson .....	310 1993-96
Myssi Calkins .....	253 1994-97
Susan Buttery .....	245 1990-93
Penny Siqueiros .....	219 1989-92
Leslie Barton .....	216 1990-93
Tiffany Daniels .....	198 1986-89

**DOUBLES**

Wendy Braye .....	35 1994-97
Lisa Davidson .....	27 1991-94
Cindy Lawton .....	25 1994-95
Christy Larsen .....	23 1988-90
Shamalene Wilson .....	23 1993-96

**TRIPLES**

Shamalene Wilson .....	30 1993-96
Tiffany Daniels .....	21 1986-89
Lisa Davidson .....	19 1991-94
Leslie Barton .....	17 1990-93
Susan Buttery .....	16 1990-93

**HOME RUNS**

Tiffany Daniels .....	24 1986-89
Lisa Davidson .....	19 1991-94
Shamalene Wilson .....	16 1993-96
Leslie Barton .....	14 1990-93
Susan Buttery .....	10 1990-93

**STOLEN BASES**

Myssi Calkins .....	185 1994-97
Shamalene Wilson .....	161 1993-96
Leslie Barton .....	66 1990-93
Tiffany Daniels .....	61 1986-89
Greta Bahn .....	41 1984-86

**BASES ON BALLS**

Lisa Davidson .....	114 1991-94
Tiffany Daniels .....	92 1986-89
Leslie Barton .....	70 1990-93
Windy Weltz .....	65 1994-97
Susan Buttery .....	64 1990-93

**RUNS BATTED IN**

Leslie Barton .....	131 1990-93
Shamalene Wilson .....	112 1993-96
Penny Siqueiros .....	110 1989-92
Tiffany Daniels .....	103 1986-89

Wendy Braye .....	92 1994-97
-------------------	------------

**BATTING AVERAGE**

Shamalene Wilson .....	.366 1993-96
Cindy Lawton .....	.358 1994-95
Tiffany Daniels .....	.356 1986-89
Penny Siqueiros .....	.333 1989-92
Kristy Hull .....	.331 1995-97
Myssi Calkins .....	.331 1994-97

**PITCHING-CAREER RECORDS**

**GAMES**

Kristy Fuentes .....	125 1994-97
Debbie DeJohn .....	121 1987-90
Julie Larsen .....	113 1985-88
Christy Larsen .....	107 1988-91
Toni Gutierrez .....	104 1990-93

**INNINGS PITCHED**

Debbie DeJohn .....	798 1987-90
Julie Larsen .....	759 1985-88
Kristy Fuentes .....	698.1 1994-97
Toni Gutierrez .....	651 1990-93
Christy Larsen .....	604 1988-91

**WINS**

Debbie DeJohn .....	90 1987-90
Julie Larsen .....	85 1985-89
Christy Larsen .....	77 1988-91
Toni Gutierrez .....	74 1990-93
Kristy Fuentes .....	72 1994-97

**STRIKEOUTS**

Julie Larsen .....	834 1985-88
Christy Larsen .....	758 1988-91
Toni Gutierrez .....	648 1990-93
Kristy Fuentes .....	501 1994-97
Tina Kyler .....	457 1984-85

**SHUTOUTS**

Christy Larsen .....	52 1988-91
Toni Gutierrez .....	51 1990-93
Julie Larsen .....	50 1985-88
Debbie DeJohn .....	43 1987-90
Rebecca Aase .....	43 1991-94

**EARNED RUN AVERAGE**

Shelley Berube .....	0.38 1984-85
Toni Gutierrez .....	0.47 1990-93
Tina Kyler .....	0.50 1984-85
Rebecca Aase .....	0.65 1991-93
Marla Looper .....	0.78 1993-94
Rebecca Aase .....	0.84 1991-94

**TEAM SEASON RECORDS**

**VICTORIES**

Most in a Season .....	63, 1992 (63-9)
------------------------	-----------------

**STREAKS**

Longest Winning Streak .....	32, 1985 (March 4th to March 26th)
Longest Losing Streak .....	6, 1989 (March 19th to March 25th)

**WINNING PERCENTAGE**

Highest in Season .....	.875, 1984 and 1992
-------------------------	---------------------

**SHUTOUTS**

Fewest Times Shutout in Season .....	2, 1997 (65 Games), 2, 1995 (61 Games)
Most Times Shutout in Season .....	10, 1994
Longest Streak Without Being Shutout ..	46 (1984)
Most Recorded in Season .....	41, 1992
Most Consecutive .....	17, 1993
Consecutive Scoreless Innings Pitched ...	1242/3, 1993

**HITTING**

**RUNS**

Most in Game .....	17 vs. FAMU, 1987
Most Allowed in Game ..	15 vs. Arizona, 1995
Largest Winning Margin .....	17 vs. FAMU, 1987
Largest Losing Margin ..	15 vs. Arizona, 1995
Most in Season .....	364, 1992
Most Allowed in Season .....	141, 1997

**HITS**

Most in Season .....	628, 1995
Most Allowed in Season .....	361, 1995

**DOUBLES**

Most in Season .....	67, 1995
Most Allowed in Season .....	55, 1997

**TRIPLES**

Most in Season .....	33, 1994
Most Allowed in Season .....	23, 1994

**HOME RUNS**

Most in Season .....	23, 1992
Most Allowed in Season .....	23, 1997

**RUNS BATTED IN**

Most in Season .....	288, 1992
----------------------	-----------

**BATTING AVERAGE**

Highest in Season .....	.316, 1995 (628-1985)
Highest Allowed in Season .....	.204, 1996

**STOLEN BASES**

Most in Season .....	160, 1996 (72 games)
Most Allowed in Season .....	53, 1991 (58 attempts)

**FIELDING**

**PUTOUTS**

Most in Season .....	1,482, 1996 (72 games)
----------------------	------------------------

**ASSISTS**

Most in Season .....	632, 1995 (73 games)
----------------------	----------------------

**ERRORS**

Most in Season .....	98, 1996 (72 games)
Most by Opponents in Season .....	155, 1995

**FIELDING PERCENTAGE**

Highest in Season .....	.976, 1993 (61 games)
Highest in Season .....	.950, 1997 (64 games)

# record book

## PITCHING

### PITCHING APPEARANCES

Most in Season ..... 73, 1995

### INNINGS PITCHED

Most in Season ..... 514, 1991 (74 games)  
 Most by Opponents ..... 481, 1991 (74 games)

### NO-HITTERS

Most in Season ..... 8, 1986 (49 games)

### EARNED RUN AVERAGE

Lowest in Season ..... 0.37, 1984 (18 ER-339.2 IP)  
 Highest in Season ..... 1.64, 1997 (105 ER-449.0 IP)

### INDIVIDUAL SEASON RECORDS

Most Games Played: ..... Penny Siqueiros, 74, 1991  
 At Bats: ..... Susan Buttery, 240, 1992  
 Runs: ..... Shamalene Wilson, 72, 1996  
 Hits: ..... Shamalene Wilson, 92, 1996  
 Doubles: ..... Cindy Lawton, 16, 1995  
 Triples: Tiffany Daniels, 11, 1987; Shamalene Wilson, 11, 1995  
 Home Runs: ..... Tiffany Daniels, 10, 1987  
 RBI's: ..... Penny Siqueiros, 49, 1992  
 Walks: ..... Tiffany Daniels, 39, 1987  
 Strikeouts: ..... Leslie Barton, 42, 1991  
 Batting Average: ..... Shamalene Wilson, .402, 1996

Stolen Bases: ..... Shamalene Wilson, 69 (72 attempts), 1996  
 Sacrifices: ..... Shannon Mitchem, 25, 1992  
 Putouts: ..... Heather Feltmann, 480, 1994  
 Assists: ..... Cindy Lawton, 189, 1995  
 Errors: ..... Jesse McGregor, 34, 1996  
 Fielding Pct.: ..... Julie Rice, 1.000 (320 chances), 1990

## PITCHING

Appearances: ..... Kristy Fuentes, 48, 1997  
 Games Started: ..... Kristy Fuentes, 41, 1997  
 Wins: ..... Toni Gutierrez, 35, 1992  
 Losses: ..... Kristy Fuentes, 10, 1997, Renee Espinoza, 10, 1995  
 Runs (Most): ..... Kristy Fuentes, 67, 1997  
 Runs (Least): ..... Julie Larsen, 10, 1985;  
 Shelley Berube, 10, 1984; Rebecca Aase, 10, 1994  
 Earned Runs (Most) ..... Kristy Fuentes, 51, 1995, 1997  
 Earned Runs (Least): ... Toni Gutierrez, 1, (in 50 innings) 1990  
 Hits (Most): ..... Kristy Fuentes, 214, (in 310 innings) 1997  
 Walks (Most): ..... Kristy Fuentes, 83, 1997  
 Walks (Least): ..... Toni Gutierrez, 10, 1990  
 Strikeouts: ..... Christy Larsen, 307, 1991  
 Hit Batsmen: ..... Renee Espinoza, 18, 1996  
 Earned Run Average: .. Toni Gutierrez, 0.14, 1990, (50 innings)  
 Most Doubles Allowed: ..... Kristy Fuentes, 36, 1997  
 Most Triples Allowed: ..... Rebecca Aase, 11, 1994  
 Most Home Runs Allowed: .... K. Fuentes, S. Venable, 11, 1997  
 Most Consecutive Victories: ..... Rebecca Aase, 50,  
 Feb, 15, 1991 to April 24, 1993  
 Best Win Percentage: ..... 1.000 Rebecca Aase, 1992, (28-0)



# year by year records

**1978 (46-9)**

OPPONENT	FSU	OPP
Lake City CC	10	8
Florida A&M	15	3
Central CC	15	0
Florida A&M	11	1
Central CC	17	1
Central CC	17	3
Florida	6	2
Miami	18	1
Florida Int'l	5	2
West Palm JC	8	3
Florida	5	2
Florida Tech	3	8
Florida Tech	10	5
Florida	4	0
South Florida	4	5
Jacksonville	20	0
Jacksonville	6	0
Florida	10	1
Florida Tech	5	1
Flagler College	0	5
Florida Tech	0	4
Florida	1	0
Florida	4	0
Lake City CC	11	6
Lake City CC	10	2
South Florida	10	4
Lake City CC	1	0
Flagler College	12	11
Florida	8	2
Jacksonville	4	2
Jacksonville	2	1
South Florida	2	3
Stetson	9	1
Florida Int'l	4	3
Florida	8	1
Florida Tech	1	7
Florida	4	1
Florida	6	4
Stetson	11	0
South Florida	3	2
Florida Tech	10	9
Florida Tech	7	4
Auburn	4	2
Auburn	6	1
Armstrong St	4	0
Southern Miss	9	1
Delta State	4	5
Florida Int'l	3	0
Delta State	5	2
South Florida	3	6
Armstrong St	10	3
Delta State	8	3
South Florida	5	1
Florida	1	0
Florida	2	4

**1979 (26-15)**

OPPONENT	FSU	OPP
Chipola CC	3	1
Florida A&M	11	1
Chipola CC	1	5
Chipola CC	6	7
Brevard CC	4	3
Brevard CC	14	0
Broward No CC	15	2

Dade South CC	1	2
Miami	3	1
Dade North CC	3	4
Jacksonville	10	0
Florida	0	2
Florida A&M	7	2
South Florida	6	2
Florida	1	4
South Florida	0	1
Lake City CC	3	1
Lake City CC	4	3
Florida A&M	5	0
Flagler College	8	10
Central Florida	8	1
Jacksonville	4	3
Lake City CC	1	4
Lake City CC	5	3
Lake City CC	0	2
Florida	0	5
Dade North CC	15	0
Lake City CC	0	7
Jacksonville	2	1
Jacksonville	10	3
Florida	2	0
Florida	1	2
Flagler College	14	2
Florida	3	2
South Florida	6	5
Florida	7	3

**1980 (37-10)**

OPPONENT	FSU	OPP
N. Florida JC	1	2
N. Florida JC	5	4
Central Florida	5	1
Florida	0	2
Brevard CC	11	0
Brevard CC	4	1
Florida A&M	10	2
Florida JC	5	1
Flagler College	11	0
Lake City CC	6	5
Florida	5	4
Lake City CC	2	3
South Florida	1	0
South Florida	5	1
Central Florida	7	3
South Florida	8	9
Fl. Southern	9	3
Florida	3	5
Florida	5	4
Florida A&M	10	5
Stetson	14	2
Florida Int'l	11	1
Florida	4	2
Flagler College	5	2
Flagler College	17	4
Chipola CC	10	0
Lake City CC	1	3
Appalachian St	23	1
N. Kentucky	15	4
Florida	1	7
N.C. State	7	4
Florida	0	5
Chipola CC	11	3
Chipola CC	11	3
Miami	22	4

South Florida	11	1
Central Florida	3	2
Florida	3	2
N. Florida JC	4	2
N. Florida JC	2	1
Auburn	4	3
Auburn	4	3
W. GA College	3	0
Auburn	20	11
Florida	0	1
Auburn	10	3
Florida	0	4

**1981 (54-7)**

OPPONENT	FSU	OPP
Chipola JC	12	0
Chipola JC	12	0
Auburn	5	1
East Carolina	9	2
Florida A&M	11	0
Florida	3	0
Florida	3	4
Florida	5	2
Lake City CC	4	3
Miami Dade N. JC	5	0
Miami	9	0
Broward Cen. CC	2	3
Palm Beach JC	4	0
Florida	5	0
South Florida	2	0
Florida Int'l	7	0
Flagler College	16	0
Flagler College	13	0
Edward Waters	21	2
Edward Waters	10	0
South Florida	7	5
Stetson	9	0
Florida Int'l	9	2
Florida	1	5
South Florida	5	1
Georgia Tech	12	2
Armstrong State	17	4
Lake City CC	16	2
Flagler College	11	2
Flagler College	5	0
Edward Waters	15	0
Edward Waters	8	0
Western Carolina	1	0
N.C. State	3	2
East Carolina	12	0
East Carolina	4	9
East Carolina	2	5
Florida A&M	7	1
Florida	5	1
Chipola JC	14	1
Chipola JC	15	1
Eckerd College	14	3
South Florida	5	1
Livingston St.	15	2
Georgia Southern	16	0
South Florida	9	5
South Florida	8	4
Western Carolina	13	9
N.C. State	4	3
East Carolina	12	3
North Carolina	4	1

**1982 (56-10)**

OPPONENT	FSU	OPP
Florida A&M	13	4
Florida A&M	9	0
Chipola JC	15	0
Brevard JC	6	0
South Florida	3	0
Florida	3	0
Florida	6	5
Chipola JC	15	0
Chipola JC	8	2
South Florida	3	0
Mississippi	8	1
Valencia CC	15	0
Florida	2	4
Lake City CC	5	7
East Carolina	2	8
Florida A&M	12	11
Florida A&M	12	4
Georgia State	15	0
Georgia State	17	0
Wilmington Coll.	10	2
Jacksonville	11	8
Fort Valley St.	30	5
Pensacola JC	9	0
Jacksonville	1	3
Lake City CC	11	10
South Florida	0	6
Florida Int'l	8	7
Palm Beach JC	5	4
Florida	11	12
South Florida	16	9
Florida	8	1
Florida	6	1
Jacksonville	9	2
Florida	0	14
Georgia Southern	39	5
South Florida	16	14
Florida	15	4
Florida	2	3
Florida	2	11
Pensacola JC	9	3
Lake City CC	8	4
East Carolina	5	0
North Carolina	11	0
N. Kentucky	6	0
N.C. State	6	0
Chipola JC	15	0
Chipola JC	17	0
Florida	4	3
Florida A&M	19	5
Lake City CC	15	6
Lake City CC	7	6
Stetson	19	1
Florida Int'l	9	1
Florida	1	2
South Florida	6	5
Florida	5	1
Florida	9	8
Columbus College	12	0
Miss. U. of Women	10	1
South Florida	9	1
South Florida	1	1
South Florida	5	2
Georgia Southern	10	0
South Florida	17	2
UNC-Charlotte	19	4

# FLORIDA STATE UNIVERSITY SOFTBALL 1998

Florida	9	4	NE Louisiana	0	0	Onondaga CC	8	1	Florida Southern	7	3
			Grambling	7	0	Western Illinois	1	0	Rutgers	3	0
			Grambling	4	0	Millikin	6	0	Nevada-Reno	8	1
<b>1983 (46-11)</b>			Mississippi State	1	0	Michigan State	2	0	Furman	3	2
<b>OPPONENT</b>	<b>FSU</b>	<b>OPP</b>	Mississippi State	6	2	Michigan State	5	0	Mississippi State	3	1
West Florida	10	4	Miss. U. of Women	3	0	Bradley	2	0	Western Illinois	4	6
West Florida	10	9	Miss. U. of Women	6	2	Bradley	3	1	Ohio	10	0
Lake City CC	2	1	Southern Miss	1	0	Furman	13	0	Ohio	5	1
Lake City CC	3	4	Southern Miss	1	0	Stetson	2	1	Ohio State	8	0
West Florida	3	1	Southern Miss	1	0	Rutgers	4	0	Ohio State	3	2
Jacksonville	5	2	St. Louis CC	15	0	Toledo	3	2	Oklahoma State	3	2
Pensacola JC	3	2	East Central	8	0	SW Missouri St	4	3	Utah	2	6
Florida	5	1	East Central	10	0	Ohio State	6	0	Texas A&M	1	0
Florida	5	0	St. Louis CC	11	1	South Florida	2	1	St. Mary's	2	1
Florida Atlantic	16	0	Mississippi St.	5	0	Bradley	1	0	Sam Houston	3	2
Florida Atlantic	10	4	George Mason	5	0	Ohio State	3	2	Oklahoma State	2	1
Campbell College	19	2	Florida A&M	10	0	Ohio State	11	1	Arizona State	0	2
East Carolina	14	8	Onondaga JC	4	1	Ohio State	14	0	West Florida	3	0
Miami Dade N.	8	1	Onondaga JC	10	0	Brown	14	2	West Florida	5	1
West Florida	17	4	Western Illinois	1	3	Brown	14	2	Furman	0	1
Jacksonville	15	1	Western Illinois	3	1	SW Missouri St	0	1	East Carolina	3	0
Lake City CC	3	1	Rider College	10	0	Stanford	9	1	North Carolina	1	0
Cleveland State	14	2	Rider College	4	0	Baylor	4	5	South Carolina	3	0
Cleveland State	2	0	Saginaw Valley	1	0	Utah State	0	2	South Florida	3	0
Florida A&M	14	2	Saginaw Valley	7	2	New Mexico	3	2	Louisiana Tech	0	4
Florida A&M	7	6	East Carolina	2	0	Louisiana Tech	1	2	Louisiana Tech	0	1
South Florida	2	0	East Carolina	3	0	Texas A&M	1	2			
Florida Southern	8	0	North Carolina	1	0	NE Louisiana	10	1			
Palm Beach JC	6	5	North Carolina	5	0	Adelphi	0	2	<b>1987 (50-14)</b>		
South Florida	4	2	Nicholls State	1	2	Louisiana Tech	3	4	<b>OPPONENT</b>	<b>FSU</b>	<b>OPP</b>
Florida	3	2	Southern Miss	3	0	Georgia State	7	0	Stetson	7	0
South Florida	4	7	Miss. U. of Women	2	1	George Mason	5	0	Stetson	3	4
South Florida	9	0	Liberty Baptist	9	0	Western Illinois	9	0	Florida A&M	8	1
Jacksonville	2	0	Davis & Elkins	9	0	Florida A&M	1	0	Florida A&M	6	3
Jacksonville	4	2	Radford	8	0	Florida A&M	8	0	UNC-Wilmington	3	1
Pensacola JC	2	1	Ohio State	5	2	South Florida	2	1	UNC-Wilmington	2	0
East Carolina	0	2	North Carolina	3	1	South Florida	1	2	Virginia	7	0
East Carolina	5	4	Penn State	5	0	South Carolina	0	2	Virginia	2	5
UNC-Charlotte	12	0	Florida A&M	11	1	South Carolina	2	0	Limestone	6	0
N.C. State	7	1	Florida A&M	11	0	Stetson	4	1	Limestone	11	0
Cleveland Sate	5	3	New Orleans	9	0	South Florida	1	0	Temple	0	1
Northern KY	17	1	New Orleans	10	0	South Florida	1	0	Temple	6	3
Jacksonville	0	1							East Carolina	10	0
Jacksonville	3	2							East Carolina	2	1
Florida A&M	10	0	<b>1985 (50-12-2)</b>			<b>1986 (42-7)</b>			Eastern Michigan	8	1
Florida A&M	12	3	<b>OPPONENT</b>	<b>FSU</b>	<b>OPP</b>	<b>OPPONENT</b>	<b>FSU</b>	<b>OPP</b>	Bradley	2	0
Lake City CC	0	2	South Florida	2	1	West Florida	5	0	Stetson	16	0
Lake City CC	9	4	South Florida	3	4	West Florida	6	0	Temple	5	0
Stetson	14	0	Florida A&M	3	0	South Florida	1	0	South Carolina	0	4
West Florida	5	1	Florida A&M	5	0	South Florida	2	1	Rutgers	4	0
Florida	5	2	Susquehanna	11	0	Ball State	4	0	Winthrop	8	0
Florida	7	8	Susquehanna	8	2	Ball State	3	2	South Florida	3	7
Florida	0	2	Louisiana Tech	0	0	Valparaiso	5	0	South Carolina	0	2
Northern KY	13	4	McNeese State	0	4	Valparaiso	2	0	Miami (Ohio)	3	0
East Carolina	3	2	Ball State	0	0	Virginia	4	0	Miami (Ohio)	3	2
Florida	8	3	Missouri	0	1	Virginia	1	2	Tennessee Tech	10	0
South Florida	2	11	Detroit	5	0	Temple	7	0	Kent State	16	0
South Florida	3	4	Detroit	6	1	Temple	2	0	Bowling Green	4	0
			Temple	2	0	Limestone	4	0	Southern Miss	13	3
			Temple	3	0	Limestone	1	0	Nicholls State	5	0
			Grambling	11	0	Florida Southern	7	0	Furman	1	0
			Grambling	10	0	Florida Southern	2	0	Toledo	0	3
			Saginaw Valley	6	0	Maine	1	0	Toledo	9	6
			NE Louisiana	1	0	Maine	10	0	Toledo	8	1
			Grambling	7	0	Michigan State	2	0	Bowling Green	12	2
			Florida A&M	3	0	Tennessee Tech	8	0	Bowling Green	3	1
			Quincy College	4	2	Tennessee Tech	11	1	Ohio	3	0
			Quincy College	1	0	Western Illinois	11	0	Ohio	6	2
			Onondaga CC	10	0	Toledo	4	0			

FLORIDA STATE UNIVERSITY SOFTBALL 1998

West Florida	1	0
West Florida	4	0
Furman	8	2
South Florida	5	4
Nicholls State	5	1
George Mason	3	0
South Carolina	1	0
Louisiana Tech	2	1
Georgia State	4	1
South Florida	0	2
South Florida	1	0
South Carolina	1	3
South Carolina	0	1
South Carolina	2	1
Florida A&M	17	0
Florida A&M	7	1
Oklahoma	0	1
Oklahoma State	1	4
Baylor	10	0
Oklahoma	6	1
Baylor	8	1
Oklahoma State	2	0
Adelphi	1	0
Adelphi	3	1
Cal State-Fullerton	0	3
Central Michigan	0	1

Nicholls State	8	3
Utah	3	0
South Carolina	0	1
Utah	4	8
South Carolina	1	3
South Florida	8	5
South Florida	8	1
Florida A&M	3	0
Florida A&M	2	1
West Florida	5	3
West Florida	1	2
Kansas	2	1
Nebraska	0	3
Kansas	2	4
Nebraska	0	5
Creighton	4	0
Creighton	0	2
Georgia State	5	0
Georgia State	2	1
Texas A&M	0	1
Louisiana Tech	1	6

**1989 (39-14)**

OPPONENT	FSU	OPP
West Florida	3	2

Temple	3	1
Nicholls State	3	1
Arizona State	3	7
Miami (Ohio)	3	4
Miami (Ohio)	0	1
Illinois State	2	0
Connecticut	3	0
Miami (Ohio)	5	0
Southern Illinois	4	2
SW Missouri St	14	0
Stetson	6	0
North Carolina	1	2
Northern Illinois	0	3
Northern Illinois	2	5
South Florida	4	2
South Florida	8	1
Florida A&M	3	0
Florida A&M	4	1
Nebraska	0	1
Kansas	3	2
Arizona State	3	2
Kansas	1	0
Nebraska	2	4
East Carolina	3	0
Furman	5	0

**1990 (48-16)**

OPPONENT	FSU	OPP
West Florida	1	0
West Florida	1	0
Florida A&M	6	2
Florida A&M	4	0
Eastern Michigan	1	0
Eastern Michigan	1	0
Michigan	1	0
Michigan	2	3
UNC-Wilmington	6	1
UNC-Wilmington	5	0
Indiana	1	2
Iowa	0	5
Central Michigan	1	0
South Florida	2	1
Maine	7	0
Oklahoma	0	1
Southern Illinois	4	0
Virginia	1	0
Virginia	5	0
Indiana	1	0
Indiana	2	0
Connecticut	1	3
Stetson	3	2
SW Louisiana	1	2
Oklahoma	3	2
Adelphi	4	0
Nebraska	2	1
Missouri	1	2
Missouri	1	2
Northern Iowa	0	1
Northern Iowa	4	2
Princeton	5	0
Princeton	6	0
Georgia State	2	0
Georgia State	8	0
Southern Miss	4	0
Georgia Tech	10	0
Wichita State	1	0
Austin Peay	5	1
Michigan State	2	0
Georgia State	0	1
South Florida	4	1
South Florida	2	0
Stephen F. Austin	5	2
Sam Houston	0	2
Oklahoma State	1	2
Texas A&M	3	1
Texas-Arlington	0	2
Southern Miss	11	0
North Carolina	1	0
East Carolina	7	2
South Carolina	0	2
South Carolina	3	0
Florida A&M	10	0
Florida A&M	2	0
West Florida	2	0
West Florida	6	0
Texas A&M	5	0
SW Louisiana	4	3
SW Louisiana	2	1
Fresno State	1	0
Oklahoma State	1	4
Nevada-Las Vegas	4	1
UCLA	0	3

**1988 (44-14)**

OPPONENT	FSU	OPP
West Florida	1	0
West Florida	1	0
Florida A&M	14	3
Florida A&M	11	0
Eastern Michigan	3	1
Eastern Michigan	4	3
Temple	3	0
Temple	2	0
North Carolina	4	2
North Carolina	8	4
Louisiana Tech	0	7
North Carolina	2	1
Eastern Michigan	7	4
South Florida	2	1
Virginia	4	0
Temple	4	3
Okla. City College	5	0
South Carolina	1	5
Central Michigan	6	2
Southern Illinois	5	1
Southern Illinois	1	2
Virginia	5	0
Virginia	7	1
Florida A&M	7	0
NE Louisiana	5	1
Maine	1	0
Northern Illinois	3	4
Miami (Ohio)	5	1
Furman	2	0
Eastern Illinois	2	1
Northern Illinois	2	1
Eastern Illinois	3	2
Eastern Illinois	11	1
Ohio State	6	1
Ohio State	2	1
Italian Nat'l Team	4	3
Nicholls State	1	0
Nicholls State	2	1



West Florida	1	5
Florida A&M	11	0
Florida A&M	4	0
Eastern Michigan	2	0
Eastern Michigan	5	1
Temple	2	1
Temple	8	2
Virginia	4	2
Virginia	5	1
East Carolina	5	0
East Carolina	5	0
Missouri	6	0
Western Illinois	5	2
New Mexico	3	2
SW Louisiana	4	2
North Carolina	3	1
South Florida	2	0
Virginia	2	0
Nicholls State	2	0
West Florida	3	2
West Florida	3	0
Louisiana Tech	0	1
Nicholls State	1	0
Nicholls State	0	2
Louisiana Tech	0	1
South Carolina	1	2
Louisiana Tech	1	3

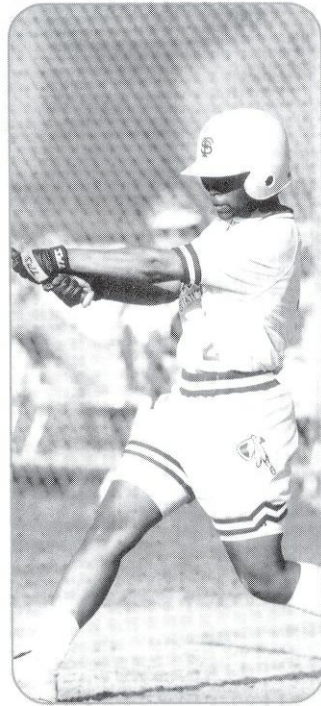


FLORIDA STATE UNIVERSITY SOFTBALL 1998

**1991 (61-12)**

OPPONENT	FSU	OPP
California	0	4
New Mexico	9	1
UCLA	2	5
Sacramento State	4	0
Pacific	4	3
Arizona	0	8
Cal St.-Northridge	0	1
West Florida	4	3
West Florida	0	5
Georgia Southern	6	2
Georgia Southern	5	1
Florida A&M	8	0
Florida A&M	4	0
South Florida	2	0
South Florida	0	2
Ball State	5	0
Samford	2	1
Samford	6	0
Detroit	9	0
Western Illinois	2	1
Indiana	3	1
Winthrop	4	1
Eastern Michigan	1	0
Oklahoma	7	1
South Carolina	3	4
Connecticut	2	1
Connecticut	1	0
Virginia	9	1
Virginia	2	1
Creighton	3	2
Miami (Ohio)	0	8
East Carolina	13	0
Western Illinois	2	1
Rhode Island	6	0
Winthrop	2	0
Indiana	6	2
Bradley	2	0
Northern Iowa	3	1
Northern Iowa	2	1
Miami (Ohio)	0	8
Miami (Ohio)	5	1
Drexel	2	0
Drexel	7	1
Bowling Green	2	0
Bowling Green	9	0
Dayton	3	0
Toledo	1	0
Northwestern	2	0
South Florida	6	5
Samford	4	0
North Carolina	5	0
South Carolina	4	1
Notre Dame	7	0
South Florida	2	0
Winthrop	4	1
SW Louisiana	3	0
Georgia Southern	4	0
Georgia Southern	9	1
Florida A&M	7	1
Florida A&M	11	1
Virginia	1	2
Eastern Michigan	3	2
Virginia	0	2
West Florida	1	0

West Florida	7	0
Connecticut	2	0
Princeton	4	3
Massachusetts	2	0
SW Louisiana	1	0
Oklahoma State	2	0
Oklahoma State	4	3
UCLA	0	1
Nevada-Las Vegas	3	1
Fresno State	0	3



**1992 (63-9)**

OPPONENT	FSU	OPP
Samford	10	0
Samford	7	0
Florida A&M	12	0
Florida A&M	10	0
West Florida	2	0
West Florida	2	0
Georgia Southern	8	0
Georgia Southern	13	3
Northwestern	10	0
Northwestern	1	0
Ball State	2	0
Ball State	9	0
South Florida	5	1
South Florida	3	0
Robert Morris	1	0
Robert Morris	14	1
Adelphi	12	2
Penn State	7	0
Virginia	10	0
Samford	4	3
Hofstra	14	4
North Carolina	12	1
Oklahoma City	2	1

Rutgers	1	0
Rutgers	8	4
Virginia	0	1
Virginia	5	2
Miami (Ohio)	0	2
Northern Iowa	2	0
Bradley	3	2
Princeton	7	0
Bowling Green	4	0
Adelphi	5	0
South Florida	1	0
Kent State	6	0
Princeton	2	1
Drexel	3	0
Drexel	4	0
Kent State	2	1
Kent State	8	0
Cal-State Fullerton	4	5
Missouri	1	2
Ohio State	1	0
Arizona	0	2
Illinois State	7	2
Oklahoma State	0	3
Georgia Southern	6	0
Georgia Southern	2	0
Florida A&M	7	0
Florida A&M	6	0
UNC-Wilmington	7	1
North Carolina	0	1
Winthrop	3	1
Georgia Tech	10	0
East Carolina	5	2
South Carolina	3	2
Georgia Tech	6	0
North Carolina	11	0
Virginia	11	1
South Carolina	2	0
South Carolina	6	0
South Carolina	2	0
West Florida	6	0
West Florida	11	2
Connecticut	1	0
Massachusetts	3	1
Connecticut	4	3
SW Louisiana	1	0
Nevada-Las Vegas	4	0
SW Louisiana	1	0
California	0	3
Massachusetts	2	4

**1993 (52-9)**

OPPONENT	FSU	OPP
Samford	3	1
Samford	3	1
West Florida	6	1
West Florida	3	1
Florida A&M	7	0
Mercer	5	0
Mercer	7	0
South Florida	10	0
South Florida	7	0
Georgia Tech	3	0
Georgia Tech	2	0
Florida A&M	10	0
Central Michigan	5	0
Georgia Southern	6	0
Hofstra	6	0

Iowa	3	0
Connecticut	1	0
Connecticut	8	0
Northern Iowa	7	0
Drake	6	0
Georgia State	1	0
SW Louisiana	1	2
Rhode Island	10	0
Eastern Illinois	7	2
Virginia	7	0
Southern Illinois	1	0
SW Louisiana	2	1
Toledo	11	0
Toledo	4	0
Fresno State	1	2
Cal Poly Pomona	1	0
Minnesota	3	1
Utah	2	3
Cal State-Fullerton	4	1
Florida A&M	10	0
Florida A&M	4	1
UNC-Wilmington	12	0
Virginia	3	2
Coastal Carolina	8	0
Hofstra	10	2
Coastal Carolina	9	1
East Carolina	13	0
Georgia Tech	12	0
Virginia	0	1
Georgia Tech	11	0
Virginia	2	0
Virginia	4	2
South Carolina	4	6
South Carolina	7	0
South Carolina	8	0
Connecticut	1	4
South Florida	1	0
Massachusetts	5	0
West Florida	5	0
West Florida	7	0
Kansas	0	1
Iowa	5	3
Kansas	5	0
Kansas	2	1
Oklahoma State	2	5
Connecticut	1	2

**1994 (50-19)**

OPPONENT	FSU	OPP
Mercer	9	3
Mercer	6	0
NC-Charlotte	4	0
NC-Charlotte	7	1
Georgia Southern	10	1
Georgia Southern	8	0
West Florida	10	0
West Florida	5	0
Florida A&M	3	0
Stetson	7	0
Stetson	5	0
Mercer	6	0
Mercer	5	0
Florida A&M	8	0
South Carolina	2	3
South Carolina	3	1
Georgia Tech	6	1
Georgia Tech	2	1

FLORIDA STATE UNIVERSITY SOFTBALL 1998

Robert Morris	0	1	Mercer	3	0	UNLV	2	3	<b>1997 (45-19-1)</b>		
Illinois-Chicago	3	0	Mercer	10	2	Washington	6	13	<b>OPPONENT</b>	<b>FSU</b>	<b>OPP</b>
Penn State	6	2	North Carolina	6	3	Arizona	4	8	Georgia Southern	8	0
UCLA	0	3	North Carolina	3	1	Illinois State	4	1	Georgia Southern	5	3
Notre Dame	3	0	Marshall	8	0	Utah State	6	5	Florida A&M	7	0
Virginia	7	0	Marshall	7	0	Cal State Fullerton	11	12	Nebraska	2	1
Oklahoma State	0	1	Indiana State	8	0	Stetson	1	0	Fresno State	0	2
Northern Illinois	3	0	Illinois-Chicago	1	3	Stetson	6	2	Oregon	1	6
Northern Illinois	1	0	Iowa	0	4	FAMU	8	0	Utah	2	6
Texas A&M	3	7	Robert Morris	3	0	Washington	1	3	Ohio State	7	2
Virginia	4	3	North Carolina	8	2	Massachusetts	4	1	Cal State Fullerton	4	2
Princeton	2	1	Yale	11	1	Long Beach State	1	2	Florida	1	3
Indiana	3	2	Virginia	2	1	Oregon	1	0	Florida	8	1
Louisiana Tech	2	0	Oklahoma State	7	4	Cal State Northridge	1	2	Mercer	1	0
Iowa State	3	2	Illinois-Chicago	1	0	UNC-Charlotte	7	1	Mercer	5	1
Eastern Michigan	1	0	Virginia	3	2	UNC-Charlotte	6	0	Florida A&M	8	0
Eastern Illinois	9	0	Virginia	3	0	Troy State	5	2	Northwestern	2	0
Illinois State	2	3	Samford	14	0	Troy State	1	2	Washington	3	8
Kansas	2	4	Miami (OH)	9	1	East Carolina	2	1	Oklahoma	2	1
Northwestern	2	8	Michigan	1	2	UT-Chattanooga	5	2	UConn	10	3
Cal State-Fullerton	0	7	Northern Illinois	3	0	Ball State	4	2	Louisiana Tech	2	6
SW Louisiana	3	12	Illinois-Chicago	3	0	Penn State	4	3	Ball State	4	0
Oklahoma State	0	1	Iowa State	2	0	Indiana	3	1	East Carolina	10	0
Utah State	5	3	Michigan	0	5	Michigan State	6	2	Michigan State	2	6
Hofstra	3	2	Massachusetts	5	4	UCLA	0	4	Hofstra	1	2
Hofstra	4	3	Massachusetts	4	3	Notre Dame	0	1	Arkansas	4	0
Florida A&M	7	0	South Carolina	1	2	Drake	1	0	Indiana	3	2
North Carolina	5	1	South Carolina	2	3	Ohio State	0	1	Iowa	1	7
North Carolina	6	2	Hofstra	5	1	Southern Illinois	3	4	Miami (OH)	2	1
UNC-Wilmington	5	0	South Carolina	3	6	Eastern Michigan	7	0	Louisiana Tech	2	3
NC-Charlotte	8	1	Hofstra	8	2	Massachusetts	3	1	Wisconsin	3	12
East Carolina	0	1	Florida A&M	8	0	Michigan	1	6	UT-Chattanooga	3	1
Georgia Tech	11	0	South Florida	4	0	Connecticut	3	0	UConn	2	1
Virginia	9	4	South Florida	3	4	Connecticut	6	0	Bradley	4	0
North Carolina	0	1	Florida A&M	9	0	Bradley	4	1	Eastern Michigan	5	1
Virginia	8	0	Florida A&M	10	0	Bradley	7	2	UConn	0	1
Virginia	4	5	Campbell	4	0	Georgia Tech	2	0	UConn	8	2
Florida A&M	8	0	North Carolina	15	0	Georgia Tech	1	3	Georgia Tech	5	1
Georgia Tech	2	1	East Carolina	10	2	FAMU	7	2	Georgia Tech	8	5
Virginia	0	2	Campbell	7	1	FAMU	13	0	Maryland	1	0
North Carolina	6	5	East Carolina	4	3	FAMU	4	0	Maryland	3	0
Virginia	1	0	North Carolina	2	1	Virginia	8	0	Youngstown State	8	2
Virginia	0	3	Florida A&M	6	0	Virginia	5	4	Youngstown State	6	3
West Florida	1	4	West Florida	8	0	Maryland	4	0	Troy State	3	2
West Florida	8	0	West Florida	3	2	Maryland	6	2	Troy State	1	1
Connecticut	4	1	North Carolina	4	0	North Carolina	2	3	Florida A&M	1	2
South Florida	2	0	Georgia Tech	2	1	North Carolina	4	5	Virginia	8	0
South Florida	4	2	Georgia Tech	5	2	Campbell	6	1	Virginia	3	6
South Florida	6	5	West Florida	9	3	Florida Atlantic	0	1	North Carolina	6	0
Oklahoma	1	3	West Florida	3	0	South Carolina	4	2	North Carolina	12	4
Providence	0	4	South Florida	0	3	North Carolina	2	0	Florida Atlantic	5	1
			South Carolina	5	4	Maryland	8	0	Campbell	4	1
			Massachusetts	0	8	Georgia Tech	5	4	Coastal Carolina	12	2
			South Carolina	6	0	Maryland	3	0	Coastal Carolina	2	1
			Massachusetts	2	0	North Carolina	3	1	Florida Atlantic	4	0
			Nebraska	1	6	West Florida	6	0	North Carolina	5	4
			Ohio	2	0	West Florida	10	0	Maryland	4	3
			Nebraska	6	2	South Florida	1	0	Maryland	1	2
			Arizona	0	15	South Florida	1	4	Florida A&M	7	0
						South Carolina	5	1	UNC Charlotte	6	1
						South Carolina	3	5	UNC Charlotte	3	1
						South Carolina	2	1	Alabama	2	0
						South Florida	3	1	Alabama	5	6
						Arizona	6	9	Auburn	2	0
						South Florida	6	0	Auburn	1	2
						Arizona	3	10	South Florida	3	4
									South Florida	1	3

**1995 (58-15)**

OPPONENT	FSU	OPP
Stetson	8	0
Stetson	2	0
Oklahoma St.	1	5
Cal-St. Fullerton	5	9
Oregon	3	2
New Mexico St.	4	0
Illinois St.	10	2
Arizona	1	7
Troy State	3	1
Troy State	3	0
Georgia Tech	9	4
Georgia Tech	10	1
UNC-Charlotte	6	0
UNC-Charlotte	8	0

**1996 (51-21)**

OPPONENT	FSU	OPP
Mercer	4	1
Mercer	5	2
West Florida	8	0
West Florida	8	0
Georgia Southern	2	1
Georgia Southern	5	0



## 1998 TOURNAMENT SCHEDULE

### Arizona State Coke Classic

Feb 13-15 • Phoenix, Az.

2/13	FSU vs. Oregon	3:00 P.M.
2/13	FSU vs. Purdue	5:00 P.M.
2/14	Washington vs. FSU	3:00 P.M.
2/14	FSU vs. Fresno State	7:30 P.M.
2/15	UNLV vs. FSU	Noon

### NFCA Leadoff Classic

Feb 27-Mar 1 • Columbus, Ga.

2/27	Indiana vs. FSU	6:00 P.M.
2/27	Arizona State vs. FSU	8:00 P.M.
2/28	FSU vs. UMASS	Noon
2/28	Cal St. Northridge vs. FSU	2:00 P.M.

### The Speedline Invitational

March 5-8 • Tampa, Fl.

3/5	Georgia vs. FSU	2:00 P.M.
3/5	FSU vs. Illinois-Chicago	8:00 P.M.
3/6	FSU vs. Central Michigan	2:00 P.M.
3/6	Purdue vs. FSU	6:00 P.M.
3/7	FSU vs. Missouri	10:00 A.M.

### Tallahassee Democrat FSU Invitational

March 13-15 • Tallahassee, Fl.

3/13	FSU vs. Northern Iowa	1:00 P.M.
3/13	FSU vs. LSU	5:00 P.M.
3/13	FSU vs. Eastern Michigan	7:00 P.M.
3/14	FSU vs. Robert Morris	11:00 A.M.
3/14	FSU vs. Penn State	3:00 P.M.

### Buzz Classic

March 27-29 • Marietta, Ga.

3/27	Wright State vs. FSU	1:00 P.M.
3/27	Georgia State vs. FSU	8:00 P.M.
3/28	Indiana State vs. FSU	12:30 P.M.
3/28	Utah vs. FSU	5:30 P.M.



## FLORIDA STATE UNIVERSITY - 1998 SOFTBALL SCHEDULE

DATE	OPPONENT	TIME	DATE	OPPONENT	TIME
Feb. 7	at Mercer	1:00 & 3:00	Mar. 25	YOUNGSTOWN STATE	5:30 & 7:30
Feb. 8	GEORGIA SOUTHERN	1:00 & 3:00	Mar. 27-29	at Buzz Classic	All Day
Feb. 13-15	at Arizona State Coke Classic	All Day	Apr. 3	WEST FLORIDA	5:30 & 7:30
Feb. 18	at West Florida	4:00 & 5:30	Apr. 5	*GEORGIA TECH	1:00 & 3:00
Feb. 20	at FAMU	6:00	Apr. 8	FLORIDA	5:30 & 7:30
Feb. 23	FAMU	6:00	Apr. 10	FAMU	6:00
Feb. 24	TROY STATE	5:30 & 7:30	Apr. 12	AUBURN	1:00 & 3:00
Feb. 27-Mar. 1	at NFCA Leadoff Classic	All Day	Apr. 15	at FAMU	6:00
Mar. 5-8	at Speedline Invitational	All Day	Apr. 18	*at Virginia	1:00 & 3:00
Mar. 10	*UNC-CHARLOTTE	5:30 & 7:30	Apr. 19	*at Maryland	Noon & 2:00
Mar. 11	MIAMI OF OHIO	5:30 & 7:30	Apr. 23-25	ACC Championships at FSU	All Day
Mar. 12	PURDUE	6:00	May 6	*at South Florida	3:00 & 5:00
Mar. 13-15	Tallahassee Democrat FSU Invitational	All Day	May 15-17	NCAA Regionals	All Day
Mar. 17	CONNECTICUT	5:30 & 7:30	May 21-25	NCAA College World Series Oklahoma City	All Day
Mar. 19	*NORTH CAROLINA	5:30 & 7:30			

\*Home games in all caps \*Indicates conference games \*All game times are Eastern Standard Time