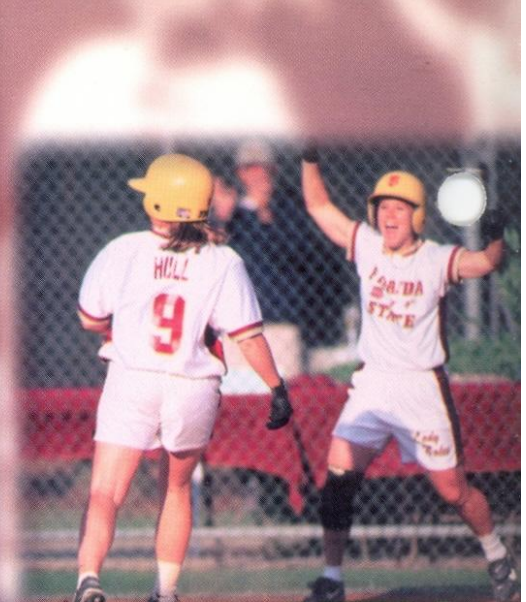


1999

FLORIDA STATE UNIVERSITY

Softball

MEDIA GUIDE



FLORIDA STATE UNIVERSITY



Media Information

Softball

PLAYERS & COACHES INTERVIEWS

All players and coaches interviews can be arranged through the sports information office by contacting Mandi Copeland at (850) 644-5656 at least 24 hours in advance. Players home phone numbers will not be released.

PRESS SERVICES

Media members will be supplied with weekly press releases, including updated results and statistics, updated conference and national rankings, as well as information on upcoming games. This information may be obtained in the sports information office or by accessing the ACC Faxback Service. For details on ACC Faxback, please contact the sports information office.

CREDITS

The 1999 Lady Seminole softball guide is a product of the Florida State University sports information office.

Editor: Tina Thomas, Assistant Sports Information Director.

Writing and Research: Mandi Copeland

Photography: FSU Photo Lab, Ross Obley, Ryals Lee

Design: M & M Creative Services, Inc. Tallahassee, FL

Printing: FSU Printing Services

Special thanks to the Georgia Pride for photos on page 44.

ON THE COVER

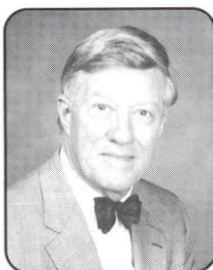
Front: The 1999 Lady Seminole seniors and team action.

Back: The 1999 team photo and schedule.

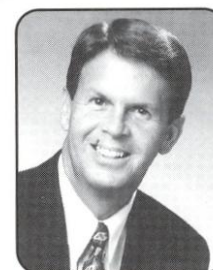
The Florida State University offers equal opportunity in its employment and educational activities in compliance with Title IX, Section 5-4 of the Rehabilitation Act of 1973 and other civil rights laws.

TABLE OF CONTENTS

This is Tallahassee	2-3	'98 Stats	37
This is Florida State	4-5	'98 Results	38
1999 Season Outlook/Quick Facts/ Roster	6-9	ACC Review	39
Head Coach JoAnne Graf	10-11	About the ACC	40-41
Assistant Coaches	12-13	Post Season Play	42
Players Bios	14-26	Series Records	43
FSU Softball Complex	27	Seminole in the Pros	44
30th Anniversary	28-29	All-time Letterwinners	45
Support Services	30-31	Honors and Awards	46-47
Life Skills	32	Records Book	48-51
NCAA Information	33	Year By Year Records	52-56
'98 Season Review	34-36	FSU in 1999 Tourney Play	IBC
		Team Photo/1999 Schedule	BC



Sandy D'Alemberte
PRESIDENT



Dave Hart
ATHLETICS DIRECTOR



Kim Record
ASSOC. ATHLETICS DIRECTOR



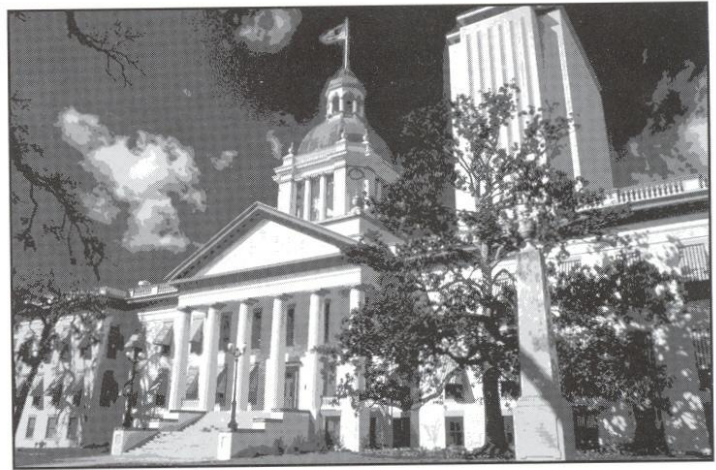
Tina Thomas
ASSISTANT S.I.D.



Mandi Copeland
SOFTBALL S.I.D.

This Is Tallahassee

Near, but far from the glaring strips of neon amusement, and the castles and crowds of Disney, lies another magical place in the Sunshine State — one of pow-wows, plantations, politics and great pride. Often described as “The Other Florida” with its deep-rooted history, rolling hills, canopy roads of moss-draped oaks, cool climate and Southern-style hospitality; it is a Florida few have seen. It is Tallahassee — Florida with a Southern accent.



Best known as Florida’s capital, Tallahassee is an intimate neo-metropolitan city where the power of state government, the academic and the artistic are complemented by subtle, old-fashioned charm. It is the perfect two- or three-day diversion for the more than 41 million annual visitors to Florida and 13 million residents.

Tallahassee touts a menagerie of sights including one of the world’s deepest freshwater springs, site of America’s first Christmas, a wildlife habitat, Capitol buildings, fascinating museums of history, sprawling plantations, highly acclaimed fishing and hunting adventures and nearby beaches. Spirited area festivals range from celebrations of Tallahassee’s spectacular spring and swamp stomps to genuine rattlesnake roundups and seafood festivals.



With the Gulf of Mexico just 20 miles south and the Georgia border only 14 miles north, Tallahassee rests between the foothills

of the Appalachian Mountains and the juncture of Florida’s panhandle and peninsula. Nearer in miles to Atlanta than to Miami, Tallahassee more closely resembles its Southern neighbors than Florida in topography, climate and lifestyle.

Accentuating Tallahassee’s Southern persona are lush rolling hills, likened to the seven hills of Rome, and five “official” canopy roads of patriarch oaks. The fer-

tile, rich soil and four distinct, yet pleasant, seasons breed floral brilliance and natural vitality year-round.

Like the city itself, the story of how Tallahassee was chosen as the state capital is rich in history. In 1823, two explorers set out — one on horseback from St. Augustine and the other by boat from Pensacola — to find a permanent, central location for the Legislature to convene. The two met at a beautiful site that the Creek and Seminole Indians called “tallahassee” — derived from the words “talwa” meaning town and “ahasee” meaning old. The rendezvous point remains Florida’s capital.

The “old town” has undergone many changes, but one thing remains the same — it is still a government town fiercely proud and dedicated to preserving its heritage. The Capitol buildings, both old and new, epitomize Tallahassee’s perseverance.

The 22nd floor of the New Capitol provides a panoramic scope of a sophisticated Southern city awash in a sea of flowering azaleas, snowy dogwoods, towering pines, fragrant magnolias, and hundreds of shimmering lakes, springs, swamps, rivers and sink holes. Special legislative viewing galleries are open during the legislative session.





In the shade of giant live oaks, proudly stands the Old Capitol, originally constructed in 1845 and restored to its 1902 splendor complete with red-and-white candy-striped awnings, a dome adorned with stained glass, antique furnishings and political memorabilia.

Across from the Old Capitol are the 40-foot twin granite towers of the Vietnam Veteran's Memorial, and the blue stone Union Bank, Florida's oldest surviving financial institution. The nostalgic Old Town Trolley, a replica turn-of-the-century street car, carries passengers through restored Adams Street Commons to numerous other historical downtown shops for *free* — unheard of even 100 years ago.

Minutes from downtown lies the Governor's Mansion, which resembles the home of Florida's military hero Andrew Jackson; and the 52-acre natural animal habitat and 1880s farm of the Tallahassee Museum of History and Natural Science, which provide the rare chance to walk and talk with native Florida animals.

Tallahassee remains firmly linked with the past as evidenced by the unearthed 1539 winter encampment of Spanish Hernando de Soto, the site of the first Christmas celebration in America. Visitors travel back through time as they stand in the shadow of a giant 12,000-year-old American Mastodon at the Museum of Florida History or explore other historical spots including The Knott House that Rhymes, The Columns, San Luis Mission, Lake Jackson State Archaeological Site, Natural Bridge Battlefield, First Presbyterian Church, Brokaw-McDougall House, Goodwood Plantation and Adams Street Commons.

Nearby, alligators lazing in the sunshine and anhinga "snake birds" perched on twisted cypress branches



are seen at Wakulla Springs, one of the world's deepest fresh water springs and site of many underwater scenes in the "Tarzan" movies with Johnny Weissmuller and Maureen O'Sullivan. Safaris aboard glass-bottomed and jungle cruise boats whisk visitors within arm's length of "The Other Florida."

Outdoor enthusiasts enjoy adventures including boating and fishing on area lakes, rivers, ponds and the Gulf — just 30 minutes away. Lakes Seminole, Jackson and Talquin are renowned in the bass fishing world for yielding the "big ones," and dense forests offer an abundance of prize-winning game. Local wildlife areas such as the Florida National Scenic Trail, St. Marks National Wildlife Refuge and Apalachicola National Forest are among many spots for camping, picnicking, swimming, biking and exploring.

Appealing to the strokes of different folks, Tallahassee also features 99 holes of golf on six courses and a proliferation of tennis centers. Sideline athletes cheer the nationally-ranked Florida State Seminoles, Florida A&M Rattlers and the Tallahassee Tiger Sharks, of the East Coast Hockey League. And always a sure bet are the nearby greyhound races.



A sport of sorts, shopping at two regional malls and many specialty centers offer many "playing options" — from popular chains to curiosity and antique shops.

Cultural interests are sparked by widely-acclaimed museums and galleries and elaborate entertainment at the 14,000-seat Tallahassee-Leon County Civic Center.

Tallahassee is a collaboration of power-play politics and classical character splashed with a twist of Southern beauty and charm. Tallahassee is Florida with a Southern accent.

This Is Florida State

Florida State University, recently celebrating its golden anniversary as a coeducational graduate research institution in 1997, has joined the nation's elite in both academics and athletics.

Located on the oldest continuous site of higher education in Florida and building rapidly on the framework of a highly regarded liberal arts college for women, the University has emerged over the past 50 years as an institution of national and international esteem. Its stature is evidenced by a number of additions to its record of excellence in the 1990s:

> In 1994, Florida State was classified a "**Research University I**" by the Carnegie Foundation, placing it among the nation's top research universities.

> In 1994, the college referral service, "Who's Who Among American High School Students," placed FSU among its top 10 — with such universities as Harvard, Duke, Stanford, North Carolina-Chapel Hill, Michigan-Ann Arbor and Yale — of most frequent choices of more than 100,000 of the nation's best and brightest high school students who asked that a specific college be notified of their recognition in "Who's Who."

> Vice President of the United States Al Gore spoke at the dedication of the **National High Magnetic Field Laboratory** at Florida State in 1994. The National Science Foundation established the \$100 million magnet lab in 1990 at FSU, which is partnered in research with the Los Alamos National Laboratory and the University of Florida. A Nobel laureate in physics and a top Russian physicist were among the first scholars drawn to the faculty. The **world's largest magnet** — two stories high and capable of generating 45 tesla or 1 million times the Earth's magnetic field — was installed in 1995 at the **NHMFL**, located in the **off-campus research complex**, Innovation Park. In 1996, the NSF renewed and increased by 50 percent the NHMFL's funding for another five years.

> FSU created the first multipurpose student identification/banking card. The **Card Application Technology Center** is a national leader in "smart card" systems.

> At the forefront of supercomputing since obtaining its first high-speed computer in 1985, FSU took yet another step in ultrafast and parallel computing in 1990 when it acquired



two supercomputers, the Thinking Machine Corp. Connection Machine and the Cray Y-MP.

> In fall 1994, the first tenants moved into the east side of the \$100 million **University Center**, a classroom-and-office facility at Doak Campbell Stadium; the stadium's south end zone also was enclosed and the adjacent Moore Athletic Center expanded. With the completion of the west side in 1996, University Center now provides 550,000 square feet of much needed academic space and a centralized location for student services.

> In 1990, Florida State **ranked second in popularity nationwide** among high school seniors, based on the number of students who request that their Scholastic Aptitude Test (SAT) scores be sent to an institution. FSU was the only institution listed among the top 10 choices of both black and white college-bound students.

> FSU's high-tech program in **structural biology** in 1991 received the University's largest single foundation grant, \$4 million.

> Capping more than a decade of national prominence in intercollegiate athletics, Florida State's athletic teams, nicknamed "**Seminoles**," joined the **Atlantic Coast Conference** as its ninth member in 1990. The FSU football team won the **1993 National Championship** and its quarterback, Charlie Ward, won the University's first **Heisman Trophy**.

> The **Dr. Bobby E. Leach Center**, a state-of-the-art student recreation facility, with a pool, saunas, basketball and racquet-sport courts, was completed in 1991.

> **FSU ranked 20th in the nation for 1990-91 in the number of black Ph.D. students it graduates.** Over the five years, 1986 to 1990, FSU ranked eighth nationally by granting doctorates to 70 African Americans.





As this list of highlights attests, Florida State is excelling in the 1990s with exceptional strength, energy and vision for the future. Under the leadership

of the University's 12th president, **Talbot "Sandy" D'Alemberte**, who took office in January 1994, FSU will continue to build on the foundation of its history of excellence in scholarship, research and service.

A senior member of the 10-member **State University System**, FSU was founded as an institution of higher learning in 1851 by legislative act and began in Tallahassee with its first students in 1857.

Today, FSU's operating budget is **\$474.3 million**. Faculty and administrators generate more than **\$102 million** annually in external funding to supplement state-sponsored research. Three direct-support organizations serve to bolster the University: **FSU Foundation**, which raises millions in private gifts to support academics, **Seminole Boosters** and **FSU Alumni Association**.

The main campus is spread over **451.6 acres in Tallahassee**; FSU, which has one of the smallest campuses in the SUS, has been actively acquiring land in the 1990s after years of being landlocked at 347 acres. FSU owns 1,281 acres in Leon, Bay, Franklin and Sarasota counties.

Within the state, the University maintains facilities at its **25-acre campus in Panama City**, its **Marine Laboratory** on the Gulf of Mexico, the Appleton Museum in Ocala and the Asolo Performing Arts Center in Sarasota. The **Center for Professional Development and Public Service**, housed in the **Augustus B. Turnbull III Florida State Conference Center** on the edge of the campus, provides extensive credit and non-credit continuing education programs statewide.

Florida State offers **286 graduate and undergraduate degree programs** through its **eight colleges** — Arts and Sciences; Business; Communication; Education; Engineering (operated jointly with Florida A&M University, a historically black institution); Human Sciences; Law; and Social Sciences (which also incorporates the Reubin Askew School of Public Administration and Policy) — and **eight schools** — Criminology and Criminal Justice; Information Studies; Motion Picture, Television and Recording Arts; Music; Nursing; Social Work; Theatre; and Visual Arts and Dance.

With 1,655 members, the FSU faculty has included **nine National Academy of Sciences elected members**, **nine American Academy of Arts and Sciences fellows** and **five Nobel laureates**. It is backed by 2,887 administrative/professional and support staff.

Library holdings at Florida State include **2.1 million book titles**, **16,384 serials** and **4.5 million micro-forms**. The main library facility, the **Robert M. Strozier Library**, is linked by computer to other state university and national research libraries. The **Paul A.M. Dirac Science Center Library** is located at the heart of the University's science research complex. FSU also maintains extensive music, library science and law libraries.

Graduate students, who number more than 5,929, pursue advanced degrees in fields as diverse as business administration and theoretical particle physics. A majority of research done at FSU is the direct result of student effort, culminating in numerous books, monographs and journal articles relating to the whole spectrum of intellectual interests and the practical needs of society.



FSU, a residential campus, places a high priority on its **30,519 students** and their needs and interests (of the student population: 45 percent are male; 55 percent are female; 20.1 percent are minorities; and 2.5 percent are foreign students). The **University Honors Program**, **Disabled Student Services**, **International Student Center**, **Student Government**, **Flying High Circus** and intramural sports are among more than 200 organizations and activities in which students may participate.



In all areas of its mission — excellence in teaching, research and public service — **Florida State University** is advancing boldly toward the 21st century.



1999 Season Outlook

In 1999, expect to see a whole lot of familiar faces on the softball field for Florida State University, because the Lady Seminoles return seven starters, are senior-laden and ready to put their years of experience to good use.

"One of our biggest strengths is going to be our experience," Head Coach Dr. JoAnne Graf said. "We've got a lot of seniors and most of our starters back from last year. These kids have already been in the biggest games that they can play in, with the exception of the national championship game. They've been to NCAA Regionals, in ACC championship games and played some of the top teams in the country and beaten them."

Anchoring the corp of seniors are captains Tami Post and Jesse McGregor, veteran starters at third base and shortstop, respectively. But Post and McGregor are just two of six seniors who combined, have 14 years of starting experience.

"Our seniors aren't very loud and vocal, but they are very assertive in their own way," Graf said. "This is probably one of the best groups that we've had as far as academic ability, on-the-field ability and character. They are just a very classy group of seniors and they work hard. I don't know that there is one person who you could pinpoint as the "leader," but as a group, they are pretty solid."

Overall, the team is comprised of six seniors, four juniors, three sophomores and six freshmen, including eight newcomers. While Graf will have the luxury of seasoned players in 1999, this season will also have to be one of great learning and development for the young players who will have the responsibility of replacing these veterans next year.

"The newcomers offer a lot of enthusiasm and willingness to learn, but naturally, they all want the opportunity to contribute right away," Graf said. "They all

realize their roles, but they are good enough competitors that they keep fighting to beat out someone else. It is healthy competition. They push the older players a bit and I think that's good. You can't ever be complacent, especially, if you want to keep being the best."

PITCHING

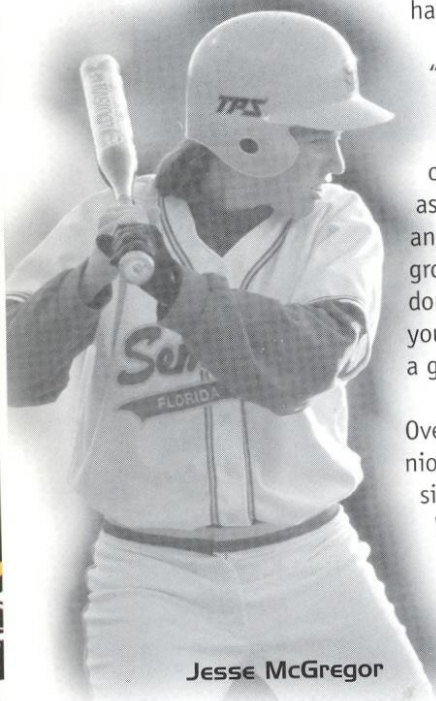
With the return of two solid veterans and the addition of a highly-touted newcomer, this group of pitchers has the opportunity to be Florida State's most dominant of recent years. All-Southeast Region second team choice Jennifer White and the 1998 Atlantic Coast Conference Tournament Most Valuable Player Stacy Venable combined for 45 of FSU's 51 victories last season and have loads of experience. Freshman Leslie Malerich possesses great power and will be a valuable addition to the rotation.

"Obviously pitching is the cornerstone upon which you have to build your team," Graf said. "We have our two back from last year in Stacy Venable and Jen White and the addition of Leslie Malerich gives us that little extra security in case we have somebody get hurt. Our pitching is very, very solid with good depth and good experience."

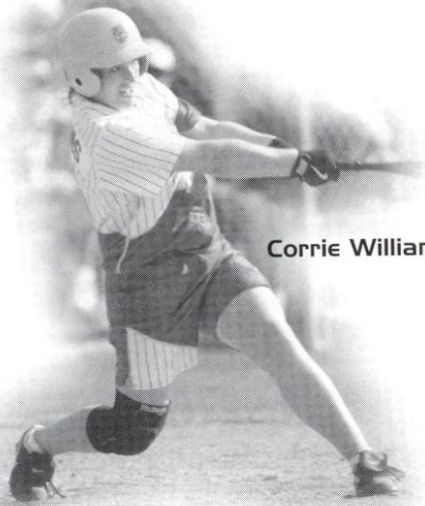
White, although just a sophomore, has experience beyond her years after making a major impact as a rookie. White was the squad's number one pitcher from the get-go and led the nation in victories with 26 before suffering a rib injury that cost her six weeks of action. She wasn't able to return to the starting rotation until NCAA regional play. Now healthy, White should be at top form in 1999.

"Jen is a finesse-pitcher," Graf said. "She just had a great freshman year and earned a lot of respect from people around the country."

Venable rose to the occasion in 1998, after White went down with an injury. The senior led FSU to another ACC Championship title with three straight victories, including two shutouts. For the season, Venable was 19-8 overall. Venable underwent shoulder surgery in October, but should be ready to go full speed come spring.



Jesse McGregor



Corrie Williams

"Stacy, a senior on the mound, is very experienced and gained a lot of confidence in herself last year, coming into the ACC Tournament and having to throw every game," Graf said. "She also earned a lot of respect from her teammates."

Malerich was the state of Indiana softball strikeout leader in 1996, 1997 and 1998 and was selected a two-time 1st team all-state honoree.

INFIELD

Not many question marks when it comes to the Florida State infield as only the catcher position will need to be filled with a new player. For the second straight season, senior Corrie Williams will occupy first base while sophomore Christy Cerecedes will handle the duties at second base. Williams earned All-Southeast Region first team honors after leading the team with 40 RBIs and she ranked second on the team in batting with a .318 average. Junior Becky Wallace and sophomore Kelly Miller will backup Williams at first.

"Last year was a big turnaround year for Corrie," Graf said. "She got a great deal more playing time, because she was producing and the more playing time she got, the more confident she became in herself. Defensively, our infield has a lot of confidence in her. She's just a solid player and is very consistent."

Cerecedes had a solid rookie season as she started all 72 games and was second on the team with 63 hits on her way to earning second team All-Southeast Region accolades. She will be backed-up by freshman Dana

Vickery, who will rotate between a couple of positions.

"Christy was the only newcomer to the infield last season and she stepped up and gained confidence as the season progressed and really had a solid year," Graf said.

Both shortstop Jesse McGregor and third baseman Tami Post, who both started all 72 games in 1998, will be entering their fourth straight seasons at their respective positions. McGregor earned All-ACC honors and was named to the ACC All-Tournament Team after batting a team-leading .625. Post was as solid as ever defensively at the corner.

"Jesse has improved every year," Graf said. "Her defense has gotten better and better. She has worked on her range and her arm has become consistent while her hitting has become more disciplined as well.

"Tami is the best defensive player that I've seen for a very long time. The biggest thing for Tami is to get her bat turned around. We had to DH for her quite a bit last year, but she has worked very hard over the summer."

Newcomers Becky Brock and Jackie Hirschfeld will backup McGregor and Post, respectively, and gain experience at the infield positions.

Junior Teresa Edenfield and newcomer Andi Lyons will battle for the starting catcher position. Edenfield proved to be very valuable as a designated hitter last season and has improved defensively. Lyons, a transfer from St. Petersburg Junior College, already has collegiate experience and should improve as she gets more opportunities to get into some game situations. Freshman Kimmy Carter could see some action at catcher as well.

OUTFIELD

The outfield is more of the same story for Florida State: solid and seniors. Dana Bailey returns for her third season at center while Danielle Cox, a newcomer to the outfield last season, will once again occupy left field. Right field has been pegged the "newcomer spot" by Coach Graf as the position is up for grabs. Newcomers

Roster

Kimmy Carter, Tanya Mitchell, Felicia Williams and Dana Vickery will all vie for that spot.

Bailey is as aggressive and valuable at the plate as she is in the outfield. A speedy base runner, Bailey not only led the team in stolen bases with 27, but in hits with 69 and a .342 batting average. She had a banner season in 1998, earning All-Southeast Region first team honors as well as All-ACC and ACC All-Tournament Team honors.

"Dana dives for the ball better than any outfielder we have," Graf said. "She gets a good jump on the ball and reacts quickly and correctly and doesn't make many mistakes. She's going to be just dynamic to watch."

can and broke the 22-year batting record at the national tournament, batting .688.

"Danielle put it all together and improved a lot this summer when she broke an ASA batting record," Graf said. "She gained a lot of confidence and has even improved her speed. She's very aggressive and ready to run this year.

"Dana and Danielle give us a tremendous amount of speed at the top of our line up and can really set the table for our three, four and five hitters. If those two can get on base a lot, it is going to be the key to our offense."

THE SCHEDULE

The 1999 schedule is once again donned with national-level competition. Like the past several years, the Tribe will compete in the Arizona State Tournament in Tempe, Ariz., the NFCA Classic in Columbus, Ga., the South Florida Classic in Tampa, Fla., and after a one-year absence, will return to the Tar Heel Invitational in Chapel Hill, N.C. FSU will also host two tournaments of their own.

"We open up the season the earliest ever, but we need to get in some games before we head out to Arizona, where we will face some of the nation's best teams," Graf said. "Playing a tough schedule makes a difference later on when you are playing in games like conference finals. The kids aren't intimidated anymore when they see good competition early."

1999 FLORIDA STATE SOFTBALL ROSTER

NO.	NAME	POS.	YR.	B/T	HOMETOWN (PREVIOUS SCHOOL)
2	Danielle Cox	OF	Sr.	L/L	Anniston, AL (Gulf Coast CC)
3	Felicia Williams	OF	Jr.	L/R	Orlando, FL (Valencia CC)
6	Dana Bailey	OF	Sr.	R/R	Bossier City, LA (Parkway HS)
7	Jesse McGregor	SS	Sr.	R/R	Houston, TX (St. John's HS)
8	Kimmy Carter	C/OF	Fr.	R/R	West Palm Beach, FL (The King's Academy)
9	LaTanya Mitchell	OF	Fr.	L/R	Ft. Myers, FL (Riverdale HS)
10	Andi Lyons	C	Jr.	R/R	Oldsmar, FL (St. Petersburg JC)
12	Jennifer White	P	So.	R/R	Tuttle, OK (Tuttle HS)
13	Christy Cerecedes	2B	So.	R/R	Hacienda Heights, CA (Los Altos HS)
14	Teresa Edenfield	C/DH	Jr.	R/R	Marianna, FL (Maclay HS)
15	Corrie Williams	1B	Sr.	R/R	Bakersfield, CA (North HS)
16	Becky Brock	SS	Fr.	R/R	Macclenny, FL (Baker County HS)
17	Becky Wallace	1B	Jr.	R/R	Naples, FL (Barron Collier HS)
20	Kelly Miller	1B	So.	R/R	Vallejo, CA (Vallejo HS)
21	Dana Vickery	2B/OH	Fr.	S/R	Clearwater, FL (Clearwater HS)
22	Stacy Venable	P	Sr.	R/R	Choctaw, OK (NE Oklahoma A&M JC)
23	Leslie Malerich	P	Fr.	R/R	Merrillville, IN (Merrillville HS)
24	Jackie Hirschfeld	3B	Fr.	R/R	Tampa, FL (Tampa Catholic)
25	Tami Post	3B	Sr.	R/R	Citrus Heights, CA (Del Campo HS)

Head Coach: Dr. JoAnne Graf

Assistant Coaches: Michelle Bolster, Chandelle Schulte

Volunteer Assistant Coach: Carrie Partlowe

Athletic Trainer: Robin Gibson

Although a senior, Cox is in only her second year at Florida State, but did not miss a game all of last season. Among the team leaders in hits with 53, Cox also ranked second on the squad with 21 stolen bases. Over the summer, Cox was named a Women's Major ASA first team All-Ameri-

Last season, the Lady Seminoles defeated No. 3 Washington 1-0 and No. 2 Fresno State, the eventual National Champions, 2-1, on the same day at the Arizona State Tournament. This season, Fresno State will travel to Tallahassee to compete in FSU's 24-team tournament.

Quick Facts

"I maintain the philosophy that if you are going to be the best, you better try to beat the best," Graf said. "That's what you play for and that's why the players come here to play. Sure we could win a lot more games if we played easier competition, but that would do us no good."

The newly-constructed Seminole Softball Complex will be the site of three tournaments, including the 1999 Atlantic Coast Conference Tournament. The tournament

has been played in Tallahassee for five of its seven years and returned to Lady Seminole Field last year after two straight seasons on neutral sites. Florida State finished second in the regular-season, but fared well in the ACC Championships and earned its sixth ACC title.

"The ACC has definitely improved," Graf said. "It is a very competitive situation. We know we can't take things for granted and we know we'll have to work very hard to defend that championship."

Quick Facts

FSU QUICK FACTS

Location - Tallahassee, FL
Enrollment - 30,519
Founded - 1857
Colors - Garnet & Gold
Nickname - Lady Seminoles
President - Sandy D'Alemberte
Conference - Atlantic Coast (NCAA Div. I)

ATHLETIC ADMINISTRATION

Athletics Director - Dave Hart, Jr.
Associate Athletics Director - Kim Record
AD's Phone - 850/644-1079

SPORTS INFORMATION STAFF

SID - Rob Wilson
Softball Contacts - Mandi Copeland/Tina Thomas
SID Address - PO Box 2195, Tallahassee, FL, 32316
SID Phone - 850/644-5656/1065
SID FAX - 850/644-3820
Copeland's Home Phone - 850/893-0420
Copeland's Email Address - acc6664@garnet.acns.fsu.edu
Thomas' Home Phone - 850/514-3351
Thomas' Email Address - tthomas@mail.fsu.edu
Press Box Phone - TBA
ACC Faxback - 336/854-5859, box score - 32552, release - 32550, statistics - 32351, schedule/roster - 32554
Internet Site - www.seminoles.com

SOFTBALL STAFF

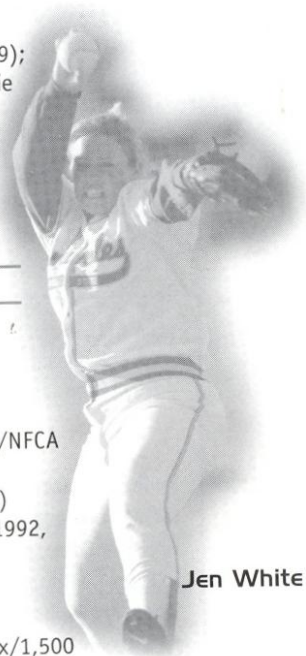
Head Coach - Dr. JoAnne Graf (FSU '75)
Career and FSU Record - 964-260-5
Season at FSU - Entering 21st
Assistant Coaches - Michelle Bolster (Michigan '89); Chandelle Schulte (Eastern Michigan '91), Carrie Partlowe (Miami-Ohio '97)
SB Office Phone - 850/644-2386
Best time to call - Mornings
Athletic Trainer - Robin Gibson
Equipment Manager - Melissa Dawson

1998 RESULTS/1999 OUTLOOK

Record - 51-21
ACC Record - 5-3/ 2nd
ACC Tournament - 3-0/1st
Postseason - Regionals
Final National Ranking - 17th (USA Today/NFCA Coaches)
NCAA Regional Appearances - 12 (1986-96, 98)
World Series Appearances - 5 (1987, 1990, 1991, 1992, 1993)
Letterwinners Returning/Lost - 11/3
Starters Returning/Lost - 7/2
Home Field/Capacity - Seminole Softball Complex/1,500

TOP RETURNING PLAYERS -

Dana Bailey - Sr., CF, .342, 40 runs, 69 hits, 19 RBI, 27 steals
Corrie Williams - Sr., 1B, .318, 31 runs, 56 hits, 40 RBI
Christy Cerecedes - So., 2B, .300, 38 runs, 63 hits, 22 RBI
Jennifer White - So., P, 1.37 ERA, 26-8, 123 strikeouts
Stacy Venable - Sr., P, 1.77 ERA, 19-8, 87 strikeouts



Jen White

JoAnne Graf Bio



FSU SOFTBALL HEAD COACH

Dr. JoAnne Graf

FLORIDA STATE '75

21ST SEASON

964-260-5

Dr. JoAnne Graf and Florida State University softball. You simply can't think of one without thinking of the other, because for the past 20 years, this relationship has developed into the creation of one of the nation's premier softball programs. As the University recognizes its 30th Anniversary for women's athletics in 1998-99, it has been Graf and her teams that have given Florida State a great deal to celebrate over the years.

Over the past two decades, Graf has maintained the philosophy that hard work and dedication produce positive results. It is because of this attitude, there are not many things that Graf has not accomplished in her 20-year coaching career.

It seems with each and every year, Graf celebrates yet another landmark accomplishment. Graf became just the second coach in NCAA Division I softball history to notch 900 victories when the Lady Seminoles defeated North Carolina 6-0 in Chapel Hill on April 10th, 1997.

With 964 career victories, Graf ranks second all-time by victories among Division I softball coaches. Her 745-207-5 (.781) record in fast-

pitch competition only, ranks her second by percentage and sixth by victories among all Division I active softball coaches. But the accolades don't stop there. Graf has been named the ACC Coach of the Year three times after leading the Lady Seminoles to consecutive conference titles in 1992 and 1993 and co-championship status in 1997. In 1995, she was selected the ACC/Metro Conference Coach of the Year after guiding Florida State to a 9-1 league record and an automatic bid to NCAA regional play. She has led FSU to 11 seasons of 50 wins or more, including two seasons when the Lady 'Noles recorded more than 60 victories. She has guided FSU to a total of six ACC championship titles to date.

The softball careers of many former Lady Seminoles and FSU assistant coaches did not end once they moved on from the friendly confines of Lady Seminole Field in Tallahassee. Here's a look at some FSU alumni and former assistant coaches who are currently serving in the softball coaching field.

Louie Berndt (asst. coach, 1989)	Head Coach, Marshall
Connie Clark (asst. coach, 1990-95)	Head Coach, Texas
Tina Kyler Deese (player, 1984-85, asst. coach, 1986)	Head Coach, Auburn
Jo Evans (asst. coach, 1984)	Head Coach, Texas A&M
Stephanie Ferilita (player, 1995-96)	Assistant Coach, Loras College
Kristy Fuentes (player, 1994-97)	Assistant Coach, North Florida C.C.
Kym Averill Gaudreau (player, 1989)	Head Coach, Lake Mary High School
B. J. Hodges (player, 1990-91)	Head Coach, Wolfson High School
Kelley Kirkland (asst. coach, 1992-93)	Head Coach, Georgia Southern
Marla Looper (player, 1993-94)	Assistant Coach, Kansas
Susan Painter (player, 1981-84)	Head Coach, Gulf Coast C.C.
Penny Siqueiros (player, 1989-92; asst. coach 1992-95)	Head Coach, Emory
Windy Taff (player, 1996-97)	Head Coach, Leon High School
Windy Weltz (player, 1993-97)	Assistant Coach, Lake City C.C.

Under Coach Graf's direction, Florida State has been to the NCAA College World Series in Oklahoma City five times and in 15 years of fast-



**LADY SEMINOLE
SOFTBALL**

UNDER DR. JOANNE GRAF

1979	26-15	.634
1980	37-10	.787
1981	54- 7	.882
1982	56-10	.848
1983	46-11	.807
1984	41- 5-2	.875
1985	50-12-2	.797
1986	42- 7	.857
1987	50-14	.781
1988	44-14	.759
1989	39-14	.736
1990	47-16	.750
1991	62-12	.838
1992	63-9	.875
1993	52-9	.852
1994	50-19	.724
1995	58-15	.795
1996	51-21	.708
1997	45-19-1	.700
1998	51-21	.708

pitch competition, she has directed the Lady Seminoles to 12 regional tournament appearances. Florida State has also finished among the nation's top 13 teams in 11 of the past 13 seasons, with its highest ranking coming in 1990 when the Lady Seminoles placed third at the College World Series. But the success didn't begin there. In her first five years at Florida State, Graf accumulated 219 wins playing the best slow-pitch competition in the nation. She claimed two national titles while coaching five All-Americans as she established a solid basis to build upon.

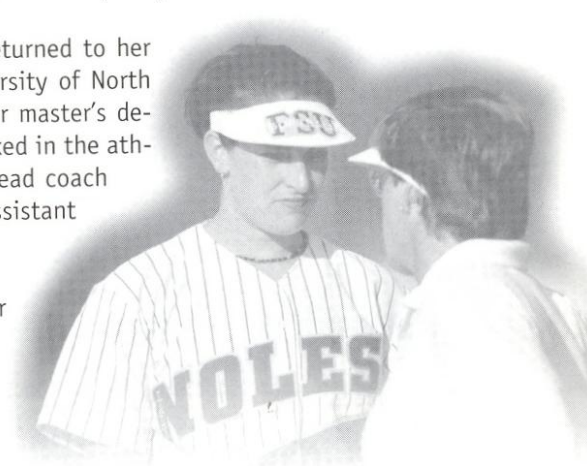
Graf, who has served as a member of the NFCA All-American Committee and is presently a member of the NCAA South Region Committee, was voted the South Region Coach-of-the-Year in 1986. She has seen 57 of her players selected to NCAA All-South Region teams, including five players in 1998. Her coaching has produced 10 All-Americans in the 1990s alone, including three first team selections in centerfielder Shama Wilson (1996), second baseman Lisa Davidson (1993) and shortstop Tiffany Daniels (1987).

A 1975 graduate of Florida State, Graf returned to her alma mater after two years at the University of North Carolina-Greensboro where she earned her master's degree in physical education. Graf also worked in the athletic department at UNC-Greensboro as head coach

for the university's men's and women's swim teams while also serving as assistant softball coach.

Graf, who serves as director of the FSU softball camp each summer, is a former president of the Florida Collegiate Athletic Association. She has also served as a member of the NCAA Softball Committee and chaired the NCAA Softball Advisory Committee for the South Region.

In 1992, Graf added "Dr." to her name after completing her doctorate degree in athletic administration at FSU.



DIVISION I SOFTBALL

TOP 10 MOST WINNINGEST ACTIVE COACHES

(By Percentage) includes Fast Pitch competition only

COACH, TEAM	YRS	RECORD	PCT
1. Mike Candrea, Arizona	13	694-143-0	.829
2. DR. JOANNE GRAF, FLORIDA STATE	15	745-207-5	.781
3. Yvette Girouard, Southwestern La.	18	660-224-0	.747
4. Margie Wright, Fresno State	19	820-280-3	.745
5. Sue Enquist, UCLA	5	207-72-0	.742
6. Sandy Fischer, Oklahoma State	20	771-289-3	.727
7. Joyce Compton, South Carolina	16	674-256-1	.724
8. Bill Galloway, Louisiana Tech	20	793-303-2	.723
9. Mike McGovern, ILL.-Chicago	9	417-160-1	.722
10. Judi Garman, Cal St. Fullerton	19	877-345-4	.717

DIVISION I SOFTBALL

TOP 10 MOST WINNINGEST COACHES

(By Victories-All Time)

COACH, TEAM	YRS	RECORD
1. Judi Garman, Cal St. Fullerton	27	1088-387-4
2. DR. JOANNE GRAF, FLORIDA ST.	20	964-260-5
3. Sharron Backus, UCLA	21	847-167-3
4. Bill Galloway, Louisiana Tech	21	837-314-2
5. Margie Wright, Fresno State	19	820-280-3
6. Sandy Fischer, Oklahoma State	20	771-289-3
7. Gayle Blevins, Iowa	18	755-358-4
8. Bob Brock, Texas A&M	18	731-301-1
9. Liz Miller, Notre Dame	21	706-210-0
10. Carol Spanks, UNLV	18	688-375-6

Assistant Coaches



FSU SOFTBALL ASSISTANT COACH

Michelle Bolster

UNIV. OF MICHIGAN '89

4TH SEASON AT FSU

Bolster has had a decorated playing career as well. While at Michigan, Bolster was named the 1988 Big Ten Player of the Year and earned first team all-region honors. Following her collegiate career, she played for many nationally ranked fast-pitch teams including the Raybestos Brakettes. Bolster has garnered such awards as ASA All-American honors and has also participated in three Olympic Sports Festivals.

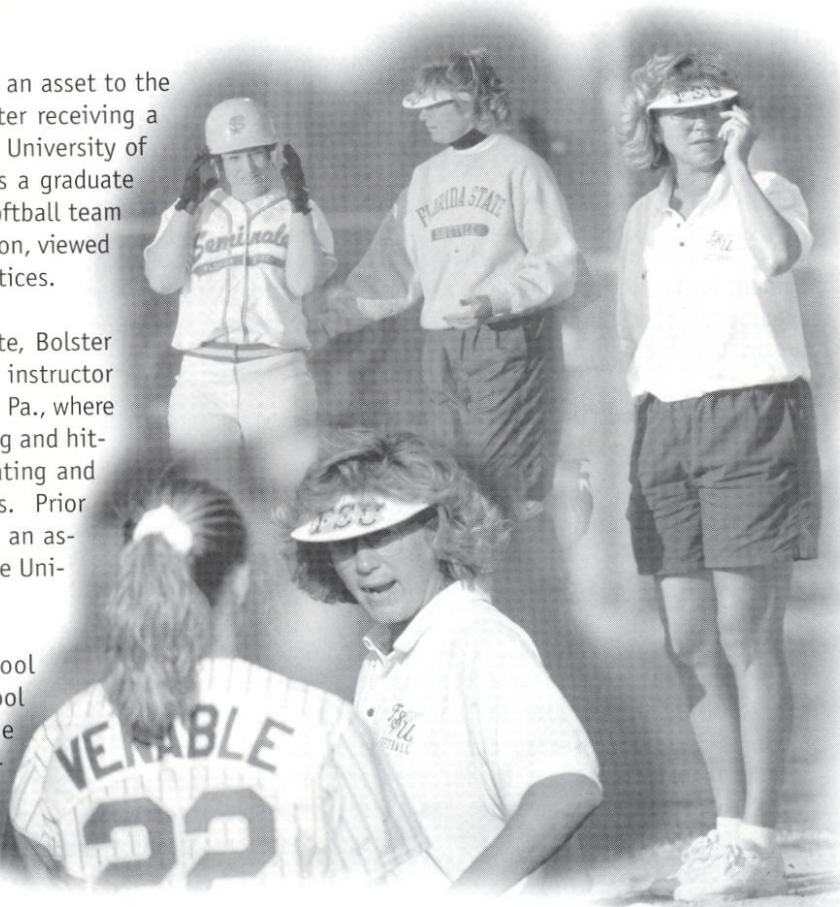
In her fourth season as an assistant coach at Florida State, Michelle Bolster brings the Lady Seminoles a unique perspective on the sport of softball. With her experience as both a player and a coach, Bolster offers insight at all levels of competition.

At Florida State, Bolster responsibilities include recruiting and working with the Lady Seminole pitching staff.

Bolster's work experience makes her an asset to the Lady Seminoles coaching staff. After receiving a degree in Physical Education at the University of Michigan in 1989, Bolster served as a graduate assistant coach for the Wolverine softball team where she provided pitching instruction, viewed recruiting tapes and organized practices.

Just prior to coming to Florida State, Bolster worked as the pitching and hitting instructor at the Tri-State Academy in Avondale, Pa., where she specialized in individual pitching and hitting instruction as well as coordinating and directing summer camps and clinics. Prior to working at Tri-State, Bolster was an assistant coach at Bowling Green State University in Ohio from 1992-94.

Bolster coached at the high school level in 1990-91 at Milan High School in Milan, Mich. Serving as the school's head coach, Bolster implemented the entire program from on the field instruction to fundraising for the team.



Assistant Coaches



FSU SOFTBALL ASSISTANT COACH

Chandelle Schulte

**EASTERN MICHIGAN '91
3RD SEASON AT FSU**

— just to name a few. In 1996, she was honored as the Wolverine Hoosier Athletic Conference Coach of the Year after leading the squad to the league's co-championship. Schulte's coaching produced four All-Americans and over the three-year period, her teams broke every softball record in the school's history.

The success of the Florida State University softball program was definitely a draw for third year assistant coach Chandelle Schulte, because success is what she's used to. After three seasons at the helm of the Concordia College softball program and three trips to the National Christian College Athletic Association's College World Series, including a second-place finish in 1995, Schulte's knowledge and postseason experience will be an asset to the Lady Seminoles.

As head coach at Concordia in Ann Arbor, Mich., Schulte's responsibilities went way beyond coaching. Her duties also included recruiting, scheduling, team travel and fundraising

While coaching at Concordia, Schulte worked as the Director of Residential Life at the school and also served as an intern in the compliance office at the University of Michigan. The East Pointe, Mich., native received a bachelor's degree in English Literature and Language from Eastern Michigan in May of 1991 and a master's degree in Sports Management from Wayne State in June 1996.

At Florida State, Schulte works with the outfielders as well as serve as co-coordinator of the JoAnne Graf softball camps.



FSU SOFTBALL VOLUNTEER ASSISTANT COACH

Carrie Partlowe

**MIAMI OHIO '97
2ND SEASON AT FSU**

and 1997. She began her collegiate softball career at Georgia State and helped lead the squad to the 1994 TAAC championship and an appearance in NCAA regional play. Partlowe played summer ball with the Columbus Jets and has been active as a softball clinician.

Destin, Florida native Carrie Partlowe joined the Florida State softball staff the summer of 1997 and is serving as a volunteer assistant coach while pursuing a master's degree at FSU in sports administration.

An all-academic team member for both the Trans American and Mid-Atlantic Conferences, Partlowe was a Dean's List member and graduated from Miami with a 3.48 grade point average in health and sports studies.

A 1997 graduate of Miami University in Oxford, Ohio, Partlowe served as the softball team captain in 1996

She works with all aspects of the FSU softball program.

Player Biographies



dana
BAILEY

VITAL INFO

HOMETOWN	Bossier City, LA
YEAR	Senior
POSITION	Center Field
BATS/THROWS	Left/Right

#6



A solid, consistent bunter... has the ability to put people in position to win a game... possesses great speed and has a strong arm... third-year starter in center field... vocal player... **1998:** Played in 68 games... was first on the team with 69 hits and a .342 batting average... was also first on the team with 27 stolen bases... garnered first team All-South-east Region accolades... earned ACC All-Tournament Team honors... was an All-ACC selection and was runner-up for player of the year in the league... ranked fourth in the ACC in batting and second in steals per game average (0.40)... was fifth on the team with 19 RBIs... hit safely in 14 of the last 20 straight, including a 10-game hitting streak and eight of those games saw multiple hits... also had a seven-game hitting streak... had five multiple RBI games... had 23 multiple hit games... was second on the team with 40 runs scored... went 4-for-5 and scored three runs vs. Florida... also had three, three-hit games... **1997:** Started all 65 games in centerfield... recorded 11 multiple hit games... tied for third on the team with nine stolen bases... nearly doubled her hits from the previous season with 45... had a solid season defensively with 101 putouts and just two errors...**1996:** Was a solid contributor as a rookie playing in 52 games in-

cluding 37 starts in right field... showed some power at the plate as six of her 23 hits were doubles... drove in nine runs and walked 10 times... **High School:** Was a three-sport athlete at Parkway High School ...received All-District MVP honors for four years in high school...was named to the Louisiana All Stars as a senior.. received all-City accolades as a freshman, sophomore and senior...was pegged an All-State Honorable Mention as a freshman...was a member of the Honor Roll, National Honor Society and Who's Who at Parkway High School... **Personal:** Is an English major... born February 16, 1977.

• Bailey at the plate...

	Avg.	G	AB	R	H	RBI	2B	3B	HR	BB	SO	SB-SBA
1996	.221	52	104	15	23	9	6	0	0	10	21	0-1
1997	.256	65	176	19	45	14	3	3	0	13	20	9-13
1998	.342	68	202	40	69	19	1	1	0	16	24	27-29
Totals	.284	185	482	74	137	42	10	4	0	39	65	36-43



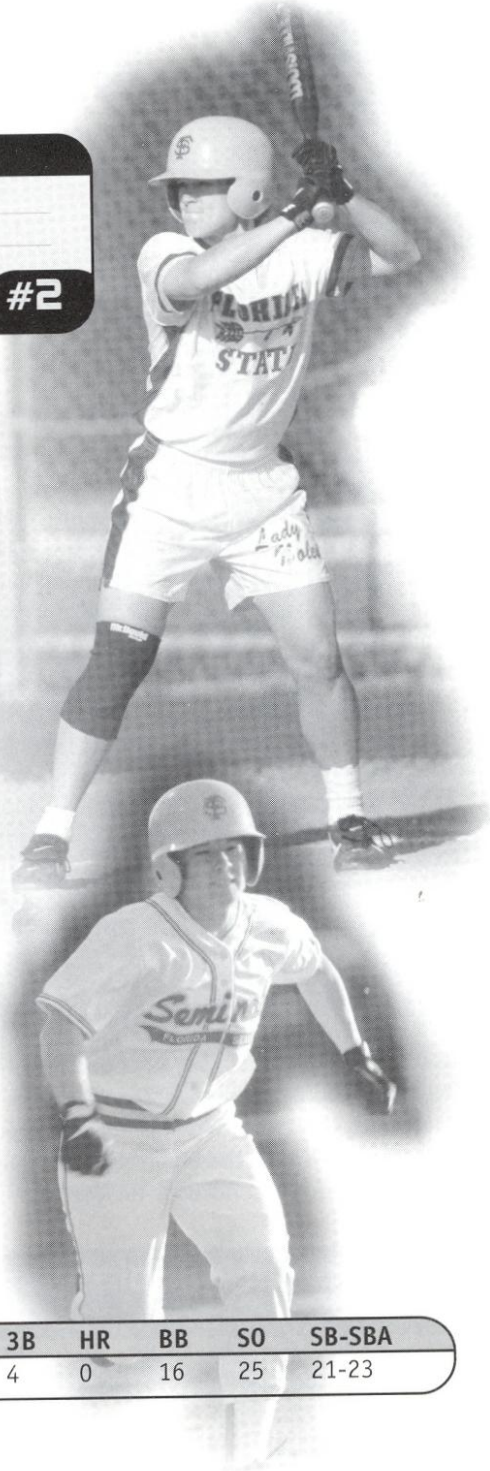
danielle
COX

VITAL INFO

HOMETOWN	Anniston, AL
YEAR	Senior
POSITION	Left Field
BATS/THROWS	Left/Left

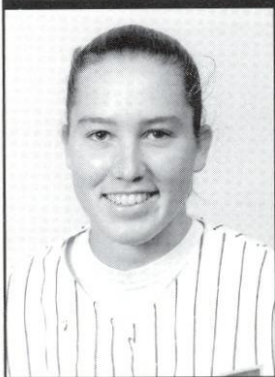
#2

Has ability to ignite the offense... gets on base early and often... second year starter in left field... a raw talent... a speedy baserunner... broke the Women's Major ASA 22-year batting record with a .688 average at the national tournament this summer... earned first team ASA All-American honors... **1998:** Played in all 72 games at left field... was the only newcomer to the outfield... was among the leaders on the team with 53 hits... led the team with four triples... drove in 12 runs... ranked second on the team with 21 stolen bases... reached base on a team-high five hit by pitches... had 13 multiple hit games... had a hitting streak of eight games... ranked tied for third in the ACC in triples and fourth in steals per game average (0.29)... **Gulf Coast Community College:** Named an All-American her freshman year... was a second team all-state selection her sophomore year... played one year of basketball along with two years of softball... **High School:** Earned Alabama Player of the Year honors at Saks High School... **Personal:** Majoring in sports management... born June 6, 1976... nickname is Coxy.



• Cox at the plate...

	Avg.	G	AB	R	H	RBI	2B	3B	HR	BB	SO	SB-SBA
1998	.285	72	186	29	53	12	2	4	0	16	25	21-23

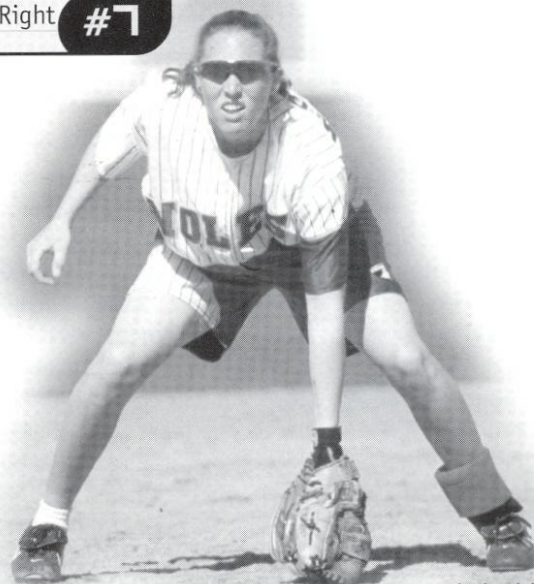


jesse
McGREGOR

VITAL INFO

HOMETOWN	Houston, TX
YEAR	Senior
POSITION	Shortstop
BATS/THROWS	Right/Right #7

Four-year starter at shortstop... quiet leader on the field... very consistent up the middle... powerful hitter... team captain... **1998:** Played in all 72 games at shortstop... was named to the ACC All-Tournament Team after batting a team-leading .625... was an all-ACC selection after leading the team in batting in ACC games with a .400 BA... earned ACC Player of the Week honors for April 28th and March 23rd ... ranked fourth on the team in RBIs with 20 and walks with 21... was among the team leaders with 55 hits... had 10 multiple hit games... had three multiple RBI games... hit safely in 12 of the last 18 games, including a nine-game streak... recorded a season-high four walks vs. West Florida... named to the Buzz Classic All-Tournament team... **1997:** Showed tremendous improvement defensively in second season as starter at shortstop... knocked in 24 runs which was third best on team... was among the top five on the team with 54 hits... finished the season strong hitting safely in 22 of her last 25 games... had 11 multiple hit games...suffered a knee injury in collision with Myssi Calkins in ACC tourney and missed four games... **1996:** Stepped in at shortstop and was the only rookie to start all 72 games... led the team with nine doubles... drove in 33 runs - second best on the team... also



ranked second in at bats with 214... recorded a hitting streak of seven games during the season... was fourth on the team and led all newcomers with a .280 batting average and 60 hits... **High School:** Lettered in softball, basketball and volleyball at St. John's High School... achieved all-conference honors four years for softball...was selected the team's Most Valuable Player as a sophomore and junior... was also pegged an all-conference performer for volleyball and basketball in junior and senior seasons... pegged school's Best Female Athlete all four years... **Personal:** Is a psychology major... a two-time ACC Academic Honor Roll member... born July 6, 1977.

• McGregor at the plate...

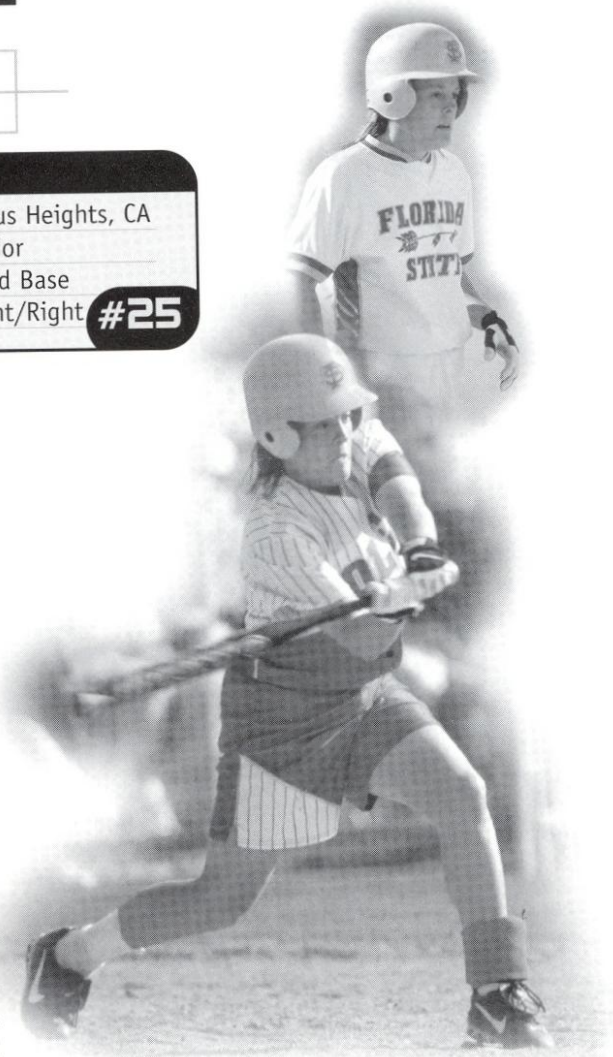
	Avg.	G	AB	R	H	RBI	2B	3B	HR	BB	SO	SB-SBA
1996	.280	72	214	18	60	33	9	1	0	10	10	6-6
1997	.303	60	178	19	54	24	4	1	0	16	9	9-11
1998	.284	72	194	24	55	20	5	2	0	21	12	4-4
Totals	.288	204	586	61	169	77	18	4	0	47	31	19-21



tami
POST

VITAL INFO

HOMETOWN	Citrus Heights, CA
YEAR	Senior
POSITION	Third Base
BATS/THROWS	Right/Right #25

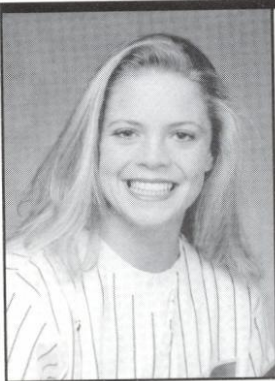


Will start at third base for fourth straight year... team captain... has a very quick release... one of the best and most consistent defensive players on the team... not many bunters beat her throw... **1998:** Played in all 72 games at third base... had three multiple hit games...was among the team leaders with four doubles... drove in 13 runs... **1997:** Had a solid sophomore season... started all 65 games... finished second on the team with 31 RBIs... had 12 multiple hit games, including a four-hit outing...was named to the Atlantic Coast Conference All-Tournament team... earned Tar Heel Invitational All-Tournament team honors... was named the ACC/SAA Player of the Week on April 14th after batting .474 with nine hits and nine RBIs... twice recorded four RBIs in a game in season-opener vs. Georgia Southern and again vs. North Carolina... had a six-game hitting streak... was among the team leaders with seven doubles and 12 sacrifices... **1996:** Was projected to serve as a backup at second base, but developed into a solid player at third base after playing in 70 games at the position... ranked second among all newcomers with 49 hits and a .244 batting average... showed strength at the plate with four doubles and two triples... drove in 19 runs... **High School:** Was a two sport athlete at Del Campo High

School... earned All-League Softball honors from 1991-95... was a three-year All-Metro softball selection... garnered all-league honors in basketball from 1993-95... **Personal:** Is majoring in criminology... born May 26, 1977... nickname is Hoover.

• **Post at the plate...**

	Avg.	G	AB	R	H	RBI	2B	3B	HR	BB	SO	SB-SBA
1996	.244	70	201	19	49	19	4	2	0	15	21	1-1
1997	.243	65	189	24	46	31	7	3	0	13	9	4-5
1998	.198	72	121	13	24	13	4	1	0	9	2	1-1
Totals	.233	207	511	56	119	63	15	6	0	37	32	6-7



stacy
VENABLE

VITAL INFO

HOMETOWN	Choctaw, OK
YEAR	Senior
POSITION	Pitcher
BATS/THROWS	Right/Right #22



A very self-confident pitcher... coming off solid junior season... intense player who rises to challenges... **1998:** Earned Most Valuable Player honors after leading FSU to the ACC Tournament championship title with a 3-0 record, including two shutouts, and a 0.37 ERA... was 19-8 with a 1.77 ERA... was an all-ACC selection... made 36 appearances and had 24 complete games... had five shutouts... was twice named the ACC Pitcher of the Week... led FSU to victory over No. 6 South Florida in last regular-season series... struck out a season-high eight batters in Utah loss... also struck out seven in Indiana win... pitched a season-high 10 innings in Cal State Northridge game... **1997:** Was the No. 2 arm in her first season in the garnet and gold... made a solid contribution appearing in 23 games and recording an 11-9 record... pitched a no-hitter in FSU's 3-0 victory over Maryland on March 25th and struck out eight batters in the game... had four shutouts on the season... recorded 13 complete games...was named to the Dean's List and the ACC honor roll... **NE Oklahoma A&M Junior College:** Earned Junior College All-America honors... played one season and was the team's starting pitcher... named

an all-region, all-conference selection... **High School:** Was a three-sport athlete, playing softball, basketball and running track at Choctaw High... garnered all-city, all-region and all-conference softball honors as a junior and senior... was selected an all-state pitcher after leading her squad to the 5A championship in senior season... Dean's List and honor roll student... **Personal:** Is majoring in exercise physiology... celebrates a Nov. 29, 1976 birthday.

• **Venable on the mound...**

	ERA	W/L	APP	GS	CG	SHO	IP	WP	SV	H	R	ER	BB	SO
1997	2.21	11-9	23	22	13	4	117	4	0	95	54	37	45	50
1998	1.77	19-8	36	36	24	5	193.1	17	0	179	68	49	65	87
Totals	1.94	30-17	59	58	37	9	310.1	21	0	274	121	86	110	137



CORRIE
WILLIAMS

VITAL INFO

HOMETOWN	Bakersfield, CA
YEAR	Senior
POSITION	First Base
BATS/THROWS	Right/Right #15



A big threat offensively... a powerhitter... can hit the long ball... solid starter at first base... vocal leader... versatile and mobile athlete... **1998:** Played in 68 games, pitching and at first base... selected to the all-Southeast Region's first team... was named to the ACC All-Tournament Team and batted .400 with three RBIs... pitched in 16 games and had a 6-5 record... was second on the team in batting among all starters with a .318 batting average... ranked seventh in the ACC in batting and fifth in RBIs per game average (0.59)... had three of the team's four home runs.. was the team leader with 40 RBIs and 14 doubles... was walked 26 times -- second on the team... with just one error, has the highest fielding percentage and the most total chances of all starters at .997... has 12 multiple hit games... had three, five-hit streaks... drove in a season-high four runs vs. Youngstown State... drove in four runs in Florida doubleheader... recorded a season-high 16 putouts vs. Washington... **1997:** Came back from off-season knee surgery to play in 46 games... finished third on the team with eight doubles... earned ACC Player of the Week honors on March 2nd after batting .556 at the NFCA Leadoff Classic and leading the team with five RBIs... contributed with 22 hits... **1996:** Contributed immediately in freshman season, playing in 68 of 72 games at first base...

was among the leaders on the team with six doubles... drove in 26 runs, fourth best on team... was one of just three players to hit a home run... led all infielders with a .974 fielding percentage... was third among the rookies with 40 hits... **High School:** Was a two-sport athlete, playing softball and soccer for four years at North High School... garnered 1995 Louisville Slugger Second Team All-American honors... was a member of the All Western Regional and All-State first teams... was pegged the All Area MVP and softball team MVP... was a first team all-league selection for both softball and soccer... received the Sam Lynn Award, making her the Most Valuable Female Athlete at North... was also a first-team all-league and all-area selection for softball in 1994... an Honor Roll member... **Personal:** A sports management major... born April 1, 1977.

Williams at the plate...

	Avg.	G	AB	R	H	RBI	2B	3B	HR	BB	SO	SB-SBA
1996	.206	68	194	11	40	26	6	0	1	9	33	2-2
1997	.198	48	111	9	22	10	8	0	0	11	19	0-0
1998	.318	68	176	31	56	40	14	1	3	27	29	4-4
Totals	.245	184	481	51	118	76	28	1	4	47	81	6-6



teresa

EDENFIELD

VITAL INFO

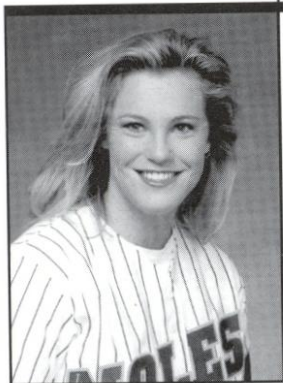
HOMETOWN	Marianna, FL
YEAR	Junior
POSITION	Catcher/DH
BATS/THROWS	Right/Right #14



Will be battling for the starting catching position... has proved very valuable as a designated hitter... has great versatility... right on the edge of breaking into the everyday lineup... has improved her hitting... **1998:** Played in 46 games, mostly at designated player... had 16 RBIs off of 31 hits... has had five multiple hit games... had a 10-game hitting streak... among the team leaders with four doubles... drove in a season-high four runs vs. Mercer... **1997:** Saw most playing time of all rookies... played in 32 games as designated player or shortstop including 22 starts... was solid at shortstop in replacing the injured Jesse McGregor for four games... finished with three multiple hit games... **High School:** Letterwinner in softball and volleyball... earned all-state honors in both sports in junior and senior seasons... played her senior season at Maclay after transferring from Marianna High School... earned team most valuable player honors for her junior and senior years... recipient of the team's Best Offensive Player award her freshman and sophomore years... also voted Best Defensive Player as a sophomore... excelled in academics as well in garnering National Honor and Beta Society recognition... a consistent honor roll student throughout high school... **Personal:** Majoring in psychology... born April 4, 1978.

• Edenfield at the plate...

	Avg.	G	AB	R	H	RBI	2B	3B	HR	BB	SO	SB-SBA
1997	.238	32	63	7	15	5	2	0	0	5	11	1-3
1998	.274	46	113	15	31	16	4	1	0	10	17	3-4
Totals	.261	78	176	22	46	21	6	1	0	15	28	4-7



becky
WALLACE

VITAL INFO

HOMETOWN	Naples, FL
YEAR	Junior
POSITION	First Base
BATS/THROWS	Right/Right #17

Provides valuable depth at first base... is very good off of the bench... solid defensively... is solid fundamentally... team has a lot of confidence in her... **1998:** Saw action in 14 games, mostly as a pinch hitter... came in to play first base... had two RBIs off of three hits... **1997:** Saw limited action as a rookie but provided depth to the team... saw action in 15 games... **High School:** Was a two-sport athlete at Barron Collier High School, lettering four years in both softball and volleyball... named all-county in both sports all four years... tabbed a third team all-state choice in softball as a senior... was twice named the team's most valuable player in volleyball and once in softball... captained the volleyball squad in 1995... was the runner-up for athlete of the year honors in season season... solid student, earning high honors all four years with a 4.0 GPA... **Personal:** Major is business... was named to the Dean's List... was named to the ACC honor roll... born May 8, 1978.



• **Wallace at the plate...**

	Avg.	G	AB	R	H	RBI	2B	3B	HR	BB	SO	SB-SBA
1997	.095	15	21	2	2	0	0	0	0	2	5	0-0
1998	.167	14	18	1	3	2	0	0	0	0	2	0-0
Totals	.128	29	39	3	5	2	0	0	0	2	7	0-0



christy
CERECEDES

VITAL INFO

HOMETOWN	Hacienda Heights, CA
YEAR	Sophomore
POSITION	Second Base
BATS/THROWS	Right/Right

#13

Second year starter at second base... a smart player who adjusts quickly... fierce competitor... is most emotional and spirited player on the team... helps keep other players intense... expects to win every time she steps onto the field... **1998:** Started all 72 games at second base... was the only newcomer to the infield... earned second team all-Southeast Region honors... scored the winning run in the ACC Championship game and was the only Lady Seminole to have two hits in that game...

was first on the team in at bats (210) and second in hits with 63 and third with 22 RBIs -- the most of all rookies... was 15-for-17 in steals, tied for third best on team... ranked fifth in the ACC in steals per game (0.21)... had 16 multiple hit games and five multiple RBI games... was named the ACC Player of the Week on April 7th... **High School:**

Named the San Gabriel Valley Player of the Year... earned first team all-league and all-valley team honors two years and also garnered Most Valuable Player honors for both... honored as Los Altos High School Female Athlete of the Year... was a first team all-state pick as a junior... earned Rookie of the Year honors as a freshman... well-rounded athlete who also played three years of basketball... a four-year honor roll student... **Personal:** Majoring in communications... was born on Christmas day in 1978... nickname is 'Cedes.

• Cerecedes at the plate...

	Avg.	G	AB	R	H	RBI	2B	3B	HR	BB	SO	SB-SBA
1998	.300	72	210	38	63	22	8	2	0	30	21	15-17



kelly
MILLER

VITAL INFO

HOMETOWN	Vallejo, CA
YEAR	Sophomore
POSITION	First Base
BATS/THROWS	Right/Right

#20

A very solid backup at first base... has a great deal of potential as a hitter and could develop into a threat at the plate... is young, but has already shown improvement... provides an imposing presence on the field... **1998:** Played in 31 games... a power hitter... started at first base when Corrie Williams was pitching... had just 12 hits, but six of them were doubles

which was fourth on the team... one of her hits was a home run... came in to pinch-hit in eighth inning vs. West Florida and drove in winning run with a double to center field... was the designated player in first Florida game and drove in a run... had one multiple hit and one multiple RBI game... **High School:** Four year letterwinner in softball at Vallejo High School... also played three years of volleyball and two years of soccer... **Personal:** Majoring in social work... born on August 22, 1979... nickname is Moose.

• Miller at the plate...

	Avg.	G	AB	R	H	RBI	2B	3B	HR	BB	SO	SB-SBA
1998	.169	31	71	6	12	8	6	0	1	2	19	1-1



jennifer
WHITE

VITAL INFO

HOMETOWN	Tuttle, OK
YEAR	Sophomore
POSITION	Pitcher
BATS/THROWS	Right/Right

#12

Will be squad number one pitcher for second straight season... solid hitter at the plate and bats for herself... is a finesse-type thrower... made an immediate impact as a rookie... earned respect and confidence from her teammates... **1998:** Saw action in 39 games, returning to action in NCAA regional play after missing six weeks of action with a rib injury... earned second team all-Southeast Region honors... although sidelined, still led the country with 26 victories until April 14th... was FSU's ace on the mound with a 26-8 record and a

1.37 ERA... was tied for first in the ACC with a 1.37 ERA... earned ACC Pitcher of the Week honors three times... earned victories over No. 3 Washington and No. 2 Fresno State early in the season... also pitched FSU to victory over nationally-ranked LSU... had five shutouts... had 27 complete games in 36 appearances... struck out 123 batters and walked just 36 in 215.1 innings pitched... held opponents to a .214 batting average... was named the Most Valuable Player

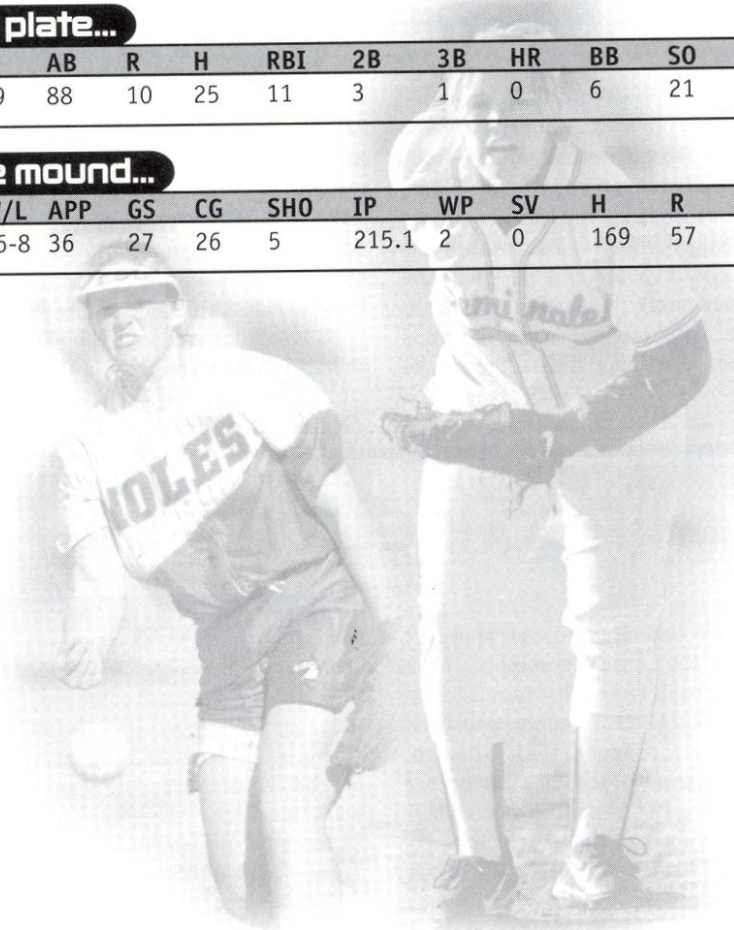
of the Tallahassee Democrat Florida State Invitational after leading FSU to the title with a 5-0 record and six RBIs... also batted for herself and had 25 hits and 11 RBIs... on the batting end, had four multiple hit games... drove in a season-high three runs vs. Central Michigan... struck out eight batters in five games... **High School:** two-time high school All-American... four-year letterwinner in softball and basketball... named to the Principal's honor roll... **Personal:** Majoring in communications... born on Feb. 1, 1978... nickname is JW.

• White at the plate...

	Avg.	G	AB	R	H	RBI	2B	3B	HR	BB	SO	SB-SBA
1998	.284	39	88	10	25	11	3	1	0	6	21	4-5

• White on the mound...

	ERA	W/L	APP	GS	CG	SHO	IP	WP	SV	H	R	ER	BB	SO
1998	1.37	26-8	36	27	26	5	215.1	2	0	169	57	42	36	123



Newcomer Biographies

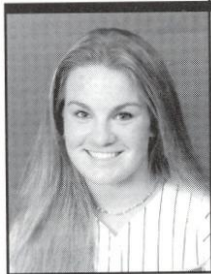


becky BROCK

Will provide backup at short-stop... a very intelligent player who just needs game experience at this level... **High School:** Named the team's best offensive player as a senior after earning best defensive player of the year honors in 1996 and 1997... pegged Baker County's Female Scholar-Athlete of the Year in 1998... also lettered in basketball and volleyball and earned Most Valuable Player accolades in both in 1998... competed in golf and bowling... four-year honor roll member... **Personal:** Major is undecided... was born July 14, 1980.

VITAL INFO

HOMETOWN	Macclenny, FL
YEAR	Freshman
POSITION	Shortstop
BATS/THROWS	Right/Right #16



kimmy CARTER

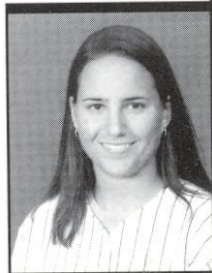
Plays to win... will provide depth at the catcher and right field positions... a spark plug... very strong in her fundamental skills... **High School:** Was chosen the

Class 2A Most Valuable Player as a senior... was the team Most Valuable Player for three consecutive years... served as team captain for two years... was a three-time all-area and two time all-state first team selection... chosen the Female

VITAL INFO

HOMETOWN	West Palm Beach, FL
YEAR	Freshman
POSITION	Catcher/Outfield
BATS/THROWS	Right/Right #8

Athlete of the Year in junior and senior years... led team in batting and stealing in final two seasons... ranked second in the county with a .647 batting average as a senior... was selected an all-star catcher as the team earned the district title in senior season... also played soccer and volleyball... selected a Scholar Athlete as a junior and senior... **Personal:** Major is undecided... born October 6, 1980... sister plays tennis at Samford University... father is 18-year baseball veteran and all-star Gary Carter.



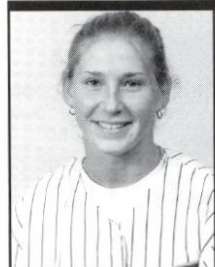
jackie HIRSCHFELD

Will learn from veteran Tami Post at third base this season... **High School:** Earned first team all-conference and all-county honors and was a second team all-state

selection...garnered Offensive Most Valuable Player honors as a senior...also lettered four years in basketball and volleyball... an honor roll member... **Personal:** Major is undecided... born November 11, 1979.

VITAL INFO

HOMETOWN	Tampa, FL
YEAR	Freshman
POSITION	Third Base
BATS/THROWS	Right/Right #24



andi LYONS

Will be one of the squad's main catchers... already has game experience coming in as a transfer...

Junior College: Played one season at Saint Petersburg and was named the Player of the Year after

redshirting first year... was a first team all-state and all-conference catcher in 1998... also named to all-tournament team at state... garnered Most Valuable Player of the Tallahassee Community College Tournament... graduated with honors... **Personal:** Major is sports administration.... born November 11, 1976.

VITAL INFO

HOMETOWN	Oldsmar, FL
YEAR	Junior
POSITION	Catcher
BATS/THROWS	Right/Right #10



leslie MALERICH

Will see a great deal of action on the mound as a rookie... throws the ball hard.. has tremendous ability... **High School:** Was the state of Indiana softball strikeout leader in 1996, 1997 and 1998...

with 1,003 career strikeouts, is second all-time in the state of Indiana... was a Miss Softball Nominee in 1998... selected a two-time 1st team all-state honoree... helped her team to the state title in 1997 and was named the Player and Athlete

VITAL INFO

HOMETOWN	Merrillville, IN
YEAR	Freshman
POSITION	Pitcher
BATS/THROWS	Right/Right #23

of the Year in Indiana... twice earned conference Most Valuable Player... earned second team all-state accolades as a sophomore... holds every pitching record at her high school... also lettered and received numerous honors in volleyball and swimming... named the 1998 Merrillville High School Athlete of the Year... **Personal:** Major is undecided... her sister plays softball and volleyball at Aurora University in Illinois... born February 29, 1980.



latanya MITCHELL

Has a lot of potential... solid athlete who should see valuable playing time throughout the season... possesses a great deal of natural talent... could challenge for a starting spot in right field... **High**

School: Four-year letterwinner in softball, volleyball and basketball... named Riverdale High's softball Most Valuable Player as a junior and senior.... was a two-time second team All-State selection... served as team captain in final two sea-

VITAL INFO

HOMETOWN	Fort Myers, FL
YEAR	Freshman
POSITION	Outfield
BATS/THROWS	Left/Right #9

sons... was the Class 4A basketball player of the year and a first team all-state honoree in 1998... four-year honor roll student... **Personal:** Major is undecided... was born November 5, 1979... goes by Tanya.



dana
VICKERY

Versatile athlete... will rotate between and add depth to many positions... **High School:** Named a first team all-county player at utility and an honorable mention at catcher as a senior... earned

second team all-county honors at catcher in 1996-97 and all-county first team accolades as a utility player in 1994-95...

VITAL INFO

HOMETOWN	Clearwater, FL
YEAR	Freshman
POSITION	Second Base
BATS/THROWS	Switch/Right #21

also played volleyball and helped lead the team to a perfect 32-0 in 1997-98... played in the Canadian International Challenge softball tournament during the summer and was named Most Valuable Player... **Personal:** Is majoring in criminology... born February 1, 1980.



felicia
WILLIAMS

Will be the speed off the bench... a solid, instinctive baserunner... will provide depth to the outfield positions... **Junior College:** Named most improved player and

second team all-conference in sophomore year at Valencia Community College... **High School:** Played varsity softball all four years and was a cheerleader for two years... **Personal:** Is majoring in business... born February 23, 1978.

VITAL INFO

HOMETOWN	Orlando, FL
YEAR	Junior
POSITION	Outfield
BATS/THROWS	Left/Right #3



FSU Softball Complex

HOME OF THE LADY SEMINOLES

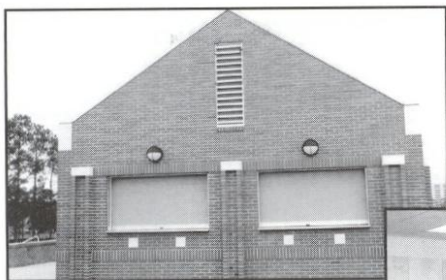
"Field of Dreams"

The Seminole Softball/Soccer Complex

Florida State's dream of a new, state-of-the-art softball complex became reality when ground was broken in a ceremony last spring. Over the past eight months, construction workers have been working round-the-clock on the facility which also houses the Seminole soccer stadium.

The complex includes ticket and concessions buildings and spacious press boxes, including press seating and radio/television booths. The two-level team building features a reception area, softball and soccer coaches offices which overlook their respective stadiums, a combined workroom, large team and coaches lockerrooms and training and equipment rooms.

The Seminole Softball/Soccer Complex is located in between the Dick Howser Baseball Stadium and the Mike Long Track on Chieftan Way. The facility can be accessed from both Chieftan Way and Stadium Drive.



Concessions Building



Locker Room



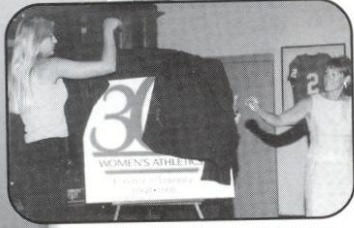
Softball/Soccer Team Building



Press Box

QUICK FACTS	
Architects	Gilchrist and Crowe
Construction	began Spring 1998
Field Dimensions	200' - right and left field 220' - center field
Stadium Capacity	1,500

30th Anniversary



Florida State kicked off the year celebration when volleyball's Gabrielle Reece returned to Tallahassee in July to help unveil the 30th Anniversary logo.

While women's athletics has held a rich tradition in Tallahassee since the early 1900s when Florida State was known as the Florida State College for Women, the 1998-99 season marks the 30th Anniversary for a continuous women's athletics program at Florida State University.



Through the years, a foundation of excellence, both athletically and academically, has been planted upon which a winning tradition continues to grow.

FSU'S WOMEN'S NATIONAL CHAMPIONS

- Golf** 1981 AIAW Championship
- Softball** 1981 & 1982 AIAW Champs
- Track** 1984 NCAA Outdoor Champs
- Track** 1985 NCAA Indoor Champs

30 Years of Excellence

1968-1973

In 1968, the **volleyball** team was Florida State's first women's intercollegiate athletics team.



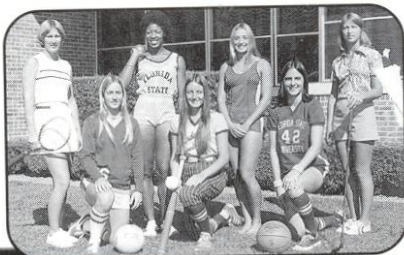
Women's **track and field** was added as an intercollegiate sport in 1969.

The **volleyball** squad played in its first national tournament in 1972.

1974-1978

The **Lady Seminole** logo became the symbol for Florida State women's athletics in the 1974-75 season.

By the 1975-76 season, Florida State University sponsored seven women's **intercollegiate teams**.



1979-1983

Sharon Spuler—Swimming 11-time All-American.



Lenore Gribble—Swimming 10-time All-American.

The 1981 season marked the first of two straight **AIAW**



National Championships for Head Coach JoAnne Graf and the Lady Seminole softball program.

Head Coach Verlyn Giles led Florida State to the 1981 **AIAW National Collegiate Golf Championship** title.



Softball's **Darby Cottle**, a two-time All-American, was named the slowpitch **National Player of the Year** in 1982.



Jamie Kaplan (pictured) and **Lee McGuire** were the first two women's **tennis** players at Florida State to earn an invitation to the NCAA tournament.

1984-1988

One of the most prolific scorers ever to play at Florida State, **Sue Galkantas** scored an unbelievable **2,323 points**, the most points scored by a basketball player — male or female — in FSU history.



Lady Seminole Milestones

