

FLORIDA STATE UNIVERSITY

softball

MEDIA GUIDE 2000



Not too many people can say they are the first to do anything in history, but Florida State Head Coach Dr. JoAnne Graf can!

Dr. Graf became the first coach in Division I history to win 1,000 Division I games and the first to win 1,000 at a single university with FSU's 2-1 win over South Florida on May 6. These wins include slow and fast pitch.

In her 21 years at the helm of the Florida State program, Coach Graf has led the Lady Seminoles to Five College World Series, 12 NCAA Regional appearances and two slowpitch National Championships. Under Graf's direction, the Lady Seminoles have practically owned every Atlantic Coast Conference title since the league adopted softball as a sport in 1992. Her coaching has produced 17 All-Americans, including four first team selections, numerous all-conference and all-region players and six players who took the step to the professional league. She has watched the program grow from playing on an intramural field to having a home in a state-of-the-art facility and has watched many of her players go on to become high school and college coaches, taking their experience and knowledge as a player under Coach Graf and making a career of it.



Dr. JoAnne Graf's Milestone Victories

No.	Date	Score/Opponent	No. Wins	Date	Score/Opponent
1000	May 6, 1999	2-1 vs South Florida	400	April 26, 1987	2-0 vs. Oklahoma State
900	April 10, 1997	6-0 vs. North Carolina	300	April 5, 1985	10-1 vs. NE Louisiana
800	April 7, 1995	15-0 vs. North Carolina	200	March 26, 1983	3-2 vs. Florida
700	April 17, 1993	4-2 vs. Virginia	100	April 10, 1981	3-2 vs. NC State
600	February 23, 1992	2-0 vs. West Florida	1	February 26, 1979	3-1 vs Chipola College

Media Information

PLAYERS & COACHES INTERVIEWS

All players and coaches interviews can be arranged through the sports information office by contacting Tina Thomas at (850) 644-1065 at least 24 hours in advance. Players home phone numbers will not be released.

PRESS SERVICES

Media members will be supplied with weekly press releases, including updated results and statistics, updated conference and national rankings, as well as information on upcoming games. This information may be obtained in the sports information office or by accessing the ACC Faxback Service. For details on ACC Faxback, please contact the sports information office.

CREDITS

The 2000 Lady Seminole softball guide is a product of the Florida State University sports information office.

Editor: Tina Thomas, Assistant Sports Information Director.

Writing and Research: Rick Coffin, Ketsia Colimon, Jennifer Dowling

Photography: FSU Photo Lab, Ross Obley, Ryals Lee, Tom Casazza

Design: M & M Creative Services, Inc. Tallahassee, FL

Printing: FSU Printing Services

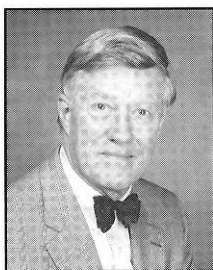
Special thanks to the Georgia Pride for photos on page 42.

ON THE COVER

Front: The 2000 Lady Seminole seniors.

Back: The 2000 team photo and schedule.

The Florida State University offers equal opportunity in its employment and educational activities in compliance with Title IX, Section 5-4 of the Rehabilitation Act of 1973 and other civil rights laws.



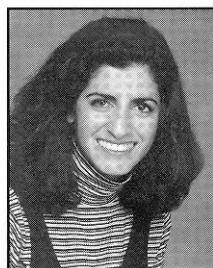
Sandy D'Alemberte
PRESIDENT



Dave Hart
ATHLETICS DIRECTOR



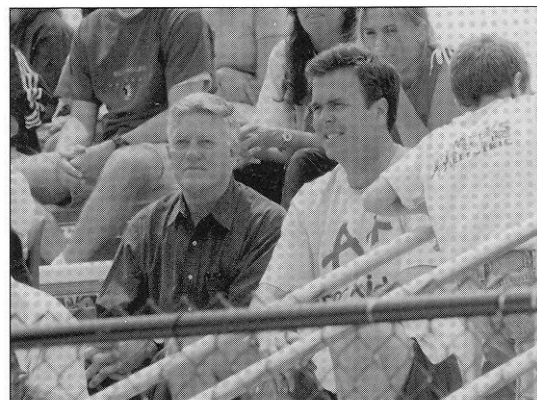
Kim Record
ASSOC. ATHLETICS
DIRECTOR



Tina Thomas
ASSISTANT S.I.D.

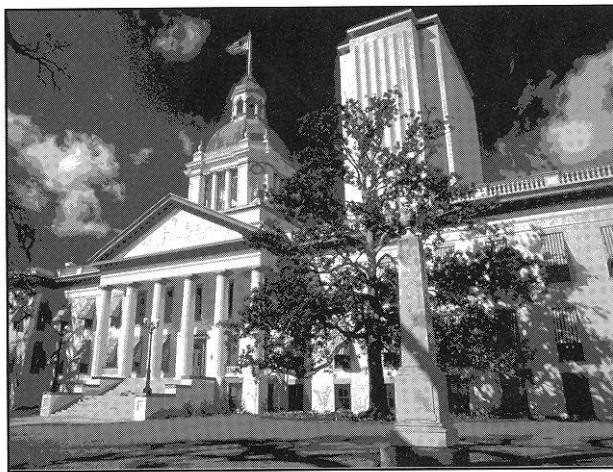
TABLE OF CONTENTS

This is Tallahassee	2-3
This is Florida State	4-5
2000 Season Outlook.....	6-8
Quick Facts	9
Head Coach JoAnne Graf.....	10-11
Assistant Coaches/Staff	12-13
Roster/2000 Tourney Play	14
Players Bios	15-25
Seminole Softball Complex	26-27
Support Services	28-29
Life Skills	30
NCAA Information	31
'99 Season Review.....	32-34
'99 Stats.....	35
'99 Results.....	36
'99 ACC Review	37
About the ACC.....	38-39
Post Season Play.....	40
Series Records	41
Seminole in the Pros.....	42
All-time Letterwinners	43
Honors and Awards	44-45
Records Book	46-55
Photo Roster	56



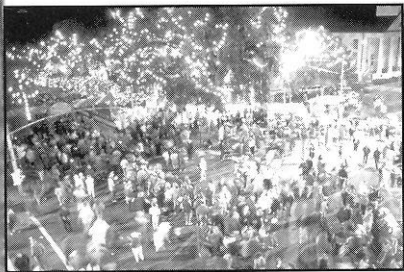
FSU President Sandy D'Alemberte and Florida Governor Jeb Bush enjoy a day at the ballpark.

This is Tallahassee



Near, but far from the glaring strips of neon amusement, and the castles and crowds of Disney, lies another magical place in the Sunshine State — one of pow-wows, plantations, politics and great pride. Often described as “The Other Florida” with its deep-rooted history, rolling hills, canopy roads of moss-draped oaks, cool climate and Southern-style hospitality; it is a Florida few have seen. It is Tallahassee — Florida with a Southern accent.

Best known as Florida’s capital, Tallahassee is an intimate neo-metropolitan city where the power of state government, the academic and the artistic are complemented by subtle, old-fashioned charm. It is the perfect two- or three-day diversion for the more than 41 million annual visitors to Florida and 13 million residents.



Tallahassee touts a menagerie of sights including one of the world’s deepest freshwater

springs, site of America’s first Christmas, a wildlife habitat, Capitol buildings, fascinating museums of history, sprawling plantations, highly acclaimed fishing and hunting adventures and nearby beaches. Spirited area festivals range from celebrations of Tallahassee’s spectacular spring and swamp stomps to genuine rattlesnake roundups and seafood festivals.

With the Gulf of Mexico just 20 miles south and the Georgia border only 14 miles north, Tallahassee rests between the foothills of the Appalachian Mountains and the juncture of Florida’s panhandle and peninsula. Nearer in miles to Atlanta than to Miami, Tallahassee more closely resembles its Southern neighbors than Florida in topography, climate and lifestyle.

Accentuating Tallahassee’s Southern persona are lush rolling hills, likened to the seven hills of Rome, and five “official” canopy roads of patriarch oaks. The fertile, rich soil and four distinct, yet pleasant, seasons breed floral brilliance and natural vitality year-round.

Like the city itself, the story of how Tallahassee was chosen as the state capital is rich in history. In 1823, two explorers set out — one on horseback from St. Augustine and the other by boat from Pensacola — to find a permanent, central location for the Legislature to convene. The two met at a beautiful site that the Creek and Seminole Indians called “tallahassee” — derived from the words “talwa” meaning town and “ahasee” meaning old. The rendezvous point remains Florida’s capital.

The “old town” has undergone many changes, but one thing remains the same — it is still a government town fiercely proud and dedicated to preserving its heritage. The Capitol buildings, both old and new, epitomize Tallahassee’s perseverance.

The 22nd floor of the New Capitol provides a panoramic scope of a sophisticated Southern city awash in a sea of flowering azaleas, snowy dogwoods, towering pines, fragrant magnolias, and hundreds of shimmering lakes, springs, swamps, rivers and sink holes. Special legislative viewing galleries are open during the legislative session.

Below, in the shade of giant live oaks, proudly stands the Old Capitol, originally constructed in 1845 and restored to its 1902 splendor complete with red-and-white candy-striped awnings, a dome adorned with stained glass, antique furnishings and political memorabilia.

Across from the Old Capitol are the 40-foot twin granite towers of the Vietnam Veteran’s Memorial, and the blue stone Union Bank, Florida’s oldest surviving financial institution. The nostalgic Old Town Trolley, a replica turn-of-the-century street car, carries passengers through restored Adams



Street Commons to numerous other historical downtown shops for *free* — unheard of even 100 years ago.

Minutes from downtown lies the Governor’s Mansion, which resembles the home of Florida’s military hero



Andrew Jackson; and the 52-acre natural animal habitat and 1880s farm of the Tallahassee Museum of History and Natural Science, which provide the rare chance to walk and talk with native Florida animals.

Tallahassee remains firmly linked with the past as evidenced by the unearthed 1539 winter encampment of Spanish Hernando de Soto, the site of the first Christmas celebration in America. Visitors travel back through time as they stand in the shadow of a giant 12,000-year-old American Mastodon at the Museum of Florida History or explore other historical spots including The Knott House that Rhymes, The Columns, San Luis Mission, Lake Jackson State Archaeological Site, Natural Bridge Battlefield, First Presbyterian Church, Brokaw-McDougall House, Goodwood Plantation and Adams Street Commons.

Nearby, alligators lazing in the sunshine and anhinga "snake birds" perched on twisted cypress branches are seen at Wakulla Springs, one of the world's deepest fresh water springs and site of many underwater scenes in the "Tarzan" movies with Johnny Weissmuller and Maureen O'Sullivan. Safaris aboard glass-bottomed and jungle cruise boats whisk visitors within arm's length of "The Other Florida."

Outdoor enthusiasts enjoy adventures including boating and fishing on area lakes, rivers, ponds and the Gulf — just 30 minutes away. Lakes Seminole, Jackson and Talquin are renowned in the bass fishing world



for yielding the "big ones," and dense forests offer an abundance of prize-winning game. Local wildlife areas such as the Florida National Scenic Trail, St. Marks National Wildlife Refuge and Apalachicola National Forest are among many spots for camping, picnicking, swimming, biking and exploring.

Appealing to the strokes of different folks, Tallahassee also features 99 holes of golf on six courses and a proliferation of tennis centers. Sideline athletes cheer the nationally-ranked Florida State Seminoles, Florida A&M Rattlers and the Tallahassee Tiger Sharks, of the East Coast Hockey League. And always a sure bet are the nearby greyhound races.



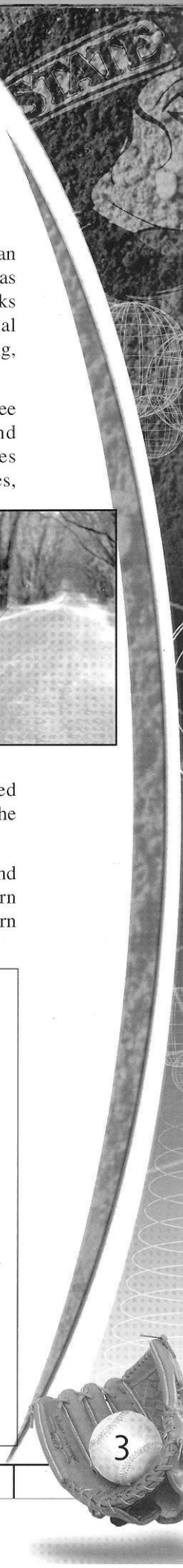
A sport of sorts, shopping at two regional malls and many specialty centers offer many "playing options" — from popular chains to curiosity and antique shops.

Cultural interests are sparked by widely-acclaimed museums and galleries and elaborate entertainment at the 14,000-seat Tallahassee-Leon County Civic Center.

Tallahassee is a collaboration of power-play politics and classical character splashed with a twist of Southern beauty and charm. Tallahassee is Florida with a Southern accent.

We Won!

Tallahassee's an All-America City! On June 26, judges from the National Civic League named Tallahassee as one of 10 cities to win the prestigious All-America City (AAC) award from the 1999 All-America City conference in Philadelphia. The All-America City award is the most prestigious and coveted award a community can win. The annual award recognizes exemplary, grassroots and problem-solving efforts of communities that cooperatively tackle challenges and achieve measurable results. Judging is based on the overall level of community involvement in solving critical local problems, including public-private partnerships. "This is clearly one of the most exciting things to ever happen to Tallahassee," said a jubilant Mayor Scott Maddox. "For those of us who call Tallahassee home, the All-America City award verifies what we've known for so long — that we have one of the greatest cities in all of America!"



This is FSU

Florida State University, recently celebrating its golden anniversary as a coeducational graduate research institution in 1997, has joined the nation's elite in both academics and athletics.

Located on the oldest continuous site of higher education in Florida and building rapidly on the framework of a highly regarded liberal arts college for women, the University has emerged over the past 50 years as an institution of national and international esteem. Its stature is evidenced by a number of additions to its record of excellence in the 1990s:

- In 1994, Florida State was classified a **"Research University I"** by the Carnegie Foundation, placing it among the nation's top research universities.
- In 1994, the college referral service, "Who's Who Among American High School Students," placed FSU among its top 10 — with such universities as Harvard, Duke, Stanford, North Carolina-Chapel Hill, Michigan-Ann Arbor and Yale — of most frequent choices of more than 100,000 of the nation's best and brightest high school students who asked that a specific college be notified of their recognition in "Who's Who."
- Vice President of the United States Al Gore spoke at the dedication of the **National High Magnetic Field Laboratory** at Florida State in 1994. The National Science Foundation established the \$100 million magnet lab in 1990 at FSU, which is partnered in research with the Los Alamos National Laboratory and the University of Florida. A Nobel laureate in physics and a top Russian physicist were among the first scholars drawn to the faculty. The **world's largest magnet** — two stories high and capable of generating 45 tesla or 1 million times the Earth's magnetic field — was installed in 1995 at the NHMFL, located in the **off-campus research complex**, Innovation Park. In 1996, the NSF renewed and increased by 50 percent the NHMFL's funding for another five years.
- FSU created the first multipurpose student identification/banking card. The **Card Application Technology Center** is a national leader in "smart card" systems.
- At the forefront of supercomputing since obtaining its first high-speed computer in 1985, FSU took yet another step in ultrafast and parallel computing in 1990 when it acquired **two supercomputers**, the Thinking Machine Corp. Connection Machine and the Cray Y-MP.
- In fall 1994, the first tenants moved into the east side of the \$100 million **University Center**, a classroom-and-



office facility at Doak Campbell Stadium; the stadium's south end zone also was enclosed and the adjacent Moore Athletic Center expanded. With the completion of the west side in 1996, University Center now provides 550,000 square feet of much needed academic space and a centralized location for student services.

- In 1990, Florida State **ranked second in popularity nationwide** among high school seniors, based on the number of students who request that their Scholastic Aptitude Test (SAT) scores be sent to an institution. FSU was the only institution listed among the top 10 choices of both black and white college-bound students.

- FSU's high-tech program in **structural biology** in 1991 received the University's largest single foundation grant, \$4 million.

- Capping more than a decade of national prominence in intercollegiate athletics, Florida State's athletic teams, nicknamed **"Seminoles,"** joined the **Atlantic Coast Conference** as its ninth member in 1990. The FSU football team won the **1993 National Championship** and its quarterback, Charlie Ward, won the University's first **Heisman Trophy**.

- The **Dr. Bobby E. Leach Center**, a state-of-the-art student recreation facility, with a pool, saunas, basketball and racquet-sport courts, was completed in 1991.

- FSU ranked **20th in the nation for 1990-1991 in the**



number of black Ph.D. students it graduates. Over the five years, 1986 to 1990, FSU ranked eighth nationally by granting doctorates to 70 African Americans.

As this list of highlights attests, Florida State is excelling in the 1990s with exceptional strength, energy and vision for the future. Under the leadership of the University's 12th president, **Talbot "Sandy" D'Alemberte**, who took office in January 1994, FSU will continue to build on the foundation of its history of excellence in scholarship, research and service.

A senior member of the 10-member **State University System**, FSU was founded as an institution of higher learning in 1851 by legislative act and began in Tallahassee with its first students in 1857.

Today, FSU's operating budget is **\$474.3 million**. Faculty and administrators generate more than **\$102 million** annually in external funding to supplement state-sponsored research. Three direct-support organizations serve to bolster the University: **FSU Foundation**, which raises millions in private gifts to support academics, **Seminole Boosters** and **FSU Alumni Association**.

The main campus is spread over **451.6 acres in Tallahassee**; FSU, which has one of the smallest campuses in the SUS, has been actively acquiring land in the 1990s after years of being landlocked at 347 acres. FSU owns 1,281 acres in Leon, Bay, Franklin and Sarasota counties.

Within the state, the University maintains facilities at its **25-acre campus in Panama City**, its **Marine Laboratory** on the Gulf of Mexico, the **Appleton Museum** in Ocala and the **Asolo Performing Arts Center** in Sarasota. The **Center for Professional Development and Public Service**, housed in the **Augustus B. Turnbull III Florida State Conference Center** on the edge of the campus, provides extensive credit and non-credit continuing education programs statewide.

Florida State offers **286 graduate and undergraduate degree programs** through its **eight colleges** — Arts and Sciences; Business; Communication; Education; Engineering (operated jointly with Florida A&M University, a historically black institution); Human Sciences; Law; and Social Sciences (which also incorporates the **Reubin Askew School of Public Administration and Policy**) — and **eight schools** — Criminology and Criminal Justice; Information Studies; Motion Picture, Television and Recording Arts; Music; Nursing; Social Work; Theatre; and Visual Arts and Dance.

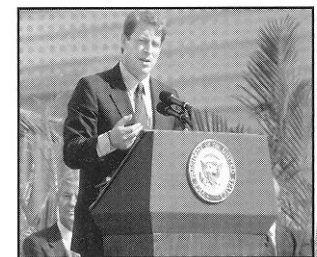
With 1,655 members, the FSU faculty has included **nine National Academy of Sciences elected members, nine American Academy of Arts and Sciences fellows and five Nobel laureates**. It is backed by 2,887 administrative/professional and support staff.

Library holdings at Florida State include **2.1 million book titles, 16,384 serials and 4.5 million micro-forms**. The main library facility, the **Robert M. Strozier Library**, is linked by computer to other state university and national research libraries. The **Paul A.M. Dirac Science Center Library** is located at the heart of the University's science research complex. FSU also maintains extensive music, library science and law libraries.

Graduate students, who number more than 5,929, pursue advanced degrees in fields as diverse as business administration and theoretical particle physics. A majority of research done at FSU is the direct result of student effort, culminating in numerous books, monographs and journal articles relating to the whole spectrum of intellectual interests and the practical needs of society.

FSU, a residential campus, places a high priority on its **30,519 students** and their needs and interests (of the student population: 45 percent are male; 55 percent are female; 20.1 percent are minorities; and 2.5 percent are foreign students). The **University Honors Program, Disabled Student Services, International Student Center, Student Government, Flying High Circus** and intramural sports are among more than 200 organizations and activities in which students may participate.

In all areas of its mission — excellence in teaching, research and public service — **Florida State University** is advancing



2000 Outlook

NEW CENTURY, NEW TEAM

The year 2000 -- a new millennium full of excitement and celebration. For the Florida State softball program, it also represents a rebirth of sorts as the Lady Seminoles strive to lift the program to even greater heights.

"The year 2000 is really exciting," FSU Head Coach Dr. JoAnne Graf said. "It's going to be a neat season. We've done some great things in the 1990s, but we want to do even better things in the year 2000. It is kind of fitting that we are starting a new year with a new coaching staff, a new facility and kind of a new team."

A lot of new faces will don the garnet and gold this season. Just three starters and 11 letterwinners return from last year's senior-laden squad that finished 40-25-1. Florida State is replacing an entirely new infield, with the exception of the catcher and will also have newcomers in left and center field.

"It is going to take awhile to establish a team-identity," Graf said. "We have quite a few new players and two new coaches, so I think the early part of the season we are going to have to get to know each other and see how everybody reacts under pressure in positions that maybe they haven't played before. So for all of us, it is going to be a learning experience. As the season goes along and as the new players learn our system, I think we will continue to improve and really be playing well by the end of the season which is always a goal that you want.

"It's going to be challenging -- there's no doubt about that, probably one of the most challenging ones that we've ever had, but I think we've got the kind of players who will respond to that challenge."

PITCHING

The Lady Seminoles return two solid performers in the pitching department in junior Jennifer White-Stokes and sophomore Leslie Malerich. Gone is Stacy Venable, who led the team with a 1.04 ERA and a 13-1 record in 1999. White-Stokes and Malerich, however, combined for 27 victories.

"We will miss Stacy Venable," Graf said. "She was kind of our 'championship' pitcher. But we do have two very strong pitchers coming back in Jennifer and Leslie. I feel that they are only going to be stronger. They are both more experienced and both pretty healthy. And mentally, they've gotten a lot better."

White-Stokes had the most appearances (37) of all three pitchers last year and earned 16 victories. In 28 starts, she led the pitching staff with 24 complete games and seven shutouts. She led the FSU hurlers

with 164 strikeouts and ranked third in the ACC with a 1.53 ERA. At the plate, White had a .255 batting average and drove in eight runs.

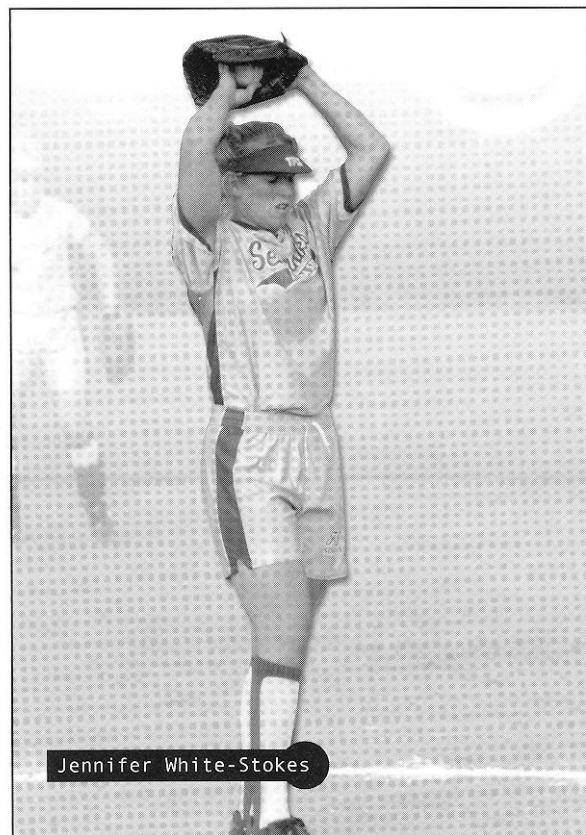
As a rookie, Malerich got a lot of game experience with 32 appearances, including 19 starts. She had an 11-8 record as the squad's number three pitcher.

Graf plans on a two-pitcher rotation, with White-Stokes and Malerich, much of the season but newcomer Robyn Gauger, from Gulf Coast Community College, will add depth on the mound. Gauger will also see action at other positions.

INFIELD

Aside from the catcher position, the Florida State infield will be relatively new. Senior Teresa Edenfield and senior Andi Lyons, who shared the starting duties behind the plate in 1999, return as the veterans in the infield.

Edenfield, who was named to the 1999 ACC All-Tournament Team, played in 37 games, hit .243 and had 13 RBIs. In her first season as a Lady Seminole, Lyons saw action in 49 games at catcher and designated hitter. She hit .245 and drove in 16 runs.



Jennifer White-Stokes

2000 Outlook

"As the only returning starters in the infield, both Teresa and Andi will be even more valuable this season," Graf said. "Their leadership for the young players and their experience with the pitching staff will be a key to our success."

Returning senior Becky Wallace and junior Kelly Miller will likely share the reigns at first base. Wallace played in 45 games, mostly at designated hitter, and was fourth on the team with 19 RBIs. Miller played in 28 games and drove in 10 runs in 51 at bats.

"While neither Becky or Kelly have been full-time starters, they each have solid game experience and are each very capable of successfully holding down the job at first base," Graf said.

Slated for starting honors at second base is freshman Brandi Stuart and junior Stephanie Elowsky will serve as backup. Third base will be handled by sophomore Becky Brock who played in 11 games as a freshman. Transfer Natalie Bennett will get the nod at shortstop while freshman Beth Wade will likely wear a redshirt this season.

"It's going to be an interesting year in the infield," Graf said. "Getting the unit to gel, the line-up combinations worked out and figuring out who's going to win the battles is going to be a challenge. We have a lot of close battles in which nobody has really come forward and taken the position. We've got to get into some game situations and get experience that you can't duplicate in practice. Once we do that, and find out who's strong at the plate, then we can start settling into a lineup."

OUTFIELD

Like the infield, the outfield will have a new look in 2000. Sophomore Kimmy Carter is the lone returnee in the outfield and will hold down the starting job in right field for the second straight season. Carter, a solid fielder, is also the leading, returning hitter with a .294 batting average and 21 RBIs.

Center field will likely be occupied by junior newcomer Rita Brooks, who possesses the most speed on the team. The two catchers, Teresa Edenfield and Andi Lyons, will rotate in left field while newcomer Staci Brandon could also vie for playing time there. Returnees Felecia Williams and LaTanya Mitchell will also provide depth to the outfield.

"Kimmy is a solid player and we have great confidence in her offensively and defensively," Graf said. Rita is by far our fastest player and she can really cover a lot of ground in center. We have several players who have the ability to play left field for us. That position could boil down to who's

hitting the ball the best."

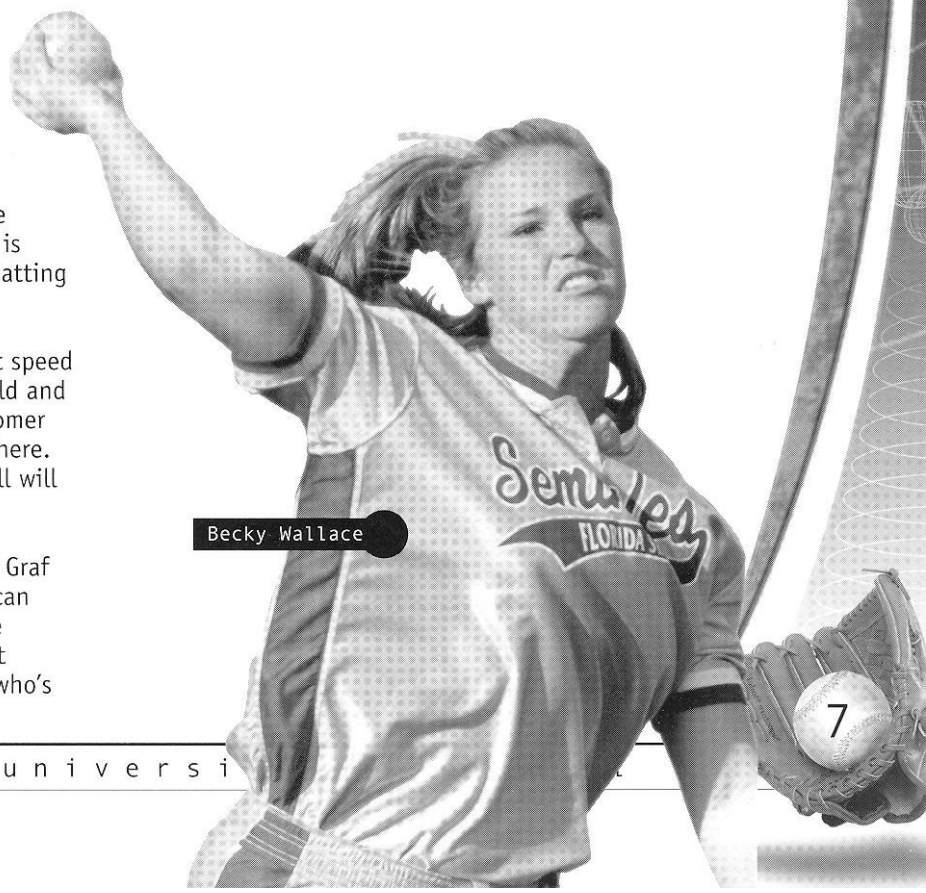
SCHEDULE

As always, Florida State will have a very strong schedule. The Lady Seminoles will host three tournaments at the Seminole Softball Complex and travel four different directions to compete in four other regular-season tournaments. The Tribe will head south to the Florida Atlantic Tournament in late February. In early March, FSU will head north for the annual NFCA Leadoff Classic in Columbus, Ga. In mid-March, the Lady Seminoles will travel west to participate in the Fresno State Classic in Fresno, Calif., and will end the month with a tournament at Tennessee-Chattanooga.

"We play a lot of the teams that played in regionals last year," Graf said. "We've got a very tough schedule, but it will give us a chance to learn what we need to work on and how we stack up against the top teams in the country and how they stack up against us."

At the end of April, Florida State will host the Atlantic Coast Conference Tournament for the second straight season and sixth time overall.

"The ACC is getting tougher and tougher each year," Graf said. "I feel that the ACC is beginning



Becky Wallace

2000 Outlook

to establish a reputation as a strong conference. Maryland earned a lot of respect for our conference when they went out and beat Arizona last year in regionals. I think that proves on the field that we are a conference that can compete with anybody. It's going to a tough situation to come back and repeat as the ACC champion, but that is certainly one of our goals."

Graf on ...

The team offensively ...

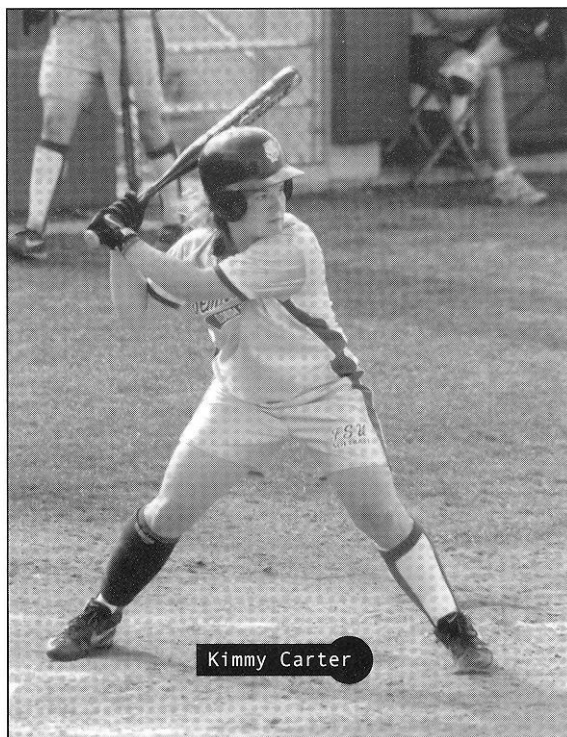
While Florida State may have increased its offensive power this season, they may have lost some speed. Danielle Cox, a first team All-American who led the team and the nation with 73 stolen bases last season and also led the team with a record 98 hits and .432 batting average has moved on to the professional ranks. The Lady Seminoles will have the task of replacing her offensive production.

"I think we will have some more power, but I think we've lost some speed. Rita (Brooks) is very, very fast, but doesn't have the experience and is going to have to work to get on base and get herself into some stealing opportunities. We are going to miss Danielle Cox. She had just a awesome senior season. But I think we are going to put the ball in play more and hit the ball a little harder and will hopefully be a better offensive team then we were last year."

The coaching staff ...

Two new assistant coaches round out the 2000 staff with the arrival of Louie Berndt and Heather Compton. Berndt was an assistant coach at FSU in 1989 and returns to Tallahassee after serving as the head coach at Marshall University the past six seasons. Compton, a standout collegiate pitcher from UCLA, spent the summer playing professionally with the Tampa Bay Firestix.

"I am very excited about our new coaches. I think we have very good experience in Louie. She's very enthusiastic, very knowledgeable and a great recruiter. Heather, although this is her first college coaching job, has played internationally, played ASA ball and played professionally and brings an experience level that I think our players, especially our pitchers, can relate to. We are working well as a group which is very important as we enter this season and really begin to learn a lot about each other. Our



chemistry as a staff is very evident to the players which is so important."

Postseason play...

"We want to get back to regionals. We felt like we got snubbed last year and we were playing better than anybody at the end of the season. We swept the conference tournament, but we didn't get the respect from the teams in our region, so we are going to play more teams from our region. I hope we get that respect back. We've got a lot to prove this year."

The new Seminole softball complex...

"I think everybody who plays here, plays better. It's the type of facility that you get out and get excited about playing on. I definitely think that we play on one of the nicest facilities in the country. It's really nice to have an all inclusive facility with everything right here and that's what makes us special. There are some nice fields out there, but they don't have everything right there."

2000 Outlook

2000 FLORIDA STATE SOFTBALL FACTS

FSU QUICK FACTS

Location - Tallahassee, FL
Enrollment - 30,519
Founded - 1857
Colors - Garnet & Gold
Nickname - Lady Seminoles
President - Sandy D'Alemberte
Conference - Atlantic Coast (NCAA Div. I)

ATHLETIC ADMINISTRATION

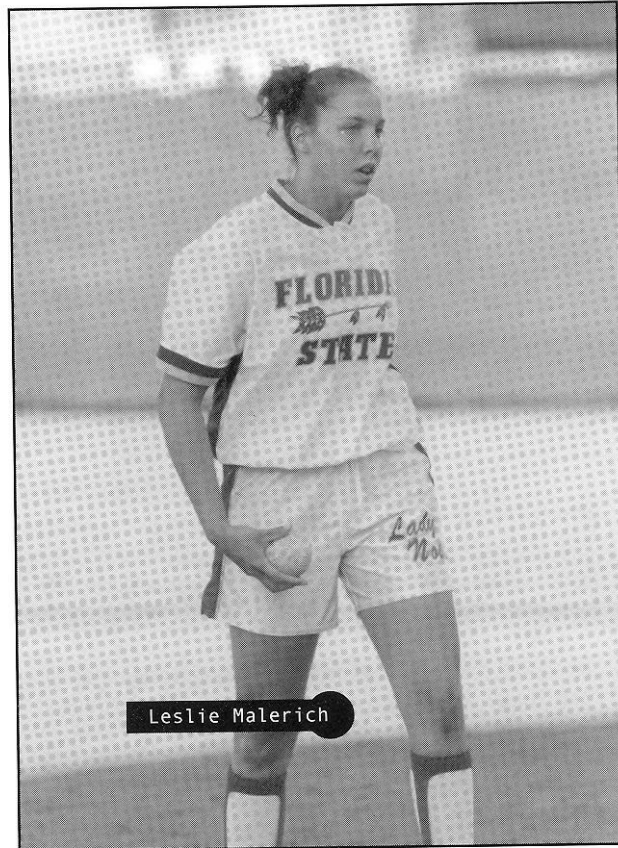
Athletics Director - Dave Hart, Jr.
Associate Athletics Director - Kim Record
AD's Phone - 850/644-1079

SPORTS INFORMATION STAFF

SID - Rob Wilson
Softball Contact - Tina Thomas
SID Address - PO Box 2195, Tallahassee, FL, 32316
SID Phone - 850/644-1065
SID FAX - 850/644-3820
Thomas' Home Phone - 850/514-3351
Thomas' Email Address - tthomas@mailers.fsu.edu
Press Box Phone - 850/645-3243
ACC Faxback - 336/854-5859, box score - 32552,
release - 32550, statistics - 32351, schedule/roster
- 32554
Internet Site - www.seminoles.com

SOFTBALL STAFF

Head Coach - Dr. JoAnne Graf (FSU '75)
Career and FSU Record - 1004-285-6
Season at FSU - Entering 22nd
Assistant Coaches - Louie Berndt, Heather Compton
SB Office Phone - 850/644-2386
Best time to call - Mornings
Athletic Trainer - Robin Gibson
Equipment Manager - Melissa Dawson



Leslie Malerich

1999 RESULTS/2000 OUTLOOK

Record - 40-25-1
ACC Record - 6-2/Tied 1st
ACC Tournament - 3-0/1st
Postseason - None
Final National Ranking - None
NCAA Regional Appearances - 12 (1986-96, 98)
World Series Appearances - 5 (1987, 1990, 1991, 1992, 1993)
Letterwinners Returning/Lost - 11/8
Starters Returning/Lost - 3/6
Home Field/Capacity - Seminole Softball Complex/1,000

TOP RETURNING PLAYERS

Jennifer White-Stokes Jr., RHP, 1.53 ERA, 16-16, 164 strikeouts
Kimmy Carter So., RF, .294, 19 runs, 37 hits, 21 RBI



Dr. JoAnne Graf



**FLORIDA STATE SOFTBALL
HEAD COACH**

**Dr. JoAnne Graf • Florida State '75
22nd Season • 1004-285-6**

Dr. JoAnne Graf and Florida State University softball. You simply can't think of one without thinking of the other, because for the past 21 years, this relationship has developed into the creation of one of the nation's premier softball programs.

Over the past two decades, Graf has maintained the philosophy that hard work and dedication produce positive results. It is because of this attitude, there are not many things that Graf has not accomplished in her 21-year coaching career.

It seems with each and every year, Graf celebrates yet another landmark accomplishment. On May 6th in a 2-1 victory over rival-South Florida, Graf became the first coach in Division I softball to earn 1,000 Division I wins, including slow and fast pitch competition. Adding even more flavor to this amazing feat is that each of every one of Graf's 1,000 victories came at Florida State. Now that's loyalty at its finest!

Graf has been named the ACC Coach of the Year three times after leading the Lady Seminoles to consecutive conference titles in 1992 and 1993 and co-championship status in 1997. In 1995, she was selected the ACC/Metro Conference Coach of the Year after guiding Florida State to a 9-1 league record and an automatic bid to NCAA regional play. She has led FSU to 11 seasons of 50 wins or more, including two seasons when the Lady 'Noles recorded more than 60 victories. She has guided FSU to seven ACC championship titles.

Under Coach Graf's direction, Florida State has been to the NCAA College World Series in Oklahoma City five times and in 16 years of fast-pitch competition, she has directed the Lady Seminoles to 12 regional tournament appearances. Florida State has also finished among the nation's top 13 teams in 11 of the past 14 seasons, with its highest ranking coming in 1990 when the Lady Seminoles placed third at the College World Series. But the success didn't begin there. In her first five years at Florida State, Graf accumulated 219 wins playing the best slow-pitch competition in the nation. She claimed two national titles while coaching five All-Americans as she established a solid basis to build upon.

LADY SEMINOLE SOFTBALL UNDER DR. JOANNE GRAF

YEAR	RECORD	PCT.
1979	26-15	.634
1980	37-10	.787
1981	54- 7	.882
1982	56-10	.848
1983	46-11	.807
1984	41- 5-2	.875
1985	50-12-2	.797
1986	42- 7	.857
1987	50-14	.781
1988	44-14	.759
1989	39-14	.736
1990	47-16	.750
1991	62-12	.838
1992	63-9	.875
1993	52-9	.852
1994	50-19	.724
1995	58-15	.795
1996	51-21	.708
1997	45-19-1	.700
1998	51-21	.708
1999	40-25-1	.614
Career	1004-285-6	.778

Graf, who was voted the South Region Coach-of-the-Year in 1986, has seen 59 of her players selected to NCAA All-South Region teams, including two players in 1999. Her coaching has produced 11 All-Americans in the 1990s alone, including four first team selections in left fielder Danielle Cox (1999), center fielder Shama Wilson (1996), second baseman Lisa Davidson (1993) and shortstop Tiffany Daniels (1987).

A 1975 graduate of Florida State, Graf returned to her alma mater after two years at the University of North Carolina-Greensboro where she earned her master's degree in physical education. Graf also worked in the athletic department at UNC-Greensboro as head

coach for the university's men's and women's swim teams while also serving as assistant softball coach.

Graf, who serves as director of the FSU softball camp each summer, is a former president of the Florida Collegiate Athletic Association. Presently, Graf is serving as a member of the NCAA Softball Committee and has chaired the NCAA Softball Advisory Committee for the South Region.

In 1992, Graf added "Dr." to her name after completing her doctorate degree in athletic administration at FSU.

The softball careers of many former Lady Seminoles and FSU assistant coaches did not end once they moved on from the friendly confines of Lady Seminole Field in Tallahassee. Here's a look at some FSU alumni and former assistant coaches who are currently serving in the softball coaching field.

- Leslie Adams (player, 1992-93)**
Assistant Coach, Louisville
- Michelle Bolster (asst. coach, 1996-99)**
Assistant Coach, Arizona State
- Connie Clark (asst. coach, 1990-95)**
Head Coach, Texas
- Tina Kyler Deese (player, 1984-85, asst. coach, 1986)**
Head Coach, Auburn
- Jo Evans (asst. coach, 1984)**
Head Coach, Texas A&M
- Stephanie Ferlita (player, 1995-96)**
Assistant Coach, Charleston Southern
- Kym Averill Gaudreau (player, 1989)**
Head Coach, Lake Mary High School
- B. J. Hodges (player, 1990-91)**
Head Coach, Wolfson High School
- Kelley Kirkland (asst. coach, 1992-93)**
Head Coach, Georgia Southern
- Marla Looper (player, 1993-94)**
Assistant Coach, Texas
- Jesse McGregor (player, 1996-99)**
Volunteer Assistant Coach, Texas
- Susan Painter (player, 1981-84)**
Head Coach, Gulf Coast C.C.
- Carrie Partlowe (vol. asst. coach, 1998-99)**
Assistant Coach, Wichita State
- Chandelle Schulte (asst. coach, 1997-99)**
Head Coach Charleston Southern
- Penny Siqueiros (player, 1989-92; asst. coach 1992-95)**
Head Coach, Emory
- Windy Taff (player, 1996-97)**
Head Coach, Leon High School
- Windy Weltz (player, 1993-97)**
Head Coach, Georgia College & State University

GRAF'S MILESTONE VICTORIES

No.	Date	Score/Opponent
1000	May 6, 1999	2-1 vs South Florida
900	April 10, 1997	6-0 vs. North Carolina
800	April 7, 1995	15-0 vs. North Carolina
700	April 17, 1993	4-2 vs. Virginia
600	February 23, 1992	2-0 vs. West Florida
500	March 13, 1990	5-0 vs. Virginia
400	April 26, 1987	2-0 vs. Oklahoma State
300	April 5, 1985	10-1 vs. NE Louisiana
200	March 26, 1983	3-2 vs. Florida
100	April 10, 1981	3-2 vs. NC State
1	February 26, 1979	3-1 vs Chipola College

DIVISION I SOFTBALL TOP 10 MOST WINNINGEST ACTIVE COACHES (By Percentage)

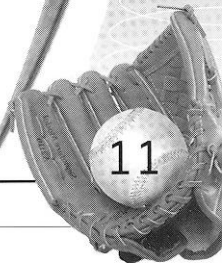
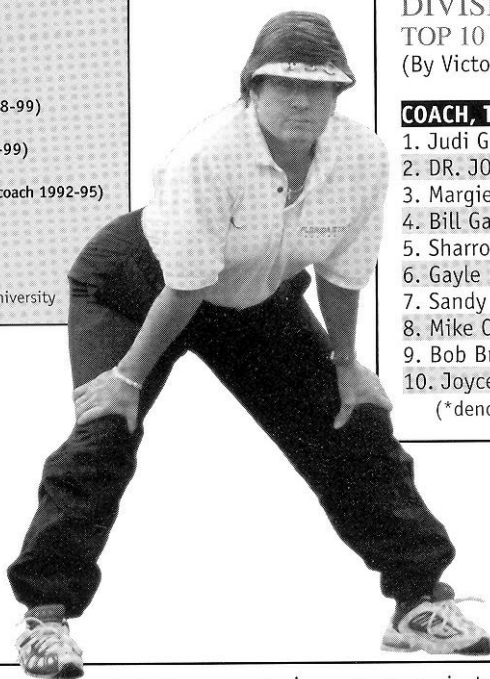
includes Fast Pitch competition only

COACH, TEAM	YRS	RECORD	PCT
1. Sue Enquist, UCLA	11	533-105-0	.835
2. Mike Candrea, Arizona	14	747-159-0	.825
3. DR. JOANNE GRAF, FLORIDA STATE	16	785-232-6	.770
4. Margie Wright, Fresno State	20	885-290-3	.753
5. Yvette Girouard, La. Lafayette	19	714-235-0	.752
6. Mike McGovern, Ill.-Chicago	10	484-177-1	.732
7. Joyce Compton, South Carolina	17	723-277-1	.723
8. Bill Galloway, Louisiana Tech	21	827-321-2	.720
9. Patty Gasso, Oklahoma	5	237-93-0	.718
10. Sandy Fischer, Oklahoma State	21	792-313-3	.716

DIVISION I SOFTBALL TOP 10 MOST WINNINGEST COACHES (By Victories-All Time)

COACH, TEAM	YRS	RECORD
1. Judi Garman, Cal St. Fullerton*	28	1124-406-4
2. DR. JOANNE GRAF, FLORIDA ST.	21	1004-285-6
3. Margie Wright, Fresno State	20	885-290-3
4. Bill Galloway, Louisiana Tech	22	871-332-2
5. Sharron Backus, UCLA*	21	847-167-3
6. Gayle Blevins, Iowa	20	796-384-5
7. Sandy Fischer, Oklahoma State	21	792-313-3
8. Mike Candrea, Arizona	14	747-159-0
9. Bob Brock, Texas A&M*	18	731-301-1
10. Joyce Compton, South Carolina	17	723-277-1

(*denotes inactive coach)



Louie Berndt



**FLORIDA STATE SOFTBALL
ASSISTANT COACH**
**Louie Berndt • Western Michigan '75
1st Season**

Louie Berndt, an FSU assistant coach in 1989, returned to Florida State in July to serve as the top assistant coach for the Lady Seminole softball program.

Berndt comes to FSU after serving as the head softball coach at Marshall University the past six seasons. Berndt was brought to Marshall to help jumpstart its softball program which was reinstated in 1993. In 1994, Berndt made her head coaching debut and guided the Thundering Herd to a 17-21 record. In 1995, in just her second season at the helm, Berndt led Marshall to its first ever Southern Conference Tournament title and to its first NCAA Tournament. She was named the Southern Conference Coach of the Year in 1996 after the squad set numerous school records with a 39-23 record.

Berndt also developed a softball Booster Club while at Marshall and designed a new 1,000-square foot softball locker room, complete with a players' lounge, an adjacent 1,680-square foot indoor batting cage and a playing field located in the heart of campus. Several of Berndt's

players at Marshall received all-conference accolades, including back-to-back Freshman "Player of the Year" honors.

Berndt is a graduate of Western Michigan University, where she was a two-time All-American at second base. She led the Broncos to three NCAA Tournament bids, including two World Series berths. The team leader in hitting three straight seasons, Berndt had a career .321 batting average and .973 fielding percentage. An All-Mid American Conference and NCAA All-Region selection, Berndt was also invited to the Pan American Team tryouts and was selected to play in the Tri-Nation Games in Colorado Springs, Colo., during her senior year.

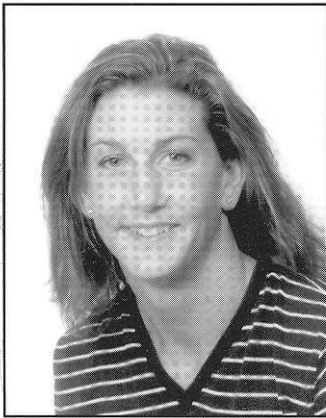
In 1985, Berndt turned her efforts to the coaching ranks as an assistant coach at Nicholls State. She helped lead Nicholls to a school-record 47 wins that year. In 1987, the Lady Colonels won the Gulf Star Conference Championship. Berndt joined the Florida State staff as a pitching and outfield coach for the 1989 season. She helped the Lady Seminoles to a Top 20 ranking and a second-place finish at the Southwest Regionals. From 1989 to 1993, Berndt helped rebuild a struggling Ohio State softball program. The Buckeyes won the Big Ten Championship in 1990 and advanced to NCAA Regionals.

Some of Berndt's responsibilities at Florida State will include recruiting, coaching the outfield and serving as the coordinator of the JoAnne Graf softball summer camps.



Head Coach Dr. JoAnne Graf, Assistant Coaches Louie Berndt and Heather Compton, Athletic Trainer Robin Gibson

Heather Compton



**FLORIDA STATE SOFTBALL
ASSISTANT COACH**
Heather Compton • UCLA '94
1st Season

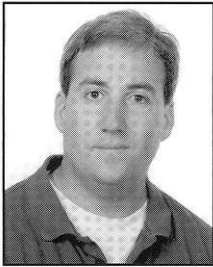
Former UCLA standout Heather Compton, a pitcher with the Tampa Bay Firestix of the Women's Professional Softball League, joined the Florida State softball staff as an assistant coach in August.

An outstanding collegiate pitcher, Compton is a 1994 graduate of UCLA where she earned a degree in political science while lettering four years for the Bruins' softball team. She led UCLA to World Series appearances in each of her four seasons and was a member of the Bruins' 1990 and 1992 national championship teams. Compton garnered first team All-American honors in 1991 and was also named to the All-College World Series team. She ranks among UCLA's career leaders in five categories, including wins (67), appearances (84), strikeouts (540), innings pitched (538.2) and ERA (0.52).

Compton also has international playing experience. She was a member of the USA National Team that earned a gold medal at the 1994 Pan American Games in Guatemala and then went on to play for league champion Poneke Kilbernic Softball Club in New Zealand from 1994 through 1996. She spent the summer of 1996 with the Brioski Junior Softball Team and posted the best record in the Italian Pro Softball League. Compton played with the ASA's Southern California Jazz last summer before joining the WPSL this summer as a pitcher for the Firestix.

Compton, who also taught three years of social studies and special education at Righetti High School in California, will serve as the Seminoles' pitching coach and also teach two physical education classes at FSU.

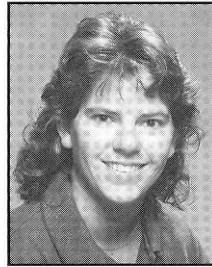
Softball Support Staff



Craig Campanozzi
SEMINOLE PRODUCTIONS



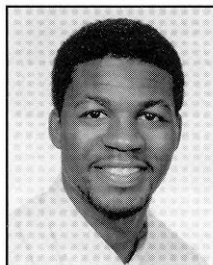
Lacey Davis
STUDENT ATHLETIC
TRAINER



Melissa Dawson
FACILITIES/
GAME MANAGEMENT



Gloria Jordan
SOFTBALL SECRETARY



Dexter Lamont
SOFTBALL SPORTS
PROMOTIONS DIRECTOR



Samone Mitchell
TEAM MANAGER

Roster

2000 FLORIDA STATE SOFTBALL ROSTER

NO.	NAME	POS.	YR.	B/T	HOMETOWN/PREVIOUS SCHOOL
1	Staci Brandon	3B/OF	Jr.	L/R	Peoria, AZ/Phoenix College
2	Becky Brock	SS	So.	R/R	Macclenny, FL/Baker County HS
3	Felicia Williams	OF	Sr.	L/R	Orlando, FL/Valencia CC
8	Kimmy Carter	OF/C	So.	R/R	Palm Bch Gardens, FL/The King's Acad.
10	Andi Lyons	C	Sr.	R/R	Oldsmar, FL/St. Petersburg JC
11	Beth Wade	3B/1B	Fr.	R/R	Colquitt, GA/Miller County HS
12	Jennifer White-Stokes	P	Jr.	R/R	Tuttle, OK/Tuttle HS
14	Teresa Edenfield	C	Sr.	R/R	Marianna, FL/Maclay HS
15	Rita Brooks	OF	Jr.	L/R	Cottondale, AL/North Florida CC
17	Becky Wallace	1B	Sr.	R/R	Naples, FL/Barron Collier HS
20	LaTanya Mitchell	OF	So.	L/R	Ft. Myers, FL/Riverdale HS
23	Leslie Malerich	P	So.	R/R	Merrillville, IN/Merrillville HS
24	Jackie Hirschfeld	3B	So.	R/R	Tampa, FL/Tampa Catholic
25	Robyn Gauger	P/1B/OF	Jr.	R/R	St. Mark's, FL/Gulf Coast CC
29	Brandi Stuart	2B/1F	Fr.	R/R	Cerritos, CA/Cerritos HS
32	Stephanie Elosky	SS	Jr.	R/R	Pensacola, FL/Pensacola JC
43	Natalie Bennett	SS/3B	Jr.	R/R	Belleville, IL/Drake University
48	Kelly Miller	1B	Jr.	R/R	Vallejo, CA/Vallejo HS

Head Coach: Dr. JoAnne Graf (1004-285-6/entering 22nd year)
 Assistant Coaches: Louie Berndt, Heather Compton
 Athletic Trainer: Robin Gibson

FSU IN TOURNEY PLAY

(all listed game times are Eastern)

SEMINOLE CLASSIC

Feb. 11-13 • Tallahassee, Fla.

2/11	FSU vs. Cal Berkeley	6:00 p.m.
2/12	FSU vs. Florida Atlantic	12:00 p.m.
2/12	FSU vs. FAMU	2:00 p.m.
2/13	Single Elimination Play	TBA

FLORIDA ATLANTIC TOURNAMENT

February 26-27 • Boca Raton, Fla.

2/26	Eastern Michigan vs. FSU	12:00 p.m.
2/26	Florida Atlantic vs. FSU	2:00 p.m.
2/27	FSU vs. Villanova	10:00 a.m.
2/27	FSU vs. Furman	12:00 p.m.

NECA LEADOFF CLASSIC

March 3-5 • Columbus, Ga.

3/4	FSU vs. Fresno State	12:00 p.m.
3/4	FSU vs. Harvard	2:30 p.m.
3/5	FSU vs. Texas	10:00 a.m.
3/5	Single Elimination Play	TBA

FRESNO STATE HALLOWELL CHEVROLET SOFTBALL CLASSIC

March 9-12 • Fresno, Ca.

3/10	FSU vs. UCLA	4:00 p.m.
3/10	FSU vs. Ole Miss	7:00 p.m.
3/11	Cal Poly vs. FSU	2:00 p.m.

3/12	Illinois State vs. FSU	2:00 p.m.
3/12	Texas Tech vs. FSU	4:00 p.m.

TALLAHASSEE DEMOCRAT

FLORIDA STATE INVITATIONAL

March 17-19 • Tallahassee, Fla.

3/17	FSU vs. Troy State	12:00 p.m.
3/17	FSU vs. Miami (OH)	4:00 p.m.
3/17	FSU vs. Kansas	6:00 p.m.
3/18	Bracket Play	TBA
3/19	Single Elimination Play	TBA

UTC FROST CUTLERY CHALLENGE

March 24-26 • Chattanooga, Tenn.

3/24	So. Louisiana vs. FSU	12:00 p.m.
3/24	UTC vs. FSU	6:00 p.m.
3/25	FSU vs. Wisconsin	12:00 p.m.
3/25	FSU vs. So. Louisiana	2:00 p.m.
3/26	Wisconsin vs. FSU	2:00 p.m.
3/26	FSU vs. UTC	4:00 p.m.

FSU TRI HEADER

April 8-9 • Tallahassee, Fla.

4/8	FSU vs. Southern Miss	1:00 p.m.
4/8	FAMU vs. FSU	5:00 p.m.
4/9	FSU vs. Southern Miss	3:00 p.m.
4/9	FAMU vs. FSU	5:00 p.m.

The Players

#14



HOMETOWN Marianna, FL
YEAR Senior
POSITION Catcher/DH
BATS/THROWS Right/Right

TERESA EDENFIELD

Will share the starting duties at catcher... is also a valuable designated hitter... will also see action in left field... is a very versatile player... **1999:** Was named to the ACC All-Tournament Team after helping the Lady Seminoles to another league championship... hit her first career homerun with a three-run shot over the left field wall against FAMU... played in 37 games, mostly at catcher... had 25 hits and 13 RBIs... had two doubles against UNC-Charlotte and six on the year... caught six players stealing and had five stolen bases...**1998:** Played in 46 games, mostly at designated player... had 16 RBIs off of 31 hits... has had five multiple hit games... had a 10-game hitting streak... among the team leaders with four doubles... drove in a season-high four runs vs. Mercer... **1997:** Saw most playing time of all rookies... played in 32 games as designated player or shortstop including 22 starts... was solid at shortstop in replacing the injured Jesse McGregor for four games... finished with three multiple hit games... **High School:** Letterwinner in softball and volleyball... earned all-state honors in both sports in junior and senior seasons... played her senior



season at Maclay after transferring from Marianna High School... earned team most valuable player honors for her junior and senior years... recipient of the team's Best Offensive Player award her freshman and sophomore years... also voted Best Defensive Player as a sophomore... excelled in academics as well in garnering National Honor and Beta Society recognition... a consistent honor roll student throughout high school... **Personal:** Majoring in psychology... born April 4, 1978.

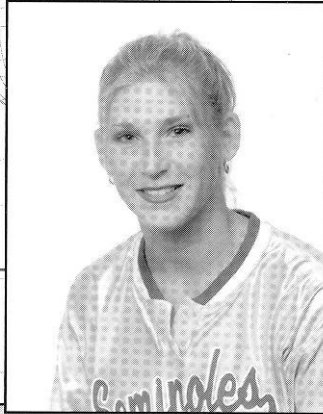
EDENFIELD AT THE PLATE...

Year	Avg.	G	AB	R	H	RBI	2B	3B	HR	BB	SO	SB-SBA
1997	.238	32	63	7	15	5	2	0	0	5	11	1-3
1998	.274	46	113	15	31	16	4	1	0	10	17	3-4
1999	.243	37	103	7	25	13	6	0	1	3	18	5-6
Totals	.254	115	279	29	71	34	12	1	1	18	46	9-13



The Players

#10



HOMETOWN Oldsmar, FL
YEAR Senior
POSITION Catcher
BATS/THROWS Right/Right

ANDI LYONS

Will be one of the squad's main catchers for the second straight season... will also see action in left field and as a designated hitter... solid behind the plate... has good experience with pitching staff...

1999: Played in 49 games between the catcher and designated hitter positions in first season at FSU... threw out 10 batters on the bases... hit her first home run as a Lady Seminole against FAMU... had two RBIs and two doubles against Mercer... with 16 RBIs on the season, was one of just eight players with double figure RBIs... was seventh on the team with 34 hits... was second on the team with 207 putouts... was a perfect 5-5 in stolen bases... **Junior**

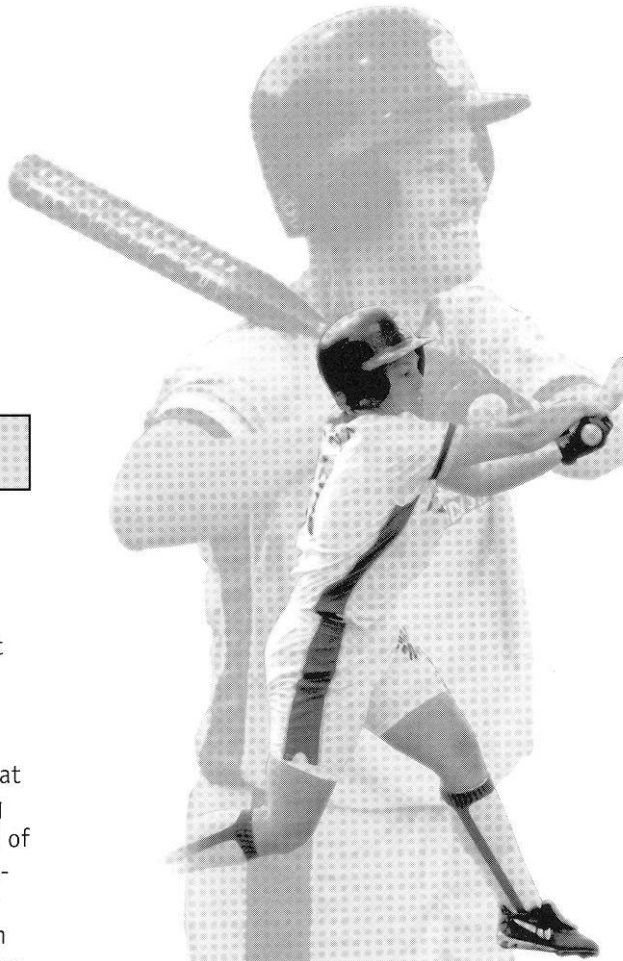
College: Played one season at Saint Petersburg and was named the Player of the Year after redshirting first year... was a first team all-state and all-conference catcher in 1998... also named to all-tournament team at state... garnered Most Valuable Player of the Tallahassee Community College Tournament... graduated with honors... **Personal:** Major is sports management...played ASA summer ball with the Bombers and the South Florida Sugar Canes... born November 11, 1976.

LYONS AT THE PLATE . . .

Year	Avg.	G	AB	R	H	RBI	2B	3B	HR	BB	SO	SB-SBA
1999	.245	49	139	22	34	16	5	0	1	9	24	5-5
Totals	.245	49	139	22	34	16	5	0	1	9	24	5-5

The Players

#17



HOMETOWN Naples, FL
YEAR Senior
POSITION First Base
BATS/THROWS Right/Right

BECKY WALLACE

Three-year letterwinner who will vie for starting duties at first base... a solid defensive player who is strong fundamentally... has improved her game offensively and is now a threat as a power hitter at the plate... is a team captain... **1999:** Saw most time at designated player, but was also a backup to veteran Corrie Williams at first base... has best season of her career and became a valuable player at the plate... played in 45 games with a .240 batting average... was fourth on the team with 19 RBIs off of 25 hits... hit her first career home run with a three-run blast against UNLV... was among the leader on the team with eight doubles... **1998:** Saw action in 14 games, mostly as a pinch hitter... came in to play first base... had two RBIs off of three hits... **1997:** Saw limited action as a rookie but provided depth to the team... saw action in 15 games... **High School:** Was a two-sport athlete at Barron Collier High School, lettering four years in both softball and volleyball... named all-county in both sports all four years... tabbed a third team all-state choice in softball as a senior... was twice named the team's most valuable player in volleyball and once in

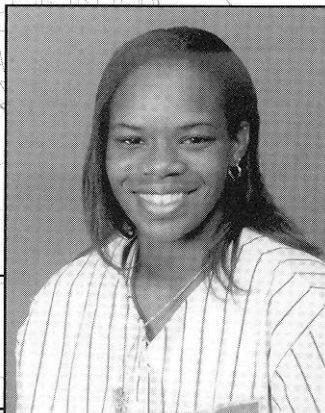
softball... captained the volleyball squad in 1995... was the runner-up for athlete of the year honors in season... solid student, earning high honors all four years with a 4.0 GPA... **Personal:** Major is marketing... was named to the Dean's List... was named to the ACC honor roll... played ball with the South Florida Sugar Canes... born May 8, 1978.

WALLACE AT THE PLATE...

Year	Avg.	G	AB	R	H	RBI	2B	3B	HR	BB	SO	SB-SBA
1997	.095	15	21	2	2	0	0	0	0	2	5	0-0
1998	.167	14	18	1	3	2	0	0	0	0	2	0-0
1999	.240	45	104	6	25	19	8	0	1	3	19	1-1
Totals	.210	74	143	9	30	21	8	0	1	5	26	1-1

The Players

#3

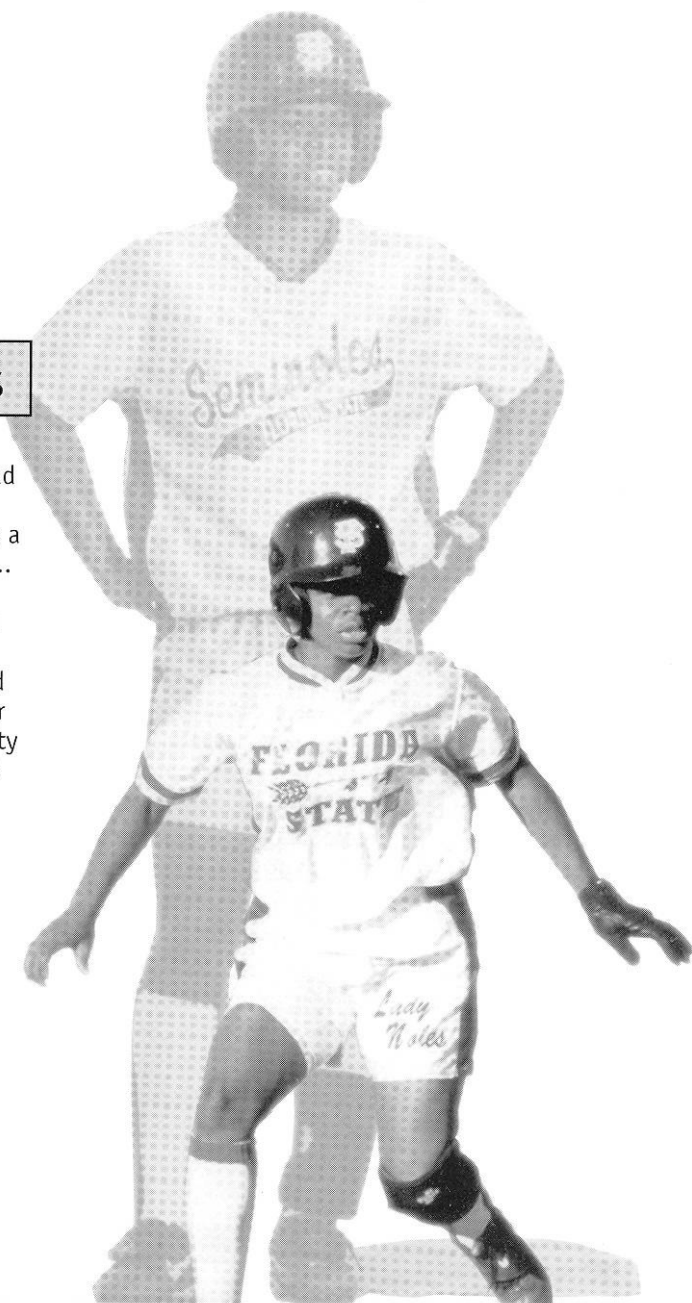


HOMETOWN Orlando, FL
YEAR Senior
POSITION Outfield
BATS/THROWS Left/Right

FELICIA WILLIAMS

Will provide valuable speed off the bench... will add depth to the outfield... is a solid, instinctive base runner... **1999:** Appeared in 30 games primarily as a pinch runner... played in right field against FAMU... had four stolen bases and scored 11 runs...

Junior College: Named most improved player and second team all-conference in sophomore year at Valencia Community College... **High School:** Played varsity softball all four years and was a cheerleader for two years... **Personal:** Is majoring in hospitality administration... is a member of the Black Student Union and NAACP... born February 23, 1978.



WILLIAMS AT THE PLATE...

Year	Avg.	G	AB	R	H	RBI	2B	3B	HR	BB	SO	SB-SBA
1999	.000	30	2	11	0	0	0	0	0	1	0	4-6
Totals	.000	30	2	11	0	0	0	0	0	1	0	4-6